



# Economic and Social Indicators

**Issue No 1756**

**Producer Price Index - Agriculture**

**3<sup>rd</sup> Quarter 2023**

**Released online : 21 November 2023**

<https://statsmauritius.govmu.org>

Price: Rs 40.00

Statistics Mauritius  
Ministry of Finance, Economic Planning and Development  
Port Louis

Note: Readers are invited to make the distinction between official data which are published in the Economic and Social indicators and the analysis presented for the benefit of general readers. Differences of opinion may arise regarding the analytical part but these do not in any way, undermine the quality of the data. The Editors welcome constructive critical comments.

# Producer Price Index – Agriculture (PPI-A)

## Third quarter 2023

(Base period year 2018 = 100)

### 1. Introduction

The Producer Price Index-Agriculture (PPI-A) gives a measure of the average change in the selling prices which producers receive for their agricultural products.

This issue of the Economic and Social Indicators presents PPI-A indices for the months of July, August, and September 2023 as well as figures for preceding months updated in the light of additional information that has now become available. Monthly weights are given in Table 13.

Table 11 presents the monthly indices as well as the quarterly and yearly averages for the agricultural sector. Comparative monthly indices for the agricultural sector are given in Table 12.

The methodology for the computation of PPI-A is given in the annex of this publication.

### 2. Producer Price Index - Agriculture: Third Quarter 2023

#### 2.1 Structure of PPI-A (Base period: 2018=100)

PPI-A covers two sub-groups, namely: "Crop products" and "Animals and animal products". "Crop products" is further subdivided into "Sugar cane" and "Other crop products". "Other crop products" heavily influences both the "overall" index and that of the sub-group "Crop products", of which it constitutes 34.7% and 62.0% of the respective weights.

#### 2.2 Changes in the monthly index

Fig 1: Overall monthly indices, October 2022 – September 2023

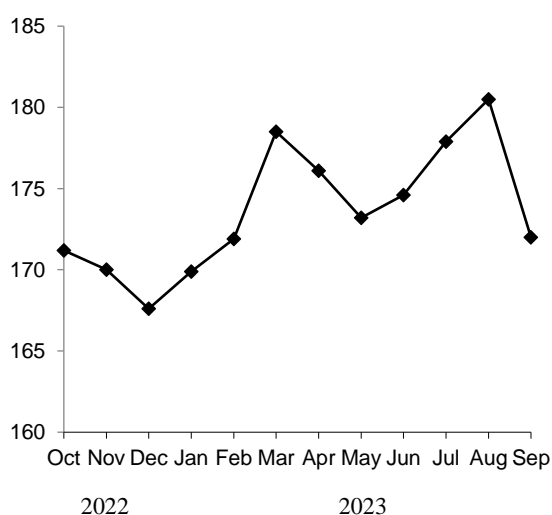


Figure 1 shows the monthly evolution of PPI-A for the period October 2022 to September 2023.

PPI-A, which was 174.6 in June 2023, decreased by 1.5% to reach 172.0 in September 2023. The monthly changes were as follows: July (+1.9%), August (+1.5%) and September (-4.7%).

The index for the sub-group "Crop products", which carries 55.9% of the total weight, increased by 0.8% from 190.2 in June 2023 to 191.8 in September. The monthly changes were as follows: July (+1.8%), August (+2.4%) and September (-3.3%).

#### 2.2.1 Sugar cane

The index for the period July to September 2023 was 267.8 based on the forecasted price of sugar for the crop year 2023-2024. This represents an increase of 1.7% over the price of sugar for the crop year 2022-2023.

#### 2.2.2 Other crop products

The index for "Other crop products" which was 145.5 in June 2023, decreased by 0.1% to reach 145.4 in September 2023, mainly due to decreases in the prices of fresh vegetables (tomato) (-6.5%), partly mitigated by increases in the prices of fruits and nuts (banana) (+17.0%).

In July, the index increased by 1.9%, mainly due to increases in the prices of fruits and nuts (pineapple and banana) (+14.3%), partly offset by decreases in the prices of fresh vegetables (tomato) (-2.1%).

In August, the index increased by 5.1%, mainly due to increases in the prices of fruits and nuts (pineapple) (+12.0%) and fresh vegetables (other fresh vegetables) (+3.9%).

In September, the index decreased by 6.7%, mainly due to decreases in the prices of fresh vegetables (tomato, creepers, beans, and other fresh vegetables) (-8.1%) and, fruits and nuts (pineapple) (-8.6%).

#### 2.2.3 Animals and animal products

The index for the sub-group "Animals and animal products" which was 154.9 in June 2023, decreased

by 5.1% to reach 147.0 in September, mainly due to decreases in the prices of poultry (-9.8%), partly mitigated by increases in the prices of eggs (+11.0%).

In July, this index increased by 1.9%, mainly due to increases in the prices of eggs (+11.0%).

In August, the index remained unchanged.

In September, the index fell by 6.8%, due to decreases in the prices of poultry (-9.8%).

More details of changes on a month-to-month basis are given in Table 6 and changes over the corresponding month of the previous year in Table 7.

### 2.3 Changes in the quarterly index

Fig 2: Overall quarterly indices, 4<sup>th</sup> quarter 2021 – 3<sup>rd</sup> quarter 2023

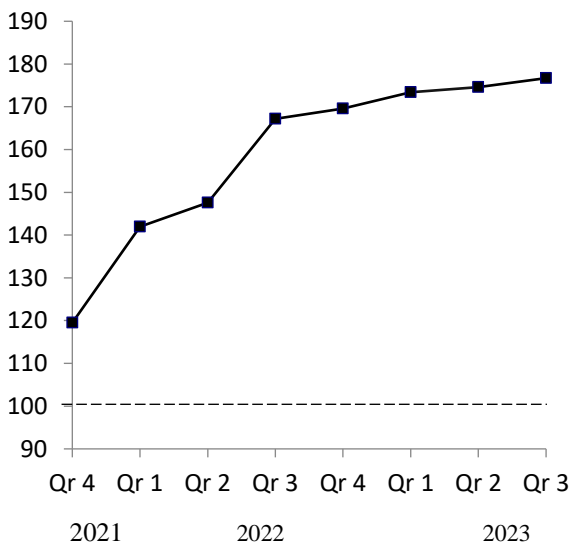


Figure 2 and Table 8 show the movement of quarterly PPI-A covering the period of the 4th Quarter 2021 to the 3rd Quarter 2023.

The overall index for the third quarter of 2023 increased by 1.2% when compared to the previous quarter and by 5.7% when compared to the corresponding quarter. Percentage changes on a quarterly basis and the net contributions of commodity groups and products to the overall index are given in Table 9.

### 2.4 Changes in the yearly index

The average prices which producers received from the sale of agricultural products in the year 2022 were 32.6% higher compared to the year 2021. The annual indices for the years 2020 - 2022, annual changes and the net contributions of commodity

groups and products to the change are presented in Table 10.

Statistics Mauritius  
Ministry of Finance, Economic Planning and  
Development  
Port Louis  
21 November 2023

#### **CONTACT PERSONS:**

Ms. A.D. Soobhug  
Statistician  
[asoobhug@govmu.org](mailto:asoobhug@govmu.org)

Ms. B.Z. Lall Mahomed  
Senior Statistical Officer  
[bzallmahomed@govmu.org](mailto:bzallmahomed@govmu.org)

Statistics Mauritius  
L.I.C Centre  
J. Kennedy Street  
Port Louis  
Telephone: (230) 208 1800  
Fax: (230) 211 4150

**Monthly Producer Price Index - Agriculture (PPI-A)**

(Base period: Year 2018=100)

**Table 1: Monthly indices by commodity group and product, January 2023 - September 2023**

Commodity Group	Weight	2023								
		January	February	March	April	May	June	July	August	September
<b>Crop Products</b>	<b>558.9</b>	<b>183.2</b>	<b>193.3</b>	<b>205.1</b>	<b>199.1</b>	<b>193.7</b>	<b>190.2</b>	<b>193.7</b>	<b>198.4</b>	<b>191.8</b>
<b>Sugar Cane</b>	<b>212.1</b>	<b>263.2</b>	<b>263.2</b>	<b>263.2</b>	<b>263.2</b>	<b>263.2</b>	<b>263.2</b>	<b>267.8<sup>1</sup></b>	<b>267.8<sup>1</sup></b>	<b>267.8<sup>1</sup></b>
<b>Other crops products</b>	<b>346.7</b>	<b>134.2</b>	<b>150.5</b>	<b>169.5</b>	<b>159.9</b>	<b>151.2</b>	<b>145.5</b>	<b>148.3</b>	<b>155.9</b>	<b>145.4</b>
<b>Fresh Vegetables<sup>2</sup></b>	<b>209.7</b>	<b>126.4</b>	<b>147.7</b>	<b>174.6</b>	<b>162.1</b>	<b>151.0</b>	<b>146.1</b>	<b>143.0</b>	<b>148.6</b>	<b>136.6</b>
Beans	7.8	186.9	220.2	200.0	167.0	151.1	148.4	163.9	155.5	124.9
Brinjal	7.7	151.0	186.3	117.4	125.6	190.9	258.7	249.6	208.1	187.8
Cabbage	11.9	151.6	157.1	146.4	119.3	96.9	124.1	167.0	158.4	158.4
Cauliflower	3.0	142.2	168.2	168.9	191.1	191.1	190.2	163.0	151.3	169.2
Carrot	13.6	94.8	119.2	146.3	156.3	187.3	145.5	138.2	136.8	192.5
Onion	10.9	162.4	162.4	...	...	...	167.5	167.5	167.5	167.5
Tomato	63.3	77.9	107.3	212.2	206.3	163.1	145.0	119.7	114.9	62.1
Creepers	60.8	155.6	198.2	157.3	125.2	125.0	136.9	157.0	153.3	131.8
Other fresh vegetables	30.7	128.3	143.6	145.3	144.1	144.8	136.8	130.4	157.6	140.3
<b>Fruits and nuts<sup>2</sup></b>	<b>67.6</b>	<b>161.5</b>	<b>178.9</b>	<b>188.5</b>	<b>180.1</b>	<b>169.8</b>	<b>154.2</b>	<b>176.3</b>	<b>197.4</b>	<b>180.4</b>
Banana	12.8	205.7	205.7	205.7	205.7	205.7	205.7	221.4	221.4	221.4
Pineapple	29.4	187.5	178.0	182.0	172.4	156.1	168.8	177.6	186.4	161.2
Other fruits	25.4	138.5	148.4	...	139.5	160.3	104.9	104.9	...	...
<b>Oilseeds and oleaginous fruits<sup>2</sup></b>	<b>5.8</b>	<b>97.0</b>	<b>97.1</b>	<b>120.4</b>	<b>125.3</b>	<b>124.2</b>	<b>90.9</b>	<b>99.9</b>	<b>99.9</b>	<b>107.8</b>
Groundnut	2.1	176.6	160.2	159.0	162.7	162.0	160.5	167.0	192.3	192.7
Coconut	3.7	71.8	71.8	71.8	71.8	71.8	71.8	81.7	81.7	81.7
<b>Edible roots and tubers<sup>2</sup></b>	<b>39.3</b>	<b>134.8</b>	<b>134.3</b>	<b>139.0</b>	<b>134.8</b>	<b>134.3</b>	<b>141.9</b>	<b>143.6</b>	<b>143.3</b>	<b>142.3</b>
Potato	30.8	133.4	133.4	...	...	...	143.6	143.6	143.6	143.6
Other Root crops	8.4	135.0	134.3	139.0	134.8	134.3	141.3	143.6	141.9	132.7
<b>Stimulant &amp; spice<sup>2</sup></b>	<b>14.6</b>	<b>121.1</b>	<b>122.8</b>	<b>121.3</b>	<b>122.0</b>	<b>124.0</b>	<b>123.1</b>	<b>124.6</b>	<b>127.4</b>	<b>127.9</b>
Tea	12.0	121.2 <sup>1</sup>	121.2 <sup>1</sup>	121.2 <sup>1</sup>	121.2 <sup>1</sup>	121.2 <sup>1</sup>	121.2 <sup>1</sup>	121.2 <sup>1</sup>	121.2 <sup>1</sup>	121.2 <sup>1</sup>
Ginger	2.5	119.6	159.2	167.9	162.0	174.1	167.2	152.3	155.4	138.1
<b>Flowers, ornamental plants</b>	<b>9.9</b>	<b>151.6</b>	<b>151.6</b>	<b>151.6</b>	<b>151.6</b>	<b>151.6</b>	<b>151.6</b>	<b>151.6</b>	<b>151.6</b>	<b>151.6</b>
Anthurium	3.0	88.8	88.8	88.8	88.8	88.8	88.8	88.8	88.8	88.8
Rose	1.1	171.1	171.1	171.1	171.1	171.1	171.1	171.1	171.1	171.1
Other flowers	5.8	180.0	180.0	180.0	180.0	180.0	180.0	180.0	180.0	180.0
<b>Animals &amp; Animal Products</b>	<b>441.1</b>	<b>153.1</b>	<b>144.7</b>	<b>144.9</b>	<b>147.0</b>	<b>147.2</b>	<b>154.9</b>	<b>157.8</b>	<b>157.8</b>	<b>147.0</b>
Cattle	43.7	116.2	116.2	118.6	118.6	119.8	119.8	119.8	119.8	119.8
Pigs	3.1	116.5	116.5	116.5	116.5	116.5	116.5	119.1	119.1	119.1
Goat	0.7	138.7	140.1	140.1	141.5	141.5	141.5	141.5	141.5	141.5
Deer	8.8	113.7	113.7	113.7	113.7	113.7	114.9	112.6	112.6	112.6
Poultry	283.9	172.2	172.2	172.2	172.2	172.2	172.2	172.2	172.2	155.3
Eggs	95.0	119.7	80.3	80.3	90.0	90.4	125.9	139.8	139.8	139.8
Milk	5.9	127.9	127.9	127.9	127.9	127.9	127.9	127.9	127.9	127.9
<b>Overall Index</b>	<b>1,000.0</b>	<b>169.9</b>	<b>171.9</b>	<b>178.5</b>	<b>176.1</b>	<b>173.2</b>	<b>174.6</b>	<b>177.9</b>	<b>180.5</b>	<b>172.0</b>

<sup>1</sup> Provisional

... Not applicable

<sup>2</sup> The indices are computed based on the method of variable baskets with fixed monthly weights in the base year as explained at paragraph 12 of Annex. The composition of these baskets is shown in Table 13.

**Monthly Producer Price Index - Agriculture (PPI-A)**

(Base period: Year 2018=100)

**Table 2: Monthly indices by commodity group and product, January 2022 - December 2022**

Commodity Group	Weight	2022											
		January	February	March	April	May	June	July	August	September	October	November	December
<b>Crop Products</b>	<b>558.9</b>	<b>137.5</b>	<b>164.8</b>	<b>187.8</b>	<b>180.4</b>	<b>156.3</b>	<b>140.6</b>	<b>174.7</b>	<b>180.3</b>	<b>188.6</b>	<b>186.5</b>	<b>182.1</b>	<b>177.7</b>
<b>Sugar Cane</b>	<b>212.1</b>	<b>172.7</b>	<b>172.7</b>	<b>172.7</b>	<b>172.7</b>	<b>172.7</b>	<b>172.7</b>	<b>263.2</b>	<b>263.2</b>	<b>263.2</b>	<b>263.2</b>	<b>263.2</b>	<b>263.2</b>
<b>Other crops products</b>	<b>346.7</b>	<b>115.9</b>	<b>160.0</b>	<b>197.0</b>	<b>185.1</b>	<b>146.2</b>	<b>120.9</b>	<b>120.5</b>	<b>129.6</b>	<b>142.9</b>	<b>139.6</b>	<b>132.4</b>	<b>125.3</b>
<b>Fresh Vegetables <sup>2</sup></b>	<b>209.7</b>	<b>110.8</b>	<b>179.0</b>	<b>230.7</b>	<b>211.9</b>	<b>150.6</b>	<b>106.8</b>	<b>103.9</b>	<b>112.5</b>	<b>128.2</b>	<b>122.8</b>	<b>119.7</b>	<b>120.4</b>
Beans	7.8	127.1	184.4	298.5	227.7	147.7	85.8	103.1	143.0	128.9	110.2	107.3	131.6
Brinjal	7.7	114.2	184.1	205.1	247.8	292.1	264.7	193.1	143.6	142.1	145.4	135.7	139.7
Cabbage	11.9	140.9	187.7	228.2	182.0	168.0	143.0	87.8	76.5	94.0	109.5	128.0	149.4
Cauliflower	3.0	152.9	170.6	190.4	176.9	172.0	155.9	124.2	92.3	102.4	121.0	127.4	129.1
Carrot	13.6	106.5	235.5	362.8	281.4	183.9	87.3	52.0	49.2	42.2	50.3	67.9	78.4
Onion	10.9	119.7	119.7	...	...	...	162.4	162.4	162.4	162.4	162.4	162.4	162.4
Tomato	63.3	73.2	169.9	237.5	270.8	141.5	75.7	64.4	55.4	47.1	65.8	73.7	77.1
Creepers	60.8	126.5	201.1	190.8	119.9	135.3	118.9	131.2	134.7	148.4	140.8	133.5	146.6
Other fresh vegetables	30.7	126.7	140.5	200.0	167.5	131.1	115.8	123.4	134.1	148.8	141.6	132.6	114.9
<b>Fruits and nuts <sup>2</sup></b>	<b>67.6</b>	<b>129.5</b>	<b>140.2</b>	<b>168.7</b>	<b>171.1</b>	<b>164.8</b>	<b>165.3</b>	<b>170.5</b>	<b>187.0</b>	<b>202.5</b>	<b>202.5</b>	<b>172.2</b>	<b>133.2</b>
Banana	12.8	129.8	129.8	169.7	169.7	169.7	169.7	169.7	169.7	169.7	169.7	186.8	186.8
Pineapple	29.4	140.0	143.7	168.3	171.3	164.8	189.1	184.9	194.9	217.9	227.3	208.8	181.7
Other fruits	25.4	124.1	141.1	...	177.1	151.8	129.5	124.7	...	...	165.2	144.6	118.8
<b>Oilseeds and oleaginous fruits <sup>2</sup></b>	<b>5.8</b>	<b>100.2</b>	<b>99.6</b>	<b>121.0</b>	<b>125.6</b>	<b>124.1</b>	<b>101.5</b>	<b>103.2</b>	<b>102.0</b>	<b>113.2</b>	<b>100.6</b>	<b>126.8</b>	<b>133.2</b>
Groundnut	2.1	150.8	137.5	150.1	152.2	150.5	152.2	152.2	164.3	190.2	167.3	172.5	177.5
Coconut	3.7	84.2	84.2	84.2	87.5	87.5	87.5	89.7	89.7	89.7	71.8	71.8	71.8
<b>Edible roots and tubers <sup>2</sup></b>	<b>39.3</b>	<b>117.8</b>	<b>124.0</b>	<b>122.4</b>	<b>112.6</b>	<b>107.7</b>	<b>120.4</b>	<b>124.0</b>	<b>130.2</b>	<b>131.9</b>	<b>133.2</b>	<b>133.4</b>	<b>133.1</b>
Potato	30.8	111.2	111.2	...	...	...	133.4	133.4	133.4	133.4	133.4	133.4	133.4
Other Root crops	8.4	118.8	124.5	122.4	112.6	107.7	116.2	110.1	113.8	120.4	130.7	133.2	130.6
<b>Stimulant &amp; spice <sup>2</sup></b>	<b>14.6</b>	<b>119.8</b>	<b>121.8</b>	<b>121.2</b>	<b>121.5</b>	<b>121.8</b>	<b>121.8</b>	<b>120.4</b>	<b>119.0</b>	<b>113.9</b>	<b>113.9</b>	<b>117.8</b>	<b>118.1</b>
Tea	12.0	121.2	121.2	121.2	121.2	121.2	121.2	121.2 <sup>1</sup>	121.2 <sup>1</sup>	121.2 <sup>1</sup>	121.2 <sup>1</sup>	121.2 <sup>1</sup>	121.2 <sup>1</sup>
Ginger	2.5	91.7	135.5	126.6	137.7	131.7	134.8	114.4	108.9	102.7	96.9	110.8	111.0
<b>Flowers, ornamental plants</b>	<b>9.9</b>	<b>128.3</b>	<b>128.3</b>	<b>128.3</b>	<b>128.3</b>	<b>128.3</b>	<b>128.3</b>	<b>128.3</b>	<b>129.6</b>	<b>151.0</b>	<b>151.0</b>	<b>151.0</b>	<b>151.0</b>
Anthurium	3.0	82.7	82.7	82.7	82.7	82.7	82.7	82.7	86.8	86.8	86.8	86.8	86.8
Rose	1.1	136.8	136.8	136.8	136.8	136.8	136.8	136.8	136.8	171.1	171.1	171.1	171.1
Other flowers	5.8	150.0	150.0	150.0	150.0	150.0	150.0	150.0	150.0	180.0	180.0	180.0	180.0
<b>Animals &amp; Animal Products</b>	<b>441.1</b>	<b>109.6</b>	<b>112.1</b>	<b>123.3</b>	<b>123.7</b>	<b>130.2</b>	<b>144.3</b>	<b>144.4</b>	<b>152.7</b>	<b>151.1</b>	<b>151.9</b>	<b>154.6</b>	<b>154.7</b>
Cattle	43.7	106.4	106.4	106.4	107.5	107.5	112.8	112.8	112.8	114.0	115.1	116.2	116.2
Pigs	3.1	111.1	111.1	113.3	116.5	116.5	116.5	116.5	116.5	116.5	116.5	116.5	116.5
Goat	0.7	122.1	125.7	125.7	125.7	127.0	130.8	130.8	130.8	130.8	134.7	138.7	138.7
Deer	8.8	105.1	105.1	105.1	105.1	105.1	114.4	120.0	120.0	120.0	116.3	113.7	113.7
Poultry	283.9	111.7	115.6	126.4	126.4	136.5	152.9	152.9	165.7	165.7	170.5	170.5	170.5
Eggs	95.0	105.2	105.5	125.1	125.3	125.3	138.1	138.1	138.3	130.0	119.5	131.7	132.0
Milk	5.9	103.5	103.5	103.5	119.8	119.8	119.8	127.9	127.9	127.9	127.9	127.9	127.9
<b>Overall Index</b>	<b>1,000.0</b>	<b>125.2</b>	<b>141.6</b>	<b>159.3</b>	<b>155.4</b>	<b>144.8</b>	<b>142.2</b>	<b>161.3</b>	<b>168.1</b>	<b>172.1</b>	<b>171.2</b>	<b>170.0</b>	<b>167.6</b>

<sup>1</sup> Provisional

... Not applicable

<sup>2</sup> The indices are computed based on the method of variable baskets with fixed monthly weights in the base year as explained at paragraph 12 of Annex. The composition of these baskets is shown in Table 13.

**Monthly Producer Price Index - Agriculture (PPI-A)**

(Base period: Year 2018 =100)

**Table 3: Monthly indices by commodity group and product, January 2021 - December 2021**

Commodity Group	Weight	2021											
		January	February	March	April	May	June	July	August	September	October	November	December
<b>Crop Products</b>	<b>558.9</b>	<b>122.0</b>	<b>125.5</b>	<b>135.1</b>	<b>134.3</b>	<b>141.2</b>	<b>139.7</b>	<b>135.8</b>	<b>130.5</b>	<b>135.0</b>	<b>132.7</b>	<b>128.9</b>	<b>135.1</b>
<b>Sugar Cane</b>	<b>212.1</b>	<b>144.9</b>	<b>144.9</b>	<b>144.9</b>	<b>144.9</b>	<b>144.9</b>	<b>144.9</b>	<b>172.7</b>	<b>172.7</b>	<b>172.7</b>	<b>172.7</b>	<b>172.7</b>	<b>172.7</b>
<b>Other crops products</b>	<b>346.7</b>	<b>108.0</b>	<b>113.6</b>	<b>129.1</b>	<b>127.8</b>	<b>138.9</b>	<b>136.5</b>	<b>113.3</b>	<b>104.7</b>	<b>112.0</b>	<b>108.2</b>	<b>102.1</b>	<b>112.1</b>
<b>Fresh Vegetables<sup>1</sup></b>	<b>209.7</b>	<b>101.5</b>	<b>106.7</b>	<b>133.0</b>	<b>130.5</b>	<b>153.9</b>	<b>152.4</b>	<b>114.1</b>	<b>95.5</b>	<b>105.1</b>	<b>98.0</b>	<b>92.1</b>	<b>104.5</b>
Beans	7.8	113.5	114.5	116.7	113.2	139.3	144.7	80.9	94.2	111.3	94.5	76.6	127.9
Brinjal	7.7	66.4	75.7	90.4	107.4	191.6	208.6	158.4	147.6	167.2	124.3	117.6	180.8
Cabbage	11.9	113.0	104.6	134.7	146.4	192.0	181.0	122.4	60.1	61.5	78.3	109.8	157.2
Cauliflower	3.0	135.8	184.7	178.4	165.6	171.3	162.1	107.1	80.5	101.3	140.2	144.3	140.2
Carrot	13.6	95.5	110.7	218.6	182.9	222.7	165.8	125.2	80.9	56.1	67.3	86.1	119.2
Onion	10.9	113.2	113.2	...	...	...	119.7	119.7	119.7	119.7	119.7	119.7	119.7
Tomato	63.3	92.9	110.5	136.9	133.1	145.5	145.4	86.5	46.8	20.5	42.7	52.1	55.1
Creepers	60.8	110.5	108.1	121.0	119.8	142.8	152.4	129.3	106.2	115.6	114.0	94.5	117.6
Other fresh vegetables	30.7	98.2	95.4	101.8	102.7	116.9	141.5	136.5	125.3	133.1	126.7	110.1	102.1
<b>Fruits and nuts<sup>1</sup></b>	<b>67.6</b>	<b>122.1</b>	<b>141.1</b>	<b>127.1</b>	<b>130.0</b>	<b>116.4</b>	<b>115.2</b>	<b>110.1</b>	<b>126.2</b>	<b>132.0</b>	<b>134.1</b>	<b>121.1</b>	<b>132.6</b>
Banana	12.8	138.9	138.9	138.9	138.9	119.9	119.9	129.8	129.8	129.8	129.8	129.8	129.8
Pineapple	29.4	104.9	142.9	122.7	131.1	123.4	144.8	114.5	124.6	133.0	136.2	125.0	122.9
Other fruits	25.4	127.5	137.3	...	62.7	64.0	71.0	66.2	...	...	134.9	116.2	134.6
<b>Oilseeds and oleaginous fruits<sup>1</sup></b>	<b>5.8</b>	<b>82.0</b>	<b>77.3</b>	<b>101.8</b>	<b>100.9</b>	<b>108.2</b>	<b>89.0</b>	<b>92.7</b>	<b>86.8</b>	<b>99.7</b>	<b>101.5</b>	<b>114.4</b>	<b>120.1</b>
Groundnut	2.1	120.1	95.0	126.8	122.6	135.6	158.4	168.3	162.5	190.2	158.5	145.8	151.3
Coconut	3.7	70.0	70.0	70.0	70.0	70.0	70.0	72.1	72.1	72.1	76.7	76.7	76.7
<b>Edible roots and tubers<sup>1</sup></b>	<b>39.3</b>	<b>119.5</b>	<b>108.7</b>	<b>126.3</b>	<b>122.6</b>	<b>117.2</b>	<b>110.1</b>	<b>110.4</b>	<b>109.4</b>	<b>111.1</b>	<b>110.8</b>	<b>111.3</b>	<b>111.3</b>
Potato	30.8	103.1	103.1	...	...	...	111.2	111.2	111.2	111.2	111.2	111.2	111.2
Other Root crops	8.4	121.8	108.9	126.3	122.6	117.2	109.8	109.2	99.9	110.1	106.2	112.3	111.5
<b>Stimulant &amp; spice<sup>1</sup></b>	<b>14.6</b>	<b>113.0</b>	<b>112.8</b>	<b>111.9</b>	<b>113.8</b>	<b>115.6</b>	<b>113.5</b>	<b>122.0</b>	<b>115.4</b>	<b>115.0</b>	<b>117.1</b>	<b>110.8</b>	<b>115.4</b>
Tea	12.0	111.7	111.7	111.7	111.7	111.7	111.7	121.2	121.2	121.2	121.2	121.2	121.2
Ginger	2.5	139.5	138.6	233.2	212.8	186.6	154.7	128.1	89.0	105.4	107.8	88.7	102.1
<b>Flowers, ornamental plants</b>	<b>9.9</b>	<b>112.4</b>	<b>112.4</b>	<b>112.4</b>	<b>111.3</b>	<b>112.4</b>	<b>112.4</b>	<b>128.3</b>	<b>128.3</b>	<b>128.3</b>	<b>128.3</b>	<b>128.3</b>	<b>128.3</b>
Anthurium	3.0	82.7	82.7	82.7	82.7	82.7	82.7	82.7	82.7	82.7	82.7	82.7	82.7
Rose	1.1	126.3	126.3	126.3	115.8	126.3	126.3	136.8	136.8	136.8	136.8	136.8	136.8
Other flowers	5.8	125.0	125.0	125.0	125.0	125.0	125.0	150.0	150.0	150.0	150.0	150.0	150.0
<b>Animals &amp; Animal Products</b>	<b>441.1</b>	<b>95.9</b>	<b>95.3</b>	<b>95.8</b>	<b>97.0</b>	<b>101.9</b>	<b>101.9</b>	<b>99.6</b>	<b>99.6</b>	<b>99.6</b>	<b>99.4</b>	<b>101.5</b>	<b>109.3</b>
Cattle	43.7	99.3	99.3	99.3	101.3	101.3	101.3	104.3	104.3	104.3	104.3	104.3	104.3
Pigs	3.1	111.1	111.1	111.1	111.1	111.1	111.1	114.0	114.0	114.0	111.1	111.1	111.1
Goat	0.7	102.5	102.5	102.5	101.5	101.5	101.5	104.5	104.5	104.5	104.5	106.6	112.0
Deer	8.8	101.1	101.1	101.1	101.1	101.1	101.1	105.1	105.1	105.1	105.1	105.1	105.1
Poultry	283.9	97.8	96.1	96.1	96.1	103.3	103.3	103.3	103.3	103.3	103.0	103.0	111.7
Eggs	95.0	87.5	89.7	92.0	96.9	98.0	98.0	85.4	85.4	85.2	85.7	95.4	105.2
Milk	5.9	97.4	97.4	97.4	97.4	97.4	97.4	97.4	97.4	97.4	97.4	97.4	97.4
<b>Overall Index</b>	<b>1,000.0</b>	<b>110.5</b>	<b>112.2</b>	<b>117.8</b>	<b>117.8</b>	<b>123.9</b>	<b>123.0</b>	<b>119.8</b>	<b>116.9</b>	<b>119.4</b>	<b>118.0</b>	<b>116.8</b>	<b>123.7</b>

<sup>1</sup> The indices are computed based on the method of variable baskets with fixed monthly weights in the base year as explained at paragraph 12 of Annex. The composition of these baskets is shown in Table 13.

... Not applicable

**Monthly Producer Price Index - Agriculture (PPI-A)**

(Base period: Year 2018 =100)

**Table 4: Monthly indices by commodity group and product, January 2020 - December 2020**

Commodity Group	Weight	2020											
		January	February	March	April	May	June	July	August	September	October	November	December
<b>Crop Products</b>	<b>558.9</b>	<b>116.8</b>	<b>132.7</b>	<b>157.2</b>	<b>153.1</b>	<b>119.1</b>	<b>99.7</b>	<b>111.8</b>	<b>114.4</b>	<b>122.8</b>	<b>117.5</b>	<b>112.1</b>	<b>112.1</b>
<b>Sugar Cane</b>	<b>212.1</b>	<b>117.3</b>	<b>117.3</b>	<b>117.3</b>	<b>117.3</b>	<b>117.3</b>	<b>117.3</b>	<b>144.9</b>	<b>144.9</b>	<b>144.9</b>	<b>144.9</b>	<b>144.9</b>	<b>144.9</b>
<b>Other crops products</b>	<b>346.7</b>	<b>116.4</b>	<b>142.2</b>	<b>181.6</b>	<b>175.0</b>	<b>120.2</b>	<b>88.9</b>	<b>91.5</b>	<b>95.7</b>	<b>109.3</b>	<b>100.7</b>	<b>92.0</b>	<b>92.0</b>
<b>Fresh Vegetables<sup>1</sup></b>	<b>209.7</b>	<b>116.7</b>	<b>162.0</b>	<b>213.8</b>	<b>215.0</b>	<b>134.0</b>	<b>81.2</b>	<b>80.8</b>	<b>89.9</b>	<b>105.0</b>	<b>88.8</b>	<b>81.8</b>	<b>85.7</b>
Beans	7.8	179.9	151.5	159.7	137.7	91.6	57.5	76.1	121.9	112.4	56.6	62.8	107.4
Brinjal	7.7	85.9	106.8	145.5	279.0	188.6	124.7	82.4	121.7	117.1	76.1	59.8	61.3
Cabbage	11.9	123.3	184.4	264.4	269.4	101.9	51.6	49.6	47.2	60.8	87.2	95.9	109.4
Cauliflower	3.0	125.4	145.0	181.8	185.4	176.4	129.1	111.4	95.7	99.1	113.1	112.2	120.9
Carrot	13.6	87.5	137.6	303.1	261.2	126.4	52.0	55.0	57.4	41.7	56.1	54.6	76.7
Onion	10.9	102.6	102.6	...	...	...	102.6	113.2	113.2	113.2	113.2	113.2	113.2
Tomato	63.3	111.8	217.6	248.5	222.5	148.3	59.1	42.2	26.5	26.8	43.2	58.4	60.4
Creepers	60.8	116.5	117.6	151.7	190.2	134.6	111.0	112.0	109.8	134.7	102.4	81.0	91.6
Other fresh vegetables	30.7	124.9	103.4	159.6	174.6	110.6	90.5	107.2	110.6	111.7	117.1	96.3	93.8
<b>Fruits and nuts<sup>1</sup></b>	<b>67.6</b>	<b>131.5</b>	<b>118.4</b>	<b>133.1</b>	<b>97.1</b>	<b>89.7</b>	<b>96.8</b>	<b>107.1</b>	<b>101.6</b>	<b>123.0</b>	<b>130.7</b>	<b>106.1</b>	<b>93.0</b>
Banana	12.8	112.8	112.8	119.9	119.9	112.8	112.8	112.8	112.8	112.8	118.8	118.8	118.8
Pineapple	29.4	159.9	125.2	138.0	86.4	81.2	101.1	112.3	96.5	127.8	142.7	101.3	76.3
Other fruits	25.4	120.7	101.2	...	114.7	81.7	81.8	81.8	...	...	103.2	105.8	93.5
<b>Oilseeds and oleaginous fruits<sup>1</sup></b>	<b>5.8</b>	<b>82.3</b>	<b>82.0</b>	<b>100.2</b>	<b>102.0</b>	<b>101.6</b>	<b>82.1</b>	<b>79.0</b>	<b>74.4</b>	<b>80.7</b>	<b>90.6</b>	<b>107.7</b>	<b>107.0</b>
Groundnut	2.1	131.2	119.9	126.8	126.8	126.8	138.9	123.9	114.1	126.8	145.7	141.4	135.9
Coconut	3.7	66.7	66.7	66.7	66.7	66.7	66.7	66.7	66.7	66.7	66.7	66.7	66.7
<b>Edible roots and tubers<sup>1</sup></b>	<b>39.3</b>	<b>95.6</b>	<b>103.4</b>	<b>149.9</b>	<b>145.9</b>	<b>105.1</b>	<b>98.4</b>	<b>105.7</b>	<b>104.5</b>	<b>104.9</b>	<b>104.3</b>	<b>104.6</b>	<b>105.7</b>
Potato	30.8	99.1	99.1	...	...	...	99.1	103.1	103.1	103.1	103.1	103.1	103.1
Other Root crops	8.4	95.2	103.6	149.9	145.9	105.1	98.2	109.6	111.3	118.3	118.1	116.9	125.9
<b>Stimulant &amp; spice<sup>1</sup></b>	<b>14.6</b>	<b>115.2</b>	<b>115.2</b>	<b>106.9</b>	<b>111.6</b>	<b>117.0</b>	<b>113.5</b>	<b>115.4</b>	<b>114.4</b>	<b>118.5</b>	<b>113.9</b>	<b>113.9</b>	<b>115.6</b>
Tea	12.0	106.5	106.5	106.5	106.5	106.5	106.5	111.7	111.7	111.7	111.7	111.7	111.7
Ginger	2.5	297.2	317.5	362.0	357.1	303.2	272.5	145.4	127.0	128.7	119.0	118.3	124.9
<b>Flowers, ornamental plants</b>	<b>9.9</b>	<b>112.7</b>	<b>112.5</b>	<b>112.2</b>	<b>112.2</b>	<b>112.2</b>	<b>128.1</b>	<b>128.1</b>	<b>128.1</b>	<b>128.1</b>	<b>119.6</b>	<b>119.6</b>	<b>119.6</b>
Anthurium	3.0	83.7	83.1	82.1	82.1	82.1	82.1	82.1	82.1	82.1	82.1	82.1	82.1
Rose	1.1	126.3	126.3	126.3	126.3	126.3	136.8	136.8	136.8	136.8	126.3	126.3	126.3
Other flowers	5.8	125.0	125.0	125.0	125.0	125.0	150.0	150.0	150.0	150.0	137.5	137.5	137.5
<b>Animals &amp; Animal Products</b>	<b>441.1</b>	<b>95.6</b>	<b>95.6</b>	<b>94.9</b>	<b>95.5</b>	<b>95.5</b>	<b>93.4</b>	<b>93.3</b>	<b>91.9</b>	<b>92.2</b>	<b>95.8</b>	<b>95.3</b>	<b>95.1</b>
Cattle	43.7	99.8	99.8	99.8	98.8	98.8	98.8	99.3	99.3	99.3	99.3	99.3	99.3
Pigs	3.1	97.3	97.3	97.3	97.3	97.3	97.3	97.3	111.1	108.5	111.1	111.1	111.1
Goat	0.7	101.9	101.9	101.9	100.9	100.9	100.9	100.5	100.5	100.5	100.5	100.5	100.5
Deer	8.8	100.0	100.0	100.0	100.0	100.0	100.0	101.1	101.1	101.1	101.1	101.1	101.1
Poultry	283.9	96.4	96.4	96.4	92.6	94.4	94.4	96.2	95.1	96.2	96.7	96.7	96.7
Eggs	95.0	90.6	90.6	87.3	102.6	96.8	86.5	80.9	77.2	75.4	90.1	87.9	87.2
Milk	5.9	93.4	93.4	93.4	93.4	93.4	97.4	97.4	97.4	97.4	97.4	97.4	97.4
<b>Overall Index</b>	<b>1,000.0</b>	<b>107.4</b>	<b>116.3</b>	<b>129.7</b>	<b>127.7</b>	<b>108.7</b>	<b>96.9</b>	<b>103.6</b>	<b>104.5</b>	<b>109.3</b>	<b>107.9</b>	<b>104.7</b>	<b>104.6</b>

<sup>1</sup> The indices are computed based on the method of variable baskets with fixed monthly weights in the base year as explained at paragraph 12 of Annex. The composition of these baskets is shown in Table 13.

... Not applicable



**Monthly Producer Price Index - Agriculture (PPI-A)**  
(Base period: Year 2018 =100)

**Table 5: Monthly indices by commodity group and product, January 2019 - December 2019**

Commodity Group	Weight	2019											
		January	February	March	April	May	June	July	August	September	October	November	December
<b>Crop Products</b>	<b>558.9</b>	<b>93.2</b>	<b>101.2</b>	<b>111.4</b>	<b>116.7</b>	<b>103.2</b>	<b>85.9</b>	<b>101.5</b>	<b>115.1</b>	<b>106.9</b>	<b>100.2</b>	<b>99.2</b>	<b>100.9</b>
<b>Sugar Cane</b>	<b>212.1</b>	<b>89.6</b>	<b>89.6</b>	<b>89.6</b>	<b>89.6</b>	<b>89.6</b>	<b>89.6</b>	<b>117.3</b>	<b>117.3</b>	<b>117.3</b>	<b>117.3</b>	<b>117.3</b>	<b>117.3</b>
<b>Other crops products</b>	<b>346.7</b>	<b>95.5</b>	<b>108.2</b>	<b>124.7</b>	<b>133.3</b>	<b>111.4</b>	<b>83.7</b>	<b>91.8</b>	<b>113.8</b>	<b>100.5</b>	<b>89.7</b>	<b>88.1</b>	<b>90.9</b>
<b>Fresh Vegetables <sup>1</sup></b>	<b>209.7</b>	<b>89.2</b>	<b>109.7</b>	<b>133.5</b>	<b>146.2</b>	<b>118.6</b>	<b>74.6</b>	<b>85.4</b>	<b>114.7</b>	<b>93.7</b>	<b>78.3</b>	<b>73.6</b>	<b>78.3</b>
Beans	7.8	90.7	135.7	121.4	145.5	97.4	79.1	126.5	152.3	58.3	46.8	75.1	102.4
Brinjal	7.7	75.6	83.0	69.0	123.6	119.8	111.9	94.9	136.4	98.5	60.9	98.0	91.2
Cabbage	11.9	96.6	113.1	153.7	142.7	99.6	80.8	80.3	110.7	88.3	58.9	90.9	94.0
Cauliflower	3.0	140.2	164.0	167.4	155.4	178.6	122.8	114.8	105.5	100.8	93.8	117.8	95.5
Carrot	13.6	137.2	164.9	207.0	261.5	197.6	65.1	58.3	56.0	41.4	41.8	40.0	46.4
Onion	10.9	102.6	102.6	...	...	...	102.6	102.6	102.6	102.6	102.6	102.6	102.6
Tomato	63.3	75.5	108.2	166.0	163.6	128.7	44.4	44.1	66.6	87.2	62.2	42.2	49.6
Creepers	60.8	91.2	111.1	74.9	84.7	75.8	91.3	105.9	131.9	102.0	85.0	74.5	89.6
Other fresh vegetables	30.7	86.1	90.7	103.2	125.1	109.0	105.2	124.3	132.7	99.9	82.8	87.5	87.0
<b>Fruits and nuts <sup>1</sup></b>	<b>67.6</b>	<b>110.5</b>	<b>112.7</b>	<b>124.5</b>	<b>122.9</b>	<b>101.7</b>	<b>96.6</b>	<b>100.3</b>	<b>116.7</b>	<b>110.2</b>	<b>105.4</b>	<b>109.3</b>	<b>107.6</b>
Banana	12.8	126.2	126.2	126.2	126.2	126.2	126.2	98.5	112.8	112.8	112.8	112.8	119.9
Pineapple	29.4	115.8	110.5	123.8	124.2	94.2	93.9	106.8	118.5	109.0	98.7	99.1	108.7
Other fruits	25.4	104.4	103.3	...	84.0	84.1	84.0	81.8	...	...	119.2	115.0	106.2
<b>Oilseeds and oleaginous fruits <sup>1</sup></b>	<b>5.8</b>	<b>101.6</b>	<b>105.4</b>	<b>99.4</b>	<b>104.4</b>	<b>91.4</b>	<b>102.3</b>	<b>105.6</b>	<b>104.9</b>	<b>108.4</b>	<b>86.6</b>	<b>105.3</b>	<b>110.8</b>
Groundnut	2.1	107.2	118.6	99.1	107.4	85.3	110.8	126.8	129.2	135.9	132.8	137.1	142.5
Coconut	3.7	100.0	100.0	100.0	100.0	100.0	100.0	100.0	100.0	100.0	66.7	66.7	66.7
<b>Edible roots and tubers <sup>1</sup></b>	<b>39.3</b>	<b>94.1</b>	<b>92.3</b>	<b>93.0</b>	<b>101.3</b>	<b>92.8</b>	<b>90.3</b>	<b>94.2</b>	<b>99.2</b>	<b>99.4</b>	<b>99.0</b>	<b>99.5</b>	<b>99.6</b>
Potato	30.8	99.1	99.1	...	...	...	99.1	99.1	99.1	99.1	99.1	99.1	99.1
Other Root crops	8.4	93.4	92.0	93.0	101.3	92.8	87.5	87.1	99.6	101.5	97.8	102.5	103.1
<b>Stimulant &amp; spice <sup>1</sup></b>	<b>14.6</b>	<b>105.4</b>	<b>107.9</b>	<b>102.8</b>	<b>106.8</b>	<b>111.2</b>	<b>109.5</b>	<b>118.9</b>	<b>130.1</b>	<b>146.2</b>	<b>140.9</b>	<b>144.4</b>	<b>148.4</b>
Tea	12.0	102.5	102.5	102.5	102.5	102.5	102.5	106.5	106.5	106.5	106.5	106.5	106.5
Ginger	2.5	166.9	232.8	292.8	315.6	265.8	268.3	221.3	238.0	206.1	221.1	224.6	245.9
<b>Flowers, ornamental plants</b>	<b>9.9</b>	<b>112.2</b>	<b>112.5</b>	<b>112.5</b>	<b>112.5</b>	<b>112.5</b>	<b>112.5</b>	<b>112.5</b>	<b>112.5</b>	<b>112.5</b>	<b>112.5</b>	<b>112.5</b>	<b>112.5</b>
Anthurium	3.0	82.1	83.1	83.1	83.1	83.1	83.1	83.1	83.1	83.1	83.1	83.1	83.1
Rose	1.1	126.3	126.3	126.3	126.3	126.3	126.3	126.3	126.3	126.3	126.3	126.3	126.3
Other flowers	5.8	125.0	125.0	125.0	125.0	125.0	125.0	125.0	125.0	125.0	125.0	125.0	125.0
<b>Animals &amp; Animal Products</b>	<b>441.1</b>	<b>95.5</b>	<b>94.5</b>	<b>95.8</b>	<b>95.5</b>	<b>94.5</b>	<b>95.8</b>	<b>99.5</b>	<b>99.7</b>	<b>96.6</b>	<b>93.9</b>	<b>94.5</b>	<b>95.2</b>
Cattle	43.7	100.8	100.8	100.8	100.8	100.8	100.8	100.8	100.8	100.8	99.8	99.8	99.8
Pigs	3.1	97.3	97.3	97.3	97.3	97.3	97.3	97.3	97.3	97.3	97.3	97.3	97.3
Goat	0.7	102.0	102.0	102.0	100.9	100.9	100.9	100.9	100.9	100.9	101.9	101.9	101.9
Deer	8.8	100.0	100.0	100.0	100.0	100.0	100.0	100.0	100.0	100.0	100.0	100.0	100.0
Poultry	283.9	94.3	94.3	94.3	94.3	94.3	94.3	98.0	98.0	95.9	94.8	94.8	95.3
Eggs	95.0	94.4	89.9	96.1	94.4	89.9	96.1	103.9	104.9	96.6	87.7	90.7	92.6
Milk	5.9	121.8	121.8	121.8	121.8	121.8	121.8	93.4	93.4	93.4	93.4	93.4	93.4
<b>Overall Index</b>	<b>1,000.0</b>	<b>94.2</b>	<b>98.2</b>	<b>104.5</b>	<b>107.3</b>	<b>99.4</b>	<b>90.3</b>	<b>100.6</b>	<b>108.3</b>	<b>102.4</b>	<b>97.4</b>	<b>97.1</b>	<b>98.4</b>

<sup>1</sup> The indices are computed based on the method of variable baskets with fixed monthly weights in the base year as explained at paragraph 12 of Annex. The composition of these baskets is shown in Table 13.

... Not applicable

**Monthly Producer Price Index - Agriculture (PPI-A)**

(Base period: Year 2018=100)

**Table 6: Percentage changes from previous month by commodity group and product, October 2022 - September 2023**

Commodity Group	Weight	Percentage changes from											
		Sep 22 to Oct 22	Oct 22 to Nov 22	Nov 22 to Dec 22	Dec 22 to Jan-23	Jan 23 to Feb 23	Feb 23 to Mar 23	Mar 23 to Apr 23	Apr 23 to May 23	May 23 to Jun 23	Jun 23 to Jul 23	Jul 23 to Aug 23	Aug 23 to Sep 23
<b>Crop Products</b>	<b>558.9</b>	<b>-1.1</b>	<b>-2.4</b>	<b>-2.4</b>	<b>3.1</b>	<b>5.5</b>	<b>6.1</b>	<b>-2.9</b>	<b>-2.7</b>	<b>-1.8</b>	<b>1.8</b>	<b>2.4</b>	<b>-3.3</b>
<b>Sugar Cane</b>	<b>212.1</b>	<b>0.0</b>	<b>0.0</b>	<b>0.0</b>	<b>0.0</b>	<b>0.0</b>	<b>0.0</b>	<b>0.0</b>	<b>0.0</b>	<b>0.0</b>	<b>1.7</b>	<b>0.0</b>	<b>0.0</b>
<b>Other crops products</b>	<b>346.7</b>	<b>-2.3</b>	<b>-5.2</b>	<b>-5.4</b>	<b>7.1</b>	<b>12.1</b>	<b>12.6</b>	<b>-5.7</b>	<b>-5.4</b>	<b>-3.8</b>	<b>1.9</b>	<b>5.1</b>	<b>-6.7</b>
<b>Fresh Vegetables</b>	<b>209.7</b>	<b>-4.2</b>	<b>-2.5</b>	<b>0.6</b>	<b>5.0</b>	<b>16.9</b>	<b>18.2</b>	<b>-7.2</b>	<b>-6.8</b>	<b>-3.2</b>	<b>-2.1</b>	<b>3.9</b>	<b>-8.1</b>
Beans	7.8	-14.5	-2.6	22.6	42.0	17.8	-9.2	-16.5	-9.5	-1.8	10.4	-5.1	-19.7
Brinjal	7.7	2.3	-6.7	2.9	8.1	23.4	-37.0	7.0	52.0	35.5	-3.5	-16.6	-9.8
Cabbage	11.9	16.5	16.9	16.7	1.5	3.6	-6.8	-18.5	-18.8	28.1	34.6	-5.1	0.0
Cauliflower	3.0	18.2	5.3	1.3	10.1	18.3	0.4	13.1	0.0	-0.5	-14.3	-7.2	11.8
Carrot	13.6	19.2	35.0	15.5	20.9	25.7	22.7	6.8	19.8	-22.3	-5.0	-1.0	40.7
Onion	10.9	0.0	0.0	0.0	0.0	0.0	...	...	...	...	0.0	0.0	0.0
Tomato	63.3	39.7	12.0	4.6	1.0	37.7	97.8	-2.8	-20.9	-11.1	-17.4	-4.0	-46.0
Creepers	60.8	-5.1	-5.2	9.8	6.1	27.4	-20.6	-20.4	-0.2	9.5	14.7	-2.4	-14.0
Other fresh vegetables	30.7	-4.8	-6.4	-13.3	11.7	11.9	1.2	-0.8	0.5	-5.5	-4.7	20.9	-11.0
<b>Fruits and nuts</b>	<b>67.6</b>	<b>0.0</b>	<b>-15.0</b>	<b>-22.6</b>	<b>21.2</b>	<b>10.8</b>	<b>5.4</b>	<b>-4.5</b>	<b>-5.7</b>	<b>-9.2</b>	<b>14.3</b>	<b>12.0</b>	<b>-8.6</b>
Banana	12.8	0.0	10.1	0.0	10.1	0.0	0.0	0.0	0.0	0.0	7.6	0.0	0.0
Pineapple	29.4	4.3	-8.1	-13.0	3.2	-5.1	2.2	-5.3	-9.5	8.1	5.2	5.0	-13.5
Other fruits	25.4	...	-12.5	-17.8	16.6	7.1	...	...	14.9	-34.6	0.0	...	...
<b>Oilseeds and oleaginous fruits</b>	<b>5.8</b>	<b>-11.1</b>	<b>26.0</b>	<b>5.0</b>	<b>-27.2</b>	<b>0.1</b>	<b>24.0</b>	<b>4.1</b>	<b>-0.9</b>	<b>-26.8</b>	<b>9.9</b>	<b>0.0</b>	<b>7.9</b>
Groundnut	2.1	-12.0	3.1	2.9	-0.5	-9.3	-0.7	2.3	-0.4	-0.9	4.0	15.1	0.2
Coconut	3.7	-20.0	0.0	0.0	0.0	0.0	0.0	0.0	0.0	0.0	13.8	0.0	0.0
<b>Edible roots and tubers</b>	<b>39.3</b>	<b>1.0</b>	<b>0.2</b>	<b>-0.2</b>	<b>1.3</b>	<b>-0.4</b>	<b>3.5</b>	<b>-3.0</b>	<b>-0.4</b>	<b>5.7</b>	<b>1.2</b>	<b>-0.2</b>	<b>-0.7</b>
Potato	30.8	0.0	0.0	0.0	0.0	0.0	...	...	...	...	0.0	0.0	0.0
Other Root crops	8.4	8.6	1.9	-2.0	3.4	-0.5	3.5	-3.0	-0.4	5.2	1.6	-1.2	-6.5
<b>Stimulant &amp; spice</b>	<b>14.6</b>	<b>0.0</b>	<b>3.4</b>	<b>0.3</b>	<b>2.5</b>	<b>1.4</b>	<b>-1.2</b>	<b>0.6</b>	<b>1.6</b>	<b>-0.7</b>	<b>1.2</b>	<b>2.2</b>	<b>0.4</b>
Tea	12.0	0.0	0.0	0.0	0.0	0.0	0.0	0.0	0.0	0.0	0.0	0.0	0.0
Ginger	2.5	-5.6	14.3	0.2	7.7	33.1	5.5	-3.5	7.5	-4.0	-8.9	2.0	-11.1
<b>Flowers, ornamental plants</b>	<b>9.9</b>	<b>0.0</b>	<b>0.0</b>	<b>0.0</b>	<b>0.4</b>	<b>0.0</b>	<b>0.0</b>	<b>0.0</b>	<b>0.0</b>	<b>0.0</b>	<b>0.0</b>	<b>0.0</b>	<b>0.0</b>
Anthurium	3.0	0.0	0.0	0.0	2.3	0.0	0.0	0.0	0.0	0.0	0.0	0.0	0.0
Rose	1.1	0.0	0.0	0.0	0.0	0.0	0.0	0.0	0.0	0.0	0.0	0.0	0.0
Other flowers	5.8	0.0	0.0	0.0	0.0	0.0	0.0	0.0	0.0	0.0	0.0	0.0	0.0
<b>Animals &amp; Animal Products</b>	<b>441.1</b>	<b>0.5</b>	<b>1.8</b>	<b>0.1</b>	<b>-1.0</b>	<b>-5.5</b>	<b>0.1</b>	<b>1.4</b>	<b>0.1</b>	<b>5.2</b>	<b>1.9</b>	<b>0.0</b>	<b>-6.8</b>
Cattle	43.7	1.0	1.0	0.0	0.0	0.0	2.1	0.0	1.0	0.0	0.0	0.0	0.0
Pigs	3.1	0.0	0.0	0.0	0.0	0.0	0.0	0.0	0.0	0.0	2.2	0.0	0.0
Goat	0.7	3.0	3.0	0.0	0.0	1.0	0.0	1.0	0.0	0.0	0.0	0.0	0.0
Deer	8.8	-3.1	-2.2	0.0	0.0	0.0	0.0	0.0	0.0	1.1	-2.0	0.0	0.0
Poultry	283.9	2.9	0.0	0.0	1.0	0.0	0.0	0.0	0.0	0.0	0.0	0.0	-9.8
Eggs	95.0	-8.1	10.2	0.2	-9.3	-32.9	0.0	12.1	0.4	39.3	11.0	0.0	0.0
Milk	5.9	0.0	0.0	0.0	0.0	0.0	0.0	0.0	0.0	0.0	0.0	0.0	0.0
<b>Overall Change</b>	<b>1,000.0</b>	<b>-0.5</b>	<b>-0.7</b>	<b>-1.4</b>	<b>1.4</b>	<b>1.2</b>	<b>3.8</b>	<b>-1.3</b>	<b>-1.6</b>	<b>0.8</b>	<b>1.9</b>	<b>1.5</b>	<b>-4.7</b>

... Not applicable

**Monthly Producer Price Index - Agriculture (PPI-A)**

(Base period: Year 2018=100)

**Table 7: Percentage changes from corresponding month of previous year by commodity group and product, October 2022 - September 2023**

Commodity Group	Weight	Percentage changes from											
		Oct 21 to Oct 22	Nov 21 to Nov 22	Dec 21 to Dec 22	Jan 22 to Jan 23	Feb 22 to Feb 23	Mar 22 to Mar 23	Apr 22 to Apr 23	May 22 to May 23	Jun 22 to Jun 23	Jul 22 to Jul 23	Aug 22 to Aug 23	Sep 22 to Sept 23
<b>Crop Products</b>	<b>558.9</b>	<b>40.5</b>	<b>41.3</b>	<b>31.5</b>	<b>33.2</b>	<b>17.3</b>	<b>9.2</b>	<b>10.4</b>	<b>23.9</b>	<b>35.3</b>	<b>10.9</b>	<b>10.0</b>	<b>1.7</b>
<b>Sugar Cane</b>	<b>212.1</b>	<b>52.4</b>	<b>52.4</b>	<b>52.4</b>	<b>52.4</b>	<b>52.4</b>	<b>52.4</b>	<b>52.4</b>	<b>52.4</b>	<b>52.4</b>	<b>1.7</b>	<b>1.7</b>	<b>1.7</b>
<b>Other crops products</b>	<b>346.7</b>	<b>29.0</b>	<b>29.7</b>	<b>11.8</b>	<b>15.8</b>	<b>-5.9</b>	<b>-14.0</b>	<b>-13.6</b>	<b>3.4</b>	<b>20.3</b>	<b>23.1</b>	<b>20.3</b>	<b>1.7</b>
<b>Fresh Vegetables</b>	<b>209.7</b>	<b>25.3</b>	<b>30.0</b>	<b>15.2</b>	<b>14.1</b>	<b>-17.5</b>	<b>-24.3</b>	<b>-23.5</b>	<b>0.3</b>	<b>36.8</b>	<b>37.6</b>	<b>32.1</b>	<b>6.6</b>
Beans	7.8	16.6	40.1	2.9	47.0	19.4	-33.0	-26.7	2.3	73.0	59.0	8.7	-3.1
Brinjal	7.7	17.0	15.4	-22.7	32.2	1.2	-42.8	-49.3	-34.6	-2.3	29.3	44.9	32.2
Cabbage	11.9	39.8	16.6	-5.0	7.6	-16.3	-35.8	-34.5	-42.3	-13.2	90.2	107.1	68.5
Cauliflower	3.0	-13.7	-11.7	-7.9	-7.0	-1.4	-11.3	8.0	11.1	22.0	31.2	63.9	65.2
Carrot	13.6	-25.3	-21.1	-34.2	-11.0	-49.4	-59.7	-44.5	1.8	66.7	165.8	178.0	356.2
Onion	10.9	35.7	35.7	35.7	35.7	35.7	...	...	...	3.1	3.1	3.1	3.1
Tomato	63.3	54.1	41.5	39.9	6.4	-36.8	-10.7	-23.8	15.3	91.5	85.9	107.4	31.8
Creepers	60.8	23.5	41.3	24.7	23.0	-1.4	-17.6	4.4	-7.6	15.1	19.7	13.8	-11.2
Other fresh vegetables	30.7	11.8	20.4	12.5	1.3	2.2	-27.4	-14.0	10.5	18.1	5.7	17.5	-5.7
<b>Fruits and nuts</b>	<b>67.6</b>	<b>51.0</b>	<b>42.2</b>	<b>0.5</b>	<b>24.7</b>	<b>27.6</b>	<b>11.7</b>	<b>5.3</b>	<b>3.0</b>	<b>-6.7</b>	<b>3.4</b>	<b>5.6</b>	<b>-10.9</b>
Banana	12.8	30.7	43.9	43.9	58.5	58.5	21.2	21.2	21.2	21.2	30.5	30.5	30.5
Pineapple	29.4	66.9	67.0	47.8	33.9	23.9	8.1	0.6	-5.3	-10.7	-3.9	-4.4	-26.0
Other fruits	25.4	22.5	24.4	-11.7	11.6	5.2	...	-21.2	5.6	-19.0	-15.9	...	...
<b>Oilseeds and oleaginous fruits</b>	<b>5.8</b>	<b>-0.9</b>	<b>10.8</b>	<b>10.9</b>	<b>-3.2</b>	<b>-2.5</b>	<b>-0.5</b>	<b>-0.2</b>	<b>0.1</b>	<b>-10.4</b>	<b>-3.2</b>	<b>-2.1</b>	<b>-4.8</b>
Groundnut	2.1	5.6	18.3	17.3	17.1	16.5	5.9	6.9	7.6	5.5	9.7	17.0	1.3
Coconut	3.7	-6.4	-6.4	-6.4	-14.7	-14.7	-14.7	-17.9	-17.9	-17.9	-8.9	-8.9	-8.9
<b>Edible roots and tubers</b>	<b>39.3</b>	<b>20.2</b>	<b>19.9</b>	<b>19.6</b>	<b>14.4</b>	<b>8.3</b>	<b>13.6</b>	<b>19.7</b>	<b>24.7</b>	<b>17.9</b>	<b>15.8</b>	<b>10.1</b>	<b>7.9</b>
Potato	30.8	20.0	20.0	20.0	20.0	20.0	...	...	...	7.6	7.6	7.6	7.6
Other Root crops	8.4	23.1	18.6	17.1	13.6	7.9	13.6	19.7	24.7	21.6	30.4	24.7	10.2
<b>Stimulant &amp; spice</b>	<b>14.6</b>	<b>-2.7</b>	<b>6.3</b>	<b>2.3</b>	<b>1.1</b>	<b>0.8</b>	<b>0.1</b>	<b>0.4</b>	<b>1.8</b>	<b>1.1</b>	<b>3.5</b>	<b>7.1</b>	<b>12.3</b>
Tea	12.0	0.0	0.0	0.0	0.0	0.0	0.0	0.0	0.0	0.0	0.0	0.0	0.0
Ginger	2.5	-10.1	24.9	8.7	30.4	17.5	32.6	17.6	32.2	24.0	33.1	42.7	34.5
<b>Flowers, ornamental plants</b>	<b>9.9</b>	<b>17.7</b>	<b>17.7</b>	<b>17.7</b>	<b>18.2</b>	<b>18.2</b>	<b>18.2</b>	<b>18.2</b>	<b>18.2</b>	<b>18.2</b>	<b>18.2</b>	<b>17.0</b>	<b>0.4</b>
Anthurium	3.0	5.0	5.0	5.0	7.4	7.4	7.4	7.4	7.4	7.4	7.4	2.3	2.3
Rose	1.1	25.1	25.1	25.1	25.1	25.1	25.1	25.1	25.1	25.1	25.1	25.1	0.0
Other flowers	5.8	20.0	20.0	20.0	20.0	20.0	20.0	20.0	20.0	20.0	20.0	20.0	0.0
<b>Animals &amp; Animal Products</b>	<b>441.1</b>	<b>52.8</b>	<b>52.3</b>	<b>41.5</b>	<b>39.7</b>	<b>29.1</b>	<b>17.5</b>	<b>18.8</b>	<b>13.1</b>	<b>7.3</b>	<b>9.3</b>	<b>3.3</b>	<b>-2.7</b>
Cattle	43.7	10.4	11.4	11.4	9.2	9.2	11.5	10.3	11.4	6.2	6.2	6.2	5.1
Pigs	3.1	4.9	4.9	4.9	4.9	4.9	2.8	0.0	0.0	0.0	2.2	2.2	2.2
Goat	0.7	28.9	30.1	23.8	13.6	11.5	11.5	12.6	11.4	8.2	8.2	8.2	8.2
Deer	8.8	10.7	8.2	8.2	8.2	8.2	8.2	8.2	8.2	0.4	-6.2	-6.2	-6.2
Poultry	283.9	65.5	65.5	52.6	54.2	49.0	36.2	36.2	26.2	12.6	12.6	3.9	-6.3
Eggs	95.0	39.4	38.1	25.5	13.8	-23.9	-35.8	-28.2	-27.9	-8.8	1.2	1.1	7.5
Milk	5.9	31.3	31.3	31.3	23.6	23.6	23.6	6.8	6.8	6.8	0.0	0.0	0.0
<b>Overall Change</b>	<b>1,000.0</b>	<b>45.1</b>	<b>45.5</b>	<b>35.5</b>	<b>35.7</b>	<b>21.4</b>	<b>12.1</b>	<b>13.3</b>	<b>19.6</b>	<b>22.8</b>	<b>10.3</b>	<b>7.4</b>	<b>-0.1</b>

... Not applicable

**Quarterly Producer Price Index - Agriculture (PPI-A)**  
(Base period: Year 2018=100)

**Table 8: Quarterly indices<sup>1</sup> by commodity group and product, 4th Quarter 2021 - 3rd Quarter 2023**

Commodity Group	Weight	2021			2022			2023		
		4 <sup>th</sup> Qr	1 <sup>st</sup> Qr	2 <sup>nd</sup> Qr	3 <sup>rd</sup> Qr	4 <sup>th</sup> Qr	1 <sup>st</sup> Qr	2 <sup>nd</sup> Qr	3 <sup>rd</sup> Qr	
<b>Crop Products</b>	<b>558.9</b>	<b>132.2</b>	<b>163.4</b>	<b>159.8</b>	<b>181.5</b>	<b>182.0</b>	<b>193.9</b>	<b>194.5</b>	<b>194.4</b>	
<b>Sugar Cane</b>	<b>212.1</b>	<b>172.7</b>	<b>172.7</b>	<b>172.7</b>	<b>263.2</b>	<b>263.2</b>	<b>263.2</b>	<b>263.2</b>	<b>267.8<sup>2</sup></b>	
<b>Other crops products</b>	<b>346.7</b>	<b>107.3</b>	<b>157.6</b>	<b>152.6</b>	<b>131.7</b>	<b>132.3</b>	<b>151.4</b>	<b>152.6</b>	<b>149.3</b>	
<b>Fresh Vegetables<sup>3</sup></b>	<b>209.7</b>	<b>97.6</b>	<b>178.0</b>	<b>163.3</b>	<b>114.9</b>	<b>121.0</b>	<b>151.3</b>	<b>154.1</b>	<b>142.0</b>	
Beans	7.8	96.5	194.7	156.9	127.6	114.0	202.3	155.9	142.7	
Brinjal	7.7	134.3	168.4	267.5	158.3	140.2	152.6	184.3	211.1	
Cabbage	11.9	110.0	197.1	169.0	87.6	126.4	150.6	112.8	161.1	
Cauliflower	3.0	141.4	166.9	163.6	109.7	124.6	156.8	190.6	162.2	
Carrot	13.6	93.6	255.5	212.4	47.5	67.9	124.4	167.7	157.2	
Onion	10.9	119.7	119.7	162.4	162.4	162.4	162.4	167.5	167.5	
Tomato	63.3	49.5	173.8	174.8	59.2	71.7	140.5	175.3	107.3	
Creepers	60.8	108.6	172.2	124.8	138.7	140.2	170.6	128.4	146.4	
Other fresh vegetables	30.7	114.0	155.0	141.1	134.8	130.3	139.4	142.5	140.5	
<b>Fruits and nuts<sup>3</sup></b>	<b>67.6</b>	<b>129.3</b>	<b>141.1</b>	<b>166.7</b>	<b>185.4</b>	<b>155.1</b>	<b>172.3</b>	<b>165.9</b>	<b>184.1</b>	
Banana	12.8	129.8	143.0	169.7	169.7	181.2	205.7	205.7	221.4	
Pineapple	29.4	127.9	150.8	175.4	198.9	206.6	182.3	165.7	175.3	
Other fruits	25.4	129.8	126.5	136.4	124.7	126.9	139.9	116.3	104.9	
<b>Oilseeds and oleaginous fruits<sup>3</sup></b>	<b>5.8</b>	<b>112.4</b>	<b>105.7</b>	<b>116.2</b>	<b>108.5</b>	<b>120.9</b>	<b>103.4</b>	<b>112.2</b>	<b>104.4</b>	
Groundnut	2.1	150.6	146.6	151.4	178.0	173.6	164.1	162.0	187.6	
Coconut	3.7	76.7	84.2	87.5	89.7	71.8	71.8	71.8	81.7	
<b>Edible roots and tubers<sup>3</sup></b>	<b>39.3</b>	<b>111.1</b>	<b>121.5</b>	<b>114.3</b>	<b>130.1</b>	<b>133.3</b>	<b>136.0</b>	<b>137.6</b>	<b>142.9</b>	
Potato	30.8	111.2	111.2	133.4	133.4	133.4	133.4	143.6	143.6	
Other Root crops	8.4	110.2	122.0	112.2	114.6	131.7	136.2	136.9	139.5	
<b>Stimulant &amp; spice<sup>3</sup></b>	<b>14.6</b>	<b>114.4</b>	<b>120.9</b>	<b>121.7</b>	<b>117.3</b>	<b>116.6</b>	<b>121.7</b>	<b>123.0</b>	<b>126.8</b>	
Tea	12.0	121.2	121.2	121.2	121.2 <sup>2</sup>	121.2 <sup>2</sup>	121.2 <sup>2</sup>	121.2 <sup>2</sup>	121.2 <sup>2</sup>	
Ginger	2.5	99.2	112.8	133.9	105.5	106.4	139.0	169.5	143.6	
<b>Flowers, ornamental plants</b>	<b>9.9</b>	<b>128.3</b>	<b>128.3</b>	<b>128.3</b>	<b>136.3</b>	<b>151.0</b>	<b>151.6</b>	<b>151.6</b>	<b>151.6</b>	
Anthurium	3.0	82.7	82.7	82.7	85.4	86.8	88.8	88.8	88.8	
Rose	1.1	136.8	136.8	136.8	148.2	171.1	171.1	171.1	171.1	
Other flowers	5.8	150.0	150.0	150.0	160.0	180.0	180.0	180.0	180.0	
<b>Animals &amp; Animal Products</b>	<b>441.1</b>	<b>103.4</b>	<b>115.0</b>	<b>132.7</b>	<b>149.4</b>	<b>153.7</b>	<b>147.6</b>	<b>149.7</b>	<b>154.2</b>	
Cattle	43.7	104.3	106.4	109.3	113.2	115.8	117.0	119.4	119.8	
Pigs	3.1	111.1	111.8	116.5	116.5	116.5	116.5	116.5	119.1	
Goat	0.7	107.7	124.5	127.8	130.8	137.4	139.6	141.5	141.5	
Deer	8.8	105.1	105.1	108.2	120.0	114.6	113.7	114.1	112.6	
Poultry	283.9	105.9	117.9	138.6	161.4	170.5	172.2	172.2	166.6	
Eggs	95.0	95.4	111.9	129.6	135.5	127.7	93.4	102.1	139.8	
Milk	5.9	97.4	103.5	119.8	127.9	127.9	127.9	127.9	127.9	
<b>Overall Index</b>	<b>1,000.0</b>	<b>119.5</b>	<b>142.0</b>	<b>147.6</b>	<b>167.2</b>	<b>169.6</b>	<b>173.4</b>	<b>174.6</b>	<b>176.7</b>	

<sup>1</sup> Using data for base period (2018) as weights

<sup>2</sup> Provisional

<sup>3</sup> The indices are computed based on the method of variable baskets with fixed monthly weights in the base year as explained at paragraph 12 of Annex. The composition of these baskets is shown in Table 13.

Quarterly Producer Price Index - Agriculture (PPI-A)

(Base period: Year 2018=100)

Table 9: Quarterly changes (%) and net contributions of commodity group and product to the change, 3rd Quarter 2022 - 3rd Quarter 2023

Commodity Group	Weight	Percentage changes from previous quarter				Percentage changes from corresponding quarter of previous year				Net contributions from			
		3 <sup>rd</sup> Qr 22	4 <sup>th</sup> Qr 22	1 <sup>st</sup> Qr 23	2 <sup>nd</sup> Qr 23	4 <sup>th</sup> Qr 21	1 <sup>st</sup> Qr 22	2 <sup>nd</sup> Qr 22	3 <sup>rd</sup> Qr 22	3 <sup>rd</sup> Qr 22	4 <sup>th</sup> Qr 22	1 <sup>st</sup> Qr 23	2 <sup>nd</sup> Qr 23
		to 4 <sup>th</sup> Qr 22	to 1 <sup>st</sup> Qr 23	to 2 <sup>nd</sup> Qr 23	to 3 <sup>rd</sup> Qr 23	to 4 <sup>th</sup> Qr 22	to 1 <sup>st</sup> Qr 23	to 2 <sup>nd</sup> Qr 23	to 3 <sup>rd</sup> Qr 23	to 4 <sup>th</sup> Qr 22	to 1 <sup>st</sup> Qr 23	to 2 <sup>nd</sup> Qr 23	to 3 <sup>rd</sup> Qr 23
<b>Crop Products</b>	<b>558.9</b>	<b>0.3</b>	<b>6.5</b>	<b>0.3</b>	<b>-0.1</b>	<b>37.7</b>	<b>18.7</b>	<b>21.7</b>	<b>7.1</b>	<b>1.93</b>	<b>8.45</b>	<b>-0.78</b>	<b>-1.61</b>
<b>Sugar Cane</b>	<b>212.1</b>	<b>0.0</b>	<b>0.0</b>	<b>0.0</b>	<b>1.7</b>	<b>52.4</b>	<b>52.4</b>	<b>52.4</b>	<b>1.7</b>	<b>0.00</b>	<b>0.00</b>	<b>0.00</b>	<b>0.98</b>
<b>Other crops products</b>	<b>346.7</b>	<b>0.5</b>	<b>14.4</b>	<b>0.8</b>	<b>-2.2</b>	<b>23.3</b>	<b>-3.9</b>	<b>0.0</b>	<b>13.4</b>	<b>1.93</b>	<b>8.45</b>	<b>-0.78</b>	<b>-2.58</b>
<b>Fresh Vegetables</b>	<b>209.7</b>	<b>5.3</b>	<b>25.0</b>	<b>1.9</b>	<b>-7.9</b>	<b>24.0</b>	<b>-15.0</b>	<b>-5.6</b>	<b>23.6</b>	<b>1.28</b>	<b>8.42</b>	<b>-0.09</b>	<b>-2.82</b>
Beans	7.8	-10.7	77.5	-22.9	-8.5	18.1	3.9	-0.6	11.8	-0.11	0.69	-0.36	-0.10
Brinjal	7.7	-11.4	8.8	20.8	14.5	4.4	-9.4	-31.1	33.4	-0.14	0.10	0.24	0.21
Cabbage	11.9	44.3	19.1	-25.1	42.8	14.9	-23.6	-33.3	83.9	0.46	0.29	-0.45	0.58
Cauliflower	3.0	13.6	25.8	21.6	-14.9	-11.9	-6.1	16.5	47.9	0.04	0.10	0.10	-0.09
Carrot	13.6	42.9	83.2	34.8	-6.3	-27.5	-51.3	-21.0	230.9	0.28	0.77	0.59	-0.14
Onion	10.9	0.0	0.0	3.1	0.0	35.7	35.7	3.1	3.1	0.00	0.00	0.06	0.00
Tomato	63.3	21.1	96.0	24.8	-38.8	44.8	-19.2	0.3	81.3	0.79	4.36	2.20	-4.31
Creepers	60.8	1.1	21.7	-24.7	14.0	29.1	-0.9	2.9	5.6	0.09	1.85	-2.56	1.09
Other fresh vegetables	30.7	-3.3	7.0	2.2	-1.4	14.3	-10.1	1.0	4.2	-0.14	0.28	0.10	-0.06
<b>Fruits and nuts</b>	<b>67.6</b>	<b>-16.3</b>	<b>11.1</b>	<b>-3.7</b>	<b>11.0</b>	<b>20.0</b>	<b>22.1</b>	<b>-0.5</b>	<b>-0.7</b>	<b>0.43</b>	<b>-0.07</b>	<b>-1.09</b>	<b>0.19</b>
Banana	12.8	6.8	13.5	0.0	7.6	39.6	43.8	21.2	30.5	0.15	0.31	0.00	0.20
Pineapple	29.4	3.9	-11.8	-9.1	5.8	61.5	20.9	-5.5	-11.9	0.23	-0.71	-0.49	0.28
Other fruits	25.4	1.8	10.2	-16.9	-9.8	-2.2	10.6	-14.7	-15.9	0.06	0.33	-0.60	-0.29
<b>Oilseeds and oleaginous fruits</b>	<b>5.8</b>	<b>11.4</b>	<b>-14.5</b>	<b>8.5</b>	<b>-7.0</b>	<b>7.6</b>	<b>-2.2</b>	<b>-3.4</b>	<b>-3.8</b>	<b>-0.08</b>	<b>-0.02</b>	<b>0.00</b>	<b>0.09</b>
Groundnut	2.1	-2.5	-5.5	-1.3	15.8	15.3	11.9	7.0	5.4	-0.01	-0.02	0.00	0.05
Coconut	3.7	-20.0	0.0	0.0	13.8	-6.4	-14.7	-17.9	-8.9	-0.07	0.00	0.00	0.04
<b>Edible roots and tubers</b>	<b>39.3</b>	<b>2.5</b>	<b>2.0</b>	<b>1.2</b>	<b>3.9</b>	<b>20.0</b>	<b>11.9</b>	<b>20.4</b>	<b>9.8</b>	<b>0.14</b>	<b>0.04</b>	<b>0.32</b>	<b>0.02</b>
Potato	30.8	0.0	0.0	7.6	0.0	20.0	20.0	7.6	7.6	0.00	0.00	0.31	0.00
Other Root crops	8.4	14.9	3.4	0.5	1.9	19.5	11.6	22.0	21.7	0.14	0.04	0.01	0.02
<b>Stimulant &amp; spice</b>	<b>14.6</b>	<b>-0.6</b>	<b>4.4</b>	<b>1.1</b>	<b>3.1</b>	<b>1.9</b>	<b>0.7</b>	<b>1.1</b>	<b>8.1</b>	<b>0.00</b>	<b>0.08</b>	<b>0.08</b>	<b>-0.07</b>
Tea	12.0	0.0	0.0	0.0	0.0	0.0	0.0	0.0	0.0	0.00	0.00	0.00	0.00
Ginger	2.5	0.9	30.6	21.9	-15.3	7.3	23.2	26.6	36.1	0.00	0.08	0.08	-0.07
<b>Flowers, ornamental plants</b>	<b>9.9</b>	<b>10.8</b>	<b>0.4</b>	<b>0.0</b>	<b>0.0</b>	<b>17.7</b>	<b>18.2</b>	<b>18.2</b>	<b>11.2</b>	<b>0.15</b>	<b>0.01</b>	<b>0.00</b>	<b>0.00</b>
Anthurium	3.0	1.6	2.3	0.0	0.0	5.0	7.4	7.4	4.0	0.00	0.01	0.00	0.00
Rose	1.1	15.5	0.0	0.0	0.0	25.1	25.1	25.1	15.5	0.02	0.00	0.00	0.00
Other flowers	5.8	12.5	0.0	0.0	0.0	20.0	20.0	20.0	12.5	0.12	0.00	0.00	0.00
<b>Animals &amp; Animal Products</b>	<b>441.1</b>	<b>2.9</b>	<b>-4.0</b>	<b>1.4</b>	<b>3.0</b>	<b>48.6</b>	<b>28.3</b>	<b>12.8</b>	<b>3.2</b>	<b>1.91</b>	<b>-2.73</b>	<b>0.94</b>	<b>2.00</b>
Cattle	43.7	2.3	1.0	2.1	0.3	11.0	10.0	9.2	5.8	0.11	0.05	0.10	0.02
Pigs	3.1	0.0	0.0	0.0	2.2	4.9	4.2	0.0	2.2	0.00	0.00	0.00	0.01
Goat	0.7	5.0	1.6	1.4	0.0	27.6	12.1	10.7	8.2	0.00	0.00	0.00	0.00
Deer	8.8	-4.5	-0.8	0.4	-1.3	9.0	8.2	5.5	-6.2	-0.05	-0.01	0.00	-0.01
Poultry	283.9	5.6	1.0	0.0	-3.3	61.0	46.1	24.2	3.2	2.58	0.48	0.00	-1.59
Eggs	95.0	-5.8	-26.9	9.3	36.9	33.9	-16.5	-21.2	3.2	-0.74	-3.26	0.83	3.58
Milk	5.9	0.0	0.0	0.0	0.0	31.3	23.6	6.8	0.0	0.00	0.00	0.00	0.00
<b>Overall</b>	<b>1,000.0</b>	<b>1.4</b>	<b>2.2</b>	<b>0.7</b>	<b>1.2</b>	<b>41.9</b>	<b>22.1</b>	<b>18.3</b>	<b>5.7</b>	<b>3.84</b>	<b>5.72</b>	<b>0.15</b>	<b>0.40</b>

**Annual Producer Price Index - Agriculture (PPI-A)**

(Base period: Year 2018=100)

**Table 10: Annual indices, annual changes (%) and net contributions of commodity group and product to the change, 2020-2022**

Commodity Group	Weight	Annual index <sup>1</sup>			Percentage changes from		Net contributions from	
		2020	2021	2022	2020 to 2021	2021 to 2022	2020 to 2021	2021 to 2022
<b>Crop Products</b>	<b>558.9</b>	<b>122.4</b>	<b>132.8</b>	<b>172.2</b>	<b>8.5</b>	<b>29.7</b>	<b>4.9</b>	<b>22.4</b>
<b>Sugar Cane</b>	<b>212.1</b>	<b>131.1</b>	<b>158.8</b>	<b>217.9</b>	<b>21.1</b>	<b>37.2</b>	<b>5.9</b>	<b>12.5</b>
<b>Other crops products</b>	<b>346.7</b>	<b>116.3</b>	<b>116.1</b>	<b>142.8</b>	<b>-0.2</b>	<b>23.0</b>	<b>-0.9</b>	<b>9.8</b>
<b>Fresh Vegetables <sup>3</sup></b>	<b>209.7</b>	<b>127.4</b>	<b>115.8</b>	<b>147.0</b>	<b>-9.1</b>	<b>26.9</b>	<b>-2.4</b>	<b>6.6</b>
Beans	7.8	112.0	108.8	148.5	-2.9	36.5	0.0	0.3
Brinjal	7.7	124.0	131.4	183.6	6.0	39.7	0.1	0.4
Cabbage	11.9	156.4	126.4	162.1	-19.2	28.2	-0.4	0.4
Cauliflower	3.0	121.2	131.3	131.9	8.3	0.5	0.0	0.0
Carrot	13.6	141.1	148.3	172.3	5.1	16.2	0.1	0.3
Onion	10.9	113.1	119.6	161.9	5.7	35.4	0.1	0.5
Tomato	63.3	134.5	102.8	136.6	-23.6	32.9	-2.0	2.1
Creepers	60.8	121.0	118.0	145.7	-2.5	23.5	-0.2	1.7
Other fresh vegetables	30.7	118.4	114.6	141.0	-3.2	23.0	-0.1	0.8
<b>Fruits and nuts <sup>3</sup></b>	<b>67.6</b>	<b>108.2</b>	<b>126.0</b>	<b>158.9</b>	<b>16.5</b>	<b>26.1</b>	<b>1.2</b>	<b>2.2</b>
Banana	12.8	115.6	130.9	166.9	13.2	27.5	0.2	0.5
Pineapple	29.4	112.3	127.5	182.2	13.5	42.9	0.4	1.6
Other fruits	25.4	99.7	121.8	127.7	22.2	4.8	0.6	0.1
<b>Oilseeds and oleaginous fruits <sup>3</sup></b>	<b>5.8</b>	<b>90.1</b>	<b>99.7</b>	<b>113.3</b>	<b>10.7</b>	<b>13.6</b>	<b>0.1</b>	<b>0.1</b>
Groundnut	2.1	131.8	148.4	165.2	12.6	11.3	0.0	0.0
Coconut	3.7	66.7	72.5	84.2	8.7	16.1	0.0	0.0
<b>Edible roots and tubers <sup>3</sup></b>	<b>39.3</b>	<b>106.0</b>	<b>111.5</b>	<b>130.6</b>	<b>5.2</b>	<b>17.1</b>	<b>0.2</b>	<b>0.7</b>
Potato	30.8	103.1	111.2	133.3	7.9	19.9	0.2	0.7
Other Root crops	8.4	116.5	112.8	120.4	-3.2	6.7	0.0	0.1
<b>Stimulant &amp; spice <sup>3</sup></b>	<b>14.6</b>	<b>114.5</b>	<b>114.7</b>	<b>118.8</b>	<b>0.2</b>	<b>3.6</b>	<b>0.0</b>	<b>0.1</b>
Tea	12.0	109.1	116.5	121.2 <sup>2</sup>	6.8	4.0	0.1	0.1
Ginger	2.5	139.8	106.6	107.6	-23.7	0.9	-0.1	0.0
<b>Flowers, ornamental plants</b>	<b>9.9</b>	<b>119.4</b>	<b>120.3</b>	<b>136.0</b>	<b>0.8</b>	<b>13.1</b>	<b>0.0</b>	<b>0.2</b>
Anthurium	3.0	82.3	82.7	84.4	0.5	2.1	0.0	0.0
Rose	1.1	129.8	130.7	148.2	0.7	13.4	0.0	0.0
Other flowers	5.8	136.5	137.5	160.0	0.7	16.4	0.0	0.1
<b>Animals &amp; Animal Products</b>	<b>441.1</b>	<b>94.5</b>	<b>99.7</b>	<b>137.7</b>	<b>5.5</b>	<b>38.1</b>	<b>2.3</b>	<b>16.8</b>
Cattle	43.7	99.3	102.3	111.2	3.0	8.7	0.1	0.4
Pigs	3.1	102.8	111.8	115.3	8.8	3.1	0.0	0.0
Goat	0.7	100.9	104.0	130.1	3.1	25.1	0.0	0.0
Deer	8.8	100.5	103.1	112.0	2.6	8.6	0.0	0.1
Poultry	283.9	95.7	101.7	147.1	6.3	44.6	1.7	12.9
Eggs	95.0	87.8	92.0	126.2	4.8	37.2	0.4	3.2
Milk	5.9	95.7	97.4	119.8	1.8	23.0	0.0	0.1
<b>Overall</b>	<b>1,000.0</b>	<b>110.1</b>	<b>118.3</b>	<b>156.9</b>	<b>7.4</b>	<b>32.6</b>	<b>7.2</b>	<b>39.1</b>

<sup>1</sup> Using data for base period (2018) as weights

<sup>2</sup> Provisional

<sup>3</sup> The indices are computed based on the method of variable baskets with fixed monthly weights in the base year as explained at paragraph 12 of Annex. The composition of these baskets is shown in Table 13.

**Table 11: Monthly and Quarterly Price Indices - Agriculture (PPI-A): January 2020 - September 2023****(Base period : Year 2018=100)**

<b>Month</b>	<b>2020</b>	<b>2021</b>	<b>2022</b>	<b>2023</b>
January	107.4	110.5	125.2	169.9 <sup>1</sup>
February	116.3	112.2	141.6	171.9 <sup>1</sup>
March	129.7	117.8	159.3	178.5 <sup>1</sup>
<b>1<sup>st</sup> quarter</b>	<b>117.8</b>	<b>113.5</b>	<b>142.0</b>	<b>173.4 <sup>1</sup></b>
April	127.7	117.8	155.4	176.1 <sup>1</sup>
May	108.7	123.9	144.8	173.2 <sup>1</sup>
June	96.9	123.0	142.2	174.6 <sup>1</sup>
<b>2<sup>nd</sup> quarter</b>	<b>111.4</b>	<b>121.5</b>	<b>147.6</b>	<b>174.6 <sup>1</sup></b>
July	103.6	119.8	161.3 <sup>1</sup>	177.9 <sup>1</sup>
August	104.5	116.9	168.1 <sup>1</sup>	180.5 <sup>1</sup>
September	109.3	119.4	172.1 <sup>1</sup>	172.0 <sup>1</sup>
<b>3<sup>rd</sup> quarter</b>	<b>105.9</b>	<b>118.7</b>	<b>167.2 <sup>1</sup></b>	<b>176.7 <sup>1</sup></b>
October	107.9	118.0	171.2 <sup>1</sup>	
November	104.7	116.8	170.0 <sup>1</sup>	
December	104.6	123.7	167.6 <sup>1</sup>	
<b>4<sup>th</sup> quarter</b>	<b>105.7</b>	<b>119.5</b>	<b>169.6 <sup>1</sup></b>	
<b>Yearly average <sup>2</sup></b>	<b>110.1</b>	<b>118.3</b>	<b>156.9</b>	
<b>Annual change (%)</b>	<b>10.3</b>	<b>7.4</b>	<b>32.6</b>	

<sup>1</sup> Provisional<sup>2</sup> Using data for base period (2018) as weights

**Table 12: Monthly Producer Price Index - Agriculture (PPI-A)<sup>1</sup>: January 2007 - September 2023**

**(Base period: Year 2018=100)**

Month	2007	2008	2009	2010	2011	2012	2013	2014	2015	2016	2017	2018	2019	2020	2021	2022	2023
January	86.4	90.5	94.3	90.0	87.8	95.3	99.8	104.1	100.1	93.0	98.8	104.0	94.2	107.4	110.5	125.2	169.9 <sup>2</sup>
February	90.4	93.4	99.1	94.5	91.0	96.7	100.7	107.5	98.6	95.9	103.3	105.2	98.2	116.3	112.2	141.6	171.9 <sup>2</sup>
March	99.3	94.6	100.6	94.3	91.3	98.8	100.2	101.3	102.6	97.3	105.2	106.4	104.5	129.7	117.8	159.3	178.5 <sup>2</sup>
April	96.0	99.3	98.4	93.3	91.9	97.3	100.6	102.6	95.5	94.7	106.1	103.5	107.3	127.7	117.8	155.4	176.1 <sup>2</sup>
May	90.4	96.7	97.0	89.6	91.1	96.3	101.7	100.0	87.3	94.7	114.0	103.1	99.4	108.7	123.9	144.8	173.2 <sup>2</sup>
June	85.5	98.4	96.8	89.3	89.6	95.7	101.7	100.6	90.5	95.2	115.0	96.8	90.3	96.9	123.0	142.2	174.6 <sup>2</sup>
July	87.1	95.3	87.2	87.3	97.6	100.7	101.5	93.4	90.2	100.7	96.9	95.8	100.6	103.6	119.8	161.3 <sup>2</sup>	177.9 <sup>2</sup>
August	88.8	93.4	86.6	87.4	97.9	99.2	101.5	95.6	93.5	99.9	93.0	97.1	108.3	104.5	116.9	168.1 <sup>2</sup>	180.5 <sup>2</sup>
September	89.9	93.4	85.5	84.1	97.3	96.5	101.0	91.2	93.4	99.8	88.7	98.8	102.4	109.3	119.4	172.1 <sup>2</sup>	172.0 <sup>2</sup>
October	89.7	94.2	84.5	86.1	95.3	97.0	99.2	86.4	90.8	97.6	91.9	96.0	97.4	107.9	118.0	171.2 <sup>2</sup>	
November	89.3	93.7	86.4	87.5	95.8	99.1	98.3	88.0	90.3	98.2	96.8	96.2	97.1	104.7	116.8	170.0 <sup>2</sup>	
December	88.4	92.2	84.4	84.7	96.3	98.3	98.8	88.4	91.3	102.4	103.0	97.1	98.4	104.6	123.7	167.6 <sup>2</sup>	
Yearly Average <sup>3</sup>	89.1	94.4	91.3	88.9	93.5	97.3	100.4	96.3	93.4	97.6	101.0	100.0	99.8	110.1	118.3	156.9	
Annual change (%)	7.1	6.0	-3.3	-2.6	5.2	4.0	3.2	-4.1	-3.0	4.5	3.5	-1.0	-0.2	10.3	7.4	32.6	

<sup>1</sup> The indices for January 2007 to December 2021 previously based on 2013=100, have been converted to the new base 2018=100

<sup>2</sup> Provisional

<sup>3</sup> Using data for base period (2018) as weights



**Monthly Producer Price Index - Agriculture (PPI-A)**

(Base period: Year 2018 =100)

**Table 13: Weight distribution for the base period and its months by commodity group and product**

Commodity Group	Weight												
	Year	January	February	March	April	May	June	July	August	September	October	November	December
<b>Crop Products</b>	<b>558.9</b>	<b>558.9</b>	<b>558.9</b>	<b>558.9</b>	<b>558.9</b>	<b>558.9</b>	<b>558.9</b>	<b>558.9</b>	<b>558.9</b>	<b>558.9</b>	<b>558.9</b>	<b>558.9</b>	<b>558.9</b>
<b>Sugar Cane</b>	<b>212.1</b>	<b>212.1</b>	<b>212.1</b>	<b>212.1</b>	<b>212.1</b>	<b>212.1</b>	<b>212.1</b>	<b>212.1</b>	<b>212.1</b>	<b>212.1</b>	<b>212.1</b>	<b>212.1</b>	<b>212.1</b>
<b>Other crops products</b>	<b>346.7</b>	<b>346.7</b>	<b>346.7</b>	<b>346.7</b>	<b>346.7</b>	<b>346.7</b>	<b>346.7</b>	<b>346.7</b>	<b>346.7</b>	<b>346.7</b>	<b>346.7</b>	<b>346.7</b>	<b>346.7</b>
<b>Fresh Vegetables</b>	<b>209.7</b>	<b>209.7</b>	<b>209.7</b>	<b>209.7</b>	<b>209.7</b>	<b>209.7</b>	<b>209.7</b>	<b>209.7</b>	<b>209.7</b>	<b>209.7</b>	<b>209.7</b>	<b>209.7</b>	<b>209.7</b>
Beans	7.8	9.7	7.5	5.8	5.1	5.4	6.8	5.9	13.5	13.7	10.3	6.3	6.5
Brinjal	7.7	8.6	7.6	6.9	7.4	7.2	7.9	8.2	8.4	13.6	5.9	6.6	5.1
Cabbage	11.9	12.9	13.4	22.6	14.6	12.2	10.5	5.7	7.4	8.3	9.9	9.3	9.6
Cauliflower	3.0	2.4	1.5	0.9	0.6	2.2	4.9	7.1	6.2	5.3	3.9	2.4	2.3
Carrot	13.6	13.4	9.3	16.5	23.0	24.7	11.6	6.8	13.3	8.8	5.9	13.9	14.3
Onion	10.9	1.6	0.0	0.0	0.0	0.0	0.1	0.4	3.0	25.7	41.3	42.1	11.0
Tomato	63.3	59.6	84.4	80.0	77.4	74.4	79.8	74.2	38.8	25.8	46.4	49.7	48.6
Creepers	60.8	69.8	55.5	51.2	51.0	50.7	57.5	66.0	84.1	76.6	55.3	56.8	75.6
Other fresh vegetables	30.7	31.8	30.5	25.7	30.6	32.8	30.6	35.5	35.1	31.8	30.7	22.6	36.7
<b>Fruits and nuts</b>	<b>67.6</b>	<b>67.6</b>	<b>67.6</b>	<b>67.6</b>	<b>67.6</b>	<b>67.6</b>	<b>67.6</b>	<b>67.6</b>	<b>67.6</b>	<b>67.6</b>	<b>67.6</b>	<b>67.6</b>	<b>67.6</b>
Banana	12.8	8.4	14.6	18.5	18.8	18.1	12.7	17.5	21.2	21.6	20.0	9.7	5.3
Pineapple	29.4	20.2	41.2	49.1	45.5	42.7	32.0	38.4	46.4	46.0	39.1	22.7	9.6
Other fruits	25.4	39.0	11.7	0.0	3.2	6.9	22.8	11.7	0.0	0.0	8.4	35.2	52.6
<b>Oilseeds and oleaginous fruits</b>	<b>5.8</b>	<b>5.8</b>	<b>5.8</b>	<b>5.8</b>	<b>5.8</b>	<b>5.8</b>	<b>5.8</b>	<b>5.8</b>	<b>5.8</b>	<b>5.8</b>	<b>5.8</b>	<b>5.8</b>	<b>5.8</b>
Groundnut	2.1	1.4	1.7	3.2	3.4	3.4	1.2	1.2	1.0	1.4	1.7	3.2	3.4
Coconut	3.7	4.4	4.1	2.6	2.4	2.4	4.5	4.6	4.8	4.4	4.0	2.6	2.4
<b>Edible roots and tubers</b>	<b>39.3</b>	<b>39.3</b>	<b>39.3</b>	<b>39.3</b>	<b>39.3</b>	<b>39.3</b>	<b>39.3</b>	<b>39.3</b>	<b>39.3</b>	<b>39.3</b>	<b>39.3</b>	<b>39.3</b>	<b>39.3</b>
Potato	30.8	4.8	1.5	0.0	0.0	0.0	9.7	23.4	32.8	34.6	36.2	35.2	34.8
Other Root crops	8.4	34.5	37.8	39.3	39.3	39.3	29.6	15.9	6.4	4.6	3.1	4.1	4.5
<b>Stimulant &amp; spice</b>	<b>14.6</b>	<b>14.6</b>	<b>14.6</b>	<b>14.6</b>	<b>14.6</b>	<b>14.6</b>	<b>14.6</b>	<b>14.6</b>	<b>14.6</b>	<b>14.6</b>	<b>14.6</b>	<b>14.6</b>	<b>14.6</b>
Tea	12.0	13.9	14.0	14.5	14.3	13.8	13.9	13.0	11.9	8.8	10.2	9.9	10.2
Ginger	2.5	0.7	0.6	0.0	0.3	0.8	0.6	1.6	2.6	5.8	4.4	4.7	4.4
<b>Flowers, ornamental plants</b>	<b>9.9</b>	<b>9.9</b>	<b>9.9</b>	<b>9.9</b>	<b>9.9</b>	<b>9.9</b>	<b>9.9</b>	<b>9.9</b>	<b>9.9</b>	<b>9.9</b>	<b>9.9</b>	<b>9.9</b>	<b>9.9</b>
Anthurium	3.0	3.0	3.0	3.0	3.0	3.0	3.0	3.0	3.0	3.0	3.0	3.0	3.0
Rose	1.1	1.1	1.1	1.1	1.1	1.1	1.1	1.1	1.1	1.1	1.1	1.1	1.1
Other flowers	5.8	5.8	5.8	5.8	5.8	5.8	5.8	5.8	5.8	5.8	5.8	5.8	5.8
<b>Animals &amp; Animal Products</b>	<b>441.1</b>	<b>441.1</b>	<b>441.1</b>	<b>441.1</b>	<b>441.1</b>	<b>441.1</b>	<b>441.1</b>	<b>441.1</b>	<b>441.1</b>	<b>441.1</b>	<b>441.1</b>	<b>441.1</b>	<b>441.1</b>
Cattle	43.7	43.7	43.7	43.7	43.7	43.7	43.7	43.7	43.7	43.7	43.7	43.7	43.7
Pigs	3.1	3.1	3.1	3.1	3.1	3.1	3.1	3.1	3.1	3.1	3.1	3.1	3.1
Goat	0.7	0.7	0.7	0.7	0.7	0.7	0.7	0.7	0.7	0.7	0.7	0.7	0.7
Deer	8.8	8.8	8.8	8.8	8.8	8.8	8.8	8.8	8.8	8.8	8.8	8.8	8.8
Poultry	283.9	283.9	283.9	283.9	283.9	283.9	283.9	283.9	283.9	283.9	283.9	283.9	283.9
Eggs	95.0	95.0	95.0	95.0	95.0	95.0	95.0	95.0	95.0	95.0	95.0	95.0	95.0
Milk	5.9	5.9	5.9	5.9	5.9	5.9	5.9	5.9	5.9	5.9	5.9	5.9	5.9
<b>Overall Index</b>	<b>1,000.0</b>	<b>1,000.0</b>	<b>1,000.0</b>	<b>1,000.0</b>	<b>1,000.0</b>	<b>1,000.0</b>	<b>1,000.0</b>	<b>1,000.0</b>	<b>1,000.0</b>	<b>1,000.0</b>	<b>1,000.0</b>	<b>1,000.0</b>	<b>1,000.0</b>

**Producer Price Index – Agriculture (PPI-A)****Methodology for the computation of PPI-A****1. Introduction**

The analysis of price data implies a comparison of current and past prices. Comparison overtime is required to study the price movement in order to understand the history and to indicate future outlook. While price relatives of single commodities can be studied in isolation, a general conclusion can only be derived from averages, covering a given set or class of commodities. The indicators of average price changes are the price indices.

**2. Scope**

The PPI-A covers agricultural products that are classified according to the latest Central Product Classification (CPC) Ver.2.1. There are two divisions: Division 01 - Crop Products and Division 02 - Animals & Animal Products. "Crop Products" is further divided into 7 Commodity Groups namely:

Group 012: Fresh vegetables

Group 013: Fruit and nuts

Group 014: Oilseeds and oleaginous fruits

Group 015: Edible roots and tubers

Group 016: Stimulant and spice

Group 018: Sugar cane

Group 019: Flowers, ornamental plants

**3. Commodity Coverage**

The bulk of the products in agriculture, with the exception of forestry, fishing and agricultural services, is taken into account in the producer price index. Thus, about 75% of the gross output of the agricultural sector has been considered.

**4. Observation Units**

There are essentially three types of observation units for collecting producer prices: (i) producers (ii) purchasers and (iii) markets. However, in the context of Mauritius, different types of observation units are used for different commodities as shown below:

(a) For main commercial crops (sugar cane and tea leaf etc.), the respective marketing agency is the source of the price data.

(b) For vegetables, price data are obtained mainly at three auction markets which are situated at Vacoas, Flacq and Port Louis respectively.

(c) For fruits, prices are recorded from different sources such as planters and first middlemen.

(d) For animals and animal products, price data are available at sources varying from marketing agencies to producers.

## **5. Definition of prices**

A price is a pure price when the same amount of money refers to what the buyer pays and what the seller receives. Since the price series form the basis for calculation, the index of the output prices must be representative of what the farmer actually receives.

The prices must be recorded at a point in the marketing of the product which is as close as possible to the farmer. This means that the selling prices should be recorded at the farm gate or (if this is not possible) at the next stage of the commodity flow.

## **6. Purpose of the agricultural price indices**

The purpose of the price indices is to provide information on trends in producer prices of agricultural products and purchase prices of the means of agricultural production.

The selling prices of agricultural products and the purchase of the means of production have a decisive influence on farmers' income. It would, therefore, be useful to have indicators showing how agricultural revenue and expenditure are influenced by their price component.

The agricultural price indicators are of two types: -

- (i) Prices received by farmers represent the producer prices of agricultural products (output prices)
- (ii) Prices paid by farmers are the purchase prices of agricultural requisites (input prices)

The two classes of prices mentioned above are considered important in the context of economic analysis and agricultural policy decisions. Index numbers based on them show the average changes in these prices.

It is to be noted that only the output price index for different groups of commodities is compiled.

## **7. Price received by agricultural producers**

As mentioned earlier, the prices for the index should be farm-gate prices, but this is not possible in many cases. Hence, in lieu of the farm-gate price, the wholesale price of the product is recorded at the three auction markets located in Vacoas, Flacq, and Port Louis.

In regards to sugarcane, there is no actual market price for the product. The final price for a crop is only available after the crop year to which it refers. Provisional estimates of the price of sugar are provided by Mauritius Sugar Syndicate. This is however revised as soon as the final price is available. The same procedure is applied to tea whereby prices are obtained from the National Agricultural Products Regulatory Office (NAPRO).

## 8. Frequency of Price Collection

The frequency of price collection varies from weekly for some commodities to only once a year in others. Broadly speaking, the frequency of price collection is as follows: -

- (i) For vegetables, price data are collected every second and fourth week of a month at the three earlier mentioned auction markets.
- (ii) For commodities for which prices are fairly stable, data suppliers are visited on a quarterly basis, but prices are collected for each month of the quarter. For example, crop products – potato, onion etc.
- (iii) For the main commercial crops like sugar cane and tea, the reported prices are normally fixed for the crop year by the respective marketing agency.
- (iv) For the remaining type of items not mentioned above, the price data are collected on a monthly basis.

## 9. Weighting scheme and choice of the base period

As price data are associated with a commercial transaction, it is logical to relate prices to sales rather than total production. However, since the value of production for the market (sales) is not available here, the value of the total production is considered as a proxy in the calculation of weights. Furthermore, since meteorological conditions and market forces may generate high fluctuations, the weighted base is taken as the average of the total production for three years.

It may be noted that ‘Food and Agriculture Organisation’ and ‘Eurostat’ recommend that if the quantity weight base is the average of 3 years, then the reference base for prices should be the middle year. In the new set of indices, the weights have been derived by multiplying the average of production during the years 2017, 2018 and 2019 by the average of unit prices in 2018, the reference period. The weight is assigned to each commodity group on the basis of total production (as a proxy for sales) pertaining to the particular group. At the commodity level, the weights are apportioned within the commodity group on the basis of the production of each product.

Quarterly and annual indices have been computed using a weighting system based on the production value for the base period.

## 10. Index calculation

The PPI will be calculated according to a Laspeyres formula:

$$I_t = \frac{\sum W_i (P_{ti}/P_{oi})}{\sum W_i} \times 100$$

Where:

- I<sub>t</sub>** is the index for the current period t  
**P<sub>ti</sub>** is the price of commodity i in the current period t  
**P<sub>oi</sub>** is the price of the commodity i in the reference period o (2018)  
**W<sub>i</sub>** is the weight associated with commodity i

As per the International Monetary Fund's recommendation to harmonize the method of computation of all indices, prices of commodities collected at different auction markets are computed using geometric mean instead of simple average.

## 11. Uses of agricultural price indices

The construction of agricultural price index numbers may serve various purposes as shown below: -

- (i) Economic analysis, in particular the estimation of general price trends and their relationship with other pertinent variables, e.g. the study of domestic price changes in relation to prices observed in external markets or the movement of agricultural production.
- (ii) Monitoring the implementation of agricultural price policy decisions such as the introduction or modification of support prices
- (iii) Forecasting price movements in connection with market studies or business cycle research.
- (iv) Compilation of national accounts at constant prices. In order to estimate the growth of the real product of the agricultural sector, deflator indices are needed. They are appropriately weighted indices of agricultural commodities or input items.

## 12. Seasonality

Prices and quantities of many agricultural commodities show seasonal variations. As vegetables and fruits are extremely seasonal products, it is therefore decided to use the method of variable baskets with fixed monthly weights in the base year.

There are 12 monthly baskets of representative products. The composition of these baskets varies each month. Certain products whose marketing period covers the whole year appear in all 12 monthly baskets, while others, which are more seasonal, appear only in some of them. However, the composition of the basket for a given month is fixed over time.

## 13. Missing Prices

There is also, in the field of agricultural price observation, the case of missing prices for a product must be taken into account because there is an index weight for the respective month. In these cases, imputation is carried out as per International Monetary Fund's recommendations.

## 14. Periodicity

The index is calculated on a monthly, quarterly as well as on an annual basis. While quarterly and annual price indices can normally be calculated as the simple (unweighted) average of the monthly indices, it is recommended that the monthly sales figures for the base year be used as weights to calculate the quarterly and annual indices. If sales figures are not available, total production can be used as a proxy when most of the production is available for sales. Such is the case in Mauritius and the values of total production have been used as weights.

**Statistics Mauritius**  
**LIC Centre,**  
**John Kennedy Street,**  
**Port Louis, MAURITIUS**  
**T: +230 208 1800**  
**F: +230 211 4150**  
**W: <https://statsmauritius.govmu.org>**  
**E: [statsmauritius@govmu.org](mailto:statsmauritius@govmu.org)**