



Economic and Social Indicators

Issue No 1719

Producer Price Index - Agriculture

1st Quarter 2023

Released online : 23 May 2023

<https://statsmauritius.govmu.org>

Price: Rs 40.00

Statistics Mauritius
Ministry of Finance, Economic Planning and Development
Port Louis

Note: Readers are invited to make the distinction between official data which are published in the Economic and Social indicators and the analysis presented for the benefit of general readers. Differences of opinion may arise regarding the analytical part but these do not in any way, undermine the quality of the data. The Editors welcome constructive critical comments.

Producer Price Index – Agriculture (PPI-A)

First quarter 2023

(Base period year 2018 = 100)

1. Introduction

The Producer Price Index-Agriculture (PPI-A) gives a measure of the average change in the selling prices which producers receive for their agricultural products.

This issue of the Economic and Social Indicators presents PPI-A indices for the months of January, February and March 2023 as well as figures for preceding months updated in the light of additional information that has now become available. Monthly weights are given in Table 13.

Table 11 presents the monthly indices as well as the quarterly and yearly average for the agricultural sector. Comparative monthly indices for the agricultural sector are given in Table 12.

The methodology for the computation of PPI-A is given in the annex of this publication.

2. Producer Price Index - Agriculture: First Quarter 2023

2.1 Structure of PPI-A (Base period: 2018=100)

PPI-A covers two sub-groups, namely: "Crop products" and "Animals and animal products". "Crop products" is further subdivided into "Sugar cane" and "Other crop products". "Other crop products" heavily influences both the "overall" index and that of the sub-group "Crop products", of which it constitutes 34.7% and 62.0% of the respective weights.

2.2 Changes in the monthly index

Fig 1: Overall monthly indices, April 2022 – March 2023

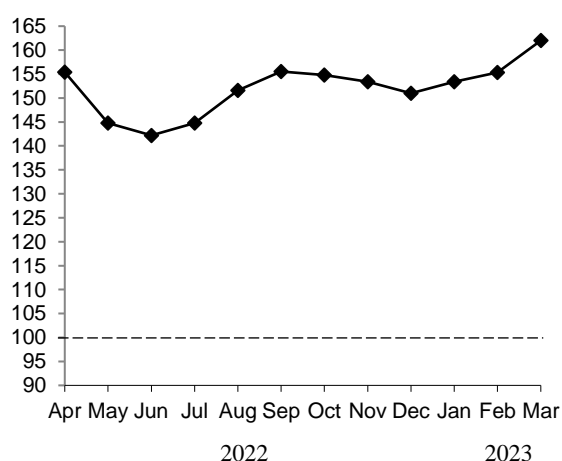


Figure 1 shows the monthly evolution of PPI-A for the period April 2022 to March 2023.

PPI-A, which was 151.0 in December 2022, increased by 7.3% to reach 162.0 in March 2023. The monthly increases were as follows: January (+1.6%), February (+1.2%) and March (+4.3%).

The index for the sub-group "Crop products", which carries 55.9% of the total weight, increased by 18.5% from 148.1 in December 2022 to 175.5 in March 2023. The monthly increases were as follows: 3.7% in January, 6.6% in February and 7.2% in March.

2.2.1 Sugar cane

The index for the period July 2022 to March 2023 was 185.4 based on the forecasted price of sugar for the crop year 2022-2023. This index will be revised at the end of June 2023 when the final price is available.

2.2.2 Other crop products

The index for "Other crop products" which was 125.3 in December 2022, increased by 35.3% to reach 169.5 in March 2023, mainly due to increases in the prices of fresh vegetables (tomato, carrot, creepers, beans and other fresh vegetables) (+45.0%) and, fruits and nuts (+41.5%).

In January, this index increased by 7.1%, mainly due to increases in the prices of fruits and nuts (+21.2%) and fresh vegetables (creepers, beans, carrot and other fresh vegetables) (+5.0%).

In February, the index increased by 12.1%, mainly due to increases in the prices of fresh vegetables (creepers and tomato) (+16.9%) and, fruits and nuts (+10.8%).

In March, the index rose by 12.6%, mainly due to increases in the prices of fresh vegetables (tomato and carrot) (+18.2%).

2.2.3 Animals and animal products

The index for the sub-group "Animals and animal products" which was 154.7 in December 2022, decreased by 6.3% to reach 144.9 in March 2023, mainly due to decreases in the prices of eggs (-39.2%).

In January, this index decreased by 1.0%, mainly due to decreases in the prices of eggs (-9.3%).

In February, the index fell by 5.5%, mainly due to decreases in the prices of eggs (-32.9%).

In March, the index rose by 0.1%, mainly due to increases in the prices of cattle (+2.1%).

More details of changes on a month-to-month basis are given in Table 6 and changes over the corresponding month of the previous year in Table 7.

2.3 Changes in the quarterly index

Fig 2: Overall quarterly indices, 2nd quarter 2021 – 1st quarter 2023

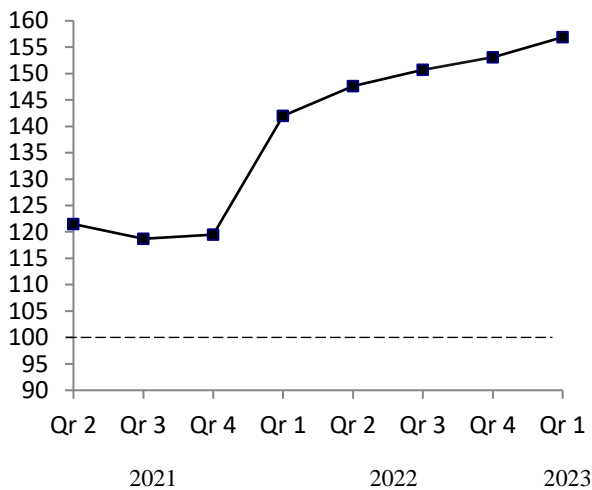


Figure 2 and Table 8 show the movement of quarterly PPI-A covering the period of 2nd Quarter 2021 to 1st Quarter 2023.

The overall index for the first quarter of 2023 increased by 2.5% when compared to the previous quarter and by 10.5% when compared to the corresponding quarter. Percentage changes on a quarterly basis and the net contributions of commodity groups and products to the overall index are given in Table 9.

2.4 Changes in the yearly index

The average prices which producers received from the sale of agricultural products in the year 2022 were 25.4% higher compared to the year 2021. The annual indices for the years 2020 - 2022, annual changes and the net contributions of commodity groups and products to the change are presented in Table 10.

Statistics Mauritius
Ministry of Finance, Economic Planning and
Development
Port Louis
May 2023

CONTACT PERSONS:

Ms. A. D. Soobhug
Statistician
asoobhug@govmu.org

Mr. J. Sowdagur
Senior Statistical Officer
jasowdagur@govmu.org

Statistics Mauritius
L.I.C Centre
J. Kennedy Street
Port Louis
Telephone: (230) 208 1800
Fax: (230) 211 4150

Monthly Producer Price Index - Agriculture (PPI-A)

(Base period: Year 2018=100)

Table 1: Monthly indices by commodity group and product, January 2023 - March 2023

Commodity Group	Weight	2023		
		January	February	March
Crop Products	558.9	153.6	163.7	175.5
Sugar Cane	212.1	185.4¹	185.4¹	185.4¹
Other crops products	346.7	134.2	150.5	169.5
Fresh Vegetables²	209.7	126.4	147.7	174.6
Beans	7.8	186.9	220.2	200.0
Brinjal	7.7	151.0	186.3	117.4
Cabbage	11.9	151.6	157.1	146.4
Cauliflower	3.0	142.2	168.2	168.9
Carrot	13.6	94.8	119.2	146.3
Onion	10.9	162.4	162.4	...
Tomato	63.3	77.9	107.3	212.2
Creepers	60.8	155.6	198.2	157.3
Other fresh vegetables	30.7	128.3	143.6	145.3
Fruits and nuts²	67.6	161.5	178.9	188.5
Banana	12.8	205.7	205.7	205.7
Pineapple	29.4	187.5	178.0	182.0
Other fruits	25.4	138.5	148.4	...
Oilseeds and oleaginous fruits²	5.8	97.0	97.1	120.4
Groundnut	2.1	176.6	160.2	159.0
Coconut	3.7	71.8	71.8	71.8
Edible roots and tubers²	39.3	134.8	134.3	139.0
Potato	30.8	133.4	133.4	...
Other Root crops	8.4	135.0	134.3	139.0
Stimulant & spice²	14.6	121.1	122.8	121.3
Tea	12.0	121.2 ¹	121.2 ¹	121.2 ¹
Ginger	2.5	119.6	159.2	167.9
Flowers, ornamental plants	9.9	151.6	151.6	151.6
Anthurium	3.0	88.8	88.8	88.8
Rose	1.1	171.1	171.1	171.1
Other flowers	5.8	180.0	180.0	180.0
Animals & Animal Products	441.1	153.1	144.7	144.9
Cattle	43.7	116.2	116.2	118.6
Pigs	3.1	116.5	116.5	116.5
Goat	0.7	138.7	140.1	140.1
Deer	8.8	113.7	113.7	113.7
Poultry	283.9	172.2	172.2	172.2
Eggs	95.0	119.7	80.3	80.3
Milk	5.9	127.9	127.9	127.9
Overall Index	1,000.0	153.4	155.3	162.0

¹ Provisional

... Not applicable

² The indices are computed based on the method of variable baskets with fixed monthly weights in the base year as explained at paragraph 12 of Annex. The composition of these baskets is shown in Table 13.

Monthly Producer Price Index - Agriculture (PPI-A)

(Base period: Year 2018=100)

Table 2: Monthly indices by commodity group and product, January 2022 - December 2022

Commodity Group	Weight	2022											
		January	February	March	April	May	June	July	August	September	October	November	December
Crop Products	558.9	137.5	164.8	187.8	180.4	156.3	140.6	145.2	150.8	159.0	157.0	152.5	148.1
Sugar Cane	212.1	172.7	172.7	172.7	172.7	172.7	172.7	185.4¹	185.4¹	185.4¹	185.4¹	185.4¹	185.4¹
Other crops products	346.7	115.9	160.0	197.0	185.1	146.2	120.9	120.5	129.6	142.9	139.6	132.4	125.3
Fresh Vegetables²	209.7	110.8	179.0	230.7	211.9	150.6	106.8	103.9	112.5	128.2	122.8	119.7	120.4
Beans	7.8	127.1	184.4	298.5	227.7	147.7	85.8	103.1	143.0	128.9	110.2	107.3	131.6
Brinjal	7.7	114.2	184.1	205.1	247.8	292.1	264.7	193.1	143.6	142.1	145.4	135.7	139.7
Cabbage	11.9	140.9	187.7	228.2	182.0	168.0	143.0	87.8	76.5	94.0	109.5	128.0	149.4
Cauliflower	3.0	152.9	170.6	190.4	176.9	172.0	155.9	124.2	92.3	102.4	121.0	127.4	129.1
Carrot	13.6	106.5	235.5	362.8	281.4	183.9	87.3	52.0	49.2	42.2	50.3	67.9	78.4
Onion	10.9	119.7	119.7	162.4	162.4	162.4	162.4	162.4	162.4	162.4
Tomato	63.3	73.2	169.9	237.5	270.8	141.5	75.7	64.4	55.4	47.1	65.8	73.7	77.1
Creepers	60.8	126.5	201.1	190.8	119.9	135.3	118.9	131.2	134.7	148.4	140.8	133.5	146.6
Other fresh vegetables	30.7	126.7	140.5	200.0	167.5	131.1	115.8	123.4	134.1	148.8	141.6	132.6	114.9
Fruits and nuts²	67.6	129.5	140.2	168.7	171.1	164.8	165.3	170.5	187.0	202.5	202.5	172.2	133.2
Banana	12.8	129.8	129.8	169.7	169.7	169.7	169.7	169.7	169.7	169.7	169.7	186.8	186.8
Pineapple	29.4	140.0	143.7	168.3	171.3	164.8	189.1	184.9	194.9	217.9	227.3	208.8	181.7
Other fruits	25.4	124.1	141.1	...	177.1	151.8	129.5	124.7	165.2	144.6	118.8
Oilseeds and oleaginous fruits²	5.8	100.2	99.6	121.0	125.6	124.1	101.5	103.2	102.0	113.2	100.6	126.8	133.2
Groundnut	2.1	150.8	137.5	150.1	152.2	150.5	152.2	152.2	164.3	190.2	167.3	172.5	177.5
Coconut	3.7	84.2	84.2	84.2	87.5	87.5	87.5	89.7	89.7	89.7	71.8	71.8	71.8
Edible roots and tubers²	39.3	117.8	124.0	122.4	112.6	107.7	120.4	124.0	130.2	131.9	133.2	133.4	133.1
Potato	30.8	111.2	111.2	133.4	133.4	133.4	133.4	133.4	133.4	133.4
Other Root crops	8.4	118.8	124.5	122.4	112.6	107.7	116.2	110.1	113.8	120.4	130.7	133.2	130.6
Stimulant & spice²	14.6	119.8	121.8	121.2	121.5	121.8	121.8	120.4	119.0	113.9	113.9	117.8	118.1
Tea	12.0	121.2	121.2	121.2	121.2	121.2	121.2	121.2 ¹	121.2 ¹	121.2 ¹	121.2 ¹	121.2 ¹	121.2 ¹
Ginger	2.5	91.7	135.5	126.6	137.7	131.7	134.8	114.4	108.9	102.7	96.9	110.8	111.0
Flowers, ornamental plants	9.9	128.3	128.3	128.3	128.3	128.3	128.3	128.3	129.6	151.0	151.0	151.0	151.0
Anthurium	3.0	82.7	82.7	82.7	82.7	82.7	82.7	82.7	86.8	86.8	86.8	86.8	86.8
Rose	1.1	136.8	136.8	136.8	136.8	136.8	136.8	136.8	136.8	171.1	171.1	171.1	171.1
Other flowers	5.8	150.0	150.0	150.0	150.0	150.0	150.0	150.0	150.0	180.0	180.0	180.0	180.0
Animals & Animal Products	441.1	109.6	112.1	123.3	123.7	130.2	144.3	144.4	152.7	151.1	151.9	154.6	154.7
Cattle	43.7	106.4	106.4	106.4	107.5	107.5	112.8	112.8	112.8	114.0	115.1	116.2	116.2
Pigs	3.1	111.1	111.1	113.3	116.5	116.5	116.5	116.5	116.5	116.5	116.5	116.5	116.5
Goat	0.7	122.1	125.7	125.7	125.7	127.0	130.8	130.8	130.8	130.8	134.7	138.7	138.7
Deer	8.8	105.1	105.1	105.1	105.1	105.1	114.4	120.0	120.0	120.0	116.3	113.7	113.7
Poultry	283.9	111.7	115.6	126.4	126.4	136.5	152.9	152.9	165.7	165.7	170.5	170.5	170.5
Eggs	95.0	105.2	105.5	125.1	125.3	125.3	138.1	138.1	138.3	130.0	119.5	131.7	132.0
Milk	5.9	103.5	103.5	103.5	119.8	119.8	119.8	127.9	127.9	127.9	127.9	127.9	127.9
Overall Index	1,000.0	125.2	141.6	159.3	155.4	144.8	142.2	144.8	151.6	155.5	154.8	153.4	151.0

¹ Provisional

... Not applicable

² The indices are computed based on the method of variable baskets with fixed monthly weights in the base year as explained at paragraph 12 of Annex. The composition of these baskets is shown in Table 13.

Monthly Producer Price Index - Agriculture (PPI-A)

(Base period: Year 2018 =100)

Table 3: Monthly indices by commodity group and product, January 2021 - December 2021

Commodity Group	Weight	2021											
		January	February	March	April	May	June	July	August	September	October	November	December
Crop Products	558.9	122.0	125.5	135.1	134.3	141.2	139.7	135.8	130.5	135.0	132.7	128.9	135.1
Sugar Cane	212.1	144.9	144.9	144.9	144.9	144.9	144.9	172.7	172.7	172.7	172.7	172.7	172.7
Other crops products	346.7	108.0	113.6	129.1	127.8	138.9	136.5	113.3	104.7	112.0	108.2	102.1	112.1
Fresh Vegetables¹	209.7	101.5	106.7	133.0	130.5	153.9	152.4	114.1	95.5	105.1	98.0	92.1	104.5
Beans	7.8	113.5	114.5	116.7	113.2	139.3	144.7	80.9	94.2	111.3	94.5	76.6	127.9
Brinjal	7.7	66.4	75.7	90.4	107.4	191.6	208.6	158.4	147.6	167.2	124.3	117.6	180.8
Cabbage	11.9	113.0	104.6	134.7	146.4	192.0	181.0	122.4	60.1	61.5	78.3	109.8	157.2
Cauliflower	3.0	135.8	184.7	178.4	165.6	171.3	162.1	107.1	80.5	101.3	140.2	144.3	140.2
Carrot	13.6	95.5	110.7	218.6	182.9	222.7	165.8	125.2	80.9	56.1	67.3	86.1	119.2
Onion	10.9	113.2	113.2	119.7	119.7	119.7	119.7	119.7	119.7	119.7
Tomato	63.3	92.9	110.5	136.9	133.1	145.5	145.4	86.5	46.8	20.5	42.7	52.1	55.1
Creepers	60.8	110.5	108.1	121.0	119.8	142.8	152.4	129.3	106.2	115.6	114.0	94.5	117.6
Other fresh vegetables	30.7	98.2	95.4	101.8	102.7	116.9	141.5	136.5	125.3	133.1	126.7	110.1	102.1
Fruits and nuts¹	67.6	122.1	141.1	127.1	130.0	116.4	115.2	110.1	126.2	132.0	134.1	121.1	132.6
Banana	12.8	138.9	138.9	138.9	138.9	119.9	119.9	129.8	129.8	129.8	129.8	129.8	129.8
Pineapple	29.4	104.9	142.9	122.7	131.1	123.4	144.8	114.5	124.6	133.0	136.2	125.0	122.9
Other fruits	25.4	127.5	137.3	...	62.7	64.0	71.0	66.2	134.9	116.2	134.6
Oilseeds and oleaginous fruits¹	5.8	82.0	77.3	101.8	100.9	108.2	89.0	92.7	86.8	99.7	101.5	114.4	120.1
Groundnut	2.1	120.1	95.0	126.8	122.6	135.6	158.4	168.3	162.5	190.2	158.5	145.8	151.3
Coconut	3.7	70.0	70.0	70.0	70.0	70.0	70.0	72.1	72.1	72.1	76.7	76.7	76.7
Edible roots and tubers¹	39.3	119.5	108.7	126.3	122.6	117.2	110.1	110.4	109.4	111.1	110.8	111.3	111.3
Potato	30.8	103.1	103.1	111.2	111.2	111.2	111.2	111.2	111.2	111.2
Other Root crops	8.4	121.8	108.9	126.3	122.6	117.2	109.8	109.2	99.9	110.1	106.2	112.3	111.5
Stimulant & spice¹	14.6	113.0	112.8	111.9	113.8	115.6	113.5	122.0	115.4	115.0	117.1	110.8	115.4
Tea	12.0	111.7	111.7	111.7	111.7	111.7	111.7	121.2	121.2	121.2	121.2	121.2	121.2
Ginger	2.5	139.5	138.6	233.2	212.8	186.6	154.7	128.1	89.0	105.4	107.8	88.7	102.1
Flowers, ornamental plants	9.9	112.4	112.4	112.4	111.3	112.4	112.4	128.3	128.3	128.3	128.3	128.3	128.3
Anthurium	3.0	82.7	82.7	82.7	82.7	82.7	82.7	82.7	82.7	82.7	82.7	82.7	82.7
Rose	1.1	126.3	126.3	126.3	115.8	126.3	126.3	136.8	136.8	136.8	136.8	136.8	136.8
Other flowers	5.8	125.0	125.0	125.0	125.0	125.0	125.0	150.0	150.0	150.0	150.0	150.0	150.0
Animals & Animal Products	441.1	95.9	95.3	95.8	97.0	101.9	101.9	99.6	99.6	99.6	99.4	101.5	109.3
Cattle	43.7	99.3	99.3	99.3	101.3	101.3	101.3	104.3	104.3	104.3	104.3	104.3	104.3
Pigs	3.1	111.1	111.1	111.1	111.1	111.1	111.1	114.0	114.0	114.0	111.1	111.1	111.1
Goat	0.7	102.5	102.5	102.5	101.5	101.5	101.5	104.5	104.5	104.5	104.5	106.6	112.0
Deer	8.8	101.1	101.1	101.1	101.1	101.1	101.1	105.1	105.1	105.1	105.1	105.1	105.1
Poultry	283.9	97.8	96.1	96.1	96.1	103.3	103.3	103.3	103.3	103.3	103.0	103.0	111.7
Eggs	95.0	87.5	89.7	92.0	96.9	98.0	98.0	85.4	85.4	85.2	85.7	95.4	105.2
Milk	5.9	97.4	97.4	97.4	97.4	97.4	97.4	97.4	97.4	97.4	97.4	97.4	97.4
Overall Index	1,000.0	110.5	112.2	117.8	117.8	123.9	123.0	119.8	116.9	119.4	118.0	116.8	123.7

¹ The indices are computed based on the method of variable baskets with fixed monthly weights in the base year as explained at paragraph 12 of Annex. The composition of these baskets is shown in Table 13.

... Not applicable

Monthly Producer Price Index - Agriculture (PPI-A)

(Base period: Year 2018 =100)

Table 4: Monthly indices by commodity group and product, January 2020 - December 2020

Commodity Group	Weight	2020											
		January	February	March	April	May	June	July	August	September	October	November	December
Crop Products	558.9	116.8	132.7	157.2	153.1	119.1	99.7	111.8	114.4	122.8	117.5	112.1	112.1
Sugar Cane	212.1	117.3	117.3	117.3	117.3	117.3	117.3	144.9	144.9	144.9	144.9	144.9	144.9
Other crops products	346.7	116.4	142.2	181.6	175.0	120.2	88.9	91.5	95.7	109.3	100.7	92.0	92.0
Fresh Vegetables¹	209.7	116.7	162.0	213.8	215.0	134.0	81.2	80.8	89.9	105.0	88.8	81.8	85.7
Beans	7.8	179.9	151.5	159.7	137.7	91.6	57.5	76.1	121.9	112.4	56.6	62.8	107.4
Brinjal	7.7	85.9	106.8	145.5	279.0	188.6	124.7	82.4	121.7	117.1	76.1	59.8	61.3
Cabbage	11.9	123.3	184.4	264.4	269.4	101.9	51.6	49.6	47.2	60.8	87.2	95.9	109.4
Cauliflower	3.0	125.4	145.0	181.8	185.4	176.4	129.1	111.4	95.7	99.1	113.1	112.2	120.9
Carrot	13.6	87.5	137.6	303.1	261.2	126.4	52.0	55.0	57.4	41.7	56.1	54.6	76.7
Onion	10.9	102.6	102.6	102.6	113.2	113.2	113.2	113.2	113.2	113.2
Tomato	63.3	111.8	217.6	248.5	222.5	148.3	59.1	42.2	26.5	26.8	43.2	58.4	60.4
Creepers	60.8	116.5	117.6	151.7	190.2	134.6	111.0	112.0	109.8	134.7	102.4	81.0	91.6
Other fresh vegetables	30.7	124.9	103.4	159.6	174.6	110.6	90.5	107.2	110.6	111.7	117.1	96.3	93.8
Fruits and nuts¹	67.6	131.5	118.4	133.1	97.1	89.7	96.8	107.1	101.6	123.0	130.7	106.1	93.0
Banana	12.8	112.8	112.8	119.9	119.9	112.8	112.8	112.8	112.8	112.8	118.8	118.8	118.8
Pineapple	29.4	159.9	125.2	138.0	86.4	81.2	101.1	112.3	96.5	127.8	142.7	101.3	76.3
Other fruits	25.4	120.7	101.2	...	114.7	81.7	81.8	81.8	103.2	105.8	93.5
Oilseeds and oleaginous fruits¹	5.8	82.3	82.0	100.2	102.0	101.6	82.1	79.0	74.4	80.7	90.6	107.7	107.0
Groundnut	2.1	131.2	119.9	126.8	126.8	126.8	138.9	123.9	114.1	126.8	145.7	141.4	135.9
Coconut	3.7	66.7	66.7	66.7	66.7	66.7	66.7	66.7	66.7	66.7	66.7	66.7	66.7
Edible roots and tubers¹	39.3	95.6	103.4	149.9	145.9	105.1	98.4	105.7	104.5	104.9	104.3	104.6	105.7
Potato	30.8	99.1	99.1	99.1	103.1	103.1	103.1	103.1	103.1	103.1
Other Root crops	8.4	95.2	103.6	149.9	145.9	105.1	98.2	109.6	111.3	118.3	118.1	116.9	125.9
Stimulant & spice¹	14.6	115.2	115.2	106.9	111.6	117.0	113.5	115.4	114.4	118.5	113.9	113.9	115.6
Tea	12.0	106.5	106.5	106.5	106.5	106.5	106.5	111.7	111.7	111.7	111.7	111.7	111.7
Ginger	2.5	297.2	317.5	362.0	357.1	303.2	272.5	145.4	127.0	128.7	119.0	118.3	124.9
Flowers, ornamental plants	9.9	112.7	112.5	112.2	112.2	112.2	128.1	128.1	128.1	128.1	119.6	119.6	119.6
Anthurium	3.0	83.7	83.1	82.1	82.1	82.1	82.1	82.1	82.1	82.1	82.1	82.1	82.1
Rose	1.1	126.3	126.3	126.3	126.3	126.3	136.8	136.8	136.8	136.8	126.3	126.3	126.3
Other flowers	5.8	125.0	125.0	125.0	125.0	125.0	150.0	150.0	150.0	150.0	137.5	137.5	137.5
Animals & Animal Products	441.1	95.6	95.6	94.9	95.5	95.5	93.4	93.3	91.9	92.2	95.8	95.3	95.1
Cattle	43.7	99.8	99.8	99.8	98.8	98.8	98.8	99.3	99.3	99.3	99.3	99.3	99.3
Pigs	3.1	97.3	97.3	97.3	97.3	97.3	97.3	97.3	111.1	108.5	111.1	111.1	111.1
Goat	0.7	101.9	101.9	101.9	100.9	100.9	100.9	100.5	100.5	100.5	100.5	100.5	100.5
Deer	8.8	100.0	100.0	100.0	100.0	100.0	100.0	101.1	101.1	101.1	101.1	101.1	101.1
Poultry	283.9	96.4	96.4	96.4	92.6	94.4	94.4	96.2	95.1	96.2	96.7	96.7	96.7
Eggs	95.0	90.6	90.6	87.3	102.6	96.8	86.5	80.9	77.2	75.4	90.1	87.9	87.2
Milk	5.9	93.4	93.4	93.4	93.4	93.4	97.4	97.4	97.4	97.4	97.4	97.4	97.4
Overall Index	1,000.0	107.4	116.3	129.7	127.7	108.7	96.9	103.6	104.5	109.3	107.9	104.7	104.6

¹ The indices are computed based on the method of variable baskets with fixed monthly weights in the base year as explained at paragraph 12 of Annex. The composition of these baskets is shown in Table 13.

... Not applicable

Monthly Producer Price Index - Agriculture (PPI-A)

(Base period: Year 2018 =100)

Table 5: Monthly indices by commodity group and product, January 2019 - December 2019

Commodity Group	Weight	2019											
		January	February	March	April	May	June	July	August	September	October	November	December
Crop Products	558.9	93.2	101.2	111.4	116.7	103.2	85.9	101.5	115.1	106.9	100.2	99.2	100.9
Sugar Cane	212.1	89.6	89.6	89.6	89.6	89.6	89.6	117.3	117.3	117.3	117.3	117.3	117.3
Other crops products	346.7	95.5	108.2	124.7	133.3	111.4	83.7	91.8	113.8	100.5	89.7	88.1	90.9
Fresh Vegetables ¹	209.7	89.2	109.7	133.5	146.2	118.6	74.6	85.4	114.7	93.7	78.3	73.6	78.3
Beans	7.8	90.7	135.7	121.4	145.5	97.4	79.1	126.5	152.3	58.3	46.8	75.1	102.4
Brinjal	7.7	75.6	83.0	69.0	123.6	119.8	111.9	94.9	136.4	98.5	60.9	98.0	91.2
Cabbage	11.9	96.6	113.1	153.7	142.7	99.6	80.8	80.3	110.7	88.3	58.9	90.9	94.0
Cauliflower	3.0	140.2	164.0	167.4	155.4	178.6	122.8	114.8	105.5	100.8	93.8	117.8	95.5
Carrot	13.6	137.2	164.9	207.0	261.5	197.6	65.1	58.3	56.0	41.4	41.8	40.0	46.4
Onion	10.9	102.6	102.6	102.6	102.6	102.6	102.6	102.6	102.6	102.6
Tomato	63.3	75.5	108.2	166.0	163.6	128.7	44.4	44.1	66.6	87.2	62.2	42.2	49.6
Creepers	60.8	91.2	111.1	74.9	84.7	75.8	91.3	105.9	131.9	102.0	85.0	74.5	89.6
Other fresh vegetables	30.7	86.1	90.7	103.2	125.1	109.0	105.2	124.3	132.7	99.9	82.8	87.5	87.0
Fruits and nuts ¹	67.6	110.5	112.7	124.5	122.9	101.7	96.6	100.3	116.7	110.2	105.4	109.3	107.6
Banana	12.8	126.2	126.2	126.2	126.2	126.2	126.2	98.5	112.8	112.8	112.8	112.8	119.9
Pineapple	29.4	115.8	110.5	123.8	124.2	94.2	93.9	106.8	118.5	109.0	98.7	99.1	108.7
Other fruits	25.4	104.4	103.3	...	84.0	84.1	84.0	81.8	119.2	115.0	106.2
Oilseeds and oleaginous fruits ¹	5.8	101.6	105.4	99.4	104.4	91.4	102.3	105.6	104.9	108.4	86.6	105.3	110.8
Groundnut	2.1	107.2	118.6	99.1	107.4	85.3	110.8	126.8	129.2	135.9	132.8	137.1	142.5
Coconut	3.7	100.0	100.0	100.0	100.0	100.0	100.0	100.0	100.0	100.0	66.7	66.7	66.7
Edible roots and tubers ¹	39.3	94.1	92.3	93.0	101.3	92.8	90.3	94.2	99.2	99.4	99.0	99.5	99.6
Potato	30.8	99.1	99.1	99.1	99.1	99.1	99.1	99.1	99.1	99.1
Other Root crops	8.4	93.4	92.0	93.0	101.3	92.8	87.5	87.1	99.6	101.5	97.8	102.5	103.1
Stimulant & spice ¹	14.6	105.4	107.9	102.8	106.8	111.2	109.5	118.9	130.1	146.2	140.9	144.4	148.4
Tea	12.0	102.5	102.5	102.5	102.5	102.5	102.5	106.5	106.5	106.5	106.5	106.5	106.5
Ginger	2.5	166.9	232.8	292.8	315.6	265.8	268.3	221.3	238.0	206.1	221.1	224.6	245.9
Flowers, ornamental plants	9.9	112.2	112.5	112.5	112.5	112.5	112.5	112.5	112.5	112.5	112.5	112.5	112.5
Anthurium	3.0	82.1	83.1	83.1	83.1	83.1	83.1	83.1	83.1	83.1	83.1	83.1	83.1
Rose	1.1	126.3	126.3	126.3	126.3	126.3	126.3	126.3	126.3	126.3	126.3	126.3	126.3
Other flowers	5.8	125.0	125.0	125.0	125.0	125.0	125.0	125.0	125.0	125.0	125.0	125.0	125.0
Animals & Animal Products	441.1	95.5	94.5	95.8	95.5	94.5	95.8	99.5	99.7	96.6	93.9	94.5	95.2
Cattle	43.7	100.8	100.8	100.8	100.8	100.8	100.8	100.8	100.8	100.8	99.8	99.8	99.8
Pigs	3.1	97.3	97.3	97.3	97.3	97.3	97.3	97.3	97.3	97.3	97.3	97.3	97.3
Goat	0.7	102.0	102.0	102.0	100.9	100.9	100.9	100.9	100.9	100.9	101.9	101.9	101.9
Deer	8.8	100.0	100.0	100.0	100.0	100.0	100.0	100.0	100.0	100.0	100.0	100.0	100.0
Poultry	283.9	94.3	94.3	94.3	94.3	94.3	94.3	98.0	98.0	95.9	94.8	94.8	95.3
Eggs	95.0	94.4	89.9	96.1	94.4	89.9	96.1	103.9	104.9	96.6	87.7	90.7	92.6
Milk	5.9	121.8	121.8	121.8	121.8	121.8	121.8	93.4	93.4	93.4	93.4	93.4	93.4
Overall Index	1,000.0	94.2	98.2	104.5	107.3	99.4	90.3	100.6	108.3	102.4	97.4	97.1	98.4

¹ The indices are computed based on the method of variable baskets with fixed monthly weights in the base year as explained at paragraph 12 of Annex. The composition of these baskets is shown in Table 13.

... Not applicable

Monthly Producer Price Index - Agriculture (PPI-A)

(Base period: Year 2018=100)

Table 6: Percentage changes from previous month by commodity group and product, April 2022 - March 2023

Commodity Group	Weight	Percentage changes from											
		Mar 22 to	Apr 22 to	May 22 to	Jun 22 to	Jul 22 to	Aug 22 to	Sep 22 to	Oct 22 to	Nov 22 to	Dec 22 to	Jan 23 to	Feb 23 to
		Apr 22	May 22	Jun 22	Jul 22	Aug 22	Sep 22	Oct 22	Nov 22	Dec 22	Jan-23	Feb 23	Mar 23
Crop Products	558.9	-3.9	-13.4	-10.0	3.3	3.9	5.4	-1.3	-2.9	-2.9	3.7	6.6	7.2
Sugar Cane	212.1	0.0	0.0	0.0	7.4	0.0	0.0	0.0	0.0	0.0	0.0	0.0	0.0
Other crops products	346.7	-6.0	-21.0	-17.3	-0.3	7.6	10.3	-2.3	-5.2	-5.4	7.1	12.1	12.6
Fresh Vegetables	209.7	-8.1	-28.9	-29.1	-2.7	8.3	14.0	-4.2	-2.5	0.6	5.0	16.9	18.2
Beans	7.8	-23.7	-35.1	-41.9	20.2	38.7	-9.9	-14.5	-2.6	22.6	42.0	17.8	-9.2
Brinjal	7.7	20.8	17.9	-9.4	-27.0	-25.6	-1.0	2.3	-6.7	2.9	8.1	23.4	-37.0
Cabbage	11.9	-20.2	-7.7	-14.9	-38.6	-12.9	22.9	16.5	16.9	16.7	1.5	3.6	-6.8
Cauliflower	3.0	-7.1	-2.8	-9.4	-20.3	-25.7	10.9	18.2	5.3	1.3	10.1	18.3	0.4
Carrot	13.6	-22.4	-34.6	-52.5	-40.4	-5.4	-14.2	19.2	35.0	15.5	20.9	25.7	22.7
Onion	10.9	0.0	0.0	0.0	0.0	0.0	0.0	0.0	0.0	...
Tomato	63.3	14.0	-47.7	-46.5	-14.9	-14.0	-15.0	39.7	12.0	4.6	1.0	37.7	97.8
Creepers	60.8	-37.2	12.8	-12.1	10.3	2.7	10.2	-5.1	-5.2	9.8	6.1	27.4	-20.6
Other fresh vegetables	30.7	-16.3	-21.7	-11.7	6.6	8.7	11.0	-4.8	-6.4	-13.3	11.7	11.9	1.2
Fruits and nuts	67.6	1.4	-3.7	0.3	3.1	9.7	8.3	0.0	-15.0	-22.6	21.2	10.8	5.4
Banana	12.8	0.0	0.0	0.0	0.0	0.0	0.0	0.0	10.1	0.0	10.1	0.0	0.0
Pineapple	29.4	1.8	-3.8	14.7	-2.2	5.4	11.8	4.3	-8.1	-13.0	3.2	-5.1	2.2
Other fruits	25.4	...	-14.3	-14.7	-3.7	-12.5	-17.8	16.6	7.1	...
Oilseeds and oleaginous fruits	5.8	3.8	-1.2	-18.2	1.7	-1.2	11.0	-11.1	26.0	5.0	-27.2	0.1	24.0
Groundnut	2.1	1.4	-1.1	1.1	0.0	8.0	15.8	-12.0	3.1	2.9	-0.5	-9.3	-0.7
Coconut	3.7	3.9	0.0	0.0	2.5	0.0	0.0	-20.0	0.0	0.0	0.0	0.0	0.0
Edible roots and tubers	39.3	-8.0	-4.4	11.8	3.0	5.0	1.3	1.0	0.2	-0.2	1.3	-0.4	3.5
Potato	30.8	0.0	0.0	0.0	0.0	0.0	0.0	0.0	0.0	...
Other Root crops	8.4	-8.0	-4.4	7.9	-5.2	3.4	5.8	8.6	1.9	-2.0	3.4	-0.5	3.5
Stimulant & spice	14.6	0.2	0.2	0.0	-1.1	-1.2	-4.3	0.0	3.4	0.3	2.5	1.4	-1.2
Tea	12.0	0.0	0.0	0.0	0.0	0.0	0.0	0.0	0.0	0.0	0.0	0.0	0.0
Ginger	2.5	8.8	-4.4	2.4	-15.1	-4.8	-5.7	-5.6	14.3	0.2	7.7	33.1	5.5
Flowers, ornamental plants	9.9	0.0	0.0	0.0	0.0	1.0	16.5	0.0	0.0	0.0	0.4	0.0	0.0
Anthurium	3.0	0.0	0.0	0.0	0.0	5.0	0.0	0.0	0.0	0.0	2.3	0.0	0.0
Rose	1.1	0.0	0.0	0.0	0.0	0.0	25.1	0.0	0.0	0.0	0.0	0.0	0.0
Other flowers	5.8	0.0	0.0	0.0	0.0	0.0	20.0	0.0	0.0	0.0	0.0	0.0	0.0
Animals & Animal Products	441.1	0.3	5.3	10.8	0.1	5.7	-1.0	0.5	1.8	0.1	-1.0	-5.5	0.1
Cattle	43.7	1.0	0.0	4.9	0.0	0.0	1.1	1.0	1.0	0.0	0.0	0.0	2.1
Pigs	3.1	2.8	0.0	0.0	0.0	0.0	0.0	0.0	0.0	0.0	0.0	0.0	0.0
Goat	0.7	0.0	1.0	3.0	0.0	0.0	0.0	3.0	3.0	0.0	0.0	1.0	0.0
Deer	8.8	0.0	0.0	8.8	4.9	0.0	0.0	-3.1	-2.2	0.0	0.0	0.0	0.0
Poultry	283.9	0.0	8.0	12.0	0.0	8.4	0.0	2.9	0.0	0.0	1.0	0.0	0.0
Eggs	95.0	0.2	0.0	10.2	0.0	0.1	-6.0	-8.1	10.2	0.2	-9.3	-32.9	0.0
Milk	5.9	15.7	0.0	0.0	6.8	0.0	0.0	0.0	0.0	0.0	0.0	0.0	0.0
Overall Change	1,000.0	-2.4	-6.8	-1.8	1.8	4.7	2.6	-0.5	-0.9	-1.6	1.6	1.2	4.3

... Not applicable

Monthly Producer Price Index - Agriculture (PPI-A)

(Base period: Year 2018=100)

Table 7: Percentage changes from corresponding month of previous year by commodity group and product, April 2022 - March 2023

Commodity Group	Weight	Percentage changes from											
		Apr 21 to Apr 22	May 21 to May 22	Jun 21 to Jun 22	Jul 21 to Jul 22	Aug 21 to Aug 22	Sep 21 to Sept 22	Oct 21 to Oct 22	Nov 21 to Nov 22	Dec 21 to Dec 22	Jan 22 to Jan 23	Feb 22 to Feb 23	Mar 22 to Mar 23
Crop Products	558.9	34.3	10.7	0.6	6.9	15.6	17.8	18.3	18.3	9.6	11.7	-0.7	-6.5
Sugar Cane	212.1	19.2	19.2	19.2	7.4	7.4	7.4	7.4	7.4	7.4	7.4	7.4	7.4
Other crops products	346.7	44.8	5.3	-11.4	6.4	23.8	27.6	29.0	29.7	11.8	15.8	-5.9	-14.0
Fresh Vegetables	209.7	62.4	-2.1	-29.9	-8.9	17.8	22.0	25.3	30.0	15.2	14.1	-17.5	-24.3
Beans	7.8	101.1	6.0	-40.7	27.4	51.8	15.8	16.6	40.1	2.9	47.0	19.4	-33.0
Brinjal	7.7	130.7	52.5	26.9	21.9	-2.7	-15.0	17.0	15.4	-22.7	32.2	1.2	-42.8
Cabbage	11.9	24.3	-12.5	-21.0	-28.3	27.3	52.8	39.8	16.6	-5.0	7.6	-16.3	-35.8
Cauliflower	3.0	6.8	0.4	-3.8	16.0	14.7	1.1	-13.7	-11.7	-7.9	-7.0	-1.4	-11.3
Carrot	13.6	53.9	-17.4	-47.3	-58.5	-39.2	-24.8	-25.3	-21.1	-34.2	-11.0	-49.4	-59.7
Onion	10.9	35.7	35.7	35.7	35.7	35.7	35.7	35.7	35.7	35.7	...
Tomato	63.3	103.5	-2.7	-47.9	-25.5	18.4	129.8	54.1	41.5	39.9	6.4	-36.8	-10.7
Creepers	60.8	0.1	-5.3	-22.0	1.5	26.8	28.4	23.5	41.3	24.7	23.0	-1.4	-17.6
Other fresh vegetables	30.7	63.1	12.1	-18.2	-9.6	7.0	11.8	11.8	20.4	12.5	1.3	2.2	-27.4
Fruits and nuts	67.6	31.6	41.6	43.5	54.9	48.2	53.4	51.0	42.2	0.5	24.7	27.6	11.7
Banana	12.8	22.2	41.5	41.5	30.7	30.7	30.7	30.7	43.9	43.9	58.5	58.5	21.2
Pineapple	29.4	30.7	33.5	30.6	61.5	56.4	63.8	66.9	67.0	47.8	33.9	23.9	8.1
Other fruits	25.4	182.5	137.2	82.4	88.4	22.5	24.4	-11.7	11.6	5.2	...
Oilseeds and oleaginous fruits	5.8	24.5	14.7	14.0	11.3	17.5	13.5	-0.9	10.8	10.9	-3.2	-2.5	-0.5
Groundnut	2.1	24.1	11.0	-3.9	-9.6	1.1	0.0	5.6	18.3	17.3	17.1	16.5	5.9
Coconut	3.7	25.0	25.0	25.0	24.4	24.4	24.4	-6.4	-6.4	-6.4	-14.7	-14.7	-14.7
Edible roots and tubers	39.3	-8.2	-8.1	9.4	12.3	19.0	18.7	20.2	19.9	19.6	14.4	8.3	13.6
Potato	30.8	20.0	20.0	20.0	20.0	20.0	20.0	20.0	20.0	20.0	...
Other Root crops	8.4	-8.2	-8.1	5.8	0.8	13.9	9.4	23.1	18.6	17.1	13.6	7.9	13.6
Stimulant & spice	14.6	6.8	5.4	7.3	-1.3	3.1	-1.0	-2.7	6.3	2.3	1.1	0.8	0.1
Tea	12.0	8.5	8.5	8.5	0.0	0.0	0.0	0.0	0.0	0.0	0.0	0.0	0.0
Ginger	2.5	-35.3	-29.4	-12.9	-10.7	22.4	-2.6	-10.1	24.9	8.7	30.4	17.5	32.6
Flowers, ornamental plants	9.9	15.3	14.1	14.1	0.0	1.0	17.7	17.7	17.7	17.7	18.2	18.2	18.2
Anthurium	3.0	0.0	0.0	0.0	0.0	5.0	5.0	5.0	5.0	5.0	7.4	7.4	7.4
Rose	1.1	18.1	8.3	8.3	0.0	0.0	25.1	25.1	25.1	25.1	25.1	25.1	25.1
Other flowers	5.8	20.0	20.0	20.0	0.0	0.0	20.0	20.0	20.0	20.0	20.0	20.0	20.0
Animals & Animal Products	441.1	27.5	27.8	41.6	45.0	53.3	51.7	52.8	52.3	41.5	39.7	29.1	17.5
Cattle	43.7	6.1	6.1	11.4	8.1	8.1	9.3	10.4	11.4	11.4	9.2	9.2	11.5
Pigs	3.1	4.9	4.9	4.9	2.2	2.2	2.2	4.9	4.9	4.9	4.9	4.9	2.8
Goat	0.7	23.8	25.1	28.9	25.2	25.2	25.2	28.9	30.1	23.8	13.6	11.5	11.5
Deer	8.8	4.0	4.0	13.2	14.2	14.2	14.2	10.7	8.2	8.2	8.2	8.2	8.2
Poultry	283.9	31.5	32.1	48.0	48.0	60.4	60.4	65.5	65.5	52.6	54.2	49.0	36.2
Eggs	95.0	29.3	27.9	40.9	61.7	61.9	52.6	39.4	38.1	25.5	13.8	-23.9	-35.8
Milk	5.9	23.0	23.0	23.0	31.3	31.3	31.3	31.3	31.3	31.3	23.6	23.6	23.6
Overall Change	1,000.0	31.9	16.9	15.6	20.9	29.7	30.2	31.2	31.3	22.1	22.5	9.7	1.7

... Not applicable

Quarterly Producer Price Index - Agriculture (PPI-A)

(Base period: Year 2018=100)

Table 8: Quarterly indices¹ by commodity group and product, 2nd Quarter 2021 - 1st Quarter 2023

Commodity Group	Weight	2021			2022				2023
		2 nd Qr	3 rd Qr	4 th Qr	1 st Qr	2 nd Qr	3 rd Qr	4 th Qr	1 st Qr
Crop Products	558.9	138.3	133.9	132.2	163.4	159.8	151.9	152.5	164.3
Sugar Cane	212.1	144.9	172.7	172.7	172.7	172.7	185.4 ²	185.4 ²	185.4 ²
Other crops products	346.7	134.2	110.4	107.3	157.6	152.6	131.7	132.3	151.4
Fresh Vegetables ³	209.7	144.4	106.3	97.6	178.0	163.3	114.9	121.0	151.3
Beans	7.8	131.7	99.5	96.5	194.7	156.9	127.6	114.0	202.3
Brinjal	7.7	163.7	160.6	134.3	168.4	267.5	158.3	140.2	152.6
Cabbage	11.9	169.1	80.3	110.0	197.1	169.0	87.6	126.4	150.6
Cauliflower	3.0	165.6	98.9	141.4	166.9	163.6	109.7	124.6	156.8
Carrot	13.6	197.1	84.9	93.6	255.5	212.4	47.5	67.9	124.4
Onion	10.9	119.7	119.7	119.7	119.7	162.4	162.4	162.4	162.4
Tomato	63.3	140.6	65.6	49.5	173.8	174.8	59.2	71.7	140.5
Creepers	60.8	136.8	117.8	108.6	172.2	124.8	138.7	140.2	170.6
Other fresh vegetables	30.7	117.7	132.6	114.0	155.0	141.1	134.8	130.3	139.4
Fruits and nuts ³	67.6	119.6	121.8	129.3	141.1	166.7	185.4	155.1	172.3
Banana	12.8	126.0	129.8	129.8	143.0	169.7	169.7	181.2	205.7
Pineapple	29.4	133.4	123.9	127.9	150.8	175.4	198.9	206.6	182.3
Other fruits	25.4	69.3	66.2	129.8	126.5	136.4	124.7	126.9	139.9
Oilseeds and oleaginous fruits ³	5.8	99.3	95.2	112.4	105.7	116.2	108.5	120.9	103.4
Groundnut	2.1	135.3	180.8	150.6	146.6	151.4	178.0	173.6	164.1
Coconut	3.7	70.0	72.1	76.7	84.2	87.5	89.7	71.8	71.8
Edible roots and tubers ³	39.3	115.9	110.4	111.1	121.5	114.3	130.1	133.3	136.0
Potato	30.8	111.2	111.2	111.2	111.2	133.4	133.4	133.4	133.4
Other Root crops	8.4	116.4	106.5	110.2	122.0	112.2	114.6	131.7	136.2
Stimulant & spice ³	14.6	114.3	117.1	114.4	120.9	121.7	117.3	116.6	121.7
Tea	12.0	111.7	121.2	121.2	121.2	121.2	121.2	121.2	121.2
Ginger	2.5	179.5	104.6	99.2	112.8	133.9	105.5	106.4	139.0
Flowers, ornamental plants	9.9	112.0	128.3	128.3	128.3	128.3	136.3	151.0	151.6
Anthurium	3.0	82.7	82.7	82.7	82.7	82.7	85.4	86.8	88.8
Rose	1.1	122.8	136.8	136.8	136.8	136.8	148.2	171.1	171.1
Other flowers	5.8	125.0	150.0	150.0	150.0	150.0	160.0	180.0	180.0
Animals & Animal Products	441.1	100.3	99.6	103.4	115.0	132.7	149.4	153.7	147.6
Cattle	43.7	101.3	104.3	104.3	106.4	109.3	113.2	115.8	117.0
Pigs	3.1	111.1	114.0	111.1	111.8	116.5	116.5	116.5	116.5
Goat	0.7	101.5	104.5	107.7	124.5	127.8	130.8	137.4	139.6
Deer	8.8	101.1	105.1	105.1	105.1	108.2	120.0	114.6	113.7
Poultry	283.9	100.9	103.3	105.9	117.9	138.6	161.4	170.5	172.2
Eggs	95.0	97.6	85.3	95.4	111.9	129.6	135.5	127.7	93.4
Milk	5.9	97.4	97.4	97.4	103.5	119.8	127.9	127.9	127.9
Overall Index	1,000.0	121.5	118.7	119.5	142.0	147.6	150.7	153.1	156.9

¹ Using data for base period (2018) as weights

² Provisional

³ The indices are computed based on the method of variable baskets with fixed monthly weights in the base year as explained at paragraph 12 of Annex. The composition of these baskets is shown in Table 13.

Quarterly Producer Price Index - Agriculture (PPI-A)

(Base period: Year 2018=100)

Table 9: Quarterly changes (%) and net contributions of commodity group and product to the change, 1st Quarter 2022 - 1st Quarter 2023

Commodity Group	Weight	Percentage changes from previous quarter				Percentage changes from corresponding quarter of previous year				Net contributions from			
		1 st Qr 22 to 2 nd Qr 22	2 nd Qr 22 to 3 rd Qr 22	3 rd Qr 22 to 4 th Qr 22	4 th Qr 22 to 1 st Qr 23	2 nd Qr 21 to 2 nd Qr 22	3 rd Qr 21 to 3 rd Qr 22	4 th Qr 21 to 4 th Qr 22	1 st Qr 22 to 1 st Qr 23	1 st Qr 22 to 2 nd Qr 22	2 nd Qr 22 to 3 rd Qr 22	3 rd Qr 22 to 4 th Qr 22	4 th Qr 22 to 1 st Qr 23
		Crop Products	558.9	-2.2	-4.9	0.4	7.7	15.5	13.4	15.4	0.6	-1.25	-7.93
Sugar Cane	212.1	0.0	7.4	0.0	0.0	19.2	7.4	7.4	7.4	0.00	2.69	0.00	0.00
Other crops products	346.7	-3.2	-13.7	0.5	14.4	13.7	19.3	23.3	-3.9	-1.25	-10.62	1.93	8.45
Fresh Vegetables	209.7	-8.3	-29.6	5.3	25.0	13.1	8.1	24.0	-15.0	-3.24	-11.11	1.28	8.42
Beans	7.8	-19.4	-18.7	-10.7	77.5	19.1	28.2	18.1	3.9	-0.29	-0.23	-0.11	0.69
Brinjal	7.7	58.8	-40.8	-11.4	8.8	63.4	-1.4	4.4	-9.4	0.76	-0.84	-0.14	0.10
Cabbage	11.9	-14.3	-48.2	44.3	19.1	-0.1	9.1	14.9	-23.6	-0.33	-0.97	0.46	0.29
Cauliflower	3.0	-2.0	-32.9	13.6	25.8	-1.2	10.9	-11.9	-6.1	-0.01	-0.16	0.04	0.10
Carrot	13.6	-16.9	-77.6	42.9	83.2	7.8	-44.1	-27.5	-51.3	-0.58	-2.24	0.28	0.77
Onion	10.9	35.7	0.0	0.0	0.0	35.7	35.7	35.7	35.7	0.47	0.00	0.00	0.00
Tomato	63.3	0.6	-66.1	21.1	96.0	24.3	-9.8	44.8	-19.2	0.06	-7.32	0.79	4.36
Creepers	60.8	-27.5	11.1	1.1	21.7	-8.8	17.7	29.1	-0.9	-2.88	0.84	0.09	1.85
Other fresh vegetables	30.7	-9.0	-4.5	-3.3	7.0	19.9	1.7	14.3	-10.1	-0.43	-0.19	-0.14	0.28
Fruits and nuts	67.6	18.1	11.2	-16.3	11.1	39.4	52.2	20.0	22.1	1.32	0.39	0.43	-0.07
Banana	12.8	18.7	0.0	6.8	13.5	34.7	30.7	39.6	43.8	0.34	0.00	0.15	0.31
Pineapple	29.4	16.3	13.4	3.9	-11.8	31.5	60.5	61.5	20.9	0.72	0.69	0.23	-0.71
Other fruits	25.4	7.8	-8.6	1.8	10.2	96.8	88.4	-2.2	10.6	0.25	-0.30	0.06	0.33
Oilseeds and oleaginous fruits	5.8	9.9	-6.6	11.4	-14.5	17.0	14.0	7.6	-2.2	0.02	0.06	-0.08	-0.02
Groundnut	2.1	3.3	17.6	-2.5	-5.5	11.9	-1.5	15.3	11.9	0.01	0.06	-0.01	-0.02
Coconut	3.7	3.9	2.5	-20.0	0.0	25.0	24.4	-6.4	-14.7	0.01	0.01	-0.07	0.00
Edible roots and tubers	39.3	-5.9	13.8	2.5	2.0	-1.4	17.8	20.0	11.9	0.60	0.02	0.14	0.04
Potato	30.8	20.0	0.0	0.0	0.0	20.0	20.0	20.0	20.0	0.68	0.00	0.00	0.00
Other Root crops	8.4	-8.0	2.1	14.9	3.4	-3.6	7.6	19.5	11.6	-0.08	0.02	0.14	0.04
Stimulant & spice	14.6	0.7	-3.6	-0.6	4.4	6.5	0.2	1.9	0.7	0.05	-0.07	0.00	0.08
Tea	12.0	0.0	0.0	0.0	0.0	8.5	0.0	0.0	0.0	0.00	0.00	0.00	0.00
Ginger	2.5	18.7	-21.2	0.9	30.6	-25.4	0.9	7.3	23.2	0.05	-0.07	0.00	0.08
Flowers, ornamental plants	9.9	0.0	6.2	10.8	0.4	14.6	6.2	17.7	18.2	0.00	0.08	0.15	0.01
Anthurium	3.0	0.0	3.3	1.6	2.3	0.0	3.3	5.0	7.4	0.00	0.01	0.00	0.01
Rose	1.1	0.0	8.3	15.5	0.0	11.4	8.3	25.1	25.1	0.00	0.01	0.02	0.00
Other flowers	5.8	0.0	6.7	12.5	0.0	20.0	6.7	20.0	20.0	0.00	0.06	0.12	0.00
Animals & Animal Products	441.1	15.4	12.6	2.9	-4.0	32.3	50.0	48.6	28.3	7.83	7.36	1.91	-2.73
Cattle	43.7	2.7	3.6	2.3	1.0	7.9	8.5	11.0	10.0	0.13	0.17	0.11	0.05
Pigs	3.1	4.2	0.0	0.0	0.0	4.9	2.2	4.9	4.2	0.01	0.00	0.00	0.00
Goat	0.7	2.7	2.3	5.0	1.6	25.9	25.2	27.6	12.1	0.00	0.00	0.00	0.00
Deer	8.8	2.9	10.9	-4.5	-0.8	7.0	14.2	9.0	8.2	0.03	0.10	-0.05	-0.01
Poultry	283.9	17.6	16.5	5.6	1.0	37.4	56.2	61.0	46.1	5.88	6.47	2.58	0.48
Eggs	95.0	15.8	4.6	-5.8	-26.9	32.8	58.9	33.9	-16.5	1.68	0.56	-0.74	-3.26
Milk	5.9	15.7	6.8	0.0	0.0	23.0	31.3	31.3	23.6	0.10	0.05	0.00	0.00
Overall	1,000.0	3.9	2.1	1.6	2.5	21.5	27.0	28.1	10.5	6.58	-0.57	3.84	5.72

Annual Producer Price Index - Agriculture (PPI-A)
(Base period: Year 2018=100)

Table 10: Annual indices, annual changes (%) and net contributions of commodity group and product to the change, 2020-2022

Commodity Group	Weight	Annual index ¹			Percentage changes from		Net contributions from	
		2020	2021	2022	2020 to 2021	2021 to 2022	2020 to 2021	2021 to 2022
Crop Products	558.9	122.4	132.8	156.7	8.5	18.0	4.93	14.10
Sugar Cane	212.1	131.1	158.8	179.0²	21.1	12.7	5.88	4.29
Other crops products	346.7	116.3	116.1	142.8	-0.2	23.0	-0.94	9.81
Fresh Vegetables³	209.7	127.4	115.8	147.0	-9.1	26.9	-2.43	6.56
Beans	7.8	112.0	108.8	148.5	-2.9	36.5	-0.02	0.31
Brinjal	7.7	124.0	131.4	183.6	6.0	39.7	0.06	0.40
Cabbage	11.9	156.4	126.4	162.1	-19.2	28.2	-0.36	0.43
Cauliflower	3.0	121.2	131.3	131.9	8.3	0.5	0.03	0.00
Carrot	13.6	141.1	148.3	172.3	5.1	16.2	0.10	0.33
Onion	10.9	113.1	119.6	161.9	5.7	35.4	0.07	0.46
Tomato	63.3	134.5	102.8	136.6	-23.6	32.9	-2.01	2.14
Creepers	60.8	121.0	118.0	145.7	-2.5	23.5	-0.18	1.68
Other fresh vegetables	30.7	118.4	114.6	141.0	-3.2	23.0	-0.12	0.81
Fruits and nuts³	67.6	108.2	126.0	158.9	16.5	26.1	1.20	2.22
Banana	12.8	115.6	130.9	166.9	13.2	27.5	0.20	0.46
Pineapple	29.4	112.3	127.5	182.2	13.5	42.9	0.45	1.61
Other fruits	25.4	99.7	121.8	127.7	22.2	4.8	0.56	0.15
Oilseeds and oleaginous fruits³	5.8	90.1	99.7	113.3	10.7	13.6	0.06	0.08
Groundnut	2.1	131.8	148.4	165.2	12.6	11.3	0.03	0.03
Coconut	3.7	66.7	72.5	84.2	8.7	16.1	0.02	0.04
Edible roots and tubers³	39.3	106.0	111.5	130.6	5.2	17.1	0.22	0.75
Potato	30.8	103.1	111.2	133.3	7.9	19.9	0.25	0.68
Other Root crops	8.4	116.5	112.8	120.4	-3.2	6.7	-0.03	0.06
Stimulant & spice³	14.6	114.5	114.7	118.8	0.2	3.6	0.00	0.06
Tea	12.0	109.1	116.5	121.2 ²	6.8	4.0	0.09	0.06
Ginger	2.5	139.8	106.6	107.6	-23.7	0.9	-0.08	0.00
Flowers, ornamental plants	9.9	119.4	120.3	136.0	0.8	13.1	0.01	0.16
Anthurium	3.0	82.3	82.7	84.4	0.5	2.1	0.00	0.01
Rose	1.1	129.8	130.7	148.2	0.7	13.4	0.00	0.02
Other flowers	5.8	136.5	137.5	160.0	0.7	16.4	0.01	0.13
Animals & Animal Products	441.1	94.5	99.7	137.7	5.5	38.1	2.30	16.77
Cattle	43.7	99.3	102.3	111.2	3.0	8.7	0.13	0.39
Pigs	3.1	102.8	111.8	115.3	8.8	3.1	0.03	0.01
Goat	0.7	100.9	104.0	130.1	3.1	25.1	0.00	0.02
Deer	8.8	100.5	103.1	112.0	2.6	8.6	0.02	0.08
Poultry	283.9	95.7	101.7	147.1	6.3	44.6	1.70	12.89
Eggs	95.0	87.8	92.0	126.2	4.8	37.2	0.40	3.25
Milk	5.9	95.7	97.4	119.8	1.8	23.0	0.01	0.13
Overall	1,000.0	110.1	118.3	148.4	7.4	25.4	7.23	30.87

¹ Using data for base period (2018) as weights

² Provisional

³ The indices are computed based on the method of variable baskets with fixed monthly weights in the base year as explained at paragraph 12 of Annex. The composition of these baskets is shown in Table 13.

Table 11: Monthly and Quarterly Price Indices - Agriculture (PPI-A): January 2020 - March 2023**(Base period : Year 2018=100)**

Month	2020	2021	2022	2023
January	107.4	110.5	125.2	153.4 ¹
February	116.3	112.2	141.6	155.3 ¹
March	129.7	117.8	159.3	162.0 ¹
<i>1st quarter</i>	<i>117.8</i>	<i>113.5</i>	<i>142.0</i>	<i>156.9</i>
April	127.7	117.8	155.4	
May	108.7	123.9	144.8	
June	96.9	123.0	142.2	
<i>2nd quarter</i>	<i>111.4</i>	<i>121.5</i>	<i>147.6</i>	
July	103.6	119.8	144.8 ¹	
August	104.5	116.9	151.6 ¹	
September	109.3	119.4	155.5 ¹	
<i>3rd quarter</i>	<i>105.9</i>	<i>118.7</i>	<i>150.7</i>	
October	107.9	118.0	154.8 ¹	
November	104.7	116.8	153.4 ¹	
December	104.6	123.7	151.0 ¹	
<i>4th quarter</i>	<i>105.7</i>	<i>119.5</i>	<i>153.1</i>	
Yearly average ²	<i>110.1</i>	<i>118.3</i>	<i>148.4</i>	
<i>Annual change (%)</i>	<i>10.3</i>	<i>7.4</i>	<i>25.4</i>	

¹ Provisional² Using data for base period (2018) as weights

Table 12: Monthly Producer Price Index - Agriculture (PPI-A)¹: January 2007 - March 2023

(Base period: Year 2018=100)

Month	2007	2008	2009	2010	2011	2012	2013	2014	2015	2016	2017	2018	2019	2020	2021	2022	2023
January	86.4	90.5	94.3	90.0	87.8	95.3	99.8	104.1	100.1	93.0	98.8	104.0	94.2	107.4	110.5	125.2	153.4 ²
February	90.4	93.4	99.1	94.5	91.0	96.7	100.7	107.5	98.6	95.9	103.3	105.2	98.2	116.3	112.2	141.6	155.3 ²
March	99.3	94.6	100.6	94.3	91.3	98.8	100.2	101.3	102.6	97.3	105.2	106.4	104.5	129.7	117.8	159.3	162.0 ²
April	96.0	99.3	98.4	93.3	91.9	97.3	100.6	102.6	95.5	94.7	106.1	103.5	107.3	127.7	117.8	155.4	
May	90.4	96.7	97.0	89.6	91.1	96.3	101.7	100.0	87.3	94.7	114.0	103.1	99.4	108.7	123.9	144.8	
June	85.5	98.4	96.8	89.3	89.6	95.7	101.7	100.6	90.5	95.2	115.0	96.8	90.3	96.9	123.0	142.2	
July	87.1	95.3	87.2	87.3	97.6	100.7	101.5	93.4	90.2	100.7	96.9	95.8	100.6	103.6	119.8	144.8 ²	
August	88.8	93.4	86.6	87.4	97.9	99.2	101.5	95.6	93.5	99.9	93.0	97.1	108.3	104.5	116.9	151.6 ²	
September	89.9	93.4	85.5	84.1	97.3	96.5	101.0	91.2	93.4	99.8	88.7	98.8	102.4	109.3	119.4	155.5 ²	
October	89.7	94.2	84.5	86.1	95.3	97.0	99.2	86.4	90.8	97.6	91.9	96.0	97.4	107.9	118.0	154.8 ²	
November	89.3	93.7	86.4	87.5	95.8	99.1	98.3	88.0	90.3	98.2	96.8	96.2	97.1	104.7	116.8	153.4 ²	
December	88.4	92.2	84.4	84.7	96.3	98.3	98.8	88.4	91.3	102.4	103.0	97.1	98.4	104.6	123.7	151.0 ²	
Yearly Average³	89.1	94.4	91.3	88.9	93.5	97.3	100.4	96.3	93.4	97.6	101.0	100.0	99.8	110.1	118.3	148.4	
Annual change (%)	7.1	6.0	-3.3	-2.6	5.2	4.0	3.2	-4.1	-3.0	4.5	3.5	-1.0	-0.2	10.3	7.4	25.4	

¹ The indices for January 2007 to December 2021 previously based on 2013=100, have been converted to the new base 2018=100

² Provisional

³ Using data for base period (2018) as weights

Monthly Producer Price Index - Agriculture (PPI-A)
(Base period: Year 2018 =100)

Table 13: Weight distribution for the base period and its months by commodity group and product

Commodity Group	Weight												
	Year	January	February	March	April	May	June	July	August	September	October	November	December
Crop Products	558.9	558.9	558.9	558.9	558.9	558.9	558.9	558.9	558.9	558.9	558.9	558.9	558.9
Sugar Cane	212.1	212.1	212.1	212.1	212.1	212.1	212.1	212.1	212.1	212.1	212.1	212.1	212.1
Other crops products	346.7	346.7	346.7	346.7	346.7	346.7	346.7	346.7	346.7	346.7	346.7	346.7	346.7
Fresh Vegetables	209.7	209.7	209.7	209.7	209.7	209.7	209.7	209.7	209.7	209.7	209.7	209.7	209.7
Beans	7.8	9.7	7.5	5.8	5.1	5.4	6.8	5.9	13.5	13.7	10.3	6.3	6.5
Brinjal	7.7	8.6	7.6	6.9	7.4	7.2	7.9	8.2	8.4	13.6	5.9	6.6	5.1
Cabbage	11.9	12.9	13.4	22.6	14.6	12.2	10.5	5.7	7.4	8.3	9.9	9.3	9.6
Cauliflower	3.0	2.4	1.5	0.9	0.6	2.2	4.9	7.1	6.2	5.3	3.9	2.4	2.3
Carrot	13.6	13.4	9.3	16.5	23.0	24.7	11.6	6.8	13.3	8.8	5.9	13.9	14.3
Onion	10.9	1.6	0.0	0.0	0.0	0.0	0.1	0.4	3.0	25.7	41.3	42.1	11.0
Tomato	63.3	59.6	84.4	80.0	77.4	74.4	79.8	74.2	38.8	25.8	46.4	49.7	48.6
Creepers	60.8	69.8	55.5	51.2	51.0	50.7	57.5	66.0	84.1	76.6	55.3	56.8	75.6
Other fresh vegetables	30.7	31.8	30.5	25.7	30.6	32.8	30.6	35.5	35.1	31.8	30.7	22.6	36.7
Fruits and nuts	67.6	67.6	67.6	67.6	67.6	67.6	67.6	67.6	67.6	67.6	67.6	67.6	67.6
Banana	12.8	8.4	14.6	18.5	18.8	18.1	12.7	17.5	21.2	21.6	20.0	9.7	5.3
Pineapple	29.4	20.2	41.2	49.1	45.5	42.7	32.0	38.4	46.4	46.0	39.1	22.7	9.6
Other fruits	25.4	39.0	11.7	0.0	3.2	6.9	22.8	11.7	0.0	0.0	8.4	35.2	52.6
Oilseeds and oleaginous fruits	5.8	5.8	5.8	5.8	5.8	5.8	5.8	5.8	5.8	5.8	5.8	5.8	5.8
Groundnut	2.1	1.4	1.7	3.2	3.4	3.4	1.2	1.2	1.0	1.4	1.7	3.2	3.4
Coconut	3.7	4.4	4.1	2.6	2.4	2.4	4.5	4.6	4.8	4.4	4.0	2.6	2.4
Edible roots and tubers	39.3	39.3	39.3	39.3	39.3	39.3	39.3	39.3	39.3	39.3	39.3	39.3	39.3
Potato	30.8	4.8	1.5	0.0	0.0	0.0	9.7	23.4	32.8	34.6	36.2	35.2	34.8
Other Root crops	8.4	34.5	37.8	39.3	39.3	39.3	29.6	15.9	6.4	4.6	3.1	4.1	4.5
Stimulant & spice	14.6	14.6	14.6	14.6	14.6	14.6	14.6	14.6	14.6	14.6	14.6	14.6	14.6
Tea	12.0	13.9	14.0	14.5	14.3	13.8	13.9	13.0	11.9	8.8	10.2	9.9	10.2
Ginger	2.5	0.7	0.6	0.0	0.3	0.8	0.6	1.6	2.6	5.8	4.4	4.7	4.4
Flowers, ornamental plants	9.9	9.9	9.9	9.9	9.9	9.9	9.9	9.9	9.9	9.9	9.9	9.9	9.9
Anthurium	3.0	3.0	3.0	3.0	3.0	3.0	3.0	3.0	3.0	3.0	3.0	3.0	3.0
Rose	1.1	1.1	1.1	1.1	1.1	1.1	1.1	1.1	1.1	1.1	1.1	1.1	1.1
Other flowers	5.8	5.8	5.8	5.8	5.8	5.8	5.8	5.8	5.8	5.8	5.8	5.8	5.8
Animals & Animal Products	441.1	441.1	441.1	441.1	441.1	441.1	441.1	441.1	441.1	441.1	441.1	441.1	441.1
Cattle	43.7	43.7	43.7	43.7	43.7	43.7	43.7	43.7	43.7	43.7	43.7	43.7	43.7
Pigs	3.1	3.1	3.1	3.1	3.1	3.1	3.1	3.1	3.1	3.1	3.1	3.1	3.1
Goat	0.7	0.7	0.7	0.7	0.7	0.7	0.7	0.7	0.7	0.7	0.7	0.7	0.7
Deer	8.8	8.8	8.8	8.8	8.8	8.8	8.8	8.8	8.8	8.8	8.8	8.8	8.8
Poultry	283.9	283.9	283.9	283.9	283.9	283.9	283.9	283.9	283.9	283.9	283.9	283.9	283.9
Eggs	95.0	95.0	95.0	95.0	95.0	95.0	95.0	95.0	95.0	95.0	95.0	95.0	95.0
Milk	5.9	5.9	5.9	5.9	5.9	5.9	5.9	5.9	5.9	5.9	5.9	5.9	5.9
Overall Index	1,000.0	1,000.0	1,000.0	1,000.0	1,000.0	1,000.0	1,000.0	1,000.0	1,000.0	1,000.0	1,000.0	1,000.0	1,000.0

Producer Price Index – Agriculture (PPI-A)**Methodology for the computation of PPI-A****1. Introduction**

The analysis of price data implies a comparison of current and past prices. Comparison overtime is required to study the price movement in order to understand the history and to indicate future outlook. While price relatives of single commodities can be studied in isolation, a general conclusion can only be derived from averages, covering a given set or class of commodities. The indicators of average price changes are the price indices.

2. Scope

The PPI-A covers agricultural products that are classified according to the latest Central Product Classification (CPC) Ver.2.1. There are two divisions: Division 01 - Crop Products and Division 02 - Animals & Animal Products. “Crop Products” is further divided into 7 Commodity Groups namely:

Group 012: Fresh vegetables

Group 013: Fruit and nuts

Group 014: Oilseeds and oleaginous fruits

Group 015: Edible roots and tubers

Group 016: Stimulant and spice

Group 018: Sugar cane

Group 019: Flowers, ornamental plants

3. Commodity Coverage

The bulk of the products in agriculture, with the exception of forestry, fishing and agricultural services, is taken into account in the producer price index. Thus, about 75% of the gross output of the agricultural sector has been considered.

4. Observation Units

There are essentially three types of observation units for collecting producer prices: (i) producers (ii) purchasers and (iii) markets. However, in the context of Mauritius, different types of observation units are used for different commodities as shown below:

(a) For main commercial crops (sugar cane and tea leaf etc.), the respective marketing agency is the source of the price data.

(b) For vegetables, price data are obtained mainly at three auction markets which are situated at Vacoas, Flacq and Port Louis respectively.

(c) For fruits, prices are recorded from different sources such as planters and first middlemen.

(d) For animals and animal products, price data are available at sources varying from marketing agencies to producers.

5. Definition of prices

A price is a pure price when the same amount of money refers to what the buyer pays and what the seller receives. Since the price series form the basis for calculation, the index of the output prices must be representative of what the farmer actually receives.

The prices must be recorded at a point in the marketing of the product which is as close as possible to the farmer. This means that the selling prices should be recorded at the farm gate or (if this is not possible) at the next stage of the commodity flow.

6. Purpose of the agricultural price indices

The purpose of the price indices is to provide information on trends in producer prices of agricultural products and purchase prices of the means of agricultural production.

The selling prices of agricultural products and the purchase of the means of production have a decisive influence on farmers' income. It would, therefore, be useful to have indicators showing how agricultural revenue and expenditure are influenced by their price component.

The agricultural price indicators are of two types: -

- (i) Prices received by farmers represent the producer prices of agricultural products (output prices)
- (ii) Prices paid by farmers are the purchase prices of agricultural requisites (input prices)

The two classes of prices mentioned above are considered important in the context of economic analysis and agricultural policy decisions. Index numbers based on them show the average changes in these prices.

It is to be noted that only the output price index for different groups of commodities is compiled.

7. Price received by agricultural producers

As mentioned earlier, the prices for the index should be farm-gate prices, but this is not possible in many cases. Hence, in lieu of the farm-gate price, the wholesale price of the product is recorded at the three auction markets located in Vacoas, Flacq and Port Louis.

In regards to sugarcane, there is no actual market price for the product. The final price for a crop is only available after the crop year to which it refers. Provisional estimates of the price of sugar is provided by Mauritius Sugar Syndicate. This is however revised as soon as the final price is available. The same procedure is applied to tea whereby prices are obtained from National Agricultural Products Regulatory Office (NAPRO).

8. Frequency of Price Collection

The frequency of price collection varies from weekly for some commodities to only once a year in others. Broadly speaking, the frequency of price collection is as follows: -

- (i) For vegetables, price data are collected every second and fourth week of a month at the three earlier mentioned auction markets.
- (ii) For commodities for which prices are fairly stable, data suppliers are visited on a quarterly basis, but prices are collected for each month of the quarter. For example, crop products – potato, onion etc.
- (iii) For the main commercial crops like sugar cane and tea, the reported prices are normally fixed for the crop year by the respective marketing agency.
- (iv) For the remaining type of items not mentioned above, the price data are collected on a monthly basis.

9. Weighting scheme and choice of the base period

As price data are associated with a commercial transaction, it is logical to relate prices to sales rather than total production. However, since the value of production for the market (sales) is not available here, the value of the total production is considered as a proxy in the calculation of weights. Furthermore, since meteorological conditions and market forces may generate high fluctuations, the weighted base is taken as the average of the total production for three years.

It may be noted that ‘Food and Agriculture Organisation’ and ‘Eurostat’ recommend that if the quantity weight base is the average of 3 years, then the reference base for prices should be the middle year. In the new set of indices, the weights have been derived by multiplying the average of production during the years 2017, 2018 and 2019 by the average of unit prices in 2018, the reference period. The weight is assigned to each commodity group on the basis of total production (as a proxy for sales) pertaining to the particular group. At the commodity level, the weights are apportioned within the commodity group on the basis of the production of each product.

Quarterly and annual indices have been computed using a weighting system based on the production value for the base period.

10. Index calculation

The PPI will be calculated according to a Laspeyres formula:

$$I_t = \frac{\sum W_i (P_{ti}/P_{oi})}{\sum W_i} \times 100$$

Where:

- I_t** is the index for the current period t
P_{ti} is the price of commodity i in the current period t
P_{oi} is the price of the commodity i in the reference period o (2018)
W_i is the weight associated with commodity i

As per the International Monetary Fund's recommendation to harmonize the method of computation of all indices, prices of commodities collected at different auction markets are computed using geometric mean instead of simple average.

11. Uses of agricultural price indices

The construction of agricultural price index numbers may serve various purposes as shown below: -

- (i) Economic analysis, in particular the estimation of general price trends and their relationship with other pertinent variables, e.g. the study of domestic price changes in relation to prices observed in external markets or the movement of agricultural production.
- (ii) Monitoring the implementation of agricultural price policy decisions such as the introduction or modification of support prices
- (iii) Forecasting price movements in connection with market studies or business cycle research.
- (iv) Compilation of national accounts at constant prices. In order to estimate the growth of the real product of the agricultural sector, deflator indices are needed. They are appropriately weighted indices of agricultural commodities or input items.

12. Seasonality

Prices and quantities of many agricultural commodities show seasonal variations. As vegetables and fruits are extremely seasonal products, it is therefore decided to use the method of variable baskets with fixed monthly weights in the base year.

There are 12 monthly baskets of representative products. The composition of these baskets varies each month. Certain products whose marketing period covers the whole year appear in all 12 monthly baskets, while others, which are more seasonal, appear only in some of them. However, the composition of the basket for a given month is fixed over time.

13. Missing Prices

There is also, in the field of agricultural price observation, the case of missing prices for a product must be taken into account because there is an index weight for the respective month. In these cases, imputation is carried out as per International Monetary Fund's recommendations.

14. Periodicity

The index is calculated on a monthly, quarterly as well as on an annual basis. While quarterly and annual price indices can normally be calculated as the simple (unweighted) average of the monthly indices, it is recommended that the monthly sales figures for the base year be used as weights to calculate the quarterly and annual indices. If sales figures are not available, total production can be used as a proxy when most of the production is available for sales. Such is the case in Mauritius and the values of total production have been used as weights.

Statistics Mauritius
LIC Centre,
John Kennedy Street,
Port Louis, MAURITIUS
T: +230 208 1800
F: +230 211 4150
W: <https://statsmauritius.govmu.org>
E: statsmauritius@govmu.org