

MONITORING THE SOCIO-ECONOMIC EFFECTS OF COVID-19 ON MAURITIAN HOUSEHOLDS

**BASED ON 3 ROUNDS OF THE RAPID CONTINUOUS
MULTI-PURPOSE HOUSEHOLD SURVEY**

MAY – JULY, 2020

October 2020

HIGHLIGHTS

- About 10 percent of households report to have not been able to purchase basic food items in July compared to about 15 percent in June and 21 percent between the start of the sanitary curfew and May 2020.
- The share of households that report to have skipped a meal reduced from 17 percent during the lockdown in May to less than 12 percent in July, whereas the share of households where at least one member had to skip once all the meals of a day remains virtually stable at about 3 percent since the lockdown started.
- In July, nearly all households have been able to access medical treatment when needed compared to 89 percent in June and 71 percent in May.
- More than 80 percent of households with children in school age have been able to access home based education while schools remained closed in May and June.
- 31 percent of households surveyed in July reported a reduction in income compared to June, while 38 percent of those surveyed in June reported a reduction in their June income compared to May and 36 percent of households surveyed in May reported a reduction in income compared to before the lockdown.
- In July 2020, the number of individuals (ages 16-64 not in full time education) in employment increased to 498,000 from 473,100 in June and 405,400 in May.
- The unemployment rate (based on a labor force comprising individuals ages 16-64 not in full time education) is estimated at 10.3 percent in July, 12.2 percent in June and 10.2 percent in May 2020.
- The number of economically inactive individuals (ages 16-64 not in full time education) is estimated at 215,800 in July and declined from 336,900 in May to 230,600 in June.

TABLE OF CONTENTS

Highlights.....	2
Table of Contents	3
List of Figures.....	4
List of Tables	4
Introduction	5
Access to Goods and Services and Food Security	6
Access to Food and Food Security	6
Access to Medical Treatment	8
Access to Distance Learning	9
The Labor Market.....	10
Employment, Unemployment and Inactivity	10
Individual Earnings	16
Household Shocks and Coping Strategies	18
Annex A: Methodology	20
Annex B: Definitions.....	21
Annex C: Tables.....	22

LIST OF FIGURES

Figure 1. Access to food.....	6
Figure 2. Food insecurity.....	7
Figure 3. Access to medical treatment.....	8
Figure 4. Access to home-based education.....	9
Figure 5. Changes in business income among the self-employed.....	17
Figure 6. Distribution of households by number of shocks and survey round.....	18
Figure 7. Changes in household income by survey round.....	19
Figure 8. Strategy adopted by households to cope with main shock by survey round.....	19

LIST OF TABLES

Table 1. Employed, unemployed and economically inactive in population aged 16-64 and not in fulltime education, by sex and for youth (16 – 24), by survey round.....	11
Table 2. Employment in population ages 16-64 years and not in fulltime education, by type of employment, formality status, and survey round.....	13
Table 3. Employment by industrial activity in population ages 16-64 years and not in fulltime education, by survey round.....	15
Table 4. Monthly salary of employees ages 16-64 not in full-time education, overall and by sector and survey round .	16
Table C 1. Reliability of labor statistics estimates – May, June, and July 2020.....	22

INTRODUCTION

Statistics Mauritius (SM) and the World Bank (WB) have launched a series of rapid phone household surveys, known as Rapid Continuous Multi-Purpose Household Survey (RCMPHS), to monitor the socio-economic effects of COVID-19 on the lives of Mauritian households over the period May-July 2020. Following the outbreak of COVID-19 and lockdown measures introduced by the Government of Mauritius, field activities related to face-to-face data collection have been suspended since March 20, 2020. The three rounds of Rapid Continuous Multi-Purpose Household Survey capture key information, representative at the national level, typically collected by Statistics Mauritius through face-to-face interviews. The number of households covered in May, June and July was 924, 907 and 803 respectively.¹

The questionnaire of the RCMPHS consists of 7 modules soliciting information about economic activity of individuals aged 16 to 64 years not in full-time education, access to basic goods and services, food insecurity, household income, shocks and coping strategies.

This note presents the results of the telephone surveys conducted in May, June, and July 2020.

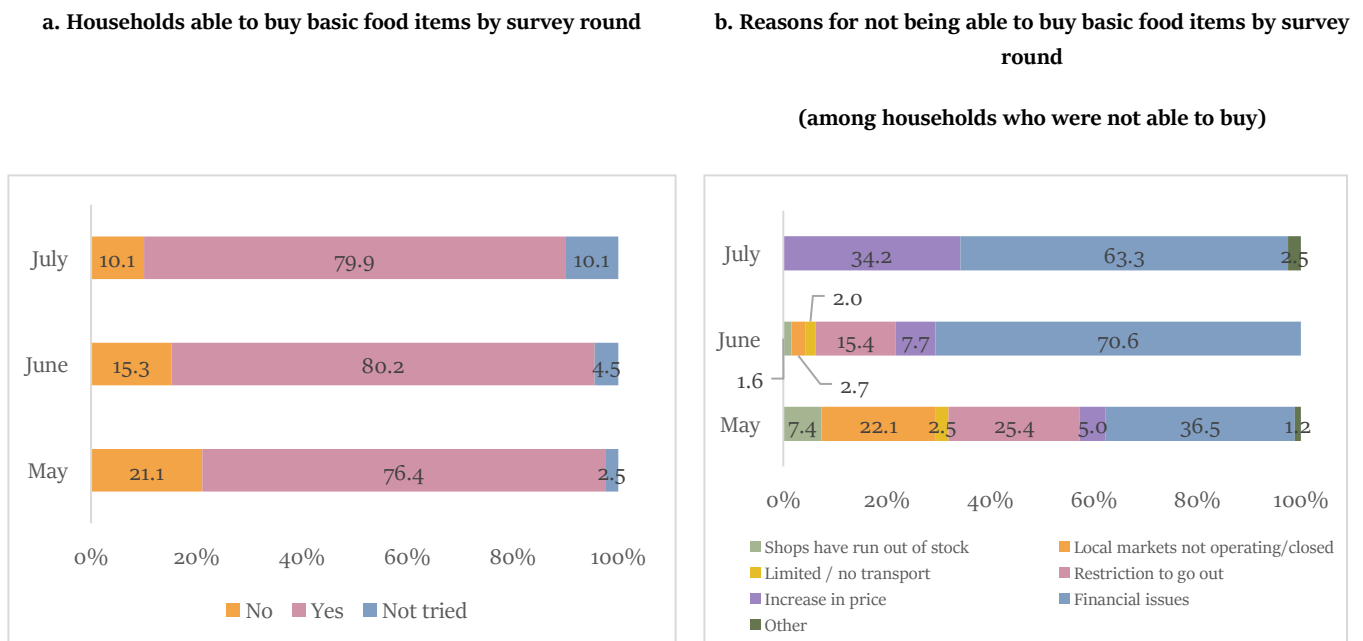
¹ The reference week to monitor economic activities was the week 18-24 for the May survey, 15-21 for the June survey and 13- 19 for the July survey.

ACCESS TO GOODS AND SERVICES AND FOOD SECURITY

ACCESS TO FOOD AND FOOD SECURITY

About 1 in 10 households report to have not been able to purchase basic food items during the week preceding the survey round of July (Figure 1 - panel a). This compares with about 15 percent in June and 21 percent between the start of the sanitary curfew and May 2020. With the easing of the lockdown in June, the reasons reported by households for not being able to access basic food items change. In July, financial problems (63 percent) and increase in price (34 percent) are the key impediments to access basic food items (Figure 1 - panel b). These differ from what households reported in May and to some extent in June that included movements' restrictions, closure of markets, unavailability of food items.

Figure 1. Access to food



Note: The reference period is since lockdown in the May round, and last week in the June and July rounds.

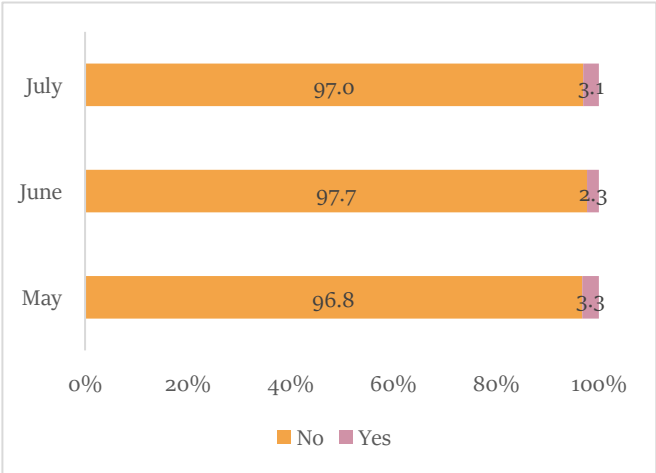
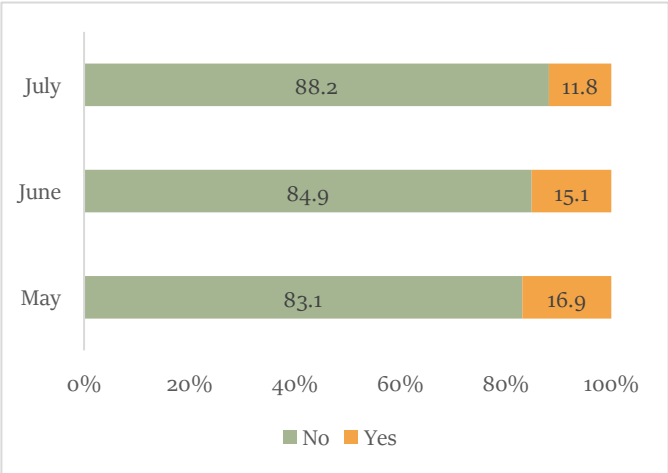
Source: Based on data from the Rapid Continuous Multi-Purpose Household Survey, Statistics Mauritius and World Bank.

To face food needs, households might adopt negative coping strategies, whereby they skip a meal or go without eating for an entire day. The share of households that report to have skipped a meal reduced to less than 12 percent in July from 17 percent between the start of the lockdown and the survey conducted in May (Figure 2 – panel a). At 3.1 percent, the share of households where at least one member had to skip once all the meals of a day remains virtually stable since the lockdown started (Figure 2 – panel b).

Figure 2. Food insecurity

a. Households that had to skip a meal by survey round

b. Households that went without eating for a whole day by survey round



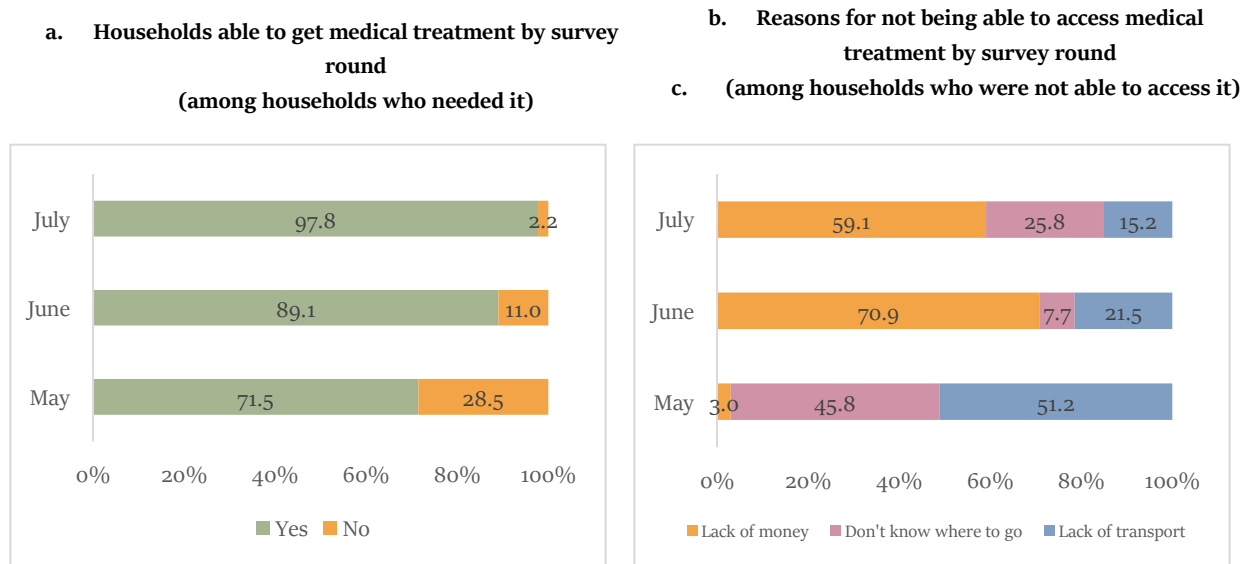
Note: The reference period is since lockdown in the May round, and last week in the June and July rounds.

Source: Based on data from the Rapid Continuous Multi-Purpose Household Survey, Statistics Mauritius and World Bank.

ACCESS TO MEDICAL TREATMENT

During the month of July, virtually all households report to have been able to access medical treatment when needed (Figure 3 – panel a). This compares with 89 percent in June and 71.5 percent in May. Lack of money (59 percent) is the main reason for not being able to get access to medical treatment in July (Figure 3 – panel b). Comparatively, during the lockdown (May round) lack of transport was the main problem for over 1 in 2 households.

Figure 3. Access to medical treatment



Note: The reference period is since lockdown in the May round, and last week in the June and July rounds.

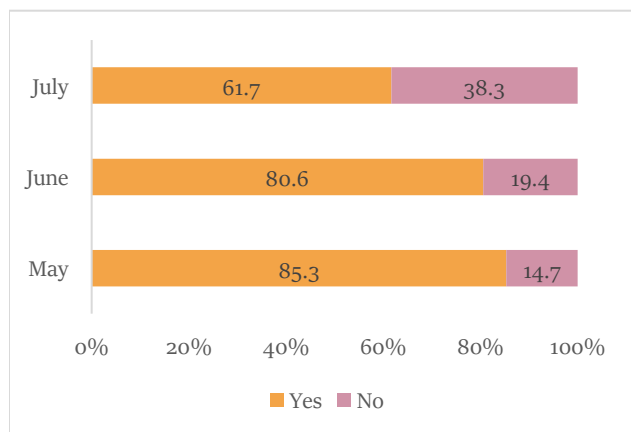
Source: Based on data from the Rapid Continuous Multi-Purpose Household Survey, Statistics Mauritius and World Bank.

ACCESS TO DISTANCE LEARNING

While national lockdown was lifted on June 1, educational institutions remained closed until the end of June. Lockdown measures and school closures have caused disruptions in the delivery of services, including education. In many countries with fast and reliable internet connection, students have been able to get access to remote learning through computers, laptops, tablets, and smartphones. In Mauritius, during the week 13 to 19 July, less than 2 in 3 households report their children were able to access distance learning (Figure 4). This can be explained by the re-opening of schools on July 1. During the week 15 to 21 June, 81 percent of households with children in school age reported to have been able to access home based education. Special educational programs on TV have largely contributed to this relatively high access rate.

Figure 4. Access to home-based education

Households with children in school age able to access home-based education by survey round



Note: The reference period is since lockdown in the May round, and last week in the June and July rounds.

Source: Based on data from the Rapid Continuous Multi-Purpose Household Survey, Statistics Mauritius and World Bank.

EMPLOYMENT, UNEMPLOYMENT AND INACTIVITY

Employment

With the lifting of the national lockdown in June, individuals who could not work remotely have gradually gone back to their workplace. This is reflected in the increase in employment (individuals aged 16-64 years not in full time education) levels in June and July compared to May (Table 1)³. Total employment increased from 405,400 in May to 473,100 in June, that is, an increase of 67,700. Employment rose further by some 24,900 to reach 498,000 in July. Nonetheless, employment levels remain below the level observed in the first quarter of 2020 by 36,800 units or 6.9 percent.

Differences by formality status and type of employment. In the first quarter 2020, formal employment was estimated at about 384,000 or 72 percent of total employment, while the remaining 150,800 or 28 percent was informal (Table 2)⁴ In May, over two thirds of the drop in employment of around 129,400 came mostly from informal employment (-89,200) as opposed to formal employment (-40,200). With the lifting of the lockdown in June, informal employment rebounded by 44,900 (or 73 percent) in June and by 12,700 (or 12 percent) in July. Informal employment was around 31,600 (or 21 percent) below the level estimated in the first quarter. On the other hand, formal employment declined by 40,200 (or 10.5 percent) in May, and then it increased by 22,800 in June and by 12,200 in July. Formal employment in July was about 5,200 or 1.4 percent below the level observed in the first quarter.

² All estimates given here refer to population comprising all individuals from 16 to 64 years of age not in full-time education. Estimates in other SM publications refer to all individuals aged 16 and above.

³ The employed population consists of Mauritians ages 16-64 not in full time education who have worked for pay, profit or family gain for at least one hour during the third week of the reference month. It includes individuals who are temporarily absent from work for reasons such as working time arrangements, nature of their work, public holidays, annual leave, sick leave, maternity/paternity leave. However, individuals absent for other reasons, including the Covid-19 lockdown, are classified as employed only if at least one of the following two conditions hold: (i) total expected duration of absence is three months or less, or (ii) a worker continues to receive a remuneration (full or partial) paid by the employer.

It should, however, be noted that many workers, particularly the self-employed, are unlikely to have clarity regarding the exact date when they will be able to resume work in the context of a pandemic and lockdown. While the second criterion applied to most formal employees during the lockdown, it might not have applied to all informal workers.

⁴ In this note, a paid employee is classified as in informal wage employment if he/she reports his/her employer does not pay contributions to the National Pension Fund. In addition to informal wage employment, the informal sector includes persons engaged as employers, own account workers and contributing family workers in household unincorporated market enterprises that do not have a complete set of accounts. First, the household market enterprise is considered as an 'unincorporated enterprise' if assets used are not separate from those of the owner, that is, same assets are used for household purposes and for running the business. Second, a household unincorporated market enterprise constitutes an informal unit if the enterprise does not have a complete set of accounts with balance sheets.

Table 1. Employed, unemployed and economically inactive in population aged 16-64 and not in fulltime education, by sex and for youth (16 – 24), by survey round

	Q1-20	May-20	Jun-20	Jul-20	Q1-20 to May-20	Change Q1-20 to Jun-20	Q1-20 to Jul-20
Men							
Employed	319,700	248,400	273,200	296,800	-71,300	-46,500	-22,900
Unemployed	17,600	28,600	36,300	32,200	+11,000	+18,700	+14,600
Inactive	52,500	111,600	74,100	53,800	+59,100	+21,600	+1,300
Population	389,800	388,600	383,600	382,800	-1,200	-6,200	-7,000
Labor force	337,300	277,000	309,500	329,000	-60,300	-27,800	-8,300
Activity Rate (%)	86.5	71.3	80.7	85.9	-15.2	-5.8	-0.6
Unemployment Rate (%)	5.2	10.3	11.7	9.8	+5.1	+6.5	+4.6
Women							
Employed	215,100	157,000	199,900	201,200	-58,100	-15,200	-13,900
Unemployed	23,700	17,200	29,700	25,100	-6,500	+6,000	+1,400
Inactive	152,600	225,300	156,500	162,000	+72,700	+3,900	+9,400
Population	391,400	399,500	386,100	388,300	+8,100	-5,300	-3,100
Labor force	238,800	174,200	229,600	226,300	-64,600	-9,200	-12,500
Activity Rate (%)	61	43.6	59.5	58.3	-17.4	-1.5	-2.7
Unemployment Rate (%)	9.9	9.9	12.9	11.1	0.0	+3.0	+1.2
Both Sexes							
Employed	534,800	405,400	473,100	498,000	-129,400	-61,700	-36,800
Unemployed	41,300	45,800	66,000	57,300	+4,500	+24,700	+16,000
Inactive	205,100	336,900	230,600	215,800	+131,800	+25,500	+10,700
Population	781,200	788,100	769,700	771,100	+6,900	-11,500	-10,100
Labor force	576,100	451,200	539,100	555,300	-124,900	-37,000	-20,800
Activity Rate (%)	73.7	57.3	70.0	72.0	-16.4	-3.7	-1.7
Unemployment Rate (%)	7.2	10.2	12.2	10.3	+3.0	+5.0	+3.1
Youth (16 - 24)							
Employed	54,000	40,600	44,300	45,900	-13,400	-9,700	-8,100
Unemployed	18,100	9,800	16,500	20,600	-8,300	-1,600	+2,500
Inactive	28,900	53,700	28,900	25,300	+24,800	0.0	-3,600
Population	101,000	104,100	89,700	91,800	+3,100	-11,300	-9,200
Labor force	72,100	50,400	60,800	66,500	-21,700	-11,300	-5,600
Activity Rate (%)	71.4	48.4	67.8	72.4	-23.0	-3.6	+1.0
Unemployment Rate (%)	25.1	19.4	27.1	31.0	-5.7	+2.0	+5.9

Source: Based on data from the quarter 1-2020 of the Continuous Multi-Purpose Household Survey data and from the Rapid Continuous Multi-Purpose Household Survey of May, June and July 2020, Statistics Mauritius and World Bank.

Note : Activity rate = labor force over population; Unemployment rate = unemployed over labor force.

In the first quarter 2020, out of an employed population of 534,800, 434,200 or 81 percent were wage earners (Table 2). The remaining 100,600 or 19 percent were in non-wage employment, that

is, own-account workers, employers and contributing family workers. The reduction in total employment in May was mainly ascribable to wage employment (-84,400) than non-wage employment (-45,000). However, in relative terms wage employment declined by about 19 percent, whereas non-wage employment decreased by about 45 percent. In June and July, non-wage employment rebounded considerably in relative terms. In June wage employment increased by 12 percent (43,700), and non-wage employment increased by 43 percent (24,000). In July, non-wage employment continued to increase and reached a level of 99,600, virtually identical to the level estimated in first quarter. Wage employment increased in July by an additional 4,900 and was at 398,400, about 8 percent (35,800) below the level estimated in the first quarter.

In the first quarter 2020, some 350,300 or 81 percent of wage workers were formal. In May, the decline in wage employment was driven by the dynamic of informal employment (-54,800) as opposed to the formal component (-29,600). In June, informal wage employment increased by 32,900 and a further 900 in July. Formal wage employment also increased by 10,800 in June and 4,000 in July. Compared to the first quarter figures, formal wage employment in July was 4.2 percent lower, while informal wage employment was 25 percent lower.

Around one third of non-wage employment was formal and two-thirds informal in the first quarter 2020. In May, formal non-wage employment fell by 10,600 or 31 percent compared to the first quarter 2020, while informal non-wage employment declined by 34,400 or 51 percent. In June and July, formal non-wage employment recovered rapidly. In fact, formal non-wage employment bounced back with an increase of 12,000 in June and a further 8,200 in July. Overall, formal non-wage employment in July was some 9,600 above the first quarter level. Informal non-wage employment increased by 12,000 in June and an additional 11,800 in July. Despite adding up a total of 23,800 since May, informal non-wage employment in July was still below the first quarter level by some 10,600 or 16 percent.

Differences by sex. The number of women employed as of July was about 6.5 percent (or 13,900) lower compared with the pre-crisis levels (Table 1). Employment levels among women increased sizably by 27 percent between May and June and modestly between June and July. Employment among men as of July was about 7.2 percent lower than before the pandemic started (Table 1). Employment levels among men increased by 10 percent between May and June and by 8.6 percent between June and July.

Table 2. Employment in population ages 16-64 years and not in fulltime education, by type of employment, formality status, and survey round

	Formal	Informal	Total
Wage and Non-Wage Employment			
Q1 20	384,000	150,800	534,800
May-20	343,800	61,600	405,400
Jun-20	366,600	106,500	473,100
Jul-20	378,800	119,200	498,000
<i>Change</i> Q1 20 - May 20	-40,200	-89,200	-129,400
Q1 20 - Jun 20	-17,400	-44,300	-61,700
Q1 20 - Jul 20	-5,200	-31,600	-36,800
Wage Employment			
Q1 20	350,300	83,900	434,200
May-20	320,700	29,100	349,800
Jun-20	331,500	62,000	393,500
Jul-20	335,500	62,900	398,400
<i>Change</i> Q1 20 - May 20	-29,600	-54,800	-84,400
Q1 20 - Jun 20	-18,800	-21,900	-40,700
Q1 20 - Jul 20	-14,800	-21,000	-35,800
Non-Wage Employment			
Q1 20	33,700	66,900	100,600
May-20	23,100	32,500	55,600
Jun-20	35,100	44,500	79,600
Jul-20	43,300	56,300	99,600
<i>Change</i> Q1 20 - May 20	-10,600	-34,400	-45,000
Q1 20 - Jun 20	+1,400	-22,400	-21,000
Q1 20 - Jul 20	+9,600	-10,600	-1,000

Source: Based on data from the quarter 1-2020 of the Continuous Multi-Purpose Household Survey and from the Rapid Continuous Multi-Purpose Household Survey, Statistics Mauritius and World Bank.

Unemployment

At **10.3** percent in July, the unemployment rate is about 3 percentage points higher than in the first quarter of 2020. The number of unemployed increased by about 44 percent from 45,800 in May to

66,000 in June 2020, and it declined by 13 percent to 57,300 in July. The unemployment rate is estimated at 12.2 percent in June and 10.3 percent in July relative to 10.2 percent in May 2020.

The number of unemployed women increased by about 1,400 units (+6 percent) between the first quarter and July, while the number of unemployed men increased by 14,600 or 83 percent and declined by 4,100 units (-11.3 percent) between June and July. The unemployment rate among women increased from 9.9 percent in the first quarter to 11.1 percent in July 2020, while among men it increased from 5.2 percent to 9.8 percent. A similar percentage of men and women have lost their job between Q1 and July. Yet, men are more likely to continue to participate to the labor market and look for jobs, whereas women are more likely to exit the market and become inactive.

Inactivity

In July, the number of inactive is about 215,800, still 10,700 units (or 5 percent) higher than the level estimated in the first quarter of the year. In June the number of inactive individual reduced to 230,600 from 336,900 in May (Table 1).

The increase in the inactive population was considerably larger among women that posted an increase of 6.2 percent in July relative to the first quarter, whereas the number of inactive men increased only by 2.5 percent. The activity rate among women declined from 61 percent in the first quarter to 58.3 percent in July.

Youth

In May 2020, that is, during the lockdown, activity rate among the youth fell to 48.4 percent from 71.4 percent in the first quarter 2020. The number of youth employed dropped from 54,000 to 40,600 and the number of unemployed from 18,100 to 9,800. Youth employment went up by 3,700 or 9 percent in June and further by 1,600 or 3.6 percent in July. In July, youth employment was below the first quarter level by some 8,100 or 15 percent. Youth unemployment was around 20,600 in July – up by some 2,500 compared to the first quarter. Youth unemployment rate fell from 25.1 percent in the first quarter 2020 to 19.4 percent in May and thereafter increased to 27.1 percent in June and 31 percent in July.

Employment by sector

Primary sector. Employment in the primary sector fell to 19,100 in May due to the lockdown. However, employment in the sector increased gradually to 22,400 in June and 29,000 in July. Compared to the first quarter 2020, employment in the primary sector was lower by some 6,400 or 18% in July.

Secondary sector. Similarly, employment in the secondary sector dropped from 120,400 in the first quarter 2020 to 87,100 in May, that is 33,300 lower. However, after the lockdown was lifted, employment increased significantly by 16,300 in June to 103,400 and a further 19,600 in July to 123,000. In fact, employment in July was higher than the first quarter.

Tertiary sector. Employment in the tertiary sector contracted by 21% or 79,800 in May compared to the first quarter 2020. Thereafter, employment increased by 48,100 or 16% to reach 347,300 in June. It then decreased by 1,300 in July to reach 346,000. At that level, employment in the tertiary sector was about 9% below the level estimated in the first quarter of the year.

Table 3. Employment by industrial activity in population ages 16-64 years and not in fulltime education, by survey round

	Q1 - 20	May-20	Jun-20	Jul-20	Change		
					Q1 - May, 20	Q1 - Jun, 20	Q1 - Jul, 20
Primary sector	35,400	19,100	22,400	29,000	-16,300	-13,000	-6,400
Secondary sector	120,400	87,100	103,400	123,000	-33,300	-17,000	+2,600
Tertiary sector	379,000	299,200	347,300	346,000	-79,800	-31,700	-33,000
Total	534,800	405,400	473,100	498,000	-129,400	-61,700	-36,800

Source: Based on data from the quarter 1-2020 of the Continuous Multi-Purpose Household Survey and from the Rapid Continuous Multi-Purpose Household Survey of May, June and July 2020, Statistics Mauritius and World Bank.

INDIVIDUAL EARNINGS

In July, about 11% of employees worked less than their usual hours of work compared to 15% in June and 23% in May. Nearly half of employees who reported to have worked shorter hours received only part of their normal salary in July. This compares with about 28% of employees in May and approximately the same percentage (27%) in June.

Compared to the first quarter of 2020 (before the outbreak of the pandemic), average monthly salaries in July decreased by 18% (Primary sector: -12%, Secondary sector: -13% and Tertiary sector: -18%) (Table 4).

Average monthly salaries in June 2020 declined by about 2.5% compared to May 2020, and in July by an additional 0.5% compared to June 2020. Employees in the secondary and tertiary sectors earned less in June compared to May (-4 and -6%, respectively), whereas those in the primary sector earned some 17% more. In July, employees in the tertiary sector earned 5% more than in June, whereas those in the primary and secondary sector earned 10% and 1.3% less than in June.

Table 4. Monthly salary of employees ages 16-64 not in full-time education, overall and by sector and survey round

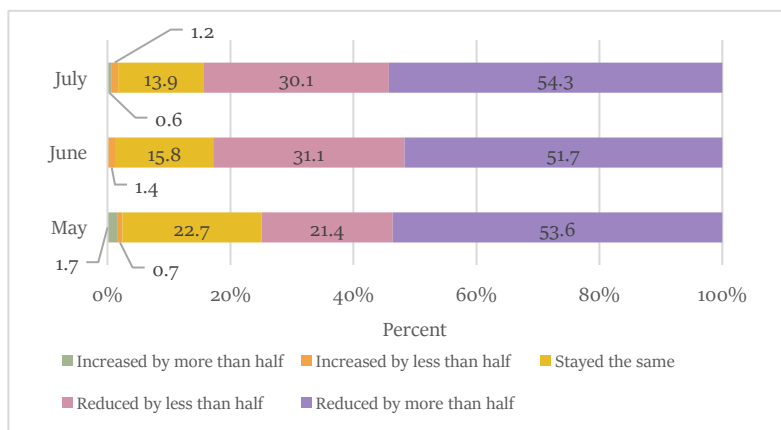
	Q1 - 20	May-20	Jun-20	Jul-20	Change (%)		
					Q1 - May, 20	Q1 - Jun, 20	Q1 - Jul, 20
All Sectors							
Average Value	23,500	19,900	19,400	19,300	-15.3	-17.4	-17.9
Median Value	18,000	15,000	15,000	15,000	-16.7	-16.7	-16.7
By sector (Average Value)							
Primary	16,500	13,800	16,100	14,500	-16.4	-2.4	-12.1
Secondary	18,000	16,600	15,900	15,700	-7.8	-11.7	-12.8
Tertiary	25,500	21,100	19,900	20,900	-17.3	-22.0	-18.0

Source: Based on data from the quarter 1-2020 of the Continuous Multi-Purpose Household Survey and from the Rapid Continuous Multi-Purpose Household Survey of May, June and July 2020, Statistics Mauritius and World Bank.

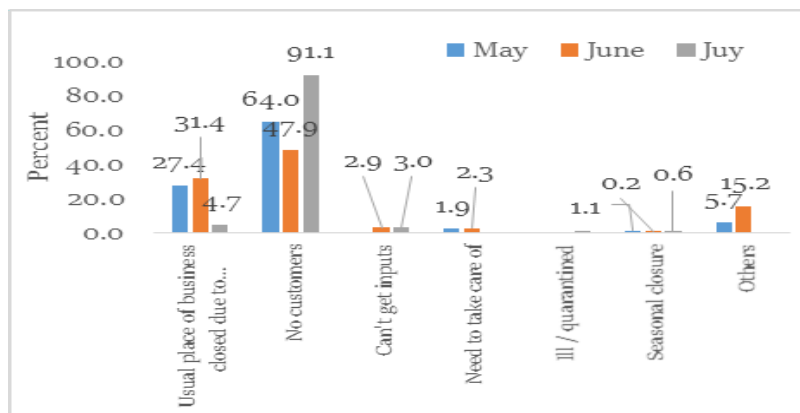
An increasing number of self-employed/employers report a decline in their business income over the period May-July 2020. In May, those experiencing a decline in income were 75 percent of the total, in June the share increased to 83 percent and in July there was a further increase to reach 84.4 percent (Figure 5 - panel a). The main reason for the decline in income in July was lack of customers (91 percent), whereas in May and June the main reason were lack of customers followed by closure of the usual place of business due to COVID-19 (Figure 5 - panel b).

Figure 5. Changes in business income among the self-employed

a. Distribution of self-employed by degree of change in their business income by survey round



b. Distribution of self-employed by reasons for reporting a decline in business income by survey round



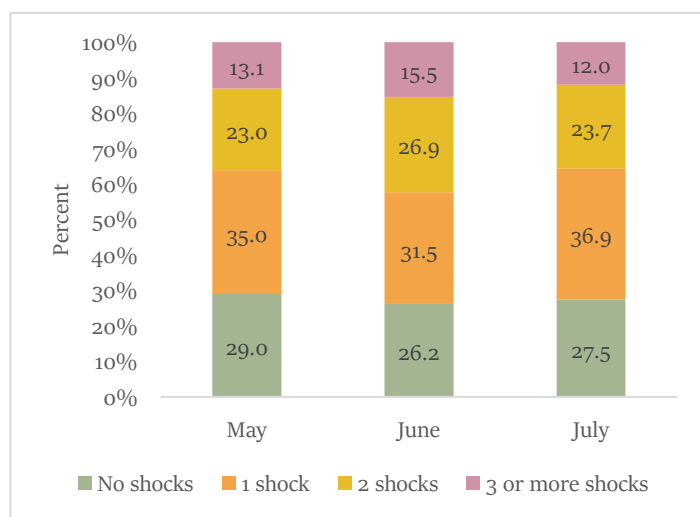
Note: The reference period is since lockdown in the May round, and last week in the June and July rounds.

Source: Based on data from the Rapid Continuous Multi-Purpose Household Survey, Statistics Mauritius and World Bank.

HOUSEHOLD SHOCKS AND COPING STRATEGIES

As a result of the pandemic and lockdown measures, Mauritian households have been affected by various types of shocks. A smaller share of households reported to have experienced no shock in July (27.5 percent) compared with May (29 percent), and more household were likely to have experienced just one shock in July (37 percent) compared with May (35 percent) (Figure 6). The top three shocks that have affected households have remained the same over time: (i) an increase in prices (67.5 percent of households in July and 64.2 percent in May), (ii) a reduction in salary (27 percent of households in July and 33 percent in May), (iii) and a reduction in income from business (15 percent of households in July and 13 percent in May).

Figure 6. Distribution of households by number of shocks and survey round



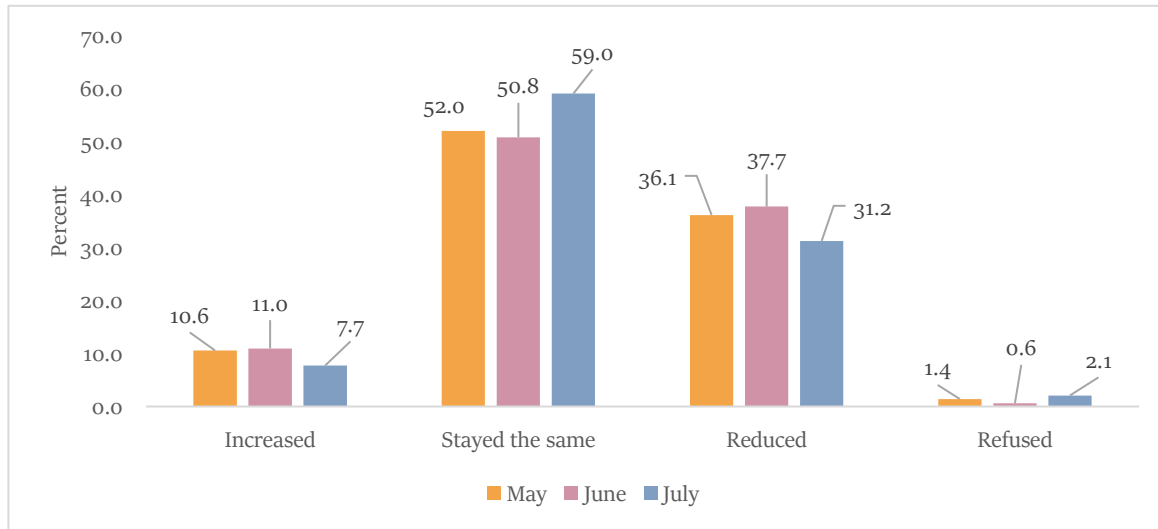
Source: Based on data from the Rapid Continuous Multi-Purpose Household Survey, Statistics Mauritius and World Bank.

Shocks translate into large changes in household income if coping strategies adopted by households are not effective in mitigating their negative consequences. Over 59 percent of households reported no change in their July income compared to income in June, a number that increased from 51 percent in June relative to May and from 52 percent in May compared to before the lockdown (Figure 7). About 31 percent of households reported a reduction in income in July relative to June and 38 percent in June relative to May. Among these households, the share reporting a reduction of over 50 percent declined from 18 percent in May to 14 percent in July.

Households hit by shocks have adopted different coping strategies (Figure 8). An increasing share of households have reduced their food consumption (40 percent in July relative to 32 percent in June and 27 percent in May). The percentage of households that have resorted to their savings has reduced from 26 percent in May to 13 percent in July as those that have reduced nonfood

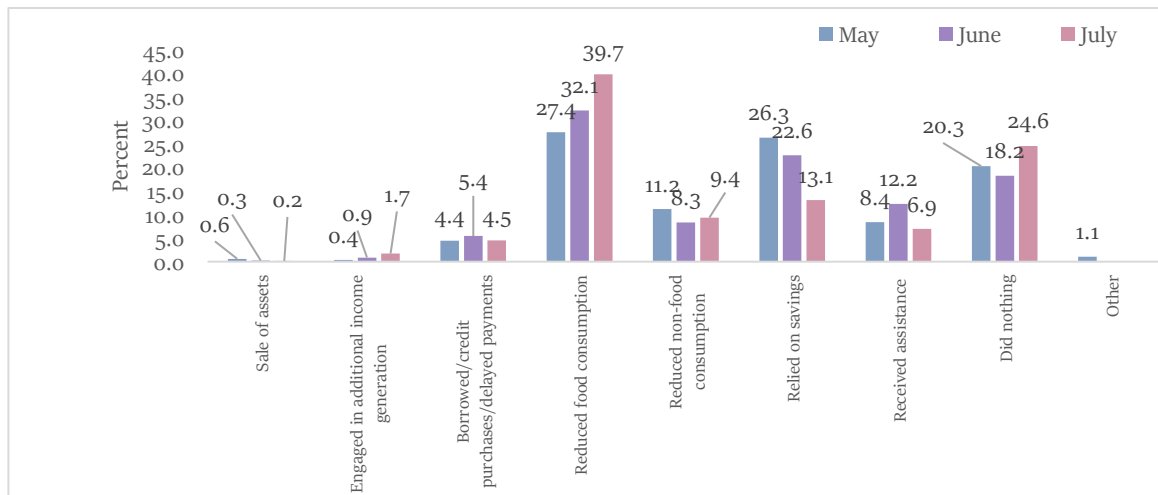
consumption (from 11.2 percent in May to 9.4 percent in July) or have received assistance from family and friends (from 8.4 percent in May to 6.9 percent in July). A considerable share of households did not adopt any strategies to mitigate the negative effect of the shocks: the share increased from 20 percent in May to 25 percent in July.

Figure 7. Changes in household income by survey round



Source: Based on data from the Rapid Continuous Multi-Purpose Household Survey, Statistics Mauritius and World Bank.

Figure 8. Strategy adopted by households to cope with main shock by survey round



Source: Based on data from the Rapid Continuous Multi-Purpose Household Survey, Statistics Mauritius and World Bank.

ANNEX A: METHODOLOGY

Data collection: Telephone interviews of household members. The observation unit is the household head or a knowledgeable person, except for the employment module where each individual is asked to respond personally to the extent he is available to do so at the time of the interview (response by proxy is otherwise accepted).

Frequency of data collection: Monthly. The reference period for data on labor force is the third week of the survey month.

Scope and coverage of collection: Mauritian households in the islands of Mauritius and Rodrigues.

Sampling methodology: A Stratified two-stage sampling design is used. At the first stage, Primary Sampling Units (PSUs) are selected in proportion to square root of the total number of households in the geographical district and at the second stage a fixed number of households is selected from each selected PSU. The Relative Development Index (RDI) is used as the spatial stratification factor. This index is based on 12 variables encompassing housing and living conditions, literacy and education, and employment derived from the 2011 Housing and Population Census to rank PSUs. A set of RDIs for administrative regions has been published in the series "Economic and Social Indicators" - Issue No. 977. The second stage stratification criteria are community, household size and average monthly expenditure of the household.

Sample size: The response rate for the June survey stands at 92 percent, with a total of 907 households that completed the interview.

Questionnaire: The questionnaire comprises seven modules. Module 1 covers the general characteristics of the population. Module 2 solicits information about economic activities on every household member ages 16 to 64 not in full time education. Module 3 covers access to basic food and services including health and education. Module 4 captures information on food security. Module 5 covers information regarding changes in household income, module 6 captures information regarding the type of strategies adopted by households to cope with shocks, and module 7 covers safety nets since the lockdown.

Reliability of estimates: Estimates from the May, June and July surveys were based on samples of 924, 907 and 803 households, respectively. Margin of error associated with the estimates are given in (Table C 1).

ANNEX B: DEFINITIONS

Labor Market Status	
<i>Employment</i>	<p>The employed population consists of Mauritians ages 16-64 not in full time education who have worked for pay, profit or family gain for at least one hour during the reference week of a month.⁵ It includes individuals who are <u>temporarily absent</u> from work for reasons such as working time arrangements, nature of their work, public holidays, annual leave, sick leave, maternity/paternity leave.</p> <p>Individuals <u>absent for other reasons</u> such as parental leave, education leave, other personal leave, furlough, layoff, temporary disorganization or suspension of work, lack of clients, capital or materials, strike, government lockdown, quarantine, disaster, etc. are classified as employed if one of the following two conditions hold:</p> <ol style="list-style-type: none"> 1. total expected duration of absence is three months or less, 2. a worker continues to receive a remuneration (full or partial) paid by the employer.
<i>Unemployment</i>	The unemployed population comprises all Mauritians ages 16-64 not in full time education who were not employed and looked for work and were available for work during the reference week.
<i>Inactivity</i>	The inactive population includes persons who were neither employed nor unemployed during the reference week. This includes individuals who during the reference week were not employed because of the lockdown, did not have any job attachment, were not available for work and did not look for work.
Employment Type	
<i>Employer</i>	An employer is a person who operates his/her own business or trade and hires one or more employees.
<i>Own-account worker</i>	An own-account worker is a person who operates his/her own business or trade and does not hire employees. He/She may be working alone or with the help of contributing family workers.
<i>Employee</i>	An employee is a person who works for pay for someone else, even in a temporary capacity.
<i>Apprentice</i>	An apprentice is a person being trained for a job or trade. He/She may be paid or may receive some pocket money; a paid apprentice is considered in-employment.
<i>Contributing family worker</i>	A contributing family worker is a person who works without pay in a market-oriented enterprise operated by a family member.

⁵ Previously published estimates refer to all individuals aged 16 and above.

ANNEX C: TABLES

Table C 1. Reliability of labor statistics estimates – May, June, and July 2020

		Estimates	Standard Error	Coefficient of variation (%)
Both Sexes				
Labour force				
	May-20	451,200	31,300	6.9
	Jun-20	539,100	31,100	5.8
	Jul-20	555,300	34,300	6.2
Employment				
	May-20	405,400	28,300	7.0
	Jun-20	473,100	27,400	5.8
	Jul-20	498,000	29,600	5.9
Unemployment				
	May-20	45,800	5,600	12.2
	Jun-20	66,000	7,200	10.9
	Jul-20	57,300	7,400	12.9
Unemployment rate, %				
	May-20	10.2	1.0	9.8
	Jun-20	12.2	1.1	9.0
	Jul-20	10.3	1.0	9.7
Activity rate, %				
	May-20	57.3	1.3	2.3
	Jun-20	70.0	1.2	1.7
	Jul-20	72.0	1.3	1.8
Men				
Labour force				
	May-20	277,000	19,700	7.1
	Jun-20	309,500	17,900	5.8
	Jul-20	329,000	21,400	6.5
Employment				
	May-20	248,400	17,200	6.9
	Jun-20	273,200	15,700	5.7
	Jul-20	296,800	18,300	6.2
Unemployment				
	May-20	28,600	4,600	16.1
	Jun-20	36,300	5,200	14.3

		Estimates	Standard Error	Coefficient of variation (%)
Unemployment rate, %	Jul-20	32,200	5,200	16.1
	May-20	10.3	1.3	12.8
	Jun-20	11.7	1.4	12.3
Activity rate, %	Jul-20	9.8	1.3	13.3
	May-20	71.3	1.6	2.2
	Jun-20	80.7	1.2	1.5
	Jul-20	85.9	1.4	1.6
Women				
Labour force				
	May-20	174,200	14,000	8.0
	Jun-20	229,600	15,700	6.8
	Jul-20	226,300	14,900	6.6
Employment				
	May-20	157,000	13,500	8.6
	Jun-20	199,900	14,200	7.1
	Jul-20	201,200	13,500	6.7
Unemployment				
	May-20	17,200	3,300	19.2
	Jun-20	29,700	4,300	14.5
	Jul-20	25,100	4,100	16.3
Unemployment rate, %				
	May-20	9.9	1.9	19.2
	Jun-20	12.9	1.6	12.4
	Jul-20	11.1	1.6	14.4
Activity rate, %				
	May-20	43.6	1.7	3.9
	Jun-20	59.5	1.8	3.0
	Jul-20	58.3	1.9	3.3
Reliability of estimates		High reliability		Less than 7.5
		Medium reliability		7.5 - 15.0
		Low reliability		Greater than 15.0

Source: Based on data from the Rapid Continuous Multi-Purpose Household Survey of May, June and July 2020, Statistics Mauritius and World Bank.