

PRODUCER PRICE INDEX - MANUFACTURING (PPI-M)

1st Quarter 2020

(Base year: 2013 =100)

1. Introduction

The Producer Price Index of the Manufacturing sector (PPI-M) measures pure price changes in the effective prices received by producers for that part of their output, which is sold on the domestic market (in Mauritian rupees) and therefore excludes Export Oriented Enterprises.

This issue of the Economic and Social Indicators (ESI) presents a series of monthly PPI-M for the period April 2019 to March 2020 and quarterly indices from the second quarter of 2018 to the first quarter of 2020. The weights for the PPI-M have been derived from the results of the 2013 Census of Economic Activities.

Indices prior to April 2019 are posted on Statistics Mauritius website in the historical series of manufacturing statistics:

<http://statsmauritius.govmu.org/English/StatsbySubj/Pages/Manufacturing.aspx>

The methodology used for the computation of PPI-M is annexed.

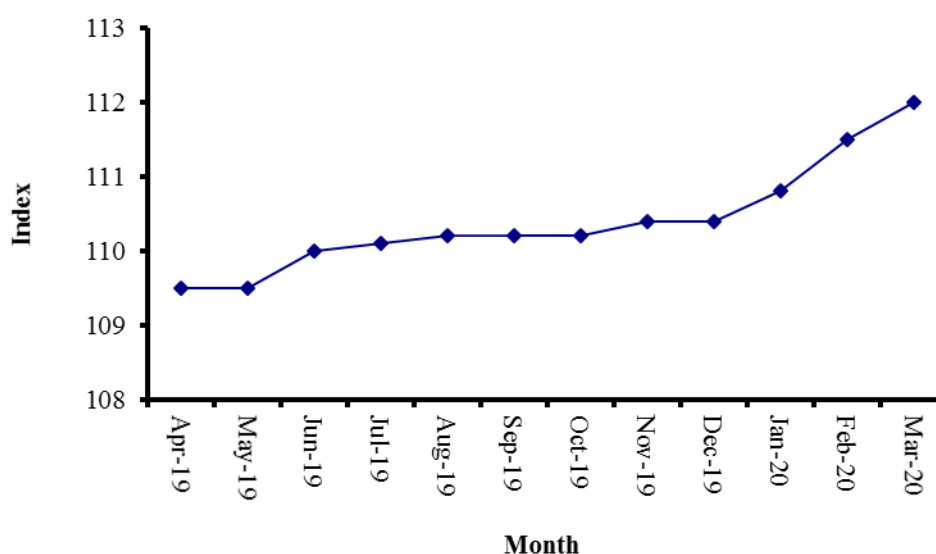
2. Changes during first quarter 2020

2.1 Manufacturing Sector

The Producer Price Index for the manufacturing sector registered an increase of 1.6 points (+1.4%) from 110.4 in December 2019 to 112.0 in March 2020. The main reason for the net increase was higher prices of “Food products and beverages” (+1.5%) and “Other non-metallic mineral products” (+5.4%).

On a monthly basis, the PPI-M increased by 0.4 point (+0.4%), 0.7 point (+0.6%) and 0.5 point (+0.4%) in January, February and March 2020 respectively (Table 1a).

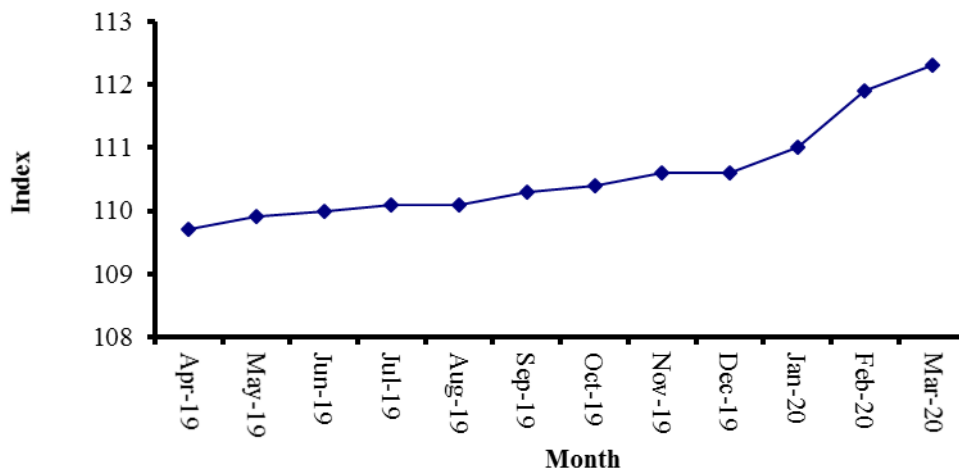
**Fig 1: Overall monthly indices: April 2019 - March 2020
Manufacturing Sector**



2.2 Manufacture of Food Products and Beverages

The Producer Price Index for “Food products and beverages”, which accounts for 55.2% of the total weight, registered a net increase of 1.7 points (+1.5%) from 110.6 in December 2019 to 112.3 in March 2020. This increase was mainly attributable to higher prices of “Grain mill products” (+6.0%), “Bakery products” (+2.2%), “Distilled potable alcoholic beverages” (+1.9%), “Vegetable and animal oils and fats” (+5.1%) and “Processing and preserving of meat” (+1.1%).

**Fig 2: Monthly indices: April 2019 - March 2020
Food Products and Beverages**

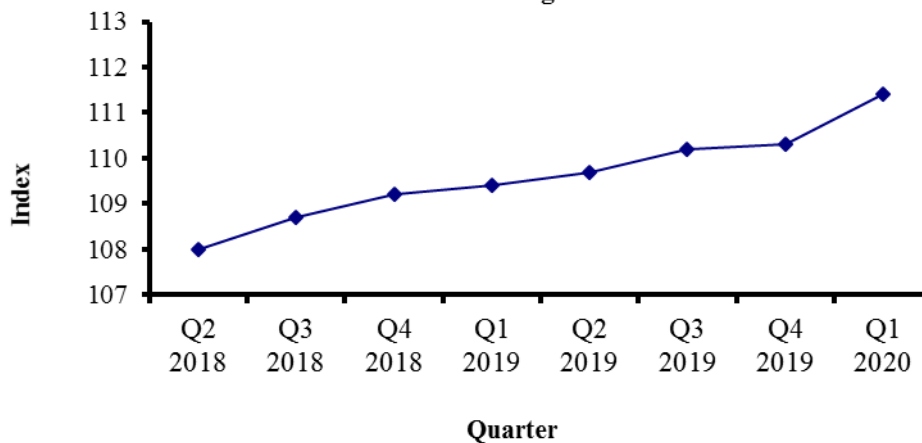


On a monthly basis, the index for this activity group increased by 0.4 point (+0.4%), 0.9 point (+0.8%) and 0.4 point (+0.4%) in January, February and March 2020 respectively.

3. Change in quarterly PPI-M

3.1 Manufacturing Sector

**Fig 3: Overall quarterly indices:
2nd Quarter 2018 to 1st Quarter 2020
Manufacturing Sector**

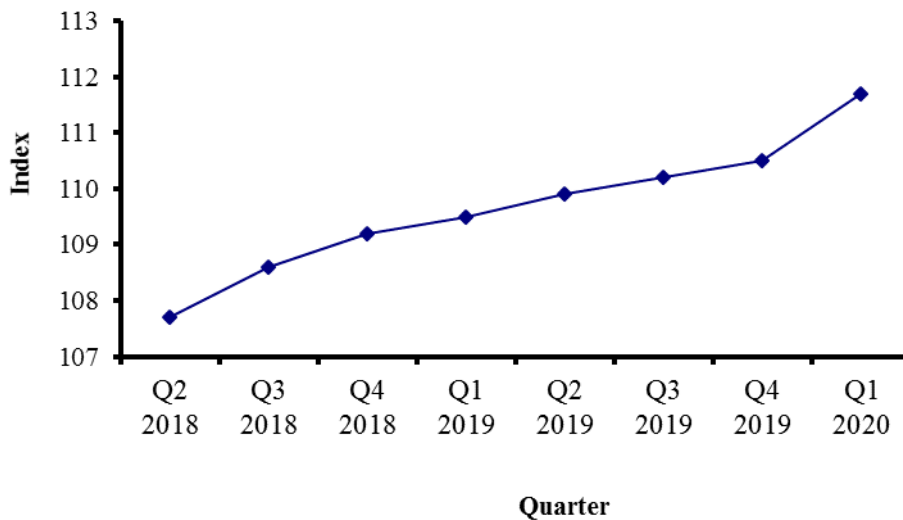


The average PPI-M for the first quarter of 2020 stood at 111.4, i.e an increase of 1.1 points (+1.0%) from 110.3 in the fourth quarter of 2019. This increase was mainly attributable to higher prices of “Food products and beverages” (+1.1%) (Table 2a).

Compared to the corresponding quarter of 2019, the average PPI-M for the first quarter of 2020 increased by 2.0 points (+1.8%), mainly explained by higher prices of “Food products and beverages” (+2.0%), “Other products” (+10.1%), “Other non-metallic mineral products” (+3.2%) and “Motor vehicles, trailers and semi-trailers” (+18.5%), partly offset by decreases in the prices of “Printing and reproduction of recorded media” (-2.0%) and “Basic metals” (-2.7%).

3.2 Manufacture of Food Products and Beverages

**Fig 4: Quarterly indices:
2nd Quarter 2018 to 1st Quarter 2020
Food Products and Beverages**



Compared to the previous quarter, the index for “Food products and beverages” increased by 1.2 points (+1.1%) in the first quarter of 2020. The index for “Food products” increased by 1.5 points (+1.4%), mainly explained by higher prices of “Grain mill products” (+2.8%), “Bakery products” (+1.4%), “Processing and preserving of meat” (+0.9%), “Vegetable and animal oils and fats” (+4.1%) and “Other food products n.e.c” (+1.7%). The index for beverages increased by 0.6 point (+0.5%) due to an increase in the prices of “Distilled potable alcoholic beverages” (+1.3%).

When compared to the first quarter of 2019, the index for “Food products and beverages” increased by 2.2 points (+2.0%). The index for “Food products” increased by 2.8 points (+2.7%), mainly due to higher prices of “Grain mill products” (+12.2%), “Processing and preserving of meat” (+1.4%), “Other food products n.e.c” (+3.8%), “Bakery products” (+1.4%) and “Dairy products” (+5.7%), partly offset by lower prices of “Vegetable and animal oils and fats” (-2.3%). The index for “Beverages” increased by 1.1 points (+0.9%), as a result of higher prices of “Distilled potable alcoholic beverages” (+1.3%) and “Malt liquors and malt including non alcoholic beer” (+1.0%).

4. Yearly Index

The average yearly index for the manufacturing sector as a whole was 109.9 in 2019, i.e. 1.6 points (+1.5%) higher than the figure of 108.3 in 2018. The index for the “Manufacture of food products and beverages” was 110.0 in 2019 compared to 108.1 in 2018, i.e. an increase of 1.9 points (+1.8%). The index for the “Manufacture of chemicals and chemical products” stood at 111.0 in 2019, higher by 0.9 point (+0.8%) compared to 110.1 in 2018. The index for “Manufacture of Rubber and plastic products” remained at 111.3, same as in 2018.

Fig 5: Yearly indices: 2010 - 2019

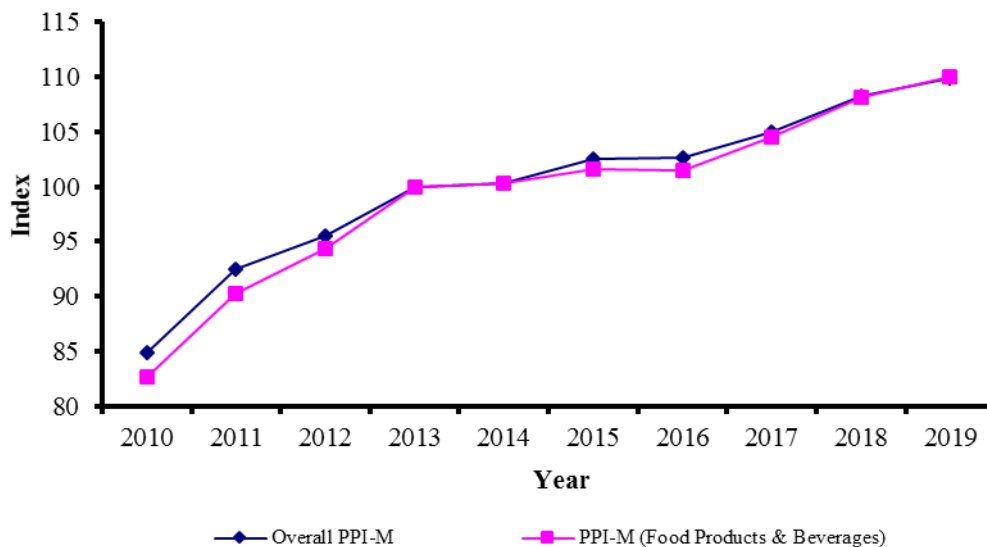


Figure 5 shows that the yearly indices for the manufacturing sector as a whole and that for “Manufacture of food products and beverages” increased steadily from 2010 to 2013. In the year 2014, the indices remained nearly constant and then picked up slightly in 2015 which remained nearly unaltered in 2016 and then increased steadily from 2017 to 2019.

Statistics Mauritius

Ministry of Finance, Economic Planning & Development

Port Louis

June 2020

Contact Persons:

Mr. R. Ajodhea
Statistician
rajodhea@govmu.org

Mr. J. Sowdagur
Senior Statistical Officer
jasowdagur@govmu.org

Statistics Mauritius
L.I.C Centre
J. Kennedy Street
Port Louis

Telephone: (230) 208 1800
Fax: (230) 211 4150

Table 1(a) - Monthly indices of the Manufacturing Sector by industry group, April 2019 - March 2020

Base period: Year 2013=100

NSIC	Industry group	Weight	Apr-19	May-19	Jun-19	Jul-19	Aug-19	Sep-19	Oct-19	Nov-19	Dec-19	Jan-20	Feb-20	Mar-20	Percentage change from		
															Dec 19	Jan 20	Feb 20
															to Jan 20	to Feb 20	to Mar 20
10-33	Total manufacturing	1000	109.5	109.5	110.0	110.1	110.2	110.2	110.2	110.4	110.4	110.8	111.5	112.0	0.4	0.6	0.4
10/11	Food products and beverages	552	109.7	109.9	110.0	110.1	110.1	110.3	110.4	110.6	110.6	111.0	111.9	112.3	0.4	0.8	0.4
13	Textiles	6	103.2	103.2	106.8	106.8	106.8	106.8	106.8	106.8	106.8	106.8	106.8	106.8	0.0	0.0	0.0
14	Wearing apparel	34	121.0	121.0	123.6	123.6	123.6	123.6	123.6	123.6	123.6	123.6	123.6	123.6	0.0	0.0	0.0
15	Leather and related products	3	136.1	136.1	136.1	136.1	136.1	136.1	136.1	136.1	136.1	138.9	139.7	139.7	2.1	0.6	0.0
16/17	Wood and products of wood & cork; articles of straw and plaiting materials/ Paper and paper products	16	108.9	108.9	108.9	108.9	108.9	108.9	108.9	108.9	110.9	110.9	110.9	111.4	0.0	0.0	0.5
18	Printing and reproduction of recorded media	28	89.5	90.8	91.6	91.0	90.4	88.3	88.3	88.5	89.1	88.9	88.9	89.0	-0.2	0.0	0.1
20	Chemicals and chemical products	69	110.3	110.0	110.3	111.2	111.5	111.5	111.5	111.5	111.6	111.7	111.8	112.0	0.1	0.1	0.2
22	Rubber and plastic products	31	111.1	111.1	111.1	111.4	111.4	111.4	111.4	111.4	111.4	111.2	111.2	111.2	-0.2	0.0	0.0
23	Other non-metallic mineral products	52	116.8	116.8	116.8	117.1	117.4	117.4	117.4	117.4	117.4	117.9	119.8	123.7	0.4	1.6	3.3
24	Basic metals	11	101.7	101.7	101.2	100.5	100.3	99.9	99.7	99.7	99.4	99.4	99.4	99.4	0.0	0.0	0.0
25	Fabricated metal products	76	108.2	108.2	108.2	108.2	108.2	108.2	108.2	108.2	108.2	108.3	108.3	108.3	0.1	0.0	0.0
27	Electrical equipment	2	98.2	98.2	98.2	98.2	98.2	98.2	98.2	98.2	98.2	98.2	98.2	98.2	0.0	0.0	0.0
28	Machinery and equipment, n.e.c	9	88.4	88.4	88.4	88.4	88.4	88.4	88.4	88.4	88.4	88.4	88.4	88.4	0.0	0.0	0.0
29	Motor vehicles, trailers and semi-trailers	5	128.9	128.9	128.9	128.9	128.9	128.9	128.9	128.9	128.9	128.9	128.9	128.9	149.5	154.3	154.3
30	Other transport equipment	16	109.3	108.8	109.8	110.5	113.5	109.8	111.3	112.2	110.7	110.7	110.5	113.5	0.0	-0.2	2.7
31	Furniture	65	110.7	110.7	110.7	110.7	110.7	110.7	110.8	110.8	110.8	110.9	111.0	111.0	0.1	0.1	0.0
32	Other products	25	98.7	98.7	106.9	106.9	106.9	106.9	106.9	106.9	106.9	108.4	108.9	108.9	1.4	0.5	0.0

Table 1(b) - Monthly indices for Manufacture of Food Products & Beverages by industry group, April 2019 - March 2020

Base period: Year 2013=100

NSIC	Industry group	Weight	Apr-19	May-19	Jun-19	Jul-19	Aug-19	Sep-19	Oct-19	Nov-19	Dec-19	Jan-20	Feb-20	Mar-20	Percentage change from		
															Dec 19 to Jan 20	Jan 20 to Feb 20	Feb 20 to Mar 20
10-11	Total food products & beverages	552	109.7	109.9	110.0	110.1	110.1	110.3	110.4	110.6	110.6	111.0	111.9	112.3	0.4	0.8	0.4
101-108	Food products	374	103.9	104.1	104.1	104.1	104.2	104.5	104.6	104.9	104.9	105.5	106.5	107.0	0.6	0.9	0.5
1010	Processing and preserving of meat	97	110.4	110.4	110.4	109.8	110.1	110.7	111.0	111.0	111.0	111.7	112.2	112.2	0.6	0.4	0.0
1020	Processing and preserving of fish, crustaceans & molluscs	3	112.4	112.4	112.4	112.4	112.4	112.4	112.4	112.4	112.4	112.4	112.4	112.4	0.0	0.0	0.0
1030	Processing and preserving of fruits and vegetables	10	113.6	113.6	113.6	113.6	113.6	113.6	113.6	113.6	113.6	113.6	113.6	114.2	0.0	0.0	0.5
1040	Vegetable and animal oils and fats	30	78.2	78.2	78.2	78.2	78.2	78.2	78.7	79.1	78.8	80.7	82.8	82.8	2.4	2.6	0.0
1050	Dairy products	16	109.6	109.6	109.6	109.6	109.6	109.6	109.6	114.3	115.7	115.8	115.8	115.8	0.1	0.0	0.0
1061	Grain mill products	54	87.9	89.0	89.5	90.6	90.5	91.4	91.3	91.9	91.3	92.0	93.6	96.8	0.8	1.7	3.4
1071	Bakery products	72	114.1	114.1	114.1	114.1	114.1	114.1	114.1	114.1	114.1	114.1	116.5	116.6	0.0	2.1	0.1
10711/ 10712	<i>Bread/Pastries and cakes</i>	69	113.3	113.3	113.3	113.3	113.3	113.3	113.3	113.3	113.3	113.3	115.9	115.9	0.0	2.3	0.0
10713	<i>Biscuits and other dry bakery products</i>	3	118.3	118.3	118.3	118.3	118.3	118.3	118.3	118.3	118.3	118.3	118.3	121.4	0.0	0.0	2.6
1074	Macaroni, noodles, couscous and similar farinaceous products	11	105.5	105.5	105.5	105.5	105.5	105.5	105.5	105.5	105.5	105.7	105.7	105.7	0.2	0.0	0.0
1075	Prepared meals and dishes	2	124.6	124.6	124.6	124.6	124.6	124.6	124.6	124.6	124.6	124.6	124.6	126.8	0.0	0.0	1.8
1079	Other food products n.e.c	34	118.9	119.1	119.1	119.1	119.2	119.2	119.2	119.2	119.2	120.9	121.3	121.5	1.4	0.3	0.2
10791	<i>Tea</i>	5	130.1	130.1	130.1	130.1	130.1	130.1	130.1	130.1	130.1	130.1	130.1	131.6	0.0	0.0	1.2
10793/ 10799	<i>Spices, sauces, condiments and other food products n.e.c</i>	29	116.9	117.1	117.1	117.1	117.1	117.2	117.2	117.2	117.2	119.2	119.7	119.7	1.7	0.4	0.0
1080	Animal feed	45	92.2	92.2	92.2	92.2	92.2	92.2	92.2	92.2	92.2	92.2	92.2	92.2	0.0	0.0	0.0
110	Beverages	178	122.0	122.0	122.2	122.5	122.5	122.5	122.5	122.5	122.5	122.5	123.4	123.4	0.0	0.7	0.0
1101	Distilled potable alcoholic beverages	65	131.6	131.6	131.6	131.6	131.6	131.6	131.6	131.6	131.6	131.6	134.1	134.1	0.0	1.9	0.0
1102	Wines	13	133.7	133.7	133.7	133.7	133.7	133.7	133.7	133.7	133.7	133.7	133.7	133.7	0.0	0.0	0.0
1103	Malt liquors and malt including non alcoholic beer	73	114.8	114.8	115.3	115.9	115.9	115.9	115.9	115.9	115.9	115.9	115.9	115.9	0.0	0.0	0.0
1104	Soft drinks, mineral waters and other bottled waters	27	113.0	113.0	113.0	113.0	113.0	113.0	113.0	113.0	113.0	113.0	113.0	113.0	0.0	0.0	0.0

Table 1(c) - Monthly indices for Manufacture of Chemicals and Chemical Products & Rubber and Plastic Products by industry group, April 2019 - March 2020

Base period: Year 2013=100

NSIC	Industry group	Weight	Apr-19	May-19	Jun-19	Jul-19	Aug-19	Sep-19	Oct-19	Nov-19	Dec-19	Jan-20	Feb-20	Mar-20	Percentage change from		
															Dec 19 to Jan 20	Jan 20 to Feb 20	Feb 20 to Mar 20
20	Chemicals and chemical products	69	110.3	110.0	110.3	111.2	111.5	111.5	111.5	111.5	111.6	111.7	111.8	112.0	0.1	0.1	0.2
2011	Basic chemicals	9	110.3	107.8	107.8	107.8	107.8	107.8	107.8	107.8	107.8	107.8	108.5	108.5	0.0	0.6	0.0
2012	Manufacture of fertilizers and nitrogen compounds	8	89.0	89.0	89.0	89.0	89.0	89.0	89.0	89.0	89.0	89.0	89.0	89.0	0.0	0.0	0.0
2022	Paints, varnishes and similar coatings, printing ink and mastics	26	115.6	115.6	115.6	117.5	117.5	117.5	117.5	117.5	117.5	117.5	117.5	117.5	0.0	0.0	0.0
2023	Soap and detergents, cleaning and polishing preparations, perfumes and toilet preparations	26	111.8	111.8	112.8	113.1	113.9	113.9	113.9	113.9	114.2	114.4	114.6	115.0	0.2	0.2	0.3
22	Rubber and plastic products	31	111.1	111.1	111.1	111.4	111.4	111.4	111.4	111.4	111.4	111.2	111.2	111.2	-0.2	0.0	0.0
2211	Rubber tyres and tubes, retreading and rebuilding of rubber tyres	5	101.9	101.9	101.9	103.6	104.0	104.0	104.0	104.0	104.0	104.0	104.0	104.0	0.0	0.0	0.0
2220	Plastic products	26	112.9	112.9	112.9	112.9	112.9	112.9	112.9	112.9	112.9	112.6	112.5	112.5	-0.3	-0.1	0.0

Table 2(a) - Quarterly & yearly indices of the Manufacturing sector by industry group, 2nd Quarter 2018 - 1st Quarter 2020

Base period: Year 2013=100

NSIC	Industry group	Weight	2018				2019					2020
			2nd Qr.	3rd Qr.	4th Qr.	Year Average	1st Qr.	2nd Qr.	3rd Qr.	4th Qr.	Year Average	1st Qr.
10-33	Total manufacturing	1000	108.0	108.7	109.2	108.3	109.4	109.7	110.2	110.3	109.9	111.4
10/11	Food products and beverages	552	107.7	108.6	109.2	108.1	109.5	109.9	110.2	110.5	110.0	111.7
13	Textiles	6	103.2	103.2	103.2	103.2	103.2	104.4	106.8	106.8	105.3	106.8
14	Wearing apparel	34	120.8	120.8	120.8	120.4	120.9	121.9	123.6	123.6	122.5	123.6
15	Leather and related products	3	115.6	121.8	128.6	120.4	136.1	136.1	136.1	136.1	136.1	139.4
16/17	Wood and products of wood & cork; articles of straw and plaiting materials/ Paper and paper products	16	108.4	108.6	108.9	108.4	108.9	108.9	108.9	109.6	109.1	111.1
18	Printing and reproduction of recorded media	28	92.0	89.2	90.5	91.6	90.7	90.6	89.9	88.6	90.0	88.9
20	Chemicals and chemical products	69	109.8	111.2	110.8	110.1	110.7	110.2	111.4	111.5	111.0	111.8
22	Rubber and plastic products	31	111.8	110.5	111.1	111.3	111.1	111.1	111.4	111.4	111.3	111.2
23	Other non-metallic mineral products	52	114.8	116.2	116.8	115.7	116.8	116.8	117.3	117.4	117.1	120.5
24	Basic metals	11	99.0	102.1	102.5	100.1	102.2	101.5	100.2	99.6	100.9	99.4
25	Fabricated metal products	76	107.7	107.6	108.2	108.0	108.2	108.2	108.2	108.2	108.2	108.3
27	Electrical equipment	2	98.2	98.2	98.2	98.2	98.2	98.2	98.2	98.2	98.2	98.2
28	Machinery and equipment, n.e.c	9	88.4	88.4	88.4	88.4	88.4	88.4	88.4	88.4	88.4	88.4
29	Motor vehicles, trailers and semi-trailers	5	125.4	126.6	128.9	126.1	128.9	128.9	128.9	128.9	128.9	152.7
30	Other transport equipment	16	103.2	108.0	107.5	104.6	108.8	109.3	111.3	111.4	110.2	111.6
31	Furniture	65	110.6	110.7	110.7	110.6	110.7	110.7	110.7	110.8	110.7	111.0
32	Other products	25	98.7	98.7	98.7	98.7	98.7	101.4	106.9	106.9	103.5	108.7

Table 2(b) - Quarterly & yearly indices for the Manufacturing of Food Products & Beverages by industry group, 2nd Quarter 2018 - 1st Quarter 2020

Base period: Year 2013=100

NSIC	Industry group	Weight	2018				2019					2020
			2nd Qr.	3rd Qr.	4th Qr.	Year Average	1st Qr.	2nd Qr.	3rd Qr.	4th Qr.	Year Average	1st Qr.
10-11	Total food products & beverages	552	107.7	108.6	109.2	108.1	109.5	109.9	110.2	110.5	110.0	111.7
101-108	Food products	374	101.9	102.8	103.1	102.1	103.5	104.0	104.3	104.8	104.2	106.3
1010	Processing and preserving of meat	97	107.5	110.1	110.4	108.7	110.4	110.4	110.2	111.0	110.5	112.0
1020	Processing and preserving of fish, crustaceans & molluscs	3	112.4	112.4	112.4	112.4	112.4	112.4	112.4	112.4	112.4	112.4
1030	Processing and preserving of fruits and vegetables	10	110.8	112.0	112.0	111.4	112.2	113.6	113.6	113.6	113.3	113.8
1040	Vegetable and animal oils and fats	30	87.6	87.6	85.6	87.1	84.0	78.2	78.2	78.9	79.8	82.1
1050	Dairy products	16	109.5	109.5	109.5	109.5	109.6	109.6	109.6	113.2	110.5	115.8
1061	Grain mill products	54	82.4	81.2	81.4	80.2	83.9	88.8	90.8	91.5	88.8	94.1
1071	Bakery products	72	114.0	114.0	114.2	113.7	114.1	114.1	114.1	114.1	114.1	115.7
10711/ 10712	<i>Bread/Pastries and cakes</i>	69	<i>113.3</i>	<i>113.3</i>	<i>113.3</i>	<i>113.0</i>	<i>113.3</i>	<i>113.3</i>	<i>113.3</i>	<i>113.3</i>	<i>113.3</i>	<i>115.0</i>
10713	<i>Biscuits and other dry bakery products</i>	3	<i>120.1</i>	<i>120.1</i>	<i>120.1</i>	<i>120.3</i>	<i>119.0</i>	<i>118.3</i>	<i>118.3</i>	<i>118.3</i>	<i>118.5</i>	<i>119.3</i>
1074	Macaroni, noodles, couscous and similar farinaceous products	11	105.5	105.5	105.5	105.5	105.5	105.5	105.5	105.5	105.5	105.7
1075	Prepared meals and dishes	2	121.7	121.7	121.7	121.7	124.2	124.6	124.6	124.6	124.5	125.3
1079	Other food products n.e.c	34	112.9	113.8	115.6	113.5	116.8	119.0	119.2	119.2	118.6	121.2
10791	<i>Tea</i>	5	<i>100.6</i>	<i>104.3</i>	<i>115.9</i>	<i>103.6</i>	<i>120.0</i>	<i>130.1</i>	<i>130.1</i>	<i>130.1</i>	<i>127.6</i>	<i>130.6</i>
10793/ 10799	<i>Spices, sauces, condiments and other food products n.e.c</i>	29	<i>115.1</i>	<i>115.5</i>	<i>115.5</i>	<i>115.3</i>	<i>116.3</i>	<i>117.0</i>	<i>117.1</i>	<i>117.2</i>	<i>116.9</i>	<i>119.5</i>
1080	Animal feed	45	88.3	90.2	91.8	89.7	92.2	92.2	92.2	92.2	92.2	92.2
110	Beverages	178	119.8	120.9	122.0	120.6	122.0	122.1	122.5	122.5	122.3	123.1
1101	Distilled potable alcoholic beverages	65	128.2	131.0	132.5	130.0	131.6	131.6	131.6	131.6	131.6	133.3
1102	Wines	13	128.8	129.9	133.7	130.3	133.7	133.7	133.7	133.7	133.7	133.7
1103	Malt liquors and malt including non alcoholic beer	73	113.2	113.2	114.0	113.4	114.8	115.0	115.9	115.9	115.4	115.9
1104	Soft drinks, mineral waters and other bottled waters	27	113.0	113.0	113.0	113.0	113.0	113.0	113.0	113.0	113.0	113.0

Table 2(c) - Quarterly & yearly indices for the Manufacture of Chemicals and Chemical Products & Rubber and Plastic products, by industry group, 2nd Quarter 2018 - 1st Quarter 2020

Base period: Year 2013=100

NSIC	Industry group	Weight	2018				2019					2020
			2nd Qr.	3rd Qr.	4th Qr.	Year Average	1st Qr.	2nd Qr.	3rd Qr.	4th Qr.	Year Average	1st Qr.
20	Chemicals and chemical products	69	109.8	111.2	110.8	110.1	110.7	110.2	111.4	111.5	111.0	111.8
2011	Basic chemicals	9	114.5	117.1	114.9	115.2	113.5	108.6	107.8	107.8	109.4	108.3
2012	Manufacture of fertilizers and nitrogen compounds	8	89.0	89.0	89.0	89.0	89.0	89.0	89.0	89.0	89.0	89.0
2022	Paints, varnishes and similar coatings, printing ink and mastics	26	114.9	115.6	115.6	114.6	115.6	115.6	117.5	117.5	116.6	117.5
2023	Soap and detergents, cleaning and polishing preparations, perfumes and toilet preparations	26	109.9	111.7	111.5	110.5	111.8	112.1	113.6	114.0	112.9	114.7
22	Rubber and plastic products	31	111.8	110.5	111.1	111.3	111.1	111.1	111.4	111.4	111.3	111.2
2211	Rubber tyres and tubes, retreading and rebuilding of rubber tyres	5	110.2	101.9	101.9	106.1	101.9	101.9	103.9	104.0	102.9	104.0
2220	Plastic products	26	112.1	112.2	112.9	112.3	112.9	112.9	112.9	112.9	112.9	112.5

Table 3(a) - Quarterly percentage change of the Manufacturing Sector by industry group, 2nd Quarter 2018 - 1st Quarter 2020

Base period: Year 2013=100

NSIC	Industry group	Weight	Percentage changes from previous quarter				Percentage changes from corresponding quarter of previous year			
			1st Qr 19 to 2nd Qr 19	2nd Qr 19 to 3rd Qr 19	3rd Qr 19 to 4th Qr 19	4th Qr 19 to 1st Qr 20	2nd Qr 18 to 2nd Qr 19	3rd Qr 18 to 3rd Qr 19	4th Qr 18 to 4th Qr 19	1st Qr 19 to 1st Qr 20
10-33	Total manufacturing	1000	+ 0.3	+ 0.5	+ 0.1	+ 1.0	+ 1.6	+ 1.4	+ 1.0	+ 1.8
10/11	Food products and beverages	552	+ 0.4	+ 0.3	+ 0.3	+ 1.1	+ 2.0	+ 1.5	+ 1.2	+ 2.0
13	Textiles	6	+ 1.2	+ 2.3	0.0	0.0	+ 1.2	+ 3.5	+ 3.5	+ 3.5
14	Wearing apparel	34	+ 0.8	+ 1.4	0.0	0.0	+ 0.9	+ 2.3	+ 2.3	+ 2.2
15	Leather and related products	3	0.0	0.0	0.0	+ 2.4	+ 17.7	+ 11.7	+ 5.8	+ 2.4
16/17	Wood and products of wood & cork; articles of straw and plaiting materials/ Paper and paper products	16	0.0	0.0	+ 0.6	+ 1.4	+ 0.5	+ 0.3	+ 0.6	+ 2.0
18	Printing and reproduction of recorded media	28	- 0.1	- 0.8	- 1.4	+ 0.3	- 1.5	+ 0.8	- 2.1	- 2.0
20	Chemicals and chemical products	69	- 0.5	+ 1.1	+ 0.1	+ 0.3	+ 0.4	+ 0.2	+ 0.6	+ 1.0
22	Rubber and plastic products	31	0.0	+ 0.3	0.0	-0.2	- 0.6	+ 0.8	+ 0.3	+ 0.1
23	Other non-metallic mineral products	52	0.0	+ 0.4	+ 0.1	+ 2.6	+ 1.7	+ 0.9	+ 0.5	+ 3.2
24	Basic metals	11	- 0.7	- 1.3	- 0.6	- 0.2	+ 2.5	- 1.9	- 2.8	- 2.7
25	Fabricated metal products	76	0.0	0.0	0.0	+ 0.1	+ 0.5	+ 0.6	0.0	+ 0.1
27	Electrical equipment	2	0.0	0.0	0.0	0.0	0.0	0.0	0.0	0.0
28	Machinery and equipment, n.e.c	9	0.0	0.0	0.0	0.0	0.0	0.0	0.0	0.0
29	Motor vehicles, trailers and semi-trailers	5	0.0	0.0	0.0	+ 18.5	+ 2.8	+ 1.8	0.0	+ 18.5
30	Other transport equipment	16	+ 0.5	+ 1.8	+ 0.1	+ 0.2	+ 5.9	+ 3.1	+ 3.6	+ 2.6
31	Furniture	65	0.0	0.0	+ 0.1	+ 0.2	+ 0.1	0.0	+ 0.1	+ 0.3
32	Other products	25	+ 2.7	+ 5.4	0.0	+ 1.7	+ 2.7	+ 8.3	+ 8.3	+ 10.1

Table 3(b) - Quarterly percentage change for Manufacture of Food Products & Beverages by industry group, 2nd Quarter 2018 - 1st Quarter 2020

Base period: Year 2013=100

NSIC	Industry group	Weight	Percentage changes from previous quarter				Percentage changes from corresponding quarter of previous year			
			1st Qr 19 to 2nd Qr 19	2nd Qr 19 to 3rd Qr 19	3rd Qr 19 to 4th Qr 19	4th Qr 19 to 1st Qr 20	2nd Qr 18 to 2nd Qr 19	3rd Qr 18 to 3rd Qr 19	4th Qr 18 to 4th Qr 19	1st Qr 19 to 1st Qr 20
10-11	Total food products & beverages	552	+ 0.4	+ 0.3	+ 0.3	+ 1.1	+ 2.0	+ 1.5	+ 1.2	+ 2.0
101-108	Food products	374	+ 0.5	+ 0.3	+ 0.5	+ 1.4	+ 2.1	+ 1.5	+ 1.6	+ 2.7
1010	Processing and preserving of meat	97	0.0	-0.2	+ 0.7	+ 0.9	+ 2.7	+ 0.1	+ 0.5	+ 1.4
1020	Processing and preserving of fish, crustaceans & molluscs	3	0.0	0.0	0.0	0.0	0.0	0.0	0.0	0.0
1030	Processing and preserving of fruits and vegetables	10	+ 1.2	0.0	0.0	+ 0.2	+ 2.5	+ 1.4	+ 1.4	+ 1.4
1040	Vegetable and animal oils and fats	30	-6.9	0.0	+ 0.9	+ 4.1	- 10.7	- 10.7	- 7.8	- 2.3
1050	Dairy products	16	0.0	0.0	+ 3.3	+ 2.3	+ 0.1	+ 0.1	+ 3.4	+ 5.7
1061	Grain mill products	54	+ 5.8	+ 2.3	+ 0.8	+ 2.8	+ 7.8	+ 11.8	+ 12.4	+ 12.2
1071	Bakery products	72	0.0	0.0	0.0	+ 1.4	+ 0.1	+ 0.1	- 0.1	+ 1.4
10711/ 10712	<i>Bread/Pastries and cakes</i>	69	0.0	0.0	0.0	+ 1.5	0.0	0.0	0.0	+ 1.5
10713	<i>Biscuits and other dry bakery products</i>	3	-0.6	0.0	0.0	+ 0.8	- 1.5	- 1.5	- 1.5	+ 0.3
1074	Macaroni, noodles, couscous and similar farinaceous products	11	0.0	0.0	0.0	+ 0.2	0.0	0.0	0.0	+ 0.2
1075	Prepared meals and dishes	2	+ 0.3	0.0	0.0	+ 0.6	+ 2.4	+ 2.4	+ 2.4	+ 0.9
1079	Other food products n.e.c	34	+ 1.9	+ 0.2	0.0	+ 1.7	+ 5.4	+ 4.7	+ 3.1	+ 3.8
10791	<i>Tea</i>	5	+ 8.4	0.0	0.0	+ 0.4	+ 29.3	+ 24.7	+ 12.3	+ 8.8
10793/ 10799	<i>Spices, sauces, condiments and other food products n.e.c</i>	29	+ 0.6	+ 0.1	+ 0.1	+ 2.0	+ 1.7	+ 1.4	+ 1.5	+ 2.8
1080	Animal feed	45	0.0	0.0	0.0	0.0	+ 4.4	+ 2.2	+ 0.4	0.0
110	Beverages	178	+ 0.1	+ 0.3	0.0	+ 0.5	+ 1.9	+ 1.3	+ 0.4	+ 0.9
1101	Distilled potable alcoholic beverages	65	0.0	0.0	0.0	+ 1.3	+ 2.7	+ 0.5	- 0.7	+ 1.3
1102	Wines	13	0.0	0.0	0.0	0.0	+ 3.8	+ 2.9	0.0	0.0
1103	Malt liquors and malt including non alcoholic beer	73	+ 0.2	+ 0.8	0.0	0.0	+ 1.6	+ 2.4	+ 1.7	+ 1.0
1104	Soft drinks, mineral waters and other bottled waters	27	0.0	0.0	0.0	0.0	0.0	0.0	0.0	0.0

Table 3(c) - Quarterly percentage change for Manufacture of Chemicals and Chemical Products & Rubber and Plastic Products by industry group, 2nd Quarter 2018 - 1st Quarter 2020

Base period: Year 2013=100

NSIC	Industry group	Weight	Percentage changes from previous quarter				Percentage changes from corresponding quarter of previous year			
			1st Qr 19 to 2nd Qr 19	2nd Qr 19 to 3rd Qr 19	3rd Qr 19 to 4th Qr 19	4th Qr 19 to 1st Qr 20	2nd Qr 18 to 2nd Qr 19	3rd Qr 18 to 3rd Qr 19	4th Qr 18 to 4th Qr 19	1st Qr 19 to 1st Qr 20
20	Chemicals and chemical products	69	- 0.5	+ 1.1	+ 0.1	+ 0.3	+ 0.4	+ 0.2	+ 0.6	+ 1.0
2011	Basic chemicals	9	- 4.3	- 0.7	0.0	+ 0.5	- 5.2	- 7.9	- 6.2	- 4.6
2012	Manufacture of fertilizers and nitrogen compounds	8	0.0	0.0	0.0	0.0	0.0	0.0	0.0	0.0
2022	Paints, varnishes and similar coatings, printing ink and mastics	26	0.0	+ 1.6	0.0	0.0	+ 0.6	+ 1.6	+ 1.6	+ 1.6
2023	Soap and detergents, cleaning and polishing preparations, perfumes and toilet preparations	26	+ 0.3	+ 1.3	+ 0.4	+ 0.6	+ 2.0	+ 1.7	+ 2.2	+ 2.6
22	Rubber and plastic products	31	0.0	+ 0.3	0.0	-0.2	- 0.6	+ 0.8	+ 0.3	+ 0.1
2211	Rubber tyres and tubes, retreading and rebuilding of rubber tyres	5	0.0	+ 2.0	+ 0.1	0.0	- 7.5	+ 2.0	+ 2.1	+ 2.1
2220	Plastic products	26	0.0	0.0	0.0	-0.4	+ 0.7	+ 0.6	0.0	-0.4

Producer Price Index – Manufacturing (PPI-M)

Methodology for the computation of the PPI-M

1. Definition

The Producer Price Index (PPI-M) measures changes in the effective prices received by producers in the manufacturing sector for that part of their output, which is sold on the domestic market. It reflects the price trends of a fixed basket of goods representative of the output of Non Export Oriented Enterprises (Non EOE).

The concepts and definitions of the PPI-M largely follow the guidelines provided in the “IMF Producer Price Index Manual Theory and Practice”.

2. Scope

The PPI-M covers both large and small manufacturing establishments falling within divisions 10 to 33 of the National Standard Industrial Classification Rev.2 (NSIC Rev.2), which is an adapted version of the International Standard Industrial Classification (ISIC) Rev.4. The establishments are classified under 24 divisions, 71 groups, 137 classes and 240 sub-classes.

The following divisions have been excluded for reasons given in brackets:

- (a) Division 12: Manufacture of tobacco products (no longer manufactured in Mauritius)
- (b) Division 19: Manufacture of coke and refined petroleum products (weight in the overall index is not significant)
- (c) Division 21: Manufacture of basic pharmaceutical products and pharmaceutical preparations (weight in the overall index is not significant and change of products is too dynamic)
- (d) Division 26: Manufacture of computers, electronic and optical products (weight in the overall index is not significant and change of products is too dynamic)
- (e) Division 33: Repair and installation of machinery and equipment (weight in the overall index is not significant and change of products is too dynamic)

The activities covered by the index represent around 97% of the gross output generated by the Non-EOE manufacturing sector during year 2013.

3. Frame

A list of all large establishments (engaging 10 or more persons) falling under the scope of the PPI-M was obtained from the 2013 Census of Economic Activities (CEA 2013). For small establishments (engaging less than 10 persons), the list of respondents at the CEA 2013 was used.

4. Selection of establishments (producers)

A sample of 126 large establishments was selected from the list of large manufacturing establishments. Those establishments were the most important ones in terms of Gross Output (GO) in their respective 5-digit sub-class.

Small establishments selected for price collection were those engaged in the manufacture of wearing apparel, fabricated metal products and furniture as these activities were the most important ones performed by small manufacturing establishments.

Output of the selected establishments represented around 60% of the total GO generated by all establishments falling within the scope of the PPI-M.

5. Selection of products to be priced

Some 400 products have been selected for pricing. These are the most important ones in terms of contribution to the gross output or turnover of the selected establishments.

6. Price collection

Prices collected refer to the prices received by producers for the sale of their products on the local market. The prices exclude all taxes on products, namely excise duty and value added tax (VAT).

As from July 2013, prices are collected on a monthly basis and provisional monthly indices are compiled. The overall PPI-M on a monthly basis is published according to SDDS requirements.

For revised monthly and quarterly indices at division level and in some specific cases at even lower level, the selected establishments are visited on a quarterly basis and prices of the selected products are collected for each month of the reference quarter.

7. Updating of weights

7.1 Historical background

Statistics Mauritius first published a Producers Price Index limited to the “Manufacturing of food products, beverages and tobacco” in March 1994 with 1993 as base period (1993 = 100). The index was revised in June 2002 to cover all relevant industry groups of the former Non-EPZ manufacturing sector, based on the results of the 1997 Census of Economic Activities. The base period was 1998. The base year was subsequently revised to 2003 and 2007, based on the results of the 2002 and 2007 rounds of the Census of Economic Activities.

The current basket of goods has been updated based on the results of the 2013 Census of Economic Activities and the index is computed with year 2013 as base period.

8. Index calculation

The PPI-M is computed according to the Laspeyres Formula.

The formula used is given below

$$I_c = \frac{\sum W_i * \left(\frac{P_{ci}}{P_{oi}}\right)}{\sum W_i} * 100$$

Where I_c = Index for current month

W_i = Weight associated with product i

P_{ci} = Price of product i for the current month

P_{oi} = Price for product i for the base period (2013)

The PPI-M is calculated at the 5-digit sub-class level of the NSIC Rev.2 by the above formula. The lowest level indices are determined as a geometric average of the price relatives of the basic observations. Indices at the division level (2-digit code) are then derived as a weighted average of the indices of the products falling within each division. Finally, the overall index is obtained as a weighted average of the division indices.

9. Uses of PPI

- (a) The PPI is a leading indicator of the future status of inflation. Movement of PPI is usually indicative of a similar change of part of the Consumer Price Index (CPI). PPI can also be used in the economic analysis of inflation transmission process.
- (b) It provides specific price deflators for the computation of national accounts at constant prices in order to measure real growth
- (c) It is helpful in the formulation of contract agreement. It can be used as an escalation clause to protect buyers and sellers against inflation or deflation.
- (d) PPI is also used in econometric models, in forecasting and in inventory accounting.

10. Missing prices

In case of temporarily missing prices for products, the change in the prices are assumed to be following the same trend as the average price in the 5-digit sub-class or of a higher level.

11. Treatment of product permanently disappeared

Products may disappear permanently for various reasons. The products may disappear from the market because new products have been introduced or the establishments from which the price has been collected have stopped selling the product. When a product disappears permanently, a replacement product of a similar nature will be included in the index.

12. Treatment of quality change

The index is a measure of only “PURE” price changes and should as far as possible measure the price changes of the same products. Hence, the products must not be affected by quality change. If the change is due to quality, an estimate of the proportion of the change attributed to the quality element is made and adjustment done accordingly.

13. Reliability of the PPI-M

The statistical accuracy of the PPI-M depends heavily on the quality of information provided by the selected establishments (respondents). This office places great emphasis on the need for reporting effective selling prices, i.e. prices after discounts and other price deductions rather than the list or catalogue prices.

Standard editing procedures are used to validate the accuracy and reliability of the data. Collected prices are validated during the field work and inconsistencies discussed with the respondents and corrected.

Further computer checks are made at office level when compiling the indices. Comparison is also made with the CPI and with the import/export price indices. Systematic analyzes of the source data are made in the context of weight and base year revisions that occur every five years.