

Labour force, Employment and Unemployment – Fourth quarter 2019

Introduction

1. This issue of Economic and Social Indicators (ESI) presents a set of estimates of labour force, employment and unemployment for the fourth quarter of 2019, based on the results of the Continuous Multi-Purpose Household Survey (CMPHS) from October to December 2019. The estimates refer to the Mauritian population aged 16 years and above.
2. Annual estimates of labour force including foreign workers derived after integrating data from CMPHS with other sources are given at Annex 3.

Key figures

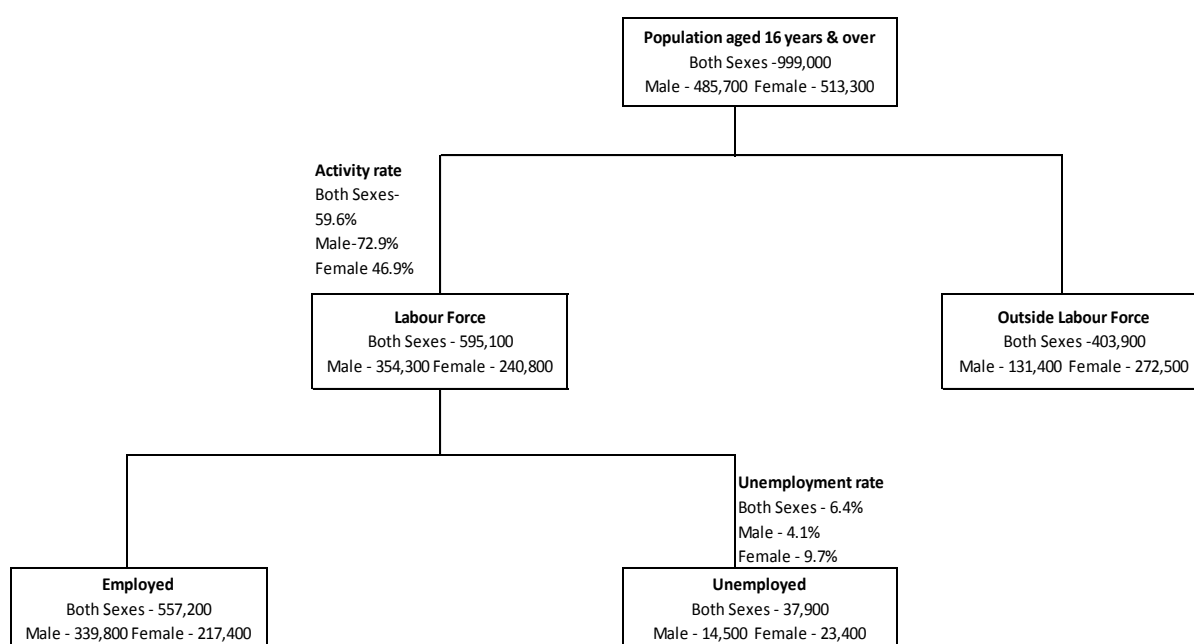
	Q4 2018	Q3 2019	Q4 2019	Change	
				Q4 2018 to Q4 2019	Q3 2019 to Q4 2019
Population (aged 16+)	992,800	997,100	999,000	+6,200	+1,900
Labour Force (Economically active)	591,300	585,000	595,100	+3,800	+10,100
<i>Of which Employment</i>	<i>553,200</i>	<i>545,700</i>	<i>557,200</i>	<i>+4,000</i>	<i>+11,500</i>
<i>Unemployment</i>	<i>38,100</i>	<i>39,300</i>	<i>37,900</i>	<i>-200</i>	<i>-1,400</i>
Outside Labour Force (Economically inactive)	401,500	412,100	403,900	+2,400	-8,200
Activity rate (%)	59.6	58.7	59.6	0.0	+0.9
Unemployment rate (%)	6.4	6.7	6.4	0.0	-0.3
Seasonally adjusted unemployment rate	7.0	6.9	7.0	0.0	+0.1
Youth unemployment	17,900	16,400	17,400	-500	+1,000
Youth unemployment rate (%)	22.1	23.4	23.2	+1.1	-0.2

The net change in employment level in the above table is equal to “Employment creations minus employment losses” during the period under reference.

Labour market overview, fourth quarter 2019

- Compared with the corresponding quarter of 2018, there has been an increase in the labour force (+3,800), with a rise in employment (+4,000) and a fall in unemployment (-200). The number of persons outside labour force increased by 2,400 during the same period.
- Compared with the previous quarter, labour force increased by 10,100 with an increase in employment (+11,500) and a decrease in unemployment (-1,400). The number of persons outside labour force decreased by 8,200 during the same period.

Chart 1: The Labour Market, 4th quarter 2019



Labour force participation

	Q4 2018	Q3 2019	Q4 2019	Change	
				Q4 2018 to Q4 2019	Q3 2019 to Q4 2019
Activity rate (%)					
Both sexes	59.6	58.7	59.6	0.0	+0.9
Male	74.5	73.1	72.9	-1.6	-0.2
Female	45.4	45.0	46.9	+1.5	+1.9

- The activity rate for fourth quarter 2019 remained unchanged at 59.6% compared to the corresponding quarter one year earlier. The male activity rate decreased by 1.6 percentage points to 72.9% and the female rate increased by 1.5 percentage points to 46.9%.

6. Compared to the previous quarter, the activity rate increased by 0.9 percentage point. The male activity rate decreased by 0.2 percentage point to 72.9% while the female activity rate increased by 1.9 percentage points to 46.9%.

Employment

	Q4 2018	Q3 2019	Q4 2019	Change	
				Q4 2018 to Q4 2019	Q3 2019 to Q4 2019
Employment					
Both sexes	553,200	545,700	557,200	+4,000	+11,500
Male	345,400	339,100	339,800	-5,600	+700
Female	207,800	206,600	217,400	+9,600	+10,800

7. From fourth quarter 2018 to fourth quarter 2019, employment increased by 4,000 to 557,200; female employment increased by 9,600 while male employment decreased by 5,600.
8. Compared to the previous quarter, employment increased by 11,500; both male and female employment increased by 700 and 10,800 respectively.

Unemployment

	Q4 2018	Q3 2019	Q4 2019	Change	
				Q4 2018 to Q4 2019	Q3 2019 to Q4 2019
Unemployment					
Both sexes	38,100	39,300	37,900	-200	-1,400
Male	14,800	15,500	14,500	-300	-1,000
Female	23,300	23,800	23,400	+100	-400
Unemployment rate (%)					
Both sexes	6.4	6.7	6.4	0.0	-0.3
Male	4.1	4.4	4.1	0.0	-0.3
Female	10.1	10.3	9.7	-0.4	-0.6

4th Quarter 2018 to 4th Quarter 2019

9. From fourth quarter 2018 to fourth quarter 2019, the number of unemployed persons decreased by 200; male unemployment decreased by 300 while female unemployment increased by 100.
10. The unemployment rate remained unchanged at 6.4% from fourth quarter 2018 to fourth quarter 2019. Male unemployment rate remained unchanged at 4.1% while female unemployment rate decreased by 0.4 percentage point to 9.7%.

3rd Quarter 2019 to 4th Quarter 2019

11. When compared with the third quarter of 2019, the total number of unemployed persons decreased by 1,400 with decreases of 1,000 among males and 400 among females.
12. From third quarter 2019 to fourth quarter 2019, the unemployment rate decreased by 0.3 percentage point from 6.7% to 6.4%. Male unemployment rate decreased by 0.3 percentage point from 4.4% to 4.1% while female unemployment rate decreased by 0.6 percentage point from 10.3% to 9.7%.

Unemployment of the youth aged 16-24 years

	Q4 2018	Q3 2019	Q4 2019	Change	
				Q4 2018 to Q4 2019	Q3 2019 to Q4 2019
Youth unemployment					
Both sexes	17,900	16,400	17,400	-500	+1,000
Male	8,200	8,100	7,500	-700	-600
Female	9,700	8,300	9,900	+200	+1,600
Youth unemployment rate (%)					
Both sexes	22.1	23.4	23.2	+1.1	-0.2
Male	17.9	19.7	18.0	+0.1	-1.7
Female	27.6	28.6	29.7	+2.1	+1.1

13. At the fourth quarter of 2019, unemployed youth aged 16 to 24 years was estimated at 17,400 (7,500 males and 9,900 females) compared to 16,400 (8,100 males and 8,300 females) at the previous quarter and 17,900 (8,200 males and 9,700 females) at the fourth quarter of 2018.

14. The youth unemployment rate increased from 22.1% to 23.2% in the fourth quarter of 2019 when compared to the corresponding quarter one year earlier. During the same period, the youth unemployment rate for male increased by 0.1 percentage point to 18.0% and female youth unemployment rate increased by 2.1 percentage points to 29.7%.
15. Compared to the previous quarter, the youth unemployment rate decreased from 23.4% to 23.2% with a decrease of 1.7 percentage points in the male youth unemployment rate and an increase of 1.1 percentage points in the female youth unemployment rate.

Characteristics of the unemployed as at fourth quarter 2019

16. The main characteristics of the unemployed as at fourth quarter 2019 were as follows:
 - (i) The 37,900 unemployed comprised 14,500 males (38%) and 23,400 females (62%).
 - (ii) Around 24,200 (64%) of the unemployed were not yet married. The majority of males (82%) were not yet married compared to 53% among the females.
 - (iii) Some 2,900 (8%) did not have a Certificate of Primary Education (CPE) level or equivalent and 13,000 (34%) did not have the Cambridge School Certificate (SC) or equivalent.
 - (iv) Around 32,900 (87%) had been looking for work for up to one year and the remaining 5,000 (13%) for more than one year.
 - (v) About 23,800 (63%) had working experience and 14,100 (37%) were looking for a first job.
 - (vi) Around 20,500 (54%) were registered at the Employment Service Information Centre.
 - (vii) There were 9,400 (25%) young persons aged 16 to 24 years, not yet married and looking for a first job. Some 3,200 possessed a qualification below SC.
 - (viii) 4,200 or 11% of the unemployed were heads of households.
 - (ix) 4,100 (11%) lived in households with no employed persons.

Seasonally adjusted unemployment rate

17. Seasonally adjusted unemployment rate for the fourth quarter of 2019 was 7.0%, same as at the corresponding quarter of 2018 but slightly higher than the rate at the previous quarter (6.9%).

Population outside Labour Force

18. The number of persons aged 16 years and over, not forming part of the labour force (inactive population) was estimated at 403,900 at the fourth quarter of 2019 compared to 412,100 in the previous quarter and 401,500 in the fourth quarter of 2018.
19. The population outside labour force comprised 131,400 males and 272,500 females. Among males, around 53% were 'retired or old persons' and 30% were students. Among females, 56% were homemakers; 22% were 'retired or old persons' and 16% were 'students'.

Employment and Unemployment estimates - Year 2019¹

20. Based on the results of the survey for the four quarters of 2019, the following are the estimates for employment and unemployment for 2019 compared to 2018:

	Year 2018	Year 2019 ¹	Change
Employment	543,700	551,300	+7,600 ²
Unemployment	40,100	39,700	-400
Unemployment rate (%)	6.9	6.7	-0.2

¹Provisional ²please see explanations in the box on page 1

CAUTION:

The estimate of unemployment rate for the year is NOT end of year estimate (i.e as at 31st December). It represents weighted averages of estimates based on sample data collected throughout the year under review.

21. Employment increased by 7,600 in 2019 to reach 551,300 compared to 543,700 in 2018. It is to be noted that this increase represents the net change in employment level, i.e the combined effect of employment creations and losses during the period under reference.
22. Unemployment rate for year 2019 worked out to 6.7% compared to 6.9% in 2018.

Sampling errors

23. The estimates in this publication are based on the results of a sample survey and are thus subject to sample variability. Standard errors and confidence intervals give an indication of this variability.
24. The standard error of the estimates and the 95% confidence interval which represent a 95% chance that the true value lies within that interval, are given in the tables that follow.

Estimated labour force, employment and unemployment by sex, 4th quarter 2018 – 4th quarter 2019

Both Sexes

		Estimates	Standard Error	95% confidence interval	
				Lower limit	Upper limit
Labour force					
	2018 Q4	591,300	11,800	568,100	614,500
	2019 Q1	586,400	11,300	564,100	608,700
	Q2	592,900	11,900	569,400	616,400
	Q3	585,000	10,200	564,900	605,200
	Q4 ¹	595,100	9,900	575,600	614,600
Employment					
	2018 Q4	553,200	11,500	530,600	575,800
	2019 Q1	546,000	10,700	524,800	567,100
	Q2	553,800	11,200	531,700	575,900
	Q3	545,700	9,900	526,100	565,300
	Q4 ¹	557,200	9,400	538,600	575,800
Unemployment					
	2018 Q4	38,100	2,600	33,000	43,200
	2019 Q1	40,400	2,800	34,900	46,000
	Q2	39,100	2,500	34,100	44,100
	Q3	39,300	2,400	34,600	44,100
	Q4 ¹	37,900	2,600	32,900	43,000
Unemployment rate, %					
	2018 Q4	6.4	0.4	5.6	7.3
	2019 Q1	6.9	0.5	6.0	7.8
	Q2	6.6	0.4	5.8	7.4
	Q3	6.7	0.4	5.9	7.5
	Q4 ¹	6.4	0.4	5.6	7.2
Activity rate, %					
	2018 Q4	59.6	0.6	58.4	60.7
	2019 Q1	59.0	0.6	57.7	60.3
	Q2	59.5	0.6	58.3	60.8
	Q3	58.7	0.6	57.5	59.8
	Q4 ¹	59.6	0.6	58.4	60.7

¹ Provisional

Estimated labour force, employment and unemployment by sex, 4th quarter 2018 – 4th quarter 2019

Male

		Estimates	Standard Error	95% confidence interval	
				Lower limit	Upper limit
Labour force					
	2018 Q4	360,200	7,300	345,700	374,600
	2019 Q1	353,200	7,100	339,200	367,200
	Q2	354,600	7,300	340,200	368,900
	Q3	354,600	6,400	342,000	367,200
	Q4 ¹	354,300	6,700	341,200	367,500
Employment					
	2018 Q4	345,400	7,400	330,900	359,800
	2019 Q1	335,800	6,700	322,600	349,000
	Q2	341,200	7,300	326,900	355,500
	Q3	339,100	6,100	327,000	351,100
	Q4 ¹	339,800	6,400	327,100	352,500
Unemployment					
	2018 Q4	14,800	1,500	11,800	17,900
	2019 Q1	17,400	1,800	13,800	21,000
	Q2	13,400	1,400	10,600	16,200
	Q3	15,500	1,500	12,500	18,500
	Q4 ¹	14,500	1,600	11,300	17,700
Unemployment rate, %					
	2018 Q4	4.1	0.4	3.3	5.0
	2019 Q1	4.9	0.5	4.0	5.9
	Q2	3.8	0.4	3.0	4.6
	Q3	4.4	0.4	3.6	5.2
	Q4 ¹	4.1	0.4	3.2	5.0
Activity rate, %					
	2018 Q4	74.5	0.7	73.2	75.8
	2019 Q1	73.0	0.8	71.4	74.6
	Q2	73.1	0.8	71.5	74.6
	Q3	73.1	0.7	71.7	74.6
	Q4 ¹	72.9	0.7	71.5	74.4

¹ Provisional

Estimated labour force, employment and unemployment by sex, 4th quarter 2018 – 4th quarter 2019

Female

		Estimates	Standard Error	95% confidence interval	
				Lower limit	Upper limit
Labour force					
	2018 Q4	231,100	6,300	218,700	243,600
	2019 Q1	233,200	6,500	220,500	245,900
	Q2	238,300	6,800	225,000	251,600
	Q3	230,400	6,200	218,300	242,700
	Q4 ¹	240,800	5,700	229,700	251,900
Employment					
	2018 Q4	207,800	6,100	195,800	219,900
	2019 Q1	210,200	6,100	198,100	222,300
	Q2	212,600	6,200	200,300	224,900
	Q3	206,600	6,000	194,800	218,500
	Q4 ¹	217,400	5,400	206,800	227,900
Unemployment					
	2018 Q4	23,300	2,100	19,200	27,400
	2019 Q1	23,000	1,900	19,200	26,800
	Q2	25,700	2,100	21,500	29,900
	Q3	23,800	1,800	20,300	27,300
	Q4 ¹	23,400	1,800	19,800	27,000
Unemployment rate, %					
	2018 Q4	10.1	0.9	8.4	11.8
	2019 Q1	9.9	0.8	8.3	11.4
	Q2	10.8	0.8	9.2	12.4
	Q3	10.3	0.8	8.9	11.8
	Q4 ¹	9.7	0.7	8.3	11.1
Activity rate, %					
	2018 Q4	45.4	0.9	43.7	47.1
	2019 Q1	45.7	0.9	43.9	47.6
	Q2	46.6	0.9	44.8	48.4
	Q3	45.0	0.8	43.3	46.7
	Q4 ¹	46.9	0.8	45.3	48.5

¹ Provisional

Longer time series

1. The following graphs show the series for employment, unemployment rate and activity rate from 4th quarter 2015 to 4th quarter 2019.

Chart 2: Employment by quarter, 4th quarter 2015 – 4th quarter 2019

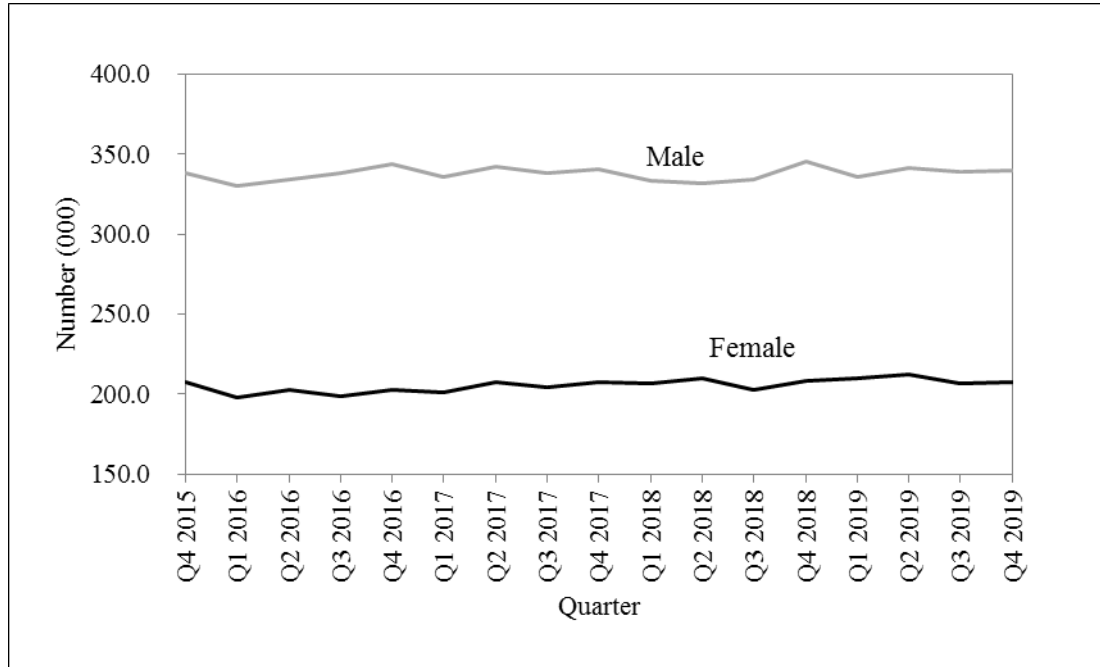


Chart 3: Unemployment rate by quarter, 4th quarter 2015 – 4th quarter 2019

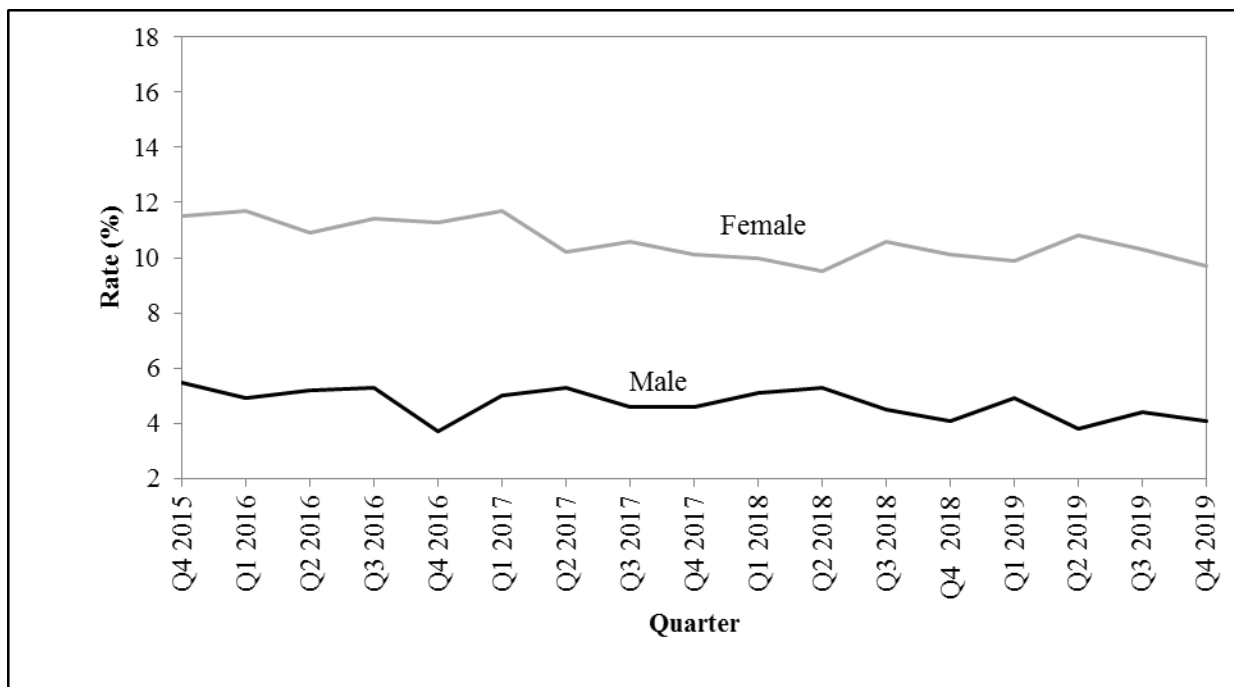
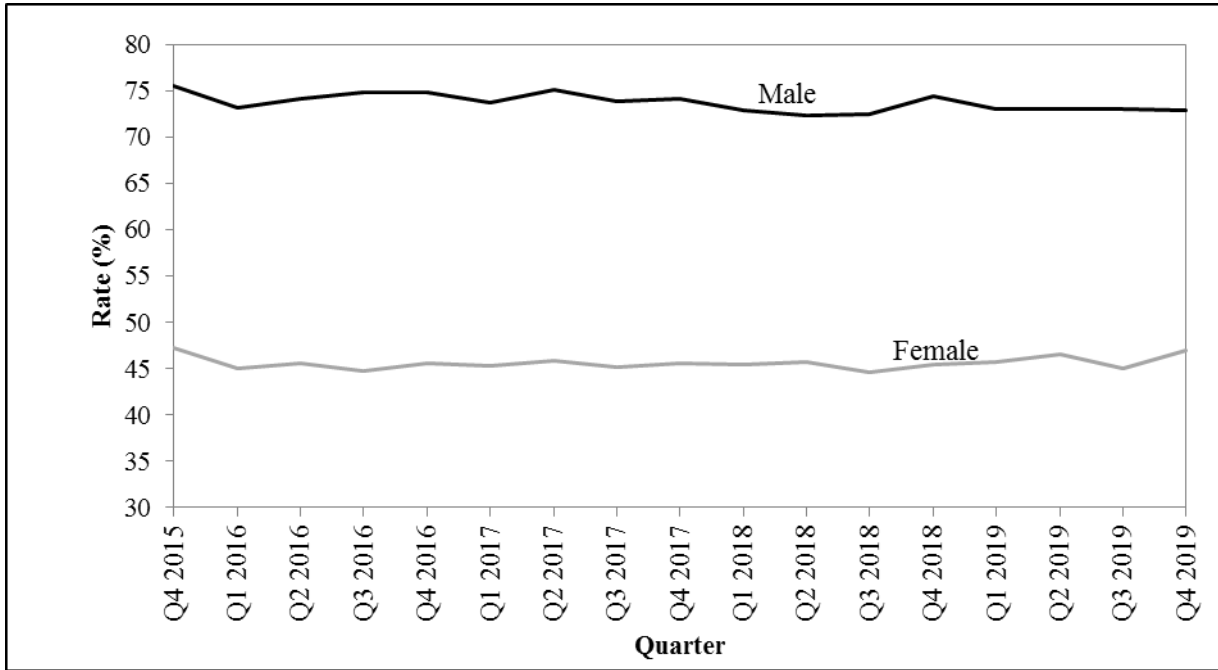


Chart 4: Activity rate by quarter, 4th quarter 2015 – 4th quarter 2019



The following tables together with the web version of this publication can be downloaded from Statistics Mauritius website at <http://statsmauritius.govmu.org> From the homepage, click on ‘Statistics by subject’ followed by ‘Labour’ then select the appropriate publication under the heading ‘Publications – Economic and Social Indicators’.

List of tables

Table 1: Labour market activity by status, 4th Quarter 2018 to 4th Quarter 2019

Table 2: Labour force characteristics by age and sex, 4th Quarter 2019

Table 3: Employment by industrial sector, 4th Quarter 2018 to 4th Quarter 2019

Table 4: Employment by occupational group, 4th Quarter 2018 to 4th Quarter 2019

Table 5: Employment by hours worked, 4th Quarter 2018 to 4th Quarter 2019

Table 6: Unemployment by educational attainment, 4th Quarter 2018 to 4th Quarter 2019

Table 7: Unemployment by age, 4th Quarter 2018 to 4th Quarter 2019

Table 8: Unemployment by work experience, 4th Quarter 2018 to 4th Quarter 2019

Table 9: Economically inactive population by reason, 4th Quarter 2018 to 4th Quarter 2019

Annex 3: Annual labour force estimates based on data from different data sources, 2012-2019

Statistics Mauritius

Ministry of Finance, Economic Planning and Development

Port Louis

March 2020

Contact persons: (1) Mr. S. Bhonoo (Statistician)

Email: sbhonoo@govmu.org

(2) Ms P. Koonjul (Senior Statistical Officer)

Email : pkoonjul@govmu.org

Statistics Mauritius

LIC Centre, Port Louis

Tel: 2081800 Fax: 2114150

NOTES

Release of Labour Force data

Labour Force statistics are compiled and published in the “Economic and Social Indicators” in March, June, September and December according to an advance calendar posted on the website of Statistics Mauritius (<http://statsmauritius.govmu.org>). This issue provides data for the fourth quarter 2019 compared to the previous quarter and to the same quarter a year ago.

However, where appropriate, historical series are also provided for the main indicators.

The CMPHS Survey methodology

Data collection

Face to face interviews of household members are carried out by qualified interviewers recruited by the office.

Frequency of data collection

Data collection is carried out monthly except in 2004 when it was carried out every quarter. Up to 2005, the reference period for data on labour force was the last week of the survey month. As from 2006, the reference week has been changed to the second week of the survey month so that estimates can be published within one quarter of the reference period, as required by the IMF Special Data Dissemination System (SDDS) to which the country has graduated on 28 February 2012.

Scope and coverage of collection

All private Mauritian households in the islands of Mauritius and Rodrigues are covered.

Sampling method

A Stratified two-stage sampling design is used. At the first stage, Primary Sampling Units (PSUs) are selected in proportion to square root of the total number of households in the geographical district and at the second stage a fixed number of households is selected from each selected PSU.

Prior to 2005, the first stage stratification factors were urban, semi urban and rural geographical locations. As from 2005, the Relative Development Index (RDI) is used as the spatial stratification factor. This index is based on 12 variables encompassing housing and living conditions, literacy and education, and employment derived from the 2011 Housing and Population Census to rank PSUs. A set of RDIs for administrative regions has been published in the series "Economic and Social Indicators" - Issue No. 977.

The second stage stratification criteria are community, household size and average monthly expenditure of the household.

Sample size

From 1999 to 2003, around 6,500 households were covered each year. In 2004, the sample was increased to 8,640 so that reliable quarterly estimates of labour force, employment and unemployment could be worked out. As from 2005, the sample for the year has been further increased to 11,280. Furthermore, in order to measure quarterly changes, 50% of the households sampled in a quarter are re-interviewed in the following quarter; for example, 50% of the households sampled in the first quarter of 2005 have been re-interviewed in the second quarter of 2005.

Questionnaire

The CMPHS questionnaire comprises three modules: (a) a basic module common to all rounds of the survey covering the general characteristics of the population (b) a second module covering labour force with in-depth investigation and a core set of questions which are kept constant at all rounds of the survey and (c) a third module grouping other topics of interest but investigated in less details.

Estimation and reliability of results

Estimates worked out from household survey data are inevitably subject to sampling variability since they are based on information collected from only a sample of households rather than from all households. The Standard Error (S.E) which is a measure of this variability, used to set confidence intervals for any estimate (whether a total or a rate) derived from the sample. For example, a 95% confidence interval indicates that there is 95% chance that the upper and lower limits of the interval enclose the true value (which would be obtained if all households had been surveyed). Standard errors and confidence intervals are calculated for the main labour force estimates.

Definitions

Household

A household is defined as either a person living on his/her own or a group of two or more persons, who may or may not be related, but who live together and make common provision for food and other essentials for living.

Employment

Employed population consists of Mauritians aged 16 years and above (16+) who have worked for pay, profit or family gain for at least one hour during the reference week of a month. It includes those who are temporarily absent from work for reasons such as leave with pay, leave without pay and temporary disorganisation of work (bad weather, break down of equipment, lack of order, etc.).

It is to be noted that as from year 2007, labour force estimates are based on population aged 16 years and above, following the amendment to the Labour Act in December 2006 whereby the minimum legal working age is 16 years, and the subsequent recommendation by the ILO to be in line with the amended Labour Act.

Unemployment

Unemployed population comprises all Mauritians aged 16+ who are not working but who are looking for work and are available for work during the reference period.

Labour force

Labour force or active population is made up of employed and unemployed population.

Unemployment rate

Unemployment rate is the ratio (%) of unemployment to labour force.

Outside the Labour Force (previously known as inactive population)

Outside the labour force includes all Mauritians aged 16+ years, not forming part of the labour force for reasons such as attendance at educational institutions, engagement in household duties, retirement, old age and infirmity/disablement.

Activity rate

Activity rate is the ratio (%) of labour force to population aged 16+ (active and inactive population).

Employer

An employer is a person who operates his/her own business or trade and hires one or more employees

Own account worker

An Own account worker is a person who operates his/her own business or trade but does not hire employees. He/She may be working alone or with the help of contributing family workers.

Employee

An Employee is a person who works for pay for someone else, even in a temporary capacity.

Apprentice

An Apprentice is a person being trained for a job or trade. He/She may be paid or may receive some pocket money; a paid apprentice is considered as an employee.

Contributing family worker

A Contributing family worker is a person who works without pay in an enterprise operated by a family member.

Educational attainment

Primary: comprises persons who have studied up to a “Standard” between Standard 1 and the Certificate of Primary Education (CPE) or equivalent.

Secondary: comprises persons who have studied up to a “Form” between Form 1 and the Higher School Certificate (HSC) or equivalent.

Tertiary: comprises persons who in addition to their secondary educational certificates (SC and HSC or equivalent) also possess either a certificate/diploma (which is above the HSC but below a first degree) or a degree.

Annual labour force estimates based on data from different data sources, 2012 - 2019

	Labour force			Employment				Unemployment ¹	
	Mauritians aged 16+	Foreign workers	Total	in large establishments	outside large establishments	Total	of whom Mauritian	Number	Rate
	(000s)	(000s)	(000s)	(000s)	(000s)	(000s)	(000s)	(000s)	(%)
Both sexes									
2012	556.3	24.0	580.3	311.5	224.2	535.7	511.7	44.6	8.0
2013	571.2	26.3	597.5	312.5	239.5	552.0	525.7	45.5	8.0
2014	575.7	28.3	604.0	313.5	245.7	559.2	530.9	44.8	7.8
2015	584.6	28.3	612.9	314.1	252.5	566.6	538.3	46.3	7.9
2016	581.0	28.6	609.6	314.2	253.0	567.2	538.6	42.4	7.3
2017	586.9	28.4	615.3	316.9	256.6	573.5	545.1	41.8	7.1
2018	583.8	29.4	613.2	320.0	253.1	573.1	543.7	40.1	6.9
2019	591.0	30.7	621.7	322.4	259.6	582.0	551.3	39.7	6.7
Male									
2012	346.9	14.2	361.1	198.3	144.7	343.0	328.8	18.1	5.2
2013	350.4	16.5	366.9	199.1	149.2	348.3	331.8	18.6	5.3
2014	352.8	18.3	371.1	199.3	152.4	351.7	333.4	19.4	5.5
2015	353.3	18.6	371.9	198.5	153.9	352.4	333.8	19.5	5.5
2016	353.6	19.3	372.9	198.6	157.4	356.0	336.7	16.9	4.8
2017	356.6	20.0	376.6	194.8	164.6	359.4	339.4	17.2	4.8
2018	352.8	21.3	374.1	196.0	161.4	357.4	336.1	16.7	4.7
2019	354.7	24.5	379.2	198.5	165.1	363.6	339.1	15.6	4.4
Female									
2012	209.4	9.8	219.2	113.2	79.5	192.7	182.9	26.5	12.7
2013	220.8	9.8	230.6	113.4	90.3	203.7	193.9	26.9	12.2
2014	222.9	10.0	232.9	114.2	93.3	207.5	197.5	25.4	11.4
2015	231.3	9.7	241.0	115.6	98.6	214.2	204.5	26.8	11.6
2016	227.4	9.3	236.7	115.6	95.6	211.2	201.9	25.5	11.2
2017	230.3	8.4	238.7	122.1	92.0	214.1	205.7	24.6	10.7
2018	231.0	8.1	239.1	124.0	91.7	215.7	207.6	23.4	10.1
2019	236.3	6.2	242.5	123.9	94.5	218.4	212.2	24.1	10.2

¹ Unemployment figures and rate refer to Mauritians

Note:

1. The above figures have been worked out in order to give a set of comparable labour force estimates obtained from different sources. Users are cautioned in the use of these figures given that there are differences related to the reference period, coverage and methodology. The different sources from which these estimates have been obtained are as follows:

- i CMPHS for Mauritian labour force estimates which are subject to sampling variability as mentioned at Annex 1.
- ii The Annual Survey of Employment and Earnings (SEE) carried out in March of each year. Employment figures refer to jobs in large establishments employing 10 or more persons and include both Mauritians and foreign workers.
- iii Employment in 'other than large' establishments has been estimated after reconciling data from CMPHS, SEE and administrative sources.

Table 1: Labour market activity by status, 4th Quarter 2018 to 4th Quarter 2019

	Total Mauritian population aged 16 & over	In employment					Unemployed	In thousands	
		Employees	Employers	Own account workers	Contrib. family workers	Total		Total econ. active	Total econ. inactive
Both sexes									
2018 Q4	992.8	445.5	19.5	76.5	11.7	553.2	38.1	591.3	401.5
2019 Q1	993.8	431.9	18.4	84.0	11.7	546.0	40.4	586.4	407.4
Q2	996.3	442.2	17.9	81.2	12.5	553.8	39.1	592.9	403.4
Q3	997.1	446.0	17.9	74.1	7.7	545.7	39.3	585.0	412.1
Q4 ¹	999.0	446.6	18.3	78.3	14.0	557.2	37.9	595.1	403.9
% change, latest quarter over:									
previous quarter	0.2	0.1	2.2	5.7	81.8	2.1	-3.6	1.7	-2.0
same quarter a year ago	0.6	0.2	-6.2	2.4	19.7	0.7	-0.5	0.6	0.6
Male									
2018 Q4	483.4	265.2	17.1	59.3	3.8	345.4	14.8	360.2	123.2
2019 Q1	484.0	251.9	16.1	64.2	3.6	335.8	17.4	353.2	130.8
Q2	485.2	260.8	14.4	62.1	3.9	341.2	13.4	354.6	130.6
Q3	484.9	265.1	15.8	55.4	2.8	339.1	15.5	354.6	130.3
Q4 ¹	485.7	259.0	16.0	60.3	4.5	339.8	14.5	354.3	131.4
% change, latest quarter over:									
previous quarter	0.2	-2.3	1.3	8.8	60.7	0.2	-6.5	-0.1	0.8
same quarter a year ago	0.5	-2.3	-6.4	1.7	18.4	-1.6	-2.0	-1.6	6.7
Female									
2018 Q4	509.4	180.3	2.4	17.2	7.9	207.8	23.3	231.1	278.3
2019 Q1	509.8	180.0	2.3	19.8	8.1	210.2	23.0	233.2	276.6
Q2	511.1	181.4	3.5	19.1	8.6	212.6	25.7	238.3	272.8
Q3	512.2	180.9	2.1	18.7	4.9	206.6	23.8	230.4	281.8
Q4 ¹	513.3	187.6	2.3	18.0	9.5	217.4	23.4	240.8	272.5
% change, latest quarter over:									
previous quarter	0.2	3.7	9.5	-3.7	93.9	5.2	-1.7	4.5	-3.3
same quarter a year ago	0.8	4.0	-4.2	4.7	20.3	4.6	0.4	4.2	-2.1

¹ Provisional

Table 2: Labour force characteristics by age and sex, 4th Quarter 2019¹**In thousands**

	Mauritian aged	Age group (years)				
	16 and over	16-24	25 - 29	30 - 39	40 - 49	50+
Both sexes						
In employment	557.2	57.5	67.0	133.4	137.9	161.4
Unemployed	37.9	17.4	8.7	6.9	3.0	1.9
Labour force	595.1	74.9	75.7	140.3	140.9	163.3
Economically inactive	403.9	93.5	11.9	27.7	32.7	238.1
Total Population	999.0	168.4	87.6	168.0	173.6	401.4
Employment rate (%)	93.6	76.8	88.5	95.1	97.9	98.8
Unemployment rate (%)	6.4	23.2	11.5	4.9	2.1	1.2
Activity rate (%)	59.6	44.5	86.4	83.5	81.2	40.7
Male						
In employment	339.8	34.1	39.0	76.7	83.1	106.9
Unemployed	14.5	7.5	2.9	2.5	0.4	1.2
Labour force	354.3	41.6	41.9	79.2	83.5	108.1
Economically inactive	131.4	43.1	1.4	4.0	3.6	79.3
Total Population	485.7	84.7	43.3	83.2	87.1	187.4
Employment rate (%)	95.9	82.0	93.1	96.8	99.5	98.9
Unemployment rate (%)	4.1	18.0	6.9	3.2	0.5	1.1
Activity rate (%)	72.9	49.1	96.8	95.2	95.9	57.7
Female						
In employment	217.4	23.4	28.0	56.7	54.8	54.5
Unemployed	23.4	9.9	5.8	4.4	2.6	0.7
Labour force	240.8	33.3	33.8	61.1	57.4	55.2
Economically inactive	272.5	50.4	10.5	23.7	29.1	158.8
Total Population	513.3	83.7	44.3	84.8	86.5	214.0
Employment rate (%)	90.3	70.3	82.8	92.8	95.5	98.7
Unemployment rate (%)	9.7	29.7	17.2	7.2	4.5	1.3
Activity rate (%)	46.9	39.8	76.3	72.1	66.4	25.8

¹ Provisional

Table 3: Employment by industrial activity, 4th Quarter 2018 to 4th Quarter 2019

	Total employed aged 16+	Primary sector	Secondary sector	Tertiary sector	Selected NSIC ¹ Sections			
					Manufacturing	Construction	Wholesale and retail trade	Other services
					C	F	G	H - U
	(000s)	(%)	(%)	(%)	(%)	(%)	(%)	(%)
Both sexes								
2018 Q4	553.2	6.6	26.2	67.2	15.1	10.3	15.9	51.3
2019 Q1	546.0	6.5	23.9	69.6	13.1	10.1	15.9	53.7
Q2	553.8	5.1	22.2	72.7	12.0	9.2	17.0	55.8
Q3	545.7	5.2	23.3	71.5	12.0	10.2	14.9	56.6
Q4 ²	557.2	6.6	25.4	68.0	14.0	10.5	15.4	52.6
Male								
2018 Q4	345.4	8.0	30.9	61.1	13.8	15.9	15.3	45.8
2019 Q1	335.8	7.9	29.8	62.3	12.9	15.9	14.8	47.5
Q2	341.2	6.4	28.4	65.2	12.5	14.5	15.4	49.8
Q3	339.1	6.0	28.5	65.5	11.0	16.0	14.7	50.8
Q4 ²	339.8	8.1	31.4	60.5	13.3	16.8	14.4	46.1
Female								
2018 Q4	207.8	4.3	18.3	77.4	17.2	0.9	17.0	60.4
2019 Q1	210.2	4.1	14.5	81.4	13.5	0.8	17.6	63.7
Q2	212.6	2.9	12.1	85.0	11.3	0.6	19.5	65.5
Q3	206.6	3.9	14.7	81.4	13.8	0.6	15.2	66.2
Q4 ²	217.4	4.4	16.0	79.6	15.1	0.6	16.9	62.6

¹ National version of the International Standard Industrial Classification of All Economic Activities (ISIC Revision 4)

² Provisional

Table 4: Employment by occupational group, 4th Quarter 2018 to 4th Quarter 2019

	Total employed aged 16+	ISCO-08 ¹				
		Managers, Professionals, Technicians & associate professionals	Clerical support workers	Service and sales workers	Agricultural, Craft & related trades workers, Plant & machine operators & assemblers	Elementary occupations
		1,2,3 (%)	4 (%)	5 (%)	6,7,8 (%)	9 (%)
	(000s)					
Both sexes						
2018 Q4	553.2	24.2	8.2	21.0	29.8	16.8
2019 Q1	546.0	23.6	7.9	23.1	29.4	16.0
Q2	553.8	26.4	8.1	23.4	26.3	15.8
Q3	545.7	24.2	9.8	21.2	28.2	16.6
Q4 ²	557.2	22.7	8.7	22.5	30.0	16.1
Male						
2018 Q4	345.4	22.2	5.2	18.2	40.3	14.1
2019 Q1	335.8	21.1	4.5	20.3	41.3	12.8
Q2	341.2	23.8	5.6	21.3	36.8	12.5
Q3	339.1	22.4	6.6	18.9	38.5	13.6
Q4 ²	339.8	20.2	5.2	20.1	41.8	12.7
Female						
2018 Q4	207.8	27.7	13.0	25.6	12.2	21.5
2019 Q1	210.2	27.7	13.3	27.5	10.5	21.0
Q2	212.6	30.5	12.2	26.8	9.5	21.0
Q3	206.6	27.3	15.0	25.1	11.0	21.6
Q4 ²	217.4	26.8	14.1	26.2	11.5	21.4

¹ National version of the International Standard Classification of Occupations (ISCO-08)² Provisional

Table 5: Employment by hours worked, 4th Quarter 2018 to 4th Quarter 2019

	Total employed aged 16+ (000's)	Total hours worked (000's)	% having worked for:					Average number of hours worked
			0 hour	1 to 23 hours	24 to 40 hours	41 to 50 hours	51 and above	
Both sexes								
2018 Q4	553.2	20,900	6.3	10.1	37.8	30.4	15.4	40.3
2019 Q1	546.0	19,900	4.6	11.7	45.4	25.9	12.4	38.1
Q2	553.8	21,100	3.8	10.8	42.2	29.3	13.9	39.6
Q3	545.7	20,000	4.6	10.3	48.0	23.9	13.2	38.4
Q4 ¹	557.2	21,300	5.9	9.9	38.0	31.4	14.8	40.5
Male								
2018 Q4	345.4	13,800	5.1	8.0	35.8	32.2	18.9	42.1
2019 Q1	335.8	12,700	5.8	8.9	42.7	27.1	15.5	40.1
Q2	341.2	13,500	4.6	8.6	38.1	31.7	17.0	41.5
Q3	339.1	13,100	4.7	7.2	46.4	25.2	16.5	40.5
Q4 ¹	339.8	13,800	5.6	6.2	36.0	34.2	18.0	42.9
Female								
2018 Q4	207.8	7,100	8.2	13.7	41.0	27.6	9.5	37.3
2019 Q1	210.2	7,200	2.8	16.3	49.6	23.9	7.4	35.1
Q2	212.6	7,600	2.5	14.4	48.8	25.5	8.8	36.6
Q3	206.6	6,900	4.5	15.4	50.7	21.7	7.7	34.9
Q4 ¹	217.4	7,500	6.5	15.8	41.1	26.9	9.7	36.8

0 hour not included in total hours worked & in average number of hours worked

¹ Provisional

Table 6: Unemployment by educational attainment, 4th Quarter 2018 to 4th Quarter 2019

	Unemployed Mauritians aged 16+ (000s)	Primary			Secondary				Tertiary
		Total (%)	Below CPE (%)	Passed CPE (%)	Total (%)	Below SC (%)	Passed SC (%)	Passed HSC (%)	(%)
Both sexes									
2018 Q4	38.1	12.6	10.0	2.6	64.3	34.9	17.6	11.8	23.1
2019 Q1	40.4	12.8	10.6	2.2	67.3	38.4	15.8	13.1	19.9
Q2	39.1	14.0	11.0	3.0	65.0	33.0	19.2	12.8	21.0
Q3	39.3	15.8	10.7	5.1	56.2	32.8	12.7	10.7	28.0
Q4 ¹	37.9	11.6	7.6	4.0	60.2	30.3	16.4	13.5	28.2
Male									
2018 Q4	14.8	10.1	7.4	2.7	69.6	40.6	15.5	13.5	20.3
2019 Q1	17.4	14.4	12.1	2.3	68.9	49.4	10.3	9.2	16.7
Q2	13.4	14.2	10.5	3.7	63.4	41.8	9.7	11.9	22.4
Q3	15.5	14.9	9.7	5.2	65.7	40.6	9.7	15.4	19.4
Q4 ¹	14.5	11.7	5.5	6.2	70.4	42.1	13.8	14.5	17.9
Female									
2018 Q4	23.3	14.2	11.6	2.6	60.9	31.3	18.9	10.7	24.9
2019 Q1	23.0	11.7	9.5	2.2	66.1	30.0	20.0	16.1	22.2
Q2	25.7	14.0	11.3	2.7	65.8	28.5	24.1	13.2	20.2
Q3	23.8	16.3	11.3	5.0	50.1	27.8	14.7	7.6	33.6
Q4 ¹	23.4	11.6	9.0	2.6	53.8	23.1	17.9	12.8	34.6

¹ Provisional

Table 7: Unemployment by age, 4th Quarter 2018 to 4th Quarter 2019

In Thousands

		All aged 16 and over	Age group (years)		
			16-24	25-49	50+
Both sexes					
	2018 Q4	38.1	17.9	18.1	2.1
	2019 Q1	40.4	18.2	19.9	2.3
	Q2	39.1	16.1	20.3	2.7
	Q3	39.3	16.4	20.2	2.7
	Q4 ¹	37.9	17.4	18.6	1.9
Change, latest quarter over:					
	previous quarter	-1.4	1.0	-1.6	-0.8
	same quarter a year ago	-0.2	-0.5	0.5	-0.2
Male					
	2018 Q4	14.8	8.2	5.5	1.1
	2019 Q1	17.4	8.1	8.4	0.9
	Q2	13.4	6.1	5.9	1.4
	Q3	15.5	8.1	6.2	1.2
	Q4 ¹	14.5	7.5	5.8	1.2
Change, latest quarter over:					
	previous quarter	-1.0	-0.6	-0.4	0.0
	same quarter a year ago	-0.3	-0.7	0.3	0.1
Female					
	2018 Q4	23.3	9.7	12.6	1.0
	2019 Q1	23.0	10.1	11.5	1.4
	Q2	25.7	10.0	14.4	1.3
	Q3	23.8	8.3	14.0	1.5
	Q4 ¹	23.4	9.9	12.8	0.7
Change, latest quarter over:					
	previous quarter	-0.4	1.6	-1.2	-0.8
	same quarter a year ago	0.1	0.2	0.2	-0.3

¹ Provisional

Table 8: Unemployment by work experience, 4th Quarter 2018 to 4th Quarter 2019

	Unemployed Mauritians aged 16+	No. of first job seekers	Unemployed with work experience by industry *					
			Total	Manuf.	Construction	Wholesale & Retail Trade	Accommodation & Food Service Activities	Other
	(000s)	(000s)	(000s)	(%)	(%)	(%)	(%)	(%)
Both sexes								
2018 Q4	38.1	12.3	25.8	14.3	7.4	22.5	16.3	39.5
2019 Q1	40.4	13.4	27.0	13.0	10.0	20.7	19.6	36.7
Q2	39.1	10.5	28.6	12.9	8.0	24.5	11.5	43.1
Q3	39.3	11.0	28.3	12.0	7.3	24.5	16.1	40.1
Q4 ¹	37.9	14.1	23.8	11.8	11.8	15.5	14.7	46.2
Change, latest quarter over:								
previous quarter	-1.4	3.1	-4.5					
same quarter a year ago	-0.2	1.8	-2.0					
Male								
2018 Q4	14.8	4.9	9.9	14.1	18.2	17.2	19.2	31.3
2019 Q1	17.4	5.2	12.2	8.2	21.3	12.3	22.1	36.1
Q2	13.4	3.6	9.8	14.3	23.5	15.3	7.1	39.8
Q3	15.5	4.1	11.4	9.8	16.9	20.5	19.5	33.3
Q4 ¹	14.5	3.5	11.0	9.1	25.5	10.0	13.6	41.8
Change, latest quarter over:								
previous quarter	-1.0	-0.6	-0.4					
same quarter a year ago	-0.3	-1.4	1.1					
Female								
2018 Q4	23.3	7.4	15.9	14.5	0.6	25.8	14.5	44.6
2019 Q1	23.0	8.2	14.8	16.9	0.7	27.7	17.6	37.1
Q2	25.7	6.9	18.8	12.2	0.0	29.3	13.8	44.7
Q3	23.8	6.9	16.9	13.5	0.8	27.2	13.8	44.7
Q4 ¹	23.4	10.6	12.8	14.1	0.0	20.3	15.6	50.0
Change, latest quarter over:								
previous quarter	-0.4	3.7	-4.1					
same quarter a year ago	0.1	3.2	-3.1					

* National version of the International Standard Industrial Classification of All Economic Activities (ISIC Revision 4)

¹ Provisional

Table 9: Economically inactive population by reason, 4th Quarter 2018 to 4th Quarter 2019

	Total Mauritians aged 16+ (000s)	Economically inactive by reason					
		Total (000s)	Homemakers (%)	Retired or elderly (%)	Students (%)	Sick or disabled (%)	Other (%)
Both sexes							
2018 Q4	992.8	401.5	39.4	29.0	20.0	9.1	2.5
2019 Q1	993.8	407.4	39.1	29.0	18.4	9.1	4.4
Q2	996.3	403.4	38.9	28.2	19.5	9.5	3.9
Q3	997.1	412.1	38.2	29.8	21.2	7.8	3.0
Q4 ¹	999.0	403.9	38.1	31.8	20.6	6.9	2.6
Male							
2018 Q4	483.4	123.2	0.8	51.1	30.8	14.3	3.0
2019 Q1	484.0	130.8	0.3	48.9	27.3	17.4	6.1
Q2	485.2	130.6	0.3	48.5	28.6	16.5	6.1
Q3	484.9	130.3	0.4	50.4	30.7	13.7	4.8
Q4 ¹	485.7	131.4	0.9	53.1	30.1	11.6	4.3
Female							
2018 Q4	509.4	278.3	56.4	19.2	15.2	6.9	2.3
2019 Q1	509.8	276.6	57.5	19.6	14.2	5.2	3.5
Q2	511.1	272.8	57.3	18.5	15.1	6.2	2.9
Q3	512.2	281.8	55.7	20.3	16.8	5.0	2.2
Q4 ¹	513.3	272.5	56.0	21.5	16.0	4.6	1.9

¹ Provisional