

**PRODUCER PRICE INDEX - MANUFACTURING (PPI-M)**  
**3rd Quarter 2018**  
**(Base year: 2013 =100)**

## 1. Introduction

The Producer Price Index of the Manufacturing sector (PPI-M) measures pure price changes in the effective prices received by producers for that part of their output, which is sold on the domestic market (in Mauritian rupees) and therefore excludes Export Oriented Enterprises.

This issue of the Economic and Social Indicators (ESI) presents a series of monthly PPI-M for the period October 2017 to September 2018 and quarterly indices from the fourth quarter of 2016 to the third quarter of 2018. The weights for the PPI-M have been derived from the results of the 2013 Census of Economic Activities. To facilitate analysis, chain-linked indices with base year 2013 for the period January 2009 to September 2018 are given in tables 4(a), 4(b), 4(c) and 4(d).

Indices prior to October 2017 are posted on Statistics Mauritius website in the historical series of manufacturing statistics:

<http://statsmauritius.govmu.org/English/StatsbySubj/Pages/Manufacturing.aspx>

The methodology used for the computation of PPI-M is annexed.

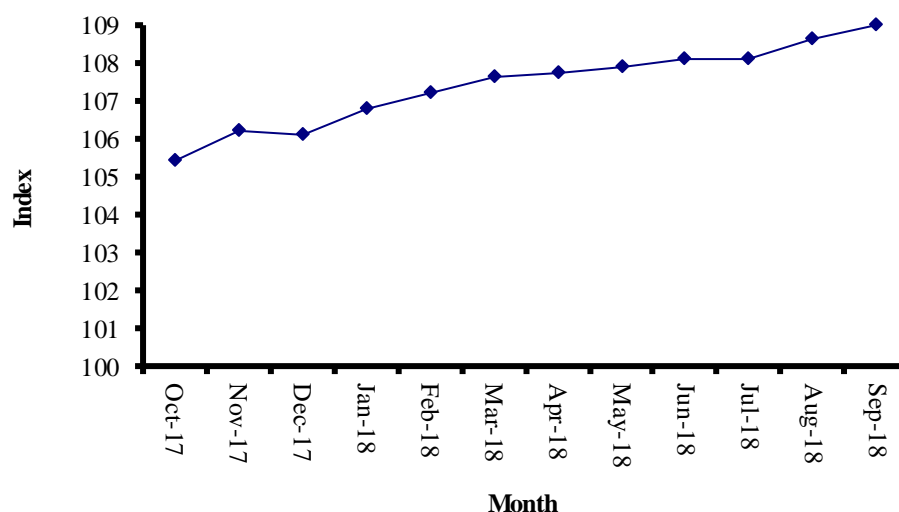
## 2. Changes during third quarter 2018

### 2.1 Manufacturing Sector

The Producer Price Index for the manufacturing sector registered an increase of 0.9 point (+0.8%) from 108.1 in June 2018 to 109.0 in September 2018. The main reason for the net increase was higher prices of “Food products and beverages” (+1.1%), “Other non-metallic mineral products” (+1.7%), “Chemicals and chemical products” (+1.0%) and “Other transport equipment” (+2.9%) partly offset by decreases in the prices of “Rubber and plastic products” (-1.2%) and “Printing and reproduction of recorded media” (-1.3%).

On a monthly basis, the PPI-M remained unchanged in July 2018, increased by 0.5 point (+0.5%) in August 2018 and by 0.4 point (+0.4%) in September 2018 (Table 1a).

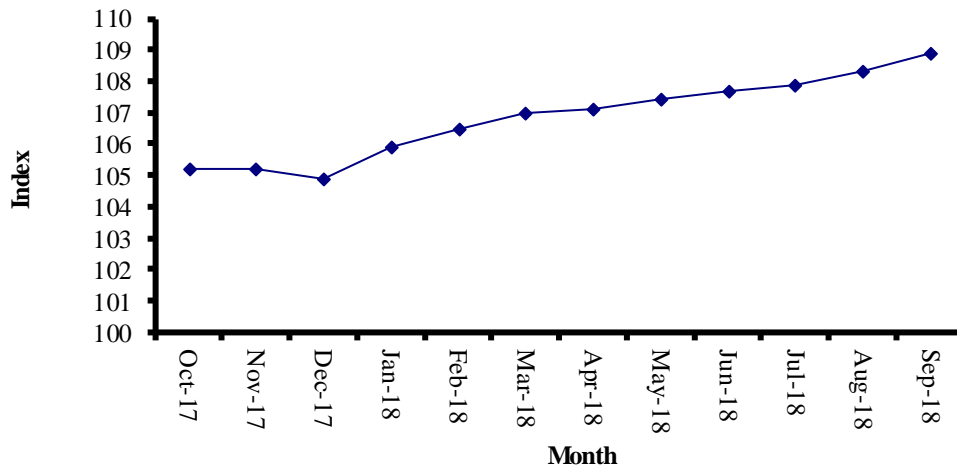
**Fig 1: Overall monthly indices: October 2017- September 2018**  
**Manufacturing Sector**



## 2.2 Manufacture of Food Products and Beverages

The Producer Price Index for “Food products and beverages”, which accounts for 55.2% of the total weight, registered a net increase of 1.2 points (+1.1%) from 107.7 in June 2018 to 108.9 in September 2018. This increase was mainly attributable to higher prices of “Distilled potable alcoholic beverages” (+4.1%) and “Processing and preserving of meat” (+2.2%) partly offset by decrease in prices of “Grain mill products” (-2.4%).

**Fig 2: Monthly indices: October 2017 - September 2018  
Food Products and Beverages**

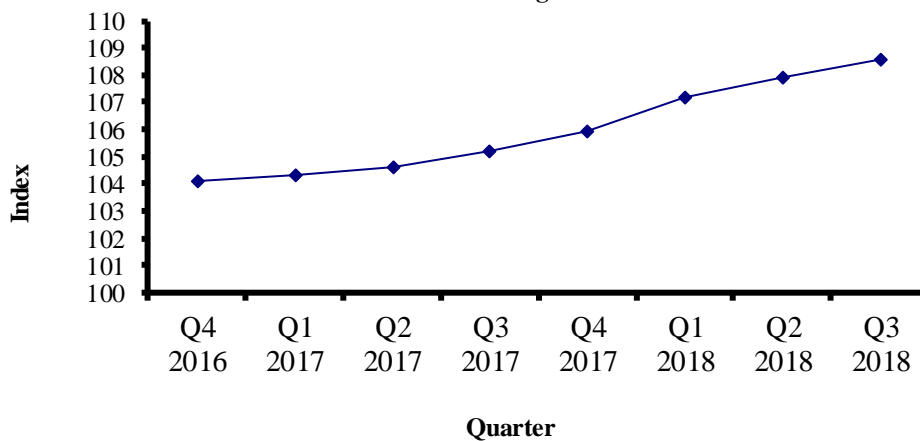


On a monthly basis, the index for this activity group increased by 0.2 point (+0.2 %) in July 2018, 0.4 point (+0.4%) in August 2018 and 0.6 point (+0.6%) in September 2018 (Table 1b).

## 3. Change in quarterly PPI-M

### 3.1 Manufacturing Sector

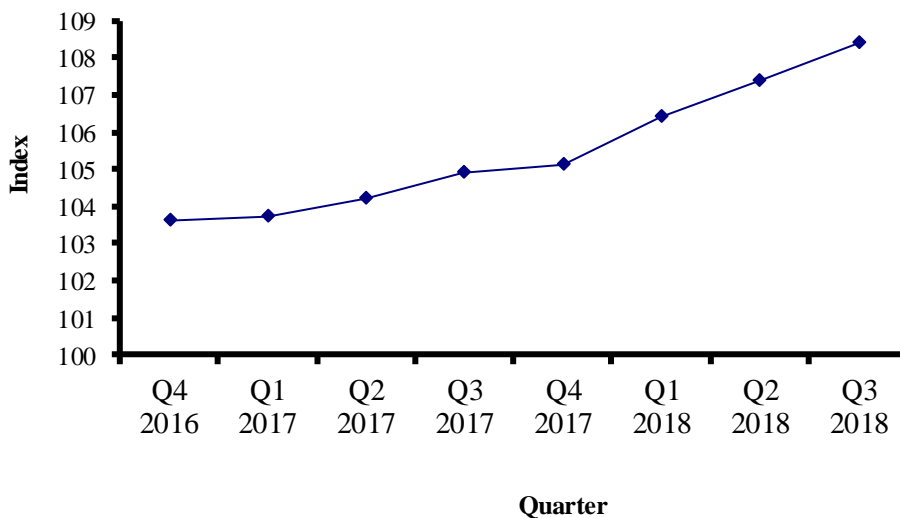
**Fig 3: Overall quarterly indices:  
4<sup>th</sup> Quarter 2016 to 3<sup>rd</sup> Quarter 2018  
Manufacturing Sector**



The average PPI-M for the third quarter of 2018 stood at 108.6, i.e an increase of 0.7 point (+0.6%) from 107.9 in the second quarter of 2018 (Table 2a). Compared to the corresponding quarter of 2017, the average PPI-M for the third quarter of 2018 increased by 3.4 points (+3.2%), mainly explained by higher prices of “Food products and beverages” (+3.3%).

### 3.2 Manufacture of Food Products and Beverages

**Fig 4: Quarterly indices:  
4<sup>th</sup> Quarter 2016 to 3<sup>rd</sup> Quarter 2018  
Food Products and Beverages**



Compared to the previous quarter, the index for “Food products and beverages” increased by 1.0 point (+0.9%) in the third quarter of 2018. The index for “Food products” increased by 1.0 point (+1.0%), mainly explained by higher prices of “Processing and preserving of meat” (+2.7%). The index for “Beverages” increased by 1.1 points (+0.9%).

When compared to the third quarter of 2017, the index for “Food products and beverages” increased by 3.5 points (+3.3%) mainly due to higher prices of “Grain mill products” (+16.3%), “Processing and preserving of meat” (+3.8%), “Bakery products” (+3.0%) and “Malt liquors and malt including non alcoholic beer” (+3.9%).

## 4. Yearly Index

The average yearly index for the manufacturing sector as a whole was 105.0 in 2017, i.e. 2.3 points (+2.2%) higher than the figure of 102.7 in 2016. The index for the manufacture of food products and beverages was 104.5 in 2017 compared to 101.5 in 2016, i.e. an increase of 3.0 points (+3.0%).

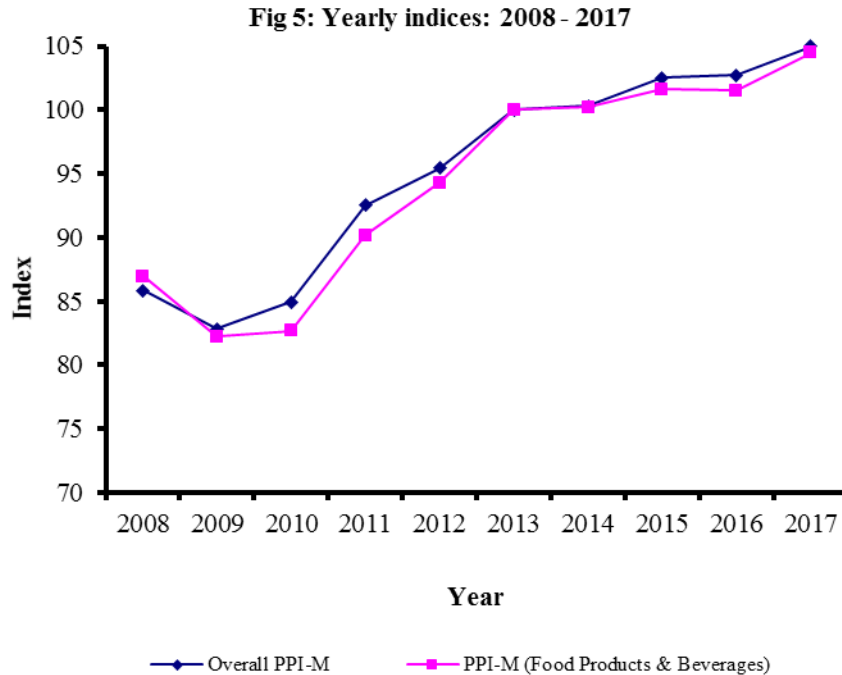


Figure 5 shows that the yearly index for the manufacturing sector as a whole as well as that for the manufacture of food products and beverages declined in 2009. A steady rise is then noted from 2010 to 2013. In the year 2014 the indices remained nearly unchanged and then picked up in 2015. In 2016, the indices remained nearly unchanged and then picked up in 2017.

### Statistics Mauritius

Ministry of Finance and Economic Development

Port Louis

December 2018

#### **Contact Persons:**

Mr. R. Ajodhea  
 Statistician  
[rajodhea@govmu.org](mailto:rajodhea@govmu.org)

Mr. J. Sowdagur  
 Senior Statistical Officer  
[jasowdagur@govmu.org](mailto:jasowdagur@govmu.org)

Statistics Mauritius  
 L.I.C Centre  
 J. Kennedy Street  
 Port Louis

Telephone: (230) 208 1800  
 Fax: (230) 211 4150

**Table 1(a) - Monthly indices of the Manufacturing Sector by industry group, Oct 2017 - Sep 2018**

Base period: Year 2013=100

NSIC	Industry group	Weight	Oct-17	Nov-17	Dec-17	Jan-18	Feb-18	Mar-18	Apr-18	May-18	Jun-18	Jul-18	Aug-18	Sep-18	Percentage change from		
															Jun 18 to Jul 18	Jul 18 to Aug 18	Aug 18 to Sep 18
<b>10-33</b>	<b>Total manufacturing</b>	<b>1000</b>	<b>105.4</b>	<b>106.2</b>	<b>106.1</b>	<b>106.8</b>	<b>107.2</b>	<b>107.6</b>	<b>107.7</b>	<b>107.9</b>	<b>108.1</b>	<b>108.1</b>	<b>108.6</b>	<b>109.0</b>	<b>0.0</b>	<b>0.5</b>	<b>0.4</b>
10/11	Food products and beverages	552	105.2	105.2	104.9	105.9	106.5	107.0	107.1	107.4	107.7	107.9	108.3	108.9	0.2	0.4	0.6
13	Textiles	6	103.2	103.2	103.2	103.2	103.2	103.2	103.2	103.2	103.2	103.2	103.2	103.2	0.0	0.0	0.0
14	Wearing apparel	34	118.9	118.9	119.2	119.2	119.2	119.2	120.8	120.8	120.8	120.8	120.8	120.8	0.0	0.0	0.0
15	Leather and related products	3	115.6	115.6	115.6	115.6	115.6	115.6	115.6	115.6	115.6	115.6	124.8	124.8	0.0	8.0	0.0
16/17	Wood and products of wood & cork; articles of straw and plaiting materials/ Paper and paper products	16	105.0	109.8	106.3	106.3	108.3	108.4	108.4	108.4	108.5	108.5	108.5	108.9	0.0	0.0	0.4
18	Printing and reproduction of recorded media	28	91.5	91.8	92.0	93.8	92.0	98.0	93.3	91.7	91.2	89.5	88.2	90.0	-1.9	-1.5	2.0
20	Chemicals and chemical products	69	106.4	107.3	107.3	107.4	109.0	109.0	109.3	110.1	110.1	111.1	111.2	111.2	0.9	0.1	0.0
22	Rubber and plastic products	31	111.8	111.8	111.8	111.8	111.8	111.8	111.8	111.8	111.8	110.5	110.5	110.5	-1.2	0.0	0.0
23	Other non-metallic mineral products	52	102.8	114.7	114.7	114.7	114.8	114.8	114.8	114.8	114.8	114.8	116.8	116.8	0.0	1.7	0.0
24	Basic metals	11	94.4	95.5	95.5	96.0	97.1	97.1	97.4	99.3	100.2	101.2	102.4	102.7	1.0	1.2	0.3
25	Fabricated metal products	76	106.8	106.8	108.0	108.4	108.8	108.4	108.4	107.3	107.5	107.5	107.5	107.8	0.0	0.0	0.3
27	Electrical equipment	2	98.2	98.2	98.2	98.2	98.2	98.2	98.2	98.2	98.2	98.2	98.2	98.2	0.0	0.0	0.0
28	Machinery and equipment, n.e.c	9	88.4	88.4	88.4	88.4	88.4	88.4	88.4	88.4	88.4	88.4	88.4	88.4	0.0	0.0	0.0
29	Motor vehicles, trailers and semi-trailers	5	119.7	119.7	119.7	119.7	125.4	125.4	125.4	125.4	125.4	125.4	125.4	128.9	0.0	0.0	2.8
30	Other transport equipment	16	102.6	105.5	104.8	105.7	96.1	97.2	100.7	102.1	106.7	103.8	110.4	109.8	-2.7	6.4	-0.5
31	Furniture	65	110.2	110.2	110.2	110.2	110.6	110.6	110.6	110.6	110.6	110.7	110.7	110.7	0.1	0.0	0.0
32	Other products	25	96.4	96.7	96.7	98.5	98.7	98.7	98.7	98.7	98.7	98.7	98.7	98.7	0.0	0.0	0.0

**Table 1(b) - Monthly indices for Manufacture of Food Products & Beverages by industry group, Oct 2017 - Sep 2018**

Base period: Year 2013=100

NSIC	Industry group	Weight	Oct-17	Nov-17	Dec-17	Jan-18	Feb-18	Mar-18	Apr-18	May-18	Jun-18	Jul-18	Aug-18	Sep-18	Percentage change from		
															Jun 18 to Jul 18	Jul 18 to Aug 18	Aug 18 to Sep 18
<b>10-11</b>	<b>Total food products &amp; beverages</b>	<b>552</b>	<b>105.2</b>	<b>105.2</b>	<b>104.9</b>	<b>105.9</b>	<b>106.5</b>	<b>107.0</b>	<b>107.1</b>	<b>107.4</b>	<b>107.7</b>	<b>107.9</b>	<b>108.3</b>	<b>108.9</b>	<b>0.2</b>	<b>0.4</b>	<b>0.6</b>
<b>101-108</b>	<b>Food products</b>	<b>374</b>	<b>99.4</b>	<b>99.4</b>	<b>99.0</b>	<b>99.6</b>	<b>100.5</b>	<b>101.2</b>	<b>101.4</b>	<b>101.9</b>	<b>102.2</b>	<b>102.5</b>	<b>102.7</b>	<b>103.1</b>	<b>0.3</b>	<b>0.2</b>	<b>0.4</b>
1010	Processing and preserving of meat	97	106.9	106.9	106.9	106.9	106.9	106.6	106.6	106.9	108.0	109.7	110.1	110.4	1.6	0.4	0.3
1020	Processing and preserving of fish, crustaceans & molluscs	3	112.4	112.4	112.4	112.4	112.4	112.4	112.4	112.4	112.4	112.4	112.4	112.4	0.0	0.0	0.0
1030	Processing and preserving of fruits and vegetables	10	110.8	110.8	110.8	110.8	110.8	110.8	110.8	110.8	110.8	112.0	112.0	112.0	1.1	0.0	0.0
1040	Vegetable and animal oils and fats	30	87.6	87.6	87.6	87.6	87.6	87.6	87.6	87.6	87.6	87.6	87.6	87.6	0.0	0.0	0.0
1050	Dairy products	16	109.2	109.2	109.2	109.2	109.5	109.5	109.5	109.5	109.5	109.5	109.5	109.5	0.0	0.0	0.0
1061	Grain mill products	54	70.5	70.2	70.1	72.1	75.6	80.0	81.4	82.7	83.1	81.1	81.3	81.1	-2.4	0.2	-0.2
1071	Bakery products	72	110.7	110.7	110.7	110.8	112.9	113.7	114.0	114.0	114.0	114.0	114.0	114.1	0.0	0.0	0.1
10711/ 10712	<i>Bread/Pastries and cakes</i>	69	110.3	110.3	110.3	110.3	112.5	113.3	113.3	113.3	113.3	113.3	113.3	113.3	0.0	0.0	0.0
10713	<i>Biscuits and other dry bakery products</i>	3	119.8	119.8	119.8	120.8	120.8	120.8	120.1	120.1	120.1	120.1	120.1	120.1	0.0	0.0	0.0
1074	Macaroni, noodles, couscous and similar farinaceous products	11	105.5	105.5	105.5	105.5	105.5	105.5	105.5	105.5	105.5	105.5	105.5	105.5	0.0	0.0	0.0
1075	Prepared meals and dishes	2	121.7	121.7	121.7	121.7	121.7	121.7	121.7	121.7	121.7	121.7	121.7	121.7	0.0	0.0	0.0
1079	Other food products n.e.c	34	111.6	111.6	111.6	111.8	111.8	111.8	111.8	113.4	113.4	113.8	113.8	113.9	0.4	0.0	0.1
10791	<i>Tea</i>	5	93.7	93.7	93.7	93.7	93.7	93.7	93.7	104.1	104.1	104.1	104.1	104.8	0.0	0.0	0.7
10793/ 10799	<i>Spices, sauces, condiments and other food products n.e.c</i>	29	114.9	114.9	114.9	115.2	115.2	115.1	115.1	115.1	115.1	115.5	115.5	115.5	0.3	0.0	0.0
1080	Animal feed	45	89.3	89.3	86.5	88.3	88.3	88.3	88.3	88.3	88.3	89.3	89.3	91.9	1.1	0.0	2.9
<b>110</b>	<b>Beverages</b>	<b>178</b>	<b>117.3</b>	<b>117.3</b>	<b>117.3</b>	<b>119.1</b>	<b>119.1</b>	<b>119.1</b>	<b>119.1</b>	<b>119.1</b>	<b>119.1</b>	<b>119.1</b>	<b>120.2</b>	<b>121.2</b>	<b>0.0</b>	<b>0.9</b>	<b>0.8</b>
1101	Distilled potable alcoholic beverages	65	128.2	128.2	128.2	128.2	128.2	128.2	128.2	128.2	128.2	128.2	131.2	133.5	0.0	2.3	1.8
1102	Wines	13	128.8	128.8	128.8	128.8	128.8	128.8	128.8	128.8	128.8	128.8	128.8	132.2	0.0	0.0	2.6
1103	Malt liquors and malt including non alcoholic beer	73	109.0	109.0	109.0	113.2	113.2	113.2	113.2	113.2	113.2	113.2	113.2	113.2	0.0	0.0	0.0
1104	Soft drinks, mineral waters and other bottled waters	27	108.1	108.1	108.1	108.1	108.1	108.1	108.1	108.1	108.1	108.1	108.1	108.1	0.0	0.0	0.0

**Table 1(c) - Monthly indices for Manufacture of Chemicals and Chemical Products & Rubber and Plastic Products by industry group, Oct 2017 - Sep 2018**

Base period: Year 2013=100

NSIC	Industry group	Weight	Oct-17	Nov-17	Dec-17	Jan-18	Feb-18	Mar-18	Apr-18	May-18	Jun-18	Jul-18	Aug-18	Sep-18	Percentage change from		
															Jun 18 to Jul 18	Jul 18 to Aug 18	Aug 18 to Sep 18
<b>20</b>	<b>Chemicals and chemical products</b>	<b>69</b>	<b>106.4</b>	<b>107.3</b>	<b>107.3</b>	<b>107.4</b>	<b>109.0</b>	<b>109.0</b>	<b>109.3</b>	<b>110.1</b>	<b>110.1</b>	<b>111.1</b>	<b>111.2</b>	<b>111.2</b>	<b>0.9</b>	<b>0.1</b>	<b>0.0</b>
2011	Basic chemicals	9	107.4	113.2	113.2	113.2	114.5	114.5	114.5	114.5	114.5	116.9	117.2	117.2	2.1	0.3	0.0
2012	Manufacture of fertilizers and nitrogen compounds	8	89.0	89.0	89.0	89.0	89.0	89.0	89.0	89.0	89.0	89.0	89.0	89.0	0.0	0.0	0.0
2022	Paints, varnishes and similar coatings, printing ink and mastics	26	110.2	110.2	110.2	110.2	113.5	113.5	113.5	115.6	115.6	115.6	115.6	115.6	0.0	0.0	0.0
2023	Soap and detergents, cleaning and polishing preparations, perfumes and toilet preparations	26	107.9	108.2	108.2	108.4	108.9	108.9	109.9	109.9	109.9	111.7	111.7	111.7	1.6	0.0	0.0
<b>22</b>	<b>Rubber and plastic products</b>	<b>31</b>	<b>111.8</b>	<b>111.8</b>	<b>111.8</b>	<b>111.8</b>	<b>111.8</b>	<b>111.8</b>	<b>111.8</b>	<b>111.8</b>	<b>111.8</b>	<b>110.5</b>	<b>110.5</b>	<b>110.5</b>	<b>-1.2</b>	<b>0.0</b>	<b>0.0</b>
2211	Rubber tyres and tubes, retreading and rebuilding of rubber tyres	5	110.2	110.2	110.2	110.2	110.2	110.2	110.2	110.2	110.2	101.9	101.9	101.9	-7.5	0.0	0.0
2220	Plastic products	26	112.1	112.1	112.1	112.1	112.1	112.1	112.1	112.1	112.1	112.1	112.2	112.2	0.0	0.1	0.0

**Table 2(a) - Quarterly & yearly indices of the Manufacturing sector by industry group, 4th Quarter 2016 - 3rd Quarter 2018**

Base period: Year 2013=100

NSIC	Industry group	Weight	2016		2017					2018		
			4th Qr.	Year Average	1st Qr.	2nd Qr.	3rd Qr.	4th Qr.	Year Average	1st Qr.	2nd Qr.	3rd Qr.
<b>10-33</b>	<b>Total manufacturing</b>	<b>1000</b>	<b>104.1</b>	<b>102.7</b>	<b>104.3</b>	<b>104.6</b>	<b>105.2</b>	<b>105.9</b>	<b>105.0</b>	<b>107.2</b>	<b>107.9</b>	<b>108.6</b>
10/11	Food products and beverages	552	103.6	<b>101.5</b>	103.7	104.2	104.9	105.1	<b>104.5</b>	106.4	107.4	108.4
13	Textiles	6	103.2	<b>103.0</b>	103.2	103.2	103.2	103.2	<b>103.2</b>	103.2	103.2	103.2
14	Wearing apparel	34	118.9	<b>118.7</b>	118.9	118.9	118.9	119.0	<b>118.9</b>	119.2	120.8	120.8
15	Leather and related products	3	108.1	<b>105.0</b>	115.6	115.6	115.6	115.6	<b>115.6</b>	115.6	115.6	121.8
16/17	Wood and products of wood & cork; articles of straw and plaiting materials/ Paper and paper products	16	101.5	<b>98.5</b>	102.8	103.2	105.0	107.0	<b>104.5</b>	107.7	108.4	108.6
18	Printing and reproduction of recorded media	28	92.0	<b>96.3</b>	94.0	93.0	93.0	91.8	<b>92.9</b>	94.6	92.0	89.2
20	Chemicals and chemical products	69	106.3	<b>104.5</b>	106.7	106.5	106.3	107.0	<b>106.6</b>	108.4	109.9	111.2
22	Rubber and plastic products	31	109.2	<b>106.7</b>	109.4	109.7	111.5	111.8	<b>110.6</b>	111.8	111.8	110.5
23	Other non-metallic mineral products	52	102.8	<b>102.8</b>	102.8	102.8	102.8	110.7	<b>104.8</b>	114.8	114.8	116.2
24	Basic metals	11	86.1	<b>88.8</b>	88.6	89.7	91.9	95.1	<b>91.3</b>	96.7	99.0	102.1
25	Fabricated metal products	76	105.8	<b>105.9</b>	106.6	106.7	106.7	107.2	<b>106.8</b>	108.5	107.7	107.6
27	Electrical equipment	2	98.2	<b>97.6</b>	98.2	98.2	98.2	98.2	<b>98.2</b>	98.2	98.2	98.2
28	Machinery and equipment, n.e.c	9	88.4	<b>88.4</b>	88.4	88.4	88.4	88.4	<b>88.4</b>	88.4	88.4	88.4
29	Motor vehicles, trailers and semi- trailers	5	102.6	<b>102.6</b>	102.6	102.6	119.3	119.7	<b>111.0</b>	123.5	125.4	126.6
30	Other transport equipment	16	109.1	<b>105.2</b>	102.4	103.2	102.7	104.3	<b>103.1</b>	99.6	103.2	108.0
31	Furniture	65	108.7	<b>107.7</b>	108.8	108.8	109.3	110.2	<b>109.2</b>	110.5	110.6	110.7
32	Other products	25	95.5	<b>94.7</b>	95.5	95.6	96.1	96.6	<b>96.0</b>	98.7	98.7	98.7



Table 2(b)- Quarterly & yearly indices for the Manufacturing of Food Products & Beverages by industry group, 4th Quarter 2016 - 3rd Quarter 2018

Base period: Year 2013=100

NSIC	Industry group	Weight	2016		2017					2018		
			4th Qr.	Year Average	1st Qr.	2nd Qr.	3rd Qr.	4th Qr.	Year Average	1st Qr.	2nd Qr.	3rd Qr.
<b>10-11</b>	<b>Total food products &amp; beverages</b>	<b>552</b>	<b>103.6</b>	<b>101.5</b>	<b>103.7</b>	<b>104.2</b>	<b>104.9</b>	<b>105.1</b>	<b>104.5</b>	<b>106.4</b>	<b>107.4</b>	<b>108.4</b>
<b>101-108</b>	<b>Food products</b>	<b>374</b>	<b>99.6</b>	<b>98.5</b>	<b>99.6</b>	<b>99.6</b>	<b>99.1</b>	<b>99.2</b>	<b>99.4</b>	<b>100.4</b>	<b>101.8</b>	<b>102.8</b>
1010	Processing and preserving of meat	97	104.2	101.4	105.2	106.0	106.1	106.9	106.1	106.8	107.2	110.1
1020	Processing and preserving of fish, crustaceans & molluscs	3	110.0	108.1	110.0	110.0	112.4	112.4	111.2	112.4	112.4	112.4
1030	Processing and preserving of fruits and vegetables	10	109.5	107.3	109.7	110.0	110.6	110.8	110.2	110.8	110.8	112.0
1040	Vegetable and animal oils and fats	30	86.6	86.6	90.1	89.3	87.6	87.6	88.6	87.6	87.6	87.6
1050	Dairy products	16	106.4	106.4	108.1	108.6	108.6	109.2	108.6	109.4	109.5	109.5
1061	Grain mill products	54	79.5	82.8	74.7	72.6	69.8	70.2	71.8	75.9	82.4	81.2
1071	Bakery products	72	111.9	109.6	112.1	111.6	110.7	110.7	111.3	112.5	114.0	114.0
10711/ 10712	<i>Bread/Pastries and cakes</i>	69	<i>111.7</i>	<i>109.5</i>	<i>111.7</i>	<i>111.2</i>	<i>110.3</i>	<i>110.3</i>	<i>110.8</i>	<i>112.0</i>	<i>113.3</i>	<i>113.3</i>
10713	<i>Biscuits and other dry bakery products</i>	3	<i>116.1</i>	<i>110.0</i>	<i>119.8</i>	<i>119.8</i>	<i>119.8</i>	<i>119.8</i>	<i>119.8</i>	<i>120.8</i>	<i>120.1</i>	<i>120.1</i>
1074	Macaroni, noodles, couscous and similar farinaceous products	11	100.5	100.4	100.5	103.9	105.5	105.5	103.9	105.5	105.5	105.5
1075	Prepared meals and dishes	2	114.9	112.8	114.9	118.4	121.2	121.7	119.0	121.7	121.7	121.7
1079	Other food products n.e.c	34	109.6	105.5	109.9	110.6	111.7	111.6	110.9	111.8	112.9	113.8
10791	<i>Tea</i>	5	<i>80.8</i>	<i>76.1</i>	<i>82.2</i>	<i>84.4</i>	<i>93.7</i>	<i>93.7</i>	<i>88.5</i>	<i>93.7</i>	<i>100.6</i>	<i>104.3</i>
10793/ 10799	<i>Spices, sauces, condiments and other food products n.e.c</i>	29	<i>114.9</i>	<i>110.9</i>	<i>115.0</i>	<i>115.4</i>	<i>115.0</i>	<i>114.9</i>	<i>115.1</i>	<i>115.1</i>	<i>115.1</i>	<i>115.5</i>
1080	Animal feed	45	89.3	89.7	89.3	89.3	89.3	88.0	88.9	88.3	88.3	90.2
<b>110</b>	<b>Beverages</b>	<b>178</b>	<b>111.9</b>	<b>107.6</b>	<b>112.2</b>	<b>113.9</b>	<b>117.3</b>	<b>117.3</b>	<b>115.2</b>	<b>119.1</b>	<b>119.1</b>	<b>120.2</b>
1101	Distilled potable alcoholic beverages	65	115.4	109.2	116.2	120.2	128.2	128.2	123.2	128.2	128.2	131.0
1102	Wines	13	125.3	119.5	125.3	126.5	128.8	128.8	127.4	128.8	128.8	129.9
1103	Malt liquors and malt including non alcoholic beer	73	107.8	105.4	107.8	108.2	109.0	109.0	108.5	113.2	113.2	113.2
1104	Soft drinks, mineral waters and other bottled waters	27	108.1	104.1	108.1	108.1	108.1	108.1	108.1	108.1	108.1	108.1

**Table 2(c) - Quarterly & yearly indices for the Manufacture of Chemicals and Chemical Products & Rubber and Plastic products, by industry group, 4th Quarter 2016 to 3rd Quarter 2018**

Base period: Year 2013=100

NSIC	Industry group	Weight	2016		2017					2018		
			4th Qr.	Year Average	1st Qr.	2nd Qr.	3rd Qr.	4th Qr.	Year Average	1st Qr.	2nd Qr.	3rd Qr.
<b>20</b>	<b>Chemicals and chemical products</b>	<b>69</b>	<b>106.3</b>	<b>104.5</b>	<b>106.7</b>	<b>106.5</b>	<b>106.3</b>	<b>107.0</b>	<b>106.6</b>	<b>108.4</b>	<b>109.9</b>	<b>111.2</b>
2011	Basic chemicals	9	104.4	103.3	107.0	107.4	107.4	111.3	108.3	114.1	114.5	117.1
2012	Manufacture of fertilizers and nitrogen compounds	8	93.9	93.9	93.9	90.6	89.0	89.0	90.6	89.0	89.0	89.0
2022	Paints, varnishes and similar coatings, printing ink and mastics	26	110.0	107.3	110.2	110.2	110.2	110.2	110.2	112.4	114.9	115.6
2023	Soap and detergents, cleaning and polishing preparations, perfumes and toilet preparations	26	107.1	105.5	107.3	107.4	107.5	108.1	107.6	108.7	109.9	111.7
<b>22</b>	<b>Rubber and plastic products</b>	<b>31</b>	<b>109.2</b>	<b>106.7</b>	<b>109.4</b>	<b>109.7</b>	<b>111.5</b>	<b>111.8</b>	<b>110.6</b>	<b>111.8</b>	<b>111.8</b>	<b>110.5</b>
2211	Rubber tyres and tubes, retreading and rebuilding of rubber tyres	5	104.9	102.7	104.9	104.9	108.4	110.2	107.1	110.2	110.2	101.9
2220	Plastic products	26	110.0	107.4	110.2	110.6	112.1	112.1	111.2	112.1	112.1	112.2

**Table 3(a) - Quarterly percentage change of the Manufacturing Sector by industry group, 4th Quarter 2016 - 3rd Quarter 2018**

Base period: Year 2013=100

NSIC	Industry group	Weight	Percentage changes from previous quarter				Percentage changes from corresponding quarter of previous year			
			3rd Qr 17 to 4th Qr 17	4th Qr 17 to 1st Qr 18	1st Qr 18 to 2nd Qr 18	2nd Qr 18 to 3rd Qr 18	4th Qr 16 to 4th Qr 17	1st Qr 17 to 1st Qr 18	2nd Qr 17 to 2nd Qr 18	3rd Qr 17 to 3rd Qr 18
<b>10-33</b>	<b>Total manufacturing</b>	<b>1000</b>	<b>+ 0.7</b>	<b>+ 1.2</b>	<b>+ 0.7</b>	<b>+ 0.6</b>	<b>+ 1.7</b>	<b>+ 2.8</b>	<b>+ 3.2</b>	<b>+ 3.2</b>
10/11	Food products and beverages	552	+ 0.2	+ 1.2	+ 0.9	+ 0.9	+ 1.4	+ 2.6	+ 3.1	+ 3.3
13	Textiles	6	0.0	0.0	0.0	0.0	0.0	0.0	0.0	0.0
14	Wearing apparel	34	+ 0.1	+ 0.2	+ 1.4	0.0	+ 0.1	+ 0.2	+ 1.6	+ 1.6
15	Leather and related products	3	0.0	0.0	0.0	+ 5.4	+ 6.9	0.0	0.0	+ 5.4
16/17	Wood and products of wood & cork; articles of straw and plaiting materials/ Paper and paper products	16	+ 1.9	+ 0.7	+ 0.6	+ 0.2	+ 5.4	+ 4.8	+ 5.0	+ 3.4
18	Printing and reproduction of recorded media	28	- 1.3	+ 3.1	- 2.7	- 3.0	- 0.2	+ 0.6	- 1.1	- 4.1
20	Chemicals and chemical products	69	+ 0.7	+ 1.3	+ 1.4	+ 1.2	+ 0.7	+ 1.6	+ 3.2	+ 4.6
22	Rubber and plastic products	31	+ 0.3	0.0	0.0	- 1.2	+ 2.4	+ 2.2	+ 1.9	- 0.9
23	Other non-metallic mineral products	52	+ 7.7	+ 3.7	0.0	+ 1.2	+ 7.7	+ 11.7	+ 11.7	+ 13.0
24	Basic metals	11	+ 3.5	+ 1.7	+ 2.4	+ 3.1	+ 10.5	+ 9.1	+ 10.4	+ 11.1
25	Fabricated metal products	76	+ 0.5	+ 1.2	- 0.7	- 0.1	+ 1.3	+ 1.8	+ 0.9	+ 0.8
27	Electrical equipment	2	0.0	0.0	0.0	0.0	0.0	0.0	0.0	0.0
28	Machinery and equipment, n.e.c	9	0.0	0.0	0.0	0.0	0.0	0.0	0.0	0.0
29	Motor vehicles, trailers and semi-trailers	5	+ 0.3	+ 3.2	+ 1.5	+ 1.0	+ 16.7	+ 20.4	+ 22.2	+ 6.1
30	Other transport equipment	16	+ 1.6	- 4.5	+ 3.6	+ 4.7	- 4.4	- 2.7	0.0	+ 5.2
31	Furniture	65	+ 0.8	+ 0.3	+ 0.1	+ 0.1	+ 1.4	+ 1.6	+ 1.7	+ 1.3
32	Other products	25	+ 0.5	+ 2.2	0.0	0.0	+ 1.2	+ 3.4	+ 3.2	+ 2.7

**Table 3(b) - Quarterly percentage change for Manufacture of Food Products & Beverages by industry group, 4th Quarter 2016 - 3rd Quarter 2018**

Base period: Year 2013=100

NSIC	Industry group	Weight	Percentage changes from previous quarter				Percentage changes from corresponding quarter of previous year			
			3rd Qr 17 to 4th Qr 17	4th Qr 17 to 1st Qr 18	1st Qr 18 to 2nd Qr 18	2nd Qr 18 to 3rd Qr 18	4th Qr 16 to 4th Qr 17	1st Qr 17 to 1st Qr 18	2nd Qr 17 to 2nd Qr 18	3rd Qr 17 to 3rd Qr 18
<b>10-11</b>	<b>Total food products &amp; beverages</b>	<b>552</b>	<b>+ 0.2</b>	<b>+ 1.2</b>	<b>+ 0.9</b>	<b>+ 0.9</b>	<b>+ 1.4</b>	<b>+ 2.6</b>	<b>+ 3.1</b>	<b>+ 3.3</b>
<b>101-108</b>	<b>Food products</b>	<b>374</b>	<b>+ 0.1</b>	<b>+ 1.2</b>	<b>+ 1.4</b>	<b>+ 1.0</b>	<b>- 0.4</b>	<b>+ 0.8</b>	<b>+ 2.2</b>	<b>+ 3.7</b>
1010	Processing and preserving of meat	97	+ 0.8	- 0.1	+ 0.4	+ 2.7	+ 2.6	+ 1.5	+ 1.1	+ 3.8
1020	Processing and preserving of fish, crustaceans & molluscs	3	0.0	0.0	0.0	0.0	+ 2.2	+ 2.2	+ 2.2	0.0
1030	Processing and preserving of fruits and vegetables	10	+ 0.2	0.0	0.0	+ 1.1	+ 1.2	+ 1.0	+ 0.7	+ 1.3
1040	Vegetable and animal oils and fats	30	0.0	0.0	0.0	0.0	+ 1.2	- 2.8	- 1.9	0.0
1050	Dairy products	16	+ 0.6	+ 0.2	+ 0.1	0.0	+ 2.6	+ 1.2	+ 0.8	+ 0.8
1061	Grain mill products	54	+ 0.6	+ 8.1	+ 8.6	- 1.5	- 11.7	+ 1.6	+ 13.5	+ 16.3
1071	Bakery products	72	0.0	+ 1.6	+ 1.3	0.0	- 1.1	+ 0.4	+ 2.2	+ 3.0
10711/ 10712	<i>Bread/Pastries and cakes</i>	69	0.0	+ 1.5	+ 1.2	0.0	- 1.3	+ 0.3	+ 1.9	+ 2.7
10713	<i>Biscuits and other dry bakery products</i>	3	0.0	+ 0.8	- 0.6	0.0	+ 3.2	+ 0.8	+ 0.3	+ 0.3
1074	Macaroni, noodles, couscous and similar farinaceous products	11	0.0	0.0	0.0	0.0	+ 5.0	+ 5.0	+ 1.5	0.0
1075	Prepared meals and dishes	2	+ 0.4	0.0	0.0	0.0	+ 5.9	+ 5.9	+ 2.8	+ 0.4
1079	Other food products n.e.c	34	- 0.1	+ 0.2	+ 1.0	+ 0.8	+ 1.8	+ 1.7	+ 2.1	+ 1.9
10791	<i>Tea</i>	5	0.0	0.0	+ 7.4	+ 3.7	+ 16.0	+ 14.0	+ 19.2	+ 11.3
10793/ 10799	<i>Spices, sauces, condiments and other food products n.e.c</i>	29	- 0.1	+ 0.2	0.0	+ 0.3	0.0	+ 0.1	- 0.3	+ 0.4
1080	Animal feed	45	- 1.5	+ 0.3	0.0	+ 2.2	- 1.5	- 1.1	- 1.1	+ 1.0
<b>110</b>	<b>Beverages</b>	<b>178</b>	<b>0.0</b>	<b>+ 1.5</b>	<b>0.0</b>	<b>+ 0.9</b>	<b>+ 4.8</b>	<b>+ 6.1</b>	<b>+ 4.6</b>	<b>+ 2.5</b>
1101	Distilled potable alcoholic beverages	65	0.0	0.0	0.0	+ 2.2	+ 11.1	+ 10.3	+ 6.7	+ 2.2
1102	Wines	13	0.0	0.0	0.0	+ 0.9	+ 2.8	+ 2.8	+ 1.8	+ 0.9
1103	Malt liquors and malt including non alcoholic beer	73	0.0	+ 3.9	0.0	0.0	+ 1.1	+ 5.0	+ 4.6	+ 3.9
1104	Soft drinks, mineral waters and other bottled waters	27	0.0	0.0	0.0	0.0	0.0	0.0	0.0	0.0

**Table 3(c) - Quarterly percentage change for Manufacture of Chemicals and Chemical Products & Rubber and Plastic Products by industry group, 4th Quarter 2016 - 3rd Quarter 2018**

Base period: Year 2013=100

NSIC	Industry group	Weight	Percentage changes from previous quarter				Percentage changes from corresponding quarter of previous year			
			3rd Qr 17 to 4th Qr 17	4th Qr 17 to 1st Qr 18	1st Qr 18 to 2nd Qr 18	2nd Qr 18 to 3rd Qr 18	4th Qr 16 to 4th Qr 17	1st Qr 17 to 1st Qr 18	2nd Qr 17 to 2nd Qr 18	3rd Qr 17 to 3rd Qr 18
<b>20</b>	<b>Chemicals and chemical products</b>	<b>69</b>	<b>+ 0.7</b>	<b>+ 1.3</b>	<b>+ 1.4</b>	<b>+ 1.2</b>	<b>+ 0.7</b>	<b>+ 1.6</b>	<b>+ 3.2</b>	<b>+ 4.6</b>
2011	Basic chemicals	9	+ 3.6	+ 2.5	+ 0.4	+ 2.3	+ 6.6	+ 6.6	+ 6.6	+ 9.0
2012	Manufacture of fertilizers and nitrogen compounds	8	0.0	0.0	0.0	0.0	- 5.2	- 5.2	- 1.8	0.0
2022	Paints, varnishes and similar coatings, printing ink and mastics	26	0.0	+ 2.0	+ 2.2	+ 0.6	+ 0.2	+ 2.0	+ 4.3	+ 4.9
2023	Soap and detergents, cleaning and polishing preparations, perfumes and toilet preparations	26	+ 0.6	+ 0.6	+ 1.1	+ 1.6	+ 0.9	+ 1.3	+ 2.3	+ 3.9
<b>22</b>	<b>Rubber and plastic products</b>	<b>31</b>	<b>+ 0.3</b>	<b>0.0</b>	<b>0.0</b>	<b>- 1.2</b>	<b>+ 2.4</b>	<b>+ 2.2</b>	<b>+ 1.9</b>	<b>- 0.9</b>
2211	Rubber tyres and tubes, retreading and rebuilding of rubber tyres	5	+ 1.7	0.0	0.0	- 7.5	+ 5.1	+ 5.1	+ 5.1	- 6.0
2220	Plastic products	26	0.0	0.0	0.0	+ 0.1	+ 1.9	+ 1.7	+ 1.4	+ 0.1

**Table 4(a) - Comparative monthly and quarterly indices of the Manufacturing Sector, January 2009 - September 2018**

Base period: Year 2013=100

Month	2009	2010	2011	2012	2013	2014	2015	2016	2017	2018
January	85.7	83.2	89.1	94.6	98.6	100.1	101.6	101.6	104.3	106.8
February	83.3	83.3	91.9	94.3	99.9	100.1	101.5	101.5	104.1	107.2
March	83.4	83.4	91.5	93.9	100.0	100.3	102.0	102.0	104.4	107.6
<b>Average 1<sup>st</sup> Quarter</b>	<b>84.1</b>	<b>83.3</b>	<b>90.8</b>	<b>94.3</b>	<b>99.5</b>	<b>100.2</b>	<b>101.7</b>	<b>101.7</b>	<b>104.3</b>	<b>107.2</b>
April	82.7	84.1	91.5	94.4	100.0	100.4	101.9	101.9	104.3	107.7
May	82.0	84.8	91.7	94.5	99.9	100.4	101.9	102.1	104.3	107.9
June	81.8	85.3	92.3	94.9	99.8	100.6	102.1	102.2	105.1	108.1
<b>Average 2<sup>nd</sup> Quarter</b>	<b>82.2</b>	<b>84.7</b>	<b>91.8</b>	<b>94.6</b>	<b>99.9</b>	<b>100.5</b>	<b>102.0</b>	<b>102.1</b>	<b>104.6</b>	<b>107.9</b>
July	82.3	85.3	92.6	95.4	100.1	100.6	102.3	102.8	105.1	108.1
August	82.3	85.4	92.9	95.5	100.1	100.3	103.1	102.8	105.2	108.6
September	82.2	85.2	93.0	95.6	100.0	100.3	103.3	103.0	105.3	109.0
<b>Average 3<sup>rd</sup> Quarter</b>	<b>82.3</b>	<b>85.3</b>	<b>92.8</b>	<b>95.5</b>	<b>100.1</b>	<b>100.4</b>	<b>102.9</b>	<b>102.9</b>	<b>105.2</b>	<b>108.6</b>
October	82.6	85.4	94.1	96.9	100.1	100.4	103.4	103.7	105.4	
November	82.7	86.6	94.6	97.8	100.9	100.3	103.5	104.3	106.2	
December	82.7	87.1	94.9	97.8	100.5	100.0	103.5	104.3	106.1	
<b>Average 4<sup>th</sup> Quarter</b>	<b>82.7</b>	<b>86.4</b>	<b>94.5</b>	<b>97.5</b>	<b>100.5</b>	<b>100.2</b>	<b>103.5</b>	<b>104.1</b>	<b>105.9</b>	
<b>Yearly average</b>	<b>82.8</b>	<b>84.9</b>	<b>92.5</b>	<b>95.5</b>	<b>100.0</b>	<b>100.3</b>	<b>102.5</b>	<b>102.7</b>	<b>105.0</b>	
<b>Annual change (%)</b>	<b>- 3.5</b>	<b>+ 2.5</b>	<b>+ 9.0</b>	<b>+ 3.2</b>	<b>+ 4.7</b>	<b>+ 0.3</b>	<b>+ 2.2</b>	<b>+ 0.2</b>	<b>+ 2.2</b>	

**Table 4(b) - Comparative monthly and quarterly indices for Manufacture of Food Products & Beverages, January 2009 - September 2018**

Base period: Year 2013=100

Month	2009	2010	2011	2012	2013	2014	2015	2016	2017	2018
January	86.2	81.5	85.5	93.5	97.4	100.5	100.5	100.6	103.8	105.9
February	82.6	81.7	90.0	92.4	99.7	100.0	100.3	100.4	103.6	106.5
March	82.7	81.9	89.2	92.4	99.9	100.0	101.0	101.1	103.6	107.0
<b>Average 1<sup>st</sup> Quarter</b>	<b>83.8</b>	<b>81.7</b>	<b>88.2</b>	<b>92.8</b>	<b>99.0</b>	<b>100.2</b>	<b>100.6</b>	<b>100.7</b>	<b>103.7</b>	<b>106.5</b>
April	82.8	82.0	89.4	93.1	100.0	100.0	101.0	100.1	103.6	107.1
May	81.8	82.5	89.4	93.3	100.1	100.1	100.9	100.2	103.8	107.4
June	81.4	82.7	89.5	93.8	100.1	100.4	101.2	100.5	105.1	107.7
<b>Average 2<sup>nd</sup> Quarter</b>	<b>82.0</b>	<b>82.4</b>	<b>89.4</b>	<b>93.4</b>	<b>100.1</b>	<b>100.2</b>	<b>101.0</b>	<b>100.3</b>	<b>104.2</b>	<b>107.4</b>
July	81.9	82.7	89.8	94.4	100.2	100.4	101.3	100.9	104.9	107.9
August	81.9	82.9	90.1	94.5	100.2	100.1	102.0	101.3	104.9	108.3
September	81.6	82.8	90.5	94.4	100.0	100.4	102.6	101.7	105.0	108.9
<b>Average 3<sup>rd</sup> Quarter</b>	<b>81.8</b>	<b>82.8</b>	<b>90.1</b>	<b>94.4</b>	<b>100.1</b>	<b>100.3</b>	<b>102.0</b>	<b>101.3</b>	<b>104.9</b>	<b>108.4</b>
October	81.4	82.5	92.4	95.5	99.8	100.4	102.7	102.9	105.2	
November	81.3	84.1	92.9	96.9	101.5	100.5	102.9	103.9	105.2	
December	81.2	84.9	93.3	96.8	101.1	99.9	102.8	103.9	104.9	
<b>Average 4<sup>th</sup> Quarter</b>	<b>81.3</b>	<b>83.8</b>	<b>92.9</b>	<b>96.4</b>	<b>100.8</b>	<b>100.3</b>	<b>102.8</b>	<b>103.6</b>	<b>105.1</b>	
<b>Yearly average</b>	<b>82.2</b>	<b>82.7</b>	<b>90.2</b>	<b>94.3</b>	<b>100.0</b>	<b>100.3</b>	<b>101.6</b>	<b>101.5</b>	<b>104.5</b>	
<b>Annual change (%)</b>	<b>- 5.5</b>	<b>+ 0.6</b>	<b>+ 9.1</b>	<b>+ 4.5</b>	<b>+ 6.0</b>	<b>+ 0.3</b>	<b>+ 1.3</b>	<b>- 0.1</b>	<b>+ 3.0</b>	

**Table 4(c) - Comparative monthly and quarterly indices for Manufacture of Chemicals and Chemical Products, January 2009 - September 2018**

Base period: Year 2013=100

Month	2009	2010	2011	2012	2013	2014	2015	2016	2017	2018
January	80.5	86.3	90.7	93.4	99.2	100.6	100.8	100.8	106.6	107.4
February	80.5	86.7	90.8	94.0	99.2	100.6	100.8	100.8	106.8	109.0
March	80.5	86.7	90.8	94.0	99.3	100.8	100.9	100.9	106.8	109.0
<b>Average 1<sup>st</sup> Quarter</b>	<b>80.5</b>	<b>86.6</b>	<b>90.8</b>	<b>93.8</b>	<b>99.2</b>	<b>100.7</b>	<b>100.8</b>	<b>100.8</b>	<b>106.7</b>	<b>108.5</b>
April	81.3	87.0	90.7	94.0	99.5	100.8	101.1	105.1	106.8	109.3
May	81.4	87.0	90.7	94.0	99.8	101.1	101.6	105.1	106.3	110.1
June	81.5	87.6	90.7	94.0	99.8	101.1	101.6	105.4	106.3	110.1
<b>Average 2<sup>nd</sup> Quarter</b>	<b>81.4</b>	<b>87.2</b>	<b>90.7</b>	<b>94.0</b>	<b>99.7</b>	<b>101.0</b>	<b>101.4</b>	<b>105.2</b>	<b>106.5</b>	<b>109.8</b>
July	82.4	88.1	93.2	94.4	99.8	101.2	102.2	105.7	106.3	111.1
August	82.4	88.1	93.3	94.4	100.1	100.7	104.5	105.7	106.3	111.2
September	82.5	88.1	93.3	94.4	100.1	100.7	104.5	105.7	106.3	111.2
<b>Average 3<sup>rd</sup> Quarter</b>	<b>82.4</b>	<b>88.1</b>	<b>93.3</b>	<b>94.4</b>	<b>100.0</b>	<b>100.9</b>	<b>103.7</b>	<b>105.7</b>	<b>106.3</b>	<b>111.2</b>
October	83.1	89.5	93.3	98.6	100.7	100.7	104.5	106.1	106.4	
November	83.1	89.5	93.4	98.6	101.2	100.7	104.5	106.4	107.3	
December	83.1	90.1	93.4	98.8	101.2	100.7	104.5	106.4	107.3	
<b>Average 4<sup>th</sup> Quarter</b>	<b>83.1</b>	<b>89.7</b>	<b>93.4</b>	<b>98.7</b>	<b>101.0</b>	<b>100.7</b>	<b>104.5</b>	<b>106.3</b>	<b>107.0</b>	
<b>Yearly average</b>	<b>81.9</b>	<b>87.9</b>	<b>92.1</b>	<b>95.2</b>	<b>100.0</b>	<b>100.8</b>	<b>102.6</b>	<b>104.5</b>	<b>106.6</b>	
<b>Annual change (%)</b>	<b>- 5.9</b>	<b>+ 7.3</b>	<b>+ 4.8</b>	<b>+ 3.4</b>	<b>+ 5.0</b>	<b>+ 0.8</b>	<b>+ 1.8</b>	<b>+ 1.9</b>	<b>+ 2.0</b>	



**Table 4(d) - Comparative monthly and quarterly indices for Manufacture of Rubber and Plastic Products, January 2009 - September 2018**

Base period: Year 2013=100

Month	2009	2010	2011	2012	2013	2014	2015	2016	2017	2018
January	90.9	98.3	103.8	97.6	99.2	100.4	103.0	103.0	109.2	111.8
February	90.9	98.3	103.7	104.6	99.2	101.7	101.7	101.7	109.2	111.8
March	91.0	98.3	105.3	99.8	100.1	101.7	103.1	103.1	109.7	111.8
<b>Average 1<sup>st</sup> Quarter</b>	<b>90.9</b>	<b>98.3</b>	<b>104.3</b>	<b>100.7</b>	<b>99.5</b>	<b>101.3</b>	<b>102.6</b>	<b>102.6</b>	<b>109.4</b>	<b>111.8</b>
April	92.1	99.3	105.5	99.8	100.2	101.7	103.1	105.8	109.7	111.8
May	92.4	99.3	105.5	99.8	100.2	101.7	104.8	105.5	109.7	111.8
June	92.5	99.5	105.5	99.8	100.2	102.9	104.8	105.5	109.7	111.8
<b>Average 2<sup>nd</sup> Quarter</b>	<b>92.3</b>	<b>99.4</b>	<b>105.5</b>	<b>99.8</b>	<b>100.2</b>	<b>102.1</b>	<b>104.2</b>	<b>105.6</b>	<b>109.7</b>	<b>111.8</b>
July	92.5	100.7	105.6	99.8	100.2	103.0	105.8	109.2	110.9	110.5
August	92.8	100.7	105.6	99.8	100.2	103.0	105.8	109.2	111.8	110.5
September	92.9	100.7	105.8	99.8	100.2	103.0	105.8	109.2	111.8	110.5
<b>Average 3<sup>rd</sup> Quarter</b>	<b>92.7</b>	<b>100.7</b>	<b>105.7</b>	<b>99.8</b>	<b>100.2</b>	<b>103.0</b>	<b>105.8</b>	<b>109.2</b>	<b>111.5</b>	<b>110.5</b>
October	99.6	104.2	105.5	99.5	100.2	103.0	105.8	109.2	111.8	
November	99.8	104.2	105.5	100.0	100.2	103.0	105.8	109.2	111.8	
December	99.7	104.2	105.5	98.9	100.2	103.0	105.8	109.2	111.8	
<b>Average 4<sup>th</sup> Quarter</b>	<b>99.7</b>	<b>104.2</b>	<b>105.5</b>	<b>99.5</b>	<b>100.2</b>	<b>103.0</b>	<b>105.8</b>	<b>109.2</b>	<b>111.8</b>	
<b>Yearly average</b>	<b>93.9</b>	<b>100.7</b>	<b>105.3</b>	<b>100.0</b>	<b>100.0</b>	<b>102.4</b>	<b>104.6</b>	<b>106.7</b>	<b>110.6</b>	
<b>Annual change (%)</b>	<b>+ 7.9</b>	<b>+ 7.2</b>	<b>+ 4.6</b>	<b>- 5.0</b>	<b>+ 0.0</b>	<b>+ 2.4</b>	<b>+ 2.1</b>	<b>+ 2.0</b>	<b>+ 3.7</b>	

## **Producer Price Index – Manufacturing (PPI-M)**

### **Methodology for the computation of the PPI-M**

#### **1. Definition**

The Producer Price Index (PPI-M) measures changes in the effective prices received by producers in the manufacturing sector for that part of their output, which is sold on the domestic market. It reflects the price trends of a fixed basket of goods representative of the output of Non Export Oriented Enterprises (Non EOE).

The concepts and definitions of the PPI-M largely follow the guidelines provided in the “IMF Producer Price Index Manual Theory and Practice”.

#### **2. Scope**

The PPI-M covers both large and small manufacturing establishments falling within divisions 10 to 33 of the National Standard Industrial Classification Rev.2 (NSIC Rev.2), which is an adapted version of the International Standard Industrial Classification (ISIC) Rev.4. The establishments are classified under 24 divisions, 71 groups, 137 classes and 240 sub-classes.

The following divisions have been excluded for reasons given in brackets:

- (a) Division 12: Manufacture of tobacco products (no longer manufactured in Mauritius)
- (b) Division 19: Manufacture of coke and refined petroleum products (weight in the overall index is not significant)
- (c) Division 21: Manufacture of basic pharmaceutical products and pharmaceutical preparations (weight in the overall index is not significant and change of products is too dynamic)
- (d) Division 26: Manufacture of computers, electronic and optical products (weight in the overall index is not significant and change of products is too dynamic)
- (e) Division 33: Repair and installation of machinery and equipment (weight in the overall index is not significant and change of products is too dynamic)

The activities covered by the index represent around 97% of the gross output generated by the Non-EOE manufacturing sector during year 2013.

#### **3. Frame**

A list of all large establishments (engaging 10 or more persons) falling under the scope of the PPI-M was obtained from the 2013 Census of Economic Activities (CEA 2013). For small establishments (engaging less than 10 persons), the list of respondents at the CEA 2013 was used.

#### **4. Selection of establishments (producers)**

A sample of 126 large establishments was selected from the list of large manufacturing establishments. Those establishments were the most important ones in terms of Gross Output (GO) in their respective 5-digit sub-class.

Small establishments selected for price collection were those engaged in the manufacture of wearing apparel, fabricated metal products and furniture as these activities were the most important ones performed by small manufacturing establishments.

Output of the selected establishments represented around 60% of the total GO generated by all establishments falling within the scope of the PPI-M.

#### **5. Selection of products to be priced**

Some 400 products have been selected for pricing. These are the most important ones in terms of contribution to the gross output or turnover of the selected establishments.

#### **6. Price collection**

Prices collected refer to the prices received by producers for the sale of their products on the local market. The prices exclude all taxes on products, namely excise duty and value added tax (VAT).

As from July 2013, prices are collected on a monthly basis and provisional monthly indices are compiled. The overall PPI-M on a monthly basis is published according to SDDS requirements.

For revised monthly and quarterly indices at division level and in some specific cases at even lower level, the selected establishments are visited on a quarterly basis and prices of the selected products are collected for each month of the reference quarter.

#### **7. Updating of weights**

##### ***7.1 Historical background***

Statistics Mauritius first published a Producers Price Index limited to the “Manufacturing of food products, beverages and tobacco” in March 1994 with 1993 as base period (1993 = 100). The index was revised in June 2002 to cover all relevant industry groups of the former Non-EPZ manufacturing sector, based on the results of the 1997 Census of Economic Activities. The base period was 1998. The base year was subsequently revised to 2003 and 2007, based on the results of the 2002 and 2007 rounds of the Census of Economic Activities.

The current basket of goods has been updated based on the results of the 2013 Census of Economic Activities and the index is computed with year 2013 as base period.

## 8. Index calculation

The PPI-M is computed according to the Laspeyres Formula.

The formula used is given below

$$I_c = \frac{\sum W_i * \left(\frac{P_{ci}}{P_{oi}}\right)}{\sum W_i} * 100$$

Where  $I_c$  = Index for current month

$W_i$  = Weight associated with product  $i$

$P_{ci}$  = Price of product  $i$  for the current month

$P_{oi}$  = Price for product  $i$  for the base period (2013)

The PPI-M is calculated at the 5-digit sub-class level of the NSIC Rev.2 by the above formula. The lowest level indices are determined as a geometric average of the price relatives of the basic observations. Indices at the division level (2-digit code) are then derived as a weighted average of the indices of the products falling within each division. Finally, the overall index is obtained as a weighted average of the division indices.

## 9. Uses of PPI

- (a) The PPI is a leading indicator of the future status of inflation. Movement of PPI is usually indicative of a similar change of part of the Consumer Price Index (CPI). PPI can also be used in the economic analysis of inflation transmission process.
- (b) It provides specific price deflators for the computation of national accounts at constant prices in order to measure real growth
- (c) It is helpful in the formulation of contract agreement. It can be used as an escalation clause to protect buyers and sellers against inflation or deflation.
- (d) PPI is also used in econometric models, in forecasting and in inventory accounting.

## 10. Missing prices

In case of temporarily missing prices for products, the change in the prices are assumed to be following the same trend as the average price in the 5-digit sub-class or of a higher level.

### **11. Treatment of product permanently disappeared**

Products may disappear permanently for various reasons. The products may disappear from the market because new products have been introduced or the establishments from which the price has been collected have stopped selling the product. When a product disappears permanently, a replacement product of a similar nature will be included in the index.

### **12. Treatment of quality change**

The index is a measure of only “PURE” price changes and should as far as possible measure the price changes of the same products. Hence, the products must not be affected by quality change. If the change is due to quality, an estimate of the proportion of the change attributed to the quality element is made and adjustment done accordingly.

### **13. Reliability of the PPI-M**

The statistical accuracy of the PPI-M depends heavily on the quality of information provided by the selected establishments (respondents). This office places great emphasis on the need for reporting effective selling prices, i.e. prices after discounts and other price deductions rather than the list or catalogue prices.

Standard editing procedures are used to validate the accuracy and reliability of the data. Collected prices are validated during the field work and inconsistencies discussed with the respondents and corrected.

Further computer checks are made at office level when compiling the indices. Comparison is also made with the CPI and with the import/export price indices. Systematic analyzes of the source data are made in the context of weight and base year revisions that occur every five years.