

Producer Price Index – Agriculture (PPI-A)

Second quarter 2017

(Base period year 2013 = 100)

1. Introduction

The Producer Price Index-Agriculture (PPI-A) gives a measure of the average change in the selling prices which producers receive for their agricultural products.

This issue of the Economic and Social Indicators presents monthly PPI-A indices for the months of April, May and June 2017 as well as figures for preceding months updated in the light of additional information that have now become available. Monthly weights by commodity group and product are given in Table 12.

The methodology for the computation of PPI-A is annexed.

2. Producer Price Index - Agriculture: Second Quarter 2017

2.1 Structure of PPI-A (Base period: 2013=100)

PPI-A covers two sub-groups, namely: "Crop products" and "Animals and animal products". "Crop products" is further subdivided into "Sugar cane" and "Other crop products". Sugar cane heavily influences both the "overall" index and that of sub-group "Crop products", of which it constitutes 35.7% and 58.3% of the respective weights.

2.2 Changes in the monthly index

Fig 1: Overall monthly indices, July 2016 –June 2017

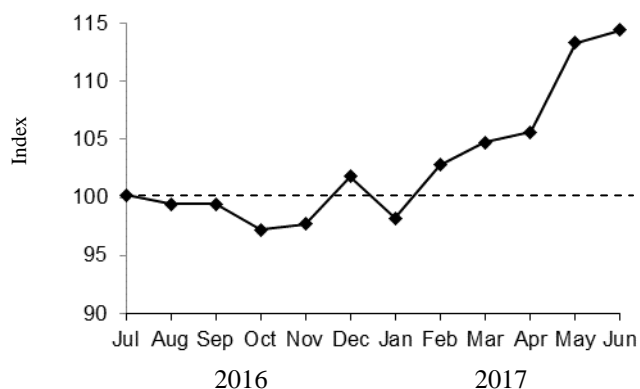


Figure 1 shows the monthly evolution of PPI-A for the period July 2016 to June 2017.

PPI-A, which was 104.7 in March 2017 went up by 9.3% to reach 114.4 in June 2017. This rise was due to increases of 0.9%, 7.3% and 1.0% in April, May and June respectively.

The index for the sub-group "Crop products", which carries 61.2% of the total weight, increased by 0.3%, 10.5% and 1.3% in April, May and June respectively.

2.2.1 Sugar cane

The index for "Sugar cane" for the period July 2016 to June 2017 was 98.4 based on the final price of sugar for the 2016 crop. This represents an increase of 18.3% over the 2015 crop. It is assumed that the same price prevails during the whole of the crop year.

2.2.2 Other crop products

The index for "Other crop products" went up by 1.5% in April mainly due to the combined effects of an increase of 10.4% in the prices of fruits and nuts and a decrease of 1.1% in the prices of fresh vegetables (creepers, brinjal and cabbage).

In May, the index went up by 21.4% mainly due to increases of 31.1% in the prices of fresh vegetables (creepers, brinjal, carrot and other fresh vegetables) and 8.5% in the prices of fruits and nuts.

In June, the index rose by 2.6% mainly due to an increase of 39.7% in the prices of fruits and nuts, partly offset by a decrease of 2.7% in the prices of fresh vegetables (creepers, tomato, brinjal and carrot).

2.2.3 Animals and animal products

The index for the sub-group "Animals and animal products" went up by 2.0% in April mainly due to increases in the prices of eggs (+5.8%), poultry (+0.8%) and pigs (+18.3%).

In May, the index rose by 1.9% due to an increase in the prices of eggs (+11.6%).

In June, the index increased by 0.2% due to an increase in the prices of eggs (+1.0%).

More details of changes on a month-to-month basis are given in Table 5 and changes over the corresponding month of the previous year in Table 6.

2.3 Changes in the quarterly index

Fig 2: Overall quarterly indices, 3rd quarter 2015 –2nd quarter 2017

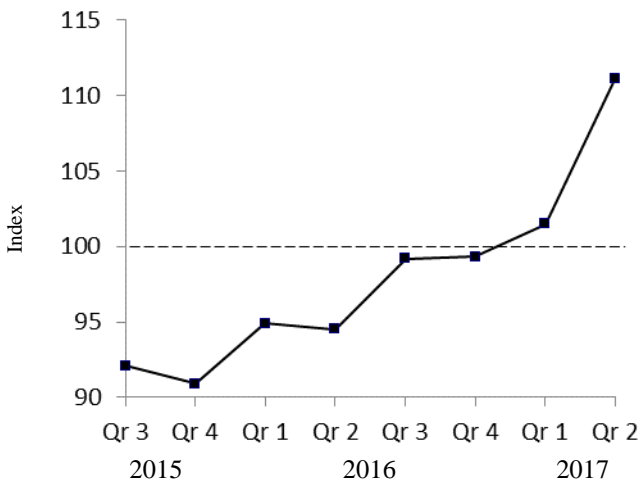


Figure 2 and Table 7 show the movement of quarterly PPI-A covering the periods 2015, 2016 and 2017.

The overall index for the second quarter of 2017 went up by 9.5% compared to the previous quarter and rose by 17.6% compared to the corresponding quarter of 2016. Percentage changes on a quarterly basis and the net contributions of commodity groups and products to the overall index are given in Table 8.

2.4 Changes in the yearly index

Average prices which producers received from the sale of agricultural products in the year 2016 were 4.5% higher compared to the previous year. The annual indices for the years 2014, 2015 and 2016, annual changes and the net contributions of commodity groups and products to the change are presented in Table 9.

Statistics Mauritius
 Ministry of Finance and Economic Development
 Port Louis
August 2017

CONTACT PERSONS:

Mr. B. Unmar
 Senior Statistician

Mr. D. Chinnee
 Temp. Statistician

Agriculture Unit
 Statistics Mauritius
 5th Floor, LIC Centre
 Port Louis

Tel. (230) 208-1800

Fax (230) 213-0234/(230) 213-6535

Email: cso_agriculture@govmu.org

Website: <http://statsmauritius.govmu.org>

Monthly Producer Price Index -Agriculture (PPI-A)
(Base period: Year 2013 =100)

Table 1 : Monthly indices by commodity group and product, January 2017 - June 2017

Commodity Group	Weight	2017					
		January	February	March	April	May	June
Crop Products	611.6	98.6	106.3	109.7	110.0	121.5	123.1
Sugar Cane	356.8	98.4 ¹	98.4 ¹	98.4 ¹	98.4	98.4	98.4
Other crops products	254.8	95.0	110.8	117.2	119.0	144.5	148.3
Fresh Vegetables ²	134.2	91.7	126.3	141.0	139.4	182.7	177.7
Beans	4.6	103.1	143.9	154.4	190.8	196.7	169.5
Brinjal	6.0	98.3	123.7	85.1	69.3	319.3	215.3
Cabbage	5.9	83.6	137.0	195.0	180.5	214.4	220.7
Cauliflower	2.9	133.2	171.3	203.5	230.6	209.0	177.7
Carrot	8.8	49.3	81.3	113.3	183.8	279.9	248.2
Onion	12.3	104.9	104.9	104.9
Tomato	37.3	57.9	101.7	205.7	241.8	204.3	185.2
Creepers	30.0	104.2	144.7	132.8	97.7	187.4	178.1
Other fresh vegetables	26.4	106.9	125.4	94.7	116.7	131.5	126.9
Fruit and nuts ²	64.0	104.0	91.3	88.8	98.0	106.3	148.5
Banana	10.1	110.8	110.8	110.8	110.8	110.8	110.8
Pineapple	20.4	65.7	65.7	79.3	86.7	90.5	98.6
Other fruits	33.5	139.0	164.7	...	184.2	184.4	221.6
Oilseeds and oleaginous fruits ²	3.4	129.1	130.0	134.7	128.2	138.2	143.8
Groundnut	2.3	122.3	123.1	131.6	123.2	134.2	139.4
Coconut	1.1	160.0	160.0	160.0	160.0	160.0	160.0
Edible roots and tubers ²	35.7	111.4	135.9	143.3	136.2	155.4	124.1
Potato	29.0	103.5	103.5
Other Root crops	6.7	124.3	135.9	143.3	136.2	155.4	149.8
Stimulant & spice ²	9.6	114.0	109.2	109.2	109.2	109.2	109.2
Tea ³	7.5	109.2	109.2	109.2	109.2	109.2	109.2
Ginger	2.1	197.5	162.4	168.7	152.4	167.1	172.4
Flowers, ornamental plants	7.9	102.4	102.4	102.4	102.4	102.4	102.4
Anthurium	2.4	84.2	84.2	84.2	84.2	84.2	84.2
Rose	0.9	90.0	90.0	90.0	90.0	90.0	90.0
Other flowers	4.6	114.3	114.3	114.3	114.3	114.3	114.3
Animals & Animal Products	388.4	97.5	97.0	96.7	98.6	100.5	100.7
Cattle	25.2	124.3	124.3	124.3	125.5	125.5	125.5
Pigs	11.5	61.3	61.3	61.3	72.5	72.5	72.5
Goat	3.4	126.9	126.9	126.9	123.1	123.1	123.1
Deer	6.9	99.3	99.3	99.3	99.3	99.3	99.3
Poultry	267.1	96.2	96.2	96.2	97.0	97.0	97.0
Eggs	66.3	96.5	93.5	91.7	97.0	108.3	109.4
Milk	8.0	102.4	102.4	102.4	102.4	102.4	102.4
Overall Index	1,000.0	98.2	102.8	104.7	105.6	113.3	114.4

¹ Revised² The indices are computed based on the method of variable baskets with fixed monthly weights in the base year as explained at paragraph 12 of Annex. The composition of these baskets is shown in Table 12.³ Provisional

... Not applicable

Monthly Producer Price Index -Agriculture (PPI-A)

(Base period:Year 2013 =100)

Table 2 : Monthly indices by commodity group and product, January 2016 - December 2016

Commodity Group	Weight	2016											
		January	February	March	April	May	June	July	August	September	October	November	December
Crop Products	611.6	87.8	92.9	94.6	90.2	89.3	89.4	97.8	96.4	96.5	95.2	97.2	103.4
Sugar Cane	356.8	83.2	83.2	83.2	83.2	83.2	83.2	98.4 ¹	98.4 ¹	98.4 ¹	98.4 ¹	98.4 ¹	98.4 ¹
Other crops products	254.8	90.1	100.7	103.2	94.7	93.0	93.2	93.4	89.6	90.5	89.1	92.7	106.9
Fresh Vegetables ²	134.2	87.3	116.0	129.8	103.9	98.1	88.8	94.4	91.5	92.3	86.6	91.2	96.3
Beans	4.6	65.8	151.6	163.6	87.9	90.6	103.1	88.6	90.0	64.8	92.7	89.7	76.6
Brinjal	6.0	68.4	69.9	90.8	77.1	110.8	93.6	122.5	92.4	99.5	79.7	87.5	57.5
Cabbage	5.9	118.5	138.5	170.1	130.5	120.0	75.1	36.1	54.4	70.6	66.4	60.3	90.1
Cauliflower	2.9	90.9	90.9	90.9	110.6	110.6	95.4	82.7	76.6	87.0	89.9	89.9	75.4
Carrot	8.8	60.1	92.7	178.3	159.4	77.3	38.5	26.1	45.6	37.4	41.6	42.1	52.8
Onion	12.3	104.9	104.9	104.9	104.9	104.9	104.9	104.9	104.9	104.9
Tomato	37.3	120.4	189.2	230.8	148.8	103.4	93.5	42.2	48.4	36.8	41.2	94.1	101.1
Creepers	30.0	78.4	94.3	97.5	81.6	88.3	93.4	118.7	130.4	123.8	80.4	82.5	115.1
Other fresh vegetables	26.4	78.2	100.4	70.6	96.0	103.9	90.1	132.2	140.5	165.1	117.7	99.3	91.8
Fruits and nuts ²	64.0	101.5	93.4	77.6	88.1	95.4	112.6	96.2	86.6	86.0	88.1	96.6	146.5
Banana	10.1	105.9	105.9	105.9	105.9	105.9	105.9	118.2	118.2	118.2	118.2	118.2	118.2
Pineapple	20.4	62.9	70.4	65.5	74.6	76.4	71.4	74.9	73.8	73.7	70.1	59.6	62.1
Other fruits	33.5	137.7	168.8	...	177.2	177.3	160.8	137.1	141.2	138.4	190.9
Oilseeds and oleaginous fruits ²	3.4	106.5	106.2	101.2	111.5	108.5	111.8	110.3	112.1	120.0	113.5	129.1	113.5
Groundnut	2.3	94.8	93.7	93.6	103.7	99.1	98.6	100.8	99.5	97.1	102.3	123.1	104.8
Coconut	1.1	160.0	160.0	160.0	160.0	160.0	160.0	160.0	160.0	160.0	160.0	160.0	160.0
Edible roots and tubers ²	35.7	98.2	94.6	101.3	101.5	95.0	99.7	102.8	104.1	103.3	103.2	103.0	102.5
Potato	29.0	101.2	101.2	103.5	103.5	103.5	103.5	103.5	103.5
Other Root crops	6.7	93.2	94.6	101.3	101.5	95.0	97.9	97.1	110.2	100.9	97.3	93.0	95.4
Stimulant & spice ²	9.6	115.4	109.2	109.2	110.6	112.8	114.6	112.8	124.0	125.5	112.4	111.0	109.8
Tea	7.5	109.2	109.2	109.2	109.2	109.2	109.2	109.2	109.2	109.2	109.2	109.2	109.2
Ginger	2.1	224.9	260.3	239.7	225.4	221.8	178.6	126.8	156.7	140.6	116.4	114.0	130.5
Flowers, ornamental plants	7.9	102.4	102.4	102.4	102.4	102.4	102.4	102.4	102.4	102.4	102.4	102.4	102.4
Anthurium	2.4	84.2	84.2	84.2	84.2	84.2	84.2	84.2	84.2	84.2	84.2	84.2	84.2
Rose	0.9	90.0	90.0	90.0	90.0	90.0	90.0	90.0	90.0	90.0	90.0	90.0	90.0
Other flowers	4.6	114.3	114.3	114.3	114.3	114.3	114.3	114.3	114.3	114.3	114.3	114.3	114.3
Animals & Animal Products	388.4	100.2	99.5	100.5	100.7	102.1	103.4	103.7	103.9	103.7	100.0	98.3	99.2
Cattle	25.2	109.7	109.7	109.7	111.8	111.8	111.8	113.0	113.0	113.0	124.3	124.3	124.3
Pigs	11.5	64.9	64.9	64.9	64.9	64.9	61.3	61.3	61.3	61.3	61.3	61.3	61.3
Goat	3.4	110.8	110.8	110.8	112.0	112.0	112.0	115.3	115.3	115.3	116.5	116.5	116.5
Deer	6.9	99.3	99.3	99.3	99.3	99.3	99.3	99.3	99.3	99.3	99.3	99.3	99.3
Poultry	267.1	101.6	101.6	101.6	101.6	103.3	103.3	103.6	103.6	103.6	97.9	96.2	99.0
Eggs	66.3	96.6	92.4	98.6	98.4	99.6	108.0	108.1	109.2	108.4	105.0	101.6	95.5
Milk	8.0	102.4	102.4	102.4	102.4	102.4	102.4	102.4	102.4	102.4	102.4	102.4	102.4
Overall Index	1000.0	92.6	95.5	96.9	94.3	94.3	94.8	100.2	99.4	99.4	97.2	97.7	101.8

... Not applicable

¹ Revised

² The indices are computed based on the method of variable baskets with fixed monthly weights in the base year as explained at paragraph 12 of Annex. The composition of these baskets is shown in Table 12.

³ Provisional

Monthly Producer Price Index -Agriculture (PPI-A)

(Base period:Year 2013 =100)

Table 3 : Monthly indices by commodity group and product, January 2015 - December 2015

Commodity Group	Weight	2015											
		January	February	March	April	May	June	July	August	September	October	November	December
Crop Products	611.6	98.9	97.6	103.7	91.3	77.8	82.6	82.2	87.7	87.4	84.0	84.1	84.7
Sugar Cane	356.8	80.2	80.2	80.2	80.2	80.2	80.2	83.2	83.2	83.2	83.2	83.2	83.2
Other crops products	254.8	118.3	114.3	127.1	100.1	70.9	82.6	79.4	91.1	91.0	84.7	84.7	85.8
Fresh Vegetables¹	134.2	145.9	140.1	173.5	114.9	58.8	61.1	65.2	91.4	93.5	81.7	72.8	72.0
Beans	4.6	234.4	165.1	194.2	123.6	42.1	44.7	74.5	107.3	53.0	46.0	64.6	70.6
Brinjal	6.0	135.2	119.3	200.2	128.2	95.2	92.2	99.8	97.1	86.5	70.7	69.7	71.9
Cabbage	5.9	133.1	286.9	267.0	198.1	54.9	50.4	50.8	75.2	92.2	60.8	62.1	84.1
Cauliflower	2.9	63.0	63.0	65.5	65.5	124.1	83.2	82.6	91.2	98.2	87.1	92.4	91.0
Carrot	8.8	243.5	260.0	215.1	208.2	75.9	49.3	42.6	39.5	53.2	45.8	52.9	63.3
Onion	12.3	104.9	104.9	104.9	104.9	104.9	104.9	104.9	104.9	104.9
Tomato	37.3	205.7	277.6	209.1	195.4	51.1	49.3	69.2	110.6	103.9	55.5	42.6	49.9
Creepers	30.0	120.6	114.2	150.2	102.8	64.0	65.9	78.4	92.7	96.5	73.2	67.0	69.6
Other fresh vegetables	26.4	109.8	57.8	146.3	67.3	48.9	65.1	49.2	87.9	93.5	96.8	83.5	82.2
Fruits and nuts¹	64.0	101.5	104.7	87.5	92.2	94.3	124.9	99.1	94.3	86.2	81.0	99.7	110.3
Banana	10.1	99.8	99.8	99.8	98.5	98.5	98.5	102.2	105.9	105.9	105.9	105.9	105.9
Pineapple	20.4	77.4	101.9	82.2	82.6	69.4	67.1	66.9	89.6	78.7	67.0	72.3	77.1
Other fruits	33.5	126.1	125.8	...	191.6	224.5	200.9	200.9	117.1	135.7	126.4
Oilseeds and oleaginous fruits¹	3.4	89.1	88.2	120.3	105.6	96.2	100.0	102.9	113.5	124.4	109.4	116.8	115.0
Groundnut	2.3	73.5	71.8	115.2	96.8	84.3	83.5	92.1	101.5	104.2	97.1	108.2	106.6
Coconut	1.1	160.0	160.0	160.0	160.0	160.0	160.0	160.0	160.0	160.0	160.0	160.0	160.0
Edible roots and tubers¹	35.7	101.6	97.3	104.6	103.5	80.8	98.2	101.3	100.8	100.8	100.5	100.4	99.4
Potato	29.0	101.2	101.2	101.2	101.2	101.2	101.2	101.2	101.2
Other Root crops	6.7	102.2	97.3	104.6	103.5	80.8	94.4	101.7	97.4	95.0	87.2	84.9	86.9
Stimulant & spice¹	9.6	104.1	104.1	104.1	104.1	104.1	104.1	118.2	127.2	131.5	121.5	125.3	111.4
Tea	7.5	104.1	104.1	104.1	104.1	104.1	104.1	109.2	109.2	109.2	109.2	109.2	109.2
Ginger	2.1	276.4	276.0	288.2	247.8	210.7	196.2	152.9	167.2	151.8	136.3	152.5	192.5
Flowers, ornamental plants	7.9	102.4	102.4	102.4	102.4	102.4	102.4	102.4	102.4	102.4	102.4	102.4	102.4
Anthurium	2.4	84.2	84.2	84.2	84.2	84.2	84.2	84.2	84.2	84.2	84.2	84.2	84.2
Rose	0.9	90.0	90.0	90.0	90.0	90.0	90.0	90.0	90.0	90.0	90.0	90.0	90.0
Other flowers	4.6	114.3	114.3	114.3	114.3	114.3	114.3	114.3	114.3	114.3	114.3	114.3	114.3
Animals & Animal Products	388.4	100.9	99.2	99.9	101.0	101.6	101.8	101.7	101.6	101.7	100.5	99.1	100.7
Cattle	25.2	104.3	104.3	104.3	105.4	105.4	105.4	106.4	106.4	106.4	107.5	107.5	107.5
Pigs	11.5	94.6	94.6	94.6	86.5	86.5	86.5	86.5	86.5	86.5	86.5	82.1	82.1
Goat	3.4	107.6	107.6	107.6	108.7	108.7	108.7	110.9	110.9	110.9	109.7	109.7	109.7
Deer	6.9	99.3	99.3	99.3	99.3	99.3	99.3	99.3	99.3	99.3	99.3	99.3	99.3
Poultry	267.1	100.5	98.2	99.3	100.5	100.5	100.5	99.9	99.9	99.9	98.8	98.8	101.6
Eggs	66.3	102.0	101.2	100.4	103.4	107.0	108.1	109.0	108.8	109.2	106.7	99.2	97.3
Milk	8.0	102.4	102.4	102.4	102.4	102.4	102.4	102.4	102.4	102.4	102.4	102.4	102.4
Overall Index	1,000.0	99.7	98.2	102.2	95.1	87.0	90.1	89.8	93.1	93.0	90.4	89.9	90.9

¹ The indices are computed based on the method of variable baskets with fixed monthly weights in the base year as explained at paragraph 12 of Annex. The composition of these baskets is shown in Table 12.

... Not applicable

Monthly Producer Price Index -Agriculture (PPI-A)

(Base period:Year 2013 =100)

Table 4 : Monthly indices by commodity group and product, January 2014 - December 2014

Commodity Group	Weight	2014											
		January	February	March	April	May	June	July	August	September	October	November	December
Crop Products	611.6	106.0	111.5	101.8	103.2	98.5	99.3	87.5	91.2	84.3	78.4	80.4	80.0
Sugar Cane	356.8	100.0	100.0	100.0	100.0	100.0	100.0	80.2	80.2	80.2	80.2	80.2	80.2
Other crops products	254.8	109.4	120.4	97.8	102.6	91.9	93.4	93.9	101.3	86.6	74.4	78.6	77.1
Fresh Vegetables ¹	134.2	111.9	139.3	109.1	102.2	89.3	88.4	94.0	113.8	87.1	67.9	70.2	66.4
Beans	4.6	182.3	154.5	147.4	103.0	65.9	75.4	107.0	122.7	104.4	48.6	56.8	105.5
Brinjal	6.0	117.7	59.2	93.1	119.8	98.2	131.2	125.2	171.6	96.3	37.9	83.2	23.1
Cabbage	5.9	65.5	78.3	90.3	99.4	135.9	122.4	122.9	125.5	83.2	48.7	53.9	43.5
Cauliflower	2.9	119.4	120.6	120.6	120.6	103.8	97.1	75.4	84.0	86.3	63.0	63.0	65.5
Carrot	8.8	173.5	235.8	170.6	157.4	94.3	62.8	36.7	74.9	35.4	43.5	72.2	99.8
Onion	12.3	104.9	104.9	104.9	104.9	104.9	104.9	104.9	104.9	104.9
Tomato	37.3	101.7	211.7	186.1	152.7	59.4	90.2	65.4	78.2	43.3	21.7	34.1	47.3
Creepers	30.0	117.4	127.9	79.1	62.7	88.4	90.2	104.6	134.2	113.1	64.7	71.5	73.6
Other fresh vegetables	26.4	99.2	108.0	70.4	103.0	102.3	75.9	111.6	157.4	122.1	78.4	73.3	65.9
Fruits and nuts ¹	64.0	130.7	121.2	101.1	125.8	109.0	116.6	101.0	94.1	78.4	63.7	78.9	89.8
Banana	10.1	96.1	97.3	97.3	94.8	88.7	88.7	95.2	95.2	95.2	96.1	95.2	95.2
Pineapple	20.4	84.9	107.2	102.7	133.6	106.3	93.2	83.8	93.6	72.0	42.3	48.4	41.8
Other fruits	33.5	189.8	224.5	...	188.7	171.7	156.0	165.5	135.1	114.0	110.9
Oilseeds and oleaginous fruits ¹	3.4	89.1	88.8	77.9	90.9	92.1	91.8	95.3	95.9	99.7	100.9	95.3	81.5
Groundnut	2.3	86.8	86.2	75.3	89.3	90.6	89.5	94.3	94.7	99.7	91.7	86.2	70.4
Coconut	1.1	100.0	100.0	100.0	100.0	100.0	100.0	100.0	100.0	100.0	140.0	140.0	140.0
Edible roots and tubers ¹	35.7	103.8	111.8	95.6	100.8	98.4	100.8	101.8	102.0	101.7	100.3	100.5	98.9
Potato	29.0	100.0	101.2	101.2	101.2	101.2	101.2	101.2	101.2
Other Root crops	6.7	110.1	111.8	95.6	100.8	98.4	100.4	106.9	109.4	108.7	83.5	86.0	83.4
Stimulant & spice ¹	9.6	101.4	100.0	100.0	101.1	102.0	103.0	110.1	115.4	153.1	146.8	144.2	107.3
Tea	7.5	100.0	100.0	100.0	100.0	100.0	100.0	104.1	104.1	104.1	104.1	104.1	104.1
Ginger	2.1	125.7	139.0	126.7	190.5	162.6	138.9	133.4	140.6	198.1	198.3	212.2	229.0
Flowers, ornamental plants	7.9	102.4	102.4	102.4	102.4	102.4	102.4	102.4	102.4	102.4	102.4	102.4	102.4
Anthurium	2.4	84.2	84.2	84.2	84.2	84.2	84.2	84.2	84.2	84.2	84.2	84.2	84.2
Rose	0.9	90.0	90.0	90.0	90.0	90.0	90.0	90.0	90.0	90.0	90.0	90.0	90.0
Other flowers	4.6	114.3	114.3	114.3	114.3	114.3	114.3	114.3	114.3	114.3	114.3	114.3	114.3
Animals & Animal Products	388.4	100.1	100.1	99.6	100.6	101.3	101.6	101.7	101.4	101.1	98.2	99.0	100.6
Cattle	25.2	102.0	102.0	102.0	103.3	103.3	103.3	103.3	103.3	103.3	104.3	104.3	104.3
Pigs	11.5	100.1	97.7	92.4	92.4	92.4	92.4	92.4	92.4	91.7	94.6	94.6	94.6
Goat	3.4	106.2	106.2	106.2	105.2	105.2	105.2	103.4	103.4	103.4	105.5	105.5	105.5
Deer	6.9	100.1	100.1	100.1	100.1	100.1	100.1	99.3	99.3	99.3	99.3	99.3	99.3
Poultry	267.1	98.2	98.2	98.2	99.9	99.9	99.9	99.9	99.9	99.9	96.5	97.0	99.3
Eggs	66.3	106.7	107.3	104.8	103.8	107.6	109.6	109.6	108.0	106.5	102.2	104.7	105.2
Milk	8.0	100.0	100.0	100.0	100.0	100.0	100.0	102.4	102.4	102.4	102.4	102.4	102.4
Overall Index	1,000.0	103.7	107.1	100.9	102.2	99.6	100.2	93.0	95.2	90.8	86.1	87.6	88.0

¹ The indices are computed based on the method of variable baskets with fixed monthly weights in the base year as explained at paragraph 12 of Annex. The composition of these baskets is shown in Table 12.

... Not applicable

Monthly Producer Price Index -Agriculture (PPI-A)

(Base period:Year 2013=100)

Table 5 : Percentage changes from previous month by commodity group and product , July 2016 - June 2017

Commodity Group	Weight	Percentage changes from											
		Jun 16 to Jul 16	Jul 16 to Aug 16	Aug 16 to Sep 16	Sep 16 to Oct 16	Oct 16 to Nov 16	Nov 16 to Dec 16	Dec 16 to Jan 17	Jan 17 to Feb 17	Feb 17 to Mar 17	Mar 17 to Apr 17	Apr 17 to May 17	May 17 to Jun 17
Crop Products	611.6	9.5	-1.4	0.2	-1.3	2.0	6.4	-4.6	7.8	3.2	0.2	10.5	1.3
Sugar Cane	356.8	18.0	0.0	0.0	0.0	0.0	0.0	0.0	0.0	0.0	0.0	0.0	0.0
Other crops products	254.8	0.2	0.2	-4.1	1.0	-1.5	4.0	11.1	16.6	5.8	1.5	21.4	2.6
Fresh Vegetables	134.2	-9.5	6.3	-3.1	0.9	-6.2	5.3	-4.8	37.7	11.6	-1.1	31.1	-2.7
Beans	4.6	-14.1	1.6	-28.0	43.1	-3.2	-14.6	34.6	39.6	7.3	23.6	3.1	-13.8
Brinjal	6.0	30.9	-24.6	7.7	-19.9	9.8	-34.3	71.0	25.8	-31.2	-18.6	360.8	-32.6
Cabbage	5.9	-51.9	50.7	29.8	-5.9	-9.2	49.4	-7.2	63.9	42.3	-7.4	18.8	2.9
Cauliflower	2.9	-13.3	-7.4	13.6	3.3	0.0	-16.1	76.7	28.6	18.8	13.3	-9.4	-15.0
Carrot	8.8	-32.2	74.7	-18.0	11.2	1.2	25.4	-6.6	64.9	39.4	62.2	52.3	-11.3
Onion	12.3	0.0	0.0	0.0	0.0	0.0	0.0	0.0	0.0
Tomato	37.3	-54.9	14.7	-24.0	12.0	128.4	7.4	-42.7	75.6	102.3	17.5	-15.5	-9.3
Creepers	30.0	27.1	9.9	-5.1	-35.1	2.6	39.5	-9.5	38.9	-8.2	-26.4	91.8	-5.0
Other fresh vegetables	26.4	46.7	6.3	17.5	-28.7	-15.6	-7.6	16.4	17.3	-24.5	23.2	12.7	-3.5
Fruits and nuts	64.0	-14.6	-10.0	-0.7	2.4	9.6	51.7	-29.0	-12.2	-2.7	10.4	8.5	39.7
Banana	10.1	11.6	0.0	0.0	0.0	0.0	0.0	-6.3	0.0	0.0	0.0	0.0	0.0
Pineapple	20.4	4.9	-1.5	-0.1	-4.9	-15.0	4.2	5.8	0.0	20.7	9.3	4.4	9.0
Other fruits	33.5	-14.7	-2.0	37.9	-27.2	18.5	0.1	20.2
Oilseeds and oleaginous fruits	3.4	-1.3	1.6	7.0	-5.4	13.7	-12.1	13.7	0.7	3.6	-4.8	7.8	4.1
Groundnut	2.3	2.2	-1.3	-2.4	5.4	20.3	-14.9	16.7	0.7	6.9	-6.4	8.9	3.9
Coconut	1.1	0.0	0.0	0.0	0.0	0.0	0.0	0.0	0.0	0.0	0.0	0.0	0.0
Edible roots and tubers	35.7	3.1	1.3	-0.8	-0.1	-0.2	-0.5	8.7	22.0	5.4	-5.0	14.1	-20.1
Potato	29.0	2.3	0.0	0.0	0.0	0.0	0.0	0.0
Other Root crops	6.7	-0.8	13.5	-8.4	-3.6	-4.4	2.6	30.3	9.3	5.4	-5.0	14.1	-3.6
Stimulant & spice	9.6	0.0	0.0	0.0	0.0	0.0	0.0	3.8	-4.2	0.0	0.5	1.2	2.8
Tea	7.5	0.0	0.0	0.0	0.0	0.0	0.0	0.0	0.0	0.0	0.0	0.0	0.0
Ginger	2.1	-29.0	23.6	-10.3	-17.2	-2.1	14.5	51.3	-17.8	3.9	-9.7	9.6	3.2
Flowers, ornamental plants	7.9	0.0	0.0	0.0	0.0	0.0	0.0	0.0	0.0	0.0	0.0	0.0	0.0
Anthurium	2.4	0.0	0.0	0.0	0.0	0.0	0.0	0.0	0.0	0.0	0.0	0.0	0.0
Rose	0.9	0.0	0.0	0.0	0.0	0.0	0.0	0.0	0.0	0.0	0.0	0.0	0.0
Other flowers	4.6	0.0	0.0	0.0	0.0	0.0	0.0	0.0	0.0	0.0	0.0	0.0	0.0
Animals & Animal Products	388.4	0.3	0.2	-0.2	-3.6	-1.7	0.9	-1.7	-0.5	-0.3	2.0	1.9	0.2
Cattle	25.2	1.1	0.0	0.0	10.0	0.0	0.0	0.0	0.0	0.0	1.0	0.0	0.0
Pigs	11.5	0.0	0.0	0.0	0.0	0.0	0.0	0.0	0.0	0.0	18.3	0.0	0.0
Goat	3.4	2.9	0.0	0.0	1.0	0.0	0.0	8.9	0.0	0.0	-3.0	0.0	0.0
Deer	6.9	0.0	0.0	0.0	0.0	0.0	0.0	0.0	0.0	0.0	0.0	0.0	0.0
Poultry	267.1	0.3	0.0	0.0	-5.5	-1.7	2.9	-2.8	0.0	0.0	0.8	0.0	0.0
Eggs	66.3	0.1	1.0	-0.7	-3.1	-3.2	-6.0	1.0	-3.1	-1.9	5.8	11.6	1.0
Milk	8.0	0.0	0.0	0.0	0.0	0.0	0.0	0.0	0.0	0.0	0.0	0.0	0.0
Overall Change	1,000.0	5.7	-0.8	0.0	-2.2	0.5	4.2	-3.5	4.7	1.8	0.9	7.3	1.0

... Not applicable

Monthly Producer Price Index -Agriculture (PPI-A)

(Base period:Year 2013=100)

Table 6 : Percentage changes from corresponding month of previous year by commodity group and product , July 2016 - June 2017

Commodity Group	Weight	Percentage changes from											
		Jul 15 to Jul 16	Aug 15 to Aug 16	Sep 15 to Sep 16	Oct 15 to Oct 16	Nov 15 to Nov 16	Dec 15 to Dec 16	Jan 16 to Jan 17	Feb 16 to Feb 17	Mar 16 to Mar 17	Apr 16 to Apr 17	May 16 to May 17	Jun 16 to Jun 17
Crop Products	611.6	19.1	10.0	10.6	13.6	15.7	22.2	12.4	14.5	16.1	22.0	36.1	37.7
Sugar Cane	356.8	19.9	19.9	19.9	19.9	19.9	19.9	18.3	18.3	18.3	18.3	18.3	18.3
Other crops products	254.8	17.6	-1.6	-0.5	5.2	9.4	24.6	5.4	10.0	13.6	25.7	55.4	59.1
Fresh Vegetables	134.2	44.8	0.1	-1.3	6.0	25.3	33.8	5.0	8.9	8.6	34.2	86.2	100.1
Beans	4.6	18.9	-16.1	22.3	101.5	38.9	8.5	56.7	-5.1	-5.6	117.1	117.1	64.4
Brinjal	6.0	22.7	-4.8	15.0	12.7	25.5	-20.0	43.7	77.0	-6.3	-10.1	188.2	130.0
Cabbage	5.9	-28.9	-27.7	-23.4	9.2	-2.9	7.1	-29.5	-1.1	14.6	38.3	78.7	193.9
Cauliflower	2.9	0.1	-16.0	-11.4	3.2	-2.7	-17.1	46.5	88.4	123.9	108.5	89.0	86.3
Carrot	8.8	-38.7	15.4	-29.7	-9.2	-20.4	-16.6	-18.0	-12.3	-36.5	15.3	262.1	544.7
Onion	12.3	0.0	0.0	0.0	0.0	0.0	0.0	0.0	0.0	0.0
Tomato	37.3	-39.0	-56.2	-64.6	-25.8	120.9	102.6	-51.9	-46.2	-10.9	62.5	97.6	98.1
Creepers	30.0	51.4	40.7	28.3	9.8	23.1	65.4	32.9	53.4	36.2	19.7	112.2	90.7
Other fresh vegetables	26.4	168.7	59.8	76.6	21.6	18.9	11.7	36.7	24.9	34.1	21.6	26.6	40.8
Fruits and nuts	64.0	-2.9	-8.2	-0.2	8.8	-3.1	32.8	2.5	-2.2	14.4	11.2	11.4	31.9
Banana	10.1	15.7	11.6	11.6	11.6	11.6	11.6	4.6	4.6	4.6	4.6	4.6	4.6
Pineapple	20.4	12.0	-17.6	-6.4	4.6	-17.6	-19.5	4.5	-6.7	21.1	16.2	18.5	38.1
Other fruits	33.5	-31.8	20.6	2.0	51.0	0.9	-2.4	...	4.0	4.0	37.8
Oilseeds and oleaginous fruits	3.4	7.2	-1.2	-3.5	3.7	10.5	-1.3	21.2	22.4	33.1	15.0	27.4	28.6
Groundnut	2.3	9.4	-2.0	-6.8	5.4	13.8	-1.7	29.0	31.4	40.6	18.8	35.4	41.4
Coconut	1.1	0.0	0.0	0.0	0.0	0.0	0.0	0.0	0.0	0.0	0.0	0.0	0.0
Edible roots and tubers	35.7	1.5	3.3	2.5	2.7	2.6	3.1	13.4	43.7	41.5	34.1	63.6	23.3
Potato	29.0	2.3	2.3	2.3	2.3	2.3	2.3	2.3	2.3
Other Root crops	6.7	-4.5	13.1	6.2	11.6	9.5	9.8	33.4	43.7	41.5	34.2	63.6	53.0
Stimulant & spice	9.6	0.0	0.0	0.0	0.0	0.0	0.0	-1.2	0.0	0.0	0.0	0.0	0.0
Tea	7.5	0.0	0.0	0.0	0.0	0.0	0.0	0.0	0.0	0.0	0.0	0.0	0.0
Ginger	2.1	-17.1	-6.3	-7.4	-14.6	-25.2	-32.2	-12.2	-37.6	-29.6	-32.4	-24.7	-3.5
Flowers, ornamental plants	7.9	0.0	0.0	0.0	0.0	0.0	0.0	0.0	0.0	0.0	0.0	0.0	0.0
Anthurium	2.4	0.0	0.0	0.0	0.0	0.0	0.0	0.0	0.0	0.0	0.0	0.0	0.0
Rose	0.9	0.0	0.0	0.0	0.0	0.0	0.0	0.0	0.0	0.0	0.0	0.0	0.0
Other flowers	4.6	0.0	0.0	0.0	0.0	0.0	0.0	0.0	0.0	0.0	0.0	0.0	0.0
Animals & Animal Products	388.4	2.0	2.3	2.0	-0.5	-0.8	-1.5	-2.7	-2.5	-3.8	-2.1	-1.6	-2.6
Cattle	25.2	6.2	6.2	6.2	15.6	15.6	15.6	13.3	13.3	13.3	12.3	12.3	12.3
Pigs	11.5	-29.1	-29.1	-29.1	-29.1	-25.3	-25.3	-5.5	-5.5	-5.5	11.7	11.7	18.3
Goat	3.4	4.0	4.0	4.0	6.2	6.2	6.2	14.5	14.5	14.5	9.9	9.9	9.9
Deer	6.9	0.0	0.0	0.0	0.0	0.0	0.0	0.0	0.0	0.0	0.0	0.0	0.0
Poultry	267.1	3.7	3.7	3.7	-0.9	-2.6	-2.6	-5.3	-5.3	-5.3	-4.5	-6.1	-6.1
Eggs	66.3	-0.8	0.4	-0.7	-1.6	2.4	-1.8	-0.1	1.2	-7.0	-1.4	8.7	1.3
Milk	8.0	0.0	0.0	0.0	0.0	0.0	0.0	0.0	0.0	0.0	0.0	0.0	0.0
Overall Change	1,000.0	11.6	6.8	6.9	7.5	8.7	12.0	6.0	7.6	8.0	12.0	20.1	20.7

... Not applicable

Quarterly Producer Price Index -Agriculture (PPI-A)

(Base period:Year 2013=100)

Table 7 : Quarterly indices ¹ by commodity group and product, 3rd Quarter 2015 - 2nd Quarter 2017

Commodity Group	Weight	2015		2016				2017	
		3 rd Qr	4 th Qr	1 st Qr	2 nd Qr	3 rd Qr	4 th Qr	1 st Qr	2 nd Qr
Crop Products	611.6	86.0	85.0	91.6	89.8	96.3	99.3	104.3	118.2
Sugar Cane	356.8	82.5	82.5	83.2	83.2	98.4²	98.4²	98.4²	98.4
Other crops products	254.8	87.1	86.3	97.8	94.3	91.3	97.9	106.5	137.7
Fresh Vegetables³	134.2	83.1	76.1	109.3	97.2	92.8	90.8	117.6	166.5
Beans	4.6	76.3	59.8	119.6	94.8	79.5	86.6	129.9	184.0
Brinjal	6.0	94.3	70.8	76.1	93.8	104.7	74.7	102.2	200.8
Cabbage	5.9	72.8	68.1	143.7	107.0	53.7	71.3	140.9	205.9
Cauliflower	2.9	90.2	89.7	90.9	102.7	81.7	86.5	164.2	196.2
Carrot	8.8	45.1	53.4	109.8	83.5	37.2	45.1	80.8	241.2
Onion	12.3	104.9	104.9	...	104.9	104.9	104.9	...	0.0
Tomato	37.3	95.3	49.4	174.7	113.2	42.2	76.9	115.6	208.3
Creepers	30.0	88.9	69.9	89.9	87.8	124.0	92.4	126.8	154.9
Other fresh vegetables	26.4	69.0	87.8	85.4	97.9	142.3	103.1	111.7	124.5
Fruits and nuts³	64.0	93.5	100.4	93.1	100.3	90.0	117.6	96.5	121.2
Banana	10.1	104.7	105.9	105.9	105.9	118.2	118.2	110.8	110.8
Pineapple	20.4	78.5	71.9	66.2	74.2	74.1	63.9	70.1	91.7
Other fruits	33.5	200.9	128.5	143.2	164.6	137.1	174.3	143.5	213.0
Oilseeds and oleaginous fruits³	3.4	114.4	113.4	105.0	110.7	114.6	118.3	130.9	138.2
Groundnut	2.3	99.2	103.6	94.1	100.1	99.2	109.6	125.2	133.5
Coconut	1.1	160.0	160.0	160.0	160.0	160.0	160.0	160.0	160.0
Edible roots and tubers³	35.7	100.9	100.3	97.9	99.0	103.4	103.0	123.8	133.3
Potato	29.0	101.2	101.2	101.2	101.2	103.5	103.5	103.5	103.5
Other Root crops	6.7	98.3	86.4	96.2	98.0	102.6	95.4	134.5	147.6
Stimulant & spice³	9.6	125.7	119.4	109.7	111.1	120.7	111.3	110.9	111.7
Tea	7.5	107.5	107.5	107.5	107.5	107.5 ⁴	109.2 ⁴	109.2 ⁴	109.2 ⁴
Ginger	2.1	155.8	144.0	224.9	194.3	142.6	115.7	197.5	169.1
Flowers, ornamental plants	7.9	102.4	102.4	102.4	102.4	102.4	102.4	102.4	102.4
Anthurium	2.4	84.2	84.2	84.2	84.2	84.2	84.2	84.2	84.2
Rose	0.9	90.0	90.0	90.0	90.0	90.0	90.0	90.0	90.0
Other flowers	4.6	114.3	114.3	114.3	114.3	114.3	114.3	114.3	114.3
Animals & Animal Products	388.4	101.7	100.1	100.1	102.0	103.8	99.2	97.1	99.9
Cattle	25.2	106.4	107.5	109.7	111.8	113.0	124.3	124.3	125.5
Pigs	11.5	86.5	83.6	64.9	63.7	61.3	61.3	61.3	72.5
Goat	3.4	110.9	109.7	110.8	112.0	115.3	116.5	126.9	123.1
Deer	6.9	99.3	99.3	99.3	99.3	99.3	99.3	99.3	99.3
Poultry	267.1	99.9	99.7	101.6	102.7	103.6	97.7	96.2	97.0
Eggs	66.3	109.0	101.1	95.9	102.0	108.6	100.7	93.9	104.9
Milk	8.0	102.4	102.4	102.4	102.4	102.4	102.4	102.4	102.4
Overall Index	1,000.0	92.1	90.9	94.9	94.5	99.2	99.3	101.5	111.1

¹ Using data for base period (2013) as weights

² Revised

³ The indices are computed based on the method of variable baskets with fixed monthly weights in the base year as explained at paragraph 12 of Annex. The composition of these baskets is shown in Table 12.

⁴ Provisional

... Not applicable

Quarterly Producer Price Index -Agriculture (PPI-A)

(Base period:Year 2013=100)

Table 8 : Quarterly changes (%) and net contributions of commodity group and product to the change, 2nd Quarter 2016 - 2nd Quarter 2017

Commodity Group	Weight	Percentage changes from previous quarter				Percentage changes from corresponding quarter of previous year				Net contributions from			
		2 nd Qr 16	3 rd Qr 16	4 th Qr 16	1 st Qr 17	3 rd Qr 15	4 th Qr 15	1 st Qr 16	2 nd Qr 16	2 nd Qr 16	3 rd Qr 16	4 th Qr 16	1 st Qr 17
		to 3 rd Qr 16	to 4 th Qr 16	to 1 st Qr 17	to 2 nd Qr 17	to 3 rd Qr 16	to 4 th Qr 16	to 1 st Qr 17	to 2 nd Qr 17	to 3 rd Qr 16	to 4 th Qr 16	to 1 st Qr 17	to 2 nd Qr 17
Crop Products	611.6	7.2	3.1	4.9	13.3	12.0	16.8	13.8	31.6	2.97	0.71	3.51	10.22
Sugar Cane	356.8	18.1	0.0	0.0	0.1	19.2	19.2	18.1	18.3	5.39	0.00	0.00	0.04
Other crops products	254.8	-3.2	7.2	8.8	29.3	4.8	13.4	8.9	46.0	-1.91	0.42	3.10	9.55
Fresh Vegetables	134.2	-4.5	-2.2	29.5	41.6	11.7	19.3	7.6	71.3	-1.18	-0.65	4.02	7.37
Beans	4.6	-16.1	8.9	50.0	41.6	4.2	44.8	8.6	94.1	-0.07	0.03	0.20	0.25
Brinjal	6.0	11.6	-28.7	36.8	96.5	11.0	5.5	34.3	114.1	0.07	-0.18	0.17	0.59
Cabbage	5.9	-49.8	32.8	97.6	46.1	-26.2	4.7	-1.9	92.4	-0.31	0.10	0.41	0.38
Cauliflower	2.9	-20.4	5.9	89.8	19.5	-9.4	-3.6	80.6	91.0	-0.06	0.01	0.23	0.09
Carrot	8.8	-55.4	21.2	79.2	198.5	-17.5	-15.5	-26.4	188.9	-0.41	0.07	0.31	1.41
Onion	12.3	0.0	0.0	0.0	0.0	...	0.0	0.00	0.00	0.00	0.00
Tomato	37.3	-62.7	82.2	50.3	80.2	-55.7	55.7	-33.8	84.0	-2.65	1.29	1.44	3.46
Creepers	30.0	41.2	-25.5	37.2	22.2	39.5	32.2	41.0	76.4	1.09	-0.95	1.03	0.84
Other fresh vegetables	26.4	45.4	-27.5	8.3	11.5	106.2	17.4	30.8	27.2	1.17	-1.03	0.23	0.34
Fruits and nuts	64.0	-10.3	30.7	-17.9	25.6	-3.7	17.1	3.7	20.8	-0.80	1.04	-0.98	2.77
Banana	10.1	11.6	0.0	-6.3	0.0	12.9	11.6	4.6	4.6	0.12	0.00	-0.07	0.00
Pineapple	20.4	-0.1	-13.8	9.7	30.8	-5.6	-11.1	5.9	23.6	0.00	-0.21	0.13	0.44
Other fruits	33.5	-16.7	27.1	-17.7	48.4	-31.8	35.6	0.2	29.4	-0.92	1.25	-1.03	2.33
Oilseeds and oleaginous fruits	3.4	3.5	3.2	10.7	5.6	0.2	4.3	24.7	24.8	0.00	0.02	0.04	0.02
Groundnut	2.3	-0.9	10.5	14.2	6.6	0.0	5.8	33.0	33.4	0.00	0.02	0.04	0.02
Coconut	1.1	0.0	0.0	0.0	0.0	0.0	0.0	0.0	0.0	0.00	0.00	0.00	0.00
Edible roots and tubers	35.7	4.4	-0.4	20.2	7.7	2.5	2.7	26.5	34.6	0.10	-0.05	0.26	0.09
Potato	29.0	2.3	0.0	0.0	0.0	2.3	2.3	2.3	2.3	0.07	0.00	0.00	0.00
Other Root crops	6.7	4.7	-7.0	41.0	9.7	4.4	10.4	39.8	50.6	0.01	0.03	-0.05	0.09
Stimulant & spice	9.6	8.6	-7.8	-0.4	0.0	-4.0	-6.8	1.1	0.0	-0.11	-0.04	0.17	-0.06
Tea	7.5	0.0	1.6	0.0	0.0	0.0	1.6	1.6	0.0	0.00	0.01	0.00	0.00
Ginger	2.1	-26.6	-18.9	70.7	-14.4	-8.5	-19.7	-12.2	-13.0	-0.11	-0.06	0.17	-0.06
Flowers, ornamental plants	7.9	0.0	0.0	0.0	0.0	0.0	0.0	0.0	0.0	0.00	0.00	0.00	0.00
Anthurium	2.4	0.0	0.0	0.0	0.0	0.0	0.0	0.0	0.0	0.00	0.00	0.00	0.00
Rose	0.9	0.0	0.0	0.0	0.0	0.0	0.0	0.0	0.0	0.00	0.00	0.00	0.00
Other flowers	4.6	0.0	0.0	0.0	0.0	0.0	0.0	0.0	0.0	0.00	0.00	0.00	0.00
Animals & Animal Products	388.4	1.8	-4.4	-2.1	2.9	2.1	-0.9	-3.0	-2.1	0.69	-1.81	-0.82	1.09
Cattle	25.2	1.1	10.0	0.0	1.0	6.2	15.6	13.3	12.3	0.03	0.28	0.00	0.03
Pigs	11.5	-3.8	0.0	0.0	18.3	-29.1	-26.7	-5.5	13.8	-0.03	0.00	0.00	0.13
Goat	3.4	2.9	1.0	8.9	-3.0	4.0	6.2	14.5	9.9	0.01	0.00	0.04	-0.01
Deer	6.9	0.0	0.0	0.0	0.0	0.0	0.0	0.0	0.0	0.00	0.00	0.00	0.00
Poultry	267.1	0.9	-5.7	-1.5	0.8	3.7	-2.0	-5.3	-5.6	0.24	-1.58	-0.40	0.21
Eggs	66.3	6.5	-7.3	-6.8	11.7	-0.4	-0.4	-2.1	2.8	0.44	-0.52	-0.45	0.73
Milk	8.0	0.0	0.0	0.0	0.0	0.0	0.0	0.0	0.0	0.00	0.00	0.00	0.00
Overall	1,000.0	5.0	0.1	2.1	9.5	7.7	9.2	6.8	17.6	3.66	-1.10	2.69	11.31

... Not applicable

Annual Producer Price Index -Agriculture (PPI-A)

(Base period:Year 2013=100)

Table 9 : Annual indices, annual changes (%) and net contributions of commodity group and product to the change, 2014 - 2016

Commodity Group	Weight	Annual index ¹			Percentage changes from		Net contributions from	
		2014	2015	2016	2014 to 2015	2015 to 2016	2014 to 2015	2015 to 2016
Crop Products	611.6	92.9	88.1	94.6	-5.2	7.4	-2.39	3.87
Sugar Cane	356.8	90.1	81.2	90.8 ²	-9.9	11.8	-3.18	3.43
Other crops products	254.8	93.1	93.9	96.1	0.9	2.3	0.69	0.54
Fresh Vegetables ³	134.2	91.9	94.3	96.6	2.6	2.4	0.72	-0.14
Beans	4.6	103.0	95.4	93.1	-7.4	-2.4	-0.03	-0.01
Brinjal	6.0	93.6	104.6	86.3	11.8	-17.5	0.07	-0.11
Cabbage	5.9	91.0	108.1	87.7	18.8	-18.9	0.10	-0.12
Cauliflower	2.9	84.8	88.7	88.4	4.6	-0.3	0.01	0.00
Carrot	8.8	88.3	99.6	62.5	12.8	-34.8	0.03	-0.29
Onion	12.3	104.9	104.9	104.9	0.0	0.0	0.00	0.00
Tomato	37.3	81.1	108.2	95.3	33.4	-11.9	1.01	-0.48
Creepers	30.0	93.6	91.6	98.0	-2.1	7.0	-0.06	0.19
Other fresh vegetables	26.4	94.3	79.1	105.1	-16.1	32.9	-0.40	0.69
Fruits and nuts ³	64.0	100.6	100.0	102.3	-0.6	2.3	0.06	0.53
Banana	10.1	94.6	102.2	112.0	8.0	9.6	0.08	0.10
Pineapple	20.4	83.0	77.5	69.5	-6.6	-10.3	-0.11	-0.16
Other fruits	33.5	83.0	77.5	163.6	-6.6	12.2	0.09	0.60
Oilseeds and oleaginous fruits ³	3.4	93.0	108.2	113.1	16.3	4.5	0.07	0.01
Groundnut	2.3	88.8	95.3	101.3	7.3	6.3	0.01	0.01
Coconut	1.1	109.5	160.0	160.0	46.1	0.0	0.06	0.00
Edible roots and tubers ³	35.7	100.8	100.3	102.8	-0.5	2.5	-0.03	0.09
Potato	29.0	101.2	101.2	103.4	0.0	2.2	0.00	0.06
Other Root crops	6.7	98.0	93.6	98.0	-4.5	4.7	-0.03	0.03
Stimulant & spice ³	9.6	120.6	117.0	114.8	-3.0	-1.9	-0.03	-0.02
Tea	7.5	102.1	106.2	109.2	4.0	2.8	0.03	0.02
Ginger	2.1	185.3	154.7	134.6	-16.5	-13.0	-0.06	-0.04
Flowers, ornamental plants	7.9	102.4	102.4	102.4	0.0	0.0	0.00	0.00
Anthurium	2.4	84.2	84.2	84.2	0.0	0.0	0.00	0.00
Rose	0.9	90.0	90.0	90.0	0.0	0.0	0.00	0.00
Other flowers	4.6	114.3	114.3	114.3	0.0	0.0	0.00	0.00
Animals & Animal Products	388.4	100.5	100.8	101.2	0.3	0.4	0.16	0.18
Cattle	25.2	103.2	105.9	114.7	2.6	8.3	0.07	0.22
Pigs	11.5	94.0	87.8	62.8	-6.6	-28.5	-0.07	-0.29
Goat	3.4	105.1	109.2	113.6	3.9	4.0	0.01	0.01
Deer	6.9	99.7	99.3	99.3	-0.4	0.0	0.00	0.00
Poultry	267.1	98.9	99.9	101.4	1.0	1.5	0.27	0.40
Eggs	66.3	106.3	104.4	101.8	-1.8	-2.5	-0.13	-0.17
Milk	8.0	101.2	102.4	102.4	1.2	0.0	0.01	0.00
Overall	1,000.0	95.9	93.0	97.2	-3.0	4.5	-2.23	4.05

¹ Using data for base period (2013) as weights

² Revised

³ The indices are computed based on the method of variable baskets with fixed monthly weights in the base year as explained at paragraph 12 of Annex. The composition of these baskets is shown in Table 12.

⁴ Provisional

Table 10 : Monthly and Quarterly Price Indices - Agriculture (PPI-A) : January 2014 - June 2017**(Base period : Year 2013=100)**

Month	2014	2015	2016	2017
January	103.7	99.7	92.6	98.2 ¹
February	107.1	98.2	95.5	102.8 ¹
March	100.9	102.2	96.9	104.7 ¹
<i>1st quarter</i>	<i>101.1</i>	<i>99.9</i>	<i>94.9</i>	<i>101.5</i> ¹
April	102.2	95.1	94.3	105.6 ²
May	99.6	87.0	94.3	113.3 ²
June	100.2	90.1	94.8	114.4 ²
<i>2nd quarter</i>	<i>100.7</i>	<i>90.9</i>	<i>94.5</i>	<i>111.1</i> ²
July	93.0	89.8	100.2 ¹	
August	95.2	93.1	99.4 ¹	
September	90.8	93.0	99.4 ¹	
<i>3rd quarter</i>	<i>93.0</i>	<i>92.1</i>	<i>99.2</i> ¹	
October	86.1	90.4	97.2 ¹	
November	87.6	89.9	97.7 ¹	
December	88.0	90.9	101.8 ¹	
<i>4th quarter</i>	<i>87.5</i>	<i>90.9</i>	<i>99.3</i> ¹	
Yearly average ³	95.9	93.0	97.2 ¹	
<i>Annual change (%)</i>	-4.1	-3.0	4.5	

¹ Revised² Provisional³ Using data for base period (2013) as weights

Table 11 : Monthly Producer Price Index-Agriculture (PPI-A) ¹ : January 2001 - June 2017

(Base period:Year 2013=100)

Month	2001	2002	2003	2004	2005	2006	2007	2008	2009	2010	2011	2012	2013	2014	2015	2016	2017
January	55.5	65.6	64.6	73.7	73.5	80.7	86.1	90.2	93.9	89.6	87.4	94.9	99.4	103.7	99.7	92.6	98.2 ²
February	56.9	70.4	68.4	74.1	78.2	80.7	90.1	93.0	98.7	94.1	90.6	96.3	100.3	107.1	98.2	95.5	102.8 ²
March	55.6	71.2	71.9	76.7	84.4	87.0	98.9	94.2	100.2	94.0	90.9	98.4	99.8	100.9	102.2	96.9	104.7 ²
April	57.3	64.8	72.2	77.4	90.3	88.8	95.7	98.9	98.0	92.9	91.6	96.9	100.2	102.2	95.1	94.3	105.6 ³
May	58.8	61.1	73.8	75.1	84.3	82.7	90.1	96.4	96.6	89.3	90.8	95.9	101.3	99.6	87.0	94.3	113.3 ³
June	60.0	61.2	71.8	73.1	77.0	80.9	85.2	98.0	96.5	88.9	89.3	95.3	101.3	100.2	90.1	94.8	114.4 ³
July	62.9	65.6	71.6	74.7	77.9	83.2	86.8	94.9	86.9	87.0	97.2	100.3	101.1	93.0	89.8	100.2 ²	
August	61.8	66.3	70.3	74.2	77.6	85.0	88.5	93.0	86.2	87.0	97.5	98.8	101.1	95.2	93.1	99.4 ²	
September	60.7	66.8	68.8	72.9	79.1	83.1	89.5	93.0	85.2	83.8	96.9	96.1	100.6	90.8	93.0	99.4 ²	
October	61.3	67.2	68.6	73.4	81.5	82.1	89.4	93.8	84.2	85.7	94.9	96.6	98.8	86.1	90.4	97.2 ²	
November	60.5	64.7	70.1	72.8	78.9	82.3	88.9	93.3	86.1	87.1	95.4	98.7	97.9	87.6	89.9	97.7 ²	
December	62.2	65.7	69.8	71.8	79.3	82.7	88.0	91.8	84.0	84.4	95.9	97.9	98.4	88.0	90.9	101.8 ²	
Yearly Average ⁴	59.7	65.3	69.8	73.6	79.5	82.8	88.7	94.1	90.9	88.6	93.2	96.9	100.0	95.9	93.0	97.2 ²	
Annual change (%)	4.3	9.4	6.9	5.5	8.0	4.1	7.1	6.0	-3.3	-2.6	5.2	4.0	3.2	-4.1	-3.0	4.5	

¹ The indices for January 2001 to June 2017 previously based on 2007=100 have been converted to the new base 2013=100

² Revised

³ Provisional

⁴ Using data for base period (2013) as weights

Monthly Producer Price Index -Agriculture (PPI-A)
(Base period:Year 2013 =100)

Table 12 : Weight distribution for the base period and its months by commodity group and product

Commodity Group	Weight												
	Year	January	February	March	April	May	June	July	August	September	October	November	December
Crop Products	611.6	611.6	611.6	611.6	611.6	611.6	611.6	611.6	611.6	611.6	611.6	611.6	611.6
Sugar Cane	356.8	356.8	356.8	356.8	356.8	356.8	356.8	356.8	356.8	356.8	356.8	356.8	356.8
Other crops products	254.8	254.8	254.8	254.8	254.8	254.8	254.8	254.8	254.8	254.8	254.8	254.8	254.8
Fresh Vegetables	134.2	134.2	134.2	134.2	134.2	134.2	134.2	134.2	134.2	134.2	134.2	134.2	134.2
Beans	4.6	4.3	4.0	3.5	3.3	3.0	4.7	3.7	4.8	5.1	3.5	3.8	4.4
Brinjal	6.0	5.7	5.7	6.7	5.0	4.8	5.5	4.3	5.0	4.4	3.4	4.6	5.3
Cabbage	5.9	3.7	3.4	5.4	4.2	3.9	5.2	5.6	6.7	5.5	3.1	3.3	3.4
Cauliflower	2.9	1.4	1.1	1.2	1.7	3.2	6.0	6.3	7.5	5.1	3.1	2.6	2.2
Carrot	8.8	6.4	6.6	8.0	5.6	6.4	9.2	9.0	13.7	10.8	5.4	5.9	6.0
Onion	12.3	1.1	0.0	0.0	0.0	0.0	0.2	0.8	5.6	19.0	35.2	28.1	6.6
Tomato	37.3	29.2	25.6	28.9	24.0	25.8	32.7	28.2	34.3	32.2	25.3	28.8	28.2
Creepers	30.0	43.3	44.9	53.6	42.1	42.5	45.3	36.6	36.8	33.7	24.4	30.3	33.3
Other fresh vegetables	26.4	38.9	43.0	26.9	48.3	44.6	25.5	39.6	19.7	18.4	30.8	26.9	44.7
Fruits and nuts	64.0	64.0	64.0	64.0	64.0	64.0	64.0	64.0	64.0	64.0	64.0	64.0	64.0
Banana	10.1	10.8	16.5	19.2	17.4	16.7	12.3	15.2	18.4	17.7	15.7	10.9	7.5
Pineapple	20.4	26.4	38.5	44.8	43.5	40.1	26.9	37.4	45.6	46.3	42.7	31.2	17.9
Other fruits	33.5	26.8	9.0	0.0	3.1	7.1	24.8	11.4	0.0	0.0	5.6	22.0	38.7
Oilseeds and oleaginous fruits	3.4	3.4	3.4	3.4	3.4	3.4	3.4	3.4	3.4	3.4	3.4	3.4	3.4
Groundnut	2.3	2.8	2.8	3.0	2.9	2.9	2.7	2.8	2.7	2.2	2.7	2.8	2.9
Coconut	1.1	0.6	0.6	0.4	0.5	0.5	0.7	0.6	0.7	1.2	0.7	0.6	0.5
Edible roots and tubers	35.7	35.7	35.7	35.7	35.7	35.7	35.7	35.7	35.7	35.7	35.7	35.7	35.7
Potato	29.0	22.2	0.0	0.0	0.0	0.0	19.8	31.6	32.3	33.5	33.8	34.0	31.1
Other Root crops	6.7	13.5	35.7	35.7	35.7	35.7	15.9	4.1	3.4	2.2	1.9	1.7	4.6
Stimulant & spice	9.6	9.6	9.6	9.6	9.6	9.6	9.6	9.6	9.6	9.6	9.6	9.6	9.6
Tea	7.5	9.1	9.6	9.6	9.5	9.3	8.9	7.6	6.6	4.6	5.3	6.0	9.4
Ginger	2.1	0.5	0.0	0.0	0.1	0.3	0.8	2.0	3.0	5.0	4.3	3.6	0.3
Flowers, ornamental plants	7.9	7.9	7.9	7.9	7.9	7.9	7.9	7.9	7.9	7.9	7.9	7.9	7.9
Anthurium	2.4	2.4	2.4	2.4	2.4	2.4	2.4	2.4	2.4	2.4	2.4	2.4	2.4
Rose	0.9	0.9	0.9	0.9	0.9	0.9	0.9	0.9	0.9	0.9	0.9	0.9	0.9
Other flowers	4.6	4.6	4.6	4.6	4.6	4.6	4.6	4.6	4.6	4.6	4.6	4.6	4.6
Animals & Animal Products	388.4	388.4	388.4	388.4	388.4	388.4	388.4	388.4	388.4	388.4	388.4	388.4	388.4
Cattle	25.2	25.2	25.2	25.2	25.2	25.2	25.2	25.2	25.2	25.2	25.2	25.2	25.2
Pigs	11.5	11.5	11.5	11.5	11.5	11.5	11.5	11.5	11.5	11.5	11.5	11.5	11.5
Goat	3.4	3.4	3.4	3.4	3.4	3.4	3.4	3.4	3.4	3.4	3.4	3.4	3.4
Deer	6.9	6.9	6.9	6.9	6.9	6.9	6.9	6.9	6.9	6.9	6.9	6.9	6.9
Poultry	267.1	267.1	267.1	267.1	267.1	267.1	267.1	267.1	267.1	267.1	267.1	267.1	267.1
Eggs	66.3	66.3	66.3	66.3	66.3	66.3	66.3	66.3	66.3	66.3	66.3	66.3	66.3
Milk	8.0	8.0	8.0	8.0	8.0	8.0	8.0	8.0	8.0	8.0	8.0	8.0	8.0
Overall Index	1,000.0	1,000.0	1,000.0	1,000.0	1,000.0	1,000.0	1,000.0	1,000.0	1,000.0	1,000.0	1,000.0	1,000.0	1,000.0

Producer Price Index – Agriculture (PPI-A)**Methodology for the computation of PPI-A****1. Introduction**

The analysis of price data implies comparison of current and past prices. Comparison over time is required to study the price movement in order to understand the history and to indicate future outlook. While price relatives of single commodities can be studied in isolation, general conclusion can only be derived from averages, covering a given set or class of commodities. The indicators of average price changes are the price indices.

2. Scope

The PPI-A covers agricultural products that are classified according to the latest Central Product Classification (CPC) Ver.2.1. There are two divisions: Division 01 - Crop Products and Division 02 - Animals & Animal Products. “Crop Products” is further divided into 7 Commodity Groups namely:

Group 012: Fresh vegetables

Group 013: Fruit and nuts

Group 014: Oilseeds and oleaginous fruits

Group 015: Edible roots and tubers

Group 016: Stimulant and spice

Group 018: Sugar cane

Group 019: Flowers, ornamental plants

3. Commodity Coverage

The bulk of the products in agriculture, with the exception of forestry, fishing and agricultural services, is taken into account in the producer price index. Thus, about 79% of the total value of agricultural production is covered.

4. Observation Units

There are essentially three types of observation units for collecting producer prices: (i) producers (ii) purchasers and (iii) markets. However, in the context of Mauritius, different type of observation units are used for different commodities as shown below:

(a) For main commercial crops (sugar cane and tea leaf etc) the respective marketing agency is the source of the price data.

(b) For vegetables, price data are obtained mainly at the two auction markets which are situated at Vacoas and Port Louis respectively.

(c) For fruits, prices are recorded from different sources such as planters and first middlemen.

(d) For animals and animal products, price data are available at sources varying from marketing agencies to producers.

5. Definition of prices

A price is a pure price when the same amount of money refers to what the buyer pays and what the seller receives. Since the price series form the basis for calculation, the index of the output prices must be representative of what the farmer actually receives.

The prices must be recorded at a point in the marketing of the product which is as close as possible to the farmer. This means that the selling prices should be recorded at the farm-gate or (if this is not possible) at the next stage of the commodity flow.

6. Purpose of the agricultural price indices

The purpose of the price indices is to provide information on trends in producer prices of agricultural products and purchase prices of the means of agricultural production.

The selling prices of agricultural products and the purchase of the means of production have a decisive influence on farmer's income. It would, therefore, be useful to have indicators showing how agricultural revenue and expenditure are influenced by their price component.

The agricultural price indicators are of two types:-

- (i) Prices received by farmers represent the producer prices of agricultural products (output prices)
- (ii) Prices paid by farmers are the purchase prices of agricultural requisites (input prices)

The two classes of prices mentioned above, are considered important in the context of economic analysis and agricultural policy decisions. Index numbers based on them show the average changes of these prices.

It is to be noted that only the output price index for different groups of commodities is compiled.

7. Price received by agricultural producers

As mentioned earlier, the prices for the index should be farm-gate prices, but this is not possible in many cases. Hence, in lieu of the farm-gate price, the wholesale price of the produce is recorded at the two auction markets located in Vacoas and Port Louis.

As regards sugarcane, there is no actual market price for the product. The final price for a crop is only available after the crop year to which it refers. Provisional estimates of the price of sugar is provided by Mauritius Sugar Syndicate. This is however revised as soon as the final price is available. The same procedure is applied to tea.

8. Frequency of Price Collection

The frequency of price collection varies from weekly for some commodities to only once a year in others. Broadly speaking, the frequency of price collection is as follows:-

- (i) For vegetables, price data are collected every second and fourth week of a month at the two auction markets
- (ii) For commodities for which prices are fairly stable, data suppliers are visited on a quarterly basis, but prices are collected for each month of the quarter. For example crop products – potato, onion etc.
- (iii) For the main commercial crops like sugar cane and tea leaf, the reported prices are normally fixed for the crop year by the respective marketing agency.
- (iv) For the remaining type of items not mentioned above, the price data are collected on a monthly basis.

9. Weighting scheme and choice of the base period

As price data are associated with commercial transaction, it is logical to relate prices to sales rather than total production. However, since value of production for the market (sales) is not available here, the value of the total production is considered as a proxy in calculation of weights. Furthermore, since meteorological conditions and market forces may generate high fluctuations, the weight base is taken as the average of the total production for three years.

It may be noted that ‘Food and Agriculture Organisation’ and ‘Eurostat’ recommend that if the quantity weight base is the average of 3 years, then the reference base for prices should be the middle year. The weights are derived by multiplying the average of production during the years 2012, 2013 and 2014 by the average of unit prices in 2013, the reference period. The weight is assigned to each commodity group on the basis of total production (as a proxy for sales) pertaining to the particular group. At commodity level, the weights are apportioned within the commodity group on the basis of production of each product.

Quarterly and annual indices have been computed using a weighting system based on the production value for the base period.

10. Index calculation

The PPI will be calculated according to a Laspeyres formula:

$$I_t = \frac{\sum W_i (P_{ti}/P_{oi})}{\sum W_i} \times 100$$

Where:

- I_t** is the index for the current period t
P_{ti} is the price of commodity i in the current period t
P_{oi} is the price of the commodity i in the reference period o (2013)
W_i is the weight associated with commodity i

The prices of commodity i, whenever there are more than one quote as in the case of wholesale price at the two auction markets, are averaged using geometric mean.

11. Uses of agricultural price indices

The construction of agricultural price index numbers may serve various purposes as shown below:-

- (i) Economic analysis, in particular the estimation of general price trends and their relationship with other pertinent variable, e.g the study of domestic price changes in relation to prices observed in external markets or the movement of agricultural production.
- (ii) Monitoring the implementation of agricultural price policy decision such as the introduction or modification of support prices
- (iii) Forecasting price movements in connection with market studies or business cycle research.
- (iv) Compilation of national accounts at constant prices. In order to estimate the growth of the real product of the agricultural sector, deflator indices are needed. They are appropriately weighted indices of agricultural commodities or input items.

12. Seasonality

Prices and quantities of many agricultural commodities show seasonal variations. As vegetables and fruits are extremely seasonal products, it is therefore decided to use the method of variable baskets with fixed monthly weights in the base year.

There are 12 monthly baskets of representative products. The composition of these baskets varies each month. Certain products whose marketing period covers the whole year appear in all 12 monthly baskets, while others, which are more seasonal, appear only in some of them. However, the composition of the basket for a given month is fixed over time.

13. Missing Prices

There is also in the field of agricultural price observation the case of missing prices for a product which must be taken into account because there is an index weight for respective month. In these cases, the last observed price is carried forward as recommended by the Producer Price Index Manual of the International Monetary Fund.

14. Periodicity

The index is calculated on a monthly, quarterly as well as on an annual basis. While quarterly and annual price indices can normally be calculated as the simple (unweighted) average of the monthly indices, it is recommended that the monthly sales figures for the base year be used as weights to calculate the quarterly and annual indices. If sales figures are not available, total production can be used as a proxy when most of the production is available for sales. Such is the case in Mauritius and the values of total production have been used as weights.