

Quarterly National Accounts

Fourth Quarter 2016

Introduction

This issue of Economic and Social Indicators on Quarterly National Accounts (QNA) presents quarterly estimates of GDP for the first quarter of 2012 to the fourth quarter of 2016. Estimates have been worked out using both the production and the expenditure approach, based on latest available data. The production data covering value added at current prices and growth rates over the corresponding period of the previous year by industry group are presented in Tables 1 and 2, and the components of expenditure of GDP in Tables 3 and 4. Data in these tables have not been seasonally adjusted, which partly explains the fluctuations in the series (Figure 1).

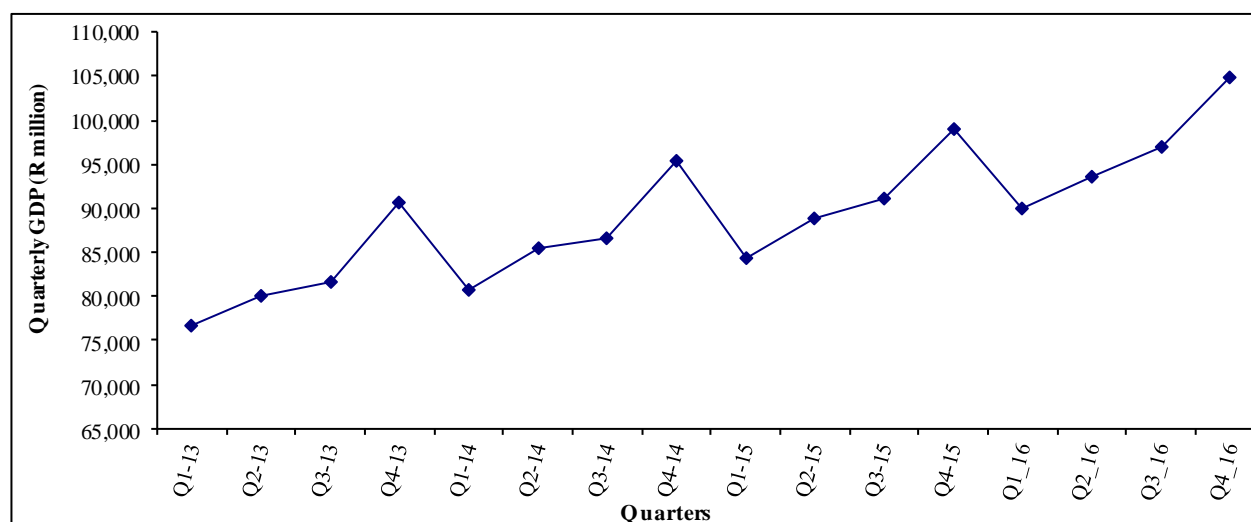
For more meaningful trend analysis, seasonally adjusted estimates of quarterly GDP from the production approach have been worked out. The derived quarter-to-quarter growth rates for first quarter 2013 to the fourth quarter of 2016, together with some analysis are presented in section 5 of this publication.

Definitions of terminology are given on pages 9 and 10. The data sources and methods used, including the method used for seasonal adjustment are described in the Annex.

2. Quarterly Gross Value Added (GVA) estimates at current prices

Figure 1 shows the quarterly Gross Value Added (GVA) estimates at basic prices for the first quarter of 2013 to the fourth quarter of 2016. It is observed that throughout the period, the quarterly data follow the same pattern every year. Production is relatively low in the first quarter; it increases gradually in the two subsequent quarters to peak in the last quarter before declining in the first quarter of the following year. This pattern clearly indicates seasonality in the data. Thus, in 2015, GVA at current basic prices which stood at R 84,237 million in the first quarter, increased to R 88,799 million in the second quarter, R 91,080 million in the third quarter to peak at R 99,032 million in the fourth quarter. It then declined to R 89,935 million in the first quarter of 2016 and picked up in the second, third and fourth quarters to reach R 93,604 million, R 96,892 million and R 104,936 million respectively.

Fig 1: Quarterly GVA estimates at current basic prices, Q₁ 2013 – Q₄ 2016



The lower GVA figures observed during the first quarters may be due to lower economic activities resulting from temporary closures of firms during the month of January because of New Year festivities. On the other hand, the higher GVA figures during the last quarters could be explained by more activities in “Accommodation and food service activities” due to high tourist arrivals, “Manufacturing” and “Wholesale and retail trade” to meet the high demand for consumption goods for end of year festivities.

Quarterly data series normally indicate that around 23% of the annual GVA is produced in the first quarters, 25% in the second quarters, 25% in the third quarters and 27% in the fourth quarters.

Quarterly GVA at current prices for the fourth quarter of 2016 is estimated at R 104,936 million compared to R 96,892 million in the previous quarter and to R 99,032 million in the corresponding quarter of 2015.

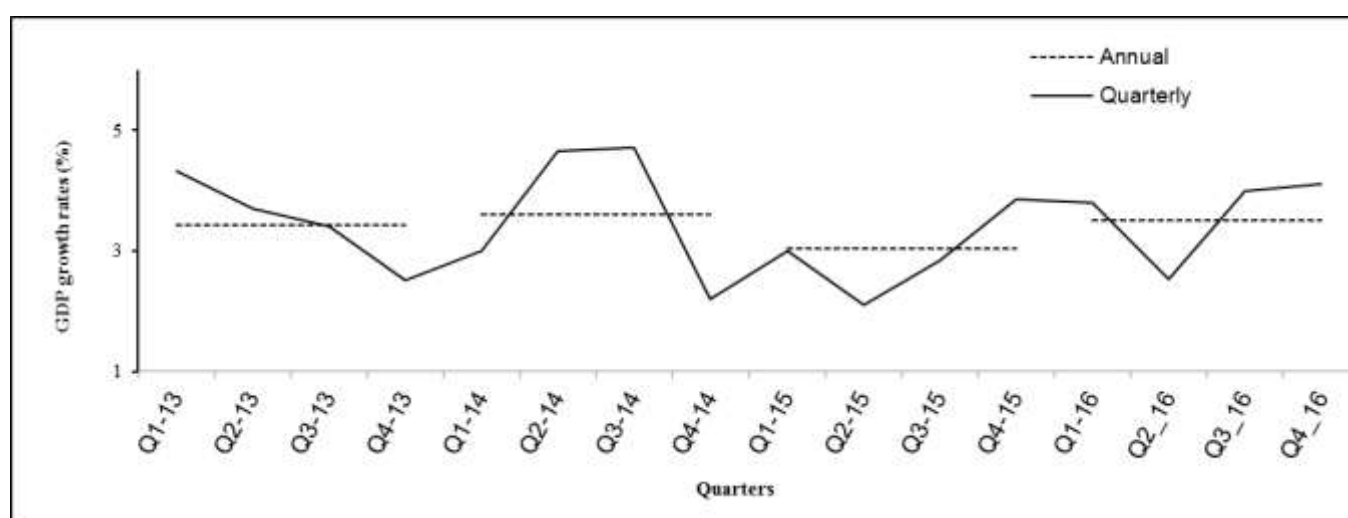
3. Quarterly growth rates (based on data unadjusted for seasonality) – Table 2

3.1 Growth rates, Q1 2013 – Q4 2016, (year on year change)

Table 2 shows year on year quarterly growth rates by industry group for the period first quarter of 2013 to the fourth quarter of 2016. The rates are based on value added unadjusted for seasonality and represent the percentage change in real value added over the same quarter of the previous year.

Figure 2 shows the year on year quarterly GVA growth rates for the first quarter of 2013 to the fourth quarter of 2016 and the annual rates for 2013 to 2016. After growths of 3.4% and 3.6% in 2013 and 2014, a lower growth of 3.0% was registered in 2015. GVA growth for 2016 is now estimated at 3.5%.

Fig. 2: GVA growth rates, quarterly (percentage change over corresponding period of previous year) and annual, Q1 2013 – Q4 2016



The quarterly growth rates show a slowdown of the economy in 2013, from 4.3% in the first quarter to 2.5% in the last quarter. Improvement is subsequently observed till the third quarter of 2014 but was followed by a lower growth of 2.2% in the fourth quarter. Steady growth was then registered in 2015 with 3.0% in the first quarter, 2.1% in the second quarter, 2.9% in the third quarter and 3.8% in the fourth quarter. Latest figures for 2016 indicate a better performance than in 2015, except for the second quarter when GVA growth rate worked out to 2.3%.

3.2 Growth rates, (year-on-year), Q₃ 2016

Based on latest available information, GVA growth for the third quarter of 2016 over the corresponding quarter of 2015 has been revised downward to 3.7% instead of 4.0%, estimated in December 2016. This downward revision is mainly the result of lower growths in “Water supply, sewerage, waste management and remediation activities” (3.9% instead of 4.4%), “Information and communication” (4.8% instead of 6.3%), “Professional, scientific and technical activities” (5.8% instead of 6.1%), “Public administration and defence; compulsory social security” (3.4% instead of 3.7%) and “Arts, entertainment and recreation”, (4.7% instead of 5.8%).

3.3 Growth rates, (year-on-year), Q₄ 2016

GVA growth rate for the fourth quarter of 2016 over the corresponding quarter of 2015 is estimated at 4.1%. Growth was registered in all sectors as follows:

“Agriculture, forestry and fishing” grew by 2.5% in the fourth quarter of 2016 after a growth of 3.5% in the previous quarter. The growth of 2.5% in the fourth quarter was due to growths of 6.0% in “Sugarcane” and 0.6% in “Other agriculture”.

“Manufacturing” rose by 1.6% in the fourth quarter after a growth of 1.2% in the previous quarter. The expansion of 1.6% was the result of growths of 7.0% in “Sugar”, 1.4% in “Food (exc. sugar)” and 8.5% in “Other manufacturing” but somehow offset by a decline of 6% in “Textile”.

“Electricity, gas, steam and air conditioning supply” grew by 2.3% in the fourth quarter, lower than the rate of 3.1% noted in the third quarter.

“Water supply, sewerage, waste management and remediation activities” grew by 1.1% in the fourth quarter, lower than the growth of 3.9% in the previous quarter.

“Construction” registered a positive growth of 6.2% in the fourth quarter of 2016 after that of 7.3% in the previous quarter.

“Wholesale and retail trade; repair of motor vehicles and motorcycles” grew by 3.0% in the fourth quarter of 2016, after a growth of 2.9% in the third quarter.

“Transportation and storage” grew by 3.7% in the fourth quarter of 2016, lower than the rate of 4.1% in the previous quarter.

“Accommodation and food service activities” registered another high growth of 12.0% in the fourth quarter of 2016, after the growth of 7.4% in the previous quarter.

“Information and communication” grew by 6.9% in the fourth quarter following the growth of 4.8% in the third quarter.

“Financial and insurance activities” registered a growth of 5.6% in the fourth quarter of 2016, same as in the previous quarter.

“Real estate activities” grew by 2.6% in the fourth quarter of 2016 after a growth of 3.2% during the third quarter. Growth in real estate activities is mainly driven by changes in ‘Ownership of dwellings’ which grew by 2.3% in the fourth quarter of 2016 after a growth of 2.9% in the third quarter.

“Professional, scientific and technical activities” grew by 5.7% in the fourth quarter of 2016 slightly lower than the growth of 5.8% in the previous quarter.

“Administrative and support service activities” registered a growth of 5.6% in the last quarter of 2016 after a growth of 6.6% in the previous quarter.

“Public administration and defence; compulsory social security” grew by 3.1%, lower than the growth of 3.4% in the previous quarter.

“Education” grew by 0.2% in the fourth quarter of 2016 after a growth of 1.0% in the previous quarter.

“Human health and social work activities” grew by 2.4% in the fourth quarter of 2016 after a growth of 2.3% in the third quarter.

“Arts, entertainment and recreation” registered a growth rate of 4.8% in the fourth quarter of 2016, lower than the growth of 5.2% during the third quarter.

“Other service activities” grew by 3.2% in the fourth quarter of 2016, same as in the previous quarter.

3.4 Contribution of industry groups to GVA growth, fourth quarter 2016

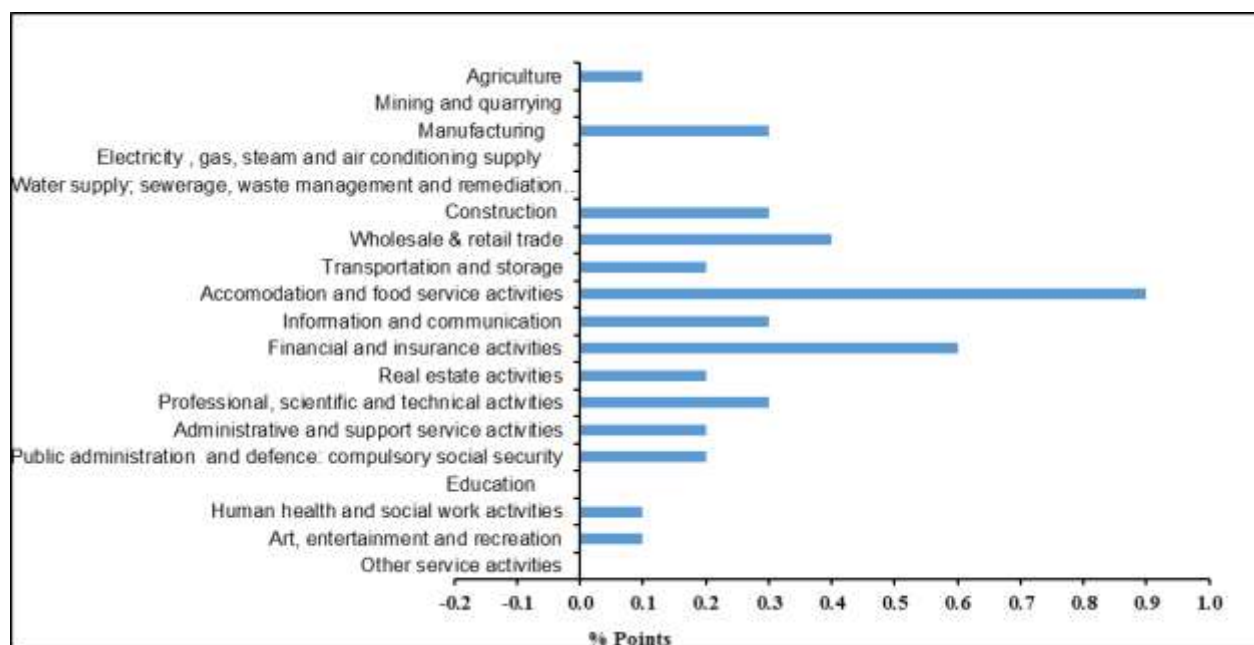
The contribution of an industry to GVA growth depends on two factors, namely, its share in GVA and the change in its real value added. From Table A and Figure 3, it is observed that the 4.1% growth in GVA during the fourth quarter of 2016 was mainly due to:

- (i) “Accommodation and food service activities” which contributed 0.9 percentage point;
- (ii) “Financial and insurance activities” contributing 0.6 percentage point;
- (iii) “Wholesale and retail trade; repair of motor vehicles and motorcycles” contributing 0.4 percentage point;
- (iv) “Manufacturing”, “Construction”, and “Professional, scientific and technical activities” each contributing 0.3 percentage point.

Industry	Contribution to GVA growth											
	Q1 2014	Q2 2014	Q3 2014	Q4 2014	Q1 2015	Q2 2015	Q3 2015	Q4 2015	Q1 2016	Q2 2016	Q3 2016	Q4 2016
Agriculture, forestry and fishing	0.1	0.1	0.1	0.1	-0.3	0.0	0.1	0.0	0.2	0.1	0.1	0.1
Mining and quarrying	0.0	0.0	0.0	0.0	0.0	0.0	0.0	0.0	0.0	0.0	0.0	0.0
Manufacturing	-0.3	0.6	0.5	-0.4	0.3	-0.4	-0.1	0.3	-0.2	-0.3	0.2	0.3
Electricity , gas, steam and air conditioning supply	0.1	0.1	0.0	0.0	0.1	0.0	0.0	0.1	0.2	0.1	0.1	0.0
Water supply;sewerage, waste management and remediation activities	0.0	0.0	0.0	0.0	0.0	0.0	0.0	0.0	0.0	0.0	0.0	0.0
Construction	-0.3	-0.6	-0.5	-0.5	-0.4	-0.4	-0.1	-0.1	-0.3	-0.3	0.3	0.3
Wholesale & retail trade; repair of motor vehicles, motorcycles	0.3	0.4	0.4	0.4	0.3	0.3	0.3	0.4	0.4	0.4	0.3	0.4
Transportation and storage	0.2	0.2	0.2	0.1	0.2	0.2	0.2	0.3	0.3	0.3	0.3	0.2
Accomodation and food service activities	-0.1	0.5	0.2	0.4	0.7	0.2	0.5	0.7	0.9	0.3	0.4	0.9
Information and communication	0.3	0.3	0.3	0.2	0.4	0.4	0.2	0.3	0.3	0.2	0.2	0.3
Financial and insurance activities	0.6	0.6	0.5	0.6	0.5	0.6	0.6	0.7	0.8	0.7	0.7	0.6
Real estate activities	0.2	0.2	0.2	-0.2	0.1	0.1	0.1	0.6	0.4	0.2	0.2	0.2
Professional, scientific and technical activities	0.3	0.4	0.3	0.2	0.2	0.2	0.2	0.2	0.3	0.3	0.3	0.3
Administrative and support service activities	0.1	0.2	0.2	0.2	0.2	0.2	0.2	0.2	0.2	0.2	0.2	0.2
Public administration and defence: compulsory social security	0.2	0.3	0.4	0.3	0.1	0.2	0.2	-0.2	0.2	0.0	0.2	0.2
Education	0.1	0.1	0.2	0.2	0.1	0.2	0.1	0.1	0.0	0.0	0.0	0.0
Human health and social work activities	0.3	0.3	0.3	0.4	0.2	0.1	0.2	0.1	0.1	0.1	0.1	0.1
Art , entertainment and recreation	0.2	0.2	0.2	0.2	0.2	0.2	0.2	0.2	0.2	0.2	0.2	0.1
Other services	0.1	0.1	0.1	0.1	0.0	0.0	0.0	0.1	0.0	0.0	0.1	0.0
GVA at basic prices	2.4	4.0	3.6	2.2	3.0	2.1	2.9	3.8	3.7	2.3	3.7	4.1

Contribution of an industry to the GDP growth is calculated as the product of its share in the economy and the year on year growth rate

Fig 3: Contribution of industry groups to GVA growth rate, fourth quarter 2016



4. Quarterly GDP by expenditure

4.1 *Quarterly expenditure components at current prices*

During the fourth quarter of 2016, final consumption expenditure which comprises consumption expenditure of households and general government, amounted to R 105,881 million, representing 89% of the quarterly GDP at market prices. Final consumption of households estimated at R 88,965 million, represented 75% of the quarterly GDP and that of general government, estimated at R 16,916 million, 14% of the quarterly GDP (Table 3).

Analysis of quarterly data shows seasonality in household consumption expenditure with highest consumption occurring during the fourth quarters. In 2016, it is noted that household consumption expenditure during the fourth quarter represented 28% of the yearly total compared to 23% in the first quarter, 24% in the second quarter and 25% in the third quarter.

Data prior to 2014 show that “Exports of goods” were highest during the fourth quarters. However, this seasonal pattern is not that obvious in following years. “Exports of services” which comprises mainly tourist earnings and revenue of the national airline from foreign travellers are normally highest during the first and fourth quarters.

Imports of goods are highest in the fourth quarters, mainly explained by high consumption at the end of the year. Import of services are generally highest in the fourth quarters.

There is no distinct seasonal pattern in the data for general government consumption expenditure and Gross Fixed Capital Formation (GFCF).

4.2 *Growth rates (year-on-year) of expenditure components, Q4 2016*

Analysis of year on year quarterly GDP by expenditure shows that total final consumption expenditure in real terms increased by 3.0% in the fourth quarter of 2016, compared to the corresponding quarter of 2015, higher than in the third quarter of 2016 (Table 4). Final consumption expenditure of households grew by 3.3% compared to 2.9% in the previous quarter while that of general government grew by 1.3% compared to 0.9% in the third quarter of 2016.

Investment grew by 1.7% in the fourth quarter of 2016 after a growth of 9.4% in the third quarter. The 1.7% growth in the fourth quarter was the result of a positive growth of 6.6% in “Building and construction work”, partly offset by a decline of 7.4% in “Machinery and equipment”.

The 6.6% growth in “Building and construction work” in the fourth quarter is due to a growth of 19.1% in “Residential building” and 10.1% in “Non-residential building”, partly offset by a contraction of 14.8% in “Other construction work”.

The decline of 7.4% in “Machinery and equipment” is the result of negative growths of 1.6% in “Passenger car” and 15.0% in “Other machinery and equipment”, partly offset by a positive growth of 45.3% in “Other transport equipment”.

Exports of goods and services grew by 0.3% in the fourth quarter of 2016 after a decline of 5.9% in the third quarter. The growth of 0.3% is the net result of a positive growth of 5.0% of exports of services and a contraction of 5.7% in export of goods.

Imports of goods and services registered a decline of 4.2% in the fourth quarter of 2016 after a growth of 2.0% in the previous quarter. The decline of 4.2% is due to contractions of 0.7% and 13.3% in imports of goods and imports of services respectively.

5. Seasonally adjusted quarterly GVA

Table B and Figure 4 show the year-on-year quarterly GVA growth rates based on unadjusted data and the quarter-to-quarter growth rates based on seasonally adjusted data for first quarter of 2011 to fourth quarter of 2016.

As indicated earlier, while the year-on-year growth rates can be used to analyse trends, the quarter to quarter growth rates provide a more meaningful trend analysis with the advantage of being able to detect trend changes much earlier. For example, the year-on-year growth rates show a turning point in the fourth quarter of 2013; however the quarter-to-quarter seasonally adjusted data show a turning point as early as the first quarter of 2013.

Seasonally adjusted data show that the quarter to quarter GVA growth rate declined to 1.0% in the fourth quarter of 2016 after a growth of 3.0% in the third quarter.

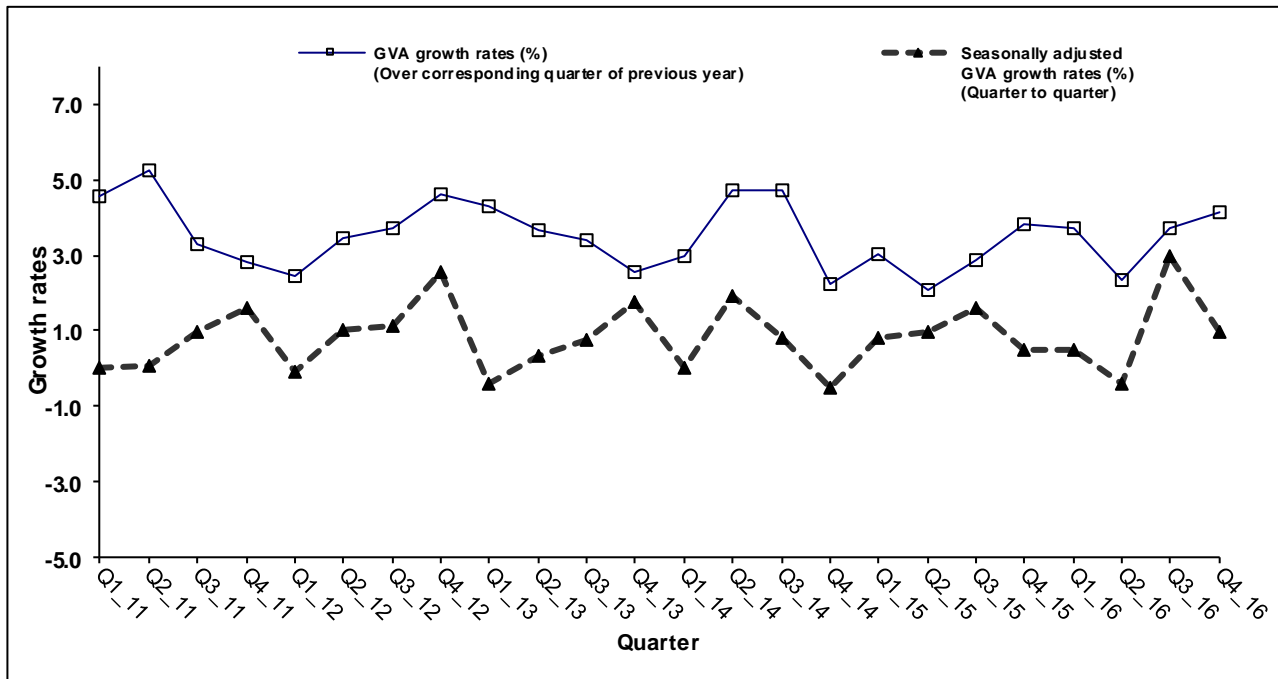
Users may consult the website of Statistics Mauritius (<http://statsmauritius.govmu.org>) for seasonally adjusted growth rates by industry group.

Table B: Quarterly GVA growth rates ¹, Q1 2011 – Q4 2016

Quarter	GVA growth rates (%) (Over corresponding quarter of previous year)	Seasonally adjusted GVA growth rates (%) (Quarter to quarter)	Quarter	GVA growth rates (%) (Over corresponding quarter of previous year)	Seasonally adjusted GVA growth rates (%) (Quarter to quarter)
Q1_11	4.5	0.0	Q1_14	3.0	0.0
Q2_11	5.2	0.1	Q2_14	4.7	1.9
Q3_11	3.3	1.0	Q3_14	4.7	0.8
Q4_11	2.8	1.6	Q4_14	2.2	-0.5
Q1_12	2.5	-0.1	Q1_15	3.0	0.8
Q2_12	3.5	1.0	Q2_15	2.1	1.0
Q3_12	3.7	1.1	Q3_15	2.9	1.6
Q4_12	4.6	2.5	Q4_15	3.8	0.5
Q1_13	4.3	-0.4	Q1_16	3.7	0.5
Q2_13	3.7	0.3	Q2_16	2.3	-0.4
Q3_13	3.4	0.8	Q3_16	3.7	3.0
Q4_13	2.5	1.8	Q4_16	4.1	1.0

^{1/} Growth rates for first quarter 2011 to third quarter 2016 have been revised and that of the fourth quarter of 2016 is a first estimate

Figure 4: GVA growth rates (over corresponding quarter of previous year and quarter to quarter), Q1 2011 – Q4 2016.



Definition of terminology used

1. Gross Domestic Product (GDP)

GDP is the aggregate money value of all goods and services produced within a country out of economic activity during a specified period before provision for the consumption of fixed capital.

2. Gross Value Added (GVA) at basic prices

Gross Value Added at basic prices is obtained as the difference between output and intermediate consumption whereby output is valued at basic prices and intermediate consumption at purchasers' prices.

The basic price is the amount receivable by the producer exclusive of taxes on products and inclusive of subsidies on products. The equivalent for imported products is the c.i.f. value, i.e. the value at the border of the importing country.

The purchasers' price is the amount payable by the purchaser exclusive of deductible taxes on products (e.g. deductible value added tax).

3. GDP at market prices

GDP at market prices is equal to the Gross Value Added at basic prices plus taxes (net of subsidies) on products.

4. Final Consumption expenditure

Final Consumption expenditure refers to the expenditure made on goods and services by households and government.

5. Gross Fixed Capital Formation (GFCF)

GFCF is the net additions to the physical assets of the country in a year. These consist mainly of investment in buildings, plants, machinery and transport equipment, all valued at market prices.

6. Exports and Imports of goods and services

Exports and imports of goods are measured on an f.o.b. basis. Insurance and freight, which represent the difference between the c.i.f. and f.o.b. values of imports of goods, are recorded as import of services.

Exports and imports of goods are compiled according to the General Trade System, using the national boundary as the statistical frontier. All goods entering the country are recorded in imports and goods leaving the country in exports.

7. Export Oriented Enterprises (EOE)

Export Oriented Enterprises comprise enterprises formerly operating with an export certificate and those export manufacturing enterprises holding a registration certificate issued by the Board of Investment.

8. Change in inventories

Change in inventories includes the value of the physical change in inventories of raw materials, work in progress, and finished goods held by producers.

9. Financial intermediation services indirectly measured (FISIM)

FISIM is the value of services not explicitly charged by financial institutions (banks and similar institutions) and is imputed in respect of all loans and deposits irrespective of source of funds. As recommended by the 2008 SNA, it is allocated to users as follows: intermediate consumption of businesses, final consumption of households and government, and a component of exports of services.

Note: Figures in some tables may not add up to the total published due to rounding off.

Statistics Mauritius
Ministry of Finance and Economic Development
Port Louis
March 2017

<p>Contact Persons: Mr. K. Persand (Statistician) Ms. F. Victor (Senior Statistical Officer) Statistics Mauritius L.I.C. Centre Port-Louis Tel: (230) 208-1800 Fax: (230) 213-0234 Email: cso_qna@govmu.org</p>

Table 1 - Gross value added by industry group at current basic prices, Q₁ 2013 - Q₄ 2016

	(R million)									
	Year (Cumulated 4 quarters)		2013				2014			
	2013	2014	Q1	Q2	Q3	Q4	Q1	Q2	Q3	Q4
Agriculture, forestry and fishing	12,570	12,778	2,668	2,674	3,195	4,033	2,906	2,748	3,256	3,868
Sugarcane	3,544	3,162	609	674	858	1,404	540	598	764	1,260
Other	9,026	9,616	2,059	2,000	2,337	2,629	2,366	2,150	2,492	2,608
Mining and quarrying	990	1,000	202	240	245	303	180	227	244	348
Manufacturing	51,788	53,274	10,034	12,272	13,541	15,940	9,942	12,770	13,598	16,963
Sugar	810	641	142	224	223	221	113	177	177	175
Food (exc sugar)	18,253	18,663	3,478	4,144	4,953	5,677	3,516	4,240	4,794	6,113
Textile	15,517	16,118	2,942	3,928	4,151	4,497	2,825	4,232	4,205	4,856
Other	17,207	17,852	3,472	3,976	4,214	5,545	3,488	4,122	4,423	5,819
Electricity , gas, steam and air conditioning supply	4,722	5,511	1,255	1,193	1,137	1,136	1,414	1,432	1,324	1,341
Water supply; sewerage, waste management and remediation activities	1,294	1,340	338	325	349	283	356	329	363	293
Construction	17,923	16,631	4,356	4,539	4,553	4,475	4,184	4,158	4,178	4,111
Wholesale & retail trade; repair of motor vehicles and motorcycles	38,965	41,579	8,220	9,469	9,422	11,855	8,869	10,194	10,159	12,357
of which wholesale and retail trade	36,545	38,977	7,781	8,819	8,871	11,075	8,390	9,494	9,564	11,528
Transportation and storage	19,779	21,160	5,000	4,603	5,008	5,167	5,281	4,983	5,387	5,509
Accommodation and food service activities	19,827	21,702	6,051	4,410	3,618	5,748	6,238	5,202	4,163	6,099
Information and communication	14,398	14,948	3,472	3,494	3,641	3,790	3,643	3,633	3,791	3,882
Financial and insurance activities	38,336	41,322	9,039	9,524	9,607	10,166	9,791	10,232	10,285	11,014
Monetary intermediation	21,755	23,309	5,469	5,776	5,155	5,355	5,898	6,154	5,486	5,771
Financial leasing and other credit granting	2,316	2,500	526	504	612	674	569	541	660	730
Insurance, reinsurance and pension funding	10,199	11,071	2,122	2,345	2,763	2,970	2,314	2,562	2,970	3,224
Other	4,066	4,442	922	900	1,077	1,167	1,009	975	1,169	1,288
Real estate activities	20,042	21,165	4,997	4,895	4,793	5,356	5,236	5,149	5,582	5,198
of which Owner occupied dwellings	16,796	17,572	4,204	4,077	3,985	4,530	4,345	4,241	4,687	4,300
Professional, scientific and technical activities	14,624	15,923	3,526	3,661	3,653	3,784	3,872	4,005	3,982	4,065
Administrative and support service activities	8,754	9,752	2,106	2,189	2,187	2,272	2,385	2,448	2,442	2,477
Public administration and defence: compulsory social security	20,196	21,543	4,590	5,084	5,213	5,310	4,718	5,611	5,478	5,737
Education	15,725	16,562	3,831	4,014	4,026	3,853	4,062	4,209	4,179	4,113
Human health and social work activities	13,123	14,431	3,271	3,288	3,335	3,229	3,521	3,630	3,651	3,630
Art , entertainment and recreation	10,766	11,854	2,507	2,792	2,787	2,680	2,809	3,084	3,069	2,891
Other service activities	5,189	5,537	1,173	1,327	1,328	1,361	1,274	1,421	1,418	1,423
Gross Value Added (GVA) at basic prices	329,009	348,012	76,637	79,995	81,636	90,742	80,681	85,465	86,547	95,319
Taxes on products (net of subsidies)	43,388	44,051	9,591	10,546	10,969	12,282	9,834	11,338	10,608	12,271
Gross Domestic Product at market prices	372,397	392,062	86,228	90,540	92,605	103,024	90,515	96,802	97,155	107,590
Export Oriented Enterprises	20,328	20,704	4,053	5,193	5,527	5,554	4,041	5,429	5,502	5,731

Table 1 - (cont'd) Gross value added by industry group at current basic prices, Q₁ 2013- Q₄ 2016

(R million)

	Year (Cumulated 4 quarters)		2015 ¹				2016			
	2015	2016	Q1	Q2	Q3	Q4	Q1 ¹	Q2 ¹	Q3 ¹	Q4 ²
Agriculture, forestry and fishing	12,696	13,620	2,746	2,624	3,293	4,032	2,907	2,888	3,579	4,245
Sugarcane	2,912	3,084	492	543	705	1,171	532	588	748	1,216
Other	9,784	10,536	2,254	2,081	2,588	2,861	2,376	2,300	2,831	3,029
Mining and quarrying	893	908	173	233	241	246	177	237	239	255
Manufacturing	53,503	53,706	9,984	12,847	14,129	16,543	10,308	12,707	14,313	16,378
Sugar	608	775	107	168	167	166	136	214	213	211
Food (exc sugar)	18,774	19,018	3,541	4,136	5,007	6,089	3,622	4,053	5,162	6,181
Textile	16,634	15,830	2,856	4,380	4,515	4,883	3,020	3,902	4,542	4,366
Other	17,487	18,083	3,480	4,162	4,440	5,405	3,530	4,537	4,395	5,621
Electricity , gas, steam and air conditioning supply	7,083	8,429	1,856	1,742	1,669	1,816	2,180	2,029	2,010	2,210
Water supply; sewerage, waste management and remediation activities	1,442	1,490	372	394	338	338	386	402	357	345
Construction	16,018	16,018	3,948	3,921	4,077	4,072	3,671	3,643	4,377	4,327
Wholesale & retail trade; repair of motor vehicles and motorcycles	43,738	45,914	9,421	10,849	10,820	12,648	9,894	11,414	11,319	13,288
of which wholesale and retail trade	40,968	43,005	8,914	10,114	10,187	11,753	9,361	10,642	10,652	12,351
Transportation and storage	22,415	24,131	5,556	5,354	5,708	5,797	5,983	5,782	6,159	6,206
Accommodation and food service activities	23,520	26,727	6,511	4,986	4,862	7,161	7,454	5,746	5,483	8,043
Information and communication	15,445	16,067	3,835	3,866	3,796	3,947	4,056	4,025	3,868	4,118
Financial and insurance activities	43,599	46,614	10,527	10,781	10,800	11,490	11,280	11,565	11,544	12,225
Monetary intermediation	24,528	26,489	6,377	6,485	5,735	5,930	6,920	7,031	6,204	6,334
Financial leasing and other credit granting	2,545	2,604	607	552	663	722	619	571	680	734
Insurance, reinsurance and pension funding	11,734	12,461	2,461	2,691	3,143	3,440	2,597	2,859	3,323	3,682
Other	4,792	5,060	1,081	1,054	1,260	1,398	1,144	1,104	1,337	1,475
Real estate activities	21,888	22,770	5,322	5,248	5,659	5,659	5,678	5,419	5,848	5,825
of which Owner occupied dwellings	18,026	18,657	4,362	4,272	4,698	4,694	4,649	4,385	4,826	4,798
Professional, scientific and technical activities	16,953	18,107	4,132	4,257	4,234	4,330	4,415	4,558	4,527	4,608
Administrative and support service activities	10,541	11,278	2,583	2,640	2,632	2,685	2,759	2,827	2,829	2,862
Public administration and defence: compulsory social security	22,309	24,733	4,897	5,974	5,772	5,666	5,476	6,450	6,458	6,348
Education	17,305	18,547	4,263	4,471	4,369	4,202	4,583	4,745	4,701	4,518
Human health and social work activities	15,458	16,764	3,792	3,877	3,960	3,829	4,119	4,192	4,266	4,187
Art , entertainment and recreation	12,598	13,453	2,993	3,267	3,255	3,083	3,212	3,440	3,466	3,335
Other service activities	5,775	6,031	1,333	1,474	1,474	1,495	1,398	1,527	1,538	1,568
Gross Value Added (GVA) at basic prices	363,177	385,305	84,244	88,806	91,088	99,040	89,935	93,594	96,882	104,893
Taxes on products (net of subsidies)	46,346	48,883	11,300	11,317	10,982	12,747	11,615	12,676	11,009	13,583
Gross Domestic Product at market prices	409,523	434,187	95,544	100,123	102,070	111,787	101,550	106,270	107,891	118,476
Export Oriented Enterprises	20,858	20,154	3,990	5,545	5,770	5,554	4,280	4,974	5,637	5,263

Table 2 - Gross Value Added-sectoral growth rates (% over corresponding period of previous year), Q₁ 2013 - Q₄ 2016

	Annual growth rate		2013				2014			
	2013	2014	Q1	Q2	Q3	Q4	Q1	Q2	Q3	Q4
Agriculture, forestry and fishing	+0.5	+5.0	-3.9	+0.2	+4.5	-0.2	+5.0	+4.4	+3.4	+2.8
Sugarcane	-2.2	-3.5	-1.9	-1.5	-2.5	-2.4	-4.5	-4.4	-3.9	-2.4
Other	+1.8	+6.5	-6.7	+0.3	+8.4	+1.8	+9.0	+8.6	+5.7	+4.4
Mining and quarrying	-4.6	-2.5	-2.4	-6.6	-0.7	-8.0	-9.5	-2.0	-3.0	+3.2
Manufacturing	+4.7	+1.8	+6.4	+5.2	+3.7	+4.1	+0.3	+5.4	+3.9	-2.0
Sugar	+0.4	+0.8	+0.4	+0.4	+0.4	+0.4	+0.8	+0.8	+0.8	+0.8
Food (exc sugar)	-0.3	+2.4	-1.5	-1.4	+3.3	-1.4	-1.2	+3.4	+3.7	+2.6
Textile	2.6	4.2	+6.2	+8.0	-2.5	+0.8	-2.0	+8.2	+6.5	+2.6
Other	12.7	1.0	+16.7	+11.4	+9.7	+13.8	+4.0	+7.8	+0.8	-12.0
Electricity , gas, steam and air conditioning supply	+4.4	+4.0	+6.5	+2.5	+3.7	+4.5	+3.7	+6.5	+2.3	+3.4
Water supply; sewerage, waste management and remediation activities	+2.5	+2.9	+3.0	+1.1	+1.9	+4.0	+5.1	+0.4	+4.0	+2.4
Construction	-8.2	-8.5	-0.7	-1.8	-10.2	-18.0	-6.0	-9.7	-9.3	-9.1
Wholesale & retail trade; repair of motor vehicles and motorcycles	+2.8	+3.0	+3.4	+2.8	+2.4	+2.5	+2.8	+2.8	+3.0	+3.2
of which wholesale and retail trade	+2.6	+2.9	+3.4	+2.7	+2.2	+2.4	+2.7	+2.8	+2.9	+3.1
Transportation and storage	+2.4	+2.8	+3.2	-0.6	+2.0	+4.5	+2.8	+3.6	+3.3	+1.9
Accommodation and food service activities	+2.9	+6.1	+2.0	+1.9	+4.1	+3.8	+1.0	+11.7	+7.5	+6.0
Information and communication	+7.1	+6.4	+7.4	+8.2	+7.3	+5.6	+6.9	+6.0	+7.0	+5.8
Financial and insurance activities	+5.5	+5.5	+5.3	+5.4	+5.9	+5.4	+6.1	+5.7	+4.8	+5.4
Monetary intermediation	+5.6	+5.5	+5.5	+5.4	+6.0	+5.6	+6.0	+5.6	+4.6	+5.7
Financial leasing and other credit granting	+6.5	+6.5	+6.2	+6.4	+6.5	+6.8	+6.5	+6.7	+6.3	+6.5
Insurance, reinsurance and pension funding	+4.9	+5.0	+4.5	+4.9	+5.7	+4.4	+5.6	+5.8	+4.1	+5.0
Other	+5.5	+5.9	+5.2	+5.7	+5.5	+5.6	+5.9	+5.5	+6.2	+6.0
Real estate activities	+6.0	+5.2	+10.5	+8.7	+5.7	+0.5	+3.3	+4.6	+16.9	-3.1
of which Owner occupied dwellings	+5.9	+4.9	+10.8	+8.8	+5.5	-0.2	+2.9	+4.3	+18.1	-4.3
Professional, scientific and technical activities	+6.9	+5.5	+7.0	+6.9	+7.0	+6.7	+5.5	+5.6	+5.6	+5.4
Administrative and support service activities	+8.1	+7.9	+7.9	+7.8	+7.9	+8.7	+7.8	+8.0	+8.0	+7.8
Public administration and defence: compulsory social security	+0.9	+5.4	-2.0	+0.1	+2.7	+2.6	+1.1	+9.8	+3.9	+6.2
Education	+1.6	+2.6	+3.6	+0.8	+0.9	+1.1	+2.9	+1.9	+2.0	+3.7
Human health and social work activities	+5.4	+6.7	+7.5	+3.8	+4.3	+6.2	+5.8	+6.7	+6.4	+8.0
Art , entertainment and recreation	+7.7	+6.8	+7.5	+7.6	+7.6	+8.0	+7.0	+6.8	+6.8	+6.8
Other service activities	+4.3	+3.4	+3.1	+3.9	+4.6	+5.5	+3.3	+3.4	+3.4	+3.5
Gross Value Added (GVA) at basic prices	+3.4	+3.6	+4.3	+3.7	+3.4	+2.5	+3.0	+4.7	+4.7	+2.2
Taxes on products (net of subsidies)	+3.0	+4.8	-0.3	+4.2	+3.0	+4.8	+4.1	+6.5	+4.2	+4.3
Gross Domestic Product at market prices	+3.4	+3.7	+0.9	+3.5	+4.5	+4.2	+2.0	+4.0	+4.7	+4.0
Export Oriented Enterprises	-3.0	+2.5	-2.2	-0.7	-6.5	-2.1	+0.9	+5.6	+3.4	-0.4

**Table 2 - (cont'd) Gross Value Added-sectoral growth rates (% over corresponding period of previous year),
Q₁ 2013 - Q₄ 2016**

	Annual growth rate		2015 ¹				2016			
	2015	2016	Q1	Q2	Q3	Q4	Q1 ¹	Q2 ¹	Q3 ¹	Q4 ²
Agriculture, forestry and fishing	-0.3	+3.7	-7.6	+1.0	+2.6	+0.2	+5.7	+4.4	+3.5	+2.5
Sugarcane	-6.2	+5.5	-6.3	-7.1	-5.9	-6.0	+3.9	+5.5	+5.6	+6.0
Other	+1.6	+3.2	-7.7	+1.8	+3.9	+4.5	+6.3	+4.2	+3.2	+0.6
Mining and quarrying	-3.4	+1.0	-0.7	-2.9	-5.6	-3.5	-2.0	+3.3	+0.9	+1.4
Manufacturing	+0.0	+0.0	+2.5	-2.7	-0.8	+1.5	-1.6	-2.1	+1.2	+1.6
Sugar	-8.9	+7.0	-8.9	-8.9	-8.9	-8.9	+7.0	+7.0	+7.0	+7.0
Food (exc sugar)	+3.0	+1.5	+7.2	+2.3	+0.6	+3.1	+1.0	+2.3	+1.1	+1.4
Textile	-2.8	-5.5	-2.0	-7.2	-0.1	-2.0	-3.4	-13.8	+1.1	-6.0
Other	-0.2	+3.2	+2.0	-3.2	-2.6	+3.1	-3.1	+4.1	+1.0	+8.5
Electricity , gas, steam and air conditioning supply	+3.8	+4.2	+4.2	+2.1	+1.7	+6.9	+7.0	+4.0	+3.1	+2.3
Water supply; sewerage, waste management and remediation activities	+3.0	+2.0	+3.4	+4.2	+1.9	+2.6	+1.2	+2.0	+3.9	+1.1
Construction	-4.9	+0.0	-7.5	-7.5	-2.7	-1.8	-7.1	-7.0	+7.3	+6.2
Wholesale & retail trade; repair of motor vehicles and motorcycles	+2.8	+3.0	+2.8	+2.5	+3.1	+2.9	+3.1	+3.1	+2.9	+3.0
of which wholesale and retail trade	+2.7	+3.0	+2.8	+2.5	+3.0	+2.6	+3.1	+3.0	+2.8	+3.0
Other	+4.2	+4.2	+4.0	+2.2	+4.2	+6.0	+3.6	+4.4	+4.2	+3.7
Transportation and storage	+3.4	+4.0	+2.8	+3.8	+2.9	+4.1	+3.7	+4.3	+4.1	+3.7
Accommodation and food service activities	+8.7	+9.2	+9.7	+3.1	+10.1	+10.8	+10.9	+4.5	+7.4	+12.0
Information and communication	+7.0	+6.0	+8.2	+8.7	+5.0	+6.2	+6.4	+5.6	+4.8	+6.9
Financial and insurance activities	+5.3	+5.7	+4.6	+5.0	+5.5	+5.7	+5.8	+5.7	+5.6	+5.6
Monetary intermediation	+5.4	+6.0	+4.2	+5.3	+5.9	+5.7	+6.2	+5.7	+6.0	+5.9
Financial leasing and other credit granting	+6.3	+6.5	+6.5	+6.3	+6.6	+5.8	+6.4	+6.6	+6.7	+6.3
Insurance, reinsurance and pension funding	+4.6	+5.2	+4.6	+4.0	+4.5	+5.2	+5.3	+5.5	+4.7	+5.3
Other	+5.8	+5.0	+6.5	+5.2	+5.5	+6.0	+5.0	+5.3	+4.9	+4.6
Real estate activities	+4.2	+3.8	+2.3	+2.4	+1.7	+9.8	+6.4	+3.2	+3.2	+2.6
of which Owner occupied dwellings	+4.0	+3.6	+1.8	+2.0	+1.2	+10.2	+6.6	+2.9	+2.9	+2.3
Other	+0.0	+5.5	+0.0	+0.0	+0.0	+0.0	+0.0	+0.0	+0.0	+0.0
Professional, scientific and technical activities	+5.1	+5.7	+4.8	+5.0	+5.2	+5.3	+5.7	+5.6	+5.8	+5.7
Administrative and support service activities	+6.7	+5.9	+6.6	+6.8	+6.6	+6.8	+5.5	+5.8	+6.6	+5.6
Public administration and defence; compulsory social security	+0.8	+2.5	+1.1	+2.5	+2.5	-2.9	+2.8	+0.7	+3.4	+3.1
Education	+2.5	+0.6	+2.9	+3.5	+2.2	+1.4	+0.9	+0.2	+1.0	+0.2
Human health and social work activities	+3.5	+2.3	+3.6	+3.4	+4.3	+2.9	+2.2	+2.2	+2.3	+2.4
Art , entertainment and recreation	+4.8	+5.0	+4.7	+4.6	+4.8	+5.1	+5.1	+5.1	+5.2	+4.8
Other service activities	+3.0	+3.1	+2.8	+2.8	+2.8	+3.6	+2.9	+2.9	+3.2	+3.2
Gross Value Added (GVA) at basic prices	+3.0	+3.5	+3.0	+2.1	+2.9	+3.8	+3.7	+2.3	+3.7	+4.1
Taxes on products (net of subsidies)	+6.9	+5.6	+12.1	+1.8	+7.0	+7.1	+5.5	+12.8	+1.2	+3.2
Gross Domestic Product at market prices	+3.5	+3.7	+6.0	+2.3	+2.6	+3.2	+3.5	+3.5	+3.6	+4.3
Export Oriented Enterprises	-3.1	-5.1	-3.7	-5.6	-0.9	-2.5	-1.9	-11.8	-0.3	-5.6

1/ revised estimates 2/ first estimates

Table 3 - Quarterly expenditure on Gross Domestic Product at current market prices, Q₁ 2013 - Q₄ 2016

(R million)

	Year (Cumulated 4 quarters)		2013				2014			
	2013	2014	Q1	Q2	Q3	Q4	Q1	Q2	Q3	Q4
Final consumption expenditure	330,895	350,457	77,035	79,017	82,814	92,029	80,899	84,439	87,508	97,611
Households	276,507	292,343	63,975	65,634	69,265	77,632	67,240	69,871	73,232	82,000
General Government	54,388	58,114	13,060	13,383	13,549	14,397	13,659	14,568	14,276	15,611
Gross fixed capital formation	77,618	73,989	17,717	18,481	19,998	21,421	17,419	17,857	17,925	20,790
A. Building & construction work	50,111	47,016	12,121	12,627	12,722	12,642	11,760	11,667	11,788	11,803
Residential building	23,286	21,532	5,721	5,868	5,787	5,910	5,523	4,782	5,597	5,630
Non residential building	15,925	12,877	3,853	4,211	4,261	3,600	2,917	3,499	3,230	3,231
Other construction work	10,900	12,607	2,546	2,548	2,674	3,132	3,319	3,386	2,960	2,942
B. Machinery & equipment	27,507	26,973	5,596	5,855	7,277	8,779	5,659	6,190	6,137	8,987
Passenger car	3,714	3,630	857	796	833	1,229	819	915	897	999
Other transport equipment	5,247	4,658	629	559	1,534	2,525	575	675	672	2,736
<i>Other transport equipment (excluding aircraft & marine vessel)</i>	2,617	2,645	599	559	534	925	575	675	672	723
Other machinery and equipment	18,545	18,685	4,110	4,500	4,910	5,025	4,265	4,600	4,568	5,252
Change in inventories	4,429	3,152	1,293	184	2,841	111	363	915	978	895
Exports of goods and services	180,305	200,198	44,908	43,786	42,586	49,026	45,257	51,150	51,016	52,776
Goods (f.o.b)	88,048	94,776	20,307	21,668	22,408	23,665	20,476	24,447	25,254	24,599
Services	92,257	105,422	24,601	22,118	20,178	25,361	24,781	26,703	25,762	28,177
Less Imports of goods and services	229,219	243,980	52,520	52,826	58,512	65,360	52,356	58,643	64,299	68,683
Goods (f.o.b)	157,673	164,170	35,917	36,717	40,014	45,025	34,054	40,001	43,667	46,448
Services	71,546	79,810	16,603	16,109	18,498	20,335	18,302	18,642	20,632	22,235
Statistical Discrepancies	8,369	8,245	-2,204	1,898	2,878	5,797	-1,067	1,084	4,027	4,200
Gross Domestic Product at market prices	372,397	392,062	86,228	90,540	92,605	103,024	90,515	96,802	97,155	107,590

Table 3 (cont'd) - Quarterly expenditure on Gross Domestic Product at current market prices, Q₁ 2013- Q₄2016

(Rs Million)

	Year (Cumulated 4 quarters)		2015				2016			
	2015	2016	Q1	Q2	Q3	Q4	Q1 ¹	Q2 ¹	Q3 ¹	Q4 ²
Final consumption expenditure	366,892	385,913	85,041	89,140	92,947	99,764	89,304	93,698	97,030	105,881
Households	306,206	319,758	70,717	73,493	77,790	84,206	73,741	76,363	80,689	88,965
General Government	60,686	66,156	14,323	15,647	15,157	15,559	15,563	17,335	16,341	16,916
Gross fixed capital formation	71,155	74,747	17,518	17,769	17,724	18,144	18,533	17,815	19,706	18,693
A. Building & construction work	45,717	46,403	11,146	11,350	11,542	11,680	10,741	10,664	12,542	12,456
Residential building	21,925	24,790	5,450	5,415	5,613	5,447	5,850	5,590	6,856	6,494
Non residential building	10,726	10,089	2,683	2,740	2,703	2,599	2,136	2,259	2,830	2,863
Other construction work	13,067	11,524	3,013	3,195	3,225	3,634	2,754	2,815	2,856	3,099
B. Machinery & equipment	25,438	28,344	6,372	6,420	6,182	6,464	7,792	7,151	7,164	6,237
Passenger car	3,780	4,083	889	999	961	932	1,055	1,063	1,020	945
Other transport equipment	2,216	4,531	633	546	472	565	1,172	1,023	1,494	842
<i>Other transport equipment (excluding aircraft & marine vessel)</i>	2,216	3,038	633	546	472	565	708	886	869	575
Other machinery and equipment	19,442	19,730	4,850	4,875	4,750	4,967	5,565	5,065	4,650	4,450
Change in inventories	2,999	-2,048	486	1,683	260	571	287	-1,092	-384	-859
Exports of goods and services	200,008	193,255	49,280	50,537	48,717	51,474	49,363	45,677	46,328	51,887
Goods (f.o.b)	93,290	83,851	22,410	24,825	23,706	22,349	20,948	21,205	20,792	20,906
Services	106,718	109,404	26,870	25,712	25,011	29,125	28,415	24,472	25,536	30,981
Less Imports of goods and services	241,189	234,087	57,218	60,329	60,530	63,112	53,839	56,302	60,263	63,683
Goods (f.o.b)	158,688	156,633	36,694	40,546	39,550	41,898	35,317	38,074	39,604	43,638
Services	82,501	77,454	20,524	19,783	20,980	21,214	18,522	18,228	20,659	20,045
Statistical discrepancies	9,658	16,407	438	1,323	2,952	4,946	-2,098	6,474	5,474	6,557
Gross Domestic Product at market prices	409,523	434,187	95,544	100,123	102,070	111,787	101,550	106,270	107,891	118,476

1/ revised estimates 2/ first estimates

Table 4 - Expenditure on GDP at market prices- Growth rates (% over corresponding period of previous year), Q₁ 2013 - Q₄ 2016

	Annual growth rate		2013				2014			
	2013	2014	Q1	Q2	Q3	Q4	Q1	Q2	Q3	Q4
Final consumption expenditure	+2.5	+2.9	+3.0	+2.5	+2.4	+2.0	+1.6	+3.5	+3.1	+3.4
Households	+2.6	+2.6	+2.7	+2.6	+3.0	+2.1	+1.6	+2.9	+3.1	+2.9
General Government	+1.8	+4.6	+4.3	+1.8	-0.3	+1.5	+1.8	+6.6	+3.1	+6.5
Gross fixed capital formation	-3.3	-5.9	-10.7	-4.3	-0.6	+1.9	-3.3	-4.5	-11.4	-4.2
A. Building & construction work	-10.2	-7.4	-4.1	-4.1	-11.4	-19.1	-5.1	-8.9	-8.4	-7.1
Residential building	+3.0	-8.8	+22.7	+12.0	-3.0	-12.5	-5.5	-19.7	-4.4	-5.2
Non residential building	-17.5	-20.2	-19.1	-6.6	-10.6	-31.9	-25.9	-18.1	-25.1	-10.7
Other construction work	-21.4	+14.1	-20.9	-25.6	-26.5	-12.6	+27.6	+31.0	+9.4	-6.6
B. Machinery & equipment	+11.7	-3.2	-21.6	-4.4	+25.8	+59.7	+0.1	+4.6	-16.5	+0.3
Passenger car	-5.0	-4.2	-1.0	-18.4	-16.7	+13.6	-6.1	+14.1	+6.4	-20.6
Other transport equipment	+80.3	-13.0	-27.2	-17.8	+122.0	+281.4	-11.1	+17.4	-57.3	+6.0
<i>Other transport equipment (excluding aircraft & marine vessel)</i>	<i>-10.1</i>	<i>-0.9</i>	<i>-31.0</i>	<i>-18.3</i>	<i>-23.0</i>	<i>+39.4</i>	<i>-5.7</i>	<i>+18.7</i>	<i>+23.8</i>	<i>-23.2</i>
Other machinery and equipment	+3.9	-0.2	-23.9	+0.4	+20.1	+33.2	+2.7	+1.2	-7.9	+3.5
Exports of goods and services	-5.8	+10.9	-7.5	-10.9	-4.0	-0.6	+0.7	+17.0	+20.0	+7.0
Goods (f.o.b)	+4.6	+12.1	+4.2	-0.4	+5.9	+8.5	+3.4	+18.4	+18.8	+7.6
Services	-13.6	+9.8	-15.0	-18.8	-12.6	-7.7	-1.5	+15.7	+21.3	+6.4
Less Imports of goods and services	-0.4	+8.5	-4.4	-9.3	+4.9	+6.8	+0.8	+8.9	+8.9	+14.1
Goods (f.o.b)	+4.7	+8.0	-1.7	-2.9	+11.0	+12.2	-1.8	+8.3	+9.4	+14.5
Services	-11.0	+9.6	-10.2	-22.0	-7.2	-4.5	+6.7	+10.5	+7.5	+13.1

Table 4 (cont'd) - Expenditure on GDP at market prices - Growth rates (% over corresponding period of previous year), Q₁ 2013-Q₄ 2016

	Annual growth rate		2015				2016			
	2015	2016	Q1 ¹	Q2 ¹	Q3 ¹	Q4 ¹	Q1 ¹	Q2 ¹	Q3 ¹	Q4 ²
Final consumption expenditure	+2.8	+2.8	+2.6	+3.2	+3.4	+2.2	+2.4	+3.1	+2.6	+3.0
Households	+2.9	+2.9	+2.5	+2.9	+3.2	+3.0	+2.6	+2.8	+2.9	+3.3
General Government	+2.2	+2.1	+2.9	+4.8	+3.9	-2.4	+1.6	+4.5	+0.9	+1.3
Gross fixed capital formation	-5.4	+3.3	-0.8	-2.1	-2.9	-14.4	+3.8	-1.5	+9.4	+1.7
A. Building & construction work	-4.1	+1.5	-6.2	-4.0	-3.7	-2.5	-3.9	-6.0	+8.8	+6.6
Residential building	+0.4	+13.0	-2.4	+11.8	-1.3	-4.7	+7.1	+3.3	+22.3	+19.1
Non residential building	-17.8	-6.0	-9.0	-22.7	-17.7	-20.7	-20.6	-17.5	+4.8	+10.1
Other construction work	+2.2	-11.8	-10.2	-6.9	+7.2	+21.7	-8.8	-11.8	-11.4	-14.8
B. Machinery & equipment	-7.8	+6.7	+10.1	+1.4	-1.5	-30.3	+17.1	+6.3	+10.7	-7.4
Passenger car	+1.1	+4.9	+5.9	+6.4	+4.3	-9.6	+16.0	+3.5	+3.3	-1.6
Other transport equipment	-53.8	+98.5	+7.2	-21.3	-31.7	-80.0	+80.3	+82.6	+208.7	+45.3
<i>Other transport equipment (excluding aircraft & marine vessel)</i>	-18.7	+33.1	+6.6	-21.7	-32.1	-24.4	+9.0	+58.1	+79.6	-0.7
Other machinery and equipment	+2.0	-3.4	+11.3	+3.7	+1.7	-7.5	+9.0	-1.3	-7.0	-15.0
Exports of goods and services	-0.7	-5.3	+13.1	-2.5	-5.8	-5.8	-5.1	-10.3	-5.9	+0.3
Goods (f.o.b)	-2.7	-11.2	+14.9	-0.7	-8.4	-13.1	-11.7	-14.6	-12.3	-5.7
Services	+1.1	+0.1	+11.5	-4.3	-3.0	+0.8	+0.5	-6.0	+0.3	+5.0
Less Imports of goods and services	+6.2	-0.2	+15.9	+9.8	+4.9	-1.9	+6.5	-1.7	+2.0	-4.2
Goods (f.o.b)	+8.4	+4.0	+19.1	+13.2	+5.8	-0.6	+13.1	+1.1	+3.6	-0.7
Services	+1.6	-8.4	+9.0	+1.5	+2.5	-5.2	-8.7	-9.4	-2.0	-13.3

ANNEX

Concepts, data sources and methods for compiling quarterly GDP estimates

1. Concepts and definitions

The quarterly estimates have been compiled according to guidelines provided in the IMF manual entitled “Quarterly National Accounts Manual – Concepts, Data sources and Compilation”, which is itself based on the System of National Accounts (SNA) of the United Nations and are therefore consistent with annual estimates of the National Accounts.

2. Sources of data

The objective of the Quarterly National Accounts (QNA) is to provide the best indication of quarterly movements. Indicators for QNA have therefore been chosen according to their ability to capture the movements in the performance of the various sectors.

The main sources of data for compiling QNA estimates include quarterly production accounts of various organisations, quarterly surveys on income and expenditure among enterprises considered as drivers in specific sectors, quarterly quantity produced, quarterly expenditure of Government from the Accountant General Department, quarterly data from administrative sources such as building permits from local government, foreign trade data from the Customs Department, turnover data from the VAT systems, tourism receipts from the Bank of Mauritius, as well as some indirect indicators such as employment.

3. Methods used

When data on both output and input are available, the quarterly value added estimates are computed as the difference between the output and the intermediate consumption (inputs consumed in the process). When the quarterly output only is readily available or is compiled on the basis of quarterly data on quantity produced, the value added is computed using the production structure of the industry obtained at the latest Census of Economic Activities or from the latest annual production accounts available. When indicators on quarterly volume produced and price only are available, these are applied to the last quarterly value added figures to have the estimates for the quarter under review.

Constant price estimates exclude price effects of prices and therefore provide real growths. The constant price estimates are computed using the double deflation method for sectors where information on both inputs and outputs is available. In practice such data are difficult to obtain, hence ‘proxy indicators’ of volume changes are used if available, otherwise value series are deflated by an appropriate price index.

As recommended in the Quarterly National Accounts Manual, the Annual Overlap Technique has been used to derive constant quarterly estimates, instead of the traditional fixed-base year constant price estimates. This technique entails compiling estimates for each quarter at the weighted annual average prices of the previous year. The volume data of QNA are then chain-linked to obtain the constant price series.

4. Seasonal adjustment of quarterly GDP

Value added by sector and total GDP have been seasonally adjusted and are published on the web site of the office. The methodology adopted in the seasonal adjustment exercise is briefly given below. Seasonally adjusted time series has historically been a common practice in analyzing business cycles. Currently this is widely used by a majority of statistical offices, central banks and policy analysts to describe and understand the most recent economic developments.

4.1 Procedures for seasonal adjustment of quarterly GDP

QNA data are subject to seasonal variations which are recurrent within a year pattern. For example, activities of “Wholesale and retail trade” are usually lowest in the first quarters, but highest in the fourth quarters in line with the high demand for consumption goods at the end of the year; activities of “Hotels and restaurants” are highest in the first and last quarters in line with high tourist arrivals during these quarters. For meaningful comparison of quarter to quarter growth, particularly for identifying turning points, the seasonal component must be removed from the data.

The procedures for carrying out the seasonal adjustment exercise are as follows:

- (i) The software, Demetra, developed by Eurostat and which includes the X-12 program has been used.
- (ii) Forward adjustment, instead of concurrent adjustment, has been used for quarterly series up to the most recently completed year, that is seasonal factors for the four quarters ahead are estimated using the X-12 procedure. When a new data point becomes available, the seasonally adjusted value of the new data point is obtained by dividing it by the appropriate forward factor if model is multiplicative or subtracting from it the appropriate forward factor if the underlying model is additive.
- (iii) The seasonal adjustment exercise has been reworked using data estimated up to third quarter of 2016. In the light of the new seasonal factors, the seasonally adjusted growth rates have been revised.
- (iv) Direct adjustment of the aggregate GDP has been used to obtain seasonally adjusted GDP.
- (v) Adjustments have been made so that the sums of quarterly seasonally adjusted data are equal to the original yearly totals.

It should be noted that different seasonal adjustment methods, no matter how carefully they have been implemented, do not always yield identical results if applied to the same time series. In addition, even if the same seasonal adjustment method is applied, there may be substantial revisions, particular towards the end of the time series, when new data are included in the calculation and taking account of possible shifts in the seasonal movements. Consequently, seasonally adjusted data remain provisional for longer than unadjusted figures, which are also subject to revisions.

5. Data sources, methods and indicators used for the estimation of quarterly GDP

The table below gives the data sources and methods used for the estimation of quarterly GDP estimates at current and constant prices by both the production and expenditure approaches.

Production approach

Industry group	Data sources	Methods	Indicator - constant price estimates
A. Agriculture, Forestry and Fishing			
Sugar Cane	<ul style="list-style-type: none"> - Annual production and price of sugar. - Survey of sugar factories for the quarterly cost structure. 	<ul style="list-style-type: none"> - Final estimates: Based on the final annual production accounts. Annual gross output and intermediate consumption are allocated to quarters according to cost structure of cane growing furnished by surveyed sugar factories. The value added is thereafter derived. - Preliminary estimates: value added for the year based on expected production and price of sugar is quarterlised using the latest value added structure. 	<ul style="list-style-type: none"> - Double deflation using PPI-A for output and a weighted price index based on relevant components of the CPI for inputs - Preliminary quarterly changes are based on the annual price deflator.
Tea	<ul style="list-style-type: none"> - Quarterly production and prices of tea from Tea Board. - Benchmark ratios from Agricultural Cost of Production Survey (ACOPS 2005) 	<ul style="list-style-type: none"> - Output based on quarterly production and prices. - Value added derived using the production structure obtained at the ACOPS 2005. 	<ul style="list-style-type: none"> - Double deflation using relevant component of the Producer Price Index. - Agriculture (PPI-A) for output and a weighted price index based on retail prices of relevant inputs for IC.
Food crops	<ul style="list-style-type: none"> - Monthly quantities of food crops from Agricultural Research and Extension Unit (AREU). - Retail prices through the monthly consumer price surveys. - Benchmark ratios from Agricultural Cost of Production Survey (ACOPS 2005) 	<ul style="list-style-type: none"> - Output is based on quarterly quantities of food crops produced and producers' price obtained from retail prices adjusted for transport and trade margins. - Value added derived using the production structure obtained at the ACOPS 2005. 	<ul style="list-style-type: none"> - Double deflation using relevant component of Producer Price Index - Agriculture (PPI-A) for output and a weighted price index based on retail prices of relevant inputs for IC.
Flowers	<ul style="list-style-type: none"> - Quarterly exports of flowers from Trade Statistics. An estimate is worked out for locally sold flowers, based on number of weddings, deaths, religious ceremonies, etc. 	<ul style="list-style-type: none"> - Output is based on quarterly quantities produced and on producers' price obtained from retail prices adjusted for transport and trade margins - Value added derived using the production structure obtained at the ACOPS 2005 	<ul style="list-style-type: none"> - Double deflation using relevant component of Producer Price Index - Agriculture (PPI-A) for output and a weighted price index based on retail prices of relevant inputs for IC.

Industry group	Data sources	Methods	Indicator - constant price estimates
Fruits	<ul style="list-style-type: none"> - Monthly production of some fruits from FAREI. - Quarterly production of other fruits based on CA 2014, supplemented with data from other sources. - Benchmark ratios from Agricultural Cost of Production Survey (ACOPS 2005) 	<ul style="list-style-type: none"> - Value added based on quarterly quantities produced and on producers' price obtained from retail prices adjusted for transport and trade margins. 	<ul style="list-style-type: none"> - Deflation using component of PPI-A
Livestock, Poultry and Related Products	<ul style="list-style-type: none"> - Quarterly production of poultry from survey among main breeders. - Monthly quantity of livestock slaughtered from the Mauritius Meat Authority (MMA) adjusted for illegal slaughtering. - Retail prices. 	<ul style="list-style-type: none"> - Value added based on quarterly quantities produced and on producers' price derived from retail prices adjusted for transport and trade margins. 	<ul style="list-style-type: none"> - Deflation using component of PPI-A.
Government Services	<ul style="list-style-type: none"> - Expenditure of Budgetary Central Government from the Accountant General Department. - Expenditure for Rodrigues from Rodrigues Regional Assembly. - Expenditure for EBUs and Local Government is estimated. 	<ul style="list-style-type: none"> - Value added is estimated at cost, that is, it is equal to compensation of employees and consumption of fixed capital. 	<ul style="list-style-type: none"> - Compensation of Employees is deflated using the annual wage rate index based on salary compensation. - Consumption of Fixed Capital is deflated using the quarterly Construction Price Index (for Construction items) Vehicle Price Index (for vehicles) and a combination of PPI and IPI (for machinery and equipment excluding vehicles).
Fishing	<ul style="list-style-type: none"> - Quarterly quantities of fish caught from the Albion Fisheries Research Centre (AFRC) Retail prices. 	<ul style="list-style-type: none"> - Value added based on quarterly quantities of fish caught and producers' price derived from retail prices adjusted for trade margins. 	<ul style="list-style-type: none"> - Deflation by quarterly changes in the estimated producers' price based on retail prices.

Industry group	Data sources	Methods	Indicator - constant price estimates
B. Mining & Quarrying			
Mining & Quarrying	<ul style="list-style-type: none"> - Quarterly quantities of salt produced and sand extracted, and their prices through surveys of establishments. 	<ul style="list-style-type: none"> - Value added derived using data collected from quarterly surveys 	<ul style="list-style-type: none"> - Deflation using appropriate component of CPI.
	<ul style="list-style-type: none"> - Quarterly data from the VAT systems from the Mauritius Revenue Authority (MRA). 	<ul style="list-style-type: none"> - Value added compiled from quarterly data obtained from the VAT systems. 	<ul style="list-style-type: none"> - Deflation using component of PPI-M.
C. Manufacturing			
Sugar Milling	<ul style="list-style-type: none"> - Annual production and price of sugar. - Final annual production accounts. - Survey of sugar factories to have the quarterly cost structure. 	<ul style="list-style-type: none"> - Final estimates: Based on the final annual production accounts; Annual gross output and intermediate consumption are allocated to quarters according to cost structure of sugar milling activities furnished by surveyed sugar factories. The value added is thereafter derived. - Preliminary estimates: value added for the year based on expected production and price of sugar. The estimate is quarterlised using the latest value added structure. 	<ul style="list-style-type: none"> - Double deflation using PPI-A for output and a weighted price index based on relevant components of the CPI for inputs. - Preliminary quarterly changes are based on the annual price deflator
Export Oriented Enterprises (EOE)	<ul style="list-style-type: none"> - Quarterly exports from Trade statistics. - Quarterly survey of establishments - Level of stock from quarterly stock surveys - Quarterly turnover from VAT systems. 	<ul style="list-style-type: none"> - Quarterly value added based on quarterly gross output compiled from these sources and last annual technical ratio. 	<ul style="list-style-type: none"> - Volume index by industry from Quarterly Index of Industrial Production (QIIP).
Non – EOE	<ul style="list-style-type: none"> - Quarterly exports from Trade Statistics - Quarterly turnover from the VAT systems, - Production of excisable goods from Customs and Excise Department - Quarterly survey of establishments - Level of stock from quarterly stock surveys 	<ul style="list-style-type: none"> - Quarterly value added estimates based on quarterly gross output compiled from these sources and latest annual technical ratio. 	<ul style="list-style-type: none"> - Volume index by industry from Quarterly Index of Industrial Production (QIIP)
D. Electricity, Gas, Steam and air conditioning supply			
Electricity, gas and steam	<ul style="list-style-type: none"> - Quarterly production accounts from Central Electricity Board (CEB) 	<ul style="list-style-type: none"> - Value added compiled from quarterly accounts. 	<ul style="list-style-type: none"> - Volume based on quarterly quantity of electricity sold (All sales by CEB).
	<ul style="list-style-type: none"> - Quarterly production data of the Independent Power Producers 	<ul style="list-style-type: none"> - Value added derived from the value of electricity purchased by CEB and quarterly technical ratio of the previous year. 	

Industry group	Data sources	Methods	Indicator - constant price estimates
E. Water Supply; sewerage, waste management and remediation activities			
Water supply	- Quarterly production accounts from Central Water Authority (CWA)	- Value added compiled from quarterly accounts of CWA	Volume based on quarterly quantity of water sold.
Sewerage and waste management activities	- Quarterly data from the VAT Department	- Value added based on quarterly turnover obtained from the VAT systems.	- Deflation by appropriate component of consumer price index.
F. Construction			
Construction	<ul style="list-style-type: none"> - Monthly building permits from Municipalities and District Councils - Quarterly capital expenditure estimates of General Government from Accountant General Department - Maintenance expenditure by Government based on quarterly output of the Ministry of Public Infrastructure from Accountant General Department - Maintenance expenditure by households from latest Household Budget Survey 	- Quarterly output based on these sources and quarterly value added derived using the production structure obtained at the 2013 CEA.	- Deflation by quarterly Construction Price Index.
- G. Wholesale & Retail Trade, Repair of Motor Vehicles, Motorcycles			
Wholesale & Retail Trade	<ul style="list-style-type: none"> - Quarterly imports from Trade statistics - Local production from Agriculture statistics and Industrial statistics 	<ul style="list-style-type: none"> - For imported goods, gross output based on trade margins computed from quarterly imports. - For local production, gross output based on trends of production of food crops and production of the non-EOE sector (local consumption). - Value added derived using the production structure obtained at the 2013 CEA. 	<ul style="list-style-type: none"> - Change in volume of imports derived by deflating imports by sector by relevant IPI components. - Local component – Deflation by overall CPI
Repair of motor vehicles and motor cycles	<ul style="list-style-type: none"> - Imports of spare parts. - Quarterly VAT data - Road transport statistics (number of vehicles registered and number of accidents) 	- Quarterly estimates based on imports of spare parts, changes in number of vehicles registered and number of accidents.	- Deflation by overall CPI.

Industry group	Data sources	Methods	Indicator - constant price estimates
H. Transport and Storage			
Land Transport			
Bus	<ul style="list-style-type: none"> - Quarterly production accounts of bus companies and bus fleet from National Transport Authority (NTA) 	<ul style="list-style-type: none"> - Value added compiled from quarterly accounts 	<ul style="list-style-type: none"> - Double deflation using bus fare for output and relevant CPI components for inputs.
Taxi	<ul style="list-style-type: none"> - Quarterly licences of taxi cars from NTA - Taxi fares from monthly consumer price surveys. 	<ul style="list-style-type: none"> - Output based on the quarterly number of licences delivered and taxi fare. - Value added derived using the production structure obtained at the 2013 CEA. 	<ul style="list-style-type: none"> - Double deflation using relevant CPI components for output and inputs.
Lorries	<ul style="list-style-type: none"> - Quarterly licences of lorries from the National Transport Authority - Lorry charges based on CEA. 	<ul style="list-style-type: none"> - Output based on the quarterly licences of lorries. - Value added derived using the structure obtained at the 2013 CEA. 	<ul style="list-style-type: none"> - Double deflation using relevant CPI components for output and inputs.
Water transport	<ul style="list-style-type: none"> - Quarterly number of passengers from Mauritius Shipping Corporation. 	<ul style="list-style-type: none"> - The number of passengers and fares charged as per CPI are used to estimate quarterly output. - Value added is derived using the production structure obtained at the 2013 CEA. 	<ul style="list-style-type: none"> - Volume based on number of passengers.
Air transport	<ul style="list-style-type: none"> - Quarterly receipts and expenditure from Air Mauritius Ltd. 	<ul style="list-style-type: none"> - Value added compiled from quarterly accounts 	<ul style="list-style-type: none"> - Double deflation using airfare index for output and relevant CPI components for inputs.
Services allied to transport	<ul style="list-style-type: none"> - Quarterly receipts and expenditure from Mauritius Ports Authority (MPA) and Cargo Handling Corporation (CHC). - Quarterly indicators such as tourist arrivals and number of Mauritian travelling abroad. 	<ul style="list-style-type: none"> - Value added compiled from quarterly accounts where available. - For other related activities, annual estimates are quarterlised using the quarterly indicators. 	<ul style="list-style-type: none"> - Goods: Volume based on tonnage of goods loaded and unloaded. - Passengers: Volume based on quarterly indicators.
Storage	<ul style="list-style-type: none"> - Quarterly data from the VAT Department. 	<ul style="list-style-type: none"> - Value added compiled from the quarterly data obtained from the VAT Department 	<ul style="list-style-type: none"> - Changes in quarterly export of sugar and relevant components deflated by overall CPI

Industry group	Data sources	Methods	Indicator - constant price estimates
I. Accommodation and food service activities			
Accommodation and food services activities	<ul style="list-style-type: none"> - Quarterly tourist arrivals from Tourism statistics - Quarterly tourist earnings from Bank of Mauritius - Expenditure on food and accommodation by tourists from Survey of tourist expenditure 	<ul style="list-style-type: none"> - Gross output based on quarterly estimates of expenditure on food and accommodation derived from quarterly tourist earnings and pattern of expenditure of tourists. - Value added is estimated using the production structure obtained from latest available annual production accounts. 	<ul style="list-style-type: none"> - Volume based on number of tourist arrivals for 'Accommodation'. - Food service activities deflated by CPI component measuring price of meals in bars and restaurants.
J. Information and communication			
Telecommunication services	<ul style="list-style-type: none"> - Quarterly data from the VAT systems from the Mauritius Revenue Authority (MRA). 	<ul style="list-style-type: none"> - Value added compiled from quarterly turnover obtained from the VAT systems. 	<ul style="list-style-type: none"> - Deflation by changes in the price of telephone calls.
Activities related to information and communication	<ul style="list-style-type: none"> - Quarterly data from the VAT systems from the Mauritius Revenue Authority (MRA). 	<ul style="list-style-type: none"> - Value added compiled from quarterly turnover obtained from the VAT systems. 	<ul style="list-style-type: none"> - Deflation by overall consumer price index.
K. Financial and insurance activities			
Financial and insurance activities	<ul style="list-style-type: none"> - Quarterly surveys of banks, insurance companies and other financial institutions 	<ul style="list-style-type: none"> - Value added compiled from quarterly accounts. 	<ul style="list-style-type: none"> - Banks (Segment A): Deflation using changes in interest rates, local inflation rate and changes in exchange rates. - Banks (Segment B): Deflation using changes in exchange rates and inflation rate for developing countries. - Insurance sector: Volume based on changes in the number of vehicles and number of life policies. - Financial leasing and other credit granting institutions: Price indicator in line with deflator of commercial banks. - Other financial: Deflation using changes in exchange rates.

L. Real Estate activities			
Ownership of dwellings	<ul style="list-style-type: none"> - Number of housing units (HU) from Housing Census - Interest on housing loans from the Bank of Mauritius. 	<ul style="list-style-type: none"> - Value added is compiled annually according to the User Cost Method based on: <ul style="list-style-type: none"> - an operating surplus calculated on interest rate on housing loans, - taxes paid on dwellings and consumption of fixed capital (depreciation of the building). <p>The annual figure is then quarterlised.</p>	<ul style="list-style-type: none"> - Estimate at constant price based on change in volume of residential building permits.
Real estate activities	<ul style="list-style-type: none"> - Number of building permits of non-residential buildings - Quarterly data from the VAT Department 	<p>This sector includes agencies involved in the sale of property and an imputed rent of owner occupied non-residential buildings</p>	<ul style="list-style-type: none"> - Deflation by Consumer Price Index.

Industry group	Data sources	Methods	Indicator - constant price estimates
M. Professional, scientific and technical activities			
Professional, scientific and technical activities	<ul style="list-style-type: none"> - Quarterly data from the VAT Department - Trends in related sectors - Indirect indicators such as cases lodged in court. 	This sector covers the units which offer their services to different activities both onshore and offshore including own account professional workers such as lawyers, accountants, notaries, surveyors etc.	Deflation by Consumer Price Index.
N. Administrative and support service activities			
Administrative and support service activities	<ul style="list-style-type: none"> - Quarterly data from the VAT Department - Trends in related sectors - Indirect indicators such as tourist arrivals 	This sector covers units engaged in rental and leasing activities, cleaning activities, travel agencies, call centers and other business support activities	Deflation by Consumer Price Index.
O. Public Administration & Defense; Compulsory Social Security			
Public Administration and Defence, Compulsory Social Security	<ul style="list-style-type: none"> - Expenditure of Budgetary Central Government from the Accountant General Department. - Expenditure for Rodrigues from Rodrigues Regional Assembly. - Expenditure for EBUs and Local Government is estimated. 	<ul style="list-style-type: none"> - Estimates are made at cost, that is, Gross output = Value added (VA) + purchase of goods and services (IC) Value added = Compensation of employees + consumption of fixed capital 	<ul style="list-style-type: none"> - Compensation of Employees is deflated using the annual wage rate index based on salary compensation. - Consumption of Fixed Capital is deflated using the quarterly Construction Price Index (for Construction items), Vehicle Price Index (for vehicles) and a combination of PPI and IPI (for machinery and equipment excluding vehicles). - Goods and services are deflated using quarterly Consumer Price Index.

Industry group	Data sources	Methods	Indicator - constant price estimates
P. Education services			
Education Services	<ul style="list-style-type: none"> - Expenditures related to education (preprimary, primary, secondary and tertiary sectors) incurred by the different levels of the General Government (mainly BCG and EBUs) are used to estimate value added, intermediate consumption and gross output of education in the public sector. - Annual data on enrolment from the Ministry of Education - Enrolment from private schools and Mauritius Institute of Training and Development (MITD) - Percentage change in fees charged for private tuition estimated from the sub-index for "Education" obtained from the CPI Unit 	<ul style="list-style-type: none"> - Estimate are made at cost, that is, - Gross output = Value added (VA) + purchase of goods and services (IC) - Value added = Compensation of employees + consumption of fixed capital - Private schools and MITD: annual output is divided by 4. - Private tuition fees: output based on ten months only (February to November and quarterlised accordingly). 	<ul style="list-style-type: none"> - Compensation of Employees is deflated using the annual wage rate index based on salary compensation. - Consumption of Fixed Capital is deflated using the quarterly Construction Price Index (for Construction items), Vehicle Price Index (for vehicles) and a combination of PPI and IPI (for machinery and equipment excluding vehicles). - Goods and services are deflated by using quarterly CPI. - Volume based on enrolment statistics. - Deflation by CPI component
Q. Human health and social work activities			
Health and Social Work activities	<ul style="list-style-type: none"> - Expenditure related to Health and Social Work incurred by the different levels of the General Government (mainly BCG and EBUs) are used to estimate value added, intermediate consumption and gross output of Health and Social Work in the public sector. 	<ul style="list-style-type: none"> - Estimate are made at cost, that is, - Gross output = Value added (VA) + purchase of goods and services (IC) - Value added = Compensation of employees + consumption of fixed capital 	<ul style="list-style-type: none"> - Compensation of Employees is deflated using the annual wage rate index based on salary compensation. - Consumption of Fixed Capital is deflated using the quarterly Construction Price Index (for Construction items), Vehicle Price Index (for vehicles) and a combination of PPI and IPI (for machinery and equipment excluding vehicles). - Goods and services are deflated using quarterly Consumer Price Index.

Industry group	Data sources	Methods	Indicator - constant price estimates
	<ul style="list-style-type: none"> - Annual production accounts of clinics. - Quarterly data on admissions in clinics and hospitals from the Ministry of Health. - No. of private medical practitioners from the Ministry of Health. - Fees charged from monthly consumer price surveys. 	Annual value added for private health services is computed using available production accounts of clinics and supplemented with indicators on private practitioners. The estimates are quarterlised using quarterly data on admissions to clinics and hospitals.	<ul style="list-style-type: none"> - Deflation by CPI component.
R. Art, entertainment and recreation			
Art, entertainment and recreation activities	<ul style="list-style-type: none"> - Quarterly data from the VAT Department - Quarterly data on government revenue from gambling and betting taxes. 	Includes gambling, sports, amusement and recreational activities <ul style="list-style-type: none"> - Quarterly gross output derived from VAT systems. - Value added estimated using technical coefficients obtained from latest available annual final production accounts. 	<ul style="list-style-type: none"> - Deflation by Consumer Price Index
S. Other service activities			
Other service activities	<ul style="list-style-type: none"> - Quarterly turnover from the VAT department - Demographic statistics such as births, deaths and marriages. - Tourist arrivals 	<ul style="list-style-type: none"> - Includes activities of membership organizations, units engaged in repair of computers and household goods and other personal service activities - Quarterly gross output derived from the VAT returns. - Value added estimated using technical coefficients obtained from latest available annual final production accounts. - For companies not registered at the VAT: annual estimates are quarterlised using indirect indicators such as quarterly number of births, deaths, marriages, and tourist arrivals. 	<ul style="list-style-type: none"> - Deflation by Consumer Price Index.
T. Activities of households as employers, etc			
Private households with employed persons	<ul style="list-style-type: none"> - Number of employees based on number of household with domestic employees as collected in Household Budget Survey (HBS). - Wage Rate from monthly consumer price surveys. 	<ul style="list-style-type: none"> - Annual estimate, based on the number of persons employed and average wage, is divided by 4. 	<ul style="list-style-type: none"> - Deflation by wage increase due to salary compensation of every year.

Data sources, methods and indicators used for the estimation of quarterly GDP
Expenditure approach

Item	Sources & Methodology	Indicator – constant price estimates
Final Consumption Expenditure - Household (HH)	Annual estimates are quarterlised using Continuous Multi-Purpose Household Survey (CMPHS) and HBS structure adjusted for conceptual difference with national accounts.	- Deflation by Consumer Price Index.
Final Consumption Expenditure – General Government	<p>Final Consumption Expenditure for the General Government is equal to the value of services produced plus value of goods and services purchased from private producers for free distribution to households plus output of the Central Bank.</p> <p>Quarterly data for Budgetary Central Government is available from the Accountant General Department.</p> <p>Quarterly data for Rodrigues is available from the RRA's finance department.</p> <p>Quarterly data for Extra Budgetary Units and Local Government are estimated.</p> <p>Quarterly data from the Central Bank</p>	<p>- Compensation of Employees is deflated using the annual wage rate index based on salary compensation.</p> <p>Consumption of Fixed Capital is deflated using the quarterly Construction Price Index (for Construction items), Vehicle Price Index (for vehicles) and a combination of PPI and IPI (for machinery and equipment excluding vehicles)</p> <p>Goods and services is deflated using quarterly Consumer Price Index.</p>

Gross Fixed Capital Formation (GFCF)

Building and Construction

Residential Building	Quarterly investment in residential buildings based on quarterly data on floor area from building permits (with a lag of 1 quarter) and quarterly Construction Price Index, together with quarterly data from National Housing Development Company (NHDC) and other sources, and an estimate for projects for which no permit has been issued. The cost per unit of floor area has been revised in 2009 based on the last revision in the Construction Price Index.	- Deflation by quarterly construction price index.
Non-Residential Building and Other Construction Work	Quarterly investment in non-residential buildings and other construction work based on quarterly building permits for non-residential buildings (lag by one quarter) and quarterly Construction Price Index, work in progress of large projects and quarterly data on Government capital expenditure available from the Accountant General Department and MOFED (PSIP).	

Item	Sources & Methodology	Indicator – constant price estimates
Machinery and Equipment		
Aircraft	Based on information provided by Air Mauritius Ltd and the Accountant General Department	Exchange rate of the currency in which asset is purchased.
Marine Vessel	Based on information provided by Mauritius Ports Authority (MPA)	
Transport Equipment	Based on information on registered vehicles provided by National Transport Authority (NTA) classified as final consumption expenditure or investment according to purchasers. For transport equipment for which no registration is necessary, imports statistics are used.	A vehicle price index based on seven types of vehicles.
Other Machinery and Equipment.	<p>Estimates are mostly based on quarterly Trade Statistics given that most of the machinery and equipment are imported. The imported machinery and equipment goods are brought to purchasers' prices by adding all duties and taxes, landing cost, transport cost and margins. Duties and taxes are available from Customs Department, landing cost from Mauritius Ports Authority while rates of transport and margin are based on the results of the 2013 CEA. Annual installation cost obtained through surveys is quarterlised according to the quarterly trend of concerned machinery.</p> <p>Local production of machinery is estimated from outputs of companies producing capital goods.</p>	A weighted deflator based on separate deflators for “locally produced goods” and “imported goods”. For the “locally produced goods” PPI components are used whilst for “imported goods” IPI components for “Machinery and equipment” excluding transport equipment are used to construct the deflators.
Exports and Imports of Goods and Services	<p>Data available from the Quarterly Balance of Payments (BOP) of the Bank of Mauritius (BOM) adjusted for import and export of FISIM. For import and export of goods, import and export price indices are used as deflators. For export of services, each component is deflated with concerned output deflators.</p> <p>For import of services, a combined index is compiled based on exchange rate and inflation of trading countries.</p>	- Deflation using respective quarterly price indices.
Allocation of FISIM by sector	The quarterly figure of FISIM calculated from data available on deposits, loans and prevailing rates is distributed by sector following recommendation in the System of National Accounts (SNA).	<p>FISIM on loans: Deflated by changes in lending rate and inflation rate.</p> <p>FISIM on deposits: Deflated by changes in deposit rate and inflation rate.</p> <p>Import of FISIM: Deflated by changes in weighted exchange rates based on imports.</p>