

Labour force, Employment and Unemployment – First quarter 2016

Introduction

1. This issue of Economic and Social Indicators (ESI) presents a set of estimates of labour force, employment and unemployment for the first quarter of 2016, based on the results of the Continuous Multi-Purpose Household Survey (CMPHS) from January to March 2016. The estimates refer to the Mauritian population aged 16 years and above.
2. Annual estimates of labour force including foreign workers derived after integrating data from CMPHS with other sources are given at Annex 3.

Key figures

	Q1 2015	Q4 2015	Q1 2016 ¹	Change	
				Q1 2016- Q1 2015	Q1 2016 - Q4 2015
Labour force	579,400	592,200	571,700	-7,700	-20,500
Employment	529,100	545,600	528,200	-900	-17,400
Unemployment	50,300	46,600	43,500	-6,800	-3,100
Unemployment rate (%)	8.7	7.9	7.6	-1.1	-0.3
Seasonally adjusted unemployment rate (%)	8.1	8.6	7.0	-1.1	-1.6

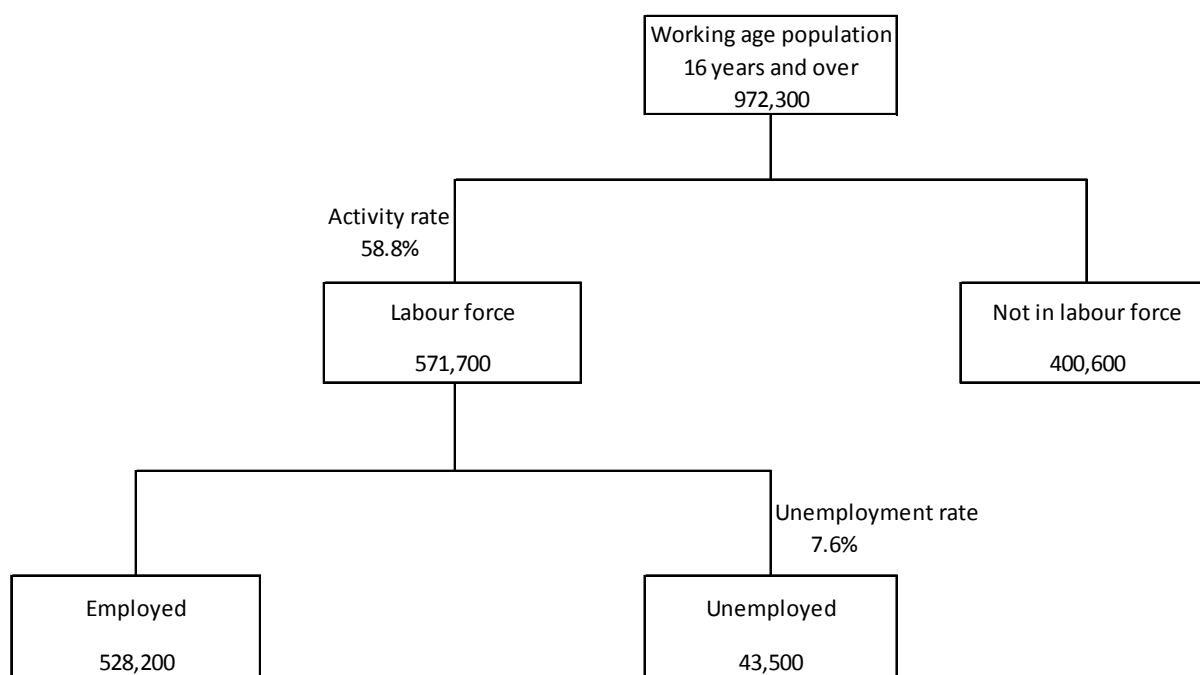
¹Provisional

Labour market overview, first quarter 2016

3. Compared with the corresponding quarter of 2015, there has been a decrease in the labour force (-7,700) with a decrease in both employment (-900) and unemployment (-6,800).
4. Compared with the previous quarter, labour force decreased by 20,500 with a decrease in both employment (-17,400) and unemployment (-3,100).

NOTE: The increase or decrease in employment represents the net change in employment level i.e the combined effect of employment creations and losses during the period under reference.

Chart 1: The Labour Market, 1st quarter 2016



Labour force participation

5. The activity rate for the first quarter 2016 was 58.8%, down by 1.2 percentage points from 60.0% in the corresponding quarter one year earlier. The male activity rate decreased by 1.0 percentage point to 73.2% and the female activity rate decreased by 1.5 percentage points to 45.0%.
6. Compared with the previous quarter, the activity rate decreased by 2.2 percentage points to 58.8%. The male activity rate decreased by 2.3 percentage points from 75.5% to 73.2% and the female activity rate by 2.2 percentage points from 47.2% to 45.0%.

Employment

7. From first quarter 2015 to first quarter 2016, employment decreased by 900 to 528,200; male employment increased by 4,300 to 330,300 while female employment decreased by 5,200 to 197,900.
8. Compared with the previous quarter, employment decreased by 17,400 with a decrease in both male employment (-7,600) and female employment (-9,800).

Unemployment

1st Quarter 2015 to 1st Quarter 2016

9. From first quarter 2015 to first quarter 2016, the number of unemployed persons decreased by 6,800 (-6,300 males and -500 females).

10. The unemployment rate decreased by 1.1 percentage points from 8.7% in the first quarter 2015 to 7.6% in the first quarter 2016. During that same period, male unemployment rate decreased by 1.8 percentage points to 4.9% while female unemployment rate remained at the same level of 11.7%.

4th Quarter 2015 to 1st Quarter 2016

11. When compared with the fourth quarter of 2015, the total number of unemployed persons decreased by 3,100. Decreases were registered among both males (-2,500) and females (-600).

12. From fourth quarter 2015 to first quarter 2016, the unemployment rate decreased by 0.3 percentage point with a decrease of 0.6 percentage point in male unemployment rate and an increase of 0.2 percentage point in female unemployment rate.

13. At the first quarter 2016, youth unemployed aged 16 to 24 years numbered 18,700 (8,500 males and 10,200 females) compared to 23,300 (11,200 males and 12,100 females) at the corresponding quarter of 2015 and 22,100 (10,000 males and 12,100 females) at the previous quarter.

Characteristics of the unemployed as at first quarter 2016

14. The main characteristics of the unemployed as at first quarter 2016 were as follows:

- (i) The 43,500 unemployed comprised 17,200 males (40%) and 26,300 females (60%).
- (ii) Around 24,100 (55%) of the unemployed were single. Among males the majority (79%) was single compared to 40% among the females.
- (iii) Some 4,300 or 10% had not reached the Certificate of Primary Education (CPE) level or equivalent and a further 16,200 (37%) did not have the Cambridge School Certificate (SC) or equivalent.
- (iv) Around 35,800 (82%) had been looking for work for up to one year and the remaining 7,700 (18%) for more than one year.
- (v) About 29,900 (69%) had working experience and 13,600 (31%) were looking for a job for the first time.
- (vi) Around 18,700 (43%) were registered at the Employment Service.
- (vii) There were 9,300 (21%) young persons aged 16 to 24 years, not yet married and looking for a first job. Some 2,500 (27%) of them had not passed SC.
- (viii) Ever married (including widowed, divorced or separated) unemployed persons aged 25 to 44 years and having worked before numbered 11,700. Among them, about 7,700 (66%) had not passed SC.
- (ix) 4,700 or 11% of the unemployed were heads of households.

- (x) 5,200 (12%) lived in households with no employed persons.

Seasonally adjusted unemployment rate

15. Seasonally adjusted unemployment rate for the first quarter of 2016 was 7.0%, lower than the rate of 8.1% at the corresponding quarter of 2015 and 8.6% at the fourth quarter of 2015.

Economically inactive population

16. The number of persons aged 16 years and over, not forming part of the labour force (inactive population) was estimated at 400,600 at the first quarter 2016 compared to 386,200 in the corresponding quarter of 2015 and 378,600 in the previous quarter.
17. The inactive population was made up of 127,100 males and 273,500 females. Among inactive males, around 46% were 'retired or old persons' and 30% were students. Among females, 60% were homemakers; 'Retired or old persons' and students each represented 15% of the inactive females.

Forecasts of Employment and Unemployment estimates - Year 2016

18. Based on the results of the survey for the first quarter of the current year and other information available, the following are the forecasts of employment and unemployment for 2016:

	Year 2015	Year 2016¹	Change
Employment	538,300	540,500	+2,200 ²
Unemployment	46,300	45,300	-1,000
Unemployment rate (%)	7.9	7.7	-0.2

¹Forecast ²please see explanations in the box on page 1

CAUTION:

The estimate of unemployment rate for the year 2015 (7.9%) is NOT end of year estimate (i.e as at 31st December). It represents weighted averages of estimates based on sample data collected throughout the year under review.

19. The employment level of Mauritians is expected to increase on a net basis, by 2,200 to 540,500 in 2016 from 538,300 in 2015. It is to be noted that this increase represents the net change in employment level, i.e the combined effect of employment creations and losses during the period under reference.
20. Unemployment rate for year 2016 is projected at 7.7% compared to 7.9% for 2015.

Sampling errors

21. The estimates in this publication are based on the results of a sample survey and are thus subject to sample variability. Standard errors and confidence intervals give an indication of this variability.
22. The standard error of the estimates and the 95% confidence interval which represent a 95% chance that the true value lies within that interval, are given in the tables that follow.

Estimated labour force, employment and unemployment by sex, 1st quarter 2015 – 1st quarter 2016

Both Sexes

		Estimates	Standard Error	95% confidence interval	
				Lower limit	Upper limit
Labour force					
	2015 Q1	579,400	9,700	560,400	598,600
	Q2	588,600	10,200	568,600	608,600
	Q3	579,100	10,300	558,900	599,300
	Q4	592,200	13,000	566,800	617,800
	2016 Q1 ¹	571,700	12,400	547,300	596,200
Employment					
	2015 Q1	529,100	8,900	511,600	546,800
	Q2	542,600	9,900	523,100	562,200
	Q3	536,500	9,900	517,100	555,900
	Q4	545,600	12,500	521,000	570,300
	2016 Q1 ¹	528,200	11,200	506,200	550,300
Unemployment					
	2015 Q1	50,300	3,000	44,400	56,400
	Q2	46,000	2,800	40,400	51,400
	Q3	42,600	2,500	37,700	47,500
	Q4	46,600	2,800	41,000	52,200
	2016 Q1 ¹	43,500	2,800	38,000	48,900
Unemployment rate, %					
	2015 Q1	8.7	0.5	7.7	9.6
	Q2	7.8	0.5	6.9	8.7
	Q3	7.4	0.4	6.5	8.2
	Q4	7.9	0.5	7.0	8.8
	2016 Q1 ¹	7.6	0.4	6.8	8.4
Activity rate, %					
	2015 Q1	60.0	0.6	58.9	61.2
	Q2	60.8	0.7	59.4	62.1
	Q3	59.8	0.7	58.4	61.2
	Q4	61.0	0.7	59.6	62.4
	2016 Q1 ¹	58.8	0.7	57.5	60.1

¹ Provisional

Estimated labour force, employment and unemployment by sex, 1st quarter 2015 – 1st quarter 2016

Male

	Estimates	Standard Error	95% confidence interval	
			Lower limit	Upper limit
Labour force				
2015 Q1	349,500	6,000	337,700	361,300
Q2	354,100	6,800	340,600	367,500
Q3	353,100	6,800	339,800	366,400
Q4	357,600	8,100	341,700	373,600
2016 Q1 ¹	347,500	7,900	332,000	363,100
Employment				
2015 Q1	326,000	5,700	314,900	337,200
Q2	335,900	6,800	322,500	349,300
Q3	336,000	6,600	323,100	348,900
Q4	337,900	8,100	321,900	354,000
2016 Q1 ¹	330,300	7,500	315,600	345,100
Unemployment				
2015 Q1	23,500	2,100	19,300	27,600
Q2	18,200	1,500	15,200	21,100
Q3	17,100	1,700	13,800	20,400
Q4	19,700	1,600	16,500	22,800
2016 Q1 ¹	17,200	1,700	13,800	20,600
Unemployment rate, %				
2015 Q1	6.7	0.6	5.6	7.9
Q2	5.1	0.4	4.3	6.0
Q3	4.8	0.5	3.9	5.7
Q4	5.5	0.5	4.6	6.4
2016 Q1 ¹	4.9	0.5	4.0	5.9
Activity rate, %				
2015 Q1	74.2	0.7	72.8	75.6
Q2	75.0	0.8	73.4	76.5
Q3	74.7	0.8	73.2	76.3
Q4	75.5	0.8	74.0	77.0
2016 Q1 ¹	73.2	0.8	71.7	74.8

¹ Provisional

Estimated labour force, employment and unemployment by sex, 1st quarter 2015 – 1st quarter 2016

Female

		Estimates	Standard Error	95% confidence interval	
				Lower limit	Upper limit
Labour force					
	2015 Q1	229,900	5,800	218,500	241,500
	Q2	234,500	6,000	222,700	246,300
	Q3	226,000	6,100	213,900	238,100
	Q4	234,600	7,000	220,900	248,400
	2016 Q1 ¹	224,200	6,300	211,800	236,600
Employment					
	2015 Q1	203,100	5,500	192,400	213,900
	Q2	206,700	5,700	195,600	217,900
	Q3	200,500	5,900	188,900	212,100
	Q4	207,700	6,400	195,100	220,300
	2016 Q1 ¹	197,900	5,700	186,800	209,100
Unemployment					
	2015 Q1	26,800	2,200	22,500	31,300
	Q2	27,800	2,200	23,400	32,200
	Q3	25,500	1,900	21,800	29,200
	Q4	26,900	2,300	22,500	31,400
	2016 Q1 ¹	26,300	2,100	22,000	30,500
Unemployment rate, %					
	2015 Q1	11.7	0.9	9.9	13.5
	Q2	11.9	0.9	10.1	13.6
	Q3	11.3	0.8	9.7	12.9
	Q4	11.5	0.9	9.7	13.2
	2016 Q1 ¹	11.7	0.9	10.0	13.4
Activity rate, %					
	2015 Q1	46.5	0.9	44.8	48.2
	Q2	47.3	1.0	45.3	49.3
	Q3	45.6	1.0	43.6	47.5
	Q4	47.2	1.0	45.3	49.1
	2016 Q1 ¹	45.0	0.9	43.3	46.8

¹ Provisional

Longer time series

- The following graphs show the series for employment, unemployment and activity rate from 1st quarter 2012 to 1st quarter 2016.

Chart 2: Employment by quarter, 1st quarter 2012 – 1st quarter 2016

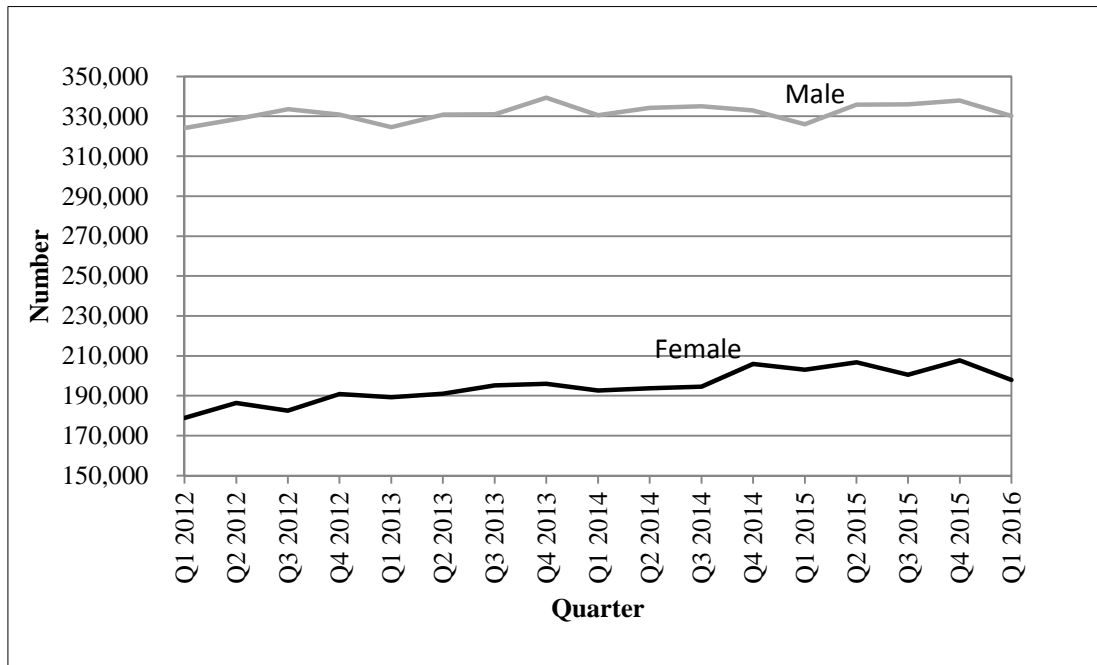


Chart 3: Unemployment rate by quarter, 1st quarter 2012 – 1st quarter 2016

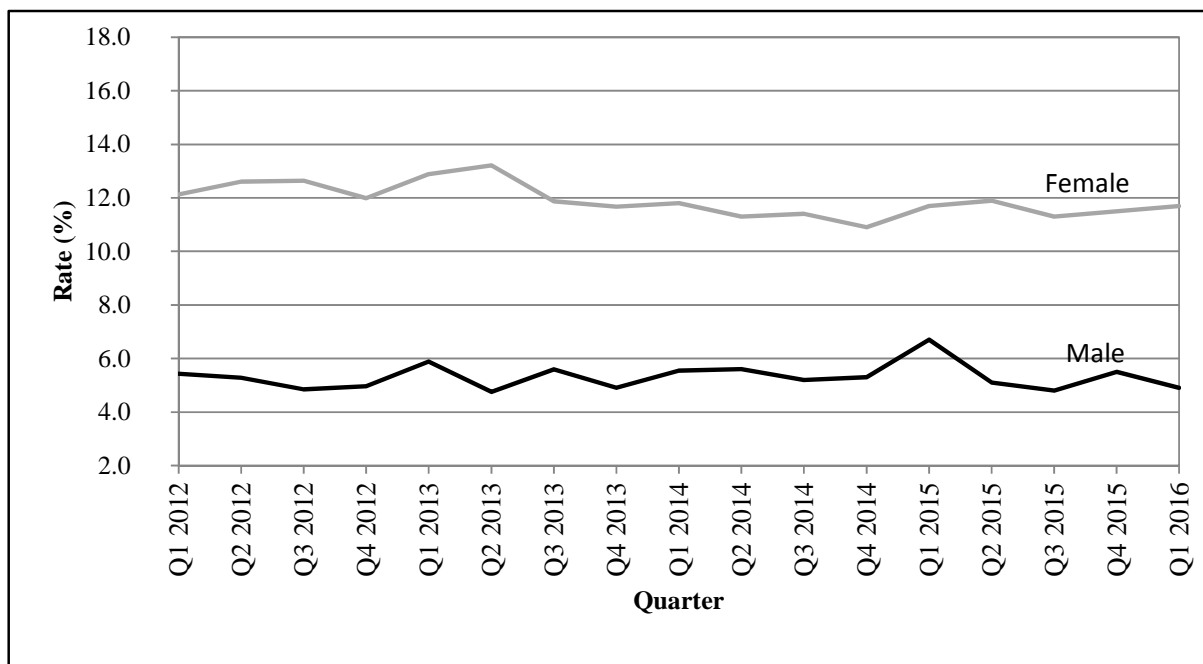
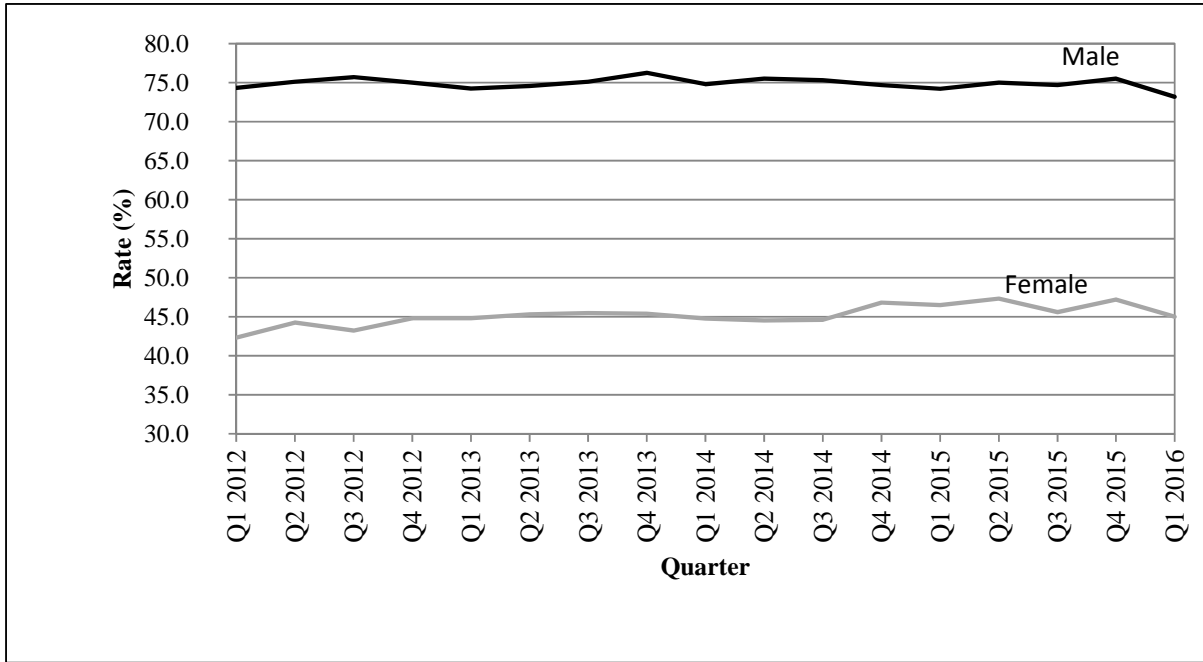


Chart 4: Activity rate by quarter, 1st quarter 2012 – 1st quarter 2016



The following tables together with the web version of this publication can be downloaded from Statistics Mauritius website at <http://statsmauritius.govmu.org> From the homepage, click on ‘Statistics by subject’ followed by ‘labour’ then select the appropriate publication under the heading ‘Publications – Economic and Social Indicators’.

List of tables

Table 1: Labour market activity by status, 1st Quarter 2015 to 1st Quarter 2016

Table 2: Labour force characteristics by age and sex, 1st Quarter 2016

Table 3: Employment by industrial activity, 1st Quarter 2015 to 1st Quarter 2016

Table 4: Employment by occupational group, 1st Quarter 2015 to 1st Quarter 2016

Table 5: Employment by hours worked, 1st Quarter 2015 to 1st Quarter 2016

Table 6: Unemployment by educational attainment, 1st Quarter 2015 to 1st Quarter 2016

Table 7: Unemployment by age, 1st Quarter 2015 to 1st Quarter 2016

Table 8: Unemployment by work experience, 1st Quarter 2015 to 1st Quarter 2016

Table 9: Economically inactive population by reason, 1st Quarter 2015 to 1st Quarter 2016

Statistics Mauritius

Ministry of Finance and Economic Development

Port Louis

June 2016

Contact persons: (1) Ms. N. Ramjan (Statistician)

Email: nramjan@govmu.org

(2) Ms. P. Koonjul (Senior Statistical Officer)

Email: pkoonjul@govmu.org

Statistics Mauritius

LIC Centre, Port Louis

Tel: 2081800 Fax: 2114150

NOTES

Release of Labour Force data

Labour Force statistics are compiled and published in the “Economic and Social Indicators” in March, June, September and December according to an advance calendar posted on the website of Statistics Mauritius (<http://statsmauritius.govmu.org>). This issue provides data for the first quarter 2016 compared to the previous quarter and to the same quarter a year ago.

However, where appropriate, historical series are also provided for the main indicators.

The CMPHS Survey methodology

Data collection

Face to face interviews of household members are carried out by qualified interviewers recruited by the office.

Frequency of data collection

Data collection is carried out monthly except in 2004 when it was carried out every quarter. Up to 2005, the reference period for data on labour force was the last week of the survey month. As from 2006, the reference week has been changed to the second week of the survey month so that estimates can be published within one quarter of the reference period, as required by the IMF Special Data Dissemination System (SDDS) to which the country has graduated on 28 February 2012.

Scope and coverage of collection

All private Mauritian households in the islands of Mauritius and Rodrigues are covered.

Sampling method

A Stratified two-stage sampling design is used. At the first stage, Primary Sampling Units (PSUs) are selected with probability proportional to size and at the second stage, a fixed number of households is selected from each selected PSU.

Prior to 2005, the first stage stratification factors were urban, semi urban and rural geographical locations. As from 2005, the Relative Development Index (RDI) is used as the spatial stratification factor. This index is based on 12 variables encompassing housing and living conditions, literacy and education, and employment derived from the 2011 Housing and Population Census to rank PSUs. A set of RDIs for administrative regions has been published in the series "Economic and Social Indicators" - Issue No. 977.

The second stage stratification criteria are community, household size and average monthly expenditure of the household.

Sample size

From 1999 to 2003, around 6,500 households were covered each year. In 2004, the sample was increased to 8,640 so that reliable quarterly estimates of labour force, employment and unemployment could be worked out. As from 2005, the sample for the year has been further increased to 11,280. Furthermore, in order to measure quarterly changes, 50% of the households sampled in a quarter are re-interviewed in the following quarter; for example, 50% of the households sampled in the first quarter of 2005 have been re-interviewed in the second quarter of 2005.

Questionnaire

The CMPHS questionnaire comprises three modules: a basic module common to all rounds of the survey covering the general characteristics of the population (b) a second module covering labour force with in-depth investigation and a core set of questions which are kept constant at all rounds of the survey and (c) a third module grouping other topics of interest but investigated in less details.

Estimation and reliability of results

Estimates worked out from household survey data are inevitably subject to sampling variability since they are based on information collected from only a sample of households rather than from all households. The Standard Error (S.E) which is a measure of this variability, used to set confidence intervals for any estimate (whether a total or a rate) derived from the sample. For example, a 95% confidence interval indicates that there is 95% chance that the upper and lower limits of the interval enclose the true value (which would be obtained if all households had been surveyed). Standard errors and confidence intervals are calculated for the main labour force estimates.

Definitions

Household

A household is defined as either a person living on his/her own or a group of two or more persons, who may or may not be related, but who live together and make common provision for food and other essentials for living.

Employment

Employed population consists of Mauritians aged 16 years and above (16+) who have worked for pay, profit or family gain for at least one hour during the reference week of a month. It includes those who are temporarily absent from work for reasons such as leave with pay, leave without pay and temporary disorganisation of work (bad weather, break down of equipment, lack of order, etc.).

It is to be noted that as from year 2007, labour force estimates are based on population aged 16 years and above, following the amendment to the Labour Act in December 2006 whereby the minimum legal working age is 16 years, and the subsequent recommendation by the ILO to be in line with the amended Labour Act.

Unemployment

Unemployed population comprises all Mauritians aged 16+ who are not working but who are looking for work and are available for work during the reference period.

Labour force

Labour force or active population is made up of employed and unemployed population.

Unemployment rate

Unemployment rate is the ratio (%) of unemployment to labour force.

Inactive population

Inactive population includes all Mauritians aged 16+ years, not forming part of the labour force for reasons such as attendance at educational institutions, engagement in household duties, retirement, old age and infirmity/disablement.

Activity rate

Activity rate is the ratio (%) of labour force to population aged 16+ (active and inactive population).

Employer

An employer is a person who operates his/her own business or trade and hires one or more employees.

Own account worker

An Own account worker is a person who operates his/her own business or trade but does not hire employees. He/She may be working alone or with the help of contributing family workers.

Employee

An Employee is a person who works for pay for someone else, even in a temporary capacity.

Apprentice

An Apprentice is a person being trained for a job or trade and does not receive pay or may just receive some pocket money; an apprentice is considered as an employee.

Contributing family worker

A Contributing family worker is a person who works without pay in an enterprise operated by a family member.

Educational attainment

Primary: comprises persons who have studied up to a “Standard” between Standard 1 and the Certificate of Primary Education (CPE) or equivalent.

Secondary: comprises persons who have studied up to a “Form” between Form 1 and the Higher School Certificate (HSC) or equivalent.

Tertiary: comprises persons who in addition to their secondary educational certificates (SC and HSC or equivalent) also possess either a certificate/diploma (which is above the HSC but below a first degree) or a degree.

Annex 3

Annual labour force estimates based on data from different data sources, 2011 - 2016

	Labour force			Employment				Unemployment ¹	
	Mauritians aged 16+	Foreign workers	Total	in large establishments	outside large establishments	Total	of whom Mauritians	Number	Rate
	(000s)	(000s)	(000s)	(000s)	(000s)	(000s)	(000s)	(000s)	(%)
Both sexes									
2011	548.6	23.0	571.6	310.7	218.2	528.9	505.9	42.7	7.8
2012	556.3	24.0	580.3	311.5	224.2	535.7	511.7	44.6	8.0
2013	571.2	26.3	597.5	312.5	239.5	552.0	525.7	45.5	8.0
2014	575.7	28.3	604.0	313.3	245.9	559.2	530.9	44.8	7.8
2015	584.6	28.3	612.9	313.5	253.1	566.6	538.3	46.3	7.9
2016 ²	585.8	28.1	613.9	313.3	255.3	568.6	540.5	45.3	7.7
Change current year over previous:	1.2	-0.2	1.0	-0.2	2.2	2.0	2.2	-1.0	-0.2
Male									
2011	343.3	13.4	356.7	197.8	141.6	339.4	326.0	17.3	5.0
2012	346.9	14.2	361.1	198.3	144.7	343.0	328.8	18.1	5.2
2013	350.4	16.5	366.9	199.1	149.2	348.3	331.8	18.6	5.3
2014	352.8	18.3	371.1	199.1	152.6	351.7	333.4	19.4	5.5
2015	353.3	18.6	371.9	198.1	154.3	352.4	333.8	19.5	5.5
2016 ²	354.2	18.9	373.1	198.0	155.8	353.8	334.9	19.3	5.4
Change current year over previous:	0.9	0.3	1.2	-0.1	1.5	1.4	1.1	-0.2	-0.1
Female									
2011	205.3	9.6	214.9	112.9	76.6	189.5	179.9	25.4	12.4
2012	209.4	9.8	219.2	113.2	79.5	192.7	182.9	26.5	12.7
2013	220.8	9.8	230.6	113.4	90.3	203.7	193.9	26.9	12.2
2014	222.9	10.0	232.9	114.2	93.3	207.5	197.5	25.4	11.4
2015	231.3	9.7	241.0	115.4	98.8	214.2	204.5	26.8	11.6
2016 ²	231.6	9.2	240.8	115.3	99.5	214.8	205.6	26.0	11.2
Change current year over previous:	0.3	-0.5	-0.2	-0.1	0.7	0.6	1.1	-0.8	-0.4

¹ Unemployment figures and rate refer to Mauritians² Provisional**Note:**

1. The above figures have been worked out in order to give a set of comparable labour force estimates obtained from different sources. Users are cautioned in the use of these figures given that there are differences related to the reference period, coverage and methodology. The different sources from which these estimates have been obtained are as follows:

- i CMPHS for Mauritian labour force estimates which are subject to sampling variability as mentioned at Annex 1.
- ii The Annual Survey of Employment and Earnings (SEE) carried out in March of each year. Employment figures refer to jobs in large establishments employing 10 or more persons and include both Mauritians and foreign workers.
- iii Employment in 'other than large' establishments has been estimated after reconciling data from CMPHS, SEE and administrative sources.

Table 1: Labour market activity by status, 1st Quarter 2015 to 1st Quarter 2016

In thousands

	Total Mauritian population aged 16 & over	In employment					Unemployed	Total econ. active	Total econ. inactive	
		Employees	Employers	Own account workers	Contrib. family workers	Total				
Both sexes										
2015 Q1	965.6	418.3	20.0	78.8	12.0	529.1	50.3	579.4	386.2	
Q2	968.4	422.2	21.9	83.8	14.6	542.6	46.0	588.6	379.8	
Q3	968.4	428.4	20.3	74.9	12.9	536.5	42.6	579.1	389.3	
Q4	970.8	432.9	23.3	74.7	14.7	545.6	46.6	592.2	378.6	
2016 Q1 ¹	972.3	421.0	21.5	77.3	8.4	528.2	43.5	571.7	400.6	
% change, latest quarter over:										
previous quarter	0.2	-2.7	-7.7	3.5	-42.9	-3.2	-6.7	-3.5	5.8	
same quarter a year ago	0.7	0.6	7.5	-1.9	-30.0	-0.2	-13.5	-1.3	3.7	
Male										
2015 Q1	471.1	245.6	17.0	59.6	3.8	326.0	23.5	349.5	121.6	
Q2	472.4	251.9	18.7	61.4	3.9	335.9	18.2	354.1	118.3	
Q3	472.6	262.2	16.6	54.4	2.8	336.0	17.1	353.1	119.5	
Q4	473.7	258.7	19.1	56.5	3.6	337.9	19.7	357.6	116.1	
2016 Q1 ¹	474.6	251.5	19.4	57.5	1.9	330.3	17.2	347.5	127.1	
% change, latest quarter over:										
previous quarter	0.2	-2.8	1.6	1.8	-47.2	-2.2	-12.7	-2.8	9.5	
same quarter a year ago	0.7	2.4	14.1	-3.5	-50.0	1.3	-26.8	-0.6	4.5	
Female										
2015 Q1	494.5	172.7	3.0	19.2	8.2	203.1	26.8	229.9	264.6	
Q2	496.0	170.3	3.2	22.4	10.7	206.7	27.8	234.5	261.5	
Q3	495.8	166.2	3.7	20.5	10.1	200.5	25.5	226.0	269.8	
Q4	497.1	174.2	4.2	18.2	11.1	207.7	26.9	234.6	262.5	
2016 Q1 ¹	497.7	169.5	2.1	19.8	6.5	197.9	26.3	224.2	273.5	
% change, latest quarter over:										
previous quarter	0.1	-2.7	-50.0	8.8	-41.4	-4.7	-2.2	-4.4	4.2	
same quarter a year ago	0.6	-1.9	-30.0	3.1	-20.7	-2.6	-1.9	-2.5	3.4	

¹ Provisional

Table 2: Labour force characteristics by age and sex, 1st Quarter 2016¹**In thousands**

	Mauritian aged 16 and over	Age group (years)				
		16-24	25 - 29	30 - 39	40 - 49	50+
Both sexes						
In employment	528.2	58.6	57.6	135.6	126.0	150.4
Unemployed	43.5	18.7	7.6	11.3	3.3	2.6
Labour force	571.7	77.3	65.2	146.9	129.3	153.0
Economically inactive	400.6	95.2	15.0	33.8	40.9	215.7
Total Population	972.3	172.5	80.2	180.7	170.2	368.7
Employment rate (%)	92.4	75.8	88.3	92.3	97.4	98.3
Unemployment rate (%)	7.6	24.2	11.7	7.7	2.6	1.7
Activity rate (%)	58.8	44.8	81.3	81.3	76.0	41.5
Male						
In employment	330.3	35.6	35.0	81.5	79.8	98.4
Unemployed	17.2	8.5	2.6	4.2	0.4	1.5
Labour force	347.5	44.1	37.6	85.7	80.2	99.9
Economically inactive	127.1	42.7	2.7	4.4	5.1	72.2
Total Population	474.6	86.8	40.3	90.1	85.3	172.1
Employment rate (%)	95.1	80.7	93.1	95.1	99.5	98.5
Unemployment rate (%)	4.9	19.3	6.9	4.9	0.5	1.5
Activity rate (%)	73.2	50.8	93.3	95.1	94.0	58.0
Female						
In employment	197.9	23.0	22.6	54.1	46.2	52.0
Unemployed	26.3	10.2	5.0	7.1	2.9	1.1
Labour force	224.2	33.2	27.6	61.2	49.1	53.1
Economically inactive	273.5	52.5	12.3	29.4	35.8	143.5
Total Population	497.7	85.7	39.9	90.6	84.9	196.6
Employment rate (%)	88.3	69.3	81.9	88.4	94.1	97.9
Unemployment rate (%)	11.7	30.7	18.1	11.6	5.9	2.1
Activity rate (%)	45.0	38.7	69.2	67.5	57.8	27.0

¹ Provisional

Table 3: Employment by industrial activity, 1st Quarter 2015 to 1st Quarter 2016

	Total employed aged 16+	Primary sector	Secondary sector	Tertiary sector	Selected NSIC ¹ Sections			
					Manufacturing	Construction	Wholesale and retail trade	Other services
					C	F	G	H - U
	(000s)	(%)	(%)	(%)	(%)	(%)	(%)	(%)
Both sexes								
2015 Q1	529.1	8.5	26.4	65.1	15.1	9.8	13.6	51.5
Q2	542.6	7.4	24.0	68.6	13.3	9.4	14.6	54.0
Q3	536.5	7.7	24.1	68.2	14.1	8.5	14.8	53.4
Q4	545.6	8.0	25.9	66.1	15.3	9.2	15.1	51.0
2016 Q1 ²	528.2	7.8	26.1	66.1	13.8	10.7	14.1	51.9
Male								
2015 Q1	326.0	10.1	31.1	58.8	13.6	15.5	12.7	46.1
Q2	335.9	8.5	29.2	62.3	12.5	14.6	13.6	48.6
Q3	336.0	8.7	28.8	62.5	13.4	13.2	13.6	48.9
Q4	337.9	9.2	30.6	60.2	14.3	14.4	13.2	47.0
2016 Q1 ²	330.3	8.6	31.7	59.7	12.7	16.5	12.8	47.0
Female								
2015 Q1	203.1	6.1	18.7	75.2	17.4	0.8	15.1	60.1
Q2	206.7	5.7	15.4	78.9	14.4	0.8	16.2	62.7
Q3	200.5	6.0	16.2	77.8	15.3	0.6	16.8	61.0
Q4	207.7	6.1	18.2	75.7	17.1	0.8	18.2	57.5
2016 Q1 ²	197.9	6.5	16.9	76.6	15.5	1.1	16.4	60.2

¹ National version of the International Standard Industrial Classification of All Economic Activities (ISIC Revision 4)

² Provisional

Table 4: Employment by occupational group, 1st Quarter 2015 to 1st Quarter 2016

	ISCO-08 ¹					
	Total employed aged 16+	Managers, Professionals, Technicians & associate professionals	Clerical support workers	Service and sales workers	Agricultural, Craft & related trades workers, Plant & machine operators & assemblers	Elementary occupations
		(000s)	1,2,3 (%)	4 (%)	5 (%)	6,7,8 (%)
Both sexes						
2015 Q1	529.1	24.6	8.5	19.3	30.9	16.7
Q2	542.6	26.0	8.5	21.0	29.4	15.1
Q3	536.5	25.2	8.8	21.8	28.7	15.5
Q4	545.6	22.8	9.4	21.6	28.5	17.7
2016 Q1 ²	528.2	25.3	8.3	20.3	29.7	16.4
Male						
2015 Q1	326.0	22.2	6.0	17.8	42.2	11.8
Q2	335.9	23.3	5.0	19.6	40.5	11.6
Q3	336.0	22.5	6.0	20.4	38.5	12.6
Q4	337.9	20.8	6.3	19.8	38.5	14.6
2016 Q1 ²	330.3	24.4	5.4	17.8	40.2	12.2
Female						
2015 Q1	203.1	28.3	12.6	21.7	12.8	24.6
Q2	206.7	30.2	14.2	23.5	11.5	20.6
Q3	200.5	29.5	13.6	24.1	12.3	20.5
Q4	207.7	26.0	14.4	24.5	12.3	22.8
2016 Q1 ²	197.9	26.8	13.1	24.4	12.2	23.5

¹ National version of the International Standard Classification of Occupations (ISCO-08)

² Provisional

Table 5: Employment by hours worked, 1st Quarter 2015 to 1st Quarter 2016

	Total employed aged 16+ (000's)	Total hours worked (000's)	% having worked for:					Average number of hours worked
			0 hour	1 to 23 hours	24 to 40 hours	41 to 50 hours	51 and above	
Both sexes								
2015 Q1	529.1	18,400	7.4	15.1	41.6	22.6	13.3	38.0
Q2	542.6	19,900	5.9	12.3	40.9	27.0	13.9	39.0
Q3	536.5	19,900	6.3	12.1	38.7	27.9	15.0	39.5
Q4	545.6	20,100	6.5	10.7	42.9	24.7	15.2	39.4
2016 Q1 ¹	528.2	18,400	5.6	16.5	43.3	22.1	12.5	36.8
Male								
2015 Q1	326.0	11,900	8.7	11.1	40.0	23.8	16.4	40.0
Q2	335.9	13,000	6.5	8.6	38.7	29.4	16.8	41.3
Q3	336.0	13,100	6.7	9.2	35.5	30.1	18.5	41.9
Q4	337.9	13,100	6.4	7.5	41.8	26.3	18.0	41.5
2016 Q1 ¹	330.3	12,100	6.3	13.5	40.4	24.4	15.4	38.9
Female								
2015 Q1	203.1	6,500	5.5	21.5	44.1	20.7	8.2	34.0
Q2	206.7	6,900	5.0	18.2	44.5	23.2	9.1	35.3
Q3	200.5	6,800	5.6	17.1	43.9	24.3	9.1	35.7
Q4	207.7	7,000	6.6	16.0	44.6	22.2	10.6	35.9
2016 Q1 ¹	197.9	6,300	4.3	21.8	48.1	18.2	7.6	33.3

0 hour not included in total hours worked & in average number of hours worked

¹ Provisional

Table 6: Unemployment by educational attainment, 1st Quarter 2015 to 1st Quarter 2016

	Unemployed Mauritians aged 16+ (000s)	Primary			Secondary			Tertiary		
		Total (%)	Below CPE (%)	Passed CPE (%)	Total (%)	Below SC (%)	Passed SC (%)	Passed HSC (%)		
Both sexes										
2015 Q1	50.3	21.9	14.9	7.0	63.0	29.6	15.7	17.7	15.1	
Q2	46.0	16.1	10.7	5.4	64.1	33.7	16.7	13.7	19.8	
Q3	42.6	17.1	13.1	4.0	62.9	33.8	13.4	15.7	20.0	
Q4	46.6	17.2	12.9	4.3	60.1	27.9	13.5	18.7	22.7	
2016 Q1 ¹	43.5	13.8	9.9	3.9	63.4	37.2	13.3	12.9	22.8	
Male										
2015 Q1	23.5	23.4	16.2	7.2	62.6	36.2	14.0	12.3	14.0	
Q2	18.2	14.8	10.4	4.4	69.8	40.7	15.4	13.7	15.4	
Q3	17.1	21.7	17.0	4.7	64.3	40.9	8.2	15.2	14.0	
Q4	19.7	17.8	13.7	4.1	58.3	28.4	12.7	17.2	23.9	
2016 Q1 ¹	17.2	16.3	13.4	2.9	58.1	33.1	10.5	14.5	25.6	
Female										
2015 Q1	26.8	20.5	13.8	6.7	63.4	23.9	17.2	22.4	16.1	
Q2	27.8	16.9	10.8	6.1	60.4	29.1	17.6	13.7	22.7	
Q3	25.5	14.1	10.6	3.5	62.0	29.0	16.9	16.1	23.9	
Q4	26.9	16.8	12.3	4.5	61.3	27.5	14.1	19.7	21.9	
2016 Q1 ¹	26.3	12.2	7.6	4.6	66.9	39.9	15.2	11.8	20.9	

¹ Provisional

Table 7: Unemployment by age, 1st Quarter 2015 to 1st Quarter 2016**In Thousands**

		All aged 16 and over	Age group (years)		
			16-24	25-49	50+
Both sexes					
	2015 Q1	50.3	23.3	23.6	3.4
	Q2	46.0	19.7	21.8	4.5
	Q3	42.6	20.7	19.8	2.1
	Q4	46.6	22.1	21.2	3.3
	2016 Q1 ¹	43.5	18.7	22.2	2.6
Change, latest quarter over:					
	previous quarter	-3.1	-3.4	1.0	-0.7
	same quarter a year ago	-6.8	-4.6	-1.4	-0.8
Male					
	2015 Q1	23.5	11.2	9.7	2.6
	Q2	18.2	9.4	6.3	2.5
	Q3	17.1	9.5	6.6	1.0
	Q4	19.7	10.0	7.3	2.4
	2016 Q1 ¹	17.2	8.5	7.2	1.5
Change, latest quarter over:					
	previous quarter	-2.5	-1.5	-0.1	-0.9
	same quarter a year ago	-6.3	-2.7	-2.5	-1.1
Female					
	2015 Q1	26.8	12.1	13.9	0.8
	Q2	27.8	10.3	15.5	2.0
	Q3	25.5	11.2	13.2	1.1
	Q4	26.9	12.1	13.9	0.9
	2016 Q1 ¹	26.3	10.2	15.0	1.1
Change, latest quarter over:					
	previous quarter	-0.6	-1.9	1.1	0.2
	same quarter a year ago	-0.5	-1.9	1.1	0.3

¹ Provisional

Table 8: Unemployment by work experience, 1st Quarter 2015 to 1st Quarter 2016

	Unemployed Mauritians aged 16+	No. of first job seekers	Unemployed with work experience by industry *					
			Total	Manuf.	Construction	Trade	Accommodation & Food Service Activities	Other
	(000s)	(000s)	(000s)	(%)	(%)	(%)	(%)	(%)
Both sexes								
2015 Q1	50.3	17.1	33.2	16.6	19.0	22.3	9.6	32.5
Q2	46.0	12.4	33.6	18.2	9.8	21.7	16.1	34.2
Q3	42.6	13.7	28.9	12.1	11.4	23.5	12.8	40.2
Q4	46.6	14.6	32.0	17.8	10.0	21.9	10.6	39.7
2016 Q1 ¹	43.5	13.6	29.9	12.7	9.7	23.1	21.4	33.1
Change, latest quarter over:								
previous quarter	-3.1	-1.0	-2.1					
same quarter a year ago	-6.8	-3.5	-3.3					
Male								
2015 Q1	23.5	6.0	17.5	13.7	36.0	17.1	8.0	25.2
Q2	18.2	5.4	12.8	15.6	24.2	14.1	10.9	35.2
Q3	17.1	4.1	13.0	9.2	23.8	20.0	10.8	36.2
Q4	19.7	6.0	13.7	13.1	23.4	14.6	10.2	38.7
2016 Q1 ¹	17.2	4.8	12.4	11.3	21.8	17.7	20.2	29.0
Change, latest quarter over:								
previous quarter	-2.5	-1.2	-1.3					
same quarter a year ago	-6.3	-1.2	-5.1					
Female								
2015 Q1	26.8	11.1	15.7	19.7	0.0	28.0	11.5	40.8
Q2	27.8	7.0	20.8	19.7	1.0	26.4	19.2	33.7
Q3	25.5	9.6	15.9	14.5	1.3	26.4	14.5	43.3
Q4	26.9	8.6	18.3	21.3	0.0	27.3	10.9	40.5
2016 Q1 ¹	26.3	8.8	17.5	13.7	1.1	26.9	22.3	36.0
Change, latest quarter over:								
previous quarter	-0.6	0.2	-0.8					
same quarter a year ago	-0.5	-2.3	1.8					

* National version of the International Standard Industrial Classification of All Economic Activities (ISIC Revision 4)

¹ Provisional

Table 9: Economically inactive population by reason, 1st Quarter 2015 to 1st Quarter 2016

	Total Mauritians aged 16+ (000s)	Economically inactive by reason					
		Total	Homemakers	Retired or elderly	Students	Sick or disabled	Other
		(000s)	(%)	(%)	(%)	(%)	(%)
Both sexes							
2015 Q1	965.6	386.2	40.5	25.0	20.5	9.0	5.0
Q2	968.4	379.8	38.7	26.4	21.2	9.2	4.5
Q3	968.4	389.3	42.1	24.4	21.1	8.8	3.6
Q4	970.8	378.6	39.9	26.5	21.2	8.9	3.5
2016 Q1 ¹	972.3	400.6	40.8	24.8	19.3	9.7	5.4
Male							
2015 Q1	471.1	121.6	0.2	45.1	30.3	16.4	8.0
Q2	472.4	118.3	1.3	46.1	33.0	15.3	4.3
Q3	472.6	119.5	0.1	46.3	34.0	14.6	5.0
Q4	473.7	116.1	0.3	46.9	33.3	14.3	5.2
2016 Q1 ¹	474.6	127.1	0.7	45.7	29.7	16.1	7.8
Female							
2015 Q1	494.5	264.6	59.0	15.8	16.0	5.7	3.5
Q2	496.0	261.5	55.5	17.6	15.8	6.5	4.6
Q3	495.8	269.8	60.7	14.7	15.5	6.2	2.9
Q4	497.1	262.5	57.5	17.5	15.8	6.5	2.7
2016 Q1 ¹	497.7	273.5	59.5	15.1	14.5	6.7	4.2

¹ Provisional