

Producer Price Index – Agriculture (PPI-A)

Second quarter 2015

(Base period year 2007 = 100)

1. Introduction

The Producer Price Index-Agriculture (PPI-A) gives a measure of the average change in the selling prices which producers receive for their agricultural products.

This issue of the Economic and Social Indicators presents monthly PPI-A indices for the months of April, May and June 2015 as well as figures for preceding months updated in the light of additional information that have now become available. Monthly weights by commodity group and product are given in Table 12.

The methodology for the construction of PPI-A is annexed.

2. Producer Price Index - Agriculture: Second Quarter 2015

2.1 Structure of PPI-A (Base period: 2007=100)

PPI-A covers two sub-groups, namely: "Crop products" and "Animals and animal products". "Crop products" is further subdivided into "Sugar cane", and "Other crop products". Sugar cane heavily influences both the "overall" index and that of sub-group "Crop products", of which it constitutes 57.1% and 75.5% of the respective weights.

2.2 Changes in the monthly index

Fig 1: Overall monthly indices, July 2014 – June 2015

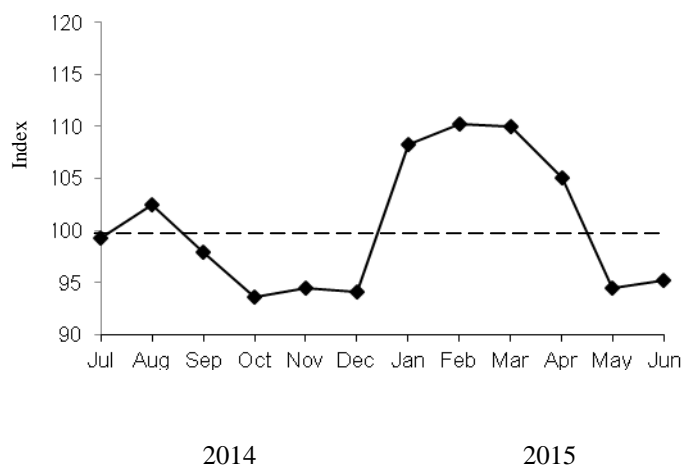


Figure 1 shows the monthly evolution of PPI-A for the period July 2014 to June 2015.

PPI-A, which was 110.0 in March 2015, went down by 13.5% to 95.2 in June 2015. This drop was due to the combined effects of decreases of 4.5% and 10.0% registered in April and May respectively and a rise of 0.7% in June (Table 5).

The index for the sub-group "Crop products", which carries 75.6% of the total weight, decreased by 8.1% and 16.2% in April and May respectively and increased by 1.2% in June.

2.2.1 Sugar cane

The index for "Sugar cane" for the period July 2014 to June 2015 was 69.5 in the light of the final price of sugar for the 2014 crop. This represents a decrease of 19.8% over the 2013 crop. It is assumed that the same price prevails during the whole of the crop year.

2.2.2 Other crop products

The index for "Other crop products" declined by 17.6% in April mainly due to a decrease of 24.3% in the prices of fresh vegetables (creepers, tomato, cabbage and other fresh vegetables).

In May, the index went down by 39.5% mainly due to a drop of 50.7% in the prices of fresh vegetables (tomato, creepers, carrot and cabbage).

In June, the index rose by 4.4% mainly due to the combined effects of an increase of 33.6% in the prices of edible roots and tubers and a decrease of 1.4% in the prices of fresh vegetables.

2.2.3 Animals and animal products

The index for the sub-group "Animals and animal products" increased by 2.4% in April mainly due to increases in the prices of eggs (+8.4%) and poultry (+1.0%), partly offset by lower prices of pigs (-8.9%).

In May, the index registered a rise of 1.0% due to an increase in the prices of eggs (+4.9%).

In June, the index rose by 0.1% due to higher prices of eggs (+0.2%).

More details of changes on a month-to-month basis are given in Table 5 and changes over the corresponding month of the previous year, in Table 6.

2.3 Changes in the quarterly index

Fig 2: Overall quarterly indices, 3rd quarter 2013 – 2nd quarter 2015

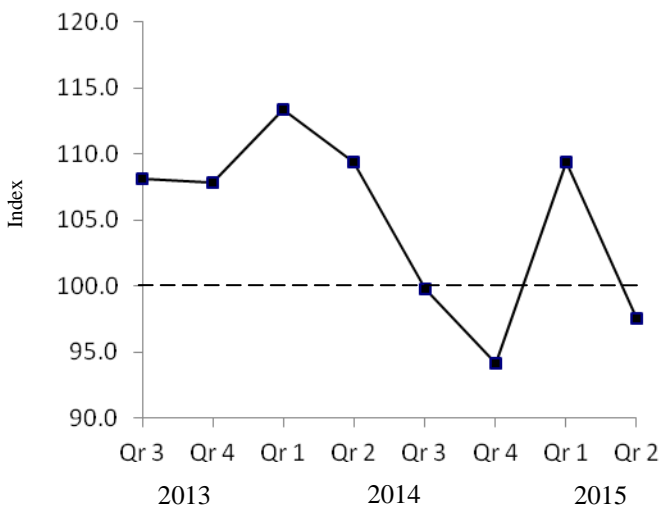


Figure 2 and Table 7 show the movement of PPI-A covering the periods 2013, 2014 and 2015 on a quarterly basis.

The overall index for the second quarter of 2015 dropped by 10.9% compared to the previous quarter and declined by 10.9% compared to the corresponding quarter of 2014. Percentage changes on a quarterly basis and the net contributions of commodity groups and products are given in Table 8.

2.4 Changes in the yearly index

Average prices which producers received from the sale of agricultural products in the year 2014 were 8.0% lower compared to the previous year. The annual indices for the years 2012, 2013 and 2014, annual changes and the net contributions of commodity groups and products to the change are presented in Table 9.

Statistics Mauritius
Ministry of Finance and Economic Development
Port Louis
August 2015

CONTACT PERSONS:

Mr. B. Unmar
Senior Statistician

Mr. D. Chinnee
Senior Statistical Officer
Agriculture Unit
Statistics Mauritius
5th Floor, LIC Centre
Port Louis
Tel: (230) 208-1800
Fax: (230) 211-4150/(230) 213-6535
Email: cso_agriculture@govmu.org
Website: <http://statsmauritius.govmu.org>

Monthly Producer Price Index -Agriculture (PPI-A)
(Base period:Year 2007 =100)

Table 1 : Monthly indices by commodity group and product, January 2015 - June 2015

Commodity Group	Weight	2015					
		January	February	March	April	May	June
Crop Products	755.9	93.9	97.4	96.8	89.0	74.6	75.5
Sugar Cane	570.5	69.5 ¹	69.5 ¹	69.5 ¹	69.5	69.5	69.5
Other crops products	185.4	169.2	183.3	180.8	149.0	90.2	94.2
Fresh Vegetables ²	115.1	199.8	220.8	217.0	164.3	81.0	79.9
Beans	3.4	316.0	222.6	261.8	166.5	56.8	60.3
Brinjal	2.7	229.9	202.9	340.6	218.0	161.9	156.8
Cabbage	4.2	161.4	347.9	323.8	240.2	66.6	61.1
Cauliflower	2.6	77.3	77.3	80.3	80.3	152.2	102.0
Carrot	7.2	326.8	348.9	288.7	279.3	101.8	66.1
Onion	8.1	147.4	147.4	147.4
Tomato	30.1	263.2	355.2	267.5	250.0	65.4	63.1
Creepers	37.0	139.4	131.4	172.6	121.0	74.4	83.0
Other fresh vegetables	19.8	161.5	115.2	183.8	134.3	101.4	98.8
Fruit and nuts ²	20.3	104.1	133.6	121.0	121.0	108.9	108.4
Banana	7.1	99.9	99.9	99.9	98.6	98.6	98.6
Pineapple	8.4	131.6	173.2	139.7	140.5	118.0	114.0
Other fruits	4.8	92.5	99.7	...	160.0	200.0	178.0
Oilseeds and oleaginous fruits ²	1.5	134.0	143.3	190.0	174.0	156.0	156.7
Groundnut	0.8	119.0	116.2	186.5	156.6	136.4	135.2
Coconut	0.7	200.0	200.0	200.0	200.0	200.0	200.0
Edible roots and tubers ²	24.7	143.4	126.8	133.5	143.4	100.2	133.9
Potato	22.4	147.1	147.1
Other Root crops	2.3	133.1	126.8	133.5	143.4	100.2	128.5
Stimulant & spice ²	12.1	118.8	118.3	118.9	114.0	116.9	119.4
Tea ³	8.1	112.3	112.3	112.3	112.3	112.3	112.3
Ginger	4.0	190.7	190.4	198.8	171.0	145.4	135.4
Flowers, ornamental plants	11.7	91.6	91.6	91.6	91.6	91.6	91.6
Anthurium	5.1	101.4	101.4	101.4	101.4	101.4	101.4
Rose	3.0	163.6	163.6	163.6	163.6	163.6	163.6
Other flowers	0.4	160.0	160.0	160.0	160.0	160.0	160.0
Tobacco	3.2	-	-	-	-	-	-
Animals & Animal Products	244.1	152.3	149.9	151.0	154.6	156.2	156.3
Cattle	2.0	136.5	136.5	136.5	138.0	138.0	138.0
Pigs	3.2	121.8	121.8	121.8	110.9	110.9	110.9
Goat	0.7	179.7	179.7	179.7	181.5	181.5	181.5
Deer	4.9	136.5	136.5	136.5	136.5	136.5	136.5
Poultry	174.2	157.3	154.1	155.7	157.3	157.3	157.3
Eggs	55.0	136.9	136.7	136.4	147.8	155.1	155.4
Milk	4.1	188.9	188.9	188.9	188.9	188.9	188.9
Overall Index	1,000.0	108.2	110.2	110.0	105.0	94.5	95.2

¹ Revised

³ Provisional

... Not applicable

² The indices are computed based on the method of variable baskets with fixed monthly weights in the base year as explained at paragraph 12 of Annex. The composition of these baskets is shown in Table 12.

- No production

Monthly Producer Price Index -Agriculture (PPI-A)
(Base period:Year 2007 =100)

Table 2 : Monthly indices by commodity group and product, January 2014 - December 2014

Commodity Group	Weight	2014											
		January	February	March	April	May	June	July	August	September	October	November	December
Crop Products	755.9	97.9	107.0	98.6	96.4	93.0	94.3	81.1	86.5	80.8	76.2	77.2	76.0
Sugar Cane	570.5	86.7	86.7	86.7	86.7	86.7	86.7	69.5¹	69.5¹	69.5¹	69.5¹	69.5¹	69.5¹
Other crops products	185.4	132.5	169.5	135.2	126.2	112.3	117.7	116.8	138.8	115.6	97.0	101.0	95.9
Fresh Vegetables²	115.1	137.1	192.0	144.1	120.7	107.0	115.4	114.1	148.1	111.2	86.0	93.4	86.3
Beans	3.4	245.7	208.3	198.7	138.9	88.8	101.6	144.2	165.4	140.8	65.5	76.6	142.2
Brinjal	2.7	200.3	100.7	158.4	203.7	167.1	223.2	213.0	292.0	163.8	64.5	141.5	39.3
Cabbage	4.2	79.5	94.9	109.5	120.5	164.8	148.4	149.0	152.2	100.9	59.1	65.4	52.7
Cauliflower	2.6	146.4	147.8	147.8	147.8	127.3	119.0	92.4	103.0	105.7	77.3	77.3	80.3
Carrot	7.2	232.8	316.5	228.9	211.2	126.6	84.3	49.3	100.5	47.5	58.4	96.9	133.9
Onion	8.1	147.4	147.4	147.4	147.4	147.4	147.4	147.4	147.4	147.4
Tomato	30.1	130.1	270.9	238.1	195.4	76.0	115.4	83.6	100.1	55.4	27.7	43.6	60.5
Creepers	37.0	134.2	148.0	92.0	74.9	109.5	109.3	129.3	163.7	138.2	77.8	85.5	86.3
Other fresh vegetables	19.8	112.7	132.6	99.0	114.6	116.3	116.0	149.2	207.3	162.2	109.4	106.7	97.4
Fruits and nuts²	20.3	127.7	148.5	138.3	165.1	135.2	124.0	118.1	125.4	108.4	87.9	84.2	76.8
Banana	7.1	96.2	97.4	97.4	94.9	88.8	88.8	95.3	95.3	95.3	96.2	95.3	95.3
Pineapple	8.4	144.2	182.3	174.6	227.0	180.7	158.4	142.5	159.0	122.3	71.9	82.3	71.1
Other fruits	4.8	136.8	177.6	...	160.0	150.0	137.3	145.0	106.9	77.8	73.9
Oilseeds and oleaginous fruits²	1.5	137.3	134.7	122.7	136.7	140.0	138.0	137.3	136.0	131.3	163.3	156.7	132.0
Groundnut	0.8	140.5	139.4	121.9	144.4	146.7	144.8	152.7	153.2	161.3	148.4	139.4	114.0
Coconut	0.7	125.0	125.0	125.0	125.0	125.0	125.0	125.0	125.0	125.0	175.0	175.0	175.0
Edible roots and tubers²	24.7	145.0	149.4	124.8	142.4	126.6	139.7	146.6	147.0	146.8	142.9	145.4	144.6
Potato	22.4	145.4	147.1	147.1	147.1	147.1	147.1	147.1	147.1
Other Root crops	2.3	143.8	149.4	124.8	142.4	126.6	136.7	141.6	144.2	141.1	91.4	105.1	103.5
Stimulant & spice²	12.1	110.2	111.0	110.3	112.9	112.3	107.1	101.3	102.9	127.3	119.8	113.8	120.0
Tea	8.1	112.3	112.3	112.3	112.3	112.3	112.3	112.3 ³	112.3 ³	112.3 ³	112.3 ³	112.3 ³	112.3 ³
Ginger	4.0	86.7	95.9	87.4	131.4	112.2	95.8	92.1	97.0	136.7	136.9	146.4	158.0
Flowers, ornamental plants	11.7	91.6	91.6	91.6	91.6	91.6	91.6	91.6	91.6	91.6	91.6	91.6	91.6
Anthurium	5.1	101.4	101.4	101.4	101.4	101.4	101.4	101.4	101.4	101.4	101.4	101.4	101.4
Rose	3.0	163.6	163.6	163.6	163.6	163.6	163.6	163.6	163.6	163.6	163.6	163.6	163.6
Other flowers	0.4	160.0	160.0	160.0	160.0	160.0	160.0	160.0	160.0	160.0	160.0	160.0	160.0
Tobacco	3.2	-	-	-	-	-	-	-	-	-	-	-	-
Animals & Animal Products	244.1	151.3	151.3	151.0	153.7	155.8	155.9	155.8	151.9	150.9	147.4	148.1	150.3
Cattle	2.0	133.5	133.5	133.5	135.5	135.5	135.5	135.5	135.5	135.5	136.5	136.5	136.5
Pigs	3.2	128.7	125.5	119.0	119.0	119.0	119.0	119.0	119.0	117.8	121.8	121.8	121.8
Goat	0.7	177.4	177.4	177.4	175.6	175.6	175.6	172.7	172.7	172.7	176.2	176.2	176.2
Deer	4.9	142.4	142.4	142.4	142.4	142.4	142.4	136.5	136.5	136.5	136.5	136.5	136.5
Poultry	174.2	154.1	154.1	154.1	156.5	156.5	156.5	156.5	156.5	156.5	151.8	152.5	155.7
Eggs	55.0	142.4	142.5	141.8	145.8	155.3	155.8	155.8	138.5	133.8	132.7	133.4	133.5
Milk	4.1	184.5	184.5	184.5	184.5	184.5	184.5	188.9	188.9	188.9	188.9	188.9	188.9
Overall Index	1,000.0	110.9	117.8	111.4	110.4	108.3	109.3	99.3	102.5	97.9	93.6	94.5	94.1

¹ Revised

... Not applicable

- No production

² The indices are computed based on the method of variable baskets with fixed monthly weights in the base year as explained at paragraph 12 of Annex. The composition of these baskets is shown in Table 12.

³ Provisional

Monthly Producer Price Index -Agriculture (PPI-A)

(Base period:Year 2007 =100)

Table 3 : Monthly indices by commodity group and product, January 2013 - December 2013

Commodity Group	Weight	2013											
		January	February	March	April	May	June	July	August	September	October	November	December
Crop Products	755.9	107.3	111.6	111.0	108.8	106.9	104.2	93.2	92.8	92.1	95.2	95.4	92.6
Sugar Cane	570.5	96.3	96.3	96.3	96.3	96.3	96.3	86.7	86.7	86.7	86.7	86.7	86.7
Other crops products	185.4	141.0	158.7	156.3	147.4	139.7	128.5	113.3	111.6	108.9	121.2	122.1	110.8
Fresh Vegetables ¹	115.1	151.8	184.1	177.5	162.6	153.8	129.6	107.1	96.6	90.9	113.2	119.8	105.1
Beans	3.4	217.7	189.4	187.9	173.7	180.3	147.1	106.5	95.5	105.5	118.0	97.3	86.0
Brinjal	2.7	176.4	81.9	158.8	175.3	214.9	274.4	274.3	202.5	156.4	192.2	128.6	51.9
Cabbage	4.2	157.7	182.2	209.3	196.4	147.3	93.2	45.7	35.1	73.9	140.4	176.1	121.7
Cauliflower	2.6	133.9	133.9	133.9	133.9	152.4	177.9	103.6	86.4	93.1	122.8	150.1	133.7
Carrot	7.2	183.4	222.3	261.8	178.0	242.0	164.0	82.7	30.7	50.7	82.0	136.2	198.4
Onion	8.1	140.5	140.5	140.5	140.5	140.5	140.5	140.5	140.5	140.5
Tomato	30.1	167.5	289.7	296.3	278.1	147.6	72.6	68.0	67.1	50.7	67.9	103.8	96.1
Creepers	37.0	125.7	127.8	108.6	116.5	147.8	142.5	113.4	106.5	108.3	119.5	117.0	105.7
Other fresh vegetables	19.8	152.0	124.5	138.4	141.8	140.1	163.9	169.5	153.1	123.1	114.5	106.3	90.1
Fruits and nuts ¹	20.3	110.7	108.5	108.3	100.4	113.5	129.2	117.7	164.5	171.1	146.0	109.9	94.8
Banana	7.1	87.5	87.5	93.7	93.7	93.7	93.7	93.7	93.7	93.7	93.7	93.7	99.9
Pineapple	8.4	156.3	130.1	121.3	106.2	133.0	165.8	143.4	244.0	252.8	222.4	143.4	106.2
Other fruits	4.8	100.5	96.7	...	140.0	125.0	108.5	140.0	104.5	100.2	90.6
Oilseeds and oleaginous fruits ¹	1.5	146.0	143.3	158.0	147.3	156.0	148.7	142.7	142.0	132.7	146.0	146.7	144.0
Groundnut	0.8	151.0	151.6	168.7	161.5	169.5	160.6	164.8	167.3	168.2	173.2	167.8	151.8
Coconut	0.7	125.0	125.0	125.0	125.0	125.0	125.0	125.0	125.0	125.0	125.0	125.0	125.0
Edible roots and tubers ¹	24.7	139.6	123.9	135.0	142.2	116.4	136.1	144.3	145.1	144.9	145.6	145.1	144.0
Potato	22.4	145.4	145.4	145.4	145.4	145.4	145.4	145.4	145.4
Other Root crops	2.3	123.7	123.9	135.0	142.2	116.4	132.2	133.2	138.8	134.6	148.4	138.4	121.8
Stimulant & spice ¹	12.1	109.1	109.1	110.3	111.7	107.7	100.9	84.5	78.3	81.2	97.6	110.1	103.7
Tea	8.1	112.3	112.3	112.3	112.3	112.3	112.3	112.3	112.3	112.3	112.3	112.3	112.3
Ginger	4.0	73.0	71.3	87.3	92.7	78.2	75.8	61.1	57.4	61.8	63.8	63.1	61.2
Flowers, ornamental plants	11.7	122.6	122.6	122.6	126.7	126.7	126.7	127.0	127.0	127.0	127.0	127.0	127.0
Anthurium	5.1	101.4	101.4	101.4	101.4	101.4	101.4	101.4	101.4	101.4	101.4	101.4	101.4
Rose	3.0	150.0	150.0	150.0	163.6	163.6	163.6	163.6	163.6	163.6	163.6	163.6	163.6
Other flowers	0.4	135.0	135.0	135.0	150.0	150.0	150.0	160.0	160.0	160.0	160.0	160.0	160.0
Tobacco	3.2	129.4	129.4	129.4	129.4	129.4	129.4	129.4	129.4	129.4	129.4	129.4	129.4
Animals & Animal Products	244.1	148.0	150.6	151.0	152.6	152.6	153.7	155.4	155.5	155.1	150.4	147.8	152.1
Cattle	2.0	130.0	130.0	130.0	130.0	130.0	130.0	130.0	130.0	130.0	132.0	132.0	132.0
Pigs	3.2	134.9	134.9	134.9	134.9	134.9	129.0	121.8	121.8	121.8	119.0	128.7	128.7
Goat	0.7	163.4	163.4	163.4	171.6	171.6	171.6	166.5	166.5	166.5	166.5	166.5	166.5
Deer	4.9	144.3	144.3	144.3	144.3	144.3	137.1	137.1	137.1	137.1	142.4	142.4	142.4
Poultry	174.2	152.0	155.2	155.2	156.7	156.7	156.7	160.4	160.4	160.4	154.9	149.4	153.3
Eggs	55.0	134.2	135.4	137.3	139.9	139.9	145.8	141.6	142.0	139.9	136.8	142.0	148.6
Milk	4.1	184.5	184.5	184.5	184.5	184.5	184.5	184.5	184.5	184.5	184.5	184.5	184.5
Overall Index	1000.0	117.2	121.1	120.8	119.5	118.1	116.3	108.4	108.1	107.5	108.7	108.2	107.1

¹ The indices are computed based on the method of variable baskets with fixed monthly weights in the base year as explained at paragraph 12 of Annex. The composition of these baskets is shown in Table 12.

... Not applicable

Monthly Producer Price Index -Agriculture (PPI-A)

(Base period:Year 2007 =100)

Table 4 : Monthly indices by commodity group and product, January 2012 - December 2012

Commodity Group	Weight	2012											
		January	February	March	April	May	June	July	August	September	October	November	December
Crop Products	755.9	93.2	94.8	98.7	97.0	95.2	95.1	102.2	100.3	97.0	99.9	101.4	99.4
Sugar Cane	570.5	87.8	87.8	87.8	87.8	87.8	87.8	96.3	96.3	96.3	96.3	96.3	96.3
Other crops products	185.4	109.8	116.3	132.3	125.3	118.1	117.6	120.3	112.7	99.1	110.9	117.0	108.8
Fresh Vegetables ¹	115.1	96.7	115.2	139.4	131.7	124.1	117.9	118.4	105.2	80.5	98.3	110.7	102.6
Beans	3.4	109.4	121.9	172.3	167.0	140.6	155.5	157.0	109.0	87.1	153.7	113.4	95.4
Brinjal	2.7	58.4	139.0	180.4	92.1	154.2	173.1	182.2	156.1	149.8	215.0	191.2	105.7
Cabbage	4.2	181.1	101.1	87.9	105.9	113.8	139.2	155.6	71.2	62.5	47.6	83.8	110.2
Cauliflower	2.6	130.0	130.0	130.0	152.7	152.7	146.9	138.2	129.1	116.9	100.5	126.8	126.8
Carrot	7.2	146.7	188.1	182.9	194.0	178.3	151.3	178.4	130.8	55.8	49.1	62.3	85.2
Onion	8.1	140.5	140.5	140.5	140.5	140.5	140.5	140.5	140.5	140.5
Tomato	30.1	71.1	111.0	186.7	199.6	137.9	90.1	51.6	51.7	31.9	31.9	68.7	95.3
Creepers	37.0	96.2	103.3	100.5	109.4	115.4	121.4	131.0	129.7	104.0	101.3	100.5	92.4
Other fresh vegetables	19.8	116.0	117.1	142.3	105.5	103.4	110.9	127.0	122.2	100.4	121.8	159.7	120.9
Fruits and nuts ¹	20.3	144.0	118.7	115.1	99.2	92.1	104.5	117.4	123.8	141.8	139.0	119.1	94.1
Banana	7.1	76.4	76.4	76.4	82.6	86.3	86.3	81.4	83.8	83.8	88.8	88.8	88.8
Pineapple	8.4	177.6	157.3	149.4	113.7	97.2	120.4	156.1	168.7	202.9	202.9	159.0	98.2
Other fruits	4.8	164.5	109.9	...	120.0	141.7	142.4	150.0	129.6	115.3	94.3
Oilseeds and oleaginous fruits ¹	1.5	118.7	144.0	154.0	140.0	130.0	136.7	140.7	142.0	132.7	145.3	142.0	132.7
Groundnut	0.8	117.2	153.2	163.3	149.5	132.5	142.5	159.7	166.6	170.1	171.3	158.7	135.5
Coconut	0.7	125.0	125.0	125.0	125.0	125.0	125.0	125.0	125.0	125.0	125.0	125.0	125.0
Edible roots and tubers ¹	24.7	137.0	118.4	127.2	124.7	112.4	128.1	143.5	144.2	144.4	142.9	143.9	143.9
Potato	22.4	144.0	145.4	145.4	145.4	145.4	145.4	145.4	145.4
Other Root crops	2.3	118.0	118.4	127.2	124.7	112.4	121.1	123.8	121.7	121.5	111.8	109.1	119.0
Stimulant & spice ¹	12.1	111.0	111.7	112.2	110.9	111.7	108.5	91.8	88.6	85.5	103.1	110.1	103.9
Tea	8.1	110.6	110.6	110.6	110.6	110.6	110.6	112.3	112.3	112.3	112.3	112.3	112.3
Ginger	4.0	115.4	125.5	132.6	121.0	117.9	104.1	74.6	73.9	68.8	81.7	62.8	62.3
Flowers, ornamental plants	11.7	119.4	120.3	120.3	121.6	121.6	121.6	121.6	122.6	122.6	122.6	122.6	122.6
Anthurium	5.1	96.9	99.0	99.0	99.0	99.0	99.0	99.0	101.4	101.4	101.4	101.4	101.4
Rose	3.0	150.0	150.0	150.0	150.0	150.0	150.0	150.0	150.0	150.0	150.0	150.0	150.0
Other flowers	0.4	135.0	135.0	135.0	135.0	135.0	135.0	135.0	135.0	135.0	135.0	135.0	135.0
Tobacco	3.2	124.7	124.7	124.7	129.4	129.4	129.4	129.4	129.4	129.4	129.4	129.4	129.4
Animals & Animal Products	244.1	149.8	151.0	148.5	146.8	147.9	145.4	146.5	145.2	143.1	136.9	141.7	144.1
Cattle	2.0	120.0	120.0	120.0	126.5	126.5	126.5	132.5	132.5	132.5	129.5	129.5	129.5
Pigs	3.2	94.1	94.1	94.1	94.1	94.1	94.1	94.1	94.1	102.2	132.7	132.7	134.9
Goat	0.7	167.8	167.8	167.8	164.4	164.4	164.4	161.1	161.1	161.1	158.7	158.7	158.7
Deer	4.9	143.1	143.1	143.1	143.1	143.1	139.2	139.2	139.2	139.2	144.3	144.3	144.3
Poultry	174.2	152.8	154.4	151.2	150.4	150.4	150.4	150.4	150.4	150.4	140.1	146.5	150.4
Eggs	55.0	142.5	142.9	141.9	136.5	141.6	130.6	135.2	129.3	120.0	122.5	123.7	121.8
Milk	4.1	184.5	184.5	184.5	184.5	184.5	184.5	184.5	184.5	184.5	184.5	184.5	184.5
Overall Index	1000.0	107.0	108.5	110.9	109.2	108.1	107.4	113.0	111.3	108.3	108.9	111.2	110.3

¹ The indices are computed based on the method of variable baskets with fixed monthly weights in the base year as explained at paragraph 12 of Annex. The composition of these baskets is shown in Table 12.

... Not applicable

Monthly Producer Price Index -Agriculture (PPI-A)

(Base period:Year 2007=100)

Table 5 : Percentage changes from previous month by commodity group and product , July 2014 - June 2015

Commodity Group	Weight	Percentage changes from											
		Jun 14 to Jul 14	Jul 14 to Aug 14	Aug 14 to Sep 14	Sep 14 to Oct 14	Oct 14 to Nov 14	Nov 14 to Dec 14	Dec 14 to Jan 15	Jan 15 to Feb 15	Feb 15 to Mar 15	Mar 15 to Apr 15	Apr 15 to May 15	May 15 to Jun 15
Crop Products	755.9	-14.0	6.7	-6.6	-5.7	1.3	-1.6	23.6	3.7	-0.6	-8.1	-16.2	1.2
Sugar Cane	570.5	-19.8	0.0	0.0	0.0	0.0	0.0	0.0	0.0	0.0	0.0	0.0	0.0
Other crops products	185.4	-0.8	18.8	-16.7	-16.1	4.1	-5.0	76.4	8.3	-1.4	-17.6	-39.5	4.4
Fresh Vegetables	115.1	-1.1	29.8	-24.9	-22.7	8.6	-7.6	131.5	10.5	-1.7	-24.3	-50.7	-1.4
Beans	3.4	41.9	14.7	-14.9	-53.5	16.9	85.6	122.2	-29.6	17.6	-36.4	-65.9	6.2
Brinjal	2.7	-4.6	37.1	-43.9	-60.6	119.4	-72.2	485.0	-11.7	67.9	-36.0	-25.7	-3.2
Cabbage	4.2	0.4	2.1	-33.7	-41.4	10.7	-19.4	206.3	115.6	-6.9	-25.8	-72.3	-8.3
Cauliflower	2.6	-22.4	11.5	2.6	-26.9	0.0	3.9	-3.7	0.0	3.9	0.0	89.5	-33.0
Carrot	7.2	-41.5	103.9	-52.7	22.9	65.9	38.2	144.1	6.8	-17.3	-3.3	-63.6	-35.1
Onion	8.1	0.0	0.0	0.0	0.0	0.0	0.0	0.0	0.0
Tomato	30.1	-27.6	19.7	-44.7	-50.0	57.4	38.8	335.0	35.0	-24.7	-6.5	-73.8	-3.5
Creepers	37.0	18.3	26.6	-15.6	-43.7	9.9	0.9	61.5	-5.7	31.4	-29.9	-38.5	11.6
Other fresh vegetables	19.8	28.6	38.9	-21.8	-32.6	-2.5	-8.7	65.8	-28.7	59.5	-26.9	-24.5	-2.6
Fruits and nuts	20.3	-4.8	6.2	-13.6	-18.9	-4.2	-8.8	35.5	28.3	-9.4	0.0	-10.0	-0.5
Banana	7.1	7.3	0.0	0.0	0.9	-0.9	0.0	4.8	0.0	0.0	-1.3	0.0	0.0
Pineapple	8.4	-10.0	11.6	-23.1	-41.2	14.5	-13.6	85.1	31.6	-19.3	0.6	-16.0	-3.4
Other fruits	4.8	5.6	-27.2	-5.0	25.2	7.8	25.0	-11.0
Oilseeds and oleaginous fruits	1.5	-0.5	-0.9	-3.5	24.4	-4.0	-15.8	1.5	6.9	32.6	-8.4	-10.3	0.4
Groundnut	0.8	5.5	0.3	5.3	-8.0	-6.1	-18.2	4.4	-2.4	60.5	-16.0	-12.9	-0.9
Coconut	0.7	0.0	0.0	0.0	40.0	0.0	0.0	14.3	0.0	0.0	0.0	0.0	0.0
Edible roots and tubers	24.7	4.9	0.3	-0.1	-2.7	1.7	-0.6	-0.8	-11.6	5.3	7.4	-30.1	33.6
Potato	22.4	0.0	0.0	0.0	0.0	0.0	0.0	0.0
Other Root crops	2.3	3.6	1.8	-2.1	-35.2	15.0	-1.5	28.6	-4.7	5.3	7.4	-30.1	28.2
Stimulant & spice	12.1	-5.4	1.6	23.7	-5.9	-5.0	5.4	-1.0	-0.4	0.5	-4.1	2.5	2.1
Tea	8.1	0.0	0.0	0.0	0.0	0.0	0.0	0.0	0.0	0.0	0.0	0.0	0.0
Ginger	4.0	-3.9	5.3	40.9	0.1	6.9	7.9	20.7	-0.2	4.4	-14.0	-15.0	-6.9
Flowers, ornamental plants	11.7	0.0	0.0	0.0	0.0	0.0	0.0	0.0	0.0	0.0	0.0	0.0	0.0
Anthurium	5.1	0.0	0.0	0.0	0.0	0.0	0.0	0.0	0.0	0.0	0.0	0.0	0.0
Rose	3.0	0.0	0.0	0.0	0.0	0.0	0.0	0.0	0.0	0.0	0.0	0.0	0.0
Other flowers	0.4	0.0	0.0	0.0	0.0	0.0	0.0	0.0	0.0	0.0	0.0	0.0	0.0
Tobacco	3.2	-	-	-	-	-	-	-	-	-	-	-	-
Animals & Animal Products	244.1	-0.1	-2.5	-0.7	-2.3	0.5	1.5	1.3	-1.6	0.7	2.4	1.0	0.1
Cattle	2.0	0.0	0.0	0.0	0.7	0.0	0.0	0.0	0.0	0.0	1.1	0.0	0.0
Pigs	3.2	0.0	0.0	-1.0	3.4	0.0	0.0	0.0	0.0	0.0	-8.9	0.0	0.0
Goat	0.7	-1.7	0.0	0.0	2.0	0.0	0.0	2.0	0.0	0.0	1.0	0.0	0.0
Deer	4.9	-4.1	0.0	0.0	0.0	0.0	0.0	0.0	0.0	0.0	0.0	0.0	0.0
Poultry	174.2	0.0	0.0	0.0	-3.0	0.5	2.1	1.0	-2.0	1.0	1.0	0.0	0.0
Eggs	55.0	0.0	-11.1	-3.4	-0.8	0.5	0.1	2.5	-0.1	-0.2	8.4	4.9	0.2
Milk	4.1	2.4	0.0	0.0	0.0	0.0	0.0	0.0	0.0	0.0	0.0	0.0	0.0
Overall Change	1,000.0	-9.1	3.2	-4.5	-4.4	1.0	-0.4	15.0	1.8	-0.2	-4.5	-10.0	0.7

... Not applicable

- No production

Monthly Producer Price Index -Agriculture (PPI-A)

(Base period:Year 2007=100)

Table 6 : Percentage changes from corresponding month of previous year by commodity group and product , July 2014 - June 2015

Commodity Group	Weight	Percentage changes from											
		Jul 13 to Jul 14	Aug 13 to Aug 14	Sep 13 to Sep 14	Oct 13 to Oct 14	Nov 13 to Nov 14	Dec 13 to Dec 14	Jan 14 to Jan 15	Feb 14 to Feb 15	Mar 14 to Mar 15	Apr 14 to Apr 15	May 14 to May 15	Jun 14 to Jun 15
Crop Products	755.9	-13.0	-6.8	-12.3	-20.0	-19.1	-17.9	-4.1	-9.0	-1.8	-7.7	-19.8	-19.9
Sugar Cane	570.5	-19.8	-19.8	-19.8	-19.8	-19.8	-19.8	-19.8	-19.8	-19.8	-19.8	-19.8	-19.8
Other crops products	185.4	3.1	24.4	6.2	-20.0	-17.3	-13.4	27.7	8.1	33.7	18.1	-19.7	-20.0
Fresh Vegetables	115.1	6.5	53.3	22.3	-24.0	-22.0	-17.9	45.7	15.0	50.6	36.1	-24.3	-30.8
Beans	3.4	35.4	73.2	33.5	-44.5	-21.3	65.3	28.6	6.9	31.8	19.9	-36.0	-40.6
Brinjal	2.7	-22.3	44.2	4.7	-66.4	10.0	-24.3	14.8	101.5	115.0	7.0	-3.1	-29.7
Cabbage	4.2	226.0	333.6	36.5	-57.9	-62.9	-56.7	103.0	266.6	195.7	99.3	-59.6	-58.8
Cauliflower	2.6	-10.8	19.2	13.5	-37.1	-48.5	-39.9	-47.2	-47.7	-45.7	-45.7	19.6	-14.3
Carrot	7.2	-40.4	227.4	-6.3	-28.8	-28.9	-32.5	40.4	10.2	26.1	32.2	-19.6	-21.6
Onion	8.1	4.9	4.9	4.9	4.9	4.9	4.9	0.0	0.0	0.0
Tomato	30.1	22.9	49.2	9.3	-59.2	-58.0	-37.0	102.3	31.1	12.3	27.9	-13.9	-45.3
Creepers	37.0	14.0	53.7	27.6	-34.9	-26.9	-18.4	3.9	-11.2	87.6	61.5	-32.1	-24.1
Other fresh vegetables	19.8	-12.0	35.4	31.8	-4.5	0.4	8.1	43.3	-13.1	85.7	17.2	-12.8	-14.8
Fruits and nuts	20.3	0.3	-23.8	-36.6	-39.8	-23.4	-19.0	-18.5	-10.0	-12.5	-26.7	-19.5	-12.6
Banana	7.1	1.7	1.7	1.7	2.7	1.7	-4.6	3.8	2.6	2.6	3.9	11.0	11.0
Pineapple	8.4	-0.6	-34.8	-51.6	-67.7	-42.6	-33.1	-8.7	-5.0	-20.0	-38.1	-34.7	-28.0
Other fruits	4.8	3.6	2.3	-22.4	-18.4	-32.4	-43.9	...	0.0	33.3	29.6
Oilseeds and oleaginous fruits	1.5	-3.8	-4.2	-1.1	11.8	6.8	-8.3	-2.4	6.4	54.8	27.3	11.4	13.6
Groundnut	0.8	-7.3	-8.4	-4.1	-14.3	-16.9	-24.9	-15.3	-16.6	53.0	8.4	-7.0	-6.6
Coconut	0.7	0.0	0.0	0.0	40.0	40.0	40.0	60.0	60.0	60.0	60.0	60.0	60.0
Edible roots and tubers	24.7	1.6	1.3	1.3	-1.9	0.2	0.4	-1.1	-15.1	7.0	0.7	-20.9	-4.2
Potato	22.4	1.2	1.2	1.2	1.2	1.2	1.2	1.2	0.0
Other Root crops	2.3	6.3	3.9	4.8	-38.4	-24.1	-15.0	-7.4	-15.1	7.0	0.7	-20.9	-6.0
Stimulant & spice	12.1	19.9	31.4	56.8	22.7	3.4	15.7	7.8	6.6	7.8	1.0	4.1	11.5
Tea	8.1	0.0	0.0	0.0	0.0	0.0	0.0	0.0	0.0	0.0	0.0	0.0	0.0
Ginger	4.0	50.7	69.0	121.2	114.6	132.0	158.2	120.0	98.5	127.5	30.1	29.6	41.3
Flowers, ornamental plants	11.7	-27.9	-27.9	-27.9	-27.9	-27.9	-27.9	0.0	0.0	0.0	0.0	0.0	0.0
Anthurium	5.1	0.0	0.0	0.0	0.0	0.0	0.0	0.0	0.0	0.0	0.0	0.0	0.0
Rose	3.0	0.0	0.0	0.0	0.0	0.0	0.0	0.0	0.0	0.0	0.0	0.0	0.0
Other flowers	0.4	0.0	0.0	0.0	0.0	0.0	0.0	0.0	0.0	0.0	0.0	0.0	0.0
Tobacco	3.2	-	-	-	-	-	-	-	-	-	-	-	-
Animals & Animal Products	244.1	0.3	-2.3	-2.7	-2.0	0.2	-1.2	0.7	-0.9	0.0	0.6	0.3	0.3
Cattle	2.0	4.2	4.2	4.2	3.4	3.4	3.4	2.2	2.2	2.2	1.8	1.8	1.8
Pigs	3.2	-2.3	-2.3	-3.3	2.4	-5.4	-5.4	-5.4	-2.9	2.4	-6.8	-6.8	-6.8
Goat	0.7	3.7	3.7	3.7	5.8	5.8	5.8	1.3	1.3	1.3	3.4	3.4	3.4
Deer	4.9	-0.4	-0.4	-0.4	-4.1	-4.1	-4.1	-4.1	-4.1	-4.1	-4.1	-4.1	-4.1
Poultry	174.2	-2.4	-2.4	-2.4	-2.0	2.1	1.6	2.1	0.0	1.0	0.5	0.5	0.5
Eggs	55.0	10.0	-2.5	-4.4	-3.0	-6.1	-10.2	-3.9	-4.1	-3.8	1.4	-0.1	-0.3
Milk	4.1	2.4	2.4	2.4	2.4	2.4	2.4	2.4	2.4	2.4	2.4	2.4	2.4
Overall Change	1,000.0	-8.4	-5.2	-8.9	-13.9	-12.7	-12.1	-2.4	-6.5	-1.3	-4.9	-12.7	-12.9

... Not applicable

- No production

Quarterly Producer Price Index -Agriculture (PPI-A)
(Base period:Year 2007=100)

Table 7 : Quarterly indices ¹ by commodity group and product, 3rd Quarter 2013 - 2nd Quarter 2015

Commodity Group	Weight	2013		2014				2015	
		3 rd Qr	4 th Qr	1 st Qr	2 nd Qr	3 rd Qr	4 th Qr	1 st Qr	2 nd Qr
Crop Products	755.9	92.8	94.2	101.2	94.6	82.7	76.5	95.9	78.7
Sugar Cane	570.5	86.7	86.7	86.7	86.7	69.5 ²	69.5 ²	69.5 ²	69.5
Other crops products	185.4	111.4	117.3	145.9	118.9	123.5	97.8	177.0	107.0
Fresh Vegetables ³	115.1	98.5	113.1	157.9	114.0	124.0	88.7	211.0	100.5
Beans	3.4	102.9	101.6	224.5	104.5	149.1	92.5	275.1	80.9
Brinjal	2.7	206.6	123.2	154.7	199.7	221.8	82.5	242.2	176.5
Cabbage	4.2	51.7	145.0	90.9	149.4	134.4	59.0	258.8	86.9
Cauliflower	2.6	95.5	131.4	146.8	120.6	99.1	77.8	77.5	111.2
Carrot	7.2	58.2	132.1	261.5	120.0	63.4	92.0	323.5	116.2
Onion	8.1	140.5	140.5	...	147.4	147.4	147.4	...	147.4
Tomato	30.1	61.9	90.6	201.4	118.6	79.5	45.0	297.6	100.7
Creepers	37.0	109.5	113.8	128.3	99.5	143.4	83.4	145.0	91.0
Other fresh vegetables	19.8	148.4	103.2	116.3	115.7	172.5	104.3	151.0	109.7
Fruits and nuts ³	20.3	151.4	108.3	136.8	142.1	117.2	80.9	117.5	113.0
Banana	7.1	93.7	95.8	97.0	90.9	95.3	95.6	99.9	98.6
Pineapple	8.4	214.3	152.7	168.9	190.9	140.8	75.0	150.2	125.1
Other fruits	4.8	140.0	93.6	144.2	140.9	145.0	76.3	93.8	180.4
Oilseeds and oleaginous fruits ³	1.5	137.9	145.4	134.0	138.4	134.2	148.6	146.4	159.3
Groundnut	0.8	166.6	160.9	137.0	145.3	155.1	128.6	130.0	138.7
Coconut	0.7	125.0	125.0	125.0	125.0	125.0	175.0	200.0	200.0
Edible roots and tubers ³	24.7	144.8	145.0	140.9	138.4	146.8	144.3	138.4	131.5
Potato	22.4	145.4	145.4	145.4	147.1	147.1	147.1	147.1	147.1
Other Root crops	2.3	135.6	139.2	137.4	137.0	142.3	98.1	131.5	128.9
Stimulant & spice ³	12.1	81.2	103.1	110.5	110.4	111.0	118.2	118.7	117.1
Tea	8.1	112.3	112.3	112.3	112.3	112.3 ⁴	112.3 ⁴	112.3 ⁴	112.3 ⁴
Ginger	4.0	60.0	63.0	89.9	101.5	110.0	143.8	193.2	139.5
Flowers, ornamental plants	11.7	127.0	127.0	91.6	91.6	91.6	91.6	91.6	91.6
Anthurium	5.1	101.4	101.4	101.4	101.4	101.4	101.4	101.4	101.4
Rose	3.0	163.6	163.6	163.6	163.6	163.6	163.6	163.6	163.6
Other flowers	0.4	160.0	160.0	160.0	160.0	160.0	160.0	160.0	160.0
Tobacco	3.2	129.4	129.4	-	-	-	-	-	-
Animals & Animal Products	244.1	155.3	150.1	151.2	155.1	152.9	148.5	151.1	155.7
Cattle	2.0	130.0	132.0	133.5	135.5	135.5	136.5	136.5	138.0
Pigs	3.2	121.8	125.5	124.4	119.0	118.6	121.8	121.8	110.9
Goat	0.7	166.5	166.5	177.4	175.6	172.7	176.2	179.7	181.5
Deer	4.9	137.1	142.4	142.4	142.4	136.5	136.5	136.5	136.5
Poultry	174.2	160.4	152.5	154.1	156.5	156.5	153.3	155.7	157.3
Eggs	55.0	141.2	142.5	142.2	152.3	142.7	133.2	136.7	152.8
Milk	4.1	184.5	184.5	184.5	184.5	188.9	188.9	188.9	188.9
Overall Index	1,000.0	108.1	107.8	113.4	109.4	99.8	94.1	109.4	97.5

9

¹ Using data for base period (2007) as weights

² Revised

... Not applicable

- No production

³ The indices are computed based on the method of variable baskets with fixed monthly weights in the base year as explained at paragraph 12 of Annex. The composition of these baskets is shown in Table 12.

⁴ Provisional

Quarterly Producer Price Index -Agriculture (PPI-A)

(Base period:Year 2007=100)

Table 8: Quarterly changes (%) and net contributions of commodity group and product to the change, 1st Quarter 2014 - 2nd Quarter 2015

Commodity Group	Weight	Percentage changes from previous quarter				Percentage changes from corresponding quarter of previous year				Net contributions from			
		2 nd Qr 14	3 rd Qr 14	4 th Qr 14	1 st Qr 15	3 rd Qr 13	4 th Qr 13	1 st Qr 14	2 nd Qr 14	2 nd Qr 14	3 rd Qr 14	4 th Qr 14	1 st Qr 15
		to 3 rd Qr 14	to 4 th Qr 14	to 1 st Qr 15	to 2 nd Qr 15	to 3 rd Qr 14	to 4 th Qr 14	to 1 st Qr 15	to 2 nd Qr 15	to 3 rd Qr 14	to 4 th Qr 14	to 1 st Qr 15	to 2 nd Qr 15
Crop Products	755.9	-12.6	-7.5	25.4	-17.9	-10.9	-18.8	-5.2	-16.8	-8.87	-6.18	15.40	-11.73
Sugar Cane	570.5	-19.8	0.0	0.0	0.0	-19.8	-19.8	-19.8	-19.8	-9.81	0.00	0.00	0.00
Other crops products	185.4	3.9	-20.8	81.0	-39.5	10.9	-16.6	21.3	-10.0	0.94	-6.18	15.40	-11.73
Fresh Vegetables	115.1	8.8	-28.5	137.9	-52.4	25.9	-21.6	33.6	-11.8	1.26	-5.34	14.36	-11.71
Beans	3.4	42.7	-38.0	197.4	-70.6	44.9	-9.0	22.5	-22.6	0.15	-0.19	0.62	-0.66
Brinjal	2.7	11.1	-62.8	193.6	-27.1	7.4	-33.0	56.6	-11.6	0.06	-0.38	0.43	-0.18
Cabbage	4.2	-10.0	-56.1	338.6	-66.4	160.0	-59.3	184.7	-41.8	-0.06	-0.32	0.84	-0.72
Cauliflower	2.6	-17.8	-21.5	-0.4	43.5	3.8	-40.8	-47.2	-7.8	-0.06	-0.06	0.00	0.09
Carrot	7.2	-47.2	45.1	251.6	-64.1	8.9	-30.4	23.7	-3.2	-0.41	0.21	1.67	-1.49
Onion	8.1	0.0	0.0	4.9	4.9	...	0.0	0.00	0.00	-1.19	1.19
Tomato	30.1	-33.0	-43.4	561.3	-66.2	28.4	-50.3	47.8	-15.1	-1.18	-1.04	7.60	-5.93
Creepers	37.0	44.1	-41.8	73.9	-37.2	31.0	-26.7	13.0	-8.5	1.62	-2.22	2.28	-2.00
Other fresh vegetables	19.8	49.1	-39.5	44.8	-27.4	16.2	1.1	29.8	-5.2	1.12	-1.35	0.92	-0.82
Fruits and nuts	20.3	-17.5	-31.0	45.2	-3.8	-22.6	-25.3	-14.1	-20.5	-0.37	-0.88	0.75	0.20
Banana	7.1	4.8	0.3	4.5	-1.3	1.7	-0.2	3.0	8.5	0.03	0.00	0.03	-0.01
Pineapple	8.4	-26.2	-46.7	100.3	-16.7	-34.3	-50.9	-11.1	-34.5	-0.42	-0.55	0.63	-0.21
Other fruits	4.8	2.9	-47.4	22.9	92.3	3.6	-18.5	-35.0	28.0	0.02	-0.33	0.08	0.42
Oilseeds and oleaginous fruits	1.5	-3.0	10.7	-1.5	8.8	-2.7	2.2	9.3	15.1	0.01	0.01	0.02	0.01
Groundnut	0.8	6.7	-17.1	1.1	6.7	-6.9	-20.1	-5.1	-4.5	0.01	-0.02	0.00	0.01
Coconut	0.7	0.0	40.0	14.3	0.0	0.0	40.0	60.0	60.0	0.00	0.04	0.02	0.00
Edible roots and tubers	24.7	6.1	-1.7	-4.1	-5.0	1.4	-0.5	-1.8	-5.0	0.01	-0.10	0.08	-0.01
Potato	22.4	0.0	0.0	0.0	0.0	1.2	1.2	1.2	0.0	0.00	0.00	0.00	0.00
Other Root crops	2.3	3.9	-31.1	34.0	-2.0	4.9	-29.5	-4.3	-5.9	0.01	-0.10	0.08	-0.01
Stimulant & spice	12.1	0.5	6.5	0.4	-1.3	36.7	14.6	7.4	6.1	0.03	0.14	0.20	-0.21
Tea	8.1	0.0	0.0	0.0	0.0	0.0	0.0	0.0	0.0	0.00	0.00	0.00	0.00
Ginger	4.0	8.4	30.7	34.4	-27.8	83.3	128.3	114.9	37.4	0.03	0.14	0.20	-0.21
Flowers, ornamental plants	11.7	0.0	0.0	0.0	0.0	-27.9	-27.9	0.0	0.0	0.00	0.00	0.00	0.00
Anthurium	5.1	0.0	0.0	0.0	0.0	0.0	0.0	0.0	0.0	0.00	0.00	0.00	0.00
Rose	3.0	0.0	0.0	0.0	0.0	0.0	0.0	0.0	0.0	0.00	0.00	0.00	0.00
Other flowers	0.4	0.0	0.0	0.0	0.0	0.0	0.0	0.0	0.0	0.00	0.00	0.00	0.00
Tobacco	3.2	-	-	-	-	-	-	-	-	0.00	0.00	0.00	0.00
Animals & Animal Products	244.1	-1.4	-2.9	1.8	3.0	-1.5	-1.1	-0.1	0.4	-0.54	-1.07	0.61	1.13
Cattle	2.0	0.0	0.7	0.0	1.1	4.2	3.4	2.2	1.8	0.00	0.00	0.00	0.00
Pigs	3.2	-0.3	2.7	0.0	-8.9	-2.6	-2.9	-2.1	-6.8	0.00	0.01	0.00	-0.03
Goat	0.7	-1.7	2.0	2.0	1.0	3.7	5.8	1.3	3.4	0.00	0.00	0.00	0.00
Deer	4.9	-4.1	0.0	0.0	0.0	-0.4	-4.1	-4.1	-4.1	-0.03	0.00	0.00	0.00
Poultry	174.2	0.0	-2.0	1.6	1.0	-2.4	0.5	1.0	0.5	0.00	-0.56	0.42	0.28
Eggs	55.0	-6.3	-6.7	2.6	11.8	1.1	-6.5	-3.9	0.3	-0.53	-0.52	0.19	0.89
Milk	4.1	2.4	0.0	0.0	0.0	2.4	2.4	2.4	2.4	0.02	0.00	0.00	0.00
Overall	1,000.0	-8.8	-5.7	16.3	-10.9	-7.7	-12.7	-3.5	-10.9	-9.41	-7.24	16.02	-10.59

... Not applicable

- No production

Annual Producer Price Index -Agriculture (PPI-A)

(Base period:Year 2007=100)

Table 9 : Annual indices, annual changes (%) and net contributions of commodity group and product to the change, 2012 - 2014

Commodity Group	Weight	Annual index ¹			Percentage changes from		Net contributions from	
		2012	2013	2014	2012 to 2013	2013 to 2014	2012 to 2013	2013 to 2014
Crop Products	755.9	97.5	100.0	88.1	2.6	-11.9	1.84	-8.99
Sugar Cane	570.5	92.0	91.5	78.1 ²	-0.5	-14.6	-0.29	-7.64
Other crops products	185.4	114.6	126.0	118.8	9.9	-5.7	2.13	-1.34
Fresh Vegetables ³	115.1	108.8	126.6	117.3	16.4	-7.3	2.05	-1.07
Beans	3.4	127.6	131.5	133.9	3.1	1.8	0.01	0.01
Brinjal	2.7	148.8	164.9	155.8	10.8	-5.5	0.04	-0.02
Cabbage	4.2	106.6	112.4	112.4	5.4	0.0	0.02	0.00
Cauliflower	2.6	130.4	114.3	100.4	-12.3	-12.2	-0.04	-0.04
Carrot	7.2	128.6	134.4	122.2	4.5	-9.1	0.04	-0.09
Onion	8.1	140.5	140.5	147.4	0.0	4.9	0.00	0.06
Tomato	30.1	80.8	124.2	103.3	53.7	-16.8	1.31	-0.63
Creepers	37.0	108.5	119.7	113.1	10.3	-5.5	0.41	-0.24
Other fresh vegetables	19.8	121.0	133.3	127.5	10.2	-4.4	0.24	-0.11
Fruits and nuts ³	20.3	116.0	117.3	114.0	1.1	-2.8	0.04	-0.08
Banana	7.1	83.3	93.1	94.7	11.8	1.7	0.07	0.01
Pineapple	8.4	148.6	156.7	146.1	5.5	-6.8	0.07	-0.09
Other fruits	4.8	116.4	95.6	95.9	-17.9	0.3	-0.10	0.00
Oilseeds and oleaginous fruits ³	1.5	135.8	145.1	138.5	6.8	-4.5	0.01	-0.01
Groundnut	0.8	144.0	160.0	139.9	11.1	-12.6	0.01	-0.02
Coconut	0.7	125.0	125.0	136.9	0.0	9.5	0.00	0.01
Edible roots and tubers ³	24.7	142.9	144.4	145.0	1.0	0.4	0.04	0.02
Potato	22.4	145.4	145.4	147.1	0.0	1.2	0.00	0.04
Other Root crops	2.3	118.6	134.9	125.0	13.7	-7.3	0.04	-0.02
Stimulant & spice ³	12.1	100.5	95.8	112.2	-4.7	17.1	-0.06	0.20
Tea	8.1	111.4	112.3	112.3 ⁴	0.8	0.0	0.01	0.00
Ginger	4.0	78.6	62.9	112.1	-20.0	78.2	-0.06	0.20
Flowers, ornamental plants	11.7	121.6	125.8	91.6	3.5	-27.2	0.05	-0.40
Anthurium	5.1	99.8	101.4	101.4	1.6	0.0	0.01	0.00
Rose	3.0	150.0	160.2	163.6	6.8	2.1	0.03	0.01
Other flowers	0.4	135.0	151.3	160.0	12.1	5.8	0.01	0.00
Tobacco	3.2	128.2	129.4	-	0.9	-100.0	0.00	-0.41
Animals & Animal Products	244.1	145.6	152.0	151.9	4.4	-0.1	1.58	-0.02
Cattle	2.0	127.1	130.5	135.2	2.7	3.6	0.01	0.01
Pigs	3.2	104.6	128.8	121.0	23.1	-6.1	0.08	-0.02
Goat	0.7	163.0	167.0	175.5	2.5	5.1	0.00	0.01
Deer	4.9	142.1	141.4	139.4	-0.5	-1.4	0.00	-0.01
Poultry	174.2	149.8	155.9	155.1	4.1	-0.5	1.06	-0.14
Eggs	55.0	132.5	140.3	142.6	5.9	1.6	0.43	0.13
Milk	4.1	184.5	184.5	186.7	0.0	1.2	0.00	0.01
Overall	1,000.0	109.2	112.7	103.7	3.2	-8.0	3.42	-9.01

¹ Using data for base period (2007) as weights

² Revised

- No production

³ The indices are computed based on the method of variable baskets with fixed monthly weights in the base year as explained at paragraph 12 of Annex. The composition of these baskets is shown in Table 12.

⁴ Provisional

Table 10 : Monthly and Quarterly Price Indices - Agriculture (PPI-A) : January 2012 - June 2015

(Base period : Year 2007=100)

Month	2012	2013	2014	2015
January	107.0	117.2	110.9	108.2 ¹
February	108.5	121.1	117.8	110.2 ¹
March	110.9	120.8	111.4	110.0 ¹
1st quarter	108.5	119.5	113.4	109.4 ¹
April	109.2	119.5	110.4	105.0 ²
May	108.1	118.1	108.3	94.5 ²
June	107.4	116.3	109.3	95.2 ²
2nd quarter	108.1	117.6	109.4	97.5 ²
July	113.0	108.4	99.3 ¹	
August	111.3	108.1	102.5 ¹	
September	108.3	107.5	97.9 ¹	
3rd quarter	110.9	108.1	99.8 ¹	
October	108.9	108.7	93.6 ¹	
November	111.2	108.2	94.5 ¹	
December	110.3	107.1	94.1 ¹	
4th quarter	110.0	107.8	94.1 ¹	
Yearly average ³	109.2	112.7	103.7 ¹	
Annual change (%)	4.0	3.2	-8.0	

¹ Revised² Provisional³ Using data for base period (2007) as weights

Table 11 : Monthly Producer Price Index-Agriculture (PPI-A) ¹ : January 1999 - June 2015

(Base period:Year 2007=100)

Month	1999	2000	2001	2002	2003	2004	2005	2006	2007	2008	2009	2010	2011	2012	2013	2014	2015
January	71.6	64.1	62.5	73.9	72.8	83.1	82.9	90.9	97.0	101.6	105.8	101.0	98.5	107.0	117.2	110.9	108.2 ²
February	72.1	70.6	64.1	79.3	77.0	83.5	88.1	90.9	101.5	104.8	111.2	106.1	102.1	108.5	121.1	117.8	110.2 ²
March	72.6	70.6	62.7	80.3	81.0	86.4	95.1	98.1	111.5	106.2	112.9	105.9	102.5	110.9	120.8	111.4	110.0 ²
April	74.5	66.7	64.6	73.0	81.4	87.2	101.8	100.1	107.8	111.5	110.4	104.7	103.2	109.2	119.5	110.4	105.0 ³
May	73.4	66.6	66.3	68.9	83.1	84.6	95.0	93.2	101.5	108.6	108.9	100.6	102.3	108.1	118.1	108.3	94.5 ³
June	72.0	65.3	67.6	68.9	80.9	82.3	86.8	91.2	96.0	110.4	108.7	100.2	100.6	107.4	116.3	109.3	95.2 ³
July	68.3	63.3	70.9	74.0	80.7	84.2	87.8	93.8	97.8	107.0	97.9	98.0	109.5	113.0	108.4	99.3 ²	
August	68.3	64.1	69.7	74.7	79.2	83.6	87.5	95.8	99.7	104.8	97.2	98.1	109.9	111.3	108.1	102.5 ²	
September	67.0	63.3	68.4	75.3	77.6	82.1	89.1	93.6	100.9	104.8	96.0	94.4	109.2	108.3	107.5	97.9 ²	
October	67.0	62.1	69.1	75.7	77.3	82.7	91.8	92.5	100.7	105.7	94.9	96.6	107.0	108.9	108.7	93.6 ²	
November	67.3	61.3	68.1	72.9	79.0	82.0	89.0	92.8	100.2	105.2	97.0	98.2	107.5	111.2	108.2	94.5 ²	
December	66.9	61.1	70.1	74.0	78.7	80.9	89.3	93.2	99.2	103.5	94.7	95.1	108.1	110.3	107.1	94.1 ²	
Yearly Average ⁴	69.5	64.5	67.3	73.6	78.7	83.0	89.6	93.3	100.0	106.0	102.5	99.8	105.0	109.2	112.7	103.7 ²	
Annual change (%)	1.2	-7.2	4.3	9.4	6.9	5.5	8.0	4.1	7.1	6.0	-3.3	-2.6	5.2	4.0	3.2	-8.0	

¹ The indices for January 1993 to June 2009 previously based on 2002=100 have been converted to the new base 2007=100; indices as from January 2007 onwards have been worked out according to CPC Ver. 2.1

² Revised

³ Provisional

⁴ Using data for base period (2007) as weights

Monthly Producer Price Index -Agriculture (PPI-A)

(Base period:Year 2007 =100)

Table 12 : Weight distribution for the base period and its months by commodity group and product

Commodity Group	Weight												
	Year	January	February	March	April	May	June	July	August	September	October	November	December
Crop Products	755.9	755.9	755.9	755.9	755.9	755.9	755.9	755.9	755.9	755.9	755.9	755.9	755.9
Sugar Cane	570.5	570.5	570.5	570.5	570.5	570.5	570.5	570.5	570.5	570.5	570.5	570.5	570.5
Other crops products	185.4	185.4	185.4	185.4	185.4	185.4	185.4	185.4	185.4	185.4	185.4	185.4	185.4
Fresh Vegetables	115.1	115.1	115.1	115.1	115.1	115.1	115.1	115.1	115.1	115.1	115.1	115.1	115.1
Beans	3.4	3.0	2.5	2.2	3.3	4.4	3.6	3.6	3.6	4.5	3.6	2.9	3.3
Brinjal	2.7	3.4	3.6	3.1	2.8	2.2	2.0	2.1	2.7	2.8	2.5	2.5	2.9
Cabbage	4.2	3.3	3.1	2.8	3.2	5.1	7.5	5.7	4.8	5.2	3.8	2.7	3.3
Cauliflower	2.6	0.3	0.1	0.0 ¹	0.0 ¹	1.3	4.4	7.8	6.5	4.9	2.0	0.8	4.8
Carrot	7.2	6.0	7.4	9.5	5.6	6.2	8.7	11.0	8.5	8.6	6.0	5.1	0.6
Onion	8.1	0.0	0.0	0.0	0.1	0.8	1.7	2.7	2.1	3.4	27.7	26.4	8.2
Tomato	30.1	35.8	35.2	27.7	22.9	27.6	30.8	29.2	31.0	31.1	24.5	28.4	34.3
Creepers	37.0	40.4	41.7	47.2	51.3	45.0	37.2	34.9	36.2	34.7	29.0	29.9	37.2
Other fresh vegetables	19.8	22.9	21.5	22.6	26.0	22.5	19.3	18.1	19.6	20.0	16.0	16.5	20.5
Fruits and nuts	20.3	20.3	20.3	20.3	20.3	20.3	20.3	20.3	20.3	20.3	20.3	20.3	20.3
Banana	7.1	5.5	7.9	9.5	9.5	10.0	9.8	10.5	10.7	10.4	9.8	6.1	3.3
Pineapple	8.4	5.0	9.4	10.8	10.8	10.2	9.9	9.6	9.6	9.9	8.1	5.5	3.5
Other fruits	4.8	9.8	3.0	0.0	0.1	0.1	0.6	0.2	0.0	0.0	2.5	8.8	13.5
Oilseeds and oleaginous fruits	1.5	1.5	1.5	1.5	1.5	1.5	1.5	1.5	1.5	1.5	1.5	1.5	1.5
Groundnut	0.8	1.2	1.0	1.1	0.9	1.0	1.0	0.7	0.6	0.3	0.7	0.8	1.1
Coconut	0.7	0.3	0.5	0.4	0.6	0.5	0.5	0.8	0.9	1.2	0.8	0.7	0.4
Edible roots and tubers	24.7	24.7	24.7	24.7	24.7	24.7	24.7	24.7	24.7	24.7	24.7	24.7	24.7
Potato	22.4	18.1	0.0	0.0	0.0	0.0	7.2	22.6	23.4	23.6	22.8	23.7	23.3
Other Root crops	2.3	6.6	24.7	24.7	24.7	24.7	17.5	2.1	1.3	1.1	1.9	1.0	1.4
Stimulant & spice	12.1	12.1	12.1	12.1	12.1	12.1	12.1	12.1	12.1	12.1	12.1	12.1	12.1
Tea	8.1	11.1	11.2	11.2	11.8	10.5	8.3	5.5	4.6	4.7	8.4	11.6	10.1
Ginger	4.0	1.0	0.9	0.9	0.3	1.7	3.8	6.6	7.5	7.4	3.7	0.5	2.0
Flowers, ornamental plants	11.7	11.7	11.7	11.7	11.7	11.7	11.7	11.7	11.7	11.7	11.7	11.7	11.7
Anthurium	5.1	5.1	5.1	5.1	5.1	5.1	5.1	5.1	5.1	5.1	5.1	5.1	5.1
Rose	3.0	3.0	3.0	3.0	3.0	3.0	3.0	3.0	3.0	3.0	3.0	3.0	3.0
Other flowers	0.4	0.4	0.4	0.4	0.4	0.4	0.4	0.4	0.4	0.4	0.4	0.4	0.4
Tobacco	3.2	3.2	3.2	3.2	3.2	3.2	3.2	3.2	3.2	3.2	3.2	3.2	3.2
Animals & Animal Products	244.1	244.1	244.1	244.1	244.1	244.1	244.1	244.1	244.1	244.1	244.1	244.1	244.1
Cattle	2.0	2.0	2.0	2.0	2.0	2.0	2.0	2.0	2.0	2.0	2.0	2.0	2.0
Pigs	3.2	3.2	3.2	3.2	3.2	3.2	3.2	3.2	3.2	3.2	3.2	3.2	3.2
Goat	0.7	0.7	0.7	0.7	0.7	0.7	0.7	0.7	0.7	0.7	0.7	0.7	0.7
Deer	4.9	4.9	4.9	4.9	4.9	4.9	4.9	4.9	4.9	4.9	4.9	4.9	4.9
Poultry	174.2	174.2	174.2	174.2	174.2	174.2	174.2	174.2	174.2	174.2	174.2	174.2	174.2
Eggs	55.0	55.0	55.0	55.0	55.0	55.0	55.0	55.0	55.0	55.0	55.0	55.0	55.0
Milk	4.1	4.1	4.1	4.1	4.1	4.1	4.1	4.1	4.1	4.1	4.1	4.1	4.1
Overall Index	1,000.0	1,000.0	1,000.0	1,000.0	1,000.0	1,000.0	1,000.0	1,000.0	1,000.0	1,000.0	1,000.0	1,000.0	1,000.0

¹ Due to rounding

ANNEX

Producer Price Index – Agriculture (PPI-A) Methodology for the Construction of PPI-A

1. Introduction

The analysis of price data implies comparison of current and past prices. Comparison over time is required to study the price movement in order to understand the history and to indicate future outlook. While price relatives of single commodities can be studied in isolation, general conclusion can only be derived from averages, covering a given set or class of commodities. The indicators of average price changes are the price indices.

2. Scope

The PPI-A covers agricultural products that are classified according to the latest Central Product Classification (CPC) Ver.2.1. There are two divisions: Division 01 - Crop Products and Division 02 - Animals & Animal Products. “Crop Products” is further divided into 7 Commodity Groups namely:

Group 012: Fresh vegetables

Group 013: Fruit and nuts

Group 014: Oilseeds and oleaginous fruits

Group 015: Edible roots and tubers

Group 016: Stimulant and spice

Group 018: Sugar cane

Group 019: Flowers, ornamental plants

3. Purpose of the agricultural price indices

The purpose of the price indices is to provide information on trends in producer prices of agricultural products and purchase prices of the means of agricultural production.

The selling prices of agricultural products and the purchase of the means of production have a decisive influence on farmer’s income. It would, therefore, be useful to have indicators showing how agricultural revenue and expenditure are influenced by their price component.

The agricultural price indicators are of two types:-

- (i) Prices received by farmers represent the producer prices of agricultural products (output prices)
- (ii) Prices paid by farmers are the purchase prices of agricultural requisites (input prices)

The two classes of prices mentioned above, are considered important in the context of economic analysis and agricultural policy decisions. Index numbers based on them show the average changes of these prices.

It is to be noted that only the output price index for different groups of commodities is compiled.

4. Uses of agricultural price indices

The construction of agricultural price index numbers may serve various purposes as shown below:-

- (i) Economic analysis, in particular the estimation of general price trends and their relationship with other pertinent variable, e.g the study of domestic price changes in relation to prices observed in external markets or the movement of agricultural production.
- (ii) Monitoring the implementation of agricultural price policy decision such as the introduction or modification of support prices
- (iii) Forecasting price movements in connection with market studies or business cycle research.
- (iv) Compilation of national accounts at constant prices. In order to estimate the growth of the real product of the agricultural sector, deflator indices are needed. They are appropriately weighted indices of agricultural commodities or input items.

5. Definition of prices

A price is a pure price when the same amount of money refers to what the buyer pays and what the seller receives. Since the price series form the basis for calculation, the index of the output prices must be representative of what the farmer actually receives.

The prices must be recorded at a point in the marketing of the product which is as close as possible to the farmer. This means that the selling prices should be recorded at the farm-gate or (if this is not possible) at the next stage of the commodity flow.

6. Price received by agricultural producers

As mentioned earlier, the prices for the index should be farm-gate prices, but this is not possible in many cases. Hence, in lieu of the farm-gate price, the wholesale price of the produce is recorded at the two auction markets located in Vacoas and Port Louis.

As regards sugarcane, there is no actual market price for the product. The final price for a crop is only available after the crop year to which it refers. Provisional estimates of the price of sugar is provided by Mauritius Sugar Syndicate. This is however revised as soon as the final price is available. The same procedure is applied to tea and tobacco.

7. Weighting scheme and choice of the base period

As price data are associated with commercial transaction, it is logical to relate prices to sales rather than total production. However, since value of production for the market (sales) is not available here, the value of the total production is considered as a proxy in calculation of weights. Furthermore, since meteorological conditions and market forces may generate high fluctuations, the weight base is taken as the average of the total production for three years.

It may be noted that 'Food and Agriculture Organisation' and 'Eurostat' recommend that if the quantity weight base is the average of 3 years, then the reference base for prices should be the middle year. The weights are derived by multiplying the average of production during the years 2006, 2007 and 2008 by the average of unit prices in 2007, the reference period. The weight is assigned to each commodity group on the basis of total production (as a proxy for sales) pertaining to the particular group. At commodity level, the weights are apportioned within the commodity group on the basis of production of each product.

Quarterly and annual indices have been computed using a weighting system based on the production value for the base period.

8. Type of Index

The PPI will be calculated according to a modified Laspeyres formula:

$$I_t = \frac{\sum W_i (P_{ti}/P_{oi})}{\sum W_i} \times 100$$

Where:

- I_t** is the index for the current period t
- P_{ti}** is the price of commodity i in the current period t
- P_{oi}** is the price of the commodity i in the reference period o (2007)
- W_i** is the weight associated with commodity i

The prices of commodity i, whenever there are more than one quote as in the case of wholesale price at the two auction markets, are averaged using geometric mean.

9. Commodity Coverage

The bulk of the products in agriculture, with the exception of forestry, fishing and agricultural services, is taken into account in the producer price index. Thus, about 83% of the total value of agricultural production is covered.

10. Observation Units

There are essentially three types of observation units for collecting producer prices: (i) producers (ii) purchasers and (iii) markets. However, in the context of Mauritius, different type of observation units are used for different commodities as shown below:

- (a) For main Commercial crops (sugarcane, tea leaf and tobacco leaf etc) the respective marketing agency is the source of the price data.
- (b) For vegetables, price data are obtained mainly at the two auction markets which are situated at Vacoas and Port Louis respectively.
- (c) For fruits, prices are recorded from different sources such as planters and first middlemen.
- (d) For animals and animal products, price data are available at sources varying from marketing agencies to producers.

11. Frequency of Price Collection

The frequency of price collection varies from weekly for some commodities to only once a year in others. Broadly speaking, the frequency of price collection is as follows:-

- (i) For vegetables, price data are collected every second and fourth week of a month at the two auction markets.
- (ii) For commodities for which prices are fairly stable, data suppliers are visited on a quarterly basis, but prices are collected for each month of the quarter. For example Crop products – potato, onion etc.
- (iii) For the main Commercial crops like Sugarcane, tea leaf and tobacco leaf, the reported prices are normally fixed for the crop year by the respective marketing agency.
- (iv) For the remaining type of items not mentioned above, the price data are collected on a monthly basis.

12. Seasonality

Prices and quantities of many agricultural commodities show seasonal variations. As vegetables and fruits are extremely seasonal products, it is therefore decided to use the method of variable baskets with fixed monthly weights in the base year.

There are 12 monthly baskets of representative products. The composition of these baskets varies each month. Certain products whose marketing period covers the whole year appear in all 12 monthly baskets, while others, which are more seasonal, appear only in some of them. However, the composition of the basket for a given month is fixed over time.

13. Missing Prices

There is also in the field of agricultural price observation the case of missing prices for a product which must be taken into account because there is an index weight for respective month. In these cases, the last observed price is carried forward as recommended by the Producer Price Index Manual of the International Monetary Fund.

14. Periodicity

The index is calculated on a monthly, quarterly as well as on an annual basis. While quarterly and annual price indices can normally be calculated as the simple (unweighted) average of the monthly indices, it is recommended that the monthly sales figures for the base year be used as weights to calculate the quarterly and annual indices. If sales figures are not available, total production can be used as a proxy when most of the production is available for sales. Such is the case in Mauritius and the values of total production have been used as weights.