

Labour force, Employment and Unemployment – Second quarter 2014

Introduction

1. This issue of Economic and Social Indicators (ESI) presents a set of estimates of labour force, employment and unemployment for the second quarter of 2014, based on the results of the Continuous Multi-Purpose Household Survey (CMPHS) from April to June 2014. The estimates refer to the Mauritian population aged 16 years and above.
2. Annual estimates of labour force including foreign workers derived after integrating data from CMPHS with other sources are given at Annex 3.

Key figures

	Q2 2013	Q1 2014	Q2 2014 ¹	Change	
				Q2 2014 - Q2 2013	Q2 2014 - Q1 2014
Labour force	567,600	568,500	572,400	+4,800	+3,900
Employment	522,000	523,200	527,900	+5,900	+4,700
Unemployment	45,600	45,300	44,500	-1,100	-800
Unemployment rate (%)	8.0	8.0	7.8	-0.2	-0.2
Seasonally adjusted unemployment rate (%)	7.6	7.4	7.4	-0.2	-

¹Provisional

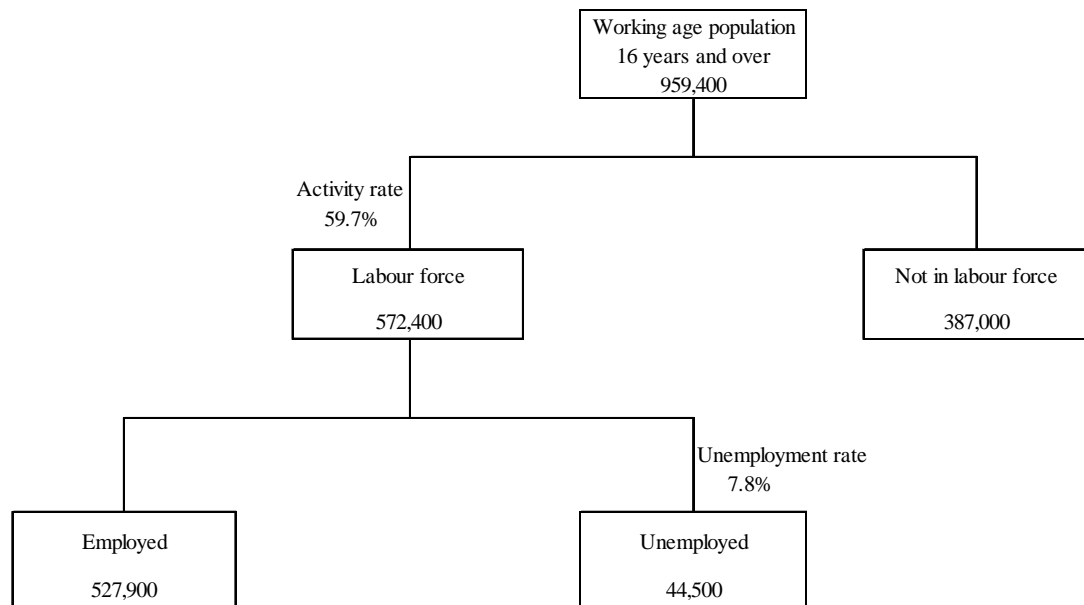
Forecasts of Employment and Unemployment - Year 2014

	Year 2013	Forecast Year 2014	Change
Employment	525,700	531,200	+5,500
Unemployment	45,500	45,000	-500
Unemployment rate (%)	8.0	7.8	-0.2

Labour market overview, second quarter 2014

3. Compared with the corresponding quarter of 2013, there has been an increase in the labour force (+4,800) with an increase in employment (+5,900) and a decrease in unemployment (-1,100).
4. Compared with the previous quarter, labour force shows an increase of (+3,900) with an increase in employment (+4,700) and a decrease in unemployment (-800).

Chart 1: The Labour Market, 2nd quarter 2014



Labour force participation

5. The activity rate for second quarter 2014 was 59.7%, up by 0.1 percentage point from 59.6% in the corresponding quarter one year earlier. The activity rate for male increased by 0.9 percentage point to 75.5% while that for female decreased by 0.8 percentage point to 44.5%.
6. Compared with the previous quarter, the activity rate increased to 59.7% by 0.3 percentage point. The male activity rate increased by 0.7 percentage point from 74.8% to 75.5% and female rate decreased by 0.2 percentage point from 44.7% to 44.5%.

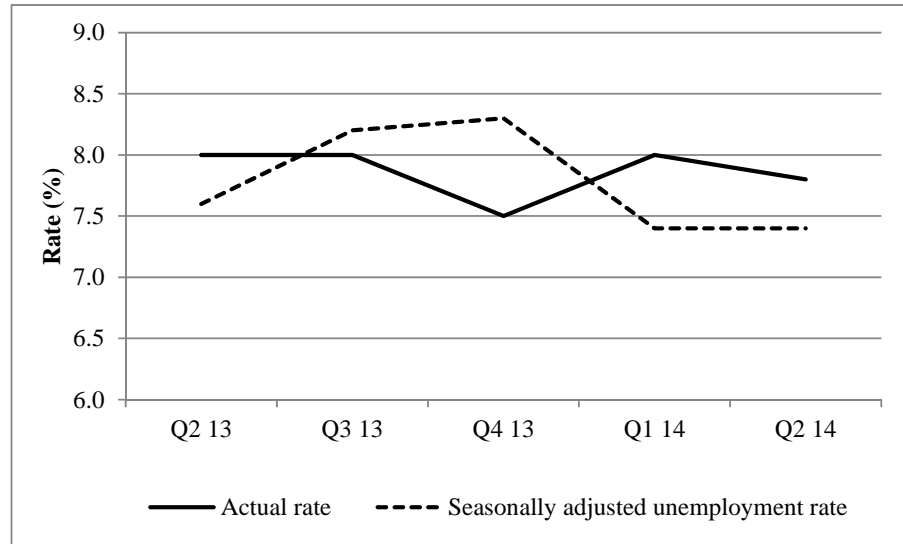
Employment

7. From second quarter 2013 to second quarter 2014, employment increased by 5,900 to 527,900; male employment increased by 3,300 to 334,200 and female employment by 2,600 to 193,700.
8. Compared with the previous quarter, employment increased by 4,700 with increases of 3,700 in male employment and 1,000 in female employment.
9. It is noted that the average number of hours worked per week, which was around 41 hours prior to 2012, has been declining to reach 38 hours at the second quarter 2014.

Unemployment

10. From second quarter 2013 to second quarter 2014, the number of unemployed persons decreased by 1,100 to 44,500. Male unemployment increased by 3,400 while female unemployment decreased by 4,500.
11. The unemployment rate decreased by 0.2 percentage point from second quarter 2013 to second quarter 2014. Male unemployment rate increased by 0.9 percentage point while female unemployment rate decreased by 1.9 percentage points.
12. When compared with first quarter of 2014, the total number of unemployed persons decreased by 800 (+500 males and -1,300 females).
13. From first quarter 2014 to second quarter 2014, the unemployment rate decreased by 0.2 percentage point with increase in males (0.1 percentage point) and decrease in females (0.5 percentage point).

Chart 2: Actual and seasonally adjusted unemployment rate by quarter, 2nd quarter 2013 – 2nd quarter 2014



14. Seasonally adjusted unemployment rate for the second quarter of 2014 was 7.4%, same rate as the first quarter of 2014, and lower than the rate of 7.6% for the second quarter of 2013.
15. The main characteristics of the unemployed as at second quarter 2014 were as follows:
- (i) The 44,500 unemployed comprised 19,900 males (45%) and 24,600 females (55%).
 - (ii) Around 18,800 (42%) of them were aged below 25 years.
 - (iii) More than half (51%) of the unemployed were single. Among males, the majority (69%) was single while among females, the majority (64%) was ever married.
 - (iv) Some 8,200 or 18% had not reached the Certificate of Primary Education (CPE) level or equivalent and a further 16,200 (36%) did not have the Cambridge School Certificate (SC) or equivalent.
 - (v) Around 35,400 (80%) had been looking for work for up to one year and the remaining 9,100 (20%) for more than one year.
 - (vi) About 32,300 (73%) had working experience and 12,200 (27%) were looking for a job for the first time.
 - (vii) Around 15,800 (36%) were registered at the Employment Service.
 - (viii) There were 8,100 (18%) young persons aged 16 to 24 years, not yet married and looking for a first job. Some 1,900 (24%) of them had not passed SC.

- (ix) Ever married (including widowed, divorced or separated) unemployed persons aged 25 to 44 years and having worked before numbered 11,200. Among them, about 4,400 (40%) had not passed SC.
- (x) 6,600 or 15% of the unemployed were heads of households.
- (xi) 6,900 (16%) lived in households with no employed persons.

Economically inactive population

- 16. The number of persons aged 16 years and over, not forming part of the labour force (inactive population) was estimated at 387,000 at second quarter 2014.
- 17. The inactive population was made up of 114,700 males and 272,300 females. Among inactive males, around 47% were 'retired or old persons' and 33% were students. Among females, 60% were homemakers; 15% were students and 14% were 'retired or old persons'.

Sampling errors

- 18. The estimates in this publication are based on the results of a sample survey and are thus subject to sample variability. Standard errors and confidence intervals give an indication of this variability.
- 19. The standard error of the estimates and the 95% confidence interval which represent a 95% chance that the true value lies within that interval, are given in the tables that follow.

Estimated labour force, employment and unemployment by sex, 2nd quarter 2013 – 2nd quarter 2014

Both Sexes

		Estimates	Standard Error	95% confidence interval	
				Lower limit	Upper limit
Labour force					
	2013 Q2	567,600	11,500	545,000	590,300
	Q3	572,100	9,600	553,200	590,900
	Q4	578,700	13,000	553,000	604,200
	2014 Q1	568,500	9,700	549,400	587,700
	Q2 ¹	572,400	11,900	549,100	595,800
Employment					
	2013 Q2	522,000	10,700	500,900	543,100
	Q3	526,200	9,300	508,000	544,400
	Q4	535,300	12,000	511,600	559,000
	2014 Q1	523,200	9,100	505,300	541,100
	Q2 ¹	527,900	10,800	506,700	549,200
Unemployment					
	2013 Q2	45,600	3,100	39,500	51,800
	Q3	45,900	2,800	40,200	51,400
	Q4	43,400	2,700	37,900	48,700
	2014 Q1	45,300	2,800	39,900	50,800
	Q2 ¹	44,500	3,100	38,300	50,700
Unemployment rate, %					
	2013 Q2	8.0	0.5	7.0	9.1
	Q3	8.0	0.5	7.1	9.0
	Q4	7.5	0.4	6.7	8.3
	2014 Q1	8.0	0.5	7.1	8.9
	Q2 ¹	7.8	0.5	6.8	8.7
Activity rate, %					
	2013 Q2	59.6	0.7	58.3	61.0
	Q3	60.0	0.7	58.6	61.3
	Q4	60.5	0.6	59.3	61.6
	2014 Q1	59.4	0.7	58.1	60.7
	Q2 ¹	59.7	0.7	58.4	61.0

¹ Provisional

Estimated labour force, employment and unemployment by sex, 2nd quarter 2013 – 2nd quarter 2014

Male

		Estimates	Standard Error	95% confidence interval	
				Lower limit	Upper limit
Labour force					
	2013 Q2	347,400	7,300	333,100	361,700
	Q3	350,600	5,600	339,500	361,500
	Q4	356,800	8,200	340,600	372,900
	2014 Q1	349,900	6,200	337,800	362,000
	Q2 ¹	354,100	7,600	339,100	369,200
Employment					
	2013 Q2	330,900	7,100	317,000	344,800
	Q3	331,000	5,500	320,200	341,700
	Q4	339,300	7,900	323,800	354,800
	2014 Q1	330,500	5,700	319,200	341,800
	Q2 ¹	334,200	7,100	320,200	348,200
Unemployment					
	2013 Q2	16,500	1,700	13,100	19,900
	Q3	19,600	1,700	16,100	23,000
	Q4	17,500	1,600	14,400	20,600
	2014 Q1	19,400	1,800	15,900	22,900
	Q2 ¹	19,900	2,000	16,000	23,800
Unemployment rate, %					
	2013 Q2	4.7	0.5	3.8	5.7
	Q3	5.6	0.5	4.6	6.5
	Q4	4.9	0.4	4.1	5.7
	2014 Q1	5.5	0.5	4.6	6.5
	Q2 ¹	5.6	0.5	4.6	6.7
Activity rate, %					
	2013 Q2	74.6	0.7	73.1	76.1
	Q3	75.1	0.7	73.7	76.5
	Q4	76.3	0.7	74.9	77.6
	2014 Q1	74.8	0.8	73.3	76.3
	Q2 ¹	75.5	0.7	74.1	77.0

¹ Provisional

Estimated labour force, employment and unemployment by sex, 2nd quarter 2013 – 2nd quarter 2014

Female

		Estimates	Standard Error	95% confidence interval	
				Lower limit	Upper limit
Labour force					
	2013 Q2	220,200	6,500	207,500	233,000
	Q3	221,500	6,300	209,100	233,800
	Q4	221,900	6,500	209,000	234,700
	2014 Q1	218,600	5,600	207,500	229,700
	Q2 ¹	218,300	6,300	205,900	230,700
Employment					
	2013 Q2	191,100	5,800	179,700	202,400
	Q3	195,200	5,900	183,600	206,800
	Q4	196,000	5,800	184,600	207,400
	2014 Q1	192,700	5,300	182,200	203,100
	Q2 ¹	193,700	5,900	182,000	205,400
Unemployment					
	2013 Q2	29,100	2,400	24,500	33,800
	Q3	26,300	2,100	22,200	30,300
	Q4	25,900	2,300	21,400	30,300
	2014 Q1	25,900	2,000	22,000	29,900
	Q2 ¹	24,600	2,100	20,400	28,700
Unemployment rate, %					
	2013 Q2	13.2	1.0	11.3	15.1
	Q3	11.9	0.9	10.1	13.6
	Q4	11.7	0.9	9.9	13.4
	2014 Q1	11.8	0.9	10.2	13.6
	Q2 ¹	11.3	0.9	9.4	13.1
Activity rate, %					
	2013 Q2	45.3	1.0	43.3	47.3
	Q3	45.4	1.1	43.2	47.5
	Q4	45.4	0.9	43.7	47.1
	2014 Q1	44.7	0.9	42.9	46.4
	Q2 ¹	44.5	1.0	42.6	46.4

¹ Provisional

Longer time series

- The following graphs show the series for employment, unemployment and activity rate from 2nd quarter 2010 to 2nd quarter 2014.

Chart 3: Employment by quarter, 2nd quarter 2010 – 2nd quarter 2014

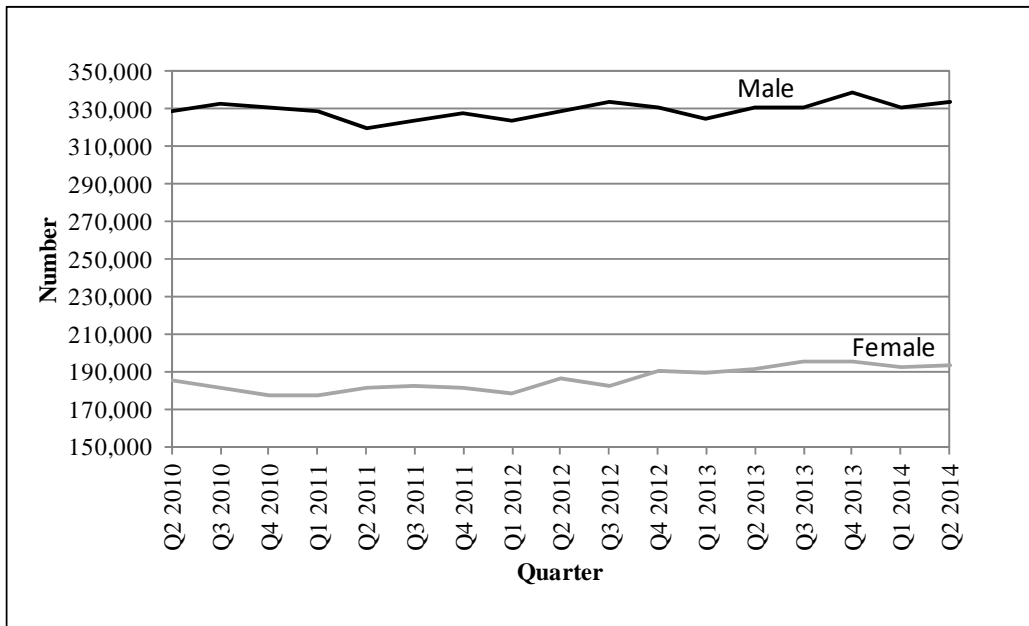


Chart 4: Unemployment rate by quarter, 2nd quarter 2010 – 2nd quarter 2014

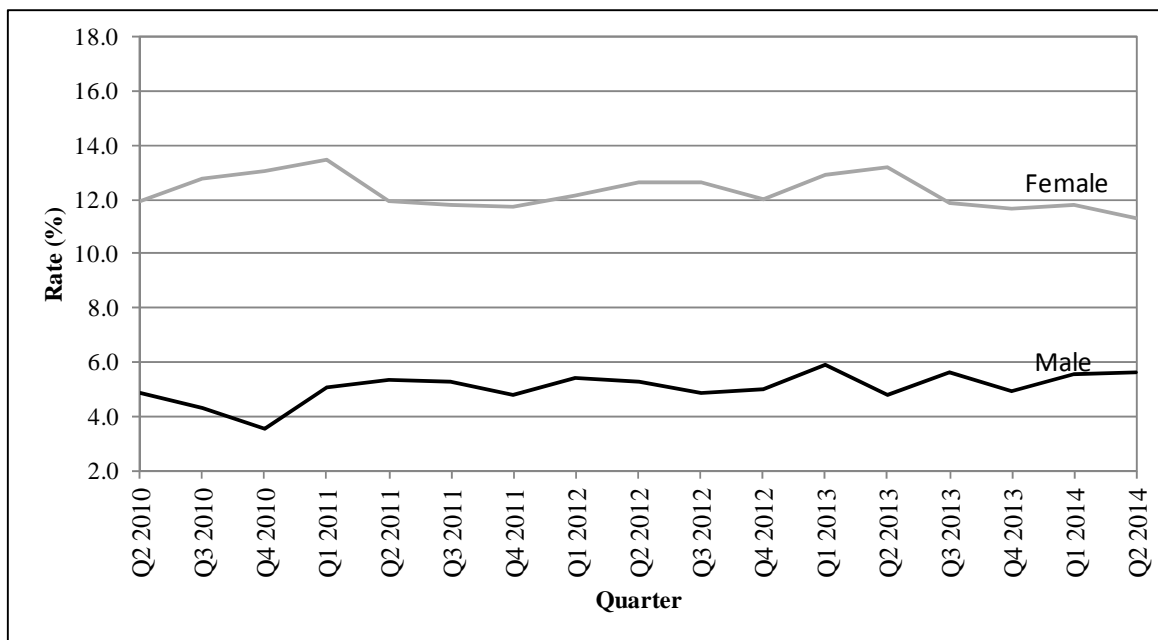


Chart 5: Activity rate by quarter, 2nd quarter 2010 – 2nd quarter 2014

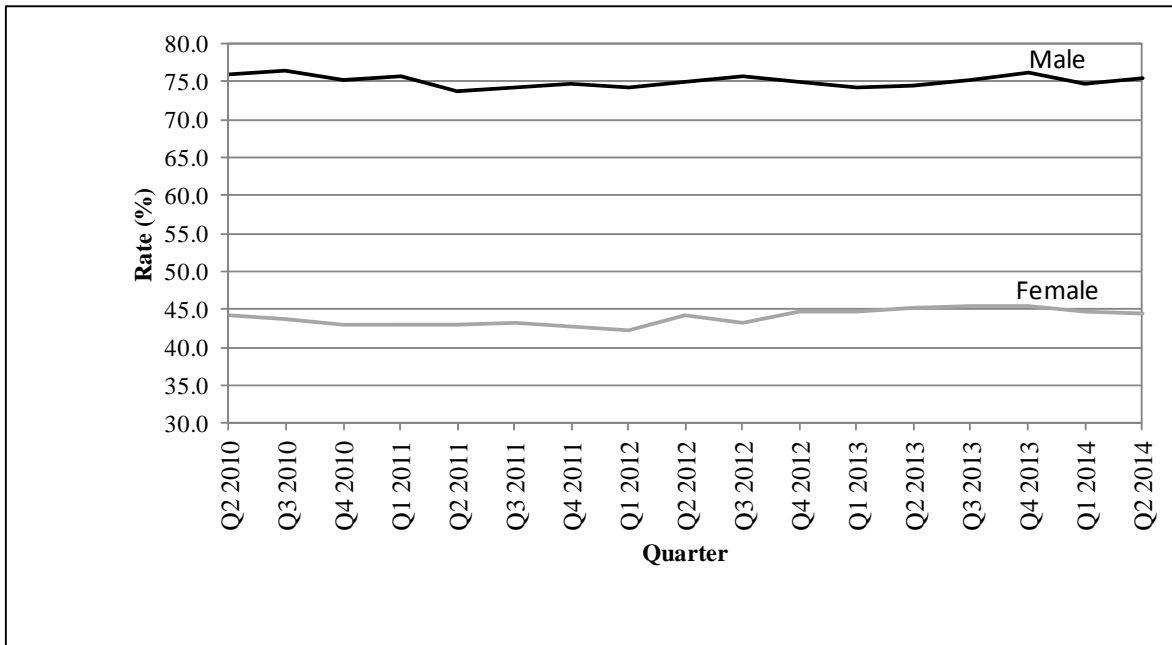
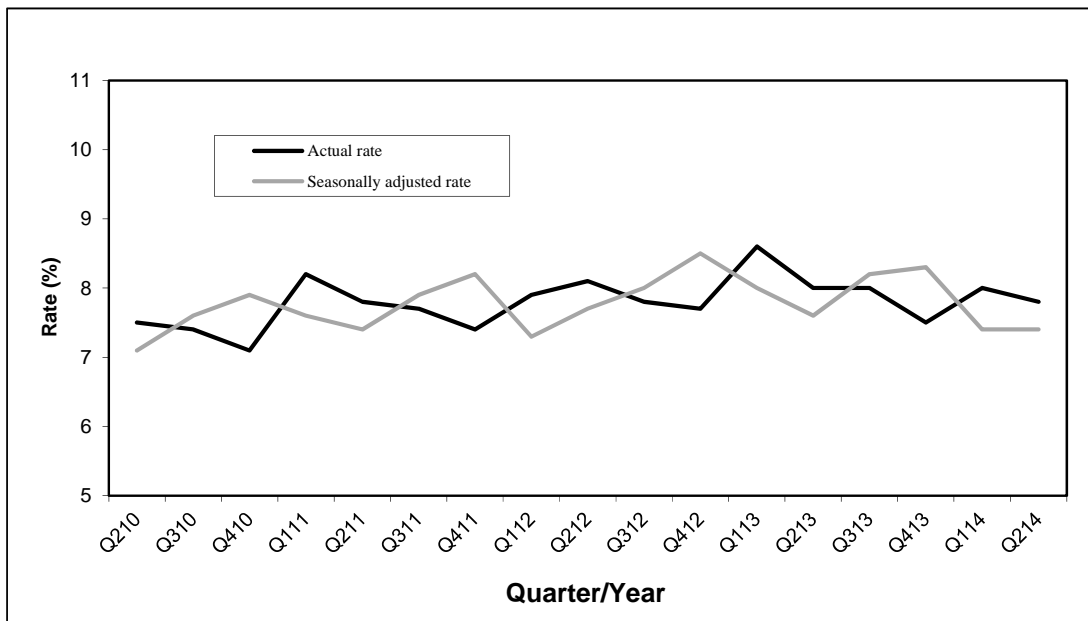


Chart 6: Actual and seasonally adjusted unemployment rate, 2nd quarter 2010 – 2nd quarter 2014



The following tables together with the web version of this publication can be downloaded from Statistics Mauritius website at <http://statsmauritius.gov.mu>. From the homepage, click on 'Statistics by subject' followed by 'labour' then select the appropriate publication under the heading 'Publications – Economic and Social Indicators'.

List of tables

Table 1: Labour market activity by status, 2nd Quarter 2013 to 2nd Quarter 2014

Table 2: Labour force characteristics by age and sex, 2nd Quarter 2014

Table 3: Employment by industrial activity, 2nd Quarter 2013 to 2nd Quarter 2014

Table 4: Employment by occupational group, 2nd Quarter 2013 to 2nd Quarter 2014

Table 5: Employment by hours worked, 2nd Quarter 2013 to 2nd Quarter 2014

Table 6: Unemployment by educational attainment, 2nd Quarter 2013 to 2nd Quarter 2014

Table 7: Unemployment by age, 2nd Quarter 2013 to 2nd Quarter 2014

Table 8: Unemployment by work experience, 2nd Quarter 2013 to 2nd Quarter 2014

Table 9: Economically inactive population by reason, 2nd Quarter 2013 to 2nd Quarter 2014

Statistics Mauritius
Ministry of Finance and Economic Development
Port Louis

September 2014

Contact persons: (1) Ms. N. Ramjan (Statistician)
Email: nramjan@mail.gov.mu

(2) Ms. P. Koonjul (Senior Statistical Officer)
Email: pkoonjul@mail.gov.mu

Statistics Mauritius
LIC Centre, Port Louis
Tel: 2081800 Fax: 2114150

NOTES

Release of Labour Force data

Labour Force statistics are compiled and published in the “Economic and Social Indicators” in March, June, September and December according to an advance calendar posted on the website of Statistics Mauritius (<http://statsmauritius.gov.mu>). This issue provides data for the second quarter 2014 compared to the same quarter a year ago.

However, where appropriate, historical series are also provided for the main indicators.

The CMPHS Survey methodology

Data collection

Face to face interviews of household members are carried out by qualified interviewers recruited by the office.

Frequency of data collection

Data collection is carried out monthly except in 2004 when it was carried out every quarter. Up to 2005, the reference period for data on labour force was the last week of the survey month. As from 2006, the reference week has been changed to the second week of the survey month so that estimates can be published within one quarter of the reference period, as required by the IMF Special Data Dissemination System (SDDS) to which the country has graduated on 28 February 2012.

Scope and coverage of collection

All private Mauritian households in the islands of Mauritius and Rodrigues are covered.

Sampling method

A Stratified two-stage sampling design is used. At the first stage, Primary Sampling Units (PSUs) are selected with probability proportional to size and at the second stage, a fixed number of households is selected from each selected PSU.

Prior to 2005, the first stage stratification factors were urban, semi urban and rural geographical locations. As from 2005, the Relative Development Index (RDI) is used as the spatial stratification factor. This index is based on 12 variables encompassing housing and living conditions, literacy and education, and employment derived from the 2011 Housing and Population Census to rank PSUs. A set of RDIs for administrative regions has been published in the series "Economic and Social Indicators" - Issue No. 977.

The second stage stratification criteria are community, household size and average monthly expenditure of the household.

Sample size

From 1999 to 2003, around 6,500 households were covered each year. In 2004, the sample was increased to 8,640 so that reliable quarterly estimates of labour force, employment and unemployment could be worked out. As from 2005, the sample for the year has been further increased to 11,280. Furthermore, in order to measure quarterly changes, 50% of the households sampled in a quarter are re-interviewed in the following quarter; for example, 50% of the households sampled in the first quarter of 2005 have been re-interviewed in the second quarter of 2005.

Questionnaire

The CMPHS questionnaire comprises three modules: a basic module common to all rounds of the survey covering the general characteristics of the population (b) a second module covering labour force with in-depth investigation and a core set of questions which are kept constant at all rounds of the survey and (c) a third module grouping other topics of interest but investigated in less details.

Estimation and reliability of results

Estimates worked out from household survey data are inevitably subject to sampling variability since they are based on information collected from only a sample of households rather than from all households. The Standard Error (S.E) which is a measure of this variability, used to set confidence intervals for any estimate (whether a total or a rate) derived from the sample. For example, a 95% confidence interval indicates that there is 95% chance that the upper and lower limits of the interval enclose the true value (which would be obtained if all households had been surveyed). Standard errors and confidence intervals are calculated for the main labour force estimates.

Definitions

Household

A household is defined as either a person living on his/her own or a group of two or more persons, who may or may not be related, but who live together and make common provision for food and other essentials for living.

Employment

Employed population consists of Mauritians aged 16 years and above (16+) who have worked for pay, profit or family gain for at least one hour during the reference week of a month. It includes those who are temporarily absent from work for reasons such as leave with pay, leave without pay and temporary disorganisation of work (bad weather, break down of equipment, lack of order, etc.).

It is to be noted that as from year 2007, labour force estimates are based on population aged 16 years and above, following the amendment to the Labour Act in December 2006 whereby the minimum legal working age is 16 years, and the subsequent recommendation by the ILO to be in line with the amended Labour Act.

Unemployment

Unemployed population comprises all Mauritians aged 16+ who are not working but who are looking for work and are available for work during the reference period.

Labour force

Labour force or active population is made up of employed and unemployed population.

Unemployment rate

Unemployment rate is the ratio (%) of unemployment to labour force.

Inactive population

Inactive population includes all Mauritians aged 16+ years, not forming part of the labour force for reasons such as attendance at educational institutions, engagement in household duties, retirement, old age and infirmity/disablement.

Activity rate

Activity rate is the ratio (%) of labour force to population aged 16+ (active and inactive population).

Employer

An employer is a person who operates his/her own business or trade and hires one or more employees.

Own account worker

An Own account worker is a person who operates his/her own business or trade but does not hire employees. He/She may be working alone or with the help of contributing family workers.

Employee

An Employee is a person who works for pay for someone else, even in a temporary capacity.

Apprentice

An Apprentice is a person being trained for a job or trade and does not receive pay or may just receive some pocket money; an apprentice is considered as an employee.

Contributing family worker

A Contributing family worker is a person who works without pay in an enterprise operated by a family member.

Educational attainment

Primary: comprises persons who have studied up to a “Standard” between Standard 1 and the Certificate of Primary Education (CPE) or equivalent.

Secondary: comprises persons who have studied up to a “Form” between Form 1 and the Higher School Certificate (HSC) or equivalent.

Tertiary: comprises persons who in addition to their secondary educational certificates (SC and HSC or equivalent) also possess either a certificate/diploma (which is above the HSC but below a first degree) or a degree.

Annual labour force estimates based on data from different data sources, 2011 - 2014

	Labour force			Employment				Unemployment ¹	
	Mauritians aged 16+	Foreign workers	Total	in large establishments	outside large establishments	Total	<i>of whom Mauritians</i>	Number	Rate
	(000s)	(000s)	(000s)	(000s)	(000s)	(000s)	(000s)	(000s)	(%)
Both sexes									
2011	548.6	23.0	571.6	310.7	218.2	528.9	505.9	42.7	7.8
2012	556.3	24.0	580.3	311.5	224.2	535.7	511.7	44.6	8.0
2013	571.2	26.3	597.5	312.5	239.5	552.0	525.7	45.5	8.0
2014 ²	576.2	28.3	604.5	313.5	246.0	559.5	531.2	45.0	7.8
Change current year over previous:	5.0	2.0	7.0	1.0	6.5	7.5	5.5	-0.5	-0.2
Male									
2011	343.3	13.4	356.7	197.8	141.6	339.4	326.0	17.3	5.0
2012	346.9	14.2	361.1	198.3	144.7	343.0	328.8	18.1	5.2
2013	350.4	16.5	366.9	199.1	149.2	348.3	331.8	18.6	5.3
2014 ²	353.9	18.3	372.2	199.3	154.2	353.5	335.2	18.7	5.3
Change current year over previous:	3.5	1.8	5.3	0.2	5.0	5.2	3.4	0.1	0.0
Female									
2011	205.3	9.6	214.9	112.9	76.6	189.5	179.9	25.4	12.4
2012	209.4	9.8	219.2	113.2	79.5	192.7	182.9	26.5	12.7
2013	220.8	9.8	230.6	113.4	90.3	203.7	193.9	26.9	12.2
2014 ²	222.3	10.0	232.3	114.2	91.8	206.0	196.0	26.3	11.8
Change current year over previous:	1.5	0.2	1.7	0.8	1.5	2.3	2.1	-0.6	-0.4

¹ Unemployment figures and rate refer to Mauritians² Forecast**Note:**

1. The above figures have been worked out in order to give a set of comparable labour force estimates obtained from different sources. Users are cautioned in the use of these figures given that there are differences related to the reference period, coverage and methodology. The different sources from which these estimates have been obtained are as follows:
 - i CMPHS for Mauritian labour force estimates which are subject to sampling variability as mentioned at paragraph 17.
 - ii The Annual Survey of Employment and Earnings (SEE) carried out in March of each year. Employment figures refer to jobs in large establishments employing 10 or more persons and include both Mauritians and foreign workers.
 - iii Employment in 'other than large' establishments has been estimated after reconciling data from CMPHS, SEE and administrative sources.
2. The Labour Force, Employment and Unemployment estimates are based on population figures revised according to the 2011 Population Census results.

Table 1: Labour market activity by status, 2nd Quarter 2013 to 2nd Quarter 2014

		In thousands							
	Total Mauritian population aged 16 & over	In employment					Unemployed	Total econ. active	Total econ. inactive
		Employees	Employers	Own account workers	Contrib. family workers	Total			
Both sexes									
2013 Q2	951.8	408.9	20.5	81.9	10.7	522.0	45.6	567.6	384.2
Q3	954.1	409.6	22.0	80.3	14.3	526.2	45.9	572.1	382.0
Q4	956.6	427.4	19.5	75.5	12.9	535.3	43.4	578.7	377.9
2014 Q1	956.9	409.4	23.2	78.6	12.0	523.2	45.3	568.5	388.4
Q2 ¹	959.4	414.0	24.3	80.1	9.5	527.9	44.5	572.4	387.0
% change, latest quarter over:									
previous quarter	0.3	1.1	4.7	1.9	-20.8	0.9	-1.8	0.7	-0.4
same quarter a year ago	0.8	1.2	18.5	-2.2	-11.2	1.1	-2.4	0.8	0.7
Male									
2013 Q2	465.8	248.4	16.3	63.9	2.3	330.9	16.5	347.4	118.4
Q3	466.7	248.5	17.2	61.3	4.0	331.0	19.6	350.6	116.1
Q4	467.8	261.3	17.2	57.7	3.1	339.3	17.5	356.8	111.0
2014 Q1	467.6	247.7	18.7	60.8	3.3	330.5	19.4	349.9	117.7
Q2 ¹	468.8	253.5	21.0	57.8	1.9	334.2	19.9	354.1	114.7
% change, latest quarter over:									
previous quarter	0.3	2.3	12.3	-4.9	-42.4	1.1	2.6	1.2	-2.5
same quarter a year ago	0.6	2.1	28.8	-9.5	-17.4	1.0	20.6	1.9	-3.1
Female									
2013 Q2	486.0	160.5	4.2	18.0	8.4	191.1	29.1	220.2	265.8
Q3	487.4	161.1	4.8	19.0	10.3	195.2	26.3	221.5	265.9
Q4	488.8	166.1	2.3	17.8	9.8	196.0	25.9	221.9	266.9
2014 Q1	489.3	161.7	4.5	17.8	8.7	192.7	25.9	218.6	270.7
Q2 ¹	490.6	160.5	3.3	22.3	7.6	193.7	24.6	218.3	272.3
% change, latest quarter over:									
previous quarter	0.3	-0.7	-26.7	25.3	-12.6	0.5	-5.0	-0.1	0.6
same quarter a year ago	0.9	0.0	-21.4	23.9	-9.5	1.4	-15.5	-0.9	2.4

Note : The estimates are based on population figures revised according to the 2011 Population Census results.

¹ Provisional

Table 2: Labour force characteristics by age and sex, 2nd Quarter 2014¹

In thousands

	Mauritian aged 16 and over	Age group (years)				
		16-24	25 - 29	30 - 39	40 - 49	50+
Both sexes						
In employment	527.9	55.2	57.9	140.8	128.4	145.6
Unemployed	44.5	18.8	6.4	8.9	6.6	3.8
Labour force	572.4	74.0	64.3	149.7	135.0	149.4
Economically inactive	387.0	99.8	13.2	34.4	39.3	200.3
Total Population	959.4	173.8	77.5	184.1	174.3	349.7
Employment rate (%)	92.2	74.6	90.0	94.1	95.1	97.5
Unemployment rate (%)	7.8	25.4	10.0	5.9	4.9	2.5
Activity rate (%)	59.7	42.6	83.0	81.3	77.5	42.7
Male						
In employment	334.2	35.8	33.5	86.6	80.7	97.6
Unemployed	19.9	9.4	2.5	2.4	2.8	2.8
Labour force	354.1	45.2	36.0	89.0	83.5	100.4
Economically inactive	114.7	42.2	3.0	3.2	3.9	62.4
Total Population	468.8	87.4	39.0	92.2	87.4	162.8
Employment rate (%)	94.4	79.2	93.1	97.3	96.6	97.2
Unemployment rate (%)	5.6	20.8	6.9	2.7	3.4	2.8
Activity rate (%)	75.5	51.7	92.3	96.5	95.5	61.7
Female						
In employment	193.7	19.4	24.4	54.2	47.7	48.0
Unemployed	24.6	9.4	3.9	6.5	3.8	1.0
Labour force	218.3	28.8	28.3	60.7	51.5	49.0
Economically inactive	272.3	57.6	10.2	31.2	35.4	137.9
Total Population	490.6	86.4	38.5	91.9	86.9	186.9
Employment rate (%)	88.7	67.4	86.2	89.3	92.6	98.0
Unemployment rate (%)	11.3	32.6	13.8	10.7	7.4	2.0
Activity rate (%)	44.5	33.3	73.5	66.1	59.3	26.2

Note : The estimates are based on population figures revised according to the 2011 Population Census results.

¹ Provisional

Table 3: Employment by industrial activity, 2nd Quarter 2013 to 2nd Quarter 2014

	Total employed aged 16+	Primary sector	Secondary sector	Tertiary sector	Selected NSIC ¹ Sections			
					Manufacturing	Construction	Wholesale and retail trade	Other services
					C	F	G	H - U
	(000s)	(%)	(%)	(%)	(%)	(%)	(%)	(%)
Both sexes								
2013 Q2	522.0	6.9	25.3	67.8	13.2	10.5	14.4	53.4
Q3	526.2	7.3	27.2	65.5	15.9	9.5	15.4	50.1
Q4	535.3	7.7	29.0	63.3	16.4	10.7	15.0	48.3
2014 Q1	523.2	7.8	26.7	65.5	14.4	10.6	14.8	50.7
Q2 ²	527.9	7.0	24.4	68.6	12.5	10.8	14.7	53.9
Male								
2013 Q2	330.9	7.9	30.9	61.2	12.2	16.4	13.4	47.8
Q3	331.0	8.2	31.8	60.0	14.3	14.9	14.4	45.7
Q4	339.3	8.8	34.0	57.2	15.1	16.4	14.1	43.1
2014 Q1	330.5	8.9	32.2	58.9	13.8	16.1	13.8	45.1
Q2 ²	334.2	8.2	28.9	62.9	10.9	15.6	13.5	49.5
Female								
2013 Q2	191.1	5.0	15.8	79.2	14.9	0.4	16.3	62.9
Q3	195.2	5.7	19.6	74.7	18.6	0.4	17.1	57.6
Q4	196.0	5.9	20.2	73.9	18.6	0.8	16.4	57.5
2014 Q1	192.7	6.1	17.3	76.6	15.6	1.1	16.5	60.2
Q2 ²	193.7	4.8	16.7	78.5	15.2	0.9	16.8	61.7

Note : The estimates are based on population figures revised according to the 2011 Population Census results.

¹ National version of the International Standard Industrial Classification (ISIC Revision 4)

² Provisional

Table 4: Employment by occupational group, 2nd Quarter 2013 to 2nd Quarter 2014

		ISCO-08 ¹					
		Total employed aged 16+	Managers, Professionals, Technicians & associate professionals	Clerical support workers	Service and sales workers	Agricultural, Craft & related trades workers, Plant & machine operators & assemblers	Elementary occupations
		(000s)	1,2,3 (%)	4 (%)	5 (%)	6,7,8 (%)	9 (%)
Both sexes							
2013 Q2		522.0	26.2	7.7	20.1	30.5	15.5
	Q3	526.2	24.7	8.0	19.6	31.7	16.0
	Q4	535.3	21.7	8.4	19.5	34.2	16.2
2014 Q1		523.2	24.7	8.0	19.8	31.1	16.4
	Q2 ²	527.9	24.5	8.5	20.9	30.8	15.3
Male							
2013 Q2		330.9	23.3	4.0	18.8	42.1	11.8
	Q3	331.0	22.5	4.7	17.8	42.1	12.9
	Q4	339.3	19.3	5.2	17.6	45.1	12.8
2014 Q1		330.5	22.9	4.9	18.3	41.9	12.0
	Q2 ²	334.2	22.2	5.2	19.1	41.3	12.2
Female							
2013 Q2		191.1	31.3	14.2	22.4	10.4	21.7
	Q3	195.2	28.5	13.6	22.4	14.1	21.4
	Q4	196.0	25.8	13.9	23.0	15.3	22.0
2014 Q1		192.7	27.8	13.4	22.3	12.6	23.9
	Q2 ²	193.7	28.4	14.2	24.1	12.6	20.7

Note : The estimates are based on population figures revised according to the 2011 Population Census results.

¹ National version of the International Standard Classification of Occupation (ISCO-08)

² Provisional

Table 5: Employment by hours worked, 2nd Quarter 2013 to 2nd Quarter 2014

	Total employed aged 16+ (000's)	Total hours worked (000's)	% having worked for:					Average number of hours worked
			0 hour	1 to 23 hours	24 to 40 hours	41 to 50 hours	51 and above	
Both sexes								
2013 Q2	522.0	19,100	5.3	11.6	44.0	24.8	14.3	38.6
Q3	526.2	19,100	5.4	12.7	42.9	24.8	14.2	38.3
Q4	535.3	20,400	6.0	11.9	35.1	29.5	17.5	40.5
2014 Q1	523.2	18,400	4.5	12.4	50.9	20.3	11.9	36.9
Q2 ¹	527.9	19,600	5.6	11.8	39.8	27.9	14.9	39.4
Male								
2013 Q2	330.9	12,700	5.5	8.6	41.5	27.0	17.4	40.7
Q3	331.0	12,800	5.3	8.7	41.3	26.9	17.8	40.8
Q4	339.3	13,800	5.3	8.7	33.0	32.0	21.0	42.9
2014 Q1	330.5	12,200	4.9	9.5	49.5	21.9	14.2	38.9
Q2 ¹	334.2	13,000	5.6	9.4	37.2	30.1	17.7	41.3
Female								
2013 Q2	191.1	6,400	4.9	16.7	48.5	20.9	9.0	35.1
Q3	195.2	6,300	5.5	19.7	45.6	21.1	8.1	34.1
Q4	196.0	6,600	7.2	17.3	38.9	25.2	11.4	36.4
2014 Q1	192.7	6,200	3.9	17.3	53.4	17.5	7.9	33.5
Q2 ¹	193.7	6,600	5.6	15.9	44.3	24.1	10.1	36.1

Note : The estimates are based on population figures revised according to the 2011 Population Census results.

0 hour not included in total hours worked & in average number of hours worked

¹ Provisional

Table 6: Unemployment by educational attainment, 2nd Quarter 2013 to 2nd Quarter 2014

	Unemployed Mauritians aged 16+ (000s)	Primary			Secondary				Tertiary	
		Total (%)	Below CPE (%)	Passed CPE (%)	Total (%)	Below SC (%)	Passed SC (%)	Passed HSC (%)	(%)	
Both sexes										
2013 Q2	45.6	23.5	17.1	6.4	56.1	35.5	16.4	4.2	20.4	
Q3	45.9	25.7	20.0	5.7	51.6	28.3	16.1	7.2	22.7	
Q4	43.4	25.1	15.7	9.4	51.3	29.0	15.4	6.9	23.6	
2014 Q1	45.3	25.0	15.9	9.1	56.6	27.4	19.4	9.8	18.4	
Q2 ¹	44.5	22.9	18.4	4.5	55.1	36.4	11.7	7.0	22.0	
Male										
2013 Q2	16.5	29.1	20.0	9.1	58.2	38.2	17.0	3.0	12.7	
Q3	19.6	28.1	21.4	6.7	51.5	32.1	13.8	5.6	20.4	
Q4	17.5	29.7	23.4	6.3	46.9	28.0	12.0	6.9	23.4	
2014 Q1	19.4	32.6	20.8	11.8	53.0	31.7	13.7	7.6	14.4	
Q2 ¹	19.9	26.1	23.6	2.5	60.3	40.7	12.6	7.0	13.6	
Female										
2013 Q2	29.1	20.3	15.5	4.8	55.0	34.0	16.2	4.8	24.7	
Q3	26.3	23.9	19.0	4.9	51.8	25.5	17.9	8.4	24.3	
Q4	25.9	22.0	10.4	11.6	54.4	29.7	17.8	6.9	23.6	
2014 Q1	25.9	19.3	12.3	7.0	59.3	24.2	23.7	11.4	21.4	
Q2 ¹	24.6	20.3	14.2	6.1	50.8	32.9	11.0	6.9	28.9	

Note : The estimates are based on population figures revised according to the 2011 Population Census results.

¹ Provisional

Table 7: Unemployment by age, 2nd Quarter 2013 to 2nd Quarter 2014

		All aged 16 and over	Age group (years)		
			16-24	25-49	50+
Both sexes					
	2013 Q2	45.6	19.3	23.2	3.1
	Q3	45.9	16.2	26.1	3.6
	Q4	43.4	16.8	22.7	3.9
	2014 Q1	45.3	18.4	23.5	3.4
	Q2 ¹	44.5	18.8	21.9	3.8
Change, latest quarter over:					
	previous quarter	-0.8	0.4	-1.6	0.4
	same quarter a year ago	-1.1	-0.5	-1.3	0.7
Male					
	2013 Q2	16.5	7.4	7.3	1.8
	Q3	19.6	7.6	10.3	1.7
	Q4	17.5	7.0	8.5	2.0
	2014 Q1	19.4	8.7	7.8	2.9
	Q2 ¹	19.9	9.4	7.7	2.8
Change, latest quarter over:					
	previous quarter	0.5	0.7	-0.1	-0.1
	same quarter a year ago	3.4	2.0	0.4	1.0
Female					
	2013 Q2	29.1	11.9	15.9	1.3
	Q3	26.3	8.6	15.8	1.9
	Q4	25.9	9.8	14.2	1.9
	2014 Q1	25.9	9.7	15.7	0.5
	Q2 ¹	24.6	9.4	14.2	1.0
Change, latest quarter over:					
	previous quarter	-1.3	-0.3	-1.5	0.5
	same quarter a year ago	-4.5	-2.5	-1.7	-0.3

Note : The estimates are based on population figures revised according to the 2011 Population Census results.

¹ Provisional

Table 8: Unemployment by work experience, 2nd Quarter 2013 to 2nd Quarter 2014

	Unemployed Mauritians aged 16+	No. of first job seekers	Unemployed with work experience by industry *						
			Total	Manuf.	Construction	Trade	Accommodation & Food Service Activities	Other	
			(000s)	(%)	(%)	(%)	(%)	(%)	
Both sexes									
2013 Q2	45.6	15.4	30.2	9.3	12.9	21.2	14.9	41.7	
Q3	45.9	12.8	33.1	18.4	12.4	23.3	10.9	35.0	
Q4	43.4	15.8	27.6	16.3	13.8	19.9	13.8	36.2	
2014 Q1	45.3	13.2	32.1	13.7	10.6	18.7	16.5	40.5	
Q2 ¹	44.5	12.2	32.3	16.9	12.4	18.6	16.1	36.0	
Change, latest quarter over:									
previous quarter	-0.8	-1.0	0.2						
same quarter a year ago	-1.1	-3.2	2.1						
Male									
2013 Q2	16.5	4.1	12.4	4.8	31.5	14.5	12.9	36.3	
Q3	19.6	4.1	15.5	15.5	23.9	17.4	11.0	32.2	
Q4	17.5	5.8	11.7	15.4	29.1	10.3	11.1	34.1	
2014 Q1	19.4	5.2	14.2	13.4	23.9	13.4	19.0	30.3	
Q2 ¹	19.9	3.8	16.1	16.3	24.5	15.3	16.9	27.0	
Change, latest quarter over:									
previous quarter	0.5	-1.4	1.9						
same quarter a year ago	3.4	-0.3	3.7						
Female									
2013 Q2	29.1	11.3	17.8	12.4	0.0	25.8	16.3	45.5	
Q3	26.3	8.7	17.6	21.0	2.3	28.4	10.8	37.5	
Q4	25.9	10.0	15.9	17.0	2.5	27.0	15.7	37.8	
2014 Q1	25.9	8.0	17.9	14.0	0.0	22.9	14.5	48.6	
Q2 ¹	24.6	8.4	16.2	17.5	0.3	21.8	15.3	45.1	
Change, latest quarter over:									
previous quarter	-1.3	0.4	-1.7						
same quarter a year ago	-4.5	-2.9	-1.6						

Note : The estimates are based on population figures revised according to the 2011 Population Census results.

* National version of the International Standard Industrial Classification (ISIC Revision 4)

¹ Provisional

Table 9: Economically inactive population by reason, 2nd Quarter 2013 to 2nd Quarter 2014

		Total Mauritians aged 16+ (000s)	Economically inactive by reason					
			Total	Homemakers	Retired or elderly	Students	Sick or disabled	Other
			(000s)	(%)	(%)	(%)	(%)	(%)
Both sexes								
	2013 Q2	951.8	384.2	37.1	27.2	20.9	7.7	7.1
	Q3	954.1	382.0	38.3	26.0	22.4	8.6	4.7
	Q4	956.6	377.9	39.2	25.5	22.0	9.2	4.1
	2014 Q1	956.9	388.4	40.2	25.5	20.6	9.1	4.6
	Q2 ¹	959.4	387.0	42.3	24.0	20.5	7.2	6.0
Male								
	Q2	465.8	118.4	0.2	47.4	34.0	11.8	6.6
	Q3	466.7	116.1	0.2	44.2	34.8	15.9	4.9
	Q4	467.8	111.0	0.6	45.8	34.5	15.8	3.3
	2014 Q1	467.6	117.7	0.3	46.0	30.9	16.0	6.8
	Q2 ¹	468.8	114.7	0.1	47.1	33.4	12.2	7.2
Female								
	Q2	486.0	265.8	53.6	18.2	15.0	5.9	7.3
	Q3	487.4	265.9	54.9	18.1	17.0	5.4	4.6
	Q4	488.8	266.9	55.3	17.0	16.7	6.5	4.5
	2014 Q1	489.3	270.7	57.6	16.7	16.1	5.9	3.7
	Q2 ¹	490.6	272.3	60.1	14.2	15.0	5.1	5.6

Note : The estimates are based on population figures revised according to the 2011 Population Census results.

¹ Provisional