

Labour force, Employment and Unemployment – Third quarter 2013

Introduction

1. This issue of Economic and Social Indicators (ESI) presents a set of estimates of labour force, employment and unemployment for the third quarter of 2013, based on the results of the Continuous Multi-Purpose Household Survey (CMPHS) from July to September 2013. The estimates refer to the Mauritian population aged 16 years and above.
2. Annual estimates of labour force including foreign workers derived after integrating data from CMPHS with other sources are given at Annex 3.

Key figures

	Q3 2012	Q2 2013	Q3 2013	Change	
				Q3 2013 - Q3 2012	Q3 2013 - Q2 2013
Labour force	596,400	607,700	609,700	+13,300	+2,000
Employment	549,300	558,000	562,400	+13,100	+4,400
Unemployment	47,100	49,700	47,300	+200	-2,400
Unemployment rate (%)	7.9	8.2	7.8	-0.1	-0.4
Seasonally adjusted unemployment rate (%)	8.1	7.8	8.0	-0.1	0.2

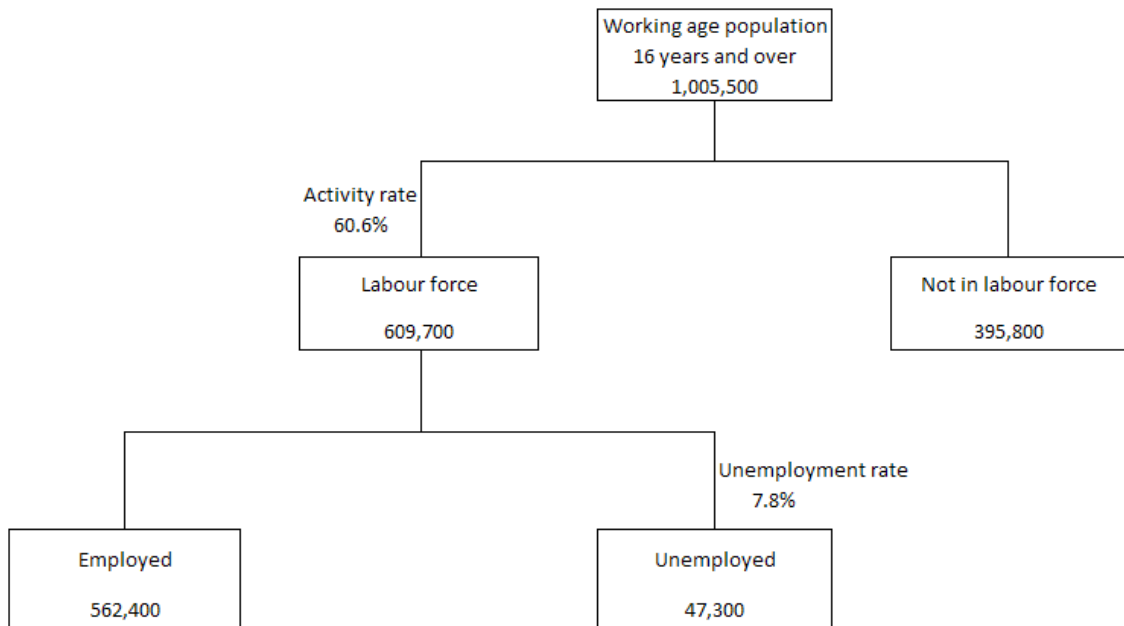
Forecasts of Employment and Unemployment - Year 2013

	Year 2012	Forecast Year 2013	Change
Employment	544,800	557,300	+12,500
Unemployment	48,300	49,600	+1,300
Unemployment rate (%)	8.1	8.2	+0.1

Labour market overview, third quarter 2013

3. Compared with the corresponding quarter of 2012, there has been an increase in the labour force (+13,300) with an increase in both employment (+13,100) and in unemployment (+200).
4. Compared with the previous quarter, labour force showed an increase of 2,000 with an increase in employment (+4,400) and a decrease in unemployment (-2,400).

Chart 1: The Labour Market, 3rd quarter 2013



Labour force participation

5. The activity rate for third quarter 2013 was 60.6%, up by 0.6 percentage point from 60.0% in the corresponding quarter one year earlier. The activity rate for male decreased by 0.8 percentage point to 75.6% while that for female increased by 2.2 percentage points to 46.3%.
6. Compared with the previous quarter, the activity rate remained unchanged at 60.6%. The male activity rate increased by 0.2 percentage point from 75.4% to 75.6% whilst that of female remained unchanged at 46.3%.

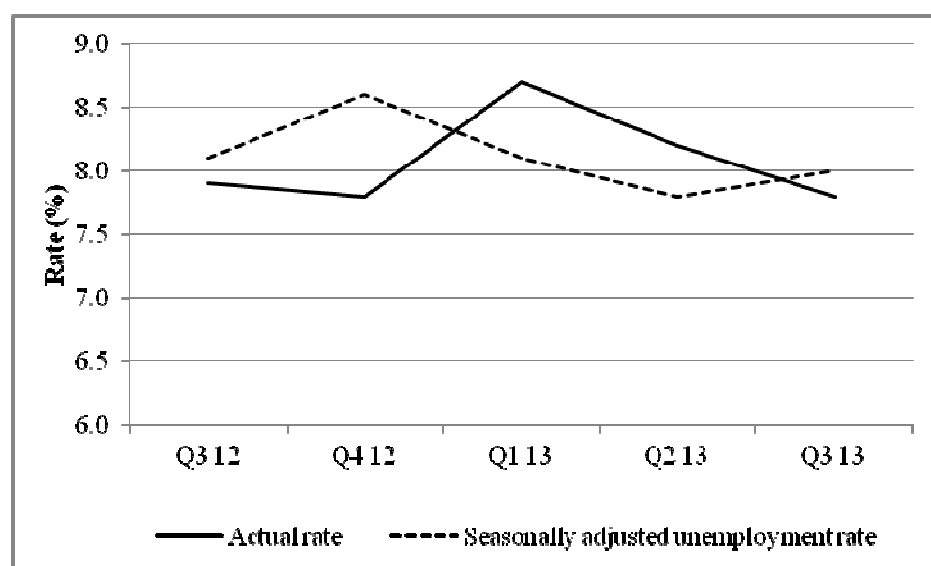
Employment

7. From third quarter 2012 to third quarter 2013, employment increased by 13,100 to 562,400; female employment increased by 14,300 to 209,900 whilst male decreased by 1,200 to 352,500.
8. Compared with the previous quarter, employment increased by 4,400 with increases of 100 in male employment and 4,300 in female employment.

Unemployment

9. From third quarter 2012 to third quarter 2013, the number of unemployed persons increased by 200 to 47,300. This increase is the net effect of a rise of 1,100 in unemployed male and a decline of 900 in the number of unemployed females.
10. The unemployment rate decreased by 0.1% from third quarter 2012 to third quarter 2013. Male unemployment rate increased by 0.3 percentage point whereas female unemployment rate decreased by -1.1 percentage points.
11. When compared with second quarter of 2013, the total number of unemployed persons decreased by 2,400 (+1,600 males and -4,000 females).
12. From second quarter to third quarter 2013, the unemployment rate decreased by 0.4 percentage point with an increase of 0.4 percentage point in that of male and a fall of 1.7 percentage points in the female rate.

Chart 2: Actual and seasonally adjusted unemployment rate by quarter, 3rd quarter 2012 – 3rd quarter 2013



13. Unemployment rate is usually higher in the first half of the year because of school leavers joining the labour market, and lower in the second half with more casual jobs being available mainly in the trade sector (street vendors, salespersons in shops, etc.) at the end of the year. In order to observe the real trend over time, adjustments have to be made for seasonal fluctuations. Seasonally adjusted unemployment rate for the third quarter of 2013 was 8.0%, lower than the rate of 8.1% for third quarter of 2012, and higher than the rate of 7.8% for the second quarter of 2013.

14. The main characteristics of the unemployed as at third quarter 2013 were as follows:

- (i) The 47,300 unemployed comprised 19,700 males (42%) and 27,600 females (58%).
- (ii) Around 17,500 (37%) of them were aged below 25 years.
- (iii) About half of the unemployed were single. Among males, the majority (76%) was single while among females, the majority (66%) was ever married.
- (iv) Some 9,100 or 19% had not reached the Certificate of Primary Education (CPE) level or equivalent and a further 15,800 (33%) did not have the Cambridge School Certificate (SC) or equivalent.
- (v) Around 36,600 (77%) had been looking for work for up to one year and the remaining 10,700 (23%) for more than one year.
- (vi) About 33,500 (71%) had working experience and 13,800 (29%) were looking for a job for the first time.
- (vii) Around 19,700 (42%) were registered at the Employment Service.
- (viii) There were 8,400 (18%) young persons aged 16 to 24 years, not yet married and looking for a first job. Some 2,300 (27%) of them had not passed SC.
- (ix) Ever married (including widowed, divorced or separated) unemployed persons aged 25 to 44 years and having worked before numbered 12,500. Among them, about 7,700 (62%) had not passed SC.
- (x) 5,500 or 12% of the unemployed were heads of households.
- (xi) 8,500 (18%) lived in households with no employed persons.

Economically inactive population

15. The number of persons aged 16 years and over, not forming part of the labour force (inactive population) was estimated at 395,800 at third quarter 2013.
16. The inactive population was made up of 120,000 males and 275,800 females. Among inactive males, around 41% were 'retired or old persons' and 36% were students. Among females, 55% were homemakers; 'retired or old persons' and students were both at around 17%.

Sampling errors

17. The estimates in this publication are based on the results of a sample survey and are thus subject to sample variability. Standard errors and confidence intervals give an indication of this variability.
18. The standard error of the estimates and the 95% confidence interval which represent a 95% chance that the true value lies within that interval, are given in the tables that follow.

Estimated labour force, employment and unemployment by sex, 3rd quarter 2012 – 3rd quarter 2013

Both Sexes

		Estimates	Standard Error	95% confidence interval	
				Lower limit	Upper limit
Labour force					
	2012 Q3	596,400	12,600	571,600	621,200
	Q4	602,900	17,300	568,800	637,100
	2013 Q1	601,700	11,700	578,600	624,800
	Q2	607,700	12,400	583,100	632,100
	Q3 ¹	609,700	10,300	589,500	630,000
Employment					
	2012 Q 3	549,300	11,800	526,200	572,500
	Q4	556,100	16,000	524,600	587,600
	2013 Q1	549,200	10,300	529,000	569,400
	Q2	558,000	11,600	535,200	580,700
	Q3 ¹	562,400	9,900	542,900	582,000
Unemployment					
	2012 Q3	47,100	2,900	41,400	52,700
	Q4	46,800	3,500	39,900	53,700
	2013 Q1	52,500	3,300	45,900	59,100
	Q2	49,700	3,400	42,900	56,400
	Q3 ¹	47,300	3,100	41,300	53,400
Unemployment rate, %					
	2012 Q3	7.9	0.4	7.0	8.8
	Q4	7.8	0.5	6.8	8.8
	2013 Q1	8.7	0.5	7.8	9.7
	Q2	8.2	0.5	7.1	9.2
	Q3 ¹	7.8	0.5	6.8	8.7
Activity rate, %					
	2012 Q3	60.0	0.6	58.8	61.1
	Q4	60.5	0.7	59.1	61.8
	2013 Q1	60.2	0.6	58.9	61.4
	Q2	60.6	0.7	59.2	61.9
	Q3 ¹	60.6	0.7	59.3	61.9

¹ Provisional

Estimated labour force, employment and unemployment by sex, 3rd quarter 2012 – 3rd quarter 2013

Male

		Estimates	Standard Error	95% confidence interval	
				Lower limit	Upper limit
Labour force					
	2012 Q3	372,300	8,200	356,200	388,400
	Q4	370,000	11,700	346,900	393,200
	2013 Q1	367,700	7,500	352,900	382,500
	Q2	370,500	7,900	354,900	385,900
	Q3 ¹	372,200	6,000	360,400	384,200
Employment					
	2012 Q3	353,700	7,800	338,400	369,000
	Q4	351,200	11,200	329,200	373,200
	2013 Q1	345,600	6,900	332,000	359,200
	Q2	352,400	7,700	337,300	367,400
	Q3 ¹	352,500	5,900	340,900	364,200
Unemployment					
	2012 Q3	18,600	1,800	14,900	22,200
	Q4	18,800	2,000	14,800	22,800
	2013 Q1	22,100	2,000	18,100	26,100
	Q2	18,100	1,900	14,300	21,800
	Q3 ¹	19,700	1,800	16,100	23,400
Unemployment rate, %					
	2012 Q3	5.0	0.5	4.4	6.4
	Q4	5.1	0.5	3.8	5.9
	2013 Q1	6.0	0.5	5.0	7.0
	Q2	4.9	0.5	3.9	5.9
	Q3 ¹	5.3	0.5	4.3	6.3
Activity rate, %					
	2012 Q3	76.4	0.7	75.1	77.7
	Q4	75.8	0.8	74.3	77.3
	2013 Q1	75.1	0.7	73.5	76.5
	Q2	75.4	0.7	74.0	76.9
	Q3 ¹	75.6	0.7	74.3	77.0

¹ Provisional

Estimated labour force, employment and unemployment by sex, 3rd quarter 2012 – 3rd quarter 2013

Female

		Estimates	Standard Error	95% confidence interval	
				Lower limit	Upper limit
Labour force					
	2012 Q3	224,100	6,700	210,800	237,400
	Q4	232,900	7,500	218,000	247,700
	2013 Q1	234,000	6,500	221,300	246,700
	Q2	237,200	6,900	223,500	250,900
	Q3 ¹	237,500	6,600	224,400	250,600
Employment					
	2012 Q3	195,600	6,300	183,300	207,900
	Q4	204,900	6,800	191,400	218,300
	2013 Q1	203,600	5,800	192,200	215,000
	Q2	205,600	6,200	193,500	217,800
	Q3 ¹	209,900	6,300	197,500	222,300
Unemployment					
	2012 Q3	28,500	2,200	24,100	32,800
	Q4	28,000	2,400	23,200	32,800
	2013 Q1	30,400	2,400	25,700	35,100
	Q2	31,600	2,600	26,500	36,700
	Q3 ¹	27,600	2,200	23,200	32,000
Unemployment rate, %					
	2012 Q3	12.7	0.9	10.9	14.5
	Q4	12.0	0.9	10.2	13.9
	2013 Q1	13.0	0.9	11.2	14.8
	Q2	13.3	1.0	11.4	15.2
	Q3 ¹	11.6	0.9	9.9	13.4
Activity rate, %					
	2012 Q3	44.1	1.0	42.2	46.1
	Q4	45.8	1.0	43.7	47.8
	2013 Q1	45.8	0.9	44.0	47.7
	Q2	46.3	1.0	44.3	48.4
	Q3 ¹	46.3	1.1	44.2	48.4

¹ Provisional

Longer time series

1. The following graphs show the series for employment, unemployment and activity rate from 3rd quarter 2009 to 3rd quarter 2013.

Chart 3: Employment by quarter, 3rd quarter 2009 – 3rd quarter 2013

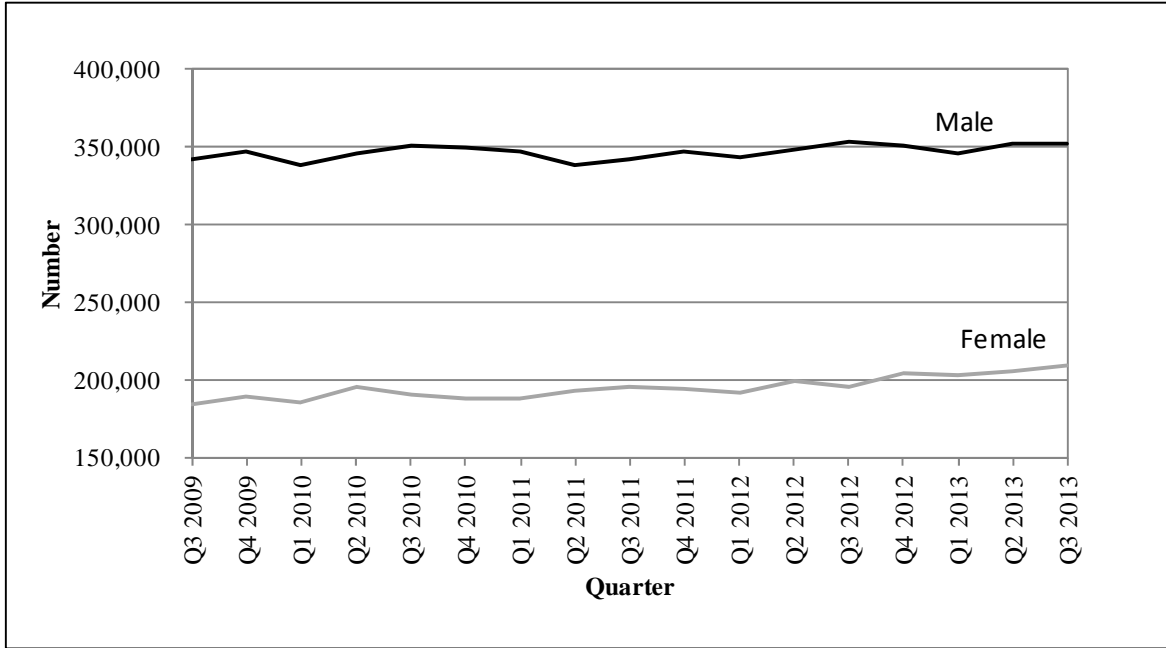


Chart 4: Unemployment rate by quarter, 3rd quarter 2009 – 3rd quarter 2013

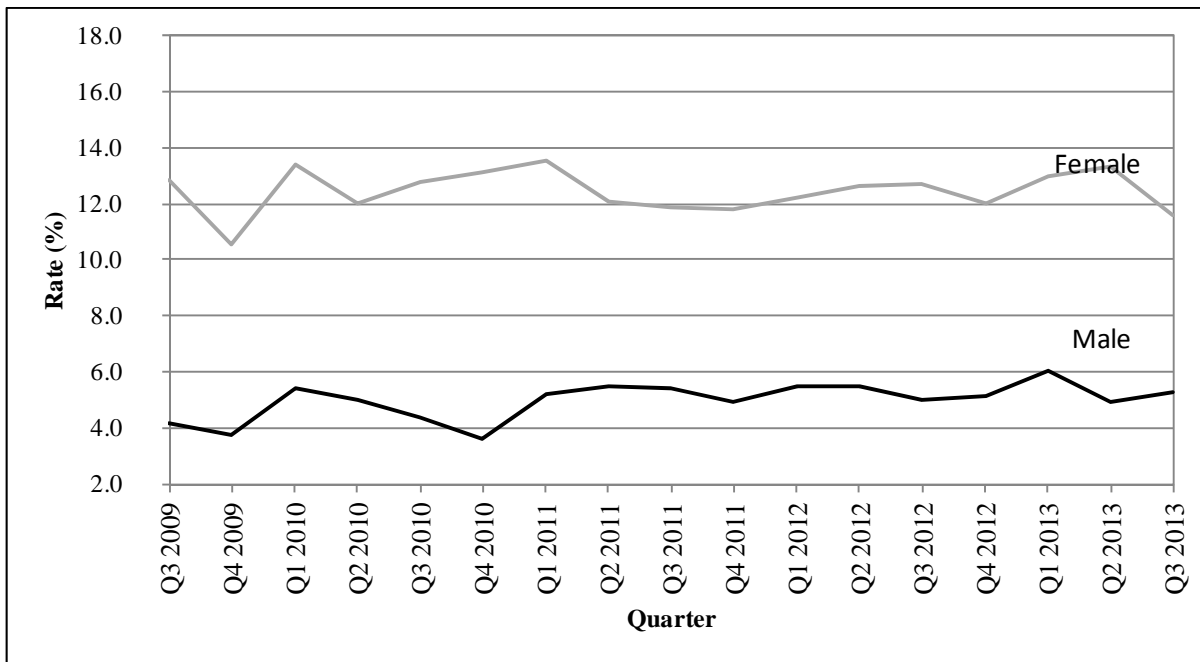


Chart 5: Activity rate by quarter, 3rd quarter 2009 – 3rd quarter 2013

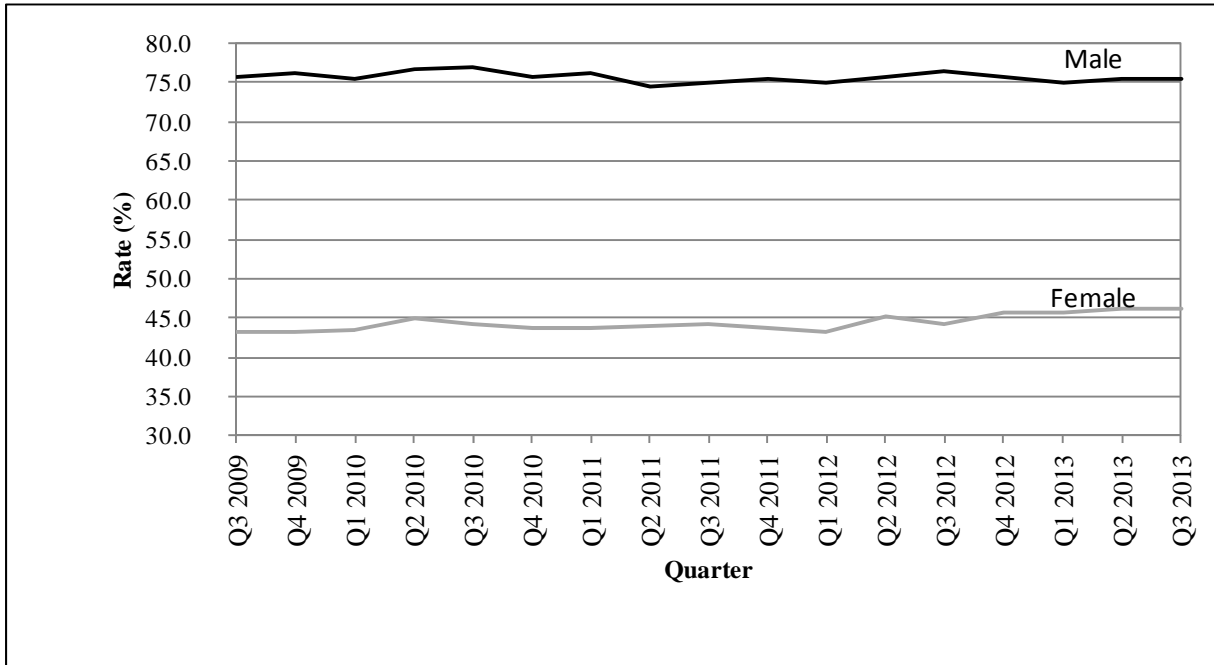
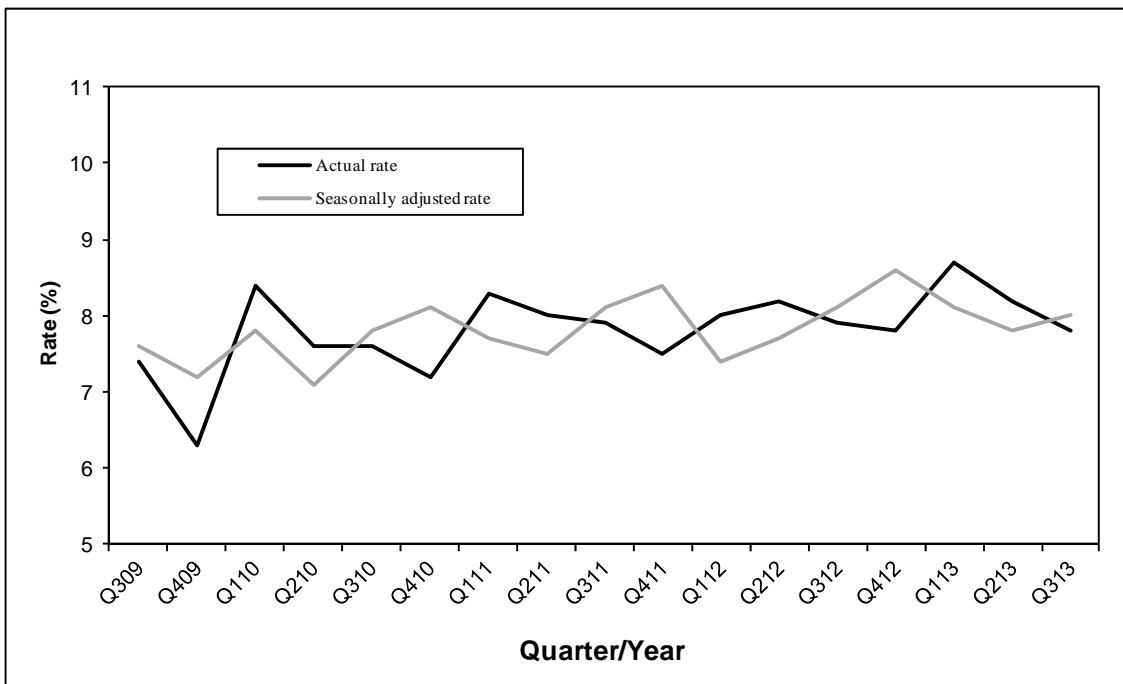


Chart 6: Actual and seasonally adjusted unemployment rate, 3rd quarter 2009 – 3rd quarter 2013



The following tables together with the web version of this publication can be downloaded from Statistics Mauritius website at <http://statsmauritius.gov.mu>. From the homepage, click on 'Statistics by subject' followed by 'labour' then select the appropriate publication under the heading 'Publications – Economic and Social Indicators'.

List of tables

Table 1: Labour market activity by status, 3rd Quarter 2012 to 3rd Quarter 2013

Table 2: Labour force characteristics by age and sex, 3rd Quarter 2013

Table 3: Employment by industrial activity, 3rd Quarter 2012 to 3rd Quarter 2013

Table 4: Employment by occupational group, 3rd Quarter 2012 to 3rd Quarter 2013

Table 5: Employment by hours worked, 3rd Quarter 2012 to 3rd Quarter 2013

Table 6: Unemployment by educational attainment, 3rd Quarter 2012 to 3rd Quarter 2013

Table 7: Unemployment by age, 3rd Quarter 2012 to 3rd Quarter 2013

Table 8: Unemployment by work experience, 3rd Quarter 2012 to 3rd Quarter 2013

Table 9: Economically inactive population by reason, 3rd Quarter 2012 to 3rd Quarter 2013

Statistics Mauritius
Ministry of Finance and Economic Development
Port Louis

December 2013

Contact persons: (1) Ms. N. Ramjan (Statistician)
Email: nramjan@mail.gov.mu

(2) Ms. P. Koonjul (Senior Statistical Officer)
Email: pkoonjul@mail.gov.mu

Statistics Mauritius
LIC Centre, Port Louis
Tel: 2122316, 2122317 Fax: 2114150

NOTES

Release of Labour Force data

Labour Force statistics are compiled and published in the “Economic and Social Indicators” in March, June, September and December according to an advance calendar posted on the website of Statistics Mauritius (<http://statsmauritius.gov.mu>). This issue provides data for the third quarter 2013 compared to the same quarter a year ago.

However, where appropriate, historical series are also provided for the main indicators.

The CMPHS Survey methodology

Data collection

Face to face interviews of household members are carried out by qualified interviewers recruited by the office.

Frequency of data collection

Data collection is carried out monthly except in 2004 when it was carried out every quarter. Up to 2005, the reference period for data on labour force was the last week of the survey month. As from 2006, the reference week has been changed to the second week of the survey month so that estimates can be published within one quarter of the reference period, as required by the IMF Special Data Dissemination System (SDDS) to which the country has graduated on 28 February 2012.

Scope and coverage of collection

All private Mauritian households in the islands of Mauritius and Rodrigues are covered.

Sampling method

A Stratified two-stage sampling design is used. At the first stage, Primary Sampling Units (PSUs) are selected with probability proportional to size and at the second stage, a fixed number of households is selected from each selected PSU.

Prior to 2005, the first stage stratification factors were urban, semi urban and rural geographical locations. As from 2005, the Relative Development Index (RDI) is used as the spatial stratification factor. This index is based on 12 variables encompassing housing and living conditions, literacy and education, and employment derived from the 2011 Housing and Population Census to rank PSUs. A set of RDIs for administrative regions has been published in the series "Economic and Social Indicators" - Issue No. 977.

The second stage stratification criteria are community, household size and average monthly expenditure of the household.

Sample size

From 1999 to 2003, around 6,500 households were covered each year. In 2004, the sample was increased to 8,640 so that reliable quarterly estimates of labour force, employment and unemployment could be worked out. As from 2005, the sample for the year has been further increased to 11,280. Furthermore, in order to measure quarterly changes, 50% of the households sampled in a quarter are re-interviewed in the following quarter; for example, 50% of the households sampled in the first quarter of 2005 have been re-interviewed in the second quarter of 2005.

Questionnaire

The CMPHS questionnaire comprises three modules: a basic module common to all rounds of the survey covering the general characteristics of the population (b) a second module covering labour force with in-depth investigation and a core set of questions which are kept constant at all rounds of the survey and (c) a third module grouping other topics of interest but investigated in less details.

Estimation and reliability of results

Estimates worked out from household survey data are inevitably subject to sampling variability since they are based on information collected from only a sample of households rather than from all households. The Standard Error (S.E) which is a measure of this variability, used to set confidence intervals for any estimate (whether a total or a rate) derived from the sample. For example, a 95% confidence interval indicates that there is 95% chance that the upper and lower limits of the interval enclose the true value (which would be obtained if all households had been surveyed). Standard errors and confidence intervals are calculated for the main labour force estimates.

Definitions

Household

A household is defined as either a person living on his/her own or a group of two or more persons, who may or may not be related, but who live together and make common provision for food and other essentials for living.

Employment

Employed population consists of Mauritians aged 16 years and above (16+) who have worked for pay, profit or family gain for at least one hour during the reference week of a month. It includes those who are temporarily absent from work for reasons such as leave with pay, leave without pay and temporary disorganisation of work (bad weather, break down of equipment, lack of order, etc.).

It is to be noted that as from year 2007, labour force estimates are based on population aged 16 years and above, following the amendment to the Labour Act in December 2006 whereby the minimum legal working age is 16 years, and the subsequent recommendation by the ILO to be in line with the amended Labour Act.

Unemployment

Unemployed population comprises all Mauritians aged 16+ who are not working but who are looking for work and are available for work during the reference period.

Labour force

Labour force or active population is made up of employed and unemployed population.

Unemployment rate

Unemployment rate is the ratio (%) of unemployment to labour force.

Inactive population

Inactive population includes all Mauritians aged 16+ years, not forming part of the labour force for reasons such as attendance at educational institutions, engagement in household duties, retirement, old age and infirmity/disablement.

Activity rate

Activity rate is the ratio (%) of labour force to population aged 16+ (active and inactive population).

Employer

An employer is a person who operates his/her own business or trade and hires one or more employees.

Own account worker

An Own account worker is a person who operates his/her own business or trade but does not hire employees. He/She may be working alone or with the help of contributing family workers.

Employee

An Employee is a person who works for pay for someone else, even in a temporary capacity.

Apprentice

An Apprentice is a person being trained for a job or trade and does not receive pay or may just receive some pocket money; an apprentice is considered as an employee.

Contributing family worker

A Contributing family worker is a person who works without pay in an enterprise operated by a family member.

Educational attainment

Primary: comprises persons who have studied up to a “Standard” between Standard 1 and the Certificate of Primary Education (CPE) or equivalent.

Secondary: comprises persons who have studied up to a “Form” between Form 1 and the Higher School Certificate (HSC) or equivalent.

Tertiary: comprises persons who in addition to their secondary educational certificates (SC and HSC or equivalent) also possess either a certificate/diploma (which is above the HSC but below a first degree) or a degree.

Annex 3

Annual labour force estimates based on data from different data sources, 2005 - 2013

	Labour force			Employment				Unemployment ¹	
	Mauritians aged 16+	Foreign workers	Total	in large establishment	outside large establishment	Total	of whom Mauritians	Number	Rate
	(000s)	(000s)	(000s)	(000s)	(000s)	(000s)	(000s)	(000s)	(%)
Both sexes									
2005	542.5	16.6	559.1	292.2	215.0	507.2	490.6	51.9	9.6
2006	548.4	16.7	565.1	295.1	220.2	515.3	498.6	49.8	9.1
2007	548.9	21.6	570.5	302.0	221.7	523.7	502.1	46.8	8.5
2008	559.4	24.0	583.4	311.6	231.4	543.0	519.0	40.4	7.2
2009	566.3	21.0	587.3	306.0	239.8	545.8	524.8	41.5	7.3
2010	581.3	22.0	603.3	310.1	248.0	558.1	536.1	45.2	7.8
2011	582.8	23.0	605.8	310.7	249.0	559.7	536.7	46.1	7.9
2012	593.1	24.0	617.1	311.5	257.3	568.8	544.8	48.3	8.1
2013 ²	606.9	26.3	633.2	312.5	271.1	583.6	557.3	49.6	8.2
Change current year over previous:	13.8	2.3	16.1	1.0	13.8	14.8	12.5	1.3	0.1
Male									
2005	349.6	9.1	358.7	189.3	149.2	338.5	329.4	20.2	5.8
2006	351.4	8.3	359.7	190.0	150.5	340.5	332.2	19.2	5.5
2007	353.6	12.1	365.7	195.6	151.5	347.1	335.0	18.6	5.3
2008	355.6	14.7	370.3	201.0	154.7	355.7	341.0	14.6	4.1
2009	358.1	13.0	371.1	198.0	157.3	355.3	342.3	15.8	4.4
2010	362.4	13.1	375.5	198.8	160.0	358.8	345.7	16.7	4.6
2011	363.6	13.4	377.0	197.8	160.4	358.2	344.8	18.8	5.2
2012	368.4	14.2	382.6	198.3	164.6	362.9	348.7	19.7	5.3
2013 ²	370.3	16.5	386.8	199.1	167.9	367.0	350.5	19.8	5.3
Change current year over previous:	1.9	2.3	4.2	0.8	3.3	4.1	1.8	0.1	0.0
Female									
2005	192.9	7.5	200.4	102.9	65.8	168.7	161.2	31.7	16.4
2006	197.0	8.4	205.4	105.1	69.7	174.8	166.4	30.6	15.5
2007	195.3	9.5	204.8	106.4	70.2	176.6	167.1	28.2	14.4
2008	203.8	9.3	213.1	110.6	76.7	187.3	178.0	25.8	12.7
2009	208.2	8.0	216.2	108.0	82.5	190.5	182.5	25.7	12.3
2010	218.9	8.9	227.8	111.3	88.0	199.3	190.4	28.5	13.0
2011	219.2	9.6	228.8	112.9	88.6	201.5	191.9	27.3	12.5
2012	224.7	9.8	234.5	113.2	92.7	205.9	196.1	28.6	12.7
2013 ²	236.6	9.8	246.4	113.4	103.2	216.6	206.8	29.8	12.6
Change current year over previous:	11.9	0.0	11.9	0.2	10.5	10.7	10.7	1.2	-0.1

¹ Unemployment figures and rate refer to Mauritians² Forecast**Note:**

The above figures have been worked out in order to give a set of comparable labour force estimates obtained from different sources. Users are cautioned in the use of these figures given that there are differences related to the reference period, coverage and methodology. The different sources from which these estimates have been obtained are as follows:

- i CMPHS for Mauritian labour force estimates which are subject to sampling variability as mentioned at paragraph 17.
- ii The Annual Survey of Employment and Earnings (SEE) carried out in March of each year. Employment figures refer to jobs in large establishments employing 10 or more persons and include both Mauritians and foreign workers.
- iii Employment in 'other than large' establishments has been estimated after reconciling data from CPMHS, SEE and administrative sources.

Table 1: Labour market activity by status, 3rd Quarter 2012 to 3rd Quarter 2013

In thousands

	Total Mauritian population aged 16 & over	In employment					Unemployed	Total econ. active	Total econ. inactive
		Employees	Employers	Own account workers	Contrib. family workers	Total			
Both sexes									
2012 Q3	994.8	439.1	19.0	77.4	13.8	549.3	47.1	596.4	398.4
Q4	997.0	444.1	18.8	80.4	12.8	556.1	46.8	602.9	394.1
2013 Q1	1000.2	438.7	18.1	82.2	10.2	549.2	52.5	601.7	398.5
Q2	1003.2	438.7	21.6	86.2	11.5	558.0	49.7	607.7	395.5
Q3 ¹	1005.5	439.2	23.2	84.7	15.3	562.4	47.3	609.7	395.8
% change, latest quarter over:									
previous quarter	0.2	0.1	7.4	-1.7	33.0	0.8	-4.8	0.3	0.1
same quarter a year ago	1.1	0.0	22.1	9.4	10.9	2.4	0.4	2.2	-0.7
Male									
2012 Q3	487.2	275.7	16.7	58.0	3.3	353.7	18.6	372.3	114.9
Q4	488.2	274.2	15.9	57.9	3.2	351.2	18.8	370.0	118.2
2013 Q1	489.7	263.8	15.9	64.0	1.9	345.6	22.1	367.7	122.0
Q2	491.1	265.7	17.1	67.1	2.5	352.4	18.1	370.5	120.6
Q3 ¹	492.2	265.7	18.1	64.4	4.3	352.5	19.7	372.2	120.0
% change, latest quarter over:									
previous quarter	0.2	0.0	5.8	-4.0	72.0	0.0	8.8	0.5	-0.5
same quarter a year ago	1.0	-3.6	8.4	11.0	30.3	-0.3	5.9	0.0	4.4
Female									
2012 Q3	507.6	163.4	2.3	19.4	10.5	195.6	28.5	224.1	283.5
Q4	508.8	169.9	2.9	22.5	9.6	204.9	28.0	232.9	275.9
2013 Q1	510.5	174.9	2.2	18.2	8.3	203.6	30.4	234.0	276.5
Q2	512.1	173.0	4.5	19.1	9.0	205.6	31.6	237.2	274.9
Q3 ¹	513.3	173.4	5.1	20.4	11.0	209.9	27.6	237.5	275.8
% change, latest quarter over:									
previous quarter	0.2	0.2	13.3	6.8	22.2	2.1	-12.7	0.1	0.3
same quarter a year ago	1.1	6.1	121.7	5.2	4.8	7.3	-3.2	6.0	-2.7

¹ Provisional

Table 2: Labour force characteristics by age and sex, 3rd Quarter 2013¹

In thousands

	Mauritian aged	Age group (years)				
	16 and over	16-24	25 - 29	30 - 39	40 - 49	50+
Both sexes						
In employment	562.4	61.3	60.5	157.7	140.6	142.3
Unemployed	47.3	17.5	8.6	11.9	5.7	3.6
Labour force	609.7	78.8	69.1	169.6	146.3	145.9
Economically inactive	395.8	106.7	19.3	36.8	41.2	191.8
Total Population	1005.5	185.5	88.4	206.4	187.5	337.7
Employment rate (%)	92.2	77.8	87.6	93.0	96.1	97.5
Unemployment rate (%)	7.8	22.2	12.4	7.0	3.9	2.5
Activity rate (%)	60.6	42.5	78.2	82.2	78.0	43.2
Male						
In employment	352.5	39.8	38.2	94.7	85.5	94.3
Unemployed	19.7	8.4	3.6	3.6	2.4	1.7
Labour force	372.2	48.2	41.8	98.3	87.9	96.0
Economically inactive	120.0	46.4	3.5	4.4	4.8	60.9
Total Population	492.2	94.6	45.3	102.7	92.7	156.9
Employment rate (%)	94.7	82.6	91.4	96.3	97.3	98.2
Unemployment rate (%)	5.3	17.4	8.6	3.7	2.7	1.8
Activity rate (%)	75.6	51.0	92.3	95.7	94.8	61.2
Female						
In employment	209.9	21.5	22.3	63.0	55.1	48.0
Unemployed	27.6	9.1	5.0	8.3	3.3	1.9
Labour force	237.5	30.6	27.3	71.3	58.4	49.9
Economically inactive	275.8	60.3	15.8	32.4	36.4	130.9
Total Population	513.3	90.9	43.1	103.7	94.8	180.8
Employment rate (%)	88.4	70.3	81.7	88.4	94.3	96.2
Unemployment rate (%)	11.6	29.7	18.3	11.6	5.7	3.8
Activity rate (%)	46.3	33.7	63.3	68.8	61.6	27.6

¹ Provisional

Table 3: Employment by industrial activity ¹, 3rd Quarter 2012 to 3rd Quarter 2013

	Total employed aged 16+	Primary sector	Secondary sector	Tertiary sector	Selected NSIC ² Sections				
					Manufacturing	Construction	Wholesale and retail trade	Other services	
					C	F	G	H - U	
	(000s)	(%)	(%)	(%)	(%)	(%)	(%)	(%)	
Both sexes									
2012 Q3	549.3	7.9	27.6	64.5	15.7	10.2	15.8	48.7	
Q4	556.1	8.0	28.0	64.0	16.3	10.1	16.0	48.0	
2013 Q1	549.2	7.4	25.7	66.9	14.1	10.3	15.9	51.0	
Q2	558.0	6.7	25.3	68.0	13.2	10.5	14.5	53.5	
Q3 ³	562.4	7.1	27.3	65.6	15.9	9.6	15.4	50.2	
Male									
2012 Q3	353.7	8.7	32.3	58.9	14.5	15.5	14.1	44.8	
Q4	351.2	8.9	31.9	59.2	14.0	15.6	14.3	44.9	
2013 Q1	345.6	8.3	31.2	60.5	13.6	15.8	14.9	45.6	
Q2	352.4	7.7	31.0	61.3	12.2	16.5	13.4	47.9	
Q3 ³	352.5	8.0	31.9	60.1	14.2	15.1	14.4	45.7	
Female									
2012 Q3	195.6	6.5	18.9	74.5	17.9	0.6	18.9	55.6	
Q4	204.9	6.5	21.3	72.2	20.3	0.7	18.8	53.4	
2013 Q1	203.6	6.0	16.3	77.7	15.1	0.9	17.5	60.2	
Q2	205.6	4.9	15.7	79.4	14.8	0.3	16.3	63.1	
Q3 ³	209.9	5.5	19.6	74.9	18.7	0.4	17.2	57.7	

¹ The distribution of employment by sector and selected NSIC sections is provisional

² National version of the International Standard Industrial Classification (ISIC Revision 4)

³ Provisional

Table 4: Employment by occupational group ¹, 3rd Quarter 2012 to 3rd Quarter 2013

	Total employed aged 16+	ISCO-08 ²				
		Managers, Professionals, Technicians & associate professionals	Clerical support workers	Service and sales workers	Agricultural, Craft & related trades workers, Plant & machine operators & assemblers	Elementary occupations
		1,2,3 (%)	4 (%)	5 (%)	6,7,8 (%)	9 (%)
	(000s)					
Both sexes						
2012 Q3	549.3	21.2	9.0	20.7	31.8	17.3
Q4	556.1	19.6	9.4	21.1	32.0	17.9
2013 Q1	549.2	24.3	8.9	20.0	30.8	16.0
Q2	558.0	26.4	7.8	20.2	30.3	15.3
Q3 ³	562.4	24.8	8.2	19.5	31.6	15.9
Male						
2012 Q3	353.7	19.8	5.3	19.4	41.9	13.6
Q4	351.2	18.3	5.9	19.6	41.7	14.5
2013 Q1	345.6	21.9	6.1	18.4	41.8	11.8
Q2	352.4	23.3	4.0	18.9	42.1	11.7
Q3 ³	352.5	22.5	4.9	17.8	42.1	12.7
Female						
2012 Q3	195.6	23.6	15.8	23.1	13.6	23.9
Q4	204.9	21.8	15.3	23.8	15.3	23.8
2013 Q1	203.6	28.3	13.6	22.7	12.2	23.2
Q2	205.6	31.6	14.3	22.4	10.3	21.4
Q3 ³	209.9	28.8	13.8	22.4	14.0	21.0

¹ The distribution of employment by occupational group is provisional

² National version of the International Standard Classification of Occupation (ISCO-08)

³ Provisional

Table 5: Employment by hours worked, 3rd Quarter 2012 to 3rd Quarter 2013

	Total employed aged 16+ (000's)	Total hours worked (000's)	% having worked for:					Average number of hours worked
			0 hour	1 to 23 hours	24 to 40 hours	41 to 50 hours	51 and above	
Both sexes								
2012 Q3	549.3	20,500	5.2	9.9	43.7	27.2	14.1	39.4
Q4	556.1	20,500	6.0	11.3	41.8	25.7	15.2	39.3
2013 Q1	549.2	19,700	5.2	11.9	48.0	21.8	13.1	37.7
Q2	558.0	20,400	5.3	11.5	44.0	24.9	14.3	38.6
Q3 ¹	562.4	20,400	5.4	12.5	43.2	24.8	14.1	38.3
Male								
2012 Q3	353.7	13,900	5.5	6.6	41.1	29.6	17.1	41.7
Q4	351.2	13,700	6.1	7.6	40.5	27.7	18.0	41.6
2013 Q1	345.6	12,900	6.3	8.7	45.1	24.3	15.6	39.8
Q2	352.4	13,500	5.5	8.5	41.3	27.3	17.4	40.7
Q3 ¹	352.5	13,600	5.3	8.6	41.5	27.0	17.6	40.8
Female								
2012 Q3	195.6	6,600	4.6	15.8	48.3	22.7	8.6	35.4
Q4	204.9	6,800	5.9	17.6	44.0	22.3	10.2	35.3
2013 Q1	203.6	6,800	3.4	17.1	52.9	17.6	9.0	34.4
Q2	205.6	6,900	4.9	16.6	48.6	20.9	9.0	35.1
Q3 ¹	209.9	6,800	5.5	19.2	46.1	21.1	8.1	34.2

0 hour not included in total hours worked & in average number of hours worked

¹ Provisional

Table 6: Unemployment by educational attainment, 3rd Quarter 2012 to 3rd Quarter 2013

	Unemployed Mauritians aged 16+ (000s)	Primary			Secondary				Tertiary	
		Total (%)	Below CPE (%)	Passed CPE (%)	Total (%)	Below SC (%)	Passed SC (%)	Passed HSC (%)	(%)	
Both sexes										
2012 Q3	47.1	26.3	21.3	5.0	50.4	26.1	16.1	8.2	23.3	
Q4	46.8	23.3	13.9	9.4	54.9	32.7	15.8	6.4	21.8	
2013 Q1	52.5	26.3	18.9	7.4	56.2	32.4	17.1	6.7	17.5	
Q2	49.7	23.5	16.9	6.6	56.2	35.5	16.7	4.0	20.3	
Q3 ¹	47.3	24.1	19.2	4.9	52.2	28.5	16.9	6.8	23.7	
Male										
2012 Q3	18.6	26.9	24.8	2.1	50.0	30.9	16.5	2.6	23.1	
Q4	18.8	25.7	19.3	6.4	58.3	34.8	16.6	7.0	16.0	
2013 Q1	22.1	29.0	21.3	7.7	56.5	35.7	12.7	8.1	14.5	
Q2	18.1	29.3	19.9	9.4	58.0	38.1	17.1	2.8	12.7	
Q3 ¹	19.7	25.9	20.3	5.6	52.3	31.5	14.7	6.1	21.8	
Female										
2012 Q3	28.5	26.1	19.1	7.0	50.6	23.0	15.8	11.8	23.3	
Q4	28.0	21.7	10.3	11.4	52.7	31.3	15.3	6.0	25.6	
2013 Q1	30.4	24.3	17.1	7.2	56.3	30.3	20.4	5.6	19.4	
Q2	31.6	20.3	15.2	5.1	55.0	33.8	16.5	4.7	24.7	
Q3 ¹	27.6	22.8	18.5	4.3	52.2	26.5	18.5	7.2	25.0	

¹ Provisional

Table 7: Unemployment by age, 3rd Quarter 2012 to 3rd Quarter 2013

		All aged 16 and over	Age group (years)		
			16-24	25-49	50+
Both sexes					
	2012 Q3	47.1	20.5	23.6	3.0
	Q4	46.8	19.2	23.7	3.9
	2013 Q1	52.5	19.3	28.6	4.6
	Q2	49.7	20.8	25.8	3.1
	Q3 ¹	47.3	17.5	26.2	3.6
Change, latest quarter over:					
	previous quarter	-2.4	-3.3	0.4	0.5
	same quarter a year ago	0.2	-3.0	2.6	0.6
Male					
	2012 Q3	18.6	9.7	7.5	1.4
	Q4	18.8	8.0	8.7	2.1
	2013 Q1	22.1	9.8	10.0	2.3
	Q2	18.1	8.2	8.1	1.8
	Q3 ¹	19.7	8.4	9.6	1.7
Change, latest quarter over:					
	previous quarter	1.6	0.2	1.5	-0.1
	same quarter a year ago	1.1	-1.3	2.1	0.3
Female					
	2012 Q3	28.5	10.8	16.1	1.6
	Q4	28.0	11.2	15.0	1.8
	2013 Q1	30.4	9.5	18.6	2.3
	Q2	31.6	12.6	17.7	1.3
	Q3 ¹	27.6	9.1	16.6	1.9
Change, latest quarter over:					
	previous quarter	-4.0	-3.5	-1.1	0.6
	same quarter a year ago	-0.9	-1.7	0.5	0.3

¹ Provisional

Table 8: Unemployment by work experience, 3rd Quarter 2012 to 3rd Quarter 2013

	Unemployed Mauritians aged 16+	No. of first job seekers	Unemployed with work experience by industry *						
			Total	Manuf.	Construction	Trade	Accommodation & Food Service Activities	Other	
	(000s)	(000s)	(000s)	(%)	(%)	(%)	(%)	(%)	
Both sexes									
2012 Q3	47.1	16.5	30.6	22.3	11.4	14.8	11.4	40.1	
Q4	46.8	16.3	30.5	22.3	16.6	14.5	11.9	34.7	
2013 Q1	52.5	16.7	35.8	17.6	14.2	16.8	14.5	36.9	
Q2	49.7	16.8	32.9	9.1	12.8	21.3	15.2	41.6	
Q3 ¹	47.3	13.8	33.5	19.2	12.5	21.5	11.3	35.5	
Change, latest quarter over:									
previous quarter	-2.4	-3.0	0.6						
same quarter a year ago	0.2	-2.7	2.9						
Male									
2012 Q3	18.6	5.5	13.1	8.9	28.9	13.1	12.6	36.5	
Q4	18.8	5.1	13.7	12.1	35.1	9.5	16.3	27.0	
2013 Q1	22.1	6.0	16.1	13.7	31.1	10.6	17.4	27.2	
Q2	18.1	4.6	13.5	4.4	31.1	14.8	13.3	36.4	
Q3 ¹	19.7	4.4	15.3	17.1	24.8	15.0	11.1	32.0	
Change, latest quarter over:									
previous quarter	1.6	-0.2	1.8						
same quarter a year ago	1.1	-1.1	2.2						
Female									
2012 Q3	28.5	11.0	17.5	22.4	3.5	18.7	9.9	45.5	
Q4	28.0	11.2	16.8	31.1	0.5	18.9	8.0	41.5	
2013 Q1	30.4	10.7	19.7	20.8	0.5	21.8	12.2	44.7	
Q2	31.6	12.2	19.4	12.4	0.0	25.8	16.5	45.3	
Q3 ¹	27.6	9.4	18.2	20.9	2.2	26.9	11.5	38.5	
Change, latest quarter over:									
previous quarter	-4.0	-2.8	-1.2						
same quarter a year ago	-0.9	-1.6	0.7						

* National version of the International Standard Industrial Classification (ISIC Revision 4)

¹ Provisional

Table 9: Economically inactive population by reason, 3rd Quarter 2012 to 3rd Quarter 2013

	Total Mauritians aged 16+ (000s)	Economically inactive by reason						
		Total (000s)	Homemakers (%)	Retired or elderly (%)	Students (%)	Sick or disabled (%)	Other (%)	
Both sexes								
2012 Q3	994.8	398.4	39.6	23.5	22.1	8.2	6.6	
Q4	997.0	394.1	37.4	25.0	21.7	9.4	6.5	
2013 Q1	1000.2	398.5	36.8	25.2	20.6	8.5	8.9	
Q2	1003.2	395.5	37.7	25.8	21.4	7.8	7.3	
Q3 ¹	1005.5	395.8	38.7	24.4	22.9	9.0	5.0	
Male								
2012 Q3	487.2	114.9	0.4	43.2	37.0	13.0	6.4	
Q4	488.2	118.2	0.1	42.1	34.1	16.8	6.9	
2013 Q1	489.7	122.0	0.4	43.0	32.6	13.8	10.2	
Q2	491.1	120.6	0.2	45.3	35.4	12.1	7.0	
Q3 ¹	492.2	120.0	0.3	41.5	35.9	16.8	5.5	
Female								
2012 Q3	507.6	283.5	55.4	15.6	16.1	6.2	6.7	
Q4	508.8	275.9	53.4	17.7	16.4	6.2	6.3	
2013 Q1	510.5	276.5	52.9	17.4	15.3	6.2	8.2	
Q2	512.1	274.9	54.1	17.2	15.3	6.0	7.4	
Q3 ¹	513.3	275.8	55.4	17.0	17.2	5.7	4.7	

¹ Provisional