

## Labour force, Employment and Unemployment – First quarter 2013

### Introduction

1. This issue of Economic and Social Indicators (ESI) presents a set of estimates of labour force, employment and unemployment for the first quarter of 2013, based on the results of the Continuous Multi-Purpose Household Survey (CMPHS) from January to March 2013. The estimates refer to the Mauritian population aged 16 years and above.
2. Annual estimates of labour force including foreign workers derived after integrating data from CMPHS with other sources are given at Annex 3.

### Key figures

	Q1 2012	Q4 2012	Q1 2013	Change	
				Q1 2013 - Q1 2012	Q1 2013 - Q4 2012
Labour force	582,300	602,900	601,700	19,400	-1,200
Employment	535,500	556,100	549,200	13,700	-6,900
Unemployment	46,800	46,800	52,500	5,700	5,700
Unemployment rate (%)	8.0	7.8	8.7	0.7	0.9
Seasonally adjusted unemployment rate (%)	7.4	8.6	8.1	0.7	-0.5

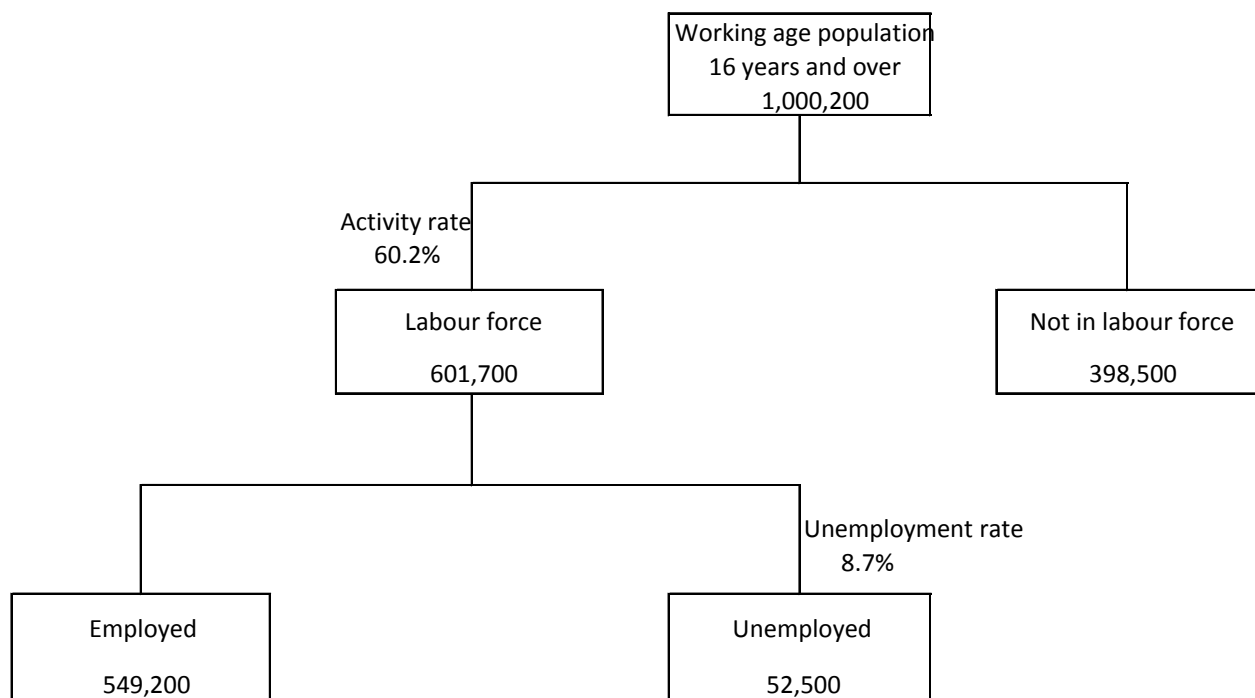
### Forecasts of Employment and Unemployment - Year 2013

	Year 2012	Forecast Year 2013	Change
Employment	544,800	551,300	+6,500
Unemployment	48,300	49,800	+1,500
Unemployment rate (%)	8.1	8.3	+0.2

### Labour market overview, first quarter 2013

3. Compared with the corresponding quarter of 2012, there has been an increase in the labour force (19,400) with an increase in both employment (13,700) and in unemployment (5,700).
4. Compared with the previous quarter, labour force showed a decrease of 1,200 with a decrease in employment (-6,900) and an increase in unemployment (+5,700).

Chart 1: The Labour Market, 1<sup>st</sup> quarter 2013



### Labour force participation

5. The activity rate for first quarter 2013 was 60.2%, up by 1.4 percentage points from 58.8% in the corresponding period one year earlier. The activity rate for male remained unchanged at 75.1% while that for female increased by 2.6 percentage points to 45.8%
6. Compared with the previous quarter, the activity rate decreased by 0.3 percentage point (from 60.5% to 60.2%) with a fall of 0.7 percentage point in the male activity rate and no change in the female rate.

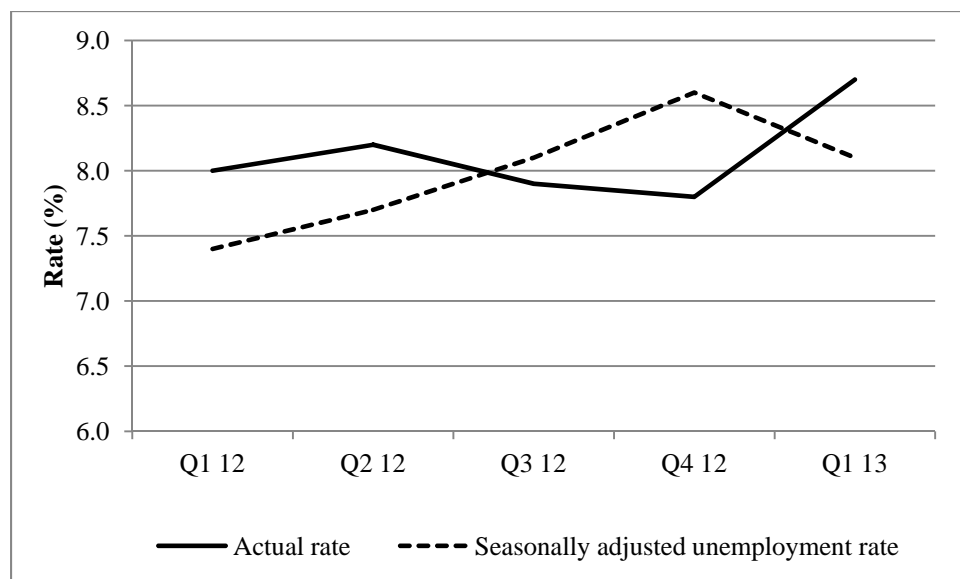
## Employment

7. From first quarter 2012 to first quarter 2013, employment increased by 13,700 to 549,200; male employment increased by 1,700 to 345,600 and female increased by 12,000 to 203,600.
8. Compared with the previous quarter, employment decreased by 6,900 with a drop of 5,600 in male employment and 1,300 in female employment.

## Unemployment

9. From first quarter 2012 to first quarter 2013, the number of unemployed persons increased by 5,700 to 52,500. This increase was due to increases of 1,900 in the number of unemployed males and 3,800 in unemployed females.
10. The unemployment rate increased by 0.7 percentage point to 8.7% from first quarter 2012 to first quarter 2013. Male and female unemployment rate increased by 0.5 and 0.8 percentage points respectively.
11. When compared with fourth quarter of 2012, the total number of unemployed persons increased by 5,700 (+3,300 males and +2,400 females).
12. From fourth quarter 2012 to first quarter 2013, the unemployment rate increased by 0.9 percentage point with a rise of 0.9 percentage point in the male rate and of 1.0 in that of female.

Chart 2: Actual and seasonally adjusted unemployment rate by quarter, 1<sup>st</sup> quarter 2012 – 1st quarter 2013



13. Unemployment rate is usually higher in the first half of the year because of school leavers joining the labour market, and lower in the second half with more casual jobs being available mainly in the trade sector (street vendors, salespersons in shops, etc.) at the end of the year. In order to observe the real trend over time, adjustments have to be made for seasonal fluctuations. Seasonally adjusted unemployment rate for the first quarter of 2013 was 8.1%, higher than the rate of 7.4% for first quarter of 2012, and lower than the rate of 8.6% for the fourth quarter of 2012.

14. The main characteristics of the unemployed as at first quarter 2013 were as follows:

- (i) The 52,500 unemployed comprised 22,100 males (42%) and 30,400 females (58%).
- (ii) Around 19,300 (37%) of them were aged below 25 years.
- (iii) About half of the unemployed were single. Among males, the majority (71%) was single while among females, the majority (67%) was ever married.
- (iv) Some 9,900 or 19% had not reached the Certificate of Primary Education (CPE) level or equivalent and a further 17,000 (32%) did not have the Cambridge School Certificate (SC) or equivalent.
- (v) Around 41,300 (79%) had been looking for work for up to one year and the remaining 11,200 (21%) for more than one year.
- (vi) About 35,800 (68%) had working experience and 16,700 (32%) were looking for a job for the first time.
- (vii) Around 19,500 (37%) were registered at the Employment Service.
- (viii) There were 9,400 (18%) young persons aged 16 to 24 years, not yet married and looking for a first job. Some 3,600 (38%) of them had not passed SC.
- (ix) Ever married (including widowed, divorced or separated) unemployed persons aged 25 to 44 years and having worked before numbered 14,300. Among them, about 11,200 (78%) had not passed SC.
- (x) 8,200 or 16% of the unemployed were heads of households.
- (xi) 6,600 (13%) lived in households with no employed persons.

### **Economically inactive population**

15. The number of persons aged 16 years and over, not forming part of the labour force (inactive population) was estimated at 398,500 at first quarter 2013.
16. The inactive population was made up of 122,000 males and 276,500 females. Among inactive males, 43% were 'retired or old persons' and 33% were students. Among females, 53% were homemakers, 17% 'retired or old persons' and 15% students.

### **Sampling errors**

17. The estimates in this publication are based on the results of a sample survey and are thus subject to sample variability. Standard errors and confidence intervals give an indication of this variability.
18. The standard error of the estimates and the 95% confidence interval which represent a 95% chance that the true value lies within that interval, are given in the tables that follow.

Estimated labour force, employment and unemployment by sex, 1st quarter 2012 –  
1st quarter 2013

Both Sexes

		Estimates	Standard Error	95% confidence interval	
				Lower limit	Upper limit
Labour force					
	2012 Q1	582,300	13,700	555,400	609,400
	Q2	597,200	16,600	564,600	629,800
	Q3	596,400	12,600	571,600	621,200
	Q4	602,900	17,300	568,800	637,100
	2013 Q1 <sup>1</sup>	601,700	11,700	578,600	624,800
Employment					
	2012 Q1	535,500	12,800	510,300	560,800
	Q2	548,300	16,100	516,600	579,900
	Q3	549,300	11,800	526,200	572,500
	Q4	556,100	16,000	524,600	587,600
	2013 Q1 <sup>1</sup>	549,200	10,300	529,000	569,400
Unemployment					
	2012 Q1	46,800	3,000	40,900	52,800
	Q2	48,900	3,100	42,900	55,100
	Q3	47,100	2,900	41,400	52,700
	Q4	46,800	3,500	39,900	53,700
	2013 Q1 <sup>1</sup>	52,500	3,300	45,900	59,100
Unemployment rate, %					
	2012 Q1	8.0	0.5	7.1	9.0
	Q2	8.2	0.5	7.2	9.2
	Q3	7.9	0.4	7.0	8.8
	Q4	7.8	0.5	6.8	8.8
	2013 Q1 <sup>1</sup>	8.7	0.5	7.8	9.7
Activity rate, %					
	2012 Q1	58.8	0.6	57.7	60.9
	Q2	60.2	0.6	59.0	60.0
	Q3	60.0	0.6	58.8	61.4
	Q4	60.5	0.7	59.1	61.1
	2013 Q1 <sup>1</sup>	60.2	0.6	58.9	61.4

<sup>1</sup> Provisional

Estimated labour force, employment and unemployment by sex, 1st quarter 2012 –  
1st quarter 2013

Male

		Estimates	Standard Error	95% confidence interval	
				Lower limit	Upper limit
Labour force					
	2012 Q1	364,100	8,900	346,500	381,700
	Q2	368,700	10,300	348,400	389,000
	Q3	372,300	8,200	356,200	388,400
	Q4	370,000	11,700	346,900	393,200
	2013 Q1 <sup>1</sup>	367,700	7,500	352,900	382,500
Employment					
	2012 Q1	343,900	8,400	327,300	360,600
	Q2	348,600	10,200	328,400	368,700
	Q3	353,700	7,800	338,400	369,000
	Q4	351,200	11,200	329,200	373,200
	2013 Q1 <sup>1</sup>	345,600	6,900	332,000	359,200
Unemployment					
	2012 Q1	20,200	1,800	16,600	23,700
	Q2	20,100	1,700	16,700	23,600
	Q3	18,600	1,800	14,900	22,200
	Q4	18,800	2,000	14,800	22,800
	2013 Q1 <sup>1</sup>	22,100	2,000	18,100	26,100
Unemployment rate, %					
	2012 Q1	5.5	0.5	4.2	6.1
	Q2	5.5	0.5	4.6	6.4
	Q3	5.0	0.5	4.4	6.4
	Q4	5.1	0.5	3.8	5.9
	2013 Q1 <sup>1</sup>	6.0	0.5	5.0	7.0
Activity rate, %					
	2012 Q1	75.1	0.7	73.8	76.4
	Q2	75.8	0.7	74.5	77.1
	Q3	76.4	0.7	75.1	77.7
	Q4	75.8	0.8	74.3	77.3
	2013 Q1 <sup>1</sup>	75.1	0.7	73.5	76.5

<sup>1</sup>Provisional

Estimated labour force, employment and unemployment by sex, 1st quarter 2012 –  
1st quarter 2013

Female

	Estimates	Standard Error	95% confidence interval	
			Lower limit	Upper limit
Labour force				
2012 Q1	218,200	6,300	205,800	230,800
Q2	228,500	7,700	213,300	243,800
Q3	224,100	67000	210,800	237,400
Q4	232,900	7,500	218,000	247,700
2013 Q1 <sup>1</sup>	234,000	6,500	221,300	246,700
Employment				
2012 Q1	191,600	6,000	179,800	203,400
Q2	199,700	7,200	185,500	213,900
Q3	195,600	6,300	183,300	207,900
Q4	204,900	6,800	191,400	218,300
2013 Q1 <sup>1</sup>	203,600	5,800	192,200	215,000
Unemployment				
2012 Q1	26,600	1,900	22,800	30,500
Q2	28,800	2,300	24,200	33,500
Q3	28,500	2,200	24,100	32,800
Q4	28,000	2,400	23,200	32,800
2013 Q1 <sup>1</sup>	30,400	2,400	25,700	35,100
Unemployment rate, %				
2012 Q1	12.2	0.8	10.5	13.9
Q2	12.6	1.0	10.7	14.5
Q3	12.7	0.9	10.9	14.5
Q4	12.0	0.9	10.2	13.9
2013 Q1 <sup>1</sup>	13.0	0.9	11.2	14.8
Activity rate, %				
2012 Q1	43.2	0.9	41.5	45.0
Q2	45.1	0.9	43.3	46.9
Q3	44.1	1.0	42.2	46.1
Q4	45.8	1.0	43.7	47.8
2013 Q1 <sup>1</sup>	45.8	0.9	44.0	47.7

<sup>1</sup> Provisional



## Longer time series

- The following graphs show the series for employment, unemployment and activity rate from 1<sup>st</sup> quarter 2009 to 1<sup>st</sup> quarter 2013.

Chart 3: Employment by quarter, 1<sup>st</sup> quarter 2009 - 1<sup>st</sup> quarter 2013

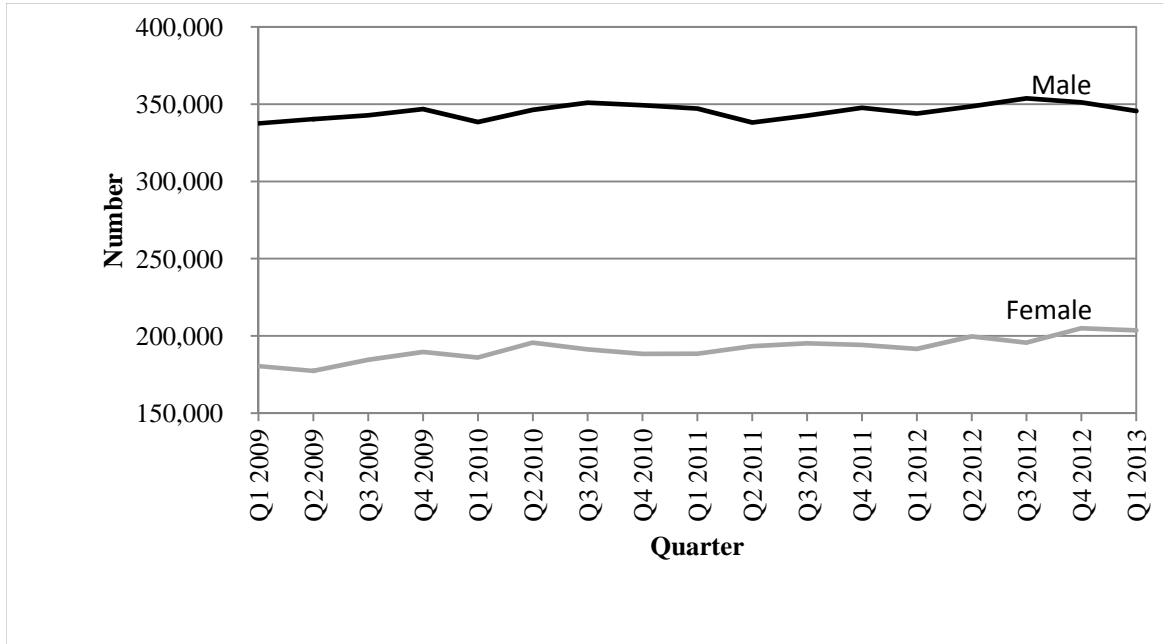
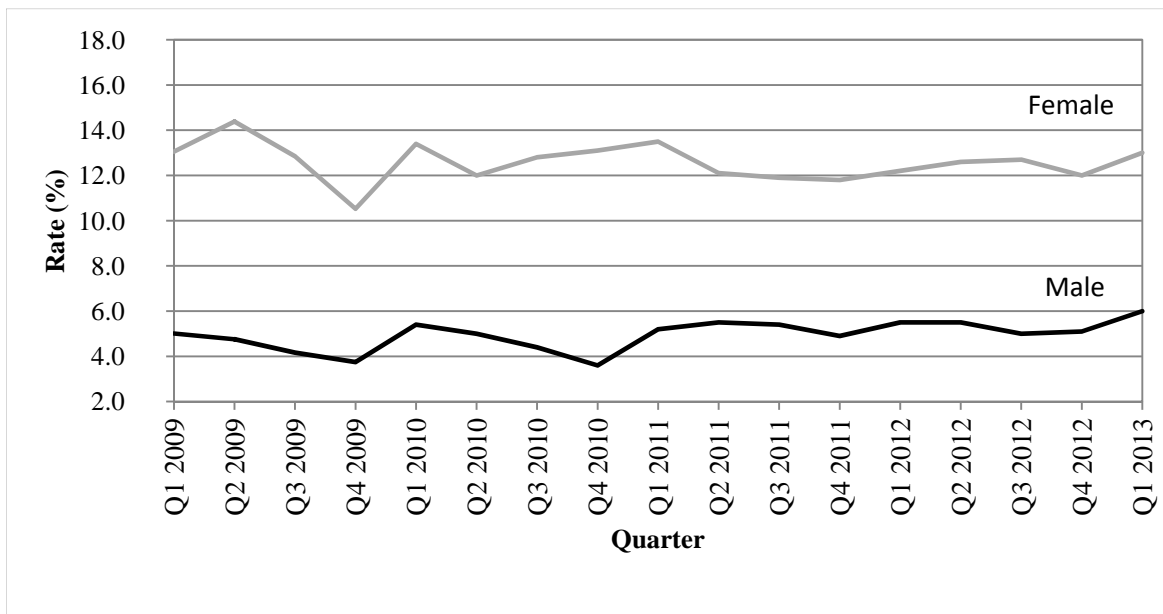
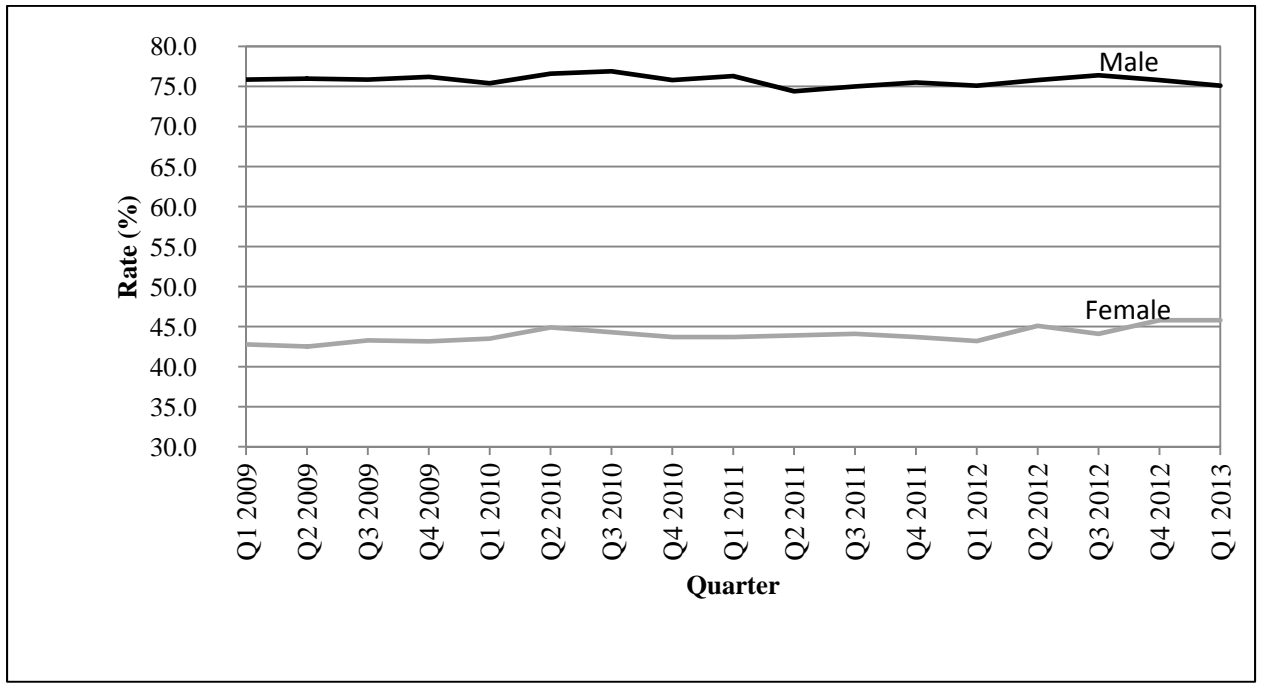


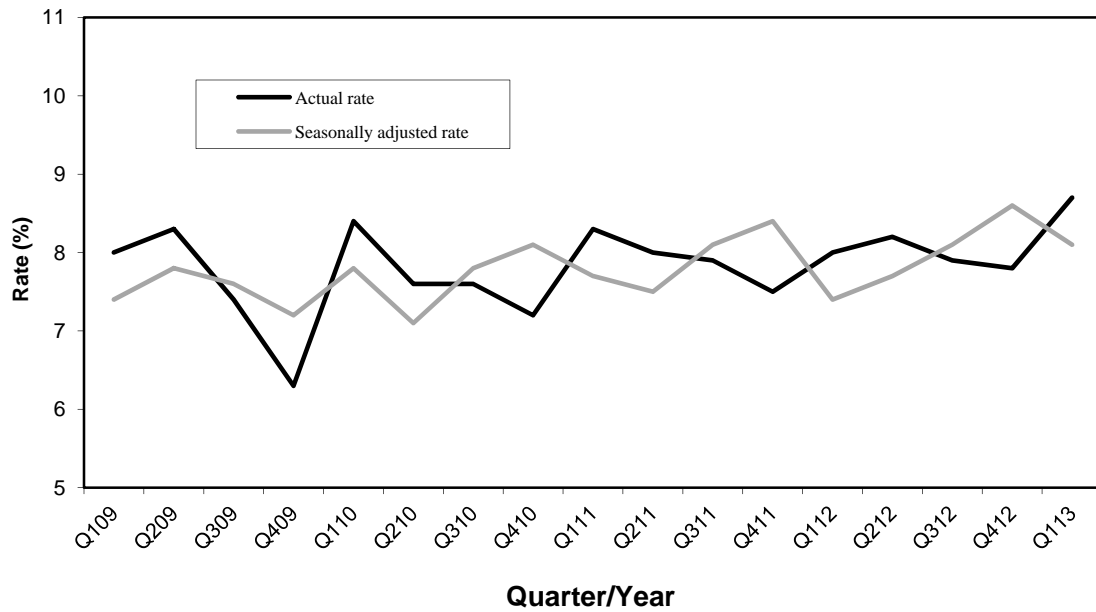
Chart 4: Unemployment rate by quarter, 1<sup>st</sup> quarter 2009 - 1<sup>st</sup> quarter 2013



**Chart 5: Activity rate by quarter, 1<sup>st</sup> quarter 2009 - 1<sup>st</sup> quarter 2013**



**Chart 6: Actual and seasonally adjusted unemployment rate, 1<sup>st</sup> quarter 2009 – 1<sup>st</sup> quarter 2013**



The following tables together with the web version of this publication can be downloaded from Statistics Mauritius website at <http://statsmauritius.gov.mu>. From the homepage, click on 'Statistics by subject' followed by 'labour' then select the appropriate publication under the heading 'Publications – Economic and Social Indicators'.

### **List of tables**

*Table 1: Labour market activity by status, 1st Quarter 2012 to 1st Quarter 2013*

*Table 2: Labour force characteristics by age and sex, 1st Quarter 2013*

*Table 3: Employment by industrial activity, 1st Quarter 2012 to 1st Quarter 2013*

*Table 4: Employment by occupational group, 1st Quarter 2012 to 1st Quarter 2013*

*Table 5: Employment by hours worked, 1st Quarter 2012 to 1st Quarter 2013*

*Table 6: Unemployment by educational attainment, 1st Quarter 2012 to 1st Quarter 2013*

*Table 7: Unemployment by age, 1st Quarter 2012 to 1st Quarter 2013*

*Table 8: Unemployment by work experience, 1st Quarter 2012 to 1st Quarter 2013*

*Table 9: Economically inactive population by reason, 1st Quarter 2012 to 1st Quarter 2013*

Statistics Mauritius  
Ministry of Finance and Economic Development  
Port Louis

June 2013

Contact persons: (1) Ms. N. Ramjan (Statistician)  
Email: [cso\\_cmphs@mail.gov.mu](mailto:cso_cmphs@mail.gov.mu)

(2) Ms. S. Nunhuck (Statistician)  
Email: [snunhuck@mail.gov.mu](mailto:snunhuck@mail.gov.mu)

Statistics Mauritius  
LIC Centre, Port Louis  
Tel: 2122316, 2122317 Fax: 2114150

## **NOTES**

### **Release of Labour Force data**

Labour Force statistics are compiled and published in the “Economic and Social Indicators” in March, June, September and December according to an advance calendar posted on the website of Statistics Mauritius (<http://statsmauritius.gov.mu>). This issue provides data for the first quarter 2013 compared to the same quarter a year ago.

However, where appropriate, historical series are also provided for the main indicators.

### **The CMPHS Survey methodology**

#### **Data collection**

Face to face interviews of household members are carried out by qualified interviewers recruited by the office.

#### **Frequency of data collection**

Data collection is carried out monthly except in 2004 when it was carried out every quarter. Up to 2005, the reference period for data on labour force was the last week of the survey month. As from 2006, the reference week has been changed to the second week of the survey month so that estimates can be published within one quarter of the reference period, as required by the IMF Special Data Dissemination System (SDDS) to which the country has graduated on 28 February 2012.

#### **Scope and coverage of collection**

All private Mauritian households in the islands of Mauritius and Rodrigues are covered.

#### **Sampling method**

A Stratified two-stage sampling design is used. At the first stage, Primary Sampling Units (PSUs) are selected with probability proportional to size and at the second stage, a fixed number of households is selected from each selected PSU.

Prior to 2005, the first stage stratification factors were urban, semi urban and rural geographical locations. As from 2005, the Relative Development Index (RDI) is used as the spatial stratification factor. This index is based on 12 variables encompassing housing and living conditions, literacy and education, and employment derived from the 2011 Housing and Population Census to rank PSUs. A set of RDIs for administrative regions has been published in the series "Economic and Social Indicators" - Issue No. 977.

The second stage stratification criteria are community, household size and average monthly expenditure of the household.

### **Sample size**

From 1999 to 2003, around 6,500 households were covered each year. In 2004, the sample was increased to 8,640 so that reliable quarterly estimates of labour force, employment and unemployment could be worked out. As from 2005, the sample for the year has been further increased to 11,280. Furthermore, in order to measure quarterly changes, 50% of the households sampled in a quarter are re-interviewed in the following quarter; for example, 50% of the households sampled in the first quarter of 2005 have been re-interviewed in the second quarter of 2005.

### **Questionnaire**

The CMPHS questionnaire comprises three modules: a basic module common to all rounds of the survey covering the general characteristics of the population (b) a second module covering labour force with in-depth investigation and a core set of questions which are kept constant at all rounds of the survey and (c) a third module grouping other topics of interest but investigated in less details.

### **Estimation and reliability of results**

Estimates worked out from household survey data are inevitably subject to sampling variability since they are based on information collected from only a sample of households rather than from all households. The Standard Error (S.E) which is a measure of this variability, used to set confidence intervals for any estimate (whether a total or a rate) derived from the sample. For example, a 95% confidence interval indicates that there is 95% chance that the upper and lower limits of the interval enclose the true value (which would be obtained if all households had been surveyed). Standard errors and confidence intervals are calculated for the main labour force estimates.

## **Definitions**

### **Household**

A household is defined as either a person living on his/her own or a group of two or more persons, who may or may not be related, but who live together and make common provision for food and other essentials for living.

### **Employment**

Employed population consists of Mauritians aged 16 years and above (16+) who have worked for pay, profit or family gain for at least one hour during the reference week of a month. It includes those who are temporarily absent from work for reasons such as leave with pay, leave without pay and temporary disorganisation of work (bad weather, break down of equipment, lack of order, etc.).

It is to be noted that as from year 2007, labour force estimates are based on population aged 16 years and above, following the amendment to the Labour Act in December 2006 whereby the minimum legal working age is 16 years, and the subsequent recommendation by the ILO to be in line with the amended Labour Act.

### **Unemployment**

Unemployed population comprises all Mauritians aged 16+ who are not working but who are looking for work and are available for work during the reference period.

### **Labour force**

Labour force or active population is made up of employed and unemployed population.

### **Unemployment rate**

Unemployment rate is the ratio (%) of unemployment to labour force.

### **Inactive population**

Inactive population includes all Mauritians aged 16+ years, not forming part of the labour force for reasons such as attendance at educational institutions, engagement in household duties, retirement, old age and infirmity/disablement.

### **Activity rate**

Activity rate is the ratio (%) of labour force to population aged 16+ (active and inactive population).

**Employer**

An employer is a person who operates his/her own business or trade and hires one or more employees.

**Own account worker**

An Own account worker is a person who operates his/her own business or trade but does not hire employees. He/She may be working alone or with the help of contributing family workers.

**Employee**

An Employee is a person who works for pay for someone else, even in a temporary capacity.

**Apprentice**

An Apprentice is a person being trained for a job or trade and does not receive pay or may just receive some pocket money; an apprentice is considered as an employee.

**Contributing family worker**

A Contributing family worker is a person who works without pay in an enterprise operated by a family member.

**Educational attainment**

*Primary:* comprises persons who have studied up to a “Standard” between Standard 1 and the Certificate of Primary Education (CPE) or equivalent.

*Secondary:* comprises persons who have studied up to a “Form” between Form 1 and the Higher School Certificate (HSC) or equivalent.

*Tertiary:* comprises persons who in addition to their secondary educational certificates (SC and HSC or equivalent) also possess either a certificate/diploma (which is above the HSC but below a first degree) or a degree.

## Annual labour force estimates based on data from different data sources, 2005 - 2013

	Labour force			Employment				Unemployment <sup>1</sup>	
	Mauritians aged 16+	Foreign workers	Total	in large establishments	outside large establishments	Total	of whom Mauritians	Number	Rate
	(000s)	(000s)	(000s)	(000s)	(000s)	(000s)	(000s)	(000s)	(%)
<b>Both sexes</b>									
2005	542.5	16.6	<b>559.1</b>	292.2	215.0	<b>507.2</b>	490.6	51.9	9.6
2006	548.4	16.7	<b>565.1</b>	295.1	220.2	<b>515.3</b>	498.6	49.8	9.1
2007	548.9	21.6	<b>570.5</b>	302.0	221.7	<b>523.7</b>	502.1	46.8	8.5
2008	559.4	24.0	<b>583.4</b>	311.6	231.4	<b>543.0</b>	519.0	40.4	7.2
2009	566.3	21.0	<b>587.3</b>	306.0	239.8	<b>545.8</b>	524.8	41.5	7.3
2010	581.3	22.0	<b>603.3</b>	310.1	248.0	<b>558.1</b>	536.1	45.2	7.8
2011	582.8	23.0	<b>605.8</b>	310.7	249.0	<b>559.7</b>	536.7	46.1	7.9
2012	593.1	24.0	<b>617.1</b>	311.5	257.3	<b>568.8</b>	544.8	48.3	8.1
2013 <sup>2</sup>	601.1	24.5	<b>625.6</b>	312.0	263.8	<b>575.8</b>	551.3	49.8	8.3
Change current year over previous:	8.0	0.5	<b>8.5</b>	0.5	6.5	<b>7.0</b>	6.5	1.5	0.2
<b>Male</b>									
2005	349.6	9.1	<b>358.7</b>	189.3	149.2	<b>338.5</b>	329.4	20.2	5.8
2006	351.4	8.3	<b>359.7</b>	190.0	150.5	<b>340.5</b>	332.2	19.2	5.5
2007	353.6	12.1	<b>365.7</b>	195.6	151.5	<b>347.1</b>	335.0	18.6	5.3
2008	355.6	14.7	<b>370.3</b>	201.0	154.7	<b>355.7</b>	341.0	14.6	4.1
2009	358.1	13.0	<b>371.1</b>	198.0	157.3	<b>355.3</b>	342.3	15.8	4.4
2010	362.4	13.1	<b>375.5</b>	198.8	160.0	<b>358.8</b>	345.7	16.7	4.6
2011	363.6	13.4	<b>377.0</b>	197.8	160.4	<b>358.2</b>	344.8	18.8	5.2
2012	368.4	14.2	<b>382.6</b>	198.3	164.6	<b>362.9</b>	348.7	19.7	5.3
2013 <sup>2</sup>	372.4	14.4	<b>386.8</b>	198.6	167.9	<b>366.5</b>	352.1	20.3	5.5
Change current year over previous:	4.0	0.2	<b>4.2</b>	0.3	3.3	<b>3.6</b>	3.4	0.6	0.2
<b>Female</b>									
2005	192.9	7.5	<b>200.4</b>	102.9	65.8	<b>168.7</b>	161.2	31.7	16.4
2006	197.0	8.4	<b>205.4</b>	105.1	69.7	<b>174.8</b>	166.4	30.6	15.5
2007	195.3	9.5	<b>204.8</b>	106.4	70.2	<b>176.6</b>	167.1	28.2	14.4
2008	203.8	9.3	<b>213.1</b>	110.6	76.7	<b>187.3</b>	178.0	25.8	12.7
2009	208.2	8.0	<b>216.2</b>	108.0	82.5	<b>190.5</b>	182.5	25.7	12.3
2010	218.9	8.9	<b>227.8</b>	111.3	88.0	<b>199.3</b>	190.4	28.5	13.0
2011	219.2	9.6	<b>228.8</b>	112.9	88.6	<b>201.5</b>	191.9	27.3	12.5
2012	224.7	9.8	<b>234.5</b>	113.2	92.7	<b>205.9</b>	196.1	28.6	12.7
2013 <sup>2</sup>	228.7	10.1	<b>238.8</b>	113.4	95.9	<b>209.3</b>	199.2	29.5	12.9
Change current year over previous:	4.0	0.3	<b>4.3</b>	0.2	3.2	<b>3.4</b>	3.1	0.9	0.2

<sup>1</sup> Unemployment figures and rate refer to Mauritians<sup>2</sup> Forecast**Note:**

The above figures have been worked out in order to give a set of comparable labour force estimates obtained from different sources. Users are cautioned in the use of these figures given that there are differences related to the reference period, coverage and methodology. The different sources from which these estimates have been obtained are as follows:

- i CMPHS for Mauritian labour force estimates which are subject to sampling variability as mentioned at paragraph 17.
- ii The Annual Survey of Employment and Earnings (SEE) carried out in March of each year. Employment figures refer to jobs in large establishments employing 10 or more persons and include both Mauritians and foreign workers.
- iii Employment in 'other than large' establishments has been estimated after reconciling data from CMPHS, SEE and administrative sources.



**Table 1: Labour market activity by status, 1st Quarter 2012 to 1st Quarter 2013**

In thousands

	Total Mauritian population aged 16 & over	In employment					Unemployed	Total econ. active	Total econ. inactive
		Employees	Employers	Own account workers	Contrib. family workers	Total			
<b>Both sexes</b>									
2012 Q1	<b>989.6</b>	420.7	19.7	84.0	11.1	<b>535.5</b>	<b>46.8</b>	<b>582.3</b>	<b>407.3</b>
Q2	<b>992.6</b>	433.6	20.4	84.3	10.0	<b>548.3</b>	<b>48.9</b>	<b>597.2</b>	<b>395.4</b>
Q3	<b>994.8</b>	439.1	19.0	77.4	13.8	<b>549.3</b>	<b>47.1</b>	<b>596.4</b>	<b>398.4</b>
Q4	<b>997.0</b>	444.1	18.8	80.4	12.8	<b>556.1</b>	<b>46.8</b>	<b>602.9</b>	<b>394.1</b>
2013 Q1 <sup>1</sup>	<b>1000.2</b>	438.7	18.1	82.2	10.2	<b>549.2</b>	<b>52.5</b>	<b>601.7</b>	<b>398.5</b>
<b>% change, latest quarter over:</b>									
previous quarter	<b>0.3</b>	<b>-1.2</b>	<b>-3.7</b>	<b>2.2</b>	<b>-20.3</b>	<b>-1.2</b>	<b>12.2</b>	<b>-0.2</b>	<b>1.1</b>
same quarter a year ago	<b>1.1</b>	<b>4.3</b>	<b>-8.1</b>	<b>-2.1</b>	<b>-8.1</b>	<b>2.6</b>	<b>12.2</b>	<b>3.3</b>	<b>-2.2</b>
<b>Male</b>									
2012 Q1	<b>484.8</b>	261.7	17.2	61.6	3.4	<b>343.9</b>	<b>20.2</b>	<b>364.1</b>	<b>120.7</b>
Q2	<b>486.2</b>	265.9	17.8	62.1	2.8	<b>348.6</b>	<b>20.1</b>	<b>368.7</b>	<b>117.5</b>
Q3	<b>487.2</b>	275.7	16.7	58.0	3.3	<b>353.7</b>	<b>18.6</b>	<b>372.3</b>	<b>114.9</b>
Q4	<b>488.2</b>	274.2	15.9	57.9	3.2	<b>351.2</b>	<b>18.8</b>	<b>370.0</b>	<b>118.2</b>
2013 Q1 <sup>1</sup>	<b>489.7</b>	263.8	15.9	64.0	1.9	<b>345.6</b>	<b>22.1</b>	<b>367.7</b>	<b>122.0</b>
<b>% change, latest quarter over:</b>									
previous quarter	<b>0.3</b>	<b>-3.8</b>	<b>0.0</b>	<b>10.5</b>	<b>-40.6</b>	<b>-1.6</b>	<b>17.6</b>	<b>-0.6</b>	<b>3.2</b>
same quarter a year ago	<b>1.0</b>	<b>0.8</b>	<b>-7.6</b>	<b>3.9</b>	<b>-44.1</b>	<b>0.5</b>	<b>9.4</b>	<b>1.0</b>	<b>1.1</b>
<b>Female</b>									
2012 Q1	<b>504.8</b>	159.0	2.5	22.4	7.7	<b>191.6</b>	<b>26.6</b>	<b>218.2</b>	<b>286.6</b>
Q2	<b>506.4</b>	167.7	2.6	22.2	7.2	<b>199.7</b>	<b>28.8</b>	<b>228.5</b>	<b>277.9</b>
Q3	<b>507.6</b>	163.4	2.3	19.4	10.5	<b>195.6</b>	<b>28.5</b>	<b>224.1</b>	<b>283.5</b>
Q4	<b>508.8</b>	169.9	2.9	22.5	9.6	<b>204.9</b>	<b>28.0</b>	<b>232.9</b>	<b>275.9</b>
2013 Q1 <sup>1</sup>	<b>510.5</b>	174.9	2.2	18.2	8.3	<b>203.6</b>	<b>30.4</b>	<b>234.0</b>	<b>276.5</b>
<b>% change, latest quarter over:</b>									
previous quarter	<b>0.3</b>	<b>2.9</b>	<b>-24.1</b>	<b>-19.1</b>	<b>-13.5</b>	<b>-0.6</b>	<b>8.6</b>	<b>0.5</b>	<b>0.2</b>
same quarter a year ago	<b>1.1</b>	<b>10.0</b>	<b>-12.0</b>	<b>-18.8</b>	<b>7.8</b>	<b>6.3</b>	<b>14.3</b>	<b>7.2</b>	<b>-3.5</b>

<sup>1</sup> provisional

**Table 2: Labour force characteristics by age and sex, 1st Quarter 2013<sup>1</sup>**

In thousands

	Mauritian aged	Age group (years)				
	16 and over	16-24	25 - 29	30 - 39	40 - 49	50+
<b>Both sexes</b>						
In employment	<b>549.2</b>	62.2	64.7	152.2	136.7	133.4
Unemployed	<b>52.5</b>	19.3	7.6	14.2	6.8	4.6
Labour force	<b>601.7</b>	81.5	72.3	166.4	143.4	138.1
Economically inactive	<b>398.5</b>	104.1	16.0	39.8	45.2	193.4
Total Population	<b>1000.2</b>	185.5	88.3	206.1	188.8	331.5
Employment rate (%)	<b>91.3</b>	76.3	89.5	91.5	95.3	96.6
Unemployment rate (%)	<b>8.7</b>	23.7	10.5	8.5	4.7	3.3
Activity rate (%)	<b>60.2</b>	43.9	81.9	80.7	76.0	41.7
<b>Male</b>						
In employment	<b>345.6</b>	38.2	39.6	92.4	85.0	90.4
Unemployed	<b>22.1</b>	9.8	2.4	5.7	1.9	2.3
Labour force	<b>367.7</b>	48.0	42.0	98.1	86.8	92.8
Economically inactive	<b>122.0</b>	46.7	3.2	4.4	6.5	61.2
Total Population	<b>489.7</b>	94.6	45.2	102.5	93.4	154.0
Employment rate (%)	<b>94.0</b>	79.6	94.3	94.2	97.9	97.4
Unemployment rate (%)	<b>6.0</b>	20.4	5.7	5.8	2.2	2.5
Activity rate (%)	<b>75.1</b>	50.7	92.9	95.7	92.9	60.3
<b>Female</b>						
In employment	<b>203.6</b>	24.0	25.1	59.8	51.7	43.0
Unemployed	<b>30.4</b>	9.5	5.2	8.5	4.9	2.3
Labour force	<b>234.0</b>	33.5	30.3	68.3	56.6	45.3
Economically inactive	<b>276.5</b>	57.4	12.8	35.4	38.7	132.2
Total Population	<b>510.5</b>	90.9	43.1	103.6	95.4	177.5
Employment rate (%)	<b>87.0</b>	71.6	82.8	87.6	91.3	94.9
Unemployment rate (%)	<b>13.0</b>	28.4	17.2	12.4	8.7	5.1
Activity rate (%)	<b>45.8</b>	36.9	70.3	65.9	59.3	25.5

<sup>1</sup> provisional

**Table 3: Employment by industrial activity <sup>1</sup>, 1st Quarter 2012 to 1st Quarter 2013**

	Total employed aged 16+	Primary sector	Secondary sector	Tertiary sector	Selected NSIC <sup>2</sup> Sections			
					Manufacturing	Construction	Wholesale and retail trade	Other services
					C	F	G	H - U
	(000s)	(%)	(%)	(%)	(%)	(%)	(%)	(%)
<b>Both sexes</b>								
2012 Q1	535.5	7.3	27.8	64.9	15.8	10.6	16.7	48.2
Q2	548.3	8.0	26.8	65.2	15.1	9.9	16.1	49.1
Q3	549.3	7.9	27.6	64.5	15.7	10.2	15.8	48.7
Q4	556.1	8.0	28.0	64.0	16.3	10.1	16.0	48.0
2013 Q1 <sup>3</sup>	549.2	7.4	25.7	66.9	14.1	10.3	15.9	59.7
<b>Male</b>								
2012 Q1	343.9	8.1	31.8	60.1	13.9	16.0	15.6	44.5
Q2	348.6	8.5	31.1	60.4	13.2	15.2	14.1	46.3
Q3	353.7	8.7	32.3	58.9	14.5	15.5	14.1	44.8
Q4	351.2	8.9	31.9	59.2	14.0	15.6	14.3	44.9
2013 Q1 <sup>3</sup>	345.6	8.3	31.2	60.5	13.6	15.8	14.9	55.7
<b>Female</b>								
2012 Q1	191.6	5.9	20.6	73.5	19.2	0.8	18.7	54.8
Q2	199.7	7.1	19.4	73.5	18.4	0.6	19.6	53.9
Q3	195.6	6.5	18.9	74.5	17.9	0.6	18.9	55.6
Q4	204.9	6.5	21.3	72.2	20.3	0.7	18.8	53.4
2013 Q1 <sup>3</sup>	203.6	6.0	16.3	77.7	15.1	0.9	17.5	66.5

<sup>1</sup> The distribution of employment by sector and selected NSIC sections is provisional

<sup>2</sup> National version of the International Standard Industrial Classification (ISIC Revision 4)

<sup>3</sup> provisional

**Table 4: Employment by occupational group <sup>1</sup>, 1st Quarter 2012 to 1st Quarter 2013**

	Total employed aged 16+	ISCO-08 <sup>2</sup>				
		Managers, Professionals, Technicians & associate professionals	Clerical support workers	Service and sales workers	Agricultural, Craft & related trades workers, Plant & machine operators & assemblers	Elementary occupations
		1,2,3 (%)	4 (%)	5 (%)	6,7,8 (%)	9 (%)
	(000s)					
<b>Both sexes</b>						
2012 Q1	535.5	20.4	8.9	22.1	31.8	16.7
Q2	548.3	19.8	8.9	21.1	31.9	18.3
Q3	549.3	21.2	9.0	20.7	31.8	17.3
Q4	556.1	19.6	9.4	21.1	32.0	17.9
2013 Q1 <sup>3</sup>	549.2	24.3	8.9	20.0	30.8	16.0
<b>Male</b>						
2012 Q1	343.9	20.0	5.2	19.9	41.0	13.8
Q2	348.6	18.7	5.7	19.5	42.4	13.7
Q3	353.7	19.8	5.3	19.4	41.9	13.6
Q4	351.2	18.3	5.9	19.6	41.7	14.5
2013 Q1 <sup>3</sup>	345.6	21.9	6.1	18.4	41.8	11.8
<b>Female</b>						
2012 Q1	191.6	21.1	15.5	25.9	15.4	22.0
Q2	199.7	21.8	14.3	23.8	13.7	26.4
Q3	195.6	23.6	15.8	23.1	13.6	23.9
Q4	204.9	21.8	15.3	23.8	15.3	23.8
2013 Q1 <sup>3</sup>	203.6	28.3	13.6	22.7	12.2	23.2

<sup>1</sup> The distribution of employment by occupational group is provisional

<sup>2</sup> National version of the International Standard Classification of Occupation (ISCO-08)

<sup>3</sup> provisional

**Table 5: Employment by hours worked, 1st Quarter 2012 to 1st Quarter 2013**

	Total employed aged 16+ (000's)	Total hours worked (000's)	% having worked for:					Average number of hours worked
			0 hour	1 to 23 hours	24 to 40 hours	41 to 50 hours	51 and above	
<b>Both sexes</b>								
2012 Q1	535.5	19,900	4.9	10.6	45.4	25.0	14.1	39.2
Q2	548.3	20,600	6.8	9.4	40.3	27.4	16.1	40.4
Q3	549.3	20,500	5.2	9.9	43.7	27.2	14.1	39.4
Q4	556.1	20,500	6.0	11.3	41.8	25.7	15.2	39.3
2013 Q1 <sup>1</sup>	549.2	19,700	5.2	11.9	48.0	21.8	13.1	37.7
<b>Male</b>								
2012 Q1	343.9	13,400	5.5	7.1	43.0	28.3	16.1	41.3
Q2	348.6	13,700	7.2	6.1	38.5	30.3	17.9	42.3
Q3	353.7	13,900	5.5	6.6	41.1	29.6	17.1	41.7
Q4	351.2	13,700	6.1	7.6	40.5	27.7	18.0	41.6
2013 Q1 <sup>1</sup>	345.6	12,900	6.3	8.7	45.1	24.3	15.6	39.8
<b>Female</b>								
2012 Q1	191.6	6,500	3.9	16.8	49.7	19.1	10.5	35.5
Q2	199.7	6,900	6.3	15.0	43.6	22.3	12.8	37.0
Q3	195.6	6,600	4.6	15.8	48.3	22.7	8.6	35.4
Q4	204.9	6,800	5.9	17.6	44.0	22.3	10.2	35.3
2013 Q1 <sup>1</sup>	203.6	6,800	3.4	17.1	52.9	17.6	9.0	34.4

0 hour not included in total hours worked & in average number of hours worked

<sup>1</sup> provisional

**Table 6: Unemployment by educational attainment, 1st Quarter 2012 to 1st Quarter 2013**

	Unemployed Mauritians aged 16+ (000s)	Primary			Secondary			Tertiary	
		Total (%)	Below CPE (%)	Passed CPE (%)	Total (%)	Below SC (%)	Passed SC (%)	Passed HSC (%)	(%)
<b>Both sexes</b>									
2012 Q1	<b>46.8</b>	<b>24.5</b>	18.4	6.1	<b>58.6</b>	33.6	19.2	5.8	<b>16.9</b>
Q2	<b>48.9</b>	<b>23.0</b>	16.0	7.0	<b>59.3</b>	37.6	14.2	7.5	<b>17.7</b>
Q3	<b>47.1</b>	<b>26.3</b>	21.3	5.0	<b>50.4</b>	26.1	16.1	8.2	<b>23.3</b>
Q4	<b>46.8</b>	<b>23.3</b>	13.9	9.4	<b>54.9</b>	32.7	15.8	6.4	<b>21.8</b>
2013 Q1 <sup>1</sup>	<b>52.5</b>	<b>26.3</b>	18.9	7.4	<b>56.2</b>	32.4	17.1	6.7	<b>17.5</b>
<b>Male</b>									
2012 Q1	<b>20.2</b>	<b>25.7</b>	20.6	5.1	<b>55.3</b>	34.4	16.5	4.4	<b>19.0</b>
Q2	<b>20.1</b>	<b>22.1</b>	15.7	6.4	<b>59.4</b>	41.3	13.0	5.1	<b>18.5</b>
Q3	<b>18.6</b>	<b>26.9</b>	24.8	2.1	<b>50.0</b>	30.9	16.5	2.6	<b>23.1</b>
Q4	<b>18.8</b>	<b>25.7</b>	19.3	6.4	<b>58.3</b>	34.8	16.6	7.0	<b>16.0</b>
2013 Q1 <sup>1</sup>	<b>22.1</b>	<b>29.0</b>	21.3	7.7	<b>56.5</b>	35.7	12.7	8.1	<b>14.5</b>
<b>Female</b>									
2012 Q1	<b>26.6</b>	<b>23.5</b>	16.7	6.8	<b>61.1</b>	33.0	21.2	6.9	<b>15.4</b>
Q2	<b>28.8</b>	<b>23.7</b>	16.2	7.5	<b>59.1</b>	35.0	15.0	9.1	<b>17.2</b>
Q3	<b>28.5</b>	<b>26.1</b>	19.1	7.0	<b>50.6</b>	23.0	15.8	11.8	<b>23.3</b>
Q4	<b>28.0</b>	<b>21.7</b>	10.3	11.4	<b>52.7</b>	31.3	15.3	6.0	<b>25.6</b>
2013 Q1 <sup>1</sup>	<b>30.4</b>	<b>24.3</b>	17.1	7.2	<b>56.3</b>	30.3	20.4	5.6	<b>19.4</b>

<sup>1</sup> provisional

**Table 7: Unemployment by age, 1st Quarter 2012 to 1st Quarter 2013**

		All aged 16 and over	Age group (years)		
			16-24	25-49	50+
<b>Both sexes</b>					
	2012 Q1	46.8	18.0	24.9	3.9
	Q2	48.9	22.3	23.5	3.1
	Q3	47.1	20.5	23.6	3.0
	Q4	46.8	19.2	23.7	3.9
	2013 Q1 <sup>1</sup>	52.5	19.3	28.6	4.6
<b>Change, latest quarter over:</b>					
	previous quarter	5.7	0.1	4.9	0.7
	same quarter a year ago	5.7	1.3	3.7	0.7
<b>Male</b>					
	2012 Q1	20.2	8.7	8.7	2.8
	Q2	20.1	10.9	8.3	0.9
	Q3	18.6	9.7	7.5	1.4
	Q4	18.8	8.0	8.7	2.1
	2013 Q1 <sup>1</sup>	22.1	9.8	10.0	2.3
<b>Change, latest quarter over:</b>					
	previous quarter	3.3	1.8	1.3	0.2
	same quarter a year ago	1.9	1.1	1.3	-0.5
<b>Female</b>					
	2012 Q1	26.6	9.3	16.2	1.1
	Q2	28.8	11.4	15.2	2.2
	Q3	28.5	10.8	16.1	1.6
	Q4	28.0	11.2	15.0	1.8
	2013 Q1 <sup>1</sup>	30.4	9.5	18.6	2.3
<b>Change, latest quarter over:</b>					
	previous quarter	2.4	-1.7	3.6	0.5
	same quarter a year ago	3.8	0.2	2.4	1.2

<sup>1</sup> provisional

**Table 8: Unemployment by work experience, 1st Quarter 2012 to 1st Quarter 2013**

	Unemployed Mauritians aged 16+	No. of first job seekers	Unemployed with work experience by industry *						
			Total	Manuf.	Construction	Trade	Accommodation & Food Service Activities	Other	
	(000s)	(000s)	(000s)	(%)	(%)	(%)	(%)	(%)	
<b>Both sexes</b>									
2012 Q1	46.8	15.3	31.5	25.3	18.2	19.7	7.3	29.5	
Q2	48.9	18.8	30.1	21.6	9.5	18.8	10.1	40.0	
Q3	47.1	16.5	30.6	22.3	11.4	14.8	11.4	40.1	
Q4 <sup>1</sup>	46.8	16.3	30.5	22.3	16.6	14.5	11.9	34.7	
2013 Q1	52.5	16.7	35.8	17.6	14.2	16.8	14.5	36.9	
<b>Change, latest quarter over:</b>									
previous quarter	5.7	0.4	5.3	-4.7	-2.4	2.3	2.6	2.2	
same quarter a year ago	5.7	1.4	4.3	-7.7	-4.0	-2.9	7.2	7.4	
<b>Male</b>									
2012 Q1	20.2	5.7	14.5	17.2	17.5	13.5	12.0	39.8	
Q2	20.1	7.0	13.1	12.8	23.0	13.4	7.7	43.1	
Q3	18.6	5.5	13.1	8.9	28.9	13.1	12.6	36.5	
Q4 <sup>1</sup>	18.8	5.1	13.7	12.1	35.1	9.5	16.3	27.0	
2013 Q1	22.1	6.0	16.1	13.7	31.1	10.6	17.4	27.2	
<b>Change, latest quarter over:</b>									
previous quarter	3.3	0.9	2.4	1.6	-4.0	1.1	1.1	0.2	
same quarter a year ago	1.9	0.3	1.6	-3.5	13.6	-2.9	5.4	-12.6	
<b>Female</b>									
2012 Q1	26.6	9.6	17.0	25.7	1.8	24.0	8.4	40.1	
Q2	28.8	11.8	17.0	30.2	1.8	15.9	14.5	37.6	
Q3	28.5	11.0	17.5	22.4	3.5	18.7	9.9	45.5	
Q4 <sup>1</sup>	28.0	11.2	16.8	31.1	0.5	18.9	8.0	41.5	
2013 Q1	30.4	10.7	19.7	20.8	0.5	21.8	12.2	44.7	
<b>Change, latest quarter over:</b>									
previous quarter	2.4	-0.5	2.9	-10.3	0.0	2.9	4.2	3.2	
same quarter a year ago	3.8	1.1	2.7	-4.9	-1.3	-2.2	3.8	4.6	

\* National version of the International Standard Industrial Classification (ISIC Revision 4)

<sup>1</sup> provisional



**Table 9: Economically inactive population by reason, 1st Quarter 2012 to 1st Quarter 2013**

	Total Mauritians aged 16+ (000s)	Economically inactive by reason					
		Total (000s)	Homemakers (%)	Retired or elderly (%)	Students (%)	Sick or disabled (%)	Other (%)
<b>Both sexes</b>							
2012 Q1	989.6	407.3	40.8	23.6	21.4	8.1	6.1
Q2	992.6	395.4	41.0	23.3	22.0	7.9	5.8
Q3	994.8	398.4	39.6	23.5	22.1	8.2	6.6
Q4	997.0	394.1	37.4	25.0	21.7	9.4	6.5
2013 Q1 <sup>1</sup>	1000.2	398.5	36.8	25.2	20.6	8.5	8.9
<b>Male</b>							
2012 Q1	484.8	120.7	0.3	42.0	36.2	13.9	7.6
Q2	486.2	117.5	0.5	42.6	35.9	13.8	7.2
Q3	487.2	114.9	0.4	43.2	37.0	13.0	6.4
Q4	488.2	118.2	0.1	42.1	34.1	16.8	6.9
2013 Q1 <sup>1</sup>	489.7	122.0	0.4	43	32.6	13.8	10.2
<b>Female</b>							
2012 Q1	504.8	286.6	57.8	15.8	15.0	5.7	5.7
Q2	506.4	277.9	58.1	15.2	16.1	5.5	5.1
Q3	507.6	283.5	55.4	15.6	16.1	6.2	6.7
Q4	508.8	275.9	53.4	17.7	16.4	6.2	6.3
2013 Q1 <sup>1</sup>	510.5	276.5	52.9	17.4	15.3	6.2	8.2

<sup>1</sup> provisional