

## Labour force, Employment and Unemployment – First quarter 2012

### Introduction

1. This issue of Economic and Social Indicators (ESI) presents a set of estimates of labour force, employment and unemployment for the first quarter of 2012, based on the results of the Continuous Multi-Purpose Household Survey (CMPHS) from January to March 2012. The estimates refer to the Mauritian population aged 16 years and above.
2. Annual estimates of labour force including foreign workers derived after integrating data from CMPHS with other sources are given at Annex 3.

### Key figures

	Q1 2011	Q4 2011	Q1 2012	Change	
				Q1 2012 - Q1 2011	Q1 2012 - Q4 2011
Labour force	584,100	585,600	579,500	-4,600	-6,100
Employment	535,600	541,800	535,500	-100	-6,300
Unemployment	48,500	43,800	44,000	-4,500	+200
Unemployment rate (%)	8.3	7.5	7.6	-0.7	+0.1
Seasonally adjusted unemployment rate (%)	7.7	8.4	7.0	-0.7	-1.4

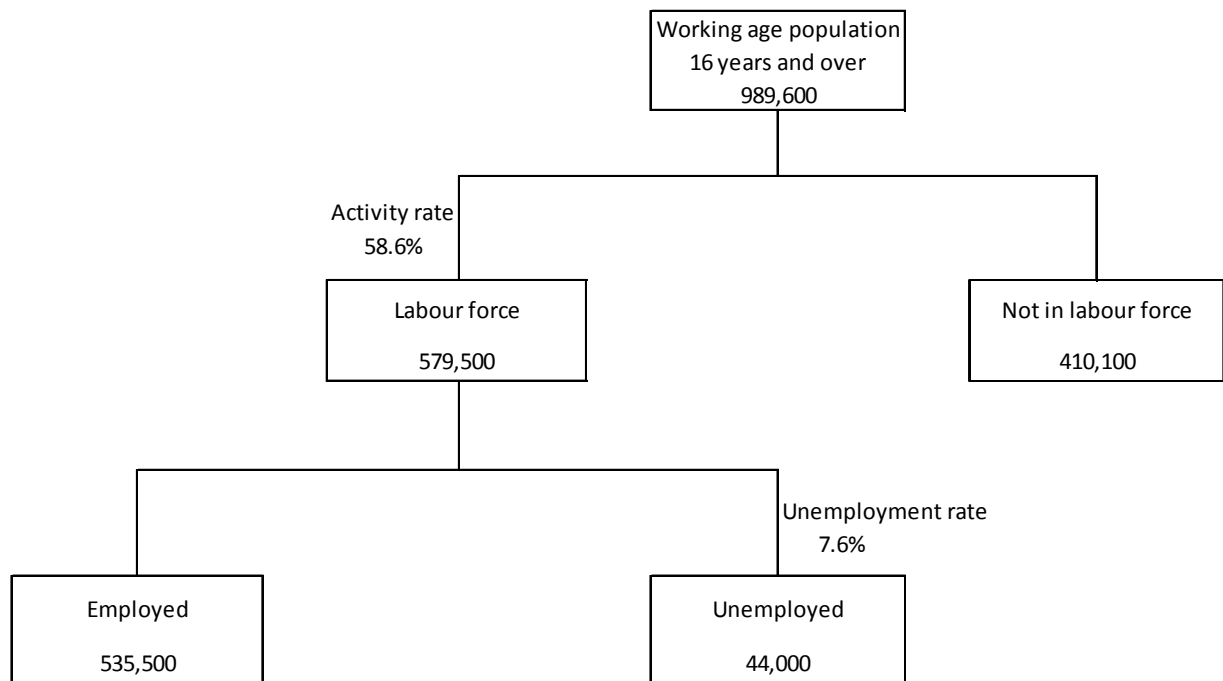
### Forecasts of Employment and unemployment - Year 2012

	Year 2011	Forecast Year 2012	Change
Employment	536,700	537,900	+1,200
Unemployment	46,100	46,900	+800
Unemployment rate (%)	7.9	8.0	+0.1

## Labour market overview, first quarter 2012

3. Compared with the corresponding quarter of 2011, there has been a decrease in the labour force (-4,600) with a fall in both unemployment (-4,500) and employment (-100).
4. Compared with the previous quarter, labour force also showed a decrease of 6,100 with a decrease in employment (-6,300) and an increase in unemployment (+200).

Chart 1: The Labour Market, 1<sup>st</sup> quarter 2012



## Labour force participation

5. The activity rate for first quarter 2012 was 58.6%, down by 1.1 percentage points from 59.7% in the corresponding period one year earlier. The activity rates for male and female decreased respectively by 1.5 percentage points to 74.8% and by 0.8 percentage point to 42.9%.
6. Compared with the previous quarter, the activity rate decreased by 0.7 percentage point (from 59.3% to 58.6%) with a fall of 0.7% in the male activity rate and 0.8% in the female rate.

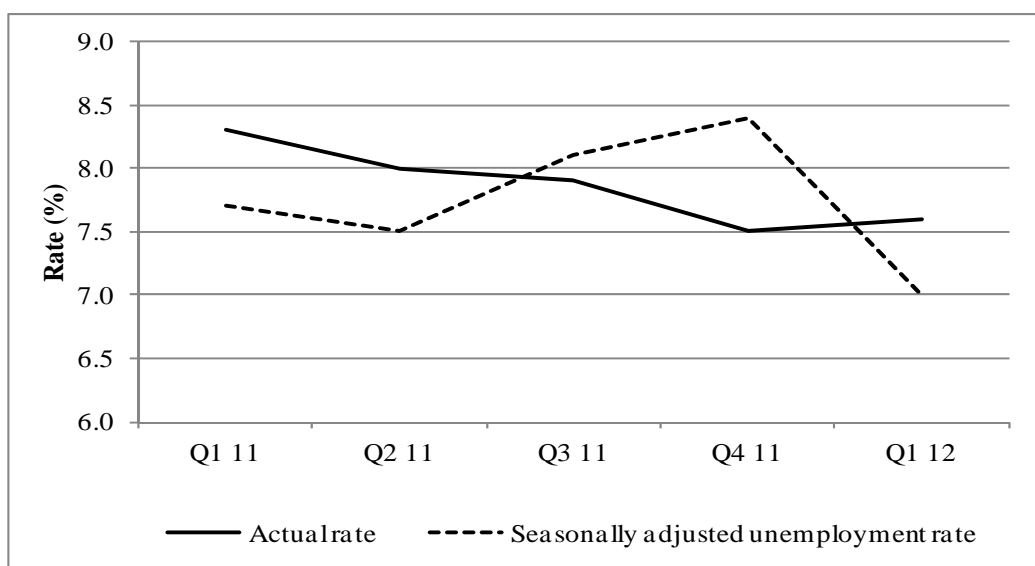
## Employment

7. From first quarter 2011 to first quarter 2012, employment decreased marginally by 100 to 535,500; male employment decreased by 3,200 to 343,900 whilst female increased by 3,100 to 191,600.
8. Compared with the previous quarter, employment decreased by 6,300 with a drop of 3,700 in male employment and 2,600 in female employment.

## Unemployment

9. From first quarter 2011 to first quarter 2012, the number of unemployed persons decreased by 4,500 to 44,000. This fall was due to respective decreases of 4,400 in the number of unemployed females and 100 in unemployed males.
10. The unemployment rate decreased by 0.7 percentage point to 7.6% from first quarter 2011 to first quarter 2012. Female unemployment rate decreased by 1.9 percentage points to 11.6% whilst male unemployment rate remained unchanged at 5.2%.
11. When compared with fourth quarter of 2011, the number of unemployed persons increased marginally by 200 (+1,000 males and -800 females).
12. From fourth quarter 2011 to first quarter 2012, the unemployment rate increased by 0.1 percentage point with a rise of 0.3 percentage point in the male rate and a drop of 0.2 in that of female.

Chart 2: Actual and seasonally adjusted unemployment rate by quarter, 1<sup>st</sup> quarter 2011 – 1st quarter 2012



13. Unemployment rate is usually higher in the first half of the year because of school leavers joining the labour market, and lower in the second half with more casual jobs being available mainly in the trade sector (street vendors, salespersons in shops, etc.) at the end of the year. In order to observe the real trend over time, adjustments have to be made for seasonal fluctuations. Seasonally adjusted unemployment rate for the first quarter of 2012 was 7.0%, lower than the rate of 7.7% for first quarter of 2011 and 8.4% for the fourth quarter of 2011.
14. The main characteristics of the unemployed as at first quarter 2012 were as follows:
- (i) The 44,000 unemployed comprised 18,900 males (43%) and 25,100 females (57%).
  - (ii) Around 17,500 (40%) of them were aged below 25 years.
  - (iii) About half of the unemployed were single. Among males, the majority (70%) was single while among females, the majority (64%) was ever married.
  - (iv) Some 8,300 or 19% had not reached the Certificate of Primary Education (CPE) level or equivalent and a further 17,500 (40%) did not have the Cambridge School Certificate (SC) or equivalent.
  - (v) Around 34,000 (77%) had been looking for work for up to one year and the remaining 10,000 (23%) for more than one year.
  - (vi) About 29,000 (66%) had working experience and 15,000 (34%) were looking for a job for the first time.
  - (vii) Around 16,100 (37%) were registered at the Employment Service.
  - (viii) There were 8,400 (19%) young persons aged 16 to 24 years, not yet married and looking for a first job. Some 3,300 (39%) of them had not passed SC.
  - (ix) Ever married (including widowed, divorced or separated) unemployed persons aged 25 to 44 years and having worked before numbered 9,200. Among them, about 7,000 (76%) had not passed SC.
  - (x) 6,500 or 15% of the unemployed were heads of households.
  - (xi) 6,600 (15%) lived in households with no employed persons.

### **Economically inactive population**

15. The number of persons aged 16 years and over, not forming part of the labour force (inactive population) was estimated at 410,100 at first quarter 2012.
16. The inactive population was made up of 122,000 males and 288,100 females. Among inactive males, 42% were 'retired or old persons' and 36% were students. Among females, 58% were homemakers and 15% students.

### **Sampling errors**

17. The estimates in this publication are based on the results of a sample survey and are thus subject to sample variability. Standard errors and confidence intervals give an indication of this variability.
18. The standard error of the estimates and the 95% confidence interval which represent a 95% chance that the true value lies within that interval, are given in the tables that follow.

Estimated labour force, employment and unemployment by sex, 1st quarter 2011 –  
1st quarter 2012

Both Sexes

		Estimates	Standard Error	95% confidence interval	
				Lower limit	Upper limit
Labour force					
	2011 Q1	584,100	13,200	558,000	610,200
	Q2	577,600	15,800	546,400	608,800
	Q3	583,700	12,600	559,000	608,400
	Q4	585,600	16,800	552,500	618,800
	2012 Q1	579,500	13,500	553,000	606,100
Employment					
	2011 Q1	535,600	12,300	511,400	559,900
	Q2	531,400	14,300	503,200	559,600
	Q3	537,800	11,700	514,700	560,900
	Q4	541,800	15,400	511,600	572,100
	2012 Q1	535,500	12,800	510,300	560,800
Unemployment					
	2011 Q1	48,500	3,300	42,000	54,900
	Q2	46,200	3,700	38,900	53,500
	Q3	45,900	3,200	39,600	52,200
	Q4	43,800	3,800	36,300	51,300
	2012 Q1	44,000	3,000	38,100	49,800
Unemployment rate, %					
	2011 Q1	8.3	0.5	7.3	9.3
	Q2	8.0	0.6	6.9	9.1
	Q3	7.9	0.5	6.9	8.9
	Q4	7.5	0.6	6.3	8.6
	2012 Q1	7.6	0.5	6.6	8.5
Activity rate, %					
	2011 Q1	59.7	0.6	58.6	60.9
	Q2	58.9	0.6	57.7	60.0
	Q3	59.3	0.6	58.1	60.5
	Q4	59.3	0.6	58.1	60.6
	2012 Q1	58.6	0.5	57.4	59.7

Estimated labour force, employment and unemployment by sex, 1st quarter 2011 –  
1st quarter 2012

Male

		Estimates	Standard Error	95% confidence interval	
				Lower limit	Upper limit
Labour force					
	2011 Q1	366,100	8,300	349,900	382,400
	Q2	357,800	10,000	338,000	377,500
	Q3	362,100	8,500	345,500	378,800
	Q4	365,500	11,500	342,900	388,100
	2012 Q1	362,800	8,700	345,600	380,000
Employment					
	2011 Q1	347,100	7,900	331,500	362,800
	Q2	338,100	9,500	319,500	356,700
	Q3	342,600	8,000	326,900	358,400
	Q4	347,600	10,600	326,600	368,500
	2012 Q1	343,900	8,400	327,300	360,600
Unemployment					
	2011 Q1	19,000	1,900	15,300	22,600
	Q2	19,700	2,300	15,200	24,100
	Q3	19,500	1,900	15,700	23,300
	Q4	17,900	2,200	13,700	22,200
	2012 Q1	18,900	1,700	15,500	22,300
Unemployment rate, %					
	2011 Q1	5.2	0.5	4.2	6.1
	Q2	5.5	0.6	4.3	6.7
	Q3	5.4	0.5	4.4	6.4
	Q4	4.9	0.5	3.8	6.0
	2012 Q1	5.2	0.5	4.3	6.1
Activity rate, %					
	2011 Q1	76.3	0.7	75.0	77.7
	Q2	74.4	0.8	72.8	75.9
	Q3	75.0	0.7	73.7	76.4
	Q4	75.5	0.7	74.1	77.0
	2012 Q1	74.8	0.7	73.5	76.2

Estimated labour force, employment and unemployment by sex, 1st quarter 2011 –  
1st quarter 2012

Female

		Estimates	Standard Error	95% confidence interval	
				Lower limit	Upper limit
<b>Labour force</b>					
	2011 Q1	218,000	6,700	204,800	231,200
	Q2	219,800	7,500	205,000	234,700
	Q3	221,600	6,000	209,700	233,400
	Q4	220,100	7,200	206,000	234,300
	2012 Q1	216,700	6,300	204,400	229,100
<b>Employment</b>					
	2011 Q1	188,500	6,200	176,300	200,700
	Q2	193,300	6,700	180,200	206,400
	Q3	195,200	5,600	184,200	206,200
	Q4	194,200	6,500	181,500	207,000
	2012 Q1	191,600	6,000	179,800	203,400
<b>Unemployment</b>					
	2011 Q1	29,500	2,500	24,500	34,400
	Q2	26,500	2,500	21,700	31,400
	Q3	26,400	2,300	21,900	30,800
	Q4	25,900	2,900	20,200	31,600
	2012 Q1	25,100	1,900	21,400	28,800
<b>Unemployment rate, %</b>					
	2011 Q1	13.5	1.0	11.4	15.6
	Q2	12.1	1.0	10.1	14.0
	Q3	11.9	0.9	10.0	13.8
	Q4	11.8	1.2	9.4	14.1
	2012 Q1	11.6	0.8	9.9	13.2
<b>Activity rate, %</b>					
	2011 Q1	43.7	0.9	41.9	45.5
	Q2	43.9	0.9	42.1	45.8
	Q3	44.1	0.9	42.3	45.9
	Q4	43.7	0.9	41.9	45.6
	2012 Q1	42.9	0.9	41.2	44.6



**Longer time series**

19. The following graphs show the series for employment, unemployment and activity rate from 1<sup>st</sup> quarter 2008 to 1<sup>st</sup> quarter 2012.

Chart 3: Employment by quarter, 1<sup>st</sup> quarter 2008 - 1<sup>st</sup> quarter 2012

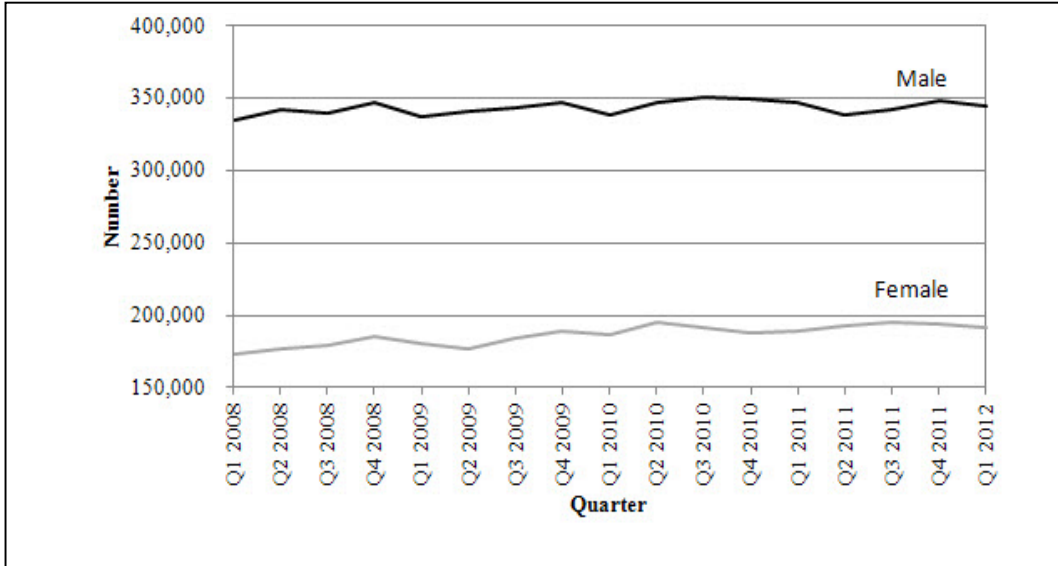


Chart 4: Unemployment rate by quarter, 1<sup>st</sup> quarter 2008 - 1<sup>st</sup> quarter 2012

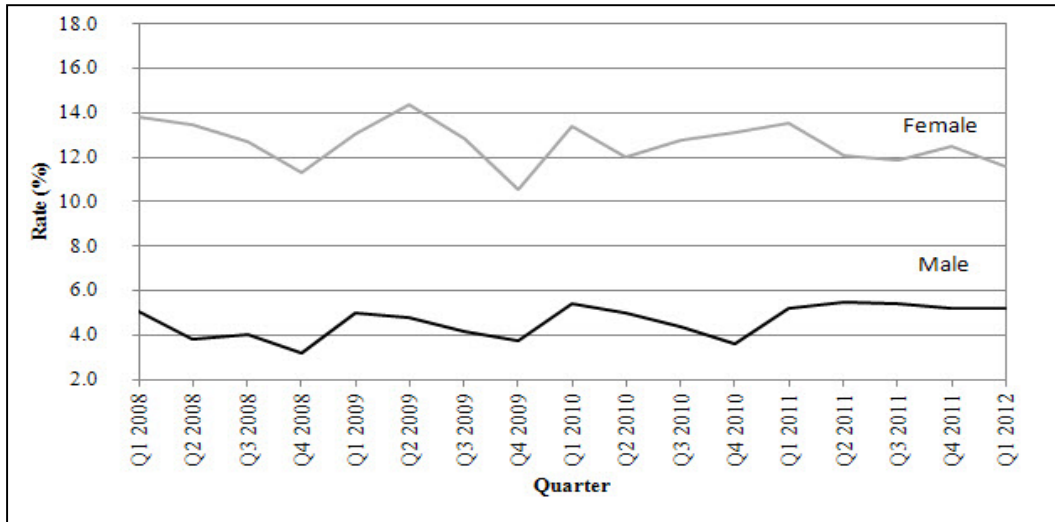


Chart 5: Activity rate by quarter, 1<sup>st</sup> quarter 2008 - 1<sup>st</sup> quarter 2012

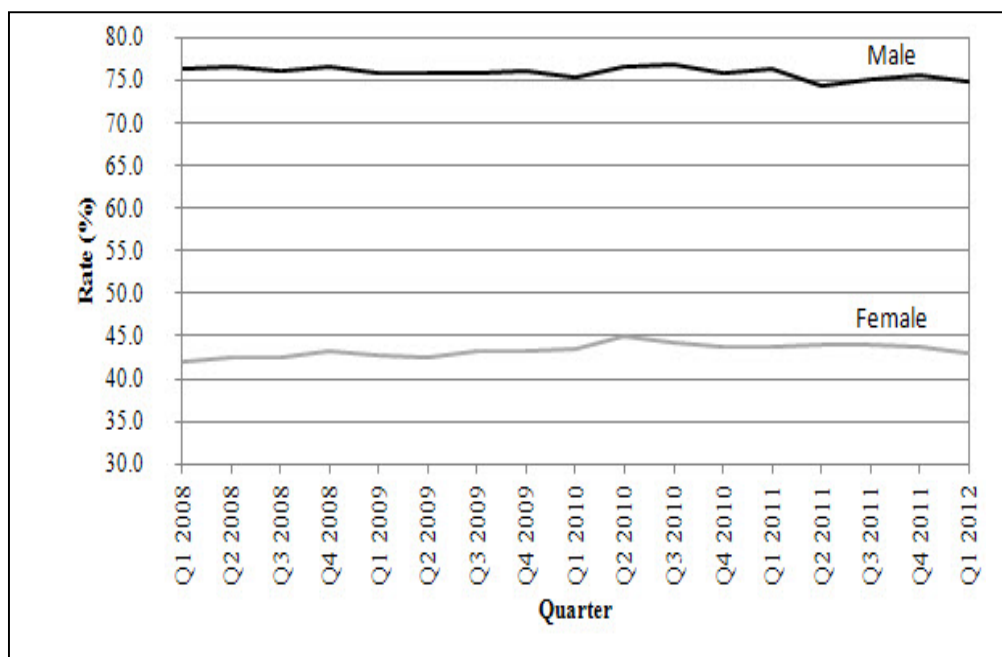
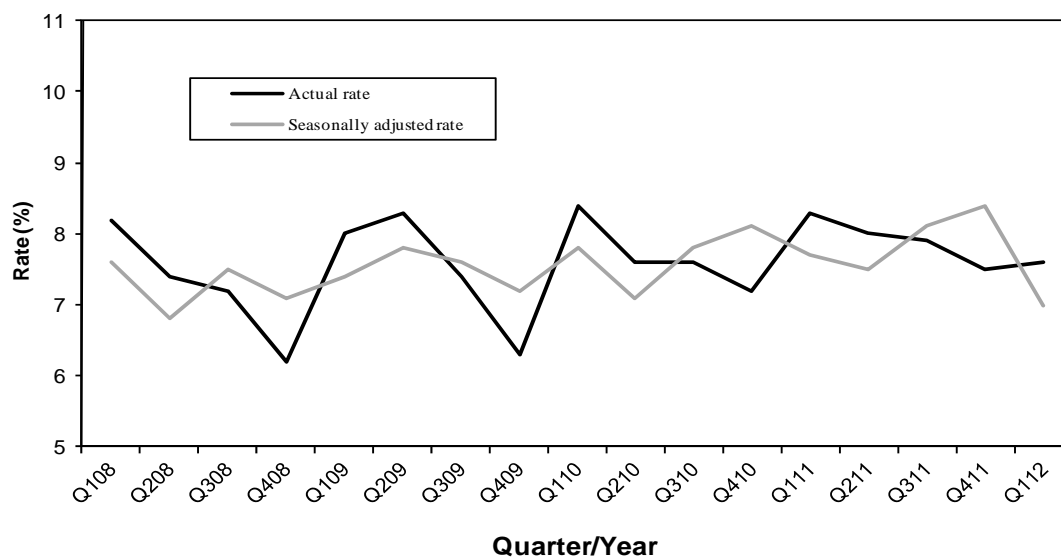


Chart 6: Actual and seasonally adjusted unemployment rate, 1<sup>st</sup> quarter 2008 – 1<sup>st</sup> quarter 2012



The following tables together with the web version of this publication can be downloaded from Statistics Mauritius website at <http://statsmauritius.gov.mu>. From the homepage, click on 'Statistics by subject' followed by 'labour' then select the appropriate publication under the heading 'Publications – Economic and Social Indicators'.

## List of tables

*Table 1: Labour market activity by status, 1st Quarter 2011 to 1st Quarter 2012*

*Table 2: Labour force characteristics by age and sex, 1st Quarter 2012*

*Table 3: Employment by industrial activity, 1st Quarter 2011 to 1st Quarter 2012*

*Table 4: Employment by occupational group, 1st Quarter 2011 to 1st Quarter 2012*

*Table 5: Employment by hours worked, 1st Quarter 2011 to 1st Quarter 2012*

*Table 6: Unemployment by educational attainment, 1st Quarter 2011 to 1st Quarter 2012*

*Table 7: Unemployment by age, 1st Quarter 2011 to 1st Quarter 2012*

*Table 8: Unemployment by work experience, 1st Quarter 2011 to 1st Quarter 2012*

*Table 9: Economically inactive population by reason, 1st Quarter 2011 to 1st Quarter 2012*

Statistics Mauritius  
Ministry of Finance and Economic Development  
Port Louis

June 2012

Contact persons: (1) Ms. C. Bandinah (Statistician)  
Email: [cso\\_cmphs@mail.gov.mu](mailto:cso_cmphs@mail.gov.mu)

(2) Mr. C.K. Arianaick (Statistician)  
Email: [carianaick@mail.gov.mu](mailto:carianaick@mail.gov.mu)

Statistics Mauritius  
LIC Centre, Port Louis  
Tel: 2122316, 2122317 Fax: 2114150

## **NOTES**

### **Release of Labour Force data**

Labour Force statistics are compiled and published in the “Economic and Social Indicators” in March, June, September and December according to an advance calendar posted on the website of Statistics Mauritius (<http://statsmauritius.gov.mu>). This issue provides data for the first quarter 2012 compared to the same quarter a year ago.

However, where appropriate, historical series are also provided for the main indicators.

### **The CMPHS Survey methodology**

#### **Data collection**

Face to face interviews of household members are carried out by qualified interviewers recruited by the office.

#### **Frequency of data collection**

Data collection is carried out monthly except in 2004 when it was carried out every quarter. Up to 2005, the reference period for data on labour force was the last week of the survey month. As from 2006, the reference week has been changed to the second week of the survey month so that estimates can be published within one quarter of the reference period, as required by the IMF Special Data Dissemination System (SDDS) to which the country has graduated on 28 February 2012.

#### **Scope and coverage of collection**

All private Mauritian households in the islands of Mauritius and Rodrigues are covered.

#### **Sampling method**

A Stratified two-stage sampling design is used. At the first stage, Primary Sampling Units (PSUs) are selected with probability proportional to size and at the second stage, a fixed number of households is selected from each selected PSU.

Prior to 2005, the first stage stratification factors were urban, semi urban and rural geographical locations. As from 2005, the Relative Development Index (RDI) is used as the spatial stratification factor. This index is based on 12 variables encompassing housing and living conditions, literacy and education, and employment derived from the 2000 Housing and Population Census to rank PSUs. A set of RDIs for administrative regions has been published in the series "Economic and Social Indicators" - Issue No. 393.

The second stage stratification criteria are community, household size and average monthly expenditure of the household.

### **Sample size**

From 1999 to 2003, around 6,500 households were covered each year. In 2004, the sample was increased to 8,640 so that reliable quarterly estimates of labour force, employment and unemployment could be worked out. As from 2005, the sample for the year has been further increased to 11,280. Furthermore, in order to measure quarterly changes, 50% of the households sampled in a quarter are re-interviewed in the following quarter; for example, 50% of the households sampled in the first quarter of 2005 have been re-interviewed in the second quarter of 2005.

### **Questionnaire**

The CMPHS questionnaire comprises three modules: a basic module common to all rounds of the survey covering the general characteristics of the population (b) a second module covering labour force with in-depth investigation and a core set of questions which are kept constant at all rounds of the survey and (c) a third module grouping other topics of interest but investigated in less details.

### **Estimation and reliability of results**

Estimates worked out from household survey data are inevitably subject to sampling variability since they are based on information collected from only a sample of households rather than from all households. The Standard Error (S.E) which is a measure of this variability, used to set confidence intervals for any estimate (whether a total or a rate) derived from the sample. For example, a 95% confidence interval indicates that there is 95% chance that the upper and lower limits of the interval enclose the true value (which would be obtained if all households had been surveyed). Standard errors and confidence intervals are calculated for the main labour force estimates.

### **Implementation of revised classifications**

As from this issue of the Economic and Social Indicators, Labour force, employment and unemployment estimates will be produced according to national classifications based on the following revised classifications:

- a. International Standard Industrial Classification of All Economic Activities, Rev. 4 of 2007;
- b. International Standard Classification of Occupations, 2008; and
- c. International Standard Classification of Education, 1997.

## **Definitions**

### **Household**

A household is defined as either a person living on his/her own or a group of two or more persons, who may or may not be related, but who live together and make common provision for food and other essentials for living.

### **Employment**

Employed population consists of Mauritians aged 16 years and above (16+) who have worked for pay, profit or family gain for at least one hour during the reference week of a month. It includes those who are temporarily absent from work for reasons such as leave with pay, leave without pay and temporary disorganisation of work (bad weather, break down of equipment, lack of order, etc.).

It is to be noted that as from year 2007, labour force estimates are based on population aged 16 years and above, following the amendment to the Labour Act in December 2006 whereby the minimum legal working age is 16 years, and the subsequent recommendation by the ILO to be in line with the amended Labour Act.

### **Unemployment**

Unemployed population comprises all Mauritians aged 16+ who are not working but who are looking for work and are available for work during the reference period.

### **Labour force**

Labour force or active population is made up of employed and unemployed population.

### **Unemployment rate**

Unemployment rate is the ratio (%) of unemployment to labour force.

### **Inactive population**

Inactive population includes all Mauritians aged 16+ years, not forming part of the labour force for reasons such as attendance at educational institutions, engagement in household duties, retirement, old age and infirmity/disablement.

### **Activity rate**

Activity rate is the ratio (%) of labour force to population aged 16+ (active and inactive population).

**Employer**

An employer is a person who operates his/her own business or trade and hires one or more employees.

**Own account worker**

An Own account worker is a person who operates his/her own business or trade but does not hire employees. He/She may be working alone or with the help of contributing family workers.

**Employee**

An Employee is a person who works for pay for someone else, even in a temporary capacity.

**Apprentice**

An Apprentice is a person being trained for a job or trade and does not receive pay or may just receive some pocket money; an apprentice is considered as an employee.

**Contributing family worker**

A Contributing family worker is a person who works without pay in an enterprise operated by a family member.

**Educational attainment**

*Primary:* comprises persons who have studied up to a “Standard” between Standard 1 and the Certificate of Primary Education (CPE) or equivalent.

*Secondary:* comprises persons who have studied up to a “Form” between Form 1 and the Higher School Certificate (HSC) or equivalent.

*Tertiary:* comprises persons who in addition to their secondary educational certificates (SC and HSC or equivalent) also possess either a certificate/diploma (which is above the HSC but below a first degree) or a degree.

## Annual labour force estimates based on data from different data sources, 2004 - 2012

	Labour force			Employment				Unemployment <sup>1</sup>	
	Mauritians aged 16+	Foreign workers	Total	in large establishments	outside large establishments	Total	of whom Mauritians	Number	Rate
	(000s)	(000s)	(000s)	(000s)	(000s)	(000s)	(000s)	(000s)	(%)
<b>Both sexes</b>									
2004	531.3	17.5	<b>548.8</b>	293.3	210.9	<b>504.2</b>	486.7	44.6	8.4
2005	542.5	16.6	<b>559.1</b>	292.2	215.0	<b>507.2</b>	490.6	51.9	9.6
2006	548.4	16.7	<b>565.1</b>	295.1	220.2	<b>515.3</b>	498.6	49.8	9.1
2007	548.9	21.6	<b>570.5</b>	302.0	221.7	<b>523.7</b>	502.1	46.8	8.5
2008	559.4	24.0	<b>583.4</b>	311.6	231.4	<b>543.0</b>	519.0	40.4	7.2
2009	566.3	21.0	<b>587.3</b>	306.0	239.8	<b>545.8</b>	524.8	41.5	7.3
2010	581.3	22.0	<b>603.3</b>	310.1	248.0	<b>558.1</b>	536.1	45.2	7.8
2011	582.8	23.0	<b>605.8</b>	310.7	249.0	<b>559.7</b>	536.7	46.1	7.9
2012 <sup>2</sup>	584.8	23.6	<b>608.4</b>	310.7	250.8	<b>561.5</b>	537.9	46.9	8.0
Change current year over previous:	2.0	0.6	<b>2.6</b>	0.0	1.8	<b>1.8</b>	1.2	0.8	0.1
<b>Male</b>									
2004	347.8	9.0	<b>356.8</b>	189.1	147.7	<b>336.8</b>	327.8	20.0	5.8
2005	349.6	9.1	<b>358.7</b>	189.3	149.2	<b>338.5</b>	329.4	20.2	5.8
2006	351.4	8.3	<b>359.7</b>	190.0	150.5	<b>340.5</b>	332.2	19.2	5.5
2007	353.6	12.1	<b>365.7</b>	195.6	151.5	<b>347.1</b>	335.0	18.6	5.3
2008	355.6	14.7	<b>370.3</b>	201.0	154.7	<b>355.7</b>	341.0	14.6	4.1
2009	358.1	13.0	<b>371.1</b>	198.0	157.3	<b>355.3</b>	342.3	15.8	4.4
2010	362.4	13.1	<b>375.5</b>	198.8	160.0	<b>358.8</b>	345.7	16.7	4.6
2011	363.6	13.4	<b>377.0</b>	197.8	160.4	<b>358.2</b>	344.8	18.8	5.2
2012 <sup>2</sup>	364.6	13.6	<b>378.2</b>	197.8	161.2	<b>359.0</b>	345.4	19.2	5.3
Change current year over previous:	1.0	0.2	<b>1.2</b>	0.0	0.8	<b>0.8</b>	0.6	0.4	0.1
<b>Female</b>									
2004	183.5	8.5	<b>192.0</b>	104.2	63.2	<b>167.4</b>	158.9	24.6	13.4
2005	192.9	7.5	<b>200.4</b>	102.9	65.8	<b>168.7</b>	161.2	31.7	16.4
2006	197.0	8.4	<b>205.4</b>	105.1	69.7	<b>174.8</b>	166.4	30.6	15.5
2007	195.3	9.5	<b>204.8</b>	106.4	70.2	<b>176.6</b>	167.1	28.2	14.4
2008	203.8	9.3	<b>213.1</b>	110.6	76.7	<b>187.3</b>	178.0	25.8	12.7
2009	208.2	8.0	<b>216.2</b>	108.0	82.5	<b>190.5</b>	182.5	25.7	12.3
2010	218.9	8.9	<b>227.8</b>	111.3	88.0	<b>199.3</b>	190.4	28.5	13.0
2011	219.2	9.6	<b>228.8</b>	112.9	88.6	<b>201.5</b>	191.9	27.3	12.5
2012 <sup>2</sup>	220.2	10.0	<b>230.2</b>	112.9	89.6	<b>202.5</b>	192.5	27.7	12.6
Change current year over previous:	1.0	0.4	<b>1.4</b>	0.0	1.0	<b>1.0</b>	0.6	0.4	0.1

<sup>1</sup> Unemployment figures and rate refer to Mauritians<sup>2</sup> Forecast**Note:**

The above figures have been worked out in order to give a set of comparable labour force estimates obtained from different sources. Users are cautioned in the use of these figures given that there are differences related to the reference period, coverage and methodology. The different sources from which these estimates have been obtained are as follows:

- i CMPHS for Mauritian labour force estimates which are subject to sampling variability as mentioned at paragraph 17.
- ii The Annual Survey of Employment and Earnings (SEE) carried out in March of each year. Employment figures refer to jobs in large establishments employing 10 or more persons and include both Mauritians and foreign workers.
- iii Employment in 'other than large' establishments has been estimated after reconciling data from CMPHS, SEE and administrative sources.



**Table 1: Labour market activity by status, 1st Quarter 2011 to 1st Quarter 2012**

In thousands

	Total Mauritian population aged 16 & over	In employment					Unemployed	Total econ. active	Total econ. inactive
		Employees	Employers	Own	Contrib.	Total			
				account workers	family workers				
<b>Both sexes</b>									
2011 Q1	<b>978.2</b>	426.8	24.1	72.7	12.0	<b>535.6</b>	<b>48.5</b>	<b>584.1</b>	<b>394.1</b>
Q2	<b>981.4</b>	433.2	19.2	70.5	8.5	<b>531.4</b>	<b>46.2</b>	<b>577.6</b>	<b>403.8</b>
Q3	<b>984.8</b>	440.2	21.5	67.1	9.0	<b>537.8</b>	<b>45.9</b>	<b>583.7</b>	<b>401.1</b>
Q4	<b>987.2</b>	438.4	20.1	73.3	10.0	<b>541.8</b>	<b>43.8</b>	<b>585.6</b>	<b>401.6</b>
2012 Q1	<b>989.6</b>	421.8	20.1	80.7	12.9	<b>535.5</b>	<b>44.0</b>	<b>579.5</b>	<b>410.1</b>
<b>% change, latest quarter over:</b>									
previous quarter	<b>0.2</b>	-3.8	0.0	10.1	29.0	<b>-1.2</b>	<b>0.5</b>	<b>-1.0</b>	<b>2.1</b>
same quarter a year ago	<b>1.2</b>	-1.2	-16.6	11.0	7.5	<b>0.0</b>	<b>-9.3</b>	<b>-0.8</b>	<b>4.1</b>
<b>Male</b>									
2011 Q1	<b>479.7</b>	268.3	20.8	55.2	2.8	<b>347.1</b>	<b>19.0</b>	<b>366.1</b>	<b>113.6</b>
Q2	<b>481.2</b>	267.1	15.9	54.1	1.0	<b>338.1</b>	<b>19.7</b>	<b>357.8</b>	<b>123.4</b>
Q3	<b>482.6</b>	271.7	18.8	49.7	2.4	<b>342.6</b>	<b>19.5</b>	<b>362.1</b>	<b>120.5</b>
Q4	<b>483.8</b>	272.2	17.4	55.6	2.4	<b>347.6</b>	<b>17.9</b>	<b>365.5</b>	<b>118.3</b>
2012 Q1	<b>484.8</b>	261.0	18.2	61.9	2.8	<b>343.9</b>	<b>18.9</b>	<b>362.8</b>	<b>122.0</b>
<b>% change, latest quarter over:</b>									
previous quarter	<b>0.2</b>	-4.1	4.6	11.3	16.7	<b>-1.1</b>	<b>5.6</b>	<b>-0.7</b>	<b>3.1</b>
same quarter a year ago	<b>1.1</b>	-2.7	-12.5	12.1	0.0	<b>-0.9</b>	<b>-0.5</b>	<b>-0.9</b>	<b>7.4</b>
<b>Female</b>									
2011 Q1	<b>498.5</b>	158.5	3.3	17.5	9.2	<b>188.5</b>	<b>29.5</b>	<b>218.0</b>	<b>280.5</b>
Q2	<b>500.2</b>	166.1	3.3	16.4	7.5	<b>193.3</b>	<b>26.5</b>	<b>219.8</b>	<b>280.4</b>
Q3	<b>502.2</b>	168.5	2.7	17.4	6.6	<b>195.2</b>	<b>26.4</b>	<b>221.6</b>	<b>280.6</b>
Q4	<b>503.4</b>	166.2	2.7	17.7	7.6	<b>194.2</b>	<b>25.9</b>	<b>220.1</b>	<b>283.3</b>
2012 Q1	<b>504.8</b>	160.8	1.9	18.8	10.1	<b>191.6</b>	<b>25.1</b>	<b>216.7</b>	<b>288.1</b>
<b>% change, latest quarter over:</b>									
previous quarter	<b>0.3</b>	-3.2	-29.6	6.2	32.9	<b>-1.3</b>	<b>-3.1</b>	<b>-1.5</b>	<b>1.7</b>
same quarter a year ago	<b>1.3</b>	1.5	-42.4	7.4	9.8	<b>1.6</b>	<b>-14.9</b>	<b>-0.6</b>	<b>2.7</b>

**Table 2: Labour force characteristics by age and sex, 1st Quarter 2012**

In thousands

	Mauritian aged 16 and over	Age group (years)				
		16-24	25 - 29	30 - 39	40 - 49	50+
<b>Both sexes</b>						
In employment	<b>535.5</b>	61.6	64.5	147.3	139.8	122.3
Unemployed	<b>44.0</b>	17.5	7.4	8.7	6.7	3.7
Labour force	<b>579.5</b>	79.1	71.9	156.0	146.5	126.0
Economically inactive	<b>410.1</b>	105.9	17.7	47.5	45.4	193.6
Total Population	<b>989.6</b>	185.0	89.6	203.5	191.9	319.6
Employment rate (%)	<b>92.4</b>	77.9	89.7	94.4	95.4	97.1
Unemployment rate (%)	<b>7.6</b>	22.1	10.3	5.6	4.6	2.9
Activity rate (%)	<b>58.6</b>	42.8	80.2	76.7	76.3	39.4
<b>Male</b>						
In employment	<b>343.9</b>	37.5	38.9	94.4	87.7	85.4
Unemployed	<b>18.9</b>	8.3	3.0	2.7	2.3	2.6
Labour force	<b>362.8</b>	45.8	41.9	97.1	90.0	88.0
Economically inactive	<b>122.0</b>	48.6	4.0	4.1	5.1	60.2
Total Population	<b>484.8</b>	94.4	45.9	101.2	95.1	148.2
Employment rate (%)	<b>94.8</b>	81.9	92.8	97.2	97.4	97.0
Unemployment rate (%)	<b>5.2</b>	18.1	7.2	2.8	2.6	3.0
Activity rate (%)	<b>74.8</b>	48.5	91.3	95.9	94.6	59.4
<b>Female</b>						
In employment	<b>191.6</b>	24.1	25.6	52.9	52.1	36.9
Unemployed	<b>25.1</b>	9.2	4.4	6.0	4.4	1.1
Labour force	<b>216.7</b>	33.3	30.0	58.9	56.5	38.0
Economically inactive	<b>288.1</b>	57.3	13.7	43.4	40.3	133.4
Total Population	<b>504.8</b>	90.6	43.7	102.3	96.8	171.4
Employment rate (%)	<b>88.4</b>	72.4	85.3	89.8	92.2	97.1
Unemployment rate (%)	<b>11.6</b>	27.6	14.7	10.2	7.8	2.9
Activity rate (%)	<b>42.9</b>	36.8	68.6	57.6	58.4	22.2

**Table 3: Employment by industrial activity <sup>1</sup>, 1st Quarter 2011 to 1st Quarter 2012**

	Total employed aged 16+	Primary sector	Secondary sector	Tertiary sector	Selected NSIC <sup>2</sup> Sections				
					Manufacturing	Construction	Wholesale and retail trade	Other services	
					C	F	G	H - Q	
	(000s)	(%)	(%)	(%)	(%)	(%)	(%)	(%)	
<b>Both sexes</b>									
2011 Q1	535.6	7.2	29.2	63.6	16.9	10.9	15.2	20.6	
Q2	531.4	7.5	28.0	64.5	16.1	10.3	15.7	22.4	
Q3	537.8	8.3	27.5	64.2	15.5	10.4	14.6	23.7	
Q4	541.8	8.2	27.9	63.9	16.5	10.1	15.6	21.7	
2012 Q1	535.5	7.3	28.5	64.2	15.8	10.9	16.6	20.9	
<b>Male</b>									
2011 Q1	347.1	7.9	32.8	59.3	14.7	16.1	14.7	13.8	
Q2	338.1	8.1	32.4	59.5	14.3	15.7	14.2	15.3	
Q3	342.6	9.4	32.4	58.2	14.1	16.0	13.1	15.0	
Q4	347.6	9.3	31.9	58.8	14.5	15.4	14.6	14.3	
2012 Q1	343.9	8.2	32.6	59.2	13.9	16.5	15.6	13.2	
<b>Female</b>									
2011 Q1	188.5	5.9	22.6	71.5	21.0	1.2	16.1	33.2	
Q2	193.3	6.4	20.3	73.3	19.1	0.9	18.4	34.9	
Q3	195.2	6.4	18.8	74.8	17.8	0.8	17.2	39.0	
Q4	194.2	6.0	20.8	73.2	20.2	0.5	17.5	35.0	
2012 Q1	191.6	5.8	21.2	73.0	19.2	0.8	18.6	34.4	

<sup>1</sup>The distribution of employment by sector and selected NSIC sections is provisional

<sup>2</sup>National version of the International Standard Industrial Classification (ISIC Revision 4)

**Table 4: Employment by occupational group <sup>1</sup>, 1st Quarter 2011 to 1st Quarter 2012**

		Total employed aged 16+	ISCO-08 <sup>2</sup>				
			Managers, Professionals, Technicians & associate professionals	Clerical support workers	Service and sales workers	Agricultural, Craft & related trades workers, Plant & machine operators & assemblers	Elementary occupations
		(000s)	1,2,3 (%)	4 (%)	5 (%)	6,7,8 (%)	9 (%)
<b>Both sexes</b>							
	2011 Q1	535.6	20.2	9.3	22.0	32.5	16.0
	Q2	531.4	19.9	9.3	22.1	31.0	17.7
	Q3	537.8	21.4	9.5		30.4	18.0
	Q4	541.8	19.5	9.9	21.7	30.3	18.6
	2012 Q1	535.5	20.4	8.9	22.1	31.8	16.7
<b>Male</b>							
	2011 Q1	347.1	18.5	6.3	21.0	41.1	13.1
	Q2	338.1	17.8	6.1	21.5	39.9	14.7
	Q3	342.6	20.4	5.8	19.0	40.2	14.6
	Q4	347.6	18.4	5.9	20.5	39.1	16.1
	2012 Q1	343.9	20.0	5.2	19.9	41.0	13.8
<b>Female</b>							
	2011 Q1	188.5	23.2	14.7	23.9	16.7	21.5
	Q2	193.3	23.5	15.0	23.2	15.4	22.9
	Q3	195.2	23.2	15.8	23.6	13.6	23.8
	Q4	194.2	21.4	17.1	23.9	14.6	23.0
	2012 Q1	191.6	21.1	15.5	25.9	15.4	22.0

<sup>1</sup> The distribution of employment by occupational group is provisional

<sup>2</sup> National version of the International Standard Classification of Occupation (ISCO-08)

**Table 5: Employment by hours worked, 1st Quarter 2011 to 1st Quarter 2012**

	Total employed aged 16+	Total hours worked	% having worked for:					Average number of hours	
			0 hour	1 to 23 hours	24 to 40 hours	41 to 50 hours	51 and above		
<b>Both sexes</b>									
2011 Q1	535.6	21,100	5.2	8.8	38.7	28.5	18.8	41.6	
Q2	531.4	21,100	4.7	8.5	39.3	31.2	16.3	41.5	
Q3	537.8	21,600	4.4	7.9	38.5	30.5	18.7	42.0	
Q4	541.8	21,400	6.2	7.7	35.9	31.7	18.5	42.0	
2012 Q1	535.5	19,900	4.9	10.6	45.4	25.0	14.1	39.2	
<b>Male</b>									
2011 Q1	347.1	14,300	5.6	6.3	36.1	30.2	21.8	43.7	
Q2	338.1	14,300	5.0	5.8	36.5	33.6	19.1	43.5	
Q3	342.6	14,500	4.6	5.5	33.8	33.9	22.2	44.2	
Q4	347.6	14,500	6.1	5.1	33.4	33.1	22.4	44.4	
2012 Q1	343.9	13,400	5.5	7.1	43.0	28.3	16.1	41.3	
<b>Female</b>									
2011 Q1	188.5	6,800	4.5	13.4	43.4	25.5	13.2	38.0	
Q2	193.3	6,800	4.3	13.2	44.1	27.0	11.5	37.9	
Q3	195.2	7,100	4.1	12.2	46.6	24.5	12.6	38.0	
Q4	194.2	6,900	6.4	12.4	40.5	29.1	11.6	37.8	
2012 Q1	191.6	6,500	3.9	16.8	49.7	19.1	10.5	35.5	

0 hour not included in total hours worked & in average number of hours worked

**Table 6: Unemployment by educational attainment, 1st Quarter 2011 to 1st Quarter 2012**

	Unemployed Mauritians aged 16+	Primary			Secondary			Tertiary		
		Total	Below CPE	Passed CPE	Total	Below SC	Passed SC	Passed HSC		
		(000s)	(%)	(%)	(%)	(%)	(%)	(%)	(%)	
<b>Both sexes</b>										
2011 Q1	<b>48.5</b>	<b>29.4</b>	20.6	8.8	<b>57.2</b>	30.6	18.7	7.9	<b>13.4</b>	
Q2	<b>46.2</b>	<b>27.5</b>	18.9	8.6	<b>57.4</b>	35.1	15.1	7.2	<b>15.1</b>	
Q3	<b>45.9</b>	<b>28.1</b>	18.3	9.8	<b>53.8</b>	30.4	14.8	8.6	<b>18.1</b>	
Q4	<b>43.8</b>	<b>28.0</b>	19.5	8.5	<b>55.7</b>	27.8	22.7	5.2	<b>16.3</b>	
2012 Q1	<b>44.0</b>	<b>25.3</b>	18.8	6.5	<b>58.3</b>	33.3	19.2	5.8	<b>16.4</b>	
<b>Male</b>										
2011 Q1	<b>19.0</b>	<b>29.8</b>	20.0	9.8	<b>58.1</b>	35.6	12.7	9.8	<b>12.1</b>	
Q2	<b>19.7</b>	<b>24.2</b>	17.7	6.5	<b>57.5</b>	40.4	10.7	6.4	<b>18.3</b>	
Q3	<b>19.5</b>	<b>26.6</b>	18.7	7.9	<b>53.4</b>	29.9	15.3	8.2	<b>20.0</b>	
Q4	<b>17.9</b>	<b>32.8</b>	27.2	5.6	<b>52.9</b>	28.3	20.9	3.7	<b>14.3</b>	
2012 Q1	<b>18.9</b>	<b>27.0</b>	21.5	5.5	<b>55.4</b>	35.7	16.0	3.7	<b>17.6</b>	
<b>Female</b>										
2011 Q1	<b>29.5</b>	<b>29.0</b>	20.9	8.1	<b>56.8</b>	27.5	22.5	6.8	<b>14.2</b>	
Q2	<b>26.5</b>	<b>29.9</b>	19.8	10.1	<b>57.5</b>	31.4	18.4	7.7	<b>12.6</b>	
Q3	<b>26.4</b>	<b>29.2</b>	18.0	11.2	<b>54.1</b>	30.7	14.4	9.0	<b>16.7</b>	
Q4	<b>25.9</b>	<b>24.8</b>	14.2	10.6	<b>57.6</b>	27.5	23.9	6.2	<b>17.6</b>	
2012 Q1	<b>25.1</b>	<b>24.2</b>	17.0	7.2	<b>60.4</b>	31.5	21.6	7.3	<b>15.4</b>	

**Table 7: Unemployment by age, 1st Quarter 2011 to 1st Quarter 2012**

		All aged 16 and over	Age group (years)		
			16-24	25-49	50+
<b>Both sexes</b>					
	2011 Q1	48.5	18.8	25.1	4.6
	Q2	46.2	16.0	27.0	3.2
	Q3	45.9	17.6	25.0	3.3
	Q4	43.8	17.1	23.1	3.6
	2012 Q1	44.0	17.5	22.8	3.7
<b>Change, latest quarter over:</b>					
	previous quarter	0.2	0.4	-0.3	0.1
	same quarter a year ago	-4.5	-1.3	-2.3	-0.9
<b>Male</b>					
	2011 Q1	19.0	8.4	8.2	2.4
	Q2	19.7	8.2	9.6	1.9
	Q3	19.5	9.2	8.4	1.9
	Q4	17.9	6.8	9.1	2.0
	2012 Q1	18.9	8.3	8.0	2.6
<b>Change, latest quarter over:</b>					
	previous quarter	1.0	1.5	-1.1	0.6
	same quarter a year ago	-0.1	-0.1	-0.2	0.2
<b>Female</b>					
	2011 Q1	29.5	10.4	16.9	2.2
	Q2	26.5	7.8	17.4	1.3
	Q3	26.4	8.4	16.6	1.4
	Q4	25.9	10.3	14.0	1.6
	2012 Q1	25.1	9.2	14.8	1.1
<b>Change, latest quarter over:</b>					
	previous quarter	-0.8	-1.1	0.8	-0.5
	same quarter a year ago	-4.4	-1.2	-2.1	-1.1

**Table 8: Unemployment by work experience, 1st Quarter 2011 to 1st Quarter 2012**

	Unemployed Mauritians aged 16+	No. of first job seekers	Unemployed with work experience by industry *						
			Total	Manuf.	Construction	Trade	Accommodation & Food Service Activities	Other	
	(000s)	(000s)	(000s)	(%)	(%)	(%)	(%)	(%)	
<b>Both sexes</b>									
2011 Q1	48.5	17.1	31.3	24.2	13.2	19.9	9.8	32.9	
Q2	46.2	14.7	31.5	21.5	13.1	17.7	10.3	37.4	
Q3	45.9	15.4	30.6	21.8	17.6	15.2	12.5	32.9	
Q4	43.8	15.6	28.1	25.3	18.2	19.7	7.3	29.5	
2012 Q1	44.0	15.0	29.0	21.3	10.2	19.5	10.1	38.9	
<b>Change, latest quarter over:</b>									
previous quarter	0.2	-0.6	0.9						
same quarter a year ago	-4.5	-2.1	-2.3						
<b>Male</b>									
2011 Q1	19.0	5.8	13.2	19.7	29.3	12.3	11.3	27.4	
Q2	19.7	5.4	14.3	13.3	26.5	9.7	11.8	38.7	
Q3	19.5	5.6	14.0	19.0	36.5	7.5	10.5	26.5	
Q4	17.9	4.4	13.4	16.1	35.1	14.2	6.4	28.2	
2012 Q1	18.9	5.3	13.6	17.3	18.7	12.9	12.9	38.2	
<b>Change, latest quarter over:</b>									
previous quarter	1.0	0.9	0.2						
same quarter a year ago	-0.1	-0.5	0.4						
<b>Female</b>									
2011 Q1	29.5	11.3	18.1	27.6	1.0	25.7	8.7	37.0	
Q2	26.5	9.3	17.2	29.6	0.0	25.6	8.9	35.9	
Q3	26.4	9.8	16.6	24.4	0.5	22.1	14.3	38.7	
Q4	25.9	11.2	14.7	34.9	0.5	25.4	8.3	30.9	
2012 Q1	25.1	9.7	15.4	25.1	2.0	25.8	7.3	39.8	
<b>Change, latest quarter over:</b>									
previous quarter	-0.8	-1.5	0.7						
same quarter a year ago	-4.4	-1.6	-2.7						

\* National version of the International Standard Industrial Classification (ISIC Revision 4)

\*The distribution of unemployed by sector is provisional



**Table 9: Economically inactive population by reason, 1st Quarter 2011 to 1st Quarter 2012**

	Total Mauritians aged 16+	Economically inactive by reason					
		Total	Homemakers	Retired or elderly	Students	Sick or disabled	Other
	(000s)	(000s)	(%)	(%)	(%)	(%)	(%)
<b>Both sexes</b>							
2011 Q1	978.2	394.1	40.4	23.8	21.4	7.7	6.7
Q2	981.4	403.8	38.1	25.5	21.4	7.8	7.2
Q3	984.8	401.1	39.1	25.4	21.5	8.8	5.2
Q4	987.2	401.6	39.6	24.9	21.5	7.7	6.3
2012 Q1	989.6	410.1	40.8	23.4	21.2	8.1	6.5
<b>Male</b>							
2011 Q1	479.7	113.6	0.1	41.5	37.3	12.8	8.3
Q2	481.2	123.4	0.3	43.0	34.9	13.0	8.8
Q3	482.6	120.5	0.2	45.3	36.2	12.1	6.2
Q4	483.8	118.3	0.3	45.0	36.1	11.3	7.3
2012 Q1	484.8	122.0	0.3	41.6	36.0	13.7	8.4
<b>Female</b>							
2011 Q1	498.5	280.5	56.7	16.6	15.0	5.7	6.0
Q2	500.2	280.4	54.7	17.8	15.5	5.5	6.5
Q3	502.2	280.6	55.7	16.9	15.1	5.9	6.4
Q4	503.4	283.3	56.0	16.5	15.4	6.2	5.9
2012 Q1	504.8	288.1	57.9	15.8	15.0	5.7	5.6