

Labour force, Employment and Unemployment – Third quarter 2010

Introduction

1. This issue of Economic and Social Indicators (ESI) presents a set of estimates of labour force, employment and unemployment for the third quarter of 2010, based on the results of the Continuous Multi-Purpose Household Survey (CMPHS) from July to September 2010. The estimates refer to the Mauritian population aged 16 years and above.
2. Annual estimates of labour force including foreign workers derived after integrating data from CMPHS with other sources are given at Annex 3.

Key figures

	Q3 2009	Q2 2010	Q3 2010	Change	
				Q3 2010 - Q3 2009	Q3 2010 - Q2 2010
Labour force	569,400	586,700	586,600	+17,200	-100
Employment	527,300	541,900	542,200	+14,900	+300
Unemployment	42,100	44,800	44,400	+2,300	-400
Unemployment rate (%)	7.4	7.6	7.6	+0.2	0.0
Seasonally adjusted unemployment rate (%)	7.7	7.0	7.9	+0.2	+0.9

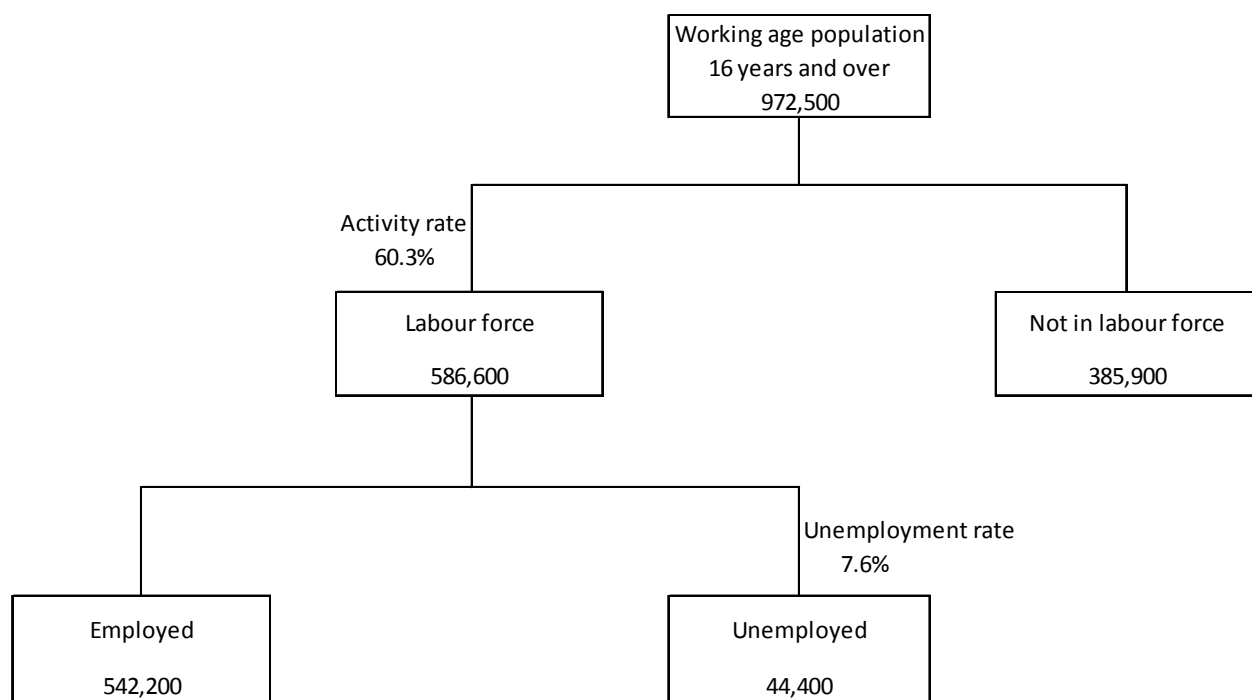
Forecast of employment and unemployment - Year 2010

	Year 2009	Forecast Year 2010	Change
Employment	524,800	536,500	+11,700
Unemployment	41,500	43,700	+2,200
Unemployment rate (%)	7.3	7.5	+0.2

Labour market overview, third quarter 2010

3. Compared with the corresponding quarter of 2009, there has been an increase in the labour force (+17,200) with a rise in both employment (+14,900) and unemployment (+2,300).
4. Compared with the previous quarter, labour force decreased marginally by 100; employment increased by 300 while unemployment decreased by 400.

Chart 1: The Labour Market, 3rd quarter 2010



Labour force participation

5. The activity rate for third quarter 2010 was 60.3%, up by 1.0 percentage point from 59.3% in the corresponding period one year earlier. Male activity rate increased by 1.1 percentage points to 76.9% while female activity rate increased by 1.0 percentage point to 44.3%.
6. Compared with the previous quarter, the activity rate decreased by 0.2 percentage point (from 60.5% to 60.3%) with an increase in male activity rate by 0.3 percentage point and a decrease in female activity rate by 0.6 percentage point.

Employment

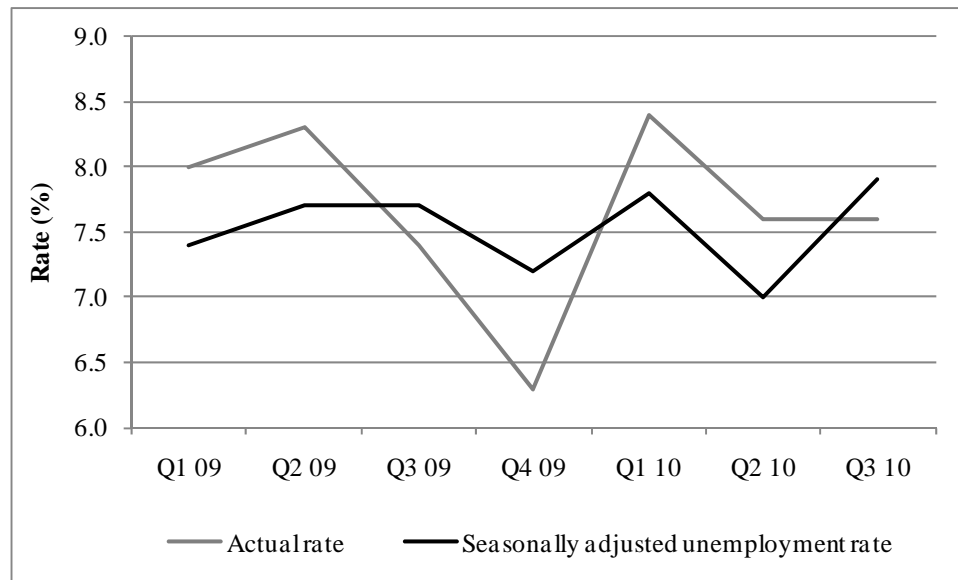
7. From third quarter 2009 to third quarter 2010, employment rose by 14,900 (+2.8%) to 542,200. This rise was driven by an increase of 8,100 in male employment to 350,900 and for female employment by 6,800 to 191,300.
8. Compared with the previous quarter, employment increased slightly by 300 with a rise of 4,600 in male employment and a fall of 4,300 in female employment.

Unemployment

9. From third quarter 2009 to third quarter 2010, the number of unemployed persons increased by 2,300 to 44,400. This rise was due to an increase of 1,300 and 1,000 in the number of unemployed males and female respectively.
10. The main characteristics of the unemployed as at third quarter 2010 were as follows:
 - (i) The 44,400 unemployed comprised 16,200 males (36%) and 28,200 females (64%).
 - (ii) Around 18,000 (41%) of them were aged below 25 years.
 - (iii) Slightly more than half (22,300) of the unemployed were single. Among males, the majority (80%) was single while among females, the majority (67%) was ever married.
 - (iv) Some 6,700 or 15% had not reached the Certificate of Primary Education (CPE) level or equivalent and a further 20,000 (45%) did not have the Cambridge School Certificate (SC) or equivalent.
 - (v) Around 34,600 (78%) had been looking for work for up to one year and the remaining 9,800 (22%) for more than one year.
 - (vi) About 30,000 (68%) had working experience and 14,400 (32%) were looking for a job for the first time.
 - (vii) Around 19,800 (45%) were registered at the Employment Service.
 - (viii) There were 9,900 (22%) young persons aged 16 to 24 years, not yet married and looking for a first job. Some 3,700 (37%) of them had not passed SC.
 - (ix) Ever married (including widowed, divorced or separated) unemployed persons aged 25 to 44 years and having worked before numbered 13,800. Among them, about 6,000 (43%) had not passed SC.
 - (x) 3,400 or 8% of the unemployed were heads of households.
 - (xi) 4,900 (11%) lived in households with no employed persons.

11. The unemployment rate increased by 0.2 percentage point to 7.6% from third quarter 2009 to third quarter 2010. Male unemployment rate increased by 0.2 percentage point to 4.4% whilst female unemployment rate remained unchanged at 12.8%.
12. When compared with second quarter of 2010, the number of unemployed persons slightly decreased by 400; male unemployed fell by 1,900 while their female counterpart rose by 1,500. The unemployment rate stood at 7.6%, same level as that of the previous quarter.

Chart 2: Actual and seasonally adjusted unemployment rate by quarter, 1st quarter 2009 – 3rd quarter 2010



13. Unemployment rate is usually higher in the first half of the year because of school leavers joining the labour market, and lower in the second half with more casual jobs being available mainly in the trade sector (street vendors, salespersons in shops, etc.) at the end of the year. In order to observe the real trend over time, adjustments have to be made for seasonal fluctuations. Seasonally adjusted unemployment rate for the third quarter of 2010 was 7.9%, higher than the rate of 7.0% for the second quarter of 2010 and 7.7% for the third quarter of 2009.

Economically inactive population

14. The number of persons aged 16 years and over, not forming part of the labour force (inactive population) was estimated at 385,900 at third quarter 2010.

15. Among them, 3,100 persons were not working and available for work but were not actively looking for work. These persons have not been classified as unemployed since they did not satisfy all the three criteria for unemployment, i.e. not working, looking for work and available for work. From the survey responses, about 70% of those inactives either believed that suitable jobs were not available or did not know where to look for work.
16. The inactive population was made up of 110,000 males and 275,900 females. Among inactive males, 44% were 'retired or old persons' and 39% were students. Among females, 61% were homemakers and 17% students.

Sampling errors

17. The estimates in this publication are based on the results of a sample survey and are thus subject to sample variability. Standard errors and confidence intervals give an indication of this variability.
18. The standard error of the estimates and the 95% confidence interval which represent a 95% chance that the true value lies within that interval, are given in the table that follows.

Estimated labour force, employment and unemployment by sex, 3rd quarter 2009 –
3rd quarter 2010

Both Sexes

		Estimates	Standard Error	95% confidence interval	
				Lower limit	Upper limit
Labour force					
	2009 Q3	569,400	13,300	543,300	595,500
	Q4	572,200	15,900	540,800	603,500
	2010 Q1	572,400	12,100	548,500	596,300
	Q2	586,700	15,900	555,300	617,800
	Q3	586,600	12,000	562,900	610,200
Employment					
	2009 Q3	527,300	12,500	502,600	551,800
	Q4	536,400	15,400	505,900	566,600
	2010 Q1	524,400	11,400	502,000	546,900
	Q2	541,900	15,400	511,400	572,100
	Q3	542,200	11,200	520,100	564,100
Unemployment					
	2009 Q3	42,100	3,000	36,200	48,000
	Q4	35,800	2,800	30,500	41,300
	2010 Q1	48,000	3,000	42,100	53,800
	Q2	44,800	2,800	39,200	50,400
	Q3	44,400	3,200	38,200	50,700
Unemployment rate, %					
	2009 Q3	7.4	0.5	6.4	8.4
	Q4	6.3	0.5	5.4	7.2
	2010 Q1	8.4	0.5	7.4	9.3
	Q2	7.6	0.5	6.7	8.6
	Q3	7.6	0.5	6.6	8.6
Activity rate, %					
	2009 Q3	59.3	0.6	58.0	60.5
	Q4	59.4	0.7	58.0	60.7
	2010 Q1	59.2	0.6	57.9	60.4
	Q2	60.5	0.6	59.3	61.6
	Q3	60.3	0.7	59.0	61.6

Estimated labour force, employment and unemployment by sex, 3rd quarter 2009 –
3rd quarter 2010

Male

		Estimates	Standard Error	95% confidence interval	
				Lower limit	Upper limit
Labour force					
	2009 Q3	357,700	8,500	341,000	374,300
	Q4	360,300	10,300	340,000	380,600
	2010 Q1	357,700	7,800	342,300	373,200
	Q2	364,400	11,700	341,200	387,400
	Q3	367,100	8,300	350,800	383,400
Employment					
	2009 Q3	342,800	8,300	326,300	359,100
	Q4	346,800	10,200	326,600	366,900
	2010 Q1	338,400	7,500	323,600	353,300
	Q2	346,300	11,300	323,900	368,500
	Q3	350,900	7,900	335,400	366,400
Unemployment					
	2009 Q3	14,900	1,800	11,500	18,400
	Q4	13,500	1,700	10,300	16,900
	2010 Q1	19,300	1,900	15,600	23,000
	Q2	18,100	1,700	14,700	21,500
	Q3	16,200	1,700	12,800	19,600
Unemployment rate, %					
	2009 Q3	4.2	0.5	3.2	5.1
	Q4	3.7	0.5	2.9	4.7
	2010 Q1	5.4	0.5	4.4	6.4
	Q2	5.0	0.5	4.1	5.8
	Q3	4.4	0.4	3.5	5.3
Activity rate, %					
	2009 Q3	75.8	0.8	74.3	77.4
	Q4	76.2	0.8	74.7	77.7
	2010 Q1	75.4	0.7	74.0	76.8
	Q2	76.6	0.8	75.0	78.1
	Q3	76.9	0.7	75.5	78.4

Estimated labour force, employment and unemployment by sex, 3rd quarter 2009 –
3rd quarter 2010

Female					
		Estimates	Standard Error	95% confidence interval	
				Lower limit	Upper limit
Labour force					
	2009 Q3	211,700	6,500	198,900	224,600
	Q4	211,900	7,000	198,100	225,600
	2010 Q1	214,700	6,400	202,100	227,200
	Q2	222,300	6,400	209,700	234,900
	Q3	219,500	6,000	207,600	231,300
Employment					
	2009 Q3	184,500	6,000	172,800	196,300
	Q4	189,600	6,800	176,200	202,900
	2010 Q1	186,000	6,000	174,200	197,700
	Q2	195,600	6,200	183,400	207,700
	Q3	191,300	5,700	180,000	202,400
Unemployment					
	2009 Q3	27,200	2,200	22,900	31,600
	Q4	22,300	2,000	18,500	26,200
	2010 Q1	28,700	2,200	24,400	33,000
	Q2	26,700	2,000	22,700	30,700
	Q3	28,200	2,200	23,800	32,700
Unemployment rate, %					
	2009 Q3	12.8	1.0	11.0	14.7
	Q4	10.5	0.9	8.8	12.3
	2010 Q1	13.4	0.9	11.5	15.2
	Q2	12.0	0.9	10.3	13.8
	Q3	12.8	1.0	11.0	14.8
Activity rate, %					
	2009 Q3	43.3	0.9	41.4	45.1
	Q4	43.2	1.0	41.3	45.1
	2010 Q1	43.5	1.0	41.6	45.4
	Q2	44.9	0.9	43.1	46.8
	Q3	44.3	1.0	42.4	46.2

Longer time series

19. The following graphs show the series for employment, unemployment and activity rate over a six year period.

Chart 3: Employment by quarter, 1st quarter 2004 – 3rd quarter 2010

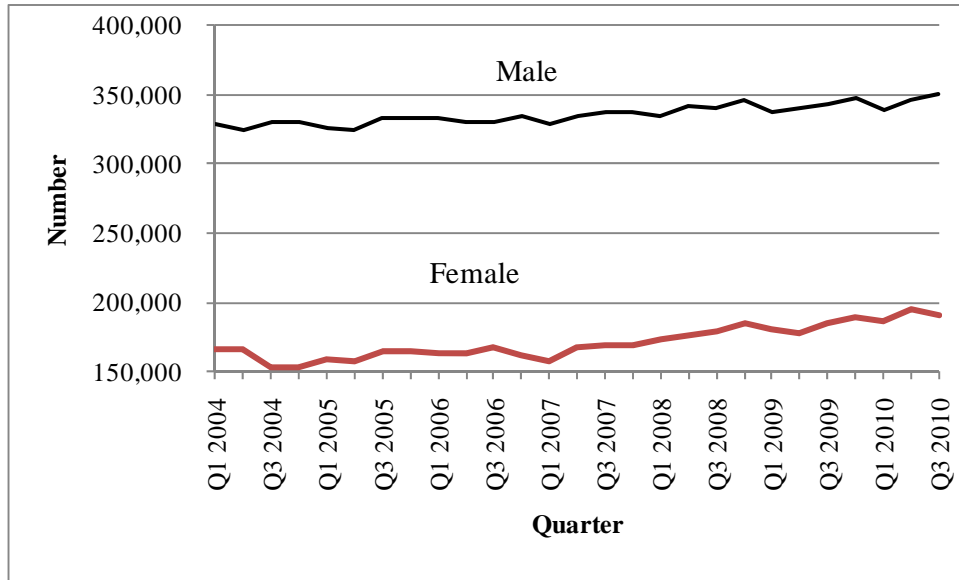


Chart 4: Unemployment rate by quarter, 1st quarter 2004 – 3rd quarter 2010

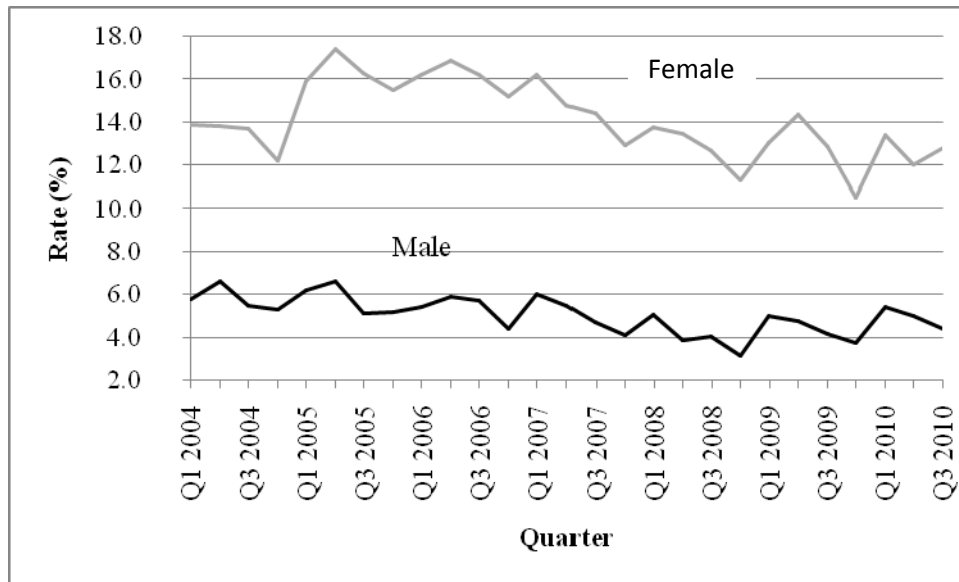


Chart 5: Activity rate by quarter, 1st quarter 2004 – 3rd quarter 2010

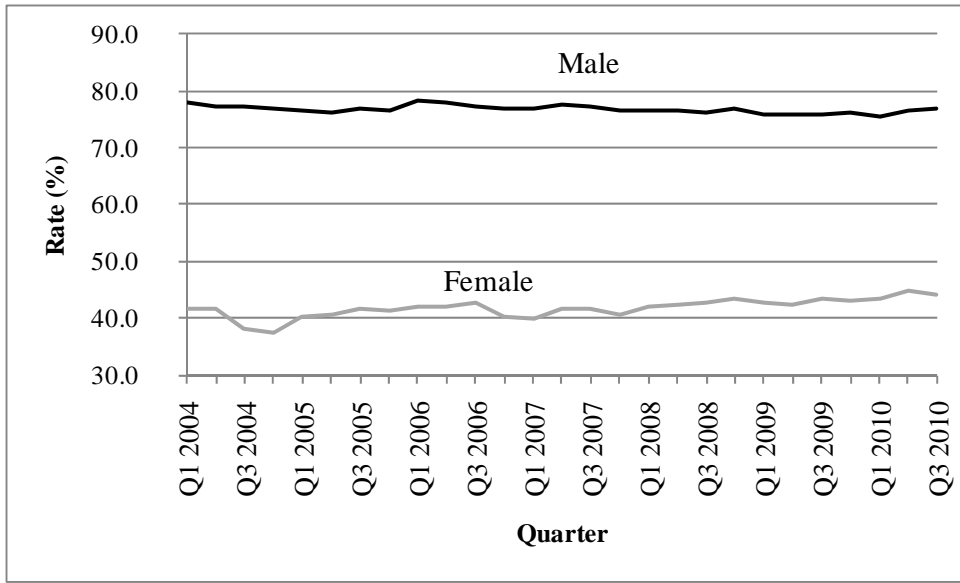
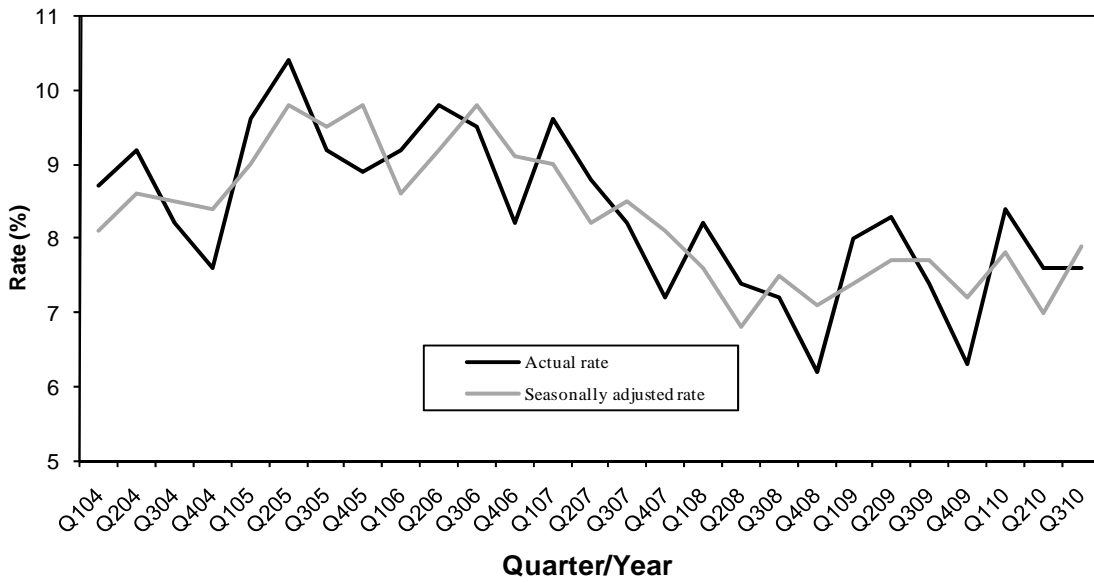


Chart 6: Actual and seasonally adjusted unemployment rate, 1st quarter 2004 – 3rd quarter 2010



The following tables are available together with the web version of this publication and can be downloaded from the CSO website at <http://statsmauritius.gov.mu>. From the homepage, click on 'Statistics by subject' followed by 'labour' then select the appropriate publication under the heading 'Publications – Economic and Social Indicators'.

List of tables

Table 1: Labour market activity by status, 3rd Quarter 2009 to 3rd Quarter 2010

Table 2: Labour force characteristics by age and sex, 3rd Quarter 2010

Table 3: Employment by industrial activity, 3rd Quarter 2009 to 3rd Quarter 2010

Table 4: Employment by occupational group, 3rd Quarter 2009 to 3rd Quarter 2010

Table 5: Employment by hours worked, 3rd Quarter 2009 to 3rd Quarter 2010

Table 6: Unemployment by educational attainment, 3rd Quarter 2009 to 3rd Quarter 2010

Table 7: Unemployment by age, 3rd Quarter 2009 to 3rd Quarter 2010

Table 8: Unemployment by work experience, 3rd Quarter 2009 to 3rd Quarter 2010

Table 9: Economically inactive population by reason, 3rd Quarter 2009 to 3rd Quarter 2010

Central Statistics Office

Ministry of Finance and Economic Development

Port Louis

December 2010

Contact persons:	(1) C. K. Arianaick (statistician) Email: carianaick@mail.gov.mu
	(2) Mrs C. Bandinah (statistician) Email: cs0_cmphs@mail.gov.mu
	Central Statistics Office LIC Centre, Port Louis Tel: 2122316, 2122317 Fax: 2114150

NOTES

Release of Labour Force data

Labour Force statistics are compiled and published in the “Economic and Social Indicators” in March, June, September and December according to an advance calendar posted on the website of the Central Statistics Office (<http://statsmauritius.gov.mu>). This issue provides data for the third quarter 2010 compared to the same quarter a year ago.

However, where appropriate, historical series are also provided for the main indicators.

The CMPHS Survey methodology

Data collection

Face to face interviews of household members are carried out by qualified interviewers recruited by the office.

Frequency of data collection

Data collection is carried out monthly except in 2004 when it was carried out every quarter. Up to 2005, the reference period for data on labour force was the last week of the survey month. As from 2006, the reference week has been changed to the second week of the survey month so that estimates can be published within one quarter of the reference period, as required by the IMF Special Data Dissemination System (SDDS) to which the country expects to graduate by January 2011.

Scope and coverage of collection

All private Mauritian households in the islands of Mauritius and Rodrigues are covered.

Sampling method

A Stratified two-stage sampling design is used. At the first stage, Primary Sampling Units (PSUs) are selected with probability proportional to size and at the second stage, a fixed number of households is selected from each selected PSU.

Prior to 2005, the first stage stratification factors were urban, semi urban and rural geographical locations. As from 2005, the Relative Development Index (RDI) is used as the spatial stratification factor. This index is based on 12 variables encompassing housing and living conditions, literacy and education, and employment derived from the 2000 Housing and Population Census to rank PSUs. A set of RDIs for administrative regions has been published in the series "Economic and Social Indicators" - Issue No. 393.

The second stage stratification criteria are community, household size and average monthly expenditure of the household.

Sample size

From 1999 to 2003, around 6,500 households were covered each year. In 2004, the sample was increased to 8,640 so that reliable quarterly estimates of labour force, employment and unemployment could be worked out. As from 2005, the sample for the year has been further increased to 11,280. Furthermore, in order to measure quarterly changes, 50% of the households sampled in a quarter are re-interviewed in the following quarter; for example, 50% of the households sampled in the first quarter of 2005 have been re-interviewed in the second quarter of 2005.

Questionnaire

The CMPHS questionnaire comprises three modules: a basic module common to all rounds of the survey covering the general characteristics of the population (b) a second module covering labour force with in-depth investigation and a core set of questions which are kept constant at all rounds of the survey and (c) a third module grouping other topics of interest but investigated in less details.

Estimation and reliability of results

Estimates worked out from household survey data are inevitably subject to sampling variability since they are based on information collected from only a sample of households rather than from all households. The Standard Error (S.E) which is a measure of this variability, used to set confidence intervals for any estimate (whether a total or a rate) derived from the sample. For example, a 95% confidence interval indicates that there is 95% chance that the upper and lower limits of the interval enclose the true value (which would be obtained if all households had been surveyed). Standard errors and confidence intervals are calculated for the main labour force estimates.

Definitions

Household

A household is defined as either a person living on his/her own or a group of two or more persons, who may or may not be related, but who live together and make common provision for food and other essentials for living.

Employment

Employed population consists of Mauritians aged 16 years and above (16+) who have worked for pay, profit or family gain for at least one hour during the reference week of a month. It includes those who are temporarily absent from work for reasons such as leave with pay, leave without pay and temporary disorganisation of work (bad weather, break down of equipment, lack of order, etc.).

It is to be noted that as from year 2007, labour force estimates are based on population aged 16 years and above, following the amendment to the Labour Act in December 2006 whereby the minimum legal working age is 16 years, and the subsequent recommendation by the ILO to be in line with the amended Labour Act.

Unemployment

Unemployed population comprises all Mauritians aged 16+ who are not working but who are looking for work and are available for work during the reference period.

Labour force

Labour force or active population is made up of employed and unemployed population.

Unemployment rate

Unemployment rate is the ratio (%) of unemployment to labour force.

Inactive population

Inactive population includes all Mauritians aged 16+ years, not forming part of the labour force for reasons such as attendance at educational institutions, engagement in household duties, retirement, old age and infirmity/disablement.

Activity rate

Activity rate is the ratio (%) of labour force to population aged 16+ (active and inactive population).

Employer

An employer is a person who operates his/her own business or trade and hires one or more employees.

Own account worker

An Own account worker is a person who operates his/her own business or trade but does not hire employees. He/She may be working alone or with the help of contributing family workers.

Employee

An Employee is a person who works for pay for someone else, even in a temporary capacity.

Apprentice

An Apprentice is a person being trained for a job or trade and does not receive pay or may just receive some pocket money; an apprentice is considered as an employee.

Contributing family worker

A Contributing family worker is a person who works without pay in an enterprise operated by a family member.

Educational attainment

Primary: comprises persons who have studied up to a “Standard” between Standard 1 and the Certificate of Primary Education (CPE) or equivalent.

Secondary: comprises persons who have studied up to a “Form” between Form 1 and the Higher School Certificate (HSC) or equivalent.

Tertiary: comprises persons who in addition to their secondary educational certificates (SC and HSC or equivalent) also possess either a certificate/diploma (which is above the HSC but below a first degree) or a degree.

Annual labour force estimates based on data from different data sources, 2002 - 2010

	Labour force			Employment				Unemployment ¹	
	Mauritians aged 16+	Foreign workers	Total	in large establishments	outside large establishments	Total	of whom Mauritians	Number	Rate
	(000s)	(000s)	(000s)	(000s)	(000s)	(000s)	(000s)	(000s)	(%)
Both sexes									
2002	513.0	17.0	530.0	297.2	196.0	493.2	476.2	36.8	7.2
2003	520.9	18.2	539.1	296.9	202.1	499.0	480.8	40.1	7.7
2004	531.3	17.5	548.8	293.3	210.9	504.2	486.7	44.6	8.4
2005	542.5	16.6	559.1	292.2	215.0	507.2	490.6	51.9	9.6
2006	548.4	16.7	565.1	295.1	220.2	515.3	498.6	49.8	9.1
2007	548.9	21.6	570.5	302.0	221.7	523.7	502.1	46.8	8.5
2008	559.4	24.0	583.4	311.6	231.4	543.0	519.0	40.4	7.2
2009	566.3	21.0	587.3	306.0	239.8	545.8	524.8	41.5	7.3
2010 ²	580.2	22.2	602.4	310.6	248.1	558.7	536.5	43.7	7.5
Change current year over previous:	13.9	1.2	15.1	4.6	8.3	12.9	11.7	2.2	0.2
Male									
2002	339.8	6.4	346.2	188.2	140.0	328.2	321.8	18.0	5.3
2003	343.1	7.9	351.0	188.2	143.2	331.4	323.5	19.6	5.7
2004	347.8	9.0	356.8	189.1	147.7	336.8	327.8	20.0	5.8
2005	349.6	9.1	358.7	189.3	149.2	338.5	329.4	20.2	5.8
2006	351.4	8.3	359.7	190.0	150.5	340.5	332.2	19.2	5.5
2007	353.6	12.1	365.7	195.6	151.5	347.1	335.0	18.6	5.3
2008	355.6	14.7	370.3	201.0	154.7	355.7	341.0	14.6	4.1
2009	358.1	13.0	371.1	198.0	157.3	355.3	342.3	15.8	4.4
2010 ²	363.4	13.2	376.6	199.3	160.3	359.6	346.4	17.0	4.7
Change current year over previous:	5.3	0.2	5.5	1.3	3.0	4.3	4.1	1.2	0.3
Female									
2002	173.2	10.6	183.8	109.0	56.0	165.0	154.4	18.8	10.9
2003	177.8	10.3	188.1	108.7	58.9	167.6	157.3	20.5	11.5
2004	183.5	8.5	192.0	104.2	63.2	167.4	158.9	24.6	13.4
2005	192.9	7.5	200.4	102.9	65.8	168.7	161.2	31.7	16.4
2006	197.0	8.4	205.4	105.1	69.7	174.8	166.4	30.6	15.5
2007	195.3	9.5	204.8	106.4	70.2	176.6	167.1	28.2	14.4
2008	203.8	9.3	213.1	110.6	76.7	187.3	178.0	25.8	12.7
2009	208.2	8.0	216.2	108.0	82.5	190.5	182.5	25.7	12.3
2010 ²	216.8	9.0	225.8	111.3	87.8	199.1	190.1	26.7	12.3
Change current year over previous:	8.6	1.0	9.6	3.3	5.3	8.6	7.6	1.0	0.0

Note:

The above figures have been worked out in order to give a set of comparable labour force estimates obtained from different sources. Users are cautioned in the use of these figures given that there are differences related to the reference period, coverage and methodology. The different sources from which these estimates have been obtained are as follows:

- i CMPHS for Mauritian labour force estimates which are subject to sampling variability as mentioned at paragraph 17.
- ii The Annual Survey of Employment and Earnings (SEE) carried out in March of each year. Employment figures refer to jobs in large establishments employing 10 or more persons and include both Mauritians and foreign workers.
- iii Employment in 'other than large' establishments has been estimated after reconciling data from CMPHS, SEE and administrative sources.

¹ Unemployment figures and rate refer to Mauritians

² Forecast

Table 1: Labour market activity by status, 3rd Quarter 2009 to 3rd Quarter 2010

In thousands

	Total Mauritian population aged 16 & over	In employment					Unemployed	Total econ. active	Total econ. inactive
		Employees	Employers	Own account workers	Contrib. family workers	Total			
Both sexes									
2009 Q3	960.8	424.1	26.1	66.9	10.2	527.3	42.1	569.4	391.4
Q4	963.9	425.8	20.6	76.3	13.7	536.4	35.8	572.2	391.7
2010 Q1	967.3	425.0	17.9	68.2	13.3	524.4	48.0	572.4	394.9
Q2	970.5	433.1	23.9	72.7	12.2	541.9	44.8	586.7	383.8
Q3	972.5	429.2	21.7	78.0	13.3	542.2	44.4	586.6	385.9
% change, latest quarter over:									
previous quarter	0.2	-0.9	-9.2	7.3	9.0	0.1	-0.9	0.0	0.5
same quarter a year ago	1.2	1.2	-16.9	16.6	30.4	2.8	5.5	3.0	-1.4
Male									
2009 Q3	471.6	267.3	22.0	51.4	2.1	342.8	14.9	357.7	113.9
Q4	472.9	268.1	17.3	58.3	3.1	346.8	13.5	360.3	112.6
2010 Q1	474.3	268.4	14.5	52.8	2.7	338.4	19.3	357.7	116.6
Q2	475.8	269.8	20.4	52.3	3.8	346.3	18.1	364.4	111.4
Q3	477.1	269.5	18.6	60.0	2.8	350.9	16.2	367.1	110.0
% change, latest quarter over:									
previous quarter	0.3	-0.1	-8.8	14.7	-26.3	1.3	-10.5	0.7	-1.3
same quarter a year ago	1.2	0.8	-15.5	16.7	33.3	2.4	8.7	2.6	-3.4
Female									
2009 Q3	489.2	156.8	4.1	15.5	8.1	184.5	27.2	211.7	277.5
Q4	491.0	157.7	3.3	18.0	10.6	189.6	22.3	211.9	279.1
2010 Q1	493.0	156.6	3.4	15.4	10.6	186.0	28.7	214.7	278.3
Q2	494.7	163.3	3.5	20.4	8.4	195.6	26.7	222.3	272.4
Q3	495.4	159.7	3.1	18.0	10.5	191.3	28.2	219.5	275.9
% change, latest quarter over:									
previous quarter	0.1	-2.2	-11.4	-11.8	25.0	-2.2	5.6	-1.3	1.3
same quarter a year ago	1.3	1.8	-24.4	16.1	29.6	3.7	3.7	3.7	-0.6

Table 2: Labour force characteristics by age and sex, 3rd Quarter 2010

In thousands

	Mauritian aged	Age group (years)				
	16 and over	16-24	25 - 29	30 - 39	40 - 49	50+
Both sexes						
In employment	542,200	61,900	67,300	147,300	140,800	124,900
Unemployed	44,400	18,000	8,100	10,500	5,800	2,000
Labour force	586,600	79,900	75,400	157,800	146,600	126,900
Economically inactive	385,900	101,800	20,000	40,500	48,100	175,500
Total Population	972,500	181,700	95,400	198,300	194,700	302,400
Employment rate (%)	92.4	77.5	89.3	93.3	96.0	98.4
Unemployment rate (%)	7.6	22.5	10.7	6.7	4.0	1.6
Activity rate (%)	60.3	44.0	79.0	79.6	75.3	42.0
Male						
In employment	350,900	38,800	42,500	93,700	91,300	84,600
Unemployed	16,200	9,100	3,200	2,000	1,000	900
Labour force	367,100	47,900	45,700	95,700	92,300	85,500
Economically inactive	110,000	44,900	3,200	2,700	4,500	54,700
Total Population	477,100	92,800	48,900	98,400	96,800	140,200
Employment rate (%)	95.6	81.0	93.0	97.9	98.9	98.9
Unemployment rate (%)	4.4	19.0	7.0	2.1	1.1	1.1
Activity rate (%)	76.9	51.6	93.5	97.3	95.4	61.0
Female						
In employment	191,300	23,100	24,800	53,600	49,500	40,300
Unemployed	28,200	8,900	4,900	8,500	4,800	1,100
Labour force	219,500	32,000	29,700	62,100	54,300	41,400
Economically inactive	275,900	56,900	16,800	37,800	43,600	120,800
Total Population	495,400	88,900	46,500	99,900	97,900	162,200
Employment rate (%)	87.2	72.2	83.5	86.3	91.2	97.3
Unemployment rate (%)	12.8	27.8	16.5	13.7	8.8	2.7
Activity rate (%)	44.3	36.0	63.9	62.2	55.5	25.5

Table 3: Employment by industrial activity, 3rd Quarter 2009 to 3rd Quarter 2010

	Total employed aged 16+	Primary sector	Secondary sector	Tertiary sector	Selected NSIC* Sections				
					Manufacturing	Construction	Wholesale and retail trade	Other services	
					C	F	G	H - Q	
	(000s)	(%)	(%)	(%)	(%)	(%)	(%)	(%)	
Both sexes									
2009 Q3	527.3	9.2	29.3	61.5	17.7	10.9	13.7	47.8	
Q4	536.4	9.4	29.6	61.0	18.3	10.7	14.2	46.8	
2010 Q1	524.4	8.2	29.4	62.4	18.2	10.6	13.8	48.6	
Q2	541.9	8.2	28.1	63.7	16.4	10.9	14.9	48.8	
Q3	542.2	9.5	27.1	63.4	15.3	11.1	14.0	49.4	
Male									
2009 Q3	342.8	9.8	33.2	57.0	15.9	16.4	13.0	44.0	
Q4	346.8	10.1	33.0	56.9	16.4	16.1	14.0	42.9	
2010 Q1	338.4	8.6	32.3	59.1	15.5	16.0	14.0	45.1	
Q2	346.3	9.0	31.7	59.3	14.1	16.4	14.2	45.1	
Q3	350.9	10.2	31.5	58.3	14.0	16.6	12.8	45.5	
Female									
2009 Q3	184.5	8.2	22.1	69.7	21.2	0.8	15.0	54.7	
Q4	189.6	8.3	23.2	68.5	22.0	1.0	14.6	53.9	
2010 Q1	186.0	7.7	24.0	68.3	23.1	0.7	13.4	54.9	
Q2	195.6	6.9	21.7	71.4	20.4	1.2	16.3	55.1	
Q3	191.3	8.2	19.0	72.8	17.8	1.2	16.2	56.6	

* National version of the International Standard Industrial Classification (ISIC Revision 3)

Table 4: Employment by occupational group, 3rd Quarter 2009 to 3rd Quarter 2010

		ISCO (International Standard Classification of Occupations)					
		Total employed aged 16+	Managers, senior officials & professionals	Admin & Secretarial staff	Service workers	Agricultural & trade workers, operators	Elementary occupations
		(000s)	1,2,3 (%)	4 (%)	5 (%)	6,7,8 (%)	9 (%)
Both sexes							
	2009 Q3	527.3	17.2	9.2	18.5	34.7	20.4
	Q4	536.4	16.2	9.7	19.8	35.3	19.0
	2010 Q1	524.4	18.6	9.9	18.9	33.5	19.1
	Q2	541.9	17.3	10.0	19.7	33.6	19.4
	Q3	542.2	17.0	10.5	19.2	33.7	19.6
Male							
	2009 Q3	342.8	15.3	5.7	17.3	43.3	18.4
	Q4	346.8	14.0	6.1	18.1	44.1	17.7
	2010 Q1	338.4	16.8	6.1	18.3	41.5	17.3
	Q2	346.3	15.3	6.6	18.6	42.4	17.1
	Q3	350.9	15.2	7.1	16.8	43.6	17.3
Female							
	2009 Q3	184.5	20.7	15.6	20.5	18.9	24.3
	Q4	189.6	20.1	16.2	23.0	19.2	21.5
	2010 Q1	186.0	21.9	16.5	20.2	18.9	22.5
	Q2	195.6	20.9	16.0	21.7	17.9	23.5
	Q3	191.3	20.3	16.7	23.6	15.6	23.8

Table 5: Employment by hours worked, 3rd Quarter 2009 to 3rd Quarter 2010

	Total employed aged 16+ (000's)	Total hours worked	% having worked for:					Average number of hours worked
			0 hour	1 to 23 hours	24 to 40 hours	41 to 50 hours	51 and above	
Both sexes								
2009 Q3	527.3	20,900	4.1	8.1	37.9	31.9	18.0	41.5
Q4	536.4	20,900	5.5	8.6	38.0	29.7	18.2	41.3
2010 Q1	524.4	19,000	3.9	11.3	48.5	22.9	13.4	37.7
Q2	541.9	21,000	4.2	9.9	39.0	30.4	16.5	38.8
Q3	542.2	21,000	4.8	9.4	38.0	30.7	17.1	41.1
Male								
2009 Q3	342.8	14,300	3.9	5.1	34.8	34.4	21.8	43.9
Q4	346.8	14,500	4.4	5.2	36.3	32.0	22.1	43.9
2010 Q1	338.4	12,900	4.5	7.6	46.5	25.1	16.3	39.9
Q2	346.3	14,100	4.2	6.8	36.9	32.2	19.9	40.8
Q3	350.9	14,300	5.1	6.6	34.4	33.5	20.4	43.5
Female								
2009 Q3	184.5	6,600	4.4	13.7	43.6	27.1	11.2	37.1
Q4	189.6	6,400	7.6	14.9	41.0	25.5	11.0	36.5
2010 Q1	186.0	6,100	2.7	17.9	52.3	19.0	8.1	33.8
Q2	195.6	6,900	4.1	15.5	42.9	27	10.5	35.2
Q3	191.3	6,700	4.6	14.4	44.4	25.7	10.9	36.9

Table 6: Unemployment by educational attainment, 3rd Quarter 2009 to 3rd Quarter 2010

	Unemployed Mauritians aged 16+ (000s)	Primary			Secondary				Tertiary	
		Total (%)	Below CPE (%)	Passed CPE (%)	Total (%)	Below SC (%)	Passed SC (%)	Passed HSC (%)	(%)	
Both sexes										
2009 Q3	42.1	28.8	18.9	9.9	66.2	37.4	20.5	8.3	5.0	
Q4	35.8	29.3	22.4	6.9	64.5	34.4	21.2	8.9	6.2	
2010 Q1	48.0	30.8	20.8	10.0	61.3	34.1	19.5	7.7	7.9	
Q2	44.8	28.8	18.3	10.5	64.9	34.1	19.3	11.5	6.3	
Q3	44.4	25.5	15.2	10.3	64.8	34.6	21.0	9.2	9.7	
Male										
2009 Q3	14.9	34.6	24.6	10.0	59.0	32.7	19.5	6.8	6.4	
Q4	13.5	32.6	26.5	6.1	59.6	36.4	18.0	5.2	7.8	
2010 Q1	19.3	32.7	24.1	8.6	57.9	40.7	10.2	7.0	9.4	
Q2	18.1	28.8	20.3	8.5	62.8	36.4	12.1	14.3	8.4	
Q3	16.2	23.7	16.4	7.3	62.0	29.7	20.5	11.8	14.3	
Female										
2009 Q3	27.2	25.7	15.8	9.9	70.2	40.0	21.1	9.1	4.1	
Q4	22.3	27.1	19.8	7.3	67.7	33.3	23.1	11.3	5.2	
2010 Q1	28.7	29.5	18.5	11.0	63.6	29.7	25.7	8.2	6.9	
Q2	26.7	28.7	16.9	11.8	66.3	32.7	24.1	9.5	5.0	
Q3	28.2	26.5	14.5	12.0	66.4	37.4	21.3	7.7	7.1	

Table 7: Unemployment by age, 3rd Quarter 2009 to 3rd Quarter 2010

	All aged 16 and over	Age group (years)		
		16-24	25-49	50+
Both sexes				
2009 Q3	42.1	15.8	24.4	1.9
Q4	35.8	13.9	19.9	2.0
2010 Q1	48.0	20.2	24.2	3.6
Q2	44.8	19.8	21.9	3.1
Q3	44.4	18.0	24.4	2.0
Change, latest quarter over:				
previous quarter	-0.4	-1.8	2.5	-1.1
same quarter a year ago	2.3	2.2	0.0	0.1
Male				
2009 Q3	14.9	7.2	6.6	1.1
Q4	13.5	6.7	6.1	0.7
2010 Q1	19.3	9.4	8.3	1.6
Q2	18.1	10.3	6.7	1.1
Q3	16.2	9.1	6.2	0.9
Change, latest quarter over:				
previous quarter	-1.9	-1.2	-0.5	-0.2
same quarter a year ago	1.3	1.9	-0.4	-0.2
Female				
2009 Q3	27.2	8.6	17.8	0.8
Q4	22.3	7.2	13.8	1.3
2010 Q1	28.7	10.8	15.9	2.0
Q2	26.7	9.5	15.2	2.0
Q3	28.2	8.9	18.2	1.1
Change, latest quarter over:				
previous quarter	1.5	-0.6	3.0	-0.9
same quarter a year ago	1.0	0.3	0.4	0.3

Table 8: Unemployment by work experience, 3rd Quarter 2009 to 3rd Quarter 2010

	Unemployed Mauritians aged 16+	No. of first job seekers	Unemployed with work experience by industry						
			Total	Manuf.	Construction	Trade	Hotels and restaurants	Other	
			(000s)	(%)	(%)	(%)	(%)	(%)	
Both sexes									
2009 Q3	42.1	14.0	28.1	36.2	11.6	12.6	7.9	31.7	
Q4	35.8	12.1	23.7	31.2	14.7	12.2	9.0	32.9	
2010 Q1	48.0	15.4	32.6	27.9	16.9	17.0	8.2	30.0	
Q2	44.8	15.5	29.3	24.8	13.4	16.5	9.2	36.1	
Q3	44.4	14.4	30.0	29.9	10.8	16.8	12.0	30.5	
Change, latest quarter over:									
previous quarter	-0.4	-1.1	0.7						
same quarter a year ago	2.3	0.4	1.9						
Male									
2009 Q3	14.9	3.9	11.0	24.3	29.8	5.3	5.8	34.8	
Q4	13.5	3.8	9.7	14.3	35.1	8.7	5.3	36.6	
2010 Q1	19.3	4.6	14.7	12.5	37.4	12.9	9.7	27.5	
Q2	18.1	6.5	11.6	15.5	33.8	7.1	11.6	32.0	
Q3	16.2	5.8	10.4	17.7	31.1	3.6	15.2	32.4	
Change, latest quarter over:									
previous quarter	-1.9	-0.7	-1.2						
same quarter a year ago	1.3	1.9	-0.6						
Female									
2009 Q3	27.2	10.1	17.1	43.9	0.0	17.3	9.2	29.6	
Q4	22.3	8.3	14.0	42.8	0.5	14.6	11.5	30.6	
2010 Q1	28.7	10.8	17.9	40.5	0.0	20.4	7.1	32.0	
Q2	26.7	9.0	17.7	30.9	0.0	22.7	7.7	38.7	
Q3	28.2	8.6	19.6	36.3	0.0	23.8	10.3	29.6	
Change, latest quarter over:									
previous quarter	1.5	-0.4	1.9						
same quarter a year ago	1.0	-1.5	2.5						

Table 9: Economically inactive population by reason, 3rd Quarter 2009 to 3rd Quarter 2010

	Total Mauritians aged 16+ (000s)	Economically inactive by reason						
		Total (000s)	Homemakers (%)	Retired or elderly (%)	Students (%)	Sick or disabled (%)	Other (%)	
Both sexes								
2009 Q3	960.8	391.4	46.1	20.9	23.1	7.2	2.7	
Q4	963.9	391.7	45.9	21.6	23.6	6.7	2.2	
2010 Q1	967.3	394.9	44.6	21.9	23.0	7.6	2.9	
Q2	970.5	383.8	43.7	23.1	22.9	7.5	2.8	
Q3	972.5	385.9	43.7	23.0	23.1	7.7	2.5	
Male								
2009 Q3	471.6	113.9	0.6	42.6	40.8	13.2	2.8	
Q4	472.9	112.6	0.4	44.4	42.0	10.7	2.5	
2010 Q1	474.3	116.6	0.2	43.4	40.4	12.3	3.7	
Q2	475.8	111.4	0.1	44.3	40.5	12.2	2.9	
Q3	477.1	110.0	0.0	44.2	39.3	12.7	3.8	
Female								
2009 Q3	489.2	277.5	64.5	12.1	15.9	4.7	2.8	
Q4	491.0	279.1	64.6	12.2	16.0	5.0	2.2	
2010 Q1	493.0	278.3	63.1	12.9	15.7	5.7	2.6	
Q2	494.7	272.4	61.7	14.3	15.6	5.5	2.9	
Q3	495.4	275.9	61.3	14.5	16.6	5.8	1.8	