

# EDUCATION STATISTICS - 2010

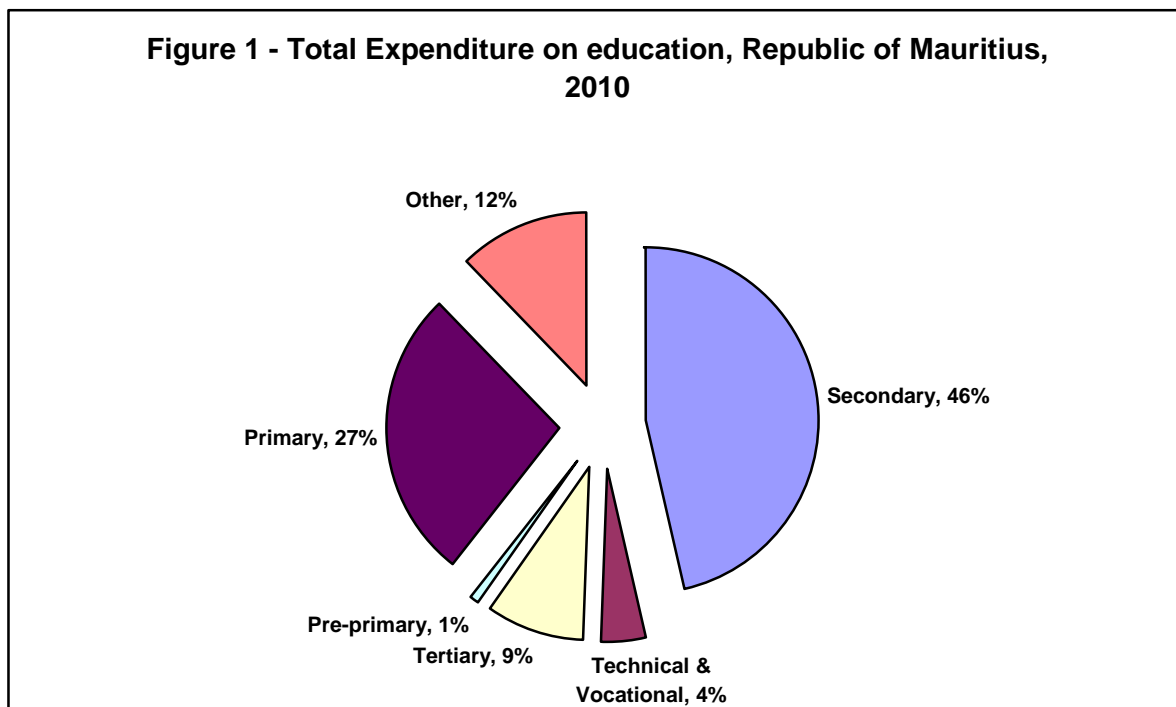
## 1. Introduction

This issue of the Economic and Social Indicators presents data on education, compiled on the basis of information collected through the annual survey conducted in schools in March 2010, together with data from other sources. The data refer to the Republic of Mauritius (excluding Agalega) and cover pre-primary, primary, secondary (academic and pre-vocational) and tertiary education. The main indicators on education for the period 2006 – 2010 are presented in Table 1.1. Figures for 2010 are provisional.

## 2. Expenditure

Total government expenditure estimates for the period 2010 is Rs 85,348 million, out of which, Rs 10,467 million (12%) has been allocated to education.

Out of the total budget on education and training for 2010, 46% is allocated to secondary education, 27% to primary education, 9% to tertiary education, 4% to technical and vocational education, 1% to pre-primary education and the remaining 12% to other expenses (Table 2.2 and Figure 1).



### **3. Pre-primary education**

#### **3.1 Schools**

In March 2010, there were 1,048 schools providing pre-primary education: 1,015 in the Island of Mauritius and 33 in Rodrigues. Of these schools, 799 (76%) were privately run institutions; 179 (17%), operating on government primary school premises, were administered by the Early Childhood Care and Education Authority (Ex Pre-School Trust Fund) and the remaining 70 (7%) were administered by either Roman Catholic (RC) or Hindu Education Authorities or Municipal/Village Councils (Table 3.1).

#### **3.2 Enrolment**

Total enrolment in pre-primary schools numbered 34,289, of whom 17,416 were boys and 16,873 girls (Table 3.3). The Gross Enrolment Ratio (pre-primary enrolment as a percentage of the population aged 4 and 5 years) works out to 94% in 2010.

#### **3.3 Personnel**

In March 2010, total employment in pre-primary schools stood at 3,210 of whom 2,313 were teachers and 897, non-teaching staff. The average number of pupils per teacher works out to 15.

### **4 Primary education**

#### **4.1 Schools**

In March 2010, there were 305 schools providing primary education: 291 in the Island of Mauritius and 14 in Rodrigues. The majority (222) of the schools were run by government, 51 by the Roman Catholic Education Authority (RCEA), 2 by the Hindu Education Authority and the other 30 were private non-aided schools.

#### **4.2 Enrolment**

The primary school population in the Republic of Mauritius stood at 117,427 in 2010 a decrease of 495 from 2009 figure. Boys represented 51% of the 2010 primary school population and girls 49%. Around 73% of the primary school population was enrolled in government schools and the remaining was in private aided and non-aided schools (Table 4.3).

Distribution by grade shows that the highest number of pupils was in standard VI (23,235 pupils including 4,090 repeaters). The Gross Enrolment Ratio (primary enrolment as a percentage of the population aged 6 to 11 years) works out to 101%, same as in 2009.

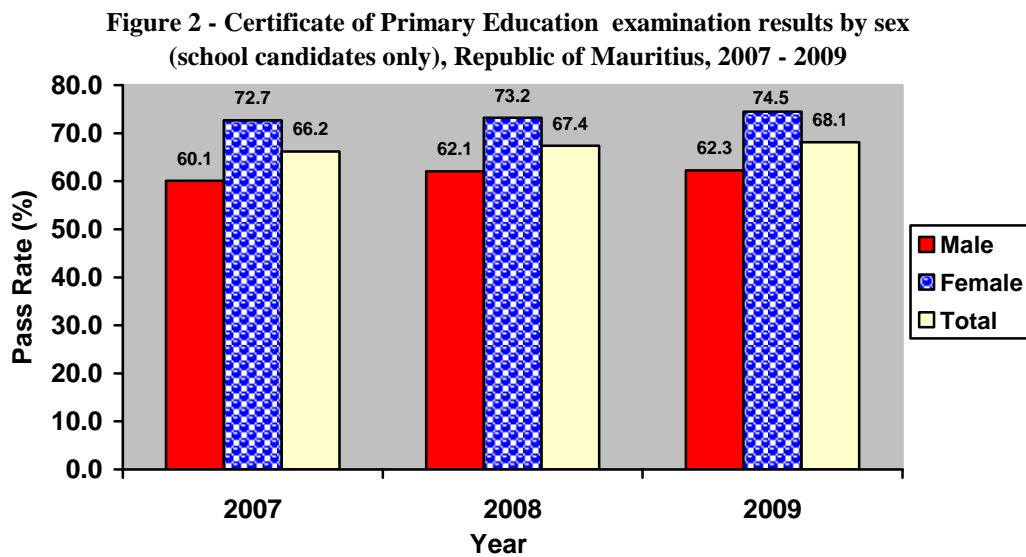
### 4.3 Personnel

At March 2010, 8,046 persons were employed in primary schools. Of this number, 5,435 were teaching staff: 4,126 General Purpose Teachers and 1,309 Oriental Language Teachers. The remaining 2,611 comprised 295 Head Teachers, 939 Deputy Head Teachers and 1,377 administrative and other workers (Table 4.9). The pupil/teacher (general purpose) ratio in primary schools works out to 28.

### 4.4 Certificate of Primary Education (CPE)

In 2009, the number of candidates who took part in the CPE examination was 25,146 (22,620 school candidates and 2,526 private candidates), with an overall pass rate of 64%.

The pass rate among school candidates, comprising 11,764 boys and 10,856 girls, was 68%. The girls were more successful than the boys, with respective pass rates of 75% and 62% (Table 4.12 and Figure 2).



The overall pass rate among the 2,526 private candidates (1,518 boys and 1,008 girls) was 28%, with girls again achieving better results than boys, 33% against 24% (Table 4.12).

School candidates who took part in the CPE examination for the first time did much better than those taking the examination a second time, 76% against 40% (Table 4.12).

## **5. Secondary and pre-vocational education**

### **5.1 General**

At March 2010, 63 schools were offering secondary academic education only, 5 pre-vocational education only and 119 both secondary academic and pre-vocational education.

### **5.2 Secondary education (Academic only)**

#### **5.2.1 Schools**

Out of the 182 schools dispensing secondary academic education, 177 were in the Island of Mauritius and 5 in Rodrigues. State administered schools numbered 69, while the other 113 were private aided and non-aided schools (Table 5.1).

#### **5.2.2 Enrolment**

Secondary education enrolment decreased by some 1,350 from 116,226 in 2009 to reach 114,879 in 2010. Table 5.3 shows that 60,096 (52%) were girls and 54,783 (48%) were boys. About 43% of the secondary school population were in state schools and 57% in private (aided and unaided) schools. Gross Enrolment Ratio (secondary education enrolment as a percentage of the population aged 12 to 19 years) for the academic stream works out to 68% in 2010.

### **5.3 Pre-vocational education**

#### **5.3.1 Schools**

At March 2010, 124 schools were offering pre-vocational education: 119 in the Island of Mauritius and 5 in Rodrigues. Forty-nine of these schools were state pre-vocational schools while the remaining 75 were private schools.

#### **5.3.2 Enrolment**

Enrolment in the schools offering pre-vocational education was 7,442 comprising 4,764 boys and 2,678 girls (Table 5.11). About 29% of the students in pre-vocational schools were in state schools.

## 5.4 Personnel

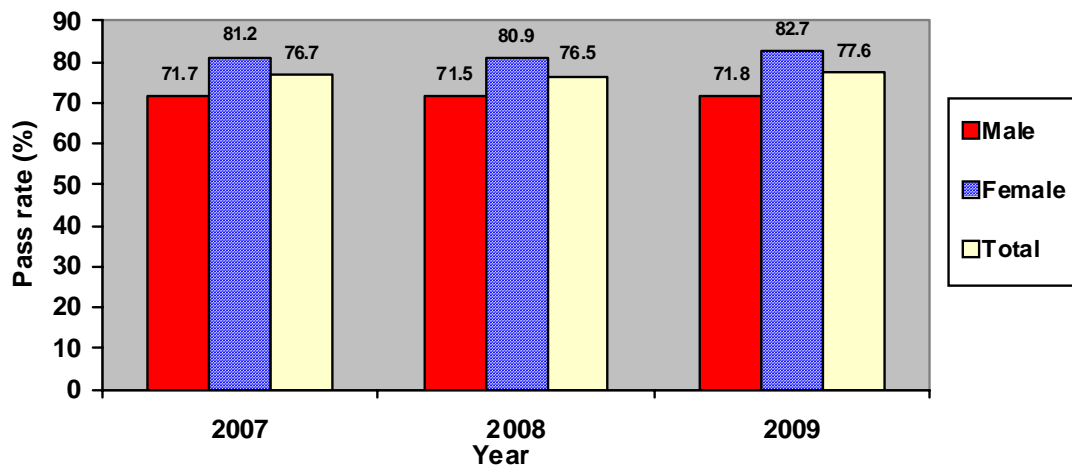
The number of teachers working in schools offering secondary and pre-vocational education was 8,323 at March 2010.

The secondary education teaching staff in the academic stream was 7,695 (3,269 males and 4,426 females). The pupil/teacher ratio works out to 15. On the other hand, the pre-vocational education teaching staff stood at 628 (225 males and 403 females), giving an average of 12 pupils per teacher.

## 5.5 Cambridge School Certificate (SC)

In 2009, out of 17,496 candidates (8,136 males and 9,360 females) who took part in the Cambridge School Certificate examination, 13,585 were successful. Comparison with the 2008 results shows that the overall pass rate has improved from 76.5% to 77.6% (Table 5.19 and Figure 3).

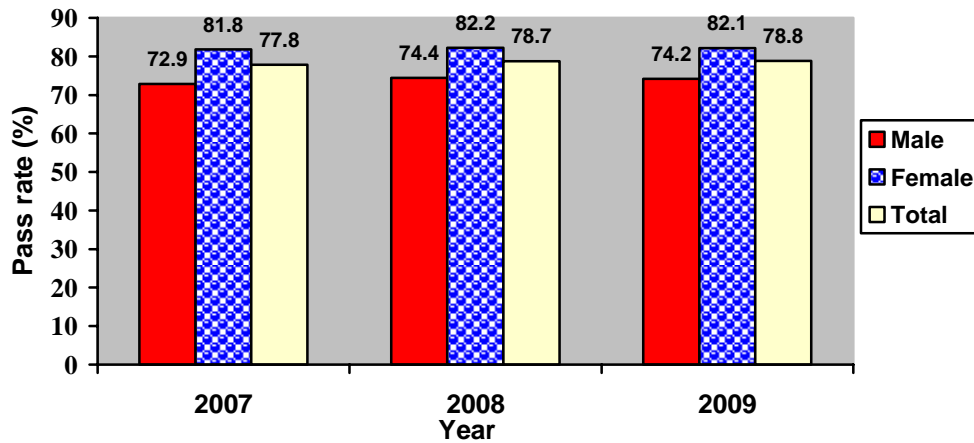
**Figure 3 - Cambridge School Certificate pass rate (school candidates only), Republic of Mauritius, 2007 - 2009**



## 5.6 Cambridge Higher School Certificate (HSC)

The number of students taking part in the 2009 Cambridge Higher School Certificate examination stood at 9,490 (4,034 males and 5,456 females). The overall pass rate was 78.8%, slightly higher than the 2008 figure of 78.7% (Table 5.20 and Figure 4).

**Figure 4 - Cambridge Higher School Certificate pass rate (school candidates only), Republic of Mauritius, 2007 - 2009**



## 6. Tertiary Education

As at December 2009, the total number of students (part-time and full-time) enrolled on tertiary-level programmes (including Distance Education) reached 41,484 compared to 38,623 in December 2008, representing an increase of 7.4%.

The majority of students (74%) were enrolled in tertiary education locally in both public-funded institutions (48%) and private institutions (26%). Another 26% of the students were enrolled in tertiary education overseas (Table 6.1b).

The Gross Enrolment Ratio (tertiary education enrolment as a percentage of the population aged 20 to 24 years), which was 41.4% in 2008, reached 43.4 % in 2009.

**Central Statistics Office  
Ministry of Finance and Economic Development  
Port Louis  
Mauritius  
September 2010**

### Contact Person

D. Pothegadoo  
Statistician  
Statistics Unit  
Ministry of Education and Human Resources  
Pont Fer, Phoenix  
Tel: 601 5252, 601 5200, Ext. 5430, 5478  
Fax: 686 8774  
Email : dpothegadoo@mail.gov.mu

## LIST OF TABLES

	<b>Page</b>
<b>EDUCATION INDICATORS</b>	
1.1 Main Education indicators and data, Republic of Mauritius, 2006 - 2010	7
<b>EXPENDITURE ON EDUCATION</b>	
2.1 Total Government Expenditure, Republic of Mauritius, 2008/2009, July-December 2009 and 2010	8
2.2 Government Expenditure on Education by sector, 2008/2009, July-December 2009 and 2010	8
<b>PRE-PRIMARY EDUCATION</b>	
3.1 Distribution of pre-primary schools by district and type of administration, 2010	9
3.2 Distribution of pre-primary schools by zone and type of administration, 2010	9
3.3 Enrolment and personnel in pre-primary schools by district and sex, 2010	10
3.4 Enrolment and personnel in pre-primary schools by zone and sex, 2010	10
<b>PRIMARY EDUCATION</b>	
4.1 Distribution of primary schools by district and type of administration, 2010	11
4.2 Distribution of primary schools by zone and type of administration, 2010	11
4.3 Enrolment in primary schools by district, type of administration and sex , 2010	12
4.4 Enrolment in primary schools by zone, type of administration and sex , 2010	12
4.5 Enrolment in primary schools by district and grade, 2010	13
4.6 Enrolment in primary schools by zone and grade, 2010	13
4.7 Enrolment in primary schools by grade and sex, 2008 - 2010	14
4.8 Enrolment in primary schools by type of administration, grade and sex, 2008 - 2010, Republic of Mauritius	15
4.9 Personnel in primary schools by district and occupational status, 2010	16
4.10 Personnel in primary schools by zone and occupational status, 2010	16
4.11 Certificate of Primary Education (CPE) examination results by sex, 2007 - 2009	17
4.12 Performance at Certificate of Primary Education (CPE) examination by sex and sitting, 2009	18
<b>SECONDARY EDUCATION - ACADEMIC STREAM AND PRE-VOCATIONAL</b>	
5.1 Distribution of secondary schools by district and type of administration, 2010	19
5.2 Distribution of secondary schools by zone and type of administration, 2010	19
5.3 Enrolment in secondary schools (academic stream) by district, type of administration and sex, 2010	20
5.4 Enrolment in secondary schools (academic stream) by zone, type of administration and sex, 2010	20

5.5	Enrolment in secondary schools (academic stream) by district and grade, 2010	21
5.6	Enrolment in secondary schools (academic stream) by zone and grade, 2010	21
5.7	Enrolment in secondary schools (academic stream) by grade and sex, 2008 - 2010	22
5.8	Enrolment in secondary schools (academic stream) by type of administration, grade and sex, 2008 - 2010, Republic of Mauritius	23
5.9	Distribution of schools offering pre-vocational education by district and type of administration, 2010	24
5.10	Distribution of schools offering pre-vocational education by zone and type of administration, 2010	24
5.11	Enrolment in schools offering pre-vocational education by district, type of administration and sex, 2010	25
5.12	Enrolment in schools offering pre-vocational education by zone, type of administration and sex, 2010	25
5.13	Enrolment in schools offering pre-vocational education by district and year of study, 2010	26
5.14	Enrolment in schools offering pre-vocational education by zone and year of study, 2010	26
5.15	Enrolment in schools offering pre-vocational education by year of study and sex, 2008 - 2010	27
5.16	Enrolment in schools offering pre-vocational education by type of administration, year of study and sex, 2008 - 2010, Republic of Mauritius	28
5.17	Teaching staff in secondary (academic & pre-vocational streams) by district and sex, 2010	29
5.18	Teaching staff in secondary schools (academic & pre-vocational streams) by zone and sex, 2010	29
5.19	Cambridge School Certificate (SC) examination results by type of school administration and sex, 2007 - 2009	30
5.20	Cambridge Higher School Certificate (HSC) examination results by type of school administration and sex, 2007 - 2009	31

#### **POST SECONDARY EDUCATION**

6.1(a)	Total number of students enrolled in Tertiary Education, both locally and overseas, by field of study as at December 2008	32
6.1(b)	Total number of students enrolled in Tertiary Education, both locally and overseas, by field of study as at December 2009	33



Table 1.1 - Main Education Indicators and data, Republic of Mauritius, 2006 - 2010

	2006	2007	2008	2009	2010
<b>Pre-primary</b>					
Number of schools	1,087	1,076	1,070	1,057	1,048
Enrolment	37,129	36,467	36,242	35,974	34,289
Number of teachers	2,527	2,513	2,541	2,518	2,313
Gross Enrolment Ratio (%)	95	94	94	96	94
Pupil/Teacher Ratio	15	15	14	14	15

**Primary**

Number of schools	290	289	299	302	305
Enrolment	121,387	119,310	119,022	117,922	117,427
Number of teachers	5,598	5,548	5,495	5,454	5,435
Gross Enrolment Ratio (%)	102	101	101	101	101
Pupil/Teacher Ratio	29	28	29	29	28
Transition Rate (Primary to Secondary)	84	81	82	82	n.a
Certificate of Primary Education Pass Rate	67.9	66.2	67.4	68.1	n.a

**Secondary (Academic and Pre-Vocational)**

Number of schools	196	193	187	185	182
Enrolment	125,081	126,279	124,998	124,259	122,321
Number of teachers	7,761	8,124	8,053	8,186	8,323
Gross Enrolment Ratio (%)	75	74	74	73	73
Pupil/Teacher Ratio	16	16	16	15	15
Cambridge School Certificate Pass Rate	78.9	76.7	76.5	77.6	n.a
Cambridge Higher School Certificate Pass Rate	79.3	77.8	78.7	78.8	n.a

**Tertiary<sup>1</sup>**

Enrolment	33,230	35,023	38,623	41,484	n.a
Gross Enrolment Ratio (%)	34	37	41	43	n.a

<sup>1</sup> Source: Tertiary Education Commission

**Expenditure<sup>2</sup>**

	2005/2006	2006/2007	2007/2008	2008/2009	2010
Total Government Expenditure (Rs million)	53,609.9	56,315.0	61,544.0	76,215.2	85,348.2
Total Government Expenditure on Education (Rs million)	7,266.6	7,606.7	8,326.8	10,625.0	11,571.2
Total Government Expenditure on Education as a % of GDP at market price	3.7	3.5	3.3	3.9	4.0
Total Government Expenditure on Education as a % of Total Government Expenditure	13.6	13.5	13.5	13.9	13.6

<sup>2</sup> Revised

n.a: Not available

Table 2.1- Total Government Expenditure, Republic of Mauritius, 2008/2009, July - December 2009 and 2010

(Rs million)			
	2008/2009 <sup>1</sup>	July - Dec 2009 <sup>1</sup>	2010 <sup>1</sup>
<b>Total Government Expenditure</b>	<b>76,215.2</b>	<b>38,652.6</b>	<b>85,348.2</b>
of which expenditure by:			
Ministry of Education & HR	9,488.5	5,114.0	10,466.7

Table 2.2 - Government Expenditure on Education by sector, 2008/2009, July - December 2009 and 2010

(Rs million)						
	2008/2009 <sup>1</sup>		July - Dec 2009 <sup>1</sup>		2010 <sup>1</sup>	
	Amount	%	Amount	%	Amount	%
<b>Island of Mauritius</b>						
<b>Ministry of Education &amp; HR</b>	<b>9,488.5</b>	<b>89.3</b>	<b>5,114.0</b>	<b>89.9</b>	<b>10,466.7</b>	<b>90.5</b>
<i>Pre-primary</i>	137.8	1.3	74.1	1.3	152.5	1.3
<i>Primary</i>	2,571.7	24.2	1,512.1	26.6	3,020.1	26.1
<i>Secondary</i>	4,958.3	46.7	2,684.2	47.2	5,306.4	45.9
<i>Technical &amp; Vocational</i>	445.5	4.2	232.1	4.1	448.9	3.9
<i>Tertiary Education</i>	803.3	7.6	455.1	8.0	1,046.3	9.0
<i>Special Education Programmes</i> <sup>2</sup>	308.5	2.9	29.3	0.5	202.4	1.7
<i>Other</i> <sup>3</sup>	263.4	2.5	127.1	2.2	290.1	2.5
<b>Island of Rodrigues</b> <sup>4</sup>	<b>212.2</b>	<b>2.0</b>	<b>94.2</b>	<b>1.7</b>	<b>199.3</b>	<b>1.7</b>
<i>Pre-Primary</i>	4.3	0.0	2.3	0.0	4.6	0.0
<i>Primary</i>	139.6	1.3	65.5	1.2	121.4	1.0
<i>Secondary</i>	37.1	0.3	11.2	0.2	43.1	0.4
<i>Technical &amp; Vocational</i>	10.4	0.1	0.2	0.0	0.4	0.0
<i>Tertiary Education</i>	3.9	0.0	4.0	0.1	8.0	0.1
<i>Other</i>	16.9	0.2	11.0	0.2	21.8	0.2
<b>Other Ministries</b> <sup>5</sup>	<b>924.3</b>	<b>8.7</b>	<b>479.5</b>	<b>8.4</b>	<b>905.2</b>	<b>7.8</b>
<b>Total</b>	<b>10,625.0</b>	<b>100.0</b>	<b>5,687.7</b>	<b>100.0</b>	<b>11,571.2</b>	<b>100.0</b>

<sup>1</sup> Revised Estimates

<sup>2</sup> Includes Mauritius Institute of Education (MIE), Conservatoire de Musique Francois Mitterrand, Human Resource Development Council (HRDC), National Productivity and Competitiveness Council (NPCC) & Mauritius College of the Air (MCA)

<sup>3</sup> Includes Mauritius Qualifications Authority (MQA), Rajiv Gandhi Science Centre & World Hindi Secretariat

<sup>4</sup> Expenditure on Education under Ministry of Rodrigues Vote

<sup>5</sup> Includes Maritime Training, Mauritius Institute of Health, Contribution to National Empowerment Foundation Assistance for Examination fees & Free travel scheme for students

Table 3.1 - Distribution of pre-primary schools by district and type of administration, 2010

District	Type of Administration				
	Total	ECCEA <sup>1</sup>	RC/HA <sup>2</sup>	Municipal/ V.Council	Private <sup>3</sup>
Port Louis	128	18	1	16	93
Pamplemousses	102	22	1	1	78
Riv. du Rempart	109	22	-	2	85
Flacq	114	29	3	-	82
Grand Port	98	19	1	11	67
Savanne	56	10	1	2	43
Plaines Wilhems	288	31	2	26	229
Moka	70	14	3	-	53
Black River	50	11	-	-	39
Island of Mauritius	1,015	176	12	58	769
Island of Rodrigues	33	3	-	-	30
Republic of Mauritius	1,048	179	12	58	799

Source: ECCEA (Early Childhood Care Education Authority, Ex-PSTF)

Table 3.2 - Distribution of pre-primary schools by zone and type of administration, 2010

Zone	Type of Administration				
	Total	ECCEA <sup>1</sup>	RC/HA <sup>2</sup>	Municipal/ V.Council	Private <sup>3</sup>
1 - Port Louis / North	339	62	2	19	256
2 - B.Bassin-R.Hill / East	261	51	6	9	195
3 - Curepipe / South	227	36	2	15	174
4 - Q.Bornes / Vacoas-Phoenix /West	188	27	2	15	144
Island of Mauritius	1,015	176	12	58	769
Island of Rodrigues	33	3	-	-	30
Republic of Mauritius	1,048	179	12	58	799

<sup>1</sup> ECCEA: Early Childhood Care and Education Authority (Ex Pre-School Trust Fund)

<sup>2</sup> RC/HA: Roman Catholic and Hindu Aided Schools

<sup>3</sup> Private: Includes pupils from NGO

Source: ECCEA (Early Childhood Care Education Authority, Ex-PSTF)

Table 3.3 - Enrolment and personnel in pre-primary schools by district and sex, 2010

District	Enrolment			Personnel		
	Male	Female	Total	Teaching	Non - Teaching	Total
Port Louis	2,319	2,291	4,610	324	119	443
Pamplemousses	1,770	1,657	3,427	258	89	347
Riviere du Rempart	1,565	1,507	3,072	217	51	268
Flacq	1,991	1,907	3,898	252	126	378
Grand Port	1,489	1,449	2,938	206	103	309
Savanne	941	922	1,863	120	60	180
Plaines Wilhems	4,704	4,567	9,271	690	226	916
Moka	926	855	1,781	100	50	150
Black River	915	937	1,852	80	40	120
Island of Mauritius	16,620	16,092	32,712	2,247	864	3,111
Island of Rodrigues	796	781	1,577	66	33	99
Republic of Mauritius	17,416	16,873	34,289	2,313	897	3,210

Source: ECCEA (Early Childhood Care Education Authority, Ex-PSTF)

Table 3.4 - Enrolment and personnel in pre-primary schools by zone and sex, 2010

Zone	Enrolment			Personnel		
	Male	Female	Total	Teaching	Non - Teaching	Total
1 - Port Louis / North	5,654	5,455	11,109	802	260	1,062
2 - B.Bassin-R.Hill / East	4,198	4,015	8,213	514	257	771
3 - Curepipe / South	3,589	3,414	7,003	482	196	678
4 - Q.Bornes / Vacoas-Phoenix / West	3,179	3,208	6,387	449	151	600
Island of Mauritius	16,620	16,092	32,712	2,247	864	3,111
Island of Rodrigues	796	781	1,577	66	33	99
Republic of Mauritius	17,416	16,873	34,289	2,313	897	3,210

Source: ECCEA (Early Childhood Care Education Authority, Ex-PSTF)

Table 4.1 - Distribution of primary schools<sup>1</sup> by district and type of administration, 2010

District	Total	Type of Administration					
		Government		Private			
				Aided		Non - Aided	
		No.	%	No.	%	No.	%
Port Louis	35	25	71	8	23	2	6
Pamplemousses	29	23	79	-	-	6	21
Riviere du Rempart	27	22	82	3	11	2	7
Flacq	38	28	73	9	24	1	3
Grand Port	30	25	83	5	17	-	-
Savanne	17	14	82	3	18	-	-
Plaines Wilhems	73	44	60	13	18	16	22
Moka	26	20	77	4	15	2	8
Black River	16	12	75	3	19	1	6
Island of Mauritius	291	213	73	48	16	30	10
Island of Rodrigues	14	9	64	5	36	-	-
Republic of Mauritius	305	222	73	53	17	30	10

Table 4.2 - Distribution of primary schools<sup>1</sup> by zone and type of administration, 2010

Zone	Total	Type of Administration					
		Government		Private			
				Aided		Non - Aided	
		No.	%	No.	%	No.	%
1 - Port Louis / North	93	72	77	11	12	10	11
2 - B.Bassin-R.Hill / East	79	58	73	17	22	4	5
3 - Curepipe / South	66	48	73	12	18	6	9
4 - Q.Bornes / Vacoas-Phoenix / West	53	35	66	8	15	10	19
Rodrigues	14	9	64	5	36	-	-
All Zones	305	222	73	53	17	30	10

<sup>1</sup> Excluding schools with partial stream

Table 4.3 - Enrolment in primary schools<sup>1</sup> by district, type of administration and sex, 2010

District	All schools			Government schools			Private schools					
	Total	Male	Female	Total	Male	Female	Aided			Non-aided		
							Total	Male	Female	Total	Male	Female
Port Louis	16,277	8,206	8,071	10,447	5,305	5,142	5,259	2,647	2,612	571	254	317
Pamplemousses	10,673	5,500	5,173	9,304	4,726	4,578	-	-	-	1,369	774	595
Riviere du Rempart	10,329	5,347	4,982	8,614	4,465	4,149	974	494	480	741	388	353
Flacq	13,671	6,948	6,723	11,527	5,825	5,702	1,941	1,009	932	203	114	89
Grand Port	10,335	5,143	5,192	8,504	4,225	4,279	1,831	918	913	-	-	-
Savanne	6,134	3,188	2,946	5,328	2,786	2,542	806	402	404	-	-	-
Plaines Wilhems	32,428	16,466	15,962	19,008	9,711	9,297	9,207	4,644	4,563	4,213	2,111	2,102
Moka	7,679	3,881	3,798	5,740	2,935	2,805	1,054	496	558	885	450	435
Black River	4,718	2,353	2,365	3,770	1,888	1,882	701	335	366	247	130	117
Island of Mauritius	112,244	57,032	55,212	82,242	41,866	40,376	21,773	10,945	10,828	8,229	4,221	4,008
Island of Rodrigues	5,183	2,641	2,542	3,063	1,575	1,488	2,120	1,066	1,054	-	-	-
Republic of Mauritius	117,427	59,673	57,754	85,305	43,441	41,864	23,893	12,011	11,882	8,229	4,221	4,008

Table 4.4 - Enrolment in primary schools<sup>1</sup> by zone, type of administration and sex, 2010

Zone	All schools			Government schools			Private schools					
	Total	Male	Female	Total	Male	Female	Aided			Non-aided		
							Total	Male	Female	Total	Male	Female
1 - Port Louis / North	38,097	19,466	18,631	29,183	14,909	14,274	6,233	3,141	3,092	2,681	1,416	1,265
2 - B.Bassin-R.Hill / East	28,551	14,532	14,019	20,570	10,477	10,093	6,636	3,336	3,300	1,345	719	626
3 - Curepipe / South	24,689	12,478	12,211	17,413	8,843	8,570	5,123	2,554	2,569	2,153	1,081	1,072
4 - Q.Bornes / Vacoas-Phoenix / West	20,907	10,556	10,351	15,076	7,637	7,439	3,781	1,914	1,867	2,050	1,005	1,045
Rodrigues	5,183	2,641	2,542	3,063	1,575	1,488	2,120	1,066	1,054	-	-	-
All Zones	117,427	59,673	57,754	85,305	43,441	41,864	23,893	12,011	11,882	8,229	4,221	4,008

<sup>1</sup> including enrolment in schools with a partial stream

Table 4.5 - Enrolment in primary schools<sup>1</sup> by district and grade, 2010

District	Grade/Standard							All Grades
	I	II	III	IV	V	VI	VI (repeaters)	
Port Louis	2,545	2,532	2,654	2,545	2,709	2,596	696	16,277
Pamplemousses	1,692	1,630	1,734	1,708	1,687	1,693	529	10,673
Riviere du Rempart	1,518	1,665	1,653	1,712	1,679	1,773	329	10,329
Flacq	2,057	2,115	2,189	2,258	2,332	2,300	420	13,671
Grand Port	1,559	1,611	1,671	1,642	1,720	1,789	343	10,335
Savanne	967	951	1,029	976	976	995	240	6,134
Plaines Wilhems	5,048	5,180	5,368	5,310	5,398	5,314	810	32,428
Moka	1,170	1,267	1,265	1,207	1,294	1,258	218	7,679
Black River	875	753	772	718	667	644	289	4,718
Island of Mauritius	17,431	17,704	18,335	18,076	18,462	18,362	3,874	112,244
Island of Rodrigues	896	818	840	815	815	783	216	5,183
Republic of Mauritius	18,327	18,522	19,175	18,891	19,277	19,145	4,090	117,427

Table 4.6 - Enrolment in primary schools<sup>1</sup> by zone and grade, 2010

Zone	Grade/Standard							All Grades
	I	II	III	IV	V	VI	VI (repeaters)	
1 -Port Louis / North	5,878	5,959	6,173	6,096	6,200	6,179	1,612	38,097
2 -B.Bassin-R.Hill / East	4,349	4,481	4,579	4,597	4,852	4,803	890	28,551
3 -Curepipe / South	3,809	3,903	4,119	3,964	4,088	4,029	777	24,689
4 -Q.Bornes/Vacoas-Phoenix/West	3,395	3,361	3,464	3,419	3,322	3,351	595	20,907
Rodrigues	896	818	840	815	815	783	216	5,183
All Zones	18,327	18,522	19,175	18,891	19,277	19,145	4,090	117,427

<sup>1</sup> including enrolment in schools with a partial stream

Table 4.7 - Enrolment in primary schools<sup>1</sup> by grade and sex, 2008 - 2010

Grade	2008			2009			2010		
	Total	Male	Female	Total	Male	Female	Total	Male	Female
<b>Republic of Mauritius</b>									
<b>I</b>	19,048	9,587	9,461	18,613	9,452	9,161	18,327	9,182	9,145
<b>II</b>	18,915	9,533	9,382	19,121	9,604	9,517	18,522	9,380	9,142
<b>III</b>	19,425	9,926	9,499	18,955	9,513	9,442	19,175	9,648	9,527
<b>IV</b>	19,488	9,849	9,639	19,329	9,759	9,570	18,891	9,500	9,391
<b>V</b>	18,487	9,416	9,071	19,310	9,805	9,505	19,277	9,796	9,481
<b>VI</b>	18,901	9,570	9,331	18,282	9,250	9,032	19,145	9,716	9,429
<b>VI Repeaters</b>	4,758	2,812	1,946	4,312	2,565	1,747	4,090	2,451	1,639
<b>Total</b>	119,022	60,693	58,329	117,922	59,948	57,974	117,427	59,673	57,754
<b>Island of Mauritius</b>									
<b>I</b>	18,201	9,174	9,027	17,800	9,028	8,772	17,431	8,734	8,697
<b>II</b>	18,100	9,121	8,979	18,275	9,187	9,088	17,704	8,965	8,739
<b>III</b>	18,601	9,507	9,094	18,149	9,110	9,039	18,335	9,229	9,106
<b>IV</b>	18,681	9,434	9,247	18,506	9,338	9,168	18,076	9,097	8,979
<b>V</b>	17,788	9,054	8,734	18,510	9,396	9,114	18,462	9,379	9,083
<b>VI</b>	18,178	9,200	8,978	17,588	8,903	8,685	18,362	9,319	9,043
<b>VI Repeaters</b>	4,458	2,638	1,820	4,056	2,407	1,649	3,874	2,309	1,565
<b>Total</b>	114,007	58,128	55,879	112,884	57,369	55,515	112,244	57,032	55,212
<b>Island of Rodrigues</b>									
<b>I</b>	847	413	434	813	424	389	896	448	448
<b>II</b>	815	412	403	846	417	429	818	415	403
<b>III</b>	824	419	405	806	403	403	840	419	421
<b>IV</b>	807	415	392	823	421	402	815	403	412
<b>V</b>	699	362	337	800	409	391	815	417	398
<b>VI</b>	723	370	353	694	347	347	783	397	386
<b>VI Repeaters</b>	300	174	126	256	158	98	216	142	74
<b>Total</b>	5,015	2,565	2,450	5,038	2,579	2,459	5,183	2,641	2,542

<sup>1</sup> Includes pupils attending schools with a partial stream



Table 4.8 - Enrolment in primary schools<sup>1</sup> by type of administration, grade and sex, 2008 - 2010

**Republic of Mauritius**

Grade	2008			2009			2010		
	Total	Male	Female	Total	Male	Female	Total	Male	Female
<b>All schools</b>									
<b>I</b>	19,048	9,587	9,461	18,613	9,452	9,161	18,327	9,182	9,145
<b>II</b>	18,915	9,533	9,382	19,121	9,604	9,517	18,522	9,380	9,142
<b>III</b>	19,425	9,926	9,499	18,955	9,513	9,442	19,175	9,648	9,527
<b>IV</b>	19,488	9,849	9,639	19,329	9,759	9,570	18,891	9,500	9,391
<b>V</b>	18,487	9,416	9,071	19,310	9,805	9,505	19,277	9,796	9,481
<b>VI</b>	18,901	9,570	9,331	18,282	9,250	9,032	19,145	9,716	9,429
<b>VI Repeaters</b>	4,758	2,812	1,946	4,312	2,565	1,747	4,090	2,451	1,639
<b>Total</b>	119,022	60,693	58,329	117,922	59,948	57,974	117,427	59,673	57,754
<b>Government schools</b>									
<b>I</b>	13,963	7,021	6,942	13,331	6,783	6,548	13,120	6,594	6,526
<b>II</b>	13,698	6,951	6,747	13,870	6,968	6,902	13,362	6,758	6,604
<b>III</b>	14,120	7,251	6,869	13,693	6,937	6,756	13,909	6,998	6,911
<b>IV</b>	14,248	7,219	7,029	14,048	7,090	6,958	13,694	6,944	6,750
<b>V</b>	13,555	6,934	6,621	14,146	7,218	6,928	14,015	7,136	6,879
<b>VI</b>	14,023	7,151	6,872	13,408	6,796	6,612	14,133	7,179	6,954
<b>VI Repeaters</b>	3,830	2,252	1,578	3,301	1,949	1,352	3,072	1,832	1,240
<b>Total</b>	87,437	44,779	42,658	85,797	43,741	42,056	85,305	43,441	41,864
<b>Private schools</b>									
<b>I</b>	5,085	2,566	2,519	5,282	2,669	2,613	5,207	2,588	2,619
<b>II</b>	5,217	2,582	2,635	5,251	2,636	2,615	5,160	2,622	2,538
<b>III</b>	5,305	2,675	2,630	5,262	2,576	2,686	5,266	2,650	2,616
<b>IV</b>	5,240	2,630	2,610	5,281	2,669	2,612	5,197	2,556	2,641
<b>V</b>	4,932	2,482	2,450	5,164	2,587	2,577	5,262	2,660	2,602
<b>VI</b>	4,878	2,419	2,459	4,874	2,454	2,420	5,012	2,537	2,475
<b>VI Repeaters</b>	928	560	368	1,011	616	395	1,018	619	399
<b>Total</b>	31,585	15,914	15,671	32,125	16,207	15,918	32,122	16,232	15,890

<sup>1</sup> including enrolment in schools with a partial stream

Table 4.9 - Personnel in primary schools by district and occupational status, 2010

District	Head Teacher	Deputy Head Teacher	Teacher General Purpose *	Teacher, Oriental language								School clerk	Caretaker	Labourer	Other	TOTAL
				Total	Hindi	Urdu	Tamil	Telugu	Marathi	Arabic	Modern					
Port Louis	34	113	520	159	47	52	24	3	1	27	5	26	74	45	3	974
Pamplemousses	28	90	378	153	89	33	18	10	-	3	-	18	61	30	11	769
Riv. du Rempart	26	98	374	148	90	21	21	12	-	4	-	20	41	46	9	762
Flacq	36	94	461	195	101	46	22	12	7	5	2	27	76	45	10	944
Grand Port	29	89	334	127	54	21	19	14	6	12	1	21	44	41	7	692
Savanne	16	53	202	76	25	12	13	8	8	10	-	10	36	19	7	419
Plaines Wilhems	71	284	1,115	317	113	83	42	20	19	26	14	56	151	84	59	2,137
Moka	25	70	340	102	35	29	17	8	6	5	2	20	32	34	19	642
Black River	16	24	196	32	15	5	6	-	6	-	-	9	24	20	4	325
Island of Mauritius	281	915	3,920	1,309	569	302	182	87	53	92	24	207	539	364	129	7,664
Island of Rodrigues	14	24	206	-	-	-	-	-	-	-	-	14	46	50	28	382
Republic of Mauritius	295	939	4,126	1,309	569	302	182	87	53	92	24	221	585	414	157	8,046

Table 4.10 - Personnel in primary schools by zone and occupational status, 2010

Zone	Head Teacher	Deputy Head Teacher	Teacher General Purpose *	Teacher, Oriental language								School clerk	Caretaker	Labourer	Other	TOTAL
				Total	Hindi	Urdu	Tamil	Telugu	Marathi	Arabic	Modern Chinese					
1 - Port Louis / North	91	307	1,312	473	230	110	65	25	1	37	5	66	180	124	23	2,576
2 - B.Bassin-R.Hill / East	74	199	1,041	351	155	94	47	21	16	10	8	57	136	98	35	1,991
3 - Curepipe / South	64	213	842	268	98	48	41	27	17	33	4	46	126	93	33	1,685
4 - Q.Bornes/ Vacoas-Phoenix/ West	52	196	725	217	86	50	29	14	19	12	7	38	97	49	38	1,412
Rodrigues	14	24	206	-	-	-	-	-	-	-	-	14	46	50	28	382
All Zones	295	939	4,126	1,309	569	302	182	87	53	92	24	221	585	414	157	8,046

\* including physical education instructors

Table 4.11 - Certificate of Primary Education (CPE) examination results by sex, 2007 - 2009

**School Candidates only**

		2007			2008			2009		
		No. Examined	No. Passed	% Passed	No. Examined	No. Passed	% Passed	No. Examined	No. Passed	% Passed
		<b>Republic of Mauritius</b>	Total	24,050	15,915	66.2	23,664	15,957	67.4	22,620
	Male	12,368	7,428	60.1	12,299	7,633	62.1	11,764	7,328	62.3
	Female	11,682	8,487	72.7	11,365	8,324	73.2	10,856	8,083	74.5
<b>Island of Mauritius</b>	Total	23,078	15,431	66.9	22,662	15,404	68.0	21,675	14,871	68.6
	Male	11,877	7,222	60.8	11,769	7,368	62.6	11,262	7,079	62.9
	Female	11,201	8,209	73.3	10,893	8,036	73.8	10,413	7,792	74.8
<b>Island of Rodrigues</b>	Total	972	484	49.8	1,002	553	55.2	945	540	57.1
	Male	491	206	42.0	530	265	50.0	502	249	49.6
	Female	481	278	57.8	472	288	61.0	443	291	65.7

Source: Mauritius Examinations Syndicate

Table 4.12 - Performance at Certificate of Primary Education (CPE) examination by sex and sitting, 2009

		Island of Mauritius			Island of Rodrigues			Republic of Mauritius		
		No. Examined	No. Passed	% Passed	No. Examined	No. Passed	% Passed	No. Examined	No. Passed	% Passed
<b>School Candidates</b>										
First Sitting	Total	17,104	13,028	76.2	698	467	66.9	17,802	13,495	75.8
	Male	8,647	6,186	71.5	356	212	59.6	9,003	6,398	71.1
	Female	8,457	6,842	80.9	342	255	74.6	8,799	7,097	80.7
Second Sitting (or more)	Total	4,571	1,843	40.3	247	73	29.6	4,818	1,916	39.8
	Male	2,615	893	34.1	146	37	25.3	2,761	930	33.7
	Female	1,956	950	48.6	101	36	35.6	2,057	986	47.9
Total	Total	21,675	14,871	68.6	945	540	57.1	22,620	15,411	68.1
	Male	11,262	7,079	62.9	502	249	49.6	11,764	7,328	62.3
	Female	10,413	7,792	74.8	443	291	65.7	10,856	8,083	74.5
<b>Private Candidates</b>										
	Total	2,454	679	27.7	72	19	26.4	2,526	698	27.6
	Male	1,471	356	24.2	47	12	25.5	1,518	368	24.2
	Female	983	323	32.9	25	7	28.0	1,008	330	32.7
<b>School &amp; Private Candidates</b>										
	Total	24,129	15,550	64.4	1,017	559	55.0	25,146	16,109	64.1
	Male	12,733	7,435	58.4	549	261	47.5	13,282	7,696	57.9
	Female	11,396	8,115	71.2	468	298	63.7	11,864	8,413	70.9

Source: Mauritius Examinations Syndicate

Table 5.1 - Distribution of secondary schools by district and type of administration, 2010

District	All Schools <sup>1</sup>	Type of Administration					
		State <sup>2</sup>		Private			
		No.	%	Aided <sup>3</sup>		Non - Aided	
No.	%			No.	%		
Port Louis	28	8	29	16	57	4	14
Pamplemousses	16	8	50	7	44	1	6
Riviere du Rempart	13	6	46	5	39	2	15
Flacq	15	8	53	7	47	-	-
Grand Port	11	4	36	7	64	-	-
Savanne	7	4	57	3	43	-	-
Plaines Wilhems	70	23	33	36	51	11	16
Moka	12	5	42	4	33	3	25
Black River	5	3	60	2	40	-	-
Island of Mauritius	177	69	39	87	49	21	12
Island of Rodrigues	5	-	-	5	100	-	-
Republic of Mauritius	182	69	38	92	50	21	12

Table 5.2 - Distribution of secondary schools by zone and type of administration, 2010

Zone	All Schools <sup>1</sup>	Type of Administration					
		State <sup>2</sup>		Private			
		No.	%	Aided <sup>3</sup>		Non - Aided	
No.	%			No.	%		
1 - Port Louis / North	58	23	40	28	48	7	12
2 - B.Bassin-R.Hill / East	46	19	41	22	48	5	11
3 - Curepipe / South	41	12	29	22	54	7	17
4 - Q.Bornes / Vacoas-Phoenix / West	32	15	47	15	47	2	6
Rodrigues	5	-	-	5	100	-	-
All Zones	182	69	38	92	50	21	12

<sup>1</sup> 63 of these schools offer academic education only and 119 both academic and pre-vocational education

<sup>2</sup> includes Mahatma Gandhi Institute, Rabindranath Tagore Secondary School and 4 Mahatma Gandhi State Schools

<sup>3</sup> includes Mauritius Educational Development Company (MEDCO) / Rodrigues Educational Development Company (REDCO)

Table 5.3 - Enrolment in secondary schools (academic stream) by district, type of administration and sex, 2010

District	All schools			State schools <sup>1</sup>			Private schools					
							Aided <sup>2</sup>			Non-aided		
	Total	Male	Female	Total	Male	Female	Total	Male	Female	Total	Male	Female
Port Louis	15,039	6,976	8,063	5,240	2,486	2,754	8,580	3,729	4,851	1,219	761	458
Pamplemousses	9,074	4,131	4,943	5,462	2,524	2,938	3,606	1,605	2,001	-	2	4
Riviere du Rempart	9,927	4,992	4,935	4,969	3,003	1,966	4,379	1,710	2,669	579	279	300
Flacq	12,739	5,978	6,761	6,167	2,380	3,787	6,572	3,598	2,974	-	-	-
Grand Port	6,746	2,931	3,815	2,985	1,557	1,428	3,761	1,374	2,387	-	-	-
Savanne	4,089	1,964	2,125	2,603	1,284	1,319	1,486	680	806	-	-	-
Plaines Wilhems	45,880	22,878	23,002	17,088	7,936	9,152	25,701	13,231	12,470	3,091	1,711	1,380
Moka	5,837	2,560	3,277	3,023	1,401	1,622	1,431	427	1,004	1,383	732	651
Black River	1,963	716	1,247	1,441	466	975	522	250	272	-	-	-
Island of Mauritius	111,294	53,126	58,168	48,978	23,037	25,941	56,038	26,604	29,434	6,278	3,485	2,793
Island of Rodrigues	3,585	1,657	1,928	-	-	-	3,585	1,657	1,928	-	-	-
Republic of Mauritius	114,879	54,783	60,096	48,978	23,037	25,941	59,623	28,261	31,362	6,278	3,485	2,793

Table 5.4 - Enrolment in secondary schools (academic stream) by zone, type of administration and sex, 2010

Zone	All schools			State schools <sup>1</sup>			Private schools					
							Aided <sup>2</sup>			Non-aided		
	Total	Male	Female	Total	Male	Female	Total	Male	Female	Total	Male	Female
1 - Port Louis / North	34,416	16,099	18,317	16,047	8,013	8,034	16,565	7,044	9,521	1,804	1,042	762
2 - B.Bassin-R.Hill / East	30,338	14,947	15,391	13,497	6,126	7,371	15,281	7,975	7,306	1,560	846	714
3 - Curepipe / South	27,101	13,255	13,846	8,825	4,441	4,384	15,652	7,378	8,274	2,624	1,436	1,188
4 - Q.Bornes / Vacoas-Phoenix / West	19,439	8,825	10,614	10,609	4,457	6,152	8,540	4,207	4,333	290	161	129
Rodrigues	3,585	1,657	1,928	-	-	-	3,585	1,657	1,928	-	-	-
All Zones	114,879	54,783	60,096	48,978	23,037	25,941	59,623	28,261	31,362	6,278	3,485	2,793

<sup>1</sup> includes Mahatma Gandhi Institute, Rabindranath Tagore Secondary School and Mahatma Gandhi State Schools<sup>2</sup> includes Mauritius Educational Development Company (MEDCO) / Rodrigues Educational Development Company (REDCO)

Table 5.5 - Enrolment in secondary schools (academic stream) by district and grade, 2010

District	Grade							All Grades
	I	II	III	IV	V	VI Lower	VI Upper	
Port Louis	2,065	2,262	2,374	2,568	2,731	1,510	1,529	15,039
Pamplemousses	1,389	1,321	1,480	1,695	1,643	742	804	9,074
Riviere du Rempart	1,461	1,518	1,435	1,933	1,744	913	923	9,927
Flacq	1,700	1,913	1,894	2,247	2,809	1,087	1,089	12,739
Grand Port	869	925	907	1,290	1,553	558	644	6,746
Savanne	539	609	651	712	969	312	297	4,089
Plaines Wilhems	6,500	6,666	6,898	8,025	7,637	5,144	5,010	45,880
Moka	902	833	843	1,069	1,011	622	557	5,837
Black River	304	360	374	336	381	120	88	1,963
Island of Mauritius	15,729	16,407	16,856	19,875	20,478	11,008	10,941	111,294
Island of Rodrigues	512	551	667	647	676	255	277	3,585
Republic of Mauritius	16,241	16,958	17,523	20,522	21,154	11,263	11,218	114,879

Table 5.6 - Enrolment in secondary schools (academic stream) by zone and grade, 2010

Zone	Grade							All Grades
	I	II	III	IV	V	VI Lower	VI Upper	
1 - Port Louis / North	4,968	5,137	5,329	6,253	6,227	3,208	3,294	34,416
2 - B.Bassin-R.Hill / East	4,291	4,525	4,455	5,340	5,543	3,177	3,007	30,338
3 - Curepipe / South	3,682	3,803	3,936	4,821	5,356	2,714	2,789	27,101
4 - Q.Bornes / Vacoas-Phoenix / West	2,788	2,942	3,136	3,461	3,352	1,909	1,851	19,439
Rodrigues	512	551	667	647	676	255	277	3,585
All Zones	16,241	16,958	17,523	20,522	21,154	11,263	11,218	114,879

Table 5.7 - Enrolment in secondary schools (academic stream) by grade and sex, 2008 - 2010

Grade	2008			2009			2010		
	Total	Male	Female	Total	Male	Female	Total	Male	Female
<b>Republic of Mauritius</b>									
<b>I</b>	17,028	8,169	8,859	16,809	8,197	8,612	16,241	7,894	8,347
<b>II</b>	18,269	8,740	9,529	17,246	8,210	9,036	16,958	8,150	8,808
<b>III</b>	18,792	9,092	9,700	18,632	8,980	9,652	17,523	8,382	9,141
<b>IV</b>	19,932	9,794	10,138	20,355	9,968	10,387	20,522	9,955	10,567
<b>V</b>	21,267	10,386	10,881	21,080	10,151	10,929	21,154	10,397	10,757
<b>VI Lower</b>	10,833	4,847	5,986	11,135	4,904	6,231	11,263	4,994	6,269
<b>VI Upper</b>	10,382	4,845	5,537	10,969	4,979	5,990	11,218	5,011	6,207
<b>Total</b>	116,503	55,873	60,630	116,226	55,389	60,837	114,879	54,783	60,096
<b>Island of Mauritius</b>									
<b>I</b>	16,503	7,930	8,573	16,272	7,923	8,349	15,729	7,641	8,088
<b>II</b>	17,616	8,460	9,156	16,677	7,954	8,723	16,407	7,867	8,540
<b>III</b>	18,107	8,740	9,367	17,924	8,651	9,273	16,856	8,087	8,769
<b>IV</b>	19,343	9,528	9,815	19,677	9,636	10,041	19,875	9,660	10,215
<b>V</b>	20,682	10,127	10,555	20,424	9,871	10,553	20,478	10,092	10,386
<b>VI Lower</b>	10,612	4,751	5,861	10,905	4,803	6,102	11,008	4,890	6,118
<b>VI Upper</b>	10,132	4,729	5,403	10,693	4,858	5,835	10,941	4,889	6,052
<b>Total</b>	112,995	54,265	58,730	112,572	53,696	58,876	111,294	53,126	58,168
<b>Island of Rodrigues</b>									
<b>I</b>	525	239	286	537	274	263	512	253	259
<b>II</b>	653	280	373	569	256	313	551	283	268
<b>III</b>	685	352	333	708	329	379	667	295	372
<b>IV</b>	589	266	323	678	332	346	647	295	352
<b>V</b>	585	259	326	656	280	376	676	305	371
<b>VI Lower</b>	221	96	125	230	101	129	255	104	151
<b>VI Upper</b>	250	116	134	276	121	155	277	122	155
<b>Total</b>	3,508	1,608	1,900	3,654	1,693	1,961	3,585	1,657	1,928



Table 5.8 - Enrolment in secondary schools (academic stream) by type of administration, grade and sex, 2008 - 2010

Republic of Mauritius

Grade	2008			2009			2010		
	Total	Male	Female	Total	Male	Female	Total	Male	Female
<b>All schools</b>									
<b>I</b>	17,028	8,169	8,859	16,809	8,197	8,612	16,241	7,894	8,347
<b>II</b>	18,269	8,740	9,529	17,246	8,210	9,036	16,958	8,150	8,808
<b>III</b>	18,792	9,092	9,700	18,632	8,980	9,652	17,523	8,382	9,141
<b>IV</b>	19,932	9,794	10,138	20,355	9,968	10,387	20,522	9,955	10,567
<b>V</b>	21,267	10,386	10,881	21,080	10,151	10,929	21,154	10,397	10,757
<b>VI Lower</b>	10,833	4,847	5,986	11,135	4,904	6,231	11,263	4,994	6,269
<b>VI Upper</b>	10,382	4,845	5,537	10,969	4,979	5,990	11,218	5,011	6,207
<b>Total</b>	116,503	55,873	60,630	116,226	55,389	60,837	114,879	54,783	60,096
<b>State Schools</b>									
<b>I</b>	7,221	3,587	3,634	7,535	3,775	3,760	7,171	3,529	3,642
<b>II</b>	7,391	3,502	3,889	7,190	3,547	3,643	7,307	3,576	3,731
<b>III</b>	7,390	3,642	3,748	7,442	3,532	3,910	7,245	3,560	3,685
<b>IV</b>	7,600	3,844	3,756	7,610	3,773	3,837	7,802	3,737	4,065
<b>V</b>	8,444	4,065	4,379	8,370	4,055	4,315	8,212	3,969	4,243
<b>VI Lower</b>	4,649	1,959	2,690	5,438	2,169	3,269	5,626	2,367	3,259
<b>VI Upper</b>	4,345	2,008	2,337	4,976	2,127	2,849	5,615	2,299	3,316
<b>Total</b>	47,040	22,607	24,433	48,561	22,978	25,583	48,978	23,037	25,941
<b>Private Schools</b>									
<b>I</b>	9,807	4,582	5,225	9,274	4,422	4,852	9,070	4,365	4,705
<b>II</b>	10,878	5,238	5,640	10,056	4,663	5,393	9,651	4,574	5,077
<b>III</b>	11,402	5,450	5,952	11,190	5,448	5,742	10,278	4,822	5,456
<b>IV</b>	12,332	5,950	6,382	12,745	6,195	6,550	12,720	6,218	6,502
<b>V</b>	12,823	6,321	6,502	12,710	6,096	6,614	12,942	6,428	6,514
<b>VI Lower</b>	6,184	2,888	3,296	5,697	2,735	2,962	5,637	2,627	3,010
<b>VI Upper</b>	6,037	2,837	3,200	5,993	2,852	3,141	5,603	2,712	2,891
<b>Total</b>	69,463	33,266	36,197	67,665	32,411	35,254	65,901	31,746	34,155

Table 5.9 - Distribution of schools offering pre-vocational education by district and type of administration, 2010

District	All Schools <sup>1</sup>	Type of Administration			
		State		Private <sup>2</sup>	
		No.	%	No.	%
Port Louis	17	5	29	12	71
Pamplemousses	12	5	42	7	58
Riviere du Rempart	13	8	62	5	38
Flacq	11	6	55	5	45
Grand Port	9	2	22	7	78
Savanne	7	4	57	3	43
Plaines Wilhems	37	12	32	25	68
Moka	8	4	50	4	50
Black River	5	3	60	2	40
Island of Mauritius	119	49	41	70	59
Island of Rodrigues	5	-	-	5	100
Republic of Mauritius	124	49	40	75	60

Table 5.10 - Distribution of schools offering pre-vocational education by zone and type of administration, 2010

Zone	All Schools <sup>1</sup>	Type of Administration			
		State		Private <sup>2</sup>	
		No.	%	No.	%
1 - Port Louis / North	43	19	44	24	56
2 - B.Bassin-R.Hill / East	33	15	45	18	55
3 - Curepipe / South	25	7	28	18	72
4 - Q.Bornes / Vacoas-Phoenix / West	18	8	44	10	56
Rodrigues	5	-	-	5	100
All Zones	124	49	40	75	60

<sup>1</sup> includes 119 secondary schools providing both academic and pre-vocational education and 5 schools providing only pre-vocational

<sup>2</sup> includes Mauritius Educational Development Company (MEDCO) / Rodrigues Educational Development Company (REDCO)

Table 5.11 - Enrolment in schools offering pre-vocational education by district, type of administration and sex, 2010

District	All schools			State schools			Private schools <sup>1</sup>		
	Total	Male	Female	Total	Male	Female	Total	Male	Female
Port Louis	1,093	644	449	247	146	101	846	498	348
Pamplemousses	742	477	265	249	206	43	493	271	222
Riviere du Rempart	699	490	209	293	225	68	406	265	141
Flacq	835	565	270	294	108	186	541	457	84
Grand Port	626	421	205	56	49	7	570	372	198
Savanne	479	316	163	133	68	65	346	248	98
Plaines Wilhems	1,856	1,209	647	470	374	96	1,386	835	551
Moka	360	198	162	180	90	90	180	108	72
Black River	338	191	147	204	109	95	134	82	52
Island of Mauritius	7,028	4,511	2,517	2,126	1,375	751	4,902	3,136	1,766
Island of Rodrigues	414	253	161	-	-	-	414	253	161
Republic of Mauritius	7,442	4,764	2,678	2,126	1,375	751	5,316	3,389	1,927

Table 5.12 - Enrolment in schools offering pre-vocational education by zone, type of administration and sex, 2010

Zone	All schools			State schools			Private schools <sup>1</sup>		
	Total	Male	Female	Total	Male	Female	Total	Male	Female
1 - Port Louis / North	2,577	1,611	966	832	577	255	1,745	1,034	711
2 - B.Bassin-R.Hill / East	1,922	1,294	628	732	465	267	1,190	829	361
3 - Curepipe / South	1,514	966	548	224	139	85	1,290	827	463
4 - Q.Bornes / Vacoas-Phoenix / West	1,015	640	375	338	194	144	677	446	231
Rodrigues	414	253	161	-	-	-	414	253	161
All Zones	7,442	4,764	2,678	2,126	1,375	751	5,316	3,389	1,927

<sup>1</sup> includes Mauritius Educational Development Company (MEDCO) / Rodrigues Educational Development Company (REDCO)

Table 5.13 - Enrolment in schools offering pre-vocational education by district and year of study, 2010

District	Enrolment											
	Year I			Year II			Year III			Total		
	Total	Male	Female	Total	Male	Female	Total	Male	Female	Total	Male	Female
Port Louis	425	281	144	371	203	168	297	160	137	1,093	644	449
Pamplemousses	293	189	104	230	145	85	219	143	76	742	477	265
Riviere du Rempart	219	148	71	262	184	78	218	158	60	699	490	209
Flacq	285	174	111	321	225	96	229	166	63	835	565	270
Grand Port	232	158	74	190	127	63	204	136	68	626	421	205
Savanne	177	111	66	188	120	68	114	85	29	479	316	163
P.Wilhems	653	420	233	648	443	205	555	346	209	1,856	1,209	647
Moka	109	65	44	147	74	73	104	59	45	360	198	162
Black River	156	101	55	106	55	51	76	35	41	338	191	147
Island of Mauritius	2,549	1,647	902	2,463	1,576	887	2,016	1,288	728	7,028	4,511	2,517
Island of Rodrigues	142	89	53	126	78	48	146	86	60	414	253	161
Republic of Mauritius	2,691	1,736	955	2,589	1,654	935	2,162	1,374	788	7,442	4,764	2,678

Table 5.14 - Enrolment in schools offering pre-vocational education by zone and year of study, 2010

Zone	Enrolment											
	Year I			Year II			Year III			Total		
	Total	Male	Female	Total	Male	Female	Total	Male	Female	Total	Male	Female
1- Port Louis / North	961	618	343	882	532	350	734	461	273	2,577	1,611	966
2- B.Bassin-R.Hill / East	652	433	219	711	489	222	559	372	187	1,922	1,294	628
3- Curepipe / South	554	345	209	507	323	184	453	298	155	1,514	966	548
4- Q.Bornes / Vacoas-Phoenix / West	382	251	131	363	232	131	270	157	113	1,015	640	375
Rodrigues	142	89	53	126	78	48	146	86	60	414	253	161
All Zones	2,691	1,736	955	2,589	1,654	935	2,162	1,374	788	7,442	4,764	2,678

Table 5.15 - Enrolment in schools offering pre-vocational education by year of study and sex,  
2008 - 2010

Year of study	2008			2009			2010		
	Total	Male	Female	Total	Male	Female	Total	Male	Female
<b>Republic of Mauritius</b>									
I	2,971	1,869	1,102	2,981	1,889	1,092	2,691	1,736	955
II	2,858	1,787	1,071	2,612	1,655	957	2,589	1,654	935
III	2,666	1,680	986	2,440	1,570	870	2,162	1,374	788
Total	8,495	5,336	3,159	8,033	5,114	2,919	7,442	4,764	2,678
<b>Island of Mauritius</b>									
I	2,794	1,766	1,028	2,844	1,804	1,040	2,549	1,647	902
II	2,696	1,685	1,011	2,441	1,554	887	2,463	1,576	887
III	2,521	1,602	919	2,289	1,476	813	2,016	1,288	728
Total	8,011	5,053	2,958	7,574	4,834	2,740	7,028	4,511	2,517
<b>Island of Rodrigues</b>									
I	177	103	74	137	85	52	142	89	53
II	162	102	60	171	101	70	126	78	48
III	145	78	67	151	94	57	146	86	60
Total	484	283	201	459	280	179	414	253	161

Table 5.16 - Enrolment in schools offering pre-vocational education by type of administration, year of study and sex, 2008 - 2010

**Republic of Mauritius**

Year of study	2008			2009			2010		
	Total	Male	Female	Total	Male	Female	Total	Male	Female
<b>All schools</b>									
I	2,971	1,869	1,102	2,981	1,889	1,092	2,691	1,736	955
II	2,858	1,787	1,071	2,612	1,655	957	2,589	1,654	935
III	2,666	1,680	986	2,440	1,570	870	2,162	1,374	788
Total	8,495	5,336	3,159	8,033	5,114	2,919	7,442	4,764	2,678
<b>State</b>									
I	893	599	294	891	562	329	778	507	271
II	959	637	322	739	501	238	765	477	288
III	1,010	699	311	781	542	239	583	391	192
Total	2,862	1,935	927	2,411	1,605	806	2,126	1,375	751
<b>Private</b>									
I	2,078	1,270	808	2,090	1,327	763	1,913	1,229	684
II	1,899	1,150	749	1,873	1,154	719	1,824	1,177	647
III	1,656	981	675	1,659	1,028	631	1,579	983	596
Total	5,633	3,401	2,232	5,622	3,509	2,113	5,316	3,389	1,927

Table 5.17 - Teaching staff in secondary schools (academic & pre-vocational streams) by district and sex, 2010

District	Academic			Pre-vocational			Academic & Pre-vocational		
	Total	Male	Female	Total	Male	Female	Total	Male	Female
Port Louis	1,043	434	609	69	27	42	1,112	461	651
Pamplemousses	629	265	364	70	21	49	699	286	413
Riviere du Rempart	620	287	333	71	31	40	691	318	373
Flacq	834	394	440	58	25	33	892	419	473
Grand Port	486	194	292	48	15	33	534	209	325
Savanne	320	149	171	42	17	25	362	166	196
Plaines Wilhems	2,904	1,201	1,703	167	53	114	3,071	1,254	1,817
Moka	489	168	321	47	15	32	536	183	353
Black River	165	82	83	22	9	13	187	91	96
Island of Mauritius	7,490	3,174	4,316	594	213	381	8,084	3,387	4,697
Island of Rodrigues	205	95	110	34	12	22	239	107	132
Republic of Mauritius	7,695	3,269	4,426	628	225	403	8,323	3,494	4,829

Table 5.18 - Teaching staff in secondary schools (academic & pre-vocational streams) by zone and sex, 2010

Zone	Academic			Pre-vocational			Academic & Pre-vocational		
	Total	Male	Female	Total	Male	Female	Total	Male	Female
1 - Port Louis / North	2,335	998	1,337	213	79	134	2,548	1,077	1,471
2 - B.Bassin-R.Hill / East	2,039	877	1,162	170	67	103	2,209	944	1,265
3 - Curepipe / South	1,773	753	1,020	129	41	88	1,902	794	1,108
4 - Q.Bornes / Vacoas-Phoenix / West	1,343	546	797	82	26	56	1,425	572	853
Rodrigues	205	95	110	34	12	22	239	107	132
All Zones	7,695	3,269	4,426	628	225	403	8,323	3,494	4,829

Table 5.19 - Cambridge School Certificate (SC) examination results by type of school administration and sex, 2007 - 2009

**School candidates only**

Type of school administration and sex		2007			2008			2009		
		No. Examined	No. Passed	% Passed	No. Examined	No. Passed	% Passed	No. Examined	No. Passed	% Passed
<b>Republic of Mauritius</b>										
<b>All Schools</b>	Total	17,343	13,298	76.7	17,794	13,617	76.5	17,496	13,585	77.6
	Male	8,213	5,889	71.7	8,262	5,908	71.5	8,136	5,844	71.8
	Female	9,130	7,409	81.2	9,532	7,709	80.9	9,360	7,741	82.7
<b>State Schools</b>	Total	6,804	5,680	83.5	8,280	6,871	83.0	8,356	7,078	84.7
	Male	3,336	2,597	77.8	3,919	3,042	77.6	4,043	3,187	78.8
	Female	3,468	3,083	88.9	4,361	3,829	87.8	4,313	3,891	90.2
<b>Private Schools</b>	Total	10,539	7,618	72.3	9,514	6,746	70.9	9,140	6,507	71.2
	Male	4,877	3,292	67.5	4,343	2,866	66.0	4,093	2,657	64.9
	Female	5,662	4,326	76.4	5,171	3,880	75.0	5,047	3,850	76.3
<b>Island of Mauritius</b>										
<b>All Schools</b>	Total	16,761	12,866	76.8	17,227	13,211	76.7	16,950	13,182	77.8
	Male	7,948	5,704	71.8	8,024	5,738	71.5	7,910	5,685	71.9
	Female	8,813	7,162	81.3	9,203	7,473	81.2	9,040	7,497	82.9
<b>State Schools</b>	Total	6,804	5,680	83.5	8,280	6,871	83.0	8,356	7,078	84.7
	Male	3,336	2,597	77.8	3,919	3,042	77.6	4,043	3,187	78.8
	Female	3,468	3,083	88.9	4,361	3,829	87.8	4,313	3,891	90.2
<b>Private Schools</b>	Total	9,957	7,186	72.2	8,947	6,340	70.9	8,594	6,104	71.0
	Male	4,612	3,107	67.4	4,105	2,696	65.7	3,867	2,498	64.6
	Female	5,345	4,079	76.3	4,842	3,644	75.3	4,727	3,606	76.3
<b>Island of Rodrigues <sup>1</sup></b>										
<b>All Schools</b>	Total	582	432	74.2	567	406	71.6	546	403	73.8
	Male	265	185	69.8	238	170	71.4	226	159	70.4
	Female	317	247	77.9	329	236	71.7	320	244	76.3

Source: Mauritius Examinations Syndicate

<sup>1</sup> All candidates in Rodrigues are from REDCO and private schools.



Table 5.20 - Cambridge Higher School Certificate (HSC) examination results by type of school administration and sex, 2007 - 2009

**School candidates only**

Type of school administration and sex		2007			2008			2009		
		No. Examined	No. Passed	% Passed	No. Examined	No. Passed	% Passed	No. Examined	No. Passed	% Passed
<b>Republic of Mauritius</b>										
<b>All Schools</b>	Total	8,517	6,622	77.8	8,907	7,011	78.7	9,490	7,475	78.8
	Male	3,896	2,842	72.9	3,999	2,976	74.4	4,034	2,995	74.2
	Female	4,621	3,780	81.8	4,908	4,035	82.2	5,456	4,480	82.1
<b>State Schools</b>	Total	3,911	3,209	82.1	4,111	3,384	82.3	4,734	4,007	84.6
	Male	1,866	1,410	75.6	1,911	1,481	77.5	1,991	1,602	80.5
	Female	2,045	1,799	88.0	2,200	1,903	86.5	2,743	2,405	87.7
<b>Private Schools</b>	Total	4,606	3,413	74.1	4,796	3,627	75.6	4,756	3,468	72.9
	Male	2,030	1,432	70.5	2,088	1,495	71.6	2,043	1,393	68.2
	Female	2,576	1,981	76.9	2,708	2,132	78.7	2,713	2,075	76.5
<b>Island of Mauritius</b>										
<b>All Schools</b>	Total	8,290	6,456	77.9	8,658	6,827	78.9	9,222	7,280	78.9
	Male	3,796	2,764	72.8	3,884	2,896	74.6	3,916	2,915	74.4
	Female	4,494	3,692	82.2	4,774	3,931	82.3	5,306	4,365	82.3
<b>State Schools</b>	Total	3,911	3,209	82.1	4,111	3,384	82.3	4,734	4,007	84.6
	Male	1,866	1,410	75.6	1,911	1,481	77.5	1,991	1,602	80.5
	Female	2,045	1,799	88.0	2,200	1,903	86.5	2,743	2,405	87.7
<b>Private Schools</b>	Total	4,379	3,247	74.1	4,547	3,443	75.7	4,488	3,273	72.9
	Male	1,930	1,354	70.2	1,973	1,415	71.7	1,925	1,313	68.2
	Female	2,449	1,893	77.3	2,574	2,028	78.8	2,563	1,960	76.5
<b>Island of Rodrigues<sup>1</sup></b>										
<b>All Schools</b>	Total	227	166	73.1	249	184	73.9	268	195	72.8
	Male	100	78	78.0	115	80	69.6	118	80	67.8
	Female	127	88	69.3	134	104	77.6	150	115	76.7

Source: Mauritius Examinations Syndicate

<sup>1</sup> All candidates in Rodrigues are from REDCO and private schools

Table 6.1(a) - Total number of students enrolled in Tertiary Education, both locally and overseas, by field of study as at December 2008

Field of study	Total	Publicly Funded Institutions (PFIs)									Distance Education/ Private Providers	Overseas
		UOM <sup>1</sup>	UTM	MIE	MGI	MCA	Polytechnics	IVTB	MIH	Total(PFIs)		
Accountancy	5,139	257	24	-	-	-	-	-	-	281	4,324	534
Administration / Management	5,168	1,521	1,034	-	-	133	349	-	-	3,037	1,160	971
Agriculture	338	319	-	-	-	-	-	-	-	319	-	19
Architecture	134	-	-	-	-	-	-	-	-	-	7	127
Arts	553	-	-	-	160	-	-	-	-	160	254	139
Banking / Finance	981	465	265	-	-	-	-	-	-	730	110	141
Business / Commerce / Marketing	3,096	148	-	-	-	42	-	-	-	190	1,150	1,756
Communication	451	86	69	-	-	-	-	-	-	155	112	184
Counselling	62	-	62	-	-	-	-	-	-	62	-	-
Dentistry	331	-	-	-	-	-	-	-	-	-	267	64
Economics	763	467	13	-	-	-	-	-	-	480	47	236
Education	4,530	22	135	4,196	-	2	-	-	-	4,355	36	139
Fisheries Studies	17	-	15	-	-	-	-	-	-	15	-	2
Engineering	2,780	1,220	31	-	-	-	268	22	-	1,541	229	1,010
Health Sciences	673	378	108	-	-	-	-	-	51	537	-	136
Humanities	542	258	-	-	79	-	-	-	-	337	9	196
Information Technology	3,448	949	419	-	-	11	166	121	-	1,666	756	1,026
Languages	1,292	361	-	-	300	131	-	-	-	792	120	380
Law	1,195	331	-	-	-	-	-	-	-	331	385	479
Mathematics	441	201	43	-	-	-	-	-	-	244	32	165
Medecine	1,889	74	-	-	-	-	-	-	16	90	702	1,097
Pharmacy	174	34	-	-	-	-	-	-	-	34	11	129
Police Studies	6	6	-	-	-	-	-	-	-	6	-	-
Psychology	35	-	-	-	-	-	-	-	-	-	-	35
Religious Studies	67	-	-	-	-	-	-	-	-	-	47	20
Research (Msc, MPhil / PhD)	219	191	28	-	-	-	-	-	-	219	-	-
Science	1,119	464	-	-	-	-	-	-	-	464	28	627
Social Science	918	397	-	-	-	-	-	-	-	397	36	485
Textile	271	125	-	-	-	-	-	85	-	210	6	55
Travel / Hotel / Tourism	1,443	195	247	-	-	60	-	194	-	696	100	647
Others	548	-	24	-	-	-	-	-	-	24	75	449
<b>Total</b>	<b>38,623</b>	<b>8,469</b>	<b>2,517</b>	<b>4,196</b>	<b>539</b>	<b>379</b>	<b>783</b>	<b>422</b>	<b>67</b>	<b>17,372</b>	<b>10,003</b>	<b>11,248</b>

<sup>1</sup> Excludes enrolment on joint MIE & MGI Programmes

Source : Tertiary Education Commission (TEC) Report- 2008

Table 6.1(b) - Total number of students enrolled in Tertiary Education, both locally and overseas, by field of study as at December 2009

Field of study	Total	Publicly Funded Institutions (PFIs)											Distance Education/ Private Providers	Overseas
		UOM <sup>1</sup>	UTM	FDI <sup>2</sup>	MIE	MGI	RTI <sup>3</sup>	MCA	Polytechnics	MITD	MIH	Total(PFIs)		
Accountancy	5,249	303	16		-	-		-	26	-	-	345	4,405	499
Administration / Management	5,301	1,821	1,182		-	-		125	308	-	-	3,436	1,234	631
Agriculture	378	353	-		-	-		-	-	-	-	353	-	25
Architecture	196	-	-		-	-		-	-	-	-	-	14	182
Arts	677	-	-		-	197	12	-	-	50	-	259	300	118
Banking / Finance	1,141	545	254		-	-		24	57	-	-	880	91	170
Business / Commerce / Marketing	3,743	294	11		-	-		30	18	-	-	353	1,482	1,908
Communication	561	86	74		-	-		-	-	23	-	183	137	241
Counselling	93	-	93		-	-		-	-	-	-	93	-	-
Dentistry	252	-	-		-	-		-	-	-	-	-	168	84
Economics	843	497	13		-	-		-	-	-	-	510	72	261
Education	5,205	76	207		4,738	-		3	-	-	-	5,024	43	138
Fisheries Studies	18	-	15		-	-		-	-	-	-	15	-	3
Engineering	3,000	1,250	87		-	-		-	240	28	-	1,605	158	1,237
Health Sciences	662	308	144		-	-		-	-	-	24	476	72	114
Humanities	470	257	-		-	-		-	-	-	-	257	14	199
Information Technology	3,559	1,004	495	15	-	-		10	186	113	-	1,823	913	823
Languages	1,442	419	-		-	429		190	-	-	-	1,038	204	200
Law	1,328	471	-		-	-		-	-	-	-	471	360	497
Library	45	35	-		-	-		10	-	-	-	45	-	-
Mathematics	503	266	62		-	-		-	-	-	-	328	44	131
Medecine	1,710	142	-		-	-		-	-	-	22	164	592	954
Mrs	12	12	-		-	-		-	-	-	-	12	-	-
Pharmacy	174	30	-		-	-		-	-	-	-	30	17	127
Police Studies	8	6	-		-	-		-	-	-	-	6	-	2
Psychology	181	107	-		-	-		-	-	-	-	107	-	74
Religious Studies	95	-	-		-	-		-	-	-	-	-	78	17
Research (MPhil / PhD)	212	159	34		-	-		-	-	-	-	193	-	19
Science	944	519	-		-	-		-	-	-	-	519	3	422
Social Science	1,438	337	-		-	-		-	-	-	-	337	75	1,026
Textile	262	156	-	11	-	-		-	-	22	-	189	10	63
Travel / Hotel / Tourism	1,241	210	227		-	-		60	-	230	-	727	63	451
Others	541	-	104		-	-		-	-	-	-	104	114	323
<b>Total</b>	<b>41,484</b>	<b>9,663</b>	<b>3,018</b>	<b>26</b>	<b>4,738</b>	<b>626</b>	<b>12</b>	<b>452</b>	<b>835</b>	<b>466</b>	<b>46</b>	<b>19,882</b>	<b>10,663</b>	<b>10,939</b>

<sup>1</sup> Excludes enrolment on joint MIE & MGI Programme:<sup>2</sup> FDI - The Fashion and Design Institute<sup>3</sup> RTI - The Rabindranath Tagore Institute