

**Quarterly Export and Import Price Indices**  
**4th Quarter 2009**  
**(Base year: 2007=100)**

**1. Introduction**

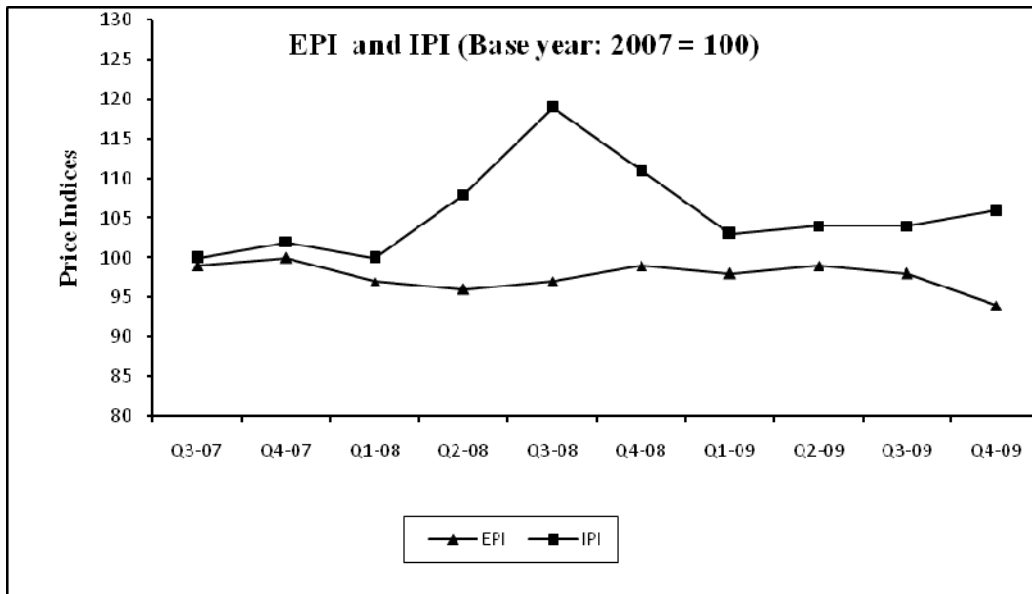
The Export Price Index (EPI) provides an overall measure of pure price changes (in Mauritian rupees) of goods exported to other countries. The Import Price Index (IPI), on the other hand, measures price changes (in Mauritian rupees) of goods purchased from other countries.

This issue of Economic and Social Indicators presents a series of quarterly export and import price indices for the period 2007 to fourth quarter 2009 with 2007 as base year. The weights have been derived from exports and imports data for the base year, while the average import and export prices of representative items in 2007 have been used as the base year.

The methodology used and the weight structure are given in the technical notes at Annex.

**2. Terms of trade (base year: 2007 = 100)**

The terms of trade index is the ratio of export price index to import price index. A rise in this ratio indicates that the terms of trade have moved in favour of Mauritius. During the fourth quarter of 2009, export prices decreased by 3.4% over the previous quarter while import prices increased by 1.8%. Consequently, the terms of trade decreased by 5 points to reach 89.



### **3. Export.Price.Index.(EPI)(Tables 4-9)**

#### **3.1 Structure of the EPI**

The EPI covers six sections of the SITC, namely “Food and live animals”, “Crude materials, inedible, except fuels”, “Animals and vegetable oils & fats”, “Chemicals and related products”, “Manufactured goods classified chiefly by material” and “Miscellaneous manufactured articles”. Exports of goods falling under these sections covered 88% of total exports in base year 2007. In addition to the overall index, separate sub-indices are given for the different sections, groups of commodities and items product categories.

#### **3.2 Changes in Export Price Index (4th quarter 2009)**

##### 3.2.1 Overall Index

During the fourth quarter of 2009, the EPI decreased by 3.4% to reach 94.4 from 97.8 in the third quarter of 2009. This was mainly due to decreases in the prices of “Food and live animals” (-3.6%), “Miscellaneous manufactured articles” (-3.4%), “Manufactured goods classified chiefly by material” (-3.2%) and “Chemicals and related products, n.e.s” (-1.1%).

Compared to price levels in the corresponding quarter of 2008, the index was 4.8% lower, mostly explained by a price decrease of 14.6% in “Food and live animals” offset by an increase of 1.2% in “Miscellaneous manufactured articles”.

##### 3.2.2 Sub-indices by section

###### *Section 0: Food and live animals*

During the fourth quarter of 2009, the sub-index for “Food and live animals”, accounting for 34.5% of the total weight decreased by 3.6% from 93.0 to 89.6, this was mainly due to a decrease of 9.1% in the export price of “Fish and fish preparations”.

When compared to the corresponding quarter of 2008, the index fell by 14.6% due to a decline of 35.9% in the prices of “Fish and fish preparations”.

###### *Section 2: Crude materials, inedible, except fuels*

The index for “Crude materials, inedible, except fuels” increased by 5.1% from 139.6 in the third quarter of 2009 to 146.7 in the fourth quarter of 2009 following an increase of 4.9% in the export price of fresh cut flowers.

When compared to the corresponding quarter of 2008, the index was 15.6% lower.

###### *Section 4: Animal and vegetable oils, fats and waxes*

The index for “Animal and vegetable oils, fats and waxes” decreased by 37.6% from 114.7 in the third quarter to 71.6 in the fourth quarter of 2009.

Compared to the corresponding period of 2008, the index went down by 24.4%.

#### *Section 5: Chemicals and related products*

The export price index for “Chemicals and related products” which stood at 94.3 in the third quarter of 2009, decreased by 1.1% to reach 93.3 in the fourth quarter of 2009.

Compared to the corresponding quarter of 2008, the index went up by 0.6%.

#### *Section 6: Manufactured goods classified chiefly by material*

During the fourth quarter of 2009, the export prices of goods in this section, which consist mainly of textile fabrics, registered a decrease of 3.2% from 127.1 in the third quarter of 2009 to 123.0 in the fourth quarter of 2009. The export prices of “Textile yarn and fabrics”, the most important component of this section, went down by 3.3%.

Compared to the corresponding quarter of 2008, the index decreased by 0.2%, mainly as a result of a 6.1% decrease in the export prices of “Textile yarn and fabrics”.

#### *Section 8: Miscellaneous manufactured articles*

“Miscellaneous manufactured articles” which consists mostly of articles of wearing apparel, is the most important section of the export price index as it carries about 55% of the total weight.

During the fourth quarter of 2009, the index for this section decreased by 3.4% from 96.6 in the third quarter of 2009 to 93.3 in the fourth quarter of 2009. Within the section, the export prices of “Articles of apparel and clothing accessories” decreased by 3.4%.

Compared to the corresponding quarter of 2008, the index registered an increase of 1.2%.

## **4. Import Price Index (IPI) (Tables 10 -16)**

### **4.1 Structure of the IPI**

The IPI covers nine out of the 10 Standard International Trade Classification (SITC, Rev. 3) sections, namely “Food and live animals”, “Beverages and tobacco”, “Crude materials, inedible, except fuels”, “Mineral fuels, lubricants and related materials”, “Animal and vegetable oils, fats and waxes”, “Chemical materials and related products, n.e.s”, “Manufactured goods classified chiefly by materials”, “Machinery and transport equipment” and “Miscellaneous manufactured articles”.

The only SITC section not covered in the index is “Commodities and transactions not classified elsewhere”, because of the heterogeneity of the products and the inherent difficulties in pricing the items of a constant quality.

Thus, the index, either directly or indirectly, covers about 91% of merchandise imported during 2007. Sixty per cent of the items are directly represented; for those items which are not directly represented, the prices are considered to move similarly to those represented directly.

## **4.2 Changes in Import Price Index – 4th quarter 2009**

### 4.2.1 Overall Index

The Import Price Index (IPI) for the fourth quarter of 2009 went up by 1.8% to reach 105.8 from 103.9 in the previous quarter. This was mainly the effect of increases in the prices of “Mineral fuels, lubricants and related materials” (15.8%) and “Manufactured goods classified chiefly by material” (1.6%), partly offset by price decreases in “Food and live animals” (-2.3%) and “Machinery and transport equipment” (-2.7%).

Compared to the corresponding period of 2008, the index went down by 4.6% mainly as a result of decreases in prices of “Manufactured goods classified by material” (-11.5%), “Food and live animals” (-16.1%) and “Machinery and transport equipment” (-1.4%), partly offset by a price increase of 12.2% in “Mineral fuels, lubricants and related materials”.

### 4.2.2 Sub-indices by section

#### *Section 0: Food and live animals*

The index for “Food and live animals”, representing about 18% of total weight, decreased by 2.3%, from 111.5 in the third quarter of 2009 to 108.9 in the fourth quarter of 2009. Within the section, the most significant price decreases were registered in “Fish and fish preparations” (-10.1%), “Cereals and cereal preparations” (-3.3%), “Dairy products and birds’ eggs” (-0.3%) and “Meat and meat preparations” (1.7%), while increases have been registered in “Vegetables and fruits” (9.6%) and “Miscellaneous edible products and preparations” (2.1%).

Compared to the fourth quarter of 2008, the index went down by 16.1%, mostly as a result of decreases in the prices of “Fish and fish preparations” (-19.4%), “Cereals and cereal preparations” (-38.1%) and “Dairy products and birds’ eggs” (-11.5%), partly offset by an increase in the price of “Vegetables and fruits” (20.2%).

#### *Section 1: Beverages and tobacco*

The index for “Beverages and tobacco” increased by 2.6% from 140.5 in the third quarter of 2009 to 144.2 in the fourth quarter of 2009, due to price increases of 2.3% and 3.2% in “Beverages” and “Tobacco and tobacco manufactures” respectively.

When compared to the corresponding period of 2008, the index rose by 30.1%.

## *Section 2: Crude materials, inedible, except fuels*

The index for “Crude materials, inedible, except fuels” decreased by 2.1% from 138.4 in the third quarter of 2009 to 135.5 in the fourth quarter of 2009 mainly as a result of decreases of 3.3% and 6.9% in the import prices of “cork and wood” and “Crude fertilizers and crude minerals” respectively.

Compared to the corresponding period of last year, the index decreased by 8.1% mainly attributable to decreases of 15.6% in the prices of “cork and wood” and 7.4% in “Textile fibres and their wastes”.

## *Section 3: Mineral fuels, lubricants and related materials*

The index for “Mineral fuels, lubricants and related materials” with 20% of the total weight went up by 15.8% from 97.3 in the third quarter of 2009 to reach 112.7, due to a rise of 17.9% in the prices of “Petroleum, petroleum products and materials”.

Compared to the corresponding period of 2008, the index registered an increase of 12.2% mostly due to a rise of 21.5% in the prices of “Petroleum, petroleum products and materials”.

## *Section 4: Animal and vegetable oils, fats and waxes*

During the fourth quarter of 2009, a decrease of 1.9% was registered in the index for “Animal and vegetable oils, fats and waxes”

When compared to the corresponding quarter of 2008, the index showed a decrease of 31.1%.

## *Section 5: Chemical materials and related products, not elsewhere specified (n.e.s)*

The index for “Chemical materials and related products, n.e.s” dropped by 5.5% in the fourth quarter of 2009 from 108.6 in the third quarter of 2009 to reach 102.6. During the quarter, decreases in import prices were registered in “Medicinal and pharmaceutical products” (-3.6%), “Plastics in primary forms” (-3.5%), “Essential oils and perfume materials, etc” (-1.8%), “Chemical materials and products, n.e.s” (-7.7%) and “Fertilizers” (-23.1%).

The index went down by 7.5% when compared to the corresponding period of last year.

## *Section 6: Manufactured goods classified chiefly by material*

In the fourth quarter of 2009, the index for “Manufactured goods classified chiefly by material” stood at 96.3, that is, an increase of 1.6% over the previous quarter. This is mainly attributable to price increases of 6.9% in “Textile yarn, fabrics, made-up-articles n.e.s” and 5.5% in “Non-metallic mineral manufactures n.e.s”, partly offset by price decreases of 4.9% in “Iron and steel” and 8.5% in “Manufactures of metals, n.e.s”.

When compared to the corresponding quarter of 2008, the index went down by 11.5%, mainly the effect of price decreases of 25.4%, 33.0% and 3.1% in “Non-metallic mineral manufactures n.e.s” , “Iron and steel”, and “Textile yarn, fabrics, made-up-articles n.e.s” respectively.

#### *Section 7: Machinery and transport equipment*

The index of “Machinery and transport equipment” with 18% of total weight dropped to 100.6 in the fourth quarter of 2009, representing a decrease of 2.7% when compared to the previous quarter. Main decreases were registered in “Telecommunications and sound recording” (-0.4%) and “Road vehicles” (-0.5%), “General industrial machinery and equipment” (-8.5%), “Machinery specialized for particular industries” (-3.1%) and “Electrical machinery, apparatus and appliances, n.e.s. , & parts thereof of reproducing apparatus” (-4.3%).

Compared to the corresponding quarter of 2008, the index decreased by 1.4% mainly attributable to price decreases in “Road vehicles” (-5.7%), and “General industrial machinery and equipment” (-5.4 %).

#### *Section 8: Miscellaneous manufactured articles*

The index for “Miscellaneous manufactured articles” went slightly down by 0.8% from 106.1 in the third quarter of 2009 to reach 105.3. The import prices of goods classified in the division “Photographic apparatus, equipment and supplies and optical goods, n.e.s.; watches & clocks” registered a drop of 3.3% and those of “Professional, scientific and controlling inst.” a drop of 1.1%.

Compared to the corresponding quarter of 2008, the index went up by 2.7% mostly due to increases of 4.3% in the prices of “Miscellaneous manufactured articles” and of 8.1% in “Professional, scientific and controlling inst.”

### **5. Past trends**

The EPI and IPI in this publication are not strictly comparable with previously published series worked out using 2003 as base year. Chain linked export and import price indices using 2007 as the base year have been worked out using appropriate conversion factors and are presented in Tables 9 and 15 respectively.

#### **Central Statistics Office**

Ministry of Finance and Economic Empowerment

**PORT LOUIS**

March 2010

**Contact Person**

**Ms F Victor**

**Senior Statistical Officer**

**Central Statistics Office**

**L.I.C Centre**

**J.Kennedy Street**

**Port Louis**

**Telephone: 2108091/2122316/2122317**

**Fax: 211 4150**

**Email: cso\_trade@mail.gov.mu**

Table 1- Price indices of exports and imports and terms of trade, 2007 - 4th quarter 2009

| Period                        |             | Price indices |            | Terms of trade |
|-------------------------------|-------------|---------------|------------|----------------|
|                               |             | Export        | Import     |                |
| Reference year : 2007 = 1 0 0 |             |               |            |                |
| 2007                          | 1st Qr      | 102           | 99         | 103            |
|                               | 2nd Qr      | 99            | 99         | 100            |
|                               | 3rd Qr      | 99            | 100        | 99             |
|                               | 4th Qr      | 100           | 102        | 98             |
|                               | <b>Year</b> | <b>100</b>    | <b>100</b> | <b>100</b>     |
| 2008                          | 1st Qr      | 97            | 100        | 97             |
|                               | 2nd Qr      | 96            | 108        | 89             |
|                               | 3rd Qr      | 97            | 119        | 81             |
|                               | 4th Qr      | 99            | 111        | 89             |
|                               | <b>Year</b> | <b>97</b>     | <b>110</b> | <b>89</b>      |
| 2009                          | 1st Qr      | 98            | 103        | 95             |
|                               | 2nd Qr      | 99            | 104        | 95             |
|                               | 3rd Qr      | 98            | 104        | 94             |
|                               | 4th Qr      | 94            | 106        | 89             |
|                               | <b>Year</b> | <b>97</b>     | <b>104</b> | <b>93</b>      |

<sup>1</sup> Provisional

Table 2-Percentage change in the price and volume of exports<sup>1</sup>, 4th quarter 2008 - 4th quarter 2009

| SITC-section | Description                                       | Weight       | F.O.B Value (Rs Mn) |               | % change |       |                     |
|--------------|---|--------------|---------------------|---------------|----------|-------|---------------------|
|              |   |              | Oct-Dec 2008        | Oct-Dec 2009  | Value    | Price | Volume <sup>3</sup> |
|              |   |              | <b>Overall</b>      | <b>10,000</b> |          |       |                     |
| 0            | Food and live animals                             | <b>3,445</b> | 6,427               | 4,479         | -30      | -15   | -18                 |
|              | <i>of which:</i>                                  |              |                     |               |          |       | <b>0</b>            |
|              | <i>Sugar</i>                                      | <b>1,904</b> | 3,641               | 1,679         | -54      | +4    | -56                 |
| 2            | Crude materials, inedible except fuels            | <b>37</b>    | 180                 | 252           | 40       | -16   | +66                 |
| 4            | Animals and vegetables oils & fats                | <b>9</b>     | 2                   | 11            | 450      | -24   | 627                 |
| 5            | Chemicals & related products, n.e.s               | <b>233</b>   | 648                 | 655           | 1        | +1    | 0                   |
| 6            | Manufactured goods classified chiefly by material | <b>759</b>   | 1,319               | 1,350         | 2        | 0     | 3                   |
| 8            | Miscellaneous manufactured articles               | <b>5,517</b> | 7,547               | 7,291         | -3       | 1     | -4                  |

<sup>1</sup> Excluding sections 1,3,7 and 9 not covered by the EPI

<sup>2</sup> Provisional <sup>3</sup> Volume change has been derived as the ratio of value to price change

Table 3 -Percentage change in the price and volume of total imports<sup>1</sup>, 4th quarter 2008 - 4th quarter 2009

| SITC-section | Description  | Weight       | C.I.F Value (Rs Mn) |               | % change |       |                     |
|--------------|--|--------------|---------------------|---------------|----------|-------|---------------------|
|              |  |              | Oct-Dec 2008        | Oct-Dec 2009  | Value    | Price | Volume <sup>3</sup> |
|              |  |              | <b>Overall</b>      | <b>10,000</b> |          |       |                     |
| 0            | Food and live animals                                | <b>1,808</b> | 5,743               | 5,543         | -3       | -16   | +15                 |
| 1            | Beverages & tobacco                                  | <b>138</b>   | 684                 | 709           | +4       | +30   | -20                 |
| 2            | Crude materials, inedible except fuels               | <b>288</b>   | 892                 | 993           | +11      | -8    | +21                 |
| 3            | Mineral fuels, lubricants & related materials        | <b>2,004</b> | 5,904               | 5,675         | -4       | +12   | -14                 |
| 4            | Animals and vegetables oils & fats                   | <b>104</b>   | 516                 | 292           | -43      | -31   | -18                 |
| 5            | Chemicals & related products, n.e.s                  | <b>851</b>   | 2,915               | 2,955         | +1       | -8    | +10                 |
| 6            | Manufactured goods classified chiefly by material    | <b>2,141</b> | 7,332               | 5,924         | -19      | -12   | -8                  |
| 7            | Machinery & transport equipment (excluding aircraft) | <b>1,800</b> | 7,532               | 9,634         | +28      | -1    | +29                 |
| 8            | Miscellaneous manufactured articles                  | <b>866</b>   | 3,706               | 3,632         | -2       | +3    | -5                  |

<sup>1</sup> Excluding section 9 not covered by the IPI

<sup>2</sup> Provisional <sup>3</sup> Volume change has been derived as the ratio of value to price change

**Table 4 - Quarterly Export Price Index by SITC <sup>1</sup> section, 2007 - 4th quarter 2009**

Reference year 2007=100

| SITC <sup>1</sup><br>Section | Description                                       | Weight        | 2007         | 2008        |             |             |             |             | 2009        |             |                     |                     |             |
|------------------------------|---|---------------|--------------|-------------|-------------|-------------|-------------|-------------|-------------|-------------|---------------------|---------------------|-------------|
|                              |   |               | Average      | 1st Qr      | 2nd Qr      | 3rd Qr      | 4th Qr      | Average     | 1st Qr      | 2nd Qr      | 3rd Qr <sup>2</sup> | 4th Qr <sup>3</sup> | Average     |
|                              | <b>Overall</b>                                    | <b>10,000</b> | <b>100.0</b> | <b>96.5</b> | <b>96.0</b> | <b>96.9</b> | <b>99.2</b> | <b>97.2</b> | <b>97.6</b> | <b>98.7</b> | <b>97.8</b>         | <b>94.4</b>         | <b>97.1</b> |
| 0                            | Food and live animals                             | 3,445         | 100.0        | 104.1       | 104.8       | 102.3       | 104.8       | 104.0       | 96.1        | 92.5        | 93.0                | 89.6                | 92.8        |
| 2                            | Crude materials, inedible, except fuels           | 37            | 100.0        | 88.0        | 116.9       | 148.3       | 173.9       | 131.8       | 139.6       | 116.4       | 139.6               | 146.7               | 135.6       |
| 4                            | Animals and vegetables oils & fats                | 9             | 100.0        | 94.7        | 94.7        | 94.7        | 94.7        | 94.7        | 103.2       | 117.4       | 114.7               | 71.6                | 101.7       |
| 5                            | Chemicals and related products, n.e.s             | 233           | 100.0        | 93.3        | 93.8        | 93.0        | 92.7        | 93.2        | 96.8        | 100.5       | 94.3                | 93.3                | 96.2        |
| 6                            | Manufactured goods classified chiefly by material | 759           | 100.0        | 105.4       | 105.5       | 113.3       | 123.2       | 111.9       | 127.5       | 134.7       | 127.1               | 123.0               | 128.1       |
| 8                            | Miscellaneous manufactured articles               | 5,517         | 100.0        | 90.7        | 89.1        | 91.2        | 92.2        | 90.8        | 94.2        | 97.4        | 96.6                | 93.3                | 95.4        |

<sup>1</sup> The Standard International Trade Classification Revision 3 (SITC Rev 3)

<sup>2</sup> Revised

<sup>3</sup> Provisional



**Table 5 - Quarterly Export Price Index by SITC <sup>1</sup>, 2007 - 4th quarter 2009**

Reference year 2007=100

| SITC <sup>1</sup><br>Section | Description   | Weight        | 2007         | 2008         |              |              |              |              | 2009         |              |                     |                     |              |
|------------------------------|---|---------------|--------------|--------------|--------------|--------------|--------------|--------------|--------------|--------------|---------------------|---------------------|--------------|
|                              |   |               | Average      | 1st Qr       | 2nd Qr       | 3rd Qr       | 4th Qr       | Average      | 1st Qr       | 2nd Qr       | 3rd Qr <sup>2</sup> | 4th Qr <sup>3</sup> | Average      |
|                              | <b>Overall</b>  | <b>10,000</b> | <b>100.0</b> | <b>96.5</b>  | <b>96.0</b>  | <b>96.9</b>  | <b>99.2</b>  | <b>97.2</b>  | <b>97.6</b>  | <b>98.7</b>  | <b>97.8</b>         | <b>94.4</b>         | <b>97.1</b>  |
| <b>0</b>                     | <b>Food and live animals</b>  | <b>3,445</b>  | <b>100.0</b> | <b>104.1</b> | <b>104.8</b> | <b>102.3</b> | <b>104.8</b> | <b>104.0</b> | <b>96.1</b>  | <b>92.5</b>  | <b>93.0</b>         | <b>89.6</b>         | <b>92.8</b>  |
|                              | Live animals  | 163           | 100.0        | 104.7        | 100.5        | 101.9        | 104.6        | 102.9        | 110.6        | 113.9        | 112.7               | 106.6               | 110.9        |
|                              | Fish, crustaceans, molluscs, and aquatic invertebrates and preparations thereof | 1,262         | 100.0        | 108.0        | 110.4        | 122.7        | 128.9        | 117.5        | 104.4        | 94.5         | 90.8                | 82.6                | 93.1         |
|                              | Cereals and cereal preparations   | 55            | 100.0        | 138.6        | 139.4        | 140.0        | 138.0        | 139.0        | 131.4        | 126.5        | 125.7               | 124.3               | 127.0        |
|                              | Sugars, sugar preparations and honey  | 1,904         | 100.0        | 100.6        | 100.6        | 87.7         | 87.7         | 94.2         | 87.7         | 87.7         | 91.1                | 91.1                | 89.4         |
|                              | Feeding stuff for animals   | 61            | 100.0        | 97.4         | 102.0        | 103.7        | 113.8        | 104.2        | 114.9        | 114.9        | 113.8               | 111.1               | 113.7        |
| <b>2</b>                     | <b>Crude materials, inedible, except fuels</b>                                  | <b>37</b>     | <b>100.0</b> | <b>88.0</b>  | <b>116.9</b> | <b>148.3</b> | <b>173.9</b> | <b>131.8</b> | <b>139.6</b> | <b>116.4</b> | <b>139.6</b>        | <b>146.7</b>        | <b>135.6</b> |
|                              | Crude animal and vegetable materials  | 37            | 100.0        | 88.0         | 116.9        | 148.3        | 173.9        | 131.8        | 139.6        | 116.4        | 139.9               | 146.7               | 135.7        |
| <b>4</b>                     | <b>Animal and vegetable oils, fats and waxes</b>                                | <b>9</b>      | <b>100.0</b> | <b>94.7</b>  | <b>94.7</b>  | <b>94.7</b>  | <b>94.7</b>  | <b>94.7</b>  | <b>103.2</b> | <b>117.4</b> | <b>114.7</b>        | <b>71.6</b>         | <b>101.7</b> |
|                              | Fixed vegetable fats and oils, crude, refined or fractionated                   | 9             | 100.0        | 94.7         | 94.7         | 94.7         | 94.7         | 94.7         | 103.2        | 117.4        | 114.7               | 71.6                | 101.7        |
| <b>5</b>                     | <b>Chemicals and related products, n.e.s</b>                                    | <b>233</b>    | <b>100.0</b> | <b>93.3</b>  | <b>93.8</b>  | <b>93.0</b>  | <b>92.7</b>  | <b>93.2</b>  | <b>96.8</b>  | <b>100.5</b> | <b>94.3</b>         | <b>93.3</b>         | <b>96.2</b>  |
|                              | Organic chemicals   | 69            | 100.0        | 96.9         | 97.6         | 95.6         | 96.2         | 96.6         | 100.4        | 104.2        | 80.4                | 82.5                | 91.8         |
|                              | Medicinal and pharmaceutical products   | 164           | 100.0        | 91.8         | 92.2         | 91.9         | 91.2         | 91.8         | 95.4         | 99.0         | 100.1               | 97.8                | 98.1         |
| <b>6</b>                     | <b>Manufactured goods classified chiefly by material</b>                        | <b>759</b>    | <b>100.0</b> | <b>105.4</b> | <b>105.5</b> | <b>113.3</b> | <b>123.2</b> | <b>111.9</b> | <b>127.5</b> | <b>134.7</b> | <b>127.1</b>        | <b>123.0</b>        | <b>128.1</b> |
|                              | Textile yarn, fabrics, made-up articles, n.e.s., & related products             | 438           | 100.0        | 107.5        | 107.5        | 119.1        | 134.7        | 117.2        | 137.6        | 146.2        | 130.7               | 126.5               | 135.3        |
|                              | Non-metallic mineral manufactures, n.e.s  | 178           | 100.0        | 99.5         | 99.3         | 104.6        | 109.1        | 103.1        | 116.3        | 120.1        | 120.5               | 118.5               | 118.9        |
|                              | Manufactures of metal, n.e.s.   | 143           | 100.0        | 106.5        | 106.9        | 106.5        | 105.7        | 106.4        | 110.6        | 117.5        | 124.1               | 117.9               | 117.5        |

<sup>1</sup> The Standard International Trade Classification Revision 3 (SITC Rev 3)

<sup>2</sup> Revised

<sup>3</sup> Provisional

**Table 5 (cont'd) - Quarterly Export Price Index by SITC<sup>1</sup>, 2007 - 4th quarter 2009**

Reference year 2007=100

| SITC <sup>1</sup><br>Section | Description   | Weight       | 2007         | 2008        |             |             |             |             | 2009        |             |                     |                     |             |
|------------------------------|---|--------------|--------------|-------------|-------------|-------------|-------------|-------------|-------------|-------------|---------------------|---------------------|-------------|
|                              |   |              | Average      | 1st Qr      | 2nd Qr      | 3rd Qr      | 4th Qr      | Average     | 1st Qr      | 2nd Qr      | 3rd Qr <sup>2</sup> | 4th Qr <sup>3</sup> | Average     |
| <b>8</b>                     | <b>Miscellaneous manufactured articles</b>  | <b>5,517</b> | <b>100.0</b> | <b>90.7</b> | <b>89.1</b> | <b>91.2</b> | <b>92.2</b> | <b>90.8</b> | <b>94.2</b> | <b>97.4</b> | <b>96.6</b>         | <b>93.3</b>         | <b>95.4</b> |
|                              | Articles of apparel and clothing accessories  | 5,389        | 98.7         | 90.6        | 92.2        | 90.8        | 91.6        | 91.3        | 93.4        | 96.5        | 95.7                | 92.4                | 94.5        |
|                              | <i>Men's or boys' coats, jackets, suits, blazers, trousers, shorts, shirts etc, not knitted or crocheted</i>    | 1,488        | 98.8         | 91.9        | 90.5        | 94.0        | 98.7        | 93.8        | 98.6        | 99.8        | 98.3                | 93.4                | 97.5        |
|                              | <i>Women's or girls' coats, jackets, suits, blazers, trousers, shorts, shirts etc, not knitted or crocheted</i> | 256          | 98.7         | 89.7        | 88.1        | 90.4        | 101.3       | 92.4        | 112.3       | 110.7       | 113.1               | 130.1               | 116.5       |
|                              | <i>Men's or boys' coats, jackets, suits, blazers, trousers, shorts, shirts etc, knitted or crocheted</i>        | 546          | 99.9         | 91.9        | 90.2        | 90.0        | 78.3        | 87.6        | 79.9        | 83.2        | 84.3                | 82.1                | 82.4        |
|                              | <i>Women's or girls' coats, jackets, suits, blazers, trousers, shorts, shirts etc, knitted or crocheted</i>     | 49           | 98.8         | 90.7        | 91.3        | 91.6        | 86.1        | 89.9        | 90.1        | 93.5        | 94.6                | 92.4                | 92.6        |
|                              | <i>Articles of apparel, of textile fabrics, whether or not knitted or crocheted</i>                             | 3,050        | 100.0        | 89.8        | 87.7        | 89.5        | 89.8        | 89.2        | 91.8        | 95.9        | 95.1                | 90.6                | 93.3        |
|                              | Photographic apparatus, equipment and supplies and optical goods, n.e.s.; watches & clocks                      | 99           | 101.5        | 99.9        | 106.4       | 110.6       | 124.3       | 110.3       | 137.1       | 141.3       | 141.4               | 138.5               | 139.6       |
|                              | <i>Optical goods, n.e.s</i>   | 29           | 99.3         | 93.1        | 88.6        | 91.5        | 95.6        | 92.2        | 102.1       | 104.3       | 103.4               | 99.8                | 102.4       |
|                              | <i>Watches and clocks</i>   | 70           | 102.5        | 102.7       | 113.7       | 118.5       | 136.2       | 117.8       | 151.6       | 156.6       | 157.1               | 154.6               | 155.0       |
|                              | Miscellaneous manufactured articles, n.e.s  | 29           | 97.5         | 88.8        | 86.2        | 87.2        | 94.4        | 89.1        | 99.4        | 99.8        | 100.8               | 94.7                | 98.7        |

<sup>1</sup> The Standard International Trade Classification Revision 3 (SITC Rev 3)

<sup>2</sup> Revised

<sup>3</sup> Provisional

**Table 6 - Export Price Index: Percentage change by SITC<sup>1</sup> section, 3rd quarter 2008 - 4th quarter 2009**

Reference year 2007=100

| Section | Description                                       | Weight       |                 |                 |                 |                 |                 |                 |                 |                 |                 |  |
|---------|---|--------------|-----------------|-----------------|-----------------|-----------------|-----------------|-----------------|-----------------|-----------------|-----------------|--|
|         |   |              | 3rd Qr 08       | 4th Qr 08       | 1st Qr 09       | 2nd Qr 09       | 3rd Qr 09       | 1st Qr 08       | 2nd Qr 08       | 3rd Qr 08       | 4th Qr 08       |  |
|         |   |              | to<br>4th Qr 08 | to<br>1st Qr 09 | to<br>2nd Qr 09 | to<br>3rd Qr 09 | to<br>4th Qr 09 | to<br>1st Qr 09 | to<br>2nd Qr 09 | to<br>3rd Qr 09 | to<br>4th Qr 09 |  |
|         | <b>Overall</b>                                    | <b>10000</b> | <b>2.4</b>      | <b>-1.6</b>     | <b>1.1</b>      | <b>-0.9</b>     | <b>-3.4</b>     | <b>1.2</b>      | <b>2.8</b>      | <b>0.8</b>      | <b>-4.8</b>     |  |
| 0       | Food and live animals                             | 3445         | 2.5             | -8.4            | -3.7            | 0.5             | -3.6            | -7.7            | -11.7           | -9.1            | -14.6           |  |
| 2       | Crude materials, inedible, except fuels           | 37           | 17.3            | -19.7           | -16.6           | 19.9            | 5.1             | 58.6            | -0.4            | -5.8            | -15.6           |  |
| 4       | Animals and vegetables oils & fats                | 9            | 0.0             | 9.0             | 13.7            | -2.2            | -37.6           | 9.0             | 24.0            | 21.2            | -24.4           |  |
| 5       | Chemicals and related products, n.e.s             | 233          | -0.3            | 4.5             | 3.8             | -6.2            | -1.1            | 3.7             | 7.2             | 1.4             | 0.6             |  |
| 6       | Manufactured goods classified chiefly by material | 759          | 8.7             | 3.5             | 5.6             | -5.6            | -3.2            | 21.0            | 27.7            | 12.2            | -0.2            |  |
| 8       | Miscellaneous manufactured articles               | 5517         | 1.1             | 2.2             | 3.3             | -0.8            | -3.4            | 3.9             | 9.3             | 5.9             | 1.2             |  |

<sup>1</sup> The Standard International Trade Classification Revision 3 (SITC Rev 3)

**Table 7 - Export Price Index: Percentage change by SITC<sup>1</sup>, 3rd Qr 2008 - 4th Qr 2009**

Reference year 2007=100

| Section  | Description   | Weight        |                              |                              |                              |                              |                              |                              |                              |                              |                              |  |
|----------|---|---------------|------------------------------|------------------------------|------------------------------|------------------------------|------------------------------|------------------------------|------------------------------|------------------------------|------------------------------|--|
|          |   |               | 3rd Qr 08<br>to<br>4th Qr 08 | 4th Qr 08<br>to<br>1st Qr 09 | 1st Qr 09<br>to<br>2nd Qr 09 | 2nd Qr 09<br>to<br>3rd Qr 09 | 3rd Qr 09<br>to<br>4th Qr 09 | 1st Qr 08<br>to<br>1st Qr 09 | 2nd Qr 08<br>to<br>2nd Qr 09 | 3rd Qr 08<br>to<br>3rd Qr 09 | 4th Qr 08<br>to<br>4th Qr 09 |  |
|          | <b>Overall</b>  | <b>10,000</b> | <b>2.4</b>                   | <b>-1.6</b>                  | <b>1.1</b>                   | <b>-0.9</b>                  | <b>-3.4</b>                  | <b>1.2</b>                   | <b>2.8</b>                   | <b>0.8</b>                   | <b>-4.8</b>                  |  |
| <b>0</b> | <b>Food and live animals</b>  | <b>3,445</b>  | <b>2.5</b>                   | <b>-8.4</b>                  | <b>-3.7</b>                  | <b>0.5</b>                   | <b>-3.6</b>                  | <b>-7.7</b>                  | <b>-11.7</b>                 | <b>-9.1</b>                  | <b>-14.6</b>                 |  |
|          | Live animals  | 163           | 2.7                          | 5.7                          | 2.9                          | -1.1                         | -5.4                         | 5.7                          | 13.3                         | 10.5                         | 1.9                          |  |
|          | Fish, crustaceans, molluscs, and aquatic invertebrates and preparations thereof | 1,262         | 5.1                          | -19.0                        | -9.5                         | -3.9                         | -9.1                         | -3.4                         | -14.4                        | -25.9                        | -35.9                        |  |
|          | Cereals and cereal preparations   | 55            | -1.5                         | -4.7                         | -3.7                         | -0.7                         | -1.1                         | -5.2                         | -9.2                         | -10.3                        | -9.9                         |  |
|          | Sugars, sugar preparations and honey  | 1,904         | 0.0                          | 0.0                          | 0.0                          | 3.8                          | 0.0                          | -12.9                        | -12.9                        | 3.8                          | 3.8                          |  |
|          | Feeding stuff for animals   | 61            | 9.7                          | 1.0                          | 0.0                          | -1.0                         | -2.3                         | 18.0                         | 12.7                         | 9.7                          | -2.3                         |  |
| <b>2</b> | <b>Crude materials, inedible, except fuels</b>                                  | <b>37</b>     | <b>17.3</b>                  | <b>-19.7</b>                 | <b>-16.6</b>                 | <b>19.9</b>                  | <b>5.1</b>                   | <b>58.6</b>                  | <b>-0.4</b>                  | <b>-5.8</b>                  | <b>-15.6</b>                 |  |
|          | Crude animal and vegetable materials  | 37            | 17.3                         | -19.7                        | -16.6                        | 20.1                         | 4.9                          | 58.6                         | -0.4                         | -5.6                         | -15.6                        |  |
| <b>4</b> | <b>Animals and vegetables oils &amp; fats</b>                                   | <b>9</b>      | <b>0.0</b>                   | <b>9.0</b>                   | <b>13.7</b>                  | <b>-2.2</b>                  | <b>-37.6</b>                 | <b>9.0</b>                   | <b>24.0</b>                  | <b>21.2</b>                  | <b>-24.4</b>                 |  |
|          | Fixed vegetable fats and oils, crude, refined or fractionated                   | 9             | 0.0                          | 9.0                          | 13.7                         | -2.2                         | -37.6                        | 9.0                          | 24.0                         | 21.2                         | -24.4                        |  |
| <b>5</b> | <b>Chemicals and related products, n.e.s</b>                                    | <b>233</b>    | <b>-0.3</b>                  | <b>4.5</b>                   | <b>3.8</b>                   | <b>-6.2</b>                  | <b>-1.1</b>                  | <b>3.7</b>                   | <b>7.2</b>                   | <b>1.4</b>                   | <b>0.6</b>                   |  |
|          | Organic chemicals   | 69            | 0.6                          | 4.3                          | 3.8                          | -22.8                        | 2.6                          | 3.5                          | 6.7                          | -15.9                        | -14.3                        |  |
|          | Medicinal and pharmaceutical products   | 164           | -0.8                         | 4.6                          | 3.8                          | 1.1                          | -2.3                         | 3.8                          | 7.4                          | 9.0                          | 7.3                          |  |
| <b>6</b> | <b>Manufactured goods classified chiefly by material</b>                        | <b>759</b>    | <b>8.7</b>                   | <b>3.5</b>                   | <b>5.6</b>                   | <b>-5.6</b>                  | <b>-3.2</b>                  | <b>21.0</b>                  | <b>27.7</b>                  | <b>12.2</b>                  | <b>-0.2</b>                  |  |
|          | Textile yarn, fabrics, made-up articles, n.e.s., & related products             | 438           | 13.1                         | 2.2                          | 6.2                          | -10.5                        | -3.3                         | 28.1                         | 36.0                         | 9.8                          | -6.1                         |  |
|          | Non-metallic mineral manufactures, n.e.s  | 178           | 4.3                          | 6.5                          | 3.3                          | 0.3                          | -1.6                         | 16.8                         | 20.9                         | 15.2                         | 8.6                          |  |
|          | Manufactures of metal, n.e.s.   | 143           | -0.8                         | 4.6                          | 6.3                          | 5.6                          | -5.0                         | 3.9                          | 9.9                          | 16.5                         | 11.5                         |  |

<sup>1</sup> The Standard International Trade Classification Revision 3 (SITC Rev 3)

**Table 7 (cont'd) - Export Price Index: Percentage change by SITC<sup>1</sup>, 3rd quarter 2008 - 4th quarter 2009**

Reference year 2007=100

| Section  | Description   | Percentage change from |                              |                              |                              |                              |                              |                              |                              |                              |                              |
|----------|---|------------------------|------------------------------|------------------------------|------------------------------|------------------------------|------------------------------|------------------------------|------------------------------|------------------------------|------------------------------|
|          |   | Weight                 | 3rd Qr 08<br>to<br>4th Qr 08 | 4th Qr 08<br>to<br>1st Qr 09 | 1st Qr 09<br>to<br>2nd Qr 09 | 2nd Qr 09<br>to<br>3rd Qr 09 | 3rd Qr 09<br>to<br>4th Qr 09 | 1st Qr 08<br>to<br>1st Qr 09 | 2nd Qr 08<br>to<br>2nd Qr 09 | 3rd Qr 08<br>to<br>3rd Qr 09 | 4th Qr 08<br>to<br>4th Qr 09 |
| <b>8</b> | <b>Miscellaneous manufactured articles</b>  | <b>5,517</b>           | <b>1.1</b>                   | <b>2.2</b>                   | <b>3.3</b>                   | <b>-0.8</b>                  | <b>-3.4</b>                  | <b>3.9</b>                   | <b>9.3</b>                   | <b>5.9</b>                   | <b>1.2</b>                   |
|          | Articles of apparel and clothing accessories  | 5,389                  | 0.8                          | 2.0                          | 3.3                          | -0.9                         | -3.4                         | 3.2                          | 4.7                          | 5.4                          | 0.9                          |
|          | <i>Men's or boys' coats, jackets, suits, blazers, trousers, shorts, shirts etc, not knitted or crocheted</i>    | 1,488                  | 5.0                          | -0.1                         | 1.2                          | -1.5                         | -5.0                         | 7.3                          | 10.2                         | 4.6                          | -5.3                         |
|          | <i>Women's or girls' coats, jackets, suits, blazers, trousers, shorts, shirts etc, not knitted or crocheted</i> | 256                    | 12.1                         | 10.9                         | -1.5                         | 2.1                          | 15.1                         | 25.2                         | 25.7                         | 25.1                         | 28.4                         |
|          | <i>Men's or boys' coats, jackets, suits, blazers, trousers, shorts, shirts etc, knitted or crocheted</i>        | 546                    | -13.0                        | 2.0                          | 4.1                          | 1.3                          | -2.6                         | -13.1                        | -7.7                         | -6.3                         | 4.8                          |
|          | <i>Women's or girls' coats, jackets, suits, blazers, trousers, shorts, shirts etc, knitted or crocheted</i>     | 49                     | -6.0                         | 4.6                          | 3.8                          | 1.1                          | -2.3                         | -0.7                         | 2.4                          | 3.2                          | 7.3                          |
|          | <i>Articles of apparel, of textile fabrics, whether or not knitted or crocheted</i>                             | 3,050                  | 0.4                          | 2.2                          | 4.4                          | -0.9                         | -4.7                         | 2.3                          | 9.3                          | 6.3                          | 0.9                          |
|          | Photographic apparatus, equipment and supplies and optical goods, n.e.s.; watches & clocks                      | 99                     | 12.4                         | 10.3                         | 3.1                          | 0.1                          | -2.0                         | 37.2                         | 32.9                         | 27.8                         | 11.4                         |
|          | <i>Optical goods,n.e.s</i>  | 29                     | 4.5                          | 6.8                          | 2.2                          | -0.9                         | -3.5                         | 9.7                          | 17.8                         | 13.0                         | 4.4                          |
|          | <i>Watches and clocks</i>   | 70                     | 14.9                         | 11.3                         | 3.3                          | 0.3                          | -1.6                         | 47.6                         | 37.7                         | 32.6                         | 13.5                         |
|          | Miscellaneous manufactured articles, n.e.s  | 29                     | 8.3                          | 5.3                          | 0.4                          | 1.0                          | -6.0                         | 12.0                         | 15.8                         | 15.6                         | 0.3                          |

<sup>1</sup> The Standard International Trade Classification Revision 3 (SITC Rev 3)

**Table 8 - Quarterly Export Price Index, 1<sup>st</sup> Qr 1994 - 4th Qr 2009 (multiple base)**

|             | Reference year 1993=100 |              |              |              | Reference year 1997=100 |              |              |              |              |              | Reference year 2003=100 |              |              |              | Reference year 2007=100 |                   |
|-------------|-------------------------|--------------|--------------|--------------|-------------------------|--------------|--------------|--------------|--------------|--------------|-------------------------|--------------|--------------|--------------|-------------------------|-------------------|
|             | 1994                    | 1995         | 1996         | 1997         | 1998                    | 1999         | 2000         | 2001         | 2002         | 2003         | 2004                    | 2005         | 2006         | 2007         | 2008                    | 2009              |
| Qr 1        | 103.2                   | 109.5        | 117.0        | 125.3        | 102.1                   | 111.0        | 108.2        | 108.1        | 117.6        | 124.9        | 102.0                   | 112.0        | 116.4        | 129.1        | 96.5                    | 97.6              |
| Qr 2        | 101.6                   | 109.8        | 121.3        | 126.2        | 106.1                   | 110.0        | 105.3        | 107.4        | 120.2        | 126.5        | 106.3                   | 111.7        | 119.3        | 126.4        | 96.0                    | 98.7              |
| Qr 3        | 105.2                   | 113.2        | 126.8        | 123.8        | 111.3                   | 109.7        | 101.6        | 112.6        | 126.5        | 131.2        | 109.5                   | 114.6        | 122.0        | 126.4        | 96.9                    | 97.8 <sup>1</sup> |
| Qr 4        | 107.3                   | 114.7        | 127.2        | 132.0        | 113.8                   | 109.7        | 102.4        | 114.8        | 126.8        | 132.2        | 111.3                   | 115.2        | 125.0        | 126.3        | 99.2                    | 94.4 <sup>2</sup> |
| <b>Year</b> | <b>104.3</b>            | <b>111.8</b> | <b>123.1</b> | <b>126.8</b> | <b>108.3</b>            | <b>110.1</b> | <b>104.4</b> | <b>110.7</b> | <b>122.8</b> | <b>128.7</b> | <b>107.3</b>            | <b>113.4</b> | <b>120.7</b> | <b>127.1</b> | <b>97.2</b>             | <b>97.1</b>       |

14

<sup>1</sup> Revised

<sup>2</sup> Provisional

**Table 9 - Quarterly Export Price Index, 1st Qr 1994 - 4th Qr 2009 (single base)**

|             | Reference year 2007=100 |             |             |             |             |             |             |             |             |             |             |             |             |              |             |                   |
|-------------|-------------------------|-------------|-------------|-------------|-------------|-------------|-------------|-------------|-------------|-------------|-------------|-------------|-------------|--------------|-------------|-------------------|
|             | 1994                    | 1995        | 1996        | 1997        | 1998        | 1999        | 2000        | 2001        | 2002        | 2003        | 2004        | 2005        | 2006        | 2007         | 2008        | 2009              |
| Qr 1        | 49.8                    | 52.8        | 56.4        | 60.4        | 62.4        | 67.9        | 66.2        | 66.1        | 71.9        | 76.4        | 80.3        | 88.2        | 91.6        | 101.6        | 96.5        | 97.6              |
| Qr 2        | 49.0                    | 53.0        | 58.5        | 60.9        | 64.9        | 67.3        | 64.4        | 65.7        | 73.5        | 77.4        | 83.7        | 87.9        | 93.9        | 99.4         | 96.0        | 98.7              |
| Qr 3        | 50.7                    | 54.6        | 61.2        | 59.7        | 68.1        | 67.1        | 62.1        | 68.9        | 77.4        | 80.2        | 86.2        | 90.2        | 96.0        | 98.9         | 96.9        | 97.8 <sup>1</sup> |
| Qr 4        | 51.7                    | 55.3        | 61.3        | 63.7        | 69.6        | 67.1        | 62.6        | 70.2        | 77.5        | 80.8        | 87.6        | 90.7        | 98.4        | 100.0        | 99.2        | 94.4 <sup>2</sup> |
| <b>Year</b> | <b>50.3</b>             | <b>53.9</b> | <b>59.4</b> | <b>61.2</b> | <b>66.2</b> | <b>67.3</b> | <b>63.8</b> | <b>67.7</b> | <b>75.1</b> | <b>78.7</b> | <b>84.4</b> | <b>89.2</b> | <b>95.0</b> | <b>100.0</b> | <b>97.2</b> | <b>97.1</b>       |

<sup>1</sup> Revised

<sup>2</sup> Provisional

5

**Table 10 - Quarterly Import Price Index by SITC<sup>1</sup> section, 2007 - 4th quarter 2009**

Reference year 2007=100

| Section | Description                                       | Weight        | 2007         | 2008   |        |        |        | 2009         |        |        |                     |                     |              |
|---------|---|---------------|--------------|--------|--------|--------|--------|--------------|--------|--------|---------------------|---------------------|--------------|
|         |   |               | Average      | 1st Qr | 2nd Qr | 3rd Qr | 4th Qr | Average      | 1st Qr | 2nd Qr | 3rd Qr <sup>2</sup> | 4th Qr <sup>3</sup> | Average      |
|         | <b>Overall Index</b>                              | <b>10,000</b> | <b>100.0</b> | 100.3  | 108.4  | 118.7  | 110.9  | <b>109.6</b> | 102.6  | 103.5  | 103.9               | 105.8               | <b>103.9</b> |
| 0       | Food and live animals                             | 1,808         | 100.0        | 113.4  | 114.1  | 121.8  | 129.9  | <b>119.8</b> | 110.0  | 109.4  | 111.5               | 108.9               | <b>109.9</b> |
| 1       | Beverages and tobacco                             | 138           | 100.0        | 103.6  | 103.5  | 112.3  | 110.9  | <b>107.6</b> | 116.4  | 137.9  | 140.5               | 144.2               | <b>134.7</b> |
| 2       | Crude materials, inedible, except fuels           | 288           | 100.0        | 91.3   | 115.7  | 132.5  | 147.4  | <b>121.7</b> | 153.6  | 135.6  | 138.4               | 135.5               | <b>140.8</b> |
| 3       | Mineral fuels, lubricants and related materials   | 2,004         | 100.0        | 110.7  | 144.7  | 166.8  | 100.4  | <b>130.6</b> | 78.5   | 82.1   | 97.3                | 112.7               | <b>92.6</b>  |
| 4       | Animal and vegetable oils, fats and waxes         | 104           | 100.0        | 126.2  | 153.2  | 150.8  | 144.9  | <b>143.8</b> | 109.7  | 96.4   | 101.7               | 99.8                | <b>101.9</b> |
| 5       | Chemical materials & related products, n.e.s      | 851           | 100.0        | 93.8   | 93.8   | 103.6  | 110.9  | <b>100.5</b> | 112.5  | 113.7  | 108.6               | 102.6               | <b>109.3</b> |
| 6       | Manufactured goods classified chiefly by material | 2,141         | 100.0        | 89.7   | 93.0   | 105.4  | 108.8  | <b>99.2</b>  | 102.7  | 106.0  | 94.8                | 96.3                | <b>99.9</b>  |
| 7       | Machinery and transport equipment                 | 1,800         | 100.0        | 93.9   | 91.7   | 93.5   | 102.0  | <b>95.3</b>  | 105.4  | 104.3  | 103.3               | 100.6               | <b>103.4</b> |
| 8       | Miscellaneous manufactured articles               | 866           | 100.0        | 94.2   | 92.6   | 94.1   | 102.5  | <b>95.8</b>  | 107.0  | 107.9  | 106.1               | 105.3               | <b>106.6</b> |

<sup>1</sup> The Standard International Trade Classification Revision 3 (SITC Rev. 3)

<sup>2</sup> Revised

<sup>3</sup> Provisional



**Table 11 - Quarterly Import Price Index by SITC<sup>1</sup> section & division, 2007 - 4th quarter 2009**

Reference year 2007=100

| Section/<br>Division | Description  | Weight        | 2007         | 2008         |              |              |              |              | 2009         |              |                     |                     |              |
|----------------------|--|---------------|--------------|--------------|--------------|--------------|--------------|--------------|--------------|--------------|---------------------|---------------------|--------------|
|                      |  |               | Average      | 1st Qr       | 2nd Qr       | 3rd Qr       | 4th Qr       | Average      | 1st Qr       | 2nd Qr       | 3rd Qr <sup>2</sup> | 4th Qr <sup>3</sup> | Average      |
|                      | <b>Overall Index</b>   | <b>10,000</b> | <b>100.0</b> | <b>100.3</b> | <b>108.4</b> | <b>118.7</b> | <b>110.9</b> | <b>109.6</b> | <b>102.6</b> | <b>103.5</b> | <b>103.9</b>        | <b>105.8</b>        | <b>103.9</b> |
| <b>Section 0</b>     | <b>Food and live animals</b>   | <b>1,808</b>  | <b>100.0</b> | <b>113.4</b> | <b>114.1</b> | <b>121.8</b> | <b>129.9</b> | <b>119.8</b> | <b>110.0</b> | <b>109.4</b> | <b>111.5</b>        | <b>108.9</b>        | <b>109.9</b> |
| Div 00               | Live animals   | 29            | 100.0        | 101.0        | 101.7        | 105.0        | 113.6        | 105.3        | 135.0        | 108.4        | 101.6               | 98.5                | 110.9        |
| Div 01               | Meat and meat preparations   | 122           | 100.0        | 99.7         | 107.9        | 121.9        | 114.8        | 111.1        | 111.3        | 113.0        | 120.4               | 122.4               | 116.8        |
| Div 02               | Dairy products and birds' eggs   | 220           | 100.0        | 130.7        | 136.1        | 129.4        | 136.5        | 133.2        | 132.9        | 122.5        | 121.1               | 120.7               | 124.3        |
| Div 03               | Fish, crustaceans, etc, and preparations thereof                                     | 638           | 100.0        | 106.0        | 99.4         | 99.1         | 99.1         | 100.9        | 84.8         | 84.5         | 88.9                | 79.9                | 84.5         |
| Div 04               | Cereals and cereal preparations  | 360           | 100.0        | 150.6        | 160.9        | 187.7        | 216.5        | 178.9        | 143.2        | 141.2        | 138.7               | 134.1               | 139.3        |
|                      | <i>of which wheat</i>  | <i>144</i>    | <i>100.0</i> | <i>193.2</i> | <i>185.5</i> | <i>206.1</i> | <i>269.0</i> | <i>213.4</i> | <i>127.9</i> | <i>127.9</i> | <i>124.1</i>        | <i>124.1</i>        | <i>126.0</i> |
| Div 05               | Vegetables and fruit   | 177           | 100.0        | 76.6         | 72.4         | 83.3         | 87.8         | 80.0         | 87.0         | 91.0         | 96.4                | 105.6               | 95.0         |
| Div 06               | Sugars, sugar preparations and honey   | 59            | 100.0        | 100.0        | 102.2        | 124.6        | 164.8        | 122.9        | 158.7        | 161.9        | 168.9               | 168.9               | 164.6        |
| Div 07               | Coffee, tea, cocoa, spices and manufactures thereof                                  | 47            | 100.0        | 101.9        | 94.0         | 97.3         | 100.3        | 98.4         | 106.7        | 111.6        | 111.6               | 113.4               | 110.8        |
| Div 08               | Feeding stuff for animals  | 40            | 100.0        | 94.6         | 104.6        | 101.4        | 99.9         | 100.1        | 90.5         | 100.8        | 104.8               | 131.2               | 106.8        |
| Div 09               | Miscellaneous edible products and preparations                                       | 116           | 100.0        | 97.3         | 98.2         | 106.0        | 106.0        | 101.9        | 112.6        | 122.6        | 118.9               | 121.4               | 118.9        |
| <b>Section 1</b>     | <b>Beverages and Tobacco</b>   | <b>138</b>    | <b>100.0</b> | <b>103.6</b> | <b>103.5</b> | <b>112.3</b> | <b>110.9</b> | <b>107.6</b> | <b>116.4</b> | <b>137.9</b> | <b>140.5</b>        | <b>144.2</b>        | <b>134.7</b> |
| Div 11               | Beverages  | 81            | 100.0        | 103.5        | 102.2        | 116.8        | 112.5        | 108.8        | 117.2        | 137.2        | 140.1               | 143.2               | 134.4        |
| Div 12               | Tobacco and tobacco manufactures   | 57            | 100.0        | 103.8        | 105.5        | 105.9        | 108.5        | 105.9        | 115.4        | 138.7        | 141.1               | 145.5               | 135.2        |
| <b>Section 2</b>     | <b>Crude materials, inedible, except fuels</b>                                       | <b>288</b>    | <b>100.0</b> | <b>91.3</b>  | <b>115.7</b> | <b>132.5</b> | <b>147.4</b> | <b>121.7</b> | <b>153.6</b> | <b>135.6</b> | <b>138.4</b>        | <b>135.5</b>        | <b>140.8</b> |
| Div 24               | Cork and wood  | 98            | 100.0        | 94.8         | 164.5        | 202.8        | 223.6        | 171.4        | 238.7        | 204.8        | 195.3               | 188.8               | 206.9        |
| Div 26               | Textile fibres and their wastes (not manufactured into yarn or fabric)               | 168           | 100.0        | 86.9         | 85.5         | 88.4         | 99.7         | 90.1         | 100.9        | 92.7         | 91.4                | 92.3                | 94.3         |
| Div 27               | Crude fertilisers and crude minerals (excluding coal, petroleum and precious stones) | 22            | 100.0        | 109.3        | 129.1        | 156.4        | 172.1        | 141.7        | 176.5        | 154.2        | 244.7               | 227.8               | 200.8        |

<sup>1</sup> The Standard International Trade Classification Revision 3 (SITC Rev. 3)

<sup>2</sup> Revised

<sup>3</sup> Provisional

**Table 11 (cont'd) - Quarterly Import Price Index by SITC<sup>1</sup> section & division, 2007 - 4th quarter 2009**

Reference year 2007=100

| Section/<br>Division | Description   | Weight       | 2007         | 2008         |              |              |              |              | 2009         |              |                     |                     |              |
|----------------------|---|--------------|--------------|--------------|--------------|--------------|--------------|--------------|--------------|--------------|---------------------|---------------------|--------------|
|                      |   |              | Average      | 1st Qr       | 2nd Qr       | 3rd Qr       | 4th Qr       | Average      | 1st Qr       | 2nd Qr       | 3rd Qr <sup>2</sup> | 4th Qr <sup>3</sup> | Average      |
| <b>Section 3</b>     | <b>Mineral fuels, lubricants and related materials</b>        | <b>2,004</b> | <b>100.0</b> | <b>110.7</b> | <b>144.7</b> | <b>166.8</b> | <b>100.4</b> | <b>130.6</b> | <b>78.5</b>  | <b>82.1</b>  | <b>97.3</b>         | <b>112.7</b>        | <b>92.6</b>  |
| Div 32               | Coal, coke and briquettes                                     | 145          | 100.0        | 110.7        | 156.7        | 233.8        | 158.6        | 165.0        | 140.3        | 121.7        | 117.4               | 111.9               | 122.8        |
| Div 33               | Petroleum, petroleum products and related materials           | 1,725        | 100.0        | 110.6        | 146.0        | 163.9        | 93.4         | 128.4        | 72.6         | 79.2         | 96.2                | 113.5               | 90.4         |
| Div 34               | Gas, natural and manufactured                                 | 134          | 100.0        | 112.4        | 115.2        | 131.6        | 127.6        | 121.7        | 88.3         | 75.4         | 89.8                | 103.5               | 89.2         |
| <b>Section 4</b>     | <b>Animal and vegetable oils, fats and waxes</b>              | <b>104</b>   | <b>100.0</b> | <b>126.2</b> | <b>153.2</b> | <b>150.8</b> | <b>144.9</b> | <b>143.8</b> | <b>109.7</b> | <b>96.4</b>  | <b>101.7</b>        | <b>99.8</b>         | <b>101.9</b> |
| Div 42               | Fixed vegetable fats and oils, crude, refined or fractionated | 104          | 100.0        | 126.2        | 153.2        | 150.8        | 144.9        | 143.8        | 109.7        | 96.4         | 101.7               | 99.8                | 101.9        |
| <b>Section 5</b>     | <b>Chemical materials &amp; related products, n.e.s</b>       | <b>851</b>   | <b>100.0</b> | <b>93.8</b>  | <b>93.8</b>  | <b>103.6</b> | <b>110.9</b> | <b>100.5</b> | <b>112.5</b> | <b>113.7</b> | <b>108.6</b>        | <b>102.6</b>        | <b>109.3</b> |
| Div 51               | Organic chemicals   | 61           | 100.0        | 93.3         | 95.4         | 101.7        | 112.1        | 100.6        | 119.7        | 113.9        | 108.6               | 103.3               | 111.4        |
| Div 54               | Medicinal and pharmaceutical products                         | 225          | 100.0        | 93.0         | 90.4         | 92.6         | 92.5         | 92.1         | 95.5         | 98.6         | 98.3                | 94.8                | 96.8         |
| Div 55               | Essential oils and resinoids & perfume materials;toilet, etc. | 147          | 100.0        | 98.9         | 104.0        | 103.5        | 108.2        | 103.6        | 115.0        | 123.3        | 130.8               | 128.4               | 124.4        |
| Div 56               | Fertilizers (other than those of group 272)                   | 49           | 100.0        | 92.0         | 88.3         | 192.4        | 217.4        | 147.6        | 230.5        | 230.5        | 150.2               | 115.5               | 181.7        |
| Div 57               | Plastics in primary forms                                     | 157          | 100.0        | 91.3         | 91.3         | 100.7        | 109.7        | 98.2         | 95.3         | 93.0         | 92.7                | 89.4                | 92.6         |
| Div 58               | Plastics in non-primary forms                                 | 81           | 100.0        | 91.1         | 88.8         | 91.4         | 96.9         | 92.0         | 97.5         | 102.2        | 100.4               | 96.2                | 99.1         |
| Div 59               | Chemical materials & products, n.e.s                          | 131          | 100.0        | 95.1         | 95.8         | 101.1        | 115.3        | 101.8        | 121.2        | 117.0        | 109.8               | 101.3               | 112.3        |

<sup>1</sup> The Standard International Trade Classification Revision 3 (SITC Rev. 3)

<sup>2</sup> Revised

<sup>3</sup> Provisional

**Table 11 (cont'd) - Quarterly Import Price Index by SITC<sup>1</sup> section & division, 2007 - 4th quarter 2009**

Reference year 2007=100

| Section/<br>Division | Description   | Weight       | 2007         | 2008        |             |              |              |             | 2009         |              |                     |                     |             |
|----------------------|---|--------------|--------------|-------------|-------------|--------------|--------------|-------------|--------------|--------------|---------------------|---------------------|-------------|
|                      |   |              | Average      | 1st Qr      | 2nd Qr      | 3rd Qr       | 4th Qr       | Average     | 1st Qr       | 2nd Qr       | 3rd Qr <sup>2</sup> | 4th Qr <sup>3</sup> | Average     |
| <b>Section 6</b>     | <b>Manufactured goods classified chiefly by material</b>                        | <b>2,141</b> | <b>100.0</b> | <b>89.7</b> | <b>93.0</b> | <b>105.4</b> | <b>108.8</b> | <b>99.2</b> | <b>102.7</b> | <b>106.0</b> | <b>94.8</b>         | <b>96.3</b>         | <b>99.9</b> |
| Div 61               | Leather, leather manufactures, n.e.s., & dressed furskins                       | 27           | 100.0        | 97.6        | 100.7       | 94.5         | 104.1        | 99.2        | 110.2        | 111.3        | 112.9               | 110.4               | 111.2       |
| Div 62               | Rubber manufactures, n.e.s.   | 70           | 100.0        | 91.4        | 92.7        | 103.8        | 108.7        | 99.2        | 112.2        | 119.1        | 116.1               | 115.9               | 115.8       |
| Div 63               | Cork and wood manufactures (excluding furniture)                                | 50           | 100.0        | 91.7        | 88.1        | 96.6         | 109.2        | 96.4        | 115.7        | 115.7        | 112.2               | 112.2               | 114.0       |
| Div 64               | Paper, paperboard and articles of paper pulp                                    | 151          | 100.0        | 77.8        | 97.8        | 102.0        | 99.8         | 94.3        | 95.7         | 94.2         | 92.4                | 88.5                | 92.7        |
| Div 65               | Textile yarn, fabrics, made-up articles, n.e.s                                  | 813          | 100.0        | 89.6        | 91.2        | 96.6         | 98.7         | 94.0        | 98.3         | 100.1        | 89.5                | 95.7                | 95.9        |
|                      | <i>of which</i>   |              |              |             |             |              |              |             |              |              |                     |                     |             |
|                      | <i>Textile yarn</i>   | 406          | 100.0        | 91.0        | 93.1        | 95.6         | 100.1        | 95.0        | 94.7         | 94.5         | 77.6                | 93.2                | 90.0        |
|                      | <i>Cotton fabrics, woven (not including narrow or special fabrics)</i>          | 233          | 100.0        | 85.9        | 88.5        | 99.2         | 92.2         | 91.5        | 99.7         | 106.5        | 100.6               | 97.5                | 101.1       |
|                      | <i>Fabrics, woven, of man-made textile materials</i>                            | 100          | 100.0        | 86.4        | 83.4        | 85.5         | 96.4         | 87.9        | 101.3        | 100.4        | 97.7                | 93.1                | 98.1        |
|                      | <i>Knitted/crocheted fabric including tubular knit, fabrics, n.e.s</i>          | 74           | 100.0        | 97.8        | 99.4        | 108.5        | 114.4        | 105.0       | 109.7        | 110.0        | 108.9               | 107.0               | 108.9       |
| Div 66               | Non-metallic mineral manufactures, n.e.s.                                       | 416          | 100.0        | 100.4       | 98.2        | 111.9        | 130.9        | 110.3       | 115.1        | 117.8        | 92.5                | 97.6                | 105.8       |
|                      | <i>of which</i>   |              |              |             |             |              |              |             |              |              |                     |                     |             |
|                      | <i>Lime, cement &amp; fab. const. materials (except glass &amp; clay mats.)</i> | 175          | 100.0        | 105.6       | 109.8       | 119.2        | 134.9        | 117.4       | 100.4        | 97.8         | 87.1                | 82.4                | 91.9        |
|                      | <i>Clay construction materials &amp; refractory construction materials</i>      | 66           | 100.0        | 93.8        | 93.5        | 92.0         | 99.1         | 94.6        | 107.0        | 107.4        | 104.4               | 103.4               | 105.5       |
|                      | <i>Pearls, precious and semi-precious stones, unworked or worked</i>            | 175          | 100.0        | 97.7        | 88.3        | 112.0        | 138.8        | 109.2       | 132.8        | 141.8        | 93.5                | 110.8               | 119.7       |
| Div 67               | Iron and steel  | 285          | 100.0        | 84.1        | 96.1        | 110.6        | 114.6        | 101.4       | 103.2        | 94.7         | 80.7                | 76.7                | 88.8        |
| Div 68               | Non-ferrous metals  | 95           | 100.0        | 87.8        | 96.3        | 97.6         | 99.0         | 95.2        | 72.8         | 92.3         | 95.4                | 99.2                | 89.9        |
| Div 69               | Manufactures of metals, n.e.s.  | 247          | 100.0        | 84.3        | 82.5        | 126.8        | 108.4        | 100.5       | 105.4        | 126.0        | 123.4               | 112.9               | 116.9       |

<sup>1</sup> The Standard International Trade Classification Revision 3 (SITC Rev. 3)

<sup>2</sup> Revised

<sup>3</sup> Provisional

**Table 11 (cont'd) - Quarterly Import Price Index by SITC<sup>1</sup> section & division, 2007 - 4th quarter 2009**

Reference year 2007=100

| Section/<br>Division | Description   | Weight       | 2007         | 2008        |             |             |              |             | 2009         |              |                     |                     |              |
|----------------------|---|--------------|--------------|-------------|-------------|-------------|--------------|-------------|--------------|--------------|---------------------|---------------------|--------------|
|                      |   |              | Average      | 1st Qr      | 2nd Qr      | 3rd Qr      | 4th Qr       | Average     | 1st Qr       | 2nd Qr       | 3rd Qr <sup>2</sup> | 4th Qr <sup>3</sup> | Average      |
| <b>Section 7</b>     | <b>Machinery and transport equipment</b>  | <b>1,800</b> | <b>100.0</b> | <b>93.9</b> | <b>91.7</b> | <b>93.5</b> | <b>102.0</b> | <b>95.3</b> | <b>105.4</b> | <b>104.3</b> | <b>103.3</b>        | <b>100.6</b>        | <b>103.4</b> |
| Div 71               | Power generating machinery and equipment  | 65           | 100.0        | 95.5        | 95.5        | 101.9       | 115.2        | 102.0       | 110.6        | 101.9        | 116.1               | 116.1               | 111.2        |
| Div 72               | Machinery specialized for particular industries   | 266          | 100.0        | 94.9        | 93.0        | 94.8        | 99.3         | 95.5        | 103.3        | 103.6        | 105.1               | 101.8               | 103.5        |
| Div 74               | General industrial machinery & equipment, n.e.s.  | 271          | 100.0        | 93.2        | 90.3        | 94.3        | 100.8        | 94.7        | 107.2        | 107.9        | 104.2               | 95.4                | 103.7        |
| Div 75               | Office machines and automatic data processing machines  | 96           | 100.0        | 94.5        | 91.3        | 81.9        | 93.2         | 90.2        | 101.2        | 99.9         | 95.0                | 93.7                | 97.5         |
| Div 76               | Telecommunications and sound recording and  | 456          | 100.0        | 89.6        | 87.1        | 87.4        | 87.4         | 87.9        | 88.0         | 88.2         | 88.1                | 87.7                | 88.0         |
| Div 77               | Electrical machinery, apparatus and appliances, n.e.s., & parts thereof reproducing apparatus   | 238          | 100.0        | 96.4        | 93.5        | 95.0        | 103.5        | 97.1        | 110.9        | 114.2        | 111.6               | 106.9               | 110.9        |
| Div 78               | Road vehicles (including air-cushion vehicles)  | 408          | 100.0        | 96.6        | 95.3        | 99.4        | 120.0        | 102.8       | 122.1        | 116.0        | 113.7               | 113.1               | 116.2        |
|                      | <i>of which Motor cars &amp; other motor vehicles principally designed for the transport of persons, including station wagons &amp; racing cars</i> | 272          | 100.0        | 93.9        | 92.5        | 97.2        | 116.1        | 99.9        | 114.2        | 112.5        | 109.1               | 109.1               | 111.2        |
| <b>Section 8</b>     | <b>Miscellaneous manufactured articles</b>  | <b>866</b>   | <b>100.0</b> | <b>94.2</b> | <b>92.6</b> | <b>94.1</b> | <b>102.5</b> | <b>95.8</b> | <b>107.0</b> | <b>107.9</b> | <b>106.1</b>        | <b>105.3</b>        | <b>106.6</b> |
| Div 81               | Prefabricated buildings; sanitary plumbing, heating & lighting fixtures and fittings, n.e.s.  | 62           | 100.0        | 88.8        | 89.2        | 87.8        | 86.9         | 88.2        | 94.4         | 97.2         | 95.9                | 93.4                | 95.2         |
| Div 82               | Furniture & parts thereof; bedding, mattresses, mattress support, cushions & similar stuffed furnishings  | 98           | 100.0        | 96.6        | 94.2        | 112.7       | 145.6        | 112.3       | 146.4        | 146.4        | 145.0               | 144.4               | 145.5        |
| Div 87               | Professional, scientific and controlling inst. and app.   | 103          | 100.0        | 93.4        | 83.2        | 83.2        | 89.9         | 87.4        | 94.4         | 97.2         | 98.2                | 97.1                | 96.7         |
| Div 88               | Photographic apparatus, equipment and supplies and optical goods, n.e.s.; watches & clocks  | 107          | 100.0        | 93.8        | 95.7        | 110.9       | 121.9        | 105.6       | 121.8        | 127.6        | 119.9               | 115.9               | 121.3        |
| Div 89               | Miscellaneous manufactured articles, n.e.s.   | 496          | 100.0        | 94.7        | 93.9        | 89.9        | 94.3         | 93.2        | 100.2        | 99.7         | 98.4                | 98.4                | 99.2         |
|                      | <i>of which Articles, n.e.s. of plastics</i>  | 168          | 100.0        | 93.2        | 90.5        | 78.8        | 86.8         | 87.3        | 94.3         | 85.1         | 82.0                | 79.1                | 85.1         |
|                      | <i>Jewellery, goldsmiths' &amp; silversmiths' wares of precious/semi-precious, n.e.s.</i>   | 101          | 100.0        | 97.4        | 91.0        | 91.4        | 93.0         | 93.2        | 101.7        | 114.5        | 116.7               | 130.4               | 115.8        |

20

<sup>1</sup> The Standard International Trade Classification Revision 3 (SITC Rev. 3)

<sup>2</sup> Revised

<sup>3</sup> Provisional

**Table 12 - Import Price Index : Percentage change by SITC<sup>1</sup> section, 3rd quarter 2008 - 4th quarter 2009**

Reference year 2007=100

| Section | Description                                       | Weight        |                                 |                              |                              |                                 |                                 |                                 |                              |                                 |                                 |  |
|---------|---|---------------|---------------------------------|------------------------------|------------------------------|---------------------------------|---------------------------------|---------------------------------|------------------------------|---------------------------------|---------------------------------|--|
|         |   |               | 3rd Qr 08<br>to<br>4th<br>Qr 08 | 4th Qr 08<br>to<br>1st Qr 09 | 1st Qr 09<br>to<br>2nd Qr 09 | 2nd Qr 09<br>to<br>3rd<br>Qr 09 | 3rd Qr 09<br>to<br>4th<br>Qr 09 | 1st Qr 08<br>to<br>1st<br>Qr 09 | 2nd Qr 08<br>to<br>2nd Qr 09 | 3rd Qr 08<br>to<br>3rd<br>Qr 09 | 4th Qr 08<br>to<br>4th<br>Qr 09 |  |
|         | <b>Overall Index</b>                              | <b>10,000</b> | <b>-6.6</b>                     | <b>-7.5</b>                  | <b>0.9</b>                   | <b>0.4</b>                      | <b>1.8</b>                      | <b>2.3</b>                      | <b>-4.5</b>                  | <b>-12.5</b>                    | <b>-4.6</b>                     |  |
| 0       | Food and live animals                             | <b>1,808</b>  | 6.6                             | -15.3                        | -0.5                         | 1.9                             | -2.3                            | -3.0                            | -4.1                         | -8.5                            | -16.1                           |  |
| 1       | Beverages and tobacco                             | <b>138</b>    | -1.3                            | 5.0                          | 18.4                         | 1.9                             | 2.6                             | 12.3                            | 33.1                         | 25.1                            | 30.1                            |  |
| 2       | Crude materials, inedible, except fuels           | <b>288</b>    | 11.2                            | 4.2                          | -11.7                        | 2.1                             | -2.1                            | 68.3                            | 17.1                         | 4.5                             | -8.1                            |  |
| 3       | Mineral fuels, lubricants and related materials   | <b>2,004</b>  | -39.8                           | -21.8                        | 4.5                          | 18.6                            | 15.8                            | -29.1                           | -43.3                        | -41.6                           | 12.2                            |  |
| 4       | Animal and vegetable oils, fats and waxes         | <b>104</b>    | -3.9                            | -24.2                        | -12.2                        | 5.6                             | -1.9                            | -13.0                           | -37.1                        | -32.5                           | -31.1                           |  |
| 5       | Chemical materials & related products, n.e.s      | <b>851</b>    | 7.1                             | 1.4                          | 1.1                          | -4.5                            | -5.5                            | 19.9                            | 21.1                         | 4.8                             | -7.5                            |  |
| 6       | Manufactured goods classified chiefly by material | <b>2,141</b>  | 3.3                             | -5.7                         | 3.2                          | -10.6                           | 1.6                             | 14.5                            | 13.9                         | -10.0                           | -11.5                           |  |
| 7       | Machinery and transport equipment                 | <b>1,800</b>  | 9.1                             | 3.4                          | -1.1                         | -0.9                            | -2.7                            | 12.3                            | 13.7                         | 10.5                            | -1.4                            |  |
| 8       | Miscellaneous manufactured articles               | <b>866</b>    | 8.9                             | 4.4                          | 0.9                          | -1.7                            | -0.8                            | 13.5                            | 16.6                         | 12.7                            | 2.7                             |  |

<sup>1</sup> The Standard International Trade Classification Revision 3 (SITC Rev. 3)

**Table 13 - Import Price Index: Percentage change by SITC<sup>1</sup> section & division, 3rd quarter 2008 - 4th quarter 2009**

Reference year 2007=100

| Section/<br>Division | Description  | Weight        | Percentage changes from      |                              |                              |                              |                              |                              |                              |                              |                              |
|----------------------|--|---------------|------------------------------|------------------------------|------------------------------|------------------------------|------------------------------|------------------------------|------------------------------|------------------------------|------------------------------|
|                      |  |               | 3rd Qr 08<br>to<br>4th Qr 08 | 4th Qr 08<br>to<br>1st Qr 09 | 1st Qr 09<br>to<br>2nd Qr 09 | 2nd Qr 09<br>to<br>3rd Qr 09 | 3rd Qr 09<br>to<br>4th Qr 09 | 1st Qr 08<br>to<br>1st Qr 09 | 2nd Qr 08<br>to<br>2nd Qr 09 | 3rd Qr 08<br>to<br>3rd Qr 09 | 4th Qr 08<br>to<br>4th Qr 09 |
|                      | <b>Overall Index</b>   | <b>10,000</b> | <b>-6.6</b>                  | <b>-7.5</b>                  | <b>0.9</b>                   | <b>0.4</b>                   | <b>1.8</b>                   | <b>2.3</b>                   | <b>-4.5</b>                  | <b>-12.5</b>                 | <b>-4.6</b>                  |
| <b>Section 0</b>     | <b>Food and live animals</b>   | <b>1,808</b>  | <b>6.6</b>                   | <b>-15.3</b>                 | <b>-0.5</b>                  | <b>1.9</b>                   | <b>-2.3</b>                  | <b>-3.0</b>                  | <b>-4.1</b>                  | <b>-8.5</b>                  | <b>-16.1</b>                 |
| Div 00               | Live animals   | 29            | 8.1                          | 18.9                         | -19.7                        | -6.3                         | -3.0                         | 33.7                         | 6.6                          | -3.3                         | -13.3                        |
| Div 01               | Meat and meat preparations   | 122           | -5.8                         | -3.1                         | 1.5                          | 6.6                          | 1.7                          | 11.6                         | 4.6                          | -1.2                         | 6.6                          |
| Div 02               | Dairy products and birds' eggs   | 220           | 5.5                          | -2.7                         | -7.8                         | -1.2                         | -0.3                         | 1.7                          | -10.0                        | -6.5                         | -11.5                        |
| Div 03               | Fish, crustaceans, etc, and preparations thereof                                     | 638           | 0.1                          | -14.4                        | -0.4                         | 5.2                          | -10.1                        | -19.9                        | -15.0                        | -10.3                        | -19.4                        |
| Div 04               | Cereals and cereal preparations  | 360           | 15.3                         | -33.8                        | -1.4                         | -1.8                         | -3.3                         | -4.9                         | -12.2                        | -26.1                        | -38.1                        |
|                      | <i>of which wheat</i>  | <i>144</i>    | <i>30.5</i>                  | <i>-52.4</i>                 | <i>0.0</i>                   | <i>-3.0</i>                  | <i>0.0</i>                   | <i>-33.8</i>                 | <i>-31.0</i>                 | <i>-39.8</i>                 | <i>-53.9</i>                 |
| Div 05               | Vegetables and fruit   | 177           | 5.4                          | -1.0                         | 4.6                          | 5.9                          | 9.6                          | 13.6                         | 25.7                         | 15.6                         | 20.2                         |
| Div 06               | Sugars, sugar preparations and honey   | 59            | 32.3                         | -3.7                         | 2.0                          | 4.4                          | 0.0                          | 58.7                         | 58.4                         | 35.6                         | 2.5                          |
| Div 07               | Coffee, tea, cocoa, spices and manufactures thereof                                  | 47            | 3.1                          | 6.3                          | 4.7                          | 0.0                          | 1.6                          | 4.6                          | 18.7                         | 14.8                         | 13.1                         |
| Div 08               | Feeding stuff for animals  | 40            | -1.5                         | -9.4                         | 11.3                         | 4.1                          | 25.1                         | -4.3                         | -3.7                         | 3.3                          | 31.3                         |
| Div 09               | Miscellaneous edible products and preparations                                       | 116           | 0.0                          | 6.2                          | 8.9                          | -3.1                         | 2.1                          | 15.7                         | 24.9                         | 12.2                         | 14.5                         |
| <b>Section 1</b>     | <b>Beverages and Tobacco</b>   | <b>138</b>    | <b>-1.3</b>                  | <b>5.0</b>                   | <b>18.4</b>                  | <b>1.9</b>                   | <b>2.6</b>                   | <b>12.3</b>                  | <b>33.1</b>                  | <b>25.1</b>                  | <b>30.1</b>                  |
| Div 11               | Beverages  | 81            | -3.7                         | 4.1                          | 17.2                         | 2.0                          | 2.3                          | 13.2                         | 34.3                         | 19.9                         | 27.3                         |
| Div 12               | Tobacco and tobacco manufactures   | 57            | 2.5                          | 6.3                          | 20.3                         | 1.7                          | 3.2                          | 11.1                         | 31.5                         | 33.3                         | 34.1                         |
| <b>Section 2</b>     | <b>Crude materials, inedible, except fuels</b>                                       | <b>288</b>    | <b>11.2</b>                  | <b>4.2</b>                   | <b>-11.7</b>                 | <b>2.1</b>                   | <b>-2.1</b>                  | <b>68.3</b>                  | <b>17.1</b>                  | <b>4.5</b>                   | <b>-8.1</b>                  |
| Div 24               | Cork and wood  | 98            | 10.3                         | 6.7                          | -14.2                        | -4.7                         | -3.3                         | 151.9                        | 24.5                         | -3.7                         | -15.6                        |
| Div 26               | Textile fibres and their wastes (not manufactured into yarn or fabric)               | 168           | 12.8                         | 1.3                          | -8.1                         | -1.5                         | 1.0                          | 16.2                         | 8.4                          | 3.4                          | -7.4                         |
| Div 27               | Crude fertilisers and crude minerals (excluding coal, petroleum and precious stones) | 22            | 10.0                         | 2.5                          | -12.6                        | 58.6                         | -6.9                         | 61.5                         | 19.4                         | 56.4                         | 32.4                         |

<sup>1</sup> The Standard International Trade Classification Revision 3 (SITC Rev. 3)

**Table 13 cont'd - Import Price Index: Percentage change by SITC<sup>1</sup> section & division, 3rd quarter 2008 - 4th quarter 2009**

Reference year 2007=100

| Section/<br>Division | Description   | Weight       | Percentage changes from         |                              |                              |                                 |                                 |   |  |  |  |
|----------------------|---|--------------|---------------------------------|------------------------------|------------------------------|---------------------------------|---------------------------------|---|--|--|--|
|                      |   |              | 3rd Qr 08<br>to<br>4th<br>Qr 08 | 4th Qr 09<br>to<br>1st Qr 09 | 1st Qr 09<br>to<br>2nd Qr 09 | 2nd Qr 09<br>to<br>3rd<br>Qr 09 | 3rd Qr 09<br>to<br>4th<br>Qr 09 | 1 <sup>st</sup> Qr 08<br>to<br>1 <sup>st</sup><br>Qr 09 | 2 <sup>nd</sup> Qr 08<br>to<br>2nd Qr 09 | 3 <sup>rd</sup> Qr 08<br>to<br>3rd Qr 09 | 4 <sup>th</sup> Qr 08<br>to<br>4th Qr 09 |
| <b>Section 3</b>     | <b>Mineral fuels, lubricants and related materials</b>        | <b>2,004</b> | <b>-39.8</b>                    | <b>-21.8</b>                 | <b>4.5</b>                   | <b>18.6</b>                     | <b>15.8</b>                     | <b>-29.1</b>  | <b>-43.3</b>                             | <b>-41.6</b>                             | <b>12.2</b>                              |
| Div 32               | Coal, coke and briquettes                                     | 145          | -32.2                           | -11.5                        | -13.3                        | -3.5                            | -4.7                            | 26.7  | -22.3                                    | -49.8                                    | -29.5                                    |
| Div 33               | Petroleum, petroleum products and related materials           | 1,725        | -43.0                           | -22.3                        | 9.2                          | 21.4                            | 17.9                            | -34.4   | -45.7                                    | -41.3                                    | 21.5                                     |
| Div 34               | Gas, natural and manufactured                                 | 134          | -3.0                            | -30.8                        | -14.6                        | 19.0                            | 15.2                            | -21.5   | -34.5                                    | -31.7                                    | -18.9                                    |
| <b>Section 4</b>     | <b>Animal and vegetable oils, fats and waxes</b>              | <b>104</b>   | <b>-3.9</b>                     | <b>-24.2</b>                 | <b>-12.2</b>                 | <b>5.6</b>                      | <b>-1.9</b>                     | <b>-13.0</b>  | <b>-37.1</b>                             | <b>-32.5</b>                             | <b>-31.1</b>                             |
| Div 42               | Fixed vegetable fats and oils, crude, refined or fractionated | 104          | -3.9                            | -24.2                        | -12.2                        | 5.6                             | -1.9                            | -13.0   | -37.1                                    | -32.5                                    | -31.1                                    |
| <b>Section 5</b>     | <b>Chemical materials &amp; related products, n.e.s</b>       | <b>851</b>   | <b>7.1</b>                      | <b>1.4</b>                   | <b>1.1</b>                   | <b>-4.5</b>                     | <b>-5.5</b>                     | <b>19.9</b>   | <b>21.1</b>                              | <b>4.8</b>                               | <b>-7.5</b>                              |
| Div 51               | Organic chemicals   | 61           | 10.3                            | 6.7                          | -4.8                         | -4.7                            | -4.8                            | 28.2  | 19.4                                     | 6.7                                      | -7.9                                     |
| Div 54               | Medical and pharmaceutical products                           | 225          | -0.1                            | 3.2                          | 3.3                          | -0.3                            | -3.6                            | 2.7   | 9.0                                      | 6.2                                      | 2.5                                      |
| Div 55               | Essential oils and resinoids & perfume materials;toilet, etc. | 147          | 4.6                             | 6.3                          | 7.2                          | 6.1                             | -1.8                            | 16.3  | 18.6                                     | 26.4                                     | 18.7                                     |
| Div 56               | Fertilizers (other than those of group 272)                   | 49           | 13.0                            | 6.0                          | 0.0                          | -34.8                           | -23.1                           | 150.5   | 160.9                                    | -21.9                                    | -46.9                                    |
| Div 57               | Plastics in primary forms                                     | 157          | 9.0                             | -13.1                        | -2.5                         | -0.3                            | -3.5                            | 4.5   | 1.8                                      | -8.0                                     | -18.5                                    |
| Div 58               | Plastics in non-primary forms                                 | 81           | 6.1                             | 0.6                          | 4.8                          | -1.7                            | -4.1                            | 7.1   | 15.0                                     | 9.9                                      | -0.7                                     |
| Div 59               | Chemical materials & products, n.e.s                          | 131          | 14.0                            | 5.1                          | -3.5                         | -6.2                            | -7.7                            | 27.4  | 22.1                                     | 8.6                                      | -12.1                                    |

<sup>1</sup> The Standard International Trade Classification Revision 3 (SITC Rev. 3)

Table 13 cont'd - Import Price Index: Percentage change by SITC<sup>1</sup> section & division, 3rd quarter 2008 - 4th quarter 2009

Reference year 2007=100

| Section/<br>Division | Description   | Weight       | Percentage changes from         |                                 |                              |                                 |                                 |                                 |                                 |                                 |                                 |
|----------------------|---|--------------|---------------------------------|---------------------------------|------------------------------|---------------------------------|---------------------------------|---------------------------------|---------------------------------|---------------------------------|---------------------------------|
|                      |   |              | 3rd Qr 08<br>to<br>4th<br>Qr 08 | 4th Qr 08<br>to<br>1st<br>Qr 09 | 1st Qr 09<br>to<br>2nd Qr 09 | 2nd Qr 09<br>to<br>3rd<br>Qr 09 | 3rd Qr 09<br>to<br>4th<br>Qr 09 | 1st Qr 08<br>to<br>1st<br>Qr 09 | 2nd Qr 08<br>to<br>2nd<br>Qr 09 | 3rd Qr 08<br>to<br>3rd<br>Qr 09 | 4th Qr 08<br>to<br>4th<br>Qr 09 |
| <b>Section 6</b>     | <b>Manufactured goods classified chiefly by materia</b>                         | <b>2,141</b> | <b>3.3</b>                      | <b>-5.7</b>                     | <b>3.2</b>                   | <b>-10.6</b>                    | <b>1.6</b>                      | <b>14.5</b>                     | <b>13.9</b>                     | <b>-10.0</b>                    | <b>-11.5</b>                    |
| Div 61               | Leather, leather manufactures, n.e.s., & dressed furskins                       | 27           | 10.2                            | 5.8                             | 1.0                          | 1.4                             | -2.2                            | 12.9                            | 10.5                            | 19.5                            | 6.0                             |
| Div 62               | Rubber manufactures, n.e.s.   | 70           | 4.7                             | 3.2                             | 6.2                          | -2.6                            | -0.1                            | 22.7                            | 28.5                            | 11.8                            | 6.6                             |
| Div 63               | Cork and wood manufactures (excluding furniture)                                | 50           | 13.0                            | 6.0                             | 0.0                          | -3.0                            | 0.0                             | 26.1                            | 31.4                            | 16.2                            | 2.8                             |
| Div 64               | Paper, paperboard and articles of paper pulp                                    | 151          | -2.2                            | -4.0                            | -1.7                         | -1.9                            | -4.2                            | 23.1                            | -3.7                            | -9.5                            | -11.3                           |
| Div 65               | Textile yarn, fabrics, made-up articles, n.e.s                                  | 813          | 2.2                             | -0.4                            | 1.8                          | -10.6                           | 6.9                             | 9.7                             | 9.8                             | -7.3                            | -3.1                            |
|                      | <i>of which</i>   |              |                                 |                                 |                              |                                 |                                 |                                 |                                 |                                 |                                 |
|                      | <i>Textile yarn</i>   | 406          | 4.7                             | -5.4                            | -0.2                         | -17.9                           | 20.1                            | 4.0                             | 1.5                             | -18.9                           | -6.9                            |
|                      | <i>Cotton fabrics, woven (not including narrow or special fabrics)</i>          | 233          | -7.0                            | 8.1                             | 6.9                          | -5.5                            | -3.1                            | 16.0                            | 20.3                            | 1.5                             | 5.8                             |
|                      | <i>Fabrics, woven, of man-made textile materials</i>                            | 100          | 12.7                            | 5.1                             | -0.9                         | -2.7                            | -4.7                            | 17.3                            | 20.4                            | 14.3                            | -3.3                            |
|                      | <i>Knitted/crocheted fabric including tubular knit, fabrics n.e.s</i>           | 74           | 5.4                             | -4.2                            | 0.3                          | -1.0                            | -1.7                            | 12.1                            | 10.7                            | 0.3                             | -6.5                            |
| Div 66               | Non-metallic mineral manufactures, n.e.s.                                       | 416          | 17.0                            | -12.1                           | 2.4                          | -21.5                           | 5.5                             | 14.6                            | 20.0                            | -17.3                           | -25.4                           |
|                      | <i>of which</i>   |              |                                 |                                 |                              |                                 |                                 |                                 |                                 |                                 |                                 |
|                      | <i>Lime, cement &amp; fab. const. materials (except glass &amp; clay mats.)</i> | 175          | 13.1                            | -25.6                           | -2.6                         | -11.0                           | -5.4                            | -4.9                            | -10.9                           | -27.0                           | -38.9                           |
|                      | <i>Clay construction materials &amp; refractory construction materials</i>      | 66           | 7.7                             | 7.9                             | 0.4                          | -2.8                            | -1.0                            | 14.1                            | 14.8                            | 13.5                            | 4.3                             |
|                      | <i>Pearls, precious and semi-precious stones, unworked or worked</i>            | 175          | 23.9                            | -4.3                            | 6.8                          | -34.1                           | 18.4                            | 35.9                            | 60.6                            | -16.5                           | -20.2                           |
| Div 67               | Iron and steel  | 285          | 3.5                             | -9.9                            | -8.3                         | -14.8                           | -4.9                            | 22.7                            | -1.5                            | -27.1                           | -33.0                           |
| Div 68               | Non-ferrous metals  | 95           | 1.5                             | -26.5                           | 26.9                         | 3.3                             | 4.0                             | -17.1                           | -4.2                            | -2.3                            | 0.2                             |
| Div 69               | Manufactures of metals, n.e.s.  | 247          | -14.5                           | -2.8                            | 19.5                         | -2.1                            | -8.5                            | 25.0                            | 52.7                            | -2.7                            | 4.2                             |

<sup>1</sup> The Standard International Trade Classification Revision 3 (SITC Rev. 3)



**Table 13 cont'd - Import Price Index: Percentage change by SITC<sup>1</sup> section & division, 3rd quarter 2008 - 4thquarter 2009**

Reference year 2007=100

| Section/<br>Division | Description  | Weight       | Percentage changes from      |  |                              |                              |                                 |   |  |   |                                 |
|----------------------|--|--------------|------------------------------|--|------------------------------|------------------------------|---------------------------------|---|--|---|---------------------------------|
|                      |  |              | 3rd Qr 08<br>to<br>4th Qr 08 | 4 <sup>th</sup> Qr 08<br>to<br>1 <sup>st</sup> Qr 09 | 1st Qr 09<br>to<br>2nd Qr 09 | 2nd Qr 09<br>to<br>3rd Qr 09 | 3rd Qr 09<br>to<br>4th<br>Qr 09 | 1 <sup>st</sup> Qr 08<br>to<br>1 <sup>st</sup><br>Qr 09 | 2 <sup>nd</sup> Qr 08<br>to<br>2nd Qr 09 | 3 <sup>rd</sup> Qr 08<br>to<br>3rd<br>Qr 09 | 4th Qr 08<br>to<br>4th<br>Qr 09 |
| <b>Section 7</b>     | <b>Machinery and transport equipment</b>   | <b>1,800</b> | <b>9.1</b>                   | <b>3.4</b>   | <b>-1.1</b>                  | <b>-0.9</b>                  | <b>-2.7</b>                     | <b>12.3</b>   | <b>13.7</b>                              | <b>10.5</b>                                 | <b>-1.4</b>                     |
| Div 71               | Power generating machinery and equipment   | 65           | 13.0                         | -4.0   | -7.8                         | 13.9                         | 0.0                             | 15.8  | 6.8                                      | 13.9  | 0.8                             |
| Div 72               | Machinery specialized for particular industries  | 266          | 4.7                          | 4.1  | 0.3                          | 1.4                          | -3.1                            | 8.8   | 11.5                                     | 10.9  | 2.6                             |
| Div 74               | General industrial machinery & equipment, n.e.s.   | 271          | 6.9                          | 6.3  | 0.7                          | -3.4                         | -8.5                            | 15.0  | 19.5                                     | 10.5  | -5.4                            |
| Div 75               | Office machines and automatic data processing machines   | 96           | 13.8                         | 8.6  | -1.3                         | -5.0                         | -1.3                            | 7.1   | 9.5                                      | 16.0  | 0.6                             |
| Div 76               | Telecommunications and sound recording and   | 456          | 0.0                          | 0.7  | 0.2                          | -0.1                         | -0.4                            | -1.8  | 1.2                                      | 0.8   | 0.4                             |
| Div 77               | Electrical machinery, apparatus and appliances, n.e.s., & parts thereof reproducing apparatus            | 238          | 9.0                          | 7.1  | 3.0                          | -2.2                         | -4.3                            | 15.0  | 22.1                                     | 17.6  | 3.3                             |
| Div 78               | Road vehicles (including air-cushion vehicles)   | 408          | 20.7                         | 1.8  | -5.0                         | -2.0                         | -0.5                            | 26.4  | 21.7                                     | 14.4  | -5.7                            |
|                      | <i>of which Motor cars &amp; other motor vehicles for the transport of persons</i>                       | 272          | 19.4                         | -1.6   | -1.5                         | -3.0                         | 0.0                             | 21.6  | 21.6                                     | 12.3  | -6.0                            |
| <b>Section 8</b>     | <b>Miscellaneous manufactured articles</b>   | <b>866</b>   | <b>8.9</b>                   | <b>4.4</b>   | <b>0.9</b>                   | <b>-1.7</b>                  | <b>-0.8</b>                     | <b>13.5</b>   | <b>16.6</b>                              | <b>12.7</b>                                 | <b>2.7</b>                      |
| Div 81               | Prefabricated buildings; sanitary plumbing, heating & lighting fixtures and fittings, n.e.s.             | 62           | -1.0                         | 8.6  | 3.0                          | -1.3                         | -2.6                            | 6.3   | 8.9                                      | 9.3   | 7.5                             |
| Div 82               | Furniture & parts thereof; bedding, mattresses, mattress support, cushions & similar stuffed furnishings | 98           | 29.1                         | 0.5  | 0.0                          | -1.0                         | -0.4                            | 51.6  | 55.3                                     | 28.6  | -0.8                            |
| Div 87               | Professional, scientific and controlling inst. and app.  | 103          | 8.0                          | 5.0  | 3.0                          | 1.0                          | -1.1                            | 1.1   | 16.8                                     | 18.0  | 8.1                             |
| Div 88               | Photographic apparatus, equipment and supplies and optical goods, n.e.s.; watches & clocks               | 107          | 9.9                          | -0.1   | 4.7                          | -6.1                         | -3.3                            | 29.9  | 33.4                                     | 8.1   | -4.9                            |
| Div 89               | Miscellaneous manufactured articles, n.e.s.  | 496          | 4.9                          | 6.2  | -0.5                         | -1.3                         | 0.0                             | 5.8   | 6.1                                      | 9.4   | 4.3                             |
|                      | <i>of which Articles, n.e.s. of plastics</i>   | 168          | 10.1                         | 8.7  | -9.7                         | -3.7                         | -3.5                            | 1.2   | -5.9                                     | 4.0   | -8.8                            |
|                      | <i>Jewellery, goldsmiths' &amp; silversmiths' wares of precious/semi-precious, n.e.s</i>                 | 101          | 1.8                          | 9.4  | 12.5                         | 1.9                          | 11.8                            | 4.4   | 25.8                                     | 27.7  | 40.2                            |

<sup>1</sup> The Standard International Trade Classification Revision 3 (SITC Rev. 3)

**Table 14 - Quarterly Import Price Index, 1<sup>st</sup> Qr 2004 - 4th Qr 2009 (multiple base)**

|             | Reference year 2003=100 |              |              |              | Reference year 2007=100 |                           |
|-------------|-------------------------|--------------|--------------|--------------|-------------------------|---------------------------|
|             | 2004                    | 2005         | 2006         | 2007         | 2008                    | 2009                      |
| Qr 1        | 100.9                   | 123.6        | 137.8        | 156.2        | 100.3                   | 102.6                     |
| Qr 2        | 110.5                   | 124.8        | 141.1        | 151.8        | 108.4                   | 103.5                     |
| Qr 3        | 115.6                   | 134.1        | 148.3        | 150.2        | 118.7                   | 103.9 <sup>1</sup>        |
| Qr 4        | 117.4                   | 132.7        | 153.3        | 156.2        | 110.9                   | 105.8 <sup>2</sup>        |
| <b>Year</b> | <b>111.1</b>            | <b>128.8</b> | <b>145.1</b> | <b>153.6</b> | <b>109.6</b>            | <b>103.9 <sup>2</sup></b> |

<sup>1</sup> Revised

<sup>2</sup> Provisional

**Table 15 - Quarterly Import Price Index, 1<sup>st</sup> Qr 2004 - 4th Qr 2009 (single base)**

|             | Reference year 2007=100 |             |             |              |              |                          |
|-------------|-------------------------|-------------|-------------|--------------|--------------|--------------------------|
|             | 2004                    | 2005        | 2006        | 2007         | 2008         | 2009                     |
| Qr 1        | 65.7                    | 80.5        | 89.7        | 101.7        | 100.3        | 102.6                    |
| Qr 2        | 71.9                    | 81.3        | 91.9        | 98.8         | 108.4        | 103.5                    |
| Qr 3        | 75.3                    | 87.3        | 96.5        | 97.8         | 118.7        | 103.9 <sup>1</sup>       |
| Qr 4        | 76.4                    | 86.4        | 99.8        | 101.7        | 110.9        | 105.8 <sup>2</sup>       |
| <b>Year</b> | <b>72.3</b>             | <b>83.9</b> | <b>94.5</b> | <b>100.0</b> | <b>109.6</b> | <b>103.9<sup>2</sup></b> |

<sup>1</sup> Revised

<sup>2</sup> Provisional

*ANNEX***Technical Note****Export Price Index (EPI)****Methodology for the Construction of the EPI****Definition**

The Export Price index (EPI) provides an overall measure of pure price changes in Mauritian Rupees of goods exported to other countries. This index is constructed from the export prices of a "constant" well-defined representative basket of products selected from trade data in the base year, that is, in 2007.

The first series of EPI was calculated with year 1993 as base and reference period. It was subsequently rebased in 1997, 2003 and 2007.

**Scope and Classification**

The index is based on the Nomenclature of the Standard International Trade Classification of the United Nations (SITC Rev 4). Separate sub-indices are produced for each SITC section and for more detailed groups where possible.

The EPI covers domestic exports and re-exports, the most important commodities being sugar, textile fabrics, articles of apparel and clothing accessories.

However, some commodities were excluded in the computation of the weights, because of their heterogeneity and the inherent difficulties in pricing the items to a constant quality. These were precious stones, jewellery, recorded media and free publications, and all products classified within the Sections 1, 3, 7 and 9 of the SITC; together, they accounted for around 12% of total exports.

The index thus covers about 88% of the value of merchandise exported during 2007. Items directly represented (price movements followed), constitute 75% of the total value of exports. For the other 13% not directly represented, their prices are considered to move similarly to those represented directly.

**Selection of Items to be priced and Outlets**

A representative sample of 25 exporting companies (outlets) was selected from trade declarations submitted to the Customs Department in 2007 for the pricing of the commodity items. The sample consists of major exporting companies trading on a regular basis. The selected companies are visited each quarter to collect the required prices.

A total of 65 items, representing 30 commodities were selected for pricing on the basis of regularity of trade and share in total exports, the most important ones being sugar, textile fabrics, and articles of apparel and clothing accessories. Specifications of items to be priced (physical and qualitative) were established in collaboration with the selected exporting companies to ensure that same items are priced every quarter. Specifications

include: pricing basis, contract basis, country of destination, unit of measurement, mode of transport, terms of payment, currency and any other conditions like quality and quantity of the product, that have a bearing on the price.

### **Weighting Scheme**

The weights have been derived from the 2007 total exports. Weights assigned to each section, division, group and commodity are based on their export values in 2007. Items selected for pricing purposes represent all commodities that fall within that weight group.

### **Changes in the weights from 2003 to 2007**

The changes in weights at section level are shown in the table below.

| Section   | Description                                       | 2003   | 2007   |
|-----------|---|--------|--------|
|           | All sections                                      | 10,000 | 10,000 |
| Section 0 | Food and live animals                             | 2,942  | 3,445  |
| Section 2 | Crude materials, inedible, except fuels           | 31     | 37     |
| Section 4 | Animal and vegetable oils, fats and waxes         | -      | 9      |
| Section 5 | Chemical materials & related products, n.e.s      | 21     | 233    |
| Section 6 | Manufactured goods classified chiefly by material | 293    | 759    |
| Section 8 | Miscellaneous manufactured articles               | 6,713  | 5,517  |

It is noted that the weights of “Food and live animals”, and “Manufactured goods classified chiefly by material” have increased in the new weight structure due to their growing importance while the increase in the weights of “Chemicals and related products” was a result of the introduction of medicinal and pharmaceutical products in the index basket.

### **Base and Reference Period**

Both the base period (period to which weights refer) and the reference period (index=100) for the EPI are the calendar year 2007. Export data for year 2007 have been used to derive the weights while the yearly average prices were used as reference year prices. The quarterly average prices have also been used to calculate the quarterly indices for the reference year.

### **Price Collection**

Selected companies are visited once every quarter, but prices are collected for each month of the quarter and quarterly averages worked out for the computation of the price indices. Some 65 price quotations are collected each month. These prices are reported on a free on board (F.O.B.) basis and are mostly contract prices.

## Sugar

Due to its specificity, sugar has been treated differently. Sugar produced during a crop year, which normally extends from July to June of the following year, is usually exported during the same crop year. The export prices are mostly negotiated prices. These prices can be quite volatile between quarters, depending on the destination of the shipments. Therefore, in order to eliminate these price distortions between quarters, the same average yearly price for the crop year is used for the four quarters of that crop year. It is to be noted that the base year price of sugar is the average price for crop years 2006/07 and 2007/08.

## Uses of the EPI

The EPI is mainly used as price deflators for exports. It shows changes in the prices of Mauritian products sold abroad and can be used for calculating changes in the volume of exports.

It also serves as a basis to assess the competitiveness of Mauritian products in relation to price trends of common products of other countries with which Mauritius competes for markets.

## Calculation of the EPI

The lowest level (SITC 7 digit) indices are calculated as a geometric average of the price relatives of the basic observations. A modified Laspeyres formula, based on the weighted average of price relatives, is used to calculate higher level indices.

The mathematical form of the formula is shown below:

$$I_{ot} = \frac{\sum w_i \times \frac{P_{it}}{P_{io}} \times 100}{\sum w_i}$$

Where  $I_{ot}$  is the index for period t compared to base period 0

$w_i$  is the weight of the  $i^{\text{th}}$  element

$P_{io}$  is the base price of the  $i^{\text{th}}$  element

$P_{it}$  is the price of the  $i^{\text{th}}$  element in period t

$\frac{P_{it}}{P_{io}}$  is the price relative of the  $i^{\text{th}}$  element  
in period t relative to base period 0

$\Sigma$  means summation over all selected elements

## **Import Price Index (IPI)**

### **Methodology for the Construction of the IPI**

#### **Definition**

The Import Price Index (IPI) provides an overall measure of pure price changes (in Mauritian Rupees) of goods imported into the country.

The IPI is based on actual price measurements of a fixed basket of imported goods. It requires elaborate specifications of products and takes into account the main price determining factors such as country of origin and quality.

The first IPI was calculated with the year 2003 as reference and 2002 as base year. The new index is calculated with 2007 as base and reference year.

#### **Scope and Classification**

The commodities are classified according to the United Nations Standard International Trade Classification (SITC Rev 4). Sub-indices are produced for each SITC section and for more detailed groups where possible.

For the computation of weights, some commodities accounting for around 9% of total imports in 2007 were excluded because of their heterogeneity and the inherent difficulties in pricing the items to a constant quality. These were: precious stones, jewellery, cellular telephones, recorded media and free publications, aircraft, helicopters and marine vessels, certain machine parts, textile wastes and Section 9 of the SITC described as “Commodities and transactions not classified elsewhere”.

Thus, the index covers about 91% of the value of merchandise imported during 2007. Items directly represented (price movements followed), constitute around 60% of the total value of imports. For the other 31% not directly represented, their prices are considered to move similarly to those represented directly.

#### **Selection of Items to be priced and Outlets**

The commodities forming the basket were selected according to the following criteria:

- (i) As far as possible, an item is included if it is imported regularly and frequently
- (ii) The items selected had to be, to a large extent, representative of the bulk of the trader’s import
- (iii) There must be a sustained demand of the commodity variety
- (iv) Items had to be specific and detailed enough for pricing.

Similarly, an importer for a particular product is selected provided that he imports that product on a regular basis.

Detailed characteristics (physical and qualitative) of items to be priced were established in collaboration with the importers so that the price quotations from period to period refer to the same items. The following are some commodity specifications: pricing basis, country of importation, unit of measurement, mode of transport, terms of payment, currency and any other conditions like quality and quantity of the product that have a bearing on the price

At the end of the process, some 139 commodity items and 220 outlets were selected for subsequent pricing.

### **Weighting scheme**

The weights were derived from total imports in 2007. Weights assigned to each section and group are based on their import values in that year. Products or group of products selected for pricing purposes represent all products that fall within that weight group.

### **Changes in the weights from 2003 to 2007**

The changes in weights at section level are shown in the table below.

| Section   | Description                                       | 2003   | 2007   |
|-----------|---|--------|--------|
|           | All sections                                      | 10,000 | 10,000 |
| Section 0 | Food and live animals                             | 1,621  | 1,808  |
| Section 1 | Beverages and Tobacco                             | -      | 138    |
| Section 2 | Crude materials, inedible, except fuels           | 221    | 288    |
| Section 3 | Mineral fuels, lubricants and related materials   | 1,789  | 2,004  |
| Section 4 | Animal and vegetable oils, fats and waxes         | 113    | 104    |
| Section 5 | Chemical materials & related products, n.e.s      | 467    | 851    |
| Section 6 | Manufactured goods classified chiefly by material | 3,776  | 2,141  |
| Section 7 | Machinery and transport equipment                 | 1,134  | 1,800  |
| Section 8 | Miscellaneous manufactured articles               | 879    | 866    |

The main changes were:

- (i) "Manufactured goods classified chiefly by material" declined by 1,635 from 3,776 in 2003 to 2,141 due to lower imports of textile yarn, paper and paperboard and cotton fabrics
- (ii) "Machinery and transport equipment" increased by 666 from 1,134 in 2003 to 1,800 as a result of higher imports.



## **Base and Reference Period**

Both the base period (period to which weights refer) and the reference period (index=100) for the IPI are the calendar year 2007. Import data for year 2007 have been used to derive the weights while the yearly average prices were used as reference year prices. The quarterly average prices have also been used to calculate the quarterly indices for the reference year.

## **Price collection**

There are two common practices for the collection of prices of items falling in the basket. Prices for the specified goods are collected each month from importers and average quarterly prices are then derived for compiling the index, or, in case where most imports occur at intervals longer than a month, prices are collected only once every quarter and refer to the last consignment. A preliminary survey of the importers has shown that, in the case of Mauritius, the second practice is more suitable.

Prices are reported on a cost, insurance and freight (c.i.f) basis and are expressed in Mauritian Rupees. Exchange rates from the Customs and Excise Department are used in case prices are reported in foreign currencies.

Though the frequency of imports has been taken into consideration in selecting items and importers, it may happen that some items in the basket have not been imported during a certain period. In such cases, the prices are estimated using the variations in the exchange rate of the currency of imports. The underlying assumption is that the only factor affecting the price is the value of the Mauritian Rupee relative to the transaction currency. However, for items that would no longer be imported, they would have to be substituted by similar items.

## **Petroleum products and rice**

It is to be noted that for petroleum products, the index is calculated differently given that these products, namely gasoline, gas oil, aviation fuel, fuel oil, LPG are now imported more than once during a quarter. All prices available for the quarter are collected and an average price for the quarter is computed.

The above pricing system is also applicable for rice , imported by the STC.

## **Uses of the Import Price Index**

The Import Price Index is an important economic indicator which is used, inter alia, to:

- (i) measure changes in prices of imports
- (ii) analyse the effect of import price changes on the various sectors of the economy
- (iii) calculate changes in the volume of imports
- (iv) calculate the terms of trade (that is the ratio of export prices to import prices)
- (v) analyse the effect of exchange rates on import prices.

### Calculation of the IPI

The lowest level indices are determined as a geometric average of the price relatives of the basic observations. A modified Laspeyres formula, based on the weighted average of price relatives, is used to calculate higher level indices.

The mathematical form of the formula is shown below:

$$I_{ot} = \frac{\sum w_i \times \frac{P_{it}}{P_{io}} \times 100}{\sum w_i}$$

Where  $I_{ot}$  is the index for period t compared to base period 0

$w_i$  is the weight of the  $i^{\text{th}}$  element

$P_{io}$  is the base price of the  $i^{\text{th}}$  element

$P_{it}$  is the price of the  $i^{\text{th}}$  element in period t

$\frac{P_{it}}{P_{io}}$  is the price relative of the  $i^{\text{th}}$  element  
in period t relative to base period 0

$\Sigma$  means summation over all selected elements