

# CONSTRUCTION PRICE INDEX

( Input Cost Index for the construction of a single storey house )  
2<sup>nd</sup> Quarter 2009

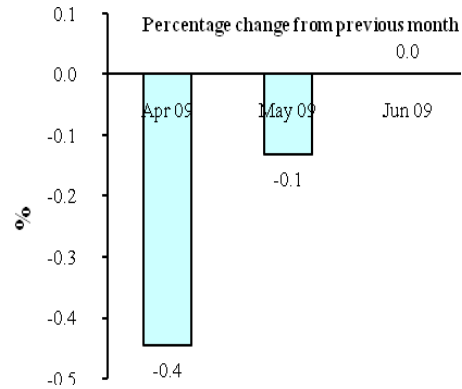
## 1. Introduction

This issue of the Economic and Social Indicators presents the monthly Construction Price Index (residential) for the second quarter of 2009 with fourth quarter 2001 as base period. Figures showing the evolution of the index during the past twelve months are also included. The methodology used for compiling the index is given in Annex. Figures have been rounded to one or two decimal places although they have been calculated to many decimal places.

The 0.4% decrease in April was mostly due to lower prices of steel bars, and the 0.1% decrease in May was a result of lower prices in metal openings. (Table 1.2)

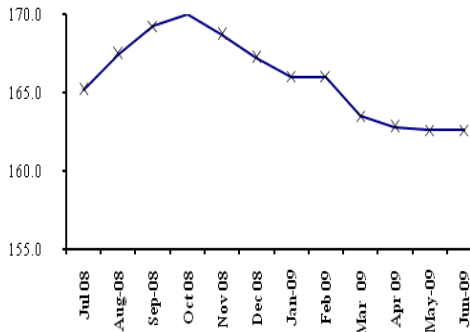
## 2. Changes in the Construction Price Index.

The Construction Price Index, which stood at 163.5 at the end of March 2009, went down to 162.8 in April 2009, 162.6 in May 2009 and remained unchanged in June 2009. (Table 1.1).

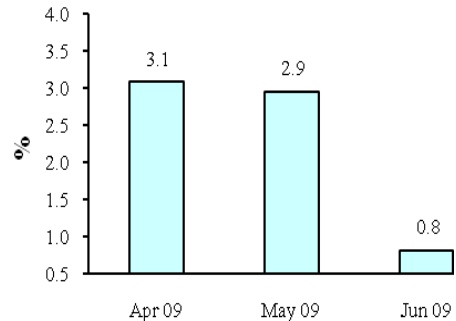


Compared to the corresponding months of the previous year, the index shows overall increases of 3.1 % for April, 2.9% for May and 0.8% for June 2009. (Table 1.3).

Construction Price Index  
July 2008 to June 2009



Percentage change from corresponding month of previous year



### 3. Changes by Input Categories

Changes by input categories are shown in Tables 1.1 to 1.5.

During the second quarter of 2009, no change was registered in the sub-indices for “Labour”, “Hire of plant” and “Transport” categories.

The “Materials” sub-index decreased by 0.7% from 190.8 in March 2009 to 189.5 in April 2009 due to lower prices of steel bars (8.9%), partly offset by increases of 2.9% in metal openings, particularly garage doors and 9.7% in plumbing.

In May, the index fell by 0.2% as a result of a decrease of 1.6% in the prices of inputs for metal openings.

No change was registered in the month of June 2009.

The net monthly contributions of the input categories to the index for the period July 2008 to June 2009 are shown in Table 1.4.

Quarterly averages of the monthly indices by input category and the percentage change from quarter to quarter are shown in Table 1.5.

### 4. Changes by Work Category

Changes by work category are shown in Tables 2.1 to 2.5.

In April 2009, lower prices of steel bars resulted in a decrease of 7.0% in the work category “Reinforcement”. During the same month, the “Metal openings” category rose by 2.8% following higher prices of garage doors and the “Plumbing/sanitary installation” category registered an increase of 3.5% due to a rise in the price of water tank.

In May the “Metal openings” work category registered a drop of 1.5% due to lower prices of inputs for metal openings.

Table 2.4 shows the net monthly contributions of the work categories to the index since July 2008.

Quarterly averages of the monthly indices by work category and the percentage change from quarter to quarter are shown in Table 2.5.

### 5. Past Trends

Table 3 summarises the monthly indices, the quarterly and yearly averages as well as the percentage changes in the yearly averages since 1998. Indices for the years 1998 to 2001 have been worked out using as base the fourth quarter of 1993, while the base period for the calculation of the index from 2002 onwards is the fourth quarter of 2001.

The two series are not strictly comparable because of different base periods. A chain linked series with base period fourth quarter 2001 is given in table 4.

### 6. Revision of weights

As from the next issue, construction price index will be based on a revised basket of inputs.

*Central Statistics office*  
*Ministry of finance and economic*  
*Empowerment*  
Port Louis  
August 2009

Contact person:	Ms. F. Victor Senior Statistical Officer Central Statistics Office LIC Centre Port-Louis Tel: 212 2316/17 Fax: 211 4150 Email: cso_construction@mail.gov.mu
-----------------	--

## Input Cost Index for the construction of a single storey house

(Base: 4th Quarter 2001 = 100)

**Table 1.1: Monthly sub-indices by input category, July 2008 to June 2009**

Input Categories	Weight	2008						2009					
		Jul	Aug	Sep	Oct	Nov	Dec	Jan	Feb	Mar	Apr	May	Jun
<b>LABOUR</b>	<b>34.5</b>	<b>123.4</b>	<b>123.4</b>	<b>123.4</b>	<b>123.4</b>	<b>123.4</b>	<b>123.4</b>	<b>123.4</b>	<b>123.4</b>	<b>123.4</b>	<b>123.4</b>	<b>123.4</b>	<b>123.4</b>
<b>HIRE OF PLANT</b>	<b>3.0</b>	<b>135.5</b>	<b>135.5</b>	<b>135.5</b>	<b>135.5</b>	<b>135.5</b>	<b>135.5</b>	<b>135.5</b>	<b>135.5</b>	<b>135.5</b>	<b>135.5</b>	<b>135.5</b>	<b>135.5</b>
<b>MATERIALS :</b>	<b>57.2</b>	<b>193.6</b>	<b>197.6</b>	<b>200.7</b>	<b>201.4</b>	<b>199.8</b>	<b>197.3</b>	<b>195.2</b>	<b>195.2</b>	<b>190.8</b>	<b>189.5</b>	<b>189.1</b>	<b>189.1</b>
Hardcore (remplissage)	1.0	110.5	110.5	110.5	110.5	110.5	110.5	110.5	110.5	110.5	110.5	110.5	110.5
Cement	10.0	222.2	222.2	222.2	222.2	222.2	222.2	222.2	222.2	216.2	216.2	216.2	216.2
Sand	6.1	159.8	159.8	159.8	168.0	162.9	161.0	160.1	160.1	160.1	160.1	160.1	160.1
Aggregate	2.9	182.9	182.9	182.9	200.3	188.8	186.8	179.8	179.8	179.8	179.8	179.8	179.8
Block	4.4	178.9	178.9	178.9	188.3	183.3	182.4	181.2	181.2	181.2	181.2	181.2	181.2
Steel bars (armature)	5.8	318.1	352.3	357.2	339.7	339.7	320.8	296.4	296.4	264.3	240.7	240.7	240.7
Galvanised corrugated cast iron sheeting	1.2	185.7	185.7	185.7	187.1	187.1	187.1	190.5	190.5	190.5	190.5	190.5	190.5
Timber: (a) Carpentry	3.9	156.0	156.0	156.0	156.0	156.0	156.0	170.0	170.0	170.0	170.5	170.5	170.5
(b) Joinery	4.2	202.5	202.8	203.4	203.4	203.4	203.4	206.9	206.9	206.9	206.9	206.9	206.9
Metal openings	6.1	194.6	199.0	218.7	218.7	218.7	218.7	221.4	221.4	220.7	227.1	223.6	223.6
Ceramic tiles	1.3	114.6	119.2	119.2	119.2	119.2	119.2	119.2	119.2	119.2	119.2	119.2	119.2
Glass and putty	0.7	137.7	137.7	139.7	139.7	139.7	139.7	140.3	140.3	140.3	140.3	140.3	140.3
Paint	2.0	155.0	155.0	167.1	167.1	167.1	167.1	167.1	167.1	167.1	167.1	167.1	167.1
Plumbing	1.5	157.7	157.7	159.7	160.5	160.5	160.5	160.5	160.5	160.5	176.1	176.1	176.1
Sanitary installation	2.3	130.3	128.1	127.4	127.4	127.4	127.4	127.4	127.4	127.4	127.4	127.4	127.4
Electrical installation	2.6	171.9	171.9	171.9	169.8	169.8	163.5	147.5	147.5	147.5	147.5	147.5	147.5
Other	1.2	167.4	168.2	169.2	169.2	169.2	169.2	170.0	170.0	170.0	170.0	170.0	170.0
<b>TRANSPORT</b>	<b>5.3</b>	<b>146.2</b>	<b>146.2</b>	<b>146.2</b>	<b>154.0</b>	<b>145.4</b>	<b>145.4</b>	<b>145.4</b>	<b>145.4</b>	<b>145.4</b>	<b>145.4</b>	<b>145.4</b>	<b>145.4</b>
<b>Total</b>	<b>100.0</b>	<b>165.2</b>	<b>167.5</b>	<b>169.2</b>	<b>170.0</b>	<b>168.7</b>	<b>167.2</b>	<b>166.0</b>	<b>166.0</b>	<b>163.5</b>	<b>162.8</b>	<b>162.6</b>	<b>162.6</b>

## Input Cost Index for the construction of a single storey house

(Base: 4th Quarter 2001 = 100)

**Table 1.2: Percentage change from previous month by input category, July 2008 to June 2009**

Input Categories	Weight	% change from previous month											
		Jul 08	Aug 08	Sep 08	Oct 08	Nov 08	Dec 08	Jan 09	Feb 09	Mar 09	Apr 09	May 09	Jun 09
<b>LABOUR</b>	<b>34.5</b>	<b>3.3</b>	<b>0.0</b>	<b>0.0</b>	<b>0.0</b>	<b>0.0</b>	<b>0.0</b>	<b>0.0</b>	<b>0.0</b>	<b>0.0</b>	<b>0.0</b>	<b>0.0</b>	<b>0.0</b>
<b>HIRE OF PLANT</b>	<b>3.0</b>	<b>0.0</b>	<b>0.0</b>	<b>0.0</b>	<b>0.0</b>	<b>0.0</b>	<b>0.0</b>	<b>0.0</b>	<b>0.0</b>	<b>0.0</b>	<b>0.0</b>	<b>0.0</b>	<b>0.0</b>
<b>MATERIALS :</b>	<b>57.2</b>	<b>2.4</b>	<b>2.1</b>	<b>1.6</b>	<b>0.3</b>	<b>-0.8</b>	<b>-1.3</b>	<b>-1.1</b>	<b>0.0</b>	<b>-2.2</b>	<b>-0.7</b>	<b>-0.2</b>	<b>0.0</b>
Hardcore (remplissage)	1.0	0.0	0.0	0.0	0.0	0.0	0.0	0.0	0.0	0.0	0.0	0.0	0.0
Cement	10.0	0.0	0.0	0.0	0.0	0.0	0.0	0.0	0.0	-2.7	0.0	0.0	0.0
Sand	6.1	9.5	0.0	0.0	5.2	-3.1	-1.1	-0.6	0.0	0.0	0.0	0.0	0.0
Aggregate	2.9	12.4	0.0	0.0	9.5	-5.7	-1.1	-3.7	0.0	0.0	0.0	0.0	0.0
Block	4.4	5.3	0.0	0.0	5.3	-2.7	-0.5	-0.6	0.0	0.0	0.0	0.0	0.0
Steel bars (armature)	5.8	3.5	10.8	1.4	-4.9	0.0	-5.6	-7.6	0.0	-10.8	-8.9	0.0	0.0
Galvanised corrugated cast iron sheeting	1.2	0.0	0.0	0.0	0.7	0.0	0.0	1.8	0.0	0.0	0.0	0.0	0.0
Timber: (a) Carpentry	3.9	0.0	0.0	0.0	0.0	0.0	0.0	8.9	0.0	0.0	0.3	0.0	0.0
(b) Joinery	4.2	1.2	0.2	0.3	0.0	0.0	0.0	1.7	0.0	0.0	0.0	0.0	0.0
Metal openings	6.1	0.5	2.3	9.9	0.0	0.0	0.0	1.3	0.0	-0.3	2.9	-1.6	0.0
Ceramic tiles	1.3	0.0	4.0	0.0	0.0	0.0	0.0	0.0	0.0	0.0	0.0	0.0	0.0
Glass and putty	0.7	0.0	0.0	1.4	0.0	0.0	0.0	0.5	0.0	0.0	0.0	0.0	0.0
Paint	2.0	0.0	0.0	7.9	0.0	0.0	0.0	0.0	0.0	0.0	0.0	0.0	0.0
Plumbing	1.5	0.6	0.0	1.2	0.5	0.0	0.0	0.0	0.0	0.0	9.7	0.0	0.0
Sanitary installation	2.3	0.2	-1.7	-0.5	0.0	0.0	0.0	0.0	0.0	0.0	0.0	0.0	0.0
Electrical installation	2.6	-2.9	0.0	0.0	-1.2	0.0	-3.7	-9.8	0.0	0.0	0.0	0.0	0.0
Other	1.2	3.1	0.5	0.6	0.0	0.0	0.0	0.5	0.0	0.0	0.0	0.0	0.0
<b>TRANSPORT</b>	<b>5.3</b>	<b>0.0</b>	<b>0.0</b>	<b>0.0</b>	<b>5.3</b>	<b>-5.5</b>	<b>0.0</b>	<b>0.0</b>	<b>0.0</b>	<b>0.0</b>	<b>0.0</b>	<b>0.0</b>	<b>0.0</b>
<b>OVERALL CHANGE</b>	<b>100.0</b>	<b>2.4</b>	<b>1.4</b>	<b>1.1</b>	<b>0.5</b>	<b>-0.8</b>	<b>-0.9</b>	<b>-0.7</b>	<b>0.0</b>	<b>-1.5</b>	<b>-0.4</b>	<b>-0.1</b>	<b>0.0</b>

## Input Cost Index for the construction of a single storey house

(Base: 4th Quarter 2001 = 100)

**Table 1.3: Percentage change from corresponding month of previous year by input category, July 2008 to June 2009**

Input Categories	Weight	% change from corresponding month of previous year											
		Jul 08	Aug 08	Sep 08	Oct 08	Nov 08	Dec 08	Jan 09	Feb 09	Mar 09	Apr 09	May 09	Jun 09
<b>LABOUR</b>	<b>34.5</b>	<b>3.3</b>	<b>3.3</b>	<b>3.3</b>	<b>3.3</b>	<b>3.3</b>	<b>3.3</b>	<b>3.3</b>	<b>3.3</b>	<b>3.3</b>	<b>3.3</b>	<b>3.3</b>	<b>3.3</b>
<b>HIRE OF PLANT</b>	<b>3.0</b>	<b>7.0</b>	<b>3.0</b>	<b>3.0</b>	<b>3.0</b>	<b>3.0</b>	<b>3.0</b>	<b>0.0</b>	<b>0.0</b>	<b>0.0</b>	<b>0.0</b>	<b>0.0</b>	<b>0.0</b>
<b>MATERIALS :</b>	<b>57.2</b>	<b>12.2</b>	<b>13.7</b>	<b>15.2</b>	<b>14.0</b>	<b>15.2</b>	<b>13.4</b>	<b>5.3</b>	<b>5.3</b>	<b>4.1</b>	<b>3.4</b>	<b>3.2</b>	<b>0.0</b>
Hardcore (remplissage)	1.0	0.0	0.0	0.0	0.0	0.0	0.0	0.0	0.0	0.0	0.0	0.0	0.0
Cement	10.0	9.2	9.2	9.2	9.2	9.2	9.2	-9.3	-9.3	-2.7	-2.7	-2.7	-2.7
Sand	6.1	22.4	22.4	22.4	15.2	11.6	10.4	9.7	9.7	9.7	9.7	9.7	9.7
Aggregate	2.9	22.0	22.0	22.0	28.6	21.2	19.9	10.5	10.5	10.5	10.5	10.5	10.5
Block	4.4	20.1	20.1	20.1	22.4	19.2	18.6	6.7	6.7	6.7	6.7	6.7	6.7
Steel bars (armature)	5.8	8.8	20.5	22.2	16.2	30.9	23.6	16.3	16.3	-2.1	-10.8	-10.8	-21.7
Galvanised corrugated cast iron sheeting	1.2	5.2	5.2	5.2	6.0	6.0	6.0	5.1	5.1	5.1	5.1	5.1	2.5
Timber: (a) Carpentry	3.9	10.1	10.1	10.1	10.1	10.1	10.1	17.8	17.8	17.5	17.9	17.9	9.3
(b) Joinery	4.2	17.7	17.9	18.2	18.2	17.3	17.3	10.4	10.4	6.6	6.6	6.6	3.4
Metal openings	6.1	14.5	17.1	28.7	28.7	28.4	25.2	17.1	17.1	16.8	20.2	18.3	15.5
Ceramic tiles	1.3	2.0	6.1	6.1	6.1	6.1	6.1	4.0	4.0	4.0	4.0	4.0	4.0
Glass and putty	0.7	18.3	6.4	7.9	7.9	7.5	7.5	3.6	3.6	3.6	3.6	3.6	1.9
Paint	2.0	9.0	9.0	7.2	7.2	7.2	7.2	7.2	7.2	7.9	7.9	7.9	7.9
Plumbing	1.5	2.5	2.1	3.4	3.9	3.6	3.6	2.7	2.7	2.7	12.7	12.7	12.2
Sanitary installation	2.3	6.0	0.5	0.0	0.0	-0.2	-0.2	-1.4	-1.4	-1.4	-1.4	-1.4	-2.0
Electrical installation	2.6	5.0	-4.8	-4.8	-5.9	-6.0	-9.5	-17.4	-17.4	-17.4	-17.4	-17.4	-16.6
Other	1.2	15.5	16.0	14.7	14.7	13.2	13.2	11.4	11.4	11.8	11.8	11.8	4.7
<b>TRANSPORT</b>	<b>5.3</b>	<b>15.7</b>	<b>15.7</b>	<b>15.7</b>	<b>21.8</b>	<b>15.1</b>	<b>15.1</b>	<b>-0.6</b>	<b>-0.6</b>	<b>-0.6</b>	<b>-0.6</b>	<b>-0.6</b>	<b>-0.6</b>
<b>OVERALL CHANGE</b>	<b>100.0</b>	<b>9.8</b>	<b>10.7</b>	<b>11.7</b>	<b>11.2</b>	<b>11.6</b>	<b>10.5</b>	<b>4.4</b>	<b>4.4</b>	<b>3.5</b>	<b>3.1</b>	<b>2.9</b>	<b>0.8</b>

## Input Cost Index for the construction of a single storey house

(Base: 4th Quarter 2001 = 100)

**Table 1.4: Net monthly contributions of input categories to the index, July 2008 to June 2009**

Input Categories	Weight	2008						2009					
		Jul	Aug	Sep	Oct	Nov	Dec	Jan	Feb	Mar	Apr	May	Jun
<b>LABOUR</b>	<b>34.5</b>	<b>1.36</b>	<b>0.00</b>	<b>0.00</b>	<b>0.00</b>	<b>0.00</b>	<b>0.00</b>	<b>0.00</b>	<b>0.00</b>	<b>0.00</b>	<b>0.00</b>	<b>0.00</b>	<b>0.00</b>
<b>HIRE OF PLANT</b>	<b>3.0</b>	<b>0.00</b>	<b>0.00</b>	<b>0.00</b>	<b>0.00</b>	<b>0.00</b>	<b>0.00</b>	<b>0.00</b>	<b>0.00</b>	<b>0.00</b>	<b>0.00</b>	<b>0.00</b>	<b>0.00</b>
<b>MATERIALS :</b>	<b>57.2</b>	<b>2.56</b>	<b>2.29</b>	<b>1.79</b>	<b>0.37</b>	<b>-0.89</b>	<b>-1.47</b>	<b>-1.19</b>	<b>0.00</b>	<b>-2.50</b>	<b>-0.73</b>	<b>-0.21</b>	<b>0.00</b>
Hardcore (remplissage)	1.0	0.00	0.00	0.00	0.00	0.00	0.00	0.00	0.00	0.00	0.00	0.00	0.00
Cement	10.0	0.00	0.00	0.00	0.00	0.00	0.00	0.00	0.00	-0.60	0.00	0.00	0.00
Sand	6.1	0.85	0.00	0.00	0.50	-0.31	-0.11	-0.06	0.00	0.00	0.00	0.00	0.00
Aggregate	2.9	0.58	0.00	0.00	0.50	-0.33	-0.06	-0.20	0.00	0.00	0.00	0.00	0.00
Block	4.4	0.40	0.00	0.00	0.42	-0.22	-0.04	-0.05	0.00	0.00	0.00	0.00	0.00
Steel bars (armature)	5.8	0.62	1.99	0.29	-1.02	0.00	-1.10	-1.42	0.00	-1.86	-1.37	0.00	0.00
Galvanised corrugated cast iron sheeting	1.2	0.00	0.00	0.00	0.02	0.00	0.00	0.04	0.00	0.00	0.00	0.00	0.00
Timber: (a) Carpentry	3.9	0.00	0.00	0.00	0.00	0.00	0.00	0.54	0.00	0.00	0.02	0.00	0.00
(b) Joinery	4.2	0.10	0.01	0.02	0.00	0.00	0.00	0.15	0.00	0.00	0.00	0.00	0.00
Metal openings	6.1	0.06	0.27	1.19	-0.01	0.00	0.00	0.17	0.00	-0.04	0.39	-0.21	0.00
Ceramic tiles	1.3	0.00	0.06	0.00	0.00	0.00	0.00	0.00	0.00	0.00	0.00	0.00	0.00
Glass and putty	0.7	0.00	0.00	0.01	0.00	0.00	0.00	0.01	0.00	0.00	0.00	0.00	0.00
Paint	2.0	0.00	0.00	0.25	0.00	0.00	0.00	0.00	0.00	0.00	0.00	0.00	0.00
Plumbing	1.5	0.01	0.00	0.03	0.01	0.00	0.00	0.00	0.00	0.00	0.23	0.00	0.00
Sanitary installation	2.3	0.01	-0.05	-0.02	-0.01	-0.02	0.00	0.03	0.00	0.00	0.00	0.00	0.00
Electrical installation	2.6	-0.13	0.00	0.00	-0.05	0.00	-0.16	-0.41	0.00	0.00	0.00	0.00	0.00
Other	1.2	0.06	0.01	0.01	0.01	0.00	0.00	0.00	0.00	0.00	0.00	0.00	0.00
<b>TRANSPORT</b>	<b>5.3</b>	<b>0.00</b>	<b>0.00</b>	<b>0.00</b>	<b>0.41</b>	<b>-0.45</b>	<b>0.00</b>	<b>0.00</b>	<b>0.00</b>	<b>0.00</b>	<b>0.00</b>	<b>0.00</b>	<b>0.00</b>
<b>TOTAL</b>	<b>100.0</b>	<b>3.91</b>	<b>2.29</b>	<b>1.79</b>	<b>0.77</b>	<b>-1.34</b>	<b>-1.47</b>	<b>-1.19</b>	<b>0.00</b>	<b>-2.50</b>	<b>-0.73</b>	<b>-0.21</b>	<b>0.00</b>

## Input Cost Index for the construction of a single storey house

(Base: 4th Quarter 2001 = 100)

**Table 1.5: Quarterly average of monthly indices and percentage changes by input category, July 2008 to June 2009**

Input Categories	Weight	2008		2009		% change from previous quarter			
		3rd Qr	4th Qr	1st Qr	2nd Qr	3rd Qr 2008	4th Qr 2008	1st Qr 2009	2nd Qr 2009
<b>LABOUR</b>	<b>34.5</b>	<b>123.4</b>	<b>123.4</b>	<b>123.4</b>	<b>123.4</b>	<b>3.3</b>	<b>0.0</b>	<b>0.0</b>	<b>0.0</b>
<b>HIRE OF PLANT</b>	<b>3.0</b>	<b>135.5</b>	<b>135.5</b>	<b>135.5</b>	<b>135.5</b>	<b>0.0</b>	<b>0.0</b>	<b>0.0</b>	<b>0.0</b>
<b>MATERIALS :</b>	<b>57.2</b>	<b>197.3</b>	<b>199.5</b>	<b>193.7</b>	<b>189.3</b>	<b>6.5</b>	<b>1.1</b>	<b>-2.9</b>	<b>-2.3</b>
Hardcore (remplissage)	1.0	110.5	110.5	110.5	110.5	0.0	0.0	0.0	0.0
Cement	10.0	222.2	222.2	220.2	216.2	0.0	0.0	-0.9	-1.8
Sand	6.1	159.8	164.0	160.1	160.1	9.5	2.6	-2.4	0.0
Aggregate	2.9	182.9	191.9	179.8	179.8	12.4	4.9	-6.3	0.0
Block	4.4	178.9	184.7	181.2	181.2	5.3	3.2	-1.9	0.0
Steel bars (armature)	5.8	342.5	333.4	285.7	240.7	21.3	-2.7	-14.3	-15.7
Galvanised corrugated cast iron sheeting	1.2	185.7	187.1	190.5	190.5	1.6	0.7	1.8	0.0
Timber: (a) Carpentry	3.9	156.0	156.0	170.0	170.5	5.1	0.0	8.9	0.3
(b) Joinery	4.2	202.9	203.4	206.9	206.9	3.5	0.2	1.7	0.0
Metal openings	6.1	204.1	218.7	221.2	224.8	7.1	7.2	1.1	1.6
Ceramic tiles	1.3	117.7	119.2	119.2	119.2	2.6	1.3	0.0	0.0
Glass and putty	0.7	138.4	139.7	140.3	140.3	1.6	0.9	0.5	0.0
Paint	2.0	159.0	167.1	167.1	167.1	2.6	5.1	0.0	0.0
Plumbing	1.5	158.4	160.5	160.5	176.1	1.2	1.3	0.0	9.7
Sanitary installation	2.3	128.6	127.4	127.4	127.4	-0.7	-0.9	0.0	0.0
Electrical installation	2.6	171.9	167.7	147.5	147.5	-3.5	-2.4	-12.0	0.0
Other	1.2	168.3	169.2	170.0	170.0	8.2	0.5	0.5	0.0
<b>TRANSPORT</b>	<b>5.3</b>	<b>146.2</b>	<b>148.3</b>	<b>145.4</b>	<b>145.4</b>	<b>0.0</b>	<b>1.4</b>	<b>-1.9</b>	<b>0.0</b>
<b>OVERALL INDEX AND CHANGE</b>	<b>100.0</b>	<b>167.3</b>	<b>168.6</b>	<b>165.2</b>	<b>162.6</b>	<b>5.2</b>	<b>0.8</b>	<b>-2.0</b>	<b>-1.5</b>

## Input Cost Index for the construction of a single storey house

(Base: 4th Quarter 2001 = 100)

**Table 2.1: Monthly sub-indices by work category, July 2008 to June 2009**

Work Categories	Weight	2008						2009					
		Jul	Aug	Sep	Oct	Nov	Dec	Jan	Feb	Mar	Apr	May	Jun
1. Setting up	2.3	169.7	169.7	169.8	172.0	170.6	170.4	173.3	173.3	172.9	173.2	173.2	173.2
2. Setting out	0.5	124.9	124.9	124.9	124.9	124.9	124.9	131.0	131.0	131.0	132.6	132.6	132.6
3. Temporary works	0.5	140.1	140.1	140.2	140.3	140.1	140.1	148.3	148.3	148.3	149.6	149.6	149.6
4. Site preparation, excavation & disposal, hardcore filling	5.8	131.2	131.2	131.2	131.9	131.3	131.2	131.2	131.2	131.2	131.2	131.2	131.2
5. Concrete	20.2	170.0	170.0	170.0	173.8	170.8	170.2	169.1	169.1	167.4	167.4	167.4	167.4
6. Reinforcement	9.2	243.7	265.2	268.3	257.4	257.1	245.3	230.0	230.0	209.7	195.1	195.1	195.1
7. Formwork (coffrage)	7.8	141.1	141.1	141.2	141.3	141.1	141.1	146.7	146.7	146.7	146.7	146.7	146.7
8. Blockwork	8.5	161.9	161.9	161.9	169.0	165.6	165.1	164.5	164.5	164.0	164.0	164.0	164.0
9. Softwood joinery	4.5	197.5	197.9	198.4	198.4	198.3	198.3	201.6	201.6	201.6	201.6	201.6	201.6
10. Ironmongery	0.5	134.5	136.5	135.8	135.8	135.8	135.8	136.6	136.6	136.6	136.6	136.6	136.6
11. Metal openings	6.5	190.3	194.4	212.9	212.8	212.7	212.7	215.4	215.4	214.7	220.7	217.4	217.4
12. Rendering to wall/ceiling (crépissage)	9.9	141.6	141.6	141.6	142.8	141.8	141.6	141.5	141.5	140.7	140.7	140.7	140.7
13. Bed & screed to floor/roof	4.2	172.8	172.8	172.8	176.1	173.3	172.9	172.7	172.7	170.3	170.3	170.3	170.3
14. Tiling	2.1	119.1	121.9	121.9	122.0	121.9	121.9	122.0	122.0	122.0	122.0	122.0	122.0
15. Glazing	1.0	136.4	136.4	137.8	138.4	137.3	137.3	137.9	137.9	137.9	137.9	137.9	137.9
16. Painting	5.2	135.3	135.3	140.1	140.3	140.1	140.1	140.1	140.1	140.1	140.1	140.1	140.1
17. Plumbing/sanitary installation	5.0	136.0	134.9	135.1	135.2	134.6	134.7	135.2	135.2	135.2	139.9	139.9	139.9
18. Electrical installation	4.2	153.0	153.0	153.0	151.8	151.7	147.9	138.2	138.2	138.2	138.2	138.2	138.2
19. Drainage	2.1	163.7	164.5	164.5	167.5	165.8	165.0	164.5	164.5	163.8	162.8	162.8	162.8
<b>Total</b>	<b>100.0</b>	<b>165.2</b>	<b>167.5</b>	<b>169.2</b>	<b>170.0</b>	<b>168.7</b>	<b>167.2</b>	<b>166.0</b>	<b>166.0</b>	<b>163.5</b>	<b>162.8</b>	<b>162.6</b>	<b>162.6</b>



## Input Cost Index for the construction of a single storey house

(Base: 4th Quarter 2001 = 100)

**Table 2.2: Percentage change from previous month by work category, July 2008 to June 2009**

Work Categories	Weight	% change from previous month											
		Jul 08	Aug 08	Sep 08	Oct 08	Nov 08	Dec 08	Jan 09	Feb 09	Mar 09	Apr 09	May 09	Jun 09
1. Setting up	2.3	1.2	0.0	0.1	1.3	-0.8	-0.1	1.7	0.0	-0.2	0.2	0.0	0.0
2. Setting out	0.5	1.9	0.0	0.0	0.0	0.0	0.0	4.9	0.0	0.0	1.2	0.0	0.0
3. Temporary works	0.5	1.3	0.0	0.1	0.1	-0.1	0.0	5.9	0.0	0.0	0.9	0.0	0.0
4. Site preparation, excavation & disposal, hardcore filling	5.8	3.2	0.0	0.0	0.6	-0.5	-0.1	0.0	0.0	0.0	0.0	0.0	0.0
5. Concrete	20.2	3.8	0.0	0.0	2.2	-1.8	-0.3	-0.6	0.0	-1.0	0.0	0.0	0.0
6. Reinforcement	9.2	2.2	8.8	1.2	-4.0	-0.1	-4.6	-6.2	0.0	-8.8	-7.0	0.0	0.0
7. Formwork (coffrage)	7.8	1.6	0.0	0.1	0.1	-0.2	0.0	3.9	0.0	0.0	0.0	0.0	0.0
8. Blockwork	8.5	4.0	0.0	0.0	4.4	-2.0	-0.3	-0.4	0.0	-0.2	0.0	0.0	0.0
9. Softwood joinery	4.5	1.3	0.2	0.3	0.0	0.0	0.0	1.7	0.0	0.0	0.0	0.0	0.0
10. Ironmongery	0.5	1.3	1.5	-0.5	0.0	0.0	0.0	0.6	0.0	0.0	0.0	0.0	0.0
11. Metal openings	6.5	0.6	2.2	9.5	0.0	0.0	0.0	1.2	0.0	-0.3	2.8	-1.5	0.0
12. Rendering to wall/ceiling (crépissage)	9.9	3.4	0.0	0.0	0.9	-0.7	-0.1	-0.1	0.0	-0.6	0.0	0.0	0.0
13. Bed & screed to floor/roof	4.2	2.9	0.0	0.0	1.9	-1.6	-0.2	-0.1	0.0	-1.4	0.0	0.0	0.0
14. Tiling	2.1	1.4	2.3	0.1	0.0	0.0	0.0	0.0	0.0	0.0	0.0	0.0	0.0
15. Glazing	1.0	0.5	0.0	1.1	0.4	-0.8	0.0	0.4	0.0	0.0	0.0	0.0	0.0
16. Painting	5.2	1.7	0.0	3.5	0.1	-0.1	0.0	0.0	0.0	0.0	0.0	0.0	0.0
17. Plumbing/sanitary installation	5.0	1.0	-0.8	0.1	0.1	-0.4	0.1	0.4	0.0	0.0	3.5	0.0	0.0
18. Electrical installation	4.2	-0.9	0.0	0.0	-0.8	0.0	-2.5	-6.6	0.0	0.0	0.0	0.0	0.0
19. Drainage	2.1	3.8	0.5	0.0	1.8	-1.0	-0.5	-0.3	0.0	-0.4	-0.6	0.0	0.0
<b>OVERALL CHANGE</b>	<b>100.0</b>	<b>2.4</b>	<b>1.4</b>	<b>1.1</b>	<b>0.5</b>	<b>-0.8</b>	<b>-0.9</b>	<b>-0.7</b>	<b>0.0</b>	<b>-1.5</b>	<b>-0.4</b>	<b>-0.1</b>	<b>0.0</b>

## Input Cost Index for the construction of a single storey house

(Base: 4th Quarter 2001 = 100)

**Table 2.3: Percentage change from corresponding month of previous year by input category, July 2008 to June 2009**

Work categories	Weight	% change from corresponding month of previous year											
		Jul 08	Aug 08	Sep 08	Oct 08	Nov 08	Dec 08	Jan 09	Feb 09	Mar 09	Apr 09	May 09	Jun 09
1. Setting up	2.3	8.2	8.2	8.3	9.2	8.3	8.2	5.2	5.2	5.9	6.1	6.1	3.3
2. Setting out	0.5	7.7	7.7	7.7	7.7	7.7	7.7	13.0	13.0	13.0	14.3	14.3	8.1
3. Temporary works	0.5	9.5	9.5	9.6	9.7	9.5	9.5	14.7	14.7	14.3	15.3	15.3	8.3
4. Site preparation, excavation & disposal, hardcore filling	5.8	6.5	5.0	5.0	5.4	4.9	4.8	3.2	3.2	3.2	3.2	3.2	3.2
5. Concrete	20.2	12.3	12.2	12.2	12.2	10.2	9.9	-0.8	-0.8	2.2	2.2	2.2	2.2
6. Reinforcement	9.2	6.7	16.1	17.5	12.8	23.8	18.1	12.0	12.0	-2.4	-9.2	-9.2	-18.2
7. Formwork (coffrage)	7.8	7.1	7.1	7.2	7.3	7.1	7.1	9.7	9.7	9.8	9.8	9.8	5.6
8. Blockwork	8.5	15.0	15.0	15.0	17.5	15.1	14.7	4.6	4.6	5.4	5.4	5.4	5.4
9. Softwood joinery	4.5	17.1	17.3	17.6	17.6	16.8	16.8	10.0	10.0	6.5	6.5	6.5	3.4
10. Ironmongery	0.5	11.7	13.4	12.8	12.8	9.1	9.1	9.8	9.8	8.3	8.3	8.3	2.9
11. Metal openings	6.5	14.1	16.5	27.6	27.6	27.3	24.2	16.5	16.5	16.2	19.4	17.6	14.9
12. Rendering to wall/ceiling (crépissage)	9.9	7.2	7.2	7.2	6.9	6.1	6.0	0.9	0.9	2.7	2.7	2.7	2.7
13. Bed & screed to floor/roof	4.2	11.4	11.4	11.4	10.6	8.9	8.6	-2.4	-2.4	1.4	1.4	1.4	1.4
14. Tiling	2.1	3.1	5.5	5.1	5.2	5.1	5.1	3.8	3.8	3.8	3.8	3.8	3.8
15. Glazing	1.0	16.0	7.1	8.3	8.7	7.6	7.6	2.8	2.8	2.8	2.8	2.8	1.5
16. Painting	5.2	6.2	6.2	5.2	5.3	5.2	5.2	5.0	5.0	5.3	5.3	5.3	5.4
17. Plumbing/sanitary installation	5.0	4.0	1.9	2.0	2.1	1.5	1.5	0.8	0.8	0.8	4.3	4.3	3.9
18. Electrical installation	4.2	4.7	-2.1	-2.1	-2.9	-3.0	-5.5	-11.1	-11.1	-11.1	-11.1	-11.1	-10.5
19. Drainage	2.1	9.7	9.3	9.3	10.1	9.5	9.0	3.7	3.7	4.7	4.1	4.1	3.2
<b>OVERALL CHANGE</b>	<b>100.0</b>	<b>9.8</b>	<b>10.7</b>	<b>11.7</b>	<b>11.2</b>	<b>11.6</b>	<b>10.5</b>	<b>4.4</b>	<b>4.4</b>	<b>3.5</b>	<b>3.1</b>	<b>2.9</b>	<b>0.8</b>

## Input Cost Index for the construction of a single storey house

(Base: 4th Quarter 2001 = 100)

**Table 2.4: Net monthly contributions of work categories to the index, July 2008 to June 2009**

Work Categories	Weight	2008						2009					
		Jul	Aug	Sep	Oct	Nov	Dec	Jan	Feb	Mar	Apr	May	Jun
1. Setting up	2.3	0.05	0.00	0.00	0.05	-0.03	0.00	0.07	0.00	-0.01	0.01	0.00	0.00
2. Setting out	0.5	0.01	0.00	0.00	0.00	0.00	0.00	0.03	0.00	0.00	0.01	0.00	0.00
3. Temporary works	0.5	0.01	0.00	0.00	0.00	0.00	0.00	0.04	0.00	0.00	0.01	0.00	0.00
4. Site preparation, excavation & disposal, hardcore filling	5.8	0.24	0.00	0.00	0.04	-0.04	-0.01	0.00	0.00	0.00	0.00	0.00	0.00
5. Concrete	20.2	1.26	0.00	0.00	0.77	-0.62	-0.12	-0.22	0.00	-0.35	0.00	0.00	0.00
6. Reinforcement	9.2	0.49	1.98	0.28	-1.00	-0.03	-1.09	-1.41	0.00	-1.86	-1.35	0.00	0.00
7. Formwork (coffrage)	7.8	0.17	0.00	0.01	0.01	-0.02	0.00	0.43	0.00	0.00	0.00	0.00	0.00
8. Blockwork	8.5	0.54	0.00	0.00	0.60	-0.29	-0.05	-0.05	0.00	-0.03	0.00	0.00	0.00
9. Softwood joinery	4.5	0.11	0.01	0.02	0.00	0.00	0.00	0.15	0.00	0.00	0.00	0.00	0.00
10. Ironmongery	0.5	0.01	0.01	0.00	0.00	0.00	0.00	0.00	0.00	0.00	0.00	0.00	0.00
11. Metal openings	6.5	0.07	0.27	1.19	0.00	-0.01	0.00	0.17	0.00	-0.04	0.39	-0.21	0.00
12. Rendering to wall/ceiling (crépissage)	9.9	0.45	0.00	0.00	0.12	-0.10	-0.02	-0.01	0.00	-0.09	0.00	0.00	0.00
13. Bed & screed to floor/roof	4.2	0.20	0.00	0.00	0.14	-0.12	-0.02	-0.01	0.00	-0.10	0.00	0.00	0.00
14. Tiling	2.1	0.03	0.06	0.00	0.00	0.00	0.00	0.00	0.00	0.00	0.00	0.00	0.00
15. Glazing	1.0	0.01	0.00	0.01	0.01	-0.01	0.00	0.01	0.00	0.00	0.00	0.00	0.00
16. Painting	5.2	0.12	0.00	0.25	0.01	-0.01	0.00	0.00	0.00	0.00	0.00	0.00	0.00
17. Plumbing/sanitary installation	5.0	0.06	-0.05	0.01	0.01	-0.03	0.00	0.03	0.00	0.00	0.23	0.00	0.00
18. Electrical installation	4.2	-0.06	0.00	0.00	-0.05	0.00	-0.16	-0.41	0.00	0.00	0.00	0.00	0.00
19. Drainage	2.1	0.12	0.02	0.00	0.06	-0.04	-0.02	-0.01	0.00	-0.02	-0.02	0.00	0.00
<b>TOTAL</b>	<b>100.0</b>	<b>3.91</b>	<b>2.29</b>	<b>1.79</b>	<b>0.77</b>	<b>-1.34</b>	<b>-1.47</b>	<b>-1.19</b>	<b>0.00</b>	<b>-2.50</b>	<b>-0.73</b>	<b>-0.21</b>	<b>0.00</b>

## Input Cost Index for the construction of a single storey house

(Base: 4th Quarter 2001 = 100)

**Table 2.5: Quarterly average of monthly indices and percentage changes by work category, July 2008 to June 2009**

Work Categories	Weight	2008		2009		% change from previous quarter			
		3rd Qr	4th Qr	1st Qr	2nd Qr	3rd Qr 2008	4th Qr 2008	1st Qr 2009	2nd Qr 2009
1. Setting up	2.3	169.7	171.0	173.1	173.2	3.1	0.8	1.2	0.1
2. Setting out	0.5	124.9	124.9	131.0	132.6	5.7	0.0	4.9	1.2
3. Temporary works	0.5	140.1	140.2	148.3	149.6	5.7	0.1	5.8	0.9
4. Site preparation, excavation & disposal, hardcore filling	5.8	131.2	131.5	131.2	131.2	3.2	0.2	-0.2	0.0
5. Concrete	20.2	170.0	171.6	168.5	167.4	3.8	0.9	-1.8	-0.7
6. Reinforcement	9.2	259.1	253.3	223.2	195.1	16.3	-2.2	-11.9	-12.6
7. Formwork (coffrage)	7.8	141.1	141.2	146.7	146.7	4.3	0.1	3.9	0.0
8. Blockwork	8.5	161.9	166.6	164.3	164.0	4.0	2.9	-1.4	-0.2
9. Softwood joinery	4.5	197.9	198.3	201.6	201.6	3.5	0.2	1.6	0.0
10. Ironmongery	0.5	135.6	135.8	136.6	136.6	5.6	0.1	0.6	0.0
11. Metal openings	6.5	199.2	212.8	215.2	218.5	6.9	6.8	1.1	1.6
12. Rendering to wall/ceiling (crépissage)	9.9	141.6	142.1	141.2	140.7	3.4	0.3	-0.6	-0.4
13. Bed & screed to floor/roof	4.2	172.8	174.1	171.9	170.3	2.9	0.7	-1.3	-0.9
14. Tiling	2.1	121.0	122.0	122.0	122.0	3.0	0.8	0.0	0.0
15. Glazing	1.0	136.9	137.7	137.9	137.9	1.6	0.6	0.1	0.0
16. Painting	5.2	136.9	140.2	140.1	140.1	2.9	2.4	0.0	0.0
17. Plumbing/sanitary installation	5.0	135.3	134.9	135.2	139.9	0.8	-0.3	0.3	3.5
18. Electrical installation	4.2	153.0	150.5	138.2	138.2	-1.3	-1.7	-8.2	0.0
19. Drainage	2.1	164.2	166.1	164.3	162.8	4.7	1.1	-1.1	-0.9
<b>OVERALL INDEX AND CHANGE</b>	<b>100.0</b>	<b>167.3</b>	<b>168.6</b>	<b>165.2</b>	<b>162.6</b>	<b>5.2</b>	<b>0.8</b>	<b>-2.0</b>	<b>-1.5</b>

**Table 3: Construction Price Index - January 1998 to June 2009**

	<i>(Base: 4th Quarter 1993 = 100)</i>				<i>(Base: 4th Quarter 2001 = 100)</i>							
	<b>1998</b>	<b>1999</b>	<b>2000</b>	<b>2001</b>	<b>2002</b>	<b>2003</b>	<b>2004</b>	<b>2005</b>	<b>2006</b>	<b>2007</b>	<b>2008</b>	<b>2009</b>
<b>January</b>	115.2	118.6	120.4	124.9	100.3	105.8	109.5	118.7	126.7	140.7	159.0	166.0
<b>February</b>	115.3	119.1	120.4	124.9	100.5	106.8	112.2	122.5	127.3	140.7	159.0	166.0
<b>March</b>	115.3	119.1	120.5	125.0	100.6	107.0	112.3	122.5	127.3	141.2	157.9	163.5
<i>1st Quarter</i>	<i>115.3</i>	<i>118.9</i>	<i>120.5</i>	<i>124.9</i>	<i>100.5</i>	<i>106.5</i>	<i>111.3</i>	<i>121.3</i>	<i>127.1</i>	<i>140.9</i>	<i>158.7</i>	<i>165.2</i>
<b>April</b>	115.3	119.2	120.4	124.9	100.7	107.1	112.3	122.5	127.9	#####	157.9	162.8
<b>May</b>	115.5	119.2	120.4	124.9	101.5	107.1	112.3	122.7	127.9	#####	157.9	162.6
<b>June</b>	115.6	119.3	120.5	124.9	101.5	107.1	115.5	122.7	129.9	#####	161.2	162.6
<i>2nd Quarter</i>	<i>115.5</i>	<i>119.3</i>	<i>120.5</i>	<i>124.9</i>	<i>101.3</i>	<i>107.1</i>	<i>113.4</i>	<i>122.6</i>	<i>128.6</i>	<i>145.2</i>	<i>159.0</i>	<i>162.6</i>
<b>July</b>	116.9	120.9	121.5	126.9	105.4	108.1	116.4	124.6	134.4	150.5	165.2	
<b>August</b>	117.5	121.0	121.6	127.4	105.4	108.6	116.4	124.6	135.1	151.3	167.5	
<b>September</b>	118.1	121.0	121.4	127.4	105.4	109.4	117.0	124.6	135.1	151.6	169.2	
<i>3rd Quarter</i>	<i>117.5</i>	<i>120.9</i>	<i>121.5</i>	<i>127.2</i>	<i>105.4</i>	<i>108.7</i>	<i>116.6</i>	<i>124.6</i>	<i>134.9</i>	<i>151.1</i>	<i>167.3</i>	
<b>October</b>	118.4	121.2	124.3	127.6	105.2	109.4	117.3	125.3	135.1	152.9	170.0	
<b>November</b>	118.4	120.5	124.4	128.4	105.3	109.5	117.8	126.1	136.9	151.1	168.7	
<b>December</b>	118.6	120.6	124.4	128.5	105.3	109.5	118.4	126.1	137.1	151.4	167.2	
<i>4th Quarter</i>	<i>118.4</i>	<i>120.8</i>	<i>124.3</i>	<i>128.2</i>	<i>105.3</i>	<i>109.5</i>	<i>117.8</i>	<i>125.8</i>	<i>136.4</i>	<i>151.8</i>	<i>168.6</i>	
<b>Yearly average</b>	<b>116.7</b>	<b>120.0</b>	<b>121.7</b>	<b>126.3</b>	<b>103.1</b>	<b>107.9</b>	<b>114.8</b>	<b>123.6</b>	<b>131.8</b>	<b>147.2</b>	<b>163.4</b>	
<b>% change in the yearly average</b>	<b>2.9</b>	<b>2.8</b>	<b>1.4</b>	<b>3.8</b>	<b>4.7</b>	<b>4.7</b>	<b>6.3</b>	<b>7.7</b>	<b>6.6</b>	<b>11.8</b>	<b>11.0</b>	

**Table 4: Construction Price Index - January 1999 to June 2009 (base period 4th Qtr2001=100)**

	<b>1999</b>	<b>2000</b>	<b>2001</b>	<b>2002</b>	<b>2003</b>	<b>2004</b>	<b>2005</b>	<b>2006</b>	<b>2007</b>	<b>2008</b>	<b>2009</b>
<b>January</b>	92.5	93.9	97.4	100.3	105.8	109.5	118.7	126.7	140.7	159.0	166.0
<b>February</b>	92.9	93.9	97.4	100.5	106.8	112.2	122.5	127.3	140.7	159.0	166.0
<b>March</b>	92.9	94.0	97.5	100.6	107.0	112.3	122.5	127.3	141.2	157.9	163.5
<i>1st Quarter</i>	92.8	93.9	97.4	100.5	106.5	111.3	121.2	127.1	140.9	158.7	165.2
<b>April</b>	93.0	93.9	97.4	100.7	107.1	112.3	122.5	127.9	144.1	157.9	162.8
<b>May</b>	93.0	93.9	97.4	101.5	107.1	112.3	122.7	127.9	144.3	157.9	162.6
<b>June</b>	93.1	94.0	97.4	101.5	107.1	115.5	122.7	129.9	147.4	161.2	162.6
<i>2nd Quarter</i>	93.0	93.9	97.4	101.2	107.1	113.4	122.6	128.6	145.3	159.0	162.6
<b>July</b>	94.3	94.8	99.0	105.4	108.1	116.4	124.6	134.4	150.5	165.2	
<b>August</b>	94.4	94.9	99.4	105.4	108.6	116.4	124.6	135.1	151.3	167.5	
<b>September</b>	94.4	94.7	99.4	105.4	109.4	117.0	124.6	135.1	151.6	169.2	
<i>3rd Quarter</i>	94.4	94.8	99.2	105.4	108.7	116.6	124.6	134.9	151.1	167.3	
<b>October</b>	94.6	97.0	99.5	105.2	109.4	117.3	125.3	135.1	152.9	170.0	
<b>November</b>	94.0	97.0	100.2	105.3	109.5	117.8	126.1	136.9	151.1	168.7	
<b>December</b>	94.1	97.0	100.2	105.3	109.5	118.4	126.1	137.1	151.4	167.2	
<i>4th Quarter</i>	94.2	97.0	100.0	105.3	109.5	117.8	125.8	136.4	151.8	168.6	
<b>Yearly average</b>	<b>93.6</b>	<b>94.9</b>	<b>98.5</b>	<b>103.1</b>	<b>107.9</b>	<b>114.8</b>	<b>123.6</b>	<b>131.7</b>	<b>147.3</b>	<b>163.4</b>	
<b>% change in the yearly average</b>	<b>2.8</b>	<b>1.4</b>	<b>3.8</b>	<b>4.7</b>	<b>4.7</b>	<b>6.3</b>	<b>7.7</b>	<b>6.6</b>	<b>11.8</b>	<b>11.0</b>	

## Technical Note

### Methodology for the compilation of the Construction Price Index

#### (i) Introduction

A Construction Price Index measures the change in the level of construction prices. The construction industry is very broad and highly diversified with considerable variations from one type of construction to another. This makes it difficult to derive generalized indices that would be applicable to the industry as a whole. The Central Statistics Office has decided to start with an index for residential buildings only.

#### (ii) Types of Construction Price Indices

Different approaches to index number compilation are used depending on the purpose for which the index is required. There are two main types of construction price indices:

##### **The Output Price Index**

In this approach, specific projects representative of the various categories of construction works are selected as models and construction firms are surveyed and asked to provide estimates of the prevailing market prices for each of the projects. As such, the output price indices respond to the changes in prices of materials used and cost of labour, as well as changes in overhead costs and profits.

##### **The Input Price Index**

The index is based on prices of a representative selection of basic inputs (labour, plant, materials and transport) that go into the construction work. Hence, the input price index measures the change in the cost of resources to the contractor, and not the change in the price that the client pays.

The office opted for the input price index which, though more limiting than the output price index, is simpler and less expensive to construct and maintain.

#### (iii) Selection of representative dwelling

Since it would have been too time-consuming and costly to include all major types of residential dwellings, it was decided to restrict the index to the most common type identified at the 2000 Housing Census. The drawings of the prototype model dwelling were provided by the Mauritius Housing Company Ltd. A description of the model is given at paragraph (viii) below.

**(iv) Weighting scheme**

The quantity survey work to determine the weighting pattern for the index was entrusted to a private firm of Quantity Surveyors following established procedures.

Any given construction consists of an assembly of a certain number of stages or work categories. Nineteen stages or broad work categories were identified and detailed costs of inputs in terms of labour, plant, materials and transport that go into the construction of the selected model were calculated under each of the 19 work categories. The weights have been worked out in such a way that they can be presented in terms of inputs as well as work categories. For publication purposes, weights and sub-indices are shown not only for the 19 work categories, but also for the 4 broad input categories of labour, plant, materials and transport, the “materials” category being further sub-divided into 17 sub-categories.

**(v) Data collection**

The data needed for the computation of the index are collected every month from a sample of 53 outlets in 8 regions of the island. Prices are collected in respect of some 84 items, representative of all items that go into the computation of the index.

**(vi) Calculation of the Construction Price Index**

The Construction Price Index is a weighted average of price relatives of individual items, based on the modified Laspeyres formula:

$$I_t = \frac{\sum W_i (P_{it} / P_{i0})}{\sum W_i} \times 100$$

where  $I_t$  = index for current period t

$P_{i0}$  = price of item i at base period 0

$P_{it}$  = price of item i at current period t

$W_i$  = weight of item i

The base period is the 4<sup>th</sup> quarter of 2001.

**(vii) Uses**

- a) Construction price indices give an indication of the change in the level of prices of construction works. As such, they are used as deflators for the measurement of real growth in the construction sector.



- b) They are also useful for evaluating cost fluctuations in contracts regarding construction works and for renegotiating owner-tenant agreements.

**(viii) Description of model dwelling**

The model used is a single storey (ground floor) detached house of 128.30 square metres (1,381 square feet) in floor area measured at plinth level to the external face of the external walls. The overall area is inclusive of 18.55 square metres (200 square feet) in respect of a garage.

It comprises two bedrooms, a living-dining room, a kitchen, a toilet, a bathroom, a verandah and an attached garage. The building has concrete block walls, reinforced concrete flat roof, internal flush plywood doors, glazed metal openings, screeded floor and roof, tiling to floor and walls of w.c. and bathroom and kitchen worktop; the ceilings and walls are rendered and painted both internally and externally. Plumbing, sanitary installation and electrical installation are included as well as drainage which is to be connected to the sewerage system.

Provision has been made, in the form of more substantial foundations and of stub columns on the roof, for converting the single into a two-storey house eventually. Site works are restricted to spreading and leveling surplus excavated material around the site.

The index excludes the cost of the building permit and the draughtman's fee; these two items represent 0.47% and 1.30% of the total cost respectively.

It is assumed that although the house is not constructed by a contractor, the client has recourse to the services of a foreman.