

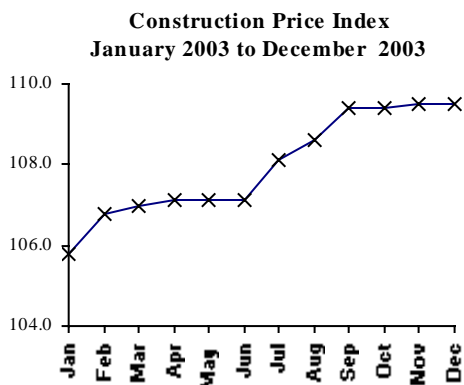
CONSTRUCTION PRICE INDEX

(Input Cost Index for the construction of a single storey house)
4th Quarter 2003

1. Introduction

This issue of the Economic and Social Indicators presents the monthly Construction Price Index (residential) for the fourth quarter of 2003 with fourth quarter 2001 as base period. Figures showing the evolution of the index during the past twelve months are also included. A description of the model dwelling used for constructing the index is given in Annex. Figures have been rounded to one decimal place although they have been calculated to many decimal places.

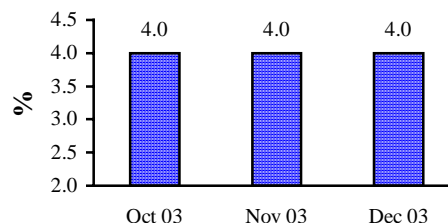
2. Changes in the Construction Price Index.



The Construction Price Index increased marginally during the fourth quarter of 2003. The index, which stood at 109.4 at the end of September 2003, did not register any change in October. It increased marginally to 109.5 in November, a level which was maintained in December.

The 0.1 % increase in November was mainly due to higher prices of 6 mm steel bars and metallic openings.

Percentage change from corresponding month of 2002



Compared to the corresponding months of 2002, the indices for the months of October, November and December have all registered increases of 4%.

The yearly average index works out to 107.9 for 2003, compared to 103.1 for 2002, or an increase of 4.7%. (Table 3)

3. Changes by Input Categories

Changes by input categories are shown in Tables 1.1 to 1.5. During the fourth quarter of 2003, no change was registered in the sub-indices for “Labour”, “Hire of Plant” and “Transport” categories.

As regards the sub-index for the “Materials” category, the level attained in September (111.9) was maintained in October. It then increased marginally to reach 112.1 in November as a result of higher prices of 6 mm steel bars (4%) and metal openings (4-5%). No change was noted in December.

The net monthly contributions of the input categories to the index during the year 2003 are shown in Table 1.4.

Quarterly averages of the monthly indices by input categories and the percentage change from quarter to quarter are shown in Table 1.5.

4. Changes by Work Categories

Changes by work categories are shown in Tables 2.1 to 2.5.

There were no changes in the sub-indices in the month of October.

The higher cost of 6 mm steel bars in November resulted in an increase of 0.3% in the work category “Reinforcement”. In the same month, the increase in the price of metal openings moved up the “Metal openings” sub-index by 0.5%.

No changes in the sub-indices were registered in the month of December.

Table 2.4 shows the net monthly contributions of the work categories to the index in 2003.

Quarterly averages of the monthly indices by work categories and the percentage change from quarter to quarter are shown in Table 2.5.

5. Past Trends

Table 3 summarises the monthly indices, the quarterly and yearly averages as well as the percentage changes in the yearly average since 1998. Indices for the years 1998 to 2001 have been worked out using as base the fourth quarter of 1993, while the base period for the calculation of the index from 2002 onwards is the fourth quarter of 2001.

The two series are not strictly comparable. A crude method of converting an index from the new base to the old base is to multiply the new index by 1.282. Conversely, an index on the old base can be converted to the new base by dividing the old index by 1.282.

*Central Statistics Office
Ministry of Finance and Economic Development
Port Louis
February 2004*

<p>Contact person: Mr. D. Bundhoo Statistician - Housing and Construction Unit Central Statistics Office LIC Centre Port Louis Tel: 212 2316 / 17 Fax: 211 4150 Email: cso@mail.gov.mu</p>
--

Input Cost Index for the construction of a single storey house

(Base: 4th Quarter 2001 = 100)

Table 1.1: Monthly sub-indices by input categories, January 2003 to December 2003

Input Categories	Weigh	2003											
		Jan	Feb	Mar	Apr	May	Jun	Jul	Aug	Sep	Oct	Nov	Dec
LABOUR	34.5	103.4	103.4	103.4	103.4	103.4	103.4	106.5	106.5	106.5	106.5	106.5	106.5
HIRE OF PLANT	3.0	101.6	101.6	101.6	101.6	101.6	101.6	101.6	101.6	101.6	101.6	101.6	101.6
MATERIALS :	57.2	107.4	109.3	109.5	109.7	109.7	109.7	109.8	110.6	111.9	111.9	112.1	112.1
Hardcore (remplissage)	1.0	110.5	110.5	110.5	110.5	110.5	110.5	110.5	110.5	110.5	110.5	110.5	110.5
Cement	10.0	104.5	113.8	113.8	113.8	113.8	113.8	113.8	113.8	113.8	113.8	113.8	113.8
Sand	6.1	105.6	105.6	105.6	105.6	105.6	105.6	105.6	105.6	111.1	111.1	111.1	111.1
Aggregate	2.9	109.8	109.8	109.8	109.8	109.8	109.8	109.8	109.8	118.4	118.4	118.4	118.4
Block	4.4	109.9	113.2	113.2	113.2	113.2	113.2	113.2	113.2	117.0	117.0	117.0	117.0
Steel bars (armature)	5.8	114.0	114.0	114.0	114.0	114.0	114.0	114.1	120.9	120.9	120.9	121.5	121.5
Galvanised corrugated cast iron sheeting	1.2	101.0	101.0	101.4	101.9	101.9	101.9	101.9	101.9	101.9	101.9	101.9	101.9
Timber: (a) Carpentry	3.9	116.4	116.4	116.4	116.4	116.4	116.4	116.0	116.0	116.0	116.0	116.0	116.0
(b) Joinery	4.2	105.3	105.3	105.8	105.7	105.7	105.7	105.7	105.6	105.6	105.6	105.6	105.6
Metal openings	6.1	110.0	110.0	110.0	110.5	110.5	110.5	110.5	111.7	111.7	111.7	112.3	112.3
Ceramic tiles	1.3	101.5	101.5	101.5	101.5	101.5	101.5	101.5	101.5	101.5	101.5	101.5	101.5
Glass and putty	0.7	103.1	104.1	104.1	104.1	104.1	104.1	104.1	104.4	104.4	104.4	104.4	104.4
Paint	2.0	102.9	102.9	103.7	104.2	104.2	104.2	105.9	105.9	105.9	105.9	106.1	106.1
Plumbing	1.5	108.7	108.8	108.8	108.8	108.8	108.8	108.6	108.6	108.6	108.6	108.7	108.7
Sanitary installation	2.3	100.1	100.1	100.1	101.4	101.4	101.4	101.4	102.9	102.9	102.9	103.3	103.3
Electrical installation	2.6	102.2	102.2	104.8	106.3	106.3	106.3	106.2	105.9	105.9	105.9	105.9	105.9
Other	1.2	104.1	104.1	105.2	105.3	105.3	105.3	105.1	105.4	105.4	105.4	105.4	105.4
TRANSPORT	5.3	105.3	105.3	105.3	105.3	105.3	105.3	105.3	105.3	105.3	105.3	105.3	105.3
Total	100.0	105.8	106.8	107.0	107.1	107.1	107.1	108.1	108.6	109.4	109.4	109.5	109.5

Input Cost Index for the construction of a single storey house

(Base: 4th Quarter 2001 = 100)

Table 1.2: Percentage change from previous month by input categories, January 2003 to December 2003

Input Categories	Weight	2003											
		Dec 02 to Jan 03	Jan to Feb	Feb to Mar	Mar to Apr	Apr to May	May to Jun	Jun to Jul	Jul to Aug	Aug to Sep	Sep to Oct	Oct to Nov	Nov to Dec
LABOUR	34.5	0.0	0.0	0.0	0.0	0.0	0.0	2.9	0.0	0.0	0.0	0.0	0.0
HIRE OF PLANT	3.0	0.6	0.0	0.0	0.0	0.0	0.0	0.0	0.0	0.0	0.0	0.0	0.0
MATERIALS :	57.2	0.7	1.8	0.2	0.2	0.0	0.0	0.0	0.8	1.2	0.0	0.1	0.0
Hardcore (remplissage)	1.0	0.0	0.0	0.0	0.0	0.0	0.0	0.0	0.0	0.0	0.0	0.0	0.0
Cement	10.0	0.0	8.9	0.0	0.0	0.0	0.0	0.0	0.0	0.0	0.0	0.0	0.0
Sand	6.1	0.0	0.0	0.0	0.0	0.0	0.0	0.0	0.0	5.2	0.0	0.0	0.0
Aggregate	2.9	0.0	0.0	0.0	0.0	0.0	0.0	0.0	0.0	7.9	0.0	0.0	0.0
Block	4.4	0.0	3.0	0.0	0.0	0.0	0.0	0.0	0.0	3.4	0.0	0.0	0.0
Steel bars (armature)	5.8	5.5	0.0	0.0	0.0	0.0	0.0	0.0	5.9	0.0	0.0	0.5	0.0
Galvanised corrugated cast iron sheeting	1.2	0.0	0.0	0.5	0.5	0.0	0.0	0.0	0.0	0.0	0.0	0.0	0.0
Timber: (a) Carpentry	3.9	0.0	0.0	0.0	0.0	0.0	0.0	-0.3	0.0	0.0	0.0	0.0	0.0
(b) Joinery	4.2	0.0	0.0	0.5	-0.1	0.0	0.0	0.0	-0.1	0.0	0.0	0.0	0.0
Metal openings	6.1	0.0	0.0	0.0	0.4	0.0	0.0	0.0	1.1	0.0	0.0	0.5	0.0
Ceramic tiles	1.3	0.0	0.0	0.0	0.0	0.0	0.0	0.0	0.0	0.0	0.0	0.0	0.0
Glass and putty	0.7	0.0	1.0	0.0	0.0	0.0	0.0	0.0	0.2	0.0	0.0	0.0	0.0
Paint	2.0	0.0	0.0	0.8	0.5	0.0	0.0	1.6	0.0	0.0	0.0	0.2	0.0
Plumbing	1.5	5.4	0.1	0.0	0.0	0.0	0.0	-0.2	0.0	0.0	0.0	0.1	0.0
Sanitary installation	2.3	0.4	0.0	0.0	1.3	0.0	0.0	0.0	1.4	0.0	0.0	0.4	0.0
Electrical installation	2.6	0.0	0.0	2.6	1.5	0.0	0.0	-0.1	-0.3	0.0	0.0	0.0	0.0
Other	1.2	0.4	0.0	1.1	0.1	0.0	0.0	-0.2	0.3	0.0	0.0	0.0	0.0
TRANSPORT	5.3	0.0	0.0	0.0	0.0	0.0	0.0	0.0	0.0	0.0	0.0	0.0	0.0
OVERALL CHANGE		0.4	1.0	0.1	0.1	0.0	0.0	1.0	0.5	0.7	0.0	0.1	0.0

Input Cost Index for the construction of a single storey house

(Base: 4th Quarter 2001 = 100)

Table 1.3: Percentage change from corresponding month of previous year by input categories, January 2003 to December 2003

Input Categories	Weight	Jan 02 to Jan 03	Feb 02 to Feb 03	Mar 02 to Mar 03	Apr 02 to Apr 03	May 02 to May03	Jun 02 to Jun03	Jul 02 to Jul 03	Aug 02 to Aug 03	Sep 02 to Sep 03	Oct 02 to Oct 03	Nov 02 to Nov 03	Dec 02 to Dec 03
LABOUR	34.5	3.4	3.4	3.4	3.4	3.4	3.4	2.9	2.9	2.9	2.9	2.9	2.9
HIRE OF PLANT	3.0	1.6	1.6	1.6	1.6	1.6	1.6	0.6	0.6	0.6	0.6	0.6	0.6
MATERIALS :	57.2	6.9	8.3	8.5	8.4	6.9	6.9	2.8	3.5	4.7	5.1	5.1	5.1
Hardcore (remplissage)	1.0	10.5	10.5	10.5	10.5	10.5	10.5	0.0	0.0	0.0	0.0	0.0	0.0
Cement	10.0	2.6	11.8	11.8	11.8	11.8	11.8	8.9	8.9	8.9	8.9	8.9	8.9
Sand	6.1	5.6	5.6	5.6	5.6	5.6	5.6	0.0	0.0	5.2	5.2	5.2	5.2
Aggregate	2.9	9.8	9.8	9.8	9.8	9.8	9.8	0.0	0.0	7.9	7.9	7.9	7.9
Block	4.4	8.0	11.3	11.3	11.3	11.3	11.3	3.0	3.0	6.5	6.5	6.5	6.5
Steel bars (armature)	5.8	14.0	9.7	9.7	9.6	9.6	9.6	6.4	12.0	12.0	12.0	12.4	12.4
Galvanised corrugated cast iron sheeting	1.2	1.0	1.4	1.9	2.4	2.9	2.9	0.9	0.9	0.9	0.9	0.9	0.9
Timber: (a) Carpentry	3.9	16.4	16.4	15.3	15.3	-4.4	-4.4	-4.7	-4.7	-4.7	-0.3	-0.3	-0.3
(b) Joinery	4.2	5.3	4.9	5.4	5.3	4.0	4.0	0.5	0.4	0.4	0.3	0.3	0.3
Metal openings	6.1	10.0	9.8	9.8	8.2	8.2	8.2	1.4	2.5	2.5	2.5	2.0	2.0
Ceramic tiles	1.3	1.5	1.5	0.4	0.0	0.0	0.0	0.0	0.0	0.0	0.0	0.0	0.0
Glass and putty	0.7	3.1	4.1	4.0	4.1	4.1	4.1	1.0	1.3	1.3	1.3	1.3	1.3
Paint	2.0	2.9	2.3	3.1	4.1	4.1	4.1	2.9	2.9	2.9	2.9	3.1	3.1
Plumbing	1.5	8.7	8.8	8.7	8.7	8.6	8.6	5.8	5.8	5.8	5.8	5.5	5.5
Sanitary installation	2.3	0.0	0.0	0.4	2.2	2.2	2.2	1.9	3.3	3.3	3.3	3.6	3.6
Electrical installation	2.6	2.1	2.1	4.8	6.3	6.4	6.4	3.8	3.5	3.5	3.5	3.6	3.6
Other	1.2	4.1	4.2	5.3	5.4	5.4	5.4	2.0	2.3	2.3	2.3	1.6	1.6
TRANSPORT	5.3	5.3	5.3	5.3	5.3	5.3	5.3	0.0	0.0	0.0	0.0	0.0	0.0
OVERALL CHANGE		5.5	6.3	6.4	6.4	5.5	5.5	2.6	3.0	3.8	4.0	4.0	4.0

Input Cost Index for the construction of a single storey house

(Base: 4th Quarter 2001 = 100)

Table 1.4: Net monthly contributions of input categories to the index, January 2003 to December 2003

Input Categories	Weight	2003											
		Dec 02 to Jan 03	Jan to Feb	Feb to Mar	Mar to Apr	Apr to May	May to Jun	Jun to Jul	Jul to Aug	Aug to Sep	Sep to Oct	Oct to Nov	Nov to Dec
LABOUR	34.5	0.00	0.00	0.00	0.00	0.00	0.00	1.05	0.00	0.00	0.00	0.00	0.00
HIRE OF PLANT	3.0	0.02	0.00	0.00	0.00	0.00	0.00	0.00	0.00	0.00	0.00	0.00	0.00
MATERIALS :	57.2	0.44	1.08	0.13	0.11	0.00	0.00	0.02	0.48	0.75	0.00	0.09	0.00
Hardcore (remplissage)	1.0	0.00	0.00	0.00	0.00	0.00	0.00	0.00	0.00	0.00	0.00	0.00	0.00
Cement	10.0	0.00	0.93	0.00	0.00	0.00	0.00	0.00	0.00	0.00	0.00	0.00	0.00
Sand	6.1	0.00	0.00	0.00	0.00	0.00	0.00	0.00	0.00	0.33	0.00	0.00	0.00
Aggregate	2.9	0.00	0.00	0.00	0.00	0.00	0.00	0.00	0.00	0.25	0.00	0.00	0.00
Block	4.4	0.00	0.15	0.00	0.00	0.00	0.00	0.00	0.00	0.17	0.00	0.00	0.00
Steel bars (armature)	5.8	0.35	0.00	0.00	0.00	0.00	0.00	0.00	0.39	0.00	0.00	0.04	0.00
Galvanised corrugated cast iron sheeting	1.2	0.00	0.00	0.01	0.01	0.00	0.00	0.00	0.00	0.00	0.00	0.00	0.00
Timber: (a) Carpentry	3.9	0.00	0.00	0.00	0.00	0.00	0.00	0.00	-0.01	0.00	0.00	0.00	0.00
(b) Joinery	4.2	0.00	0.00	0.02	0.00	0.00	0.00	0.00	0.00	0.00	0.00	0.00	0.00
Metal openings	6.1	0.00	0.00	0.00	0.03	0.00	0.00	0.00	0.07	0.00	0.00	0.03	0.00
Ceramic tiles	1.3	0.00	0.00	0.00	0.00	0.00	0.00	0.00	0.00	0.00	0.00	0.00	0.00
Glass and putty	0.7	0.00	0.00	0.00	0.00	0.00	0.00	0.00	0.00	0.00	0.00	0.00	0.00
Paint	2.0	0.00	0.00	0.02	0.01	0.00	0.00	0.03	0.00	0.00	0.00	0.01	0.00
Plumbing	1.5	0.08	0.00	0.00	0.00	0.00	0.00	0.00	0.00	0.00	0.00	0.00	0.00
Sanitary installation	2.3	0.01	0.00	0.00	0.03	0.00	0.00	0.00	0.03	0.00	0.00	0.01	0.00
Electrical installation	2.6	0.00	0.00	0.07	0.04	0.00	0.00	0.00	-0.01	0.00	0.00	0.00	0.00
Other	1.2	0.00	0.00	0.01	0.00	0.00	0.00	0.00	0.00	0.00	0.00	0.00	0.00
TRANSPORT	5.3	0.00	0.00	0.00	0.00	0.00	0.00	0.00	0.00	0.00	0.00	0.00	0.00
TOTAL	100.0	0.46	1.08	0.13	0.11	0.00	0.00	1.07	0.48	0.75	0.00	0.09	0.00

9

Input Cost Index for the construction of a single storey house

(Base: 4th Quarter 2001 = 100)

Table 1.5: Quarterly average of monthly indices and percentage changes by input categories, January 2003 - December 2003

Input Categories	Weight	2003				% change from previous quarter			
		1st Qr	2nd Qr	3rd Qr	4th Qr	1st Qr 2003	2nd Qr 2003	3rd Qr 2003	4th Qr 2003
LABOUR	34.5	103.4	103.4	106.5	106.5	0.0	0.0	2.9	0.0
HIRE OF PLANT	3.0	101.6	101.6	101.6	101.6	0.6	0.0	0.0	0.0
MATERIALS :	57.2	108.8	109.7	110.8	112.0	2.0	0.9	0.9	1.1
Hardcore (remplissage)	1.0	110.5	110.5	110.5	110.5	0.0	0.0	0.0	0.0
Cement	10.0	110.7	113.8	113.8	113.8	5.9	2.8	0.0	0.0
Sand	6.1	105.6	105.6	107.4	111.1	0.0	0.0	1.7	3.4
Aggregate	2.9	109.8	109.8	112.7	118.4	0.0	0.0	2.6	5.1
Block	4.4	112.1	113.2	114.5	117.0	2.0	1.0	1.1	2.2
Steel bars (armature)	5.8	114.0	114.0	118.6	121.3	5.6	0.0	4.0	2.3
Galvanised corrugated cast iron sheeting	1.2	101.1	101.9	101.9	101.9	0.2	0.8	0.0	0.0
Timber: (a) Carpentry	3.9	116.4	116.4	116.0	116.0	0.0	0.0	-0.3	0.0
(b) Joinery	4.2	105.5	105.7	105.6	105.6	0.2	0.2	-0.1	0.0
Metal openings	6.1	110.0	110.5	111.3	112.1	0.3	0.4	0.7	0.7
Ceramic tiles	1.3	101.5	101.5	101.5	101.5	0.0	0.0	0.0	0.0
Glass and putty	0.7	103.8	104.1	104.3	104.4	0.7	0.3	0.2	0.1
Paint	2.0	103.2	104.2	105.9	106.1	0.3	1.0	1.6	0.2
Plumbing	1.5	108.8	108.8	108.6	108.7	5.6	0.0	-0.2	0.1
Sanitary installation	2.3	100.1	101.4	102.4	103.2	0.5	1.3	1.0	0.7
Electrical installation	2.6	103.0	106.3	106.0	105.9	0.8	3.2	-0.3	-0.1
Other	1.2	104.5	105.3	105.3	105.4	0.9	0.8	0.0	0.1
TRANSPORT	5.3	105.3	105.3	105.3	105.3	0.0	0.0	0.0	0.0
OVERALL INDEX AND CHANGE		106.5	107.1	108.7	109.5	1.2	0.5	1.5	0.7

Input Cost Index for the construction of a single storey house

(Base: 4th Quarter 2001 = 100)

Table 2.1: Monthly sub-indices by work categories, January 2003 to December 2003

Work Categories	Weight	2003											
		Jan	Feb	Mar	Apr	May	Jun	Jul	Aug	Sep	Oct	Nov	Dec
1. Setting up	2.3	102.6	103.1	103.4	103.6	103.6	103.6	103.9	103.9	104.5	104.5	104.5	104.5
2. Setting out	0.5	101.6	101.6	101.6	101.6	101.6	101.6	103.1	103.1	103.1	103.1	103.1	103.1
3. Temporary works	0.5	107.7	107.7	107.7	107.7	107.7	107.7	108.5	108.5	108.5	108.5	108.5	108.5
4. Site preparation, excavation & disposal, hardcore filling	5.8	105.4	105.4	105.4	105.4	105.4	105.4	107.7	107.7	108.0	108.0	108.0	108.0
5. Concrete	20.2	105.1	107.8	107.8	107.8	107.8	107.8	108.7	108.7	110.8	110.8	110.8	110.8
6. Reinforcement	9.2	110.2	110.2	110.2	110.2	110.2	110.2	111.3	115.5	115.5	115.5	115.9	115.9
7. Formwork (coffrage)	7.8	109.0	109.0	109.0	109.0	109.0	109.0	110.0	110.0	110.0	110.0	110.0	110.0
8. Blockwork	8.5	107.0	109.3	109.3	109.3	109.3	109.3	110.0	110.0	112.2	112.2	112.2	112.2
9. Softwood joinery	4.5	105.2	105.2	105.7	105.6	105.6	105.6	105.7	105.6	105.6	105.6	105.6	105.6
10. Ironmongery	0.5	103.1	103.1	105.8	105.8	105.8	105.8	106.9	107.2	107.2	107.2	107.2	107.2
11. Metal openings	6.5	109.6	109.6	109.6	110.1	110.1	110.1	110.2	111.3	111.3	111.3	111.9	111.9
12. Rendering to wall/ceiling (crépissage)	9.9	103.7	105.1	105.1	105.1	105.1	105.1	107.2	107.2	107.6	107.6	107.6	107.6
13. Bed & screed to floor/roof	4.2	104.7	108.3	108.3	108.3	108.3	108.3	109.0	109.0	110.3	110.3	110.3	110.3
14. Tiling	2.1	102.1	102.1	102.1	102.2	102.2	102.2	103.1	103.2	103.2	103.2	103.2	103.2
15. Glazing	1.0	103.3	104.1	104.1	104.1	104.1	104.1	104.5	104.6	104.6	104.6	104.6	104.6
16. Painting	5.2	103.2	103.2	103.5	103.7	103.7	103.7	105.8	105.8	105.8	105.8	105.9	105.9
17. Plumbing/sanitary installation	5.0	103.6	103.7	103.7	104.3	104.3	104.3	105.1	105.7	105.7	105.7	106.0	106.0
18. Electrical installation	4.2	102.6	102.6	104.2	105.1	105.1	105.1	106.2	106.0	106.0	106.0	106.0	106.0
19. Drainage	2.1	105.5	106.9	106.9	106.9	106.9	106.9	107.8	107.9	109.0	109.0	109.0	109.0
Total	100.0	105.8	106.8	107.0	107.1	107.1	107.1	108.1	108.6	109.4	109.4	109.5	109.5

Input Cost Index for the construction of a single storey house

(Base: 4th Quarter 2001 = 100)

Table 2.2: Percentage change from previous month by work categories, January 2003 to December 2003

Work Categories	Weight	2003											
		Dec 02 to Jan 03	Jan to Feb	Feb to Mar	Mar to Apr	Apr to May	May to Jun	Jun to Jul	Jul to Aug	Aug to Sep	Sep to Oct	Oct to Nov	Nov to Dec
1. Setting up	2.3	0.0	0.5	0.2	0.2	0.0	0.0	0.3	0.0	0.5	0.0	0.0	0.0
2. Setting out	0.5	0.0	0.0	0.0	0.0	0.0	0.0	1.4	0.0	0.0	0.0	0.0	0.0
3. Temporary works	0.5	0.0	0.0	0.0	0.0	0.0	0.0	0.7	0.0	0.0	0.0	0.0	0.0
4. Site preparation, excavation & disposal, hardcore filling	5.8	0.3	0.0	0.0	0.0	0.0	0.0	2.1	0.0	0.3	0.0	0.0	0.0
5. Concrete	20.2	0.0	2.6	0.0	0.0	0.0	0.0	0.8	0.0	1.9	0.0	0.0	0.0
6. Reinforcement	9.2	3.5	0.0	0.0	0.0	0.0	0.0	1.0	3.8	0.0	0.0	0.3	0.0
7. Formwork (coffrage)	7.8	0.0	0.0	0.0	0.0	0.0	0.0	0.9	0.0	0.0	0.0	0.0	0.0
8. Blockwork	8.5	0.0	2.1	0.0	0.0	0.0	0.0	0.7	0.0	2.0	0.0	0.0	0.0
9. Softwood joinery	4.5	0.0	0.0	0.5	-0.1	0.0	0.0	0.2	-0.1	0.0	0.0	0.0	0.0
10. Ironmongery	0.5	0.0	0.0	2.6	0.0	0.0	0.0	1.0	0.2	0.0	0.0	0.0	0.0
11. Metal openings	6.5	0.0	0.0	0.0	0.4	0.0	0.0	0.1	1.0	0.0	0.0	0.5	0.0
12. Rendering to wall/ceiling (crépissage)	9.9	0.0	1.3	0.0	0.0	0.0	0.0	2.0	0.0	0.4	0.0	0.0	0.0
13. Bed & screed to floor/roof	4.2	0.0	3.5	0.0	0.0	0.0	0.0	0.7	0.0	1.1	0.0	0.0	0.0
14. Tiling	2.1	0.0	0.0	0.0	0.0	0.0	0.0	0.9	0.1	0.0	0.0	0.0	0.0
15. Glazing	1.0	0.0	0.8	0.0	0.0	0.0	0.0	0.3	0.2	0.0	0.0	0.0	0.0
16. Painting	5.2	0.0	0.0	0.3	0.2	0.0	0.0	2.0	0.0	0.0	0.0	0.1	0.0
17. Plumbing/sanitary installation	5.0	1.9	0.0	0.0	0.6	0.0	0.0	0.8	0.6	0.0	0.0	0.2	0.0
18. Electrical installation	4.2	0.0	0.0	1.6	0.9	0.0	0.0	1.0	-0.2	0.0	0.0	0.0	0.0
19. Drainage	2.1	0.3	1.3	0.0	0.0	0.0	0.0	0.8	0.1	1.0	0.0	0.0	0.0
OVERALL CHANGE		0.4	1.0	0.1	0.1	0.0	0.0	1.0	0.5	0.7	0.0	0.1	0.0

Input Cost Index for the construction of a single storey house

(Base: 4th Quarter 2001 = 100)

Table 2.3: Percentage change from corresponding month of previous year by work categories, January 2003 to December 2003

Work Categories	Weight	Jan 02 to	Feb 02 to	Mar 02 to	Apr 02 to	May 02 to	Jun 02 to	Jul 02 to	Aug 02 to	Sep 02 to	Oct 02 to	Nov 02 to	Dec 02 to
		Jan 03	Feb 03	Mar 03	Apr 03	May03	Jun03	Jul 03	Aug 03	Sep 03	Oct 03	Nov 03	Dec 03
1. Setting up	2.3	2.5	3.3	3.5	3.8	4.0	4.0	1.3	1.3	1.9	1.9	1.9	1.9
2. Setting out	0.5	1.6	1.6	1.6	1.6	1.6	1.6	1.4	1.4	1.4	1.4	1.4	1.4
3. Temporary works	0.5	7.7	7.7	7.4	7.4	-0.8	-0.8	-1.2	-1.2	-1.2	0.7	0.7	0.7
4. Site preparation, excavation & disposal, hardcore filling	5.8	5.4	5.4	5.4	5.4	5.4	5.4	2.4	2.4	2.7	2.7	2.7	2.7
5. Concrete	20.2	4.5	7.2	7.2	7.2	7.2	7.2	3.4	3.4	5.4	5.4	5.4	5.4
6. Reinforcement	9.2	10.2	7.5	7.5	7.4	7.4	7.4	5.1	8.6	8.6	8.6	8.9	8.9
7. Formwork (coffrage)	7.8	9.0	9.0	8.6	8.6	-0.8	-0.8	-1.3	-1.3	-1.3	0.9	0.9	0.9
8. Blockwork	8.5	5.9	8.2	8.2	8.2	8.2	8.2	2.8	2.8	4.9	4.9	4.9	4.9
9. Softwood joinery	4.5	5.2	4.8	5.3	5.2	3.9	3.9	0.6	0.5	0.5	0.4	0.4	0.4
10. Ironmongery	0.5	3.1	3.4	6.1	6.5	6.5	6.5	5.4	5.6	5.6	5.6	3.9	3.9
11. Metal openings	6.5	9.6	9.4	9.4	7.9	7.9	7.9	1.5	2.5	2.5	2.5	2.1	2.1
12. Rendering to wall/ceiling (crépissage)	9.9	3.5	4.8	4.8	4.8	4.8	4.8	3.3	3.3	3.7	3.7	3.7	3.7
13. Bed & screed to floor/roof	4.2	3.9	7.5	7.5	7.5	7.5	7.5	4.2	4.2	5.3	5.3	5.3	5.3
14. Tiling	2.1	2.1	2.1	1.4	1.2	1.2	1.2	1.0	1.0	1.0	1.0	1.0	1.0
15. Glazing	1.0	3.3	4.1	4.0	4.1	4.1	4.1	1.1	1.3	1.3	1.3	1.3	1.3
16. Painting	5.2	3.2	2.9	3.2	3.6	3.6	3.6	2.5	2.6	2.6	2.6	2.7	2.7
17. Plumbing/sanitary installation	5.0	3.6	3.6	3.8	4.6	4.5	4.5	3.4	4.1	4.1	4.1	4.1	4.1
18. Electrical installation	4.2	2.6	2.6	4.2	5.1	5.1	5.1	3.4	3.2	3.2	3.2	3.3	3.3
19. Drainage	2.1	5.1	6.4	6.4	6.2	5.1	5.1	2.2	2.4	3.4	3.7	3.7	3.7
OVERALL CHANGE		5.5	6.3	6.4	6.4	5.5	5.5	2.6	3.0	3.8	4.0	4.0	4.0

Input Cost Index for the construction of a single storey house

(Base: 4th Quarter 2001 = 100)

Table 2.4: Net monthly contributions of work categories to the index, January 2003 to December 2003

Work Categories	Weight	2003											
		Dec 02 to Jan 03	Jan to Feb	Feb to Mar	Mar to Apr	Apr to May	May to Jun	Jun to Jul	Jul to Aug	Aug to Sep	Sep to Oct	Oct to Nov	Nov to Dec
1. Setting up	2.3	0.00	0.01	0.01	0.01	0.00	0.00	0.01	0.00	0.01	0.00	0.00	0.00
2. Setting out	0.5	0.00	0.00	0.00	0.00	0.00	0.00	0.01	0.00	0.00	0.00	0.00	0.00
3. Temporary works	0.5	0.00	0.00	0.00	0.00	0.00	0.00	0.00	0.00	0.00	0.00	0.00	0.00
4. Site preparation, excavation & disposal, hardcore filling	5.8	0.02	0.00	0.00	0.00	0.00	0.00	0.13	0.00	0.02	0.00	0.00	0.00
5. Concrete	20.2	0.00	0.56	0.00	0.00	0.00	0.00	0.18	0.00	0.42	0.00	0.00	0.00
6. Reinforcement	9.2	0.34	0.00	0.00	0.00	0.00	0.00	0.10	0.39	0.00	0.00	0.04	0.00
7. Formwork (coffrage)	7.8	0.00	0.00	0.00	0.00	0.00	0.00	0.08	0.00	0.00	0.00	0.00	0.00
8. Blockwork	8.5	0.00	0.19	0.00	0.00	0.00	0.00	0.06	0.00	0.19	0.00	0.00	0.00
9. Softwood joinery	4.5	0.00	0.00	0.02	0.00	0.00	0.00	0.01	0.00	0.00	0.00	0.00	0.00
10. Ironmongery	0.5	0.00	0.00	0.01	0.00	0.00	0.00	0.01	0.00	0.00	0.00	0.00	0.00
11. Metal openings	6.5	0.00	0.00	0.00	0.03	0.00	0.00	0.01	0.07	0.00	0.00	0.03	0.00
12. Rendering to wall/ceiling (crépissage)	9.9	0.00	0.13	0.00	0.00	0.00	0.00	0.20	0.00	0.05	0.00	0.00	0.00
13. Bed & screed to floor/roof	4.2	0.00	0.15	0.00	0.00	0.00	0.00	0.03	0.00	0.05	0.00	0.00	0.00
14. Tiling	2.1	0.00	0.00	0.00	0.00	0.00	0.00	0.02	0.00	0.00	0.00	0.00	0.00
15. Glazing	1.0	0.00	0.01	0.00	0.00	0.00	0.00	0.00	0.00	0.00	0.00	0.00	0.00
16. Painting	5.2	0.00	0.00	0.02	0.01	0.00	0.00	0.11	0.00	0.00	0.00	0.01	0.00
17. Plumbing/sanitary installation	5.0	0.09	0.00	0.00	0.03	0.00	0.00	0.04	0.03	0.00	0.00	0.01	0.00
18. Electrical installation	4.2	0.00	0.00	0.07	0.04	0.00	0.00	0.05	-0.01	0.00	0.00	0.00	0.00
19. Drainage	2.1	0.01	0.03	0.00	0.00	0.00	0.00	0.02	0.00	0.02	0.00	0.00	0.00
TOTAL	100.0	0.46	1.08	0.13	0.11	0.00	0.00	1.07	0.48	0.75	0.00	0.09	0.00

Input Cost Index for the construction of a single storey house

(Base: 4th Quarter 2001 = 100)

Table 2.5: Quarterly average of monthly indices and percentage changes by work categories, January 2003 - December 2003

Work Categories	Weight	2003				% change from previous quarter			
		1st Qr	2nd Qr	3rd Qr	4th Qr	1st Qr 2003	2nd Qr 2003	3rd Qr 2003	4th Qr 2003
1. Setting up	2.3	103.0	103.6	104.1	104.5	0.4	0.6	0.5	0.3
2. Setting out	0.5	101.6	101.6	103.1	103.1	0.0	0.0	1.4	0.0
3. Temporary works	0.5	107.7	107.7	108.5	108.5	0.0	0.0	0.7	0.0
4. Site preparation, excavation & disposal, hardcore filling	5.8	105.4	105.4	107.8	108.0	0.3	0.0	2.2	0.2
5. Concrete	20.2	106.9	107.8	109.4	110.8	1.7	0.8	1.5	1.3
6. Reinforcement	9.2	110.2	110.2	114.1	115.8	3.5	0.0	3.6	1.5
7. Formwork (coffrage)	7.8	109.0	109.0	110.0	110.0	0.0	0.0	0.9	0.0
8. Blockwork	8.5	108.5	109.3	110.8	112.2	1.4	0.7	1.4	1.3
9. Softwood joinery	4.5	105.3	105.6	105.7	105.6	0.2	0.2	0.1	0.0
10. Ironmongery	0.5	104.0	105.8	107.1	107.2	1.4	1.7	1.2	0.1
11. Metal openings	6.5	109.6	110.1	111.0	111.7	0.3	0.4	0.8	0.7
12. Rendering to wall/ceiling (crépissage)	9.9	104.7	105.1	107.3	107.6	0.9	0.4	2.1	0.3
13. Bed & screed to floor/roof	4.2	107.1	108.3	109.4	110.3	2.3	1.1	1.1	0.7
14. Tiling	2.1	102.1	102.2	103.2	103.2	0.0	0.0	1.0	0.0
15. Glazing	1.0	103.8	104.1	104.6	104.6	0.5	0.3	0.5	0.1
16. Painting	5.2	103.3	103.7	105.8	105.9	0.1	0.4	2.0	0.1
17. Plumbing/sanitary installation	5.0	103.7	104.3	105.5	105.9	1.9	0.6	1.2	0.4
18. Electrical installation	4.2	103.1	105.1	106.0	106.0	0.5	1.9	0.9	-0.1
19. Drainage	2.1	106.4	106.9	108.2	109.0	1.2	0.4	1.2	0.7
OVERALL INDEX AND CHANGE		106.5	107.1	108.7	109.5	1.2	0.5	1.5	0.7

Table 3: Construction Price Index - January 1998 to December 2003

	<i>(Base: 4th Quarter 1993 = 100)</i>				<i>(Base: 4th Quarter 2001 = 100)</i>	
	1998	1999	2000	2001	2002	2003
January	115.2	118.6	120.4	124.9	100.3	105.8
February	115.3	119.1	120.4	124.9	100.5	106.8
March	115.3	119.1	120.5	125.0	100.6	107.0
<i>1st Quarter</i>	<i>115.3</i>	<i>118.9</i>	<i>120.5</i>	<i>124.9</i>	<i>100.5</i>	<i>106.5</i>
April	115.3	119.2	120.4	124.9	100.7	107.1
May	115.5	119.2	120.4	124.9	101.5	107.1
June	115.6	119.3	120.5	124.9	101.5	107.1
<i>2nd Quarter</i>	<i>115.5</i>	<i>119.3</i>	<i>120.5</i>	<i>124.9</i>	<i>101.3</i>	<i>107.1</i>
July	116.9	120.9	121.5	126.9	105.4	108.1
August	117.5	121.0	121.6	127.4	105.4	108.6
September	118.1	121.0	121.4	127.4	105.4	109.4
<i>3rd Quarter</i>	<i>117.5</i>	<i>120.9</i>	<i>121.5</i>	<i>127.2</i>	<i>105.4</i>	<i>108.7</i>
October	118.4	121.2	124.3	127.6	105.2	109.4
November	118.4	120.5	124.4	128.4	105.3	109.5
December	118.6	120.6	124.4	128.5	105.3	109.5
<i>4th Quarter</i>	<i>118.4</i>	<i>120.8</i>	<i>124.3</i>	<i>128.2</i>	<i>105.3</i>	<i>109.5</i>
Yearly average	116.7	120.0	121.7	126.3	103.1	107.9
% change in the yearly average	2.9	2.8	1.4	3.8		4.7

ANNEX**Description of the model used for establishing the
Construction Price Index**

The model used is a single storey (ground floor) detached house of 128.30 square metres (1,381 square feet) in floor area measured at plinth level to the external face of the external walls. The overall area is inclusive of 18.55 square metres (200 square feet) in respect of a garage.

It comprises two bedrooms, a living-dining room, a kitchen, a toilet, a bathroom, a verandah and an attached garage. The building has concrete block walls, reinforced concrete flat roof, internal flush plywood doors, glazed metal openings, screeded floor and roof, tiling to floor and walls of w.c. and bathroom and kitchen worktop; the ceilings and walls are rendered and painted both internally and externally. Plumbing, sanitary installation and electrical installation are included as well as drainage which is to be connected to the sewerage system.

Provision has been made, in the form of more substantial foundations and of stub columns on the roof, for converting the single into a two-storey house eventually. Site works are restricted to spreading and levelling surplus excavated material around the site.

The Index excludes the cost of the building permit and the draughtman's fee; these two items represent 0.47 % and 1.30% of the total cost respectively.

It is assumed that although the house is not constructed by a contractor, the client has recourse to the services of a foreman.