

**CONSTRUCTION PRICE INDEX**  
( Cost Price Index for the construction of a single storey house - Input Price Index )  
3<sup>rd</sup> Quarter 2001

**1. Introduction**

This report presents the monthly Construction Price Index ( residential ) for the 3<sup>rd</sup> quarter of 2001. Figures showing the evolution of the index during the past twelve months are also included. A description of the model dwelling used for constructing the index is given in the Annex. Figures are presented at one decimal place although they have been calculated to many decimal places.

**2. Changes in the Construction Price Index**

The Construction Price Index increased by 2.5 points during the 3<sup>rd</sup> quarter of 2001. The index, which stood at 124.9 at the end of June 2001, increased to 126.9 in July and 127.4 in August, this latter level being maintained in September.

The rise of 1.6% in July is mainly the result of higher wages following the 2001/2002 salary compensation coupled with an increase in Value Added Tax (VAT) from 10% to 12%. This latter factor caused increases in the prices of many items constituting the Construction Price Index, the most important being cement, sand, aggregates, blocks and steel bars. Higher costs of hiring mixer and breaker used for excavation also had an effect, though less significant, on the index in July.

A further rise in the prices of sand, aggregates and blocks was noted in August, thus causing an increase of 0.4% in the index.

Compared to the corresponding months of 2000, the index shows increases of 4.4% for July, 4.8% for August and 4.9% for September.

**3. Changes by Input Categories**

Changes by input categories are shown in Tables 1.1 to 1.5 and Chart 1.

The "Labour" category registered an increase of 2.7% from 125.7 in June to 129.0 in July as a result of higher wages ranging between 2% and 3%. This level remained unchanged through August and September.

The sub-index for the "Hire of plant" category moved up from 111.5 in June to 113.5 in July due to increases in the hiring costs of mixer (8% - 10%) and breaker used for excavation (4% - 5%). No change was noted in August and September

With the higher rate of VAT in July, the prices of a wide range of materials went up. This resulted in an increase in the "Materials" category sub-index from 123.8 in June to 125.2 in July. The items that most affected the index are: cement (1.8% - 2%), sand, aggregates and block (1.8%), and steel bars (1.2% - 3%). A further increase in the prices of sand, aggregates and

blocks by 3% moved up the sub-index for the “Materials” category from 125.2 in July to 126.1 in August, a level which was maintained in September.

No change was registered in the “Transport” category during the 3<sup>rd</sup> quarter of 2001.

The net monthly contributions of the input categories to the index during the period October 2000 to September 2001 are shown in Table 1.4.

Quarterly averages of the monthly indices by input categories and the percentage change from quarter to quarter are shown in Table 1.5.

#### **4. Changes by Work Categories**

In July all work categories were affected by higher wages. The effect on the work category “Softwood Joinery” was however offset by lower prices of wood. Several work categories were also affected by increases in the prices of cement, sand, aggregates, block, steel bars and higher hiring costs of mixer and breaker. The effect is more pronounced in those categories where these items have greater weights, e.g “Site preparation, excavation and disposal, hardcore filling” (2.3%), “Concrete” (2.0%), “Reinforcement” (2.7%), “Blockwork” (1.8%) and “Rendering to wall and ceiling” (2.2%). Changes by work categories are shown in Tables 2.1 to 2.5.

In August, the work categories which registered the most important increases were “Concrete” (0.9%) and “Blockwork” (1.8%), due to higher costs of sand, aggregates and block.

No change was noted in September.

Table 2.4 shows the net monthly contributions of the work categories to the index for the period October 2000 to September 2001.

Quarterly averages of the monthly indices by work categories and the percentage change from quarter to quarter are shown in Table 2.5.

#### **5. Past Trends**

Table 3 summarizes the monthly indices, the quarterly and yearly averages as well as the changes in the yearly average since 1995.

Central Statistics Office  
Ministry of Economic Development, Financial Services and Corporate Affairs  
Port Louis  
November 2001

Contact person: Mr. D. Bundhoo  
Statistician (Housing Unit)  
Phone: 212 2316 / 17

**Cost Price Index for the construction of a single storey house (Input Price Index)**  
(Base: 4th Quarter 1993 = 100)

**Table 1.1: Monthly sub-indices by input categories, October 2000 - September 2001**

Input Categories	Weight	2000			2001								
		Oct	Nov	Dec	Jan	Feb	Mar	Apr	May	Jun	Jul	Aug	Sep
<b>LABOUR</b>	<b>32.8</b>	<b>125.7</b>	<b>125.7</b>	<b>125.7</b>	<b>125.7</b>	<b>125.7</b>	<b>125.7</b>	<b>125.7</b>	<b>125.7</b>	<b>125.7</b>	<b>129.0</b>	<b>129.0</b>	<b>129.0</b>
<b>HIRE OF PLANT</b>	<b>4.0</b>	<b>111.2</b>	<b>111.2</b>	<b>111.2</b>	<b>111.2</b>	<b>111.2</b>	<b>111.2</b>	<b>111.5</b>	<b>111.5</b>	<b>111.5</b>	<b>113.5</b>	<b>113.5</b>	<b>113.5</b>
<b>MATERIALS :</b>	<b>58.7</b>	<b>122.8</b>	<b>122.9</b>	<b>122.9</b>	<b>123.8</b>	<b>123.8</b>	<b>123.9</b>	<b>123.8</b>	<b>123.8</b>	<b>123.8</b>	<b>125.2</b>	<b>126.1</b>	<b>126.1</b>
Hardcore (remplissage)	1.0	102.9	102.9	102.9	102.9	102.9	102.9	102.9	102.9	102.9	102.9	102.9	102.9
Cement	12.0	103.3	103.3	103.3	103.3	103.3	103.3	103.3	103.3	103.3	105.0	105.0	105.0
Sand	5.3	133.5	133.5	133.5	133.5	133.5	133.5	133.5	133.5	133.5	136.0	140.2	140.2
Aggregates	2.4	164.4	164.4	164.4	164.4	164.4	164.4	164.4	164.4	164.4	167.4	173.0	173.0
Block	3.9	138.7	138.7	138.7	138.7	138.7	138.7	138.7	138.7	138.7	141.3	145.7	145.7
Steel bars (armature)	5.1	124.2	124.2	124.2	134.0	134.0	134.0	134.0	134.0	133.7	137.5	137.5	137.5
Galvanised corrugated cast iron sheeting	1.5	122.4	122.4	122.4	122.4	122.4	122.4	122.4	122.4	122.4	121.5	121.5	121.5
Timber: (a) Carpentry	6.1	110.4	111.8	111.8	111.8	111.8	112.6	112.6	112.6	112.6	113.4	113.4	113.4
(b) Joinery	2.4	116.0	116.6	116.6	116.6	116.6	118.3	118.1	118.1	118.1	117.7	117.7	117.7
Steel sections & ironmongery for metal openings	4.9	129.9	129.9	129.9	130.0	130.0	130.0	129.7	129.7	129.7	131.1	131.1	131.1
Ceramic tiles	1.4	140.4	140.4	140.4	140.4	140.4	140.4	140.4	140.4	140.4	140.4	140.4	140.4
Glass, putty and oil	0.8	119.6	119.6	119.6	119.6	119.6	119.6	119.6	119.6	119.6	119.6	119.6	119.6
Paint	1.9	142.7	142.7	142.7	142.7	142.7	142.7	142.7	142.7	142.7	143.3	143.3	143.3
Plumbing	2.1	130.1	130.0	130.0	130.0	130.0	130.0	130.1	130.0	130.0	130.3	130.3	130.3
Sanitary installation	2.0	126.9	126.9	126.9	127.0	127.0	127.0	126.9	126.9	126.6	127.4	127.4	127.4
Electrical installation	3.2	123.2	123.2	123.2	123.1	123.1	123.1	122.0	122.0	122.0	121.6	121.6	121.6
Other	2.7	122.4	122.7	122.7	122.7	122.7	122.6	122.6	122.5	122.5	122.2	122.2	122.2
<b>TRANSPORT</b>	<b>4.5</b>	<b>145.3</b>	<b>145.3</b>	<b>145.3</b>	<b>145.3</b>	<b>145.3</b>	<b>145.3</b>	<b>145.3</b>	<b>145.3</b>	<b>145.3</b>	<b>145.3</b>	<b>145.3</b>	<b>145.3</b>
<b>OVERALL INDEX</b>		<b>124.3</b>	<b>124.4</b>	<b>124.4</b>	<b>124.9</b>	<b>124.9</b>	<b>125.0</b>	<b>124.9</b>	<b>124.9</b>	<b>124.9</b>	<b>126.9</b>	<b>127.4</b>	<b>127.4</b>

**Cost Price Index for the construction of a single storey house (Input Price Index)**  
(Base : 4th Quarter 1993 = 100)

**Table 1.2: Percentage change from previous month by input categories, October 2000 - September 2001**

Input Categories	Weight	2000			2001									
		Sep to Oct	Oct to Nov	Nov to Dec	Dec-00 to Jan-01	Jan to Feb	Feb to Mar	Mar to Apr	Apr to May	May to Jun	Jun to Jul	Jul to Aug	Aug to Sep	
LABOUR	32.8	0.0	0.0	0.0	0.0	0.0	0.0	0.0	0.0	0.0	2.7	0.0	0.0	
HIRE OF PLANT	4.0	6.2	0.0	0.0	0.0	0.0	0.0	0.3	0.0	0.0	1.8	0.0	0.0	
MATERIALS :	58.7	2.2	0.1	0.0	0.7	0.0	0.1	-0.1	0.0	0.0	0.0	0.0	0.0	
Hardcore (remplissage)	1.0	0.0	0.0	0.0	0.0	0.0	0.0	0.0	0.0	0.0	1.7	0.0	0.0	
Cement	12.0	0.0	0.0	0.0	0.0	0.0	0.0	0.0	0.0	0.0	1.8	3.1	0.0	
Sand	5.3	13.7	0.0	0.0	0.0	0.0	0.0	0.0	0.0	0.0	1.8	3.3	0.0	
Aggregates	2.4	15.8	0.0	0.0	0.0	0.0	0.0	0.0	0.0	0.0	1.8	3.1	0.0	
Block	3.9	3.3	0.0	0.0	0.0	0.0	0.0	0.0	0.0	0.0	2.9	0.0	0.0	
Steel bars (armature)	5.1	0.0	0.0	0.0	7.9	0.0	0.0	0.0	0.0	-0.3	2.9	0.0	0.0	
Galvanised corrugated cast iron sheeting	1.5	0.0	0.0	0.0	0.0	0.0	0.0	0.0	0.0	0.0	-0.7	0.0	0.0	
Timber: (a) Carpentry	6.1	0.0	1.3	0.0	0.0	0.0	0.7	0.0	0.0	0.0	0.8	0.0	0.0	
(b) Joinery	2.4	0.0	0.5	0.0	0.0	0.0	1.4	-0.1	0.0	0.0	-0.3	0.0	0.0	
Steel sections & ironmongery for metal openings	4.9	0.0	0.0	0.0	0.1	0.0	0.0	-0.2	0.0	0.0	1.1	0.0	0.0	
Ceramic tiles	1.4	0.9	0.0	0.0	0.0	0.0	0.0	0.0	0.0	0.0	0.0	0.0	0.0	
Glass,putty and oil	0.8	1.0	0.0	0.0	0.0	0.0	0.0	0.0	0.0	0.0	0.4	0.0	0.0	
Paint	1.9	0.0	0.0	0.0	0.0	0.0	0.0	0.0	0.0	0.0	0.2	0.0	0.0	
Plumbing	2.1	0.0	-0.1	0.0	0.0	0.0	0.0	0.1	-0.1	0.0	0.2	0.0	0.0	
Sanitary installation	2.0	0.1	0.0	0.0	0.1	0.0	0.0	-0.1	0.0	-0.2	0.6	0.0	0.0	
Electrical installation	3.2	-1.9	0.0	0.0	-0.1	0.0	0.0	-0.9	0.0	0.0	-0.4	0.0	0.0	
Other	2.7	-0.1	0.2	0.0	0.0	0.0	-0.1	0.0	-0.1	0.0	-0.2	0.0	0.0	
TRANSPORT	4.5	19.5	0.0	0.0	0.0	0.0	0.0	0.0	0.0	0.0	0.0	0.0	0.0	
<b>OVERALL CHANGE</b>		<b>2.3</b>	<b>0.1</b>	<b>0.0</b>	<b>0.4</b>	<b>0.0</b>	<b>0.1</b>	<b>0.0</b>	<b>0.0</b>	<b>0.0</b>	<b>1.6</b>	<b>0.4</b>	<b>0.0</b>	

**Cost Price Index for the construction of a single storey house (Input Price Index)**  
(Base : 4th Quarter 1993 = 100)

**Table 1.3: Percentage change from corresponding month of previous year by input categories, October 2000 to September 2001**

Input Categories	Weight	Oct-99 to Oct-00	Nov-99 to Nov-00	Dec-99 to Dec-00	Jan-00 to Jan-01	Feb-00 to Feb-01	Mar-00 to Mar-01	Apr-00 to Apr-01	May-00 to May-01	Jun-00 to Jun-01	Jul-00 to Jul-01	Aug-00 to Aug-01	Sep-00 to Sep-01
<b>LABOUR</b>	<b>32.8</b>	2.6	2.6	2.6	2.6	2.6	2.6	2.6	2.6	2.6	2.7	2.7	2.7
<b>HIRE OF PLANT</b>	<b>4.0</b>	6.2	6.2	6.2	6.2	6.2	6.2	6.5	6.5	6.5	8.4	8.4	8.4
<b>MATERIALS :</b>	<b>58.7</b>	0.8	2.0	2.0	2.9	2.9	3.0	3.0	3.0	2.8	4.0	4.7	4.9
Hardcore (remplissage)	1.0	0.0	0.0	0.0	0.0	0.0	0.0	0.0	0.0	0.0	0.0	0.0	0.0
Cement	12.0	-3.7	0.0	0.0	0.0	0.0	0.0	0.0	0.0	0.0	1.7	1.7	1.7
Sand	5.3	13.7	13.7	13.7	13.7	13.7	13.7	13.7	13.7	13.7	15.7	19.3	19.3
Aggregate	2.4	15.8	15.8	15.8	15.8	15.8	15.8	15.8	15.8	15.8	17.9	21.8	21.8
Block	3.9	2.3	3.3	3.3	3.3	3.3	3.3	3.3	3.3	3.3	5.2	8.5	8.5
Steel bars (armature)	5.1	-3.6	-1.1	-1.1	6.8	6.8	6.3	6.7	6.7	6.4	9.4	9.4	10.8
Galvanised corrugated cast iron sheeting	1.5	-3.7	-3.7	-3.7	-3.7	-3.7	-2.2	-2.7	-2.7	-2.7	-3.3	-3.3	-0.7
Timber: (a) Carpentry	6.1	-3.2	-2.0	-2.0	0.9	0.9	1.5	1.5	1.5	1.1	1.9	1.9	2.7
(b) Joinery	2.4	0.8	1.3	1.3	1.2	1.2	2.6	2.5	2.5	1.6	1.5	1.5	1.5
Steel sections & ironmongery for metal openings	4.9	-0.5	-0.5	-0.5	-0.5	-0.5	-0.4	-0.5	-0.5	-0.6	0.9	0.9	0.9
Ceramic tiles	1.4	10.5	10.5	10.5	5.5	5.5	4.4	4.4	4.4	4.4	4.4	0.9	0.9
Glass, putty and oil	0.8	4.9	4.9	4.9	4.9	4.9	4.9	4.9	4.9	1.0	1.0	1.0	1.0
Paint	1.9	-1.0	-1.0	-1.0	-0.2	-0.2	-0.2	-0.2	-0.2	0.0	0.4	0.4	0.4
Plumbing	2.1	-0.7	-0.8	-0.8	-0.2	-0.2	-0.2	-0.1	-0.2	-0.2	0.2	0.2	0.2
Sanitary installation	2.0	0.6	0.5	0.5	0.6	0.6	0.0	0.5	0.5	0.2	0.9	0.6	0.6
Electrical installation	3.2	-2.5	-2.5	-2.5	-2.0	-2.0	-2.0	-2.9	-2.9	-2.9	-3.3	-3.3	-3.2
Other	2.7	-0.2	0.1	0.1	0.2	0.2	0.2	0.2	0.1	-0.1	-0.2	-0.2	-0.2
<b>TRANSPORT</b>	<b>4.5</b>	<b>21.7</b>	<b>21.7</b>	<b>19.5</b>	<b>19.5</b>	<b>19.5</b>	<b>19.5</b>	<b>19.5</b>	<b>19.5</b>	<b>19.5</b>	<b>19.5</b>	<b>19.5</b>	<b>19.5</b>
<b>OVERALL CHANGE</b>		<b>2.5</b>	<b>3.2</b>	<b>3.1</b>	<b>3.7</b>	<b>3.7</b>	<b>3.7</b>	<b>3.7</b>	<b>3.7</b>	<b>3.6</b>	<b>4.4</b>	<b>4.8</b>	<b>4.9</b>

**Cost Price Index for the construction of a single storey house (Input Price Index)**  
(Base : 4th Quarter 1993 = 100)

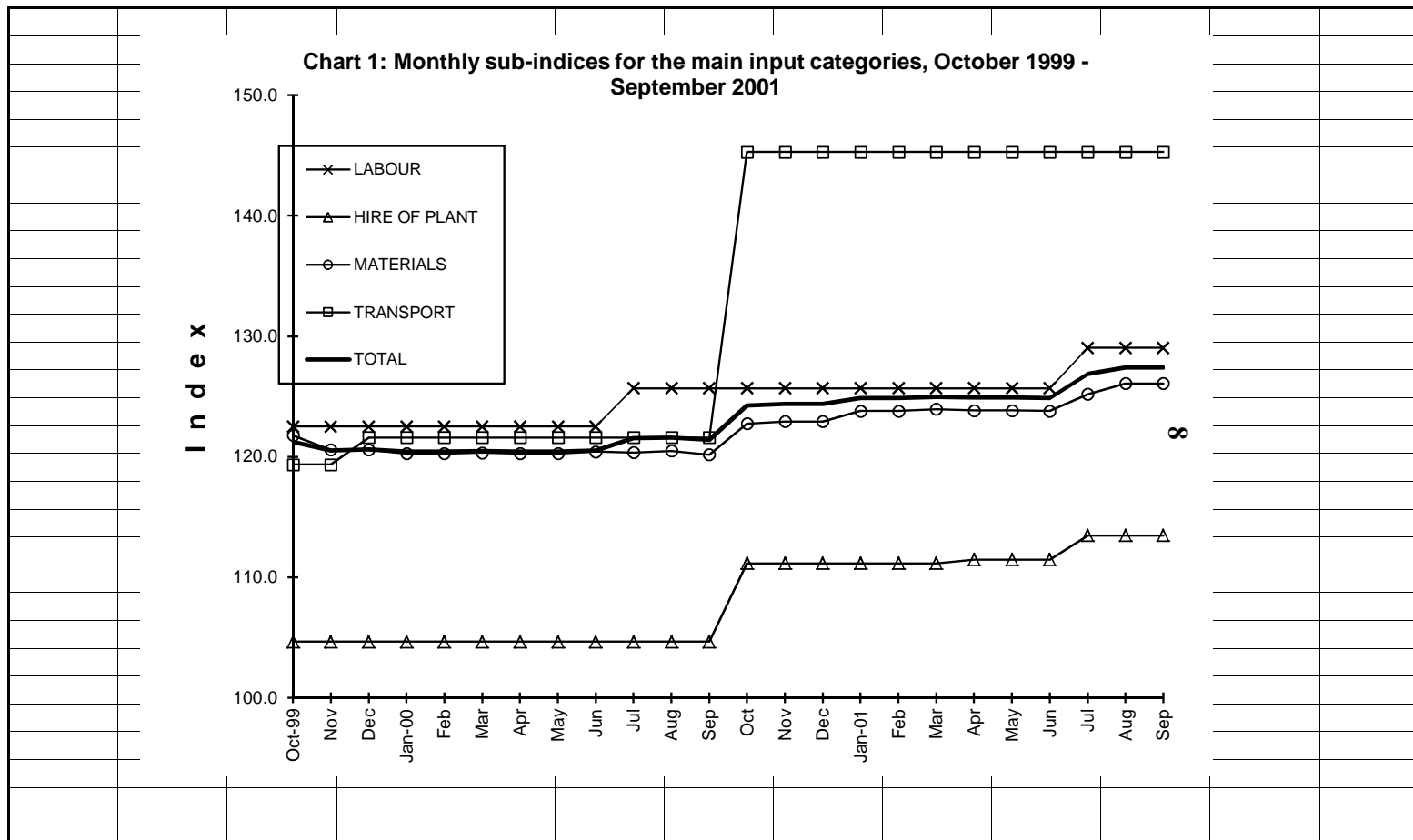
**Table 1.4: Net monthly contributions of input categories to the index, October 2000 - September 2001**

Input Categories	Weight	2000			2001									
		Sep to Oct	Oct to Nov	Nov to Dec	Dec-00 to Jan-01	Jan to Feb	Feb to Mar	Mar to Apr	Apr to May	May to Jun	Jun to Jul	Jul to Aug	Aug to Sep	
<b>LABOUR</b>	<b>32.8</b>	<b>0.00</b>	<b>0.00</b>	<b>0.00</b>	<b>0.00</b>	<b>0.00</b>	<b>0.00</b>	<b>0.00</b>	<b>0.00</b>	<b>0.00</b>	<b>0.00</b>	<b>+1.10</b>	<b>0.00</b>	<b>0.00</b>
<b>HIRE OF PLANT</b>	<b>4.0</b>	<b>+0.26</b>	<b>0.00</b>	<b>0.00</b>	<b>0.00</b>	<b>0.00</b>	<b>0.00</b>	<b>+0.01</b>	<b>0.00</b>	<b>0.00</b>	<b>0.00</b>	<b>+0.08</b>	<b>0.00</b>	<b>0.00</b>
<b>MATERIALS :</b>	<b>58.7</b>	<b>+1.52</b>	<b>+0.11</b>	<b>0.00</b>	<b>+0.50</b>	<b>0.00</b>	<b>+0.09</b>	<b>-0.06</b>	<b>0.00</b>	<b>-0.02</b>	<b>+0.82</b>	<b>+0.53</b>	<b>0.00</b>	<b>0.00</b>
Hardcore (remplissage)	1.0	0.00	0.00	0.00	0.00	0.00	0.00	0.00	0.00	0.00	0.00	0.00	0.00	0.00
Cement	12.0	0.00	0.00	0.00	0.00	0.00	0.00	0.00	0.00	0.00	0.00	+0.21	0.00	0.00
Sand	5.3	+0.85	0.00	0.00	0.00	0.00	0.00	0.00	0.00	0.00	0.00	+0.13	+0.22	0.00
Aggregates	2.4	+0.54	0.00	0.00	0.00	0.00	0.00	0.00	0.00	0.00	0.00	+0.07	+0.14	0.00
Block	3.9	+0.18	0.00	0.00	0.00	0.00	0.00	0.00	0.00	0.00	0.00	+0.10	+0.17	0.00
Steel bars (armature)	5.1	0.00	0.00	0.00	+0.50	0.00	0.00	0.00	0.00	-0.02	+0.20	0.00	0.00	0.00
Galvanised corrugated cast iron sheeting	1.5	0.00	0.00	0.00	0.00	0.00	0.00	0.00	0.00	0.00	-0.01	0.00	0.00	0.00
Timber: (a) Carpentry	6.1	0.00	+0.09	0.00	0.00	0.00	+0.05	0.00	0.00	0.00	+0.05	0.00	0.00	0.00
(b) Joinery	2.4	0.00	+0.01	0.00	0.00	0.00	+0.04	0.00	0.00	0.00	-0.01	0.00	0.00	0.00
Steel sections & ironmongery for metal openings	4.9	0.00	0.00	0.00	0.00	0.00	0.00	-0.02	0.00	0.00	+0.07	0.00	0.00	0.00
Ceramic tiles	1.4	+0.02	0.00	0.00	0.00	0.00	0.00	0.00	0.00	0.00	0.00	0.00	0.00	0.00
Glass,putty and oil	0.8	+0.01	0.00	0.00	0.00	0.00	0.00	0.00	0.00	0.00	0.00	0.00	0.00	0.00
Paint	1.9	0.00	0.00	0.00	0.00	0.00	0.00	0.00	0.00	0.00	0.00	0.01	0.00	0.00
Plumbing	2.1	0.00	0.00	0.00	0.00	0.00	0.00	0.00	0.00	0.00	0.00	0.01	0.00	0.00
Sanitary installation	2.0	0.00	0.00	0.00	0.00	0.00	0.00	0.00	0.00	0.00	-0.01	+0.02	0.00	0.00
Electrical installation	3.2	-0.08	0.00	0.00	0.00	0.00	0.00	-0.04	0.00	0.00	-0.02	0.00	0.00	0.00
Other	2.7	0.00	+0.01	0.00	0.00	0.00	0.00	0.00	0.00	0.00	0.00	-0.01	0.00	0.00
<b>TRANSPORT</b>	<b>4.5</b>	<b>+1.06</b>	<b>0.00</b>	<b>0.00</b>	<b>0.00</b>	<b>0.00</b>	<b>0.00</b>	<b>0.00</b>	<b>0.00</b>	<b>0.00</b>	<b>0.00</b>	<b>0.00</b>	<b>0.00</b>	<b>0.00</b>
<b>TOTAL</b>	<b>100.0</b>	<b>+2.84</b>	<b>+0.11</b>	<b>0.00</b>	<b>+0.50</b>	<b>0.00</b>	<b>+0.09</b>	<b>-0.05</b>	<b>0.00</b>	<b>-0.03</b>	<b>+2.00</b>	<b>+0.53</b>	<b>0.00</b>	<b>0.00</b>

**Cost Price Index for the construction of a single storey house (Input Price Index)**  
(Base : 4th Quarter 1993 = 100)

**Table 1.5 : Quarterly average of monthly indices and percentage changes by input categories, October 2000 - September 2001**

Input Categories	Weight	Quarterly average				% change from previous quarter			
		2000	2001			4th Qr 2000	1st Qr 2001	2nd Qr 2001	3rd Qr 2001
		4th Qr	1st Qr	2nd Qr	3rd Qr				
<b>LABOUR</b>	<b>32.8</b>	<b>125.7</b>	<b>125.7</b>	<b>125.7</b>	<b>129.0</b>	<b>0.0</b>	<b>0.0</b>	<b>0.0</b>	<b>2.7</b>
<b>HIRE OF PLANT</b>	<b>4.0</b>	<b>111.2</b>	<b>111.2</b>	<b>111.5</b>	<b>113.5</b>	<b>6.2</b>	<b>0.0</b>	<b>0.3</b>	<b>1.8</b>
<b>MATERIALS :</b>	<b>58.7</b>	<b>122.9</b>	<b>123.8</b>	<b>123.8</b>	<b>125.8</b>	<b>2.1</b>	<b>0.8</b>	<b>0.0</b>	<b>1.6</b>
Hardcore (remplissage)	1.0	102.9	102.9	102.9	102.9	0.0	0.0	0.0	0.0
Cement	12.0	103.3	103.3	103.3	105.0	0.0	0.0	0.0	1.7
Sand	5.3	133.5	133.5	133.5	138.8	13.7	0.0	0.0	3.9
Aggregate	2.4	164.4	164.4	164.4	171.1	15.8	0.0	0.0	4.1
Block	3.9	138.7	138.7	138.7	144.2	3.3	0.0	0.0	4.0
Steel bars (armature)	5.1	124.2	134.0	133.9	137.5	-0.8	7.9	-0.1	2.7
Galvanised corrugated cast iron sheeting	1.5	122.4	122.4	122.4	121.5	-1.8	0.0	0.0	-0.7
Timber: (a) Carpentry	6.1	111.4	112.1	112.6	113.4	0.3	0.7	0.4	0.8
(b) Joinery	2.4	116.4	117.2	118.1	117.7	0.4	0.6	0.8	-0.3
Steel sections & ironmongery for metal openings	4.9	129.9	130.0	129.7	131.1	0.0	0.1	-0.2	1.1
Ceramic tiles	1.4	140.4	140.4	140.4	140.4	2.0	0.0	0.0	0.0
Glass,putty and oil	0.8	119.6	119.6	119.6	119.6	1.0	0.0	0.0	0.0
Paint	1.9	142.7	142.7	142.7	143.3	0.0	0.0	0.0	0.4
Plumbing	2.1	130.0	130.0	130.0	130.3	-0.1	0.0	0.0	0.2
Sanitary installation	2.0	126.9	127.0	126.8	127.4	0.2	0.1	-0.1	0.5
Electrical installation	3.2	123.2	123.1	122.0	121.6	-1.9	-0.1	-0.9	-0.4
Other	2.7	122.6	122.6	122.5	122.2	0.1	0.1	-0.1	-0.3
<b>TRANSPORT</b>	<b>4.5</b>	<b>145.3</b>	<b>145.3</b>	<b>145.3</b>	<b>145.3</b>	<b>19.5</b>	<b>0.0</b>	<b>0.0</b>	<b>0.0</b>
<b>Overall index and change</b>		<b>124.3</b>	<b>124.9</b>	<b>124.9</b>	<b>127.2</b>	<b>2.3</b>	<b>0.5</b>	<b>0.0</b>	<b>1.9</b>





**Cost Price Index for the construction of a single storey house (Input Price Index)**  
(Base : 4th Quarter 1993 = 100 )

**Table 2.1: Monthly sub-indices by work categories, October 2000 - September 2001**

Work Categories	Weight	2000			2001								
		Oct	Nov	Dec	Jan	Feb	Mar	Apr	May	Jun	Jul	Aug	Sep
1. Setting up	2.9	121.3	121.5	121.5	121.5	121.5	121.5	121.5	121.5	121.5	121.8	122.1	122.1
2. Setting out	0.5	122.3	123.5	123.5	123.5	123.5	124.1	124.1	124.1	124.1	126.5	126.5	126.5
3. Temporary works	1.1	124.4	127.9	127.9	127.9	127.9	129.0	129.0	129.0	129.0	130.3	130.3	130.3
4. Site preparation,excavation & disposal,hardcore filling	5.5	122.5	122.5	122.5	122.5	122.5	122.5	122.7	122.7	122.7	125.5	125.6	125.6
5. Concrete	20.1	124.4	124.4	124.4	124.4	124.4	124.4	124.4	124.4	124.4	126.9	128.1	128.1
6. Reinforcement	8.3	125.8	125.8	125.8	131.9	131.9	131.9	131.9	131.9	131.7	135.2	135.2	135.2
7. Formwork (coffrage)	9.8	115.1	115.4	115.4	115.4	115.4	115.7	115.7	115.7	115.7	117.1	117.1	117.1
8. Blockwork	7.6	131.8	131.6	131.8	131.8	131.8	131.8	131.8	131.8	131.8	134.2	136.6	136.6
9. Softwood joinery	2.8	118.0	118.5	118.5	118.5	118.5	119.9	119.8	119.8	119.8	119.8	119.8	119.8
10. Ironmongery	0.9	120.2	121.0	121.0	121.0	121.0	121.0	121.0	121.0	121.0	121.5	121.5	121.5
11. Steel windows & doors	5.3	129.9	129.9	129.9	129.9	129.9	130.0	129.7	129.7	129.7	131.2	131.2	131.2
12. Rendering to wall/ceiling (crepissage)	9.8	121.2	121.2	121.2	121.2	121.2	121.2	121.2	121.2	121.2	124.0	124.3	124.3
13. Bed & screed to floor/roof	4.1	117.4	117.4	117.4	117.4	117.4	117.4	117.4	117.4	117.4	119.6	120.5	120.5
14. Tiling	2.4	135.8	135.8	135.8	135.8	135.8	135.7	135.7	135.6	135.6	136.6	136.6	136.6
15. Glazing	1.0	122.6	122.6	122.6	122.6	122.6	122.6	122.6	122.6	122.6	122.9	122.9	122.9
16. Painting	4.3	133.8	133.8	133.8	133.8	133.8	133.8	133.8	133.8	133.8	135.8	135.8	135.8
17. Plumbing/sanitary inst.	5.9	127.3	127.2	127.2	127.3	127.3	127.3	127.3	127.2	127.1	128.4	128.4	128.4
18. Electrical installation	5.1	124.5	124.5	124.5	124.4	124.4	124.4	123.7	123.7	123.7	124.4	124.4	124.4
19. Drainage	2.6	124.4	124.4	124.4	124.4	124.4	124.4	124.4	124.4	124.4	125.7	126.6	126.6
<b>OVERALL INDEX</b>		<b>124.3</b>	<b>124.4</b>	<b>124.4</b>	<b>124.9</b>	<b>124.9</b>	<b>125.0</b>	<b>124.9</b>	<b>124.9</b>	<b>124.9</b>	<b>126.9</b>	<b>127.4</b>	<b>127.4</b>

**Cost Price Index for the construction of a single storey house (Input Price Index)**  
(Base : 4th Quarter 1993 = 100)

**Table 2.2 : Percentage change from previous month by work categories, October 2000 - September 2001**

Work Categories	Weight	2000			2001									
		Sep to Oct	Oct to Nov	Nov to Dec	Dec-00 to Jan-01	Jan to Feb	Feb to Mar	Mar to Apr	Apr to May	May to Jun	Jun to Jul	Jul to Aug	Aug to Sep	
1. Setting up	2.9	1.8	0.1	0.0	0.0	0.0	0.0	0.0	0.0	0.0	0.2	0.3	0.0	
2. Setting out	0.5	0.0	1.0	0.0	0.0	0.0	0.5	0.0	0.0	0.0	1.9	0.0	0.0	
3. Temporary works	1.1	0.0	2.7	0.0	0.0	0.0	0.9	0.0	0.0	0.0	1.0	0.0	0.0	
4. Site preparation,excavation & disposal,hardcore filling	5.5	2.5	0.0	0.0	0.0	0.0	0.0	0.2	0.0	0.0	2.3	0.1	0.0	
5. Concrete	20.1	6.2	0.0	0.0	0.0	0.0	0.0	0.0	0.0	0.0	2.0	0.9	0.0	
6. Reinforcement	8.3	1.0	0.0	0.0	4.8	0.0	0.0	0.0	0.0	-0.2	2.7	0.0	0.0	
7. Formwork (coffrage)	9.8	0.8	0.3	0.0	0.0	0.0	0.3	0.0	0.0	0.0	1.2	0.0	0.0	
8. Blockwork	7.6	3.9	0.0	0.0	0.0	0.0	0.0	0.0	0.0	0.0	1.8	1.8	0.0	
9. Softwood joinery	2.8	0.8	0.4	0.0	0.0	0.0	1.2	-0.1	0.0	0.0	0.0	0.0	0.0	
10. Ironmongery	0.9	0.0	0.7	0.0	0.0	0.0	0.0	0.0	0.0	0.0	0.4	0.0	0.0	
11. Steel windows & doors	5.3	0.4	0.0	0.0	0.0	0.0	0.0	-0.2	0.0	0.0	1.1	0.0	0.0	
12. Rendering to wall/ceiling (crepissage)	9.8	1.6	0.0	0.0	0.0	0.0	0.0	0.0	0.0	0.0	2.2	0.3	0.0	
13. Bed & screed to floor/roof	4.1	4.3	0.0	0.0	0.0	0.0	0.0	0.0	0.0	0.0	1.8	0.8	0.0	
14. Tiling	2.4	0.5	0.0	0.0	0.0	0.0	-0.1	0.0	-0.1	0.0	0.7	0.0	0.0	
15. Glazing	1.0	2.9	0.0	0.0	0.0	0.0	0.0	0.0	0.0	0.0	0.3	0.0	0.0	
16. Painting	4.3	0.4	0.0	0.0	0.0	0.0	0.0	0.0	0.0	0.0	1.5	0.0	0.0	
17. Plumbing/sanitary inst.	5.9	0.4	0.0	0.0	0.0	0.0	0.0	0.0	0.0	-0.1	1.0	0.0	0.0	
18. Electrical installation	5.1	-0.9	0.0	0.0	0.0	0.0	0.0	-0.6	0.0	0.0	0.6	0.0	0.0	
19. Drainage	2.6	3.5	0.0	0.0	0.0	0.0	0.0	0.0	0.0	0.0	1.1	0.7	0.0	
<b>OVERALL CHANGE</b>		<b>2.3</b>	<b>0.1</b>	<b>0.0</b>	<b>0.4</b>	<b>0.0</b>	<b>0.1</b>	<b>0.0</b>	<b>0.0</b>	<b>0.0</b>	<b>1.6</b>	<b>0.4</b>	<b>0.0</b>	

**Cost Price Index for the construction of a single storey house (Input Price Index)**  
(Base : 4th Quarter 1993 = 100)

**Table 2.3: Percentage change from corresponding month of previous year by work categories, October 2000 to September 2001**

Work Categories	Weight	Oct-99 to Oct-00	Nov-99 to Nov-00	Dec-99 to Dec-00	Jan-00 to Jan-01	Feb-00 to Feb-01	Mar-00 to Mar-01	Apr-00 to Apr-01	May-00 to May-01	Jun-00 to Jun-01	Jul-00 to Jul-01	Aug-00 to Aug-01	Sep-00 to Sep-01
1. Setting up	2.9	-0.5	-0.2	-0.2	0.1	0.1	0.9	0.7	0.7	0.7	0.7	0.9	2.5
2. Setting out	0.5	-0.3	0.7	0.7	2.1	2.1	2.6	2.6	2.6	2.6	3.2	3.2	3.4
3. Temporary works	1.1	0.4	3.2	3.2	2.8	2.8	3.7	3.7	3.7	3.7	4.6	4.6	4.7
4. Site preparation,excavation & disposal,hardcore filling	5.5	4.5	4.5	4.5	4.5	4.5	4.5	4.7	4.7	4.7	5.0	5.1	5.1
5. Concrete	20.1	5.8	7.0	7.0	7.0	7.0	7.0	7.0	7.0	7.0	8.3	9.4	9.4
6. Reinforcement	8.3	-0.4	1.2	1.2	6.0	6.0	5.8	6.0	6.0	5.8	7.7	7.7	8.5
7. Formwork (coffrage)	9.8	-0.1	0.2	0.2	1.8	1.8	2.1	2.0	2.0	1.8	2.2	2.2	2.6
8. Blockwork	7.6	4.6	5.5	4.5	4.5	4.5	4.5	4.5	4.5	4.5	5.8	7.6	7.6
9. Softwood joinery	2.8	1.7	2.1	2.1	2.1	2.1	3.3	3.2	3.2	2.4	2.3	2.3	2.3
10. Ironmongery	0.9	-0.4	0.3	0.3	1.4	1.4	1.4	1.4	1.4	0.9	1.1	1.1	1.1
11. Steel windows & doors	5.3	0.0	0.0	0.0	0.1	0.1	0.1	0.0	0.0	-0.1	1.3	1.3	1.4
12. Rendering to wall/ceiling (crepissage)	9.8	2.7	3.3	3.3	3.3	3.3	3.3	3.3	3.3	3.3	3.8	4.1	4.1
13. Bed & screed to floor/roof	4.1	3.2	5.0	5.0	5.0	5.0	5.0	5.0	5.0	5.0	6.3	7.1	7.1
14. Tiling	2.4	6.9	6.9	6.9	4.0	4.0	3.3	3.3	3.2	3.2	3.2	1.1	1.1
15. Glazing	1.0	6.3	6.3	6.3	6.3	6.3	6.3	6.3	6.3	3.2	3.2	3.2	3.2
16. Painting	4.3	1.1	1.1	1.1	1.6	1.6	1.6	1.6	1.6	1.6	1.9	1.9	1.9
17. Plumbing/sanitary inst.	5.9	0.9	0.9	0.9	1.1	1.1	0.9	1.1	1.1	1.0	1.4	1.3	1.3
18. Electrical installation	5.1	-0.2	-0.2	-0.4	-0.2	-0.2	-0.2	-0.7	-0.7	-0.7	-0.9	-0.9	-0.9
19. Drainage	2.6	3.3	3.8	3.8	4.1	4.1	4.1	4.1	4.1	4.1	4.6	5.4	5.4
<b>OVERALL CHANGE</b>		<b>2.5</b>	<b>3.2</b>	<b>3.1</b>	<b>3.7</b>	<b>3.7</b>	<b>3.7</b>	<b>3.7</b>	<b>3.7</b>	<b>3.6</b>	<b>4.4</b>	<b>4.8</b>	<b>4.9</b>

**Cost Price Index for the construction of a single storey house (Input Price Index)**  
(Base : 4th Quarter 1993 = 100)

**Table 2.4 :Net monthly contributions of work categories to the index, October 2000 - September 2001**

Work Categories	Weight	2000			2001									
		Sep to Oct	Oct to Nov	Nov to Dec	Dec-00 to Jan-01	Jan to Feb	Feb to Mar	Mar to Apr	Apr to May	May to Jun	Jul to Jul	Jul to Aug	Aug to Sep	
1. Setting up	2.9	+0.06	0.00	0.00	0.00	0.00	0.00	0.00	0.00	0.00	+0.01	+0.01	0.00	
2. Setting out	0.5	0.00	+0.01	0.00	0.00	0.00	+0.01	0.00	0.00	0.00	+0.01	0.00	0.00	
3. Temporary works	1.1	0.00	+0.04	0.00	0.00	0.00	+0.01	0.00	0.00	0.00	+0.01	0.00	0.00	
4. Site preparation,excavation & disposal,hardcore filling	5.5	+0.16	0.00	0.00	0.00	0.00	0.00	+0.01	0.00	0.00	+0.16	+0.01	0.00	
5. Concrete	20.1	+1.46	0.00	0.00	0.00	0.00	0.00	0.00	0.00	0.00	+0.50	+0.24	0.00	
6. Reinforcement	8.3	+0.10	0.00	0.00	+0.50	0.00	0.00	0.00	0.00	-0.02	+0.29	0.00	0.00	
7. Formwork (coffrage)	9.8	+0.09	+0.04	0.00	0.00	0.00	+0.03	0.00	0.00	0.00	+0.14	0.00	0.00	
8. Blockwork	7.6	+0.37	0.00	0.00	0.00	0.00	0.00	0.00	0.00	0.00	+0.18	+0.18	0.00	
9. Softwood joinery	2.8	+0.03	+0.01	0.00	0.00	0.00	+0.04	0.00	0.00	0.00	0.00	0.00	0.00	
10. Ironmongery	0.9	0.00	+0.01	0.00	0.00	0.00	0.00	0.00	0.00	0.00	0.00	0.00	0.00	
11. Steel windows & doors	5.3	+0.03	0.00	0.00	0.00	0.00	0.00	-0.02	0.00	0.00	+0.08	0.00	0.00	
12. Rendering to wall/ceiling (crepissage)	9.8	+0.18	0.00	0.00	0.00	0.00	0.00	0.00	0.00	0.00	+0.27	+0.03	0.00	
13. Bed & screed to floor/roof	4.1	+0.20	0.00	0.00	0.00	0.00	0.00	0.00	0.00	0.00	+0.09	+0.04	0.00	
14. Tiling	2.4	+0.02	0.00	0.00	0.00	0.00	0.00	0.00	0.00	0.00	+0.02	0.00	0.00	
15. Glazing	1.0	+0.03	0.00	0.00	0.00	0.00	0.00	0.00	0.00	0.00	0.00	0.00	0.00	
16. Painting	4.3	+0.03	0.00	0.00	0.00	0.00	0.00	0.00	0.00	0.00	+0.08	0.00	0.00	
17. Plumbing/sanitary inst.	5.9	+0.03	0.00	0.00	0.00	0.00	0.00	0.00	0.00	-0.01	+0.07	0.00	0.00	
18. Electrical installation	5.1	-0.06	0.00	0.00	0.00	0.00	0.00	-0.04	0.00	0.00	+0.04	0.00	0.00	
19. Drainage	2.6	+0.11	0.00	0.00	0.00	0.00	0.00	0.00	0.00	0.00	+0.03	+0.02	0.00	
<b>TOTAL</b>	<b>100.0</b>	<b>+2.84</b>	<b>+0.11</b>	<b>0.00</b>	<b>+0.50</b>	<b>0.00</b>	<b>+0.09</b>	<b>-0.05</b>	<b>0.00</b>	<b>-0.03</b>	<b>+2.00</b>	<b>+0.53</b>	<b>0.00</b>	

**Cost Price Index for the construction of a single storey house (Input Price Index)**  
(Base : 4th Quarter 1993 = 100)

**Table 2.5 : Quarterly average of monthly indices and percentage changes by work categories, October 2000 - September 2001**

Work Categories	Weight	Quarterly average				% change from previous quarter			
		2000	2001			4th Qr 2000	1st Qr 2001	2nd Qr 2001	3rd Qr 2001
		4th Qr	1st Qr	2nd Qr	3rd Qr				
1. Setting up	2.9	121.4	121.5	121.5	122.0	0.9	0.1	0.0	0.4
2. Setting out	0.5	123.1	123.7	124.1	126.5	0.5	0.5	0.3	1.9
3. Temporary works	1.1	126.7	128.2	129.0	130.3	1.8	1.2	0.6	1.0
4. Site preparation,excavation & disposal,hardcore filling	5.5	122.5	122.5	122.7	125.6	2.5	0.0	0.2	2.4
5. Concrete	20.1	124.4	124.4	124.4	127.7	6.2	0.0	0.0	2.6
6. Reinforcement	8.3	125.8	131.9	131.8	135.2	0.5	4.8	-0.1	2.5
7. Formwork (coffrage)	9.8	115.3	115.5	115.7	117.1	0.7	0.2	0.1	1.2
8. Blockwork	7.6	131.8	131.8	131.8	135.8	3.9	0.0	0.0	3.0
9. Softwood joinery	2.8	118.3	119.0	119.8	119.8	1.1	0.5	0.7	0.0
10. Ironmongery	0.9	120.7	121.0	121.0	121.5	0.5	0.2	0.0	0.4
11. Steel windows & doors	5.3	129.9	129.9	129.7	131.2	0.4	0.1	-0.2	1.1
12. Rendering to wall/ceiling (crepissage)	9.8	121.2	121.2	121.2	124.2	1.6	0.0	0.0	2.4
13. Bed & screed to floor/roof	4.1	117.4	117.4	117.4	120.2	4.3	0.0	0.0	2.4
14. Tiling	2.4	135.8	135.8	135.6	136.6	1.2	0.0	-0.1	0.7
15. Glazing	1.0	122.6	122.6	122.6	122.9	2.9	0.0	0.0	0.3
16. Painting	4.3	133.8	133.8	133.8	135.8	0.4	0.0	0.0	1.5
17. Plumbing/sanitary inst.	5.9	127.2	127.3	127.2	128.4	0.4	0.0	0.0	0.9
18. Electrical installation	5.1	124.5	124.4	123.7	124.4	-0.9	0.0	-0.6	0.6
19. Drainage	2.6	124.4	124.4	124.4	126.3	3.5	0.0	0.0	1.5
<b>Overall index and change</b>		<b>124.3</b>	<b>124.9</b>	<b>124.9</b>	<b>127.2</b>	<b>2.3</b>	<b>0.5</b>	<b>0.0</b>	<b>1.9</b>

**Table 3: Construction Price Index - January 1995 to June 2001**

(Base: 4th Quarter 1993 = 100)

	<b>1995</b>	<b>1996</b>	<b>1997</b>	<b>1998</b>	<b>1999</b>	<b>2000</b>	
<b>January</b>	104.4	106.8	111.8	115.2	118.6	120.4	124.9
<b>February</b>	104.4	107.0	111.9	115.3	119.1	120.4	124.9
<b>March</b>	104.5	107.1	112.0	115.3	119.1	120.5	125.0
<i>1st Quarter</i>	<i>104.4</i>	<i>107.0</i>	<i>111.9</i>	<i>115.3</i>	<i>118.9</i>	<i>120.5</i>	<i>124.9</i>
<b>April</b>	104.8	107.2	112.1	115.3	119.2	120.4	124.9
<b>May</b>	105.1	107.3	112.2	115.5	119.2	120.4	124.9
<b>June</b>	105.1	110.2	112.0	115.6	119.3	120.5	124.9
<i>2nd Quarter</i>	<i>105.0</i>	<i>108.2</i>	<i>112.1</i>	<i>115.5</i>	<i>119.3</i>	<i>120.5</i>	<i>124.9</i>
<b>July</b>	106.1	110.8	114.0	116.9	120.9	121.5	126.9
<b>August</b>	106.2	111.4	114.5	117.5	121.0	121.6	127.4
<b>September</b>	106.4	111.4	114.9	118.1	121.0	121.4	127.4
<i>3rd Quarter</i>	<i>106.2</i>	<i>111.2</i>	<i>114.5</i>	<i>117.5</i>	<i>120.9</i>	<i>121.5</i>	<i>127.2</i>
<b>October</b>	106.6	111.4	115.0	118.4	121.2	124.3	
<b>November</b>	106.7	111.6	115.0	118.4	120.5	124.4	
<b>December</b>	106.8	111.7	115.2	118.6	120.6	124.4	
<i>4th Quarter</i>	<i>106.7</i>	<i>111.6</i>	<i>115.1</i>	<i>118.4</i>	<i>120.8</i>	<i>124.3</i>	
<b>Yearly average</b>	<b>105.6</b>	<b>109.5</b>	<b>113.4</b>	<b>116.7</b>	<b>120.0</b>	<b>121.7</b>	
<b>Change in the yearly average</b>		<b>3.7</b>	<b>3.6</b>	<b>2.9</b>	<b>2.8</b>	<b>1.4</b>	

**ANNEX****Description of the model used for establishing the  
Construction Price Index**

The model used is a single storey (ground floor) detached house of 108.75 square metres (1,171 square feet) in floor area measured at plinth level to the external face of the external walls.

It comprises two bedrooms, a living-dining room, a kitchen, w.c. and bathroom. The building has concrete block walls, reinforced concrete flat roof, internal flush plywood doors, glazed metal openings, screeded floor and roof, tiling to floor and walls of w.c. and bathroom and kitchen worktop; the ceilings and walls are rendered and painted both internally and externally. Plumbing, sanitary installation and electrical installation are included as well as drainage which is to be connected to the sewerage system. Site works are restricted to spreading and levelling surplus excavated material around the site.

The Index excludes the cost of the building permit and the draughtman's fee; these two items represent 0.2 % and 1.0% of the total cost respectively.

It is assumed that although the house is not constructed by a contractor, the client has recourse to the services of a foreman.