

EXTERNAL TRADE - 1ST QUARTER 1993

1. Total value of international trade and trade balance

Total international trade during the first quarter of 1993 was valued at Rs 10,700 million, nearly 5 percent higher than that of the corresponding quarter of 1992, but 17 percent below the previous quarter's level.

With exports amounting to some Rs 4,450 million and imports to around Rs 6,250 million, the net effect was a negative trade balance of Rs 1,820 million, representing a 52 percent increase over the Rs 1,200 million deficit recorded in the first quarter last year.

2. Terms of trade (Base year 1992 = 100)

In order to reflect the change in the trading pattern of the country, the calculation of the unit value export and import price indices will as from 1993 onwards be based on the year 1992 instead of the year 1988.

The export unit value index computed for the first quarter of 1993 shows that export prices were 3 percent higher than the average for the year 1992. This rise is attributable to a 7 percent increase obtained in respect of sugar and a 2 percent increase for EPZ products.

On the other hand, import prices of almost all products have gone up by around 6 percent relative to prices prevailing in 1992.

Consequently, the terms of trade which show price movements of exports relative to imports fell by 3 percentage points to 97 for the first quarter of 1993 compared to 100 for the year 1992.

3. Exports

Total export proceeds for the first three months of 1993, amounted to about Rs 4,450 million, slightly lower than that of the corresponding period of last year. Sugar exports dropped by some Rs 200 million (-15%) as a lower volume of sugar was exported: 110,000 metric tons compared to 139,000 metric tons last year. EPZ exports grew in nominal terms by Rs 116 million (+4%) to Rs 2,815 million and accounted for 63 percent of the total.

The table below summarises the main changes in exports during the first quarter of 1992 and 1993.

Exports	1st Qr. 1992	1st Qr. 1993	F.O.B. Rs million	
			Value	Change %
Sugar	1,347	1,146	- 201	-15%
E.P.Z.	2,699	2,815	+ 116	+4%
Re-exports	164	149	- 15	-9%
Ships' stores & bunkers	125	125	-	-
Other	165	200	+ 35	+21%
Total Exports	4,500	4,435	- 65	-1%

3.1 Main markets

The country's main buyers remained the European Economic Community (EEC) which purchased 74 percent of our exports. The United States absorbed another 16 percent of the total.

4. Imports

The import bill for the period January to March 1993 attained Rs 6,250 million representing an increase of some 10 percent over the corresponding period of last year. As most of the increase was due to price effects, in volume terms, imports grew marginally by around one percent only.

The comparative figures for main imports in the first quarter of 1992 and 1993 given hereunder show major increases in EPZ imports of raw materials and machinery which ~~were~~ went up by Rs 364 million (+21%) and petroleum products ,up by Rs 166 million (+48%). The rise in the petroleum bill is mainly due to a substantial increase in the volume of petroleum products imported.

Imports (Product group)	C.I.F. Rs million			
	1st Qr. 1992	1st Qr. 1993	Value	Change %
1. Food, beverages and tobacco	686	731	+45	+ 7%
2. Petroleum products	349	515	+ 166	+ 48%
3. Chemicals	448	436	- 12	- 3%
4. EPZ imports	1,745	2,109	+ 364	+ 21%
of which: Raw materials	(1,549)	(1,818)	(+269)	+ 17%
Machinery	(196)	(291)	(+95)	+ 48%
5. Other manufactured goods	972	1,009	+ 37	+ 4%
6. Other Machinery (excl. EPZ)	1,243	1,191	- 52	- 4%
7. Other	251	265	+ 14	+ 6%
Total Imports	5,694	6,256	+ 562	+ 10%
	=====	=====	=====	=====

4.1 Main suppliers

Table 9 on imports by country of origin shows that the major suppliers were: the EEC, (33%), Republic of South Africa, (14%), Japan, (7%), India, (6%) and Taiwan, (5%).

5. The EPZ Sector

In the first quarter of 1993, the EPZ enterprises exported around Rs 2,800 million worth of goods, 4 percent higher than the Rs 2,700 million recorded in the corresponding quarter of 1992 but 20 percent below the previous quarter's figure of Rs 3,500 million. After removing price effects of about 6 percent, in quantity terms, EPZ exports were around 2 percent lower than in the first quarter of 1992.

On the other hand, imports registered a substantial increase of 21 percent and amounted to Rs 2,100 million against Rs 1,750 million. Purchases of raw materials went up by Rs 269 million (+17%) and likewise an additional Rs 100 million (+48%) was spent on import of machinery and equipment.

Consequently, Net EPZ exports yielded Rs 700 million, against Rs 950 million in the corresponding period of last year. The ratio of Net exports to Exports dropped to 25 percent from 35 percent in the first quarter of 1992 and an average of 45 percent for the year 1992.

Central Statistical Office,
Ministry of Economic Planning and Development,
PORT LOUIS.
June, 1993

External Trade - 1st Quarter 1993

N O T E S

Figures for 1992 and 1993 are provisional and subject to revision.

1. COVERAGE



EXPORTS

- Cover : 1. Domestic exports (including exports from Export Processing Zone)
2. Re-Exports
3. Export ex Warehouse
4. Returned goods
- Include : 1. Government, Parcel Post and Air Freight
- Exclude : 1. Trade with Outer Islands
2. Ships' stores and bunkers

IMPORTS

- Cover : 1. Landed merchandise sent to warehouse for subsequent delivery
2. Landed merchandise issued for home consumption
- Include : 1. Government, Parcel Post and Air Freight
2. Donations from other Government and International Organisations
- Exclude : 1. Trade with Outer Islands
2. Bullion and species

2. VALUATION AND STATUS OF FIGURES

Exports are valued F.O.B. and imports C.I.F.

F.O.B. Free on Board

C.I.F. Cost, Insurance and Freight

All figures quoted are in Mauritian Rupees

3. COMMODITY CLASSIFICATION

The classification used for the compilation of trade statistics is the Standard International Trade Classification (Revised III) or S.I.T.C. (Rev. III). However, import and export bills of entry are being worked upon according to the Harmonized Commodity Description and Coding System Nomenclature, shortly known as the Harmonized System Nomenclature (H.S.N.).

4. ROUNDING OF FIGURES

Figures have been rounded off to the nearest final digit and in some cases to the nearest one decimal place and as a result in some tables there may be discrepancies between the sum of the constituent items and the total.

5. SYMBOLS

- Nil or negligible
- ... Not available
- .- Not applicable

6. ABBREVIATIONS

- Rs : Rupees
- 000 : Thousand
- Mn : Million
- M.ton : Metric ton : 1,000 kilos
- No. : Number
- M² : Square metre

Table 1 Balance of Visible Trade, 1991 - 1993

Value Rs Mn

	1991 ^{1/}	1992 ^{2/}	1992				1993 ^{2/}
			1st Qr.	2nd Qr.	3rd Qr.	4th Qr.	
Exports of goods	18,700	20,072	4,375	4,287	5,580	5,830	4,310
Domestic exports	18,084	19,513	4,211	4,186	5,465	5,651	4,161
Re-exports	615	559	164	101	115	179	149
Ships' Stores and Bunkers	600	500	125	125	125	125	125
A. Total Exports (f.o.b)	19,300	20,572	4,500	4,412	5,705	5,955	4,435
B. Total Imports (c.i.f)	24,383 ^{2/}	25,313 ^{2/}	5,694	6,340	6,302	6,980	6,256
Total Value of Trade (A + B)	43,683	45,885	10,194	10,752	12,007	12,935	10,691
Balance of Visible Trade (A - B)	-5,083	-4,741	-1,194	-1,928	-596	-1,025	-1,821

1/ revised

2/ provisional

3/ note that due to over reporting in value of aircraft parts entering the country after repairs ~~all~~ import figures have been adjusted as follows: Rs -267 million in 1991 and Rs -429 million in 1992. Import data by country and all balances have been adjusted accordingly.

Table 2 - Price (unit value) indices of exports and imports and terms of trade
1989 - 1993

P e r i o d	Price indices		Terms of trade*
	Export	Import	
	Base Year : 1988 = 100		
1989	111	119	93
1990	125	127	98
1991	133	133	100
1992	142	135	105
1992 : Qr. 1	136	132	103
Qr. 2	145	138	105
Qr. 3	140	133	105
Qr. 4	148	140	106
	Base Year : 1992 = 100		
1993 : Qr. 1	103	106	97

* Ratio of export to import price index.

A rise in this ratio indicates that the terms of trade have moved in favour of Mauritius

Table 3 - Domestic exports of main commodities - value, 1991 - 1993

F.O.B. Value Rs Mn

Commodity/Sector	1991 ^{1/}	1992 ^{2/}	1992				1993 ^{2/}
			1st Qr.	2nd Qr.	3rd Qr.	4th Qr.	
Sugar	5,298	5,668	1,347	683	1,754	1,885	1,146
Molasses	96	91	16	8	41	27	11
Tea	83	95	30	23	11	31	33
EPZ	12,136	13,081	2,699	3,340	3,540	3,502	2,815
Cut flowers (non EPZ)	78	87	25	15	17	30	28
Chemicals (non EPZ)	95	106	12	8	34	52	44
Other	298	385	82	109	68	124	84
Total Exports	18,084	19,513	4,211	4,186	5,465	5,651	4,161

^{1/} revised

^{2/} provisional

Table 4 - Domestic exports of selected commodities, quantity, 1991 - 1993

Commodity	Unit	1991 ^{1/}	1992 ^{2/}	1992				1993 ^{2/}
				1st Qr.	2nd Qr.	3rd Qr.	4th Qr.	1st Qr.
Sugar	(000) m. ton	551	598	139	68	201	190	110
Molasses	"	130	131	19	11	62	39	18
Tea	m. ton	4,494	5,418	1,742	1,469	737	1,470	1,319
Fish and fish preparations	"	6,748	7,505	1,835	1,738	2,027	1,904	1,531
Fertilizers	"	17,690	20,720	2,164	1,318	5,971	11,267	10,080

^{1/} revised

^{2/} provisional

Table 5 - Total exports^{1/} to main countries of destination, 1991 - 1993

F.O.B. Value Rs Mn

Country of destination	1991 ^{2/}	1992 ^{3/}	1993				1993 ^{3/}
			1st Qr.	2nd Qr.	3rd Qr.	4th Qr.	
1. Preferential Tariff Countries	18,114	19,488	4,246	4,183	5,414	5,645	4,184
(a) E.E.C. Countries	15,072	15,977	3,546	3,353	4,407	4,571	3,186
of which							
United Kingdom	6,750	6,992	1,737	1,174	1,870	2,212	1,532
France	3,727	4,206	899	1,093	1,039	1,175	868
Fed. Rep. of Germany	2,055	1,778	369	437	496	476	234
Italy	918	937	219	234	203	281	189
(b) Other Preferential Tariff Countries	3,042	3,511	700	830	1,007	974	998
of which							
U.S. of America	2,209	2,500	474	623	695	708	680
2. General Tariff Countries	586	584	129	104	166	186	126
Total Exports	18,700	20,072	4,375	4,287	5,580	5,830	4,310

^{1/} excluding ships' stores and bunkers

^{2/} revised

^{3/} provisional

Table 6 - Imports by section, 1991 - 1993

C.I.F. Value Rs Mn

S.I.T.C. Section	Description	1991 ^{1/}	1992 ^{2/}	1992				1993 ^{2/}
				1st Qr.	2nd Qr.	3rd Qr.	4th Qr.	
0	Food and live animals	2,692	2,945	653	733	744	816	701
1	Beverages and tobacco	113	131	33	32	26	41	30
2	Crude materials inedible, except fuels	801	753	202	227	180	145	179
3	Mineral fuels, lubricants and related materials	2,053	1,930	349	549	482	550	515
4	Animal and vegetable oils and fats	255	275	43	103	27	101	53
5	Chemicals	1,739	1,902	448	472	509	474	436
6	Manufactured goods classified chiefly by material	8,624	9,142	2,045	2,444	2,246	2,404	2,320
7	Machinery and transport equipment	5,840 ^{2/}	<u>5,720</u> ^{2/}	1,439	1,141	1,477	1,665	1,482
8	Miscellaneous manufactured articles	2,160	2,368	476	601	574	717	507
9	Other commodities and transactions	106	147	8	38	36	65	33
	Total Imports	24,383	25,313	5,694	6,340	6,302	6,980	6,256

1/ revised

2/ provisional

3/ adjusted for aircraft parts (see footnote to table 1)

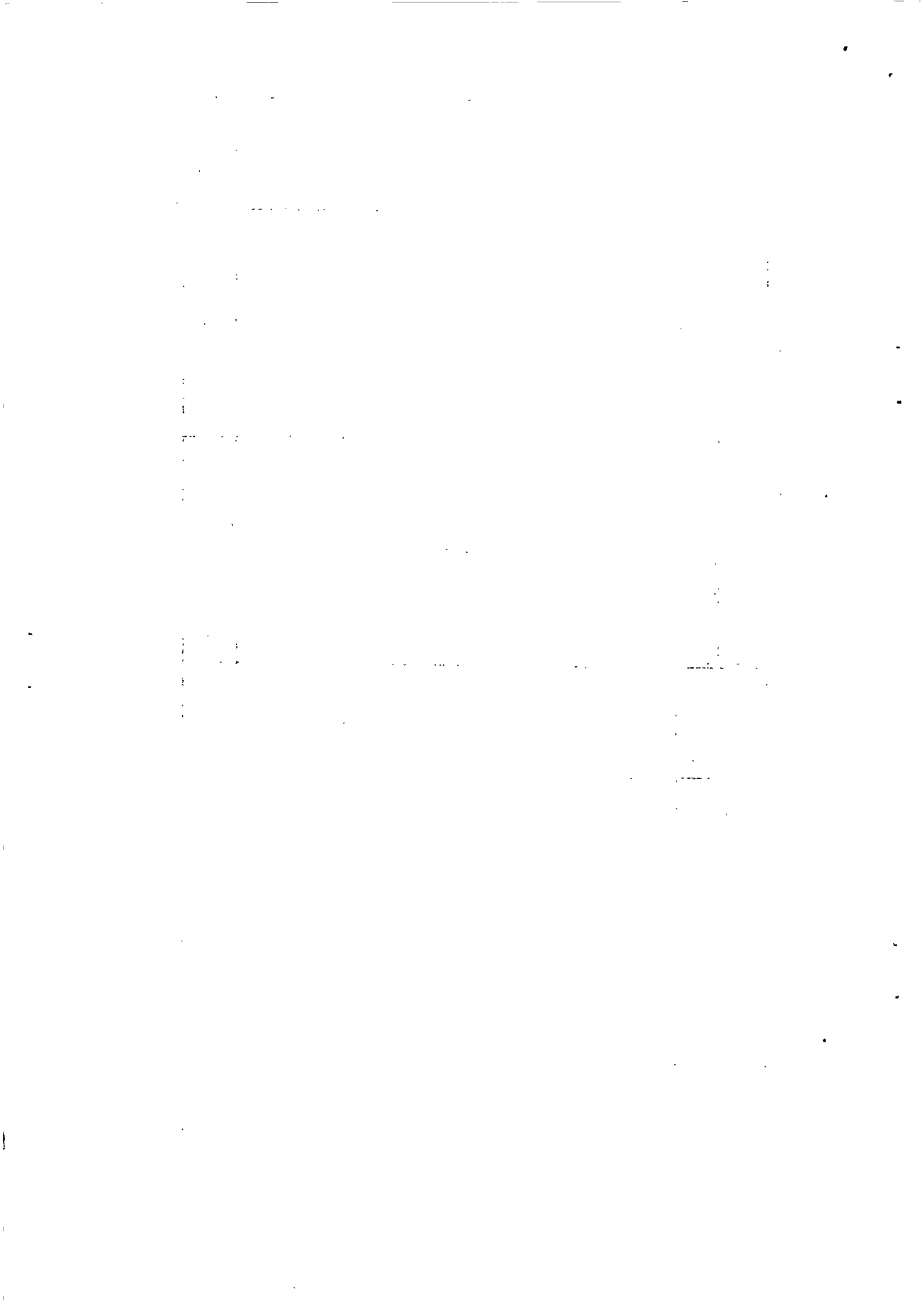


Table 7 -- Imports of main commodities, value, 1991 - 1993

Commodity	C.I.F. Value Rs Mn					
	1991 ^{1/}	1992				1993 ^{2/}
		1st Qr.	2nd Qr.	3rd Qr.	4th Qr.	
Meat and meat preparations	361	89	91	79	121	86
Rice	314	56	73	89	58	56
Wheaten flour	76	13	27	7	6	5
Wheat	114	57	46	32	62	-
Dairy products	547	148	138	168	145	148
Vegetables and fruits	370	72	124	100	87	95
Textile fibres, etc.	468	119	143	89	29	101
Refined petroleum products	1,783	313	443	420	448	459
Fixed vegetable oils & fats	200	29	89	17	85	30
Medicinal and pharmaceutical products	338	88	110	113	91	96
Textile yarn	1,717	465	504	444	410	545
Paper, paperboard and articles thereof	360	96	89	92	110	104
Textile fabrics	2,910	692	844	788	850	817
Cement	523	127	144	108	175	113
Pearls, precious and semi-precious stones	380	85	90	89	87	107
Iron and steel	700	131	219	166	172	148
Manufactures of metal, n.e.s.	665	143	164	163	172	141
General industrial machinery and telecommunications and sound recording and reproducing apparatus and equipment	739	208	202	200	183	173
Other machinery and parts ^{3/}	408	87	90	127	167	201
Road vehicles	3,415	769	590	859	591	758
Watches and clocks	1,188	380	264	291	379	317
Aircraft and marine vessel	338	82	90	80	104	93
Other	90	-	-	-	325	-
	6,379	1,445	1,766	1,781	2,107	1,663
Total Imports	24,383 ^{3/}	5,694	6,340	6,302	6,980	6,256
						25,313 ^{3/}

^{1/} revised ^{2/} provisional ^{3/} adjusted for aircraft parts (see footnote to table 1)

Table 9 -- Imports of selected commodities, quantity, 1991 - 1993

Commodity	Unit	1991 ^{1/}	1992 ^{2/}	1992				1993 ^{2/}
				1st Qr.	2nd Qr.	3rd Qr.	4th Qr.	
Rice	(000) m. ton	70	64	13	16	22	13	13
Wheaten flour	"	10	12	3	6	2	1	1
Wheat	"	56	90	29	20	16	25	-
Dairy products	"	15	16	4	4	4	4	4
Vegetable edible oils and fats	"	25	26	3	10	2	11	3
Fertilisers manufactured	"	40	53	12	9	13	19	10
Cotton fabrics	Mn M2	76	61	15	13	15	18	15
Cement	(000) m. ton	493	554	126	141	112	173	100
Iron and steel	"	84	89	18	25	24	21	18

1/ revised

2/ provisional

Table 9 - Imports by main countries of origin, 1991 - 1993

C.I.F. Value Rs Mn

Country of origin	1991 ^{1/}	1992 ^{2/}	1993				1993 ^{3/}
			1st Qr.	2nd Qr.	3rd Qr.	4th Qr.	1st Qr.
<u>Preferential Tariff Countries</u>	<u>17,052</u>	<u>18,255</u>	<u>4,096</u>	<u>4,695</u>	<u>4,629</u>	<u>4,837</u>	<u>4,569</u>
(a) <u>E.E.C. Countries</u>	<u>8,020</u>	<u>8,184</u>	<u>1,923</u>	<u>2,116</u>	<u>2,221</u>	<u>1,924</u>	<u>2,035</u>
of which France	3,283	3,373	745	847	1,032	750	878
Fed. Rep. of Germany	1,357	1,248	325	325	281	317	366
Italy	781	744	218	185	167	175	184
United Kingdom	1,658	1,774	450	445	455	425	393
(b) <u>Other Preferential Tariff Countries</u>	<u>9,032</u>	<u>10,071</u>	<u>2,174</u>	<u>2,579</u>	<u>2,408</u>	<u>2,913</u>	<u>2,534</u>
of which Singapore	730	808	160	210	202	235	187
Australia	796	804	132	263	172	237	175
Rep. of South Africa	2,870	3,272	659	824	792	999	864
U.S. of America	532	553	196	124	163	70	189
Hong Kong	1,068	1,083	252	282	271	278	256
India	1,115	1,323	299	281	297	446	367
Malaysia	539	664	133	167	150	214	139
<u>General Tariff Countries</u>	<u>7,324</u>	<u>7,058</u>	<u>1,597</u>	<u>1,645</u>	<u>1,672</u>	<u>2,142</u>	<u>1,687</u>
of which Bahrain	628	240	34	104	88	14	4
China	949	843	196	225	226	200	255
Japan	1,770	2,176	487	374	431	883	440
Taiwan	1,104	948	214	262	228	245	292
Korea Republic	377	367	100	79	84	104	114
Total Imports	<u>24,383^{3/}</u>	<u>25,313^{3/}</u>	<u>5,694</u>	<u>6,340</u>	<u>6,302</u>	<u>6,980</u>	<u>6,256</u>

1/ revised

2/ provisional

3/ adjusted for aircraft parts (See footnote to table 1)

Table 10 - Net EPZ exports, 1991 - 1993

Value Rs Mn

	1991 ^{1/}	1992 ^{2/}	1993				1993 ^{2/}
			1st Qr.	2nd Qr.	3rd Qr.	4th Qr.	
A. Total exports (f.o.b. value)	12,136	13,081	2,699	3,340	3,540	3,502	2,815
B. Total imports (c.i.f. value)	7,067	7,149	1,745	1,971	1,730	1,705	2,109
Net exports (A - B)	5,069	5,932	954	1,369	1,810	1,797	706
Net exports as % of total exports	42%	45%	35%	41%	51%	51%	25%

^{1/} revised

^{2/} provisional

Table 11 -- EPZ exports by main commodities, 1991 - 1993.

F.O.B. Value Rs Mn

Description of items	1991 ^{1/}	1992 ^{2/}	1992				1993	
			1st Qr.	2nd Qr.	3rd Qr.	4th Qr.	1st Qr.	2nd Qr.
Fish and fish preparations	296	295	71	70	74	80	68	
Textiles yarn, fabrics, made-up articles	493	468	130	116	115	108	135	
Pearls, precious and semi-precious stones	391	320	87	86	77	70	73	
Articles of apparel and clothing accessories	9,621	10,476	2,076	2,680	2,861	2,859	2,179	
Optical goods, n.e.s.	145	164	44	36	44	40	40	
Watches and clocks	550	630	143	175	163	149	155	
Toys, games and sporting goods	121	167	34	42	48	43	37	
Jewellery goldsmiths' and silversmiths' wares	157	154	32	40	40	42	32	
Other	362	407	82	95	118	111	96	
Total EPZ Exports	12,136	13,081	2,699	3,340	3,540	3,502	2,815	

^{1/} revised

^{2/} provisional

Table 12 - FYZ imports of main commodities, 1991 - 1993

Description of item	1991 ^{1/}	1992 ^{2/}	1993				1993 ^{2/}
			1st Qr.	2nd Qr.	3rd Qr.	4th Qr.	
Synthetic fibres suitable for spinning	58	27	17	7	2	1	2
Wool and other animal hair	228	215	59	100	37	15	70
Chemicals	292	291	76	76	71	68	68
Leather	98	124	24	38	31	31	32
Textile yarn and fabrics	3,979	4,202	996	1,174	1,037	995	1,206
Pearls, precious and semi-precious stones	355	314	74	84	83	73	95
Machinery including spare parts	719	677	196	165	139	177	291
Optical goods, watches and clocks, etc.	353	346	86	88	84	90	89
Jewellery	122	93	31	28	13	20	18
Other	863	860	186	211	233	231	238
Total imports	7,067	7,149	1,745	1,971	1,730	1,705	2,109

^{1/} revised

^{2/} provisional

