

M. S. ...

*Amelios*



MAURITIUS

# Economic Indicators

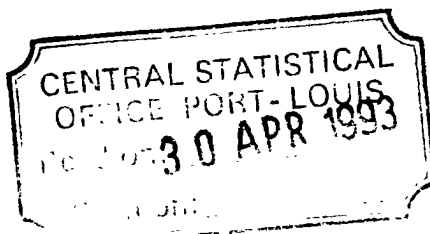
An Occasional Paper

ISSUE NO 165

23 APRIL 1993

1. INTERNATIONAL TRAVEL AND TOURISM -  
YEAR 1992
2. ROAD TRANSPORT & ACCIDENT STATISTICS -  
YEAR 1992

MINISTRY OF ECONOMIC PLANNING & DEVELOPMENT  
PORT LOUIS  
MAURITIUS



International Travel  
and Tourism - 1992

(Provisional Figures)

C O N T E N T S

	<u>Page</u>
Table 1 - Selected tourism statistics, 1988 - 1992	3
2 - Passenger traffic by month, 1990 - 1992	4
3 - Tourist arrivals by country of residence, 1991 - 1992	5
4 - Tourist arrivals by months, 1990 - 1992	6
5 - Monthly room occupancy rate for all hotels, 1990 - 1992	7
6 - Monthly bed occupancy rate for all hotels, 1990 - 1992	8
7 - Monthly room occupancy rate for large hotels, 1990 - 1992	9
8 - Monthly bed occupancy rate for large hotels, 1990 - 1992	10
9 - Employment in the tourist industry, 1988 - 1992	11

Table 1: - Selected tourism statistics, 1988 - 1992

Year	Number as at end of period			Tourist arrivals (Number)	Tourist nights (Million)	Tourist receipts (Rs Mn)
	Hotels	Rooms	Bedplaces			
1988	64	3,399	7,005	239,300	3.00	2,381
1989	67	3,605	7,374	262,790	3.20	2,796
1990	75	4,603	9,572	291,550	3.56	3,630
1991	80	5,064	10,482	300,670	3.70	3,940
1992	84 <sup>1/</sup>	5,271 <sup>1/</sup>	10,917 <sup>1/</sup>	330,880 <sup>1/</sup>	3.974 <sup>1/</sup>	4,585 <sup>1/</sup>
1991: <u>1st Qr.</u>	<u>76</u>	<u>4,661</u>	<u>9,710</u>	<u>70,370</u>	<u>0.849</u>	<u>999.0</u>
<u>2nd Qr.</u>	<u>77</u>	<u>4,700</u>	<u>9,800</u>	<u>65,040</u>	<u>0.798</u>	<u>889.0</u>
<u>1st Semester</u>	<u>77</u>	<u>4,700</u>	<u>9,800</u>	<u>135,410</u>	<u>1.647</u>	<u>1,888.0</u>
<u>3rd Qr.</u>	<u>80</u>	<u>4,777</u>	<u>9,925</u>	<u>78,340</u>	<u>0.970</u>	<u>909.0</u>
<u>4th Qr.</u>	<u>80</u>	<u>5,064</u>	<u>10,482</u>	<u>86,920</u>	<u>1.083</u>	<u>1,143.0</u>
<u>2nd Semester</u>	<u>80</u>	<u>5,064</u>	<u>10,482</u>	<u>165,260</u>	<u>2.053</u>	<u>2,052.0</u>
1992: <u>1st Qr.</u>	<u>82</u>	<u>5,146</u>	<u>10,646</u>	<u>79,380</u>	<u>0.958</u>	<u>1,258.0</u>
<u>2nd Qr.</u>	<u>85<sup>1/</sup></u>	<u>5,290<sup>1/</sup></u>	<u>10,921<sup>1/</sup></u>	<u>76,360<sup>2/</sup></u>	<u>0.913<sup>1/</sup></u>	<u>996.0<sup>2/</sup></u>
<u>1st Semester</u>	<u>85<sup>1/</sup></u>	<u>5,290<sup>1/</sup></u>	<u>10,921<sup>1/</sup></u>	<u>155,740<sup>2/</sup></u>	<u>1.871<sup>1/</sup></u>	<u>2,254.0<sup>1/</sup></u>
<u>3rd Qr.</u>	<u>84<sup>1/</sup></u>	<u>5,266<sup>1/</sup></u>	<u>10,895<sup>1/</sup></u>	<u>82,200<sup>1/</sup></u>	<u>1.003<sup>1/</sup></u>	<u>1,061.0<sup>1/</sup></u>
<u>4th Qr.</u>	<u>84<sup>1/</sup></u>	<u>5,271<sup>1/</sup></u>	<u>10,917<sup>1/</sup></u>	<u>92,940<sup>1/</sup></u>	<u>1.100<sup>1/</sup></u>	<u>1,270.0<sup>1/</sup></u>
<u>2nd Semester</u>	<u>84<sup>1/</sup></u>	<u>5,271<sup>1/</sup></u>	<u>10,917<sup>1/</sup></u>	<u>175,140<sup>1/</sup></u>	<u>2.103<sup>1/</sup></u>	<u>2,331.0<sup>1/</sup></u>

<sup>1/</sup> Provisional

<sup>2/</sup> revised



Table 2 - Passenger traffic by month, 1990 - 1992

Month	Number					
	1990		1991		1992	
	Arrivals	Departures	Arrivals	Departures	Arrivals	Departures
January	38,640	43,540	39,540	45,200	45,490	52,660
February	26,880	31,400	25,220	29,030	31,660	35,010
March	27,150	29,170	32,070	29,890	31,370	32,180
<u>1st Quarter</u>	<u>92,670</u>	<u>104,110</u>	<u>96,830</u>	<u>104,120</u>	<u>108,520<sup>2/</sup></u>	<u>119,850<sup>2/</sup></u>
April	34,770	31,840	31,340	33,590	42,000 <sup>1/</sup>	39,500 <sup>1/</sup>
May	32,210	36,140	32,780	33,490	33,400 <sup>1/</sup>	38,000 <sup>1/</sup>
June	27,020	28,920	28,730	31,060	33,600 <sup>1/</sup>	30,700 <sup>1/</sup>
<u>2nd Quarter</u>	<u>94,000</u>	<u>96,900</u>	<u>92,850</u>	<u>98,140</u>	<u>109,000<sup>1/</sup></u>	<u>108,200<sup>1/</sup></u>
<u>1st Semester</u>	<u>186,670</u>	<u>201,010</u>	<u>189,680</u>	<u>202,260</u>	<u>217,520<sup>1/</sup></u>	<u>228,050<sup>1/</sup></u>
July	34,890	29,850	36,070	29,680	38,200 <sup>1/</sup>	31,000 <sup>1/</sup>
August	44,980	44,840	46,660	50,260	47,800 <sup>1/</sup>	48,200 <sup>1/</sup>
September	34,140	38,620	30,730	32,020	35,000 <sup>1/</sup>	35,400 <sup>1/</sup>
<u>3rd Quarter</u>	<u>114,010</u>	<u>113,310</u>	<u>113,460</u>	<u>111,960</u>	<u>121,000<sup>1/</sup></u>	<u>114,600<sup>1/</sup></u>
October	37,000	33,570	37,080	34,750	40,800 <sup>1/</sup>	41,200 <sup>1/</sup>
November	34,520	37,520	37,450	39,280	40,100 <sup>1/</sup>	43,000 <sup>1/</sup>
December	46,000	36,820	49,010	37,370	53,700 <sup>1/</sup>	40,900 <sup>1/</sup>
<u>4th Quarter</u>	<u>117,520</u>	<u>107,910</u>	<u>123,540</u>	<u>111,400</u>	<u>134,600<sup>1/</sup></u>	<u>125,100<sup>1/</sup></u>
<u>2nd Semester</u>	<u>231,530</u>	<u>221,220</u>	<u>237,000</u>	<u>223,360</u>	<u>255,600<sup>1/</sup></u>	<u>239,700<sup>1/</sup></u>
Whole Year	418,200	422,230	426,680	425,620	473,120 <sup>1/</sup>	467,750 <sup>1/</sup>

<sup>1/</sup> provisional  
<sup>2/</sup> revised

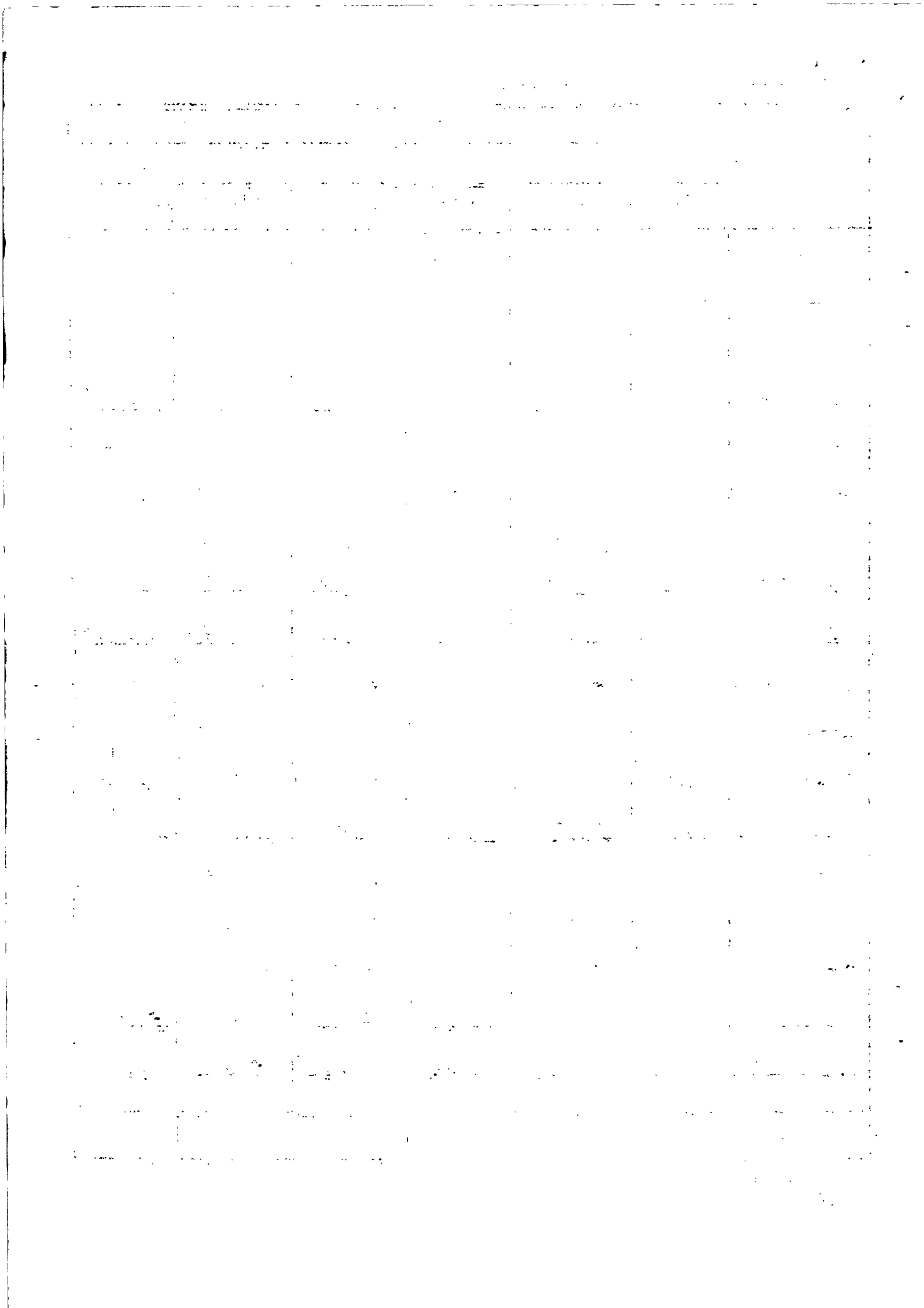


Table 3 - Tourist arrivals by country of residence, 1991 - 1992

Country of residence	1991	1992 <sup>1/</sup>	Number											
			1991						1992					
			1st Qr.	2nd Qr.	3rd Qr.	4th Qr.	1st Qr.	2nd Qr.	3rd Qr.	4th Qr.	1st Qr.	2nd Qr.	3rd Qr.	4th Qr.
France	58,370	68,060	13,930	11,310	25,240	13,190	19,940	18,390	15,380	33,770	13,890	20,400		
Germany	24,140	29,060	5,640	5,240	10,880	5,370	7,890	6,810	7,130	13,940	6,750	8,370		
Italy	13,240	15,780	2,430	2,590	5,020	3,770	4,450	4,120	2,860	6,980	3,950	4,850		
Switzerland	8,930	9,670	2,180	1,420	3,600	2,130	3,200	1,930	2,090	4,020	2,200	3,450		
United Kingdom	20,660	22,650	4,050	5,470	9,520	5,320	5,820	4,830	5,730	10,560	5,590	6,500		
Belgium	2,010	2,170	380	300	680	670	660	320	540	860	660	650		
Madagascar	6,010	6,470	1,160	1,250	2,410	1,290	2,310	1,530	1,480	3,010	1,310	2,150		
Reunion Island	77,840	82,330	20,590	15,640	36,230	23,900	17,710	21,150	17,510	38,660	25,070	18,600		
Seychelles	3,420	4,190	340	590	930	1,030	1,460	620	1,100	1,720	1,070	1,400		
Kenya	1,240	1,450	310	260	570	270	400	280	640	920	250	280		
South African Rep.	43,020	43,210	11,070	9,580	20,650	10,740	11,630	9,800	9,770	19,570	10,840	12,800		
Zambia	890	480	250	320	570	190	130	130	80	210	160	110		
Zimbabwe	3,580	3,690	700	1,050	1,750	1,010	820	480	940	1,420	1,070	1,200		
Australia	2,960	4,090	710	500	1,210	650	1,100	1,000	1,330	2,330	740	1,020		
India	8,450	8,590	1,170	1,540	4,710	2,050	1,730	1,070	2,960	4,030	2,140	2,420		
U.S.A.	1,720	1,810	340	600	940	380	400	340	500	840	410	560		
Singapore	2,010	1,980	360	550	910	500	600	380	460	840	490	650		
Japan	3,750	4,060	820	790	1,610	1,070	1,070	950	920	1,870	1,070	1,120		
Other countries	18,390	21,140	3,940	4,040	7,980	4,810	5,600	5,250	4,940	10,190	4,540	6,410		
All countries	300,670	330,880	70,370	65,040	135,410	78,340	86,920	79,380	76,360	155,740	82,200	92,940		

1/ Provisional

2/ Revised



Table 4 - Tourist arrivals by months, 1990 - 1992

Month	Number		
	1990	1991	1992
January	27,950	28,620	33,760
February	19,520	18,110	23,220
March	19,630	23,640	22,400
<u>1st Quarter</u>	<u>67,100</u>	<u>70,370</u>	79,380
April	25,570	22,540	30,630 <sup>2/</sup>
May	23,210	23,790	23,800 <sup>2/</sup>
June	17,990	18,710	21,930 <sup>2/</sup>
<u>2nd Quarter</u>	<u>66,770</u>	<u>65,040</u>	<u>76,360<sup>2/</sup></u>
<u>1st Semester</u>	<u>133,870</u>	<u>135,410</u>	<u>155,740<sup>2/</sup></u>
July	22,180	23,400	24,400 <sup>1/</sup>
August	31,120	33,410	31,000 <sup>1/</sup>
September	23,190	21,530	23,800 <sup>1/</sup>
<u>3rd Quarter</u>	<u>76,790</u>	<u>78,340</u>	<u>82,200<sup>1/</sup></u>
October	26,940	27,600	30,100 <sup>1/</sup>
November	24,300	26,600	28,500 <sup>1/</sup>
December	29,650	32,720	34,340 <sup>1/</sup>
<u>4th Quarter</u>	<u>80,890</u>	<u>86,920</u>	<u>92,940<sup>1/</sup></u>
<u>2nd Semester</u>	<u>157,680</u>	<u>165,260</u>	<u>175,140<sup>1/</sup></u>
Whole Year	291,550	300,670	330,880 <sup>1/</sup>

1/ provisional

2/ revised

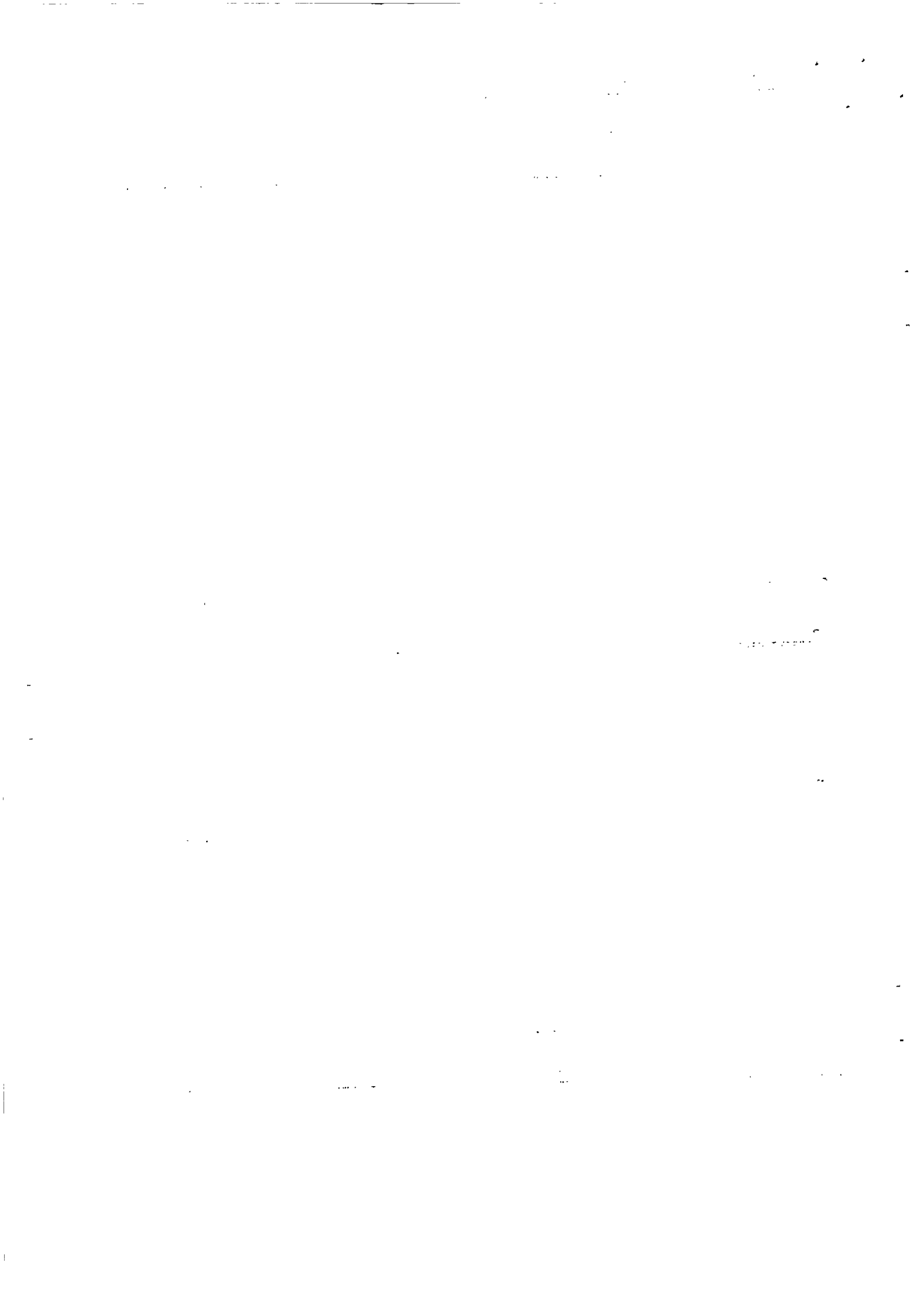


Table 5 - Monthly room occupancy rate for all hotels, 1990 - 1992

Month	Percentage		
	1990	1991	1992
January	68.6	55.0	56.4
February	61.9	48.9	51.0
March	57.4	48.1	48.9
<u>1st Quarter</u>	<u>62.6</u>	<u>50.7</u>	<u>52.0</u>
April	58.6	51.0	55.0
May	61.0	51.3	52.0
June	49.5	41.5	42.0
<u>2nd Quarter</u>	<u>56.5</u>	<u>48.1</u>	<u>50.0</u>
<u>1st Semester</u>	<u>59.5</u>	<u>49.4</u>	<u>51.0</u>
July	58.4	45.0	43.0 <u>1/</u>
August	64.4	60.4	51.2 <u>1/</u>
September	65.3	54.2	55.7 <u>1/</u>
<u>3rd Quarter</u>	<u>62.9</u>	<u>53.1</u>	<u>50.0 1/</u>
October	68.3	60.6	60.8 <u>1/</u>
November	68.8	63.3	63.4 <u>1/</u>
December	58.4	56.0	56.6 <u>1/</u>
<u>4th Quarter</u>	<u>65.0</u>	<u>59.9</u>	<u>60.3 1/</u>
<u>2nd Semester</u>	<u>64.0</u>	<u>56.9</u>	<u>55.2 1/</u>
Whole Year	61.8	53.1	53.2 <u>1/</u>

1/ provisional

Table 6 - Monthly bed occupancy rate for all hotels, 1990 - 1992

Month	Percentage		
	1990	1991	1992
January	62.2	50.3	50.8
February	53.0	43.0	44.7
March	49.0	41.1	41.8
<u>1st Quarter</u>	<u>54.8</u>	<u>44.9</u>	<u>46.0</u>
April	51.1	46.2	49.0
May	53.7	45.0	45.5
June	41.3	36.2	36.5
<u>2nd Quarter</u>	<u>48.8</u>	<u>42.6</u>	<u>43.7</u>
<u>1st Semester</u>	<u>51.8</u>	<u>43.8</u>	<u>44.9</u>
July	50.9	40.2	39.0 1/
August	59.6	56.4	47.0 1/
September	58.0	48.0	49.9 1/
<u>3rd Quarter</u>	<u>56.3</u>	<u>48.1</u>	<u>45.2 1/</u>
October	59.7	54.3	54.9 1/
November	59.6	52.3	52.0 1/
December	51.9	50.3	51.2 1/
<u>4th Quarter</u>	<u>57.0</u>	<u>52.3</u>	<u>52.7 1/</u>
<u>2nd Semester</u>	<u>56.7</u>	<u>50.6</u>	<u>49.0 1/</u>
Whole Year	54.3	47.1	47.0 1/

1/ provisional

Table 7 - Monthly room occupancy rate for large hotels, 1990 - 1992

Month	Percentage		
	1990	1991	1992
January	82.1	66.8	66.3
February	80.5	61.4	63.1
March	73.6	60.9	58.3
<u>1st Quarter</u>	<u>78.7</u>	<u>63.1</u>	<u>62.7</u>
April	74.7	66.8	68.9
May	77.6	66.6	64.2
June	68.8	52.4	52.5
<u>2nd Quarter</u>	<u>73.9</u>	<u>61.2</u>	<u>61.9</u>
<u>1st Semester</u>	<u>76.4</u>	<u>62.6</u>	<u>62.3</u>
July	73.9	58.7	53.0 <u>1/</u>
August	74.8	72.8	57.4 <u>1/</u>
September	74.5	63.9	68.8 <u>1/</u>
<u>3rd Quarter</u>	<u>74.4</u>	<u>65.1</u>	<u>59.7 1/</u>
October	83.2	74.6	70.4 <u>1/</u>
November	84.6	78.0	76.9 <u>1/</u>
December	78.1	69.1	68.4 <u>1/</u>
<u>4th Quarter</u>	<u>79.2</u>	<u>73.8</u>	<u>71.9 1/</u>
<u>2nd Semester</u>	<u>77.0</u>	<u>69.6</u>	<u>65.8 1/</u>
Whole Year	76.7	66.1	64.1 <u>1/</u>

1/ provisional

Table 8 - Monthly bed occupancy rate for large hotels, 1990 - 1992

Month	Percentage		
	1990	1991	1992
January	75.1	61.6	61.0
February	73.7	54.8	57.0
March	63.6	53.8	52.5
<u>1st Quarter</u>	<u>69.7</u>	<u>56.8</u>	<u>56.0</u>
April	66.6	61.8	63.0
May	68.9	59.8	57.0
June	59.6	47.1	46.5
<u>2nd Quarter</u>	<u>65.3</u>	<u>56.5</u>	<u>55.5</u>
<u>1st Semester</u>	<u>67.6</u>	<u>56.6</u>	<u>55.8</u>
July	64.8	54.1	48.3 <u>1/</u>
August	67.2	67.5	53.1 <u>1/</u>
September	67.4	59.1	64.2 <u>1/</u>
<u>3rd Quarter</u>	<u>66.6</u>	<u>60.2</u>	<u>55.2 1/</u>
October	75.3	59.0	55.0 <u>1/</u>
November	75.1	65.0	65.1 <u>1/</u>
December	64.0	64.0	66.6 <u>1/</u>
<u>4th Quarter</u>	<u>71.3</u>	<u>65.9</u>	<u>65.6 1/</u>
<u>2nd Semester</u>	<u>69.2</u>	<u>63.2</u>	<u>60.4 1/</u>
Whole Year	68.4	60.0	58.1 <u>1/</u>

1/ provisional

Table 9 - Employment<sup>1/</sup> in the tourist industry, 1988 - 1992

	1988		1989		1990		1991		1992	
	March	September	March	September	March	September	March	September	March	September
Restaurants	855	867	949	1,019	935	900	919	763	772	820
Hotels	4,045	4,116	4,379	4,600	5,581	5,995	6,422	6,860	7,592	7,800
Travel and Tourism	1,893	1,991	1,877	2,065	2,386	2,775	2,759	2,765	2,887	2,950
Total	6,793	6,974	7,205	7,684	8,902	9,670	10,100	10,388	11,251	11,570

<sup>1/</sup> large establishments only (i.e. employing 10 or more persons)