



MAURITIUS



Economic Indicators

An Occasional Paper

ISSUE NO 164

16 April, 1993

1. EXTERNAL TRADE - YEAR 1992
2. PROVISIONAL FIGURES OF POPULATION AND VITAL STATISTICS - YEAR 1992

MINISTRY OF ECONOMIC PLANNING & DEVELOPMENT
PORT LOUIS
MAURITIUS

External Trade - Year 1992

N O T E S

Figures for 1991 and 1992 are provisional and subject to revision.

1. COVERAGE

EXPORTS

- Cover : 1. Domestic exports (including exports from Export Processing Zone)
2. Re-Exports
3. Export ex Warehouse
4. Returned goods
- Include : 1. Government, Parcel Post and Air Freight
- Exclude : 1. Trade with Outer Islands
2. Ships' stores and bunkers

IMPORTS

- Cover : 1. Landed merchandise sent to warehouse for subsequent delivery
2. Landed merchandise issued for home consumption
- Include : 1. Government, Parcel Post and Air Freight
2. Donations from other Government and International Organisations
- Exclude : 1. Trade with Outer Islands
2. Bullion and species

2. VALUATION AND STATUS OF FIGURES

Exports are valued F.O.B. and imports C.I.F.

F.O.B. Free on Board

C.I.F. Cost, Insurance and Freight

All figures quoted are in Mauritian Rupees

3. COMMODITY CLASSIFICATION

The classification used for the compilation of trade statistics is the Standard International Trade Classification (Revised III) or S.I.T.C. (Rev. III). However, import and export bills of entry are being worked upon according to the Harmonized Commodity Description and Coding System Nomenclature, shortly known as the Harmonized System Nomenclature (H.S.N.).

4. ROUNDING OF FIGURES

Figures have been rounded off to the nearest final digit and in some cases to the nearest one decimal place and as a result in some tables there may be discrepancies between the sum of the constituent items and the total.

5. SYMBOLS

- Nil or negligible
- ... Not available
- .- Not applicable

6. ABBREVIATIONS

- Rs : Rupees
- 000 : Thousand
- Mn : Million
- M.ton : Metric ton : 1,000 kilos
- No. : Number
- M² : Square metre

Table 1 - Balance of Visible Trade, 1991 - 1992

Value Rs Mn

	1991 ^{1/}	1992 ^{2/}	1991				1992			
			1st Qr.	2nd Qr.	3rd Qr.	4th Qr.	1st Qr.	2nd Qr.	3rd Qr.	4th Qr.
Exports of goods	18,700	20,072	4,078	3,846	5,361	5,415	4,375	4,287	5,580	5,830
Domestic exports	18,084	19,513	3,831	3,734	5,236	5,283	4,211	4,186	5,465	5,651
Re-exports	615	559	247	112	125	132	164	101	115	179
Ships' Stores and Bunkers	600	500	150	150	150	150	125	125	125	125
A. Total Exports (f.o.b)	19,300	20,572	4,228	3,996	5,511	5,565	4,500	4,412	5,705	5,955
B. Total Imports (c.i.f)	24,383	25,313	5,423	5,628	6,349	6,983	5,694	6,340	6,732	6,350
Total Value of Trade (A + B)	43,683	45,885	9,651	9,624	11,860	12,548	10,194	10,752	12,007	12,935
Balance of Visible Trade (A - B)	-5,083	-4,741	-1,195	-1,632	-838	-1,418	-1,194	-1,928	-596	-1,025

^{1/} revised

^{2/} provisional

^{3/} note that due to over reporting in value of aircraft parts entering the country after repairs at import figures have been adjusted as follows: Rs -267 million in 1991 and Rs -429 million in 1992. Import data by country and all balances have been adjusted accordingly.

Table 2 - Price (unit value) indices of exports and imports and terms of trade
1989 - 1992

P e r i o d	Price indices		Terms of trade*
	Export	Import	
	Base Year : 1988 = 100		
1989	111	119	93
1990	125	127	98
1991	133	133	100
1992	142	135	105
1991 : Qr. 1	130	131	99
Qr. 2	134	132	102
Qr. 3	138	138	100
Qr. 4	132	134	99
1992 : Qr. 1	136	132	103
Qr. 2	145	138	105
Qr. 3	140	133	105
Qr. 4	148	140	106

* Ratio of export to import price index.

A rise in this ratio indicates that the terms of trade have moved in favour of Mauritius.

Table 3 - Domestic exports of main commodities - value, 1991 - 1992

Commodity/Sector	1991 ^{1/}	1992 ^{2/}	1991				1992			
			1st Qr.	2nd Qr.	3rd Qr.	4th Qr.	1st Qr.	2nd Qr.	3rd Qr.	4th Qr.
Sugar	5,298	5,668	1,375	464	1,895	1,564	1,347	683	1,754	1,885
Molasses	96	91	15	6	23	52	16	8	41	27
Tea	83	95	32	18	17	17	30	23	11	31
EPZ	12,136	13,081	2,310	3,131	3,201	3,494	2,699	3,340	3,540	3,502
Cut flowers (non EPZ)	78	87	20	17	13	28	25	15	17	30
Chemicals (non EPZ)	95	106	21	23	27	24	12	8	34	52
Other	298	385	59	75	60	104	82	109	68	124
Total Exports	18,084	19,513	3,831	3,734	5,236	5,283	4,211	4,186	5,465	5,651

^{1/} revised

^{2/} provisional

Table 4 - Domestic exports of selected commodities, quantity, 1991 - 1992

Commodity	Unit	1991 ^{1/}	1992 ^{2/}	1991				1992			
				1st Qr.	2nd Qr.	3rd Qr.	4th Qr.	1st Qr.	2nd Qr.	3rd Qr.	4th Qr.
Sugar	(000) m. ton	551	598	144	47	191	163	139	68	201	190
Molasses	"	130	131	18	6	34	73	19	11	62	39
Tea	m. ton	4,494	5,418	1,623	1,008	890	973	1,742	1,469	737	1,470
Fish and fish preparations	"	6,748	7,505	1,390	1,789	1,401	2,168	1,835	1,738	2,027	1,904
Fertilizers	"	17,690	20,720	3,277	3,490	4,462	6,461	2,164	1,318	5,971	11,267

^{1/} revised

^{2/} provisional

Table 5 - Total exports ^{1/} by main countries of destination, 1991 - 1992

F.O.B. Value Rs Mn

Country of destination	1991 ^{2/}		1992 ^{3/}				1992			
	1991 ^{2/}	1992 ^{3/}	1st Qr.	2nd Qr.	3rd Qr.	4th Qr.	1st Qr.	2nd Qr.	3rd Qr.	4th Qr.
1. <u>Preferential Tariff Countries</u>	18,114	19,488	3,945	3,690	5,225	5,253	4,246	4,183	5,414	5,645
(a) <u>E.E.C Countries</u>	15,072	15,977	3,264	2,995	4,381	4,432	3,546	3,353	4,407	4,671
of which										
United Kingdom	6,750	6,992	1,732	858	2,192	1,967	1,737	1,174	1,870	2,212
France	3,727	4,206	772	1,001	838	1,118	899	1,093	1,039	1,175
Fed. Rep. of Germany	2,055	1,778	340	545	588	581	369	437	496	476
Italy	918	937	190	223	198	308	219	234	203	281
(b) <u>Other Preferential Tariff Countries</u>	3,042	3,511	681	695	844	821	700	830	1,007	974
of which										
U.S. of America	2,209	2,500	404	524	656	623	474	623	695	708
2. <u>General Tariff Countries</u>	586	584	133	155	136	162	129	104	166	186
Total Exports	18,700	20,072	4,078	3,846	5,361	5,415	4,375	4,287	5,580	5,830

^{1/} excluding ships' stores and bunkers

^{2/} revised and provisional

^{3/} provisional

Table 6 - Imports by section, 1991 - 1992

C.I.F. Value Rs Mn

S.I.T.C Section	Description	1991 ^{1/}	1992 ^{2/}	1991				1992			
				1st Qr.	2nd Qr.	3rd Qr.	4th Qr.	1st Qr.	2nd Qr.	3rd Qr.	4th Qr.
0	Food and live animals	2,692	2,945	688	585	587	832	653	733	744	816
1	Beverages and tobacco	113	131	23	26	30	34	33	32	26	41
2	Crude materials inedible, except fuels	801	753	172	182	264	184	202	227	180	145
3	Mineral fuels, lubricants and related materials	2,053	1,930	565	432	464	592	349	549	482	550
4	Animal and vegetable oils and fats	255	275	69	45	69	73	43	103	27	101
5	Chemicals	1,739	1,902	387	434	471	447	448	472	509	474
6	Manufactured goods classi- fied chiefly by material	8,624	9,142	1,903	2,132	2,378	2,211	2,045	2,444	2,246	2,404
7	Machinery and transport equipment	5,840 ^{3/}	5,720 ^{3/}	1,126	1,235	1,526	1,953	1,439	1,141	1,477	1,665
8	Miscellaneous manufactured articles	2,160	2,368	464	531	535	630	476	601	574	717
9	Other commodities and transactions	106	147	25	28	25	28	8	38	36	65
	Total Imports	24,383	25,313	5,423	5,628	6,349	6,983	5,694	6,340	6,302	6,980

1/ revised

2/ provisional

3/ adjusted for aircraft parts (see footnote to table 1)

Table 7 -- Imports of main commodities, value, 1991 - 1992

C.I.F. Value Rs Mn

Commodity	1991 ^{1/}	1992 ^{2/}	1991				1992			
			1st Qr.	2nd Qr.	3rd Qr.	4th Qr.	1st Qr.	2nd Qr.	3rd Qr.	4th Qr.
Meat and meat preparations	361	380	65	69	91	136	89	91	79	121
Rice	314	277	112	56	-	146	56	73	89	58
Wheaten flour	76	53	40	12	13	11	13	27	7	6
Wheat	114	198	-	29	61	24	57	46	32	62
Dairy products	547	598	151	119	132	145	148	138	168	143
Vegetables and fruits	370	383	79	91	104	96	72	124	100	87
Textile fibres, etc.	468	379	95	97	173	103	119	143	89	29
Refined petroleum products	1,783	1,625	527	333	429	494	313	443	420	448
Fixed vegetable oils & fats	200	218	59	31	55	55	29	89	17	83
Medicinal and pharmaceutical products	338	401	65	82	92	99	88	110	113	91
Textile yarn	1,717	1,825	384	414	481	438	465	504	444	410
Paper, paperboard and articles thereof	360	387	89	93	89	89	96	89	92	110
Textile fabrics	2,910	3,174	651	731	764	764	692	844	788	850
Cement	523	554	100	144	145	134	127	144	108	175
Pearls, precious and semi-precious stones	380	351	74	96	106	104	85	90	89	87
Iron and steel	700	689	132	195	252	121	131	219	166	172
Manufactures of metal, n.e.s.	665	643	172	140	176	177	143	164	163	172
General industrial machinery equipment	739	793	144	182	216	197	208	202	200	183
Telecommunications and sound recording and reproducing apparatus and equipment	408	491	80	99	89	140	87	90	127	187
Other machinery and parts ^{3/}	3,415	2,809	628	590	903	1,294	769	590	859	591
Road vehicles	1,188	1,310	274	274	318	322	380	264	291	379
Watches and clocks	338	355	93	97	60	88	82	90	80	104
Aircraft and marine vessel	90	325	-	90	-	-	-	-	-	325
Other	6,379	7,095	1,409	1,564	1,600	1,806	1,445	1,766	1,781	2,107
Total Imports	24,385 ^{3/}	25,315 ^{3/}	5,423	5,628	6,349	6,983	5,694	6,340	6,302	6,980

^{1/} revised ^{2/} provisional ^{3/} adjusted for aircraft parts (see footnote to table 1)

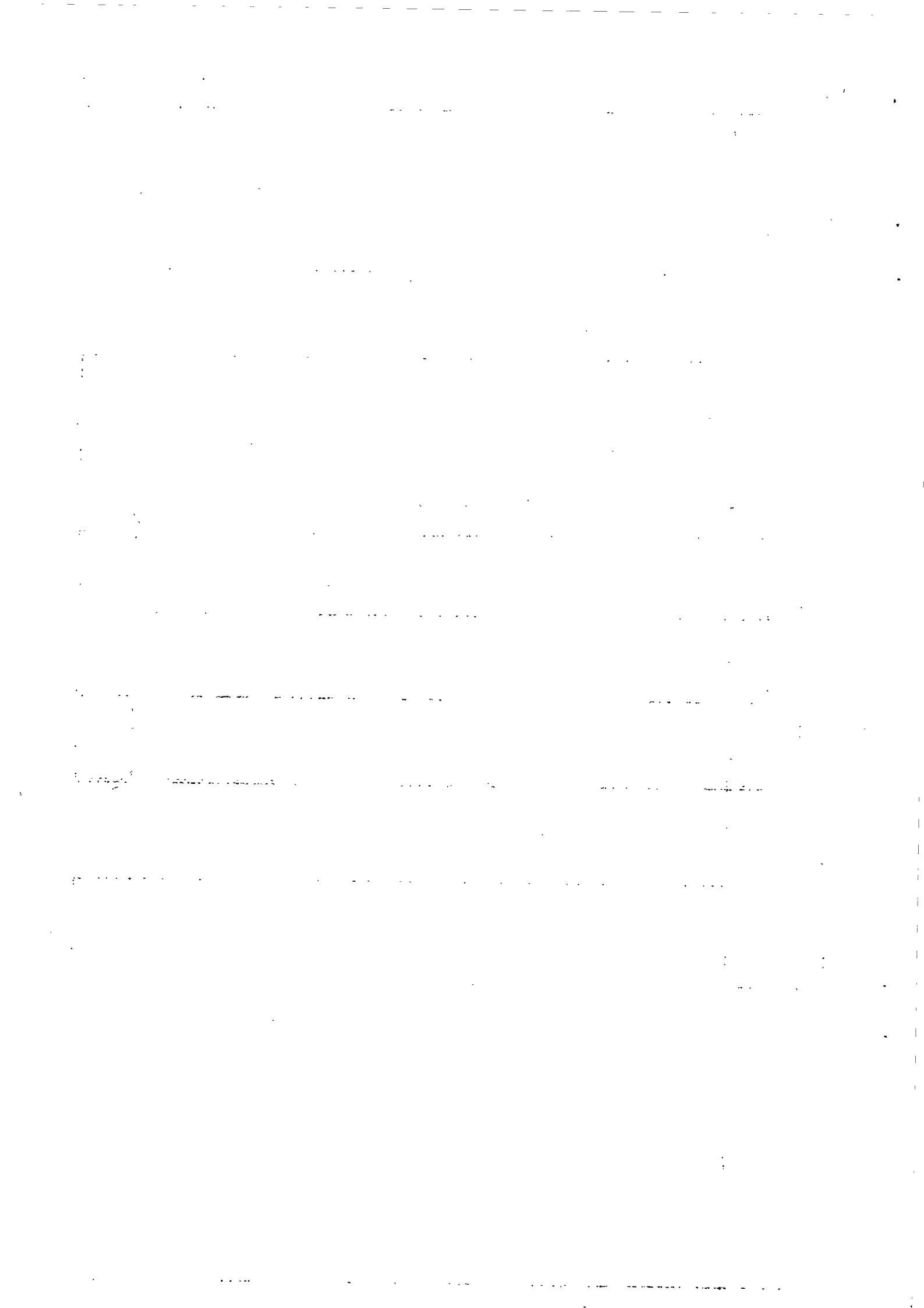


Table 8 - Imports of selected commodities, quantity, 1991 - 1992^{1/}

Commodity	Unit	1991	1992	1991				1992			
				1st Qr.	2nd Qr.	3rd Qr.	4th Qr.	1st Qr.	2nd Qr.	3rd Qr.	4th Qr.
Rice	(000) m. ton	76	64	27	13	-	36	13	16	22	13
Wheaten flour	"	18	12	10	3	3	2	3	6	2	1
Wheat	"	56	90	-	16	30	10	29	20	16	25
Dairy products	"	15	16	4	3	4	4	4	4	4	4
Vegetable edible oils and fats	"	25	26	8	4	6	7	3	10	2	11
Fertilisers manu- factured	"	48	53	4	13	20	10	12	9	13	19
Cotton fabrics	Mn M2	76	61	16	13	31	16	15	13	15	18
Cement	(000) m. ton	493	554	102	134	126	131	126	141	112	173
Iron and steel	"	84	89	16	24	28	16	18	25	24	21

^{1/} provisional

Table 9 - Imports by main countries of origin, 1991, 1992

C.I.F. Value Rs Mn

Country of origin	1991				1992			
	1st Qr.	2nd Qr.	3rd Qr.	4th Qr.	1st Qr.	2nd Qr.	3rd Qr.	4th Qr.
<u>1991</u> ^{1/}								
<u>1992</u> ^{2/}								
<u>Preferential Tariff Countries</u>	17,059	18,255	4,432	4,983	4,096	4,695	4,629	4,837
(a) <u>E.E.C. Countries</u>	8,020	8,184	1,952	2,388	1,923	2,116	2,221	1,924
of which France	3,283	3,373	814	1,123	745	847	1,032	750
Fed. Rep. of Germany	1,357	1,248	311	273	325	325	281	317
Italy	781	744	203	272	218	185	167	175
United Kingdom	1,658	1,774	404	461	450	445	455	425
(b) <u>Other Preferential Tariff Countries</u>	2,039	10,071	2,480	2,595	2,174	2,579	2,408	2,913
of which Singapore	730	808	193	218	160	210	202	235
Australia	796	804	231	198	132	263	172	237
Rep. of South Africa	2,870	3,272	810	885	659	824	792	999
U.S. of America	532	553	164	134	196	124	163	70
Hong Kong	1,068	1,083	300	283	252	282	271	278
India	1,115	1,323	293	353	299	281	297	446
Malaysia	539	664	142	157	133	167	150	214
<u>General Tariff Countries</u>	7,324	7,058	1,917	2,000	1,597	1,645	1,672	2,142
of which Bahrain	628	240	229	130	34	104	88	14
China	949	843	193	289	196	225	226	200
Japan	1,770	2,176	505	466	487	374	431	983
Taiwan	1,104	948	318	278	214	262	228	245
Korea Republic	377	367	87	115	100	79	84	104
Total Imports	24,383	25,313	6,349	6,983	5,694	6,340	6,302	6,980

1/ revised

2/ provisional

3/ adjusted for aircraft parts (See footnote to table 1)

Table 10 -- Net EPZ exports, 1991 - 1992 ✓

	1991	1992	1991								1992							
			1st Qr.		2nd Qr.		3rd Qr.		4th Qr.		1st Qr.		2nd Qr.		3rd Qr.		4th Qr.	
A. Total exports (f.o.b. value)	12,136	13,081	2,310	3,131	3,201	3,494	2,699	3,340	3,540	3,502								
B. Total imports (c.i.f. value)	7,067	7,149	1,631	1,738	1,960	1,738	1,745	1,971	1,730	1,705								
Net exports (A-B)	5,069	5,932	679	1,393	1,241	1,756	954	1,369	1,810	1,797								
Net exports as % of total exports	42%	45%	29%	44%	39%	50%	35%	41%	51%	51%								

✓ provisional

Table 11 -- EPZ exports by main commodities, 1991 -- 1992^{1/}
 F.O.B. Value Rs Mn

Description of items	1991	1992	1991				1992				
			1st Qr.	2nd Qr.	3rd Qr.	4th Qr.	1st Qr.	2nd Qr.	3rd Qr.	4th Qr.	
Fish and fish preparations	296	295	54	78	68	96	71	70	74	80	
Textiles yarn, fabrics, made-up articles	493	468	109	120	129	135	130	116	115	108	
Pearls, precious and semi-precious stones	391	300	74	100	107	110	87	86	77	70	
Articles of apparel and clothing accessories	9,621	10,476	1,770	2,471	2,587	2,793	2,076	2,680	2,861	2,859	
Optical goods, n.e.s	145	164	31	40	31	43	44	36	44	40	
Watches and clocks	550	630	133	147	120	150	143	175	163	149	
Toys, games and sporting goods	121	167	29	30	28	34	34	42	48	43	
Jewellery goldsmiths' and silversmiths' wares	157	154	28	41	40	48	32	40	40	42	
Other	362	407	82	104	91	85	82	95	118	111	
Total EPZ Exports	12,136	13,081	2,310	3,131	3,201	3,494	2,699	3,340	3,540	3,502	

^{1/} provisional

[The page contains extremely faint and illegible text, likely bleed-through from the reverse side of the document. The text is arranged in several horizontal lines across the page, but the characters are too light to be transcribed accurately.]

Table 12 - EPZ imports of main commodities, 1991 - 1992^{1/}

C.I.F. Value Rs. Mn

Description of item	1991	1992	1991				1992			
			1st Qr.	2nd Qr.	3rd Qr.	4th Qr.	1st Qr.	2nd Qr.	3rd Qr.	4th Qr.
Synthetic fibres suitable for spinning	58	27	15	18	17	18	17	7	2	1
Wool and other animal hair	228	215	49	62	72	45	59	100	37	19
Chemicals	292	291	76	70	71	75	76	76	71	68
Leather	98	124	27	23	24	24	24	38	31	31
Textile yarn and fabrics	3,979	4,202	910	1,007	1,087	975	996	1,174	1,037	995
Pearls, precious and semi-precious stones	355	344	66	88	103	98	74	84	83	73
Machinery including spare parts	719	677	199	157	198	165	196	165	139	177
Optical goods, watches and clocks, etc.	353	346	95	99	67	92	86	88	84	90
Jewellery	122	93	26	37	31	28	31	28	13	20
Other	863	860	168	187	290	218	186	211	233	231
Total imports	7,067	7,119	1,631	1,738	1,960	1,730	1,745	1,971	1,730	1,705

^{1/} provisional