

*Andreas*



MAURITIUS

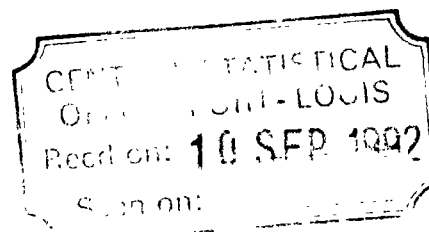
# Economic Indicators

An Occasional Paper

~~ISSUE NO 152~~

4 September, 1992

1. International Travel and Tourism  
1st September, 1992
2. Agricultural Production  
(January - June 1992)



MINISTRY OF ECONOMIC PLANNING & DEVELOPMENT  
PORT LOUIS  
MAURITIUS

## International Travel and Tourism - 1st Semester 1992

### Passenger traffic

Total passenger traffic during the second quarter of 1992 numbered 217,000, bringing the volume of traffic handled at the airport during the first semester to 445,000. Compared to the figure of 392,000 during the same period of 1991, this amounts to an increase of the order of 14%.

It will be remembered that the corresponding rate of increase for 1991 was 1.1%.

The number of arrivals for the semester was 217,090 while departures numbered 228,060.

### Tourist arrivals

Tourist arrivals during the semester is estimated at around 155,000, an increase of 14% compared to the corresponding period of last year when it was 135,410. The situation seems to be picking up after the low growth rate (1%) observed during the first semester of 1991. The growth during the current semester is now closer to the one obtained in 1990, when the corresponding figure was 14.6%.

The main tourist generating countries continued to be Reunion, France and the Republic of South Africa with respectively 42,000, 29,000 and 23,000 tourists. Tourists from these countries together represented 60% of total tourist arrivals.

Tourists from the traditional European markets grew by 18% relative to the corresponding semester of 1991 to reach 64,900, and accounted for 42% of all tourist arrivals. France led the way with 45% of this European market, followed by the United Kingdom (19%), Germany (18%), the remaining 18% coming from Italy, Switzerland and Belgium.

Reunion Island continued to be the most important short-haul market with a share of 27% of all tourist arrivals and an increase of 17% over the first semester of 1991.

The Republic of South Africa kept its position as the most important medium-haul market for Mauritius with 23,000 tourists, that is, an increase of 12% over the corresponding period of last year. Tourists from this region accounted for 15% of all tourist arrivals.

Tourist arrivals from the Malagasy Republic, India and Japan amounted to 2,800, 5,900 and 1,800 respectively.

In the light of information available for the first semester, it is expected that the total number of tourists arriving during this year may be around 330,000.

### Tourist nights

Assuming that the overall average length of stay has remained at 12 nights per tourist, as in the past few years, the total number of tourist nights spent in the country for the first semester of 1992 is estimated to be of the order of 1.9 million. This number was 1.625 million during the first semester of 1991.

### Occupancy rates

There was an increase of 590 in the number of rooms available for renting to tourists during the period. The total number of rooms stood at 5,290 at the end of June 1992.

The overall room and bed occupancy rates for all hotels have both increased marginally by one percentage point during the semester to 51% and 45% respectively. In the larger hotels these rates have stayed at around the same level as last year, that is, at around 62% and 56% respectively.

### Tourist receipts

Gross tourist receipts during the period are estimated at 2,061 million rupees, representing an increase of about 10% over the corresponding period of last year. This amounts to an average receipt per tourist of about 13,300 rupees. On this trend, it is estimated that tourist receipts for 1992 may reach around 4.4 thousand million rupees.

### Employment

The number of persons employed in tourism establishments with 10 or more persons as at the end of March 1992 was 11,250, which represents an increase of about 11% over the corresponding figure of 10,100 for March 1991.

Central Statistical Office,  
Ministry of Economic Planning and Development,  
PORT LOUIS.

August 1992

Table 1 - Selected tourism statistics, 1987 - 1992

Year	Number as at end of period			Tourist arrivals (Number)	Tourist nights (Million)	Tourist receipts (Rs Mn)
	Hotels	Rooms	Bedplaces			
1987	60	3,108	6,418	207,570	2.37	1,786
1988	64	3,399	7,005	239,300	3.00	2,381
1989	67	3,605	7,374	262,790	3.20	2,796
1990	75	4,603	9,572	291,550	3.56	3,630
1991	80	5,064	10,482	300,670	3.61 <sup>2/</sup>	3,940 <sup>2/</sup>
1991: <u>1st Qr.</u>	<u>76</u>	<u>4,661</u>	<u>9,710</u>	<u>70,370</u>	<u>0.844<sup>2/</sup></u>	<u>999.0</u>
<u>2nd Qr.</u>	<u>77</u>	<u>4,700</u>	<u>9,800</u>	<u>65,040</u>	<u>0.781<sup>2/</sup></u>	<u>889.0<sup>2/</sup></u>
<u>1st Semester</u>	<u>77</u>	<u>4,700</u>	<u>9,800</u>	<u>135,410</u>	<u>1.625<sup>2/</sup></u>	<u>1,888.0<sup>2/</sup></u>
<u>3rd Qr.</u>	<u>80</u>	<u>4,777</u>	<u>9,925</u>	<u>78,340</u>	<u>0.940<sup>2/</sup></u>	<u>909.0<sup>2/</sup></u>
<u>4th Qr.</u>	<u>80</u>	<u>5,064</u>	<u>10,482</u>	<u>86,920</u>	<u>1.045<sup>2/</sup></u>	<u>1,143.0<sup>2/</sup></u>
<u>2nd Semester</u>	<u>80</u>	<u>5,064</u>	<u>10,482</u>	<u>165,260</u>	<u>1.985<sup>2/</sup></u>	<u>2,052.0<sup>2/</sup></u>
1992: <u>1st Qr.</u>	<u>82</u>	<u>5,146<sup>1/</sup></u>	<u>10,646<sup>1/</sup></u>	<u>78,960<sup>2/</sup></u>	<u>0.948<sup>2/</sup></u>	<u>1,125.0<sup>1/</sup></u>
<u>2nd Qr.</u>	<u>85<sup>1/</sup></u>	<u>5,290<sup>1/</sup></u>	<u>10,921<sup>1/</sup></u>	<u>76,100<sup>1/</sup></u>	<u>0.913<sup>1/</sup></u>	<u>936.0<sup>1/</sup></u>
<u>1st Semester</u>	<u>85<sup>1/</sup></u>	<u>5,290<sup>1/</sup></u>	<u>10,921<sup>1/</sup></u>	<u>155,060<sup>1/</sup></u>	<u>1.861<sup>1/</sup></u>	<u>2,061.0<sup>1/</sup></u>

1/ provisional

2/ revised

Table 2 - Passenger traffic by month, 1990 - 1992

Month	Number					
	1990		1991		1992	
	Arrivals	Departures	Arrivals	Departures	Arrivals	Departures
January	38,640	43,540	39,540	45,200	45,490	52,660 <sup>2/</sup>
February	26,880	31,400	25,220	29,030	31,800 <sup>2/</sup>	35,300 <sup>2/</sup>
March	27,150	29,170	32,070	29,890	30,800 <sup>2/</sup>	31,900 <sup>2/</sup>
<u>1st Quarter</u>	<u>92,670</u>	<u>104,110</u>	<u>96,830</u>	<u>104,120</u>	<u>108,090<sup>2/</sup></u>	<u>119,860<sup>2/</sup></u>
April	34,770	31,840	31,340	33,590	42,000 <sup>1/</sup>	39,500 <sup>1/</sup>
May	32,210	36,140	32,780	33,490	33,400 <sup>1/</sup>	38,000 <sup>1/</sup>
June	27,020	28,920	28,730	31,060	33,600 <sup>1/</sup>	30,700 <sup>1/</sup>
<u>2nd Quarter</u>	<u>94,000</u>	<u>96,900</u>	<u>92,850</u>	<u>98,140</u>	<u>109,000<sup>1/</sup></u>	<u>108,200<sup>1/</sup></u>
<u>1st Semester</u>	<u>186,670</u>	<u>201,010</u>	<u>189,680</u>	<u>202,260</u>	<u>217,090<sup>1/</sup></u>	<u>228,060<sup>1/</sup></u>
July	34,890	29,850	36,070	29,680		
August	44,980	44,840	46,660	50,260		
September	34,140	38,620	30,730	32,020		
<u>3rd Quarter</u>	<u>114,010</u>	<u>113,310</u>	<u>113,460</u>	<u>111,960</u>		
October	37,000	33,570	37,080	34,750		
November	34,520	37,520	37,450	39,280		
December	46,000	36,820	49,010	37,370		
<u>4th Quarter</u>	<u>117,520</u>	<u>107,910</u>	<u>123,540</u>	<u>111,400</u>		
<u>2nd Semester</u>	<u>231,530</u>	<u>221,220</u>	<u>237,000</u>	<u>223,360</u>		
Whole Year	418,200	422,230	426,680	425,620		

<sup>1/</sup> provisional

<sup>2/</sup> revised

Table 2 - Tourist arrivals by country of residence, 1990 - 1992

Country of residence	Number											
	1990		1991		1992					1992		1st Semester
	1st Qr.	2nd Qr.	1st Semester	3rd Qr.	4th Qr.	1st Qr.	2nd Qr.	3rd Qr.	4th Qr.	1st Qr.	2nd Qr.	
France	53,170	58,370	13,930	11,310	25,240	15,190	13,940	16,800	12,200	29,000		
Germany	19,680	20,140	5,640	5,240	10,880	5,370	7,890	6,000	5,700	11,700		
Italy	14,180	15,240	2,430	2,590	5,020	3,770	4,450	4,200	2,600	6,800		
Switzerland	10,740	6,130	2,180	1,420	3,600	5,130	3,200	2,900	1,500	4,400		
United Kingdom	21,920	20,660	4,050	5,470	9,520	5,320	5,820	4,600	7,500	12,100		
Belgium	1,920	2,010	380	300	680	670	660	410	450	860		
Malaysia Republic	6,550	6,010	1,160	1,250	2,410	1,290	2,310	1,500	1,300	2,300		
Reunion Island	73,310	77,840	20,590	15,640	36,230	23,800	17,710	22,000	20,250	42,250		
Seychelles	3,500	3,420	340	590	930	1,050	1,460	450	550	1,000		
Kenya	1,440	1,270	310	260	570	370	400	320	350	670		
South Africa, Rep. of	41,860	43,020	11,070	9,500	20,650	10,740	11,630	11,600	11,500	23,100		
Malta	1,490	690	250	320	570	150	130	400	250	650		
Singapore	3,670	3,530	700	1,050	1,750	1,010	820	600	1,050	1,650		
Australia	3,060	2,360	710	500	1,210	650	1,100	770	650	1,420		
India	6,190	6,430	1,170	3,540	4,710	2,050	1,730	1,300	4,600	5,300		
U.S.A.	2,220	1,720	340	600	940	300	400	470	750	1,220		
Singapore	2,110	2,010	360	550	910	500	600	410	600	1,010		
Japan	3,220	3,750	820	730	1,610	1,070	1,070	900	950	1,650		
Other countries	19,320	18,530	3,940	4,040	7,980	4,010	5,600	3,330	3,350	6,660		
All countries	291,550	300,670	70,370	65,040	135,410	75,340	86,920	78,960	76,100	155,060		

Table 4 - Tourist arrivals: by month, 1990 - 1992

Month	Number		
	1990	1991	1992
January	27,950	28,620	33,760 <sup>2/</sup>
February	19,520	18,110	23,100 <sup>2/</sup>
March	19,630	23,640	22,100 <sup>2/</sup>
<u>1st Quarter</u>	<u>67,100</u>	<u>70,370</u>	<u>78,960<sup>2/</sup></u>
April	25,570	22,540	31,000 <sup>1/</sup>
May	23,210	23,790	23,300 <sup>1/</sup>
June	17,990	18,710	21,800 <sup>1/</sup>
<u>2nd Quarter</u>	<u>66,770</u>	<u>65,040</u>	<u>76,100<sup>1/</sup></u>
<u>1st Semester</u>	<u>133,870</u>	<u>135,410</u>	<u>155,060<sup>1/</sup></u>
July	22,180	23,400	
August	31,420	33,410	
September	23,190	21,530	
<u>3rd Quarter</u>	<u>76,790</u>	<u>78,340</u>	
October	26,940	27,600	
November	24,300	26,600	
December	29,650	32,720	
<u>4th Quarter</u>	<u>80,890</u>	<u>86,920</u>	
<u>2nd Semester</u>	<u>157,680</u>	<u>165,260</u>	
Whole Year	291,550	300,670	

<sup>1/</sup> provisional

<sup>2/</sup> revised

Table 5 - Monthly room occupancy rate for all hotels, 1990 - 1992

M o n t h	P e r c e n t a g e		
	1 9 9 0	1 9 9 1	1 9 9 2 <sup>1/</sup>
January	68.6	55.0	56.4
February	61.9	48.9	51.0
March	57.4	48.1	48.9
<u>1st Quarter</u>	<u>62.6</u>	<u>50.7</u>	<u>52.0</u>
April	58.6	51.0	55.0
May	61.0	51.3	52.0
June	49.5	41.5	42.0
<u>2nd Quarter</u>	<u>56.5</u>	<u>48.1</u>	<u>50.0</u>
<u>1st Semester</u>	<u>59.5</u>	<u>49.4</u>	<u>51.0</u>
July	58.4	45.0	
August	64.4	60.4	
September	65.3	54.2	
<u>3rd Quarter</u>	<u>62.9</u>	<u>53.1</u>	
October	68.3	60.6	
November	68.8	63.3	
December	58.4	56.0	
<u>4th quarter</u>	<u>65.0</u>	<u>59.9</u>	
<u>2nd Semester</u>	<u>64.0</u>	<u>56.9</u>	
Whole Year	61.8	53.1	

1/ provisional



Table 6 - Monthly bed occupancy rate for all hotels, 1990 - 1992

Month	Percentage		
	1990	1991	1992 <sup>1/</sup>
January	62.2	50.3	50.8
February	53.0	43.0	44.7
March	49.0	41.1	41.8
<u>1st Quarter</u>	<u>54.8</u>	<u>44.9</u>	<u>46.0</u>
April	51.1	46.2	49.0
May	53.7	45.0	45.5
June	41.3	36.2	36.5
<u>2nd Quarter</u>	<u>48.8</u>	<u>42.6</u>	<u>43.7</u>
<u>1st Semester</u>	<u>51.8</u>	<u>43.8</u>	<u>44.9</u>
July	50.9	40.2	
August	59.6	56.4	
September	58.0	48.0	
<u>3rd Quarter</u>	<u>56.3</u>	<u>48.1</u>	
October	59.7	54.3	
November	59.6	52.3	
December	51.9	50.3	
<u>4th Quarter</u>	<u>57.0</u>	<u>52.3</u>	
<u>2nd Semester</u>	<u>56.7</u>	<u>50.6</u>	
Whole Year	54.3	47.1	

1/ provisional

Table 7 - Monthly room occupancy rate for large hotels, 1990 - 1992

Month	Percentage		
	1990	1991	1992 <sup>1/</sup>
January	82.1	66.8	66.3
February	80.5	61.4	63.1
March	73.6	60.9	58.3
<u>1st Quarter</u>	<u>78.7</u>	<u>63.1</u>	<u>62.7</u>
April	74.7	66.8	68.9
May	77.6	66.6	64.2
June	68.8	52.4	52.5
<u>2nd Quarter</u>	<u>73.9</u>	<u>62.2</u>	<u>61.9</u>
<u>1st Semester</u>	<u>76.4</u>	<u>62.6</u>	<u>62.3</u>
July	73.9	58.7	
August	74.8	72.8	
September	74.5	63.9	
<u>3rd Quarter</u>	<u>74.4</u>	<u>65.1</u>	
October	83.2	74.6	
November	84.6	78.0	
December	78.1	69.1	
<u>4th Quarter</u>	<u>79.2</u>	<u>73.8</u>	
<u>2nd Semester</u>	<u>77.0</u>	<u>69.6</u>	
Whole Year	76.7	66.1	

1/ provisional

Table 8 - Monthly bed occupancy rate for large hotels, 1990 - 1992

Month	Percentage		
	1990	1991	1992 <sup>1/</sup>
January	75.1	61.6	61.0
February	73.7	54.8	57.0
March	63.6	53.8	52.5
<u>1st Quarter</u>	<u>69.7</u>	<u>56.8</u>	<u>56.0</u>
April	66.6	61.8	63.0
May	68.9	59.8	57.0
June	59.6	47.1	46.5
<u>2nd Quarter</u>	<u>65.3</u>	<u>56.5</u>	<u>55.5</u>
<u>1st Semester</u> =====	<u>67.6</u>	<u>56.6</u>	<u>55.8</u>
July	64.8	54.1	
August	67.2	67.5	
September	67.4	59.1	
<u>3rd Quarter</u>	<u>66.6</u>	<u>60.2</u>	
October	75.3	69.0	
November	75.1	65.0	
December	64.0	64.0	
<u>4th Quarter</u>	<u>71.3</u>	<u>65.9</u>	
<u>2nd Semester</u> =====	<u>69.2</u>	<u>63.2</u>	
Whole Year	68.4	60.0	

1/ provisional

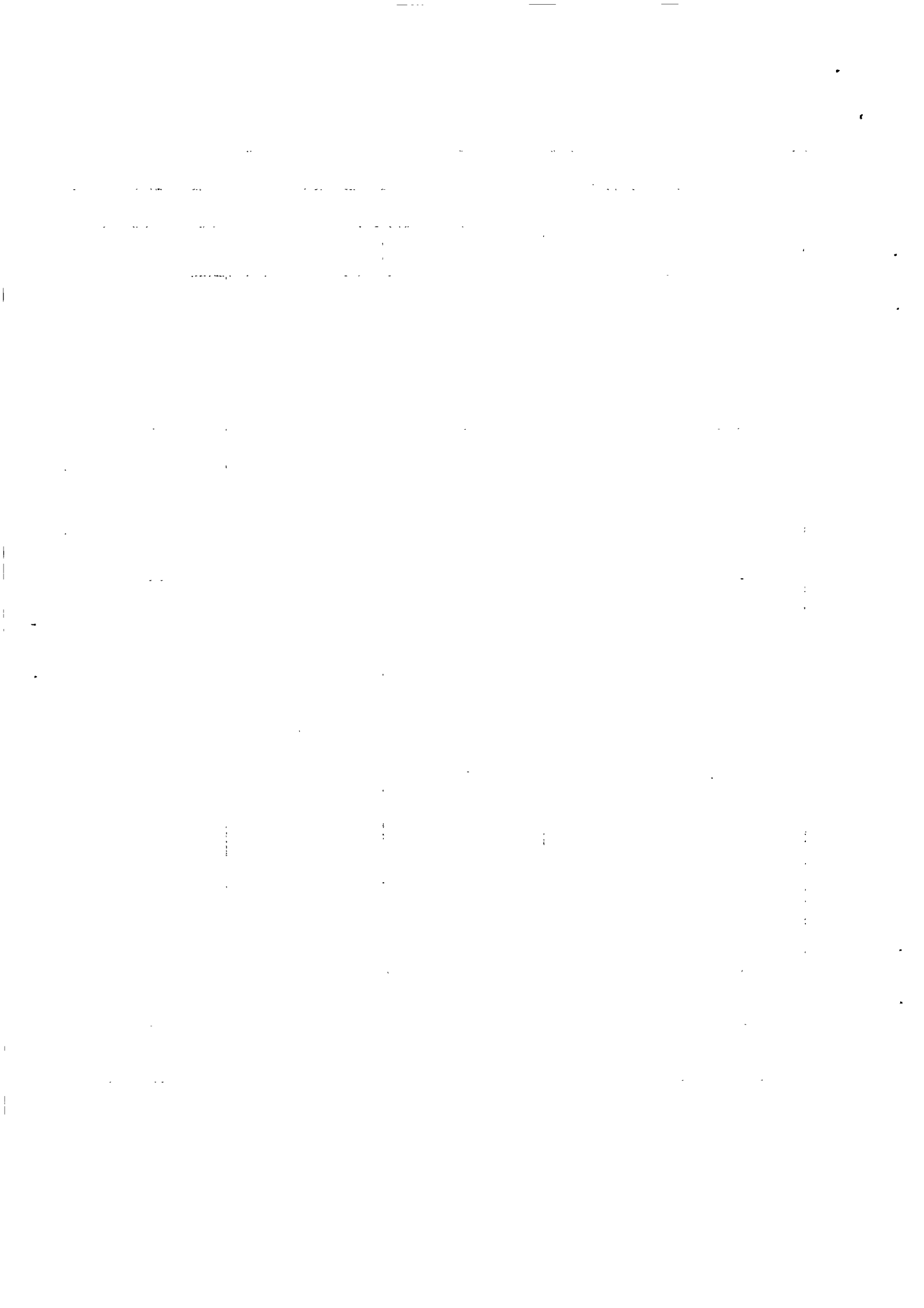


Table 2 - Employment<sup>1/</sup> in the tourist industry, 1988 - 1992

	1988		1989		1990		1991		1992
	March	September	March	September	March	September	March	September	March
Restaurants	655	867	949	1,019	955	900	919	763	772
Hotels	4,045	4,116	4,379	4,600	5,581	5,955	6,422	6,860	7,592
Travel and Tourism	1,893	1,991	1,877	2,065	2,306	2,775	2,759	2,765	2,887
Total	6,793	6,974	7,205	7,684	8,902	9,670	10,100	10,388	11,251

<sup>1/</sup> large establishments only (i.e. employin\_ 10 or more persons)