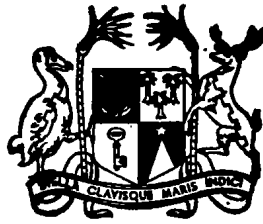


**Vol. 16**



**MAURITIUS**

**Ministry of Economic Planning and Development**

**CENTRAL STATISTICAL OFFICE**

---

**INTERNATIONAL TRAVEL  
AND  
TOURISM STATISTICS**

**1989**

**November 1990**

**(Price: Rs 75.00)**

INTERNATIONAL TRAVEL AND TOURISM STATISTICS

Vol. 16

1989

"International Travel and Tourism Statistics" is a regular publication of the Central Statistical Office, designed to present in a single report, available detailed statistics concerning international travel and tourism relating to Mauritius. It is hoped that the data herewith assembled will prove useful to the public in general and to policy makers, planners and research workers in particular.

The statistical tables presented here are based on the embarkation/disembarkation cards filled in by passengers as they leave or enter the country in the course of their travel. The statistical data have been estimated on the basis of a 10% sample of these cards.

The data in this publication are constantly updated as more reliable information become available, necessitating minor changes over previous issues. The figures published in this issue therefore supersede those of all previous issues.

The publication of this report has been made possible by the co-operation obtained from the Immigration and Passport Office, the Mauritius Government Tourist Office and the Data Processing Division of the Ministry of Finance. Their co-operation is herewith gratefully acknowledged.

The following symbols are used throughout:-

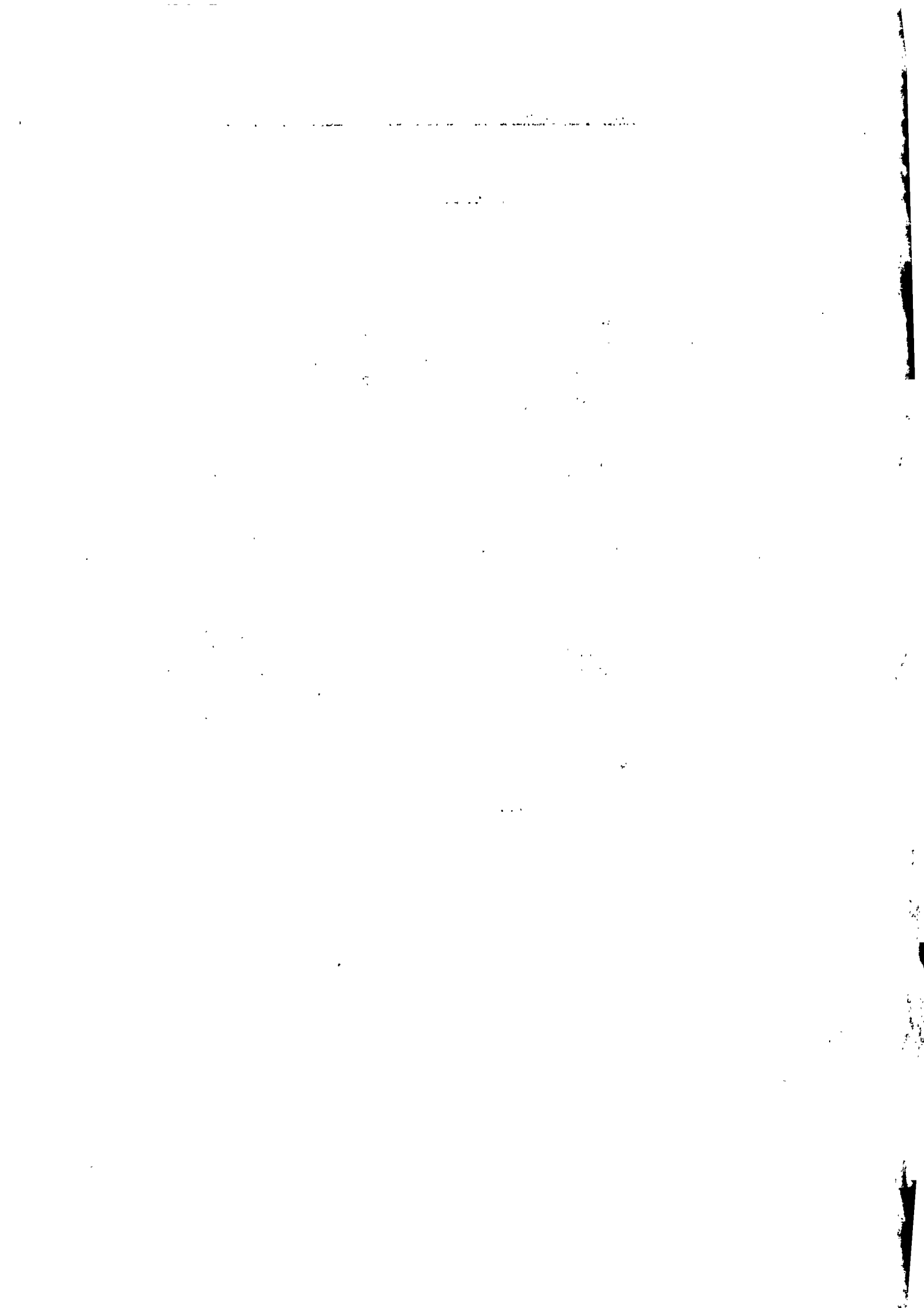
— Nil

..... Not available

(D. Zmanay)  
Director of Statistics

C.S.O  
Port Louis  
MAURITIUS

November 1990



## C O N T E N T S

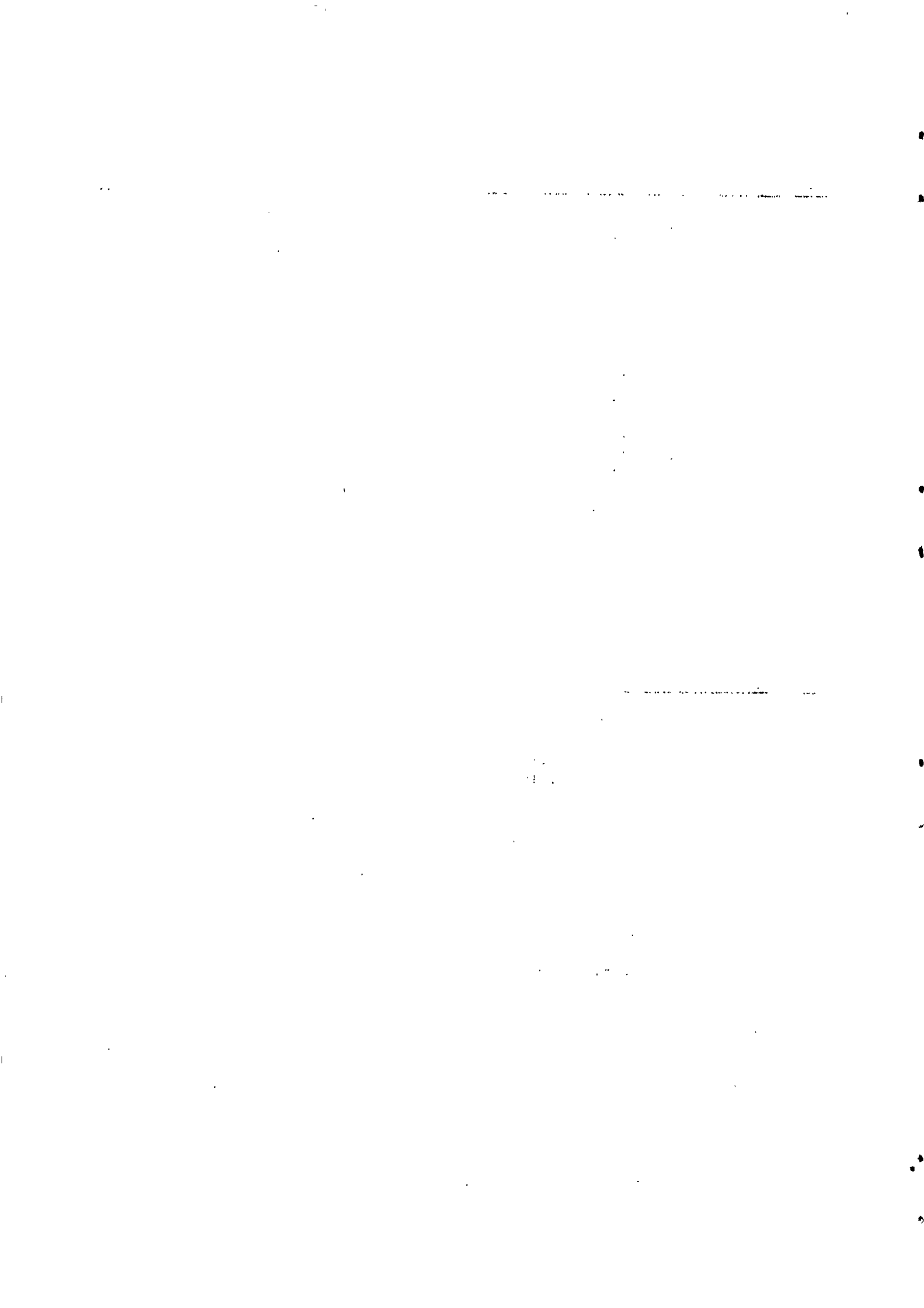
### I - POPULATION AND VITAL STATISTICS

Page

Table 1	- Estimated total (Mauritian and non-Mauritian) population of Mauritius as at 31st December, 1989 based on the 1983 Population Census data	1
2	- Population increase in intercensal periods - Island of Mauritius, 1846 - 1983	1
3	- Estimated total (Mauritian and non-Mauritian) population of Mauritius by geographical district and sex, 1987 - 1989	2
4	- Population and vital statistics - Island of Mauritius, 1901 - 1989	3
5	- Population growth and vital statistics - Island of Mauritius, 1976 - 1989	4
6	- Population increase in intercensal periods - Island of Rodrigues, 1851 - 1983	5
7	- Population growth and vital statistics - Island of Rodrigues, 1976 - 1989	6

### II - PASSENGER TRAFFIC

Table 8	- Passenger traffic by sex, 1938 - 1989	7
9	- Passenger traffic between Islands of Mauritius and Rodrigues, 1971 - 1989	8
10	- Passenger traffic by mode of transport, 1967 - 1989	10
11	- Passenger traffic by month, 1986 - 1989	11
12	- Arrivals by country of original embarkation, 1984 - 1989	12
13	- Departures by country of final destination, 1984 - 1989	13
14(a)	- Passenger traffic by type of passenger and month, 1988	14
14(b)	- Passenger traffic by type of passenger and month, 1989	15
15	- Arrivals by age and sex, 1988 - 1989	16
16	- Departures by age and sex, 1988 - 1989	17



Contents (cont'd)

<u>II - PASSENGER TRAFFIC (cont'd)</u>		<u>Page</u>
Table 17	- Excess of arrivals over departures by age and sex, 1988 - 1989	18
18	- Arrivals of residents by district of residence and sex, 1988 - 1989	19
19	- Departures of residents by district of residence and sex, 1988 - 1989	20
20	- Excess of arrivals over departures of residents by district of residence and sex, 1988 - 1989	21
21	- Arrivals of residents of Island of Mauritius by age and sex, 1988 - 1989	22
22	- Departures of residents of Island of Mauritius by age and sex, 1988 - 1989	23
23	- Excess of arrivals over departures of residents (excluding emigrants) of Island of Mauritius by age and sex, 1988 - 1989	24
24	- Excess of arrivals over departures of residents (including emigrants) of Island of Mauritius by age and sex, 1988 - 1989	25
25	- Arrivals and departures of Mauritian residents by country of embarkation and disembarkation, 1987 - 1989	26
 <u>III - EMIGRATION</u>		
Table 26	- Official long-term emigrants by sex, 1963 - 1989	27
27	- External migration, 1963 - 1989	28
28	- Official long-term emigrants by country of intended residence, 1979 - 1989	29
29	- Age distribution of official long-term emigrants, 1979 - 1989	31
30	- Official long-term emigrants by Major Occupational Group, 1983 - 1989	34
31(a)-	Official long-term emigrants by Major Occupational Group, age and sex, 1989	35
31(b)-	Official long-term emigrants by Major Occupational Group, age and sex, 1988	36

Contents (cont'd)

<u>III - EMIGRATION (cont'd)</u>		<u>Page</u>
Table 32	- Official long-term emigrants by occupation, 1987 - 1989	37
33	- Official long-term emigrants by district of last residence and sex, 1988 - 1989	38
 <u>IV - TOURISM</u>		
	Definition and notes	39
Table 34	- Tourist arrivals by mode of transport and tourist nights spent during period, 1975 - 1989	41
35	- Tourist arrivals by month of arrival, 1979 - 1989	42
36	- Percentage distribution of tourist arrivals by month of arrival, 1979 - 1989	44
37	- Tourist arrivals by country of residence and sex, 1989	45
38	- Tourist arrivals by country of residence, 1979 - 1989	46
39	- Percentage distribution of tourist arrivals by country of residence, 1979 - 1989	47
40	- Tourist nights by country of residence of tourist, 1978 - 1989	49
41	- Tourist arrivals and tourist nights by country of residence, 1989	52
42	- Visitor arrivals by age and sex, 1987 - 1988	53
43	- Visitor arrivals and visitor nights by country of residence, 1988 - 1989	54
44	- Visitor arrivals by duration of stay, 1988 - 1989	55
45(a)	- Visitor arrivals by country of residence and duration of stay, 1988	56
45(b)	- Visitor arrivals by country of residence and duration of stay, 1989	57
46(a)	- Visitor arrivals and visitor nights by country of nationality, 1988	58
46(b)	- Visitor arrivals and visitor nights by country of nationality, 1989	59

Contents (cont'd)

<u>IV - TOURISM (cont'd)</u>	<u>Page</u>
Table 47 - Gross earnings from tourism, 1980 - 1989	60
48 - Expenditure of tourists by country of residence	60
49 - Expenditure of tourists by type of expenditure	61
50 - Hotels, rooms and bed places, 1979 - 1989	62
51 - Monthly occupancy rates in large hotels, 1988 - 1989	63
52 - Arrivals of Mauritians settled abroad (excluding students) and nights spent by them by country of residence, 1988 - 1989	64
53 - Arrivals of Mauritians settled abroad (excluding students) by duration of stay, 1988 - 1989	65
54 - Total nights spent by Mauritians settled abroad (excluding students) by country of residence, 1988 - 1989	66

F I G U R E S

Figure 1 - Passenger traffic by sex, 1973 - 1989	9
2 - Tourist arrivals by month of arrival, 1986 - 1989	43
3 - Percentage distribution of tourist arrivals by country of residence, 1988 - 1989	48
4 - Total arrivals and tourist arrivals, 1979 - 1989	50
5 - Tourist nights and visitor nights, 1979 - 1989	51

Appendix : International embarkation/disembarkation specimen card

-\*\*-\*\*-\*\*-\*\*-\*\*-\*\*-\*\*-\*\*-\*\*-\*\*-



I. POPULATION AND VITAL STATISTICS

Table 1 - Estimated total (Mauritian and non-Mauritian) population of Mauritius as at 31st December 1989 based on the 1983 Population Census data

Island	Both sexes	Male	Female	Area	Density
				Km <sup>2</sup>	Persons/ Km <sup>2</sup>
Island of Mauritius	1,043,631	518,177	525,454	1,864.8	560
Island of Rodrigues	37,538	19,419	18,119	104.0	351
Other Islands	500	350	150	71.2	7
Mauritius	1,081,669	537,946	543,723	2,040.0	530

Table 2 - Population increase in intercensal periods - Island of Mauritius, 1846 - 1983

Census date	Population enumerated at Census			Inter-censal increase	Average annual rate of increase %
	Both sexes	Male	Female		
1st Aug. 1846	158,462	104,598	53,864		
20th Nov. 1851	180,823	119,341	61,482	22,361	2.55
8th Apr. 1861	310,050	202,961	107,089	129,227	5.87
11th Apr. 1871	316,042	193,575	122,467	5,992	0.19
4th Apr. 1881	359,874	208,655	151,219	43,832	1.31
6th Mar. 1891	370,588	206,038	164,550	10,714	0.29
1st Apr. 1901	371,023	199,552	171,471	435	0.01
31st Mar. 1911	368,791	194,095	174,696	-2,232	-0.06
21st May 1921	376,485	194,108	182,377	7,694	0.21
26th Apr. 1931	393,238	200,609	192,629	16,753	0.44
11th Jun. 1944	419,185	210,326	208,859	25,947	0.49
29th Jun. 1952	501,415	252,032	249,383	82,230	2.26
30th Jun. 1962 <sup>1/</sup>	681,619	342,306	339,313	180,204	3.12
30th Jun. 1972 <sup>1/</sup>	826,199	413,580	412,619	144,580	1.94
2nd Jul. 1983 <sup>1/</sup>	966,863	481,368	485,495	140,664	1.44

<sup>1/</sup> de facto population

Table 3 - Estimated total (Mauritian and non-Mauritian) population of Mauritius by geographical district and sex, 1987 - 1989

Geographical district	31st December 1987			31st December 1988 2/			31st December 1989 3/		
	Both sexes	Male	Female	Both sexes	Male	Female	Both sexes	Male	Female
Port Louis	139,038	69,191	69,847	140,722	69,436	71,286	141,870	69,534	72,336
Pamplemousses	96,834	48,865	47,969	99,261	50,016	49,245	99,722	50,089	49,633
Rivière du Rempart	87,050	43,763	43,287	88,669	44,051	44,618	89,285	43,999	45,286
Flacq	115,842	58,193	57,649	117,361	58,565	58,796	118,740	59,197	59,543
Grand Port	98,915	49,641	49,274	100,756	50,430	50,326	101,428	50,604	50,824
Savanne	62,689	31,680	31,009	63,394	31,801	31,593	63,911	32,016	31,895
P. Wilhems : Urban	277,835	138,665	139,170	281,678	140,261	141,417	283,034	140,453	142,581
Other	36,276	18,188	18,088	36,738	18,418	18,320	37,623	18,867	18,756
Moka	65,021	32,283	32,738	66,050	32,661	33,389	66,821	33,232	33,589
Black River	40,124	19,919	20,205	40,963	20,209	20,754	41,197	20,186	21,011
Island of Mauritius	1,019,624	510,388	509,236	1,035,592	515,848	519,744	1,043,631	518,177	525,454
Island of Rodrigues	36,743	18,747	17,996	36,465	18,674	17,791	37,538	19,419	18,119
Other Islands	500	350	150	500	350	150	500	350	150
Mauritius	1,056,867	529,485	527,382	1,072,557	534,872	537,685	1,081,669	537,946	543,723

1/ based on the 1983 population census data. No account has been taken of internal migration

2/ revised

3/ provisional

Table 4 - Population and vital statistics - Island of Mauritius, 1901 - 1989

Period	Population/ at mid-period	Live births	Deaths	Natural increase	Infant deaths <sup>2/</sup>	Still births	Civil marriages
1901-05 Average	373,500	13,632	14,033	-401	2,312	1,114	...
1906-10 Average	371,200	13,295	13,901	-606	2,250	1,153	...
1911-15 Average	372,466	14,254	13,014	1,240	2,218	1,368	...
1916-20 Average	376,959	13,242	14,538	-1,296	2,211	1,454	...
1921-25 Average	379,636	14,834	11,758	3,076	2,104	1,581	2,062
1926-30 Average	403,248	14,208	11,614	2,594	2,002	1,256	1,455
1931-35 Average	398,647	12,490	11,889	601	1,752	1,216	1,489
1936-40 Average	412,003	13,621	11,157	2,464	2,119	1,240	2,093
1941-45 Average	417,838	15,027	11,927	3,100	2,318	1,240	3,333
1946-50 Average	438,797	19,595	9,113	10,482	2,343	1,348	3,503
1951-55 Average	522,577	23,176	7,701	15,475	1,884	1,472	3,307
1956-60 Average	609,518	24,803	7,091	17,712	1,691	1,767	3,112
1961	662,368	26,092	6,505	19,587	1,618	1,963	3,484
1962	681,619	26,267	6,325	19,942	1,579	1,841	3,893
1963	695,641	27,978	6,709	21,269	1,660	1,519	3,472
1964	716,298	27,528	6,184	21,344	1,561	1,611	3,965
1965	735,245	26,279	6,337	19,942	1,685	1,557	3,976
1966	753,276	26,817	6,701	20,116	1,721	1,384	4,157
1967	767,782	23,499	6,543	16,956	1,656	1,074	3,949
1968	781,615	24,413	7,126	17,287	1,688	1,110	3,974
1969	792,893	21,719	6,428	15,291	1,528	951	3,882
1970	805,489	21,623	6,309	15,314	1,232	857	4,499
1971	816,561	20,834	6,248	14,586	1,077	842	4,346
1972	826,199	20,496	6,506	13,990	1,308	718	5,082
1973	846,089	18,974	6,525	12,449	1,201	678	5,533
1974	857,063	22,938	6,221	16,717	1,045	854	6,771
1975	867,824	21,492	6,967	14,525	1,046	896	6,888
1976	879,193	22,250	6,815	15,435	900	784	8,262
1977	893,069	22,730	6,966	15,764	1,023	712	8,421
1978	907,779	24,250	6,400	17,850	823	653	10,532
1979	922,807	25,056	6,625	18,431	824	650	9,080
1980	937,886	24,983	6,685	18,298	808	623	8,629
1981	950,785	23,670	6,404	17,266	795	553	8,169
1982	960,994	21,247	6,385	14,862	624	438	10,597
1983	968,609	19,948	6,322	13,626	511	379	10,067
1984	977,129	19,222	6,417	12,805	444	388	10,638
1985	985,210	18,520	6,691	11,829	441	368	11,088
1986	993,851	18,225	6,622	11,603	480	342	10,337
1987	1,003,794	19,151	6,581	12,570	463	344	11,201
1988	1,016,596	20,057	6,699	13,358	441	351	11,283
1989	1,026,813	20,955	6,946	14,009	452	399	11,040

1/ figures refer to total population (i.e. Mauritian and non-Mauritian). Data for 1963-71 have been revised in the light of the 1972 population census results; data for 1973-82 have been revised in the light of the 1983 population census results adjusted for underenumeration of young children.

2/ deaths of children under 1-year of age

Note: The increase in the number of civil marriages as from 1982 is due largely to improve registration of religious marriages with the coming into force of a new Civil Status Act as from January, 1982.

Table 5 - Population growth and vital statistics - Island of Mauritius, 1976 - 1989

Period (year)	Population at the beginning of period	Natural movement			External migration			% increase during year due to			Population at the end of period
		Live births	Deaths	Natural increase	Arrivals	Departures	(A - D) 2/	Natural increase	(A - D) 2/	Total	
1976	878,499	22,250	6,815	15,435	139,303	141,148	- 1,845	1.76	- 0.21	13,590	892,089
1977	892,089	22,730	6,966	15,764	153,208	155,653	- 2,445	1.77	- 0.27	13,319	905,408
1978	905,408	24,250	6,400	17,850	161,688	163,733	- 2,045	1.97	- 0.23	15,805	921,213
1979	921,213	25,056	6,625	18,431	182,771	186,864	- 4,093	2.00	- 0.44	14,338	935,551
1980	935,551	24,983	6,685	18,298	163,230	167,269	- 4,039	1.96	- 0.43	14,259	949,810
1981	949,810	23,670	6,404	17,266	168,973	174,376	- 5,403	1.82	- 0.57	11,863	961,673
1982	961,673	21,247	6,385	14,862	166,669	171,991	- 5,322	1.55	- 0.55	9,540	971,213
1983	971,213	19,948	6,322	13,626	177,665	182,005	- 4,340	1.40	- 0.45	9,286	980,499
1984	980,499	19,222	6,417	12,805	198,461	202,983	- 4,522	1.31	- 0.46	8,283	988,782
1985	988,782	18,520	6,691	11,829	212,860	215,000	- 2,140	1.20	- 0.22	9,689	998,471
1986	998,471	18,225	6,622	11,603	235,640	236,850	- 1,210	1.16	- 0.12	10,393	1,008,864
1987	1,008,864	19,151	6,581	12,570	293,160	294,970	- 1,810	1.25	- 0.18	10,760	1,019,624
1988	1,019,624	20,057	6,699	13,358	343,940	341,330	+ 2,610	1.31	+ 0.26	15,968	1,035,592
1989	1,035,592	20,955	6,946	14,009	379,080	385,050	- 5,970	1.35	- 0.57	8,039	1,043,631

1/ revised in the light of the 1983 population census data adjusted for underenumeration of young children

2/ excess of arrivals over departures

Table 6 - Population increase in intercensal periods - Island of Rodrigues,  
1851 - 1983

Census date	Population enumerated at census			Intercensal increase	Average annual rate of increase (%)
	Male	Female	Both sexes		
20th Nov. 1851	327	168	495		
8th Apr. 1861	464	229	693	198	3.42
11th Apr. 1871	693	415	1,108	415	4.80
4th Apr. 1881	812	619	1,431	323	2.59
6th Mar. 1891	1,154	914	2,068	637	3.75
1st Apr. 1901	1,685	1,477	3,162	1,094	4.34
31st Mar. 1911	2,523	2,306	4,829	1,667	4.33
21st May 1921	3,300	3,284	6,584	1,755	3.15
26th Apr. 1931	4,033	4,169	8,202	1,618	2.22
11th Jun. 1944	5,740	6,145	11,885	3,683	2.89
30th Jun. 1952	5,947	7,386	13,333	1,448	1.45
30th Jun. 1962 <sup>1/</sup>	9,062	9,273	18,335	5,002	3.24
30th Jun. 1972 <sup>1/</sup>	12,270	12,499	24,769	6,434	3.05
2nd Jul. 1983 <sup>1/</sup>	16,552	16,530	33,082	8,313	2.67

<sup>1/</sup> de facto population

Table 7 - Population<sup>1/</sup> growth and vital statistics - Island of Rodrigues, 1976 - 1989

Period (year)	Population at the beginning of period		Natural movement			External migration			Total		% increase during year due to			Population at the end of period
			Live births	Deaths	Natural increase	Arrivals	Departures	(A-D) <sup>2/</sup>	increase		Natural increase	(A-D) <sup>2/</sup>	Total	
1976	24,481		1,024	153	871	3,796	4,221	- 425	446		3.56	- 1.74	1.82	24,927
1977	24,927		1,129	188	941	4,477	4,853	- 376	565		3.78	- 1.51	2.27	25,492
1978	25,492		1,028	196	832	5,571	5,642	- 71	761		3.26	- 0.28	2.98	26,253
1979	26,253		1,107	246	861	5,785	5,398	+ 387	1,248		3.28	+ 1.47	4.75	27,501
1980	27,501		1,311	234	1,077	6,042	5,722	+ 320	1,397		3.92	+ 1.16	5.08	28,898
1981	28,898		1,297	249	1,048	7,099	6,190	+ 909	1,957		3.63	+ 3.15	6.78	30,855
1982	30,855		1,212	199	1,013	6,333	5,680	+ 653	1,666		3.28	+ 2.12	5.40	32,521
1983	32,521		1,125	210	915	6,556	6,520	+ 36	951		2.81	+ 0.11	2.92	33,472
1984	33,472		1,110	229	881	7,471	7,172	+ 299	1,180		2.63	+ 0.89	3.52	34,652
1985	34,652		856	215	641	7,277	7,286	- 9	632		1.85	- 0.03	1.82	35,284
1986	35,284		945	183	762	7,975	7,906	+ 69	831		2.16	+ 0.20	2.36	36,115
1987	36,115		882	172	710	8,255	8,337	- 82	628		1.97	- 0.23	1.74	36,743
1988	36,743		884	180	704	9,146	10,128	- 982	- 278		1.92	- 2.67	-0.75	36,465
1989	36,465		867	203	664	11,501	11,092	+ 409	1,073		1.82	+ 1.12	2.94	37,538

<sup>1/</sup> based on the 1983 census data

<sup>2/</sup> excess of arrivals over departures

II - PASSENGER TRAFFIC

Table 8 - Passenger traffic<sup>1/</sup> by sex, 1938 - 1989

Period	Arrivals			Departures			Net - overseas migration
	Both sexes	Male	Female	Both sexes	Male	Female	
1938	4,554	3,062	1,492	4,281	2,896	1,384	+ 273
1939	3,171	1,984	1,187	3,212	2,127	1,085	- 41
1940	1,518	1,028	490	1,851	1,379	472	- 333
1941	1,209	950	259	4,165	3,859	306	- 2,956
1942	1,083	893	190	1,560	1,398	162	- 477
1943	1,054	859	195	737	642	95	+ 317
1944	1,034	798	236	1,053	796	2,577	- 19
1945	2,061	1,624	437	2,247	1,624	623	- 186
1946	3,298	2,279	1,019	3,377	2,160	1,217	- 79
1947	4,698	3,128	1,570	4,514	3,100	1,414	+ 184
1948	4,294	2,792	1,502	4,015	2,684	1,331	+ 279
1949	4,093	2,700	1,393	4,141	2,794	1,347	- 48
1950	5,253	3,469	1,784	4,900	3,352	1,548	+ 333
1951	5,243	3,515	1,728	5,016	3,536	1,480	+ 227
1952	6,046	3,999	2,047	5,637	3,854	1,783	+ 409
1953	7,252	4,820	2,432	7,054	4,732	2,322	+ 198
1954	7,251	4,728	2,523	7,312	4,824	2,488	- 61
1955	7,216	4,558	2,658	7,354	4,722	2,632	- 138
1956	7,747	4,873	2,874	8,225	5,219	3,006	- 478
1957	8,095	5,156	2,939	8,267	5,309	2,958	- 172
1958	8,703	5,424	3,279	8,924	5,596	3,328	- 221
1959	9,637	5,995	3,642	9,544	6,058	3,486	+ 93
1960	10,412	6,563	3,849	10,784	6,938	3,846	- 372
1961	11,854	7,246	4,608	13,033	8,165	4,868	- 1,179
1962	15,189	9,283	5,906	16,075	9,887	6,188	- 886
1963	17,974	10,866	7,108	18,215	11,024	7,191	- 241
1964	21,221	12,787	8,434	22,331	13,349	8,982	- 1,110
1965	22,024	13,571	8,453	24,150	14,759	9,391	- 2,126
1966	26,456	16,358	10,098	29,301	17,930	11,371	- 2,845
1967	29,321	18,177	11,144	32,925	20,135	12,790	- 3,604
1968	31,403	19,820	11,583	35,988	22,181	13,807	- 4,585
1969	35,919	21,552	14,367	38,929	23,127	15,802	- 3,010
1970	48,819	29,587	19,232	51,969	31,033	20,936	- 3,150
1971	60,826	36,005	24,821	63,997	37,399	26,598	- 3,171
1972	77,174	45,587	31,587	81,493	47,837	33,656	- 4,319

Table 8 (cont'd) - Passenger traffic<sup>1/</sup> by sex, 1938 - 1989

Period	Arrivals			Departures			Net overseas migration
	Both sexes	Male	Female	Both sexes	Male	Female	
1973	101,184	59,215	41,969	104,697	61,364	43,333	- 3,513
1974	109,044	63,077	45,967	113,362	65,649	47,713	- 4,318
1975	117,548	68,654	48,894	120,703	70,368	50,335	- 3,155
1976	139,303	80,674	58,629	141,148	81,718	59,430	- 1,845
1977	153,208	87,417	65,791	155,653	89,243	66,410	- 2,445
1978	161,688	93,087	68,601	163,733	94,850	68,883	- 2,045
1979	182,771	105,051	77,720	186,864	110,284	76,580	- 4,093
1980	163,230	96,460	66,770	167,269	100,579	66,690	- 4,039
1981	168,973	95,293	73,680	174,376	98,066	76,310	- 5,403
1982	166,669	93,299	73,370	171,991	95,061	76,930	- 5,322
1983	177,665	101,125	76,540	182,005	102,785	79,220	- 4,340
1984	198,461	113,201	85,260	202,983	114,203	88,780	- 4,522
1985 <sup>2/</sup>	212,860	120,940	91,920	215,000	119,780	95,220	- 2,140
1986	235,640	129,600	106,040	236,850	132,740	104,110	- 1,210
1987	293,160	161,030	132,130	294,970	160,670	134,300	- 1,810
1988	343,940	186,800	157,140	341,330	187,580	153,750	+ 2,610
1989	379,080	208,860	170,220	385,050	213,230	171,820	- 5,970

<sup>1/</sup> including seamen but excluding transit passengers who do not leave the airport

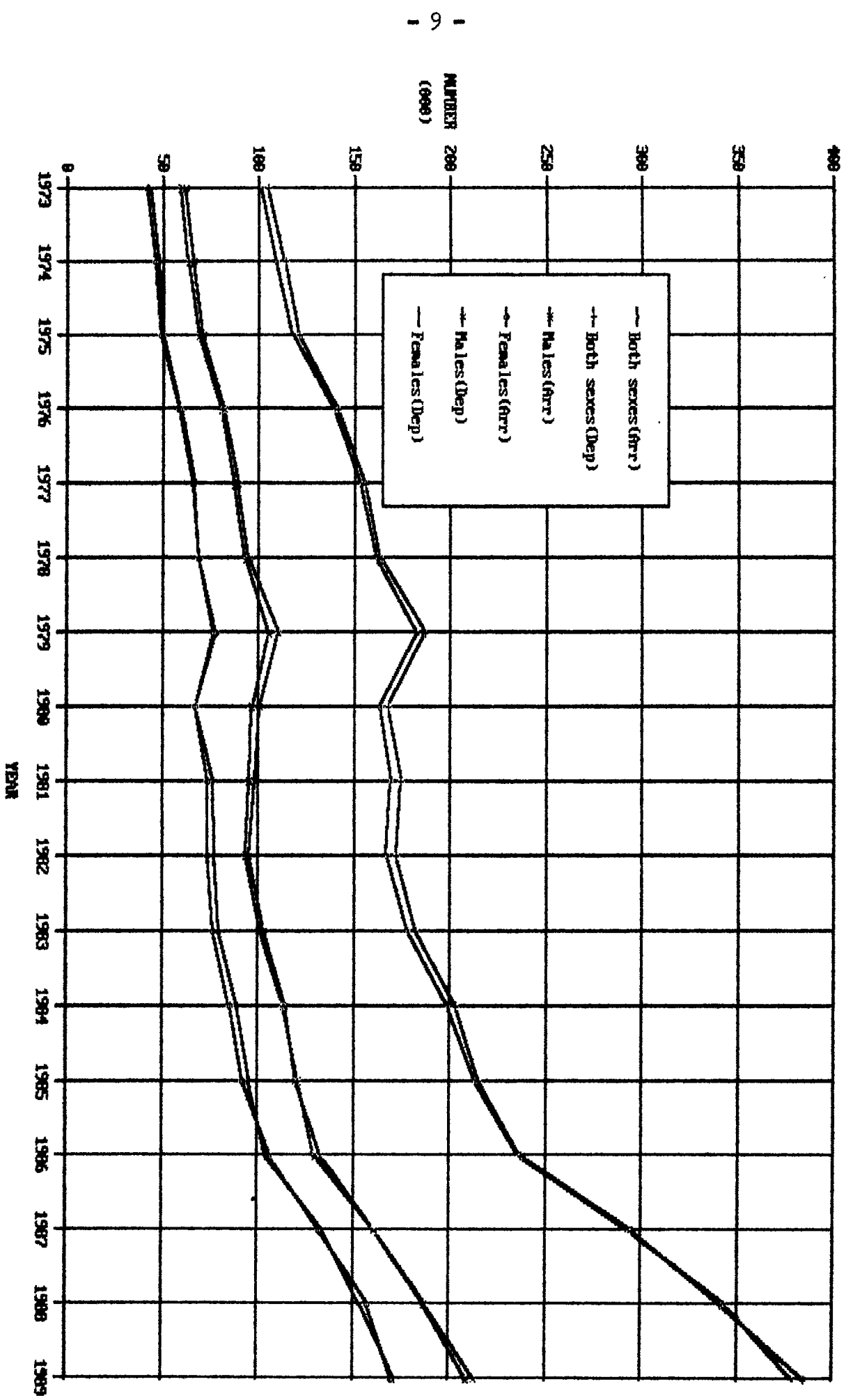
<sup>2/</sup> as from 1985, seamen are not included

Table 9 - Passenger traffic between Islands of Mauritius and Rodrigues, 1971 - 1989

Period	Arrivals in Rodrigues			Departures from Rodrigues			Net overseas migration
	Both sexes	Male	Female	Both sexes	Male	Female	
1971	1,578	1,017	561	1,744	1,118	626	- 166
1972	2,168	1,409	759	2,311	1,469	842	- 143
1973	2,427	1,521	906	2,453	1,511	942	- 26
1974	2,053	1,197	856	2,648	1,560	1,088	- 595
1975	2,968	1,870	1,098	3,319	2,030	1,289	- 351
1976	3,796	2,528	1,268	4,221	2,854	1,367	- 425
1977	4,477	2,935	1,542	4,853	3,214	1,639	- 376
1978	5,571	3,588	1,983	5,642	3,641	2,001	- 71
1979	5,785	3,794	1,991	5,398	3,672	1,726	+ 387
1980	6,042	3,964	2,078	5,722	3,908	1,814	+ 320
1981	7,099	4,871	2,228	6,190	4,256	1,934	+ 909
1982	6,333	4,144	2,189	5,680	3,778	1,902	+ 653
1983	6,556	4,182	2,374	6,520	4,182	2,338	+ 36
1984	7,471	4,762	2,709	7,172	4,452	2,720	+ 299
1985	7,277	4,725	2,552	7,286	4,603	2,683	- 9
1986	7,975	5,103	2,872	7,906	4,976	2,930	+ 69
1987	8,255	5,135	3,120	8,337	5,135	3,202	- 82
1988	9,146	5,903	3,243	10,128	6,330	3,798	- 982
1989	11,501	7,234	4,267	11,092	6,831	4,261	+ 409



**FIG. 1-PASSENGER TRAFFIC BY SEX, 1973-1989**



NUMBER  
(000)

YEAR

Table 10 - Passenger traffic<sup>1/</sup> by mode of transport, 1967 - 1989

Period	Arrivals			Departures			Net overseas migration
	Total	By sea	By air	Total	By sea	By air	
1967	29,321	4,901	24,420	32,925	6,515	26,410	- 3,604
1968	31,403	4,264	27,139	35,988	5,967	30,021	- 4,585
1969	35,919	3,483	32,436	38,929	4,632	34,297	- 3,010
1970	48,819	3,984	44,835	51,969	4,376	47,593	- 3,150
1971	60,826	3,857	56,969	63,997	4,295	59,702	- 3,171
1972	77,174	3,741	73,433	81,493	4,072	77,421	- 4,319
1973	101,184	4,238	96,946	104,697	4,027	100,670	- 3,513
1974	109,044	3,848	105,196	113,362	3,772	109,590	- 4,318
1975	117,548	4,485	113,063	120,703	4,255	116,448	- 3,155
1976	139,303	4,367	134,936	141,148	4,441	136,707	- 1,845
1977	153,208	4,929	148,279	155,653	4,624	151,029	- 2,445
1978	161,688	4,411	157,277	163,733	4,698	159,035	- 2,045
1979	182,771	3,581	179,190	186,864	4,054	182,810	- 4,093
1980	163,230	3,980	159,250	167,269	4,469	162,800	- 4,039
1981	168,973	4,533	164,440	174,376	5,316	169,060	- 5,403
1982	166,669	3,839	162,830	171,991	4,421	167,570	- 5,322
1983	177,665	4,915	172,750	182,005	4,755	177,250	- 4,340
1984	198,461	5,541	192,920	202,983	5,553	197,430	- 4,522
1985 <sup>2/</sup>	212,860	4,450	208,410	215,000	5,020	209,980	- 2,140
1986	235,640	4,510	231,130	236,850	4,300	232,550	- 1,210
1987	293,160	4,870	288,290	294,970	5,230	289,740	- 1,810
1988	343,940	5,260	338,680	341,330	4,340	336,990	+ 2,610
1989	379,080	3,190	375,890	385,050	3,620	381,430	- 5,970
1989: 1st Qr.	87,350	890	86,460	98,550	1,030	97,520	-11,200
2nd Qr.	78,890	720	78,170	83,710	990	82,720	- 4,820
3rd Qr.	103,320	820	102,500	102,610	700	101,910	+ 710
4th Qr.	109,520	760	108,760	100,180	900	99,280	+ 9,340

<sup>1/</sup> including seamen but excluding transit passengers who do not leave the airport

<sup>2/</sup> as from 1985, seamen are not included

Table 11 - Passenger traffic<sup>1/</sup> by month, 1986 - 1989

Month	Arrivals				Departures				Excess of arrivals over departure			
	1986	1987	1988	1989	1986	1987	1988	1989	1986	1987	1988	1989
January	22,500	25,320	32,550	37,450	26,330	29,950	36,460	43,490	-4,130	-4,630	-3,870	-6,040
February	16,070	18,470	22,460	23,270	19,330	21,850	26,940	27,310	-3,260	-3,380	-4,480	-4,040
March	18,350	18,740	24,140	26,630	17,830	19,450	23,110	27,750	+ 520	+ 710	+1,030	-1,120
April	16,790	24,330	24,360	27,930	18,580	24,620	26,600	27,600	-1,590	- 290	-2,330	+ 330
May	17,930	20,090	26,560	28,020	20,500	21,690	26,980	30,900	-2,370	-1,600	- 420	-2,800
June	13,850	21,040	21,190	22,940	15,190	21,560	20,850	25,210	+ 660	+ 520	+ 340	-2,270
July	19,320	23,570	29,650	33,100	17,510	22,050	27,520	27,830	-1,710	-1,520	+2,130	15,270
August	25,460	31,320	37,830	39,970	24,170	29,050	34,960	39,430	-1,290	+2,270	+2,870	+ 540
September	18,610	26,020	26,700	30,250	22,030	29,830	30,280	35,350	-3,420	-3,810	-3,580	-5,100
October	18,300	26,120	31,930	35,140	17,140	25,000	28,100	31,630	+1,160	+1,120	+3,830	+3,510
November	21,700	25,780	30,010	32,080	21,310	26,640	31,300	34,920	+ 390	- 860	-1,290	-2,840
December	27,060	32,360	36,520	42,300	19,230	23,280	28,140	33,630	+7,830	+9,080	+8,380	+8,670
Whole Year	235,640	293,160	343,940	379,080	236,850	294,970	341,330	385,050	-1,210	-1,810	+2,610	-5,970

<sup>1/</sup> excluding transit passengers who do not leave the airport and seamen

Table 12 - Arrivals<sup>1/</sup> by country of original embarkation, 1984 - 1989

Country of original embarkation	1984	1985	1986	1987	1988	1989 <sup>2/</sup>
Australia	3,290	3,790	4,310	4,700	2,900	3,790
Belgium	400	550	600	710	1,120	1,330
France	20,830	22,950	24,760	32,600	41,460	42,450
Germany, Fed. Rep. of	7,310	7,720	7,250	12,940	15,730	18,570
Hong Kong	1,520	1,100	1,700	2,400	2,310	1,410
India	7,730	7,180	6,160	6,180	8,480	9,090
Italy	5,920	5,710	7,580	10,430	13,030	12,550
Japan	...	270	1,220	1,380	1,220	1,630
Kenya	2,170	2,680	2,740	3,410	3,920	3,720
Malagasy Republic	6,890	6,820	7,140	8,070	8,140	6,980
Malawi	560	990	430	310	270	70
Réunion	67,440	72,390	82,100	95,610	108,250	131,540
Rodrigues	7,471	7,286	7,906	8,337	10,128	11,092
Seychelles	1,950	2,870	4,250	5,920	6,510	8,070
Singapore	...	410	6,820	14,830	22,800	26,540
South Africa, Rep. of	34,950	33,410	34,430	40,150	43,340	46,890
Switzerland	5,250	7,370	8,540	9,210	9,450	9,260
Tanzania	480	850	690	1,220	910	960
United Kingdom	12,880	14,150	16,180	20,090	24,630	27,000
Zambia	1,550	440	380	1,510	3,700	5,100
Zimbabwe	2,250	2,120	2,800	2,080	3,740	3,950
Other countries	6,979	11,804	7,654	11,073	11,902	7,088
All countries	197,820	212,860	235,640	293,160	343,940	379,080

<sup>1/</sup> excluding transit passengers who did not leave the airport, discharged seamen numbering 641, 723, 972, 1,141, 772 and 716 respectively.

<sup>2/</sup> provisional.

Table 13 - Departures<sup>1/</sup> by country of final destination, 1984 - 1989

Country of final destination	1984	1985	1986	1987	1988	1989 <sup>2/</sup>
Australia	3,410	4,090	5,090	6,180	3,630	4,240
Belgium	540	520	1,280	1,200	1,550	1,930
France	23,490	24,660	26,920	36,550	43,940	49,670
Germany, Fed. Rep. of	7,740	8,930	8,220	13,940	16,290	18,860
Hong Kong	1,690	1,810	2,180	2,910	2,150	1,960
India	6,470	7,010	6,010	6,310	8,510	10,300
Italy	6,170	6,100	8,260	11,730	14,570	13,780
Japan	-	180	850	1,080	1,130	1,310
Kenya	2,380	2,790	3,080	3,430	3,210	2,700
Malagasy Republic	6,920	6,270	6,810	7,920	7,290	6,800
Malawi	690	680	390	280	220	70
Reunion	64,380	70,780	78,880	89,750	103,200	129,310
Rodrigues	7,172	7,277	7,975	8,255	9,146	11,501
Seychelles	2,440	2,900	3,400	4,610	6,110	6,880
Singapore	-	340	5,600	13,160	20,450	23,100
South Africa, Rep. of	35,570	33,150	33,730	40,390	44,030	47,200
Switzerland	6,040	7,610	8,960	9,260	9,850	10,150
Tanzania	650	740	600	920	730	810
United Kingdom	13,530	14,270	16,300	20,230	24,580	29,080
Zambia	1,300	580	260	1,360	3,620	4,740
Zimbabwe	2,140	2,490	2,960	2,640	3,390	3,990
Other countries	9,548	11,823	9,095	12,865	13,734	6,669
<b>All countries</b>	<b>202,270</b>	<b>215,000</b>	<b>236,850</b>	<b>294,970</b>	<b>341,330</b>	<b>385,050</b>

<sup>1/</sup> excluding transit passengers who did not leave the airport, engaged seamen numbering 713, 837, 1,050, 1,503, 929 and 880 respectively.

<sup>2/</sup> provisional.

Table 14 (a) - Passenger traffic<sup>1/</sup> by type of passenger and month, 1988

Type of passenger	Jan.	Feb.	Mar.	Apr.	May	Jun.	Jul.	Aug.	Sept.	Oct.	Nov.	Dec.	Whole year
<b>ARRIVALS</b>													
Visitors <sup>2/</sup>	25,600	17,840	13,770	17,890	20,760	14,380	20,310	27,580	19,910	24,530	22,600	25,660	255,820
On holiday	22,460	14,970	15,860	15,210	17,440	11,960	17,660	23,700	17,050	21,180	19,730	23,560	220,780
On business	940	1,180	1,860	1,720	1,740	1,360	1,080	1,010	1,300	1,620	1,540	840	16,190
In transit	2,180	1,690	980	870	1,500	870	1,190	2,590	1,480	1,190	1,160	910	16,590
Other and N.S.	20	20	70	60	80	190	380	280	80	540	170	350	2,260
Mauritians settled abroad	1,320	940	1,420	700	1,130	1,710	3,510	2,070	880	1,440	1,600	3,240	19,960
Mauritian residents	4,980	3,370	3,570	5,590	4,580	4,830	5,580	7,800	5,460	5,720	5,510	7,430	64,520
Other	690	310	260	190	90	270	250	380	450	240	300	190	3,640
Total	32,590	22,460	24,140	24,560	26,560	21,190	29,650	37,830	26,700	31,930	30,010	36,520	343,940
<b>DEPARTURES</b>													
Visitors	28,880	20,380	17,420	19,640	20,900	13,790	18,380	25,800	21,810	21,260	24,250	20,050	252,560
Mauritians settled abroad	3,120	1,850	930	1,210	830	1,030	1,300	3,020	2,390	980	1,070	1,120	18,850
Mauritian residents	4,130	4,360	4,430	5,560	4,997	5,680	7,430	5,840	5,680	5,550	5,800	6,620	66,077
Emigrants	303	161	212	189	253	279	147	273	259	166	111	140	2,493
Other	27	189	118	91	-	71	263	27	141	144	69	210	1,350
Total	36,460	26,940	23,110	26,690	26,980	20,850	27,520	34,960	30,280	28,100	31,300	28,140	341,330

<sup>1/</sup> as from 1985, seamen are not included

<sup>2/</sup> including non-residents (a total of 16,520) who left the airport but stayed in the country for less than a day

Table 14(b) - Passenger traffic<sup>1/</sup> by type of passenger and month, 1989

Type of passenger	Jan.	Feb.	Mar.	Apr.	May	Jun.	Jul.	Aug.	Sept.	Oct.	Nov.	Dec.	Whole year
<b>ARRIVALS</b>													
Visitors <sup>2/</sup>	29,500	18,470	20,490	20,640	21,820	15,660	22,220	29,410	22,400	26,460	23,660	30,310	281,040
On holiday	26,080	16,170	18,240	18,020	18,760	13,350	19,990	27,070	19,690	23,450	20,840	27,660	249,320
On business	940	1,100	1,130	1,440	1,340	1,210	930	780	1,060	1,920	1,760	1,220	14,830
In transit	2,400	1,160	820	970	1,400	820	1,050	1,530	1,560	1,040	1,040	1,430	15,220
Other and N.S.	80	40	300	210	320	280	250	30	90	50	20	-	1,670
Mauritians settled abroad	1,600	1,020	1,430	960	1,000	1,730	4,030	1,990	1,090	1,310	1,160	2,860	20,180
Mauritian residents	5,890	3,610	4,480	5,940	4,940	5,310	6,430	8,270	6,540	7,110	6,940	8,990	74,450
Other	460	170	230	390	260	240	420	300	220	260	320	140	3,410
Total	37,450	23,270	26,630	27,930	28,020	22,940	33,100	39,970	30,250	35,140	32,080	42,300	379,080
<b>DEPARTURES</b>													
Visitors	34,290	20,910	19,900	20,970	24,420	15,740	19,270	28,600	25,450	23,730	25,650	23,790	282,720
Mauritians settled abroad	3,650	1,810	960	1,150	970	880	1,470	3,180	2,390	1,260	1,280	900	19,900
Mauritian residents	5,280	4,390	6,580	5,330	5,250	8,240	6,630	7,440	7,325	6,490	7,780	8,790	79,525
Emigrants	221	121	170	146	145	196	103	104	185	150	121	90	1,752
Other	49	79	140	4	115	154	357	106	-	-	89	60	1,153
Total	43,490	27,310	27,750	27,600	30,900	25,210	27,830	39,430	35,350	31,630	34,920	33,630	385,050

<sup>1/</sup> excluding seamen and transit passengers who do not leave the airport

<sup>2/</sup> including non-residents (a total of 18,250) who left the airport but stayed in the country for less than a day

Table 15 - Arrivals<sup>1/</sup> by age and sex, 1988 - 1989

Age (years)	1988			1989			January - June 1989			July - December 1989		
	Both sexes	Male	Female	Both sexes	Male	Female	Both sexes	Male	Female	Both sexes	Male	Female
	Under 1	1,830	980	850	2,170	1,130	1,040	950	450	500	1,220	680
1 - 4	9,550	5,040	4,510	11,410	5,910	5,500	4,820	2,450	2,370	6,590	3,460	3,130
5 - 9	13,180	6,820	6,360	15,810	8,630	7,180	6,540	3,810	2,730	9,270	4,820	4,450
10 - 14	12,630	6,200	6,430	15,670	7,950	7,720	6,510	3,380	3,130	9,160	4,570	4,590
15 - 19	14,030	6,340	7,690	15,170	7,540	7,630	5,710	2,840	2,870	9,460	4,700	4,760
20 - 24	28,620	12,930	15,690	32,510	14,760	17,750	13,780	6,340	7,440	18,730	8,420	10,310
25 - 29	46,380	24,300	22,080	48,650	25,590	23,060	20,860	10,820	10,040	27,790	14,770	13,020
30 - 34	42,700	23,680	19,020	46,650	26,160	20,490	21,000	11,920	9,080	25,650	14,240	11,410
35 - 39	40,840	23,690	17,150	44,190	25,460	18,730	20,030	11,740	8,290	24,160	13,720	10,440
40 - 44	35,200	20,300	14,900	38,490	23,370	15,120	17,260	10,570	6,690	21,230	12,800	8,430
45 - 49	26,600	15,400	11,200	30,100	18,010	12,090	13,470	8,340	5,130	16,630	9,670	6,960
50 - 54	20,620	12,360	8,260	22,720	12,970	9,750	10,520	6,200	4,320	12,200	6,770	5,430
55 - 59	15,030	8,390	6,640	16,110	9,400	6,710	6,970	4,260	2,710	9,140	5,140	4,000
60 - 64	12,140	6,710	5,430	12,970	7,160	5,810	5,730	3,300	2,430	7,240	3,860	3,380
65 - 69	6,830	3,650	3,180	8,080	4,320	3,760	3,770	2,000	1,770	4,310	2,320	1,990
70 & over	6,380	2,950	3,430	6,350	3,110	3,240	2,820	1,430	1,390	3,530	1,680	1,850
Not stated	11,380	7,050	4,330	12,030	7,390	4,640	5,500	3,510	1,990	6,530	3,880	2,650
All ages	343,940	186,790	157,150	379,080	208,860	170,220	166,240	93,360	72,880	212,840	115,500	97,340

<sup>1/</sup> excluding discharged seamen and transit passengers who do not leave the airport



Table 16 - Departures<sup>1/</sup> by age and sex, 1988 - 1989

Age (years)	1988			1989			January - June 1989			July - December 1989		
	Both sexes	Male	Female	Both sexes	Male	Female	Both sexes	Male	Female	Both sexes	Male	Female
Under 1	1,840	970	870	2,070	1,100	970	800	450	350	1,270	650	620
1 - 4	9,150	4,780	4,370	11,790	6,160	5,630	5,550	2,950	2,600	6,240	3,210	3,030
5 - 9	12,510	6,530	5,980	15,480	8,230	7,250	7,080	3,900	3,180	8,400	4,330	4,070
10 - 14	12,410	6,720	5,690	16,110	8,000	8,110	6,940	3,400	3,540	9,170	4,600	4,570
15 - 19	14,000	6,780	7,220	16,150	7,720	8,430	6,580	3,130	3,450	9,570	4,590	4,980
20 - 24	29,800	13,440	16,360	32,030	15,080	16,950	14,030	6,770	7,260	18,000	8,310	9,690
25 - 29	45,620	23,510	22,110	51,950	27,700	24,250	23,440	12,460	10,980	28,510	15,240	13,270
30 - 34	43,460	23,940	19,520	48,750	27,810	20,940	23,590	13,410	10,180	25,160	14,400	10,760
35 - 39	40,610	23,820	16,790	45,040	26,200	18,840	23,050	13,530	9,520	21,990	12,670	9,320
40 - 44	35,740	21,150	14,590	38,230	23,050	15,180	18,540	11,080	7,460	19,690	11,970	7,720
45 - 49	26,350	15,910	10,440	28,420	16,750	11,670	13,780	8,390	5,390	14,640	8,360	6,280
50 - 54	19,800	11,910	7,890	22,500	13,360	9,140	11,300	6,560	4,740	11,200	6,800	4,400
55 - 59	14,500	8,230	6,270	17,100	9,710	7,390	8,460	4,920	3,540	8,640	4,790	3,850
60 - 64	11,400	6,150	5,250	12,970	6,850	6,120	6,350	3,600	2,750	6,620	3,250	3,370
65 - 69	7,420	4,000	3,420	8,080	4,650	3,430	4,170	2,370	1,800	3,910	2,280	1,630
70 & over	6,290	3,100	3,190	6,030	3,110	2,920	2,810	1,470	1,340	3,220	1,640	1,580
Not stated	10,430	6,640	3,790	12,350	7,750	4,600	5,790	3,710	2,080	6,560	4,040	2,520
All ages	341,330	187,580	153,750	385,050	213,230	171,820	182,260	102,100	80,160	202,790	111,130	91,660

<sup>1/</sup> excluding engaged seamen and transit passengers who do not leave the airport

Table 17 - Excess of arrivals over departures 1/ by age and sex, 1988 - 1989

Age (years)	1988			1989			January - June 1989			July - December 1989		
	Both sexes	Male	Female	Both sexes	Male	Female	Both sexes	Male	Female	Both sexes	Male	Female
	Under 1	- 10	+ 10	- 20	+ 100	+ 30	+ 70	+ 150	-	+ 150	- 50	+ 30
1 - 4	+ 400	+ 260	+ 140	- 380	- 250	- 130	- 730	- 500	- 230	+ 350	+ 250	+ 100
5 - 9	+ 670	+ 290	+ 380	+ 330	+ 400	- 70	- 540	- 90	- 450	+ 870	+ 490	+ 380
10 - 14	+ 220	- 520	+ 740	- 440	- 50	- 390	- 430	- 20	- 410	- 10	- 30	+ 20
15 - 19	+ 30	- 440	+ 470	- 980	- 180	- 800	- 870	- 290	- 580	- 110	+ 110	- 220
20 - 24	-1,180	- 510	- 670	+ 480	- 320	+ 800	- 250	- 430	+ 180	+ 730	+ 110	+ 620
25 - 29	+ 760	+ 790	- 30	-3,300	-2,110	-1,190	-2,580	-1,640	- 940	- 720	- 470	- 250
30 - 34	- 760	- 260	- 500	-2,100	-1,650	- 450	-2,590	-1,490	-1,100	+ 490	- 160	+ 650
35 - 39	+ 230	- 130	+ 360	- 850	- 740	- 110	-3,020	-1,790	-1,230	+2,170	+1,050	+1,120
40 - 44	- 540	- 850	+ 310	+ 260	+ 320	- 60	-1,280	- 510	- 770	+1,540	+ 830	+ 710
45 - 49	+ 250	- 510	+ 760	+1,680	+1,260	+ 420	- 310	- 50	- 260	+1,990	+1,310	+ 680
50 - 54	+ 820	+ 450	+ 370	+ 220	- 390	+ 610	- 780	- 360	- 420	+1,000	- 30	+1,030
55 - 59	+ 530	+ 160	+ 370	- 990	- 310	- 680	-1,490	- 660	- 830	+ 500	+ 350	+ 150
60 - 64	+ 740	+ 560	+ 180	-	+ 310	- 310	- 620	- 300	- 320	+ 620	+ 610	+ 10
65 - 69	- 590	- 350	- 240	-	- 330	+ 330	- 400	- 370	- 30	+ 400	+ 40	+ 360
70 & over	+ 90	- 150	+ 240	+ 320	-	+ 320	+ 10	- 40	+ 50	+ 310	+ 40	+ 270
Not stated	+ 950	+ 410	+ 540	- 320	- 360	+ 40	- 290	- 200	- 90	- 30	- 160	+ 130
All ages	+2,610	- 790	+3,400	-5,970	-4,370	-1,600	-16,020	-8,740	-7,280	+10,050	+4,370	+5,680

1/ excluding seamen and transit passengers who do not leave the airport

Table 18 - Arrivals of residents by district of residence and sex, 1988 - 1989

Geographical district	1988			1989			January - June 1989			July - December 1989		
	Both sexes	Male	Female	Both sexes	Male	Female	Both sexes	Male	Female	Both sexes	Male	Female
Port Louis	11,200	6,540	4,660	13,630	7,960	5,670	4,880	2,950	1,930	8,750	5,010	3,740
Pamplemousses	3,520	2,340	1,180	3,380	2,160	1,220	1,380	840	540	2,000	1,320	680
Rivière du Rempart	2,090	1,380	710	3,090	1,980	1,110	1,040	620	420	2,050	1,360	690
Flacq	1,670	1,210	460	2,730	1,860	870	910	720	190	1,820	1,140	680
Grand Port	2,410	1,430	980	2,910	1,730	1,180	1,200	710	490	1,710	1,020	690
Savanne	1,100	660	440	1,430	790	640	570	360	210	860	430	430
Plaines Wilnems:												
Urban	27,480	16,680	10,800	32,190	19,210	12,980	13,230	8,260	4,970	18,960	10,950	8,010
Other	300	110	190	110	70	40	10	10	-	100	60	40
Moka	1,460	880	580	1,730	1,130	600	690	480	210	1,040	650	390
Black River	1,210	710	500	1,050	570	480	520	290	230	530	280	250
Not stated	12,080	7,450	4,630	12,200	7,540	4,660	5,740	3,670	2,070	6,460	3,870	2,590
Whole Island	64,520	39,390	25,130	74,450	45,000	29,450	30,170	18,910	11,260	44,280	26,090	18,190

Table 19 - Departures 1/of residents by district of residence and sex, 1988 - 1989

Geographical district	1988			1989			January - June 1989			July - December 1989		
	Both sexes	Male	Female	Both sexes	Male	Female	Both sexes	Male	Female	Both sexes	Male	Female
Port Louis	11,840	6,870	4,970	14,170	8,570	5,600	5,940	3,690	2,250	8,230	4,880	3,350
Pamplemousses	3,080	1,820	1,260	4,170	2,600	1,570	1,910	1,250	660	2,260	1,350	910
Rivière du Rempart	2,160	1,550	610	3,590	2,450	1,140	1,530	1,010	520	2,060	1,440	620
Flacq	2,140	1,400	740	2,840	1,880	960	1,340	890	450	1,500	990	510
Grand Port	2,300	1,190	1,110	3,370	2,050	1,320	1,430	920	510	1,940	1,130	810
Savanne	1,490	860	630	1,700	940	760	740	450	290	960	490	470
Plaines Wilhems												
Urban	28,320	16,240	12,080	33,540	20,190	13,350	14,580	8,880	5,700	18,960	11,310	7,650
Other	400	250	150	150	80	70	60	30	30	90	50	40
Moka	1,550	830	720	1,750	940	810	650	370	280	1,100	570	530
Black River	1,190	680	510	1,410	840	570	680	360	320	730	480	250
Not stated	11,610	7,330	4,280	12,990	8,100	4,890	6,210	3,940	2,270	6,780	4,160	2,620
Whole Island	66,080	39,020	27,060	79,680	48,640	31,040	35,070	21,790	13,280	44,610	26,850	17,760

1/ excluding official long-term emigrants

Table 20 - Excess of arrivals over departures of residents by district of residence and sex, 1988 - 1989

Geographical district	1988			1989			January - June 1989			July - December 1989		
	Both sexes	Male	Female	Both sexes	Male	Female	Both sexes	Male	Female	Both sexes	Male	Female
	Port Louis	- 640	- 330	- 310	- 540	- 610	+ 70	-1,060	- 740	- 320	+ 520	+ 130
Pamplemousses	+ 440	+ 520	- 80	- 790	- 440	- 350	- 530	- 410	- 120	- 260	- 30	- 230
Rivière du Rempart	- 70	- 170	+ 100	- 500	- 470	- 30	- 490	- 390	- 100	- 10	- 80	+ 70
Flacq	- 470	- 190	- 280	- 110	- 20	- 90	- 430	- 170	- 260	+ 320	+ 150	+ 170
Grand Port	+ 110	+ 240	- 130	- 460	- 320	- 140	- 230	- 210	- 20	- 230	- 110	- 120
Savanne	- 390	- 200	- 190	- 270	- 150	- 120	- 170	- 90	- 80	- 100	- 60	- 40
Plaines Wilhems												
Urban	- 840	+ 440	-1,280	-1,350	- 980	- 370	-1,350	- 620	- 730	-	- 360	+ 360
Other	- 100	- 140	+ 40	- 40	- 10	- 30	- 50	- 20	- 30	+ 10	+ 10	-
Moka	- 90	+ 50	- 140	- 20	+ 190	- 210	+ 40	+ 110	- 70	- 60	+ 80	- 140
Black river	+ 20	+ 30	- 10	- 360	- 270	- 90	- 160	- 70	- 90	- 200	- 200	-
Not stated	+ 470	+ 120	+ 350	- 790	- 560	- 230	- 470	- 270	- 200	- 320	- 290	- 30
Whole Island	-1,560	+ 370	-1,930	-5,230	-3,640	-1,590	-4,900	-2,880	-2,020	- 330	- 760	+ 430

1/ excluding official long-term emigrants

Table 21 - Arrivals of residents of Island of Mauritius by age and sex, 1988 - 1989

Age (years)	1988			1989			January - June 1989			July - December 1989		
	Both sexes	Male	Female	Both sexes	Male	Female	Both sexes	Male	Female	Both sexes	Male	Female
	Under 1	310	180	130	370	160	210	120	60	60	250	100
1 - 4	1,000	520	480	1,310	660	650	500	210	290	810	450	360
5 - 9	2,040	1,070	970	2,210	1,290	920	790	490	300	1,420	800	620
10 - 14	1,560	790	770	2,310	1,150	1,160	860	420	440	1,450	730	720
15 - 19	2,310	1,160	1,150	2,840	1,600	1,240	1,130	590	540	1,710	1,010	700
20 - 24	5,760	3,560	2,200	6,590	3,910	2,680	2,620	1,700	920	3,970	2,210	1,760
25 - 29	7,570	4,980	2,590	8,890	5,630	3,260	3,510	2,200	1,310	5,380	3,430	1,950
30 - 34	7,400	4,660	2,740	8,250	5,480	2,770	3,460	2,400	1,060	4,790	3,080	1,710
35 - 39	6,790	4,590	2,200	7,820	4,970	2,850	3,020	2,050	970	4,800	2,920	1,880
40 - 44	4,820	3,120	1,700	5,730	3,810	1,920	2,280	1,500	780	3,450	2,310	1,140
45 - 49	3,540	2,240	1,300	4,290	2,600	1,690	1,600	1,020	580	2,690	1,580	1,110
50 - 54	3,230	1,820	1,410	3,850	2,010	1,840	1,770	1,070	700	2,080	940	1,140
55 - 59	2,560	1,360	1,200	2,850	1,630	1,220	1,090	690	400	1,760	940	820
60 - 64	2,540	1,540	1,000	2,830	1,480	1,350	1,090	600	490	1,740	880	860
65 - 69	1,200	650	550	1,630	900	730	610	310	300	1,020	590	430
70 & over	1,270	540	730	1,240	650	590	480	230	250	760	420	340
Not stated	10,620	6,610	4,010	11,440	7,070	4,370	5,240	3,370	1,870	6,200	3,700	2,500
All ages	64,520	39,390	25,130	74,450	45,000	29,450	30,170	18,910	11,260	44,280	26,090	18,190

Table 22 - Departures of residents<sup>1/</sup> of Island of Mauritius by age and sex, 1988 - 1989

Age (years)	1988			1989			January - June 1989			July - December 1989		
	Both sexes	Male	Female	Both sexes	Male	Female	Both sexes	Male	Female	Both sexes	Male	Female
	Under	290	140	150	350	230	120	150	100	50	200	130
1 - 4	1,310	640	670	1,620	780	840	760	380	380	860	400	460
5 - 9	2,150	1,140	1,010	2,440	1,290	1,150	880	500	380	1,560	790	770
10 - 14	1,950	980	970	2,670	1,530	1,140	770	450	320	1,900	1,080	820
15 - 19	2,900	1,500	1,400	3,630	1,990	1,640	1,350	760	590	2,280	1,230	1,050
20 - 24	6,810	3,940	2,870	7,950	4,810	3,140	3,390	2,040	1,350	4,560	2,770	1,790
25 - 29	7,930	4,810	3,120	9,330	6,150	3,180	3,980	2,730	1,250	5,350	3,420	1,930
30 - 34	7,150	4,430	2,720	9,320	5,770	3,550	3,910	2,470	1,440	5,410	3,300	2,110
35 - 39	6,940	4,630	2,310	8,620	5,880	2,740	3,960	2,840	1,120	4,660	3,040	1,620
40 - 44	4,630	2,960	1,670	5,780	3,900	1,880	2,280	1,610	670	3,500	2,250	1,210
45 - 49	3,310	1,940	1,370	4,150	2,470	1,680	1,750	1,060	690	2,400	1,410	990
50 - 54	3,230	1,760	1,470	3,640	2,120	1,520	1,800	940	860	1,840	1,180	660
55 - 59	2,810	1,450	1,360	3,190	1,690	1,500	1,530	780	750	1,660	910	750
60 - 64	2,240	1,170	1,070	2,630	1,270	1,360	1,550	830	720	1,080	440	640
65 - 69	1,520	730	790	1,520	850	670	910	540	370	610	310	300
70 & over	1,310	670	640	1,230	580	650	680	290	390	550	290	260
Not stated	9,600	6,130	3,470	11,610	7,330	4,280	5,420	3,470	1,950	6,190	3,860	2,330
All ages	66,080	39,020	27,060	79,680	48,640	31,040	35,070	21,790	13,280	44,610	26,850	17,760

<sup>1/</sup> excluding official long-term emigrants

Table 23 - Excess of arrivals over departures of residents (excluding emigrants) of Island of Mauritius by age and sex, 1988 - 1989

Age (years)	1988			1989			January - June 1989			July - December 1989		
	Both sexes	Male	Female	Both sexes	Male	Female	Both sexes	Male	Female	Both sexes	Male	Female
Under 1	+20	+40	-20	+20	-70	+90	-30	-40	+10	+50	-30	+80
1 - 4	-310	-120	-190	-310	-120	-190	-260	-170	-90	-50	+50	-100
5 - 9	-110	-70	-40	-230	-	-230	-90	-10	-80	-140	+10	-150
10 - 14	-390	-190	-200	-360	-380	+20	+90	-30	+120	-450	-350	-100
15 - 19	-590	-340	-250	-790	-390	-400	-220	-170	-50	-570	-220	-350
20 - 24	-1,050	-380	-670	-1,360	-900	-460	-770	-340	-430	-590	-560	-30
25 - 29	-360	+170	-530	-440	-520	+80	-470	-530	+60	+30	+10	+20
30 - 34	+250	+230	+20	-1,070	-290	-780	-450	-70	-380	-620	-220	-400
35 - 39	-150	-40	-110	-800	-910	+110	-940	-790	-150	+140	-120	+260
40 - 44	+190	+160	+30	-50	-90	+40	-	-110	+110	-50	+20	-70
45 - 49	+230	+300	-70	+140	+130	+10	-150	-40	-110	+290	+170	+120
50 - 54	-	+60	-60	+210	-110	+320	-30	+130	-160	+240	-240	+480
55 - 59	-250	-90	-160	-340	-60	-280	-440	-90	-350	+100	+30	+70
60 - 64	+300	+370	-70	+200	+210	-10	-460	-230	-230	+660	+440	+220
65 - 69	-320	-80	-240	+110	+50	+60	-300	-230	-70	+410	+280	+130
70 & over	-40	-130	+90	+10	+70	-60	-200	-60	-140	+210	+130	+80
Not stated	+1,020	+480	+540	-170	-260	+90	-180	-100	-80	+10	-160	+170
All ages	-1,560	+370	-1,930	-5,230	-3,640	-1,590	-4,900	-2,880	-2,020	-330	-760	+430



Table 24 - Excess of arrivals over departures of residents (including emigrants) of Island of Mauritius by age and sex, 1988 - 1989

Age (years)	1988			1989			January - June 1989			July - December 1989		
	Both sexes	Male	Female	Both sexes	Male	Female	Both sexes	Male	Female	Both sexes	Male	Female
Under 1	-3	+30	-33	-3	-85	+32	-42	-47	+5	+39	-38	+77
1 - 4	-401	-170	-231	-360	-152	-208	-288	-188	-100	-72	+36	-108
5 - 9	-236	-131	-105	-267	-18	-249	-114	-22	-92	-153	+4	-157
10 - 14	-479	-237	-242	-386	-393	+7	+79	-37	+116	-465	-356	-109
15 - 19	-761	-335	-426	-864	-410	-454	-263	-185	-78	-601	-225	-376
20 - 24	-1,643	-640	-1,003	-1,735	-1,116	-619	-976	-455	-521	-759	-661	-98
25 - 29	-941	-127	-814	-902	-825	-77	-732	-707	-25	-170	-118	-52
30 - 34	-142	+45	-187	-1,394	-498	-896	-642	-196	-446	-752	-302	-450
35 - 39	-356	-141	-215	-975	-1,038	+63	-1,049	-869	-180	+74	-169	+243
40 - 44	+96	+100	-4	-146	-156	+10	-53	-146	+93	-93	-10	-83
45 - 49	+182	+269	-87	+99	+109	-10	-174	-52	-122	+273	+161	+112
50 - 54	+27	+47	-84	+193	-121	+314	-39	+123	-162	+232	-244	+476
55 - 59	-263	-95	-168	-361	-75	-286	-451	-98	-353	+90	+23	+67
60 - 64	+280	+364	-84	+184	+201	-17	-468	-234	-234	+652	+435	+217
65 - 69	-330	-80	-244	+99	+45	+54	-304	-231	-73	+403	+276	+127
70 & over	-48	-133	+85	+6	+70	-64	-203	-60	-143	+209	+130	+79
Not stated	+1,019	+479	+540	-170	-260	+90	-180	-100	-80	+10	-160	+170
All ages	-4,053	-616	-3,237	-6,982	-4,722	-2,260	-5,899	-3,504	-2,395	-1,083	-1,213	+135

Table 25 - Arrivals and departures of Mauritian residents by country of embarkation and disembarkation, 1987 - 1989

Country of embarkation/ disembarkation	Arrivals			Departures			Excess of arrivals over departures		
	1987	1988	1989	1987	1988	1989	1987	1988	1989
	Australia	760	580	160	2,000	1,530	100	-1,240	- 950
Belgium	30	90	-	270	220	20	- 240	- 130	- 20
Canada	100	70	-	320	190	-	- 220	- 120	-
France	4,230	5,530	6,140	4,040	5,390	8,320	+ 190	+ 140	-2,180
Germany, Fed. Rep. of	660	730	1,340	1,560	1,220	2,280	- 900	- 490	- 940
Hong Kong	440	520	270	800	520	400	- 360	-	- 130
India	1,970	2,600	3,060	2,300	2,670	3,660	- 330	- 70	- 600
Italy	350	490	620	950	1,460	650	- 600	- 970	- 30
Kenya	720	580	550	790	560	430	- 70	+ 20	+ 120
Rodrigues	8,337	10,120	11,110	8,255	9,350	11,400	+ 82	+ 770	- 290
Reunion	13,990	17,690	22,130	13,530	17,120	22,570	+ 410	+ 570	- 440
Singapore	6,470	9,770	13,550	6,580	9,640	13,020	- 110	+ 130	+ 530
South Africa, Rep. of	3,090	3,570	3,850	3,100	3,330	4,040	- 10	+ 240	- 190
Switzerland	580	590	390	740	580	690	- 160	+ 10	- 300
United Kingdom	5,110	5,870	6,220	5,080	6,120	6,990	+ 30	- 250	- 770
Other countries	4,673	5,720	5,060	5,025	6,180	5,110	- 352	- 460	- 50
All countries	51,510	64,520	74,450	55,390	66,080	79,680	-3,880	-1,560	-5,230

III - EMIGRATION  
=====

Table 26 - Official long-term emigrants<sup>1/</sup> by sex, 1963 - 1989

Year	Both sexes	Male	Female
1963	594	326	268
1964	915	491	424
1965	1,408	659	749
1966	1,611	774	837
1967	2,225	1,038	1,187
1968	3,067	1,487	1,580
1969	2,379	1,119	1,260
1970	2,282	1,063	1,219
1971	2,351	1,078	1,273
1972	2,271	956	1,315
1973	2,037	844	1,193
1974	1,494	606	888
1975	874	328	546
1976	579	195	384
1977	290	120	170
1978	320	111	209
1979	191	43	148
1980	308	84	224
1981	485	283	202
1982	913	682	231
1983	1,735	1,437	298
1984	1,961	1,256	705
1985	1,585	742	843
1986	2,015	927	1,088
1987	3,339	1,545	1,794
1988	2,493	1,186	1,307
1989	1,752	1,082	670

<sup>1/</sup> persons who have obtained a permit to emigr. to another country

Table 27 - External migration, 1963 - 1989

Year	Arrivals	Departures			Excess of arrivals over departures (excluding emigrants)
		Total	Official long-term emigrants <sup>1/</sup>	Departures excluding emigrants	
1963	18,047	18,299	594	17,705	+342
1964	21,221	22,331	915	21,416	-195
1965	22,024	24,150	1,408	22,742	-718
1966	26,456	29,301	1,611	27,690	-1,234
1967	29,321	32,925	2,225	30,700	-1,379
1968	31,403	35,988	3,067	32,921	-1,518
1969	35,919	38,929	2,379	36,550	-631
1970	48,819	51,969	2,282	49,687	-868
1971	60,826	63,997	2,351	61,646	-820
1972	77,174	81,493	2,271	79,222	-2,048
1973	101,184	104,697	2,037	102,660	-1,476
1974	109,044	113,362	1,494	111,868	-2,824
1975	117,548	120,703	874	119,829	-2,281
1976	139,303	141,148	579	140,569	-1,266
1977	153,208	155,653	290	155,363	-2,155
1978	161,688	163,733	320	163,413	-1,725
1979	182,771	186,864	191	186,673	-3,902
1980	163,230	167,269	308	166,961	-3,731
1981	168,973	174,376	485	173,891	-4,918
1982	166,669	171,991	913	171,078	-4,409
1983	177,665	182,005	1,735	180,270	-2,605
1984	198,461	202,983	1,961	201,022	-2,561
1985	212,860	215,000	1,585	213,415	-555
1986	235,640	236,850	2,015	234,835	+805
1987	293,160	294,970	3,339	291,631	+1,529
1988	343,940	341,330	2,493	338,837	+5,103
1989	379,080	385,050	1,752	383,298	-4,218

<sup>1/</sup> persons who have obtained a permit to emigrate to another country

Note : The number of immigrants coming to settle in Mauritius is negligible. A net negative balance over successive years in the last column indicates that a number of persons not registered as official emigrants are permanently leaving the country.

Table 28 - Official long-term migrants by country of intended residence, 1979 - 1989

Country of intended residence	1979	1980	1981	1982	1983	1984	1985	1986	1987	1988	1989
All countries	191	308	485	913	1,735	1,961	1,585	2,015	5,339	2,493	1,752
<u>AFRICA</u>	2	34	42	22	421	461	234	172	529	423	521
B.I.O.T. 2/	-	-	-	-	-	106	84	45	141	234	166
Congo Brazzaville	-	-	1	-	-	9	-	4	-	-	-
Ivory Coast	-	-	2	6	1	4	9	8	1	4	3
Kenya	-	-	4	1	14	6	12	11	23	7	17
Libya	-	33	15	-	16	-	24	-	2	-	2
Malagasy Republic	-	-	-	-	-	3	2	-	3	-	1
Malawi	-	-	-	-	-	1	2	-	-	-	17
Mozambique	-	-	-	-	-	-	-	-	-	-	1
Reunion	-	-	-	-	1	14	11	10	44	26	23
Seychelles	-	-	-	5	14	47	13	34	21	27	25
South Africa, Rep. of	-	-	9	1	13	6	22	15	20	34	94
Zambia	-	-	-	-	1	14	18	8	7	5	9
Zimbabwe	-	-	-	-	342	2	5	3	9	16	10
Other African	2	1	11	9	19	59	32	34	58	70	153
<u>AMERICA</u>	10	44	41	16	8	24	27	139	120	154	138
Canada	10	40	34	16	7	19	19	71	83	105	86
U.S.A.	-	4	7	-	1	5	7	18	18	17	43
Other American	-	-	-	-	-	-	1	50	19	32	9

Table 28 (cont'd) - Official long-term emigrants<sup>1/</sup> by country of intended residence, 1979 - 1989

Country of intended residence	1979	1980	1981	1982	1983	1984	1985	1986	1987	1988	1989
<b>ASIA</b>											
Bahrain	-	-	213	735	1,101	1,249	827	770	823	953	643
India	-	-	-	1	5	9	65	47	148	50	57
Iraq	-	-	-	46	-	-	4	3	8	12	26
Israel	-	-	-	-	1	46	8	1	-	-	-
Lebanon	-	-	-	33	36	151	94	85	41	61	87
Oman	-	-	-	1	2	84	-	31	29	104	12
Quatar	-	-	50	81	43	34	29	33	3	7	-
Saudi Arabia	-	-	163	554	1,070	615	437	17	69	9	31
United Arab Emirates	-	-	-	15	2	42	150	342	131	272	259
Yemen	-	-	-	-	13	56	4	170	118	164	65
Other Asian	-	-	-	3	9	11	34	-	-	-	-
<b>EUROPE</b>	148	176	148	122	101	273	303	385	276 <sup>3/</sup>	144 <sup>4/</sup>	106 <sup>5/</sup>
Belgium	7	5	5	2	2	7	6	23	34	13	16
France	77	93	69	56	62	147	181	233	282	132	152
Germany, Fed. Rep. of	1	1	9	2	4	10	16	19	47	15	9
Italy	16	13	18	9	5	6	3	6	87	35	45
Norway	-	-	-	-	-	-	1	-	-	-	-
Switzerland	3	8	11	4	2	22	39	26	29	32	15
United Kingdom	41	49	36	47	25	66	54	69	110	92	107
Other European	3	7	-	2	1	15	3	9	14	3	10
<b>OCEANIA</b>	31	54	41	18	24	154	194	549	1,464	626	96
Australia	31	54	41	18	24	153	194	532	1,463	622	92
New Zealand	-	-	-	-	-	1	-	-	1	1	1
Other Oceanian	-	-	-	-	-	-	-	17	-	3	3

1/ persons who have obtained a permit to emigrate to another country 4/ including 110 from Kuwait  
 2/ British Indian Ocean Territory 5/ including 12 from Kuwait  
 3/ including 200 from Kuwait

Table 29 - Age distribution of official long-term emigrants<sup>1/</sup>, 1979 - 1989

Male

Age (years)	1979	1980	1981	1982	1983	1984	1985	1986	1987	1988	1989
0 - 4	4	6	7	5	22	43	39	68	113	60	47
5 - 9	4	16	5	6	13	24	32	53	116	61	18
10 - 14	8	5	11	4	5	30	19	43	65	47	13
15 - 19	7	7	21	13	14	51	19	56	74	45	20
20 - 24	7	14	105	150	197	212	116	230	251	260	216
25 - 29	1	14	67	207	525	311	182	190	333	297	305
30 - 34	3	11	27	122	301	263	143	121	238	190	208
35 - 39	2	2	10	76	156	143	86	65	169	101	128
40 - 44	1	-	19	53	101	83	44	34	72	60	66
45 - 49	2	3	1	25	62	52	28	22	42	31	21
50 - 54	1	-	1	10	27	13	12	24	21	13	11
55 - 59	-	2	2	3	8	9	6	13	18	5	15
60 - 64	2	2	4	2	3	5	5	3	17	6	9
65 - 69	-	1	1	1	1	2	5	2	5	6	5
70 & over	1	-	2	1	-	1	1	2	10	3	-
Unknown	-	2	-	4	2	14	5	1	1	1	-
All ages	43	84	283	682	1,437	1,256	742	927	1,545	1,186	1,082

<sup>1/</sup> persons who have obtained a permit to emigrate to another country.

Table 29 (cont'd) - Age distribution of official long-term emigrants<sup>1/</sup>, 1979 - 1989

Female

Age (years)	1979	1980	1981	1982	1983	1984	1985	1986	1987	1988	1989
0 - 4	7	6	7	11	13	42	39	73	129	54	26
5 - 9	6	6	14	11	12	26	29	71	117	65	19
10 - 14	16	10	6	6	6	22	26	40	75	42	13
15 - 19	32	46	42	38	25	85	103	101	145	126	54
20 - 24	47	72	57	69	91	177	251	254	369	833	159
25 - 29	18	36	33	44	55	156	179	220	384	284	157
30 - 34	9	19	13	30	56	94	118	163	253	202	116
35 - 39	4	10	11	11	18	45	39	75	131	105	47
40 - 44	2	3	2	4	9	28	18	33	70	34	30
45 - 49	3	4	3	4	4	6	14	23	31	17	20
50 - 54	2	3	5	2	4	9	3	13	28	14	6
55 - 59	-	3	3	-	2	4	5	5	19	8	6
60 - 64	2	4	2	1	2	3	10	7	20	14	7
65 - 69	-	-	2	-	-	2	6	4	10	4	6
70 & over	-	1	2	-	1	4	3	2	12	5	4
Unknown	-	1	-	-	-	2	-	4	1	-	-
All ages	148	224	202	231	298	705	843	1,088	1,794	1,307	670

<sup>1/</sup> persons who have obtained a permit to emigrate to another country



Table 29 (cont'd) - Age distribution of official long-term emigrants 1/, 1979 - 1989

Both Sexes

Age (years)	1979	1980	1981	1982	1983	1984	1985	1986	1987	1988	1989
0 - 4	11	12	14	16	35	85	78	141	242	114	73
5 - 9	10	22	19	17	25	50	61	124	233	126	37
10 - 14	24	15	17	10	11	52	45	83	140	89	26
15 - 19	39	53	63	51	39	136	122	157	219	171	74
20 - 24	54	86	162	219	288	389	367	484	620	593	375
25 - 29	19	50	100	251	580	467	361	410	717	581	462
30 - 34	12	30	40	152	357	357	261	284	491	392	324
35 - 39	6	12	21	87	174	188	125	140	300	206	175
40 - 44	3	3	21	57	110	111	62	67	142	94	96
45 - 49	5	7	4	29	66	58	42	45	73	48	41
50 - 54	3	3	6	12	31	22	15	37	49	27	17
55 - 59	-	5	5	3	10	13	11	18	37	13	21
60 - 64	4	6	6	3	5	8	15	10	37	20	16
65 - 69	-	-	3	1	1	4	11	6	15	10	11
70 & over	1	1	4	1	1	5	4	4	22	8	4
Unknown	-	3	-	4	2	16	5	5	2	1	-
All ages	191	308	485	913	1,735	1,961	1,585	2,015	3,339	2,493	1,752

1/ persons who have obtained a permit to emigrate to another country

Table 30 - Official long-term emigrants<sup>1/</sup> by Major Occupational Group, 1983 - 1989

Major Occupational Group. 2/	1983	1984	1985	1986	1987	1988	1989
Total number of emigrants	1,735	1,961	1,585	2,015	3,339	2,493	1,752
<u>Emigrants reporting an occupation</u>	<u>1,538</u>	<u>1,506</u>	<u>1,111</u>	<u>1,263</u>	<u>2,076</u>	<u>1,767</u>	<u>1,320</u>
0/1. Professional, Technical and Related Workers	328	426	112	214	281	287	278
2. Administrative and Managerial Workers	6	5	5	14	28	21	36
3. Clerical and Related Workers	36	65	106	136	350	234	167
4. Sales Workers	5	15	8	29	54	45	22
5. Service Workers	153	371	427	522	744	750	391
6. Agricultural, Animal Husbandry and Forestry Workers, Fishermen and Hunters	402	255	146	98	40	62	45
7/8/9. Production and Related Workers, Transport Equipment Operators and Labourers	600	331	267	206	497	349	359
X. Workers not classifiable by Occupation	8	38	40	44	82	19	22
<u>Emigrants not reporting any occupation</u> (including housewives and children)	<u>197</u>	<u>455</u>	<u>474</u>	<u>752</u>	<u>1,263</u>	<u>726</u>	<u>432</u>

1/ persons who have obtained a permit to emigrate to another country

2/ International Standard Classification of Occupation, Revised Edition, 1968

Table 31(a) - Official long-term emigrants 1/ by Major Occupational Group, age and sex, 1989

Major Occupational Group <u>2/</u>	Age (completed years)																
	All ages		L 20		20 - 24		25 - 34		35 - 44		45 - 54		55+		Not stated		
	Both sexes	Male	Female	Male	Female	Male	Female	Male	Female	Male	Female	Male	Female	Male	Female		
Total number of emigrants	1,752	1,082	670	98	112	216	159	513	273	194	77	32	26	29	23	-	-
<u>Emigrants reporting an occupation</u>	<u>1,320</u>	<u>960</u>	<u>360</u>	<u>16</u>	<u>17</u>	<u>204</u>	<u>87</u>	<u>498</u>	<u>184</u>	<u>190</u>	<u>56</u>	<u>30</u>	<u>14</u>	<u>22</u>	<u>2</u>	-	-
0/1 Professional, Technical & Related Workers	278	204	74	2	4	22	10	106	39	61	12	8	7	5	2	-	-
2 Administrative and Managerial Workers	36	35	1	-	-	3	-	18	1	11	-	1	-	2	-	-	-
3 Clerical & Related Workers	167	83	84	1	2	19	21	48	50	11	10	3	1	1	-	-	-
4 Sales Workers	22	12	10	-	1	1	1	5	7	3	1	2	-	1	-	-	-
5 Service Workers	391	236	155	3	7	87	39	123	71	22	32	-	6	1	-	-	-
6 Agriculture, Animal Husbandry & Forestry Workers, Fishermen & Hunters	45	45	-	2	-	12	-	27	-	4	-	-	-	-	-	-	-
7/8/9 Production & Related Workers, Transport Equipment Operators and Labourers	359	323	36	6	3	56	16	159	16	74	1	16	-	12	-	-	-
X Workers not classifiable by Occupation	22	22	-	2	-	4	-	12	-	4	-	-	-	-	-	-	-
<u>Emigrants not reporting any occupation (including housewives and children)</u>	<u>432</u>	<u>122</u>	<u>310</u>	<u>82</u>	<u>95</u>	<u>12</u>	<u>72</u>	<u>15</u>	<u>89</u>	<u>4</u>	<u>21</u>	<u>2</u>	<u>12</u>	<u>7</u>	<u>21</u>	-	-

1/ persons who have obtained a permit to emigrate to another country

2/ International Standard Classification of Occupation, Revised Edition, 1968

Table 31(b) - Official long-term emigrants<sup>1/</sup> by Major Occupational Group, age and sex 1988

Major Occupational Group <sup>2/</sup>	Age (completed years)																
	All ages		/ 20		20 - 24		25 - 34		35 - 44		45 - 54		55 +		Not stated		
	Both sexes	Male	Female	Male	Female	Male	Female	Male	Female	Male	Female	Male	Female	Male	Female	Male	Female
Total number of emigrants	2,493	1,186	1,307	213	287	260	333	487	486	161	139	44	31	21	31	-	-
Emigrants reporting an occupation	1,767	959	808	23	72	250	236	475	375	158	106	44	13	9	4	-	-
1/1 Professional, Technical & Related Workers	237	195	92	-	3	25	9	103	52	54	18	11	8	2	2	-	-
2 Administrative and Managerial Workers	21	16	5	-	-	-	-	7	4	6	-	2	1	1	-	-	-
3 Clerical & Related Workers	234	98	136	1	8	25	36	54	70	13	20	4	1	1	1	-	-
4 Sales Workers	45	26	19	1	2	7	8	13	9	4	-	-	-	-	-	-	-
5 Service Workers	750	264	486	15	53	98	158	120	210	26	62	4	3	1	1	-	-
6 Agriculture, Animal Husbandry & Forestry Workers, Fishermen and Hunters	62	60	2	3	-	23	-	33	1	1	1	-	-	-	-	-	-
7/8/9 Production & Related Workers, Transport Equipment Operators and Labourers	349	285	64	3	4	67	26	138	28	53	5	21	-	3	1	-	-
X Workers not classifiable by Occupation	15	15	4	-	2	5	1	7	1	1	1	2	-	-	-	-	-
Emigrants not reporting any occupation (including housewives and children)	726	227	499	190	215	10	95	12	111	3	33	-	18	12	27	-	-

1/ persons who have obtained a permit to emigrate to another country

2/ International Standard Classification of Occupation, Revised Edition, 1968

Table 32 - Official long-term emigrants<sup>1/</sup> by occupation, 1987 - 1989

Occupation	1987	1988	1989
Accountants	24	16	17
Air hostesses	12	6	11
Cabinet makers	25	13	4
Carpenters	17	15	31
Clerks	198	108	102
Computer Operators	9	14	10
Cooks	43	37	55
Doctors	9	15	17
Drivers	30	17	21
Electricians and electrical fitters	42	3	22
Engineers	7	2	2
Field labourers	25	52	42
Foremen	29	9	1
Machine Operators	3	5	52
Maids	481	469	166
Masons	16	9	18
Mechanics	49	12	40
Nurses	35	33	36
Painters	9	17	16
Plumbers	17	12	9
Salesmen (Wholesale & retail trade)	34	45	1
Seamstresses and tailors	52	14	27
Stenographers and typists	117	70	44
Teachers	81	29	73
Technicians	62	80	61
Waiters	105	128	120
Welders	12	6	15
Others	471	531	285
Occupation not stated or not applicable <sup>2/</sup>	1,325	726	454
Total number of emigrants	3,339	2,493	1,752

<sup>1/</sup> persons who have obtained a permit to emigrate to another country

<sup>2/</sup> emigrants not reporting any occupation (including housewives & children)

Table 33 - Official long-term emigrants <sup>1/</sup> by district of last residence and sex, 1988 - 1989

Geographical district	1988			1989			January - June 1989			July - December 1989		
	Both sexes	Male	Female	Both sexes	Male	Female	Both sexes	Male	Female	Both sexes	Male	Female
Port Louis	504	249	255	362	222	140	203	128	75	159	94	65
Pamplemousses	216	131	85	168	126	42	102	78	24	66	48	18
Riviere du Rempart	104	55	49	112	75	37	55	34	21	57	41	16
Flacq	148	69	79	134	95	39	85	59	26	49	36	13
Grand Port	188	74	114	96	54	42	60	30	30	36	24	12
Savanne	84	31	53	59	36	23	36	21	15	23	15	8
Plaines Wilhems :												
Urban	1,089	514	575	682	389	293	381	224	157	301	165	136
Other	25	9	16	17	8	9	-	-	-	17	8	9
Moka	60	30	30	64	43	21	41	28	13	23	15	8
Black River	51	18	33	50	30	20	34	20	14	16	10	6
Not stated	24	6	18	8	4	4	2	2	-	6	2	4
Whole Island	2,493	1,186	1,307	1,752	1,082	670	999	624	375	753	458	295

<sup>1/</sup> persons who have obtained a permit to emigrate to another country

IV - TOURISM

Definition and notes

1. Definition of tourist

- (a) prior to 1964, a tourist has been defined as a non-resident staying in Mauritius for more than 24 hours but less than 6 months,
- (b) as from 1964, a tourist is defined as a non-resident staying in the island for more than 24 hours but less than a year.

The figures for the two periods are nevertheless comparable because of the small number of tourists staying for more than 6 months.

2. Visitors include the following:

- (a) tourists as defined above; and
- (b) non-residents who stay in the country for less than a day, other than those who do not leave the airport.

3. Method of compilation

Certain data on tourism (such as type of visitor, tourist arrivals by month of arrival, tourist arrivals by country of residence and mode of transport) are compiled from disembarkation (arrival) cards which all passengers have to fill in when they arrive in this country. However, information on duration of stay of visitors can be compiled only from the embarkation (departure) cards which they fill in when they leave the country.

As from January 1979 figures are based on a 10% sample. Data on "visitor arrivals" are compiled both from embarkation and disembarkation cards. Since the compilation has been done on a sample basis the figures of "visitor arrivals" obtained when working with records of arrivals do not tally with those obtained when working with records of departures. The figures in the latter case have been prorated to the totals obtained when working with records of arrivals.

4. Tourist nights

Table 34, 40 and 41 show the number of nights spent by tourists who were present in the country during the period under review. Thus the number of tourist nights for 1989 include:

- (a) the nights spent during 1989 by tourists who arrived prior to 1st January 1989; and
- (b) the nights spent during 1989 by tourists who arrived during the same year.

However, nights spent after 31st December 1989 by tourists who arrived in 1989 are excluded.

#### 5. Visitor nights

The concept of visitor nights is different from that of tourist nights. Here, an attempt is made to find how many nights have been spent by the total number of visitors who arrived during the period (year) under review. For instance, the total number of visitor nights for 1989 should refer to the total number of nights spent by all visitors who arrived during the year 1989. To get this figure it is necessary to wait until all visitors who came in 1989 have left the country. However, since in principle, a visitor can stay up to one year, it is not possible to wait for so long before compiling the data. Thus, the figures for the year 1989 actually refer to the total number of nights spent as at the end of March 1990. Hence, a visitor who arrived in November 1989 and who left in April 1990 will unfortunately not be recorded in the given figures. However, because of the very small number of visitors who stay for more than two months, the errors should probably not be very significant.

6. Mauritians settled abroad are excluded from figures of tourists and visitors. Data referring to them are shown separately in tables 52 - 54. Table 52 shows the total nights spent by Mauritians settled abroad who arrived during the period under review and who have left by a given date after the end of the period. Thus the figure for 1989 include nights spent in January - March 1990 by Mauritians settled abroad who arrived in 1989. Table 54 shows the nights spent during the period under review only. Thus the figures for 1989 include nights spent in 1989 by Mauritians settled abroad, who arrived in 1988 or prior but exclude nights spent in January - March 1990 by those who arrived in 1989.

\*

\* \* \*



Table 34 - 1/ Tourist arrivals by mode of transport and tourist nights spent during period, 1975 - 1989

Period	Tourists arriving during period			Tourist nights spent during period <u>2/</u>	% Change over previous year	
	Sea	Air	Total		Tourist arrivals	Tourist nights
1975	554	74,043	74,597	746,898	+ 2.3	- 3.3
1976	778	91,783	92,561	892,222	+ 24.1	+ 19.5
1977	1,035	101,475	102,510	994,766	+ 10.7	+ 11.5
1978	696	107,626	108,322	1,051,610	+ 5.7	+ 5.7
1979	510	127,850	128,360	1,419,610	+ 18.5	+ 35.0
1980	470	114,610	115,080	1,301,730	- 10.3	- 8.3
1981	590	121,030	121,620	1,361,190	+ 5.7	+ 4.6
1982	680	117,680	118,360	1,392,510	- 2.7	+ 2.3
1983	960	122,860	123,820	1,405,870	+ 4.6	+ 1.0
1984	1,230	138,440	139,670	1,541,590	+ 12.8	+ 9.7
1985	920	147,940	148,860	1,735,960	+ 6.6	+ 12.6
1986	950	164,360	165,310	1,878,370	+ 11.0	+ 8.2
1987	1,530	206,040	207,570	2,371,970	+ 25.6	+ 26.3
1988	1,770	237,530	239,300	3,002,820	+ 15.3	+ 26.6
1989	840	261,950	262,790	3,196,780	+ 9.8	+ 6.5

1/ see notes on page 39

2/ include nights spent during reference period by tourists arriving prior to the period

Table 35 - Tourist arrivals by month of arrival, 1979 - 1989

Month of arrival	1979	1980	1981	1982	1983	1984	1985	1986	1987	1988	1989
January	12,640	10,990	11,180	11,980	13,130	14,180	14,250	16,450	18,930	23,070	26,200
February	9,930	8,650	9,300	8,450	9,190	10,850	10,620	11,520	13,950	16,330	16,900
March	9,410	9,610	9,230	8,590	9,780	11,130	11,780	13,880	13,470	18,010	19,510
April	10,860	8,290	10,440	10,050	8,570	11,080	11,480	11,830	18,180	17,320	19,430
May	10,300	8,870	8,980	9,600	9,550	11,080	11,470	13,090	14,730	19,770	20,190
June	7,190	5,970	6,240	5,810	6,370	7,590	8,380	8,710	14,270	13,430	14,630
July	10,270	8,310	8,770	9,170	9,790	10,430	9,840	12,540	15,730	19,230	21,110
August	14,710	12,790	12,950	12,730	12,970	13,650	17,410	18,090	20,990	25,020	27,310
September	9,860	8,910	10,720	10,280	10,070	10,980	11,510	12,100	18,330	18,350	20,770
October	9,760	9,660	9,820	9,800	10,020	11,360	11,720	12,630	18,920	23,250	25,360
November	10,310	9,770	10,630	9,720	10,450	12,420	13,870	16,340	18,380	20,970	22,470
December	13,120	13,260	13,360	12,180	13,930	14,920	16,530	18,130	21,690	24,550	28,910
Whole year	128,360	115,080	121,620	118,360	123,820	139,670	148,860	165,310	207,570	239,300	262,790







Table 37 - Tourist arrivals by country of residence and sex, 1989

Country of residence	Male	Female	Both sexes
Australia	1,540	970	2,510
Belgium	920	710	1,630
France	28,550	25,110	53,660
Germany, Fed. Rep. of	10,080	8,130	18,210
India	3,390	1,400	4,790
Italy	7,410	7,060	14,470
Japan	1,920	980	2,900
Kenya	680	420	1,100
Malagasy Republic	3,200	3,330	6,530
Reunion	32,220	33,330	65,550
Seychelles	1,690	1,570	3,260
Singapore	1,330	660	1,990
South Africa Rep. of	19,630	17,230	36,860
Switzerland	5,440	5,250	10,690
Tanzania	340	210	550
United Kingdom	8,880	7,670	16,550
U.S.A.	1,200	690	1,890
Zambia	980	830	1,810
Zimbabwe	1,630	1,240	2,870
Other countries	9,880	5,090	14,970
All countries	140,910	121,880	262,790

Table 38 - Tourist arrivals by country of residence, 1979 - 1989

Country of residence	1979	1980	1981	1982	1983	1984	1985	1986	1987	1988	1989
Australia	4,780	3,460	3,680	2,680	1,680	1,580	2,460	2,480	3,150	2,310	2,510
Belgium	1,060	730	770	610	590	840	840	1,140	1,400	1,810	1,630
France	25,720	19,620	21,820	22,450	22,050	25,460	27,470	32,370	44,200	50,240	53,660
Germany, Fed. Rep. of	5,550	9,050	7,470	7,040	6,960	7,890	8,920	9,120	13,780	15,130	18,210
India	2,950	2,950	2,350	1,840	1,710	2,540	2,980	2,270	2,980	4,220	4,790
Italy	3,760	4,300	5,940	5,690	5,520	6,170	6,830	9,110	12,240	14,960	14,470
Japan	...	...	...	...	...	...	650	1,740	1,780	2,190	2,900
Kenya	1,000	910	940	680	690	700	780	770	1,020	1,260	1,100
Malagasy Republic	6,220	6,480	6,890	7,090	8,110	7,780	6,710	6,180	7,190	6,770	6,530
Reunion	29,740	26,570	27,620	30,220	30,180	32,300	35,630	40,810	47,970	56,930	65,550
Seychelles	520	450	600	560	560	340	770	790	1,090	1,950	3,260
Singapore	...	...	...	...	...	...	980	1,360	1,020	1,340	1,990
South Africa, Rep. of	23,420	21,180	24,940	22,630	27,150	31,560	27,410	26,680	30,960	35,860	36,860
Switzerland	1,950	1,570	1,500	1,560	2,570	5,440	6,480	7,390	8,180	9,080	10,690
Tanzania	520	620	630	390	330	230	550	470	700	690	550
United Kingdom	8,180	7,690	6,340	5,780	5,860	5,760	7,110	8,500	11,790	13,780	16,550
U.S.A.	1,090	970	1,100	960	1,020	1,130	1,460	1,780	1,880	1,470	1,090
Zambia	2,390	1,180	1,290	1,050	720	680	400	280	860	2,590	1,810
Zimbabwe	1,290	630	1,180	910	1,730	1,800	1,900	2,740	2,370	2,900	2,870
Other countries	8,220	6,720	6,560	6,220	6,390	7,470	8,530	9,330	13,010	13,820	14,970
All countries	128,360	115,080	121,620	118,360	123,820	139,670	148,860	165,310	207,570	239,300	262,790





**FIG.3-PERCENTAGE DISTRIBUTION OF TOURIST ARRIVALS BY COUNTRY OF RESIDENCE, 1988-1989**

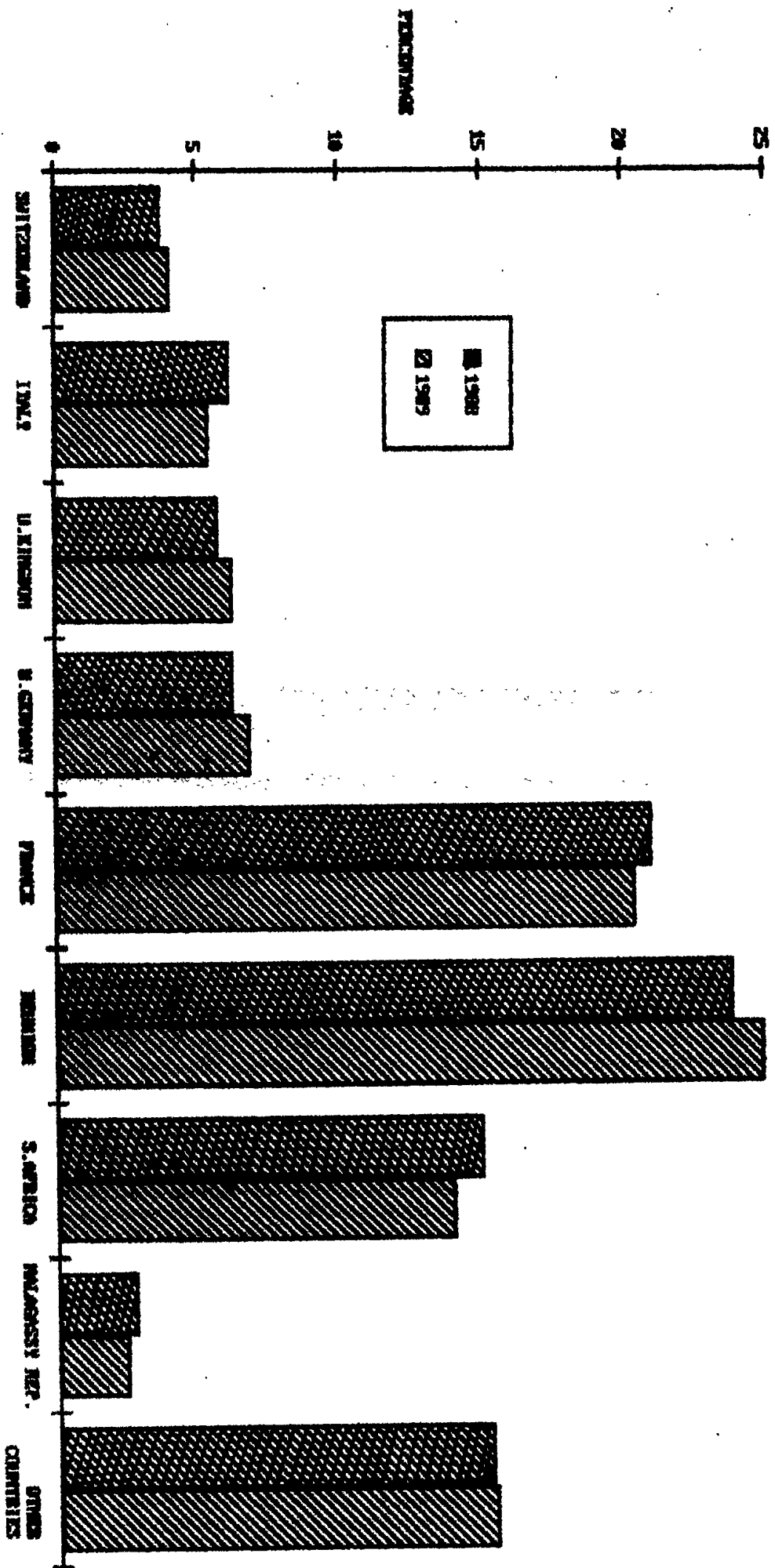




Table 40 - Tourist-<sup>1/</sup> nights by country of residence of tourist, 1979 - 1989

Country of residence	1979	1980	1981	1982	1983	1984	1985	1986	1987	1988	1989
Australia	38,570	40,270	48,070	28,270	31,560	21,050	27,520	30,650	40,160	33,590	41,340
Belgium	18,320	12,670	15,730	7,730	7,980	10,410	11,990	16,740	23,760	27,000	27,230
France	263,200	233,190	259,250	288,520	278,650	309,170	348,960	378,140	529,050	672,940	716,820
Germany, Fed. Rep. of	94,060	125,715	121,430	117,670	112,150	116,580	146,620	143,760	209,850	234,480	277,370
India	33,370	47,960	36,170	26,800	37,630	33,230	51,170	45,780	45,770	84,280	86,570
Italy	44,530	40,880	61,110	64,060	65,000	73,090	76,420	100,130	133,940	171,420	170,190
Japan	...	...	...	...	...	...	5,100	10,700	10,090	15,460	15,570
Kenya	10,310	9,290	6,960	8,830	8,730	7,100	7,910	9,150	9,100	12,040	17,460
Malagasy Republic	48,460	43,030	42,060	54,350	53,620	57,710	52,100	53,010	58,430	67,520	51,650
Réunion	243,870	243,720	230,660	294,210	243,040	264,530	337,440	343,270	394,360	534,580	567,030
Seychelles	4,810	8,710	4,350	4,590	8,350	0,620	11,240	9,760	18,250	25,140	39,070
Singapore	...	...	...	...	...	...	8,410	10,590	10,130	16,880	13,090
South Africa, Rep. of	282,740	206,670	230,850	210,560	246,870	287,350	258,470	266,110	315,210	402,200	371,430
Switzerland	21,190	25,390	20,250	31,990	36,750	74,210	95,320	119,000	122,970	135,640	167,350
Tanzania	4,750	4,460	3,680	4,100	4,550	3,310	2,970	2,560	5,390	3,930	5,420
United Kingdom	144,280	142,070	137,540	120,230	127,780	122,570	123,880	143,660	204,460	237,610	313,080
U.S.A.	17,910	10,590	13,930	17,890	11,620	15,400	21,560	14,350	24,360	23,100	27,620
Zambia	22,800	13,300	11,180	15,200	16,890	9,020	8,030	3,160	12,820	20,630	19,480
Zimbabwe	15,110	9,450	11,320	11,480	19,910	21,070	28,490	42,050	34,950	35,020	36,150
Other countries	111,330	84,290	106,650	86,030	93,990	107,170	112,360	135,800	168,920	246,760	232,860
<b>4 countries</b>	<b>1,419,610</b>	<b>1,301,730</b>	<b>1,361,190</b>	<b>1,392,510</b>	<b>1,405,870</b>	<b>1,541,590</b>	<b>1,735,960</b>	<b>1,878,370</b>	<b>2,371,970</b>	<b>3,002,020</b>	<b>3,196,780</b>

<sup>1/</sup> see notes on page 39

**FIG.4-TOTAL ARRIVALS AND TOURIST ARRIVALS, 1979-1989**

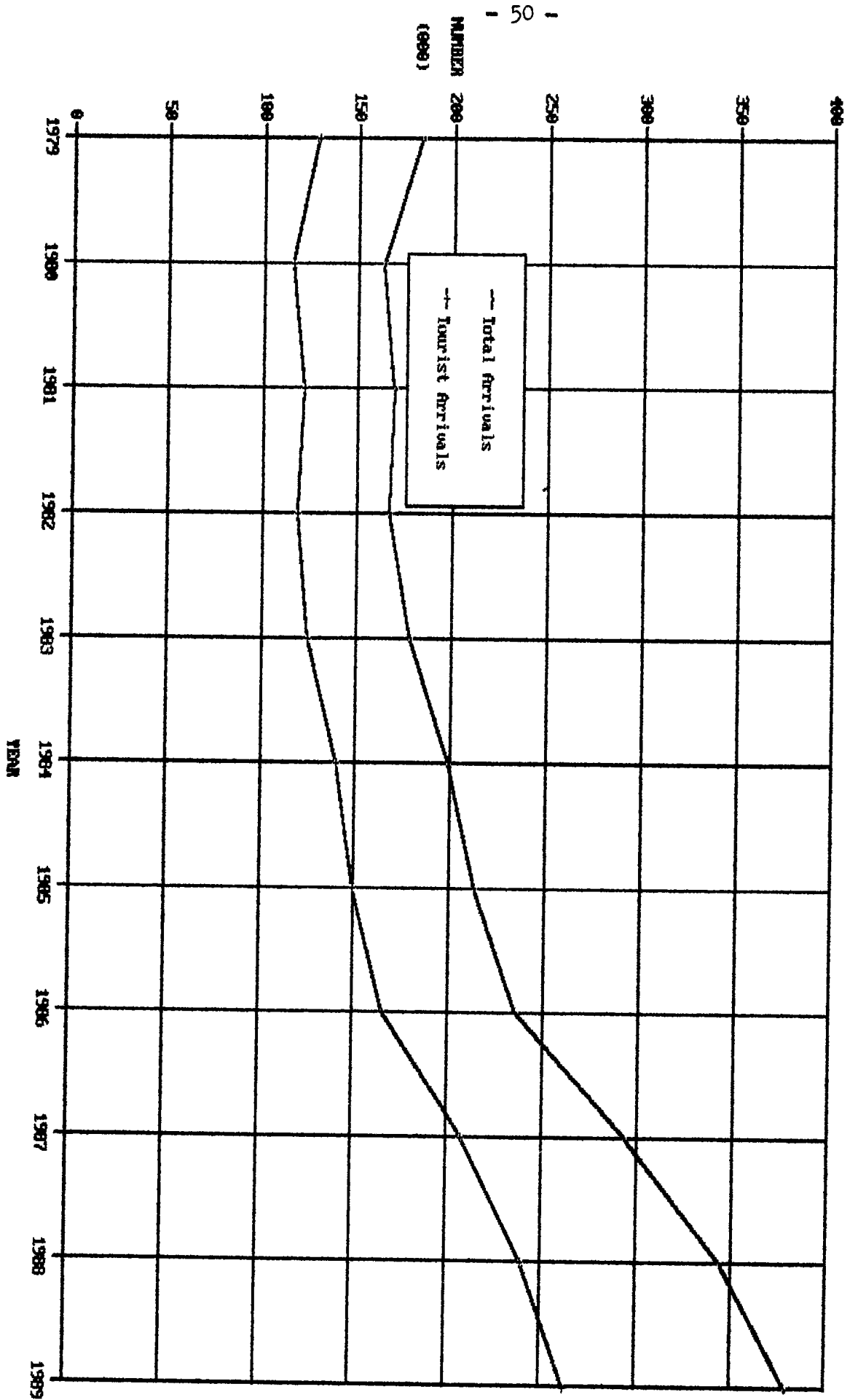


FIG.5-TOURIST NIGHTS AND VISITOR NIGHTS, 1979-1989

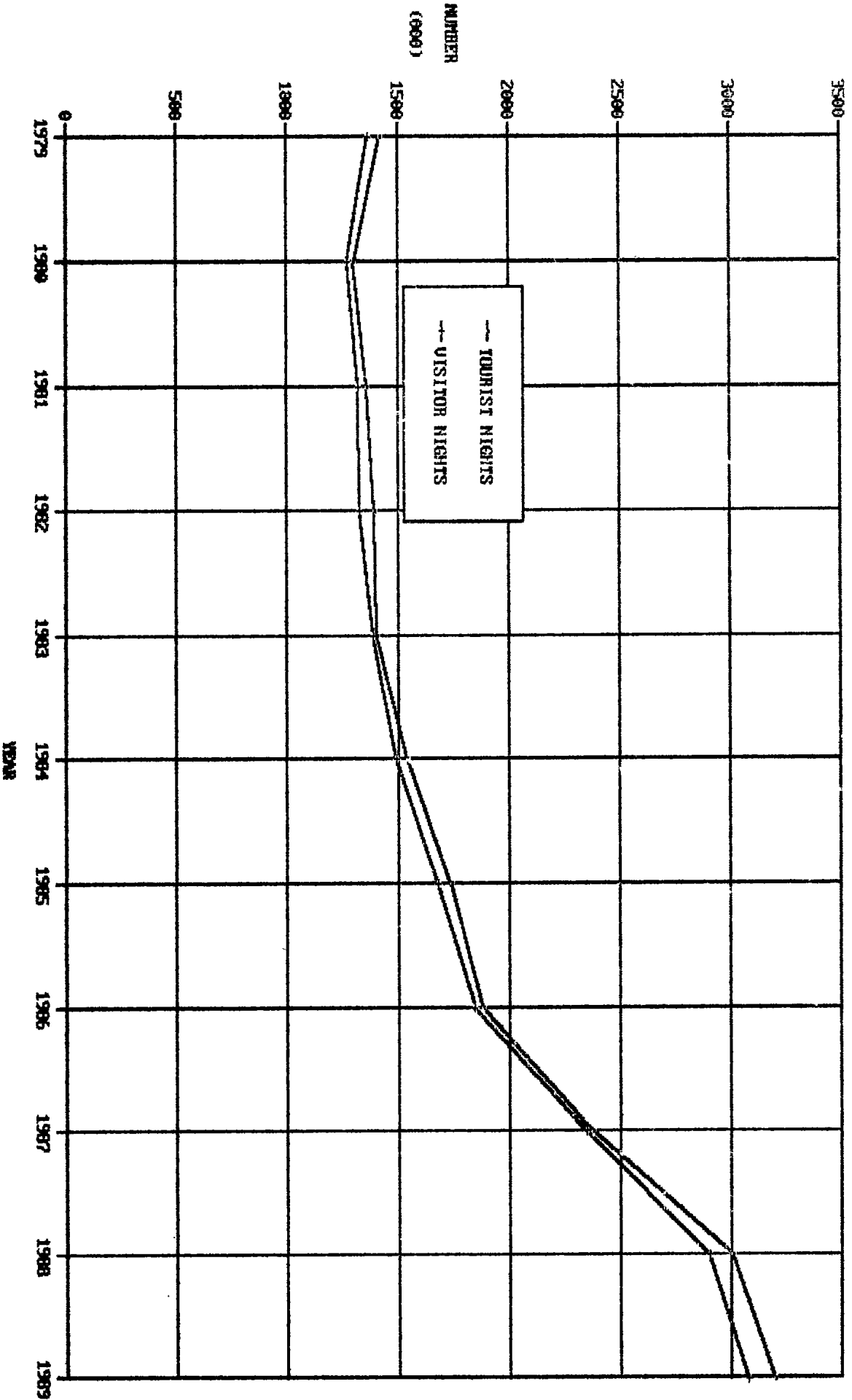


Table 41 - Tourist arrivals and tourist nights<sup>1/</sup> by country of residence, 1989

Country of residence	Tourist arrivals	Tourist nights spent during period
Australia	2,510	41,340
Belgium	1,630	27,230
France	53,660	716,820
Germany, Fed. Rep. of	18,210	277,370
India	4,790	86,570
Italy	14,470	170,190
Japan	2,900	15,570
Kenya	1,100	17,460
Malagasy Republic	6,530	51,650
Réunion	65,550	567,030
Seychelles	3,260	39,070
Singapore	1,990	13,090
South Africa, Rep. of	36,860	371,430
Switzerland	10,690	167,350
Tanzania	550	5,420
United Kingdom	16,550	313,080
U.S.A.	1,890	27,620
Zambia	1,810	19,480
Zimbabwe	2,870	36,150
Other countries	14,970	232,860
All countries	262,790	3,196,780

<sup>1/</sup> See notes on page 39

Table 42 - Visitor arrivals by age and sex, 1988 - 1989

Age (completed years)	1988 <u>2/</u>			1989 <u>3/</u>		
	Both sexes	Male	Female	Both sexes	Male	Female
	Under	1,250	610	640	1,490	740
1 - 4	6,640	3,420	3,220	9,220	4,860	4,360
5 - 9	9,010	4,760	4,250	12,050	6,450	5,600
10 - 14	9,710	5,170	4,540	12,560	5,960	6,600
15 - 19	10,380	4,980	5,400	12,040	5,500	6,540
20 - 24	22,470	9,410	13,060	22,780	9,680	13,100
25 - 29	35,610	18,110	17,500	39,700	20,310	19,390
30 - 34	33,540	18,310	15,230	35,790	20,050	15,740
35 - 39	30,900	17,790	13,110	32,510	18,030	14,480
40 - 44	28,440	16,790	11,650	29,140	17,060	12,080
45 - 49	21,570	13,020	8,550	22,510	13,110	9,400
50 - 54	15,580	9,380	6,200	17,430	10,370	7,060
55 - 59	10,900	6,370	4,530	13,010	7,490	5,520
60 - 64	8,540	4,640	3,900	9,550	5,210	4,340
65 - 69	5,610	3,130	2,480	6,130	3,570	2,560
70 & over	4,620	2,360	2,260	4,170	2,140	2,030
Not stated	1,050	590	460	960	540	420
All ages	255,820	138,840	116,980	281,040	151,070	129,970

1/ see notes on page 39

2/ visitors arriving in 1988 and leaving before 1.4.89

3/ visitors arriving in 1989 and leaving before 1.4.90

Table 43 - Visitor arrivals and visitor nights<sup>1/</sup> by country of residence, 1988 - 1989

Country of residence	1988 <sup>2/</sup>			1989 <sup>3/</sup>		
	Visitor arrivals	Visitor nights	Average length of stay	Visitor arrivals	Visitor nights	Average length of stay
Australia	2,900	35,710	12.3	3,430	39,300	11.5
Belgium	1,880	29,220	15.5	1,540	28,340	18.4
France	50,950	650,360	12.8	56,050	687,150	12.3
Germany, Fed. Rep. of	15,360	237,400	15.5	18,310	265,220	14.5
India	4,400	74,810	17.0	5,070	74,390	14.7
Italy	15,390	173,420	11.3	14,940	165,930	11.1
Japan	2,520	14,730	5.8	3,120	16,740	5.4
Kenya	1,310	13,050	10.0	1,530	17,940	11.7
Malagasy Rep.	6,950	60,340	8.7	6,920	51,540	7.4
Réunion	65,050	508,040	7.8	73,090	559,780	7.7
Seychelles	2,260	27,020	12.0	3,230	39,160	12.1
Singapore	1,650	15,920	9.6	2,240	13,120	5.9
South Africa, Rep. of	38,570	392,990	10.2	39,420	357,300	9.1
Switzerland	9,470	138,670	14.6	10,690	162,590	15.2
Tanzania	590	4,040	6.8	570	5,330	9.4
United Kingdom	13,880	227,100	16.4	16,100	302,190	18.8
U.S.A.	1,870	21,250	11.4	2,100	24,790	11.8
Zambia	3,030	19,610	6.5	4,070	19,560	4.8
Zimbabwe	3,050	35,300	11.6	2,960	32,280	10.9
Other countries	14,740	219,840	14.9	15,660	211,380	13.5
All countries	255,820	2,898,820	11.3	281,040	3,074,030	10.9

<sup>1/</sup> see notes on page 39

<sup>2/</sup> figures refer to visitors arriving in 1988 and leaving before 1.4.89 and to the nights spent by them

<sup>3/</sup> figures refer to visitors arriving in 1989 and leaving before 1.4.90 and to the nights spent by them



Table 44 - Visitor<sup>1/</sup> arrivals by duration of stay, 1988 - 1989

Duration of stay	1988 <sup>2/</sup>		1989 <sup>3/</sup>	
	Number	Percentage	Number	Percentage
Less than 1 day	16,680	6.5	18,090	6.4
1 day	8,700	3.4	8,950	3.2
2 days	9,240	3.6	10,490	3.7
3 days	13,490	5.3	15,670	5.6
4 days	12,900	5.0	14,170	5.0
5 days	17,250	6.7	18,310	6.5
6 "	18,060	7.1	21,220	7.6
7 "	41,680	16.3	49,940	17.8
8 "	11,890	4.7	11,130	4.0
9 "	10,070	3.9	11,890	4.2
10 "	8,730	3.4	10,210	3.6
11 "	6,410	2.5	6,080	2.2
12 "	15,860	6.2	16,220	5.8
13 "	8,210	3.2	7,980	2.8
14 "	14,310	5.6	15,030	5.3
15 "	3,150	1.2	3,140	1.1
16 "	2,560	1.0	2,580	0.9
17 "	2,260	0.9	2,870	1.0
18 "	1,950	0.8	1,790	0.6
19 "	5,460	2.1	5,990	2.1
20 - 24 "	10,060	3.9	10,050	3.6
25 - 29 "	5,270	2.1	6,330	2.3
1 month - under 2 months	7,520	2.9	8,530	3.0
2 months - under 3 months	1,760	0.7	2,130	0.8
3 months and over	2,350	0.9	2,250	0.8
T O T A L	255,820	100.0	281,040	100.0

<sup>1/</sup> see notes on page 39

<sup>2/</sup> visitors arriving in 1988 and leaving before 1.4.89

<sup>3/</sup> visitors arriving in 1989 and leaving before 1.4.90

Table 45 (a) - Visitor arrivals by country of residence and duration of stay, 1988

Country of residence	Duration of stay in days												Total visitors
	0	1 & 2	3 & 4	5 & 6	7 & 8	9 & 10	11 & 12	13 & 14	15 - 19	20 - 24	25 - 29	30 +	
Australia	690	510	280	200	340	60	70	100	90	60	130	370	2,900
Belgium	40	40	40	310	340	140	180	200	150	100	160	180	1,880
France	1,490	2,710	4,950	7,780	9,290	4,850	5,290	4,760	3,610	1,970	1,210	3,040	50,950
Germany, Fed. Rep. of	350	290	380	880	1,090	630	1,980	3,220	2,520	2,860	590	570	15,360
India	190	300	320	1,760	220	280	250	360	120	130	60	410	4,400
Japan	260	300	630	830	300	20	40	30	20	10	20	60	2,520
Kenya	30	190	260	280	230	60	70	70	30	10	20	60	1,310
Malagasy Rep.	240	790	1,110	1,980	1,630	260	240	220	150	60	100	170	6,950
Reunion	8,720	4,820	11,550	10,950	14,760	3,600	2,160	2,410	2,540	1,040	660	1,840	65,050
Singapore	180	350	230	330	290	20	90	30	10	20	40	60	1,650
South Africa, Rep. of	2,270	3,130	2,570	3,180	13,530	5,240	1,960	2,760	1,590	830	440	1,070	38,570
Switzerland	250	200	350	640	960	370	2,840	980	1,530	490	470	390	9,470
United Kingdom	150	530	960	1,060	2,690	550	1,760	2,100	1,160	790	670	1,460	13,880
U.S.A.	180	340	390	140	230	80	100	110	60	40	50	150	1,870
Zambia	370	1,030	110	50	950	20	10	110	210	60	40	70	3,030
Zimbabwe	50	260	140	80	960	50	70	940	80	320	50	50	3,050
Other countries	1,220	2,150	2,120	4,860	5,760	2,570	5,160	4,120	1,510	1,270	560	1,680	32,980
All countries	16,680	17,940	26,390	35,310	53,570	18,800	22,270	22,520	15,380	10,060	5,270	11,630	255,820

see notes on page 39

Table 45 (b) - Visitor arrivals by country of residence and duration of stay, 1989

Country of residence	Duration of stay in days											Total visitors	
	0	1 & 2	3 & 4	5 & 6	7 & 8	9 & 10	11 & 12	13 & 14	15-19	20-24	25-29		30 +
Australia	810	840	430	210	240	100	70	100	90	70	90	380	3,430
Belgium	30	40	80	150	220	120	130	120	140	150	90	270	1,540
France	960	2,710	5,890	8,550	11,260	5,850	5,040	4,890	3,750	2,190	1,630	3,330	56,050
Germany, Fed. Rep. of	230	300	610	1,040	1,470	1,190	4,320	2,710	3,340	1,920	670	510	18,310
India	230	360	440	1,730	370	440	80	480	170	150	70	550	5,070
Japan	220	470	1,060	950	210	10	80	40	-	40	-	40	3,120
Kenya	60	160	260	400	180	90	100	80	20	70	10	100	1,530
Malagasy Rep.	360	1,020	1,190	1,990	1,060	460	230	140	180	60	100	130	6,920
Reunion	7,940	5,080	11,550	12,660	19,820	4,690	2,130	2,590	2,380	1,350	1,110	1,790	73,090
Singapore	290	350	460	490	360	70	40	10	40	30	40	60	2,240
South Africa, Rep. of	2,500	3,980	2,670	3,770	13,730	4,700	1,710	2,140	1,820	920	430	1,050	39,420
Switzerland	300	170	610	880	830	510	3,030	1,330	1,540	460	410	620	10,690
United Kingdom	360	510	1,030	910	3,010	640	2,070	2,190	1,340	1,030	850	2,160	16,100
U.S.A.	100	340	430	330	300	70	90	80	120	30	60	150	2,100
Zambia	2,160	60	70	50	1,040	20	40	480	40	50	30	30	4,070
Zimbabwe	90	300	100	120	770	50	-	1,160	60	230	60	20	2,960
Other countries	1,450	2,750	2,960	5,100	6,200	3,090	3,140	4,470	1,340	1,300	680	1,720	34,400
All countries	18,090	19,440	29,840	39,330	61,070	22,100	22,300	23,010	16,370	10,050	6,330	12,910	281,040

/ see notes on page 39

Table 46 (a) - Visitor arrivals and visitor nights<sup>1/</sup> by country of nationality, 1988

Country of nationality	Visitor arrivals <sup>2/</sup>	Visitor nights <sup>3/</sup>	Average length of stay
Australia	2,790	35,150	12.6
Belgium	2,110	32,050	15.2
France	117,230	1,178,410	10.1
Germany, Fed. Rep. of	15,540	232,460	15.0
India	4,930	82,500	16.7
Italy	16,060	180,500	11.2
Japan	2,600	16,410	6.3
Kenya	580	8,270	14.3
Malagasy Republic	5,690	49,270	8.7
Singapore	1,170	10,200	8.7
South Africa, Rep. of	33,880	341,800	10.1
Switzerland	9,060	132,910	14.7
Tanzania	150	960	6.4
United Kingdom	18,690	287,240	15.4
U.S.A.	2,520	27,410	10.9
Zambia	1,920	9,710	5.1
Zimbabwe	2,270	26,350	11.6
Other countries	18,630	247,220	13.3
All countries	255,820	2,898,820	11.3

1/ see notes on page 39

2/ figures refer to visitors arriving in 1988 and leaving before 1.4.89

3/ figures refer to nights spent by visitors arriving in 1988 and leaving before 1.4.89

Table 46(b) - Visitor arrivals and visitor nights<sup>1/</sup> by country of nationality, 1989

Country of nationality	Visitor arrivals <sup>2/</sup>	Visitor nights <sup>3/</sup>	Average length of stay
Australia	3,120	35,080	11.2
Belgium	1,020	32,460	17.8
France	130,420	1,256,860	9.6
Germany, Fed. Rep. of	18,900	271,820	14.4
India	5,950	78,510	13.2
Italy	15,310	173,580	11.3
Japan	3,250	17,470	5.4
Kenya	780	12,580	16.1
Malagasy Republic	5,430	41,040	7.6
Singapore	1,730	11,050	6.4
South Africa, Rep. of	35,090	317,920	9.1
Switzerland	10,330	157,540	15.3
Tanzania	200	2,030	10.1
United Kingdom	21,140	350,890	16.6
U.S.A.	2,590	29,300	11.3
Zambia	2,750	7,690	2.8
Zimbabwe	2,370	25,460	10.7
Other countries	19,030	252,750	12.7
All countries	281,040	3,074,030	10.9

<sup>1/</sup> See notes on page 39

<sup>2/</sup> figures refer to visitors arriving in 1989 and leaving before 1.4.90

<sup>3/</sup> figures refer to nights spent by visitors arriving in 1989 and leaving before 1.4.90

Table 47 - Gross earnings from tourism, 1980 - 1989

Earnings (Rs Mn)	1980	1981	1982	1983	1984	1985	1986	1987	1988	1989
		361	421	450	503	630	845	1,190	1,786	2,374

Source : Bank of Mauritius

Table 48 - Expenditure<sup>1/</sup> of tourists, in thousand rupees, by country of residence

Country of Residence	Expenditure (000'Rs)					
	1980	1984	1986	1987	1988	1989
France	64,762	109,202	240,509			
Germany, Fed. Republic	50,205	53,470	118,989			
Italy	13,644	51,117	99,363			
Switzerland	7,510	45,975	96,041			
United Kingdom	36,598	53,396	88,468			
Malagasy Republic	9,221	9,474	15,191			
Reunion Island	42,953	74,857	168,138			
South Africa, Republic of	86,376	157,258	177,155			
Singapore	n.a.	n.a.	10,274			
Other countries	49,265	90,543	204,372			
All Countries	360,534	645,292	1,218,500			

<sup>1/</sup> The figures in this table are different from those in table 47. The latter are obtained from the airport survey conducted by M.G.T.O., while the former are the results from the compilation of the balance of payments by the Bank of Mauritius.

Table 49 - Expenditure<sup>1/</sup> in thousand rupees, of tourists by type of expenditure.

Type of Expenditure	Expenditure (000' Rs)		
	1 9 8 0	1 9 8 4	1 9 8 6
Accommodation	215,789	383,032	631,980
Meals and beverages	30,022	94,382	216,060
Gratuities	4,278	4,245	16,531
Transport	56,884	48,906 <sup>2/</sup>	94,227
Casinos	6,890	14,682	37,029
Sporting activities	4,688	7,343	18,680
Shopping (including local handicraft and souvenir)	33,516	76,125	178,700
Other	8,467	16,577	25,293
T O T A L	360,534	645,292	1,218,500

1/ The figures in this table are different from those in Table 47. The former are the results from the compilation of the balance of payment by the bank of Mauritius while the latter are obtained from the Airport Survey conducted by M.G.T.O.

2/ Excluding transport to hotels which is included in accommodation

Table 50 - Hotels, rooms and bed places, 1979 - 1989

Year	No. of hotels <sup>1/</sup>	No. of rooms	No. of bed places
1979	38	1,931	3,888
1980	43	2,000	4,000
1981	51	2,201	4,484
1982	51	2,204	4,530
1983	55	2,300	4,900
1984	54	2,488	5,102
1985	55	2,630	5,387
1986	56	2,888	5,955
1987	60	3,108	6,418
1988	64	3,399	7,009
1989	67	3,605	7,374

<sup>1/</sup> as from 1984 figures exclude hotels which have been converted to boarding houses but include newly constructed hotels



Table 51 - Monthly occupancy rates in large hotels, 1988 - 1989

Month	1988			1989		
	Total <sup>1/</sup> room	Tourist <sup>2/</sup> room	Total <sup>3/</sup> bed	Total <sup>1/</sup> room	Tourist <sup>2/</sup> room	Total <sup>3/</sup> bed
January	91.4	91.2	82.6	88.5	88.5	80.3
February	90.6	90.2	79.4	84.4	84.0	75.1
March	84.6	84.4	73.7	76.6	76.6	68.6
April	80.5	80.3	71.9	73.0	72.9	63.8
May	79.4	79.3	68.4	74.6	74.5	66.3
June	66.0	66.0	57.3	61.3	61.2	53.1
July	72.7	72.6	64.9	67.4	67.0	59.9
August	85.6	85.2	79.0	73.0	72.7	66.3
September	84.9	83.4	75.9	81.0	80.9	73.4
October	92.3	92.2	84.0	88.3	88.2	79.8
November	92.6	92.4	83.1	89.6	89.4	80.0
December	75.8	75.7	68.7	75.3	75.1	68.5
Mean	86.7	85.8	74.2	77.8	77.6	69.8

<sup>1/</sup> Total number of room nights rented  
 $\frac{\quad}{\quad} \times 100$

Total number of room nights available

<sup>2/</sup> Number of room nights rented to tourists  
 $\frac{\quad}{\quad} \times 100$

Total number of room nights available

<sup>3/</sup> Total number of bed nights rented  
 $\frac{\quad}{\quad} \times 100$

Total number of bed nights available

Table 52 - Arrivals of Mauritian settled abroad (excluding students) and nights<sup>1/</sup> spent by them by country of residence, 1988 - 1989

Country of residence	1988 <sup>2/</sup>			1989 <sup>3/</sup>		
	Arrivals	Nights	Average length of stay	Arrivals	Nights	Average length of stay
Australia	1,190	45,730	38.4	1,290	47,520	36.8
Belgium	260	9,910	38.1	300	11,620	38.7
Canada	690	28,770	41.7	590	20,430	34.6
France	4,970	199,020	40.0	5,570	231,650	41.6
Germany, Fed. Rep. of	260	7,720	29.7	210	7,800	37.1
Italy	220	9,990	45.4	250	11,800	47.2
Malagasy Republic	120	3,220	26.8	40	1,420	35.5
Malawi	20	610	30.5	80	2,330	29.1
Réunion	3,130	57,480	18.4	3,180	62,830	19.8
Switzerland	620	24,100	38.9	650	29,340	45.1
South Africa, Rep. of	850	22,440	26.4	760	21,400	28.2
United Kingdom	6,530	249,210	38.2	6,070	229,130	37.7
United States of America	160	5,260	32.9	140	3,700	26.4
Zambia	80	2,590	32.4	140	2,600	18.6
Other countries	860	26,370	30.7	910	27,120	29.8
All countries	19,960	692,420	34.7	20,180	710,690	35.2

<sup>1/</sup> See notes on page 39

<sup>2/</sup> Figures refer to Mauritians settled abroad arriving in 1988 and leaving before 1.4.89 and to the total nights spent by them in 1988 and 1989

<sup>3/</sup> Figures refer to Mauritians settled abroad arriving in 1989 and leaving before 1.4.90 and to the total nights spent by them in 1989 and 1990

Table 53 - Arrivals of Mauritians settled abroad (excluding students)  
by duration of stay, 1988 - 1989

Duration of stay	1988 <sup>1/</sup>	1989 <sup>2/</sup>
Less than 1 day	140	200
1 day	130	140
2 days	290	160
3 days	270	290
4 days	270	300
5 days	220	330
6 days	280	250
7 days	460	520
8 days	350	250
9 days	230	330
10 days	220	240
11 days	190	250
12 days	220	400
13 days	230	310
14 days	410	550
15 days	280	290
16 days	120	120
17 days	190	380
18 days	120	280
19 days	440	490
20 - 24 days	1,450	1,570
25 - 29 days	2,480	2,280
1 month - under 2 months	8,630	7,590
2 months - under 3 months	1,680	1,880
3 months and over	660	780
<b>T O T A L</b>	<b>19,960</b>	<b>20,180</b>

<sup>1/</sup> figures refer to Mauritians settled abroad arriving in 1988 and leaving before 1.4.89

<sup>2/</sup> figures refer to Mauritians settled abroad arriving in 1989 and leaving before 1.4.90

See notes on page 39

Table 54 - Total nights spent by Mauritians settled abroad (excluding students)  
by country of residence, 1988 - 1989

Country of residence	1988 <u>1/</u>	1989 <u>2/</u>
Australia	44,230	46,000
Belgium	10,100	10,360
Canada	25,110	20,970
France	218,220	221,910
Germany, Fed. Rep. of	7,800	8,450
Italy	9,300	10,530
Malagasy Republic	2,810	2,750
Malawi	820	1,500
Reunion	58,610	61,500
Switzerland	18,170	28,240
South Africa, Rep. of	23,740	22,530
United Kingdom	255,770	227,790
United States of America	6,070	5,840
Zambia	2,370	3,200
Other countries	25,960	29,640
All countries	709,080	701,210

1/ figures refer to nights spent during 1988 by Mauritians settled abroad arriving in 1988 or before and leaving before 1.4.89

2/ figures refer to nights spent during 1989 by Mauritians settled abroad arriving in 1989 or before and leaving before 1.4.90

See notes on page 39

**INTERNATIONAL EMBARKATION AND  
DISEMBARKATION CARD**

*Carte Internationale d'Embarquement et de  
Débarquement*

1. Mr/M. )  
Mrs/Mme ) .....  
Miss/Melle ) (Surname/Nom)  
  
.....  
(Given Names/Prénoms)

2. Date and place of birth  
*Date et lieu de naissance* .....  
  
.....

3. Nationality  
*Nationalité* .....

4. Occupation  
*Profession* .....

5. Permanent address  
*Domicile* .....  
  
.....

-----  
**For Passengers Leaving/Pour les Passagers au Départ**

6. Port of final destination  
*Lieu de destination finale* .....

-----  
**For Arriving Passengers/Pour les Passagers à l'Arrivée**

7. Port of original embarkation  
*Lieu d'embarquement d'origine* .....

8. Purpose of journey to Mauritius  
*Motif du voyage à l'Ile Maurice* .....

9. Intended length of stay in Mauritius  
*Durée probable du séjour à l'Ile Maurice* .....

10. Intended address during stay in Mauritius  
*Adresse prévue pendant le séjour à Maurice* .....  
  
.....

11. Passport No., Place and Date of issue  
*Numéro du passeport, lieu et date d'émission* .....  
  
.....