



Republic of Mauritius

**Digest of International Travel
and Tourism Statistics
2017**

**Ministry of Finance and Economic Development
Statistics Mauritius**

October 2018

(Price: Rs 75.00)

**DIGEST OF
INTERNATIONAL TRAVEL
AND
TOURISM STATISTICS
2017**

INTERNATIONAL TRAVEL AND TOURISM STATISTICS

Vol. 44

2017

"International Travel and Tourism Statistics" is a regular publication of Statistics Mauritius, designed to present in a single report, detailed statistics concerning international travel and tourism relating to Mauritius.

The statistical tables presented in this report have been compiled from data collected from the passport of travellers, disembarkation cards filled in by non-residents, questions put to non-residents entering the country, hotels and administrative records.

Statistical data on International Travel and Tourism are constantly updated as more reliable information become available, necessitating minor changes over previous issues of this publication. The figures published in this issue therefore supersede those of all previous issues.

It is hoped that the data herewith assembled will prove useful to the public in general and to policy makers, planners and research workers in particular.

The publication of this report has been made possible with the collaboration of the Passport and Immigration Office, the Ministry of Tourism and Mauritius Ports Authority. Their co-operation is herewith gratefully acknowledged.

Ms. L.F. Cheung Kai Suet

Director of Statistics

Statistics Mauritius
Ministry of Finance and Economic Development
PORT LOUIS
MAURITIUS
October 2018

CONTENTS

Page

TABLES

I - POPULATION AND VITAL STATISTICS

1 - Population and vital statistics - Republic of Mauritius , 1981 - 2017	5
---	---

II - PASSENGER TRAFFIC

2 - Passenger traffic by gender, Republic of Mauritius, 1997 - 2017	6
3 (i) - Passenger traffic between Islands of Mauritius and Rodrigues, 1997 - 2017	7
3 (ii) - Passenger traffic between Rodrigues and Reunion Island, 2015 - 2017	7
4 - Passenger traffic by mode of transport, Republic of Mauritius, 1997 - 2017	11
5 - Passenger traffic by month, Republic of Mauritius, 2014 - 2017	12
6 - Arrivals by country of embarkation , Republic of Mauritius, 2012 - 2017	13
7 - Departures by country of disembarkation, Republic of Mauritius, 2012 - 2017	14
8 - Monthly passenger traffic by type of passenger, Republic of Mauritius, 2017	15
9 - Passenger traffic by type of passenger, Republic of Mauritius, 2008 - 2017	15
10 - Total arrivals by age and gender, Republic of Mauritius, 2016 & 2017	16
11 - Total departures by age and gender, Republic of Mauritius, 2016 & 2017	17
12 - Arrivals of Mauritian residents by age and gender, 2016 & 2017	18
13 - Departures of Mauritian residents by age and gender, 2016 & 2017	19
14 - Arrivals and departures of Mauritian residents by country of embarkation and disembarkation, 2015 - 2017	20

III - TOURISM

Definition and notes	21
15 - Tourist arrivals by mode of transport and tourist nights spent during period, 2001 - 2017	23
16 - Tourist arrivals by month of arrival, 2008 - 2017	24
17 - Percentage distribution of tourist arrivals by month of arrival, 2008 - 2017	24
18 - Tourist arrivals by country of residence and gender, 2016 & 2017	26
19 - Tourist arrivals by country of residence, 2008 - 2017	27
20 - Percentage distribution of tourist arrivals by country of residence, 2008 - 2017	28
21 - Tourist arrivals by air and by main port of last embarkation for selected markets, 2017	30
22 - Tourist nights by country of residence, 2008 - 2017	31
23 - Visitor arrivals by country of residence and by purpose of visit, 2015 - 2017	33
24(i) - Visitor arrivals by age and gender, 2016 and 2017	34
24(ii) - Tourist arrivals by broad age group and mode of arrival, 2014 - 2017	34
25 - Visitor departures by duration of stay, 2016 - 2017	35
26 - Visitor departures by country of residence and duration of stay, 2017	36
27 - Tourist arrivals, tourist departures and average length of stay (nights) of tourists by country of residence, 2016 - 2017	37
28 - Gross earnings from tourism, 2008 - 2017	38
29 - Expenditure of tourists by country of residence, 2011 - 2017	38
30 - Expenditure of tourists by type of expenditure, 2011 - 2017	38
31 - Hotels, rooms and bedplaces, 2008- 2017	39
32 - Employment in large establishments of the Tourism Industry , 2008 - 2017	39
33 - Monthly occupancy rates in large hotels, 2013 - 2017	40
34 - Monthly occupancy rates in all hotels, 2013 - 2017	41

ILLUSTRATIONS

Figure	1 - Passenger traffic: Total arrivals in the Republic of Mauritius by gender, 2001 - 2017	8
	2 - Passenger traffic: Total arrivals by gender in the Island of Rodrigues from the Island of Mauritius, 2001 - 2017	8
	3 - Passenger traffic: Total departures from the Republic of Mauritius by gender, 2001 - 2017	9
	4 - Passenger traffic: Total departures by gender from the Island of Rodrigues to the Island of Mauritius, 2001 - 2017	9
	5 - Passenger Traffic: Total arrivals and total departures, Republic of Mauritius, 2008 - 2017	10
	6 - Passenger Traffic: Total arrivals and total departures between Islands of Rodrigues and Mauritius, 2008 - 2017	10
	7 - Tourist arrivals by month, 2013 - 2017	25
	8 - Percentage distribution of tourist arrivals by country of residence, 2017	29
	9 - Total arrivals and tourist arrivals, 2008 - 2017	32
	10 - Tourist nights, 2008 - 2017	32

Appendix : Disembarkation Card

Contact persons:

Mr S. Mungralee, Senior Statistician
Mrs T.Joomun, Statistician;
Mrs M.Koolwant-Beesoondoyal,
Senior Statistical Officer
Tourism Statistics Unit
Statistics Mauritius
LIC centre, John Kennedy Street, Port Louis
Tel: (230) 208 1800
Fax: (230) 211 4150
Email: sm-tourism@govmu.org

Table 1 - Population and vital statistics - Republic of Mauritius ¹, 1981 - 2017

Year	Population at mid-year	Live births	Deaths	Infant deaths	Still births	Civil marriages	Divorces ²
1981	980,462	24,967	6,653	884	590	8,406	305
1982	992,521	22,459	6,584	682	458	10,768	312
1983	1,001,691	21,073	6,532	570	403	10,255	361
1984	1,012,221	20,332	6,646	505	404	10,865	471
1985	1,020,528	19,376	6,906	487	383	11,245	460
1986	1,028,360	19,170	6,805	524	365	10,556	616
1987	1,036,082	20,033	6,753	504	363	11,392	842
1988	1,043,239	20,941	6,879	471	374	11,453	740
1989	1,051,260	21,822	7,149	498	415	11,197	711
1990	1,058,775	22,602	7,031	462	365	11,425	549
1991	1,070,266	22,197	7,027	413	400	11,295	707
1992	1,084,441	22,902	7,023	426	291	11,408	781
1993	1,097,374	22,329	7,433	438	337	11,576	762
1994	1,112,846	21,795	7,402	394	274	11,414	733
1995	1,122,457	20,549	7,465	404	299	10,624	801
1996	1,133,996	20,763	7,670	459	266	10,700	792
1997	1,148,284	20,012	7,986	406	257	10,887	891
1998	1,160,421	19,434	7,839	376	227	10,898	1,012
1999	1,175,267	20,311	7,944	396	226	11,295	1,150
2000	1,186,873	20,205	7,982	322	266	10,963	1,191
2001	1,196,287	19,696	7,983	282	244	10,635	1,512
2002	1,204,621	19,983	8,310	297	203	10,484	1,291
2003	1,213,370	19,343	8,520	250	220	10,812	1,190
2004	1,221,003	19,230	8,475	277	191	11,385	1,162
2005	1,228,254	18,820	8,646	248	185	11,294	1,133
2006	1,233,996	17,604	9,162	249	147	11,471	1,379
2007	1,239,630	17,034	8,498	261	172	11,547	1,302
2008	1,244,121	16,372	9,004	236	165	11,197	1,569
2009	1,247,429	15,344	9,224	205	138	10,619	2,154
2010	1,250,400	15,005	9,131	187	103	10,555	1,837
2011	1,252,404	14,701	9,170	189	139	10,499	1,788
2012	1,255,882	14,494	9,343	199	140	10,382	2,003
2013	1,258,653	13,688	9,440	165	117	9,575	1,584
2014	1,260,934	13,415	9,682	194	138	9,959	2,262
2015	1,262,605	12,738	9,747	173	125	9,709	2,161
2016	1,263,473	13,082	10,174	154	127	10,042	1,910
2017	1,264,613	13,479	10,140	164	135	9,757	1,996

¹ Excluding Agalega & St. Brandon

² Source : Judicial Department

Note : The increase in the number of civil marriages as from 1982 is due largely to improved registration of religious marriages with the coming into force of a new Civil Status Act as from January 1982.

II - PASSENGER TRAFFIC

Table 2 - Passenger traffic¹ by gender, Republic of Mauritius, 1997 - 2017

Period	Arrivals			Departures			Arrivals minus Departures
	Total	Male	Female	Total	Male	Female	
1997	743,291	378,593	364,698	737,523	379,841	357,682	+ 5,768
1998	778,574	367,914	410,660	775,998	382,567	393,431	+ 2,576
1999	823,085	434,667	388,418	809,233	428,234	380,999	+ 13,852
2000	915,203	480,879	434,324	895,569	469,902	425,667	+ 19,634
2001	910,489	477,984	432,505	903,073	473,096	429,977	+ 7,416
2002	951,090	498,177	452,913	942,876	494,212	448,664	+ 8,214
2003	968,906	510,212	458,694	947,774	497,011	450,763	+ 21,132
2004	1,000,545	523,961	476,584	979,322	511,734	467,588	+ 21,223
2005	1,043,900	544,520	499,380	1,029,666	538,113	491,553	+ 14,234
2006	1,072,879	562,766	510,113	1,060,074	555,279	504,795	+ 12,805
2007	1,238,826	648,554	590,272	1,237,747	645,657	592,090	+ 1,079
2008	1,280,640	669,919	610,721	1,261,182	658,947	602,235	+ 19,458
2009	1,210,005	623,925	586,080	1,206,550	623,551	582,999	+ 3,455
2010	1,312,700	677,067	635,633	1,317,581	679,362	638,219	- 4,881
2011	1,358,951	703,094	655,857	1,358,562	702,039	656,523	+ 389
2012	1,354,589	702,943	651,646	1,353,618	702,000	651,618	+ 971
2013	1,391,481	721,607	669,874	1,390,649	719,127	671,522	+ 832
2014	1,458,873	750,696	708,177	1,454,651	745,229	709,422	+ 4,222
2015	1,602,258	818,514	783,744	1,600,154	814,074	786,080	+ 2,104
2016	1,775,462	901,394	874,068	1,772,498	897,398	875,100	+ 2,964
2017 ²	1,875,872	952,002	923,870	1,872,624	946,010	926,614	+ 3,248

¹ Includes traffic between Island of Mauritius and Rodrigues and cruise travellers, but excludes traffic from other constituent islands of the Republic of Mauritius, direct transit and traffic between Rodrigues and Reunion Island.

² Provisional

Table 3 (i) - Passenger traffic¹ between Islands of Mauritius and Rodrigues, 1997 - 2017

Period	Arrivals in Rodrigues			Departures from Rodrigues			Arrivals minus Departures
	Total	Male	Female	Total	Male	Female	
1997	37,765	22,120	15,645	38,014	22,096	15,918	- 249
1998	40,648	24,181	16,467	40,553	23,072	17,481	+ 95
1999	45,117	28,384	16,733	45,154	26,961	18,193	- 37
2000	49,530	28,280	21,250	49,981	29,436	20,545	- 451
2001	52,777	30,320	22,457	52,307	30,760	21,547	+ 470
2002	60,355	34,647	25,708	59,984	34,004	25,980	+ 371
2003	63,649	37,203	26,446	63,937	37,673	26,264	- 288
2004	60,862	34,467	26,395	60,830	34,314	26,516	+ 32
2005	53,534	29,805	23,729	53,987	29,447	24,540	- 453
2006	55,368	31,395	23,973	56,015	31,822	24,193	- 647
2007	61,617	33,991	27,626	61,595	33,735	27,860	+ 22
2008	54,433	29,713	24,720	54,212	29,260	24,952	+ 221
2009	52,981	28,337	24,644	53,426	28,341	25,085	- 445
2010	60,573	31,624	28,949	60,662	32,101	28,561	- 89
2011	65,423	34,417	31,006	64,564	33,938	30,626	+ 859
2012	67,527	35,666	31,861	67,745	36,372	31,373	- 218
2013	69,762	36,235	33,527	69,848	37,348	32,500	- 86
2014	69,514	35,530	33,984	69,660	36,435	33,225	- 146
2015	80,884	40,027	40,857	80,079	41,629	38,450	+ 805
2016	92,746	46,606	46,140	90,627	46,691	43,936	+ 2,119
2017 ²	96,630	48,918	47,712	96,048	50,632	45,416	+ 582

¹ Includes residents and non-residents

² Provisional

Table 3 (ii) - Passenger traffic¹ between Rodrigues and Reunion Island, 2015 - 2017

Period	Arrivals in Rodrigues			Departures from Rodrigues			Arrivals minus Departures
	Total	Male	Female	Total	Male	Female	
2015	1,042	523	519	892	449	443	+ 150
2016	1,524	723	801	1,497	724	773	+ 27
2017 ²	1,197	582	615	1,301	622	679	- 104

¹ Includes residents and non-residents

² Provisional

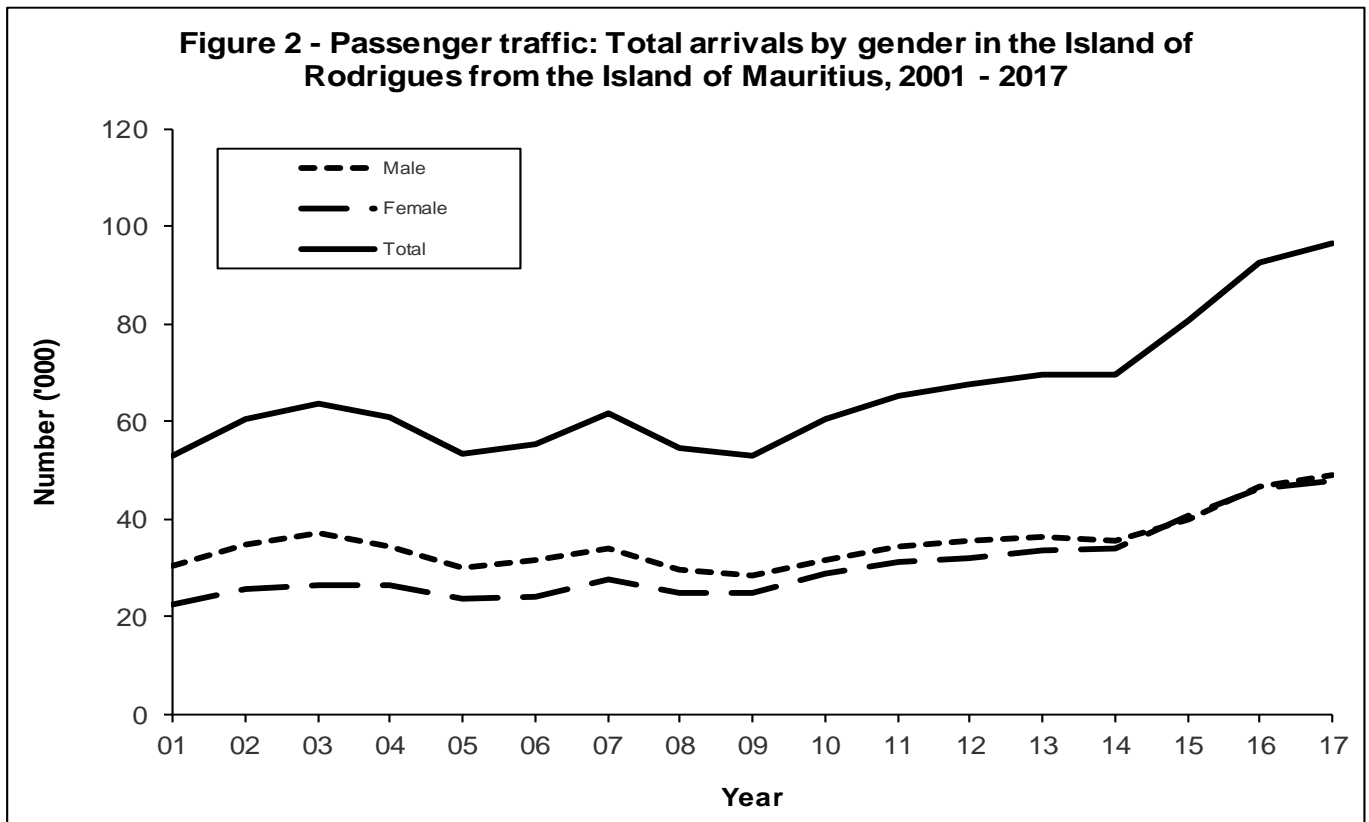
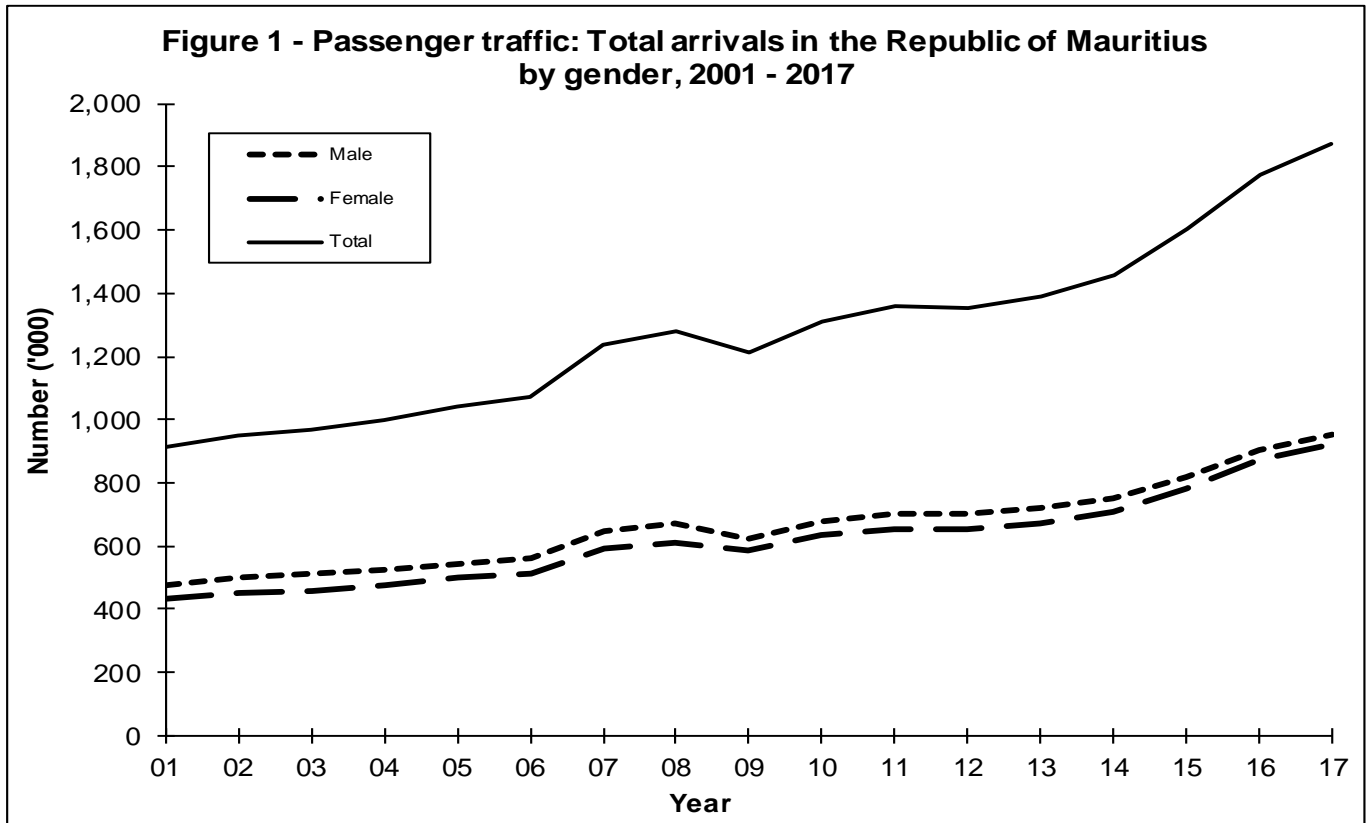


Figure 3 - Passenger traffic: Total departures from the Republic of Mauritius by gender, 2001 - 2017

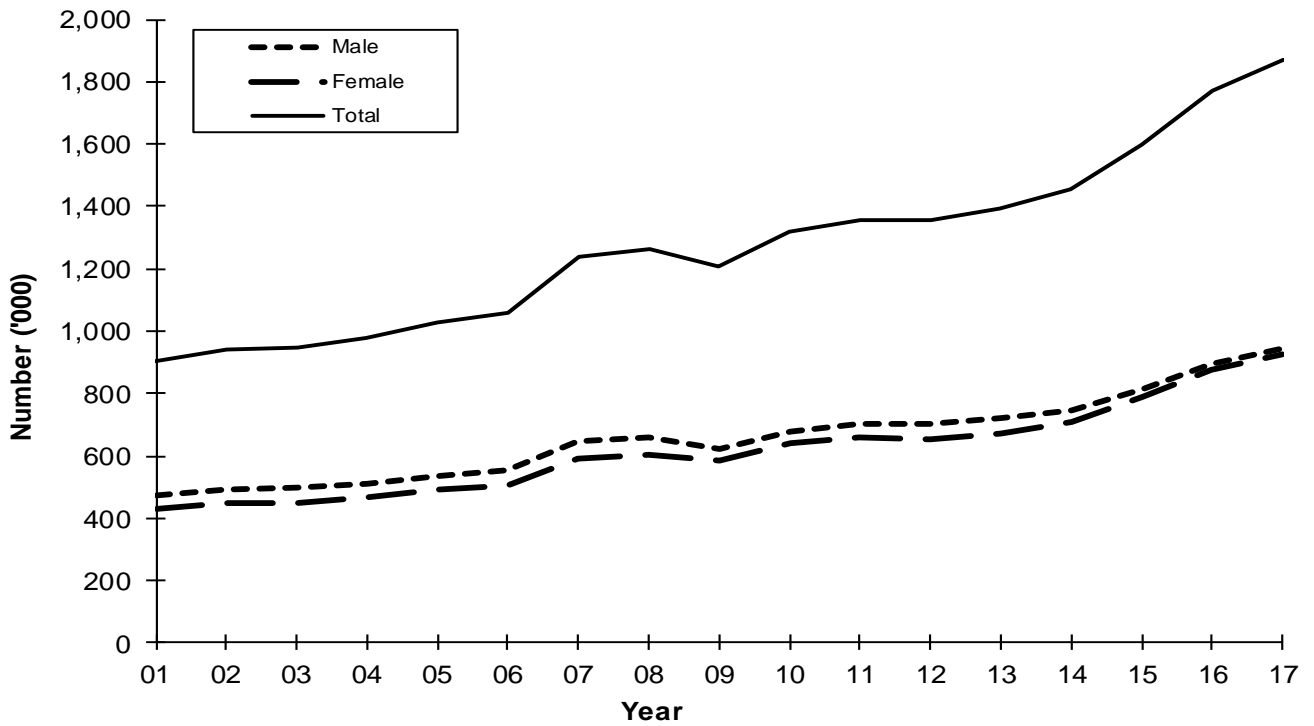


Figure 4 - Passenger traffic: Total departures by gender from the Island of Rodrigues to the Island of Mauritius, 2001 - 2017

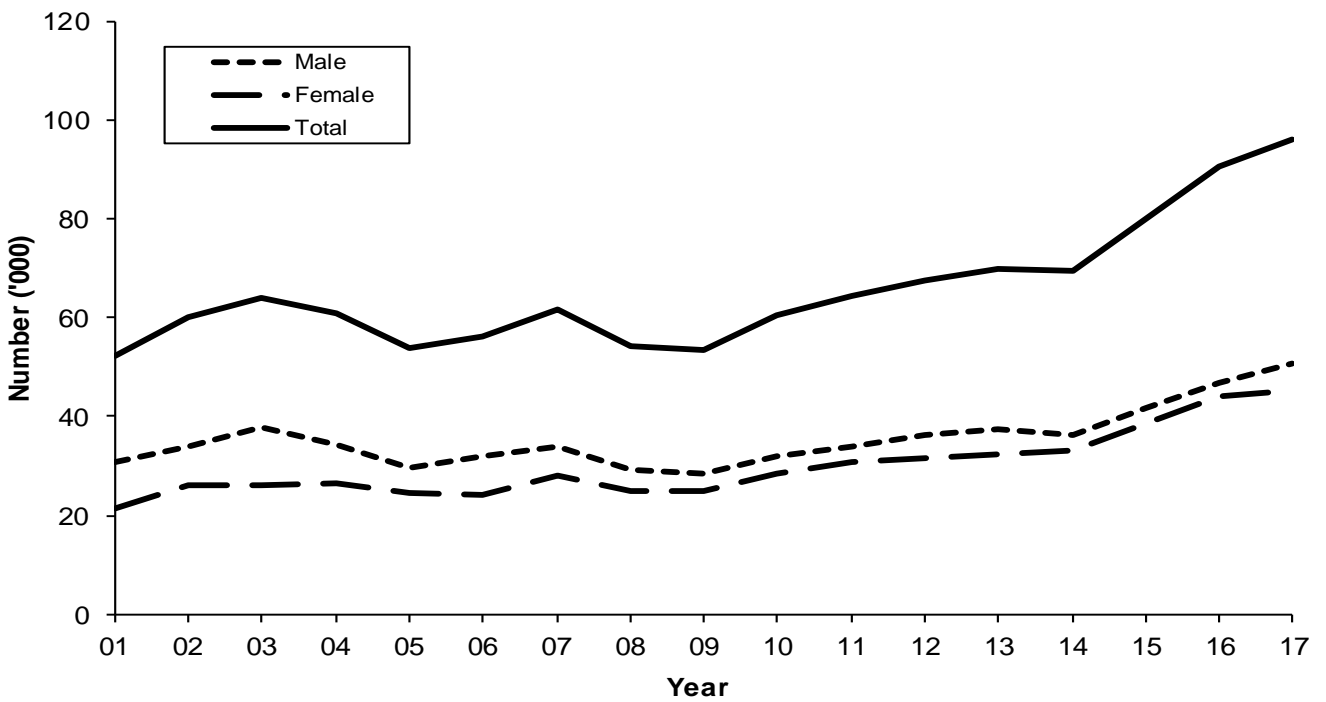


Figure 5 - Passenger traffic: Total arrivals and total departures, Republic of Mauritius, 2008 - 2017

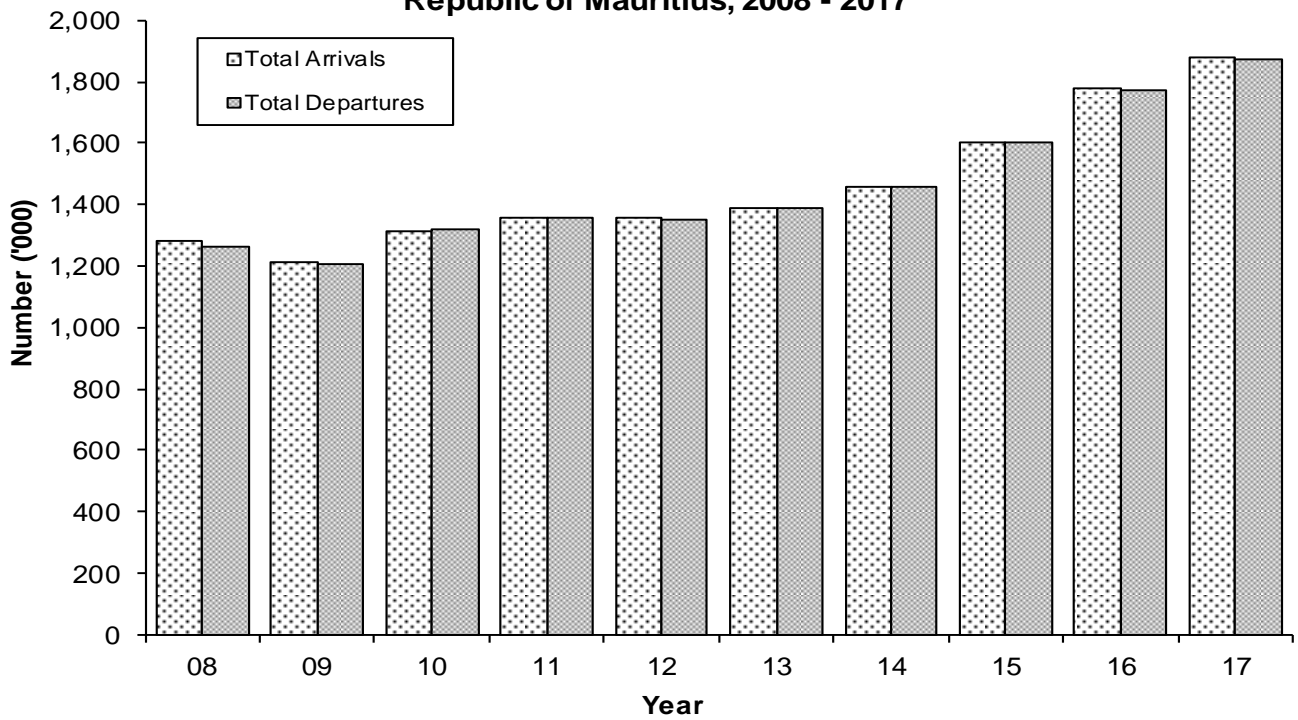


Figure 6 - Passenger traffic: Total arrivals and total departures between Islands of Rodrigues and Mauritius, 2008 - 2017

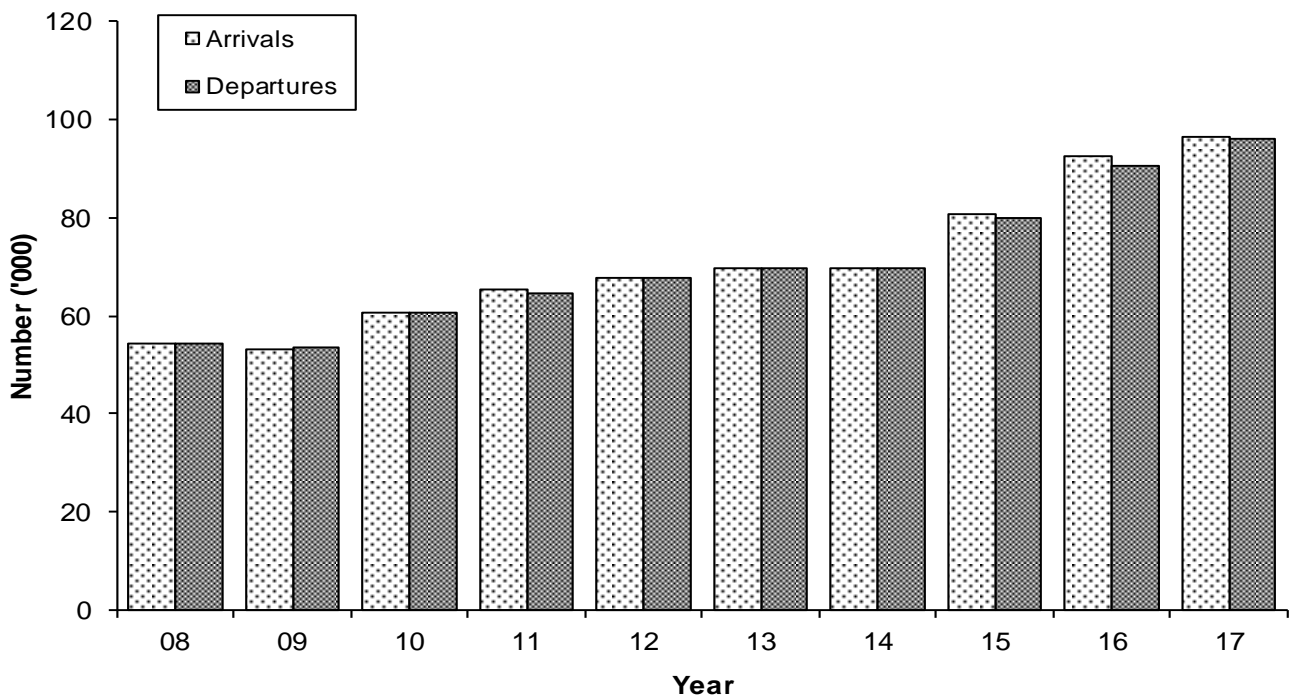


Table 4 - Passenger traffic¹ by mode of transport, Republic of Mauritius, 1997 - 2017

Period	Arrivals			Departures			Arrivals minus Departures
	Total	By sea	By air	Total	By sea	By air	
1997	743,291	29,756	713,535	737,523	27,390	710,133	+ 5,768
1998	778,574	43,706	734,868	775,998	40,809	735,189	+ 2,576
1999	823,085	40,499	782,586	809,233	39,230	770,003	+ 13,852
2000	915,203	34,262	880,941	895,569	33,368	862,201	+ 19,634
2001	910,489	27,847	882,642	903,073	26,313	876,760	+ 7,416
2002	951,090	43,890	907,200	942,876	42,630	900,246	+ 8,214
2003	968,906	31,296	937,610	947,774	28,936	918,838	+ 21,132
2004	1,000,545	32,238	968,307	979,322	28,609	950,713	+ 21,223
2005	1,043,900	35,422	1,008,478	1,029,666	35,478	994,188	+ 14,234
2006	1,072,879	31,713	1,041,166	1,060,074	28,725	1,031,349	+ 12,805
2007	1,238,826	33,373	1,205,453	1,237,747	31,001	1,206,746	+ 1,079
2008	1,280,640	48,311	1,232,329	1,261,182	47,494	1,213,688	+ 19,458
2009	1,210,005	54,396	1,155,609	1,206,550	49,005	1,157,545	+ 3,455
2010	1,312,700	57,576	1,255,124	1,317,581	63,549	1,254,032	- 4,881
2011	1,358,951	54,841	1,304,110	1,358,562	52,356	1,306,206	+ 389
2012	1,354,589	45,947	1,308,642	1,353,618	48,258	1,305,360	+ 971
2013	1,391,481	44,476	1,347,005	1,390,649	40,641	1,350,008	+ 832
2014	1,458,873	36,774	1,422,099	1,454,651	30,537	1,424,114	+ 4,222
2015	1,602,258	42,370	1,559,888	1,600,154	40,907	1,559,247	+ 2,104
2016	1,775,462	59,548	1,715,914	1,772,498	54,205	1,718,293	+ 2,964
2017 ²	1,875,872	55,078	1,820,794	1,872,624	53,331	1,819,293	+ 3,248
2017:1 st Qr.	472,029	19,815	452,214	503,677	21,881	481,796	- 31,648
2 nd Qr.	403,801	4,981	398,820	409,481	4,624	404,857	- 5,680
3 rd Qr.	437,984	1,743	436,241	430,795	1,182	429,613	+ 7,189
4 th Qr.	562,058	28,539	533,519	528,671	25,644	503,027	+ 33,387

¹ Includes traffic between Island of Mauritius and Rodrigues and cruise travellers, but excludes traffic from other constituent islands of the Republic of Mauritius, direct transit and traffic between Rodrigues and Reunion Island.

² Provisional

Table 5 - Passenger traffic¹ by month, Republic of Mauritius, 2014 - 2017

Month	Arrivals				Departures				Excess of arrivals over departures			
	2014	2015	2016	2017 ²	2014	2015	2016	2017 ²	2014	2015	2016	2017 ²
January	137,550	147,441	167,333	176,279	157,037	170,182	190,098	201,092	- 19,487	- 22,741	- 22,765	- 24,813
February	109,078	120,214	139,388	143,546	111,057	118,665	141,238	146,296	- 1,979	+ 1,549	- 1,850	- 2,750
March	125,615	135,612	147,583	152,204	131,916	140,227	147,734	156,289	- 6,301	- 4,615	- 151	- 4,085
April	123,331	130,364	135,217	159,483	118,653	129,406	140,717	159,740	+ 4,678	+ 958	- 5,500	- 257
May	107,882	119,050	126,898	133,259	117,374	130,215	134,988	139,321	- 9,492	- 11,165	- 8,090	- 6,062
June	90,357	95,590	103,484	111,059	89,884	92,364	99,753	110,420	+ 473	+ 3,226	+ 3,731	+ 639
July	117,420	134,576	150,975	158,637	104,105	120,946	135,994	145,167	+ 13,315	+ 13,630	+ 14,981	+ 13,470
August	117,100	132,087	138,833	146,301	126,957	142,667	151,717	154,805	- 9,857	- 10,580	- 12,884	- 8,504
September	104,261	115,803	125,710	133,046	103,385	115,128	125,180	130,823	+ 876	+ 675	+ 530	+ 2,223
October	132,841	143,835	170,228	171,587	124,701	139,460	161,081	165,279	+ 8,140	+ 4,375	+ 9,147	+ 6,308
November	128,251	145,683	163,213	171,531	129,282	143,416	167,038	172,594	- 1,031	+ 2,267	- 3,825	- 1,063
December	165,187	182,003	206,600	218,940	140,300	157,478	176,960	190,798	+ 24,887	+ 24,525	+ 29,640	+ 28,142
Whole Year	1,458,873	1,602,258	1,775,462	1,875,872	1,454,651	1,600,154	1,772,498	1,872,624	+ 4,222	+ 2,104	+ 2,964	+ 3,248

¹ Includes traffic between Island of Mauritius and Rodrigues and cruise travellers, but excludes traffic from other constituent islands of the Republic of Mauritius, direct transit and traffic between Rodrigues and Reunion Island.

² Provisional

Table 6 - Arrivals¹ by country of embarkation², Republic of Mauritius, 2012 - 2017

Country of embarkation	2012	2013	2014	2015	2016	2017 ⁴
Australia	22,404	29,029	24,018	29,219	25,371	28,677
Austria	NA	0	8	2,400	7,296	13,010
Finland	NA	0	313	1,814	2,179	2,526
France	274,976	256,361	251,372	257,943	262,002	247,598
Germany	41,822	40,817	38,398	41,659	72,402	88,261
Hong Kong SAR ³	25,307	21,953	19,623	22,219	21,978	20,163
India	80,325	83,472	79,597	87,894	98,460	106,119
Italy	24,333	15,742	13,054	10,878	7,640	11,879
Kenya	9,856	9,724	9,438	9,636	10,214	10,441
Malagasy Rep.	31,913	31,576	30,644	31,242	34,507	34,084
Malaysia	NA	15,639	16,767	23,489	29,569	27,013
People's Rep. of China	NA	30,415	51,300	73,085	58,038	52,959
Poland	NA	7	0	1,707	5,499	6,463
Reunion Island	257,612	255,143	257,016	279,723	297,453	320,460
Rodrigues	67,745	69,848	69,660	80,079	90,627	96,048
Russian Federation	NA	1,276	2,783	1,476	139	145
Seychelles	13,448	18,483	18,753	26,548	33,952	42,835
Singapore	22,403	14,912	12,574	4,867	15,962	22,791
S. Africa, Rep. of	144,510	155,161	162,579	165,584	186,266	198,722
Sweden	NA	26	591	3,976	4,349	4,379
Switzerland	15,791	7,749	4,244	26	7,586	18,024
United Arab Emirates	NA	230,432	282,696	329,955	344,573	333,473
United Kingdom	96,711	87,484	93,584	98,245	102,919	113,482
Other & not stated	225,433	16,232	19,861	18,594	56,481	76,320
All Countries	1,354,589	1,391,481	1,458,873	1,602,258	1,775,462	1,875,872

¹ Figures on passenger arrivals include cruise travellers, but exclude traffic from other constituent islands of the Republic of Mauritius, direct transit and traffic between Rodrigues and Reunion Island.

² Country of embarkation may either be the country of original embarkation or the transit country.

³ Special Administrative Region of China

⁴ Provisional

NA - Not available

Table 7 - Departures¹ by country of disembarkation², Republic of Mauritius, 2012 - 2017

Country of final destination	2012	2013	2014	2015	2016	2017⁴
Australia	22,785	23,118	24,255	23,136	26,823	28,176
Austria	NA	8	14	1,738	7,464	13,519
Finland	NA	0	0	1,824	2,453	2,531
France	285,448	265,911	260,609	267,046	274,018	255,049
Germany	44,984	40,974	38,477	40,420	70,174	89,978
Hong Kong SAR ³	20,821	20,803	18,656	21,785	20,183	19,750
India	78,464	77,945	73,653	81,581	92,636	99,048
Italy	25,316	16,217	12,872	10,929	8,133	11,765
Kenya	8,350	9,773	9,159	9,803	9,926	8,767
Malagasy Rep.	32,940	33,264	31,323	29,353	33,733	31,934
Malaysia	NA	15,401	22,031	24,615	25,332	13,471
People's Rep. of China	NA	30,301	51,855	72,090	57,550	52,662
Poland	NA	0	0	1,437	5,401	7,037
Reunion Island	248,892	255,094	259,550	269,825	275,550	297,944
Rodrigues	67,527	69,762	69,514	80,884	92,746	96,630
Russian Federation	NA	1,575	2,536	2,100	178	155
Seychelles	18,587	16,298	17,714	33,500	49,049	62,202
Singapore	18,229	14,460	5,831	3,864	18,054	28,634
S. Africa, Rep. of	141,989	154,218	155,693	166,656	175,507	189,782
Sweden	NA	18	22	3,647	4,089	4,396
Switzerland	11,885	7,690	4,501	36	6,256	17,577
United Arab Emirates	NA	234,282	288,227	337,189	357,096	348,554
United Kingdom	96,831	89,730	93,768	100,139	105,605	116,296
Other & not stated	230,570	13,807	14,391	16,557	54,542	76,767
All Countries	1,353,618	1,390,649	1,454,651	1,600,154	1,772,498	1,872,624

¹ Figures on passenger departures include cruise travellers, but exclude traffic from other constituent islands of the Republic of Mauritius, direct transit and traffic between Rodrigues and Reunion Island.

² Country of disembarkation may either be the country of final destination or the transit country.

³ Special Administrative Region of China

⁴ Provisional

NA Not available

Table 8 - Monthly passenger traffic¹ by type of passenger, Republic of Mauritius, 2017²

Type of passenger	Jan	Feb	Mar	Apr	May	Jun	Jul	Aug	Sep	Oct	Nov	Dec	Whole Year
Arrivals													
Visitors ³	126,627	109,914	112,832	114,814	97,442	79,221	113,438	101,517	97,459	133,415	123,271	160,340	1,370,290
- On holiday	118,014	98,760	102,090	105,686	90,271	72,078	105,127	93,642	88,777	121,118	113,252	150,232	1,259,047
- On business & Conference	3,375	3,982	4,935	4,033	4,482	4,167	4,350	3,818	4,942	5,780	5,708	2,984	52,556
- In transit	5,113	7,008	5,562	4,841	2,418	2,602	2,899	3,765	3,608	6,094	3,905	6,933	54,748
- Other and not stated	125	164	245	254	271	374	1,062	292	132	423	406	191	3,939
Mauritian residents	27,071	18,060	22,933	25,983	20,803	19,448	28,248	27,943	22,544	20,405	25,493	33,910	292,841
Rodrigues	10,623	5,258	5,831	9,222	7,318	5,104	8,535	8,673	5,493	7,722	11,633	10,636	96,048
Other ⁴	11,958	10,314	10,608	9,464	7,696	7,286	8,416	8,168	7,550	10,045	11,134	14,054	116,693
Total arrivals	176,279	143,546	152,204	159,483	133,259	111,059	158,637	146,301	133,046	171,587	171,531	218,940	1,875,872
Departures													
Visitors ³	153,758	109,422	114,108	115,520	103,840	77,466	99,079	112,066	92,883	125,711	119,512	126,106	1,349,471
Mauritian residents	22,905	20,105	23,356	23,747	19,680	19,109	27,792	24,273	23,446	20,216	27,746	30,375	282,750
Rodrigues	8,460	5,134	5,684	9,396	6,952	5,277	8,492	8,402	5,538	8,328	10,689	14,278	96,630
Other ⁴	15,969	11,635	13,141	11,077	8,849	8,568	9,804	10,064	8,956	11,024	14,647	20,039	143,773
Total departures	201,092	146,296	156,289	159,740	139,321	110,420	145,167	154,805	130,823	165,279	172,594	190,798	1,872,624

¹ Including traffic between Island of Mauritius and Rodrigues and cruise travellers, but excluding traffic from other constituent islands of the Republic of Mauritius, direct transit and traffic between Rodrigues and Reunion Island.

² Provisional

³ Including non-residents who left the airport but stayed in the country for less than a day

⁴ Including contract workers

Table 9 - Passenger traffic¹ by type of passenger, Republic of Mauritius, 2008 - 2017

Type of passenger	2008	2009	2010	2011	2012	2013	2014	2015	2016	2017 ²
Arrivals										
Visitors ³	970,482	889,999	956,327	982,566	984,104	1,014,818	1,065,030	1,172,883	1,305,372	1,370,290
- On holiday	821,325	819,739	865,562	897,786	896,977	922,970	969,157	1,076,438	1,198,547	1,259,047
- On business & Conference	37,521	29,025	36,081	40,730	42,567	43,480	44,782	48,337	50,396	52,556
- In transit	82,683	24,871	42,243	40,948	41,744	44,675	47,447	44,208	52,948	54,748
- Other & not stated	28,953	16,364	12,441	3,102	2,816	3,693	3,644	3,900	3,481	3,939
Mauritian residents	229,580	199,948	218,325	227,454	248,050	235,440	230,654	250,970	269,441	292,841
Rodrigues	54,212	53,426	60,662	64,564	67,745	69,848	69,660	80,079	90,627	96,048
Other ⁴	26,366	66,632	77,386	84,367	54,690	71,375	93,529	98,326	110,022	116,693
Total arrivals	1,280,640	1,210,005	1,312,700	1,358,951	1,354,589	1,391,481	1,458,873	1,602,258	1,775,462	1,875,872
Departures										
Visitors ³	960,279	908,253	972,791	997,507	971,157	1,011,416	1,057,727	1,163,445	1,290,328	1,349,471
Mauritian residents	225,867	195,964	211,572	219,055	236,595	227,855	222,906	242,430	260,450	282,750
Rodrigues	54,433	52,981	60,573	65,423	67,527	69,762	69,514	80,884	92,746	96,630
Other ⁴	20,603	49,352	72,645	76,577	78,339	81,616	104,504	113,395	128,974	143,773
Total departures	1,261,182	1,206,550	1,317,581	1,358,562	1,353,618	1,390,649	1,454,651	1,600,154	1,772,498	1,872,624

¹ Including traffic between Island of Mauritius and Rodrigues and cruise travellers, but excluding traffic from other constituent islands of the Republic of Mauritius, direct transit and traffic between Rodrigues and Reunion Island.

² Provisional

³ Including non-residents who left the airport but stayed in the country for less than a day

⁴ Including contract workers

Table 10 - Total arrivals¹ by age and gender, Republic of Mauritius, 2016 & 2017

Age (years)	2016			2017 ²			January - June 2017 ²			July - December 2017 ²		
	Total	Male	Female	Total	Male	Female	Total	Male	Female	Total	Male	Female
Under 1	8,037	4,081	3,956	8,738	4,412	4,326	4,305	2,135	2,170	4,433	2,277	2,156
1 - 4	45,524	23,065	22,459	47,653	24,013	23,640	23,349	11,794	11,555	24,304	12,219	12,085
5 - 9	62,473	31,522	30,951	65,432	33,024	32,408	29,641	14,906	14,735	35,791	18,118	17,673
10 - 14	61,964	30,944	31,020	65,015	32,331	32,684	27,483	13,586	13,897	37,532	18,745	18,787
15 - 19	54,617	25,696	28,921	57,810	27,178	30,632	23,024	10,623	12,401	34,786	16,555	18,231
20 - 24	85,223	34,900	50,323	89,373	36,890	52,483	40,957	16,640	24,317	48,416	20,250	28,166
25 - 29	192,924	87,749	105,175	198,896	90,091	108,805	92,433	41,902	50,531	106,463	48,189	58,274
30 - 34	181,807	93,472	88,335	191,394	98,238	93,156	89,963	46,033	43,930	101,431	52,205	49,226
35 - 39	156,734	82,731	74,003	165,584	87,952	77,632	78,808	41,703	37,105	86,776	46,249	40,527
40 - 44	148,803	79,077	69,726	153,313	81,049	72,264	73,492	39,084	34,408	79,821	41,965	37,856
45 - 49	153,555	82,107	71,448	159,795	84,882	74,913	75,751	40,313	35,438	84,044	44,569	39,475
50 - 54	152,056	79,735	72,321	162,417	84,774	77,643	76,980	40,254	36,726	85,437	44,520	40,917
55 - 59	121,830	63,037	58,793	132,937	68,590	64,347	62,697	32,355	30,342	70,240	36,235	34,005
60 - 64	99,314	51,782	47,532	107,709	56,141	51,568	50,913	26,623	24,290	56,796	29,518	27,278
65 - 69	72,979	38,428	34,551	78,066	40,861	37,205	37,563	19,669	17,894	40,503	21,192	19,311
70 & over	71,202	38,165	33,037	80,526	43,058	37,468	38,024	20,500	17,524	42,502	22,558	19,944
Not stated	106,420	54,903	51,517	111,214	58,518	52,696	50,447	27,001	23,446	60,767	31,517	29,250
All ages	1,775,462	901,394	874,068	1,875,872	952,002	923,870	875,830	445,121	430,709	1,000,042	506,881	493,161

¹ Include arrivals from Rodrigues and cruise travellers, but exclude traffic from other constituent islands of the Republic of Mauritius, direct transit and traffic between Rodrigues and Reunion Island.

² Provisional

Table 11 - Total departures¹ by age and gender, Republic of Mauritius, 2016 & 2017

Age (years)	2016			2017 ²			January - June 2017 ²			July - December 2017 ²		
	Total	Male	Female	Total	Male	Female	Total	Male	Female	Total	Male	Female
Under 1	7,669	3,938	3,731	8,368	4,229	4,139	4,441	2,213	2,228	3,927	2,016	1,911
1 - 4	45,340	22,940	22,400	47,738	24,060	23,678	25,356	12,831	12,525	22,382	11,229	11,153
5 - 9	62,123	31,285	30,838	65,237	33,007	32,230	32,544	16,435	16,109	32,693	16,572	16,121
10 - 14	61,443	30,758	30,685	64,868	32,359	32,509	30,413	15,057	15,356	34,455	17,302	17,153
15 - 19	55,056	25,819	29,237	57,838	27,172	30,666	24,953	11,608	13,345	32,885	15,564	17,321
20 - 24	83,810	33,642	50,168	87,296	35,063	52,233	41,279	16,461	24,818	46,017	18,602	27,415
25 - 29	191,621	86,734	104,887	197,673	88,869	108,804	94,011	42,404	51,607	103,662	46,465	57,197
30 - 34	182,609	93,552	89,057	192,357	98,052	94,305	93,278	47,196	46,082	99,079	50,856	48,223
35 - 39	155,806	82,475	73,331	165,242	87,804	77,438	81,948	43,247	38,701	83,294	44,557	38,737
40 - 44	149,377	79,206	70,171	154,106	81,243	72,863	77,489	40,899	36,590	76,617	40,344	36,273
45 - 49	151,599	81,410	70,189	157,967	84,129	73,838	78,627	41,688	36,939	79,340	42,441	36,899
50 - 54	153,287	80,153	73,134	163,844	85,282	78,562	81,606	42,459	39,147	82,238	42,823	39,415
55 - 59	120,531	62,356	58,175	131,557	68,008	63,549	65,185	33,661	31,524	66,372	34,347	32,025
60 - 64	100,241	52,147	48,094	108,589	56,427	52,162	53,783	27,946	25,837	54,806	28,481	26,325
65 - 69	72,747	38,371	34,376	77,692	40,663	37,029	39,394	20,549	18,845	38,298	20,114	18,184
70 & over	71,258	38,236	33,022	80,857	43,195	37,662	40,970	21,971	18,999	39,887	21,224	18,663
Not stated	107,981	54,377	53,604	111,395	56,448	54,947	47,881	24,631	23,250	63,514	31,817	31,697
All ages	1,772,498	897,399	875,099	1,872,624	946,010	926,614	913,158	461,256	451,902	959,466	484,754	474,712

¹ Include departures to Rodrigues and cruise travellers, but exclude traffic from other constituent islands of the Republic of Mauritius, direct transit and traffic between Rodrigues and Reunion Island.

² Provisional

Table 12 - Arrivals¹ of Mauritian residents by age and gender, 2016 & 2017

Age (years)	2016			2017 ²			January - June 2017 ²			July - December 2017 ²		
	Total	Male	Female	Total	Male	Female	Total	Male	Female	Total	Male	Female
Under 1	786	393	393	876	489	387	442	257	185	434	232	202
1 - 4	5,030	2,572	2,458	5,255	2,696	2,559	2,449	1,262	1,187	2,806	1,434	1,372
5 - 9	7,295	3,658	3,637	8,027	4,123	3,904	3,329	1,671	1,658	4,698	2,452	2,246
10 - 14	8,279	4,259	4,020	9,133	4,554	4,579	3,701	1,865	1,836	5,432	2,689	2,743
15 - 19	10,017	4,881	5,136	10,873	5,365	5,508	4,832	2,339	2,493	6,041	3,026	3,015
20 - 24	17,503	8,690	8,813	18,589	9,120	9,469	8,486	4,123	4,363	10,103	4,997	5,106
25 - 29	22,980	11,787	11,193	25,199	12,690	12,509	11,646	5,863	5,783	13,553	6,827	6,726
30 - 34	25,098	13,556	11,542	26,611	14,310	12,301	12,565	6,848	5,717	14,046	7,462	6,584
35 - 39	27,590	15,603	11,987	29,673	16,820	12,853	13,613	7,938	5,675	16,060	8,882	7,178
40 - 44	24,410	13,949	10,461	26,778	15,102	11,676	12,352	7,135	5,217	14,426	7,967	6,459
45 - 49	24,036	13,893	10,143	25,182	14,321	10,861	11,726	6,751	4,975	13,456	7,570	5,886
50 - 54	25,990	14,342	11,648	28,040	15,276	12,764	13,193	7,301	5,892	14,847	7,975	6,872
55 - 59	23,188	11,859	11,329	25,236	12,854	12,382	11,615	6,017	5,598	13,621	6,837	6,784
60 - 64	20,475	10,643	9,832	22,631	11,831	10,800	10,389	5,508	4,881	12,242	6,323	5,919
65 - 69	14,408	7,724	6,684	16,422	8,866	7,556	7,469	4,079	3,390	8,953	4,787	4,166
70 & over	12,356	6,619	5,737	14,316	7,655	6,661	6,491	3,475	3,016	7,825	4,180	3,645
All ages	269,441	144,428	125,013	292,841	156,072	136,769	134,298	72,432	61,866	158,543	83,640	74,903

¹ Arrivals exclude traffic between Island of Mauritius and Rodrigues and traffic between Rodrigues and Reunion Island.

² Provisional

Table 13 - Departures¹ of Mauritian residents by age and gender, 2016 & 2017

Age (years)	2016			2017 ²			January - June 2017 ²			July - December 2017 ²		
	Total	Male	Female	Total	Male	Female	Total	Male	Female	Total	Male	Female
Under 1	754	399	355	792	431	361	368	200	168	424	231	193
1 - 4	4,726	2,416	2,310	4,962	2,546	2,416	2,110	1,081	1,029	2,852	1,465	1,387
5 - 9	7,014	3,491	3,523	7,621	3,944	3,677	2,724	1,392	1,332	4,897	2,552	2,345
10 - 14	8,017	4,088	3,929	8,861	4,472	4,389	2,866	1,459	1,407	5,995	3,013	2,982
15 - 19	10,697	5,218	5,479	11,351	5,615	5,736	4,087	2,010	2,077	7,264	3,605	3,659
20 - 24	17,446	8,662	8,784	18,437	8,966	9,471	8,268	4,019	4,249	10,169	4,947	5,222
25 - 29	22,461	11,374	11,087	24,920	12,396	12,524	11,912	5,992	5,920	13,008	6,404	6,604
30 - 34	24,523	13,253	11,270	26,035	13,977	12,058	12,681	6,979	5,702	13,354	6,998	6,356
35 - 39	26,801	15,194	11,607	28,744	16,334	12,410	13,458	7,984	5,474	15,286	8,350	6,936
40 - 44	23,958	13,715	10,243	26,074	14,661	11,413	11,927	6,949	4,978	14,147	7,712	6,435
45 - 49	23,318	13,553	9,765	24,615	14,078	10,537	11,453	6,649	4,804	13,162	7,429	5,733
50 - 54	24,942	13,891	11,051	26,941	14,808	12,133	12,800	7,118	5,682	14,141	7,690	6,451
55 - 59	22,132	11,357	10,775	24,197	12,438	11,759	11,359	5,917	5,442	12,838	6,521	6,317
60 - 64	19,233	10,153	9,080	21,232	11,227	10,005	9,841	5,231	4,610	11,391	5,996	5,395
65 - 69	13,244	7,198	6,046	15,089	8,141	6,948	6,996	3,772	3,224	8,093	4,369	3,724
70 & over	11,184	5,957	5,227	12,879	6,892	5,987	6,052	3,229	2,823	6,827	3,663	3,164
All ages	260,450	139,919	120,531	282,750	150,926	131,824	128,902	69,981	58,921	153,848	80,945	72,903

¹ Departures exclude traffic between Island of Mauritius and Rodrigues and traffic between Rodrigues and Reunion Island.

² Provisional

Table 14 - Arrivals and departures of Mauritian residents¹ by country of embarkation and disembarkation, 2015 - 2017

Country of embarkation / disembarkation	Arrivals			Departures			Excess of arrivals over departures		
	2015	2016	2017 ³	2015	2016	2017 ³	2015	2016	2017 ³
Australia	8,107	8,270	8,927	8,040	8,019	8,411	+ 67	+ 251	+ 516
France	34,674	34,354	32,704	31,752	31,546	29,268	+ 2,922	+ 2,808	+ 3,436
Germany	1,797	3,391	3,900	1,544	2,440	3,334	+ 253	+ 951	+ 566
Hong Kong SAR ²	5,211	5,250	4,770	4,940	4,596	4,807	+ 271	+ 654	- 37
India	20,110	21,632	22,881	19,001	20,848	22,493	+ 1,109	+ 784	+ 388
Italy	1,732	1,263	1,964	1,595	1,365	1,873	+ 137	- 102	+ 91
Kenya	2,608	2,867	2,721	2,731	2,776	2,514	- 123	+ 91	+ 207
Malagasy Republic	8,802	9,557	8,818	8,698	9,378	8,418	+ 104	+ 179	+ 400
Malaysia	12,245	13,745	12,374	12,983	12,912	5,281	- 738	+ 833	+ 7,093
People's Rep. of China	3,163	3,380	5,249	3,376	3,708	5,731	- 213	- 328	- 482
Reunion Island	35,488	36,038	44,792	33,695	34,211	43,547	+ 1,793	1,827	+ 1,245
Seychelles	8,419	9,606	10,206	9,135	10,383	10,703	- 716	- 777	- 497
Singapore	2,364	7,443	10,283	1,721	9,537	14,974	+ 643	- 2,094	- 4,691
S. Africa, Rep of	23,203	26,644	28,058	23,361	26,411	27,751	- 158	+ 233	+ 307
United Arab Emirates	63,257	63,928	64,259	61,575	61,765	64,558	+ 1,682	+ 2,163	- 299
United Kingdom	19,587	18,875	21,695	18,175	17,414	19,423	+ 1,412	+ 1,461	+ 2,272
Other countries	203	3,198	9,240	108	3,141	9,664	+ 95	+ 57	- 424
All Countries	250,970	269,441	292,841	242,430	260,450	282,750	+ 8,540	+ 8,991	+ 10,091

¹ Figures exclude traffic between Island of Mauritius and Rodrigues and traffic between Rodrigues and Reunion Island.

² Special Administrative Region of China

³ Provisional

III - TOURISM

Definition and notes

1. Definition of tourist

- (a) Prior to 1964, a tourist has been defined as a non-resident staying in Mauritius for more than 24 hours but less than 6 months.
- (b) From 1964 to 2008, a tourist is defined as a non-resident staying in Mauritius for more than 24 hours but less than a year and is not involved in any gainful occupation.
- (c) As from 2009, a tourist is defined as a non-resident staying overnight but less than a year, and who has no employer-employee relationship with a resident.

The figures for the three periods are nevertheless comparable because of the small number of tourists staying for more than 6 months.

2. Visitors include the following:

- (a) Tourists as defined above and
- (b) Excursionists or same day visitors, i.e non-residents, other than those who do not leave the airport/ships, who depart on the same day they arrived.

3. Method of compilation

Sources of data

The main source of data for the compilation of passenger traffic statistics is the Passport and Immigration Office, which maintains a database of all passengers entering and leaving the country. The data are collected from the passport of travellers, disembarkation cards filled in by non-residents and questions put to non-residents entering the country. At the end of every month, passenger traffic for that particular month is downloaded and supplied to the Statistics Unit of the Ministry of Tourism within ten days. Additional data on cruises are supplied by the Mauritius Ports Authority and Passport and Immigration Office.

Prior to 1994, figures have been compiled from a 10% sample of embarkation and disembarkation cards filled in by passengers. However, as from January 1994, they are based on movements of all passengers. Thus disaggregated data for 1994 onwards may not be strictly comparable to previous series.

Tourism earnings

The Bank of Mauritius (BoM) is responsible for the estimation of tourism earnings based on monthly statements of Inward and Outward Remittances of Commercial Banks. As from 2015, BoM is also including data culled from Money changers and Foreign exchange dealers.

Monthly Occupancy Rates

All hotels are contacted by mail and/or phone at the end of every month on room / bed nights available and rented during the month for the calculation of room and bed occupancy.

4. Tourist nights

Prior to 2010, tables on tourist nights show the number of nights spent by tourists who were present in the country during the period under review. Thus the number of tourist nights for 2009 include:

(a) nights spent during 2009 by tourists who arrived prior to 1st January 2009; and

(b) nights during 2009 by tourists who arrived during the same year.

However, nights spent after 31st December 2009 by tourists who arrived in 2009 are excluded.

As from 2010, tourist night for year Y refer to tourist nights spent by tourists departing in year Y.

5. Large hotels

Large hotels are well established beach hotels of over 80 rooms.

Table 15 -Tourist arrivals by mode of transport and tourist nights spent during period, 2001 - 2017

Period	Tourist arrivals			Tourist nights spent during period	% change over previous year	
	Sea	Air	Total		Tourist arrivals	Tourist nights
2001	10,532	649,786	660,318	6,527,800	+ 0.6	+ 1.8
2002	14,180	667,468	681,648	6,768,870	+ 3.2	+ 3.7
2003	12,155	689,863	702,018	6,952,313	+ 3.0	+ 2.7
2004	11,390	707,471	718,861	7,118,603	+ 2.4	+ 2.4
2005	13,321	747,742	761,063	7,498,251	+ 5.9	+ 5.3
2006	13,249	775,027	788,276	7,760,679	+ 3.6	+ 3.5
2007	12,163	894,808	906,971	8,986,934	+ 15.1	+ 15.8
2008	15,961	914,495	930,456	9,218,625	+ 2.6	+ 2.6
2009	23,265	848,091	871,356	8,639,304	- 6.4	- 6.3
2010 ¹	23,648	911,179	934,827	9,336,446	+ 7.3	...
2011	25,047	939,595	964,642	9,494,297	+ 3.2	+ 1.7
2012	16,930	948,511	965,441	10,043,683	+ 0.1	+ 5.8
2013	12,815	979,688	992,503	10,675,598	+ 2.8	+ 6.3
2014	3,336	1,034,998	1,038,334	11,266,751	+ 4.6	+ 5.5
2015	19,425	1,131,827	1,151,252	12,049,901	+ 10.9	+ 7.0
2016	28,365	1,246,862	1,275,227	13,117,907	+ 10.8	+ 8.9
2017 ²	29,565	1,312,295	1,341,860	13,640,751	+ 5.2	+ 4.0

¹ As from 2010, a new methodology for computation of tourist nights is being used. "Tourist nights" for year Y refer to nights spent by tourists departing in year Y.

² Provisional

Table 16 - Tourist arrivals by month of arrival, 2008 - 2017

Month of arrival	2008	2009	2010	2011	2012	2013	2014	2015	2016	2017 ¹
January	94,579	88,591	91,857	101,887	98,837	92,810	96,285	103,556	118,426	124,362
February	77,763	67,892	72,366	77,390	79,331	81,141	78,899	91,066	100,706	105,049
March	89,152	76,425	85,748	83,349	83,827	91,690	87,876	96,425	108,704	110,271
April	72,837	68,969	64,797	79,173	79,137	76,174	88,102	90,221	91,992	111,432
May	67,705	64,761	71,055	68,214	71,396	74,641	78,545	87,054	94,830	96,557
June	53,722	46,866	53,327	54,591	54,625	54,999	60,440	65,459	71,806	78,188
July	81,169	71,872	77,009	78,034	76,166	77,365	81,934	95,694	108,122	112,347
August	71,605	63,365	65,093	66,865	65,896	73,320	78,466	89,422	94,920	100,191
September	65,632	60,144	65,404	64,880	66,369	71,926	74,508	84,456	91,384	96,282
October	83,524	80,197	87,340	90,616	89,994	92,500	101,323	109,014	130,421	130,070
November	75,380	78,544	85,982	87,348	84,398	89,092	91,213	106,204	115,782	121,496
December	97,388	103,730	114,849	112,295	115,465	116,845	120,743	132,681	148,134	155,615
Year	930,456	871,356	934,827	964,642	965,441	992,503	1,038,334	1,151,252	1,275,227	1,341,860

¹ Provisional**Table 17 - Percentage distribution of tourist arrivals by month of arrival, 2008 - 2017**

Month of arrival	2008	2009	2010	2011	2012	2013	2014	2015	2016	2017 ¹
January	10.2	10.2	9.8	10.6	10.2	9.4	9.3	9.0	9.3	9.3
February	8.4	7.8	7.7	8.0	8.2	8.2	7.6	7.9	7.9	7.8
March	9.6	8.8	9.2	8.6	8.7	9.2	8.5	8.4	8.5	8.2
April	7.8	7.9	6.9	8.2	8.2	7.7	8.5	7.8	7.2	8.3
May	7.3	7.4	7.6	7.1	7.4	7.5	7.6	7.6	7.4	7.2
June	5.8	5.4	5.7	5.7	5.7	5.5	5.8	5.7	5.6	5.8
July	8.7	8.2	8.2	8.1	7.9	7.8	7.9	8.3	8.5	8.4
August	7.7	7.3	7.0	6.9	6.8	7.4	7.6	7.8	7.4	7.5
September	7.1	6.9	7.0	6.7	6.9	7.2	7.2	7.3	7.2	7.2
October	9.0	9.2	9.3	9.4	9.3	9.3	9.8	9.5	10.2	9.7
November	8.1	9.0	9.2	9.1	8.7	9.0	8.8	9.2	9.1	9.1
December	10.5	11.9	12.3	11.6	12.0	11.8	11.6	11.5	11.6	11.6
Year	100.0	100.0	100.0	100.0	100.0	100.0	100.0	100.0	100.0	100.0

¹ Provisional

Figure 7 - Tourist arrivals by month, 2013 - 2017

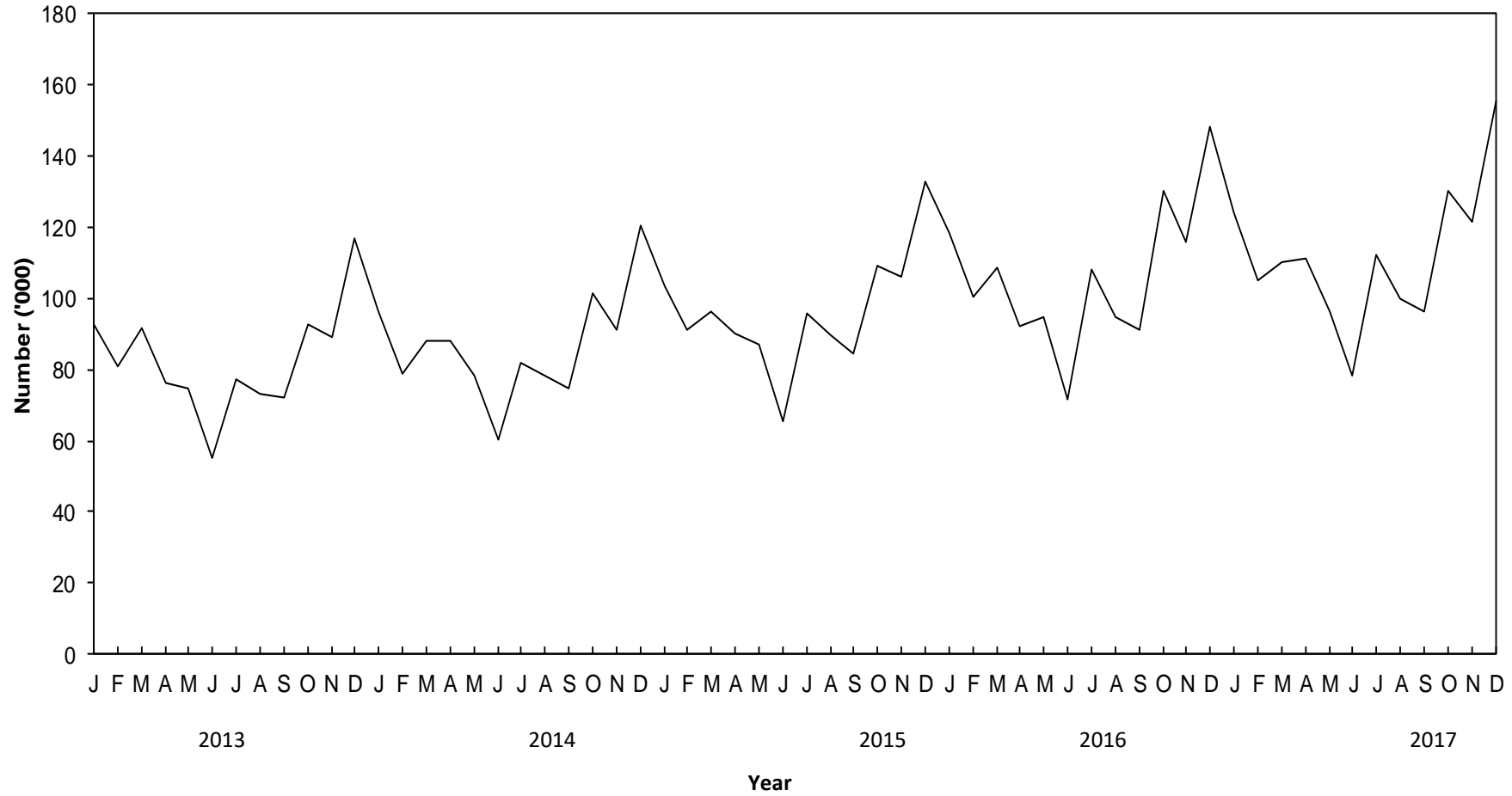


Table 18 - Tourist arrivals by country of residence and gender, 2016 & 2017

Country of residence	2016			2017 ¹		
	Male	Female	Total	Male	Female	Total
Australia	9,134	9,425	18,559	10,335	10,936	21,271
Austria	8,026	8,617	16,643	8,495	9,101	17,596
Belgium	7,801	7,874	15,675	8,135	8,285	16,420
Czech Republic	3,982	4,521	8,503	5,028	5,467	10,495
France	133,497	138,466	271,963	133,896	139,523	273,419
Germany	50,525	53,236	103,761	57,640	61,216	118,856
India	46,288	36,382	82,670	48,022	38,272	86,294
Italy	15,610	15,727	31,337	17,368	17,733	35,101
Malagasy Rep.	5,781	5,959	11,740	6,245	6,485	12,730
Netherlands	5,118	4,962	10,080	6,640	6,629	13,269
P. Rep. of China	37,094	42,280	79,374	34,149	38,802	72,951
Reunion Island	70,655	75,548	146,203	70,584	75,456	146,040
Russian Federation	4,342	4,953	9,295	5,178	5,975	11,153
Seychelles	2,833	3,560	6,393	2,787	3,471	6,258
S. Africa, Rep. of	52,546	52,288	104,834	55,624	56,505	112,129
Spain	7,689	7,615	15,304	7,713	7,539	15,252
Sweden	7,091	7,460	14,551	7,607	7,909	15,516
Switzerland	17,449	18,823	36,272	19,060	21,192	40,252
United Arab Emirates	5,175	4,439	9,614	6,108	5,758	11,866
United Kingdom	70,109	71,795	141,904	73,801	76,006	149,807
U.S.A.	4,486	4,038	8,524	4,963	4,692	9,655
Other countries	71,168	60,860	132,028	78,289	67,241	145,530
All Countries	636,399	638,828	1,275,227	667,667	674,193	1,341,860

¹ Provisional

Table 19 - Tourist arrivals by country of residence, 2008 - 2017

Country of residence	2008	2009	2010	2011	2012	2013	2014	2015	2016	2017¹
Australia	18,852	10,363	11,493	15,726	17,009	18,340	17,434	17,835	18,559	21,271
Austria	8,974	8,106	9,255	8,822	8,151	7,932	8,303	11,425	16,643	17,596
Belgium	11,796	10,254	10,214	12,029	10,967	11,562	11,465	14,223	15,675	16,420
Czech Republic	4,166	3,487	3,477	4,081	5,247	5,545	6,852	7,265	8,503	10,495
France	260,054	275,599	302,185	282,469	256,929	244,737	243,655	254,323	271,963	273,419
Germany	61,484	51,279	52,886	56,331	55,186	60,433	62,212	75,237	103,761	118,856
India	43,911	39,252	49,779	53,955	55,197	57,253	61,162	72,135	82,670	86,294
Italy	66,432	56,736	56,540	52,747	40,009	31,145	29,553	29,185	31,337	35,101
Malagasy Rep.	10,905	8,333	9,833	11,449	13,563	13,941	13,038	12,215	11,740	12,730
Netherlands	6,051	5,527	4,865	5,179	4,434	4,498	4,795	6,926	10,080	13,269
People's Rep. of China	8,425	6,925	7,609	15,133	20,885	41,909	63,363	89,584	79,374	72,951
Reunion Island	96,174	104,946	114,914	132,535	144,340	143,174	141,659	143,845	146,203	146,040
Russian Federation	6,763	5,628	6,615	12,224	19,429	14,903	13,287	11,406	9,295	11,153
Seychelles	10,604	7,532	10,160	8,485	6,779	7,183	6,926	5,652	6,393	6,258
S. Africa, Rep. of	84,448	74,176	81,458	86,232	89,058	94,137	93,075	101,943	104,834	112,129
Spain	12,001	9,549	8,096	9,801	9,473	8,428	8,632	10,013	15,304	15,252
Sweden	8,305	5,060	4,496	4,325	4,295	4,576	6,452	11,634	14,551	15,516
Switzerland	16,037	15,349	18,577	24,362	26,002	27,751	29,273	30,680	36,272	40,252
United Arab Emirates	4,109	3,141	3,470	3,780	5,403	8,159	8,000	9,049	9,614	11,866
United Kingdom	107,919	101,996	97,548	88,182	87,648	97,963	115,239	129,754	141,904	149,807
U.S.A	7,089	6,951	7,316	6,870	6,374	5,741	7,139	8,546	8,524	9,655
Other Countries	75,957	61,167	64,041	69,925	79,063	83,193	86,820	98,377	132,028	145,530
All Countries	930,456	871,356	934,827	964,642	965,441	992,503	1,038,334	1,151,252	1,275,227	1,341,860

¹ Provisional

Table 20 - Percentage distribution of tourist arrivals by country of residence, 2008 - 2017

Country of residence	2008	2009	2010	2011	2012	2013	2014	2015	2016	2017 ¹
Australia	2.0	1.2	1.2	1.6	1.8	1.8	1.7	1.5	1.5	1.6
Austria	1.0	0.9	1.0	0.9	0.8	0.8	0.8	1.0	1.3	1.3
Belgium	1.3	1.2	1.1	1.2	1.1	1.2	1.1	1.2	1.2	1.2
Czech Republic	0.4	0.4	0.4	0.4	0.5	0.6	0.7	0.6	0.7	0.8
France	27.9	31.6	32.3	29.3	26.6	24.7	23.5	22.1	21.3	20.4
Germany	6.6	5.9	5.7	5.8	5.7	6.1	6.0	6.5	8.1	8.9
India	4.7	4.5	5.3	5.6	5.7	5.8	5.9	6.3	6.5	6.4
Italy	7.1	6.5	6.0	5.5	4.1	3.1	2.8	2.5	2.5	2.6
Malagasy Rep.	1.2	1.0	1.1	1.2	1.4	1.4	1.3	1.1	0.9	0.9
Netherlands	0.7	0.6	0.5	0.5	0.5	0.5	0.5	0.6	0.8	1.0
People's Rep. of China	0.9	0.8	0.8	1.6	2.2	4.2	6.1	7.8	6.2	5.4
Reunion Island	10.3	12.0	12.3	13.7	15.0	14.4	13.6	12.5	11.5	10.9
Russian Federation	0.7	0.6	0.7	1.3	2.0	1.5	1.3	1.0	0.7	0.8
Seychelles	1.1	0.9	1.1	0.9	0.7	0.7	0.7	0.5	0.5	0.5
S. Africa, Rep. of	9.1	8.5	8.7	8.9	9.2	9.5	9.0	8.9	8.2	8.4
Spain	1.3	1.1	0.9	1.0	1.0	0.8	0.8	0.9	1.2	1.1
Sweden	0.9	0.6	0.5	0.4	0.4	0.5	0.6	1.0	1.1	1.2
Switzerland	1.7	1.8	2.0	2.5	2.7	2.8	2.8	2.7	2.8	3.0
United Arab Emirates	0.4	0.4	0.4	0.4	0.6	0.8	0.8	0.8	0.8	0.9
United Kingdom	11.6	11.7	10.4	9.1	9.1	9.9	11.1	11.3	11.1	11.2
U.S.A	0.8	0.8	0.8	0.7	0.7	0.6	0.7	0.7	0.7	0.7
Other Countries	8.2	7.0	6.9	7.2	8.2	8.4	8.4	8.5	10.4	10.8
All Countries	100.0	100.0	100.0	100.0	100.0	100.0	100.0	100.0	100.0	100.0

¹ Provisional

Figure 8 - Percentage distribution of tourist arrivals by country of residence, 2017

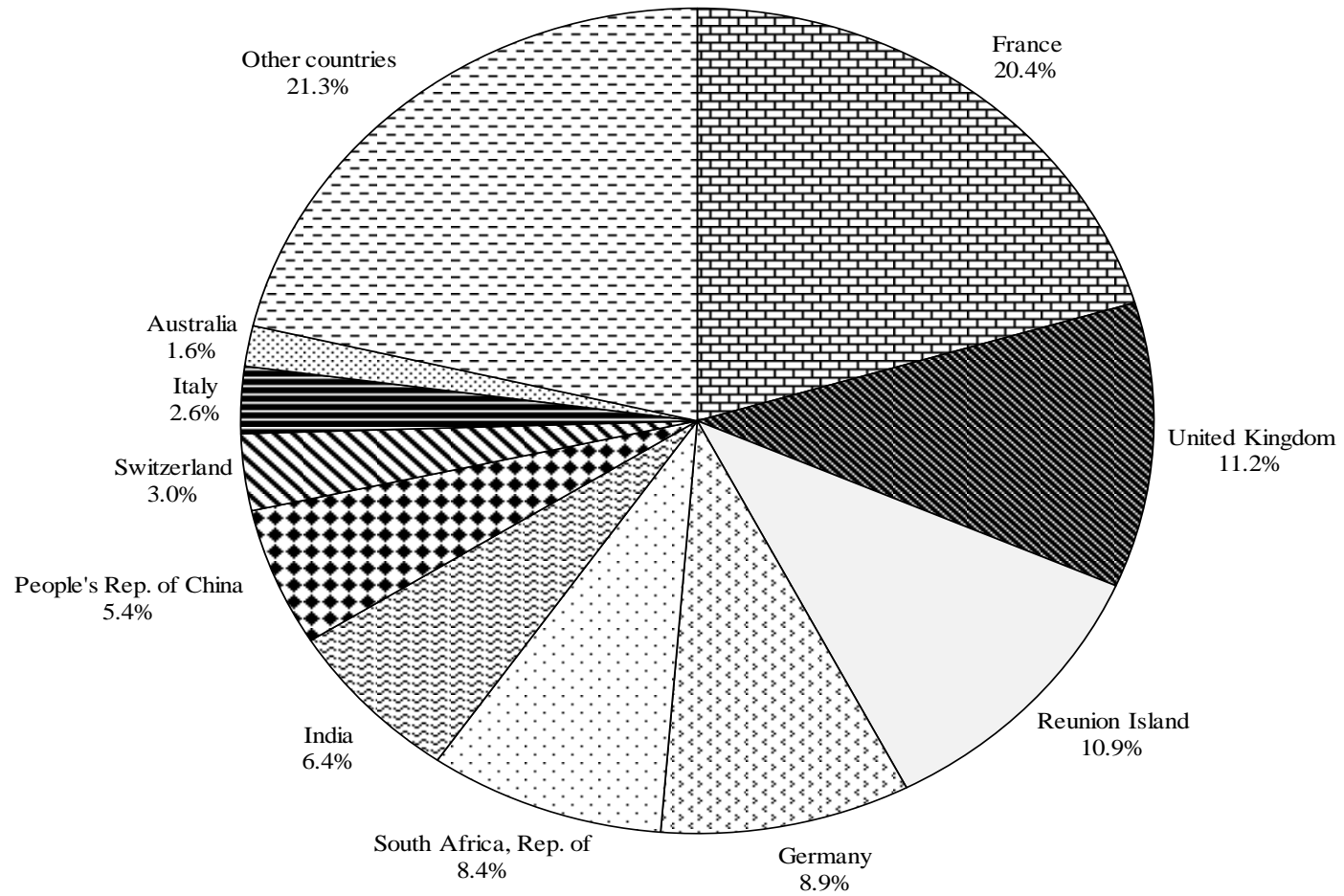


Table 21 - Tourist arrivals by air and by main port of last embarkation for selected markets, 2017 ¹

Country of last embarkation	Total tourist arrivals	of which, arrivals from selected country of residence											
		France	Germany	Italy	Turkey	Switzerland	United Kingdom	Russian Federation	Reunion Island	South Africa, Rep. of	India	People's Rep. of China	Australia
EUROPE	454,125	155,546	72,654	16,974	2,108	21,392	85,522	3,361	286	249	161	322	790
<i>of which:</i> France	200,629	143,546	9,526	4,391	16	6,399	6,595	1,601	222	92	52	116	367
Germany	76,090	5,009	55,492	673	42	2,017	1,379	161	11	19	8	31	85
Italy	9,264	118	20	8,678	0	129	16	13	10	2	1	12	11
Switzerland	15,656	1,377	1,079	243	0	10,860	323	207	7	5	0	9	6
Turkey	28,647	1,915	4,336	2,030	2,037	936	899	1,058	16	20	31	87	24
United Kingdom	85,679	2,052	460	492	9	436	75,743	85	15	102	64	64	226
AFRICA	444,216	80,127	11,407	2,928	167	4,678	10,933	516	142,269	106,425	8,312	4,304	3,216
<i>of which:</i> Kenya	6,199	141	66	32	11	75	405	22	63	85	145	384	150
Malagasy Republic	17,885	1,085	194	103	64	129	334	98	179	223	460	1,022	287
Reunion Island	232,921	69,751	4,188	358	25	2,431	1,405	98	141,381	1,389	820	1,294	426
Seychelles	25,807	7,600	901	126	22	381	686	89	51	333	6,318	221	171
South Africa, Rep. of	160,342	1,534	6,048	2,308	45	1,640	8,077	209	591	103,768	563	1,356	2,166
ASIA	396,657	32,507	26,760	13,240	291	13,035	50,545	6,965	2,497	2,092	77,522	68,010	2,707
<i>of which:</i> Hong Kong SAR ²	13,106	112	27	26	0	10	115	40	45	24	15	10,094	112
India	71,885	179	71	36	1	22	348	21	220	1,311	66,842	66	126
Malaysia	11,863	422	94	23	1	31	199	93	961	134	212	3,137	737
People's Rep. of China	43,774	55	6	1	0	1	16	18	55	29	9	42,826	12
Singapore	8,857	432	58	30	1	29	173	57	851	160	122	289	587
United Arab Emirates	243,629	31,054	26,404	12,917	271	12,929	49,639	6,679	364	429	10,276	11,587	1,132
OCEANIA	17,297	322	51	23	0	14	308	2	385	858	15	27	14,389
<i>of which:</i> Australia	17,297	322	51	23	0	14	308	2	385	858	15	27	14,389
AMERICA	0	0	0	0	0	0	0	0	0	0	0	0	0
<i>of which:</i> USA	0	0	0	0	0	0	0	0	0	0	0	0	0
Total arrivals by air	1,312,295	268,502	110,872	33,165	2,566	39,119	147,308	10,844	145,437	109,624	86,010	72,663	21,102
<i>of which:</i>		France	Germany	Italy	Turkey	Switzerland	United Kingdom	Russian Federation	Reunion Island	South Africa, Rep. of	India	People's Rep. of China	Australia
Direct from own country of residence		53.5%	50.1%	26.2%	79.4%	27.8%	51.4%	Nap	97.2%	94.7%	77.7%	58.9%	68.2%
From United Arab Emirates		11.6%	23.8%	38.9%	10.6%	33.1%	33.7%	61.6%	0.3%	0.4%	11.9%	15.9%	5.4%
From Turkey		0.7%	3.9%	6.1%		2.4%	0.6%	9.8%	0.0%	0.0%	0.0%	0.1%	0.1%
From France			8.6%	13.2%	0.6%	16.4%	4.5%	14.8%	0.2%	0.1%	0.1%	0.2%	1.7%
From Reunion Island		26.0%	3.8%	1.1%	1.0%	6.2%	1.0%	0.9%		1.3%	1.0%	1.8%	2.0%
From South Africa, Rep. of		0.6%	5.5%	7.0%	1.8%	4.2%	5.5%	1.9%	0.4%		0.7%	1.9%	10.3%

¹ Provisional

² Special Administrative Region of China

Nap: not applicable

Table 22 - Tourist nights by country of residence, 2008 - 2017

Country of residence	2008	2009	2010 ¹	2011	2012	2013	2014	2015	2016	2017 ²
Australia	161,488	138,665	173,841	184,783	219,385	223,008	233,759	239,455	241,605	266,452
Austria	NA	NA	107,902	100,339	97,043	93,864	101,266	127,358	177,805	190,291
Belgium	148,978	138,764	136,864	141,919	148,383	159,824	163,758	183,529	199,467	208,599
Czech Republic	NA	NA	NA	NA	NA	57,800	71,756	74,363	88,844	106,497
France	2,711,413	2,498,920	2,861,792	2,966,510	2,978,517	3,023,973	3,115,424	3,111,266	3,239,309	3,180,222
Germany	760,468	579,531	643,932	662,562	663,498	718,706	776,324	887,733	1,174,417	1,277,191
India	399,570	376,783	412,802	441,355	515,778	578,976	611,798	688,149	750,365	780,775
Italy	605,457	512,033	509,369	471,977	387,725	331,093	308,522	296,473	310,194	337,644
Malagasy Rep.	107,295	96,282	115,578	107,111	138,998	151,390	181,578	189,158	198,344	210,808
Netherlands	NA	NA	53,395	52,622	48,432	50,889	53,280	76,752	105,979	136,757
People's Rep. of China	105,990	69,196	95,055	120,641	226,741	376,235	469,163	650,925	559,972	544,858
Reunion Island	790,612	969,927	993,837	1,030,720	1,042,124	1,016,159	996,852	998,274	995,309	989,005
Russian Federation	NA	NA	72,279	116,692	218,512	184,407	172,525	154,305	122,691	148,907
Seychelles	95,254	67,976	89,750	81,251	66,202	66,468	62,395	58,787	65,135	64,958
S. Africa, Rep. of	699,329	602,983	670,365	704,608	734,287	786,433	784,424	835,862	862,513	920,225
Spain	NA	NA	68,259	73,841	71,931	68,742	72,554	87,418	123,552	120,048
Sweden	NA	NA	52,794	49,401	47,556	55,499	64,452	131,795	168,500	175,011
Switzerland	192,797	197,742	241,899	284,738	317,601	347,927	373,111	369,779	414,284	464,546
United Arab Emirates	NA	NA	36,279	36,271	36,205	45,811	50,912	61,349	66,518	76,444
United Kingdom	1,189,830	1,281,968	1,205,658	1,057,883	1,140,129	1,370,172	1,528,786	1,599,775	1,717,793	1,728,279
U.S.A.	65,761	54,075	51,428	59,440	54,691	57,064	66,462	79,294	78,838	85,484
Other countries	1,184,383	1,054,459	743,368	749,634	889,945	911,158	1,007,650	1,148,102	1,456,473	1,627,750
All Countries	9,218,625	8,639,304	9,336,446	9,494,297	10,043,683	10,675,598	11,266,751	12,049,901	13,117,907	13,640,751

¹ As from 2010, a new methodology for computation of tourist nights is being used. "Tourist nights" for year Y refer to nights spent by tourists departing in year Y.

² Provisional

NA - Not available

Figure 9 - Total arrivals and tourist arrivals, 2008 - 2017

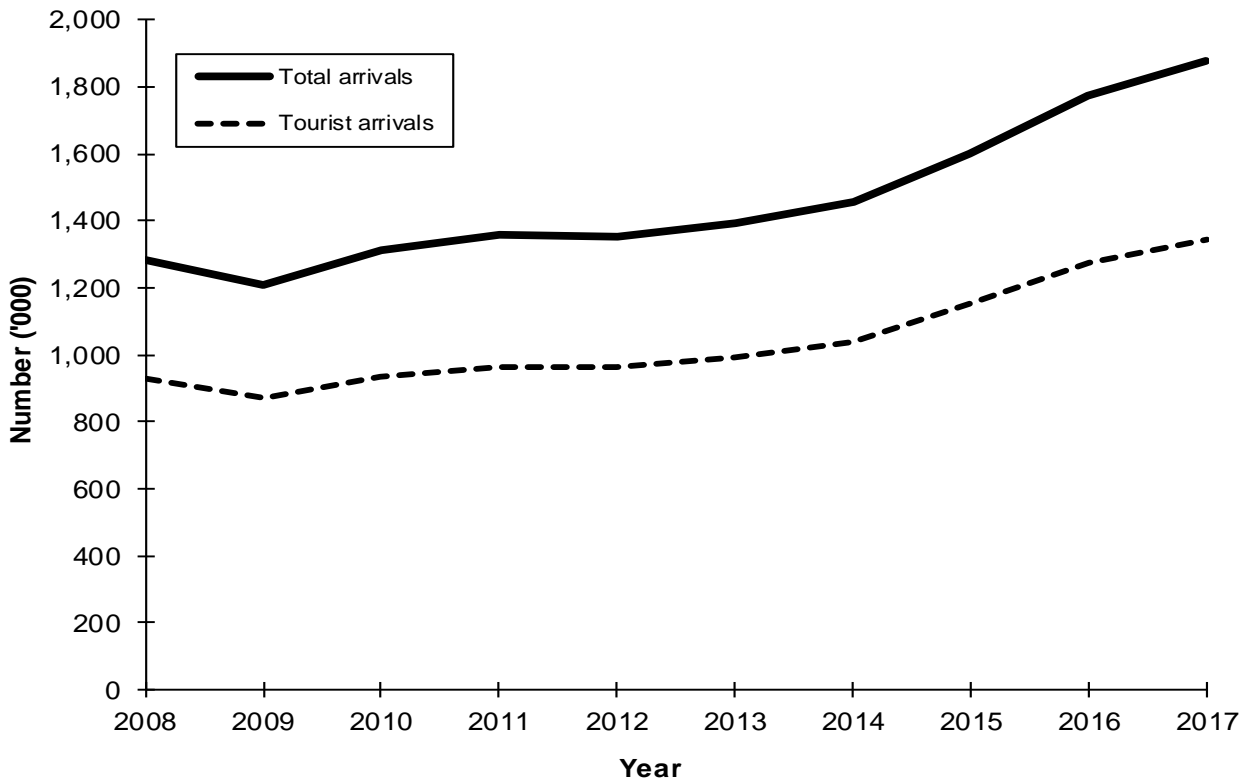


Figure 10 - Tourist nights, 2008 - 2017

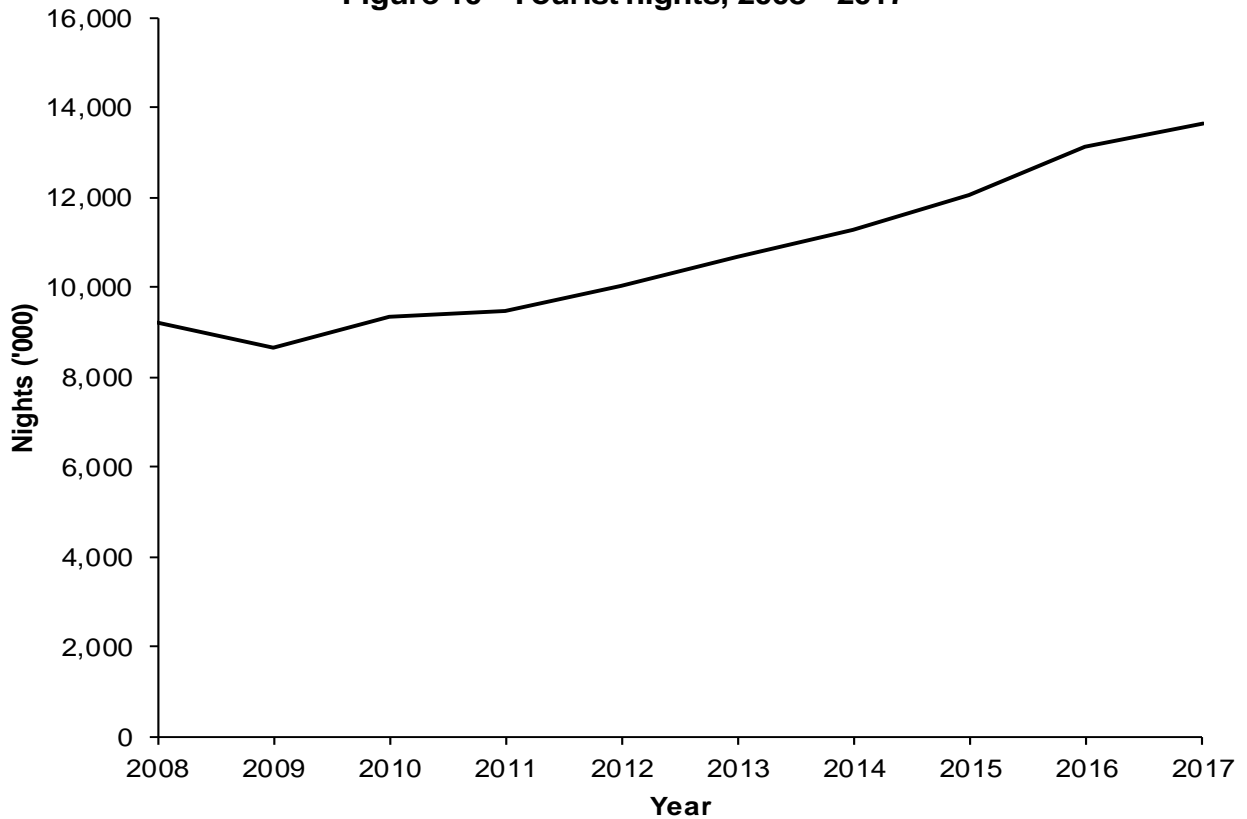


Table 23 - Visitor¹ arrivals by country of residence and by purpose of visit, 2015 - 2017

Country of residence	Visitors on holidays			Visitors on business and conference			Visitors in transit			Other visitors			Total visitors		
	2015	2016	2017 ²	2015	2016	2017 ²	2015	2016	2017 ²	2015	2016	2017 ²	2015	2016	2017 ²
Australia	16,105	16,954	19,231	494	502	470	3,294	4,402	3,164	24	53	68	19,917	21,911	22,933
Austria	11,280	16,470	17,398	96	116	109	272	510	585	17	6	6	11,665	17,102	18,098
Belgium	13,696	15,079	15,767	489	573	510	127	177	309	24	7	13	14,336	15,836	16,599
Czech Republic	7,155	8,429	10,429	99	61	34	90	112	176	6	4	9	7,350	8,606	10,648
France	245,951	263,438	264,637	6,493	6,877	6,836	4,653	4,076	4,783	365	258	239	257,462	274,649	276,495
Germany	74,109	102,618	117,508	711	841	798	2,409	3,795	6,120	38	21	32	77,267	107,275	124,458
India	64,966	75,423	78,516	5,651	5,960	5,834	1,557	1,408	2,131	338	293	320	72,512	83,084	86,801
Italy	28,594	30,572	34,389	484	577	545	1,398	1,882	1,552	23	20	26	30,499	33,051	36,512
Malagasy Rep.	7,680	7,805	8,667	1,737	1,646	1,865	2,921	2,989	2,873	349	478	423	12,687	12,918	13,828
Netherlands	6,543	9,660	12,743	329	381	431	229	333	282	7	6	18	7,108	10,380	13,474
People's Rep. of China	86,204	75,995	69,225	2,161	2,117	2,431	1,665	2,107	1,962	54	39	47	90,084	80,258	73,665
Reunion Island	138,503	140,730	140,701	2,463	2,431	2,315	6,040	6,079	6,291	664	419	348	147,670	149,659	149,655
Russian Federation	11,008	8,918	10,758	169	133	165	507	416	371	31	11	24	11,715	9,478	11,318
Seychelles	4,725	5,514	5,391	567	518	600	165	193	205	294	287	204	5,751	6,512	6,400
S. Africa Rep. of	92,549	94,775	99,907	8,459	8,978	9,925	913	1,472	2,599	341	329	523	102,262	105,554	112,954
Spain	9,203	14,529	14,440	539	465	500	601	590	569	10	10	30	10,353	15,594	15,539
Sweden	11,511	14,352	15,334	83	129	125	71	187	118	22	15	18	11,687	14,683	15,595
Switzerland	30,153	35,710	39,639	432	485	456	708	1,427	1,416	25	16	30	31,318	37,638	41,541
United Arab Emirates	8,152	8,722	10,897	851	834	924	220	245	224	7	10	7	9,230	9,811	12,052
United Kingdom	126,068	138,443	146,096	2,876	2,954	3,135	2,407	4,828	4,817	99	113	100	131,450	146,338	154,148
U.S.A.	6,735	7,316	8,529	1,211	1,043	988	2,503	1,219	531	36	16	26	10,485	9,594	10,074
Other & N. Stated	76,552	108,595	120,029	11,944	12,776	13,560	11,458	14,501	13,671	1,129	1,070	1,428	101,083	136,942	148,688
All Countries	1,077,442	1,200,047	1,260,231	48,338	50,397	52,556	44,208	52,948	54,749	3,903	3,481	3,939	1,173,891	1,306,873	1,371,475

¹ Visitors include tourists, cruise ship passengers and non-residents who stay in the country for less than a day, other than those who do not leave the airport. Figures include traffic between Rodrigues and Reunion Island.

² Provisional

Table 24(i) - Visitor arrivals¹ by age and gender, 2016 and 2017

Age (years)	Same day visitors						Tourists					
	2016			2017 ²			2016			2017 ²		
	Total	Male	Female	Total	Male	Female	Total	Male	Female	Total	Male	Female
Under 1	39	20	19	37	21	16	7,185	3,654	3,531	7,790	3,885	3,905
1 - 4	222	102	120	241	118	123	40,106	20,293	19,813	41,969	21,111	20,858
5 - 9	324	155	169	385	184	201	54,669	27,637	27,032	56,781	28,618	28,163
10 - 14	361	177	184	465	213	252	53,164	26,415	26,749	55,184	27,455	27,729
15 - 19	615	277	338	502	252	250	43,203	20,177	23,026	45,240	21,015	24,225
20 - 24	1,349	601	748	866	441	425	58,782	22,775	36,007	60,451	23,491	36,960
25 - 29	1,854	1,014	840	1,876	1,007	869	150,569	67,919	82,650	152,804	68,416	84,388
30 - 34	2,152	1,322	830	2,257	1,295	962	139,720	71,298	68,422	147,207	74,593	72,614
35 - 39	1,893	1,219	674	2,114	1,321	793	114,528	59,391	55,137	121,969	63,308	58,661
40 - 44	1,816	1,247	569	1,913	1,192	721	110,242	57,557	52,685	111,429	57,837	53,592
45 - 49	2,126	1,361	765	2,196	1,356	840	114,855	58,705	56,150	118,779	60,566	58,213
50 - 54	2,273	1,315	958	2,544	1,364	1,180	115,557	58,835	56,722	122,655	62,320	60,335
55 - 59	2,419	1,253	1,166	2,665	1,451	1,214	93,179	47,671	45,508	101,232	51,698	49,534
60 - 64	3,088	1,445	1,643	2,915	1,436	1,479	73,869	38,034	35,835	79,892	40,917	38,975
65 - 69	4,274	2,073	2,201	3,285	1,595	1,690	53,884	28,344	25,540	57,906	30,108	27,798
70 & over	6,841	3,652	3,189	5,354	2,879	2,475	51,715	27,694	24,021	60,572	32,329	28,243
All ages	31,646	17,233	14,413	29,615	16,125	13,490	1,275,227	636,399	638,828	1,341,860	667,667	674,193

¹ Visitors include tourists, cruise ship passengers and non-residents who stay in the country for less than a day, other than those who do not leave the airport. Figures include traffic between Rodrigues and Reunion Island.

² Provisional

Table 24(ii) - Tourist arrivals by broad age group and mode of arrival, 2014 - 2017

Age group (years)	2014			2015			2016			2017 ¹		
	Air	Sea	Total	Air	Sea	Total	Air	Sea	Total	Air	Sea	Total
Under 15	127,211	369	127,580	139,199	859	140,058	153,394	1,730	155,124	160,498	1,226	161,724
15 - 59	769,794	1,577	771,371	842,663	8,663	851,326	927,131	13,504	940,635	967,835	13,931	981,766
60 & over	137,993	1,390	139,383	149,965	9,903	159,868	166,337	13,131	179,468	183,962	14,408	198,370
Total	1,034,998	3,336	1,038,334	1,131,827	19,425	1,151,252	1,246,862	28,365	1,275,227	1,312,295	29,565	1,341,860

¹ Provisional

Table 25 - Visitor departures¹ by duration of stay, 2016 - 2017

Duration of stay	2016		2017 ²	
	Number	Percentage	Number	Percentage
Less than 1 night	31,646	2.4	29,615	2.2
1 night	39,241	3.0	41,034	3.0
2 nights	31,898	2.5	35,111	2.6
3 nights	49,948	3.9	54,676	4.0
4 nights	75,213	5.8	83,954	6.2
5 nights	131,601	10.2	126,181	9.3
6 nights	111,160	8.6	121,615	9.0
7 nights	246,880	19.1	250,759	18.6
8 nights	57,544	4.5	65,700	4.9
9 nights	72,852	5.6	81,075	6.0
10 nights	87,861	6.8	92,136	6.8
11 nights	40,936	3.2	45,286	3.4
12 nights	47,901	3.7	46,777	3.5
13 nights	44,031	3.4	46,133	3.4
14 nights	95,653	7.4	98,237	7.3
15 nights	13,607	1.1	14,344	1.1
16 nights	11,435	0.9	11,571	0.9
17 nights	7,804	0.6	9,023	0.7
18 nights	6,580	0.5	7,056	0.5
19 nights	6,890	0.5	6,963	0.5
20 - 24 nights	27,930	2.2	29,221	2.2
25 - 29 nights	14,495	1.1	15,448	1.1
1 month - under 2 months	24,290	1.9	24,236	1.8
2 months - under 3 months	6,878	0.5	7,090	0.5
3 months and over	7,497	0.6	7,514	0.6
All Countries	1,291,771	100.0	1,350,755	100.0

¹ Include traffic between Rodrigues and Reunion Island

² Provisional

Table 26 - Visitor departures¹ by country of residence and duration of stay, 2017²

Country of residence	Duration of stay (Nights)												
	<1	1 - 2	3 - 4	5 - 6	7 - 8	9 - 10	11 - 12	13 - 14	15 - 19	20 - 24	25 - 29	30+	Total
Australia	1,662	2,791	1,940	3,270	2,078	2,612	828	1,761	1,563	1,499	947	1,686	22,637
Belgium	179	456	728	1,384	4,022	3,044	1,938	2,028	876	665	344	813	16,477
France	3,076	12,451	21,684	28,806	75,867	43,805	21,447	24,784	13,535	8,656	5,243	12,651	272,005
Germany	5,602	6,493	2,937	7,348	17,508	19,632	17,967	30,501	7,189	3,473	789	1,130	120,569
Hong Kong SAR ³	95	154	227	499	311	87	90	23	79	27	8	24	1,624
India	507	3,616	19,413	47,896	5,185	1,883	744	999	902	577	719	3,278	85,719
Italy	1,411	1,389	946	3,775	15,184	4,168	1,936	3,325	958	709	374	872	35,047
Japan	193	555	847	534	174	75	30	19	20	11	5	50	2,513
Kenya	25	421	1,236	484	699	138	87	114	44	37	29	113	3,427
Malagasy Rep.	1,098	2,412	2,006	1,719	1,890	1,064	631	964	245	193	216	1,057	13,495
People's Rep. of China	714	2,206	5,486	52,675	7,331	1,747	779	399	454	182	208	1,303	73,484
Reunion Island	3,615	12,645	34,489	32,494	43,696	11,508	2,764	2,727	2,495	1,223	650	1,715	150,021
Seychelles	142	576	956	917	1,274	619	442	590	333	181	100	268	6,398
Singapore	42	533	811	859	314	253	98	112	117	38	16	63	3,256
S. Africa Rep. of	825	7,933	12,087	16,210	49,812	11,870	3,841	4,022	2,112	1,257	550	1,673	112,192
Switzerland	1,289	1,182	1,383	3,066	7,273	7,558	5,715	8,125	2,337	1,421	545	910	40,804
United Kingdom	4,341	4,684	4,131	10,401	31,939	31,056	13,553	35,753	5,931	4,369	2,153	3,929	152,240
U.S.A.	419	1,055	1,986	2,412	1,484	712	410	356	366	170	110	362	9,842
Zimbabwe	14	203	501	464	543	301	96	149	99	37	20	112	2,539
Other & not stated	4,366	14,390	24,836	32,583	49,875	31,079	18,667	27,619	9,302	4,496	2,422	6,831	226,466
All Countries	29,615	76,145	138,630	247,796	316,459	173,211	92,063	144,370	48,957	29,221	15,448	38,840	1,350,755

¹ Including traffic between Rodrigues and Reunion Island

² Provisional

³ Special Administrative Region of China

**Table 27 - Tourist arrivals, tourist departures and average length of stay (nights) of tourists
by country of residence, 2016 - 2017**

Country of Residence	2016			2017 ¹		
	Tourist arrivals	Departures		Tourist arrivals	Departures	
		Number of tourists	Average length of stay ² (nights)		Number of tourists	Average length of stay ² (nights)
Australia	18,559	18,002	13.4	21,271	20,975	12.7
Belgium	15,675	15,356	13.0	16,420	16,298	12.8
France	271,963	271,799	11.9	273,419	268,929	11.8
Germany	103,761	102,342	11.5	118,856	114,967	11.1
Hong Kong SAR ³	1,342	1,327	8.2	1,512	1,529	7.5
India	82,670	81,744	9.2	86,294	85,212	9.2
Italy	31,337	30,430	10.2	35,101	33,636	10.0
Japan	2,655	2,609	5.5	2,315	2,320	6.1
Kenya	3,185	3,197	7.8	3,422	3,402	8.3
Malagasy Rep.	11,740	11,281	17.6	12,730	12,397	17.0
People's Rep. of China	79,374	79,413	7.1	72,951	72,770	7.5
Reunion Island	146,203	145,875	6.8	146,040	146,406	6.8
Russian Federation	9,295	9,259	13.3	11,153	10,836	13.7
Seychelles	6,393	6,159	10.6	6,258	6,256	10.4
Singapore	2,840	2,794	7.9	3,230	3,214	7.3
S. Africa, Rep. of	104,834	102,180	8.4	112,129	111,367	8.3
Switzerland	36,272	35,454	11.7	40,252	39,515	11.8
United Arab Emirates	9,614	9,780	6.8	11,866	11,824	6.5
United Kingdom	141,904	140,460	12.2	149,807	147,899	11.7
U.S.A.	8,524	8,363	9.4	9,655	9,423	9.1
Zimbabwe	2,047	1,992	13.2	2,553	2,525	11.5
Other & not stated	185,040	180,309	11.2	204,626	199,440	11.3
All Countries	1,275,227	1,260,125	10.4	1,341,860	1,321,140	10.3

¹ Provisional

² Average length of stay refers to average number of nights spent by tourists departing in the reference period.

³ Special Administrative Region of China

Table 28 - Gross earnings from tourism, 2008 - 2017

Earnings (Rs Mn)	2008	2009	2010	2011	2012	2013	2014	2015 ¹	2016	2017 ²
		41,213	35,693	39,456	42,717	44,378	40,557	44,304	50,191	55,867

¹ As from 2015, BoM is also including data culled from Money changers and Foreign exchange dealers.

² Provisional

Source : Bank of Mauritius

Table 29 - Expenditure of tourists by country of residence, 2011 - 2017

Country of residence	Expenditure (Rs Mn)					
	2011	2012	2013	2015	2016	2017 ¹
France	11,362.9	10,316.0	10,991.1	10,622.2	11,704.4	11,958.6
Germany	2,816.3	2,922.9	3,211.3	3,512.4	4,846.9	5,400.8
Italy	2,330.9	1,597.8	1,382.9	1,193.7	1,232.4	1,407.7
Russian Federation	732.4	1,090.9	966.7	764.8	413.7	803.3
Switzerland	1,270.7	1,436.8	1,709.4	1,708.3	2,080.1	2,540.1
United Kingdom	4,390.6	4,432.1	4,822.9	6,774.2	6,873.8	7,127.5
Reunion Island	3,053.6	3,194.2	3,472.4	3,295.4	3,608.2	3,335.2
South Africa, Rep. of	3,340.4	3,326.7	3,493.1	3,178.2	3,304.4	3,850.1
People's Rep. of China	603.7	1,053.1	2,034.4	4,672.6	4,368.0	4,047.5
India	1,691.2	1,727.2	1,784.1	2,411.1	3,345.1	3,143.7
Other countries	6,954.5	7,553.8	8,009.1	11,876.2	14,465.9	16,489.3
All Countries	38,547.1	38,651.4	41,877.3	50,009.1	56,242.9	60,103.8

¹ Provisional

Source: Survey of Inbound Tourism conducted by Statistics Mauritius; Survey of Inbound Tourism was not carried out during the year 2014.

Note: Slight discrepancies may occur due to rounding off of figures; Figures in shaded cells should be treated with caution; they are subject to low reliability since they are based on fewer than 30 observations in the sample.

Table 30 - Expenditure of tourists by type of expenditure, 2011 - 2017

Type of expenditure	Expenditure (Rs Mn)					
	2011	2012	2013	2015	2016	2017 ¹
Accommodation	23,197.1	22,603.0	24,673.5	30,269.5	34,133.2	37,088.1
Meals & Beverages	4,829.6	5,475.4	4,194.3	5,437.8	5,884.5	6,392.4
Transport	3,019.3	2,882.4	3,313.0	2,261.5	2,574.2	2,662.1
Entertainment	3,031.2	3,178.1	4,557.6	5,686.4	6,759.8	6,705.9
Shopping	4,029.4	4,134.2	4,412.9	5,082.7	5,033.4	5,236.5
Other	440.4	378.3	726.1	1,271.3	1,857.9	2,018.7
Total	38,547.1	38,651.4	41,877.3	50,009.1	56,242.9	60,103.8

¹ Provisional

Source: Survey of Inbound Tourism conducted by Statistics Mauritius

Note: Slight discrepancies may occur due to rounding off of figures; Survey of Inbound Tourism was not carried out during the year 2014.

Table 31 - Hotels, rooms and bedplaces, 2008 - 2017

Year	No. of hotels ¹	No. of rooms	No. of bedplaces
2008	102	11,488	23,095
2009	102	11,456	23,235
2010	112	12,075	24,698
2011	109	11,925	24,242
2012	117	12,527	25,496
2013	107	12,376	25,105
2014	112	12,799	26,174
2015	115	13,617	28,732
2016	111	13,547	29,139
2017 ²	111 ³	13,511	29,650

¹ Refers to hotels in the Island of Mauritius which were operational

² Provisional

³ Excluding one hotel not operational because of renovation works

Table 32 - Employment in large¹ establishments of the Tourism Industry , 2008 - 2017

Year	Food Service	Hotels	Travel & Other Services ⁴	Total (Tourism Industry)
2008	2,073	22,669	4,258	29,000
2009 ²	2,585	20,904	4,206	27,695
2010 ²	2,562	21,255	3,899	27,716
2011 ²	2,627	21,815	4,100	28,542
2012 ²	2,911	22,263	3,946	29,120
2013 ²	3,027	22,432	3,865	29,324
2014 ²	3,167	22,593	3,817	29,577
2015 ²	3,249	22,630	3,804	29,683
2016 ²	3,371	23,624	3,755	30,750
2017 ³	3,168	24,087	3,664	30,919

Source: Survey of Employment and Earnings in large Establishments conducted by Statistics Mauritius

¹ Large Establishments refer to those employing 10 or more persons

² Revised

³ Provisional

⁴ Travel and Other Services include air transport services, tour operators, travel agencies and car rental

Table 33 - Monthly occupancy rates in large¹ hotels, 2013 - 2017

Month	2013		2014		2015		2016		2017 ²	
	Room	Bed	Room	Bed	Room	Bed	Room	Bed	Room	Bed
January	69	61	74	66	77	72	81	74	83	74
February	67	59	69	61	79	73	80	72	82	74
March	66	58	65	57	70	65	78	67	77	68
April	63	56	69	60	71	66	73	67	80	71
May	61	53	62	54	68	63	69	62	69	64
June	42	37	47	41	52	48	56	51	61	55
July	54	48	57	52	65	62	68	64	76	69
August	62	55	67	62	70	67	74	68	79	71
September	67	60	68	61	74	68	78	68	79	69
October	72	64	75	68	77	69	84	75	87	78
November	75	67	78	70	82	72	87	75	87	75
December	74	66	76	71	81	74	82	75	82	73
Whole Year	65	57	67	60	72	67	76	68	79	70

¹ Large Hotels are well established beach hotels of over 80 rooms

² Provisional

$$\text{Room Occupancy Rate} = \frac{\text{Total number of room nights rented}}{\text{Total number of room nights available}} \times 100$$

$$\text{Bed Occupancy Rate} = \frac{\text{Total number of bed nights rented}}{\text{Total number of bed nights available}} \times 100$$

Table 34 - Monthly occupancy rates in all hotels, 2013 - 2017

Month	2013		2014		2015		2016		2017 ¹	
	Room	Bed	Room	Bed	Room	Bed	Room	Bed	Room	Bed
January	67	59	72	64	75	69	78	71	81	73
February	66	57	67	59	75	69	76	68	81	72
March	63	56	64	56	68	62	74	64	76	67
April	60	53	65	57	68	63	69	62	78	68
May	58	51	59	52	66	60	67	60	68	61
June	42	36	46	41	51	46	54	48	60	52
July	53	47	54	49	61	58	65	60	73	66
August	60	53	62	57	66	63	70	64	75	67
September	65	57	64	58	70	64	75	65	77	67
October	71	63	71	65	74	65	81	72	85	75
November	74	65	76	67	79	68	85	74	86	74
December	73	65	74	68	78	71	81	73	81	72
Whole Year	63	55	65	58	70	63	73	65	77	68

¹ Provisional

Room Occupancy Rate = $\frac{\text{Total number of room nights rented}}{\text{Total number of room nights available}} \times 100$

Bed Occupancy Rate = $\frac{\text{Total number of bed nights rented}}{\text{Total number of bed nights available}} \times 100$

APPENDIX

**Welcome to Mauritius / Bienvenue à Maurice
DISEMBARKATION CARD / FICHE DE DEBARQUEMENT
(Regulation 23 of the Passports Regulations 1969)**

Flight No.
No. de vol

Surname
Nom

First Name/s
Prenom/s

Male *Masculin* Female *Féminin* Date of birth
Date de naissance D/J M/M Y/A

Country of Birth
Pays de naissance

Nationality
Nationalité

Profession

Passport Number
Numéro du passeport D/J M/M Y/A

Date of expiry
Date d'Expiration

Country of Issue
Pays de Délivrance

Country of residence
Pays de résidence

Street
Rue

Town/City
Ville/Cité

Port of Embarkation
Port d'Embarquement

Purpose: Holidays: *Motif: Vacances:* Other: *Autre:*

Duration of Stay
Durée du Séjour Days *Jours* Months *Mois* Years *Années*

Address during Stay
Adresse durant le Séjour

Tel:

Countries visited in Asia, Africa or South America during the last six months.
Pays visités en Asie, en Afrique ou en Amérique du Sud au cours des six derniers mois.

Are you suffering from fever? Yes No
Souffrez-vous de la fièvre Oui Non

DECLARATION

I declare that all the information I have given is true and complete. I understand that I shall commit an offence if I refuse to fill-in the card or knowingly give false information.

Je déclare qu'à ma connaissance toutes les informations fournies sont exactes et complètes. Je suis conscient que le fait de ne pas remplir cette fiche ou toute fausse déclaration de ma part pourrait entraîner des poursuites pénales.

Date Signature