



Republic of Mauritius

Digest of International Travel and Tourism Statistics 2015

**Ministry of Finance and Economic Development
Statistics Mauritius**

DIGEST OF
INTERNATIONAL TRAVEL
AND
TOURISM STATISTICS
2015

INTERNATIONAL TRAVEL AND TOURISM STATISTICS

Vol. 42

2015

"International Travel and Tourism Statistics" is a regular publication of Statistics Mauritius, designed to present in a single report, detailed statistics concerning international travel and tourism relating to Mauritius.

The statistical tables presented in this report have been compiled from data collected from the passport of travellers, disembarkation cards filled in by non-residents, questions put to non-residents entering the country, hotels and administrative records.

Statistical data on International Travel and Tourism are constantly updated as more reliable information become available, necessitating minor changes over previous issues of this publication. The figures published in this issue therefore supersede those of all previous issues.

It is hoped that the data herewith assembled will prove useful to the public in general and to policy makers, planners and research workers in particular.

The publication of this report has been made possible with the collaboration of the Passport and Immigration Office and the Ministry of Tourism and External Communications. Their co-operation is herewith gratefully acknowledged.

Ms. Y. Cassimally

Ag. Director of Statistics

Statistics Mauritius
Ministry of Finance and Economic Development
PORT LOUIS
MAURITIUS
December 2016

CONTENTS

Table	Page
I - POPULATION AND VITAL STATISTICS	
1 - Estimated resident population of Republic of Mauritius as at 31 st December, 2014 & 2015	5
2 - Population growth in intercensal periods - Island of Mauritius, 1851 - 2011	5
3 - Population growth in intercensal periods - Island of Rodrigues, 1851 - 2011	6
4 - Estimated resident population by geographical district and gender - Republic of Mauritius, 2014 & 2015 (End of year estimates)	7
5 - Population and vital statistics - Republic of Mauritius, 1980 - 2015	8
6 - Growth of the resident population and vital statistics - Island of Mauritius, 2005 - 2015	9
7 - Growth of the resident population and vital statistics - Island of Rodrigues, 2005 - 2015	9
II - PASSENGER TRAFFIC	
8 - Passenger traffic by gender, Island of Mauritius, 1995 - 2015	10
9 (i) - Passenger traffic between Islands of Mauritius and Rodrigues, 1995 - 2015	11
9 (ii) - Passenger traffic between Rodrigues and Reunion Island, 2015	11
10 - Passenger traffic by mode of transport, Island of Mauritius, 1995 - 2015	15
11 - Passenger traffic by month, Island of Mauritius, 2012 - 2015	16
12 - Arrivals by country of embarkation, Island of Mauritius, 2010 - 2015	17
13 - Departures by country of disembarkation, Island of Mauritius, 2010 - 2015	18
14 - Monthly passenger traffic by type of passenger, Island of Mauritius, 2015	19
15 - Passenger traffic by type of passenger, Island of Mauritius, 2006 - 2015	19
16 - Total arrivals by age and gender, Island of Mauritius, 2014 & 2015	20
17 - Total departures by age and gender, Island of Mauritius, 2014 & 2015	21
18 - Excess of arrivals over departures by age and gender, Island of Mauritius, 2014 & 2015	22
19 - Arrivals of Mauritian residents by age and gender, 2014 & 2015	23
20 - Departures of Mauritian residents by age and gender, 2014 & 2015	24
21 - Excess of arrivals over departures of Mauritian residents by age and gender, 2014 & 2015	25
22 - Arrivals and departures of Mauritian residents by country of embarkation and disembarkation, 2013 - 2015	26

III - TOURISM

Definition and notes	27
23 - Tourist arrivals by mode of transport and tourist nights spent during period, 1999 - 2015	29
24 - Tourist arrivals by month of arrival, 2006 - 2015	30
25 - Percentage distribution of tourist arrivals by month of arrival, 2006 - 2015	32
26 - Tourist arrivals by country of residence and gender, 2014 and 2015	33
27 - Tourist arrivals by country of residence, 2006 - 2015	34
28 - Percentage distribution of tourist arrivals by country of residence, 2006 - 2015	35
29 - Tourist nights by country of residence, 2006 - 2015	37
30 - Visitor arrivals by country of residence and type of passenger, 2013 - 2015	39
31(i) - Visitor arrivals by age and gender, 2014 & 2015	40
31(ii) - Tourist arrivals by broad age group and mode of arrival, 2014 & 2015	40
32 - Visitor departures by duration of stay, 2014 & 2015	41
33 - Visitor departures by country of residence and duration of stay, 2015	42
34 - Tourist arrivals and average length of stay of tourists by country of residence, 2014 and 2015	43
35 - Gross earnings from tourism, 2006 - 2015	44
36 - Expenditure of tourists by country of residence, 2011 - 2015	44
37 - Expenditure of tourists by type of expenditure, 2011 - 2015	44
38 - Hotels, rooms and bedplaces, 2006 - 2015	45
39 - Monthly occupancy rates in large hotels, 2011 - 2015	46
40 - Monthly occupancy rates in all hotels, 2011 - 2015	47

ILLUSTRATIONS

Figure 1	- Passenger traffic: Total arrivals in the Island of Mauritius by gender, 1999 - 2015	12
2	- Passenger traffic: Total arrivals in the Island of Rodrigues by gender, 1999 - 2015	12
3	- Passenger traffic: Total departures in the Island of Mauritius by gender, 1999 - 2015	13
4	- Passenger traffic: Total departures from the Island of Rodrigues by gender, 1999 - 2015	13
5	- Passenger Traffic: Total arrivals and total departures, Island of Mauritius, 2006 - 2015	14
6	- Passenger Traffic: Total arrivals and total departures, Island of Rodrigues, 2006 - 2015	14
7	- Tourist arrivals by month, 2011 - 2015	31
8	- Percentage distribution of tourist arrivals by country of residence, 2015	36
9	- Total arrivals and tourist arrivals, 2006 - 2015	38
10	- Tourist nights, 2006 - 2015	38

The following symbol is used throughout :-

" - " for Nil

Appendix : Disembarkation Card

Contact persons:

Mrs T.Joomun, Ag. Statistician;
Mrs M.Koolwant-Beesoondoyal,
Senior Statistical Officer
Ministry of Tourism and External
Communications
3rd Floor, Victoria House
Port Louis
Tel: (230) 211-9042/3
Fax: (230) 210-9851
Email: sm-tourism@govmu.org

I - POPULATION AND VITAL STATISTICS

**Table 1 - Estimated resident population of Republic of Mauritius
as at 31st December, 2014¹ & 2015**

Year	Island	Total	Male	Female	Area ² (sq km)	Density (persons/km ²)
2014	Mauritius	1,219,659	603,576	616,083	1,868.4	653 ²
	Rodrigues	41,788	20,584	21,204	110.1	380 ²
	Other	274	174	100	28.7	10 ²
	Republic of Mauritius	1,261,721	624,334	637,387	2,007.2	629 ²
2015 ³	Mauritius	1,220,530	604,028	616,502	1,868.4	653
	Rodrigues	42,058	20,682	21,376	110.1	382
	Other	274	174	100	28.7	10
	Republic of Mauritius	1,262,862	624,884	637,978	2,007.2	629

¹ based on the 2011 population census data adjusted for underenumeration of young children.

² Revised

³ Provisional

Table 2 - Population growth in intercensal periods - Island of Mauritius, 1851 - 2011

Census Date	Population enumerated at census			Intercensal increase	Average annual rate of increase(%)
	Total	Male	Female		
20 Nov. 1851	180,823	119,341	61,482	22,361	2.55
8 Apr. 1861	310,050	202,961	107,089	129,227	5.91
11 Apr. 1871	316,042	193,575	122,467	5,992	0.19
4 Apr. 1881	359,874	208,655	151,219	43,832	1.31
6 Mar. 1891	370,588	206,038	164,550	10,714	0.29
1 Apr. 1901	371,023	199,552	171,471	435	0.01
31 Mar. 1911	368,791	194,095	174,696	-2,232	-0.06
21 May. 1921	376,485	194,108	182,377	7,694	0.21
26 Apr. 1931	393,238	200,609	192,629	16,753	0.44
11 Jun. 1944	419,185	210,326	208,859	25,947	0.49
30 Jun. 1952	501,415	252,032	249,383	82,230	2.26
30 Jun. 1962 ¹	681,619	342,306	339,313	180,204	3.12
30 Jun. 1972 ¹	826,199	413,580	412,619	144,580	1.94
2 Jul. 1983 ¹	966,863	481,368	485,495	140,664	1.44
1 Jul. 1990 ²	1,022,456	510,676	511,780	55,593	0.80
2 Jul. 2000 ²	1,143,069	566,056	577,013	120,613	1.12
3 Jul. 2011 ²	1,196,383	590,944	605,439	53,314	0.42

¹ "De facto" population

² "De jure" population

**Table 3 - Population growth in intercensal periods - Island of Rodrigues,
1851 - 2011**

Census Date	Population enumerated at census			Intercensal increase	Average annual rate of increase (%)
	Total	Male	Female		
20 Nov. 1851	495	312	183	-	-
8 Apr. 1861	693	464	229	198	3.65
11 Apr. 1871	1,108	693	415	415	4.80
4 Apr. 1881	1,431	812	619	323	2.59
6 Mar. 1891	2,068	1,154	914	637	3.75
1 Apr. 1901	3,162	1,685	1,477	1,094	4.34
31 Mar. 1911	4,829	2,523	2,306	1,667	4.33
21 May. 1921	6,584	3,300	3,284	1,755	3.15
26 Apr. 1931	8,202	4,033	4,169	1,618	2.22
11 Jun. 1944	11,885	5,740	6,145	3,683	2.89
30 Jun. 1952	13,333	5,947	7,386	1,448	1.45
30 Jun. 1962 ¹	18,335	9,062	9,273	5,002	3.24
30 Jun. 1972 ¹	24,769	12,270	12,499	6,434	3.05
2 Jul. 1983 ¹	33,082	16,552	16,530	8,313	2.67
1 Jul. 1990 ²	34,204	17,084	17,120	1,122	0.48
2 Jul. 2000 ²	35,779	17,700	18,079	1,575	0.45
3 Jul. 2011 ²	40,434	19,904	20,530	4,655	1.12

¹ "De facto" population

² "De jure" population

Table 4 - Estimated resident population ¹ by geographical district and sex - Republic of Mauritius, 2014 & 2015
(End of year estimates)

Geographical district	Area ³ (km ²)	31 st December 2014			31 st December 2015		
		Total	Male	Female	Total	Male	Female
Port Louis	40.4	120,098	59,662	60,436	119,706	59,485	60,221
Pamplemousses	179.6	139,415	69,153	70,262	139,966	69,394	70,572
Riviere du Rempart	154.3	107,975	53,556	54,419	108,005	53,558	54,447
Flacq	298.8	138,366	68,809	69,557	138,460	68,845	69,615
Grand Port	261.3	112,906	56,182	56,724	112,997	56,208	56,789
Savanne	246.2	68,676	34,047	34,629	68,585	34,018	34,567
Plaines Wilhems	196.2	368,985	180,613	188,372	368,621	180,474	188,147
Moka	234.4	83,125	41,360	41,765	83,251	41,427	41,824
Black River	257.2	80,113	40,194	39,919	80,939	40,619	40,320
Island of Mauritius	1,868.4	1,219,659	603,576	616,083	1,220,530	604,028	616,502
Island of Rodrigues	110.1	41,788	20,584	21,204	42,058	20,682	21,376
Other ²	28.7	274	174	100	274	174	100
Republic of Mauritius	2,007.2	1,261,721	624,334	637,387	1,262,862	624,884	637,978

¹ based on the 2011 population census data adjusted for underenumeration of young children.

Internal migration within districts is assumed to be the same as the net annual internal migration during 2006 - 2011 (obtained from the 2011 census).

² includes Agalega and St Brandon.

³ Revised

Table 5 - Population and vital statistics - Republic of Mauritius ¹, 1980 - 2015

Year	Population at mid-year	Live births	Deaths	Infant deaths	Still births	Civil marriages	Divorces ²
1980	966,039	26,294	6,919	864	662	8,894	351
1981	980,462	24,967	6,653	884	590	8,406	305
1982	992,521	22,459	6,584	682	458	10,768	312
1983	1,001,691	21,073	6,532	570	403	10,255	361
1984	1,012,221	20,332	6,646	505	404	10,865	471
1985	1,020,528	19,376	6,906	487	383	11,245	460
1986	1,028,360	19,170	6,805	524	365	10,556	616
1987	1,036,082	20,033	6,753	504	363	11,392	842
1988	1,043,239	20,941	6,879	471	374	11,453	740
1989	1,051,260	21,822	7,149	498	415	11,197	711
1990	1,058,775	22,602	7,031	462	365	11,425	549
1991	1,070,266	22,197	7,027	413	400	11,295	707
1992	1,084,441	22,902	7,023	426	291	11,408	781
1993	1,097,374	22,329	7,433	438	337	11,576	762
1994	1,112,846	21,795	7,402	394	274	11,414	733
1995	1,122,457	20,549	7,465	404	299	10,624	801
1996	1,133,996	20,763	7,670	459	266	10,700	792
1997	1,148,284	20,012	7,986	406	257	10,887	891
1998	1,160,421	19,434	7,839	376	227	10,898	1,012
1999	1,175,267	20,311	7,944	396	226	11,295	1,150
2000	1,186,873	20,205	7,982	322	266	10,963	1,191
2001	1,196,287	19,696	7,983	282	244	10,635	1,512
2002	1,204,621	19,983	8,310	297	203	10,484	1,291
2003	1,213,370	19,343	8,520	250	220	10,812	1,190
2004	1,221,003	19,230	8,475	277	191	11,385	1,162
2005	1,228,254	18,820	8,646	248	185	11,294	1,133
2006	1,233,996	17,604	9,162	249	147	11,471	1,379
2007	1,239,630	17,034	8,498	261	172	11,547	1,302
2008	1,244,121	16,372	9,004	236	165	11,197	1,569
2009	1,247,429	15,344	9,224	205	138	10,619	2,154
2010	1,250,400	15,005	9,131	187	103	10,555	1,837
2011	1,252,404	14,701	9,170	189	139	10,499	1,788
2012	1,255,882	14,494	9,343	199	140	10,382	2,003
2013	1,258,653	13,688	9,440	165	117	9,575	1,584
2014	1,260,934	13,415	9,682	194	138	9,959	2,262
2015	1,262,605	12,738	9,747	173	125	9,709	2,161

¹ Excluding Agalega & St. Brandon

² Source : Judicial Department

Note : The increase in the number of civil marriages as from 1982 is due largely to improved registration of religious marriages with the coming into force of a new Civil Status Act as from January 1982.

Table 6 - Growth of the resident population and vital statistics - Island of Mauritius, 2005 - 2015

Year	Population at beginning of year	Natural movement			Net migration	Total increase	% change during the year due to:			Population at end of year
		Live births	Deaths	Natural increase			Natural increase	Migration	Total	
2005	1,201,000	17,924	8,422	9,502	+800	10,302	0.8	0.1	0.9	1,211,302
2006	1,211,302	16,723	8,917	7,806	+100	7,906	0.6	0.0	0.6	1,219,208
2007	1,219,208	16,190	8,323	7,867	0	7,867	0.6	0.0	0.6	1,227,075
2008	1,227,075	15,590	8,798	6,792	+175	6,967	0.6	0.0	0.6	1,234,042
2009	1,234,042	14,623	8,987	5,636	+110	5,746	0.5	0.0	0.5	1,239,788
2010	1,239,788	14,291	8,891	5,400	+100	5,500	0.4	0.0	0.4	1,245,288
2011	1,211,181	14,002	8,951	5,051	-3,030	2,021	0.4	-0.2	0.2	1,213,202
2012	1,213,202	13,766	9,103	4,663	-1,732	2,931	0.4	-0.2	0.2	1,216,133
2013	1,216,133	12,986	9,231	3,755	-1,828	1,927	0.3	-0.1	0.2	1,218,060
2014	1,218,060	12,727	9,438	3,289	-1,690	1,599	0.3	-0.2	0.1	1,219,659
2015	1,219,659	12,057	9,496	2,561	-1,690	871	0.2	-0.1	0.1	1,220,530

Table 7 - Growth of the resident population and vital statistics - Island of Rodrigues, 2005 - 2015

Year	Population at beginning of year	Natural movement			Net migration	Total increase	% change during the year due to:			Population at end of year
		Live births	Deaths	Natural increase			Natural increase	Migration	Total	
2005	36,772	896	224	672	-450	222	1.8	-1.2	0.6	36,994
2006	36,994	881	245	636	-400	236	1.7	-1.1	0.6	37,230
2007	37,230	844	175	669	-400	269	1.8	-1.1	0.7	37,499
2008	37,499	782	206	576	-375	201	1.5	-1.0	0.5	37,700
2009	37,700	721	237	484	-410	74	1.3	-1.1	0.2	37,774
2010	37,774	714	240	474	-410	64	1.3	-1.1	0.2	37,838
2011	40,221	699	219	480	-38	442	1.2	-0.1	1.1	40,663
2012	40,663	728	240	488	-68	420	1.2	-0.2	1.0	41,083
2013	41,083	702	209	493	-72	421	1.2	-0.2	1.0	41,504
2014	41,504	688	244	444	-160	284	1.1	-0.4	0.7	41,788
2015	41,788	681	251	430	-160	270	1.0	-0.4	0.6	42,058

II - PASSENGER TRAFFIC

Table 8 - Passenger traffic¹ by gender, Island of Mauritius, 1995 - 2015

Period	Arrivals			Departures			Arrivals minus Departures
	Total	Male	Female	Total	Male	Female	
1995	579,993	304,705	275,288	578,481	304,245	274,236	+ 1,512
1996	672,070	350,561	321,509	663,501	345,892	317,609	+ 8,569
1997	743,291	378,593	364,698	737,523	379,841	357,682	+ 5,768
1998	778,574	367,914	410,660	775,998	382,567	393,431	+ 2,576
1999	823,085	434,667	388,418	809,233	428,234	380,999	+ 13,852
2000	915,203	480,879	434,324	895,569	469,902	425,667	+ 19,634
2001	910,489	477,984	432,505	903,073	473,096	429,977	+ 7,416
2002	951,090	498,177	452,913	942,876	494,212	448,664	+ 8,214
2003	968,906	510,212	458,694	947,774	497,011	450,763	+ 21,132
2004	1,000,545	523,961	476,584	979,322	511,734	467,588	+ 21,223
2005	1,043,900	544,520	499,380	1,029,666	538,113	491,553	+ 14,234
2006	1,072,879	562,766	510,113	1,060,074	555,279	504,795	+ 12,805
2007	1,238,826	648,554	590,272	1,237,747	645,657	592,090	+ 1,079
2008	1,280,640	669,919	610,721	1,261,182	658,947	602,235	+ 19,458
2009	1,210,005	623,925	586,080	1,206,550	623,551	582,999	+ 3,455
2010	1,312,700	677,067	635,633	1,317,581	679,362	638,219	- 4,881
2011	1,358,951	703,094	655,857	1,358,562	702,039	656,523	+ 389
2012	1,354,589	702,943	651,646	1,353,618	702,000	651,618	+ 971
2013 ²	1,391,481	721,607	669,874	1,390,649	719,127	671,522	+ 832
2014 ²	1,458,873	750,696	708,177	1,454,651	745,229	709,422	+ 4,222
2015 ³	1,602,258	818,514	783,744	1,600,154	814,074	786,080	+ 2,104

¹ Includes traffic between Island of Mauritius and Rodrigues and cruise travellers, but excludes direct transit and traffic between Rodrigues and Reunion Island.

² Revised

³ Provisional

Table 9 (i) - Passenger traffic ¹ between Islands of Mauritius and Rodrigues, 1995 - 2015

Period	Arrivals in Rodrigues			Departures from Rodrigues			Arrivals minus Departures
	Total	Male	Female	Total	Male	Female	
1995	24,150	14,532	9,618	24,820	14,603	10,217	- 670
1996	29,129	16,947	12,182	29,370	16,861	12,509	- 241
1997	37,765	22,120	15,645	38,014	22,096	15,918	- 249
1998	40,648	24,181	16,467	40,553	23,072	17,481	+ 95
1999	45,117	28,384	16,733	45,154	26,961	18,193	- 37
2000	49,530	28,280	21,250	49,981	29,436	20,545	- 451
2001	52,777	30,320	22,457	52,307	30,760	21,547	+ 470
2002	60,355	34,647	25,708	59,984	34,004	25,980	+ 371
2003	63,649	37,203	26,446	63,937	37,673	26,264	- 288
2004	60,862	34,467	26,395	60,830	34,314	26,516	+ 32
2005	53,534	29,805	23,729	53,987	29,447	24,540	- 453
2006	55,368	31,395	23,973	56,015	31,822	24,193	- 647
2007	61,617	33,991	27,626	61,595	33,735	27,860	+ 22
2008	54,433	29,713	24,720	54,212	29,260	24,952	+ 221
2009	52,981	28,337	24,644	53,426	28,341	25,085	- 445
2010	60,573	31,624	28,949	60,662	32,101	28,561	- 89
2011	65,423	34,417	31,006	64,564	33,938	30,626	+ 859
2012	67,527	35,666	31,861	67,745	36,372	31,373	- 218
2013	69,762	36,235	33,527	69,848	37,348	32,500	- 86
2014	69,514	35,530	33,984	69,660	36,435	33,225	- 146
2015 ²	80,884	40,027	40,857	80,079	41,629	38,450	+ 805

¹ Includes residents and non-residents

² Provisional

Table 9 (ii) - Passenger traffic ¹ between Rodrigues and Reunion Island, 2015

Period	Arrivals in Rodrigues			Departures from Rodrigues			Arrivals minus Departures
	Total	Male	Female	Total	Male	Female	
2015 ²	1,042	523	519	892	449	443	+ 150

¹ Includes residents and non-residents

² Provisional

Figure 1 - Passenger traffic: Total arrivals in the Island of Mauritius by gender, 1999 - 2015

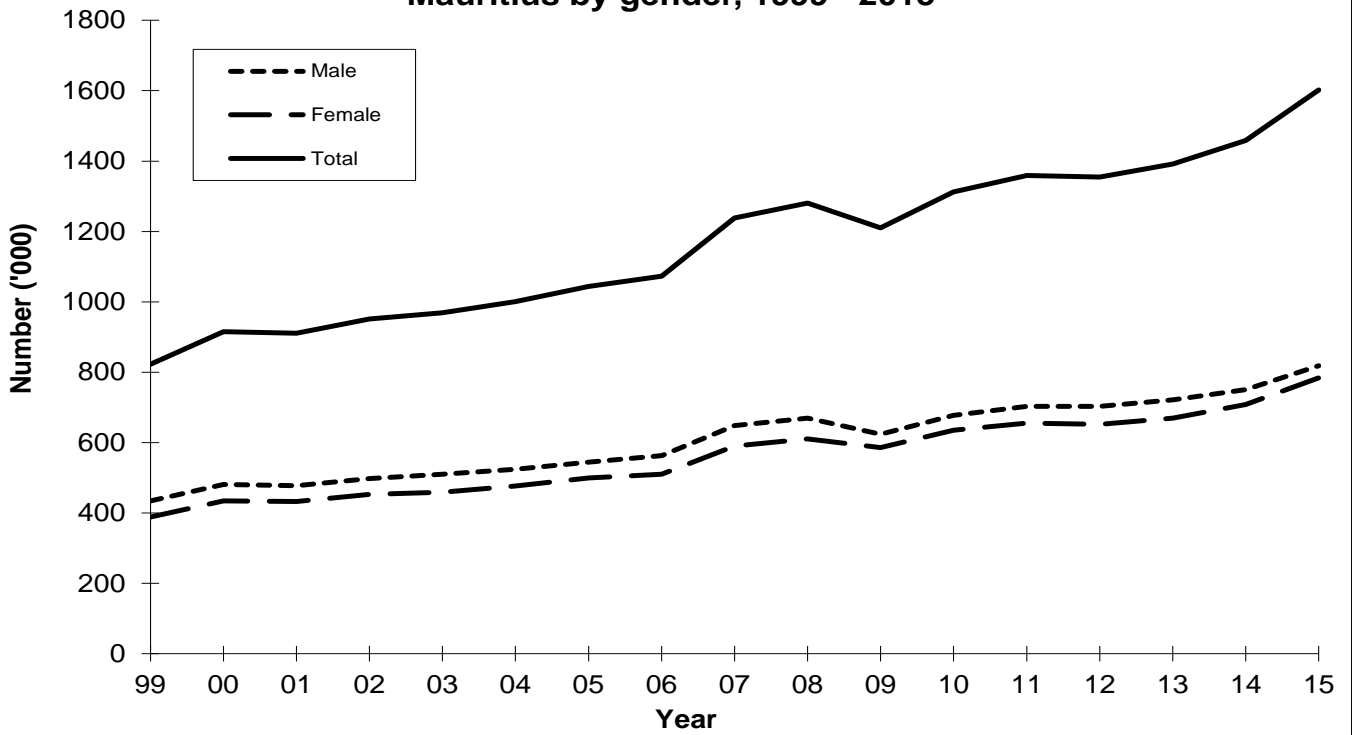


Figure 2 - Passenger traffic: Total arrivals in the Island of Rodrigues by gender, 1999 - 2015

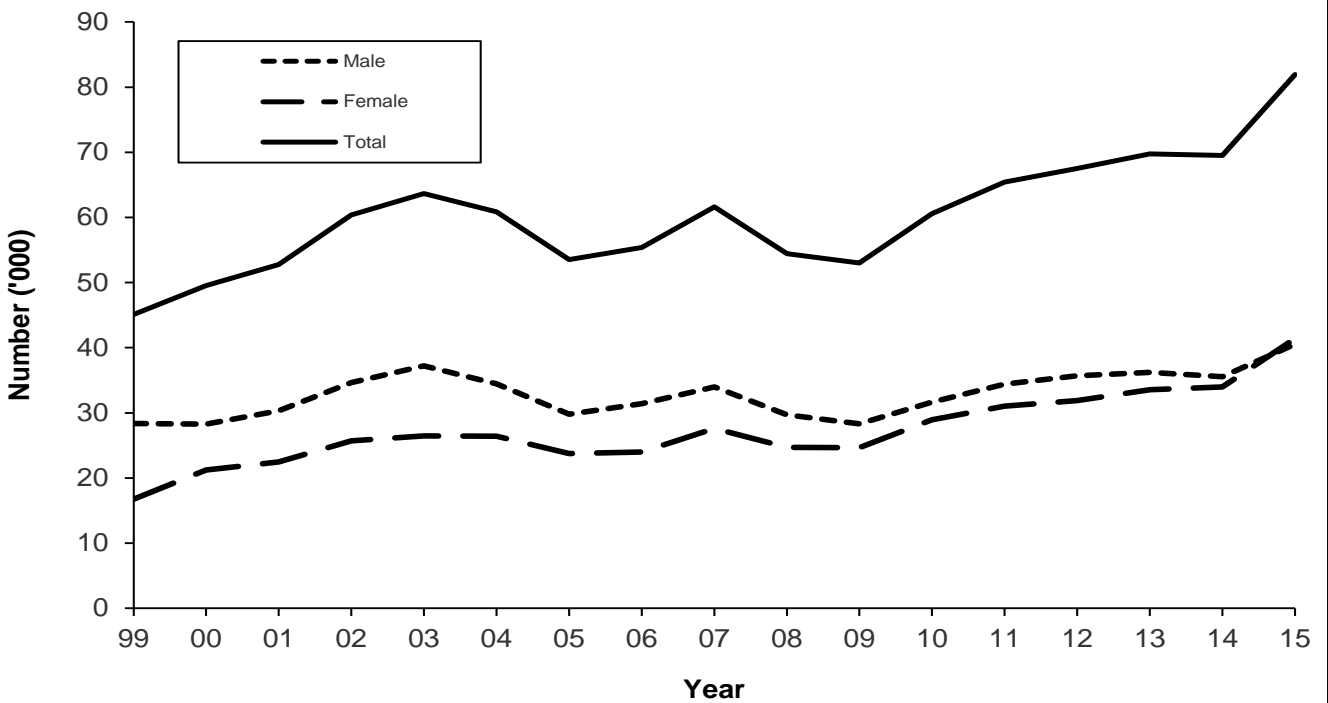


Figure 3 - Passenger traffic: Total departures from the Island of Mauritius by gender, 1999 - 2015

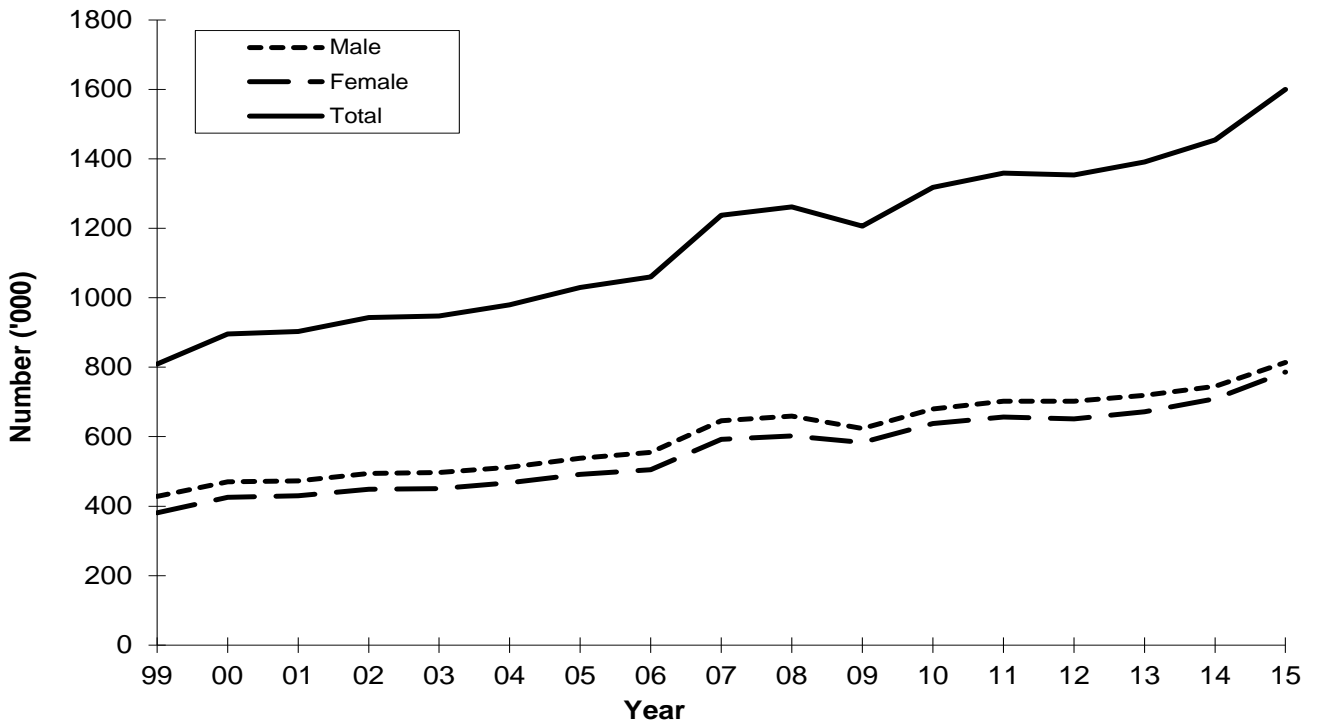


Figure 4 - Passenger traffic: Total departures from the Island of Rodrigues by gender, 1999 - 2015

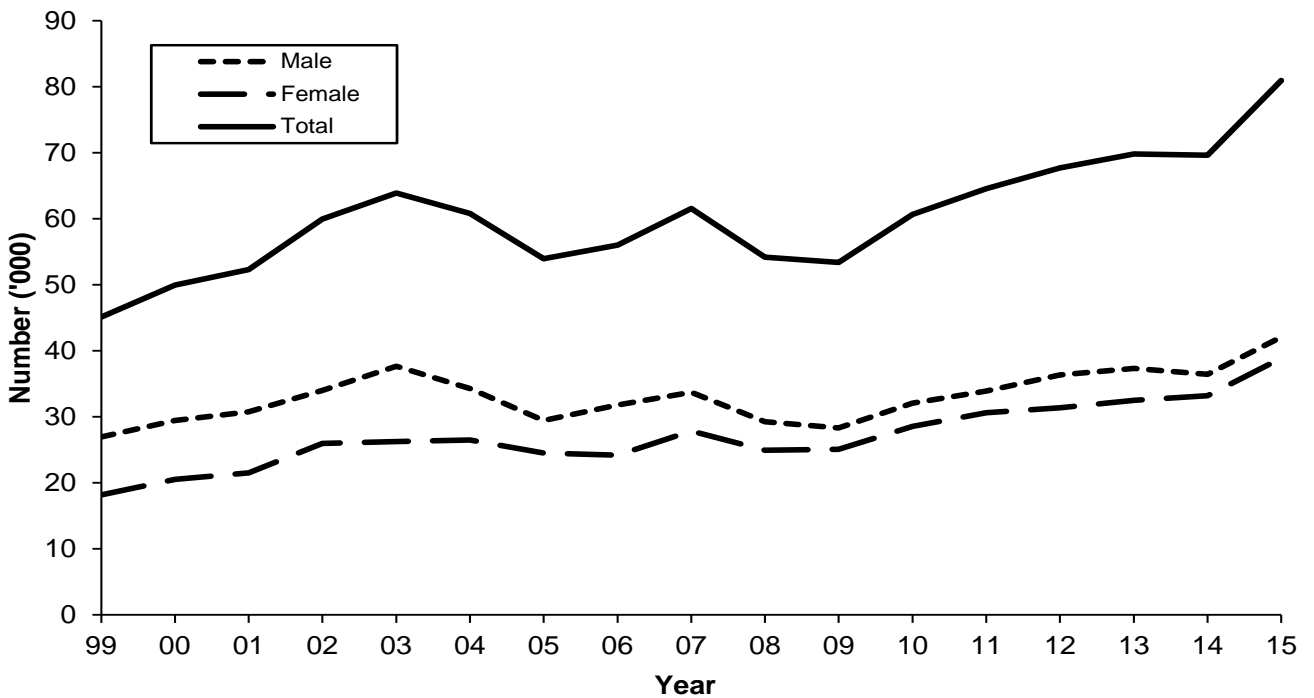


Figure 5 - Passenger traffic: Total arrivals and total departures, Island of Mauritius, 2006- 2015

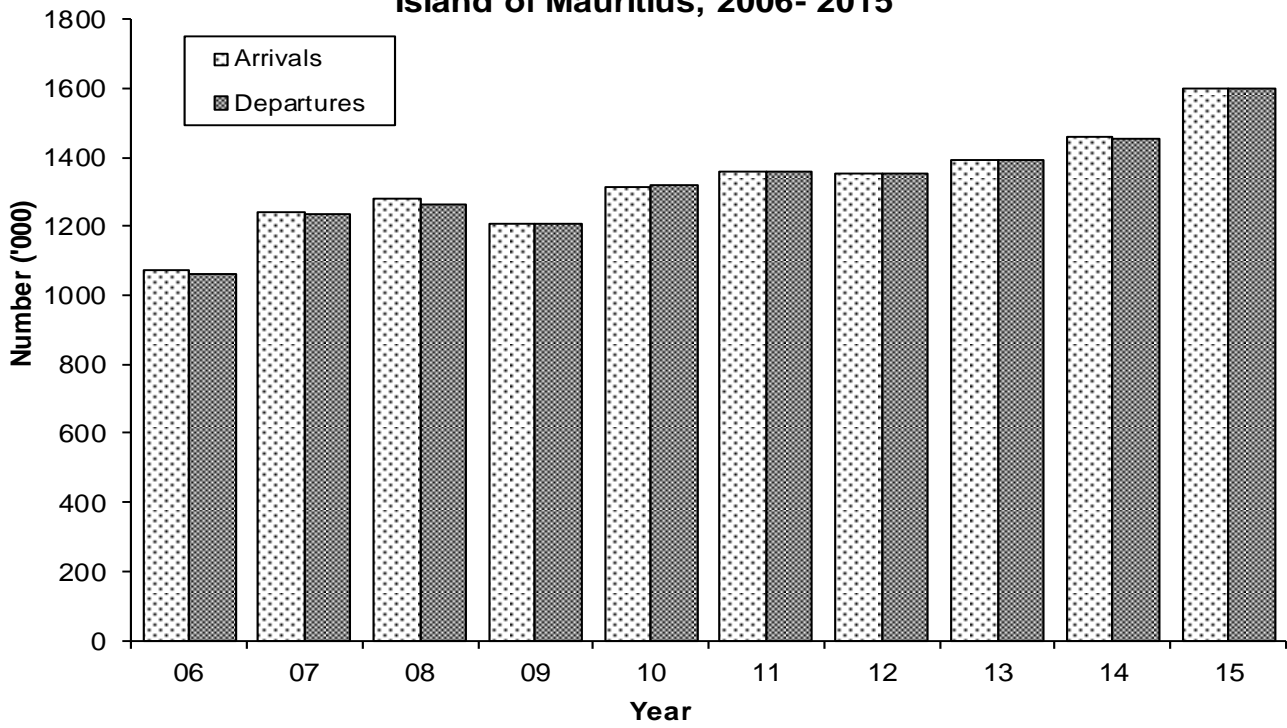


Figure 6 - Passenger traffic: Total arrivals and total departures, Island of Rodrigues, 2006- 2015

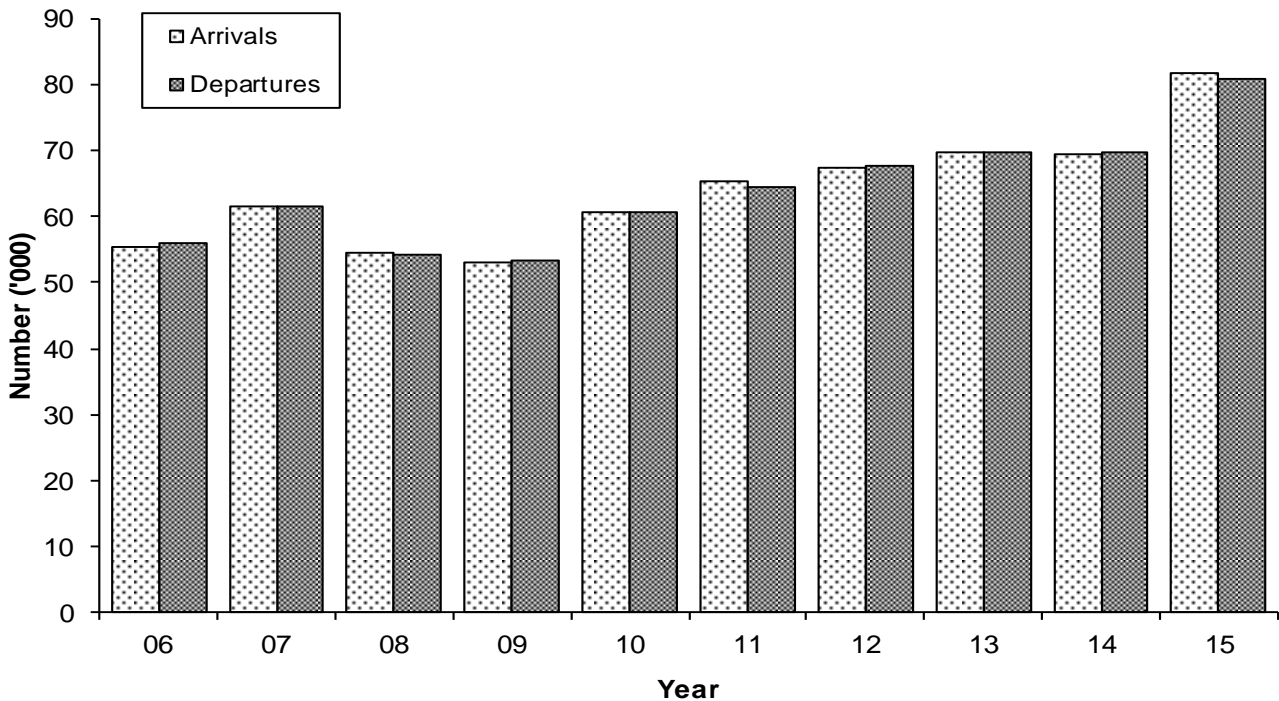


Table 10 - Passenger traffic ¹ by mode of transport, Island of Mauritius, 1995 - 2015

Period	Arrivals			Departures			Arrivals minus Departures
	Total	By sea	By air	Total	By sea	By air	
1995	579,993	18,854	561,139	578,481	17,895	560,586	+ 1,512
1996	672,070	27,308	644,762	663,501	24,794	638,707	+ 8,569
1997	743,291	29,756	713,535	737,523	27,390	710,133	+ 5,768
1998	778,574	43,706	734,868	775,998	40,809	735,189	+ 2,576
1999	823,085	40,499	782,586	809,233	39,230	770,003	+ 13,852
2000	915,203	34,262	880,941	895,569	33,368	862,201	+ 19,634
2001	910,489	27,847	882,642	903,073	26,313	876,760	+ 7,416
2002	951,090	43,890	907,200	942,876	42,630	900,246	+ 8,214
2003	968,906	31,296	937,610	947,774	28,936	918,838	+ 21,132
2004	1,000,545	32,238	968,307	979,322	28,609	950,713	+ 21,223
2005	1,043,900	35,422	1,008,478	1,029,666	35,478	994,188	+ 14,234
2006	1,072,879	31,713	1,041,166	1,060,074	28,725	1,031,349	+ 12,805
2007	1,238,826	33,373	1,205,453	1,237,747	31,001	1,206,746	+ 1,079
2008	1,280,640	48,311	1,232,329	1,261,182	47,494	1,213,688	+ 19,458
2009	1,210,005	54,396	1,155,609	1,206,550	49,005	1,157,545	+ 3,455
2010	1,312,700	57,576	1,255,124	1,317,581	63,549	1,254,032	- 4,881
2011	1,358,951	54,841	1,304,110	1,358,562	52,356	1,306,206	+ 389
2012	1,354,589	45,947	1,308,642	1,353,618	48,258	1,305,360	+ 971
2013 ²	1,391,481	44,476	1,347,005	1,390,649	40,641	1,350,008	+ 832
2014 ²	1,458,873	36,774	1,422,099	1,454,651	30,537	1,424,114	+ 4,222
2015 ³	1,602,258	42,370	1,559,888	1,600,154	40,907	1,559,247	+ 2,104
2015:1 st Qr.	403,267	22,907	380,360	429,074	21,975	407,099	- 25,807
2 nd Qr.	345,004	5,935	339,069	351,985	5,786	346,199	- 6,981
3 rd Qr.	382,466	1,936	380,530	378,741	1,578	377,163	+ 3,725
4 th Qr.	471,521	11,592	459,929	440,354	11,568	428,786	+ 31,167

¹ Includes traffic between Island of Mauritius and Rodrigues and cruise travellers, but excludes direct transit and traffic between Rodrigues and Reunion Island.

² Revised

³ Provisional

Table 11 - Passenger traffic ¹ by month, Island of Mauritius, 2012 - 2015

Month	Arrivals				Departures				Excess of arrivals over departures			
	2012	2013 ²	2014 ²	2015 ³	2012	2013 ²	2014 ²	2015 ³	2012	2013 ²	2014 ²	2015 ³
January	141,537	133,202	137,550	147,441	161,618	155,872	157,037	170,182	- 20,081	- 22,670	- 19,487	- 22,741
February	109,705	107,135	109,078	120,214	110,455	107,917	111,057	118,665	- 750	- 782	- 1,979	+ 1,549
March	111,257	121,963	125,615	135,612	115,750	121,409	131,916	140,227	- 4,493	+ 554	- 6,301	- 4,615
April	115,656	111,740	123,331	130,364	116,514	115,789	118,653	129,406	- 858	- 4,049	+ 4,678	+ 958
May	97,676	102,112	107,882	119,050	105,415	111,734	117,374	130,215	- 7,739	- 9,622	- 9,492	- 11,165
June	81,335	83,357	90,357	95,590	78,968	80,779	89,884	92,364	+ 2,367	+ 2,578	+ 473	+ 3,226
July	111,572	113,267	117,420	134,576	100,158	101,219	104,105	120,946	+ 11,414	+ 12,048	+ 13,315	+ 13,630
August	100,129	110,440	117,100	132,087	108,930	118,001	126,957	142,667	- 8,801	- 7,561	- 9,857	- 10,580
September	93,423	100,628	104,261	115,803	94,603	101,186	103,385	115,128	- 1,180	- 558	+ 876	+ 675
October	118,782	123,655	132,841	143,835	112,103	117,900	124,701	139,460	+ 6,679	+ 5,755	+ 8,140	+ 4,375
November	117,217	122,413	128,251	145,683	116,961	120,816	129,282	143,416	+ 256	+ 1,597	- 1,031	+ 2,267
December	156,300	161,569	165,187	182,003	132,143	138,027	140,300	157,478	+ 24,157	+ 23,542	+ 24,887	+ 24,525
Whole Year	1,354,589	1,391,481	1,458,873	1,602,258	1,353,618	1,390,649	1,454,651	1,600,154	+ 971	+ 832	+ 4,222	+ 2,104

¹ Includes traffic between Island of Mauritius and Rodrigues and cruise travellers, but excludes direct transit and traffic between Rodrigues and Reunion Island.

² Revised

³ Provisional

Table 12 - Arrivals ¹ by country of embarkation ², Island of Mauritius, 2010 - 2015

Country of embarkation	2010	2011	2012	2013 ⁴	2014 ⁴	2015 ⁵
Australia	21,438	20,265	22,404	29,029	24,018	29,219
Austria	NA	NA	NA	0	8	2,400
Finland	NA	NA	NA	0	313	1,814
France	273,903	279,027	274,976	256,361	251,372	257,943
Germany	42,668	45,194	41,822	40,817	38,398	41,659
Hong Kong SAR ³	28,161	30,262	25,307	21,953	19,623	22,219
India	70,138	75,268	80,325	83,472	79,597	87,894
Italy	50,884	46,198	24,333	15,742	13,054	10,878
Kenya	6,396	8,582	9,856	9,724	9,438	9,636
Malagasy Rep.	26,363	28,870	31,913	31,576	30,644	31,242
Malaysia	NA	NA	NA	15,639	16,767	23,489
People's Rep. of China	NA	NA	NA	30,415	51,300	73,085
Poland	NA	NA	NA	7	0	1,707
Reunion Island	268,943	272,452	257,612	255,143	257,016	279,723
Rodrigues	60,662	64,564	67,745	69,848	69,660	80,079
Russian Federation	NA	NA	NA	1,276	2,783	1,476
Seychelles	24,557	17,794	13,448	18,483	18,753	26,548
Singapore	21,749	23,630	22,403	14,912	12,574	4,867
S. Africa, Rep. of	138,838	147,295	144,510	155,161	162,579	165,584
Sweden	NA	NA	NA	26	591	3,976
Switzerland	14,806	17,765	15,791	7,749	4,244	26
United Arab Emirates	NA	NA	NA	230,432	282,696	329,955
United Kingdom	103,588	107,206	96,711	87,484	93,584	98,245
Other & not stated	159,606	174,579	225,433	16,232	19,861	18,594
All Countries	1,312,700	1,358,951	1,354,589	1,391,481	1,458,873	1,602,258

¹ Figures on passenger arrivals include cruise travellers, but exclude direct transit and traffic between Rodrigues and Reunion Island.

² Country of embarkation may either be the country of original embarkation or the transit country

³ Special Administrative Region of China

⁴ Revised

⁵ Provisional

NA - Not available

Table 13 - Departures ¹ by country of disembarkation ², Island of Mauritius, 2010 - 2015

Country of final destination	2010	2011	2012	2013 ⁴	2014 ⁴	2015 ⁵
Australia	18,300	25,541	22,785	23,118	24,255	23,136
Austria	NA	NA	NA	8	14	1,738
Finland	NA	NA	NA	0	0	1,824
France	284,197	291,778	285,448	265,911	260,609	267,046
Germany	44,132	43,704	44,984	40,974	38,477	40,420
Hong Kong SAR ³	27,367	26,287	20,821	20,803	18,656	21,785
India	68,052	74,296	78,464	77,945	73,653	81,581
Italy	51,220	47,729	25,316	16,217	12,872	10,929
Kenya	4,431	6,960	8,350	9,773	9,159	9,803
Malagasy Rep.	26,338	30,286	32,940	33,264	31,323	29,353
Malaysia	NA	NA	NA	15,401	22,031	24,615
People's Rep. of China	NA	NA	NA	30,301	51,855	72,090
Poland	NA	NA	NA	0	0	1,437
Reunion Island	258,359	262,721	248,892	255,094	259,550	269,825
Rodrigues	60,573	65,423	67,527	69,762	69,514	80,884
Russian Federation	NA	NA	NA	1,575	2,536	2,100
Seychelles	31,958	27,423	18,587	16,298	17,714	33,500
Singapore	17,868	17,428	18,229	14,460	5,831	3,864
S. Africa, Rep. of	132,040	136,619	141,989	154,218	155,693	166,656
Sweden	NA	NA	NA	18	22	3,647
Switzerland	13,013	17,131	11,885	7,690	4,501	36
United Arab Emirates	NA	NA	NA	234,282	288,227	337,189
United Kingdom	105,368	105,433	96,831	89,730	93,768	100,139
Other & not stated	174,365	179,803	230,570	13,807	14,391	16,557
All Countries	1,317,581	1,358,562	1,353,618	1,390,649	1,454,651	1,600,154

¹ Figures on passenger departures include cruise travellers, but exclude direct transit and traffic between Rodrigues and Reunion Island.

² Country of disembarkation may either be the country of final destination or the transit country

³ Special Administrative Region of China

⁴ Revised

⁵ Provisional

NA Not available

Table 14 - Monthly passenger traffic ¹ by type of passenger, Island of Mauritius, 2015 ²

Type of passenger	Jan	Feb	Mar	Apr	May	Jun	Jul	Aug	Sep	Oct	Nov	Dec	Whole Year
Arrivals													
Visitors ³	105,578	92,828	100,437	93,831	87,839	66,500	96,938	90,746	85,574	110,121	107,833	134,658	1,172,883
- On holiday	98,212	86,628	89,108	83,870	80,701	59,467	88,826	82,781	77,931	102,100	98,720	128,094	1,076,438
- On business & Conference	3,117	3,330	4,338	3,918	4,542	4,115	3,899	3,958	4,546	4,663	5,308	2,603	48,337
- In transit	4,100	2,705	6,680	5,458	2,313	2,372	3,866	3,711	2,961	3,083	3,161	3,798	44,208
- Other and not stated	149	165	311	585	283	546	347	296	136	275	644	163	3,900
Mauritian residents	30,649	19,001	24,607	27,956	24,247	22,857	30,587	33,914	23,794	26,344	29,429	37,664	331,049
Other ⁴	11,214	8,385	10,568	8,577	6,964	6,233	7,051	7,427	6,435	7,370	8,421	9,681	98,326
Total arrivals	147,441	120,214	135,612	130,364	119,050	95,590	134,576	132,087	115,803	143,835	145,683	182,003	1,602,258
Departures													
Visitors ³	131,554	89,030	104,159	91,839	98,461	63,145	82,317	103,153	80,805	107,224	103,522	108,236	1,163,445
Mauritian residents	26,043	20,160	24,390	27,748	23,758	21,845	30,130	30,581	26,523	24,409	30,340	37,387	323,314
Other ⁴	12,585	9,475	11,678	9,819	7,996	7,374	8,499	8,933	7,800	7,827	9,554	11,855	113,395
Total departures	170,182	118,665	140,227	129,406	130,215	92,364	120,946	142,667	115,128	139,460	143,416	157,478	1,600,154

¹ Including traffic between Island of Mauritius and Rodrigues and cruise travellers, but excluding direct transit and traffic between Rodrigues and Reunion Island.

² Provisional

³ Including non-residents who left the airport but stayed in the country for less than a day

⁴ Including contract workers

Table 15 - Passenger traffic ¹ by type of passenger, Island of Mauritius, 2006 - 2015

Type of passenger	2006	2007	2008	2009	2010	2011	2012	2013 ²	2014 ²	2015 ³
Arrivals										
Visitors ⁴	806,652	932,782	970,482	889,999	956,327	982,566	984,104	1,014,818	1,065,030	1,172,883
- On holiday	712,620	818,714	821,325	819,739	865,562	897,786	896,977	922,970	969,157	1,076,438
- On business & Conference	32,511	34,633	37,521	29,025	36,081	40,730	42,567	43,480	44,782	48,337
- In transit	47,966	61,186	82,683	24,871	42,243	40,948	41,744	44,675	47,447	44,208
- Other & not stated	13,555	18,249	28,953	16,364	12,441	3,102	2,816	3,693	3,644	3,900
Mauritian residents	242,330	277,369	283,792	253,374	278,987	292,018	315,795	305,288	300,314	331,049
Other ⁵	23,897	28,675	26,366	66,632	77,386	84,367	54,690	71,375	93,529	98,326
Total arrivals	1,072,879	1,238,826	1,280,640	1,210,005	1,312,700	1,358,951	1,354,589	1,391,481	1,458,873	1,602,258
Departures										
Visitors ⁴	801,702	942,374	960,279	908,253	972,791	997,507	971,157	1,011,416	1,057,727	1,163,445
Mauritian residents	241,138	274,786	280,300	248,945	272,145	284,478	304,122	297,617	292,420	323,314
Other ⁵	17,234	20,587	20,603	49,352	72,645	76,577	78,339	81,616	104,504	113,395
Total departures	1,060,074	1,237,747	1,261,182	1,206,550	1,317,581	1,358,562	1,353,618	1,390,649	1,454,651	1,600,154

¹ Including traffic between Island of Mauritius and Rodrigues and cruise travellers, but excluding direct transit and traffic between Rodrigues and Reunion Island.

² Revised

³ Provisional

⁴ Including non-residents who left the airport but stayed in the country for less than a day

⁵ Including contract workers

Table 16 - Total arrivals ¹ by age and gender, Island of Mauritius, 2014 & 2015

Age (years)	2014 ²			2015 ³			January - June 2015			July - December 2015		
	Total	Male	Female	Total	Male	Female	Total	Male	Female	Total	Male	Female
Under 1	6,916	3,483	3,433	7,399	3,813	3,586	3,561	1,820	1,741	3,838	1,993	1,845
1 - 4	38,288	19,410	18,878	41,274	21,021	20,253	19,745	10,012	9,733	21,529	11,009	10,520
5 - 9	51,349	26,128	25,221	56,760	28,800	27,960	25,088	12,636	12,452	31,672	16,164	15,508
10 - 14	50,804	25,697	25,107	55,837	28,166	27,671	23,662	11,838	11,824	32,175	16,328	15,847
15 - 19	43,621	20,828	22,793	48,821	23,185	25,636	20,231	9,468	10,763	28,590	13,717	14,873
20 - 24	72,614	29,884	42,730	79,817	32,381	47,436	37,032	14,770	22,262	42,785	17,611	25,174
25 - 29	157,649	72,510	85,139	180,946	82,743	98,203	83,356	38,496	44,860	97,590	44,247	53,343
30 - 34	151,537	78,457	73,080	162,826	84,261	78,565	75,268	38,990	36,278	87,558	45,271	42,287
35 - 39	132,886	70,463	62,423	141,900	75,264	66,636	67,020	35,644	31,376	74,880	39,620	35,260
40 - 44	130,657	71,685	58,972	138,119	74,382	63,737	65,134	35,423	29,711	72,985	38,959	34,026
45 - 49	130,992	70,864	60,128	140,494	75,386	65,108	66,086	35,543	30,543	74,408	39,843	34,565
50 - 54	123,052	65,382	57,670	135,487	71,611	63,876	63,162	33,612	29,550	72,325	37,999	34,326
55 - 59	99,399	52,247	47,152	108,742	56,676	52,066	51,432	26,973	24,459	57,310	29,703	27,607
60 - 64	82,292	43,856	38,436	89,388	47,024	42,364	43,042	22,603	20,439	46,346	24,421	21,925
65 - 69	55,679	29,894	25,785	63,308	33,651	29,657	31,547	16,760	14,787	31,761	16,891	14,870
70 & over	53,030	28,321	24,709	59,892	32,266	27,626	30,278	16,602	13,676	29,614	15,664	13,950
Not stated	78,108	41,587	36,521	91,248	47,884	43,364	42,627	22,713	19,914	48,621	25,171	23,450
All ages	1,458,873	750,696	708,177	1,602,258	818,514	783,744	748,271	383,903	364,368	853,987	434,611	419,376

¹ Include arrivals from Rodrigues and cruise travellers, but exclude direct transit and traffic between Rodrigues and Reunion Island.

² Revised

³ Provisional

Table 17 - Total departures ¹ by age and gender, Island of Mauritius, 2014 & 2015

Age (years)	2014 ²			2015 ³			January - June 2015			July - December 2015		
	Total	Male	Female	Total	Male	Female	Total	Male	Female	Total	Male	Female
Under 1	6,589	3,328	3,261	6,986	3,565	3,421	3,715	1,888	1,827	3,271	1,677	1,594
1 - 4	38,147	19,295	18,852	41,210	20,995	20,215	21,646	10,985	10,661	19,564	10,010	9,554
5 - 9	51,318	26,068	25,250	56,769	28,845	27,924	27,552	13,912	13,640	29,217	14,933	14,284
10 - 14	50,821	25,638	25,183	56,019	28,206	27,813	25,805	12,966	12,839	30,214	15,240	14,974
15 - 19	44,130	21,042	23,088	49,543	23,521	26,022	21,629	10,097	11,532	27,914	13,424	14,490
20 - 24	70,917	28,512	42,405	78,406	31,437	46,969	37,521	14,824	22,697	40,885	16,613	24,272
25 - 29	155,702	71,101	84,601	179,330	81,639	97,691	84,715	38,822	45,893	94,615	42,817	51,798
30 - 34	151,917	78,293	73,624	164,035	84,598	79,437	78,569	40,332	38,237	85,466	44,266	41,200
35 - 39	132,392	70,281	62,111	141,299	74,914	66,385	69,653	36,912	32,741	71,646	38,002	33,644
40 - 44	131,323	71,911	59,412	138,733	74,541	64,192	68,677	37,079	31,598	70,056	37,462	32,594
45 - 49	129,763	70,410	59,353	138,439	74,497	63,942	68,702	36,941	31,761	69,737	37,556	32,181
50 - 54	124,074	65,692	58,382	136,768	72,024	64,744	67,322	35,554	31,768	69,446	36,470	32,976
55 - 59	98,430	51,866	46,564	107,562	55,977	51,585	53,617	27,964	25,653	53,945	28,013	25,932
60 - 64	82,586	43,883	38,703	89,970	47,315	42,655	45,759	23,978	21,781	44,211	23,337	20,874
65 - 69	55,419	29,719	25,700	62,946	33,503	29,443	33,301	17,622	15,679	29,645	15,881	13,764
70 & over	53,141	28,427	24,714	59,825	32,183	27,642	32,487	17,661	14,826	27,338	14,522	12,816
Not stated	77,982	39,763	38,219	92,314	46,314	46,000	40,389	21,097	19,292	51,925	25,217	26,708
All ages	1,454,651	745,229	709,422	1,600,154	814,074	786,080	781,059	398,634	382,425	819,095	415,440	403,655

¹ Include departures to Rodrigues and cruise travellers, but exclude direct transit and traffic between Rodrigues and Reunion Island.

² Revised

³ Provisional

Table 18 - Excess ¹ of arrivals over departures by age and gender, Island of Mauritius, 2014 & 2015

Age (years)	2014 ²			2015 ³			January - June 2015			July - December 2015		
	Total	Male	Female	Total	Male	Female	Total	Male	Female	Total	Male	Female
Under 1	+ 327	+ 155	+ 172	+ 413	+ 248	+ 165	-154	-68	-86	+ 567	+ 316	+ 251
1 - 4	+ 141	+ 115	+ 26	+ 64	+ 26	+ 38	-1,901	-973	-928	+ 1,965	+ 999	+ 966
5 - 9	+ 31	+ 60	-29	-9	-45	36	-2,464	-1,276	-1,188	+ 2,455	+ 1,231	+ 1,224
10 - 14	-17	+ 59	-76	-182	-40	-142	-2,143	-1,128	-1,015	+ 1,961	+ 1,088	+ 873
15 - 19	-509	-214	-295	-722	-336	-386	-1,398	-629	-769	+ 676	+ 293	+ 383
20 - 24	+ 1,697	+ 1,372	+ 325	+ 1,411	+ 944	+ 467	-489	-54	-435	+ 1,900	+ 998	+ 902
25 - 29	+ 1,947	+ 1,409	+ 538	+ 1,616	+ 1,104	+ 512	-1,359	-326	-1,033	+ 2,975	+ 1,430	+ 1,545
30 - 34	-380	+ 164	-544	-1,209	-337	-872	-3,301	-1,342	-1,959	+ 2,092	+ 1,005	+ 1,087
35 - 39	+ 494	+ 182	+ 312	+ 601	+ 350	+ 251	-2,633	-1,268	-1,365	+ 3,234	+ 1,618	+ 1,616
40 - 44	-666	-226	-440	-614	-159	-455	-3,543	-1,656	-1,887	+ 2,929	+ 1,497	+ 1,432
45 - 49	+ 1,229	+ 454	+ 775	+ 2,055	+ 889	+ 1,166	-2,616	-1,398	-1,218	+ 4,671	+ 2,287	+ 2,384
50 - 54	-1,022	-310	-712	-1,281	-413	-868	-4,160	-1,942	-2,218	+ 2,879	+ 1,529	+ 1,350
55 - 59	+ 969	+ 381	+ 588	+ 1,180	+ 699	+ 481	-2,185	-991	-1,194	+ 3,365	+ 1,690	+ 1,675
60 - 64	-294	-27	-267	-582	-291	-291	-2,717	-1,375	-1,342	+ 2,135	+ 1,084	+ 1,051
65 - 69	+ 260	+ 175	+ 85	+ 362	+ 148	+ 214	-1,754	-862	-892	+ 2,116	+ 1,010	+ 1,106
70 & over	-111	-106	-5	67	+ 83	-16	-2,209	-1,059	-1,150	+ 2,276	+ 1,142	+ 1,134
Not stated	+ 126	+ 1,824	-1,698	-1,066	+ 1,570	-2,636	+ 2,238	+ 1,616	+ 622	-3,304	-46	-3,258
All ages	+ 4,222	+ 5,467	-1,245	+ 2,104	+ 4,440	-2,336	-32,788	-14,731	-18,057	+ 34,892	+ 19,171	+ 15,721

¹ Include traffic between Island of Mauritius and Rodrigues and cruise travellers, but exclude direct transit and traffic between Rodrigues and Reunion Island.

² Revised

³ Provisional

Table 19 - Arrivals ¹ of Mauritian residents by age and gender, 2014 & 2015

Age (years)	2014 ²			2015 ³			January - June 2015			July - December 2015		
	Total	Male	Female	Total	Male	Female	Total	Male	Female	Total	Male	Female
Under 1	764	393	371	793	415	378	396	198	198	397	217	180
1 - 4	4,209	2,149	2,060	4,635	2,464	2,171	2,085	1,104	981	2,550	1,360	1,190
5 - 9	6,027	3,032	2,995	6,639	3,356	3,283	2,752	1,364	1,388	3,887	1,992	1,895
10 - 14	6,882	3,494	3,388	7,576	3,855	3,721	3,140	1,581	1,559	4,436	2,274	2,162
15 - 19	8,125	3,991	4,134	9,090	4,455	4,635	4,102	2,022	2,080	4,988	2,433	2,555
20 - 24	15,543	7,785	7,758	16,718	8,371	8,347	7,431	3,727	3,704	9,287	4,644	4,643
25 - 29	19,201	9,856	9,345	21,241	10,842	10,399	9,676	4,929	4,747	11,565	5,913	5,652
30 - 34	22,889	12,663	10,226	23,998	13,193	10,805	11,182	6,219	4,963	12,816	6,974	5,842
35 - 39	22,893	13,203	9,690	25,569	14,541	11,028	11,834	6,822	5,012	13,735	7,719	6,016
40 - 44	20,992	12,391	8,601	22,507	13,123	9,384	10,330	6,124	4,206	12,177	6,999	5,178
45 - 49	22,093	13,035	9,058	23,293	13,566	9,727	10,898	6,535	4,363	12,395	7,031	5,364
50 - 54	22,601	12,491	10,110	24,256	13,267	10,989	11,153	6,159	4,994	13,103	7,108	5,995
55 - 59	20,154	10,500	9,654	21,999	11,287	10,712	10,241	5,319	4,922	11,758	5,968	5,790
60 - 64	17,933	9,634	8,299	19,262	10,171	9,091	9,032	4,820	4,212	10,230	5,351	4,879
65 - 69	10,699	5,899	4,800	12,375	6,787	5,588	5,704	3,191	2,513	6,671	3,596	3,075
70 & over	9,649	5,083	4,566	11,019	5,864	5,155	5,004	2,737	2,267	6,015	3,127	2,888
Not stated	69,660	36,435	33,225	80,079	41,629	38,450	34,357	18,082	16,275	45,722	23,547	22,175
All ages	300,314	162,034	138,280	331,049	177,186	153,863	149,317	80,933	68,384	181,732	96,253	85,479

¹ Include traffic between Island of Mauritius and Rodrigues, but exclude traffic between Rodrigues and Reunion Island.

² Revised

³ Provisional

Table 20 - Departures ¹ of Mauritian residents by age and gender, 2014 & 2015

Age (years)	2014 ²			2015 ³			January - June 2015			July - December 2015		
	Total	Male	Female	Total	Male	Female	Total	Male	Female	Total	Male	Female
Under 1	702	366	336	706	360	346	337	162	175	369	198	171
1 - 4	3,985	2,022	1,963	4,357	2,311	2,046	1,855	978	877	2,502	1,333	1,169
5 - 9	5,828	2,944	2,884	6,384	3,189	3,195	2,294	1,126	1,168	4,090	2,063	2,027
10 - 14	6,767	3,407	3,360	7,401	3,757	3,644	2,411	1,231	1,180	4,990	2,526	2,464
15 - 19	8,617	4,285	4,332	9,663	4,768	4,895	3,485	1,720	1,765	6,178	3,048	3,130
20 - 24	15,423	7,689	7,734	16,678	8,413	8,265	7,459	3,831	3,628	9,219	4,582	4,637
25 - 29	18,640	9,454	9,186	20,688	10,483	10,205	10,029	5,074	4,955	10,659	5,409	5,250
30 - 34	22,205	12,303	9,902	23,495	12,894	10,601	11,572	6,500	5,072	11,923	6,394	5,529
35 - 39	22,293	12,824	9,469	24,851	14,114	10,737	11,867	6,960	4,907	12,984	7,154	5,830
40 - 44	20,477	12,165	8,312	21,914	12,764	9,150	10,194	6,141	4,053	11,720	6,623	5,097
45 - 49	21,564	12,802	8,762	22,509	13,168	9,341	10,694	6,472	4,222	11,815	6,696	5,119
50 - 54	21,731	11,994	9,737	23,314	12,859	10,455	10,988	6,084	4,904	12,326	6,775	5,551
55 - 59	19,290	10,168	9,122	20,947	10,844	10,103	9,899	5,129	4,770	11,048	5,715	5,333
60 - 64	16,673	9,062	7,611	18,155	9,662	8,493	8,684	4,624	4,060	9,471	5,038	4,433
65 - 69	9,924	5,437	4,487	11,384	6,260	5,124	5,400	2,988	2,412	5,984	3,272	2,712
70 & over	8,787	4,648	4,139	9,984	5,293	4,691	4,800	2,564	2,236	5,184	2,729	2,455
Not stated	69,514	35,530	33,984	80,884	40,027	40,857	31,976	16,469	15,507	48,908	23,558	25,350
All ages	292,420	157,100	135,320	323,314	171,166	152,148	143,944	78,053	65,891	179,370	93,113	86,257

¹ Include traffic between Island of Mauritius and Rodrigues, but exclude traffic between Rodrigues and Reunion Island.

² Revised

³ Provisional

Table 21 - Excess¹ of arrivals over departures of Mauritian residents by age and gender, 2014 & 2015

Age (years)	2014 ²			2015 ³			January - June 2015			July - December 2015		
	Total	Male	Female	Total	Male	Female	Total	Male	Female	Total	Male	Female
Under 1	+ 62	+ 27	+ 35	+ 87	+ 55	+ 32	+ 59	+ 36	+ 23	+ 28	+ 19	+ 9
1 - 4	+ 224	+ 127	+ 97	+ 278	+ 153	+ 125	+ 230	+ 126	+ 104	+ 48	+ 27	+ 21
5 - 9	+ 199	+ 88	+ 111	+ 255	+ 167	+ 88	+ 458	+ 238	+ 220	-203	-71	-132
10 - 14	+ 115	+ 87	+ 28	+ 175	+ 98	+ 77	+ 729	+ 350	+ 379	-554	-252	-302
15 - 19	-492	-294	-198	-573	-313	-260	+ 617	+ 302	+ 315	-1,190	-615	-575
20 - 24	+ 120	+ 96	+ 24	+ 40	-42	+ 82	-28	-104	+ 76	+ 68	+ 62	+ 6
25 - 29	+ 561	+ 402	+ 159	+ 553	+ 359	+ 194	-353	-145	-208	+ 906	+ 504	+ 402
30 - 34	+ 684	+ 360	+ 324	+ 503	+ 299	+ 204	-390	-281	-109	+ 893	+ 580	+ 313
35 - 39	+ 600	+ 379	+ 221	+ 718	+ 427	+ 291	-33	-138	+ 105	+ 751	+ 565	+ 186
40 - 44	+ 515	+ 226	+ 289	+ 593	+ 359	+ 234	+ 136	-17	+ 153	+ 457	+ 376	+ 81
45 - 49	+ 529	+ 233	+ 296	+ 784	+ 398	+ 386	+ 204	+ 63	+ 141	+ 580	+ 335	+ 245
50 - 54	+ 870	+ 497	+ 373	+ 942	+ 408	+ 534	+ 165	+ 75	+ 90	+ 777	+ 333	+ 444
55 - 59	+ 864	+ 332	+ 532	+ 1,052	+ 443	+ 609	+ 342	+ 190	+ 152	+ 710	+ 253	+ 457
60 - 64	+ 1,260	+ 572	+ 688	+ 1,107	+ 509	+ 598	+ 348	+ 196	+ 152	+ 759	+ 313	+ 446
65 - 69	+ 775	+ 462	+ 313	+ 991	+ 527	+ 464	+ 304	+ 203	+ 101	+ 687	+ 324	+ 363
70 & over	+ 862	+ 435	+ 427	+ 1,035	+ 571	+ 464	+ 204	+ 173	+ 31	+ 831	+ 398	+ 433
Not stated	+ 146	+ 905	-759	-805	1,602	-2,407	+ 2,381	+ 1,613	+ 768	-3,186	-11	-3,175
All ages	+ 7,894	+ 4,934	+ 2,960	+ 7,735	+ 6,020	+ 1,715	+ 5,373	+ 2,880	+ 2,493	+ 2,362	+ 3,140	- 778

¹ Includes traffic between Island of Mauritius and Rodrigues, but excludes traffic between Rodrigues and Reunion Island.

² Revised

³ Provisional

Table 22 - Arrivals and departures of Mauritian residents¹ by country of embarkation and disembarkation, 2013 - 2015

Country of embarkation / disembarkation	Arrivals			Departures			Excess of arrivals over departures		
	2013 ³	2014 ³	2015 ⁴	2013 ³	2014 ³	2015 ⁴	2013 ³	2014 ³	2015 ⁴
Australia	8,421	7,532	8,107	7,982	7,281	8,040	439	251	67
France	33,821	31,541	34,674	32,180	29,280	31,752	1,641	2,261	2,922
Germany	2,254	2,019	1,797	1,944	1,639	1,544	310	380	253
Hong Kong SAR ²	7,795	5,477	5,211	7,286	5,198	4,940	509	279	271
India	23,697	20,064	20,110	22,531	19,436	19,001	1,166	628	1,109
Italy	2,502	2,576	1,732	2,507	2,359	1,595	-5	217	137
Kenya	2,710	2,300	2,608	2,754	2,497	2,731	-44	-197	-123
Malagasy Republic	9,557	9,104	8,802	9,051	8,662	8,698	506	442	104
Malaysia	8,078	8,148	12,245	8,337	10,957	12,983	-259	-2,809	-738
People's Rep. of China	2,473	2,512	3,163	2,595	2,778	3,376	-122	-266	-213
Reunion	34,913	31,863	35,488	34,582	30,887	33,695	331	976	1,793
Rodrigues	69,848	69,660	80,079	69,762	69,514	80,884	86	146	-805
Seychelles	5,102	5,546	8,419	4,957	5,630	9,135	145	-84	-716
Singapore	7,241	5,289	2,364	7,267	2,737	1,721	-26	2,552	643
S. Africa, Rep of	22,306	22,457	23,203	21,819	22,066	23,361	487	391	-158
United Arab Emirates	42,790	54,129	63,257	41,698	53,626	61,575	1,092	503	1,682
United Kingdom	21,459	19,733	19,587	20,187	17,726	18,175	1,272	2,007	1,412
Other countries	321	364	203	178	147	108	143	217	95
All Countries	305,288	300,314	331,049	297,617	292,420	323,314	7,671	7,894	7,735

¹ Figures exclude traffic between Rodrigues and Reunion Island.

² Special Administrative Region of China

³ Revised

⁴ Provisional

III - TOURISM

Definition and notes

1. Definition of tourist

- (a) Prior to 1964, a tourist has been defined as a non-resident staying in Mauritius for more than 24 hours but less than 6 months.
- (b) From 1964 to 2008, a tourist is defined as a non-resident staying in Mauritius for more than 24 hours but less than a year and is not involved in any gainful occupation.
- (c) As from 2009, a tourist is defined as a non-resident staying overnight but less than a year, and who has no employer-employee relationship with a resident.

The figures for the three periods are nevertheless comparable because of the small number of tourists staying for more than 6 months.

2. Visitors include the following:

- (a) Tourists as defined above and
- (b) Excursionists or same day visitors, i.e non-residents, other than those who do not leave the airport/ships, who depart on the same day they arrived.

3. Method of compilation

Sources of data

The main source of data for the compilation of passenger traffic statistics is the Passport and Immigration Office, which maintains a database of all passengers entering and leaving the country. The data are collected from the passport of travellers, disembarkation cards filled in by non-residents and questions put to non-residents entering the country. At the end of every month, passenger traffic for that particular month is downloaded and supplied to the Statistics Unit of the Ministry of Tourism and External Communications within ten days. Additional data on cruises are supplied by the Mauritius Ports Authority.

Prior to 1994, figures have been compiled from a 10% sample of embarkation and disembarkation cards filled in by passengers. However, as from January 1994, they are based on movements of all passengers. Thus disaggregated data for 1994 onwards may not be strictly comparable to previous series.

Tourism earnings

The Bank of Mauritius (BoM) is responsible for the estimation of tourism earnings based on monthly statements of Inward and Outward Remittances of Commercial Banks. As from 2015, BoM is also including data culled from Money changers and Foreign exchange dealers.

Monthly Occupancy Rates

All hotels are contacted by mail and/or phone at the end of every month on room / bed nights available and rented during the month for the calculation of room and bed occupancy.

4. Tourist nights

Prior to 2010, tables on tourist nights show the number of nights spent by tourists who were present in the country during the period under review. Thus the number of tourist nights for 2009 include:

- (a) nights spent during 2009 by tourists who arrived prior to 1st January 2009; and
- (b) nights during 2009 by tourists who arrived during the same year.

However, nights spent after 31st December 2009 by tourists who arrived in 2009 are excluded.

As from 2010, tourist night for year Y refer to tourist nights spent by tourists departing in year Y.

5. Large hotels

Large hotels are well established beach hotels of over 80 rooms.

Table 23 -Tourist arrivals by mode of transport and tourist nights spent during period, 1999 - 2015

Period	Tourist arrivals			Tourist nights spent during period	% change over previous year	
	Sea	Air	Total		Tourist arrivals	Tourist nights
1999	13,852	564,233	578,085	5,729,464	+ 3.6	+ 2.9
2000	10,677	645,776	656,453	6,412,876	+ 13.6	+ 11.9
2001	10,532	649,786	660,318	6,527,800	+ 0.6	+ 1.8
2002	14,180	667,468	681,648	6,768,870	+ 3.2	+ 3.7
2003	12,155	689,863	702,018	6,952,313	+ 3.0	+ 2.7
2004	11,390	707,471	718,861	7,118,603	+ 2.4	+ 2.4
2005	13,321	747,742	761,063	7,498,251	+ 5.9	+ 5.3
2006	13,249	775,027	788,276	7,760,679	+ 3.6	+ 3.5
2007	12,163	894,808	906,971	8,986,934	+ 15.1	+ 15.8
2008	15,961	914,495	930,456	9,218,625	+ 2.6	+ 2.6
2009	23,265	848,091	871,356	8,639,304	- 6.4	- 6.3
2010 ¹	23,648	911,179	934,827	9,336,446	+ 7.3	...
2011	25,047	939,595	964,642	9,494,297	+ 3.2	+ 1.7
2012	16,930	948,511	965,441	10,043,683	+ 0.1	+ 5.8
2013 ²	12,815	979,688	992,503	10,675,598	+ 2.8	+ 6.3
2014 ²	3,336	1,034,998	1,038,334	11,266,751	+ 4.6	+ 5.5
2015 ³	19,425	1,131,827	1,151,252	12,049,901	+ 10.9	+ 7.0

¹ Revised as from 2010, a new methodology for computation of tourist nights is being used. "Tourist nights" for year Y refer to nights spent by tourists departing in year Y.

² Revised

³ Provisional

Table 24 - Tourist arrivals by month of arrival, 2006 - 2015

Month of arrival	2006	2007	2008	2009	2010	2011	2012	2013 ¹	2014 ¹	2015 ²
January	86,218	91,628	94,579	88,591	91,857	101,887	98,837	92,810	96,285	103,556
February	64,894	72,338	77,763	67,892	72,366	77,390	79,331	81,141	78,899	91,066
March	58,136	79,965	89,152	76,425	85,748	83,349	83,827	91,690	87,876	96,425
April	57,361	70,297	72,837	68,969	64,797	79,173	79,137	76,174	88,102	90,221
May	50,773	65,301	67,705	64,761	71,055	68,214	71,396	74,641	78,545	87,054
June	42,755	52,584	53,722	46,866	53,327	54,591	54,625	54,999	60,440	65,459
July	65,540	77,225	81,169	71,872	77,009	78,034	76,166	77,365	81,934	95,694
August	64,307	69,941	71,605	63,365	65,093	66,865	65,896	73,320	78,466	89,422
September	56,138	65,542	65,632	60,144	65,404	64,880	66,369	71,926	74,508	84,456
October	75,451	81,244	83,524	80,197	87,340	90,616	89,994	92,500	101,323	109,014
November	70,394	77,236	75,380	78,544	85,982	87,348	84,398	89,092	91,213	106,204
December	96,309	103,670	97,388	103,730	114,849	112,295	115,465	116,845	120,743	132,681
Year	788,276	906,971	930,456	871,356	934,827	964,642	965,441	992,503	1,038,334	1,151,252

¹ Revised

² Provisional

Figure 7 - Tourist arrivals by month, 2011-2015

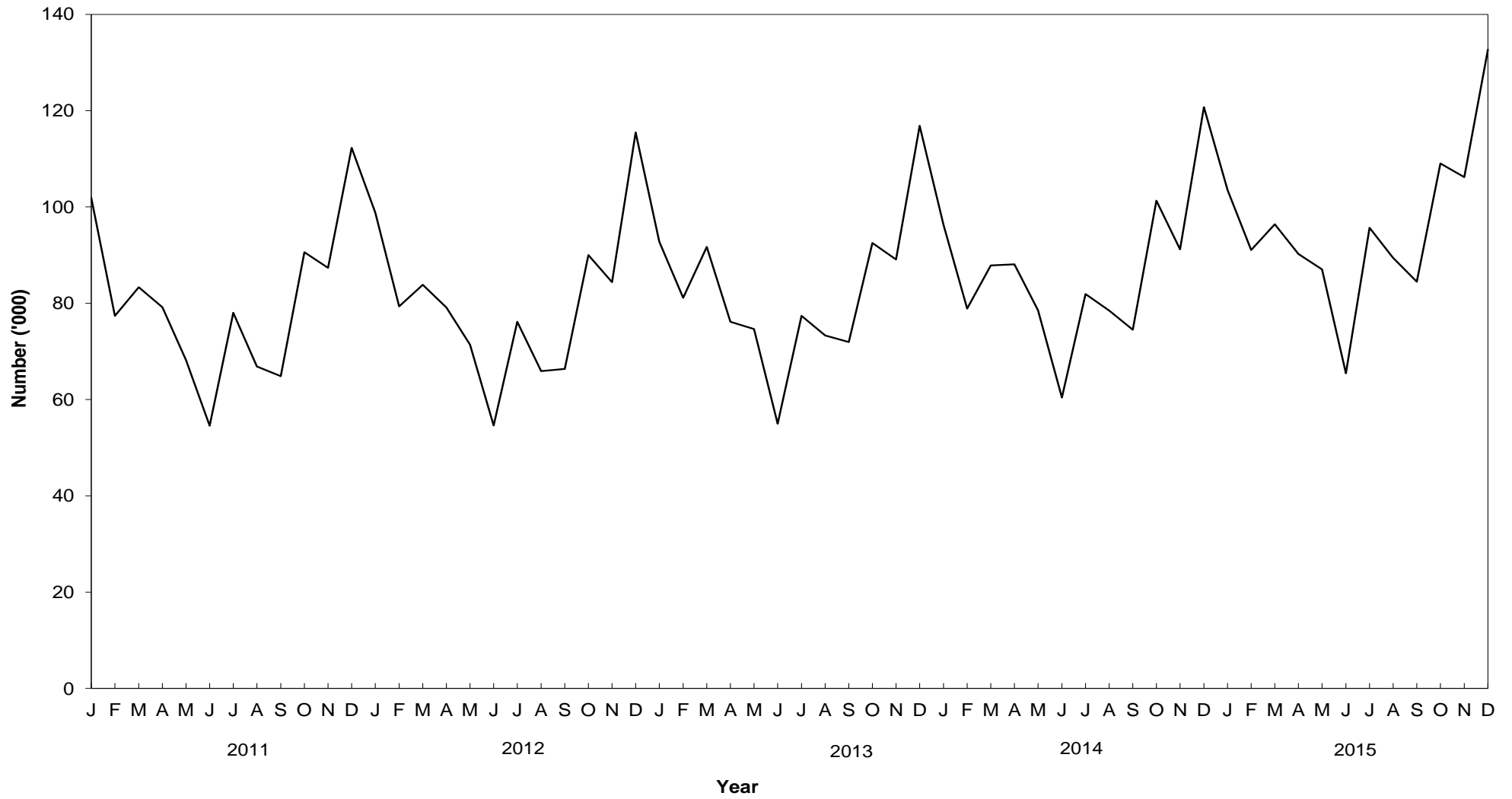


Table 25 - Percentage distribution of tourist arrivals by month of arrival, 2006 - 2015

Month of arrival	2006	2007	2008	2009	2010	2011	2012	2013 ¹	2014 ¹	2015 ²
January	10.9	10.1	10.2	10.2	9.8	10.6	10.2	9.4	9.3	9.0
February	8.2	8.0	8.4	7.8	7.7	8.0	8.2	8.2	7.6	7.9
March	7.4	8.8	9.6	8.8	9.2	8.6	8.7	9.2	8.5	8.4
April	7.3	7.8	7.8	7.9	6.9	8.2	8.2	7.7	8.5	7.8
May	6.4	7.2	7.3	7.4	7.6	7.1	7.4	7.5	7.6	7.6
June	5.4	5.8	5.8	5.4	5.7	5.7	5.7	5.5	5.8	5.7
July	8.3	8.5	8.7	8.2	8.2	8.1	7.9	7.8	7.9	8.3
August	8.2	7.7	7.7	7.3	7.0	6.9	6.8	7.4	7.6	7.8
September	7.1	7.2	7.1	6.9	7.0	6.7	6.9	7.2	7.2	7.3
October	9.6	9.0	9.0	9.2	9.3	9.4	9.3	9.3	9.8	9.5
November	8.9	8.5	8.1	9.0	9.2	9.1	8.7	9.0	8.8	9.2
December	12.2	11.4	10.5	11.9	12.3	11.6	12.0	11.8	11.6	11.5
Whole Year	100.0	100.0	100.0	100.0	100.0	100.0	100.0	100.0	100.0	100.0

¹ Revised

² Provisional

Table 26 - Tourist arrivals by country of residence and gender, 2014 and 2015

Country of residence	2014 ¹			2015 ²		
	Male	Female	Total	Male	Female	Total
Australia	8,630	8,804	17,434	8,902	8,933	17,835
Austria	4,076	4,227	8,303	5,514	5,911	11,425
Belgium	5,778	5,687	11,465	7,087	7,136	14,223
Czech Republic	3,279	3,573	6,852	3,427	3,838	7,265
France	120,367	123,288	243,655	125,190	129,133	254,323
Germany	30,527	31,685	62,212	36,843	38,394	75,237
India	34,831	26,331	61,162	40,509	31,626	72,135
Italy	14,725	14,828	29,553	14,525	14,660	29,185
Malagasy Rep.	6,495	6,543	13,038	6,192	6,023	12,215
Netherlands	2,558	2,237	4,795	3,558	3,368	6,926
P. Rep. of China	29,494	33,869	63,363	41,925	47,659	89,584
Reunion Island	68,937	72,722	141,659	70,180	73,665	143,845
Russian Federation	6,178	7,109	13,287	5,293	6,113	11,406
Seychelles	3,199	3,727	6,926	2,566	3,086	5,652
S. Africa, Rep. of	46,553	46,522	93,075	50,914	51,029	101,943
Spain	4,489	4,143	8,632	5,239	4,774	10,013
Sweden	3,200	3,252	6,452	5,776	5,858	11,634
Switzerland	14,207	15,066	29,273	14,859	15,821	30,680
United Arab Emirates	4,172	3,828	8,000	4,783	4,266	9,049
United Kingdom	57,219	58,020	115,239	64,271	65,483	129,754
U.S.A.	4,211	2,928	7,139	4,799	3,747	8,546
Other countries	48,006	38,814	86,820	54,708	43,669	98,377
All Countries	521,131	517,203	1,038,334	577,060	574,192	1,151,252

¹ Revised

² Provisional

Table 27 - Tourist arrivals by country of residence, 2006 - 2015

Country of residence	2006	2007	2008	2009	2010	2011	2012	2013 ¹	2014 ¹	2015 ²
Australia	16,660	19,635	18,852	10,363	11,493	15,726	17,009	18,340	17,434	17,835
Austria	10,483	10,969	8,974	8,106	9,255	8,822	8,151	7,932	8,303	11,425
Belgium	9,216	10,945	11,796	10,254	10,214	12,029	10,967	11,562	11,465	14,223
Czech Republic	2,609	3,044	4,166	3,487	3,477	4,081	5,247	5,545	6,852	7,265
France	182,295	240,028	260,054	275,599	302,185	282,469	256,929	244,737	243,655	254,323
Germany	57,251	65,165	61,484	51,279	52,886	56,331	55,186	60,433	62,212	75,237
India	37,498	42,974	43,911	39,252	49,779	53,955	55,197	57,253	61,162	72,135
Italy	69,407	69,510	66,432	56,736	56,540	52,747	40,009	31,145	29,553	29,185
Malagasy Rep.	7,239	8,842	10,905	8,333	9,833	11,449	13,563	13,941	13,038	12,215
Netherlands	5,525	6,331	6,051	5,527	4,865	5,179	4,434	4,498	4,795	6,926
People's Rep. of China	4,875	7,739	8,425	6,925	7,609	15,133	20,885	41,909	63,363	89,584
Reunion Island	89,127	95,823	96,174	104,946	114,914	132,535	144,340	143,174	141,659	143,845
Russian Federation	5,081	5,968	6,763	5,628	6,615	12,224	19,429	14,903	13,287	11,406
Seychelles	12,023	14,275	10,604	7,532	10,160	8,485	6,779	7,183	6,926	5,652
S. Africa, Rep. of	70,796	81,733	84,448	74,176	81,458	86,232	89,058	94,137	93,075	101,943
Spain	11,012	11,092	12,001	9,549	8,096	9,801	9,473	8,428	8,632	10,013
Sweden	6,374	9,891	8,305	5,060	4,496	4,325	4,295	4,576	6,452	11,634
Switzerland	16,161	17,546	16,037	15,349	18,577	24,362	26,002	27,751	29,273	30,680
United Arab Emirates	1,896	1,971	4,109	3,141	3,470	3,780	5,403	8,159	8,000	9,049
United Kingdom	102,333	107,297	107,919	101,996	97,548	88,182	87,648	97,963	115,239	129,754
U.S.A	5,220	5,451	7,089	6,951	7,316	6,870	6,374	5,741	7,139	8,546
Other Countries	65,195	70,742	75,957	61,167	64,041	69,925	79,063	83,193	86,820	98,377
All Countries	788,276	906,971	930,456	871,356	934,827	964,642	965,441	992,503	1,038,334	1,151,252

¹ Revised

² Provisional

Table 28 - Percentage distribution of tourist arrivals by country of residence, 2006 - 2015

Country of residence	2006	2007	2008	2009	2010	2011	2012	2013 ¹	2014 ¹	2015 ²
Australia	2.1	2.2	2.0	1.2	1.2	1.6	1.8	1.8	1.7	1.5
Austria	1.3	1.2	1.0	0.9	1.0	0.9	0.8	0.8	0.8	1.0
Belgium	1.2	1.2	1.3	1.2	1.1	1.2	1.1	1.2	1.1	1.2
Czech Republic	0.3	0.3	0.4	0.4	0.4	0.4	0.5	0.6	0.7	0.6
France	23.1	26.5	27.9	31.6	32.3	29.3	26.6	24.7	23.5	22.1
Germany	7.3	7.2	6.6	5.9	5.7	5.8	5.7	6.1	6.0	6.5
India	4.8	4.7	4.7	4.5	5.3	5.6	5.7	5.8	5.9	6.3
Italy	8.8	7.7	7.1	6.5	6.0	5.5	4.1	3.1	2.8	2.5
Malagasy Rep.	0.9	1.0	1.2	1.0	1.1	1.2	1.4	1.4	1.3	1.1
Netherlands	0.7	0.7	0.7	0.6	0.5	0.5	0.5	0.5	0.5	0.6
People's Rep. of China	0.6	0.9	0.9	0.8	0.8	1.6	2.2	4.2	6.1	7.8
Reunion Island	11.3	10.6	10.3	12.0	12.3	13.7	15.0	14.4	13.6	12.5
Russian Federation	0.6	0.7	0.7	0.6	0.7	1.3	2.0	1.5	1.3	1.0
Seychelles	1.5	1.6	1.1	0.9	1.1	0.9	0.7	0.7	0.7	0.5
S. Africa, Rep. of	9.0	9.0	9.1	8.5	8.7	8.9	9.2	9.5	9.0	8.9
Spain	1.4	1.2	1.3	1.1	0.9	1.0	1.0	0.8	0.8	0.9
Sweden	0.8	1.1	0.9	0.6	0.5	0.4	0.4	0.5	0.6	1.0
Switzerland	2.1	1.9	1.7	1.8	2.0	2.5	2.7	2.8	2.8	2.7
United Arab Emirates	0.2	0.2	0.4	0.4	0.4	0.4	0.6	0.8	0.8	0.8
United Kingdom	13.0	11.8	11.6	11.7	10.4	9.1	9.1	9.9	11.1	11.3
U.S.A	0.7	0.6	0.8	0.8	0.8	0.7	0.7	0.6	0.7	0.7
Other Countries	8.3	7.8	8.2	7.0	6.9	7.2	8.2	8.4	8.4	8.5
All Countries	100.0	100.0	100.0	100.0	100.0	100.0	100.0	100.0	100.0	100.0

¹ Revised

² Provisional

Figure 8 - Percentage distribution of tourist arrivals by country of residence, 2015

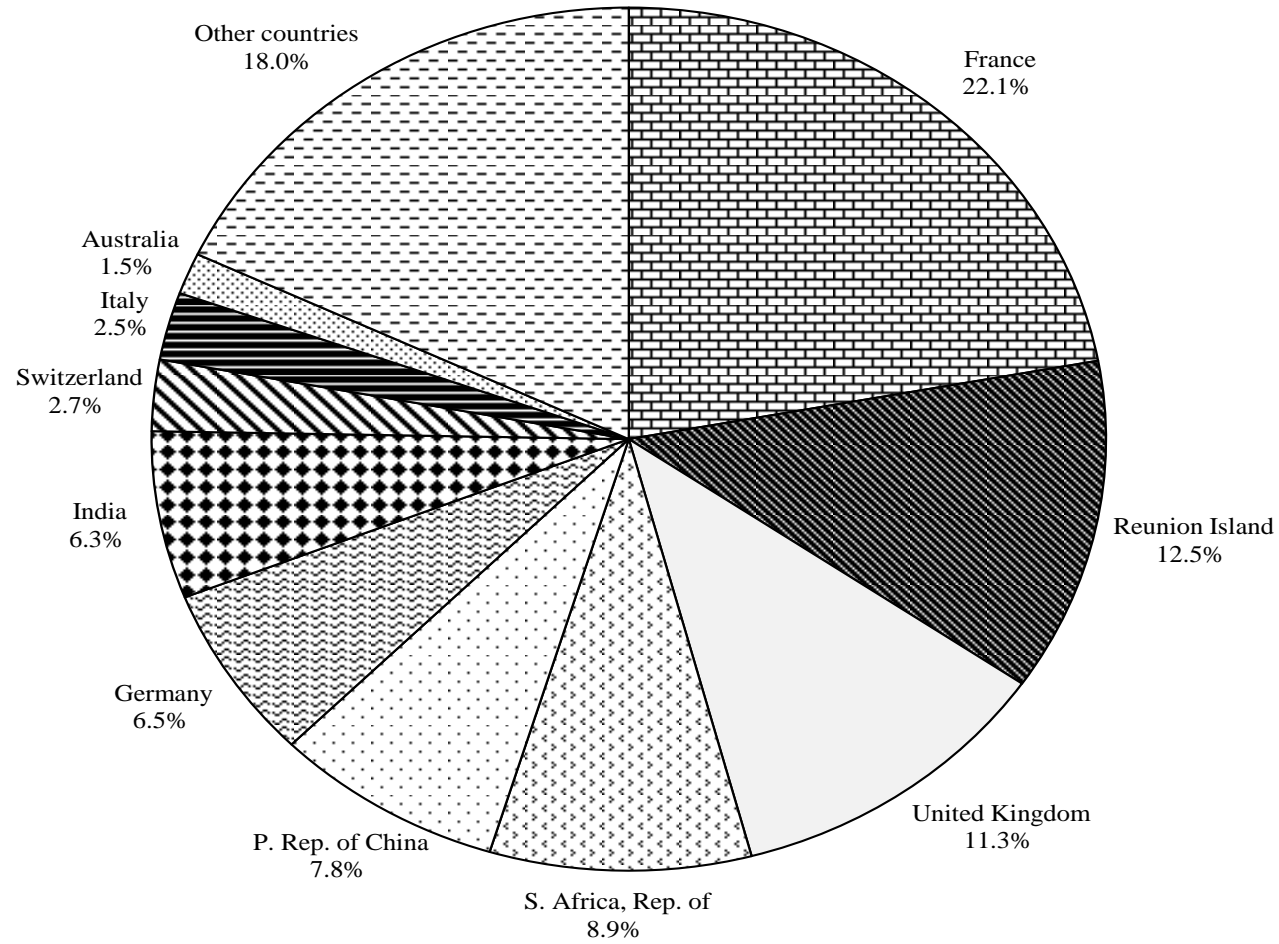


Table 29 - Tourist nights by country of residence, 2006 - 2015

Country of residence	2006	2007	2008	2009	2010 ¹	2011	2012	2013 ²	2014 ²	2015 ³
Australia	126,859	143,482	161,488	138,665	173,841	184,783	219,385	223,008	233,759	239,455
Austria	NA	NA	NA	NA	107,902	100,339	97,043	93,864	101,266	127,358
Belgium	120,987	132,145	148,978	138,764	136,864	141,919	148,383	159,824	163,758	183,529
Czech Republic	NA	NA	NA	NA	NA	NA	NA	57,800	71,756	74,363
France	1,931,005	2,542,172	2,711,413	2,498,920	2,861,792	2,966,510	2,978,517	3,023,973	3,115,424	3,111,266
Germany	655,738	735,938	760,468	579,531	643,932	662,562	663,498	718,706	776,324	887,733
India	336,048	408,128	399,570	376,783	412,802	441,355	515,778	578,976	611,798	688,149
Italy	619,089	600,236	605,457	512,033	509,369	471,977	387,725	331,093	308,522	296,473
Malagasy Rep.	84,400	98,034	107,295	96,282	115,578	107,111	138,998	151,390	181,578	189,158
Netherlands	NA	NA	NA	NA	53,395	52,622	48,432	50,889	53,280	76,752
People's Rep. of China	67,643	88,967	105,990	69,196	95,055	120,641	226,741	376,235	469,163	650,925
Reunion Island	730,678	917,369	790,612	969,927	993,837	1,030,720	1,042,124	1,016,159	996,852	998,274
Russian Federation	NA	NA	NA	NA	72,279	116,692	218,512	184,407	172,525	154,305
Seychelles	108,603	133,595	95,254	67,976	89,750	81,251	66,202	66,468	62,395	58,787
S. Africa, Rep. of	565,627	676,795	699,329	602,983	670,365	704,608	734,287	786,433	784,424	835,862
Spain	NA	NA	NA	NA	68,259	73,841	71,931	68,742	72,554	87,418
Sweden	NA	NA	NA	NA	52,794	49,401	47,556	55,499	64,452	131,795
Switzerland	200,141	207,130	192,797	197,742	241,899	284,738	317,601	347,927	373,111	369,779
United Arab Emirates	NA	NA	NA	NA	36,279	36,271	36,205	45,811	50,912	61,349
United Kingdom	1,152,123	1,141,982	1,189,830	1,281,968	1,205,658	1,057,883	1,140,129	1,370,172	1,528,786	1,599,775
U.S.A.	44,827	49,666	65,761	54,075	51,428	59,440	54,691	57,064	66,462	79,294
Other countries	1,016,911	1,111,295	1,184,383	1,054,459	743,368	749,634	889,945	911,158	1,007,650	1,148,102
All Countries	7,760,679	8,986,934	9,218,625	8,639,304	9,336,446	9,494,297	10,043,683	10,675,598	11,266,751	12,049,901

¹ As from 2010, a new methodology for computation of tourist nights is being used. "Tourist nights" for year Y refer to nights spent by tourists departing in year Y.

² Revised

³ Provisional

NA - Not available

Figure 9 - Total arrivals and tourist arrivals, 2006- 2015

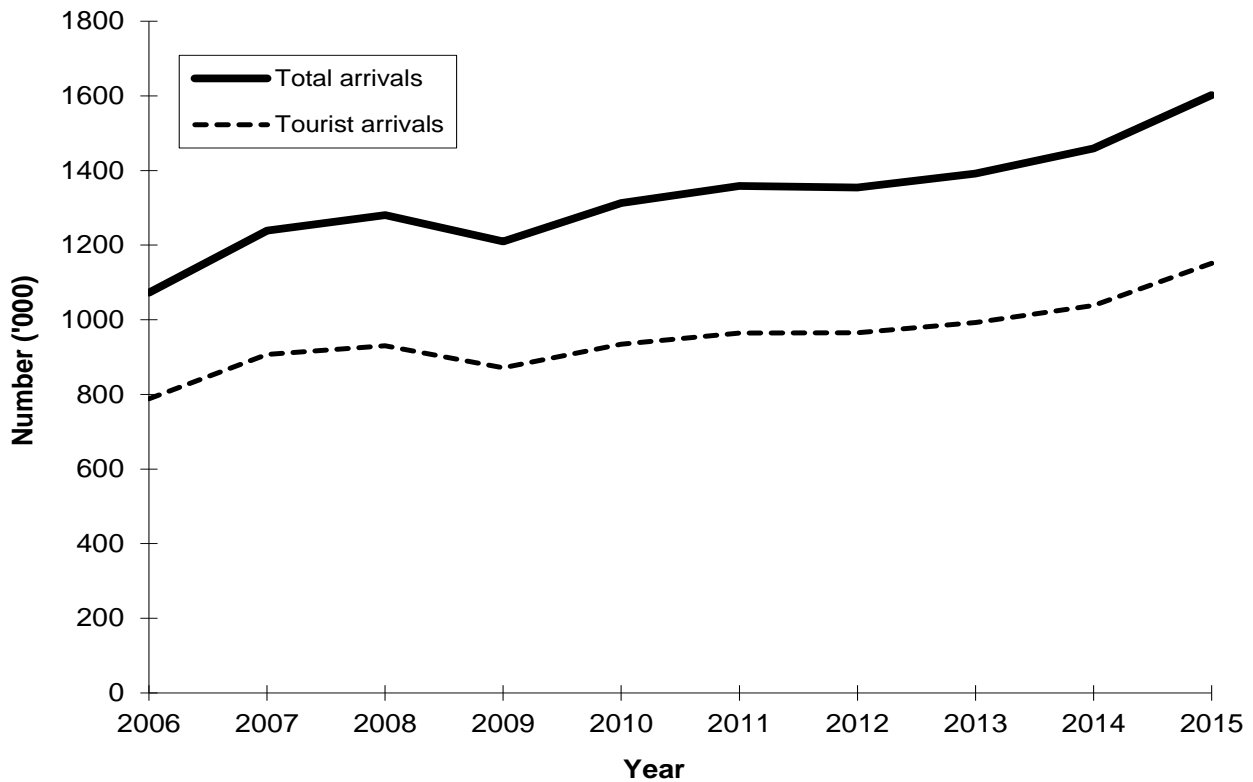


Figure 10 - Tourist nights, 2006- 2015

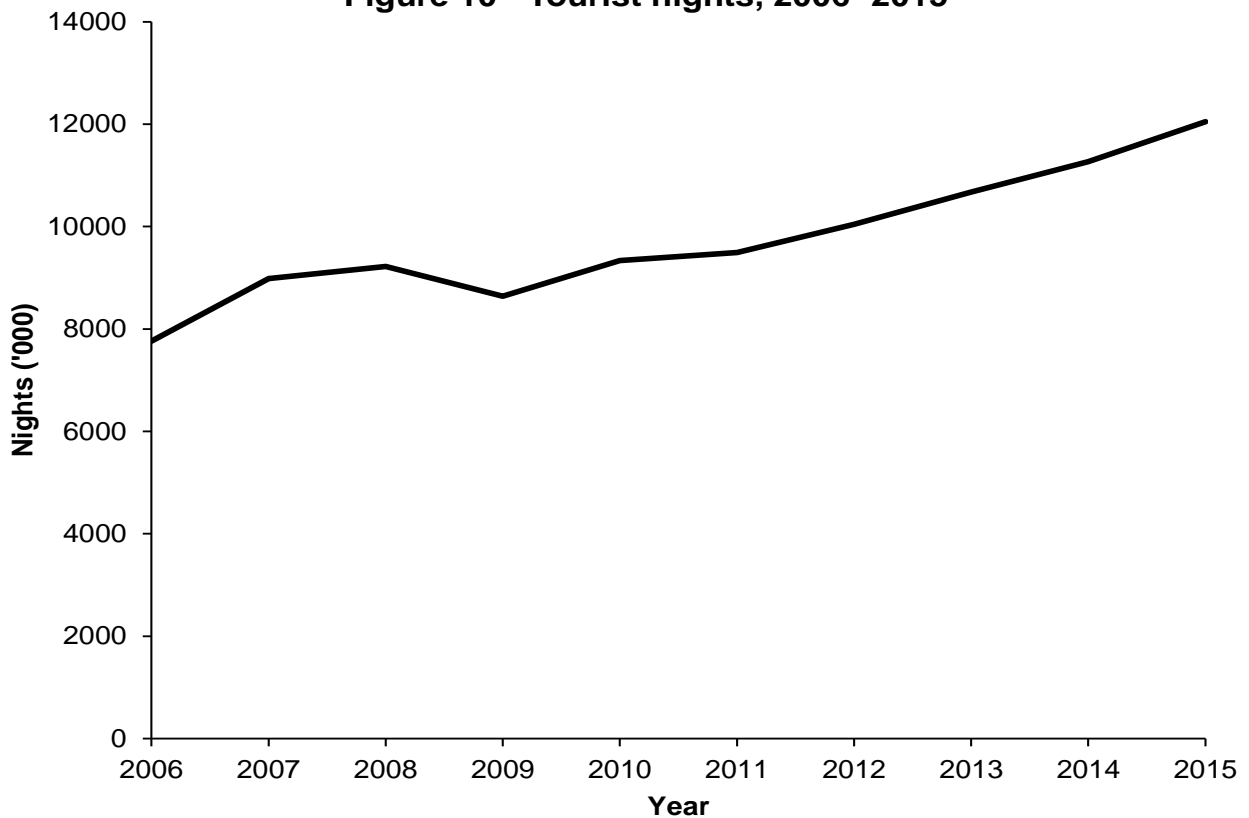


Table 30 - Visitor ¹ arrivals by country of residence and type of passenger, 2013 - 2015

Country of residence	Visitors on holidays			Visitors on business			Visitors in transit			Other visitors			Total visitors		
	2013 ²	2014 ²	2015 ³	2013 ²	2014 ²	2015 ³	2013 ²	2014 ²	2015 ³	2013 ²	2014 ²	2015 ³	2013 ²	2014 ²	2015 ³
Australia	16,030	15,379	16,105	517	602	494	4,108	3,537	3,294	15	19	24	20,670	19,537	19,917
Austria	7,800	8,201	11,280	90	79	96	147	180	272	3	7	17	8,040	8,467	11,665
Belgium	11,146	11,065	13,696	380	369	489	107	116	127	15	12	24	11,648	11,562	14,336
Czech Republic	5,477	6,775	7,155	46	56	99	99	134	90	4	3	6	5,626	6,968	7,350
France	238,132	236,350	245,951	5,104	5,710	6,493	3,807	3,575	4,653	199	263	365	247,242	245,898	257,462
Germany	58,992	61,274	74,109	663	794	711	1,932	1,383	2,409	19	41	38	61,606	63,492	77,267
India	51,188	53,905	64,966	4,960	6,100	5,651	1,197	1,267	1,557	287	363	338	57,632	61,635	72,512
Italy	30,539	28,885	28,594	508	513	484	606	375	1,398	8	22	23	31,661	29,795	30,499
Malagasy Rep.	8,388	8,019	7,680	1,468	1,407	1,737	4,246	3,760	2,921	429	456	349	14,531	13,642	12,687
Netherlands	4,120	4,439	6,543	315	296	329	180	321	229	2	7	7	4,617	5,063	7,108
People's Rep. of China	39,139	60,719	86,204	1,901	1,780	2,161	1,102	1,116	1,665	45	71	54	42,187	63,686	90,084
Reunion Island	137,359	136,274	138,503	2,189	2,252	2,463	6,679	6,026	6,040	691	645	664	146,918	145,197	147,670
Russian Federation	14,448	12,939	11,008	221	162	169	390	386	507	9	7	31	15,068	13,494	11,715
Seychelles	5,325	5,348	4,725	595	563	567	924	714	165	509	367	294	7,353	6,992	5,751
S. Africa Rep. of	85,581	84,517	92,549	7,620	7,542	8,459	2,621	3,831	913	290	230	341	96,112	96,120	102,262
Spain	7,893	8,019	9,203	351	418	539	392	326	601	3	8	10	8,639	8,771	10,353
Sweden	4,488	6,337	11,511	69	99	83	77	60	71	0	1	22	4,634	6,497	11,687
Switzerland	27,186	28,791	30,153	463	399	432	478	726	708	9	20	25	28,136	29,936	31,318
United Arab Emirates	7,535	7,361	8,152	586	589	851	177	213	220	2	9	7	8,300	8,172	9,230
United Kingdom	94,567	111,729	126,068	2,641	2,675	2,876	2,658	4,666	2,407	86	92	99	99,952	119,162	131,450
U.S.A.	4,426	5,304	6,735	1,020	1,015	1,211	1,567	3,322	2,503	9	25	36	7,022	9,666	10,485
Other & N. Stated	63,211	67,527	76,552	11,773	11,362	11,944	11,181	11,413	11,458	1,059	976	1,129	87,224	91,278	101,083
All Countries	922,970	969,157	1,077,442	43,480	44,782	48,338	44,675	47,447	44,208	3,693	3,644	3,903	1,014,818	1,065,030	1,173,891

¹ Visitors include tourists, cruise ship passengers and non-residents who stay in the country for less than a day, other than those who do not leave the airport. Figures include traffic between Rodrigues and Reunion Island.

² Revised

³ Provisional

Table 31(i) - Visitor arrivals¹ by age and gender, 2014 and 2015

Age (years)	Same day visitors						Tourists					
	2014 ²			2015 ³			2014 ²			2015 ³		
	Total	Male	Female	Total	Male	Female	Total	Male	Female	Total	Male	Female
Under 1	47	21	26	37	17	20	6,066	3,048	3,018	6,544	3,364	3,180
1 - 4	249	132	117	200	93	107	33,593	16,993	16,600	36,266	18,385	17,881
5 - 9	403	204	199	306	162	144	44,707	22,810	21,897	49,612	25,208	24,404
10 - 14	507	250	257	436	201	235	43,214	21,851	21,363	47,636	24,017	23,619
15 - 19	611	320	291	548	258	290	34,085	16,132	17,953	38,415	18,117	20,298
20 - 24	1,269	595	674	1,196	546	650	48,202	18,157	30,045	54,080	20,827	33,253
25 - 29	1,465	857	608	1,500	872	628	120,986	54,675	66,311	141,398	64,236	77,162
30 - 34	1,769	1,119	650	1,718	1,073	645	113,499	57,564	55,935	123,944	63,398	60,546
35 - 39	1,715	1,139	576	1,573	1,078	495	94,135	48,986	45,149	101,867	53,188	48,679
40 - 44	1,763	1,204	559	1,738	1,155	583	96,118	50,556	45,562	102,260	53,585	48,675
45 - 49	1,753	1,176	577	1,768	1,159	609	96,173	49,621	46,552	103,866	53,206	50,660
50 - 54	1,890	1,117	773	1,975	1,220	755	93,204	47,907	45,297	103,016	52,931	50,085
55 - 59	1,921	1,047	874	1,768	1,014	754	74,969	38,792	36,177	82,480	42,414	40,066
60 - 64	2,403	1,163	1,240	1,921	982	939	60,354	31,646	28,708	66,506	34,375	32,131
65 - 69	3,299	1,540	1,759	2,383	1,155	1,228	41,433	22,265	19,168	48,240	25,479	22,761
70 & over	5,632	3,000	2,632	3,572	1,948	1,624	37,596	20,128	17,468	45,122	24,330	20,792
All ages	26,696	14,884	11,812	22,639	12,933	9,706	1,038,334	521,131	517,203	1,151,252	577,060	574,192

¹ Visitors include tourists, cruise ship passengers and non-residents who stay in the country for less than a day, other than those who do not leave the airport. Figures include traffic between Rodrigues and Reunion Island.

² Revised

³ Provisional

Table 31(ii) - Tourist arrivals by broad age group and mode of arrival, 2014 and 2015

Age group (years)	2014 ¹			2015 ²		
	Air	Sea	Total	Air	Sea	Total
Under 15	127,211	369	127,580	139,199	859	140,058
15 - 59	769,794	1,577	771,371	842,663	8,663	851,326
60 & over	137,993	1,390	139,383	149,965	9,903	159,868
Total	1,034,998	3,336	1,038,334	1,131,827	19,425	1,151,252

¹ Revised

² Provisional

Table 32 - Visitor departures¹ by duration of stay, 2014 & 2015

Duration of stay	2014 ²		2015 ³	
	Number	Percentage	Number	Percentage
Less than 1 night	26,696	2.5	22,639	1.9
1 night	24,300	2.3	35,391	3.0
2 nights	24,102	2.3	28,263	2.4
3 nights	41,295	3.9	44,121	3.8
4 nights	61,507	5.8	65,086	5.6
5 nights	102,335	9.7	113,547	9.8
6 nights	87,881	8.3	101,796	8.7
7 nights	221,191	20.9	230,969	19.8
8 nights	49,472	4.7	64,748	5.6
9 nights	58,506	5.5	63,815	5.5
10 nights	70,202	6.6	76,356	6.6
11 nights	29,974	2.8	33,538	2.9
12 nights	38,040	3.6	40,625	3.5
13 nights	35,795	3.4	40,970	3.5
14 nights	71,218	6.7	78,680	6.8
15 nights	11,234	1.1	14,447	1.2
16 nights	9,832	0.9	10,244	0.9
17 nights	6,450	0.6	7,383	0.6
18 nights	5,714	0.5	6,169	0.5
19 nights	6,263	0.6	6,376	0.5
20 - 24 nights	25,332	2.4	27,188	2.3
25 - 29 nights	13,494	1.3	14,546	1.2
1 month - under 2 months	22,759	2.2	23,892	2.1
2 months - under 3 months	6,451	0.6	6,398	0.5
3 months and over	7,684	0.7	7,113	0.6
All Countries	1,057,727	100.0	1,164,300	100.0

¹ Include traffic between Rodrigues and Reunion Island

² Revised

³ Provisional

Table 33 - Visitor departures¹ by country of residence and duration of stay, 2015²

Country of residence	Duration of stay (Nights)												
	<1	1 - 2	3 - 4	5 - 6	7 - 8	9 - 10	11 - 12	13 - 14	15 - 19	20 - 24	25 - 29	30+	Total
Australia	2,082	2,684	1,497	2,655	1,761	2,075	699	1,347	1,285	1,258	790	1,700	19,833
Belgium	113	361	617	1,347	3,561	2,589	1,408	1,883	675	538	358	745	14,195
France	3,139	10,354	18,965	24,964	75,784	40,377	20,648	23,456	12,630	8,297	5,331	12,923	256,868
Germany	2,030	3,148	1,584	3,530	9,180	12,314	11,306	22,559	5,910	2,977	653	954	76,145
Hong Kong SAR ²	30	180	154	434	231	92	78	39	61	16	4	34	1,353
India	377	3,105	15,438	40,682	4,460	1,325	507	860	744	626	602	3,066	71,792
Italy	1,314	1,699	738	2,901	12,853	3,551	1,501	3,236	741	569	291	834	30,228
Japan	55	226	481	414	125	41	29	6	10	20	8	18	1,433
Kenya	8	624	1,013	426	807	134	82	65	34	26	20	107	3,346
Malagasy Rep.	472	3,263	1,656	1,360	1,712	831	481	823	374	205	260	1,000	12,437
People's Rep. of China	500	2,183	3,180	58,208	20,007	1,974	876	289	456	197	246	1,376	89,492
Reunion Island	3,825	12,164	31,348	29,627	50,145	8,829	2,885	2,761	2,707	1,302	679	1,899	148,171
Seychelles	99	368	940	730	1,499	512	370	586	247	196	124	163	5,834
Singapore	47	273	294	514	141	129	79	99	89	78	24	46	1,813
S. Africa Rep. of	319	6,044	9,791	13,065	48,157	11,595	3,769	3,924	2,054	1,111	477	1,268	101,574
Switzerland	638	1,011	733	2,433	5,633	5,724	4,497	5,688	2,211	1,254	484	807	31,113
United Kingdom	1,696	3,274	3,192	7,791	27,084	25,990	12,178	33,207	5,477	4,315	2,033	4,307	130,544
U.S.A.	1,939	1,017	1,715	1,946	1,320	591	341	320	359	189	102	367	10,206
Zimbabwe	1	125	371	330	437	217	97	100	37	28	15	85	1,843
Other & not stated	3,955	11,551	15,500	21,986	30,820	21,281	12,332	18,402	8,518	3,986	2,045	5,704	156,080
All Countries	22,639	63,654	109,207	215,343	295,717	140,171	74,163	119,650	44,619	27,188	14,546	37,403	1,164,300

¹ Including traffic between Rodrigues and Reunion Island

² Provisional

³ Special Administrative Region of China

Table 34 - Tourist arrivals and average length of stay of tourists by country of residence, 2014 & 2015

Country of Residence	2014 ¹			2015 ²		
	Tourist arrivals	Departures		Tourist arrivals	Departures	
		Number of tourists	Average length of stay ³ (nights)		Number of tourists	Average length of stay ³ (nights)
Australia	17,434	17,342	13.5	17,835	17,751	13.5
Belgium	11,465	11,302	14.5	14,223	14,082	13.0
France	243,655	243,865	12.8	254,323	253,729	12.3
Germany	62,212	62,196	12.5	75,237	74,115	12.0
Hong Kong SAR ⁴	1,454	1,455	8.7	1,327	1,323	8.3
India	61,162	60,515	10.1	72,135	71,415	9.6
Italy	29,553	29,134	10.6	29,185	28,914	10.3
Japan	1,653	1,651	5.3	1,415	1,378	6.6
Kenya	3,266	3,292	7.6	3,376	3,338	7.8
Malagasy Rep.	13,038	12,884	14.1	12,215	11,965	15.8
People's Rep. of China	63,363	63,496	7.4	89,584	88,992	7.3
Reunion Island	141,659	141,322	7.1	143,845	144,346	6.9
Russian Federation	13,287	13,307	13.0	11,406	11,824	13.1
Seychelles	6,926	6,758	9.2	5,652	5,735	10.3
Singapore	1,849	1,842	9.2	1,779	1,766	9.0
S. Africa, Rep. of	93,075	92,288	8.5	101,943	101,255	8.3
Switzerland	29,273	29,175	12.8	30,680	30,475	12.1
United Arab Emirates	8,000	8,006	6.4	9,049	8,841	6.9
United Kingdom	115,239	114,666	13.3	129,754	128,848	12.4
U.S.A.	7,139	6,864	9.7	8,546	8,267	9.6
Zimbabwe	1,735	1,749	10.5	1,892	1,842	11.2
Other & not stated	111,897	107,922	11.9	135,851	131,460	11.9
All Countries	1,038,334	1,031,031	10.9	1,151,252	1,141,661	10.6

¹ Revised

² Provisional

³ Average length of stay refers to average number of nights spent by tourists departing in the reference period.

⁴ Special Administrative Region of China

Table 35 - Gross earnings from tourism, 2006 - 2015

Earnings (Rs Mn)	2006	2007	2008	2009	2010	2011	2012	2013	2014	2015 ¹
		31,942	40,687	41,213	35,693	39,456	42,717	44,378	40,577	44,304

¹ As from 2015, BoM is also including data culled from Money changers and Foreign exchange dealers.

Source : Bank of Mauritius

Table 36 - Expenditure of tourists by country of residence, 2011 - 2015

Country of residence	Expenditure (Rs Mn)			
	2011	2012	2013	2015 ¹
France	11,362.9	10,316.0	10,991.1	10,622.2
Germany	2,816.3	2,922.9	3,211.3	3,512.4
Italy	2,330.9	1,597.8	1,382.9	1,193.7
Russia	732.4	1,090.9	966.7	764.8
Switzerland	1,270.7	1,436.8	1,709.4	1,708.3
United Kingdom	4,390.6	4,432.1	4,822.9	6,774.2
Reunion Island	3,053.6	3,194.2	3,472.4	3,295.5
South Africa, Rep. of	3,340.4	3,326.7	3,493.1	3,178.2
China	603.7	1,053.1	2,034.4	4,672.6
India	1,691.2	1,727.2	1,784.1	2,411.1
Other countries	6,954.5	7,553.8	8,009.1	11,876.2
All Countries	38,547.1	38,651.4	41,877.3	50,009.1

¹ Provisional

Source: Survey of Inbound Tourism conducted by Statistics Mauritius

Note: Slight discrepancies may occur due to rounding off of figures; Survey of Inbound Tourism was not carried out during the year 2014.

Table 37 - Expenditure of tourists by type of expenditure, 2011 - 2015

Type of expenditure	Expenditure (Rs Mn)			
	2011	2012	2013	2015 ¹
Accommodation	23,197	22,603	24,673	30,270
Meals & Beverages	4,830	5,475	4,194	5,438
Transport	3,019	2,882	3,313	2,261
Entertainment	3,031	3,178	4,558	5,686
Shopping	4,029	4,134	4,413	5,083
Other	441	379	726	1,271
Total	38,547	38,651	41,877	50,009

¹ Provisional

Source: Survey of Inbound Tourism conducted by Statistics Mauritius

Note: Slight discrepancies may occur due to rounding off of figures; Survey of Inbound Tourism was not carried out during the year 2014.

Table 38 - Hotels, rooms and bedplaces, 2006 - 2015

Year	No. of hotels	No. of rooms	No. of bedplaces
2006	98	10,666	21,403
2007	97	10,857	21,788
2008	102	11,488	23,095
2009	102	11,456	23,235
2010	112	12,075	24,698
2011	109	11,925	24,242
2012	117	12,527	25,496
2013	107	12,376	25,105
2014	112	12,799	26,174
2015 ¹	115 ²	13,617	28,732

¹ *Provisional*

² *Two large hotels have merged*

Table 39 - Monthly occupancy rates in large¹ hotels, 2011 - 2015

Month	2011		2012		2013		2014		2015 ²	
	Room	Bed	Room	Bed	Room	Bed	Room	Bed	Room	Bed
January	76	67	76	67	69	61	74	66	77	72
February	70	61	69	60	67	59	69	61	79	73
March	66	58	66	58	66	58	65	57	70	65
April	68	60	66	58	63	56	69	60	71	66
May	57	50	61	54	61	53	62	54	68	63
June	45	39	46	41	42	37	47	41	52	48
July	54	48	53	47	54	48	57	52	65	62
August	60	53	60	52	62	55	67	62	70	67
September	66	58	62	54	67	60	68	61	74	68
October	70	61	70	62	72	64	75	68	77	69
November	76	67	71	63	75	67	78	70	82	72
December	74	65	74	65	74	66	76	71	81	74
Whole Year	65	57	65	57	65	57	67	60	72	67

¹ Large Hotels are well established beach hotels of over 80 rooms

² Provisional

Room Occupancy Rate =
$$\frac{\text{Total number of room nights rented} \times 100}{\text{Total number of room nights available}}$$

Bed Occupancy Rate =
$$\frac{\text{Total number of bed nights rented} \times 100}{\text{Total number of bed nights available}}$$

Table 40 - Monthly occupancy rates in all hotels, 2011 - 2015

Month	2011		2012		2013		2014		2015 ¹	
	Room	Bed	Room	Bed	Room	Bed	Room	Bed	Room	Bed
January	75	66	74	65	67	59	72	64	75	69
February	68	60	67	59	66	57	67	59	75	69
March	64	57	65	57	63	56	64	56	68	62
April	64	57	62	55	60	53	65	57	68	63
May	55	49	59	52	58	51	59	52	66	60
June	44	38	45	39	42	36	46	41	51	46
July	53	47	52	45	53	47	54	49	61	58
August	57	51	56	50	60	53	62	57	66	63
September	64	57	60	53	65	57	64	58	70	64
October	68	60	67	59	71	63	71	65	74	65
November	74	66	69	61	74	65	76	67	79	68
December	73	64	71	63	73	65	74	68	78	71
Whole Year	65	57	62	55	63	55	65	58	70	63

¹ Provisional

Room Occupancy Rate = $\frac{\text{Total number of room nights rented} \times 100}{\text{Total number of room nights available}}$

Bed Occupancy Rate = $\frac{\text{Total number of bed nights rented} \times 100}{\text{Total number of bed nights available}}$

APPENDIX

Welcome to Mauritius / Bienvenue à Maurice
DISEMBARKATION CARD / FICHE DE DEBARQUEMENT
(Regulation 23 of the Passports Regulations 1969)

Flight No.
No. de vol

Surname
Nom

First Name/s
Prenom/s

Male Female Date of birth
Masculin Féminin Date de naissance

Country of Birth
Pays de naissance

Nationality
Nationalité

Profession

Passport Number
Numéro du passeport

Date of expiry
Date d'Expiration

Country of Issue
Pays de Délivrance

Country of residence
Pays de résidence

Street
Rue

Town/City
Ville/Cité

Port of Embarkation
Port d'Embarquement

Purpose: Holidays: Other:
Motif: Vacances: Autre:

Duration of Stay
Durée du Séjour Days Months Years
Jours Mois Années

Address during Stay
Adresse durant le Séjour

Tel:

Countries visited in Asia, Africa or South America during the last six months.
Pays visités en Asie, en Afrique ou en Amérique du Sud au cours des six derniers mois.

Are you suffering from fever? Yes No
Souffrez-vous de la fièvre Oui Non

DECLARATION

I declare that all the information I have given is true and complete. I understand that I shall commit an offence if I refuse to fill-in the card or knowingly give false information.

Je déclare qu'à ma connaissance toutes les informations fournies sont exactes et complètes. Je suis conscient que le fait de ne pas remplir cette fiche ou toute fausse déclaration de ma part pourrait entraîner des poursuites pénales.

Date

Signature