



**Republic of Mauritius**

**Digest of International Travel  
and Tourism Statistics  
2012**

**Ministry of Finance and Economic Development  
Statistics Mauritius**

**DIGEST OF**  
**INTERNATIONAL TRAVEL**  
**AND**  
**TOURISM STATISTICS**  
**2012**

# **INTERNATIONAL TRAVEL AND TOURISM STATISTICS**

**Vol. 39**

**2012**

"International Travel and Tourism Statistics" is a regular publication of the Statistics Mauritius, designed to present in a single report, detailed statistics concerning international travel and tourism relating to Mauritius.

The statistical tables presented in this report have been compiled from data collected from the passport of travellers, disembarkation cards filled in by non-residents, questions put to non-residents entering the country, hotels and administrative records.

Statistical data on International Travel and Tourism are constantly updated as more reliable information become available, necessitating minor changes over previous issues of this publication. The figures published in this issue therefore supersede those of all previous issues.

It is hoped that the data herewith assembled will prove useful to the public in general and to policy makers, planners and research workers in particular.

The publication of this report has been made possible with the collaboration of the Passport and Immigration Office and the Ministry of Tourism and Leisure. Their co-operation is herewith gratefully acknowledged.

L.F Cheung Kai Suet

Director of Statistics

Statistics Mauritius  
Ministry of Finance and Economic Development  
PORT LOUIS  
MAURITIUS  
November 2013

## CONTENTS

<b>Table</b>		<b>Page</b>
<b>I - POPULATION AND VITAL STATISTICS</b>		
1	- Estimated resident population of Republic of Mauritius as at 31st December, 2011 & 2012	5
2	- Population growth in intercensal periods - Island of Mauritius, 1851 - 2011	5
3	- Population growth in intercensal periods - Island of Rodrigues, 1851 - 2011	6
4	- Estimated resident population by geographical district and sex - Republic of Mauritius, 2011 & 2012 (End of year estimates)	7
5	- Population and vital statistics - Republic of Mauritius, 1977 - 2012	8
6	- Growth of the resident population and vital statistics - Island of Mauritius, 2003 - 2012	9
7	- Growth of the resident population and vital statistics - Island of Rodrigues, 2003 - 2012	10
<b>II - PASSENGER TRAFFIC</b>		
8	- Passenger traffic by sex, 1992 - 2012	11
9	- Passenger traffic between Islands of Mauritius and Rodrigues, 1992 - 2012	12
10	- Passenger traffic by mode of transport, 1992 - 2012	16
11	- Passenger traffic by month, 2009 - 2012	17
12	- Arrivals by country of original embarkation, 2007 - 2012	18
13	- Departures by country of final destination, 2007 - 2012	19
14	- Monthly passenger traffic by type of passenger, 2012	20
15	- Passenger traffic by type of passenger, 2003 - 2012	21
16	- Total arrivals by age and sex, 2011 & 2012	22
17	- Total departures by age and sex, 2011 & 2012	23
18	- Excess of arrivals over departures by age and sex, 2011 & 2012	24
19	- Arrivals of Mauritian residents by age and sex, 2011 & 2012	25
20	- Departures of Mauritian residents by age and sex, 2011 & 2012	26
21	- Excess of arrivals over departures of Mauritian residents by age and sex, 2011 & 2012	27
22	- Arrivals and departures of Mauritian residents by country of embarkation and disembarkation, 2010 - 2012	28

## **CONTENTS**

<b>Table</b>		<b>Page</b>
	<b>III - TOURISM</b>	
	<b>Definition and notes</b>	29
23	- Tourist arrivals by mode of transport and tourist nights spent during period, 1996 - 2012	31
24	- Tourist arrivals by month of arrival, 2003 - 2012	32
25	- Percentage distribution of tourist arrivals by month of arrival, 2003 - 2012	34
26	- Tourist arrivals by country of residence and sex, 2011 and 2012	35
27	- Tourist arrivals by country of residence, 2003 - 2012	36
28	- Percentage distribution of tourist arrivals by country of residence, 2003 - 2012	37
29	- Tourist nights by country of residence, 2003 - 2012	39
30	- Visitor arrivals by country of residence and type of passenger, 2010 - 2012	42
31	- Visitor arrivals by age and sex, 2011 & 2012	43
32	- Visitor arrivals by duration of stay, 2011 & 2012	44
33	- Visitor arrivals by country of residence and duration of stay, 2012	45
34	- Tourist arrivals and average length of stay of tourists by country of residence, 2011 and 2012	46
35	- Gross earnings from tourism, 2003 - 2012	47
36	- Expenditure of tourists by country of residence, 1998 - 2010	47
37	- Expenditure of tourists by type of expenditure, 1998 - 2010	48
38	- Hotels, rooms and bedplaces, 2003 - 2012	49
39	- Monthly occupancy rates in large hotels, 2008 - 2012	50
40	- Monthly occupancy rates in all hotels, 2008 - 2012	51

## **CONTENTS**

	<b>Page</b>
<b><u>ILLUSTRATIONS</u></b>	
Fig. 1 - Passenger Traffic: Total arrivals by sex, 1996 - 2012	13
2 - Passenger Traffic: Total departures by sex, 1996 - 2012	14
3 - Passenger Traffic: Total arrivals and total departures, 2003 - 2012	15
4 - Tourist arrivals by month, 2008 - 2012	33
5 - Percentage distribution of tourist arrivals by country of residence, 2012	38
6 - Total arrivals and tourist arrivals, 2003 - 2012	40
7 - Tourist nights, 2003 - 2012	41

**The following symbol is used throughout :-**

**" - " for Nil**

**Appendix : Disembarkation Card**

\*\*\*\*\*

### **Contact persons:**

Ms. M. V. Luchmun, Statistician or  
Mr. E. Romjon, Senior Statistical Officer  
Ministry of Tourism and Leisure  
3<sup>rd</sup> Floor, Victoria House  
Port Louis  
Tel: (230) 211-9042  
Fax: (230) 210-3901  
Email: sm-tourism@mail.gov.mu

## I - POPULATION AND VITAL STATISTICS

**Table 1 - Estimated resident population of Republic of Mauritius  
as at 31st December, 2011 & 2012 <sup>1</sup>**

Year	Island	Both sexes	Male	Female	Area ( sq km)	Density (persons/km <sup>2</sup> )
<b>2011</b>	Mauritius	1,250,349	615,846	634,503	1,864.8	671
	Rodrigues	38,046	18,815	19,231	104.0	366
	Other	289	193	96	71.2	4
	<b>Republic of Mauritius</b>	<b>1,288,684</b>	<b>634,854</b>	<b>653,830</b>	<b>2,040.0</b>	<b>632</b>
<b>2012</b>	Mauritius	1,255,011	617,902	637,109	1,864.8	673
	Rodrigues	38,242	18,900	19,342	104.0	368
	Other	289	193	96	71.2	4
	<b>Republic of Mauritius</b>	<b>1,293,542</b>	<b>636,995</b>	<b>656,547</b>	<b>2,040.0</b>	<b>634</b>

<sup>1</sup> based on the 2000 population census data adjusted for underenumeration of young children.

**Table2 - Population growth in intercensal periods - Island of Mauritius, 1851 - 2011**

Census Date	Population enumerated at census			Intercensal increase	Average annual rate of increase(%)
	Both sexes	Male	Female		
20 Nov. 1851	180,823	119,341	61,482	22,361	2.55
8 Apr. 1861	310,050	202,961	107,089	129,227	5.91
11 Apr. 1871	316,042	193,575	122,467	5,992	0.19
4 Apr. 1881	359,874	208,655	151,219	43,832	1.31
6 Mar. 1891	370,588	206,038	164,550	10,714	0.29
1 Apr. 1901	371,023	199,552	171,471	435	0.01
31 Mar. 1911	368,791	194,095	174,696	-2,232	-0.06
21 May. 1921	376,485	194,108	182,377	7,694	0.21
26 Apr. 1931	393,238	200,609	192,629	16,753	0.44
11 Jun. 1944	419,185	210,326	208,859	25,947	0.49
30 Jun. 1952	501,415	252,032	249,383	82,230	2.26
30 Jun. 1962 <sup>1</sup>	681,619	342,306	339,313	180,204	3.12
30 Jun. 1972 <sup>1</sup>	826,199	413,580	412,619	144,580	1.94
2 Jul. 1983 <sup>1</sup>	966,863	481,368	485,495	140,664	1.44
1 Jul. 1990 <sup>2</sup>	1,022,456	510,676	511,780	55,593	0.80
2 Jul. 2000 <sup>2</sup>	1,143,069	566,056	577,013	120,613	1.12
3 Jul. 2011 <sup>2</sup>	1,196,383	590,944	605,439	53,314	0.42

<sup>1</sup> " De facto " population

<sup>2</sup> " De jure " population

**Table 3 - Population growth in intercensal periods - Island of Rodrigues,  
1851 - 2011**

Census Date	Population enumerated at census			Inter-censal increase	Average annual rate of increase (%)
	Both sexes	Male	Female		
20 Nov. 1851	495	327	168	-	-
8 Apr. 1861	693	464	229	198	3.65
11 Apr. 1871	1,108	693	415	415	4.80
4 Apr. 1881	1,431	812	619	323	2.59
6 Mar. 1891	2,068	1,154	914	637	3.75
1 Apr. 1901	3,162	1,685	1,477	1,094	4.34
31 Mar. 1911	4,829	2,523	2,306	1,667	4.33
21 May. 1921	6,584	3,300	3,284	1,755	3.15
26 Apr. 1931	8,202	4,033	4,169	1,618	2.22
11 Jun. 1944	11,885	5,740	6,145	3,683	2.89
30 Jun. 1952	13,333	5,947	7,386	1,448	1.45
30 Jun. 1962	18,335	9,062	9,273	5,002	3.24
30 Jun. 1972 <sup>1</sup>	24,769	12,270	12,499	6,434	3.05
2 Jul. 1983 <sup>1</sup>	33,082	16,552	16,530	8,313	2.67
1 Jul. 1990 <sup>2</sup>	34,204	17,084	17,120	1,122	0.48
2 Jul. 2000 <sup>2</sup>	35,779	17,700	18,079	1,575	0.45
3 Jul. 2011 <sup>2</sup>	40,434	19,904	20,530	4,655	1.12

<sup>1</sup> " De facto " population

<sup>2</sup> " De jure " population



**Table 4 - Estimated resident population by geographical district and sex - Republic of Mauritius, 2011 & 2012**  
**(End of year estimates) <sup>1</sup>**

Geographical district	Area (km <sup>2</sup> )	31st December 2011			31st December 2012		
		Both sexes	Male	Female	Both sexes	Male	Female
Port Louis	42.7	128,009	63,053	64,956	127,454	62,752	64,702
Pamplemousses	178.7	139,424	68,721	70,703	140,511	69,202	71,309
Riviere du Rempart	147.6	109,751	54,139	55,612	110,235	54,345	55,890
Flacq	297.9	140,952	70,152	70,800	141,586	70,395	71,191
Grand Port	260.3	115,939	57,377	58,562	116,211	57,566	58,645
Savanne	244.8	70,568	34,908	35,660	70,575	34,896	35,679
Plaines Wilhems	203.3	386,248	188,319	197,929	387,372	188,757	198,615
Moka	230.5	81,566	40,259	41,307	81,820	40,388	41,432
Black River	259.0	77,892	38,918	38,974	79,247	39,601	39,646
Island of Mauritius	1,864.8	1,250,349	615,846	634,503	1,255,011	617,902	637,109
Island of Rodrigues	104.0	38,046	18,815	19,231	38,242	18,900	19,342
Other <sup>2</sup>	71.2	289	193	96	289	193	96
<b>Republic of Mauritius</b>	<b>2,040.0</b>	<b>1,288,684</b>	<b>634,854</b>	<b>653,830</b>	<b>1,293,542</b>	<b>636,995</b>	<b>656,547</b>

<sup>1</sup> based on the 2000 population census data adjusted for underenumeration of young children. Internal migration within districts is assumed to be the same as the net annual internal migration during 1995 - 2000 (obtained from the 2000 census)

<sup>2</sup> includes Agalega and St Brandon.

**Table 5 - Population and vital statistics - Republic of Mauritius, 1977 - 2012**

Year	Population at mid-year <sup>1</sup>	Live births	Deaths	Infant deaths	Still births	Civil marriages <sup>2</sup>	Divorces <sup>3</sup>
1977	918,005	23,859	7,154	1,087	742	8,632	197
1978	933,499	25,278	6,596	876	680	10,741	255
1979	949,888	26,163	6,871	891	668	9,327	265
1980	966,039	26,294	6,919	864	662	8,894	351
1981	980,462	24,967	6,653	884	590	8,406	305
1982	992,521	22,459	6,584	682	458	10,768	312
1983	1,001,691	21,073	6,532	570	403	10,255	361
1984	1,012,221	20,332	6,646	505	404	10,865	471
1985	1,020,528	19,376	6,906	487	383	11,245	460
1986	1,028,360	19,170	6,805	524	365	10,556	616
1987	1,036,082	20,033	6,753	504	363	11,392	842
1988	1,043,239	20,941	6,879	471	374	11,453	740
1989	1,051,260	21,822	7,149	498	415	11,197	711
1990	1,058,775	22,602	7,031	462	365	11,425	549
1991	1,070,266	22,197	7,027	413	400	11,295	707
1992	1,084,441	22,902	7,023	426	291	11,408	781
1993	1,097,374	22,329	7,433	438	337	11,576	762
1994	1,112,846	21,795	7,402	394	274	11,414	733
1995	1,122,457	20,549	7,465	404	299	10,624	801
1996	1,133,996	20,763	7,670	459	266	10,700	792
1997	1,148,284	20,012	7,986	406	257	10,887	891
1998	1,160,421	19,434	7,839	376	227	10,898	1,012
1999	1,175,267	20,311	7,944	396	226	11,295	1,150
2000	1,186,873	20,205	7,982	322	266	10,963	1,191
2001	1,199,881	19,696	7,983	282	244	10,635	1,512
2002	1,210,196	19,983	8,310	297	203	10,484	1,291
2003	1,222,811	19,343	8,520	250	220	10,812	1,190
2004	1,233,386	19,230	8,475	277	191	11,385	1,162
2005	1,243,253	18,820	8,646	248	185	11,294	1,133
2006	1,252,698	17,604	9,162	249	147	11,471	1,379
2007	1,260,403	17,034	8,498	261	172	11,547	1,302
2008	1,268,565	16,372	9,004	236	165	11,197	1,569
2009	1,275,032	15,344	9,224	205	138	10,619	2,154
2010	1,280,924	15,005	9,131	187	103	10,555	1,837
2011	1,286,051	14,701	9,170	189	139	10,499	1,788
2012	1,291,167	14,494	9,343	199	140	10,382	2,003

<sup>1</sup> Figures for 1976 - 1982, 1984 - 1989 and 1991 - 1999 have been respectively revised in the light of the 1983, 1990 and 2000 population census data adjusted for underenumeration of young children.

<sup>2</sup> The increase in the number of civil marriages as from 1982 is due largely to improved registration of religious marriages with the coming into force of a new Civil Status Act as from January, 1982.

<sup>3</sup> Source: Judicial Department

**Table 6 - Growth of the resident population and vital statistics - Island of Mauritius, 2002 - 2012**

Year	Population at beginning of year	Natural movement			Net migration	Total increase	% change during the year due to:			Population at end of year
		Live births	Deaths	Natural increase			Natural increase	Migration	Total	
2002	1,169,303	19,169	8,081	11,088	-202	10,886	0.95	-0.02	0.93	1,180,189
2003	1,180,189	18,518	8,310	10,208	939	11,147	0.86	+0.08	0.94	1,191,336
2004	1,191,336	18,285	8,259	10,026	-362	9,664	0.84	-0.03	0.81	1,201,000
2005	1,201,000	17,924	8,422	9,502	800	10,302	0.79	+0.07	0.86	1,211,302
2006	1,211,302	16,723	8,917	7,806	100	7,906	0.64	+0.01	0.65	1,219,208
2007	1,219,208	16,190	8,323	7,867	0	7,867	0.65	0.00	0.65	1,227,075
2008	1,227,075	15,590	8,798	6,792	175	6,967	0.55	+0.01	0.56	1,234,042
2009	1,234,042	14,623	8,987	5,636	110	5,746	0.46	+0.01	0.47	1,239,788
2010	1,239,788	14,291	8,891	5,400	100	5,500	0.44	+0.01	0.45	1,245,288
2011	1,245,288	14,002	8,951	5,051	10	5,061	0.41	0.00	0.41	1,250,349
2012	1,250,349	13,766	9,103	4,663	-1	4,662	0.37	0.00	0.37	1,255,011

**Table 7 - Growth of the resident population and vital statistics - Island of Rodrigues, 2002 - 2012**

Year	Population at beginning of year	Natural movement			Net migration	Total increase	% change during the year due to:			Population at end of year
		Live births	Deaths	Natural increase			Natural increase	Migration	Total	
2002	36,085	814	229	585	-367	218	1.62	-1.02	0.60	36,303
2003	36,303	825	210	615	-415	200	1.69	-1.14	0.55	36,503
2004	36,503	945	216	729	-460	269	2.00	-1.26	0.74	36,772
2005	36,772	896	224	672	-450	222	1.83	-1.22	0.61	36,994
2006	36,994	881	245	636	-400	236	1.72	-1.08	0.64	37,230
2007	37,230	844	175	669	-400	269	1.80	-1.07	0.73	37,499
2008	37,499	782	206	576	-375	201	1.54	-1.00	0.54	37,700
2009	37,700	721	237	484	-410	74	1.28	-1.09	0.19	37,774
2010	37,774	714	240	474	-410	64	1.25	-1.08	0.17	37,838
2011	37,838	699	219	480	-272	208	1.27	-0.72	0.55	38,046
2012	38,046	728	240	488	-292	196	1.28	-0.77	0.51	38,242

## II - PASSENGER TRAFFIC

**Table 8 - Passenger traffic<sup>1</sup> by sex, 1992 - 2012**

Period	Arrivals			Departures			Arrivals minus Departures
	Both Sexes	Male	Female	Both Sexes	Male	Female	
1992	475,920	262,660	213,260	472,010	258,320	213,690	+ 3,910
1993	523,740	280,910	242,830	520,400	281,100	239,300	+ 3,340
1994	558,136	295,259	262,877	557,575	295,500	262,075	+ 561
1995	579,993	304,705	275,288	578,481	304,245	274,236	+ 1,512
1996	672,070	350,561	321,509	663,501	345,892	317,609	+ 8,569
1997	743,291	378,593	364,698	737,523	379,841	357,682	+ 5,768
1998	778,574	367,914	410,660	775,998	382,567	393,431	+ 2,576
1999	823,085	434,667	388,418	809,233	428,234	380,999	+ 13,852
2000	915,203	480,879	434,324	895,569	469,902	425,667	+ 19,634
2001	910,489	477,984	432,505	903,073	473,096	429,977	+ 7,416
2002	951,090	498,177	452,913	942,876	494,212	448,664	+ 8,214
2003	968,906	510,212	458,694	947,774	497,011	450,763	+ 21,132
2004	1,000,545	523,961	476,584	979,322	511,734	467,588	+ 21,223
2005	1,043,900	544,520	499,380	1,029,666	538,113	491,553	+ 14,234
2006	1,072,879	562,766	510,113	1,060,074	555,279	504,795	+ 12,805
2007	1,238,826	648,554	590,272	1,237,747	645,657	592,090	+ 1,079
2008	1,280,640	669,919	610,721	1,261,182	658,947	602,235	+ 19,458
2009	1,210,005	623,925	586,080	1,206,550	623,551	582,999	+ 3,455
2010	1,312,700	677,067	635,633	1,317,581	679,362	638,219	- 4,881
2011	1,358,951	703,094	655,857	1,358,562	702,039	656,523	+ 389
2012	1,354,589	702,943	651,646	1,353,618	702,000	651,618	+ 971

<sup>1</sup> Includes traffic between Island of Mauritius and Rodrigues. As from 1994, figures of the passenger traffic also include cruise travellers, i.e passengers and crews of cruise ships.

**Table 9 - Passenger traffic<sup>1</sup> between Islands of Mauritius and Rodrigues, 1992 - 2012**

Period	Arrivals in Rodrigues			Departures from Rodrigues			Arrivals minus Departures
	Both Sexes	Male	Female	Both Sexes	Male	Female	
1992	19,064	11,629	7,435	19,865	11,887	7,978	- 801
1993	22,819	13,973	8,846	23,476	14,094	9,382	- 657
1994	23,292	14,174	9,118	23,636	14,177	9,459	- 344
1995	24,150	14,532	9,618	24,820	14,603	10,217	- 670
1996	29,129	16,947	12,182	29,370	16,861	12,509	- 241
1997	37,765	22,120	15,645	38,014	22,096	15,918	- 249
1998	40,648	24,181	16,467	40,553	23,072	17,481	+ 95
1999	45,117	28,384	16,733	45,154	26,961	18,193	- 37
2000	49,530	28,280	21,250	49,981	29,436	20,545	- 451
2001	52,777	30,320	22,457	52,307	30,760	21,547	+ 470
2002	60,355	34,647	25,708	59,984	34,004	25,980	+ 371
2003	63,649	37,203	26,446	63,937	37,673	26,264	- 288
2004	60,862	34,467	26,395	60,830	34,314	26,516	+ 32
2005	53,534	29,805	23,729	53,987	29,447	24,540	- 453
2006	55,368	31,395	23,973	56,015	31,822	24,193	- 647
2007	61,617	33,991	27,626	61,595	33,735	27,860	+ 22
2008	54,433	29,713	24,720	54,212	29,260	24,952	+ 221
2009	52,981	28,337	24,644	53,426	28,341	25,085	- 445
2010	60,573	31,624	28,949	60,662	32,101	28,561	- 89
2011	65,423	34,417	31,006	64,564	33,938	30,626	+ 859
2012	67,527	35,666	31,861	67,745	36,372	31,373	- 218

<sup>1</sup> Includes residents and non-residents

Fig 1 - Passenger traffic : Total arrivals by sex, 1996 - 2012

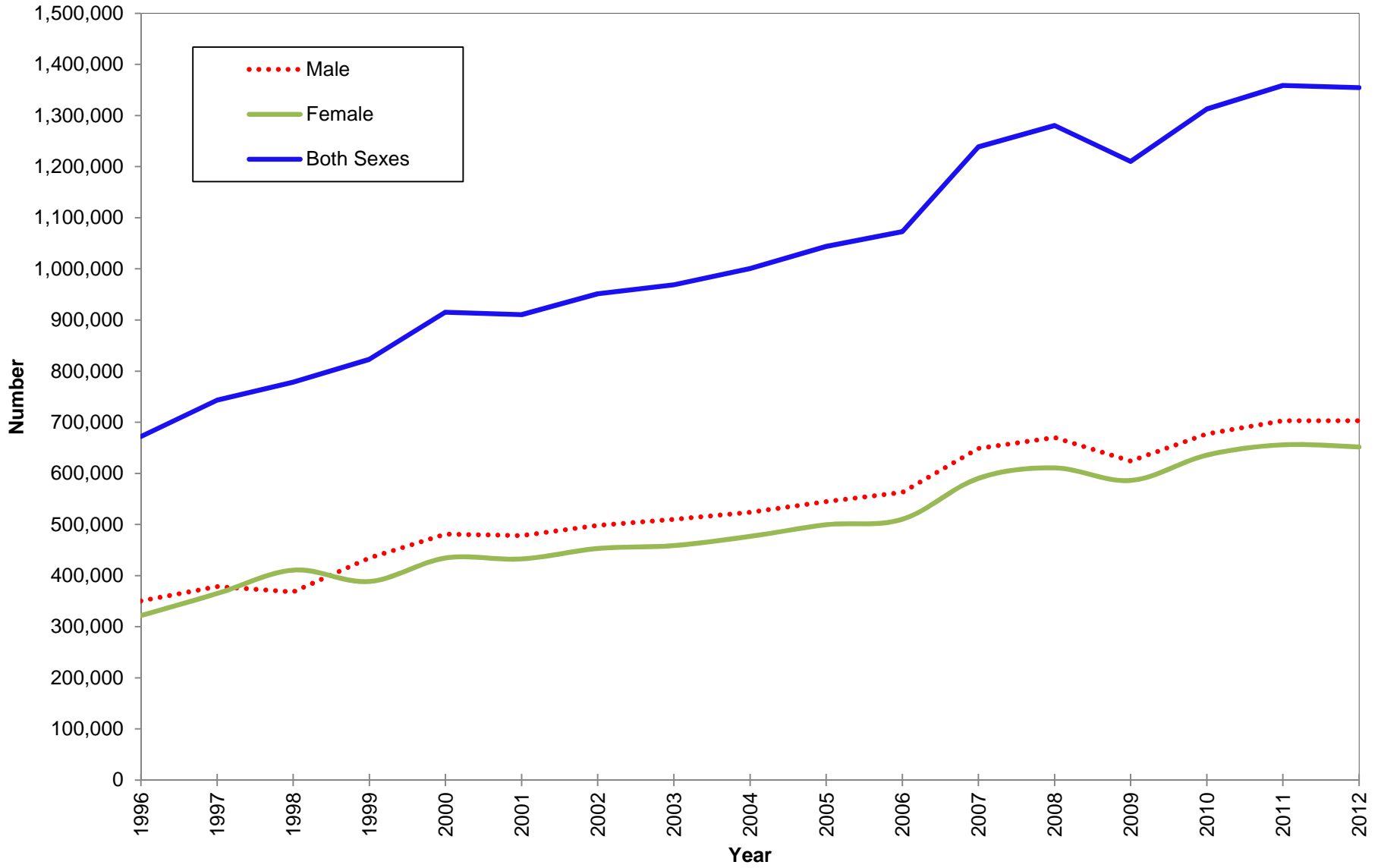
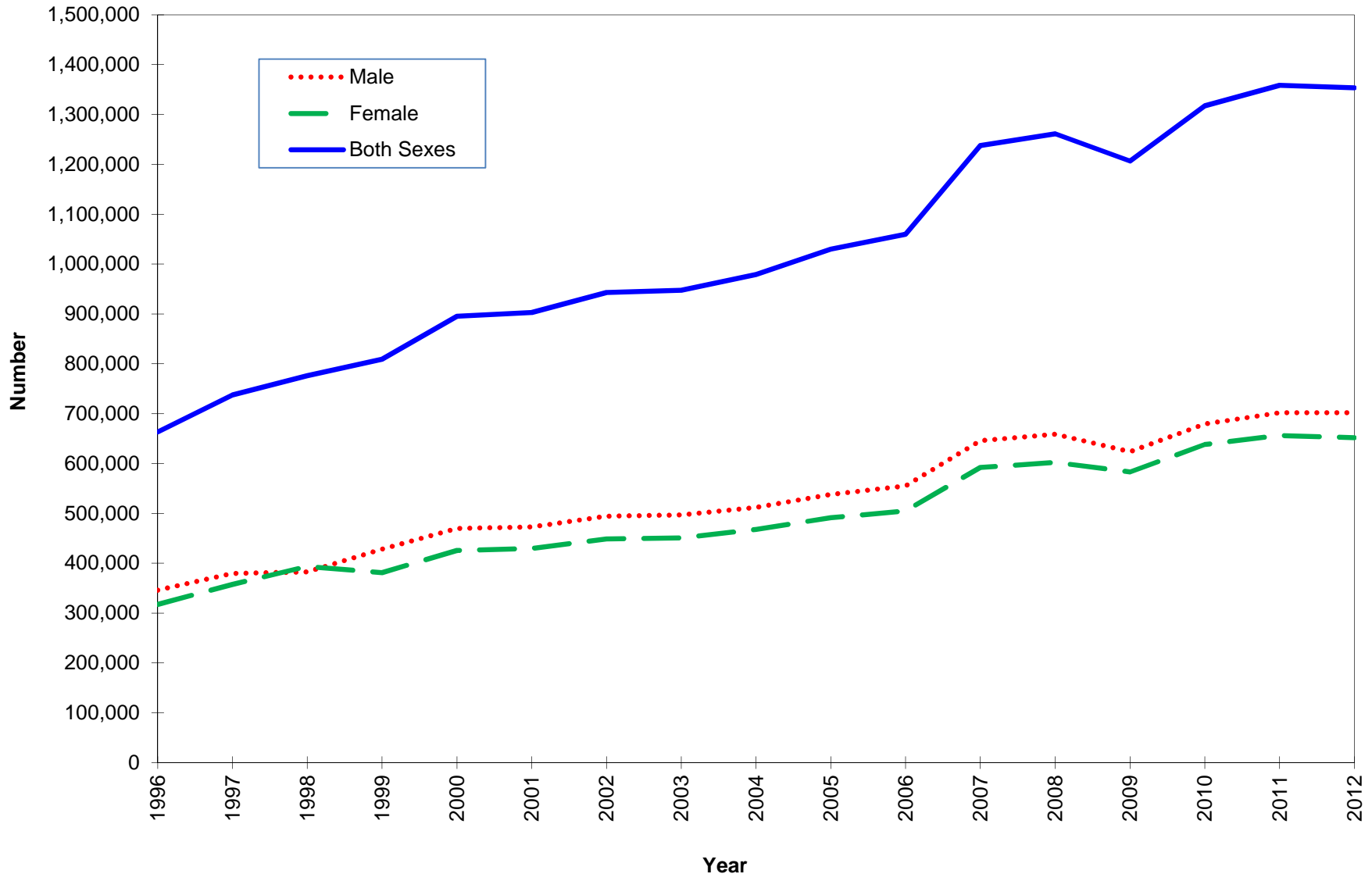
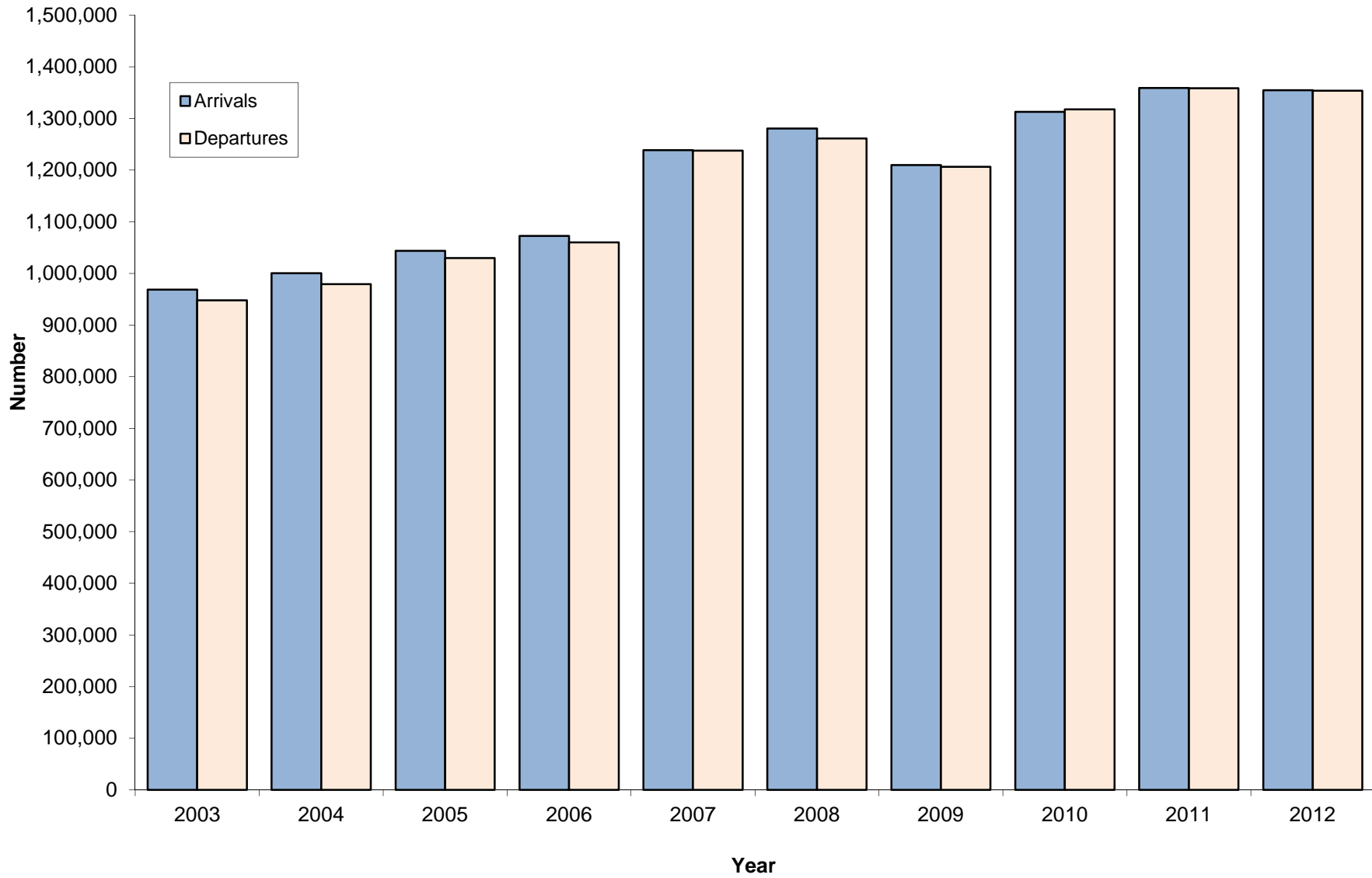


Fig 2 - Passenger traffic: Total departures by sex, 1996 - 2012





**Fig. 3 - Passenger traffic : Total arrivals and total departures, 2003 - 2012**



**Table 10 - Passenger traffic <sup>1</sup> by mode of transport, 1992 - 2012**

Period	Arrivals			Departures			Arrivals minus Departures
	Total	By sea	By air	Total	By sea	By air	
1992	475,920	9,260	466,660	472,010	6,780	465,230	+ 3,910
1993	523,740	13,530	510,210	520,400	11,890	508,510	+ 3,340
1994	558,136	19,461	538,675	557,575	17,663	539,912	+ 561
1995	579,993	18,854	561,139	578,481	17,895	560,586	+ 1,512
1996	672,070	27,308	644,762	663,501	24,794	638,707	+ 8,569
1997	743,291	29,756	713,535	737,523	27,390	710,133	+ 5,768
1998	778,574	43,706	734,868	775,998	40,809	735,189	+ 2,576
1999	823,085	40,499	782,586	809,233	39,230	770,003	+ 13,852
2000	915,203	34,262	880,941	895,569	33,368	862,201	+ 19,634
2001	910,489	27,847	882,642	903,073	26,313	876,760	+ 7,416
2002	951,090	43,890	907,200	942,876	42,630	900,246	+ 8,214
2003	968,906	31,296	937,610	947,774	28,936	918,838	+ 21,132
2004	1,000,545	32,238	968,307	979,322	28,609	950,713	+ 21,223
2005	1,043,900	35,422	1,008,478	1,029,666	35,478	994,188	+ 14,234
2006	1,072,879	31,713	1,041,166	1,060,074	28,725	1,031,349	+ 12,805
2007	1,238,826	33,373	1,205,453	1,237,747	31,001	1,206,746	+ 1,079
2008	1,280,640	48,311	1,232,329	1,261,182	47,494	1,213,688	+ 19,458
2009	1,210,005	54,396	1,155,609	1,206,550	49,005	1,157,545	+ 3,455
2010	1,312,700	57,576	1,255,124	1,317,581	63,549	1,254,032	- 4,881
2011	1,358,951	54,841	1,304,110	1,358,562	52,356	1,306,206	+ 389
2012	1,354,589	45,947	1,308,642	1,353,618	48,258	1,305,360	+ 971
2012:1st Qr.	362,499	21,393	341,106	387,823	22,609	365,214	- 25,324
2nd Qr.	294,667	8,539	286,128	300,897	8,817	292,080	- 6,230
3rd Qr.	305,124	5,701	299,423	303,691	6,034	297,657	+ 1,433
4th Qr.	392,299	10,314	381,985	361,207	10,798	350,409	+ 31,092

<sup>1</sup> Includes traffic between Island of Mauritius and Rodrigues. As from 1994, figures of the passenger traffic also include cruise travellers, i.e passengers and crews of cruise ships.

**Table 11 - Passenger traffic <sup>1</sup> by month, 2009 - 2012**

Month	Arrivals				Departures				Excess of arrivals over departures			
	2009	2010	2011	2012	2009	2010	2011	2012	2009	2010	2011	2012
January	123,979	126,978	140,898	141,537	143,807	151,282	163,294	161,618	- 19,828	- 24,304	- 22,396	- 20,081
February	92,975	95,708	107,189	109,705	93,071	95,702	105,877	110,455	- 96	+ 6	+ 1,312	- 750
March	103,580	127,560	113,364	111,257	106,719	132,127	120,954	115,750	- 3,139	- 4,567	- 7,590	- 4,493
April	95,683	93,717	112,027	115,656	95,766	100,482	109,440	116,514	- 83	- 6,765	+ 2,587	- 858
May	87,399	95,343	95,129	97,676	92,740	98,907	102,756	105,415	- 5,341	- 3,564	- 7,627	- 7,739
June	73,366	79,689	84,688	81,335	72,503	78,323	83,662	78,968	+ 863	+ 1,366	+ 1,026	+ 2,367
July	102,993	113,118	116,429	111,572	88,902	99,736	105,168	100,158	+ 14,091	+ 13,382	+ 11,261	+ 11,414
August	94,182	99,618	102,159	100,129	107,374	109,313	108,437	108,930	- 13,192	- 9,695	- 6,278	- 8,801
September	82,066	90,522	92,166	93,423	81,263	90,167	92,002	94,603	+ 803	+ 355	+ 164	- 1,180
October	105,327	115,290	120,083	118,782	103,753	112,631	117,131	112,103	+ 1,574	+ 2,659	+ 2,952	+ 6,679
November	107,065	115,763	120,253	117,217	104,114	114,383	117,011	116,961	+ 2,951	+ 1,380	+ 3,242	+ 256
December	141,390	159,394	154,566	156,300	116,538	134,528	132,830	132,143	+ 24,852	+ 24,866	+ 21,736	+ 24,157
<b>Whole Year</b>	<b>1,210,005</b>	<b>1,312,700</b>	<b>1,358,951</b>	<b>1,354,589</b>	<b>1,206,550</b>	<b>1,317,581</b>	<b>1,358,562</b>	<b>1,353,618</b>	<b>+ 3,455</b>	<b>- 4,881</b>	<b>+ 389</b>	<b>+ 971</b>

<sup>1</sup> Includes traffic between Island of Mauritius and Rodrigues. Figures of the passenger traffic also include cruise travellers, i.e passengers and crews of cruise ships.

**Table 12 - Arrivals <sup>1</sup> by country of original embarkation, 2007 - 2012**

<b>Country of original embarkation</b>	<b>2007</b>	<b>2008</b>	<b>2009</b>	<b>2010</b>	<b>2011</b>	<b>2012</b>
Australia	26,181	29,169	16,859	21,438	20,265	22,404
Belgium	127	192	4	0	0	7
France	246,006	253,159	261,716	273,903	279,027	274,976
Germany	65,876	62,858	43,157	42,668	45,194	41,822
Hong Kong SAR <sup>2</sup>	26,245	27,189	22,310	28,161	30,262	25,307
India	66,329	62,147	53,487	70,138	75,268	80,325
Italy	64,048	61,685	46,403	50,884	46,198	24,333
Japan	33	22	0	39	0	3
Kenya	8,459	5,777	4,926	6,396	8,582	9,856
Malagasy Rep.	27,343	29,211	21,480	26,363	28,870	31,913
Reunion Island	203,508	218,865	240,369	268,943	272,452	257,612
Rodrigues	61,595	54,212	53,426	60,662	64,564	67,745
Seychelles	26,795	25,541	22,702	24,557	17,794	13,448
Singapore	18,953	18,022	16,501	21,749	23,630	22,403
S. Africa, Rep. of	136,487	144,122	130,776	138,838	147,295	144,510
Switzerland	16,250	13,882	10,404	14,806	17,765	15,791
United Kingdom	128,983	132,551	108,441	103,588	107,206	96,711
Zambia	12	48	10	20	0	6
Zimbabwe	175	26	6	20	0	0
Other & not stated	115,421	141,962	157,028	159,527	174,579	225,417
<b>All Countries</b>	<b>1,238,826</b>	<b>1,280,640</b>	<b>1,210,005</b>	<b>1,312,700</b>	<b>1,358,951</b>	<b>1,354,589</b>

<sup>1</sup> Figures on passenger arrivals include cruise travellers, i.e passengers and crews of cruise ships which numbered 9747, 26388, 34117, 38061, 35172 and 27763 for 2007, 2008, 2009, 2010, 2011 and 2012 respectively, in accordance with the recommendations of the World Tourism Organisation.

<sup>2</sup> Special Administrative Region of China

Note: Figures as from 2009 refers to country of embarkation.

**Table 13 - Departures <sup>1</sup> by country of final destination, 2007 - 2012**

Country of final destination	2007	2008	2009	2010	2011	2012
Australia	29,325	33,765	18,164	18,300	25,541	22,785
Belgium	247	363	17	0	0	20
France	261,855	263,683	274,659	284,197	291,778	285,448
Germany	68,261	62,156	43,023	44,132	43,704	44,984
Hong Kong SAR <sup>2</sup>	21,441	20,247	21,795	27,367	26,287	20,821
India	64,669	59,651	53,120	68,052	74,296	78,464
Italy	64,939	62,791	47,626	51,220	47,729	25,316
Japan	13	40	0	22	0	5
Kenya	6,236	4,978	3,430	4,431	6,960	8,350
Malagasy Rep.	27,815	30,342	22,805	26,338	30,286	32,940
Reunion Island	200,200	218,786	224,128	258,359	262,721	248,892
Rodrigues	61,617	54,433	52,981	60,573	65,423	67,527
Seychelles	28,189	25,160	30,978	31,958	27,423	18,587
Singapore	17,955	17,760	15,542	17,868	17,428	18,229
S. Africa, Rep. of	122,724	126,982	117,004	132,040	136,619	141,989
Switzerland	16,136	13,841	9,234	13,013	17,131	11,885
United Kingdom	130,804	132,143	111,143	105,368	105,433	96,831
Zambia	3	153	5	0	9	0
Zimbabwe	45	3	1	0	9	14
Other & not stated	115,273	133,905	160,895	174,343	179,785	230,531
<b>All Countries</b>	<b>1,237,747</b>	<b>1,261,182</b>	<b>1,206,550</b>	<b>1,317,581</b>	<b>1,358,562</b>	<b>1,353,618</b>

<sup>1</sup> Figures on passenger departures include cruise travellers, i.e passengers and crews of cruise ships which numbered 9861, 26782, 31154, 40834, 34735 and 27953 for 2007, 2008, 2009, 2010, 2011 and 2012 respectively, in accordance with the recommendations of the World Tourism Organisation.

<sup>2</sup> Special Administrative Region of China

Note: Figures as from 2009 refers to country of disembarkation which may not necessarily be the country of final destination.

**Table 14 - Monthly passenger traffic<sup>1</sup> by type of passenger, 2012**

Type of passenger	Jan	Feb	Mar	Apr	May	Jun	Jul	Aug	Sep	Oct	Nov	Dec	Whole Year
<b>Arrivals</b>													
Visitors <sup>2</sup>	101,848	80,933	84,771	83,309	72,247	55,435	77,405	67,048	67,457	90,980	85,823	116,848	984,104
- On holiday	93,416	74,593	76,432	74,395	65,550	48,909	70,272	60,681	59,717	83,727	77,735	111,550	896,977
- On business & Conference	2,542	3,045	4,552	3,066	3,894	3,869	3,230	3,125	4,354	4,068	4,582	2,240	42,567
- In transit	5,725	3,081	3,506	5,658	2,616	2,414	3,706	3,038	2,993	3,021	3,149	2,837	41,744
- Other and not stated	165	214	281	190	187	243	197	204	393	164	357	221	2,816
Mauritian residents	29,296	18,264	21,630	27,867	22,870	23,651	31,482	30,274	23,166	24,274	27,960	35,061	315,795
Other <sup>3</sup>	10,393	10,508	4,856	4,480	2,559	2,249	2,685	2,807	2,800	3,528	3,434	4,391	54,690
<b>Total arrivals</b>	<b>141,537</b>	<b>109,705</b>	<b>111,257</b>	<b>115,656</b>	<b>97,676</b>	<b>81,335</b>	<b>111,572</b>	<b>100,129</b>	<b>93,423</b>	<b>118,782</b>	<b>117,217</b>	<b>156,300</b>	<b>1,354,589</b>
<b>Departures</b>													
Visitors	122,910	78,209	87,167	82,201	79,404	52,373	67,216	76,335	64,371	83,566	85,116	92,289	971,157
Mauritian residents	26,707	19,784	21,504	26,895	21,447	21,936	27,697	28,216	26,102	24,065	26,669	33,100	304,122
Other	12,001	12,462	7,079	7,418	4,564	4,659	5,245	4,379	4,130	4,472	5,176	6,754	78,339
<b>Total departures</b>	<b>161,618</b>	<b>110,455</b>	<b>115,750</b>	<b>116,514</b>	<b>105,415</b>	<b>78,968</b>	<b>100,158</b>	<b>108,930</b>	<b>94,603</b>	<b>112,103</b>	<b>116,961</b>	<b>132,143</b>	<b>1,353,618</b>

<sup>1</sup> Including traffic between Island of Mauritius and Rodrigues

<sup>2</sup> Including non-residents who left the airport but stayed in the country for less than a day.

<sup>3</sup> Including contract workers

**Table 15 - Passenger traffic<sup>1</sup> by type of passenger, 2003 - 2012**

Type of passenger	2003	2004	2005	2006	2007	2008	2009 <sup>4</sup>	2010 <sup>4</sup>	2011 <sup>4</sup>	2012
<b>Arrivals</b>										
Visitors <sup>2</sup>	721,348	738,516	781,572	806,652	932,782	970,482	889,999	956,327	982,566	984,104
- On holiday	636,325	653,818	692,084	712,620	818,714	821,325	819,739	865,562	897,786	896,977
- On business & Conference	31,155	30,416	30,164	32,511	34,633	37,521	29,025	36,081	40,730	42,567
- In transit	42,736	44,710	48,299	47,966	61,186	82,683	24,871	42,243	40,948	41,744
- Other & not stated	11,132	9,572	11,025	13,555	18,249	28,953	16,364	12,441	3,102	2,816
Mauritian residents	227,288	239,969	239,389	242,330	277,369	283,792	253,374	278,987	292,018	315,795
Other <sup>3</sup>	20,270	22,060	22,939	23,897	28,675	26,366	66,632	77,386	84,367	54,690
<b>Total arrivals</b>	<b>968,906</b>	<b>1,000,545</b>	<b>1,043,900</b>	<b>1,072,879</b>	<b>1,238,826</b>	<b>1,280,640</b>	<b>1,210,005</b>	<b>1,312,700</b>	<b>1,358,951</b>	<b>1,354,589</b>
<b>Departures</b>										
Visitors	705,849	718,789	773,951	801,702	942,374	960,279	908,253	972,791	997,507	971,157
Mauritian residents	224,771	240,823	236,457	241,138	274,786	280,300	248,945	272,145	284,478	304,122
Other	17,154	19,710	19,258	17,234	20,587	20,603	49,352	72,645	76,577	78,339
<b>Total departures</b>	<b>947,774</b>	<b>979,322</b>	<b>1,029,666</b>	<b>1,060,074</b>	<b>1,237,747</b>	<b>1,261,182</b>	<b>1,206,550</b>	<b>1,317,581</b>	<b>1,358,562</b>	<b>1,353,618</b>

<sup>1</sup> Including traffic between Island of Mauritius and Rodrigues. Figures of the passenger traffic also include cruise travellers, i.e. passengers and crews of cruise ships.

<sup>2</sup> Including non-residents who left the airport but stayed in the country for less than a day.

<sup>3</sup> Including contract workers.

<sup>4</sup> Revised.

**Table 16 - Total arrivals<sup>1</sup> by age and sex, 2011 & 2012**

Age (years)	2011			2012			January - June 2012			July - December 2012		
	Both Sexes	Male	Female	Both Sexes	Male	Female	Both Sexes	Male	Female	Both Sexes	Male	Female
Under 1	6,602	3,336	3,266	6,590	3,332	3,258	3,254	1,624	1,630	3,336	1,708	1,628
1 - 4	37,431	18,614	18,817	37,743	19,077	18,666	18,871	9,523	9,348	18,872	9,554	9,318
5 - 9	48,516	24,304	24,212	48,459	24,196	24,263	23,123	11,484	11,639	25,336	12,712	12,624
10 - 14	48,678	24,277	24,401	48,488	24,288	24,200	22,095	10,895	11,200	26,393	13,393	13,000
15 - 19	40,890	19,060	21,830	40,728	19,277	21,451	18,075	8,365	9,710	22,653	10,912	11,741
20 - 24	68,571	28,725	39,846	69,109	28,751	40,358	32,161	13,097	19,064	36,948	15,654	21,294
25 - 29	138,632	65,647	72,985	139,670	65,411	74,259	64,562	30,155	34,407	75,108	35,256	39,852
30 - 34	141,493	73,069	68,424	141,068	73,225	67,843	66,685	34,097	32,588	74,383	39,128	35,255
35 - 39	130,670	70,724	59,946	128,362	69,376	58,986	64,018	34,349	29,669	64,344	35,027	29,317
40 - 44	129,430	71,859	57,571	127,740	71,339	56,401	63,842	35,609	28,233	63,898	35,730	28,168
45 - 49	126,315	68,809	57,506	123,937	67,736	56,201	61,014	33,434	27,580	62,923	34,302	28,621
50 - 54	109,337	58,132	51,205	108,809	58,082	50,727	52,859	28,207	24,652	55,950	29,875	26,075
55 - 59	91,331	48,765	42,566	90,794	48,277	42,517	44,404	23,730	20,674	46,390	24,547	21,843
60 - 64	75,918	40,407	35,511	74,145	39,551	34,594	36,957	19,743	17,214	37,188	19,808	17,380
65 - 69	45,008	23,847	21,161	46,102	24,740	21,362	22,857	12,310	10,547	23,245	12,430	10,815
70 & over	44,058	23,251	20,807	43,095	22,928	20,167	21,335	11,619	9,716	21,760	11,309	10,451
Not stated	76,071	40,268	35,803	79,750	43,357	36,393	41,054	22,493	18,561	38,696	20,864	17,832
<b>All ages</b>	<b>1,358,951</b>	<b>703,094</b>	<b>655,857</b>	<b>1,354,589</b>	<b>702,943</b>	<b>651,646</b>	<b>657,166</b>	<b>340,734</b>	<b>316,432</b>	<b>697,423</b>	<b>362,209</b>	<b>335,214</b>

<sup>1</sup> Include arrivals from Rodrigues and cruise travellers, i.e passengers and crews of cruise ships which numbered 35172 and 27763 for 2011 and 2012 respectively, in accordance with the recommendations of the World Tourism Organisation.



**Table 17 - Total departures<sup>1</sup> by age and sex, 2011 & 2012**

Age (years)	2011			2012			January - June 2012			July - December 2012		
	Both Sexes	Male	Female	Both Sexes	Male	Female	Both Sexes	Male	Female	Both Sexes	Male	Female
Under 1	6,368	3,207	3,161	6,285	3,169	3,116	3,396	1,684	1,712	2,889	1,485	1,404
1 - 4	37,489	18,648	18,841	37,706	19,045	18,661	20,643	10,408	10,235	17,063	8,637	8,426
5 - 9	48,952	24,536	24,416	48,192	24,063	24,129	25,337	12,634	12,703	22,855	11,429	11,426
10 - 14	48,834	24,308	24,526	48,417	24,255	24,162	24,200	11,979	12,221	24,217	12,276	11,941
15 - 19	41,969	19,726	22,243	41,551	19,653	21,898	19,699	9,151	10,548	21,852	10,502	11,350
20 - 24	66,922	27,560	39,362	67,293	27,692	39,601	32,716	13,227	19,489	34,577	14,465	20,112
25 - 29	136,880	64,389	72,491	138,126	64,657	73,469	65,349	30,564	34,785	72,777	34,093	38,684
30 - 34	142,366	73,347	69,019	141,852	73,578	68,274	69,584	35,441	34,143	72,268	38,137	34,131
35 - 39	130,847	70,826	60,021	128,220	69,391	58,829	66,602	35,633	30,969	61,618	33,758	27,860
40 - 44	130,422	72,289	58,133	128,378	71,639	56,739	67,499	37,314	30,185	60,879	34,325	26,554
45 - 49	125,502	68,515	56,987	123,297	67,681	55,616	64,226	35,160	29,066	59,071	32,521	26,550
50 - 54	110,166	58,400	51,766	109,883	58,496	51,387	56,459	30,027	26,432	53,424	28,469	24,955
55 - 59	90,734	48,497	42,237	90,184	48,021	42,163	46,484	24,737	21,747	43,700	23,284	20,416
60 - 64	76,307	40,609	35,698	74,964	39,958	35,006	39,611	21,088	18,523	35,353	18,870	16,483
65 - 69	44,538	23,633	20,905	46,138	24,744	21,394	24,726	13,293	11,433	21,412	11,451	9,961
70 & over	43,858	23,090	20,768	43,507	23,245	20,262	23,488	12,742	10,746	20,019	10,503	9,516
Not stated	76,408	40,459	35,949	79,625	42,713	36,912	38,701	21,263	17,438	40,924	21,450	19,474
<b>All ages</b>	<b>1,358,562</b>	<b>702,039</b>	<b>656,523</b>	<b>1,353,618</b>	<b>702,000</b>	<b>651,618</b>	<b>688,720</b>	<b>356,345</b>	<b>332,375</b>	<b>664,898</b>	<b>345,655</b>	<b>319,243</b>

<sup>1</sup> Include departures to Rodrigues and cruise travellers, i.e passengers and crews of cruise ships which numbered 34735 and 27953 for 2011 and 2012 respectively, in accordance with the recommendations of the World Tourism Organisation.

**Table 18 - Excess of arrivals over departures<sup>1</sup> by age and sex, 2011 & 2012**

Age (years)	2011			2012			January - June 2012			July - December 2012		
	Both Sexes	Male	Female	Both Sexes	Male	Female	Both Sexes	Male	Female	Both Sexes	Male	Female
Under 1	234	129	105	305	163	142	-142	-60	-82	447	223	224
1 - 4	-58	-34	-24	37	32	5	-1,772	-885	-887	1,809	917	892
5 - 9	-436	-232	-204	267	133	134	-2,214	-1,150	-1,064	2,481	1,283	1,198
10 - 14	-156	-31	-125	71	33	38	-2,105	-1,084	-1,021	2,176	1,117	1,059
15 - 19	-1,079	-666	-413	-823	-376	-447	-1,624	-786	-838	801	410	391
20 - 24	1,649	1,165	484	1,816	1,059	757	-555	-130	-425	2,371	1,189	1,182
25 - 29	1,752	1,258	494	1,544	754	790	-787	-409	-378	2,331	1,163	1,168
30 - 34	-873	-278	-595	-784	-353	-431	-2,899	-1,344	-1,555	2,115	991	1,124
35 - 39	-177	-102	-75	142	-15	157	-2,584	-1,284	-1,300	2,726	1,269	1,457
40 - 44	-992	-430	-562	-638	-300	-338	-3,657	-1,705	-1,952	3,019	1,405	1,614
45 - 49	813	294	519	640	55	585	-3,212	-1,726	-1,486	3,852	1,781	2,071
50 - 54	-829	-268	-561	-1,074	-414	-660	-3,600	-1,820	-1,780	2,526	1,406	1,120
55 - 59	597	268	329	610	256	354	-2,080	-1,007	-1,073	2,690	1,263	1,427
60 - 64	-389	-202	-187	-819	-407	-412	-2,654	-1,345	-1,309	1,835	938	897
65 - 69	470	214	256	-36	-4	-32	-1,869	-983	-886	1,833	979	854
70 & over	200	161	39	-412	-317	-95	-2,153	-1,123	-1,030	1,741	806	935
Not stated	-337	-191	-146	125	644	-519	2,353	1,230	1,123	-2,228	-586	-1,642
<b>All ages</b>	<b>389</b>	<b>1,055</b>	<b>-666</b>	<b>971</b>	<b>943</b>	<b>28</b>	<b>-31,554</b>	<b>-15,611</b>	<b>-15,943</b>	<b>32,525</b>	<b>16,554</b>	<b>15,971</b>

<sup>1</sup> Including traffic between Island of Mauritius and Rodrigues

**Table 19 - Arrivals<sup>1</sup> of Mauritian residents by age and sex, 2011 & 2012**

Age (years)	2011			2012			January - June 2012			July - December 2012		
	Both Sexes	Male	Female	Both Sexes	Male	Female	Both Sexes	Male	Female	Both Sexes	Male	Female
Under 1	621	304	317	728	374	354	339	169	170	389	205	184
1 - 4	3,615	1,809	1,806	4,328	2,238	2,090	1,969	1,016	953	2,359	1,222	1,137
5 - 9	4,970	2,555	2,415	5,681	2,885	2,796	2,335	1,175	1,160	3,346	1,710	1,636
10 - 14	5,926	2,945	2,981	6,439	3,256	3,183	2,623	1,316	1,307	3,816	1,940	1,876
15 - 19	7,749	3,695	4,054	7,929	3,848	4,081	3,645	1,757	1,888	4,284	2,091	2,193
20 - 24	16,092	7,883	8,209	16,568	8,048	8,520	7,404	3,552	3,852	9,164	4,496	4,668
25 - 29	21,605	11,001	10,604	22,029	11,275	10,754	10,275	5,213	5,062	11,754	6,062	5,692
30 - 34	26,751	13,832	12,919	27,297	14,398	12,899	12,654	6,687	5,967	14,643	7,711	6,932
35 - 39	24,562	13,278	11,284	28,102	15,456	12,646	13,049	7,271	5,778	15,053	8,185	6,868
40 - 44	25,334	15,272	10,062	28,391	17,306	11,085	13,286	8,152	5,134	15,105	9,154	5,951
45 - 49	24,303	14,147	10,156	27,383	16,274	11,109	12,695	7,680	5,015	14,688	8,594	6,094
50 - 54	19,588	10,309	9,279	22,327	12,324	10,003	9,948	5,548	4,400	12,379	6,776	5,603
55 - 59	17,459	9,064	8,395	20,033	10,833	9,200	9,225	5,005	4,220	10,808	5,828	4,980
60 - 64	13,695	7,342	6,353	15,909	8,633	7,276	7,344	3,986	3,358	8,565	4,647	3,918
65 - 69	7,500	3,846	3,654	8,757	4,739	4,018	4,016	2,213	1,803	4,741	2,526	2,215
70 & over	7,684	3,878	3,806	8,345	4,315	4,030	3,730	1,967	1,763	4,615	2,348	2,267
Not stated	64,564	33,938	30,626	65,549	35,047	30,502	29,041	15,484	13,557	36,508	19,563	16,945
<b>All ages</b>	<b>292,018</b>	<b>155,098</b>	<b>136,920</b>	<b>315,795</b>	<b>171,249</b>	<b>144,546</b>	<b>143,578</b>	<b>78,191</b>	<b>65,387</b>	<b>172,217</b>	<b>93,058</b>	<b>79,159</b>

<sup>1</sup> Including arrivals from Rodrigues

**Table 20 - Departures<sup>1</sup> of Mauritian residents by age and sex, 2011 & 2012**

Age (years)	2011			2012			January - June 2012			July - December 2012		
	Both Sexes	Male	Female	Both Sexes	Male	Female	Both Sexes	Male	Female	Both Sexes	Male	Female
Under 1	609	295	314	701	358	343	331	156	175	370	202	168
1 - 4	3,413	1,711	1,702	3,759	1,919	1,840	1,707	876	831	2,052	1,043	1,009
5 - 9	4,880	2,489	2,391	5,130	2,614	2,516	1,845	968	877	3,285	1,646	1,639
10 - 14	5,766	2,876	2,890	5,986	3,019	2,967	1,922	964	958	4,064	2,055	2,009
15 - 19	8,213	3,994	4,219	8,423	4,097	4,326	3,153	1,512	1,641	5,270	2,585	2,685
20 - 24	15,878	7,833	8,045	16,306	7,970	8,336	7,494	3,602	3,892	8,812	4,368	4,444
25 - 29	20,898	10,553	10,345	20,882	10,628	10,254	10,363	5,275	5,088	10,519	5,353	5,166
30 - 34	26,236	13,550	12,686	25,924	13,613	12,311	12,704	6,723	5,981	13,220	6,890	6,330
35 - 39	24,013	13,010	11,003	26,786	14,721	12,065	12,632	7,086	5,546	14,154	7,635	6,519
40 - 44	24,619	14,934	9,685	26,972	16,453	10,519	12,884	7,918	4,966	14,088	8,535	5,553
45 - 49	23,325	13,599	9,726	26,257	15,687	10,570	12,330	7,497	4,833	13,927	8,190	5,737
50 - 54	18,614	9,858	8,756	21,177	11,679	9,498	9,612	5,350	4,262	11,565	6,329	5,236
55 - 59	16,404	8,654	7,750	18,755	10,219	8,536	8,736	4,678	4,058	10,019	5,541	4,478
60 - 64	12,493	6,664	5,829	14,660	8,003	6,657	6,887	3,739	3,148	7,773	4,264	3,509
65 - 69	6,819	3,512	3,307	7,921	4,238	3,683	3,850	2,072	1,778	4,071	2,166	1,905
70 & over	6,875	3,395	3,480	7,626	3,954	3,672	3,683	1,917	1,766	3,943	2,037	1,906
Not stated	65,423	34,417	31,006	66,857	35,272	31,585	28,140	15,142	12,998	38,717	20,130	18,587
<b>All ages</b>	<b>284,478</b>	<b>151,344</b>	<b>133,134</b>	<b>304,122</b>	<b>164,444</b>	<b>139,678</b>	<b>138,273</b>	<b>75,475</b>	<b>62,798</b>	<b>165,849</b>	<b>88,969</b>	<b>76,880</b>

<sup>1</sup> Including departures to Rodrigues

**Table 21 - Excess of arrivals over departures<sup>1</sup> of Mauritian residents by age & sex, 2011 & 2012**

Age (years)	2011			2012			January - June 2012			July - December 2012		
	Both Sexes	Male	Female	Both Sexes	Male	Female	Both Sexes	Male	Female	Both Sexes	Male	Female
Under 1	12	9	3	27	16	11	8	13	-5	19	3	16
1 - 4	202	98	104	569	319	250	262	140	122	307	179	128
5 - 9	90	66	24	551	271	280	490	207	283	61	64	-3
10 - 14	160	69	91	453	237	216	701	352	349	-248	-115	-133
15 - 19	-464	-299	-165	-494	-249	-245	492	245	247	-986	-494	-492
20 - 24	214	50	164	262	78	184	-90	-50	-40	352	128	224
25 - 29	707	448	259	1,147	647	500	-88	-62	-26	1,235	709	526
30 - 34	515	282	233	1,373	785	588	-50	-36	-14	1,423	821	602
35 - 39	549	268	281	1,316	735	581	417	185	232	899	550	349
40 - 44	715	338	377	1,419	853	566	402	234	168	1,017	619	398
45 - 49	978	548	430	1,126	587	539	365	183	182	761	404	357
50 - 54	974	451	523	1,150	645	505	336	198	138	814	447	367
55 - 59	1,055	410	645	1,278	614	664	489	327	162	789	287	502
60 - 64	1,202	678	524	1,249	630	619	457	247	210	792	383	409
65 - 69	681	334	347	836	501	335	166	141	25	670	360	310
70 & over	809	483	326	719	361	358	47	50	-3	672	311	361
Not stated	-859	-479	-380	-1,308	-225	-1,083	901	342	559	-2,209	-567	-1,642
<b>All ages</b>	<b>7,540</b>	<b>3,754</b>	<b>3,786</b>	<b>11,673</b>	<b>6,805</b>	<b>4,868</b>	<b>5,305</b>	<b>2,716</b>	<b>2,589</b>	<b>6,368</b>	<b>4,089</b>	<b>2,279</b>

<sup>1</sup> Including traffic between Island of Mauritius and Rodrigues.

**Table 22 - Arrivals and departures of Mauritian residents<sup>1</sup> by country of embarkation and disembarkation, 2010 - 2012**

Country of embarkation/ disembarkation	Arrivals			Departures			Excess of arrivals over departures		
	2010	2011	2012	2010	2011	2012	2010	2011	2012
Australia	9,001	9,287	9,282	8,690	9,534	9,251	311	-247	31
France	30,199	30,581	38,872	29,577	29,631	35,939	622	950	2,933
Germany	2,731	2,907	2,775	2,532	2,337	3,428	199	570	-653
Hong Kong SAR <sup>2</sup>	13,951	11,913	9,548	13,840	11,628	8,359	111	285	1,189
India	21,423	22,060	25,792	21,447	21,825	24,393	-24	235	1,399
Italy	5,779	6,325	2,959	5,994	6,315	2,876	-215	10	83
Kenya	1,582	2,305	3,016	1,755	2,507	3,074	-173	-202	-58
Rodrigues	60,662	64,564	67,745	60,573	65,423	67,527	89	-859	218
Reunion	32,744	33,929	38,638	30,366	31,642	36,615	2,378	2,287	2,023
Singapore	11,695	11,808	11,672	10,203	9,469	10,227	1,492	2,339	1,445
S. Africa, Rep of	20,394	20,207	23,571	20,000	20,087	22,604	394	120	967
Switzerland	2,286	2,247	2,179	2,042	2,001	1,003	244	246	1,176
United Kingdom	25,601	28,031	25,998	22,673	24,815	23,725	2,928	3,216	2,273
Other countries	40,939	45,854	53,748	42,453	47,264	55,101	-1,514	-1,410	-1,353
<b>All Countries</b>	<b>278,987</b>	<b>292,018</b>	<b>315,795</b>	<b>272,145</b>	<b>284,478</b>	<b>304,122</b>	<b>6,842</b>	<b>7,540</b>	<b>11,673</b>

<sup>1</sup> Including traffic between Island of Mauritius and Rodrigues

<sup>2</sup> Special Administrative Region of China

### III - TOURISM

#### Definition and notes

1. Definition of tourist

- (a) Prior to 1964, a tourist has been defined as a non-resident staying in Mauritius for more than 24 hours but less than 6 months.
- (b) From 1964 to 2008, a tourist is defined as a non-resident staying in Mauritius for more than 24 hours but less than a year and is not involved in any gainful occupation.
- (c) As from 2009, a tourist is defined as a non-resident staying overnight but less than a year, and who has no employer-employee relationship with a resident.

The figures for the three periods are nevertheless comparable because of the small number of tourists staying for more than 6 months.

2. Visitors include the following:

- (a) Tourists as defined above and
- (b) Excursionists or same day visitors, i.e non-residents, other than those who do not leave the airport/ships, who depart on the same day they arrived.

3. Method of compilation

*Sources of data*

The main source of data for the compilation of passenger traffic statistics is the Passport and Immigration Office, which maintains a database of all passengers entering and leaving the country. The data are collected from the passport of travellers, disembarkation cards filled in by non-residents and questions put to non-residents entering the country. At the end of every month, passenger traffic for that particular month is downloaded and supplied to the Statistics Unit of the Ministry of Tourism and Leisure within fifteen days. Additional data on cruises are supplied by the Mauritius Ports Authority.

Prior to 1994, figures have been compiled from a 10% sample of embarkation and disembarkation cards filled in by passengers. However, as from January 1994, they are based on movements of all passengers. Thus disaggregated data for 1994 onwards may not be strictly comparable to previous series.

#### *Tourism receipts*

The Bank of Mauritius is responsible for the estimation of tourism receipts based on monthly statements of Inward and Outward Remittances of Commercial Banks.

#### *Monthly Occupancy Rates*

All hotels are contacted by mail and/or phone at the end of every month on room / bed nights available and rented during the month for the calculation of room and bed occupancy.

#### 4. Tourist nights

Prior to 2010, tables on tourist nights show the number of nights spent by tourists who were present in the country during the period under review. Thus the number of tourist nights for 2009 include:

- (a) the nights spent during 2009 by tourists who arrived prior to 1st January 2009; and
- (b) the nights during 2009 by tourists who arrived during the same year.

However, nights spent after 31st December 2009 by tourists who arrived in 2009 are excluded.

As from 2010, tourist night for year Y refer to tourist nights spent by tourists arriving in year Y.

#### 5. Large hotels

Large hotels are well established beach hotels of over 80 rooms.



**Table 23 -Tourist arrivals by mode of transport and tourist nights spent during period, 1996 - 2012**

Period	Tourist arrivals			Tourist nights spent during period	% change over previous year	
	Sea	Air	Total		Tourist arrivals	Tourist nights
1996	6,484	480,383	486,867	4,957,683	+ 15.2	+ 11.8
1997	7,476	528,649	536,125	5,451,314	+ 10.1	+ 10.0
1998	17,109	541,086	558,195	5,567,889	+ 4.1	+ 2.1
1999	13,852	564,233	578,085	5,729,464	+ 3.6	+ 2.9
2000	10,677	645,776	656,453	6,412,876	+ 13.6	+ 11.9
2001	10,532	649,786	660,318	6,527,800	+ 0.6	+ 1.8
2002	14,180	667,468	681,648	6,768,870	+ 3.2	+ 3.7
2003	12,155	689,863	702,018	6,952,313	+ 3.0	+ 2.7
2004	11,390	707,471	718,861	7,118,603	+ 2.4	+ 2.4
2005	13,321	747,742	761,063	7,498,251	+ 5.9	+ 5.3
2006	13,249	775,027	788,276	7,760,679	+ 3.6	+ 3.5
2007	12,163	894,808	906,971	8,986,934	+ 15.1	+ 15.8
2008	15,961	914,495	930,456	9,218,625	+ 2.6	+ 2.6
2009	23,265	848,091	871,356	8,639,304	- 6.4	- 6.3
2010 <sup>3</sup>	23,648	911,179	934,827	9,651,244 <sup>1</sup>	...	...
2011	25,047	939,595	964,642	10,000,136 <sup>1</sup>	+ 3.2	+ 3.6
2012	16,930	948,511	965,441	10,239,544 <sup>2</sup>	+ 0.1	+ 2.4

<sup>1</sup> Revised

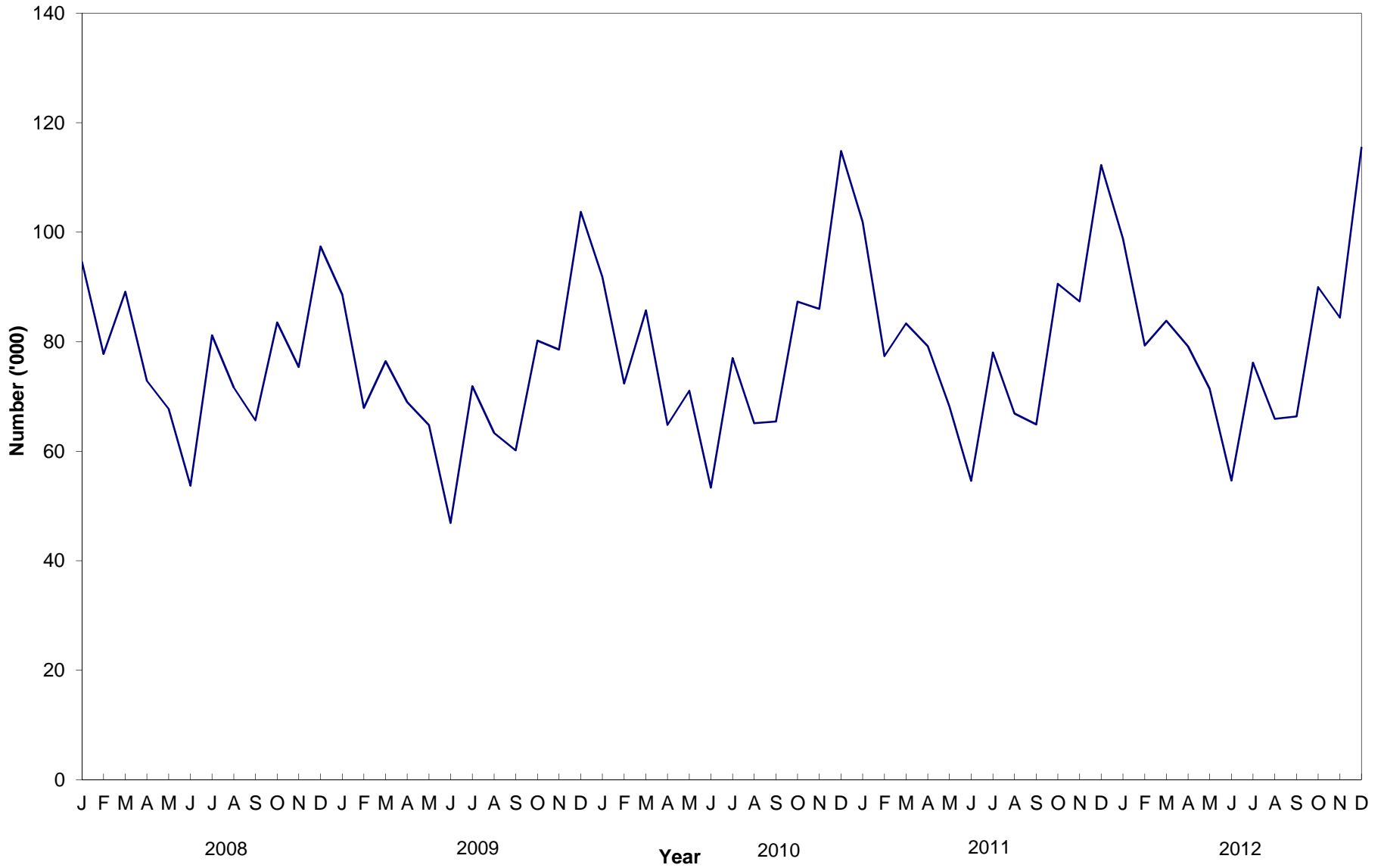
<sup>2</sup> Provisional

<sup>3</sup> As from 2010, a new methodology for computation of tourist nights is being used. Refer to definition on page 30.

**Table 24 - Tourist arrivals by month of arrival, 2003 - 2012**

<b>Month of arrival</b>	<b>2003</b>	<b>2004</b>	<b>2005</b>	<b>2006</b>	<b>2007</b>	<b>2008</b>	<b>2009</b>	<b>2010</b>	<b>2011</b>	<b>2012</b>
January	64,762	66,543	73,053	86,218	91,628	94,579	88,591	91,857	101,887	98,837
February	53,647	54,104	56,367	64,894	72,338	77,763	67,892	72,366	77,390	79,331
March	63,129	63,631	67,931	58,136	79,965	89,152	76,425	85,748	83,349	83,827
April	57,217	55,599	52,971	57,361	70,297	72,837	68,969	64,797	79,173	79,137
May	54,710	53,974	55,995	50,773	65,301	67,705	64,761	71,055	68,214	71,396
June	41,841	38,826	42,994	42,755	52,584	53,722	46,866	53,327	54,591	54,625
July	58,403	62,173	65,462	65,540	77,225	81,169	71,872	77,009	78,034	76,166
August	56,844	55,342	60,746	64,307	69,941	71,605	63,365	65,093	66,865	65,896
September	50,293	53,102	53,233	56,138	65,542	65,632	60,144	65,404	64,880	66,369
October	64,917	70,793	70,999	75,451	81,244	83,524	80,197	87,340	90,616	89,994
November	61,984	66,960	70,793	70,394	77,236	75,380	78,544	85,982	87,348	84,398
December	74,271	77,814	90,519	96,309	103,670	97,388	103,730	114,849	112,295	115,465
<b>Year</b>	<b>702,018</b>	<b>718,861</b>	<b>761,063</b>	<b>788,276</b>	<b>906,971</b>	<b>930,456</b>	<b>871,356</b>	<b>934,827</b>	<b>964,642</b>	<b>965,441</b>

**Fig 4 - Tourist arrivals by month, 2008-2012**



**Table 25 - Percentage distribution of tourist arrivals by month of arrival, 2003 - 2012**

<b>Month of arrival</b>	<b>2003</b>	<b>2004</b>	<b>2005</b>	<b>2006</b>	<b>2007</b>	<b>2008</b>	<b>2009</b>	<b>2010</b>	<b>2011</b>	<b>2012</b>
January	9.2	9.3	9.6	10.9	10.1	10.2	10.2	9.8	10.6	10.2
February	7.6	7.5	7.4	8.2	8.0	8.4	7.8	7.7	8.0	8.2
March	9.0	8.9	8.9	7.4	8.8	9.6	8.8	9.2	8.6	8.7
April	8.2	7.7	7.0	7.3	7.8	7.8	7.9	6.9	8.2	8.2
May	7.8	7.5	7.4	6.4	7.2	7.3	7.4	7.6	7.1	7.4
June	6.0	5.4	5.6	5.4	5.8	5.8	5.4	5.7	5.7	5.7
July	8.3	8.6	8.6	8.3	8.5	8.7	8.2	8.2	8.1	7.9
August	8.1	7.7	8.0	8.2	7.7	7.7	7.3	7.0	6.9	6.8
September	7.2	7.4	7.0	7.1	7.2	7.1	6.9	7.0	6.7	6.9
October	9.2	9.8	9.3	9.6	9.0	9.0	9.2	9.3	9.4	9.3
November	8.8	9.3	9.3	8.9	8.5	8.1	9.0	9.2	9.1	8.7
December	10.6	10.8	11.9	12.2	11.4	10.5	11.9	12.4	11.6	12.0
<b>Whole Year</b>	<b>100.0</b>	<b>100.0</b>	<b>100.0</b>	<b>100.0</b>	<b>100.0</b>	<b>100.0</b>	<b>100.0</b>	<b>100.0</b>	<b>100.0</b>	<b>100.0</b>

**Table 26 - Tourist arrivals by country of residence and sex, 2011 and 2012**

Country of residence	2011			2012		
	Male	Female	Both Sexes	Male	Female	Both Sexes
Australia	7,599	8,127	15,726	8,293	8,716	17,009
Belgium	6,073	5,956	12,029	5,581	5,386	10,967
France <sup>1</sup>	138,890	143,579	282,469	127,012	129,917	256,929
Germany	27,684	28,647	56,331	27,282	27,904	55,186
Hong Kong SAR <sup>2</sup>	296	297	593	654	615	1,269
India	31,583	22,372	53,955	31,515	23,682	55,197
Italy	26,053	26,694	52,747	19,951	20,058	40,009
Japan	786	759	1,545	896	745	1,641
Kenya	1,169	745	1,914	1,583	1,122	2,705
Malagasy Rep.	5,481	5,968	11,449	6,849	6,714	13,563
P. Rep. of China	8,490	6,643	15,133	11,336	9,549	20,885
Reunion Island <sup>1</sup>	65,433	67,102	132,535	70,321	74,019	144,340
Russian Federation	5,483	6,741	12,224	8,958	10,471	19,429
Seychelles	3,586	4,899	8,485	3,039	3,740	6,779
Singapore	1,249	1,212	2,461	1,216	862	2,078
S. Africa, Rep. of	43,425	42,807	86,232	44,687	44,371	89,058
Switzerland	11,670	12,692	24,362	12,552	13,450	26,002
United Arab Emirates	2,145	1,635	3,780	2,786	2,617	5,403
United Kingdom	44,765	43,417	88,182	44,027	43,621	87,648
U.S.A.	3,814	3,056	6,870	3,796	2,578	6,374
Zimbabwe	838	657	1,495	862	706	1,568
Other countries	50,178	43,947	94,125	55,805	45,597	101,402
<b>All Countries</b>	<b>486,690</b>	<b>477,952</b>	<b>964,642</b>	<b>489,001</b>	<b>476,440</b>	<b>965,441</b>

<sup>1</sup> Revised

<sup>2</sup> Special Administrative Region of China

**Table 27 - Tourist arrivals by country of residence, 2003 - 2012**

Country of residence	2003	2004	2005	2006	2007	2008	2009	2010	2011	2012
Australia	9,103	11,373	13,486	16,660	19,635	18,852	10,363	11,493	15,726	17,009
Belgium	10,170	8,524	8,973	9,216	10,945	11,796	10,254	10,214	12,029	10,967
France	200,229	210,411	220,421	182,295	240,028	260,054	275,599	302,185	282,469 <sup>2</sup>	256,929
Germany	53,970	52,277	55,983	57,251	65,165	61,484	51,279	52,886	56,331	55,186
Hong Kong SAR <sup>1</sup>	676	836	508	519	649	641	382	415	593	1,269
India	25,367	24,716	29,755	37,498	42,974	43,911	39,252	49,779	53,955	55,197
Italy	39,774	41,277	43,458	69,407	69,510	66,432	56,736	56,540	52,747	40,009
Japan	1,572	1,724	1,638	1,695	1,730	1,751	1,351	1,485	1,545	1,641
Kenya	1,510	1,506	1,358	1,694	1,790	1,997	1,386	1,548	1,914	2,705
Malagasy Rep.	11,044	8,256	7,397	7,239	8,842	10,905	8,333	9,833	11,449	13,563
People's Rep. of China	3,738	5,291	5,526	4,875	7,739	8,425	6,925	7,609	15,133	20,885
Reunion Island	95,679	96,510	99,036	89,127	95,823	96,174	104,946	114,914	132,535 <sup>2</sup>	144,340
Russian Federation	2,908	3,209	4,000	5,081	5,968	6,763	5,628	6,615	12,224	19,429
Seychelles	9,869	7,456	10,084	12,023	14,275	10,604	7,532	10,160	8,485	6,779
Singapore	2,102	2,329	1,789	1,862	2,020	1,758	1,657	1,909	2,461	2,078
S. Africa, Rep. of	45,756	52,609	58,446	70,796	81,733	84,448	74,176	81,458	86,232	89,058
Switzerland	17,929	16,110	15,773	16,161	17,546	16,037	15,349	18,577	24,362	26,002
United Arab Emirates	2,559	1,715	1,344	1,896	1,971	4,109	3,141	3,470	3,780	5,403
United Kingdom	91,210	92,652	95,407	102,333	107,297	107,919	101,996	97,548	88,182	87,648
USA	4,505	4,305	4,890	5,220	5,451	7,089	6,951	7,316	6,870	6,374
Zimbabwe	2,343	2,345	2,419	1,587	1,669	1,809	1,326	1,204	1,495	1,568
Other Countries	70,005	73,430	79,372	93,841	104,211	107,498	86,794	87,669	94,125	101,402
<b>All Countries</b>	<b>702,018</b>	<b>718,861</b>	<b>761,063</b>	<b>788,276</b>	<b>906,971</b>	<b>930,456</b>	<b>871,356</b>	<b>934,827</b>	<b>964,642</b>	<b>965,441</b>

<sup>1</sup> Special Administrative Region of China

<sup>2</sup> Revised

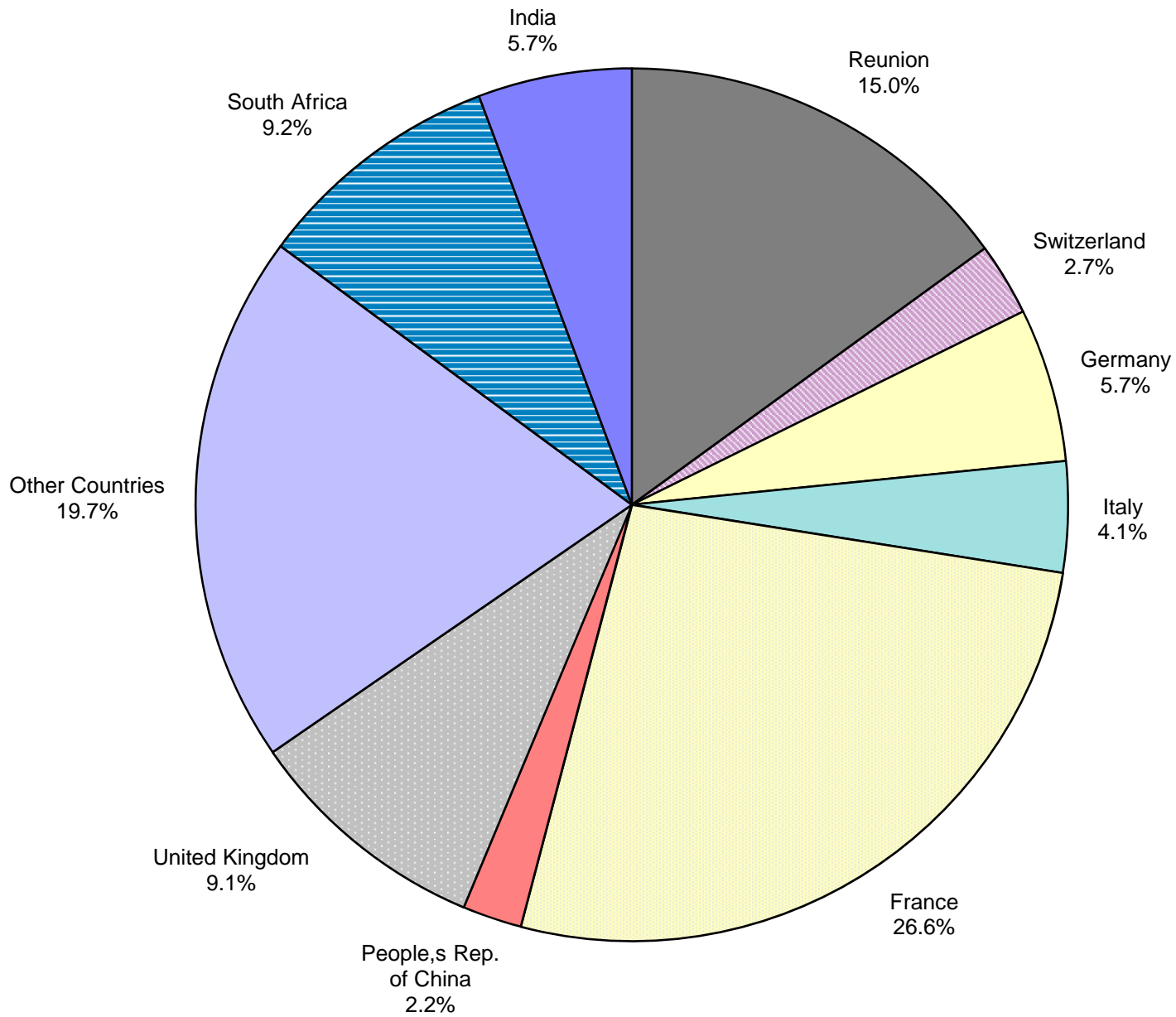
**Table 28 - Percentage distribution of tourist arrivals by country of residence, 2003 - 2012**

Country of residence	2003	2004	2005	2006	2007	2008	2009	2010	2011	2012
Australia	1.3	1.6	1.8	2.1	2.2	2.0	1.2	1.2	1.6	1.8
Belgium	1.4	1.2	1.2	1.2	1.2	1.3	1.2	1.1	1.2	1.1
France	28.5	29.3	29.0	23.1	26.5	27.9	31.6	32.3	29.3 <sup>2</sup>	26.6
Germany	7.7	7.3	7.4	7.3	7.2	6.6	5.9	5.7	5.8	5.7
Hong Kong SAR <sup>1</sup>	0.1	0.1	0.1	0.1	0.1	0.1	0.0	0.0	0.1	0.1
India	3.6	3.4	3.9	4.8	4.7	4.7	4.5	5.3	5.6	5.7
Italy	5.7	5.7	5.7	8.8	7.7	7.1	6.5	6.0	5.5	4.1
Japan	0.2	0.2	0.2	0.2	0.2	0.2	0.2	0.2	0.2	0.2
Kenya	0.2	0.2	0.2	0.2	0.2	0.2	0.2	0.2	0.2	0.3
Malagasy Rep.	1.6	1.1	1.0	0.9	1.0	1.2	1.0	1.1	1.2	1.4
People's Rep. of China	0.5	0.7	0.7	0.6	0.9	0.9	0.8	0.8	1.6	2.2
Reunion Island	13.6	13.4	13.0	11.3	10.6	10.3	12.0	12.3	13.7 <sup>2</sup>	15.0
Russian Federation	0.4	0.4	0.5	0.6	0.7	0.7	0.6	0.7	1.3	2.0
Seychelles	1.4	1.0	1.3	1.5	1.6	1.1	0.9	1.1	0.9	0.7
Singapore	0.3	0.3	0.2	0.2	0.2	0.2	0.2	0.2	0.3	0.2
S. Africa, Rep. of	6.5	7.3	7.7	9.0	9.0	9.1	8.5	8.7	8.9	9.2
Switzerland	2.6	2.2	2.1	2.1	1.9	1.7	1.8	2.0	2.5	2.7
United Arab Emirates	0.4	0.2	0.2	0.2	0.2	0.4	0.4	0.4	0.4	0.6
United Kingdom	13.0	12.9	12.5	13.0	11.8	11.6	11.7	10.4	9.1	9.1
USA	0.6	0.6	0.6	0.7	0.6	0.8	0.8	0.8	0.7	0.7
Zimbabwe	0.3	0.3	0.3	0.2	0.2	0.2	0.2	0.1	0.2	0.2
Other Countries	10.1	10.6	10.4	11.9	11.3	11.7	9.8	9.4	9.7	10.4
<b>All Countries</b>	<b>100.0</b>	<b>100.0</b>	<b>100.0</b>	<b>100.0</b>	<b>100.0</b>	<b>100.0</b>	<b>100.0</b>	<b>100.0</b>	<b>100.0</b>	<b>100.0</b>

<sup>1</sup> Special Administrative Region of China

<sup>2</sup> Revised

**Fig. 5 - Percentage distribution of tourist arrivals by country of residence, 2012**





**Table 29 - Tourist nights by country of residence, 2003 - 2012**

Country of residence	2003	2004	2005	2006	2007	2008	2009	2010 <sup>2</sup>	2011 <sup>2</sup>	2012 <sup>3</sup>
Australia	100,332	111,546	115,851	126,859	143,482	161,488	138,665	151,744	200,337	221,613
Belgium	121,687	105,445	117,210	120,987	132,145	148,978	138,764	138,874	150,952	150,913
France	1,996,305	2,101,125	2,208,575	1,931,005	2,542,172	2,711,413	2,498,920	3,296,234	3,190,400	3,024,054
Germany	636,435	608,031	655,283	655,738	735,938	760,468	579,531	657,888	686,431	672,933
Hong Kong SAR <sup>1</sup>	6,767	7,984	4,694	3,739	4,788	4,492	4,211	4,934	6,533	10,500
India	287,741	265,174	295,698	336,048	408,128	399,570	376,783	414,939	488,810	526,724
Italy	346,865	362,758	397,160	619,089	600,236	605,457	512,033	526,028	501,289	388,185
Japan	9,302	9,881	10,538	9,889	10,701	10,643	11,481	10,030	10,760	10,383
Kenya	11,347	11,069	12,258	13,875	12,642	14,338	11,767	12,684	17,600	19,058
Malagasy Rep.	128,437	83,961	73,964	84,400	98,034	107,295	96,282	108,972	125,848	136,720
People's Rep. of China	NA	NA	NA	NA	NA	NA	NA	93,492	162,914	239,924
Reunion Island	738,968	832,879	828,889	730,678	917,369	790,612	969,927	769,924	943,649	1,031,174
Russian Federation	NA	NA	NA	NA	NA	NA	NA	79,316	133,424	228,536
Seychelles	92,493	75,277	93,951	108,603	133,595	95,254	67,976	94,302	80,522	62,914
Singapore	14,871	16,094	12,106	14,166	12,200	11,953	11,330	12,825	14,805	16,642
S. Africa, Rep. of	379,561	425,680	467,603	565,627	676,795	699,329	602,983	697,026	720,138	744,119
Switzerland	220,382	189,115	185,482	200,141	207,130	192,797	197,742	243,851	299,347	327,344
United Arab Emirates	NA	NA	NA	NA	NA	NA	NA	37,433	39,421	35,932
United Kingdom	1,043,113	1,053,881	1,070,185	1,152,123	1,141,982	1,189,830	1,281,968	1,210,557	1,101,156	1,188,921
U.S.A.	38,795	39,039	41,298	44,827	49,666	65,761	54,075	63,341	67,665	56,164
Zimbabwe	26,469	28,831	31,233	20,493	23,207	24,678	12,859	11,500	15,255	18,221
Other countries	752,443	790,833	876,273	1,022,392	1,136,724	1,224,269	1,072,007	1,015,350	1,042,880	1,128,570
<b>All Countries</b>	<b>6,952,313</b>	<b>7,118,603</b>	<b>7,498,251</b>	<b>7,760,679</b>	<b>8,986,934</b>	<b>9,218,625</b>	<b>8,639,304</b>	<b>9,651,244</b>	<b>10,000,136</b>	<b>10,239,544</b>

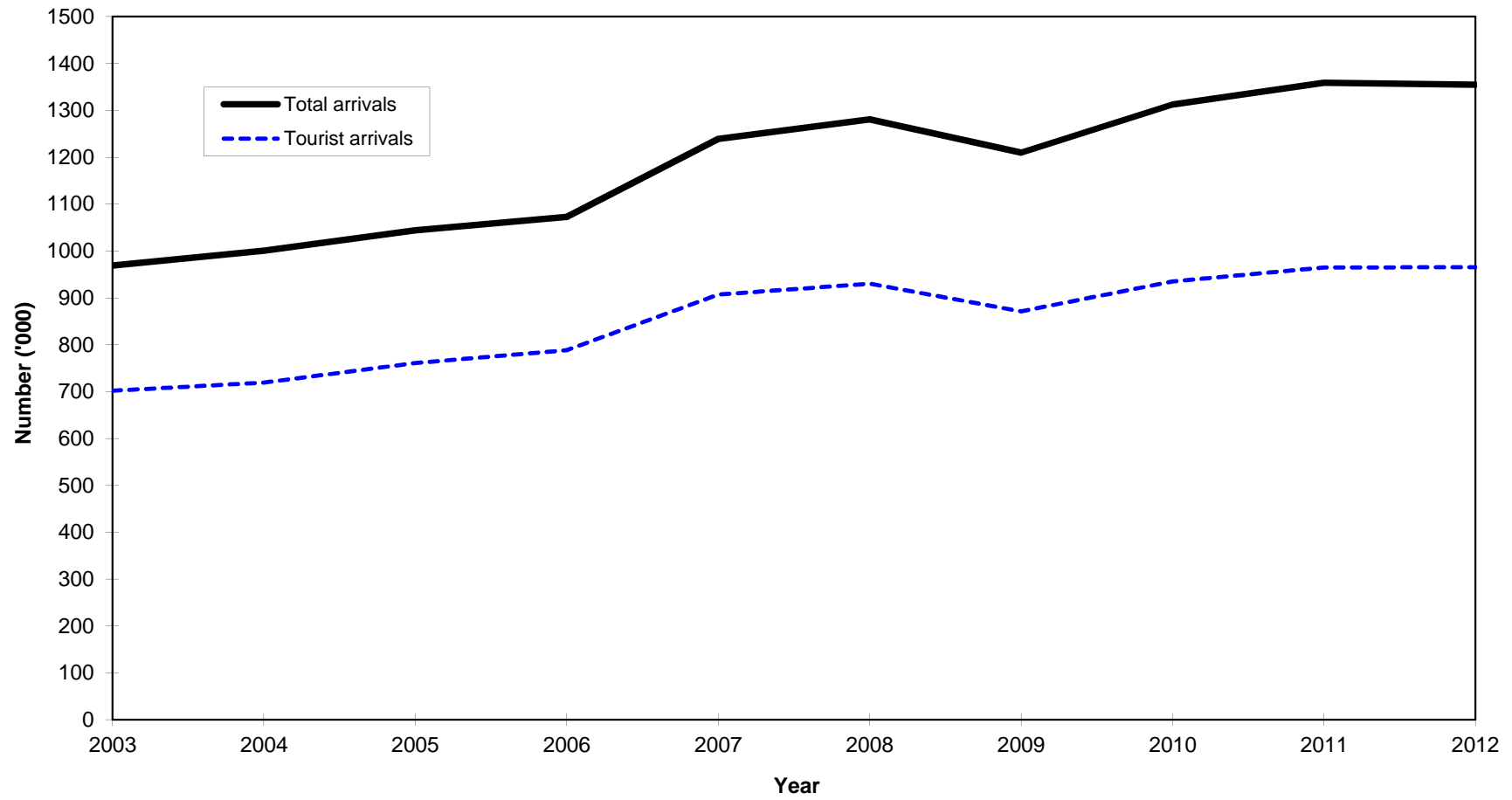
<sup>1</sup> Special Administrative Region of China

<sup>2</sup> Revised

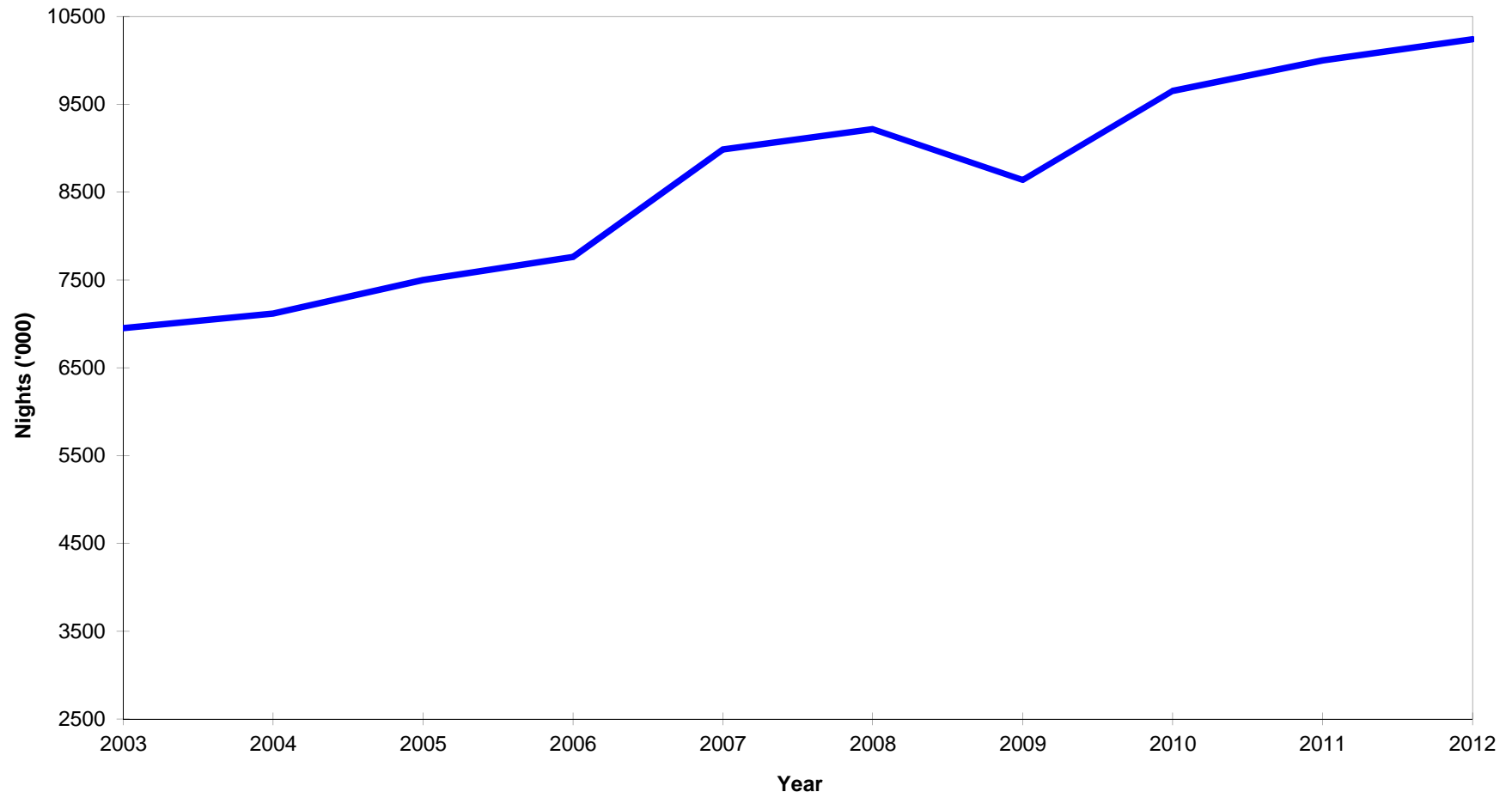
<sup>3</sup> Provisional

NA - Not available

Fig 6 - Total arrivals and tourist arrivals, 2003 - 2012



**Fig 7 - Tourist nights, 2003 - 2012**



**Table 30 - Visitor<sup>1</sup> arrivals by country of residence and type of passenger, 2010 - 2012**

Country of residence	Visitors on holidays			Visitors on business			Visitors in transit			Other visitors			Total visitors		
	2010	2011	2012	2010	2011	2012	2010	2011	2012	2010	2011	2012	2010	2011	2012
Australia	10,247	13,907	15,410	457	612	510	2,011	4,029	2,447	330	31	9	13,045	18,579	18,376
Belgium	9,614	11,592	10,563	313	357	350	244	154	114	134	32	17	10,305	12,135	11,044
France	290,752	276,625 <sup>3</sup>	249,107	4,024	4,156 <sup>3</sup>	4,960	9,118	5,777 <sup>3</sup>	5,286	3,234	921 <sup>3</sup>	300	307,128	287,479	259,653
Germany	51,837	55,381	54,381	571	658	594	1,195	886	1,069	128	20	15	53,731	56,945	56,059
Hong Kong SAR <sup>2</sup>	413	589	1,022	0	1	113	4	4	166	0	0	3	417	594	1,304
India	42,958	47,787	49,071	4,835	4,697	4,874	1,539	1,522	1,289	847	320	330	50,179	54,326	55,564
Italy	55,355	51,788	39,361	533	597	471	930	577	457	127	31	18	56,945	52,993	40,307
Japan	1,157	1,223	1,380	180	183	196	186	593	621	2	1	6	1,525	2,000	2,203
Kenya	825	887	1,349	596	869	1,059	75	166	274	82	30	36	1,578	1,952	2,718
Malagasy Rep.	6,406	7,506	8,663	975	1,080	1,585	2,551	2,917	3,552	399	281	321	10,331	11,784	14,121
Reunion Island	107,289	123,403 <sup>3</sup>	137,759	3,886	4,469 <sup>3</sup>	2,625	6,008	6,810 <sup>3</sup>	7,078	2,159	0	496	119,342	134,682	147,958
Seychelles	8,924	7,224	5,279	446	511	537	797	666	698	452	304	353	10,619	8,705	6,867
Singapore	1,449	1,794	1,576	305	320	412	168	361	121	6	4	0	1,928	2,479	2,109
S. Africa Rep. of	74,233	78,404	81,115	5,974	6,924	7,198	959	911	1,880	670	278	184	81,836	86,517	90,377
Switzerland	18,129	23,981	25,538	209	261	349	370	426	586	97	17	6	18,805	24,685	26,479
United Kingdom	91,569	83,554	84,009	2,737	3,030	2,657	4,489	3,098	3,309	2,131	125	56	100,926	89,807	90,031
U.S.A.	5,000	5,162	4,744	1,075	1,213	999	2,658	1,925	1,608	125	9	18	8,858	8,309	7,369
Zimbabwe	896	1,069	1,119	284	407	422	11	18	12	22	5	22	1,213	1,499	1,575
Other & N. Stated	88,509	105,012	125,531	8,681	10,751	12,656	8,930	10,703	11,177	1,496	630	626	107,616	127,096	149,990
<b>All Countries</b>	<b>865,562</b>	<b>897,786</b>	<b>896,977</b>	<b>36,081</b>	<b>40,730</b>	<b>42,567</b>	<b>42,243</b>	<b>40,948</b>	<b>41,744</b>	<b>12,441</b>	<b>3,102</b>	<b>2,816</b>	<b>956,327</b>	<b>982,566</b>	<b>984,104</b>

<sup>1</sup> Visitors include tourists, cruise ship passengers and non-residents who stay in the country for less than a day, other than those who do not leave the airport

<sup>2</sup> Special Administrative Region of China

<sup>3</sup> Revised

**Table 31 - Visitor arrivals by age and sex, 2011 & 2012**

Age (years)	2011			2012		
	Both Sexes	Male	Female	Both Sexes	Male	Female
Under 1	5,673	2,867	2,806	5,764	2,917	2,847
1 - 4	32,580	16,226	16,354	33,017	16,667	16,350
5 - 9	42,061	21,023	21,038	42,355	21,168	21,187
10 - 14	41,483	20,656	20,827	41,719	20,912	20,807
15 - 19	31,992	14,864	17,128	32,329	15,250	17,079
20 - 24	46,823	17,972	28,851	47,689	18,322	29,367
25 - 29	106,381	49,006	57,375	109,398	50,053	59,345
30 - 34	104,729	53,479	51,250	107,117	55,065	52,052
35 - 39	96,597	51,338	45,259	94,824	50,599	44,225
40 - 44	95,129	50,552	44,577	94,655	50,982	43,673
45 - 49	94,576	49,540	45,036	93,051	49,137	43,914
50 - 54	84,503	44,251	40,252	84,218	44,168	40,050
55 - 59	69,180	36,232	32,948	69,195	36,306	32,889
60 - 64	59,432	31,182	28,250	57,309	30,334	26,975
65 - 69	36,227	19,145	17,082	36,984	19,803	17,181
70 & over	35,200	18,636	16,564	34,480	18,482	15,998
<b>All ages</b>	<b>982,566</b>	<b>496,969</b>	<b>485,597</b>	<b>984,104</b>	<b>500,165</b>	<b>483,939</b>

**Table 32 - Visitor arrivals by duration of stay, 2011 & 2012**

Duration of stay	2011 <sup>1</sup>		2012	
	Number	Percentage	Number	Percentage
Less than 1 night	17,924	1.8	18,663	1.9
1 night	32,613	3.3	29,687	3.0
2 nights	28,890	2.9	34,834	3.5
3 nights	39,081	4.0	39,283	4.0
4 nights	53,030	5.4	54,190	5.5
5 nights	55,177	5.6	56,920	5.8
6 nights	85,907	8.7	90,269	9.2
7 nights	246,004	25.0	232,804	23.7
8 nights	43,789	4.5	42,708	4.3
9 nights	52,550	5.3	54,093	5.5
10 nights	58,258	5.9	60,251	6.1
11 nights	27,979	2.8	29,105	3.0
12 nights	30,583	3.1	31,229	3.2
13 nights	38,653	3.9	36,499	3.7
14 nights	69,199	7.0	64,445	6.6
15 nights	10,454	1.1	10,426	1.1
16 nights	8,789	0.9	9,341	1.0
17 nights	5,502	0.6	5,961	0.6
18 nights	5,171	0.5	5,160	0.5
19 nights	6,141	0.6	5,893	0.6
20 - 24 nights	24,100	2.5	24,922	2.5
25 - 29 nights	12,485	1.3	12,924	1.3
1 month - under 2 months	19,949	2.0	21,856	2.2
2 months - under 3 months	5,148	0.5	5,829	0.6
3 months and over	5,190	0.5	6,812	0.7
<b>All Countries</b>	<b>982,566</b>	<b>100.0</b>	<b>984,104</b>	<b>100.0</b>

<sup>1</sup> Revised

**Table 33 - Visitor arrivals by country of residence and duration of stay, 2012**

Country of residence	Duration of stay (Nights)												
	<1	1 - 2	3 - 4	5 - 6	7 - 8	9 - 10	11 - 12	13 - 14	15 - 19	20 - 24	25 - 29	30+	Total
Australia	1,367	2,533	1,670	3,373	1,182	1,343	465	2,194	847	1,190	596	1,616	18,376
Belgium	77	257	503	930	2,965	1,851	895	1,464	528	471	337	766	11,044
France	2,724	10,288	17,893	23,696	95,020	34,949	17,017	23,467	10,925	7,353	4,531	11,790	259,653
Germany	873	1,809	1,727	2,957	6,825	8,902	6,961	17,999	4,118	2,473	538	877	56,059
Hong Kong SAR <sup>1</sup>	35	279	154	427	88	136	23	58	39	21	5	39	1,304
India	367	2,706	11,939	31,730	2,360	1,243	428	800	652	654	296	2,389	55,564
Italy	298	1,240	786	5,314	20,428	3,498	1,819	4,307	866	584	299	868	40,307
Japan	562	220	528	584	134	31	21	29	16	14	25	39	2,203
Kenya	13	505	527	646	616	118	75	60	59	28	13	58	2,718
Malagasy Rep.	558	4,711	2,039	1,400	1,695	877	550	767	346	195	237	746	14,121
Reunion Island	3,618	15,552	24,514	24,808	50,594	9,843	4,910	4,997	3,846	1,926	1,019	2,331	147,958
Seychelles	88	1,203	558	883	1,787	556	396	644	299	187	78	188	6,867
Singapore	31	259	434	761	169	59	114	89	85	41	27	40	2,109
S. Africa Rep. of	1,319	6,315	9,662	9,843	42,043	9,957	3,150	3,534	1,830	1,021	434	1,269	90,377
Switzerland	477	663	611	2,119	5,599	3,674	2,685	6,642	1,470	1,284	502	753	26,479
United Kingdom	2,383	2,406	2,699	5,433	15,854	18,221	9,345	19,060	4,734	3,702	1,883	4,311	90,031
U.S.A.	995	1,542	1,095	1,242	883	454	253	204	217	143	79	262	7,369
Zimbabwe	7	141	284	253	396	146	72	122	53	17	12	72	1,575
Other & not stated	2,871	11,892	15,850	30,790	26,874	18,486	11,155	14,507	5,851	3,618	2,013	6,083	149,990
<b>All Countries</b>	<b>18,663</b>	<b>64,521</b>	<b>93,473</b>	<b>147,189</b>	<b>275,512</b>	<b>114,344</b>	<b>60,334</b>	<b>100,944</b>	<b>36,781</b>	<b>24,922</b>	<b>12,924</b>	<b>34,497</b>	<b>984,104</b>

<sup>1</sup> Special Administrative Region of China

**Table 34 - Tourist arrivals and average length of stay of tourists  
by country of residence, 2011 and 2012**

Country of Residence	2011		2012	
	Tourist arrivals	Average length of stay (nights) <sup>2</sup>	Tourist arrivals	Average length of stay (nights)
Australia	15,726	12.7	17,009	13.0
Belgium	12,029	12.5	10,967	13.8
France	282,469 <sup>2</sup>	11.3	256,929	11.8
Germany	56,331	12.2	55,186	12.2
Hong Kong SAR <sup>1</sup>	593	11.0	1,269	8.3
India	53,955	9.1	55,197	9.5
Italy	52,747	9.5	40,009	9.7
Japan	1,545	7.0	1,641	6.3
Kenya	1,914	9.2	2,705	7.0
Malagasy Rep.	11,449	11.0	13,563	10.1
People's Rep. of China	15,133	10.8	20,885	11.5
Reunion	132,535 <sup>2</sup>	7.1	144,340	7.1
Russian Federation	12,224	10.9	19,429	11.8
Seychelles	8,485	9.5	6,779	9.3
Singapore	2,461	6.0	2,078	8.0
S. Africa, Rep. of	86,232	8.4	89,058	8.4
Switzerland	24,362	12.3	26,002	12.6
United Arab Emirates	3,780	10.4	5,403	6.7
United Kingdom	88,182	12.5	87,648	13.6
U.S.A.	6,870	9.8	6,374	8.8
Zimbabwe	1,495	10.2	1,568	11.6
Other & not stated	94,125	11.1	101,402	11.1
<b>All Countries</b>	<b>549,638</b>	<b>10.4</b>	<b>965,441</b>	<b>10.6</b>

<sup>1</sup> Special Administrative Region of China

<sup>2</sup> Revised



**Table 35 - Gross earnings from tourism, 2003 - 2012**

Earnings (Rs Mn)	2003	2004	2005	2006	2007	2008	2009	2010	2011	2012
	19,415	23,448	25,704	31,942	40,687	41,213	35,693	39,456	42,717	44,378

Source : Bank of Mauritius

**Table 36 - Expenditure of tourists by country of residence, 1998 - 2010**

Country of residence	Expenditure (Rs Mn)						
	1998	2000	2002	2004	2006	2009	2010
France	3,173.1	3,785.7	5,188.2	6,928.4	7,620.7	12,153.6	13,981.5
Germany	1,195.9	1,447.3	1,852.9	2,084.0	2,684.3	2,794.3	2,876.4
Italy	827.9	918.3	1,215.0	1,389.9	2,920.4	2,579.8	2,503.3
Switzerland	473.3	615.7	662.6	692.2	871.7	789.6	1,108.5
United Kingdom	1,680.2	2,708.2	3,269.9	4,216.5	5,533.9	4,971.2	5,212.0
Malagasy Rep.	108.4	90.3	141.5	136.6	124.0	255.3	251.5
Reunion	855.4	871.4	1,242.5	1,575.8	1,908.4	2,537.9	3,206.3
South Africa, Rep. of	808.8	780.6	778.2	1,363.2	2,387.2	2,824.3	3,368.3
Singapore	62.5	94.5	68.6	50.4	69.2	46.7	77.6
Other countries	2,578.4	2,875.3	3,355.3	4,679.5	7,078.6	6,685.0	8,409.6
<b>All Countries</b>	<b>11,763.9</b>	<b>14,187.3</b>	<b>17,774.7</b>	<b>23,116.5</b>	<b>31,198.4</b>	<b>35,637.6</b>	<b>40,995.0</b>

Source: Prior to 2010, Survey of Outgoing Tourists conducted by the Ministry of Tourism & Leisure.  
For 2010, Survey of Inbound Tourism conducted by Statistics Mauritius.

**Table 37 - Expenditure of tourists by type of expenditure, 1998 - 2010**

Type of expenditure	Expenditure (Rs Mn)						
	1998	2000	2002	2004	2006	2009	2010
Accommodation	6,415	7,479	9,155	12,231	16,862	20,456	21,399
Meals & Beverages	1,818	2,470	3,327	4,203	5,427	5,417	5,575
Transport	804	941	1,232	1,339	1,902	2,352	5,329
Entertainment	685	839	986	1,353	1,815	2,495	3,239
Shopping	1,691	2,002	2,450	3,010	3,954	4,383	4,960
Other	351	457	624	981	1,238	535	493
<b>Total</b>	<b>11,764</b>	<b>14,187</b>	<b>17,775</b>	<b>23,117</b>	<b>31,198</b>	<b>35,638</b>	<b>40,995</b>

*Source: Prior to 2010, Survey of Outgoing Tourists conducted by the Ministry of Tourism & Leisure.  
For 2010, Survey of Inbound Tourism conducted by Statistics Mauritius.*

**Table 38 - Hotels, rooms and bedplaces, 2003 - 2012**

<b>Year</b>	<b>No. of hotels</b>	<b>No. of rooms</b>	<b>No. of bedplaces</b>
2003	97	9,647	19,727
2004	103	10,640	21,355
2005	99	10,497	21,072
2006	98	10,666	21,403
2007	97	10,857	21,788
2008	102	11,488	23,095
2009	102	11,456	23,235
2010	112	12,075	24,698
2011	109	11,925	24,242
2012	117 <sup>1</sup>	12,527	25,496

<sup>1</sup> *Excluding one hotel not operational because of renovation works*

**Table 39 - Monthly occupancy rates in large<sup>1</sup> hotels, 2008 - 2012**

Month	2008		2009		2010		2011		2012	
	Room	Bed	Room	Bed	Room	Bed	Room	Bed	Room	Bed
January	82	74	69	62	74	66	76	67	76	67
February	80	72	60	54	67	60	70	61	69	60
March	78	70	59	53	65	58	66	58	66	58
April	75	67	61	54	64	56	68	60	66	58
May	68	61	59	52	63	55	57	50	61	54
June	49	44	44	39	48	43	45	39	46	41
July	62	56	52	46	55	48	54	48	53	47
August	67	60	61	54	62	54	60	53	60	52
September	68	61	64	56	67	58	66	58	62	54
October	73	65	67	59	71	62	70	61	70	62
November	71	63	71	63	76	67	76	67	71	63
December	70	63	73	64	78	68	74	65	74	65
<b>Whole Year</b>	<b>70</b>	<b>62</b>	<b>62</b>	<b>55</b>	<b>66</b>	<b>58</b>	<b>65</b>	<b>57</b>	<b>65</b>	<b>57</b>

<sup>1</sup> Large Hotels are well established beach hotels of over 80 rooms

Room Occupancy Rate =  $\frac{\text{Total number of room nights rented} \times 100}{\text{Total number of room nights available}}$

Bed Occupancy Rate =  $\frac{\text{Total number of bed nights rented} \times 100}{\text{Total number of bed nights available}}$

**Table 40 - Monthly occupancy rates in all hotels, 2008 - 2012**

Month	2008		2009		2010		2011		2012	
	Room	Bed	Room	Bed	Room	Bed	Room	Bed	Room	Bed
January	82	73	69	62	72	64	75	66	74	65
February	78	70	60	53	67	58	68	60	67	59
March	77	69	59	52	64	56	64	57	65	57
April	72	65	59	53	61	54	64	57	62	55
May	66	60	58	52	61	53	55	49	59	52
June	49	43	45	39	47	41	44	38	45	39
July	61	55	51	45	54	47	53	47	52	45
August	65	58	59	52	60	52	57	51	56	50
September	65	58	62	55	65	57	64	57	60	53
October	71	64	65	58	69	61	68	60	67	59
November	69	62	69	61	74	65	74	66	69	61
December	69	62	70	62	75	66	73	64	71	63
<b>Whole Year</b>	<b>68</b>	<b>61</b>	<b>61</b>	<b>54</b>	<b>65</b>	<b>57</b>	<b>65</b>	<b>57</b>	<b>62</b>	<b>55</b>

Room Occupancy Rate =  $\frac{\text{Total number of room nights rented} \times 100}{\text{Total number of room nights available}}$

Bed Occupancy Rate =  $\frac{\text{Total number of bed nights rented} \times 100}{\text{Total number of bed nights available}}$

**APPENDIX**

**Welcome to Mauritius / Bienvenue à Maurice  
DISEMBARKATION CARD / FICHE DE DEBARQUEMENT  
(Regulation 23 of the Passports Regulations 1969)**

Flight No. <i>No. de vol</i>	<input type="text"/>											
Surname <i>Nom</i>	<input type="text"/>											
First Name/s <i>Prenom/s</i>	<input type="text"/>											
Male <i>Masculin</i>	<input type="checkbox"/>	Female <i>Féminin</i>	<input type="checkbox"/>	Date of birth <i>Date de naissance</i>	<input type="text"/>							
Country of Birth <i>Pays de naissance</i>	<input type="text"/>											
Nationality <i>Nationalité</i>	<input type="text"/>											
Profession	<input type="text"/>											
Passport Number <i>Numéro du passeport</i>	<input type="text"/>											
Date of expiry <i>Date d'Expiration</i>	<input type="text"/>											
Country of Issue <i>Pays de Délivrance</i>	<input type="text"/>											
Country of residence <i>Pays de résidence</i>	<input type="text"/>											
Street <i>Rue</i>	<input type="text"/>											
Town/City <i>Ville/Cité</i>	<input type="text"/>											
Port of Embarkation <i>Port d'Embarquement</i>	<input type="text"/>											
Purpose: Holidays: <i>Motif: Vacances:</i>	<input type="checkbox"/>	Other: <i>Autre:</i>	<input type="text"/>									
Duration of Stay <i>Durée du Séjour</i>	Days <i>Jours</i>	<input type="text"/>	Months <i>Mois</i>	<input type="text"/>	Years <i>Années</i>	<input type="text"/>						
Address during Stay <i>Adresse durant le Séjour</i>	<input type="text"/>											

**DECLARATION**

I declare that all the information I have given is true and complete. I understand that I shall commit an offence if I refuse to fill-in the card or knowingly give false information.

*Je déclare qu'à ma connaissance toutes les informations fournies sont exactes et complètes. Je suis conscient que le fait de ne pas remplir cette fiche ou toute fausse déclaration de ma part pourrait entraîner des poursuites pénales.*

Date

Signature