

Republic of Mauritius

Digest of International Travel and Tourism Statistics 2010

**Ministry of Finance and Economic Development
Statistics Mauritius**

DIGEST OF
INTERNATIONAL TRAVEL
AND
TOURISM STATISTICS
2010

INTERNATIONAL TRAVEL AND TOURISM STATISTICS

Vol. 37

2010

" International Travel and Tourism Statistics" is a regular publication of the Statistics Mauritius, designed to present in a single report, detailed statistics concerning international travel and tourism relating to Mauritius.

The statistical tables presented in this report have been compiled from data collected from the passport of travellers, disembarkation cards filled in by non-residents, questions put to non-residents entering the country, hotels and administrative records.

Statistical data on International Travel and Tourism are constantly updated as more reliable information become available, necessitating minor changes over previous issues of this publication. The figures published in this issue therefore supersede those of all previous issues.

It is hoped that the data herewith assembled will prove useful to the public in general and to policy makers, planners and research workers in particular.

The publication of this report has been made possible with the collaboration of the Passport and Immigration Office and the Ministry of Tourism and Leisure. Their co-operation is herewith gratefully acknowledged.

L.F Cheung Kai Suet

Director of Statistics

Statistics Mauritius
Ministry of Finance and Economic Development
PORT LOUIS
MAURITIUS
December 2011

CONTENTS

Table	Page
I - POPULATION AND VITAL STATISTICS	
1 - Estimated resident population of Republic of Mauritius as at 31st December, 2009 & 2010	5
2 - Population growth in intercensal periods - Island of Mauritius, 1851 - 2000	5
3 - Population growth in intercensal periods - Island of Rodrigues, 1851 - 2000	6
4 - Estimated resident population by geographical district and sex - Republic of Mauritius, 2009 & 2010 (End of year estimates)	7
5 - Population and vital statistics - Republic of Mauritius, 1975 - 2010	8
6 - Growth of the resident population and vital statistics - Island of Mauritius, 2001 - 2010	9
7 - Growth of the resident population and vital statistics - Island of Rodrigues, 2001 - 2010	10
II - PASSENGER TRAFFIC	
8 - Passenger traffic by sex, 1990 - 2010	11
9 - Passenger traffic between Islands of Mauritius and Rodrigues, 1990 - 2010	12
10 - Passenger traffic by mode of transport, 1990 - 2010	16
11 - Passenger traffic by month, 2007 - 2010	17
12 - Arrivals by country of original embarkation, 2005 - 2010	18
13 - Departures by country of final destination, 2005 - 2010	19
14 - Monthly passenger traffic by type of passenger, 2010	20
15 - Passenger traffic by type of passenger, 2001 - 2010	21
16 - Total arrivals by age and sex, 2009 & 2010	22
17 - Total departures by age and sex, 2009 & 2010	23
18 - Excess of arrivals over departures by age and sex, 2009 & 2010	24
19 - Arrivals of Mauritian residents by age and sex, 2009 & 2010	25
20 - Departures of Mauritian residents by age and sex, 2009 & 2010	26
21 - Excess of arrivals over departures of Mauritian residents by age and sex, 2009 & 2010	27
22 - Arrivals and departures of Mauritian residents by country of embarkation and disembarkation, 2008 - 2010	28

CONTENTS

Table		Page
	III - TOURISM	
	Definition and notes	29
23	- Tourist arrivals by mode of transport and tourist nights spent during period, 1994-2010	31
24	- Tourist arrivals by month of arrival, 2001 - 2010	32
25	- Percentage distribution of tourist arrivals by month of arrival, 2001 - 2010	34
26	- Tourist arrivals by country of residence and sex, 2009 and 2010	35
27	- Tourist arrivals by country of residence, 2001 - 2010	36
28	- Percentage distribution of tourist arrivals by country of residence, 2001 - 2010	37
29	- Tourist nights by country of residence, 2001 - 2010	39
30	- Visitor arrivals by country of residence and type of passenger, 2008 - 2010	42
31	- Visitor arrivals by age and sex, 2009 & 2010	43
32	- Visitor arrivals by duration of stay, 2009 & 2010	44
33a	- Visitor arrivals by country of residence and duration of stay, 2009	45
33b	- Visitor arrivals by country of residence and duration of stay, 2010	46
34	- Tourist arrivals and average length of stay of tourists by country of residence, 2009 and 2010	47
35	- Gross earnings from tourism, 2001 - 2010	48
36	- Expenditure of tourists by country of residence, 1998 - 2009	48
37	- Expenditure of tourists by type of expenditure, 1998 - 2009	49
38	- Hotels, rooms and bedplaces, 2001 - 2010	50
39	- Monthly occupancy rates in large hotels, 2006 - 2010	51
40	- Monthly occupancy rates in all hotels, 2006 - 2010	52

CONTENTS

Page

ILLUSTRATIONS

Fig. 1	- Passenger Traffic: Total arrivals by sex, 1994 - 2010	13
2	- Passenger Traffic: Total departures by sex, 1994 - 2010	14
3	- Passenger Traffic: Total arrivals and total departures, 2001 - 2010	15
4	- Tourist arrivals by month, 2006 - 2010	33
5	- Percentage distribution of tourist arrivals by country of residence, 2010	38
6	- Total arrivals and tourist arrivals, 2001 - 2010	40
7	- Tourist nights, 2001 - 2010	41

The following symbol is used throughout :-

" - " for Nil

Appendix : Disembarkation Card

Contact persons:

Mr A. Bundhoo, Statistician or
Mr M. Lan Pin Wing, Senior Statistical Officer
Ministry of Tourism and Leisure
3rd Floor, Victoria House
Port Louis
Tel: (230) 211-9042
Fax: (230) 210-3901
Email: statsmauritus@mail.gov.mu

I - POPULATION AND VITAL STATISTICS

**Table 1 - Estimated resident population of Republic of Mauritius
as at 31st December, 2009 & 2010 ¹**

Year	Island	Both sexes	Male	Female	Area (sq km)	Density (persons/km ²)
2009	Mauritius	1,239,788	611,593	628,195	1,864.8	665
	Rodrigues	37,774	18,690	19,084	104.0	363
	Other	289	193	96	71.2	4
	Republic of Mauritius	1,277,851	630,476	647,375	2,040.0	626
2010	Mauritius	1,245,288	613,886	631,402	1,864.8	668
	Rodrigues	37,838	18,708	19,130	104.0	364
	Other	289	193	96	71.2	4
	Republic of Mauritius	1,283,415	632,787	650,628	2,040.0	629

¹ based on the 2000 population census data adjusted for underenumeration of young children.

Table2 - Population growth in intercensal periods - Island of Mauritius, 1851 - 2000

Census Date	Population enumerated at census			Intercensal increase	Average annual rate of increase(%)
	Both sexes	Male	Female		
20 Nov. 1851	180,823	119,341	61,482	22,361	2.55
8 Apr. 1861	310,050	202,961	107,089	129,227	5.91
11 Apr. 1871	316,042	193,575	122,467	5,992	0.19
4 Apr. 1881	359,874	208,655	151,219	43,832	1.31
6 Mar. 1891	370,588	206,038	164,550	10,714	0.29
1 Apr. 1901	371,023	199,552	171,471	435	0.01
31 Mar. 1911	368,791	194,095	174,696	-2,232	-0.06
21 May. 1921	376,485	194,108	182,377	7,694	0.21
26 Apr. 1931	393,238	200,609	192,629	16,753	0.44
11 Jun. 1944	419,185	210,326	208,859	25,947	0.49
29 Jun. 1952	501,415	252,032	249,383	82,230	2.26
30 Jun. 1962 ¹	681,619	342,306	339,313	180,204	3.12
30 Jun. 1972 ¹	826,199	413,580	412,619	144,580	1.94
2 Jul. 1983 ¹	966,863	481,368	485,495	140,664	1.44
1 Jul. 1990 ²	1,022,456	510,676	511,780	55,593	0.80
1 Jul. 2000 ²	1,143,069	566,056	577,013	120,613	1.12

¹ " De facto " population

² " De jure " population

**Table 3 - Population growth in intercensal periods - Island of Rodrigues,
1851 - 2000**

Census Date	Population enumerated at census			Inter-censal increase	Average annual rate of increase (%)
	Both sexes	Male	Female		
20 Nov. 1851	495	327	168	-	-
8 Apr. 1861	693	464	229	198	3.65
11 Apr. 1871	1,108	693	415	415	4.80
4 Apr. 1881	1,431	812	619	323	2.59
6 Mar. 1891	2,068	1,154	914	637	3.75
1 Apr. 1901	3,162	1,685	1,477	1,094	4.34
31 Mar. 1911	4,829	2,523	2,306	1,667	4.33
21 May. 1921	6,584	3,300	3,284	1,755	3.15
26 Apr. 1931	8,202	4,033	4,169	1,618	2.22
11 Jun. 1944	11,885	5,740	6,145	3,683	2.89
29 Jun. 1952	13,333	5,947	7,386	1,448	1.45
30 Jun. 1962	18,335	9,062	9,273	5,002	3.24
30 Jun. 1972 ¹	24,769	12,270	12,499	6,434	3.05
2 Jul. 1983 ¹	33,082	16,552	16,530	8,313	2.67
1 Jul. 1990 ²	34,204	17,084	17,120	1,122	0.48
1 Jul. 2000 ²	35,779	17,700	18,079	1,575	0.45

¹ " De facto " population

² " De jure " population

Table 4 - Estimated resident population by geographical district and sex - Republic of Mauritius, 2009 & 2010
(End of year estimates) ¹

Geographical district	Area (km ²)	31st December 2009			31st December 2010		
		Both sexes	Male	Female	Both sexes	Male	Female
Port Louis	42.7	129,125	63,780	65,345	128,483	63,367	65,116
Pamplemousses	178.7	137,244	67,731	69,513	138,339	68,258	70,081
Riviere du Rempart	147.6	108,669	53,745	54,924	109,206	53,947	55,259
Flacq	297.9	139,465	69,531	69,934	140,294	69,871	70,423
Grand Port	260.3	115,092	57,030	58,062	115,546	57,233	58,313
Savanne	244.8	70,327	34,813	35,514	70,471	34,860	35,611
Plaines Wilhems	203.3	383,606	187,279	196,327	385,034	187,863	197,171
Moka	230.5	81,040	40,060	40,980	81,288	40,162	41,126
Black River	259.0	75,220	37,624	37,596	76,627	38,325	38,302
Island of Mauritius	1,864.8	1,239,788	611,593	628,195	1,245,288	613,886	631,402
Island of Rodrigues	104.0	37,774	18,690	19,084	37,838	18,708	19,130
Other ²	71.2	289	193	96	289	193	96
Republic of Mauritius	2,040.0	1,277,851	630,476	647,375	1,283,415	632,787	650,628

¹ based on the 2000 population census data adjusted for underenumeration of young children. Internal migration within districts is assumed to be the same as the net annual internal migration during 1995 - 2000 (obtained from the 2000 census)

² includes Agalega and St Brandon.

Table 5 - Population and vital statistics - Republic of Mauritius, 1975 - 2010

Year	Population at mid-year ¹	Live births	Deaths	Infant deaths	Still births	Civil marriages ²	Divorces ³
1975	892,045	22,557	7,201	1,130	932	7,069	110
1976	903,610	23,274	6,968	936	808	8,451	98
1977	918,005	23,859	7,154	1,087	742	8,632	197
1978	933,499	25,278	6,596	876	680	10,741	255
1979	949,888	26,163	6,871	891	668	9,327	265
1980	966,039	26,294	6,919	864	662	8,894	351
1981	980,462	24,967	6,653	884	590	8,406	305
1982	992,521	22,459	6,584	682	458	10,768	312
1983	1,001,691	21,073	6,532	570	403	10,255	361
1984	1,012,221	20,332	6,646	505	404	10,865	471
1985	1,020,528	19,376	6,906	487	383	11,245	460
1986	1,028,360	19,170	6,805	524	365	10,556	616
1987	1,036,082	20,033	6,753	504	363	11,392	842
1988	1,043,239	20,941	6,879	471	374	11,453	740
1989	1,051,260	21,822	7,149	498	415	11,197	711
1990	1,058,775	22,602	7,031	462	365	11,425	549
1991	1,070,266	22,197	7,027	413	400	11,295	707
1992	1,084,441	22,902	7,023	426	291	11,408	781
1993	1,097,374	22,329	7,433	438	337	11,576	762
1994	1,112,846	21,795	7,402	394	274	11,414	733
1995	1,122,457	20,549	7,465	404	299	10,624	801
1996	1,133,996	20,763	7,670	459	266	10,700	792
1997	1,148,284	20,012	7,986	406	257	10,887	891
1998	1,160,421	19,434	7,839	376	227	10,898	1,012
1999	1,175,267	20,311	7,944	396	226	11,295	1,150
2000	1,186,873	20,205	7,982	322	266	10,963	1,191
2001	1,199,881	19,696	7,983	282	244	10,635	1,512
2002	1,210,196	19,983	8,310	297	203	10,484	1,294
2003	1,222,811	19,343	8,520	250	220	10,812	1,190
2004	1,233,386	19,230	8,475	278	190	11,385	1,162
2005	1,243,253	18,820	8,646	248	185	11,294	1,133
2006	1,252,698	17,604	9,162	249	147	11,471	1,379
2007	1,260,403	17,034	8,498	261	172	11,547	1,302
2008	1,268,565	16,372	9,004	236	165	11,197	1,569
2009	1,275,032	15,344	9,224	205	138	10,619	2,154
2010	1,280,924	15,005	9,131	187	103	10,555	1,837

¹ Figures for 1975 - 1982, 1984 - 1989 and 1991 - 1999 have been respectively revised in the light of the 1983, 1990 and 2000 population census data adjusted for underenumeration of young children.

² The increase in the number of civil marriages as from 1982 is due largely to improved registration of religious marriages with the coming into force of a new Civil Status Act as from January, 1982.

³ Source: Judicial Department

Table 6 - Growth of the resident population and vital statistics - Island of Mauritius, 2001 - 2010

Year	Population at beginning of year	Natural movement			Net migration	Total increase	% change during the year due to:			Population at end of year
		Live births	Deaths	Natural increase			Natural increase	Migration	Total	
2001	1,157,290	18,884	7,761	11,123	890	12,013	0.96	+0.08	1.04	1,169,303
2002	1,169,303	19,169	8,081	11,088	-202	10,886	0.95	-0.02	0.93	1,180,189
2003	1,180,189	18,518	8,310	10,208	939	11,147	0.86	+0.08	0.94	1,191,336
2004	1,191,336	18,285	8,259	10,026	-362	9,664	0.84	-0.03	0.81	1,201,000
2005	1,201,000	17,924	8,422	9,502	800	10,302	0.79	0.07	0.86	1,211,302
2006	1,211,302	16,723	8,917	7,806	100	7,906	0.64	+0.01	0.65	1,219,208
2007	1,219,208	16,190	8,323	7,867	0	7,867	0.65	+0.00	0.65	1,227,075
2008	1,227,075	15,590	8,798	6,792	175	6,967	0.55	+0.01	0.56	1,234,042
2009	1,234,042	14,623	8,987	5,636	110	5,746	0.46	+0.01	0.47	1,239,788
2010	1,239,788	14,291	8,891	5,400	100	5,500	0.44	+0.01	0.45	1,245,288

Table 7 - Growth of the resident population and vital statistics - Island of Rodrigues, 2001 - 2010

Year	Population at beginning of year	Natural movement			Net migration	Total increase	% change during the year due to:			Population at end of year
		Live births	Deaths	Natural increase			Natural increase	Migration	Total	
2001	35,885	812	222	590	-390	200	1.64	-1.09	0.55	36,085
2002	36,085	814	229	585	-367	218	1.62	-1.02	0.60	36,303
2003	36,303	825	210	615	-415	200	1.69	-1.14	0.55	36,503
2004	36,503	945	216	729	-460	269	2.00	-1.26	0.74	36,772
2005	36,772	896	224	672	-450	222	1.83	-1.22	0.61	36,994
2006	36,994	881	245	636	-400	236	1.72	-1.08	0.64	37,230
2007	37,230	844	175	669	-400	269	1.80	-1.07	0.73	37,499
2008	37,499	782	206	576	-375	201	1.54	-1.00	0.54	37,700
2009	37,700	721	237	484	-410	74	1.28	-1.09	0.19	37,774
2010	37,774	714	240	474	-410	64	1.25	-1.08	0.17	37,838

II - PASSENGER TRAFFIC

Table 8 - Passenger traffic ¹ by sex, 1990 - 2010

Period	Arrivals			Departures			Arrivals minus Departures
	Both Sexes	Male	Female	Both Sexes	Male	Female	
1990	418,200	232,050	186,150	422,230	233,280	188,950	- 4,030
1991	426,680	239,630	187,050	425,620	236,190	189,430	+ 1,060
1992	475,920	262,660	213,260	472,010	258,320	213,690	+ 3,910
1993	523,740	280,910	242,830	520,400	281,100	239,300	+ 3,340
1994	558,136	295,259	262,877	557,575	295,500	262,075	+ 561
1995	579,993	304,705	275,288	578,481	304,245	274,236	+ 1,512
1996	672,070	350,561	321,509	663,501	345,892	317,609	+ 8,569
1997	743,291	378,593	364,698	737,523	379,841	357,682	+ 5,768
1998	778,574	367,914	410,660	775,998	382,567	393,431	+ 2,576
1999	823,085	434,667	388,418	809,233	428,234	380,999	+ 13,852
2000	915,203	480,879	434,324	895,569	469,902	425,667	+ 19,634
2001	910,489	477,984	432,505	903,073	473,096	429,977	+ 7,416
2002	951,090	498,177	452,913	942,876	494,212	448,664	+ 8,214
2003	968,906	510,212	458,694	947,774	497,011	450,763	+ 21,132
2004	1,000,545	523,961	476,584	979,322	511,734	467,588	+ 21,223
2005	1,043,900	544,520	499,380	1,029,666	538,113	491,553	+ 14,234
2006	1,072,879	562,766	510,113	1,060,074	555,279	504,795	+ 12,805
2007	1,238,826	648,554	590,272	1,237,747	645,657	592,090	+ 1,079
2008	1,280,640	669,919	610,721	1,261,182	658,947	602,235	+ 19,458
2009	1,210,005	623,925	586,080	1,206,550	623,551	582,999	+ 3,455
2010	1,312,700	677,067	635,633	1,317,581	679,362	638,219	- 4,881

¹ Includes traffic between Island of Mauritius and Rodrigues. As from 1994, figures of the passenger traffic also include cruise travellers, i.e passengers and crews of cruise ships.

Table 9 - Passenger traffic ¹ between Islands of Mauritius and Rodrigues, 1990 -2010

Period	Arrivals in Rodrigues			Departures from Rodrigues			Arrivals minus Departures
	Both Sexes	Male	Female	Both Sexes	Male	Female	
1990	13,110	8,023	5,087	13,492	7,949	5,543	- 382
1991	15,125	9,594	5,531	16,178	10,117	6,061	- 1,053
1992	19,064	11,629	7,435	19,865	11,887	7,978	- 801
1993	22,819	13,973	8,846	23,476	14,094	9,382	- 657
1994	23,292	14,174	9,118	23,636	14,177	9,459	- 344
1995	24,150	14,532	9,618	24,820	14,603	10,217	- 670
1996	29,129	16,947	12,182	29,370	16,861	12,509	- 241
1997	37,765	22,120	15,645	38,014	22,096	15,918	- 249
1998	40,648	24,181	16,467	40,553	23,072	17,481	+ 95
1999	45,117	28,384	16,733	45,154	26,961	18,193	- 37
2000	49,530	28,280	21,250	49,981	29,436	20,545	- 451
2001	52,777	30,320	22,457	52,307	30,760	21,547	+ 470
2002	60,355	34,647	25,708	59,984	34,004	25,980	+ 371
2003	63,649	37,203	26,446	63,937	37,673	26,264	- 288
2004	60,862	34,467	26,395	60,830	34,314	26,516	+ 32
2005	53,534	29,805	23,729	53,987	29,447	24,540	- 453
2006	55,368	31,395	23,973	56,015	31,822	24,193	- 647
2007	61,617	33,991	27,626	61,595	33,735	27,860	+ 22
2008	54,433	29,713	24,720	54,212	29,260	24,952	+ 221
2009	52,981	28,337	24,644	53,426	28,341	25,085	- 445
2010	60,573	31,624	28,949	60,662	32,101	28,561	- 89

¹ Includes residents and non-residents

Fig 1 - Passenger traffic: Total arrivals by sex, 1994- 2010

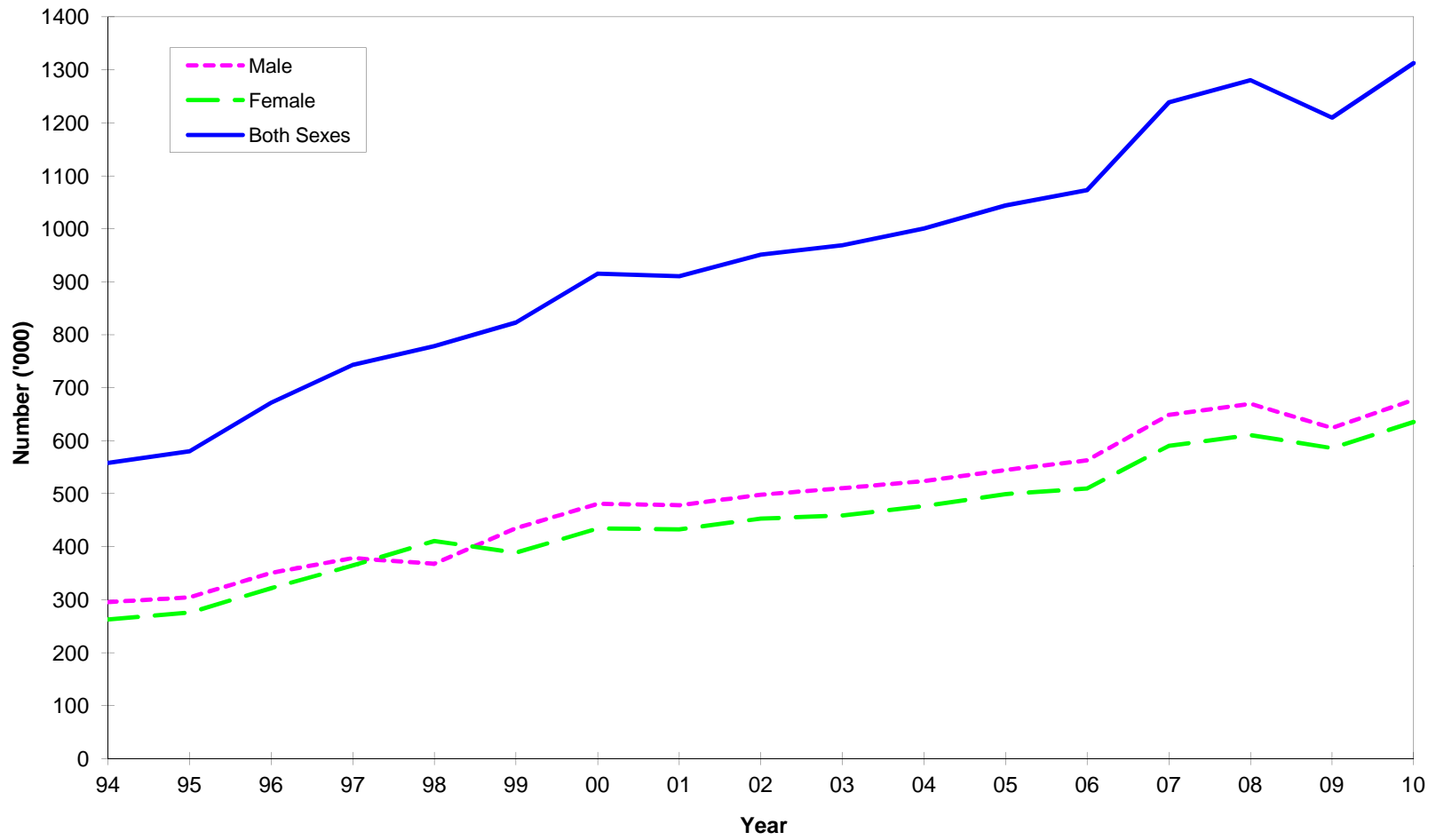


Fig 2 - Passenger traffic: Total departures by sex, 1994 - 2010

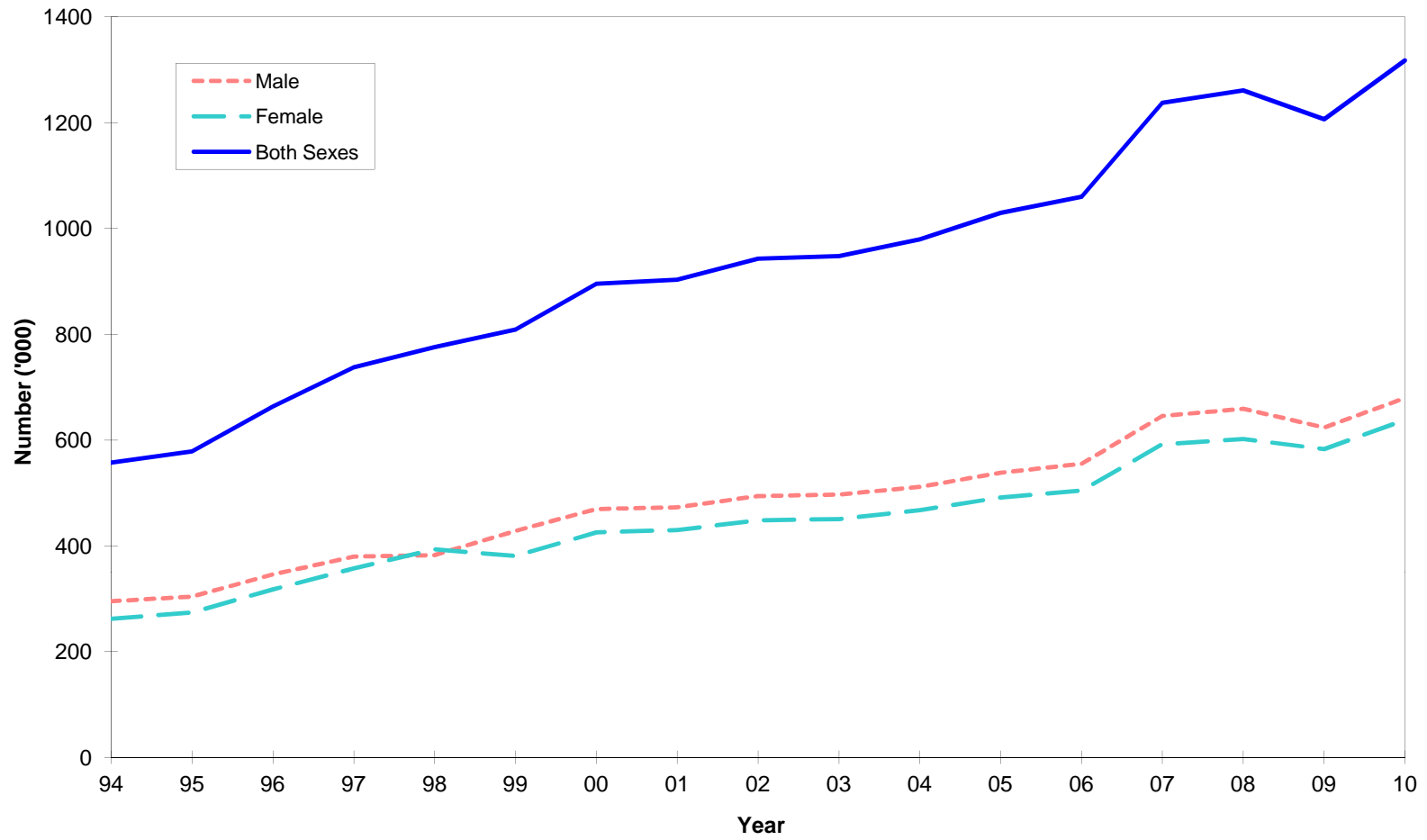


Fig. 3 - Passenger traffic : Total arrivals and total departures, 2001 - 2010

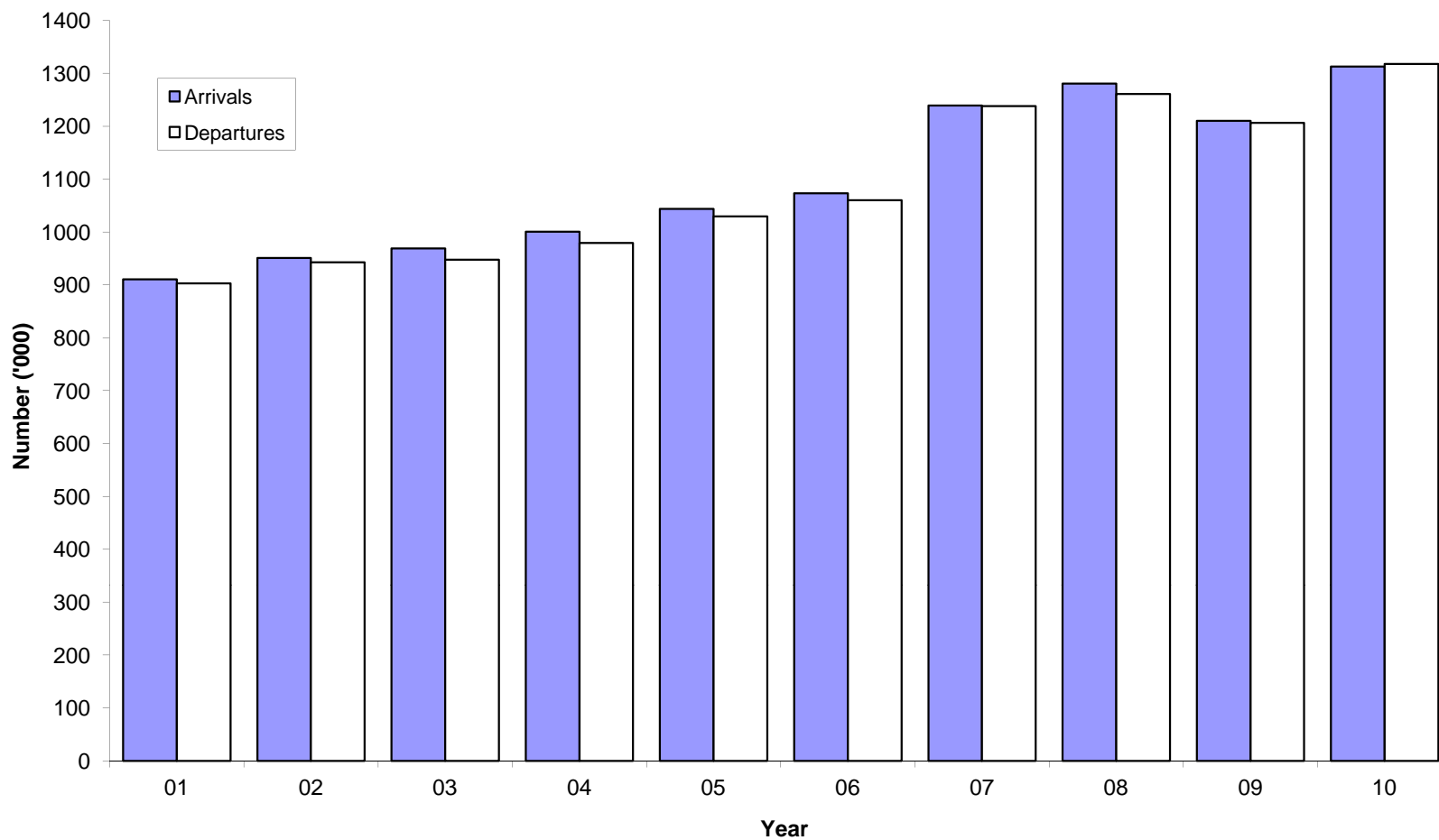


Table 10 - Passenger traffic ¹ by mode of transport, 1990 - 2010

Period	Arrivals			Departures			Arrivals minus Departures
	Total	By sea	By air	Total	By sea	By air	
1990	418,200	3,820	414,380	422,230	3,820	418,410	- 4,030
1991	426,680	7,290	419,390	425,620	5,820	419,800	+ 1,060
1992	475,920	9,260	466,660	472,010	6,780	465,230	+ 3,910
1993	523,740	13,530	510,210	520,400	11,890	508,510	+ 3,340
1994	558,136	19,461	538,675	557,575	17,663	539,912	+ 561
1995	579,993	18,854	561,139	578,481	17,895	560,586	+ 1,512
1996	672,070	27,308	644,762	663,501	24,794	638,707	+ 8,569
1997	743,291	29,756	713,535	737,523	27,390	710,133	+ 5,768
1998	778,574	43,706	734,868	775,998	40,809	735,189	+ 2,576
1999	823,085	40,499	782,586	809,233	39,230	770,003	+ 13,852
2000	915,203	34,262	880,941	895,569	33,368	862,201	+ 19,634
2001	910,489	27,847	882,642	903,073	26,313	876,760	+ 7,416
2002	951,090	43,890	907,200	942,876	42,630	900,246	+ 8,214
2003	968,906	31,296	937,610	947,774	28,936	918,838	+ 21,132
2004	1,000,545	32,238	968,307	979,322	28,609	950,713	+ 21,223
2005	1,043,900	35,422	1,008,478	1,029,666	35,478	994,188	+ 14,234
2006	1,072,879	31,713	1,041,166	1,060,074	28,725	1,031,349	+ 12,805
2007	1,238,826	33,373	1,205,453	1,237,747	31,001	1,206,746	+ 1,079
2008	1,280,640	48,311	1,232,329	1,261,182	47,494	1,213,688	+ 19,458
2009	1,210,005	54,396	1,155,609	1,206,550	49,005	1,157,545	+ 3,455
2010	1,312,700	57,576	1,255,124	1,317,581	63,549	1,254,032	- 4,881
2010:1st Qr.	350,246	33,175	317,071	379,111	39,887	339,224	- 28,865
2nd Qr.	268,749	4,521	264,228	277,712	5,355	272,357	- 8,963
3rd Qr.	303,258	4,923	298,335	299,216	4,885	294,331	+ 4,042
4th Qr.	390,447	14,957	375,490	361,542	13,422	348,120	+ 28,905

¹ Includes traffic between Island of Mauritius and Rodrigues. As from 1994, figures of the passenger traffic also include cruise travellers, i.e passengers and crews of cruise ships.

Table 11 - Passenger traffic ¹ by month, 2007 - 2010

Month	Arrivals				Departures				Excess of arrivals over departures			
	2007	2008	2009	2010	2007	2008	2009	2010	2007	2008	2009	2010
January	121,388	132,192	123,979	126,978	139,856	150,152	143,807	151,282	- 18,468	-17,960	- 19,828	- 24,304
February	90,304	101,997	92,975	95,708	89,376	103,374	93,071	95,702	+ 928	- 1,377	- 96	6
March	103,577	119,909	103,580	127,560	107,778	125,733	106,719	132,127	- 4,201	- 5,824	- 3,139	- 4,567
April	98,857	101,472	95,683	93,717	99,822	102,763	95,766	100,482	- 965	- 1,291	- 83	- 6,765
May	88,674	92,019	87,399	95,343	91,385	100,497	92,740	98,907	- 2,711	- 8,478	- 5,341	- 3,564
June	78,230	79,326	73,366	79,689	73,375	66,133	72,503	78,323	+ 4,855	+ 13,193	+ 863	+ 1,366
July	111,873	117,032	102,993	113,118	96,072	96,713	88,902	99,736	+ 15,801	+ 20,319	+ 14,091	+ 13,382
August	102,673	103,027	94,182	99,618	111,756	117,838	107,374	109,313	- 9,083	- 14,811	- 13,192	- 9,695
September	89,018	87,119	82,066	90,522	90,640	86,863	81,263	90,167	- 1,622	+ 256	+ 803	+ 355
October	105,278	108,099	105,327	115,290	105,800	106,218	103,753	112,631	- 522	+ 1,881	+ 1,574	+ 2,659
November	106,490	103,427	107,065	115,763	108,920	98,336	104,114	114,383	- 2,430	+ 5,091	+ 2,951	+ 1,380
December	142,464	135,021	141,390	159,394	122,967	106,562	116,538	134,528	+ 19,497	+ 28,459	+ 24,852	+ 24,866
Whole Year	1,238,826	1,280,640	1,210,005	1,312,700	1,237,747	1,261,182	1,206,550	1,317,581	+1,079	+ 19,458	+ 3,455	- 4,881

¹ Includes traffic between Island of Mauritius and Rodrigues. Figures of the passenger traffic also include cruise travellers, i.e passengers and crews of cruise ships.

Table 12 - Arrivals ¹ by country of original embarkation, 2005 - 2010

Country of original embarkation	2005	2006	2007	2008	2009	2010
Australia	18,282	21,563	26,181	29,169	16,859	21,438
Belgium	619	484	127	192	4	0
France	208,271	201,444	246,006	253,159	261,716	273,903
Germany	51,958	56,982	65,876	62,858	43,157	42,668
Hong Kong SAR ²	20,764	20,782	26,245	27,189	22,310	28,161
India	51,500	58,910	66,329	62,147	53,487	70,138
Italy	37,301	60,741	64,048	61,685	46,403	50,884
Japan	53	65	33	22	0	39
Kenya	1,925	9,734	8,459	5,777	4,926	6,396
Malagasy Rep.	26,515	22,141	27,343	29,211	21,480	26,363
Reunion Island	216,414	176,157	203,508	218,865	240,369	268,943
Rodrigues	53,987	56,015	61,595	54,212	53,426	60,662
Seychelles	21,718	23,766	26,795	25,541	22,702	24,557
Singapore	17,855	13,571	18,953	18,022	16,501	21,749
S. Africa, Rep. of	101,294	117,175	136,487	144,122	130,776	138,838
Switzerland	12,722	14,249	16,250	13,882	10,404	14,806
United Kingdom	115,400	116,724	128,983	132,551	108,441	103,588
Zambia	26	16	12	48	10	20
Zimbabwe	2,676	688	175	26	6	20
Other & not stated	84,620	101,672	115,421	141,962	157,028	159,527
All Countries	1,043,900	1,072,879	1,238,826	1,280,640	1,210,005	1,312,700

¹ Figures on passenger arrivals include cruise travellers, i.e passengers and crews of cruise ships which numbered 11553, 11651, 9747, 26388, 34117 and 38061 for 2005, 2006, 2007, 2008, 2009 and 2010 respectively, in accordance with the recommendations of the World Tourism Organisation.

² Special Administrative Region of China

Note: Figures as from 2009 refers to country of embarkation.

Table 13 - Departures ¹ by country of final destination, 2005 - 2010

Country of final destination	2005	2006	2007	2008	2009	2010
Australia	18,931	22,579	29,325	33,765	18,164	18,300
Belgium	102	65	247	363	17	0
France	221,372	215,093	261,855	263,683	274,659	284,197
Germany	53,368	56,377	68,261	62,156	43,023	44,132
Hong Kong SAR ²	19,052	17,898	21,441	20,247	21,795	27,367
India	50,784	55,942	64,669	59,651	53,120	68,052
Italy	35,022	57,922	64,939	62,791	47,626	51,220
Japan	41	10	13	40	0	22
Kenya	1,103	6,258	6,236	4,978	3,430	4,431
Malagasy Rep.	26,611	21,722	27,815	30,342	22,805	26,338
Reunion Island	205,625	176,007	200,200	218,786	224,128	258,359
Rodrigues	53,534	55,368	61,617	54,433	52,981	60,573
Seychelles	21,128	23,844	28,189	25,160	30,978	31,958
Singapore	17,513	18,405	17,955	17,760	15,542	17,868
S. Africa, Rep. of	91,817	107,201	122,724	126,982	117,004	132,040
Switzerland	11,443	13,148	16,136	13,841	9,234	13,013
United Kingdom	117,045	119,260	130,804	132,143	111,143	105,368
Zambia	8	13	3	153	5	0
Zimbabwe	2,352	735	45	3	1	0
Other & not stated	82,815	92,227	115,273	133,905	160,895	174,343
All Countries	1,029,666	1,060,074	1,237,747	1,261,182	1,206,550	1,317,581

¹ Figures on passenger departures include cruise travellers, i.e passengers and crews of cruise ships which numbered 12772, 11323, 9861, 26782, 31154 and 40834 for 2005, 2006, 2007, 2008, 2009 and 2010 respectively, in accordance with the recommendations of the World Tourism Organisation.

² Special Administrative Region of China

Note: Figures as from 2009 refers to country of disembarkation.

Table 14 - Monthly passenger traffic ¹ by type of passenger, 2010

Type of passenger	Jan	Feb	Mar	Apr	May	Jun	Jul	Aug	Sep	Oct	Nov	Dec	Whole Year
Arrivals													
Visitors ²	93,410	73,079	93,369	66,068	72,063	54,491	78,444	66,612	66,365	88,705	86,992	116,729	956,327
- On holiday	85,810	67,779	79,024	59,655	65,478	48,565	71,039	59,558	59,799	80,327	79,073	109,455	865,562
- On business & Conference	2,653	2,805	3,236	3,119	3,191	2,620	2,686	2,577	3,165	3,745	4,092	2,192	36,081
- In transit	1,985	1,148	8,292	1,620	1,533	1,512	1,956	1,792	1,454	1,899	1,415	2,423	27,029
- Other and not stated	2,962	1,347	2,817	1,674	1,861	1,794	2,763	2,685	1,947	2,734	2,412	2,659	27,655
Mauritian residents	26,136	16,700	21,288	22,417	18,390	20,332	29,510	26,826	19,357	21,577	23,223	33,231	278,987
Other ³	7,432	5,929	12,903	5,232	4,890	4,866	5,164	6,180	4,800	5,008	5,548	9,434	77,386
Total arrivals	126,978	95,708	127,560	93,717	95,343	79,689	113,118	99,618	90,522	115,290	115,763	159,394	1,312,700
Departures													
Visitors	123,955	75,495	104,173	76,663	79,425	57,968	70,856	82,752	66,993	90,231	87,978	101,127	1,017,616
Mauritian residents	24,338	17,730	20,836	21,973	18,334	18,987	27,403	25,333	22,076	21,068	24,827	29,240	272,145
Other	2,989	2,477	7,118	1,846	1,148	1,368	1,477	1,228	1,098	1,332	1,578	4,161	27,820
Total departures	151,282	95,702	132,127	100,482	98,907	78,323	99,736	109,313	90,167	112,631	114,383	134,528	1,317,581

¹ Including traffic between Island of Mauritius and Rodrigues

² Including non-residents who left the airport but stayed in the country for less than a day.

³ Including contract workers

Table 15 - Passenger traffic ¹ by type of passenger, 2001 - 2010

Type of passenger	2001	2002	2003	2004	2005	2006	2007	2008	2009	2010
Arrivals										
Visitors ²	674,619	709,305	721,348	738,516	781,572	806,652	932,782	970,482	889,999	956,327
- On holiday	606,545	620,124	636,325	653,818	692,084	712,620	818,714	821,325	819,739	865,562
- On business & Conference	26,523	28,558	31,155	30,416	30,164	32,511	34,633	37,521	29,025	36,081
- In transit	33,263	51,747	42,736	44,710	48,299	47,966	61,186	82,683	24,871	27,029
- Other & not stated	8,288	8,876	11,132	9,572	11,025	13,555	18,249	28,953	16,364	27,655
Mauritian residents	215,803	220,949	227,288	239,969	239,389	242,330	277,369	283,792	253,374	278,987
Other ³	20,067	20,836	20,270	22,060	22,939	23,897	28,675	26,366	66,632	77,386
Total arrivals	910,489	951,090	968,906	1,000,545	1,043,900	1,072,879	1,238,826	1,280,640	1,210,005	1,312,700
Departures										
Visitors	672,388	704,548	705,849	718,789	773,951	801,702	942,374	960,279	935,996	1,017,616
Mauritian residents	213,778	221,889	224,771	240,823	236,457	241,138	274,786	280,300	248,945	272,145
Other	16,907	16,439	17,154	19,710	19,258	17,234	20,587	20,603	21,609	27,820
Total departures	903,073	942,876	947,774	979,322	1,029,666	1,060,074	1,237,747	1,261,182	1,206,550	1,317,581

¹ Including traffic between Island of Mauritius and Rodrigues. Figures of the passenger traffic also include cruise travellers, i.e passengers and crews of cruise ships.

² Including non-residents who left the airport but stayed in the country for less than a day.

³ Including contract workers.

Table 16 - Total arrivals ¹ by age and sex, 2009 & 2010

Age (years)	2009			2010			January - June 2010			July - December 2010		
	Both Sexes	Male	Female	Both Sexes	Male	Female	Both Sexes	Male	Female	Both Sexes	Male	Female
Under 1	6,000	2,981	3,019	6,392	3,252	3,140	3,051	1,563	1,488	3,341	1,689	1,652
1 - 4	33,005	16,170	16,835	36,436	17,963	18,473	17,406	8,598	8,808	19,030	9,365	9,665
5 - 9	43,511	21,336	22,175	48,107	24,002	24,105	21,835	10,763	11,072	26,272	13,239	13,033
10 - 14	42,829	21,212	21,617	47,288	23,842	23,446	20,285	10,111	10,174	27,003	13,731	13,272
15 - 19	37,298	17,423	19,875	40,472	19,049	21,423	16,990	7,793	9,197	23,482	11,256	12,226
20 - 24	61,830	25,810	36,020	65,333	27,454	37,879	29,079	12,094	16,985	36,254	15,360	20,894
25 - 29	127,224	58,153	69,071	134,839	62,423	72,416	59,651	27,417	32,234	75,188	35,006	40,182
30 - 34	130,475	67,089	63,386	138,578	71,065	67,513	63,607	32,220	31,387	74,971	38,845	36,126
35 - 39	119,758	65,870	53,888	128,337	69,341	58,996	61,573	33,156	28,417	66,764	36,185	30,579
40 - 44	116,335	64,656	51,679	125,779	69,632	56,147	60,589	33,568	27,021	65,190	36,064	29,126
45 - 49	108,260	58,939	49,321	119,685	64,641	55,044	56,529	30,792	25,737	63,156	33,849	29,307
50 - 54	95,441	50,769	44,672	104,134	55,569	48,565	49,390	26,469	22,921	54,744	29,100	25,644
55 - 59	81,670	43,637	38,033	87,436	46,678	40,758	42,136	22,547	19,589	45,300	24,131	21,169
60 - 64	63,699	33,743	29,956	70,670	37,547	33,123	34,926	18,435	16,491	35,744	19,112	16,632
65 - 69	37,969	20,342	17,627	42,138	22,423	19,715	21,513	11,403	10,110	20,625	11,020	9,605
70 & over	36,996	19,600	17,396	42,065	22,193	19,872	21,770	11,750	10,020	20,295	10,443	9,852
Not stated	67,705	36,195	31,510	75,011	39,993	35,018	38,665	20,928	17,737	36,346	19,065	17,281
All ages	1,210,005	623,925	586,080	1,312,700	677,067	635,633	618,995	319,607	299,388	693,705	357,460	336,245

¹ Include arrivals from Rodrigues and cruise travellers, i.e passengers and crews of cruise ships which numbered 34117 and 38061 for 2009 and 2010 respectively, in accordance with the recommendations of the World Tourism Organisation.

Table 17 - Total departures ¹ by age and sex, 2009 & 2010

Age (years)	2009			2010			January - June 2010			July - December 2010		
	Both Sexes	Male	Female	Both Sexes	Male	Female	Both Sexes	Male	Female	Both Sexes	Male	Female
Under 1	5,715	2,834	2,881	6,006	3,064	2,942	3,180	1,632	1,548	2,826	1,432	1,394
1 - 4	33,028	16,183	16,845	36,429	17,956	18,473	19,175	9,483	9,692	17,254	8,473	8,781
5 - 9	43,267	21,306	21,961	48,185	23,924	24,261	24,261	11,956	12,305	23,924	11,968	11,956
10 - 14	42,751	21,132	21,619	47,523	24,025	23,498	22,508	11,201	11,307	25,015	12,824	12,191
15 - 19	38,157	17,791	20,366	41,524	19,637	21,887	18,925	8,769	10,156	22,599	10,868	11,731
20 - 24	60,797	25,291	35,506	63,860	26,541	37,319	29,874	12,392	17,482	33,986	14,149	19,837
25 - 29	127,285	59,079	68,206	132,968	61,852	71,116	60,883	28,214	32,669	72,085	33,638	38,447
30 - 34	131,374	67,793	63,581	139,147	71,276	67,871	66,530	33,718	32,812	72,617	37,558	35,059
35 - 39	119,588	66,010	53,578	129,001	69,800	59,201	64,991	34,837	30,154	64,010	34,963	29,047
40 - 44	116,663	64,745	51,918	126,965	70,222	56,743	64,626	35,574	29,052	62,339	34,648	27,691
45 - 49	107,098	58,432	48,666	118,858	64,327	54,531	59,627	32,469	27,158	59,231	31,858	27,373
50 - 54	95,540	50,791	44,749	105,468	56,155	49,313	52,929	28,179	24,750	52,539	27,976	24,563
55 - 59	80,773	43,079	37,694	87,444	46,697	40,747	44,671	23,838	20,833	42,773	22,859	19,914
60 - 64	63,658	33,677	29,981	71,959	38,135	33,824	38,286	20,028	18,258	33,673	18,107	15,566
65 - 69	37,622	20,189	17,433	43,480	23,053	20,427	24,290	12,753	11,537	19,190	10,300	8,890
70 & over	36,770	19,466	17,304	44,656	23,630	21,026	25,989	13,980	12,009	18,667	9,650	9,017
Not stated	66,464	35,753	30,711	74,108	39,068	35,040	36,078	19,390	16,688	38,030	19,678	18,352
All ages	1,206,550	623,551	582,999	1,317,581	679,362	638,219	656,823	338,413	318,410	660,758	340,949	319,809

¹ Include departures to Rodrigues and cruise travellers, i.e passengers and crews of cruise ships which numbered 31154 and 40834 for 2009 and 2010 respectively, in accordance with the recommendations of the World Tourism Organisation.

Table 18 - Excess of arrivals over departures ¹ by age and sex, 2009 & 2010

Age (years)	2009			2010			January - June 2010			July - December 2010		
	Both Sexes	Male	Female	Both Sexes	Male	Female	Both Sexes	Male	Female	Both Sexes	Male	Female
Under 1	285	147	138	386	188	198	-129	-69	-60	515	257	258
1 - 4	-23	-13	-10	7	7	0	-1,769	-885	-884	1,776	892	884
5 - 9	244	30	214	-78	78	-156	-2,426	-1,193	-1,233	2,348	1,271	1,077
10 - 14	78	80	-2	-235	-183	-52	-2,223	-1,090	-1,133	1,988	907	1,081
15 - 19	-859	-368	-491	-1,052	-588	-464	-1,935	-976	-959	883	388	495
20 - 24	1,033	519	514	1,473	913	560	-795	-298	-497	2,268	1,211	1,057
25 - 29	-61	-926	865	1,871	571	1,300	-1,232	-797	-435	3,103	1,368	1,735
30 - 34	-899	-704	-195	-569	-211	-358	-2,923	-1,498	-1,425	2,354	1,287	1,067
35 - 39	170	-140	310	-664	-459	-205	-3,418	-1,681	-1,737	2,754	1,222	1,532
40 - 44	-328	-89	-239	-1,186	-590	-596	-4,037	-2,006	-2,031	2,851	1,416	1,435
45 - 49	1,162	507	655	827	314	513	-3,098	-1,677	-1,421	3,925	1,991	1,934
50 - 54	-99	-22	-77	-1,334	-586	-748	-3,539	-1,710	-1,829	2,205	1,124	1,081
55 - 59	897	558	339	-8	-19	11	-2,535	-1,291	-1,244	2,527	1,272	1,255
60 - 64	41	66	-25	-1,289	-588	-701	-3,360	-1,593	-1,767	2,071	1,005	1,066
65 - 69	347	153	194	-1,342	-630	-712	-2,777	-1,350	-1,427	1,435	720	715
70 & over	226	134	92	-2,591	-1,437	-1,154	-4,219	-2,230	-1,989	1,628	793	835
Not stated	1,241	442	799	903	925	-22	2,587	1,538	1,049	-1,684	-613	-1,071
All ages	3,455	374	3,081	-4,881	-2,295	-2,586	-37,828	-18,806	-19,022	32,947	16,511	16,436

¹ Including traffic between Island of Mauritius and Rodrigues

Table 19 - Arrivals¹ of Mauritian residents by age and sex, 2009 & 2010

Age (years)	2009			2010			January - June 2010			July - December 2010		
	Both Sexes	Male	Female	Both Sexes	Male	Female	Both Sexes	Male	Female	Both Sexes	Male	Female
Under 1	603	297	306	594	308	286	272	145	127	322	163	159
1 - 4	3,267	1,596	1,671	3,659	1,859	1,800	1,639	844	795	2,020	1,015	1,005
5 - 9	4,675	2,287	2,388	4,965	2,427	2,538	2,071	1,025	1,046	2,894	1,402	1,492
10 - 14	5,245	2,634	2,611	5,857	2,951	2,906	2,298	1,166	1,132	3,559	1,785	1,774
15 - 19	6,692	3,316	3,376	7,743	3,762	3,981	3,421	1,655	1,766	4,322	2,107	2,215
20 - 24	14,266	7,157	7,109	14,457	7,199	7,258	6,113	3,019	3,094	8,344	4,180	4,164
25 - 29	20,989	10,688	10,301	21,476	11,067	10,409	9,845	5,119	4,726	11,631	5,948	5,683
30 - 34	24,694	12,605	12,089	26,649	13,485	13,164	12,252	6,230	6,022	14,397	7,255	7,142
35 - 39	21,248	12,354	8,894	23,443	12,829	10,614	10,519	5,968	4,551	12,924	6,861	6,063
40 - 44	22,760	13,517	9,243	24,986	15,172	9,814	11,561	7,091	4,470	13,425	8,081	5,344
45 - 49	19,905	11,543	8,362	22,288	12,838	9,450	9,811	5,784	4,027	12,477	7,054	5,423
50 - 54	17,500	9,220	8,280	19,000	9,930	9,070	8,535	4,547	3,988	10,465	5,383	5,082
55 - 59	15,206	7,981	7,225	16,807	8,789	8,018	7,410	3,998	3,412	9,397	4,791	4,606
60 - 64	10,635	5,621	5,014	12,141	6,465	5,676	5,361	2,910	2,451	6,780	3,555	3,225
65 - 69	5,931	3,051	2,880	6,947	3,553	3,394	3,066	1,561	1,505	3,881	1,992	1,889
70 & over	6,332	3,162	3,170	7,313	3,689	3,624	3,247	1,660	1,587	4,066	2,029	2,037
Not stated	53,426	28,341	25,085	60,662	32,101	28,561	27,842	14,976	12,866	32,820	17,125	15,695
All ages	253,374	135,370	118,004	278,987	148,424	130,563	125,263	67,698	57,565	153,724	80,726	72,998

¹ Including arrivals from Rodrigues

Table 20 - Departures ¹ of Mauritian residents by age and sex, 2009 & 2010

Age (years)	2009			2010			January - June 2010			July - December 2010		
	Both Sexes	Male	Female	Both Sexes	Male	Female	Both Sexes	Male	Female	Both Sexes	Male	Female
Under 1	607	298	309	582	308	274	286	157	129	296	151	145
1 - 4	3,299	1,627	1,672	3,573	1,810	1,763	1,637	842	795	1,936	968	968
5 - 9	4,591	2,302	2,289	4,877	2,389	2,488	1,808	895	913	3,069	1,494	1,575
10 - 14	5,189	2,599	2,590	5,651	2,862	2,789	1,682	840	842	3,969	2,022	1,947
15 - 19	7,718	3,812	3,906	8,375	4,114	4,261	3,012	1,525	1,487	5,363	2,589	2,774
20 - 24	14,534	7,235	7,299	14,279	7,100	7,179	6,437	3,182	3,255	7,842	3,918	3,924
25 - 29	20,961	10,557	10,404	20,967	10,729	10,238	10,488	5,404	5,084	10,479	5,325	5,154
30 - 34	24,515	12,459	12,056	26,182	13,230	12,952	12,624	6,498	6,126	13,558	6,732	6,826
35 - 39	21,047	12,186	8,861	23,146	12,642	10,504	10,718	6,110	4,608	12,428	6,532	5,896
40 - 44	22,306	13,219	9,087	24,341	14,815	9,526	11,474	7,127	4,347	12,867	7,688	5,179
45 - 49	19,372	11,182	8,190	21,528	12,467	9,061	9,703	5,769	3,934	11,825	6,698	5,127
50 - 54	16,681	8,870	7,811	18,139	9,551	8,588	8,313	4,440	3,873	9,826	5,111	4,715
55 - 59	14,291	7,539	6,752	15,744	8,308	7,436	7,151	3,846	3,305	8,593	4,462	4,131
60 - 64	9,697	5,047	4,650	11,056	5,922	5,134	5,073	2,669	2,404	5,983	3,253	2,730
65 - 69	5,407	2,765	2,642	6,422	3,238	3,184	2,974	1,496	1,478	3,448	1,742	1,706
70 & over	5,749	2,825	2,924	6,710	3,342	3,368	3,175	1,559	1,616	3,535	1,783	1,752
Not stated	52,981	28,337	24,644	60,573	31,624	28,949	25,643	13,651	11,992	34,930	17,973	16,957
All ages	248,945	132,859	116,086	272,145	144,451	127,694	122,198	66,010	56,188	149,947	78,441	71,506

¹ Including departures to Rodrigues

Table 21 - Excess of arrivals over departures ¹ of Mauritian residents by age & sex, 2009 & 2010

Age (years)	2009			2010			January - June 2010			July - December 2010		
	Both Sexes	Male	Female	Both Sexes	Male	Female	Both Sexes	Male	Female	Both Sexes	Male	Female
Under 1	-4	-1	-3	12	0	12	-14	-12	-2	26	12	14
1 - 4	-32	-31	-1	86	49	37	2	2	0	84	47	37
5 - 9	84	-15	99	88	38	50	263	130	133	-175	-92	-83
10 - 14	56	35	21	206	89	117	616	326	290	-410	-237	-173
15 - 19	-1,026	-496	-530	-632	-352	-280	409	130	279	-1,041	-482	-559
20 - 24	-268	-78	-190	178	99	79	-324	-163	-161	502	262	240
25 - 29	28	131	-103	509	338	171	-643	-285	-358	1,152	623	529
30 - 34	179	146	33	467	255	212	-372	-268	-104	839	523	316
35 - 39	201	168	33	297	187	110	-199	-142	-57	496	329	167
40 - 44	454	298	156	645	357	288	87	-36	123	558	393	165
45 - 49	533	361	172	760	371	389	108	15	93	652	356	296
50 - 54	819	350	469	861	379	482	222	107	115	639	272	367
55 - 59	915	442	473	1,063	481	582	259	152	107	804	329	475
60 - 64	938	574	364	1,085	543	542	288	241	47	797	302	495
65 - 69	524	286	238	525	315	210	92	65	27	433	250	183
70 & over	583	337	246	603	347	256	72	101	-29	531	246	285
Not stated	445	4	441	89	477	-388	2,199	1,325	874	-2,110	-848	-1,262
All ages	4,429	2,511	1,918	6,842	3,973	2,869	3,065	1,688	1,377	3,777	2,285	1,492

¹ Including traffic between Island of Mauritius and Rodrigues.

Table 22 - Arrivals and departures of Mauritian residents¹ by country of embarkation and disembarkation, 2008 - 2010

Country of embarkation/ disembarkation	Arrivals			Departures			Excess of arrivals over departures		
	2008	2009	2010	2008	2009	2010	2008	2009	2010
Australia	10,921	7,649	9,001	13,310	8,514	8,690	-2,389	-865	311
Belgium	9	0	0	63	3	0	-54	-3	0
Canada	17	0	0	29	2	0	-12	-2	0
France	33,301	29,541	30,199	34,341	29,992	29,577	-1,040	-451	622
Germany	3,574	2,382	2,731	3,151	2,204	2,532	423	178	199
Hong Kong SAR ²	11,674	10,192	13,951	11,773	11,363	13,840	-99	-1,171	111
India	19,675	17,569	21,423	19,210	17,577	21,447	465	-8	-24
Italy	4,733	4,604	5,779	4,681	5,009	5,994	52	-405	-215
Kenya	1,628	1,148	1,582	1,709	1,293	1,755	-81	-145	-173
Rodrigues	54,212	53,426	60,662	54,433	52,981	60,573	-221	445	89
Reunion	32,575	29,973	32,744	31,493	27,484	30,366	1,082	2,489	2,378
Singapore	9,324	9,400	11,695	9,995	8,349	10,203	-671	1,051	1,492
S. Africa, Rep of	19,742	18,065	20,394	19,013	18,009	20,000	729	56	394
Switzerland	2,559	1,614	2,286	2,712	1,495	2,042	-153	119	244
United Kingdom	34,732	23,632	25,601	33,544	21,611	22,673	1,188	2,021	2,928
Other countries	45,116	44,179	40,939	40,843	43,059	42,453	4,273	1,120	-1,514
All Countries	283,792	253,374	278,987	280,300	248,945	272,145	3,492	4,429	6,842

¹ Including traffic between Island of Mauritius and Rodrigues

² Special Administrative Region of China

III - TOURISM

Definition and notes

1. Definition of tourist

- (a) Prior to 1964, a tourist has been defined as a non-resident staying in Mauritius for more than 24 hours but less than 6 months.
- (b) From 1964 to 2008, a tourist is defined as a non-resident staying in Mauritius for more than 24 hours but less than a year and is not involved in any gainful occupation.
- (c) As from 2009, a tourist is defined as a non-resident staying overnight but less than a year, and who has no employer-employee relationship with a resident.

The figures for the three periods are nevertheless comparable because of the small number of tourists staying for more than 6 months.

2. Visitors include the following:

- (a) Tourists as defined above and
- (b) Excursionists or same day visitors, i.e non-residents, other than those who do not leave the airport/ships, who depart on the same day they arrived.

3. Method of compilation

Sources of data

The main source of data for the compilation of passenger traffic statistics is the Passport and Immigration Office, which maintains a database of all passengers entering and leaving the country. The data are collected from the passport of travellers, disembarkation cards filled in by non-residents and questions put to non-residents entering the country. At the end of every month, passenger traffic for that particular month is downloaded and supplied to the Statistics Unit of the Ministry of Tourism and Leisure within fifteen days. Additional data on cruises are supplied by the Mauritius Ports Authority.

Prior to 1994, figures have been compiled from a 10% sample of embarkation and disembarkation cards filled in by passengers. However, as from January 1994, they are based on movements of all passengers. Thus disaggregated data for 1994 onwards may not be strictly comparable to previous series.

Tourism receipts

The Bank of Mauritius is responsible for the estimation of tourism receipts based on monthly statements of Inward and Outward Remittances of Commercial Banks.

Monthly Occupancy Rates

All hotels are contacted by mail and/or phone at the end of every month on room / bed nights available and rented during the month for the calculation of room and bed occupancy.

4. Tourist nights

Tables on tourist nights show the number of nights spent by tourists who were present in the country during the period under review. Thus the number of tourist nights for 2010 include:

(a) the nights spent during 2010 by tourists who arrived prior to 1st January 2010; and

(b) the nights spent during 2010 by tourists who arrived during the same year.

However, nights spent after 31st December 2010 by tourists who arrived in 2010 are excluded.

5. Large hotels

Large hotels are well established beach hotels of over 80 rooms.

Table 23 -Tourist arrivals by mode of transport and tourist nights spent during period, 1994 - 2010

Period	Tourist arrivals			Tourist nights spent during period	% change over previous year	
	Sea	Air	Total		Tourist arrivals	Tourist nights
1994	6,383	394,143	400,526	4,359,303	+ 6.9	- 5.4
1995	6,105	416,358	422,463	4,434,891	+ 5.5	+ 1.7
1996	6,484	480,383	486,867	4,957,683	+ 15.2	+ 11.8
1997	7,476	528,649	536,125	5,451,314	+ 10.1	+ 10.0
1998	17,109	541,086	558,195	5,567,889	+ 4.1	+ 2.1
1999	13,852	564,233	578,085	5,729,464	+ 3.6	+ 2.9
2000	10,677	645,776	656,453	6,412,876	+ 13.6	+ 11.9
2001	10,532	649,786	660,318	6,527,800	+ 0.6	+ 1.8
2002	14,180	667,468	681,648	6,768,870	+ 3.2	+ 3.7
2003	12,155	689,863	702,018	6,952,313	+ 3.0	+ 2.7
2004	11,390	707,471	718,861	7,118,603	+ 2.4	+ 2.4
2005	13,321	747,742	761,063	7,498,251	+ 5.9	+ 5.3
2006	13,249	775,027	788,276	7,760,679	+ 3.6	+ 3.5
2007	12,163	894,808	906,971	8,986,934	+ 15.1	+ 15.8
2008	15,961	914,495	930,456	9,218,625	+ 2.6	+ 2.6
2009	23,265	848,091	871,356	8,639,304	- 6.4	- 6.3
2010	23,648	911,179	934,827	9,554,437 ¹	+ 7.3	+ 10.6

¹ Provisional

Table 24 - Tourist arrivals by month of arrival, 2001 - 2010

Month of arrival	2001	2002	2003	2004	2005	2006	2007	2008	2009	2010
January	65,122	63,551	64,762	66,543	73,053	86,218	91,628	94,579	88,591	91,857
February	49,464	50,554	53,647	54,104	56,367	64,894	72,338	77,763	67,892	72,366
March	55,944	67,554	63,129	63,631	67,931	58,136	79,965	89,152	76,425	85,748
April	54,794	48,187	57,217	55,599	52,971	57,361	70,297	72,837	68,969	64,797
May	51,969	53,813	54,710	53,974	55,995	50,773	65,301	67,705	64,761	71,055
June	38,496	39,048	41,841	38,826	42,994	42,755	52,584	53,722	46,866	53,327
July	57,274	56,709	58,403	62,173	65,462	65,540	77,225	81,169	71,872	77,009
August	52,923	53,395	56,844	55,342	60,746	64,307	69,941	71,605	63,365	65,093
September	48,953	49,774	50,293	53,102	53,233	56,138	65,542	65,632	60,144	65,404
October	59,325	65,291	64,917	70,793	70,999	75,451	81,244	83,524	80,197	87,340
November	57,326	61,326	61,984	66,960	70,793	70,394	77,236	75,380	78,544	85,982
December	68,728	72,446	74,271	77,814	90,519	96,309	103,670	97,388	103,730	114,849
Year	660,318	681,648	702,018	718,861	761,063	788,276	906,971	930,456	871,356	934,827

Fig 4 - Tourist arrivals by month, 2006- 2010

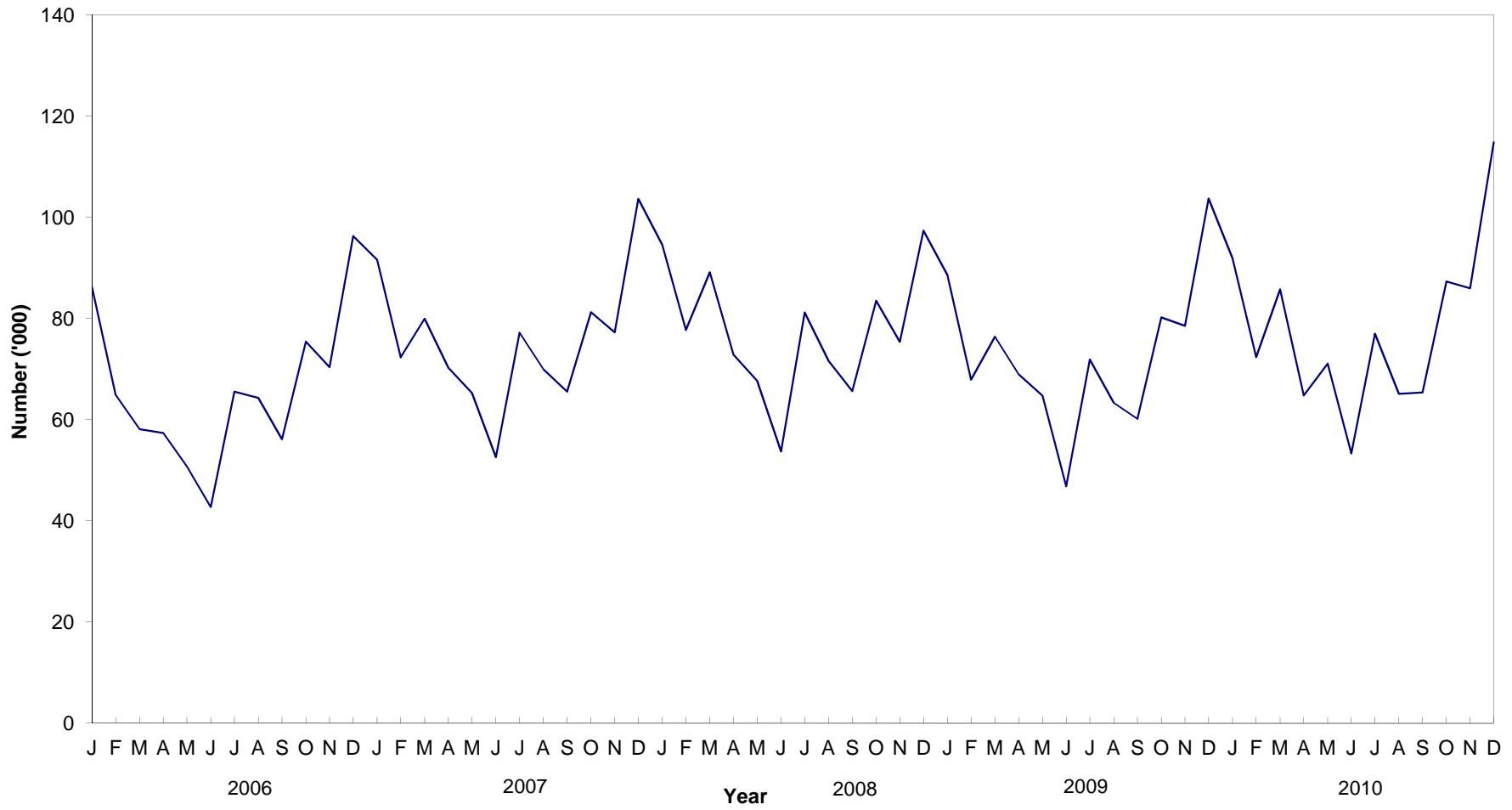


Table 25 - Percentage distribution of tourist arrivals by month of arrival, 2001 - 2010

Month of arrival	2001	2002	2003	2004	2005	2006	2007	2008	2009	2010
January	9.9	9.3	9.2	9.3	9.6	10.9	10.1	10.2	10.2	9.8
February	7.5	7.4	7.6	7.5	7.4	8.2	8.0	8.4	7.8	7.7
March	8.5	9.9	9.0	8.9	8.9	7.4	8.8	9.6	8.8	9.2
April	8.3	7.1	8.2	7.7	7.0	7.3	7.8	7.8	7.9	6.9
May	7.9	7.9	7.8	7.5	7.4	6.4	7.2	7.3	7.4	7.6
June	5.8	5.7	6.0	5.4	5.6	5.4	5.8	5.8	5.4	5.7
July	8.7	8.3	8.3	8.6	8.6	8.3	8.5	8.7	8.2	8.2
August	8.0	7.8	8.1	7.7	8.0	8.2	7.7	7.7	7.3	7.0
September	7.4	7.3	7.2	7.4	7.0	7.1	7.2	7.1	6.9	7.0
October	9.0	9.6	9.2	9.8	9.3	9.6	9.0	9.0	9.2	9.3
November	8.7	9.0	8.8	9.3	9.3	8.9	8.5	8.1	9.0	9.2
December	10.4	10.6	10.6	10.8	11.9	12.2	11.4	10.5	11.9	12.4
Whole Year	100.0	100.0	100.0	100.0	100.0	100.0	100.0	100.0	100.0	100.0

Table 26 - Tourist arrivals by country of residence and sex, 2009 and 2010

Country of residence	2009 ²			2010		
	Male	Female	Both Sexes	Male	Female	Both Sexes
Australia	5,201	5,162	10,363	5,873	5,620	11,493
Belgium	5,156	5,098	10,254	5,095	5,119	10,214
France	136,542	139,057	275,599	149,026	153,159	302,185
Germany	25,211	26,068	51,279	26,118	26,768	52,886
Hong Kong SAR ¹	143	239	382	175	240	415
India	23,314	15,938	39,252	28,906	20,873	49,779
Italy	27,778	28,958	56,736	27,673	28,867	56,540
Japan	716	635	1,351	812	673	1,485
Kenya	863	523	1,386	936	612	1,548
Malagasy Rep.	3,949	4,384	8,333	4,580	5,253	9,833
Reunion Island	51,929	53,017	104,946	56,822	58,092	114,914
Seychelles	3,100	4,432	7,532	4,129	6,031	10,160
Singapore	928	729	1,657	1,017	892	1,909
S. Africa, Rep. of	37,206	36,970	74,176	40,782	40,676	81,458
Switzerland	7,406	7,943	15,349	9,030	9,547	18,577
United Kingdom	51,333	50,663	101,996	49,220	48,328	97,548
U.S.A.	3,558	3,393	6,951	4,023	3,293	7,316
Zimbabwe	736	590	1,326	702	502	1,204
Other countries	53,586	48,902	102,488	55,814	49,549	105,363
All Countries	438,655	432,701	871,356	470,733	464,094	934,827

¹ Special Administrative Region of China

² Revised

Table 27 - Tourist arrivals by country of residence, 2001 - 2010

Country of residence	2001	2002	2003	2004	2005	2006	2007	2008	2009	2010
Australia	8,790	8,387	9,103	11,373	13,486	16,660	19,635	18,852	10,363	11,493
Belgium	10,398	10,579	10,170	8,524	8,973	9,216	10,945	11,796	10,254	10,214
France	197,595	202,869	200,229	210,411	220,421	182,295	240,028	260,054	275,599	302,185
Germany	50,866	53,762	53,970	52,277	55,983	57,251	65,165	61,484	51,279	52,886
Hong Kong SAR ¹	1,488	1,201	676	836	508	519	649	641	382	415
India	18,890	20,898	25,367	24,716	29,755	37,498	42,974	43,911	39,252	49,779
Italy	37,343	38,263	39,774	41,277	43,458	69,407	69,510	66,432	56,736	56,540
Japan	1,589	1,958	1,572	1,724	1,638	1,695	1,730	1,751	1,351	1,485
Kenya	1,734	1,507	1,510	1,506	1,358	1,694	1,790	1,997	1,386	1,548
Malagasy Rep.	6,674	9,417	11,044	8,256	7,397	7,239	8,842	10,905	8,333	9,833
Reunion Island	91,140	96,375	95,679	96,510	99,036	89,127	95,823	96,174	104,946	114,914
Seychelles	10,687	13,468	9,869	7,456	10,084	12,023	14,275	10,604	7,532	10,160
Singapore	3,431	3,114	2,102	2,329	1,789	1,862	2,020	1,758	1,657	1,909
S. Africa, Rep. of	47,882	42,685	45,756	52,609	58,446	70,796	81,733	84,448	74,176	81,458
Switzerland	18,427	17,371	17,929	16,110	15,773	16,161	17,546	16,037	15,349	18,577
United Kingdom	77,888	80,667	91,210	92,652	95,407	102,333	107,297	107,919	101,996	97,548
USA	3,923	4,116	4,505	4,305	4,890	5,220	5,451	7,089	6,951	7,316
Zimbabwe	3,860	3,185	2,343	2,345	2,419	1,587	1,669	1,809	1,326	1,204
Other countries	67,713	71,826	79,210	83,645	90,242	105,693	119,889	126,795	102,488	105,363
All Countries	660,318	681,648	702,018	718,861	761,063	788,276	906,971	930,456	871,356	934,827

¹ Special Administrative Region of China

Table 28 - Percentage distribution of tourist arrivals by country of residence, 2001 - 2010

Country of residence	2001	2002	2003	2004	2005	2006	2007	2008	2009	2010
Australia	1.3	1.2	1.3	1.6	1.8	2.1	2.2	2.0	1.2	1.2
Belgium	1.6	1.6	1.4	1.2	1.2	1.2	1.2	1.3	1.2	1.1
France	29.9	29.8	28.5	29.3	29.0	23.1	26.5	27.9	31.6	32.3
Germany	7.7	7.9	7.7	7.3	7.4	7.3	7.2	6.6	5.9	5.7
Hong Kong SAR ¹	0.2	0.2	0.1	0.1	0.1	0.1	0.1	0.1	0.0	0.0
India	2.9	3.1	3.6	3.4	3.9	4.8	4.7	4.7	4.5	5.3
Italy	5.7	5.6	5.7	5.7	5.7	8.8	7.7	7.1	6.5	6.0
Japan	0.2	0.3	0.2	0.2	0.2	0.2	0.2	0.2	0.2	0.2
Kenya	0.3	0.2	0.2	0.2	0.2	0.2	0.2	0.2	0.2	0.2
Malagasy Rep.	1.0	1.4	1.6	1.1	1.0	0.9	1.0	1.2	1.0	1.1
Reunion Island	13.8	14.1	13.6	13.4	13.0	11.3	10.6	10.3	12.0	12.3
Seychelles	1.6	2.0	1.4	1.0	1.3	1.5	1.6	1.1	0.9	1.1
Singapore	0.5	0.5	0.3	0.3	0.2	0.2	0.2	0.2	0.2	0.2
S. Africa, Rep. of	7.3	6.3	6.5	7.3	7.7	9.0	9.0	9.1	8.5	8.7
Switzerland	2.8	2.5	2.6	2.2	2.1	2.1	1.9	1.7	1.8	2.0
United Kingdom	11.8	11.8	13.0	12.9	12.5	13.0	11.8	11.6	11.7	10.4
USA	0.6	0.6	0.6	0.6	0.6	0.7	0.6	0.8	0.8	0.8
Zimbabwe	0.6	0.5	0.3	0.3	0.3	0.2	0.2	0.2	0.2	0.1
Other countries	10.3	10.5	11.3	11.6	11.9	13.3	13.2	13.6	11.6	11.3
All Countries	100.0	100.0	100.0	100.0	100.0	100.0	100.0	100.0	100.0	100.0

¹ Special Administrative Region of China

Fig. 5 - Percentage distribution of tourist arrivals by country of residence, 2010

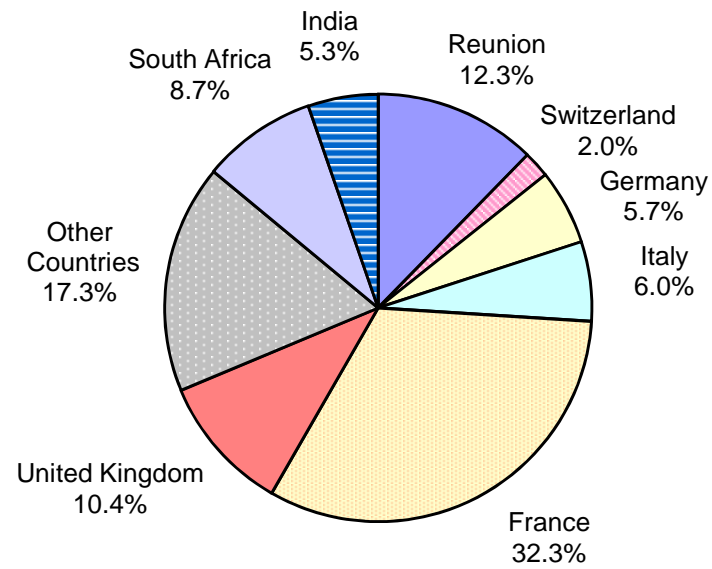


Table 29 - Tourist nights by country of residence, 2001 - 2010

Country of residence	2001	2002	2003	2004	2005	2006	2007	2008	2009 ²	2010
Australia	104,232	98,869	100,332	111,546	115,851	126,859	143,482	161,488	138,665	169,162
Belgium	125,752	124,586	121,687	105,445	117,210	120,987	132,145	148,978	138,764	139,271
France	1,966,911	2,020,850	1,996,305	2,101,125	2,208,575	1,931,005	2,542,172	2,711,413	2,498,920	2,861,874
Germany	612,881	651,913	636,435	608,031	655,283	655,738	735,938	760,468	579,531	685,258
Hong Kong SAR ¹	11,955	10,941	6,767	7,984	4,694	3,739	4,788	4,492	4,211	4,696
India	207,965	253,340	287,741	265,174	295,698	336,048	408,128	399,570	376,783	409,138
Italy	326,100	329,809	346,865	362,758	397,160	619,089	600,236	605,457	512,033	532,786
Japan	10,161	11,170	9,302	9,881	10,538	9,889	10,701	10,643	11,481	11,243
Kenya	10,780	8,784	11,347	11,069	12,258	13,875	12,642	14,338	11,767	11,715
Malagasy Rep.	66,177	81,758	128,437	83,961	73,964	84,400	98,034	107,295	96,282	110,826
Reunion Island	632,970	675,483	738,968	832,879	828,889	730,678	917,369	790,612	969,927	1,110,573
Seychelles	96,303	113,942	92,493	75,277	93,951	108,603	133,595	95,254	67,976	90,752
Singapore	23,420	20,403	14,871	16,094	12,106	14,166	12,200	11,953	11,330	12,630
S. Africa, Rep. of	400,656	376,588	379,561	425,680	467,603	565,627	676,795	699,329	602,983	680,880
Switzerland	229,227	210,510	220,382	189,115	185,482	200,141	207,130	192,797	197,742	251,009
United Kingdom	942,095	977,717	1,043,113	1,053,881	1,070,185	1,152,123	1,141,982	1,189,830	1,281,968	1,215,605
U.S.A.	37,067	38,478	38,795	39,039	41,298	44,827	49,666	65,761	54,075	52,141
Zimbabwe	47,134	39,504	26,469	28,831	31,233	20,493	23,207	24,678	12,859	11,269
Other countries	676,014	724,225	752,443	790,833	876,273	1,022,392	1,136,724	1,224,269	1,072,007	1,193,609
All Countries	6,527,800	6,768,870	6,952,313	7,118,603	7,498,251	7,760,679	8,986,934	9,218,625	8,639,304	9,554,437

¹ Special Administrative Region of China

² Revised

Fig 6 - Total arrivals and tourist arrivals, 2001 - 2010

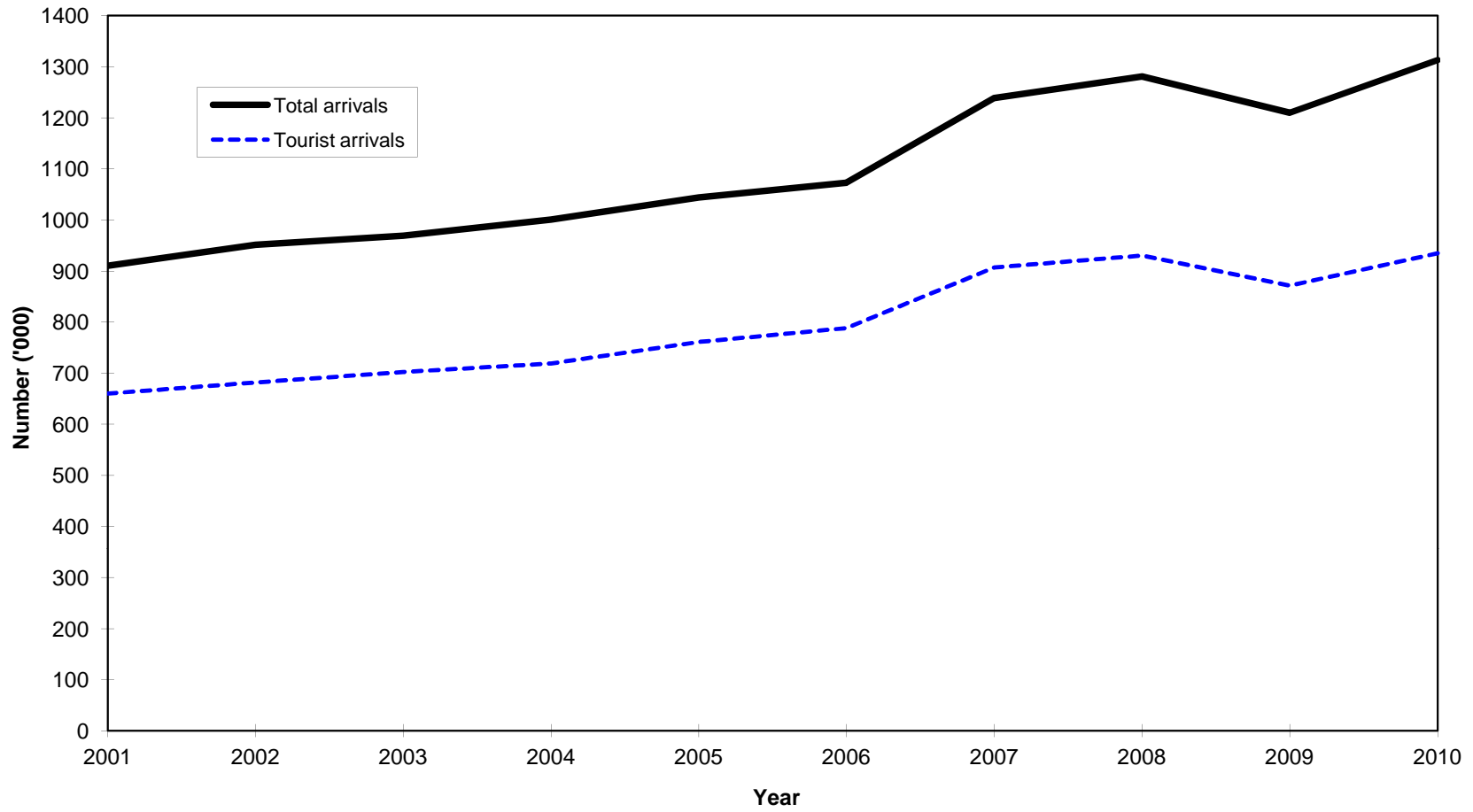


Fig 7 - Tourist nights, 2001 - 2010

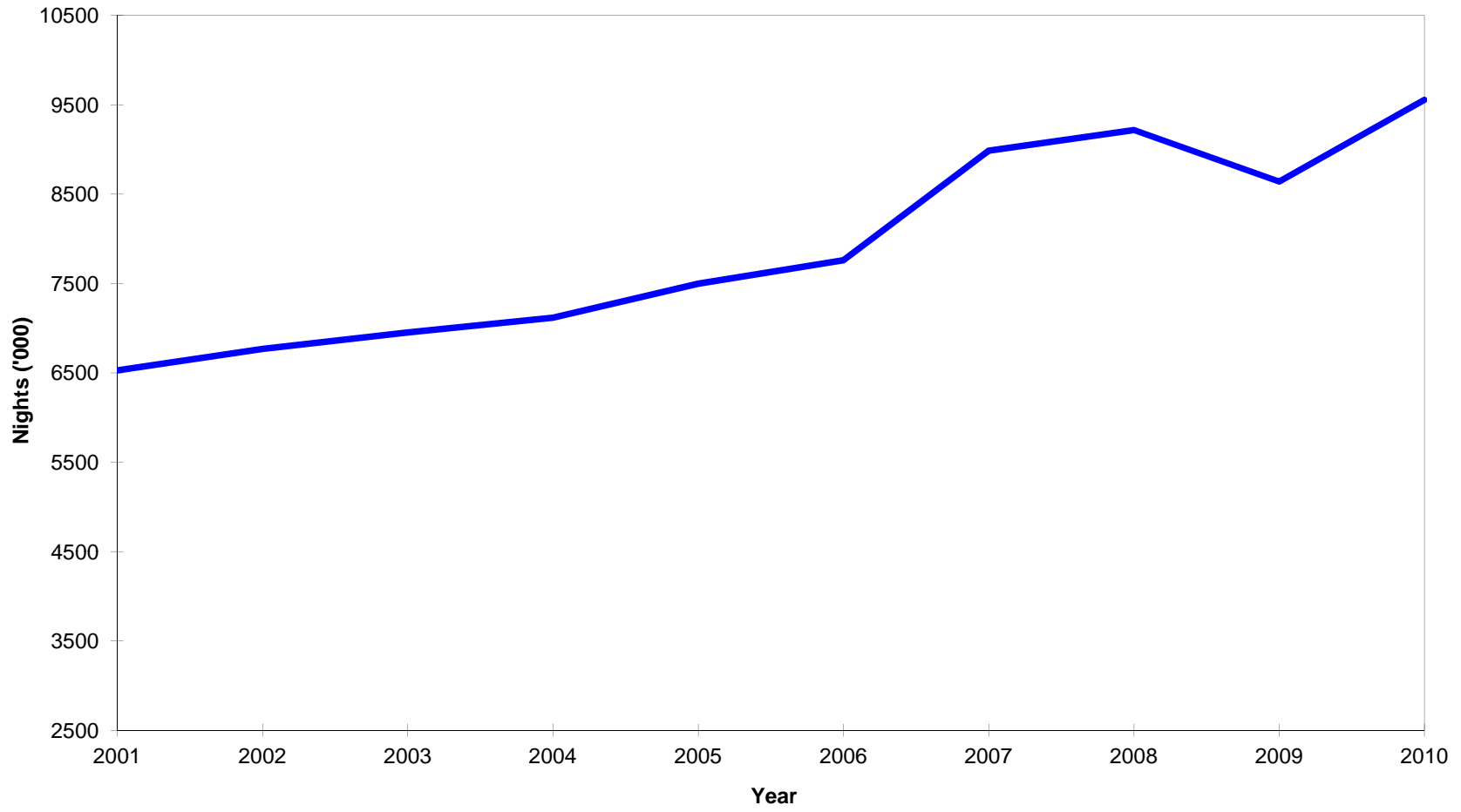


Table 30 - Visitor ¹ arrivals by country of residence and type of passenger, 2008 - 2010

Country of residence	Visitors on holidays			Visitors on business			Visitors in transit			Other visitors			Total visitors		
	2008	2009	2010	2008	2009	2010	2008	2009	2010	2008	2009	2010	2008	2009	2010
Australia	15,579	9,532	10,247	721	388	457	3,033	1,942	1,571	497	384	770	19,830	12,246	13,045
Belgium	10,650	9,929	9,614	300	268	313	534	119	103	647	46	275	12,131	10,362	10,305
France	238,717	268,194	290,752	5,776	3,087	4,024	13,143	4,793	5,155	8,203	3,764	7,197	265,839	279,838	307,128
Germany	57,748	50,285	51,837	761	534	571	3,043	716	916	1,689	355	407	63,241	51,890	53,731
Hong Kong SAR ²	399	373	413	75	1	0	173	8	2	5	2	2	652	384	417
India	35,774	33,822	42,958	5,086	4,060	4,835	2,251	643	684	1,365	1,094	1,702	44,476	39,619	50,179
Italy	62,958	55,879	55,355	606	425	533	3,196	1,357	510	1,806	190	547	68,566	57,851	56,945
Japan	1,320	1,115	1,157	183	145	180	259	68	148	34	39	40	1,796	1,367	1,525
Kenya	996	842	825	637	441	596	363	38	31	87	95	126	2,083	1,416	1,578
Malagasy Rep.	5,094	5,703	6,406	1,348	950	975	5,118	712	619	319	1,397	2,331	11,879	8,762	10,331
Reunion Island	84,464	98,426	107,289	2,151	3,247	3,886	14,077	5,816	4,563	798	2,696	3,604	101,490	110,185	119,342
Seychelles	8,821	6,840	8,924	528	346	446	1,096	415	471	445	337	778	10,890	7,938	10,619
Singapore	1,286	1,230	1,449	292	211	305	150	35	25	78	209	149	1,806	1,685	1,928
S. Africa Rep. of	73,480	68,105	74,233	6,601	4,802	5,974	2,620	830	511	2,287	844	1,118	84,988	74,581	81,836
Switzerland	15,241	15,094	18,129	240	153	209	809	291	232	226	83	235	16,516	15,621	18,805
United Kingdom	99,113	98,360	91,569	2,783	2,087	2,737	4,817	2,034	3,620	4,717	1,289	3,000	111,430	103,770	100,926
U.S.A.	5,552	5,014	5,000	874	771	1,075	1,129	328	1,705	182	1,023	1,078	7,737	7,136	8,858
Zimbabwe	1,364	1,084	896	330	207	284	61	19	9	72	30	24	1,827	1,340	1,213
Other & N. Stated	102,769	89,912	88,509	8,229	6,902	8,681	26,811	4,707	6,154	5,496	2,487	4,272	143,305	104,008	107,616
All Countries	821,325	819,739	865,562	37,521	29,025	36,081	82,683	24,871	27,029	28,953	16,364	27,655	970,482	889,999	956,327

¹ Visitors include tourists, cruise ship passengers and non-residents who stay in the country for less than a day, other than those who do not leave the airport

² Special Administrative Region of China

Table 31 - Visitor arrivals by age and sex, 2009 & 2010

Age (years)	2009			2010		
	Both Sexes	Male	Female	Both Sexes	Male	Female
Under 1	5,296	2,630	2,666	5,631	2,856	2,775
1 - 4	29,157	14,311	14,846	31,993	15,736	16,257
5 - 9	38,082	18,663	19,419	42,189	21,087	21,102
10 - 14	36,931	18,271	18,660	40,555	20,425	20,130
15 - 19	29,989	13,793	16,196	31,956	14,934	17,022
20 - 24	43,480	16,819	26,661	46,129	17,931	28,198
25 - 29	97,992	43,988	54,004	103,201	46,971	56,230
30 - 34	97,546	49,990	47,556	102,533	52,402	50,131
35 - 39	90,489	48,640	41,849	95,690	50,763	44,927
40 - 44	86,699	46,401	40,298	92,357	48,738	43,619
45 - 49	83,100	43,638	39,462	91,067	47,412	43,655
50 - 54	74,163	38,745	35,418	80,580	42,320	38,260
55 - 59	63,563	33,384	30,179	67,011	35,035	31,976
60 - 64	51,794	27,188	24,606	56,773	29,833	26,940
65 - 69	31,547	16,942	14,605	34,546	18,419	16,127
70 & over	30,171	16,080	14,091	34,116	18,052	16,064
All ages	889,999	449,483	440,516	956,327	482,914	473,413

Table 32 - Visitor arrivals by duration of stay, 2009 & 2010

Duration of stay	2009 ¹		2010	
	Number	Percentage	Number	Percentage
Less than 1 night	18,643	2.1	21,500	2.2
1 night	32,107	3.6	26,462	2.8
2 nights	21,569	2.4	23,198	2.4
3 nights	34,441	3.9	37,031	3.9
4 nights	46,719	5.2	49,490	5.2
5 nights	50,540	5.7	56,886	6.0
6 nights	74,686	8.4	81,291	8.5
7 nights	220,559	24.8	247,590	25.9
8 nights	37,368	4.2	43,255	4.5
9 nights	50,337	5.6	53,974	5.6
10 nights	51,451	5.8	55,797	5.8
11 nights	23,156	2.6	24,956	2.6
12 nights	30,183	3.4	30,679	3.2
13 nights	34,706	3.9	37,457	3.9
14 nights	73,641	8.3	77,112	8.1
15 nights	8,279	0.9	10,456	1.1
16 nights	8,080	0.9	8,800	0.9
17 nights	5,350	0.6	5,415	0.6
18 nights	4,304	0.5	4,914	0.5
19 nights	5,896	0.7	6,058	0.6
20 - 24 nights	21,097	2.4	21,677	2.3
25 - 29 nights	12,067	1.4	11,169	1.2
1 month - under 2 months	17,099	1.9	16,155	1.7
2 months - under 3 months	3,984	0.4	3,280	0.3
3 months and over	3,737	0.4	1,725	0.2
All Countries	889,999	100.0	956,327	100.0

¹ Revised

Table 33a - Visitor arrivals by country of residence and duration of stay, 2009 ¹

Country of residence	Duration of stay (Nights)												
	<1	1 - 2	3 - 4	5 - 6	7 - 8	9 - 10	11 - 12	13 - 14	15 - 19	20 - 24	25 - 29	30+	Total
Australia	1,883	1,376	1,115	1,829	1,281	791	1,261	437	801	284	377	811	12,246
Belgium	108	251	443	1,132	2,682	1,915	806	1,178	586	400	344	517	10,362
France	4,239	17,231	30,310	37,664	93,590	29,841	14,359	24,585	9,760	6,179	4,257	7,823	279,838
Germany	611	2,291	1,457	3,647	6,625	6,585	5,781	17,971	3,457	2,396	493	576	51,890
Hong Kong SAR ²	2	32	83	87	88	30	11	19	8	5	5	14	384
India	367	2,918	9,591	19,038	2,638	972	356	764	367	447	400	1,761	39,619
Italy	1,115	1,225	1,008	7,897	29,705	3,503	1,880	8,918	999	722	294	585	57,851
Japan	16	165	235	490	225	60	24	42	30	29	7	44	1,367
Kenya	30	251	296	374	187	59	46	76	17	20	24	36	1,416
Malagasy Rep.	429	2,214	1,140	1,069	1,311	547	277	538	309	206	180	542	8,762
Reunion Island	5,239	6,562	11,541	14,342	35,637	11,362	5,467	9,362	3,717	2,354	1,622	2,980	110,185
Seychelles	406	1,055	1,265	1,013	1,804	819	526	471	186	142	61	190	7,938
Singapore	28	464	319	381	215	96	29	64	36	19	8	26	1,685
S. Africa Rep. of	405	4,152	7,952	9,506	33,860	8,912	2,803	3,331	1,448	768	375	1,069	74,581
Switzerland	272	414	394	1,576	2,573	2,097	1,618	4,133	849	918	402	375	15,621
United Kingdom	1,774	4,701	3,751	7,000	20,196	19,674	10,260	22,038	4,987	3,628	1,879	3,882	103,770
U.S.A.	185	1,729	1,052	1,271	1,179	464	258	324	208	125	77	264	7,136
Zimbabwe	14	80	96	136	374	200	100	192	56	32	20	40	1,340
Other & not stated	1,520	6,566	9,112	16,773	23,754	13,864	7,476	13,911	4,080	2,425	1,241	3,286	104,008
All Countries	18,643	53,677	81,160	125,225	257,924	101,791	53,338	108,354	31,901	21,099	12,066	24,821	889,999

¹ Revised

² Special Administrative Region of China

Table 33b - Visitor arrivals by country of residence and duration of stay, 2010

Country of residence	Duration of stay (Nights)												
	<1	1 - 2	3 - 4	5 - 6	7 - 8	9 - 10	11 - 12	13 - 14	15 - 19	20 - 24	25 - 29	30+	Total
Australia	1,552	1,154	1,054	2,288	1,481	836	1,662	451	1,090	323	470	684	13,045
Belgium	91	261	500	849	2,850	1,646	807	1,466	593	430	323	489	10,305
France	4,943	15,560	31,941	40,568	110,783	33,193	15,379	27,333	10,842	6,303	3,666	6,617	307,128
Germany	845	1,237	1,793	3,543	7,424	7,744	5,738	18,237	3,496	2,405	575	694	53,731
Hong Kong SAR ¹	2	30	49	121	74	40	20	36	13	9	6	17	417
India	400	3,872	11,264	26,660	2,522	1,258	434	855	465	526	366	1,557	50,179
Italy	405	1,346	889	6,569	30,755	3,697	1,770	8,838	1,103	753	335	485	56,945
Japan	40	198	348	542	229	53	26	41	12	9	7	20	1,525
Kenya	30	233	301	296	393	116	58	68	24	24	11	24	1,578
Malagasy Rep.	498	2,853	1,341	1,249	1,403	674	458	635	318	210	190	502	10,331
Reunion Island	4,428	5,916	12,146	15,427	42,132	12,622	5,848	10,394	4,122	2,397	1,394	2,516	119,342
Seychelles	459	1,334	1,253	1,344	2,634	1,460	609	711	344	201	75	195	10,619
Singapore	19	401	474	627	108	114	25	54	46	26	12	22	1,928
S. Africa Rep. of	378	3,895	7,907	10,317	38,992	9,946	3,112	3,923	1,489	726	327	824	81,836
Switzerland	228	424	512	1,616	3,515	2,524	1,904	5,157	1,146	969	353	457	18,805
United Kingdom	3,378	2,395	3,460	6,389	19,827	18,987	10,146	22,456	5,630	3,721	1,682	2,855	100,926
U.S.A.	1,542	1,427	1,185	1,450	1,392	551	287	404	226	141	78	175	8,858
Zimbabwe	9	78	207	186	293	154	76	102	50	18	12	28	1,213
Other & not stated	2,253	7,046	9,897	18,136	24,038	14,156	7,276	13,408	4,634	2,486	1,287	2,999	107,616
All Countries	21,500	49,660	86,521	138,177	290,845	109,771	55,635	114,569	35,643	21,677	11,169	21,160	956,327

¹ Special Administrative Region of China

Table 34 - Tourist arrivals and average length of stay of tourists by country of residence, 2009 and 2010

Country of Residence	2009 ²		2010	
	Tourist arrivals	Average length of stay (nights)	Tourist arrivals	Average length of stay (nights)
Australia	10,363	13.2	11,493	12.9
Belgium	10,254	13.3	10,214	12.9
France	275,599	8.9	302,185	9.0
Germany	51,279	11.2	52,886	12.5
Hong Kong SAR ¹	382	10.7	415	10.0
India	39,252	9.5	49,779	7.7
Italy	56,736	8.7	56,540	9.0
Japan	1,351	8.3	1,485	6.5
Kenya	1,386	8.4	1,548	7.2
Malagasy Rep.	8,333	11.4	9,833	10.0
Reunion	104,946	9.1	114,914	9.2
Seychelles	7,532	8.8	10,160	8.4
Singapore	1,657	6.8	1,909	6.2
S. Africa, Rep. of	74,176	7.9	81,458	7.9
Switzerland	15,349	12.7	18,577	12.7
United Kingdom	101,996	12.4	97,548	11.8
U.S.A.	6,951	7.6	7,316	6.7
Zimbabwe	1,326	9.5	1,204	8.7
Other & not stated	102,488	10.5	105,363	10.2
All Countries	871,356	9.8	934,827	9.6

¹ Special Administrative Region of China

² Revised

Table 35 - Gross earnings from tourism, 2001 - 2010

Earnings (Rs Mn)	2001	2002	2003	2004	2005	2006	2007	2008	2009	2010
		18,166	18,328	19,415	23,448	25,704	31,942	40,687	41,213	35,693

Source : Bank of Mauritius

Table 36 - Expenditure of tourists by country of residence, 1998 - 2009

Country of residence	Expenditure (Rs Mn)					
	1998	2000	2002	2004	2006	2009
France	3,173.1	3,785.7	5,188.2	6,928.4	7,620.7	12,153.6
Germany	1,195.9	1,447.3	1,852.9	2,084.0	2,684.3	2,794.3
Italy	827.9	918.3	1,215.0	1,389.9	2,920.4	2,579.8
Switzerland	473.3	615.7	662.6	692.2	871.7	789.6
United Kingdom	1,680.2	2,708.2	3,269.9	4,216.5	5,533.9	4,971.2
Malagasy Rep.	108.4	90.3	141.5	136.6	124.0	255.3
Reunion	855.4	871.4	1,242.5	1,575.8	1,908.4	2,537.9
South Africa, Rep. of	808.8	780.6	778.2	1,363.2	2,387.2	2,824.3
Singapore	62.5	94.5	68.6	50.4	69.2	46.7
Other countries	2,578.4	2,875.3	3,355.3	4,679.5	7,078.6	6,685.0
All Countries	11,763.9	14,187.3	17,774.7	23,116.5	31,198.4	35,637.6

Source: Survey of Outgoing Tourists conducted by the Ministry of Tourism, Leisure & External Communications.

Table 37 - Expenditure of tourists by type of expenditure, 1998 - 2009

Type of expenditure	Expenditure (Rs Mn)					
	1998	2000	2002	2004	2006	2009
Accommodation	6,415	7,479	9,155	12,231	16,862	20,456
Meals & Beverages	1,818	2,470	3,327	4,203	5,427	5,417
Transport	804	941	1,232	1,339	1,902	2,352
Entertainment	685	839	986	1,353	1,815	2,495
Shopping	1,691	2,002	2,450	3,010	3,954	4,383
Other	351	457	624	981	1,238	535
Total	11,764	14,187	17,775	23,117	31,198	35,638

Source: Survey of Outgoing Tourists conducted by the Ministry of Tourism, Leisure & External Communications.

Table 38 - Hotels, rooms and bedplaces, 2001- 2010

Year	No. of hotels	No. of rooms	No. of bedplaces
2001	95	9,024	18,350
2002	95	9,623	19,597
2003	97	9,647	19,727
2004	103	10,640	21,355
2005	99	10,497	21,072
2006	98	10,666	21,403
2007	97	10,857	21,788
2008	102	11,488	23,095
2009	102	11,456	23,235
2010	112 ¹	12,075	24,698

¹ Excluding three hotels not operational because of renovation works

Table 39 - Monthly occupancy rates in large ¹ hotels, 2006 - 2010

Month	2006		2007		2008		2009		2010	
	Room	Bed	Room	Bed	Room	Bed	Room	Bed	Room	Bed
January	86	77	89	79	82	74	69	62	74	66
February	81	72	86	77	80	72	60	54	67	60
March	63	56	81	72	78	70	59	53	65	58
April	61	55	80	72	75	67	61	54	64	56
May	54	48	74	67	68	61	59	52	63	55
June	47	42	62	56	49	44	44	39	48	43
July	58	52	74	67	62	56	52	46	55	48
August	73	66	77	70	67	60	61	54	62	54
September	71	63	78	70	68	61	64	56	67	58
October	76	68	81	72	73	65	67	59	71	62
November	81	73	85	77	71	63	71	63	76	67
December	81	73	80	72	70	63	73	64	78	68
Whole Year	69	62	78	70	70	62	62	55	66	58

¹ Large Hotels are well established beach hotels of over 80 rooms

Room Occupancy Rate = $\frac{\text{Total number of room nights rented} \times 100}{\text{Total number of room nights available}}$

Bed Occupancy Rate = $\frac{\text{Total number of bed nights rented} \times 100}{\text{Total number of bed nights available}}$

Table 40 - Monthly occupancy rates in all hotels, 2006 - 2010

Month	2006		2007		2008		2009		2010	
	Room	Bed	Room	Bed	Room	Bed	Room	Bed	Room	Bed
January	81	72	86	77	82	73	69	62	72	64
February	76	68	82	73	78	70	60	53	67	58
March	60	54	77	69	77	69	59	52	64	56
April	58	52	75	67	72	65	59	53	61	54
May	51	46	71	64	66	60	58	52	61	53
June	45	41	59	53	49	43	45	39	47	41
July	56	50	71	63	61	55	51	45	54	47
August	69	62	74	67	65	58	59	52	60	52
September	67	60	75	67	65	58	62	55	65	57
October	73	65	78	70	71	64	65	58	69	61
November	78	70	83	74	69	62	69	61	74	65
December	79	71	80	72	69	62	70	62	75	66
Whole Year	66	59	76	68	68	61	61	54	65	57

Room Occupancy Rate = $\frac{\text{Total number of room nights rented} \times 100}{\text{Total number of room nights available}}$

Bed Occupancy Rate = $\frac{\text{Total number of bed nights rented} \times 100}{\text{Total number of bed nights available}}$

