

Republic of Mauritius

**Ministry of Finance and Economic Development
Central Statistics Office**

**Digest of International Travel
and Tourism Statistics
2009**

DIGEST OF
INTERNATIONAL TRAVEL
AND
TOURISM STATISTICS
2009

INTERNATIONAL TRAVEL AND TOURISM STATISTICS

Vol. 36

2009

" International Travel and Tourism Statistics" is a regular publication of the Central Statistics Office, designed to present in a single report, detailed statistics concerning international travel and tourism relating to Mauritius.

The statistical tables presented in this report have been compiled from data collected from the passport of travellers, disembarkation cards filled in by non-residents, questions put to non-residents entering the country, hotels and administrative records.

Statistical data on International Travel and Tourism are constantly updated as more reliable information become available, necessitating minor changes over previous issues of this publication. The figures published in this issue therefore supersede those of all previous issues.

It is hoped that the data herewith assembled will prove useful to the public in general and to policy makers, planners and research workers in particular.

The publication of this report has been made possible with the collaboration of the Passport and Immigration Office and the Ministry of Tourism and Leisure. Their co-operation is herewith gratefully acknowledged.

L.F Cheung Kai Suet

Director of Statistics

Central Statistics Office
Ministry of Finance and Economic Development
PORT LOUIS
MAURITIUS
December 2010

CONTENTS

Table		Page
I - POPULATION AND VITAL STATISTICS		
1 - Estimated resident population of Rep. of Mauritius as at 31st December, 2008 & 2009		5
2 - Population growth in intercensal periods - Island of Mauritius, 1851 - 2000		5
3 - Population growth in intercensal periods - Island of Rodrigues, 1851 - 2000		6
4 - Estimated resident population by geographical district and sex - Republic of Mauritius, 2008 & 2009 (End of year estimates)		7
5 - Population and vital statistics - Republic of Mauritius, 1974 - 2009		8
6 - Growth of the resident population and vital statistics - Island of Mauritius, 2000 - 2009		9
7 - Growth of the resident population and vital statistics - Island of Rodrigues, 2000 - 2009		10
II - PASSENGER TRAFFIC		
8 - Passenger traffic by sex, 1989 - 2009		11
9 - Passenger traffic between Islands of Mauritius and Rodrigues, 1989 - 2009		12
10 - Passenger traffic by mode of transport, 1989 - 2009		16
11 - Passenger traffic by month, 2006 - 2009		17
12 - Arrivals by country of original embarkation, 2004 - 2009		18
13 - Departures by country of final destination, 2004 - 2009		19
14 - Monthly passenger traffic by type of passenger, 2009		20
15 - Passenger traffic by type of passenger, 2000 - 2009		21
16 - Total arrivals by age and sex, 2008 & 2009		22
17 - Total departures by age and sex, 2008 & 2009		23
18 - Excess of arrivals over departures by age and sex, 2008 & 2009		24
19 - Arrivals of Mauritian residents by age and sex, 2008 & 2009		25
20 - Departures of Mauritian residents by age and sex, 2008 & 2009		26
21 - Excess of arrivals over departures of Mauritian residents by age and sex, 2008 & 2009		27
22 - Arrivals and departures of Mauritian residents by country of embarkation and disembarkation, 2007 - 2009		28

CONTENTS

Table		Page
	III - TOURISM	
	Definition and notes	29
23 -	Tourist arrivals by mode of transport and tourist nights spent during period, 1993-2009	31
24 -	Tourist arrivals by month of arrival, 2000 - 2009	32
25 -	Percentage distribution of tourist arrivals by month of arrival, 2000 - 2009	34
26 -	Tourist arrivals by country of residence and sex, 2009	35
27 -	Tourist arrivals by country of residence, 2000 - 2009	36
28 -	Percentage distribution of tourist arrivals by country of residence, 2000 - 2009	37
29 -	Tourist nights by country of residence, 2000 - 2009	39
30 -	Visitor arrivals by country of residence and type of passenger, 2007 - 2009	42
31 -	Visitor arrivals by age and sex, 2008 & 2009	43
32 -	Visitor arrivals by duration of stay, 2008 & 2009	44
33 -	Visitor arrivals by country of residence and duration of stay, 2009	45
34 -	Tourist arrivals and average length of stay of tourists by country of residence, 2009	46
35 -	Gross earnings from tourism, 2000 - 2009	47
36 -	Expenditure of tourists by country of residence, 1998 - 2006	47
37 -	Expenditure of tourists by type of expenditure, 1998 - 2006	48
38 -	Hotels, rooms and bedplaces, 2000 - 2009	49
39 -	Monthly occupancy rates in large hotels, 2005 - 2009	50
40 -	Monthly occupancy rates in all hotels, 2005 - 2009	51

CONTENTS

Page

ILLUSTRATIONS

Fig. 1	- Passenger Traffic: Total arrivals by sex, 1993 - 2009	13
2	- Passenger Traffic: Total departures by sex, 1993 - 2009	14
3	- Passenger Traffic: Total arrivals and total departures, 2000 - 2009	15
4	- Tourist arrivals by month, 2005 - 2009	33
5	- Percentage distribution of tourist arrivals by country of residence, 2009	38
6	- Total arrivals and tourist arrivals, 2000 - 2009	40
7	- Tourist nights, 2000 - 2009	41

The following symbol is used throughout :-

" - " for Nil

Appendix : Disembarkation Card

Contact persons:

Mr A. Bundhoo, Statistician or
Mr M. Lan Pin Wing, Senior Statistical Officer
Ministry of Tourism and Leisure
3rd Floor, Victoria House
Port Louis
Tel: 211-9042
Fax: 210-3901
Email: cso@mail.gov.mu

I - POPULATION AND VITAL STATISTICS

**Table 1 - Estimated resident population of Republic of Mauritius
as at 31st December, 2008 & 2009 ¹**

Year	Island	Both sexes	Male	Female	Area (sq km)	Density (persons/km ²)
2008	Mauritius	1,234,042	609,261	624,781	1,864.8	662
	Rodrigues	37,700	18,630	19,070	104.0	363
	Other	289	193	96	71.2	4
	Republic of Mauritius	1,272,031	628,084	643,947	2,040.0	624
2009	Mauritius	1,239,788	611,593	628,195	1,864.8	665
	Rodrigues	37,774	18,690	19,084	104.0	363
	Other	289	193	96	71.2	4
	Republic of Mauritius	1,277,851	630,476	647,375	2,040.0	626

¹ based on the 2000 population census data adjusted for underenumeration of young children.

Table2 - Population growth in intercensal periods - Island of Mauritius, 1851 - 2000

Census Date	Population enumerated at census			Intercensal increase	Average annual rate of increase(%)
	Both sexes	Male	Female		
20 Nov. 1851	180,823	119,341	61,482	22,361	2.55
8 Apr. 1861	310,050	202,961	107,089	129,227	5.91
11 Apr. 1871	316,042	193,575	122,467	5,992	0.19
4 Apr. 1881	359,874	208,655	151,219	43,832	1.31
6 Mar. 1891	370,588	206,038	164,550	10,714	0.29
1 Apr. 1901	371,023	199,552	171,471	435	0.01
31 Mar. 1911	368,791	194,095	174,696	-2,232	-0.06
21 May. 1921	376,485	194,108	182,377	7,694	0.21
26 Apr. 1931	393,238	200,609	192,629	16,753	0.44
11 Jun. 1944	419,185	210,326	208,859	25,947	0.49
29 Jun. 1952	501,415	252,032	249,383	82,230	2.26
30 Jun. 1962 ¹	681,619	342,306	339,313	180,204	3.12
30 Jun. 1972 ¹	826,199	413,580	412,619	144,580	1.94
2 Jul. 1983 ¹	966,863	481,368	485,495	140,664	1.44
1 Jul. 1990 ²	1,022,456	510,676	511,780	55,593	0.80
1 Jul. 2000 ²	1,143,069	566,056	577,013	120,613	1.12

¹ " De facto " population

² " De jure " population

**Table 3 - Population growth in intercensal periods - Island of Rodrigues,
1851 - 2000**

Census Date	Population enumerated at census			Inter-censal increase	Average annual rate of increase (%)
	Both sexes	Male	Female		
20 Nov. 1851	495	327	168	-	-
8 Apr. 1861	693	464	229	198	3.65
11 Apr. 1871	1,108	693	415	415	4.80
4 Apr. 1881	1,431	812	619	323	2.59
6 Mar. 1891	2,068	1,154	914	637	3.75
1 Apr. 1901	3,162	1,685	1,477	1,094	4.34
31 Mar. 1911	4,829	2,523	2,306	1,667	4.33
21 May. 1921	6,584	3,300	3,284	1,755	3.15
26 Apr. 1931	8,202	4,033	4,169	1,618	2.22
11 Jun. 1944	11,885	5,740	6,145	3,683	2.89
29 Jun. 1952	13,333	5,947	7,386	1,448	1.45
30 Jun. 1962	18,335	9,062	9,273	5,002	3.24
30 Jun. 1972 ¹	24,769	12,270	12,499	6,434	3.05
2 Jul. 1983 ¹	33,082	16,552	16,530	8,313	2.67
1 Jul. 1990 ²	34,204	17,084	17,120	1,122	0.48
1 Jul. 2000 ²	35,779	17,700	18,079	1,575	0.45

¹ " De facto " population

² " De jure " population

Table 4 - Estimated resident population by geographical district and sex - Republic of Mauritius, 2008 & 2009
(End of year estimates) ¹

Geographical district	Area (km ²)	31st December 2008			31st December 2009		
		Both sexes	Male	Female	Both sexes	Male	Female
Port Louis	42.7	129,624	64,080	65,544	129,125	63,780	65,345
Pamplemousses	178.7	136,024	67,192	68,832	137,244	67,731	69,513
Riviere du Rempart	147.6	108,037	53,476	54,561	108,669	53,745	54,924
Flacq	297.9	138,585	69,195	69,390	139,465	69,531	69,934
Grand Port	260.3	114,620	56,809	57,811	115,092	57,030	58,062
Savanne	244.8	70,216	34,815	35,401	70,327	34,813	35,514
Plaines Wilhems	203.3	382,236	186,776	195,460	383,606	187,279	196,327
Moka	230.5	80,789	39,926	40,863	81,040	40,060	40,980
Black River	259.0	73,911	36,992	36,919	75,220	37,624	37,596
Island of Mauritius	1,864.8	1,234,042	609,261	624,781	1,239,788	611,593	628,195
Island of Rodrigues	104.0	37,700	18,630	19,070	37,774	18,690	19,084
Other ²	71.2	289	193	96	289	193	96
Republic of Mauritius	2,040.0	1,272,031	628,084	643,947	1,277,851	630,476	647,375

¹ based on the 2000 population census data adjusted for underenumeration of young children. Internal migration within districts is assumed to be the same as the net annual internal migration during 1995 - 2000 (obtained from the 2000 census)

² includes Agalega and St Brandon.

Table 5 - Population and vital statistics - Republic of Mauritius, 1974 - 2009

Year	Population at mid-year ¹	Live births	Deaths	Infant deaths	Still births	Civil marriages ²	Divorces ³
1974	880,650	24,002	6,424	1,113	879	6,905	117
1975	892,045	22,557	7,201	1,130	932	7,069	110
1976	903,610	23,274	6,968	936	808	8,451	98
1977	918,005	23,859	7,154	1,087	742	8,632	197
1978	933,499	25,278	6,596	876	680	10,741	255
1979	949,888	26,163	6,871	891	668	9,327	265
1980	966,039	26,294	6,919	864	662	8,894	351
1981	980,462	24,967	6,653	884	590	8,406	305
1982	992,521	22,459	6,584	682	458	10,768	312
1983	1,001,691	21,073	6,532	570	403	10,255	361
1984	1,012,221	20,332	6,646	505	404	10,865	471
1985	1,020,528	19,376	6,906	487	383	11,245	460
1986	1,028,360	19,170	6,805	524	365	10,556	616
1987	1,036,082	20,033	6,753	504	363	11,392	842
1988	1,043,239	20,941	6,879	471	374	11,453	740
1989	1,051,260	21,822	7,149	498	415	11,197	711
1990	1,058,775	22,602	7,031	462	365	11,425	549
1991	1,070,266	22,197	7,027	413	400	11,295	707
1992	1,084,441	22,902	7,023	426	291	11,408	781
1993	1,097,374	22,329	7,433	438	337	11,576	762
1994	1,112,846	21,795	7,402	394	274	11,414	733
1995	1,122,457	20,549	7,465	404	299	10,624	801
1996	1,133,996	20,763	7,670	459	266	10,700	792
1997	1,148,284	20,012	7,986	406	257	10,887	891
1998	1,160,421	19,434	7,839	376	227	10,898	1,012
1999	1,175,267	20,311	7,944	396	226	11,295	1,150
2000	1,186,873	20,205	7,982	322	266	10,963	1,191
2001	1,199,881	19,696	7,983	282	244	10,635	1,512
2002	1,210,196	19,983	8,310	297	203	10,484	1,294
2003	1,222,811	19,343	8,520	250	220	10,812	1,190
2004	1,233,386	19,230	8,475	278	190	11,385	1,162
2005	1,243,253	18,820	8,646	248	185	11,294	1,133
2006	1,252,698	17,604	9,162	249	147	11,471	1,379
2007	1,260,403	17,034	8,498	261	172	11,547	1,302
2008	1,268,565	16,372	9,004	236	165	11,197	1,569
2009	1,275,032	15,344	9,224	205	138	10,619	2,154

¹ Figures for 1974 - 1982, 1984 - 1989 and 1991 - 1999 have been respectively revised in the light of the 1983, 1990 and 2000 population census data adjusted for underenumeration of young children.

² The increase in the number of civil marriages as from 1982 is due largely to improved registration of religious marriages with the coming into force of a new Civil Status Act as from January, 1982.

³ Source: Judicial Department

Table 6 - Growth of the resident population and vital statistics - Island of Mauritius, 2000 - 2009

Year	Population at beginning of year	Natural movement			Net migration	Total increase	% change during the year due to:			Population at end of year
		Live births	Deaths	Natural increase			Natural increase	Migration	Total	
2000	1,144,721	19,398	7,806	11,592	977	12,569	1.01	+0.09	1.10	1,157,290
2001	1,157,290	18,884	7,761	11,123	890	12,013	0.96	+0.08	1.04	1,169,303
2002	1,169,303	19,169	8,081	11,088	-202	10,886	0.95	-0.02	0.93	1,180,189
2003	1,180,189	18,518	8,310	10,208	939	11,147	0.86	+0.08	0.94	1,191,336
2004	1,191,336	18,285	8,259	10,026	-362	9,664	0.84	-0.03	0.81	1,201,000
2005	1,201,000	17,924	8,422	9,502	800	10,302	0.79	0.07	0.86	1,211,302
2006	1,211,302	16,723	8,917	7,806	100	7,906	0.64	+0.01	0.65	1,219,208
2007	1,219,208	16,190	8,323	7,867	0	7,867	0.65	+0.00	0.65	1,227,075
2008	1,227,075	15,590	8,798	6,792	175	6,967	0.55	+0.01	0.56	1,234,042
2009	1,234,042	14,623	8,987	5,636	110	5,746	0.46	+0.01	0.47	1,239,788

Table 7 - Growth of the resident population and vital statistics - Island of Rodrigues, 2000 - 2009

Year	Population at beginning of year	Natural movement			Net migration	Total increase	% change during the year due to:			Population at end of year
		Live births	Deaths	Natural increase			Natural increase	Migration	Total	
2000	35,640	807	176	631	-386	245	1.77	-1.08	0.69	35,885
2001	35,885	812	222	590	-390	200	1.64	-1.09	0.55	36,085
2002	36,085	814	229	585	-367	218	1.62	-1.02	0.60	36,303
2003	36,303	825	210	615	-415	200	1.69	-1.14	0.55	36,503
2004	36,503	945	216	729	-460	269	2.00	-1.26	0.74	36,772
2005	36,772	896	224	672	-450	222	1.83	-1.22	0.61	36,994
2006	36,994	881	245	636	-400	236	1.72	-1.08	0.64	37,230
2007	37,230	844	175	669	-400	269	1.80	-1.07	0.73	37,499
2008	37,499	782	206	576	-375	201	1.54	-1.00	0.54	37,700
2009	37,700	721	237	484	-410	74	1.28	-1.09	0.19	37,774

II - PASSENGER TRAFFIC

Table 8 - Passenger traffic ¹ by sex, 1989 - 2009

Period	Arrivals			Departures			Arrivals minus Departures
	Both Sexes	Male	Female	Both Sexes	Male	Female	
1989	379,080	208,860	170,220	385,050	213,230	171,820	- 5,970
1990	418,200	232,050	186,150	422,230	233,280	188,950	- 4,030
1991	426,680	239,630	187,050	425,620	236,190	189,430	+ 1,060
1992	475,920	262,660	213,260	472,010	258,320	213,690	+ 3,910
1993	523,740	280,910	242,830	520,400	281,100	239,300	+ 3,340
1994	558,136	295,259	262,877	557,575	295,500	262,075	+ 561
1995	579,993	304,705	275,288	578,481	304,245	274,236	+ 1,512
1996	672,070	350,561	321,509	663,501	345,892	317,609	+ 8,569
1997	743,291	378,593	364,698	737,523	379,841	357,682	+ 5,768
1998	778,574	367,914	410,660	775,998	382,567	393,431	+ 2,576
1999	823,085	434,667	388,418	809,233	428,234	380,999	+ 13,852
2000	915,203	480,879	434,324	895,569	469,902	425,667	+ 19,634
2001	910,489	477,984	432,505	903,073	473,096	429,977	+ 7,416
2002	951,090	498,177	452,913	942,876	494,212	448,664	+ 8,214
2003	968,906	510,212	458,694	947,774	497,011	450,763	+ 21,132
2004	1,000,545	523,961	476,584	979,322	511,734	467,588	+ 21,223
2005	1,043,900	544,520	499,380	1,029,666	538,113	491,553	+ 14,234
2006	1,072,879	562,766	510,113	1,060,074	555,279	504,795	+ 12,805
2007	1,238,826	648,554	590,272	1,237,747	645,657	592,090	+ 1,079
2008	1,280,640	669,919	610,721	1,261,182	658,947	602,235	+ 19,458
2009	1,210,005	623,925	586,080	1,206,550	623,551	582,999	+ 3,455

¹ Includes traffic between Island of Mauritius and Rodrigues. As from 1994, figures of the passenger traffic also include cruise travellers, i.e passengers and crews of cruise ships.

Table 9 - Passenger traffic ¹ between Islands of Mauritius and Rodrigues, 1989 -2009

Period	Arrivals in Rodrigues			Departures from Rodrigues			Arrivals minus Departures
	Both Sexes	Male	Female	Both Sexes	Male	Female	
1989	11,501	7,234	4,267	11,092	6,831	4,261	+ 409
1990	13,110	8,023	5,087	13,492	7,949	5,543	- 382
1991	15,125	9,594	5,531	16,178	10,117	6,061	- 1,053
1992	19,064	11,629	7,435	19,865	11,887	7,978	- 801
1993	22,819	13,973	8,846	23,476	14,094	9,382	- 657
1994	23,292	14,174	9,118	23,636	14,177	9,459	- 344
1995	24,150	14,532	9,618	24,820	14,603	10,217	- 670
1996	29,129	16,947	12,182	29,370	16,861	12,509	- 241
1997	37,765	22,120	15,645	38,014	22,096	15,918	- 249
1998	40,648	24,181	16,467	40,553	23,072	17,481	+ 95
1999	45,117	28,384	16,733	45,154	26,961	18,193	- 37
2000	49,530	28,280	21,250	49,981	29,436	20,545	- 451
2001	52,777	30,320	22,457	52,307	30,760	21,547	+ 470
2002	60,355	34,647	25,708	59,984	34,004	25,980	+ 371
2003	63,649	37,203	26,446	63,937	37,673	26,264	- 288
2004	60,862	34,467	26,395	60,830	34,314	26,516	+ 32
2005	53,534	29,805	23,729	53,987	29,447	24,540	- 453
2006	55,368	31,395	23,973	56,015	31,822	24,193	- 647
2007	61,617	33,991	27,626	61,595	33,735	27,860	+ 22
2008	54,433	29,713	24,720	54,212	29,260	24,952	+ 221
2009	52,981	28,337	24,644	53,426	28,341	25,085	- 445

¹ Includes residents and non - residents

Fig 1 - Passenger traffic: Total arrivals by sex, 1993- 2009

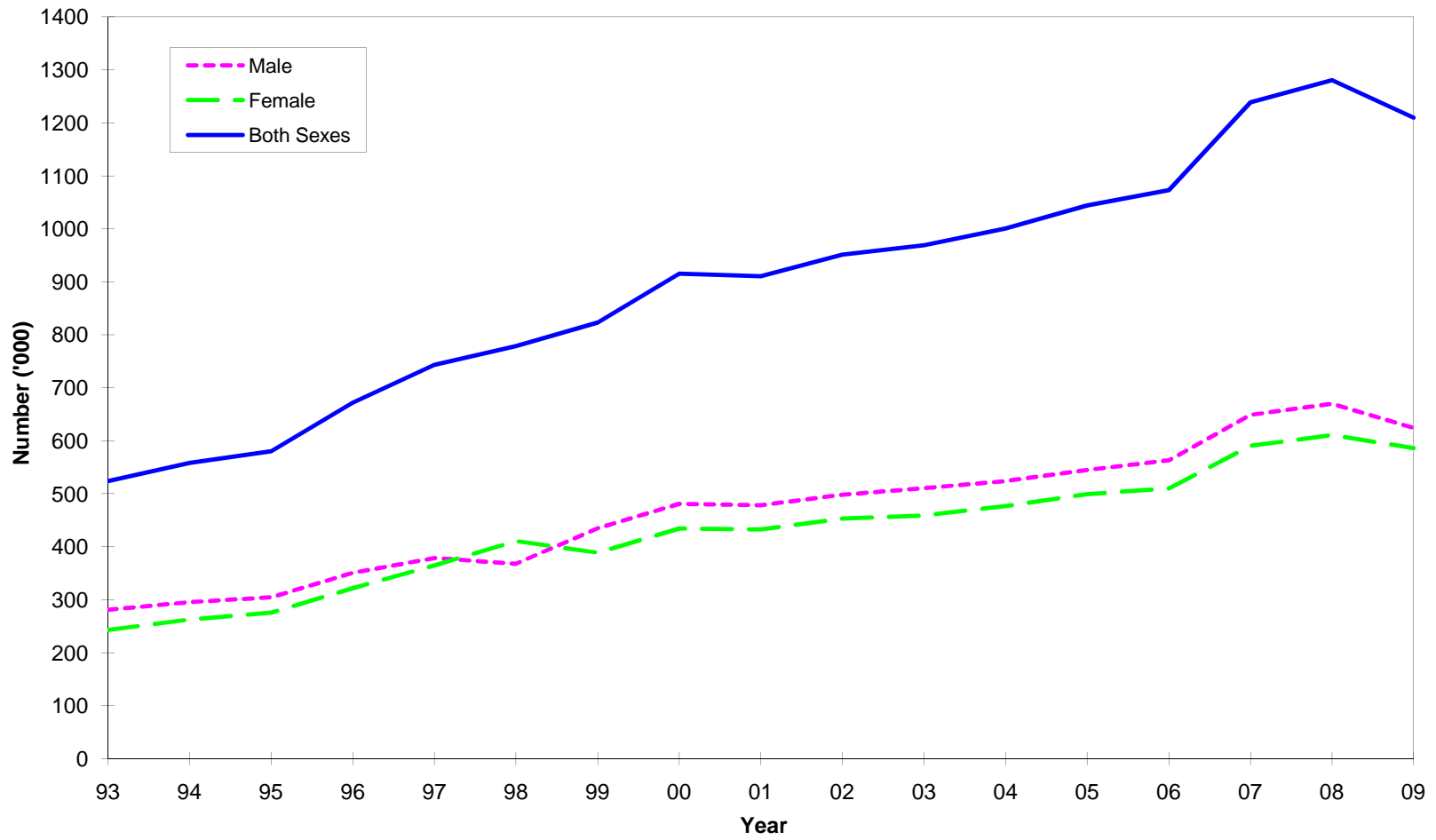


Fig 2 - Passenger traffic: Total departures by sex, 1993 - 2009

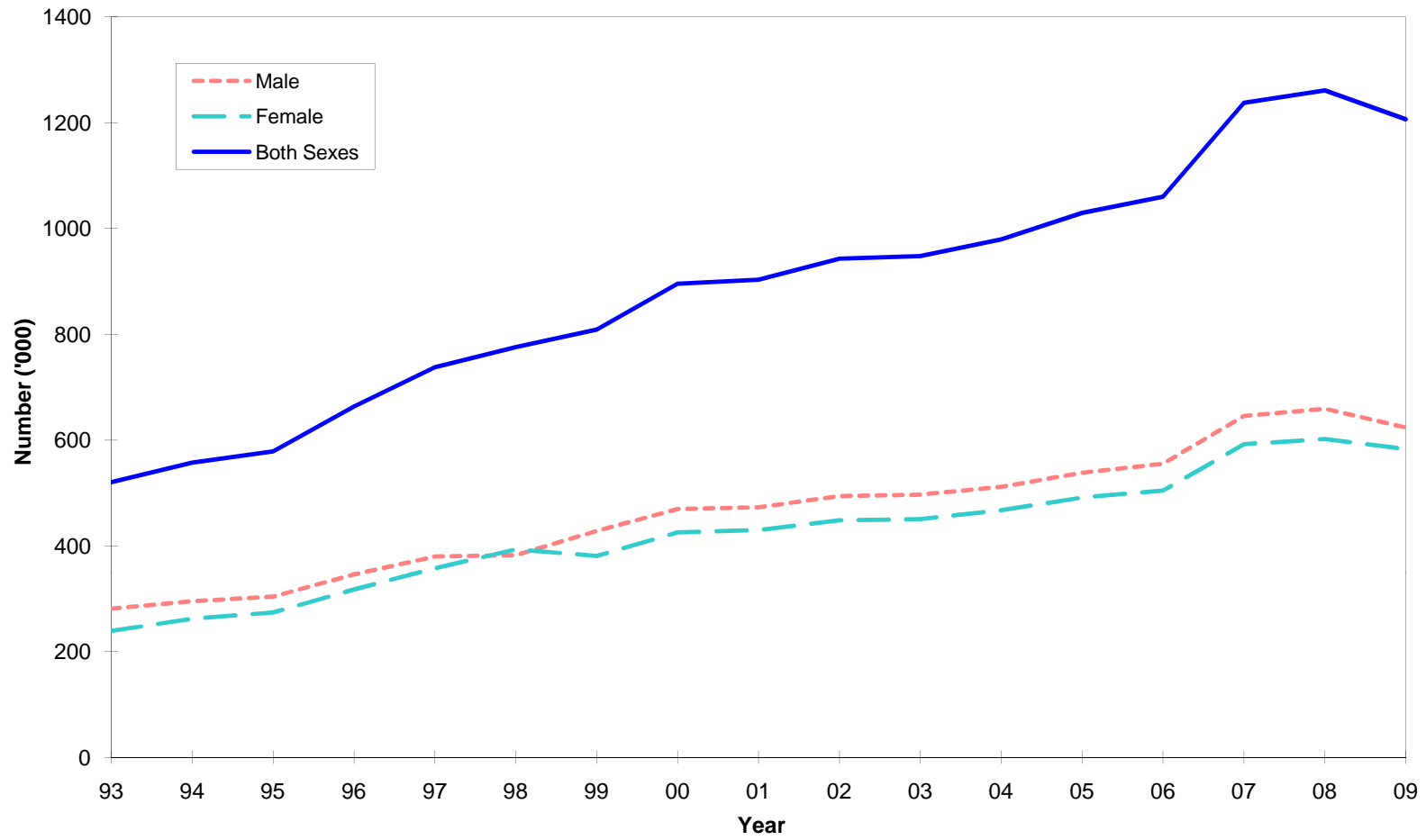


Fig. 3 - Passenger traffic : Total arrivals and total departures, 2000 - 2009

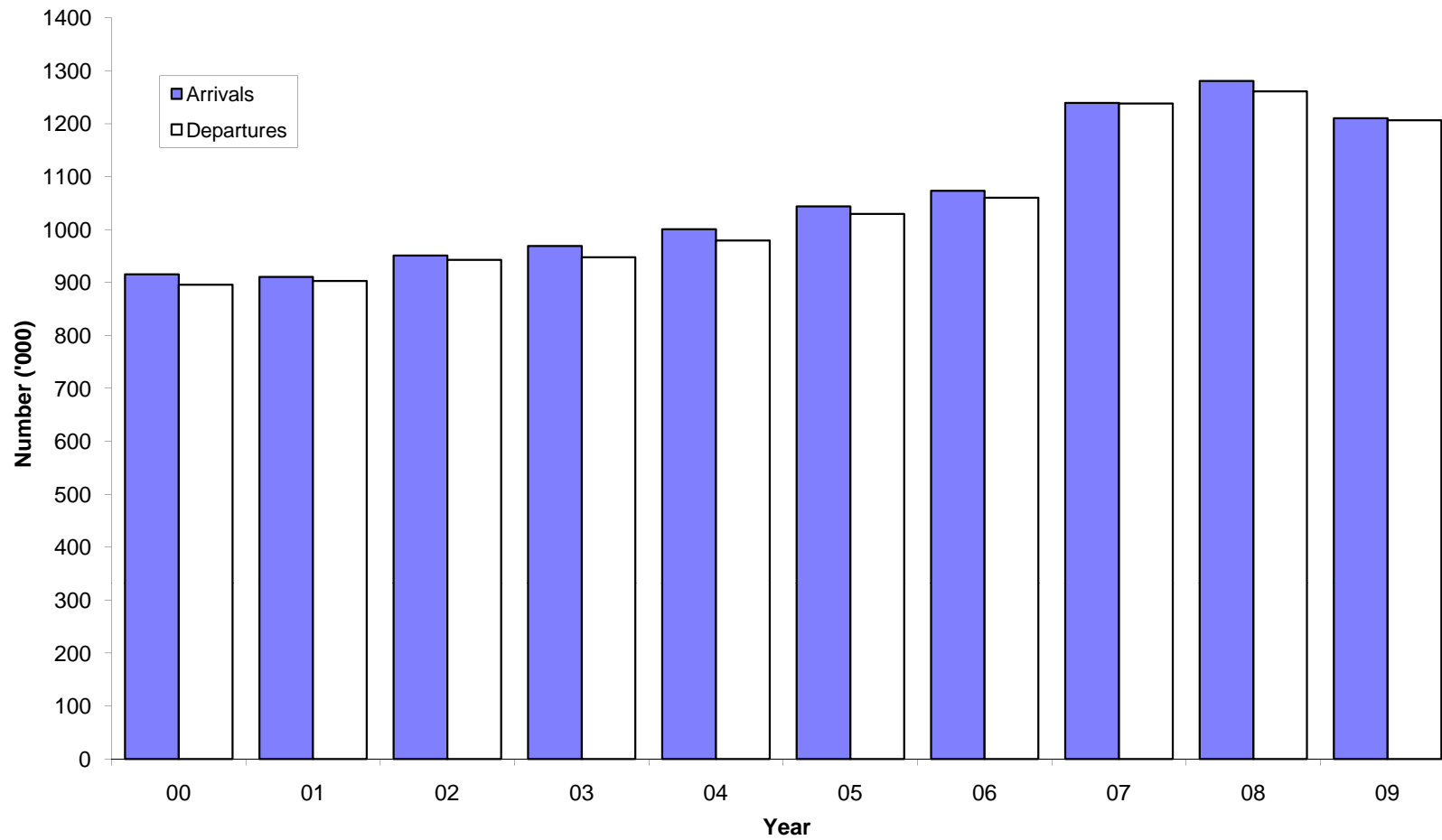


Table 10 - Passenger traffic ¹ by mode of transport, 1989 - 2009

Period	Arrivals			Departures			Arrivals minus Departures
	Total	By sea	By air	Total	By sea	By air	
1989	379,080	3,190	375,890	385,050	3,620	381,430	- 5,970
1990	418,200	3,820	414,380	422,230	3,820	418,410	- 4,030
1991	426,680	7,290	419,390	425,620	5,820	419,800	+ 1,060
1992	475,920	9,260	466,660	472,010	6,780	465,230	+ 3,910
1993	523,740	13,530	510,210	520,400	11,890	508,510	+ 3,340
1994	558,136	19,461	538,675	557,575	17,663	539,912	+ 561
1995	579,993	18,854	561,139	578,481	17,895	560,586	+ 1,512
1996	672,070	27,308	644,762	663,501	24,794	638,707	+ 8,569
1997	743,291	29,756	713,535	737,523	27,390	710,133	+ 5,768
1998	778,574	43,706	734,868	775,998	40,809	735,189	+ 2,576
1999	823,085	40,499	782,586	809,233	39,230	770,003	+ 13,852
2000	915,203	34,262	880,941	895,569	33,368	862,201	+ 19,634
2001	910,489	27,847	882,642	903,073	26,313	876,760	+ 7,416
2002	951,090	43,890	907,200	942,876	42,630	900,246	+ 8,214
2003	968,906	31,296	937,610	947,774	28,936	918,838	+ 21,132
2004	1,000,545	32,238	968,307	979,322	28,609	950,713	+ 21,223
2005	1,043,900	35,422	1,008,478	1,029,666	35,478	994,188	+ 14,234
2006	1,072,879	31,713	1,041,166	1,060,074	28,725	1,031,349	+ 12,805
2007	1,238,826	33,373	1,205,453	1,237,747	31,001	1,206,746	+ 1,079
2008	1,280,640	48,311	1,232,329	1,261,182	47,494	1,213,688	+ 19,458
2009	1,210,005	54,396	1,155,609	1,206,550	49,005	1,157,545	+ 3,455
2009:1st Qr.	320,534	29,108	291,426	343,597	29,074	314,523	- 23,063
2nd Qr.	256,448	9,077	247,371	261,009	8,585	252,424	- 4,561
3rd Qr.	279,241	5,286	273,955	277,539	5,023	272,516	+ 1,702
4th Qr.	353,782	10,925	342,857	324,405	6,323	318,082	+ 29,377

¹ Includes traffic between Island of Mauritius and Rodrigues. As from 1994, figures of the passenger traffic also include cruise travellers, i.e passengers and crews of cruise ships.

Table 11 - Passenger traffic ¹ by month, 2006 - 2009

Month	Arrivals				Departures				Excess of arrivals over departures			
	2006	2007	2008	2009	2006	2007	2008	2009	2006	2007	2008	2009
January	115,801	121,388	132,192	123,979	129,705	139,856	150,152	143,807	- 13,904	- 18,468	-17,960	- 19,828
February	83,952	90,304	101,997	92,975	84,174	89,376	103,374	93,071	- 222	+ 928	- 1,377	- 96
March	78,167	103,577	119,909	103,580	86,328	107,778	125,733	106,719	- 8,161	- 4,201	- 5,824	- 3,139
April	78,461	98,857	101,472	95,683	76,574	99,822	102,763	95,766	+ 1,887	- 965	- 1,291	- 83
May	70,188	88,674	92,019	87,399	72,775	91,385	100,497	92,740	- 2,587	- 2,711	- 8,478	- 5,341
June	63,559	78,230	79,326	73,366	59,685	73,375	66,133	72,503	+ 3,874	+ 4,855	+ 13,193	+ 863
July	95,775	111,873	117,032	102,993	81,639	96,072	96,713	88,902	+ 14,136	+ 15,801	+ 20,319	+ 14,091
August	92,048	102,673	103,027	94,182	100,271	111,756	117,838	107,374	- 8,223	- 9,083	- 14,811	- 13,192
September	76,519	89,018	87,119	82,066	78,512	90,640	86,863	81,263	- 1,993	- 1,622	+ 256	+ 803
October	96,033	105,278	108,099	105,327	90,243	105,800	106,218	103,753	+ 5,790	- 522	+ 1,881	+ 1,574
November	95,261	106,490	103,427	107,065	94,380	108,920	98,336	104,114	+ 881	- 2,430	+ 5,091	+ 2,951
December	127,115	142,464	135,021	141,390	105,788	122,967	106,562	116,538	+ 21,327	+ 19,497	+ 28,459	+ 24,852
Whole Year	1,072,879	1,238,826	1,280,640	1,210,005	1,060,074	1,237,747	1,261,182	1,206,550	+ 12,805	+1,079	+ 19,458	+ 3,455

¹ Includes traffic between Island of Mauritius and Rodrigues. Figures of the passenger traffic also include cruise travellers, i.e passengers and crews of cruise ships.

Table 12 - Arrivals ¹ by country of original embarkation, 2004 - 2009

Country of original embarkation	2004	2005	2006	2007	2008	2009
Australia	16,417	18,282	21,563	26,181	29,169	16,859
Belgium	2,778	619	484	127	192	4
France	197,937	208,271	201,444	246,006	253,159	261,716
Germany	47,601	51,958	56,982	65,876	62,858	43,157
Hong Kong SAR ²	17,453	20,764	20,782	26,245	27,189	22,310
India	49,268	51,500	58,910	66,329	62,147	53,487
Italy	35,486	37,301	60,741	64,048	61,685	46,403
Japan	140	53	65	33	22	0
Kenya	6,172	1,925	9,734	8,459	5,777	4,926
Malagasy Rep.	20,242	26,515	22,141	27,343	29,211	21,480
Reunion Island	215,820	216,414	176,157	203,508	218,865	240,369
Rodrigues	60,830	53,987	56,015	61,595	54,212	53,426
Seychelles	14,751	21,718	23,766	26,795	25,541	22,702
Singapore	15,374	17,855	13,571	18,953	18,022	16,501
S. Africa, Rep. of	93,598	101,294	117,175	136,487	144,122	130,776
Switzerland	13,402	12,722	14,249	16,250	13,882	10,404
United Kingdom	112,795	115,400	116,724	128,983	132,551	108,441
Zambia	156	26	16	12	48	10
Zimbabwe	2,439	2,676	688	175	26	6
Other & not stated	77,886	84,620	101,672	115,421	141,962	157,028
All Countries	1,000,545	1,043,900	1,072,879	1,238,826	1,280,640	1,210,005

¹ Figures on passenger arrivals include cruise travellers, i.e passengers and crews of cruise ships which numbered 9927, 11553, 11651, 9747, 26388 and 34117 for 2004, 2005, 2006, 2007, 2008 and 2009 respectively, in accordance with the recommendations of the World Tourism Organisation.

² Special Administrative Region of China

Table 13 - Departures ¹ by country of final destination, 2004 - 2009

Country of final destination	2004	2005	2006	2007	2008	2009
Australia	16,108	18,931	22,579	29,325	33,765	18,164
Belgium	1,521	102	65	247	363	17
France	208,070	221,372	215,093	261,855	263,683	274,659
Germany	50,083	53,368	56,377	68,261	62,156	43,023
Hong Kong SAR ²	16,042	19,052	17,898	21,441	20,247	21,795
India	46,669	50,784	55,942	64,669	59,651	53,120
Italy	32,351	35,022	57,922	64,939	62,791	47,626
Japan	28	41	10	13	40	0
Kenya	5,122	1,103	6,258	6,236	4,978	3,430
Malagasy Rep.	21,558	26,611	21,722	27,815	30,342	22,805
Reunion Island	206,012	205,625	176,007	200,200	218,786	224,128
Rodrigues	60,862	53,534	55,368	61,617	54,433	52,981
Seychelles	13,339	21,128	23,844	28,189	25,160	30,978
Singapore	16,715	17,513	18,405	17,955	17,760	15,542
S. Africa, Rep. of	84,821	91,817	107,201	122,724	126,982	117,004
Switzerland	12,738	11,443	13,148	16,136	13,841	9,234
United Kingdom	114,328	117,045	119,260	130,804	132,143	111,143
Zambia	20	8	13	3	153	5
Zimbabwe	2,462	2,352	735	45	3	1
Other & not stated	70,473	82,815	92,227	115,273	133,905	160,895
All Countries	979,322	1,029,666	1,060,074	1,237,747	1,261,182	1,206,550

¹ Figures on passenger departures include cruise travellers, i.e passengers and crews of cruise ships which numbered 8682, 12772, 11323, 9861, 26782 and 31154 for 2004, 2005, 2006, 2007, 2008 and 2009 respectively, in accordance with the recommendations of the World Tourism Organisation.

² Special Administrative Region of China

Table 14 - Monthly passenger traffic ¹ by type of passenger, 2009

Type of passenger	Jan	Feb	Mar	Apr	May	Jun	Jul	Aug	Sep	Oct	Nov	Dec	Whole Year
Arrivals													
Visitors ²	91,442	69,511	78,140	70,666	65,712	49,753	73,246	64,627	61,034	81,260	79,568	105,040	889,999
- On holiday	83,012	62,544	71,984	65,425	60,993	43,314	67,844	59,148	56,293	74,928	73,839	100,415	819,739
- On business & Conference	1,749	2,073	2,362	1,942	2,493	2,704	2,046	2,634	2,617	2,836	3,690	1,879	29,025
- In transit	4,755	2,139	2,266	2,126	1,315	3,151	1,667	1,529	1,504	1,544	1,233	1,642	24,871
- Other and not stated	1,926	2,755	1,528	1,173	911	584	1,689	1,316	620	1,952	806	1,104	16,364
Mauritian residents	23,915	14,284	18,964	20,144	17,442	18,689	25,704	24,309	16,582	19,873	22,535	30,933	253,374
Other ³	8,622	9,180	6,476	4,873	4,245	4,924	4,043	5,246	4,450	4,194	4,962	5,417	66,632
Total arrivals	123,979	92,975	103,580	95,683	87,399	73,366	102,993	94,182	82,066	105,327	107,065	141,390	1,210,005
Departures													
Visitors	116,080	71,982	85,824	74,858	75,285	53,464	65,286	82,110	61,358	83,219	79,160	87,370	935,996
Mauritian residents	23,437	15,963	18,327	19,501	16,786	17,298	22,733	24,455	19,197	19,615	23,609	28,024	248,945
Other	4,290	5,126	2,568	1,407	669	1,741	883	809	708	919	1,345	1,144	21,609
Total departures	143,807	93,071	106,719	95,766	92,740	72,503	88,902	107,374	81,263	103,753	104,114	116,538	1,206,550

¹ Including traffic between Island of Mauritius and Rodrigues

² Including non-residents who left the airport but stayed in the country for less than a day.

³ Including contract workers

Table 15 - Passenger traffic ¹ by type of passenger, 2000 - 2009

Type of passenger	2000	2001	2002	2003	2004	2005	2006	2007	2008	2009
Arrivals										
Visitors ²	678,472	674,619	709,305	721,348	738,516	781,572	806,652	932,782	970,482	889,999
- On holiday	602,606	606,545	620,124	636,325	653,818	692,084	712,620	818,714	821,325	819,739
- On business & Conference	27,004	26,523	28,558	31,155	30,416	30,164	32,511	34,633	37,521	29,025
- In transit	38,984	33,263	51,747	42,736	44,710	48,299	47,966	61,186	82,683	24,871
- Other & not stated	9,878	8,288	8,876	11,132	9,572	11,025	13,555	18,249	28,953	16,364
Mauritian residents	216,680	215,803	220,949	227,288	239,969	239,389	242,330	277,369	283,792	253,374
Other ³	20,051	20,067	20,836	20,270	22,060	22,939	23,897	28,675	26,366	66,632
Total arrivals	915,203	910,489	951,090	968,906	1,000,545	1,043,900	1,072,879	1,238,826	1,280,640	1,210,005
Departures										
Visitors	667,212	672,388	704,548	705,849	718,789	773,951	801,702	942,374	960,279	935,996
Mauritian residents	212,879	213,778	221,889	224,771	240,823	236,457	241,138	274,786	280,300	248,945
Other	15,478	16,907	16,439	17,154	19,710	19,258	17,234	20,587	20,603	21,609
Total departures	895,569	903,073	942,876	947,774	979,322	1,029,666	1,060,074	1,237,747	1,261,182	1,206,550

¹ Including traffic between Island of Mauritius and Rodrigues. Figures of the passenger traffic also include cruise travellers, i.e. passengers and crews of cruise ships.

² Including non-residents who left the airport but stayed in the country for less than a day.

³ Including contract workers.

Table 16 - Total arrivals ¹ by age and sex, 2008 & 2009

Age (years)	2008			2009			January - June 2009			July - December 2009		
	Both Sexes	Male	Female	Both Sexes	Male	Female	Both Sexes	Male	Female	Both Sexes	Male	Female
Under 1	6,692	3,433	3,259	6,000	2,981	3,019	2,949	1,434	1,515	3,051	1,547	1,504
1 - 4	35,584	17,915	17,669	33,005	16,170	16,835	16,114	7,919	8,195	16,891	8,251	8,640
5 - 9	47,203	24,156	23,047	43,511	21,336	22,175	19,586	9,514	10,072	23,925	11,822	12,103
10 - 14	47,020	23,794	23,226	42,829	21,212	21,617	18,508	9,095	9,413	24,321	12,117	12,204
15 - 19	40,749	19,287	21,462	37,298	17,423	19,875	15,530	7,135	8,395	21,768	10,288	11,480
20 - 24	64,551	27,192	37,359	61,830	25,810	36,020	26,954	11,175	15,779	34,876	14,635	20,241
25 - 29	132,895	62,511	70,384	127,224	58,153	69,071	55,367	25,220	30,147	71,857	32,933	38,924
30 - 34	139,223	71,960	67,263	130,475	67,089	63,386	60,507	30,926	29,581	69,968	36,163	33,805
35 - 39	132,335	73,174	59,161	119,758	65,870	53,888	57,827	31,678	26,149	61,931	34,192	27,739
40 - 44	128,769	71,920	56,849	116,335	64,656	51,679	56,170	31,384	24,786	60,165	33,272	26,893
45 - 49	114,429	62,889	51,540	108,260	58,939	49,321	51,271	28,091	23,180	56,989	30,848	26,141
50 - 54	100,182	54,451	45,731	95,441	50,769	44,672	45,881	24,431	21,450	49,560	26,338	23,222
55 - 59	84,075	45,591	38,484	81,670	43,637	38,033	40,187	21,404	18,783	41,483	22,233	19,250
60 - 64	63,641	34,126	29,515	63,699	33,743	29,956	32,387	17,010	15,377	31,312	16,733	14,579
65 - 69	38,124	20,728	17,396	37,969	20,342	17,627	20,388	10,990	9,398	17,581	9,352	8,229
70 & over	38,326	20,585	17,741	36,996	19,600	17,396	20,272	11,048	9,224	16,724	8,552	8,172
Not stated	66,842	36,207	30,635	67,705	36,195	31,510	37,084	20,336	16,748	30,621	15,859	14,762
All ages	1,280,640	669,919	610,721	1,210,005	623,925	586,080	576,982	298,790	278,192	633,023	325,135	307,888

¹ Include arrivals from Rodrigues and cruise travellers, i.e passengers and crews of cruise ships which numbered 26388 and 34117 for 2008 and 2009 respectively, in accordance with the recommendations of the World Tourism Organisation.

Table 17 - Total departures ¹ by age and sex, 2008 & 2009

Age (years)	2008			2009			January - June 2009			July - December 2009		
	Both Sexes	Male	Female	Both Sexes	Male	Female	Both Sexes	Male	Female	Both Sexes	Male	Female
Under 1	6,265	3,185	3,080	5,715	2,834	2,881	3,131	1,529	1,602	2,584	1,305	1,279
1 - 4	34,901	17,525	17,376	33,028	16,183	16,845	17,688	8,735	8,953	15,340	7,448	7,892
5 - 9	46,956	23,963	22,993	43,267	21,306	21,961	21,652	10,583	11,069	21,615	10,723	10,892
10 - 14	47,351	24,065	23,286	42,751	21,132	21,619	20,399	10,021	10,378	22,352	11,111	11,241
15 - 19	42,053	19,986	22,067	38,157	17,791	20,366	17,108	7,962	9,146	21,049	9,829	11,220
20 - 24	63,275	26,424	36,851	60,797	25,291	35,506	28,007	11,615	16,392	32,790	13,676	19,114
25 - 29	129,583	60,598	68,985	127,285	59,079	68,206	57,208	26,350	30,858	70,077	32,729	37,348
30 - 34	136,778	70,470	66,308	131,374	67,793	63,581	63,106	32,240	30,866	68,268	35,553	32,715
35 - 39	131,116	72,454	58,662	119,588	66,010	53,578	60,621	33,177	27,444	58,967	32,833	26,134
40 - 44	127,865	71,165	56,700	116,663	64,745	51,918	59,448	32,923	26,525	57,215	31,822	25,393
45 - 49	111,224	61,126	50,098	107,098	58,432	48,666	53,773	29,488	24,285	53,325	28,944	24,381
50 - 54	98,881	53,617	45,264	95,540	50,791	44,749	48,314	25,618	22,696	47,226	25,173	22,053
55 - 59	81,265	44,224	37,041	80,773	43,079	37,694	41,847	22,145	19,702	38,926	20,934	17,992
60 - 64	61,596	33,032	28,564	63,658	33,677	29,981	34,310	17,992	16,318	29,348	15,685	13,663
65 - 69	36,787	20,037	16,750	37,622	20,189	17,433	21,499	11,516	9,983	16,123	8,673	7,450
70 & over	38,067	20,331	17,736	36,770	19,466	17,304	21,650	11,702	9,948	15,120	7,764	7,356
Not stated	67,219	36,745	30,474	66,464	35,753	30,711	34,845	19,242	15,603	31,619	16,511	15,108
All ages	1,261,182	658,947	602,235	1,206,550	623,551	582,999	604,606	312,838	291,768	601,944	310,713	291,231

¹ Include departures to Rodrigues and cruise travellers, i.e passengers and crews of cruise ships which numbered 26782 and 31154 for 2008 and 2009 respectively, in accordance with the recommendations of the World Tourism Organisation.

Table 18 - Excess of arrivals over departures ¹ by age and sex, 2008 & 2009

Age (years)	2008			2009			January - June 2009			July - December 2009		
	Both Sexes	Male	Female	Both Sexes	Male	Female	Both Sexes	Male	Female	Both Sexes	Male	Female
Under 1	427	248	179	285	147	138	-182	-95	-87	467	242	225
1 - 4	683	390	293	-23	-13	-10	-1,574	-816	-758	1,551	803	748
5 - 9	247	193	54	244	30	214	-2,066	-1,069	-997	2,310	1,099	1,211
10 - 14	-331	-271	-60	78	80	-2	-1,891	-926	-965	1,969	1,006	963
15 - 19	-1,304	-699	-605	-859	-368	-491	-1,578	-827	-751	719	459	260
20 - 24	1,276	768	508	1,033	519	514	-1,053	-440	-613	2,086	959	1,127
25 - 29	3,312	1,913	1,399	-61	-926	865	-1,841	-1,130	-711	1,780	204	1,576
30 - 34	2,445	1,490	955	-899	-704	-195	-2,599	-1,314	-1,285	1,700	610	1,090
35 - 39	1,219	720	499	170	-140	310	-2,794	-1,499	-1,295	2,964	1,359	1,605
40 - 44	904	755	149	-328	-89	-239	-3,278	-1,539	-1,739	2,950	1,450	1,500
45 - 49	3,205	1,763	1,442	1,162	507	655	-2,502	-1,397	-1,105	3,664	1,904	1,760
50 - 54	1,301	834	467	-99	-22	-77	-2,433	-1,187	-1,246	2,334	1,165	1,169
55 - 59	2,810	1,367	1,443	897	558	339	-1,660	-741	-919	2,557	1,299	1,258
60 - 64	2,045	1,094	951	41	66	-25	-1,923	-982	-941	1,964	1,048	916
65 - 69	1,337	691	646	347	153	194	-1,111	-526	-585	1,458	679	779
70 & over	259	254	5	226	134	92	-1,378	-654	-724	1,604	788	816
Not stated	-377	-538	161	1,241	442	799	2,239	1,094	1,145	-998	-652	-346
All ages	19,458	10,972	8,486	3,455	374	3,081	-27,624	-14,048	-13,576	31,079	14,422	16,657

¹ Including traffic between Island of Mauritius and Rodrigues

Table 19 - Arrivals ¹ of Mauritian residents by age and sex, 2008 & 2009

Age (years)	2008			2009			January - June 2009			July - December 2009		
	Both Sexes	Male	Female	Both Sexes	Male	Female	Both Sexes	Male	Female	Both Sexes	Male	Female
Under 1	675	323	352	603	297	306	301	155	146	302	142	160
1 - 4	3,517	1,805	1,712	3,267	1,596	1,671	1,509	737	772	1,758	859	899
5 - 9	5,236	2,710	2,526	4,675	2,287	2,388	1,948	942	1,006	2,727	1,345	1,382
10 - 14	5,807	2,975	2,832	5,245	2,634	2,611	2,096	1,071	1,025	3,149	1,563	1,586
15 - 19	7,423	3,688	3,735	6,692	3,316	3,376	2,896	1,405	1,491	3,796	1,911	1,885
20 - 24	15,364	7,357	8,007	14,266	7,157	7,109	6,057	3,011	3,046	8,209	4,146	4,063
25 - 29	23,326	11,982	11,344	20,989	10,688	10,301	9,480	4,824	4,656	11,509	5,864	5,645
30 - 34	26,189	13,528	12,661	24,694	12,605	12,089	11,508	5,889	5,619	13,186	6,716	6,470
35 - 39	24,501	14,487	10,014	21,248	12,354	8,894	9,762	5,868	3,894	11,486	6,486	5,000
40 - 44	26,517	15,911	10,606	22,760	13,517	9,243	10,283	6,215	4,068	12,477	7,302	5,175
45 - 49	23,543	13,353	10,190	19,905	11,543	8,362	8,660	5,119	3,541	11,245	6,424	4,821
50 - 54	21,540	11,338	10,202	17,500	9,220	8,280	7,774	4,206	3,568	9,726	5,014	4,712
55 - 59	18,855	9,958	8,897	15,206	7,981	7,225	6,787	3,639	3,148	8,419	4,342	4,077
60 - 64	12,499	6,602	5,897	10,635	5,621	5,014	4,680	2,500	2,180	5,955	3,121	2,834
65 - 69	6,970	3,631	3,339	5,931	3,051	2,880	2,626	1,380	1,246	3,305	1,671	1,634
70 & over	7,617	3,740	3,877	6,332	3,162	3,170	2,759	1,426	1,333	3,573	1,736	1,837
Not stated	54,213	29,261	24,952	53,426	28,341	25,085	24,312	13,311	11,001	29,114	15,030	14,084
All ages	283,792	152,649	131,143	253,374	135,370	118,004	113,438	61,698	51,740	139,936	73,672	66,264

¹ Including arrivals from Rodrigues

Table 20 - Departures ¹ of Mauritian residents by age and sex, 2008 & 2009

Age (years)	2008			2009			January - June 2009			July - December 2009		
	Both Sexes	Male	Female	Both Sexes	Male	Female	Both Sexes	Male	Female	Both Sexes	Male	Female
Under 1	1,066	506	560	607	298	309	314	163	151	293	135	158
1 - 4	3,688	1,898	1,790	3,299	1,627	1,672	1,452	717	735	1,847	910	937
5 - 9	5,358	2,747	2,611	4,591	2,302	2,289	1,631	801	830	2,960	1,501	1,459
10 - 14	5,724	2,975	2,749	5,189	2,599	2,590	1,552	796	756	3,637	1,803	1,834
15 - 19	8,715	4,404	4,311	7,718	3,812	3,906	2,739	1,378	1,361	4,979	2,434	2,545
20 - 24	16,197	7,879	8,318	14,534	7,235	7,299	6,627	3,256	3,371	7,907	3,979	3,928
25 - 29	23,633	12,051	11,582	20,961	10,557	10,404	10,197	5,172	5,025	10,764	5,385	5,379
30 - 34	25,470	13,267	12,203	24,515	12,459	12,056	11,853	6,096	5,757	12,662	6,363	6,299
35 - 39	24,602	14,593	10,009	21,047	12,186	8,861	9,938	5,999	3,939	11,109	6,187	4,922
40 - 44	26,086	15,535	10,551	22,306	13,219	9,087	10,217	6,186	4,031	12,089	7,033	5,056
45 - 49	22,613	12,785	9,828	19,372	11,182	8,190	8,623	5,093	3,530	10,749	6,089	4,660
50 - 54	20,747	11,007	9,740	16,681	8,870	7,811	7,583	4,073	3,510	9,098	4,797	4,301
55 - 59	17,658	9,479	8,179	14,291	7,539	6,752	6,602	3,491	3,111	7,689	4,048	3,641
60 - 64	11,160	5,870	5,290	9,697	5,047	4,650	4,532	2,362	2,170	5,165	2,685	2,480
65 - 69	6,311	3,284	3,027	5,407	2,765	2,642	2,556	1,295	1,261	2,851	1,470	1,381
70 & over	6,837	3,387	3,450	5,749	2,825	2,924	2,754	1,369	1,385	2,995	1,456	1,539
Not stated	54,435	29,715	24,720	52,981	28,337	24,644	22,142	12,255	9,887	30,839	16,082	14,757
All ages	280,300	151,382	128,918	248,945	132,859	116,086	111,312	60,502	50,810	137,633	72,357	65,276

¹ Including departures to Rodrigues

Table 21 - Excess of arrivals over departures ¹ of Mauritian residents by age & sex, 2008 & 2009

Age (years)	2008			2009			January - June 2009			July - December 2009		
	Both Sexes	Male	Female	Both Sexes	Male	Female	Both Sexes	Male	Female	Both Sexes	Male	Female
Under 1	-391	-183	-208	-4	-1	-3	-13	-8	-5	9	7	2
1 - 4	-171	-93	-78	-32	-31	-1	57	20	37	-89	-51	-38
5 - 9	-122	-37	-85	84	-15	99	317	141	176	-233	-156	-77
10 - 14	83	0	83	56	35	21	544	275	269	-488	-240	-248
15 - 19	-1,292	-716	-576	-1,026	-496	-530	157	27	130	-1,183	-523	-660
20 - 24	-833	-522	-311	-268	-78	-190	-570	-245	-325	302	167	135
25 - 29	-307	-69	-238	28	131	-103	-717	-348	-369	745	479	266
30 - 34	719	261	458	179	146	33	-345	-207	-138	524	353	171
35 - 39	-101	-106	5	201	168	33	-176	-131	-45	377	299	78
40 - 44	431	376	55	454	298	156	66	29	37	388	269	119
45 - 49	930	568	362	533	361	172	37	26	11	496	335	161
50 - 54	793	331	462	819	350	469	191	133	58	628	217	411
55 - 59	1,197	479	718	915	442	473	185	148	37	730	294	436
60 - 64	1,339	732	607	938	574	364	148	138	10	790	436	354
65 - 69	659	347	312	524	286	238	70	85	-15	454	201	253
70 & over	780	353	427	583	337	246	5	57	-52	578	280	298
Not stated	-222	-454	232	445	4	441	2,170	1,056	1,114	-1,725	-1,052	-673
All ages	3,492	1,267	2,225	4,429	2,511	1,918	2,126	1,196	930	2,303	1,315	988

¹ Including traffic between Island of Mauritius and Rodrigues.

Table 22 - Arrivals and departures of Mauritian residents¹ by country of embarkation and disembarkation, 2007 - 2009

Country of embarkation/ disembarkation	Arrivals			Departures			Excess of arrivals over departures		
	2007	2008	2009	2007	2008	2009	2007	2008	2009
Australia	9,242	10,921	7,649	9,980	13,310	8,514	-738	-2,389	-865
Belgium	37	9	0	88	63	3	-51	-54	-3
Canada	30	17	0	14	29	2	16	-12	-2
France	31,227	33,301	29,541	32,118	34,341	29,992	-891	-1,040	-451
Germany	3,163	3,574	2,382	2,888	3,151	2,204	275	423	178
Hong Kong SAR ²	11,434	11,674	10,192	11,875	11,773	11,363	-441	-99	-1,171
India	21,292	19,675	17,569	21,190	19,210	17,577	102	465	-8
Italy	4,987	4,733	4,604	4,404	4,681	5,009	583	52	-405
Kenya	1,802	1,628	1,148	1,724	1,709	1,293	78	-81	-145
Rodrigues	61,595	54,212	53,426	61,617	54,433	52,981	-22	-221	445
Reunion	32,983	32,575	29,973	31,311	31,493	27,484	1,672	1,082	2,489
Singapore	10,344	9,324	9,400	9,571	9,995	8,349	773	-671	1,051
S. Africa, Rep of	17,207	19,742	18,065	16,301	19,013	18,009	906	729	56
Switzerland	2,555	2,559	1,614	2,522	2,712	1,495	33	-153	119
United Kingdom	35,023	34,732	23,632	33,913	33,544	21,611	1,110	1,188	2,021
Other countries	34,448	45,116	44,179	35,270	40,843	43,059	-822	4,273	1,120
All Countries	277,369	283,792	253,374	274,786	280,300	248,945	2,583	3,492	4,429

¹ Including traffic between Island of Mauritius and Rodrigues

² Special Administrative Region of China

III - TOURISM

Definition and notes

1. Definition of tourist

- (a) Prior to 1964, a tourist has been defined as a non-resident staying in Mauritius for more than 24 hours but less than 6 months.
- (b) From 1964 to 2008, a tourist is defined as a non-resident staying in Mauritius for more than 24 hours but less than a year and is not involved in any gainful occupation.
- (c) As from 2009, a tourist is defined as a non-resident staying overnight but less than a year, and who has no employer-employee relationship with a resident.

The figures for the three periods are nevertheless comparable because of the small number of tourists staying for more than 6 months.

2. Visitors include the following:

- (a) Tourists as defined above and
- (b) Excursionists or same day visitors, i.e non-residents, other than those who do not leave the airport/ships, who depart on the same day they arrived.

3. Method of compilation

Sources of data

The main source of data for the compilation of passenger traffic statistics is the Passport and Immigration Office, which maintains a database of all passengers entering and leaving the country. The data are collected from the passport of travellers, disembarkation cards filled in by non-residents and questions put to non-residents entering the country. At the end of every month, passenger traffic for that particular month is downloaded and supplied to the Statistics Unit of the Ministry of Tourism and Leisure within fifteen days. Additional data on cruises are supplied by the Mauritius Ports Authority.

Prior to 1994, figures have been compiled from a 10% sample of embarkation and disembarkation cards filled in by passengers. However, as from January 1994, they are based on movements of all passengers. Thus disaggregated data for 1994 onwards may not be strictly comparable to previous series.

Tourism receipts

The Bank of Mauritius is responsible for the estimation of tourism receipts based on monthly statements of Inward and Outward Remittances of Commercial Banks.

Monthly Occupancy Rates

All hotels are contacted by mail and/or phone at the end of every month on room / bed nights available and rented during the month for the calculation of room and bed occupancy.

4. Tourist nights

Tables on tourist nights show the number of nights spent by tourists who were present in the country during the period under review. Thus the number of tourist nights for 2009 include:

(a) the nights spent during 2009 by tourists who arrived prior to 1st January 2009; and

(b) the nights spent during 2009 by tourists who arrived during the same year.

However, nights spent after 31st December 2009 by tourists who arrived in 2009 are excluded.

5. Large hotels

Large hotels are well established beach hotels of over 80 rooms.

Table 23 -Tourist arrivals by mode of transport and tourist nights spent during period, 1993 - 2009

Period	Tourist arrivals			Tourist nights spent during period	% change over previous year	
	Sea	Air	Total		Tourist arrivals	Tourist nights
1993	5,710	368,920	374,630	4,610,400	+ 11.7	+ 12.2
1994	6,383	394,143	400,526	4,359,303	+ 6.9	- 5.4
1995	6,105	416,358	422,463	4,434,891	+ 5.5	+ 1.7
1996	6,484	480,383	486,867	4,957,683	+ 15.2	+ 11.8
1997	7,476	528,649	536,125	5,451,314	+ 10.1	+ 10.0
1998	17,109	541,086	558,195	5,567,889	+ 4.1	+ 2.1
1999	13,852	564,233	578,085	5,729,464	+ 3.6	+ 2.9
2000	10,677	645,776	656,453	6,412,876	+ 13.6	+ 11.9
2001	10,532	649,786	660,318	6,527,800	+ 0.6	+ 1.8
2002	14,180	667,468	681,648	6,768,870	+ 3.2	+ 3.7
2003	12,155	689,863	702,018	6,952,313	+ 3.0	+ 2.7
2004	11,390	707,471	718,861	7,118,603	+ 2.4	+ 2.4
2005	13,321	747,742	761,063	7,498,251	+ 5.9	+ 5.3
2006	13,249	775,027	788,276	7,760,679	+ 3.6	+ 3.5
2007	12,163	894,808	906,971	8,986,934	+ 15.1	+ 15.8
2008	15,961	914,495	930,456	9,218,625	+ 2.6	+ 2.6
2009	23,265	848,091	871,356	8,639,304 ¹	- 6.4	- 6.3

¹ Provisional

Table 24 - Tourist arrivals by month of arrival, 2000 - 2009

Month of arrival	2000	2001	2002	2003	2004	2005	2006	2007	2008	2009
January	62,355	65,122	63,551	64,762	66,543	73,053	86,218	91,628	94,579	88,591
February	50,466	49,464	50,554	53,647	54,104	56,367	64,894	72,338	77,763	67,892
March	54,872	55,944	67,554	63,129	63,631	67,931	58,136	79,965	89,152	76,425
April	56,353	54,794	48,187	57,217	55,599	52,971	57,361	70,297	72,837	68,969
May	49,960	51,969	53,813	54,710	53,974	55,995	50,773	65,301	67,705	64,761
June	39,885	38,496	39,048	41,841	38,826	42,994	42,755	52,584	53,722	46,866
July	51,577	57,274	56,709	58,403	62,173	65,462	65,540	77,225	81,169	71,872
August	59,731	52,923	53,395	56,844	55,342	60,746	64,307	69,941	71,605	63,365
September	47,634	48,953	49,774	50,293	53,102	53,233	56,138	65,542	65,632	60,144
October	61,526	59,325	65,291	64,917	70,793	70,999	75,451	81,244	83,524	80,197
November	57,334	57,326	61,326	61,984	66,960	70,793	70,394	77,236	75,380	78,544
December	64,760	68,728	72,446	74,271	77,814	90,519	96,309	103,670	97,388	103,730
Year	656,453	660,318	681,648	702,018	718,861	761,063	788,276	906,971	930,456	871,356

Fig 4 - Tourist arrivals by month, 2005- 2009

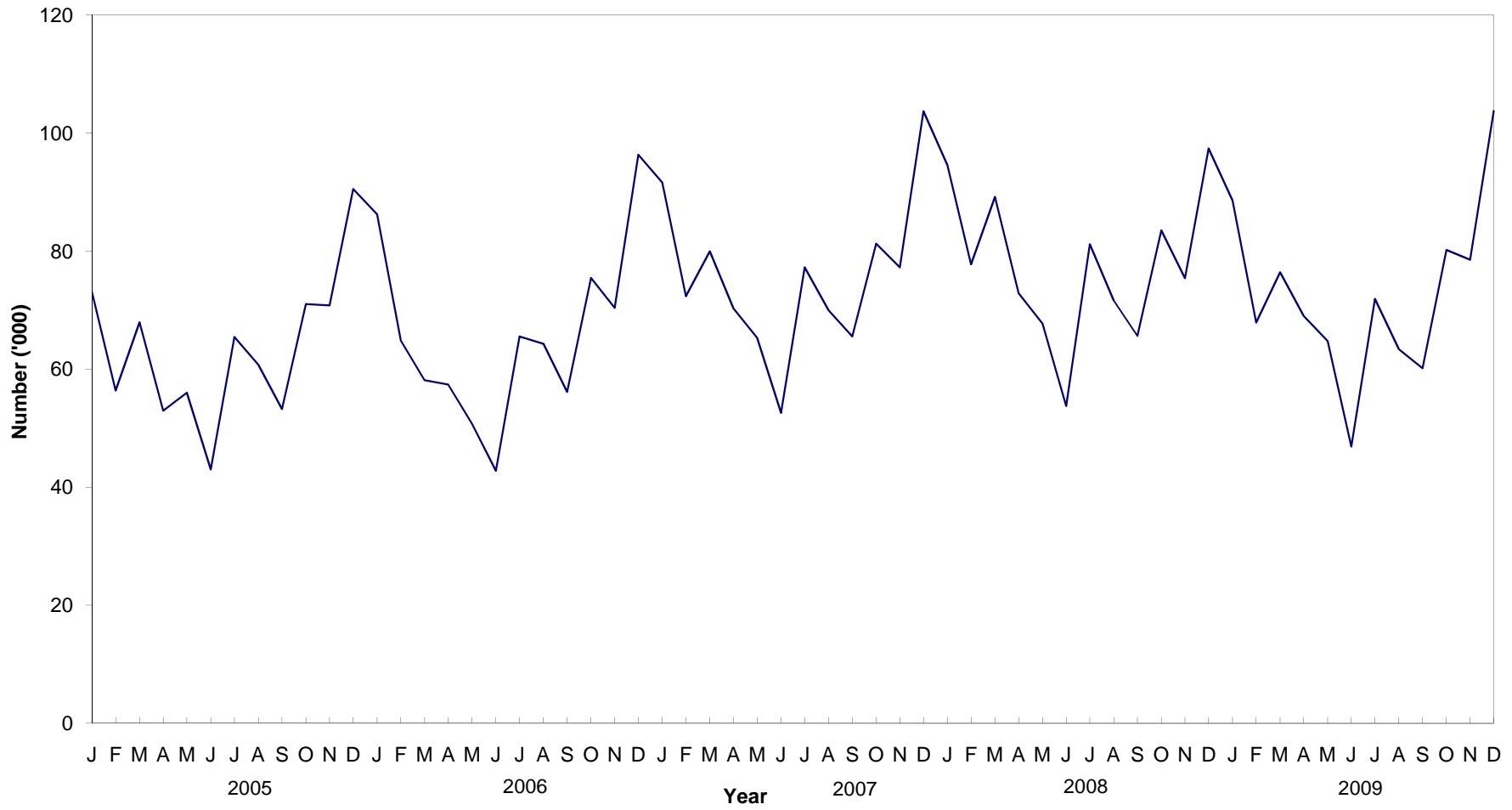


Table 25 - Percentage distribution of tourist arrivals by month of arrival, 2000 - 2009

Month of arrival	2000	2001	2002	2003	2004	2005	2006	2007	2008	2009
January	9.5	9.9	9.3	9.2	9.3	9.6	10.9	10.1	10.2	10.2
February	7.7	7.5	7.4	7.6	7.5	7.4	8.2	8.0	8.4	7.8
March	8.4	8.5	9.9	9.0	8.9	8.9	7.4	8.8	9.6	8.8
April	8.6	8.3	7.1	8.2	7.7	7.0	7.3	7.8	7.8	7.9
May	7.6	7.9	7.9	7.8	7.5	7.4	6.4	7.2	7.3	7.4
June	6.1	5.8	5.7	6.0	5.4	5.6	5.4	5.8	5.8	5.4
July	7.9	8.7	8.3	8.3	8.6	8.6	8.3	8.5	8.7	8.2
August	9.1	8.0	7.8	8.1	7.7	8.0	8.2	7.7	7.7	7.3
September	7.3	7.4	7.3	7.2	7.4	7.0	7.1	7.2	7.1	6.9
October	9.4	9.0	9.6	9.2	9.8	9.3	9.6	9.0	9.0	9.2
November	8.7	8.7	9.0	8.8	9.3	9.3	8.9	8.5	8.1	9.0
December	9.9	10.4	10.6	10.6	10.8	11.9	12.2	11.4	10.5	11.9
Whole Year	100.0	100.0	100.0	100.0	100.0	100.0	100.0	100.0	100.0	100.0

Table 26 - Tourist arrivals by country of residence and sex, 2009

Country of residence	Male	Female	Both Sexes
Australia	4,989	4,951	9,940
Belgium	5,452	5,391	10,843
France	103,670	105,579	209,249
Germany	25,030	25,880	50,910
Hong Kong SAR ¹	12	20	32
India	23,626	16,151	39,777
Italy	27,996	29,186	57,182
Japan	781	692	1,473
Kenya	748	454	1,202
Malagasy Rep.	3,368	3,739	7,107
Reunion Island	84,890	86,670	171,560
Seychelles	2,954	4,224	7,178
Singapore	844	663	1,507
S. Africa, Rep. of	35,625	35,399	71,024
Switzerland	7,328	7,860	15,188
United Kingdom	51,906	51,228	103,134
U.S.A.	3,952	3,768	7,720
Zimbabwe	623	500	1,123
Other countries	54,861	50,346	105,207
All Countries	438,655	432,701	871,356

¹ Special Administrative Region of China

Table 27 - Tourist arrivals by country of residence, 2000 - 2009

Country of residence	2000	2001	2002	2003	2004	2005	2006	2007	2008	2009
Australia	8,771	8,790	8,387	9,103	11,373	13,486	16,660	19,635	18,852	10,363
Belgium	10,998	10,398	10,579	10,170	8,524	8,973	9,216	10,945	11,796	10,254
France	198,423	197,595	202,869	200,229	210,411	220,421	182,295	240,028	260,054	275,599
Germany	52,869	50,866	53,762	53,970	52,277	55,983	57,251	65,165	61,484	51,279
Hong Kong SAR ¹	1,227	1,488	1,201	676	836	508	519	649	641	382
India	17,241	18,890	20,898	25,367	24,716	29,755	37,498	42,974	43,911	39,252
Italy	39,000	37,343	38,263	39,774	41,277	43,458	69,407	69,510	66,432	56,736
Japan	2,389	1,589	1,958	1,572	1,724	1,638	1,695	1,730	1,751	1,351
Kenya	1,801	1,734	1,507	1,510	1,506	1,358	1,694	1,790	1,997	1,386
Malagasy Rep.	7,057	6,674	9,417	11,044	8,256	7,397	7,239	8,842	10,905	8,333
Reunion Island	86,945	91,140	96,375	95,679	96,510	99,036	89,127	95,823	96,174	104,946
Seychelles	9,229	10,687	13,468	9,869	7,456	10,084	12,023	14,275	10,604	7,532
Singapore	4,104	3,431	3,114	2,102	2,329	1,789	1,862	2,020	1,758	1,657
S. Africa, Rep. of	48,683	47,882	42,685	45,756	52,609	58,446	70,796	81,733	84,448	74,176
Switzerland	20,473	18,427	17,371	17,929	16,110	15,773	16,161	17,546	16,037	15,349
United Kingdom	74,488	77,888	80,667	91,210	92,652	95,407	102,333	107,297	107,919	101,996
USA	3,704	3,923	4,116	4,505	4,305	4,890	5,220	5,451	7,089	6,951
Zimbabwe	3,435	3,860	3,185	2,343	2,345	2,419	1,587	1,669	1,809	1,326
Other countries	65,616	67,713	71,826	79,210	83,645	90,242	105,693	119,889	126,795	102,488
All Countries	656,453	660,318	681,648	702,018	718,861	761,063	788,276	906,971	930,456	871,356

¹ Special Administrative Region of China

Table 28 - Percentage distribution of tourist arrivals by country of residence, 2000 - 2009

Country of residence	2000	2001	2002	2003	2004	2005	2006	2007	2008	2009
Australia	1.3	1.3	1.2	1.3	1.6	1.8	2.1	2.2	2.0	1.2
Belgium	1.7	1.6	1.6	1.4	1.2	1.2	1.2	1.2	1.3	1.2
France	30.2	29.9	29.8	28.5	29.3	29.0	23.1	26.5	27.9	31.6
Germany	8.1	7.7	7.9	7.7	7.3	7.4	7.3	7.2	6.6	5.9
Hong Kong SAR ¹	0.2	0.2	0.2	0.1	0.1	0.1	0.1	0.1	0.1	0.1
India	2.6	2.9	3.1	3.6	3.4	3.9	4.8	4.7	4.7	4.5
Italy	5.9	5.7	5.6	5.7	5.7	5.7	8.8	7.7	7.1	6.5
Japan	0.4	0.2	0.3	0.2	0.2	0.2	0.2	0.2	0.2	0.2
Kenya	0.3	0.3	0.2	0.2	0.2	0.2	0.2	0.2	0.2	0.2
Malagasy Rep.	1.1	1.0	1.4	1.6	1.1	1.0	0.9	1.0	1.2	1.0
Reunion Island	13.2	13.8	14.1	13.6	13.4	13.0	11.3	10.6	10.3	12.0
Seychelles	1.4	1.6	2.0	1.4	1.0	1.3	1.5	1.6	1.1	0.9
Singapore	0.6	0.5	0.5	0.3	0.3	0.2	0.2	0.2	0.2	0.2
S. Africa, Rep. of	7.4	7.3	6.3	6.5	7.3	7.7	9.0	9.0	9.1	8.5
Switzerland	3.1	2.8	2.5	2.6	2.2	2.1	2.1	1.9	1.7	1.7
United Kingdom	11.3	11.8	11.8	13.0	12.9	12.5	13.0	11.8	11.6	11.7
USA	0.6	0.6	0.6	0.6	0.6	0.6	0.7	0.6	0.8	0.8
Zimbabwe	0.5	0.6	0.5	0.3	0.3	0.3	0.2	0.2	0.2	0.2
Other countries	10.0	10.3	10.5	11.3	11.6	11.9	13.3	13.2	13.6	11.6
All Countries	100.0	100.0	100.0	100.0	100.0	100.0	100.0	100.0	100.0	100.0

¹ Special Administrative Region of China

Fig. 5 - Percentage distribution of tourist arrivals by country of residence, 2009

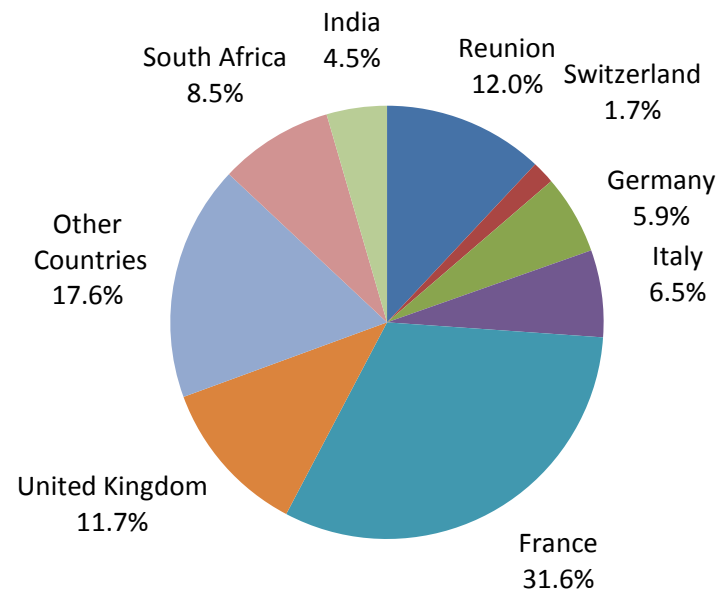


Table 29 - Tourist nights by country of residence, 2000 - 2009

Country of residence	2000	2001	2002	2003	2004	2005	2006	2007	2008	2009
Australia	96,932	104,232	98,869	100,332	111,546	115,851	126,859	143,482	161,488	138,665
Belgium	132,571	125,752	124,586	121,687	105,445	117,210	120,987	132,145	148,978	138,764
France	1,934,683	1,966,911	2,020,850	1,996,305	2,101,125	2,208,575	1,931,005	2,542,172	2,711,413	2,472,942
Germany	635,600	612,881	651,913	636,435	608,031	655,283	655,738	735,938	760,468	579,531
Hong Kong SAR ¹	9,601	11,955	10,941	6,767	7,984	4,694	3,739	4,788	4,492	4,211
India	188,008	207,965	253,340	287,741	265,174	295,698	336,048	408,128	399,570	376,784
Italy	349,267	326,100	329,809	346,865	362,758	397,160	619,089	600,236	605,457	512,034
Japan	14,054	10,161	11,170	9,302	9,881	10,538	9,889	10,701	10,643	11,480
Kenya	12,585	10,780	8,784	11,347	11,069	12,258	13,875	12,642	14,338	11,766
Malagasy Rep.	65,526	66,177	81,758	128,437	83,961	73,964	84,400	98,034	107,295	96,283
Reunion Island	596,449	632,970	675,483	738,968	832,879	828,889	730,678	917,369	790,612	995,906
Seychelles	82,577	96,303	113,942	92,493	75,277	93,951	108,603	133,595	95,254	67,976
Singapore	21,998	23,420	20,403	14,871	16,094	12,106	14,166	12,200	11,953	11,330
S. Africa, Rep. of	422,300	400,656	376,588	379,561	425,680	467,603	565,627	676,795	699,329	602,983
Switzerland	248,345	229,227	210,510	220,382	189,115	185,482	200,141	207,130	192,797	197,742
United Kingdom	884,799	942,095	977,717	1,043,113	1,053,881	1,070,185	1,152,123	1,141,982	1,189,830	1,281,966
U.S.A.	32,719	37,067	38,478	38,795	39,039	41,298	44,827	49,666	65,761	54,075
Zimbabwe	37,555	47,134	39,504	26,469	28,831	31,233	20,493	23,207	24,678	12,859
Other countries	647,307	676,014	724,225	752,443	790,833	876,273	1,022,392	1,136,724	1,224,269	1,072,007
All Countries	6,412,876	6,527,800	6,768,870	6,952,313	7,118,603	7,498,251	7,760,679	8,986,934	9,218,625	8,639,304

¹ Special Administrative Region of China

Fig 6 - Total arrivals and tourist arrivals, 2000 - 2009

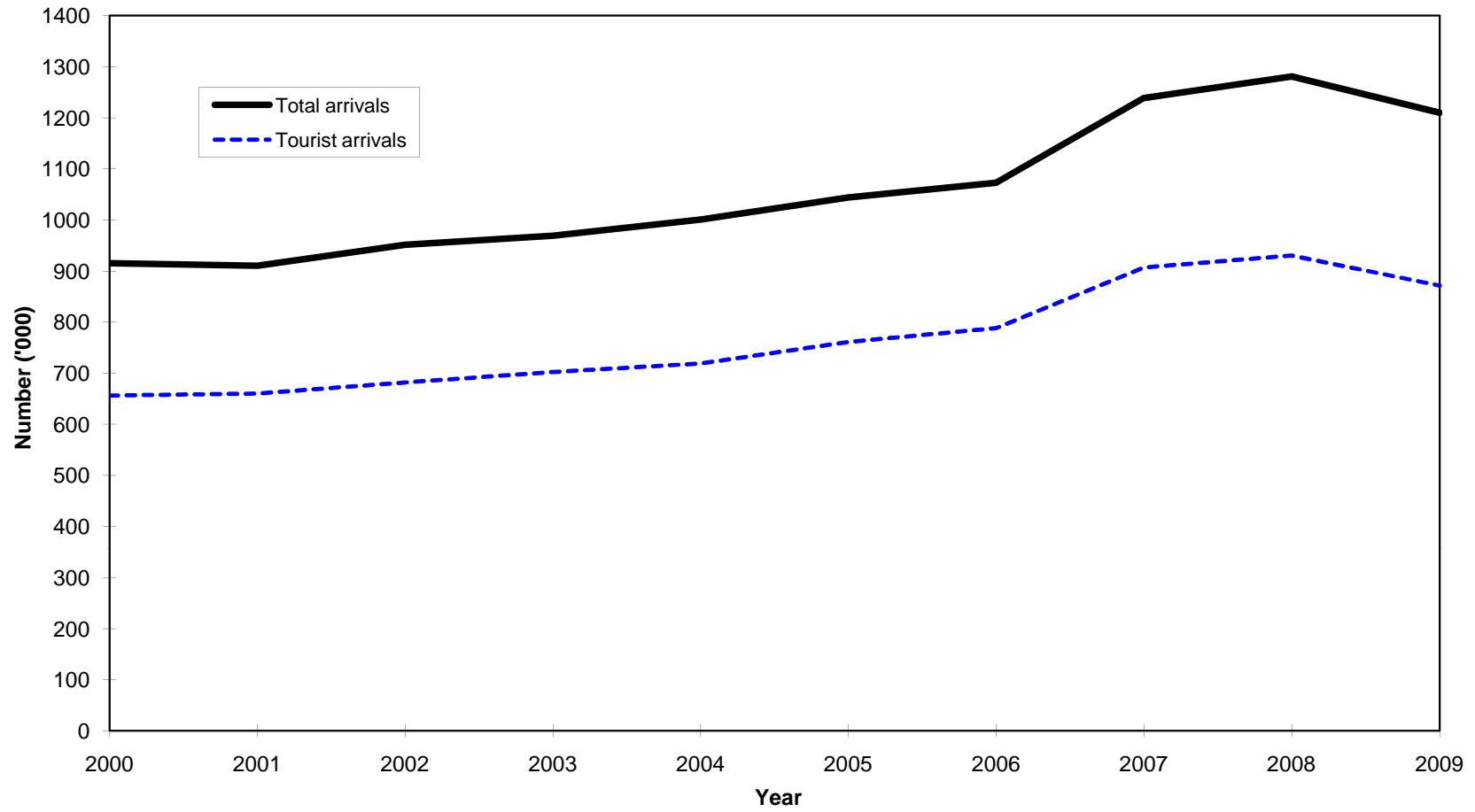


Fig 7 - Tourist nights, 2000 - 2009

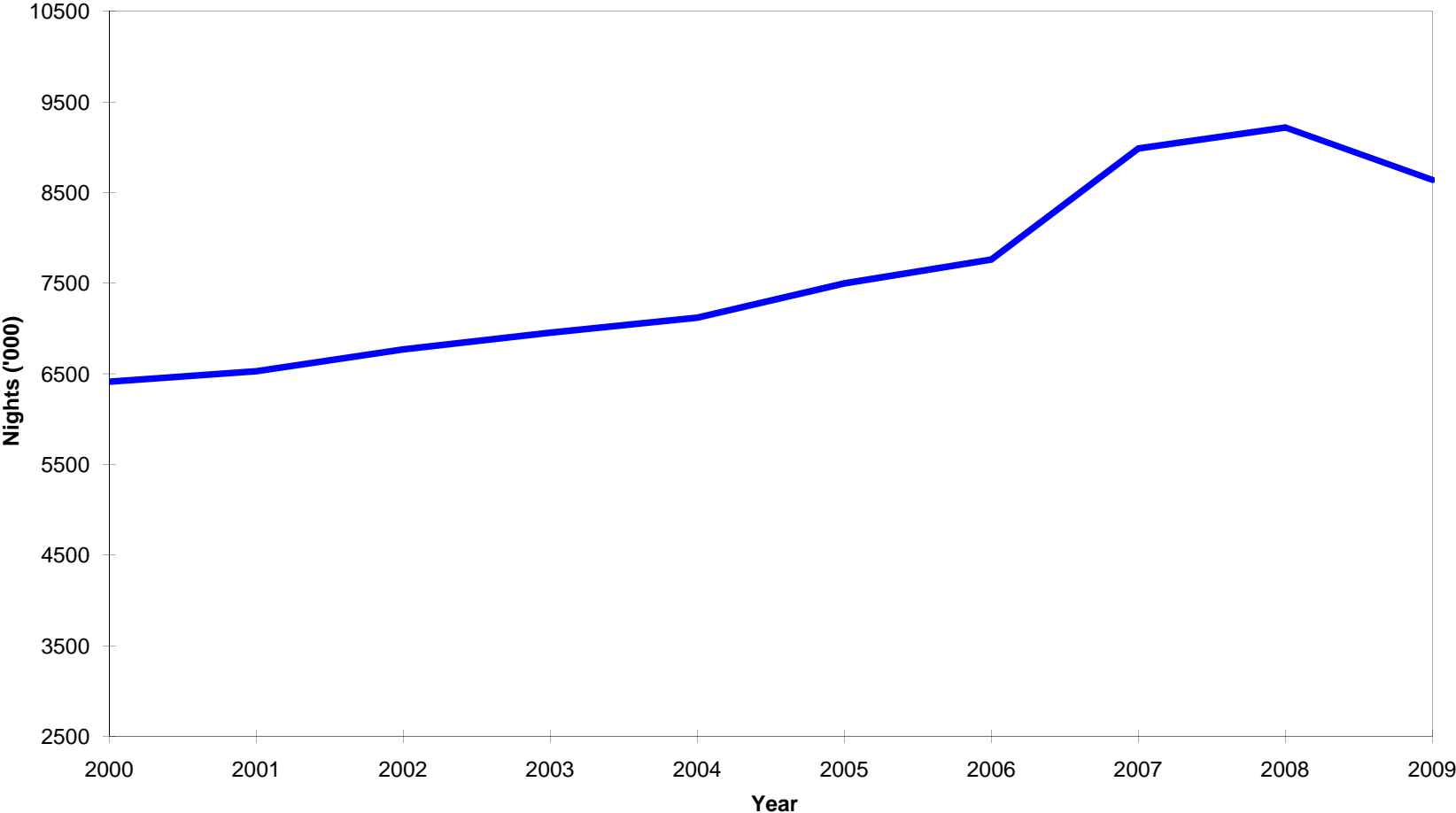


Table 30 - Visitor ¹ arrivals by country of residence and type of passenger, 2007 - 2009

Country of residence	Visitors on holidays			Visitors on business			Visitors in transit			Other visitors			Total visitors		
	2007	2008	2009	2007	2008	2009	2007	2008	2009	2007	2008	2009	2007	2008	2009
Australia	16,287	15,579	9,532	885	721	388	2,765	3,033	1,942	222	497	384	20,159	19,830	12,246
Belgium	10,122	10,650	9,929	301	300	268	197	534	119	426	647	46	11,046	12,131	10,362
France	223,773	238,717	268,194	5,297	5,776	3,087	9,404	13,143	4,793	5,453	8,203	3,764	243,927	265,839	279,838
Germany	62,307	57,748	50,285	861	761	534	1,299	3,043	716	1,223	1,689	355	65,690	63,241	51,890
Hong Kong SAR ²	368	399	373	108	75	1	178	173	8	8	5	2	662	652	384
India	35,610	35,774	33,822	4,770	5,086	4,060	2,070	2,251	643	1,174	1,365	1,094	43,624	44,476	39,619
Italy	67,204	62,958	55,879	672	606	425	764	3,196	1,357	1,093	1,806	190	69,733	68,566	57,851
Japan	1,270	1,320	1,115	169	183	145	329	259	68	20	34	39	1,788	1,796	1,367
Kenya	1,012	996	842	604	637	441	167	363	38	48	87	95	1,831	2,083	1,416
Malagasy Rep.	4,348	5,094	5,703	1,237	1,348	950	4,086	5,118	712	305	319	1,397	9,976	11,879	8,762
Reunion Island	85,380	84,464	98,426	1,877	2,151	3,247	12,817	14,077	5,816	700	798	2,696	100,774	101,490	110,185
Seychelles	12,464	8,821	6,840	460	528	346	1,238	1,096	415	422	445	337	14,584	10,890	7,938
Singapore	1,502	1,286	1,230	317	292	211	218	150	35	49	78	209	2,086	1,806	1,685
S. Africa Rep. of	72,938	73,480	68,105	5,420	6,601	4,802	2,406	2,620	830	1,441	2,287	844	82,205	84,988	74,581
Switzerland	16,671	15,241	15,094	230	240	153	771	809	291	215	226	83	17,887	16,516	15,621
United Kingdom	100,726	99,113	98,360	2,806	2,783	2,087	1,879	4,817	2,034	2,595	4,717	1,289	108,006	111,430	103,770
U.S.A.	4,400	5,552	5,014	638	874	771	457	1,129	328	117	182	1,023	5,612	7,737	7,136
Zimbabwe	1,278	1,364	1,084	251	330	207	83	61	19	75	72	30	1,687	1,827	1,340
Other & N. Stated	101,054	102,769	89,912	7,730	8,229	6,902	20,058	26,811	4,707	2,663	5,496	2,487	131,505	143,305	104,008
All Countries	818,714	821,325	819,739	34,633	37,521	29,025	61,186	82,683	24,871	18,249	28,953	16,364	932,782	970,482	889,999

¹ Visitors include tourists, cruise ship passengers and non-residents who stay in the country for less than a day, other than those who do not leave the airport

² Special Administrative Region of China

Table 31 - Visitor arrivals by age and sex, 2008 & 2009

Age (years)	2008			2009		
	Both Sexes	Male	Female	Both Sexes	Male	Female
Under 1	5,873	3,027	2,846	5,296	2,630	2,666
1 - 4	31,528	15,827	15,701	29,157	14,311	14,846
5 - 9	41,320	21,108	20,212	38,082	18,663	19,419
10 - 14	40,645	20,555	20,090	36,931	18,271	18,660
15 - 19	32,738	15,283	17,455	29,989	13,793	16,196
20 - 24	46,507	18,097	28,410	43,480	16,819	26,661
25 - 29	105,584	47,925	57,659	97,992	43,988	54,004
30 - 34	109,483	56,054	53,429	97,546	49,990	47,556
35 - 39	104,426	56,434	47,992	90,489	48,640	41,849
40 - 44	99,271	53,875	45,396	86,699	46,401	40,298
45 - 49	88,683	47,977	40,706	83,100	43,638	39,462
50 - 54	76,811	41,815	34,996	74,163	38,745	35,418
55 - 59	63,696	34,533	29,163	63,563	33,384	30,179
60 - 64	50,241	26,882	23,359	51,794	27,188	24,606
65 - 69	30,743	16,806	13,937	31,547	16,942	14,605
70 & over	30,305	16,584	13,721	30,171	16,080	14,091
Not stated	12,628	6,946	5,682	-	-	-
All ages	970,482	499,728	470,754	889,999	449,483	440,516

Table 32 - Visitor arrivals by duration of stay, 2008 & 2009

Duration of stay	2008		2009	
	Number	Percentage	Number	Percentage
Less than 1 night	40,026	4.1	18,643	2.1
1 night	38,275	3.9	32,062	3.6
2 nights	22,303	2.3	21,600	2.4
3 nights	34,706	3.6	34,388	3.9
4 nights	49,981	5.2	46,934	5.3
5 nights	47,576	4.9	50,430	5.7
6 nights	76,628	7.9	75,400	8.5
7 nights	214,045	22.1	218,615	24.6
8 nights	47,589	4.9	37,198	4.2
9 nights	52,789	5.4	50,404	5.7
10 nights	55,547	5.7	51,669	5.8
11 nights	28,676	3.0	23,148	2.6
12 nights	28,662	3.0	30,416	3.4
13 nights	42,817	4.4	34,827	3.9
14 nights	81,167	8.4	73,995	8.3
15 nights	10,746	1.1	8,221	0.9
16 nights	7,191	0.7	8,129	0.9
17 nights	5,401	0.6	5,356	0.6
18 nights	4,463	0.5	4,306	0.5
19 nights	4,528	0.5	5,940	0.7
20 - 24 nights	21,692	2.2	21,188	2.4
25 - 29 nights	11,035	1.1	12,152	1.4
1 month - under 2 months	16,487	1.7	17,212	1.9
2 months - under 3 months	26,352	2.7	4,015	0.5
3 months and over	1,800	0.2	3,751	0.4
All Countries	970,482	100.0	889,999	100.0

Table 33 - Visitor arrivals by country of residence and duration of stay, 2009

Country of residence	Duration of stay (Nights)												
	<1	1 - 2	3 - 4	5 - 6	7 - 8	9 - 10	11 - 12	13 - 14	15 - 19	20 - 24	25 - 29	30+	Total
Australia	115	248	145	679	1,306	1,105	803	2,219	418	298	91	86	7,513
Belgium	108	287	502	1,283	2,930	2,033	855	1,228	646	443	383	544	11,242
France	4,239	16,739	29,542	36,781	89,793	28,532	13,740	23,221	9,248	5,848	3,994	6,984	268,661
Germany	611	2,244	1,407	3,540	6,189	5,823	5,040	15,798	3,120	2,188	456	515	46,931
Hong Kong SAR ¹	2	423	1,116	1,163	1,145	404	143	238	103	64	69	187	5,057
India	367	2,974	10,008	19,715	2,743	978	363	769	365	430	373	1,691	40,776
Italy	1,115	1,202	973	7,667	28,058	2,993	1,635	8,025	872	670	266	467	53,943
Japan	16	169	248	511	234	58	27	44	33	32	8	40	1,420
Kenya	30	258	304	383	201	58	49	81	20	22	25	37	1,468
Malagasy Rep.	429	2,216	1,201	1,127	1,379	552	289	541	310	205	182	519	8,950
Reunion Island	5,239	5,874	10,360	12,870	31,264	9,851	4,734	7,955	3,197	2,019	1,385	2,422	97,170
Seychelles	406	1,083	1,298	1,048	1,856	755	506	455	181	143	53	183	7,967
Singapore	28	515	353	416	197	102	30	69	39	15	9	28	1,801
S. Africa Rep. of	405	4,086	7,832	9,271	32,067	8,166	2,637	3,153	1,386	733	356	1,001	71,093
Switzerland	272	434	420	1,671	2,634	2,087	1,624	4,164	865	919	415	383	15,888
United Kingdom	1,774	4,989	3,964	7,354	20,407	18,606	9,969	20,967	4,892	3,575	1,871	3,548	101,916
U.S.A.	185	1,691	1,021	1,238	1,108	437	240	289	197	115	76	238	6,835
Zimbabwe	14	23	28	40	103	51	27	50	14	9	5	9	373
Other & not stated	3,288	8,207	10,600	19,073	32,199	19,482	10,853	19,556	6,046	3,460	2,135	6,096	140,995
All Countries	18,643	53,662	81,322	125,830	255,813	102,073	53,564	108,822	31,952	21,188	12,152	24,978	889,999

¹ Special Administrative Region of China

Table 34 - Tourist arrivals and average length of stay of tourists by country of residence, 2009

Country of Residence	Tourist arrivals	Average length of stay (nights)
Australia	9,940	13.2
Belgium	10,843	13.3
France	209,249	9.0
Germany	50,910	11.2
Hong Kong SAR ¹	32	10.7
India	39,777	9.5
Italy	57,182	8.7
Japan	1,473	8.3
Kenya	1,202	8.4
Malagasy Rep.	7,107	11.4
Reunion	171,560	8.8
Seychelles	7,178	8.8
Singapore	1,507	6.8
S. Africa, Rep. of	71,024	7.9
Switzerland	15,188	12.7
United Kingdom	103,134	12.4
U.S.A.	7,720	7.6
Zimbabwe	1,123	9.5
Other & not stated	105,207	10.5
All Countries	871,356	9.8

¹ Special Administrative Region of China

Table 35 - Gross earnings from tourism, 2000 - 2009

Earnings (Rs Mn)	2000	2001	2002	2003	2004	2005	2006	2007	2008	2009
	14,234	18,166	18,328	19,415	23,448	25,704	31,942	40,687	41,213	35,693

Source : Bank of Mauritius

Table 36 - Expenditure of tourists by country of residence, 1998 - 2006

Country of residence	Expenditure (Rs Mn)				
	1998	2000	2002	2004	2006
France	3,173.1	3,785.7	5,188.2	6,928.4	7,620.7
Germany	1,195.9	1,447.3	1,852.9	2,084.0	2,684.3
Italy	827.9	918.3	1,215.0	1,389.9	2,920.4
Switzerland	473.3	615.7	662.6	692.2	871.7
United Kingdom	1,680.2	2,708.2	3,269.9	4,216.5	5,533.9
Malagasy Rep.	108.4	90.3	141.5	136.6	124.0
Reunion	855.4	871.4	1,242.5	1,575.8	1,908.4
South Africa, Rep. of	808.8	780.6	778.2	1,363.2	2,387.2
Singapore	62.5	94.5	68.6	50.4	69.2
Other countries	2,578.4	2,875.3	3,355.3	4,679.5	7,078.6
All Countries	11,763.9	14,187.3	17,774.7	23,116.5	31,198.4

Source: Survey of Outgoing Tourists conducted by the Ministry of Tourism, Leisure & External Communications every two years.

Table 37 - Expenditure of tourists by type of expenditure, 1998 - 2006

Type of expenditure	Expenditure (Rs Mn)				
	1998	2000	2002	2004	2006
Accommodation	6,415	7,479	9,155	12,231	16,862
Meals & Beverages	1,818	2,470	3,327	4,203	5,427
Transport	804	941	1,232	1,339	1,902
Entertainment	685	839	986	1,353	1,815
Shopping	1,691	2,002	2,450	3,010	3,954
Other	351	457	624	981	1,238
Total	11,764	14,187	17,775	23,117	31,198

Source: Survey of Outgoing Tourists conducted by the Ministry of Tourism, Leisure & External Communications every two years.

Table 38 - Hotels, rooms and bedplaces, 2000- 2009

Year	No. of hotels	No. of rooms	No. of bedplaces
2000	95	8,657	17,776
2001	95	9,024	18,350
2002	95	9,623	19,597
2003	97	9,647	19,727
2004	103	10,640	21,355
2005	99	10,497	21,072
2006	98	10,666	21,403
2007	97	10,857	21,788
2008	102	11,488	23,095
2009	102 ¹	11,456	23,235

¹ *Excluding seven hotels not operational because of renovation works*

Table 39 - Monthly occupancy rates in large ¹ hotels, 2005 - 2009

Month	2005		2006		2007		2008		2009	
	Room	Bed	Room	Bed	Room	Bed	Room	Bed	Room	Bed
January	77	69	86	77	89	79	82	74	69	62
February	70	63	81	72	86	77	80	72	60	54
March	68	61	63	56	81	72	78	70	59	53
April	59	53	61	55	80	72	75	67	61	54
May	58	52	54	48	74	67	68	61	59	52
June	45	41	47	42	62	56	49	44	44	39
July	56	50	58	52	74	67	62	56	52	46
August	67	60	73	66	77	70	67	60	61	54
September	67	60	71	63	78	70	68	61	64	56
October	73	65	76	68	81	72	73	65	67	59
November	83	74	81	73	85	77	71	63	71	63
December	78	70	81	73	80	72	70	63	73	64
Whole Year	66	59	69	62	78	70	70	62	62	55

¹ Large Hotels are well established beach hotels of over 80 rooms

Room Occupancy Rate = $\frac{\text{Total number of room nights rented} \times 100}{\text{Total number of room nights available}}$

Bed Occupancy Rate = $\frac{\text{Total number of bed nights rented} \times 100}{\text{Total number of bed nights available}}$

Table 40 - Monthly occupancy rates in all hotels, 2005 - 2009

Month	2005		2006		2007		2008		2009	
	Room	Bed	Room	Bed	Room	Bed	Room	Bed	Room	Bed
January	73	66	81	72	86	77	82	73	69	62
February	65	59	76	68	82	73	78	70	60	53
March	64	57	60	54	77	69	77	69	59	52
April	56	50	58	52	75	67	72	65	59	53
May	55	49	51	46	71	64	66	60	58	52
June	45	40	45	41	59	53	49	43	45	39
July	54	49	56	50	71	63	61	55	51	45
August	64	57	69	62	74	67	65	58	59	52
September	63	57	67	60	75	67	65	58	62	55
October	68	61	73	65	78	70	71	64	65	58
November	78	70	78	70	83	74	69	62	69	61
December	74	66	79	71	80	72	69	62	70	62
Whole Year	63	57	66	59	76	68	68	61	61	54

Room Occupancy Rate = $\frac{\text{Total number of room nights rented} \times 100}{\text{Total number of room nights available}}$

Bed Occupancy Rate = $\frac{\text{Total number of bed nights rented} \times 100}{\text{Total number of bed nights available}}$

APPENDIX

**Welcome to Mauritius / Bienvenue à Maurice
DISEMBARKATION CARD / FICHE DE DEBARQUEMENT
(Regulation 23 of the Passports Regulations 1969)**

Flight No. <i>No. de vol</i>												
Surname <i>Nom</i>												
First Name/s <i>Prenom/s</i>												
Male <i>Masculin</i>		Female <i>Féminin</i>		Date of birth <i>Date de naissance</i>	D/J		M/M		Y/A			
Country of Birth <i>Pays de naissance</i>												
Nationality <i>Nationalité</i>												
Profession												
Passport Number <i>Numéro du passeport</i>												
Date of expiry <i>Date d'Expiration</i>	D/J		M/M		Y/A							
Country of Issue <i>Pays de Délivrance</i>												
Country of residence <i>Pays de résidence</i>												
Street <i>Rue</i>												
Town/City <i>Ville/Cité</i>												
Port of Embarkation <i>Port d'Embarquement</i>												
Purpose: Holidays: <i>Motif: Vacances:</i>		Other: <i>Autre:</i>										
Duration of Stay <i>Durée du Séjour</i>	Days <i>Jours</i>			Months <i>Mois</i>			Years <i>Années</i>					
Address during Stay <i>Adresse durant le Séjour</i>												

DECLARATION

I declare that all the information I have given is true and complete. I understand that I shall commit an offence if I refuse to fill-in the card or knowingly give false information.

Je déclare qu'à ma connaissance toutes les informations fournies sont exactes et complètes. Je suis conscient que le fait de ne pas remplir cette fiche ou toute fausse déclaration de ma part pourrait entraîner des poursuites pénales.

Date

Signature