

Republic of Mauritius

**Ministry of Finance and Economic Empowerment
Central Statistics Office**

**Digest of International Travel
and Tourism Statistics
2008**

DIGEST OF
INTERNATIONAL TRAVEL
AND
TOURISM STATISTICS
2008

INTERNATIONAL TRAVEL AND TOURISM STATISTICS

Vol. 35

2008

" International Travel and Tourism Statistics" is a regular publication of the Central Statistics Office, designed to present in a single report, detailed statistics concerning international travel and tourism relating to Mauritius.

The statistical tables presented in this report have been compiled from the embarkation/disembarkation cards filled in by passengers as they leave or enter the country in the course of their travel.

Statistical data on International Travel and Tourism are constantly updated as more reliable information become available, necessitating minor changes over previous issues of this publication. The figures published in this issue therefore supersede those of all previous issues.

It is hoped that the data herewith assembled will prove useful to the public in general and to policy makers, planners and research workers in particular.

The publication of this report has been made possible with the collaboration of the Passport and Immigration Office and the Ministry of Tourism, Leisure and External Communications. Their co-operation is herewith gratefully acknowledged.

H. Bundhoo

Director of Statistics

Central Statistics Office
Ministry of Finance and Economic Empowerment
PORT LOUIS
MAURITIUS
September 2009

CONTENTS

Table		Page
I - POPULATION AND VITAL STATISTICS		
1	- Estimated resident population of Rep. of Mauritius as at 31st December, 2007 & 2008	5
2	- Population growth in intercensal periods - Island of Mauritius, 1851 - 2000	5
3	- Population growth in intercensal periods - Island of Rodrigues, 1851 - 2000	6
4	- Estimated resident population by geographical district and sex - Republic of Mauritius, 2007 & 2008 (End of year estimates)	7
5	- Population and vital statistics - Republic of Mauritius, 1973 - 2008	8
6	- Growth of the resident population and vital statistics - Island of Mauritius, 1999 - 2008	9
7	- Growth of the resident population and vital statistics - Island of Rodrigues, 1999 - 2008	10
II - PASSENGER TRAFFIC		
8	- Passenger traffic by sex, 1988 - 2008	11
9	- Passenger traffic between Islands of Mauritius and Rodrigues, 1988 - 2008	12
10	- Passenger traffic by mode of transport, 1988 - 2008	16
11	- Passenger traffic by month, 2005 - 2008	17
12	- Arrivals by country of original embarkation, 2003 - 2008	18
13	- Departures by country of final destination, 2003 - 2008	19
14	- Monthly passenger traffic by type of passenger, 2008	20
15	- Passenger traffic by type of passenger, 1999 - 2008	21
16	- Total arrivals by age and sex, 2007 & 2008	22
17	- Total departures by age and sex, 2007 & 2008	23
18	- Excess of arrivals over departures by age and sex, 2007 & 2008	24
19	- Arrivals of Mauritian residents by age and sex, 2007 & 2008	25
20	- Departures of Mauritian residents by age and sex, 2007 & 2008	26
21	- Excess of arrivals over departures of Mauritian residents by age and sex, 2007 & 2008	27
22	- Arrivals and departures of Mauritian residents by country of embarkation and disembarkation, 2006 - 2008	28

CONTENTS

Table		Page
	III - TOURISM	
	Definition and notes	29
23 -	Tourist arrivals by mode of transport and tourist nights spent during period, 1992-2008	31
24 -	Tourist arrivals by month of arrival, 1999 - 2008	32
25 -	Percentage distribution of tourist arrivals by month of arrival, 1999 - 2008	34
26 -	Tourist arrivals by country of residence and sex, 2008	35
27 -	Tourist arrivals by country of residence, 1999 - 2008	36
28 -	Percentage distribution of tourist arrivals by country of residence, 1999 - 2008	37
29 -	Tourist nights by country of residence, 1999 - 2008	39
30 -	Visitor arrivals by country of residence and type of passenger, 2006 - 2008	42
31 -	Visitor arrivals by age and sex, 2007 & 2008	43
32 -	Visitor arrivals by duration of stay, 2007 & 2008	44
33 -	Visitor arrivals by country of residence and duration of stay, 2008	45
34 -	Visitor arrivals and average length of stay by country of residence, 2008	46
35 -	Gross earnings from tourism, 1999 - 2008	47
36 -	Expenditure of tourists by country of residence, 1998 - 2006	47
37 -	Expenditure of tourists by type of expenditure, 1998 - 2006	48
38 -	Hotels, rooms and bedplaces, 1999 - 2008	49
39 -	Monthly occupancy rates in large hotels, 2004 - 2008	50
40 -	Monthly occupancy rates in all hotels, 2004 - 2008	51

CONTENTS

Page

ILLUSTRATIONS

Fig. 1	- Passenger Traffic: Total arrivals by sex, 1992 - 2008	13
2	- Passenger Traffic: Total departures by sex, 1992 - 2008	14
3	- Passenger Traffic: Total arrivals and total departures, 1999 - 2008	15
4	- Tourist arrivals by month, 2004 - 2008	33
5	- Percentage distribution of tourist arrivals by country of residence, 2008	38
6	- Total arrivals and tourist arrivals, 1999 - 2008	40
7	- Tourist nights, 1999 - 2008	41

The following symbol is used throughout :-

" - " for Nil

Appendix 1 : International Disembarkation Card

Appendix 2 : Embarkation Card

Contact persons:

Mr A. Bundhoo, Statistician or
Mr M. Lan Pin Wing, Senior Statistical Officer
Ministry of Tourism, Leisure &
External Communications
3rd Floor, Victoria House
Port Louis
Tel: 211-9042
Fax: 210-3901
Email: cso@mail.gov.mu

I - POPULATION AND VITAL STATISTICS

**Table 1 - Estimated resident population of Republic of Mauritius
as at 31st December, 2007 & 2008 ¹**

Year	Island	Both sexes	Male	Female	Area (sq km)	Density (persons/km ²)
2007	Mauritius	1,227,075	606,307	620,768	1,864.8	658
	Rodrigues	37,499	18,530	18,969	104.0	361
	Other	289	193	96	71.2	4
	Republic of Mauritius	1,264,863	625,030	639,833	2,040.0	620
2008	Mauritius	1,234,042	609,261	624,781	1,864.8	662
	Rodrigues	37,700	18,630	19,070	104.0	363
	Other	289	193	96	71.2	4
	Republic of Mauritius	1,272,031	628,084	643,947	2,040.0	624

¹ based on the 2000 population census data adjusted for underenumeration of young children.

Table2 - Population growth in intercensal periods - Island of Mauritius, 1851 - 2000

Census Date	Population enumerated at census			Intercensal increase	Average annual rate of increase(%)
	Both sexes	Male	Female		
20 Nov. 1851	180,823	119,341	61,482	22,361	2.55
8 Apr. 1861	310,050	202,961	107,089	129,227	5.91
11 Apr. 1871	316,042	193,575	122,467	5,992	0.19
4 Apr. 1881	359,874	208,655	151,219	43,832	1.31
6 Mar. 1891	370,588	206,038	164,550	10,714	0.29
1 Apr. 1901	371,023	199,552	171,471	435	0.01
31 Mar. 1911	368,791	194,095	174,696	-2,232	-0.06
21 May. 1921	376,485	194,108	182,377	7,694	0.21
26 Apr. 1931	393,238	200,609	192,629	16,753	0.44
11 Jun. 1944	419,185	210,326	208,859	25,947	0.49
29 Jun. 1952	501,415	252,032	249,383	82,230	2.26
30 Jun. 1962 ¹	681,619	342,306	339,313	180,204	3.12
30 Jun. 1972 ¹	826,199	413,580	412,619	144,580	1.94
2 Jul. 1983 ¹	966,863	481,368	485,495	140,664	1.44
1 Jul. 1990 ²	1,022,456	510,676	511,780	55,593	0.80
1 Jul. 2000 ²	1,143,069	566,056	577,013	120,613	1.12

¹ " De facto " population

² " De jure " population

**Table 3 - Population growth in intercensal periods - Island of Rodrigues,
1851 - 2000**

Census Date	Population enumerated at census			Inter-censal increase	Average annual rate of increase (%)
	Both sexes	Male	Female		
20 Nov. 1851	495	327	168	-	-
8 Apr. 1861	693	464	229	198	3.65
11 Apr. 1871	1,108	693	415	415	4.80
4 Apr. 1881	1,431	812	619	323	2.59
6 Mar. 1891	2,068	1,154	914	637	3.75
1 Apr. 1901	3,162	1,685	1,477	1,094	4.34
31 Mar. 1911	4,829	2,523	2,306	1,667	4.33
21 May. 1921	6,584	3,300	3,284	1,755	3.15
26 Apr. 1931	8,202	4,033	4,169	1,618	2.22
11 Jun. 1944	11,885	5,740	6,145	3,683	2.89
29 Jun. 1952	13,333	5,947	7,386	1,448	1.45
30 Jun. 1962	18,335	9,062	9,273	5,002	3.24
30 Jun. 1972 ¹	24,769	12,270	12,499	6,434	3.05
2 Jul. 1983 ¹	33,082	16,552	16,530	8,313	2.67
1 Jul. 1990 ²	34,204	17,084	17,120	1,122	0.48
1 Jul. 2000 ²	35,779	17,700	18,079	1,575	0.45

¹ " De facto " population

² " De jure " population

Table 4 - Estimated resident population by geographical district and sex - Republic of Mauritius, 2007 & 2008
(End of year estimates) ¹

Geographical district	Area (km ²)	31st December 2007			31st December 2008		
		Both sexes	Male	Female	Both sexes	Male	Female
Port Louis	42.7	129,945	64,323	65,622	129,624	64,080	65,544
Pamplemousses	178.7	134,726	66,601	68,125	136,024	67,192	68,832
Riviere du Rempart	147.6	107,243	53,118	54,125	108,037	53,476	54,561
Flacq	297.9	137,692	68,799	68,893	138,585	69,195	69,390
Grand Port	260.3	114,106	56,594	57,512	114,620	56,809	57,811
Savanne	244.8	70,020	34,749	35,271	70,216	34,815	35,401
Plaines Wilhems	203.3	380,463	186,087	194,376	382,236	186,776	195,460
Moka	230.5	80,398	39,716	40,682	80,789	39,926	40,863
Black River	259.0	72,482	36,320	36,162	73,911	36,992	36,919
Island of Mauritius	1,864.8	1,227,075	606,307	620,768	1,234,042	609,261	624,781
Island of Rodrigues	104.0	37,499	18,530	18,969	37,700	18,630	19,070
Other ²	71.2	289	193	96	289	193	96
Republic of Mauritius	2,040.0	1,264,863	625,030	639,833	1,272,031	628,084	643,947

¹ based on the 2000 population census data adjusted for underenumeration of young children. Internal migration within districts is assumed to be the same as the net annual internal migration during 1995 - 2000 (obtained from the 2000 census)

² includes Agalega and St Brandon.

Table 5 - Population and vital statistics - Republic of Mauritius, 1973 - 2008

Year	Population at mid-year ¹	Live births	Deaths	Infant deaths	Still births	Civil marriages ²	Divorces ³
1973	869,334	20,015	6,779	1,277	701	5,679	147
1974	880,650	24,002	6,424	1,113	879	6,905	117
1975	892,045	22,557	7,201	1,130	932	7,069	110
1976	903,610	23,274	6,968	936	808	8,451	98
1977	918,005	23,859	7,154	1,087	742	8,632	197
1978	933,499	25,278	6,596	876	680	10,741	255
1979	949,888	26,163	6,871	891	668	9,327	265
1980	966,039	26,294	6,919	864	662	8,894	351
1981	980,462	24,967	6,653	884	590	8,406	305
1982	992,521	22,459	6,584	682	458	10,768	312
1983	1,001,691	21,073	6,532	570	403	10,255	361
1984	1,012,221	20,332	6,646	505	404	10,865	471
1985	1,020,528	19,376	6,906	487	383	11,245	460
1986	1,028,360	19,170	6,805	524	365	10,556	616
1987	1,036,082	20,033	6,753	504	363	11,392	842
1988	1,043,239	20,941	6,879	471	374	11,453	740
1989	1,051,260	21,822	7,149	498	415	11,197	711
1990	1,058,775	22,602	7,031	462	365	11,425	549
1991	1,070,266	22,197	7,027	413	400	11,295	707
1992	1,084,441	22,902	7,023	426	291	11,408	781
1993	1,097,374	22,329	7,433	438	337	11,576	762
1994	1,112,846	21,795	7,402	394	274	11,414	733
1995	1,122,457	20,549	7,465	404	299	10,624	801
1996	1,133,996	20,763	7,670	459	266	10,700	792
1997	1,148,284	20,012	7,986	406	257	10,887	891
1998	1,160,421	19,434	7,839	376	227	10,898	1,012
1999	1,175,267	20,311	7,944	396	226	11,295	1,150
2000	1,186,873	20,205	7,982	322	266	10,963	1,191
2001	1,199,881	19,696	7,983	282	244	10,635	1,512
2002	1,210,196	19,983	8,310	297	203	10,484	1,294
2003	1,222,811	19,343	8,520	250	220	10,812	1,190
2004	1,233,386	19,230	8,475	278	190	11,385	1,162
2005	1,243,253	18,820	8,646	248	185	11,294	1,133
2006	1,252,698	17,604	9,162	249	147	11,471	1,379
2007	1,260,403	17,034	8,498	261	172	11,547	1,302
2008	1,268,565	16,372	9,004	236	165	11,197	1,569

¹ Figures for 1973 - 1982, 1984 - 1989 and 1991 - 1999 have been respectively revised in the light of the 1983, 1990 and 2000 population census data adjusted for underenumeration of young children.

² The increase in the number of civil marriages as from 1982 is due largely to improved registration of religious marriages with the coming into force of a new Civil Status Act as from January, 1982.

³ Source: Judicial Department

Table 6 - Growth of the resident population and vital statistics - Island of Mauritius, 1999 - 2008

Year	Population at beginning of year	Natural movement			Net migration	Total increase	% change during the year due to:			Population at end of year
		Live births	Deaths	Natural increase			Natural increase	Migration	Total	
1999	1,131,491	19,543	7,791	11,752	1,478	13,230	1.04	+0.13	1.17	1,144,721
2000	1,144,721	19,398	7,806	11,592	977	12,569	1.01	+0.09	1.10	1,157,290
2001	1,157,290	18,884	7,761	11,123	890	12,013	0.96	+0.08	1.04	1,169,303
2002	1,169,303	19,169	8,081	11,088	-202	10,886	0.95	-0.02	0.93	1,180,189
2003	1,180,189	18,518	8,310	10,208	939	11,147	0.86	+0.08	0.94	1,191,336
2004	1,191,336	18,285	8,259	10,026	-362	9,664	0.84	-0.03	0.81	1,201,000
2005	1,201,000	17,924	8,422	9,502	800	10,302	0.79	0.07	0.86	1,211,302
2006	1,211,302	16,723	8,917	7,806	100	7,906	0.64	+0.01	0.65	1,219,208
2007	1,219,208	16,190	8,323	7,867	0	7,867	0.65	+0.00	0.65	1,227,075
2008	1,227,075	15,590	8,798	6,792	175	6,967	0.55	+0.01	0.56	1,234,042

Table 7 - Growth of the resident population and vital statistics - Island of Rodrigues, 1999 - 2008

Year	Population at beginning of year	Natural movement			Net migration	Total increase	% change during the year due to:			Population at end of year
		Live births	Deaths	Natural increase			Natural increase	Migration	Total	
1999	35,411	768	153	615	-386	229	1.74	-1.09	0.65	35,640
2000	35,640	807	176	631	-386	245	1.77	-1.08	0.69	35,885
2001	35,885	812	222	590	-390	200	1.64	-1.09	0.55	36,085
2002	36,085	814	229	585	-367	218	1.62	-1.02	0.60	36,303
2003	36,303	825	210	615	-415	200	1.69	-1.14	0.55	36,503
2004	36,503	945	216	729	-460	269	2.00	-1.26	0.74	36,772
2005	36,772	896	224	672	-450	222	1.83	-1.22	0.61	36,994
2006	36,994	881	245	636	-400	236	1.72	-1.08	0.64	37,230
2007	37,230	844	175	669	-400	269	1.80	-1.07	0.73	37,499
2008	37,499	782	206	576	-375	201	1.54	-1.00	0.54	37,700

II - PASSENGER TRAFFIC

Table 8 - Passenger traffic ¹ by sex, 1988 - 2008

Period	Arrivals			Departures			Arrivals minus Departures
	Both Sexes	Male	Female	Both Sexes	Male	Female	
1988	343,940	186,800	157,140	341,330	187,580	153,750	+ 2,610
1989	379,080	208,860	170,220	385,050	213,230	171,820	- 5,970
1990	418,200	232,050	186,150	422,230	233,280	188,950	- 4,030
1991	426,680	239,630	187,050	425,620	236,190	189,430	+ 1,060
1992	475,920	262,660	213,260	472,010	258,320	213,690	+ 3,910
1993	523,740	280,910	242,830	520,400	281,100	239,300	+ 3,340
1994	558,136	295,259	262,877	557,575	295,500	262,075	+ 561
1995	579,993	304,705	275,288	578,481	304,245	274,236	+ 1,512
1996	672,070	350,561	321,509	663,501	345,892	317,609	+ 8,569
1997	743,291	378,593	364,698	737,523	379,841	357,682	+ 5,768
1998	778,574	367,914	410,660	775,998	382,567	393,431	+ 2,576
1999	823,085	434,667	388,418	809,233	428,234	380,999	+ 13,852
2000	915,203	480,879	434,324	895,569	469,902	425,667	+ 19,634
2001	910,489	477,984	432,505	903,073	473,096	429,977	+ 7,416
2002	951,090	498,177	452,913	942,876	494,212	448,664	+ 8,214
2003	968,906	510,212	458,694	947,774	497,011	450,763	+ 21,132
2004	1,000,545	523,961	476,584	979,322	511,734	467,588	+ 21,223
2005	1,043,900	544,520	499,380	1,029,666	538,113	491,553	+ 14,234
2006	1,072,879	562,766	510,113	1,060,074	555,279	504,795	+ 12,805
2007	1,238,826	648,554	590,272	1,237,747	645,657	592,090	+ 1,079
2008	1,280,640	669,919	610,721	1,261,182	658,947	602,235	+ 19,458

¹ Includes traffic between Island of Mauritius and Rodrigues. As from 1994, figures of the passenger traffic also include cruise excursionists, i.e passengers and crews of cruise ships.

Table 9 - Passenger traffic ¹ between Islands of Mauritius and Rodrigues, 1988 - 2008

Period	Arrivals in Rodrigues			Departures from Rodrigues			Arrivals minus Departures
	Both Sexes	Male	Female	Both Sexes	Male	Female	
1988	9,146	5,903	3,243	10,128	6,330	3,798	- 982
1989	11,501	7,234	4,267	11,092	6,831	4,261	+ 409
1990	13,110	8,023	5,087	13,492	7,949	5,543	- 382
1991	15,125	9,594	5,531	16,178	10,117	6,061	-1,053
1992	19,064	11,629	7,435	19,865	11,887	7,978	-801
1993	22,819	13,973	8,846	23,476	14,094	9,382	-657
1994	23,292	14,174	9,118	23,636	14,177	9,459	- 344
1995	24,150	14,532	9,618	24,820	14,603	10,217	- 670
1996	29,129	16,947	12,182	29,370	16,861	12,509	- 241
1997	37,765	22,120	15,645	38,014	22,096	15,918	- 249
1998	40,648	24,181	16,467	40,553	23,072	17,481	+ 95
1999	45,117	28,384	16,733	45,154	26,961	18,193	- 37
2000	49,530	28,280	21,250	49,981	29,436	20,545	- 451
2001	52,777	30,320	22,457	52,307	30,760	21,547	+ 470
2002	60,355	34,647	25,708	59,984	34,004	25,980	+ 371
2003	63,649	37,203	26,446	63,937	37,673	26,264	- 288
2004	60,862	34,467	26,395	60,830	34,314	26,516	+ 32
2005	53,534	29,805	23,729	53,987	29,447	24,540	- 453
2006	55,368	31,395	23,973	56,015	31,822	24,193	- 647
2007	61,617	33,991	27,626	61,595	33,735	27,860	+ 22
2008	54,433	29,713	24,720	54,212	29,260	24,952	+ 221

¹ Includes residents and non - residents

Fig 1 - Passenger traffic: Total arrivals by sex, 1992- 2008

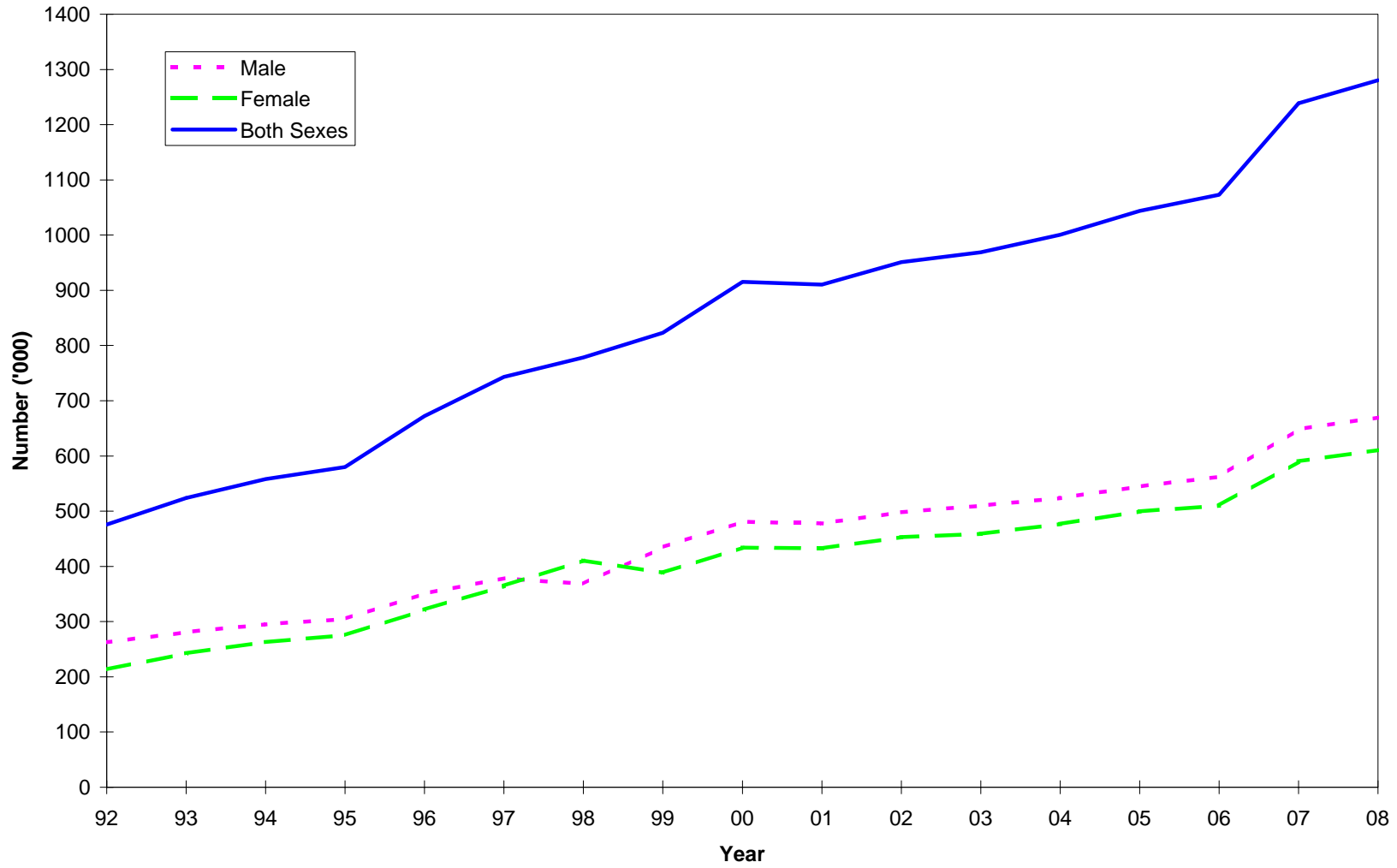


Fig 2 - Passenger traffic: Total departures by sex, 1992 - 2008

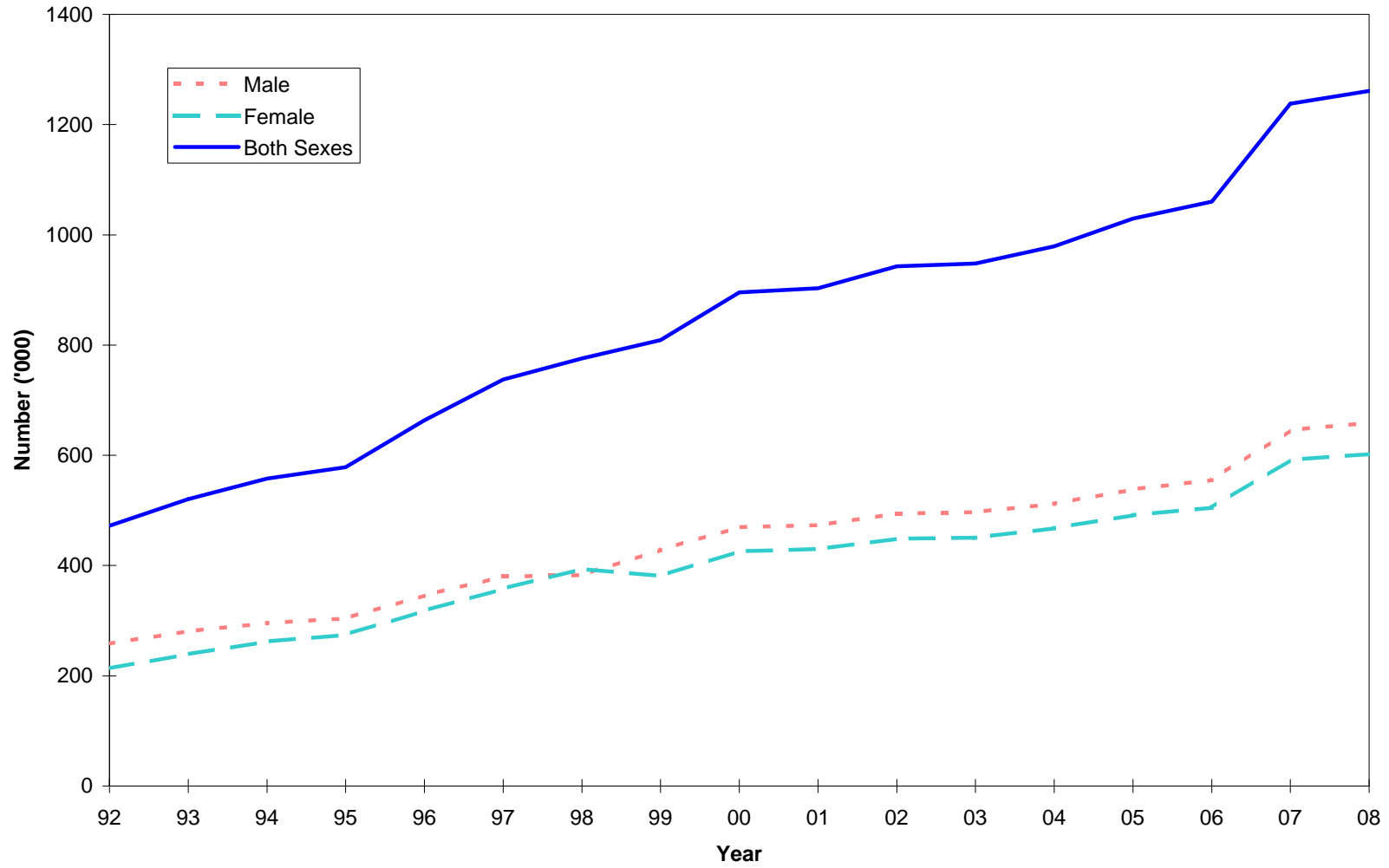


Fig. 3 - Passenger traffic : Total arrivals and total departures, 1999 - 2008

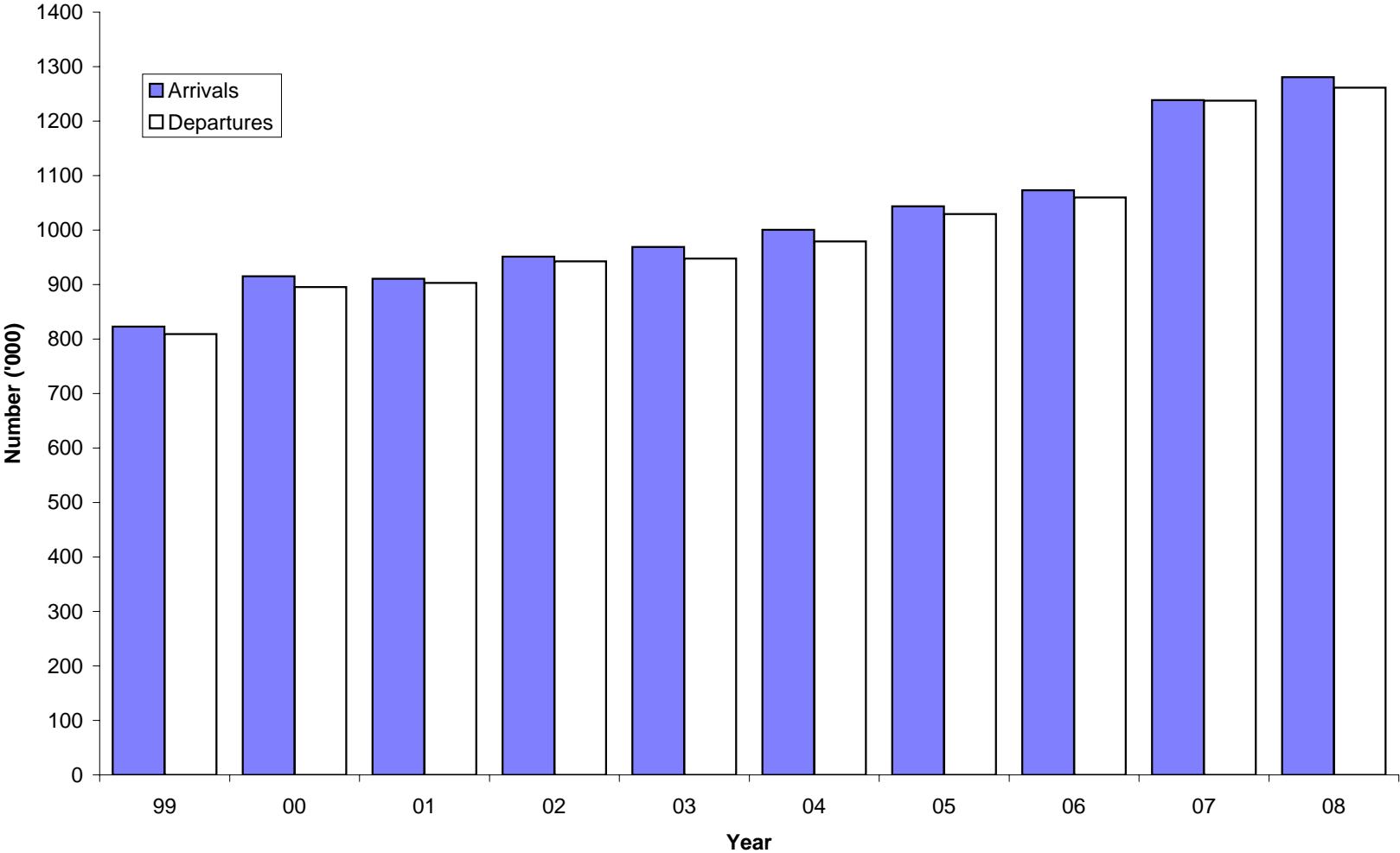


Table 10 - Passenger traffic ¹ by mode of transport, 1988 - 2008

Period	Arrivals			Departures			Arrivals minus Departures
	Total	By sea	By air	Total	By sea	By air	
1988	343,940	5,260	338,680	341,330	4,340	336,990	+ 2,610
1989	379,080	3,190	375,890	385,050	3,620	381,430	- 5,970
1990	418,200	3,820	414,380	422,230	3,820	418,410	- 4,030
1991	426,680	7,290	419,390	425,620	5,820	419,800	+ 1,060
1992	475,920	9,260	466,660	472,010	6,780	465,230	+ 3,910
1993	523,740	13,530	510,210	520,400	11,890	508,510	+ 3,340
1994	558,136	19,461	538,675	557,575	17,663	539,912	+ 561
1995	579,993	18,854	561,139	578,481	17,895	560,586	+ 1,512
1996	672,070	27,308	644,762	663,501	24,794	638,707	+ 8,569
1997	743,291	29,756	713,535	737,523	27,390	710,133	+ 5,768
1998	778,574	43,706	734,868	775,998	40,809	735,189	+ 2,576
1999	823,085	40,499	782,586	809,233	39,230	770,003	+ 13,852
2000	915,203	34,262	880,941	895,569	33,368	862,201	+ 19,634
2001	910,489	27,847	882,642	903,073	26,313	876,760	+ 7,416
2002	951,090	43,890	907,200	942,876	42,630	900,246	+ 8,214
2003	968,906	31,296	937,610	947,774	28,936	918,838	+ 21,132
2004	1,000,545	32,238	968,307	979,322	28,609	950,713	+ 21,223
2005	1,043,900	35,422	1,008,478	1,029,666	35,478	994,188	+ 14,234
2006	1,072,879	31,713	1,041,166	1,060,074	28,725	1,031,349	+ 12,805
2007	1,238,826	33,373	1,205,453	1,237,747	31,001	1,206,746	+ 1,079
2008	1,280,640	48,311	1,232,329	1,261,182	47,494	1,213,688	+ 19,458
2008:1st Qr.	354,098	22,240	331,858	379,259	21,988	357,271	- 25,161
2nd Qr.	272,817	5,563	267,254	269,393	4,941	264,452	+ 3,424
3rd Qr.	307,178	4,397	302,781	301,414	4,626	296,788	+ 5,764
4th Qr.	346,547	16,111	330,436	311,116	15,939	295,177	+ 35,431

¹ Includes traffic between Island of Mauritius and Rodrigues. As from 1994, figures of the passenger traffic also include cruise excursionists, i.e passengers and crews of cruise ships.

Table 11 - Passenger traffic ¹ by month, 2005 - 2008

Month	Arrivals				Departures				Excess of arrivals over departures			
	2005	2006	2007	2008	2005	2006	2007	2008	2005	2006	2007	2008
January	100,280	115,801	121,388	132,192	115,517	129,705	139,856	150,152	- 15,237	- 13,904	-18,468	- 17,960
February	74,305	83,952	90,304	101,997	72,084	84,174	89,376	103,374	+ 2,221	- 222	+ 928	- 1,377
March	88,986	78,167	103,577	119,909	88,710	86,328	107,778	125,733	+ 276	- 8,161	- 4,201	- 5,824
April	75,622	78,461	98,857	101,472	78,281	76,574	99,822	102,763	- 2,659	+ 1,887	- 965	- 1,291
May	77,272	70,188	88,674	92,019	79,660	72,775	91,385	100,497	- 2,388	- 2,587	- 2,711	- 8,478
June	64,325	63,559	78,230	79,326	58,353	59,685	73,375	66,133	+ 5,972	+ 3,874	+ 4,855	+ 13,193
July	92,748	95,775	111,873	117,032	77,677	81,639	96,072	96,713	+ 15,071	+ 14,136	+ 15,801	+ 20,319
August	89,531	92,048	102,673	103,027	100,304	100,271	111,756	117,838	- 10,773	- 8,223	- 9,083	- 14,811
September	74,165	76,519	89,018	87,119	78,182	78,512	90,640	86,863	- 4,017	- 1,993	- 1,622	+ 256
October	91,633	96,033	105,278	108,099	88,915	90,243	105,800	106,218	+ 2,718	+ 5,790	- 522	+ 1,881
November	94,678	95,261	106,490	103,427	91,531	94,380	108,920	98,336	+ 3,147	+ 881	- 2,430	+ 5,091
December	120,355	127,115	142,464	135,021	100,452	105,788	122,967	106,562	+ 19,903	+ 21,327	+ 19,497	+ 28,459
Whole Year	1,043,900	1,072,879	1,238,826	1,280,640	1,029,666	1,060,074	1,237,747	1,261,182	+ 14,234	+12,805	+ 1,079	+ 19,458

¹ Includes traffic between Island of Mauritius and Rodrigues. Figures of the passenger traffic also include cruise excursionists, i.e passengers and crews of cruise ships.

Table 12 - Arrivals ¹ by country of original embarkation, 2003- 2008

Country of original embarkation	2003	2004	2005	2006	2007	2008
Australia	13,350	16,417	18,282	21,563	26,181	29,169
Belgium	8,485	2,778	619	484	127	192
France	183,710	197,937	208,271	201,444	246,006	253,159
Germany	49,466	47,601	51,958	56,982	65,876	62,858
Hong Kong SAR ²	10,902	17,453	20,764	20,782	26,245	27,189
India	45,750	49,268	51,500	58,910	66,329	62,147
Italy	34,673	35,486	37,301	60,741	64,048	61,685
Japan	191	140	53	65	33	22
Kenya	6,109	6,172	1,925	9,734	8,459	5,777
Malagasy Rep.	20,848	20,242	26,515	22,141	27,343	29,211
Reunion Island	215,700	215,820	216,414	176,157	203,508	218,865
Rodrigues	63,916	60,830	53,987	56,015	61,595	54,212
Seychelles	17,585	14,751	21,718	23,766	26,795	25,541
Singapore	14,019	15,374	17,855	13,571	18,953	18,022
S. Africa, Rep. of	88,816	93,598	101,294	117,175	136,487	144,122
Switzerland	17,556	13,402	12,722	14,249	16,250	13,882
United Kingdom	103,630	112,795	115,400	116,724	128,983	132,551
Zambia	190	156	26	16	12	48
Zimbabwe	2,469	2,439	2,676	688	175	26
Other & not stated	71,541	77,886	84,620	101,672	115,421	141,962
All Countries	968,906	1,000,545	1,043,900	1,072,879	1,238,826	1,280,640

¹ As from 1994, figures of the passenger arrivals include cruise excursionists, i.e passengers and crews of cruise ships which numbered 9965, 9927, 11553, 11651, 9747 and 26388 for 2003, 2004, 2005, 2006, 2007 and 2008 respectively, in accordance with the recommendations of the World Tourism Organisation.

² Special Administrative Region of China

Table 13 - Departures ¹ by country of final destination, 2003 - 2008

Country of final destination	2003	2004	2005	2006	2007	2008
Australia	12,698	16,108	18,931	22,579	29,325	33,765
Belgium	7,546	1,521	102	65	247	363
France	197,413	208,070	221,372	215,093	261,855	263,683
Germany	50,370	50,083	53,368	56,377	68,261	62,156
Hong Kong SAR ²	9,010	16,042	19,052	17,898	21,441	20,247
India	42,508	46,669	50,784	55,942	64,669	59,651
Italy	31,958	32,351	35,022	57,922	64,939	62,791
Japan	111	28	41	10	13	40
Kenya	5,167	5,122	1,103	6,258	6,236	4,978
Malagasy Rep.	20,700	21,558	26,611	21,722	27,815	30,342
Reunion Island	204,666	206,012	205,625	176,007	200,200	218,786
Rodrigues	63,584	60,862	53,534	55,368	61,617	54,433
Seychelles	16,325	13,339	21,128	23,844	28,189	25,160
Singapore	15,392	16,715	17,513	18,405	17,955	17,760
S. Africa, Rep. of	81,848	84,821	91,817	107,201	122,724	126,982
Switzerland	17,337	12,738	11,443	13,148	16,136	13,841
United Kingdom	103,328	114,328	117,045	119,260	130,804	132,143
Zambia	111	20	8	13	3	153
Zimbabwe	2,267	2,462	2,352	735	45	3
Other & not stated	65,435	70,473	82,815	92,227	115,273	133,905
All Countries	947,774	979,322	1,029,666	1,060,074	1,237,747	1,261,182

¹ As from 1994, figures of the passenger departures include cruise excursionists, i.e passengers and crews of cruise ships which numbered 9748, 8682, 12772, 11323, 9861 and 26782 for 2003, 2004, 2005, 2006, 2007 and 2008 respectively, in accordance with the recommendations of the World Tourism Organisation.

² Special Administrative Region of China

Table 14 - Monthly passenger traffic ¹ by type of passenger, 2008

Type of passenger	Jan	Feb	Mar	Apr	May	Jun	Jul	Aug	Sep	Oct	Nov	Dec	Whole Year
Arrivals													
Visitors ²	101,366	82,719	96,316	75,277	68,807	55,070	84,205	73,351	66,688	85,539	78,704	102,440	970,482
- On holiday	84,483	69,697	79,205	63,880	59,219	45,217	70,583	61,448	57,354	73,939	67,065	89,235	821,325
- On business & Conference	1,996	2,825	3,010	3,893	3,556	3,864	3,352	2,888	3,293	3,790	3,247	1,807	37,521
- In transit	12,368	7,702	11,561	5,145	4,052	3,947	7,755	6,156	3,739	5,303	5,962	8,993	82,683
- Other and not stated	2,519	2,495	2,540	2,359	1,980	2,042	2,515	2,859	2,302	2,507	2,430	2,405	28,953
Mauritian residents	28,205	17,353	21,319	24,143	20,812	22,171	30,359	26,828	18,397	20,539	22,776	30,890	283,792
Other ³	2,621	1,925	2,274	2,052	2,400	2,085	2,468	2,848	2,034	2,021	1,947	1,691	26,366
Total arrivals	132,192	101,997	119,909	101,472	92,019	79,326	117,032	103,027	87,119	108,099	103,427	135,021	1,280,640
Departures													
Visitors	121,912	82,379	101,988	75,892	78,545	46,148	68,148	85,508	63,701	83,560	72,924	79,574	960,279
Mauritian residents	26,530	19,520	22,265	25,119	20,295	18,221	26,290	30,624	21,527	21,154	23,890	24,865	280,300
Other	1,710	1,475	1,480	1,752	1,657	1,764	2,275	1,706	1,635	1,504	1,522	2,123	20,603
Total departures	150,152	103,374	125,733	102,763	100,497	66,133	96,713	117,838	86,863	106,218	98,336	106,562	1,261,182

¹ Including traffic between Island of Mauritius and Rodrigues

² Including non-residents who left the airport but stayed in the country for less than a day.

³ Including contract workers

Table 15 - Passenger traffic ¹ by type of passenger, 1999 - 2008

Type of passenger	1999	2000	2001	2002	2003	2004	2005	2006	2007	2008
Arrivals										
Visitors ²	599,717	678,472	674,619	709,305	721,348	738,516	781,572	806,652	932,782	970,482
- On holiday	530,792	602,606	606,545	620,124	636,325	653,818	692,084	712,620	818,714	821,325
- On business & Conference	26,942	27,004	26,523	28,558	31,155	30,416	30,164	32,511	34,633	37,521
- In transit	34,703	38,984	33,263	51,747	42,736	44,710	48,299	47,966	61,186	82,683
- Other & not stated	7,280	9,878	8,288	8,876	11,132	9,572	11,025	13,555	18,249	28,953
Mauritian residents	206,806	216,680	215,803	220,949	227,288	239,969	239,389	242,330	277,369	283,792
Other ³	16,562	20,051	20,067	20,836	20,270	22,060	22,939	23,897	28,675	26,366
Total arrivals	823,085	915,203	910,489	951,090	968,906	1,000,545	1,043,900	1,072,879	1,238,826	1,280,640
Departures										
Visitors	596,953	667,212	672,388	704,548	705,849	718,789	773,951	801,702	942,374	960,279
Mauritian residents	199,245	212,879	213,778	221,889	224,771	240,823	236,457	241,138	274,786	280,300
Other	13,035	15,478	16,907	16,439	17,154	19,710	19,258	17,234	20,587	20,603
Total departures	809,233	895,569	903,073	942,876	947,774	979,322	1,029,666	1,060,074	1,237,747	1,261,182

¹ Including traffic between Island of Mauritius and Rodrigues. As from 1994, figures of the passenger traffic also include cruise excursionists, i.e passengers and crews of cruise ships.

² Including non-residents who left the airport but stayed in the country for less than a day.

³ Including contract workers.

Table 16 - Total arrivals ¹ by age and sex, 2007 & 2008

Age (years)	2007			2008			January - June 2008			July - December 2008		
	Both Sexes	Male	Female	Both Sexes	Male	Female	Both Sexes	Male	Female	Both Sexes	Male	Female
Under 1	6,340	3,152	3,188	6,692	3,433	3,259	3,168	1,680	1,488	3,524	1,753	1,771
1 - 4	35,094	17,603	17,491	35,584	17,915	17,669	17,813	8,981	8,832	17,771	8,934	8,837
5 - 9	47,786	24,256	23,530	47,203	24,156	23,047	22,458	11,545	10,913	24,745	12,611	12,134
10 - 14	46,642	23,596	23,046	47,020	23,794	23,226	21,383	10,626	10,757	25,637	13,168	12,469
15 - 19	39,292	18,445	20,847	40,749	19,287	21,462	17,949	8,515	9,434	22,800	10,772	12,028
20 - 24	62,410	26,611	35,799	64,551	27,192	37,359	29,923	12,411	17,512	34,628	14,781	19,847
25 - 29	129,091	60,537	68,554	132,895	62,511	70,384	60,660	28,445	32,215	72,235	34,066	38,169
30 - 34	136,330	71,245	65,085	139,223	71,960	67,263	66,834	34,273	32,561	72,389	37,687	34,702
35 - 39	130,902	71,933	58,969	132,335	73,174	59,161	66,990	37,165	29,825	65,345	36,009	29,336
40 - 44	124,409	69,484	54,925	128,769	71,920	56,849	64,755	36,385	28,370	64,014	35,535	28,479
45 - 49	109,945	59,880	50,065	114,429	62,889	51,540	56,639	31,147	25,492	57,790	31,742	26,048
50 - 54	97,000	52,708	44,292	100,182	54,451	45,731	49,867	27,052	22,815	50,315	27,399	22,916
55 - 59	81,482	44,645	36,837	84,075	45,591	38,484	42,193	23,030	19,163	41,882	22,561	19,321
60 - 64	57,588	31,154	26,434	63,641	34,126	29,515	32,158	17,292	14,866	31,483	16,834	14,649
65 - 69	33,402	18,516	14,886	38,124	20,728	17,396	19,619	10,718	8,901	18,505	10,010	8,495
70 & over	30,872	16,300	14,572	38,326	20,585	17,741	19,233	10,546	8,687	19,093	10,039	9,054
Not stated	70,241	38,489	31,752	66,842	36,207	30,635	35,273	19,399	15,874	31,569	16,808	14,761
All ages	1,238,826	648,554	590,272	1,280,640	669,919	610,721	626,915	329,210	297,705	653,725	340,709	313,016

¹ Include arrivals from Rodrigues and cruise excursionists, i.e passengers and crews of cruise ships which numbered 9747 and 26388 for 2007 and 2008 respectively, in accordance with the recommendations of the World Tourism Organisation.

Table 17 - Total departures ¹ by age and sex, 2007 & 2008

Age (years)	2007			2008			January - June 2008			July - December 2008		
	Both Sexes	Male	Female	Both Sexes	Male	Female	Both Sexes	Male	Female	Both Sexes	Male	Female
Under 1	5,706	2,796	2,910	6,265	3,185	3,080	3,126	1,637	1,489	3,139	1,548	1,591
1 - 4	34,192	17,164	17,028	34,901	17,525	17,376	18,916	9,506	9,410	15,985	8,019	7,966
5 - 9	47,486	24,190	23,296	46,956	23,963	22,993	24,397	12,491	11,906	22,559	11,472	11,087
10 - 14	47,504	24,009	23,495	47,351	24,065	23,286	23,481	11,783	11,698	23,870	12,282	11,588
15 - 19	41,116	19,410	21,706	42,053	19,986	22,067	19,527	9,288	10,239	22,526	10,698	11,828
20 - 24	60,898	25,393	35,505	63,275	26,424	36,851	30,513	12,545	17,968	32,762	13,879	18,883
25 - 29	127,463	59,252	68,211	129,583	60,598	68,985	61,445	28,651	32,794	68,138	31,947	36,191
30 - 34	135,771	70,621	65,150	136,778	70,470	66,308	68,426	34,723	33,703	68,352	35,747	32,605
35 - 39	129,231	70,725	58,506	131,116	72,454	58,662	69,601	38,301	31,300	61,515	34,153	27,362
40 - 44	124,847	69,252	55,595	127,865	71,165	56,700	68,051	37,860	30,191	59,814	33,305	26,509
45 - 49	109,217	59,417	49,800	111,224	61,126	50,098	58,407	32,125	26,282	52,817	29,001	23,816
50 - 54	97,929	52,926	45,003	98,881	53,617	45,264	51,954	28,114	23,840	46,927	25,503	21,424
55 - 59	81,159	44,347	36,812	81,265	44,224	37,041	43,110	23,510	19,600	38,155	20,714	17,441
60 - 64	58,270	31,489	26,781	61,596	33,032	28,564	33,165	17,741	15,424	28,431	15,291	13,140
65 - 69	33,604	18,530	15,074	36,787	20,037	16,750	20,262	11,042	9,220	16,525	8,995	7,530
70 & over	33,030	17,356	15,674	38,067	20,331	17,736	21,747	11,824	9,923	16,320	8,507	7,813
Not stated	70,324	38,780	31,544	67,219	36,745	30,474	32,524	18,120	14,404	34,695	18,625	16,070
All ages	1,237,747	645,657	592,090	1,261,182	658,947	602,235	648,652	339,261	309,391	612,530	319,686	292,844

¹ Include departures to Rodrigues and cruise excursionists, i.e passengers and crews of cruise ships which numbered 9861 and 26782 for 2007 and 2008 respectively, in accordance with the recommendations of the World Tourism Organisation.

Table 18 - Excess of arrivals over departures ¹ by age and sex, 2007 & 2008

Age (years)	2007			2008			January - June 2008			July - December 2008		
	Both Sexes	Male	Female	Both Sexes	Male	Female	Both Sexes	Male	Female	Both Sexes	Male	Female
Under 1	634	356	278	427	248	179	42	43	-1	385	205	180
1 - 4	902	439	463	683	390	293	-1,103	-525	-578	1,786	915	871
5 - 9	300	66	234	247	193	54	-1,939	-946	-993	2,186	1,139	1,047
10 - 14	-862	-413	-449	-331	-271	-60	-2,098	-1,157	-941	1,767	886	881
15 - 19	-1,824	-965	-859	-1,304	-699	-605	-1,578	-773	-805	274	74	200
20 - 24	1,512	1,218	294	1,276	768	508	-590	-134	-456	1,866	902	964
25 - 29	1,628	1,285	343	3,312	1,913	1,399	-785	-206	-579	4,097	2,119	1,978
30 - 34	559	624	-65	2,445	1,490	955	-1,592	-450	-1,142	4,037	1,940	2,097
35 - 39	1,671	1,208	463	1,219	720	499	-2,611	-1,136	-1,475	3,830	1,856	1,974
40 - 44	-438	232	-670	904	755	149	-3,296	-1,475	-1,821	4,200	2,230	1,970
45 - 49	728	463	265	3,205	1,763	1,442	-1,768	-978	-790	4,973	2,741	2,232
50 - 54	-929	-218	-711	1,301	834	467	-2,087	-1,062	-1,025	3,388	1,896	1,492
55 - 59	323	298	25	2,810	1,367	1,443	-917	-480	-437	3,727	1,847	1,880
60 - 64	-682	-335	-347	2,045	1,094	951	-1,007	-449	-558	3,052	1,543	1,509
65 - 69	-202	-14	-188	1,337	691	646	-643	-324	-319	1,980	1,015	965
70 & over	-2,158	-1,056	-1,102	259	254	5	-2,514	-1,278	-1,236	2,773	1,532	1,241
Not stated	-83	-291	208	-377	-538	161	2,749	1,279	1,470	-3,126	-1,817	-1,309
All ages	1,079	2,897	-1,818	19,458	10,972	8,486	-21,737	-10,051	-11,686	41,195	21,023	20,172

¹ Including traffic between Island of Mauritius and Rodrigues

Table 19 - Arrivals ¹ of Mauritian residents by age and sex, 2007 & 2008

Age (years)	2007			2008			January - June 2008			July - December 2008		
	Both Sexes	Male	Female	Both Sexes	Male	Female	Both Sexes	Male	Female	Both Sexes	Male	Female
Under 1	647	316	331	675	323	352	304	152	152	371	171	200
1 - 4	3,525	1,746	1,779	3,517	1,805	1,712	1,599	843	756	1,918	962	956
5 - 9	5,346	2,755	2,591	5,236	2,710	2,526	2,116	1,108	1,008	3,120	1,602	1,518
10 - 14	6,062	3,101	2,961	5,807	2,975	2,832	2,468	1,231	1,237	3,339	1,744	1,595
15 - 19	7,054	3,462	3,592	7,423	3,688	3,735	3,276	1,626	1,650	4,147	2,062	2,085
20 - 24	14,424	6,970	7,454	15,364	7,357	8,007	6,996	3,257	3,739	8,368	4,100	4,268
25 - 29	21,830	10,909	10,921	23,326	11,982	11,344	11,102	5,643	5,459	12,224	6,339	5,885
30 - 34	22,434	11,863	10,571	26,189	13,528	12,661	12,325	6,454	5,871	13,864	7,074	6,790
35 - 39	23,450	13,660	9,790	24,501	14,487	10,014	11,953	7,295	4,658	12,548	7,192	5,356
40 - 44	24,589	14,540	10,049	26,517	15,911	10,606	12,536	7,742	4,794	13,981	8,169	5,812
45 - 49	22,310	12,427	9,883	23,543	13,353	10,190	10,888	6,288	4,600	12,655	7,065	5,590
50 - 54	21,171	11,200	9,971	21,540	11,338	10,202	10,147	5,414	4,733	11,393	5,924	5,469
55 - 59	17,678	9,528	8,150	18,855	9,958	8,897	8,623	4,680	3,943	10,232	5,278	4,954
60 - 64	11,403	5,942	5,461	12,499	6,602	5,897	5,856	3,161	2,695	6,643	3,441	3,202
65 - 69	6,694	3,489	3,205	6,970	3,631	3,339	3,255	1,742	1,513	3,715	1,889	1,826
70 & over	7,157	3,508	3,649	7,617	3,740	3,877	3,494	1,785	1,709	4,123	1,955	2,168
Not stated	61,595	33,735	27,860	54,213	29,261	24,952	27,065	14,885	12,180	27,148	14,376	12,772
All ages	277,369	149,151	128,218	283,792	152,649	131,143	134,003	73,306	60,697	149,789	79,343	70,446

¹ Including arrivals from Rodrigues

Table 20 - Departures ¹ of Mauritian residents by age and sex, 2007 & 2008

Age (years)	2007			2008			January - June 2008			July - December 2008		
	Both Sexes	Male	Female	Both Sexes	Male	Female	Both Sexes	Male	Female	Both Sexes	Male	Female
Under 1	696	339	357	1,066	506	560	389	190	199	677	316	361
1 - 4	3,711	1,832	1,879	3,688	1,898	1,790	1,625	860	765	2,063	1,038	1,025
5 - 9	5,512	2,849	2,663	5,358	2,747	2,611	1,842	980	862	3,516	1,767	1,749
10 - 14	6,215	3,186	3,029	5,724	2,975	2,749	1,803	938	865	3,921	2,037	1,884
15 - 19	8,343	4,130	4,213	8,715	4,404	4,311	3,179	1,626	1,553	5,536	2,778	2,758
20 - 24	14,836	7,336	7,500	16,197	7,879	8,318	7,731	3,710	4,021	8,466	4,169	4,297
25 - 29	21,309	10,881	10,428	23,633	12,051	11,582	12,144	6,230	5,914	11,489	5,821	5,668
30 - 34	21,291	11,402	9,889	25,470	13,267	12,203	12,556	6,682	5,874	12,914	6,585	6,329
35 - 39	22,229	12,966	9,263	24,602	14,593	10,009	12,159	7,453	4,706	12,443	7,140	5,303
40 - 44	23,986	14,104	9,882	26,086	15,535	10,551	12,549	7,782	4,767	13,537	7,753	5,784
45 - 49	21,958	12,311	9,647	22,613	12,785	9,828	10,774	6,279	4,495	11,839	6,506	5,333
50 - 54	20,961	11,097	9,864	20,747	11,007	9,740	9,956	5,366	4,590	10,791	5,641	5,150
55 - 59	17,337	9,300	8,037	17,658	9,479	8,179	8,350	4,562	3,788	9,308	4,917	4,391
60 - 64	11,176	5,872	5,304	11,160	5,870	5,290	5,450	2,866	2,584	5,710	3,004	2,706
65 - 69	6,571	3,385	3,186	6,311	3,284	3,027	3,117	1,621	1,496	3,194	1,663	1,531
70 & over	7,036	3,448	3,588	6,837	3,387	3,450	3,445	1,756	1,689	3,392	1,631	1,761
Not stated	61,619	33,993	27,626	54,435	29,715	24,720	24,881	13,918	10,963	29,554	15,797	13,757
All ages	274,786	148,431	126,355	280,300	151,382	128,918	131,950	72,819	59,131	148,350	78,563	69,787

¹ Including departures to Rodrigues

Table 21 - Excess of arrivals over departures ¹ of Mauritian residents by age & sex, 2007 & 2008

Age (years)	2007			2008			January - June 2008			July - December 2008		
	Both Sexes	Male	Female	Both Sexes	Male	Female	Both Sexes	Male	Female	Both Sexes	Male	Female
Under 1	-49	-23	-26	-391	-183	-208	-85	-38	-47	-306	-145	-161
1 - 4	-186	-86	-100	-171	-93	-78	-26	-17	-9	-145	-76	-69
5 - 9	-166	-94	-72	-122	-37	-85	274	128	146	-396	-165	-231
10 - 14	-153	-85	-68	83	0	83	665	293	372	-582	-293	-289
15 - 19	-1,289	-668	-621	-1,292	-716	-576	97	0	97	-1,389	-716	-673
20 - 24	-412	-366	-46	-833	-522	-311	-735	-453	-282	-98	-69	-29
25 - 29	521	28	493	-307	-69	-238	-1,042	-587	-455	735	518	217
30 - 34	1,143	461	682	719	261	458	-231	-228	-3	950	489	461
35 - 39	1,221	694	527	-101	-106	5	-206	-158	-48	105	52	53
40 - 44	603	436	167	431	376	55	-13	-40	27	444	416	28
45 - 49	352	116	236	930	568	362	114	9	105	816	559	257
50 - 54	210	103	107	793	331	462	191	48	143	602	283	319
55 - 59	341	228	113	1,197	479	718	273	118	155	924	361	563
60 - 64	227	70	157	1,339	732	607	406	295	111	933	437	496
65 - 69	123	104	19	659	347	312	138	121	17	521	226	295
70 & over	121	60	61	780	353	427	49	29	20	731	324	407
Not stated	-24	-258	234	-222	-454	232	2,184	967	1,217	-2,406	-1,421	-985
All ages	2,583	720	1,863	3,492	1,267	2,225	2,053	487	1,566	1,439	780	659

¹ Including traffic between Island of Mauritius and Rodrigues.

Table 22 - Arrivals and departures of Mauritian residents¹ by country of embarkation and disembarkation, 2006 - 2008

Country of embarkation/ disembarkation	Arrivals			Departures			Excess of arrivals over departures		
	2006	2007	2008	2006	2007	2008	2006	2007	2008
Australia	7,368	9,242	10,921	7,904	9,980	13,310	-536	-738	-2,389
Belgium	40	37	9	20	88	63	20	-51	-54
Canada	108	30	17	24	14	29	84	16	-12
France	29,059	31,227	33,301	30,299	32,118	34,341	-1,240	-891	-1,040
Germany	2,435	3,163	3,574	2,151	2,888	3,151	284	275	423
Hong Kong SAR ²	9,856	11,434	11,674	10,379	11,875	11,773	-523	-441	-99
India	19,597	21,292	19,675	19,321	21,190	19,210	276	102	465
Italy	4,278	4,987	4,733	3,464	4,404	4,681	814	583	52
Kenya	1,222	1,802	1,628	1,188	1,724	1,709	34	78	-81
Rodrigues	56,015	61,595	54,212	55,368	61,617	54,433	647	-22	-221
Reunion	27,480	32,983	32,575	26,661	31,311	31,493	819	1,672	1,082
Singapore	6,768	10,344	9,324	9,584	9,571	9,995	-2,816	773	-671
S. Africa, Rep of	13,979	17,207	19,742	13,167	16,301	19,013	812	906	729
Switzerland	2,316	2,555	2,559	2,255	2,522	2,712	61	33	-153
United Kingdom	30,580	35,023	34,732	30,715	33,913	33,544	-135	1,110	1,188
Other countries	31,229	34,448	45,116	28,638	35,270	40,843	2,591	-822	4,273
All Countries	242,330	277,369	283,792	241,138	274,786	280,300	1,192	2,583	3,492

¹ Including traffic between Island of Mauritius and Rodrigues

² Special Administrative Region of China

III - TOURISM

Definition and notes

1. Definition of tourist

(a) prior to 1964, a tourist has been defined as a non-resident staying in Mauritius for more than 24 hours but less than 6 months.

(b) as from 1964, a tourist is defined as a non-resident staying in Mauritius for more than 24 hours but less than a year and is not involved in any gainful occupation .

The figures for the two periods are nevertheless comparable because of the small number of tourists staying for more than 6 months.

2. Visitors include the following:

(a) tourists as defined above; and

(b) cruise ship passengers and non-residents who stayed in the country for less than a day, other than those who do not leave the airport.

3. Method of compilation

Sources of data

The main source of data for the compilation of passenger traffic statistics is the Passport and Immigration Office which maintains a database of all passengers entering and leaving the country. The data are extracted from the Embarkation / Disembarkation cards filled in by all incoming and outgoing passengers. At the end of every month, passenger traffic for that particular month is downloaded and supplied to the statistics unit of the Ministry of Tourism, Leisure and External Communications within fifteen days. Additional data on cruises are supplied by the Mauritius Ports Authority.

Prior to 1994, figures have been compiled from a 10% sample of embarkation and disembarkation cards filled in by passengers. However, as from January 1994, they are based on movements of all passengers. Thus disaggregated data for 1994 onwards may not be strictly comparable to previous series.

Tourism receipts

The Bank of Mauritius is responsible for the estimation of tourism receipts based on monthly statements of Inward and Outward Remittances of Commercial Banks.

Monthly Occupancy Rates

All hotels are contacted by mail and/or phone at the end of every month on room / bed nights available and rented during the month for the calculation of room and bed occupancy.

4. Tourist nights

Tables on tourist nights show the number of nights spent by tourists who were present in the country during the period under review. Thus the number of tourist nights for 2008 include:

(a) the nights spent during 2008 by tourists who arrived prior to 1st January 2008; and

(b) the nights spent during 2008 by tourists who arrived during the same year.

However, nights spent after 31st December 2008 by tourists who arrived in 2008 are excluded.

5. Large hotels

Large hotels are well established beach hotels of over 80 rooms.

Table 23 -Tourist arrivals by mode of transport and tourist nights spent during period, 1992 - 2008

Period	Tourist arrivals			Tourist nights spent during period	% change over previous year	
	Sea	Air	Total		Tourist arrivals	Tourist nights
1992	2,630	332,770	335,400	4,110,430	+ 11.6	+ 11.2
1993	5,710	368,920	374,630	4,610,400	+ 11.7	+ 12.2
1994	6,383	394,143	400,526	4,359,303	+ 6.9	- 5.4
1995	6,105	416,358	422,463	4,434,891	+ 5.5	+ 1.7
1996	6,484	480,383	486,867	4,957,683	+ 15.2	+ 11.8
1997	7,476	528,649	536,125	5,451,314	+ 10.1	+ 10.0
1998	17,109	541,086	558,195	5,567,889	+ 4.1	+ 2.1
1999	13,852	564,233	578,085	5,729,464	+ 3.6	+ 2.9
2000	10,677	645,776	656,453	6,412,876	+ 13.6	+ 11.9
2001	10,532	649,786	660,318	6,527,800	+ 0.6	+ 1.8
2002	14,180	667,468	681,648	6,768,870	+ 3.2	+ 3.7
2003	12,155	689,863	702,018	6,952,313	+ 3.0	+ 2.7
2004	11,390	707,471	718,861	7,118,603	+ 2.4	+ 2.4
2005	13,321	747,742	761,063	7,498,251	+ 5.9	+ 5.3
2006	13,249	775,027	788,276	7,760,679	+ 3.6	+ 3.5
2007	12,163	894,808	906,971	8,986,934	+ 15.1	+ 15.8
2008	15,961	914,495	930,456	9,218,625 ¹	+ 2.6	+ 2.6

¹ Provisional

Table 24 - Tourist arrivals by month of arrival, 1999 - 2008

Month of arrival	1999	2000	2001	2002	2003	2004	2005	2006	2007	2008
January	59,680	62,355	65,122	63,551	64,762	66,543	73,053	86,218	91,628	94,579
February	41,859	50,466	49,464	50,554	53,647	54,104	56,367	64,894	72,338	77,763
March	50,707	54,872	55,944	67,554	63,129	63,631	67,931	58,136	79,965	89,152
April	41,536	56,353	54,794	48,187	57,217	55,599	52,971	57,361	70,297	72,837
May	42,254	49,960	51,969	53,813	54,710	53,974	55,995	50,773	65,301	67,705
June	35,910	39,885	38,496	39,048	41,841	38,826	42,994	42,755	52,584	53,722
July	42,862	51,577	57,274	56,709	58,403	62,173	65,462	65,540	77,225	81,169
August	57,321	59,731	52,923	53,395	56,844	55,342	60,746	64,307	69,941	71,605
September	41,383	47,634	48,953	49,774	50,293	53,102	53,233	56,138	65,542	65,632
October	55,128	61,526	59,325	65,291	64,917	70,793	70,999	75,451	81,244	83,524
November	56,584	57,334	57,326	61,326	61,984	66,960	70,793	70,394	77,236	75,380
December	52,861	64,760	68,728	72,446	74,271	77,814	90,519	96,309	103,670	97,388
Whole Year	578,085	656,453	660,318	681,648	702,018	718,861	761,063	788,276	906,971	930,456

Fig 4 - Tourist arrivals by month, 2004- 2008

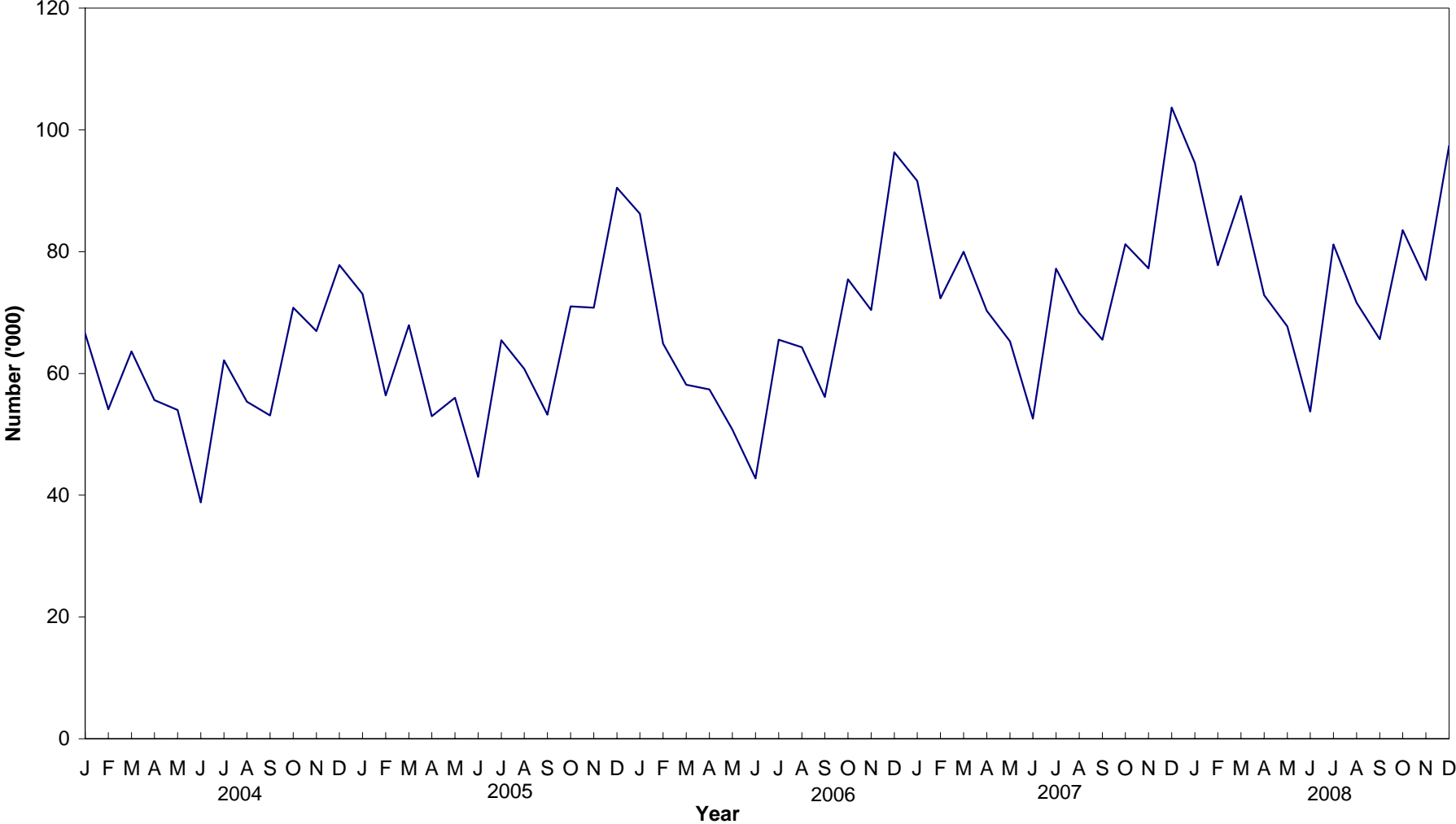


Table 26 - Tourist arrivals by country of residence and sex, 2008

Country of residence	Male	Female	Both Sexes
Australia	9,369	9,483	18,852
Belgium	6,320	5,476	11,796
France	130,404	129,650	260,054
Germany	30,846	30,638	61,484
Hong Kong SAR ¹	385	256	641
India	27,218	16,693	43,911
Italy	32,086	34,346	66,432
Japan	1,015	736	1,751
Kenya	1,270	727	1,997
Malagasy Rep.	5,529	5,376	10,905
Reunion Island	47,722	48,452	96,174
Seychelles	4,592	6,012	10,604
Singapore	996	762	1,758
S. Africa, Rep. of	44,010	40,438	84,448
Switzerland	8,065	7,972	16,037
United Kingdom	55,086	52,833	107,919
U.S.A.	3,965	3,124	7,089
Zimbabwe	1,002	807	1,809
Other countries	67,971	58,824	126,795
All Countries	477,851	452,605	930,456

¹ Special Administrative Region of China

Table 27 - Tourist arrivals by country of residence, 1999 - 2008

Country of residence	1999	2000	2001	2002	2003	2004	2005	2006	2007	2008
Australia	8,076	8,771	8,790	8,387	9,103	11,373	13,486	16,660	19,635	18,852
Belgium	9,586	10,998	10,398	10,579	10,170	8,524	8,973	9,216	10,945	11,796
France	175,431	198,423	197,595	202,869	200,229	210,411	220,421	182,295	240,028	260,054
Germany	45,206	52,869	50,866	53,762	53,970	52,277	55,983	57,251	65,165	61,484
Hong Kong SAR ¹	859	1,227	1,488	1,201	676	836	508	519	649	641
India	13,583	17,241	18,890	20,898	25,367	24,716	29,755	37,498	42,974	43,911
Italy	36,675	39,000	37,343	38,263	39,774	41,277	43,458	69,407	69,510	66,432
Japan	2,324	2,389	1,589	1,958	1,572	1,724	1,638	1,695	1,730	1,751
Kenya	1,655	1,801	1,734	1,507	1,510	1,506	1,358	1,694	1,790	1,997
Malagasy Rep.	7,880	7,057	6,674	9,417	11,044	8,256	7,397	7,239	8,842	10,905
Reunion Island	83,749	86,945	91,140	96,375	95,679	96,510	99,036	89,127	95,823	96,174
Seychelles	7,893	9,229	10,687	13,468	9,869	7,456	10,084	12,023	14,275	10,604
Singapore	3,661	4,104	3,431	3,114	2,102	2,329	1,789	1,862	2,020	1,758
S. Africa, Rep. of	46,583	48,683	47,882	42,685	45,756	52,609	58,446	70,796	81,733	84,448
Switzerland	16,281	20,473	18,427	17,371	17,929	16,110	15,773	16,161	17,546	16,037
United Kingdom	58,683	74,488	77,888	80,667	91,210	92,652	95,407	102,333	107,297	107,919
USA	3,345	3,704	3,923	4,116	4,505	4,305	4,890	5,220	5,451	7,089
Zimbabwe	2,606	3,435	3,860	3,185	2,343	2,345	2,419	1,587	1,669	1,809
Other countries	54,009	65,616	67,713	71,826	79,210	83,645	90,242	105,693	119,889	126,795
All Countries	578,085	656,453	660,318	681,648	702,018	718,861	761,063	788,276	906,971	930,456

¹ Special Administrative Region of China

Table 28 - Percentage distribution of tourist arrivals by country of residence, 1999 - 2008

Country of residence	1999	2000	2001	2002	2003	2004	2005	2006	2007	2008
Australia	1.4	1.3	1.3	1.2	1.3	1.6	1.8	2.1	2.2	2.0
Belgium	1.7	1.7	1.6	1.6	1.4	1.2	1.2	1.2	1.2	1.3
France	30.3	30.2	29.9	29.8	28.5	29.3	29.0	23.1	26.5	27.9
Germany	7.8	8.1	7.7	7.9	7.7	7.3	7.4	7.3	7.2	6.6
Hong Kong SAR ¹	0.1	0.2	0.2	0.2	0.1	0.1	0.1	0.1	0.1	0.1
India	2.3	2.6	2.9	3.1	3.6	3.4	3.9	4.8	4.7	4.7
Italy	6.3	5.9	5.7	5.6	5.7	5.7	5.7	8.8	7.7	7.1
Japan	0.4	0.4	0.2	0.3	0.2	0.2	0.2	0.2	0.2	0.2
Kenya	0.3	0.3	0.3	0.2	0.2	0.2	0.2	0.2	0.2	0.2
Malagasy Rep.	1.4	1.1	1.0	1.4	1.6	1.1	1.0	0.9	1.0	1.2
Reunion Island	14.5	13.2	13.8	14.1	13.6	13.4	13.0	11.3	10.6	10.3
Seychelles	1.4	1.4	1.6	2.0	1.4	1.0	1.3	1.5	1.6	1.1
Singapore	0.6	0.6	0.5	0.5	0.3	0.3	0.2	0.2	0.2	0.2
S. Africa, Rep. of	8.1	7.4	7.3	6.3	6.5	7.3	7.7	9.0	9.0	9.1
Switzerland	2.8	3.1	2.8	2.5	2.6	2.2	2.1	2.1	1.9	1.7
United Kingdom	10.2	11.3	11.8	11.8	13.0	12.9	12.5	13.0	11.8	11.6
USA	0.6	0.6	0.6	0.6	0.6	0.6	0.6	0.7	0.6	0.8
Zimbabwe	0.5	0.5	0.6	0.5	0.3	0.3	0.3	0.2	0.2	0.2
Other countries	9.3	10.0	10.3	10.5	11.3	11.6	11.9	13.3	13.2	13.6
All Countries	100.0	100.0	100.0	100.0	100.0	100.0	100.0	100.0	100.0	100.0

¹ Special Administrative Region of China

Fig. 5 - Percentage distribution of tourist arrivals by country of residence, 2008

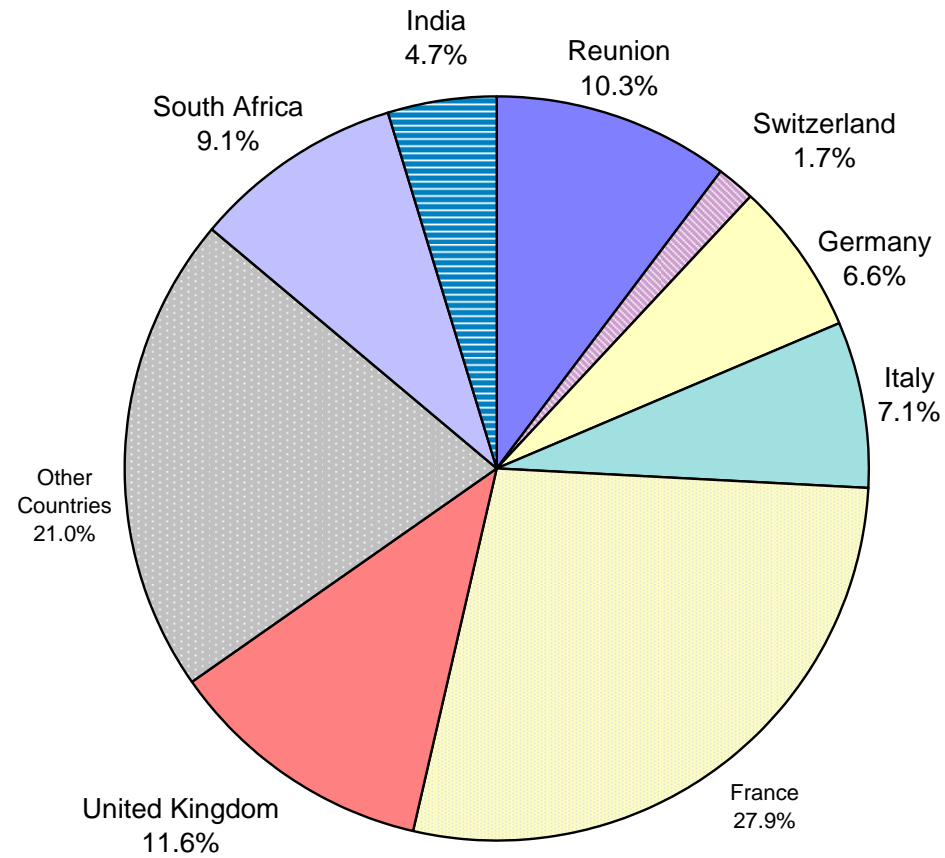


Table 29 - Tourist nights by country of residence, 1999 - 2008

Country of residence	1999	2000	2001	2002	2003	2004	2005	2006	2007	2008
Australia	91,655	96,932	104,232	98,869	100,332	111,546	115,851	126,859	143,482	161,488
Belgium	126,221	132,571	125,752	124,586	121,687	105,445	117,210	120,987	132,145	148,978
France	1,719,893	1,934,683	1,966,911	2,020,850	1,996,305	2,101,125	2,208,575	1,931,005	2,542,172	2,711,413
Germany	553,112	635,600	612,881	651,913	636,435	608,031	655,283	655,738	735,938	760,468
Hong Kong SAR ¹	9,367	9,601	11,955	10,941	6,767	7,984	4,694	3,739	4,788	4,492
India	157,110	188,008	207,965	253,340	287,741	265,174	295,698	336,048	408,128	399,570
Italy	336,271	349,267	326,100	329,809	346,865	362,758	397,160	619,089	600,236	605,457
Japan	12,593	14,054	10,161	11,170	9,302	9,881	10,538	9,889	10,701	10,643
Kenya	12,904	12,585	10,780	8,784	11,347	11,069	12,258	13,875	12,642	14,338
Malagasy Rep.	74,643	65,526	66,177	81,758	128,437	83,961	73,964	84,400	98,034	107,295
Reunion Island	576,423	596,449	632,970	675,483	738,968	832,879	828,889	730,678	917,369	790,612
Seychelles	67,271	82,577	96,303	113,942	92,493	75,277	93,951	108,603	133,595	95,254
Singapore	21,925	21,998	23,420	20,403	14,871	16,094	12,106	14,166	12,200	11,953
S. Africa, Rep. of	412,869	422,300	400,656	376,588	379,561	425,680	467,603	565,627	676,795	699,329
Switzerland	206,392	248,345	229,227	210,510	220,382	189,115	185,482	200,141	207,130	192,797
United Kingdom	720,291	884,799	942,095	977,717	1,043,113	1,053,881	1,070,185	1,152,123	1,141,982	1,189,830
U.S.A.	31,953	32,719	37,067	38,478	38,795	39,039	41,298	44,827	49,666	65,761
Zimbabwe	28,106	37,555	47,134	39,504	26,469	28,831	31,233	20,493	23,207	24,678
Other countries	570,465	647,307	676,014	724,225	752,443	790,833	876,273	1,022,392	1,136,724	1,224,269
All Countries	5,729,464	6,412,876	6,527,800	6,768,870	6,952,313	7,118,603	7,498,251	7,760,679	8,986,934	9,218,625

¹ Special Administrative Region of China

Fig 6 - Total arrivals and tourist arrivals, 1999 - 2008

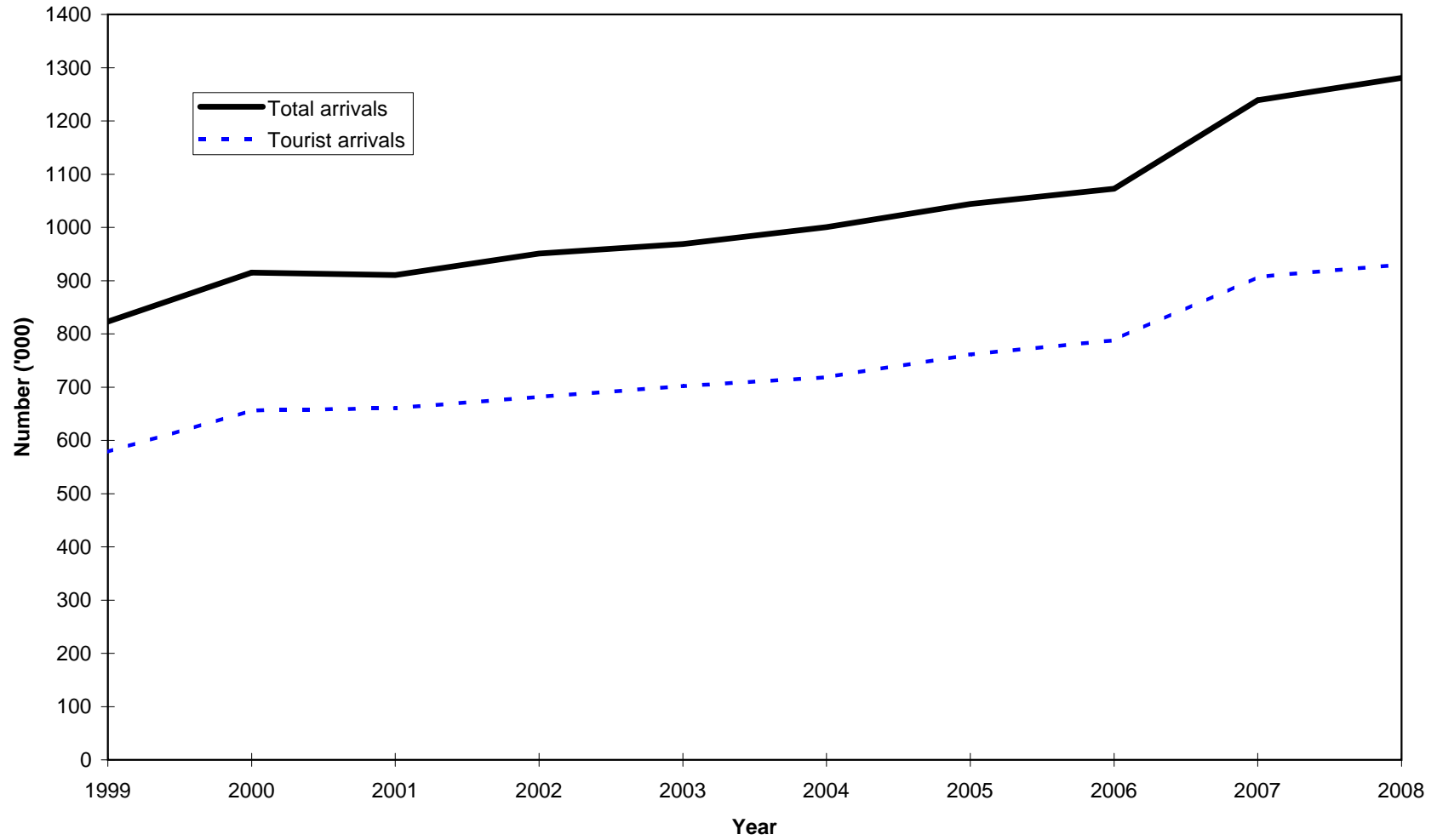


Fig 7 - Tourist nights, 1999 - 2008

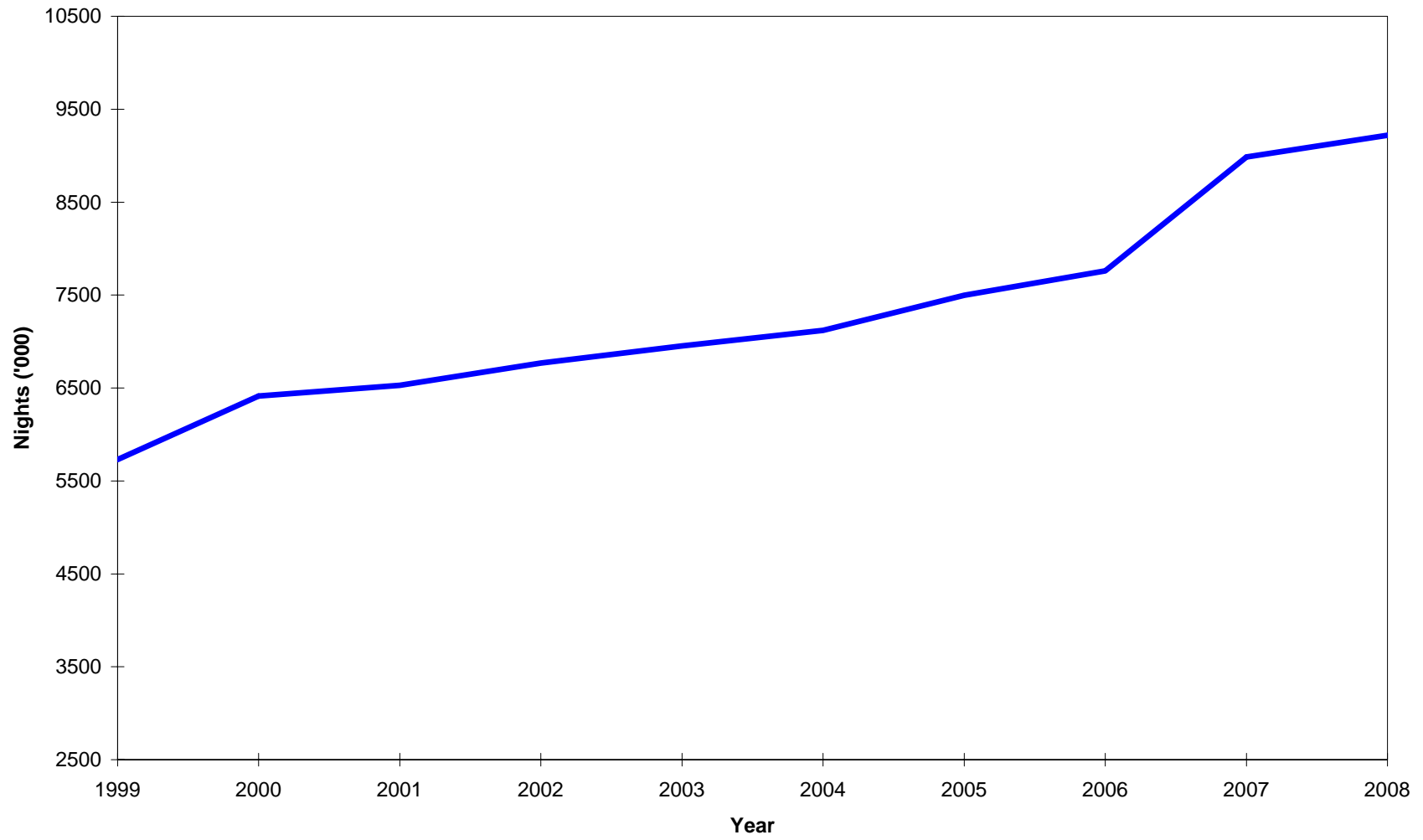


Table 30 - Visitor ¹ arrivals by country of residence and type of passenger, 2006 - 2008

Country of residence	Visitors on holidays			Visitors on business			Visitors in transit			Other visitors			Total visitors		
	2006	2007	2008	2006	2007	2008	2006	2007	2008	2006	2007	2008	2006	2007	2008
Australia	13,315	16,287	15,579	855	885	721	2,810	2,765	3,033	143	222	497	17,123	20,159	19,830
Belgium	8,650	10,122	10,650	298	301	300	108	197	534	216	426	647	9,272	11,046	12,131
France	169,818	223,773	238,717	4,477	5,297	5,776	7,259	9,404	13,143	3,351	5,453	8,203	184,905	243,927	265,839
Germany	55,029	62,307	57,748	599	861	761	1,078	1,299	3,043	956	1,223	1,689	57,662	65,690	63,241
Hong Kong SAR ²	328	368	399	87	108	75	105	178	173	2	8	5	522	662	652
India	30,073	35,610	35,774	5,186	4,770	5,086	1,589	2,070	2,251	1,086	1,174	1,365	37,934	43,624	44,476
Italy	67,884	67,204	62,958	546	672	606	413	764	3,196	730	1,093	1,806	69,573	69,733	68,566
Japan	1,161	1,270	1,320	249	169	183	307	329	259	11	20	34	1,728	1,788	1,796
Kenya	915	1,012	996	505	604	637	136	167	363	144	48	87	1,700	1,831	2,083
Malagasy Rep.	3,653	4,348	5,094	1,057	1,237	1,348	2,820	4,086	5,118	396	305	319	7,926	9,976	11,879
Reunion Island	79,794	85,380	84,464	1,801	1,877	2,151	10,053	12,817	14,077	680	700	798	92,328	100,774	101,490
Seychelles	10,406	12,464	8,821	384	460	528	892	1,238	1,096	610	422	445	12,292	14,584	10,890
Singapore	1,465	1,502	1,286	296	317	292	80	218	150	36	49	78	1,877	2,086	1,806
S. Africa Rep. of	62,737	72,938	73,480	5,587	5,420	6,601	1,902	2,406	2,620	1,037	1,441	2,287	71,263	82,205	84,988
Switzerland	15,588	16,671	15,241	224	230	240	347	771	809	132	215	226	16,291	17,887	16,516
United Kingdom	97,461	100,726	99,113	2,826	2,806	2,783	1,384	1,879	4,817	1,054	2,595	4,717	102,725	108,006	111,430
U.S.A.	4,099	4,400	5,552	756	638	874	404	457	1,129	138	117	182	5,397	5,612	7,737
Zimbabwe	1,259	1,278	1,364	231	251	330	50	83	61	63	75	72	1,603	1,687	1,827
Other & N. Stated	88,985	101,054	102,769	6,547	7,730	8,229	16,229	20,058	26,811	2,770	2,663	5,496	114,531	131,505	143,305
All Countries	712,620	818,714	821,325	32,511	34,633	37,521	47,966	61,186	82,683	13,555	18,249	28,953	806,652	932,782	970,482

¹ Visitors include tourists, cruise ship passengers and non-residents who stay in the country for less than a day, other than those who do not leave the airport

² Special Administrative Region of China

Table 31 - Visitor arrivals by age and sex, 2007 & 2008

Age (years)	2007			2008		
	Both Sexes	Male	Female	Both Sexes	Male	Female
Under 1	5,548	2,768	2,780	5,873	3,027	2,846
1 - 4	31,019	15,592	15,427	31,528	15,827	15,701
5 - 9	41,817	21,179	20,638	41,320	21,108	20,212
10 - 14	40,076	20,263	19,813	40,645	20,555	20,090
15 - 19	31,585	14,672	16,913	32,738	15,283	17,455
20 - 24	44,302	17,291	27,011	46,507	18,097	28,410
25 - 29	102,414	46,339	56,075	105,584	47,925	57,659
30 - 34	109,556	56,442	53,114	109,483	56,054	53,429
35 - 39	103,633	55,723	47,910	104,426	56,434	47,992
40 - 44	96,845	52,794	44,051	99,271	53,875	45,396
45 - 49	85,548	45,969	39,579	88,683	47,977	40,706
50 - 54	74,175	40,349	33,826	76,811	41,815	34,996
55 - 59	62,439	34,157	28,282	63,696	34,533	29,163
60 - 64	45,417	24,660	20,757	50,241	26,882	23,359
65 - 69	26,378	14,807	11,571	30,743	16,806	13,937
70 & over	23,384	12,563	10,821	30,305	16,584	13,721
Not stated	8,646	4,754	3,892	12,628	6,946	5,682
All ages	932,782	480,322	452,460	970,482	499,728	470,754

Table 32 - Visitor arrivals by duration of stay, 2007 & 2008

Duration of stay	2007		2008	
	Number	Percentage	Number	Percentage
Less than 1 day	25,811	2.8	40,026	4.1
1 day	30,973	3.3	38,275	3.9
2 days	20,722	2.2	22,303	2.3
3 days	32,067	3.4	34,706	3.6
4 days	46,233	5.0	49,981	5.2
5 days	44,583	4.8	47,576	4.9
6 days	71,085	7.6	76,628	7.9
7 days	204,253	21.9	214,045	22.1
8 days	45,594	4.9	47,589	4.9
9 days	50,663	5.4	52,789	5.4
10 days	53,671	5.8	55,547	5.7
11 days	27,696	3.0	28,676	3.0
12 days	27,471	2.9	28,662	3.0
13 days	40,673	4.4	42,817	4.4
14 days	79,412	8.5	81,167	8.4
15 days	10,269	1.1	10,746	1.1
16 days	6,897	0.7	7,191	0.7
17 days	5,150	0.6	5,401	0.6
18 days	4,287	0.5	4,463	0.5
19 days	4,293	0.5	4,528	0.5
20 - 24 days	20,598	2.2	21,692	2.2
25 - 29 days	10,227	1.1	11,035	1.1
1 month - under 2 months	15,269	1.6	16,487	1.7
2 months - under 3 months	50,571	5.4	26,352	2.7
3 months and over	4,314	0.5	1,800	0.2
All Countries	932,782	100.0	970,482	100.0

Table 33 - Visitor arrivals by country of residence and duration of stay, 2008

Country of residence	Duration of stay (Nights)												Total
	<1	1 - 2	3 - 4	5 - 6	7 - 8	9 - 10	11 - 12	13 - 14	15 - 19	20 - 24	25 - 29	30+	
Australia	978	3,249	2,630	4,512	1,862	1,705	765	1,906	488	543	244	948	19,830
Belgium	335	516	573	1,096	3,282	1,982	1,037	1,340	598	443	225	704	12,131
France	5,785	12,674	19,565	29,325	84,777	33,960	15,914	28,162	10,832	6,985	4,515	13,345	265,839
Germany	1,757	1,850	2,560	3,482	8,380	7,163	5,632	24,017	2,894	2,514	479	2,513	63,241
Hong Kong SAR ¹	11	131	65	163	31	108	12	37	15	15	8	56	652
India	565	3,174	10,251	14,988	8,491	1,317	584	953	569	681	695	2,208	44,476
Italy	2,134	3,181	1,779	7,108	35,164	2,987	2,049	9,141	1,537	963	246	2,277	68,566
Japan	45	241	417	633	176	80	32	33	22	17	44	56	1,796
Kenya	86	302	616	228	437	104	59	86	27	23	14	101	2,083
Malagasy Rep.	974	3,302	1,526	1,091	1,327	712	561	550	321	323	201	991	11,879
Reunion Island	5,316	10,493	13,902	18,298	29,119	7,876	4,248	3,392	2,606	1,124	652	4,464	101,490
Seychelles	286	1,183	1,978	1,282	2,289	1,049	756	597	436	222	191	621	10,890
Singapore	48	184	396	595	134	122	50	61	46	48	34	88	1,806
S. Africa Rep. of	540	4,032	8,863	10,349	35,391	10,236	3,586	3,519	2,214	1,348	780	4,130	84,988
Switzerland	479	393	679	1,951	2,145	1,553	1,235	5,671	649	836	224	701	16,516
United Kingdom	3,511	3,719	5,076	7,459	20,548	20,393	11,622	26,132	4,757	2,478	803	4,932	111,430
U.S.A.	648	854	2,138	1,225	1,163	516	256	260	199	123	99	256	7,737
Zimbabwe	18	108	257	203	406	203	123	200	109	51	24	125	1,827
Other & not stated	16,510	10,992	11,416	20,216	26,512	16,270	8,817	17,927	4,010	2,955	1,557	6,123	143,305
All Countries	40,026	60,578	84,687	124,204	261,634	108,336	57,338	123,984	32,329	21,692	11,035	44,639	970,482

Table 34 - Visitor arrivals and average length of stay by country of residence, 2008

Country of Residence	Visitor arrivals	Average length of stay (nights)
Australia	19,830	8.6
Belgium	12,131	12.6
France	265,839	10.4
Germany	63,241	12.4
Hong Kong SAR ¹	652	7.0
India	44,476	9.1
Italy	68,566	9.1
Japan	1,796	6.1
Kenya	2,083	7.2
Malagasy Rep.	11,879	9.8
Reunion	101,490	8.2
Seychelles	10,890	9.0
Singapore	1,806	6.8
S. Africa, Rep. of	84,988	8.3
Switzerland	16,516	12.0
United Kingdom	111,430	11.0
U.S.A.	7,737	9.3
Zimbabwe	1,827	13.6
Other & not stated	143,305	9.7
All Countries	970,482	9.9

¹ Special Administrative Region of China

Table 35 - Gross earnings from tourism, 1999 - 2008

Earnings (Rs Mn)	1999	2000	2001	2002	2003	2004	2005	2006	2007	2008
		13,668	14,234	18,166	18,328	19,415	23,448	25,704	31,942	40,687

Source : Bank of Mauritius

Table 36 - Expenditure of tourists by country of residence, 1998 - 2006

Country of residence	Expenditure (Rs Mn)				
	1998	2000	2002	2004	2006
France	3,173.1	3,785.7	5,188.2	6,928.4	7,620.7
Germany	1,195.9	1,447.3	1,852.9	2,084.0	2,684.3
Italy	827.9	918.3	1,215.0	1,389.9	2,920.4
Switzerland	473.3	615.7	662.6	692.2	871.7
United Kingdom	1,680.2	2,708.2	3,269.9	4,216.5	5,533.9
Malagasy Rep.	108.4	90.3	141.5	136.6	124.0
Reunion	855.4	871.4	1,242.5	1,575.8	1,908.4
South Africa, Rep. of	808.8	780.6	778.2	1,363.2	2,387.2
Singapore	62.5	94.5	68.6	50.4	69.2
Other countries	2,578.4	2,875.3	3,355.3	4,679.5	7,078.6
All Countries	11,763.9	14,187.3	17,774.7	23,116.5	31,198.4

Source: Survey of Outgoing Tourists conducted by the Ministry of Tourism, Leisure & External Communications every two years.

Table 37 - Expenditure of tourists by type of expenditure, 1998 - 2006

Type of expenditure	Expenditure (Rs Mn)				
	1998	2000	2002	2004	2006
Accommodation	6,415	7,479	9,155	12,231	16,862
Meals & Beverages	1,818	2,470	3,327	4,203	5,427
Transport	804	941	1,232	1,339	1,902
Entertainment	685	839	986	1,353	1,815
Shopping	1,691	2,002	2,450	3,010	3,954
Other	351	457	624	981	1,238
Total	11,764	14,187	17,775	23,117	31,198

Source: Survey of Outgoing Tourists conducted by the Ministry of Tourism, Leisure & External Communications every two years.

Table 38 - Hotels, rooms and bedplaces, 1999- 2008

Year	No. of hotels	No of rooms	No of bedplaces
1999	92	8,255	16,947
2000	95	8,657	17,776
2001	95	9,024	18,350
2002	95	9,623	19,597
2003	97	9,647	19,727
2004	103	10,640	21,355
2005	99	10,497	21,072
2006	98	10,666	21,403
2007	97	10,857	21,788
2008	102 ¹	11,488	23,095

¹ *Excluding three hotels not operational because of renovation works*

Table 39 - Monthly occupancy rates in large ¹ hotels, 2004 - 2008

Month	2004		2005		2006		2007		2008	
	Room	Bed	Room	Bed	Room	Bed	Room	Bed	Room	Be
January	72	64	77	69	86	77	89	79	82	74
February	68	60	70	63	81	72	86	77	80	72
March	70	62	68	61	63	56	81	72	78	70
April	67	59	59	53	61	55	80	72	75	67
May	62	55	58	52	54	48	74	67	68	61
June	48	43	45	41	47	42	62	56	49	44
July	55	49	56	50	58	52	74	67	62	56
August	62	56	67	60	73	66	77	70	67	60
September	69	62	67	60	71	63	78	70	68	61
October	75	67	73	65	76	68	81	72	73	65
November	78	70	83	74	81	73	85	77	71	63
December	72	64	78	70	81	73	80	72	70	63
Whole Year	66	59	66	59	69	62	78	70	70	62

¹ Large Hotels are well established beach hotels of over 80 rooms

Room Occupancy Rate = $\frac{\text{Total number of room nights rented} \times 100}{\text{Total number of room nights available}}$

Bed Occupancy Rate = $\frac{\text{Total number of bed nights rented} \times 100}{\text{Total number of bed nights available}}$

Table 40 - Monthly occupancy rates in all hotels, 2004 - 2008

Month	2004		2005		2006		2007		2008	
	Room	Bed	Room	Bed	Room	Bed	Room	Bed	Room	Bed
January	69	61	73	66	81	72	86	77	82	73
February	64	57	65	59	76	68	82	73	78	70
March	66	58	64	57	60	54	77	69	77	69
April	63	56	56	50	58	52	75	67	72	65
May	59	52	55	49	51	46	71	64	66	60
June	47	41	45	40	45	41	59	53	49	43
July	52	47	54	49	56	50	71	63	61	55
August	58	52	64	57	69	62	74	67	65	58
September	64	57	63	57	67	60	75	67	65	58
October	70	63	68	61	73	65	78	70	71	64
November	74	66	78	70	78	70	83	74	69	62
December	68	61	74	66	79	71	80	72	69	62
Whole Year	63	56	63	57	66	59	76	68	68	61

Room Occupancy Rate = $\frac{\text{Total number of room nights rented} \times 100}{\text{Total number of room nights available}}$

Bed Occupancy Rate = $\frac{\text{Total number of bed nights rented} \times 100}{\text{Total number of bed nights available}}$

APPENDIX 1

**Welcome to Mauritius / Bienvenue à Maurice
International Disembarkation Card /
Fiche de Débarquement International
(Regulation 23 of the Passports Regulations 1969)**

Flight number / Numéro de vol	<input type="text"/>	Gender / Genre	
		Male	<input type="checkbox"/>
		Female*	<input type="checkbox"/>
Family name / Nom	<input type="text"/>		
First name(s) / Prénoms(s)	<input type="text"/>		
Date and Country of birth <i>Date et pays de naissance</i>	D/J	M	Y/A
Nationality / Nationalité	<input type="text"/>		
Occupation / Profession	<input type="text"/>		
Permanent address <i>Adresse Permanente</i>	<input type="text"/>		
Temporary address in Mauritius <i>Adresse temporaire à Maurice</i>	<input type="text"/>		
Telephone number in Mauritius (if known) <i>Numéro de téléphone à Maurice (s'il y en a)</i>	<input type="text"/>		
Passport number <i>Numéro du Passeport</i>	<input type="text"/>		
Date of issue <i>Date de délivrance</i>	<input type="text"/>		
Issuing State / <i>Autorité ayant délivré le Passeport</i>	<input type="text"/>		

Port of embarkation / *Lieu d'embarquement*

Purpose of visit to Mauritius/*Motif du voyage à Maurice**

Holiday/ <i>Vacances</i>	<input type="checkbox"/>	Visit Relatives/Friends/ <i>Visite à des Parents/Amis</i>	<input type="checkbox"/>
Business/ <i>Affaires</i>	<input type="checkbox"/>	Conference/Official Mission <i>Conférence/Mission officielle</i>	<input type="checkbox"/>
Employment/ <i>Emploi</i>	<input type="checkbox"/>	Education/ <i>Éducation</i>	<input type="checkbox"/>
		Others/ <i>Autres</i>	<input type="checkbox"/>

Intended length of stay in Mauritius/*Durée probable de séjour à Maurice*.....

Accommodation during stay/*Hébergement pendant votre séjour**

Hotel/ <i>Hôtel</i>	<input type="checkbox"/>	Boarding House/ <i>Pensionnat etc</i>	<input type="checkbox"/>
Residence of Relatives/Friends/Parents/Amis	<input type="checkbox"/>		

Please indicate countries in Asia, Africa or South America where you have been during the last six months.
Veillez indiquer les pays en Asie, Afrique ou Amérique du Sud où vous avez été durant les six derniers mois.

.....

DECLARATION / DÉCLARATION

The information I have given is true and complete. I understand that I shall commit an offence if I fail to fill in the card or knowingly give false information.
Je déclare qu'à ma connaissance tous les renseignements que j'ai fournis sont exacts et complets. Je suis conscient que le fait de ne pas remplir cette fiche ou toute fausse déclaration de ma part pourrait entraîner des poursuites pénales.

SIGNATURE..... DATE.....

* Please tick appropriate box, where applicable
Cochez la case appropriée

APPENDIX 2

GOOD BYE / AU REVOIR

Embarkation Card / Fiche D'Embarquement (Regulation 23 of the Passports Regulations 1969)

Flight number/Numéro de vol.....

Family name/Nom.....

First name(s)/Prénom(s).....

Gender/Genre : Male/Female*

Date and Country of birth / Date et Pays de naissance

...../...../.....

Nationality/Nationalité.....

Occupation/Profession.....

Permanent address/Adresse permanente.....

Passport Number/Numéro du Passeport.....

Date of issue/Date de délivrance.....

Issuing State/Autorité ayant délivré le passeport.....

Final destination/Destination finale.....

Date of departure / Date de départ.....

DECLARATION

The information I have given is true and complete. I understand that I shall commit an offence if I fail to fill in the card or knowingly give false information.

Je déclare qu'à ma connaissance tous les renseignements que j'ai fournis sont exacts et complets. Je suis conscient que le fait de ne pas remplir cette fiche ou toute fausse déclaration de ma part pourrait entraîner des poursuites pénales.

Signature..... Date.....

* Delete whichever is inapplicable / Rayez la mention inutile