

INTERNATIONAL TRAVEL AND TOURISM STATISTICS

Vol. 30

2003

" International Travel and Tourism Statistics" is a regular publication of the Central Statistics Office, designed to present in a single report, detailed statistics concerning international travel and tourism relating to Mauritius.

The statistical tables presented in this report have been compiled from the embarkation/disembarkation cards filled in by passengers as they leave or enter the country in the course of their travel.

Statistical data on International Travel and Tourism are constantly updated as more reliable information become available, necessitating minor changes over previous issues of this publication. The figures published in this issue therefore supersede those of all previous issues.

It is hoped that the data herewith assembled will prove useful to the public in general and to policy makers, planners and research workers in particular.

The publication of this report has been made possible with the collaboration of the Passport and Immigration Office and the Ministry of Tourism and Leisure. Their co-operation is herewith gratefully acknowledged.

H. Bundhoo

Director of Statistics

Central Statistics Office
Ministry of Finance and Economic Development
PORT LOUIS
MAURITIUS

CONTENTS

Table	Page
I - POPULATION AND VITAL STATISTICS	
1 - Estimated resident population of Rep. of Mauritius as at 31st December, 2002 & 2003	5
2 - Population growth in intercensal periods - Island of Mauritius, 1851 - 2000	5
3 - Population growth in intercensal periods - Island of Rodrigues, 1851 - 2000	6
4 - Estimated resident population by geographical district and sex - Republic of Mauritius, 2002 & 2003	7
5 - Population and vital statistics - Republic of Mauritius, 1968 - 2003	8
6 - Growth of the resident population and vital statistics - Island of Mauritius, 1994 - 2003	9
7 - Growth of the resident population and vital statistics - Island of Rodrigues, 1994 - 2003	10
II - PASSENGER TRAFFIC	
8 - Passenger traffic by sex, 1983 - 2003	11
9 - Passenger traffic between Islands of Mauritius and Rodrigues, 1983 - 2003	12
10 - Passenger traffic by mode of transport, 1983 - 2003	16
11 - Passenger traffic by month, 2000 - 2003	17
12 - Arrivals by country of original embarkation, 1998 - 2003	18
13 - Departures by country of final destination, 1998 - 2003	19
14 - Monthly passenger traffic by type of passenger, 2003	20
15 - Passenger traffic by type of passenger, 1994 - 2003	21
16 - Total arrivals by age and sex, 2002 & 2003	22
17 - Total departures by age and sex, 2002 & 2003	23
18 - Excess of arrivals over departures by age and sex, 2002 & 2003	24
19 - Arrivals of Mauritian residents by age and sex, 2002 & 2003	25
20 - Departures of Mauritian residents by age and sex, 2002 & 2003	26
21 - Excess of arrivals over departures of Mauritian residents by age and sex, 2002 & 2003	27
22 - Arrivals and departures of Mauritian residents by country of embarkation and disembarkation, 2001 - 2003	28

CONTENTS

Table		Page
	III - TOURISM	
	Definition and notes	29
23 -	Tourist arrivals by mode of transport and tourist nights spent during period, 1987 - 2003	31
24 -	Tourist arrivals by month of arrival, 1994 - 2003	32
25 -	Percentage distribution of tourist arrivals by month of arrival, 1994 - 2003	34
26 -	Tourist arrivals by country of residence and sex, 2003	35
27 -	Tourist arrivals by country of residence , 1994 - 2003	36
28 -	Percentage distribution of tourist arrivals by country of residence, 1994 - 2003	37
29 -	Tourist nights by country of residence, 1994 - 2003	39
30 -	Visitor arrivals by country of residence and type of passenger, 2001 - 2003	42
31 -	Visitor arrivals by age and sex, 2002 & 2003	43
32 -	Visitor arrivals by duration of stay, 2002 & 2003	44
33 -	Visitor arrivals by country of residence and duration of stay, 2003	45
34 -	Visitor arrivals and average length of stay by country of residence , 2003	46
35 -	Gross earnings from tourism, 1994 - 2003	47
36 -	Expenditure of tourists by country of residence, 1994 - 2002	47
37 -	Expenditure of tourists by type of expenditure, 1994 - 2002	48
38 -	Hotels, rooms and bedplaces, 1994- 2003	49
39 -	Monthly occupancy rates in large hotels, 1999 - 2003	50
40 -	Monthly occupancy rates in all hotels, 1999 - 2003	51

CONTENTS

	Page
<u>ILLUSTRATIONS</u>	
Fig. 1 - Passenger Traffic: Total arrivals by sex, 1987 - 2003	13
2 - Passenger Traffic: Total departures by sex, 1987 - 2003	14
3 - Passenger Traffic: Total arrivals and total departures, 1994 - 2003	15
4 - Tourist arrivals by month, 1999 - 2003	33
5 - Percentage distribution of tourist arrivals by country of residence, 2003	38
6 - Total arrivals and tourist arrivals, 1994 - 2003	40
7 - Tourist nights, 1994 - 2003	41

The following symbol is used throughout :-

" - " for Nil

Appendix : International embarkation / disembarkation card

Contact person:

Mr. C.Ramnath
Statistician
Ministry of Tourism & Leisure
Ken Lee Tower
Port Louis
Tel: 210-9832
Fax: 210-9851

I - POPULATION AND VITAL STATISTICS

**Table 1 - Estimated resident population of Republic of Mauritius
as at 31st December, 2002 & 2003 ¹**

Year	Island	Both sexes	Male	Female	Area (sq km)	Density (persons/km ²)
2002	Mauritius	1,180,189	584,316	595,873	1,864.8	633
	Rodrigues	36,303	17,981	18,322	104.0	349
	Other	289	193	96	71.2	4
	Republic of Mauritius	1,216,781	602,490	614,291	2,040.0	596
2003	Mauritius	1,191,336	589,400	601,936	1,864.8	639
	Rodrigues	36,503	18,089	18,414	104.0	351
	Other	289	193	96	71.2	4
	Republic of Mauritius	1,228,128	607,682	620,446	2,040.0	602

¹ based on the 2000 population census data adjusted for underenumeration of young children.

Table 2 - Population growth in intercensal periods - Island of Mauritius, 1851 - 2000

Census Date	Population enumerated at census			Intercensal increase	Average annual rate of increase(%)
	Both sexes	Male	Female		
20 Nov. 1851	180,823	119,341	61,482	22,361	2.55
8 Apr. 1861	310,050	202,961	107,089	129,227	5.91
11 Apr. 1871	316,042	193,575	122,467	5,992	0.19
4 Apr. 1881	359,874	208,655	151,219	43,832	1.31
6 Mar. 1891	370,588	206,038	164,550	10,714	0.29
1 Apr. 1901	371,023	199,552	171,471	435	0.01
31 Mar. 1911	368,791	194,095	174,696	-2,232	-0.06
21 May. 1921	376,485	194,108	182,377	7,694	0.21
26 Apr. 1931	393,238	200,609	192,629	16,753	0.44
11 Jun. 1944	419,185	210,326	208,859	25,947	0.49
29 Jun. 1952	501,415	252,032	249,383	82,230	2.26
30 Jun. 1962 ¹	681,619	342,306	339,313	180,204	3.12
30 Jun. 1972 ¹	826,199	413,580	412,619	144,580	1.94
2 Jul. 1983 ¹	966,863	481,368	485,495	140,664	1.44
1 Jul. 1990 ²	1,022,456	510,676	511,780	55,593	0.80
1 Jul. 2000 ²	1,143,069	566,056	577,013	120,613	1.12

¹ " De facto " population

² " De jure " population

Table 3 - Population growth in intercensal periods - Island of Rodrigues, 1851 - 2000

Census Date	Population enumerated at census			Inter-censal increase	Average annual rate of increase (%)
	Both sexes	Male	Female		
20 Nov. 1851	495	327	168	-	-
8 Apr. 1861	693	464	229	198	3.65
11 Apr. 1871	1,108	693	415	415	4.80
4 Apr. 1881	1,431	812	619	323	2.59
6 Mar. 1891	2,068	1,154	914	637	3.75
1 Apr. 1901	3,162	1,685	1,477	1,094	4.34
31 Mar. 1911	4,829	2,523	2,306	1,667	4.33
21 May. 1921	6,584	3,300	3,284	1,755	3.15
26 Apr. 1931	8,202	4,033	4,169	1,618	2.22
11 Jun. 1944	11,885	5,740	6,145	3,683	2.89
29 Jun. 1952	13,333	5,947	7,386	1,448	1.45
30 Jun. 1962	18,335	9,062	9,273	5,002	3.24
30 Jun. 1972 ¹	24,769	12,270	12,499	6,434	3.05
2 Jul. 1983 ¹	33,082	16,552	16,530	8,313	2.67
1 Jul. 1990 ²	34,204	17,084	17,120	1,122	0.48
1 Jul. 2000 ²	35,779	17,700	18,079	1,575	0.45

¹ " De facto " population

² " De jure " population

Table 4 - Estimated resident population by geographical district and sex - Republic of Mauritius, 2002 & 2003
(End of year estimates) ¹

Geographical district	Area (km ²)	31st December 2002			31st December 2003		
		Both sexes	Male	Female	Both sexes	Male	Female
Port Louis	42.7	129,973	64,438	65,535	130,300	64,566	65,734
Pamplemousses	178.7	127,243	63,015	64,228	128,832	63,784	65,048
Riviere du Rempart	147.6	102,453	50,846	51,607	103,580	51,392	52,188
Flacq	297.9	131,612	65,895	65,717	133,065	66,584	66,481
Grand Port	260.3	110,036	54,628	55,408	110,983	55,065	55,918
Savanne	244.8	68,045	33,700	34,345	68,481	33,920	34,561
Plaines Wilhems	203.3	368,439	180,854	187,585	371,415	182,053	189,362
Moka	230.5	77,589	38,328	39,261	78,260	38,644	39,616
Black River	259.0	64,799	32,612	32,187	66,420	33,392	33,028
Island of Mauritius	1,864.8	1,180,189	584,316	595,873	1,191,336	589,400	601,936
Island of Rodrigues	104.0	36,303	17,981	18,322	36,503	18,089	18,414
Other ²	71.2	289	193	96	289	193	96
Republic of Mauritius	2,040.0	1,216,781	602,490	614,291	1,228,128	607,682	620,446

¹ based on the 2000 population census data adjusted for underenumeration of young children. Internal migration within districts is assumed to be the same as the net annual internal migration during 1995 - 2000 (obtained from the 2000 census)

² Other includes Agalega and St Brandon.

Table 5 - Population and vital statistics - Republic of Mauritius, 1968 - 2003

Year	Population at mid-year ¹	Live births	Deaths	Infant deaths	Still births	Civil marriages ²	Divorces ³
1968	803,447	25,409	7,382	1,790	1,140	4,119	120
1969	815,327	22,621	6,733	1,628	988	4,055	133
1970	828,922	22,766	6,520	1,312	892	4,651	126
1971	840,602	21,926	6,436	1,146	882	4,478	179
1972	850,968	21,495	6,753	1,399	749	5,214	136
1973	869,334	20,015	6,779	1,277	701	5,679	147
1974	880,650	24,002	6,424	1,113	879	6,905	117
1975	892,045	22,557	7,201	1,130	932	7,069	110
1976	903,610	23,274	6,968	936	808	8,451	98
1977	918,005	23,859	7,154	1,087	742	8,632	197
1978	933,499	25,278	6,596	876	680	10,741	255
1979	949,888	26,163	6,871	891	668	9,327	265
1980	966,039	26,294	6,919	864	662	8,894	351
1981	980,462	24,967	6,653	884	590	8,406	305
1982	992,521	22,459	6,584	682	458	10,768	312
1983	1,001,691	21,073	6,532	570	403	10,255	361
1984	1,012,221	20,332	6,646	505	404	10,865	471
1985	1,020,528	19,376	6,906	487	383	11,245	460
1986	1,028,360	19,170	6,805	524	365	10,556	616
1987	1,036,082	20,033	6,753	504	363	11,392	842
1988	1,043,239	20,941	6,879	471	374	11,453	740
1989	1,051,260	21,822	7,149	498	415	11,197	711
1990	1,058,775	22,602	7,031	462	365	11,425	549
1991	1,070,266	22,197	7,027	413	400	11,295	707
1992	1,084,441	22,902	7,023	426	291	11,408	781
1993	1,097,374	22,329	7,433	438	337	11,576	762
1994	1,112,846	21,795	7,402	394	274	11,414	733
1995	1,122,457	20,549	7,465	404	299	10,624	801
1996	1,133,996	20,763	7,670	459	266	10,700	792
1997	1,148,284	20,012	7,986	406	257	10,887	891
1998	1,160,421	19,434	7,839	376	227	10,898	1,012
1999	1,175,267	20,311	7,944	396	226	11,295	1,150
2000	1,186,873	20,205	7,982	322	266	10,963	1,191
2001	1,199,881	19,696	7,983	282	244	10,635	1,512
2002	1,210,196	19,983	8,310	297	203	10,484	1,294
2003	1,222,811	19,343	8,520	250	220	10,812	1,190

¹ Figures for 1968 - 1971 have been revised in the light of the final 1972 population census data. Figures for 1973 - 1982, 1984 - 1989 and 1991 - 1999 have been respectively revised in the light of the 1983, 1990 and 2000 population census data adjusted for underenumeration of young children.

² The increase in the number of civil marriages as from 1982 is due largely to improved registration of religious marriages with the coming into force of a new Civil Status Act as from January, 1982.

³ Source: Judicial Department

Table 6 - Growth of the resident population and vital statistics - Island of Mauritius, 1994 - 2003

Year	Population at beginning of year	Natural movement			Net migration	Total increase	% change during the year due to:			Population at end of year
		Live births	Deaths	Natural increase			Natural increase	Migration	Total	
1994	1,070,679	21,050	7,234	13,816	-1,912	11,904	1.29	-0.18	1.11	1,082,583
1995	1,082,583	19,824	7,298	12,526	-1,069	11,457	1.16	-0.10	1.06	1,094,040
1996	1,094,040	20,049	7,508	12,541	307	12,848	1.15	+0.03	1.18	1,106,888
1997	1,106,888	19,331	7,798	11,533	1,663	13,196	1.04	+0.15	1.19	1,120,084
1998	1,120,084	18,744	7,651	11,093	314	11,407	0.99	+0.03	1.02	1,131,491
1999	1,131,491	19,543	7,791	11,752	1,478	13,230	1.04	+0.13	1.17	1,144,721
2000	1,144,721	19,398	7,806	11,592	977	12,569	1.01	+0.09	1.10	1,157,290
2001	1,157,290	18,884	7,761	11,123	890	12,013	0.96	+0.08	1.04	1,169,303
2002	1,169,303	19,169	8,081	11,088	-202	10,886	0.95	-0.02	0.93	1,180,189
2003	1,180,189	18,518	8,310	10,208	939	11,147	0.86	+0.08	0.94	1,191,336

Table 7 - Growth of the resident population and vital statistics - Island of Rodrigues, 1994 - 2003

Year	Population at beginning of year	Natural movement			Net migration	Total increase	% change during the year due to:			Population at end of year
		Live births	Deaths	Natural increase			Natural increase	Migration	Total	
1994	34,555	745	168	577	-425	152	1.67	-1.23	0.44	34,707
1995	34,707	725	167	558	-397	161	1.61	-1.14	0.47	34,868
1996	34,868	714	162	552	-348	204	1.58	-1.00	0.58	35,072
1997	35,072	681	188	493	-305	188	1.41	-0.87	0.54	35,260
1998	35,260	690	188	502	-351	151	1.42	-1.00	0.42	35,411
1999	35,411	768	153	615	-386	229	1.74	-1.09	0.65	35,640
2000	35,640	807	176	631	-386	245	1.77	-1.08	0.69	35,885
2001	35,885	812	222	590	-390	200	1.64	-1.09	0.55	36,085
2002	36,085	814	229	585	-367	218	1.62	-1.02	0.60	36,303
2003	36,303	825	210	615	-415	200	1.69	-1.14	0.55	36,503

II - PASSENGER TRAFFIC

Table 8 - Passenger traffic ¹ by sex, 1983 - 2003

Period	Arrivals			Departures			Arrivals minus Departures
	Both Sexes	Male	Female	Both Sexes	Male	Female	
1983	177,665	101,125	76,540	182,005	102,785	79,220	-4,340
1984	198,461	113,201	85,260	202,983	114,203	88,780	-4,522
1985	212,860	120,940	91,920	215,000	119,780	95,220	-2,140
1986	235,640	129,600	106,040	236,850	132,740	104,110	-1,210
1987	293,160	161,030	132,130	294,970	160,670	134,300	-1,810
1988	343,940	186,800	157,140	341,330	187,580	153,750	2,610
1989	379,080	208,860	170,220	385,050	213,230	171,820	-5,970
1990	418,200	232,050	186,150	422,230	233,280	188,950	-4,030
1991	426,680	239,630	187,050	425,620	236,190	189,430	1,060
1992	475,920	262,660	213,260	472,010	258,320	213,690	3,910
1993	523,740	280,910	242,830	520,400	281,100	239,300	3,340
1994	558,136	295,259	262,877	557,575	295,500	262,075	561
1995	579,993	304,705	275,288	578,481	304,245	274,236	1,512
1996	672,070	350,561	321,509	663,501	345,892	317,609	8,569
1997	743,291	378,593	364,698	737,523	379,841	357,682	5,768
1998	778,574	367,914	410,660	775,998	382,567	393,431	2,576
1999	823,085	434,667	388,418	809,233	428,234	380,999	13,852
2000	915,203	480,879	434,324	895,569	469,902	425,667	19,634
2001	910,489	477,984	432,505	903,073	473,096	429,977	7,416
2002	951,090	498,177	452,913	942,876	494,212	448,664	8,214
2003	968,906	510,212	458,694	947,774	497,011	450,763	21,132

¹ Includes traffic between Island of Mauritius and Rodrigues. As from 1994, figures of the passenger traffic also include cruise excursionists, i.e passengers and crews of cruise ships which numbered 5725, 12460, 13261, 12806, 10910, 11096, 5511, 19613 ² and 9965 for 1995, 1996, 1997, 1998, 1999, 2000, 2001, 2002 and 2003 respectively, in accordance with the recommendations of the World Tourism Organisation.

² Revised

Table 9 - Passenger traffic ¹ between Islands of Mauritius and Rodrigues, 1983 - 2003

Period	Arrivals in Rodrigues			Departures from Rodrigues			Arrivals minus Departures
	Both Sexes	Male	Female	Both Sexes	Male	Female	
1983	6,556	4,182	2,374	6,520	4,182	2,338	+36
1984	7,471	4,762	2,709	7,172	4,452	2,720	+299
1985	7,277	4,725	2,552	7,286	4,603	2,683	-9
1986	7,975	5,103	2,872	7,906	4,976	2,930	+69
1987	8,255	5,135	3,120	8,337	5,135	3,202	-82
1988	9,146	5,903	3,243	10,128	6,330	3,798	-982
1989	11,501	7,234	4,267	11,092	6,831	4,261	+409
1990	13,110	8,023	5,087	13,492	7,949	5,543	-382
1991	15,125	9,594	5,531	16,178	10,117	6,061	-1,053
1992	19,064	11,629	7,435	19,865	11,887	7,978	-801
1993	22,819	13,973	8,846	23,476	14,094	9,382	-657
1994	23,292	14,174	9,118	23,636	14,177	9,459	-344
1995	24,150	14,532	9,618	24,820	14,603	10,217	-670
1996	29,129	16,947	12,182	29,370	16,861	12,509	-241
1997	37,765	22,120	15,645	38,014	22,096	15,918	-249
1998	40,648	24,181	16,467	40,553	23,072	17,481	+95
1999	45,117	28,384	16,733	45,154	26,961	18,193	-37
2000	49,530	28,280	21,250	49,981	29,436	20,545	-451
2001	52,777	30,320	22,457	52,307	30,760	21,547	+470
2002 ²	60,355	34,647	25,708	59,984	34,004	25,980	+371
2003	63,584	37,164	26,420	63,916	37,658	26,258	-332

¹ Includes residents and non - residents

² Revised

Fig 1 - Passenger traffic: Total arrivals by sex, 1987- 2003

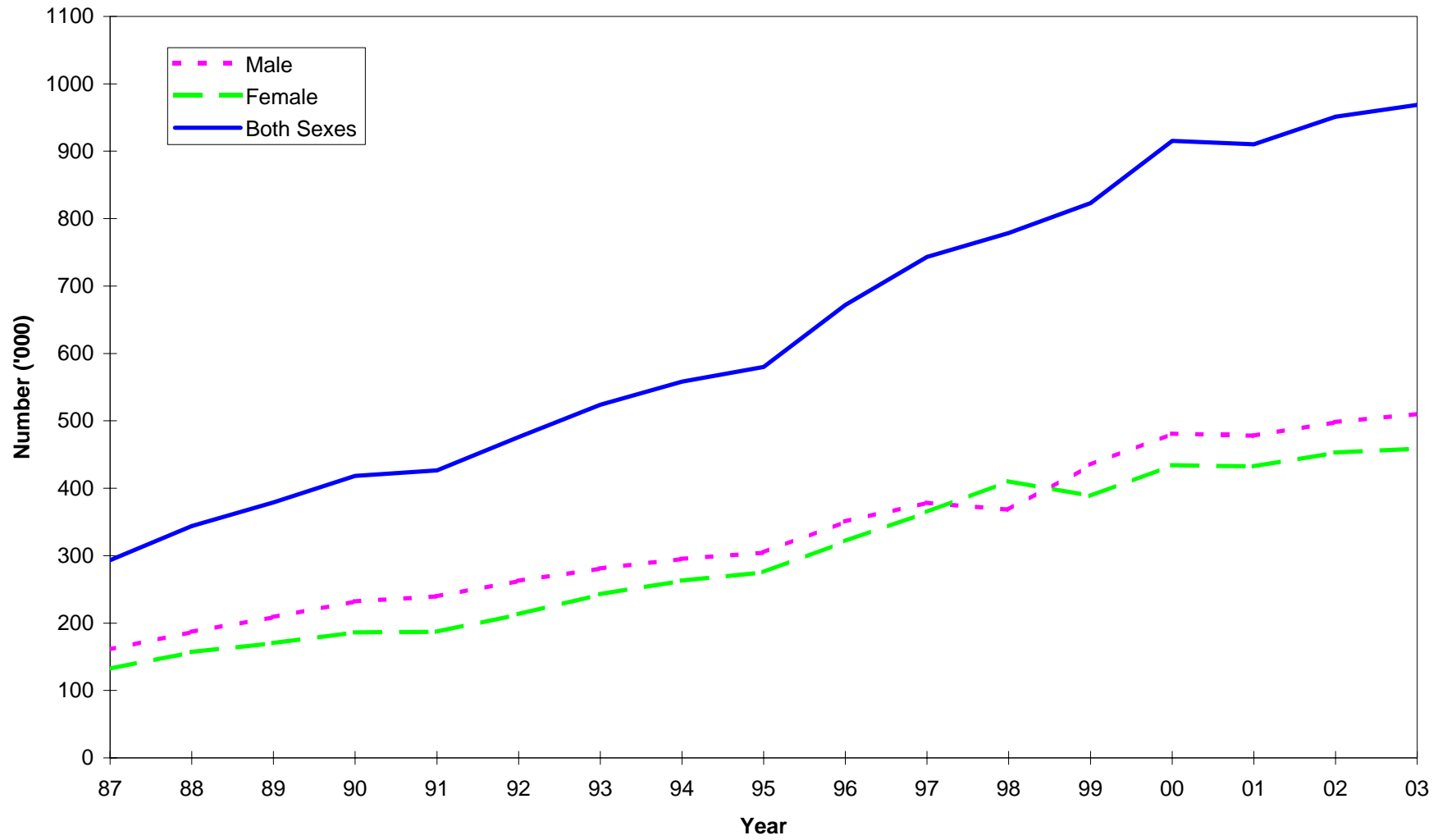


Fig 2 - Passenger traffic: Total departures by sex, 1987 - 2003

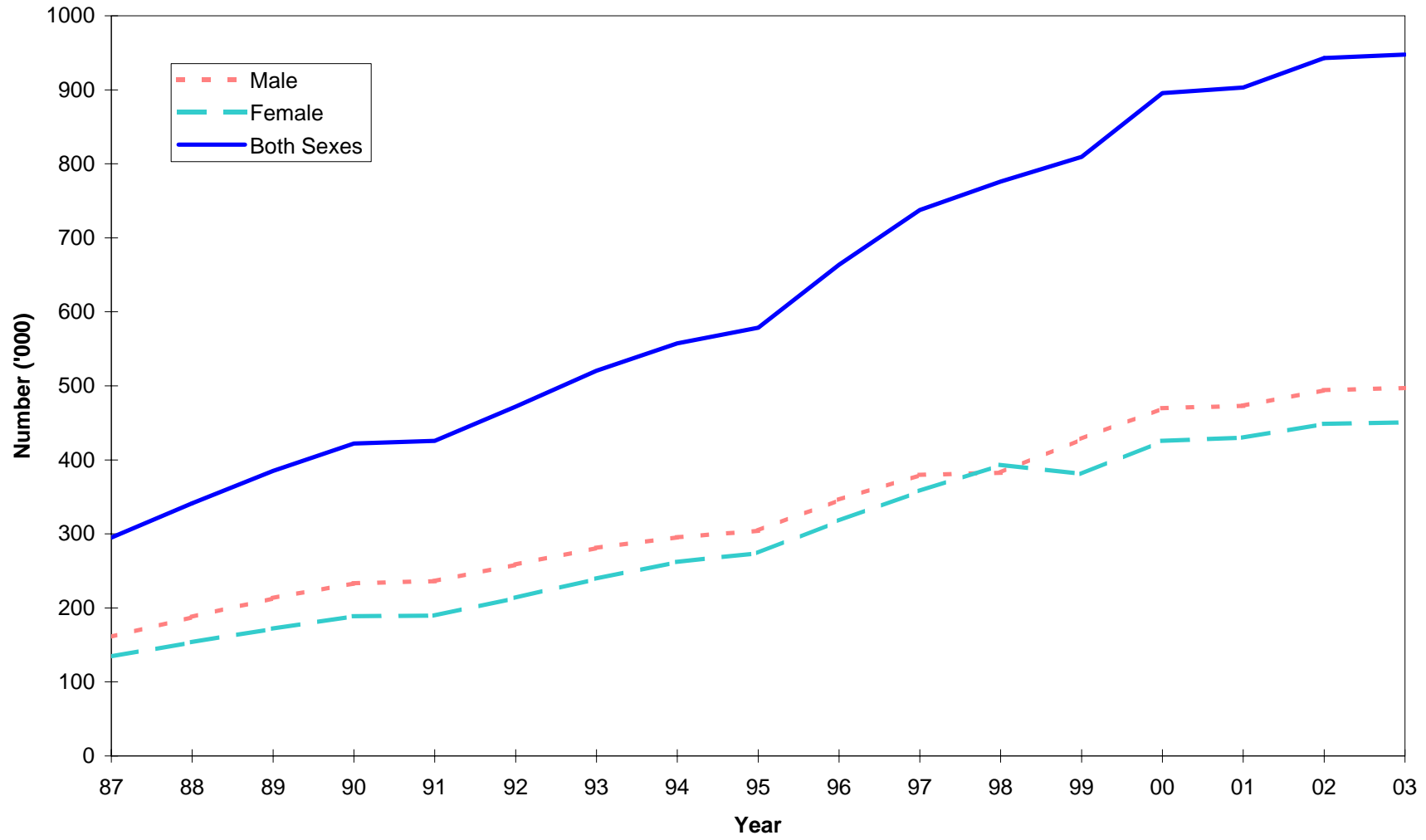


Fig. 3 - Passenger traffic : Total arrivals and total departures, 1994 - 2003

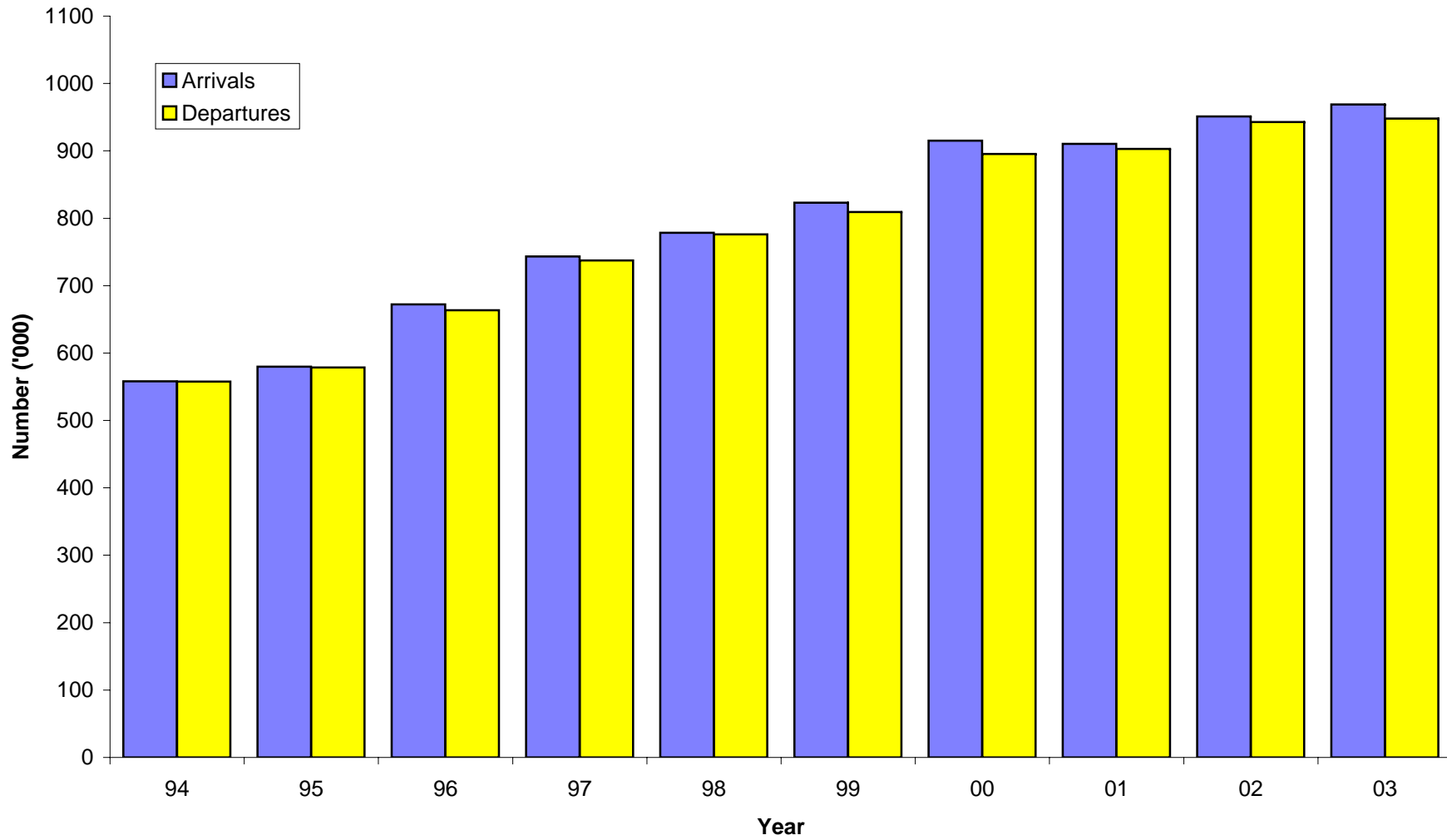


Table 10 - Passenger traffic ¹ by mode of transport, 1983 - 2003

Period	Arrivals			Departures			Arrivals minus Departures
	Total	By sea	By air	Total	By sea	By air	
1983	177,665	4,915	172,750	182,005	4,755	177,250	-4,340
1984	198,461	5,541	192,920	202,983	5,553	197,430	-4,522
1985	212,860	4,450	208,410	215,000	5,020	209,980	-2,140
1986	235,640	4,510	231,130	236,850	4,300	232,550	-1,210
1987	293,160	4,870	288,290	294,970	5,230	289,740	-1,810
1988	343,940	5,260	338,680	341,330	4,340	336,990	+2,610
1989	379,080	3,190	375,890	385,050	3,620	381,430	-5,970
1990	418,200	3,820	414,380	422,230	3,820	418,410	-4,030
1991	426,680	7,290	419,390	425,620	5,820	419,800	+1,060
1992	475,920	9,260	466,660	472,010	6,780	465,230	+3,910
1993	523,740	13,530	510,210	520,400	11,890	508,510	+3,340
1994	558,136	19,461	538,675	557,575	17,663	539,912	+561
1995	579,993	18,854	561,139	578,481	17,895	560,586	+1,512
1996	672,070	27,308	644,762	663,501	24,794	638,707	+8,569
1997	743,291	29,756	713,535	737,523	27,390	710,133	+5,768
1998	778,574	43,706	734,868	775,998	40,809	735,189	+2,576
1999	823,085	40,499	782,586	809,233	39,230	770,003	+13,852
2000	915,203	34,262	880,941	895,569	33,368	862,201	+19,634
2001	910,489	27,847	882,642	903,073	26,313	876,760	+7,416
2002	951,090	43,890	907,200	942,876	42,630	900,246	+8,214
2003	968,906	31,296	937,610	947,774	28,936	918,838	+21,132
2003:1st Qr.	248,135	14,232	233,903	263,994	13,902	250,092	-15,859
2nd Qr.	209,681	4,237	205,444	206,571	3,796	202,775	+3,110
3rd Qr.	237,415	5,959	231,456	233,932	5,531	228,401	+3,483
4th Qr.	273,675	6,868	266,807	243,277	5,707	237,570	+30,398

¹ Includes traffic between Island of Mauritius and Rodrigues. As from 1994, figures of the passenger traffic also include cruise excursionists, i.e passengers and crews of cruise ships which numbered 5725, 12460, 13261, 12806, 10910, 11096, 5511, 19613 ² and 9965 for 1995, 1996, 1997, 1998, 1999, 2000, 2001, 2002 and 2003 respectively, in accordance with the recommendations of the World Tourism Organisation.

² Revised

Table 11 - Passenger traffic ¹ by month, 2000 - 2003

Month	Arrivals				Departures				Excess of arrivals over departures			
	2000	2001	2002	2003	2000	2001	2002	2003	2000	2001	2002	2003
January	86,541	88,439	87,565	89,661	92,263	101,313	102,805	107,010	-5,722	-12,874	-15,240	-17,349
February	69,730	65,803	66,955	70,202	71,402	65,803	66,570	66,220	-1,672	-	+385	+3,982
March	74,775	77,230	93,577	88,272	74,627	78,365	90,404	90,764	+148	-1,135	+3,173	-2,492
April	78,976	74,420	68,846	75,690	76,971	72,953	74,424	70,755	+2,005	+1,467	-5,578	+4,935
May	69,435	70,014	72,054	72,888	68,409	74,003	74,316	76,818	+1,026	-3,989	-2,262	-3,930
June	59,569	57,970	58,557	61,103	60,682	55,188	54,771	58,998	-1,113	+2,782	+3,786	+2,105
July	76,217	81,692	80,392	83,122	62,511	67,941	67,111	68,222	+13,706	+13,751	+13,281	+14,900
August	86,893	78,614	80,216	83,351	95,070	89,139	91,723	94,913	-8,177	-10,525	-11,507	-11,562
September	65,227	67,520	69,633	70,942	67,811	70,012	70,008	70,797	-2,584	-2,492	-375	+145
October	79,592	77,685	87,080	85,732	69,948	74,239	83,068	81,054	+9,644	+3,446	+4,012	+4,678
November	79,014	77,644	84,799	84,359	83,201	75,425	82,260	76,295	-4,187	+2,219	+2,539	+8,064
December	89,234	93,458	101,416	103,584	72,674	78,692	85,416	85,928	+16,560	+14,766	+16,000	+17,656
Whole Year	915,203	910,489	951,090	968,906	895,569	903,073	942,876	947,774	+19,634	+7,416	+8,214	+21,132

¹ Includes traffic between Island of Mauritius and Rodrigues. Figures of the passenger traffic also include cruise excursionists, i.e passengers and crews of cruise ships which numbered 11096, 5511, 19613 ² and 9965 for 2000, 2001, 2002 and 2003 respectively, in accordance with the recommendations of the World Tourism Organisation.

² Revised

Table 12 - Arrivals ¹ by country of original embarkation, 1998 - 2003

Country of original embarkation	1998	1999	2000	2001	2002	2003
Australia	11,831	10,929	12,617	12,164	11,586	13,350
Belgium	5,617	8,011	6,479	8,547	8,719	8,485
France	126,896	149,974	175,482	176,775	185,142	183,710
Germany	35,551	39,577	47,117	46,930	47,958	49,466
Hong Kong SAR ²	7,181	7,099	11,429	15,246	19,081	10,902
India	28,565	32,345	35,484	38,682	38,388	45,750
Italy	33,619	34,243	34,570	33,910	33,239	34,673
Japan	459	425	440	185	297	191
Kenya	13,470	6,234	5,456	5,402	5,318	6,109
Malagasy Rep.	15,931	16,703	17,606	17,421	14,898	20,848
Reunion Island	214,869	210,900	215,409	219,681	218,488	215,700
Rodrigues	40,553	45,154	49,981	52,307	59,984	63,916
Seychelles	20,703	16,692	18,821	18,766	22,151	17,585
Singapore	22,374	26,135	27,429	24,577	19,804	14,019
S. Africa, Rep. of	75,451	74,343	79,404	82,262	84,713	88,816
Switzerland	18,132	18,262	26,023	20,479	16,753	17,556
United Kingdom	55,149	73,649	92,572	94,591	96,463	103,630
Zambia	73	62	123	49	37	190
Zimbabwe	9,791	8,137	6,263	5,251	4,042	2,469
Other & not stated	42,359	44,211	52,498	37,264	64,029	71,541
All Countries	778,574	823,085	915,203	910,489	951,090	968,906

¹ As from 1994, figures of the passenger traffic include cruise excursionists, i.e passengers and crews of cruise ships which numbered 12806, 10910, 11096, 5511, 19613 ³ and 9965 for 1998, 1999, 2000, 2001, 2002 and 2003 respectively, in accordance with the recommendations of the World Tourism Organisation.

² Special Administrative Region of China

³ Revised

Table 13 - Departures ¹ by country of final destination, 1998 - 2003

Country of final destination	1998	1999	2000	2001	2002	2003
Australia	10,674	9,900	11,770	12,336	11,063	12,698
Belgium	3,475	5,765	7,399	4,211	5,163	7,546
France	121,774	160,944	184,158	196,939	202,902	197,413
Germany	35,602	37,802	47,306	46,918	52,460	50,370
Hong Kong SAR ²	6,248	6,323	10,088	14,403	16,025	9,010
India	26,929	29,291	34,702	37,222	36,499	42,508
Italy	30,670	31,195	32,835	31,665	29,479	31,958
Japan	249	234	149	65	22	111
Kenya	16,464	6,449	3,904	1,985	4,103	5,167
Malagasy Rep.	16,343	16,328	18,966	18,478	15,302	20,700
Reunion Island	231,879	209,228	209,273	208,389	210,864	204,666
Rodrigues	40,648	45,117	49,530	52,777	60,355	63,584
Seychelles	19,770	17,066	17,418	17,494	21,411	16,325
Singapore	22,705	26,617	27,664	21,541	23,382	15,392
S. Africa, Rep. of	74,756	71,421	76,886	77,848	80,942	81,848
Switzerland	18,048	17,289	23,668	21,402	18,741	17,337
United Kingdom	57,262	77,252	93,451	104,135	98,989	103,328
Zambia	58	12	37	-	1	111
Zimbabwe	7,848	5,882	5,158	4,777	4,189	2,267
Other & not stated	34,596	35,118	41,207	30,488	50,984	65,435
All Countries	775,998	809,233	895,569	903,073	942,876	947,774

¹ As from 1994, figures of the passenger traffic include cruise excursionists, i.e passengers and crews of cruise ships which number 12806, 10910, 11096, 5571, 20288 ³ and 9748 for 1998, 1999, 2000, 2001 2002 and 2003 respectively, in accordance with the recommendations of the World Tourism Organisation.

² Special Administrative Region of china

³ Revised

Table 14 - Monthly passenger traffic ¹ by type of passenger, 2003

Type of passenger	Jan	Feb	Mar	Apr	May	Jun	Jul	Aug	Sep	Oct	Nov	Dec	Whole Year
Arrivals													
Visitors ²	67,023	54,648	70,681	58,166	55,591	42,652	59,236	57,974	51,148	65,968	62,867	75,394	721,348
- On holiday	57,895	48,598	56,793	52,428	49,546	37,457	53,507	50,801	45,058	58,654	56,191	69,397	636,325
- On business	2,220	2,251	2,931	2,665	2,855	2,603	2,517	2,118	2,779	2,765	3,228	2,223	31,155
- In transit	5,842	3,142	10,194	2,114	2,226	1,865	2,238	2,940	2,650	3,685	2,761	3,079	42,736
- Other and not stated	1,066	657	763	959	964	727	974	2,115	661	864	687	695	11,132
Mauritian residents	20,595	13,952	15,596	16,166	15,817	17,014	22,399	23,343	17,810	18,097	19,810	26,689	227,288
Other ³	2,043	1,602	1,995	1,358	1,480	1,437	1,487	2,034	1,984	1,667	1,682	1,501	20,270
Total arrivals	89,661	70,202	88,272	75,690	72,888	61,103	83,122	83,351	70,942	85,732	84,359	103,584	968,906
Departures													
Visitors	84,187	51,149	73,891	53,728	60,579	42,269	47,592	67,227	48,108	62,072	56,326	58,721	705,849
Mauritian residents	21,550	14,109	15,458	15,770	15,112	15,132	18,616	26,078	21,170	17,638	18,933	25,205	224,771
Other	1,273	962	1,415	1,257	1,127	1,597	2,014	1,608	1,519	1,344	1,036	2,002	17,154
Total departures	107,010	66,220	90,764	70,755	76,818	58,998	68,222	94,913	70,797	81,054	76,295	85,928	947,774

¹ Including traffic between Island of Mauritius and Rodrigues

² Including non-residents who left the airport but stayed in the country for less than a day.

³ Including contract workers

Table 15 - Passenger traffic ¹ by type of passenger, 1994 - 2003

Type of passenger	1994	1995	1996	1997	1998	1999	2000	2001	2002	2003
Arrivals										
Visitors ²	416,099	437,175	509,303	557,996	578,930	599,717	678,472	674,619	709,305	721,348
- On holiday	375,678	395,414	450,936	494,563	512,746	530,792	602,606	606,545	620,124	636,325
- On business	13,624	17,827	20,692	23,424	24,621	26,942	27,004	26,523	28,558	31,155
- In transit	21,123	20,530	33,129	34,384	35,479	34,703	38,984	33,263	51,747	42,736
- Other & not stated	5,674	3,404	4,546	5,625	6,084	7,280	9,878	8,288	8,876	11,132
Mauritian residents	130,483	130,490	149,777	170,977	183,218	206,806	216,680	215,803	220,949	227,288
Other ³	11,554	12,328	12,990	14,318	16,426	16,562	20,051	20,067	20,836	20,270
Total arrivals	558,136	579,993	672,070	743,291	778,574	823,085	915,203	910,489	951,090	968,906
Departures										
Visitors	424,947	437,166	503,817	557,012	580,863	596,953	667,212	672,388	704,548	705,849
Mauritian residents	131,715	131,296	149,544	169,375	183,355	199,245	212,879	213,778	221,889	224,771
Other	913	10,019	10,140	11,136	11,780	13,035	15,478	16,907	16,439	17,154
Total departures	557,575	578,481	663,501	737,523	775,998	809,233	895,569	903,073	942,876	947,774

¹ Including traffic between Island of Mauritius and Rodrigues. As from 1994, figures of the passenger traffic also include cruise excursionists, i.e passengers and crews of cruise ships which numbered 5935, 5725, 12460, 13261, 12806, 10910, 11096, 5511, 19613 ⁴ and 9965 for 1994, 1995, 1996, 1997, 1998, 1999, 2000, 2001, 2002 and 2003 respectively, in accordance with the recommendations of the World Tourism Organisation.

² Including non-residents who left the airport but stayed in the country for less than a day.

³ Including contract workers.

⁴ Revised

Table 16 - Total arrivals ¹ by age and sex, 2002 & 2003

Age (years)	2002			2003			January - June 2003			July - December 2003		
	Both Sexes	Male	Female	Both Sexes	Male	Female	Both Sexes	Male	Female	Both Sexes	Male	Female
Under 1	4,692	2,389	2,303	4,537	2,322	2,215	2,184	1,154	1,030	2,353	1,168	1,185
1 - 4	26,659	13,509	13,150	26,497	13,367	13,130	13,168	6,674	6,494	13,329	6,693	6,636
5 - 9	35,815	18,073	17,742	36,388	18,382	18,006	17,147	8,678	8,469	19,241	9,704	9,537
10 - 14	36,835	18,398	18,437	37,114	18,747	18,367	16,104	8,078	8,026	21,010	10,669	10,341
15 - 19	28,564	13,339	15,225	29,862	13,967	15,895	12,775	5,856	6,919	17,087	8,111	8,976
20 - 24	50,126	20,895	29,231	50,775	21,805	28,970	23,194	9,880	13,314	27,581	11,925	15,656
25 - 29	99,291	46,443	52,848	102,239	48,175	54,064	45,617	21,296	24,321	56,622	26,879	29,743
30 - 34	107,096	56,509	50,587	110,194	58,192	52,002	52,612	27,592	25,020	57,582	30,600	26,982
35 - 39	100,947	55,717	45,230	103,952	57,331	46,621	51,121	28,105	23,016	52,831	29,226	23,605
40 - 44	89,473	49,890	39,583	92,319	51,318	41,001	44,362	24,777	19,585	47,957	26,541	21,416
45 - 49	81,865	44,749	37,116	83,433	45,655	37,778	39,884	22,041	17,843	43,549	23,614	19,935
50 - 54	74,284	40,601	33,683	76,345	41,489	34,856	36,733	20,150	16,583	39,612	21,339	18,273
55 - 59	55,605	30,677	24,928	58,855	32,505	26,350	28,305	15,810	12,495	30,550	16,695	13,855
60 - 64	36,890	19,814	17,076	38,623	20,978	17,645	18,262	10,023	8,239	20,361	10,955	9,406
65 - 69	22,867	12,092	10,775	23,269	12,315	10,954	10,909	5,864	5,045	12,360	6,451	5,909
70 & over	21,141	10,697	10,444	21,967	11,265	10,702	9,643	5,082	4,561	12,324	6,183	6,141
Not stated	78,940	44,385	34,555	72,537	42,399	30,138	35,796	21,076	14,720	36,741	21,323	15,418
All ages	951,090	498,177	452,913	968,906	510,212	458,694	457,816	242,136	215,680	511,090	268,076	243,014

¹ Include arrivals from Rodrigues and cruise excursionists, i.e passengers and crews of cruise ships which numbered 19613² and 9965 for 2002 and 2003 respectively, in accordance with the recommendations of the World Tourism Organisation.

² Revised

Table 17 - Total departures ¹ by age and sex, 2002 & 2003

Age (years)	2002			2003			January - June 2003			July - December 2003		
	Both Sexes	Male	Female	Both Sexes	Male	Female	Both Sexes	Male	Female	Both Sexes	Male	Female
Under 1	4,365	2,200	2,165	4,071	2,097	1,974	2,205	1,162	1,043	1,866	935	931
1 - 4	26,443	13,440	13,003	25,823	13,020	12,803	14,296	7,213	7,083	11,527	5,807	5,720
5 - 9	36,014	18,151	17,863	36,158	18,287	17,871	18,796	9,533	9,263	17,362	8,754	8,608
10 - 14	37,043	18,513	18,530	37,267	18,779	18,488	17,622	8,766	8,856	19,645	10,013	9,632
15 - 19	29,701	13,901	15,800	30,755	14,463	16,292	13,645	6,275	7,370	17,110	8,188	8,922
20 - 24	49,621	20,941	28,680	50,496	21,425	29,071	23,552	9,805	13,747	26,944	11,620	15,324
25 - 29	96,292	45,299	50,993	97,750	45,828	51,922	44,529	20,558	23,971	53,221	25,270	27,951
30 - 34	104,649	55,067	49,582	106,355	55,674	50,681	52,521	27,079	25,442	53,834	28,595	25,239
35 - 39	99,158	54,533	44,625	100,110	54,918	45,192	52,109	28,366	23,743	48,001	26,552	21,449
40 - 44	89,049	49,466	39,583	90,240	49,940	40,300	46,445	25,731	20,714	43,795	24,209	19,586
45 - 49	80,429	43,958	36,471	81,268	44,404	36,864	41,314	22,695	18,619	39,954	21,709	18,245
50 - 54	74,292	40,487	33,805	75,131	40,665	34,466	38,386	20,919	17,467	36,745	19,746	16,999
55 - 59	54,912	30,262	24,650	57,276	31,561	25,715	29,355	16,257	13,098	27,921	15,304	12,617
60 - 64	37,024	19,870	17,154	38,215	20,793	17,422	19,427	10,662	8,765	18,788	10,131	8,657
65 - 69	22,693	12,013	10,680	22,790	12,078	10,712	11,574	6,183	5,391	11,216	5,895	5,321
70 & over	20,977	10,605	10,372	21,826	11,151	10,675	10,589	5,553	5,036	11,237	5,598	5,639
Not stated	80,214	45,506	34,708	72,243	41,928	30,315	34,200	20,325	13,875	38,043	21,603	16,440
All ages	942,876	494,212	448,664	947,774	497,011	450,763	470,565	247,082	223,483	477,209	249,929	227,280

¹ Include departures to Rodrigues and cruise excursionists, i.e passengers and crews of cruise ships which numbered 20288 ² and 9748 for 2002 and 2003 respectively, in accordance with the recommendations of the World Tourism Organisation.

² Revised

Table 18 - Excess of arrivals over departures ¹ by age and sex, 2002 & 2003

Age (years)	2002			2003			January - June 2003			July - December 2003		
	Both Sexes	Male	Female	Both Sexes	Male	Female	Both Sexes	Male	Female	Both Sexes	Male	Female
Under 1	327	189	138	466	225	241	-21	-8	-13	487	233	254
1 - 4	216	69	147	674	347	327	-1,128	-539	-589	1,802	886	916
5 - 9	-199	-78	-121	230	95	135	-1,649	-855	-794	1,879	950	929
10 - 14	-208	-115	-93	-153	-32	-121	-1,518	-688	-830	1,365	656	709
15 - 19	-1,137	-562	-575	-893	-496	-397	-870	-419	-451	-23	-77	54
20 - 24	505	-46	551	279	380	-101	-358	75	-433	637	305	332
25 - 29	2,999	1,144	1,855	4,489	2,347	2,142	1,088	738	350	3,401	1,609	1,792
30 - 34	2,447	1,442	1,005	3,839	2,518	1,321	91	513	-422	3,748	2,005	1,743
35 - 39	1,789	1,184	605	3,842	2,413	1,429	-988	-261	-727	4,830	2,674	2,156
40 - 44	424	424	0	2,079	1,378	701	-2,083	-954	-1,129	4,162	2,332	1,830
45 - 49	1,436	791	645	2,165	1,251	914	-1,430	-654	-776	3,595	1,905	1,690
50 - 54	-8	114	-122	1,214	824	390	-1,653	-769	-884	2,867	1,593	1,274
55 - 59	693	415	278	1,579	944	635	-1,050	-447	-603	2,629	1,391	1,238
60 - 64	-134	-56	-78	408	185	223	-1,165	-639	-526	1,573	824	749
65 - 69	174	79	95	479	237	242	-665	-319	-346	1,144	556	588
70 & over	164	92	72	141	114	27	-946	-471	-475	1,087	585	502
Not stated	-1,274	-1,121	-153	294	471	-177	1,596	751	845	-1,302	-280	-1,022
All ages	8,214	3,965	4,249	21,132	13,201	7,931	-12,749	-4,946	-7,803	33,881	18,147	15,734

¹ Including traffic between Island of Mauritius and Rodrigues

Table 19 - Arrivals ¹ of Mauritian residents by age and sex, 2002 & 2003

Age (years)	2002			2003			January - June 2003			July - December 2003		
	Both Sexes	Male	Female	Both Sexes	Male	Female	Both Sexes	Male	Female	Both Sexes	Male	Female
Under 1	603	316	287	561	288	273	264	142	122	297	146	151
1 - 4	3,521	1,789	1,732	3,439	1,699	1,740	1,573	761	812	1,866	938	928
5 - 9	4,859	2,494	2,365	4,767	2,419	2,348	1,971	988	983	2,796	1,431	1,365
10 - 14	5,274	2,701	2,573	5,052	2,660	2,392	1,940	1,027	913	3,112	1,633	1,479
15 - 19	5,506	2,712	2,794	5,304	2,545	2,759	2,372	1,116	1,256	2,932	1,429	1,503
20 - 24	13,055	6,402	6,653	12,978	6,464	6,514	5,866	2,904	2,962	7,112	3,560	3,552
25 - 29	14,811	7,746	7,065	15,610	8,107	7,503	6,984	3,616	3,368	8,626	4,491	4,135
30 - 34	16,291	9,456	6,835	16,220	9,434	6,786	7,395	4,379	3,016	8,825	5,055	3,770
35 - 39	19,287	11,568	7,719	19,296	11,587	7,709	8,615	5,288	3,327	10,681	6,299	4,382
40 - 44	18,477	10,905	7,572	18,925	11,129	7,796	8,026	4,893	3,133	10,899	6,236	4,663
45 - 49	17,533	9,882	7,651	17,394	9,609	7,785	7,518	4,265	3,253	9,876	5,344	4,532
50 - 54	14,947	8,167	6,780	16,109	8,705	7,404	6,935	3,823	3,112	9,174	4,882	4,292
55 - 59	9,900	5,242	4,658	10,851	5,764	5,087	4,791	2,573	2,218	6,060	3,191	2,869
60 - 64	6,998	3,464	3,534	7,113	3,629	3,484	3,071	1,614	1,457	4,042	2,015	2,027
65 - 69	4,843	2,407	2,436	4,711	2,321	2,390	2,068	1,045	1,023	2,643	1,276	1,367
70 & over	5,043	2,444	2,599	5,041	2,429	2,612	2,055	985	1,070	2,986	1,444	1,542
Not stated	60,001	34,012	25,989	63,917	37,659	26,258	27,696	16,622	11,074	36,221	21,037	15,184
All ages	220,949	121,707	99,242	227,288	126,448	100,840	99,140	56,041	43,099	128,148	70,407	57,741

¹ Including arrivals from Rodrigues

Table 20 - Departures ¹ of Mauritian residents by age and sex, 2002 & 2003

Age (years)	2002			2003			January - June 2003			July - December 2003		
	Both Sexes	Male	Female	Both Sexes	Male	Female	Both Sexes	Male	Female	Both Sexes	Male	Female
Under 1	671	346	325	616	311	305	305	156	149	311	155	156
1 - 4	3,673	1,855	1,818	3,552	1,779	1,773	1,535	764	771	2,017	1,015	1,002
5 - 9	5,081	2,581	2,500	4,874	2,453	2,421	1,685	845	840	3,189	1,608	1,581
10 - 14	5,496	2,844	2,652	5,301	2,763	2,538	1,477	785	692	3,824	1,978	1,846
15 - 19	6,631	3,225	3,406	6,539	3,212	3,327	2,285	1,110	1,175	4,254	2,102	2,152
20 - 24	13,739	6,934	6,805	13,812	7,114	6,698	6,101	3,126	2,975	7,711	3,988	3,723
25 - 29	13,564	7,280	6,284	14,170	7,672	6,498	6,726	3,605	3,121	7,444	4,067	3,377
30 - 34	15,259	8,767	6,492	14,553	8,460	6,093	6,869	4,082	2,787	7,684	4,378	3,306
35 - 39	18,875	11,212	7,663	18,134	10,829	7,305	8,300	5,106	3,194	9,834	5,723	4,111
40 - 44	18,603	10,906	7,697	18,666	11,008	7,658	8,179	4,996	3,183	10,487	6,012	4,475
45 - 49	17,703	9,927	7,776	17,431	9,594	7,837	7,835	4,433	3,402	9,596	5,161	4,435
50 - 54	15,230	8,363	6,867	16,032	8,699	7,333	7,166	3,933	3,233	8,866	4,766	4,100
55 - 59	10,003	5,323	4,680	10,892	5,834	5,058	5,029	2,700	2,329	5,863	3,134	2,729
60 - 64	7,117	3,535	3,582	7,021	3,603	3,418	3,175	1,649	1,526	3,846	1,954	1,892
65 - 69	4,863	2,424	2,439	4,663	2,293	2,370	2,184	1,061	1,123	2,479	1,232	1,247
70 & over	5,017	2,440	2,577	4,927	2,368	2,559	2,204	1,048	1,156	2,723	1,320	1,403
Not stated	60,364	34,651	25,713	63,588	37,168	26,420	26,076	15,856	10,220	37,512	21,312	16,200
All ages	221,889	122,613	99,276	224,771	125,160	99,611	97,131	55,255	41,876	127,640	69,905	57,735

¹ Including departures to Rodrigues

Table 21 - Excess of arrivals over departures ¹ of Mauritian residents by age & sex, 2002 & 2003

Age (years)	2002			2003			January - June 2003			July - December 2003		
	Both Sexes	Male	Female	Both Sexes	Male	Female	Both Sexes	Male	Female	Both Sexes	Male	Female
Under 1	-68	-30	-38	-55	-23	-32	-41	-14	-27	-14	-9	-5
1 - 4	-152	-66	-86	-113	-80	-33	38	-3	41	-151	-77	-74
5 - 9	-222	-87	-135	-107	-34	-73	286	143	143	-393	-177	-216
10 - 14	-222	-143	-79	-249	-103	-146	463	242	221	-712	-345	-367
15 - 19	-1,125	-513	-612	-1,235	-667	-568	87	6	81	-1,322	-673	-649
20 - 24	-684	-532	-152	-834	-650	-184	-235	-222	-13	-599	-428	-171
25 - 29	1,247	466	781	1,440	435	1,005	258	11	247	1,182	424	758
30 - 34	1,032	689	343	1,667	974	693	526	297	229	1,141	677	464
35 - 39	412	356	56	1,162	758	404	315	182	133	847	576	271
40 - 44	-126	-1	-125	259	121	138	-153	-103	-50	412	224	188
45 - 49	-170	-45	-125	-37	15	-52	-317	-168	-149	280	183	97
50 - 54	-283	-196	-87	77	6	71	-231	-110	-121	308	116	192
55 - 59	-103	-81	-22	-41	-70	29	-238	-127	-111	197	57	140
60 - 64	-119	-71	-48	92	26	66	-104	-35	-69	196	61	135
65 - 69	-20	-17	-3	48	28	20	-116	-16	-100	164	44	120
70 & over	26	4	22	114	61	53	-149	-63	-86	263	124	139
Not stated	-363	-639	276	329	491	-162	1,620	766	854	-1,291	-275	-1,016
All ages	-940	-906	-34	2,517	1,288	1,229	2,009	786	1,223	508	502	6

¹ Including traffic between Island of Mauritius and Rodrigues.

Table 22 - Arrivals and departures of Mauritian residents by country of embarkation and disembarkation, 2001 - 2003

Country of embarkation/ disembarkation	Arrivals			Departures			Excess of arrivals over departures		
	2001	2002	2003	2001	2002	2003	2001	2002	2003
Australia	4,358	4,498	5,188	4,525	4,705	5,250	-167	-207	-62
Belgium	1,196	1,030	1,198	613	561	1,103	583	469	95
Canada	222	330	266	64	73	47	158	257	219
France	24,451	24,987	25,673	24,159	25,168	25,396	292	-181	277
Germany	2,223	1,981	3,000	2,198	2,134	3,263	25	-153	-263
Hong Kong SAR ²	5,999	7,461	4,063	5,624	7,304	3,898	375	157	165
India	16,083	14,020	15,401	15,181	13,768	14,792	902	252	609
Italy	3,536	3,225	3,431	3,057	3,076	3,088	479	149	343
Kenya	1,055	1,231	1,217	530	1,149	1,228	525	82	-11
Rodrigues	52,307	59,984	63,916	52,777	60,355	63,584	-470	-371	332
Reunion	42,395	36,959	34,710	42,331	37,245	33,980	64	-286	730
Singapore	13,323	10,034	7,048	10,824	11,720	7,062	2,499	-1,686	-14
S. Africa, Rep of	11,903	14,312	15,029	11,302	14,460	14,010	601	-148	1,019
Switzerland	2,229	1,948	2,353	2,221	2,294	2,133	8	-346	220
United Kingdom	18,228	20,110	23,454	19,942	21,523	25,035	-1,714	-1,413	-1,581
Other countries	16,295	18,839	21,341	18,430	16,354	20,902	-2,135	2,485	439
All Countries	215,803	220,949	227,288	213,778	221,889	224,771	2,025	-940	2,517

-28-

¹ Including traffic between Island of Mauritius and Rodrigues

² Special Administrative Region of China

III - TOURISM

Definition and notes

1. Definition of tourist

(a) prior to 1964, a tourist has been defined as a non-resident staying in Mauritius for more than 24 hours but less than 6 months.

(b) as from 1964, a tourist is defined as a non-resident staying in the island for more than 24 hours but less than a year and is not involved in any gainful occupation .

The figures for the two periods are nevertheless comparable because of the small number of tourists staying for more than 6 months.

2. Visitors include the following:

(a) tourists as defined above; and

(b) cruise ship passengers and non-residents who stayed in the country for less than a day, other than those who do not leave the airport.

3. Method of compilation

Certain data on tourism (such as type of visitor, tourist arrivals by month of arrival, tourist arrivals by country of residence and mode of transport) are compiled from disembarkation cards which all passengers have to fill in when they arrive in this country. However, information on duration of stay of visitors can be compiled only from the embarkation cards which they fill in when leave the country.

Prior to 1994, figures have been compiled from a 10% sample of embarkation and disembarkation cards filled in by passengers. However, as from January 1994, they are based on movements of all passengers. Thus disaggregated data for 1994 onwards may not be strictly comparable to previous series.

4. Tourist nights

Tables on tourist nights show the number of nights spent by tourists who were present in the country during the period under review. Thus the number of tourist nights for 2003 include:

- (a) the nights spent during 2003 by tourists who arrived prior to 1st January 2003; and
- (b) the nights spent during 2003 by tourists who arrived during the same year.

However, nights spent after 31st December 2003 by tourists who arrived in 2003 are excluded.

5. Large hotels

Large hotels are well established beach hotels of over 80 rooms.

Table 23 -Tourist arrivals by mode of transport and tourist nights spent during period, 1987 - 2003

Period	Tourist arriving during period			Tourist nights spent during period	% change over previous year	
	Sea	Air	Total		Tourist arrivals	Tourist nights
1987	1,530	206,040	207,570	2,371,970	+ 25.6	+ 26.3
1988	1,770	237,530	239,300	3,002,620	+ 15.3	+ 26.6
1989	840	261,950	262,790	3,196,780	+ 9.8	+ 6.5
1990	1,200	290,350	291,550	3,564,930	+ 10.9	+ 11.5
1991	2,500	298,170	300,670	3,696,990	+ 3.1	+ 3.7
1992	2,630	332,770	335,400	4,110,430	+ 11.6	+ 11.2
1993	5,710	368,920	374,630	4,610,400	+ 11.7	+ 12.2
1994	6,383	394,143	400,526	4,359,303	+ 6.9	- 5.4
1995	6,105	416,358	422,463	4,434,891	+ 5.5	+ 1.7
1996	6,484	480,383	486,867	4,957,683	+ 15.2	+ 11.8
1997	7,476	528,649	536,125	5,451,314	+ 10.1	+ 10.0
1998	17,109	541,086	558,195	5,567,889	+ 4.1	+ 2.1
1999	13,852	564,233	578,085	5,729,464	+ 3.6	+ 2.9
2000	10,677	645,776	656,453	6,412,876	+ 13.6	+ 11.9
2001	10,532	649,786	660,318	6,527,800	+ 0.6	+ 1.8
2002	14,180	667,468	681,648	6,768,870	+ 3.2	+ 3.7
2003	12,155	689,863	702,018	6,952,313	+ 3.0	+ 2.7

Table 24 - Tourist arrivals by month of arrival, 1994 - 2003

Month of arrival	1994	1995	1996	1997	1998	1999	2000	2001	2002	2003
January	41,757	42,528	42,743	50,507	54,839	59,680	62,355	65,122	63,551	64,762
February	27,268	26,587	30,870	37,254	41,928	41,859	50,466	49,464	50,554	53,647
March	31,738	33,038	41,736	46,923	48,440	50,707	54,872	55,944	67,554	63,129
April	30,350	34,428	38,759	38,683	45,433	41,536	56,353	54,794	48,187	57,217
May	30,685	30,607	36,303	39,794	43,790	42,254	49,960	51,969	53,813	54,710
June	22,537	23,177	27,984	32,165	30,387	35,910	39,885	38,496	39,048	41,841
July	32,211	33,833	35,656	39,716	40,700	42,862	51,577	57,274	56,709	58,403
August	40,319	42,985	50,347	55,033	54,651	57,321	59,731	52,923	53,395	56,844
September	28,605	28,928	36,681	39,694	39,228	41,383	47,634	48,953	49,774	50,293
October	39,139	40,620	45,930	45,302	49,090	55,128	61,526	59,325	65,291	64,917
November	35,037	39,437	46,130	55,424	52,563	56,584	57,334	57,326	61,326	61,984
December	40,880	46,295	53,728	55,630	57,146	52,861	64,760	68,728	72,446	74,271
Whole Year	400,526	422,463	486,867	536,125	558,195	578,085	656,453	660,318	681,648	702,018

Fig 4 - Tourist arrivals by month, 1999 - 2003

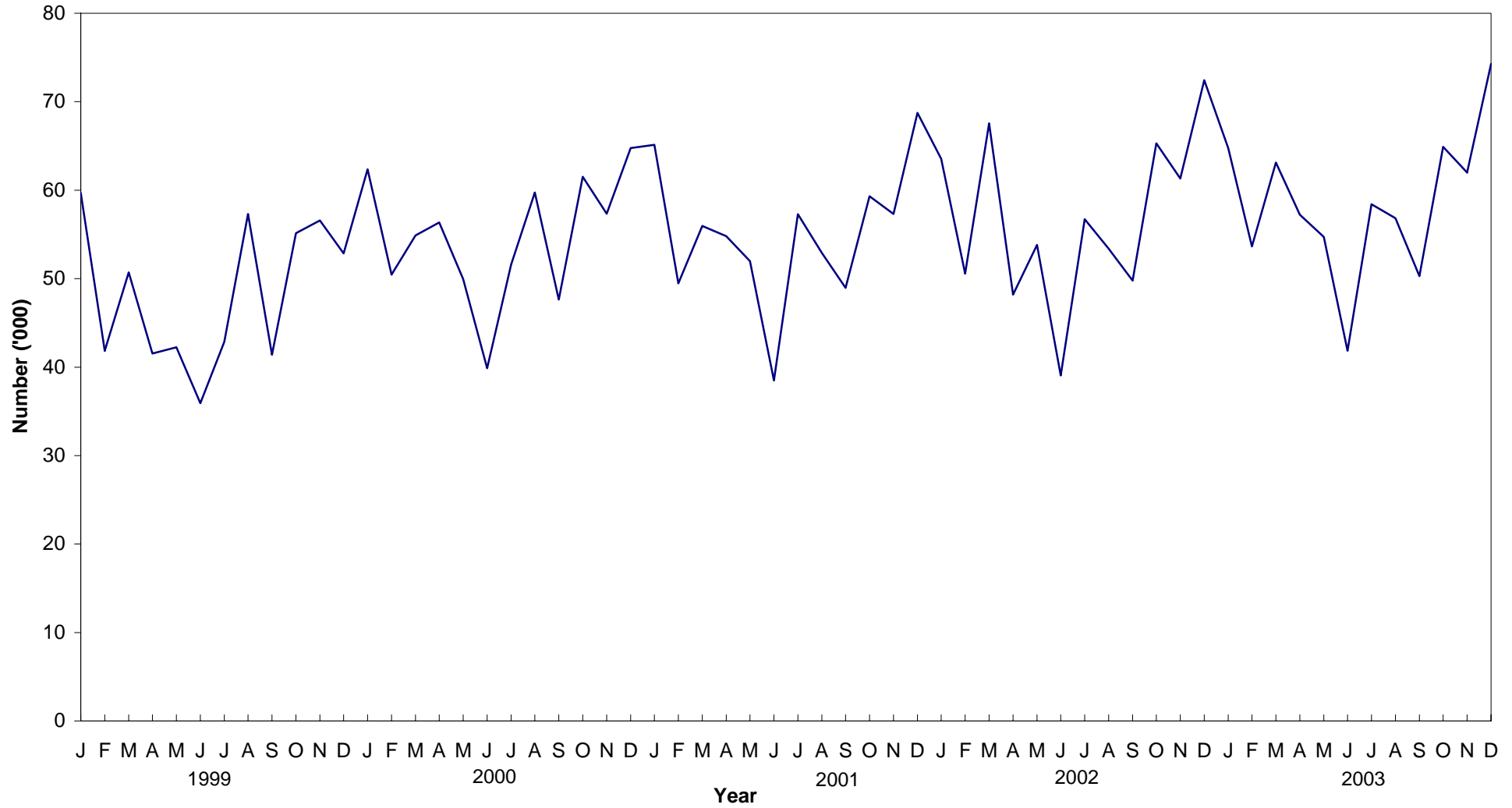


Table 25 - Percentage distribution of tourist arrivals by month of arrival, 1994 - 2003

Month of arrival	1994	1995	1996	1997	1998	1999	2000	2001	2002	2003
January	10.4	10.1	8.8	9.4	9.8	10.3	9.5	9.9	9.3	9.2
February	6.8	6.3	6.3	6.9	7.5	7.2	7.7	7.5	7.4	7.6
March	7.9	7.8	8.6	8.8	8.7	8.8	8.4	8.5	9.9	9.0
April	7.6	8.1	8.0	7.2	8.1	7.2	8.6	8.3	7.1	8.2
May	7.7	7.2	7.5	7.4	7.8	7.3	7.6	7.9	7.9	7.8
June	5.6	5.5	5.7	6.0	5.4	6.2	6.1	5.8	5.7	6.0
July	8.0	8.0	7.3	7.4	7.3	7.4	7.9	8.7	8.3	8.3
August	10.1	10.2	10.3	10.3	9.8	9.9	9.1	8.0	7.8	8.1
September	7.1	6.8	7.6	7.4	7.0	7.2	7.3	7.4	7.3	7.2
October	9.8	9.6	9.4	8.4	8.8	9.5	9.4	9.0	9.6	9.2
November	8.7	9.3	9.5	10.3	9.4	9.8	8.7	8.7	9.0	8.8
December	10.2	11.0	11.0	10.4	10.2	9.1	9.9	10.4	10.6	10.6
Whole Year	100.0	100.0	100.0	100.0	100.0	100.0	100.0	100.0	100.0	100.0

Table 26 - Tourist arrivals by country of residence and sex, 2003

Country of residence	Male	Female	Both Sexes
Australia	4,586	4,517	9,103
Belgium	5,256	4,914	10,170
France	99,649	100,580	200,229
Germany	27,059	26,911	53,970
Hong Kong SAR ¹	458	218	676
India	16,232	9,135	25,367
Italy	19,472	20,302	39,774
Japan	960	612	1,572
Kenya	934	576	1,510
Malagasy Rep.	5,418	5,626	11,044
Reunion Island	47,190	48,489	95,679
Seychelles	4,557	5,312	9,869
Singapore	1,259	843	2,102
S. Africa, Rep. of	23,759	21,997	45,756
Switzerland	8,694	9,235	17,929
United Kingdom	46,240	44,970	91,210
U.S.A.	2,676	1,829	4,505
Zimbabwe	1,172	1,171	2,343
Other countries	44,330	34,880	79,210
All Countries	359,901	342,117	702,018

¹ *Special Administrative Region of China*

Table 27 - Tourist arrivals by country of residence, 1994 - 2003

Country of residence	1994	1995	1996	1997	1998	1999	2000	2001	2002	2003
Australia	4,160	5,558	7,762	9,460	8,913	8,076	8,771	8,790	8,387	9,103
Belgium	4,292	5,802	8,060	8,162	8,365	9,586	10,998	10,398	10,579	10,170
France	106,268	116,701	130,292	145,173	162,775	175,431	198,423	197,595	202,869	200,229
Germany	41,824	41,637	45,221	43,993	43,826	45,206	52,869	50,866	53,762	53,970
Hong Kong SAR ¹	1,336	1,645	2,066	1,629	969	859	1,227	1,488	1,201	676
India	10,449	11,225	13,075	13,220	12,629	13,583	17,241	18,890	20,898	25,367
Italy	18,149	17,384	21,848	35,255	36,614	36,675	39,000	37,343	38,263	39,774
Japan	3,221	3,176	3,192	3,140	2,505	2,324	2,389	1,589	1,958	1,572
Kenya	1,278	1,158	1,170	1,230	1,684	1,655	1,801	1,734	1,507	1,510
Malagasy Rep.	6,849	6,885	11,401	10,143	9,213	7,880	7,057	6,674	9,417	11,044
Reunion Island	77,035	78,431	82,272	82,628	83,966	83,749	86,945	91,140	96,375	95,679
Seychelles	5,650	7,116	9,325	8,995	8,529	7,893	9,229	10,687	13,468	9,869
Singapore	3,247	2,601	3,153	3,404	3,515	3,661	4,104	3,431	3,114	2,102
S. Africa, Rep. of	39,762	42,653	50,361	51,249	49,676	46,583	48,683	47,882	42,685	45,756
Switzerland	11,453	13,815	15,692	16,105	16,178	16,281	20,473	18,427	17,371	17,929
United Kingdom	33,295	31,324	35,271	46,022	52,299	58,683	74,488	77,888	80,667	91,210
USA	2,006	2,093	2,362	2,879	3,158	3,345	3,704	3,923	4,116	4,505
Zimbabwe	3,539	2,965	3,402	4,248	3,796	2,606	3,435	3,860	3,185	2,343
Other countries	26,713	30,294	40,942	49,190	49,585	54,009	65,616	67,713	71,826	79,210
All Countries	400,526	422,463	486,867	536,125	558,195	578,085	656,453	660,318	681,648	702,018

¹ Special Administrative Region of China

Table 28 - Percentage distribution of tourist arrivals by country of residence, 1994 - 2003

Country of residence	1994	1995	1996	1997	1998	1999	2000	2001	2002	2003
Australia	1.0	1.3	1.6	1.8	1.6	1.4	1.3	1.3	1.2	1.3
Belgium	1.1	1.4	1.7	1.5	1.5	1.7	1.7	1.6	1.6	1.4
France	26.5	27.6	26.8	27.1	29.2	30.3	30.2	29.9	29.8	28.5
Germany	10.4	9.9	9.3	8.2	7.9	7.8	8.1	7.7	7.9	7.7
Hong Kong SAR ¹	0.3	0.4	0.4	0.3	0.2	0.1	0.2	0.2	0.2	0.1
India	2.6	2.7	2.7	2.5	2.3	2.3	2.6	2.9	3.1	3.6
Italy	4.5	4.1	4.5	6.6	6.6	6.3	5.9	5.7	5.6	5.7
Japan	0.8	0.8	0.7	0.6	0.4	0.4	0.4	0.2	0.3	0.2
Kenya	0.3	0.3	0.2	0.2	0.3	0.3	0.3	0.3	0.2	0.2
Malagasy Rep.	1.7	1.6	2.3	1.9	1.7	1.4	1.1	1.0	1.4	1.6
Reunion Island	19.2	18.6	16.9	15.4	15.0	14.5	13.2	13.8	14.1	13.6
Seychelles	1.4	1.7	1.9	1.7	1.5	1.4	1.4	1.6	2.0	1.4
Singapore	0.8	0.6	0.6	0.6	0.6	0.6	0.6	0.5	0.5	0.3
S. Africa, Rep. of	9.9	10.1	10.3	9.6	8.9	8.1	7.4	7.3	6.3	6.5
Switzerland	2.9	3.3	3.2	3.0	2.9	2.8	3.1	2.8	2.5	2.6
United Kingdom	8.3	7.4	7.2	8.6	9.4	10.2	11.3	11.8	11.8	13.0
USA	0.5	0.5	0.5	0.5	0.6	0.6	0.6	0.6	0.6	0.6
Zimbabwe	0.9	0.7	0.7	0.8	0.7	0.5	0.5	0.6	0.5	0.3
Other countries	6.7	7.2	8.4	9.2	8.9	9.3	10.0	10.3	10.5	11.3
All Countries	100.0	100.0	100.0	100.0	100.0	100.0	100.0	100.0	100.0	100.0

¹ Special Administrative Region of China

Fig. 5 - Percentage distribution of tourist arrivals by country of residence, 2003

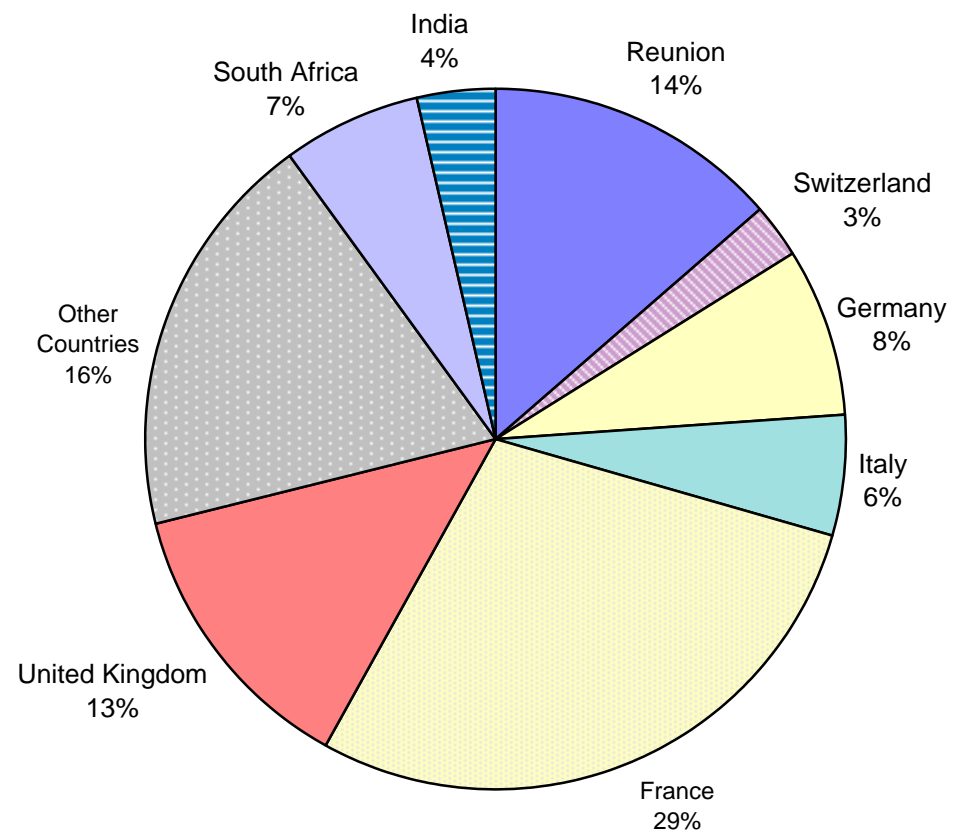


Table 29 - Tourist nights by country of residence, 1994 - 2003

Country of residence	1994	1995	1996	1997	1998	1999	2000	2001	2002	2003
Australia	62,603	85,473	115,711	123,056	104,284	91,655	96,932	104,232	98,869	100,332
Belgium	64,851	85,274	102,517	113,011	105,146	126,221	132,571	125,752	124,586	121,687
France	1,144,256	1,232,159	1,345,112	1,509,687	1,632,311	1,719,893	1,934,683	1,966,911	2,020,850	1,996,305
Germany	520,453	521,984	563,798	557,374	548,693	553,112	635,600	612,881	651,913	636,435
Hong Kong SAR ¹	14,983	14,387	17,503	13,524	9,559	9,367	9,601	11,955	10,941	6,767
India	170,802	143,884	149,164	155,700	146,872	157,110	188,008	207,965	253,340	287,741
Italy	189,369	180,214	210,962	337,486	346,779	336,271	349,267	326,100	329,809	346,865
Japan	18,536	19,007	20,676	19,834	15,625	12,593	14,054	10,161	11,170	9,302
Kenya	9,671	9,242	8,418	9,065	11,318	12,904	12,585	10,780	8,784	11,347
Malagasy Rep.	58,160	54,783	76,714	78,525	80,310	74,643	65,526	66,177	81,758	128,437
Reunion Island	582,093	573,206	585,351	593,693	588,452	576,423	596,449	632,970	675,483	738,968
Seychelles	59,840	65,577	82,035	72,835	71,407	67,271	82,577	96,303	113,942	92,493
Singapore	19,510	18,323	17,468	18,154	19,627	21,925	21,998	23,420	20,403	14,871
S. Africa, Rep. of	391,494	378,812	434,348	420,633	416,635	412,869	422,300	400,656	376,588	379,561
Switzerland	155,732	179,118	205,089	209,931	209,329	206,392	248,345	229,227	210,510	220,382
United Kingdom	498,102	470,448	510,672	625,419	675,375	720,291	884,799	942,095	977,717	1,043,113
U.S.A.	19,517	21,170	24,363	26,205	28,558	31,953	32,719	37,067	38,478	38,795
Zimbabwe	35,725	29,306	31,258	37,582	35,377	28,106	37,555	47,134	39,504	26,469
Other countries	343,606	352,524	456,524	529,600	522,232	570,465	647,307	676,014	724,225	752,443
All Countries	4,359,303	4,434,891	4,957,683	5,451,314	5,567,889	5,729,464	6,412,876	6,527,800	6,768,870	6,952,313

¹ Special Administrative Region of China

Fig 6 - Total arrivals and tourist arrivals, 1994 - 2003

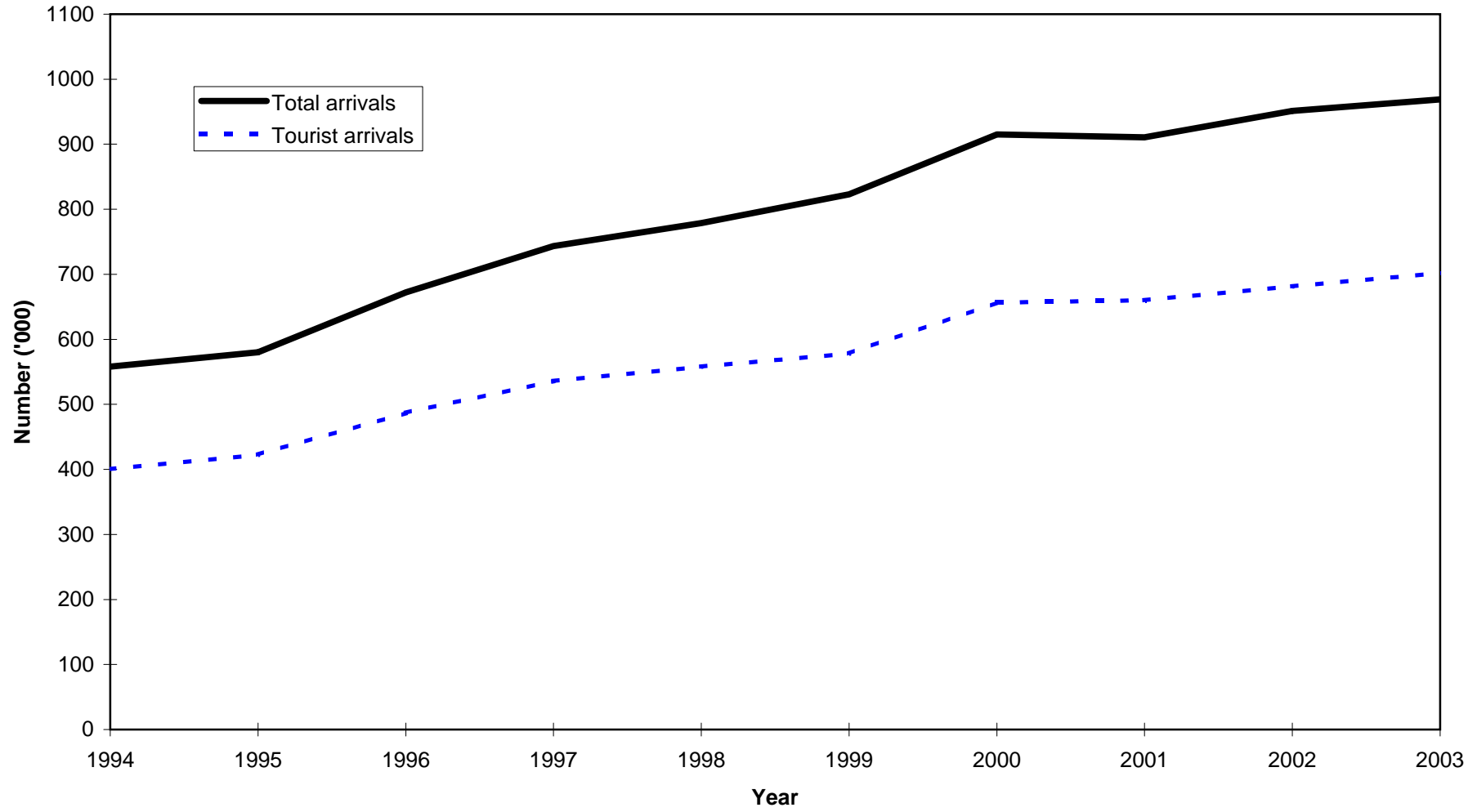


Fig 7 - Tourist nights, 1994 - 2003

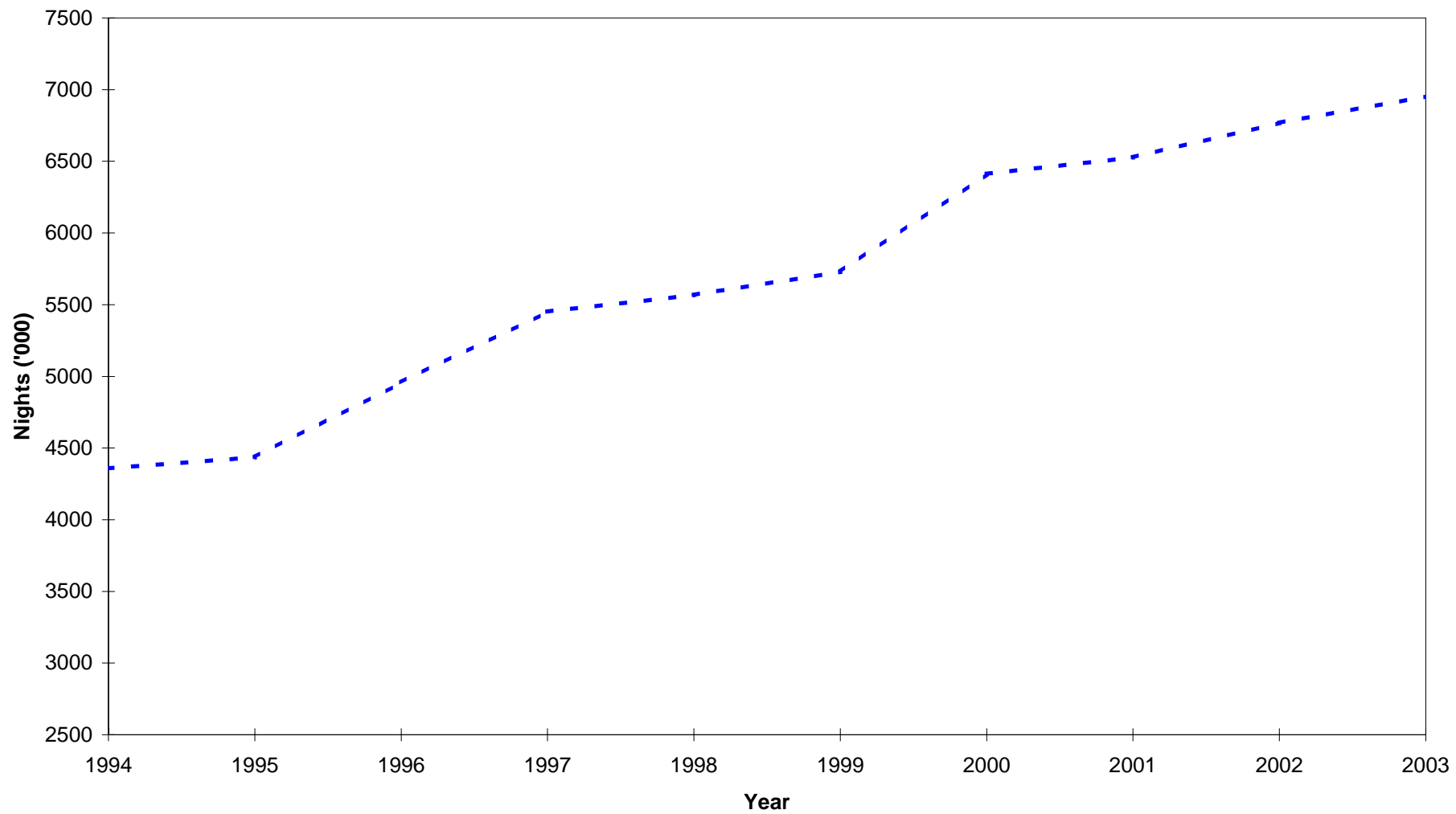


Table 30 - Visitor ¹ arrivals by country of residence and type of passenger, 2001 - 2003

Country of residence	Visitors on holidays			Visitors on business			Visitors in transit			Other visitors			Total visitors		
	2001	2002	2003	2001	2002	2003	2001	2002	2003	2001	2002	2003	2001	2002	2003
Australia	7,619	6,771	7,882	372	742	475	676	782	868	123	212	131	8,790	8,507	9,356
Belgium	10,072	10,171	9,726	232	262	269	22	101	130	72	86	125	10,398	10,620	10,250
France	189,970	193,352	190,000	4,294	4,538	5,212	1,411	4,425	4,358	1,920	2,356	2,662	197,595	204,671	202,232
Germany	49,320	52,432	52,489	612	445	597	180	967	971	754	619	634	50,866	54,463	54,691
Hong Kong SAR ²	1,008	686	309	228	255	147	214	335	240	38	26	22	1,488	1,302	718
India	14,006	15,110	19,363	3,394	3,903	3,909	891	1,157	1,644	599	937	848	18,890	21,107	25,764
Italy	36,414	37,432	38,779	460	435	490	69	184	253	400	304	385	37,343	38,355	39,907
Japan	1,295	1,596	1,112	183	154	139	90	306	376	21	45	60	1,589	2,101	1,687
Kenya	971	802	839	337	441	492	400	261	136	26	19	88	1,734	1,523	1,555
Malagasy Rep.	4,759	5,475	6,396	706	780	1,112	971	3,955	4,595	238	275	580	6,674	10,485	12,683
Reunion Island	84,987	87,868	87,762	1,848	1,945	2,126	3,901	8,768	7,918	404	587	832	91,140	99,168	98,638
Seychelles	9,544	12,217	8,324	371	399	402	397	691	767	375	363	587	10,687	13,670	10,080
Singapore	2,431	2,419	1,598	460	375	282	181	147	123	359	231	133	3,431	3,172	2,136
S. Africa Rep. of	41,908	36,071	38,645	4,257	5,099	5,625	956	1,168	1,161	761	775	576	47,882	43,113	46,007
Switzerland	18,055	17,034	17,555	274	219	229	50	206	277	48	34	36	18,427	17,493	18,097
United Kingdom	73,651	76,219	86,520	2,452	2,619	2,555	341	593	652	1,444	1,459	1,705	77,888	80,890	91,432
U.S.A.	3,004	3,251	3,254	675	627	950	174	306	309	70	58	140	3,923	4,242	4,653
Zimbabwe	3,238	2,843	1,953	362	214	282	117	75	74	143	83	57	3,860	3,215	2,366
Other & N. Stated	54,293	58,375	63,819	5,006	5,106	5,862	18,932	24,597	15,086	3,783	3,130	4,329	82,014	91,208	89,096
All Countries	606,545	620,124	636,325	26,523	28,558	31,155	29,973	49,024	39,938	11,578	11,599	13,930	674,619	709,305	721,348

¹ Visitors include tourists, cruise ship passengers and non-residents who stay in the country for less than a day, other than those who do not leave the airport

² Special Administrative Region of China

Table 31 - Visitor arrivals by age and sex, 2002 & 2003

Age (years)	2002			2003		
	Both Sexes	Male	Female	Both Sexes	Male	Female
Under 1	3,920	1,987	1,933	3,825	1,957	1,868
1 - 4	22,552	11,417	11,135	22,562	11,423	11,139
5 - 9	30,277	15,215	15,062	31,010	15,646	15,364
10 - 14	30,979	15,414	15,565	31,545	15,854	15,691
15 - 19	22,548	10,381	12,167	24,007	11,127	12,880
20 - 24	34,817	13,569	21,248	35,745	14,143	21,602
25 - 29	81,110	37,125	43,985	83,334	38,103	45,231
30 - 34	87,026	45,259	41,767	90,504	46,856	43,648
35 - 39	78,992	42,394	36,598	81,958	44,005	37,953
40 - 44	69,008	37,655	31,353	71,429	38,893	32,536
45 - 49	62,853	33,941	28,912	64,542	35,040	29,502
50 - 54	58,122	31,631	26,491	59,022	31,996	27,026
55 - 59	44,866	24,847	20,019	47,097	26,108	20,989
60 - 64	29,558	16,139	13,419	31,136	17,077	14,059
65 - 69	17,829	9,551	8,278	18,329	9,852	8,477
70 & over	15,935	8,150	7,785	16,683	8,666	8,017
Not stated	18,913	10,359	8,554	8,620	4,740	3,880
All ages	709,305	365,034	344,271	721,348	371,486	349,862

Table 32 - Visitor arrivals by duration of stay, 2002 & 2003

Duration of stay	2002		2003	
	Number	Percentage	Number	Percentage
Less than 1 day	27,657	3.9	19,330	2.7
1 day	20,272	2.9	19,320	2.7
2 days	15,349	2.2	14,209	2.0
3 days	26,322	3.7	25,647	3.6
4 days	33,181	4.7	34,422	4.8
5 days	42,772	6.0	41,585	5.8
6 days	63,215	8.9	60,133	8.3
7 days	107,239	15.1	110,652	15.3
8 days	37,376	5.3	36,240	5.0
9 days	34,118	4.8	35,139	4.9
10 days	32,548	4.6	34,549	4.8
11 days	21,942	3.1	21,043	2.9
12 days	32,308	4.6	30,350	4.2
13 days	33,017	4.7	34,868	4.8
14 days	55,187	7.8	54,928	7.6
15 days	8,617	1.2	7,791	1.1
16 days	6,372	0.9	6,217	0.9
17 days	3,978	0.6	3,743	0.5
18 days	3,464	0.5	3,528	0.5
19 days	5,181	0.7	5,021	0.7
20 - 24 days	17,350	2.4	16,521	2.3
25 - 29 days	9,074	1.3	8,846	1.2
1 month - under 2 months	13,412	1.9	12,922	1.8
2 months - under 3 months	56,870	8.0	81,667	11.3
3 months and over	2,484	0.4	2,677	0.4
All Countries	709,305	100.0	721,348	100.0

Table 33 - Visitor arrivals by country of residence and duration of stay, 2003

Country of residence	Duration of stay (Nights)												
	<1	1 - 2	3 - 4	5 - 6	7 - 8	9 - 10	11 - 12	13 - 14	15 - 19	20 - 24	25 - 29	30+	Total
Australia	253	907	714	1,726	698	384	1,323	728	376	180	262	1,805	9,356
Belgium	80	151	270	1,962	1,461	1,021	364	2,036	260	470	357	1,818	10,250
France	2,003	6,340	18,889	28,655	46,198	24,720	14,070	16,457	8,891	4,670	2,874	28,465	202,232
Germany	721	707	1,102	3,968	6,190	3,028	5,326	20,906	2,940	3,307	662	5,834	54,691
Hong Kong SAR ¹	42	201	62	118	24	42	13	20	9	21	5	161	718
India	397	1,689	4,043	8,441	3,632	859	466	857	320	255	227	4,578	25,764
Italy	133	332	1,086	6,947	15,958	2,626	1,526	6,353	616	583	310	3,437	39,907
Japan	115	351	259	395	149	58	24	17	7	5	5	302	1,687
Kenya	45	208	273	374	210	84	50	55	18	24	8	206	1,555
Malagasy Rep.	1,639	2,417	1,429	1,032	1,101	527	311	705	228	161	174	2,959	12,683
Reunion Island	2,959	9,568	14,213	19,180	24,034	7,097	3,363	2,682	2,437	955	619	11,531	98,638
Seychelles	211	730	1,262	1,196	2,480	667	461	1,106	325	211	85	1,346	10,080
Singapore	34	156	390	776	93	78	37	19	31	36	9	477	2,136
S. Africa Rep. of	251	2,241	5,556	6,198	15,506	5,309	1,747	1,960	1,129	654	367	5,089	46,007
Switzerland	168	267	310	2,269	2,319	1,416	2,408	4,391	1,154	873	436	2,086	18,097
United Kingdom	222	1,626	3,229	5,956	12,053	12,494	11,510	22,982	4,599	2,531	1,502	12,728	91,432
U.S.A.	148	504	624	839	681	327	215	218	134	68	58	837	4,653
Zimbabwe	23	78	144	137	859	107	30	355	32	95	101	405	2,366
Other & not stated	9,886	5,056	6,214	11,549	13,246	8,844	8,149	7,949	2,794	1,422	785	13,202	89,096
All Countries	19,330	33,529	60,069	101,718	146,892	69,688	51,393	89,796	26,300	16,521	8,846	97,266	721,348

¹ Special Administrative Region of China

Table 34 - Visitor arrivals and average length of stay by country of residence, 2003

Country of Residence	Visitor arrivals	Average length of stay (nights)
Australia	9,356	11.6
Belgium	10,250	12.8
France	202,232	10.6
Germany	54,691	12.8
Hong Kong SAR ¹	718	8.7
India	25,764	11.2
Italy	39,907	9.3
Japan	1,687	6.8
Kenya	1,555	7.8
Malagasy Rep.	12,683	11.6
Reunion	98,638	7.7
Seychelles	10,080	9.4
Singapore	2,136	7.5
S. Africa, Rep. of	46,007	8.7
Switzerland	18,097	12.7
United Kingdom	91,432	12.4
U.S.A.	4,653	9.4
Zimbabwe	2,366	11.7
Other & not stated	89,096	10.4
All Countries	721,348	10.5

¹ *Special Administrative Region of China*

Table 35 - Gross earnings from tourism, 1994 - 2003

Earnings (Rs Mn)	1994	1995	1996	1997	1998	1999	2000	2001	2002	2003
		6,415	7,472	9,048	10,068	11,890	13,668	14,234	18,166	18,328

Source : Bank of Mauritius

Table 36 - Expenditure of tourists by country of residence, 1994 - 2002

Country of residence	Expenditure (Rs Mn)				
	1994	1996	1998	2000	2002 ¹
France	1,729.3	2,391.8	3,173.1	3,785.7	5,188.2
Germany	933.0	1,301.0	1,195.9	1,447.3	1,852.9
Italy	357.7	541.9	827.9	918.3	1,215.0
Switzerland	279.7	475.7	473.3	615.7	662.6
United Kingdom	814.7	973.1	1,680.2	2,708.2	3,269.9
Malagasy Rep.	79.6	158.6	108.4	90.3	141.5
Reunion	552.9	731.2	855.4	871.4	1,242.5
South Africa, Rep. of	546.5	706.4	808.8	780.6	778.2
Singapore	35.9	52.0	62.5	94.5	68.6
Other countries	1,143.1	1,692.2	2,578.4	2,875.3	3,355.3
All Countries	6,472.4	9,023.9	11,763.9	14,187.3	17,774.7

- 47 -

Source: Survey of Outgoing Tourists conducted by the Ministry of Tourism and Leisure every two years.

¹ Provisional

Table 37 - Expenditure of tourists by type of expenditure, 1994 - 2002

Type of expenditure	Expenditure (Rs Mn)				
	1994	1996	1998	2000	2002 ¹
Accommodation	3,405	4,647	6,415	7,479	9,155
Meals & Beverages	997	1,381	1,818	2,470	3,327
Transport	583	668	804	941	1,232
Entertainment	214	514	685	839	986
Shopping	945	1,381	1,691	2,002	2,450
Other	330	433	351	457	624
Total	6,472	9,024	11,764	14,187	17,775

Source: Survey of Outgoing Tourists conducted by the Ministry of Tourism and Leisure every two years.

¹ Provisional

Table 38 - Hotels, rooms and bedplaces, 1994 - 2003

Year	No. of hotels	No. of rooms	No. of bedplaces
1994	90	5,888	12,187
1995	95	5,977	12,359
1996	90	6,668	13,833
1997	87	6,809	14,126
1998	90	7,267	14,995
1999	92	8,255	16,947
2000	95	8,657	17,776
2001	95	9,024	18,350
2002	95	9,623	19,597
2003	97 ¹	9,647	19,727

¹ *Excluding three hotels not operational because of renovation works*

Table 39 - Monthly occupancy rates in large ¹ hotels, 1999 - 2003

Month	1999		2000		2001		2002		2003	
	Room	Bed	Room	Bed	Room	Bed	Room	Bed	Room	Bed
January	83	74	75	67	78	69	76	68	69	61
February	77	68	77	68	70	63	74	66	69	61
March	76	67	72	64	72	64	81	72	66	58
April	74	65	77	68	70	62	68	61	67	59
May	73	64	71	63	68	61	73	65	64	56
June	64	56	62	55	51	46	53	47	50	44
July	70	62	64	57	57	51	62	56	54	48
August	74	66	73	65	65	58	69	62	64	56
September	77	68	76	67	74	66	76	68	67	59
October	83	73	79	70	76	67	82	73	72	64
November	88	78	83	74	78	70	81	71	74	65
December	62	55	71	63	72	64	72	64	70	62
Whole Year	75	67	73	65	70	62	70	62	66	58

¹ Large Hotels are well established beach hotels of over 80 rooms

Room Occupancy Rate = $\frac{\text{Total number of room nights rented} \times 100}{\text{Total number of room nights available}}$

Bed Occupancy Rate = $\frac{\text{Total number of bed nights rented} \times 100}{\text{Total number of bed nights available}}$

Table 40 - Monthly occupancy rates in all hotels, 1999 - 2003

Month	1999		2000		2001		2002		2003	
	Room	Bed	Room	Bed	Room	Bed	Room	Bed	Room	Bed
January	79	69	73	64	74	65	71	63	68	59
February	73	64	73	64	67	59	69	62	66	58
March	71	62	71	62	68	60	75	66	63	56
April	68	59	73	64	66	57	62	56	63	55
May	67	59	67	58	64	56	67	59	62	55
June	60	52	58	51	50	43	50	45	49	43
July	65	57	61	53	55	48	59	52	53	47
August	73	63	71	62	62	55	63	56	61	54
September	73	64	73	64	68	60	69	62	63	55
October	77	68	77	67	70	62	76	68	68	60
November	83	73	80	70	73	64	76	67	70	61
December	61	54	69	60	69	61	70	62	68	60
Whole Year	71	62	70	62	66	58	67	59	63	55

Room Occupancy Rate = $\frac{\text{Total number of room nights rented} \times 100}{\text{Total number of room nights available}}$

Bed Occupancy Rate = $\frac{\text{Total number of bed nights rented} \times 100}{\text{Total number of bed nights available}}$

APPENDIX

INTERNATIONAL EMBARKATION AND DISEMBARKATION CARD

*Carte Internationale d'Embarquement et de
Débarquement*

- Mr/M)
Mrs/Mme).....
Miss/Melle) (Surname / *Nom*)
.....
(Given Names / *Prénoms*)
2. Date and place of Birth
Date et lieu de naissance
.....
3. Nationality.....
Nationalité
4. Occupation.....
Profession
5. Permanent address.....
Domicile.....
6. Passport No., Place and Date of issue
Numéro du passeport, lieu et date d'émission.....
.....
7. Port of original embarkation
Lieu d'embarquement d'origine
8. Purpose of journey to Mauritius.....
Motif principal du voyage à l'Ile Maurice
9. Intended length of stay in Mauritius.....
Durée probable du séjour à l'Ile Maurice
10. Intended address during stay in Mauritius.....
Adresse prévue pendant le séjour à Maurice
.....
- Signature