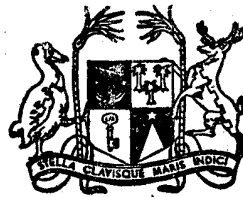


Vol. 7

No. 1



MAURITIUS

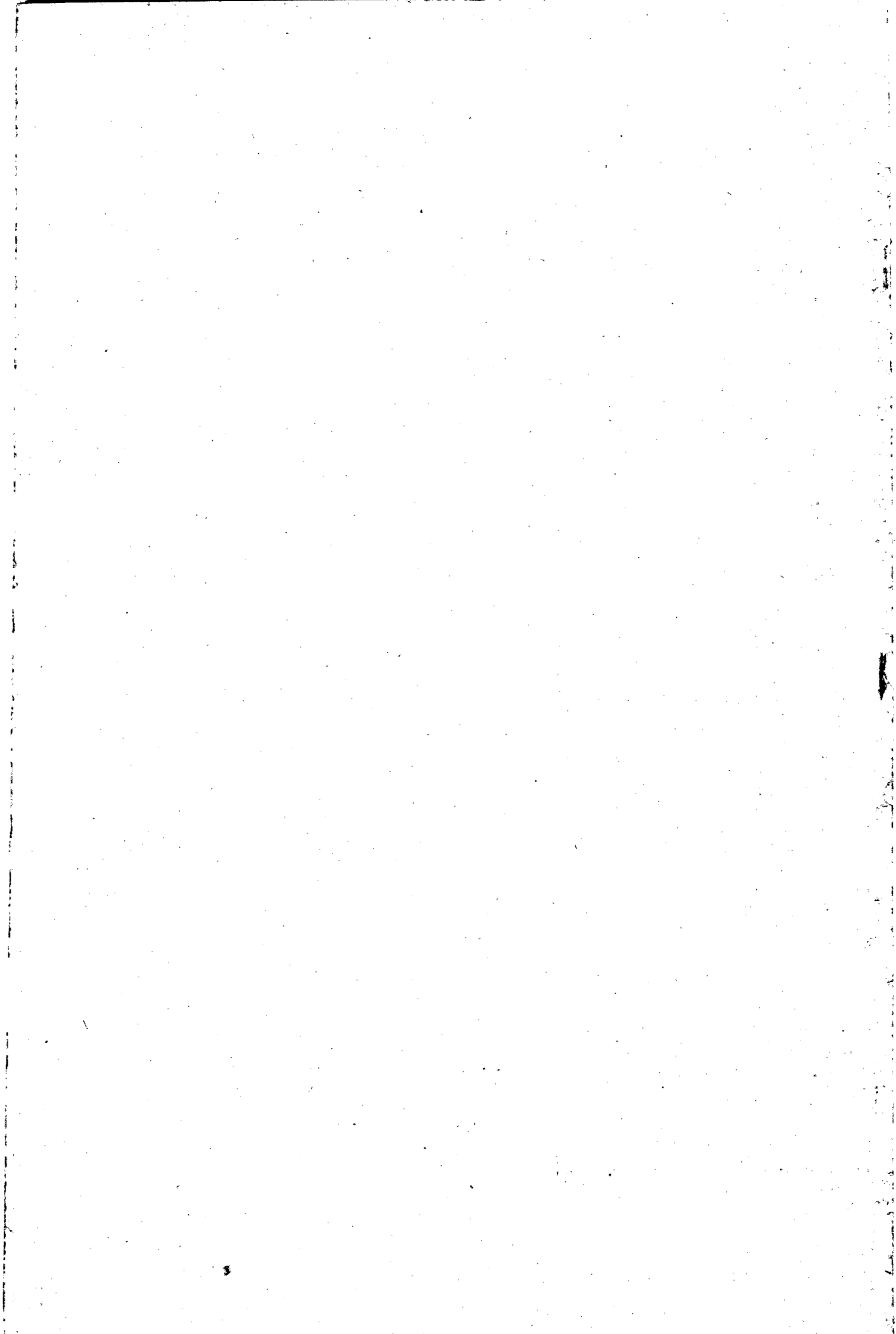
Ministry of Economic Planning and Development

CENTRAL STATISTICAL OFFICE

**INTERNATIONAL TRAVEL
AND
TOURISM**

June 1980

[Price : Rs 15.00]



INTERNATIONAL TRAVEL AND TOURISM

Vol. 7 No. 1

June 1980

"International Travel and Tourism", a publication of the Central Statistical Office, is designed to present data on international travel and tourism in more detail than those that are currently published in the Bi-annual Digest of Statistics.

As from January 1979, owing to the increase in the volume of passenger traffic, it has been decided to process the data on a 10% sample. Cases where the number of passengers are too small have been omitted in order to avoid large sampling errors. It is to be noted, however, that figures for official emigrants published in this report have been compiled from the Passport Office register.

With the help of the computer of the Ministry of Finance it has been possible to process in more detail the information recorded on the international embarkation and disembarkation cards which passengers fill in on leaving and entering the country.

It is hoped that the results, especially those on tourism, which have been assembled in this report will be useful to all those who take an interest in the evolution of the tourist industry in this country.

The co-operation of the Immigration and Passport Office of the Police Department and the Data Processing Division of the Ministry of Finance is gratefully acknowledged.

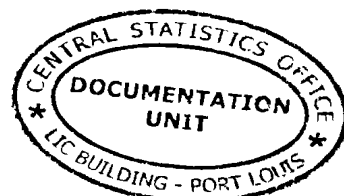
The following symbols are used throughout:

- Nil
- ... Not available

(J. Ah Kong)
Director of Statistics

Central Statistical Office
Rose Hill
Mauritius

December 1980



C O N T E N T S

I - POPULATION AND VITAL STATISTICS

	<u>Page</u>
Table 1 - Estimated population of Mauritius as at 30th June 1980 based on the final 1972 Population Census data	1
2 - Population increase in intercensal periods - Island of Mauritius, 1846 - 1972	1
3(a) Population enumerated at each census by population group and sex - Island of Mauritius, 1846 - 1952	2
3(b) Population enumerated at each census by community and sex - Island of Mauritius, 1962 - 1972	2
4 - Estimated population of Mauritius by geographical district and sex, 1978 - 1980 (mid-year estimates)	3
5 - Population and vital statistics - Island of Mauritius, 1921 - 1979	4

II - PASSENGER TRAFFIC

Table 6 - Passenger traffic by sex, 1955 - June 1980	6 & 7
7 - Passenger traffic between Island of Mauritius and Rodrigues, 1962 - June 1980	7
8 - Passenger traffic by mode of transport 1962 - June 1980	9
9 - Passenger traffic by month, 1977 - June 1980	10
10 - Arrivals by country of original embarkation, 1975 - June 1980	11
11 - Departures by country of final destination, 1975 - June 1980	12
12 - Passenger traffic by type of passenger and month, January - June 1980	13
13 - Arrivals by age and sex, July 1978 - June 1980	14
14 - Departures by age and sex, July 1978 - June 1980	15
15 - Excess of arrivals over departures by age and sex, July 1978 - June 1980	16
16 - Arrivals and departures of residents of Island of Mauritius by district of residence and sex, January - June 1980	17
17 - Arrivals of residents of Island of Mauritius by age and sex, July 1978 - June 1980	18
18 - Departures of residents of Island of Mauritius by age and sex, July 1978 - June 1980	19
19 - Excess of arrivals over departures of residents (excluding emigrants) of Island of Mauritius by age and sex, July 1978 - June 1980	20

II - PASSENGER TRAFFIC (Cont'd)

	<u>Page</u>
Table 20 - Excess of arrivals over departures of residents (including emigrants) of Island of Mauritius by age and sex, July 1978 - June 1980	21
21 - Departures of Mauritian residents travelling by air by country of final destination, 1978 - June 1980	22

III - EMIGRATION

Table 22 - Official long-term emigrants by sex, 1956 - June 1980	23
23 - External migration, 1956 - 1979	24
24 - Official long-term emigrants by country of intended residence, 1967 - June 1980	25 & 26
25 - Age distribution of official long-term emigrants, 1967 - June 1980	27-29
26 - Official long-term emigrants by Major Occupational Group, 1975 - June 1980	30
27 - Official long-term emigrants by Major Occupational Group, age and sex, January - June 1980	31
28 - Official long-term emigrants by occupation, 1978 - June 1980	32
29 - Official long-term emigrants by district of last residence and sex, July 1978 - June 1980	33

IV - TOURISM

Definition and notes	34
Table 30 - Tourist arrivals by mode of transport and total nights spent during period, 1963 - June 1980	35
31 - Tourist arrivals by month of arrival, 1970 - June 1980	36
32 - Percentage distribution of tourist arrivals by month of arrival, 1970 - 1979	38
33 - Tourist arrivals by country of residence, 1970 - June 1980	39
34 - Percentage distribution of tourist arrivals by country of residence, 1970 - June 1980	40
35 - Tourist nights by country of residence of tourist, 1970 - June 1980	42
36 - Tourist arrivals and tourist nights by country of residence, January - June 1980	44

I. POPULATION AND VITAL STATISTICS

Table 1 - Estimated population of Mauritius as at 30th June, 1980 based on the final 1972 Population Census data

Island	Both sexes	Male	Female
Island of Mauritius	926,578	455,031	471,547
Island of Rodrigues	30,275	14,612	15,663
Other islands	350	250	100
Mauritius	957,203	469,893	487,310

Table 2 - Population increase in intercensal periods - Island of Mauritius, 1846-1972

Census date	Population enumerated at Census			Intercensal increase	Average annual rate of increase %
	Both sexes	Male	Female		
1st Aug. 1846	158,462	104,598	53,864		
20th Nov. 1851	180,823	119,341	61,482	22,361	2.55
8th Apr. 1861	310,050	202,961	107,089	129,227	5.87
11th Apr. 1871	316,042	193,575	122,467	5,992	0.19
4th Apr. 1881	359,874	208,655	151,219	43,832	1.31
6th Mar. 1891	370,588	206,038	164,550	10,714	0.29
1st Apr. 1901	371,023	199,552	171,471	435	0.01
31st Mar. 1911	368,791	194,095	174,696	- 2,232	- 0.06
21st May 1921	376,485	194,108	182,377	7,694	0.21
26th Apr. 1931	393,238	200,609	192,629	16,753	0.44
11th Jun. 1944	419,185	210,326	208,859	25,947	0.49
29th Jun. 1952	501,415	252,032	249,383	82,230	2.26
30th Jun. 1962 ^{1/}	681,619	342,306	339,313	130,204	3.12
30th Jun. 1972 ^{1/}	826,199	413,580	412,619	144,580	1.94

^{1/} de facto population - including the European members of the armed forces but excluding the passengers and crews of ships lying in the harbour.

Table 3(a) - Population enumerated at each census by population group and sex - Island of Mauritius, 1846-1952

Year of census	General population			Indo-Mauritian population			Chinese population		
	Both sexes	Male	Female	Both sexes	Male	Female	Both sexes	Male	Female
1846	102,217	55,663	46,554	56,245	48,935	7,310	-	-	-
1851	102,827	55,059	47,768	77,996	64,282	13,714	-	-	-
1861	115,864	59,796	56,068	192,634	141,615	51,019	1,552	1,550	2
1871	97,497	49,487	48,010	216,258	141,804	74,454	2,287	2,284	3
1881	107,323	53,754	53,569	248,993	151,352	97,641	3,558	3,549	9
1891	111,517	55,397	56,120	255,920	147,499	108,421	3,151	3,142	9
1901	108,422	52,995	55,427	259,086	143,100	115,966	3,515	3,457	58
1911	107,432	51,608	55,624	257,697	138,974	118,723	3,662	3,313	349
1921	104,216	49,725	54,491	265,524	139,150	126,374	6,745	5,233	1,512
1931	115,666	54,733	60,933	268,649	139,533	129,116	8,923	6,343	2,580
1944	143,056	67,136	75,920	265,247	136,382	128,865	10,382	6,808	4,074
1952	148,238	70,370	77,868	335,327	171,241	164,086	17,850	10,421	7,429

At the 1962 Census each household was asked for the first time to state the population group to which each member of his household claimed to belong.

Prior to 1962, it is probable that, from one census to another, different criteria have been used in classifying the population by population groups. Figures are therefore not strictly comparable from one census to another, before 1962

Table 3(b) - Population enumerated at each census by community and sex - Island of Mauritius, 1962-72

Year of census	Total population			Hindu			Muslim			Sino-Mauritian			General population		
	Both sexes	Male	Female	Both sexes	Male	Female	Both sexes	Male	Female	Both sexes	Male	Female	Both sexes	Male	Female
1962	601,619	342,306	339,313	344,587	174,692	169,889	110,322	55,971	54,351	23,058	12,654	10,404	203,652	98,983	104,669
1972	826,199	413,580	412,619	428,167	215,654	212,513	137,081	68,789	68,292	24,084	12,649	11,235	236,867	116,288	120,579

✓ de facto population - including the European members of the armed forces but excluding the passengers and crews of ships lying in the harbour

Table 4 - Estimated population^{1/} of Mauritius by geographical district and sex, 1978-80 (mid-year estimates)

Geographical district	30th June 1978			30th June 1979			30th June 1980		
	Both sexes	Male	Female	Both sexes	Male	Female	Both sexes	Male	Female
Port-Louis	142,353	70,217	72,636	144,412	70,278	74,134	145,817	70,526	75,291
Pamplemousses	75,847	38,132	37,715	77,294	38,550	38,744	78,767	39,247	39,520
Rivière du Rempart	74,529	37,470	37,059	75,962	37,922	38,040	77,401	38,557	38,844
Flacq	99,658	49,825	49,833	101,752	50,569	51,183	103,781	51,496	52,285
Grand Port	87,957	43,948	44,009	89,504	44,413	45,091	90,918	44,971	45,947
Savanne	57,423	28,751	28,672	58,380	29,012	29,368	59,374	29,403	29,971
P. Wilhems : Urban	243,698	119,386	124,312	247,205	119,868	127,337	251,153	121,319	129,834
Other	32,598	16,716	15,882	33,377	17,080	16,297	34,010	17,360	16,650
Moka	52,884	26,308	26,576	53,829	26,614	27,215	54,837	27,075	27,762
Black River	29,024	14,546	14,478	29,784	14,780	15,004	30,520	15,077	15,443
Island of Mauritius	896,471	445,299	451,172	911,499	449,086	462,413	926,578	455,031	471,547
Island of Rodrigues	27,842	13,536	14,306	29,203	14,277	14,926	30,275	14,612	15,663
Other islands	350	250	100	350	250	100	350	250	100
Mauritius	924,663	459,085	465,578	941,052	463,613	477,439	957,203	469,893	487,510

^{1/} based on the final 1972 Population Census data. No account has been taken of internal migration

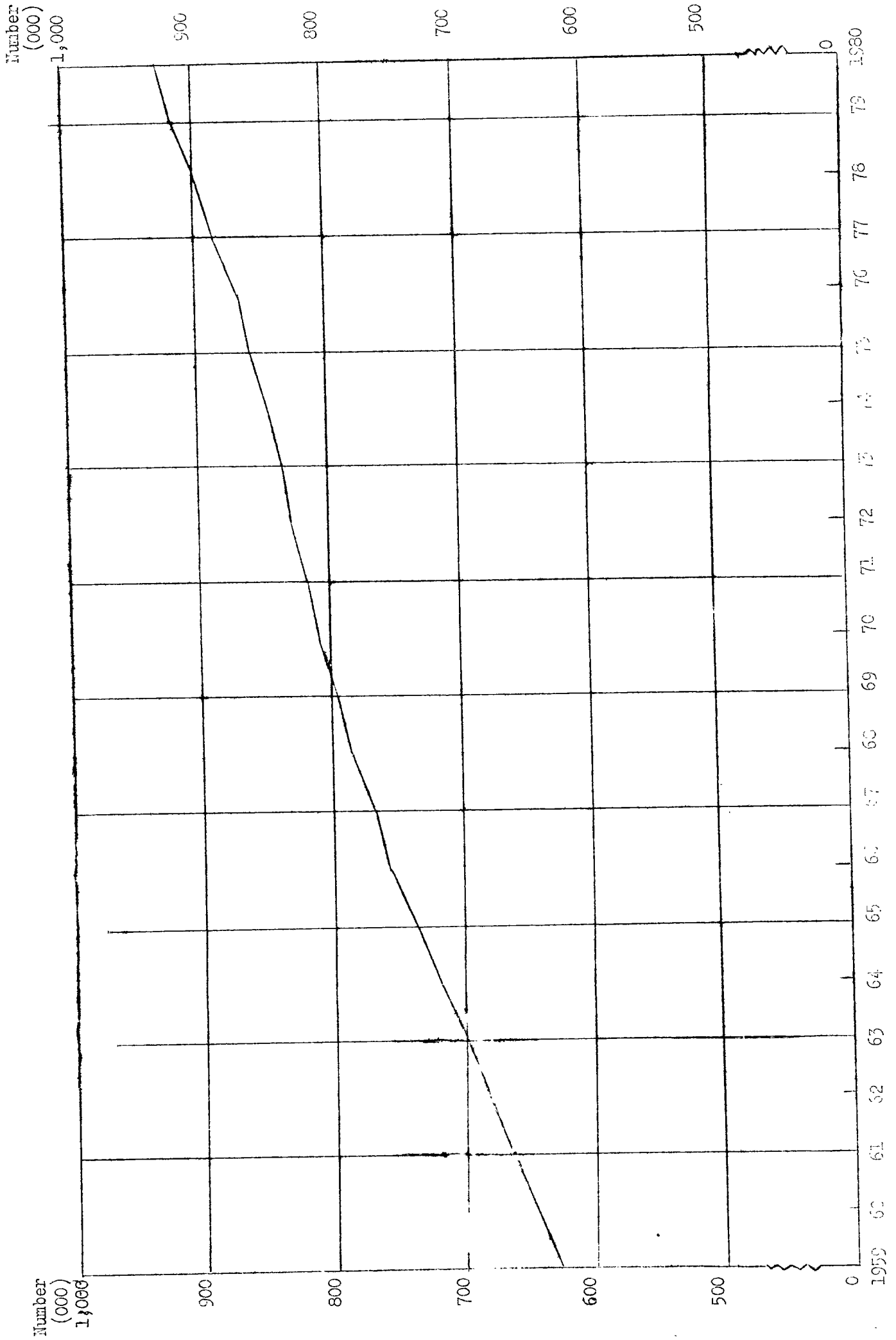
Table 5 - Population and vital statistics - Island of Mauritius, 1921 - 1979

Period	Population ^{1/} at mid-period	Live births	Deaths	Natural increase	Infant deaths ^{2/}	Still births	Civil marriages
1921-25 Average	379,636	14,834	11,758	3,076	2,104	1,581	2,062
1926-30 "	403,248	14,208	11,614	2,594	2,002	1,256	1,455
1931-35 "	398,647	12,490	11,889	601	1,752	1,216	1,489
1936-40 "	412,003	13,621	11,157	2,464	2,119	1,240	2,093
1941-45 "	417,838	15,027	11,927	3,100	2,313	1,240	3,333
1946-50 "	438,797	19,595	9,113	10,482	2,343	1,348	3,503
1951-55 "	522,577	23,176	7,701	15,475	1,884	1,472	3,307
1956	574,938	24,910	6,739	18,171	1,644	1,739	3,080
1957	593,070	25,273	7,603	17,670	1,897	1,800	2,903
1958	609,518	24,600	7,112	17,488	1,659	1,703	3,169
1959	627,249	23,923	6,753	17,170	1,495	1,759	3,297
1960	644,743	25,307	7,248	18,059	1,760	1,783	3,113
1961	662,368	26,092	6,505	19,587	1,618	1,963	3,484
1962	681,619	26,267	6,325	19,942	1,579	1,841	3,893
1963	695,641	27,978	5,709	21,269	1,660	1,519	3,472
1964	716,298	27,528	6,184	21,344	1,361	1,611	3,965
1965	735,245	26,279	6,337	19,942	1,685	1,557	3,976
1966	753,276	26,817	6,701	20,116	1,721	1,384	4,157
1967	767,782	23,499	6,543	16,956	1,656	1,074	3,949
1968	781,615	24,413	7,126	17,287	1,688	1,110	3,974
1969	792,893	21,719	6,428	15,291	1,528	951	3,882
1970	805,489	21,623	6,309	15,314	1,232	857	4,499
1971	816,561	20,834	6,248	14,586	1,077	842	4,346
1972	826,199	20,496	6,506	13,990	1,308	718	5,082
1973	834,781	18,974	6,525	12,499	1,201	678	5,533
1974	845,755	22,938	6,221	16,717	1,045	854	6,771
1975	856,516	21,492	6,967	14,525	1,046	896	6,888
1976	867,885	22,250	6,815	15,435	900	784	8,262
1977	881,761	22,730	6,966	15,764	1,023	712	8,421
1978	896,471	24,250	5,400	17,850	823	653	10,532
1979	911,499	25,056	6,625	18,431	824	650	9,080

^{1/} figures for 1963-71 have been revised in the light of the final 1972 Population Census data

^{2/} deaths of children under 1 year of age

Graph 1 - Mid-Year Population Estimates - Island of Mauritius, 1959 - 1980



II - PASSENGER TRAFFIC

Table 6 - Passenger traffic^{1/} by sex, 1933 - June 1980

Period	Arrivals			Departures			Net overseas migration
	Both sexes	Male	Female	Both sexes	Male	Female	
1933	3,444	2,410	1,034	4,011	2,862	1,149	- 567
1934	3,969	2,777	1,192	4,380	3,056	1,324	- 411
1935	3,988	2,876	1,112	4,255	2,899	1,356	- 267
1936	3,807	2,681	1,126	3,563	2,451	1,112	+ 244
1937	3,472	2,366	1,106	3,849	2,736	1,113	- 377
1938	4,554	3,062	1,492	4,281	2,896	1,385	+ 273
1939	3,171	1,984	1,187	3,212	2,127	1,085	- 41
1940	1,518	1,028	490	1,851	1,379	472	- 333
1941	1,209	950	259	4,165	3,859	306	- 2,956
1942	1,083	893	190	1,560	1,398	162	- 477
1943	1,054	859	195	737	642	95	+ 317
1944	1,034	798	236	1,053	796	257	- 19
1945	2,061	1,624	437	2,247	1,624	623	- 186
1946	3,298	2,279	1,019	3,377	2,160	1,217	- 79
1947	4,698	3,128	1,570	4,514	3,100	1,414	+ 184
1948	4,294	2,792	1,502	4,015	2,684	1,331	+ 279
1949	4,093	2,700	1,393	4,141	2,794	1,347	- 48
1950	5,253	3,469	1,784	4,900	3,352	1,548	+ 353
1951	5,243	3,515	1,728	5,016	3,536	1,480	+ 227
1952	6,046	3,999	2,047	5,637	3,854	1,783	+ 409
1953	7,252	4,820	2,432	7,054	4,732	2,322	+ 198
1954	7,251	4,728	2,523	7,312	4,824	2,488	- 61
1955	7,216	4,558	2,658	7,354	4,722	2,632	- 138
1956	7,747	4,873	2,874	8,225	5,219	3,006	- 478
1957	8,095	5,156	2,939	8,267	5,309	2,958	- 172
1958	8,703	5,424	3,279	8,924	5,596	3,328	- 221
1959	9,637	5,995	3,642	9,544	6,053	3,486	+ 93
1960	10,412	6,563	3,849	10,784	6,938	3,846	- 372
1961	11,854	7,246	4,608	13,033	8,165	4,868	- 1,179
1962	15,189	9,283	5,906	16,075	9,837	6,188	- 886

Table 6 (continued)

Period	Arrivals			Departures			Net overseas migration
	Both sexes	Male	Female	Both sexes	Male	Female	
1963	17,974	10,866	7,108	18,215	11,024	7,191	- 241
1964	21,221	12,787	8,434	22,331	13,349	8,982	- 1,110
1965	22,024	13,571	8,453	24,150	14,759	9,391	- 2,126
1966	26,456	16,358	10,098	29,301	17,930	11,371	- 2,845
1967	29,321	18,177	11,144	32,925	20,135	12,790	- 3,604
1968	31,403	19,820	11,583	35,988	22,181	13,807	- 4,585
1969	35,919	21,552	14,367	33,929	23,127	15,802	- 3,010
1970	48,819	29,587	19,232	51,969	31,033	20,936	- 3,150
1971	60,826	36,005	24,821	63,997	37,399	26,598	- 3,171
1972	77,174	45,587	31,587	81,493	47,837	33,656	- 4,319
1973	101,184	59,215	41,969	104,697	61,364	43,333	- 3,513
1974	109,044	63,077	45,967	113,362	65,649	47,713	- 4,318
1975	117,548	68,654	48,394	120,703	70,368	50,335	- 3,155
1976	139,303	80,674	58,529	141,148	81,718	59,430	- 1,845
1977	153,208	87,417	65,791	155,653	89,243	66,410	- 2,445
1978	161,683	93,087	68,601	163,733	94,850	68,883	- 2,045
1979	182,771	105,051	77,720	186,864	110,284	76,580	- 4,093
Jan-June 1980	73,002	44,822	28,180	80,065	49,235	30,830	- 7,063

1/ including seamen but excluding transit passengers who do not leave the airport

Table 7 - Passenger traffic between Island of Mauritius and Rodrigues, 1963 - June 1980

Period	Departures to Rodrigues			Arrivals from Rodrigues			Net overseas migration
	Both sexes	Male	Female	Both sexes	Male	Female	
1963	899	620	279	1,439	905	534	- 540
1964	1,300	850	450	1,450	915	535	- 150
1965	1,339	854	485	1,525	961	564	- 186
1966	1,326	860	466	1,418	904	514	- 92
1967	1,485	940	545	1,268	822	446	+ 217
1968	1,541	940	601	1,485	946	539	+ 56
1969	1,569	1,034	535	1,493	994	499	+ 76
1970	1,740	1,103	637	1,762	1,123	639	+ 22
1971	1,578	1,017	561	1,744	1,118	626	+ 166
1972	2,168	1,409	759	2,311	1,469	842	- 143
1973	2,427	1,521	906	2,453	1,511	942	+ 26
1974	2,053	1,197	856	2,648	1,560	1,088	- 595
1975	2,968	1,870	1,098	3,319	2,030	1,289	- 351
1976	3,796	2,528	1,268	4,221	2,854	1,367	- 425
1977	4,477	2,935	1,542	4,853	3,214	1,639	- 376
1978	5,571	3,588	1,983	5,642	3,641	2,001	- 71
1979	5,785	3,794	1,991	5,398	3,672	1,726	+ 387
Jan-June 1980	2,520	1,693	827	2,479	1,736	743	+ 41

Graph 2 - Passenger traffic, 1963 - 1979

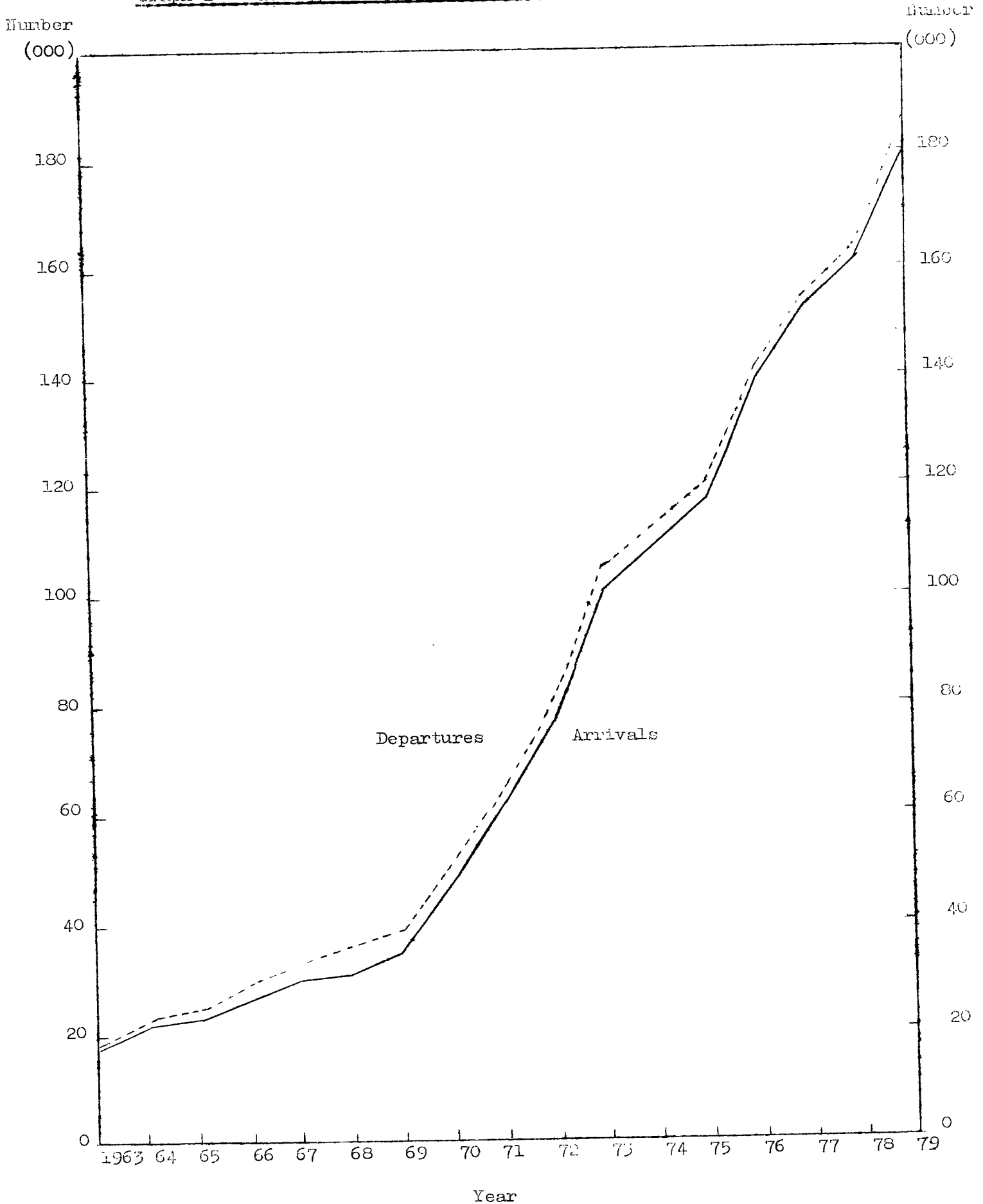


Table 8 - Passenger traffic^{1/} by mode of transport, 1962 - June 1980

Period	Arrivals			Departures			Net overseas migration
	Total	By sea	By air	Total	By sea	By air	
1962	15,189	4,258	10,931	16,075	4,374	11,701	- 386
1963	18,047	4,660	13,387	18,299	4,432	13,867	- 252
1964	21,221	5,187	16,034	22,331	5,478	16,853	- 1,110
1965	22,024	4,886	17,138	24,150	5,463	18,687	- 2,126
1966	26,456	5,544	20,912	29,301	6,330	22,971	- 2,845
1967	29,321	4,901	24,420	32,925	6,515	26,410	- 3,604
1968	31,403	4,264	27,139	35,988	5,967	30,021	- 4,585
1969	35,919	3,483	32,436	38,929	4,632	34,297	- 3,010
1970	48,819	3,984	44,835	51,969	4,376	47,593	- 3,150
1971	60,826	3,857	56,969	63,997	4,295	59,702	- 3,171
1972	77,174	3,741	73,433	81,493	4,072	77,421	- 4,319
1973	101,184	4,238	96,946	104,697	4,027	100,670	- 3,513
1974	109,044	3,848	105,196	113,362	3,772	109,590	- 4,318
1975	117,548	4,485	113,063	120,703	4,255	116,448	- 3,155
1976	139,303	4,367	134,936	141,148	4,441	136,707	- 1,845
1977	153,208	4,929	148,279	155,653	4,624	151,029	- 2,445
1978	161,688	4,411	157,277	163,733	4,698	159,035	- 2,045
1979	182,771	3,581	179,190	186,864	4,054	182,810	- 4,093
1980 : 1st Qr.	39,291	751	38,540	44,525	1,035	43,490	- 5,234
2nd Qr.	33,711	861	32,850	35,540	930	34,610	- 1,829

^{1/} including seamen but excluding transit passengers who do not leave the airport

Table 9 - Passenger traffic^{1/} by month, 1977 - June 1980

Month	Arrivals				Departures				Excess of arrivals over departures			
	1977	1978	1979	1980	1977	1978	1979	1980	1977	1978	1979	1980
January	16,034	15,890	18,078	14,983	19,383	19,041	21,033	18,070	- 3,349	- 3,151	- 2,955	- 3,087
February	11,445	11,777	13,008	11,629	13,120	15,208	15,406	13,741	- 1,675	- 1,431	- 2,398	- 2,112
March	9,947	10,816	12,861	12,679	10,564	11,098	13,758	12,714	- 617	- 282	- 897	- 35
April	12,013	11,620	15,014	11,891	11,851	11,7	15,927	13,135	+ 162	- 118	- 913	- 1,294
May	11,728	11,268	14,359	12,512	12,327	12,064	14,587	13,052	- 1,099	- 796	- 228	- 540
June	9,544	9,003	10,838	9,308	9,151	9,474	10,903	9,507	+ 193	- 471	- 65	+ 5
July	13,647	13,824	15,577		15,064	13,586	15,262		+ 583	+ 236	+ 315	
August	17,804	19,256	21,128		16,475	17,394	19,965		+ 1,329	+ 1,862	+ 1,163	
September	10,844	12,369	15,112		13,914	16,005	17,673		- 3,070	- 3,636	- 2,561	
October	11,617	13,181	13,769		10,595	12,307	13,410		+ 1,022	+ 874	+ 359	
November	11,155	13,555	13,951		11,791	14,033	14,315		- 638	- 478	- 364	
December	17,632	19,129	19,076		12,918	13,785	14,625		+ 4,714	+ 5,344	+ 4,451	
Whole year	153,208	161,688	182,771		155,653	163,733	186,864		- 2,445	- 2,045	- 4,093	

^{1/} including seamen but excluding transit passengers who do not leave the airport

Table 10 - Arrivals^{1/} by country of original embarkation, 1975 - June 1980

Country of original embarkation	1975	1976	1977	1978	1979	Jan-June 1980
Australia	5,395	5,469	4,354	4,195	6,080	2,530
France	8,277	11,044	14,798	20,053	22,300	7,240
Germany, Fed. Rep.	1,246	1,319	1,726	2,279	4,780	3,430
Hong Kong	839	983	1,016	1,072	1,020	490
India	5,608	7,055	7,955	8,048	9,520	5,410
Italy	1,276	1,346	2,380	3,016	3,200	1,620
Kenya	2,126	3,096	3,309	2,801	2,870	1,330
Malagasy Republic	2,704	4,371	6,516	5,460	6,370	3,060
Malawi	907	1,304	1,178	1,222	1,060	100
Reunion	43,058	50,538	53,024	53,197	57,150	21,490
Rhodesia	1,150	633	304	415	710	140
Rodrigues	3,319	4,221	4,853	5,642	5,398	2,479
Seychelles	2,209	2,591	3,250	3,153	3,570	1,420
South Africa, Rep. of	17,450	20,684	21,514	22,603	27,440	12,110
Switzerland	396	534	587	726	1,150	500
Tanzania	332	479	529	815	1,050	490
United Kingdom	12,192	15,376	17,102	18,497	19,290	6,050
Zambia	3,263	2,800	4,020	3,840	4,010	1,090
Other Countries	5,114	4,953	4,165	4,207	5,232	1,771
All Countries	116,861	138,796	152,580	161,241	182,200	72,750

^{1/} excluding transit passengers who did not leave the airport; discharged seamen numbering 687, 507, 628, 447, 571 and 252 respectively for the period under review.

Table 11 - Departures^{1/} by country of final destination, 1975 - June 1980

Country of final destination	1975	1976	1977	1978	1979	Jan-June 1980
Australia	4,537	4,750	4,627	4,144	5,930	2,500
France	9,814	12,865	15,736	21,256	22,010	8,850
Germany, Fed. Rep.	1,231	1,185	1,934	2,268	5,070	3,640
Hong Kong	853	1,012	1,048	1,192	1,450	640
India	5,506	5,564	6,340	6,753	8,880	3,940
Italy	1,406	1,580	3,072	3,218	4,160	2,390
Kenya	2,733	3,591	2,541	2,348	3,140	1,410
Malagasy Republic	2,228	3,094	4,990	4,435	4,870	2,330
Malawi	793	527	943	972	830	160
Reunion	42,569	49,799	53,648	53,418	58,910	23,130
Rhodesia	1,088	754	375	447	790	260
Rodrigues	2,968	3,496	4,477	5,571	5,785	2,520
Seychelles	2,061	3,223	4,023	3,544	4,780	1,560
South Africa, Rep. of	18,158	21,471	21,344	22,209	28,250	12,900
Switzerland	536	527	892	882	1,040	680
Tanzania	528	508	637	780	930	490
United Kingdom	13,728	16,641	17,757	18,855	20,030	7,660
Zambia	2,952	2,330	3,444	3,314	3,280	1,570
Other Countries	6,078	5,974	4,932	5,149	5,815	3,120
All Countries	119,772	140,409	154,760	162,753	185,950	79,750

^{1/} excluding transit passengers who did not leave the airport; engaged seamen numbering 931, 739, 893, 980, 914 and 315 respectively for the period under review

Table 12 - Passenger traffic by type of passenger and month, January - June 1980

Type of passenger	January	February	March	April	May	June	Jan-June
<u>ARRIVALS</u>							
Visitors ^{1/}	<u>11,430</u>	<u>9,320</u>	<u>9,900</u>	<u>8,550</u>	<u>9,220</u>	<u>6,330</u>	<u>54,750</u>
Or holiday	10,160	7,750	8,690	7,560	7,960	5,700	47,840
On business	480	500	600	460	640	310	3,070
In transit	750	960	570	530	570	320	3,700
Other and not stated	40	30	40	-	30	-	140
Mauritians settled abroad	<u>510</u>	<u>430</u>	<u>520</u>	<u>500</u>	<u>280</u>	<u>450</u>	<u>2,790</u>
Mauritian residents	<u>2,870</u>	<u>1,750</u>	<u>2,120</u>	<u>2,590</u>	<u>2,760</u>	<u>2,420</u>	<u>14,510</u>
Other	<u>140</u>	<u>100</u>	<u>120</u>	<u>180</u>	<u>110</u>	<u>50</u>	<u>700</u>
Total	14,950	12,600	12,660	11,820	12,710	9,250	72,750
<u>DEPARTURES</u>							
Visitors	13,420	10,000	9,200	9,610	9,710	6,130	58,100
Mauritians settled abroad	1,730	1,210	500	550	300	330	4,720
Emigrants	17	25	31	28	25	18	144
Mauritian residents	2,470	2,290	2,850	2,620	2,740	2,620	15,590
Other	353	135	79	302	105	172	1,196
Total	17,990	15,710	12,660	13,110	13,010	9,270	79,750

^{1/} excluding seamen and transit passengers who do not leave the airport

^{2/} including non-residents (a total of 2,370) who left the airport but stayed in the country for less than a day

Table 13 - Arrivals^{1/} by age and sex, July 1978 - June 1980

Age (completed years)	July - December 1978			January - June 1979			July - December 1979			January - June 1980		
	Both sexes	Male	Female	Both sexes	Male	Female	Both sexes	Male	Female	Both sexes	Male	Female
	Under 1	593	345	248	490	280	210	440	280	160	410	250
1 - 4	3,051	1,785	1,267	2,540	1,530	1,010	3,030	1,650	1,380	2,020	1,160	860
5 - 9	3,853	2,146	1,707	2,860	1,640	1,220	4,130	2,170	1,960	2,340	1,250	1,090
10 - 14	3,734	1,989	1,745	2,660	1,340	1,320	3,740	1,860	1,880	1,870	1,010	860
15 - 19	4,441	2,085	2,356	5,270	1,470	1,800	4,640	2,250	2,380	2,810	1,440	1,370
20 - 24	9,323	4,518	4,805	8,070	4,090	3,980	9,770	4,700	5,070	7,070	3,650	3,420
25 - 29	12,632	6,877	5,755	11,030	6,210	4,820	13,640	7,590	6,250	10,250	6,360	3,890
30 - 34	11,812	6,876	4,936	10,770	6,110	4,660	12,930	7,630	5,300	9,990	6,020	3,970
35 - 39	9,266	5,622	3,634	5,270	5,860	3,410	11,020	6,650	4,370	8,320	5,600	2,720
40 - 44	7,390	4,631	2,759	7,590	4,560	2,630	8,210	5,050	3,160	6,520	4,240	2,280
45 - 49	6,235	3,832	2,403	6,690	4,090	2,600	6,470	3,790	2,680	5,100	3,310	1,790
50 - 54	5,484	3,225	2,259	5,260	3,110	2,150	5,850	3,610	2,240	4,780	3,020	1,760
55 - 59	4,136	2,431	1,705	4,180	2,690	1,490	4,770	2,850	1,920	3,640	2,440	1,200
60 - 64	2,669	1,506	1,163	2,740	1,610	1,130	2,660	1,530	1,130	2,170	1,290	880
65 - 69	1,873	1,031	842	1,970	1,050	920	1,940	960	980	1,520	910	610
70 & over	1,419	765	654	1,540	750	790	1,620	960	660	1,170	650	520
Not stated	3,402	2,303	1,099	5,228	2,198	1,030	3,753	2,723	1,030	3,022	2,222	800
All ages	91,314	51,977	39,337	84,158	48,988	35,170	98,613	56,063	42,550	73,002	44,822	28,180

^{1/} including discharged seamen but excluding transit passengers who do not leave the airport

Table 14 - Departures^{1/} by age and sex, July 1973 - June 1980

Age (completed years)	July - December 1978			January - June 1979			July - December 1979			January - June 1980		
	Both sexes	Male	Female	Both sexes	Male	Female	Both sexes	Male	Female	Both sexes	Male	Female
	Under 1	555	355	200	680	400	280	620	340	280	600	340
1 - 4	2,697	1,576	1,121	2,960	1,740	1,220	2,590	1,210	1,380	2,360	1,170	1,190
5 - 9	5,482	1,983	1,499	3,580	2,060	1,320	3,670	1,890	1,780	2,860	1,610	1,250
10 - 14	3,569	1,932	1,637	5,090	1,780	1,310	3,790	2,100	1,690	2,620	1,530	1,090
15 - 19	4,719	2,340	2,379	3,840	1,820	2,020	4,500	2,400	2,100	3,430	1,670	1,760
20 - 24	9,635	4,889	4,746	9,120	4,700	4,420	10,300	5,490	4,810	7,700	3,970	3,730
25 - 29	11,778	6,538	5,240	11,740	7,040	4,700	13,150	7,290	5,860	11,400	6,760	4,640
30 - 34	10,987	6,458	4,529	11,820	7,310	4,510	11,910	6,840	5,070	10,340	6,480	3,860
35 - 39	8,647	5,312	3,335	10,670	7,160	3,510	10,440	6,150	4,290	9,020	5,970	3,050
40 - 44	6,905	4,385	2,520	7,470	4,850	2,620	7,960	4,960	3,000	7,380	4,820	2,560
45 - 49	5,865	3,646	2,219	6,850	4,320	2,530	6,480	4,110	2,370	5,560	3,620	1,940
50 - 54	5,229	3,086	2,143	5,560	3,350	2,210	5,660	3,360	2,300	4,920	3,240	1,680
55 - 59	3,888	2,325	1,565	4,210	2,350	1,860	4,110	2,490	1,620	3,790	2,390	1,400
60 - 64	2,487	1,398	1,089	2,710	1,680	1,030	2,550	1,520	1,030	2,060	1,400	660
65 - 69	1,677	933	744	2,530	1,460	870	1,890	1,020	870	1,480	1,000	480
70 & over	1,350	710	640	1,650	930	720	1,490	780	710	1,260	860	400
Not stated	3,640	2,484	1,156	3,534	2,594	940	4,140	2,790	1,350	3,285	2,405	880
All ages	87,110	50,350	36,760	91,614	55,544	36,070	95,250	54,740	40,510	80,065	49,235	30,830

^{1/} including engaged seamen but excluding transit passengers who do not leave the airport

Table 15 - Excess of arrivals over departures^{1/} by age and sex, July 1978 - June 1980

Age (completed years)	July - December 1978			January - June 1979			July - December 1979			January - June 1980		
	Both sexes	Male	Female	Both sexes	Male	Female	Both sexes	Male	Female	Both sexes	Male	Female
Under 1	+ 38	- 10	+ 48	- 190	- 120	- 70	- 180	- 60	- 120	- 190	- 90	- 100
1 - 4	+ 355	+ 209	+ 146	- 420	- 210	- 210	+ 440	+ 440	-	- 340	- 10	- 330
5 - 9	+ 371	+ 163	+ 208	- 520	- 420	- 100	+ 460	+ 280	+ 180	- 520	- 360	- 160
10 - 14	+ 165	+ 57	+ 108	- 430	- 440	+ 10	- 50	- 240	+ 190	- 750	- 520	- 230
15 - 19	- 278	- 255	- 23	- 570	- 350	- 220	+ 140	- 140	+ 280	- 620	- 230	- 390
20 - 24	- 312	- 371	+ 59	- 1,050	- 610	- 440	- 530	- 790	+ 260	- 630	- 320	- 310
25 - 29	+ 854	+ 339	+ 515	- 710	- 830	+ 120	+ 490	+ 100	+ 390	- 1,150	- 400	- 750
30 - 34	+ 825	+ 418	+ 407	- 1,050	- 1,200	+ 150	+ 1,020	+ 790	+ 230	- 350	- 460	+ 110
35 - 39	+ 619	+ 320	+ 299	- 1,400	- 1,300	- 100	+ 580	+ 500	+ 80	- 700	- 370	- 330
40 - 44	+ 485	+ 246	+ 239	+ 120	+ 110	+ 10	+ 250	+ 90	+ 160	- 860	- 580	- 280
45 - 49	+ 370	+ 186	+ 184	- 160	- 230	+ 70	- 10	- 320	+ 310	- 460	- 310	- 150
50 - 54	+ 255	+ 139	+ 116	- 500	- 240	- 60	+ 190	+ 250	- 60	- 140	- 220	+ 80
55 - 59	+ 248	+ 106	+ 142	- 30	+ 340	- 370	+ 660	+ 360	+ 300	- 150	+ 50	- 200
60 - 64	+ 182	+ 108	+ 74	+ 30	- 70	+ 100	+ 110	+ 10	+ 100	+ 110	- 110	+ 220
65 - 69	+ 196	+ 98	+ 98	- 560	- 410	+ 50	+ 50	- 60	+ 110	+ 40	- 90	+ 130
70 & over	+ 69	+ 55	+ 14	- 110	- 180	+ 70	+ 130	+ 180	- 50	- 90	- 210	+ 120
Not stated	- 238	- 181	- 57	- 306	- 396	+ 90	- 387	- 67	- 320	- 263	- 183	- 80
All ages	+4,204	+1,627	+2,577	-7,456	-6,556	- 900	+3,363	+1,325	+2,040	-7,063	-4,413	-2,650

^{1/} including seamen but excluding transit passengers who do not leave the airport

Table 16 - Arrivals and departures^{1/} of residents of Island of Mauritius by district of residence and sex, January-June 1980.

Geographical district	Arrivals			Departures			Excess of arrivals over departures		
	Both sexes	Male	Female	Both sexes	Male	Female	Both sexes	Male	Female
Port Louis	2,800	1,820	980	2,900	2,090	810	-	- 270	+ 170
Pamplenesses	530	400	130	480	370	110	+	+ 30	+ 20
Rivière du Rempart	420	310	110	330	200	130	+	+ 110	- 20
Flacq	200	130	70	370	230	140	-	- 100	- 70
Grand Port	360	210	150	420	280	140	-	- 70	+ 10
Savanne	180	110	70	160	100	60	+	+ 10	+ 10
Plaines Wilhems : Urban	5,800	3,660	2,140	6,530	4,060	2,470	-	- 400	- 330
Other	80	70	10	120	50	70	-	+ 20	- 60
Moka	290	220	70	350	240	110	-	- 20	- 40
Black River	290	190	100	230	160	70	+	+ 30	+ 30
Not stated	3,560	2,540	1,020	3,700	2,590	1,110	-	- 140	- 90
Whole island	14,510	9,660	4,850	15,590	10,370	5,220	-	- 710	- 370

^{1/} excluding official long-term emigrants

Table 17 - Arrivals of residents of Island of Mauritius by age and sex, July 1978 - June 1980

Age (completed years)	July - December 1978			January - June 1979			July - December 1979			January - June 1980		
	Both sexes	Male	Female	Both sexes	Male	Female	Both sexes	Male	Female	Both sexes	Male	Female
Under 1	104	66	38	120	80	40	190	60	50	70	60	10
1 - 4	470	270	200	380	180	200	500	290	210	250	150	100
5 - 9	516	279	237	450	230	140	600	330	270	330	180	150
10 - 14	510	257	253	480	270	210	660	330	330	280	140	140
15 - 19	694	494	400	790	400	390	910	490	420	650	360	290
20 - 24	2,638	1,623	1,015	2,110	1,120	690	2,650	1,560	1,090	1,810	1,160	650
25 - 29	2,509	1,685	884	2,150	1,330	760	2,910	1,970	940	1,930	1,430	500
30 - 34	1,824	1,235	589	1,510	940	570	1,880	1,260	620	1,340	860	480
35 - 39	1,434	919	515	1,380	930	450	1,580	1,050	530	1,050	800	250
40 - 44	1,289	835	454	1,500	880	420	1,460	1,010	450	1,010	630	380
45 - 49	1,225	808	417	1,100	650	450	1,160	670	490	930	650	280
50 - 54	1,197	702	495	950	610	340	1,350	760	590	750	530	220
55 - 59	844	504	340	660	480	180	920	560	360	570	360	210
60 - 64	753	428	325	550	310	240	760	520	240	480	240	240
65 - 69	474	246	228	270	140	130	390	200	190	230	110	120
70 & over	404	233	171	280	140	140	410	270	140	250	150	100
Not stated	2,948	1,926	1,022	2,540	1,670	870	3,230	2,270	960	2,580	1,850	730
All ages	20,093	12,510	7,583	17,000	10,780	6,220	21,460	13,600	7,860	17,510	9,660	4,850

Table 16 - Departures of residents of Island of Mauritius by age and sex, July 1978 - June 1980

Age (completed years)	July - December 1978			January - June 1979			July - December 1979			January - June 1980		
	Both sexes	Male	Female	Both sexes	Male	Female	Both sexes	Male	Female	Both sexes	Male	Female
Under 1	133	84	49	140	80	60	160	60	100	90	50	30
1 - 4	481	282	199	420	210	210	460	250	210	300	180	120
5 - 9	562	306	256	400	230	170	600	320	280	240	130	110
10 - 14	725	375	350	290	190	100	1,030	620	410	310	190	120
15 - 19	1,504	866	638	820	380	440	1,400	770	630	850	520	330
20 - 24	3,391	2,152	1,239	2,340	1,490	850	3,620	2,370	1,250	1,860	1,110	750
25 - 29	2,557	1,668	889	2,010	1,380	630	3,030	1,980	1,050	2,170	1,360	810
30 - 34	1,740	1,164	576	1,870	1,330	540	2,050	1,240	810	1,490	1,120	370
35 - 39	1,397	880	517	1,590	1,160	430	1,580	850	730	1,080	800	280
40 - 44	1,266	808	458	1,070	710	360	1,320	940	380	1,120	740	380
45 - 49	1,144	741	403	1,020	680	340	1,120	720	400	1,020	660	360
50 - 54	1,131	657	474	1,070	580	490	1,150	560	590	760	520	240
55 - 59	795	467	328	600	330	270	780	400	300	600	400	200
60 - 64	644	354	290	490	340	150	750	430	320	460	320	140
65 - 69	400	225	175	270	150	120	370	180	190	350	220	130
70 & over	382	208	174	280	140	140	360	200	160	260	190	70
Not stated	3,058	1,981	1,077	2,820	1,930	890	3,380	2,150	1,230	2,630	1,850	780
All ages	21,310	13,218	8,092	17,500	11,310	6,190	23,160	14,040	9,120	15,590	10,370	5,220

excluding official long-term emigrants

Table 19 - Excess of arrivals over departures of residents (excluding emigrants) of Island of Mauritius by age and sex, July 1978 - June 1980

Age (completed years)	July - December 1978			January - June 1979			July - December 1979			January - June 1980		
	Both sexes	Male	Female	Both sexes	Male	Female	Both sexes	Male	Female	Both sexes	Male	Female
Under 1	- 29	- 18	- 11	- 20	-	- 20	-	-	- 70	-	-	- 20
1 - 4	- 11	- 12	+ 1	- 40	- 30	- 10	+ 40	+ 40	-	-	- 30	- 20
5 - 9	- 46	- 27	- 19	+ 30	+ 60	- 30	-	+ 10	- 10	+ 90	+ 50	+ 40
10 - 14	- 215	- 118	- 97	+ 190	+ 80	+ 110	-	- 290	- 80	- 30	- 50	+ 20
15 - 19	- 610	- 372	- 238	- 30	+ 20	- 50	-	- 280	- 210	- 200	- 160	- 40
20 - 24	- 753	- 529	- 224	- 230	- 70	- 160	-	- 810	- 160	- 50	+ 50	- 100
25 - 29	+ 12	+ 17	- 5	+ 140	+ 10	+ 130	-	- 10	- 110	-	+ 70	- 310
30 - 34	+ 84	+ 71	+ 13	- 360	- 390	+ 30	-	+ 20	- 190	-	- 260	+ 110
35 - 39	+ 37	+ 39	- 2	- 210	- 230	+ 20	-	+ 200	- 200	-	-	- 30
40 - 44	+ 23	+ 27	- 4	+ 230	+ 170	+ 60	+ 140	+ 70	+ 70	-	- 110	-
45 - 49	+ 81	+ 67	+ 14	+ 80	- 30	+ 110	+ 40	- 50	+ 90	-	- 10	- 80
50 - 54	+ 66	+ 45	+ 21	- 120	+ 30	- 150	+ 200	+ 200	-	-	+ 10	- 20
55 - 59	+ 49	+ 37	+ 12	+ 50	+ 150	- 90	+ 140	+ 160	- 20	-	- 40	+ 10
60 - 64	- 109	+ 74	+ 35	+ 60	- 30	+ 90	+ 10	+ 90	- 80	+ 20	- 80	+ 100
65 - 69	+ 74	+ 21	+ 53	-	- 10	+ 10	+ 20	+ 20	-	-	- 110	- 10
70 & over	+ 22	+ 25	- 3	-	-	-	+ 50	+ 70	- 20	-	- 40	+ 30
Not stated	- 110	- 55	- 55	- 280	- 260	- 20	- 150	+ 120	- 270	-	-	- 50
All ages	- 1,217	- 708	- 500	- 509	- 530	+ 30	- 1,700	- 440	- 1,260	- 1,080	- 710	- 370

Table 20 - Excess of arrivals over departures of residents (including emigrants) of Island of Mauritius by age and sex, July 1978 - June 1980

Age (completed years)	July - December 1978			January - June 1979			July - December 1979			January - June 1980		
	Both sexes	Male	Female	Both sexes	Male	Female	Both sexes	Male	Female	Both sexes	Male	Female
Under 1	29	18	11	23	-	23	72	2	-	21	1	20
1 - 4	19	16	3	46	32	14	40	40	-	54	32	22
5 - 9	53	33	20	25	59	34	5	7	-	80	41	39
10 - 14	233	126	107	180	74	106	384	292	92	39	53	14
15 - 19	649	382	267	55	16	71	504	283	221	221	163	58
20 - 24	786	534	252	265	75	190	989	812	177	94	38	132
25 - 29	16	8	24	131	10	121	130	11	119	263	61	324
30 - 34	74	66	8	370	392	22	172	19	191	164	267	103
35 - 39	32	38	6	212	230	18	4	198	202	34	1	33
40 - 44	20	25	5	229	169	60	138	70	68	111	110	1
45 - 49	72	63	9	76	32	108	39	50	89	92	11	81
50 - 54	65	44	21	121	30	151	198	199	1	12	10	22
55 - 59	48	36	12	60	150	90	140	160	20	32	40	8
60 - 64	106	73	33	56	32	88	10	90	80	17	80	97
65 - 69	72	20	52	-	10	10	20	20	-	120	110	10
70 & over	22	25	3	1	1	-	50	70	20	11	40	29
Not stated	110	55	55	280	260	20	150	120	270	53	2	51
All ages	1,384	766	618	616	556	60	1,775	457	1,318	1,224	760	464

Table 21 - Departures of Mauritian residents travelling by air by
country of final destination, 1978 - June 1980

Country of final destination	1978	1979	Jan-June 1980
Australia	879	1,010	340
France	2,480	3,230	1,300
Germany, Fed. Rep. of	380	560	280
Hong Kong	525	730	270
India	3,167	2,990	1,040
Italy	240	380	210
Kenya	531	660	270
Rodrigues	3,075	3,654	1,499
Réunion	11,478	13,190	4,520
South Africa, Rep. of	1,550	1,900	1,260
U.K.	7,560	7,130	2,310
Other countries	2,625	2,686	1,091
All countries	34,490	38,120	14,390

III - EMIGRATION

Table 22 - Official long-term emigrants^{1/} by sex, 1956 - June 1980

Year	Both sexes	Male	Female
1956	147	93	54
1957	109	68	41
1958	163	130	33
1959	170	128	42
1960	158	132	26
1961	837	629	208
1962	1,003	711	372
1963	594	326	268
1964	915	491	424
1965	1,408	659	749
1966	1,611	774	837
1967	2,225	1,038	1,187
1968	3,067	1,487	1,580
1969	2,579	1,119	1,260
1970	2,282	1,063	1,219
1971	2,351	1,078	1,273
1972	2,271	956	1,315
1973	2,037	844	1,193
1974	1,424	606	818
1975	874	328	546
1976	579	195	384
1977	290	120	170
1978	320	111	209
1979	191	43	148
Jan - June 1980	144	50	94

^{1/} persons who have obtained a permit to emigrate to another country

Table 23 - Internal migration, 1956 - 1979

Year	Arrivals	Departures			Excess of arrivals over departures (excluding emigrants)
		Total	Official long-term emigrants ^{1/}	Departures excluding emigrants	
1956	7,747	8,225	147	8,078	- 331
1957	8,095	8,267	109	8,158	- 63
1958	8,703	8,924	163	8,761	- 58
1959	9,637	9,544	170	9,374	+ 263
1960	10,412	10,784	158	10,626	- 214
1961	11,854	13,033	837	12,196	- 342
1962	15,189	16,075	1,083	14,992	+ 197
1963	18,047	18,299	594	17,705	+ 342
1964	21,221	22,331	915	21,416	- 195
1965	22,024	24,150	1,408	22,742	- 718
1966	25,456	29,301	1,611	27,690	- 1,234
1967	29,321	32,925	2,225	30,700	- 1,379
1968	31,403	35,988	3,067	32,921	- 1,518
1969	35,919	38,929	2,379	36,550	- 631
1970	48,819	51,969	2,282	49,687	- 868
1971	60,826	63,997	2,351	61,646	- 820
1972	77,174	81,493	2,271	79,222	- 2,048
1973	101,184	104,697	2,037	102,660	- 1,476
1974	109,044	113,362	1,494	111,868	- 2,824
1975	117,548	120,703	874	119,829	- 2,281
1976	139,303	141,148	579	140,569	- 1,266
1977	153,208	155,653	290	155,363	- 2,155
1978	161,688	163,733	320	163,413	- 1,725
1979	182,771	186,864	191	186,673	- 3,902

^{1/} persons who have obtained a permit to emigrate to another country

Note: The number of immigrants coming to settle in Mauritius is negligible.
A net negative balance over successive years in the last column indicates that a number of persons not registered as official emigrants are permanently leaving the country

Table 24 - Official long-term emigrants^{1/} by country of intended residence, 1967 - June 1980

Country of intended residence	1967	1968	1969	1970	1971	1972	1973	1974	1975	1976	1977	1978	1979	Jan-June 1980
All countries	2,225	3,067	2,379	2,282	2,351	2,271	2,037	1,494	874	579	290	320	191	144
<u>AFRICA</u>	246	276	84	158	220	185	106	99	17	18	11	32	2	-
Congo Brazzaville	1	-	1	20	54	-	3	9	-	-	-	-	-	-
Kenya	1	20	3	11	9	5	12	7	-	2	-	2	-	-
Malagasy Rep.	3	2	2	4	6	4	7	-	-	1	-	-	-	-
Malawi	8	23	1	12	15	30	23	29	2	9	5	2	-	-
Mozambique	4	-	14	42	20	20	11	8	7	-	-	-	-	-
Réunion	6	9	2	1	6	-	8	1	2	1	6	21	-	-
Rhodesia	16	4	1	2	3	-	-	-	-	-	-	-	-	-
South Africa Rep.	176	171	50	22	37	5	9	8	3	-	-	1	-	-
Zambia	30	38	10	30	56	113	23	21	2	5	-	-	-	-
Other African	1	9	-	14	14	8	10	16	1	-	-	6	2	-
<u>AMERICA</u>	34	24	29	86	51	40	29	37	87	33	31	5	10	24
Canada	32	18	25	82	47	37	26	37	87	33	31	1	10	22
U.S.A.	2	6	4	4	4	2	2	-	-	-	-	4	-	2
Other American	-	-	-	-	-	1	1	-	-	-	-	-	-	-

Table 24 (cont'd.)

Country of intended residence	1967	1968	1969	1970	1971	1972	1973	1974	1975	1976	1977	1978	1979	Jan-June 1980
<u>ASIA</u>	1	1	3	4	3	18	2	2	3	-	-	1	-	-
India	1	-	3	1	-	1	2	-	2	-	-	1	-	-
Other Asian	-	1	-	3	3	17	-	2	1	-	-	-	-	-
<u>EUROPE</u>	613	728	615	939	1,056	1,145	1,353	1,042	682	477	225	252	148	97
Belgium	35	22	7	22	44	32	38	54	30	17	1	2	7	3
France	53	58	93	435	566	554	684	546	237	157	58	105	77	41
Germany, Fed. Rep.	-	-	2	5	8	31	43	7	4	1	6	12	1	1
Italy	1	-	1	4	19	48	29	19	17	17	6	5	16	9
Norway	-	-	-	1	3	2	5	1	1	2	-	4	-	-
Switzerland	3	1	-	6	1	3	5	4	4	1	4	7	3	6
United Kingdom	519	646	510	463	455	460	543	402	385	302	115	115	41	32
Other European	2	1	2	3	2	15	6	9	4	-	5	4	3	5
<u>OCEANIA</u>	1,331	2,038	1,648	1,095	1,019	883	547	314	85	51	25	30	31	23
Australia	1,330	2,037	1,645	1,082	1,004	877	545	301	84	50	25	30	31	23
New Zealand	-	1	1	-	-	1	1	-	-	-	-	-	-	-
Other Oceanian	1	-	2	13	15	5	1	13	1	1	-	-	-	-

1/ persons who have obtained a permit to emigrate to another country

Table 25 - Age distribution of official long-term emigrants, 1967 - June 1980
Male

Age (completed years)	1967	1968	1969	1970	1971	1972	1973	1974	1975	1976	1977	1978	1979	Jan-June 1980
0 - 4	127	226	136	93	85	94	65	68	36	22	24	10	4	3
5 - 9	133	197	153	106	94	113	101	77	43	28	26	23	4	9
10 - 14	135	149	146	93	96	115	105	77	59	36	23	18	8	3
15 - 19	122	147	140	113	106	108	100	57	46	29	12	21	7	3
20 - 24	132	155	114	153	171	149	112	101	66	28	10	6	7	12
25 - 29	94	141	86	141	120	85	107	82	35	21	10	10	1	9
30 - 34	63	146	75	120	108	68	59	39	17	7	3	8	3	7
35 - 39	60	93	52	68	89	59	45	38	3	5	5	2	2	1
40 - 44	63	82	62	63	69	51	53	23	6	5	4	2	1	-
45 - 49	35	48	44	32	48	46	33	13	5	4	1	4	2	1
50 - 54	25	34	39	33	25	29	13	8	3	6	-	3	1	-
55 - 59	17	27	40	15	18	11	18	8	-	2	-	1	-	-
60 - 64	20	24	13	13	12	12	15	9	3	1	1	2	2	-
65 - 69	9	10	10	9	16	7	3	1	4	1	1	1	-	-
70 & over	3	8	9	11	9	4	6	4	1	-	-	-	1	-
Unknown	-	-	-	-	1	-	3	1	1	-	-	-	-	2
All ages	1,038	1,487	1,119	1,063	1,073	956	844	606	328	195	120	111	43	50

Table 25 - (cont'd)

Female

Age (completed years)	1967	1968	1969	1970	1971	1972	1973	1974	1975	1976	1977	1978	1979	Jan-June 1980
0 - 4	138	215	121	99	90	89	48	50	46	24	11	9	7	2
5 - 9	147	202	143	98	89	110	111	79	44	29	14	13	6	1
10 - 14	123	168	151	94	89	140	104	70	42	38	19	22	16	6
15 - 19	154	172	174	161	134	157	181	153	105	74	42	53	32	18
20 - 24	171	184	150	237	241	267	263	212	142	102	41	46	47	32
25 - 29	106	149	101	132	145	148	130	102	54	51	21	30	18	14
30 - 34	74	133	87	81	106	100	84	72	33	22	6	13	9	7
35 - 39	74	85	78	64	84	75	72	47	18	9	4	8	4	3
40 - 44	58	74	58	61	58	65	63	24	12	6	5	3	2	1
45 - 49	44	54	49	50	60	47	51	27	8	8	1	6	3	1
50 - 54	32	46	53	25	31	32	21	26	10	5	3	-	2	2
55 - 59	30	32	37	37	44	33	17	10	11	-	-	2	-	2
60 - 64	11	27	21	25	21	22	17	7	6	4	1	3	2	3
65 - 69	11	19	12	17	10	16	10	4	6	7	-	1	-	-
70 & over	14	20	25	18	18	14	16	4	7	5	1	-	-	1
Unknown	-	-	-	-	3	-	5	1	2	-	-	-	-	1
All ages	1,187	1,580	1,260	1,219	1,273	1,315	1,193	888	546	384	170	209	148	94

Table 25 (cont'd)
Both sexes

Age (completed years)	1967	1968	1969	1970	1971	1972	1973	1974	1975	1976	1977	1978	1979	Jan-June 1980
0 - 4	265	441	257	192	175	183	113	118	82	46	35	19	11	5
5 - 9	280	399	296	204	185	228	212	156	87	57	40	36	10	10
10 - 14	258	317	297	187	185	255	209	147	101	74	42	40	24	9
15 - 19	276	319	314	294	250	265	281	210	151	103	54	74	39	21
20 - 24	303	339	264	390	412	416	375	313	208	130	51	52	54	44
25 - 29	200	290	187	273	273	235	237	184	89	72	31	40	19	23
30 - 34	137	279	162	201	214	168	143	111	50	29	9	21	12	14
35 - 39	134	178	130	132	173	134	117	85	21	14	9	10	6	4
40 - 44	121	156	120	124	127	116	116	47	18	11	9	5	3	1
45 - 49	79	102	93	82	108	93	84	40	13	12	2	10	5	2
50 - 54	57	80	92	58	54	61	40	34	13	11	3	3	3	2
55 - 59	47	59	77	52	62	44	35	18	11	2	-	3	-	2
60 - 64	31	51	34	33	40	34	32	16	9	5	2	5	4	3
65 - 69	20	29	22	26	26	23	13	5	10	8	2	2	-	-
70 & over	17	28	34	23	27	18	22	8	8	5	1	-	1	1
Unknown	-	-	-	-	4	-	8	2	3	-	-	-	-	3
All ages	2,225	3,067	2,379	2,282	2,351	2,271	2,037	1,494	874	579	290	320	191	144

Persons who have obtained a permit to emigrate to another country

Table 26 -- Official long-term emigrants^{1/} by Major Occupational Group, 1975 - June 1980

Major Occupational Group ^{2/}	1975	1976	1977	1978	1979	Jan-June 1980
Total number of emigrants	874	579	290	320	191	144
<u>Emigrants reporting an occupation</u>	<u>253</u>	<u>136</u>	<u>41</u>	<u>65</u>	<u>44</u>	<u>48</u>
0/1. Professional, Technical and Related Workers	62	20	10	8	3	2
2. Administrative and Managerial Workers	8	6	2	-	1	-
3. Clerical and Related Workers	42	30	7	6	4	6
4. Sales Workers	7	5	7	1	2	2
5. Service Workers	83	28	3	3	11	6
6. Agricultural, Animal Husbandry and Forestry Workers, Fishermen and Hunters	1	1	-	-	-	-
7/8/9. Production and Related Workers, Transport Equipment Operators and Labourers	48	42	11	19	22	22
X. Workers not classifiable by Occupation	2	4	1	3	1	10
<u>Emigrants not reporting any occupation (including housewives and children)</u>	<u>621</u>	<u>443</u>	<u>249</u>	<u>275</u>	<u>147</u>	<u>96</u>

^{1/} persons who have obtained a permit to emigrate to another country

^{2/} International Standard Classification of Occupations, Revised Edition, 1968

Table 27 - Official long-term emigrants^{1/} by Major Occupational Group, age and sex, January - June 1980

Major Occupational Group ^{2/}	Age (completed years)																
	All ages		< 20		20 - 24		25 - 34		35 - 44		45 - 54		55 +		Not stated		
	Both sexes	Male	Female	Male	Female	Male	Female	Male	Female	Male	Female	Male	Female	Male	Female		
Total number of emigrants	144	50	94	18	27	11	33	17	20	1	4	1	2	-	7	2	1
Emigrants reporting an occupation	48	25	23	1	1	6	13	16	7	-	2	1	-	-	-	-	-
0/1 Professional, Technical and Related Workers	2	2	-	-	-	-	-	2	-	-	-	-	-	-	-	-	-
2 Administrative and Managerial Workers	-	-	-	-	-	-	-	-	-	-	-	-	-	-	-	-	-
3 Clerical and Related Workers	6	3	3	-	-	1	2	1	1	-	-	-	-	-	-	-	-
4 Sales Workers	2	1	1	-	-	-	-	1	-	-	-	-	-	-	-	-	-
5 Service Workers	6	3	3	-	-	1	1	1	1	-	2	1	-	-	-	-	-
6 Agriculture, Animal Husbandry and Forestry Workers, Fishermen and Hunters	-	-	-	-	-	-	-	-	-	-	-	-	-	-	-	-	-
7/8/9 Production and Related Workers, Transport Equipment Operators and Labourers	22	10	12	-	1	2	6	8	5	-	-	-	-	-	-	-	-
X Workers not classifiable by Occupation	10	6	4	-	-	2	4	3	-	1	-	-	-	-	-	-	-
Emigrants not reporting any occupation (including housewives and children)	96	25	71	17	26	5	20	1	13	-	2	-	2	-	7	2	1

^{1/} persons who have obtained a permit to emigrate to another country

^{2/} International Standard Classification of Occupations, Revised Edition, 1968

Table 28 - Official long-term emigrants^{1/} by occupation, 1978 - June 1980

Occupation	1978	1979	Jan-June 1980
Accountants	-	-	-
Cabinet makers	-	2	1
Carpenters	1	-	1
Clerks	2	2	3
Cooks	2	-	2
Doctors	-	-	-
Drivers	1	-	-
Electricians (see also fitters)	-	-	1
Fitters (see also electricians)	-	1	2
Maids (domestic servants)	5	8	3
Managers	-	-	-
Masons	1	1	-
Mechanics	-	-	2
Nurses	4	-	-
Policemen	1	-	1
Salesmen	-	2	2
Seamstresses and tailors	11	15	11
Stenographers and typists	3	2	2
Storekeepers	-	-	1
Teachers	3	1	-
Waiters	-	2	-
Welders	1	1	2
Other	10	7	14
Occupation not stated or not applicable ^{2/}	275	147	96
Total number of emigrants	320	191	144

1/ persons who have obtained a permit to emigrate to another country

2/ emigrants not reporting any occupation (including housewives and children)

Table 29 - Official long-term emigrants ^{1/} by district of last residence and sex, July 1978 - June 1980

Geographical district	July - December 1978			January - June 1979 ^{2/}			July - December 1979			January - June 1980		
	Both sexes	Male	Female	Both sexes	Male	Female	Both sexes	Male	Female	Both sexes	Male	Female
Port Louis	57	24	33	22	3	19	25	6	19	39	13	26
Famplémousses	2	-	2	8	-	8	4	2	2	6	2	4
Rivière du Rempart	3	-	3	11	5	6	-	-	-	4	1	3
Flacq	3	2	1	7	1	6	1	-	1	6	2	4
Grand Port	12	1	11	10	1	9	8	-	8	4	1	3
Savanne	1	1	-	3	-	3	1	-	1	7	3	4
Plaines Wilhems : Urban	70	25	45	51	16	35	35	9	26	68	24	44
Other	1	-	1	3	-	3	-	-	-	4	-	4
Moka	3	1	2	1	-	1	-	-	-	2	-	2
Black River	1	-	1	-	-	-	1	-	1	4	2	2
Not stated	14	4	10	-	-	-	-	-	-	-	-	-
Whole island	167	58	109	116	26	90	75	17	58	144	50	94

^{1/} persons who have obtained a permit to emigrate to another country

IV - TOURISM

Definition and notes

1. Definition of tourist:

- (a) Prior to 1964, a tourist has been defined as a non-resident staying in Mauritius for more than 24 hours but less than 6 months;
- (b) As from 1964, a tourist is defined as a non-resident staying in the island for more than 24 hours but less than a year.

The figures for the two periods are nevertheless comparable because of the small number of tourists staying for more than 6 months.

2. Visitors include the following:

- (i) tourists as defined above; and
- (ii) non-residents who stay in the country for less than a day, other than those who do not leave the airport.

3. Method of compilation:

Certain data on tourism (such as type of visitor, tourist arrivals by month of arrival, tourist arrivals by country of residence and mode of transport) are compiled from disembarkation cards which visitors fill in when they arrive in this country. However, information on duration of stay of visitors can be compiled only from the embarkation cards which they fill in when they leave the country.

As from January 1979, figures are based on a 10% sample. Data on 'visitor arrivals' are compiled both from embarkation and disembarkation cards. Since the compilation has been done on a sample basis the figures of 'visitor arrivals' obtained when working with records of arrivals do not tally with those obtained when working with records of departures. The figures in the latter case have been pro-rated to the totals obtained when working with records of arrivals.

4. Tourist nights:

Table 30, 35 and 36 show the number of nights spent by tourists who were on visit in the country during the period under review. The figures therefore include nights spent during the reference period by tourists who arrived before the beginning of the period. On the other hand, nights spent after the end of the reference period by tourists who arrived during the period are excluded.

5. Visitor nights:

In tables 38 - 41 an analysis is made of nights spent by visitors who arrived during the period under review and who have left by a given date after the end of the period. Figures for January - June 1980 thus show the total number of nights spent by visitors who arrived in January - June 1980 and left before 1.10.1980.

6. Mauritians settled abroad are excluded from figures of tourists and visitors. Data referring to them are shown separately in tables 42 - 44. Table 42 shows the total nights spent by Mauritians settled abroad who arrived during the period under review and who have left by a given date after the end of the period. Thus the figures for January - June 1980 include nights spent in July - September 1980 by Mauritians settled abroad who arrived in January - June 1980. Table 44 shows the nights spent during the period under review only. Thus the figures for January - June 1980 include nights spent in January - June 1980 by Mauritians settled abroad who arrived in 1979, but exclude nights spent in July - September 1980 by those who arrived in January - June 1980.

Table 30 - Tourist^{1/} arrivals by mode of transport and total nights spent during period, 1963 - June 1980

Period	Tourist arriving during period			Total nights spent during period ^{2/}
	Sea	Air	Total	
1963	1,008	6,719	7,727	99,400
1964	1,010	9,023	10,033	144,600
1965	746	9,312	10,058	144,900
1966	1,328	11,712	13,040	162,300
1967	937	13,877	14,814	172,000
1968	647	14,906	15,553	149,500
1969	455	20,132	20,587	220,600
1970	365	27,285	27,650	287,600
1971	168	36,230	36,398	399,700
1972	143	48,654	48,797	454,300
1973	1,293 ^{3/}	66,701	67,994	733,100
1974	472	72,443	72,915	772,200
1975	554	74,043	74,597	746,900
1976	778	91,783	92,561	892,200
1977	1,035	101,475	102,510	994,800
1978	696	107,626	108,322	1,051,600
1979	510	127,850	128,360	1,419,600
Jan - June 1980	150	52,230	52,380	584,100

^{1/} see notes on page 34

^{2/} include nights spent during reference period by tourists arriving prior to the period

^{3/} includes about 700 persons who came for a religious conference

Table 31 - Tourist arrivals by month of arrival, 1970 - June 1980

Month of arrival	1970	1971	1972	1973	1974	1975	1976	1977	1978	1979	1980
January	2,718	3,669	4,701	6,874	8,495	8,401	10,055	11,507	10,008	12,640	10,990
February	2,015	2,494	3,335	4,863	5,954	4,017	7,035	9,433	8,452	9,930	8,650
March	1,876	2,191	3,046	4,152	5,272	4,383	6,149	6,974	7,715	9,410	9,610
April	1,495	2,419	2,875	5,091	5,299	4,477	6,753	8,245	7,836	10,860	8,290
May	2,281	2,905	3,261	5,060	5,205	5,235	7,385	7,974	7,357	10,300	8,870
June	1,722	1,890	2,639	4,501	4,661	3,740	4,849	5,432	5,244	7,190	5,970
July	1,981	2,918	3,986	4,726	5,579	5,739	7,551	8,832	8,599	10,270	
August	3,309	5,297	7,038	9,595	10,026	10,844	11,851	11,927	15,477	14,710	
September	2,252	2,845	3,911	5,105	5,183	5,706	6,004	6,463	7,616	9,860	
October	1,869	2,522	3,334	4,893	5,202	5,586	7,757	7,982	9,130	9,760	
November	2,049	2,615	3,873	4,398	5,650	6,634	7,157	7,859	9,719	10,310	
December	3,487	4,633	6,798	8,736	7,551	9,835	10,015	10,882	12,389	13,120	
Whole year	27,650	56,398	48,797	67,994	72,515	74,597	92,561	102,510	108,522	128,360	

(Graph 5) - Tourist arrivals by month of arrival, January 1973 - June 1980

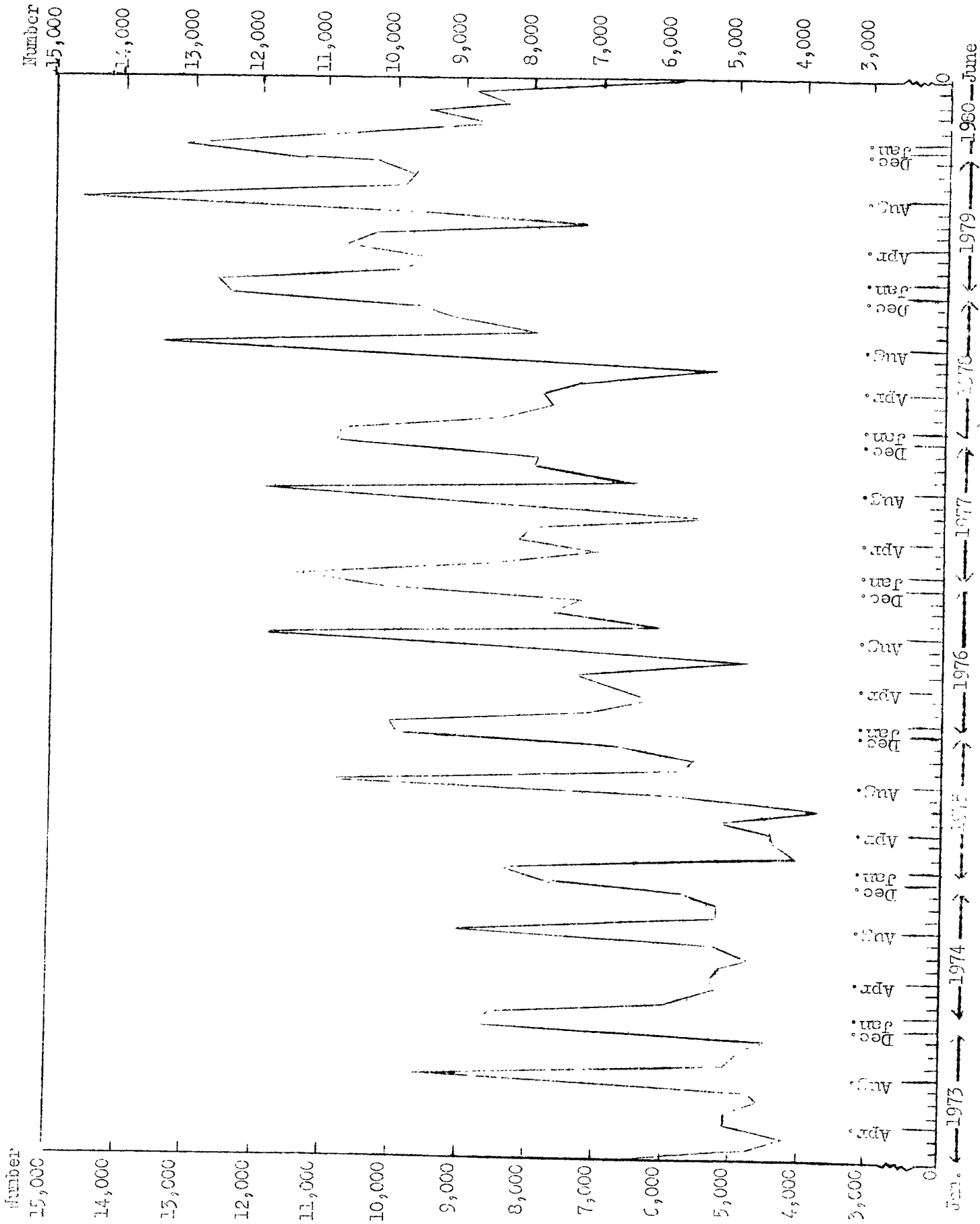


Table 33 - Tourist arrivals by country of residence, 1970 - June 1980

Country of residence	1970	1971	1972	1973	1974	1975	1976	1977	1978	1979	Jan.-June 1980
Australia	1,571	1,700	2,171	2,060	3,351	3,417	3,559	2,812	2,730	4,780	1,530
France	1,437	2,540	3,771	7,231	7,874	8,929	13,885	17,523	21,240	25,720	8,160
Germany, Fed. Rep.	481	824	1,406	1,556	1,951	1,533	1,552	2,555	2,811	5,550	4,000
India	473	554	873	2,255	1,308	1,944	2,676	2,704	2,913	2,950	1,960
Italy	190	428	775	2,156	1,937	1,712	2,115	3,302	3,492	3,760	2,110
Kenya	681	634	684	527	892	707	1,057	902	826	1,000	440
Malagasy Republic	1,985	2,287	2,747	3,565	2,379	1,875	3,035	5,213	4,891	6,220	3,040
Réunion	11,405	15,161	19,230	22,542	23,232	24,853	30,032	29,826	29,717	29,740	11,540
Rhodesia	38	191	435	530	591	1,232	920	440	688	1,290	280
Seychelles	45	63	256	565	431	405	428	505	545	520	180
South Africa, Rep. of	3,637	4,939	7,088	5,185	14,193	14,740	17,825	19,205	18,956	23,420	9,860
Switzerland	110	159	303	557	840	876	1,014	1,133	1,449	1,950	740
Tanzania	186	216	200	500	282	125	254	457	459	520	320
United Kingdom	1,740	2,252	2,848	3,822	3,452	3,598	4,852	6,024	7,133	8,180	3,640
Zambia	1,314	1,224	1,825	2,375	3,332	2,406	1,884	2,555	2,549	2,390	670
Other countries	2,501	3,226	4,179	6,537	6,564	6,144	7,495	7,754	7,917	10,370	3,910
All countries	27,650	36,398	48,797	61,114	72,915	74,597	92,561	102,510	108,322	128,360	52,380

1/ see notes on page 34

Graph 4 - Percentage distribution of tourist arrivals by country of residence, January - June 1980

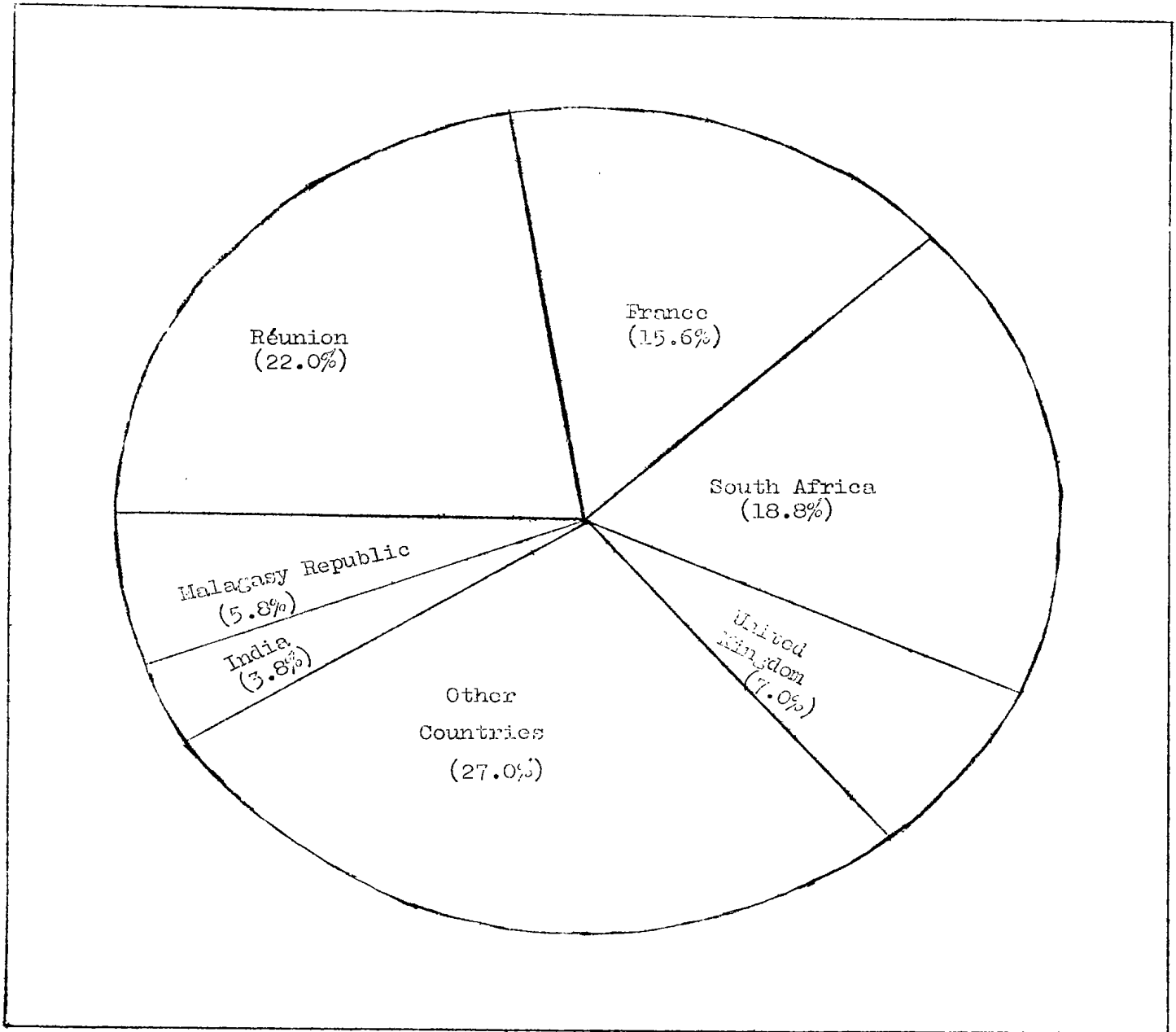


Table 35 - Tourist^{1/} nights by country of residence of tourist, 1970 - June 1980

Country of residence	1970	1971	1972	1973	1974	1975	1976	1977	1978	1979	Jan - June 1980
Australia	7,520	11,431	9,767	21,082	26,014	26,080	26,487	25,198	25,047	38,570	14,880
France	15,385	26,878	39,043	94,408	100,673	99,847	151,971	189,961	219,947	263,200	96,020
Germany, Fed. Rep.	4,874	10,582	14,306	25,016	27,796	23,068	21,128	32,015	40,450	94,060	54,670
India	7,492	8,793	8,032	16,509	15,287	17,285	22,501	22,759	26,377	33,370	21,440
Italy	1,216	3,716	5,567	19,563	20,876	15,705	21,217	30,424	29,898	44,530	22,000
Kenya	5,180	5,197	4,498	6,471	6,371	5,532	7,492	7,474	6,746	10,310	4,370
Malagasy Rep.	19,553	27,618	25,376	59,927	26,965	17,735	29,081	42,440	33,597	48,460	20,060
Réunion	130,052	172,147	198,583	236,462	227,129	220,288	244,391	243,402	237,919	243,870	108,840
Rhodesia	840	2,004	4,952	5,103	7,174	14,133	10,513	5,527	10,913	15,110	4,460
Seychelles	1,700	1,505	2,213	6,005	4,239	4,000	4,867	6,254	6,513	4,810	6,210
South Africa, Rep. of	33,630	50,066	52,383	87,975	138,178	145,596	172,865	169,522	179,566	282,740	96,030
Switzerland	1,018	1,716	2,695	5,295	10,770	10,522	13,653	17,164	17,625	21,190	12,750
Tanzania	1,860	2,543	1,673	2,761	2,563	1,512	2,892	3,582	4,035	4,750	2,280
United Kingdom	23,577	31,181	36,125	71,275	56,923	61,943	71,336	86,355	107,921	144,280	58,760
Zambia	14,052	13,076	18,972	22,567	34,948	22,394	17,006	23,779	23,457	22,800	8,110
Other countries	19,642	31,286	30,288	72,646	66,277	61,260	74,822	90,400	81,599	147,560	53,240
All countries	287,591	399,739	454,271	733,065	772,183	746,898	892,222	994,766	1,051,610	1,419,610	584,120

^{1/} see notes on page 34

Graph 5 - Total arrivals, tourist arrivals and tourist nights spent during period, 1969 - 1979

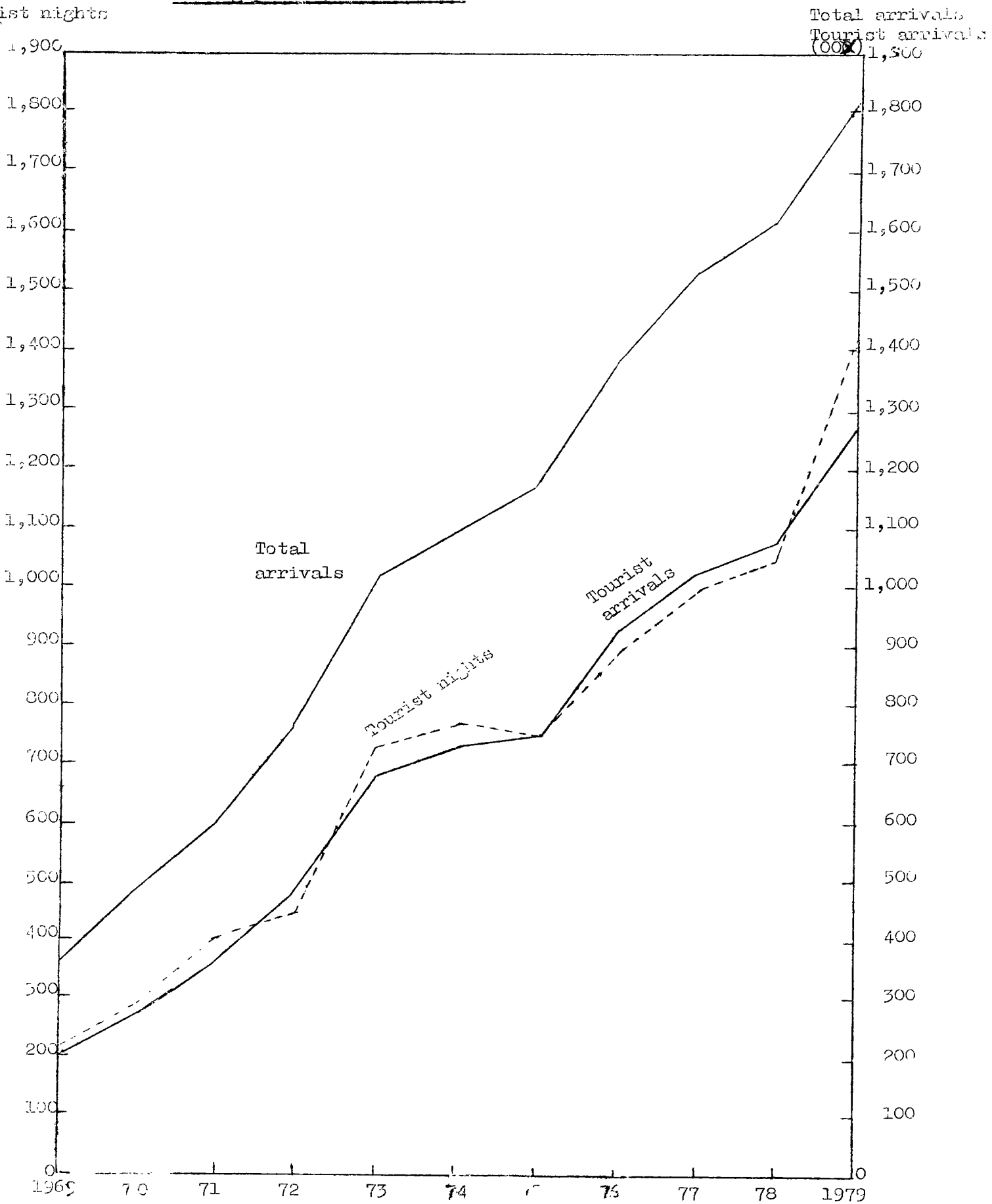


Table 36 - Tourist arrivals and tourist nights^{1/} by country of residence, January-June 1980

Country of residence	Tourist arrivals	Tourist nights spent during period
Australia	1,530	14,880
France	8,160	96,020
Germany, Fed. Rep.	4,000	54,670
India	1,960	21,440
Italy	2,110	22,000
Kenya	440	4,370
Malagasy Republic	3,040	20,060
Reunion	11,540	108,840
Rhodesia	280	4,460
Seychelles	180	6,210
South Africa, Rep. of	9,860	96,030
Switzerland	740	12,750
Tanzania	320	2,280
United Kingdom	3,640	58,760
Zambia	670	8,110
Other Countries	3,910	53,240
All Countries	52,380	584,120

^{1/} see notes on page 34

Table 57 - Visitor arrivals by age and sex, 1979^{2/} - June 1980^{3/}

Age (Completed years)	1979 ^{2/}			January-June 1980 ^{3/}		
	Both sexes	Male	Female	Both sexes	Male	Female
Under 1	720	440	280	340	240	100
1 - 4	3,670	1,960	1,710	1,610	860	810
5 - 9	5,400	3,050	2,350	1,920	1,060	860
10 - 14	5,030	2,770	2,260	1,880	1,030	790
15 - 19	5,660	2,800	2,770	2,210	1,050	1,180
20 - 24	12,160	5,760	6,400	5,120	2,430	2,640
25 - 29	17,600	9,760	7,820	7,590	4,440	3,150
30 - 34	17,960	10,450	7,510	7,560	4,510	2,950
35 - 39	16,270	10,340	5,930	7,020	4,530	2,440
40 - 44	11,950	7,540	4,410	5,360	3,580	1,980
45 - 49	10,440	6,550	3,890	3,930	2,570	1,360
50 - 54	8,430	5,190	3,240	3,610	2,400	1,210
55 - 59	6,770	4,040	2,730	2,760	1,700	1,060
60 - 64	3,810	2,250	1,560	1,450	970	480
65 - 69	3,220	1,940	1,280	1,120	790	330
70 & over	2,340	1,200	1,060	860	610	250
Not stated	620	430	190	410	280	130
All ages	132,050	76,660	55,390	54,750	33,030	21,720

^{1/} see notes on page 34

^{2/} visitors arriving in 1979 and leaving before 1.4.80.

^{3/} visitors arriving in January-June 1980 and leaving before 1.10.80.

Table 38 - Visitor arrivals and visitor nights^{1/} by country of residence,
1979 - June 1980

Country of residence	1979 ^{2/}			January - June 1980 ^{3/}		
	Visitor arrivals	Visitor nights	Average length of stay	Visitor arrivals	Visitor nights	Average length of stay
Australia	4,460	38,720	8.7	1,540	14,850	9.6
France	24,740	255,500	10.3	8,270	89,010	10.8
Germany, Fed. Rep.	5,650	89,150	15.8	3,700	53,010	14.3
India	2,940	32,530	11.1	1,850	18,690	10.1
Italy	3,810	38,560	10.1	2,140	17,560	8.2
Kenya	1,000	7,030	7.0	490	5,190	10.6
Malagasy Republic	6,530	46,330	7.1	2,950	20,340	6.9
Reunion	31,680	232,530	7.3	13,370	105,930	7.9
Rhodesia	1,220	15,130	12.4	350	4,290	12.3
Seychelles	510	4,070	8.0	300	6,200	20.7
South Africa, Rep. of	24,470	279,040	11.4	10,260	94,410	9.2
Switzerland	1,820	22,660	12.5	730	8,880	12.2
Tanzania	520	4,310	8.3	300	2,310	7.7
United Kingdom	3,520	134,740	15.8	3,160	47,130	14.9
Zambia	2,470	21,600	8.7	880	7,020	8.0
Other Countries	11,710	140,880	12.0	4,460	46,580	10.4
All Countries	132,050	1,362,780	10.3	54,750	541,400	9.9

^{1/} see notes on page 34

^{2/} figures refer to visitors arriving in 1979 and leaving before 1.4.80 and to the nights spent by them.

^{3/} figures refer to visitors arriving in January - June 1980 and leaving before 1.10.80 and to the nights spent by them.

Table 39 - Visitor^{1/} arrivals by duration of stay, 1979 - June 1980

Duration of stay	1979 ^{2/}		January - June 1980 ^{3/}	
	Number	Percentage	Number	Percentage
Less than 1 day	3,690	2.8	2,370	4.3
1 day	6,350	4.8	3,230	5.9
2 days	8,140	6.2	3,450	6.3
3 "	11,340	8.6	4,420	8.1
4 "	10,910	8.3	4,320	7.9
5 "	8,160	6.2	3,760	6.9
6 "	7,590	5.7	3,310	6.0
7 "	24,140	18.3	9,800	17.9
8 "	6,830	5.2	2,670	4.9
9 "	3,510	2.6	1,230	2.3
10 "	4,290	3.2	1,600	2.9
11 "	4,000	3.0	1,510	2.8
12 "	2,370	1.8	1,040	1.9
13 "	2,140	1.6	830	1.5
14 "	9,890	7.5	3,510	6.4
15 "	1,940	1.5	740	1.4
16 "	1,010	0.8	570	1.0
17 "	780	0.6	350	0.6
18 "	730	0.5	310	0.6
19 "	740	0.6	180	0.3
20 - 24 "	5,180	3.9	2,310	4.2
25 - 29 "	3,010	2.3	1,110	2.0
1 month - under 2 months	3,660	2.8	1,270	2.3
2 months - under 3 months	670	0.5	410	0.8
3 months and over	980	0.7	450	0.3
Not stated	-	-	-	-
Total	132,050	100.0	54,750	100.0

^{1/} see notes on page 34

^{2/} visitors arriving in 1979 and leaving before 1.4.80

^{3/} visitors arriving in January - June 1980 and leaving before 1.10.80

Table 40 - Visitor ^{1/} arrivals by country of residence and duration of stay, January - June 1980

Country of residence	Duration of stay in days												Total visitors
	0	1 & 2	3 & 4	5 & 6	7 & 8	9 & 10	11 & 12	13 & 14	15-19	20-24	25-29	30+	
Australia	80	410	400	240	70	70	30	60	40	50	30	80	1,540
France	220	620	1,340	1,410	1,860	490	480	720	350	190	180	410	8,270
India	90	490	410	360	160	60	50	-	60	20	40	110	1,850
Kenya	-	60	110	90	100	20	10	20	20	10	20	30	490
Malagasy Rep.	30	280	500	830	990	110	40	20	40	50	40	20	2,950
Reunion	1,240	1,940	3,150	2,110	1,840	650	660	390	510	240	210	450	13,370
S. Africa, Rep.	230	1,100	1,050	520	4,130	930	800	700	250	220	110	220	10,260
United Kingdom	100	150	360	180	750	140	80	340	220	340	180	320	3,160
Zambia	20	330	40	40	210	-	-	170	30	20	-	20	880
Other countries	360	1,300	1,380	1,290	2,360	380	400	1,920	630	1,190	300	470	11,980
All countries	2,370	6,680	8,740	7,070	12,470	2,830	2,550	4,340	2,150	2,310	1,110	2,130	54,750

^{1/} see notes on page 34

Table 41 - Visitor arrivals and visitor nights^{1/} by country of nationality,
January - June 1980

Country of nationality	Visitor arrivals ^{2/}	Visitor nights ^{3/}	Average length of stay
Australia	1,380	12,710	9.2
France	21,920	199,270	9.1
Germany, Fed. Rep.	3,830	53,930	14.1
India	2,340	20,760	8.9
Italy	2,260	18,600	8.2
Kenya	120	1,450	12.1
Malagasy Republic	2,620	17,680	6.7
Rhodesia	220	2,690	12.2
South Africa, Rep. of	9,610	88,590	9.2
Switzerland	830	9,780	11.8
Tanzania	200	2,530	12.6
United Kingdom	4,340	58,820	13.6
Zambia	250	1,560	6.2
Other countries	4,830	53,030	11.0
All countries	54,750	541,400	9.9

^{1/} see notes on page 34

^{2/} figures refer to visitors arriving in January - June 1980 and leaving before 1.10.80.

^{3/} figures refer to nights spent by visitors arriving in January - June 1980 and leaving before 1.10.80

Table 42 - Arrivals of Mauritians settled abroad (excluding students) and nights spent by them by country of residence, 1979-June 1980

Country of residence	1979 ^{1/}			January - June 1980 ^{2/}		
	Arrivals	Nights	Average length of stay	Arrivals	Nights	Average length of stay
Australia	690	18,500	26.8	300	4,240	14.1
Belgium	100	3,480	34.8	40	1,000	25.0
Canada	180	5,130	28.5	60	2,240	37.3
France	1,960	59,890	30.6	500	11,990	24.0
Germany, Fed. Rep. of	100	3,030	30.3	90	1,880	20.9
India	50	1,840	36.8	-	-	-
Malagasy Republic	60	2,680	44.7	10	1,560	156.0
Malawi	40	600	15.0	60	1,430	23.8
Réunion	1,470	23,750	16.2	480	6,460	13.5
Rhodesia	80	1,740	21.8	10	160	16.0
Switzerland	100	2,920	29.2	30	1,130	37.8
South Africa, Rep. of	440	8,700	19.8	130	1,990	15.3
United Kingdom	3,620	140,050	38.7	910	27,580	30.3
Zambia	90	1,750	19.4	10	20	2.0
Other Countries	600	13,070	21.8	160	2,490	15.6
All Countries	9,580	287,130	30.0	2,790	64,170	23.0

^{1/} figures refer to Mauritians settled abroad arriving in 1979 and leaving before 1.4.80 and to the total nights spent by them in 1979 and 1980

^{2/} figures refer to Mauritians settled abroad arriving in January-June 1980 and leaving before 1.10.80 and to the total nights spent by them in January-June 1980 and July-September 1980

See notes on page 34

Table 43 - Arrivals of Mauritians settled abroad (excluding students)
by duration of stay, 1979 - June 1980

Duration of stay	1979 ^{1/}	Jan - June 1980 ^{2/}
Less than 1 day	110	100
1 day	90	50
2 days	100	100
3 days	220	60
4 days	240	150
5 days	170	50
6 days	170	80
7 days	400	180
8 days	140	110
9 days	140	80
10 days	110	60
11 days	260	40
12 days	140	50
13 days	70	80
14 days	220	80
15 days	110	40
16 days	140	70
17 days	110	80
18 days	200	20
19 days	130	20
20 - 24 days	920	200
25 - 29 days	1,240	300
1 month - under 2 months	3,450	610
2 months - under 3 months	460	100
3 months and over	240	80
Not stated	-	-
Total	9,580	2,790

^{1/} figures refer to Mauritians settled abroad arriving in 1979 and leaving before 1.4.80

^{2/} figures refer to Mauritians settled abroad arriving in January - June 1980 and leaving before 1.10.80

See notes on page 34

Table 44 - Total nights spent by Mauritians settled abroad
(excluding students) by country of residence,
1979 - June 1980

Country of residence	1979 ^{1/}	Jan - June 1980 ^{2/}
Australia	28,450	8,320
Belgium	3,830	1,110
Canada	5,440	2,790
France	68,670	14,560
Germany, Fed. Rep. of	2,930	3,050
India	1,540	350
Malagasy Republic	2,770	1,580
Malawi	750	1,830
Réunion	34,330	11,060
Rhodesia	1,520	400
Switzerland	2,540	1,380
South Africa, Rep. of	11,380	2,980
United Kingdom	157,320	51,750
Zambia	1,720	300
Other countries	14,480	3,240
All countries	337,670	104,700

^{1/} figures refer to nights spent during 1979 by Mauritians settled abroad arriving in 1979 or before and leaving before 1.4.80

^{2/} figures refer to nights spent during January - June 1980 by Mauritians settled abroad arriving in Jan. - June 1980 or before and leaving before 1.10.80.

See notes on page 34

MAURITIUS

ILE MAURICE

INTERNATIONAL EMBARKATION AND DEEMBARKATION CARD

Carte International d'Embarquement et de Debarquement

1. Mr/M.)
Mrs/Mme.)
Miss/Mlle)

 Surname/Nom

 Given names/Prenoms
2. Date and Place of birth
Date et lieu de naissance
3. Nationality
Nationalité
4. Occupation
Profession
5. Permanent address
Domicile

FOR PASSENGERS DEPARTING / POUR LES PASSAGERS AU DEPART

6. Port of final destination
Lieu de destination finale

FOR ARRIVING PASSENGERS / POUR LES PASSAGERS A D'ARRIVEE

7. Port of original embarkation
Lieu d'embarquement d'origine
8. Purpose of journey to Mauritius
Motif du voyage à l'Ile Maurice
9. Intended length of stay in Mauritius
Durée probable du séjour à l'Ile Maurice
10. Intended address during stay in Mauritius
Adresse prévue pendant le séjour à Maurice
.....
11. Passport No. Place and Date of issue
Numéro du passeport, lieu et date d'émission
.....

CSO