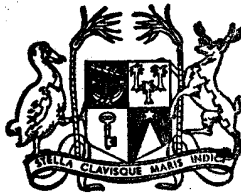


Vol. 4

No. 1



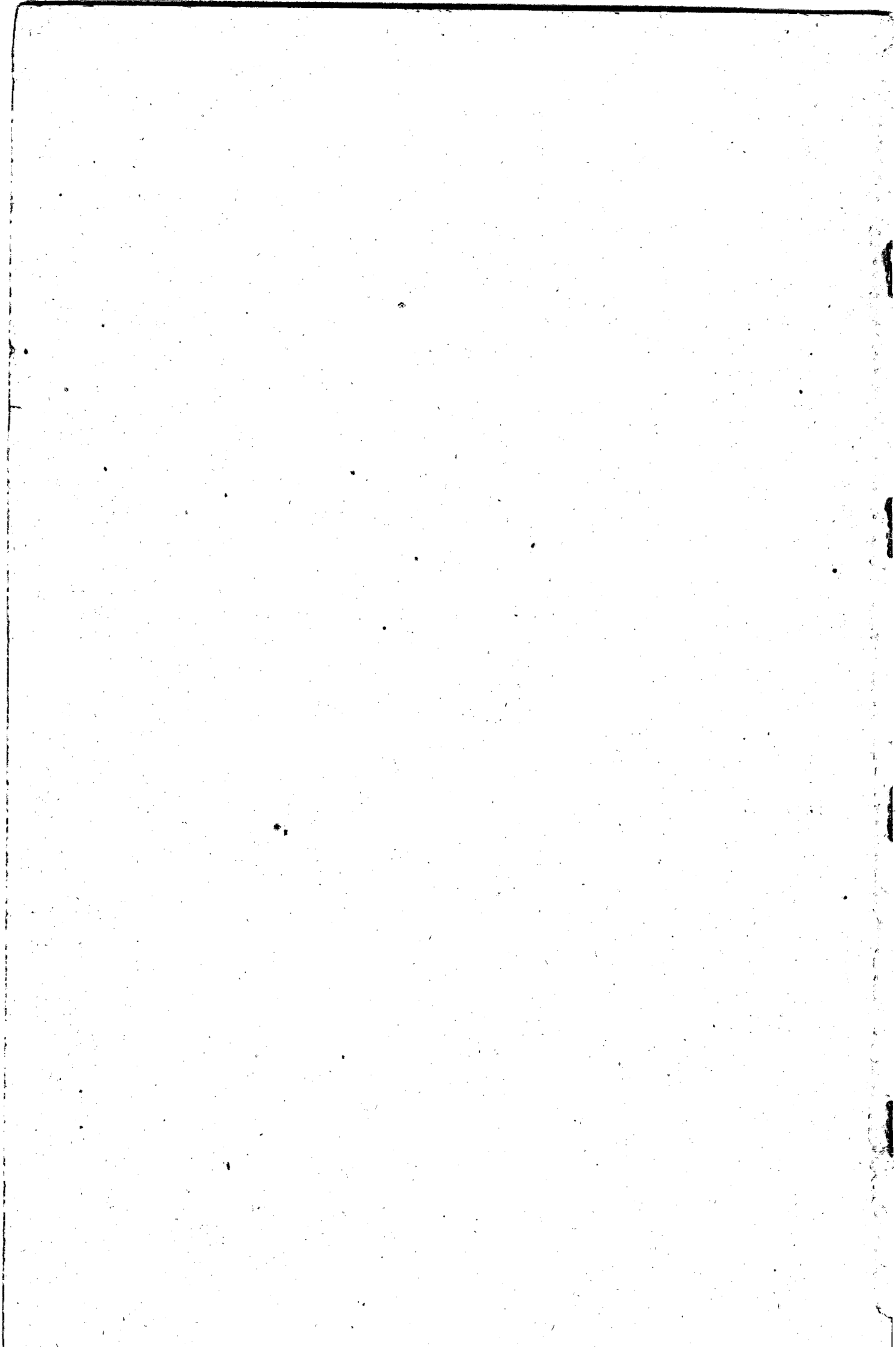
MAURITIUS

Ministry of Economic Planning and Development
CENTRAL STATISTICAL OFFICE

**INTERNATIONAL TRAVEL
AND
TOURISM**

JUNE 1977

[Price : Rs 15.00]



INTERNATIONAL TRAVEL AND TOURISM

Vol. 4 No. 1

June 1977

"International Travel and Tourism", a publication of the Central Statistical Office, is designed to present data on international travel and tourism in more detail than those that are currently published in the Bi-annual Digest of Statistics.

With the help of the computer of the Ministry of Finance it has been possible to process in more detail the information recorded on the international embarkation and disembarkation cards which passengers fill in on leaving and entering the country.

It is hoped that the results, especially those on tourism, which have been assembled in this report will be useful to all those who take an interest in the evolution of the tourist industry in this country.

The co-operation of the Immigration and Passport Office of the Police Department and the Data Processing Division of the Ministry of Finance is gratefully acknowledged.

The following symbols are used throughout:

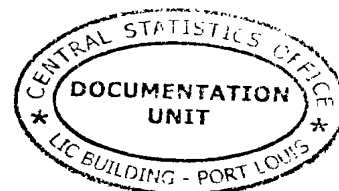
.. Nil

... Not available

J. Ah Kong
Director of Statistics

Central Statistical Office
Rose Hill
Mauritius

December 1977



CONTENTS

	<u>Page</u>
<u>I - POPULATION AND VITAL STATISTICS</u>	
Table 1 - Estimated population of Mauritius as at 30th June 1977 based on the final 1972 Population Census data	1
2 - Population increase in intercensal periods - Island of Mauritius, 1846 - 1972	1
3 (a) - Population enumerated at each census by population group and sex - Island of Mauritius, 1846 - 1952	2
3 (b) - Population enumerated at each census by community and sex - Island of Mauritius, 1962-72	2
4 - Population of Mauritius by geographical district and sex, 1975-77 (mid-year estimates)	3
5 - Population and vital statistics - Island of Mauritius, 1921-76	4
 <u>II - PASSENGER TRAFFIC</u>	
Table 6 - Passenger traffic by sex, 1933 - June 1977	6 & 7
7 - Passenger traffic between Island of Mauritius and Rodrigues, 1962 - June 1977	7
8 - Passenger traffic by mode of transport, 1962 - June 1977	9
9 - Passenger traffic by month, 1974 - June 1977	10
10 - Arrivals by country of original embarkation, 1972 - June 1977	11
11 - Departures by country of final destination, 1972 - June 1977	12
12 - Passenger traffic by type of passenger and month, January - June 1977	13
13 - Arrivals by age and sex, July 1975 - June 1977	14
14 - Departures by age and sex, July 1975 - June 1977	15
15 - Excess of arrivals over departures by age and sex, July 1975 - June 1977	16
16 - Arrivals and departures of residents of Island of Mauritius by district of residence and sex, January - June 1977	17
17 - Arrivals of residents of Island of Mauritius by age and sex, January 1975 - June 1977	18
18 - Departures of residents of Island of Mauritius by age and sex, January 1975 - June 1977	19
19 - Excess of arrivals over departures of residents (excluding emigrants) of Island of Mauritius by age and sex, January 1975 - June 1977	20
20 - Excess of arrivals over departures of residents (including emigrants) of Island of Mauritius by age and sex, January 1975 - June 1977	21
 <u>III - EMIGRATION</u>	
Table 21 - Official long-term emigrants by sex, 1956 - June 1977	22
22 - External migration, 1956-76	23
23 - Official long-term emigrants by country of intended residence, 1964 - June 1977	24 & 25
24 - Age distribution of official long-term emigrants, 1964 - June 1977	26 - 28

CONTENTS (cont'd)

	<u>Page</u>
<u>III - EMIGRATION (cont'd)</u>	
Table 25 - Official long-term emigrants by Major Occupational Group, 1972 - June 1977	29
26 - Official long-term emigrants by Major Occupational Group, age and sex, January - June 1977	30
27 - Official long-term emigrants by occupation, 1975 - June 1977	31
28 - Official long-term emigrants by district of last residence and sex, July 1975 - June 1977	32
 <u>IV - TOURISM</u>	
Definitions and notes	33
Table 29 - Tourist arrivals by mode of transport and total nights spent during period, 1963 - June 1977	34
30 - Tourist arrivals by month of arrival, 1967 - June 1977	35
31 - Percentage distribution of tourist arrivals by month of arrival, 1967-76	37
32 - Tourist arrivals by country of residence, 1967 - June 1977	38 - 40
33 - Percentage distribution of tourist arrivals by country of residence, 1967 - June 1977	41
34 - Tourist nights by country of residence of tourist, 1967 - June 1977	42 - 44
35 - Tourists arriving in January - June 1977 by country of residence and month of arrival	46
36 - Tourist arrivals and tourist nights by country of residence and mode of transport, January - June 1977	47
37 - Visitor arrivals by age and sex, 1976 - June 1977	48
38 - Visitor arrivals and visitor nights by country of residence, 1976 - June 1977	49
39 - Visitor arrivals by duration of stay, 1976 - June 1977	50
40 - Visitor arrivals by country of residence and duration of stay, January - June 1977	51
41 - Visitor arrivals and visitor nights by country of nationality, January - June 1977	52
42 - Visitor arrivals by country of residence and nationality, January - June 1977	53
43 - Visitor nights by country of residence and nationality, January - June 1977	54
44 - Arrivals of Mauritians settled abroad (excluding students and nights spent by them by country of residence, 1976 - June 1977	55
45 - Arrivals of Mauritians settled abroad (excluding students) by duration of stay, 1976 - June 1977	56
46 - Total nights spent by Mauritians settled abroad (excluding students) by country of residence, 1976 - June 1977	57

G r a p h s

Graph 1 - Mid-year population estimates - Island of Mauritius, 1956-77	5
2 - Passenger traffic, 1962-76	8
3 - Tourist arrivals by month of arrival, January 1970 - June 1977	36
4 - Tourist nights spent during period, 1967-76	45

I. POPULATION AND VITAL STATISTICS

Table 1 - Estimated population of Mauritius as at 30th June 1977 based on the final 1972 Population Census data

Island	Both sexes	Male	Female
Island of Mauritius	881,761	438,944	442,817
Island of Rodrigues	27,058	13,202	13,856
Other Islands	350	250	100
Mauritius	909,169	452,396	456,773

Table 2 - Population increase in intercensal periods - Island of Mauritius, 1846-1972

Census date	Population enumerated at census			Intercensal increase	Average annual rate of increase %.
	Both sexes	Male	Female		
1st Aug. 1846	158,462	104,598	53,864		
20th Nov. 1851	180,823	119,341	61,482	22,361	2.55
8th Apr. 1861	310,050	202,961	107,089	129,227	5.87
11th Apr. 1871	316,042	193,575	122,467	5,992	0.19
4th Apr. 1881	359,874	208,655	151,219	43,832	1.31
6th Mar. 1891	370,588	206,038	164,550	10,714	0.29
1st Apr. 1901	371,023	199,552	171,471	435	0.01
31st Mar. 1911	368,791	194,095	174,696	- 2,232	- 0.06
21st May 1921	376,485	194,108	182,377	7,694	0.21
26th Apr. 1931	393,238	200,609	192,629	16,753	0.44
11th Jun. 1944	419,185	210,326	208,859	25,947	0.49
29th Jun. 1952	501,415	252,032	249,383	82,230	2.26
30th Jun. 1962 ^{1/}	681,619	342,306	339,313	180,204	3.12
30th Jun. 1972 ^{1/}	826,199	413,580	412,619	144,580	1.94

^{1/} de facto population - including the European members of the Armed Forces but excluding the passengers and crews of ships lying in the harbour.

Table 3(a) - Population enumerated at each census by population group and sex - Island of Mauritius, 1846-1952

Year of census	General Population			Indo-Mauritian Population			Chinese Population		
	Both sexes	Male	Female	Both sexes	Male	Female	Both sexes	Male	Female
1846	102,217	55,663	46,554	56,245	48,935	7,310	-	-	-
1851	102,827	55,059	47,768	77,996	64,282	13,714	-	-	-
1861	115,864	59,796	56,068	192,634	141,615	51,019	1,552	1,550	2
1871	97,497	49,487	48,010	216,258	141,804	74,454	2,287	2,284	3
1881	107,323	53,754	53,569	248,993	151,352	97,641	3,558	3,549	9
1891	111,517	55,397	56,120	255,920	147,499	108,421	3,151	3,142	9
1901	108,422	52,995	55,427	259,086	143,100	115,986	3,515	3,457	58
1911	107,432	51,808	55,624	257,697	138,974	118,723	3,662	3,313	349
1921	104,216	49,725	54,491	265,524	139,150	126,374	6,745	5,233	1,512
1931	115,666	54,733	60,933	268,649	139,533	129,116	8,923	6,343	2,580
1944	143,056	67,136	75,920	265,247	136,362	128,865	10,882	6,808	4,074
1952	148,238	70,370	77,868	335,327	171,241	164,086	17,850	10,421	7,429

At the 1962 Census each household was asked for the first time to state the population group to which each member of his household claimed to belong.

Prior to 1962, it is probable that, from one census to another, different criteria have been used in classifying the population by population groups. Figures are therefore not strictly comparable from one census to another, before 1962.

Table 3(b) - Population enumerated at each census by community and sex - Island of Mauritius, 1962-72

Year of census	Total Population			Hindu			Muslim			Sino-Mauritian			General Population		
	Both sexes	Male	Female	Both sexes	Male	Female	Both sexes	Male	Female	Both sexes	Male	Female	Both sexes	Male	Female
1962 ^{1/}	681,619	342,306	339,313	344,587	174,698	169,889	110,322	55,971	54,351	23,058	12,654	10,404	203,652	98,983	104,669
1972 ^{1/}	826,199	413,580	412,619	428,167	215,654	212,513	137,081	68,789	68,292	24,084	12,849	11,235	236,867	116,288	120,579

^{1/} de facto population - including the European members of the Armed Forces but excluding the passengers and crews of ships lying in the harbour.

Table 4 - Population of Mauritius by geographical district and sex, 1975-77 (mid-year estimates)

Geographical district	Estimated population/as at 30.6.75			Estimated population/as at 30.6.76			Estimated population/as at 30.6.77		
	Both sexes	Male	Female	Both sexes	Male	Female	Both sexes	Male	Female
Port Louis	137,955	68,111	69,844	139,399	68,835	70,564	141,022	69,413	71,609
Pamplemousses	72,026	36,419	35,607	73,138	36,907	36,231	74,435	37,517	36,918
Rivière du Rempart	70,512	35,627	34,885	71,736	36,251	35,485	73,123	36,872	36,251
Flacq	94,017	47,361	46,656	95,675	48,111	47,564	97,633	48,978	48,655
Grand Port	83,875	42,112	41,763	85,048	42,651	42,397	86,477	43,315	43,162
Savanne	54,780	27,534	27,246	55,480	27,878	27,602	56,429	28,322	28,107
P. Wilhems: Urban	236,014	116,573	119,441	238,574	117,851	120,723	241,878	119,152	122,726
Other	29,507	14,791	14,716	29,875	14,962	14,913	30,293	15,159	15,139
Moka	50,444	25,243	25,201	51,137	25,577	25,560	52,018	25,909	26,109
Black River	27,386	13,813	13,573	27,823	14,032	13,791	28,448	14,307	14,141
Island of Mauritius	856,516	427,584	428,932	867,835	433,055	434,830	881,761	438,944	442,817
Island of Rodrigues	26,343	13,030	13,313	26,539	13,023	13,516	27,058	13,202	13,856
Other Islands	350	250	100	350	250	100	350	250	100
Mauritius	883,209	440,864	442,345	894,774	446,328	448,446	909,169	452,396	456,773

1/ based on the final 1972 Population Census data. No account has been taken of internal migration.

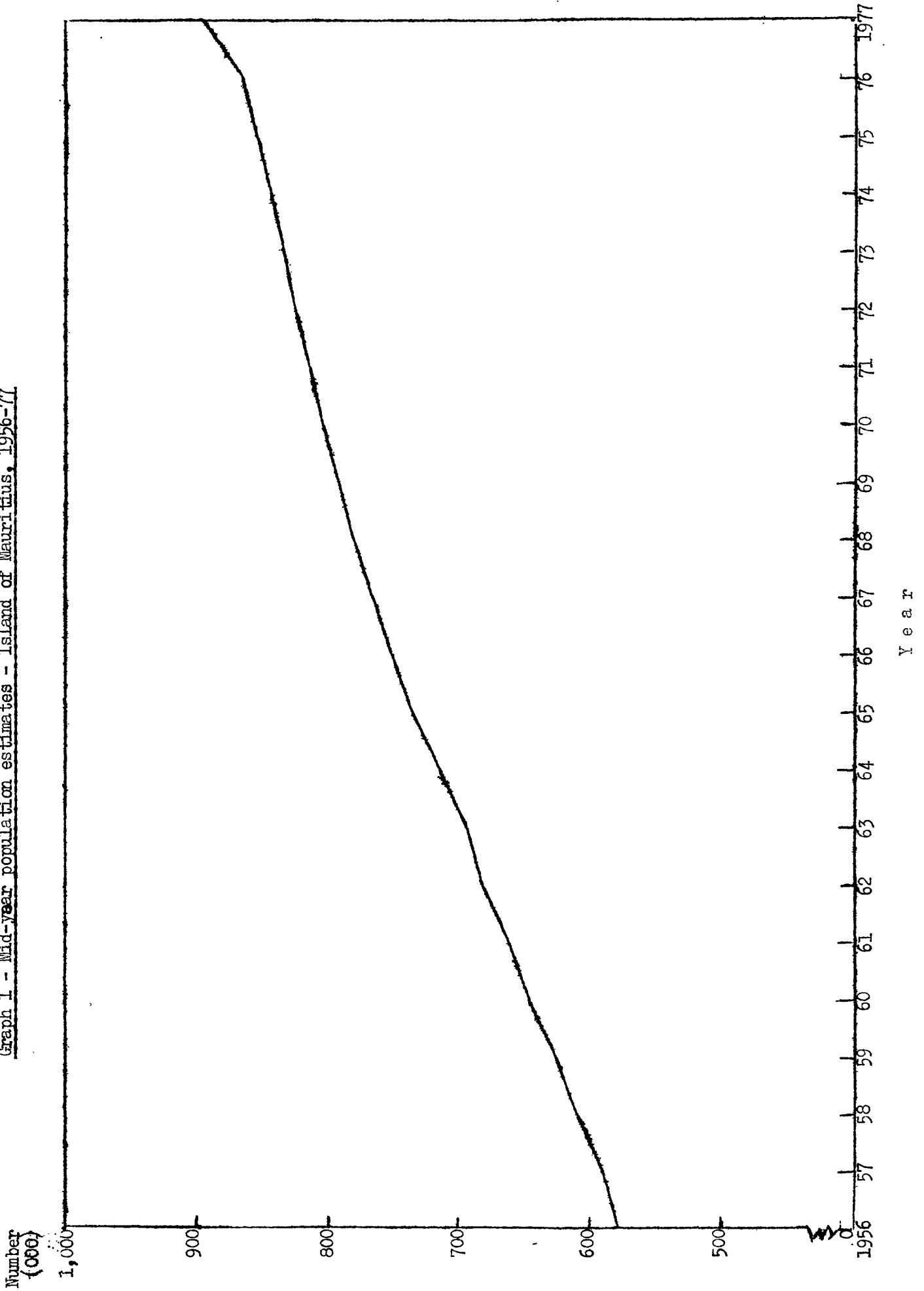
Table 5 - Population and vital statistics - Island of Mauritius, 1921-76

Period	Population ^{1/} at mid-period	Live births	Deaths	Natural increase	Infant deaths ^{2/}	Still births	Civil marriages
1921-25 Average	379,636	14,834	11,758	3,076	2,104	1,581	2,062
1926-30 "	403,248	14,208	11,614	2,594	2,002	1,256	1,455
1931-35 "	398,647	12,490	11,889	601	1,752	1,216	1,489
1936-40 "	412,003	13,621	11,157	2,464	2,119	1,240	2,093
1941-45 "	417,838	15,027	11,927	3,100	2,318	1,240	3,333
1946-50 "	438,797	19,595	9,113	10,482	2,343	1,348	3,503
1951-55 "	522,577	23,176	7,701	15,475	1,884	1,472	3,307
1956	574,938	24,910	6,739	18,171	1,644	1,789	3,080
1957	593,070	25,273	7,603	17,670	1,897	1,800	2,903
1958	609,518	24,600	7,112	17,488	1,659	1,703	3,169
1959	627,249	23,923	6,753	17,170	1,495	1,759	3,297
1960	644,743	25,307	7,248	18,059	1,760	1,783	3,113
1961	662,368	26,092	6,505	19,587	1,618	1,963	3,484
1962	681,619	26,267	6,325	19,942	1,579	1,841	3,893
1963	695,641	27,978	6,709	21,269	1,660	1,519	3,472
1964	716,298	27,528	6,184	21,344	1,561	1,611	3,965
1965	735,245	26,279	6,337	19,942	1,685	1,557	3,976
1966	753,276	26,817	6,701	20,116	1,721	1,384	4,157
1967	767,782	23,499	6,543	16,956	1,656	1,074	3,949
1968	781,615	24,413	7,126	17,287	1,688	1,110	3,974
1969	792,893	21,719	6,428	15,291	1,528	951	3,882
1970	805,489	21,623	6,309	15,314	1,232	857	4,499
1971	816,561	20,834	6,248	14,586	1,077	842	4,346
1972	826,199	20,496	6,506	13,990	1,308	718	5,082
1973	834,781	18,974	6,525	12,499	1,201	678	5,533
1974	845,755	22,938	6,221	16,717	1,045	854	6,771
1975	856,516	21,492	6,967	14,525	1,046	896	6,888
1976	867,885	22,250	6,815	15,435	900	784	8,262

^{1/} figures for 1963-71 have been revised in the light of the final 1972 Population Census data

^{2/} deaths of children under 1 year of age

Graph 1 - Mid-year population estimates - Island of Mauritius, 1956-77



II - PASSENGER TRAFFIC

Table 6 - Passenger traffic^{1/} by sex, 1933 - June 1977

Period	Arrivals			Departures			Net overseas migration
	Both sexes	Male	Female	Both sexes	Male	Female	
1933	3,444	2,410	1,034	4,011	2,862	1,149	- 567
1934	3,969	2,777	1,192	4,380	3,056	1,324	- 411
1935	3,988	2,876	1,112	4,255	2,899	1,356	- 267
1936	3,807	2,681	1,126	3,563	2,451	1,112	+ 244
1937	3,472	2,366	1,106	3,849	2,736	1,113	- 377
1938	4,554	3,062	1,492	4,281	2,896	1,385	+ 273
1939	3,171	1,984	1,187	3,212	2,127	1,085	- 41
1940	1,518	1,028	490	1,851	1,379	472	- 333
1941	1,209	950	259	4,165	3,859	306	- 2,956
1942	1,083	893	190	1,560	1,398	162	- 477
1943	1,054	859	195	737	642	95	+ 317
1944	1,034	798	236	1,053	796	257	- 19
1945	2,061	1,624	437	2,247	1,624	623	- 186
1946	3,298	2,279	1,019	3,377	2,160	1,217	- 79
1947	4,698	3,128	1,570	4,514	3,100	1,414	+ 184
1948	4,294	2,792	1,502	4,015	2,684	1,331	+ 279
1949	4,093	2,700	1,393	4,141	2,794	1,347	- 48
1950	5,253	3,469	1,784	4,900	3,352	1,548	+ 353
1951	5,243	3,515	1,728	5,016	3,536	1,480	+ 227
1952	6,046	3,999	2,047	5,637	3,854	1,783	+ 409
1953	7,252	4,820	2,432	7,054	4,732	2,322	+ 198
1954	7,251	4,728	2,523	7,312	4,824	2,488	- 61
1955	7,216	4,558	2,658	7,354	4,722	2,632	- 138
1956	7,747	4,873	2,874	8,225	5,219	3,006	- 478
1957	8,095	5,156	2,939	8,267	5,309	2,958	- 172
1958	8,703	5,424	3,279	8,924	5,596	3,328	- 221
1959	9,637	5,995	3,642	9,544	6,058	3,486	+ 93
1960	10,412	6,563	3,849	10,784	6,938	3,846	- 372
1961	11,854	7,246	4,608	13,033	8,165	4,868	- 1,179

Table 6 (continued)

Period	Arrivals			Departures			Net overseas migration
	Both sexes	Male	Female	Both sexes	Male	Female	
1962	15,189	9,283	5,906	16,075	9,887	6,188	- 886
1963	18,047	10,939	7,108	18,299	11,108	7,191	- 252
1964	21,221	12,787	8,434	22,331	13,349	8,982	- 1,110
1965	22,024	13,571	8,453	24,150	14,759	9,391	- 2,126
1966	26,456	16,358	10,098	29,301	17,930	11,371	- 2,845
1967	29,321	18,177	11,144	32,925	20,135	12,790	- 3,604
1968	31,403	19,820	11,583	35,988	22,181	13,807	- 4,585
1969	35,919	21,552	14,367	38,929	23,127	15,802	- 3,010
1970	48,819	29,587	19,232	51,969	31,033	20,936	- 3,150
1971	60,826	36,005	24,821	63,997	37,399	26,598	- 3,171
1972	77,174	45,587	31,587	81,493	47,837	33,656	- 4,319
1973	101,184	59,215	41,969	104,697	61,364	43,333	- 3,513
1974	109,044	63,077	45,967	113,362	65,649	47,713	- 4,318
1975	117,548	68,654	48,894	120,703	70,368	50,335	- 3,155
1976	139,303	80,674	58,629	141,148	81,718	59,430	- 1,845
Jan-June 1977	70,511	41,137	29,374	76,896	44,512	32,384	- 6,385

1/ including seamen but excluding transit passengers who do not leave the airport

Table 7 - Passenger traffic between Island of Mauritius and Rodrigues, 1962 - June 1977

Period	Departures to Rodrigues			Arrivals from Rodrigues			Net overseas migration
	Both sexes	Male	Female	Both sexes	Male	Female	
1962	1,033	661	372	1,126	725	401	- 93
1963	899	620	279	1,439	905	534	- 540
1964	1,300	850	450	1,450	915	535	- 150
1965	1,339	854	485	1,525	961	564	- 186
1966	1,326	860	466	1,418	904	514	- 92
1967	1,485	940	545	1,268	822	446	+ 217
1968	1,541	940	601	1,485	946	539	+ 56
1969	1,569	1,034	535	1,493	994	499	+ 76
1970	1,740	1,103	637	1,762	1,123	639	- 22
1971	1,578	1,017	561	1,744	1,118	626	- 166
1972	2,168	1,409	759	2,311	1,469	842	- 143
1973	2,427	1,521	906	2,453	1,511	942	- 26
1974	2,053	1,197	856	2,648	1,560	1,088	- 595
1975	2,968	1,870	1,098	3,319	2,030	1,289	- 351
1976	3,796	2,528	1,268	4,221	2,854	1,367	- 425
Jan-June 1977	1,897	1,256	641	2,363	1,543	820	- 466

Graph 2 - Passenger traffic, 1962-76

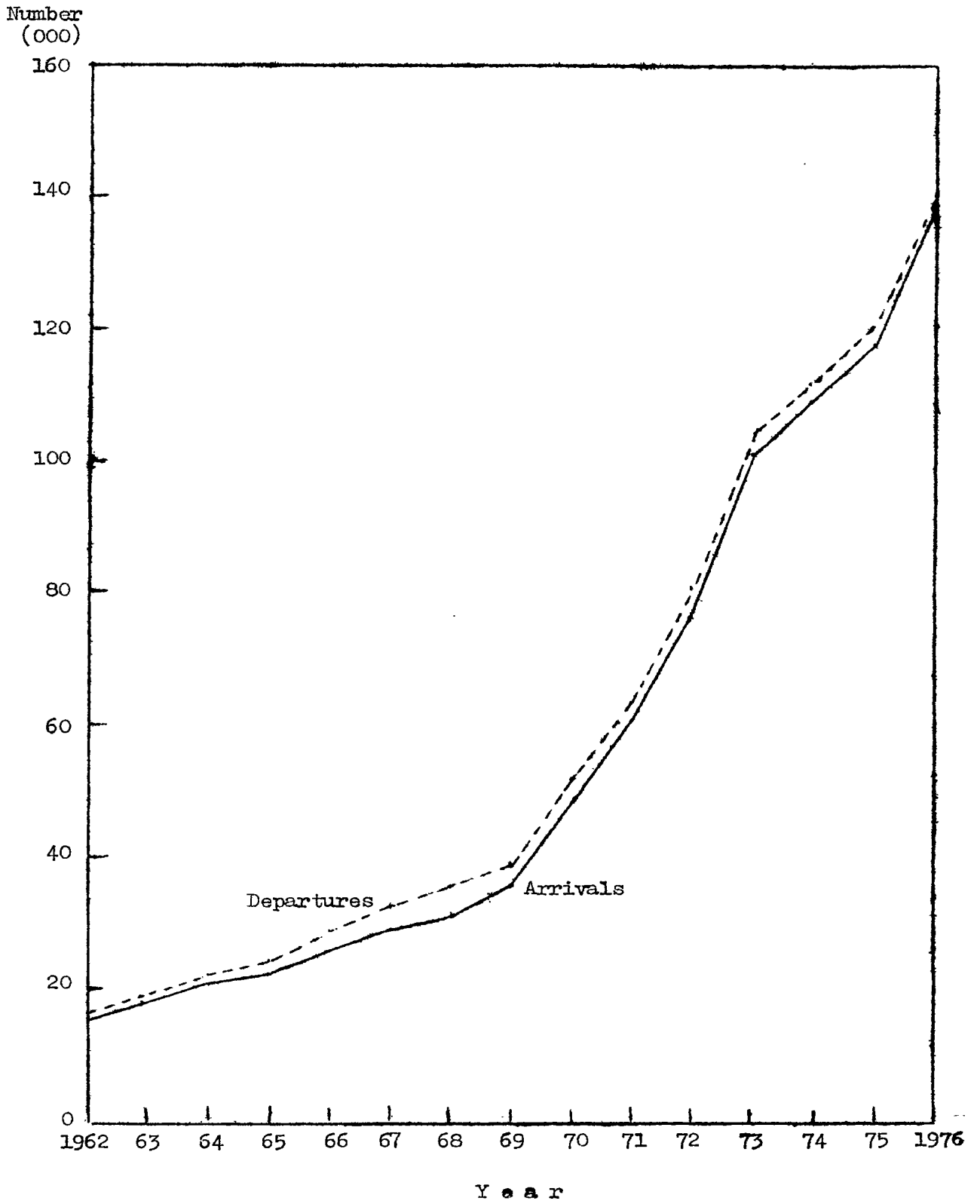


Table 8 - Passenger traffic^{1/} by mode of transport, 1962-June 1977

Period	Arrivals			Departures			Net overseas migration
	Total	By sea	By air	Total	By sea	By air	
1962	15,189	4,258	10,931	16,075	4,374	11,701	- 886
1963	18,047	4,660	13,387	18,299	4,432	13,867	- 252
1964	21,221	5,187	16,034	22,331	5,478	16,853	- 1,110
1965	22,024	4,886	17,138	24,150	5,463	18,687	- 2,126
1966	26,456	5,544	20,912	29,301	6,330	22,971	- 2,845
1967	29,321	4,901	24,420	32,925	6,515	26,410	- 3,604
1968	31,403	4,264	27,139	35,988	5,967	30,021	- 4,585
1969	35,919	3,483	32,436	38,929	4,632	34,297	- 3,010
1970	48,819	3,984	44,835	51,969	4,376	47,593	- 3,150
1971	60,826	3,857	56,969	63,997	4,295	59,702	- 3,171
1972	77,174	3,741	73,433	81,493	4,072	77,421	- 4,319
1973	101,184	4,238	96,946	104,697	4,027	100,670	- 3,513
1974	109,044	3,848	105,196	113,362	3,772	109,590	- 4,318
1975	117,548	4,485	113,063	120,703	4,255	116,448	- 3,155
1976	139,303	4,367	134,936	141,148	4,441	136,707	- 1,845
1976 : 1st Qr.	33,068	1,038	32,030	38,616	1,119	37,497	- 5,548
2nd Qr.	28,747	1,161	27,586	29,841	1,044	28,797	- 1,094
3rd Qr.	39,429	975	38,454	39,811	920	38,891	- 382
4th Qr.	38,059	1,193	36,866	32,880	1,358	31,522	+ 5,179
1977 : 1st Qr.	37,426	928	36,498	43,067	1,101	41,966	- 5,641
2nd Qr.	33,085	1,573	31,512	33,829	1,112	32,717	- 744

^{1/} including seamen but excluding transit passengers who do not leave the airport.

Table 9 - Passenger traffic^{1/} by month, 1974-June 1977

Month	Arrivals				Departures				Excess of arrivals over departures			
	1974	1975	1976	1977	1974	1975	1976	1977	1974	1975	1976	1977
January	12,015	11,918	14,436	16,034	13,947	14,327	17,267	19,383	- 1,932	- 2,409	- 2,831	- 3,349
February	7,884	6,223	9,560	11,445	10,617	9,203	12,222	13,120	- 2,733	- 2,980	- 2,662	- 1,675
March	7,379	7,115	9,072	9,947	7,469	6,734	9,127	10,564	- 90	+ 381	- 55	- 617
April	7,974	7,222	9,758	12,013	8,817	7,873	10,223	11,851	- 843	- 651	- 465	+ 162
May	7,387	7,968	10,933	11,728	7,190	9,139	11,338	12,827	+ 197	- 1,171	- 405	- 1,099
June	7,288	7,070	8,056	9,344	8,075	7,065	8,280	9,151	- 787	+ 5	- 224	+ 193
July	9,142	9,756	12,798		8,808	9,911	11,530		+ 334	- 155	+ 1,268	
August	13,128	15,963	16,970		11,630	14,024	15,218		+ 1,498	+ 1,939	+ 1,752	
September	8,058	9,304	9,661		11,521	12,466	13,063		- 3,463	- 3,162	- 3,402	
October	7,384	8,905	11,128		7,537	8,624	10,354		- 153	+ 281	+ 774	
November	8,140	10,009	10,824		8,509	10,527	11,558		- 369	- 518	- 734	
December	13,265	16,095	16,107		9,242	10,810	10,968		+ 4,023	+ 5,285	+ 5,139	
Whole year	109,044	117,548	139,303		113,362	120,703	141,148		- 4,318	- 3,155	- 1,845	

^{1/} including seamen but excluding transit passengers who do not leave the airport.

Table 10 - Arrivals^{1/} by country of original embarkation, 1972 - June 1977

Country of original embarkation	1972	1973	1974	1975	1976	Jan-June 1977
Kenya	1,940	2,349	2,815	2,733	3,591	1,809
Malagasy Republic	2,984	3,649	3,211	2,228	3,694	2,697
Malawi	482	499	628	793	897	581
Réunion	30,259	37,156	37,767	42,569	49,799	24,767
Rhodesia	462	368	535	1,088	734	149
Seychelles	1,710	1,780	2,051	2,061	3,223	1,595
South Africa, Rep. of	8,535	12,346	17,220	18,158	21,471	10,364
Tanzania	548	570	655	528	608	210
Zambia	2,290	2,605	3,663	2,952	2,330	1,907
Rodrigues	2,168	2,427	2,053	2,968	3,796	2,363
Agalega & St. Brandon	266	325	394	357	122	105
Other African	975	1,685	1,278	1,094	1,605	691
China (Mainland)	88	76	13	13	73	28
China (Taiwan)	23	170	270	93	44	65
Hong Kong	708	673	595	858	1,012	560
India	3,694	5,040	4,108	5,506	6,564	4,513
Japan	133	123	157	124	115	98
Singapore	27	53	91	99	93	42
Other Asian	430	384	696	524	668	159
Australia	3,908	4,325	4,575	4,537	4,750	2,393
New Caledonia	135	120	131	59	83	41
New Zealand	263	423	363	303	281	91
Other Oceanian	35	72	67	30	37	11
Belgium	1,485	3,066	2,235	2,242	930	82
France	4,616	6,627	9,009	9,814	12,865	6,116
Germany, Fed. Rep. of	1,082	1,650	1,487	1,231	1,183	718
Italy	829	1,656	1,783	1,406	1,580	1,089
Switzerland	225	385	589	536	597	196
United Kingdom	9,496	11,989	12,410	13,728	16,641	6,207
Other European	446	884	877	490	502	256
Canada	157	221	355	326	266	77
U.S.A.	360	356	362	226	153	103
Other American	22	31	80	32	45	52
U.S.S.R.	57	79	93	66	57	36
All countries	80,838	104,162	112,616	119,772	140,409	70,171

^{1/} excluding transit passengers who did not leave the airport; discharged seamen numbering 533, 464, 508, 687, 507 and 340 respectively for the period under review.

Table 11 - Departures^{1/} by country of final destination, 1972 - June 1977

Country of final destination	1972	1973	1974	1975	1976	Jan-June 1977
Kenya	1,690	2,278	2,319	2,126	3,096	1,346
Malagasy Republic	4,113	4,870	3,888	2,704	4,371	1,990
Malawi	463	495	571	907	1,304	514
Réunion	29,314	36,031	36,959	43,058	50,538	26,189
Rhodesia	401	342	399	1,150	633	223
Seychelles	1,348	2,295	2,429	2,209	2,591	1,931
South Africa, Rep. of	10,198	12,537	16,607	17,450	20,684	11,574
Tanzania	534	576	433	332	479	250
Zambia	2,171	2,824	3,891	3,263	2,800	1,794
Rodrigues	2,292	2,453	2,648	3,319	4,221	1,897
Agalega & St. Brandon	276	335	526	672	173	202
Other African	672	1,245	906	819	1,604	797
China (Mainland)	160	63	24	14	25	16
China (Taiwan)	34	186	197	52	38	160
Hong Kong	594	652	574	839	983	566
India	2,798	5,185	4,790	5,608	7,055	3,839
Japan	98	126	111	111	65	71
Singapore	25	42	119	36	34	27
Other Asian	343	257	571	459	772	185
Australia	3,869	4,660	5,568	5,395	5,469	2,360
New Caledonia	178	118	86	92	109	33
New Zealand	238	333	360	316	379	79
Other Oceanian	69	49	61	50	43	18
Belgium	1,494	3,808	2,294	1,703	826	185
France	2,604	4,357	7,008	8,277	11,044	7,328
Germany, Fed. Rep. of	1,188	1,596	1,548	1,246	1,319	952
Italy	572	1,470	1,362	1,276	1,346	2,032
Switzerland	167	372	510	396	534	403
United Kingdom	7,869	9,882	10,374	12,192	15,376	8,756
Other European	363	723	765	400	429	370
Canada	105	174	210	157	210	140
U.S.A.	311	290	296	124	171	139
Other American	19	26	29	55	26	15
U.S.S.R.	71	70	100	74	49	28
All countries	76,641	100,720	108,536	116,861	138,796	76,409

^{1/} excluding transit passengers who did not leave the airport; engaged seamen numbering 655, 535, 746, 931, 739 and 487 respectively for the period under review.

Table 12 - Passenger^{1/} traffic by type of passenger and month, January - June 1977.

Type of passenger	January	February	March	April	May	June	Total (Jan. - June)
ARRIVALS							
Visitors ^{2/}	12,007	9,057	7,377	8,612	8,405	5,839	51,297
On holiday	10,564	7,388	5,836	6,824	6,490	4,344	41,446
On business	401	473	596	852	791	629	3,742
In transit	1,013	1,151	902	883	969	830	5,748
Other and not stated	29	45	43	53	155	36	361
Mauritians settled abroad	870	579	607	736	508	606	3,906
Mauritian residents	2,797	1,658	1,807	2,320	2,564	2,630	13,776
Other	330	128	151	213	214	156	1,192
Total	16,004	11,422	9,942	11,881	11,691	9,231	70,171
DEPARTURES							
Visitors ^{2/}	14,128	10,140	7,356	8,282	9,312	5,531	54,749
Mauritians settled abroad	2,532	1,090	487	604	642	412	5,767
Emigrants	40	31	34	21	19	15	160
Mauritian residents	2,461	1,631	2,431	2,527	2,577	2,773	14,400
Other	123	165	198	296	245	306	1,333
Total	19,284	13,057	10,506	11,730	12,795	9,037	76,409

^{1/} excluding seamen and transit passengers who do not leave the airport.

^{2/} including non-residents (a total of 2,732 for the half-year) who left the airport but stayed in the country for less than a day.

Table 13 - Arrivals^{1/} by age and sex, July 1975 - June 1977

Age (completed years)	July - December 1975			January - June 1976			July - December 1976			January - June 1977		
	Both sexes	Male	Female	Both sexes	Male	Female	Both sexes	Male	Female	Both sexes	Male	Female
Under 1	414	226	188	343	206	137	483	255	228	444	244	200
1 - 4	2,556	1,353	1,203	2,085	1,115	970	2,770	1,475	1,295	2,271	1,208	1,063
5 - 9	2,988	1,568	1,420	2,466	1,339	1,127	3,316	1,758	1,558	2,710	1,419	1,291
10 - 14	3,043	1,533	1,510	2,370	1,245	1,125	3,172	1,626	1,546	2,509	1,317	1,192
15 - 19	3,627	1,657	1,970	2,896	1,361	1,535	3,763	1,686	2,077	3,208	1,524	1,684
20 - 24	7,579	3,628	3,951	6,619	3,343	3,276	8,246	3,914	4,332	7,310	3,588	3,722
25 - 29	10,061	5,637	4,424	8,649	5,023	3,626	11,128	6,236	4,892	9,908	5,471	4,437
30 - 34	8,314	5,037	3,277	7,697	4,747	2,950	9,663	5,659	4,004	9,011	5,490	3,521
35 - 39	6,849	4,222	2,627	6,318	4,134	2,184	7,576	4,708	2,868	7,303	4,667	2,636
40 - 44	5,400	3,450	1,950	5,151	3,426	1,725	6,272	3,914	2,358	6,070	4,004	2,066
45 - 49	4,897	3,023	1,874	4,405	2,883	1,522	5,428	3,348	2,080	5,126	3,275	1,851
50 - 54	4,171	2,478	1,693	3,779	2,375	1,404	4,601	2,714	1,887	4,144	2,535	1,609
55 - 59	2,836	1,656	1,180	2,496	1,510	986	3,204	1,883	1,321	2,987	1,802	1,185
60 - 64	2,181	1,272	909	1,940	1,133	807	2,498	1,338	1,160	2,116	1,214	902
65 - 69	1,271	695	576	1,157	670	487	1,514	795	719	1,309	709	600
70 & over	888	485	403	818	460	358	1,114	563	551	1,024	525	499
Not stated	2,957	2,048	909	2,626	1,905	721	2,740	1,927	813	3,061	2,145	916
ALL ages	70,032	39,968	30,064	61,815	36,875	24,940	77,488	43,799	33,689	70,511	41,137	29,374

^{1/} including discharged seamen but excluding transit passengers who do not leave the airport

Table 14 - Departures^{1/} by age and sex, July 1975 - June 1977

Age (completed years)	July - December 1975			January - June 1976			July - December 1976			January - June 1977		
	Both sexes	Male	Female	Both sexes	Male	Female	Both sexes	Male	Female	Both sexes	Male	Female
Under 1	341	191	150	421	241	180	430	248	182	544	289	255
1 - 4	2,280	1,239	1,041	2,552	1,353	1,199	2,473	1,361	1,112	2,696	1,427	1,269
5 - 9	2,766	1,437	1,329	2,987	1,601	1,386	2,927	1,621	1,306	3,098	1,584	1,514
10 - 14	2,932	1,527	1,405	2,839	1,515	1,324	2,913	1,523	1,390	2,831	1,500	1,331
15 - 19	3,902	1,806	2,096	3,542	1,673	1,869	3,833	1,806	2,027	3,702	1,722	1,980
20 - 24	7,748	3,945	3,803	7,659	3,758	3,901	8,125	4,085	4,040	8,040	3,882	4,158
25 - 29	9,223	5,237	3,986	9,723	5,478	4,245	10,216	5,765	4,451	10,747	5,933	4,814
30 - 34	7,639	4,655	2,984	8,436	5,093	3,343	8,958	5,313	3,645	9,757	5,889	3,868
35 - 39	6,307	3,880	2,427	6,734	4,261	2,473	7,010	4,448	2,562	7,987	5,088	2,899
40 - 44	4,967	3,214	1,753	5,608	3,643	1,965	5,902	3,751	2,151	6,491	4,237	2,254
45 - 49	4,678	2,877	1,801	4,626	2,958	1,668	5,108	3,222	1,886	5,509	3,495	2,014
50 - 54	3,893	2,298	1,595	4,104	2,502	1,602	4,294	2,532	1,762	4,430	2,673	1,757
55 - 59	2,736	1,626	1,110	2,719	1,641	1,078	2,983	1,775	1,208	3,265	1,947	1,318
60 - 64	2,120	1,246	874	2,035	1,158	877	2,291	1,234	1,057	2,351	1,334	1,017
65 - 69	1,226	664	562	1,242	698	544	1,350	719	631	1,496	817	679
70 & over	874	469	405	879	499	380	1,040	512	528	1,111	610	501
Not stated	2,730	1,936	794	2,351	1,731	620	2,838	2,000	838	2,841	2,085	756
ALL ages	66,362	38,247	28,115	68,457	39,803	28,654	72,691	41,915	30,776	76,896	44,512	32,384

^{1/} including engaged seamen but excluding transit passengers who do not leave the airport

Table 15 - Excess of arrivals^{1/} over departures^{1/} by age and sex, July 1975 - June 1977

Age (completed years)	July - December 1975			January - June 1976			July - December 1976			January - June 1977		
	Both sexes	Male	Female	Both sexes	Male	Female	Both sexes	Male	Female	Both sexes	Male	Female
Under 1	+ 73	+ 35	+ 38	- 78	- 35	- 43	+ 53	+ 7	+ 46	- 100	- 45	- 55
1 - 4	+ 276	+ 114	+ 162	- 467	- 238	- 229	+ 297	+ 114	+ 183	- 425	- 219	- 206
5 - 9	+ 222	+ 131	+ 91	- 521	- 262	- 259	+ 389	+ 137	+ 252	- 388	- 165	- 223
10 - 14	+ 111	+ 6	+ 105	- 469	- 270	- 199	+ 259	+ 103	+ 156	- 322	- 183	- 139
15 - 19	- 275	- 149	- 126	- 646	- 312	- 334	- 70	- 120	+ 50	- 494	- 198	- 296
20 - 24	- 169	- 317	+ 148	- 1,040	- 415	- 625	+ 121	- 171	+ 292	- 730	- 294	- 436
25 - 29	+ 838	+ 400	+ 438	- 1,074	- 455	- 619	+ 912	+ 471	+ 441	- 839	- 462	- 377
30 - 34	+ 675	+ 382	+ 293	- 739	- 346	- 393	+ 705	+ 346	+ 359	- 746	- 399	- 347
35 - 39	+ 542	+ 342	+ 200	- 416	- 127	- 289	+ 566	+ 260	+ 306	- 684	- 421	- 263
40 - 44	+ 433	+ 236	+ 197	- 457	- 217	- 240	+ 370	+ 163	+ 207	- 421	- 233	- 188
45 - 49	+ 219	+ 146	+ 73	- 221	- 75	- 146	+ 320	+ 126	+ 194	- 383	- 220	- 163
50 - 54	+ 278	+ 180	+ 98	- 325	- 127	- 198	+ 307	+ 182	+ 125	- 286	- 138	- 148
55 - 59	+ 100	+ 30	+ 70	- 223	- 131	- 92	+ 221	+ 108	+ 113	- 278	- 145	- 133
60 - 64	+ 61	+ 26	+ 35	- 95	- 25	- 70	+ 207	+ 104	+ 103	- 235	- 120	- 115
65 - 69	+ 45	+ 31	+ 14	- 85	- 28	- 57	+ 164	+ 76	+ 88	- 187	- 108	- 79
70 and over	+ 14	+ 16	- 2	- 61	- 39	- 22	+ 74	+ 51	+ 23	- 87	- 85	- 2
Not stated	+ 227	+ 112	+ 115	+ 275	+ 174	+ 101	- 98	- 73	- 25	+ 220	+ 60	+ 160
All ages	+ 3,670	+ 1,721	+ 1,949	- 6,642	- 2,928	- 3,714	+ 4,797	+ 1,884	+ 2,913	- 6,385	- 3,375	- 3,010

^{1/} including seamen but excluding transit passengers who do not leave the airport

Table 16 - Arrivals and departures^{1/} of residents of Island of Mauritius by district of residence and sex, January - June 1977

Geographical district	Arrivals			Departures			Excess of arrivals over departures		
	Both sexes	Male	Female	Both sexes	Male	Female	Both sexes	Male	Female
Port Louis	2,914	1,912	1,002	3,160	1,969	1,191	- 246	- 57	- 189
Pamplemousses	449	328	121	523	369	154	- 74	- 41	- 33
Rivière du Rempart	348	227	121	396	259	137	- 48	- 32	- 16
Flacq	277	196	81	301	216	85	- 24	- 20	- 4
Grand Port	311	197	114	368	224	144	- 57	- 27	- 30
Savanne	236	153	83	229	139	90	+ 7	+ 14	- 7
Plaines Wilhems : Urban	5,877	3,616	2,261	6,171	3,715	2,456	- 294	- 99	- 195
Other	86	50	36	113	65	48	- 27	- 15	- 12
Moka	228	154	74	264	171	93	- 36	- 17	- 19
Black River	140	82	58	162	89	73	- 22	- 7	- 15
Not stated	2,910	1,945	965	2,714	1,802	912	+ 196	+ 143	+ 53
Whole Island	13,776	8,860	4,916	14,401	9,018	5,383	- 625	- 158	- 467

^{1/} excluding official long-term emigrants

Table 17 - Arrivals of residents of Island of Mauritius by age and sex, January 1975 - June 1977

Age (completed years)	January-June 1975			July-December 1975			January-June 1976			July-December 1976			January-June 1977		
	Both sexes	Male	Female	Both sexes	Male	Female	Both sexes	Male	Female	Both sexes	Male	Female	Both sexes	Male	Female
Under 1	37	24	13	60	36	24	54	27	27	66	28	38	70	38	32
1 - 4	214	101	113	301	160	141	208	117	91	268	141	127	269	146	123
5 - 9	248	125	123	347	183	164	262	143	119	331	182	149	335	172	163
10 - 14	226	99	127	438	219	219	309	163	146	405	213	192	364	194	170
15 - 19	512	280	232	769	383	386	637	301	336	682	374	308	677	373	304
20 - 24	1,365	879	486	2,027	1,253	774	1,500	1,000	500	2,111	1,332	779	1,793	1,135	658
25 - 29	1,219	867	352	1,801	1,207	594	1,338	967	371	1,983	1,309	674	1,645	1,132	513
30 - 34	1,025	708	317	1,411	940	471	1,040	712	328	1,396	935	461	1,208	837	371
35 - 39	885	615	270	1,227	782	445	932	636	296	1,134	697	437	1,038	670	368
40 - 44	818	558	260	1,025	697	328	874	611	263	1,006	641	365	1,007	706	301
45 - 49	789	509	280	1,055	661	394	848	543	305	968	592	376	821	540	281
50 - 54	577	376	201	791	438	353	691	440	251	925	525	400	727	456	271
55 - 59	527	332	195	664	397	267	517	320	197	647	378	269	493	320	173
60 - 64	364	212	152	524	302	222	403	234	169	560	295	265	387	228	159
65 - 69	225	131	94	337	188	149	251	149	102	369	207	162	214	126	88
70 and over	180	111	69	250	138	112	240	141	99	263	137	126	220	118	102
Not stated	1,595	1,073	522	2,479	1,658	821	2,236	1,565	671	2,289	1,551	738	2,508	1,669	839
All ages	10,806	7,000	3,806	15,506	9,642	5,864	12,340	8,069	4,271	15,403	9,537	5,866	13,776	8,860	4,916

Table 18 - Departures of residents of Island of Mauritius by age and sex, January 1975 - June 1977

Age (completed years)	January - June 1975			July - December 1975			January - June 1976			July - December 1976			January - June 1977		
	Both sexes	Male	Female	Both sexes	Male	Female	Both sexes	Male	Female	Both sexes	Male	Female	Both sexes	Male	Female
Under 1	60	31	29	73	38	35	66	35	31	70	39	31	75	40	35
1 - 4	295	150	145	344	199	145	226	107	119	350	178	172	274	149	125
5 - 9	317	164	153	474	227	247	256	140	116	449	250	199	249	130	119
10 - 14	276	132	144	626	325	301	257	138	119	590	313	277	266	133	133
15 - 19	826	417	409	1,375	689	686	769	391	378	1,180	649	531	756	398	358
20 - 24	1,965	1,214	751	2,778	1,791	987	1,829	1,125	704	2,727	1,748	979	2,062	1,236	826
25 - 29	1,496	978	518	1,884	1,253	631	1,496	1,012	484	2,043	1,336	707	1,766	1,167	599
30 - 34	1,193	795	398	1,469	956	513	1,141	758	383	1,398	907	491	1,293	881	412
35 - 39	1,019	688	331	1,214	731	483	1,008	659	349	1,071	651	420	1,129	719	410
40 - 44	890	603	287	1,003	661	342	927	638	289	991	618	373	1,058	718	340
45 - 49	888	553	335	1,045	623	422	853	543	310	907	559	348	932	594	338
50 - 54	657	409	248	780	424	356	746	435	311	850	475	375	818	487	331
55 - 59	552	347	205	690	418	272	549	319	230	604	365	239	583	356	227
60 - 64	391	218	173	559	321	238	405	227	178	514	268	246	465	253	212
65 - 69	238	133	105	378	206	172	264	151	113	317	171	146	290	159	131
70 & over	185	104	81	290	148	142	223	130	93	244	126	118	246	140	106
Not stated	1,270	860	410	2,170	1,441	729	1,849	1,296	553	2,270	1,506	764	2,139	1,458	681
ALL ages	12,518	7,796	4,722	17,152	10,451	6,701	12,864	8,104	4,760	16,575	10,159	6,416	14,401	9,018	5,383

excluding official long-term emigrants

Table 19 - Excess of arrivals over departures of residents (excluding emigrants) of Island of Mauritius by age and sex, January 1975 - June 1977

Age (completed years)	January - June 1975			July - December 1975			January - June 1976			July - December 1976			January - June 1977		
	Both sexes	Male	Female	Both sexes	Male	Female	Both sexes	Male	Female	Both sexes	Male	Female	Both sexes	Male	Female
Under 1	23	7	16	13	2	11	4	8	4	4	11	7	5	2	3
1 - 4	81	49	32	43	39	4	18	10	28	37	37	45	5	3	2
5 - 9	69	39	30	127	44	83	6	3	3	68	50	44	86	42	44
10 - 14	50	33	17	188	106	82	52	25	27	100	85	37	98	61	37
15 - 19	314	137	177	606	306	300	132	90	42	498	223	200	79	25	54
20 - 24	600	335	265	751	538	213	329	125	204	616	416	200	269	101	168
25 - 29	277	111	166	83	46	37	158	45	113	60	27	33	121	35	86
30 - 34	168	87	81	58	16	42	101	46	55	2	28	30	85	44	41
35 - 39	134	73	61	13	51	38	76	23	53	63	46	17	91	49	42
40 - 44	72	45	27	22	36	14	53	27	26	15	23	8	51	12	39
45 - 49	99	44	55	10	38	28	5	5	5	61	33	28	111	54	57
50 - 54	80	33	47	11	14	3	55	5	60	75	50	25	91	31	60
55 - 59	25	15	10	26	21	5	32	1	33	43	13	30	90	36	54
60 - 64	27	6	21	35	19	16	2	7	9	46	27	19	78	25	53
65 - 69	13	2	11	41	18	23	13	2	11	52	36	16	76	33	43
70 & over	5	7	12	40	10	30	17	11	6	19	11	8	26	22	4
Not stated	325	213	112	309	217	92	387	269	118	19	45	26	369	211	158
All ages	1,712	796	916	1,646	809	837	524	35	489	1,172	622	550	625	158	467

Table 20 - Excess of arrivals over departures of residents (including emigrants) of Island of Mauritius by age and sex, Jan. 1975-June 1977

Age (completed years)	January - June 1975			July - December 1975			January - June 1976			July - December 1976			January - June 1977		
	Both sexes	Male	Female	Both sexes	Male	Female	Both sexes	Male	Female	Both sexes	Male	Female	Both sexes	Male	Female
Under 1	- 35	- 13	- 22	- 22	- 7	- 15	- 17	- 11	- 6	- 7	- 14	+ 7	- 6	- 3	- 3
1 - 4	- 113	- 60	- 53	- 72	- 53	- 19	- 40	+ 2	- 42	- 98	- 45	- 53	- 13	- 6	- 7
5 - 9	- 106	- 56	- 50	- 177	- 70	- 107	- 26	- 18	- 8	- 143	- 75	- 68	+ 63	+ 25	+ 38
10 - 14	- 95	- 61	- 34	- 244	- 137	- 107	+ 13	+ 6	+ 7	- 220	- 117	- 103	+ 74	+ 47	+ 27
15 - 19	- 407	- 162	- 245	- 664	- 327	- 337	- 192	- 106	- 86	- 541	- 288	- 253	- 111	- 30	- 81
20 - 24	- 725	- 380	- 345	- 834	- 559	- 275	- 422	- 144	- 278	- 653	- 425	- 228	- 302	- 106	- 196
25 - 29	- 323	- 132	- 191	- 126	- 60	- 66	- 209	- 58	- 151	- 81	- 35	- 46	- 141	- 41	- 100
30 - 34	- 194	- 96	- 98	- 82	- 24	- 58	- 120	- 51	- 69	- 12	+ 26	- 38	- 90	- 45	- 45
35 - 39	- 149	- 75	- 74	+ 7	+ 50	- 43	- 86	- 27	- 59	+ 59	+ 45	+ 14	- 95	- 52	- 43
40 - 44	- 80	- 49	- 31	+ 12	+ 34	- 22	- 62	- 31	- 31	+ 13	+ 22	- 9	- 55	- 14	- 41
45 - 49	- 106	- 47	- 59	+ 4	+ 36	- 32	- 12	- 3	- 9	+ 56	+ 32	+ 24	- 112	- 55	- 57
50 - 54	- 84	- 34	- 50	+ 2	+ 12	- 10	- 64	- 1	- 63	+ 73	+ 50	+ 23	- 93	- 31	- 62
55 - 59	- 31	- 15	- 16	- 31	- 21	- 10	- 33	-	- 33	+ 42	+ 12	+ 30	- 90	- 36	- 54
60 - 64	- 30	- 7	- 23	- 41	- 21	- 20	- 4	+ 7	- 11	+ 43	+ 26	+ 17	- 80	- 26	- 54
65 - 69	- 18	- 3	- 15	- 46	- 21	- 25	- 17	- 3	- 14	+ 48	+ 36	+ 12	- 77	- 33	- 44
70 and over	- 7	+ 7	- 14	- 46	- 11	- 35	+ 14	+ 11	+ 3	+ 17	+ 11	+ 6	- 26	- 22	- 4
Not stated	+ 323	+ 212	+ 111	+ 308	+ 217	+ 91	+ 387	+ 269	+ 118	+ 19	+ 45	- 26	+ 369	+ 211	+ 158
All ages	- 2,180	- 971	- 1,209	- 2,052	- 962	- 1,090	- 890	- 158	- 732	- 1,385	- 694	- 691	- 785	- 217	- 568

[The page contains extremely faint and illegible text, likely bleed-through from the reverse side of the document. The text is arranged in approximately 15 horizontal lines across the page.]

III - EMIGRATION

Table 21 - Official long-term emigrants^{1/} by sex, 1956-June 1977

Year	Both sexes	Male	Female
1956	147	93	54
1957	109	68	41
1958	163	130	33
1959	170	128	42
1960	158	132	26
1961	837	629	208
1962	1,083	711	372
1963	594	326	268
1964	915	491	424
1965	1,408	659	749
1966	1,611	774	837
1967	2,225	1,038	1,187
1968	3,067	1,487	1,580
1969	2,379	1,119	1,260
1970	2,282	1,063	1,219
1971	2,351	1,078	1,273
1972	2,271	956	1,315
1973	2,037	844	1,193
1974	1,494	606	888
1975	874	328	546
1976	579	195	384
Jan.-June 1977	160	59	101

^{1/} persons who have obtained a permit to emigrate to another country.

Table 22 - External migration, 1956-76

Year	Arrivals	Departures			Excess of arrivals over departures (excluding emigrants)
		Total	Official long-term emigrants ^{1/}	Departures excluding emigrants	
1956	7,747	8,225	147	8,078	- 331
1957	8,095	8,267	109	8,158	- 63
1958	8,703	8,924	163	8,761	- 58
1959	9,637	9,544	170	9,374	+ 263
1960	10,412	10,784	158	10,626	- 214
1961	11,854	13,033	837	12,196	- 342
1962	15,189	16,075	1,083	14,992	+ 197
1963	18,047	18,299	594	17,705	+ 342
1964	21,221	22,331	915	21,416	- 195
1965	22,024	24,150	1,408	22,742	- 718
1966	26,456	29,301	1,611	27,690	- 1,234
1967	29,321	32,925	2,225	30,700	- 1,379
1968	31,403	35,988	3,067	32,921	- 1,518
1969	35,919	38,929	2,379	36,550	- 631
1970	48,819	51,969	2,282	49,687	- 868
1971	60,826	63,997	2,351	61,646	- 820
1972	77,174	81,493	2,271	79,222	- 2,048
1973	101,184	104,697	2,037	102,660	- 1,476
1974	109,044	113,362	1,494	111,868	- 2,824
1975	117,548	120,703	874	119,829	- 2,281
1976	139,303	141,148	579	140,569	- 1,266

^{1/} persons who have obtained a permit to emigrate to another country.

Note : The number of immigrants coming to settle in Mauritius is negligible. A net negative balance over successive years in the last column indicates that a number of persons not registered as official emigrants are permanently leaving the country.

Table 23 - Official long-term emigrants^{1/} by country of intended residence, 1964-June 1977

Country of intended residence	1964	1965	1966	1967	1968	1969	1970	1971	1972	1973	1974	1975	1976	Jan-June 1977
All countries	915	1,408	1,611	2,225	3,067	2,379	2,282	2,351	2,271	2,037	1,494	874	579	160
<u>AFRICA</u>	74	201	164	246	276	84	158	220	185	106	99	17	18	7
Congo Brazzaville	-	-	1	1	-	1	20	54	-	3	9	-	-	-
Kenya	2	7	1	1	20	3	11	9	5	12	7	-	2	-
Malagasy Rep.	10	-	-	3	2	2	4	6	4	7	-	-	1	-
Malawi	-	3	13	8	23	1	12	15	30	23	29	2	9	5
Mozambique	-	3	-	4	-	14	42	20	20	11	8	7	-	-
Réunion	1	2	2	6	9	2	1	6	-	8	1	2	1	2
Rhodesia	19	111	54	16	4	1	2	3	-	-	-	-	-	-
South Africa, Rep.	31	72	81	176	171	50	22	37	5	9	8	3	-	-
Zambia	-	-	7	30	38	10	30	56	113	23	21	2	5	-
Other African	11	3	5	1	9	-	14	14	8	10	16	1	-	-
<u>AMERICA</u>	10	10	12	34	24	29	86	51	40	29	37	87	33	8
Canada	9	1	10	32	18	25	82	47	37	26	37	87	33	8
U.S.A.	1	9	2	2	6	4	4	4	2	2	-	-	-	-
Other American	-	-	-	-	-	-	-	-	1	1	-	-	-	-

Table 23 (cont'd)

Country of intended residence	1964	1965	1966	1967	1968	1969	1970	1971	1972	1973	1974	1975	1976	Jan-June 1977
<u>ASIA</u>	5	1	-	1	1	3	4	3	18	2	2	3	-	-
India	3	1	-	1	-	3	1	-	1	2	-	2	-	-
Other Asian	2	-	-	-	1	-	3	3	17	-	2	1	-	-
<u>EUROPE</u>	738	955	804	613	728	615	939	1,058	1,145	1,353	1,042	682	477	126
Belgium	3	5	94	35	22	7	22	44	32	38	54	30	17	1
France	12	8	41	53	58	93	435	566	554	684	546	237	137	44
Germany, Fed. Rep.	1	1	-	-	-	2	5	8	31	43	7	4	1	5
Italy	1	-	-	1	-	1	4	19	48	29	19	17	17	1
Norway	-	-	-	-	-	-	1	3	2	5	1	1	2	-
Switzerland	-	-	-	3	1	-	6	1	3	5	4	4	1	1
United Kingdom	718	939	667	519	646	510	463	415	460	543	402	385	302	74
Other European	3	2	2	2	1	2	3	2	15	6	9	4	-	-
<u>OCEANIA</u>	88	241	631	1,331	2,038	1,648	1,095	1,019	883	547	314	85	51	19
Australia	73	240	619	1,330	2,037	1,645	1,082	1,004	877	545	301	84	50	19
New Zealand	15	1	8	-	1	1	-	-	1	1	-	-	-	-
Other Oceanian	-	-	4	1	-	2	13	15	5	1	13	1	1	-

1/ persons who have obtained a permit to emigrate to another country.

Table 24 - Age distribution of official long-term emigrants^{1/}, 1964 - June 1977

Male

Age group (completed years)	1964	1965	1966	1967	1968	1969	1970	1971	1972	1973	1974	1975	1976	Jan-June 1977
0 - 4	35	89	86	127	226	136	93	83	94	65	68	36	22	4
5 - 9	41	96	94	133	197	153	106	94	118	101	77	43	28	17
10 - 14	41	79	86	135	149	146	93	96	115	105	77	59	36	14
15 - 19	38	62	70	122	147	140	113	106	108	100	57	46	29	5
20 - 24	62	63	123	132	155	114	153	171	149	112	101	66	28	5
25 - 29	72	69	87	94	141	86	141	128	85	107	82	35	21	6
30 - 34	54	58	76	63	146	75	120	108	68	59	39	17	7	1
35 - 39	44	45	49	60	93	52	68	89	59	45	38	3	5	3
40 - 44	37	33	43	63	92	62	63	69	51	53	23	6	5	2
45 - 49	28	28	12	35	48	44	32	48	46	33	13	5	4	1
50 - 54	14	21	23	25	34	39	33	23	29	19	8	3	6	-
55 - 59	17	11	7	17	27	40	15	18	11	18	8	-	2	-
60 - 64	4	4	9	20	24	13	13	19	12	15	9	3	1	1
65 - 69	1	1	5	9	10	10	9	16	7	3	1	4	1	-
70 & over	3	-	4	3	8	9	11	9	4	6	4	1	-	-
Unknown	-	-	-	-	-	-	-	1	-	3	1	1	-	-
All ages	491	659	774	1,038	1,487	1,119	1,063	1,078	956	844	606	328	195	59

Table 24 (cont'd)

Female

Age (completed years)	1964	1965	1966	1967	1968	1969	1970	1971	1972	1973	1974	1975	1976	Jan-June 1977
0 - 4	57	104	90	138	215	121	99	90	89	48	50	46	24	5
5 - 9	33	90	94	147	202	143	98	89	110	111	79	44	29	6
10 - 14	37	87	81	123	168	151	94	89	140	104	70	42	38	10
15 - 19	42	91	110	154	172	174	181	184	157	181	153	105	74	27
20 - 24	55	95	142	171	184	150	237	241	267	263	212	142	102	28
25 - 29	50	79	89	106	149	101	132	145	148	130	102	54	51	14
30 - 34	40	49	64	74	133	87	81	106	100	84	72	33	22	4
35 - 39	25	41	50	74	85	78	64	84	75	72	47	18	9	1
40 - 44	20	30	29	58	74	58	61	58	65	63	24	12	6	2
45 - 49	20	25	23	44	54	49	50	60	47	51	27	8	8	-
50 - 54	16	23	19	32	46	53	25	31	32	21	26	10	5	2
55 - 59	12	10	18	30	32	37	37	44	33	17	10	11	-	-
60 - 64	7	14	11	11	27	21	25	21	22	17	7	6	4	1
65 - 69	4	5	9	11	19	12	17	10	16	10	4	6	7	1
70 & over	5	6	7	14	20	25	18	18	14	16	4	7	5	-
Unknown	1	-	1	-	-	-	-	3	-	5	1	2	-	-
All ages	424	749	837	1,187	1,580	1,260	1,219	1,273	1,315	1,193	888	546	384	101

Table 24 (cont'd)

Both sexes

Age group (completed years)	1964	1965	1966	1967	1968	1969	1970	1971	1972	1973	1974	1975	1976	Jan-June 1977
0 - 4	92	193	176	265	441	257	192	173	183	113	118	82	46	9
5 - 9	74	186	188	280	399	296	204	183	228	212	156	87	57	23
10 - 14	78	166	167	258	317	297	187	185	255	209	147	101	74	24
15 - 19	80	153	180	276	319	314	294	290	265	281	210	151	103	32
20 - 24	117	158	265	303	339	264	390	412	416	375	313	208	130	33
25 - 29	122	148	176	200	290	187	273	273	233	237	184	89	72	20
30 - 34	94	107	140	137	279	162	201	214	168	143	111	50	29	5
35 - 39	69	86	99	134	176	130	132	173	134	117	85	21	14	4
40 - 44	57	63	72	121	156	120	124	127	116	116	47	18	11	4
45 - 49	48	53	35	79	102	93	82	108	93	84	40	13	12	1
50 - 54	30	44	42	57	80	92	58	54	61	40	34	13	11	2
55 - 59	29	21	25	47	59	77	52	62	44	35	18	11	2	-
60 - 64	11	18	20	31	51	34	38	40	34	32	16	9	5	2
65 - 69	5	6	14	20	29	22	26	26	23	13	5	10	8	1
70 & over	8	6	11	17	28	34	29	27	18	22	8	8	5	-
Unknown	1	-	1	-	-	-	-	4	-	8	2	3	-	-
All ages	915	1,408	1,611	2,225	3,067	2,379	2,282	2,351	2,271	2,037	1,494	874	579	160

1/ persons who have obtained a permit to emigrate to another country.

Table 25 - Official long-term emigrants^{1/} by Major Occupational Group, 1972-June 1977

Major Occupational Group 2/	1972	1973	1974	1975	1976	Jan-June 1977
Total number of emigrants	2,277	2,037	1,494	874	579	160
Emigrants reporting an occupation	773	704	518	253	136	61
0/1. Professional, Technical and Related Workers	7	70	97	62	20	7
2. Administrative and Managerial Workers	2	3	14	8	16	2
3. Clerical and Related Workers	155	142	52	42	30	3
4. Sales Workers	23	9	11	7	5	4
5. Service Workers	200	216	151	83	28	1
6. Agricultural, Animal Husbandry and Forestry Workers, Fishermen and Hunters	3	6	2	1	1	-
7/8/9. Production and Related Workers, Transport Equipment Operators and Labourers	290	264	182	43	42	4
X. Workers not classifiable by Occupation	3	14	9	2	4	-
Emigrants not reporting any occupation (including housewives and children)	1,493	1,313	976	621	443	139

^{1/} persons who have obtained a permit to emigrate to another country.

^{2/} International Standard Classification of Occupations, Revised Edition, 1968.

Table 26 - Official long-term emigrants^{1/} by Major Occupational Group, age and sex, January-June 1977

Major Occupational Group ^{2/}	Age (completed years)														
	All ages			< 19		20 - 24		25 - 34		35 - 44		45 - 54		55 +	
	Both sexes	Male	Female	Male	Female	Male	Female	Male	Female	Male	Female	Male	Female	Male	Female
Total number of emigrants	160	59	101	40	48	5	28	7	18	5	3	1	2	1	2
<u>Emigrants reporting an occupation</u>	21	10	11	-	1	2	2	4	5	2	2	1	-	-	-
0/1 Professional, Technical and Related Workers	7	2	5	-	-	1	1	1	3	-	1	-	-	-	-
2 Administrative and Managerial Workers	2	1	1	-	-	-	1	-	-	1	-	-	-	-	-
3 Clerical and Related Workers	3	1	2	-	1	-	1	-	-	-	-	1	-	-	-
4 Sales Workers	4	3	1	-	-	-	-	2	1	1	-	-	-	-	-
5 Service Workers	1	-	1	-	-	-	-	-	-	-	1	-	-	-	-
6 Agriculture, Animal Husbandry and Forestry Workers, Fishermen and Hunters	-	-	-	-	-	-	-	-	-	-	-	-	-	-	-
7/8/9 Production and Related Workers, Transport Equipment Operators and Labourers	4	3	1	-	-	1	-	1	1	1	-	-	-	-	-
X Workers not classifiable by Occupation	-	-	-	-	-	-	-	-	-	-	-	-	-	-	-
<u>Emigrants not reporting any occupation (including housewives and children)</u>	139	49	90	40	47	3	25	2	13	2	1	-	2	1	2

^{1/} persons who have obtained a permit to emigrate to another country

^{2/} International Standard Classification of Occupations, Revised Edition, 1968

Table 27 - Official long-term emigrants^{1/} by occupation, 1975-June 1977

Occupation	1975	1976	Jan-June 1977
Accountants	2	3	-
Cabinet makers	3	4	-
Carpenters	1	3	1
Clerks	20	18	2
Cooks	9	2	-
Doctors	1	-	-
Drivers	3	3	-
Electricians (see also fitters)	4	3	2
Fitters (see also electricians)	5	6	-
Maids (domestic servants)	42	19	-
Managers	-	-	-
Masons	1	1	-
Mechanics	3	1	-
Nurses	42	6	2
Policemen	3	-	-
Salesmen	4	3	1
Seamstresses and tailors	17	12	1
Stenographers and typists	17	8	1
Storekeepers	1	-	-
Teachers	7	6	4
Waiters	24	5	-
Welders	2	3	-
Other	42	30	7
Occupation not stated or not applicable ^{2/}	621	443	139
Total number of emigrants	874	579	160

^{1/} persons who have obtained a permit to emigrate to another country.

^{2/} emigrants not reporting any occupation (including housewives and children).

Table 28 - Official long-term emigrants^{1/} by district of last residence and sex, July 1975 - June 1977

Geographical district	July - December 1975			January - June 1976			July - December 1976			January - June 1977		
	Both sexes	Male	Female	Both sexes	Male	Female	Both sexes	Male	Female	Both sexes	Male	Female
Port Louis	104	36	68	97	29	68	47	15	32	27	9	18
Pamplemousses	7	3	4	16	4	12	7	1	6	12	5	7
Rivière du Rempart	11	5	6	7	1	6	1	1	-	15	8	7
Flacq	8	1	7	7	3	4	6	1	5	3	2	1
Grand Port	17	6	11	19	6	13	14	4	10	7	2	5
Savanne	10	3	7	5	1	4	2	-	2	1	1	-
Plaines Wilhems : Urban	191	83	108	164	63	101	87	36	51	72	26	46
Other	2	-	2	9	3	6	-	-	-	2	-	2
Moka	12	2	10	6	-	6	14	6	8	2	1	1
Black River	4	-	4	2	1	1	-	-	-	-	-	-
Not stated	40	14	26	34	12	22	35	8	27	19	5	14
Whole Island	406	153	253	366	123	243	213	72	141	160	59	101

^{1/} persons who have obtained a permit to emigrate to another country.

IV - TOURISM

Definition and notes

1. Definition of tourist:

- (a) Prior to 1964, a tourist has been defined as a non-resident staying in Mauritius for more than 24 hours but less than 6 months;
- (b) As from 1964, a tourist is defined as a non-resident staying in the island for more than 24 hours but less than a year.

The figures for the two periods are nevertheless comparable because of the small number of tourists staying for more than 6 months.

2. Visitors include the following:

- (i) tourists as defined above; and
- (ii) non-residents who stay in the country for less than a day, other than those who do not leave the airport.

3. Method of compilation:

Certain data on tourism (such as type of visitor, tourist arrivals by month of arrival, tourist arrivals by country of residence and mode of transport) are compiled from disembarkation cards which visitors fill in when they arrive in this country. However, information on duration of stay of visitors can be compiled only from the embarkation cards which they fill in when they leave the country. Since it is not possible to wait for the departure of all the visitors who come during the period under review, we restrict our analysis of duration of stay only to those visitors who arrive during the reference period but who have left by a given date after the end of the period.

However, the error due to this limitation is not considerable since visitors arriving in 1976 and leaving before 1.2.77 represent 99.1% of total visitor arrivals for 1976 and visitors arriving in January - June 1977 and leaving before 1.8.77 represent 99.6 of total visitor arrivals for January - June 1977.

4. Tourist nights:

Tables 29, 34 and 36 show the number of nights spent by tourist who were on visit in the country during the period under review. The figures therefore include nights spent during the reference period by tourists who arrived before the beginning of the period. On the other hand, nights spent after the end of the reference period by tourists who arrived during the period are excluded.

5. Visitor nights:

In Tables 38 - 41 and table 43 an analysis is made of nights spent by visitors who arrive during the period under review and who have left by a given date after the end of the period. Figures for January - June 1977 thus show the total number of nights spent by visitors who arrived in January - June 1977 and left before 1.8.77.

6. Mauritians settled abroad are excluded from figures of tourists and visitors. Data referring to them are shown separately in tables 44 - 46. Table 44 shows the total nights spent by Mauritians settled abroad who arrive during the period under review and who have left by a given date after the end of the period. Thus the figures for January - June 1977 include nights spent in July 1977 by Mauritians settled abroad who arrived in January - June 1977. Table 46 shows the nights spent during the period under review only. Thus the figures for January - June 1977 include nights spent in January - June 1977 by Mauritians settled abroad who arrived in 1976, but exclude nights spent in July 1977 by those who arrived in January - June 1977.

Table 29 - Tourist^{1/} arrivals by mode of transport and total nights spent during period, 1963 - June 1977

Period	Tourists arriving during period			Total nights spent during period ^{2/}
	Sea	Air	Total	
1963	1,008	6,719	7,727	99,400
1964	1,010	9,023	10,033	144,600
1965	746	9,312	10,058	144,900
1966	1,328	11,712	13,040	162,300
1967	937	13,877	14,814	172,000
1968	647	14,906	15,553	149,500
1969	455	20,132	20,587	220,600
1970	365	27,285	27,650	287,600
1971	168	36,230	36,398	399,700
1972	143	48,654	48,797	454,300
1973	1,293 ^{3/}	66,701	67,994	733,100
1974	472	71,443	72,915	772,200 -25,300
1975	554	74,043	74,597	746,900 14,6300
1976	778	91,783	92,561	892,200
Jan-June 1977	564	48,001	48,565	459,100

^{1/} see notes on page 33

^{2/} include nights spent during reference period by tourists arriving prior to the period

^{3/} includes about 700 persons who came for a religious conference

Table 30 - Tourist arrivals by month of arrival, 1967 - June 1977

Month of arrival	1967	1968	1969	1970	1971	1972	1973	1974	1975	1976	Jan-June 1977
January	1,165	2,023	1,892	2,718	3,669	4,701	6,874	8,495	8,401	10,055	11,507
February	1,002	1,018	1,556	2,013	2,494	3,220	4,863	5,954	4,017	7,035	8,433
March	1,050	707	1,370	1,876	2,191	3,047	4,152	5,272	4,383	6,149	6,974
April	941	936	1,449	1,493	2,419	2,870	5,091	5,299	4,477	6,753	8,245
May	819	938	1,208	2,281	2,905	3,261	5,060	5,203	5,235	7,385	7,974
June	811	832	985	1,722	1,890	2,630	4,501	4,661	3,740	4,849	5,432
July	2,322	2,068	2,334	1,981	2,918	3,986	4,726	5,119	5,739	7,551	8,832
August	1,533	1,609	2,761	3,909	5,297	7,038	9,595	9,026	10,844	11,851	11,921
September	1,105	1,200	1,816	2,232	2,845	3,911	5,105	5,183	5,706	6,004	6,463
October	1,280	1,282	1,222	1,889	2,522	3,334	4,893	5,202	5,586	7,757	7,982
November	1,079	1,059	1,564	2,049	2,615	3,873	4,398	5,650	6,634	7,157	
December	1,707	1,881	2,430	3,487	4,633	6,798	8,736	7,591	9,835	10,015	
Whole year	14,814	15,553	20,587	27,650	36,398	48,797	67,994	72,915	74,597	92,561	

1112
11,000
8,500
7,700
8

Table 32 - Tourist arrivals by country of residence, 1967 - June 1977

Country of residence	1967	1968	1969	1970	1971	1972	1973	1974	1975	1976	Jan-June 1977
All countries	14,814	15,553	20,587	27,650	36,398	48,797	67,994	72,915	74,597	92,561	48,565
AFRICA	<u>10,626</u>	<u>10,404</u>	<u>15,058</u>	<u>19,784</u>	<u>25,289</u>	<u>33,206</u>	<u>41,969</u>	<u>46,979</u>	<u>47,705</u>	<u>57,889</u>	<u>22,415</u>
Comoro Islands	14	3	16	44	25	23	126	176	181	209	129
Ethiopia	15	30	34	28	33	49	119	75	60	202	73
Kenya	552	579	574	681	634	684	824	898	707	1,057	431
Malagasy Rep.	1,598	1,512	2,050	1,985	2,287	2,747	3,563	2,679	1,976	3,035	2,003
Malawi	100	15	27	67	66	135	166	243	267	399	255
Mozambique	5	13	14	22	21	46	94	110	41	82	41
Réunion	6,242	6,094	8,905	11,405	15,161	19,230	22,542	23,232	24,853	30,032	14,577
Rhodesia	296	62	22	88	191	435	380	591	1,232	920	247
Seychelles	32	25	21	45	63	256	563	431	405	428	244
South Africa, Rep. of	1,209	1,555	2,680	3,637	4,939	7,088	9,985	14,193	14,740	17,823	9,099
Tanzania	111	262	194	186	216	200	308	282	125	254	173
Uganda	48	54	60	131	130	139	68	46	42	112	24
Zambia	318	127	332	1,314	1,224	1,825	2,375	3,332	2,406	1,884	1,382
Other African	86	73	129	151	299	349	856	691	670	1,452	737
AMERICA	<u>437</u>	<u>559</u>	<u>612</u>	<u>762</u>	<u>978</u>	<u>1,201</u>	<u>1,406</u>	<u>1,432</u>	<u>1,369</u>	<u>1,188</u>	<u>660</u>
Brazil	7	2	7	5	9	35	24	89	32	20	25

see notes on page 33

Table 32 (continued)

Country of residence	1967	1968	1969	1970	1971	1972	1973	1974	1975	1976	Jan-June 1977
Canada	33	69	57	90	145	209	329	247	302	346	144
U.S.A.	377	464	506	646	778	917	989	1,000	893	738	454
Other American	20	24	42	24	46	40	64	99	142	84	37
<u>ASIA</u>	<u>487</u>	<u>721</u>	<u>579</u>	<u>863</u>	<u>1,071</u>	<u>1,642</u>	<u>3,412</u>	<u>2,619</u>	<u>2,963</u>	<u>3,693</u>	<u>2,035</u>
China	3	30	2	5	26	91	78	50	53	77	78
Formosa (Taiwan)	1	9	11	43	60	29	310	408	90	86	83
Hong Kong	62	55	70	51	115	226	230	154	215	173	95
India	257	421	272	479	554	879	2,235	1,308	1,944	2,676	1,378
Israel	14	11	6	17	15	20	17	28	33	40	18
Japan	53	72	86	83	105	148	240	261	245	221	164
Malaysia	17	18	8	32	24	26	21	33	36	39	8
Pakistan	18	31	15	20	25	44	60	64	62	63	51
Singapore	21	30	37	44	42	29	49	79	62	60	19
Other Asian	41	44	72	89	105	150	172	234	223	258	141
<u>U.S.S.R.</u>	<u>4</u>	<u>8</u>	<u>34</u>	<u>11</u>	<u>8</u>	<u>24</u>	<u>56</u>	<u>79</u>	<u>72</u>	<u>63</u>	<u>32</u>
<u>EUROPE</u>	<u>2,314</u>	<u>2,637</u>	<u>2,809</u>	<u>4,319</u>	<u>6,820</u>	<u>9,917</u>	<u>17,323</u>	<u>17,665</u>	<u>18,253</u>	<u>25,238</u>	<u>14,640</u>
Belgium	20	23	24	47	104	318	482	502	554	597	380
Denmark	10	10	14	17	45	52	106	88	81	102	42

Table 32 (continued)

Country of residence	1967	1968	1969	1970	1971	1972	1973	1974	1975	1976	Jan-June 1977
France	888	922	767	1,437	2,540	3,771	7,281	7,874	8,929	13,885	7,470
Germany, Fed. Rep.	88	106	124	481	824	1,406	1,996	1,951	1,533	1,532	1,133
Greece	5	34	13	20	24	31	48	76	92	77	30
Irish Rep.	8	18	13	33	44	42	68	83	116	113	37
Italy	69	98	146	190	428	775	2,136	1,937	1,712	2,115	1,747
Netherlands	36	50	41	71	118	98	195	189	183	236	152
Norway	11	4	19	15	30	30	73	63	42	40	22
Spain	2	6	6	10	60	29	121	156	123	107	64
Sweden	11	11	17	21	48	73	155	106	106	225	85
Switzerland	78	74	77	110	159	303	537	840	876	1,014	507
U.K.	1,056	1,261	1,524	1,740	2,252	2,848	3,822	3,452	3,598	4,852	2,779
Other European	32	20	24	119	144	141	303	348	308	343	192
OCEANIA	946	1,224	1,495	1,908	2,232	2,807	3,828	4,138	4,235	4,490	1,783
Australia	771	999	1,162	1,571	1,700	2,171	3,060	3,351	3,417	3,559	1,481
New Caledonia	37	14	63	44	93	124	112	89	77	126	46
New Zealand	101	190	224	254	374	437	568	620	678	713	205
Other Oceanian	37	21	46	39	65	75	88	78	63	92	51

Table 34 - Tourist^{1/} nights by country of residence of tourist, 1967 - June 1977

Country of residence	1967	1968	1969	1970	1971	1972	1973	1974	1975	1976	Jan-June 1977
AFRICA	<u>129,406</u>	<u>105,719</u>	<u>165,259</u>	<u>211,132</u>	<u>279,314</u>	<u>313,953</u>	<u>414,697</u>	<u>462,475</u>	<u>441,895</u>	<u>511,575</u>	<u>255,898</u>
Comoro Islands	69	10	61	232	114	96	905	2,041	1,160	1,632	1,122
Ethiopia	62	91	251	181	359	406	1,328	580	383	2,221	551
Kenya	3,764	3,447	4,355	5,180	5,197	4,498	6,291	6,371	5,532	7,492	3,011
Malagasy Rep.	19,188	17,592	24,236	19,553	27,618	25,376	38,904	26,965	17,735	29,081	16,049
Malawi	1,233	104	285	505	860	1,074	1,655	2,910	2,407	3,420	2,344
Mozambique	71	143	349	348	137	463	914	1,249	424	511	307
Réunion	79,017	65,512	105,018	130,052	172,147	198,383	231,566	227,129	220,288	244,391	122,690
Rhodesia	4,152	945	141	840	2,004	4,952	5,048	7,174	14,133	10,513	3,038
Seychelles	424	607	858	1,700	1,505	2,213	5,508	4,239	4,000	4,867	2,759
South Africa, Rep. of	14,525	14,130	23,792	33,630	50,066	52,383	86,752	138,178	145,596	172,865	84,358
Tanzania	901	1,121	1,054	1,860	2,543	1,673	2,806	2,563	1,512	2,892	1,241
Uganda	273	491	305	1,610	1,192	763	776	357	302	976	159
Zambia	4,727	976	3,130	14,052	13,076	18,972	22,335	34,948	22,394	17,006	11,363
Other African	1,000	550	1,424	1,389	2,496	2,701	9,909	7,771	6,029	13,708	6,906
AMERICA	<u>3,721</u>	<u>4,186</u>	<u>5,109</u>	<u>4,970</u>	<u>7,807</u>	<u>7,811</u>	<u>13,565</u>	<u>13,555</u>	<u>13,938</u>	<u>11,984</u>	<u>6,365</u>
Brazil	31	7	14	18	66	67	124	435	176	83	188

Table 34 - (cont'd)

Country of residence	1967	1968	1969	1970	1971	1972	1973	1974	1975	1976	Jan-June 1977
Canada	222	392	391	569	1,558	1,773	3,412	2,966	3,444	3,611	1,864
U.S.A.	3,169	3,268	4,085	4,243	5,823	5,821	9,416	9,511	9,481	7,261	3,979
Other American	299	519	619	140	360	150	613	643	837	1,029	334
<u>ASIA</u>	<u>6,810</u>	<u>8,643</u>	<u>8,813</u>	<u>11,823</u>	<u>15,319</u>	<u>14,134</u>	<u>28,422</u>	<u>25,992</u>	<u>28,548</u>	<u>33,619</u>	<u>18,399</u>
China (Mainland)	86	398	149	285	118	929	2,866	575	453	804	453
Formosa (Taiwan)	26	122	274	140	114	155	927	1,836	866	975	1,553
Hong Kong	888	943	318	1,348	2,606	2,867	3,324	2,140	3,314	2,128	945
India	3,693	4,183	5,482	7,492	8,793	8,032	14,843	15,287	17,285	22,501	17,369
Israel	114	50	26	110	103	157	201	139	287	400	96
Japan	683	937	1,058	766	1,045	759	1,867	1,542	1,758	1,904	2,043
Malaysia	108	97	55	220	157	150	147	192	374	457	195
Pakistan	188	591	396	358	791	283	1,493	1,903	963	1,829	717
Singapore	273	283	374	228	437	181	477	419	599	499	164
Other Asian	751	1,039	681	876	1,125	621	2,277	1,959	2,649	2,122	1,364
<u>U.S.S.R.</u>	<u>66</u>	<u>50</u>	<u>900</u>	<u>211</u>	<u>223</u>	<u>206</u>	<u>1,156</u>	<u>461</u>	<u>945</u>	<u>774</u>	<u>394</u>
<u>EUROPE</u>	<u>26,168</u>	<u>25,667</u>	<u>31,506</u>	<u>49,606</u>	<u>82,343</u>	<u>104,943</u>	<u>227,565</u>	<u>239,196</u>	<u>231,316</u>	<u>302,270</u>	<u>165,513</u>
Belgium	399	181	225	696	1,523	2,564	6,569	8,198	8,202	9,129	5,127
Denmark	39	60	308	112	724	581	2,118	1,402	1,667	1,282	749

Table 34 - (cont'd)

Country of residence	1967	1968	1969	1970	1971	1972	1973	1974	1975	1976	Jan-June 1977
France	8,219	7,312	6,531	15,385	26,878	39,043	90,934	100,673	99,847	151,971	73,885
Germany, Fed. Rep.	734	613	1,200	4,874	10,582	14,306	24,910	27,796	23,068	21,128	13,229
Greece	25	467	135	326	143	152	629	748	694	652	295
Irish Rep.	228	202	37	310	1,137	348	1,372	1,238	1,689	1,624	716
Italy	367	700	1,049	1,216	3,716	5,567	19,524	20,876	15,703	21,217	18,294
Netherlands	326	434	656	573	877	530	2,417	3,602	2,461	3,359	1,883
Norway	129	8	221	46	338	271	663	462	441	530	177
Spain	14	36	21	50	665	215	1,378	1,456	919	822	698
Sweden	45	112	418	441	1,054	542	1,729	1,501	1,115	2,011	988
Switzerland	731	400	694	1,018	1,716	2,693	5,256	10,770	10,522	13,653	6,911
U.K.	14,711	14,821	19,609	23,577	31,181	36,125	66,090	56,923	61,943	71,336	40,514
Other European	201	321	402	982	1,809	2,006	3,976	3,551	3,045	3,556	2,047
<u>OCEANIA</u>	<u>5,796</u>	<u>5,242</u>	<u>8,985</u>	<u>9,849</u>	<u>14,723</u>	<u>13,224</u>	<u>22,062</u>	<u>30,504</u>	<u>30,256</u>	<u>32,000</u>	<u>11,997</u>
Australia	4,709	4,385	7,877	7,520	11,431	9,767	18,747	26,014	26,080	26,487	10,541
New Caledonia	175	70	139	118	404	747	315	584	275	624	111
New Zealand	619	691	879	2,041	2,566	2,194	2,538	3,305	3,582	4,210	1,253
Other Oceanian	293	96	90	170	322	516	462	601	319	679	92
All countries	171,967	149,507	220,572	287,591	399,739	454,271	707,467	772,183	746,898	892,222	459,066

Graph 4 - Tourist nights spent during period, 1967-76



Table 35 - Tourists^{1/} arriving in January - June 1977 by country of residence and month of arrival

Country of residence	Jan.	Feb.	March	April	May	June	Jan - June
Kenya	71	46	66	103	62	83	431
Malagasy Republic	226	235	287	507	402	346	2,003
Malawi	38	18	28	130	15	26	255
Réunion	5,000	2,864	1,033	1,669	2,846	1,165	14,577
Rhodesia	56	36	19	80	44	12	247
Seychelles	42	20	38	43	60	41	244
South Africa, Rep. of	2,168	1,389	1,629	1,472	1,208	1,233	9,099
Tanzania	32	9	22	52	30	28	173
Zambia	215	162	256	327	232	190	1,382
Other African	138	93	122	329	206	116	1,004
U.S.S.R.	4	5	11	3	6	3	32
China (Mainland)	12	3	18	9	24	12	78
China (Taiwan)	14	23	18	22	-	6	83
Hong Kong	12	15	12	15	18	23	95
India	182	117	193	313	374	199	1,378
Japan	10	44	41	33	17	19	164
Pakistan	8	10	7	6	11	9	51
Singapore	4	2	4	4	3	2	19
Other Asian	21	21	31	38	28	28	167
Australia	400	212	192	186	232	259	1,481
New Caledonia	20	8	-	15	2	1	46
New Zealand	35	30	51	37	26	26	205
Other Oceanian	11	7	10	-	2	21	51
Belgium	64	74	65	89	45	43	380
France	1,382	1,478	1,282	1,525	1,005	798	7,470
Germany, Fed. Rep. of	199	191	279	214	152	98	1,133
Italy	406	512	433	212	86	98	1,747
Switzerland	112	55	90	98	89	63	507
United Kingdom	423	539	521	484	483	329	2,779
Other European	116	108	101	123	98	78	624
Canada	32	23	32	17	27	13	144
U.S.A.	48	77	76	75	123	55	454
Other American	6	7	7	15	18	9	62
All countries	11,507	8,433	6,974	8,245	7,974	5,432	48,565

^{1/} see notes on page 33

Table 36 - Tourist arrivals and tourist nights^{1/} by country of residence and mode of transport, January - June 1977

Country of residence	Tourist arrivals			Tourist nights spent during Jan-June 1977
	Sea	Air	Total	
Kenya	9	422	431	3,011
Malagasy Republic	13	1,990	2,003	16,049
Malawi	-	255	255	2,344
Réunion	129	14,448	14,577	122,690
Rhodesia	-	247	247	3,038
Seychelles	16	228	244	2,759
South Africa, Rep. of	11	9,088	9,099	84,358
Tanzania	-	173	173	1,241
Zambia	-	1,382	1,382	11,363
Other African	13	991	1,004	9,045
U.S.S.R.	8	24	32	394
China (Mainland)	17	61	78	453
China (Taiwan)	50	33	83	1,553
Hong Kong	3	92	95	945
India	14	1,364	1,378	11,369
Japan	35	129	164	2,043
Pakistan	1	50	51	717
Singapore	-	19	19	164
Other Asian	18	149	167	1,655
Australia	10	1,471	1,481	10,541
New Caledonia	-	46	46	111
New Zealand	3	202	205	1,253
Other Oceanian	2	49	51	92
Belgium	2	378	380	5,127
France	66	7,404	7,470	73,885
Germany, Fed. Rep. of	22	1,111	1,133	13,229
Italy	-	1,747	1,747	18,294
Switzerland	2	505	507	6,911
United Kingdom	35	2,744	2,779	40,514
Other European	56	568	624	7,553
Canada	1	143	144	1,864
U.S.A.	26	428	454	3,979
Other American	2	60	62	522
All countries	564	48,001	48,565	459,066

^{1/} see notes on page 33

Table 37 - Visitor arrivals by age and sex, 1976 - June 1977

Age (completed years)	1976			January - June 1977		
	Male	Female	Both sexes	Male	Female	Both sexes
Under 1	301	221	522	167	130	297
1 - 4	1,773	1,507	3,280	885	757	1,642
5 - 9	2,301	1,929	4,230	1,083	986	2,069
10 - 14	2,207	1,988	4,195	1,032	905	1,937
15 - 19	2,172	2,644	4,816	1,114	1,223	2,337
20 - 24	4,378	5,401	9,779	2,054	2,694	4,748
25 - 29	7,657	6,313	13,970	3,200	3,362	6,562
30 - 34	7,722	5,277	12,999	4,222	2,761	6,983
35 - 39	6,667	3,739	10,406	3,728	2,078	5,806
40 - 44	5,578	3,082	8,660	3,026	1,585	4,611
45 - 49	4,622	2,629	7,251	2,584	1,432	4,016
50 - 54	3,743	2,367	6,110	1,929	1,235	3,164
55 - 59	2,519	1,629	4,148	1,416	946	2,362
60 - 64	1,757	1,389	3,146	935	677	1,612
65 - 69	1,002	818	1,820	575	437	1,012
70 & over	677	624	1,301	591	341	932
Not stated	191	136	327	162	60	222
All ages	55,247	41,693	96,940	29,403	21,717	51,120

1/ see notes on page 33

2/ visitors arriving in 1976 and leaving before 1.2.77

3/ visitors arriving in January - June 1977 and leaving before 1.8.77

Table 38 - Visitor arrivals and visitor nights^{1/} by country of residence, 1976 - June 1977

Country of residence	1976 ^{2/}			January - June 1977 ^{3/}		
	Visitor arrivals	Visitor nights	Average length of stay	Visitor arrivals	Visitor nights	Average length of stay
Kenya	1,193	7,553	6.3	470	2,955	6.3
Malagasy Republic	3,287	28,347	8.6	2,067	14,419	7.0
Malawi	393	3,233	8.2	253	2,253	8.9
Réunion	31,262	240,064	7.7	15,640	109,664	7.0
Rhodesia	943	9,827	10.4	281	2,881	10.2
Seychelles	486	4,506	9.3	256	2,598	10.1
South Africa, Rep. of	18,298	169,889	9.3	9,619	78,477	8.2
Tanzania	302	2,766	9.2	186	1,091	5.9
Zambia	1,927	16,823	8.7	1,541	11,156	7.2
Other African	2,125	19,261	9.1	979	8,459	8.6
U.S.S.R.	49	631	12.9	32	402	12.6
China (Mainland)	85	801	9.4	44	411	9.3
China (Taiwan)	123	1,023	8.3	163	1,546	9.5
Hong Kong	159	2,131	13.4	73	870	11.9
India	2,620	21,678	8.3	1,340	9,174	6.8
Japan	339	1,754	5.2	182	1,997	11.0
Singapore	79	512	6.5	19	151	7.9
Other Asian	417	4,543	10.9	196	2,415	12.3
Australia	4,199	25,902	6.2	1,607	9,232	5.7
New Caledonia	160	613	3.8	65	92	1.4
New Zealand	824	4,167	5.0	215	1,123	5.2
Other Oceanian	111	631	5.7	51	150	2.9
Belgium	597	8,935	15.0	395	4,398	11.1
France	14,585	147,937	10.1	7,610	68,143	9.0
Germany, Fed. Rep. of	1,561	21,258	13.6	1,156	12,121	10.5
Italy	2,188	22,573	10.3	1,761	14,130	8.0
Switzerland	1,028	13,204	12.8	505	5,758	11.4
United Kingdom	4,962	68,260	13.8	3,006	33,078	11.0
Other European	1,359	14,193	10.4	721	6,239	8.6
Canada	347	3,552	10.2	143	1,912	13.4
U.S.A.	812	6,945	8.6	483	3,732	7.7
Other American	120	1,168	9.7	61	414	6.8
All countries	96,940	874,680	9.0	51,120	411,441	8.0

^{1/} see notes on page 33

^{2/} figures refer to visitors arriving in 1976 and leaving before 1.2.77 and to the nights spent by them

^{3/} figures refer to visitors arriving in January - June 1977 and leaving before 1.8.77 and to the nights spent by them

Table 39 - Visitor^{1/} arrivals by duration of stay, 1976 - June 1977

Duration of stay	1976 ^{2/}		January - June 1977	
	Number	Percentage	Number	Percentage
Less than 1 day	5,229	5.4	2,732	5.3
1 day	5,571	5.7	4,079	8.0
2 days	6,977	7.2	3,969	7.8
3 "	8,375	8.6	4,150	8.1
4 "	7,486	7.7	4,571	8.9
5 "	5,628	5.8	2,814	5.5
6 "	4,994	5.2	3,648	7.1
7 "	12,454	12.9	7,670	15.0
8 "	6,099	6.3	2,936	5.7
9 "	4,055	4.2	2,134	4.2
10 "	3,258	3.4	1,288	2.5
11 "	2,500	2.6	1,136	2.2
12 "	2,180	2.3	756	1.5
13 "	2,214	2.3	825	1.5
14 "	6,128	6.3	2,781	5.5
15 "	2,002	2.1	867	1.7
16 "	1,140	1.2	461	0.9
17 "	788	0.8	281	0.6
18 "	572	0.6	251	0.5
19 "	514	0.5	251	0.5
20 - 24 "	3,020	3.1	1,571	2.7
25 - 29 "	2,546	2.6	733	1.5
1 month - under 2 months	2,382	2.4	1,032	2.0
2 months - under 3 months	468	0.5	219	0.4
3 months and over	223	0.2	109	0.2
Not stated	77	0.1	43	0.1
Total	96,940	100.0	77,120	100.0

^{1/} see notes on page 33

^{2/} visitors arriving in 1976 and leaving before 1.2.77

^{3/} visitors arriving in January - June 1977 and leaving before 1.8.77

Table 40 - Visitor arrivals by country of residence and duration of stay, January - June 1977

Country of residence	Duration of stay in days													Total visitors			
	0	1	2	3	4	5	6	7 & 8	9 & 10	11 & 12	13 & 14	15-19	20-24		25-29	30 +	Not stated
Australia	159	306	268	117	160	91	110	173	45	30	27	29	35	12	45	-	1,607
Belgium	4	20	12	16	32	27	18	91	13	21	68	24	18	15	15	1	395
France	343	373	397	530	912	560	541	1,412	401	316	966	329	167	136	222	5	7,610
Germany, F. Rep.	23	46	86	77	74	70	43	268	44	39	136	75	101	42	32	-	1,156
India	70	185	252	277	137	50	19	135	39	22	20	33	21	13	67	-	1,340
Italy	11	133	27	32	38	24	349	631	221	26	159	67	22	6	13	2	1,761
Kenya	48	56	42	59	50	30	42	54	26	9	15	6	17	3	13	-	470
Malagasy Rep.	76	228	134	238	236	140	153	317	253	100	56	59	16	12	48	1	2,067
New Zealand	17	57	32	29	19	11	9	15	3	5	1	5	5	3	4	-	215
Réunion	802	1,208	1,300	1,723	2,027	1,081	1,299	1,110	1,110	459	583	596	355	185	348	8	15,640
Seychelles	28	30	17	13	10	3	13	56	4	17	23	7	17	8	10	-	256
S. Africa, Rep. of	561	589	614	322	298	284	595	3,260	819	592	864	386	208	97	128	2	9,619
Switzerland	5	26	18	30	29	54	22	109	13	17	79	30	31	21	21	-	505
United Kingdom	182	256	233	254	221	125	164	510	180	81	197	154	120	119	208	2	3,006
United States	30	63	62	66	54	38	15	54	24	14	13	13	8	6	23	-	483
Zambia	96	161	217	112	94	37	52	332	22	25	232	103	38	12	8	-	1,541
Other countries	277	342	258	255	180	189	204	633	205	119	167	195	195	53	155	22	3,449
All countries	2,732	4,079	3,969	4,150	4,571	2,814	3,648	10,606	3,422	1,892	3,606	2,111	1,374	743	1,360	43	51,120

1/visitors arriving in January - June 1977 and leaving before 1.6.77

see notes on page 33

Table 41 - Visitor arrivals and visitor nights^{1/} by country of nationality, January - June 1977

Country of nationality	Visitor arrivals ^{2/}	Visitor nights ^{3/}	Average length of stay
Kenya	147	1,195	8.1
Malagasy Republic	1,192	8,143	6.8
Malawi	31	138	4.4
Rhodesia	178	1,861	10.4
South Africa, Rep. of	8,052	65,882	8.2
Tanzania	68	425	6.2
Zambia	319	1,898	5.9
Other African	920	8,916	9.7
U.S.S.R.	36	415	11.5
China (Mainland)	297	2,280	7.7
China (Taiwan)	114	1,043	9.1
India	2,052	12,877	6.3
Japan	197	2,062	10.5
Singapore	17	172	10.1
Other Asian	266	3,056	11.5
Australia	1,405	8,591	6.1
New Zealand	251	1,311	5.2
Other Oceanian	31	117	3.8
Belgium	423	4,617	10.9
France	23,842	181,713	7.6
Germany, Fed. Rep. of	1,472	14,823	10.1
Italy	1,916	15,706	8.2
Switzerland	558	6,246	11.2
United Kingdom	5,124	48,583	9.5
Other European	1,275	10,759	8.4
Canada	235	3,556	15.1
U.S.A.	636	4,608	7.2
Other American	65	448	6.9
All countries	51,120	411,441	8.0

^{1/} see notes on page 33

^{2/} figures refer to visitors arriving in January - June 1977 and leaving before 1.8.77

^{3/} figures refer to nights spent by visitors arriving in January - June 1977 and leaving before 1.8.77

Table 42 - Visitor arrivals^{1/} by country of residence and nationality, January - June 1977

Country of residence of nationality	Australia	Belgium	Canada	France	Germany, Fed. Rep.	India	Italy	Kenya	Malagasy Rep.	New Zealand	South Africa Rep. of	Southern Rhodesia	United Kingdom	U.S.A.	Zambia	Other countries	All countries
Australia	1,224	-	3	20	12	-	2	2	-	22	26	-	205	19	1	71	1,607
Belgium	-	349	-	16	3	-	4	-	-	1	2	-	10	3	-	7	395
Canada	-	-	128	1	-	1	-	-	-	-	-	-	8	2	-	3	143
France	3	17	2	7,421	19	2	14	-	6	3	2	-	19	13	-	89	7,610
Germany, Fed. Rep.	1	-	-	15	1,085	-	-	-	-	-	7	-	3	14	-	31	1,156
India	-	-	1	10	7	1,279	-	-	-	-	7	-	25	6	3	2	1,340
Italy	1	-	-	6	12	-	1,702	121	2	-	-	-	7	4	-	27	1,761
Kenya	11	2	6	16	10	10	14	-	1	12	-	-	178	39	-	50	470
Malagasy Rep.	11	2	6	557	29	100	41	-	1,153	-	-	-	9	6	-	153	2,067
New Zealand	2	-	-	-	-	2	-	-	-	162	2	-	43	-	-	4	215
Réunion	-	-	-	15,359	12	50	2	-	21	-	5	-	11	11	-	167	15,640
South Africa, Rep. of	52	14	12	55	186	275	67	2	-	14	7,914	12	671	51	2	292	9,619
Southern Rhodesia	1	-	1	-	4	11	3	-	1	1	27	165	62	-	2	3	281
United Kingdom	27	2	9	19	11	15	7	3	-	5	7	-	2,824	19	-	58	3,006
U.S.A.	3	1	1	7	12	8	2	1	-	-	6	-	19	401	1	21	483
Zambia	24	2	9	15	18	264	22	10	1	12	26	-	674	5	307	152	1,541
Other countries	46	32	57	325	52	35	36	8	7	19	21	1	356	43	3	2,745	3,786
All countries	1,406	423	235	23,842	1,472	2,052	1,916	147	1,192	251	8,052	178	5,124	636	319	3,875	51,120

^{1/} visitors arriving in January - June 1977 and leaving before 1.8.77

Table 43 - Visitor nights by country of residence and nationality, January - June 1977

Country of residence / Country of nationality	Australia	Belgium	Canada	France	Germany Fed. Rep.	India	Italy	Kenya	Malagasy Rep.	New Zealand	South Africa Rep. of	Southern Rhodesia	United Kingdom	U.S.A.	Zambia	Other countries	All countries
Australia	7,532	-	26	62	96	-	6	2	-	112	101	-	860	150	6	279	9,232
Belgium	-	3,901	-	300	5	-	16	-	-	9	3	-	101	13	-	50	4,398
Canada	-	-	1,700	14	-	-	-	-	-	-	-	-	146	36	-	16	1,912
France	12	172	58	66,336	203	4	129	-	15	39	32	-	229	129	-	785	68,143
Germany, Fed. Rep.	8	-	-	146	11,409	-	-	-	-	-	111	-	91	36	-	320	12,121
India	-	-	120	29	19	8,762	-	-	-	-	11	-	135	85	9	4	9,174
Italy	2	-	-	41	169	-	13,645	-	2	-	-	-	44	33	-	194	14,130
Kenya	127	26	43	96	72	126	41	1,020	1	12	-	-	878	220	-	293	2,955
Malagasy Rep.	16	9	33	4,126	156	818	360	-	7,944	-	-	-	33	52	-	872	14,419
New Zealand	2	-	-	-	-	4	-	-	-	863	9	-	245	-	-	-	1,125
Réunion	-	8	-	107,858	83	382	2	-	116	-	39	-	47	57	-	1,072	109,664
South Africa, Rep. of	372	157	155	477	1,817	1,395	815	-	-	117	64,431	135	5,769	316	6	2,515	78,477
Southern Rhodesia	11	-	5	-	48	13	32	-	6	7	286	1,718	722	-	12	21	2,881
United Kingdom	255	4	858	187	93	140	142	52	-	29	121	-	30,465	92	-	640	33,078
U.S.A.	28	17	15	62	80	57	20	7	-	-	45	-	166	3,126	4	105	3,732
Zambia	103	9	96	115	198	901	141	48	1	35	280	-	5,628	35	1,847	1,719	11,156
Other countries	123	314	447	1,864	375	275	357	66	58	88	413	8	3,024	228	14	27,192	34,846
All countries	8,591	4,617	3,556	181,713	14,823	12,877	15,706	1,195	8,143	1,311	65,882	1,861	48,583	4,608	1,898	36,077	411,441

1/ figures refer to nights spent by visitors arriving in January - June 1977 and leaving before 1.8.77
see notes on page 12

Table 44 - Arrivals of Mauritians settled abroad (excluding students) and nights spent by them by country of residence, 1976 - June 1977

Country of residence	1976 ^{1/}			January - June 1977 ^{2/}		
	Arrivals	Nights	Average length of stay	Arrivals	Nights	Average length of stay
Congo Brazzaville	8	321	40.1	5	135	27.0
Ethiopia	7	101	14.4	3	67	22.3
Kenya	35	1,040	29.7	5	88	17.6
Malagasy Republic	166	3,337	20.1	60	1,562	26.0
Malawi	148	5,274	35.6	30	967	32.2
Mozambique	29	1,548	53.4	14	603	43.1
Réunion	1,584	23,977	15.1	770	11,129	14.4
Rhodesia	83	1,973	23.8	47	1,021	21.7
Seychelles	26	395	15.2	19	394	20.7
South Africa, Rep. of	804	19,918	24.8	277	5,438	19.6
Tanzania	10	320	32.0	-	-	-
Zambia	95	2,286	24.1	62	1,369	22.1
Other African	55	2,101	38.2	13	363	27.9
Hong Kong	18	261	14.5	5	41	8.2
India	11	417	37.9	2	15	7.5
Pakistan	6	194	32.3	1	45	45.0
Singapore	8	95	11.9	1	8	8.0
Other Asian	17	251	14.8	4	46	11.5
Australia	771	23,494	30.5	183	4,455	24.3
Other Oceanian	14	427	30.5	6	125	20.8
Belgium	122	4,216	34.6	22	663	30.1
Denmark	8	146	18.2	6	190	31.7
France	1,551	51,660	33.3	299	8,367	28.0
Germany, Fed. Rep.	77	2,559	33.2	27	856	31.7
Italy	16	502	31.4	12	186	15.5
Netherlands	6	193	32.2	7	314	44.8
Switzerland	77	2,360	30.6	29	954	33.0
United Kingdom	3,287	119,840	36.4	1,167	40,650	34.8
Other European	51	1,924	37.7	15	503	33.5
Canada	194	6,310	32.5	93	2,508	27.0
U.S.A.	71	2,282	32.1	30	514	17.1
Other American	3	63	21.0	-	-	-
All countries	9,358	279,785	29.9	3,214	83,576	26.0

^{1/} figures refer to Mauritians settled abroad arriving in 1976 and leaving before 1.2.77, and to the total nights spent by them in 1976 and 1977.

^{2/} figures refer to Mauritians settled abroad arriving in January - June 1977 and leaving before 1.8.77, and to the total nights spent by them in 1977.

Table 45 - Arrivals of Mauritians settled abroad (excluding students) by duration of stay, 1976-June 1977

Duration of stay	1976 ^{1/}	January-June 1977 ^{2/}
Less than 1 day	57	52
1 day	96	69
2 days	145	111
3 days	169	108
4 days	167	101
5 days	156	48
6 days	100	60
7 days	229	111
8 days	99	81
9 days	101	44
10 days	87	47
11 days	96	51
12 days	87	73
13 days	77	17
14 days	222	91
15 days	114	52
16 days	80	55
17 days	111	37
18 days	71	33
19 days	82	28
20 - 24 days	498	227
25 - 29 days	2,601	595
1 month - under 2 months	3,355	934
2 months - under 3 months	380	116
3 months and over	167	68
Not stated	11	5
Total	9,358	3,214

^{1/} figures refer to Mauritians settled abroad arriving in 1976 and leaving before 1.2.77.

^{2/} figures refer to Mauritians settled abroad arriving in January-June 1977 and leaving before 1.8.77. The total number of arrivals for the half year was 3,906.

See notes on page 33.

Table 46 - Total nights spent by Mauritians settled abroad (excluding students) by country of residence, 1976 - June 1977

Country of residence	1976 ^{1/}	January-June 1977 ^{2/}
Congo Brazzaville	378	135
Ethiopia	98	67
Kenya	1,044	214
Malagasy Republic	3,339	1,988
Malawi	5,123	3,359
Mozambique	2,805	2,565
Réunion	25,376	15,455
Rhodesia	2,114	1,042
Seychelles	388	424
South Africa, Rep. of	20,720	7,933
Tanzania	333	24
Zambia	3,979	1,577
Other African	2,143	1,013
Hong Kong	261	41
India	409	71
Pakistan	292	45
Singapore	95	8
Other Asian	555	178
Australia	26,027	14,649
Other Oceanian	495	163
Belgium	4,912	1,113
Denmark	141	64
France	54,849	16,909
Germany, Fed. Rep.	2,618	1,199
Ireland	1,197	167
Italy	631	481
Netherlands	179	398
Switzerland	2,295	1,370
United Kingdom	136,551	68,758
Other European	1,348	538
Canada	6,557	2,928
U.S.A.	2,105	590
Other American	210	26
All countries	309,567	145,492

^{1/} figures refer to nights spent during 1976 by Mauritians settled abroad arriving in 1976 or before and leaving before 1.2.77

^{2/} figures refer to nights spent during January - June 1977 by Mauritians settled abroad arriving in January - June 1977 or before and leaving before 1.8.77

CSO I

52