

Vol. 6

No. 2



MAURITIUS

Ministry of Economic Planning and Development

CENTRAL STATISTICAL OFFICE

**INTERNATIONAL TRAVEL
AND
TOURISM**

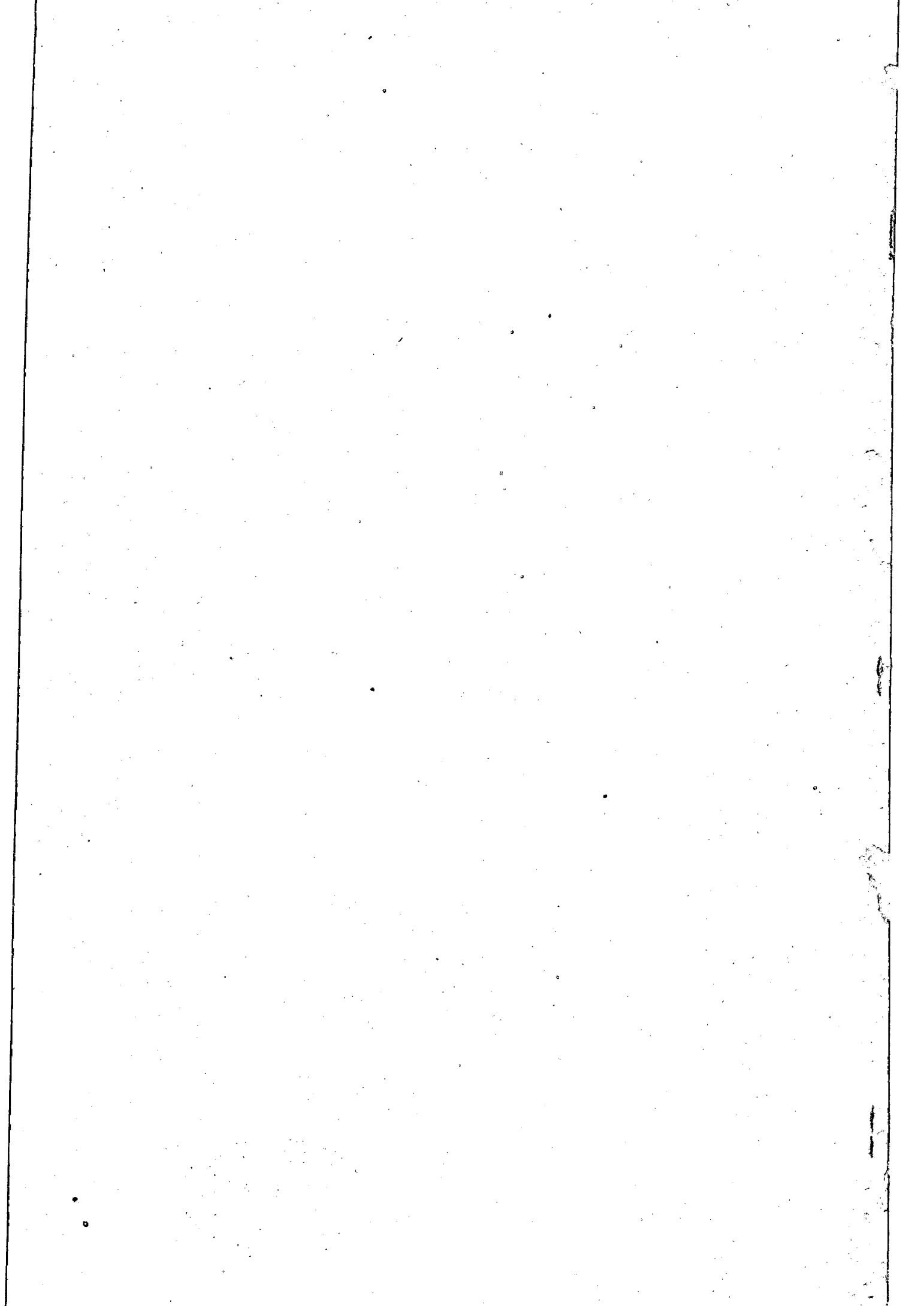
December 1979

[Price : Rs 15.00]

70

DIGEST

1999



INTERNATIONAL TRAVEL AND TOURISM

Vol. 6 No. 2

December 1979

"International Travel and Tourism", a publication of the Central Statistical Office, is designed to present data on international travel and tourism in more detail than those that are currently published in the Bi-annual Digest of Statistics.

As from January 1979, owing to the increase in the volume of passenger traffic, it has been decided to process the data on a 10% sample. Cases where the number of passengers are too small have been omitted in order to avoid large sampling errors. It is to be noted, however, that figures for official emigrants published in this report have been compiled from the Passport office register.

With the help of the computer of the Ministry of Finance it has been possible to process in more detail the information recorded on the international embarkation and disembarkation cards which passengers fill in on leaving and entering the country.

It is hoped that the results, especially those on tourism, which have been assembled in this report will be useful to all those who take an interest in the evolution of the tourist industry in this country.

The co-operation of the Immigration and Passport Office of the Police Department and the Data Processing Division of the Ministry of Finance is gratefully acknowledged.

The following symbols are used throughout:

- Nil
- ... Not available

(J. Ah Kong)
Director of Statistics

Central Statistical Office
Rose Hill
Mauritius

August 1980



C O N T E N T S

I - POPULATION AND VITAL STATISTICS

	<u>Page</u>
Table 1 - Estimated population of Mauritius as at 31st December 1979 based on the final 1972 Population Census data	1
2 - Population increase in intercensal periods - Island of Mauritius, 1846 - 1972	1
3(a) Population enumerated at each census by population group and sex - Island of Mauritius, 1846 - 1952	2
3(b) Population enumerated at each census by community and sex - Island of Mauritius, 1962 - 1972	2
4 - Estimated population of Mauritius by geographical district and sex, 1977 - 1979 (end of year estimates)	3
5 - Population and vital statistics - Island of Mauritius, 1921 - 1979	4

II - PASSENGER TRAFFIC

Table 6 - Passenger traffic by sex, 1933 - 1979	6 & 7
7 - Passenger traffic between Island of Mauritius and Rodrigues, 1962 - 1979	7
8 - Passenger traffic by mode of transport 1962 - 1979	9
9 - Passenger traffic by month, 1976 - 1979	10
10 - Arrivals by country of original embarkation, 1974 - 1979	11
11 - Departures by country of final destination, 1974 - 1979	12
12 - Passenger traffic by type of passenger and month, 1979	13
13 - Arrivals by age and sex, January 1978 - December 1979	14
14 - Departures by age and sex, January 1978 - December 1979	15
15 - Excess of arrivals over departures by age and sex, January 1978 - December 1979	16
16 - Arrivals and departures of residents of Island of Mauritius by district of residence and sex, 1979	17
17 - Arrivals of residents of Island of Mauritius by age and sex, January 1978 - December 1979	18
18 - Departures of residents of Island of Mauritius by age and sex, January 1978 - December 1979	19
19 - Excess of arrivals over departures of residents (excluding emigrants) of Island of Mauritius by age and sex, January 1978 - December 1979	20

II - PASSENGER TRAFFIC (Cont'd)

	Page
Table 20 - Excess of arrivals over departures of residents (including emigrants) of Island of Mauritius by age and sex, January 1978 - December 1979	21
21 - Departures of Mauritian residents travelling by air by country of final destination, 1977 - 1979	22

III - EMIGRATION

Table 22 - Official long-term emigrants by sex, 1956 - 1979	23
23 - External migration, 1956 - 1979	24
24 - Official long-term emigrants by country of intended residence, 1956 - 1979	25 & 26
25 - Age distribution of official long-term emigrants, 1966 - 1979	27-29
26 - Official long-term emigrants by Major Occupational Group, 1974 - 1979	30
27 - Official long-term emigrants by Major Occupational Group, age and sex, 1979	31
28 - Official long-term emigrants by occupation, 1977 - 1979	32
29 - Official long-term emigrants by district of last residence and sex, January 1978 - December 1979	33

IV - TOURISM

Definition and notes	34
Table 30 - Tourist arrivals by mode of transport and total nights spent during period, 1963 - 1979	35
31 - Tourist arrivals by month of arrival, 1969 - 1979	36
32 - Percentage distribution of tourist arrivals by month of arrival, 1969 - 1979	38
33 - Tourist arrivals by country of residence, 1969 - 1979	39
34 - Percentage distribution of tourist arrivals by country of residence, 1969 - 1979	40
35 - Tourist nights by country of residence of tourist 1969 - 1979	42
36 - Tourist arrivals and tourist nights by country of residence, 1979	44

I. POPULATION AND VITAL STATISTICS

Table 1 - Estimated population of Mauritius as at 31st December 1979
based on the final 1972 Population Census data

Island	Both sexes	Male	Female
Island of Mauritius	924,243	454,956	469,237
Island of Rodrigues	29,623	14,341	15,232
Other islands	350	250	100
Mauritius	954,216	469,547	484,669

Table 2 - Population increase in intercensal periods - Island of Mauritius, 1846-1972

Census date	Population enumerated at Census			Intercensal increase	Average annual rate of increase %
	Both sexes	Male	Female		
1st Aug. 1846	158,462	101,598	53,864		
20th Nov. 1851	130,823	119,341	61,432	22,361	2.55
8th Apr. 1861	310,050	202,961	107,039	129,227	5.87
11th Apr. 1871	316,042	193,575	122,467	5,992	0.19
4th Apr. 1881	359,374	208,655	151,219	43,832	1.31
6th Mar. 1891	370,583	206,038	164,550	10,714	0.29
1st Apr. 1901	371,023	199,552	171,471	435	0.01
31st Mar. 1911	368,791	194,095	174,696	- 2,232	- 0.06
21st May 1921	376,435	194,103	182,377	7,694	0.21
26th Apr. 1931	393,238	200,609	192,629	16,753	0.44
11th Jun. 1944	419,135	210,326	208,859	25,947	0.49
29th Jun. 1952	501,415	252,032	249,383	82,230	2.26
30th Jun. 1962 ^{1/}	681,619	342,306	339,313	130,204	3.12
30th Jun. 1972 ^{1/}	826,199	413,580	412,619	144,530	1.94

^{1/} de facto population - including the European members of the armed forces but excluding the passengers and crews of ships lying in the harbour.

Table 3(a) - Population enumerated at each census by population group and sex - Island of Mauritius, 1846-1952

Year of census	General Population			Indo-Mauritian population			Chinese population		
	Both sexes	Male	Female	Both sexes	Male	Female	Both sexes	Male	Female
1846	102,217	55,665	46,554	56,245	48,935	7,310	-	-	-
1851	102,827	55,059	47,768	77,996	64,282	13,714	-	-	-
1861	115,864	59,796	56,068	192,634	141,615	51,019	1,552	1,550	2
1871	97,497	49,487	48,010	216,258	141,804	74,454	2,287	2,284	3
1881	107,323	53,754	53,569	248,993	151,352	97,641	3,558	3,549	9
1891	111,517	55,397	56,120	255,920	147,493	108,421	3,151	3,142	9
1901	108,422	52,595	55,827	259,086	143,100	115,986	3,515	3,457	58
1911	107,432	51,808	55,624	257,697	158,974	113,723	3,662	3,313	349
1921	104,216	49,725	54,491	265,524	139,150	126,374	6,745	3,233	1,512
1931	115,666	54,733	60,933	268,649	139,533	129,116	8,923	6,343	2,580
1944	143,056	67,136	75,920	265,247	136,382	128,865	10,882	6,808	4,074
1952	148,253	70,370	77,883	335,327	171,241	164,086	17,850	10,421	7,429

At the 1962 Census each household was asked for the first time to state the population group to which each member of his household claimed to belong.

Prior to 1962, it is probable that, from one census to another, different criteria have been used in classifying the population by population groups. Figures are therefore not strictly comparable from one census to another, before 1962.

Table 3(b) - Population enumerated at each census by community and sex - Island of Mauritius, 1962-72

Year of census	Total population			Hindu			Muslim			Sino-Mauritian			General population		
	Both sexes	Male	Female	Both sexes	Male	Female	Both sexes	Male	Female	Both sexes	Male	Female	Both sexes	Male	Female
1962 ^{1/}	681,619	342,306	339,313	344,587	174,698	169,889	110,322	55,971	54,351	23,058	12,654	10,404	203,652	98,983	104,669
1972 ^{1/}	826,199	413,580	412,619	428,167	215,654	212,513	137,081	68,789	68,292	24,084	12,849	11,235	236,867	116,288	120,579

^{1/} de facto population - including the European members of the armed forces but excluding the passengers and crews of ships lying in the harbour

Table 4 - Estimated population of Mauritius by geographical district and sex, 1977-79 (end of year estimates)

Geographical district	31st December 1977			31st December 1978			31st December 1979		
	Both sexes	Male	Female	Both sexes	Male	Female	Both sexes	Male	Female
Port Louis	142,901	70,257	72,644	144,815	71,099	73,716	146,101	70,939	75,162
Pampleloussec	75,419	37,927	37,492	76,879	38,567	38,312	78,232	39,008	39,224
Rivière du Rempart	74,073	37,295	36,778	75,572	37,941	37,631	76,944	38,380	38,564
Flacq	99,052	49,589	49,463	101,163	50,508	50,655	103,176	51,272	51,904
Grand Port	87,611	43,843	43,768	89,223	44,550	44,673	90,651	44,907	45,724
Savanne	57,198	28,685	28,513	58,216	29,097	29,119	59,145	29,367	29,778
P. Wilhems: Urban	244,018	119,634	124,384	247,814	121,225	126,589	251,450	121,850	129,600
Other	32,219	16,534	15,685	32,990	16,914	16,076	33,685	17,226	16,459
Moika	52,617	26,190	26,427	53,558	26,603	26,955	54,444	26,927	27,517
Black River	28,992	14,555	14,437	29,675	14,848	14,827	30,435	15,080	15,355
Island of Mauritius	894,100	444,509	449,591	909,905	451,352	458,553	924,243	454,956	469,287
Island of Rodrigues	27,614	13,429	14,185	28,375	13,785	14,590	29,623	14,341	15,282
Other islands	350	250	100	350	250	100	350	250	100
Mauritius	922,064	458,188	463,876	938,630	465,387	473,243	954,216	469,547	484,669

based on the final 1972 Population Census data. No account has been taken of internal migration

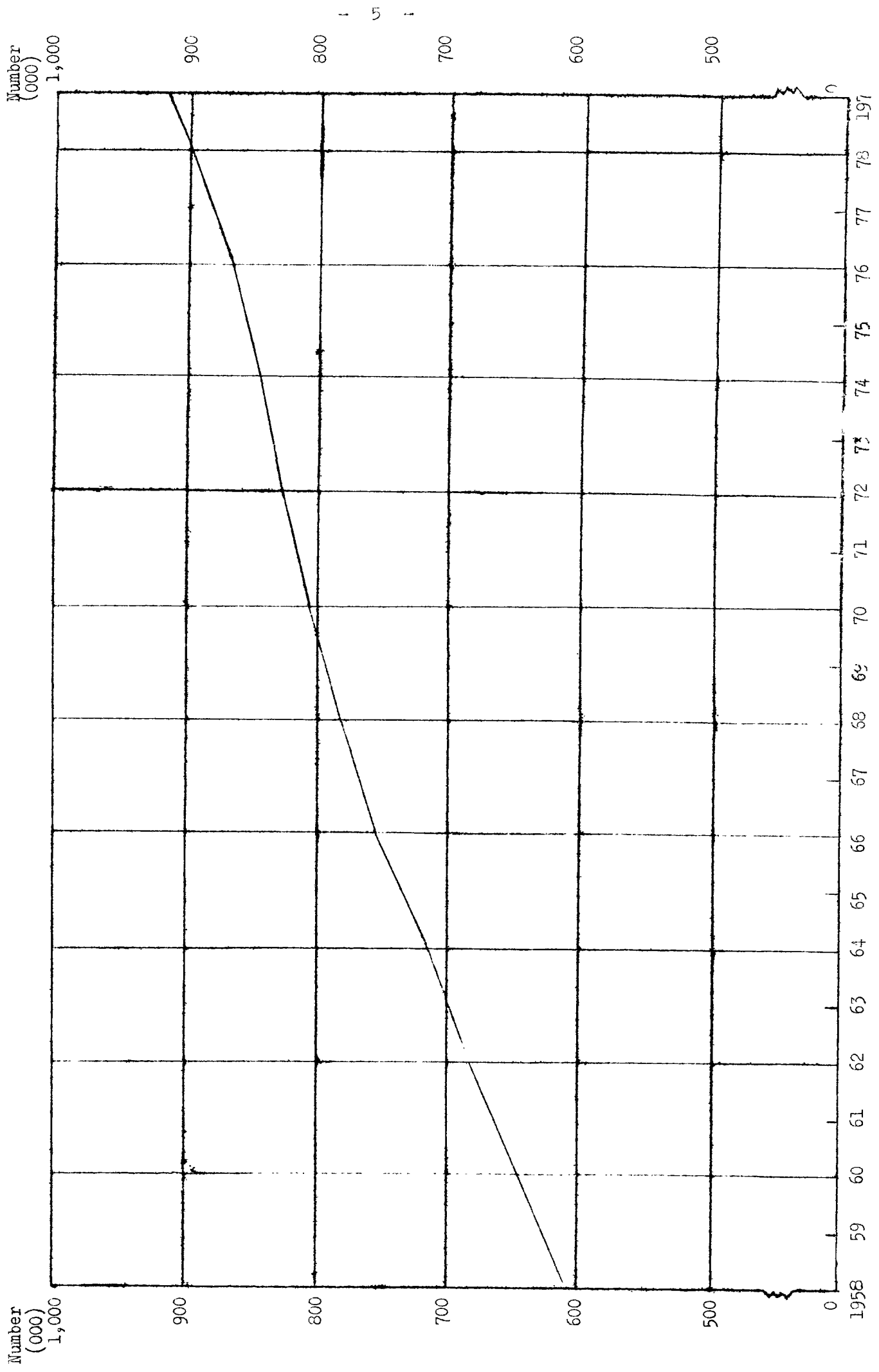
Table 5 - Population and vital statistics - Island of Mauritius, 1921 - 1979

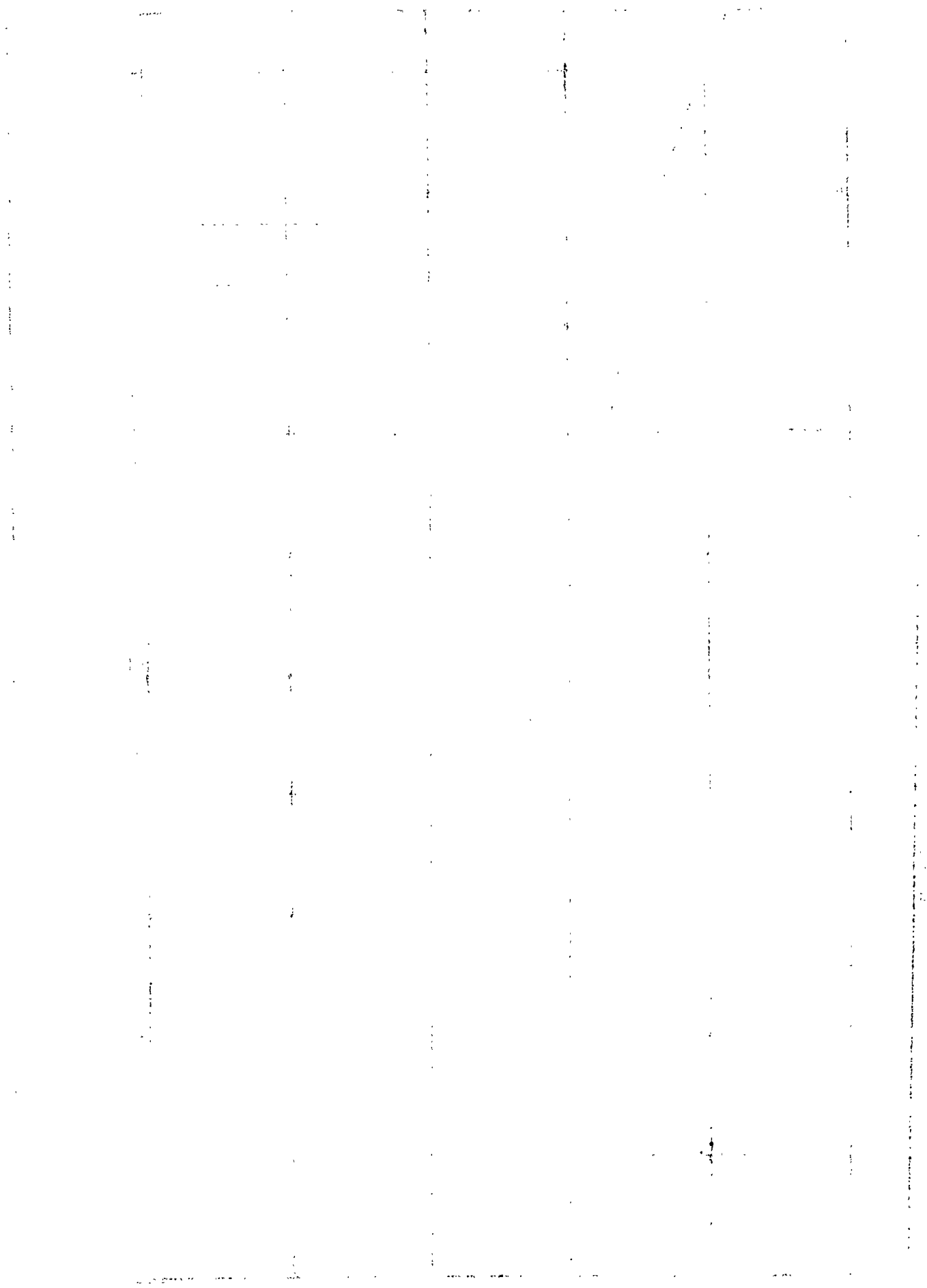
Period	Population ^{1/} at mid-period	Live births	Deaths	Natural increase	Infant deaths ^{2/}	Still births	Civil marriages
1921-25 Average	379,636	14,834	11,758	3,076	2,104	1,581	2,062
1926-30 "	403,248	14,208	11,614	2,594	2,002	1,256	1,455
1931-35 "	398,647	12,490	11,889	601	1,752	1,216	1,489
1936-40 "	412,003	13,621	11,157	2,464	2,119	1,240	2,093
1941-45 "	417,838	15,027	11,927	3,100	2,318	1,240	3,333
1946-50 "	438,797	19,595	9,113	10,482	2,343	1,348	3,503
1951-55 "	522,577	23,176	7,701	15,475	1,884	1,472	3,307
1956	574,938	24,910	6,739	18,171	1,644	1,789	3,080
1957	593,070	25,273	7,603	17,670	1,897	1,800	2,903
1958	609,518	24,600	7,112	17,488	1,659	1,703	3,169
1959	627,249	23,923	6,753	17,170	1,495	1,759	3,297
1960	644,743	25,307	7,243	18,059	1,760	1,783	3,113
1961	662,363	26,092	6,505	19,587	1,618	1,963	3,484
1962	681,619	26,267	6,325	19,942	1,579	1,841	3,393
1963	695,641	27,978	6,709	21,269	1,660	1,519	3,472
1964	716,298	27,528	6,184	21,344	1,361	1,611	3,965
1965	735,245	26,279	6,337	19,942	1,685	1,557	3,976
1966	753,276	26,817	6,701	20,116	1,721	1,384	4,157
1967	767,782	23,499	6,543	16,956	1,656	1,074	3,949
1968	781,615	24,413	7,126	17,287	1,688	1,110	3,974
1969	792,393	21,719	6,428	15,291	1,528	951	3,882
1970	805,489	21,623	6,309	15,314	1,232	357	4,499
1971	816,561	20,834	6,248	14,586	1,077	842	4,346
1972	826,199	20,496	6,506	13,990	1,308	718	5,082
1973	834,781	18,974	6,525	12,499	1,201	678	5,533
1974	845,755	22,938	6,221	16,717	1,045	854	6,771
1975	856,516	21,492	6,967	14,525	1,045	896	6,888
1976	867,385	22,250	6,815	15,435	900	784	8,262
1977	881,761	22,730	6,966	15,764	1,023	712	8,421
1978	896,471	24,250	6,400	17,850	823	653	10,532
1979	911,499	25,056	6,625	18,431	824	650	9,080

^{1/} Figures for 1963-71 have been revised in the light of the final 1972 Population Census data

^{2/} deaths of children under 1 year of age

Graph 1 - Mid-Year Population Estimates - Island of Mauritius, 1958 - 1979





II - PASSENGER TRAFFIC

Table 6 - Passenger traffic^{1/} by sex, 1933 - 1979

Period	Arrivals			Departures			Net overseas migration
	Both sexes	Male	Female	Both sexes	Male	Female	
1933	3,444	2,410	1,034	4,011	2,862	1,149	- 567
1934	3,960	2,777	1,192	4,380	3,056	1,324	- 411
1935	3,988	2,876	1,112	4,255	2,899	1,356	- 267
1936	3,807	2,681	1,126	3,563	2,451	1,112	+ 244
1937	3,472	2,366	1,106	3,849	2,736	1,113	- 377
1938	4,554	3,062	1,492	4,281	2,096	1,385	+ 273
1939	3,171	1,984	1,187	3,212	2,127	1,085	- 41
1940	1,518	1,028	490	1,851	1,379	472	- 333
1941	1,209	950	259	4,165	3,859	306	- 2,956
1942	1,083	893	190	1,560	1,598	162	- 477
1943	1,054	859	195	737	642	95	+ 317
1944	1,034	798	236	1,053	796	257	- 19
1945	2,061	1,624	437	2,247	1,624	623	- 186
1946	3,298	2,279	1,019	3,377	2,160	1,217	- 79
1947	4,698	3,128	1,570	4,514	3,100	1,414	+ 184
1948	4,294	2,792	1,502	4,015	2,684	1,331	+ 279
1949	4,093	2,700	1,393	4,141	2,794	1,347	- 48
1950	5,253	3,469	1,784	4,900	3,352	1,548	+ 353
1951	5,243	3,515	1,728	5,016	3,536	1,480	+ 227
1952	6,046	3,999	2,047	5,637	3,854	1,783	+ 409
1953	7,252	4,820	2,432	7,054	4,732	2,322	+ 198
1954	7,251	4,728	2,523	7,312	4,824	2,488	- 61
1955	7,216	4,558	2,658	7,354	4,722	2,632	- 138
1956	7,747	4,873	2,874	8,225	5,219	3,006	- 478
1957	8,095	5,156	2,939	8,267	5,309	2,958	- 172
1958	8,703	5,424	3,279	8,924	5,596	3,328	- 221
1959	9,637	5,995	3,642	9,544	6,058	3,486	+ 93
1960	10,412	6,563	3,849	10,784	6,938	3,846	- 372
1961	11,854	7,246	4,608	13,033	8,165	4,868	- 1,179
1962	15,189	9,283	5,906	16,075	9,887	6,188	- 886

Table 6 (continued)

Period	Arrivals			Departures			Net overseas migration
	Both sexes	Male	Female	Both sexes	Male	Female	
1963	17,974	10,866	7,108	18,215	11,024	7,191	- 241
1964	21,221	12,787	8,434	22,331	13,549	8,982	- 1,110
1965	22,024	13,571	8,453	24,150	14,759	9,391	- 2,126
1966	26,456	16,358	10,098	29,301	17,930	11,371	- 2,845
1967	29,321	18,177	11,144	32,925	20,135	12,790	- 3,604
1968	31,403	19,820	11,583	35,988	22,181	13,807	- 4,585
1969	35,919	21,552	14,367	38,929	23,127	15,802	- 3,010
1970	48,819	29,537	19,282	51,969	31,033	20,936	- 3,150
1971	60,826	36,005	24,821	63,997	37,399	26,598	- 3,171
1972	77,174	45,587	31,587	81,493	47,837	33,656	- 4,319
1973	101,184	59,215	41,969	104,697	61,364	43,333	- 3,513
1974	109,044	63,077	45,967	113,362	65,649	47,713	- 4,313
1975	117,548	68,654	48,894	120,703	70,358	50,335	- 3,155
1976	139,303	80,674	58,629	141,148	81,718	59,430	- 1,845
1977	153,208	87,417	65,791	155,653	89,243	66,410	- 2,445
1978	161,688	93,087	68,601	163,733	94,850	68,883	- 2,045
1979	182,771	105,051	77,720	186,864	110,284	76,580	- 4,093

1/ including seamen but excluding transit passengers who do not leave the airport

Table 7 - Passenger traffic between Island of Mauritius and Rodrigues, 1962-1979

Period	Departures to Rodrigues			Arrivals from Rodrigues			Net overseas migration
	Both sexes	Male	Female	Both sexes	Male	Female	
1962	1,033	661	372	1,126	725	401	- 93
1963	899	620	279	1,439	905	534	- 540
1964	1,300	850	450	1,450	915	535	- 150
1965	1,339	854	485	1,525	961	564	- 186
1966	1,326	860	466	1,418	904	514	- 92
1967	1,485	940	545	1,268	822	446	+ 217
1968	1,541	940	601	1,435	946	539	+ 56
1969	1,569	1,034	535	1,493	994	499	+ 76
1970	1,740	1,103	637	1,762	1,123	639	- 22
1971	1,578	1,017	561	1,744	1,118	626	- 166
1972	2,168	1,409	759	2,311	1,469	842	- 143
1973	2,427	1,521	906	2,455	1,511	942	- 26
1974	2,053	1,197	856	2,648	1,560	1,088	- 595
1975	2,968	1,870	1,098	3,319	2,030	1,289	- 351
1976	3,796	2,528	1,268	4,221	2,854	1,367	- 425
1977	4,477	2,935	1,542	4,853	3,214	1,639	- 376
1978	5,571	3,588	1,983	5,612	3,641	2,001	- 71
1979	5,785	3,794	2,991	5,598	3,672	1,926	+ 337

Graph 2 - Passenger traffic, 1963 - 1979

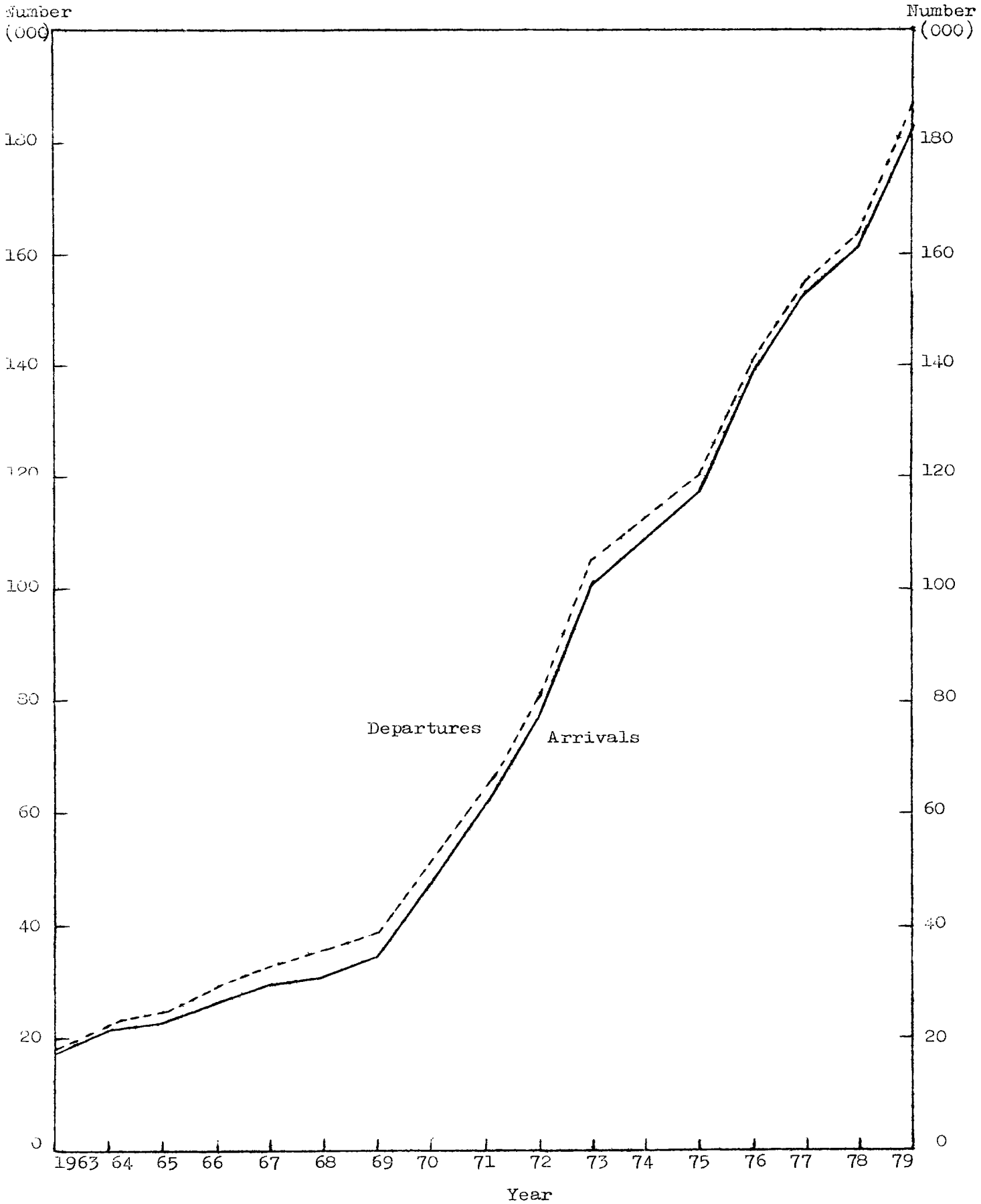


Table 8 - Passenger traffic^{1/} by mode of transport, 1962 - 1979

Period	Arrivals			Departures			Net overseas migration
	Total	By sea	By air	Total	By sea	By air	
1962	15,189	4,258	10,931	16,075	4,374	11,701	- 886
1963	18,047	4,660	13,387	18,299	4,432	13,867	- 252
1964	21,221	5,187	16,034	22,331	5,478	16,853	- 1,110
1965	22,024	4,886	17,138	24,150	5,463	18,687	- 2,126
1966	26,456	5,544	20,912	29,301	6,330	22,971	- 2,845
1967	29,321	4,901	24,420	32,925	6,515	26,410	- 3,604
1968	31,403	4,264	27,139	35,988	5,967	30,021	- 4,585
1969	35,919	3,483	32,436	38,929	4,632	34,297	- 3,010
1970	48,819	3,984	44,835	51,969	4,376	47,593	- 3,150
1971	60,826	3,857	56,969	63,997	4,295	59,702	- 3,171
1972	77,174	3,741	73,433	81,493	4,072	77,421	- 4,319
1973	101,184	4,238	96,946	104,697	4,027	100,670	- 3,513
1974	109,044	3,048	105,996	113,362	3,772	109,590	- 4,318
1975	117,543	4,485	113,058	120,703	4,255	116,448	- 3,155
1976	139,303	4,367	134,936	141,148	4,441	136,707	- 1,845
1977	153,208	4,929	148,279	155,653	4,624	151,029	- 2,445
1978	161,688	4,411	157,277	163,733	4,698	159,035	- 2,045
1979	182,771	3,581	179,190	186,864	4,054	182,810	- 4,093
1979 : 1st Qr.	43,947	927	43,020	50,197	967	49,230	- 6,250
2nd Qr.	40,211	701	39,510	41,417	997	40,420	- 1,206
3rd Qr.	51,817	1,057	50,760	52,900	1,170	51,730	- 1,083
4th Qr.	46,796	916	45,880	42,350	920	41,430	+ 4,446

^{1/} including seamen but excluding transit passengers who do not leave the airport

Table 9 - Passenger traffic ^{1/} by month, 1976- 1979

Month	Arrivals				Departures				Excess of arrivals over departures			
	1976	1977	1978	1979	1976	1977	1978	1979	1976	1977	1978	1979
January	14,436	16,034	15,890	18,078	17,267	19,383	19,041	21,033	- 2,831	- 3,349	- 3,151	- 2,955
February	9,560	11,445	11,777	13,008	12,222	13,120	13,208	15,406	- 2,362	- 1,675	- 1,431	- 2,392
March	9,072	9,947	10,816	12,861	9,127	10,564	11,098	13,753	- 55	- 617	- 282	- 897
April	9,758	12,013	11,620	15,014	10,225	11,851	11,738	15,927	- 465	+ 162	- 118	- 913
May	10,933	11,728	11,268	14,359	11,336	12,827	12,064	14,587	- 405	- 1,099	- 796	- 228
June	8,056	9,344	9,003	10,838	8,280	9,151	9,474	10,903	- 224	+ 193	- 471	- 65
July	12,798	13,647	13,824	15,577	11,530	15,064	13,586	15,262	+ 1,268	+ 583	+ 238	+ 315
August	16,570	17,804	19,256	21,126	15,218	16,475	17,394	19,565	+ 1,752	+ 1,329	+ 1,862	+ 1,163
September	9,661	10,844	12,369	15,112	13,063	13,914	16,005	17,673	- 3,402	- 3,070	- 3,636	- 2,561
October	11,128	11,617	13,181	13,769	10,354	10,595	12,307	13,410	+ 774	+ 1,022	+ 874	+ 359
November	10,824	11,153	13,555	13,951	11,558	11,791	14,033	14,315	- 734	- 638	- 478	- 364
December	15,107	17,632	19,129	19,076	10,968	12,918	13,785	14,625	+ 5,135	+ 4,714	+ 5,344	+ 4,451
Whole year	159,503	153,208	161,688	182,771	141,148	155,653	165,733	186,864	- 1,845	- 2,445	- 2,045	- 4,023

^{1/} including seamen but excluding transit passengers who do not leave the airport

Table 10 - Arrivals^{1/} by country of original embarkation, 1974-1979

Country of original embarkation	1974	1975	1976	1977	1978	1979
Australia	5,568	5,395	5,469	4,354	4,195	6,080
France	7,008	8,277	11,044	14,798	20,055	22,300
Germany, Fed. Rep.	1,548	1,246	1,319	1,726	2,279	4,780
Hong Kong	574	859	983	1,016	1,072	1,020
India	4,790	5,608	7,055	7,955	8,048	9,520
Italy	1,362	1,276	1,346	2,380	3,016	3,200
Kenya	2,319	2,126	3,096	3,309	2,801	2,870
Malagasy Republic	3,888	2,704	4,371	6,516	5,460	6,370
Malawi	571	907	1,304	1,178	1,222	1,060
Reunion	53,959	43,058	50,538	53,024	53,197	57,150
Rhodesia	399	1,150	633	304	415	710
Rodrigues	2,648	3,319	4,221	4,853	5,642	5,398
Seychelles	2,429	2,209	2,591	3,250	3,153	3,570
South Africa, Rep. of	16,607	17,450	20,684	21,514	22,605	27,440
Switzerland	510	396	534	587	726	1,150
Tanzania	433	332	479	529	815	1,050
United Kingdom	10,374	12,192	15,376	17,102	18,497	19,290
Zambia	3,891	3,263	2,800	4,020	3,840	4,010
Other Countries	3,658	5,114	4,953	4,165	4,207	5,232
All Countries	100,536	116,861	138,796	152,580	161,241	182,200

^{1/} excluding transit passengers who did not leave the airport; discharged seamen numbering 508, 687, 507, 628, 447 and 571 respectively for the period under review

Table 11 - Departures^{1/} by country of final destination, 1974-1979

Country of final destination	1974	1975	1976	1977	1978	1979
Australia	4,575	4,537	4,750	4,627	4,144	5,930
France	9,009	9,314	12,865	15,736	21,255	22,010
Germany, Fed. Rep.	1,487	1,231	1,183	1,934	2,268	5,070
Hong Kong	595	858	1,012	1,048	1,192	1,450
India	4,108	5,506	6,564	8,540	8,753	8,880
Italy	1,783	1,406	1,580	3,072	3,218	4,160
Kenya	2,815	2,733	3,591	2,541	2,548	3,140
Malagasy Republic	5,211	2,228	3,694	4,990	4,433	4,870
Malawi	628	793	897	943	972	830
Reunion	37,767	42,569	49,799	53,648	53,418	58,910
Rhodesia	535	1,088	734	375	447	790
Rodrigues	2,053	2,968	3,796	4,477	5,571	5,785
Seychelles	2,051	2,061	3,223	4,023	5,544	4,780
South Africa, Rep. of	17,220	18,158	21,471	21,344	22,209	28,250
Switzerland	539	536	597	892	882	1,040
Tanzania	655	528	608	637	780	930
United Kingdom	12,410	13,728	16,641	17,757	18,355	20,030
Zambia	5,663	2,952	2,330	3,444	3,514	5,280
Other Countries	7,462	6,078	5,074	4,932	5,149	5,815
All Countries	112,516	119,772	140,409	154,760	162,753	185,950

^{1/} excluding transit passengers who did not leave the airport; engaged seamen numbering 746, 931, 739, 893, 980 and 914 respectively for the period under review

Table 12 - Passenger traffic^{1/} by type of passenger and month, 1979

Type of passenger	January	February	March	April	May	June	July	August	September	October	November	December	Whole year
ARRIVALS													
Visitor ^{2/}	13,050	10,450	9,720	11,260	10,490	7,390	10,490	15,090	10,150	10,120	10,500	13,340	132,050
On holiday	11,990	8,900	3,300	10,310	9,340	6,540	9,680	14,090	8,690	8,880	9,010	12,190	117,920
On business	320	520	540	450	550	420	440	360	710	640	1,010	380	6,340
In transit	740	1,010	730	420	540	410	360	620	740	580	470	770	7,440
Other and not stated	-	20	100	80	60	20	10	20	10	20	10	-	350
Mauritians settled abroad	910	420	570	540	420	520	1,310	1,320	400	520	450	2,200	9,580
Mauritian residents	3,790	1,900	2,280	2,990	3,270	2,770	3,650	4,500	4,170	3,010	2,800	3,330	38,460
Other	290	150	250	190	80	100	70	190	350	80	180	180	2,110
Total	18,040	12,920	12,320	14,980	14,260	10,780	15,520	21,100	15,070	13,730	13,930	19,050	132,200
DEPARTURES													
Visitors	15,970	11,500	9,770	11,030	11,070	7,150	9,130	13,690	11,350	9,760	10,610	10,270	131,800
Mauritians settled abroad	2,050	1,520	490	670	550	520	570	1,180	1,480	670	610	490	10,800
Emigrants ^{3/}	12	21	31	13	21	18	15	9	12	8	16	15	191
Mauritian residents	2,770	2,090	3,120	3,820	2,680	3,020	5,070	4,730	4,100	2,330	2,390	3,540	40,660
Other	158	189	279	287	139	152	375	251	138	102	154	275	2,499
Total	20,960	15,320	13,690	15,820	14,460	10,860	15,160	19,860	17,580	13,370	14,280	14,590	185,950

1/ excluding seamen and transit passengers who do not leave the airport

2/ including non-residents (a total of 3,690) who left the airport but stayed in the country for less than a day

3/ figures obtained from Passport Office register

Table 13 - Arrivals^{1/} by age and sex, January 1978 - December 1979

Age (completed years)	January - June 1978			July - December 1978			January - June 1979			July - December 1979		
	Both sexes	Male	Female	Both sexes	Male	Female	Both sexes	Male	Female	Both sexes	Male	Female
Under 1	413	234	179	593	345	248	490	280	210	440	280	160
1 - 4	2,173	1,227	946	3,052	1,785	1,267	2,540	1,530	1,010	3,050	1,650	1,380
5 - 9	2,715	1,538	1,177	3,853	2,146	1,707	2,860	1,640	1,220	4,130	2,170	1,960
10 - 14	2,390	1,207	1,183	3,734	1,989	1,745	2,660	1,340	1,320	3,740	1,860	1,880
15 - 19	3,035	1,412	1,623	4,441	2,085	2,356	3,270	1,470	1,800	4,640	2,260	2,380
20 - 24	6,928	3,490	3,503	9,323	4,518	4,805	8,070	4,090	3,980	9,770	4,700	5,070
25 - 29	9,539	5,297	4,242	12,632	6,877	5,755	11,030	6,210	4,820	12,640	7,390	6,250
30 - 34	8,898	5,319	3,579	11,812	6,876	4,936	10,770	6,110	4,660	12,930	7,630	5,300
35 - 39	7,265	4,590	2,675	9,266	5,632	3,634	9,270	5,860	3,410	11,020	6,650	4,370
40 - 44	6,054	3,918	2,136	7,390	4,631	2,759	7,590	4,960	2,630	8,210	5,050	3,160
45 - 49	5,008	3,145	1,863	6,235	3,832	2,403	6,690	4,090	2,600	6,470	3,790	2,680
50 - 54	4,302	2,664	1,638	5,484	3,225	2,259	5,260	3,110	2,150	5,850	3,610	2,240
55 - 59	3,214	1,990	1,224	4,136	2,431	1,705	4,180	2,690	1,490	4,770	2,850	1,920
60 - 64	2,187	1,241	946	2,669	1,506	1,163	2,740	1,610	1,130	2,660	1,530	1,130
65 - 69	1,511	847	664	1,873	1,031	842	1,970	1,050	920	1,940	960	980
70 & over	1,100	581	519	1,419	765	654	1,540	750	790	1,620	960	660
Not stated	3,572	2,410	1,162	3,402	2,303	1,099	3,228	2,198	1,030	3,753	2,723	1,030
All ages	70,374	41,110	29,264	91,314	51,977	39,337	84,158	48,988	35,170	98,613	56,063	42,550

^{1/} including discharged seamen but excluding transit passengers who do not leave the airport

Table 14 - Departures by age and sex, January 1978 - December 1979

Age (completed years)	January-June 1978			July-December 1978			January-June 1979			July-December 1979		
	Both sexes	Male	Female	Both sexes	Male	Female	Both sexes	Male	Female	Both sexes	Male	Female
Under 1	461	275	186	555	355	200	680	400	280	620	340	280
1 - 4	2,555	1,471	1,084	2,697	1,576	1,121	2,960	1,740	1,220	2,590	1,210	1,380
5 - 9	3,138	1,695	1,443	3,482	1,983	1,499	3,380	2,060	1,320	3,670	1,890	1,780
10 - 14	2,687	1,395	1,292	3,569	1,932	1,637	3,090	1,780	1,310	3,790	2,100	1,690
15 - 19	3,440	1,599	1,841	4,719	2,340	2,379	3,840	1,820	2,020	4,500	2,400	2,100
20 - 24	7,610	3,720	3,890	9,635	4,689	4,946	9,120	4,700	4,420	10,300	5,490	4,810
25 - 29	10,275	5,648	4,625	11,772	6,538	5,240	11,740	7,040	4,700	13,150	7,290	5,860
30 - 34	5,659	5,717	3,942	10,987	6,456	4,529	11,820	7,310	4,510	11,910	6,840	5,070
35 - 39	7,792	4,903	2,889	8,647	5,312	3,335	10,670	7,160	3,510	10,440	6,150	4,290
40 - 44	6,513	4,201	2,312	6,905	4,385	2,520	7,470	4,850	2,520	7,960	4,960	3,000
45 - 49	5,431	3,346	2,085	5,865	3,646	2,219	6,850	4,320	2,530	6,480	4,110	2,370
50 - 54	4,595	2,745	1,850	5,229	3,086	2,143	5,560	3,350	2,210	5,660	3,360	2,300
55 - 59	3,544	2,205	1,339	3,888	2,325	1,563	4,210	2,350	1,660	4,110	2,490	1,620
60 - 64	2,369	1,344	1,025	2,487	1,398	1,089	2,710	1,680	1,030	2,550	1,520	1,030
65 - 69	1,656	929	727	1,677	933	744	2,330	1,460	870	1,890	1,020	870
70 & over	1,222	654	568	1,350	710	640	1,650	930	720	1,490	780	710
Not stated	3,678	2,653	1,025	3,640	2,484	1,156	3,534	2,594	940	4,140	2,790	1,350
All ages	76,623	44,500	32,123	87,110	50,350	36,760	91,614	55,544	36,070	95,250	54,740	40,510

1/ including engaged seamen but excluding transit passengers who do not leave the airport

Table 15 - Excess of arrivals over departures^{1/} by age and sex, January 1978 - December 1979

Age (completed years)	January-June 1978			July-December 1978			January-June 1979			July-December 1979		
	Both sexes	Male	Female	Both sexes	Male	Female	Both sexes	Male	Female	Both sexes	Male	Female
Under 1	- 48	- 41	- 7	+ 36	- 10	+ 48	- 190	- 120	- 70	- 180	- 60	- 120
1 - 4	- 382	- 244	- 138	+ 355	+ 209	+ 146	- 420	- 210	- 210	+ 440	+ 440	-
5 - 9	- 423	- 157	- 266	+ 371	+ 163	+ 208	- 520	- 420	- 100	+ 460	+ 280	+ 180
10 - 14	- 297	- 188	- 109	+ 165	+ 57	+ 108	- 430	- 440	+ 10	- 50	- 240	+ 190
15 - 19	- 405	- 187	- 218	- 278	- 255	- 23	- 570	- 350	- 220	+ 140	- 140	+ 280
20 - 24	- 612	- 230	- 382	- 312	- 371	+ 59	- 1,050	- 610	- 440	- 530	- 790	+ 260
25 - 29	- 734	- 351	- 383	+ 354	+ 339	+ 515	- 710	- 830	+ 120	+ 490	+ 100	+ 390
30 - 34	- 761	- 398	- 363	+ 825	+ 418	+ 407	- 1,050	- 1,200	+ 150	+ 1,020	+ 790	+ 230
35 - 39	- 527	- 313	- 214	+ 619	+ 320	+ 299	- 1,400	- 1,300	- 100	+ 580	+ 500	+ 80
40 - 44	- 459	- 283	- 176	+ 485	+ 246	+ 239	+ 120	+ 110	+ 10	+ 250	+ 90	+ 160
45 - 49	- 423	- 201	- 222	+ 370	+ 186	+ 184	- 160	- 230	+ 70	- 10	- 320	+ 310
50 - 54	- 293	- 81	- 212	+ 255	+ 159	+ 116	- 300	- 240	- 60	+ 190	+ 250	- 60
55 - 59	- 330	- 215	- 115	+ 243	+ 106	+ 142	- 30	+ 340	- 370	+ 660	+ 360	+ 300
60 - 64	- 182	- 103	- 79	+ 182	+ 108	+ 74	+ 30	- 70	+ 100	+ 110	+ 10	+ 100
65 - 69	- 145	- 82	- 63	+ 196	+ 98	+ 98	- 360	- 410	+ 50	+ 50	- 60	+ 110
70 & over	- 122	- 73	- 49	+ 55	+ 55	+ 14	- 110	- 180	+ 70	+ 130	+ 180	- 50
Not stated	- 106	- 243	+ 137	- 258	- 181	- 57	- 306	- 396	+ 90	- 387	- 67	- 320
All ages	- 6,249	- 3,390	- 2,859	+ 4,204	+ 1,627	+ 2,577	- 7,456	- 6,556	- 900	+ 3,363	+ 1,323	+ 2,040

^{1/} including seamen but excluding transit passengers who do not leave the airport

Table 16 - Arrivals and departures^{1/} of residents of Island of Mauritius by district of residence and sex, 1979

Geographical district	Arrivals			Departures			Excess of arrivals over departures		
	Both sexes	Male	Female	Both sexes	Male	Female	Both sexes	Male	Female
Port Louis	7,680	4,800	2,880	8,420	5,510	2,910	-	- 710	- 30
Pamplemousses	1,280	920	360	1,170	760	410	+	+ 160	- 50
Rivière du Rempart	920	560	360	1,150	760	390	-	- 200	- 30
Flacq	990	740	250	930	640	290	+	+ 100	- 40
Grand Port	870	630	240	1,250	870	380	-	- 240	- 140
Savanne	610	440	170	600	400	200	+	+ 40	- 30
Plaines Wilhems : Urban	16,390	9,880	6,510	16,530	9,730	6,850	-	+ 150	- 340
Other	300	190	110	310	200	110	-	- 10	-
Moka	730	490	240	800	500	300	-	- 10	- 60
Black River	650	380	270	530	290	240	+	+ 90	+ 30
Not stated	8,040	5,350	2,690	8,920	5,690	3,230	-	- 340	- 540
Whole island	38,460	24,380	14,080	40,660	25,350	15,310	-	- 970	- 1,230

^{1/} excluding official long-term emigrants

Table 17 - Arrivals of residents of Island of Mauritius by age and sex, January 1978 .. December 1979

Age (completed years)	January - June 1978			July - December 1978			January - June 1979			July - December 1979		
	Both sexes	Male	Female	Both sexes	Male	Female	Both sexes	Male	Female	Both sexes	Male	Female
Under	74	44	30	104	66	38	120	80	40	90	60	30
1 -	321	185	136	470	270	200	380	180	200	500	290	210
5 -	325	178	147	516	279	237	430	290	140	600	330	270
10 -	385	196	189	510	257	253	480	270	210	560	330	330
15 -	735	369	366	894	494	400	790	400	390	910	490	420
20 -	2,016	1,278	738	2,638	1,623	1,015	2,110	1,420	690	2,650	1,560	1,090
25 -	1,939	1,327	612	2,569	1,685	884	2,150	1,390	760	2,910	1,970	940
30 -	1,348	974	374	1,824	1,235	589	1,510	940	570	1,880	1,260	620
35 -	1,056	704	352	1,434	919	515	1,380	930	450	1,530	1,050	530
40 -	1,046	683	363	1,289	835	454	1,300	880	420	1,460	1,010	450
45 -	875	555	320	1,225	808	417	1,100	650	450	1,160	670	490
50 -	753	517	276	1,197	702	495	950	610	340	1,550	760	590
55 -	557	367	190	844	504	340	660	480	180	920	560	360
60 -	443	276	173	753	428	325	550	310	240	760	520	240
65 -	289	173	116	474	246	228	270	140	130	590	200	190
70 & over	235	122	113	404	233	171	280	140	140	410	270	140
Not stated	3,154	2,050	1,096	2,948	1,926	1,022	2,540	1,670	870	5,250	2,270	960
All ages	15,557	10,006	5,551	20,093	12,510	7,583	17,000	10,780	6,220	21,460	13,600	7,860

Table 18 - Departures of residents ^{1/} of Island of Mauritius by age and sex, January 1978 - December 1979

Age (completed years)	January - June 1978			July - December 1978			January - June 1979			July - December 1979		
	Both sexes	Male	Female	Both sexes	Male	Female	Both sexes	Male	Female	Both sexes	Male	Female
Under 1	77	48	29	133	84	49	140	80	60	160	60	100
1 - 4	343	201	142	481	282	199	420	210	210	460	250	210
5 - 9	346	190	156	562	306	256	400	230	170	600	320	280
10 - 14	284	134	150	725	375	350	290	190	100	1,050	620	410
15 - 19	785	395	390	1,504	866	638	820	380	440	1,400	770	530
20 - 24	2,140	1,296	844	3,391	2,152	1,239	2,340	1,490	850	2,620	2,370	1,250
25 - 29	2,032	1,340	692	2,557	1,668	889	2,010	1,380	630	3,030	1,980	1,050
30 - 34	1,439	991	448	1,740	1,164	576	1,870	1,330	540	2,050	1,240	810
35 - 39	1,105	719	386	1,397	880	517	1,590	1,160	430	1,580	850	730
40 - 44	1,083	705	378	1,266	808	458	1,070	710	360	1,320	940	380
45 - 49	981	606	375	1,144	741	403	1,020	680	340	1,120	720	400
50 - 54	894	540	354	1,131	657	474	1,070	580	490	1,150	560	590
55 - 59	664	431	233	795	467	328	600	330	270	780	400	380
60 - 64	555	330	225	644	354	290	490	340	150	750	430	320
65 - 69	343	187	156	400	225	175	270	150	120	370	180	190
70 & over	269	149	120	382	208	174	280	140	140	360	200	160
Not stated	2,867	1,913	954	3,058	1,981	1,077	2,820	1,930	890	3,380	2,150	1,230
All ages	16,207	10,175	6,032	21,310	13,218	8,092	17,500	11,310	6,190	23,160	14,040	9,120

^{1/} excluding official long-term emigrants

Table 19 - Excess of arrivals over departures of residents (excluding emigrants) of Island of Mauritius by age and sex, January 1978 - December 1979

Age (completed years)	January - June 1978			July - December 1978			January - June 1979			July - December 1979		
	Both sexes	Male	Female	Both sexes	Male	Female	Both sexes	Male	Female	Both sexes	Male	Female
Under 1	- 3	- 4	+ 1	- 29	- 18	- 11	- 20	-	- 20	-	-	- 70
1 - 4	- 22	- 16	- 6	- 11	- 12	+ 1	- 40	- 30	- 10	+ 40	+ 40	-
5 - 9	- 21	- 12	- 9	- 46	- 27	- 19	+ 30	+ 60	- 30	+ 10	+ 10	- 10
10 - 14	+ 101	+ 62	+ 39	- 215	- 118	- 97	+ 190	+ 80	+ 110	- 370	- 290	- 80
15 - 19	- 50	- 26	- 24	- 610	- 372	- 238	- 30	+ 20	- 50	- 490	- 280	- 210
20 - 24	- 124	- 18	- 106	- 753	- 529	- 224	- 230	- 70	- 160	- 970	- 810	- 160
25 - 29	- 93	- 13	- 80	+ 12	+ 17	- 5	+ 140	+ 10	+ 130	- 120	- 10	- 110
30 - 34	- 91	- 17	- 74	+ 84	+ 71	+ 13	- 360	- 390	+ 30	- 170	+ 20	- 190
35 - 39	- 49	- 15	- 34	+ 37	+ 39	- 2	- 210	- 230	+ 20	-	+ 200	- 200
40 - 44	- 37	- 22	- 15	+ 23	+ 27	- 4	+ 230	+ 170	+ 60	+ 140	+ 70	+ 70
45 - 49	- 106	- 51	- 55	+ 81	+ 67	+ 14	+ 80	- 30	+ 110	+ 40	- 50	+ 90
50 - 54	- 101	- 23	- 78	+ 66	+ 45	+ 21	- 120	+ 30	- 150	+ 200	+ 200	-
55 - 59	- 107	- 64	- 43	+ 49	+ 37	+ 12	+ 60	+ 150	- 90	+ 140	+ 160	- 20
60 - 64	- 106	- 54	- 52	+ 109	+ 74	+ 35	+ 60	- 30	+ 90	+ 10	+ 90	- 80
65 - 69	- 54	- 14	- 40	+ 74	+ 21	+ 53	-	- 10	+ 10	+ 20	+ 20	-
70 & over	- 34	- 27	- 7	+ 22	+ 25	- 3	-	-	-	+ 50	+ 70	- 20
Not stated	+ 287	+ 145	+ 142	- 110	- 55	- 55	- 280	- 260	- 20	- 150	+ 120	- 270
All ages	- 610	- 169	- 441	- 1,217	- 708	- 509	- 500	- 530	+ 30	- 1,700	- 440	- 1,260

Table 20 - Excess of arrivals over departures of residents (including emigrants) of Island of Mauritius by age and sex.
January 1978 - December 1979

Age (completed years)	January - June 1978			July - December 1978			January - June 1979			July - December 1979		
	Both sexes	Male	Female	Both sexes	Male	Female	Both sexes	Male	Female	Both sexes	Male	Female
Under 1	- 4	- 4	-	- 29	- 18	- 11	- 23	-	- 23	- 72	- 2	- 70
1 - 4	- 32	- 22	- 10	- 19	- 16	- 3	- 46	- 32	- 14	+ 40	+ 40	-
5 - 9	- 50	- 29	- 21	- 53	- 33	- 20	+ 25	+ 59	- 34	- 5	+ 7	- 12
10 - 14	+ 79	+ 52	+ 27	- 233	- 126	- 107	+ 180	+ 74	+ 106	- 384	- 292	- 92
15 - 19	- 85	- 37	- 48	- 649	- 382	- 267	- 55	+ 16	- 71	- 504	- 283	- 221
20 - 24	- 143	- 19	- 124	- 786	- 534	- 252	- 265	- 75	- 190	- 989	- 812	- 177
25 - 29	- 105	- 14	- 91	- 16	+ 8	- 24	+ 131	+ 10	+ 121	- 130	- 11	- 119
30 - 34	- 102	- 20	- 82	+ 74	+ 66	+ 8	- 370	- 392	+ 22	- 172	+ 19	- 191
35 - 39	- 54	- 16	- 38	+ 32	+ 38	- 6	- 212	- 230	+ 18	- 4	+ 198	- 202
40 - 44	- 39	- 22	- 17	+ 20	+ 25	- 5	+ 229	+ 169	+ 60	+ 138	+ 70	+ 68
45 - 49	- 107	- 51	- 56	+ 72	+ 63	+ 9	+ 76	- 32	+ 108	+ 39	- 50	+ 89
50 - 54	- 103	- 25	- 78	+ 65	+ 44	+ 21	- 121	+ 30	- 151	+ 198	+ 199	- 1
55 - 59	- 109	- 64	- 45	+ 48	+ 36	+ 12	+ 60	+ 150	- 90	+ 140	+ 160	- 20
60 - 64	- 108	- 55	- 53	+ 106	+ 73	+ 33	+ 56	- 32	+ 88	+ 10	+ 90	- 80
65 - 69	- 54	- 14	- 40	+ 72	+ 20	+ 52	-	- 10	+ 10	+ 20	+ 20	-
70 & over	- 34	- 27	- 7	+ 22	+ 25	- 3	- 1	- 1	-	+ 50	+ 70	- 20
Not stated	+ 287	+ 145	+ 142	- 110	- 55	- 55	- 280	- 260	- 20	- 150	+ 120	- 270
All ages	- 763	- 222	- 541	- 1,384	- 766	- 618	- 616	- 556	- 60	- 1,775	- 457	- 1,318

Table 21 - Departures of Mauritian residents travelling by air by country of final destination, 1977-79

Country of final destination	1977	1978	1979
Australia	850	879	1,010
France	1,895	2,480	3,230
Germany, Fed. Rep. of	310	380	560
Hong Kong	356	525	730
India	2,964	3,167	2,990
Italy	221	240	380
Kenya	359	531	660
Rodrigues	2,112	3,075	3,654
Réunion	10,656	11,478	13,190
South Africa, Rep. of	1,468	1,550	1,900
U.K.	7,093	7,560	7,130
Other countries	2,406	2,625	2,686
All countries	30,690	34,490	38,120

III - EMIGRATION

Table 22 - Official long-term emigrants^{1/} by sex, 1956 - 1979

Year	Both sexes	Male	Female
1956	147	93	54
1957	109	68	41
1958	163	130	33
1959	170	128	42
1960	158	132	26
1961	837	629	208
1962	1,083	711	372
1963	594	326	268
1964	915	491	424
1965	1,408	659	749
1966	1,611	774	837
1967	2,225	1,038	1,187
1968	3,067	1,487	1,580
1969	2,379	1,119	1,260
1970	2,282	1,063	1,219
1971	2,351	1,076	1,273
1972	2,271	956	1,315
1973	2,037	844	1,193
1974	1,494	606	888
1975	874	328	546
1976	579	195	384
1977	290	120	170
1978	320	111	209
1979 ^{2/}	191	43	148

^{1/} persons who have obtained a permit to emigrate to another country

^{2/} figures obtained from Passport Office register

Table 23 - External migration, 1956 - 1979

Year	Arrivals	Departures			Excess of arrivals over departures (excluding emigrants)
		Total	Official long-term emigrants ^{1/}	Departures excluding emigrants	
1956	7,747	8,223	147	8,078	- 331
1957	8,095	8,237	109	8,158	- 63
1958	8,703	8,924	153	8,761	- 58
1959	9,637	9,544	170	9,374	+ 263
1960	10,412	10,784	158	10,626	- 214
1961	11,854	11,923	337	12,196	- 342
1962	15,189	16,075	1,083	14,992	+ 197
1963	16,047	16,699	594	17,705	+ 342
1964	21,221	22,341	915	21,416	- 195
1965	22,024	24,150	1,403	22,742	- 718
1966	26,456	29,371	1,611	27,690	- 1,234
1967	29,321	31,923	2,225	30,700	- 1,379
1968	31,403	33,018	3,007	32,921	- 1,518
1969	35,949	36,916	1,379	36,550	- 631
1970	48,819	49,807	2,282	49,587	- 868
1971	60,826	62,217	2,351	61,646	- 820
1972	77,174	81,493	2,271	79,222	- 2,048
1973	101,184	101,617	2,037	102,660	- 1,476
1974	109,044	113,362	1,494	111,368	- 2,824
1975	117,547	120,753	871	119,329	- 2,281
1976	139,303	141,148	579	140,569	- 1,266
1977	152,203	153,653	290	155,363	- 2,155
1978	161,688	163,733	320	163,413	- 1,725
1979	182,771	185,364	1,112	186,673	- 3,902

^{1/} persons who have obtained a permit to emigrate to another country

^{2/} figures obtained from Passport office register

Note : The number of emigrants coming to settle in Mauritius is negligible.
A net negative balance over successive years in the last column indicates that a number of persons not registered as official emigrants are permanently leaving the country

Table 24 - Official long-term emigrants^{1/} by country of intended residence, 1966 - 1979

Country of intended residence	1966	1967	1968	1969	1970	1971	1972	1973	1974	1975	1976	1977	1978	1979 ^{2/}
All countries	1,611	2,225	3,067	2,379	2,282	2,351	2,271	2,037	1,494	874	579	290	320	191
<u>AFRICA</u>	<u>164</u>	<u>246</u>	<u>276</u>	<u>84</u>	<u>158</u>	<u>220</u>	<u>185</u>	<u>106</u>	<u>99</u>	<u>17</u>	<u>18</u>	<u>11</u>	<u>32</u>	<u>2</u>
Congo Brazzaville	1	1	-	1	20	54	-	3	9	-	-	-	-	-
Kenya	1	1	20	3	11	9	5	12	7	-	2	-	2	-
Malagasy Rep.	-	3	2	2	4	6	4	7	-	-	1	-	-	-
Malawi	13	3	23	1	12	15	30	23	29	2	9	5	2	-
Mozambique	-	4	-	14	42	20	20	11	8	7	-	-	-	-
Réunion	2	6	9	2	1	6	-	8	1	2	1	6	21	-
Rhodesia	54	16	4	1	2	3	-	-	-	-	-	-	-	-
South Africa, Rep.	81	176	171	50	22	37	5	9	8	3	-	-	1	-
Zambia	7	30	38	10	30	56	113	23	21	2	5	-	-	-
Other African	5	1	9	-	14	14	8	10	16	1	-	-	6	2
<u>AMERICA</u>	<u>12</u>	<u>34</u>	<u>24</u>	<u>29</u>	<u>86</u>	<u>51</u>	<u>40</u>	<u>29</u>	<u>37</u>	<u>87</u>	<u>33</u>	<u>31</u>	<u>5</u>	<u>10</u>
Canada	10	32	18	25	82	47	37	26	37	87	33	31	1	10
U.S.A	2	2	6	4	4	4	2	2	-	-	-	-	4	-
Other American	-	-	-	-	-	-	1	1	-	-	-	-	-	-

Table 24 (cont'd)

Country of intended residence	1966	1967	1968	1969	1970	1971	1972	1973	1974	1975	1976	1977	1978	1979 ^{2/}
<u>ASIA</u>	-	1	1	3	4	3	18	2	2	3	-	-	1	-
India	-	1	-	3	1	-	1	2	-	2	-	-	1	-
Other Asian	-	-	1	-	3	3	17	-	2	1	-	-	-	-
<u>EUROPE</u>	804	613	728	615	929	1,058	1,145	1,353	1,042	682	477	223	252	148
Belgium	94	35	22	7	22	44	32	38	54	30	17	1	2	7
France	41	53	58	93	435	566	554	684	546	227	137	88	105	77
Germany, Fcd. Rep.	-	-	-	2	5	8	31	43	7	4	1	6	12	1
Italy	-	1	-	1	4	19	40	29	19	17	17	6	5	16
Norway	-	-	-	-	1	3	2	5	1	1	2	-	4	-
Switzerland	-	3	1	-	6	1	3	5	4	4	1	4	7	3
United Kingdom	667	519	646	510	463	415	460	543	402	365	302	113	113	41
Other European	2	2	1	2	3	2	15	6	9	4	-	5	4	3
<u>OCEANIA</u>	62	1,331	2,038	1,648	1,095	1,019	883	547	314	85	51	25	30	31
Australia	619	1,330	2,037	1,645	1,082	1,004	877	545	301	84	50	25	30	51
New Zealand	8	-	1	1	-	-	1	1	-	-	-	-	-	-
Other Oceanian	4	1	-	2	13	15	5	1	13	1	1	-	-	-

1/ persons who have obtained a permit to emigrate to another country

2/ figures obtained from Passport Office register

Table 25 - Age distribution of official long-term emigrants, 1966 - 1979

Age (completed years)	1966	1967	1968	1969	1970	1971	1972	1973	1974	1975	1976	1977	1978	1979
0 - 4	86	127	226	136	95	83	94	65	68	36	22	24	10	4
5 - 9	94	133	197	153	106	94	118	101	77	43	28	26	23	4
10 - 14	86	135	149	146	93	96	115	105	77	59	36	23	18	8
15 - 19	70	122	147	140	113	106	108	100	57	46	29	12	21	7
20 - 24	123	132	155	114	153	171	149	112	101	66	28	10	6	7
25 - 29	87	94	141	86	141	128	85	107	82	55	21	10	10	1
30 - 34	76	63	146	75	120	103	68	59	39	17	7	3	8	3
35 - 39	49	60	93	52	68	89	59	45	38	5	5	5	2	2
40 - 44	43	63	82	62	63	69	51	53	23	6	5	4	2	1
45 - 49	12	35	48	44	32	48	46	33	13	5	4	1	4	2
50 - 54	25	25	34	39	53	25	29	19	8	5	6	-	3	1
55 - 59	7	17	27	40	15	18	11	18	8	-	2	-	1	-
60 - 64	9	20	24	13	13	19	12	15	9	3	1	1	2	2
65 - 69	5	9	10	10	9	16	7	3	1	4	1	1	1	-
70 & over	4	3	8	9	11	9	4	6	4	1	-	-	-	1
Unknown	-	-	-	-	-	1	-	3	1	1	-	-	-	-
All ages	774	1,038	1,487	1,119	1,063	1,076	956	844	606	328	195	120	111	43

Table 25 - (cont'd)

Female

Age (completed years)	1966	1967	1968	1969	1970	1971	1972	1973	1974	1975	1976	1977	1978	1979
0 - 4	90	136	215	121	59	90	89	48	50	46	24	11	9	7
5 - 9	94	147	202	143	90	89	110	111	79	44	29	14	13	6
10 - 14	81	123	168	151	94	89	140	104	70	42	38	19	22	16
15 - 19	110	154	172	174	181	184	157	181	153	105	74	42	53	32
20 - 24	142	171	184	150	237	241	267	263	212	142	102	41	46	47
25 - 29	85	106	149	101	132	145	148	150	102	54	51	21	30	19
30 - 34	64	74	133	87	81	106	100	84	72	35	22	6	19	9
35 - 39	50	74	85	78	64	84	75	72	47	18	9	4	8	4
40 - 44	29	58	74	58	61	58	65	63	24	12	6	5	3	1
45 - 49	25	44	54	49	50	66	47	51	27	8	8	1	6	3
50 - 54	19	32	46	53	25	51	32	21	26	10	5	3	-	2
55 - 59	18	30	32	37	37	44	33	17	10	11	-	-	2	-
60 - 64	11	11	27	21	25	21	22	17	7	6	4	1	3	2
65 - 69	9	11	19	12	17	10	16	10	4	6	7	1	1	-
70 & over	7	14	20	25	16	18	14	16	4	7	5	1	-	-
Unknown	1	-	-	-	-	5	-	5	1	2	-	-	-	-
All ages	857	1,187	1,530	1,260	1,219	1,275	1,315	1,193	888	546	584	170	209	148

Table 25 (cont'd)

Both sexes

Age (completed years)	1966	1967	1968	1969	1970	1971	1972	1973	1974	1975	1976	1977	1978	1979
0 - 4	176	265	441	257	192	173	183	113	118	82	46	35	19	11
5 - 9	188	280	399	296	204	183	228	212	156	87	57	40	36	10
10 - 14	167	258	317	297	187	185	255	209	147	101	74	42	40	24
15 - 19	180	276	319	314	294	290	265	281	210	151	103	54	74	39
20 - 24	265	303	339	264	230	412	416	375	313	208	130	51	52	54
25 - 29	176	200	290	187	273	273	233	237	184	89	72	31	40	19
30 - 34	140	137	279	162	201	214	168	143	111	50	29	9	21	12
35 - 39	99	134	178	130	132	173	134	117	85	21	14	9	10	6
40 - 44	72	121	156	120	124	127	116	116	47	18	11	9	5	3
45 - 49	35	79	102	93	82	108	93	84	40	13	12	2	10	5
50 - 54	42	57	80	92	58	54	61	40	34	13	11	3	3	3
55 - 59	25	47	59	77	52	62	44	35	18	11	2	-	3	-
60 - 64	20	31	51	34	38	40	34	32	16	9	5	2	5	4
65 - 69	14	20	29	22	26	26	23	13	5	10	8	2	2	-
70 & over	11	17	28	34	29	27	18	22	8	8	5	1	-	1
Unknown	1	-	-	-	-	4	-	8	2	3	-	-	-	-
All ages	1,611	2,225	3,067	2,379	2,282	2,351	2,271	2,037	1,494	874	579	290	320	191

1/ persons who have obtained a permit to emigrate to another country

2/ figures obtained from Passport Office register

Table 26 - Official long-term emigrants^{1/} by Major Occupational Group, 1974 - 1979

Major Occupational Group ^{2/}	1974	1975	1976	1977	1978	1979 ^{3/}
Total number of emigrants	1,494	874	579	290	320	191
<u>Emigrants reporting an occupation</u>	<u>516</u>	<u>252</u>	<u>156</u>	<u>41</u>	<u>45</u>	<u>44</u>
0/1. Professional, Technical and Related Workers	97	62	20	10	8	3
2. Administrative and Managerial Workers	14	8	6	2	-	1
3. Clerical and Related Workers	52	42	30	7	6	4
4. Sales Workers	11	7	5	7	1	2
5. Service Workers	151	83	28	5	8	11
6. Agricultural, Animal Husbandry and Forestry Workers, Fishermen and Hunters	2	1	1	-	-	-
7/8/9. Production and Related Workers, Transport Equipment Operators and Labourers	182	48	42	11	19	22
X. Workers not classifiable by Occupation	9	2	4	1	3	1
<u>Emigrants not reporting any occupation (including housewives and children)</u>	<u>976</u>	<u>621</u>	<u>443</u>	<u>249</u>	<u>275</u>	<u>147</u>

^{1/} persons who have obtained a permit to emigrate to another country

^{2/} International Standard Classification of Occupations, Revised Edition, 1968

^{3/} figures obtained from Passport Office register

Table 27 - Official long-term emigrants ^{1/} by Major Occupational Group, age and sex, 1970 ^{2/}

Major Occupational Group ^{2/}	Age (completed years)														
	All ages		/ 20		20 - 24		25 - 34		35 - 44		45 - 54		55 +		
	Both sexes	Male	Female	Male	Female	Male	Female	Male	Female	Male	Female	Male	Female	Male	Female
Total number of emigrants	191	43	148	23	60	7	49	4	27	3	5	3	5	3	2
Emigrants reporting an occupation	44	14	30	-	1	6	17	4	8	2	1	1	3	1	-
1 Professional, Technical and Related Workers	3	3	-	-	-	1	-	-	-	1	-	-	-	1	-
2 Administrative and Managerial Workers	1	1	-	-	-	-	-	1	-	-	-	-	-	-	-
3 Clerical and Related Workers	4	-	4	-	-	-	3	-	1	-	-	-	-	-	-
4 Sales Workers	2	-	2	-	-	-	2	-	-	-	-	-	-	-	-
5 Service Workers	11	2	9	-	1	2	3	-	3	-	-	-	2	-	-
6 Agriculture, Animal Husbandry and Forestry Workers, Fishermen and Hunters	-	-	-	-	-	-	-	-	-	-	-	-	-	-	-
7/8/9 Production and Related Workers, Transport Equipment Operators and Labourers	22	8	14	-	-	3	8	3	4	1	1	1	1	-	-
X Workers not classifiable by Occupation	1	-	1	-	-	-	1	-	-	-	-	-	-	-	-
Emigrants not reporting any occupation (including housewives and children)	147	29	118	23	59	1	32	-	19	1	4	2	2	2	2

^{1/} persons who have obtained a permit to emigrate to another country

^{2/} International Standard Classification of Occupations, Revised Edition, 1968

^{3/} figures obtained from Passport Office register

Table 28 - Official long-term emigrants^{1/} by occupation, 1977 - 1979

Occupation	1977	1978	1979 ^{3/}
Accountants	-	-	-
Cabinet makers	1	-	2
Carpenters	1	1	-
Clerks	5	2	2
Cooks	-	2	-
Doctors	1	-	-
Drivers	-	1	-
Electricians (see also fitters)	2	-	-
Fitters (see also electricians)	-	-	1
Maids (domestic servants)	2	5	8
Managers	-	-	-
Masons	-	1	1
Mechanics	1	-	-
Nurses	2	4	-
Policemen	-	1	-
Salesmen	3	-	2
Seamstresses and tailors	3	11	15
Stenographers and typists	1	3	2
Storekeepers	-	-	-
Teachers	4	3	1
Waiters	-	-	2
Welders	2	1	1
Other	13	10	7
Occupation not stated or not applicable ^{2/}	249	275	147
Total number of emigrants	230	320	191

^{1/} persons who have obtained a permit to emigrate to another country

^{2/} emigrants not reporting any occupation (including housewives and children)

^{3/} figures obtained from Passport Office register

Table 29 - Official long-term emigrants^{1/} by district of last residence and sex, January 1978 - December 1979

Geographical district	January - June 1978			July - December 1978			January - June 1979 ^{2/}			July - December 1979 ^{2/}		
	Both sexes	Male	Female	Both sexes	Male	Female	Both sexes	Male	Female	Both sexes	Male	Female
Port Louis	18	6	12	57	24	33	22	3	19	25	6	19
Pamplemousses	4	1	3	2	-	2	8	-	8	4	2	2
Rivière du Rempart	1	1	-	3	-	3	11	5	6	-	-	-
Flacq	1	-	1	3	2	1	7	1	6	1	-	1
Grand Port	9	4	5	12	1	11	10	1	9	8	-	8
Savanne	-	-	-	1	1	-	3	-	3	1	-	1
Plaines Wilhems : Urban	64	24	40	70	25	45	51	16	35	35	9	26
Other	1	-	1	1	-	1	3	-	3	-	-	-
Moka	3	1	2	3	1	2	1	-	1	-	-	-
Black River	3	2	1	1	-	1	-	-	-	1	-	1
Not stated	49	14	35	14	4	10	-	-	-	-	-	-
Whole island	153	53	100	167	58	109	116	26	90	75	17	58

^{1/} persons who have obtained a permit to emigrate to another country

^{2/} figures obtained from Passport Office register

IV - TOURISM

Definition and notes

1. Definition of tourist:

- (a) Prior to 1964, a tourist has been defined as a non-resident staying in Mauritius for more than 24 hours but less than 6 months;
- (b) As from 1964, a tourist is defined as a non-resident staying in the island for more than 24 hours but less than a year.

The figures for the two periods are nevertheless comparable because of the small number of tourists staying for more than 6 months.

2. Visitors include the following:

- (i) tourists as defined above; and
- (ii) non-residents who stay in the country for less than a day, other than those who do not leave the airport.

3. Method of compilation:

Certain data on tourism (such as type of visitor, tourist arrivals by month of arrival, tourist arrivals by country of residence and mode of transport) are compiled from disembarkation cards which visitors fill in when they arrive in this country. However, information on duration of stay of visitors can be compiled only from the embarkation cards which they fill in when they leave the country.

As from January 1979, figures are based on a 10% sample. Data on 'visitor arrivals' are compiled both from embarkation and disembarkation cards. Since the compilation has been done on a sample basis the figures of 'visitor arrivals' obtained when working with records of arrivals do not tally with those obtained when working with records of departures. The figures in the latter case have been pro-rated to the totals obtained when working with records of arrivals.

4. Tourist nights:

Table 30, 35 and 36 show the number of nights spent by tourists who were on visit in the country during the period under review. The figures therefore include nights spent during the reference period by tourists who arrived before the beginning of the period. On the other hand, nights spent after the end of the reference period by tourists who arrived during the period are excluded.

5. Visitor nights:

In tables 38 - 41 an analysis is made of nights spent by visitors who arrived during the period under review and who have left by a given date after the end of the period. Figures for 1979 thus show the total number of nights spent by visitors who arrived in 1979 and left before 1.4.1980.

6. Mauritians settled abroad are excluded from figures of tourists and visitors. Data referring to them are shown separately in tables 42 - 44. Table 42 shows the total nights spent by Mauritians settled abroad who arrived during the period under review and who have left by a given date after the end of the period. Thus the figures for 1979 include nights spent in January-March 1980 by Mauritians settled abroad who arrived in 1979. Table 44 shows the nights spent during the period under review only. Thus the figures for 1979 include nights spent in 1979 by Mauritians settled abroad who arrived in 1978, but exclude nights spent in January-March 1980 by those who arrived in 1979.

Table 30 - Tourist^{1/} arrivals by mode of transport and total nights spent during period, 1963-1979

Period	Tourist arriving during period			Total nights spent during period ^{2/}
	Sea	Air	Total	
1963	1,008	6,719	7,727	99,400
1964	1,010	9,023	10,033	144,600
1965	746	9,312	10,058	144,900
1966	1,323	11,712	13,040	162,300
1967	937	13,877	14,814	172,000
1968	647	14,906	15,553	149,500
1969	455	20,132	20,587	220,600
1970	365	27,285	27,650	287,600
1971	168	36,230	36,398	399,700
1972	143	48,654	48,797	454,300
1973	1,293 ^{3/}	66,701	67,994	733,100
1974	472	72,443	72,915	772,200
1975	554	74,043	74,597	746,900
1976	778	91,783	92,561	892,200
1977	1,035	101,475	102,510	994,800
1978	696	107,626	108,322	1,051,600
1979	510	127,850	128,360	1,419,600

^{1/} see notes on page 34

^{2/} include nights spent during reference period by tourists arriving prior to the period

^{3/} includes about 700 persons who came for a religious conference

Table 31 - Tourist arrivals by month of arrival, 1969-1979

Month of arrival	1969	1970	1971	1972	1973	1974	1975	1976	1977	1978	1979
January	1,692	2,718	3,669	4,701	6,874	8,495	8,401	10,055	11,507	10,808	12,640
February	1,556	2,013	2,494	3,335	4,865	5,954	4,017	7,035	8,433	8,452	9,930
March	1,370	1,876	2,191	3,046	4,152	5,272	4,383	6,149	6,974	7,715	9,410
April	1,449	1,493	2,419	2,875	5,091	5,299	4,477	6,715	8,245	7,836	10,860
May	1,208	2,281	2,905	3,261	5,060	5,203	5,235	7,385	7,974	7,337	10,300
June	985	1,722	1,890	2,639	4,501	4,661	3,740	4,849	5,432	5,244	7,190
July	2,334	1,981	2,918	3,986	4,726	5,379	5,739	7,551	8,832	8,599	10,270
August	2,761	3,909	5,297	7,038	9,595	9,026	10,844	11,851	11,927	13,477	14,710
September	1,816	2,232	2,845	3,911	5,105	5,183	5,706	6,004	6,463	7,616	9,860
October	1,222	1,889	2,522	3,534	4,893	5,202	5,586	7,757	7,382	9,130	9,760
November	1,564	2,049	2,615	3,873	4,398	5,650	6,634	7,157	7,859	9,719	10,310
December	2,430	3,487	4,633	6,796	8,736	7,591	9,835	10,615	10,882	12,389	13,120
Whole year	20,587	27,650	36,398	48,797	67,994	72,915	74,597	92,561	102,510	108,322	128,360

Graph 3 - Tourist arrivals by month of arrival, January 1973 - December 1979

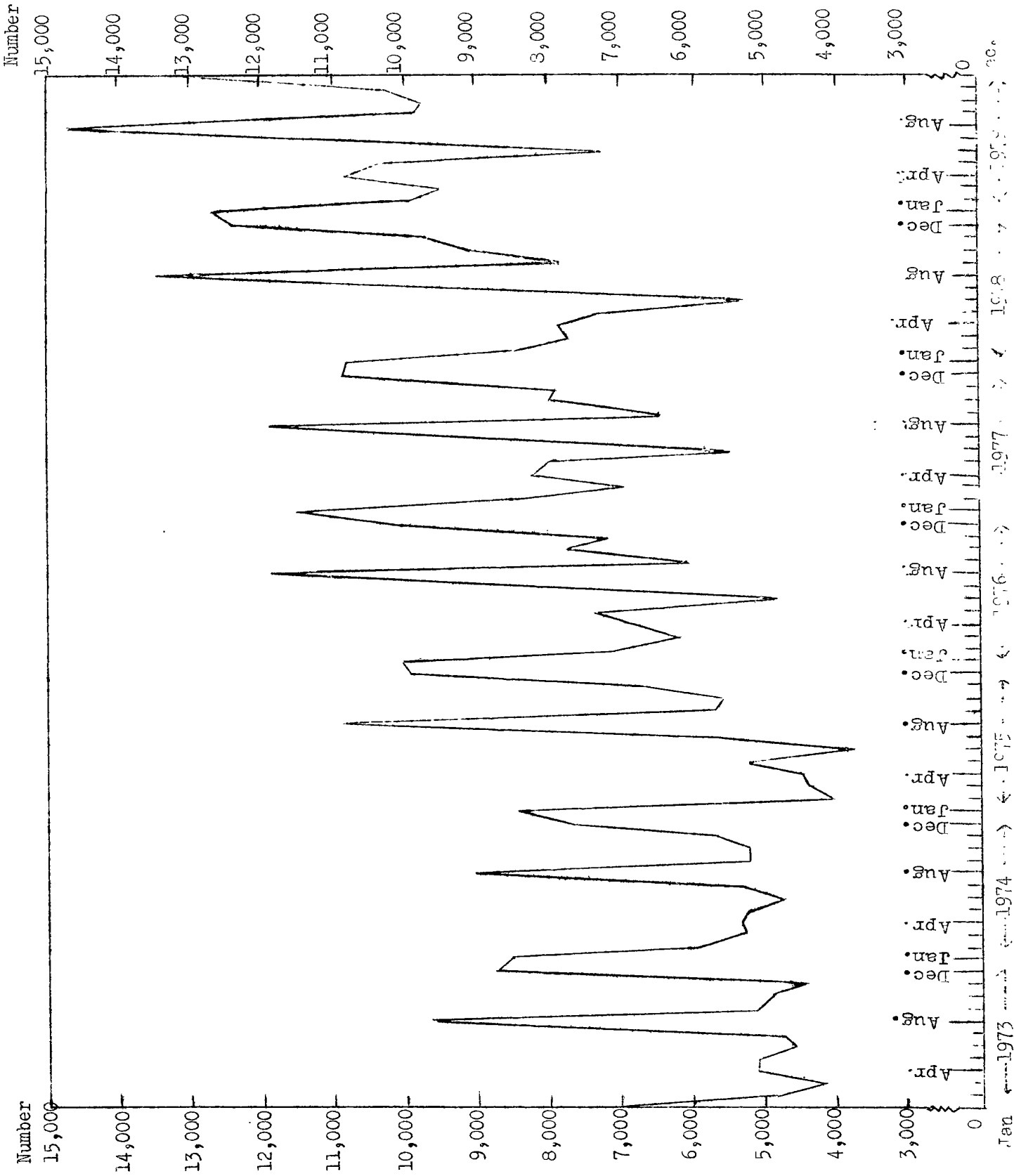


Table 33 - ^{1/}Tourist arrivals by country of residence, 1969 - 1979

Country of residence	1969	1970	1971	1972	1973	1974	1975	1976	1977	1978	1979
Australia	1,162	1,571	1,700	2,171	3,060	3,351	3,417	3,559	2,812	2,730	4,780
France	767	1,437	2,540	5,771	7,281	7,874	8,929	13,885	17,628	21,240	25,720
Germany, Fed. Rep.	124	481	824	1,406	1,996	1,951	1,533	1,532	2,535	2,811	5,550
Hong Kong	70	51	115	226	230	154	215	173	188	141	90
India	272	479	554	879	2,235	1,308	1,944	2,676	2,704	2,913	2,950
Italy	146	190	428	775	2,136	1,937	1,712	2,115	3,302	3,498	3,760
Kenya	574	681	634	684	824	898	707	1,057	909	826	1,000
Malagasy Republic	2,050	1,985	2,287	2,747	3,563	2,679	1,976	3,035	5,273	4,891	6,220
Malawi	27	67	66	135	166	243	267	399	431	343	380
Réunion	8,905	11,405	15,161	19,230	22,542	23,232	21,853	30,032	29,926	29,717	29,740
Rhodesia	22	88	191	435	380	591	1,232	920	440	688	1,290
Seychelles	21	45	63	256	563	431	405	428	505	545	520
South Africa, Rep. of	2,680	3,637	4,939	7,088	9,985	14,193	14,740	17,823	18,205	18,956	23,420
Switzerland	77	110	159	303	537	840	876	1,014	1,189	1,449	1,950
Tanzania	194	186	216	200	308	282	125	254	439	459	520
United Kingdom	1,524	1,740	2,252	2,848	3,822	3,452	3,598	4,852	6,024	7,133	8,180
Zambia	332	1,314	1,224	1,825	2,375	3,332	2,406	1,884	2,865	2,549	2,390
Other countries	1,640	2,183	3,045	3,818	5,991	6,167	5,662	6,923	7,135	7,433	9,900
All countries	20,587	27,650	36,398	48,797	67,994	72,915	74,597	92,561	102,510	108,322	128,360

^{1/} see notes on page 34

Graph 4 - Percentage distribution of tourist arrivals by country of residence - 1979

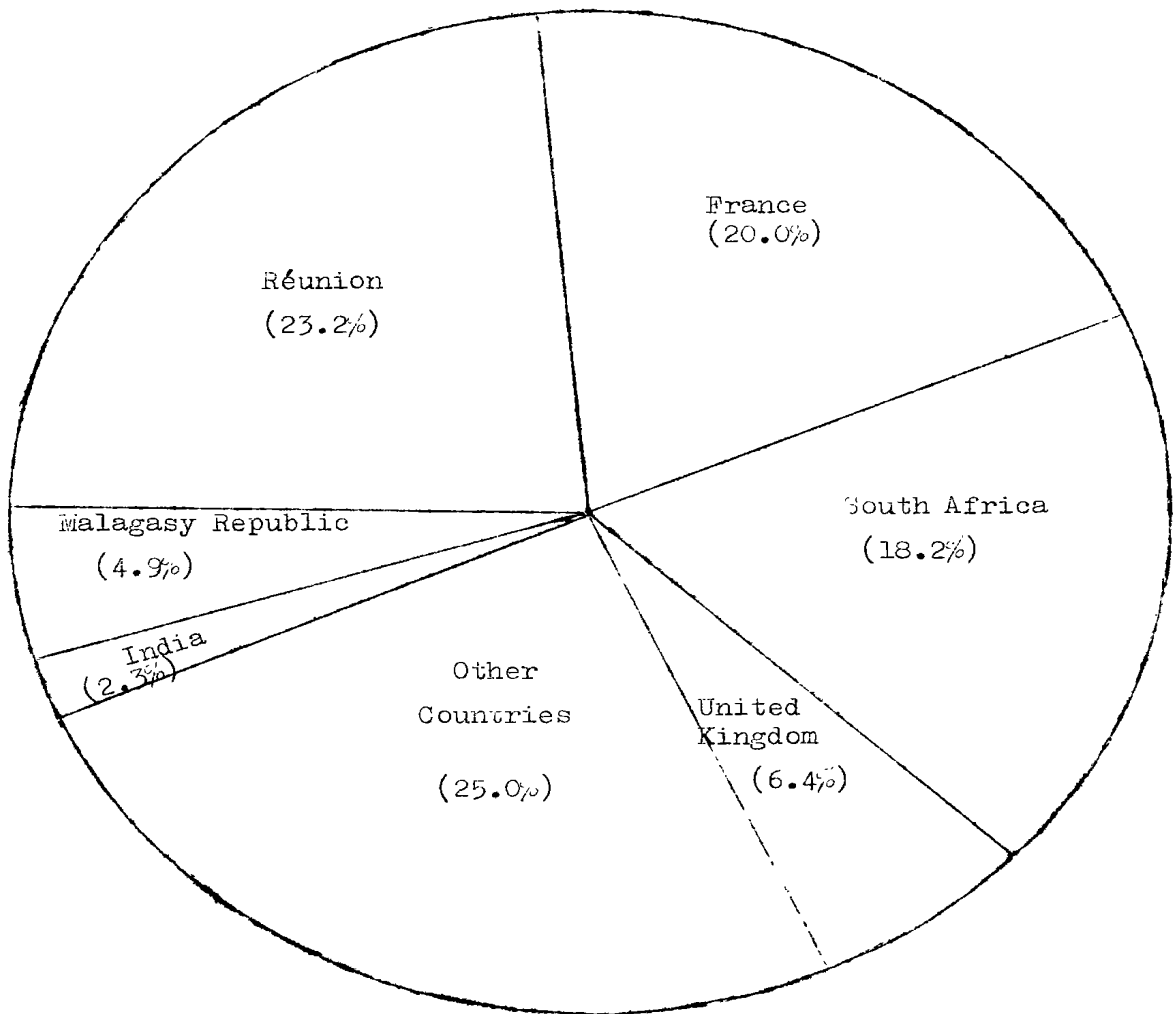
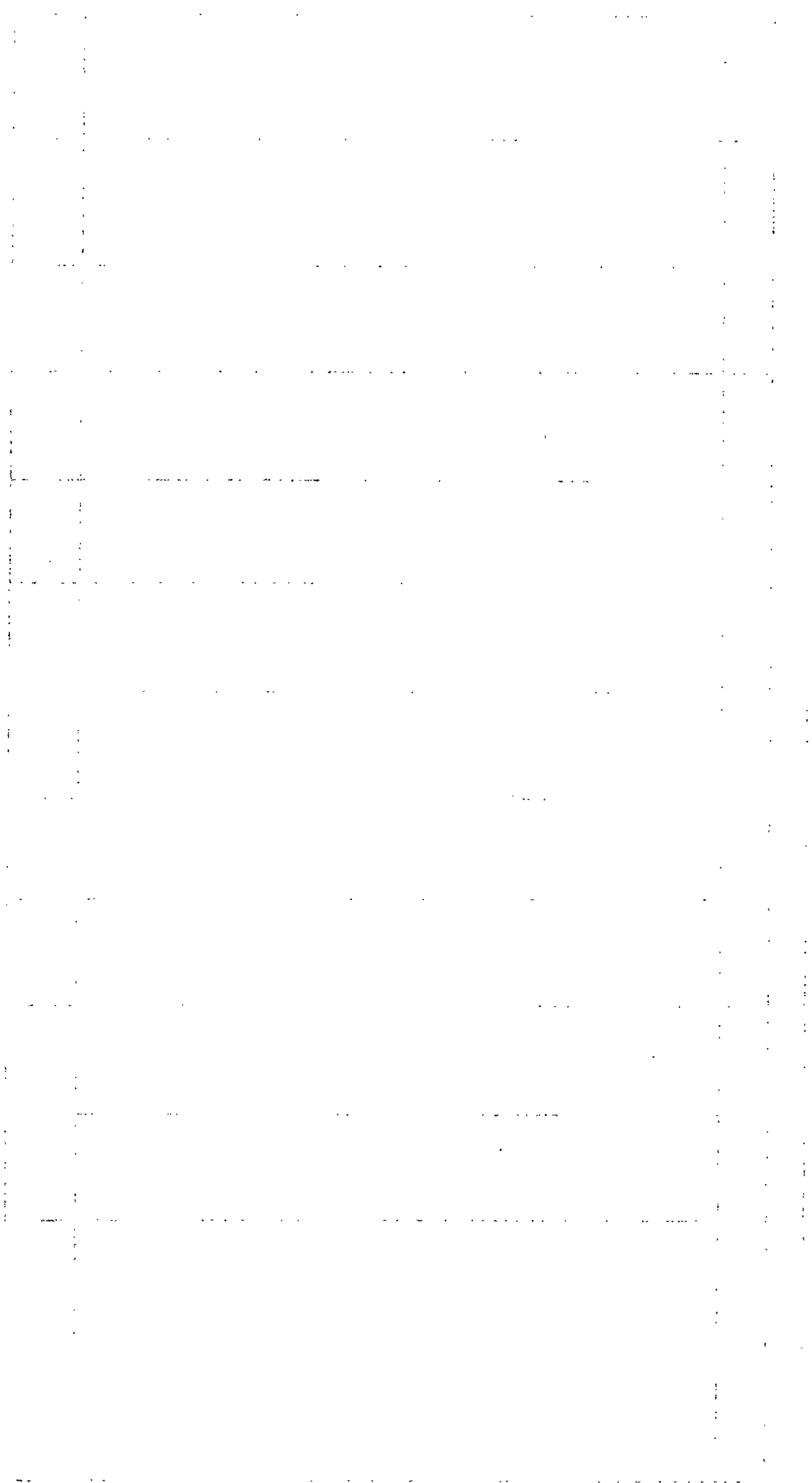


Table 35 - Tourist^{1/} nights by country of residence of tourist, 1969 - 1979

Country of residence	1969	1970	1971	1972	1973	1974	1975	1976	1977	1978	1979
Australia	7,877	7,520	11,431	9,767	21,082	26,014	26,080	26,487	23,198	25,047	38,570
France	6,531	15,385	26,878	39,043	94,408	100,673	99,847	151,971	189,961	219,947	263,200
Germany, Fed. Rep.	1,200	4,874	10,582	14,306	25,016	27,796	23,068	21,128	32,015	40,450	94,060
India	5,482	7,492	8,793	8,032	16,509	15,287	17,285	22,501	22,769	26,377	33,370
Italy	1,049	1,216	3,716	5,567	19,563	20,876	15,705	21,217	30,424	29,898	44,530
Kenya	4,355	5,180	5,197	4,498	6,471	6,371	5,532	7,492	7,474	6,746	10,310
Malagasy Rep.	24,236	19,553	27,618	25,376	39,927	26,965	17,735	29,081	42,440	33,597	48,460
Malawi	285	505	860	1,074	1,710	2,910	2,407	3,420	3,715	2,861	2,390
Reunion	105,018	130,052	172,147	198,383	236,462	227,129	220,268	244,391	243,402	237,919	243,870
Rhodesia	141	840	2,004	4,952	5,103	7,174	14,133	10,513	5,527	10,913	15,110
Seychelles	858	1,700	1,505	2,213	6,005	4,239	4,000	4,867	6,254	6,513	4,810
South Africa, Rep. of	23,792	33,630	50,066	52,383	87,975	138,178	145,596	172,865	169,522	179,566	282,740
Switzerland	694	1,018	1,716	2,693	5,295	10,770	10,522	13,653	17,164	17,625	21,190
Tanzania	1,054	1,860	2,543	1,673	2,761	2,563	1,512	2,892	3,582	4,035	4,750
United Kingdom	19,609	23,577	31,181	36,125	71,275	56,923	61,943	71,336	86,855	107,921	144,280
Zambia	3,130	14,052	13,076	18,972	22,567	34,948	22,394	17,006	23,779	23,457	22,800
Other countries	15,261	19,137	30,426	29,214	70,936	63,367	58,853	71,402	86,685	78,738	145,170
All countries	220,572	287,591	399,739	454,271	733,065	772,183	746,898	892,222	994,766	1,051,610	1,419,610

^{1/} see notes on page 34



Graph 5 - Total arrivals, tourist arrivals and tourist nights spent
during period, 1969 - 1979

Tourist nights
(000)

Total arrivals
Tourist arrivals
(000)

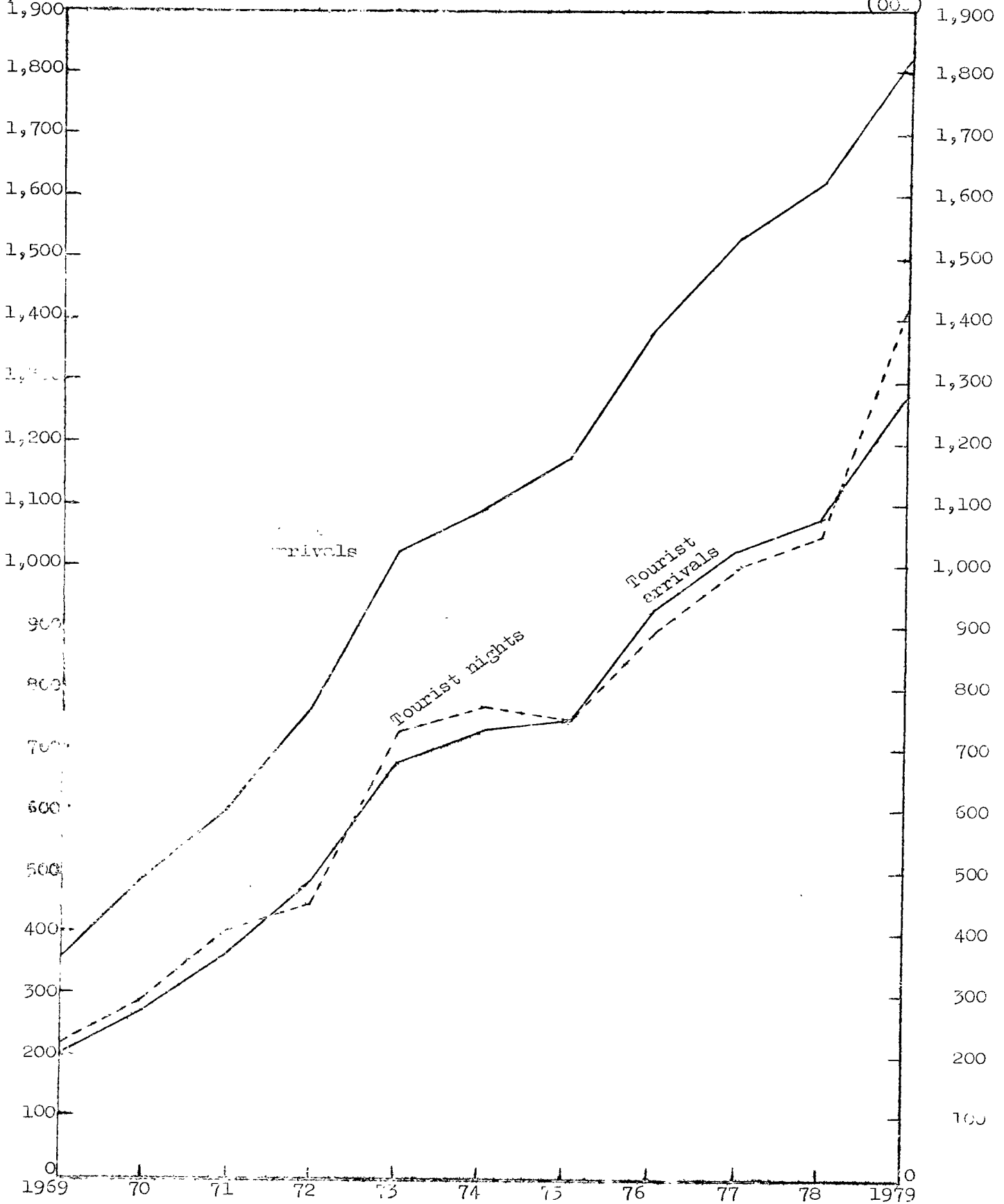


Table 36 - Tourist arrivals and tourist nights^{1/} by country of residence, 1979

Country of residence	Tourist arrivals	Tourist nights spent during period
Australia	4,780	38,570
France	25,720	263,200
Germany, Fed. Rep.	5,550	94,060
India	2,950	33,370
Italy	3,760	44,530
Kenya	1,000	10,310
Malagasy Republic	6,220	48,460
Malawi	380	2,390
Reunion	29,740	243,870
Rhodesia	1,290	15,110
Seychelles	520	4,810
South Africa, Rep. of	23,420	282,740
Switzerland	1,950	21,190
Tanzania	520	4,750
United Kingdom	8,130	144,280
Zambia	2,390	22,800
Other Countries	9,990	145,170
All Countries	128,360	1,419,610

^{1/} see notes on page 34

Table 37 - Visitor arrivals by age and sex, 1978-1979

Age (completed years)	1978/			1979/		
	Both sexes	Male	Female	Both sexes	Male	Female
Under 1	620	388	232	720	440	280
1 - 4	3,379	1,993	1,386	3,670	1,960	1,710
5 - 9	4,898	2,742	2,156	5,400	3,050	2,350
10 - 14	4,666	2,533	2,133	5,030	2,770	2,260
15 - 19	5,279	2,395	2,884	5,660	2,890	2,770
20 - 24	10,409	4,606	5,803	12,160	5,750	6,400
25 - 29	15,192	8,040	7,152	17,600	9,780	7,820
30 - 34	15,450	8,861	6,589	17,960	10,450	7,510
35 - 39	12,651	7,808	4,843	16,270	10,340	5,930
40 - 44	9,984	6,393	3,591	11,950	7,540	4,410
45 - 49	8,438	5,227	3,211	10,440	6,550	3,890
50 - 54	7,122	4,248	2,874	8,430	5,190	3,240
55 - 59	5,574	3,385	2,189	6,770	4,040	2,730
60 - 64	3,354	1,910	1,444	3,810	2,250	1,560
65 - 69	2,394	1,338	1,056	3,220	1,940	1,280
70 & over	1,744	911	833	2,340	1,280	1,060
Not stated	442	269	173	620	430	190
All ages	111,596	63,047	48,549	132,050	76,660	55,390

1/ see notes on page 34

2/ visitors arriving in 1978 and leaving before 1.2.79

3/ visitors arriving in 1979 and leaving before 1.4.80

Table 38 - Visitor arrivals and visitor nights^{1/} by country of residence.,
1978-1979

Country of residence	1978 ^{2/}			1979 ^{3/}		
	Visitor arrivals	Visitor nights	Average length of stay	Visitor arrivals	Visitor nights	Average length of stay
Australia	2,819	24,895	8.8	4,460	38,720	8.7
France	21,812	216,966	9.9	24,740	255,500	10.3
Germany, Fed. Rep.	2,885	41,331	14.3	5,650	89,150	15.8
India	2,946	25,786	8.8	2,940	32,530	11.1
Italy	3,479	31,640	9.1	3,810	38,560	10.1
Kenya	865	6,562	7.6	1,000	7,030	7.0
Malagasy Republic	4,883	32,606	6.7	6,530	46,330	7.1
Malawi	391	2,766	7.1	350	2,360	6.7
Reunion	31,608	231,721	7.3	31,680	232,530	7.3
Rhodesia	733	10,536	14.5	1,220	15,130	12.4
Seychelles	602	6,412	10.6	510	4,070	8.0
South Africa, Rep. of	19,305	177,079	9.2	24,470	279,040	11.4
Switzerland	1,460	17,261	11.8	1,820	22,660	12.5
Tanzania	487	3,858	7.9	520	4,310	8.3
United Kingdom	7,018	104,740	14.9	8,520	134,740	15.8
Zambia	2,641	23,617	8.9	2,470	21,600	8.7
Other Countries	7,662	76,522	10.0	11,360	138,520	12.2
All Countries	111,596	1,054,394	9.3	132,050	1,362,780	10.3

1/ see notes on page 34

2/ figures refer to visitors arriving in 1978 and leaving before 1.2.79 and to the nights spent by them.

3/ figures refer to visitors arriving in 1979 and leaving before 1.4.80 and to the nights spent by them.

Table 39 - Visitor^{1/} arrivals by duration of stay, 1978-1979

Duration of stay	1978 ^{2/}		1979 ^{3/}	
	Number	Percentage	Number	Percentage
Less than 1 day	3,717	3.3	3,690	2.8
1 day	6,108	5.5	6,350	4.8
2 days	6,333	5.7	8,140	6.2
3 "	10,514	9.4	11,340	8.6
4 "	9,925	8.9	10,910	8.3
5 "	6,947	6.2	8,160	6.2
6 "	6,104	5.5	7,590	5.7
7 "	20,265	18.2	24,140	18.3
8 "	4,944	4.4	6,830	5.2
9 "	3,005	2.7	3,510	2.6
10 "	4,154	3.7	4,290	3.2
11 "	3,475	3.1	4,000	3.0
12 "	1,865	1.7	2,370	1.8
13 "	1,630	1.5	2,140	1.6
14 "	7,704	6.9	9,890	7.5
15 "	1,750	1.6	1,940	1.5
16 "	1,132	1.0	1,010	0.8
17 "	713	0.6	780	0.6
18 "	760	0.7	730	0.5
19 "	654	0.6	740	0.6
20 - 24 "	3,854	3.4	5,180	3.9
25 - 29 "	2,389	2.1	3,010	2.3
1 month -- under 2 months	2,768	2.5	3,660	2.8
2 months - under 3 months	468	0.4	670	0.5
3 months and over	400	0.4	980	0.7
Not stated	31	-	-	-
Total	111,596	100.0	132,050	100.0

^{1/} see notes on page 34

^{2/} visitors arriving in 1978 and leaving before 1.2.79

^{3/} visitors arriving in 1979 and leaving before 1.4.80

Table 40 - Visitors/ arrivals by country of residence and duration of stay, 1979

Country of residence	Duration of stay in days											Total visitors	
	0	1 & 2	3 & 4	5 & 6	7 & 8	9 & 10	11 & 12	13 & 14	15-19	20-24	25-29		30+
Australia	150	1,190	1,180	660	400	130	90	210	10	150	60	290	4,460
France	400	1,650	4,390	14,510	5,010	1,610	1,070	2,570	1,060	790	720	1,120	24,740
India	170	920	570	590	160	150	40	120	10	70	20	240	2,940
Kenya	10	200	290	120	170	20	40	60	50	20	-	30	1,000
Malagasy Rep.	150	660	1,210	1,200	1,400	220	120	150	150	60	70	100	6,530
Reunion	1,560	4,300	8,700	4,630	1,800	1,670	980	1,250	150	650	510	820	31,680
S. Africa, Rep.	580	2,020	2,420	100	2,640	2,450	2,270	1,870	740	530	330	640	24,470
United Kingdom	150	420	750	600	1,540	300	420	1,580	360	1,110	340	850	8,520
Zambia	50	670	240	120	580	70	70	450	70	50	50	70	2,470
Other countries	670	2,460	2,500	2,510	5,150	1,180	1,290	3,810	1,750	1,750	910	1,150	25,240
All countries	5,600	14,490	22,250	15,750	30,570	7,800	6,370	12,050	5,200	5,180	3,010	5,310	132,050

1/ see notes on page 34

Table 41 - Visitor arrivals and visitor nights^{1/} by country of nationality, 1979

Country of nationality	Visitor arrivals ^{2/}	Visitor nights ^{3/}	Average length of stay
Australia	5,570	35,560	8.5
France	57,550	496,270	8.6
Germany, Fed. Rep.	6,240	95,350	15.4
India	4,110	38,770	9.3
Italy	4,090	42,190	10.3
Kenya	340	2,850	8.4
Malagasy Republic	5,430	38,770	7.1
Malawi	60	270	4.5
Rhodesia	770	8,720	11.3
South Africa, Rep. of	21,530	251,200	11.7
Switzerland	1,770	21,540	12.1
Tanzania	200	2,280	11.4
United Kingdom	12,900	183,820	14.2
Zambia	500	3,590	9.4
Other countries	12,530	143,800	11.4
All countries	132,050	1,362,780	10.3

^{1/} see notes on page 34

^{2/} figures refer to visitors arriving in 1979 and leaving before 1.4.80

^{3/} figures refer to nights spent by visitors arriving in 1979 and leaving before 1.4.80

Table 42 - Arrivals of Mauritians settled abroad (excluding students) and nights spent by them by country of residence, 1978 - 1979

Country of residence	1978 ^{1/}			1979 ^{2/}		
	Arrivals	Nights	Average length of stay	Arrivals	Nights	Average length of stay
Australia	755	23,637	31.4	690	18,500	26.8
Belgium	136	4,133	30.4	100	3,480	34.8
Canada	176	6,125	34.8	180	5,130	28.5
France	1,928	63,330	32.8	1,960	59,890	30.6
Germany, Fed. Rep. of	113	3,379	29.9	100	3,030	30.3
India	21	467	22.2	50	1,840	36.8
Malagasy Republic	93	2,139	23.0	60	2,680	44.7
Malawi	85	2,172	25.6	40	600	15.0
Réunion	1,542	26,321	17.1	1,470	23,750	16.2
Rhodesia	57	1,157	20.3	80	1,740	21.8
Switzerland	78	2,037	26.1	100	2,920	29.2
South Africa, Rep. of	619	14,772	23.9	440	8,700	19.8
United Kingdom	3,435	119,472	34.8	3,620	140,050	38.7
Zambia	58	1,756	30.3	90	1,750	19.4
Other Countries	418	11,855	28.4	600	13,070	21.8
All Countries	9,514	282,802	29.7	9,530	287,130	30.0

^{1/} figures refer to Mauritians settled abroad arriving in 1978 and leaving before 1.2.79, and to the total nights spent by them in 1978 and 1979

^{2/} figures refer to Mauritians settled abroad arriving in 1979 and leaving before 1.4.80 and to the total nights spent by them in 1979 and 1980

See notes on page 34

Table 43 - Arrivals of Mauritians settled abroad (excluding students) by duration of stay, 1978 - 1979

Duration of stay	1978 ^{1/}	1979 ^{2/}
Less than 1 day	85	110
1 day	131	90
2 days	131	100
3 days	179	220
4 days	146	240
5 days	93	170
6 days	128	170
7 days	245	400
8 days	155	140
9 days	125	140
10 days	107	110
11 days	95	260
12 days	93	140
13 days	91	70
14 days	226	220
15 days	113	110
16 days	113	140
17 days	103	110
18 days	224	200
19 days	175	130
20 - 24 days	926	920
25 - 29 days	1,653	1,240
1 month - under 2 months	3,715	3,450
2 months - under 3 months	358	460
3 months and over	159	240
Not stated	-	-
Total	9,514	9,580

^{1/} figures refer to Mauritians settled abroad arriving in 1978 and leaving before 1.2.79

^{2/} figures refer to Mauritians settled abroad arriving in 1979 and leaving before 1.4.80

See notes on page 34

Table 44 - Total nights spent by Mauritians settled abroad
(excluding students) by country of residence,
1978 - 1979

Country of residence	1978 <u>1/</u>	1979 <u>2/</u>
Australia	24,474	28,450
Belgium	4,267	3,830
Canada	7,561	5,440
France	69,253	68,670
Germany, Fed. Rep. of	3,342	2,930
India	456	1,540
Malagasy Republic	2,287	2,770
Malawi	3,588	750
Réunion	29,052	34,330
Rhodesia	1,217	1,520
Switzerland	2,180	2,540
South Africa, Rep. of	15,983	11,380
United Kingdom	132,736	157,320
Zambia	3,434	1,720
Other countries	13,554	14,480
All countries	313,434	337,670

1/ figures refer to nights spent during 1978 by Mauritians settled abroad arriving in 1978 or before and leaving before 1.2.1979

2/ figures refer to nights spent during 1979 by Mauritians settled abroad arriving in 1979 or before and leaving before 1.4.1980

See notes on page 34

MAURITIUS

ILE MAURICE

INTERNATIONAL EMBARKATION AND DISEMBARKATION CARD

Carte Internationale d'Embarquement et de Débarquement

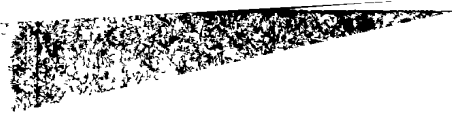
- 1. Mr/M.)
Mrs/Mme.)
Miss/Mlle) Surname/Nom
.....
Given names/Prénoms
- 2. Date and Place of birth
Date et lieu de naissance
- 3. Nationality
Nationalité
- 4. Occupation
Profession
- 5. Permanent address
Domicile

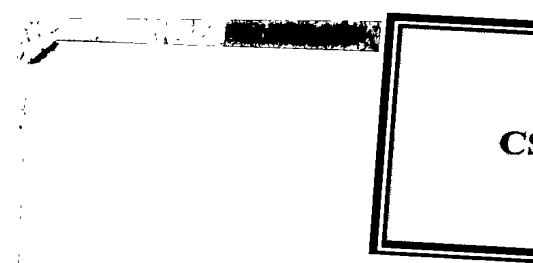
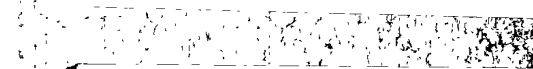
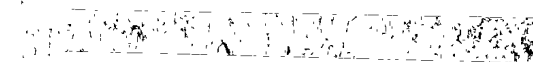
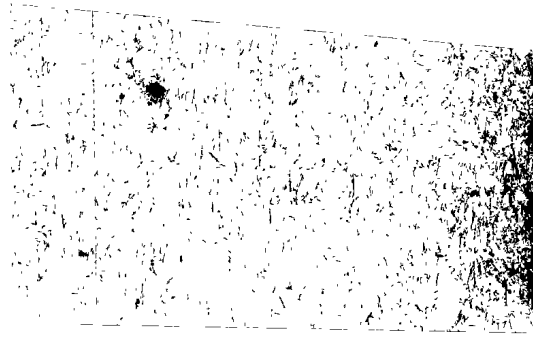
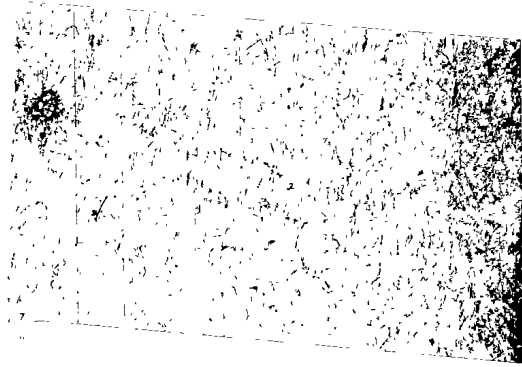
FOR PASSENGERS LEAVING / POUR LES PASSAGERS AU DEPART

- 6. Port of final destination
Lieu de destination finale

FOR ARRIVING PASSENGERS / POUR LES PASSAGERS A L'ARRIVEE

- 7. Port of original embarkation
Lieu d'embarquement d'origine
- 8. Purpose of journey to Mauritius
Motif du voyage à l'Ile Maurice
- 9. Intended length of stay in Mauritius
Durée probable du séjour à l'Ile Maurice
- 10. Intended address during stay in Mauritius
Adresse prévue pendant le séjour à Maurice
.....
- 11. Passport No. Place and Date of issue
Numéro du passport, lieu et date d'émission
.....





CS