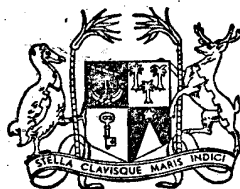


Vol. 5

No. 2



MAURITIUS

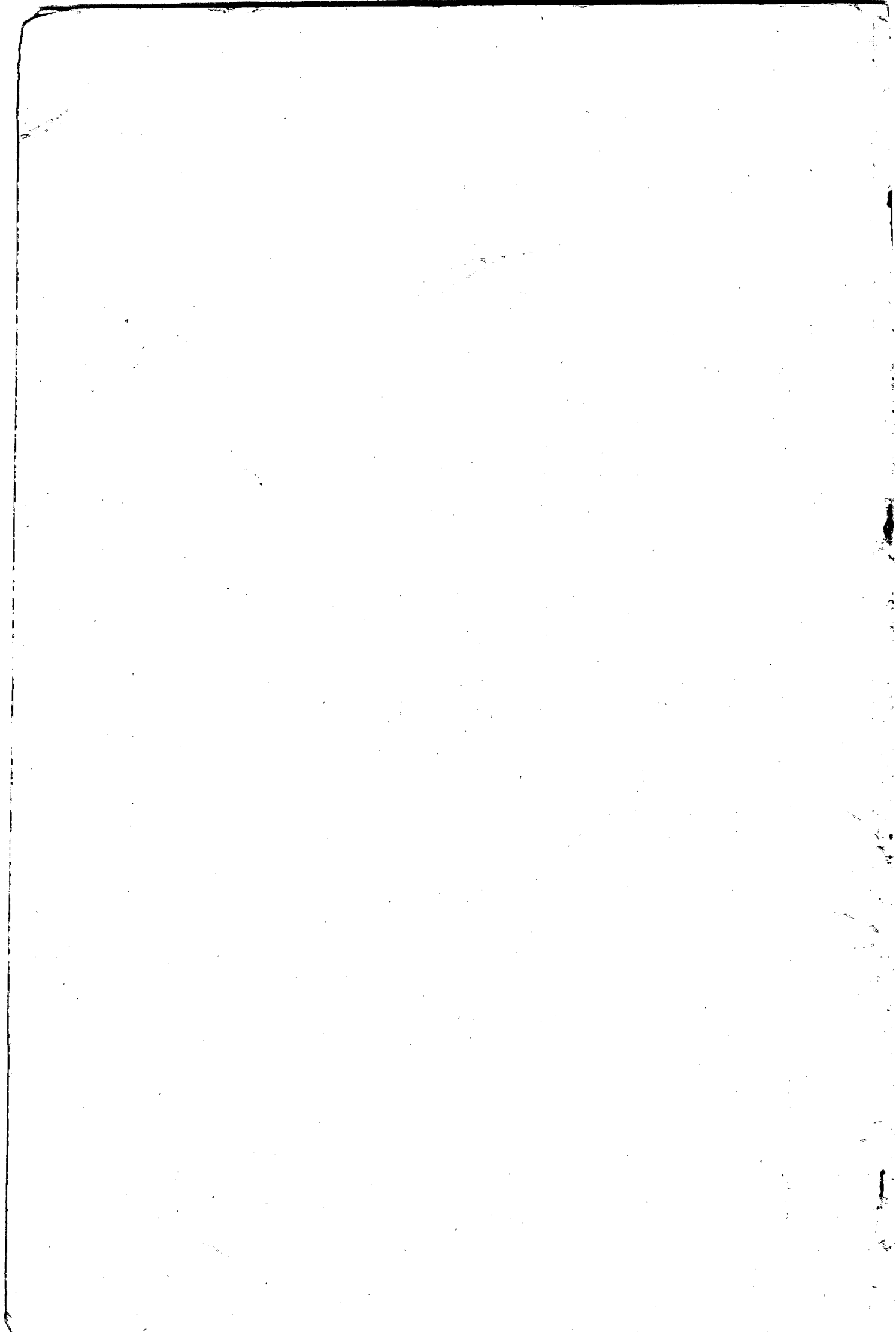
Ministry of Economic Planning and Development

CENTRAL STATISTICAL OFFICE

**INTERNATIONAL TRAVEL
AND
TOURISM**

December 1978

[Price : Rs 15.00]



INTERNATIONAL TRAVEL AND TOURISM

Vol. 5 No. 2

December 1978

"International Travel and Tourism", a publication of the Central Statistical Office, is designed to present data on international travel and tourism in more detail than those that are currently published in the Bi-annual Digest of Statistics.

With the help of the computer of the Ministry of Finance it has been possible to process in more detail the information recorded on the international embarkation and disembarkation cards which passengers fill in on leaving and entering the country.

It is hoped that the results, especially those on tourism, which have been assembled in this report will be useful to all those who take an interest in the evolution of the tourist industry in this country.

The co-operation of the Immigration and Passport Office of the Police Department and the Data Processing Division of the Ministry of Finance is gratefully acknowledged.

The following symbols are used throughout:

- Nil
- ... Not available

J. Ah Kong
Director of Statistics

Central Statistical Office
Rose Hill
Mauritius

July 1979

CONTENTS

	<u>Page</u>
<u>I - POPULATION AND VITAL STATISTICS</u>	
Table 1 - Estimated population of Mauritius as at 31st December 1978 based on the final 1972 Population Census data	1
2 - Population increase in intercensal periods - Island of Mauritius, 1846 - 1972	1
3(a) - Population enumerated at each census by population group and sex - Island of Mauritius, 1846 - 1952	2
3(b) - Population enumerated at each census by community and sex - Island of Mauritius, 1962-72	2
4 - Population of Mauritius by geographical district and sex, 1976-78 (end of year estimates)	3
5 - Population and vital statistics - Island of Mauritius, 1921-78	4
<u>II - PASSENGER TRAFFIC</u>	
Table 6 - Passenger traffic by sex, 1933-78	6 & 7
7 - Passenger traffic between Island of Mauritius and Rodrigues, 1962-78	7
8 - Passenger traffic by mode of transport, 1962-78	9
9 - Passenger traffic by month, 1975-73	10
10 - Arrivals by country of original embarkation, 1973-78	11
11 - Departures by country of final destination, 1973-78	12
12 - Passenger traffic by type of passenger and month, 1978	13
13 - Arrivals by age and sex, January 1977 - December 1978	14
14 - Departures by age and sex, January 1977 - December 1978	15
15 - Excess of arrivals over departures by age and sex, January 1977 - December 1978	16
16 - Arrivals and departures of residents of Island of Mauritius by district of residence and sex, 1978	17
17 - Arrivals of residents of Island of Mauritius by age and sex, July 1976 - December 1978	18
18 - Departures of residents of Island of Mauritius by age and sex, July 1976 - December 1978	19
19 - Excess of arrivals over departures of residents (excluding emigrants) of Island of Mauritius by age and sex, July 1976 - December 1978	20
20 - Excess of arrivals over departures of residents (including emigrants) of Island of Mauritius by age and sex, July 1976 - December 1978	21
21 - Departures of Mauritian residents by air by country of final destination, 1976-78	22
<u>III - EMIGRATION</u>	
Table 22 - Official long-term emigrants by sex, 1956-78	23
23 - External migration, 1956-78	24
24 - Official long-term emigrants by country of intended residence, 1965-78	25 & 26
25 - Age distribution of official long-term emigrants, 1965-78	27 - 29

CONTENTS (cont'd)

	<u>Page</u>
<u>III - EMIGRATION (cont'd)</u>	
Table 26 - Official long-term emigrants by Major Occupational group, 1973-78	30
27 - Official long-term emigrants by Major Occupational group, age and sex, 1978	31
28 - Official long-term emigrants by occupation, 1976-78	32
29 - Official long-term emigrants by district of last residence and sex, January 1977 - December 1978	33
<u>IV - TOURISM</u>	
Definition and notes	34
Table 30 - Tourist arrivals by mode of transport and total nights spent during period, 1963-78	35
31 - Tourist arrivals by month of arrival, 1968-78	36
32 - Percentage distribution of tourist arrivals by month of arrival, 1968-78	38
33 - Tourist arrivals by country of residence, 1968-78	39 - 41
34 - Percentage distribution of tourist arrivals by country of residence, 1968-78	42
35 - Tourist nights by country of residence of tourist, 1968-78	44 - 46
36 - Tourists arriving in 1978 by country of residence and month of arrival	48 - 49
37 - Tourist arrivals and tourist nights by country of residence and mode of transport, 1978	50
38 - Visitor arrivals by age and sex, 1977-78	51
39 - Visitor arrivals and visitor nights by country of residence, 1977-78	52
40 - Visitor arrivals by duration of stay, 1977-78	53
41 - Visitor arrivals by country of residence and duration of stay, 1978	54
42 - Visitor arrivals and visitor nights by country of nationality, 1978	55
43 - Visitor arrivals by country of residence and nationality, 1978	56
44 - Visitor nights by country of residence and nationality, 1978	57
45 - Arrivals of Mauritians settled abroad (excluding students) and nights spent by them by country of residence, 1977-78	58
46 - Arrivals of Mauritians settled abroad (excluding students) by duration of stay, 1977-78	59
47 - Total nights spent by Mauritians settled abroad (excluding students) by country of residence, 1977-78	60

Graphs

	<u>Page</u>
Graph 1 - Mid-year population estimates - Island of Mauritius, 1957-78	5
2 - Passenger traffic, 1963-78	8
3 - Tourist arrivals by month of arrival, January 1972 - December 1978	37
4 - Percentage distribution of tourist arrivals by country of residence, 1978	43
5 - Total arrivals, tourist arrivals and total nights spent during period, 1968-78	47

Appendix : International embarkation/dismbarkation Specimen card

I. POPULATION AND VITAL STATISTICS

Table 1 - Estimated population of Mauritius as at 31st December 1978 based on the final 1972 Population Census data

Island	Both sexes	Male	Female
Island of Mauritius	909,905	451,352	458,553
Island of Rodrigues	28,375	13,785	14,590
Other Islands	350	250	100
Mauritius	938,630	465,387	473,243

Table 2 - Population increase in intercensal periods - Island of Mauritius, 1846-1972

Census date	Population enumerated at Census			Intercensal increase	Average annual rate of increase %
	Both sexes	Male	Female		
1st Aug. 1846	158,462	104,598	53,864		
20th Nov. 1851	180,823	119,341	61,482	22,361	2.55
8th Apr. 1861	310,050	202,961	107,089	129,227	5.87
11th Apr. 1871	316,042	193,575	122,467	5,992	0.19
4th Apr. 1881	359,874	208,655	151,219	43,832	1.31
6th Mar. 1891	370,588	206,038	164,550	10,714	0.29
1st Apr. 1901	371,023	199,552	171,471	435	0.01
31st Mar. 1911	368,791	194,095	174,696	- 2,232	- 0.06
21st May 1921	376,485	194,108	182,377	7,694	0.21
26th Apr. 1931	393,238	200,609	192,629	16,753	0.44
11th Jun. 1944	419,185	210,326	208,859	25,947	0.49
29th Jun. 1952	501,415	252,032	249,383	82,230	2.26
30th Jun. 1962 ^{1/}	681,619	342,306	339,313	180,204	3.12
30th Jun. 1972 ^{1/}	826,199	413,580	412,619	144,580	1.94

^{1/} de facto population - including the European members of the armed Forces but excluding the passengers and crews of ships lying in the harbour.

Table 3(a) - Population enumerated at each census by population group and sex - Island of Mauritius, 1846-1952

Year of census	General Population			Indo-Mauritian Population			Chinese Population		
	Both sexes	Male	Female	Both sexes	Male	Female	Both sexes	Male	Female
1846	102,217	55,665	46,554	56,245	48,935	7,310	-	-	-
1851	102,827	55,059	47,768	77,996	64,282	13,714	-	-	-
1861	115,864	59,796	56,068	192,634	141,615	51,019	1,552	1,550	2
1871	97,497	49,487	48,010	216,258	141,804	74,454	2,287	2,284	3
1881	107,523	53,754	53,569	248,993	151,352	97,641	3,558	3,549	9
1891	111,517	55,397	56,120	255,920	147,499	108,421	3,151	3,142	9
1901	108,422	52,995	55,427	259,086	143,100	115,986	3,515	3,457	58
1911	107,432	51,808	55,624	257,697	138,974	118,723	3,662	3,313	349
1921	104,216	49,725	54,491	265,524	139,150	126,374	6,745	5,233	1,512
1931	115,666	54,733	60,933	268,649	139,533	129,116	8,923	6,343	2,580
1944	145,056	67,156	75,920	265,247	136,382	128,865	10,882	6,808	4,074
1952	148,238	70,370	77,868	335,327	171,241	164,086	17,850	10,421	7,429

At the 1962 Census each householder was asked for the first time to state the population group to which each member of his household claimed to belong.

Prior to 1962, it is probable that, from one census to another, different criteria have been used in classifying the population by population groups. Figures are therefore not strictly comparable from one census to another, before 1962

Table 3(b) - Population enumerated at each census by community and sex - Island of Mauritius, 1962-72

Year of census	Total Population			Hindu			Muslim			Sino-Mauritian			General Population		
	Both sexes	Male	Female	Both sexes	Male	Female	Both sexes	Male	Female	Both sexes	Male	Female	Both sexes	Male	Female
1962	681,619	342,306	339,313	344,587	174,698	169,889	110,322	55,971	54,351	23,058	12,654	10,404	203,652	98,983	104,669
1972	826,199	413,580	412,619	428,167	215,654	212,513	137,081	68,789	68,292	24,084	12,849	11,235	236,867	116,288	120,579

✓ de facto population - including the European members of the Armed Forces but excluding the passengers and crews of ships lying in the harbour

Table 4 - Population of Mauritius by geographical district and sex, 1976-78 (end of year estimates)

Geographical district	Estimated population ^{1/} as at 31.12.76			Estimated population ^{1/} as at 31.12.77			Estimated population ^{1/} as at 31.12.78		
	Both sexes	Male	Female	Both sexes	Male	Female	Both sexes	Male	Female
Port Louis	141,343	69,636	71,707	142,901	70,257	72,644	144,815	71,099	73,716
Pamplemousses	74,181	37,425	36,756	75,419	37,927	37,492	76,879	38,567	38,312
Rivière du Rempart	72,767	36,727	36,040	74,073	37,295	36,778	75,572	37,941	37,631
Flacq	97,163	48,790	48,373	99,052	49,589	49,463	101,163	50,508	50,655
Grand Port	86,269	43,214	43,055	87,611	43,843	43,768	89,223	44,550	44,673
Savanne	56,210	28,212	27,998	57,198	28,685	28,513	58,216	29,097	29,119
P. Wilhems : Urban	242,596	119,610	122,986	244,018	119,634	124,384	247,814	121,225	126,589
Other	30,035	15,037	14,998	32,219	16,534	15,685	32,990	16,914	16,076
Moka	51,807	25,845	25,962	52,617	26,190	26,427	53,558	26,603	26,955
Black River	28,410	14,312	14,098	28,992	14,555	14,437	29,675	14,848	14,827
Island of Mauritius	880,781	438,808	441,973	894,100	444,509	449,591	909,905	451,352	458,553
Island of Rodrigues	27,049	13,251	13,798	27,614	13,429	14,185	28,375	13,785	14,590
Other Islands	350	250	100	350	250	100	350	250	100
Mauritius	908,180	452,309	455,871	922,064	458,188	463,876	938,630	465,387	473,243

^{1/} based on the final 1972 population census data. No account has been taken of internal migration

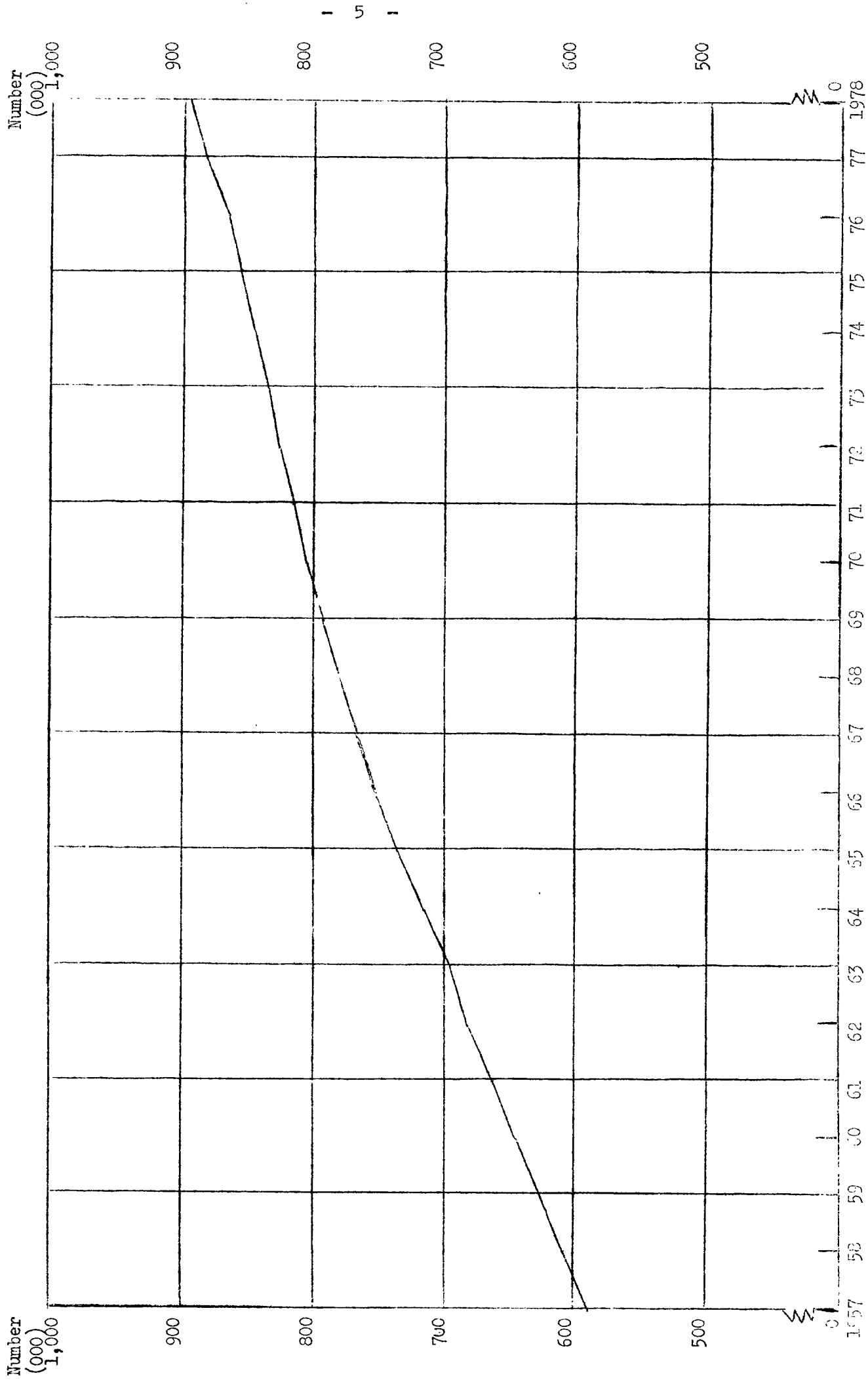
Table 5 - Population and vital statistics - Island of Mauritius, 1921-1973

Period	Population ^{1/} at mid-period	Live births	Deaths	Natural increase	Infant deaths ^{2/}	Still births	Civil marriages
1921-25 Average	379,636	14,834	11,758	3,076	2,104	1,581	2,062
1926-30 "	403,248	14,203	11,614	2,594	2,002	1,256	1,455
1931-35 "	393,647	12,490	11,889	601	1,752	1,216	1,489
1936-40 "	412,003	13,621	11,157	2,464	2,119	1,240	2,093
1941-45 "	417,838	15,027	11,927	3,100	2,318	1,240	3,333
1946-50 "	438,797	19,595	9,113	10,482	2,343	1,348	3,503
1951-55 "	522,577	23,176	7,701	15,475	1,884	1,472	3,307
1956	574,933	24,910	6,739	18,171	1,644	1,739	3,030
1957	593,070	25,273	7,603	17,670	1,897	1,800	2,903
1958	609,518	24,600	7,112	17,488	1,659	1,703	3,169
1959	627,249	23,923	6,753	17,170	1,495	1,759	3,297
1960	644,743	25,307	7,248	18,059	1,760	1,733	3,113
1961	622,368	26,092	6,505	19,587	1,618	1,963	3,484
1962	681,619	26,267	6,325	19,942	1,579	1,841	3,393
1963	695,641	27,978	6,709	21,269	1,660	1,519	3,472
1964	716,293	27,528	6,184	21,344	1,361	1,611	3,965
1965	735,245	26,279	6,337	19,942	1,635	1,557	3,976
1966	753,276	26,817	6,701	20,116	1,721	1,384	4,157
1967	767,782	23,499	6,543	16,956	1,656	1,074	3,949
1968	781,615	24,413	7,126	17,287	1,688	1,110	3,974
1969	792,893	21,719	6,428	15,291	1,523	951	3,382
1970	805,489	21,623	6,309	15,314	1,232	357	4,499
1971	816,561	20,334	6,248	14,586	1,077	842	4,346
1972	826,199	20,496	6,506	13,990	1,303	718	5,032
1973	834,781	18,974	6,525	12,499	1,201	678	5,533
1974	845,755	22,933	6,221	16,717	1,045	354	6,771
1975	856,516	21,492	6,967	14,525	1,046	896	6,888
1976	867,885	22,250	6,815	15,435	900	784	8,262
1977	881,761	22,730	6,966	15,764	1,023	712	8,421
1978	896,471	24,250	6,400	17,850	823	653	10,532

^{1/} figures for 1963-71 have been revised in the light of the final 1972 Population Census data.

^{2/} deaths of children under 1 year of age.

Graph 1 - Mid-year population estimates - Island of Mauritius, 1957 - 1978



II - PASSENGER TRAFFIC

Table 6 - Passenger traffic^{1/} by sex, 1933 - 1978

Period	Arrivals			Departures			Net overseas migration
	Both sexes	Male	Female	Both sexes	Male	Female	
1933	3,444	2,410	1,034	4,011	2,862	1,149	- 567
1934	3,969	2,777	1,192	4,380	3,056	1,324	- 411
1935	3,988	2,876	1,112	4,255	2,899	1,356	- 267
1936	3,807	2,681	1,126	3,563	2,451	1,112	+ 244
1937	3,472	2,366	1,106	3,849	2,736	1,113	- 377
1938	4,554	3,062	1,492	4,281	2,896	1,385	+ 273
1939	3,171	1,984	1,187	3,212	2,127	1,085	- 41
1940	1,513	1,028	490	1,851	1,379	472	- 333
1941	1,209	950	259	4,165	3,859	306	- 2,956
1942	1,083	893	190	1,560	1,398	162	- 477
1943	1,054	859	195	737	642	95	+ 317
1944	1,034	798	236	1,053	796	257	- 19
1945	2,061	1,624	437	2,247	1,624	623	- 186
1946	3,293	2,279	1,019	3,377	2,160	1,217	- 79
1947	4,698	3,128	1,570	4,514	3,100	1,414	+ 184
1948	4,294	2,792	1,502	4,015	2,684	1,331	+ 279
1949	4,093	2,700	1,393	4,141	2,794	1,347	- 48
1950	5,253	3,469	1,784	4,900	3,352	1,548	+ 353
1951	5,243	3,515	1,728	5,016	3,536	1,480	+ 227
1952	6,046	3,999	2,047	5,637	3,854	1,783	+ 409
1953	7,252	4,820	2,432	7,054	4,732	2,322	+ 198
1954	7,251	4,728	2,523	7,312	4,824	2,488	- 61
1955	7,216	4,558	2,658	7,354	4,722	2,632	- 138
1956	7,747	4,873	2,874	8,225	5,219	3,006	- 473
1957	8,095	5,156	2,939	8,267	5,309	2,958	- 172
1958	3,703	5,424	3,279	8,924	5,596	3,328	- 221
1959	9,637	5,995	3,642	9,544	6,058	3,486	+ 93
1960	10,412	6,563	3,849	10,784	6,938	3,846	- 372
1961	11,854	7,246	4,608	13,033	8,165	4,868	- 1,179
1962	15,189	9,283	5,906	16,075	9,387	6,188	- 386

Table 6 (continued)

Period	Arrivals			Departures			Net overseas migration
	Both sexes	Male	Female	Both sexes	Male	Female	
1963	17,974	10,866	7,108	18,215	11,024	7,191	- 241
1964	21,221	12,787	8,434	22,331	13,349	8,982	- 1,110
1965	22,024	13,571	8,453	24,150	14,759	9,391	- 2,126
1966	26,456	16,358	10,098	29,301	17,930	11,371	- 2,845
1967	29,321	18,177	11,144	32,925	20,135	12,790	- 3,604
1968	31,403	19,820	11,583	35,988	22,181	13,807	- 4,585
1969	35,919	21,552	14,367	38,929	23,127	15,802	- 3,010
1970	48,819	29,587	19,232	51,969	31,033	20,936	- 3,150
1971	60,826	36,005	24,821	63,997	37,399	26,598	- 3,171
1972	77,174	45,587	31,587	81,493	47,837	33,656	- 4,319
1973	101,184	59,215	41,969	104,697	61,364	43,333	- 3,513
1974	109,044	63,077	45,967	113,362	65,649	47,713	- 4,318
1975	117,548	68,654	48,894	120,703	70,368	50,335	- 3,155
1976	139,303	80,674	58,629	141,148	81,718	59,430	- 1,845
1977	153,208	87,417	65,791	155,653	89,243	66,410	- 2,445
1978	161,688	93,087	68,601	163,733	94,850	68,883	- 2,045

1/ including seamen but excluding transit passengers who do not leave the airport

Table 7 - Passenger traffic between Island of Mauritius and Rodrigues, 1962 - 1978

Period	Departures to Rodrigues			Arrivals from Rodrigues			Net overseas migration
	Both sexes	Male	Female	Both sexes	Male	Female	
1962	1,033	661	372	1,126	725	401	- 93
1963	899	620	279	1,439	905	534	- 540
1964	1,300	850	450	1,450	915	535	- 150
1965	1,339	854	485	1,525	961	564	- 186
1966	1,326	860	466	1,418	904	514	- 92
1967	1,485	940	545	1,268	822	446	+ 217
1968	1,541	940	601	1,485	946	539	+ 56
1969	1,569	1,034	535	1,493	994	499	+ 76
1970	1,740	1,103	637	1,762	1,123	639	- 22
1971	1,578	1,017	561	1,744	1,118	626	- 166
1972	2,168	1,409	759	2,311	1,469	842	- 143
1973	2,427	1,521	906	2,453	1,511	942	- 26
1974	2,053	1,197	856	2,648	1,560	1,088	- 595
1975	2,968	1,870	1,098	3,319	2,030	1,289	- 351
1976	3,796	2,528	1,268	4,221	2,854	1,367	- 425
1977	4,477	2,935	1,542	4,853	3,214	1,639	- 376
1978	5,571	3,588	1,983	5,642	3,641	2,001	- 71

Graph 2 - Passenger traffic, 1963-1978

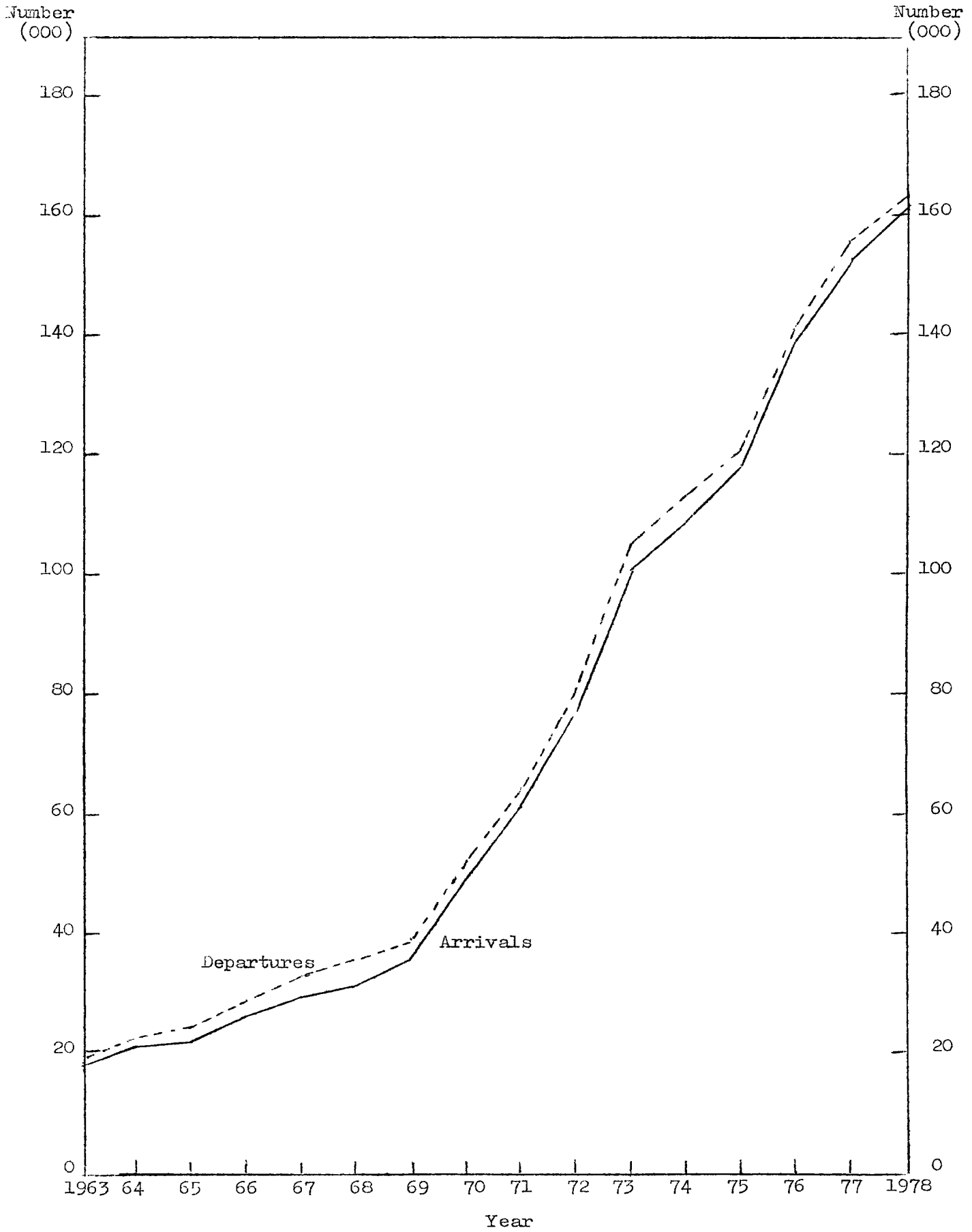


Table 8 - Passenger traffic^{1/} by mode of transport, 1962 - 1978

Period	Arrivals			Departures			Net overseas migration
	Total	By sea	By air	Total	By sea	By air	
1962	15,189	4,258	10,931	16,075	4,374	11,701	- 886
1963	18,047	4,660	13,387	18,299	4,432	13,867	- 252
1964	21,221	5,187	16,034	22,331	5,478	16,853	- 1,110
1965	22,024	4,886	17,138	24,150	5,463	18,687	- 2,126
1966	26,456	5,544	20,912	29,301	6,330	22,971	- 2,845
1967	29,321	4,901	24,420	32,925	6,515	26,410	- 3,604
1968	31,403	4,264	27,139	35,988	5,967	30,021	- 4,585
1969	35,919	3,483	32,436	38,929	4,632	34,297	- 3,010
1970	48,819	3,984	44,835	51,969	4,376	47,593	- 3,150
1971	60,826	3,857	56,969	63,997	4,295	59,702	- 3,171
1972	77,174	3,741	73,433	81,493	4,072	77,421	- 4,319
1973	101,184	4,238	96,946	104,697	4,027	100,670	- 3,513
1974	109,044	3,848	105,196	113,362	3,772	109,590	- 4,318
1975	117,548	4,485	113,063	120,703	4,255	116,448	- 3,155
1976	139,303	4,367	134,936	141,148	4,441	136,707	- 1,845
1977	153,208	4,929	148,279	155,653	4,624	151,029	- 2,445
1978	161,688	4,411	157,277	163,733	4,698	159,035	- 2,045
1978 : 1st Qr.	38,483	1,018	37,465	43,347	1,283	42,064	- 4,864
2nd Qr.	31,891	1,438	30,453	33,276	1,217	32,059	- 1,385
3rd Qr.	45,449	919	44,530	46,985	1,314	45,671	- 1,536
4th Qr.	45,865	1,036	44,829	40,125	884	39,241	+ 5,740

^{1/} including seamen but excluding transit passengers who do not leave the airport

Table 9 - Passenger traffic ^{1/} by month, 1975 - 1978

Month	Arrivals				Departures				Excess of arrivals over departures							
	1975	1976	1977	1978	1975	1976	1977	1978	1975	1976	1977	1978	1975	1976	1977	1978
January	11,918	14,436	16,034	15,890	14,327	17,267	19,383	19,041	- 2,411	- 2,831	- 3,349	- 3,151	- 2,411	- 2,831	- 3,349	- 3,151
February	6,223	9,560	11,445	11,777	9,203	12,222	13,120	13,208	- 2,980	- 2,662	- 1,675	- 1,431	- 2,980	- 2,662	- 1,675	- 1,431
March	7,115	9,072	9,947	10,816	6,734	9,127	10,564	11,098	+ 381	- 55	- 617	- 282	+ 381	- 55	- 617	- 282
April	7,222	9,758	12,013	11,620	7,875	10,223	11,851	11,738	- 651	- 465	+ 162	- 118	- 651	- 465	+ 162	- 118
May	7,968	10,933	11,728	11,268	9,139	11,338	12,827	12,064	- 1,771	- 405	- 1,099	- 796	- 1,771	- 405	- 1,099	- 796
June	7,070	8,056	9,344	9,003	7,065	8,280	9,151	9,474	+ 5	- 224	+ 193	- 471	+ 5	- 224	+ 193	- 471
July	9,756	12,798	13,647	13,824	9,911	11,550	13,064	13,586	- 155	+ 1,268	+ 583	+ 238	- 155	+ 1,268	+ 583	+ 238
August	15,963	16,970	17,804	19,256	14,024	15,218	16,475	17,394	+ 1,939	+ 1,752	+ 1,329	+ 1,862	+ 1,939	+ 1,752	+ 1,329	+ 1,862
September	9,304	9,661	10,844	12,369	12,466	13,063	13,914	16,005	- 3,162	- 3,402	- 3,070	- 3,636	- 3,162	- 3,402	- 3,070	- 3,636
October	8,905	11,128	11,617	13,181	8,624	10,354	10,595	12,307	+ 281	+ 774	+ 1,022	+ 874	+ 281	+ 774	+ 1,022	+ 874
November	10,009	10,824	11,153	13,555	10,527	11,558	11,791	14,033	- 518	- 734	- 638	- 478	- 518	- 734	- 638	- 478
December	16,095	16,107	17,632	19,129	10,810	10,968	12,918	13,785	+ 5,285	+ 5,139	+ 4,714	+ 5,344	+ 5,285	+ 5,139	+ 4,714	+ 5,344
Whole year	117,548	139,303	153,208	161,688	120,703	141,148	155,653	163,733	- 3,155	- 1,845	- 2,445	- 2,045	- 3,155	- 1,845	- 2,445	- 2,045

^{1/} including seamen but excluding transit passengers who do not leave the airport

Table 10 - Arrivals^{1/} by country of original embarkation, 1973 - 1978

Country of original embarkation	1973	1974	1975	1976	1977	1978
Kenya	2,349	2,815	2,733	3,591	3,309	2,801
Malagasy Republic	3,649	3,211	2,228	3,694	6,516	5,460
Malawi	499	628	793	897	1,178	1,222
Réunion	37,156	37,767	42,569	49,799	53,024	53,197
Rhodesia	368	535	1,088	734	304	415
Seychelles	1,780	2,051	2,061	3,223	3,250	3,153
South Africa, Rep. of	12,346	17,220	18,158	21,471	21,514	22,603
Tanzania	570	655	528	608	529	815
Zambia	2,605	3,663	2,952	2,330	4,020	3,840
Rodrigues	2,427	2,053	2,968	3,796	4,853	5,642
Agalega & St. Brandon	325	394	357	122	361	375
Other African	1,685	1,278	1,094	1,605	1,200	1,136
China (Mainland)	76	13	13	73	58	79
China (Taiwan)	170	270	93	44	91	10
Hong Kong	673	595	858	1,012	1,016	1,072
India	5,040	4,108	5,506	6,564	7,955	8,048
Japan	123	157	124	115	130	94
Singapore	53	91	99	93	76	82
Other Asian	384	696	524	668	506	784
Australia	4,325	4,575	4,537	4,750	4,354	4,195
New Caledonia	120	131	59	83	80	74
New Zealand	423	363	303	281	169	139
Other Oceanian	72	67	30	37	36	50
Belgium	3,066	2,235	2,242	930	243	310
France	6,627	9,009	9,814	12,865	14,798	20,053
Germany, Fed. Rep. of	1,650	1,487	1,231	1,183	1,726	2,279
Italy	1,656	1,783	1,406	1,580	2,380	3,016
Switzerland	385	589	536	597	587	726
United Kingdom	11,989	12,410	13,728	16,641	17,102	18,497
Other European	884	877	490	502	628	557
Canada	221	355	326	266	225	215
U.S.A.	356	362	226	153	227	229
Other American	31	80	32	45	55	28
U.S.S.R.	79	93	66	57	80	45
All countries	104,162	112,616	119,772	140,409	152,580	161,241

^{1/} excluding transit passengers who did not leave the airport; discharged seamen numbering 533, 464, 508, 687, 507 and 447 respectively for the period under review

Table 11 - Departures^{1/} by country of final destination, 1973 - 1978

Country of final destination	1973	1974	1975	1976	1977	1978
Kenya	2,278	2,319	2,126	3,096	2,541	2,348
Malagasy Republic	4,870	3,888	2,704	4,371	4,990	4,433
Malawi	495	571	907	1,304	943	972
Réunion	36,031	36,959	43,058	50,538	53,648	53,418
Rhodesia	342	399	1,150	633	375	447
Seychelles	2,295	2,429	2,209	2,591	4,023	3,544
South Africa, Rep. of	12,537	16,607	17,450	20,684	21,344	22,209
Tanzania	576	433	332	479	637	780
Zambia	2,824	3,891	3,263	2,800	3,444	3,314
Rodrigues	2,453	2,648	3,319	4,221	4,477	5,571
Agalega & St. Brandon	335	526	672	173	318	273
Other African	1,245	905	819	1,604	1,412	1,117
China (Mainland)	63	24	14	25	58	62
China (Taiwan)	186	197	52	38	195	185
Hong Kong	652	574	839	983	1,048	1,192
India	5,185	4,790	5,608	7,055	8,340	8,753
Japan	126	111	111	65	129	95
Singapore	42	119	36	34	81	123
Other Asian	257	574	439	772	666	1,223
Australia	4,660	5,568	5,395	5,469	4,627	4,144
New Caledonia	118	86	92	109	53	37
New Zealand	333	360	316	379	173	140
Other Oceanian	49	61	50	43	48	11
Belgium	3,808	2,294	1,703	826	367	370
France	4,357	7,008	8,277	11,044	15,736	21,256
Germany, Fed. Rep. of	1,596	1,548	1,246	1,319	1,934	2,268
Italy	1,470	1,362	1,276	1,346	3,072	3,218
Switzerland	372	510	396	534	892	882
United Kingdom	9,882	10,374	12,192	15,376	17,757	18,855
Other European	723	765	400	429	800	877
Canada	174	210	157	210	276	247
U.S.A.	290	296	124	171	254	274
Other American	26	29	55	26	19	31
U.S.S.R.	70	100	74	49	83	84
All countries	100,720	108,536	116,861	138,796	154,760	162,753

^{1/} excluding transit passengers who did not leave the airport; engaged seamen numbering 655, 535, 746, 931, 739 and 980 respectively for the period under review

Table 12 - Passenger traffic^{1/} by type of passenger and month, 1978

Type of passenger	Jan.	Feb.	Mar.	Apr.	May	Jun.	Jul.	Aug.	Sept.	Oct.	Nov.	Dec.	Whole year
ARRIVALS													
Visitors ^{2/}	11,274	9,003	8,108	8,118	7,533	5,437	8,916	13,732	7,967	9,356	9,913	12,682	112,039
On holiday	10,162	7,490	6,856	6,896	6,566	4,405	7,894	12,854	6,912	8,250	8,603	11,884	98,772
On business	328	506	498	602	488	462	423	365	385	600	744	240	5,641
In transit	742	980	708	576	455	532	588	496	640	474	467	546	7,204
Other and not stated	42	27	45	44	24	38	11	17	30	32	99	12	422
Mauritians settled abroad	905	524	541	517	492	520	1,490	1,220	610	610	601	2,618	10,648
Mauritian residents:	3,315	2,021	1,879	2,642	2,995	2,745	3,150	4,076	3,403	2,991	2,829	3,644	35,690
Other	363	200	249	307	196	269	224	183	365	184	181	143	2,864
Total	15,857	11,748	10,777	11,584	11,216	8,971	13,780	19,211	12,345	13,141	13,524	19,087	161,241
DEPARTURES													
Visitors ^{2/}	13,639	9,592	7,577	7,947	8,490	5,187	7,989	12,306	10,203	8,263	10,504	9,244	110,941
Mauritians settled abroad	2,258	1,061	513	557	590	440	578	1,238	1,388	589	585	527	10,324
Emigrants	24	21	29	32	23	24	32	16	37	28	27	27	320
Mauritian residents:	2,743	2,274	2,509	2,828	2,492	3,361	4,482	3,405	4,107	3,038	2,621	3,657	37,517
Other	257	198	346	304	335	380	465	257	213	324	265	307	3,651
Total	18,921	13,146	10,974	11,668	11,930	9,392	13,546	17,222	15,948	12,242	14,002	13,762	162,753

^{1/} excluding seamen, and transit passengers who do not leave the airport

^{2/} including non-residents (a total of 3,717 for the year) who left the airport but stayed in the country for less than a day

Table 13 - Arrivals^{1/} by age and sex, January 1977 - December 1978

Age (completed years)	January - June 1977			July - December 1977			January - June 1978			July - December 1978		
	Both sexes	Male	Female	Both sexes	Male	Female	Both sexes	Male	Female	Both sexes	Male	Female
	Under	444	244	200	533	301	232	413	234	179	593	345
1 - 4	2,271	1,208	1,063	2,968	1,641	1,327	2,173	1,227	946	3,052	1,785	1,267
5 - 9	2,710	1,419	1,291	3,649	1,928	1,721	2,715	1,538	1,177	3,853	2,146	1,707
10 - 14	2,509	1,317	1,192	3,421	1,800	1,621	2,390	1,207	1,183	3,734	1,989	1,745
15 - 19	3,208	1,524	1,684	4,128	1,924	2,204	3,035	1,412	1,623	4,441	2,085	2,356
20 - 24	7,310	3,588	3,722	8,823	4,131	4,692	6,998	3,490	3,508	9,323	4,518	4,805
25 - 29	9,903	5,471	4,437	11,640	6,196	5,444	9,539	5,297	4,242	12,632	6,877	5,755
30 - 34	9,011	5,490	3,521	10,390	5,031	4,359	8,898	5,319	3,579	11,812	6,876	4,936
35 - 39	7,303	4,667	2,636	8,291	5,007	3,284	7,265	4,590	2,675	9,266	5,632	3,634
40 - 44	6,070	4,004	2,066	6,605	4,127	2,478	6,054	3,918	2,136	7,390	4,631	2,759
45 - 49	5,126	3,275	1,851	5,410	3,264	2,146	5,008	3,145	1,863	6,235	3,832	2,403
50 - 54	4,144	2,535	1,609	4,801	2,790	2,011	4,302	2,664	1,638	5,484	3,225	2,259
55 - 59	2,987	1,802	1,185	3,497	2,011	1,486	3,214	1,990	1,224	4,136	2,431	1,705
60 - 64	2,116	1,214	902	2,412	1,318	1,094	2,187	1,241	946	2,669	1,506	1,163
65 - 69	1,309	709	600	1,634	857	777	1,511	847	664	1,873	1,031	842
70 & over	1,024	525	499	1,232	606	626	1,100	581	519	1,419	765	654
Not stated	3,061	2,145	916	3,263	2,348	915	3,572	2,410	1,162	3,402	2,303	1,099
All ages	70,511	41,137	29,374	82,697	46,280	36,417	70,374	41,110	29,264	91,314	51,977	39,337

^{1/} including discharged seamen but excluding transit passengers who do not leave the airport

Table 14 - Departures ^{1/} by age and sex, January 1977 - December 1978

Age (completed years)	January - June 1977			July - December 1977			January - June 1978			July - December 1978		
	Both sexes	Male	Female	Both sexes	Male	Female	Both sexes	Male	Female	Both sexes	Male	Female
Under 1	544	289	255	514	305	209	461	275	186	555	355	200
1 - 4	2,696	1,427	1,269	2,715	1,517	1,198	2,555	1,471	1,084	2,697	1,576	1,121
5 - 9	3,098	1,584	1,514	3,381	1,871	1,510	3,138	1,695	1,443	3,482	1,983	1,499
10 - 14	2,831	1,500	1,331	3,338	1,781	1,557	2,687	1,395	1,292	3,569	1,932	1,637
15 - 19	3,702	1,722	1,980	4,471	2,176	2,295	3,440	1,599	1,841	4,719	2,340	2,379
20 - 24	8,040	3,882	4,158	8,877	4,464	4,413	7,610	3,720	3,890	9,635	4,889	4,746
25 - 29	10,747	5,933	4,814	10,843	5,848	4,995	10,273	5,648	4,625	11,778	6,538	5,240
30 - 34	9,757	5,889	3,868	9,540	5,613	3,927	9,659	5,717	3,942	10,987	6,458	4,529
35 - 39	7,987	5,088	2,899	7,766	4,728	3,038	7,792	4,903	2,889	8,647	5,312	3,335
40 - 44	6,491	4,237	2,254	6,114	3,825	2,289	6,513	4,201	2,312	6,905	4,385	2,520
45 - 49	5,509	3,495	2,014	5,048	3,109	1,939	5,431	3,346	2,085	5,865	3,646	2,219
50 - 54	4,430	2,673	1,757	4,518	2,629	1,889	4,595	2,745	1,850	5,229	3,086	2,143
55 - 59	3,265	1,947	1,318	3,288	1,902	1,386	3,544	2,205	1,339	3,888	2,325	1,563
60 - 64	2,351	1,334	1,017	2,266	1,269	997	2,369	1,344	1,025	2,487	1,398	1,089
65 - 69	1,496	817	679	1,493	780	713	1,656	929	727	1,677	933	744
70 & over	1,111	610	501	1,151	557	594	1,222	654	568	1,350	710	640
Not stated	2,841	2,085	756	3,434	2,357	1,077	3,678	2,653	1,025	3,640	2,484	1,156
All ages	76,896	44,512	32,384	78,757	44,731	34,026	76,623	44,500	32,123	87,110	50,350	36,760

^{1/} including engaged seamen but excluding transit passengers who do not leave the airport

Table 15 - Excess of arrivals^{1/} over departures^{1/} by age and sex, January 1977 - December 1978

Age (completed years)	January - June 1977			July - December 1977			January - June 1978			July - December 1978		
	Both sexes	Male	Female	Both sexes	Male	Female	Both sexes	Male	Female	Both sexes	Male	Female
Under 1	- 100	- 45	- 55	+ 19	- 4	+ 23	- 48	- 41	- 7	+ 38	- 10	+ 48
1 - 4	- 425	- 219	- 206	+ 253	+ 124	+ 129	- 382	- 244	- 138	+ 355	+ 209	+ 146
5 - 9	- 388	- 165	- 223	+ 268	+ 57	+ 211	- 423	- 157	- 266	+ 371	+ 163	+ 208
10 - 14	- 322	- 183	- 139	+ 83	+ 19	+ 64	- 297	- 188	- 109	+ 165	+ 57	+ 108
15 - 19	- 494	- 198	- 296	- 343	- 252	- 91	- 405	- 197	- 213	- 278	- 255	- 23
20 - 24	- 730	- 294	- 436	- 54	- 333	+ 279	- 612	- 230	- 382	- 312	- 371	+ 59
25 - 29	- 839	- 462	- 377	+ 797	+ 348	+ 449	- 734	- 351	- 385	+ 854	+ 339	+ 515
30 - 34	- 746	- 399	- 347	+ 650	- 418	+ 432	- 761	- 398	- 363	+ 925	+ 418	+ 407
35 - 39	- 684	- 421	- 263	+ 525	+ 275	+ 246	- 527	- 313	- 214	+ 619	+ 320	+ 299
40 - 44	- 421	- 233	- 188	+ 491	+ 302	+ 189	- 459	- 283	- 176	+ 485	+ 246	+ 239
45 - 49	- 383	- 220	- 163	+ 362	+ 155	+ 207	- 423	- 201	- 222	+ 370	+ 186	+ 184
50 - 54	- 286	- 138	- 148	+ 283	+ 161	+ 122	- 293	- 81	- 212	+ 255	+ 139	+ 116
55 - 59	- 278	- 145	- 133	+ 209	+ 109	+ 100	- 330	- 215	- 115	+ 248	+ 106	+ 142
60 - 64	- 235	- 120	- 115	+ 146	+ 49	+ 97	- 182	- 103	- 79	+ 182	+ 108	+ 74
65 - 69	- 187	- 108	- 79	+ 141	+ 77	+ 64	- 145	- 82	- 63	+ 196	+ 98	+ 98
70 & over	- 87	- 85	- 2	+ 81	+ 49	+ 32	- 122	- 73	- 49	+ 69	+ 55	+ 14
Not stated	+ 220	+ 60	+ 160	- 171	- 9	- 162	- 106	- 243	+ 137	- 238	- 181	- 57
All ages	- 6,385	- 3,375	- 3,010	+ 3,940	+ 1,549	+ 2,391	- 6,249	- 3,390	- 2,859	+ 4,204	+ 1,627	+ 2,577

^{1/}including seamen but excluding transit passengers who do not leave the airport

Table 16 - Arrivals and departures^{1/} of residents of Island of Mauritius by district of residence and sex, 1978

Geographical district	Arrivals			Departures			Excess of arrivals over departures		
	Both sexes	Male	Female	Both sexes	Male	Female	Both sexes	Male	Females
Port Louis	7,246	4,645	2,601	7,871	4,850	3,021	-	- 205	- 420
Pamplemousses	1,179	795	384	1,200	826	374	-	- 31	+ 10
Rivière du Rempart	907	606	301	1,042	716	326	-	- 110	- 25
Flacq	889	621	268	947	682	265	-	- 61	+ 3
Grand Port	965	613	352	1,029	648	381	-	- 35	- 29
Savanne	484	323	161	508	338	170	-	- 15	- 9
Plaines Wilhems : Urban	15,344	9,321	6,023	15,933	9,577	6,356	-	- 256	- 333
Other	219	140	79	270	174	96	-	- 34	- 17
Moka	669	418	251	684	426	258	-	- 8	- 7
Black River	442	261	181	428	242	186	+	+ 19	- 5
Not stated	7,346	4,773	2,573	7,605	4,914	2,691	-	- 141	- 118
Whole Island	35,690	22,516	13,174	37,517	23,393	14,124	-	- 877	- 950

^{1/} excluding official long-term emigrants

Table 17 - Arrivals of residents of Island of Mauritius by age and sex, July 1976 - December 1978

Age (completed years)	July-December 1976			January-June 1977			July-December 1977			January-June 1978			July-December 1978		
	Both sexes	Male	Female	Both sexes	Male	Female	Both sexes	Male	Female	Both sexes	Male	Female	Both sexes	Male	Female
Under 1	66	28	38	70	38	32	102	58	44	74	44	30	104	66	38
1 - 4	268	141	127	269	146	123	418	213	205	321	185	136	470	270	200
5 - 9	331	182	149	335	172	163	422	233	189	325	178	147	516	279	237
10 - 14	405	213	192	364	194	170	465	262	203	385	196	189	510	257	253
15 - 19	682	374	308	677	373	304	822	437	385	735	369	366	894	494	400
20 - 24	2,111	1,332	779	1,793	1,135	658	2,399	1,427	972	2,016	1,278	738	2,633	1,623	1,015
25 - 29	1,983	1,309	674	1,645	1,132	513	2,269	1,484	785	1,939	1,327	612	2,569	1,685	884
30 - 34	1,396	935	461	1,208	837	371	1,569	1,013	556	1,348	974	374	1,824	1,235	589
35 - 39	1,134	697	437	1,038	670	368	1,316	832	484	1,056	704	352	1,434	919	515
40 - 44	1,006	641	365	1,007	706	301	1,175	757	418	1,046	683	363	1,289	835	454
45 - 49	968	592	376	821	540	281	1,074	656	418	875	555	320	1,225	808	417
50 - 54	925	525	400	727	456	271	947	524	423	793	517	276	1,197	702	495
55 - 59	647	378	269	493	320	173	706	428	278	557	367	190	844	504	340
60 - 64	560	295	265	387	228	159	615	312	303	449	276	173	753	428	325
65 - 69	369	207	162	214	126	88	388	214	174	289	175	116	474	246	228
70 & over	263	137	126	220	118	102	330	183	147	235	122	113	404	233	171
Not stated	2,289	1,551	738	2,508	1,569	839	2,783	1,943	840	3,154	2,058	1,096	2,948	1,926	1,022
All ages	15,403	9,537	5,866	13,776	8,860	4,916	17,800	10,976	6,824	15,597	10,006	5,591	20,093	12,510	7,583

Table 13 - Departures of residents^{1/} of Island of Mauritius by age and sex, July 1976 - December 1978

Age (completed years)	July - December 1976			January - June 1977			July - December 1977			January - June 1978			July - December 1978		
	Both sexes	Male	Female	Both sexes	Male	Female	Both sexes	Male	Female	Both sexes	Male	Female	Both sexes	Male	Female
Under 1	70	39	31	75	40	35	106	59	47	77	48	29	133	84	49
1 - 4	350	178	172	274	149	125	449	234	215	343	201	142	481	282	199
5 - 9	449	250	199	249	130	119	513	275	243	346	190	156	562	306	256
10 - 14	590	313	277	266	133	133	705	384	321	284	134	150	725	375	350
15 - 19	1,180	649	531	756	398	358	1,434	782	652	785	395	390	1,504	866	638
20 - 24	2,727	1,748	979	2,062	1,236	826	3,125	1,961	1,164	2,140	1,296	844	3,391	2,152	1,239
25 - 29	2,043	1,336	707	1,766	1,167	599	2,347	1,536	811	2,032	1,340	692	2,557	1,668	889
30 - 34	1,398	907	491	1,293	881	412	1,521	1,008	513	1,439	991	448	1,740	1,164	576
35 - 39	1,071	651	420	1,129	719	410	1,293	784	514	1,105	719	386	1,397	880	517
40 - 44	991	618	373	1,058	718	340	1,165	734	431	1,083	705	378	1,266	808	458
45 - 49	907	559	348	932	594	338	987	584	403	981	606	375	1,144	741	403
50 - 54	350	475	375	813	487	331	889	488	401	994	540	354	1,131	657	474
55 - 59	604	365	239	583	356	227	672	392	280	664	431	233	795	467	328
60 - 64	514	268	246	465	253	212	551	298	253	555	330	225	644	354	290
65 - 69	317	171	146	290	159	131	340	174	166	343	187	156	400	225	175
70 & over	244	126	118	246	140	106	310	158	152	269	149	120	382	208	174
Not stated	2,270	1,506	764	2,139	1,453	681	2,769	1,800	969	2,367	1,913	954	3,058	1,981	1,077
All ages	16,575	10,159	6,416	14,401	9,018	5,383	19,136	11,651	7,535	16,207	10,175	6,032	21,310	13,218	8,092

^{1/} excluding official long-term emigrants

Table 19 - Excess of arrivals over departures of residents (excluding emigrants) of Island of Mauritius by age and sex, July 1976 - December 1978

Age (completed years)	July - December 1976			January - June 1977			July - December 1977			January - June 1978			July - December 1978		
	Both sexes	Male	Female	Both sexes	Male	Female	Both sexes	Male	Female	Both sexes	Male	Female	Both sexes	Male	Female
Under 1	- 4	- 11	+ 7	- 5	- 2	- 3	- 4	- 1	- 3	- 3	- 4	+ 1	- 29	- 18	- 11
1 - 4	- 32	- 37	- 45	- 5	- 3	- 2	- 31	- 21	- 10	- 22	- 16	+ 6	- 11	- 12	+ 1
5 - 9	- 118	- 68	- 50	+ 86	+ 42	+ 44	- 96	- 42	- 54	- 21	- 12	- 9	- 46	- 27	- 19
10 - 14	- 185	- 100	- 85	+ 98	+ 61	+ 37	- 240	- 122	- 118	+ 101	+ 62	+ 39	- 215	- 118	- 97
15 - 19	- 498	- 275	- 223	- 79	- 25	- 54	- 612	- 345	- 267	- 50	- 25	- 24	- 610	- 372	- 238
20 - 24	- 616	- 416	- 200	- 269	- 101	- 168	- 726	- 534	- 192	- 124	- 18	- 106	- 753	- 529	- 224
25 - 29	- 60	- 27	- 33	- 121	- 35	- 86	- 78	- 52	- 26	- 93	- 13	+ 80	+ 12	+ 17	- 5
30 - 34	- 2	+ 28	- 30	- 85	- 44	- 41	+ 48	+ 5	+ 43	- 91	- 17	- 74	+ 84	+ 71	+ 13
35 - 39	+ 63	+ 46	+ 17	- 91	- 49	- 42	+ 18	+ 48	- 30	- 49	- 15	- 34	+ 37	+ 39	- 2
40 - 44	+ 15	+ 23	- 8	- 51	- 12	- 39	+ 10	+ 23	- 13	- 37	- 22	- 15	+ 23	+ 27	- 4
45 - 49	+ 61	+ 33	+ 28	- 111	- 54	- 57	+ 87	+ 72	+ 15	- 106	- 51	- 55	+ 81	+ 67	+ 14
50 - 54	+ 75	+ 50	+ 25	- 91	- 31	- 60	+ 58	+ 36	+ 22	- 101	- 23	- 78	+ 66	+ 45	+ 21
55 - 59	+ 43	+ 13	+ 30	- 90	- 36	- 54	+ 34	+ 36	- 2	- 107	- 54	- 43	+ 49	+ 37	+ 12
60 - 64	+ 46	+ 27	+ 19	- 78	- 25	- 53	+ 64	+ 14	+ 50	- 106	- 54	- 52	+ 109	+ 74	+ 35
65 - 69	+ 52	+ 36	+ 16	- 76	- 33	- 43	+ 48	+ 40	+ 8	- 54	- 14	- 40	+ 74	+ 21	+ 53
70 & over	+ 19	+ 11	+ 8	- 26	- 22	- 4	+ 20	+ 25	- 5	- 34	- 27	+ 7	+ 22	+ 25	- 3
Not stated	+ 19	+ 45	- 26	+ 369	+ 211	+ 158	+ 14	+ 143	- 129	+ 287	+ 145	+ 142	- 110	- 55	- 55
ALL ages	- 1,172	- 622	- 550	- 625	- 158	- 467	- 1,386	- 675	- 711	- 610	- 169	- 441	- 1,217	- 708	- 509

Table 20 - Excess of arrivals over departures of residents (including emigrants) of Island of Mauritius by age and sex, July 1976-December 1978

Age (completed years)	July - December 1976			January - June 1977			July - December 1977			January - June 1978			July - December 1978		
	Both sexes	Male	Female	Both sexes	Male	Female	Both sexes	Male	Female	Both sexes	Male	Female	Both sexes	Male	Female
Under	7	14	7	6	3	3	8	4	4	4	4	-	29	18	11
1 - 4	98	45	53	13	6	7	53	38	15	32	22	10	19	16	3
5 - 9	143	75	68	63	25	38	113	51	62	50	29	21	53	33	20
10 - 14	220	117	103	74	47	27	258	131	127	79	52	27	233	126	107
15 - 19	541	288	253	111	30	81	634	352	282	85	37	48	649	382	267
20 - 24	653	425	228	302	106	196	744	539	205	143	19	124	786	534	252
25 - 29	81	35	46	141	41	100	89	56	33	105	14	91	16	8	24
30 - 34	12	26	38	90	45	45	44	3	41	102	20	82	74	66	8
35 - 39	59	45	14	95	52	43	13	46	33	54	16	38	32	38	6
40 - 44	13	22	9	55	14	41	5	21	16	39	22	17	20	25	5
45 - 49	56	32	24	112	55	57	86	72	14	107	51	56	72	63	9
50 - 54	73	50	23	93	31	62	57	36	21	103	25	78	65	44	21
55 - 59	42	12	30	90	36	54	34	36	2	109	64	45	48	36	12
60 - 64	43	26	17	80	26	54	64	14	50	108	55	53	106	73	33
65 - 69	48	36	12	77	33	44	47	39	8	54	14	40	72	20	52
70 & over	17	11	6	26	22	4	19	25	6	34	27	7	22	25	3
Not stated	19	45	26	369	211	158	14	143	129	287	145	142	110	55	55
All ages	1,385	694	691	785	217	568	1,516	736	780	763	222	541	1,384	766	618

Table 21 - Departures of Mauritian residents by air by country of final destination, 1976 - 1978

Country of final destination	1976	1977	1978
Kenya	345	359	531
Malagasy Republic	474	444	351
Malawi	216	161	207
Réunion	9,192	10,656	11,478
Rhodesia	29	39	18
Seychelles	301	239	195
South Africa, Rep. of	1,301	1,468	1,550
Tanzania	38	69	48
Zambia	237	229	275
Rodrigues	1,241	2,112	3,075
Other African	282	418	352
China (Mainland)	7	-	1
China (Taiwan)	-	1	2
Hong Kong	401	356	525
India	1,959	2,964	3,167
Japan	18	9	3
Singapore	22	31	32
Saudi Arabia	298	233	446
Other Asian	151	94	295
Australia	616	850	879
New Zealand	4	5	9
Other Oceanian	2	6	4
Belgium	350	84	65
France	1,652	1,895	2,480
Germany, Fed. Rep. of	230	310	380
Italy	215	221	240
Switzerland	71	125	115
United Kingdom	6,532	7,093	7,560
Other European	73	94	86
Canada	84	59	70
U.S.A.	20	29	37
Other American	18	2	-
U.S.S.R.	25	35	14
All countries	26,404	30,690	34,490

III. - EMIGRATION

Table 22 - Official long-term emigrants^{1/} by sex, 1956 - 1978

Year	Both sexes	Male	Female
1956	147	93	54
1957	109	68	41
1958	163	130	33
1959	170	128	42
1960	158	132	26
1961	837	629	208
1962	1,083	711	372
1963	594	326	268
1964	915	491	424
1965	1,408	659	749
1966	1,611	774	837
1967	2,225	1,038	1,187
1968	3,067	1,487	1,580
1969	2,379	1,119	1,260
1970	2,282	1,063	1,219
1971	2,351	1,078	1,273
1972	2,271	956	1,315
1973	2,037	844	1,193
1974	1,494	606	888
1975	874	328	546
1976	579	195	384
1977	290	120	170
1978	320	111	209

^{1/} persons who have obtained a permit to emigrate to another country

Table 23 - External migration, 1956 - 1978

Year	Arrivals	Departures			Excess of arrivals over departures (excluding emigrants)
		Total	Official long-term emigrants ^{1/}	Departures excluding emigrants	
1956	7,747	8,225	147	8,078	- 331
1957	8,095	8,267	109	8,158	- 63
1958	8,703	8,924	163	8,761	- 58
1959	9,637	9,544	170	9,374	+ 263
1960	10,412	10,784	158	10,626	- 214
1961	11,854	13,033	837	12,196	- 342
1962	15,189	16,075	1,083	14,992	+ 197
1963	18,047	18,299	594	17,705	+ 342
1964	21,221	22,331	915	21,416	- 195
1965	22,024	24,150	1,408	22,742	- 718
1966	26,456	29,301	1,611	27,690	- 1,234
1967	29,321	32,925	2,225	30,700	- 1,379
1968	31,403	35,988	3,067	32,921	- 1,518
1969	35,919	38,929	2,379	36,550	- 631
1970	48,819	51,969	2,282	49,687	- 868
1971	60,826	63,997	2,351	61,646	- 820
1972	77,174	81,493	2,271	79,222	- 2,048
1973	101,184	104,697	2,037	102,660	- 1,476
1974	109,044	113,362	1,494	111,868	- 2,824
1975	117,548	120,703	874	119,829	- 2,281
1976	139,303	141,148	579	140,569	- 1,266
1977	153,208	155,653	290	155,363	- 2,155
1978	161,688	163,733	320	163,413	- 1,725

^{1/} persons who have obtained a permit to emigrate to another country

Note : The number of immigrants coming to settle in Mauritius is negligible. A net negative balance over successive years in the last column indicates that a number of persons not registered as official emigrants are permanently leaving the country

Table 24 - Official long-term emigrants^{1/} by country of intended residence, 1965 - 1978

Country of intended residence	1965	1966	1967	1968	1969	1970	1971	1972	1973	1974	1975	1976	1977	1978
All countries	1,408	1,611	2,225	3,067	2,379	2,282	2,351	2,271	2,037	1,494	874	579	290	320
<u>AFRICA</u>	<u>201</u>	<u>164</u>	<u>246</u>	<u>276</u>	<u>84</u>	<u>158</u>	<u>220</u>	<u>185</u>	<u>106</u>	<u>99</u>	<u>17</u>	<u>18</u>	<u>11</u>	<u>32</u>
Congo Brazaville	-	1	1	-	1	20	54	-	3	9	-	-	-	-
Kenya	7	1	1	20	3	11	9	5	12	7	-	2	-	2
Malagasy Rep.	-	-	3	2	2	4	6	4	7	-	-	1	-	-
Malawi	3	13	8	23	1	12	15	30	23	29	2	9	5	2
Mozambique	3	-	4	-	14	42	20	20	11	8	-	-	-	-
Réunion	2	2	6	9	2	1	6	-	8	1	2	1	6	21
Rhodesia	111	54	16	4	1	2	3	-	-	-	-	-	-	-
South Africa, Rep.	72	81	176	171	50	22	37	5	9	8	3	-	-	1
Zambia	-	7	30	38	10	30	56	113	23	21	2	5	-	-
Other African	3	5	1	9	-	14	14	8	10	16	1	-	-	6
<u>AMERICA</u>	<u>10</u>	<u>12</u>	<u>34</u>	<u>24</u>	<u>29</u>	<u>86</u>	<u>51</u>	<u>40</u>	<u>29</u>	<u>37</u>	<u>87</u>	<u>33</u>	<u>31</u>	<u>5</u>
Canada	1	10	32	18	25	82	47	37	26	37	87	33	31	1
U.S.A.	9	2	2	6	4	4	4	2	2	-	-	-	-	4
Other American	-	-	-	-	-	-	-	1	1	-	-	-	-	-

Table 24 (cont'd)

Country of intended residence	1965	1966	1967	1968	1969	1970	1971	1972	1973	1974	1975	1976	1977	1978
<u>ASIA</u>	1	-	1	1	3	4	3	18	2	2	2	-	-	1
India	1	-	1	-	3	1	-	1	2	-	2	-	-	1
Other Asian	-	-	-	1	-	3	3	17	-	2	1	-	-	-
<u>EUROPE</u>	955	804	613	728	615	939	1,058	1,145	1,353	1,042	682	477	223	252
Belgium	5	94	35	22	7	22	44	32	38	54	30	17	1	2
France	8	41	53	58	93	435	566	554	684	546	237	137	88	105
Germany, Fed. Rep.	1	-	-	-	2	5	8	31	43	7	4	1	6	12
Italy	-	-	1	-	1	4	19	48	29	19	17	17	6	5
Norway	-	-	-	-	-	1	3	2	5	1	1	2	-	4
Switzerland	-	-	3	1	-	6	1	3	5	4	4	1	4	7
United Kingdom	939	667	519	646	510	463	415	460	543	402	385	302	113	113
Other European	2	2	2	1	2	3	2	15	6	9	4	-	5	4
<u>OCEANIA</u>	241	631	1,331	2,038	1,648	1,095	1,019	883	547	314	85	51	25	30
Australia	240	619	1,330	2,037	1,645	1,082	1,004	877	545	301	84	50	25	30
New Zealand	1	8	-	1	1	-	-	1	1	-	-	-	-	-
Other Oceanian	-	4	1	-	2	13	15	5	1	13	1	1	-	-

1/ persons who have obtained a permit to emigrate to another country

Table 25 - Age distribution of official long-term emigrants, 1965 - 1978

Male

Age group (completed years)	1965	1966	1967	1968	1969	1970	1971	1972	1973	1974	1975	1976	1977	1978
0 - 4	89	86	107	225	156	97	83	94	65	68	36	22	24	10
5 - 9	96	94	133	197	155	106	94	118	101	77	43	28	26	23
10 - 14	79	86	135	149	146	93	96	115	105	77	59	36	23	18
15 - 19	62	70	122	147	140	115	106	108	100	57	46	29	12	21
20 - 24	63	123	132	155	114	153	111	149	112	101	66	28	10	6
25 - 29	69	87	94	141	86	145	128	95	107	82	35	21	10	10
30 - 34	58	76	63	146	75	120	108	68	59	39	17	7	5	8
35 - 39	45	49	60	93	52	60	82	59	45	38	3	5	5	2
40 - 44	33	43	63	82	62	63	69	51	53	23	6	5	4	2
45 - 49	28	12	35	48	44	32	48	46	33	13	5	4	1	4
50 - 54	21	23	25	34	39	33	23	29	19	8	3	6	-	3
55 - 59	11	7	17	27	40	15	18	11	18	8	-	2	-	1
60 - 64	4	9	20	24	13	13	19	12	15	9	3	1	1	2
65 - 69	1	5	9	10	10	9	16	7	5	1	4	1	1	1
70 & over	-	4	3	8	9	11	9	4	6	4	1	-	-	-
Unknown	-	-	-	-	-	-	1	-	3	1	1	-	-	-
All ages	659	774	1,038	1,487	1,119	1,063	1,078	955	844	606	328	195	120	111

Table 25 - (cont'd)

Female

Age (completed years)	1965	1966	1967	1968	1969	1970	1971	1972	1973	1974	1975	1976	1977	1978
0 - 4	104	90	138	215	121	99	90	89	48	50	46	24	11	9
5 - 9	90	94	147	202	143	98	89	110	111	79	44	29	14	13
10 - 14	87	81	123	168	151	94	89	140	104	70	42	38	19	22
15 - 19	91	110	154	172	174	181	184	157	181	153	105	74	42	53
20 - 24	95	142	171	184	150	237	241	267	263	212	142	102	41	46
25 - 29	79	89	106	149	101	132	145	148	130	102	54	51	21	30
30 - 34	49	64	74	133	87	81	106	100	84	72	33	22	6	13
35 - 39	41	50	74	85	78	64	84	75	72	47	18	9	4	8
40 - 44	30	29	58	74	58	61	58	65	63	24	12	6	5	3
45 - 49	25	23	44	54	49	50	60	47	51	27	8	8	1	6
50 - 54	25	19	32	46	53	25	31	32	21	26	10	5	3	-
55 - 59	10	18	30	32	37	37	44	33	17	10	11	-	-	2
60 - 64	14	11	11	27	21	25	21	22	17	7	6	4	1	3
65 - 69	5	9	11	19	12	17	10	16	10	4	6	7	1	1
70 & over	6	7	14	20	25	18	18	14	16	4	7	5	1	-
Unknown	-	1	-	-	-	-	3	-	5	1	2	-	-	-
All ages	749	837	1,187	1,580	1,260	1,219	1,273	1,315	1,193	888	546	384	170	209

Table 25 (cont'd)

Both sexes

Age group (completed years)	1965	1966	1967	1968	1969	1970	1971	1972	1973	1974	1975	1976	1977	1978
0 - 4	193	176	265	441	257	192	173	183	113	118	82	46	35	19
5 - 9	186	188	280	399	296	204	183	228	212	156	87	57	40	36
10 - 14	166	167	258	317	297	187	185	255	209	147	101	74	42	40
15 - 19	153	180	276	319	314	294	290	265	281	210	151	103	54	74
20 - 24	158	265	303	339	264	390	412	416	375	313	208	130	51	52
25 - 29	148	176	200	290	187	273	273	233	237	184	89	72	31	40
30 - 34	107	140	137	279	162	201	214	168	143	111	50	29	9	21
35 - 39	86	99	134	178	130	132	173	134	117	85	21	14	9	10
40 - 44	63	72	121	156	120	124	127	116	116	47	18	11	9	5
45 - 49	53	35	79	102	93	82	108	93	84	40	13	12	2	10
50 - 54	44	42	57	80	92	58	54	61	40	34	13	11	3	3
55 - 59	21	25	47	59	77	52	62	44	35	18	11	2	-	3
60 - 64	18	20	31	51	34	38	40	34	32	16	9	5	2	5
65 - 69	6	14	20	29	22	26	26	23	13	5	10	8	2	2
70 & over	6	11	17	28	34	29	27	18	22	8	8	5	1	-
Unknown	-	1	-	-	-	-	4	-	8	2	3	-	-	-
All ages	1,408	1,611	2,225	3,067	2,379	2,282	2,351	2,271	2,037	1,494	874	579	290	320

1/ persons who have obtained a permit to emigrate to another country

Table 26 - Official long-term emigrants^{1/} by Major Occupational Group, 1973 - 1978

Major Occupational Group ^{2/}	1973	1974	1975	1976	1977	1978
Total number of emigrants	2,037	1,494	874	579	290	320
<u>Emigrants reporting an occupation</u>	<u>724</u>	<u>518</u>	<u>253</u>	<u>136</u>	<u>41</u>	<u>45</u>
0/1. Professional, Technical and Related Workers	70	97	62	20	10	8
2. Administrative and Managerial Workers	3	14	8	6	2	-
3. Clerical and Related Workers	142	52	42	30	7	6
4. Sales Workers	9	11	7	5	7	1
5. Service Workers	216	151	83	28	3	8
6. Agricultural, Animal Husbandry and Forestry Workers, Fishermen and Hunters	6	2	1	1	-	-
7/8/9. Production and Related Workers, Transport Equipment Operators and Labourers	264	182	48	42	11	19
X. Workers not classifiable by Occupation	14	9	2	4	1	3
<u>Emigrants not reporting any occupation (including housewives and children)</u>	<u>1,313</u>	<u>976</u>	<u>621</u>	<u>443</u>	<u>249</u>	<u>275</u>

^{1/} persons who have obtained a permit to emigrate to another country

^{2/} International Standard Classification of Occupations, Revised Edition, 1968

Table 27 - Official long-term emigrants ^{1/} by Major Occupational Group, age and sex, 1978

Major Occupational Group ^{2/}	Age (completed years)														
	All ages		19		20 - 24		25 - 34		35 - 44		45 - 54		55 +		
	Both sexes	Male	Female	Male	Female	Male	Female	Male	Female	Male	Female	Male	Female		
Total number of emigrants	320	111	209	72	97	6	46	18	43	4	11	7	6	4	6
Emigrants reporting an occupation	<u>45</u>	<u>23</u>	<u>22</u>	<u>2</u>	<u>5</u>	<u>1</u>	<u>6</u>	<u>13</u>	<u>8</u>	<u>2</u>	<u>2</u>	<u>5</u>	<u>2</u>	<u>2</u>	<u>1</u>
0/1 Professional, Technical and Related Workers	8	4	4	-	-	-	-	3	3	-	1	1	-	-	-
2 Administrative and Managerial Workers	-	-	-	-	-	-	-	-	-	-	-	-	-	-	-
3 Clerical and Related Workers	6	3	3	-	1	1	2	2	-	-	-	-	-	-	-
4 Sales Workers	1	1	-	-	-	-	-	-	-	-	-	-	-	1	-
5 Service Workers	8	3	5	-	1	-	-	1	2	1	1	1	-	-	1
6 Agriculture, Animal Husbandry and Forestry Workers, Fishermen and Hunters	-	-	-	-	-	-	-	-	-	-	-	-	-	-	-
7/8/9 Production and Related Workers, Transport Equipment Operators and Labourers	19	9	10	-	3	-	4	5	3	1	-	2	-	1	-
X Workers not classifiable by Occupation	3	3	-	-	-	-	-	2	-	-	-	1	-	-	-
Emigrants not reporting any occupation (including housewives and children)	<u>275</u>	<u>88</u>	<u>187</u>	<u>72</u>	<u>92</u>	<u>5</u>	<u>40</u>	<u>5</u>	<u>35</u>	<u>2</u>	<u>9</u>	<u>2</u>	<u>6</u>	<u>2</u>	<u>5</u>

^{1/} persons who have obtained a permit to emigrate to another country

^{2/} International Standard Classification of Occupations, Revised Edition, 1968

Table 28 - Official long-term emigrants^{1/} by occupation, 1976-78

Occupation	1976	1977	1978
Accountants	3	-	-
Cabinet makers	4	1	-
Carpenters	3	1	1
Clerks	18	5	2
Cooks	2	-	2
Doctors	-	1	-
Drivers	3	-	1
Electricians (see also fitters)	3	2	-
Fitters (see also electricians)	6	-	-
Maids (domestic servants)	19	2	5
Managers	-	-	-
Masons	1	-	1
Mechanics	1	1	-
Nurses	6	2	4
Policemen	-	-	1
Salesmen	3	3	-
Seamstresses and tailors	12	3	11
Stenographers and typists	8	1	3
Storekeepers	-	-	-
Teachers	6	4	3
Waiters	5	-	-
Welders	3	2	1
Other	30	13	10
Occupation not stated or not applicable ^{2/}	443	249	275
Total number of emigrants	579	290	320

^{1/} persons who have obtained a permit to emigrate to another country

^{2/} emigrants not reporting any occupation (including housewives and children)

Table 29 - Official long-term emigrants^{1/} by district of last residence and sex, January 1977 - December 1978

Geographical district	January - June 1977			July - December 1977			January - June 1978			July - December 1978		
	Both sexes	Male	Female	Both sexes	Male	Female	Both sexes	Male	Female	Both sexes	Male	Female
Port Louis	27	9	18	34	17	17	18	6	12	57	24	33
Pamplemousses	12	5	7	5	2	3	4	1	3	2	-	2
Rivière du Rempart	15	8	7	1	-	1	1	1	-	3	-	3
Flacq	3	2	1	-	-	-	1	-	1	3	2	1
Grand Port	7	2	5	7	4	3	9	4	5	12	1	11
Savanne	1	1	-	7	4	3	-	-	-	1	1	-
Plaines Wilhems : Urban	72	26	46	57	30	27	64	24	40	70	25	45
Other	2	-	2	3	2	1	1	-	1	1	-	1
Moka	2	1	1	1	-	1	3	1	2	3	1	2
Black River	-	-	-	-	-	-	3	2	1	1	-	1
Not stated	19	5	14	15	2	13	49	14	35	14	4	10
Whole Island	160	59	101	130	61	69	153	53	100	167	58	109

^{1/} persons who have obtained a permit to emigrate to another country.

IV - TOURISM

Definition and notes

1. Definition of tourist:

- (a) Prior to 1964, a tourist has been defined as a non-resident staying in Mauritius for more than 24 hours but less than 6 months;
- (b) As from 1964, a tourist is defined as a non-resident staying in the island for more than 24 hours but less than a year.

The figures for the two periods are nevertheless comparable because of the small number of tourists staying for more than 6 months.

2. Visitors include the following:

- (i) tourists as defined above; and
- (ii) non-residents who stay in the country for less than a day, other than those who do not leave the airport.

3. Method of compilation:

Certain data on tourism (such as type of visitor, tourist arrivals by month of arrival, tourist arrivals by country of residence and mode of transport) are compiled from disembarkation cards which visitors fill in when they arrive in this country. However, information on duration of stay of visitors can be compiled only from the embarkation cards which they fill in when they leave the country. Since it is not possible to wait for the departure of all the visitors who come during the period under review, we restrict our analysis of duration of stay only to those visitors who arrive during the reference period but who have left by a given date after the end of the period.

However, the consequence to this limitation is not considerable since visitors arriving in 1977 and leaving before 1.2.78 represent 99.4% of total visitor arrivals for 1977 and visitors arriving in 1978 and leaving before 1.2.79 represent 99.6 of total visitor arrivals for 1978.

4. Tourist nights:

Tables 30, 35 and 37 show the number of nights spent by tourists who were on visit in the country during the period under review. The figures therefore include nights spent during the reference period by tourists who arrived before the beginning of the period. On the other hand, nights spent after the end of the reference period by tourists who arrived during the period are excluded.

5. Visitor nights:

In tables 39 - 42 and table 44 an analysis is made of nights spent by visitors who arrive during the period under review and who have left by a given date after the end of the period. Figures for 1978 thus show the total number of nights spent by visitors who arrived in 1978 and left before 1.2.79.

6. Mauritians settled abroad are excluded from figures of tourists and visitors. Data referring to them are shown separately in tables 45 - 47. Table 45 shows the total nights spent by Mauritians settled abroad who arrive during the period under review and who have left by a given date after the end of the period. Thus the figures for 1978 include nights spent in January 1979 by Mauritians settled abroad who arrived in 1978. Table 47 shows the nights spent during the period under review only. Thus the figures for 1978 include nights spent in 1978 by Mauritians settled abroad who arrived in 1977, but exclude nights spent in January 1979 by those who arrived in 1978.

Table 30 - Tourist^{1/} arrivals by mode of transport and total nights spent during period, 1963 - 1978

Period	Tourist arriving during period			Total nights spent during period ^{2/}
	Sea	Air	Total	
1963	1,008	6,719	7,727	99,400
1964	1,010	9,023	10,033	144,600
1965	746	9,312	10,058	144,900
1966	1,328	11,712	13,040	162,300
1967	937	13,877	14,814	172,000
1968	647	14,906	15,553	149,500
1969	455	20,132	20,587	220,600
1970	365	27,285	27,650	287,600
1971	168	36,230	36,398	399,700
1972	143	48,654	48,797	454,300
1973	1,293 ^{3/}	66,701	67,994	733,100
1974	472	72,443	72,915	772,200
1975	554	74,043	74,597	746,900
1976	778	91,783	92,561	892,200
1977	1,035	101,475	102,510	994,800
1978	696	107,626	108,322	1,051,600

^{1/} see notes on page 34

^{2/} include nights spent during reference period by tourists arriving prior to the period

^{3/} includes about 700 persons who came for a religious conference

Table 31 - Tourist arrivals by month of arrival, 1968 - 1978

Month of arrival	1968	1969	1970	1971	1972	1973	1974	1975	1976	1977	1978
January	2,023	1,892	2,718	3,669	4,701	6,874	8,495	8,401	10,055	11,507	10,803
February	1,018	1,556	2,013	2,424	3,335	4,865	5,954	4,017	7,035	8,433	8,452
March	707	1,370	1,876	2,191	3,046	4,152	5,272	4,383	6,149	6,974	7,715
April	936	1,449	1,493	2,419	2,875	5,091	5,299	4,477	6,753	8,245	7,836
May	938	1,208	2,281	2,905	3,251	5,050	5,203	5,235	7,385	7,974	7,337
June	832	985	1,722	1,890	2,639	4,504	4,661	3,740	4,849	5,432	5,244
July	2,063	2,334	1,984	2,918	3,956	4,725	5,379	5,739	7,551	8,832	8,599
August	1,609	2,761	3,903	5,297	7,048	9,595	9,026	10,844	11,851	11,927	13,477
September	1,200	1,816	2,232	2,845	3,911	5,105	5,133	5,706	6,004	6,463	7,615
October	1,282	1,222	1,889	2,522	3,324	4,893	5,202	5,586	7,757	7,982	9,130
November	1,059	1,564	2,049	2,615	3,813	4,398	5,650	6,634	7,157	7,859	9,719
December	1,881	2,430	3,487	4,533	6,798	8,726	7,591	9,835	10,015	10,882	12,389
Whole year	15,553	20,587	27,650	36,398	48,797	67,994	72,915	74,597	92,561	102,510	108,322

Graph 3 - Tourist arrivals by month of arrival, January 1972 - December 1978

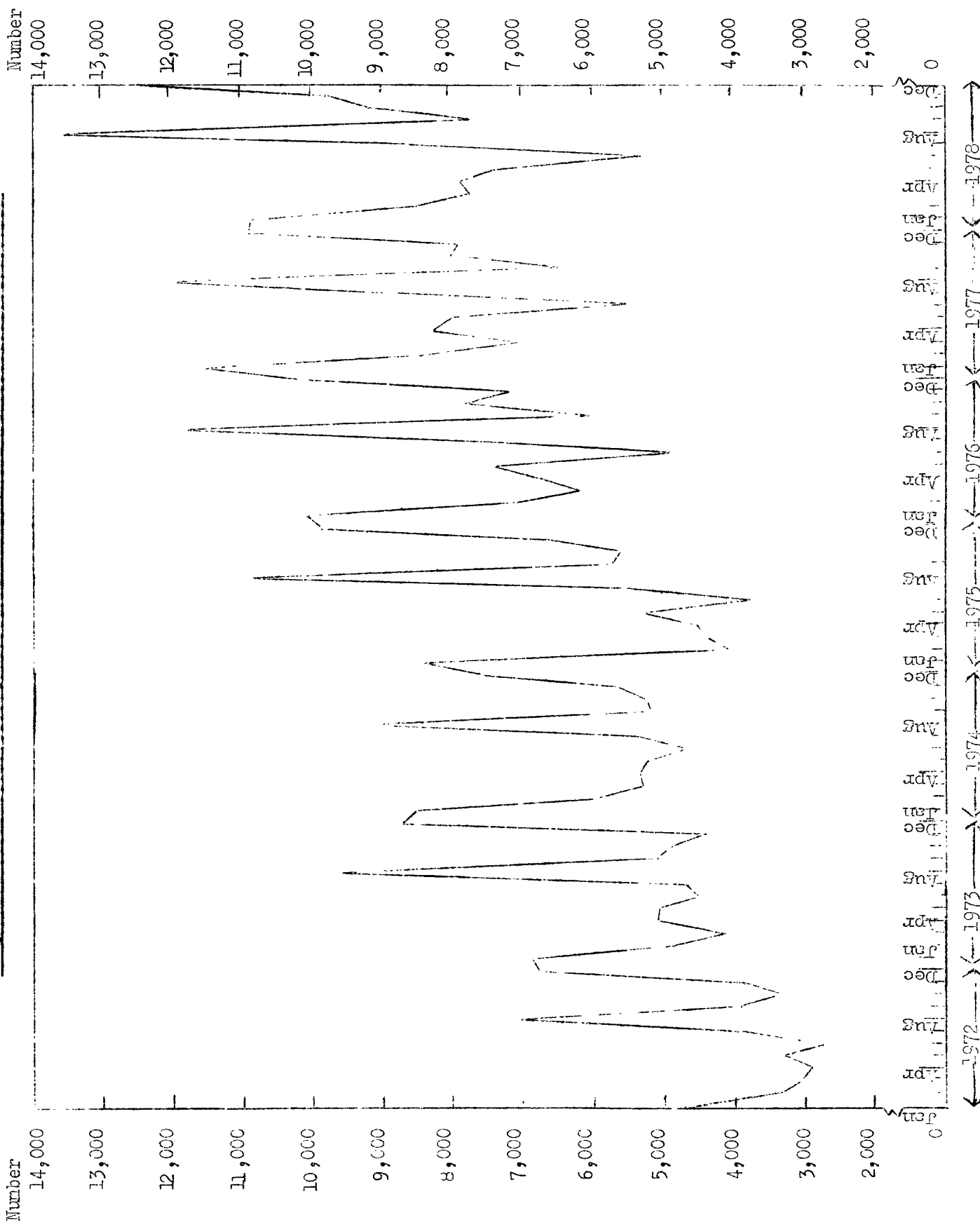


Table 33 - Tourist^{1/} arrivals by country of residence, 1968 - 1978

Country of residence	1968	1969	1970	1971	1972	1973	1974	1975	1976	1977	1978
All countries	15,553	20,587	27,650	36,398	48,797	67,994	72,915	74,597	92,561	102,510	108,322
<u>AFRICA</u>	10,404	15,058	19,784	25,289	33,206	41,969	46,979	47,705	57,889	60,733	60,394
Comoro Islands	3	16	44	25	23	126	176	181	209	232	205
Ethiopia	30	34	28	33	49	119	75	60	202	127	66
Kenya	579	574	681	634	684	824	898	707	1,057	909	826
Malagasy Rep.	1,512	2,050	1,985	2,287	2,747	3,563	2,679	1,976	3,035	5,273	4,891
Malawi	15	27	67	66	135	166	243	267	399	431	343
Mozambique	13	14	22	21	46	94	110	41	82	65	51
Réunion	5,094	8,905	11,405	15,161	19,230	22,542	23,232	24,853	30,032	29,926	29,717
Rhodesia	62	22	88	191	435	380	591	1,232	920	440	688
Seychelles	25	21	45	63	256	563	431	405	428	505	545
South Africa, Rep. of	1,555	2,680	5,637	4,939	7,088	9,985	14,193	14,740	17,823	18,205	18,956
Tanzania	262	194	186	216	200	308	282	125	254	439	459
Uganda	54	60	131	130	139	68	46	42	112	43	31
Zambia	127	332	1,314	1,224	1,825	2,375	3,332	2,406	1,884	2,865	2,549
Other African	73	129	151	299	349	856	691	670	1,452	1,273	1,067
<u>AMERICA</u>	559	612	765	978	1,201	1,406	1,435	1,369	1,188	1,380	1,486
Brazil	2	7	5	9	35	24	89	32	20	72	38

^{1/} see notes on page 34

Table 33 (continued)

Country of residence	1968	1969	1970	1971	1972	1973	1974	1975	1976	1977	1978
Canada	69	57	90	145	209	329	247	302	346	292	302
U.S.A.	464	506	646	778	917	989	1,000	893	738	921	862
Other American	24	42	24	46	40	64	99	142	84	95	284
<u>ASIA</u>	<u>721</u>	<u>579</u>	<u>863</u>	<u>1,071</u>	<u>1,642</u>	<u>3,412</u>	<u>2,619</u>	<u>2,963</u>	<u>3,693</u>	<u>3,956</u>	<u>4,077</u>
China	30	2	5	26	91	78	50	53	77	114	125
Formosa (Taiwan)	9	11	43	60	29	310	408	90	86	130	69
Hong Kong	55	70	51	115	226	230	154	215	173	188	141
India	421	272	479	554	879	2,235	1,308	1,944	2,676	2,704	2,913
Israel	11	6	17	15	20	17	28	33	40	22	22
Japan	72	86	83	105	148	240	261	245	221	298	227
Malaysia	18	8	32	24	26	21	33	36	39	20	26
Pakistan	31	15	20	25	44	60	64	62	63	102	139
Singapore	30	37	44	42	29	49	79	62	60	50	87
Other Asian	44	72	89	105	150	172	234	223	258	328	328
<u>U.S.S.R.</u>	<u>8</u>	<u>34</u>	<u>11</u>	<u>8</u>	<u>24</u>	<u>56</u>	<u>79</u>	<u>72</u>	<u>63</u>	<u>116</u>	<u>75</u>
<u>EUROPE</u>	<u>2,637</u>	<u>2,809</u>	<u>4,319</u>	<u>6,820</u>	<u>9,917</u>	<u>17,323</u>	<u>17,665</u>	<u>18,253</u>	<u>25,238</u>	<u>32,953</u>	<u>38,972</u>
Belgium	23	24	47	104	318	482	502	554	597	825	939
Denmark	10	14	17	45	52	106	88	81	102	106	87

Table 33 (continued)

Country of residence	1968	1969	1970	1971	1972	1973	1974	1975	1976	1977	1978
France	922	767	1,437	2,540	3,771	7,281	7,874	8,929	13,885	17,628	21,240
Germany, Fed. Rep.	106	124	481	824	1,406	1,996	1,951	1,533	1,532	2,535	2,811
Greece	34	13	28	24	31	48	76	92	77	96	78
Irish Rep.	18	13	33	44	42	68	83	116	113	102	159
Italy	98	146	190	428	775	2,136	1,937	1,712	2,115	3,302	3,498
Netherlands	50	41	71	118	98	195	189	183	236	304	329
Norway	4	19	15	30	30	73	63	42	40	67	49
Spain	6	6	10	60	29	121	156	123	107	159	289
Sweden	11	17	21	48	73	155	106	106	225	147	176
Switzerland	74	77	110	159	303	537	840	876	1,014	1,189	1,449
U.K.	1,261	1,524	1,740	2,252	2,848	3,822	3,452	3,598	4,852	6,024	7,133
Other European	20	24	119	144	141	303	348	308	343	469	735
OCEANIA	<u>1,224</u>	<u>1,495</u>	<u>1,908</u>	<u>2,232</u>	<u>2,807</u>	<u>3,828</u>	<u>4,138</u>	<u>4,235</u>	<u>4,490</u>	<u>3,372</u>	<u>3,318</u>
Australia	999	1,162	1,571	1,700	2,171	3,060	3,351	3,417	3,559	2,812	2,730
New Caledonia	14	63	44	93	124	112	89	77	126	93	103
New Zealand	190	224	254	374	437	568	620	678	713	393	394
Other Oceanian	21	46	39	65	75	88	78	63	92	74	91

Graph 4 - Percentage distribution of tourist arrivals
by country of residence, 1978

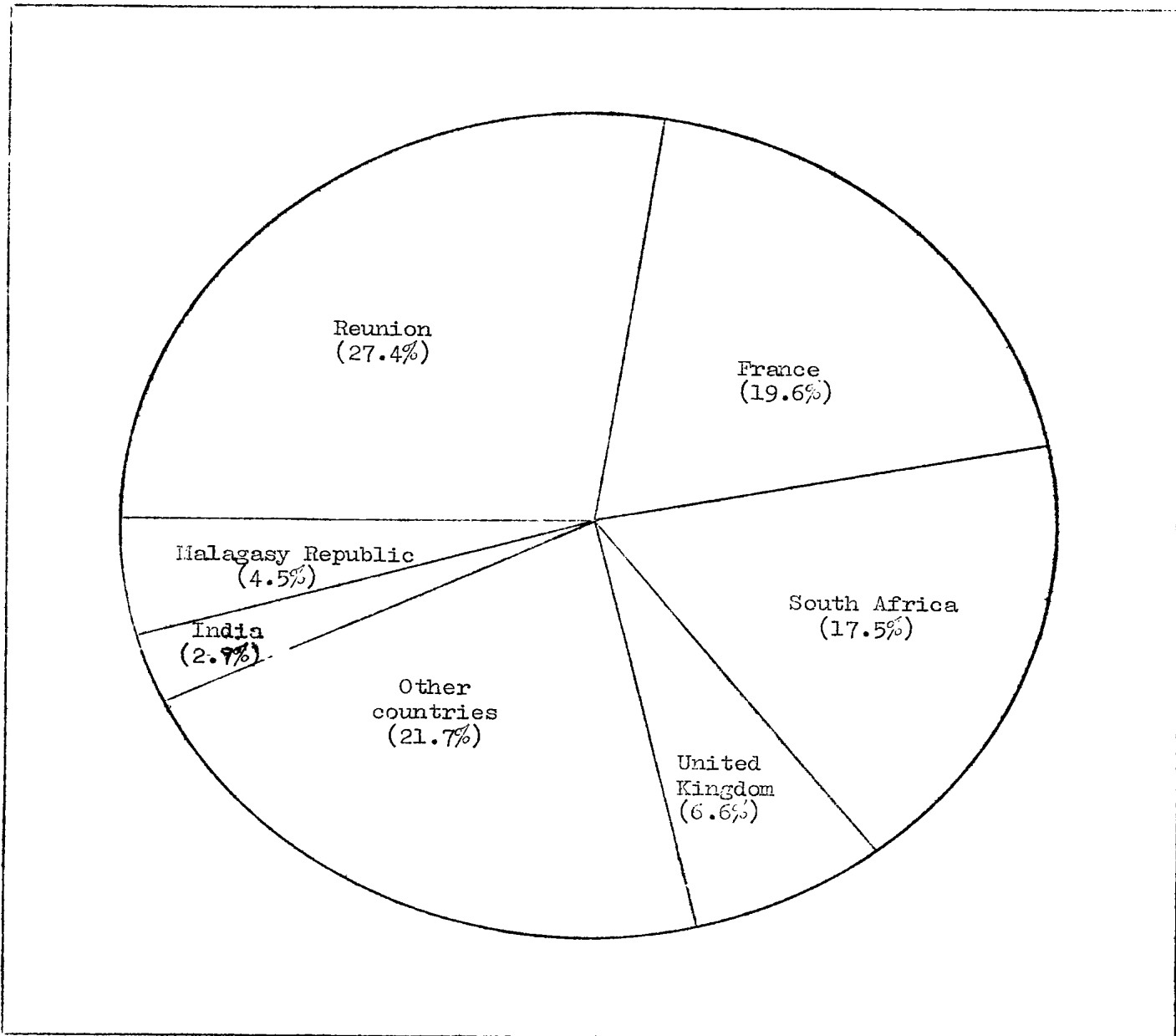


Table 35 - Tourist^{1/} nights by country of residence of tourist, 1968 - 1978

Country of residence	1968	1969	1970	1971	1972	1973	1974	1975	1976	1977	1978
<u>AFRICA</u>	<u>195,719</u>	<u>165,259</u>	<u>211,132</u>	<u>279,314</u>	<u>313,953</u>	<u>423,442</u>	<u>462,475</u>	<u>441,895</u>	<u>511,575</u>	<u>522,697</u>	<u>519,608</u>
Comoro Islands	10	61	232	114	96	905	2,041	1,160	1,632	1,932	1,661
Ethiopia	91	251	181	359	406	1,328	580	383	2,221	903	344
Kenya	3,447	4,355	5,180	5,197	4,498	6,471	6,371	5,532	7,492	7,474	6,745
Malagasy Rep.	17,592	24,236	19,553	27,618	25,376	39,927	26,965	17,735	29,081	42,440	33,597
Malawi	104	285	505	860	1,074	1,710	2,910	2,407	3,420	3,715	2,861
Mozambique	143	349	348	137	463	914	1,249	424	511	574	289
Réunion	65,512	105,018	130,052	172,147	198,383	236,462	227,129	220,288	244,391	243,402	237,919
Rhodesia	945	141	840	2,004	4,952	5,103	7,174	14,133	10,513	5,527	10,913
Seychelles	607	858	1,700	1,505	2,213	6,005	4,239	4,000	4,867	6,254	6,513
South Africa, Rep. of	14,130	23,792	33,630	50,066	52,383	87,975	138,178	145,596	172,865	169,522	179,566
Tanzania	1,121	1,054	1,860	2,543	1,673	2,761	2,563	1,512	2,892	3,582	4,035
Uganda	491	305	1,610	1,192	763	812	357	302	976	321	266
Zambia	976	3,130	14,052	13,076	18,972	22,567	34,948	22,394	17,006	23,779	23,457
Other African	550	1,424	1,389	2,496	2,701	10,502	7,771	6,029	13,708	13,272	11,441
<u>AMERICA</u>	<u>4,186</u>	<u>5,109</u>	<u>4,970</u>	<u>7,807</u>	<u>7,811</u>	<u>14,205</u>	<u>13,555</u>	<u>13,938</u>	<u>11,984</u>	<u>15,956</u>	<u>14,088</u>
Brazil	7	14	18	66	67	124	435	176	83	775	133

^{1/} see notes on page 34

Table 35 - (cont'd)

Country of residence.	1968	1969	1970	1971	1972	1973	1974	1975	1976	1977	1978
Canada	392	391	569	1,558	1,773	3,445	2,966	3,444	3,611	4,360	4,389
U.S.A.	3,268	4,085	4,243	5,823	5,821	10,023	9,511	9,481	7,261	8,676	7,478
Other American	519	619	140	360	150	613	643	837	1,029	2,145	2,088
<u>ASIA</u>	<u>8,643</u>	<u>8,813</u>	<u>11,823</u>	<u>15,329</u>	<u>14,134</u>	<u>31,653</u>	<u>25,992</u>	<u>28,548</u>	<u>33,619</u>	<u>42,560</u>	<u>40,343</u>
China (Mainland)	398	149	285	153	929	3,916	575	453	804	4,144	848
Formosa (Taiwan)	122	274	140	114	155	927	1,836	866	975	1,848	637
Hong Kong	943	318	1,348	2,606	2,867	3,959	2,140	3,314	2,128	3,128	2,140
India	4,183	5,482	7,492	8,793	8,032	16,509	15,287	17,285	22,501	22,769	26,377
Israel	50	26	110	103	157	201	139	287	400	102	223
Japan	937	1,058	766	1,045	759	1,938	1,542	1,756	1,904	3,321	1,716
Malaysia	97	55	220	157	150	147	192	374	457	300	484
Pakistan	591	396	358	791	283	1,506	1,903	963	1,829	1,793	3,109
Singapore	283	374	228	437	181	477	419	599	499	543	1,009
Other Asian	1,039	681	876	1,125	621	2,073	1,959	2,649	2,122	4,612	3,800
<u>U.S.S.R.</u>	<u>50</u>	<u>900</u>	<u>211</u>	<u>223</u>	<u>206</u>	<u>1,416</u>	<u>461</u>	<u>945</u>	<u>774</u>	<u>1,255</u>	<u>654</u>
<u>EUROPE</u>	<u>25,667</u>	<u>31,506</u>	<u>49,606</u>	<u>82,343</u>	<u>104,943</u>	<u>237,907</u>	<u>239,196</u>	<u>231,316</u>	<u>302,270</u>	<u>385,278</u>	<u>448,701</u>
Belgium	181	225	696	1,523	2,564	7,115	8,198	8,202	9,129	12,041	12,589
Denmark	60	308	112	724	581	2,136	1,402	1,667	1,282	1,635	1,566

Table 35 - (cont'd)

Country of residence	1968	1969	1970	1971	1972	1973	1974	1975	1976	1977	1978
France	7,312	6,531	15,385	26,878	39,043	94,408	100,673	99,847	151,971	189,961	219,947
Germany, Fed. Rep.	613	1,200	4,874	10,582	14,306	25,016	27,796	23,068	21,128	32,015	40,450
Greece	467	135	326	143	152	629	748	694	652	707	624
Irish Rep.	202	37	310	1,137	348	1,684	1,238	1,689	1,624	1,810	2,689
Italy	700	1,049	1,216	3,716	5,567	19,563	20,876	15,703	21,217	30,424	29,898
Netherlands	434	656	573	877	530	2,417	3,602	2,461	3,359	4,383	3,510
Norway	8	221	46	338	271	663	462	441	530	476	602
Spain	36	21	50	665	215	1,389	1,456	919	822	1,335	1,988
Sweden	112	418	441	1,054	542	1,729	1,501	1,115	2,011	1,698	1,504
Switzerland	400	694	1,018	1,716	2,693	5,295	10,779	10,522	13,653	17,164	17,625
United Kingdom	14,821	19,609	23,577	31,181	36,125	71,275	56,923	61,943	71,336	86,855	107,921
Other European	321	402	982	1,809	2,006	4,588	3,551	3,045	3,556	4,774	7,788
<u>OCEANIA</u>	<u>5,242</u>	<u>8,905</u>	<u>9,849</u>	<u>14,723</u>	<u>13,224</u>	<u>24,442</u>	<u>30,504</u>	<u>30,256</u>	<u>32,000</u>	<u>27,020</u>	<u>28,216</u>
Australia	4,385	7,877	7,520	11,431	9,767	21,082	26,014	26,080	26,487	23,198	25,047
New Caledonia	70	139	118	404	747	341	584	275	624	220	527
New Zealand	691	879	2,041	2,566	2,194	2,556	3,305	3,582	4,210	3,021	2,434
Other Oceanian	96	90	170	322	516	463	601	319	679	581	208
All countries	149,507	220,572	287,591	399,739	454,271	733,065	772,183	746,898	892,222	994,766	1,051,610

Graph 5 - Total arrivals, tourist arrivals and tourist nights spent during period, 1968-78

Tourist
nights
(000)

Total arrivals
Tourist arrivals
(000)

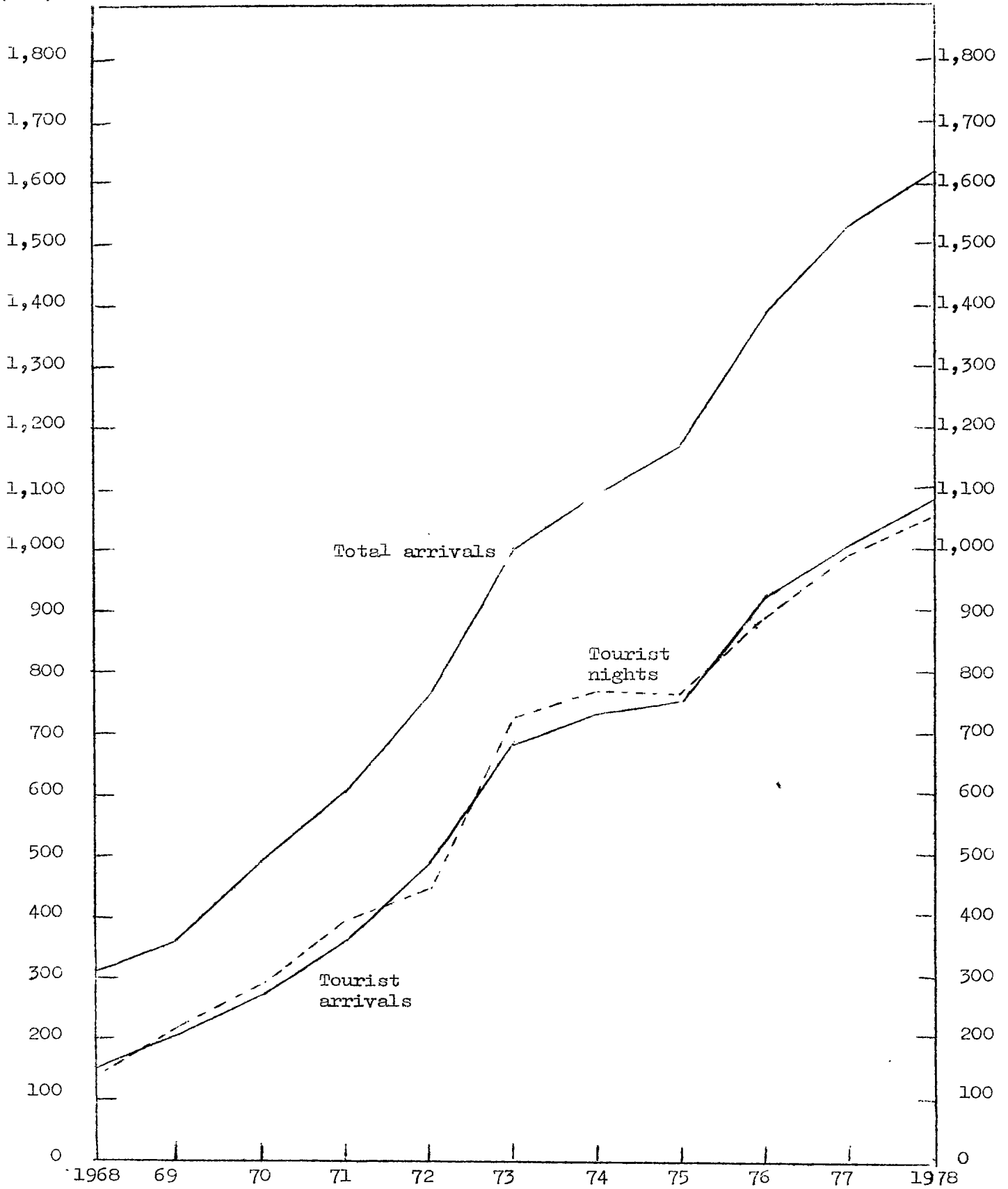


Table 36 - Tourists arriving in 1978 by country of residence and month of arrival

Country of residence	Jan.	Feb.	Mar.	Apr.	May	Jun.	Jul.	Aug.	Sept.	Oct.	Nov.	Dec.	Whole year
Kenya	61	68	57	73	61	40	64	70	60	91	115	66	826
Malagasy Republic	192	189	454	515	264	435	572	384	400	413	592	681	4,891
Malawi	30	29	15	33	27	20	37	36	42	34	15	25	343
Réunion	4,916	2,580	1,496	1,317	2,812	1,026	1,622	6,071	2,098	1,692	1,509	2,578	29,717
Rhodesia	4	30	60	179	49	31	20	125	88	37	40	25	688
Seychelles	48	33	41	46	31	18	60	60	44	58	37	69	545
South Africa, Rep. of	1,468	1,300	1,567	1,498	1,227	1,178	1,701	965	1,418	2,061	1,669	2,904	18,956
Tanzania	37	20	59	77	27	21	29	47	13	37	37	55	459
Zambia	199	170	215	290	214	152	220	185	216	164	146	378	2,549
Other African	85	78	112	223	74	136	116	103	76	128	156	133	1,420
U.S.S.R.	4	2	5	6	10	3	2	2	2	3	4	32	75
China (Mainland)	11	6	9	13	12	3	7	9	14	28	9	4	125
China (Taiwan)	5	-	21	-	-	4	-	20	1	11	1	6	69
Hong Kong	13	12	16	12	6	12	12	24	9	6	13	6	141
India	167	238	299	244	289	276	258	205	289	191	217	240	2,913
Japan	6	18	63	11	14	14	14	14	24	22	18	9	227
Pakistan	5	9	14	22	6	3	14	17	9	6	28	6	139
Singapore	4	2	7	4	7	11	13	5	7	7	12	8	87
Other Asian	28	33	59	37	21	25	19	32	38	29	42	13	376

Table 36 (continued)

Country of residence	Jan.	Feb.	Mar.	Apr.	May	Jun.	Jul.	Aug.	Sept.	Oct.	Nov.	Dec.	Whole year
Australia	247	140	122	135	139	207	186	289	322	393	296	254	2,730
New Caledonia	12	1	5	1	4	12	9	10	3	14	7	25	103
New Zealand	23	14	31	41	33	28	46	38	35	42	35	28	394
Other Oceanian	23	1	6	7	2	2	8	11	4	22	5	-	91
Belgium	55	56	66	54	49	38	147	100	63	83	66	162	939
France	1,693	1,766	1,235	2,012	898	826	2,183	3,157	1,351	1,647	2,474	1,998	21,240
Germany, Fed. Rep. of	189	248	299	202	130	98	181	196	143	301	326	498	2,811
Italy	385	260	284	165	94	70	147	360	87	221	516	909	3,498
Switzerland	157	106	106	111	39	39	146	102	79	153	153	258	1,449
United Kingdom	420	711	669	459	596	334	529	489	446	892	854	734	7,133
Other European	100	166	213	129	100	100	114	226	127	213	206	208	1,902
Canada	22	26	20	39	15	19	36	32	12	26	25	30	302
U.S.A.	128	69	81	67	72	56	57	74	55	78	80	45	862
Other American	71	71	9	14	15	7	30	19	41	27	16	2	322
All countries	10,803	8,452	7,715	7,836	7,537	5,244	8,599	13,477	7,616	9,130	9,719	12,389	108,322

1/ see notes on page 34

Table 37 - Tourist arrivals and tourist nights^{1/} by country of residence and mode of transport, 1978

Country of residence	Tourist arrivals			Tourist nights spent during period
	Sea	Air	Total	
Kenya	-	826	826	6,746
Malagasy Republic	4	4,887	4,891	33,597
Malawi	-	343	343	2,861
Réunion	233	29,484	29,717	237,919
Rhodesia	-	688	688	10,913
Seychelles	1	544	545	6,513
South Africa, Rep. of	21	18,935	18,956	179,566
Tanzania	-	459	459	4,035
Zambia	-	2,549	2,549	23,457
Other African	5	1,415	1,420	14,001
U.S.S.R.	3	72	75	654
China (Mainland)	19	106	125	848
China (Taiwan)	3	66	69	637
Hong Kong	3	138	141	2,140
India	18	2,895	2,913	26,377
Japan	39	188	227	1,716
Pakistan	16	123	139	3,109
Singapore	-	87	87	1,009
Other Asian	30	346	376	4,507
Australia	26	2,704	2,730	25,047
New Caledonia	-	103	103	527
New Zealand	15	379	394	2,434
Other Oceanian	4	87	91	208
Belgium	3	936	939	12,589
France	45	21,195	21,240	219,947
Germany, Fed. Rep. of	16	2,795	2,811	40,450
Italy	6	3,492	3,498	29,898
Switzerland	6	1,443	1,449	17,625
United Kingdom	43	7,090	7,133	107,921
Other European	79	1,823	1,902	20,271
Canada	4	298	302	4,389
U.S.A.	54	808	852	7,478
Other American	-	322	322	2,221
All countries	696	107,626	108,322	1,051,610

^{1/} see notes on page 34

Table 38 - Visitor^{1/} arrivals by age and sex, 1977 - 1978

Age (completed years)	1977 ^{2/}			1978 ^{3/}		
	Male	Female	Both sexes	Male	Female	Both sexes
Under 1	355	267	622	388	232	620
1 - 4	1,928	1,579	3,507	1,993	1,386	3,379
5 - 9	2,510	2,184	4,694	2,742	2,156	4,898
10 - 14	2,381	2,076	4,457	2,533	2,133	4,666
15 - 19	2,472	2,844	5,316	2,395	2,884	5,279
20 - 24	4,709	5,856	10,565	4,606	5,803	10,409
25 - 29	7,911	7,198	15,109	8,040	7,152	15,192
30 - 34	8,548	5,971	14,519	8,861	6,589	15,450
35 - 39	7,511	4,465	11,976	7,808	4,843	12,651
40 - 44	5,954	3,384	9,338	6,393	3,591	9,984
45 - 49	4,949	2,909	7,858	5,227	3,211	8,438
50 - 54	3,997	2,649	6,646	4,248	2,874	7,122
55 - 59	2,890	2,003	4,893	3,385	2,189	5,574
60 - 64	1,868	1,374	3,242	1,910	1,444	3,354
65 - 69	1,163	1,009	2,172	1,338	1,056	2,394
70 & over	777	738	1,515	911	833	1,744
Not stated	318	193	511	269	173	442
All ages	60,241	46,699	106,940	63,047	48,549	111,596

^{1/} see notes on page 34

^{2/} visitors arriving in 1977 and leaving before 1.2.78

^{3/} visitors arriving in 1978 and leaving before 1.2.79

Table 39 - Visitor arrivals and visitor nights^{1/} by country of residence, 1977-1978

Country of residence	1977 ^{2/}			1978 ^{3/}		
	Visitor arrivals	Visitor nights	Average length of stay	Visitor arrivals	Visitor nights	Average length of stay
Kenya	974	7,482	7.7	865	6,562	7.6
Malagasy Republic	5,337	39,817	7.5	4,883	32,603	6.7
Malawi	417	3,304	9.1	391	2,765	7.1
Réunion	31,623	234,029	7.4	31,608	231,721	7.3
Rhodesia	477	5,576	11.7	733	10,636	14.5
Seychelles	528	6,178	11.7	602	6,412	10.6
South Africa, Rep. of	19,108	167,719	8.8	19,305	177,079	9.2
Tanzania	442	3,164	7.2	487	3,353	7.9
Zambia	2,971	24,239	8.2	2,641	23,617	8.9
Other African	1,723	16,672	9.7	1,424	13,616	9.6
U.S.S.R.	115	1,207	10.5	81	640	7.9
China (Mainland)	133	4,076	30.6	95	805	8.5
China (Taiwan)	199	1,324	9.2	118	579	4.9
Hong Kong	193	3,029	15.3	129	1,830	14.6
India	2,647	20,403	7.7	2,946	25,736	8.8
Japan	322	3,322	10.3	213	1,696	7.8
Singapore	56	543	9.7	77	937	12.8
Other Asian	506	6,592	13.0	534	6,838	12.9
Australia	3,067	22,269	7.3	2,819	24,395	8.8
New Caledonia	123	202	1.6	150	445	3.0
New Zealand	405	2,903	7.2	338	2,428	6.2
Other Oceanian	79	600	7.6	57	190	3.3
Belgium	836	11,535	13.8	938	12,545	12.7
France	13,195	186,593	10.2	21,312	216,966	9.9
Germany, Fed. Rep. of	2,593	31,611	12.2	2,885	41,331	14.3
Italy	3,330	30,070	9.0	3,479	31,640	9.1
Switzerland	1,214	16,322	13.4	1,460	17,261	11.8
United Kingdom	6,326	82,737	13.1	7,018	104,740	14.9
Other European	1,566	15,735	10.1	1,940	20,521	10.6
Canada	295	4,252	14.4	294	4,331	14.7
U.S.A.	952	8,410	8.8	838	7,096	8.5
Other American	183	2,881	15.7	331	1,875	5.7
All countries	106,940	965,946	9.0	111,596	1,034,394	9.3

^{1/} see notes on page 34

^{2/} figures refer to visitors arriving in 1977 and leaving before 1.2.78 and to the nights spent by them

^{3/} figures refer to visitors arriving in 1978 and leaving before 1.2.79 and to the nights spent by them

Table 40 - Visitor^{1/} arrivals by duration of stay, 1977 - 1978

Duration of stay	1977 ^{2/}		1978 ^{3/}	
	Number	Percentage	Number	Percentage
Less than 1 day	5,123	4.8	3,717	3.3
1 day	7,673	7.2	6,108	5.5
2 days	7,318	6.8	6,333	5.7
3 "	8,994	8.4	10,514	9.4
4 "	9,231	8.6	9,926	8.9
5 "	6,381	6.0	6,947	6.2
6 "	6,429	6.0	6,104	5.5
7 "	16,106	15.1	20,265	18.2
8 "	5,835	5.5	4,944	4.4
9 "	4,387	4.1	3,005	2.7
10 "	3,092	2.9	4,164	3.7
11 "	2,398	2.2	3,473	3.1
12 "	1,703	1.6	1,865	1.7
13 "	1,664	1.6	1,630	1.5
14 "	6,411	6.0	7,704	6.9
15 "	1,876	1.8	1,750	1.6
16 "	987	0.9	1,132	1.0
17 "	683	0.6	713	0.6
18 "	559	0.5	760	0.7
19 "	614	0.5	634	0.6
20 - 24 "	3,640	3.4	3,354	3.4
25 - 29 "	2,186	2.0	2,389	2.1
1 month - under 2 months	2,553	2.4	2,768	2.5
2 months - under 3 months	543	0.5	466	0.4
3 months and over	423	0.4	400	0.4
Not stated	66	0.1	31	-
Total	106,940	100.0	111,596	100.0

^{1/} see notes on page 34

^{2/} visitors arriving in 1977 and leaving before 1.2.78

^{3/} visitors arriving in 1978 and leaving before 1.2.79

Table 41 - Visitor arrivals by country of residence and duration of stay, 1978

Country of residence	Duration of stay in days													Total visitors			
	0	1	2	3	4	5	6	7 & 8	9 & 10	11&12	13&14	15-19	20-24		25-29	30 +	Not stated
Australia	97	460	309	308	399	260	87	272	106	68	59	95	77	59	163	-	2,819
Belgium	24	9	33	54	83	62	46	177	39	36	182	72	84	43	44	-	988
France	736	672	1,157	1,878	1,802	1,878	1,757	4,057	1,069	1,081	2,351	1,289	758	561	766	-	21,812
Germany, F. Rep.	38	80	108	120	120	66	51	600	112	93	577	179	441	182	118	-	2,885
India	114	613	312	360	406	230	100	184	88	91	67	98	61	34	188	-	2,946
Italy	18	76	48	227	213	135	185	1,287	257	185	516	181	76	35	40	-	3,479
Kenya	31	69	105	80	112	59	28	167	40	44	42	31	22	7	28	-	865
Malagasy Rep.	63	211	239	637	892	437	639	1,043	240	116	92	101	50	47	76	-	4,883
New Zealand	6	117	30	26	74	25	6	43	5	12	9	10	3	8	14	-	388
Réunion	1,589	1,802	2,195	4,590	3,961	2,479	2,072	5,829	1,968	1,084	1,129	1,156	568	432	754	-	31,608
Seychelles	36	93	37	60	23	19	12	88	25	12	67	31	38	27	34	-	602
S. Africa, Rep. of	492	635	733	1,076	614	293	421	7,607	2,317	1,758	1,669	716	423	287	264	-	19,305
Switzerland	11	29	44	64	57	78	79	332	70	56	355	87	116	37	45	-	1,460
United Kingdom	78	200	229	207	292	314	205	1,484	390	365	1,106	406	662	376	704	-	7,018
United States	24	97	155	100	81	57	40	100	38	20	11	44	18	9	44	-	838
Zambia	72	363	140	162	133	94	58	657	87	45	511	135	98	44	42	-	2,641
Other countries	288	582	459	565	664	461	318	1,282	318	272	591	358	359	201	310	31	7,059
All countries	3,717	6,108	6,333	10,514	9,926	6,947	6,104	25,209	7,169	5,338	9,334	4,989	3,854	2,389	3,634	31	111,596

1/ visitors arriving in 1978 and leaving before 1.2.79

see notes on page 34

Table 42 - Visitor arrivals and visitor nights^{1/} by country of nationality, 1978

Country of nationality	Visitor arrivals ^{2/}	Visitor nights ^{3/}	Average length of stay
Kenya	307	2,553	8.3
Malagasy Republic	3,755	24,281	6.5
Malawi	82	547	6.7
Rhodesia	447	6,369	14.2
South Africa, Rep. of	16,550	150,237	9.1
Tanzania	184	1,801	9.8
Zambia	459	3,928	8.6
Other African	1,190	13,581	11.4
U.S.S.R.	82	648	7.9
China (Mainland)	329	3,101	9.4
China (Taiwan)	98	342	3.5
India	3,993	31,732	7.9
Japan	248	1,870	7.5
Singapore	65	903	13.9
Other Asian	690	8,488	12.3
Australia	2,383	21,967	9.2
New Zealand	398	2,556	6.4
Other Oceanian	26	161	6.2
Belgium	1,048	13,294	12.7
France	54,734	458,042	8.4
Germany, Fed. Rep. of	3,441	47,128	13.7
Italy	3,735	34,343	9.2
Switzerland	1,583	18,565	11.7
United Kingdom	10,819	139,131	12.9
Other European	3,090	32,385	10.5
Canada	387	4,463	11.5
U.S.A.	1,137	9,636	8.5
Other American	338	2,342	6.9
All countries	111,596	1,034,394	9.3

^{1/} see notes on page 34

^{2/} figures refer to visitors arriving in 1978 and leaving before 1.2.79

^{3/} figures refer to nights spent by visitors arriving in 1978 and leaving before 1.2.79

Table 43 - Visitor arrivals by country of residence and nationality, 1978

Country of residence \ Country of nationality	Australia	Belgium	Canada	France	Germany, Fed. Rep.	India	Italy	Kenya	Malagasy Rep.	New Zealand	South Africa Rep. of	Southern Rhodesia	United Kingdom	U.S.A.	Zambia	Other countries	All countries
Australia	2,182	4	14	27	24	2	10	2	-	31	40	2	338	11	5	127	2,819
Belgium	-	870	2	44	1	1	12	-	3	-	3	-	20	5	-	27	988
Canada	-	-	242	11	-	3	-	2	-	-	2	2	21	3	-	8	294
France	4	28	6	21,486	30	5	26	-	3	-	2	-	51	22	-	149	21,812
Germany, Fed. Rep.	1	2	-	23	2,752	1	6	-	-	-	1	-	14	25	-	60	2,885
India	3	-	-	20	-	2,861	-	1	-	-	10	-	34	5	2	10	2,946
Italy	1	2	8	32	14	-	3,364	-	2	-	1	-	12	9	-	34	3,479
Kenya	23	2	15	14	26	19	16	280	-	3	5	1	263	70	4	124	865
Malagasy Rep.	-	1	7	746	23	147	44	-	3,686	-	-	1	13	17	-	198	4,883
New Zealand	13	-	1	10	5	2	-	1	-	283	9	-	57	2	-	5	388
Réunion	2	6	7	31,221	22	75	2	-	46	-	17	-	41	9	-	160	31,608
South Africa, Rep. of	64	37	12	97	324	195	126	2	-	17	16,305	33	1,448	75	3	569	19,305
Southern Rhodesia	3	1	1	1	12	4	6	-	-	1	41	401	246	1	-	15	733
United Kingdom	32	3	23	55	20	25	10	2	-	8	19	1	6,597	44	4	175	7,018
U.S.A.	4	-	3	14	8	8	-	-	-	-	1	-	27	755	-	18	838
Zambia	7	12	27	48	39	539	66	10	-	10	32	2	1,011	13	434	391	2,641
Other countries	44	80	19	853	141	106	45	7	15	45	64	4	626	71	7	5,967	8,094
All countries	2,383	1,048	387	54,702	3,441	3,993	5,733	307	3,755	398	16,550	447	10,819	1,137	459	8,037	111,596

Visitors arriving in 1978 and leaving before 1.2.79

Table 44 - Visitor nights¹ by country of residence and nationality, 1978

Country of residence \ Country of nationality	Australia	Belgium	Canada	France	Germany Fed. Rep.	India	Italy	Kenya	Malagasy Rep.	New Zealand	South Africa Rep. of	Southern Rhodesia	United Kingdom	U.S.A.	Zambia	Other countries	All countries
Australia	20,285	60	103	207	192	4	78	4	-	361	221	8	2,365	30	25	954	24,895
Belgium	-	11,146	7	496	3	1	95	-	20	-	27	-	459	33	-	258	12,545
Canada	-	-	3,310	384	-	45	-	12	-	-	5	36	340	12	-	187	4,331
France	43	324	29	212,994	315	50	327	-	14	-	35	-	860	143	-	1,827	216,966
Germany, Fed. Rep.	8	14	-	348	39,762	10	118	-	-	-	17	-	237	96	-	721	41,331
India	42	-	-	53	-	25,270	-	28	-	-	33	-	166	102	14	78	25,786
Italy	8	46	28	279	190	-	30,476	-	8	-	11	-	179	101	-	314	31,640
Kenya	141	9	71	116	191	336	87	2,285	-	18	23	2	2,018	303	40	922	6,562
Malagasy Rep.	-	5	43	5,343	110	1,312	186	-	23,877	-	-	24	113	40	-	1,550	32,603
New Zealand	147	-	6	50	38	2	-	5	-	1,826	44	-	276	-	-	34	2,428
Réunion	11	38	41	229,251	89	352	9	-	247	-	108	-	257	64	-	1,254	231,721
South Africa, Rep. of	571	351	92	950	3,130	1,223	1,258	70	-	78	148,023	494	13,821	814	22	5,182	177,079
Southern Rhodesia	19	18	11	21	179	9	65	-	-	11	587	5,704	3,754	25	-	233	10,636
United Kingdom	409	14	293	779	526	320	74	39	-	54	242	5	98,114	594	9	3,268	104,740
U.S.A.	23	-	10	80	73	82	-	-	-	-	16	-	141,487	146	-	184	7,096
Zambia	59	165	309	313	486	2,302	1,100	59	-	68	294	14	10,181	146	3,771	4,350	23,617
Other countries	201	1,104	110	6,094	1,844	414	470	51	115	140	551	82	5,852	641	47	62,702	80,418
All countries	21,967	13,294	4,463	457,758	47,128	31,732	34,343	2,553	24,281	2,556	150,237	6,369	139,131	9,636	3,928	85,018	1,034,394

¹/ figures refer to nights spent by visitors arriving in 1978 and leaving before 1.2.79

see notes on page 34

Table 45 - Arrivals of Mauritians settled abroad (excluding students) and nights spent by them by country of residence, 1977 - 1978

Country of residence	1977 ^{1/}			1978 ^{2/}		
	Arrivals	Nights	Average length of stay	Arrivals	Nights	Average length of stay
Congo Brazzaville	13	377	29.0	9	284	31.6
Ethiopia	8	254	31.8	7	196	28.0
Kenya	28	634	22.6	27	492	18.2
Malagasy Republic	147	3,998	27.2	93	2,139	23.0
Malawi	146	4,685	32.1	85	2,172	25.6
Mozambique	15	609	40.6	25	1,025	41.0
Réunion	1,681	28,040	16.7	1,542	26,321	17.1
Rhodesia	87	2,017	23.2	57	1,157	20.3
Seychelles	45	997	22.2	42	718	17.1
South Africa, Rep. of	731	16,292	22.3	619	14,772	23.9
Tanzania	1	14	14.0	5	80	16.0
Zambia	122	3,129	25.6	58	1,756	30.3
Other African	71	3,341	47.0	73	2,124	29.1
Hong Kong	16	444	27.8	20	507	25.4
India	11	377	34.3	21	467	22.2
Pakistan	2	242	121.0	1	7	7.0
Singapore	1	8	8.0	9	106	11.8
Other Asian	13	148	11.4	14	346	24.7
Australia	749	22,525	30.1	755	23,687	31.4
Other Oceanian	13	351	27.0	14	375	26.8
Belgium	96	3,006	31.3	136	4,133	30.4
Denmark	11	315	28.6	4	114	28.5
France	1,768	59,254	33.5	1,928	63,330	32.8
Germany, Fed. Rep.	82	2,550	31.1	113	3,379	29.9
Italy	21	453	21.6	34	976	28.7
Netherlands	9	374	41.6	12	411	34.2
Switzerland	96	2,583	26.9	78	2,037	26.1
United Kingdom	3,371	121,903	36.2	3,435	119,472	34.8
Other European	37	1,092	29.5	59	2,029	34.4
Canada	247	7,477	30.3	176	6,125	34.8
U.S.A.	94	2,285	24.3	60	2,022	33.7
Other American	3	20	6.7	3	43	14.3
All countries	9,735	289,794	29.8	9,514	282,802	29.7

^{1/} figures refer to Mauritians settled abroad arriving in 1977 and leaving before 1.2.78, and to the total nights spent by them in 1977 and 1978

^{2/} figures refer to Mauritians settled abroad arriving in 1978 and leaving before 1.2.79 and to the total nights spent by them in 1978 and 1979

see notes on page 34

Table 46 - Arrivals of Mauritians settled abroad (excluding students)
by duration of stay, 1977 - 1978

Duration of stay	1977 ^{1/}	1978 ^{2/}
Less than 1 day	93	35
1 day	119	131
2 days	219	131
3 days	213	179
4 days	193	146
5 days	107	93
6 days	120	128
7 days	223	245
8 days	145	155
9 days	112	125
10 days	99	107
11 days	101	95
12 days	153	93
13 days	56	91
14 days	232	226
15 days	113	113
16 days	104	113
17 days	80	108
18 days	90	124
19 days	115	135
20 - 24 days	760	926
25 - 29 days	1,866	1,653
1 month - under 2 months	3,768	3,795
2 months - under 3 months	435	358
3 months and over	204	159
Not stated	10	-
Total	9,735	9,514

^{1/} figures refer to Mauritians settled abroad arriving in 1977 and leaving before 1.2.78. The total number of arrivals for the year was 10,939.

^{2/} figures refer to Mauritians settled abroad arriving in 1978 and leaving before 1.2.79. The total number of arrivals for the year was 10,648.

See notes on page 34.

Table 47 - Total nights spent by Mauritians settled abroad (excluding students) by country of residence, 1977 - 1978

Country of residence	1977 ^{1/}	1978 ^{2/}
Congo Brazzaville	377	234
Ethiopia	234	259
Kenya	716	529
Malagasy Republic	4,365	2,237
Malawi	5,398	3,588
Mozambique	2,535	1,403
Réunion	30,862	29,052
Rhodesia	1,996	1,217
Seychelles	983	737
South Africa, Rep. of	17,616	15,983
Tanzania	38	73
Zambia	3,161	3,484
Other African	3,905	2,952
Hong Kong	433	517
India	422	456
Pakistan	242	7
Singapore	8	106
Other Asian	264	480
Australia	25,935	24,474
Other Oceanian	309	321
Belgium	3,131	4,267
Denmark	304	127
France	63,153	69,253
Germany, Fed. Rep.	2,784	3,342
Ireland	320	357
Italy	652	801
Netherlands	458	373
Switzerland	2,347	2,180
United Kingdom	140,211	132,736
Other European	1,301	1,411
Canada	7,376	7,561
U.S.A.	2,201	2,259
Other American	46	43
All countries	324,638	313,434

^{1/} figures refer to nights spent during 1977 by Mauritians settled abroad arriving in 1977 or before and leaving before 1.2.1978.

^{2/} figures refer to nights spent during 1978 by Mauritians settled abroad arriving in 1978 or before and leaving before 1.2.1979

See notes on page 34.

Handwritten marks or scribbles in the top right corner.

Main body of the document containing faint, illegible text, possibly bleed-through from the reverse side of the page.