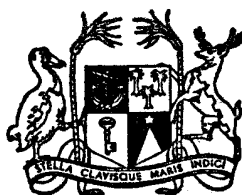


**Vol. 3**

**No. 2**



**MAURITIUS**

**Ministry of Economic Planning and Development  
CENTRAL STATISTICAL OFFICE**

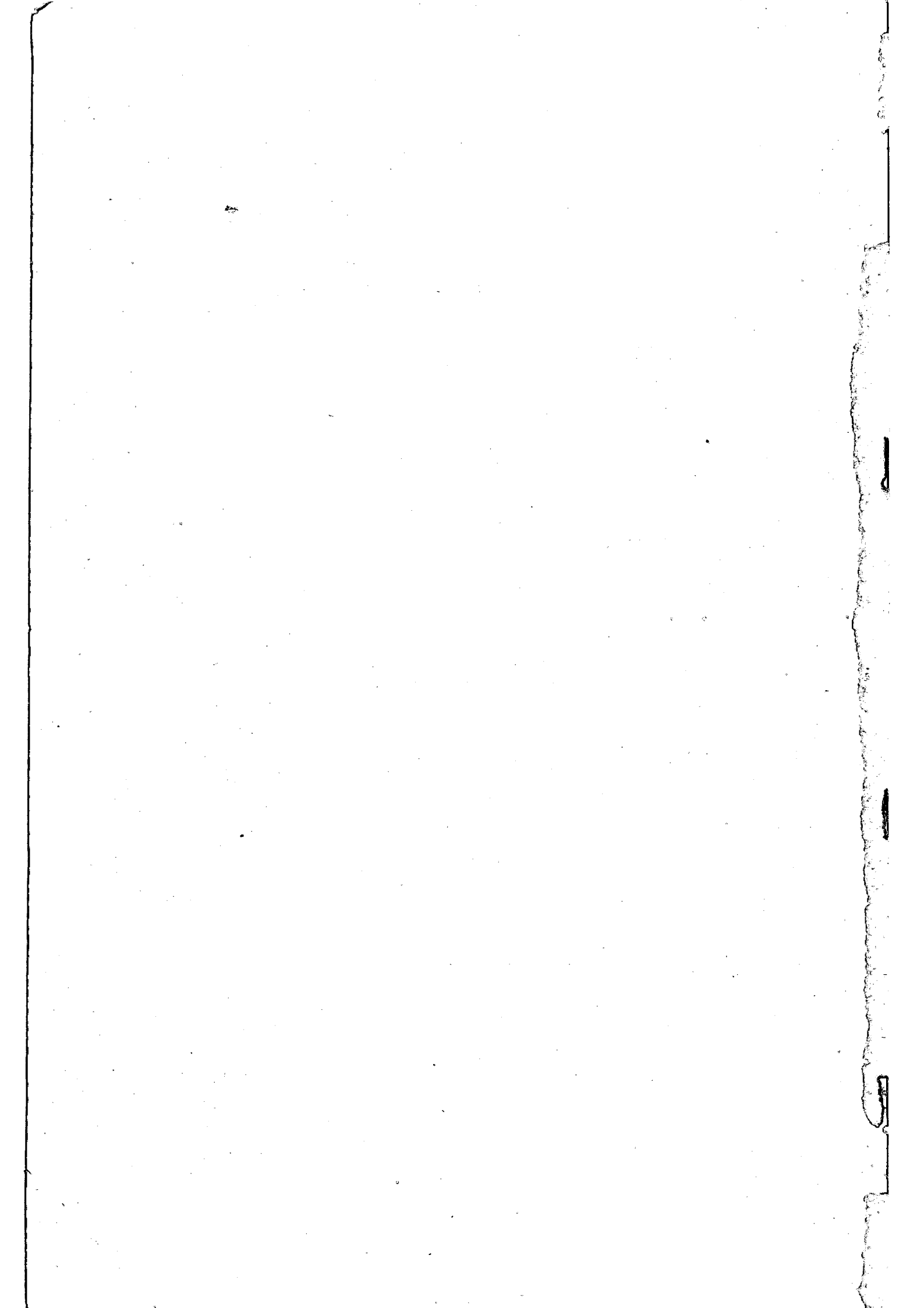
---

**INTERNATIONAL TRAVEL  
AND  
TOURISM**

---

**December 1976**

**[ Price : Rs 15.00 ]**



INTERNATIONAL TRAVEL AND TOURISM

Vol. 3 No. 2

December 1976

"International Travel and Tourism", a publication of the Central Statistical Office, is designed to present data on international travel and tourism in more detail than those that are currently published in the Bi-annual Digest of Statistics.

With the help of the computer of the Ministry of Finance it has been possible to process in more detail the information recorded on the international embarkation and disembarkation cards which passengers fill in on leaving and entering the country.

It is hoped that the results, especially those on tourism, which have been assembled in this report will be useful to all those who take an interest in the evolution of the tourist industry in this country.

The co-operation of the Immigration and Passport Office of the Police Department and the Data Processing Division of the Ministry of Finance is gratefully acknowledged.

The following symbols are used throughout:

- Nil

... Not available

J. Ah Kong  
Director of Statistics

Central Statistical Office  
Rose Hill  
Mauritius  
June 1977

CONTENTS

Page

I - POPULATION AND VITAL STATISTICS

Table 1 - Estimated population of Mauritius as at 31.12.76 based on the final 1972 Population Census data	1
2 - Population increase in intercensal periods - Island of Mauritius, 1846- 1972	1
3 (a) - Population enumerated at each census by population group and sex - Island of Mauritius, 1846-1952	2
3 (b) - Population enumerated at each census by community and sex - Island of Mauritius, 1962-72	2
4 - Population of Mauritius by geographical district and sex, 1974-76 (end-of-year estimates)	3
5 - Population and vital statistics - Island of Mauritius, 1921-76	4

II - PASSENGER TRAFFIC

Table 6 - Passenger traffic by sex, 1933-76	5 & 6
7 - Passenger traffic between Island of Mauritius and Rodrigues, 1962-76	6
8 - Passenger traffic by mode of transport, 1962-76	7
9 - Passenger traffic by month, 1973-76	8
10 - Arrivals by country of original embarkation, 1971-76	9
11 - Departures by country of final destination, 1971-76	10
12 - Passenger traffic by type of passenger and month, 1976	11
13 - Arrivals by age and sex, January 1975 - December 1976	12
14 - Departures by age and sex, January 1975 - December 1976	13
15 - Excess of arrivals over departures by age and sex, January 1975 - December 1976	14
16 - Arrivals and departures of residents of Island of Mauritius by district of residence and sex, 1976	15
17 - Arrivals of residents of Island of Mauritius by age and sex, July 1974 - December 1976	16
18 - Departures of residents of Island of Mauritius by age and sex, July 1974 - December 1976	17
19 - Excess of arrivals over departures of residents (excluding emigrants) of Island of Mauritius by age and sex, July 1974 - December 1976	18
20 - Excess of arrivals over departures of residents (including emigrants) of Island of Mauritius by age and sex, July 1974 - December 1976	19

III - EMIGRATION

Table 21 - Official long-term emigrants by sex, 1956-76	20
22 - External migration, 1956-76	21
23 - Official long-term emigrants by country of intended residence, 1963-76	22 & 23
24 - Age distribution of official long-term emigrants, 1963-76	24 - 26
25 - Official long-term emigrants by Major Occupational Group, 1972-76	27
26 - Official long-term emigrants by Major Occupational Group, age and sex, 1976	28
27 - Official long-term emigrants by occupation, 1974-76	29
28 - Official long-term emigrants by district of last residence and sex, January 1975 - December 1976	30

CONTENTS (cont'd)

	<u>Page</u>
<u>IV - TOURISM</u>	
Definition and notes	31
Table 29 - Tourist arrivals by mode of transport and total nights spent during period, 1953-76	32
30 - Tourist arrivals by month of arrival, 1966-76	33
31 - Percentage distribution of tourist arrivals by month of arrival, 1966-76	34
32 - Tourist arrivals by country of residence, 1966-76	35 - 37
33 - Percentage distribution of tourist arrivals by country of residence, 1966-76	38
34 - Tourist nights by country of residence of tourist, 1966-76	39 - 41
35 - Tourists arriving in 1976 by country of residence and month of arrival	42 & 43
36 - Tourist arrivals and tourist nights by country of residence and mode of transport, 1976	44
37 - Visitor arrivals by age and sex, 1975-76	45
38 - Visitor arrivals and visitor nights by country of residence, 1975-76	46
39 - Visitor arrivals by duration of stay, 1975-76	47
40 - Visitor arrivals by country of residence and duration of stay, 1976	48
41 - Visitor arrivals and visitor nights by country of nationality, 1976	49
42 - Visitor arrivals by country of residence and nationality, 1976	50
43 - Visitor nights by country of residence and nationality, 1976	51
44 - Arrivals of Mauritians settled abroad (excluding students) and nights spent by them by country of residence, 1975-76	52
45 - Arrivals of Mauritians settled abroad (excluding students) by duration of stay, 1975-76	53
46 - Total nights spent by Mauritians settled abroad (excluding students) by country of residence, 1975-76	54

-----

I. POPULATION AND VITAL STATISTICS

Table 1 - Estimated population of Mauritius as at 31st December 1976 based on the final 1972 Population Census data

Island	Both sexes	Male	Female
Island of Mauritius	880,781	438,808	441,973
Island of Rodrigues	27,049	13,251	13,798
Other Islands	350	250	100
<b>Mauritius</b>	<b>908,180</b>	<b>452,309</b>	<b>455,871</b>

Table 2 - Population increase in intercensal periods - Island of Mauritius, 1846-1972

Census date	Population enumerated at census			Intercensal increase	Average annual rate of increase %
	Both sexes	Male	Female		
1st Aug. 1846	158,462	104,598	53,864		
20th Nov. 1851	180,823	119,341	61,482	22,361	2.55
8th Apr. 1861	310,050	202,961	107,089	129,227	5.87
11th Apr. 1871	316,042	193,575	122,467	5,992	0.19
4th Apr. 1881	359,874	208,655	151,219	43,832	1.31
6th Mar. 1891	370,588	206,038	164,550	10,714	0.29
1st Apr. 1901	371,023	199,552	171,471	435	0.01
31st Mar. 1911	368,791	194,095	174,696	- 2,232	- 0.06
21st May 1921	376,485	194,108	182,377	7,694	0.21
26th Apr. 1931	393,238	200,609	192,629	16,753	0.44
11th Jun. 1944	419,185	210,326	208,859	25,947	0.49
29th Jun. 1952	501,415	252,032	249,383	82,230	2.26
30th Jun. 1962 <sup>1/</sup>	681,619	342,306	339,313	180,204	3.12
30th Jun. 1972 <sup>1/</sup>	826,199	413,580	412,619	144,580	1.94

<sup>1/</sup> de facto population - including the European members of the Armed Forces but excluding the passengers and crews of ships lying in the harbour.

Table 3(a) - Population enumerated at each census by population group and sex - Island of Mauritius, 1846-1952

Year of census	General Population			Indo-Mauritian Population			Chinese Population			At the 1962 Census each householder was asked, for the first time to state the population group to which each member of his household claimed to belong.  Prior to 1962, it is probable that, from one census to another, different criteria have been used in classifying the population by population groups. Figures are therefore not strictly comparable from one census to another, before 1962.
	Both sexes	Male	Female	Both sexes	Male	Female	Both sexes	Male	Female	
1846	102,217	55,663	46,554	56,245	48,935	7,310	-	-	-	
1851	102,827	55,059	47,768	77,996	64,282	13,714	-	-	-	
1861	115,864	59,796	56,068	192,634	141,615	51,019	1,552	1,550	2	
1871	97,497	49,487	48,010	216,258	141,804	74,454	2,287	2,284	3	
1881	107,323	53,754	53,569	248,993	151,352	97,641	3,558	3,549	9	
1891	111,517	55,397	56,120	255,920	147,499	108,421	3,151	3,142	9	
1901	108,422	52,995	55,427	259,086	143,100	115,986	3,515	3,457	58	
1911	107,432	51,808	55,624	257,697	138,974	118,723	3,662	3,313	349	
1921	104,216	49,725	54,491	265,524	139,150	126,374	5,745	5,233	1,512	
1931	115,666	54,733	60,933	268,649	139,533	129,116	8,923	6,343	2,580	
1944	143,056	67,136	75,920	265,247	136,382	128,865	10,882	6,808	4,074	
1952	148,238	70,370	77,868	335,327	171,241	164,086	17,850	10,421	7,429	

Table 3(b) - Population enumerated at each census by community and sex - Island of Mauritius, 1962-72

Year of census	Total Population			Hindu			Muslim			Sino-Mauritian			General Population		
	Both sexes	Male	Female	Both sexes	Male	Female	Both sexes	Male	Female	Both sexes	Male	Female	Both sexes	Male	Female
1962 <sup>1/</sup>	681,619	342,306	339,313	344,587	174,698	169,889	110,322	55,971	54,351	23,058	12,654	10,404	203,652	98,983	104,669
1972 <sup>1/</sup>	826,199	413,500	412,619	428,167	215,654	212,513	137,081	68,789	68,292	24,084	12,849	11,235	236,867	116,288	120,579

<sup>1/</sup> de facto population - including the European members of the Armed Forces with excluding the passengers and crews of ships living in the Harbour.

Table 4 - Population of Mauritius by geographical district and sex, 1974-76 (end of year estimates)

Geographical district	Estimated population <sup>1/</sup> as at 31.12.74			Estimated population <sup>1/</sup> as at 31.12.75			Estimated population <sup>1/</sup> as at 31.12.76		
	Both sexes	Male	Female	Both sexes	Male	Female	Both sexes	Male	Female
Port Louis	138,145	68,242	69,903	139,592	68,865	70,727	141,343	69,636	71,707
Pamplemousses	71,772	36,303	35,469	72,810	36,795	36,035	74,181	37,425	36,756
Rivière du Rempart	70,131	35,478	34,653	71,540	36,036	35,304	72,767	36,727	36,040
Flacq	93,540	47,160	46,380	95,212	47,919	47,293	97,163	48,790	48,373
Grand Port	83,696	42,030	41,666	84,856	42,558	42,298	86,269	43,214	43,055
Savanne	54,690	27,481	27,209	55,333	27,792	27,547	56,210	28,212	27,998
P. Wilhems : Urban	236,915	117,032	119,883	239,453	118,178	121,275	242,596	119,610	122,986
Other	29,301	14,706	14,595	29,745	14,901	14,844	30,035	15,037	14,998
Moka	50,280	25,187	25,093	50,961	25,484	25,477	51,807	25,845	25,962
Black River	27,351	13,813	13,538	27,863	14,013	13,820	28,410	14,312	14,098
Island of Mauritius	855,821	427,432	428,389	867,191	432,571	434,620	880,781	433,808	441,973
Island of Rodrigues	26,123	12,397	13,726	26,693	13,136	13,467	27,049	13,251	13,798
Other Islands	350	250	100	350	250	100	350	250	100
Mauritius	882,294	440,579	441,715	894,144	445,957	448,187	908,180	452,309	455,871

<sup>1/</sup> Based on the final 1972 Population Census data. No account has been taken of internal migration.



Table 5 - Population and vital statistics - Island of Mauritius, 1921-76

Period	Population <sup>1/</sup> at mid-period	Live births	Deaths	Natural increase	Infant deaths <sup>2/</sup>	Still births	Civil marriages
1921-25 Average	379,636	14,834	11,758	3,076	2,104	1,581	2,062
1926-30 "	403,248	14,208	11,614	2,594	2,002	1,256	1,455
1931-35 "	398,647	12,490	11,889	601	1,752	1,216	1,489
1936-40 "	412,003	13,621	11,157	2,464	2,119	1,240	2,093
1941-45 "	417,838	15,027	11,927	3,100	2,318	1,240	3,333
1946-50 "	438,797	19,595	9,113	10,482	2,343	1,348	3,503
1951-55 "	522,577	23,176	7,701	15,475	1,884	1,472	3,307
1956	574,938	24,910	6,739	18,171	1,644	1,789	3,080
1957	593,070	25,273	7,603	17,670	1,897	1,800	2,903
1958	609,518	24,600	7,112	17,488	1,659	1,703	3,169
1959	627,249	23,923	6,753	17,170	1,495	1,759	3,297
1960	644,743	25,307	7,248	18,059	1,760	1,783	3,113
1961	662,368	26,092	6,505	19,587	1,618	1,963	3,484
1962	681,619	26,267	6,325	19,942	1,579	1,841	3,893
1963	695,641	27,978	6,709	21,269	1,660	1,519	3,472
1964	716,298	27,528	6,184	21,344	1,561	1,611	3,965
1965	735,245	26,279	6,337	19,942	1,685	1,557	3,976
1966	753,276	25,817	6,701	20,116	1,721	1,384	4,157
1967	767,782	23,499	6,543	16,956	1,656	1,074	3,949
1968	781,615	24,413	7,126	17,287	1,688	1,110	3,974
1969	792,893	21,719	6,428	15,291	1,528	951	3,882
1970	805,489	21,623	6,309	15,314	1,232	857	4,499
1971	816,561	20,834	6,248	14,586	1,077	842	4,346
1972	826,199	20,496	6,506	13,990	1,308	718	5,082
1973	834,781	18,974	6,525	12,449	1,201	678	5,533
1974	845,755	22,938	6,221	16,717	1,045	854	6,771
1975	856,516	21,492	6,967	14,525	1,046	896	6,888
1976	867,885	22,250	6,815	15,435	900	784	8,262

<sup>1/</sup> Figures for 1961-71 have been revised in the light of the final 1972 Population Census data.

<sup>2/</sup> Deaths of children under 1 year of age.

II - PASSENGER TRAFFIC

Table 6 - Passenger traffic<sup>1/</sup> by sex, 1933-76

Period	Arrivals			Departures			Net overseas migration
	Both sexes	Male	Female	Both sexes	Male	Female	
1933	3,444	2,410	1,034	4,011	2,862	1,149	- 567
1934	3,969	2,777	1,192	4,380	3,056	1,324	- 411
1935	3,988	2,876	1,112	4,255	2,899	1,356	- 267
1936	3,807	2,681	1,126	3,563	2,451	1,112	+ 244
1937	3,472	2,366	1,106	3,849	2,736	1,113	- 377
1938	4,554	3,062	1,492	4,281	2,896	1,385	+ 273
1939	3,171	1,984	1,187	3,212	2,127	1,085	- 41
1940	1,518	1,028	490	1,851	1,379	472	- 333
1941	1,209	950	259	4,165	3,859	306	- 2,956
1942	1,083	893	190	1,560	1,398	162	- 477
1943	1,054	859	195	737	642	95	+ 317
1944	1,034	798	236	1,053	796	257	- 19
1945	2,061	1,624	437	2,247	1,624	623	- 186
1946	3,298	2,279	1,019	3,377	2,160	1,217	- 79
1947	4,698	3,128	1,570	4,514	3,100	1,414	+ 184
1948	4,294	2,792	1,502	4,015	2,684	1,331	+ 279
1949	4,093	2,700	1,393	4,141	2,794	1,347	- 48
1950	5,253	3,469	1,784	4,900	3,352	1,548	+ 353
1951	5,243	3,515	1,728	5,016	3,536	1,480	+ 227
1952	6,046	3,999	2,047	5,637	3,854	1,783	+ 409
1953	7,252	4,820	2,432	7,054	4,732	2,322	+ 198
1954	7,251	4,728	2,523	7,312	4,824	2,488	- 61
1955	7,216	4,558	2,658	7,354	4,722	2,632	- 138
1956	7,747	4,873	2,874	8,225	5,219	3,006	- 478
1957	8,095	5,156	2,939	8,267	5,309	2,958	- 172
1958	8,703	5,424	3,279	8,924	5,596	3,328	- 221
1959	9,637	5,995	3,642	9,544	6,058	3,486	+ 93
1960	10,412	6,563	3,849	10,784	6,938	3,846	- 372

Table 6 (continued)

Period	Arrivals			Departures			Net overseas migration
	Both sexes	Male	Female	Both sexes	Male	Female	
1961	11,854	7,246	4,608	13,033	8,165	4,868	- 1,179
1962	15,189	9,283	5,906	16,075	9,887	6,188	- 886
1963	18,047	10,939	7,108	18,299	11,108	7,191	- 252
1964	21,221	12,787	8,434	22,331	13,349	8,982	- 1,110
1965	22,024	13,571	8,453	24,150	14,759	9,391	- 2,126
1966	26,456	16,358	10,098	29,301	17,930	11,371	- 2,845
1967	29,321	18,177	11,144	32,925	20,135	12,790	- 3,604
1968	31,403	19,820	11,583	35,988	22,181	13,807	- 4,585
1969	35,919	21,552	14,367	38,929	23,127	15,802	- 3,010
1970	48,819	29,587	19,232	51,969	31,033	20,936	- 3,150
1971	60,826	36,005	24,821	63,997	37,399	26,598	- 3,171
1972	77,174	45,587	31,587	81,493	47,837	33,656	- 4,319
1973	101,184	59,215	41,969	104,697	61,364	43,333	- 3,513
1974	109,044	63,077	45,967	113,362	65,649	47,713	- 4,318
1975	117,548	68,654	48,894	120,703	70,368	50,335	- 3,155
1976	139,303	80,674	58,629	141,148	81,718	59,430	- 1,845

1/ Including seamen but excluding transit passengers who do not leave the airport.

Table 7 - Passenger traffic between Island of Mauritius and Rodrigues, 1962-76

Period	Departures to Rodrigues			Arrivals from Rodrigues			Net overseas migration
	Both sexes	Male	Female	Both sexes	Male	Female	
1962	1,033	661	372	1,126	725	401	- 93
1963	899	620	279	1,439	905	534	- 540
1964	1,300	850	450	1,450	915	535	- 150
1965	1,339	854	485	1,525	961	564	- 186
1966	1,326	860	466	1,418	904	514	- 92
1967	1,485	940	545	1,268	822	446	+ 217
1968	1,541	940	601	1,485	946	539	+ 56
1969	1,569	1,034	535	1,493	994	499	+ 76
1970	1,740	1,103	637	1,762	1,123	639	- 22
1971	1,578	1,017	561	1,744	1,118	626	- 166
1972	2,168	1,409	759	2,311	1,469	842	- 143
1973	2,427	1,521	906	2,453	1,511	942	- 26
1974	2,053	1,197	856	2,642	1,560	1,088	- 595
1975	2,968	1,870	1,098	3,319	2,030	1,289	- 351
1976	3,796	2,528	1,268	4,221	2,854	1,367	- 425

Table 8 - Passenger traffic<sup>1/</sup> by mode of transport, 1962-76

Period	Arrivals			Departures			Net overseas migration
	Total	By sea	By air	Total	By sea	By air	
1962	15,189	4,258	10,931	16,075	4,374	11,701	- 886
1963	18,047	4,660	13,387	18,299	4,432	13,867	- 252
1964	21,221	5,187	16,034	22,331	5,478	16,853	- 1,110
1965	22,024	4,886	17,138	24,150	5,463	18,687	- 2,126
1966	26,456	5,544	20,912	29,301	6,330	22,971	- 2,845
1967	29,321	4,901	24,420	32,925	6,515	26,410	- 3,604
1968	31,403	4,264	27,139	35,988	5,967	30,021	- 4,585
1969	35,919	3,483	32,436	38,929	4,632	34,297	- 3,010
1970	48,819	3,984	44,835	51,969	4,376	47,593	- 3,150
1971	60,826	3,857	56,969	63,997	4,295	59,702	- 3,171
1972	77,174	3,741	73,433	81,493	4,072	77,421	- 4,319
1973	101,184	4,238	96,946	104,697	4,027	100,670	- 3,513
1974	109,044	3,848	105,196	113,362	3,772	109,590	- 4,318
1975	117,548	4,485	113,063	120,703	4,255	116,448	- 3,155
1976	139,303	4,367	134,936	141,148	4,441	136,707	- 1,845
1976 : 1st Qr.	33,068	1,038	32,030	38,616	1,119	37,497	- 5,548
2nd Qr.	28,747	1,161	27,586	29,841	1,044	28,797	- 1,094
3rd Qr.	39,429	975	38,454	39,811	920	38,891	- 382
4th Qr.	38,059	1,193	36,866	32,880	1,358	31,522	+ 5,179

<sup>1/</sup> Including seamen but excluding transit passengers who do not leave the airport.

Table 9 - Passenger traffic <sup>1/</sup> by month, 1973-76

Month	Arrivals					Departures					Excess of arrivals over departures				
	1973	1974	1975	1976	1977	1973	1974	1975	1976	1977	1973	1974	1975	1976	1977
January	9,307	12,015	11,918	14,436	10,915	13,047	14,327	17,267	1,608	-1,932	-2,409	-2,831			
February	6,709	7,884	6,223	9,560	8,723	10,617	9,203	12,222	-2,014	-2,733	-2,980	-2,662			
March	5,946	7,379	7,115	9,072	6,724	7,469	6,734	9,127	-778	-90	+381	-55			
April	7,502	7,974	7,222	9,758	7,854	8,817	7,873	10,223	-352	-843	-651	-465			
May	7,282	7,387	7,968	10,933	7,764	7,190	9,139	11,338	-482	+197	-1,171	-405			
June	7,216	7,288	7,070	8,056	7,437	8,075	7,065	8,280	-221	-787	+5	-224			
July	7,896	9,142	9,756	12,798	8,334	8,808	9,911	11,530	-438	+334	-155	+1,268			
August	13,816	13,128	15,963	16,970	12,239	11,630	14,024	15,218	+1,577	+1,498	+1,939	+1,752			
September	8,171	8,058	9,304	9,661	10,807	11,521	12,466	13,063	-2,636	-3,463	-3,162	-3,402			
October	7,159	7,384	8,905	11,128	7,140	7,537	8,624	10,354	+19	-153	+281	+774			
November	6,362	8,140	10,009	10,824	7,144	8,509	10,527	11,558	-782	-369	-518	-734			
December	13,818	13,265	16,095	16,107	9,616	9,242	10,810	10,968	+4,202	+4,023	+5,285	+5,139			
Whole year	101,184	109,044	117,548	139,303	104,697	113,362	120,703	141,148	-3,513	-4,318	-3,155	-1,845			

<sup>1/</sup> Including seamen but excluding transit passengers who do not leave the airport.

Table 10 - Arrivals<sup>1/</sup> by country of original embarkation, 1971-76

Country of original embarkation	1971	1972	1973	1974	1975	1976
Kenya	1,554	1,690	2,278	2,319	2,126	3,096
Malagasy Republic	3,459	4,113	4,870	3,888	2,704	4,371
Malawi	379	463	495	571	907	1,304
Réunion	25,691	29,314	36,031	36,959	43,058	50,538
Rhodesia	197	401	342	399	1,150	633
Seychelles	126	1,348	2,295	2,429	2,209	2,591
South Africa, Rep. of	6,930	10,198	12,537	16,607	17,450	20,684
Tanzania	539	534	576	433	332	479
Zambia	1,519	2,171	2,824	3,891	3,263	2,800
Rodrigues	1,744	2,292	2,453	2,648	3,319	4,221
Agalega & St. Brandon	473	276	335	526	672	173
Other African	466	672	1,245	906	819	1,604
China (Mainland)	}	160	63	24	14	25
China (Taiwan)		34	186	197	52	38
Hong Kong	249	594	652	574	839	983
India	2,270	2,798	5,185	4,790	5,608	7,055
Japan	79	98	126	111	111	65
Singapore	60	25	42	119	36	34
Other Asian	253	343	257	574	439	772
Australia	3,503	3,869	4,660	5,568	5,395	5,469
New Caledonia	...	178	118	86	92	109
New Zealand	260	238	333	360	316	379
Other Oceanian	230	69	49	61	50	43
Belgium	563	1,494	3,808	2,294	1,703	826
France	1,580	2,604	4,357	7,008	8,277	11,044
Germany, Fed. Rep. of	677	1,188	1,596	1,548	1,246	1,319
Italy	288	572	1,470	1,362	1,276	1,346
Switzerland	118	167	372	510	396	534
United Kingdom	6,039	7,869	9,882	10,374	12,192	15,376
Other European	358	363	723	765	400	429
Canada	81	105	174	210	157	210
U.S.A.	307	311	290	296	124	171
Other American	18	19	26	29	55	26
U.S.S.R.	227	71	70	100	74	49
All countries	60,237	76,641	100,720	108,536	116,861	138,796

<sup>1/</sup> Excluding transit passengers who did not leave the airport; discharged seamen numbering 589, 533, 464, 508, 687 and 507 respectively for the period under review.

Table 11 - Departures<sup>1/</sup> by country of final destination, 1971-76

Country of final destination	1971	1972	1973	1974	1975	1976
Kenya	2,155	1,940	2,349	2,815	2,733	3,591
Malagasy Republic	2,867	2,984	3,649	3,211	2,228	3,694
Malawi	471	482	499	628	793	897
Réunion	26,173	30,259	37,156	37,767	42,569	49,799
Rhodesia	214	462	368	535	1,088	734
Seychelles	165	1,710	1,780	2,051	2,061	3,223
South Africa, Rep. of	6,410	8,535	12,346	17,220	18,158	21,471
Tanzania	588	548	570	655	528	608
Zambia	1,640	2,290	2,605	3,663	2,952	2,330
Rodrigues	1,578	2,168	2,427	2,053	2,968	3,796
Agalega & St. Brandon	429	266	325	394	357	122
Other African	701	975	1,685	1,278	1,094	1,605
China (Mainland)	}	88	76	13	13	73
China (Taiwan)		23	170	270	93	44
Hong Kong	380	708	673	595	858	1,012
India	2,446	3,694	5,040	4,108	5,506	6,564
Japan	106	133	123	157	124	115
Singapore	47	27	53	91	99	93
Other Asian	364	430	384	696	524	668
Australia	3,463	3,908	4,325	4,575	4,537	4,750
New Caledonia	...	135	120	131	59	83
New Zealand	170	263	423	363	303	281
Other Oceanian	140	35	72	67	30	37
Belgium	616	1,485	3,066	2,235	2,242	930
France	2,728	4,616	6,627	9,009	9,814	12,865
Germany, Fed. Rep. of	764	1,082	1,650	1,487	1,231	1,183
Italy	224	829	1,656	1,783	1,406	1,580
Switzerland	129	225	385	589	536	597
United Kingdom	7,174	9,496	11,989	12,410	13,728	16,641
Other European	414	446	834	877	490	502
Canada	116	157	221	355	326	266
U.S.A.	304	360	356	362	226	153
Other American	14	22	31	80	32	45
U.S.S.R.	237	57	79	93	66	57
All countries	63,227	80,838	104,162	112,616	119,772	140,409

<sup>1/</sup> Excluding transit passengers who did not leave the airport; engaged seamen numbering 770,655, 535, 746 931 and 739 respectively for the period under review.

Table 12 - Passenger traffic<sup>1/</sup> by type of passenger and month, 1976

Type of passenger	Jan.	Feb.	Mar.	Apr.	May	Jun.	Jul.	Aug.	Sept.	Oct.	Nov.	Dec.	Whole year
<b>ARRIVALS</b>													
Visitors <sup>2/</sup>	10,410	7,588	6,464	7,029	7,877	5,233	8,025	12,495	6,523	8,069	7,596	10,481	97,790
On holiday	9,417	6,294	5,344	6,122	6,686	3,346	6,498	11,154	5,169	6,840	6,280	9,399	82,549
On business	283	413	463	385	509	1,301	868	612	661	633	558	279	6,965
In transit	659	803	633	495	652	509	642	681	657	524	723	783	7,761
Other and not stated	51	78	24	27	30	77	17	48	36	72	35	20	515
Mauritians settled abroad	700	491	488	557	519	608	1,496	1,185	494	629	625	2,837	10,629
Mauritian residents	3,043	1,250	1,847	1,832	2,332	2,036	2,992	3,035	2,237	2,213	2,311	2,615	27,743
Other	242	217	234	253	175	152	254	186	362	184	254	121	2,634
Total	14,525	9,546	9,033	9,671	10,903	8,029	12,767	16,901	9,616	11,095	10,786	16,054	138,796
<b>DEPARTURES</b>													
Visitors <sup>2/</sup>	12,541	8,812	6,235	6,931	8,449	4,937	7,070	10,807	8,967	6,958	8,322	7,341	97,370
Mauritians settled abroad	2,342	1,126	458	444	523	421	541	1,289	1,168	645	528	477	9,962
Emigrants	60	90	72	61	53	30	61	29	30	40	24	29	579
Mauritian residents	1,938	1,861	2,053	2,388	2,079	2,545	3,438	2,839	2,647	2,435	2,445	2,771	29,439
Other	312	304	232	279	215	310	378	185	171	182	202	280	3,059
Total	17,193	12,193	9,050	10,103	11,319	8,243	11,488	15,149	12,983	10,260	11,521	10,907	140,409

<sup>1/</sup> Excluding seamen, and transit passengers who do not leave the airport.

<sup>2/</sup> Including non-residents (a total of 5,229 for the year) who left the airport but stayed in the country for less than a day.

See notes on page 32.



Table 13 - Arrivals<sup>1/</sup> by age and sex, January 1975 - December 1976

Age (completed years)	January - June 1975			July - December 1975			January - June 1976			July - December 1976		
	Both sexes	Male	Female	Both sexes	Male	Female	Both sexes	Male	Female	Both sexes	Male	Female
Under 1	302	159	143	414	226	188	343	206	137	483	255	228
1 - 4	1,747	927	820	2,556	1,353	1,203	2,085	1,115	970	2,770	1,475	1,295
5 - 9	2,062	1,091	971	2,988	1,568	1,420	2,466	1,339	1,127	3,316	1,758	1,558
10 - 14	1,849	945	904	3,043	1,533	1,510	2,370	1,245	1,125	3,172	1,626	1,546
15 - 19	2,290	1,133	1,157	3,627	1,657	1,970	2,896	1,361	1,535	3,763	1,686	2,077
20 - 24	5,118	2,671	2,447	7,579	3,628	3,951	6,619	3,343	3,276	8,246	3,914	4,332
25 - 29	6,610	3,934	2,676	10,061	5,637	4,424	8,649	5,023	3,626	11,128	6,236	4,892
30 - 34	5,540	3,521	2,019	8,314	5,037	3,277	7,697	4,747	2,950	9,663	5,659	4,004
35 - 39	4,669	3,062	1,607	6,849	4,222	2,627	6,318	4,134	2,184	7,576	4,708	2,868
40 - 44	3,789	2,528	1,261	5,400	3,450	1,950	5,151	3,426	1,725	6,272	3,914	2,358
45 - 49	3,358	2,187	1,171	4,897	3,023	1,874	4,405	2,883	1,522	5,428	3,348	2,080
50 - 54	2,785	1,760	1,025	4,171	2,478	1,693	3,779	2,375	1,404	4,601	2,714	1,887
55 - 59	2,060	1,268	792	2,836	1,656	1,180	2,496	1,510	986	3,204	1,883	1,321
60 - 64	1,506	899	607	2,181	1,272	909	1,940	1,133	807	2,498	1,338	1,160
65 - 69	885	509	376	1,271	695	576	1,157	670	487	1,514	795	719
70 and over	629	367	262	888	485	403	818	460	358	1,114	563	551
Not stated	2,317	1,725	592	2,957	2,048	909	2,626	1,905	721	2,740	1,927	813
All ages	47,516	28,686	18,830	70,032	39,968	30,064	61,815	36,875	24,940	77,488	43,799	33,689

<sup>1/</sup> Including discharged seamen but excluding transit passengers who do not leave the airport.

Table 14 - Departures <sup>1/</sup> by age and sex, January 1975 - December 1976

Age (completed years)	January - June 1975			July - December 1975			January - June 1976			July - December 1976		
	Both sexes	Male	Female	Both sexes	Male	Female	Both sexes	Male	Female	Both sexes	Male	Female
Under 1	363	187	176	341	191	150	421	241	180	430	248	182
1 - 4	2,184	1,175	1,009	2,280	1,239	1,041	2,552	1,353	1,199	2,473	1,361	1,112
5 - 9	2,512	1,343	1,169	2,766	1,437	1,329	2,987	1,601	1,386	2,927	1,621	1,306
10 - 14	2,337	1,235	1,102	2,932	1,527	1,405	2,839	1,515	1,324	2,913	1,523	1,390
15 - 19	3,067	1,474	1,593	3,902	1,806	2,096	3,542	1,673	1,869	3,833	1,806	2,027
20 - 24	6,308	3,229	3,079	7,748	3,945	3,803	7,659	3,758	3,901	8,125	4,085	4,040
25 - 29	7,552	4,380	3,172	9,223	5,237	3,986	9,723	5,478	4,245	10,216	5,765	4,451
30 - 34	6,281	3,919	2,362	7,639	4,655	2,984	8,436	5,093	3,343	8,958	5,313	3,645
35 - 39	5,270	3,413	1,857	6,307	3,880	2,427	6,734	4,261	2,473	7,010	4,448	2,562
40 - 44	4,194	2,752	1,442	4,967	3,214	1,753	5,608	3,643	1,965	5,902	3,751	2,151
45 - 49	3,780	2,402	1,378	4,678	2,877	1,801	4,626	2,958	1,668	5,108	3,222	1,886
50 - 54	3,126	1,937	1,189	3,893	2,298	1,595	4,104	2,502	1,602	4,294	2,532	1,762
55 - 59	2,147	1,317	830	2,736	1,626	1,110	2,719	1,641	1,078	2,983	1,775	1,208
60 - 64	1,613	954	659	2,120	1,246	874	2,035	1,158	877	2,291	1,234	1,057
65 - 69	961	542	419	1,226	664	562	1,242	698	544	1,350	719	631
70 and over	673	368	305	874	469	405	879	499	380	1,040	512	528
Not stated	1,973	1,494	479	2,730	1,936	794	2,351	1,731	620	2,838	2,000	838
ALL ages	54,341	32,121	22,220	66,362	38,247	28,115	68,457	39,803	28,654	72,691	41,915	30,776

<sup>1/</sup> Including engaged seamen but excluding transit passengers who do not leave the airport.

Table 15 - Excess of arrivals<sup>1/</sup> over departures<sup>1/</sup> by age and sex, January 1975-December 1976

Age (completed years)	January - June 1975			July - December 1975			January - June 1976			July - December 1976		
	Both sexes	Male	Female	Both sexes	Male	Female	Both sexes	Male	Female	Both sexes	Male	Female
Under 1	- 61	- 28	- 33	+ 73	+ 35	+ 38	- 78	- 35	- 43	+ 53	+ 7	+ 46
1 - 4	- 437	- 248	- 189	+ 276	+ 114	+ 162	- 467	- 238	- 229	+ 297	+ 114	+ 183
5 - 9	- 450	- 252	- 198	+ 222	+ 131	+ 91	- 521	- 262	- 259	+ 389	+ 137	+ 252
10 - 14	- 488	- 290	- 198	+ 111	+ 6	+ 105	- 469	- 270	- 199	+ 259	+ 103	+ 156
15 - 19	- 777	- 341	- 436	- 275	- 149	- 126	- 646	- 312	- 334	- 70	- 120	+ 50
20 - 24	- 1,190	- 558	- 632	- 169	- 317	+ 148	- 1,040	- 415	- 625	+ 121	- 171	+ 292
25 - 29	- 942	- 446	- 496	+ 838	+ 400	+ 438	- 1,074	- 455	- 619	+ 912	+ 471	+ 441
30 - 34	- 741	- 398	- 343	+ 675	+ 582	+ 293	- 739	- 346	- 393	+ 705	+ 346	+ 359
35 - 39	- 601	- 351	- 250	+ 542	+ 342	+ 200	- 416	- 127	- 289	+ 566	+ 260	+ 306
40 - 44	- 405	- 224	- 181	+ 433	+ 236	+ 197	- 457	- 217	- 240	+ 370	+ 163	+ 207
45 - 49	- 422	- 215	- 207	+ 219	+ 146	+ 73	- 221	- 75	- 146	+ 320	+ 126	+ 194
50 - 54	- 341	- 177	- 164	+ 278	+ 180	+ 98	- 325	- 127	- 198	+ 307	+ 182	+ 125
55 - 59	- 87	- 49	- 38	+ 100	+ 30	+ 70	- 223	- 131	- 92	+ 221	+ 108	+ 113
60 - 64	- 107	- 55	- 52	+ 61	+ 26	+ 35	- 95	- 25	- 70	+ 207	+ 104	+ 103
65 - 69	- 76	- 33	- 43	+ 45	+ 31	+ 14	- 85	- 28	- 57	+ 164	+ 76	+ 88
70 and over	- 44	- 1	- 43	+ 14	+ 16	- 2	- 61	- 39	- 22	+ 74	+ 51	+ 23
Not stated	+ 344	+ 231	+ 113	+ 227	+ 112	+ 115	+ 275	+ 174	+ 101	- 98	- 73	- 25
All ages	- 6,825	- 3,435	- 3,390	+ 3,670	+ 1,721	+ 1,949	- 6,642	- 2,928	- 3,714	+ 4,797	+ 1,884	+ 2,913

<sup>1/</sup> Including seamen but excluding transit passengers who do not leave the airport.

Table 16 - Arrivals and departures<sup>1/</sup> of residents of Island of Mauritius by district of residence and sex, 1976

Geographical district	Arrivals			Departures			Excess of arrivals over departures		
	Both sexes	Male	Female	Both sexes	Male	Female	Both sexes	Male	Female
Port Louis	6,086	3,904	2,182	6,471	4,026	2,445	- 385	- 122	- 263
Pamplemousses	864	605	259	922	634	288	- 58	- 29	- 29
Rivière du Rempart	771	483	288	760	498	262	+ 11	- 15	+ 26
Flacq	553	368	185	717	500	217	- 164	- 132	- 32
Grand Port	731	440	291	797	472	325	- 66	- 32	- 34
Savanne	444	285	159	458	298	160	- 14	- 13	- 1
Plaines Wilhems : Urban	12,143	7,412	4,731	12,929	7,739	5,190	- 786	- 327	- 459
Other	228	134	94	286	150	136	- 58	- 16	- 42
Moka	515	341	174	548	347	201	- 33	- 6	- 27
Black River	236	138	98	245	139	106	- 9	- 1	- 8
Not stated	5,172	3,496	1,676	5,306	3,460	1,846	- 134	+ 36	- 170
Whole Island	27,743	17,606	10,137	29,439	18,263	11,176	- 1,696	- 657	- 1,039

<sup>1/</sup> Excluding official long-term emigrants.

Table 17 - Arrivals of residents of Island of Mauritius by age and sex, July 1974 - December 1976

Age (completed years)	July-December 1974			January-June 1975			July-December 1975			January-June 1976			July-December 1976		
	Both sexes	Male	Female	Both sexes	Male	Female	Both sexes	Male	Female	Both sexes	Male	Female	Both sexes	Male	Female
Under 1	59	29	30	37	24	13	60	35	24	54	27	27	66	28	38
1 - 4	209	102	107	214	101	113	301	160	141	208	117	91	268	141	127
5 - 9	303	154	149	248	125	123	347	183	164	252	143	119	331	182	149
10 - 14	362	182	180	226	99	127	438	219	219	309	163	146	405	213	192
15 - 19	609	321	288	512	280	232	769	383	386	637	301	336	682	374	308
20 - 24	1,610	1,003	607	1,365	879	486	2,027	1,253	774	1,500	1,000	500	2,111	1,332	779
25 - 29	1,320	870	450	1,219	867	352	1,801	1,207	594	1,338	967	371	1,983	1,309	674
30 - 34	1,076	703	373	1,025	708	317	1,411	940	471	1,040	712	328	1,396	935	461
35 - 39	1,080	684	396	885	615	270	1,227	782	445	932	636	296	1,134	697	437
40 - 44	866	568	298	818	558	260	1,025	697	328	874	611	263	1,006	641	365
45 - 49	841	513	328	789	509	280	1,055	661	394	848	543	305	968	592	376
50 - 54	647	401	246	577	376	201	791	438	353	691	440	251	925	525	400
55 - 59	569	358	211	527	332	195	664	397	267	517	320	197	647	378	269
60 - 64	398	224	174	364	212	152	524	302	222	403	234	169	560	295	265
65 - 69	205	98	107	225	131	94	337	188	149	251	149	102	369	207	162
70 and over	192	106	86	180	111	69	250	138	112	240	141	99	263	137	126
Not stated	1,910	1,251	659	1,595	1,073	522	2,479	1,658	821	2,236	1,565	671	2,289	1,551	738
ALL ages	12,256	7,567	4,689	10,806	7,000	3,806	15,506	9,642	5,864	12,340	8,069	4,271	15,403	9,537	5,866

Table 18 - Departures of residents of Island of Mauritius by age and sex, July 1974 - December 1976

Age (completed years)	July - December 1974			January - June 1975			July - December 1975			January - June 1976			July - December 1976		
	Both sexes	Male	Female	Both sexes	Male	Female	Both sexes	Male	Female	Both sexes	Male	Female	Both sexes	Male	Female
Under 1	58	30	28	60	31	29	73	38	35	66	35	31	70	39	31
1 - 4	269	132	137	295	150	145	344	199	145	226	107	119	350	178	172
5 - 9	436	236	200	317	164	153	474	227	247	256	140	116	449	250	199
10 - 14	529	270	259	276	132	144	626	325	301	257	138	119	590	313	277
15 - 19	1,198	640	558	826	417	409	1,375	689	686	769	391	378	1,180	649	531
20 - 24	2,642	1,689	953	1,965	1,214	751	2,778	1,791	987	1,829	1,125	704	2,727	1,748	979
25 - 29	1,697	1,131	566	1,496	978	518	1,884	1,253	631	1,496	1,012	484	2,043	1,336	707
30 - 34	1,233	787	446	1,193	795	398	1,469	956	513	1,141	758	383	1,398	907	491
35 - 39	1,081	678	403	1,019	688	331	1,214	731	483	1,008	659	349	1,071	651	420
40 - 44	868	579	289	890	603	287	1,003	661	342	927	638	289	991	618	373
45 - 49	808	482	326	888	553	335	1,045	623	422	853	543	310	907	559	348
50 - 54	631	377	254	657	409	248	780	424	356	746	455	311	850	475	375
55 - 59	585	346	239	552	347	205	690	418	272	549	319	230	604	365	239
60 - 64	393	217	176	391	218	173	559	321	238	405	227	178	514	268	246
65 - 69	243	119	124	238	133	105	378	206	172	264	151	113	317	171	146
70 and over	205	109	96	185	104	81	290	148	142	223	130	93	244	126	118
Not stated	1,759	1,106	653	1,270	860	410	2,170	1,441	729	1,849	1,296	553	2,270	1,506	764
All ages	14,635	8,928	5,707	12,518	7,796	4,722	17,152	10,451	6,701	12,864	8,104	4,760	16,575	10,159	6,416

✓ Excluding official long-term emigrants.

Table 19 - Excess of arrivals over departures of residents (excluding emigrants) of Island of Mauritius by age and sex, July 1974 - December 1976

Age (completed years)	July - December 1974			January - June 1975			July - December 1975			January - June 1976			July - December 1976		
	Both sexes	Male	Female	Both sexes	Male	Female	Both sexes	Male	Female	Both sexes	Male	Female	Both sexes	Male	Female
Under 1	+ 1	- 1	+ 2	- 23	- 7	- 16	- 13	- 2	- 11	- 12	- 8	- 4	- 4	- 11	+ 7
1 - 4	- 60	- 30	- 30	- 81	- 49	- 32	- 43	- 39	- 4	- 18	+ 10	- 28	- 82	- 37	- 45
5 - 9	- 133	- 82	- 51	- 69	- 39	- 30	- 127	- 44	- 83	+ 6	+ 3	+ 3	- 118	- 68	- 50
10 - 14	- 167	- 88	- 79	- 50	- 33	- 17	- 188	- 106	- 82	+ 52	+ 25	+ 27	- 185	- 100	- 85
15 - 19	- 589	- 319	- 270	- 314	- 137	- 177	- 606	- 306	- 300	- 132	- 90	- 42	- 498	- 275	- 223
20 - 24	- 1,032	- 686	- 346	- 600	- 335	- 265	- 751	- 538	- 213	- 329	- 125	- 204	- 616	- 416	- 200
25 - 29	- 377	- 261	- 116	- 277	- 111	- 166	- 83	- 46	- 37	- 158	- 45	- 113	- 60	- 27	- 33
30 - 34	- 157	- 84	- 73	- 168	- 87	- 81	- 58	- 16	- 42	- 101	- 46	- 55	- 2	+ 28	- 30
35 - 39	- 1	+ 6	- 7	- 134	- 73	- 61	+ 13	+ 51	- 38	- 76	- 23	- 53	+ 63	+ 46	+ 17
40 - 44	- 2	- 11	+ 9	- 72	- 45	- 27	+ 22	+ 36	- 14	- 53	- 27	- 26	+ 15	+ 23	- 8
45 - 49	+ 33	+ 31	+ 2	- 99	- 44	- 55	+ 10	+ 38	- 28	- 5	-	- 5	+ 61	+ 33	+ 28
50 - 54	+ 16	+ 24	- 8	- 80	- 33	- 47	+ 11	+ 14	- 3	- 55	+ 5	- 60	+ 75	+ 50	+ 25
55 - 59	- 16	+ 12	- 28	- 25	- 15	- 10	- 26	- 21	- 5	- 32	+ 1	- 33	+ 43	+ 13	+ 30
60 - 64	+ 5	+ 7	- 2	- 27	- 6	- 21	- 35	- 19	- 16	- 2	+ 7	- 9	+ 46	+ 27	+ 19
65 - 69	- 38	- 21	- 17	- 13	- 2	- 11	- 41	- 18	- 23	- 13	- 2	- 11	+ 52	+ 36	+ 16
70 and over	- 13	- 3	- 10	- 5	+ 7	- 12	- 40	- 10	- 30	+ 17	+ 11	+ 6	+ 19	+ 11	+ 8
Not stated	+ 151	+ 145	+ 6	+ 325	+ 213	+ 112	+ 309	+ 217	+ 92	+ 387	+ 269	+ 118	+ 19	+ 45	- 26
All ages	- 2,379	- 1,361	- 1,018	- 1,712	- 796	- 916	- 1,646	- 809	- 837	- 524	- 35	- 489	- 1,172	- 622	- 550

Table 20 - Excess of arrivals over departures of residents (including emigrants) of Island of Mauritius by age and sex, July 1974-December 1976

Age (completed years)	July - December 1974			January - June 1975			July - December 1975			January - June 1976			July - December 1976		
	Both sexes	Male	Female	Both sexes	Male	Female	Both sexes	Male	Female	Both sexes	Male	Female	Both sexes	Male	Female
Under 1	-	4	3	-	13	22	-	7	15	-	17	6	-	14	7
1 - 4	-	55	41	-	60	53	-	53	19	-	40	42	-	45	53
5 - 9	-	125	90	-	56	50	-	70	107	-	26	8	-	75	68
10 - 14	-	131	119	-	61	34	+	137	107	+	13	7	-	117	103
15 - 19	-	344	341	-	162	245	-	327	337	-	192	86	-	288	253
20 - 24	-	730	446	-	380	345	-	559	275	-	422	278	-	425	228
25 - 29	-	1,176	154	-	132	191	-	60	66	-	209	151	-	35	46
30 - 34	-	200	99	-	96	98	-	24	58	-	120	69	-	26	38
35 - 39	-	27	23	-	75	74	+	50	43	-	86	59	+	45	14
40 - 44	-	20	3	-	49	31	+	34	22	-	62	31	+	22	9
45 - 49	+	17	8	-	47	59	+	36	32	-	12	9	+	32	24
50 - 54	+	2	19	-	34	50	+	12	10	-	64	63	+	50	23
55 - 59	-	22	32	-	15	16	-	21	10	-	33	33	+	12	30
60 - 64	-	2	6	-	7	23	-	21	20	-	4	11	+	26	17
65 - 69	-	40	19	-	3	15	-	21	25	-	17	14	+	36	12
70 and over	-	17	11	-	7	14	-	11	35	+	14	3	+	11	6
Not stated	+	151	6	+	212	111	+	217	91	+	387	118	+	45	26
All ages	-	3,040	1,408	-	2,180	1,209	-	2,052	1,090	-	890	732	-	1,385	691



III - EMIGRATION

Table 21 - Official long-term emigrants<sup>1/</sup> by sex, 1956-76

Year	Both sexes	Male	Female
1956	147	93	54
1957	109	68	41
1958	163	130	33
1959	170	128	42
1960	158	132	26
1961	837	629	208
1962	1,083	711	372
1963	594	326	268
1964	915	491	424
1965	1,408	659	749
1966	1,611	774	837
1967	2,225	1,038	1,187
1968	3,067	1,487	1,580
1969	2,379	1,119	1,260
1970	2,282	1,063	1,219
1971	2,351	1,078	1,273
1972	2,271	956	1,315
1973	2,037	844	1,193
1974	1,494	606	888
1975	874	328	546
1976	579	195	384

<sup>1/</sup> Persons who have obtained a permit to emigrate to another country.

Table 22 - External migration, 1956-76

Year	Arrivals	Departures			Excess of arrivals over departures (excluding emigrants)
		Total	Official long-term emigrants <sup>1/</sup>	Departures excluding emigrants	
1956	7,747	8,225	147	8,078	- 331
1957	8,095	8,267	109	8,158	- 63
1958	8,703	8,924	163	8,761	- 58
1959	9,637	9,544	170	9,374	+ 263
1960	10,412	10,784	158	10,626	- 214
1961	11,854	13,033	837	12,196	- 342
1962	15,189	16,075	1,083	14,992	+ 197
1963	18,047	18,299	594	17,705	+ 342
1964	21,221	22,331	915	21,416	- 195
1965	22,024	24,150	1,408	22,742	- 718
1966	26,456	29,301	1,611	27,690	- 1,234
1967	29,321	32,925	2,225	30,700	- 1,379
1968	31,403	35,988	3,067	32,921	- 1,518
1969	35,919	38,929	2,379	36,550	- 631
1970	48,819	51,969	2,282	49,687	- 868
1971	60,826	63,997	2,351	61,646	- 820
1972	77,174	81,493	2,271	79,222	- 2,048
1973	101,184	104,697	2,037	102,660	- 1,476
1974	109,044	113,362	1,494	111,868	- 2,824
1975	117,548	120,703	874	119,829	- 2,281
1976	139,303	141,148	579	140,569	- 1,266

<sup>1/</sup> Persons who have obtained a permit to emigrate to another country.

Note: The number of immigrants coming to settle in Mauritius is negligible. A net negative balance over successive years in the last column indicates that a number of persons not registered as official emigrants are permanently leaving the country.

Table 23 - Official long-term emigrants<sup>1/</sup> by country of intended residence, 1963-76

Country of intended residence	1963	1964	1965	1966	1967	1968	1969	1970	1971	1972	1973	1974	1975	1976
All countries	594	915	1,408	1,611	2,225	3,067	2,379	2,282	2,351	2,271	2,037	1,494	874	579
<u>AFRICA</u>	<u>131</u>	<u>74</u>	<u>201</u>	<u>164</u>	<u>246</u>	<u>276</u>	<u>84</u>	<u>158</u>	<u>220</u>	<u>185</u>	<u>106</u>	<u>99</u>	<u>17</u>	<u>18</u>
Congo Brazzaville	-	-	-	1	1	-	1	20	54	-	3	9	-	-
Kenya	4	2	7	1	1	20	3	11	9	5	12	7	-	2
Malagasy Rep.	55	10	-	-	3	2	2	4	6	4	7	-	-	1
Malawi	-	-	3	13	8	23	1	12	15	30	23	29	2	9
Mozambique	-	-	3	-	4	-	14	42	20	20	11	8	7	-
Réunion	4	1	2	2	6	9	2	1	6	-	8	1	2	1
Rhodesia	13	19	111	54	16	4	1	2	3	-	-	-	-	-
South Africa, Rep.	50	31	72	81	176	171	50	22	37	5	9	8	3	-
Zambia	-	-	-	7	30	38	10	30	56	113	23	21	2	5
Other African	5	11	3	5	1	9	-	14	14	8	10	16	1	-
<u>AMERICA</u>	<u>-</u>	<u>10</u>	<u>10</u>	<u>12</u>	<u>34</u>	<u>24</u>	<u>29</u>	<u>86</u>	<u>51</u>	<u>40</u>	<u>29</u>	<u>37</u>	<u>87</u>	<u>33</u>
Canada	-	9	1	10	32	18	25	82	47	37	26	37	87	33
U.S.A.	-	1	9	2	2	6	4	4	4	2	2	-	-	-
Other American	-	-	-	-	-	-	-	-	-	1	1	-	-	-

Table 23 (cont'd)

Country of intended residence	1963	1964	1965	1966	1967	1968	1969	1970	1971	1972	1973	1974	1975	1976
<u>ASIA</u>	2	5	1	-	1	1	2	4	2	18	2	2	2	-
India	2	3	1	-	1	-	3	1	-	1	2	-	2	-
Other Asian	-	2	-	-	-	1	-	3	3	17	-	2	1	-
<u>EUROPE</u>	416	738	955	804	613	728	615	939	1,058	1,145	1,353	1,042	682	477
Belgium	-	3	5	94	35	22	7	22	44	32	38	54	30	17
France	6	12	8	41	53	58	93	435	566	554	684	546	237	137
Germany, Fed. Rep.	-	1	1	-	-	-	2	5	8	31	43	7	4	1
Italy	2	1	-	-	1	-	1	4	19	48	29	19	17	17
Norway	-	-	-	-	-	-	-	1	3	2	5	1	1	2
Switzerland	-	-	-	-	3	1	-	6	1	3	5	4	4	1
United Kingdom	407	718	939	667	519	646	510	463	415	460	543	402	385	302
Other European	1	3	2	2	2	1	2	3	2	15	6	9	4	-
<u>OCEANIA</u>	45	88	241	631	1,331	2,038	1,648	1,095	1,019	883	547	314	85	51
Australia	45	73	240	619	1,330	2,037	1,645	1,082	1,004	877	545	301	84	50
New Zealand	-	15	1	8	-	1	1	-	-	1	1	-	-	-
Other Oceanian	-	-	-	4	1	-	2	13	15	5	1	13	1	1

1/ Persons who have obtained a permit to emigrate to another country.

Table 24 -- Age distribution of official long-term emigrants<sup>1/</sup>, 1963-76

Male

Age group (completed years)	1963	1964	1965	1966	1967	1968	1969	1970	1971	1972	1973	1974	1975	1976
0 - 4	26	35	89	86	127	226	136	93	83	94	65	68	36	22
5 - 9	32	41	96	94	133	197	153	106	94	118	101	77	43	28
10 - 14	17	41	79	86	135	149	146	93	96	115	105	77	59	36
15 - 19	26	38	62	70	122	147	140	113	106	108	100	57	46	29
20 - 24	68	62	63	123	132	155	114	153	171	149	112	101	66	28
25 - 29	56	72	69	87	94	141	86	141	128	85	107	82	35	21
30 - 34	19	54	58	76	63	146	75	120	108	68	59	39	17	7
35 - 39	23	44	45	49	60	93	52	68	89	59	45	38	3	5
40 - 44	12	37	33	43	63	82	62	63	69	51	53	23	6	5
45 - 49	14	28	28	12	35	48	44	32	48	46	33	13	5	4
50 - 54	8	14	21	23	25	34	39	33	23	29	19	8	3	6
55 - 59	3	17	11	7	17	27	40	15	18	11	18	8	-	2
60 - 64	1	4	4	9	20	24	13	13	19	12	15	9	3	1
65 - 69	2	1	1	5	9	10	10	9	16	7	3	1	4	1
70 & over	-	3	-	4	3	8	9	11	9	4	6	4	1	-
Unknown	19	-	-	-	-	-	-	-	1	-	3	1	1	-
All ages	326	491	659	774	1,038	1,487	1,119	1,063	1,078	956	844	606	328	195

Table 24 - (cont'd)

Female

Age group (completed years)	1963	1964	1965	1966	1967	1968	1969	1970	1971	1972	1973	1974	1975	1976
0 - 4	28	57	104	90	138	215	121	99	90	89	48	50	46	24
5 - 9	36	33	90	94	147	202	145	98	89	110	111	79	44	29
10 - 14	26	37	87	81	123	168	151	94	89	140	104	70	42	38
15 - 19	28	42	91	110	154	172	174	181	184	157	181	153	105	74
20 - 24	38	55	95	142	171	184	150	237	241	267	263	212	142	102
25 - 29	34	50	79	89	106	149	101	132	145	148	130	102	54	51
30 - 34	19	40	49	64	74	133	87	81	106	100	84	72	33	22
35 - 39	18	25	41	50	74	85	78	64	84	75	72	47	18	9
40 - 44	7	20	30	29	58	74	58	61	58	65	63	24	12	6
45 - 49	7	20	25	23	44	54	49	50	60	47	51	27	8	8
50 - 54	10	16	23	19	32	46	53	25	31	32	21	26	10	5
55 - 59	3	12	10	18	30	32	37	37	44	33	17	10	11	-
60 - 64	2	7	14	11	11	27	21	25	21	22	17	7	6	4
65 - 69	2	4	5	9	11	19	12	17	10	16	10	4	6	7
70 & over	1	5	6	7	14	20	25	18	18	14	16	4	7	5
Unknown	9	1	-	1	-	-	-	-	3	-	5	1	2	-
All ages	268	424	749	837	1,187	1,580	1,260	1,219	1,273	1,315	1,193	888	546	384

Table 24 (cont'd)

Both sexes

Age group (completed years)	1963	1964	1965	1966	1967	1968	1969	1970	1971	1972	1973	1974	1975	1976
0 - 4	54	92	193	176	265	441	477	192	173	183	113	118	82	46
5 - 9	68	74	186	188	280	399	296	204	183	228	212	156	87	57
10 - 14	43	78	166	167	258	317	297	187	185	255	209	147	101	74
15 - 19	54	80	153	180	276	319	314	294	290	265	281	210	151	103
20 - 24	106	117	158	265	303	339	264	390	412	416	375	313	208	130
25 - 29	90	122	148	176	200	290	187	273	273	233	237	184	89	72
30 - 34	38	94	107	140	137	279	152	201	214	168	143	111	50	29
35 - 39	41	69	86	99	134	178	130	132	173	134	117	85	21	14
40 - 44	19	57	63	72	121	156	120	124	127	116	116	47	18	11
45 - 49	21	48	53	35	79	102	93	82	108	93	84	40	13	12
50 - 54	18	30	44	42	57	80	92	58	54	61	40	34	13	11
55 - 59	6	29	21	25	47	59	77	52	62	44	35	18	11	2
60 - 64	3	11	18	20	31	51	34	38	40	34	32	16	9	5
65 - 69	4	5	6	14	20	29	22	26	26	23	13	5	10	8
70 & over	1	8	6	11	17	28	24	29	27	18	22	8	8	5
Unknown	28	1	-	1	-	-	-	-	4	-	8	2	3	-
All ages	514	915	1,408	1,511	2,005	3,067	2,579	2,532	2,351	2,971	2,027	1,494	874	579

1/ Persons who have obtained a permit to emigrate to another country.

Table 25 - Official long-term emigrants<sup>1/</sup> by Major Occupational Group, 1972-76

Major Occupational Group 2/	1972	1973	1974	1975	1976
Total number of emigrants	2,271	2,037	1,494	874	579
<u>Emigrants reporting an occupation</u>	778	724	518	252	136
0/1. Professional, Technical and Related Workers	70	70	97	62	20
2. Administrative and Managerial Workers	2	3	14	8	6
3. Clerical and Related Workers	159	142	52	42	30
4. Sales Workers	23	9	11	7	5
5. Service Workers	228	216	151	83	28
6. Agricultural, Animal Husbandry and Forestry Workers, Fishermen and Hunters	3	6	2	1	1
7/8/9. Production and Related Workers, Transport Equipment Operators and Labourers	290	264	182	48	42
X. Workers not classifiable by Occupation	3	14	9	2	4
<u>Emigrants not reporting any occupation (including how wives and children)</u>	1,493	1,313	976	621	443

<sup>1/</sup> Persons who have obtained a permit to emigrate to another country.

<sup>2/</sup> International Standard Classification of Occupations, Revised Edition, 1968.



Table 26 - Official long-term emigrants<sup>1/</sup> by Major Occupational Group, age and sex, 1976

Major Occupational Group <sup>2/</sup>	Age (completed years)																
	All ages		/ 19		20 - 24		25 - 34		35 - 44		45 - 54		55 +		Not stated		
	Both sexes	Male	Female	Male	Female	Male	Female	Male	Female	Male	Female	Male	Female	Male	Female	Male	Female
Total number of emigrants	579	195	384	115	155	28	102	28	73	10	15	10	13	4	16	-	-
<u>Emigrants reporting an occupation</u>	136	67	69	3	3	23	29	21	31	10	4	8	2	2	-	-	-
0/1 Professional, Technical and Related Workers	20	10	10	-	-	6	3	4	6	-	1	-	-	-	-	-	-
2 Administrative and Managerial Workers	6	-	6	-	-	-	6	-	-	-	-	-	-	-	-	-	-
3 Clerical and Related Workers	30	10	20	-	-	7	13	2	7	1	-	-	-	-	-	-	-
4 Sales Workers	5	4	1	-	-	1	-	2	1	1	-	-	-	-	-	-	-
5 Service Workers	28	11	17	-	2	5	4	5	6	-	3	-	2	1	-	-	-
6 Agricultural, Animal Husbandry and Forestry Workers, Fishermen and Hunters	1	1	-	-	-	-	-	-	-	1	-	-	-	-	-	-	-
7/8/9 Production and Related Workers, Transport Equipment Operators and Labourers	42	30	12	3	-	4	3	8	9	6	-	8	-	1	-	-	-
X Workers not classifiable by Occupation	4	1	3	-	1	-	-	-	2	1	-	-	-	-	-	-	-
<u>Emigrants not reporting any occupation (including housewives and children)</u>	443	128	515	112	162	5	73	7	42	-	11	2	11	2	16	-	-

1/ Persons who have obtained a permit to emigrate to another country

2/ International Standard Classification of Occupations, Revised Edition, 1968

Table 27 - Official long-term emigrants<sup>1/</sup> by occupation, 1974-76

Occupation	1974	1975	1976
Accountants	3	2	3
Cabinet makers	10	3	4
Carpenters	5	1	3
Clerks	40	20	18
Cooks	8	9	2
Doctors	1	1	-
Drivers	8	3	3
Electricians (see also fitters)	16	4	3
Fitters (see also electricians)	14	5	6
Maids (domestic servants)	113	42	19
Managers	1	-	-
Masons	12	1	1
Mechanics	25	3	1
Nurses	60	42	6
Policemen	5	3	-
Salesmen	7	4	3
Seamstresses and tailors	48	17	12
Stenographers and typists	7	17	8
Storekeepers	1	1	-
Teachers	24	7	6
Waiters	17	24	5
Welders	7	2	3
Other	86	42	30
Occupation not stated or not applicable <sup>2/</sup>	976	621	443
Total number of emigrants	1,494	874	579

<sup>1/</sup> Persons who have obtained a permit to emigrate to another country.

<sup>2/</sup> Emigrants not reporting any occupation (including housewives and children).

Table 28 - Official long-term migrants<sup>1/</sup> by district of last residence and sex, January 1975-December 1976

Geographical district	January - June 1975			July - December 1975			January - June 1976			July - December 1976		
	Both sexes	Male	Female	Both sexes	Male	Female	Both sexes	Male	Female	Both sexes	Male	Female
Port Louis	105	47	58	104	36	68	97	29	68	47	15	32
Pauplemousses	14	8	6	7	3	4	16	4	12	7	1	6
Rivière du Rempart	10	3	7	11	5	6	7	1	6	1	1	-
Flacq	9	2	7	8	1	7	7	3	4	6	1	5
Grand Port	28	9	19	17	6	11	19	6	13	14	4	10
Savanne	2	1	1	10	3	7	5	1	4	2	-	2
Plaines Wilhems : Urban	224	79	145	191	83	108	164	63	101	87	36	51
Other	2	-	2	2	-	2	9	3	6	-	-	-
Moka	5	1	4	12	2	10	6	-	6	14	6	8
Black River	-	-	-	4	-	4	2	1	1	-	-	-
Not stated	69	25	44	40	14	26	34	12	22	35	8	27
Whole Island	468	175	293	406	153	253	366	123	243	213	72	141

<sup>1/</sup> Persons who have obtained a permit to emigrate to another country.

IV - TOURISM

Definition and notes

1. Definition of tourist:

- (a) Prior to 1964, a tourist has been defined as a non-resident staying in Mauritius for more than 24 hours but less than 6 months;
- (b) As from 1964, a tourist is defined as a non-resident staying in the island for more than 24 hours but less than a year.

The figures for the two periods are nevertheless comparable because of the small number of tourists staying for more than 6 months.

2. Visitors include the following:

- (i) tourists as defined above; and
- (ii) non-residents who stay in the country for less than a day, other than those who do not leave the airport.

3. Method of compilation:

Certain data on tourism (such as type of visitor, tourist arrivals by month of arrival, tourist arrivals by country of residence and mode of transport) are compiled from disembarkation cards which visitors fill in when they arrive in this country. However, information on duration of stay of visitors can be compiled only from the embarkation cards which they fill in when they leave the country. Since it is not possible to wait for the departure of all the visitors who come during the period under review, we restrict our analysis of duration of stay only to those visitors who arrive during the reference period but who have left by a given date after the end of the period.

However, the error due to this limitation is not considerable since visitors arriving in 1975 and leaving before 1.3.76 represent 99.2% of total visitor arrivals for 1975 and visitors arriving in 1976 and leaving before 1.2.77 represent 99.1% of total visitor arrivals for 1976.

4. Tourist nights:

Tables 29, 34 and 36 show the number of nights spent by tourists who were on visit in the country during the period under review. The figures therefore include nights spent during the reference period by tourists who arrived before the beginning of the period. On the other hand, nights spent after the end of the reference period by tourists who arrived during the period are excluded.

5. Visitor nights:

In tables 38 - 41 and table 43 an analysis is made of nights spent by visitors who arrive during the period under review and who have left by a given date after the end of the period. Figures for 1976 thus show the total number of nights spent by visitors who arrived in 1976 and left before 1.2.77.

6. Mauritians settled abroad are excluded from figures of tourists and visitors. Data referring to them are shown separately in tables 44 - 46. Table 44 shows the total nights spent by Mauritians settled abroad who arrive during the period under review and who have left by a given date after the end of the period. Thus the figures for 1976 include nights spent in 1977 by Mauritians settled abroad who arrived in 1976. Table 46 shows the nights spent during the period under review only. Thus the figures for 1976 include nights spent in 1976 by Mauritians settled abroad who arrived in 1975, but exclude nights spent in 1977 by those who arrived in 1976.

Table 29 - Tourist<sup>1/</sup> arrivals by mode of transport and total nights spent during during period, 1963-1976

Period	Tourists arriving during period			Total nights spent during period <sup>2/</sup>
	Sea	Air	Total	
1963	1,008	6,719	7,727	99,400
1964	1,010	9,023	10,033	144,600
1965	746	9,312	10,058	144,900
1966	1,328	11,712	13,040	162,300
1967	937	13,877	14,814	172,000
1968	647	14,906	15,553	149,500
1969	455	20,132	20,587	220,600
1970	365	27,285	27,650	287,600
1971	168	36,230	36,398	399,700
1972	143	48,654	48,797	454,300
1973	1,295 <sup>3/</sup>	66,701	67,994	733,100
1974	472	72,443	72,915	772,200
1975	554	74,043	74,597	746,900
1976	778	91,783	92,561	892,200

<sup>1/</sup> See notes on page 31.

<sup>2/</sup> Include nights spent during reference period by tourists arriving prior to the period.

<sup>3/</sup> Includes about 700 persons who came for a religious conference.

Table 30 - Tourist arrivals by month of arrival, 1966-1976

Month of arrival	1966	1967	1968	1969	1970	1971	1972	1973	1974	1975	1976
January	1,046	1,165	2,023	1,892	2,718	3,669	4,701	6,874	8,495	8,401	10,055
February	976	1,002	1,018	1,556	2,013	1,494	3,555	4,863	5,954	4,017	7,035
March	853	1,050	707	1,370	1,876	2,191	3,046	4,152	5,272	4,383	6,149
April	891	941	936	1,449	1,495	2,419	2,875	5,091	5,299	4,477	6,753
May	888	819	938	1,208	2,281	2,905	3,261	5,060	5,203	5,235	7,385
June	740	811	832	985	1,722	1,890	2,639	4,501	4,661	3,740	4,849
July	2,293	2,322	2,006	2,334	1,981	2,919	3,906	4,726	5,379	5,739	7,551
August	1,449	1,533	1,609	2,761	3,909	5,297	7,038	9,595	9,026	10,844	11,851
September	844	1,105	1,200	1,816	2,232	2,845	3,911	5,105	5,183	5,706	6,004
October	875	1,280	1,282	1,222	1,889	2,522	3,334	4,893	5,202	5,586	7,757
November	801	1,079	1,558	1,504	2,049	2,615	3,873	4,398	5,650	6,534	7,157
December	1,384	1,707	1,881	2,430	3,487	4,633	6,738	8,736	7,591	9,535	10,015
Whole year	13,010	14,814	15,553	20,587	27,650	36,333	48,797	67,994	72,915	74,597	92,561

Table 31 - Percentage distribution of tourist arrivals by month of arrival, 1966-76

Month of arrival	1966	1967	1968	1969	1970	1971	1972	1973	1974	1975	1976
January	8.0	7.9	13.0	9.2	9.8	10.1	9.6	10.1	11.7	11.3	10.9
February	7.5	6.8	6.6	7.6	7.3	6.9	6.8	7.2	8.2	5.4	7.6
March	6.5	7.1	4.5	6.7	6.8	6.0	6.3	6.1	7.2	5.9	6.6
April	6.8	6.3	6.0	7.0	5.4	6.6	5.9	7.5	7.3	6.0	7.3
May	6.8	5.5	6.0	5.9	8.3	8.0	6.7	7.4	7.1	7.0	8.0
June	5.7	5.5	5.4	4.8	6.2	5.2	5.4	6.6	6.4	5.0	5.2
July	17.6	15.7	13.3	11.3	7.2	8.0	8.2	7.0	7.4	7.7	8.2
August	11.1	10.3	10.4	13.4	14.1	14.6	14.4	14.1	12.4	14.5	12.8
September	6.5	7.5	7.7	8.8	8.1	7.8	8.0	7.5	7.1	7.6	6.5
October	6.7	8.6	8.2	5.9	6.8	6.9	6.8	7.2	7.1	7.5	8.4
November	6.2	7.3	6.8	7.6	7.4	7.2	8.0	6.5	7.7	8.9	7.7
December	10.6	11.5	12.1	11.8	12.6	12.7	13.9	12.8	10.4	13.2	10.8
Whole year	100.0	100.0	100.0	100.0	100.0	100.0	100.0	100.0	100.0	100.0	100.0

Table 32 - Tourist arrivals by country of residence, 1966-76

Country of residence	1966	1967	1968	1969	1970	1971	1972	1973	1974	1975	1976
All countries	13,040	14,814	15,553	20,587	27,650	36,398	48,797	67,994	72,915	74,597	92,561
<u>AFRICA</u>	<u>10,275</u>	<u>10,626</u>	<u>10,404</u>	<u>15,058</u>	<u>19,774</u>	<u>25,289</u>	<u>33,206</u>	<u>41,969</u>	<u>46,979</u>	<u>47,705</u>	<u>57,339</u>
Comoro Islands	20	14	3	16	44	25	23	126	176	181	209
Ethiopia	6	15	30	34	28	33	49	119	75	60	202
Kenya	299	552	579	574	681	634	684	824	898	707	1,057
Malagasy Rep.	1,648	1,598	1,512	2,050	1,985	2,287	2,747	3,563	2,679	1,976	3,035
Malawi	51	100	15	27	67	66	135	166	243	267	399
Mozambique	9	5	13	14	22	21	46	94	110	41	82
Réunion	6,738	6,242	6,094	8,905	11,405	15,161	19,230	22,542	23,232	24,853	30,032
Rhodesia	275	296	62	22	88	191	435	380	591	1,232	920
Seychelles	15	32	25	21	45	63	256	563	431	405	428
South Africa, Rep. of	770	1,209	1,555	2,680	3,637	4,939	7,088	9,985	14,193	14,740	17,823
Tanzania	103	111	262	194	186	216	200	308	282	125	254
Uganda	14	48	54	60	131	130	139	68	46	42	112
Zambia	252	318	127	332	1,314	1,224	1,825	2,375	3,332	2,406	1,884
Other African	75	86	73	129	51	299	349	856	691	670	1,152
<u>AMERICA</u>	<u>220</u>	<u>437</u>	<u>559</u>	<u>612</u>	<u>765</u>	<u>978</u>	<u>1,201</u>	<u>1,406</u>	<u>1,435</u>	<u>1,369</u>	<u>1,188</u>
Brazil	7	7	2	7	5	9	35	24	89	32	20

See notes on page 31



Table 32 (continued)

Country of residence	1966	1967	1968	1969	1970	1971	1972	1973	1974	1975	1976
Canada	21	33	69	57	90	145	209	329	247	302	346
U.S.A.	184	377	464	506	646	776	917	989	1,000	893	738
Other American	8	20	24	42	24	46	40	64	99	142	84
<u>ASIA</u>	<u>284</u>	<u>487</u>	<u>721</u>	<u>579</u>	<u>863</u>	<u>1,071</u>	<u>1,642</u>	<u>3,412</u>	<u>2,619</u>	<u>2,963</u>	<u>3,693</u>
China	52	3	30	2	5	26	91	78	50	53	77
Formosa (Taiwan)	2	1	9	11	43	60	29	310	408	90	86
Hong Kong	56	62	55	70	51	115	226	230	154	215	173
India	70	257	421	272	479	554	879	2,235	1,308	1,944	2,676
Israel	4	14	11	6	17	15	20	17	28	33	40
Japan	48	53	72	86	83	105	148	240	261	245	221
Malaysia	18	17	18	8	32	24	26	21	33	36	39
Pakistan	11	18	31	15	20	25	44	60	64	62	63
Singapore	7	21	30	37	44	42	29	49	79	62	60
Other Asian	16	41	44	72	89	105	150	172	234	223	258
<u>U.S.S.R.</u>	<u>31</u>	<u>4</u>	<u>8</u>	<u>34</u>	<u>11</u>	<u>8</u>	<u>24</u>	<u>56</u>	<u>79</u>	<u>72</u>	<u>63</u>
<u>EUROPE</u>	<u>1,804</u>	<u>2,314</u>	<u>2,637</u>	<u>2,809</u>	<u>4,319</u>	<u>6,820</u>	<u>9,917</u>	<u>17,323</u>	<u>17,665</u>	<u>18,253</u>	<u>25,238</u>
Belgium	35	20	23	24	47	104	318	482	502	554	597
Denmark	3	10	10	14	17	45	52	106	88	81	102

Table 52 (continued)

Country of residence	1966	1967	1968	1969	1970	1971	1972	1973	1974	1975	1976
France	816	888	922	767	1,437	2,540	3,771	7,281	7,874	8,929	13,885
Germany, Fed. Rep.	98	88	106	124	481	824	1,406	1,996	1,951	1,533	1,532
Greece	11	5	34	13	28	24	31	48	76	92	77
Irish Rep.	8	8	18	13	33	44	42	68	83	116	113
Italy	74	69	98	146	190	428	775	2,136	1,937	1,712	2,115
Netherlands	42	36	50	41	71	118	98	195	189	183	236
Norway	12	11	4	19	15	30	30	73	63	42	40
Spain	5	2	6	5	10	60	29	121	156	123	107
Sweden	15	11	11	17	21	48	73	155	106	106	225
Switzerland	56	78	74	77	110	159	303	537	840	876	1,014
U.K.	618	1,056	1,261	1,524	1,740	2,252	2,848	3,822	3,452	3,598	4,852
Other European	11	32	20	24	119	144	141	303	348	308	343
<u>OCEANIA</u>	<u>426</u>	<u>946</u>	<u>1,224</u>	<u>1,495</u>	<u>1,908</u>	<u>2,232</u>	<u>2,807</u>	<u>3,828</u>	<u>4,138</u>	<u>4,235</u>	<u>4,490</u>
Australia	351	771	999	1,162	1,571	1,700	2,171	3,060	3,351	3,417	3,559
New Caledonia	18	37	14	63	44	93	124	112	89	77	126
New Zealand	69	101	190	224	254	374	437	568	620	678	713
Other Oceanian	8	37	21	46	39	65	75	88	78	63	92



Table 34 - Tourist<sup>1/</sup> nights by country of residence of tourist, 1966-76

Country of residence	1966	1967	1968	1969	1970	1971	1972	1973	1974	1975	1976
All countries	162,269	171,967	149,507	220,572	287,591	399,739	454,271	707,467	772,183	746,898	892,222
<u>AFRICA</u>	<u>128,543</u>	<u>129,406</u>	<u>105,719</u>	<u>165,259</u>	<u>211,132</u>	<u>279,314</u>	<u>313,953</u>	<u>414,697</u>	<u>462,475</u>	<u>441,895</u>	<u>511,575</u>
Comoro Islands	243	69	10	61	232	114	96	905	2,041	1,160	1,632
Ethiopia	26	62	91	251	181	359	406	1,328	580	383	2,221
Kenya	2,624	3,764	3,447	4,355	5,180	5,197	4,498	6,291	6,371	5,532	7,492
Malagasy Rep.	19,065	19,188	17,592	24,236	19,553	27,618	25,376	38,904	26,965	17,735	29,081
Malawi	702	1,233	104	285	505	860	1,074	1,655	2,910	2,407	3,420
Mozambique	35	71	143	349	348	137	463	914	1,249	424	511
Réunion	85,040	79,017	65,512	105,018	130,052	172,147	198,383	231,566	227,129	220,288	244,391
Rhodesia	3,688	4,152	945	141	840	2,004	4,952	5,048	7,174	14,133	10,513
Seychelles	705	424	607	858	1,700	1,505	2,213	5,508	4,239	4,000	4,867
South Africa, Rep. of	10,593	14,525	14,130	23,792	33,630	50,066	52,383	86,752	138,178	145,596	172,865
Tanzania	837	901	1,121	1,054	1,860	2,543	1,673	2,806	2,563	1,512	2,892
Uganda	163	273	491	305	1,610	1,192	763	776	357	302	975
Zambia	4,115	4,727	976	3,130	14,052	13,076	18,972	22,335	34,948	22,394	17,006
Other African	707	1,000	550	1,424	1,389	2,496	2,701	9,909	7,771	6,029	13,708
<u>AMERICA</u>	<u>1,371</u>	<u>3,721</u>	<u>4,186</u>	<u>5,109</u>	<u>4,970</u>	<u>7,807</u>	<u>7,811</u>	<u>13,565</u>	<u>13,555</u>	<u>13,938</u>	<u>11,984</u>
Brazil	34	31	7	14	18	66	67	124	435	176	83

Table 34 - (cont'd)

Country of residence	1966	1967	1968	1969	1970	1971	1972	1973	1974	1975	1976
Canada	152	222	392	391	569	1,558	1,773	3,412	2,966	3,444	3,611
U.S.A.	1,108	3,169	3,268	4,085	4,243	5,823	5,821	9,416	9,511	9,481	7,261
Other American	77	299	519	619	140	360	150	613	643	837	1,029
<u>ASIA</u>	<u>4,458</u>	<u>6,810</u>	<u>8,643</u>	<u>8,813</u>	<u>11,823</u>	<u>15,329</u>	<u>14,134</u>	<u>28,422</u>	<u>25,992</u>	<u>28,548</u>	<u>33,619</u>
China (Mainland)	544	86	398	149	285	158	929	2,866	575	453	804
Formosa (Taiwan)	39	26	122	274	140	114	155	927	1,836	866	975
Hong Kong	998	888	943	318	1,348	2,606	2,867	3,324	2,140	3,314	2,128
India	1,412	3,693	4,183	5,482	7,492	8,793	8,032	14,843	15,287	17,285	22,501
Israel	103	114	50	26	110	103	157	201	139	287	400
Japan	741	683	937	1,058	766	1,045	759	1,867	1,542	1,758	1,904
Malaysia	212	108	97	55	220	157	150	147	192	374	457
Pakistan	143	188	591	396	358	791	283	1,493	1,903	963	1,829
Singapore	76	273	283	374	228	437	181	477	419	599	499
Other Asian	190	751	1,039	681	876	1,125	621	2,277	1,959	2,649	2,122
<u>U.S.S.R.</u>	<u>316</u>	<u>66</u>	<u>50</u>	<u>900</u>	<u>211</u>	<u>223</u>	<u>206</u>	<u>1,156</u>	<u>461</u>	<u>945</u>	<u>774</u>
<u>EUROPE</u>	<u>24,183</u>	<u>26,168</u>	<u>25,667</u>	<u>31,506</u>	<u>49,606</u>	<u>82,343</u>	<u>104,943</u>	<u>227,565</u>	<u>239,196</u>	<u>231,316</u>	<u>302,270</u>
Belgium	460	399	181	225	696	1,523	2,564	6,569	8,198	8,202	9,129
Denmark	58	39	60	308	112	724	581	2,118	1,402	1,667	1,282

Table 34 - (cont'd.)

Country of residence	1966	1967	1968	1969	1970	1971	1972	1973	1974	1975	1976
France	9,769	8,219	7,312	6,531	15,385	26,878	59,043	90,934	100,673	99,847	151,971
Germany, Fed. Rep.	1,104	734	613	1,200	4,874	10,582	14,305	24,910	27,796	23,068	21,128
Greece	126	25	467	135	326	143	152	629	748	694	652
Irish Rep.	460	228	202	37	310	1,137	348	1,372	1,238	1,689	1,624
Italy	515	367	700	1,049	1,216	3,716	5,567	19,524	20,876	15,703	21,217
Netherlands	377	326	434	656	573	877	530	2,417	3,602	2,461	3,359
Norway	110	129	8	221	46	338	271	663	462	441	530
Spain	51	14	36	21	50	665	215	1,378	1,456	919	822
Sweden	25	45	112	418	441	1,054	542	1,729	1,501	1,115	2,011
Switzerland	384	731	400	694	1,018	1,716	2,693	5,256	10,770	10,522	13,653
U.K.	10,630	14,711	14,821	19,609	23,577	31,181	36,125	66,090	56,923	61,943	71,336
Other European	114	201	321	402	982	1,809	2,006	3,976	3,551	3,045	3,556
<u>OCEANIA</u>	<u>3,398</u>	<u>5,796</u>	<u>5,242</u>	<u>8,935</u>	<u>9,849</u>	<u>14,723</u>	<u>13,224</u>	<u>22,062</u>	<u>30,504</u>	<u>30,256</u>	<u>32,000</u>
Australia	2,871	4,709	4,385	7,877	7,520	11,431	9,767	18,747	26,014	26,080	26,487
New Caledonia	88	175	70	139	118	404	747	315	584	275	624
New Zealand	375	619	691	879	2,041	2,566	2,194	2,538	3,305	3,582	4,210
Other Oceanian	64	293	96	90	170	322	516	462	601	319	679

1/ See notes on page 31.

Table 35 - Tourists arriving in 1976 by country of residence and month of arrival

Country of residence	Jan.	Feb.	Mar.	Apr.	May	Jun.	Jul.	Aug.	Sept.	Oct.	Nov.	Dec.	Whole year
Kenya	106	87	98	103	84	102	94	86	59	69	84	85	1,057
Malagasy Republic	108	154	364	257	210	204	390	285	158	218	288	399	3,035
Malawi	29	17	24	67	25	28	42	41	34	59	22	11	399
Réunion	5,063	2,630	1,108	1,947	3,000	1,380	1,799	5,659	1,756	1,748	1,320	2,622	30,032
Rhodesia	166	135	96	133	114	35	37	88	37	23	34	22	920
Seychelles	21	24	32	59	27	33	40	25	39	30	41	57	428
South Africa, Rep. of	1,682	1,201	1,281	1,607	1,546	645	1,112	1,204	1,250	1,868	1,903	2,524	17,823
Tanzania	12	11	19	69	16	41	21	13	11	14	8	19	254
Zambia	151	69	111	204	159	78	183	200	118	175	126	310	1,884
Other African	73	65	90	88	82	779	335	104	130	116	95	100	2,057
U.S.S.R.	2	2	2	6	7	9	9	-	5	7	1	13	63
China (Mainland)	4	3	4	4	6	13	8	22	2	3	3	5	77
China (Taiwan)	1	-	5	-	1	-	1	10	8	21	8	31	86
Hong Kong	22	14	6	21	10	13	24	17	14	20	12	-	173
India	167	215	422	126	199	129	178	353	219	242	266	160	2,676
Japan	41	10	-	10	33	17	18	25	20	12	25	10	221
Pakistan	3	1	5	4	-	12	11	5	1	9	4	8	63
Singapore	1	3	7	4	9	6	8	-	9	1	5	7	60
Other Asian	27	16	34	20	22	28	20	36	65	22	22	25	337

Table 35 (continued)

Country of residence	Jan.	Feb.	Mar.	Apr.	May	June	Jul.	Aug.	Sept.	Oct.	Nov.	Dec.	Whole year
Australia	521	311	257	310	295	184	270	272	317	244	223	355	3,559
New Caledonia	12	21	3	11	9	6	4	9	8	7	12	24	126
New Zealand	46	70	76	64	62	50	50	84	66	43	61	41	713
Other Oceanian	3	5	7	14	3	5	9	11	20	4	7	4	92
Belgium	29	52	27	33	44	27	97	60	37	51	61	79	597
France	915	968	1,299	732	650	513	1,947	2,168	825	1,324	1,256	1,288	13,885
Germany, Fed. Rep. of	106	93	93	146	88	93	100	80	115	169	225	224	1,532
Italy	281	165	107	92	77	40	37	303	88	206	141	578	2,115
Switzerland	50	111	62	59	47	3	118	54	83	134	120	143	1,014
United Kingdom	268	367	339	385	387	227	380	405	329	622	556	587	4,852
Other European	68	133	78	79	83	53	107	146	54	132	125	185	1,243
Canada	15	14	22	19	42	12	18	17	57	76	24	30	346
U.S.A.	55	58	62	71	47	52	75	62	34	85	71	66	738
Other American	7	10	9	9	1	2	9	7	36	3	8	3	104
All Countries	10,055	7,035	6,149	6,753	7,385	4,849	7,551	11,851	6,004	7,757	7,157	10,015	92,561

1/ See notes on page 31.



Table 36 - Tourist arrivals and tourist nights<sup>1/</sup> by country of residence and mode of transport, 1976

Country of residence	Tourist arrivals			Tourist nights spent during 1976 <sup>1/</sup>
	Sea	Air	Total	
Kenya	9	1,048	1,057	7,492
Malagasy Republic	16	3,019	3,035	29,081
Malawi	-	399	399	3,420
Réunion	179	29,853	30,032	244,391
Rhodesia	3	917	920	10,513
Seychelles	16	412	428	4,867
South Africa, Rep. of	101	17,722	17,823	172,865
Tanzania	10	244	254	2,892
Zambia	-	1,884	1,884	17,006
Other African	7	2,050	2,057	19,048
U.S.S.R.	5	58	63	774
China (Mainland)	1	76	77	804
China (Taiwan)	11	75	86	975
Hong Kong	1	172	173	2,128
India	53	2,623	2,676	22,501
Japan	6	215	221	1,904
Pakistan	6	57	63	1,829
Singapore	6	54	60	499
Other Asian	24	313	337	2,979
Australia	33	3,526	3,559	26,487
New Caledonia	-	126	126	624
New Zealand	14	699	713	4,210
Other Oceanian	2	90	92	679
Belgium	6	591	597	9,129
France	77	13,808	13,885	151,971
Germany, Fed. Rep. of	6	1,526	1,532	21,128
Italy	4	2,111	2,115	21,217
Switzerland	7	1,007	1,014	13,653
United Kingdom	51	4,801	4,852	71,336
Other European	75	1,168	1,243	13,836
Canada	11	335	346	3,611
U.S.A.	37	701	738	7,261
Other American	1	103	104	1,112
All countries	778	91,783	92,561	892,222

<sup>1/</sup> See notes on page 31.

Table 37 - Visitor<sup>1/</sup> arrivals by age and sex, 1975-76

Age (completed years)	1975 <sup>2/</sup>			1976 <sup>3/</sup>		
	Male	Female	Both sexes	Male	Female	Both sexes
Under 1	215	179	394	301	221	522
1 - 4	1,512	1,257	2,769	1,773	1,507	3,280
5 - 9	1,955	1,711	3,666	2,301	1,929	4,230
10 - 14	1,953	1,719	3,672	2,207	1,988	4,195
15 - 19	1,931	2,234	4,165	2,172	2,644	4,816
20 - 24	3,552	4,280	7,832	4,378	5,401	9,779
25 - 29	6,367	5,002	11,369	7,657	6,313	13,970
30 - 34	5,977	3,800	9,777	7,722	5,277	12,999
35 - 39	5,254	3,042	8,296	6,667	3,739	10,406
40 - 44	4,227	2,205	6,432	5,576	3,082	8,660
45 - 49	3,640	2,092	5,732	4,622	2,629	7,251
50 - 54	3,062	1,913	4,975	3,743	2,367	6,110
55 - 59	1,993	1,318	3,311	2,519	1,629	4,148
60 - 64	1,531	1,018	2,549	1,737	1,389	3,126
65 - 69	785	653	1,438	1,002	818	1,820
70 and over	557	411	968	677	624	1,301
Not stated	207	124	331	191	136	327
All ages	44,718	32,958	77,676	55,247	41,693	96,940

<sup>1/</sup> See notes on page 31.

<sup>2/</sup> Visitors arriving in 1975 and leaving before 1.3.76.

<sup>3/</sup> Visitors arriving in 1976 and leaving before 1.2.77.

Table 38 - Visitor arrivals and visitor nights<sup>1/</sup> by country of residence, 1975-76

Country of residence	1975 <sup>2/</sup>			1976 <sup>3/</sup>		
	Visitor arrivals	Visitor nights	Average length of stay	Visitor arrivals	Visitor nights	Average length of stay
Kenya	937	5,379	5.7	1,193	7,553	6.3
Malagasy Republic	2,067	16,629	8.0	3,287	28,347	8.6
Malawi	271	2,463	9.1	393	3,233	8.2
Réunion	25,627	217,978	8.5	31,262	240,064	7.7
Rhodesia	1,251	14,492	11.6	943	9,827	10.4
Seychelles	407	4,169	10.2	486	4,506	9.3
South Africa, Rep. of	15,205	145,969	9.6	18,298	169,889	9.3
Tanzania	220	1,578	7.2	302	2,766	9.2
Zambia	2,494	22,379	9.0	1,927	16,823	8.7
Other African	1,132	8,159	7.2	2,125	19,261	9.1
U.S.S.R.	74	910	12.3	49	631	12.9
China (Mainland)	57	467	8.2	85	801	9.4
China (Taiwan)	109	485	4.4	123	1,023	8.3
Hong Kong	220	3,102	14.1	159	2,131	13.4
India	1,812	15,984	8.8	2,620	21,678	8.3
Japan	252	1,509	6.0	339	1,754	5.2
Singapore	75	599	8.0	79	512	6.5
Other Asian	431	4,171	9.7	417	4,543	10.9
Australia	3,715	24,515	6.6	4,199	25,902	6.2
New Caledonia	163	305	1.9	160	613	3.8
New Zealand	797	3,568	4.5	824	4,167	5.0
Other Oceanian	100	348	3.5	111	631	5.7
Belgium	533	8,112	15.2	597	8,935	15.0
France	9,333	98,854	10.6	14,585	147,937	10.1
Germany, Fed. Rep. of	1,543	22,715	14.7	1,561	21,258	13.6
Italy	1,747	16,911	9.7	2,188	22,573	10.3
Switzerland	869	10,668	12.3	1,028	13,204	12.8
United Kingdom	3,695	60,611	16.4	4,962	68,260	13.8
Other European	1,109	11,677	10.5	1,359	14,193	10.4
Canada	314	3,065	9.8	347	3,552	10.2
U.S.A.	964	9,369	9.7	812	6,945	8.6
Other American	153	915	6.0	120	1,168	9.7
All countries	77,676	738,058	9.5	96,940	874,680	9.0

<sup>1/</sup> See notes on page 31.

<sup>2/</sup> Figures refer to visitors arriving in 1975 and leaving before 1.3.76 and to the nights spent by them.

<sup>3/</sup> Figures refer to visitors arriving in 1976 and leaving before 1.2.77 and to the nights spent by them.

Table 39 - Visitor<sup>1/</sup> arrivals by duration of stay, 1975 - 1976

Duration of stay	1975 <sup>2/</sup>		1976 <sup>3/</sup>	
	Number	Percentage	Number	Percentage
Less than 1 day	3,680	4.7	5,229	5.4
1 day	5,264	6.8	5,571	5.7
2 days	6,213	8.0	6,977	7.2
3 "	6,348	8.2	8,375	8.6
4 "	5,532	7.1	7,486	7.7
5 "	4,616	5.9	5,628	5.8
6 "	3,478	4.5	4,994	5.2
7 "	9,072	11.7	12,454	12.9
8 "	4,043	5.2	6,099	6.3
9 "	3,506	4.5	4,055	4.2
10 "	2,358	3.0	3,258	3.4
11 "	1,902	2.4	2,500	2.6
12 "	1,832	2.3	2,180	2.3
13 "	1,445	1.9	2,274	2.3
14 "	5,375	7.6	6,128	6.3
15 "	1,690	2.2	2,002	2.1
16 "	1,043	1.3	1,140	1.2
17 "	591	0.8	788	0.8
18 "	674	0.9	572	0.6
19 "	517	0.7	514	0.5
20 - 24 "	2,674	3.4	3,020	3.1
25 - 29 "	2,197	2.8	2,546	2.6
1 month - under 2 months	2,390	3.1	2,382	2.4
2 months - under 3 months	455	0.6	468	0.5
3 months and over	215	0.3	223	0.2
Not stated	66	0.1	77	0.1
Total	77,676	100.0	96,940	100.0

1/ See notes on page 31 .

2/ Visitors arriving in 1975 and leaving before 1.3.76 .

3/ Visitors arriving in 1976 and leaving before 1.2.77 .

Table 40 - Visitors/ arrivals by country of residence and duration of stay, 1976

Country of residence	Duration of stay in days													Total visitors			
	0	1	2	3	4	5	6	7 & 8	9 & 10	11 & 12	13 & 14	15-19	20-24		25-29	30 +	Not stated
Australia	631	367	767	623	419	222	139	411	112	73	87	81	47	53	165	2	4,199
Belgium	9	20	20	24	36	21	22	79	21	28	132	41	33	33	72	-	597
France	722	700	944	1,229	1,237	750	777	2,350	859	764	1,619	820	557	570	626	11	14,585
Germany, F. Rep.	43	68	99	66	89	87	48	209	47	55	189	100	216	163	80	2	1,561
India	94	210	123	527	355	236	34	416	82	188	38	110	62	47	94	4	2,620
Italy	26	49	33	43	107	80	193	762	60	64	318	335	57	24	36	1	2,188
Kenya	160	74	116	107	135	155	40	166	70	37	44	34	27	7	21	-	1,193
Malagasy Rep.	222	253	211	314	341	338	189	435	269	134	155	187	82	49	135	3	3,387
New Zealand	128	123	190	105	87	39	20	57	13	14	12	8	4	1	23	-	824
Réunion	1,657	1,792	2,456	3,337	3,242	2,351	1,758	5,472	3,002	1,404	1,441	1,412	638	604	679	11	31,262
Seychelles	62	38	73	25	14	17	7	88	21	15	52	6	14	32	22	-	486
S. Africa, Rep. of	526	700	767	872	426	615	1,144	5,582	2,057	1,261	2,126	1,122	519	331	235	5	18,293
Switzerland	24	18	33	25	81	39	31	221	29	36	212	59	123	58	39	4	1,028
United Kingdom	197	330	280	328	250	289	183	767	193	139	656	181	244	404	519	2	4,962
United States	61	74	100	81	84	65	32	71	38	46	33	51	22	18	36	-	812
Zambia	107	140	173	175	95	60	23	394	52	51	438	44	129	32	14	-	1,927
Other countries	560	615	572	494	438	264	354	1,017	368	371	844	425	246	120	287	36	7,011
All countries	5,229	5,571	6,977	8,375	7,486	5,628	4,994	18,553	7,313	4,680	8,402	5,016	3,020	2,546	3,073	77	96,940

1/ Visitors arriving in 1976 and leaving before 1.2.77.  
See notes on page 31.

Table 41 - Visitor arrivals and visitor nights<sup>1/</sup> by country of nationality, 1976

Country of nationality	Visitor arrivals <sup>2/</sup>	Visitor nights <sup>3/</sup>	Average length of stay
Kenya	350	2,304	6.6
Malagasy Republic	1,515	13,641	9.0
Malawi	85	430	5.0
Rhodesia	559	4,894	8.3
South Africa, Rep. of	15,445	142,002	9.2
Tanzania	181	1,934	10.7
Zambia	347	2,541	7.3
Other African	1,397	14,413	10.3
U.S.S.R.	37	798	9.2
China (Mainland)	492	4,394	8.9
China (Taiwan)	84	723	8.6
India	3,411	26,051	7.6
Japan	347	1,845	5.3
Singapore	55	409	7.4
Other Asian	513	5,880	11.5
Australia	3,632	22,912	6.3
New Zealand	819	4,497	5.5
Other Oceanian	40	292	7.3
Belgium	706	10,447	14.8
France	47,487	399,872	8.4
Germany, Fed. Rep. of	2,234	28,207	12.6
Italy	2,520	25,767	10.2
Switzerland	1,143	14,405	12.6
United Kingdom	9,425	107,605	11.4
Other European	2,373	24,086	10.2
Canada	471	4,312	9.2
U.S.A.	1,064	8,257	7.8
Other American	158	1,762	11.2
All countries	96,940	874,680	9.0

1/ See notes on page 31.

2/ Figures refer to visitors arriving in 1976 and leaving before 1.2.77.

3/ Figures refer to nights spent by visitors arriving in 1976 and leaving before 1.2.77.

Table 42 - Visitor arrivals<sup>1/</sup> by country of residence and nationality, 1976

Country of residence \ Country of nationality	Australia	Belgium	Canada	France	Germany, Fed. Rep.	India	Italy	Kenya	Malagasy Rep.	New Zealand	South Africa, Rep. of	Southern Rhodesia	United Kingdom	U.S.A.	Zambia	Other countries	All countries
Australia	3,255	-	24	36	40	6	13	4	-	47	62	2	564	38	3	105	4,199
Belgium	-	502	3	43	11	-	6	-	-	-	1	-	13	8	-	10	597
Canada	4	-	294	5	-	3	1	-	1	-	2	-	25	6	-	6	347
France	9	40	9	14,236	26	1	36	-	4	2	8	-	54	17	-	143	14,585
Germany, Fed. Rep.	3	3	3	23	1,456	-	3	-	-	2	2	-	7	25	-	34	1,561
India	-	-	1	13	-	2,553	1	-	-	-	2	1	30	5	-	14	2,620
Italy	2	1	1	14	8	-	2,112	-	-	-	-	-	13	5	-	32	2,188
Kenya	39	4	13	36	39	31	45	329	4	10	-	-	439	59	-	140	1,193
Malagasy Rep.	-	21	10	1,302	55	166	29	1	1,441	-	-	-	15	11	-	236	3,287
New Zealand	13	-	1	1	-	-	-	1	-	664	4	1	123	5	1	10	324
Réunion	1	11	5	30,305	12	63	8	1	39	1	6	-	27	45	-	238	31,262
South Africa, Rep. of	95	41	30	103	425	169	159	1	-	30	15,090	32	1,464	75	6	578	13,298
Southern Rhodesia	3	3	2	1	6	9	1	-	-	3	114	512	269	2	1	17	943
United Kingdom	47	4	20	57	13	23	8	2	-	17	30	-	4,592	20	3	116	4,962
U.S.A.	17	-	6	10	18	13	1	-	1	-	4	-	40	653	-	49	812
Zambia	31	17	9	31	36	274	57	3	-	31	51	5	788	19	327	248	1,927
Other countries	113	59	35	740	34	95	40	3	25	12	69	6	765	71	6	5,207	7,335
All countries	3,632	706	471	47,456	2,234	3,411	2,520	350	1,515	9	15,445	559	9,226	1,054	17,183	96,940	

<sup>1/</sup> Visitors arriving in 1976 and leaving before 1.2.77.

Table 45 - Visitor nights<sup>1/</sup> by country of residence and nationality, 1976

Country of residence \ Country of nationality	Australia	Belgium	Canada	France	Germany Fed. Rep.	India	Italy	Kenya	Malagasy Rep.	New Zealand	South Africa Rep. of	Southern Rhodesia	United Kingdom	U.S.A.	Zambia	Other countries	All countries
Australia	20,907	-	106	373	161	1	58	4	-	369	315	8	2,761	203	5	651	25,902
Belgium	-	7,936	18	439	105	-	70	-	-	-	5	-	200	54	-	108	8,935
Canada	-	-	2,860	48	-	204	4	-	7	-	37	-	254	42	-	46	3,502
France	60	621	127	143,342	193	5	421	-	47	81	99	-	848	161	-	1,932	147,937
Germany, Fed. Rep.	51	48	24	166	20,273	-	42	-	-	8	15	-	116	65	-	450	21,258
India	-	-	3	44	-	21,125	4	-	-	-	2	-	407	34	-	59	21,678
Italy	9	10	4	146	85	-	21,773	-	-	-	-	-	166	28	-	352	22,573
Kenya	89	21	116	212	334	266	206	2,143	8	21	-	-	2,950	265	-	922	7,553
Malagasy Rep.	-	116	54	11,045	445	1,362	135	7	12,981	-	-	-	127	176	-	1,849	28,347
New Zealand	44	-	16	17	-	-	-	-	-	3,373	21	1	644	26	2	23	4,167
Réunion	29	104	11	36,926	99	558	20	2	326	6	69	-	115	276	-	1,523	240,064
South Africa, Rep. of	640	456	262	1,008	4,729	701	1,721	9	-	351	133,167	285	15,067	574	71	5,842	169,889
Southern Rhodesia	29	63	18	9	67	19	44	-	-	42	1,405	4,430	3,565	10	15	111	9,827
United Kingdom	316	64	309	981	559	207	119	12	-	99	432	-	62,833	184	18	2,317	68,260
U.S.A.	87	-	14	104	239	111	11	-	4	-	44	-	348	5,521	-	462	6,945
Zambia	122	232	60	256	418	1,023	720	21	-	125	596	58	7,757	180	2,391	2,864	16,823
Other countries	523	776	310	4,422	690	469	359	106	268	22	795	112	7,630	458	39	54,011	71,020
All countries	22,912	10,447	4,312	199,538	28,207	26,051	25,767	2,304	13,641	4,497	142,002	4,894	105,788	2,257	2,541	73,522	874,680

<sup>1/</sup> Figures refer to nights spent by visitors arriving in 1976 and leaving before 1.2.77.

See notes on page 31.



Table 44 - Arrivals of Mauritians settled abroad (excluding students) and nights spent by them by country of residence, 1975-76

Country of residence	1975 <sup>1/</sup>			1976 <sup>2/</sup>		
	Arrivals	Nights	Average length of stay	Arrivals	Nights	Average length of stay
Congo Brazzaville	10	419	41.9	8	321	40.1
Ethiopia	9	156	17.3	7	101	14.4
Kenya	20	589	29.4	35	1,040	29.7
Malagasy Republic	137	2,863	20.9	166	3,337	20.1
Malawi	127	4,954	39.0	148	5,274	35.6
Mozambique	38	1,788	47.0	29	1,548	53.4
Réunion	1,498	25,535	17.0	1,584	23,977	15.1
Rhodesia	86	2,003	23.3	83	1,973	23.8
Seychelles	37	672	18.2	26	395	15.2
South Africa, Rep. of	719	17,574	24.4	804	19,918	24.8
Tanzania	14	551	25.1	10	320	32.0
Zambia	140	5,150	36.8	95	2,286	24.1
Other African	58	2,166	37.3	55	2,101	38.2
Hong Kong	17	367	21.6	18	261	14.5
India	2	14	7.0	11	417	37.9
Pakistan	8	257	32.1	6	194	32.3
Singapore	9	132	14.7	8	95	11.9
Other Asian	9	259	28.8	17	251	14.8
Australia	807	26,567	32.9	771	23,494	30.5
Other Oceanian	27	824	30.5	14	427	30.5
Belgium	124	4,825	38.9	122	4,216	34.6
Denmark	4	102	25.5	8	146	18.2
France	1,217	40,091	32.9	1,551	51,660	33.3
Germany, Fed. Rep.	66	2,109	32.0	77	2,559	33.2
Italy	25	891	35.6	16	502	31.4
Netherlands	9	319	35.4	6	193	32.2
Switzerland	69	2,567	37.2	77	2,360	30.6
United Kingdom	3,570	132,619	37.1	3,287	119,840	36.4
Other European	34	990	29.1	51	1,924	37.7
Canada	179	6,081	34.0	194	6,310	32.5
U.S.A.	36	958	26.6	71	2,282	32.1
Other American	6	256	42.7	3	63	21.0
All countries	9,111	284,448	31.2	9,358	279,785	29.9

1/ Figures refer to Mauritians settled abroad arriving in 1975 and leaving before 1.3.76, and to the total nights spent by them in 1975 and 1976.

2/ Figures refer to Mauritians settled abroad arriving in 1976 and leaving before 1.2.77, and to the total nights spent by them in 1976 and 1977.

See notes on page 31.

Table 45 - Arrivals of Mauritians settled abroad (excluding students) by duration of stay, 1975-76

Duration of stay	1975 <sup>1/</sup>	1976 <sup>2/</sup>
Less than 1 day	76	57
1 day	76	96
2 days	118	145
3 days	137	169
4 days	152	167
5 days	128	156
6 days	77	100
7 days	153	229
8 days	76	99
9 days	115	101
10 days	73	87
11 days	116	96
12 days	92	87
13 days	74	77
14 days	176	222
15 days	95	114
16 days	91	80
17 days	51	111
18 days	70	71
19 days	62	82
20 - 24 days	495	498
25 - 29 days	2,386	2,601
1 month - under 2 months	3,659	3,355
2 months - under 3 months	427	380
3 months and over	128	167
Not stated	8	11
Total	9,111	9,358

<sup>1/</sup> Figures refer to Mauritians settled abroad arriving in 1975 and leaving before 1.3.76.

<sup>2/</sup> Figures refer to Mauritians settled abroad arriving in 1976 and leaving before 1.2.77.

See notes on page 31.

Table 46 - Total nights spent by Mauritians settled abroad (excluding students) by country of residence, 1975-76

Country of residence	1975 <sup>1/</sup>	1976 <sup>2/</sup>
Congo Brazaville	404	378
Ethiopia	156	98
Kenya	553	1,044
Malagasy Republic	2,970	3,339
Malawi	4,197	5,123
Mozambique	1,231	2,805
Réunion	27,342	25,376
Rhodesia	1,952	2,114
Seychelles	774	388
South Africa, Rep. of	17,647	20,720
Tanzania	311	333
Zambia	4,691	3,979
Other African	2,484	2,143
Hong Kong	367	261
India	14	409
Pakistan	153	292
Singapore	132	95
Other Asian	262	555
Australia	29,021	26,027
Other Oceanian	763	495
Belgium	4,419	4,912
Denmark	74	141
France	39,363	54,849
Germany, Fed. Rep.	2,511	2,618
Ireland	160	1,197
Italy	795	631
Netherlands	340	179
Switzerland	2,497	2,295
United Kingdom	131,458	136,551
Other European	625	1,348
Canada	5,838	6,557
U.S.A.	976	2,105
Other American	110	210
All countries	284,500	309,567

<sup>1/</sup> Figures refer to nights spent during 1975 by Mauritians settled abroad arriving in 1975 or before and leaving before 1.3.76.

<sup>2/</sup> Figures refer to nights spent during 1976 by Mauritians settled abroad arriving in 1976 or before and leaving before 1.2.77.

See notes on page 31.

1

1. The first part of the document discusses the importance of maintaining accurate records of all transactions.

2. It is essential to ensure that all data is entered correctly and that the system is regularly updated.

3. The second part of the document outlines the various methods used to collect and analyze data.

4. These methods include both traditional statistical techniques and more modern data mining approaches.

5. The final part of the document provides a summary of the findings and offers recommendations for future research.

