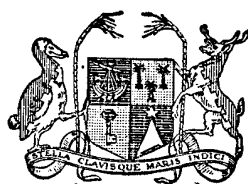


Vol. 2

No. 3



COLONY OF MAURITIUS

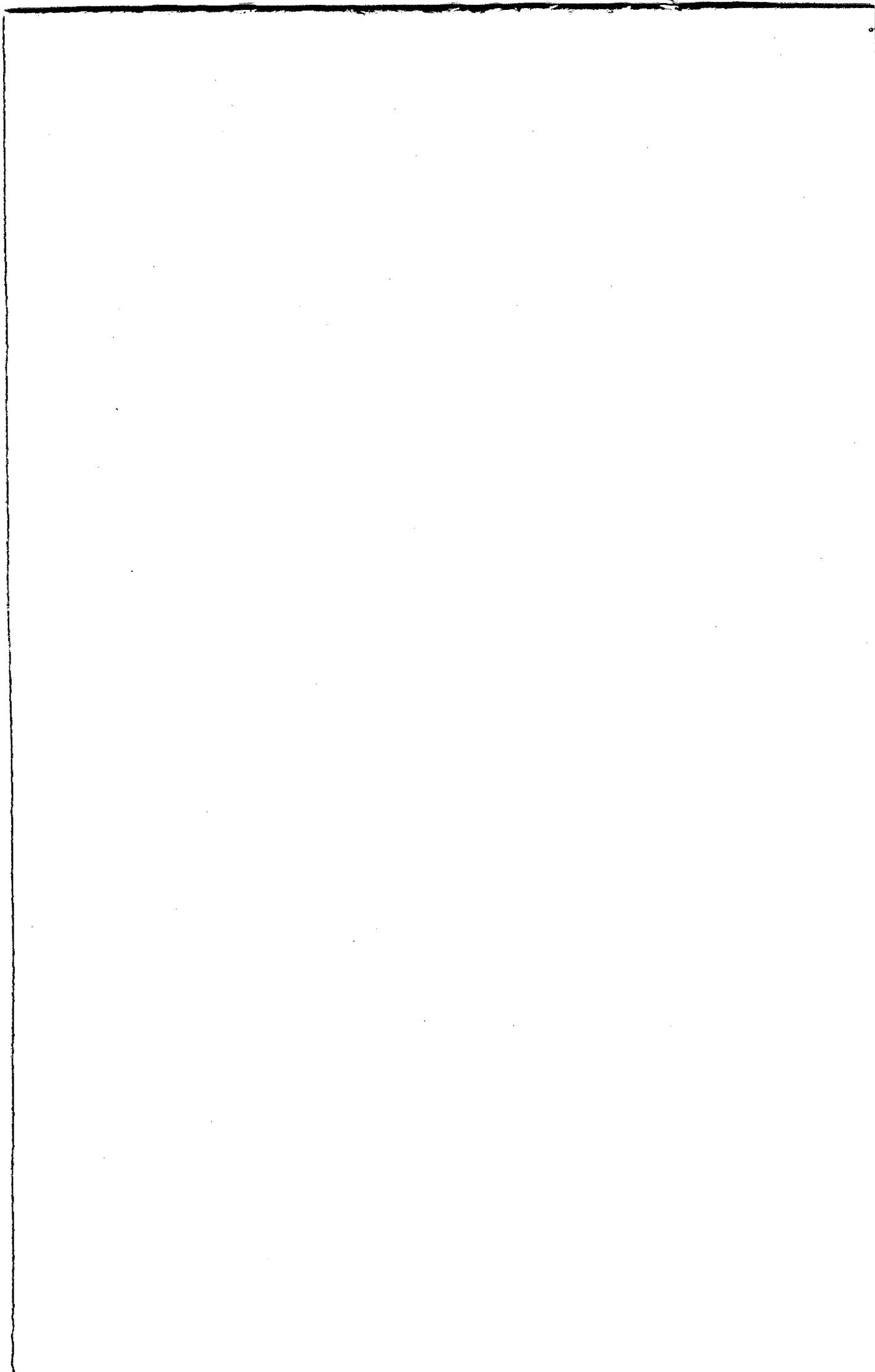
CENTRAL STATISTICAL OFFICE

**QUARTERLY
DIGEST OF STATISTICS**

September 1962

[Price : Rs 2.50]





QUARTERLY DIGEST OF STATISTICS

Notes

The following symbols are used throughout: -

- nil or negligible

... not available

2. Some of the figures in this Digest are liable to revision in later issues.

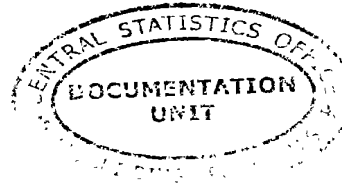
3. Where necessary figures have been rounded off to the nearest final digit, and in some tables there may be discrepancies between the sum of the constituent items and the total as shown.

Central Statistical Office,
Mauritius.

Seen on: 19.1.63

CONTENTS

POPULATION CENSUS, 1962 - PRELIMINARY RESULTS



	Page
I. <u>POPULATION AND VITAL STATISTICS</u>	
Table 1 - Population and vital statistics	1
2 - Live births and still births	1
3 - Total deaths and infant deaths	2
4 - External migration	2
II. <u>PUBLIC HEALTH</u>	
Table 5 - Statistics of hospitals	3
6 - Notifiable contagious or communicable diseases	4
III. <u>PUBLIC FINANCE</u>	
Table 7 - Central Government Revenue & Expenditure: Recurrent	5
8 - Central Government Revenue & Expenditure: Capital	6
9 - Government Borrowing	6
10 - Sterling Assets	7
11 - Banking Statistics: Assets of Commercial Banks	8
12 - " " : Liabilities of Commercial Banks	9
13 - " " : Assets of the Mauritius Agricultural Bank	10
14 - " " : Liabilities of the Mauritius Agricultural Bank	11
15 - Post Office Savings Bank	12
16 - Currency in Circulation	12
17 - Gross National Product	13
18 - Gross Fixed Domestic Capital Formation	14
19 - Balance of Payments	15
IV. <u>EXTERNAL TRADE</u>	
Table 20 - Balance of visible trade	16
21 - Quantum and price indices of exports and imports and the terms of trade	16
22 - Quantum and price indices of imports by sections	17
23 - Exports - quantities and values	18
24 - Exports - principal countries of destination - values	19
25 - Imports - values	20
26 - " : selected commodities - values	21
27 - " : " " - quantities	22
28 - " : main sources of supply - values	23

CONTENTS (Cont'd.)

	Page
V. <u>TRANSPORT AND COMMUNICATION</u>	
Table 29 - Road Transport	24
30 - Sea borne shipping	25
31 - Civil Aviation	25
VI. <u>LAND UTILISATION</u>	
Table 32 - Total area classified by utilisation	26
VII. <u>LOCAL PRODUCTION</u>	
Table 33 - Production of specific commodities	27
<u>VIII. EDUCATION</u>	
Table 34 - Roll of pupils and students in schools and colleges	28

I. POPULATION AND VITAL STATISTICS

Table 1 - Population and Vital Statistics

Period	Marriages	Births	Deaths	Natural Increase	Net Oversea migration	Total Increase
1956	3,080	24,910	6,739	18,171	+ 1,020	19,191
1957	2,903	25,273	7,603	17,670	- 172	17,498
1958	3,169	24,600	7,112	17,488	- 221	17,267
1959	3,297	23,923	6,753	17,170	+ 93	17,263
1960	3,113	25,307	7,248	18,059	- 372	17,687
1961	3,484	26,092	6,505	19,587	- 1,179	18,408
1961: 1st Qr.	649	5,211	1,637	3,574	- 449	3,125
2nd Qr.	954	6,343	1,559	4,784	- 431	4,353
3rd Qr.	829	7,561	1,692	5,869	- 248	5,621
4th Qr.	1,052	6,977	1,617	5,360	- 51	5,309
1962: 1st Qr.	962	6,780	1,810	4,970	- 674	4,296
2nd Qr.	1,005	6,263	1,507	4,756	- 731	4,025
3rd Qr.	914	6,786	1,550	5,236	+ 298	5,534

Table 2 - Live births and still births

Period	Live Births			Still Births
	Total	Males	Females	
1956	24,910	12,693	12,217	1,789
1957	25,273	12,911	12,362	1,800
1958	24,600	12,419	12,181	1,703
1959	23,923	12,107	11,816	1,759
1960	25,307	12,973	12,334	1,783
1961	26,092	13,244	12,848	1,963
1961: 1st Qr.	5,211	2,638	2,573	408
2nd Qr.	6,343	3,246	3,097	507
3rd Qr.	7,561	3,852	3,709	552
4th Qr.	6,977	3,508	3,469	496
1962: 1st Qr.	6,780	3,463	3,317	487
2nd Qr.	6,263	3,172	3,091	438
3rd Qr.	6,786	3,458	3,328	452

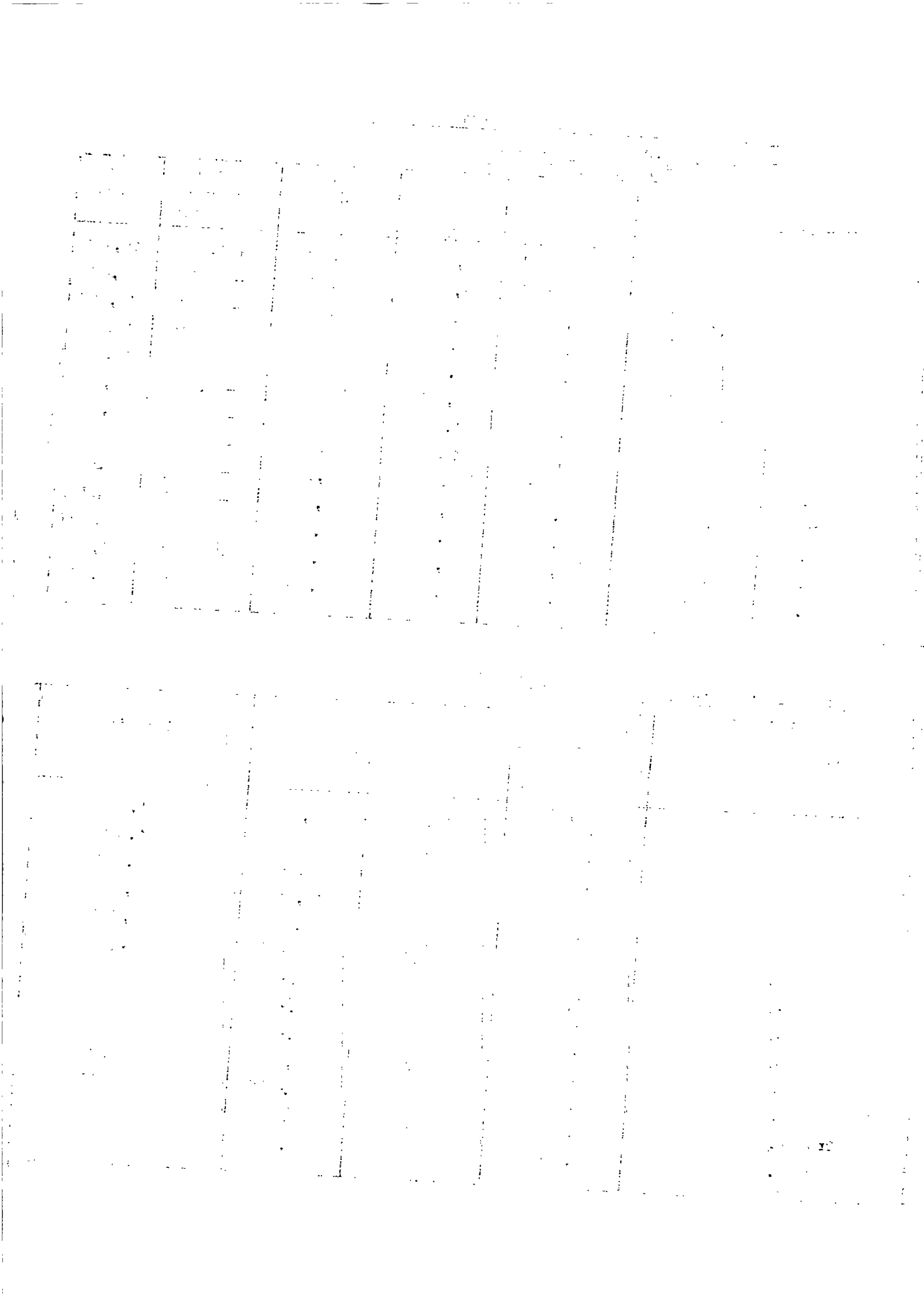


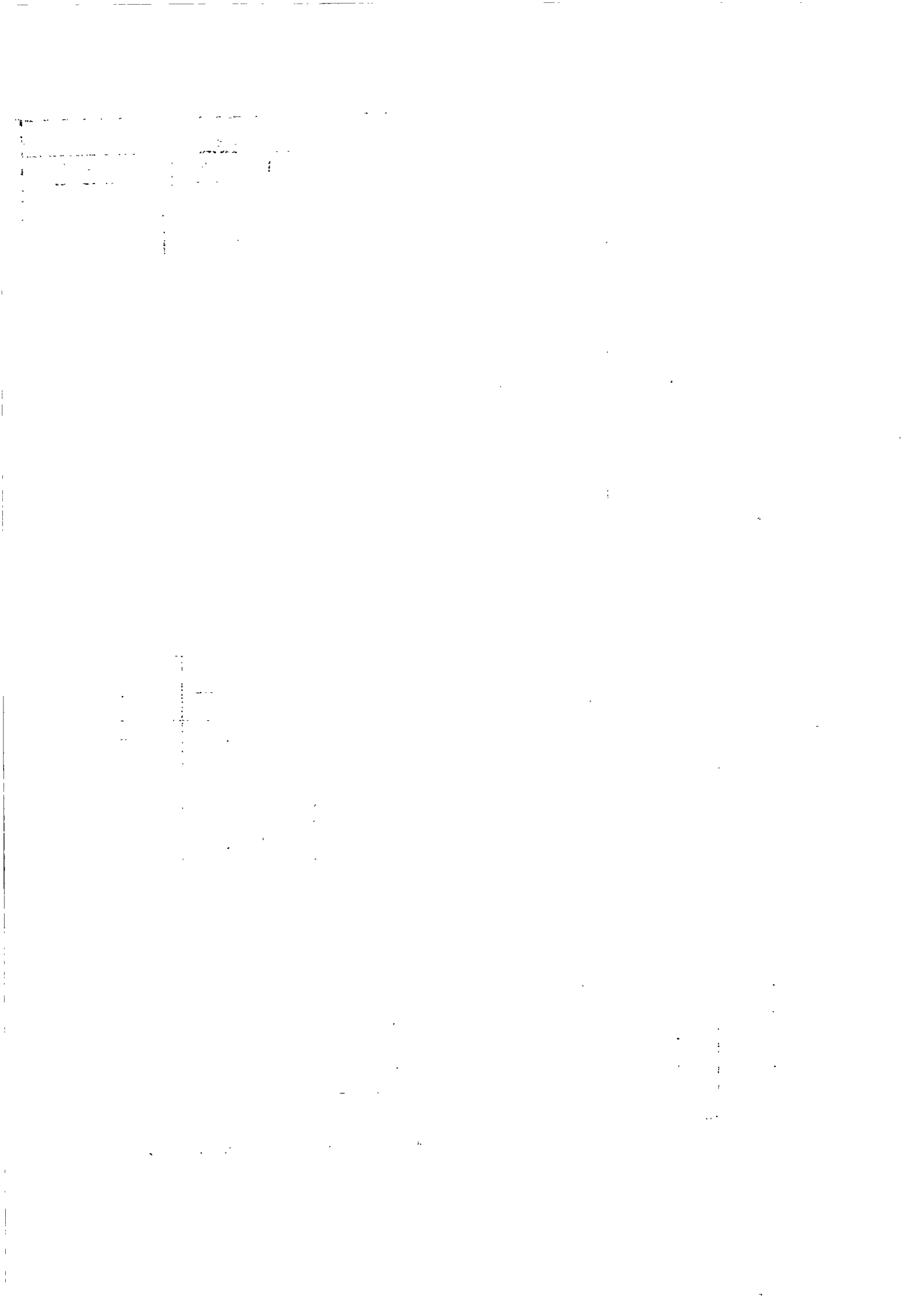
Table 3 - Total Deaths and Infant Deaths

Period	Total Deaths			Infant Deaths		
	Total	Males	Females	Total	Males	Females
1956	6,739	3,556	3,183	1,644	920	724
1957	7,603	4,019	3,584	1,897	1,017	880
1958	7,112	3,751	3,361	1,659	941	718
1959	6,753	3,499	3,254	1,495	821	674
1960	7,248	3,706	3,542	1,760	980	780
1961	6,505	3,359	3,146	1,618	915	703
1961: 1st Qr.	1,637	848	789	421	239	182
2nd Qr.	1,559	803	756	446	248	198
3rd Qr.	1,692	860	832	369	212	157
4th Qr.	1,617	848	769	382	216	166
1962: 1st Qr.	1,810	900	910	545	315	230
2nd Qr.	1,507	770	737	340	180	160
3rd Qr.	1,550	817	733	337	202	135

Table 4 - External Migration⁺

Period	Arrivals			Departures			Net migration
	Total	By sea	By air	Total	By sea	By air	
1956	7,718	3,956	3,762	8,109	4,352	3,757	- 391
1957	8,095	3,811	4,284	8,267	3,956	4,311	- 172
1958	8,703	4,023	4,680	8,924	4,189	4,735	- 221
1959	9,637	4,231	5,406	9,544	4,222	5,325	+ 93
1960	10,412	4,063	6,349	10,784	4,464	6,320	- 372
1961	11,854	4,402	7,452	13,033	5,442	7,591	- 1,179
1961: 1st Qr.	2,256	842	1,414	2,705	1,109	1,596	- 449
2nd Qr.	2,473	885	1,588	2,904	1,210	1,694	- 431
3rd Qr.	3,662	1,118	2,544	3,910	1,346	2,564	- 248
4th Qr.	3,463	1,557	1,906	3,514	1,777	1,737	- 51
1962: 1st Qr.	2,939	1,073	1,866	3,613	1,456	2,157	- 674
2nd Qr.	3,044	753	2,291	3,775	842	2,933	- 731
3rd Qr.	5,288	1,290	3,998	4,990	1,092	3,898	+ 298

⁺Includes:-- (a) The very small figure of engaged or discharged seamen;
(b) emigrants and immigrants to and from the dependencies.



II. PUBLIC HEALTH

Table 5 - Statistics of Hospitals

Period	No. of beds	Patients in hospital on last day of period	Total admissions	Deaths	Discharges	Patients remaining on last day of period
1956	2,179	1,534	30,952	1,263	29,719	1,504
1957	2,173	1,504	33,542	1,498	32,001	1,547
1958	2,214	1,547	33,767	1,363	32,371	1,580
1959	2,270	1,580	34,846	1,344	33,455	1,627
1960	2,357	1,627	34,355	1,560	32,766	1,656
1961	2,448	1,656	36,892	1,601	35,196	1,751
1961 : 1st Qr.	2,369	1,656	9,518	406	8,701	2,067
2nd Qr.	2,393	2,067	9,308	388	8,904	2,083
3rd Qr.	2,358	2,083	9,123	396	8,782	2,028
4th Qr.	2,448	2,028	8,943	411	8,809	1,751
1st Qr.	2,413	1,751	10,288	475	9,76	2,188
2nd Qr.	2,363	2,188	9,168	394	8,865	2,097
3rd Qr.	2,363	2,097	9,271	370	8,875	2,123

Table 6 -- Notifiable Contagious or Communicable Diseases

Disease Period	Typhoid fever	Diphtheria	Acute Poliomye- litis	Puerperal fever	Erysipelas	Cerebro- spinal meningitis	Tuberculosis	Leprosy
1956	149	89	31	11	4	1	414	-
1957	76	45	3	21	-	-	436	-
1958	46	67	-	4	-	-	398	-
1959	45	140	99	5	2	-	300	-
1960	114	164	1	3	2	1	313	2
1961	71	215	-	1	-	-	353	1
1961: 1st Qr.	27	42	-	1	-	-	123	1
2nd Qr.	20	56	-	-	-	-	83	-
3rd Qr.	20	59	-	-	-	-	82	-
4th Qr.	4	58	-	-	-	-	65	-
1962: 1st Qr.	19	42	-	-	-	-	74	-
2nd Qr.	25	39	-	-	-	-	76	-
3rd Qr.	19	29	-	-	-	-	81	-

III. PUBLIC FINANCE

Table 7 - Central Government Revenue and Expenditure: Recurrent

Rs million

Period	Revenue				Expenditure	
	Total	Direct taxes	Indirect taxes	Other	Total incl. debt charges	Debt charges
1956	116.7	41.1	55.4	20.2	130.3	6.0
1957	123.8	45.2	56.4	22.2	110.1	6.4
1958	134.3	48.6	61.3	24.4	142.8	6.5
1959	129.8	47.1	66.0	16.7	129.5	6.6
1960	141.0	43.2	79.6	18.2	145.9	7.9
1961	144.9	40.3	82.8	21.8	150.1	8.9
1961: 1st Qr.	24.5	1.2	19.2	4.1	31.5	2.5
2nd Qr.	46.8	20.4	19.9	6.5	41.9	1.7
3rd Qr.	28.2	2.5	21.3	4.4	30.4	3.1
4th Qr.	45.4	16.2	22.4	6.8	46.3	1.6
1962: 1st Qr.	36.4	1.7	29.9	4.8	34.1	2.8
2nd Qr.	44.5	18.1	21.5	4.9	45.2	1.6
3rd Qr.	32.6	6.2	21.8	4.6	47.6	3.4

Table 8 - Central Government Revenue and Expenditure: Capital

Rs million

Period	Revenue					Total Expenditure
	Total	Contri- butory	Grants	Loans	Other	
1956	23.6	-	21.4	2.2	-	10.1
1957	4.9	-	2.0	2.9	-	23.2
1958	7.7	6.5	0.6	-	0.6	28.2
1959	20.3	1.8	0.9	15.9	1.7	29.8
1960	32.6	14.0	2.0	15.4	1.2	45.8
1961	43.1	12.0	18.3	12.0	0.8	47.4
1961: 1st Qr.	20.1	-	11.9	8.0	0.2	10.9
2nd Qr.	4.1	-	1.6	2.4	0.1	14.3
3rd Qr.	0.8	-	-	0.3	0.5	9.9
4th Qr.	18.1	12.0	4.8	1.3	-	12.3
1962: 1st Qr.	7.5	-	3.4	3.9	0.2	9.8
2nd Qr.	12.5	-	5.9	6.6	-	20.1
3rd Qr.	16.5	12.0	1.2	3.3	-	15.8

Table 9 - Central Government Indebtedness

Rs million

Period	Amount out- standing at beginning of period	Borrowing			Repay- ments
		Total	Internal	External	
1956-57	99.0	-	-	-	0.5
1957-58	98.5	-	-	-	0.5
1958-59	98.0	0.5	0.5	-	0.5
1959-60	98.0	29.8	29.8	-	0.5
1960-61	127.3	16.9	9.3	7.6	0.5
1960: July-Sept.	127.3	1.9	1.9	-	0.5
Oct-Dec.	128.7	0.7	0.7	-	-
1961: Jan.-March	129.4	11.3	3.7	7.6	-
April-June	140.7	3.0	3.0	-	-
July-Sept.	143.7	0.5	0.5	-	0.5
Oct.-Dec.	143.7	2.6	2.6	-	-
1962: Jan.-March	146.3	5.7	4.4	1.3	-
April-June	152.0	4.7	0.5	4.2	-
July-Sept.	156.7	3.9	3.9	-	0.5

Table 10 - Sterling Assets
(end of period)

Rs million

Period	(Investments) (Nominal value)					Liquid Assets (Cash and money at call)					
	Government	Semi Governmental Institutions	Currency Backing	Post Office Savings Bank	Total	Government	Semi Governmental Institutions	Currency Backing	Post Office Savings Bank	Total Government & Semi-governmental Institutions	Net balances of banks due from banks abroad
1956	50.4	86.2	62.2	26.1	224.9	36.4	-	6.5	-	42.9	76.2
1957	55.6	88.9	62.3	26.7	233.5	34.5	0.9	12.1	-	47.5	112.1
1958	51.7	92.2	63.9	26.3	234.1	30.3	20.6	16.8	1.5	69.2	67.1
1959	52.0	64.7	60.1	26.3	203.1	20.4	49.9	28.8	1.1	103.2	52.4
1960	42.9	79.4	66.0	26.3	214.6	18.3	- 2.3	15.5	4.1	35.6	16.2
1961	26.4	64.8	60.5	25.8	177.5	24.1	- 42.8	26.8	2.2	10.3	35.1
1961:1st Qr.	29.4	71.3	66.0	26.3	193.0	44.4	- 42.4	14.0	1.5	17.5	8.6
2nd Qr.	26.5	64.8	60.2	25.6	177.1	41.6	- 40.8	17.3	2.2	20.3	- 66.4
3rd Qr.	28.3	64.8	60.5	25.8	179.4	28.8	- 41.6	17.3	2.2	6.7	- 46.0
4th Qr.	26.4	64.8	60.5	25.8	177.5	24.1	- 42.8	26.8	2.2	10.3	35.1
1962:1st Qr.	27.6	60.7	60.0	25.8	174.1	27.5	- 38.9	20.8	2.2	11.6	3.9
2nd Qr.	28.8	60.7	60.0	25.8	175.3	20.7	- 40.8	19.2	1.4	0.5	- 59.7
3rd Qr.	28.9	30.7	59.8	25.8	145.2	8.3	- 13.3	21.3	1.4	17.7	- 61.6

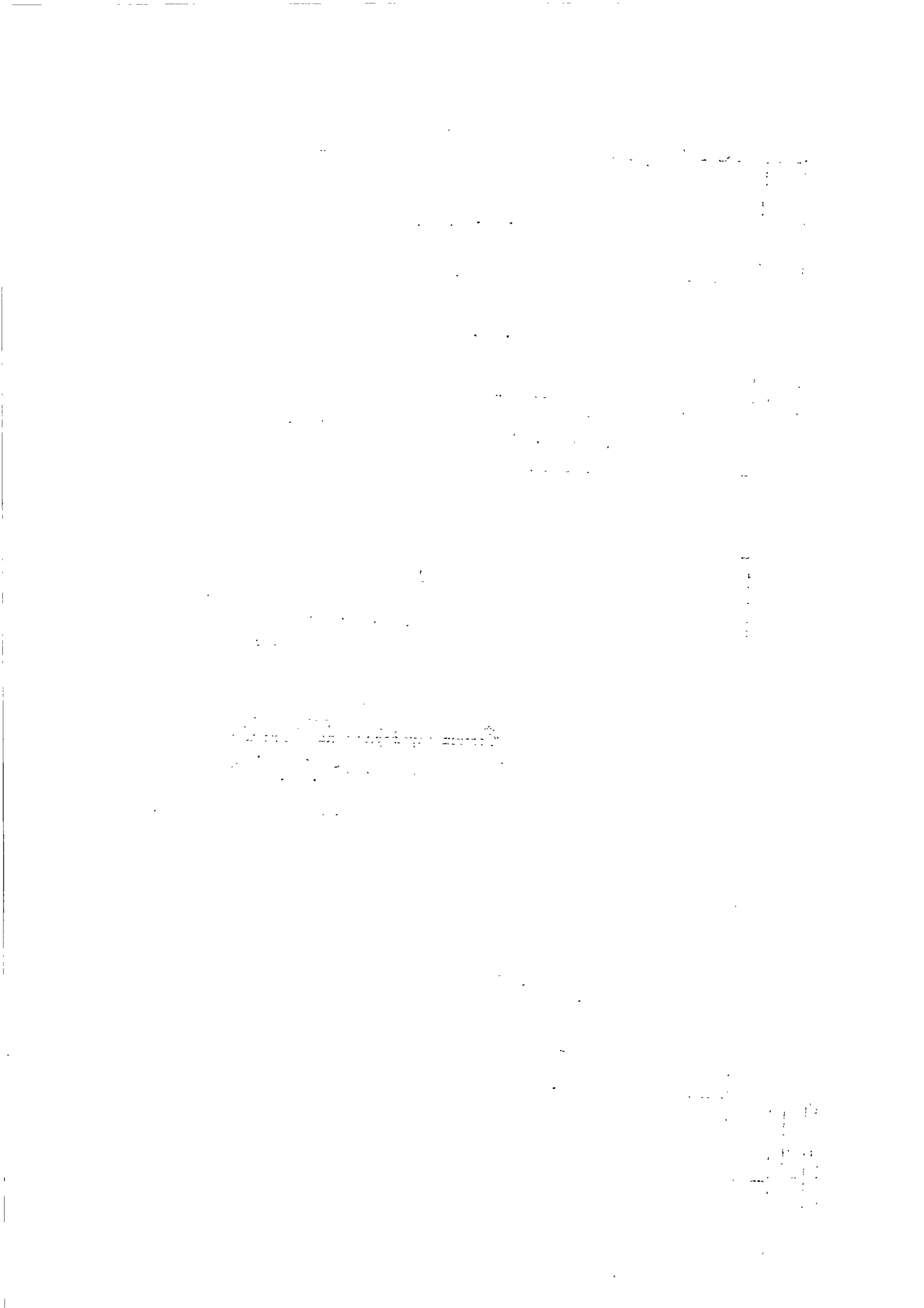


Table 11 - Banking Statistics - Assets of Commercial banks

Rs million

Period	Total	Cash	Balances due by		Loans and Advances			Investments		Other Assets	
			Other banks in the colony	Banks abroad	Primary Products	Other industries	Other Advances	Local	Abroad	Bills discounted and bills receivable	Other
1956: 31st Dec.	140.4	6.2	2.5	77.4	10.9	15.5	20.1	2.5	2.1	-	3.2
1957: "	188.6	6.9	1.8	113.9	12.0	18.2	25.1	5.5	2.0	-	3.2
1958 "	181.6	4.9	7.6	69.2	19.1	30.0	9.0	5.5	2.0	-	34.3
1959 "	186.3	7.2	7.1	54.4	25.9	31.0	9.7	5.5	2.0	7.2	36.3
1960 "	194.2	7.5	2.3	26.4	45.0	45.0	13.6	5.5	2.0	13.8	33.1
1961: 31st March	196.2	8.1	1.1	26.9	44.9	46.7	11.6	5.5	2.0	11.2	38.2
30th June	214.8	7.4	3.3	1.1	73.8	51.8	19.3	5.5	2.0	16.0	34.6
30th Sept.	221.9	6.2	2.1	1.3	82.2	47.8	22.3	5.6	2.0	14.7	37.7
31st Dec.	241.2	6.0	3.0	57.1	53.3	45.7	21.8	5.0	2.0	11.8	35.5
1962: 31st March	229.3	7.6	0.9	35.4	65.0	47.4	18.2	5.0	2.0	10.6	37.2
30th June	239.1	8.1	1.3	5.7	95.8	46.9	27.8	5.0	2.0	12.5	34.0
30th Sept.	236.8	5.6	1.6	5.9	94.1	56.3	16.9	5.0	2.0	12.5	36.9

Table 12 - Banking Statistics - Liabilities of Commercial banks

Rs million

Period	Total	Notes in Circulation	Deposits			Balances due to		Other Liabilities
			Demand	Time	Savings	Other banks in the colony	Banks abroad	
1956: 31st Dec.	140.4	-	99.9	13.9	5.2	2.6	1.2	17.6
1957: "	188.6	-	127.1	32.2	6.3	2.6	1.8	18.6
1958: "	181.6	-	107.8	16.2	8.5	4.5	2.1	42.5
1959: "	186.3	-	115.0	5.1	10.5	2.6	2.0	51.1
1960: "	194.2	-	113.3	3.0	11.6	2.7	10.2	53.4
1961: 31st March	196.2	-	102.8	4.9	12.3	1.4	18.3	56.5
30th June	214.8	-	74.6	3.5	12.1	3.5	67.5	53.6
30th Sept.	221.9	-	98.4	4.1	12.2	2.7	47.3	57.2
31st Dec.	241.2	-	143.5	3.6	12.5	3.7	22.0	55.9
1962: 31st March	229.3	-	104.6	22.5	13.0	1.1	31.5	56.6
30th June	239.1	-	97.3	8.8	12.8	2.0	65.4	52.8
30th Sept.	236.8	-	91.4	5.9	14.1	2.3	67.5	55.6

Table 13 - Banking Statistics - Assets of the Mauritius Agricultural Bank

Rs million

Period	Total	Cash	Balances due by			Loans and Advances			Investments		Other Assets
			Other banks in the colony	Banks abroad	Primary products	Other industries	Other Advances	Local	Abroad		
1956: 31st Dec.	39.5	0.3	1.4	-	25.8	-	8.3	0.5	0.6	2.6	
1957: "	40.2	0.1	0.3	-	25.9	0.4	8.8	0.8	0.4	3.5	
1958: "	42.4	0.1	0.7	-	26.5	0.8	9.4	0.8	0.5	3.6	
1959: "	42.6	0.1	0.6	-	26.0	0.8	10.0	0.8	0.6	3.7	
1960: "	40.0	0.1	0.9	-	25.5	0.8	9.7	0.8	0.7	1.5	
1961: 31st March	41.7	-	1.1	-	25.5	0.8	9.6	2.4	0.7	1.6	
30th June	41.6	0.2	0.5	-	25.1	0.8	9.8	2.4	0.7	2.1	
30th Sept.	41.8	-	0.7	-	24.9	0.8	10.7	2.0	0.7	2.0	
31st Dec.	42.4	-	0.9	-	25.2	0.8	11.8	0.9	0.7	2.1	
1962: 31st March	42.3	-	0.3	-	25.0	0.8	12.5	0.9	0.7	2.1	
30th June	44.2	-	1.7	-	24.9	0.7	12.9	1.0	0.9	2.1	
30th Sept.	45.0	-	0.9	-	24.8	0.7	13.7	1.0	0.9	3.0	

Table 14 - Banking Statistics - Liabilities of the Mauritius Agricultural Bank

Rs million

Period	Total	Notes in Circulation	Deposits			Balances due to		Other Liabilities
			Demand	Time	Savings	Other banks in the colony	Banks abroad	
1956: 31st Dec.	39.5	-	-	4.8	1.8	-	-	32.9
1957: "	40.2	-	-	5.0	1.8	-	-	33.4
1958: "	42.4	-	-	5.4	2.0	-	-	35.0
1959: "	42.6	-	-	5.1	2.1	-	-	35.4
1960: "	40.0	-	-	4.9	2.1	-	-	33.0
1961: 31st March	41.7	-	-	4.9	2.2	-	-	34.6
30th June	41.6	-	-	7.0	2.2	-	-	32.2
30th Sept.	41.8	-	-	7.0	2.1	-	-	32.0
31st Dec.	42.4	-	-	7.0	2.1	-	-	32.6
1962: 31st March	42.3	-	-	7.3	2.2	-	-	31.8
30th June	44.2	-	-	8.4	2.1	-	-	32.9
30th Sept.	45.0	-	-	8.4	2.1	-	-	33.5

Table 15 - Post Office Savings Bank

Period	Deposits	Withdrawals	Accumulated balance	Number of accounts
	during period		at the end of period	
	Rs mn	Rs mn	Rs mn	
1956	13.3	15.2	27.4	...
1957	13.2	13.8	27.5	...
1958	14.8	13.8	29.1	...
1959	17.2	14.9	32.1	...
1960	15.3	16.9	31.3	...
1961	11.9	13.4	30.4	...
1961:1st Qr.	4.0	3.9	31.4	...
2nd Qr.	2.9	3.6	31.4	81,861
3rd Qr.	3.7	4.5	30.6	...
4th Qr.	1.3	1.4	30.4	...
1962:1st Qr.	3.6	3.9	30.2	...
2nd Qr.	2.6	3.5	30.0	83,857
3rd Qr.	3.8	4.2	29.7	...

Table 16 - Currency in circulation
(end of period)

Rs million

Period	Notes	Coins	Total	Cash held by banks	Net circulation
1956	56.9	3.7	60.6	6.2	54.4
1957	61.5	3.9	65.4	6.9	58.5
1958	65.6	4.3	69.9	4.9	65.0
1959	73.2	4.6	77.8	7.2	70.6
1960	73.1	4.5	77.6	7.5	70.1
1961	77.7	4.5	82.2	6.0	76.2
1961:1st Qr.	71.6	4.5	76.1	8.1	68.0
2nd Qr.	68.2	4.5	72.7	7.4	65.3
3rd Qr.	68.2	4.5	72.7	6.2	66.5
4th Qr.	77.7	4.5	82.2	6.0	76.2
1962:1st Qr.	71.4	4.3	75.7	7.6	68.1
2nd Qr.	68.9	4.3	73.2	8.1	65.1
3rd Qr.	70.5	4.7	75.2	5.6	69.6

**Table 17 - Industrial Origin of Gross National Product
at current factor cost**

Rs million

	1956	1957	1958	1959	1960	1961
1. Agriculture, forestry, hunting and fishing	201	197	185	204	109	182
2. Mining and quarrying	1	1	1	1	1	1
3. Manufacturing	130	129	114	123	80	131
4. Construction	28	31	32	34	35	50
5. Electricity, gas, water and sanitary services	9	10	11	12	12	14
6. Transportation, storage and communication	74	78	83	91	83	97
7. Wholesale and retail trade	60	65	68	65	67	73
8. Banking, insurance and real estate	11	11	12	12	13	14
9. Ownership of dwellings	42	44	45	47	42	50
10. Public administration and defence	20	22	24	27	27	27
11. Services	48	54	59	64	69	71
GROSS DOMESTIC PRODUCT AT FACTOR COST	624	642	634	680	538	710
Net factor income from abroad	3	4	4	7	10	- 5
GROSS NATIONAL PRODUCT AT FACTOR COST	627	646	638	687	548	705

The above estimates are liable to revision as much of the information on which they are based are provisional.

Table 18 - Composition of Gross Fixed Domestic Capital Formation

(at current prices)

Rs million

	1957	1958	1959	1960 ⁺	1961 ^{+@}
A. By type of capital good					
a. Land [‡]	3	3	2	3	3
b. Dwellings	21	21	25	30	42
c. Non-residential buildings	14	12	13	13	18
d. Other construction and works	16	18	24	23	29
e. Transport equipment	12	17	15	19	18
(i) Passenger cars	4	5	4	6	5
(ii) Other equipment	8	12	11	13	13
f. Machinery and other equipment	28	44	44	46	38
GROSS FIXED DOMESTIC CAPITAL FORMATION	94	115	123	134	148
B. By industrial use					
a. Agriculture, forestry and fishing	7	16	17	13	7
b. Mining and quarrying	-	-	-	-	-
c. Manufacture	20	28	28	27	24
d. Construction	24	20	19	22	37
e. Electricity, gas and water	4	7	13	12	13
f. Transportation, storage and communication	13	18	17	24	20
g. Wholesale and retail trade	1	1	1	1	1
h. Banking, insurance and real estate	-	-	-	-	-
i. Ownership of dwellings	21	21	25	30	42
j. Public Administration	-	-	-	-	-
k. Service industries	1	1	1	2	1
l. Legal fees, stamp duties etc.	3	3	2	3	3
Gross FIXED DOMESTIC CAPITAL FORMATION	94	115	123	134	148

+ Excluding the expenditure incurred on reconstruction of and abnormal repairs to buildings damaged by the 1960 cyclones and valued at 60 million rupees in 1960 and 6 million rupees in 1961.

@ Provisional.

‡ Including legal fees, stamp duties, agents' commissions etc., connected with the transfer of ownership of land and buildings.

Rs million

Table 19 - Balance of Payments

	1956		1957		1958		1959		1960		1961 ⁺	
	Receipts	Payments	Receipts	Payments	Receipts	Payments	Receipts	Payments	Receipts	Payments	Receipts	Payments
Goods and Services	324.4	255.0	360.6	297.8	320.2	335.8	325.8	324.9	248.5	368.5	343.0	378.2
Donations	6.4	4.7	3.5	6.0	2.5	6.1	2.6	6.2	5.8	5.7	21.2	8.8
Capital Transactions	22.4	77.1	4.4	74.3	47.7	32.5	47.7	39.8	105.8	21.4	97.9	55.5
Net Credit or Debit Balance	-	16.4	9.6	-	4.0	-	-	5.2	35.5	-	-	19.6
TOTAL	353.2	353.2	378.1	378.1	374.4	374.4	376.1	376.1	395.6	395.6	462.1	462.1

+ Provisional

IV. EXTERNAL TRADE

Table 20 - Balance of Visible Trade

Rs million

Period	Imports (c.i.f.value)	Exports ⁺ (f.o.b.value)	Balance of visible trade	
			Surplus	Deficit
1956	224.1	298.1	74.0	-
1957	263.8	330.3	66.5	-
1958	299.2	288.9	-	10.3
1959	286.9	289.6	2.7	-
1960	331.9	185.0	-	146.9
1961	324.0	294.2	-	29.8
1961:1st Qr.	85.2	16.4	-	68.8
2nd Qr.	85.3	6.6	-	78.7
3rd Qr.	82.9	111.5	28.6	-
4th Qr.	70.6	159.6	89.0	-
1962:1st Qr.	74.5	17.5	-	57.0
2nd Qr. ^x	83.3	13.8	-	69.5

Table 21 - Quantum and price indices of exports and imports and terms of trade

Period	Quantum indices		Price indices		Terms of trade [‡]
	Export	Import	Export	Import	
1956	100	100	100	100	100
1957	110	116	101	101	100
1958	98	130	99	102	97
1959	96	132	101	97	104
1960	57	154	109	96	114
1961	98	150	101	96	105

+ Including value of sugar quota certificates, but excluding sales value of bunker fuel and ships' stores.

For 1961 the value of sugar quota certificates has been included in the 4th quarter.

x Provisional.

‡ Ratio of export price index to import price index.

A rise in the index indicates that the terms of trade have moved in favour of Mauritius.

Table 23 - Exports - Quantities and Values

Quantity: thousand metric tons
Value : Rs million f.o.b.

Period	Total Value [‡]	Re-exports Value	Domestic Exports									
			Total		Sugar		Molasses		Tea		Other	
			Quantity	Value ^x	Quantity	Value ^x	Quantity	Value	Quantity	Value	Quantity	Value
1956	298.1	4.1	...	294.0	540.0	289.3	52.7	3.4	0.2	0.8	...	0.5
1957	330.3	7.5	...	322.8	585.6	314.8	72.5	5.4	0.4	2.3	...	0.3
1958	288.9	3.6	...	285.3	522.8	277.1	59.2	4.9	0.4	2.3	...	1.0
1959	289.6	4.0	...	285.6	512.0	276.9	60.0	4.8	0.5	2.7	...	1.2
1960	185.0	5.5	...	179.5	299.4	174.0	45.2	3.4	0.2	1.3	...	0.8
1961	294.2	10.5	...	283.7	505.7	272.2	64.6	5.0	0.8	4.9	...	1.7
1961: 1st Qr.	16.4	3.7	...	12.7	16.2	9.3	9.0	0.7	0.3	1.6	...	1.1
2nd Qr.	6.6	3.9	...	2.7	0.3	0.1	10.7	0.8	0.3	1.8	...	0.1
3rd Qr.	111.5	1.1	...	110.4	218.8	108.7	14.3	1.0	0.1	0.6	...	0.1
4th Qr.	159.6	1.7	...	157.9	270.4	154.1	30.6	2.5	0.2	0.9	...	0.4
1962: 1st Qr.	17.5	1.0	...	16.5	22.5	13.1	13.8	1.1	0.3	1.6	...	0.7
2nd Qr.	13.8	3.1	...	10.7	13.0	7.7	16.9	1.6	0.2	1.0	...	0.4

‡ Including value of sugar quota certificates, but excluding sales value of bunker fuel and ships' stores.

x For 1961 the value of sugar quota certificates has been included in the 4th quarter.

+ Provisional.

Table 24 - Total Exports: Principal countries of destination - values

Rs million f.o.b.

Period	United Kingdom	Canada	Hong-Kong	Malaya	Nyasaland	Singapore	Holland	Japan	Lebanon
1956	223.8	54.4	-	1.7	-	0.6	0.7	-	-
1957	231.3	44.2	6.2	1.3	-	0.1	0.4	15.1	0.4
1958	234.1	26.6	0.5	2.1	-	1.1	1.3	0.4	3.8
1959	229.6	37.5	3.0	0.4	2.2	1.1	1.6	0.8	2.9
1960	159.5	10.0	-	0.4	0.9	0.3	1.0	1.5	-
1961	235.9	36.4	0.1	-	-	-	0.1	2.3	-
1961:1st Qr.	11.7	-	-	-	-	-	-	0.6	-
2nd Qr.	2.8	-	-	-	-	-	-	1.6	-
3rd Qr.	85.8	23.6	-	-	-	-	-	-	-
4th Qr.	135.5	12.8	-	-	-	-	-	0.1	-
1962:1st Qr.	15.0	-	-	-	-	-	0.4	0.1	-
2nd Qr. ⁺	9.3	-	0.2	0.1	-	-	-	-	-

+ Provisional.

± Excluding value of sugar quota certificates.

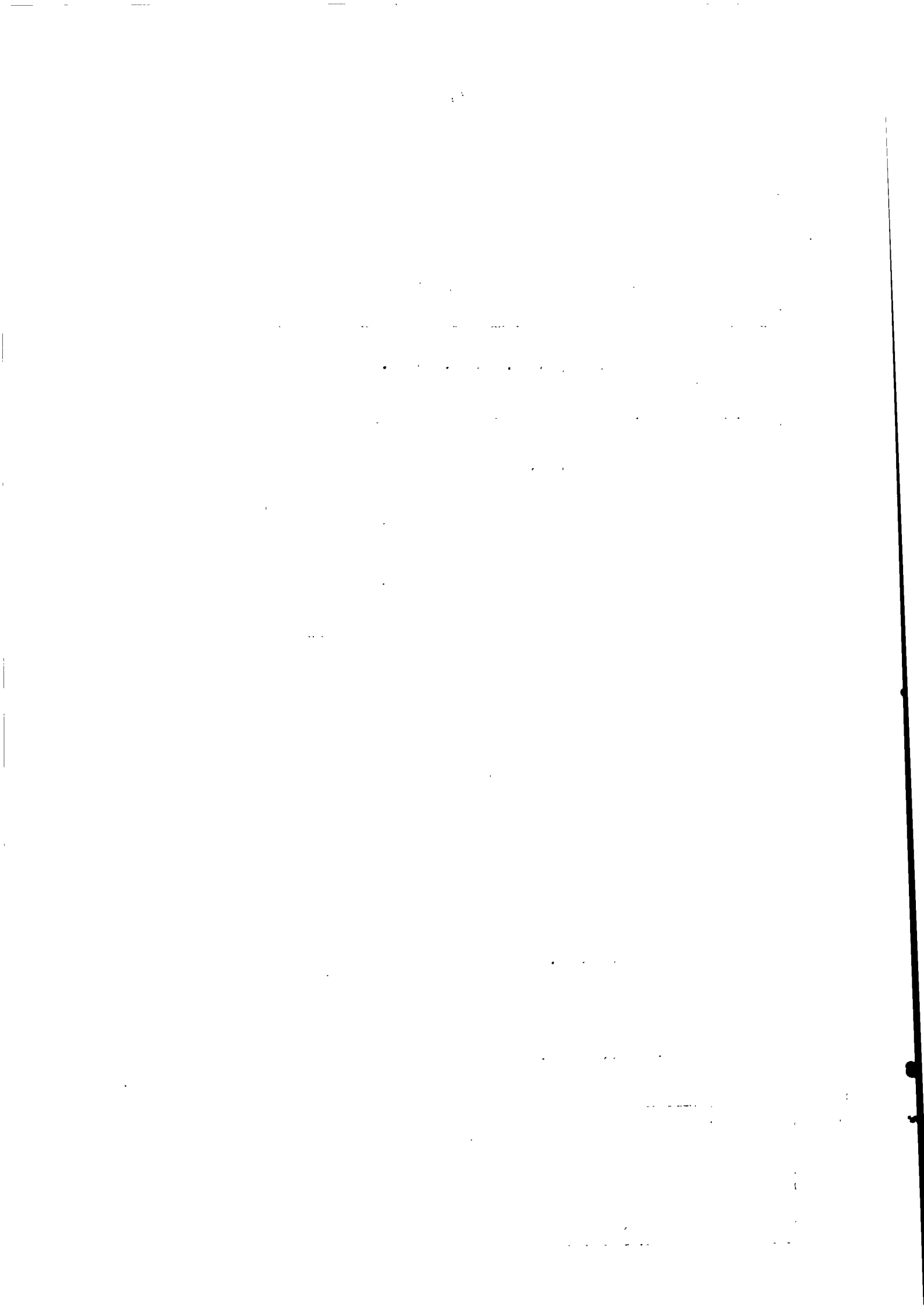


Table 25 - Imports - values

Period	Total	Food	Beverages and tobacco	Crude materials, inedible, except fuels	Mineral fuels, lubricants, etc.	Animal and vegetable oils and fats	Chemicals	Manufactured goods classified chiefly by material	Machinery and transport equipment	Miscellaneous manufactured articles	Miscellaneous transactions & commodities n.e.s.
1956	224.1	61.0	5.4	7.9	14.2	9.0	27.3	56.3	27.8	14.9	0.3
1957	263.8	73.7	5.7	6.1	14.9	11.0	30.7	64.2	38.9	18.1	0.5
1958	299.2	88.3	7.2	6.2	13.2	7.7	29.3	66.6	58.1	22.1	0.5
1959	286.9	76.8	7.0	7.0	13.5	7.6	32.8	62.8	56.1	22.8	0.5
1960	331.9	85.2	8.1	7.4	13.2	10.3	34.4	86.9	58.5	27.3	0.6
1961	324.0	88.9	8.4	8.2	11.7	10.3	36.0	76.0	53.7	29.9	0.9
1961:1st Qr.	85.2	25.9	2.1	2.2	4.1	1.2	7.8	19.0	16.0	6.6	0.3
2nd Qr.	85.3	24.7	2.0	2.3	3.8	2.2	7.8	18.7	15.9	7.7	0.2
3rd Qr.	82.9	21.5	1.8	2.0	2.5	4.4	10.6	20.6	12.2	7.1	0.1
4th Qr.	70.6	16.8	2.6	1.7	1.2	2.4	9.8	17.7	9.6	8.5	0.2
1962:1st Qr.	74.5	21.9	2.0	1.7	4.7	2.3	7.8	16.5	10.5	7.0	0.1
2nd Qr.	83.3	22.7	2.4	1.4	3.7	2.1	8.9	17.1	16.0	8.8	0.2

+ Provisional

Rs million c.i.f.

Table 26 - Imports of Merchandise: selected commodities - Values

Rs million c.i.f.

Period	Rice	Wheat Flour	Alcoholic Beverages	Petroleum products	Vegetable edible oils	Fertilizers manufactured	Cotton fabrics	Textile fabrics	Cement	Iron and steel goods	Manufactures of metals n.e.s.	Machinery, other than electric	Electric machinery apparatus and appliances	Road Motor vehicles and parts
1956	27.4	6.5	2.9	12.5	8.3	13.8	8.5	5.8	5.4	8.3	7.4	10.8	8.0	6.9
1957	36.1	7.9	3.4	13.1	10.4	14.5	12.5	5.5	6.3	11.4	7.6	15.6	11.6	10.3
1958	44.1	11.1	3.9	11.7	7.2	12.1	10.7	7.2	6.7	11.4	8.2	26.1	17.0	13.2
1959	32.4	7.4	4.7	12.5	7.1	14.3	11.0	6.2	7.1	10.5	7.1	21.1	20.2	13.0
1960	33.0	10.0	6.0	12.9	9.7	13.2	12.1	5.9	9.9	23.0	12.8	21.6	19.6	15.5
1961	36.8	9.4	6.8	10.9	9.8	12.9	12.2	6.5	9.1	13.8	11.8	20.2	17.5	13.8
1961: 1st Qr.	11.2	2.8	1.6	4.0	1.0	1.4	2.9	1.4	2.4	2.9	3.7	6.3	5.2	4.2
2nd Qr.	12.3	2.2	1.8	3.6	2.1	1.7	2.7	1.3	1.7	4.3	2.5	6.0	5.8	3.6
3rd Qr.	8.6	2.6	1.3	2.2	4.3	4.7	3.4	1.9	2.9	4.1	2.8	4.3	4.4	3.2
4th Qr.	4.8	1.7	2.1	1.2	2.4	5.2	3.3	1.9	2.1	2.5	2.8	3.6	2.1	2.7
1962: 1st Qr.	8.2	2.4	1.5	4.6	2.2	2.6	3.3	1.4	1.6	2.6	2.4	4.8	2.0	3.4
2nd Qr. ⁺	9.3	2.6	1.7	3.6	2.0	2.3	2.6	1.5	1.6	2.3	2.5	6.7	4.9	4.1

+ Provisional

Table 27 - Imports of Merchandise: selected commodities - quantities

Period	Rice	Wheat Flour	Vegetable edible oils	Fertilizers, manufactured	Cotton fabrics	Textile fabrics	Cement	Iron and steel goods
	Thousand M/Tons	Thousand M/Tons	Thousand M/Tons	Thousand M/Tons	Million Sq. Metres	Million Sq. Metres	Thousand M/Tons	Thousand M/Tons
1956	45.1	17.0	5.2	39.7	6.5	2.4	38.1	8.9
1957	62.1	19.3	5.6	40.7	10.6	2.5	43.0	12.7
1958	70.5	25.4	4.7	36.1	8.5	3.7	51.5	12.6
1959	57.1	17.7	5.0	50.1	9.6	3.6	62.1	12.9
1960	60.6	23.9	7.1	51.3	9.1	2.4	94.6	26.7
1961	67.2	22.7	6.5	50.3	9.0	2.8	91.8	16.8
1961: 1st Qr.	20.8	6.7	0.8	5.6	2.0	0.5	24.6	3.6
2nd Qr.	21.5	5.4	1.5	6.5	1.9	0.5	17.1	5.4
3rd Qr.	15.8	6.4	2.7	18.2	2.6	0.9	28.8	4.8
4th Qr.	9.1	4.1	1.6	20.0	2.5	0.9	21.3	3.3
1962: 1st Qr.	15.5	5.5	1.4	10.9	2.6	0.7	17.8	3.3
2nd Qr. ⁺	17.2	6.0	1.2	9.0	1.9	0.7	17.0	3.0

+ Provisional

Table 28 - Imports: Main sources of supply- values

Rs million c.i.f.

Period	United Kingdom	Australia	Burma	Hong-Kong	India	Republic of South Africa	Western Germany	Iran	Japan	Siam	France	United States of America
1956	76.3	13.8	15.6	3.7	23.4	13.6	6.6	5.7	2.7	1.8	8.1	4.3
1957	93.8	17.4	35.2	5.0	14.0	19.7	9.0	9.8	3.9	3.0	11.8	5.8
1958	108.4	21.1	30.4	5.9	12.3	17.7	12.2	7.9	8.1	9.2	11.4	9.9
1959	105.9	19.5	28.6	7.1	12.7	20.0	11.9	10.6	9.2	6.2	9.4	8.5
1960	115.9	23.0	26.8	9.4	13.5	21.7	13.0	9.7	13.4	8.8	13.0	9.5
1961	104.3	22.4	28.9	9.7	13.8	27.1	15.0	8.2	9.7	10.0	12.9	7.6
1961:1st Qr.	29.5	7.4	10.1	1.7	3.2	7.1	2.8	3.5	2.0	1.8	2.3	2.1
2nd Qr.	26.6	5.2	5.9	2.7	2.5	7.9	3.8	2.7	1.9	7.0	3.8	2.1
3rd Qr.	26.6	4.6	8.1	2.1	4.4	6.1	4.5	1.3	2.9	0.9	3.8	1.5
4th Qr.	22.2	5.2	4.8	3.2	3.6	6.1	3.9	0.7	2.9	0.3	2.9	1.9
1962:1st Qr.	20.9	5.0	8.2	2.0	4.2	7.9	2.2	4.3	2.0	0.3	3.6	1.6
2nd Qr. ⁺	26.0	4.7	6.7	2.6	3.2	10.5	2.8	2.7	1.9	1.1	3.7	2.6

+ Provisional

V. TRANSPORT AND COMMUNICATION

Table 29 - Road Transport

End of period	Grand Total	Private Vehicles				Commercial Vehicles					Government owned vehicles
		Total	Cars	Motor Cycles	Other	Total	Taxi-Cars	Buses ⁺	Lorries	Other	
1956	10,882	6,849	5,934	726	189	3,663	974	356	1,881	452	370
1957	11,456	7,164	6,155	769	240	3,900	1,030	430	1,922	518	392
1958	12,286	7,570	6,471	850	249	4,287	1,225	441	2,011	610	429
1959	13,291	7,877	6,549	969	359	4,961	1,689	488	2,140	644	453
1960	14,083	9,181	7,649	1,092	440	4,401	1,274	447	1,901	779	501
1961: 1st Qr.	14,730	9,357	7,743	1,128	486	4,873	1,333	456	2,258	826	500
2nd Qr.	15,091	9,631	7,961	1,166	504	4,952	1,281	471	2,329	871	508
3rd Qr.	15,364	9,777	8,081	1,196	500	5,036	1,274	466	2,367	929	551
4th Qr.	15,669	10,026	8,273	1,236	517	5,079	1,270	466	2,390	953	564
1962: 1st Qr.	15,857	10,187	8,377	1,283	527	5,103	1,260	470	2,389	984	567
2nd Qr.	16,062	10,299	8,440	1,316	543	5,186	1,268	484	2,412	1,022	577
3rd Qr.	16,370	10,548	8,628	1,354	566	5,235	1,239	489	2,465	1,042	587

+ Figures for 1956 - 1959 include private buses.

Since 1960 these are grouped with "Other private vehicles".

Table 30 - Sea Borne shipping

Thousand M/Tons

Period	Vessels entering		Vessels leaving		Goods [⊗]	
	Number	Net registered tonnage	Number	Net registered tonnage	Unloaded	Loaded
1956	297	1,239	304	1,243	352	620
1957	329	1,290	325	1,273	384	682
1958	345	1,306	347	1,312	399	596
1959	365	1,363	367	1,352	425	589
1960	371	1,251	369	1,253	479	366
1961	418	1,510	419	1,508	478	604
1961: 1st Qr.	91	323	91	324	120	35
2nd Qr.	89	308	90	312	121	24
3rd Qr.	117	458	110	433	127	238
4th Qr.	121	421	128	439	110	307
1962: 1st Qr.	95	325	92	313	116	42
2nd Qr.	88	290	92	310	115	46
3rd Qr.	157	449	153	429	149	245 [ⓐ]

⊗ Including bunkers

ⓐ Excluding bunkers

Table 31 - Civil Aviation

Period	Number of movements		Passengers		Freight	
	Landings	Take offs	Set down	Picked up	Unloaded M/Tons	Loaded M/Tons
1956	170	170	3,805	3,827	39.1	90.6
1957	175	176	4,290	4,312	42.2	64.3
1958	223	222	4,722	4,763	44.7	53.8
1959	255	256	5,371	5,325	51.4	39.7
1960	251	250	6,312	6,311	89.5	21.1
1961	287	288	7,645	7,775	201.6	70.8
1961: 1st Qr.	58	59	1,400	1,563	68.8	18.1
2nd Qr.	56	56	1,582	1,688	40.5	23.4
3rd Qr.	90	89	2,530	2,561	50.5	16.4
4th Qr.	83	84	2,133	1,963	41.8	12.9
1962: 1st Qr.	82	81	1,844	2,136	18.2	5.8
2nd Qr.	91	90	2,189	2,799	37.0	13.3
3rd Qr.	90	89	3,683	3,602	47.6	13.9

Notes: In this table: (1) are included only movements of commercial aircraft;
 (2) each touch down and take off is counted as a separate movement;
 (3) passengers in transit are excluded;
 (4) freight carried by planes other than commercial are included.

VI. LAND UTILISATION

Table 32 - Total area classified by utilisation

	<u>Acres</u>				
	1957	1958	1959	1960	1961
Agriculture:	208,500	213,600	221,100	225,200	226,300
Sugar	190,500	197,400	203,700	208,100	209,800
Aloe fibre (effective area)	4,300	3,700	2,400	2,000	2,200
Tea	3,600	3,600	4,000	4,400	4,400
Tobacco	800	1,000	1,100	1,000	900
Foodcrops	4,300	2,900	2,800	2,400	2,000
Vegetables	5,000	5,000	7,100	7,300	7,000
Arable land potentially productive	1,900	1,200	1,000	-	-
Forests scrub areas, grasslands & grazing grounds	198,200	193,800	186,500	183,400	182,300
Private forestlands	15,000	15,000	15,000	15,000	15,000
Crown Forests	67,100	67,700	67,700	67,700	67,700
Pas Geometriques ⁼	5,290	5,290	5,290	5,290	5,290
Natural reserves ⁺	15,500	15,500	15,500	15,500	15,500
Meadows, grass lands, scrubs, forests and grazing grounds	95,310	90,310	83,010	79,910	78,810
Built on areas	14,200	14,200	14,200	14,200	14,200
Inland water bodies	23,000	23,000	23,000	23,000	23,000
Reservoirs , crater, lakes, ponds	3,000	3,000	3,000	3,000	3,000
Natural water courses	20,000	20,000	20,000	20,000	20,000
Roads - tracks [@]	10,000	10,000	10,000	10,000	10,000
Permanent waste lands	5,000	5,000	5,000	5,000	5,000
TOTAL ISLAND AREA	460,800	460,800	460,800	460,800	460,800

= Leased crown lands in the coastal belt.

+ Privately owned mountain and river reserves protected by law.

@ Estimated - including roads in agricultural lands.

VII. LOCAL PRODUCTION

Table 33 - Production of Specific Commodities

Period	Sugar cane M/Tons	Sugar M/Tons	Molasses M/Tons	Alcohol (Total at 100° GL) HL.	Tea M/Tons	Tobacco leaf kgs	Cigarettes kgs	Rum [±] HL.	Country Liquor HL.	Sacks Units	Electricity Generated Mn Kwh.
1956	4,421,427	572,512	118,716	17,322	697.4	417,522	561,479	15,463	41,133	1,401,143	41.2
1957	4,343,898	562,003	110,471	15,592	859.0	453,303	561,256	14,667	38,638	1,657,046	44.6
1958	4,328,877	525,842	113,811	16,431	873.0	449,239	545,665	15,827	39,837	1,422,659	48.9
1959	4,743,301	580,372	118,056	17,730	905.9	462,900	585,377	18,753	50,293	1,200,659	55.8
1960	2,393,532	235,781	72,991	19,536	786.0	459,764	618,274	16,096	49,517	1,270,020	54.6
1961	4,942,981	553,259	139,234	14,148	1,274.2	447,945	584,423	14,159	55,644	1,422,734	63.2
1961:1st Qr.	-	-	-	...	512.3	105,561	140,773	2,727	10,829	277,336	14.8
2nd Qr.	-	-	-	...	317.4	125,785	144,632	3,355	11,185	385,889	15.6
3rd Qr.	66.9	115,376	156,672	3,785	15,354	400,335	16.2
4th Qr.	377.6	101,223	142,346	4,292	18,276	359,174	16.6
1962:1st Qr.	-	-	-	...	488.1	99,139	141,784	3,111	12,926	289,061	17.0
2nd Qr.	-	-	-	...	201.7	104,091	137,735	3,380	14,462	389,551	19.5
3rd Qr.	106.3	115,910	152,238	3,462	14,680	416,300	19.9

± Issued for local consumption at 40-50° GL.

VIII. EDUCATION

Table 34 - Roll of pupils and students in schools and colleges

Period	Primary Schools			Secondary Schools			
	Total	Government	Aided	Total	Government	Aided	Private
October 1956	72,333	36,412	35,921	10,960	1,118	2,123	7,719
" 1957	86,422	45,737	40,685	12,606	1,152	2,256	9,198
" 1958	98,387	54,251	44,136	15,437	1,262	2,424	11,751
" 1959	105,223	59,876	45,347	18,489	1,360	2,435	14,694
" 1960	104,713	60,938	43,775	22,840	1,456	2,557	18,827
" 1961	113,604	66,497	47,107	24,851	1,629	2,602	20,620