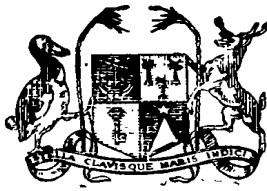


Vol. I

No. 3



COLONY OF MAURITIUS

CENTRAL STATISTICAL OFFICE

**QUARTERLY
DIGEST OF STATISTICS**

September 1961

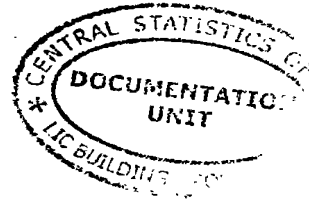
[Price : Rs 2.50]

ES

CENTRAL STATISTICAL OFFICE
OFFICE PORT-LAURENCE

Received on: 19.7.62

Seen on:



QUARTERLY DIGEST OF STATISTICS

Notes

The following symbols are used throughout: -

- nil or negligible

... not available

2. Some of the figures in this Digest are liable to revision in later issues.

3. Where necessary figures have been rounded off to the nearest final digit, and in some tables there may be discrepancies between the sum of the constituent items and the total as shown.

Central Statistical Office,
Mauritius.

I. POPULATION AND VITAL STATISTICS

Table 1 - Population and vital statistics

| Period | Marriages | Births | Deaths | Natural Increase | Net Oversea migration | Total Increase | Estimated pop. at the end of the period |
|--------------|-----------|--------|--------|------------------|-----------------------|----------------|---|
| 1956 | 3,080 | 24,910 | 6,739 | 18,171 | + 1,020 | 19,191 | 579,123 |
| 1957 | 2,903 | 25,273 | 7,603 | 17,670 | - 172 | 17,498 | 596,621 |
| 1958 | 3,169 | 24,600 | 7,112 | 17,488 | - 221 | 17,267 | 613,888 |
| 1959 | 3,297 | 23,923 | 6,753 | 17,170 | + 93 | 17,263 | 631,151 |
| 1960 | 3,113 | 25,307 | 7,248 | 18,059 | - 372 | 17,687 | 648,838 |
| 1960 1st Qr. | 597 | 6,343 | 1,936 | 4,407 | - 359 | 4,048 | 635,199 |
| 2nd Qr. | 829 | 5,807 | 1,964 | 3,843 | - 351 | 3,492 | 638,691 |
| 3rd Qr. | 784 | 6,876 | 1,886 | 4,990 | - 126 | 4,864 | 643,555 |
| 4th Qr. | 903 | 6,281 | 1,462 | 4,819 | + 464 | 5,283 | 648,838 |
| 1961 1st Qr. | 649 | 5,211 | 1,637 | 3,574 | - 449 | 3,125 | 651,963 |
| 2nd Qr. | 954 | 6,343 | 1,559 | 4,784 | - 431 | 4,353 | 656,316 |
| 3rd Qr. | 829 | 7,561 | 1,692 | 5,869 | - 248 | 5,621 | 661,937 |

Table 2 - Live births and still births

| Period | Live births | | | Still births |
|----------------|-------------|--------|---------|--------------|
| | Total | Males | Females | |
| 1956 | 24,910 | 12,693 | 12,217 | 1,789 |
| 1957 | 25,273 | 12,911 | 12,362 | 1,800 |
| 1958 | 24,600 | 12,419 | 12,181 | 1,703 |
| 1959 | 23,923 | 12,107 | 11,816 | 1,759 |
| 1960 | 25,307 | 12,973 | 12,334 | 1,783 |
| 1960 : 1st Qr. | 6,343 | 3,277 | 3,066 | 426 |
| 2nd Qr. | 5,807 | 2,944 | 2,863 | 474 |
| 3rd Qr. | 6,876 | 3,544 | 3,332 | 506 |
| 4th Qr. | 6,281 | 3,208 | 3,073 | 377 |
| 1961 : 1st Qr. | 5,211 | 2,638 | 2,573 | 408 |
| 2nd Qr. | 6,343 | 3,246 | 3,097 | 507 |
| 3rd Qr. | 7,561 | 3,852 | 3,709 | 539 |

Table 3 - Total Deaths and Infant Deaths

| Period | Total deaths | | | Infant deaths | | |
|----------------|--------------|-------|---------|---------------|-------|---------|
| | Total | Males | Females | Total | Males | Females |
| 1956 | 6,739 | 3,556 | 3,183 | 1,644 | 920 | 724 |
| 1957 | 7,603 | 4,019 | 3,584 | 1,897 | 1,017 | 880 |
| 1958 | 7,112 | 3,751 | 3,361 | 1,659 | 941 | 718 |
| 1959 | 6,753 | 3,499 | 3,254 | 1,495 | 821 | 674 |
| 1960 | 7,248 | 3,706 | 3,542 | 1,760 | 980 | 780 |
| 1960 : 1st Qr. | 1,936 | 986 | 950 | 476 | 265 | 211 |
| 2nd Qr. | 1,964 | 984 | 980 | 467 | 250 | 217 |
| 3rd Qr. | 1,886 | 1,002 | 884 | 460 | 271 | 189 |
| 4th Qr. | 1,462 | 734 | 728 | 358 | 195 | 163 |
| 1961 : 1st Qr. | 1,637 | 848 | 789 | 421 | 239 | 182 |
| 2nd Qr. | 1,559 | 803 | 756 | 446 | 241 | 205 |
| 3rd Qr. | 1,692 | 860 | 832 | 369 | 212 | 157 |

Table 4 - External Migration⁺

| Period | Arrivals | | | Departures | | | Net migration |
|--------------|----------|--------|--------|------------|--------|--------|---------------|
| | Total | By sea | By air | Total | By sea | By air | |
| 1956 | 7,718 | 3,956 | 3,762 | 8,109 | 4,352 | 3,757 | - 391 |
| 1957 | 8,095 | 3,811 | 4,284 | 8,267 | 3,956 | 4,311 | - 172 |
| 1958 | 8,703 | 4,023 | 4,680 | 8,924 | 4,189 | 4,735 | - 221 |
| 1959 | 9,637 | 4,231 | 5,406 | 9,544 | 4,222 | 5,325 | + 93 |
| 1960 | 10,412 | 4,063 | 6,349 | 10,784 | 4,464 | 6,320 | - 372 |
| 1961 1st Qr. | 2,256 | 842 | 1,414 | 2,705 | 1,109 | 1,596 | - 449 |
| 2nd Qr. | 2,473 | 885 | 1,588 | 2,904 | 1,210 | 1,694 | - 431 |
| 3rd Qr. | 3,662 | 1,118 | 2,544 | 3,910 | 1,346 | 2,564 | - 248 |

⁺Includes: (a) The very small figure of engaged or discharged seamen;
(b) emigrants and immigrants to and from the dependencies.

II. PUBLIC HEALTH

Table 5 - Statistics of Hospitals

| Period | No. of beds | Patients in hospital on last day of period | Total admissions | Deaths | Discharges | Patients remaining on last day of period |
|----------------|-------------|--|------------------|--------|------------|--|
| 1956 | 2,179 | 1,534 | 30,952 | 1,263 | 29,719 | 1,504 |
| 1957 | 2,173 | 1,504 | 33,542 | 1,498 | 32,001 | 1,547 |
| 1958 | 2,214 | 1,547 | 33,767 | 1,363 | 32,371 | 1,580 |
| 1959 | 2,270 | 1,580 | 34,846 | 1,344 | 33,455 | 1,627 |
| 1960 | 2,357 | 1,627 | 34,355 | 1,560 | 32,766 | 1,656 |
| 1961 : 1st Qr. | 2,369 | 1,656 | 9,518 | 406 | 8,701 | 2,067 |
| 2nd Qr. | 2,393 | 2,067 | 9,308 | 388 | 8,904 | 2,083 |
| 3rd Qr. | 2,358 | 2,083 | 9,123 | 396 | 8,782 | 2,028 |

Table 6 -- Notifiable Contagious or Communicable Diseases

| Disease Period | Typhoid fever | Diphtheria | Acute Poliomyelitis | Puerperal fever | Erysipelas | Cerebro- spinal meningitis | Tuberculosis | Leprosy |
|-------------------|------------------|------------|------------------------|--------------------|------------|----------------------------------|--------------|---------|
| 1956 | 149 | 89 | 31 | 11 | 4 | 1 | 414 | - |
| 1957 | 76 | 45 | 3 | 21 | - | - | 436 | - |
| 1958 | 46 | 67 | - | 4 | - | - | 398 | - |
| 1959 | 45 | 140 | 99 | 5 | 2 | - | 300 | - |
| 1960 | 114 | 164 | 1 | 3 | 2 | 1 | 313 | 2 |
| 1961 : 1st Qr. | 27 | 42 | - | 1 | - | - | 123 | 1 |
| 2nd Qr. | 20 | 56 | - | - | - | - | 83 | - |
| 3rd Qr. | 20 | 59 | - | - | - | - | 82 | - |

III. PUBLIC FINANCE

Table 7 - Central Government Revenue and Expenditure: Recurrent

Rs million

| Period | Revenue | | | | Expenditure | |
|----------------|---------|--------------|----------------|-------|--------------------------|--------------|
| | Total | Direct taxes | Indirect taxes | Other | Total incl. debt charges | Debt Charges |
| 1956 | 116.7 | 41.1 | 55.4 | 20.2 | 130.3 | 6.0 |
| 1957 | 123.8 | 45.2 | 56.4 | 22.2 | 110.1 | 6.4 |
| 1958 | 134.3 | 48.6 | 61.3 | 24.4 | 142.8 | 6.5 |
| 1959 | 129.8 | 47.1 | 66.0 | 16.7 | 129.5 | 6.6 |
| 1960 | 141.0 | 43.2 | 79.6 | 18.2 | 145.9 | 7.9 |
| 1960: 1st Qr. | 20.9 | 1.5 | 16.1 | 3.3 | 35.3 | 1.6 |
| 2nd Qr. | 44.7 | 19.8 | 19.8 | 5.1 | 43.1 | 1.9 |
| 3rd Qr. | 26.5 | 1.5 | 21.3 | 3.7 | 30.6 | 2.8 |
| 4th Qr. | 48.9 | 20.4 | 22.4 | 6.1 | 36.9 | 1.6 |
| 1961 : 1st Qr. | 24.5 | 1.2 | 19.2 | 4.1 | 31.5 | 2.5 |
| 2nd Qr. | 46.8 | 20.4 | 19.9 | 6.5 | 41.9 | 1.7 |
| 3rd Qr. | 28.2 | 2.5 | 21.3 | 4.4 | 30.4 | 3.1 |

Table 8 - Central Government Revenue and Expenditure: Capital

Rs million

| Period | Revenue | | | | | Total Expenditure |
|----------------|---------|--------------|--------|-------|-------|-------------------|
| | Total | Contributory | Grants | Loans | Other | |
| 1956 | 23.6 | - | 21.4 | 2.2 | - | 10.1 |
| 1957 | 4.9 | - | 2.0 | 2.9 | - | 23.2 |
| 1958 | 7.7 | 6.5 | 0.6 | - | 0.6 | 28.2 |
| 1959 | 20.3 | 1.8 | 0.9 | 15.9 | 1.7 | 29.8 |
| 1960 | 32.6 | 14.0 | 2.0 | 15.4 | 1.2 | 45.8 |
| 1960 : 1st Qr. | 19.2 | 6.5 | 0.1 | 12.2 | 0.4 | 8.5 |
| 2nd Qr. | 1.6 | - | 0.4 | 1.0 | 0.2 | 16.7 |
| 3rd Qr. | 2.6 | - | 0.6 | 1.6 | 0.4 | 10.6 |
| 4th Qr. | 9.2 | 7.5 | 0.9 | 0.6 | 0.2 | 10.0 |
| 1961 : 1st Qr. | 20.1 | - | 11.9 | 8.0 | 0.2 | 10.9 |
| 2nd Qr. | 4.1 | - | 1.6 | 2.4 | 0.1 | 14.3 |
| 3rd Qr. | 0.8 | - | - | 0.3 | 0.5 | 9.9 |

Table 9 - Central Government Indebtedness

Rs million

| Period | Amount outstanding at beginning of period | Borrowing | | | Repayments |
|-----------------------|---|-----------|----------|----------|------------|
| | | Total | Internal | External | |
| 1956 - 57 | 99.0 | - | - | - | 0.5 |
| 1957 - 58 | 98.5 | - | - | - | 0.5 |
| 1958 - 59 | 98.0 | 0.5 | 0.5 | - | 0.5 |
| 1959 - 60 | 98.0 | 29.8 | 29.8 | - | 0.5 |
| 1960 - 61 | 127.3 | 16.9 | 9.3 | 7.6 | 0.5 |
| 1960 : July-September | 127.3 | 1.9 | 1.9 | - | 0.5 |
| October-December | 128.7 | 0.7 | 0.7 | - | - |
| 1961 : January-March | 129.4 | 11.3 | 3.7 | 7.6 | - |
| April-June | 140.7 | 3.0 | 3.0 | - | - |
| July-September | 143.7 | 0.5 | 0.5 | - | 0.5 |

Table 10 - Sterling Assets
(end of period)

| Period | Investments (Nominal value) | | | | | Liquid Assets (Cash and money at call) | | | | | Rs million |
|----------------|--------------------------------|--------------------------------|------------------|--------------------------|-------|---|--------------------------------|------------------|--------------------------|---|------------|
| | Government | Semi-Governmental Institutions | Currency Backing | Post Office Savings Bank | Total | Government | Semi-Governmental Institutions | Currency Backing | Post Office Savings Bank | Total Government & Semi-governmental Institutions | |
| 1956 | 50.4 | 76.2 | 62.2 | 26.1 | 224.9 | 36.4 | - | 6.5 | - | 42.9 | 76.2 |
| 1957 | 55.6 | 88.9 | 62.3 | 26.7 | 233.5 | 34.5 | 0.9 | 12.1 | - | 47.5 | 112.1 |
| 1958 | 51.7 | 92.2 | 63.9 | 26.3 | 234.1 | 30.3 | 20.6 | 16.8 | 1.5 | 69.2 | 67.1 |
| 1959 | 52.0 | 64.7 | 60.1 | 26.3 | 203.1 | 20.4 | 49.9 | 28.8 | 4.1 | 103.2 | 52.4 |
| 1960 : 1st Qr. | 49.8 | 81.7 | 58.2 | 26.3 | 216.0 | 19.3 | 40.0 | 17.6 | 4.0 | 80.9 | 27.9 |
| 2nd Qr. | 50.8 | 81.7 | 58.1 | 26.3 | 216.9 | 11.1 | 38.1 | 12.8 | 4.1 | 56.1 | 6.5 |
| 3rd Qr. | 51.6 | 81.7 | 58.1 | 26.3 | 217.7 | 7.9 | 32.9 | 11.7 | 4.1 | 59.6 | 33.3 |
| 4th Qr. | 42.9 | 79.4 | 66.0 | 26.3 | 214.6 | 18.3 | 2.3 | 15.5 | 4.1 | 35.6 | 16.2 |
| 1961 : 1st Qr. | 29.4 | 71.3 | 66.0 | 26.3 | 193.0 | 44.4 | 42.4 | 14.0 | 1.5 | 17.5 | 8.6 |
| 2nd Qr. | 26.5 | 64.8 | 60.2 | 25.6 | 177.1 | 41.6 | 40.8 | 17.3 | 2.2 | 20.3 | 66.4 |
| 3rd Qr. | 28.3 | 64.8 | 60.5 | 25.8 | 179.4 | 28.8 | 41.6 | 17.3 | 2.2 | 6.7 | 46.0 |

Table II - Banking Statistics - Assets of Commercial banks

Rs million

| Period | Total | Cash | Balances due by | | Loans and Advances | | | Investments | | Other Assets | |
|------------------|-------|------|---------------------------|--------------|--------------------|------------------|----------------|-------------|--------|---------------------------------------|-------|
| | | | Other banks in the colony | Banks abroad | Primary Products | Other industries | Other Advances | Local | Abroad | Bills discounted and bills receivable | Other |
| 1956: 31st Dec. | 179.9 | 6.4 | 3.9 | 77.4 | 36.8 | 15.5 | 28.4 | 3.0 | 2.7 | - | 5.8 |
| 1957: " | 228.8 | 7.1 | 2.1 | 113.9 | 37.9 | 18.6 | 33.9 | 6.3 | 2.4 | - | 6.6 |
| 1958 " | 181.6 | 4.9 | 7.6 | 69.2 | 19.1 | 30.0 | 9.0 | 5.5 | 2.0 | - | 34.3 |
| 1959 " | 186.3 | 7.2 | 7.1 | 54.4 | 25.9 | 31.0 | 9.7 | 5.5 | 2.0 | 7.2 | 36.3 |
| 1960: 31st March | 183.0 | 7.6 | 6.3 | 36.3 | 32.5 | 34.7 | 12.9 | 5.5 | 2.0 | 8.2 | 37.0 |
| 30th June | 183.8 | 6.1 | 8.9 | 8.4 | 52.6 | 39.1 | 13.5 | 5.5 | 2.0 | 12.6 | 35.1 |
| 30th Sept. | 190.1 | 4.9 | 1.5 | 1.5 | 65.4 | 42.6 | 15.0 | 5.5 | 2.0 | 16.1 | 35.6 |
| 31st Dec. | 194.2 | 7.5 | 2.3 | 26.4 | 45.0 | 45.0 | 13.6 | 5.5 | 2.0 | 13.8 | 33.1 |
| 1961: 31st March | 196.2 | 8.1 | 1.1 | 26.9 | 44.9 | 46.7 | 11.6 | 5.5 | 2.0 | 11.2 | 38.2 |
| 30th June | 214.8 | 7.4 | 3.3 | 1.1 | 73.8 | 51.8 | 19.3 | 5.5 | 2.0 | 16.0 | 34.6 |
| 30th Sept. | 221.9 | 6.2 | 2.1 | 1.3 | 82.2 | 47.8 | 22.3 | 5.6 | 2.0 | 14.7 | 37.7 |

Table 12- Banking Statistics - Liabilities of Commercial banks

Rs million

| Period | Total | Notes in Circulation | Deposits | | | Balances due to | | Other Liabilities |
|------------------|-------|----------------------|----------|------|---------|---------------------------|--------------|-------------------|
| | | | Demand | Time | Savings | Other banks in the colony | Banks abroad | |
| 1956: 31st Dec. | 179.9 | - | 99.9 | 18.7 | 7.0 | 2.6 | 1.2 | 50.5 |
| 1957 " | 228.8 | - | 127.2 | 37.1 | 8.1 | 2.6 | 1.8 | 52.0 |
| 1958 " | 181.6 | - | 107.8 | 16.2 | 8.5 | 4.5 | 2.1 | 42.5 |
| 1959 " | 186.3 | - | 115.0 | 5.1 | 10.5 | 2.6 | 2.0 | 51.1 |
| 1960: 31st March | 183.0 | - | 103.6 | 4.9 | 11.1 | 1.4 | 8.4 | 53.6 |
| 30th June. | 183.8 | - | 95.0 | 7.9 | 11.0 | 2.6 | 14.9 | 52.4 |
| 30th Sept. | 190.1 | - | 75.1 | 13.7 | 11.5 | 1.9 | 34.8 | 53.1 |
| 31st Dec. | 194.2 | - | 113.3 | 3.0 | 11.6 | 2.7 | 10.2 | 53.4 |
| 1961: 31st March | 196.2 | - | 102.8 | 4.9 | 12.3 | 1.4 | 18.3 | 56.5 |
| 30th June | 214.8 | - | 74.6 | 3.5 | 12.1 | 3.5 | 67.5 | 53.6 |
| 30th Sept. | 221.9 | - | 98.4 | 4.1 | 12.2 | 2.7 | 47.3 | 57.2 |

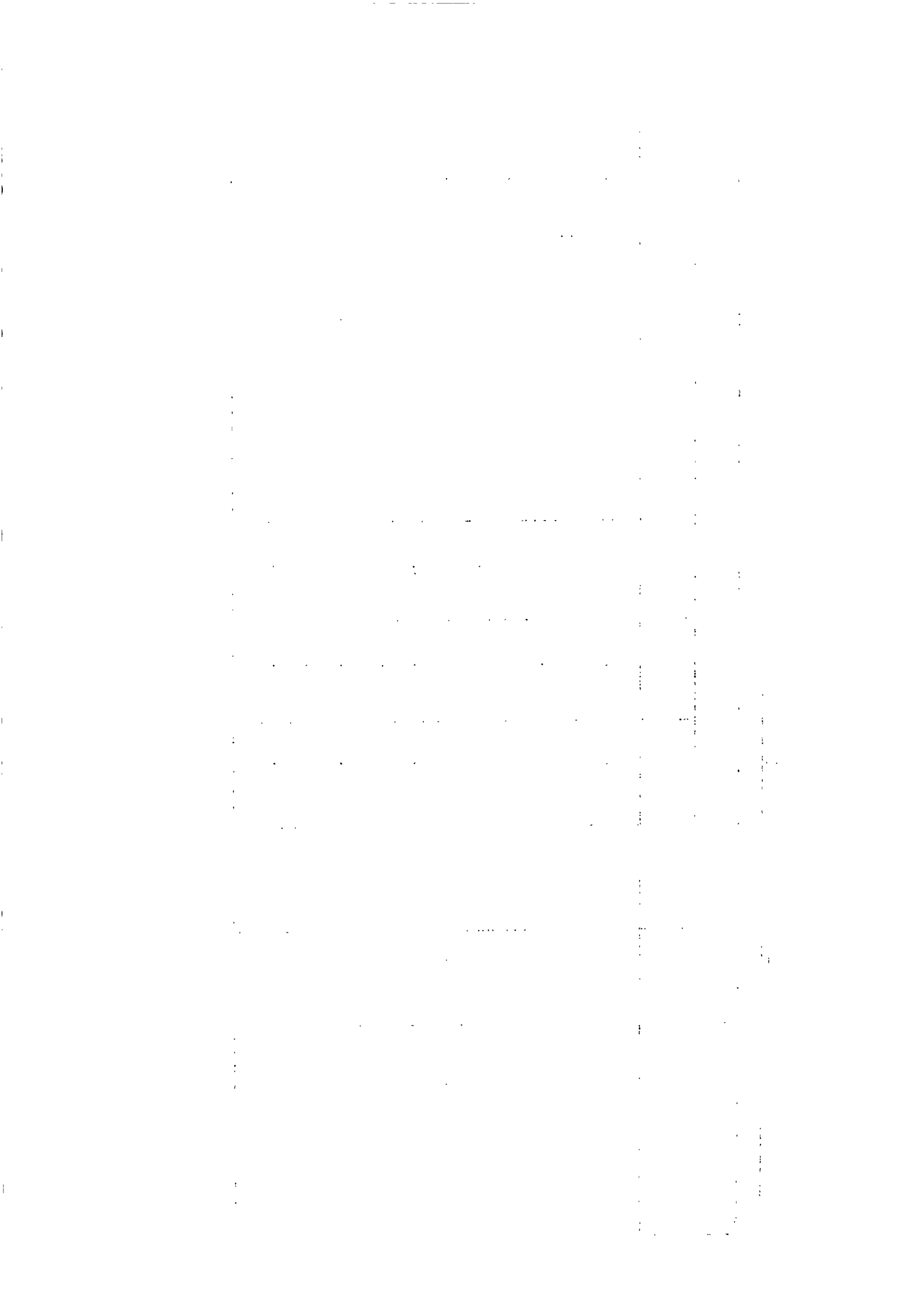


Table 13- Banking Statistics - Assets of the Mauritius Agricultural Bank

| Period | Total | Cash | Balances due by | | Loans and Advances | | | Investments | | Other Assets |
|------------------|-------|------|---------------------------|--------------|--------------------|------------------|----------------|-------------|--------|--------------|
| | | | Other banks in the colony | Banks abroad | Primary products | Other Industries | Other Advances | Local | Abroad | |
| | | | | | | | | | | |
| 1956: 31st Dec. | 39.5 | 0.3 | 1.4 | - | 25.8 | - | 8.3 | 0.5 | 0.6 | 2.6 |
| 1957 " | 40.2 | 0.1 | 0.3 | - | 25.9 | 0.4 | 8.8 | 0.8 | 0.4 | 3.5 |
| 1958 " | 42.4 | 0.1 | 0.7 | - | 26.5 | 0.8 | 9.4 | 0.8 | 0.5 | 3.6 |
| 1959 " | 42.6 | 0.1 | 0.6 | - | 26.0 | 0.8 | 10.0 | 0.8 | 0.6 | 3.7 |
| 1960: 31st March | 42.2 | 0.1 | 0.6 | - | 25.9 | 0.9 | 9.9 | 0.8 | 0.6 | 3.4 |
| 30th June | 40.9 | 0.1 | 0.6 | - | 25.9 | 0.9 | 9.8 | 0.8 | 0.7 | 2.1 |
| 30th Sept. | 40.2 | - | 0.8 | - | 25.6 | 0.8 | 9.7 | 0.8 | 0.8 | 1.7 |
| 31st Dec. | 40.0 | 0.1 | 0.9 | - | 25.5 | 0.8 | 9.7 | 0.8 | 0.7 | 1.5 |
| 1961: 31st March | 41.7 | - | 1.1 | - | 25.5 | 0.8 | 9.6 | 2.4 | 0.7 | 1.6 |
| 30th June | 41.6 | 0.2 | 0.5 | - | 25.1 | 0.8 | 9.8 | 2.4 | 0.7 | 2.1 |
| 30th Sept. | 41.8 | - | 0.7 | - | 24.9 | 0.8 | 10.7 | 2.0 | 0.7 | 2.0 |

Rs million

| THE UNIVERSITY OF CHICAGO | | | |
|---------------------------|--------------------|--------|------|
| NAME | RESIDENCE | DEGREE | DATE |
| ALLEN, J. R. | 1234 N. BROADWAY | B.S. | 1965 |
| BROWN, M. L. | 567 E. MAIN ST. | M.A. | 1972 |
| CHEN, K. H. | 890 WEST 10TH | PH.D. | 1988 |
| DAVIS, R. T. | 210 S. HAWKINS | B.A. | 1960 |
| EASTMAN, G. W. | 345 S. STATE ST. | PH.D. | 1978 |
| FISHER, D. K. | 678 N. LAUREL | B.S. | 1968 |
| GILBERT, L. M. | 901 W. MADISON | M.A. | 1975 |
| HARRIS, J. P. | 123 E. PULASKI | B.A. | 1963 |
| JACKSON, A. R. | 456 W. ROOSEVELT | PH.D. | 1982 |
| KELLY, B. S. | 789 N. VAN DYKE | B.S. | 1967 |
| LI, X. Y. | 101 S. WASHINGTON | PH.D. | 1990 |
| MILLER, C. T. | 234 W. WASHINGTON | B.A. | 1962 |
| NELSON, H. W. | 567 S. WASHINGTON | M.A. | 1973 |
| OLSON, I. J. | 890 N. WASHINGTON | PH.D. | 1985 |
| PETERSON, J. K. | 123 W. WASHINGTON | B.S. | 1964 |
| ROBERTS, L. M. | 456 N. WASHINGTON | M.A. | 1974 |
| SCHEIDT, M. N. | 789 E. WASHINGTON | PH.D. | 1987 |
| SMITH, R. O. | 1011 W. WASHINGTON | B.A. | 1961 |
| TAYLOR, S. P. | 1234 E. WASHINGTON | M.A. | 1971 |
| WALKER, T. Q. | 1567 W. WASHINGTON | PH.D. | 1983 |
| WARD, U. R. | 1890 N. WASHINGTON | B.S. | 1966 |
| XIA, Y. Z. | 2123 S. WASHINGTON | PH.D. | 1989 |
| YOUNG, V. S. | 2456 W. WASHINGTON | B.A. | 1963 |
| ZHANG, W. X. | 2789 E. WASHINGTON | PH.D. | 1986 |

Table 14 - Banking Statistics - Liabilities of The Mauritius Agricultural Bank

| Period | Total | Notes in circulation | Deposits | | | Balances due to | | | Other Liabilities |
|-------------------|-------|----------------------|----------|------|---------|---------------------------|--------------|------|-------------------|
| | | | Demand | Time | Savings | Other banks in the colony | Banks abroad | | |
| | | | | | | | | | |
| 1956: 31st Dec. | 39.5 | - | - | 4.8 | 1.8 | - | - | 32.9 | |
| 1957 " | 40.2 | - | - | 5.0 | 1.8 | - | - | 33.4 | |
| 1958 " | 42.4 | - | - | 5.4 | 2.0 | - | - | 35.0 | |
| 1959 " | 42.6 | - | - | 5.1 | 2.1 | - | - | 35.4 | |
| 1960 : 31st March | 42.2 | - | - | 5.1 | 2.2 | - | - | 34.9 | |
| 30th June | 40.9 | - | - | 5.1 | 2.2 | - | - | 33.6 | |
| 30th Sept. | 40.2 | - | - | 5.0 | 2.1 | - | - | 33.1 | |
| 31st Dec. | 40.0 | - | - | 4.9 | 2.1 | - | - | 33.0 | |
| 1961 : 31st March | 41.7 | - | - | 4.9 | 2.2 | - | - | 34.6 | |
| 30th June | 41.6 | - | 0.2 | 7.0 | 2.2 | - | - | 32.2 | |
| 30th Sept. | 41.8 | - | 0.7 | 7.0 | 2.1 | - | - | 32.0 | |

Rs million

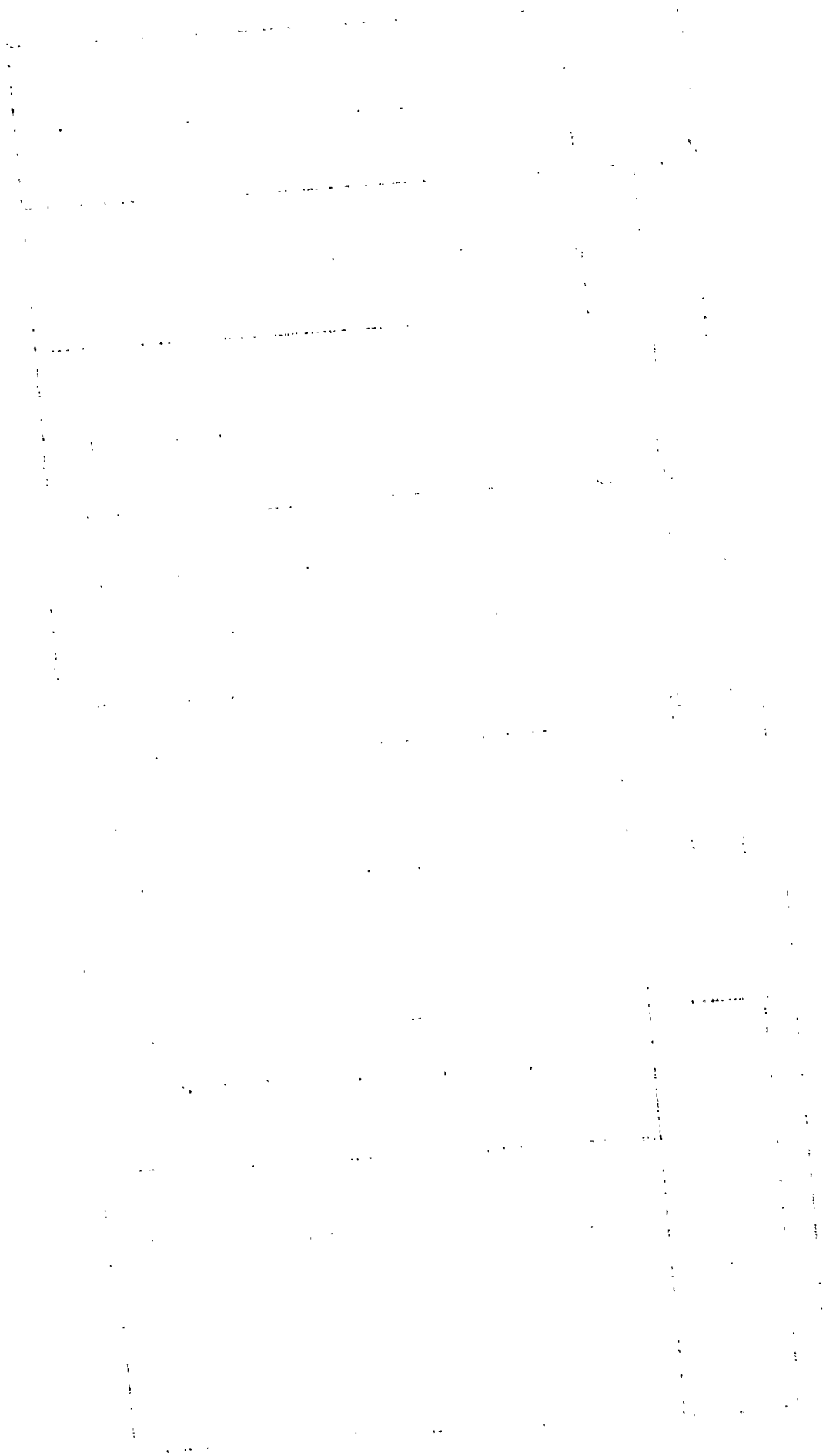


Table 15 - Post Office Savings Bank

| Period | Deposits | Withdrawals | Accumulated balance | Number of accounts |
|--------------|---------------|-------------|----------------------|--------------------|
| | during period | | at the end of period | |
| | Rs mn | Rsmn | Rsmn | |
| 1956 | 13.3 | 15.2 | 27.4 | ... |
| 1957 | 13.2 | 13.8 | 27.5 | ... |
| 1958 | 14.8 | 13.8 | 29.1 | ... |
| 1959 | 17.2 | 14.9 | 32.1 | ... |
| 1960 | 15.3 | 16.9 | 31.3 | ... |
| 1960 1st Qr. | 4.3 | 4.0 | 32.4 | ... |
| 2nd Qr. | 3.0 | 4.0 | 32.2 | 79,388 |
| 3rd Qr. | 4.3 | 4.5 | 32.0 | ... |
| 4th Qr. | 3.7 | 4.4 | 31.3 | ... |
| 1961 1st Qr. | 4.0 | 3.9 | 31.4 | ... |
| 2nd Qr. | 2.9 | 3.6 | 31.4 | 81,861 |
| 3rd Qr. | 3.7 | 4.5 | 30.6 | ... |

Table 16 - Currency in circulation
(end of period)

| Period | Rs million | | | | |
|--------------|------------|-------|-------|--------------------|-----------------|
| | Notes | Coins | Total | Cash held by banks | Net circulation |
| 1956 | 56.9 | 3.7 | 60.6 | 6.4 | 54.2 |
| 1957 | 61.5 | 3.9 | 65.4 | 7.1 | 58.3 |
| 1958 | 65.6 | 4.3 | 69.9 | 4.9 | 65.0 |
| 1959 | 73.2 | 4.6 | 77.8 | 7.2 | 70.6 |
| 1960 | 73.1 | 4.5 | 77.6 | 7.5 | 70.1 |
| 1960 1st Qr. | 69.0 | 4.4 | 73.4 | 7.6 | 65.8 |
| 2nd Qr. | 64.6 | 4.0 | 68.6 | 6.1 | 62.5 |
| 3rd Qr. | 66.4 | 4.2 | 70.6 | 4.9 | 65.7 |
| 4th Qr. | 73.1 | 4.5 | 77.6 | 7.5 | 70.1 |
| 1961 1st Qr. | 71.6 | 4.5 | 76.1 | 8.1 | 68.0 |
| 2nd Qr. | 68.2 | 4.5 | 72.7 | 7.4 | 65.3 |
| 3rd Qr. | 68.2 | 4.5 | 72.7 | 6.2 | 66.5 |

Table 17 - Industrial Origin of Gross National Product
At current factor cost

| | <u>Rs million</u> | | | | |
|--|-------------------|------|------|-------------------|-------------------|
| | 1956 | 1957 | 1958 | 1959 ⁺ | 1960 ⁺ |
| 1. Agriculture, forestry, hunting and fishing | 208 | 204 | 186 | 199 | 127 |
| 2. Mining and quarrying | - | 1 | 1 | 1 | 1 |
| 3. Manufacturing | 126 | 125 | 118 | 127 | 88 |
| 4. Construction | 27 | 30 | 30 | 34 | 33 |
| 5. Electricity, gas, water and sanitary services | 9 | 9 | 11 | 11 | 11 |
| 6. Transportation, storage and communication | 73 | 77 | 81 | 89 | 71 |
| 7. Wholesale and retail trade | 60 | 65 | 68 | 65 | 67 |
| 8. Banking, insurance and real estate | 11 | 11 | 11 | 12 | 13 |
| 9. Ownership of dwellings | 42 | 44 | 45 | 47 | 42 |
| 10. Public administration and defence | 20 | 22 | 24 | 27 | 27 |
| 11. Services | 48 | 54 | 59 | 64 | 69 |
| GROSS DOMESTIC PRODUCT AT FACTOR COST | 624 | 642 | 634 | 676 | 549 |
| Net factor income from abroad | 3 | 4 | 4 | 7 | 10 |
| GROSS NATIONAL PRODUCT AT FACTOR COST | 627 | 646 | 638 | 683 | 559 |

⁺provisional.

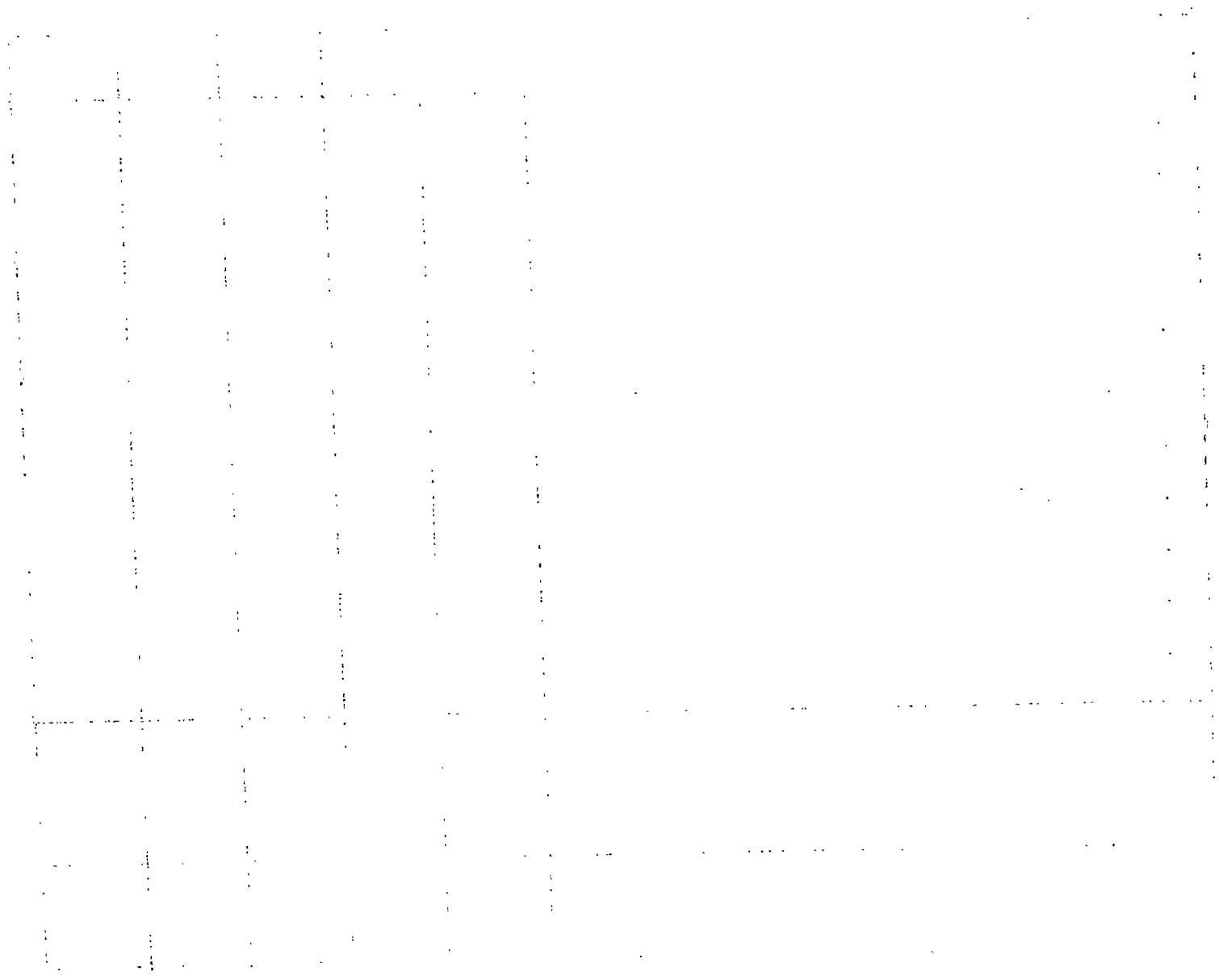


Table 18 - Composition of Gross Fixed Domestic Capital Formation
(at current prices)

| | Rs million | | | | |
|---|------------|-----------|------------|------------|-------------------|
| | 1956 | 1957 | 1958 | 1959 | 1960 ⁺ |
| A. By type of capital good | | | | | |
| a. Land ^{**} | 2 | 3 | 3 | 2 | 3 |
| b. Dwellings | 22 | 21 | 21 | 25 | 30 |
| c. Non-residential buildings | 10 | 14 | 12 | 13 | 13 |
| d. Other construction and works | 18 | 16 | 18 | 24 | 23 |
| e. Transport equipment | 9 | 12 | 17 | 15 | 19 |
| (i) Passenger cars |) 9 | 4 | 5 | 4 | 6 |
| (ii) Other equipment | | 8 | 12 | 11 | 13 |
| f. Machinery and other equipment | 20 | 28 | 44 | 44 | 46 |
| GROSS FIXED DOMESTIC CAPITAL FORMATION | 81 | 94 | 115 | 123 | 134 |
| B. By industrial use | | | | | |
| a. Agriculture, forestry and fishing | 5 | 7 | 16 | 17 | 13 |
| b. Mining and quarrying | - | - | - | - | - |
| c. Manufacture | 15 | 20 | 28 | 28 | 27 |
| d. Construction | 20 | 24 | 20 | 19 | 22 |
| e. Electricity, gas and water | 6 | 4 | 7 | 13 | 12 |
| f. Transportation, storage and communication | 9 | 13 | 18 | 17 | 24 |
| g. Wholesale and retail trade | 1 | 1 | 1 | 1 | 1 |
| h. Banking, insurance and real estate | - | - | - | - | - |
| i. Ownership of dwellings | 22 | 21 | 21 | 25 | 30 |
| j. Public administration | - | - | - | - | - |
| k. Service industries | 1 | 1 | 1 | 1 | 2 |
| l. Legal fees, stamp duties etc. | 2 | 3 | 3 | 2 | 3 |
| GROSS FIXED DOMESTIC CAPITAL FORMATION | 81 | 94 | 115 | 123 | 134 |

⁺Provisional.- Excluding 60 million rupees, the expenditure incurred in 1960 on abnormal repairs and reconstruction of buildings damaged by the 1960 cyclones.

^{**}Including legal fees, stamp duties, agents' commissions etc. connected with the transfer of ownership of land and buildings.

Table 19 - Balance of Payments

| | Rs million | | | | | | | | | |
|-----------------------------|--------------|--------------|--------------|--------------|--------------|--------------|--------------|--------------|--------------|--------------|
| | 1956 | | 1957 | | 1958 | | 1959 | | 1960+ | |
| | Receipts | Payments | Receipts | Payments | Receipts | Payments | Receipts | Payments | Receipts | Payments |
| Goods and Services | 324.4 | 255.0 | 360.6 | 297.8 | 320.2 | 355.8 | 335.8 | 324.9 | 248.5 | 368.5 |
| Donations | 6.4 | 4.7 | 3.5 | 6.0 | 2.5 | 6.1 | 2.6 | 6.2 | 5.8 | 5.7 |
| Capital Transactions | 22.4 | 77.1 | 4.4 | 74.3 | 47.7 | 32.5 | 47.7 | 39.8 | 105.8 | 21.4 |
| Net Credit or Debit Balance | - | 16.4 | 9.6 | - | 4.0 | - | - | 5.2 | 35.5 | - |
| TOTAL | 353.2 | 353.2 | 378.1 | 378.1 | 374.4 | 374.4 | 376.1 | 376.1 | 395.6 | 395.6 |

+ provisional.

IV. EXTERNAL TRADE

Table 20 - Balance of Visible Trade

| Period | Imports (c.i.f.value) | Exports ⁺ (f.o.b. value) | Rs million | |
|----------------------|--------------------------|--|--------------------------|---------|
| | | | Balance of visible trade | |
| | | | Surplus | Deficit |
| 1956 | 224.1 | 298.1 | 74.0 | - |
| 1957 | 263.8 | 330.3 | 66.5 | - |
| 1958 | 299.2 | 288.9 | - | 10.3 |
| 1959 | 286.9 | 289.6 | 2.7 | - |
| 1960 | 331.9 | 185.0 | - | 146.9 |
| 1960 : 1st Qr. | 75.6 | 27.8 | - | 47.8 |
| 2nd Qr. | 91.1 | 31.1 | - | 60.0 |
| 3rd Qr. | 78.2 | 59.0 | - | 19.2 |
| 4th Qr. | 87.0 | 67.1 | - | 19.9 |
| 1961 : 1st Qr. | 85.2 | 16.4 | - | 68.8 |
| 2nd Qr. | 85.3 | 6.6 | - | 78.7 |
| 3rd Qr. ^x | 82.9 | 114.6 | 31.7 | - |

Table 21 - Quantum and price indices of exports and imports and the terms of trade

| Period | Quantum indices | | Price indices | | Terms of trade ^z |
|--------|-----------------|--------|---------------|--------|-----------------------------|
| | Export | Import | Export | Import | |
| 1956 | 100 | 100 | 100 | 100 | 100 |
| 1957 | 110 | 116 | 101 | 101 | 100 |
| 1958 | 98 | 130 | 99 | 102 | 97 |
| 1959 | 96 | 132 | 101 | 97 | 104 |
| 1960 | 57 | 154 | 109 | 96 | 114 |

⁺Including value of sugar quota certificates, but excluding sales value of bunker fuel and ships' stores.

For 1960 the value of sugar quota certificates has been included in the 4th quarter.

^x Provisional.

^z Ratio of export price index to import price index.

A rise in the index indicates that the terms of trade have moved in favour of Mauritius.

Table 22 - Quantum and Price Indices of Imports by Sections

| Period | All Sections | Food | Beverages and tobacco | Crude materials inedible except fuels | Mineral fuels, lubricants etc. | Animal and vegetable oils and fats | Chemicals | Manufactured goods classified chiefly by material | Machinery and transport equipment | Miscellaneous manufactured articles |
|------------------------|--------------|------|-----------------------|---------------------------------------|--------------------------------|------------------------------------|-----------|---|-----------------------------------|-------------------------------------|
| <u>Quantum Indices</u> | | | | | | | | | | |
| 1956 | 100 | 100 | 100 | 100 | 100 | 100 | 100 | 100 | 100 | 100 |
| 1957 | 116 | 121 | 102 | 82 | 101 | 113 | 109 | 117 | 138 | 116 |
| 1958 | 130 | 139 | 128 | 75 | 102 | 95 | 108 | 120 | 201 | 154 |
| 1959 | 132 | 127 | 122 | 86 | 107 | 98 | 132 | 121 | 182 | 172 |
| 1960 | 154 | 143 | 142 | 90 | 104 | 133 | 145 | 158 | 198 | 235 |
| <u>Price Indices</u> | | | | | | | | | | |
| 1956 | 100 | 100 | 100 | 100 | 100 | 100 | 100 | 100 | 100 | 100 |
| 1957 | 101 | 99 | 103 | 94 | 105 | 107 | 103 | 97 | 101 | 104 |
| 1958 | 102 | 103 | 103 | 104 | 92 | 89 | 100 | 99 | 104 | 97 |
| 1959 | 97 | 99 | 105 | 102 | 89 | 86 | 91 | 92 | 111 | 89 |
| 1960 | 96 | 98 | 105 | 104 | 90 | 86 | 87 | 98 | 106 | 78 |

Table 23 - Exports - Quantities and values

Quantity: thousand metric tons
Value : Rs million f.o.b.

| Period | Total Value* | Re-exports Value | Domestic Exports | | | | | | | | | |
|----------------------|--------------|------------------|------------------|--------|----------|--------|----------|-------|----------|-------|----------|-------|
| | | | Total | | Sugar | | Molasses | | Tea | | Other | |
| | | | Quantity | Value* | Quantity | Value* | Quantity | Value | Quantity | Value | Quantity | Value |
| 1956 | 298.1 | 4.1 | ... | 294.0 | 540.0 | 289.3 | 52.7 | 3.4 | 0.2 | 0.8 | ... | 0.5 |
| 1957 | 330.3 | 7.5 | ... | 322.8 | 585.6 | 314.8 | 72.5 | 5.4 | 0.4 | 2.3 | ... | 0.3 |
| 1958 | 288.9 | 3.6 | ... | 285.3 | 522.8 | 277.1 | 59.2 | 4.9 | 0.4 | 2.3 | ... | 1.0 |
| 1959 | 289.6 | 4.0 | ... | 285.6 | 512.0 | 276.9 | 60.0 | 4.8 | 0.5 | 2.7 | ... | 1.2 |
| 1960 | 185.0 | 5.5 | ... | 179.5 | 299.4 | 174.0 | 45.2 | 3.4 | 0.2 | 1.3 | ... | 0.8 |
| 1960 : 1st Qr. | 27.8 | 1.5 | ... | 26.3 | 47.6 | 25.3 | 0.1 | - | 0.1 | 0.5 | ... | 0.5 |
| 2nd Qr. | 31.1 | 1.7 | ... | 29.4 | 54.8 | 27.9 | 12.8 | 1.1 | 0.1 | 0.3 | ... | 0.1 |
| 3rd Qr. | 59.0 | 1.1 | ... | 57.9 | 97.2 | 56.0 | 20.0 | 1.5 | - | 0.2 | ... | 0.2 |
| 4th Qr. | 67.1 | 1.2 | ... | 65.9 | 99.8 | 64.8 | 12.3 | 0.8 | - | 0.3 | ... | - |
| 1961 : 1st Qr. | 16.4 | 3.7 | ... | 12.7 | 16.2 | 9.3 | 9.0 | 0.7 | 0.3 | 1.6 | ... | 1.1 |
| 2nd Qr. | 6.6 | 3.9 | ... | 2.7 | 0.3 | 0.1 | 10.7 | 0.8 | 0.3 | 1.7 | ... | 0.1 |
| 3rd Qr. ⁺ | 114.6 | 1.1 | ... | 113.5 | 218.8 | 111.8 | 14.3 | 1.0 | 0.1 | 0.6 | ... | 0.1 |

* Including value of sugar quota certificates, but excluding sales value of bunker fuel and ships' stores.

For 1960 the value of sugar quota certificates has been included in the 4th quarter.

⁺ Provisional.

Table 24 - Exports: Principal countries of destination - values

| Period | Rs million f.o.b. | | | | | | | | | |
|----------------------|-------------------|--------|-----------|--------|-----------|-----------|---------|-------|---------|--|
| | United Kingdom | Canada | Hong-Kong | Malaya | Nyasaland | Singapore | Holland | Japan | Lebanon | |
| 1956 | 223.8 | 54.4 | - | 1.7 | - | 0.6 | 0.7 | - | - | |
| 1957 | 231.3 | 44.2 | 6.2 | 1.3 | - | 0.1 | 0.4 | 15.1 | 0.4 | |
| 1958 | 234.1 | 26.6 | 0.5 | 2.1 | - | 1.1 | 1.3 | 0.4 | 3.8 | |
| 1959 | 229.6 | 37.5 | 3.0 | 0.4 | 2.2 | 1.1 | 1.6 | 0.8 | 2.9 | |
| 1960 | 159.5 | 10.0 | - | 0.4 | 0.9 | 0.3 | 1.0 | 1.5 | - | |
| 1960 : 1st Qr. | 21.9 | 2.6 | - | 0.4 | 0.9 | 0.2 | 0.1 | - | - | |
| 2nd Qr. | 21.8 | 7.4 | - | - | - | 0.1 | 0.1 | 1.0 | - | |
| 3rd Qr. | 58.0 | - | - | - | - | - | - | 0.2 | - | |
| 4th Qr. | 57.8 | - | - | - | - | - | 0.8 | 0.3 | - | |
| 1961 : 1st Qr. | 11.7 | - | - | - | - | - | - | 0.6 | - | |
| 2nd Qr. | 2.8 | - | - | - | - | - | - | 1.6 | - | |
| 3rd Qr. [†] | 85.8 | 26.6 | - | - | - | - | - | - | - | |

[‡] Excluding value of sugar quota certificates.

[†] provisional.

Table 25 - Imports - values

Rs million c.i.f.

| Period | Total | Food | Beverages and tobacco | Crude materials, inedible, except fuels | Mineral fuels, lubricants, etc. | Animal and vegetable oils and fats | Chemicals | Manufactured goods classified chiefly by material | Machinery and transport equipment | Miscellaneous manufactured articles | Miscellaneous transactions & commodities n.e.s. |
|----------------|-------|------|-----------------------|---|---------------------------------|------------------------------------|-----------|---|-----------------------------------|-------------------------------------|---|
| 1956 | 224.1 | 61.0 | 5.4 | 7.9 | 14.2 | 9.0 | 27.3 | 56.3 | 27.8 | 14.9 | 0.3 |
| 1957 | 263.8 | 73.7 | 5.7 | 6.1 | 14.9 | 11.0 | 30.7 | 64.2 | 38.9 | 18.1 | 0.5 |
| 1958 | 299.2 | 83.3 | 7.2 | 6.2 | 13.2 | 7.7 | 29.3 | 66.6 | 58.1 | 22.1 | 0.5 |
| 1959 | 286.9 | 76.8 | 7.0 | 7.0 | 13.5 | 7.5 | 32.8 | 62.8 | 56.1 | 22.8 | 0.5 |
| 1960 | 331.9 | 85.2 | 8.1 | 7.4 | 13.2 | 10.3 | 34.4 | 86.9 | 58.5 | 27.3 | 0.6 |
| 1960 : 1st Qr. | 75.6 | 21.9 | 1.5 | 1.2 | 2.3 | 3.3 | 6.3 | 17.5 | 16.5 | 5.0 | 0.1 |
| 2nd Qr. | 91.1 | 24.5 | 1.7 | 2.3 | 4.2 | 3.4 | 7.4 | 23.3 | 16.9 | 7.2 | 0.2 |
| 3rd Qr. | 78.2 | 20.5 | 2.0 | 2.0 | 3.2 | 1.7 | 8.4 | 22.9 | 10.8 | 6.6 | 0.1 |
| 4th Qr. | 87.0 | 18.3 | 2.9 | 1.9 | 3.5 | 1.9 | 12.3 | 23.2 | 14.3 | 8.5 | 0.2 |
| 1961 : 1st Qr. | 85.2 | 25.9 | 2.1 | 2.2 | 4.1 | 1.2 | 7.8 | 19.0 | 16.0 | 6.6 | 0.3 |
| 2nd Qr. | 85.3 | 24.7 | 2.0 | 2.3 | 3.8 | 2.2 | 7.8 | 18.7 | 15.9 | 7.7 | 0.2 |
| 3rd Qr. | 82.9 | 21.5 | 1.8 | 2.0 | 2.6 | 4.4 | 10.6 | 20.6 | 12.2 | 7.1 | 0.1 |

+ provisional.

Table 26 - Imports of Merchandise: selected commodities - values

| Period | Rs million c.i.f | | | | | | | | | | | | | |
|----------------|------------------|-------------|---------------------|--------------------|-----------------------|--------------------------|----------------|-----------------|--------|----------------------|------------------------------|-------------------------------|--|-------------------------------|
| | Rice | Wheat flour | Alcoholic beverages | Petroleum products | Vegetable edible oils | Fertilizers manufactured | Cotton fabrics | Textile fabrics | Cement | Iron and steel goods | Manufactures of metals n.e.s | Machinery other than electric | Electric machinery, apparatus & appliances | Road motor vehicles and parts |
| 1956 | 27.4 | 6.5 | 2.9 | 12.5 | 8.3 | 13.8 | 8.5 | 5.8 | 5.4 | 8.3 | 7.4 | 10.8 | 8.0 | 6.9 |
| 1957 | 36.1 | 7.9 | 3.4 | 13.1 | 10.4 | 14.5 | 12.5 | 5.5 | 6.3 | 11.4 | 7.6 | 15.6 | 11.6 | 10.3 |
| 1958 | 44.1 | 11.1 | 3.9 | 11.7 | 7.2 | 12.1 | 10.7 | 7.2 | 6.7 | 11.4 | 8.2 | 26.1 | 17.0 | 13.2 |
| 1959 | 32.4 | 7.4 | 4.7 | 12.5 | 7.1 | 14.3 | 11.0 | 6.2 | 7.1 | 10.5 | 7.1 | 21.1 | 20.2 | 13.0 |
| 1960 | 33.0 | 10.0 | 6.0 | 12.9 | 9.7 | 13.2 | 12.1 | 5.9 | 9.9 | 23.0 | 12.8 | 21.6 | 19.6 | 15.5 |
| 1960 : 1st Qr. | 9.7 | 2.8 | 1.1 | 2.3 | 3.2 | 1.8 | 2.9 | 1.5 | 1.2 | 3.7 | 2.4 | 6.9 | 5.4 | 3.9 |
| 2nd Qr. | 11.2 | 2.0 | 1.2 | 4.0 | 3.2 | 1.7 | 3.1 | 1.4 | 2.4 | 6.3 | 3.7 | 7.1 | 4.5 | 4.8 |
| 3rd Qr. | 7.4 | 2.3 | 1.4 | 3.1 | 1.6 | 3.0 | 3.0 | 1.5 | 3.4 | 6.7 | 2.7 | 3.3 | 3.3 | 3.6 |
| 4th Qr. | 4.7 | 2.9 | 2.3 | 3.5 | 1.7 | 6.7 | 3.1 | 1.5 | 2.9 | 6.3 | 4.0 | 4.3 | 6.4 | 3.2 |
| 1961 : 1st Qr. | 11.2 | 2.8 | 1.6 | 4.0 | 1.0 | 1.4 | 2.9 | 1.4 | 2.4 | 2.9 | 3.7 | 6.3 | 5.2 | 4.2 |
| 2nd Qr. | 12.3 | 2.2 | 1.8 | 3.6 | 2.1 | 1.7 | 2.7 | 1.3 | 1.7 | 4.3 | 2.5 | 6.0 | 5.8 | 3.6 |
| 3rd Qr† | 8.6 | 2.6 | 1.3 | 2.2 | 4.3 | 4.7 | 3.4 | 1.9 | 2.9 | 4.1 | 2.8 | 4.3 | 4.4 | 3.2 |

† provisional.

Table 27 - Imports of Merchandise: selected commodities - quantities

| Period | Rice Thousand M/Tons | Wheat flour Thousand M/Tons | Vegetable edible oils Thousand M/Tons | Fertilizers Thousand M/Tons | Cotton Fabrics Million Sq. Metres | Textile Fabrics Million Sq. Metres | Cement Thousand M/Tons | Iron and steel goods Thousand M/Tons |
|----------------------|----------------------------|-----------------------------------|--|-----------------------------------|--|---|------------------------------|---|
| 1956 | 45.1 | 17.0 | 5.2 | 39.7 | 6.5 | 2.4 | 38.1 | 8.9 |
| 1957 | 62.1 | 19.3 | 5.6 | 40.7 | 10.6 | 2.5 | 43.0 | 12.7 |
| 1958 | 70.5 | 25.4 | 4.7 | 36.1 | 8.5 | 3.7 | 51.5 | 12.6 |
| 1959 | 57.1 | 17.7 | 5.0 | 50.1 | 9.6 | 3.6 | 62.1 | 12.9 |
| 1960 | 60.6 | 23.9 | 7.1 | 51.3 | 9.1 | 2.4 | 94.6 | 26.7 |
| 1960 : 1st Qr. | 18.0 | 6.6 | 2.2 | 6.6 | 2.3 | 0.7 | 11.4 | 4.4 |
| 2nd Qr. | 19.5 | 4.6 | 2.4 | 6.3 | 2.3 | 0.6 | 22.5 | 7.0 |
| 3rd Qr. | 14.1 | 5.7 | 1.2 | 11.1 | 2.4 | 0.6 | 31.8 | 7.9 |
| 4th Qr. | 9.0 | 7.0 | 1.3 | 27.3 | 2.1 | 0.5 | 28.9 | 7.4 |
| 1961 : 1st Qr. | 20.8 | 6.7 | 0.8 | 5.6 | 2.0 | 0.5 | 24.6 | 3.6 |
| 2nd Qr. | 21.5 | 5.4 | 1.5 | 6.5 | 1.9 | 0.5 | 17.1 | 5.1 |
| 3rd Qr. ⁺ | 15.8 | 6.4 | 2.7 | 18.2 | 2.6 | 0.9 | 28.8 | 4.8 |

⁺ provisional.

Table 28 - Imports: Main sources of supply - values

| Period | Rs million c.i.f. | | | | | | | | | | | |
|----------------------|-------------------|-----------|-------|-----------|-------|-----------------------|-----------------|------|-------|------|--------|--------------------------|
| | United Kingdom | Australia | Burma | Hong-Kong | India | Union of South Africa | Western Germany | Iran | Japan | Siam | France | United States of America |
| 1956 | 76.3 | 13.8 | 15.6 | 3.7 | 23.4 | 13.6 | 6.6 | 5.7 | 2.7 | 1.8 | 8.1 | 4.3 |
| 1957 | 93.8 | 17.4 | 35.2 | 5.0 | 14.0 | 19.7 | 9.0 | 9.8 | 3.9 | 3.0 | 11.8 | 5.8 |
| 1958 | 108.4 | 21.1 | 30.4 | 5.9 | 12.3 | 17.7 | 12.2 | 7.9 | 8.1 | 9.2 | 11.4 | 9.9 |
| 1959 | 105.9 | 19.5 | 28.6 | 7.1 | 12.7 | 20.0 | 11.9 | 10.6 | 9.2 | 6.2 | 9.4 | 8.5 |
| 1960 | 115.9 | 23.0 | 26.8 | 9.4 | 13.5 | 21.7 | 13.0 | 9.7 | 13.4 | 8.8 | 13.0 | 9.5 |
| 1960 : 1st Qr. | 25.6 | 6.2 | 8.6 | 1.7 | 3.8 | 4.0 | 2.5 | 1.7 | 2.4 | 1.6 | 4.3 | 2.6 |
| 2nd Qr. | 30.3 | 4.7 | 5.8 | 2.8 | 4.0 | 6.8 | 2.8 | 2.9 | 3.1 | 6.2 | 3.1 | 3.0 |
| 3rd Qr. | 25.5 | 5.9 | 7.7 | 2.2 | 3.3 | 4.6 | 3.8 | 2.7 | 3.9 | 0.6 | 2.5 | 1.8 |
| 4th Qr. | 34.5 | 6.2 | 4.7 | 2.7 | 2.4 | 6.3 | 3.9 | 2.4 | 4.0 | 0.4 | 3.1 | 2.1 |
| 1961 : 1st Qr. | 29.5 | 7.4 | 10.1 | 1.7 | 3.2 | 7.1 | 2.8 | 3.5 | 2.0 | 1.8 | 2.3 | 2.1 |
| 2nd Qr. | 26.6 | 5.2 | 5.9 | 2.7 | 2.5 | 7.9 | 3.8 | 2.7 | 1.9 | 7.0 | 3.8 | 2.1 |
| 3rd Qr. ⁺ | 26.7 | 4.6 | 8.1 | 2.1 | 4.4 | 6.1 | 4.5 | 1.3 | 2.9 | 0.9 | 3.8 | 1.5 |

⁺ provisional.

V. TRANSPORT AND COMMUNICATION

Table 29 - Road Transport

| Period | Grand Total | Private Vehicles | | | | Commercial Vehicles | | | | Government owned vehicles | |
|--------------|-------------|------------------|-------|--------------|-------|---------------------|-----------|--------------------|---------|---------------------------|-------|
| | | Total | Cars | Motor cycles | Other | Total | Taxi-cars | Buses [†] | Lorries | | Other |
| 1956 | 10,882 | 6,849 | 5,934 | 726 | 189 | 3,663 | 974 | 356 | 1,881 | 452 | 370 |
| 1957 | 11,456 | 7,164 | 6,155 | 769 | 240 | 3,900 | 1,030 | 430 | 1,922 | 518 | 392 |
| 1958 | 12,286 | 7,570 | 6,471 | 850 | 249 | 4,287 | 1,225 | 441 | 2,011 | 610 | 429 |
| 1959 | 13,291 | 7,877 | 6,549 | 969 | 359 | 4,961 | 1,689 | 488 | 2,140 | 644 | 453 |
| 1960 | 14,083 | 9,181 | 7,649 | 1,092 | 440 | 4,401 | 1,274 | 447 | 1,901 | 779 | 501 |
| 1961 1st Qr. | 14,730 | 9,357 | 7,743 | 1,128 | 486 | 4,873 | 1,333 | 456 | 2,258 | 826 | 500 |
| 2nd Qr. | 15,091 | 9,631 | 7,961 | 1,166 | 504 | 4,952 | 1,281 | 471 | 2,329 | 871 | 508 |
| 3rd Qr. | 15,364 | 9,777 | 8,081 | 1,196 | 500 | 5,036 | 1,274 | 466 | 2,367 | 929 | 551 |

[†] Figures for 1956-1959 include private buses. Since 1960 these are grouped with "Other private vehicles".

Table 30 - Sea Borne shipping

Thousand M/Tons

| Period | Vessels entering | | Vessels leaving | | Goods | |
|-----------------------------|------------------|------------------------|-----------------|------------------------|----------|--------|
| | Number | Net registered tonnage | Number | Net registered tonnage | Unloaded | Loaded |
| 1956 | 297 | 1,239 | 304 | 1,243 | 352 | 620 |
| 1957 | 329 | 1,290 | 325 | 1,273 | 384 | 682 |
| 1958 | 345 | 1,306 | 347 | 1,312 | 399 | 596 |
| 1959 | 365 | 1,363 | 367 | 1,352 | 425 | 589 |
| 1960 | 371 | 1,251 | 369 | 1,253 | 479 | 366 |
| 1960: 1st Qr. | 85 | 289 | 82 | 286 | 88 | 52 |
| 2nd Qr. | 81 | 281 | 85 | 294 | 124 | 77 |
| 3rd Qr. | 104 | 333 | 102 | 322 | 124 | 122 |
| 4th Qr. | 101 | 348 | 100 | 351 | 143 | 115 |
| 1961 ⁺ : 1st Qr. | 91 | 323 | 91 | 324 | 120 | 36 |
| 2nd Qr. | 89 | 308 | 90 | 312 | 121 | 24 |
| 3rd Qr. | 117 | 458 | 110 | 433 | 127 | 238 |

⁺provisional.

Table 31 - Civil Aviation

| Period | Number of movements | | Passengers | | Freight | |
|----------------|---------------------|-----------|------------|-----------|-----------------|---------------|
| | Landings | Take offs | Set down | Picked up | Unloaded M/Tons | Loaded M/Tons |
| 1956 | 170 | 170 | 3,805 | 3,827 | 39.1 | 90.6 |
| 1957 | 175 | 176 | 4,290 | 4,312 | 42.2 | 64.3 |
| 1958 | 223 | 222 | 4,722 | 4,763 | 44.7 | 53.8 |
| 1959 | 255 | 256 | 5,371 | 5,325 | 51.4 | 39.7 |
| 1960 | 251 | 250 | 6,312 | 6,311 | 89.5 | 21.1 |
| 1961 : 1st Qr. | 63 | 63 | 1,400 | 1,563 | 68.8 | 18.1 |
| 2nd Qr. | 56 | 56 | 1,582 | 1,688 | 40.5 | 23.4 |
| 3rd Qr. | 88 | 87 | 2,530 | 2,561 | 50.5 | 16.4 |

Notes: In this table:

- (1) are included only movements of commercial aircraft;
- (2) each touch down and take off is counted as a separate movement;
- (3) passengers in transit are excluded;
- (4) freight carried by planes other than commercial are included.

1. The first part of the document discusses the importance of maintaining accurate records of all transactions. It emphasizes that every entry should be supported by a valid receipt or invoice. This ensures transparency and allows for easy verification of the data. The text also mentions that regular audits are necessary to identify any discrepancies or errors in the accounting process.

2. The second part of the document focuses on the role of technology in modern accounting. It highlights how software solutions can streamline various tasks, such as data entry, calculation, and reporting. This not only saves time but also reduces the risk of human error. The document suggests that businesses should invest in reliable accounting software to improve their operational efficiency.

3. The third part of the document addresses the importance of staying up-to-date with the latest accounting standards and regulations. It notes that the accounting profession is constantly evolving, and professionals must stay informed about any changes. This can be achieved through continuous education and professional development. The text also mentions that compliance with these standards is crucial for maintaining the integrity and credibility of the financial statements.

4. The fourth part of the document discusses the importance of clear communication and collaboration between different departments within an organization. It states that effective communication is essential for ensuring that all stakeholders are aware of the financial goals and objectives. This involves regular meetings and reports that provide a clear overview of the company's financial performance. The text also mentions that collaboration between departments can help identify areas for improvement and optimize resource allocation.

5. The fifth part of the document focuses on the importance of maintaining a strong internal control system. It explains that internal controls are designed to prevent and detect errors and fraud. This involves implementing a system of checks and balances that covers all aspects of the accounting process. The document suggests that businesses should regularly review and update their internal control system to ensure it remains effective and relevant to their current operations.

VI. LAND UTILISATION

Table 32 - Total area classified by utilisation

| | Acres | | | | |
|---|---------|---------|---------|---------|---------|
| | 1956 | 1957 | 1958 | 1959 | 1960 |
| Agriculture: | 206,600 | 208,500 | 213,600 | 221,100 | 225,200 |
| Sugar | 188,000 | 190,500 | 197,400 | 203,700 | 208,100 |
| Aloe fibre (effective area) | 5,400 | 4,300 | 3,700 | 2,400 | 2,000 |
| Tea | 3,000 | 3,600 | 3,600 | 4,000 | 4,400 |
| Tobacco | 700 | 800 | 1,000 | 1,100 | 1,000 |
| Foodcrops | 4,500 | 4,300 | 2,900 | 2,800 | 2,400 |
| Vegetables | 5,000 | 5,000 | 5,000 | 7,100 | 7,300 |
| Arable land potentially productive | 3,800 | 1,900 | 1,200 | 1,000 | - |
| Forests scrub areas, grasslands & grazing grounds | 198,200 | 198,200 | 193,800 | 186,500 | 183,400 |
| Private forestlands | 15,000 | 15,000 | 15,000 | 15,000 | 15,000 |
| Crown forests | 67,100 | 67,100 | 67,700 | 67,700 | 67,700 |
| Pas geometriques [*] | 5,290 | 5,290 | 5,290 | 5,290 | 5,290 |
| Natural reserves ⁺ | 15,500 | 15,500 | 15,500 | 15,500 | 15,500 |
| Meadows, grass lands, scrubs, forests and grazing grounds | 95,310 | 95,310 | 90,310 | 83,010 | 79,910 |
| Built on areas | 14,200 | 14,200 | 14,200 | 14,200 | 14,200 |
| Inland water bodies | 23,000 | 23,000 | 23,000 | 23,000 | 23,000 |
| Reservoirs, crater, lakes, ponds | 3,000 | 3,000 | 3,000 | 3,000 | 3,000 |
| Natural water courses | 20,000 | 20,000 | 20,000 | 20,000 | 20,000 |
| Roads - tracks [@] | 10,000 | 10,000 | 10,000 | 10,000 | 10,000 |
| Permanent waste lands | 5,000 | 5,000 | 5,000 | 5,000 | 5,000 |
| TOTAL ISLAND AREA | 460,800 | 460,800 | 460,800 | 460,800 | 460,800 |

^{*} Leased crown lands in the coastal belt.

⁺ Privately owned mountain and river reserves protected by law.

[@] Estimated - including roads in agricultural lands.

VII. LOCAL PRODUCTION

Table 33 - Production of Specific Commodities

| Period | Sugar cane M/Tons | Sugar M/Tons | Molasses M/Tons | Alcohol (total at 100° G.L.) HL. | Tea M/Tons | Tobacco leaf kgs | Cigarettes kgs | Rum ⁺ HL. | Country Liquor HL. | Sacks Units | Electricity Generated Mn. kwh. |
|----------------|-------------------------|----------------------|--------------------|---|---------------|------------------------|-------------------|-------------------------|--------------------------|----------------|--------------------------------------|
| 1956 | 4,421,427 | 572,512 | 118,716 | 17,322 | 697.4 | 417,522 | 561,479 | 15,463 | 41,133 | 1,401,143 | 41.2 |
| 1957 | 4,343,898 | 562,003 | 110,471 | 15,592 | 859.0 | 453,303 | 561,256 | 14,667 | 38,638 | 1,657,046 | 43.3 |
| 1958 | 4,328,877 | 525,842 | 113,811 | 16,431 | 873.0 | 449,239 | 545,665 | 15,827 | 39,837 | 1,422,659 | 46.8 |
| 1959 | 4,743,301 | 580,372 | 118,056 | 17,730 | 905.9 | 462,900 | 585,377 | 18,753 | 50,293 | 1,200,659 | 55.8 |
| 1960 | 2,393,532 | 235,781 | 72,991 | 19,536 | 786.0 | 459,764 | 618,274 | 16,096 | 49,517 | 1,270,020 | 54.6 |
| 1961 : 1st Qr. | - | - | - | ... | 512.3 | 105,561 | 140,773 | 2,727 | 10,829 | 277,336 | 14.8 |
| 2nd Qr. | - | - | - | ... | 317.4 | 125,785 | 144,632 | 3,355 | 11,185 | 262,385 | 15.6 |
| 3rd Qr. | ... | 266,004 [#] | ... | ... | 66.9 | 115,376 | 156,672 | 3,785 | 15,354 | 400,335 | 16.2 |

[#] Provisional.

⁺ Issued for local consumption at 40-50° G.L.

VIII. EDUCATION

Table 34 - Roll of pupils and students in schools and colleges

| Period | Primary Schools | | | Secondary Schools | | | |
|--------------|-----------------|------------|--------|-------------------|------------|-------|---------|
| | Total | Government | Aided | Total | Government | Aided | Private |
| October 1956 | 72,333 | 36,412 | 35,921 | 10,960 | 1,118 | 2,123 | 7,719 |
| 1957 | 86,422 | 45,737 | 40,685 | 12,606 | 1,152 | 2,256 | 9,198 |
| 1958 | 98,387 | 54,251 | 44,136 | 15,437 | 1,262 | 2,424 | 11,751 |
| 1959 | 105,223 | 59,876 | 45,347 | 18,489 | 1,360 | 2,435 | 14,694 |
| 1960 | 104,713 | 60,938 | 43,775 | 22,840 | 1,456 | 2,557 | 18,827 |



A