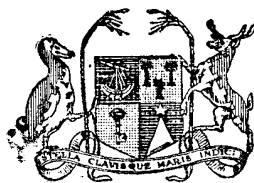


Vol. 5

No. 2



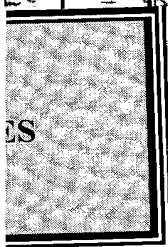
COLONY OF MAURITIUS

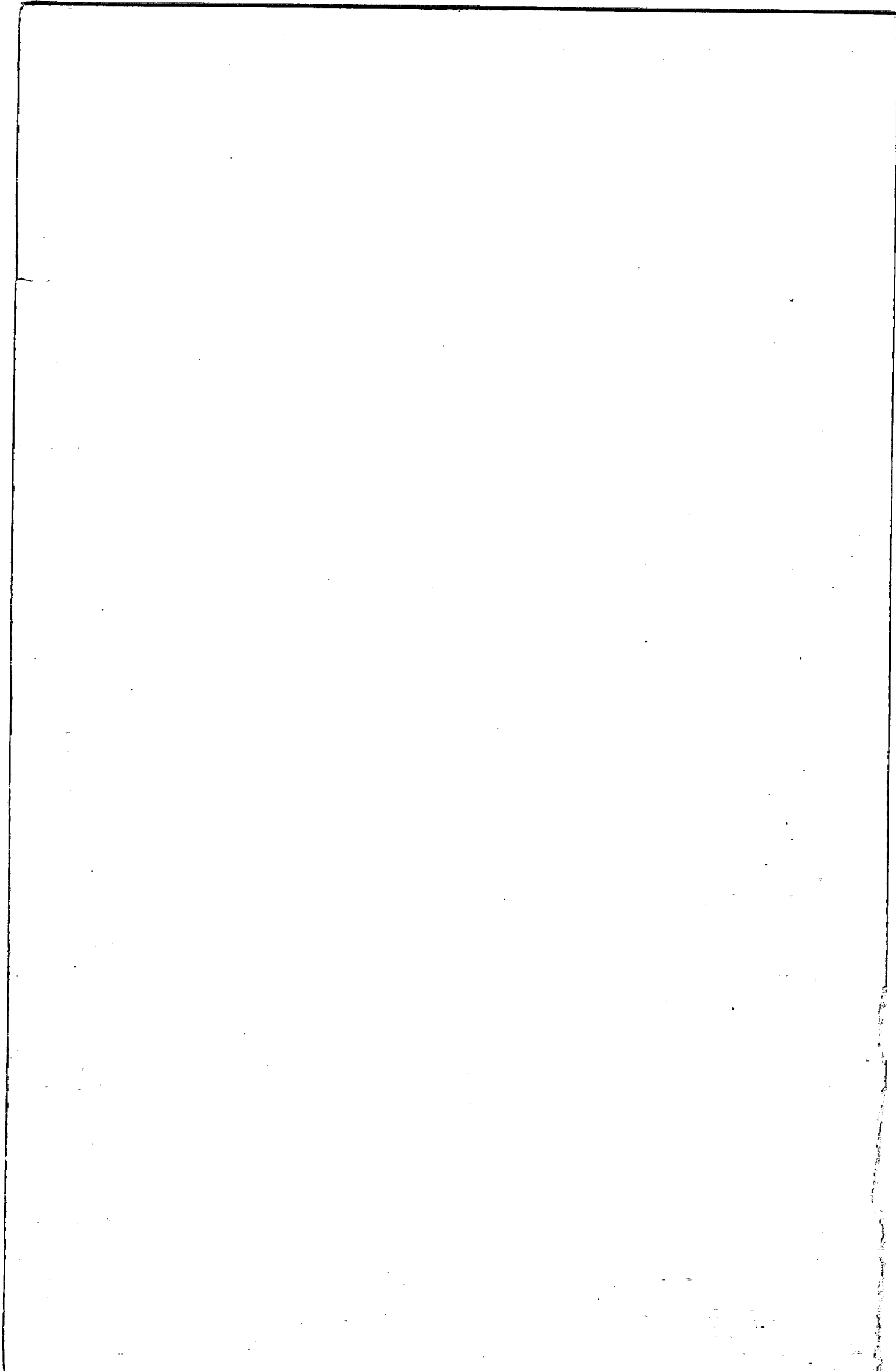
CENTRAL STATISTICAL OFFICE

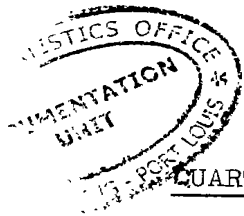
**QUARTERLY
DIGEST OF STATISTICS**

June 1965

[Price : Rs 2.50]







QUARTERLY DIGEST OF STATISTICS

NOTES

CENTRAL STATISTICAL OFFICE PORT LOUIS
dated on: 15.5.66
on on: _____

The following symbols are used throughout: -

- Nil or negligible
- ... Not available

2. Some of the figures in this Digest are liable to revision in the later issues.
3. Where necessary figures have been rounded off to the nearest final digit, and in some tables there may be discrepancies between the sum of the constituent items and the total as shown.

Central Statistical Office,
Mauritius.

CONTENTS

	Page
I. <u>POPULATION AND VITAL STATISTICS</u>	
Table 1 - Population and vital statistics	1
2 - Live-births and still-births	1
3 - Total deaths and infant deaths	2
4 - External migration	2
II. <u>PUBLIC HEALTH</u>	
Table 5 - Statistics of hospitals	3
6 - Notifiable, contagious or communicable diseases	4
III. <u>PUBLIC FINANCE</u>	
Table 7 - Central Government Revenue & Expenditure: Recurrent	5
8 - Central Government Revenue & Expenditure: Capital	6
9 - Central Government Indebtedness	6
10 - Sterling Assets	7
11 - Banking Statistics: Assets of Commercial Banks	8
12 - " " : Liabilities of Commercial Banks	9
13 - " " : Assets of the Development Bank of Mauritius & The Mauritius Housing Corporation	10
14 - " " : Liabilities of the Development Bank of Mauritius & The Mauritius Housing Corporation	11
15 - Post Office Savings Bank	12
16 - Currency in Circulation	12
17 - Gross National Product	13
18 - Gross Fixed Domestic Capital Formation	14
19 - Balance of Payments	15
IV. <u>CONSUMER PRICE INDICES</u>	
Table 20 - Consumer Price Indices	16
V. <u>EXTERNAL TRADE</u>	
Table 21 - Balance of visible trade	17
22 - Quantum and price indices of exports and imports and terms of trade	17
23 - Quantum and price indices of imports by section	18
24 - Exports: quantities and values	19
25 - Exports: principal countries of destination - values	20
26 - Imports: values	21
27 - " : selected commodities - values	22
28 - " : " " - quantities	23
29 - " : main sources of supply - values	24

CONTENTS (Cont'd)

	Page
VI. <u>TRANSPORT AND COMMUNICATION</u>	
Table 30 - Road Transport	25
31 - Sea Borne Shipping	26
32 - Civil Aviation	26
VII. <u>LAND UTILISATION</u>	
Table 33 - Total area classified by utilisation	27
VIII. <u>LOCAL PRODUCTION</u>	
Table 34 - Production of specific commodities	28
IX. <u>EDUCATION</u>	
Table 35 - Roll of pupils and students in schools and colleges	29

.....

I. POPULATION AND VITAL STATISTICS

Table 1 - Population and vital statistics

Period	Marriages	Births	Deaths	Natural Increase	Net Oversea migration	Total increase	Estimated population at the end of the period
1960	3,113	25,307	7,248	18,059	- 372	17,687	654,890
1961	3,484	26,092	6,505	19,587	- 1,179	18,408	673,298
1962	3,893	26,267	6,325	19,942	- 886	19,056	692,354
1963	3,472	27,978	6,709	21,269	- 252	21,017	713,371
1964	3,965	27,528	6,184	21,344	- 1,110	20,234	733,605
1964 : 1st Qr.	809	6,206	1,627	4,579	- 839	3,740	717,111
2nd Qr.	1,015	6,834	1,482	5,352	- 374	4,978	722,089
3rd Qr.	983	7,297	1,687	5,610	- 318	5,292	727,381
4th Qr.	1,158	7,191	1,388	5,803	+ 421	6,224	733,605
1965 : 1st Qr.	900	6,237	1,612	4,625	- 1,265	3,360	736,965
2nd Qr.	990	6,209	1,491	4,718	- 647	4,071	741,036

Revision of population estimates prior to 1962 based on data obtained from the 1962 population census.

Table 2 - Live births and still births

Period	Live births			Still births
	Total	Males	Females	
1960	25,307	12,973	12,334	1,783
1961	26,092	13,244	12,848	1,963
1962	26,267	13,395	12,872	1,841
1963	27,978	14,263	13,715	1,519
1964	27,528	13,960	13,568	1,611
1964 : 1st Qr.	6,206	3,077	3,129	306
2nd Qr.	6,834	3,489	3,345	395
3rd Qr.	7,297	3,727	3,570	469
4th Qr.	7,191	3,667	3,524	441
1965 : 1st Qr.	6,237	3,108	3,129	403
2nd Qr.	6,209	3,199	3,010	389

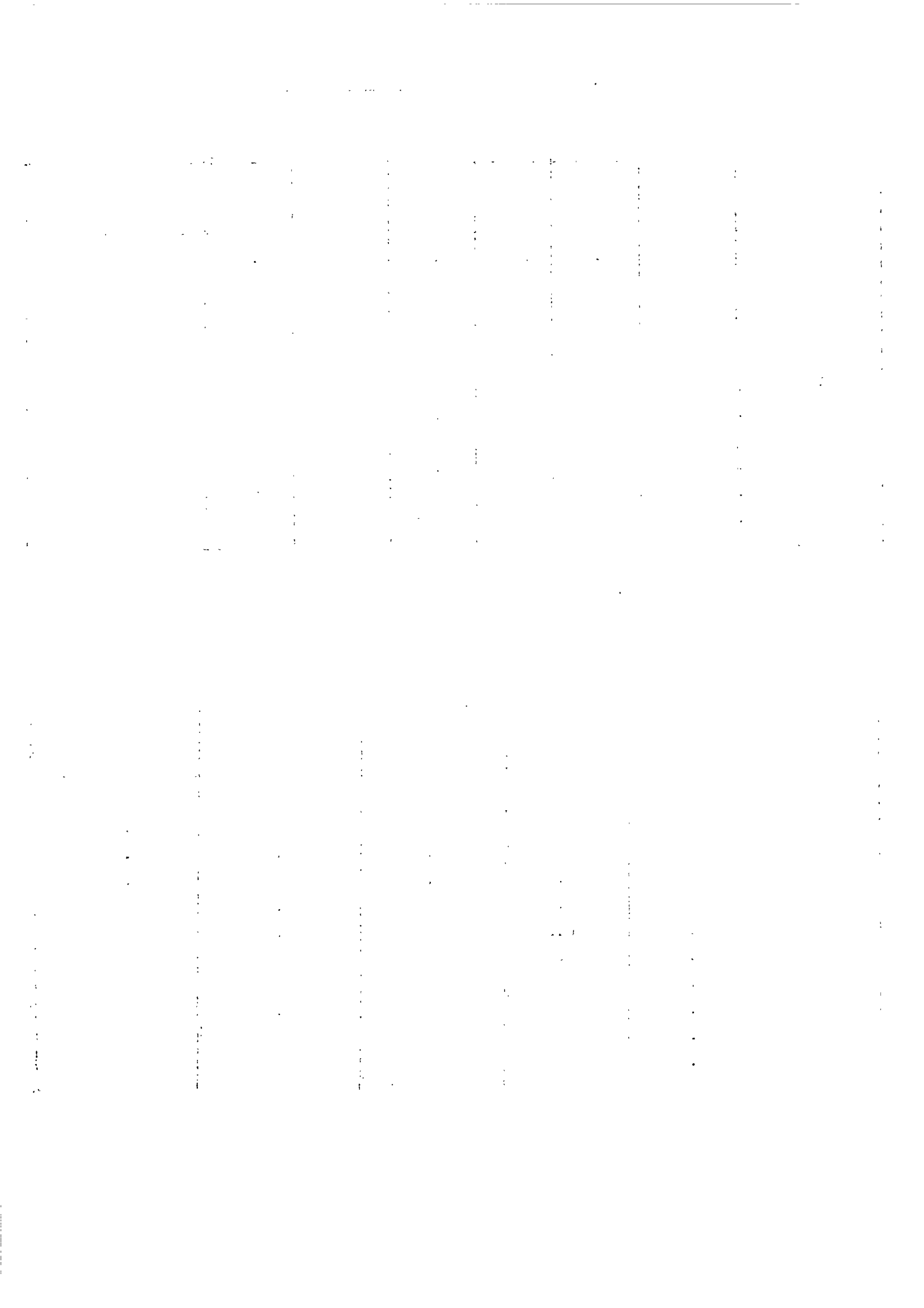


Table 3 - Total Deaths and Infant Deaths

Period	Total Deaths			Infant Deaths		
	Total	Males	Females	Total	Males	Females
1960	7,248	3,706	3,542	1,760	980	780
1961	6,505	3,359	3,146	1,618	915	703
1962	6,325	3,255	3,070	1,579	896	683
1963	6,709	3,457	3,252	1,660	929	731
1964	6,184	3,249	2,935	1,561	900	661
1964 : 1st Qr.	1,627	830	797	484	301	183
2nd Qr.	1,482	750	732	375	209	166
3rd Qr.	1,687	906	781	374	204	170
4th Qr.	1,388	763	625	328	186	142
1965 : 1st Qr.	1,612	879	733	275	214	489
2nd Qr.	1,491	783	708	247	197	444

Table 4 - External Migration⁺

Period	Arrivals			Departures			Net migration
	Total	By sea	By air	Total	By sea	By air	
1960	10,412	4,063	6,349	10,784	4,464	6,320	- 372
1961	11,854	4,402	7,452	13,033	5,442	7,591	- 1,179
1962	15,189	4,258	10,931	16,075	4,374	11,701	- 886
1963	18,047	4,660	13,387	18,299	4,432	13,867	- 252
1964	21,221	5,187	16,034	22,331	5,478	16,853	- 1,110
1964 : 1st Qr.	4,456	1,157	3,299	5,295	1,444	3,851	- 839
2nd Qr.	4,529	949	3,580	4,903	1,195	3,708	- 374
3rd Qr.	6,743	1,421	5,322	7,061	1,503	5,558	- 318
4th Qr.	5,493	1,660	3,833	5,072	1,336	3,736	+ 421
1965 : 1st Qr.	4,435	1,775	3,660	5,700	1,281	4,419	- 1,265
2nd Qr.	4,960	1,092	3,868	5,607	1,437	4,170	- 647

⁺Includes: - (a) The very small figure of engaged or discharged seamen; (b) Emigrants and immigrants to and from the dependencies; and (c) Movement of military personnel as from the 1962 Population Census.

II. PUBLIC HEALTH

Table 5 - Statistics of hospitals

Period	No. of beds	Patients in hospital on 1st day of period	Total admissions	Deaths	Discharges	Patients remaining on last day of period
1960	2,357	1,627	34,355	1,560	32,766	1,656
1961	2,448	1,656	36,892	1,601	35,196	1,751
1962	2,453	1,751	38,130	1,628	36,480	1,773
1963	2,453	1,773	45,717	1,959	43,686	1,845
1964	2,481	1,845	49,080	1,887	47,233	1,805
1964 : 1st Qr.	2,481	1,845	12,085	494	11,288	2,148
2nd Qr.	2,431	2,148	12,688	467	12,149	2,220
3rd Qr.	2,481	2,220	12,161	492	11,657	2,232
4th Qr.	2,481	2,232	12,146	434	12,139	1,805
1965 : 1st Qr.	2,514	1,805	13,010	485	12,050	2,280
2nd Qr.	2,514	2,280	12,678	448	12,259	2,251

Table 6 - Notifiable, contagious or communicable diseases

Disease	Typhoid	Diphtheria	Acute poliomyelitis	Puerperal fever	Erysipelas	Cerebro-spinal meningitis	Tuberculosis	Leprosy	Murine typhus
1960	114	164	1	3	2	1	313	2	-
1961	71	215	-	1	-	-	353	1	-
1962	81	151	1	-	-	-	300	-	3
1963	89	145	3	2	2	-	429	4	3
1964	64	206	-	6	-	-	472	-	1
1964 : 1st Qr.	12	27	-	1	-	-	93	-	1
2nd Qr.	19	113	-	-	-	-	145	-	-
3rd Qr.	16	42	-	1	-	-	124	-	-
4th Qr.	17	24	-	4	-	-	110	-	-
1965 : 1st Qr.	32	35	-	-	-	-	106	-	-
2nd Qr.	18	16	-	-	-	-	77	-	-

III. PUBLIC FINANCE

Table 7 - Central Government Revenue and Expenditure: Recurrent

Rs Million

Period	Revenue				Expenditure	
	Total	Direct taxes	Indirect taxes	Other	Total including debt charges	Debt charges
1960	141.0	43.2	79.6	18.2	145.9	7.9
1961	144.9	40.3	82.8	21.8	150.1	8.9
1962	154.8	38.3	97.2	19.3	164.9	9.3
1963	168.8	41.0	102.9	24.9	164.6	10.6
1964	214.3	63.9	123.2	27.2	192.6	12.7
1964 : 1st Qr.	51.9	6.6	41.0	4.3	47.0	3.2
2nd Qr.	52.7	13.9	27.7	11.1	51.1	2.7
3rd Qr.	43.1	11.1	26.4	5.6	39.0	3.8
4th Qr.	66.8	32.3	28.1	6.4	55.5	3.0
1965 : 1st Qr.	56.5	19.4	32.1	5.0	46.2	3.6
2nd Qr.	65.4	27.8	25.1	12.5	64.9	3.2

Table 8 - Central Government Revenue and Expenditure: Capital

Period	Revenue					Total expenditure
	Total	Contributory	Grants	Loans	Other	
1960	32.6	14.0	2.0	15.4	1.2	45.8
1961	43.1	12.0	18.3	12.0	0.8	47.4
1962	43.8	12.0	13.3	18.3	0.2	62.9
1963	72.3	6.0	9.1	56.4	0.8	53.2
1964	60.7	16.0	6.5	36.8	1.4	55.5
1964 : 1st Qr.	20.9	6.0	3.2	10.9	0.8	11.5
2nd Qr.	20.1	-	1.8	18.1	0.2	20.0
3rd Qr.	5.3	-	0.5	4.6	0.2	10.0
4th Qr.	14.4	10.0	1.0	3.2	0.2	14.0
1965 : 1st Qr.	11.4	-	2.3	7.4	1.7	14.9
2nd Qr.	13.6	10.0	1.1	2.2	0.3	18.0

Table 9 - Central Government Indebtedness

Period	Amount outstanding at beginning of period	Borrowing			Repayments
		Total	Internal	External	
1960-61	127.3	16.9	9.3	7.6	0.5
1961-62	143.7	13.5	8.0	5.5	0.5
1962-63	156.7	39.2	24.6	14.6	7.5
1963-64	188.4	54.1	7.6	46.5	1.1
1964: Jan.-March	212.3	11.3	2.8	8.5	0.2
April-June	223.4	18.3	2.2	16.1	0.3
July-Sept.	241.4	5.1	2.7	2.4	0.5
Oct.-Dec.	246.0	4.1	1.3	2.8	0.1
1965: Jan.-March	250.0	8.6	2.8	5.8	0.3
April-June	258.3	2.3	0.5	1.8	0.3

Table 10 - Sterling Assets
(end of period)

Period	INVESTMENTS (Nominal Value)				LIQUID ASSETS (Cash and money at call)					Net balances of banks due from banks abroad	
	Government	Semi-governmental institutions	Currency Backing	Post Office Savings Bank	Total	Government	Semi-governmental institutions	Currency Backing	Post Office Savings Bank		Total Government & semi-governmental institutions
1960	42.9	79.4	66.0	26.3	214.6	18.3	-	2.3	4.1	35.6	16.2
1961	26.4	64.8	60.5	25.8	177.5	24.1	-	42.8	2.2	10.3	35.1
1962	29.4	20.5	59.6	23.3	132.8	3.0	-	6.5	2.1	27.3	21.0
1963	32.6	8.8	45.7	23.1	110.2	12.0	-	1.2	4.3	61.6	108.0
1964	38.0	8.8	44.9	22.4	114.1	8.6	-	7.7	6.5	68.8	96.1
1964 : 1st Qr.	32.8	8.8	45.7	23.0	110.3	11.0	-	1.1	5.4	58.6	129.4
2nd Qr.	34.9	8.8	45.6	22.7	112.0	22.2	-	8.7	5.0	72.7	40.3
3rd Qr.	35.8	8.8	44.9	22.5	112.0	31.1	-	7.6	5.1	82.6	46.3
4th Qr.	38.0	8.8	41.9	22.4	114.1	8.6	-	7.7	6.5	68.8	96.1
1965 : 1st Qr.	38.9	8.8	58.2	22.4	128.3	6.4	-	7.9	6.5	47.6	24.4
2nd Qr.	37.7	8.7	57.7	24.5	128.6	5.8	-	7.0	4.7	43.4	- 39.0

Rs Million

Table 11 - Banking Statistics - Assets of Commercial banks

Period	Total	Cash	Balances due by		Loans and Advances			Investments		Other Assets	
			Other banks in the colony	Banks abroad	Primary products	Other industries	Other advances	Local	Abroad	Bills discounted and bills receivable	Other
1960 : 31st Dec.	194.2	7.5	2.3	26.4	45.0	13.6	5.5	2.0	13.8	33.1	
1961 : "	241.2	6.0	3.0	57.1	45.7	21.8	5.0	2.0	11.8	35.5	
1962 : "	229.2	6.4	0.9	46.4	44.0	20.9	5.0	2.0	10.7	35.5	
1963 : "	281.9	8.9	3.3	113.2	41.8	19.9	6.4	2.0	10.5	47.4	
1964 : "	311.1	7.3	2.0	97.4	51.6	32.4	10.6	2.4	15.3	47.2	
1964 : 31st March	313.3	10.2	1.5	130.1	50.7	19.6	6.5	2.0	11.3	48.6	
30th June	271.8	8.6	1.7	50.7	49.1	30.4	6.5	5.0	14.5	53.3	
30th Sept.	271.9	7.8	2.1	57.3	58.6	23.8	8.5	2.0	14.8	49.8	
31st Dec.	311.1	7.3	2.0	97.4	51.6	32.4	10.6	2.4	15.3	47.2	
1965 : 31st March	275.8	8.9	2.3	32.2	60.6	29.0	6.0	6.7	14.7	51.2	
30th June	293.2	9.2	2.0	6.2	63.4	36.4	6.0	6.7	15.2	48.9	

Table 12 - Banking Statistics - Liabilities of Commercial banks

Period	Total	Notes in circulation	Deposits			Balances due to			Other Liabilities
			Demand	Time	Savings	Other banks in the colony	Banks abroad		
1960 : 31st Dec.	194.2	-	113.3	3.0	11.6	2.7	10.7	53.4	
1961 : "	241.2	-	143.5	3.6	12.5	3.7	22.0	55.9	
1962 : "	229.2	-	124.5	7.3	15.2	1.3	25.5	55.4	
1963 : "	281.9	-	174.7	10.7	20.7	4.3	5.2	66.3	
1964 : "	311.1	-	161.2	52.3	26.2	2.7	1.4	67.3	
1964 : 31st March	313.3	-	206.1	14.4	24.0	1.9	0.7	66.2	
: 30th June	271.8	-	134.7	27.7	24.6	2.3	10.4	72.1	
: 30th Sept.	271.9	-	135.3	28.6	25.5	2.4	11.1	69.0	
: 31st Dec.	311.1	-	161.2	52.3	26.2	2.7	1.4	67.3	
1965 : 31st March	275.8	-	120.2	47.3	26.7	2.7	7.8	71.1	
: 30th June	293.2	-	94.3	55.5	26.8	2.6	45.2	68.8	

Rs Million

Table 13 - Banking Statistics - Assets of the Development Bank of Mauritius and the Mauritius Housing Corporation

Period	Total	Cash	Balances due by				Loans and Advances			Investments		Other Assets
			Other banks in the colony	Banks abroad	Primary products	Other industries	Other advances	Local	Abroad			
										Other banks in the colony	Banks abroad	
1960 : 31st Dec.	40.0	0.1	0.9	-	25.5	0.8	9.7	0.8	0.7	1.5		
1961 : "	42.4	-	0.9	-	25.2	0.8	11.8	0.9	0.7	2.1		
1962 : "	46.3	-	1.6	-	24.4	0.8	14.0	1.0	0.9	3.6		
1963 : "	45.8	-	1.3	-	23.4	1.0	14.7	1.1	0.9	3.4		
1964 : "	48.3	-	2.4	-	22.1	1.7	15.6	1.4	0.9	4.2		
1964 : 31st March	46.5	-	1.4	-	23.2	1.0	14.9	1.1	0.9	4.0		
30th June	45.8	-	1.1	-	22.7	1.0	15.1	1.1	0.9	3.9		
30th Sept.	45.3	-	1.2	-	22.5	1.2	15.4	1.0	0.9	3.1		
31st Dec.	48.3	-	2.4	-	22.1	1.7	15.6	1.4	0.9	4.2		
1965 : 31st March	49.2	0.7	1.4	-	23.7	2.0	15.8	1.8	1.1	2.7		
30th June	35.1	0.1	2.5	-	23.7	2.4	-	1.8	1.1	3.5		

Rs Million

Table 14 - Banking Statistics: Liabilities of the Development Bank of Mauritius and the Housing Corporation

Period	Total	Notes in circulation	Deposits			Balances due to		Other Liabilities
			Demand	Time	Savings	Other banks in the colony	Banks abroad	
1960 : 31st Dec.	40.0	-	-	4.9	2.1	-	33.0	
1961 : "	42.4	-	0.7	7.0	2.1	-	32.6	
1962 : "	46.3	-	0.7	9.6	2.0	-	34.0	
1963 : "	45.8	-	0.5	9.0	2.2	-	34.1	
1964 : "	48.3	-	0.3	8.6	2.1	-	37.3	
1964 : 31st March	46.5	-	0.4	8.8	2.2	-	35.1	
30th June	45.8	-	0.4	8.8	2.2	-	34.4	
30th Sept.	45.3	-	0.4	8.7	2.1	-	34.1	
31st Dec.	48.3	-	0.3	8.6	2.1	-	37.3	
1965 : 31st March	49.2	-	0.4	7.9	2.1	-	38.8	
30th June	35.2	-	0.3	3.8	2.1	-	29.0	

1. The first part of the document discusses the importance of maintaining accurate records of all transactions and activities. It emphasizes that proper record-keeping is essential for transparency and accountability, particularly in financial reporting and compliance with regulatory requirements. The text notes that incomplete or inconsistent records can lead to significant legal and financial consequences for the organization.

2. The second section addresses the challenges associated with data management and security. It highlights the need for robust cybersecurity measures to protect sensitive information from unauthorized access, theft, or loss. The document also discusses the importance of data backup and recovery strategies to ensure business continuity in the event of a disaster or system failure.

3. The third part of the document focuses on the role of technology in streamlining operations and improving efficiency. It explores various digital tools and platforms that can be used to automate repetitive tasks, enhance communication, and facilitate data analysis. The text suggests that investing in technology is a key strategy for organizations looking to stay competitive in a rapidly changing market.

4. The final section discusses the importance of human resources and employee development. It emphasizes that a skilled and motivated workforce is critical to the success of any organization. The document outlines strategies for recruitment, training, and performance management, as well as the benefits of a positive work environment and employee engagement.

Table 15 - Post Office Savings Bank

Period	Deposits	Withdrawals	Accumulated Balance	Number of Accounts
	during period		at the end of period	
	Rs Mn	Rs Mn	Rs Mn	
1960	15.3	16.9	31.3	...
1961	11.9	13.4	30.4	...
1962	13.9	15.3	29.8	...
1963	15.4	13.4	32.6	...
1964	16.9	15.6	34.8	...
1964 : 1st Qr.	4.7	3.4	33.9	...
2nd Qr.	3.3	3.6	34.4	84,642
3rd Qr.	4.6	4.5	34.5	...
4th Qr.	4.3	4.1	34.8	...
1965 : 1st Qr.	4.0	4.0	34.8	...
2nd Qr.	2.8	3.4	35.2	86,929

Table 16 - Currency in circulation
(end of period)

Period	Rs Million				
	Notes	Coins	Total	Cash held by banks	Net circulation
1960	73.1	4.5	77.6	7.5	70.1
1961	77.7	4.5	82.2	6.0	76.2
1962	77.3	4.9	82.2	6.4	75.8
1963	95.8	5.3	101.1	8.9	92.2
1964	92.2	5.6	97.8	7.3	90.5
1964 : 1st Qr.	88.6	5.1	93.7	10.2	83.5
2nd Qr.	84.2	5.0	89.2	8.6	80.6
3rd Qr.	85.2	5.4	90.6	7.8	82.8
4th Qr.	92.2	5.6	97.8	7.3	90.5
1965 : 1st Qr.	85.7	5.3	91.0	8.9	82.1
2nd Qr.	84.3	5.2	89.5	9.2	80.3

Table 17 - Industrial Origin of Gross National Product
(At current factor cost)

	<u>Rs Million</u>			
	1960	1961	1962	1963 ⁺
1. Agriculture, forestry, hunting and fishing	112	193	189	311
2. Mining and quarrying	1	1	1	1
3. Manufacturing	70	121	122	182
4. Construction	35	49	50	48
5. Electricity, gas, water and sanitary services	12	14	17	21
6. Transportation, storage and communication	84	92	95	109
7. Wholesale and retail trade	67	74	74	79
8. Banking, insurance and real estate	13	13	14	15
9. Ownership of dwellings	42	52	55	57
10. Public Administration and defence	27	29	31	33
11. Services	69	72	77	81
GROSS DOMESTIC PRODUCT AT FACTOR COST	532	710	725	937
Net factor income from abroad	10	- 5	- 5	- 11
GROSS NATIONAL PRODUCT AT FACTOR COST	542	705	720	926

⁺provisional.

Table 18 - Composition of Gross Fixed Domestic Capital Formation
(at current prices)

	Rs Million				
	1960	1961	1962	1963	1964 [@]
A. By type of capital good					
a. Land ^x	5	3	2	2	3
b. Dwellings	30	42	42	45	42
c. Non-residential buildings	13	18	14	13	19
d. Other construction and works	23	29	37	38	31
e. Transport equipment	19	18	16	16	24
(i) Passenger cars	6	5	5	5	8
(ii) Other equipment	13	13	11	11	16
f. Machinery and other equipment	46	39	30	43	52
GROSS FIXED DOMESTIC CAPITAL FORMATION ⁺	134	149	141	157	171
B. By industrial use					
a. Agriculture, forestry and fishing	17	13	15	9	17
b. Mining and quarrying	-	-	-	-	-
c. Manufacture	28	24	20	21	33
d. Construction	3	2	2	3	3
e. Electricity, gas and water	13	13	12	30	16
f. Transportation, storage and communications	25	28	23	20	27
g. Wholesale and retail trade	4	5	3	3	6
h. Banking, insurance and real estate	-	-	1	1	1
i. Ownership of dwellings	30	43	44	49	42
j. Public Administration	8	13	14	14	18
k. Service industries	3	5	5	5	5
l. Legal fees, stamp duties, etc.	3	3	2	2	3
GROSS FIXED DOMESTIC CAPITAL FORMATION ⁺	134	149	141	157	171

⁺Excluding the expenditure incurred on reconstruction of and abnormal repairs to buildings damaged by cyclones and valued as follows:

1960	:	Rs 60 M
1961	:	Rs 6 M
1962	:	Rs 5 M
1963	:	Rs 2 M

^xIncluding legal fees, stamp duties, agents' commissions etc., connected with the transfer of ownership of land and buildings.

[@]provisional.

Table 19 - Balance of Payments

Rs Million

	1960		1961		1962		1963 ⁺	
	Receipts	Payments	Receipts	Payments	Receipts	Payments	Receipts	Payments
Goods and services	248.5	368.5	343.0	378.2	339.3	377.0	463.4	388.5
Donations	5.8	5.7	21.2	8.8	16.7	9.8	11.7	8.5
Capital Transactions	105.8	21.4	97.8	55.5	90.4	51.5	62.7	141.5
Net Credit or Debit Balance	35.5	-	-	19.6	-	8.1	0.7	-
TOTAL	395.6	395.6	462.1	462.1	446.4	446.4	538.5	538.5

⁺ provisional.

IV; CONSUMER PRICE INDICES

Table 20 - Consumer Price Indices
(Base: January-June 1962 = 100)

The table below gives for the period January 1963 to June 1965, three consumer price indices, viz:

- (a) an index for households in urban areas;
- (b) an index for households in rural areas;
- (c) a total index for Mauritius as a whole.

Period	Urban	Rural	Total
<u>1963</u> : January	98.6	99.0	98.8
February	99.3	99.6	99.4
March	98.0	98.2	98.1
April	97.3	97.4	97.4
May	97.5	97.5	97.5
June	97.4	97.4	97.4
July	98.1	98.1	98.1
August	98.3	98.2	98.2
September	98.9	98.8	98.8
October	100.2	100.2	100.2
November	99.3	99.2	99.2
December	98.6	98.6	98.6
<u>1964</u> : January	100.2	100.2	100.2
February	104.3	104.2	104.3
March	102.9	102.9	102.9
April	101.7	101.8	101.7
May	99.5	99.0	99.2
June	98.4	97.9	98.1
July	98.9	98.5	98.7
August	100.0	99.4	99.7
September	100.3	99.6	99.9
October	100.0	99.3	99.6
November	99.8	99.2	99.5
December	100.5	100.0	100.3
<u>1965</u> : January	101.5	101.0	101.2
February	101.4	101.0	101.2
March	101.4	100.8	101.0
April	102.4	102.2	102.3
May	103.3	102.9	103.0
June	104.0	104.0	104.0

V. EXTERNAL TRADE

Table 21 - Balance of visible trade

Period	Imports (C.I.F. Value)	Exports ⁺ (F.O.B. Value)	Rs Million	
			Balance of visible trade Surplus	Deficit
1960	331.9	185.0	-	146.9
1961	324.0	294.2	-	29.8
1962	322.7	305.9	-	16.8
1963	333.1	427.8	94.7	-
1964	388.9	366.9	-	22.0
1964 : 1st Qr.	76.4	76.4	-	-
2nd Qr.	96.9	17.6	-	79.3
3rd Qr.	108.8	125.7	16.9	-
4th Qr.	106.8	147.2	40.4	-
1965 : 1st Qr.	88.2	12.5	-	75.7
2nd Qr. ^x	97.6	12.1	-	85.5

Table 22 - Quantum and price indices of exports and imports and terms of trade
(1956 = 100)

Period	Quantum indices		Price indices		Terms of trade [*]
	Export	Import	Export	Import	
1960	57	154	109	96	114
1961	98	150	101	96	105
1962	100	152	102	95	107
1963	111	153	130	97	134
1964	111	175	111	99	112

⁺Including value of sugar quota certificates, but excluding sales value of bunker fuel and ships' stores.

For the years 1963 and 1964, the value of sugar quota certificates has been included in the 4th quarter.

^xprovisional.

^{*}Ratio of export price index to import price index.

A rise in the index indicates that the terms of trade has moved in favour of Mauritius.

Table 23 - Quantum and Prices of Imports by Sections

(1956 = 100)

Period	All Sections	Food	Beverage and tobacco	Crude materials inedible, except fuels	Mineral fuels, lubricants, etc.	Animal and vegetable oils and fats	Chemicals	Quantum Indices					Miscellaneous manufactured articles
								Manufactured goods classified chiefly by material	Machinery and transport equipment	Miscellaneous manufactured articles	Manufactured goods classified chiefly by material	Machinery and transport equipment	
1960	154	143	142	90	104	133	145	158	198	235			
1961	150	151	148	102	99	127	149	141	179	197			
1962	152	157	143	78	127	135	156	138	148	218			
1963	153	161	136	66	114	167	166	139	174	179			
1964	175	175	126	75	154	151	184	171	211	205			
<u>Price Indices</u>													
1960	96	98	105	104	90	86	87	98	106	78			
1961	96	97	105	102	83	90	88	96	108	102			
1962	95	97	105	103	86	88	87	91	110	108			
1963	97	96	107	107	88	81	88	90	115	119			
1964	90	94	109	109	78	53	92	92	119	116			

Table 24 - Exports: Quantities and values

Period	Total		DOMESTIC EXPORTS									
	value*	Re-exports value	Total		Sugar		Molasses		Tea		Other	
			Quantity	Value	Quantity	Value	Quantity	Value	Quantity	Value	Quantity	Value
1960	185.0	5.5	...	179.5	299.4	174.0	3.4	45.2	0.2	1.3	...	0.8
1961	294.2	10.5	...	283.7	505.7	272.2	5.0	64.6	0.8	4.9	...	1.6
1962	305.9	8.5	...	297.1	515.1	282.0	9.1	110.3	0.7	3.9	...	2.1
1963	427.8	6.8	...	420.9	574.3	400.2	13.5	109.8	1.0	5.5	...	1.8
1964	366.9	7.0	...	359.7	575.7	344.2	8.8	99.1	0.8	4.4	...	2.5
1964 1st Qr.	76.4	1.6	...	74.8	91.2	69.5	3.5	28.6	0.2	1.4	...	0.4
2nd Qr.	17.6	1.4	...	16.2	17.1	12.7	1.5	12.3	0.3	1.4	...	0.6
3rd Qr.	125.7	1.3	...	124.3	227.0	121.7	2.2	25.0	0.1	0.3	...	0.2
4th Qr.	147.2	2.7	...	144.6	240.4	140.3	1.7	33.2	0.2	1.3	...	1.3
1965: 1st Qr.	12.5	1.7	...	10.7	11.1	6.9	1.1	19.6	0.5	2.6	...	0.2
2nd Qr.	12.1	3.3	...	8.8	16.6	6.3	1.0	19.1	0.2	1.2	...	0.3

*Including value of sugar quota certificates, but excluding sales value of bunker fuel and ships' stores.

+ provisional

x the value of sugar quota certificates has been included in the 4th quarter of 1964.

Table 25 - Total Exports* : Principal countries of destination - values

Period	Rs Million F.O.B.									
	United Kingdom	Canada	Republic of South Africa	Federation of Malaysia	New Zealand	Holland	Italy	Japan	Reunion	United States of America
1960	159.5	10.0	0.5	0.7	-	1.0	-	1.5	1.4	-
1961	235.9	36.4	0.5	-	0.2	0.1	-	2.3	1.5	3.5
1962	251.0	22.3	2.1	0.1	0.6	2.0	0.5	3.0	1.2	9.2
1963	290.7	66.7	1.2	0.1	0.4	0.1	8.4	0.6	1.8	47.8
1964	272.7	57.1	2.3	4.0	0.3	1.6	11.8	0.2	1.0	5.4
1964 : 1st Qr.	62.2	-	0.7	-	0.1	-	11.0	0.1	0.2	1.5
2nd Qr.	14.3	-	0.4	-	0.1	1.5	0.4	0.1	0.3	-
3rd Qr.	81.9	36.4	0.1	4.0	-	-	-	-	0.2	2.2
4th Qr.	114.3	20.7	1.1	-	0.1	0.1	0.4	-	0.3	1.6
1965 : 1st Qr.	9.7	-	0.2	-	0.3	-	-	-	0.4	0.8
2nd Qr. ⁺	4.7	-	4.2	-	0.1	0.1	-	-	0.5	2.0

* excluding value of sugar quota certificates.

⁺ provisional.

Table 26 - Imports: Values

Period	Rs Million c.i.f.												
	Total	Food	Beverages and tobacco	Crude materials inedible, except fuels	Mineral fuels, lubricants etc.	Animal and vegetable oils and fats	Chemicals	Manufactured goods classified chiefly by machinery and transport equipment	Miscellaneous manufactured articles	Miscellaneous transactions & commodities r.e.s			
1960	331.9	85.2	8.1	7.4	13.2	10.3	34.4	86.9	58.5	27.3	0.6		
1961	324.0	88.9	8.4	8.2	11.7	10.3	36.0	76.0	53.7	29.9	0.9		
1962	322.7	93.0	8.1	6.3	15.5	10.7	37.2	70.9	45.4	34.9	0.7		
1963	333.1	94.7	7.9	5.6	14.2	12.1	39.7	70.8	55.7	31.7	0.8		
1964	388.9	105.9	7.4	6.5	17.0	11.3	46.4	88.5	70.3	35.5	0.1		
1964 : 1st Qr.	76.4	19.6	1.3	1.1	3.9	2.7	8.4	18.8	13.7	6.8	0.1		
2nd Qr.	96.9	27.2	1.6	1.7	4.5	2.8	9.3	22.5	18.6	8.7	-		
3rd Qr.	108.8	28.4	2.0	2.0	4.5	3.8	16.3	24.5	18.2	8.9	-		
4th Qr.	106.8	30.7	2.5	1.7	4.1	2.0	12.5	22.7	19.6	11.0	-		
1965 : 1st Qr.	88.2	25.5	1.5	1.6	5.0	4.8	8.5	21.0	13.4	6.8	0.1		
2nd Qr. ⁺	97.6	25.3	1.9	1.6	3.2	2.7	11.5	22.7	19.8	8.7	0.1		

⁺ provisional

Table 27 - Imports of merchandise: selected commodities - values

Period	Rice	Wheat flour	Alcoholic beverages	Petroleum products	Vegetable edible oils	Fertilizers, manufactured	Cotton fabrics	Other textile fabrics	Cement	Iron and steel goods	Manufactures of metals n.e.s.	Machinery, other than electric	Electric machinery, apparatus and appliances	Road motor vehicles and parts
1960	33.0	10.0	6.0	12.9	9.7	13.2	12.1	5.9	9.9	23.0	12.8	21.6	19.6	15.5
1961	36.8	9.4	6.8	10.9	9.8	12.7	12.2	6.5	9.1	13.8	11.8	20.2	17.5	13.8
1962	37.3	11.6	6.4	15.0	10.0	14.9	12.7	5.6	8.8	11.1	9.6	18.2	12.0	13.8
1963	38.5	12.1	5.9	13.8	11.5	16.4	12.1	6.5	7.4	9.0	12.0	17.8	22.0	13.8
1964	39.2	13.5	5.6	16.6	10.8	19.4	13.5	8.7	9.1	15.6	13.4	30.0	18.5	19.3
1964 : 1st Qr.	5.2	2.8	0.9	3.9	2.6	2.3	2.9	1.9	2.2	3.2	2.7	4.9	3.2	4.9
2nd Qr.	10.1	2.3	1.2	4.3	2.6	3.0	3.7	2.1	2.5	3.6	3.5	7.6	4.5	5.6
3rd Qr.	12.2	4.1	1.4	4.4	3.7	8.3	3.6	2.3	2.7	4.2	4.0	7.0	5.5	5.3
4th Qr.	11.7	4.3	2.1	4.0	1.9	5.8	3.3	2.4	1.7	4.6	3.2	10.5	5.3	3.4
1965 : 1st Qr.	10.6	3.2	0.9	4.9	4.7	1.5	2.7	2.0	3.1	3.8	2.8	5.5	3.9	3.7
2nd Qr. ⁺	9.6	3.5	1.3	3.1	2.6	3.7	2.7	1.6	2.2	3.9	3.5	9.9	5.4	4.0

⁺ provisional.

Table 28 - Imports of merchandise: selected commodities - quantities

Period	Rice	Wheat flour	Vegetable edible oils	Fertilizers manufactured	Cotton fabrics	Other textile fabrics	Cement	Iron and steel goods
	Thousand M/Tons	Thousand M/Tons	Thousand M/Tons	Thousand M/Tons	Million Sq.metres	Million Sq. metres	Thousand M/Tons	Thousand M/Tons
1960	60.6	23.9	7.1	51.3	9.1	2.4	94.6	26.7
1961	67.2	22.7	6.5	50.3	9.0	2.8	91.8	16.8
1962	68.2	26.6	6.8	62.7	10.0	2.5	95.2	14.2
1963	69.7	28.2	8.2	66.7	9.6	2.0	80.4	12.9
1964	68.1	28.6	7.5	69.3	10.2	3.0	103.1	21.3
1964 : 1st Qr.	8.9	6.1	1.8	9.5	2.2	0.7	25.4	4.7
2nd Qr.	18.4	5.0	1.8	10.7	2.9	0.7	27.7	5.0
3rd Qr.	20.8	8.5	2.7	28.0	2.6	0.8	30.1	5.6
4th Qr.	19.9	9.0	1.2	21.1	2.5	0.9	19.9	6.0
1965 : 1st Qr.	18.3	7.3	2.7	6.1	2.2	0.8	28.1	5.1
2nd Qr. ⁺	16.6	8.2	1.5	10.8	2.1	0.5	24.2	5.5

⁺ provisional.

Table 29 - Imports: Main sources of supply - values

Period	Rs Million c.i.f.											
	United Kingdom	Australia	Burma	Hong-Kong	India	Republic of South Africa	Western Germany	Iran	Japan	Siam	France	United States of America
1960	115.9	23.0	26.8	9.4	13.5	21.7	13.0	9.7	13.4	8.8	13.0	9.5
1961	104.8	22.4	28.9	9.7	13.8	27.1	15.0	8.2	9.7	10.0	12.9	7.6
1962	90.2	22.1	34.5	11.7	14.0	34.7	13.1	12.4	10.1	4.7	15.4	7.8
1963	94.2	19.3	34.7	11.7	13.0	30.8	13.0	10.3	9.7	4.3	17.2	9.0
1964	115.2	30.6	26.5	12.3	16.3	32.3	13.7	11.3	15.6	13.9	17.2	11.4
1964 : 1st Qr.	24.6	5.8	3.1	2.4	3.7	7.5	2.8	3.0	2.6	2.3	3.4	2.6
2nd Qr.	26.1	6.5	9.0	3.9	4.7	9.3	3.2	3.3	3.3	1.5	3.4	2.5
3rd Qr.	32.8	8.0	4.2	2.8	3.9	8.2	4.8	3.5	4.5	8.3	4.6	3.3
4th Qr.	31.8	10.3	10.2	3.2	4.0	7.3	2.9	1.6	5.3	1.8	5.8	3.1
1965 : 1st Qr.	24.8	4.0	5.5	2.3	3.0	9.2	2.9	3.1	3.8	5.5	4.7	3.0
2nd Qr.	28.0	6.0	2.2	2.6	3.0	9.8	3.6	1.7	3.1	7.6	6.9	3.6

+ provisional

IV. TRANSPORT AND COMMUNICATION

Table 30 - Road Transport

End of period	Grand Total	Private Vehicles			Commercial Vehicles				Government owned vehicles		
		Total	Cars	Motor cycles	Other	Total	Taxi-cars	Buses		Lorries	Other
1960	14,083	9,181	7,649	1,092	440	4,401	1,274	447	1,901	779	501
1961	15,669	10,026	8,273	1,236	517	5,079	1,270	466	2,390	953	564
1962	16,673	10,847	8,860	1,400	587	5,224	1,194	498	2,470	1,062	602
1963	18,092	12,020	9,640	1,621	759	5,446	1,284	519	2,561	1,082	626
1964	20,093	13,536	10,709	1,914	913	5,899	1,389	590	2,672	1,248	658
1964 : 1st Qr.	18,577	12,213	9,934	1,706	573	5,734	1,297	518	2,590	1,329	630
2nd Qr.	19,158	13,037	10,208	1,762	1,067	5,482	1,338	564	2,645	935	639
3rd Qr.	19,740	13,298	10,624	1,835	839	5,790	1,266	537	2,686	1,301	652
4th Qr.	20,093	13,536	10,709	1,914	913	5,899	1,389	590	2,672	1,248	658
1965 : 1st Qr.	20,607	13,965	11,014	1,989	962	5,950	1,402	595	2,679	1,274	692
2nd Qr.	21,168	14,332	11,234	2,063	1,035	6,100	1,421	604	2,718	1,357	736

Table 31 - Sea Borne Shipping

Period	Vessels entering		Vessels leaving		Goods	
	Number	Net registered tonnage	Number	Net registered tonnage	Unloaded	Loaded ⁺
		Thousand M/Tons		Thousand M/Tons	Thousand M/Tons	Thousand M/Tons
1960	371	1,251	369	1,253	479	366
1961	418	1,510	419	1,508	478	604
1962	467	1,494	464	1,489	517	647
1963	493	1,593	487	1,601	466	701
1964	731	1,900	730	1,906	578	712
1964 : 1st Qr.	147	505	153	522	119	127
2nd Qr.	149	395	148	386	140	39
3rd Qr.	209	528	207	512	162	260
4th Qr.	226	471	222	486	157	287
1965 : 1st Qr.	159	385	166	383	134	44
2nd Qr.	147	337	145	344	110	46

⁺including bunkers

Table 32 - Civil Aviation

Period	Number of movements		Passengers		Freight	
	Landings	Take offs	Set down	Picked up	Unloaded	Loaded
					M/Tons	M/Tons
1960	251	250	6,312	6,311	89.5	21.1
1961	287	288	7,545	7,775	201.6	70.8
1962	377	376	10,351	11,179	130.9	43.4
1963	390	390	12,912	13,405	120.4	51.5
1964	431	431	15,810	16,593	152.7	53.1
1964 : 1st Qr.	92	92	3,276	3,794	32.8	9.2
2nd Qr.	108	108	3,492	3,581	48.0	16.2
3rd Qr.	124	123	5,261	5,503	35.4	13.3
4th Qr.	107	108	3,781	3,715	36.5	14.4
1965 : 1st Qr.	104	104	3,614	4,371	30.2	21.3
2nd Qr.	120	119	3,834	4,138	63.1	16.7

Note: In this table: - (1) are included only movements of commercial aircraft;
(2) each touch down and take off is counted as a separate movement;
(3) passengers in transit are excluded;
(4) freight carried by planes other than commercial are included.

VII. LAND UTILISATION

Table 33 - Total area classified by utilisation

	Acres				
	1960	1961	1962	1963	1964
<u>Agriculture:</u>	225,200	226,300	229,400	228,700	231,000
Sugar	208,100	209,800	213,800	213,000	215,800
Aloe fibre (effective area)	2,000	2,200	1,100	1,000	900
Tea	4,400	4,400	4,900	5,300	5,800
Tobacco	1,000	900	700	800	500
Foodcrops	2,400	2,000	2,100	2,100	1,900
Vegetables	7,300	7,000	6,800	6,500	6,100
<u>Forests, scrub areas, grasslands and grazing grounds</u>	183,400	182,300	179,200	179,900	177,600
Private forestlands	15,000	15,000	15,000	15,000	15,000
Crown Forests	67,700	67,700	67,240	67,000	67,000
Pas Geometriques ^x	5,290	5,290	5,290	5,290	5,290
Natural reserves ⁺	15,500	15,500	15,500	15,500	15,500
Meadows, grasslands, scrubs, forests and grazing grounds	79,910	78,810	76,170	77,110	74,810
<u>Built on areas</u>	14,200	14,200	14,200	14,200	14,200
<u>Inland water bodies</u>	23,000	23,000	23,000	23,000	23,000
Reservoirs, crater, lakes, ponds	3,000	3,000	3,000	3,000	3,000
Natural water courses	20,000	20,000	20,000	20,000	20,000
<u>Roads - tracks[@]</u>	10,000	10,000	10,000	10,000	10,000
<u>Permanent waste lands</u>	5,000	5,000	5,000	5,000	5,000
TOTAL ISLAND AREA	460,800	460,800	460,800	460,800	460,800

^xLeased crownlands in the coastal belt.

⁺Privately owned mountain and river reserves protected by law.

[@]Estimated - including roads in agricultural lands.

VIII. LOCAL PRODUCTION

Table 34 - Production of specific commodities

Period	Sugar cane Thousand M/Tons	Sugar Thousand M/Tons	Molasses Thousand M/Tons	Alcohol (Total) @ 100° GL Hectolitre	Tea M/Tons	Tobacco leaf M/Tons	Cigarettes M/Tons	Rum ^x Hectolitre	Country liquor Hectolitre	Beer Hectolitre	Sacks Thousand units	Electricity generated Mn Kwh
1960	2,335.5	235.8	73.0	19,536	786.0	459.8	618.3	16,096	49,517	-	1,270.0	54.6
1961	4,943.0	553.3	139.2	14,148	1,274.2	447.9	584.4	14,159	55,644	-	1,422.7	63.2
1962	4,624.5	532.8	125.6	15,460	1,269.8	424.4	576.7	14,440	57,812	-	1,500.2	77.2
1963	5,746.7	685.6	150.1	17,360	1,477.2	457.7	576.8	15,386	50,246	19,518	1,534.5	87.4
1964	4,380.5	519.0	115.3	15,380	1,392.7	462.3	603.9	15,709	45,859	36,521	1,457.6	93.3
1964: 1st Qr.	-	-	-	...	524.8	101.5	131.0	3,157	9,363	10,087	244.3	21.6
2nd Qr.	-	-	-	...	260.2	115.1	147.5	3,738	12,361	7,048	401.1	23.3
3rd Qr.	67.4	124.6	163.3	4,196	12,409	6,062	392.2	23.6
4th Qr.	540.3	121.1	162.1	4,618	11,726	13,324	419.9	24.8
1965: 1st Qr.	-	-	-	...	739.1	105.9	133.9	3,030	9,956	4,697	297.2	24.4
2nd Qr.	-	-	-	...	288.2	114.4	139.3	3,472	9,393	6,430	427.8	25.8

^x issued for local consumption at 40°-50° Gay Lussac.

IX - EDUCATION

Table 35 - Roll of pupils and students in schools and colleges

Period	PRIMARY SCHOOLS			SECONDARY SCHOOLS			
	Total	Government	Aided	Total	Government	Aided	Private
	October 1960	104,713	60,938	43,775	22,840	1,456	2,557
" 1961	113,604	66,497	47,107	24,851	1,629	2,602	20,620
" 1962	119,630	72,241	47,389	26,861	1,750	4,688	20,423
" 1963	124,049	75,672	48,377	28,134	1,945	4,900	21,289
" 1964	126,409	86,240	40,169	31,797	2,067	5,029	24,701

