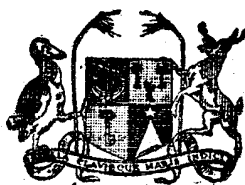


Vol. 3

No. 2



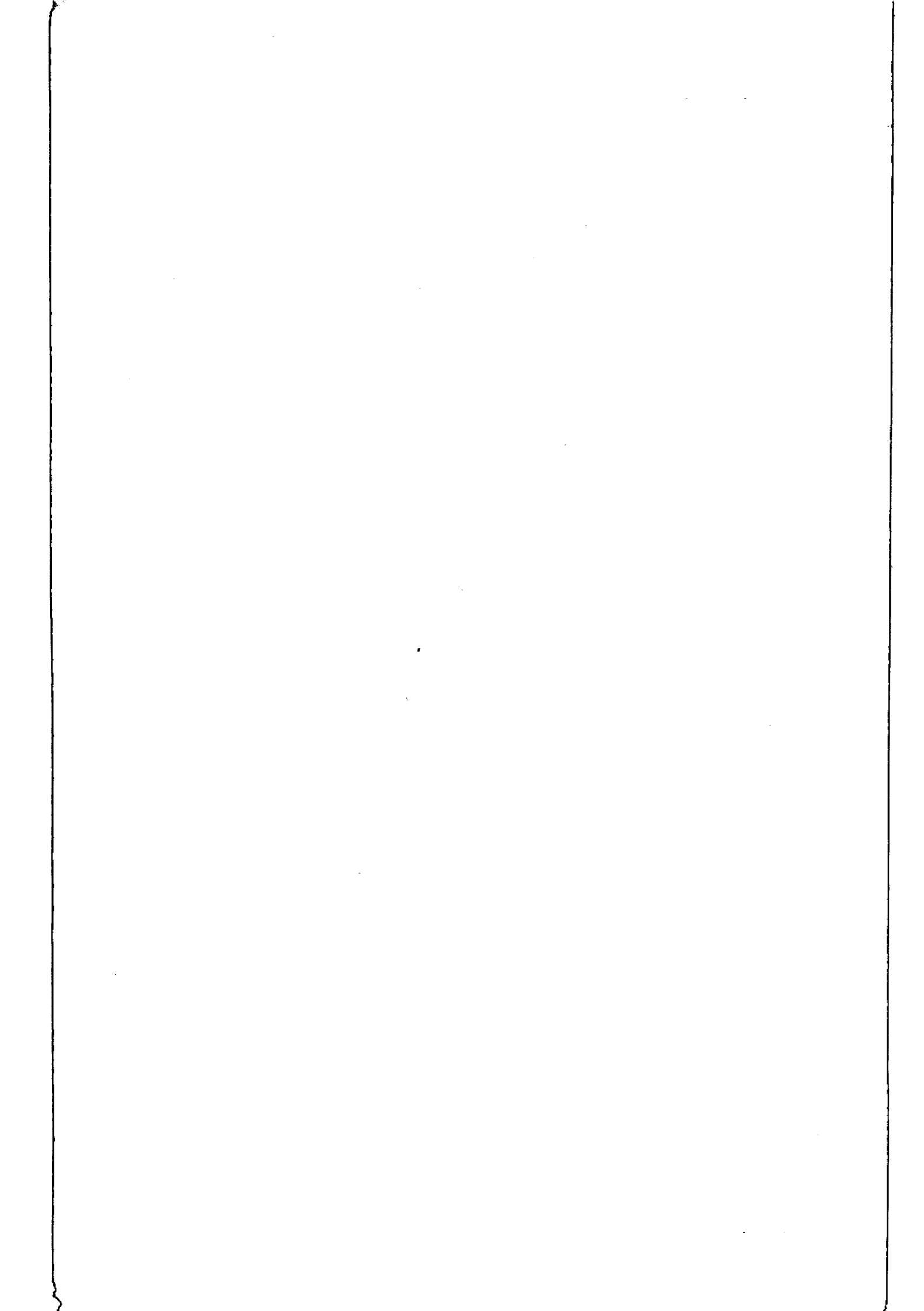
COLONY OF MAURITIUS

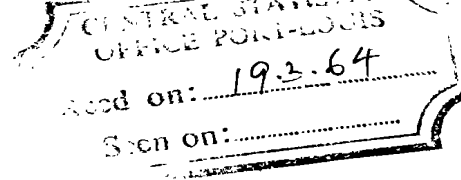
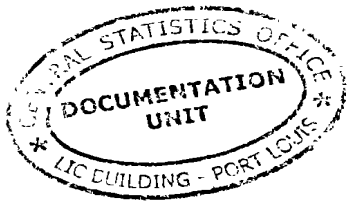
CENTRAL STATISTICAL OFFICE

**QUARTERLY
DIGEST OF STATISTICS**

June 1963

[Price : Rs 2.50]





QUARTERLY DIGEST OF STATISTICS

NOTES

The following symbols are used throughout:-

- Nil or Negligible

... Not Available

2. Some of the figures in this Digest are liable to revision in later issues.

3. Where necessary figures have been rounded off to the nearest final digit, and in some tables there may be discrepancies between the sum of the constituent items and the total as shown.

Central Statistical Office,
Mauritius.

CONTENTS

	Page
Population Census, 30th June 1962 - Total Population by sex, population group and Electoral District	I - II
Total population by population group and Geographical District	III
I. <u>POPULATION AND VITAL STATISTICS</u>	
Table 1 - Population and vital statistics	1
2 - Live births and still births	1
3 - Total deaths and infant deaths	2
4 - External migration	2
II. <u>PUBLIC HEALTH</u>	
Table 5 - Statistics of hospitals	3
6 - Notifiable, contagious or communicable diseases	4
III. <u>PUBLIC FINANCE</u>	
Table 7 - Central Government Revenue & Expenditure: Recurrent	5
8 - Central Government Revenue & Expenditure: Capital	6
9 - Government Borrowing	6
10 - Sterling Assets	7
11 - Banking Statistics: Assets of Commercial Banks	8
12 - " " : Liabilities of Commercial Banks	9
13 - " " : Assets of the Mauritius Agricultural Bank	10
14 - " " : Liabilities of the Mauritius Agricultural Bank	11
15 - Post Office Savings Bank	12
16 - Currency in Circulation	12
17 - Gross National Product	13
18 - Gross Fixed Domestic Capital Formation	14
19 - Balance of Payments	15
IV. <u>CONSUMER PRICE INDICES</u>	15A
V. <u>EXTERNAL TRADE</u>	
Table 20 - Balance of visible trade	16
21 - Quantum and price indices of exports and imports and the terms of trade	16
22 - Quantum and price indices of imports by sections	17
23 - Exports - quantities and values	18
24 - Exports - principal countries of destination - values	19
25 - Imports - values	20
26 - " - selected commodities - values	21
27 - " - " - quantities	22
28 - " - main sources of supply - values	23

CONTENTS (Cont'd)

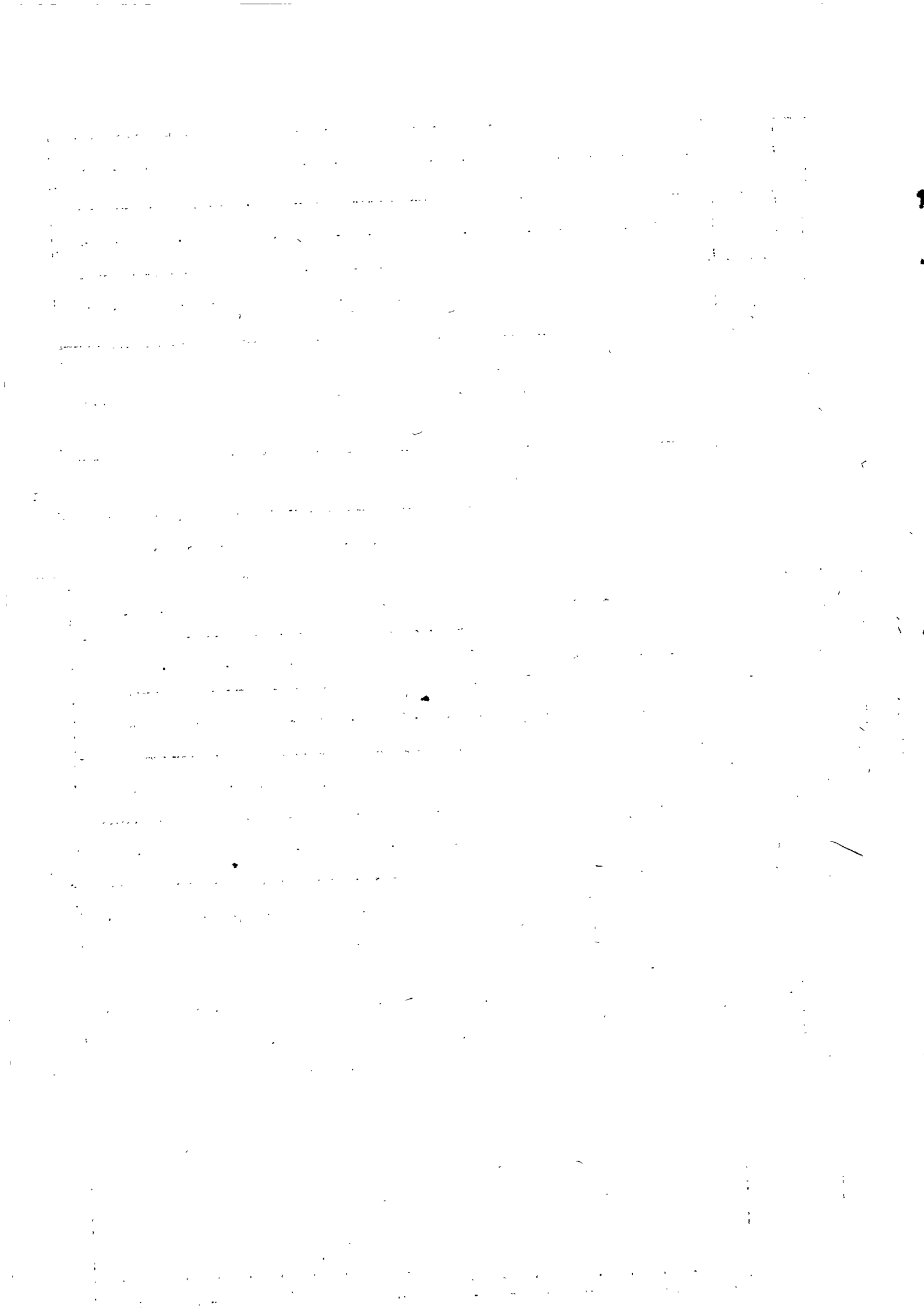
	Page
VI. <u>TRANSPORT AND COMMUNICATION</u>	
Table 29 - Road Transport	24
30 - Sea borne shipping	25
31 - Civil Aviation	25
VII. <u>LAND UTILISATION</u>	
Table 32 - Total area classified by utilisation	26
VIII. <u>LOCAL PRODUCTION</u>	
Table 33 - Production of specific commodities	27
IX. <u>EDUCATION</u>	
Table 34 - Roll of pupils and students in schools and colleges	28

COLONY OF MAURITIUS

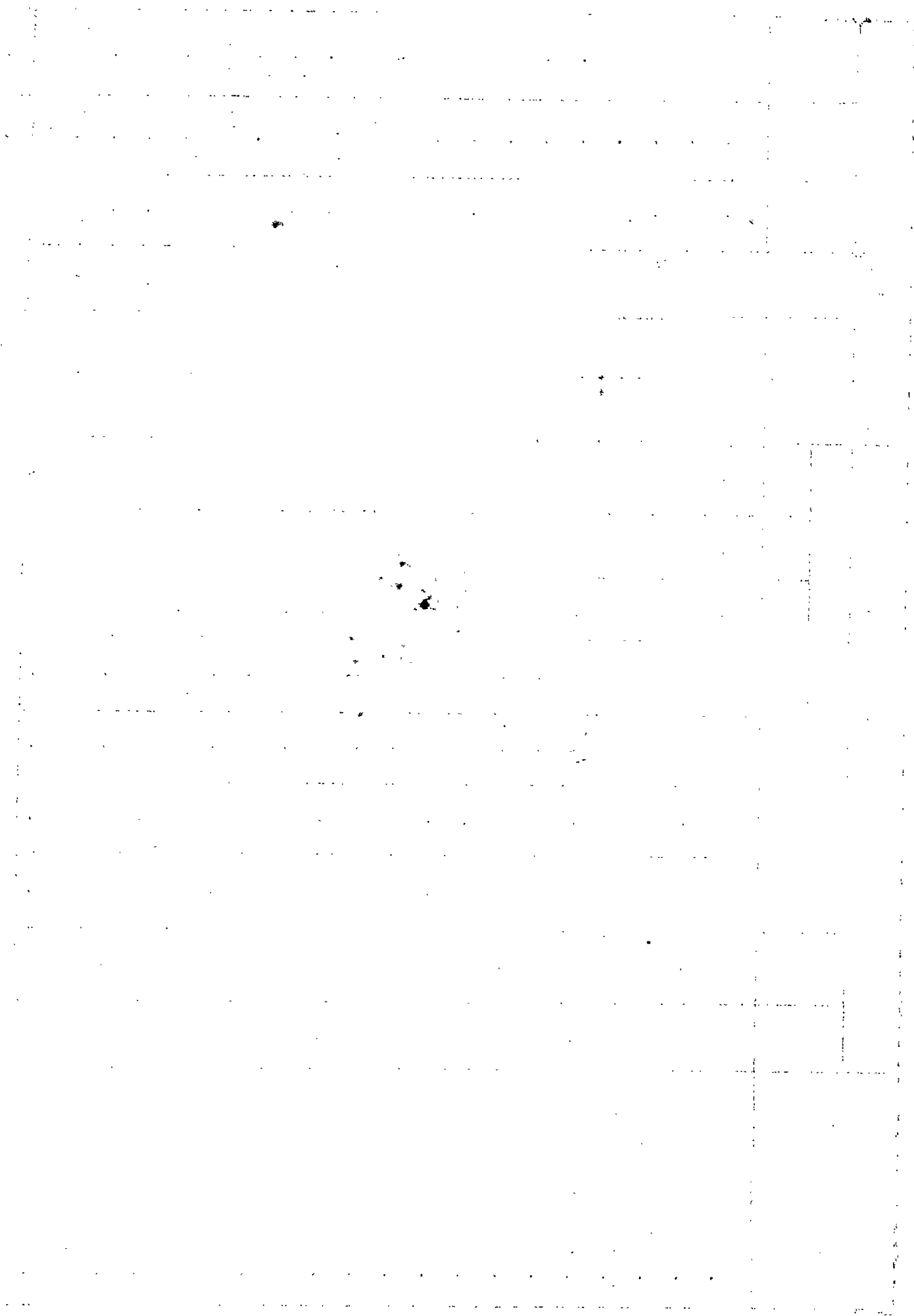
POPULATION CENSUS, 30th JUNE 1962

TOTAL POPULATION BY SEX, POPULATION GROUP AND ELECTORAL DISTRICT

	General Population			Indo - Mauritian Population						Chinese Population			Total Population		
	M	F	T	Hindu			Muslim			M	F	T	M	F	T
				M	F	T	M	F	T						
1. Grand River North West	4,401	4,427	8,828	3,416	3,296	6,712	2,188	2,039	4,227	348	305	653	10,353	10,067	20,420
2. Port Louis West	3,475	3,886	7,361	2,025	1,982	4,007	1,267	1,244	2,511	657	570	1,227	7,424	7,682	15,106
3. Port Louis South	3,338	3,650	6,988	3,507	3,407	6,914	1,168	1,228	2,396	592	612	1,204	8,605	8,897	17,502
4. Port Louis Central	1,693	2,039	3,732	1,017	996	2,013	3,437	3,317	6,754	871	816	1,687	7,018	7,198	14,216
5. Port Louis Maritime	753	834	1,587	881	901	1,782	1,266	1,239	2,505	2,425	2,097	4,522	5,325	5,071	10,396
6. Port Louis East	2,287	2,395	4,682	712	763	1,475	5,512	5,489	11,001	543	473	1,016	9,054	9,120	18,174
7. Port Louis North	3,933	4,279	8,212	1,832	1,939	3,771	2,134	2,037	4,171	791	693	1,484	8,690	8,948	17,638
8. Montagne Longue	2,096	2,171	4,267	5,910	5,724	11,634	760	700	1,460	144	117	261	8,910	8,712	17,622
9. Pamplemousses	2,232	2,254	4,486	4,901	4,809	9,710	1,287	1,262	2,549	155	110	265	8,575	8,435	17,010
10. Triolet	1,159	1,170	2,329	6,010	5,780	11,790	1,663	1,532	3,195	100	83	183	8,932	8,565	17,497
11. Grand Baie	897	972	1,869	6,218	5,802	12,020	1,637	1,608	3,245	119	73	192	8,871	8,455	17,326
12. Poudre d'Or	2,319	2,308	4,627	5,614	5,353	10,967	853	826	1,679	92	56	148	8,878	8,543	17,421
13. Piton	905	947	1,852	5,580	5,343	10,923	396	429	825	78	55	133	6,959	6,774	13,733
14. Riviere du Rempart	802	856	1,658	6,163	5,974	12,142	1,372	1,331	2,703	81	66	147	8,423	8,227	16,650
15. Flacq	2,325	2,359	4,684	7,574	7,373	14,947	677	669	1,346	186	130	316	10,762	10,531	21,293
16. Bon Accueil	1,095	1,037	2,132	7,142	6,830	13,972	1,466	1,403	2,869	91	45	136	9,794	9,315	19,109
17. Quartier Militaire	627	647	1,274	5,613	5,371	10,984	916	859	1,775	104	78	182	7,260	6,955	14,215
18. Montagne Blanche	1,154	1,091	2,245	5,492	5,454	10,946	1,985	1,981	3,966	113	108	221	8,744	8,634	17,378
19. Grand River South East	2,535	2,493	5,028	4,711	4,765	9,476	1,267	1,223	2,490	150	93	243	8,663	8,574	17,237
20. Vieux Grand Port	1,958	1,932	3,890	4,860	4,770	9,630	634	643	1,277	105	67	172	7,557	7,412	14,969



Electoral District	General Population			Indo-Mauritian Population						Chinese Population			Total Population		
	M	F	T	Hindu			Muslim			M	F	T	M	F	T
				M	F	T	M	F	T						
21. Rose Belle	1,506	1,559	3,065	6,447	5,939	12,386	1,315	1,283	2,598	174	129	303	9,442	8,910	18,352
22. Mahebourg	2,925	2,888	5,813	3,462	3,390	6,852	1,228	1,164	2,392	243	188	431	7,858	7,630	15,488
23. Plaine Magnien	1,831	1,854	3,685	5,549	5,339	10,888	837	851	1,688	132	92	224	8,349	8,136	16,485
24. Riviere des Anguilles	1,700	1,636	3,336	5,031	5,015	10,046	2,441	2,434	4,875	205	130	335	9,377	9,215	18,592
25. Souillac	1,455	1,438	2,893	4,812	4,720	9,532	1,037	933	1,970	133	102	235	7,437	7,193	14,630
26. Savanne	2,354	2,238	4,592	5,535	5,425	10,960	1,428	1,396	2,824	187	127	314	9,504	9,186	18,690
27. Black River	3,313	3,309	6,622	5,126	5,044	10,170	1,166	180	346	179	102	281	8,784	8,635	17,419
28. Vacoas	2,747	2,840	5,587	5,027	4,868	9,895	1,304	1,384	2,888	229	175	404	9,507	9,267	18,774
29. Curepipe	3,503	3,787	7,290	2,536	2,422	4,958	683	672	1,355	170	179	349	6,892	7,060	13,952
30. Midlands	3,769	4,374	8,143	2,325	2,305	4,630	1,117	1,008	2,125	354	250	604	7,565	7,937	15,502
31. Floreal	3,898	4,224	8,122	3,620	3,404	7,024	727	723	1,450	249	160	409	8,494	8,511	17,005
32. La Caverne	3,433	3,614	7,047	5,473	5,337	10,810	1,907	1,829	3,736	248	197	445	10,061	10,977	22,038
33. Phoenix	1,866	1,872	3,738	3,939	3,934	7,873	3,325	3,176	6,501	121	114	235	9,251	9,096	18,347
34. Belle Rose	2,965	3,399	6,364	3,998	3,911	7,909	604	588	1,192	157	171	328	7,724	8,069	15,793
35. Quatre Bornes	4,204	4,897	9,101	2,833	2,779	5,612	870	872	1,742	309	203	512	8,216	8,751	16,967
36. Stanley	4,598	4,783	9,381	5,556	5,378	10,934	1,169	1,118	2,287	336	272	608	11,659	11,551	23,210
37. Rose Hill	3,448	4,298	7,746	1,722	1,682	3,404	843	794	1,637	746	558	1,304	6,759	7,332	14,091
38. Moka	1,721	1,735	3,456	5,422	5,426	10,848	1,599	1,559	3,158	142	114	256	8,884	8,834	17,718
39. Beau Bassin	4,576	5,220	9,796	2,629	2,674	5,303	506	542	1,048	325	279	604	8,036	8,715	16,751
40. Petite Riviere	3,185	2,959	6,144	4,506	4,232	8,738	793	743	1,536	270	215	485	8,754	8,149	16,903
Total	98,981	104,671	203,652	174,731	169,856	344,587	155,984	154,338	110,322	12,654	10,404	23,058	342,350	339,269	681,619



TOTAL POPULATION BY POPULATION GROUP AND GEOGRAPHICAL DISTRICT

District	General Population	Indo - Mauritian Population		Chinese Population	Total Population
		Hindu	Muslim		
1. Port Louis	44,362	29,773	33,855	11,960	119,950
2. Pamplemousses	9,182	37,852	8,218	647	55,899
3. Riviere du Rempart	8,569	37,462	6,777	501	53,309
4. Flacq	13,570	48,708	9,929	854	73,051
5. Grand Port	17,220	41,241	9,342	1,220	69,023
6. Savanne	9,926	27,513	8,164	777	46,380
7. Plaines Wilhems	87,617	86,874	27,473	6,220	208,184
8. Moka	5,742	24,778	6,194	531	37,245
9. Black River	7,464	10,386	370	348	18,568
WHOLE ISLAND	203,652	344,587	110,322	23,058	681,619

I. POPULATION AND VITAL STATISTICS

Table 1 - Population and Vital Statistics

Period	Marriages	Births	Deaths	Natural Increase	Net Oversea migration	Total Increase	Estimated Population at the end of the period
1956	3,080	24,910	6,739	18,171	+ 1,020	19,191	585,175
1957	2,903	25,273	7,603	17,670	- 172	17,498	602,673
1958	3,169	24,600	7,112	17,488	- 221	17,267	619,940
1959	3,297	23,923	6,753	17,170	+ 93	17,263	637,203
1960	3,113	25,307	7,248	18,059	- 372	17,687	654,890
1961	3,484	26,092	6,505	19,587	- 1,179	18,408	673,298
1962	3,893	26,267	6,325	19,942	- 887	19,055	692,353
1962:1st Qr.	962	6,780	1,810	4,970	- 674	4,296	677,594
2nd Qr.	1,005	6,263	1,507	4,756	- 731	4,025	681,619 ⁺
3rd Qr.	914	6,786	1,550	5,236	+ 298	5,534	687,153
4th Qr.	1,012	6,438	1,458	4,980	+ 220	5,200	692,353
1963:1st Qr.	720	6,412	1,561	4,851	- 495	4,356	696,709

Revision of population estimates prior to 1962 based on data obtained from the 1962 Population Census.

+ 1962 Population Census

Table 2 - Live Births and Still Births

Period	LIVE BIRTHS			Still Births
	Total	Males	Females	
1956	24,910	12,693	12,217	1,789
1957	25,273	12,911	12,362	1,800
1958	24,600	12,419	12,181	1,703
1959	23,923	12,107	11,816	1,759
1960	25,307	12,973	12,334	1,783
1961	26,092	13,244	12,848	1,963
1962	26,267	13,395	12,872	1,841
1962:1st Qr.	6,780	3,463	3,317	487
2nd Qr.	6,263	3,172	3,091	438
3rd Qr.	6,786	3,458	3,328	452
4th Qr.	6,438	3,302	3,136	464
1963:1st Qr.	6,412	3,295	3,117	335

Table 3 - Total Deaths and Infant Deaths

Period	Total Deaths			Infant Deaths		
	Total	Males	Females	Total	Males	Females
1956	6,739	3,556	3,183	1,644	920	724
1957	7,603	4,019	3,584	1,897	1,017	880
1958	7,112	3,751	3,361	1,659	941	718
1959	6,753	3,499	3,254	1,495	821	674
1960	7,248	3,706	3,542	1,760	980	780
1961	6,505	3,359	3,146	1,618	915	703
1962	6,325	3,255	3,070	1,579	896	683
1962:1st Qr.	1,810	900	910	545	315	230
2nd Qr.	1,507	770	737	340	180	160
3rd Qr.	1,550	817	733	337	202	135
4th Qr.	1,458	768	690	357	199	158
1963:1st Qr.	1,561	784	777	432	236	196

Table 4 - External Migration⁺

Period	Arrivals			Departures			Net migration
	Total	By Sea	By Air	Total	By Sea	By Air	
1956	7,718	3,956	3,762	8,109	4,352	3,757	- 391
1957	8,095	3,811	4,284	8,267	3,956	4,311	- 172
1958	8,703	4,023	4,680	8,924	4,189	4,735	- 221
1959	9,637	4,231	5,406	9,544	4,222	5,325	+ 93
1960	10,412	4,063	6,349	10,784	4,464	6,320	- 372
1961	11,854	4,402	7,452	13,033	5,442	7,591	- 1,179
1962	15,188	4,258	10,930	16,075	4,374	11,701	- 887
1962: 1st Qr.	2,939	1,073	1,866	3,613	1,456	2,157	- 674
2nd Qr.	3,044	753	2,291	3,775	842	2,933	- 731
3rd Qr.	5,288	1,290	3,998	4,990	1,092	3,898	+ 298
4th Qr.	3,917	1,142	2,775	3,697	984	2,713	+ 220
1963: 1st Qr.	3,760	1,028	2,732	4,255	1,215	3,040	- 495
2nd Qr.	3,727	879	2,848	4,090	949	3,141	- 363

⁺Includes:- (a) The very small figure of engaged or discharged seamen;

(b) Emigrants and immigrants to and from the dependencies.

II. PUBLIC HEALTH

Table 5 - Statistics of Hospitals

Period	No. of beds	Patients in hospital on 1st day of period	Total Admissions	Deaths	Discharges	Patients remaining on last day of period
1956	2,179	1,534	30,952	1,263	29,719	1,504
1957	2,173	1,504	33,542	1,498	32,001	1,547
1958	2,214	1,547	33,767	1,363	32,371	1,580
1959	2,270	1,580	34,846	1,344	33,455	1,627
1960	2,357	1,627	34,355	1,560	32,766	1,656
1961	2,448	1,656	36,892	1,601	35,196	1,751
1962	2,453	1,751	38,130	1,628	36,480	1,773
1962: 1st Qr.	2,413	1,751	10,288	475	9,376	2,188
2nd Qr.	2,363	2,188	9,168	394	8,865	2,097
3rd Qr.	2,363	2,097	9,271	370	8,875	2,123
4th Qr.	2,453	2,123	9,403	389	9,364	1,773
1963: 1st Qr.	2,453	1,773	10,570	520	9,661	2,162
2nd Qr.	2,453	2,162	10,858	443	10,438	2,139

Date	Description	Amount
1900	Jan 1	100.00
1900	Feb 1	200.00
1900	Mar 1	300.00
1900	Apr 1	400.00
1900	May 1	500.00
1900	Jun 1	600.00
1900	Jul 1	700.00
1900	Aug 1	800.00
1900	Sep 1	900.00
1900	Oct 1	1000.00
1900	Nov 1	1100.00
1900	Dec 1	1200.00
1901	Jan 1	1300.00
1901	Feb 1	1400.00
1901	Mar 1	1500.00
1901	Apr 1	1600.00
1901	May 1	1700.00
1901	Jun 1	1800.00
1901	Jul 1	1900.00
1901	Aug 1	2000.00
1901	Sep 1	2100.00
1901	Oct 1	2200.00
1901	Nov 1	2300.00
1901	Dec 1	2400.00
1902	Jan 1	2500.00
1902	Feb 1	2600.00
1902	Mar 1	2700.00
1902	Apr 1	2800.00
1902	May 1	2900.00
1902	Jun 1	3000.00

Table 6. - Notifiable Contagious or Communicable Diseases

Disease	Typhoid Fever	Diphtheria	Acute Poliomyelitis	Puerperal Fever	Erysipelas	Cerebro- spinal meningitis	Tuberculo- sis	Leprosy	Murine Typhus
Period									
1956	149	89	31	11	4	1	414	-	-
1957	76	45	3	21	-	-	436	-	-
1958	46	67	-	4	-	-	398	-	-
1959	45	140	99	5	2	-	300	-	-
1960	114	164	1	3	2	1	313	2	-
1961	71	215	-	1	-	-	353	1	-
1962	81	151	1	-	-	-	300	-	3
1962: 1st Qr.	19	42	-	-	-	-	74	-	-
2nd Qr.	25	39	-	-	-	-	76	-	-
3rd Qr.	19	29	-	-	-	-	81	-	-
4th Qr.	18	41	1	-	-	-	69	-	3
1963: 1st Qr.	19	65	1	-	-	-	71	4	-
2nd Qr.	24	42	1	-	2	-	106	-	1

III. PUBLIC FINANCE

Table 7 - Central Government Revenue and Expenditure: Recurrent

Rs Million

Period	R E V E N U E				E X P E N D I T U R E	
	Total	Direct Taxes	Indirect Taxes	Other	Total including Debt Charges	Debt Charges
1956	116.7	41.1	55.4	20.2	130.3	6.0
1957	123.8	45.2	56.4	22.2	110.1	6.4
1958	134.3	48.6	61.3	24.4	142.8	6.5
1959	129.8	47.1	66.0	16.7	129.5	6.6
1960	141.0	43.2	79.6	18.2	145.9	7.9
1961	144.9	40.3	82.8	21.8	150.1	8.9
1962	154.8	38.3	97.2	19.3	164.9	9.3
1961: 1st Qr.	24.5	1.2	19.2	4.1	31.5	2.5
2nd Qr.	46.8	20.4	19.9	6.5	41.9	1.7
3rd Qr.	28.2	2.5	21.3	4.4	30.4	3.1
4th Qr.	45.4	16.2	22.4	6.8	46.3	1.6
1962: 1st Qr.	36.4	1.7	29.9	4.8	34.1	2.8
2nd Qr.	44.5	18.1	21.5	4.9	45.2	1.6
3rd Qr.	32.6	6.2	21.8	4.6	47.6	3.4
4th Qr.	41.3	12.3	24.0	5.0	38.0	1.5
1963: 1st Qr.	44.8	8.9	30.7	5.2	37.9	3.0
2nd Qr.	44.1	11.3	22.9	9.9	44.5	1.6

Table 8 - Central Government Revenue and Expenditure:Capital

Rs. Million

Period	R E V E N U E					Total Expenditure
	Total	Contri- butory	Grants	Loans	Other	
1956	23.6	-	21.4	2.2	-	10.1
1957	4.9	-	2.0	2.9	-	23.2
1958	7.7	6.5	0.6	-	0.6	28.2
1959	20.3	1.8	0.9	15.9	1.7	29.8
1960	32.6	14.0	2.0	15.4	1.2	45.8
1961	43.1	12.0	18.3	12.0	0.8	47.4
1962	43.8	12.0	13.3	18.3	0.2	62.9
1962: 1st Qr.	7.5	-	3.4	3.9	0.2	9.8
2nd Qr.	12.5	-	5.9	6.6	-	20.1
3rd Qr.	16.5	12.0	1.2	3.3	-	15.8
4th Qr.	7.3	-	2.8	4.5	-	17.2
1963: 1st Qr.	13.4	-	5.3	8.1	-	13.5
2nd Qr.	27.4	-	2.7	24.1	0.6	17.5

Table 9 - Central Government Indebtedness

Rs. Million

Period	Amount outstanding at beginning of period	B O R R O W I N G			Repayments
		Total	Internal	External	
1956	99.0	-	-	-	0.5
1957-58	98.5	-	-	-	0.5
1958-59	98.0	0.5	0.5	-	0.5
1959-60	98.0	29.8	29.8	-	0.5
1960-61	127.3	16.9	9.3	7.6	0.5
1961-62	143.7	13.5	8.0	5.5	0.5
1962: Jan.-March	146.3	5.7	4.4	1.3	-
April-June	152.0	4.7	0.5	4.2	-
July-Sept.	156.7	3.9	3.9	-	7.0
Oct.-Dec.	153.6	3.5	3.1	0.4	-
1963: Jan.-March	157.1	7.6	2.1	5.5	0.4
April-June	164.3	24.2	15.5	8.7	0.1

Table 10 - Sterling Assets
(end of period)

Rs Million

Period	INVESTMENTS (Nominal Value)					LIQUID ASSETS (Cash and money at call)					
	Government	Semi Governmental Institutions	Currency Backing	Post Office Savings Bank	Total	Government	Semi Governmental Institutions	Currency Backing	Post Office Savings Bank	Total Government & Semi Governmental Institutions	Net Balances of Banks due from banks abroad
1956	50.4	86.2	62.2	26.1	224.9	36.4	-	6.5	-	42.9	76.2
1957	55.6	88.9	62.3	26.7	233.5	34.5	0.9	12.1	-	47.5	112.1
1958	51.7	92.2	63.9	26.3	234.1	30.3	20.6	16.8	1.5	69.2	67.1
1959	52.0	64.7	60.1	26.3	203.1	20.4	49.9	28.8	4.1	103.2	52.4
1960	42.9	79.4	66.0	26.3	214.6	18.3	- 2.3	15.5	4.1	35.6	16.2
1961	26.4	64.8	60.5	25.8	177.5	24.1	- 42.8	26.8	2.2	10.3	35.1
1962	29.4	20.5	59.6	23.3	132.8	3.0	- 7.1	28.7	2.1	26.7	20.9
1962: 1st Qr.	27.6	60.7	60.0	25.8	174.1	27.5	- 38.9	20.8	2.2	11.6	3.9
2nd Qr.	28.8	60.7	60.0	25.8	175.3	20.7	- 40.2	19.2	1.4	1.1	- 59.7
3rd Qr.	28.9	30.7	59.8	25.8	145.2	8.3	- 12.8	21.3	1.4	18.2	- 61.6
4th Qr.	29.4	20.5	59.6	23.3	132.8	3.0	- 6.5	28.7	2.1	27.3	21.0
1963: 1st Qr.	30.3	20.5	53.3	23.2	127.3	6.3	- 8.3	31.5	2.7	32.2	- 4.3
2nd Qr.	31.4	20.5	46.7	23.2	121.8	18.4	- 8.4	21.0	2.7	33.7	- 82.3

Table 11 - Banking Statistics - Assets of Commercial banks

Rs Million

Period	Total	Cash	Balances due by			Loans and Advances			Investments		Other Assets	
			Other Banks in the colony	Banks abroad	Primary Products	Other Industries	Other Advances	Local	Abroad	Bills discounted and bills receivable	Other	
1956:31st Dec.	140.4	6.2	2.5	77.4	10.9	15.5	20.1	2.5	2.1	-	3.2	
1957: "	188.6	6.9	1.8	113.9	12.0	18.2	25.1	5.5	2.0	-	3.2	
1958: "	181.6	4.9	7.6	69.2	19.1	30.0	9.0	5.5	2.0	-	34.3	
1959: "	186.3	7.2	7.1	54.4	25.9	31.0	9.7	5.5	2.0	7.2	36.3	
1960: "	194.2	7.5	2.3	26.4	45.0	45.0	13.6	5.5	2.0	13.8	33.1	
1961: "	241.2	6.0	3.0	57.1	53.3	45.7	21.8	5.0	2.0	11.8	35.5	
1962: "	229.2	6.4	0.9	46.4	57.4	44.0	20.9	5.0	2.0	10.7	35.5	
1962:31st March	229.3	7.6	0.9	35.4	65.0	47.4	18.2	5.0	2.0	10.6	37.2	
30th June	239.1	8.1	1.3	5.7	95.8	46.9	27.8	5.0	2.0	12.5	34.0	
30th Sept.	236.8	5.6	1.6	5.9	94.1	56.3	16.9	5.0	2.0	12.5	36.9	
31st Dec.	229.2	6.4	0.9	46.4	57.4	44.0	20.9	5.0	2.0	10.7	35.5	
1963:31st March	230.8	6.9	2.0	31.0	69.8	50.4	16.5	5.0	2.0	10.7	36.5	
30th June	256.5	6.8	1.2	6.2	106.2	49.2	24.3	5.4	2.0	15.0	40.2	

1. The first part of the document discusses the importance of maintaining accurate records of all transactions and activities. It emphasizes that this is essential for ensuring transparency and accountability in the organization's operations.

2. The second part of the document outlines the various methods and tools used to collect and analyze data. It highlights the need for consistent data collection procedures and the use of advanced analytical techniques to derive meaningful insights from the data.

3. The third part of the document focuses on the role of technology in data management and analysis. It discusses how modern software solutions can streamline data collection, storage, and processing, thereby improving efficiency and accuracy.

4. The fourth part of the document addresses the challenges associated with data management, such as data quality, security, and privacy. It provides strategies to mitigate these risks and ensure that the data remains reliable and secure throughout its lifecycle.

5. The fifth part of the document concludes by summarizing the key findings and recommendations. It stresses the importance of a data-driven approach in decision-making and the need for continuous monitoring and improvement of the data management process.

Table 12 - Banking Statistics - Liabilities of Commercial banks

Rs Million

Period	Total	Notes in Circulation	D E P O S I T S			Balances due to		Other Liabilities
			Demand	Time	Savings	Other banks in the colony	Banks abroad	
1956:31st Dec.	140.4	-	99.9	13.9	15.2	2.6	1.2	17.6
1957: "	188.6	-	127.1	32.2	6.3	2.6	1.8	18.6
1958: "	181.6	-	107.8	16.2	8.5	4.5	2.1	42.5
1959: "	186.3	-	115.0	5.1	10.5	2.6	2.0	51.1
1960: "	194.2	-	113.3	3.0	11.6	2.7	10.2	53.4
1961: "	241.2	-	143.5	3.6	12.5	3.7	22.0	55.9
1962: "	229.2	-	124.5	7.3	15.2	1.3	25.5	55.4
1962:31st March	229.3	-	104.6	22.5	13.0	1.1	31.5	56.6
30th June	239.1	-	97.3	8.8	12.8	2.0	65.4	52.8
30th Sept.	236.8	-	91.4	5.9	14.1	2.3	67.5	55.6
31st Dec.	229.2	-	124.5	7.3	15.2	1.3	25.5	55.4
1963:31st March	230.8	-	106.3	15.0	16.3	2.5	35.3	55.4
30th June	256.5	-	81.8	8.2	17.1	1.8	88.5	59.1

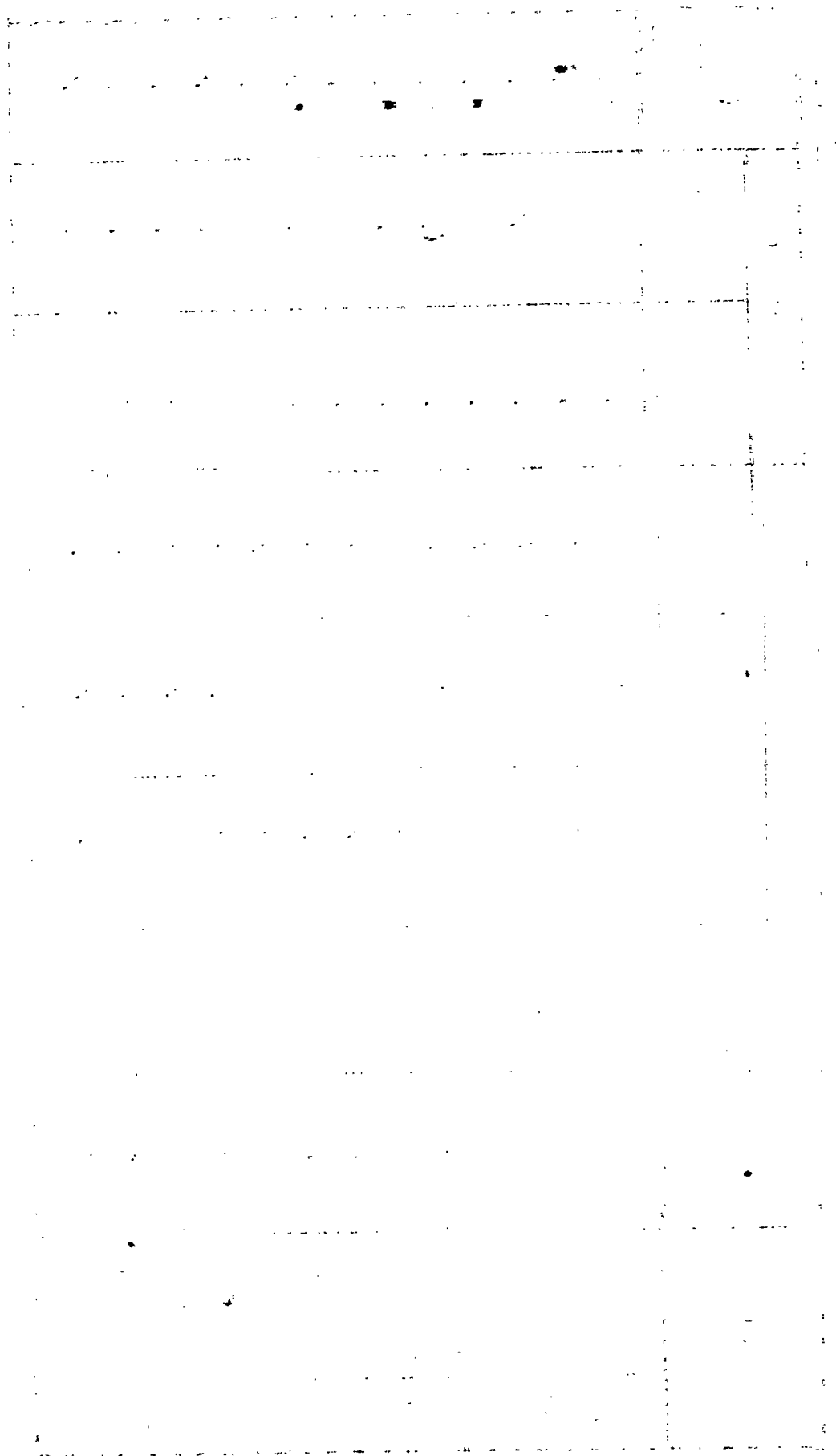


Table 13 - Banking Statistics - Assets of the Mauritius Agricultural Bank and the Mauritius Housing Corporation

Rs Million

Period	Total	Cash	Balances due by		Loans and Advances			Investments		Other Assets
			Other banks in the colony	Banks abroad	Primary products	Other Industries	Other Advances	Local	Abroad	
1956:31st Dec.	39.5	0.3	1.4	-	25.8	-	8.3	0.5	0.6	2.6
1957: " "	40.2	0.1	0.3	-	25.9	0.4	8.8	0.8	0.4	3.5
1958: " "	42.4	0.1	0.7	-	26.5	0.8	9.4	0.8	0.5	3.6
1959: " "	42.6	0.1	0.6	-	26.0	0.8	10.0	0.8	0.6	3.7
1960: " "	40.0	0.1	0.9	-	25.5	0.8	9.7	0.8	0.7	1.5
1961: " "	42.4	-	0.9	-	25.2	0.8	11.8	0.9	0.7	2.1
1962: " "	46.3	-	1.6	-	24.4	0.8	14.0	1.0	0.9	3.6
1962:31st March	42.3	-	0.3	-	25.0	0.8	12.5	0.9	0.7	2.1
30th June	44.2	-	1.7	-	24.9	0.7	12.9	1.0	0.9	2.1
30th Sept	45.0	-	0.9	-	24.8	0.7	13.7	1.0	0.9	3.0
31st Dec.	46.3	-	1.6	-	24.4	0.8	14.0	1.0	0.9	3.6
1963:31st March	45.0	-	1.5	-	24.2	0.8	14.1	1.0	0.9	2.5
30th June	45.7	0.1	1.9	-	24.0	0.9	14.2	1.1	0.9	2.6

1. The first part of the document discusses the importance of maintaining accurate records of all transactions. It emphasizes that proper record-keeping is essential for the integrity of the financial system and for the ability to detect and prevent fraud. The text notes that without reliable records, it would be difficult to verify the accuracy of financial statements and to identify any irregularities.

2. The second part of the document focuses on the role of internal controls in ensuring the reliability of financial information. It describes how internal controls are designed to prevent errors and to detect any misstatements or fraud that may occur. The text highlights the importance of a strong internal control system in maintaining the trust of investors and other stakeholders in the financial statements.

3. The third part of the document discusses the impact of external audits on the financial reporting process. It explains that external audits provide an independent assessment of the accuracy and reliability of the financial statements. The text notes that external audits are a key component of the financial reporting process and that they help to ensure that the financial statements are prepared in accordance with the applicable accounting standards.

4. The fourth part of the document discusses the importance of transparency and disclosure in financial reporting. It emphasizes that companies should provide clear and concise information about their financial performance and position. The text notes that transparency and disclosure are essential for investors and other stakeholders to make informed decisions about the company.

5. The fifth part of the document discusses the role of the accounting profession in maintaining the integrity of the financial system. It describes how accountants are responsible for preparing and auditing financial statements and for ensuring that they are prepared in accordance with the applicable accounting standards. The text notes that the accounting profession plays a vital role in maintaining the trust of investors and other stakeholders in the financial system.

Table 14 - Banking Statistics - Liabilities of the Mauritius Agricultural and the Mauritius Housing Corporation

Rs Million

Period	Total	Notes in Circulation	Deposits			Balances due to		Other Liabilities
			Demand	Time	Savings	Other banks in the colony	Banks abroad	
1956: 31st Dec.	39.5	-	-	4.8	1.8	-	-	32.9
1957: "	40.2	-	-	5.0	1.8	-	-	33.4
1958: "	42.4	-	-	5.4	2.0	-	-	35.0
1959: "	42.6	-	-	5.1	2.1	-	-	35.4
1960: "	40.0	-	-	4.9	2.1	-	-	33.0
1961: "	42.4	-	0.7	7.0	2.1	-	-	32.6
1962: "	46.3	-	0.7	9.6	2.0	-	-	34.0
1962: 31st March	42.3	-	1.0	7.3	2.2	-	-	31.8
30th June	44.2	-	0.8	8.4	2.1	-	-	32.9
30th Sept.	45.0	-	1.0	8.4	2.1	-	-	33.5
31st Dec.	46.3	-	0.7	9.6	2.0	-	-	34.0
1963: 31st March	45.0	-	0.6	9.4	2.0	-	-	33.0
30th June	45.7	-	0.5	9.4	2.0	-	-	33.8

[The page contains extremely faint, illegible text that appears to be bleed-through from the reverse side of the document. The text is organized into several horizontal lines and is mostly obscured by noise and low contrast.]

Table 15 - Post Office Savings Bank

Period	Deposits	Withdrawals	Accumulated balance	Number of Accounts
	during period		at the end of period	
	Rs Mn.	Rs Mn.	Rs Mn.	
1956	13.3	15.2	27.4	...
1957	13.2	13.8	27.5	...
1958	14.8	13.8	29.1	...
1959	17.2	14.9	32.1	...
1960	15.3	16.9	31.3	...
1961	11.9	13.4	30.4	...
1962	13.9	15.3	29.8	...
1962: 1st Qr.	3.6	3.9	30.2	...
2nd Qr.	2.6	3.5	30.0	83.857
3rd Qr.	3.8	4.2	29.7	...
4th Qr.	3.9	3.7	29.8	...
1963: 1st Qr.	3.5	3.4	29.9	...
2nd Qr.	2.6	3.1	30.2	...

Table 16 - Currency in circulation
(end of period)

Rs Million

Period	Notes	Coins	Total	Cash held by banks	Net Circulation
1956	56.9	3.7	60.6	6.2	54.4
1957	61.5	3.9	65.4	6.9	58.5
1958	65.6	4.3	69.9	4.9	65.0
1959	73.2	4.6	77.8	7.2	70.6
1960	73.1	4.5	77.6	7.5	70.1
1961	77.7	4.5	82.2	6.0	76.2
1962	77.3	4.9	82.2	6.4	75.8
1962: 1st Qr.	71.4	4.3	75.7	7.6	68.1
2nd Qr.	68.9	4.3	73.2	8.1	65.1
3rd Qr.	70.5	4.7	75.2	5.6	69.6
4th Qr.	77.3	4.9	82.2	6.4	75.8
1963: 1st Qr.	73.2	4.6	77.8	6.9	70.9
2nd Qr.	71.9	4.6	76.5	6.8	69.7

Table 17 - Industrial Origin of Gross National Product

At current factor cost

Rs Million

	1956	1957	1958	1959	1960	1961 ⁺
1. Agriculture, forestry, hunting and fishing	201	197	189	205	112	182
2. Mining and quarrying	1	1	1	1	1	1
3. Manufacturing	130	129	107	117	70	131
4. Construction	28	31	32	34	35	50
5. Electricity, gas, water and sanitary services	9	10	11	12	12	14
6. Transportation, storage and communication	74	78	82	90	84	97
7. Wholesale and retail trade	60	65	68	65	67	73
8. Banking, insurance and real estate	11	11	12	12	13	14
9. Ownership of dwellings	42	44	45	47	42	50
10. Public administration and defence	20	22	24	27	27	27
11. Services	48	54	59	64	69	71
GROSS DOMESTIC PRODUCT AT FACTOR COST	624	642	630	674	532	710
Net factor income from abroad	3	4	4	7	10	- 5
GROSS NATIONAL PRODUCT AT FACTOR COST	627	646	634	681	542	705

⁺provisional

Table 18 - Composition of Gross Fixed Domestic Capital Formation
(at current prices)

Rs Million

	1957	1958	1959	1960	1961 ⁺	1962 [@]
A. By type of capital good						
a. Land ^x	3	3	2	3	3	2
b. Dwellings	21	21	25	30	42	42
c. Non-residential buildings	14	12	13	13	18	14
d. Other construction and works	16	18	24	23	29	37
e. Transport equipment	12	17	15	19	18	16
(i) Passenger cars	4	5	4	6	5	5
(ii) Other equipment	8	12	11	13	13	11
f. Machinery and other equipment	28	44	44	46	39	30
GROSS FIXED DOMESTIC CAPITAL FORMATION	94	115	123	134	149	141
B. By industrial use						
a. Agriculture, forestry and fishing	7	16	17	13	7	9
b. Mining and quarrying	-	-	-	-	-	-
c. Manufacture	20	28	28	27	25	20
d. Construction	24	20	19	22	37	38
e. Electricity, gas and water	4	7	13	12	13	10
f. Transportation, storage and communication	13	18	17	24	20	18
g. Wholesale and retail trade	1	1	1	1	1	1
h. Banking, insurance and real estate	-	-	-	-	-	-
i. Ownership of dwellings	21	21	25	30	42	42
j. Public Administration	-	-	-	-	-	-
k. Service industries	1	1	1	2	1	1
l. Legal fees, stamp duties, etc.	3	3	2	3	3	2
GROSS FIXED DOMESTIC CAPITAL FORMATION	94	115	123	134	149	141

+ Excluding the expenditure incurred on reconstruction of and abnormal repairs to buildings damaged by the 1960 cyclones and valued at 60 million rupees in 1960 and 6 million rupees in 1961.

x Including legal fees, stamp duties, agents' commissions etc., connected with the transfer of ownership of land and buildings.

@ Provisional.

Table 19 - Balance of Payments

Rs Million

	1957		1958		1959		1960		1961		1962 ⁺	
	Receipts	Payments	Receipts	Payments	Receipts	Payments	Receipts	Payments	Receipts	Payments	Receipts	Payments
Goods and Services	360.6	297.8	320.2	335.8	325.8	324.9	248.5	368.5	343.0	378.2	339.3	377.0
Donations	3.5	6.0	2.5	6.1	2.6	6.2	5.8	5.7	21.2	8.8	16.7	9.8
Capital Transactions	4.4	74.3	47.7	32.5	47.7	39.8	105.8	21.4	97.9	55.5	90.4	51.5
Net Credit or Debit Balance	9.6	-	4.0	-	-	5.2	35.5	-	-	19.6	-	8.1
T O T A L	378.1	378.1	374.4	374.4	376.1	376.1	395.6	395.6	462.1	462.1	446.4	446.4

⁺ Provisional

CONSUMER PRICE INDICES(commonly called Cost of Living Indices)Base: January-June 1962 = 100

The table below gives for the period April 1962 to June, 1963, three new consumer price indices, viz:-

- (a) An index for households in urban areas;
- (b) An index for households in rural areas;
- (c) A total index for Mauritius as a whole.

They cover households whose main wage earner draws an income of less than Rs 1000 per month and are based on data obtained from a Family Budget Enquiry carried out by Mr. Wolf Scott of the centre for Urban Studies at University College, London, who was designated by the International Labour Office to advise and assist the Government in establishing these new indices.

Period	Urban	Rural	Total
	(January-June 1962=100)		
<u>1962</u>			
April	101.2	101.6	101.4
May	100.5	100.5	100.5
June	98.5	98.4	98.4
July	98.5	98.6	98.5
August	99.0	99.2	99.1
September	99.5	99.3	99.4
October	99.1	99.2	99.1
November	98.1	98.2	98.1
December	96.8	97.0	96.9
<u>1963</u>			
January	98.6	99.0	98.8
February	99.3	99.6	99.4
March	98.0	98.2	98.1
April	97.3	97.4	97.4
May	97.5	97.5	97.5
June	97.4	97.4	97.4

Table 20 - Balance of Visible Trade

Rs Million

Period	Imports (C.I.F.Value)	Exports ⁺ (F.O.B.Value)	Balance of visible trade	
			Surplus	Deficit
1956	224.1	298.1	74.0	-
1957	263.8	330.3	66.5	-
1958	299.2	288.9	-	10.3
1959	286.9	289.6	2.7	-
1960	331.9	185.0	-	146.9
1961	324.0	294.2	-	29.8
1962	322.7	305.9	-	16.8
1962:1st Qr.	74.5	17.4	-	57.1
2nd Qr.	83.3	13.8	-	69.5
3rd Qr.	81.4	131.2	49.8	-
4th Qr.	83.5	143.5	60.0	-
1963 ^x 1st Qr.	76.7	20.2	-	56.5

Table 21 - Quantum and price indices of exports and imports and terms of trade

Period	Quantum Indices		Price Indices		Terms of Trade ⁺⁺
	Export	Import	Export	Import	
1956	100	100	100	100	100
1957	110	116	101	101	100
1958	98	130	99	102	97
1959	96	132	101	97	104
1960	57	154	109	96	114
1961	98	150	101	96	105
1962	100	152	102	95	107

+ Including value of sugar quota certificates, but excluding sales value of bunker fuel and ships' stores.

For 1961 and 1962 the value of sugar quota certificates has been included in the 4th quarter.

x Provisional.

++ Ratio of export price index to import price index.

A rise in the index indicates that the terms of trade have moved in favour of Mauritius.

Table 23 - Exports - Quantities and Values

Quantity: Thousand metric tons
Value: Rs Million f. o. b.

Period	Total Value*	Re-exports Value	Domestic Exports										
			Total		Sugar		Molasses		Tea		Other		
			Quantity	Value ^x	Quantity	Value ^x	Quantity	Value	Quantity	Value	Quantity	Value	
1956	298.1	4.1	...	294.0	540.0	289.3	72.7	3.4	0.2	0.8	0.5
1957	330.3	7.5	...	322.8	585.6	314.8	72.5	5.4	0.4	2.3	6.3
1958	288.9	3.6	...	285.3	522.8	277.1	59.2	4.9	0.4	2.3	1.0
1959	289.6	4.0	...	285.6	512.0	276.9	60.0	4.8	0.5	2.7	1.2
1960	185.0	5.5	...	179.5	299.4	174.0	45.2	3.4	0.2	1.3	0.8
1961	294.2	10.5	...	283.7	505.7	272.2	64.6	5.0	0.8	4.9	1.6
1962	305.9	8.8	...	297.1	515.1	282.0	110.3	9.1	0.7	3.9	2.1
1962: 1st Qr.	17.4	0.9	...	16.5	22.5	13.1	13.8	1.1	0.3	1.6	0.7
2nd Qr.	13.8	3.1	...	10.7	13.0	7.7	16.9	1.6	0.2	1.0	0.4
3rd Qr.	131.2	2.9	...	128.3	221.9	126.0	20.4	1.6	-	6.1	0.6
4th Qr.	143.5	1.9	...	141.6	257.8	135.3	59.2	4.8	0.2	1.2	0.4
1963 [†] 1st Qr.	20.2	1.8	...	18.4	22.6	13.4	19.3	1.6	0.5	2.7	0.7

* Including value of sugar quota certificates, but excluding sales value of bunker fuel and ships' stores.

^x For 1961 and 1962 the value of sugar quota certificates has been included in the 4th Quarter.

[†] Provisional

Table 24 - Total Exports* : Principal countries of destination - values

Rs. Million f.o.b.

Period	United Kingdom	Canada	Hong-Kong	Malaya	Nyasaland	Singapore	Holland	Japan	Lebanon	United States of America
1956	223.8	54.4	-	1.7	-	0.6	0.7	-	-	-
1957	231.3	44.2	6.2	1.3	-	0.1	0.4	15.1	0.4	0.4
1958	234.1	26.6	0.5	2.1	-	1.1	1.3	0.4	3.8	0.6
1959	229.6	37.5	3.0	0.4	2.2	1.1	1.6	0.8	2.9	0.1
1960	159.5	10.0	-	0.4	0.9	0.3	1.0	1.5	-	-
1961	235.9	36.4	0.1	-	-	-	0.1	2.3	-	3.5
1962	251.0	22.3	0.3	0.1	-	-	2.0	3.0	-	9.2
1962: 1st Qr.	15.0	-	-	-	-	-	0.4	0.1	-	1.0
2nd Qr.	9.3	-	0.2	0.1	-	-	-	-	-	1.2
3rd Qr.	115.7	10.8	-	-	-	-	0.7	0.1	-	0.9
4th Qr.	110.9	11.5	-	-	-	-	0.9	2.9	-	6.1
1963 ⁺ 1st Qr.	16.3	-	-	-	-	0.1	-	0.1	-	1.5

+ Provisional

* Excluding value of sugar quota certificates.

2

1. The first part of the document discusses the importance of maintaining accurate records of all transactions. It emphasizes that this is essential for ensuring the integrity of the financial statements and for providing a clear audit trail. The document also notes that proper record-keeping is a key component of good internal control.

2. The second part of the document focuses on the role of the accounting department in the overall business operation. It highlights the need for the accounting team to work closely with other departments to ensure that all financial data is captured and recorded accurately. This includes monitoring the flow of goods and services, as well as the collection of payments and the payment of liabilities.

3. The third part of the document discusses the importance of regular financial reporting. It states that management should receive timely and accurate financial information to make informed decisions about the business. This information should include the income statement, the balance sheet, and the cash flow statement, among other things.

4. The fourth part of the document addresses the issue of budgeting and cost control. It explains that a well-defined budget is essential for setting financial goals and for monitoring the company's performance against those goals. It also discusses the importance of identifying and controlling costs to ensure that the company remains profitable.

5. The fifth part of the document discusses the importance of maintaining accurate records of all assets and liabilities. It notes that this is essential for ensuring that the company's financial statements are accurate and for providing a clear audit trail. The document also discusses the importance of regularly reviewing the company's assets and liabilities to ensure that they are properly valued and recorded.

6. The sixth part of the document discusses the importance of maintaining accurate records of all taxes and other legal obligations. It notes that this is essential for ensuring that the company is in compliance with all applicable laws and regulations. The document also discusses the importance of regularly reviewing the company's tax and other legal obligations to ensure that they are properly calculated and paid.

7. The seventh part of the document discusses the importance of maintaining accurate records of all employee salaries and benefits. It notes that this is essential for ensuring that the company's financial statements are accurate and for providing a clear audit trail. The document also discusses the importance of regularly reviewing the company's employee salaries and benefits to ensure that they are properly calculated and paid.

8. The eighth part of the document discusses the importance of maintaining accurate records of all company expenses. It notes that this is essential for ensuring that the company's financial statements are accurate and for providing a clear audit trail. The document also discusses the importance of regularly reviewing the company's expenses to ensure that they are properly recorded and controlled.

9. The ninth part of the document discusses the importance of maintaining accurate records of all company income. It notes that this is essential for ensuring that the company's financial statements are accurate and for providing a clear audit trail. The document also discusses the importance of regularly reviewing the company's income to ensure that it is properly recorded and controlled.

10. The tenth part of the document discusses the importance of maintaining accurate records of all company assets and liabilities. It notes that this is essential for ensuring that the company's financial statements are accurate and for providing a clear audit trail. The document also discusses the importance of regularly reviewing the company's assets and liabilities to ensure that they are properly valued and recorded.

Table 25 - Imports - Values

Rs Million c.i.f.

Period	Total	Food	Beverages and Tobacco	Grude materials, inedible, except Fuels.	Mineral Fuels, Lubricants, etc.	Animal and vegetable oils and fats	Chemicals	Manufactured goods classified chiefly by material	Machinery and transport equipment	Miscellaneous manufactured articles	Miscellaneous transactions and commodities n.e.s.
1956	224.1	61.0	5.4	7.9	14.2	9.0	27.3	56.3	27.8	14.9	0.3
1957	263.8	73.7	5.7	6.1	14.9	11.0	30.7	64.2	38.9	18.1	0.5
1958	299.2	88.3	7.2	6.2	13.2	7.7	29.3	66.6	58.1	22.1	0.5
1959	286.9	76.8	7.0	7.0	13.5	7.6	32.8	62.8	56.1	22.8	0.5
1960	331.9	85.2	8.1	7.4	13.2	10.3	34.4	86.9	58.5	27.3	0.6
1961	324.0	88.9	8.4	8.2	11.7	10.3	36.0	76.0	53.7	29.9	0.9
1962	322.7	93.0	8.1	6.3	15.5	10.7	37.2	70.9	45.4	34.9	0.7
1962: 1st Qr.	74.5	21.9	2.0	1.7	4.7	2.3	7.8	16.5	10.5	7.0	0.1
2nd Qr.	83.3	22.7	2.4	1.4	3.7	2.1	8.9	17.1	16.0	8.8	0.2
3rd Qr.	81.4	25.1	1.6	1.6	3.2	3.0	10.3	18.2	10.0	8.3	0.2
4th Qr.	83.5	23.4	2.2	1.5	3.9	3.2	10.2	19.1	8.9	10.9	0.2
1963 [†] 1st Qr.	76.7	23.4	1.9	1.7	4.1	3.5	7.6	17.6	9.7	6.9	0.2

[†]Provisional

Table 26 - Imports of Merchandise: selected commodities - Values

Rs Million c.i.f.

Period	Rice	Wheat Flour	Alcoholic Beverages	Petroleum products	Vegetable edible oils	Fertilizers manufactured	Cotton fabrics	Other Textile fabrics	Cement	Iron and steel goods	Manufactures of metals n.e.s.	Machinery other than electric	Electric machinery apparatus and appliances	Road Motor Vehicles and parts
1956	27.4	6.5	2.9	12.5	8.3	13.8	8.5	5.8	5.4	8.3	7.4	10.8	8.0	6.9
1957	36.1	7.9	3.4	13.1	10.4	14.5	12.5	5.5	6.3	11.4	7.6	15.6	11.6	10.3
1958	44.1	11.1	3.9	11.7	7.2	12.1	10.7	7.2	6.7	11.4	8.2	26.1	17.0	13.2
1959	32.4	7.4	4.7	12.5	7.1	14.3	11.0	6.2	7.1	10.5	7.1	21.1	20.2	13.0
1960	33.0	10.0	6.0	12.9	9.7	13.2	12.1	5.9	9.9	23.0	12.8	21.6	19.6	15.5
1961	36.8	9.4	6.8	10.9	9.8	12.9	12.2	6.5	9.1	13.8	11.8	20.2	17.5	13.8
1962	37.3	11.6	6.4	15.0	10.0	14.9	12.7	5.6	8.8	11.1	9.6	18.2	12.0	13.8
1962: 1st Qr.	8.2	2.4	1.5	4.6	2.1	2.6	3.3	1.4	1.6	2.6	2.4	4.8	2.0	3.4
2nd Qr.	9.3	2.6	1.7	3.6	2.0	2.3	2.6	1.5	1.6	2.3	2.5	6.7	4.9	4.1
3rd Qr.	10.6	3.8	1.2	3.1	2.8	4.8	3.5	1.2	3.3	2.6	2.5	3.4	2.7	3.3
4th Qr.	9.3	2.8	1.9	3.7	3.1	5.2	3.3	1.6	2.4	3.5	2.3	3.3	2.4	3.0
1963 [†] 1st Qr.	6.9	5.1	1.4	4.0	3.3	1.5	2.8	1.4	1.8	2.2	3.5	2.5	4.0	2.7

[†]Provisional

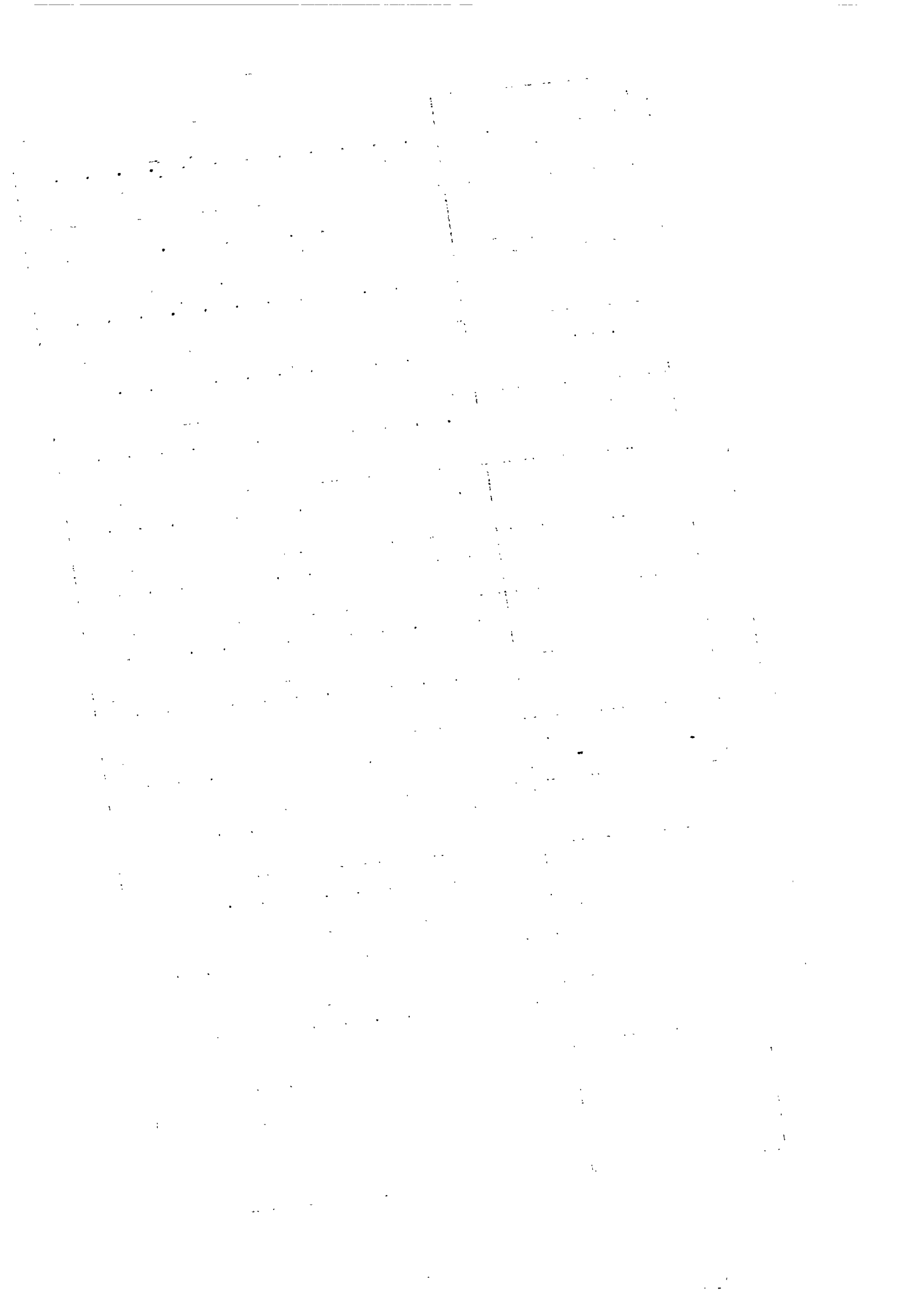


Table 27 - Imports of merchandise: selected commodities - quantities

Period	Rice Thousand M/Tons	Wheat Flour Thousand M/Tons	Vegetable edible oils Thousand M/Tons	Fertilizers manufactured Thousand M/Tons	Cotton fabrics Million Sq. Metres	Other Textile Fabrics Million Sq. Metres	Cement Thousand M/Tons	Iron and Steel goods Thousand M/Tons
1956	45.1	17.0	5.2	39.7	6.5	2.4	38.1	8.9
1957	62.1	19.3	5.6	40.7	10.6	2.5	43.0	12.7
1958	70.5	25.4	4.7	36.1	8.5	3.7	51.5	12.6
1959	57.1	17.7	5.0	50.1	9.6	3.6	62.1	12.9
1960	60.6	23.9	7.1	51.3	9.1	2.4	94.6	26.7
1961	67.2	22.7	6.5	50.3	9.0	2.8	91.8	16.8
1962	68.2	26.6	6.8	62.7	10.0	2.5	95.2	14.2
1962: 1st Qr.	15.5	5.5	1.4	10.9	2.6	0.7	17.8	3.3
2nd Qr.	17.2	6.0	1.2	9.0	1.9	0.7	17.0	3.0
3rd Qr.	18.8	8.5	1.9	20.5	2.7	0.5	34.9	3.5
4th Qr.	16.7	6.5	2.2	22.3	2.8	0.5	25.5	4.4
1963: 1st Qr.	12.4	12.0	2.5	6.6	2.5	0.5	19.6	3.4

+ Provisional

Table 28 - Imports: Main sources of supply - values

Rs million c.i.f.

Period	United Kingdom	Australia	Burma	Hong-Kong	India	Republic of South Africa	Western Germany	Iran	Japan	Siam	France	United States of America
1956	76.3	13.8	15.6	3.7	23.4	13.6	6.6	5.7	2.7	1.8	8.1	4.3
1957	93.8	17.4	35.2	5.0	14.0	19.7	9.0	9.8	3.9	3.0	11.8	5.8
1958	108.4	21.1	30.4	5.9	12.3	17.7	12.2	7.9	8.1	9.2	11.4	9.9
1959	105.9	19.5	28.6	7.1	12.7	20.0	11.9	10.6	9.2	6.2	9.4	8.5
1960	115.9	23.0	26.8	9.4	13.5	21.7	13.0	9.7	13.4	8.8	13.0	9.5
1961	104.8	22.4	28.9	9.7	13.8	27.1	15.0	8.2	9.7	10.0	12.9	7.6
1962	90.2	22.1	34.5	11.7	14.0	34.7	13.1	12.4	10.1	4.7	15.4	7.8
1962: 1st Qr.	20.9	5.0	8.2	2.0	4.2	7.9	2.2	4.3	2.0	0.3	3.6	1.6
2nd Qr.	26.0	4.7	8.7	2.6	3.2	10.5	2.8	2.7	1.9	1.1	3.7	2.6
3rd Qr.	21.0	6.5	9.2	2.9	3.3	8.1	3.8	2.5	2.7	1.9	3.8	2.5
4th Qr.	22.3	6.0	8.4	4.2	3.2	8.1	4.3	3.0	3.4	1.3	4.2	1.1
1963: 1st Qr.	21.3	4.7	5.8	2.2	4.0	9.2	2.5	2.5	2.3	1.4	5.6	1.4

†Provisional.

V. TRANSPORT AND COMMUNICATION

Table 29 - Road Transport

End of period	Grand Total	Private Vehicles			Commercial Vehicles					Government owned vehicles	
		Total	Cars	Motor Cycles	Other	Total	Taxi-Cars	Buses [†]	Lorries		Other
1956	10,882	6,849	5,934	726	189	3,663	974	356	1,881	452	370
1957	11,456	7,164	6,155	769	240	3,900	1,030	430	1,922	518	392
1958	12,286	7,570	6,471	850	249	4,287	1,225	441	2,011	610	429
1959	13,291	7,877	6,549	969	359	4,961	1,689	488	2,140	644	453
1960	14,083	9,181	7,649	1,092	440	4,401	1,274	447	1,901	779	501
1961	15,669	10,026	8,273	1,236	517	5,079	1,270	466	2,390	953	564
1962	16,673	10,847	8,860	1,400	587	5,224	1,194	498	2,470	1,062	602
1962: 1st Qr.	15,857	10,187	8,377	1,283	527	5,103	1,260	470	2,389	984	567
2nd Qr.	16,062	10,299	8,440	1,316	543	5,186	1,268	484	2,412	1,022	577
3rd Qr.	16,370	10,548	8,628	1,354	566	5,235	1,239	489	2,465	1,042	587
4th Qr.	16,673	10,847	8,860	1,400	587	5,224	1,194	498	2,470	1,062	602
1963: 1st Qr.	16,918	10,999	8,906	1,455	638	5,297	1,285	505	2,470	1,037	622
2nd Qr.	17,236	11,208	9,068	1,511	629	5,415	1,296	506	2,519	1,094	613

[†] Figures for 1956 - 1959 include private buses.

Since 1960 these are grouped with "Other private vehicles".

1. The first part of the document discusses the importance of maintaining accurate records of all transactions. It emphasizes that proper record-keeping is essential for the integrity of the financial system and for the ability to detect and prevent fraud. The text notes that without reliable records, it would be difficult to track the flow of funds and identify any irregularities.

2. The second part of the document outlines the various methods used to collect and analyze data. It describes how different types of information are gathered from various sources and how this data is then processed to identify trends and patterns. The text highlights the need for consistent and standardized data collection procedures to ensure the reliability of the results.

3. The third part of the document focuses on the analysis of the collected data. It discusses the various statistical techniques and models used to interpret the data and draw meaningful conclusions. The text notes that the analysis should be thorough and objective, and that the results should be clearly communicated to the relevant stakeholders.

4. The fourth part of the document discusses the implications of the findings and the steps that should be taken to address any identified issues. It emphasizes the importance of transparency and accountability in the reporting process and the need for ongoing monitoring and evaluation to ensure that the system remains effective and secure.

5. The final part of the document provides a summary of the key points and offers recommendations for future work. It concludes by stating that the information provided in this document is intended to serve as a guide and that further research and development are needed to continue to improve the system.

Table 30 - Sea Borne Shipping

Period	Vessels Entering		Vessels Leaving		Goods	
	Number	Net registered tonnage Thousand M/Tons	Number	Net registered tonnage Thousand M/Tons	Unloaded Thousand M/Tons	Loaded ⁺ Thousand M/Tons
1956	297	1,239	304	1,243	352	620
1957	329	1,290	325	1,273	384	682
1958	345	1,306	347	1,312	399	596
1959	365	1,363	367	1,352	425	589
1960	371	1,251	369	1,253	479	366
1961	418	1,510	419	1,508	478	604
1962	467	1,494	464	1,489	517	647
1962: 1st Qr.	95	325	92	313	116	42
2nd Qr.	88	290	92	310	115	46
3rd Qr.	157	449	153	429	149	250
4th Qr.	127	430	127	437	137	309
1963: 1st Qr.	98	297	101	347	101	46
2nd Qr.	99	319	98	316

⁺Including bunkers

Table 31 - Civil Aviation

Period	Number of movements		Passengers		Freight	
	Landings	Take Offs	Set Down	Picked up	Unloaded M/Tons	Loaded M/Tons
1956	170	170	3,805	3,827	39.1	90.6
1957	175	176	4,290	4,312	42.2	64.3
1958	223	222	4,722	4,763	44.7	53.8
1959	255	256	5,371	5,325	51.4	39.7
1960	251	250	6,312	6,311	89.5	21.1
1961	287	288	7,645	7,775	201.6	70.8
1962	347	345	10,351	11,179	130.9	43.4
1962: 1st Qr.	82	81	1,844	2,136	18.2	5.8
2nd Qr.	91	90	2,189	2,799	37.0	13.3
3rd Qr.	90	89	3,683	3,602	47.6	13.9
4th Qr.	84	85	2,635	2,642	28.1	10.4
1963: 1st Qr.	84	82	2,701	3,007	20.4	7.1
2nd Qr.	86	87	2,798	3,019	33.8	14.3

Notes: In this table: (1) are included only movements of commercial aircraft;
(2) each touch down and take off is counted as a separate movement;
(3) passengers in transit are excluded;
(4) freight carried by planes other than commercial are included.

VI. LAND UTILISATION

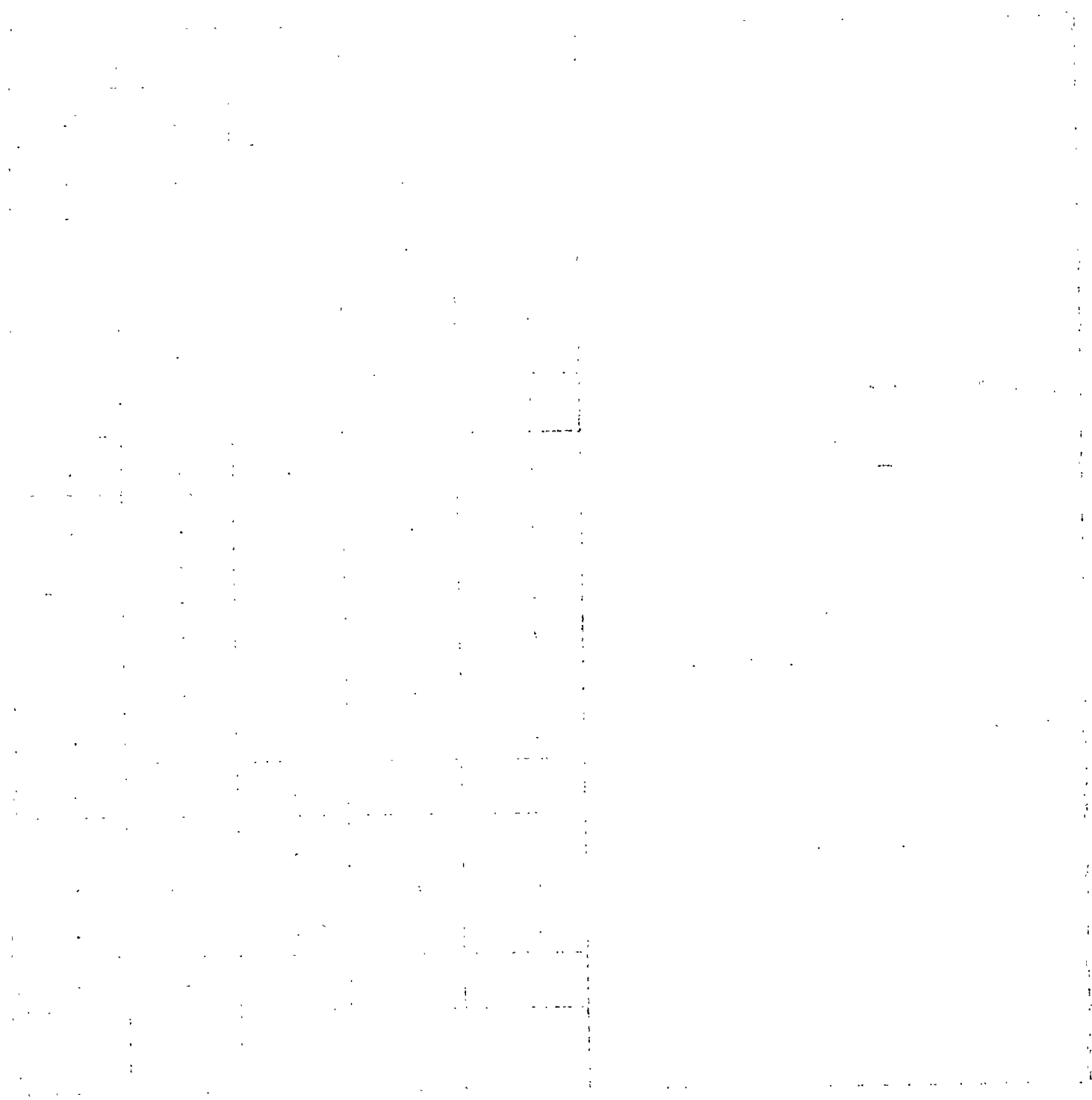
Table 32 - Total area classified by utilisation

	Acres				
	1958	1959	1960	1961	1962
Agriculture:	213,600	221,100	225,200	226,300	229,400
Sugar	197,400	203,700	208,100	209,800	213,800
Aloe fibre(effective area)	3,700	2,400	2,000	2,200	1,100
Tea	3,600	4,000	4,400	4,400	4,900
Tobacco	1,000	1,100	1,000	900	700
Foodcrops	2,900	2,800	2,400	2,000	2,100
Vegetables	5,000	7,100	7,300	7,000	6,800
Arable land potentially productive	1,200	1,000	-	-	-
Forests scrub areas, grasslands and grazing grounds	193,800	186,500	183,400	182,300	179,200
Private forestlands	15,000	15,000	15,000	15,000	15,000
Crown Forests	67,700	67,700	67,700	67,700	67,240
Pas géométriques ^x	5,290	5,290	5,290	5,290	5,290
Natural reserves ⁺	15,500	15,500	15,500	15,500	15,500
Meadows, grass lands, scrubs, forests and grazing grounds	90,310	83,010	79,910	78,810	76,170
Built on areas	14,200	14,200	14,200	14,200	14,200
Inland water bodies	23,000	23,000	23,000	23,000	23,000
Reservoirs, crater, lakes, ponds	3,000	3,000	3,000	3,000	3,000
Natural water courses	20,000	20,000	20,000	20,000	20,000
Roads - tracks [@]	10,000	10,000	10,000	10,000	10,000
Permanent waste lands	5,000	5,000	5,000	5,000	5,000
TOTAL ISLAND AREA	460,800	460,800	460,800	460,800	460,800

^xLeased crown lands in the coastal belt.

⁺Privately owned mountain and river reserves protected by law.

[@]Estimated - including roads in agricultural lands.



VII - LOCAL PRODUCTION

Table 33 - Production of Specific Commodities

Period	Sugar Cane M/Tons	Sugar M/Tons	Molasses M/Tons	Alcohol (Total) @100° GL HL	Tea M/Tons	Tobacco Leaf Kgs	Cigarettes Kgs	Rum ^x HL	Country Liquor HL	Sacks Units	Electricity Generated Mn Kwh
1956	4,421,427	572,512	118,716	17,322	697.4	417,522	561,479	15,463	41,133	1,401,143	41.2
1957	4,343,898	562,003	110,471	15,592	859.0	453,303	561,256	14,667	38,638	1,657,046	44.6
1958	4,328,877	525,842	113,811	16,431	873.0	449,239	545,665	15,827	39,837	1,422,659	48.9
1959	4,743,301	580,372	118,056	17,730	905.9	462,900	585,377	18,753	50,293	1,200,659	55.8
1960	2,393,532	235,781	72,991	19,536	786.0	459,764	618,274	16,096	49,517	1,270,020	54.6
1961	4,942,981	553,259	139,234	14,148	1,274.2	447,945	584,423	14,159	55,644	1,422,734	63.2
1962	4,624,487	533,000 ⁺	125,590	15,460	1,269.8	424,448	576,683	14,440	57,812	1,500,177	77.2
1962:1st Qr.	-	-	-	...	488.1	99,139	141,784	3,111	12,926	289,061	17.0
2nd Qr.	-	-	-	...	216.6	104,091	137,735	3,380	14,462	389,551	19.5
3rd Qr.	106.3	115,910	152,238	3,462	14,680	416,300	19.9
4th Qr.	458.8	105,308	144,926	4,487	15,744	405,265	20.8
1963:1st Qr.	-	-	-	...	622.7	105,770	131,650	2,899	10,534	300,042	20.8
2nd Qr.	-	-	-	...	275.3	108,683	134,822	3,502	12,531	395,342	21.7

⁺Provisional

^xIssued for local consumption at 40 - 50° GL.

VIII - EDUCATION

Table 34 - Roll of pupils and students in schools and colleges

Period	PRIMARY SCHOOLS			SECONDARY SCHOOLS			
	Total	Government	Aided	Total	Government	Aided	Private
October, 1956	72,333	36,412	35,921	10,960	1,118	2,123	7,719
" 1957	86,422	45,737	40,685	12,606	1,152	2,256	9,198
" 1958	98,387	54,251	44,136	15,437	1,262	2,424	11,751
" 1959	105,223	59,876	45,347	18,489	1,360	2,435	14,694
" 1960	104,713	60,938	43,775	22,840	1,456	2,557	18,827
" 1961	113,604	66,497	47,107	24,851	1,629	2,602	20,620
" 1962	119,630	72,241	47,389	26,861	1,750	4,688	20,423



