

Vol. 2

No. 4



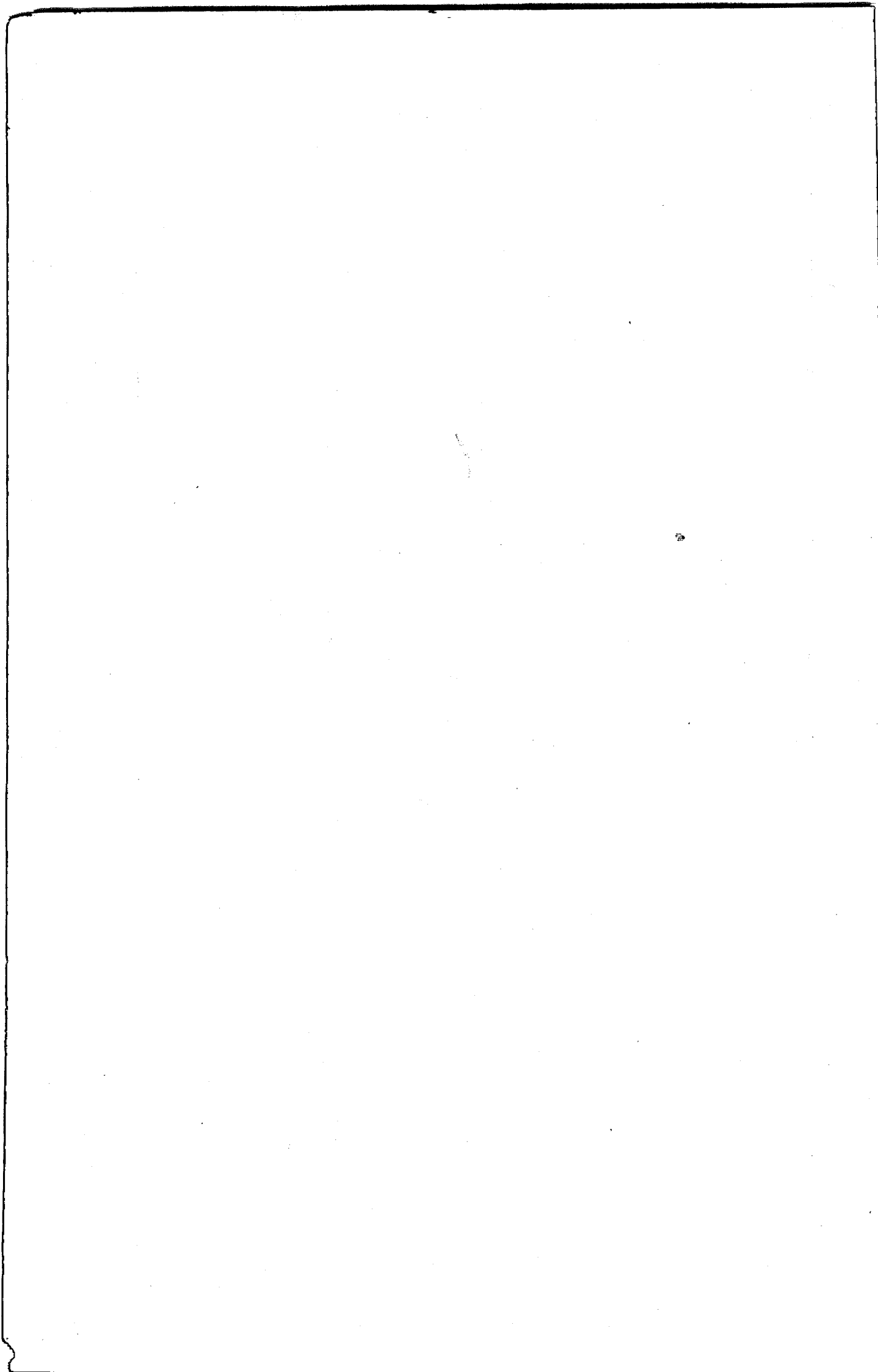
COLONY OF MAURITIUS

CENTRAL STATISTICAL OFFICE

**QUARTERLY
DIGEST OF STATISTICS**

December 1962

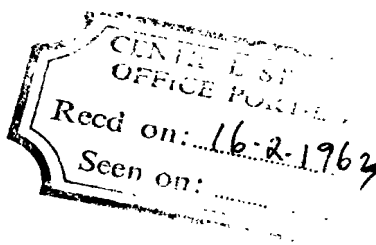
[Price : Rs 2.50]





CONTENTS

	Page
POPULATION CENSUS, 1962 - Preliminary Results by Village Council areas	(i) - (v)
Final Results of Towns	(v)
I. <u>POPULATION AND VITAL STATISTICS</u>	
Table 1 - Population and vital statistics	1
2 - Live births and still births	1
3 - Total deaths and infant deaths	2
4 - External migration	2
II. <u>PUBLIC HEALTH</u>	
Table 5 - Statistics of hospitals	3
5 - Notifiable contagious or communicable diseases	4
III. <u>PUBLIC FINANCE</u>	
Table 7 - Central Government Revenue & Expenditure: Recurrent	5
8 - Central Government Revenue & Expenditure: Capital	6
9 - Government Borrowing	6
10 - Sterling Assets	7
11 - Banking Statistics: Assets of Commercial Banks	8
12 - " " : Liabilities of Commercial Banks	9
13 - " " : Assets of the Mauritius Agricultural Bank	10
14 - " " : Liabilities of the Mauritius Agricultural Bank	11
15 - Post Office Savings Bank	12
16 - Currency in Circulation	12
17 - Gross National Product	13
18 - Gross Fixed Domestic Capital Formation	14
19 - Balance of Payments	15
IV. <u>EXTERNAL TRADE</u>	
Table 20 - Balance of visible trade	16
21 - Quantum and price indices of exports and imports and the terms of trade	16
22 - Quantum and price indices of imports by sections	17
23 - Exports - quantities and values	18
24 - Exports - principal countries of destination - values	19
25 - Imports - values	20
26 - " - Selected commodities - values	21
27 - " - " " - quantities	22
28 - " - main sources of supply - values	23



CONTENTS(Cont'd)

	Page
V. <u>TRANSPORT AND COMMUNICATION</u>	
Table 29 - Road Transport	24
30 - Sea borne shipping	25
31 - Civil Aviation	25
VI. <u>LAND UTILISATION</u>	
Table 32 - Total area classified by utilisation	26
VII. <u>LOCAL PRODUCTION</u>	
Table 33 - Production of specific commodities	27
VIII. <u>EDUCATION</u>	
Table 34 - Roll of pupils and students in schools and colleges	28

QUARTERLY DIGEST OF STATISTICS

NOTES

POPULATION CENSUS, 1962

Preliminary results

The 13th Population Census of Mauritius was taken on Saturday 30th June, 1962.

In planning the Census, the units of enumeration were so designed as to fit the boundaries of electoral areas, townships and Village Council areas.

The following figures (except those for the towns) are provisional and may be revised when a full scrutiny of the Census returns will have been completed. They represent a count of persons in the district where they actually were at midnight on Saturday 30th June, 1962 irrespective of their usual places of residence. It is proposed to correct for this movement of population before the issue of the final results.

This de facto population, however, excludes the foreign-born members of H.M.S. Mauritius and the crews of ships of foreign navies which were in Port Louis Harbour on Census night.

.....

The following symbols are used throughout:-

- nil or negligible

... not available

2. Some of the figures in this Digest are liable to revision in later issues.
3. Where necessary figures have been rounded off to the nearest final digit, and in some tables there may be discrepancies between the sum of the constituent items and the total as shown.

Central Statistical Office,
Mauritius.

(i)

POPULATION CENSUS, 1962

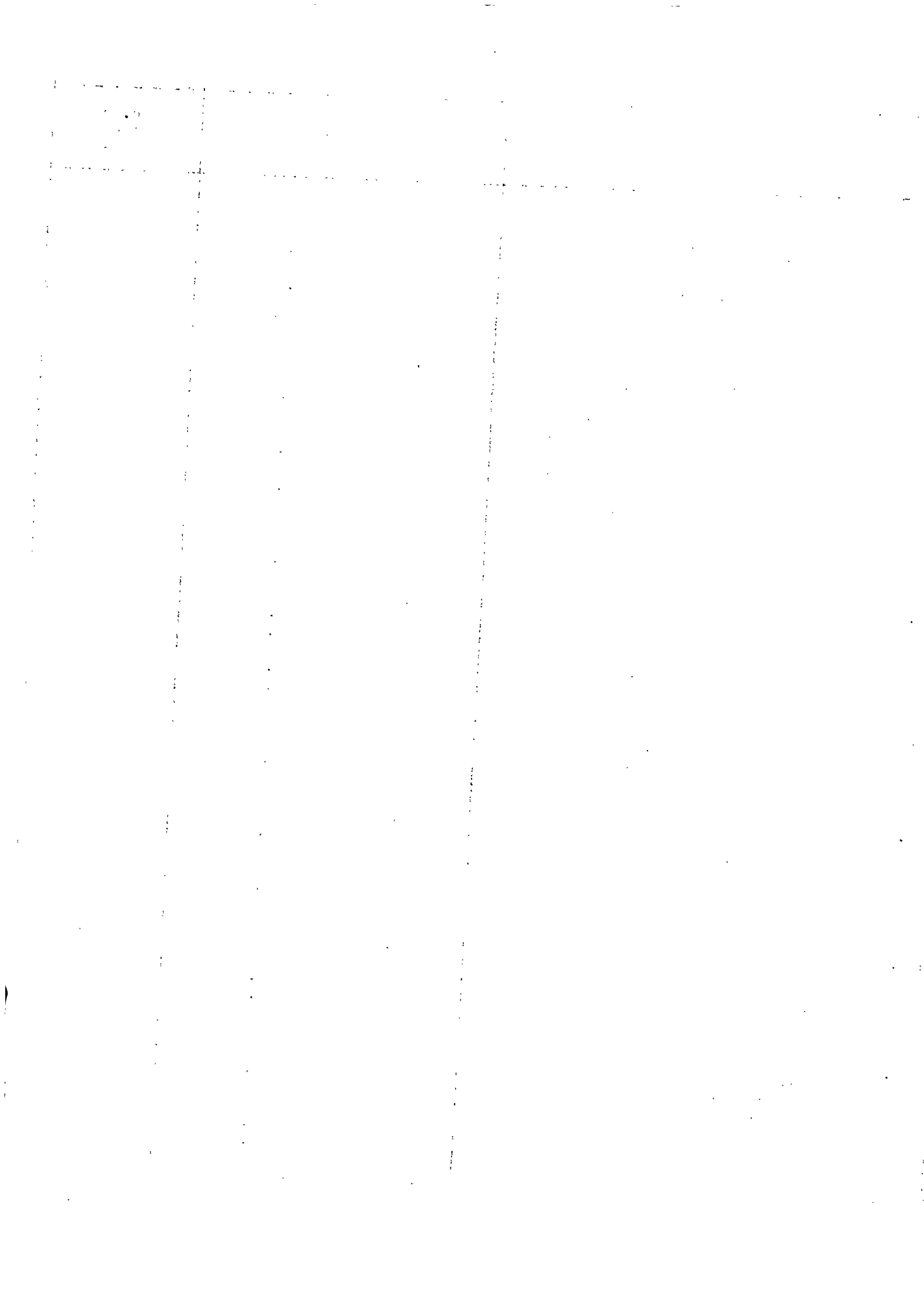
Preliminary Results

Area	Population	No. of Private Households
1. GRAND RIVER NORTH WEST	20,395	4396
Grand River North West Village Council	3,393	
Pailles Village Council	1,560	
Cassis Village Council	6,126	
Port Louis Town	9,316	
2. PORT LOUIS WEST	15,092	2869
3. PORT LOUIS SOUTH	17,441	3481
Tranquebar Village Council	3,999	
Port Louis Town	11,409	
Other Localities	2,033	
4. PORT LOUIS CENTRAL	14,282	2803
5. PORT LOUIS MARITIME	10,328	2171
6. PORT LOUIS EAST	18,142	3699
7. PORT LOUIS NORTH	17,622	3888
Roche Bois Village Council	7,211	
Port Louis Town	10,411	
8. MONTAGNE LONGUE	17,657	3494
Vallée des Prêtres Village Council	2,312	
Sainte Croix Village Council	5,734	
Long Mountain Village Council	6,359	
Crève Coeur Village Council	2,058	
Congomah Village Council	1,194	
9. PAMPLEMOUSSES	17,022	3717
Terre Rouge Village Council	7,146	
Calebasson Village Council	1,782	
d'Epinay Village Council	3,739	
Pamplemousses Village Council	4,355	
10. TRIOLET	17,517	3296
Pointe aux Piments Village Council	2,089	
Arsenal Village Council	1,030	
Triolet Village Council	10,265	
Morcellement St. André Village Council	3,121	
Other Localities	1,012	
11. GRAND BAIE	17,392	3328
Grand Baie Village Council	3,219	
Vale Village Council	2,172	
Plaine des Papayes Village Council	3,430	
Fond du Sac Village Council	2,861	
Petit Raffray Village Council	5,405	
Other Localities	305	

(ii)

Area	Population	No. of Private Households
12. POUUDRE D'OR Grand Gaube Village Council Goodlands Village Council Poudre d'Or Village Council Other Localities	17,308 5,108 9,708 1,760 732	3182
13. PITON Poudre d'Or Hamlet Village Council Espérance Trébuchet Village Council Cottage Village Council Piton Village Council Villebague Village Council Other Localities	13,581 1,213 1,383 1,699 3,386 1,453 4,447	2560
14. RIVIERE DU REMPART Rivière du Rempart Village Council Roches Noires Village Council Belle Vue Maurel Village Council Other Localities	16,605 6,096 4,691 5,225 593	3154
15. FLACQ Central Flacq Village Council Poste de Flacq Village Council Mare La Chaux Village Council Quatre Cocos Village Council Camp Ithier Village Council Ecroignard Village Council Other Localities	21,353 7,245 2,324 1,166 2,339 2,332 2,702 3,245	4370
16. BON ACCUEIL Laventure Village Council Bon Accueil Village Council St. Julien Village Council Other Localities	19,065 2,445 12,578 2,428 1,614	3691
17. QUARTIER MILITAIRE Camp Thorel Village Council St. Julien d'Hotman Village Council Quartier Militaire Village Council Espérance Village Council Dagotière Village Council Other Localities	14,135 1,224 1,786 3,582 967 3,101 3,475	2855
18. MONTAGNE BLANCHE Médine Village Council Camp de Masque Village Council Camp de Masque Pavé Village Council Montagne Blanche Village Council Melrose Village Council Sébastopol Village Council Other Localities	17,360 3,800 1,869 2,717 3,857 928 3,163 1,026	3691

Area	Population	No. of Private Households
9. GRAND RIVER SOUTH EAST Trou d'Eau Douce Village Council Bel Air Rivière Sèche Village Council Grand River South East Village Council Olivia Village Council Clémencia Village Council Other Localities	17,214 2,816 7,835 2,005 2,899 949 710	3660
20. VIEUX GRAND PORT Quatre Scours Village Council Grand Sable Village Council Bambous Virieux Village Council Bois des Amourettes Village Council Old Grand Port Village Council Rivière des Créoles Village Council St. Hubert Village Council Mare Chicose Village Council Cluny Village Council Bananes Village Council Other Localities	14,931 1,797 1,283 732 1,052 1,711 872 2,069 244 775 302 4,094	3398
21. ROSE BELLE Nouvelle France Village Council Union Park Village Council Rose Belle Village Council New Grove Village Council Other Localities	18,368 3,444 1,571 6,737 5,438 1,178	3557
22. MAHEBOURG Bel Air Village Council Mahebourg Village Council Other Localities	15,469 1,357 14,054 58	3403
23. PLAINE MAGNIEN Mare d'Albert Village Council Mare Tabac Village Council Plaine Magnien Village Council Trois Boutiques Village Council Other Localities	16,472 2,540 1,408 3,928 3,541 5,055	3655
24. RIVIERE DES ANGUILLES L'Escalier Village Council Camp Diable Village Council Rivière des Anguilles Village Council Other Localities	18,550 4,758 2,797 6,234 4,761	4078
25. SOUILLAC Rivière du Poste Village Council Bois Chéri Village Council Grand Bois Village Council Souillac Village Council Other Localities	14,647 1,402 1,715 3,783 3,194 4,553	3146



Area	Population	Number of Private Households
26. S.VANNE Surinam Village Council Chemin Grenier Village Council Baie du Cap Village Council Other Localities	18,676 4,895 9,216 2,731 1,834	3970
27. BLACK RIVER Bambous Village Council Cascavelle Village Council Flic en Flacq Village Council Palma Road Village Council Bassin Road Village Council Tamarin Village Council Grandè Rivière Noire Village Council Case Noyale - La Gaulette Village Council Chamarel Village Council Other Localities	17,486 2,999 889 828 1,976 4,782 885 1,162 1,556 606 1,803	3618
28. VACOAS Henrietta Village Council Vacoas Town Other Localities	18,757 2,385 12,085 4,287	3594
29. CUREPIPE	13,876	2697
30. MIDLANDS Eau Coulée Village Council Couvent de Lorette Village Council Curepipe Town Other Localities	15,409 1,722 2,161 9,591 1,935	3248
31. FLOREAL Mangalkhan-Rivière Sèche Village Council Engrais Martial Village Council Curepipe Town Other Localities	17,020 1,510 3,675 11,822 13	3393
32. LA CAVERNE Vacoas Town Other Localities	21,564 18,372 3,192	4082
33. PHOENIX	18,343	3381
34. BELLE ROSE Cinq Arpents Village Council Quatre Bornes Town Other Localities	15,782 704 13,728 1,350	3213
35. QUATRE BORNES Quatre Bornes Rose Hill Town	16,933 14,614 2,319	3367

Area	Population	Number of Private Households
36. STANLEY Plaisance Village Council(Part) - See also C.D. 39 Stanley Village Council Tréfles Village Council Other Localities	23,098 7,563 7,791 4,364 3,380	4599
37. ROSE HILL	14,035	2700
38. MOKA Moka Village Council St.Pierre Village Council Ripailles Village Council La Laura-Malenga Village Council L'Avenir Village Council Other Localities	17,708 4,737 7,878 1,609 730 1,685 1,069	3300
39. BEAU BASSIN Mont Roches Village Council Plaisance Village Council(part) - See also C.D. 36 Beau Bassin Town	16,703 2,607 426 13,670	3450
40. PETITE RIVIERE Petite Rivière Village Council Beau Bassin Town Other Localities	16,967 2,882 7,628 6,457	3344
GRAND TOTAL	680,305	137493

POPULATION OF TOWNS - 1962 CENSUS
(Final Results)

Town	Males	Females	Total
Port Louis	44,235	44,861	89,096
Beau Bassin) Rose Hill)	18,166	19,631	37,797
Quatre Bornes	13,807	14,581	28,388
Curepipe	17,253	18,022	35,275

100-1000

I. POPULATION AND VITAL STATISTICS

Table 1 - Population and Vital Statistics

Period	Marriages	Births	Deaths	Natural Increase	Net Oversea Migration	Total Increase
1956	3,080	24,910	6,739	18,171	+ 1,020	19,191
1957	2,903	25,273	7,603	17,670	- 172	17,498
1958	3,169	24,600	7,112	17,488	- 221	17,267
1959	3,297	23,923	6,753	17,170	+ 93	17,263
1960	3,113	25,307	7,248	18,059	- 372	17,687
1961	3,484	26,092	6,505	19,587	- 1,179	18,408
1962	3,893	26,267	6,325	19,942	- 887	19,055
1961: 1st Qr.	649	5,211	1,637	3,574	- 449	3,125
2nd Qr.	954	6,343	1,559	4,784	- 431	4,353
3rd Qr.	829	7,561	1,692	5,869	- 248	5,621
4th Qr.	1,052	6,977	1,617	5,360	- 51	5,309
1962: 1st Qr.	962	6,780	1,810	4,970	- 674	4,296
2nd Qr.	1,005	6,263	1,507	4,756	- 731	4,025
3rd Qr.	914	6,786	1,550	5,236	+ 298	5,534
4th Qr.	1,012	6,438	1,458	4,980	+ 220	5,200

Table 2 - Live births and still births

Period	Live Births			Still Births
	Total	Males	Females	
1956	24,910	12,693	12,217	1,789
1957	25,273	12,911	12,362	1,800
1958	24,600	12,419	12,181	1,703
1959	23,923	12,107	11,816	1,759
1960	25,307	12,973	12,334	1,783
1961	26,092	13,244	12,848	1,963
1962	26,267	13,395	12,872	1,841
1961: 1st Qr.	5,211	2,638	2,573	408
2nd Qr.	6,343	3,246	3,097	507
3rd Qr.	7,561	3,852	3,709	552
4th Qr.	6,977	3,508	3,469	496
1962: 1st Qr.	6,780	3,463	3,317	487
2nd Qr.	6,263	3,172	3,091	438
3rd Qr.	6,786	3,458	3,328	452
4th Qr.	6,438	3,302	3,136	464



Table 3 - Total Deaths and Infant Deaths

Period	Total Deaths			Infant Deaths		
	Total	Males	Females	Total	Males	Females
1956	6,739	3,556	3,183	1,644	920	724
1957	7,603	4,019	3,584	1,897	1,017	880
1958	7,112	3,751	3,361	1,659	941	718
1959	6,753	3,499	3,254	1,495	821	674
1960	7,248	3,706	3,542	1,760	980	780
1961	6,505	3,359	3,146	1,618	915	703
1962	6,325	3,255	3,070	1,579	896	683
1961: 1st Qr.	1,637	848	789	421	239	182
2nd Qr.	1,559	803	756	446	248	198
3rd Qr.	1,692	860	832	369	212	157
4th Qr.	1,617	848	769	382	216	166
1962: 1st Qr.	1,810	900	910	545	315	230
2nd Qr.	1,507	770	737	340	180	160
3rd Qr.	1,550	817	733	337	202	135
4th Qr.	1,458	768	690	357	199	158

Table 4 - External Migration⁺

Period	Arrivals			Departures			Net migration
	Total	By Sea	By Air	Total	By Sea	By Air	
1956	7,718	3,956	3,762	8,109	4,352	3,757	- 391
1957	8,095	3,811	4,284	8,267	3,956	4,311	- 172
1958	8,703	4,023	4,680	8,924	4,189	4,735	- 221
1959	9,637	4,231	5,406	9,544	4,222	5,325	+ 93
1960	10,412	4,063	6,349	10,784	4,464	6,320	- 372
1961	11,854	4,402	7,452	13,033	5,442	7,591	- 1,179
1962	15,188	4,258	10,930	16,075	4,374	11,701	- 887
1961: 1st Qr.	2,256	842	1,414	2,705	1,109	1,596	- 449
2nd Qr.	2,473	885	1,588	2,904	1,210	1,694	- 431
3rd Qr.	3,662	1,118	2,544	3,910	1,346	2,564	- 248
4th Qr.	3,463	1,557	1,906	3,514	1,777	1,737	- 51
1962: 1st Qr.	2,939	1,073	1,866	3,613	1,456	2,157	- 674
2nd Qr.	3,044	753	2,291	3,775	842	2,933	- 731
3rd Qr.	5,288	1,290	3,998	4,990	1,092	3,898	+ 298
4th Qr.	3,917	1,142	2,775	3,697	984	2,713	+ 220

+ Includes:-(a) The very small figure of engaged or discharged seamen;
(b) Emigrants and immigrants to and from the dependencies.

II. PUBLIC HEALTH

Table 5 - Statistics of Hospitals

Period	No. of beds	Patients in hospital on 1st day of period	Total Admissions	Deaths	Discharges	Patients remaining on last day of period
1956	2,179	1,534	30,952	1,263	29,719	1,504
1957	2,173	1,504	33,542	1,498	32,001	1,547
1958	2,214	1,547	33,767	1,363	32,371	1,580
1959	2,270	1,580	34,846	1,344	33,455	1,627
1960	2,357	1,627	34,355	1,560	32,766	1,656
1961	2,448	1,656	36,892	1,601	35,196	1,751
1962	2,453	1,751	38,130	1,628	36,480	1,773
1961: 1st Qr.	2,369	1,656	9,518	406	8,701	2,067
2nd Qr.	2,393	2,067	9,308	388	8,904	2,083
3rd Qr.	2,358	2,083	9,123	396	8,782	2,028
4th Qr.	2,448	2,028	8,943	411	8,809	1,751
1962: 1st Qr.	2,413	1,751	10,288	475	9,376	2,188
2nd Qr.	2,363	2,188	9,168	394	8,865	2,097
3rd Qr.	2,363	2,097	9,271	370	8,875	2,123
4th Qr.	2,453	2,123	9,403	389	9,364	1,773

Table 6 - Notifiable Contagious or Communicable Diseases

Disease	Typhoid Fever	Diphtheria	Acute Poliomye- litis	Puerperal fever	Erysipelas	Cerebro- spinal meningitis	Tuberculo- sis	Leprosy	Urine Typhus
Period									
1956	149	89	31	11	4	1	414	-	-
1957	76	45	3	21	-	-	436	-	-
1958	46	67	-	4	-	-	398	-	-
1959	45	140	99	5	2	-	300	-	-
1960	114	164	1	3	2	1	313	2	-
1961	71	215	-	1	-	-	353	1	-
1961:1st Qr.	27	42	-	1	-	-	123	1	-
2nd Qr.	20	56	-	-	-	-	83	-	-
3rd Qr.	20	59	-	-	-	-	82	-	-
4th Qr.	4	58	-	-	-	-	65	-	-
1962:1st Qr.	19	42	-	-	-	-	74	-	-
2nd Qr.	25	39	-	-	-	-	76	-	-
3rd Qr.	19	29	-	-	-	-	81	-	-
4th Qr.	18	41	1	-	-	-	69	-	3

III. PUBLIC FINANCE

Table 7 - Central Government Revenue and Expenditure: Recurrent

Rs Million

Period	REVENUE				EXPENDITURE	
	Total	Direct Taxes	Indirect Taxes	Other	Total incl. Debt Charges	Debt Charges
1956	116.7	41.1	55.4	20.2	130.3	6.0
1957	123.8	45.2	56.4	22.2	110.1	6.4
1958	134.3	48.6	61.3	24.4	142.8	6.5
1959	129.8	47.1	66.0	16.7	129.5	6.6
1960	141.0	43.2	79.6	18.2	145.9	7.9
1961	144.9	40.3	82.8	21.8	150.1	8.9
1962	154.8	38.3	97.2	19.3	164.9	9.3
1961: 1st Qr.	24.5	1.2	19.2	4.1	31.5	2.5
2nd Qr.	46.8	20.4	19.9	6.5	41.9	1.7
3rd Qr.	28.2	2.5	21.3	4.4	30.4	3.1
4th Qr.	45.4	16.2	22.4	6.8	46.3	1.6
1962: 1st Qr.	36.4	1.7	29.9	4.8	34.1	2.8
2nd Qr.	44.5	18.1	21.5	4.9	45.2	1.6
3rd Qr.	32.6	6.2	21.8	4.6	47.6	3.4
4th Qr.	41.3	12.3	24.0	5.0	38.0	1.5

Table 8 - Central Government Revenue and Expenditure: Capital

Rs Million

Period	Revenue					Total Expenditure
	Total	Contri- butory	Grants	Loans	Other	
1956	23.6	-	21.4	2.2	-	10.1
1957	4.9	-	2.0	2.9	-	23.2
1958	7.7	6.5	0.6	-	0.6	28.2
1959	20.3	1.8	0.9	15.9	1.7	29.8
1960	32.6	14.0	2.0	15.4	1.2	45.8
1961	43.1	12.0	18.3	12.0	0.8	47.4
1962	43.8	12.0	13.3	18.3	0.2	62.9
1961: 1st Qr.	20.1	-	11.9	8.0	0.2	10.9
2nd Qr.	4.1	-	1.6	2.4	0.1	14.3
3rd Qr.	0.8	-	-	0.3	0.5	9.9
4th Qr.	18.1	12.0	4.8	1.3	-	12.3
1962: 1st Qr.	7.5	-	3.4	3.9	0.2	9.8
2nd Qr.	12.5	-	5.9	6.6	-	20.1
3rd Qr.	16.5	12.0	1.2	3.3	-	15.8
4th Qr.	7.3	-	2.8	4.5	-	17.2

Table 9 - Central Government Indebtedness

Rs Million

Period	Amount out- standing at beginning of period	Borrowing			Repay- ments
		Total	Internal	External	
1956 - 57	99.0	-	-	-	0.5
1957 - 58	98.5	-	-	-	0.5
1958 - 59	98.0	0.5	0.5	-	0.5
1959 - 60	98.0	29.8	29.8	-	0.5
1960 - 61	127.3	16.9	9.3	7.6	0.5
1961 - 62	143.7	13.5	8.0	5.5	0.5
1960: July-Sept.	127.3	1.9	1.9	-	0.5
Oct.-Dec.	128.7	0.7	0.7	-	-
1961: Jan.-March	129.4	11.3	3.7	7.6	-
April-June	140.7	3.0	3.0	-	-
July-Sept.	143.7	0.5	0.5	-	0.5
Oct.-Dec.	143.7	2.6	2.6	-	-
1962: Jan.-March	146.3	5.7	4.4	1.3	-
April-June	152.0	4.7	0.5	4.2	-
July-Sept.	156.7	3.9	3.9	-	0.5
Oct.-Dec.	160.1	3.5	3.1	0.4	-

Table 10 - Sterling Assets
(end of period)

Rs million

Period	INVESTMENTS (Nominal Value)					LIQUID ASSETS (Cash and money at call)					
	Government	Semi Governmental Institutions	Currency Backing	Post Office Savings Bank	Total	Government	Semi Governmental Institutions	Currency Backing	Post Office Savings Bank	Total Government & Semi Governmental Institutions	Net Balances of banks due from banks abroad
1956	50.4	86.2	62.2	26.1	224.9	36.4	-	6.5	-	42.9	76.2
1957	55.6	88.9	62.3	26.7	233.5	34.5	0.9	12.1	-	47.5	112.1
1958	51.7	92.2	63.9	26.3	234.1	30.3	20.6	16.8	1.5	69.2	67.1
1959	52.0	64.7	60.1	26.3	203.1	20.4	49.9	28.8	4.1	103.2	52.4
1960	42.9	79.4	66.0	26.3	214.6	18.3	- 2.3	15.5	4.1	35.6	16.2
1961	26.4	64.8	60.5	25.8	177.5	24.1	- 42.8	26.8	2.2	10.3	35.1
1962	29.4	20.5	59.6	23.3	132.8	3.0	- 7.1	28.7	2.1	26.7	20.9
1961:1st Qr.	29.4	71.3	66.0	26.3	193.0	44.4	- 42.4	14.0	1.5	17.5	8.6
2nd Qr.	26.5	64.8	60.2	25.6	177.1	41.6	- 40.8	17.3	2.2	20.3	- 66.4
3rd Qr.	28.3	64.8	60.5	25.8	179.4	28.8	- 41.6	17.3	2.2	6.7	- 46.0
4th Qr.	26.4	64.8	60.5	25.8	177.5	24.1	- 42.8	26.8	2.2	10.3	35.1
1962:1st Qr.	27.6	60.7	60.0	25.8	174.1	27.5	- 38.9	20.8	2.2	11.6	3.9
2nd Qr.	28.8	60.7	60.0	25.8	175.3	20.7	- 40.8	19.2	1.4	0.5	- 59.7
3rd Qr.	28.9	30.7	59.8	25.8	145.2	8.3	- 13.3	21.3	1.4	17.7	- 61.6
4th Qr.	29.4	20.5	59.6	23.3	132.8	3.0	- 7.1	28.7	2.1	26.7	20.9

Table 11 - Banking Statistics - Assets of Commercial banks

Rs Million

Period	Total	Cash	Balances due by		Loans and Advances			Investments		Other Assets	
			Other banks in the colony	Banks abroad	Primary products	Other industries	Other Advances	Local	Abroad	Bills discounted and bills receivable	Other
1956: 31st Dec.	140.4	6.2	2.5	77.4	10.9	15.5	20.1	2.5	2.1	-	3.2
1957: "	188.6	6.9	1.8	113.9	12.0	18.2	25.1	5.5	2.0	-	3.2
1958: "	181.6	4.9	7.6	69.2	19.1	30.0	9.0	5.5	2.0	-	34.3
1959: "	186.3	7.2	7.1	54.4	25.9	31.0	9.7	5.5	2.0	7.2	36.3
1960: "	194.2	7.5	2.3	26.4	45.0	45.0	13.6	5.5	2.0	13.8	33.1
1961: "	241.2	6.0	3.0	57.1	53.3	45.7	21.8	5.0	2.0	11.8	35.5
1962: "	229.2	6.4	0.9	46.4	57.4	44.0	20.9	5.0	2.0	10.7	35.5
1961: 31st March	196.2	8.1	1.1	26.9	44.9	46.7	11.6	5.5	2.0	11.2	38.2
30th June	214.8	7.4	3.3	1.1	73.8	51.8	19.3	5.5	2.0	16.0	34.6
30th Sept.	221.9	6.2	2.1	1.3	82.2	47.8	22.3	5.6	2.0	14.7	37.7
31st Dec.	241.2	6.0	3.0	57.1	53.3	45.7	21.8	5.0	2.0	11.8	35.5
1962: 31st March	229.3	7.6	0.9	35.4	65.0	47.4	18.2	5.0	2.0	10.6	37.2
30th June	239.1	8.1	1.3	5.7	95.8	46.9	27.8	5.0	2.0	12.5	34.0
30th Sept.	236.8	5.6	1.6	5.9	94.1	56.3	16.9	5.0	2.0	12.5	36.9
31st Dec.	229.2	6.4	0.9	46.4	57.4	44.0	20.9	5.0	2.0	10.7	35.5

Table 12 - Banking Statistics - Liabilities of Commercial banks

Rs million

Period	Total	Notes in Circulation	Deposits			Balances due to		Other Liabilities
			Demand	Time	Savings	Other banks in the colony	Banks abroad	
1956: 31st Dec.	140.4	-	99.9	13.9	15.2	2.6	1.2	17.6
1957: "	188.6	-	127.1	32.2	6.3	2.6	1.8	18.6
1958: "	181.6	-	107.8	16.2	8.5	4.5	2.1	42.5
1959: "	186.3	-	115.0	5.1	10.5	2.6	2.0	51.1
1960: "	194.2	-	113.3	3.0	11.6	2.7	10.2	53.4
1961: "	241.2	-	143.5	3.6	12.5	3.7	22.0	55.9
1962: "	229.2	-	124.5	7.3	15.2	1.3	25.5	55.4
1961: 31st March	196.2	-	102.8	4.9	12.3	1.4	18.3	56.5
30th June	214.8	-	74.6	3.5	12.1	3.5	67.5	53.6
30th Sept.	221.9	-	98.4	4.1	12.2	2.7	47.3	57.2
31st Dec.	241.2	-	143.5	3.6	12.5	3.7	22.0	55.9
1962: 31st March	229.3	-	104.6	22.5	13.0	1.1	31.5	56.6
30th June	239.1	-	97.3	8.8	12.8	2.0	65.4	52.8
30th Sept.	236.8	-	91.4	5.9	14.1	2.3	67.5	55.6
31st Dec.	229.2	-	124.5	7.3	15.2	1.3	25.5	55.4

Table 13 - Banking Statistics - Assets of the Mauritius Agricultural Bank

Rs Million

Period	Total	Cash	Balances due by		Loans and advances			Investments		Other Assets
			Other banks in the colony	Banks abroad	Primary products	Other industries	Other Advances	Local	Abroad	
1956: 31st Dec.	39.5	0.3	1.4	-	25.8	-	8.3	0.5	0.6	2.6
1957: "	40.2	0.1	0.3	-	25.9	0.4	8.8	0.8	0.4	3.5
1958: "	42.4	0.1	0.7	-	26.5	0.8	9.4	0.8	0.5	3.6
1959: "	42.6	0.1	0.6	-	26.0	0.8	10.0	0.8	0.6	3.7
1960: "	40.0	0.1	0.9	-	25.5	0.8	9.7	0.8	0.7	1.5
1961: "	42.4	-	0.9	-	25.2	0.8	11.8	0.9	0.7	2.1
1962: "	46.3	-	1.6	-	24.4	0.8	14.0	1.0	0.9	3.6
1961: 31st March	41.7	-	1.1	-	25.5	0.8	9.6	2.4	0.7	1.6
30th June	41.6	0.2	0.5	-	25.1	0.8	9.8	2.4	0.7	2.1
30th Sept.	41.8	-	0.7	-	24.9	0.8	10.7	2.0	0.7	2.0
31st Dec.	42.4	-	0.9	-	25.2	0.8	11.8	0.9	0.7	2.1
1962: 31st March	42.3	-	0.3	-	25.0	0.8	12.5	0.9	0.7	2.1
30th June	44.2	-	1.7	-	24.9	0.7	12.9	1.0	0.9	2.1
30th Sept.	45.0	-	0.9	-	24.8	0.7	13.7	1.0	0.9	3.0
31st Dec.	46.3	-	1.6	-	24.4	0.8	14.0	1.0	0.9	3.6

Table 14 - Banking Statistics - Liabilities of the Mauritius Agricultural Bank

Rs Million

Period	Total	Notes in Circulation	Deposits			Balances due to		Other Liabilities
			Demand	Time	Savings	Other banks in the colony	Banks abroad	
1956: 31st Dec.	39.5	-	-	4.8	1.8	-	-	32.9
1957: "	40.2	-	-	5.0	1.8	-	-	33.4
1958: "	42.4	-	-	5.4	2.0	-	-	35.0
1959: "	42.6	-	-	5.1	2.1	-	-	35.4
1960: "	40.0	-	-	4.9	2.1	-	-	33.0
1961: "	42.4	-	0.7	7.0	2.1	-	-	32.6
1962: "	46.3	-	0.7	9.6	2.0	-	-	34.0
1961: 31st March	41.7	-	-	4.9	2.2	-	-	34.6
30th June	41.6	-	0.2	7.0	2.2	-	-	32.2
30th Sept.	41.8	-	0.7	7.0	2.1	-	-	32.0
31st Dec.	42.4	-	0.7	7.0	2.1	-	-	32.6
1962: 31st March	42.3	-	1.0	7.3	2.2	-	-	31.8
30th June	44.2	-	0.8	8.4	2.1	-	-	32.9
30th Sept.	45.0	-	1.0	8.4	2.1	-	-	33.5
31st Dec.	46.3	-	0.7	9.6	2.0	-	-	34.0

Table 15 - Post Office Savings Bank

Period	Deposits	Withdrawals	Accumulated balance	Number of accounts
	during period		at the end of period	
	Rs Mn	Rs Mn	Rs Mn	
1956	13.3	15.2	27.4	...
1957	13.2	13.8	27.5	...
1958	14.8	13.8	29.1	...
1959	17.2	14.9	32.1	...
1960	15.3	16.9	31.3	...
1961	11.9	13.4	30.4	...
1962	13.9	15.3	29.8	...
1961: 1st Qr.	4.0	3.9	31.4	...
2nd Qr.	2.9	3.6	31.4	81,861
3rd Qr.	3.7	4.5	30.6	...
4th Qr.	1.3	1.4	30.4	...
1962: 1st Qr.	3.6	3.9	30.2	...
2nd Qr.	2.6	3.5	30.0	83,857
3rd Qr.	3.8	4.2	29.7	...
4th Qr.	3.9	3.7	29.8	...

Table 16 - Currency in circulation

(end of period)

Rs Million

Period	Notes	Coins	Total	Cash held by banks	Net circulation
1956	56.9	3.7	60.6	6.2	54.4
1957	61.5	3.9	65.4	6.9	58.5
1958	65.6	4.3	69.9	4.9	65.0
1959	73.2	4.6	77.8	7.2	70.6
1960	73.1	4.5	77.6	7.5	70.1
1961	77.7	4.5	82.2	6.0	76.2
1962	77.3	4.9	82.2	6.4	75.8
1961: 1st Qr.	71.6	4.5	76.1	8.1	68.0
2nd Qr.	68.2	4.5	72.7	7.4	65.3
3rd Qr.	68.2	4.5	72.7	6.2	66.5
4th Qr.	77.7	4.5	82.2	6.0	76.2
1962: 1st Qr.	71.4	4.3	75.7	7.6	68.1
2nd Qr.	68.9	4.3	73.2	8.1	65.1
3rd Qr.	70.5	4.7	75.2	5.6	69.6
4th Qr.	77.3	4.9	82.2	6.4	75.8

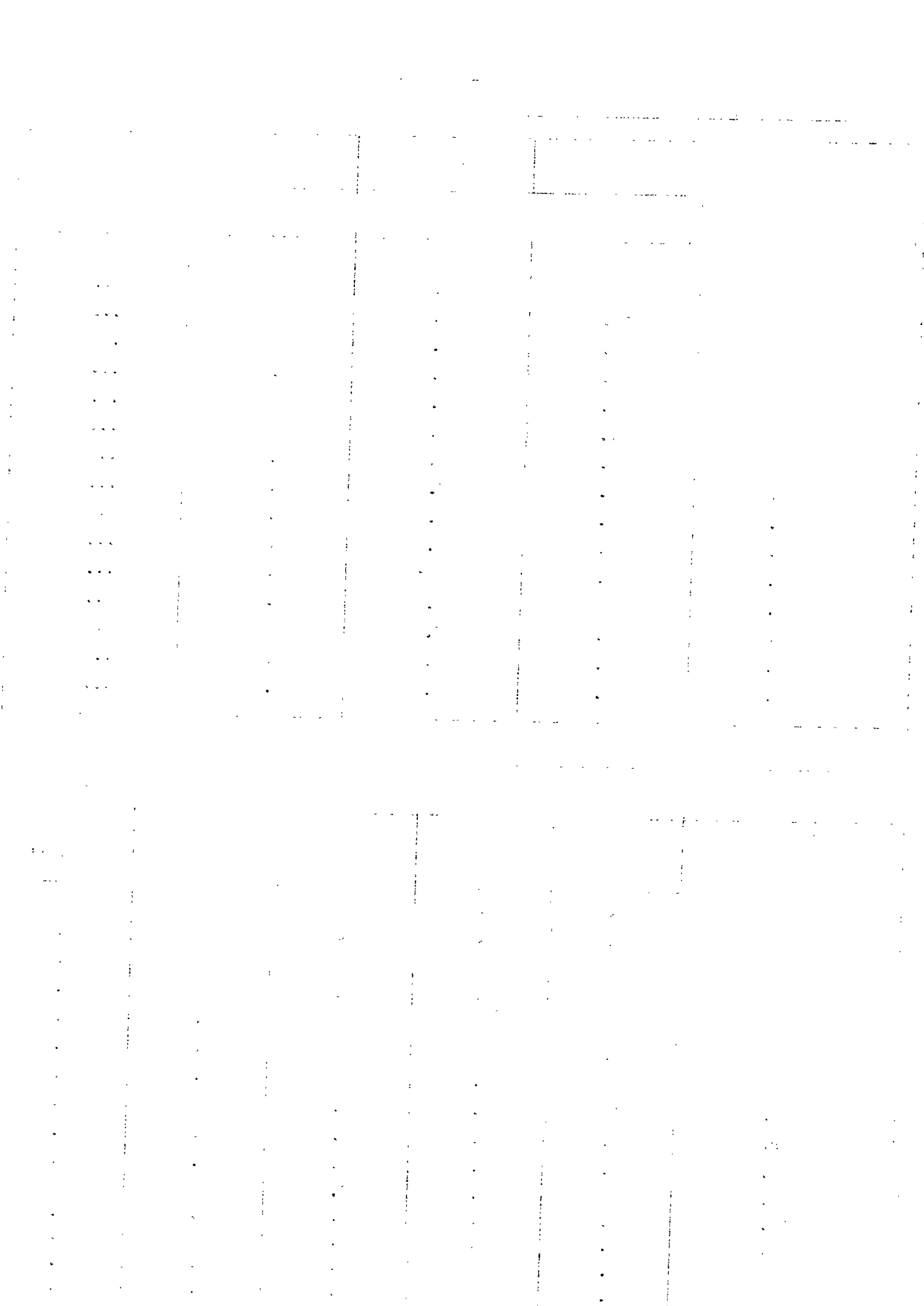


Table 17 - Industrial Origin of Gross National Product
At current factor cost

Rs Million

	1956	1957	1958	1959	1960	1961 ⁺
1. Agriculture, forestry, hunting and fishing	201	197	189	205	112	182
2. Mining and quarrying	1	1	1	1	1	1
3. Manufacturing	130	129	107	117	70	131
4. Construction	28	31	32	34	35	50
5. Electricity, gas, water and sanitary services	9	10	11	12	12	14
6. Transportation, storage and communication	74	78	82	90	84	97
7. Wholesale and retail trade	60	65	68	65	67	73
8. Banking, insurance and real estate	11	11	12	12	13	14
9. Ownership of dwellings	42	44	45	47	42	50
10. Public administration and defence	20	22	24	27	27	27
11. Services	48	54	59	64	69	71
GROSS DOMESTIC PRODUCT AT FACTOR COST	624	642	630	674	532	710
Net factor income from abroad	3	4	4	7	10	- 5
GROSS NATIONAL PRODUCT AT FACTOR COST	627	646	634	681	542	705

⁺provisional

Table 18 - Composition of Gross Fixed Domestic Capital Formation
(at current prices)

	Rs million				
	1957	1958	1959	1960	1961 ⁺
A. By type of capital good					
a. Land ^x	3	3	2	3	3
b. Dwellings	21	21	25	30	42
c. Non-residential buildings	14	12	13	13	18
d. Other construction and works	16	18	24	23	29
e. Transport equipment	12	17	15	19	18
(i) Passenger cars	4	5	4	6	5
(ii) Other equipment	8	12	11	13	13
f. Machinery and other equipment	28	44	44	46	39
GROSS FIXED DOMESTIC CAPITAL FORMATION	94	115	123	134	149
B. By industrial use					
a. Agriculture, forestry and fishing	7	16	17	13	7
b. Mining and quarrying	-	-	-	-	-
c. Manufacture	20	28	28	27	25
d. Construction	24	20	19	22	37
e. Electricity, gas and water	4	7	13	12	13
f. Transportation, storage and communication	13	18	17	24	20
g. Wholesale and retail trade	1	1	1	1	1
h. Banking, insurance and real estate	-	-	-	-	-
i. Ownership of dwellings	21	21	25	30	42
j. Public Administration	-	-	-	-	-
k. Service industries	1	1	1	2	1
l. Legal fees, stamp duties, etc.	3	3	2	3	3
GROSS FIXED DOMESTIC CAPITAL FORMATION	94	115	123	134	149

+ Excluding the expenditure incurred on reconstruction of and abnormal repairs to buildings damaged by the 1960 cyclones and valued at 60 million rupees in 1960 and 6 million rupees in 1961.

x Including legal fees, stamp duties, agents' commissions etc., connected with the transfer of ownership of land and buildings.

Table 19 - Balance of Payments

Rs Million

	1956		1957		1958		1959		1960		1961 ⁺	
	Receipts	Payments	Receipts	Payments	Receipts	Payments	Receipts	Payments	Receipts	Payments	Receipts	Payments
Goods and Services	324.4	255.0	360.6	297.8	320.2	335.8	325.8	324.9	248.5	368.5	343.0	378.2
Donations	6.4	4.7	3.5	6.0	2.5	6.1	2.6	6.2	5.8	5.7	21.2	8.8
Capital Transactions	22.4	77.1	4.4	74.3	47.7	32.5	47.7	39.8	105.8	21.4	97.9	55.5
Net Credit or Debit Balance	-	16.4	9.6	-	4.0	-	-	5.2	35.5	-	-	19.6
TOTAL	353.2	353.2	378.1	378.1	374.4	374.4	376.1	376.1	395.6	395.6	462.1	462.1

⁺ Provisional

Table 20 - Balance of Visible Trade

Rs Million

Period	Imports (c.i.f. value)	Exports ⁺ (f.o.b. value)	Balance of visible trade	
			Surplus	Deficit
1956	224.1	298.1	74.0	-
1957	263.8	330.3	66.5	-
1958	299.2	288.9	-	10.3
1959	286.9	289.6	2.7	-
1960	331.9	185.0	-	146.9
1961	324.0	294.2	-	29.8
1962 ^x	322.7	305.4	-	17.3
1961: 1st Qr.	85.2	16.4	-	68.8
2nd Qr.	85.3	6.6	-	78.7
3rd Qr.	82.9	111.5	28.6	-
4th Qr.	70.6	159.6	89.0	-
1962: 1st Qr.	74.5	17.5	-	57.0
2nd Qr.	83.3	13.8	-	69.5
3rd Qr.	81.4	131.2	49.8	-
4th Qr.	83.5	142.9	59.5	-

Table 21 - Quantum and price indices of exports and imports and terms of trade

Period	Quantum indices		Price indices		Terms of trade ^z
	Export	Import	Export	Import	
1956	100	100	100	100	100
1957	110	116	101	101	100
1958	98	130	99	102	97
1959	96	132	101	97	104
1960	57	154	109	96	114
1961	98	150	101	96	105

+ Including value of sugar quota certificates, but excluding sales value of bunker fuel and ships' stores.

For 1961 the value of sugar quota certificates has been included in the 4th quarter.

x Provisional

z Ratio of export price index to import price index.

A rise in the index indicates that the terms of trade have moved in favour of Mauritius.

Table 22 - Quantum and Price Indices of Imports by Sections

Period	All Sections	Food	Beverages and tobacco	Crude materials, inedible, except fuels	Mineral fuels, lubricants etc	Animal and vegetable oils and fats	Chemicals	Manufactured goods classified chiefly by material	Machinery and transport equipment	Miscellaneous manufactured articles
<u>Quantum Indices</u>										
1956	100	100	100	100	100	100	100	100	100	100
1957	116	121	102	82	101	113	109	117	138	116
1958	130	139	128	75	102	95	108	120	201	154
1959	132	127	122	86	107	98	132	121	182	172
1960	154	143	142	90	104	133	145	158	198	235
1961	150	151	148	102	99	127	149	142	179	197
<u>Price Indices</u>										
1956	100	100	100	100	100	100	100	100	100	100
1957	101	99	103	94	105	107	103	97	101	104
1958	102	103	103	104	92	89	100	99	104	97
1959	97	99	105	102	89	86	91	92	111	89
1960	96	98	105	104	90	86	87	98	106	78
1961	96	96	105	102	83	90	88	95	108	102

1. The first part of the document discusses the importance of maintaining accurate records of all transactions. It emphasizes that this is crucial for ensuring the integrity of the financial statements and for providing a clear audit trail. The text notes that any discrepancies or errors in the records could lead to significant consequences, including legal liabilities and a loss of trust from stakeholders.

2. The second part of the document outlines the specific procedures for recording transactions. It details the steps involved in identifying the nature of the transaction, determining the appropriate accounting treatment, and ensuring that all necessary supporting documents are properly filed. The text stresses the need for consistency and adherence to established accounting principles throughout the entire process.

3. The third part of the document addresses the role of internal controls in preventing and detecting errors or fraud. It describes how a robust system of internal controls can provide a high level of assurance that the financial information is reliable and free from material misstatements. The text highlights the importance of regular monitoring and evaluation of these controls to ensure they remain effective over time.

4. The fourth part of the document discusses the impact of technology on the accounting process. It explores how the use of accounting software and digital tools can streamline operations, reduce the risk of human error, and improve the overall efficiency of the financial reporting process. The text also touches upon the importance of data security and the need for appropriate safeguards to protect sensitive financial information.

5. The fifth and final part of the document provides a summary of the key points discussed and offers some concluding thoughts on the overall importance of sound financial management practices. It reiterates the message that a commitment to accuracy, transparency, and strong internal controls is essential for the long-term success and sustainability of any organization.

6. The first part of this section discusses the importance of maintaining accurate records of all transactions. It emphasizes that this is crucial for ensuring the integrity of the financial statements and for providing a clear audit trail. The text notes that any discrepancies or errors in the records could lead to significant consequences, including legal liabilities and a loss of trust from stakeholders.

7. The second part of this section outlines the specific procedures for recording transactions. It details the steps involved in identifying the nature of the transaction, determining the appropriate accounting treatment, and ensuring that all necessary supporting documents are properly filed. The text stresses the need for consistency and adherence to established accounting principles throughout the entire process.

8. The third part of this section addresses the role of internal controls in preventing and detecting errors or fraud. It describes how a robust system of internal controls can provide a high level of assurance that the financial information is reliable and free from material misstatements. The text highlights the importance of regular monitoring and evaluation of these controls to ensure they remain effective over time.

9. The fourth part of this section discusses the impact of technology on the accounting process. It explores how the use of accounting software and digital tools can streamline operations, reduce the risk of human error, and improve the overall efficiency of the financial reporting process. The text also touches upon the importance of data security and the need for appropriate safeguards to protect sensitive financial information.

10. The fifth and final part of this section provides a summary of the key points discussed and offers some concluding thoughts on the overall importance of sound financial management practices. It reiterates the message that a commitment to accuracy, transparency, and strong internal controls is essential for the long-term success and sustainability of any organization.

11. The first part of this section discusses the importance of maintaining accurate records of all transactions. It emphasizes that this is crucial for ensuring the integrity of the financial statements and for providing a clear audit trail. The text notes that any discrepancies or errors in the records could lead to significant consequences, including legal liabilities and a loss of trust from stakeholders.

12. The second part of this section outlines the specific procedures for recording transactions. It details the steps involved in identifying the nature of the transaction, determining the appropriate accounting treatment, and ensuring that all necessary supporting documents are properly filed. The text stresses the need for consistency and adherence to established accounting principles throughout the entire process.

13. The third part of this section addresses the role of internal controls in preventing and detecting errors or fraud. It describes how a robust system of internal controls can provide a high level of assurance that the financial information is reliable and free from material misstatements. The text highlights the importance of regular monitoring and evaluation of these controls to ensure they remain effective over time.

14. The fourth part of this section discusses the impact of technology on the accounting process. It explores how the use of accounting software and digital tools can streamline operations, reduce the risk of human error, and improve the overall efficiency of the financial reporting process. The text also touches upon the importance of data security and the need for appropriate safeguards to protect sensitive financial information.

15. The fifth and final part of this section provides a summary of the key points discussed and offers some concluding thoughts on the overall importance of sound financial management practices. It reiterates the message that a commitment to accuracy, transparency, and strong internal controls is essential for the long-term success and sustainability of any organization.

Table 23 - Exports - Quantities and Values

Quantity: thousand metric tons

Value : Rs million f.o.b.

Period	Domestic Exports											
	Total Value ^z	Re-Exports Value	Total		Sugar		Molasses		Tea		Other	
			Quantity	Value ^x	Quantity	Value	Quantity	Value	Quantity	Value	Quantity	Value
1956	298.1	4.1	...	294.0	540.0	289.3	72.7	3.4	0.2	0.8	...	0.5
1957	330.3	7.5	...	322.8	585.6	314.8	72.5	5.4	0.4	2.3	...	0.3
1958	288.9	3.6	...	285.3	522.8	277.1	59.2	4.9	0.4	2.3	...	1.0
1959	289.6	4.0	...	285.6	512.0	276.9	60.0	4.8	0.5	2.7	...	1.2
1960	185.0	5.5	...	179.5	299.4	174.0	45.2	3.4	0.2	1.3	...	0.8
1961	294.2	10.5	...	283.7	505.7	272.2	64.6	5.0	0.8	4.8	...	1.7
1962 ⁺	305.4	8.8	...	296.5	515.1	281.5	110.3	9.1	0.7	3.9	...	2.1
1961: 1st Qr.	16.4	3.7	...	12.7	16.2	9.3	9.0	0.7	0.3	1.6	...	1.1
2nd Qr.	6.6	3.9	...	2.7	0.3	0.1	10.7	0.8	0.3	1.8	...	0.1
3rd Qr.	111.5	1.1	...	110.4	218.8	108.7	14.3	1.0	0.1	0.6	...	0.1
4th Qr.	159.6	1.7	...	157.9	270.4	154.1	30.6	2.5	0.2	0.9	...	0.4
1962: 1st Qr.	17.5	1.0	...	16.5	22.5	13.1	13.8	1.1	0.3	1.6	...	0.7
2nd Qr.	13.8	3.1	...	10.7	13.0	7.7	16.9	1.6	0.2	1.0	...	0.4
3rd Qr.	131.2	2.9	...	128.3	221.9	126.0	20.4	1.6	-	0.1	...	0.6
4th Qr.	142.9	1.9	...	141.1	257.8	134.7	59.2	4.8	0.2	1.2	...	0.4

^z Including value of sugar quota certificates, but excluding sales value of bunker fuel and ships' stores.

^x For 1961 the value of sugar quota certificates has been included in the 4th quarter.

⁺ Provisional.

Table 24 - Total Exports² : Principal countries of destination - values

Rs. Million f.o.b.

Period	United Kingdom	Canada	Hong-Kong	Malaya	Myasaland	Singapore	Holland	Japan	Lebanon
1956	223.8	54.4	-	1.7	-	0.6	0.7	-	-
1957	231.3	44.2	6.2	1.3	-	0.1	0.4	15.1	0.4
1958	234.1	26.6	0.5	2.1	-	1.1	1.3	0.4	3.8
1959	229.6	37.5	3.0	0.4	2.2	1.1	1.6	0.8	2.9
1960	159.5	10.0	-	0.4	0.9	0.3	1.0	1.5	-
1961	235.9	36.4	0.1	-	-	-	0.1	2.3	-
1962 [†]	246.8	22.3	0.3	0.1	-	-	2.0	3.0	-
1961: 1st Qr.	11.7	-	-	-	-	-	-	0.6	-
2nd Qr.	2.8	-	-	-	-	-	-	1.6	-
3rd Qr.	85.8	23.6	-	-	-	-	-	-	-
4th Qr.	135.5	12.8	-	-	-	-	-	0.1	-
1962: 1st Qr.	15.0	-	-	-	-	-	0.4	0.1	-
2nd Qr.	9.3	-	0.2	0.1	-	-	-	-	-
3rd Qr.	115.7	10.8	-	-	-	-	0.7	0.1	-
4th Qr.	106.7	11.5	-	-	-	-	0.9	2.9	-

+ Provisional

² Excluding value of sugar quota certificates.

Table 25 - Imports - values

Rs Million c.i.f.

Period	Total	Food	Beverages and tobacco	Crude materials, inedible, except fuels.	Mineral fuels, lubricants, etc.	Animal and vegetable oils and fats	Chemicals	Manufactured goods classified chiefly by material	Machinery and transport equipment	Miscellaneous manufactured articles	Miscellaneous transactions and commodities n.e.s.
1956	224.1	61.0	5.4	7.9	14.2	9.0	27.3	56.3	27.8	14.9	0.3
1957	263.8	73.7	5.7	6.1	14.9	11.0	30.7	64.2	38.9	18.1	0.5
1958	299.2	88.3	7.2	6.2	13.2	7.7	29.3	66.6	58.1	22.1	0.5
1959	286.9	76.8	7.0	7.0	13.5	7.6	32.8	62.8	56.1	22.8	0.5
1960	331.9	85.2	8.1	7.4	13.2	10.3	34.4	86.9	58.5	27.3	0.6
1961	324.0	88.9	8.4	8.2	11.7	10.3	36.0	76.0	53.7	29.9	0.9
1962 [†]	322.7	93.0	8.1	6.3	15.5	10.7	37.2	70.9	45.4	35.0	0.6
1961: 1st Qr.	85.2	25.9	2.1	2.2	4.1	1.2	7.8	19.0	16.0	6.6	0.3
2nd Qr.	85.3	24.7	2.0	2.3	3.8	2.2	7.8	18.7	15.9	7.7	0.2
3rd Qr.	82.9	21.5	1.8	2.0	2.5	4.4	10.6	20.6	12.2	7.1	0.1
4th Qr.	70.6	16.8	2.6	1.7	1.2	2.4	9.8	17.7	9.6	8.5	0.2
1962: 1st Qr.	74.5	21.9	2.0	1.7	4.7	2.3	7.8	16.5	10.5	7.0	0.1
2nd Qr.	83.3	22.7	2.4	1.4	3.7	2.1	8.9	17.1	16.0	8.8	0.2
3rd Qr.	81.4	25.1	1.6	1.6	3.2	3.0	10.3	18.4	10.0	8.3	0.2
4th Qr.	83.5	23.4	2.2	1.5	3.9	3.2	10.2	19.1	8.9	10.9	0.2

[†] Provisional

[The page contains extremely faint and illegible text, likely bleed-through from the reverse side of the document. The text is too light to transcribe accurately.]

Table 26 - Imports of Merchandise: selected commodities - Values

Rs million c.i.f.

Period	Rice	Wheat Flour	Alcoholic Beverages	Petroleum products	Vegetable edible oils	Fertilizers manufactured	Cotton fabrics	Textile fabrics	Cement	Iron and steel goods	Manufactures of metals n.e.s.	Machinery, other than electric	Electric machinery apparatus and appliances	Road Motor Vehicles and parts
1956	27.4	6.5	2.9	12.5	8.3	13.8	8.5	5.8	5.4	8.3	7.4	10.8	8.0	6.9
1957	36.1	7.9	3.4	13.1	10.4	14.5	12.5	5.5	6.3	11.4	7.6	15.6	11.6	10.3
1958	44.1	11.1	3.9	11.7	7.2	12.1	10.7	7.2	6.7	11.4	8.2	26.1	17.0	13.2
1959	32.4	7.4	4.7	12.5	7.1	14.3	11.0	6.2	7.1	10.5	7.1	21.1	20.2	13.0
1960	33.0	10.0	6.0	12.9	9.7	13.2	12.1	5.9	9.9	23.0	12.8	21.6	19.6	15.5
1961	36.8	9.4	6.8	10.9	9.8	12.9	12.2	6.5	9.1	13.8	11.8	20.2	17.5	13.8
1962 [†]	37.3	11.6	6.4	15.0	10.0	14.9	12.7	5.6	8.8	11.1	9.6	18.2	12.0	13.8
1961: 1st Qr.	11.2	2.8	1.6	4.0	1.0	1.4	2.9	1.4	2.4	2.9	3.7	6.3	5.2	4.2
2nd Qr.	12.3	2.2	1.8	3.6	2.1	1.7	2.7	1.3	1.7	4.3	2.5	6.0	5.8	3.6
3rd Qr.	8.6	2.6	1.3	2.2	4.3	4.7	3.4	1.9	2.9	4.1	2.8	4.3	4.4	3.2
4th Qr.	4.8	1.7	2.1	1.2	2.4	5.2	3.3	1.9	2.1	2.5	2.8	3.6	2.1	2.7
1962: 1st Qr.	8.2	2.4	1.5	4.6	2.1	2.6	3.3	1.4	1.6	2.6	2.4	4.8	2.0	3.4
2nd Qr.	9.3	2.6	1.7	3.6	2.0	2.3	2.6	1.5	1.6	2.3	2.5	6.7	4.9	4.1
3rd Qr.	10.6	3.8	1.2	3.1	2.8	4.8	3.5	1.2	3.3	2.6	2.5	3.4	2.7	3.3
4th Qr.	9.3	2.8	1.9	3.7	5.1	5.2	3.3	1.6	2.4	3.5	2.3	3.3	2.4	3.0

[†]Provisional.

Table 27 - Imports of Merchandise: selected commodities - quantities

Period	Rice Thousand M/Tons	Wheat Flour Thousand M/Tons	Vegetable edible oils Thousand M/Tons	Fertilizers, manufactured Thousand M/Tons	Cotton Fabrics Million Sq. Metres	Textile Fabrics Million Sq. Metres	Cement Thousand M/Tons	Iron and Steel goods Thousand M/Tons
1956	45.1	17.0	5.2	39.7	6.5	2.4	38.1	8.9
1957	62.1	19.3	5.6	40.7	10.6	2.5	43.0	12.7
1958	70.5	25.4	4.7	36.1	8.5	3.7	51.5	12.6
1959	57.1	17.7	5.0	50.1	9.6	3.6	62.1	12.9
1960	60.6	23.9	7.1	51.3	9.1	2.4	94.6	26.7
1961	67.2	22.7	6.5	50.3	9.0	2.8	91.8	16.8
1962 ⁺	68.2	26.6	6.8	62.7	10.0	2.5	95.2	14.2
1961: 1st Qr.	20.8	6.7	0.8	5.6	2.0	0.5	24.6	3.6
2nd Qr.	21.5	5.4	1.5	6.5	1.9	0.5	17.1	5.1
3rd Qr.	15.8	6.4	2.7	18.2	2.6	0.9	28.8	4.8
4th Qr.	9.1	4.1	1.6	20.0	2.5	0.9	21.3	3.3
1962: 1st Qr.	15.5	5.5	1.4	10.9	2.6	0.7	17.8	3.3
2nd Qr.	17.2	6.0	1.2	9.0	1.9	0.7	17.0	3.0
3rd Qr.	18.8	8.5	1.9	20.5	2.7	0.5	34.9	3.5
4th Qr.	16.7	6.5	2.2	22.3	2.8	0.5	25.5	4.4

⁺Provisional.

Table 28 - Imports: Main sources of supply - values

Rs. million c.i.f.

Period	United Kingdom	Australia	Burma	Hong-Kong	India	Republic of South Africa	Western Germany	Iran	Japan	Siam	France	United States of America
1956	76.3	13.8	15.6	3.7	23.4	13.6	6.6	5.7	2.7	1.8	8.1	4.3
1957	93.8	17.4	35.2	5.0	14.0	19.7	9.0	9.8	3.9	3.0	11.8	5.8
1958	108.4	21.1	30.4	5.9	12.3	17.7	12.2	7.9	8.1	9.2	11.4	9.9
1959	105.9	19.5	28.6	7.1	12.7	20.0	11.9	10.6	9.2	6.2	9.4	8.5
1960	115.9	23.0	26.8	9.4	13.5	21.7	13.0	9.7	13.4	8.8	13.0	9.5
1961	104.3	22.4	28.9	9.7	13.8	27.1	15.0	8.2	9.7	10.0	12.9	7.6
1962 [†]	90.2	22.1	34.5	11.7	14.0	34.7	13.1	12.4	10.1	4.7	15.4	7.8
1961: 1st Qr.	29.5	7.4	10.1	1.7	3.2	7.1	2.8	3.5	2.0	1.8	2.3	2.1
2nd Qr.	26.6	5.2	5.9	2.7	2.5	7.9	3.8	2.7	1.9	7.0	3.8	2.1
3rd Qr.	26.6	4.6	8.1	2.1	4.4	6.1	4.5	1.3	2.9	0.9	3.8	1.5
4th Qr.	22.2	5.2	4.8	3.2	3.6	6.1	3.9	0.7	2.9	0.3	2.9	1.9
1962: 1st Qr.	20.9	5.0	8.2	2.0	4.2	7.9	2.2	4.3	2.0	0.3	3.6	1.6
2nd Qr.	26.0	4.7	8.7	2.6	3.2	10.5	2.8	2.7	1.9	1.1	3.7	2.6
3rd Qr.	21.0	6.5	9.2	2.9	3.3	8.1	3.8	2.5	2.7	1.9	3.8	2.5
4th Qr.	22.3	6.0	8.4	4.2	3.2	8.1	4.3	3.0	3.4	1.3	4.2	1.1

†Provisional.

V. TRANSPORT AND COMMUNICATION

Table 29. Road Transport

End of period	Grand Total	Private Vehicles			Commercial Vehicles				Government owned vehicles		
		Total	Cars	Motor Cycles	Other	Total	Taxi-Cars	Buses + Lorries		Other	
1956	10,882	6,849	5,934	726	189	3,663	974	356	1,881	452	370
1957	11,456	7,164	6,155	769	240	3,900	1,030	430	1,922	518	392
1958	12,286	7,570	6,471	850	249	4,287	1,225	441	2,011	610	429
1959	13,291	7,877	6,549	969	359	4,961	1,689	488	2,140	644	453
1960	14,083	9,181	7,549	1,092	440	4,401	1,274	447	1,901	779	501
1961	15,669	10,026	8,273	1,236	517	5,079	1,270	456	2,390	953	564
1962	16,673	10,847	8,860	1,400	587	5,224	1,194	498	2,470	1,062	602
1961: 1st Qr.	14,730	9,757	7,743	1,128	486	4,873	1,335	456	2,258	826	500
2nd Qr.	15,091	9,631	7,961	1,166	504	4,952	1,281	471	2,329	871	508
3rd Qr.	15,364	9,777	8,081	1,196	500	5,036	1,274	466	2,367	929	551
4th Qr.	15,669	10,026	8,273	1,236	517	5,079	1,270	466	2,390	953	564
1962: 1st Qr.	15,857	10,187	8,377	1,283	527	5,103	1,260	470	2,389	984	567
2nd Qr.	16,062	10,299	8,440	1,316	543	5,186	1,268	484	2,412	1,022	577
3rd Qr.	16,370	10,548	8,628	1,354	566	5,235	1,239	489	2,465	1,042	587
4th Qr.	16,673	10,847	8,860	1,400	587	5,224	1,194	498	2,470	1,062	602

+ Figures for 1956 - 1959 include private buses.
 Since 1960 these are grouped with "Other private vehicles".

Table 30 - Sea Borne shipping

Period	Vessels entering		Vessels Leaving		Goods	
	Number	Net registered tonnage	Number	Net registered tonnage	Unloaded Thousand M/Tons	Loaded [≠] Thousand M/Tons
1956	297	1,239	307	1,243	352	620
1957	329	1,290	325	1,273	384	682
1958	345	1,306	347	1,312	399	596
1959	365	1,363	367	1,352	425	589
1960	371	1,251	369	1,253	479	366
1961	418	1,510	419	1,508	478	604
1962	467	1,494	464	1,489	517	647
1961:1st Qr.	91	323	91	324	120	35
2nd Qr.	89	308	90	312	121	24
3rd Qr.	117	458	110	433	127	238
4th Qr.	121	421	128	439	110	307
1962:1st Qr.	95	325	92	313	116	42
2nd Qr.	88	290	92	310	115	46
3rd Qr.	157	449	153	429	149	250
4th Qr.	127	430	127	437	137	309

≠ Including bunkers

Table 31 - Civil Aviation

Period	Number of movements		Passengers		Freight	
	Landings	Take offs	Set down	Picked up	Unloaded M/Tons	Loaded M/Tons
1956	170	170	3,805	3,827	39.1	90.6
1957	175	176	4,290	4,312	42.2	64.3
1958	223	222	4,722	4,763	44.7	53.8
1959	255	256	5,371	5,325	51.4	39.7
1960	251	250	6,312	6,311	89.5	21.1
1961	287	288	7,645	7,775	201.6	70.8
1962	347	345	10,351	11,179	130.9	43.4
1961:1st Qr.	58	59	1,400	1,563	68.8	18.1
2nd Qr.	56	56	1,582	1,688	40.5	23.4
3rd Qr.	90	89	2,530	2,561	50.5	16.4
4th Qr.	83	84	2,133	1,963	41.8	12.9
1962:1st Qr.	82	81	1,844	2,136	18.2	5.8
2nd Qr.	91	90	2,189	2,799	37.0	13.3
3rd Qr.	90	89	3,683	3,602	47.6	13.9
4th Qr.	84	85	2,635	2,642	28.1	10.4

Notes: In this table: (1) are included only movements of commercial aircraft;
(2) each touch down and take off is counted as a separate movement;
(3) passengers in transit are excluded;
(4) freight carried by planes other than commercial are included.

VI - LAND UTILISATION

Table 32 - Total area classified by utilisation

	<u>Acres</u>				
	1957	1958	1959	1960	1961
Agriculture:	208,500	213,600	221,100	225,200	226,300
Sugar	190,500	197,400	203,700	208,100	209,800
Aloe fibre(effective area)	4,300	3,700	2,400	2,000	2,200
Tea	3,600	3,600	4,000	4,400	4,400
Tobacco	800	1,000	1,100	1,000	900
Foodcrops	4,300	2,900	2,800	2,400	2,000
Vegetables	5,000	5,000	7,100	7,300	7,000
Arable land potentially productive	1,900	1,200	1,000	-	-
Forests scrub areas, grasslands & grazing grounds	198,200	193,800	186,500	183,400	182,300
Private forestlands	15,000	15,000	15,000	15,000	15,000
Crown Forests	67,100	67,700	67,700	67,700	67,700
Pas Geometriques ^x	5,290	5,290	5,290	5,290	5,290
Natural reserves ⁺	15,500	15,500	15,500	15,500	15,500
Meadows, grass lands, scrubs, forests and grazing grounds	95,310	90,310	83,010	79,910	78,810
Built on areas	14,200	14,200	14,200	14,200	14,200
Inland water bodies	23,000	23,000	23,000	23,000	23,000
Reservoirs, crater, lakes, ponds	3,000	3,000	3,000	3,000	3,000
Natural water courses	20,000	20,000	20,000	20,000	20,000
Roads - tracks [@]	10,000	10,000	10,000	10,000	10,000
Permanent waste lands	5,000	5,000	5,000	5,000	5,000
TOTAL ISLAND AREA	460,800	460,800	460,800	460,800	460,800

x Leased crown lands in the coastal belt.

+ Privately owned mountain and river reserves protected by law.

@ Estimated - including roads in agricultural lands.

VII - LOCAL PRODUCTION

Table 33 - Production of Specific Commodities

Period	Sugar Cane M/Tons	Sugar M/Tons	Molasses M/Tons	Alcohol (Total) @ 100° GL HL	Tea M/Tons	Tobacco Leaf kgs	Cigarettes kgs	Rum [⊛] HL	Country Liquor HL	Sacks Units	Electricity Generated Mn Kwh
1956	4,421,427	572,512	118,716	17,322	697.4	417,522	561,479	15,463	41,133	1,401,143	41.2
1957	4,343,898	562,003	110,471	15,592	859.0	453,303	561,256	14,667	38,638	1,657,046	44.6
1958	4,328,877	525,842	113,811	16,431	873.0	449,239	545,665	15,827	39,837	1,422,659	48.9
1959	4,743,301	580,372	118,056	17,730	905.9	462,900	585,377	18,753	50,293	1,200,659	55.8
1960	2,393,532	235,781	72,991	19,536	786.0	459,764	618,274	16,096	49,517	1,270,020	54.6
1961	4,942,981	553,259	139,234	14,148	1,274.2	447,945	584,423	14,159	55,644	1,422,734	63.2
1962	4,624,487 ⁺	533,000 ⁺	125,590	15,460	1,269.8	424,448	576,683	14,440	57,812	1,500,177	77.2
1961: 1st Qr.	-	-	-	...	512.3	105,561	140,773	2,727	10,829	277,336	14.8
2nd Qr.	-	-	-	...	317.4	125,785	144,632	3,355	11,185	385,889	15.6
3rd Qr.	66.9	115,376	156,672	3,785	15,354	400,335	16.2
4th Qr.	377.6	101,223	142,346	4,292	18,276	359,174	16.6
1962: 1st Qr.	-	-	-	...	488.1	99,139	141,784	3,111	12,926	289,061	17.0
2nd Qr.	-	-	-	...	216.6	104,091	137,735	3,380	14,462	389,551	19.5
3rd Qr.	106.3	115,910	152,238	3,462	14,680	416,300	19.9
4th Qr.	458.8	105,308	144,926	4,487	15,744	405,265	20.8

+ Provisional

⊛ Issued for local consumption at 40 - 50° GL.

1. The first part of the document discusses the importance of maintaining accurate records of all transactions and activities. It emphasizes that this is essential for ensuring transparency and accountability in the organization's operations.

2. The second part of the document outlines the various methods and tools used to collect and analyze data. It highlights the need for consistent data collection procedures and the use of advanced analytical techniques to derive meaningful insights from the data.

3. The third part of the document focuses on the role of technology in data management and analysis. It discusses how modern software solutions can streamline data collection, storage, and processing, thereby improving efficiency and accuracy.

4. The fourth part of the document addresses the challenges associated with data management, such as data quality, security, and privacy. It provides strategies to mitigate these risks and ensure that the data remains reliable and secure throughout its lifecycle.

5. The fifth part of the document discusses the importance of data governance and the establishment of clear policies and procedures. It emphasizes that effective data governance is crucial for ensuring that data is used responsibly and in compliance with relevant regulations.

6. The sixth part of the document explores the role of data in decision-making and strategic planning. It highlights how data-driven insights can help organizations identify opportunities, assess risks, and make informed decisions that drive growth and success.

7. The seventh part of the document discusses the importance of data literacy and the need for ongoing training and development. It emphasizes that all employees should have a basic understanding of data and be able to interpret and use it effectively in their work.

8. The eighth part of the document discusses the importance of data ethics and the need to consider the social and ethical implications of data collection and analysis. It emphasizes that organizations should be transparent about their data practices and respect the privacy and rights of individuals.

9. The ninth part of the document discusses the importance of data security and the need to implement robust security measures to protect sensitive information. It emphasizes that data security is a top priority for any organization that handles large amounts of data.

10. The tenth part of the document discusses the importance of data integration and the need to ensure that data from different sources is consistent and interoperable. It emphasizes that data integration is essential for providing a comprehensive view of the organization's operations and for enabling cross-functional collaboration.

Table 34 - Roll of pupils and students in schools and colleges

Period	PRIMARY SCHOOLS			SECONDARY SCHOOLS			
	Total	Government	Aided	Total	Government	Aided	Private
October, 1956	72,333	36,412	35,921	10,960	1,118	2,123	7,719
" 1957	86,422	45,737	40,685	12,606	1,152	2,256	9,198
" 1958	96,387	54,251	44,136	15,437	1,262	2,424	11,751
" 1959	105,223	59,876	45,347	18,489	1,360	2,455	14,694
" 1960	104,713	60,938	43,775	22,840	1,456	2,557	18,827
" 1961	113,604	66,497	47,107	24,851	1,629	2,602	20,620