



Republic of Mauritius

Vol. 20

Ministry of Finance
and Economic Empowerment

Central Statistics Office

Digest of Public Finance Statistics 2008

May 2009

(Price: Rs 50.00)

Ministry of Finance and Economic Empowerment

CENTRAL STATISTICS OFFICE

**DIGEST OF
PUBLIC FINANCE STATISTICS
2008**



DIGEST OF PUBLIC FINANCE STATISTICS

FOREWORD

This is the twentieth issue of the Digest of Public Finance Statistics, a regular annual publication of the Central Statistics Office.

The digest contains detailed data on government operations for the financial years 2004/2005 to 2007/2008. The tables have been prepared in accordance with the recommendations of the Government Finance Statistics (GFS) 1986 Manual of the International Monetary Fund (IMF).

Data for financial year 2008/2009 onwards will be compiled according to the GFS Manual 2001 of the IMF. We are taking the opportunity to publish in this Digest two tables showing monthly data for Budgetary Central Government for the period July to December 2008: (1) Statement of Government Operations and (2) Revenue. A complete set of tables based on GFS 2001 will be published in the next issue of the Digest of Public Finance Statistics.

It is hoped that the statistics will be useful to the public in general, and in particular, to planners and policy makers.

The Treasury, the Rodrigues Regional Assembly, the municipalities, the district councils and the extra budgetary units (including social security schemes) forming part of government have provided information needed for the preparation of this report. This office herewith acknowledges the valuable contribution of these institutions.

H. Bundhoo

Director of Statistics

Central Statistics Office

Ministry of Finance and Economic Empowerment

PORT LOUIS

MAY 2009

Contact person:

Mr. E. Wong Ping Lun

Statistician

Public Finance Statistics Unit

Ministry of Finance and Economic Empowerment

Telephone: 201-1603 / 2671 / 2895

Fax : 201-1597

Email : cso@mail.gov.mu

CONTENTS

	<u>Page</u>
Concepts and definitions (GFS 1986)	3-9
Budgetary Central Government (GFS 1986)	
Table 1.1 - Main aggregates, 2004/2005 - 2007/2008	10
Table 1.2 - Summary of operations, 2004/2005 - 2007/2008	11
Table 1.3 - Summary of operations, percentages, 2004/2005 - 2007/2008	12
Table 1.4 - Revenue and grants, 2004/2005 - 2007/2008	13
Table 1.5 - Functional classification of expenditure, 2004/2005 - 2007/2008	14-15
Table 1.6 - Functional classification of current expenditure, 2004/2005 - 2007/2008	16
Table 1.7 - Functional classification of capital expenditure, 2004/2005 - 2007/2008	17
Table 1.8 - Economic classification of expenditure, 2004/2005 - 2007/2008	18
Table 1.9 - Functional classification of lending minus repayments, 2004/2005 - 2007/2008	19
Table 1.10 - Financing by type of debt holder, 2004/2005 - 2007/2008	20
Table 1.11 - Financing by type of debt instrument, 2004/2005 - 2007/2008	20
Table 1.12 - Outstanding debt by type of debt holder, 2004/2005 - 2007/2008	21
Table 1.13 - Outstanding debt by type of debt instrument, 2004/2005 - 2007/2008	21
Consolidated Central Government (GFS 1986)	
Table 2.1 - Main aggregates, 2004/2005 - 2007/2008	23
Table 2.2 - Summary of operations, 2004/2005 - 2007/2008	24
Table 2.3 - Summary of operations, percentages, 2004/2005 - 2007/2008	25
Table 2.4 - Revenue and grants, 2004/2005 - 2007/2008	27-30
Table 2.5 - Functional classification of expenditure, 2004/2005 - 2007/2008	32-33
Table 2.6 - Functional classification of current expenditure, 2004/2005 - 2007/2008	34-37
Table 2.7 - Functional classification of capital expenditure, 2004/2005 - 2007/2008	38-41
Table 2.8 - Economic classification of expenditure, 2004/2005 - 2007/2008	42-45
Table 2.9 - Functional classification of lending minus repayments, 2004/2005 - 2007/2008	46-47
Table 2.10 - Financing by type of debt holder, 2004/2005 - 2007/2008	48-49
Table 2.11 - Financing by type of debt instrument, 2004/2005 - 2007/2008	50-51
Table 2.12 - Outstanding debt by type of debt holder, 2004/2005 - 2007/2008	52
Table 2.13 - Outstanding debt by type of debt instrument, 2004/2005 - 2007/2008	53
Table 2.14 - Debt charges, 2004/2005 - 2007/2008	54
Local Government (GFS 1986)	
Table 3.1 - Revenue and grants, 2004/2005 - 2007/2008	55
Table 3.2 - Functional classification of expenditure, 2004/2005 - 2007/2008	55
Table 3.3 - Economic classification of expenditure, 2004/2005 - 2007/2008	55
General Government (GFS 1986)	
Table 4.1 - Main aggregates, 2004/2005 - 2007/2008	56
Table 4.2 - Revenue and grants, 2004/2005 - 2007/2008	57-58
Table 4.3 - Functional classification of expenditure, 2004/2005 - 2007/2008	59-60
Table 4.4 - Economic classification of expenditure, 2004/2005 - 2007/2008	61-62
Public Sector	
Table 5.1 - Employment and wages & salaries in the public sector, 2004/2005-2007/2008	63
Table 5.2 - Percentage distribution of employees and wages in the public sector, 2005 - 2007	64
Income Tax Statistics	
Table 6.1 - Individuals - Analysis by range of gross income, years of assessment, 2005/2006 - 2008/2009	65-66
Table 6.2 - Companies - Analysis by range of liable income, years of assessment, 2005/2006 - 2008/2009	67-68

CONTENTS (continued)

Budgetary Central Government (GFS 2001)

Diagram 1 - Relationships between GFS 1986 and 2001 Classification Systems	69
Table 7.1 - Statement of Budgetary Central Government Operations, 2007/2008 - 2008/2009	70
Table 7.2 - Revenues, 2008/2009	71

Graphs/Illustrations

Figure 1 - Budgetary Central Government - Revenue and expenditure, 2002/2003 -2007/2008	22
Figure 2 - Consolidated Central Government - Revenue and expenditure, 2002/2003 -2007/2008	22
Figure 3 - Consolidated Central Government - Revenue and grants, 2002/2003 -2007/2008	26
Figure 4 - Consolidated Central Government - Tax revenue, 2002/2003 -2007/2008	26
Figure 5 - Consolidated Central Government - Total expenditure, 2002/2003 -2007/2008	31

Concepts and definitions

1. Concepts

Detailed data on revenue, grants, expenditure, lending minus repayments, financing and debt of the general government sector have been prepared according to the concepts and definitions laid down in 'A Manual on Government Finance Statistics (GFS) 1986' of the International Monetary Fund.

Data on wages and salaries in the public sector and income tax analysis by range of gross income for individuals and range of liable income for companies are also provided.

2. Definition of main aggregates

Revenue includes nonrepayable receipts from taxes (i.e. compulsory payments to government), income from property such as interests and dividends, fees and other charges. Non repayable receipts from other governments and international institutions are separately classified under grants.

Expenditure includes all nonrepayable payments made by government, whether for current or capital purposes. Unlike the treatment in receipts, payments of grants or transfers are included within expenditure itself rather than forming a separate category.

Lending minus repayments consists of loans made by government to public and private bodies net of repayments of past loans for purposes of public policy. Government's acquisition of equities for public policy purposes is also included here.

Deficit or surplus is defined as revenue and grants received less total expenditure and net lending. It is also equal (with an opposite sign) to the amount of net borrowing by the government.

Financing represents the means by which a government provides financial resources to cover a budget deficit or allocates financial resources arising from a surplus. It thus includes government borrowing and amortization vis-à-vis all other sectors, domestic and foreign. According to the GFS manual, since transactions with the IMF are directly connected with management of the country's international reserves, they should be included in the functions of the central bank (Bank of Mauritius). Hence, receipts of funds from and payments to the IMF have been excluded from government accounts and the net transactions treated as a net borrowing from the central bank. Similarly, in the tables relating to Central Government debt, borrowings from the IMF are included in domestic debt, i.e., from the central bank.

Debt represents the outstanding stock of liabilities of the government to the rest of the economy and the world. It excludes borrowing and lending transactions among units forming part of Central Government. For example, investment of the surpluses of the National Pensions Fund with Government, is not included in consolidated Central Government debt.

3. Coverage

3.1 The General Government Sector

Government is defined as consisting of all units performing Government functions: that is, the implementation of public policy through the provision of primarily non-market services and the transfer of income, supported mainly by compulsory levies.

The **General Government** sector is made up of (i) Central Government (ii) Regional Government and (iii) Local Government.

(i) Central Government covers all units that are agencies of the country's central authority. It consists of Budgetary Central Government, Extra Budgetary Units and Social Security Schemes.

Budgetary Central Government includes all ministries and departments.

The Consolidated Sinking Fund, which is made up of contributions provided by the Government for the gradual redemption of Government domestic debt, is also considered to form part of the Budgetary Central Government accounts.

Extra Budgetary Units are agencies responsible for the performance of specialised governmental functions in such fields as health, education, social welfare, construction and so on, under the authority of Central Government. (See List 4.1)

Social Security Schemes are schemes imposed, controlled or financed by the public authorities for the purpose of providing social security benefits for the community. Included here is the National Pensions Scheme.

(ii) Regional Government consists of the administration of Rodrigues.

(iii) Local Government consists of municipalities and district councils/ village councils exercising an independent competence as government units.

3.2 The Public Sector

The **Public Sector** consists of the general government sector, non-financial public corporations and public financial corporations.

An institution is considered as public if it is entirely or mainly owned and/or controlled by government itself or by some other public institutions.

'Own' is defined as having all or a majority of the shares or other forms of capital participation. 'Control' implies having an effective influence in the main aspects of management.

Non-Financial Public Corporations are government-owned or government-controlled units selling goods and services to the public on a large scale. (See List 4.2)

Public Financial Corporations are government-owned or government-controlled institutions primarily engaged in both incurring liabilities and acquiring financial assets in the market. (See List 4.3)

4. List of public institutions as at March 2009

4.1 Extra Budgetary Units (*including Social Security Schemes*)

1. Aapravasi Ghat Trust Fund
2. Agalega Island Council
3. Agricultural Research and Extension Unit
4. Beach Authority
5. Board of Investment (includes Financial Services Promotion Agency as from Oct 2006)
6. Bus Industry Employees Welfare Fund
7. Central Procurement Board
8. Civil Service Family Protection Scheme Board
9. Competition Commission
10. Conservatoire de Musique "Francois Mitterand Trust Fund"
11. Construction Industry Development Board
12. Early Childhood Care and Education Authority (Ex-Pre School Trust Fund)
13. Employees Welfare Fund
14. Export Processing Zone Labour Welfare Fund
15. Farmers Service Corporation
16. Farmers training School
17. Fashion and Design Institute
18. Financial Intelligence Unit
19. Financial Reporting Council
20. Fisherman Welfare Fund
21. Food and Agricultural Research Council
22. Food security Fund
23. Gambling Regulatory Authority (Ex- Horse Racing Board)
24. Hindi Speaking Union
25. Human Resource and knowledge Development Fund
26. Human Resource Development Council
27. Ilois Welfare Fund
28. Independent Broadcasting Authority
29. Independent Commission Against Corruption
30. Industrial and Vocational Training Board
31. Information & Communication Technologies Authority
32. Irrigation Authority
33. Islamic Cultural Centre Trust Fund
34. Law Reform Commission
35. Le Morne Heritage Trust Fund
36. Local Infrastructure Fund
37. Lois Lagesse Trust Fund

38. Mahatma Gandhi Institute
39. Malcolm De Chazal Trust Fund
40. Manufacturing Adjustment and SME Development Fund
41. "Maurice Ile Durable" (MID) Fund
42. Mauritian Cultural Centre Trust
43. Mauritian Tamil Cultural Centre
44. Mauritius College of the Air
45. Mauritius Council of Registered Librarians
46. The English Speaking Union
47. Mauritius Ex-Services Trust Fund
48. Mauritius Examinations Syndicate
49. Mauritius Film Development Corporation
50. Mauritius Institute of Education
51. Mauritius Institute of Health
52. Mauritius Marathi Cultural Centre Trust
53. Mauritius Museums Council
54. Mauritius Oceanography Institute
55. Mauritius Qualifications Authority
56. Mauritius Research Council
57. Mauritius Revenue Authority
58. Mauritius Society of Authors
59. Mauritius Sports Council
60. Mauritius Standards Bureau
61. Mauritius Telegu Cultural Centre Trust
62. Mauritius Tourism Promotion Authority
63. Mauritius Urdu Speaking Union
64. Media Trust Fund
65. Monopolies and Mergers Commission
66. National Adoption Council
67. National Art Gallery
68. National Children's Council
69. National Computer Board
70. National Council for Rehabilitation of Disabled Persons
71. National Economic and Social Council
72. National Environment Fund
73. National Institute of Cooperative Entrepreneurship
74. National Heritage Trust Fund
75. National Human Rights Commission
76. National Library
77. National Pensions Fund

78. National Productivity and Competitiveness Council
79. National Solidarity Fund
80. National Women Entrepreneur Council
81. National Women's Council
82. National Youth Council
83. NATReSA
84. Nelson Mandela Centre for African Culture
85. NGO Trust Fund
86. Outer Islands Development Corporation
87. President's Fund for Creative Writing in English
88. Private Secondary Schools Authority
89. Professor Basdeo Bissoondoyal Trust Fund
90. Public Officers' Welfare Council
91. Rabindranath Tagore Institute
92. Radiation Protection Authority
93. Rajiv Gandhi Science Centre
94. Ramayana Centre
95. Road Development Authority
96. Seafarer's Welfare Fund
97. Small Enterprises and Handicraft Development Authority
98. Senior Citizens Council
99. Small Planters Welfare Fund
100. Social Housing Development Fund
101. SSR Botanical Garden Trust
102. Sugar Industry Labour Welfare Fund
103. Tea Board
104. Technical School Management Trust Fund
105. Tertiary Education Commission
106. Tourism Authority
107. Tourism Employees Welfare Fund
108. Town and Country Planning Board
109. Trade Union Trust Fund
110. Training & Employment of Disabled Persons Board
111. Trust Fund for Excellence in Sports
112. Trust Fund for Social Integration of Vulnerable Groups
113. Trust Fund for Specialised Medical Care
114. University of Mauritius
115. University of Technology
116. Utilities Regulatory Authority
117. World Hindi Secretariat

4.2 Non-Financial Public Corporations

1. Agricultural Marketing Board
2. Air Mauritius
3. Airport Logistics Ltd
4. Airport of Rodrigues
5. Airports of Mauritius
6. Beach Casino Ltd
7. BPML Freeport Services
8. Business Parks of Mauritius Ltd
9. Call Services Ltd (Telecom)
10. Capital Assets Management Ltd
11. Cargo Handling Corporation
12. Casino de Maurice Ltd
13. Cellplus (Telecom)
14. Central Electricity Board
15. Central Water Authority
16. Domaine Les Pailles
17. Editions de L'Ocean Indien Ltee
18. Enterprise Mauritius (includes EPZDA, MIDA and SUBEX-M as from 2005)
19. Le Caudan Waterfront Casino Ltd
20. Le Grand Casino du Domaine Ltd
21. Le Val Development Ltd
22. Mauritius Broadcasting Corporation
23. Mauritius Duty Free Paradise Co Ltd
24. Mauritius Meat Authority
25. Mauritius Ports Authority
26. Mauritius Posts Ltd
27. Mauritius Shipping Corporation
28. Mauritius Sugar Authority
29. Mauritius Sugar Terminal Corporation
30. Mauritius Sugar Industry Research Institute
31. Mauritius Telecom
32. MSC Coraline Ship Agency Ltd
33. Multi Carrier Mauritius Ltd
34. National Housing Development Corporation
35. National Transport Corporation
36. Prime Real Estate Ltd

37. Rose Belle Sugar Estate
38. SBM IT Ltd
39. SIC Secretarial and Registry Services Ltd
40. State Informatics Ltd
41. State Land Development Co Ltd
42. State Property Development Company Ltd
43. State Trading Corporation
44. Sugar Planters Mechanical Pool Corporation
45. Sun Casinos Ltd
46. Telecom Plus
47. Teleservices Ltd (Telecom)
48. Tobacco Board
49. Wastewater Management Authority

4.3 Public Financial Corporations

1. Alliance Investments Ltd
2. Bank of Mauritius
3. Development Bank of Mauritius Ltd
4. Financial Services Commission
5. Mauritius Civil Service Mutual Aid Association Ltd
6. Mauritius Housing Company Ltd
7. Mauritius Post and Cooperative Bank
8. National Savings Fund
9. SBM Financials Ltd
10. SBM Global Investments Ltd
11. SBM Investments Ltd
12. SBM Lease Ltd
13. SBM Mauritius Assets Managers Ltd
14. SBM Securities Ltd
15. SIC Fund Management Ltd
16. SICOM Financial Services
17. State Bank of Mauritius Ltd
18. State Insurance Corporation of Mauritius Ltd
19. State Investment Corporation Ltd
20. State Investment Finance Corporation Ltd
21. Sugar Insurance Fund Board

Table 1.1 - Main aggregates, 2004/2005 - 2007/2008

Budgetary Central Government

R million

Main aggregates	2004/2005	2005/2006	2006/2007	2007/2008 ¹
1 Current revenue	35,192.4	38,508.7	41,818.2	52,744.3
(i) Tax revenue	32,718.6	35,381.5	38,185.9	47,831.4
(ii) Nontax revenue	2,473.8	3,127.2	3,632.3	4,912.9
2 Capital revenue	383.2	221.7	28.7	23.2
3 Total revenue	35,575.6	38,730.4	41,846.9	52,767.5
4 Grants	444.0	489.2	321.9	454.1
5 Total revenue and grants	36,019.6	39,219.6	42,168.8	53,221.6
6 Current expenditure	38,042.3	41,915.3	44,122.2	48,423.3
7 Capital expenditure	6,344.8	6,959.9	7,110.9	11,682.3
8 Total expenditure	44,387.1	48,875.2	51,233.1	60,105.6
9 Lending minus repayments	637.4	688.9	374.9	1,437.1
10 Total expenditure and lending minus repayments	45,024.5	49,564.1	51,608.0	61,542.7
11 Gross fixed capital formation	5,354.6	5,159.2	4,608.7	8,105.1
12 Current account surplus / deficit (1 - 6)	-2,849.9	-3,406.6	-2,304.0	4,321.0
13 Overall deficit / surplus (5 - 10)	-9,004.9	-10,344.5	-9,439.2	-8,321.1
14 Financing	9,004.9	10,344.5	9,439.2	8,321.1
(i) Domestic	8,539.2	11,493.7	4,974.0	8,560.7
(ii) Foreign	465.7	-1,149.2	4,465.2	-239.6
15 Budgetary central government debt	105,815.7	113,363.5	122,119.7	122,286.5
(i) Domestic	96,583.5	104,828.1	108,667.9	109,835.5
(ii) Foreign	9,232.2	8,535.4	13,451.8	12,451.0
16 Total external debt of the Country	26,067.0	26,296.0	26,886.0	23,322.0

¹ Revised

Table 1.2 Summary of Budgetary Central Government Operations, 2004/2005 - 2007/2008

Major components

R million

	Total Revenue and Grants		Current Revenue		Capital Revenue	Grants	Total Expend. & Net lending	Total Expenditure	Lending minus Repayment	Overall Deficit/ Surplus	Financing		Monetary Authorities
	Total	Tax Revenue	Total	Nontax Revenue							Abroad	Domestic	
2004/2005	36,019.6	32,718.6	35,192.4	2,473.8	383.2	444.0	45,024.5	44,387.1	637.4	-9,004.9	465.7	8,539.2	1,312.5
2005/2006	39,219.6	35,381.5	38,508.7	3,127.2	221.7	489.2	49,564.1	48,875.2	688.9	-10,344.5	-1,149.2	11,493.7	1,127.2
2006/2007	42,168.8	38,185.9	41,818.2	3,632.3	28.7	321.9	51,608.0	51,233.1	374.9	-9,439.2	4,465.2	4,974.0	-2,904.9
2007/2008	53,221.6	47,831.4	52,744.3	4,912.9	23.2	454.1	61,542.7	60,105.6	1,437.1	-8,321.1	-239.6	8,560.7	11.4

Types of revenue

	Tax on Income, Profits & Capital Gains										Total Revenue
	Tax on Property		Domestic Taxes on Goods & Services		Taxes on Intern. Trade & Trans		Other Taxes	Non tax Revenue	Capital Revenue	Total Revenue	
	Total	National Residential Property	Total	of which VAT/S.T	Total	of which VAT/S.T					
2004/2005	5,829.0	2,553.2	1,680.2	17,464.7	12,529.3	7,730.5	14.2	2,473.8	383.2	35,575.6	
2005/2006	7,468.9	2,767.9	1,939.5	18,762.0	13,709.5	7,195.4	15.7	3,127.2	221.7	38,730.4	
2006/2007	7,607.6	2,332.3	2,798.5	21,403.6	15,468.1	6,299.2	77.0	3,632.3	28.7	41,846.9	
2007/2008	10,558.2	3,405.7	4,003.0	26,477.4	18,542.0	6,646.2	146.6	4,912.9	23.2	52,747.5	

Expenditures by function

	Expenditure on Goods & Services										Total Expenditure		
	General Public Service	Defence & Public Order	Education	Health	Social Security & Welfare	Housing & Community Amenities	Recre. & Cultural & Relg. Affairs	Fuel and Energy	Agri. Forest & Hunting	Mining Manuf. & Construct		Transp and Communic	Other Econ Services & Functions
2004/2005	3,495.9	3,901.7	6,742.8	3,948.1	8,724.7	3,208.9	541.1	69.2	1,550.0	140.9	725.5	11,338.3	44,387.1
2005/2006	3,947.9	4,325.2	6,852.1	4,213.3	10,304.5	3,428.1	569.6	38.0	1,438.8	143.1	1,378.7	12,235.9	48,875.2
2006/2007	3,985.1	4,354.5	7,088.6	4,401.9	11,268.6	3,254.2	526.6	33.5	1,351.4	115.1	1,622.7	13,230.9	51,233.1
2007/2008	4,573.3	4,540.8	8,703.3	4,679.8	11,744.7	3,144.1	551.5	1,031.9	4,228.1	111.9	1,565.1	15,231.1	60,105.6

Expenditures by economic type

	Expenditure on Goods & Services					Subsidies & other current transfers		Capital Expenditure	Lending minus Repayments
	Total Expend. & Net Lending	Total		Employer Contribution	Other	Total	Other current transfers		
		Wages & Salaries	Interest Payments						
2004/2005	44,387.1	15,328.3	11,670.3	3,658.0	-	15,529.6	14,945.7	6,344.8	637.4
2005/2006	48,875.2	16,892.3	12,298.7	4,593.6	-	17,668.3	16,464.7	6,959.9	688.9
2006/2007	51,233.1	16,375.2	12,263.4	4,111.8	-	18,864.5	18,107.9	7,110.9	374.9
2007/2008	60,105.6	16,969.4	12,700.0	4,269.4	-	20,778.7	19,821.5	11,682.3	1,437.1

Table 1.3 Summary of Budgetary Central Government Operations, Percentages - 2004/2005 - 2007/2008
Major components as % of Total Expenditure and Net Lending

	Total Revenue and Grants		Current Revenue			Capital Revenue	Grants	Total Expend. & Net lending	Total Expenditure	Lending minus Repayment	Overall Deficit/ Surplus	Financing		Monetary Authorities
	Total	and Grants	Total	Tax Revenue	Nontax Revenue							Abroad	Domestic	
2004/2005	80.0		78.2	72.7	5.5	0.9	1.0	100.0	98.6	1.4	-20.0	1.0	19.0	2.9
2005/2006	79.1		77.7	71.4	6.3	0.4	1.0	100.0	98.6	1.4	-20.9	-2.3	23.2	2.3
2006/2007	81.7		81.0	74.0	7.0	0.1	0.6	100.0	99.3	0.7	-18.3	8.7	9.6	-5.6
2007/2008	103.1		85.7	77.7	8.0	-	0.7	100.0	97.7	2.3	-13.5	-0.4	13.9	0.0

Types of revenue as % of Total Revenue

	Tax on Income, Profits & Capital Gains										Other Taxes	Non tax Revenue	Capital Revenue	Total Revenue	
	Total	Tax on Income, Profits & Capital Gains			Taxes on Property	Domestic Taxes on Goods & Services of which VAT/S.T		Taxes on Intern. Trade & Trans	Fuel and Energy	Agri. Forest & Hunting					Mining Manuf. & Construct
		Individuals	Corporate	Tax Deduction at Source		National Residential Property	Total								
2004/2005	16.4	7.2	9.2	-	4.7	49.1	35.2	21.7	1.2	0.3	0.0	7.0	1.1	100.0	
2005/2006	19.3	7.1	12.1	-	5.0	48.4	35.4	18.6	1.2	0.3	0.0	8.1	0.6	100.0	
2006/2007	18.2	5.6	12.6	-	6.7	51.1	37.0	15.1	1.0	0.2	0.2	8.7	0.1	100.0	
2007/2008	20.0	6.5	11.8	1.5	7.6	50.2	35.2	12.6	0.9	0.2	0.3	9.3	-	100.0	

Expenditures by function as % of Total Expenditure

	General Public Service	Defence & Public Order	Education	Health	Social Service & Welfare	Housing & Community Amenities	Recre. & Cultural & Relg. Affairs	Fuel and Energy	Agri. Forest & Hunting	Mining Manuf. & Construct	Transp and Communic	Other Econ Affairs & Services	Total Expenditure
2004/2005	7.9	8.8	15.2	8.9	19.7	7.2	1.2	0.2	3.5	0.3	1.6	25.5	100.0
2005/2006	8.1	8.8	14.0	8.6	21.1	7.0	1.2	0.1	2.9	0.3	2.8	25.0	100.0
2006/2007	7.8	8.5	13.8	8.6	22.0	6.4	1.0	0.1	2.6	0.2	3.2	25.8	100.0
2007/2008	7.6	7.6	14.5	7.8	19.5	5.2	0.9	1.7	7.0	0.2	2.6	25.3	100.0

Expenditures by economic type as a % of Total Expenditure and Net Lending

	Total Expend. & Net Lending	Total Expenditure	Current Expenditure	Expenditure on Goods & Services			Subsidies & other current transfers		Capital Expenditure	Lending minus Repayments			
				Expenditure on Goods & Services		Interest Payments	Subsidies	Other current transfers					
				Total	Wages & Salaries						Employer Contribution	Other	
2004/2005	100.0	98.6	84.5	34.0	25.9	-	8.1	16.0	34.5	1.3	33.2	14.1	1.4
2005/2006	100.0	98.6	84.6	34.1	24.8	-	9.3	14.8	35.6	2.4	33.2	14.0	1.4
2006/2007	100.0	99.3	85.5	31.7	23.8	-	8.0	17.2	36.6	1.5	35.1	13.8	0.7
2007/2008	100.0	97.7	78.7	27.6	20.6	-	6.9	17.3	33.8	1.6	32.2	19.0	2.3

Table 1.4 Revenue and grants, 2004/2005 - 2007/2008
Budgetary Central Government

Revenue items	2004/2005		2005/2006		2006/2007		2007/2008 ¹	
	Amount	%	Amount	%	Amount	%	Amount	%
Current Revenue	35,192.4	97.7	38,508.7	98.2	41,818.2	99.2	52,744.3	99.1
Tax revenue	32,718.6	90.8	35,381.5	90.2	38,185.9	90.6	47,831.4	89.9
Tax on income, profits and capital gains	5,829.0	16.2	7,468.9	19.0	7,607.6	18.0	10,558.2	19.8
Individual income tax	2,553.2	7.1	2,767.9	7.1	2,332.3	5.5	3,405.7	6.4
Corporate tax	3,275.8	9.1	4,701.0	12.0	5,275.3	12.5	6,236.4	11.7
Tax deduction at source	-	-	-	-	-	-	797.4	1.5
National residential property tax	-	-	-	-	-	-	118.7	0.2
Social security contributions	-	-	-	-	-	-	-	-
Taxes on payroll and workforce	-	-	-	-	-	-	-	-
Taxes on property	1,680.2	4.7	1,939.5	4.9	2,798.5	6.6	4,003.0	7.5
Domestic taxes on goods and services	17,464.7	48.5	18,762.0	47.8	21,403.6	50.8	26,477.4	49.7
of which : Excise duties	2,838.4	7.9	2,467.8	6.3	2,998.9	7.1	4,198.0	7.9
VAT/Sales tax	12,529.3	34.8	13,709.5	35.0	15,468.1	36.7	18,542.0	34.8
Tax on gambling	1,075.3	3.0	1,185.4	3.0	1,267.6	3.0	1,621.7	3.0
Tax on hotel bills	26.5	0.1	344.9	0.9	506.3	1.2	788.3	1.5
Import duties	7,730.5	21.5	7,195.4	18.3	6,299.2	14.9	6,646.2	12.5
Export duties	-	-	-	-	-	-	-	-
Other tax revenue	14.2	0.0	15.7	0.0	77.0	0.2	146.6	0.3
Nontax revenue	2,473.8	6.9	3,127.2	8.0	3,632.3	8.6	4,912.9	9.2
Property income	1,234.7	3.4	1,804.8	4.6	2,179.5	5.2	3,406.0	6.4
Fees, charges and non-industrial sales	899.9	2.5	976.0	2.5	1,099.1	2.6	1,122.6	2.1
Fines and Forfeits	150.6	0.4	151.4	0.4	152.5	0.4	163.8	0.3
Employees' contributions to government employee pension funds	175.4	0.5	185.8	0.5	191.2	0.5	196.7	0.4
Other nontax revenue	13.2	0.0	9.2	0.0	10.0	0.0	23.8	0.0
Capital revenue	383.2	1.1	221.7	0.6	28.7	0.1	23.2	0.0
Sale of fixed capital assets	383.2	1.1	221.7	0.6	28.7	0.1	23.2	0.0
Total revenue	35,575.6	98.8	38,730.4	98.8	41,846.9	99.2	52,767.5	99.1
Grants	444.0	1.2	489.2	1.2	321.9	0.8	454.1	0.9
Total revenue and grants	36,019.6	100.0	39,219.6	100.0	42,168.8	100.0	53,221.6	100.0

¹ Revised

Table 1.5 - Functional classification of expenditure, 2004/2005 - 2007/2008
Budgetary Central Government

R million

Functional categories	2004/2005			2005/2006		
	Current	Capital	Total	Current	Capital	Total
			%			%
General Government Services	6,755.5	642.1	16.7	7,397.6	854.1	8,273.1
General public services	3,105.5	390.4	7.9	3,495.9	508.6	3,947.9
Defence	292.3	0.8	0.7	293.1	2.9	348.3
Public order and safety	3,357.7	250.9	8.1	3,608.6	342.6	3,976.9
Community and Social Services	19,225.5	3,940.1	52.2	23,165.6	4,256.9	25,367.6
Education	5,834.3	908.5	15.2	6,742.8	724.4	6,852.1
Health	3,597.0	351.1	8.9	3,948.1	164.3	4,213.3
Social security and welfare	8,568.7	156.0	19.7	8,724.7	725.7	10,304.5
Housing and community amenities	771.0	2,437.9	7.2	3,208.9	2,558.5	3,428.1
Recreational, cultural and religious services	454.5	86.6	1.2	541.1	84.0	569.6
Economic Services	2,828.1	1,281.5	9.3	4,109.6	1,385.4	5,270.2
Fuel and energy	40.3	28.9	0.2	69.2	8.1	38.0
Agriculture, forestry, fishing and hunting	1,212.4	337.6	3.5	1,550.0	251.2	1,438.8
Mining and mineral resources, manufacturing and construction	119.7	21.2	0.3	140.9	12.5	143.1
Transportation and communication	357.3	368.2	1.6	725.5	556.4	1,378.7
Other economic services	1,098.4	525.6	3.7	1,624.0	557.2	2,271.6
Other functions	9,233.2	481.1	21.9	9,714.3	463.5	9,964.3
Other expenditure	9,233.2	481.1	21.9	9,714.3	463.5	9,964.3
Public debt interest	7,184.4	-	16.2	7,184.4	-	7,354.7
Transfer to local government	1,236.4	70.2	2.9	1,306.6	102.7	1,400.4
Transfer to Rodrigues	812.4	410.9	2.8	1,223.3	360.8	1,209.2
Total	38,042.3	6,344.8	100.0	44,387.1	6,959.9	48,875.2
				41,915.3		100.0

Table 1.5 (Cont'd) - Functional classification of expenditure, 2004/2005 - 2007/2008
Budgetary Central Government

R million

Functional categories	2006/2007			2007/2008 ¹				
	Current	Capital	Total	%	Current	Capital	Total	%
General Government Services	7,499.6	840.0	8,339.6	16.3	7,812.6	1,301.5	9,114.1	15.2
General public services	3,438.3	546.8	3,985.1	7.8	3,610.3	963.0	4,573.3	7.6
Defence ²	334.5	2.2	336.7	0.7	-	-	-	-
Public order and safety	3,726.8	291.0	4,017.8	7.8	4,202.3	338.5	4,540.8	7.6
Community and Social Services	22,514.5	4,025.4	26,539.9	51.8	24,394.0	4,429.4	28,823.4	48.0
Education	6,387.4	701.2	7,088.6	13.8	6,845.6	1,857.7	8,703.3	14.5
Health	4,240.1	161.8	4,401.9	8.6	4,468.6	211.2	4,679.8	7.8
Social security and welfare	10,595.9	672.7	11,268.6	22.0	11,606.5	138.2	11,744.7	19.5
Housing and community amenities	821.0	2,433.2	3,254.2	6.4	979.7	2,164.4	3,144.1	5.2
Recreational, cultural and religious services	470.1	56.5	526.6	1.0	493.6	57.9	551.5	0.9
Economic Services	3,067.1	1,659.6	4,726.7	9.2	3,276.1	5,257.0	8,533.1	14.2
Fuel and energy	24.2	9.3	33.5	0.1	28.2	1,003.7	1,031.9	1.7
Agriculture, forestry, fishing and hunting	1,193.0	158.4	1,351.4	2.6	1,279.1	2,949.0	4,228.1	7.0
Mining and mineral resources, manufacturing and construction	113.4	1.7	115.1	0.2	110.0	1.9	111.9	0.2
Transportation and communication	982.2	640.5	1,622.7	3.2	1,060.7	504.4	1,565.1	2.6
Other economic services	754.3	849.7	1,604.0	3.1	798.1	798.0	1,596.1	2.7
Other functions	11,041.0	585.9	11,626.9	22.7	12,940.6	694.4	13,635.0	22.7
Other expenditure	11,041.0	585.9	11,626.9	22.7	12,940.6	694.4	13,635.0	22.7
Public debt interest	8,882.5	-	8,882.5	17.3	10,675.2	-	10,675.2	17.8
Transfer to local government	1,293.5	311.9	1,605.4	3.1	1,361.5	301.4	1,662.9	2.8
Transfer to Rodrigues	865.0	274.0	1,139.0	2.2	903.9	393.0	1,296.9	2.2
Total	44,122.2	7,110.9	51,233.1	100.0	48,423.3	11,682.3	60,105.6	100.0

¹ Revised

² As from 2007/2008, classified under Public order and safety

Table 1.6 - Functional classification of current expenditure, 2004/2005 - 2007/2008
Budgetary Central Government

Functional categories	2004/2005		2005/2006		2006/2007		2007/2008 ¹	
	Amount	%	Amount	%	Amount	%	Amount	%
General Government Services	6,755.5	17.8	7,419.0	17.7	7,499.6	17.0	7,812.6	16.1
General public services	3,105.5	8.2	3,439.3	8.2	3,438.3	7.8	3,610.3	7.5
Defence ²	292.3	0.8	345.4	0.8	334.5	0.8	-	-
Public order and safety	3,357.7	8.8	3,634.3	8.7	3,726.8	8.4	4,202.3	8.7
Community and Social Services	19,225.5	50.5	21,110.7	50.4	22,514.5	51.0	24,394.0	50.4
Education	5,834.3	15.3	6,127.7	14.6	6,387.4	14.5	6,845.6	14.1
Health	3,597.0	9.5	4,049.0	9.7	4,240.1	9.6	4,468.6	9.2
Social security and welfare	8,568.7	22.5	9,578.8	22.9	10,595.9	24.0	11,606.5	24.0
Housing and community amenities	771.0	2.0	869.6	2.1	821.0	1.9	979.7	2.0
Recreational, cultural and religious services	454.5	1.2	485.6	1.2	470.1	1.1	493.6	1.0
Economic Services	2,828.1	7.4	3,884.8	9.3	3,067.1	7.0	3,276.1	6.8
Fuel and energy	40.3	0.1	29.9	0.1	24.2	0.1	28.2	0.1
Agriculture, forestry, fishing and hunting	1,212.4	3.2	1,187.6	2.8	1,193.0	2.7	1,279.1	2.6
Mining and mineral resources, manufacturing and construction	119.7	0.3	130.6	0.3	113.4	0.3	110.0	0.2
Transportation and communication	357.3	0.9	822.3	2.0	982.2	2.2	1,060.7	2.2
Other economic services	1,098.4	2.9	1,714.4	4.1	754.3	1.7	798.1	1.6
Other functions	9,233.2	24.3	9,500.8	22.7	11,041.0	25.0	12,940.6	26.7
Other expenditure	9,233.2	24.3	9,500.8	22.7	11,041.0	25.0	12,940.6	26.7
Public debt interest	7,184.4	18.9	7,354.7	17.5	8,882.5	20.1	10,675.2	22.0
Transfer to local government	1,236.4	3.3	1,297.7	3.1	1,293.5	2.9	1,361.5	2.8
Transfer to Rodrigues	812.4	2.1	848.4	2.0	865.0	2.0	903.9	1.9
Total	38,042.3	100.0	41,915.3	100.0	44,122.2	100.0	48,423.3	100.0

¹ Revised ² As from 2007/2008, classified under Public order and safety

Table 1.7 - Functional classification of capital expenditure, 2004/2005 - 2007/2008
Budgetary Central Government

Functional categories	2004/2005		2005/2006		2006/2007		2007/2008 ¹	
	Amount	%	Amount	%	Amount	%	Amount	%
General Government Services	642.1	10.1	854.1	12.3	840.0	11.8	1,301.5	11.1
General public services	390.4	6.2	508.6	7.3	546.8	7.7	963.0	8.2
Defence ²	0.8	0.0	2.9	0.0	2.2	0.0	-	-
Public order and safety	250.9	4.0	342.6	4.9	291.0	4.1	338.5	2.9
Community and Social Services	3,940.1	62.1	4,256.9	61.2	4,025.4	56.6	4,429.4	37.9
Education	908.5	14.3	724.4	10.4	701.2	9.9	1,857.7	15.9
Health	351.1	5.5	164.3	2.4	161.8	2.3	211.2	1.8
Social security and welfare	156.0	2.5	725.7	10.4	672.7	9.5	138.2	1.2
Housing and community amenities	2,437.9	38.4	2,558.5	36.8	2,433.2	34.2	2,164.4	18.5
Recreational, cultural and religious services	86.6	1.4	84.0	1.2	56.5	0.8	57.9	0.5
Economic Services	1,281.5	20.2	1,385.4	19.9	1,659.6	23.3	5,257.0	45.0
Fuel and energy	28.9	0.5	8.1	0.1	9.3	0.1	1,003.7	8.6
Agriculture, forestry, fishing and hunting	337.6	5.3	251.2	3.6	158.4	2.2	2,949.0	25.2
Mining and mineral resources, manufacturing and construction	21.2	0.3	12.5	0.2	1.7	-	1.9	-
Transportation and communication	368.2	5.8	556.4	8.0	640.5	9.0	504.4	4.3
Other economic services	525.6	8.3	557.2	8.0	849.7	11.9	798.0	6.8
Other Functions	481.1	7.6	463.5	6.7	585.9	8.2	694.4	5.9
Other expenditure	481.1	7.6	463.5	6.7	585.9	8.2	694.4	5.9
Transfer to Local government	70.2	1.1	102.7	1.5	311.9	4.4	301.4	2.6
Transfer to Rodrigues	410.9	6.5	360.8	5.2	274.0	3.9	393.0	3.4
Total	6,344.8	100.0	6,959.9	100.0	7,110.9	100.0	11,682.3	100.0

¹ Revised ² As from 2007/2008, classified under Public order and safety

Table 1.8 - Economic classification of expenditure, 2004/2005 - 2007/2008
 Budgetary Central Government

Economic categories	2004/2005		2005/2006		2006/2007		2007/2008 ¹	
	Amount	%	Amount	%	Amount	%	Amount	%
Current expenditure	38,042.3	85.7	41,915.3	85.8	44,122.2	86.1	48,423.3	80.6
Wages and salaries	11,670.3	26.3	12,298.7	25.2	12,263.4	23.9	12,700.0	21.1
Employer contributions to pension schemes	-	-	-	-	-	-	-	-
Other purchases of goods and services	3,658.0	8.2	4,593.6	9.4	4,111.8	8.0	4,269.4	7.1
Interest payments	7,184.4	16.2	7,354.7	15.0	8,882.5	17.3	10,675.2	17.8
Subsidies and other current transfers	15,529.6	35.0	17,668.3	36.1	18,864.5	36.8	20,778.7	34.6
Subsidies	583.9	1.3	1,203.6	2.5	756.6	1.5	957.2	
Transfer to local government	1,236.4	2.8	1,297.7	2.7	1,293.5	2.5	1,361.5	2.3
Transfer to Rodrigues	812.4	1.8	848.4	1.7	865.0	1.7	903.9	1.5
Transfer to nonprofit institutions and households	12,776.1	28.8	14,130.9	28.9	15,775.8	30.8	17,373.1	28.9
Transfer abroad	120.8	0.3	187.7	0.4	173.6	0.3	183.0	0.3
Capital expenditure	6,344.8	14.3	6,959.9	14.2	7,110.9	13.9	11,682.3	19.4
Acquisition of fixed capital assets	5,354.6	12.1	5,159.2	10.6	4,608.7	9.0	8,105.1	13.5
Purchase of land	49.6	0.1	147.7	0.3	153.7	0.3	269.7	0.4
Capital transfers	940.6	2.1	1,653.0	3.4	2,348.5	4.6	3,307.5	5.5
To local government	70.2	0.2	102.7	0.2	311.9	0.6	301.4	0.5
To Rodrigues	410.9	0.9	360.8	0.7	274.0	0.5	393.0	0.7
To nonfinancial public enterprises	238.6	0.5	952.6	1.9	784.3	1.5	264.1	0.4
To public financial institutions	183.5	0.4	203.2	0.4	945.7	1.8	149.0	0.2
Other domestic transfers	30.9	0.1	27.1	0.1	25.4	0.0	2,099.4	3.5
Abroad	6.5	0.0	6.6	0.0	7.2	0.0	100.6	0.2
Total expenditure	44,387.1	100.0	48,875.2	100.0	51,233.1	100.0	60,105.6	100.0

¹ Revised

Table 1.9 - Functional classification of Lending Minus Repayments, 2004/2005 - 2007/2008

Budgetary Central Government

R million

Functional classification	2004/2005	2005/2006	2006/2007	2007/2008 ¹
General Government Services	-0.1	-0.1	-0.2	-0.1
General public services	-0.1	-0.1	-0.2	-0.1
Defence	-	-	-	-
Public order and safety	-	-	-	-
Community and Social Services	294.6	78.4	202.6	79.0
Education	-10.2	-	-	-
Health	-	-	-	-
Social security and welfare	-	-	-	-
Housing and community amenities	155.1	78.4	202.6	79.0
Recreational, cultural and religious services	149.7	-	-	-
Economic Services	342.9	610.6	172.5	1,358.2
Fuel and energy	-282.7	1.9	2.6	-17.0
Agriculture, forestry, fishing and hunting	-3.0	-3.0	-2.1	-2.4
Mining and mineral resources, manufacturing and construction	20.6	-45.0	-16.5	-11.8
Transportation and communication	0.3	162.8	6.1	1,235.6
Other economic services	607.7	493.9	182.4	153.8
Other Functions	-	-	-	-
Other expenditure	-	-	-	-
Total	637.4	688.9	374.9	1,437.1

¹ Revised

Table 1.10 - Financing by type of debt holder, 2004/2005 - 2007/2008

Budgetary Central Government

R million

Debt holders	2004/2005	2005/2006	2006/2007	2007/2008 ¹
Domestic financing	8,539.2	11,493.7	4,974.0	8,560.7
Other general government	2,119.3	4,014.5	5,034.4	-881.7
Monetary authorities	1,312.5	1,127.2	-2,904.9	11.4
of which: I.M.F.	-44.0	475.6	225.0	-3.6
Deposit money banks	4,054.8	4,292.4	-3,869.9	14,493.7
Other	1,052.6	2,059.6	6,714.4	-5,062.7
Adjustments	-	-	-	-
Foreign financing	465.7	- 1,149.2	4,465.2	- 239.6
International development institutions	-244.7	-300.0	554.9	858.8
Foreign governments	507.7	-517.4	1,028.7	648.6
Other	202.7	-331.8	2,881.6	-1,747.0
Changes in cash, deposits, etc.	-	-	-	-
Total	9,004.9	10,344.5	9,439.2	8,321.1

¹ Revised

Table 1.11 - Financing by type of debt instrument, 2004/2005 - 2007/2008

Budgetary Central Government

R million

Debt instrument	2004/2005	2005/2006	2006/2007 ¹	2007/2008 ¹
Domestic financing	8,539.2	11,493.7	4,974.0	8,560.7
Long-term bonds and bills	15,954.1	14,273.4	15,096.8	10,317.9
Short-term bonds and bills	-6,059.1	-2,260.0	-11,120.5	-5,581.8
Long-term loans n.e.c	-	-	-	-
of which: I.M.F.	-	-	-	-
Short-term loans and advances	-	-	-	-
Other liabilities	-	-	-	-
Changes in cash, deposits, etc	-1,355.8	-519.7	997.7	3,824.6
Adjustments	-	-	-	-
Foreign financing	465.7	- 1,149.2	4,465.2	- 239.6
Long-term bonds	-	-	867.8	-272.6
Short-term bonds and bills	208.2	-325.9	2,019.9	-1,469.0
Long-term loans	257.5	-823.3	1,577.5	1,502.0
Changes in cash, deposits, etc.	-	-	-	-
Total	9,004.9	10,344.5	9,439.2	8,321.1

¹ Revised

Table 1.12 - Outstanding debt by type of debt holder, 2004/2005 - 2007/2008

Budgetary Central Government		R million			
Debt holders	2004/2005	2005/2006	2006/2007	2007/2008	
Domestic debt	96,583.5	104,828.1	108,667.9	109,835.5	
Other general government	26,856.6	30,032.4	34,842.3	27,813.2	
Monetary authorities	3,321.7	4,039.9	636.5	606.0	
of which: I.M.F.	-	-	-	-	
Deposit money banks	44,765.9	48,110.0	43,581.0	57,561.8	
Other	21,639.3	22,645.8	29,608.1	23,854.5	
Foreign debt	9,232.2	8,535.4	13,451.8	12,451.0	
International development institutions	4,912.4	4,925.5	5,632.5	5,907.0	
Foreign governments	3,908.8	3,545.1	4,687.8	5,288.8	
Other	411.0	64.8	3,131.5	1,255.2	
Total	105,815.7	113,363.5	122,119.7	122,286.5	

Table 1.13 - Outstanding debt by type of debt instrument, 2004/2005 - 2007/2008

Budgetary Central Government		R million			
Debt instrument	2004/2005	2005/2006	2006/2007	2007/2008	
Domestic debt	96,583.5	104,828.1	108,667.9	109,835.5	
Long-term bonds	37,852.7	49,354.2	65,035.3	73,274.1	
Short-term bonds and bills	58,730.8	55,473.9	43,632.6	36,561.4	
Long-term loans n.e.c	-	-	-	-	
of which: I.M.F.	-	-	-	-	
Short-term loans and advances	-	-	-	-	
Other liabilities	-	-	-	-	
Foreign debt	9,232.2	8,535.4	13,451.8	12,451.0	
Long-term bonds	-	-	896.3	605.3	
Short-term bonds and bills	350.1	6.9	2,182.1	609.6	
Long-term loans	8,882.1	8,528.5	10,373.4	11,236.1	
Total	105,815.7	113,363.5	122,119.7	122,286.5	

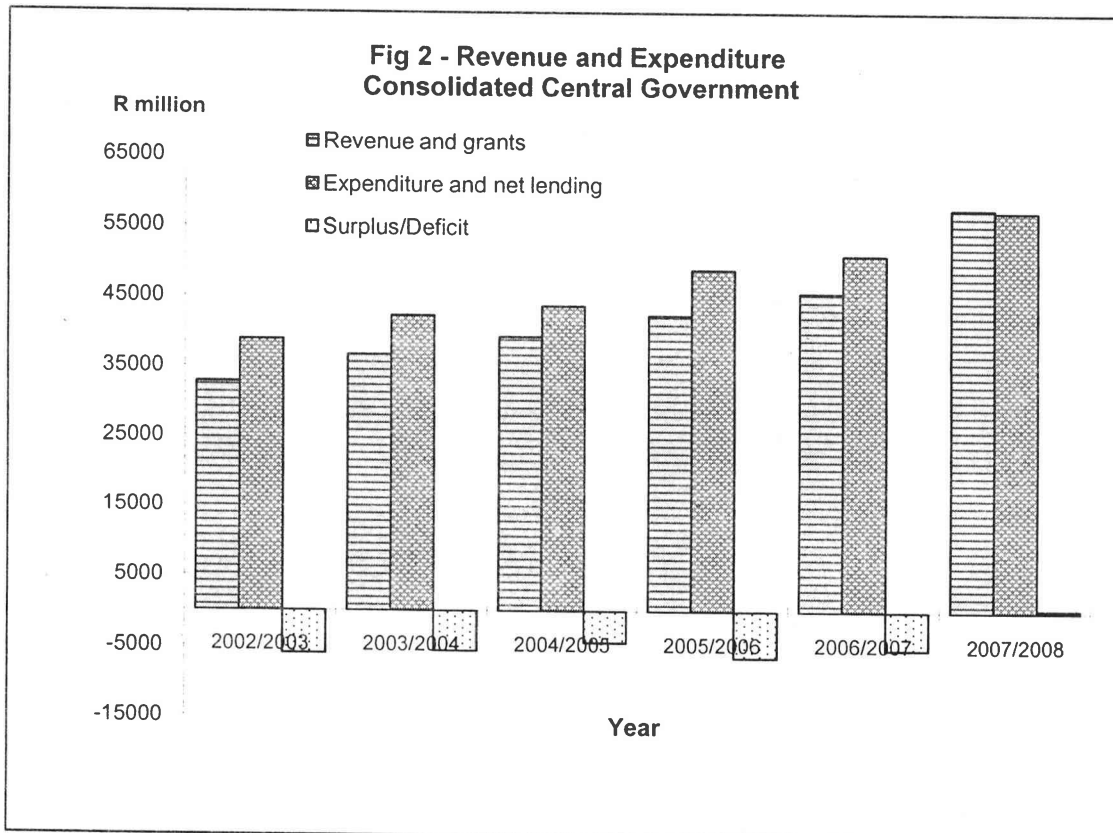
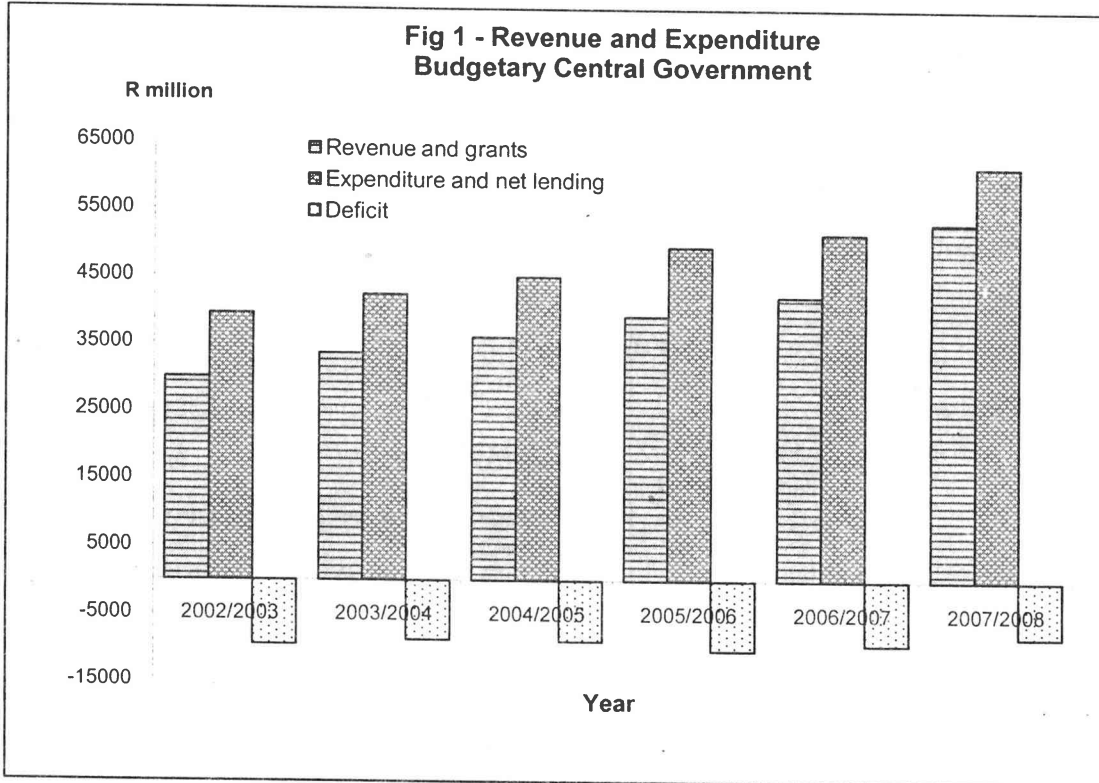


Table 2.1 - Main aggregates, 2004/2005- 2007/2008

Consolidated Central Government

R million

Main aggregates	2004/2005	2005/2006	2006/2007	2007/2008
1 Current revenue	38,490.0	41,691.7	45,289.8	57,116.2
(i) Tax revenue	34,338.7	37,117.3	40,052.8	49,926.5
(ii) Nontax revenue	4,151.3	4,574.4	5,237.0	7,189.7
2 Capital revenue	386.4	225.2	29.4	23.2
3 Total Revenue	38,876.4	41,916.9	45,319.2	57,139.4
4 Grants	444.0	489.2	321.9	454.1
5 Total revenue and grants	39,320.4	42,406.1	45,641.1	57,593.5
6 Current expenditure	37,041.3	41,326.3	43,767.1	47,233.1
7 Capital expenditure	6,063.0	6,914.5	6,842.5	8,548.1
8 Total expenditure	43,104.3	48,240.8	50,609.6	55,781.2
9 Lending minus repayments	647.6	688.9	374.9	1,437.1
10 Total expenditure and lending minus repayments	43,751.9	48,929.7	50,984.5	57,218.3
11 Gross fixed capital formation	4,985.0	5,055.1	4,340.3	4,913.4
12 Current account surplus / deficit (1 - 6)	1,448.7	365.4	1,522.7	9,883.1
13 Overall deficit / surplus (5 - 10)	-4,431.5	-6,523.6	-5,343.4	375.2
14 Financing	4,431.5	6,523.6	5,343.4	-375.2
(i) Domestic	4,620.8	7,709.7	766.4	-177.2
(ii) Foreign	-189.3	-1,186.1	4,577.0	-198.0
15 Central government debt at end of period	79,797.1	84,755.0	88,541.5	95,790.4
(i) Domestic	70,506.9	76,102.1	74,860.4	83,068.5
(ii) Foreign	9,290.2	8,652.9	13,681.1	12,721.9
16 Total external debt of the Country	26,067.0	26,296.0	26,886.0	23,322.0

Table 2.2 Summary of Consolidated Central Government Operations, 2004/2005 - 2007/2008
Major components

R Million

	Total Revenue and Grants		Current Revenue		Nontax Revenue		Capital Revenue	Grants	Total Expend. & Net lending	Total Expenditure	Lending minus Repayment	Overall Deficit/ Surplus	Financing		Monetary Authorities
	Total	and Grants	Total	Tax Revenue	Total	Revenue							Abroad	Domestic	
2004/2005	39,320.4	38,490.0	34,338.7	4,151.3	386.4	444.0	43,751.9	43,104.3	647.6	-4,431.5	-189.3	4,620.8	1,312.5		
2005/2006	42,406.1	41,691.7	37,117.3	4,574.4	225.2	489.2	48,929.7	48,240.8	688.9	-6,523.6	-1,186.1	7,709.7	-1,127.2		
2006/2007	45,641.1	45,289.8	40,032.8	5,237.0	29.4	321.9	50,984.5	50,609.6	374.9	-5,343.4	4,577.0	766.4	-2,904.9		
2007/2008	57,593.5	57,116.2	49,926.5	7,189.7	23.2	454.1	57,218.3	55,781.2	1,437.1	375.2	-198.0	-177.2	-3,108.6		

Types of revenue

	Tax on income, profits & capital gains				Social Security Contrib.	Taxes on Payroll & workforce	Taxes on property	Domestic Taxes on Goods & services		Taxes on Intern. Trade & Trans	Other Taxes	Non tax Revenue	Capital Revenue	Total Revenue
	Total	of which		Total				of which VAT/S.T						
		Individuals	Corporate											
2004/2005	5,829.0	2,553.2	3,275.8	1,311.1	204.1	1,680.2	17,569.6	12,529.3	7,730.5	14.2	4,151.3	386.4	38,876.4	
2005/2006	7,468.9	2,767.9	4,701.0	1,394.2	219.0	1,939.5	18,884.6	13,709.5	7,195.4	15.7	4,574.4	225.2	41,916.9	
2006/2007	7,607.6	2,332.3	5,275.3	1,502.0	253.2	2,798.5	21,515.3	15,468.1	6,299.2	77.0	5,237.0	29.4	45,319.2	
2007/2008	10,558.2	3,405.7	6,236.4	1,696.5	272.0	4,003.0	26,604.0	18,542.0	6,646.2	146.6	7,189.7	23.2	57,139.4	

Expenditures by function

	General Public Service	Defence & Public Order	Education	Health	Social Security & Welfare	Housing & Community Amenities	Recre. & Cultural Affairs	Fuel and Energy	Agri. Forest Fishing & Hunting	Mining Manuf. & Construct	Transp and Communic	Other Econ Affairs & Services	Total expenditure
2004/2005	3,499.4	3,895.5	7,028.2	3,965.2	9,499.7	3,216.4	544.4	69.2	1,667.4	182.7	610.2	8,926.0	43,104.3
2005/2006	3,950.3	4,316.6	7,476.1	4,213.3	11,200.9	3,436.8	586.0	38.0	1,455.6	168.2	1,491.4	9,907.6	48,240.8
2006/2007	4,050.1	4,333.5	7,652.3	4,405.4	12,151.4	3,260.4	539.2	33.2	1,388.1	115.1	1,556.2	11,104.7	50,609.6
2007/2008	4,577.4	4,503.9	8,230.5	4,706.4	12,602.1	3,034.3	568.3	31.9	3,326.3	111.8	1,644.5	12,443.8	55,781.2

Expenditures by Economic Type

	Total expd and net lending	Total expenditure	Current expenditure	Expenditure on Goods & Services			Interest Payments	Subsidies & other current transfers		Capital expenditure	Lending minus Repayments	
				Total	Wages & salaries	Employer Contribution		Other	Total			Other current transfers
2004/2005	43,751.9	43,104.3	37,041.3	19,808.7	14,772.3	250.0	4,786.4	12,563.2	1,040.6	11,522.6	647.6	
2005/2006	48,929.7	48,240.8	41,326.3	21,570.8	15,513.4	265.0	5,792.4	14,616.2	1,651.4	12,964.8	688.9	
2006/2007	50,984.5	50,609.6	43,767.1	22,050.4	16,181.5	330.0	5,538.9	14,894.1	1,249.6	13,644.5	374.9	
2007/2008	57,218.3	55,781.2	47,233.1	23,055.2	16,926.3	380.0	5,748.9	16,207.3	1,530.4	14,676.9	1,437.1	

Table 2.3 Summary of Consolidated Central Government Operations, Percentages, 2004/2005 - 2007/2008
Major components as % of Total Expenditure and Net Lending

	Total Revenue and Grants		Current Revenue		Capital Revenue	Grants	Total Expend. & Net lending	Total Expenditure	Lending minus Repayment	Overall Deficit/ Surplus	Financing		
	Total	Nontax Revenue	Tax Revenue	Abroad							Domestic	Monetary Authorities	
2004/2005	89.9	88.0	78.5	9.5	0.9	1.0	100.0	98.5	1.5	-10.1	-0.4	10.6	3.0
2005/2006	86.7	85.2	75.9	9.3	0.5	1.0	100.0	98.6	1.4	-13.3	-2.4	15.8	2.3
2006/2007	89.5	88.8	78.6	10.3	0.1	0.6	100.0	99.3	0.7	-10.5	9.0	1.5	-5.7
2007/2008	100.7	99.8	87.3	12.6	0.0	0.8	100.0	97.5	2.5	0.7	-0.3	-0.3	-5.4

Types of revenue as % of Total Revenue

	Tax on income, profits & capital gains			Social Security Contrib.	Taxes on Payroll & workforce	Taxes on property	Domestic Taxes on Goods & services		Taxes on Intern. Trade & Trans	Other Taxes	Non tax Revenue	Capital Revenue	Total Revenue
	Total	of which					Total	of which VAT/S.T					
		Individuals	Corporate										
2004/2005	15.0	6.6	8.4	3.4	0.5	4.3	45.2	32.2	19.9	0.0	10.7	1.0	100.0
2005/2006	17.8	6.6	11.2	3.3	0.5	4.6	45.1	32.7	17.2	0.0	10.9	0.5	100.0
2006/2007	16.8	5.1	11.6	3.3	0.6	6.2	47.5	34.1	13.9	0.2	11.6	0.1	100.0
2007/2008	18.5	6.0	10.9	3.0	0.5	7.0	46.6	32.5	11.6	0.3	12.6	0.0	100.0

Expenditures by function as % of Total Expenditure Government

	General Public Service	Defence & Public Order	Education	Health	Social Service & Welfare	Housing & Community Amenities	Recre. & Cultural & Relg Affairs	Fuel and Energy	Agri. Forest Fishing & Hunting	Mining Manuf. & Construct	Transp and Communic	Other Econ Affairs & Services	Total expenditure
2004/2005	8.1	9.0	16.3	9.2	22.0	7.5	1.3	0.2	3.9	0.4	1.4	20.7	100.0
2005/2006	8.2	8.9	15.5	8.7	23.2	7.1	1.2	0.1	3.0	0.3	3.1	20.5	100.0
2006/2007	8.0	8.6	15.1	8.7	24.0	6.4	1.1	0.1	2.7	0.2	3.1	21.9	100.0
2007/2008	8.2	8.1	14.8	8.4	22.6	5.4	1.0	0.1	6.0	0.2	2.9	22.3	100.0

Expenditure by economic type as a % of Total Expenditure and Net Lending

	Total expd and net lending	Total expenditure	Current expenditure	Expenditure on Goods & Services			Interest Payments	Subsidies & other current transfers		Capital expenditure	Lending minus Repayments	
				Total	Wages & salaries			Total	Subsidies			Other current transfers
					Employer Contribution	Other						
2004/2005	100.0	98.5	84.7	45.3	33.8	0.6	10.9	10.7	28.7	2.4	26.3	1.5
2005/2006	100.0	98.6	84.5	44.1	31.7	0.5	11.8	10.5	29.9	3.4	26.5	1.4
2006/2007	100.0	99.3	85.8	43.2	31.7	0.6	10.9	13.4	29.2	2.5	26.8	0.7
2007/2008	100.0	97.5	82.5	40.3	29.6	0.7	10.0	13.9	28.3	2.7	25.7	2.5

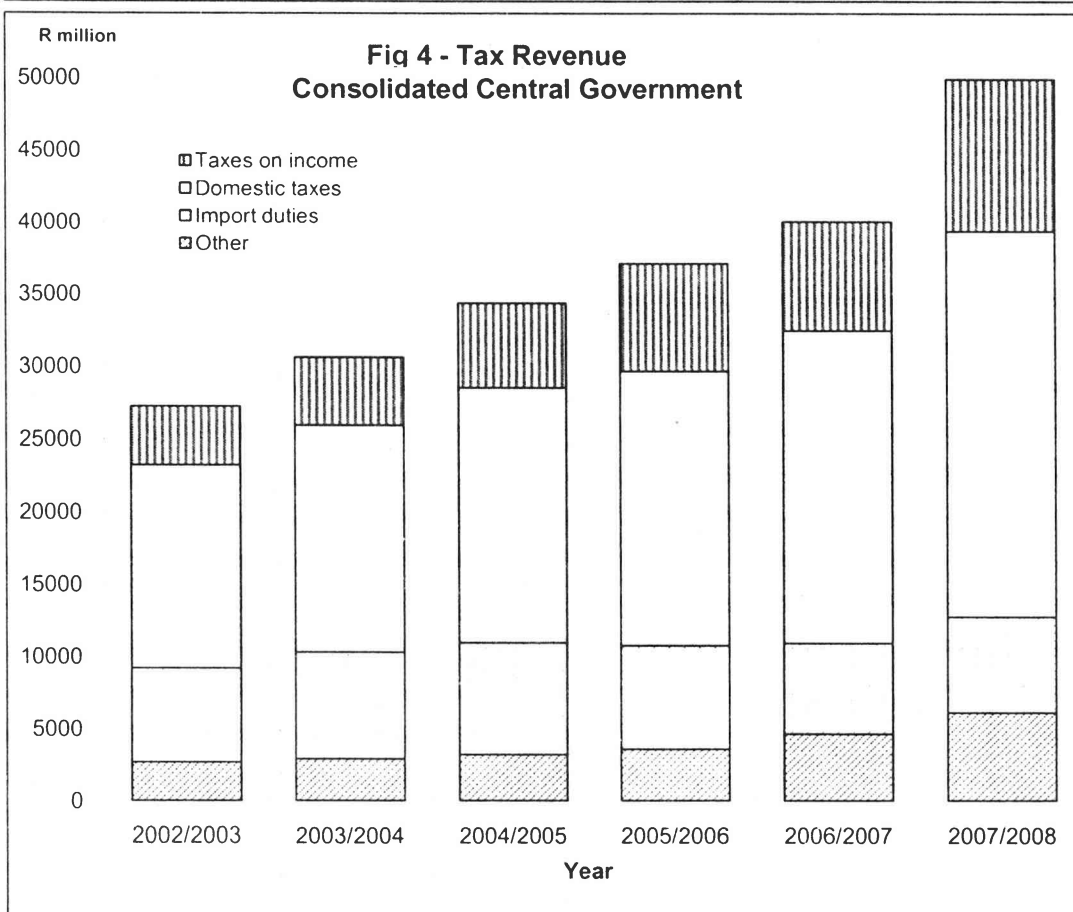
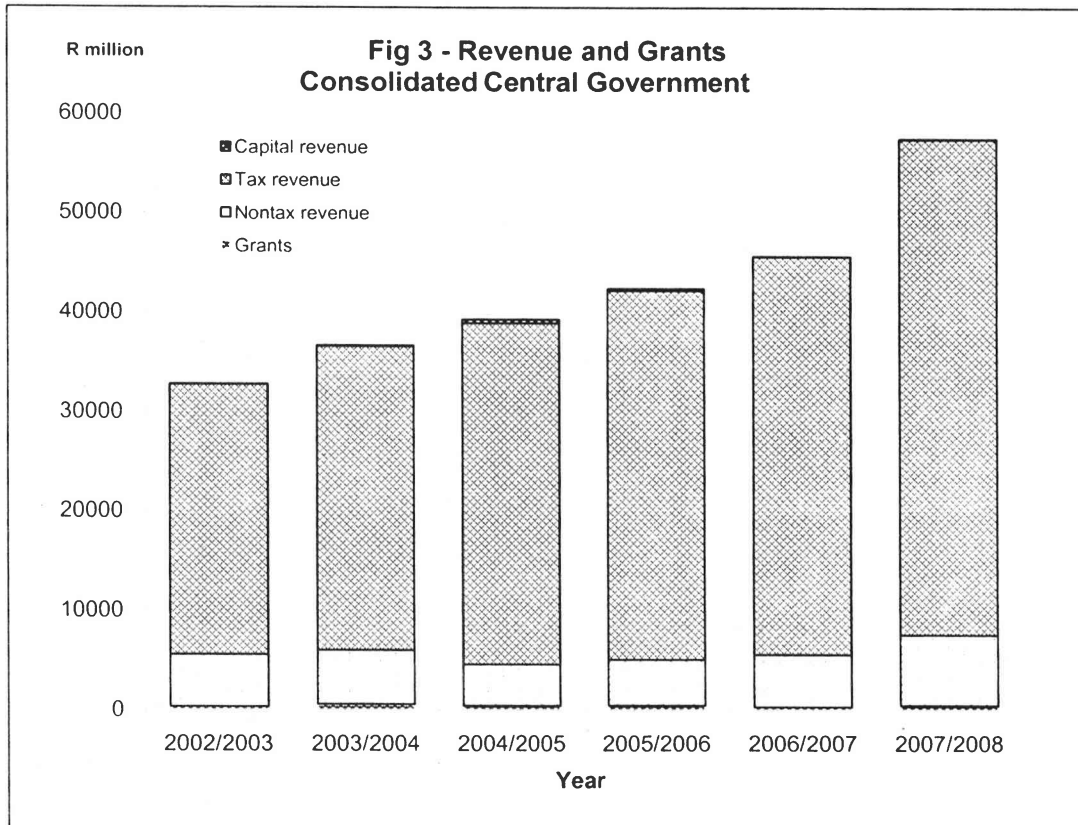


Table 2.4 - Revenue and grants, 2004/2005 - 2007/2008
Consolidated Central Government

R million

Revenue items	2004/2005				
	Budgetary Accounts (1)	Extra Budgetary (2)	Social Security (3)	Consolidated Central Government	
				(1+2+3)	(%)
Current Revenue	34,965.4	1,200.9	2,323.7	38,490.0	97.9
Tax revenue	32,718.6	309.0	1,311.1	34,338.7	87.3
Tax on income, profits and capital gains	5,829.0	-	-	5,829.0	14.8
Individual income tax	2,553.2	-	-	2,553.2	6.5
Corporate tax	3,275.8	-	-	3,275.8	8.3
Social security contributions	-	-	1,311.1	1,311.1	3.3
Taxes on payroll and workforce	-	204.1	-	204.1	0.5
Taxes on property	1,680.2	-	-	1,680.2	4.3
Domestic taxes on goods and services	17,464.7	104.9	-	17,569.6	44.7
of which : Excise duties	2,838.4	-	-	2,838.4	7.2
VAT/Sales tax	12,529.3	-	-	12,529.3	31.9
Tax on gambling	1,075.3	-	-	1,075.3	2.7
Tax on hotel bills	26.5	-	-	26.5	0.1
Import duties	7,730.5	-	-	7,730.5	19.7
Export duties	-	-	-	-	-
Other tax revenue	14.2	-	-	14.2	0.0
Nontax revenue	2,246.8	891.9	1,012.6	4,151.3	10.6
Property income	1,234.7	136.4	973.0	2,344.1	6.0
Fees, charges and non-industrial sales	846.5	396.8	39.6	1,282.9	3.3
Fines and forfeits	150.6	-	-	150.6	0.4
Employees' contributions to government employee pension funds	1.8	173.6	-	175.4	0.4
Other nontax revenue	13.2	185.1	-	198.3	0.5
Capital Revenue	383.2	3.2	-	386.4	1.0
Total revenue	35,348.6	1,204.1	2,323.7	38,876.4	98.9
Grants	444.0	-	-	444.0	1.1
Total revenue and grants	35,792.6	1,204.1	2,323.7	39,320.4	100.0

Table 2.4 (Cont'd) - Revenue and grants, 2004/2005 - 2007/2008
Consolidated Central Government

Revenue items	R million				
	2005/2006				
	Budgetary Accounts (1)	Extra Budgetary (2)	Social Security (3)	Consolidated Central Government (1+2+3) (%)	
Current Revenue	38,267.1	1,354.5	2,070.1	41,691.7	98.3
Tax revenue	35,381.5	341.6	1,394.2	37,117.3	87.5
Tax on income, profits and capital gains	7,468.9	-	-	7,468.9	17.6
Individual income tax	2,767.9	-	-	2,767.9	6.5
Corporate tax	4,701.0	-	-	4,701.0	11.1
Social security contributions	-	-	1,394.2	1,394.2	3.3
Taxes on payroll and workforce	-	219.0	-	219.0	0.5
Taxes on property	1,939.5	-	-	1,939.5	4.6
Domestic taxes on goods and services	18,762.0	122.6	-	18,884.6	44.5
of which : Excise duties	2,467.8	-	-	2,467.8	5.8
VAT/Sales tax	13,709.5	-	-	13,709.5	32.3
Tax on gambling	1,185.4	-	-	1,185.4	2.8
Tax on hotel bills	344.9	-	-	344.9	0.8
Import duties	7,195.4	-	-	7,195.4	17.0
Export duties	-	-	-	-	-
Other tax revenue	15.7	-	-	15.7	0.0
Nontax revenue	2,885.6	1,012.9	675.9	4,574.4	10.8
Property income	1,804.8	149.4	628.6	2,582.8	6.1
Fees, charges and non-industrial sales	918.4	420.7	47.3	1,386.4	3.3
Fines and forfeits	151.4	-	-	151.4	0.4
Employees' contributions to government employee pension funds	1.8	184.0	-	185.8	0.4
Other nontax revenue	9.2	258.8	-	268.0	0.6
Capital Revenue	221.7	3.5	-	225.2	0.5
Total revenue	38,488.8	1,358.0	2,070.1	41,916.9	98.8
Grants	489.2	-	-	489.2	1.2
Total revenue and grants	38,978.0	1,358.0	2,070.1	42,406.1	100.0

Table 2.4 (Cont'd) - Revenue and grants, 2004/2005 - 2007/2008
Consolidated Central Government

R million

Revenue items	2006/2007				
	Budgetary Accounts	Extra Budgetary	Social Security	Consolidated Central Government	
	(1)	(2)	(3)	(1+2+3)	(%)
Current Revenue	41,567.3	1,414.1	2,308.4	45,289.8	99.2
Tax revenue	38,185.9	364.9	1,502.0	40,052.8	87.8
Tax on income, profits and capital gains	7,607.6	-	-	7,607.6	16.7
Individual income tax	2,332.3	-	-	2,332.3	5.1
Corporate tax	5,275.3	-	-	5,275.3	11.6
Social security contributions	-	-	1,502.0	1,502.0	3.3
Taxes on payroll and workforce	-	253.2	-	253.2	0.6
Taxes on property	2,798.5	-	-	2,798.5	6.1
Domestic taxes on goods and services	21,403.6	111.7	-	21,515.3	47.1
of which : Excise duties	2,998.9	-	-	2,998.9	6.6
VAT/Sales tax	15,468.1	-	-	15,468.1	33.9
Tax on gambling	1,085.6	-	-	1,085.6	2.4
Tax on hotel bills	506.3	-	-	506.3	1.1
Import duties	6,299.2	-	-	6,299.2	13.8
Export duties	-	-	-	-	-
Other tax revenue	77.0	-	-	77.0	0.2
Nontax revenue	3,381.4	1,049.2	806.4	5,237.0	11.5
Property income	2,179.5	157.5	775.2	3,112.2	6.8
Fees, charges and non-industrial sales	1,036.8	438.5	31.2	1,506.5	3.3
Fines and forfeits	152.5	-	-	152.5	0.3
Employees' contributions to government employee pension funds	2.6	188.6	-	191.2	0.4
Other nontax revenue	10.0	264.6	-	274.6	0.6
Capital Revenue	28.7	0.7	-	29.4	0.1
Total revenue	41,596.0	1,414.8	2,308.4	45,319.2	99.3
Grants	321.9	-	-	321.9	0.7
Total revenue and grants	41,917.9	1,414.8	2,308.4	45,641.1	100.0

Table 2.4 (Cont'd) - Revenue and grants, 2004/2005 - 2007/2008
Consolidated Central Government

R million

Revenue items	2007/2008				
	Budgetary Accounts	Extra Budgetary	Social Security	Consolidated Central Government	
	(1)	(2)	(3)	(1+2+3)	(%)
Current Revenue	52,494.9	1,672.9	2,948.4	57,116.2	99.2
Tax revenue	47,831.4	398.6	1,696.5	49,926.5	86.7
Tax on income, profits and capital gains	10,558.2	-	-	10,558.2	18.3
Individual income tax	3,405.7	-	-	3,405.7	5.9
Corporate tax	6,236.4	-	-	6,236.4	10.8
Tax deduction at source	797.4	-	-	797.4	1.4
National residential property tax	118.7	-	-	118.7	0.2
Social security contributions	-	-	1,696.5	1,696.5	2.9
Taxes on payroll and workforce	-	272.0	-	272.0	0.5
Taxes on property	4,003.0	-	-	4,003.0	7.0
Domestic taxes on goods and services	26,477.4	126.6	-	26,604.0	46.2
of which : Excise duties	4,198.0	-	-	4,198.0	7.3
VAT/Sales tax	18,542.0	-	-	18,542.0	32.2
Tax on gambling	1,441.2	-	-	1,441.2	2.5
Tax on hotel bills	788.3	-	-	788.3	1.4
Import duties	6,646.2	-	-	6,646.2	11.5
Export duties	-	-	-	-	-
Other tax revenue	146.6	-	-	146.6	0.3
Nontax revenue	4,663.5	1,274.3	1,251.9	7,189.7	12.5
Property income	3,406.0	162.3	1,171.5	4,739.8	8.2
Fees, charges and non-industrial sales	1,067.1	703.6	80.4	1,851.1	3.2
Fines and forfeits	163.8	-	-	163.8	0.3
Employees' contributions to government employee pension funds	2.8	193.9	-	196.7	0.3
Other nontax revenue	23.8	214.5	-	238.3	0.4
Capital Revenue	23.2		-	23.2	0.0
Total revenue	52,518.1	1,672.9	2,948.4	57,139.4	99.2
Grants	454.1	-	-	454.1	0.8
Total revenue and grants	52,972.2	1,672.9	2,948.4	57,593.5	100.0

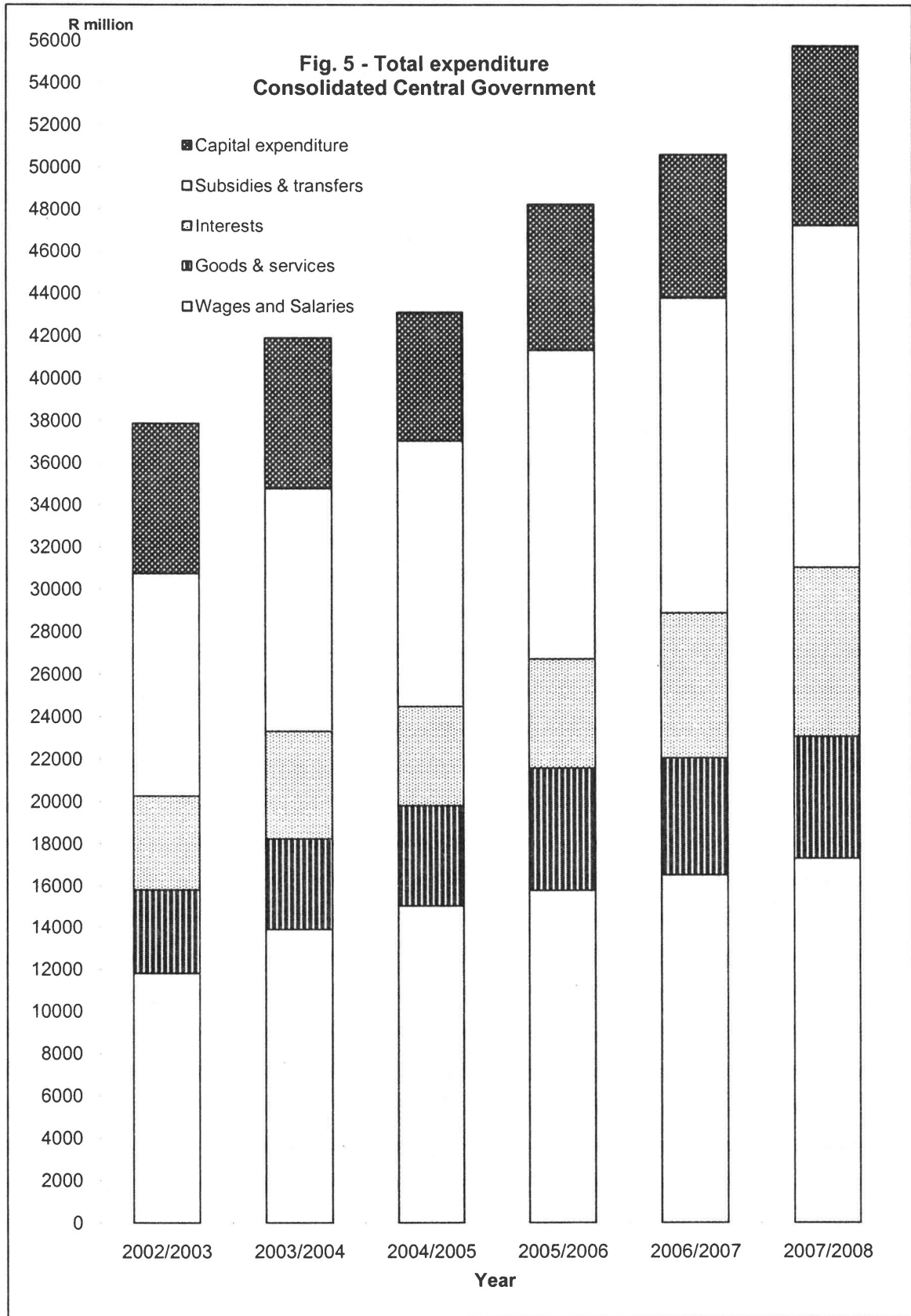


Table 2.5 - Functional classification of expenditure, 2004/2005 - 2007/2008
Consolidated Central Government

Functional categories	2004/2005				2005/2006			
	Current	Capital	Total	%	Current	Capital	Total	%
	R million							
General Government Services	6,744.6	650.3	7,394.9	17.2	7,413.1	853.8	8,266.9	17.1
General public services	3,101.7	397.7	3,499.4	8.1	3,442.1	508.2	3,950.3	8.2
Defence	292.3	0.8	293.1	0.7	345.4	2.9	348.3	0.7
Public order and safety	3,350.6	251.8	3,602.4	8.4	3,625.6	342.7	3,968.3	8.2
Community and Social Services	20,430.7	3,823.2	24,253.9	56.3	22,655.6	4,257.5	26,913.1	55.8
Education	6,227.9	800.3	7,028.2	16.3	6,729.8	746.3	7,476.1	15.5
Health	3,609.2	356.0	3,965.2	9.2	4,049.0	164.3	4,213.3	8.7
Social security and welfare	9,345.5	154.2	9,499.7	22.0	10,484.9	716.0	11,200.9	23.2
Housing and community amenities	788.0	2,428.4	3,216.4	7.5	886.0	2,550.8	3,436.8	7.1
Recreational, cultural and religious services	460.1	84.3	544.4	0.0	505.9	80.1	586.0	0.0
religious services	460.1	84.3	544.4	1.3	505.9	80.1	586.0	1.2
Economic Services	3,269.4	1,108.4	4,377.8	10.2	4,115.1	1,339.7	5,454.8	11.3
Fuel and energy	40.3	28.9	69.2	0.2	29.9	8.1	38.0	0.1
Agriculture, forestry, fishing and hunting	1,313.2	354.2	1,667.4	3.9	1,272.2	183.4	1,455.6	3.0
Mining and mineral resources, manufacturing and construction	166.7	16.0	182.7	0.0	147.4	20.8	168.2	0.0
Transportation and communication	421.6	188.6	610.2	0.4	906.0	585.4	1,491.4	0.3
Other economic services	1,327.6	520.7	1,848.3	1.4	1,759.6	542.0	2,301.6	3.1
Other functions	6,596.6	481.1	7,077.7	4.3	7,142.5	463.5	7,606.0	4.8
Other expenditure	6,596.6	481.1	7,077.7	16.4	7,142.5	463.5	7,606.0	15.8
Public debt interest	4,669.4	-	4,669.4	16.4	5,139.3	-	5,139.3	15.8
Transfer to local government	1,236.4	70.2	1,306.6	10.8	1,297.7	102.7	1,400.4	10.7
Transfer to Rodrigues	690.8	410.9	1,101.7	3.0	705.5	360.8	1,066.3	2.9
Total	37,041.3	6,063.0	43,104.3	100.0	41,326.3	6,914.5	48,240.8	100.0

Table 2.5(Cont'd) - Functional classification of expenditure, 2004/2005 - 2007/2008
Consolidated Central Government

Functional categories	2006/2007			2007/2008			R million	
	Current	Capital	Total	%	Current	Capital		Total
General Government Services	7,511.9	871.7	8,383.6	16.6	7,803.2	1,278.1	9,081.3	16.3
General public services	3,471.5	578.6	4,050.1	8.0	3,624.9	952.5	4,577.4	8.2
Defence ¹	334.5	2.2	336.7	0.7	-	-	-	-
Public order and safety	3,705.9	290.9	3,996.8	7.9	4,178.3	325.6	4,503.9	8.1
Community and Social Services	24,075.5	3,953.2	28,028.7	55.4	25,796.9	3,344.7	29,141.6	52.2
Education	6,997.7	654.6	7,652.3	15.1	7,387.8	842.7	8,230.5	14.8
Health	4,243.6	161.8	4,405.4	8.7	4,478.9	227.5	4,706.4	8.4
Social security and welfare	11,513.6	637.8	12,151.4	24.0	12,419.4	182.7	12,602.1	22.6
Housing and community amenities	829.2	2,431.2	3,260.4	6.4	997.2	2,037.1	3,034.3	5.4
Recreational, cultural and religious services	491.4	67.8	559.2	0.0	513.6	54.7	568.3	1.0
Economic Services	3,349.6	1,431.7	4,781.3	9.4	3,564.9	3,230.9	6,795.8	12.2
Fuel and energy	23.9	9.3	33.2	0.1	28.2	3.7	31.9	0.1
Agriculture, forestry, fishing and hunting	1,244.2	143.9	1,388.1	2.7	1,379.1	1,947.2	3,326.3	6.0
Mining and mineral resources, manufacturing and construction	113.4	1.7	115.1	0.2	109.9	1.9	111.8	0.2
Transportation and communication	1,133.3	422.9	1,556.2	3.1	1,149.0	495.5	1,644.5	2.9
Other economic services	834.8	853.9	1,688.7	3.3	898.7	782.6	1,681.3	3.0
Other functions	8,830.1	585.9	9,416.0	18.6	10,068.1	694.4	10,762.5	19.3
Other expenditure	8,830.1	585.9	9,416.0	18.6	10,068.1	694.4	10,762.5	19.3
Public debt interest	6,822.6	-	6,822.6	13.5	7,970.6	-	7,970.6	14.3
Transfer to local government	1,293.5	311.9	1,605.4	3.2	1,361.5	301.4	1,662.9	3.0
Transfer to Rodrigues	714.0	274.0	988.0	2.0	736.0	393.0	1,129.0	2.0
Total	43,767.1	6,842.5	50,609.6	100.0	47,233.1	8,548.1	55,781.2	100.0

¹ As from 2007/2008, classified under Public order and safety

Table 2.6 - Functional classification of current expenditure, 2004/2005 - 2007/2008
Consolidated Central Government

R million

Functional categories	2004/2005				
	Budgetary Accounts	Extra Budgetary	Social Security	Consolidated Central Government	
	(1)	(2)	(3)	(1+2+3)	(%)
General Government Services	6,462.0	282.6	-	6,744.6	18.2
General public services	2,916.0	185.7	-	3,101.7	8.4
Defence	292.3	-	-	292.3	0.8
Public order and safety	3,253.7	96.9	-	3,350.6	9.0
Community and Social Services	10,518.4	4,225.8	5,686.5	20,430.7	55.2
Education	3,023.8	3,204.1	-	6,227.9	16.8
Health	3,506.3	102.9	-	3,609.2	9.7
Social security and welfare	2,920.7	738.3	5,686.5	9,345.5	25.2
Housing and community amenities	735.2	52.8	-	788.0	2.1
Recreational, cultural and religious services	332.4	127.7	-	460.1	1.2
Economic Services	2,268.6	1,000.8	-	3,269.4	8.8
Fuel and energy	40.3	-	-	40.3	0.1
Agriculture, forestry, fishing and hunting	1,004.0	309.2	-	1,313.2	3.5
Mining and mineral resources, manufacturing and construction	55.6	111.1	-	166.7	0.5
Transportation and communication	343.1	78.5	-	421.6	1.1
Other economic services	825.6	502.0	-	1,327.6	3.6
Other Functions	6,596.3	0.3	-	6,596.6	17.8
Other expenditure	6,596.3	0.3	-	6,596.6	17.8
Public debt interest	4,669.1	0.3	-	4,669.4	12.6
Transfer to local government	1,236.4	-	-	1,236.4	3.3
Transfer to Rodrigues	690.8	-	-	690.8	1.9
Total	25,845.3	5,509.5	5,686.5	37,041.3	100.0

Table 2.6 (Cont'd) - Functional classification of current expenditure, 2004/2005 - 2007/2008
Consolidated Central Government

R million

Functional categories	2005/2006				
	Budgetary	Extra	Social	Consolidated Central	
	Accounts	Budgetary	Security	Government	
	(1)	(2)	(3)	(1+2+3)	(%)
General Government Services	7,101.1	312.0	-	7,413.1	17.9
General public services	3,226.9	215.2	-	3,442.1	8.3
Defence	345.4	-	-	345.4	0.8
Public order and safety	3,528.8	96.8	-	3,625.6	8.8
Community and Social Services	11,429.1	4,662.6	6,563.9	22,655.6	54.8
Education	3,145.0	3,584.8	-	6,729.8	16.3
Health	3,965.5	83.5	-	4,049.0	9.8
Social security and welfare	3,131.9	789.1	6,563.9	10,484.9	25.4
Housing and community amenities	825.5	60.5	-	886.0	2.1
Recreational, cultural and religious services	361.2	144.7	-	505.9	1.2
Economic Services	3,278.4	836.7	-	4,115.1	10.0
Fuel and energy	29.9	-	-	29.9	0.1
Agriculture, forestry, fishing and hunting	960.2	312.0	-	1,272.2	3.1
Mining and mineral resources, manufacturing and construction	110.9	36.5	-	147.4	0.4
Transportation and communication	807.3	98.7	-	906.0	2.2
Other economic services	1,370.1	389.5	-	1,759.6	4.3
Other Functions	7,125.8	16.7	-	7,142.5	17.3
Other expenditure	7,125.8	16.7	-	7,142.5	17.3
Public debt interest	5,122.6	16.7	-	5,139.3	12.4
Transfer to local government	1,297.7	-	-	1,297.7	3.1
Transfer to Rodrigues	705.5	-	-	705.5	1.7
Total	28,934.4	5,828.0	6,563.9	41,326.3	100.0

**Table 2.6 (Cont'd) - Functional classification of current expenditure, 2004/2005 - 2007/2008
Consolidated Central Government**

R million

Functional categories	2006/2007				
	Budgetary Accounts	Extra Budgetary	Social Security	Consolidated Central Government	
	(1)	(2)	(3)	(1+2+3)	(%)
General Government Services	6,605.5	906.4	-	7,511.9	17.2
General public services	2,639.2	832.3	-	3,471.5	7.9
Defence	334.5	-	-	334.5	0.8
Public order and safety	3,631.8	74.1	-	3,705.9	8.5
Community and Social Services	12,159.5	4,959.2	6,956.8	24,075.5	55.0
Education	3,260.8	3,736.9	-	6,997.7	16.0
Health	4,124.1	119.5	-	4,243.6	9.7
Social security and welfare	3,592.8	964.0	6,956.8	11,513.6	26.3
Housing and community amenities	813.2	16.0	-	829.2	1.9
Recreational,cultural and religious services	368.6	122.8	-	491.4	1.1
Economic Services	2,424.2	925.4	-	3,349.6	7.7
Fuel and energy	23.9	-	-	23.9	0.1
Agriculture,forestry,fishing and hunting	958.5	285.7	-	1,244.2	2.8
Mining and mineral resources, manufacturing and construction	111.8	1.6	-	113.4	0.3
Transportation and communication	973.1	160.2	-	1,133.3	2.6
Other economic services	356.9	477.9	-	834.8	1.9
Other Functions	8,799.7	30.4	-	8,830.1	20.2
Other expenditure	8,799.7	30.4	-	8,830.1	20.2
Public debt interest	6,792.2	30.4	-	6,822.6	15.6
Transfer to local government	1,293.5	-	-	1,293.5	3.0
Transfer to Rodrigues	714.0	-	-	714.0	1.6
Total	29,988.9	6,821.4	6,956.8	43,767.1	100.0

Table 2.6 (Cont'd) - Functional classification of current expenditure, 2004/2005 - 2007/2008
Consolidated Central Government

Functional categories	R million				
	2007/2008				
	Budgetary Accounts (1)	Extra Budgetary (2)	Social Security (3)	Consolidated Central Government	
			(1+2+3)	(%)	
General Government Services	6,769.3	1,033.9	-	7,803.2	16.5
General public services	2,673.1	951.8	-	3,624.9	7.7
Defence ¹	-	-	-	-	-
Public order and safety	4,096.2	82.1	-	4,178.3	8.8
Community and Social Services	12,869.3	5,334.8	7,592.8	25,796.9	54.6
Education	3,329.0	4,058.8	-	7,387.8	15.6
Health	4,365.6	113.3	-	4,478.9	9.5
Social security and welfare	3,826.4	1,000.2	7,592.8	12,419.4	26.3
Housing and community amenities	965.1	32.1	-	997.2	2.1
Recreational, cultural and religious services	383.2	130.4	-	513.6	1.1
Economic Services	2,577.0	987.9	-	3,564.9	7.5
Fuel and energy	28.2	-	-	28.2	0.1
Agriculture, forestry, fishing and hunting	1,043.8	335.3	-	1,379.1	2.9
Mining and mineral resources, manufacturing and construction	108.2	1.7	-	109.9	0.2
Transportation and communication	1,018.4	130.6	-	1,149.0	2.4
Other economic services	378.4	520.3	-	898.7	1.9
Other Functions	10,056.7	11.4	-	10,068.1	21.3
Other expenditure	10,056.7	11.4	-	10,068.1	21.3
Public debt interest	7,959.2	11.4	-	7,970.6	16.9
Transfer to local government	1,361.5	-	-	1,361.5	2.9
Transfer to Rodrigues	736.0	-	-	736.0	1.6
Total	32,272.3	7,368.0	7,592.8	47,233.1	100.0

¹ As from 2007/2008, classified under Public order and safety

Table 2.7 - Functional classification of capital expenditure, 2004/2005 - 2007/2008
Consolidated Central Government

R million

Functional categories	2004/2005				
	Budgetary Accounts (1)	Extra Budgetary (2)	Social Security (3)	Consolidated Central Government	
				(1+2+3)	(%)
General Government Services	600.4	49.9	-	650.3	10.7
General public services	351.7	46.0	-	397.7	6.6
Defence	0.8	-	-	0.8	0.0
Public order and safety	247.9	3.9	-	251.8	4.2
Community and Social Services	3,596.4	210.9	15.9	3,823.2	63.1
Education	706.3	94.0	-	800.3	13.2
Health	350.4	5.6	-	356.0	5.9
Social security and welfare	42.7	95.6	15.9	154.2	2.5
Housing and community amenities	2,417.8	10.6	-	2,428.4	40.1
Recreational, cultural and religious services	79.2	5.1	-	84.3	1.4
Economic Services	782.3	326.1	-	1,108.4	18.3
Fuel and energy	28.9	-	-	28.9	0.5
Agriculture, forestry, fishing and hunting	162.0	192.2	-	354.2	5.8
Mining and mineral resources, manufacturing and construction	1.1	14.9	-	16.0	0.3
Transportation and communication	93.0	95.6	-	188.6	3.1
Other economic services	497.3	23.4	-	520.7	8.6
Other Functions	481.1	-	-	481.1	7.9
Other expenditure	481.1	-	-	481.1	7.9
Transfer to Local government	70.2	-	-	70.2	1.2
Transfer to Rodrigues	410.9	-	-	410.9	6.8
Total	5,460.2	586.9	15.9	6,063.0	100.0

**Table 2.7(Cont'd) - Functional classification of capital expenditure, 2004/2005 - 2007/2008
Consolidated Central Government**

R million

Functional categories	2005/2006				
	Budgetary Accounts	Extra Budgetary	Social Security	Consolidated Central Government	
	(1)	(2)	(3)	(1+2+3)	(%)
General Government Services	777.7	76.1	-	853.8	12.3
General public services	432.7	75.5	-	508.2	7.3
Defence	2.9	-	-	2.9	0.0
Public order and safety	342.1	0.6	-	342.7	5.0
Community and Social Services	3,968.6	282.5	6.4	4,257.5	61.6
Education	549.2	197.1	-	746.3	10.8
Health	162.7	1.6	-	164.3	2.4
Social security and welfare	645.2	64.4	6.4	716.0	10.4
Housing and community amenities	2,538.2	12.6	-	2,550.8	36.9
Recreational,cultural and religious services	73.3	6.8	-	80.1	1.2
Economic Services	753.0	586.7	-	1,339.7	19.4
Fuel and energy	8.1	-	-	8.1	0.1
Agriculture,forestry,fishing and hunting	107.7	75.7	-	183.4	2.7
Mining and mineral resources, manufacturing and construction	0.9	19.9	-	20.8	0.3
Transportation and communication	102.4	483.0	-	585.4	8.5
Other economic services	533.9	8.1	-	542.0	7.8
Other Functions	463.5	-	-	463.5	6.7
Other expenditure	463.5	-	-	463.5	6.7
Transfer to Local government	102.7	-	-	102.7	1.5
Transfer to Rodrigues	360.8	-	-	360.8	5.2
Total	5,962.8	945.3	6.4	6,914.5	100.0

Table 2.7(Cont'd) - Functional classification of capital expenditure, 2004/2005 - 2007/2008
Consolidated Central Government

R million

Functional categories	2006/2007				
	Budgetary Accounts	Extra Budgetary	Social Security	Consolidated Central Government	
	(1)	(2)	(3)	(1+2+3)	(%)
General Government Services	785.4	86.3	-	871.7	12.7
General public services	494.2	84.4	-	578.6	8.5
Defence	2.2	-	-	2.2	0.0
Public order and safety	289.0	1.9	-	290.9	4.3
Community and Social Services	3,802.8	140.3	10.1	3,953.2	57.8
Education	562.9	91.7	-	654.6	9.6
Health	161.8	-	-	161.8	2.4
Social security and welfare	618.4	9.3	10.1	637.8	9.3
Housing and community amenities	2,415.9	15.3	-	2,431.2	35.5
Recreational,cultural and religious services	43.8	24.0	-	67.8	1.0
Economic Services	1,079.9	351.8	-	1,431.7	20.9
Fuel and energy	9.3	-	-	9.3	0.1
Agriculture,forestry,fishing and hunting	116.5	27.4	-	143.9	2.1
Mining and mineral resources, manufacturing and construction	1.7	-	-	1.7	0.0
Transportation and communication	137.0	285.9	-	422.9	6.2
Other economic services	815.4	38.5	-	853.9	12.5
Other Functions	585.9	-	-	585.9	8.6
Other expenditure	585.9	-	-	585.9	8.6
Transfer to Local government	311.9	-	-	311.9	4.6
Transfer to Rodrigues	274.0	-	-	274.0	4.0
Total	6,254.0	578.4	10.1	6,842.5	100.0

**Table 2.7(Cont'd) - Functional classification of capital expenditure, 2004/2005 - 2007/2008
Consolidated Central Government**

Functional categories	R million				
	2007/2008				
	Budgetary Accounts (1)	Extra Budgetary (2)	Social Security (3)	Consolidated Central Government	
				(1+2+3)	(%)
General Government Services	1,179.3	98.8	-	1,278.1	15.0
General public services	858.3	94.2	-	952.5	11.1
Defence ¹	-	-	-	-	-
Public order and safety	321.0	4.6	-	325.6	3.8
Community and Social Services	3,075.3	215.9	53.5	3,344.7	39.1
Education	736.5	106.2	-	842.7	9.9
Health	211.2	16.3	-	227.5	2.7
Social security and welfare	58.2	71.0	53.5	182.7	2.1
Housing and community amenities	2,027.9	9.2	-	2,037.1	23.8
Recreational,cultural and religious services	41.5	13.2	-	54.7	0.6
Economic Services	2,897.0	333.9	-	3,230.9	37.8
Fuel and energy	3.7	-	-	3.7	0.0
Agriculture,forestry,fishing and hunting	1,920.8	26.4	-	1,947.2	22.8
Mining and mineral resources, manufacturing and construction	1.9	-	-	1.9	0.0
Transportation and communication	203.2	292.3	-	495.5	5.8
Other economic services	767.4	15.2	-	782.6	9.2
Other Functions	694.4	-	-	694.4	8.1
Other expenditure	694.4	-	-	694.4	8.1
Transfer to Local government	301.4	-	-	301.4	3.5
Transfer to Rodrigues	393.0	-	-	393.0	4.6
Total	7,846.0	648.6	53.5	8,548.1	100.0

¹ As from 2007/2008, classified under Public order and safety

Table 2.8 - Economic classification of expenditure, 2004/2005 - 2007/2008

Consolidated Central Government

R million

Economic categories	2004/2005				
	Budgetary Accounts	Extra Budgetary	Social Security	Consolidated Central Government	
	(1)	(2)	(3)	(1+2+3)	(%)
Current expenditure	25,845.3	5,509.5	5,686.5	37,041.3	85.9
Wages and salaries	11,670.3	3,097.5	4.5	14,772.3	34.3
Employer contributions to pension schemes	-	250.0	-	250.0	0.6
Other purchases of goods and services	3,616.8	1,116.7	52.9	4,786.4	11.1
Interest payments	4,669.1	0.3	-	4,669.4	10.8
Subsidies and other current transfers	5,889.1	1,045.0	5,629.1	12,563.2	29.1
Subsidies	583.9	456.7	-	1,040.6	2.4
Transfers to local government	1,236.4	-	-	1,236.4	2.9
Transfers to Rodrigues	690.8	-	-	690.8	1.6
Transfers to nonprofit institutions and households	3,257.2	584.8	5,629.1	9,471.1	22.0
Transfers abroad	120.8	3.5	-	124.3	0.3
Capital expenditure	5,460.2	586.9	15.9	6,063.0	14.1
Acquisition of fixed capital assets	4,470.0	499.1	15.9	4,985.0	11.6
Purchase of land	49.6	-	-	49.6	0.1
Capital transfers	940.6	87.8	-	1,028.4	2.4
To local government	70.2	-	-	70.2	0.2
To Rodrigues	410.9	-	-	410.9	1.0
To nonfinancial public enterprises	238.6	-	-	238.6	0.6
To public financial institutions	183.5	-	-	183.5	0.4
Other domestic transfers	30.9	87.8	-	118.7	0.3
Abroad	6.5	-	-	6.5	0.0
Total	31,305.5	6,096.4	5,702.4	43,104.3	100.0

Table 2.8(Cont'd) - Economic classification of expenditure, 2004/2005 - 2007/2008
Consolidated Central Government

R million

Economic categories	2005/2006				
	Budgetary	Extra	Social	Consolidated Central	
	Accounts	Budgetary	Security	Government	
	(1)	(2)	(3)	(1+2+3)	(%)
Current expenditure	28,934.4	5,828.0	6,563.9	41,326.3	85.7
Wages and salaries	12,298.7	3,210.5	4.2	15,513.4	32.2
Employer contributions to pension schemes	-	265.0	-	265.0	0.5
Other purchases of goods and services	4,552.4	1,176.4	63.6	5,792.4	12.0
Interest payments	5,122.6	16.7	-	5,139.3	10.7
Subsidies and other current transfers	6,960.7	1,159.4	6,496.1	14,616.2	30.3
Subsidies	1,203.6	447.8	-	1,651.4	3.4
Transfers to local government	1,297.7	-	-	1,297.7	2.7
Transfers to Rodrigues	705.5	-	-	705.5	1.5
Transfers to nonprofit institutions and households	3,566.2	710.2	6,496.1	10,772.5	22.3
Transfers abroad	187.7	1.4	-	189.1	0.4
Capital expenditure	5,962.8	945.3	6.4	6,914.5	14.3
Acquisition of fixed capital assets	4,162.1	886.6	6.4	5,055.1	10.5
Purchase of land	147.7	-	-	147.7	0.3
Capital transfers	1,653.0	58.7	-	1,711.7	3.5
To local government	102.7	-	-	102.7	0.2
To Rodrigues	360.8	-	-	360.8	0.7
To nonfinancial public enterprises	952.6	-	-	952.6	2.0
To public financial institutions	203.2	-	-	203.2	0.4
Other domestic transfers	27.1	58.7	-	85.8	0.2
Abroad	6.6	-	-	6.6	0.0
Total	34,897.2	6,773.3	6,570.3	48,240.8	100.0

Table 2.8(Cont'd) - Economic classification of expenditure, 2004/2005 - 2007/2008

Consolidated Central Government

R million

Economic categories	2006/2007				
	Budgetary Accounts	Extra Budgetary	Social Security	Consolidated Central Government	
	(1)	(2)	(3)	(1+2+3)	(%)
Current expenditure	29,988.9	6,821.4	6,956.8	43,767.1	86.5
Wages and salaries	12,263.4	3,913.6	4.5	16,181.5	32.0
Employer contributions to pension schemes	-	330.0	-	330.0	0.7
Other purchases of goods and services	4,070.6	1,402.7	65.6	5,538.9	10.9
Interest payments	6,792.2	30.4	-	6,822.6	13.5
Subsidies and other current transfers	6,862.7	1,144.7	6,886.7	14,894.1	29.4
Subsidies	756.6	493.0	-	1,249.6	2.5
Transfers to local government	1,293.5	-	-	1,293.5	2.6
Transfers to Rodrigues	714.0	-	-	714.0	1.4
Transfers to nonprofit institutions and households	3,925.0	648.4	6,886.7	11,460.1	22.6
Transfers abroad	173.6	3.3	-	176.9	0.3
Capital expenditure	6,254.0	578.4	10.1	6,842.5	13.5
Acquisition of fixed capital assets	3,751.8	578.4	10.1	4,340.3	8.6
Purchase of land	153.7	-	-	153.7	0.3
Capital transfers	2,348.5	-	-	2,348.5	4.6
To local government	311.9	-	-	311.9	0.6
To Rodrigues	274.0	-	-	274.0	0.5
To nonfinancial public enterprises	784.3	-	-	784.3	1.5
To public financial institutions	945.7	-	-	945.7	1.9
Other domestic transfers	25.4	-	-	25.4	0.1
Abroad	7.2	-	-	7.2	0.0
Total	36,242.9	7,399.8	6,966.9	50,609.6	100.0

Table 2.8(Cont'd) - Economic classification of expenditure, 2004/2005 - 2007/2008

Consolidated Central Government

R million

Economic categories	2007/2008				
	Budgetary Accounts	Extra Budgetary	Social Security	Consolidated Central Government	
	(1)	(2)	(3)	(1+2+3)	(%)
Current expenditure	32,272.3	7,368.0	7,592.8	47,233.1	84.7
Wages and salaries	12,700.0	4,220.8	5.5	16,926.3	30.3
Employer contributions to pension schemes	-	380.0	-	380.0	0.7
Other purchases of goods and services	4,228.2	1,461.2	59.5	5,748.9	10.3
Interest payments	7,959.2	11.4	-	7,970.6	14.3
Subsidies and other current transfers	7,384.9	1,294.6	7,527.8	16,207.3	29.1
Subsidies	957.2	573.2	-	1,530.4	2.7
Transfers to local government	1,361.5	-	-	1,361.5	2.4
Transfers to Rodrigues	736.0	-	-	736.0	1.3
Transfers to nonprofit institutions and households	4,147.2	718.6	7,527.8	12,393.6	22.2
Transfers abroad	183.0	2.8	-	185.8	0.3
Capital expenditure	7,846.0	648.6	53.5	8,548.1	15.3
Acquisition of fixed capital assets	4,268.8	591.1	53.5	4,913.4	8.8
Purchase of land	269.7	-	-	269.7	0.5
Capital transfers	3,307.5	57.5	-	3,365.0	6.0
To local government	301.4	-	-	301.4	0.5
To Rodrigues	393.0	-	-	393.0	0.7
To nonfinancial public enterprises	264.1	-	-	264.1	0.5
To public financial institutions	149.0	-	-	149.0	0.3
Other domestic transfers	2,099.4	57.5	-	2,156.9	3.9
Abroad	100.6	-	-	100.6	0.2
Total	40,118.3	8,016.6	7,646.3	55,781.2	100.0

Table 2.9 - Functional classification of Lending Minus Repayments, 2004/2005 - 2007/2008
Consolidated Central Government

Functional categories	2004/2005				2005/2006				R million
	Budgetary Accounts	Extra Budgetary	Social Security	Consolidated Central Govt.	Budgetary Accounts	Extra Budgetary	Social Security	Consolidated Central Govt.	
General Government Services	-0.1	-	-	-0.1	-0.1	-	-	-0.1	
General public services	-0.1	-	-	-0.1	-0.1	-	-	-0.1	
Defence	-	-	-	-	-	-	-	-	
Public order and safety	-	-	-	-	-	-	-	-	
Community and Social Services	304.8	-	-	304.8	78.4	-	-	78.4	
Education	-	-	-	-	-	-	-	-	
Health	-	-	-	-	-	-	-	-	
Social security and welfare	-	-	-	-	-	-	-	-	
Housing and community amenities	155.1	-	-	155.1	78.4	-	-	78.4	
Recreational, cultural and religious services	149.7	-	-	149.7	-	-	-	-	
Economic Services	342.9	-	-	342.9	610.6	-	-	610.6	
Fuel and energy	-282.7	-	-	-282.7	1.9	-	-	1.9	
Agriculture, forestry, fishing and hunting	-3.0	-	-	-3.0	-3.0	-	-	-3.0	
Mining and mineral resources, manufacturing and construction	20.6	-	-	20.6	-45.0	-	-	-45.0	
Transportation and communication	0.3	-	-	0.3	162.8	-	-	162.8	
Other economic services	607.7	-	-	607.7	493.9	-	-	493.9	
Other Functions	-	-	-	-	-	-	-	-	
Other expenditure	-	-	-	-	-	-	-	-	
Total	647.6	-	-	647.6	688.9	-	-	688.9	

Table 2.9 (Cont'd) - Functional classification of Lending Minus Repayments, 2004/2005 - 2007/2008
Consolidated Central Government

Functional categories	R million							
	2006/2007			2007/2008				
	Budgetary Accounts	Extra Budgetary	Social Security	Consolidated Central Govt.	Budgetary Accounts	Extra Budgetary	Social Security	Consolidated Central Govt.
General Government Services								
General public services	-0.2	-	-	-0.2	-0.1	-	-	-0.1
Defence	-0.2	-	-	-0.2	-0.1	-	-	-0.1
Public order and safety	-	-	-	-	-	-	-	-
Community and Social Services	202.6	-	-	202.6	79.0	-	-	79.0
Education	-	-	-	-	-	-	-	-
Health	-	-	-	-	-	-	-	-
Social security and welfare	-	-	-	-	-	-	-	-
Housing and community amenities	202.6	-	-	202.6	79.0	-	-	79.0
Recreational, cultural and religious services	-	-	-	-	-	-	-	-
Economic Services	172.5	-	-	172.5	1,358.2	-	-	1,358.2
Fuel and energy	2.6	-	-	2.6	-17.0	-	-	-17.0
Agriculture, forestry, fishing and hunting	-2.1	-	-	-2.1	-2.4	-	-	-2.4
Mining and mineral resources, manufacturing and construction	-16.5	-	-	-16.5	-11.8	-	-	-11.8
Transportation and communication	6.1	-	-	6.1	1,235.6	-	-	1,235.6
Other economic services	182.4	-	-	182.4	153.8	-	-	153.8
Other Functions								
Other expenditure	-	-	-	-	-	-	-	-
Total	374.9	-	-	374.9	1,437.1	-	-	1,437.1

Table 2.10 - Financing by type of debt holder, 2004/2005 - 2007/2008
Consolidated Central Government

Debt holders	2004/2005 ¹				2005/2006 ¹				R million
	Budgetary Accounts	Extra Budgetary	Social Security	Consolidated Central Govt.	Budgetary Accounts	Extra Budgetary	Social Security	Consolidated Central Govt.	
Domestic financing	6,017.8	-279.2	-1,117.8	4,620.8	8,662.9	-268.4	-684.8	7,709.7	
Other general government	-359.6	-	-	-359.6	1,212.8	-	-	1,212.8	
Monetary authorities	1,312.5	-	-	1,312.5	1,127.2	-	-	1,127.2	
<i>of which: I.M.F.</i>	-44.0	-	-	-44.0	475.6	-	-	475.6	
Deposit money banks	4,054.8	-90.8	-1,269.3	2,694.7	4,292.4	-117.1	-985.6	3,189.7	
Other	1,010.1	-188.4	151.5	973.2	2,030.5	-151.3	300.8	2,180.0	
Foreign financing	465.7	58.0	-713.0	-189.3	-1,149.2	59.5	-96.4	-1,186.1	
International development institutions	-244.7	58.0	-	-186.7	-300.0	59.5	-	-240.5	
Foreign governments	507.7	-	-	507.7	-517.4	-	-	-517.4	
Other	202.7	-	-	202.7	-331.8	-	-	-331.8	
Changes in cash, deposits, etc.	-	-	-713.0	-713.0	-	-	-96.4	-96.4	
Total	6,483.5	-221.2	-1,830.8	4,431.5	7,513.7	-208.9	-781.2	6,523.6	

¹ Revised

Table 2.10 (Cont'd) - Financing by type of debt holder, 2004/2005 - 2007/2008
Consolidated Central Government

Debt holders	2006/2007 ¹				2007/2008			
	Budgetary Accounts	Extra Budgetary	Social Security	Consolidated Central Govt.	Budgetary Accounts	Extra Budgetary	Social Security	Consolidated Central Govt.
Domestic financing	1,845.8	-466.2	-613.2	766.4	8,401.2	-3,388.1	-5,190.3	-177.2
Other general government	1,948.8	-	-	1,948.8	-355.4	-	-	-355.4
Monetary authorities	-2,904.9	-	-	-2,904.9	11.4	-3120	-	-3,108.6
of which: I.M.F.	225.0	-	-	225.0	-3.6	-	-	-3.6
Deposit money banks	-3,869.9	-564.5	-1,100.0	-5,534.4	14,493.7	-136.6	-1740	12,617.1
Other	6,671.8	98.3	486.8	7,256.9	-5,748.5	-131.5	-3450.3	-9,330.3
Foreign financing	4,465.2	111.8	-	4,577.0	-239.6	41.6	-	-198.0
International development institutions	554.9	111.8	-	666.7	858.8	41.6	-	900.4
Foreign governments	1,028.7	-	-	1,028.7	648.6	-	-	648.6
Other	2,881.6	-	-	2,881.6	-1,747.0	-	-	-1,747.0
Changes in cash, deposits, etc.	-	-	-	-	-	-	-	-
Total	6,311.0	-354.4	-613.2	5,343.4	8,161.6	-3,346.5	-5,190.3	-375.2

¹ Revised

Table 2.11 - Financing by type of debt instrument, 2004/2005 - 2007/2008
Consolidated Central Government

R million

Debt instrument	2004/2005 ¹				2005/2006 ¹			
	Budgetary Accounts	Extra Budgetary	Social Security	Consolidated Central Govt.	Budgetary Accounts	Extra Budgetary	Social Security	Consolidated Central Govt.
Domestic financing	6,017.8	-279.2	-1,117.8	4,620.8	8,662.9	-268.4	-684.8	7,709.7
Long-term bonds	7,319.0	-	-	7,319.0	10,454.5	-	-	10,454.5
Short-term bonds and bills	97.1	-	-	97.1	-1,242.8	-	-	-1,242.8
Long-term loans n.e.c	-	-9.2	143.7	134.5	-	-107.6	300.5	192.9
of which: I.M.F.	-	-	-	-	-	-	-	-
Short-term loans and advances	-	0.6	-	0.6	-	0.6	-	0.6
Other liabilities	-	-270.6	7.8	-262.8	-	-161.4	0.3	-161.1
Changes in cash, deposits, etc	-1,398.3	-	-1,269.3	-2,667.6	-548.8	-	-985.6	-1,534.4
Foreign financing	465.7	58.0	-713.0	-189.3	-1,149.2	59.5	-96.4	-1,186.1
Long-term bonds	-	-	-	-	-	-	-	-
Short-term bonds and bills	208.2	-	-	208.2	-325.9	-	-	-325.9
Long-term loans	257.5	58.0	-	315.5	-823.3	59.5	-	-763.8
Changes in cash, deposits, etc.	-	-	-713.0	-713.0	-	-	-96.4	-96.4
Total	6,483.5	-221.2	-1,830.8	4,431.5	7,513.7	-208.9	-781.2	6,523.6

¹ Revised

Table 2.11 (Cont'd) - Financing by type of debt instrument, 2004/2005 - 2007/2008
Consolidated Central Government

R million

Debt instrument	2006/2007 ¹				2007/2008			
	Budgetary Accounts	Extra Budgetary	Social Security	Consolidated Central Govt.	Budgetary Accounts	Extra Budgetary	Social Security	Consolidated Central Govt.
Domestic financing	1,845.8	-466.2	-613.2	766.4	8,401.2	-3,388.1	-5,190.3	-177.2
Long-term bonds	12,339.9	-	-	12,339.9	7,470.2	-	-	7,470.2
Short-term bonds and bills	-11,449.2	-	-	-11,449.2	-2,207.8	-	-	-2,207.8
Long-term loans n.e.c	-	-260.5	478.2	217.7	-	22.9	186.0	208.9
of which: I.M.F.	-	-	-	-	-	-	-	-
Short-term loans and advances	-	0.6	-	0.6	-	-0.2	-	-0.2
Other liabilities	-	-206.3	-	-206.3	-	-290.8	-	-290.8
Changes in cash, deposits, etc	955.1	-	-1,091.4	-136.3	3,138.8	-3,120.0	-5,376.3	-5,357.5
Foreign financing	4,465.2	111.8	-	4,577.0	-239.6	41.6	-	-198.0
Long-term bonds	867.8	-	-	867.8	-272.6	-	-	-272.6
Short-term bonds and bills	2,019.9	-	-	2,019.9	-1,469.0	-	-	-1,469.0
Long-term loans	1,577.5	111.8	-	1,689.3	1,502.0	41.6	-	1,543.6
Changes in cash, deposits, etc.	-	-	-	-	-	-	-	-
Total	6,311.0	-354.4	-613.2	5,343.4	8,161.6	-3,346.5	-5,190.3	-375.2

¹ Revised

Table 2.12 - Outstanding debt by type of debt holder, 2004/2005 - 2007/2008
Consolidated Central Government

Debt holders	2004/2005				2005/2006				Consolidated Central Govt.
	Budgetary Accounts	Extra Budgetary	Social Security	Consolidated Central Govt.	Budgetary Accounts	Extra Budgetary	Social Security	Consolidated Central Govt.	
Domestic debt	69,726.9	780.0	-	70,506.9	74,795.7	1,306.4	-	76,102.1	
Other general government	-	-	-	-	-	-	-	-	
Monetary authorities of which: I.M.F.	3,321.7	-	-	3,321.7	4,039.9	-	-	4,039.9	
Deposit money banks	44,765.9	150.0	-	44,915.9	48,110.0	262.3	-	48,372.3	
Other	21,639.3	630.0	-	22,269.3	22,645.8	1,044.1	-	23,689.9	
Foreign debt	9,232.2	58.0	-	9,290.2	8,535.4	117.5	-	8,652.9	
International development institutions	4,912.4	58.0	-	4,970.4	4,925.5	117.5	-	5,043.0	
Foreign governments	3,908.8	-	-	3,908.8	3,545.1	-	-	3,545.1	
Other	411.0	-	-	411.0	64.8	-	-	64.8	
Total	78,959.1	838.0	-	79,797.1	83,331.1	1,423.9	-	84,755.0	

Table 2.12 (cont'd) - Outstanding debt by type of debt holder, 2004/2005 - 2007/2008
Consolidated Central Government

Debt holders	2006/2007				2007/2008				Consolidated Central Govt.
	Budgetary Accounts	Extra Budgetary	Social Security	Consolidated Central Govt.	Budgetary Accounts	Extra Budgetary	Social Security	Consolidated Central Govt.	
Domestic debt	73,825.6	1,034.8	-	74,860.4	82,022.3	1,046.2	-	83,068.5	
Other general government	-	-	-	-	-	-	-	-	
Monetary authorities of which: I.M.F.	636.5	-	-	636.5	606.0	-	-	606.0	
Deposit money banks	43,581.0	8.4	-	43,589.4	57,561.8	24.2	-	57,586.0	
Other	29,608.1	1,026.4	-	30,634.5	23,854.5	1,022.0	-	24,876.5	
Foreign debt	13,451.8	229.3	-	13,681.1	12,451.0	270.9	-	12,721.9	
International development institutions	5,632.5	229.3	-	5,861.8	5,907.0	270.9	-	6,177.9	
Foreign governments	4,687.8	-	-	4,687.8	5,288.8	-	-	5,288.8	
Other	3,131.5	-	-	3,131.5	1,255.2	-	-	1,255.2	
Total	87,277.4	1,264.1	-	88,541.5	94,473.3	1,317.1	-	95,790.4	

Table 2.13 - Outstanding debt by type of debt instrument, 2004/2005 - 2007/2008
Consolidated Central Government

Debt instrument	2004/2005				2005/2006				R million
	Budgetary Accounts	Extra Budgetary	Social Security	Consolidated Central Govt.	Budgetary Accounts	Extra Budgetary	Social Security	Consolidated Central Govt.	
Domestic debt	69,726.9	780.0	-	70,506.9	74,795.7	1,306.4	-	76,102.1	
Long-term bonds and bills	17,584.5	-	-	17,584.5	24,525.5	-	-	24,525.5	
Short-term bonds and bills	52,142.4	-	-	52,142.4	50,270.2	-	-	50,270.2	
Long-term loans n.e.c of which: I.M.F.	-	67.0	-	67.0	-	206.6	-	206.6	
Short-term loans and advances	-	-	-	-	-	-	-	-	
Other liabilities	-	713.0	-	713.0	-	1,099.8	-	1,099.8	
Foreign debt	9,232.2	58.0	-	9,290.2	8,535.4	117.5	-	8,652.9	
Long-term bonds and bills	350.1	-	-	350.1	6.9	-	-	0.0	
Short-term bonds and bills	8,882.1	58.0	-	8,940.1	8,528.5	-	-	6.9	
Long-term loans	-	-	-	-	-	-	-	-	
Total	78,959.1	838.0	-	79,797.1	83,331.1	1,423.9	-	84,755.0	

Table 2.13 (cont'd) - Outstanding debt by type of debt instrument, 2004/2005 - 2007/2008
Consolidated Central Government

Debt instrument	2006/2007 ¹				2007/2008				R million
	Budgetary Accounts	Extra Budgetary	Social Security	Consolidated Central Govt.	Budgetary Accounts	Extra Budgetary	Social Security	Consolidated Central Govt.	
Domestic debt	73,825.6	1,034.8	-	74,860.4	82,022.3	1,046.2	-	83,068.5	
Long-term bonds and bills	37,336.4	-	-	37,336.4	46,458.6	-	-	46,458.6	
Short-term bonds and bills	36,489.2	-	-	36,489.2	35,563.7	-	-	35,563.7	
Long-term loans n.e.c of which: I.M.F.	-	2.2	-	2.2	-	2.0	-	2.0	
Short-term loans and advances	-	-	-	-	-	-	-	-	
Other liabilities	-	1,032.6	-	1,032.6	-	1,044.2	-	1,044.2	
Foreign debt	13,451.8	229.3	-	13,681.1	12,451.0	270.9	-	12,721.9	
Long-term bonds and bills	896.3	-	-	896.3	605.3	-	-	605.3	
Short-term bonds and bills	2,182.1	-	-	2,182.1	609.6	-	-	609.6	
Long-term loans	10,373.4	229.3	-	10,602.7	11,236.1	270.9	-	11,507.0	
Total	87,277.4	1,264.1	-	88,541.5	94,473.3	1,317.1	-	95,790.4	

¹ Revised

Table 2.14 - Debt charges, 2004/2005 - 2007/2008

Debt charges	2004/2005		2005/2006		2006/2007		2007/2008	
	Amount	%	Amount	%	Amount	%	Amount	%
1 Amortization	1,968.1	29.6	2,179.1	29.8	2,153.5	24.0	2,584.4	24.5
Internal	1,038.2	15.6	859.6	11.8	1,183.3	13.2	1,664.3	15.8
External	929.9	14.0	1,319.5	18.0	970.2	10.8	920.1	8.7
2 Interest	4,669.2	70.2	5,122.6	70.0	6,792.2	75.8	7,959.2	75.4
Internal	4,452.9	67.0	4,853.7	66.4	6,525.4	72.9	7,638.5	72.4
External	216.3	3.3	268.9	3.7	266.8	3.0	320.7	3.0
3 Management charges	10.8	0.2	12.4	0.2	9.7	0.1	8.6	0.1
Total debt servicing	6,648.1	100.0	7,314.1	100.0	8,955.4	100.0	10,552.2	100.0

R million

Table 3.1 - Revenue and grants, 2004/2005 - 2007/2008

Local Government

R million

Revenue items	2004/2005	2005/2006	2006/2007	2007/2008
Tax revenue	484.2	537.2	623.5	651.2
Taxes on property	240.1	247.7	287.6	305.7
Domestic taxes on goods and services	244.1	289.5	335.9	345.5
Nontax revenue	157.2	150.4	180.8	227.4
Property income	45.2	47.3	69.4	101.8
Fees, charges and non-industrial sales	95.9	93.0	105.8	123.1
Fines and Forfeits	0.1	0.1	0.2	0.2
Other nontax revenue	16.0	10.0	5.4	2.3
Capital revenue	-	-	-	-
Total revenue	641.4	687.6	804.3	878.6
Grants	1,306.6	1,400.4	1,605.4	1,662.9
Total revenue and grants	1,948.0	2,088.0	2,409.7	2,541.5

Table 3.2 - Functional classification of expenditure, 2004/2005 - 2007/2008

Local Government

R million

Functional classification	2004/2005	2005/2006	2006/2007	2007/2008
General public services	435.7	457.4	462.3	437.4
Public order and safety	-	-	-	-
Education	12.4	13.0	13.1	14.2
Health	-	-	-	0.2
Social security and welfare	146.1	151.7	154.9	169.6
Housing and community amenities	763.0	753.9	776.1	812.6
Recreational, cultural & religious services	190.1	162.5	148.3	179.6
Mining, manufacturing and construction	309.1	335.0	317.3	389.6
Transportation & communication	123.6	111.7	202.7	161.1
Other economic services	-	4.5	0.4	1.7
Other expenditure	7.8	3.4	3.6	7.3
Total	1,987.8	1,993.1	2,078.7	2,173.3

Table 3.3 - Economic classification of expenditure, 2004/2005 - 2007/2008

Local Government

R million

Economic classification	2004/2005	2005/2006	2006/2007	2007/2008
Current expenditure	1,675.7	1,713.3	1,773.7	1,883.1
Wages and salaries	927.2	983.7	1,013.3	1,080.8
Other purchase of goods and services	553.3	551.8	584.9	612.3
Interest payment	7.8	3.4	3.6	7.3
Transfer to non-profit institutions and households	186.8	173.2	171.3	182.2
Transfers abroad	0.6	1.2	0.6	0.5
Capital expenditure	312.1	279.8	305.0	290.2
Acquisition of fixed capital assets	310.3	279.8	305.0	290.2
Purchase of land	1.8	-	-	-
Total	1,987.8	1,993.1	2,078.7	2,173.3

Table 4.1 - Main Aggregates, 2004/2005 -2007/2008

Consolidated General Government

R million

Main aggregates	2004/2005	2005/2006	2006/2007	2007/2008
1 Current revenue	39,146.1	42,394.0	46,112.9	58,012.7
(i) Tax revenue	34,824.9	37,656.3	40,678.5	50,580.3
(ii) Nontax revenue	4,321.2	4,737.7	5,434.4	7,432.4
2 Capital revenue	386.4	225.2	29.4	23.2
3 Total revenue	39,532.5	42,619.2	46,142.3	58,035.9
4 Grants	444.0	489.2	321.9	454.1
5 Total revenue and grants	39,976.5	43,108.4	46,464.2	58,490.0
6 Current expenditure	37,491.1	41,785.0	44,279.9	47,801.8
7 Capital expenditure	6,314.4	7,080.6	6,820.0	8,526.5
8 Total expenditure	43,805.5	48,865.6	51,099.9	56,328.3
9 Lending minus repayments	647.6	688.9	374.9	1,437.1
10 Total expenditure and lending minus repayments	44,453.1	49,554.5	51,474.8	57,765.4
11 Gross fixed capital formation	5,705.1	5,684.7	4,903.7	5,579.0
12 Current account surplus (1 - 6)	1,655.0	609.0	1,833.0	10,210.9
13 Overall deficit / surplus (5 - 10)	-4,476.6	-6,446.1	-5,010.6	724.6
14 Financing	4,476.6	6,446.1	5,010.6	-724.6
(i) Domestic	4,665.9	7,632.2	433.6	-526.6
(ii) Foreign	-189.3	-1,186.1	4,577.0	-198.0

Table 4.2 - Revenue and grants, 2004/2005 - 2007/2008
Consolidated General Government

R million

Revenue items	2004/2005				2005/2006			
	Central Government	Regional Government	Local Government	Consolidated General Govt.	Central Government	Regional Government	Local Government	Consolidated General Govt.
Tax revenue	34,338.7	2.0	484.2	34,824.9	37,117.3	1.8	537.2	37,656.3
Tax on income, profits and capital gains	5,829.0	-	-	5,829.0	7,468.9	-	-	7,468.9
Social security contributions	1,311.1	-	-	1,311.1	1,394.2	-	-	1,394.2
Taxes on payroll and workforce	204.1	-	-	204.1	219.0	-	-	219.0
Taxes on property	1,680.2	-	240.1	1,920.3	1,939.5	-	247.7	2,187.2
Domestic taxes on goods and services	17,569.6	2.0	244.1	17,815.7	18,884.6	1.8	289.5	19,175.9
Taxes on international trade and transaction	7,730.5	-	-	7,730.5	7,195.4	-	-	7,195.4
Other tax revenue	14.2	-	-	14.2	15.7	-	-	15.7
Nontax revenue	4,151.3	12.7	157.2	4,321.2	4,574.4	12.9	150.4	4,737.7
Property income	2,344.1	5.9	45.2	2,395.2	2,582.8	6.1	47.3	2,636.2
Fees, charges and non-industrial sales	1,282.9	5.7	95.9	1,384.5	1,386.4	5.1	93.0	1,484.5
Fines and Forfeits	150.6	0.9	0.1	151.6	151.4	1.5	0.1	153.0
Employees' contributions to government employee pension funds	175.4	0.2	-	175.6	185.8	0.2	-	186.0
Other nontax revenue	198.3	-	16.0	214.3	268.0	-	10.0	278.0
Capital revenue	386.4	-	-	386.4	225.2	-	-	225.2
Sale of fixed capital assets	386.4	-	-	386.4	225.2	-	-	225.2
Total revenue	38,876.4	14.7	641.4	39,532.5	41,916.9	14.7	687.6	42,619.2
Grants	444.0	-	-	444.0	489.2	-	-	489.2
Total revenue and grants	39,320.4	14.7	641.4	39,976.5	42,406.1	14.7	687.6	43,108.4

Table 4.2 (Cont'd) - Revenue and grants, 2004/2005 - 2007/2008
Consolidated General Government

Revenue items	2006/2007					2007/2008				
	Central Government	Regional Government	Local Government	Consolidated General Govt.	Central Government	Regional Government	Local Government	Consolidated General Govt.		
Tax revenue	40,052.8	2.2	623.5	40,678.5	49,926.5	2.6	651.2	50,580.3		
Tax on income, profits and capital gains	7,607.6	-	-	7,607.6	10,558.2	-	-	10,558.2		
Social security contributions	1,502.0	-	-	1,502.0	1,696.5	-	-	1,696.5		
Taxes on payroll and workforce	253.2	-	-	253.2	272.0	-	-	272.0		
Taxes on property	2,798.5	-	287.6	3,086.1	4,003.0	-	305.7	4,308.7		
Domestic taxes on goods and services	21,515.3	2.2	335.9	21,853.4	26,604.0	2.6	345.5	26,952.1		
Taxes on international trade and transaction	6,299.2	-	-	6,299.2	6,646.2	-	-	6,646.2		
Other tax revenue	77.0	-	-	77.0	146.6	-	-	146.6		
Nontax revenue	5,237.0	16.6	180.8	5,434.4	7,189.7	15.3	227.4	7,432.4		
Property income	3,112.2	7.0	69.4	3,188.6	4,739.8	6.5	101.8	4,848.1		
Fees, charges and non-industrial sales	1,506.5	7.8	105.8	1,620.1	1,851.1	7.0	123.1	1,981.2		
Fines and Forfeits	152.5	1.5	0.2	154.2	163.8	1.4	0.2	165.4		
Employees' contributions to government employee pension funds	191.2	0.3	-	191.5	196.7	0.4	-	197.1		
Other nontax revenue	274.6	-	5.4	280.0	238.3	-	2.3	240.6		
Capital revenue	29.4	-	-	29.4	23.2	-	-	23.2		
Sale of fixed capital assets	29.4	-	-	29.4	23.2	-	-	23.2		
Total revenue	45,319.2	18.8	804.3	46,142.3	57,139.4	17.9	878.6	58,035.9		
Grants	321.9	-	-	321.9	454.1	-	-	454.1		
Total revenue and grants	45,641.1	18.8	804.3	46,464.2	57,593.5	17.9	878.6	58,490.0		

R million

Table 4.3 - Functional classification of expenditure, 2004/2005 - 2007/2008
Consolidated General Government

Functional categories	R million									
	2004/2005					2005/2006				
	Central Government	Regional Government	Local Government	Consolidated General Govt.	Central Government	Regional Government	Local Government	Consolidated General Govt.		
General Government Services	7,394.9	215.5	435.7	8,046.1	8,266.9	189.7	457.4	8,914.0		
General public services	3,499.4	196.2	435.7	4,131.3	3,950.3	168.9	457.4	4,576.6		
Defence	293.1	-	-	293.1	348.3	-	-	348.3		
Public order and safety	3,602.4	19.3	-	3,621.7	3,968.3	20.8	-	3,989.1		
Community and Social Services	24,253.9	600.6	1,111.6	25,966.1	26,913.1	556.2	1,081.1	28,550.4		
Education	7,028.2	141.9	12.4	7,182.5	7,476.1	125.2	13.0	7,614.3		
Health	3,965.2	140.0	-	4,105.2	4,213.3	156.9	-	4,370.2		
Social security and welfare	9,499.7	36.1	146.1	9,681.9	11,200.9	42.2	151.7	11,394.8		
Housing and community amenities	3,216.4	180.9	763.0	4,160.3	3,436.8	140.5	753.9	4,331.2		
Recreational,cultural and religious services	544.4	101.7	190.1	836.2	586.0	91.4	162.5	839.9		
Economic Services	4,377.8	305.6	432.7	5,116.1	5,454.8	352.5	451.2	6,258.5		
Fuel and energy	69.2	-	-	69.2	38.0	-	-	38.0		
Agriculture,forestry,fishing and hunting	1,667.4	158.1	-	1,825.5	1,455.6	169.1	-	1,624.7		
Mining and mineral resources, manufacturing & construction	182.7	-	309.1	491.8	168.2	-	335.0	503.2		
Transportation & communication	610.2	133.8	123.6	867.6	1,491.4	163.8	111.7	1,766.9		
Other economic services	1,848.3	13.7	-	1,862.0	2,301.6	19.6	4.5	2,325.7		
Other functions	4,669.4	-	7.8	4,677.2	5,139.3	-	3.4	5,142.7		
Other expenditure	4,669.4	-	7.8	4,677.2	5,139.3	-	3.4	5,142.7		
Total	40,696.0	1,121.7	1,987.8	43,805.5	45,774.1	1,098.4	1,993.1	48,865.6		

Table 4.3 (Cont'd)- Functional classification of expenditure, 2004/2005 - 2007/2008

Functional categories	2006/2007						2007/2008			
	Central Government	Regional Government	Local Government	Consolidated General Govt.	Central Government	Regional Government	Local Government	Consolidated General Govt.		
General Government Services	8,383.6	182.8	462.3	9,028.7	9,081.3	223.7	437.4	9,742.4		
General public services	4,050.1	160.1	462.3	4,672.5	4,577.4	197.7	437.4	5,212.5		
Defence ¹	336.7	-	-	336.7	-	-	-	-		
Public order and safety	3,996.8	22.7	-	4,019.5	4,503.9	26.0	-	4,529.9		
Community and Social Services	28,028.7	565.4	1,092.4	29,686.5	29,141.6	596.5	1,176.2	30,914.3		
Education	7,652.3	130.2	13.1	7,795.6	8,230.5	120.6	14.2	8,365.3		
Health	4,405.4	164.5	-	4,569.9	4,706.4	184.6	0.2	4,891.2		
Social security and welfare	12,151.4	47.9	154.9	12,354.2	12,602.1	55.0	169.6	12,826.7		
Housing and community amenities	3,260.4	139.3	776.1	4,175.8	3,034.3	183.0	812.6	4,029.9		
Recreational,cultural and religious services	559.2	83.5	148.3	791.0	568.3	53.3	179.6	801.2		
Economic Services	4,781.3	256.8	520.4	5,558.5	6,795.8	345.5	552.4	7,693.7		
Fuel and energy	33.2	-	-	33.2	31.9	0.5	-	32.4		
Agriculture,forestry,fishing and hunting	1,388.1	128.6	-	1,516.7	3,326.3	142.8	-	3,469.1		
Mining and mineral resources, manufacturing & construction	115.1	-	317.3	432.4	111.8	0.1	389.6	501.5		
Transportation & communication	1,556.2	105.2	202.7	1,864.1	1,644.5	176.0	161.1	1,981.6		
Other economic services	1,688.7	23.0	0.4	1,712.1	1,681.3	26.1	1.7	1,709.1		
Other functions	6,822.6	-	3.6	6,826.2	7,970.6	-	7.3	7,977.9		
Other expenditure	6,822.6	-	3.6	6,826.2	7,970.6	-	7.3	7,977.9		
Total	48,016.2	1,005.0	2,078.7	51,099.9	52,989.3	1,165.7	2,173.3	56,328.3		

¹ As from 2007/2008, classified under Public order and safety

Table 4.4 - Economic classification of expenditure, 2004/2005 - 2007/2008
Consolidated General Government

R million

Economic categories	2004/2005				2005/2006			
	Central Government	Regional Government	Local Government	Consolidated General Govt.	Central Government	Regional Government	Local Government	Consolidated General Govt.
Current expenditure	35,114.1	701.3	1,675.7	37,491.1	39,323.1	748.6	1,713.3	41,785.0
Wages and salaries	14,772.3	476.5	927.2	16,176.0	15,513.4	492.2	983.7	16,989.3
Employer contributions to pension schemes	250.0	-	-	250.0	265.0	-	-	265.0
Other purchases of goods and services	4,786.4	110.0	553.3	5,449.7	5,792.4	127.0	551.8	6,471.2
Interest payments	4,669.4	-	7.8	4,677.2	5,139.3	-	3.4	5,142.7
Subsidies and other current transfers	10,636.0	114.8	187.4	10,938.2	12,613.0	129.4	174.4	12,916.8
Capital expenditure	5,581.9	420.4	312.1	6,314.4	6,451.0	349.8	279.8	7,080.6
Acquisition of fixed capital assets	4,985.0	409.8	310.3	5,705.1	5,055.1	349.8	279.8	5,684.7
Purchase of land	49.6	10.6	1.8	62.0	147.7	-	-	147.7
Capital transfers	547.3	-	-	547.3	1,248.2	-	-	1,248.2
Total	40,696.0	1,121.7	1,987.8	43,805.5	45,774.1	1,098.4	1,993.1	48,865.6

Table 4.4 (cont'd) - Economic classification of expenditure, 2004/2005 - 2007/2008

R million

Economic categories	2006/2007				2007/2008			
	Central Government	Regional Government	Local Government	Consolidated General Govt.	Central Government	Regional Government	Local Government	Consolidated General Govt.
Current expenditure	41,759.6	746.6	1,773.7	44,279.9	45,135.6	783.1	1,883.1	47,801.8
Wages and salaries	16,181.5	491.3	1,013.3	17,686.1	16,926.3	503.0	1,080.8	18,510.1
Employer contributions to pension schemes	330.0	-	-	330.0	380.0	-	-	380.0
Other purchases of goods and services	5,538.9	139.6	584.9	6,263.4	5,748.9	171.7	612.3	6,532.9
Interest payments	6,822.6	-	3.6	6,826.2	7,970.6	-	7.3	7,977.9
Subsidies and other current transfers	12,886.6	115.7	171.9	13,174.2	14,109.8	108.4	182.7	14,400.9
Capital expenditure	6,256.6	258.4	305.0	6,820.0	7,853.7	382.6	290.2	8,526.5
Acquisition of fixed capital assets	4,340.3	258.4	305.0	4,903.7	4,913.4	375.4	290.2	5,579.0
Purchase of land	153.7	-	-	153.7	269.7	0.2	-	269.9
Capital transfers	1,762.6	-	-	1,762.6	2,670.6	7.0	-	2,677.6
Total	48,016.2	1,005.0	2,078.7	51,099.9	52,989.3	1,165.7	2,173.3	56,328.3

PUBLIC SECTOR

Table 5.1 Employment and wages & salaries* in the public sector, 2004/2005 - 2007/2008

Public institutions	2004/2005		2005/2006		2006/2007 ¹		2007/2008 ²	
	No of employees (Sep 2004)	Wages, salaries (R million)	No of employees (Sep 2005)	Wages, salaries (R million)	No of employees (Sep 2006)	Wages, salaries (R million)	No of employees (Sep 2007)	Wages, salaries (R million)
Budgetary central government ³	52,601	10,315	53,274	10,875	51,694	10,682	54,185	11,019
Rodrigues regional government	3,130	450	3,019	454	2,914	452	2,825	476
Extra budgetary units	13,275	2,673	13,646	2,863	15,329	3,256	15,637	3,534
of which PSSA - Private Schools	5,782	1,193	6,050	1,285	6,287	1,347	6,399	1,388
Local government	6,594	830	6,763	857	6,822	931	6,957	997
Non financial public enterprises	19,201	4,736	19,186	4,933	18,425	4,902	17,654	5,301
Public financial institutions	2,390	677	2,514	738	2,587	757	2,548	806
Total	97,191	19,681	98,402	20,720	97,771	20,980	99,806	22,133

¹ Revised

² Provisional

³ No of employees for budgetary central government excludes those with nil salaries and those paid on manual paysheets

* Basic wages and salaries, overtime, bonuses, salary compensation & allowances paid

Table 6.1 - Income tax - Individuals: Analysis by range of gross income, years of assessment, 2005/2006 - 2008/2009

Range of gross income (Rupees)	Year of assessment 2005/2006					Year of assessment 2006/2007				
	Number of taxpayers	Gross income R million	Chargeable income R million	Tax payable R million	Number of taxpayers	Gross income R million	Chargeable income R million	Tax payable R million		
75000 or less	10	-	-	-	71	2	5	1		
75,001 - 100,000	1,207	115	5	-	205	19	2	-		
100,001 - 150,000	13,260	1,662	204	22.7	11,494	1,460	161	18		
150,001 - 200,000	12,062	2,123	403	59	10,654	1,866	350	51		
200,001 - 250,000	12,648	2,850	594	100	10,463	2,357	491	83		
250,001 - 500,000	24,902	8,451	2,289	461	24,604	8,398	2,154	432		
500,001 - 750,000	5,100	3,062	1,250	282	5,217	3,143	1,205	272		
750,001 - 1,000,000	1,745	1,496	744	177	1,917	1,645	775	183		
1,000,001 - 1,500,000	1,294	1,556	951	243	1,337	1,614	944	241		
1,500,001 - 2,000,000	505	863	608	162	526	904	658	166		
2,000,001 - 2,500,000	281	626	479	132	285	638	477	129		
2,500,001 - 5,000,000	375	1,271	1,061	295	410	1,359	1,104	306		
Over 5,000,000	138	1,188	1,099	313	159	1,255	1,107	319		
Total	73,527	25,263	9,687	2,247	67,342	24,660	9,433	2,201		

Figures are provisional and subject to amendment

Source : Mauritius Revenue Authority

Table 6.1 (Cont'd) - Income tax - Individuals: Analysis by range of gross income, years of assessment, 2005/2006 - 2008/2009

Range of gross income (Rupees)	Year of assessment 2007/2008					Year of assessment 2008/2009				
	Number of taxpayers	Gross income R million	Chargeable income R million	Tax payable (inc NRPT) (R million)	Tax payable (exc NRPT) (R million)	Number of taxpayers	Gross income R million	Chargeable income R million	Tax payable (inc NRPT) (R million)	Tax payable (exc NRPT) (R million)
75000 or less	235	8	7	2	1	345	11	10	2	2
75,001 - 100,000	61	5	4	1	1	71	6	6	1	1
100,001 - 150,000	80	10	9	2	2	106	13	13	2	2
150,001 - 200,000	55	10	9	1	1	82	14	14	2	2
200,001 - 250,000	6,991	1,618	52	19	18	6,108	1,419	120	18	18
250,001 - 500,000	24,724	8,985	1,731	384	362	26,360	9,588	2,656	417	398
500,001 - 750,000	8,745	5,251	1,909	388	363	9,827	5,903	2,797	444	419
750,001 - 1,000,000	3,053	2,615	1,341	261	249	3,549	3,047	1,915	299	287
1,000,001 - 1,500,000	2,338	2,801	1,721	363	350	2,809	3,393	2,492	387	373
1,500,001 - 2,000,000	945	1,615	1,117	248	241	1,091	1,875	1,520	235	228
2,000,001 - 2,500,000	490	1,095	806	182	178	612	1,363	1,165	179	174
2,500,001 - 5,000,000	768	2,585	2,092	472	464	1,079	3,680	3,311	504	495
Over 5,000,000	305	2,644	2,344	535	530	444	4,126	3,974	601	595
Total	48,790	29,242	13,142	2,858	2,760	52,483	34,438	19,993	3,092	2,994

Figures are provisional and subject to amendment

Source : Mauritius Revenue Authority

Table 6.2 -Income tax - Companies: Analysis by range of liable income, years of assessment, 2005/2006 - 2008/2009

Range of liable income (Rupees)	Year of assessment 2005/2006					Year of assessment 2006/2007						
	Number of companies	Gross income (R million)	Chargeable income (R million)	Tax payable (R million)	Number of companies	Gross income (R million)	Chargeable income (R million)	Tax payable (R million)	Number of companies	Gross income (R million)	Chargeable income (R million)	Tax payable (R million)
25,000 or less	7,079	4.8	818.7	28.3	9,712	6.5	858.5	29.6				
25,001 - 50,000	215	8.0	11.7	0.1	269	9.8	123.3	3.5				
50,001 - 100,000	293	21.4	5.6	1.4	380	27.7	26.1	0.9				
100,001 - 150,000	279	34.8	2.1	0.4	300	37.5	1.9	0.4				
150,001 - 250,000	450	89.0	5.6	1.1	524	104.6	28.8	2.7				
250,001 - 500,000	861	318.6	23.7	4.3	995	367.6	41.1	4.9				
500,001 - 750,000	626	388.3	24.0	3.4	700	434.0	40.7	5.2				
750,001 - 1,000,000	517	447.0	27.4	4.4	618	538.4	38.4	6.8				
1,000,001 - 1,500,000	835	1,037.7	2,659.2	87.0	966	1,203.2	285.3	11.7				
1,500,001 - 2,000,000	713	1,242.1	84.4	13.0	854	1,492.5	93.4	14.7				
2,000,001 - 5,000,000	2,130	6,630.6	501.4	64.1	2,253	7,110.6	542.2	71.2				
5,000,001 - 10,000,000	1,287	9,275.9	978.8	100.5	1,328	9,501.5	833.6	90.8				
Over 10,000,000	3,375	559,003.6	72,384.7	3,739.5	3,669	784,289.6	88,171.0	3,956.7				
Total	18,660	578,501.8	77,527.4	4,047.5	22,568	805,123.4	91,084.2	4,199.1				

Figures are provisional and subject to amendment

Source : Mauritius Revenue Authority

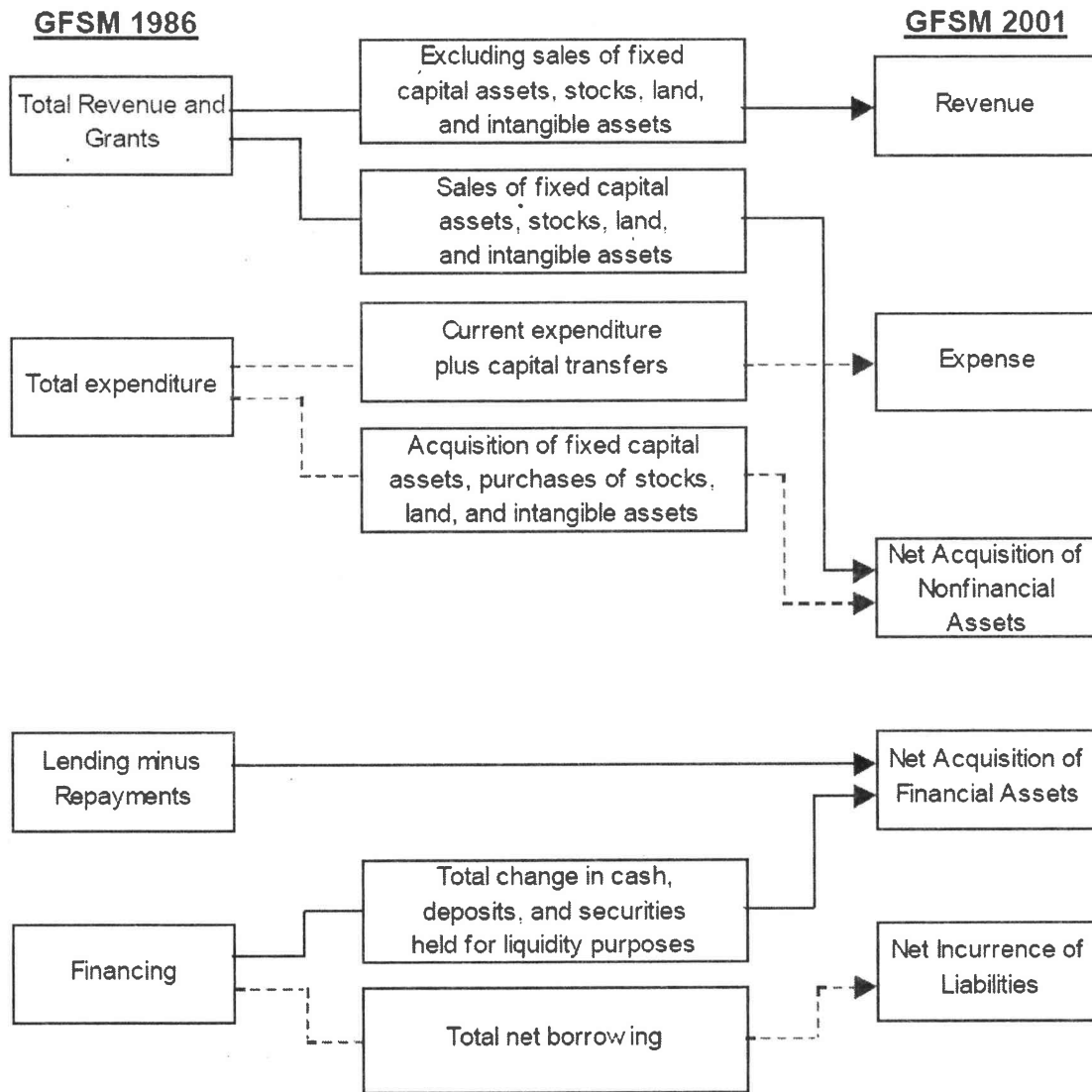
Table 6.2 (cont'd) - Income tax - Companies: Analysis by range of liable income, years of assessment, 2005/2006 - 2008/2009

Range of liable income (Rupees)	Year of assessment 2007/2008					Year of assessment 2008/2009				
	Number of companies	Gross income (R million)	Chargeable income (R million)	Tax payable (inc NRPT) (R million)	Tax payable (exc NRPT) (R million)	Number of companies	Gross income (R million)	Chargeable income (R million)	Tax payable (inc NRPT) (R million)	Tax payable (exc NRPT) (R million)
25,000 or less	10,974	8.7	142.0	11.6	11.4	12,382	10.4	91.1	11.6	8.5
25,001 - 50,000	348	12.8	124.5	4.0	3.9	407	14.9	237.8	7.3	7.3
50,001 - 100,000	485	35.6	14.2	0.8	0.8	516	7.6	5.7	0.5	0.4
100,001 - 150,000	367	46.0	41.6	1.9	1.9	404	50.5	15.3	0.9	0.9
150,001 - 250,000	624	124.5	9.2	1.8	1.8	655	129.6	19.7	1.5	1.4
250,001 - 500,000	1,112	414.9	46.1	6.0	5.9	1,245	457.4	195.4	9.8	9.7
500,001 - 750,000	839	518.8	69.8	7.8	7.8	922	571.5	43.8	5.7	5.6
750,001 - 1,000,000	732	637.7	39.6	6.2	6.2	771	677.1	100.1	6.2	6.1
1,000,001 - 1,500,000	1,146	1,429.9	85.9	15.3	15.2	1,241	1,529.6	112.6	11.9	11.9
1,500,001 - 2,000,000	1,149	2,023.7	193.1	19.8	19.9	1,295	2,273.0	456.6	28.3	28.0
2,000,001 - 5,000,000	2,203	7,164.9	1,236.3	91.6	91.2	2,443	7,975.6	801.4	81.8	81.3
5,000,001 - 10,000,000	1,458	10,401.5	2,524.7	129.8	129.7	1,625	11,678.1	1,494.4	131.3	129.4
Over 10,000,000	3,911	842,575.9	117,608.8	5,964.3	5,962.8	4,354	1,051,648.4	147,189.1	6,418.9	6,397.8
Total	25,348	865,394.9	122,135.8	6,261.0	6,258.4	28,260	1,077,023.7	150,763.1	6,715.7	6,688.3

Figures are provisional and subject to amendment

Source : Mauritius Revenue Authority

Diagram 1: Broad Overview of Relationships Between GFSM 1986 and GFSM 2001 Classification Systems



Source: Classification of GFSM 1986 Data to the GFSM 2001 Framework by Tobias M. Wickens (IMF)

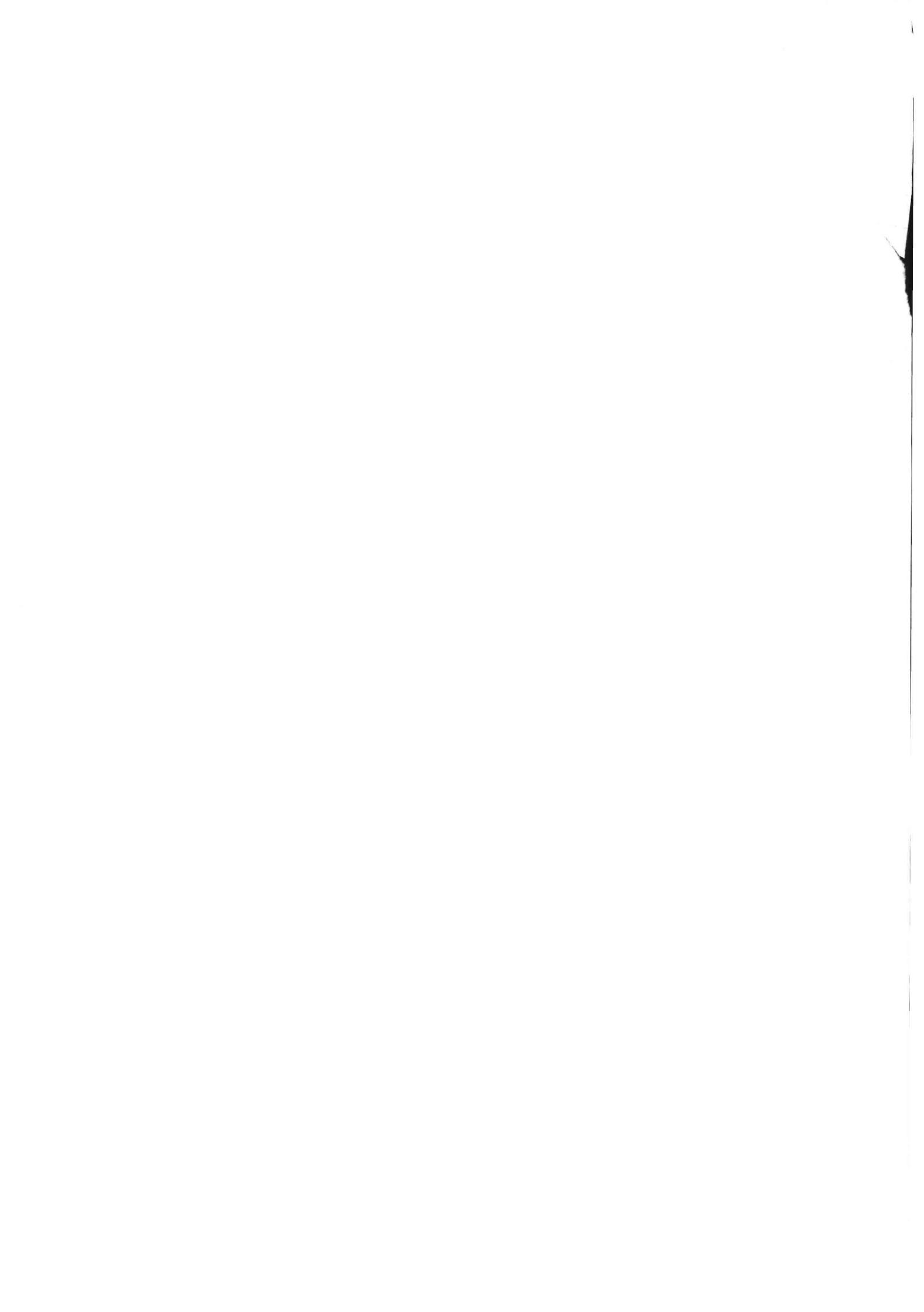
Table 7.1 - Statement of Government Operations, 2007/2008 - 2008/2009 (based on GFS 2001)

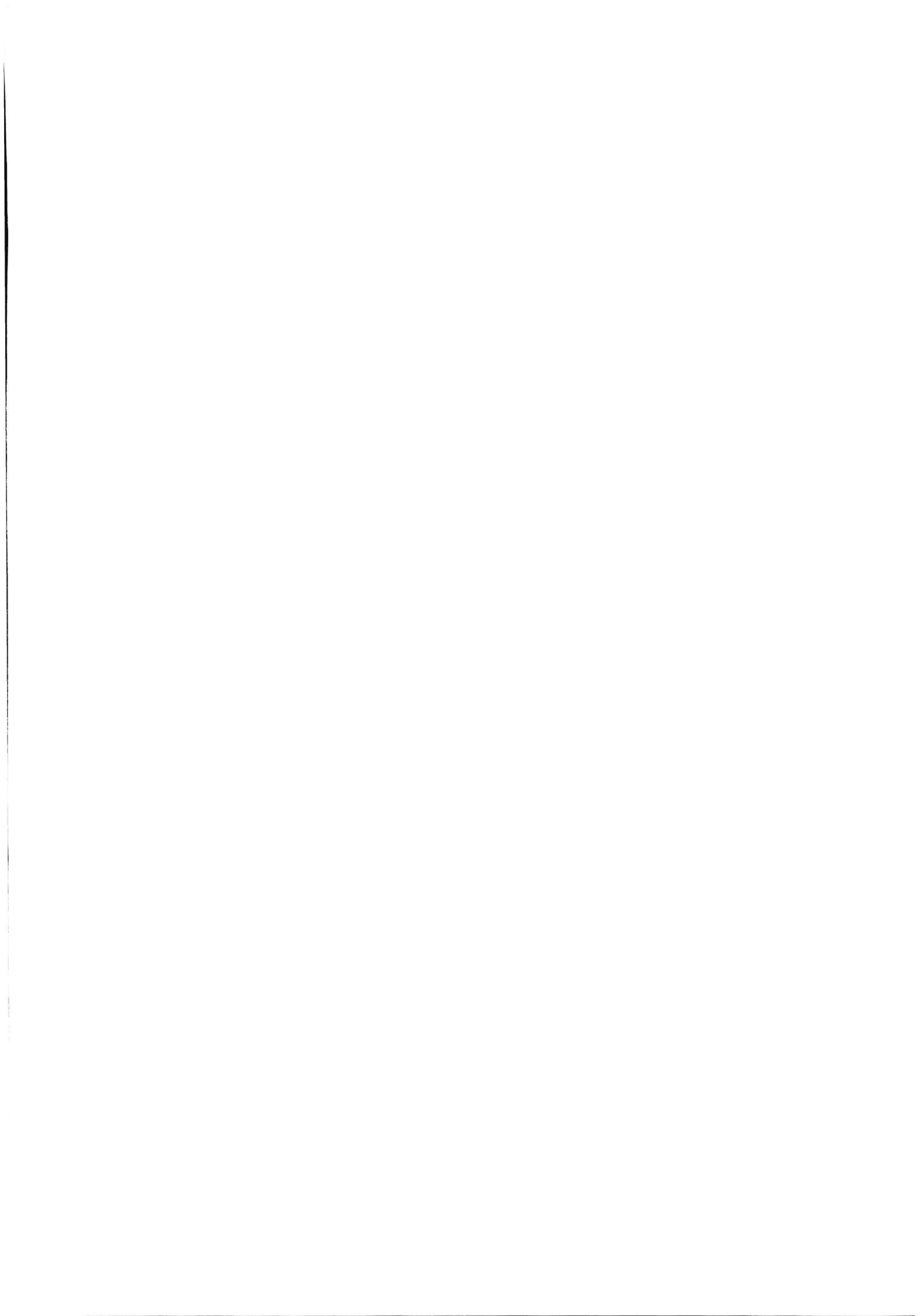
Budgetary Central Government		2007/08 Actual	2008/09 Estimates	2008/09 Revised Estimates	Jul 08	Aug 08	Sep 08	Jul 08 to Sep 08	Oct 08	Nov 08	Dec 08	Oct 08 to Dec 08
TRANSACTIONS AFFECTING NET WORTH:												
1	Revenue	53,222	61,583	60,583	5,082	3,494	7,643	16,221	5,801	5,359	7,687	18,847
11	Taxes	47,831	50,696	50,236	3,971	2,896	5,844	12,711	5,299	3,555	6,549	15,403
12	Social contributions	197	1,002	928	75	79	80	235	81	84	80	245
13	Grants	454	4,025	3,157	189	1	1,496	1,687	-	2	842	844
14	Other revenue	4,739	5,861	6,262	847	518	224	1,589	421	1,718	216	2,354
2	Expense	55,590	63,505	64,674	3,936	3,985	4,470	12,391	4,632	4,684	7,333	16,649
21	Compensation of employees	12,700	17,148	16,521	1,177	1,193	1,233	3,604	1,224	1,242	2,172	4,637
22	Use of goods and services	4,269	5,240	5,332	230	335	361	926	335	415	449	1,199
24	Interest ¹	10,675	11,009	10,517	775	533	928	2,236	653	844	1,507	3,005
25	Subsidies	1,393	922	972	64	85	64	213	84	66	68	218
26	Grants	13,456	12,075	16,801	748	898	899	2,545	1,347	1,158	1,310	3,815
27	Social benefits	10,232	12,236	11,801	891	894	911	2,695	912	903	1,721	3,536
28	Other expense	2,865	3,075	2,730	51	47	75	173	76	56	107	239
29	Contingencies	-	1,800	-	-	-	-	-	-	-	-	-
	<i>Gross operating balance (1-2)</i>	-2,368	-1,922	-4,091	1,146	-491	3,174	3,830	1,169	675	354	2,198
TRANSACTIONS IN NON-FINANCIAL ASSETS:												
31	Net Acquisition of Non-financial Assets	4,539	7,225	6,500	155	170	230	555	302	339	496	1,137
311	Fixed assets	4,269	7,105	6,380	155	163	224	541	294	331	490	1,114
314	Nonproduced assets	270	120	120	1	7	6	14	8	8	6	23
NLB	<i>Net lending / borrowing (1 - 2 - 31)</i>	-6,907	-9,147	-10,591	990	-661	2,944	3,273	867	336	-142	1,061
TRANSACTIONS IN FINANCIAL ASSETS AND LIABILITIES:												
32	Net acquisition of financial assets	1,419	141	1,598	-6	-14	12	-8	7	266	-46	227
321	Domestic	1,415	141	1,311	-6	-14	12	-8	7	-10	-46	-48
	<i>Loan to Parastatals</i>	266	495	785	-	-	12	12	8	-	1	10
	<i>Reimbursement of loan</i>	503	429	663	6	14	-	20	1	10	48	58
	<i>Equity purchase</i>	1,651	75	1,189	-	-	-	-	-	-	-	-
322	Foreign	-	-	-	-	-	-	-	-	-	-	-
323	Monetary gold and SDRs	4	-	287	-	-	-	-	-	275	-	275
33	Net incurrence of liabilities	8,325	9,287	12,185	-996	646	-2,932	-3,282	-860	-71	96	-834
331	Domestic	8,565	5,665	8,290	-1,034	570	-3,025	-3,489	-1,042	-94	35	-1,100
332	Foreign	-240	3,622	3,895	38	76	93	207	182	23	61	266

¹ As from FY 2008-09, interest is computed on an accrual basis instead of cash basis.

Table 7.2 - Revenue, 2008/2009 (based on GFS 2001)

Budgetary Central Government		R million									
		2008/09 Estimates	2008/09 Revised Estimates	Jul 08	Aug 08	Sep 08	Jul 08 to Sep 08	Oct 08	Nov 08	Dec 08	Oct 08 to Dec 08
	TOTAL REVENUE	61,583	60,583	5,082	3,494	7,643	16,221	5,801	5,359	7,687	18,847
11	Taxes	50,696	50,236	3,971	2,896	5,844	12,711	5,299	3,555	6,549	15,403
1.11	Taxes on income, profits and capital gains	11,565	13,544	438	285	2,254	2,977	2,094	430	2,897	5,422
1.13	Taxes on property	4,220	3,935	621	300	379	1,299	318	415	421	1,154
1.14	Taxes on goods and services	32,651	30,702	2,714	2,167	2,988	7,869	2,692	2,485	2,844	8,021
1.15	Taxes on international trade and transactions	1,475	1,475	177	122	85	384	150	192	193	534
1.16	Other taxes	785	580	22	22	138	182	44	34	194	272
12	Social contributions	1,002	928	75	79	80	235	81	84	80	245
1.21	Social security contributions	728	684	54	58	57	169	59	61	58	178
1.22	Other social contributions	274	244	21	22	23	65	22	23	22	66
13	Grants	4,025	3,157	189	1	1,496	1,687	-	2	842	844
1.31	Grants from foreign governments	340	340	-	-	-	-	-	-	-	-
1.32	Grants from international organisations	3,685	2,817	189	1	1,496	1,687	-	2	842	844
14	Other revenue	5,861	6,262	847	518	224	1,589	421	1,718	216	2,354
1.41	Property income	4,421	4,807	750	415	122	1,287	312	1,605	93	2,009
1.42	Sales of goods and services	1,256	1,228	79	83	86	248	94	100	99	293
1.43	Fines, penalties and forfeits	179	186	17	12	15	45	15	13	16	45
1.45	Miscellaneous revenue	5	41	1	8	-	9	-	-	7	8





Central Statistics Office, LIC Building, John Kennedy Street, Port Louis
Tel. : 212 2316/7, Fax: 211 4150
Email: cso@mail.gov.mu, Web Site: <http://statsmauritius.gov.mu>