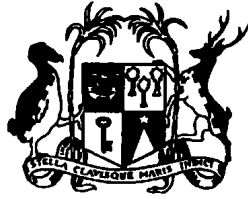


R. H. M. (2 copy)

Vol. 14



REPUBLIC OF MAURITIUS

Ministry of Economic Development and Regional Cooperation

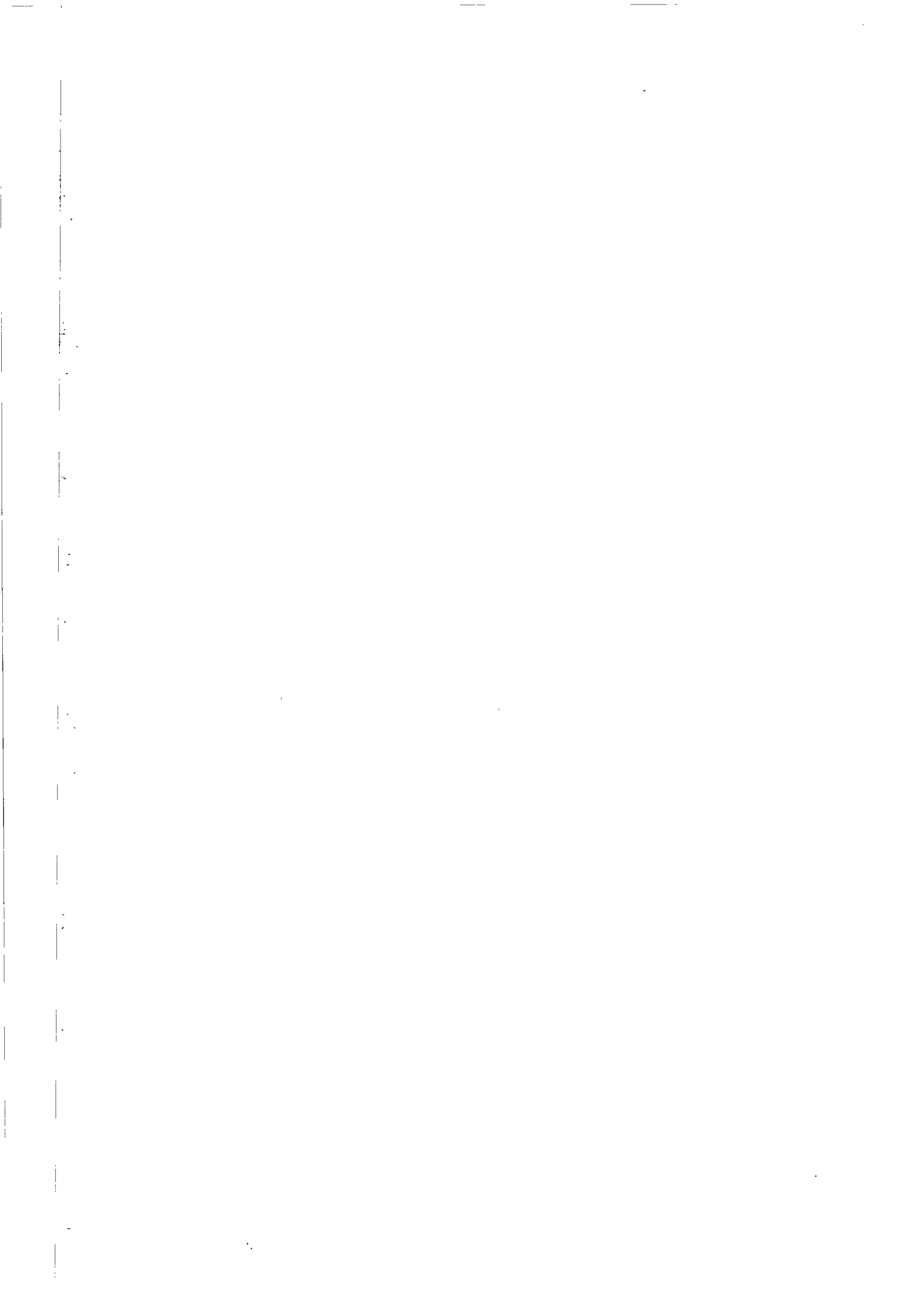
CENTRAL STATISTICAL OFFICE

**DIGEST OF EDUCATIONAL
STATISTICS**

1997

June 1998

(Price Rs. 100.00)



**Ministry of Economic Development and Regional
Cooperation**

CENTRAL STATISTICAL OFFICE

**DIGEST OF EDUCATIONAL
STATISTICS**

1997

FOREWORD

This is the fourteenth issue of a yearly publication of the Central Statistical Office on education statistics for the Republic of Mauritius.

Data on pre-primary, primary and secondary education have been collected from all schools in 1997 and processed at the Ministry of Education and Human Resource Development. Some data on tertiary education have also been included. The information presented in this publication refer to school infrastructure, school population, personnel, examinations and others.

Data on infrastructure, school population and personnel for primary and secondary level refer to 31 March 1997. For pre-primary the reference date is 30 June 1997.

It is hoped that the statistics assembled in this report will prove valuable to all users, in particular to education planners and policy makers. The assistance of the Ministry of Education and Human Resource Development in the collection and processing of the information, the Central Information Systems Division in providing hardware and data entry facilities, and the cooperation of all heads of educational institutions in supplying the basic information is gratefully acknowledged.

S. BASANT RAI
Director

Central Statistical Office
Ministry of Economic Development
and Regional Cooperation
Port Louis
MAURITIUS

June 1998

EDUCATION STATISTICS 1997

BUDGET

Government expenditure on education was Rs 2,767 million for the financial year 1997/98 as compared to Rs 2,380 million for the year 1996/97. This represents 13.5% of the total government budget of Rs 20,500 million for 1997/98 (table 1.1).

Of the budget allocated to education, 39.5% was disbursed to the secondary education, 35.0% to the primary, 11.9% to post secondary, 2 % to pre-primary, 2 % to technical and vocational and the remaining 9.6 % to other expenses.

2 PRE-PRIMARY EDUCATION

2.1 Schools

In June 1997, a survey was carried out in 1,145 pre-primary schools: 1,110 in the Island of Mauritius and 35 in Rodrigues. Of these schools, 80% were run by private institutions, 15% by the Parent Teacher Associations (PTA's) on Primary schools' premises, and the other 5 % by the Municipal and Village Councils (table 1.3.1).

2.2 Enrolment

The population aged 3 years and over enrolled in pre-primary schools numbered 42,904 (21,663 boys and 21,241 girls). The Gross Enrolment Rate which was around 80 % in 1996, has gone up to 96 % in 1997, following facilities provided by the State in terms of infrastructure in Primary schools and grants to pre-primary schools amounting to Rs 55 million.

2.3 Personnel

The pre-primary schools employed 3,293 persons, 2,588 teachers and 705 non-teaching staff. Almost all the teachers were female (table 1.8.1).

3. PRIMARY EDUCATION

3.1 Schools

In 1997, with the opening of one new government school in Rodrigues and the inclusion of 1 private unaided school in the Island of Mauritius, the number of primary schools totalled 283 (270 in Island of Mauritius and 13 in Rodrigues). The majority of schools (221) were administered by government, 51 by Roman Catholic Education Authority (RCEA), 2 by Hindu Education Authority and the remaining 9 were private unaided schools.

3.2 Enrolment

The overall primary school population in the Republic of Mauritius increased by 2 % to reach 127,109 (64,386 boys and 62,723 girls) in 1997.

The gradewise distribution (table 2.8.1) shows that the highest number was enrolled in grade VI with 23,226 pupils. This included 5,161 repeaters who wanted to improve their results. It is however to be noted that the pupils repeating grade VI has declined; 5,161 in 1997 as against 5,601 in 1996 and 6,933 in 1995. The proportion of children attending primary schools compared to the total population aged (6 - 11 years) was 107%.

Seven Asian languages are offered to pupils in primary schools. The primary school pupils studying anyone of these languages numbered 81,695 or 67 % of total enrolment in the Island of Mauritius.

3.3 Personnel

Employment in the Primary Education Sector totalled 8,260 (4,822 male and 3,438 female staff). This number comprised 3,700 general purpose teachers, 1,500 Asian language teachers, 274 head teachers, 960 deputy head teachers and 1,826 other administrative staff and manual workers. The number of pupils per teacher works out to 34 as compared to 33 in 1996.

3.4 Certificate of Primary Education (CPE) Examination

In November 1997, 25,230 school candidates, 24,254 in the Island of Mauritius and 976 in Rodrigues, took part in the Certificate of Primary Education examination. Out of those examined 65.2% were successful (table 2.21).

4 SECONDARY EDUCATION

4.1 Schools

In 1997, secondary education was dispensed in 130 schools (127 in Island of Mauritius and 3 in Rodrigues). Twenty nine of these schools were administered by government and the remaining 101 were confessional or private (aided and unaided) schools.

4.2 Enrolment

The secondary school enrolment shows an upward trend. The school population has gone up by 1 % to reach 93,839. The percentage distribution by gender remained the same as the previous year's, that is 51 % for girls against 49% for boys. The State Schools enrolled 22 % of

the overall student population, while the private schools had the other 78 % (table 3.6.1). The proportion of children enrolled in secondary schools compared to the respective population aged (12 - 19 years) works out to 54 %.

4.3 Personnel

The secondary education sector were staffed by 7,150 persons: 4,710 (66 %) teachers and 2,440 (34 %) administrative staff and manual workers. Twenty seven per cent of the teachers were employed by the State Schools. The pupil/teacher ratio remained the same as that in 1996, that is 20.

4.4 Cambridge School Certificate (SC) and Higher School Certificate (HSC)

In November 1997, out of 13,661 candidates who took part in the School Certificate Examination, 75.5% were successful. The girls scored better results than the boys, 77.2 % against 73.7 % (table 3.20).

The overall HSC examination's result in 1997 has improved by 4% as compared to that of the previous year. Out of 5,793 students examined, 73.1 % completed the HSC. A percentage distribution by gender showed that the girls did better than boys, 74.3% against 71.6% (table 3.21).

4.5 Technical and Vocational Education

In 1997, 20 Basic Secondary Schools (18 in Island of Mauritius and 2 in Rodrigues) and 2 private unaided schools offered technical and vocational education to pupils not attending the general secondary schools. These schools enrolled 1,191 students, 873 boys and 318 girls (table 3.22).

The Industrial and Vocational Training Board (IVTB) provided further technical education and training in 17 centres. Students attending full-time courses, mainly school leavers, numbered 1,211 while 2,355 were enrolled for the part time short courses.

5 TERTIARY

5.1 University of Mauritius (UOM)

5.1.1. Enrolment

The University of Mauritius offers a variety of courses ranging from Certificate level to Higher Degree with more emphasis being put on degree and higher degree courses. The enrolment increased by 27% for full time courses and 22% for part time courses (table 4.1). Thus the student population for the academic year 1997/98, in the five faculties, reached 3,135 from 2,496 in 1996/97.

5.1.2. Output

For the academic year 1996/97, 780 students (434 male and 346 female) graduated from the University of Mauritius. A perceptible increase is noted in the number of passes at degree level, 398 against 309 in 1995/96 (table 4.3).

5.2 Mauritius Institute of Education (MIE)

5.2.1. Enrolment

The courses at MIE are aimed to those engaged (or are to be engaged) in teaching and educational administration. The level of courses offered ranged from Certificate to Post Graduate Certificate in Education. For the reference year, enrolment at all levels totalled 1,323 : 1,171 persons engaged in part time academic pursuits and 152 trainee primary teachers on a full time basis (table 4.4).

5.3 Mahatma Gandhi Institute (MGI)

The MGI which also comprises a secondary school with 837 students in 1997, offers courses in the following broad areas : the Performing Arts, Fine Arts and Indian Languages. These are at Certificate, Diploma and Degree level. Of the total student population (1,541), the highest number of students (865) were enrolled for the Performing Arts and 62 for Fine Arts. The other 614 students (including 39 students attending full time Joint Honours Degree with part attendance at the UOM) were studying the Indian Languages (table 4.5).

5.4 Polytechnics

The Sir Guy Forget Polytechnic, engaged mainly in technical studies, offered courses in Automechanics, Electro Technique and Building Construction at skilled workers and technical level. In 1997, a total of 392 students (of whom 6 were female students) attended one of the courses.

The Droopnath Ramphul Polytechnic, specialised mainly in Business Studies and Information System had a student population of 288 (table 3.22). The female students represented 43% of the overall enrolment.

CONTENTS

Table		Page
1.	EXPENDITURE AND PRE-PRIMARY	
1.1	Recurrent expenditure on Education , 1995 -97	1
1.2	Recurrent expenditure on Education by sector, 1995-97	1
1.3.1	Distribution of pre-primary schools by district and administration – 1997	2
1.3.2	Distribution of pre-primary schools by region and administration - 1997	2
1.4.1	Distribution of pre-primary schools by district and school size - 1997	3
1.4.2	Distribution of pre-primary schools by region and school size - 1997	3
1.5.1	Distribution of pre-primary schools by district and facilities available - 1997	4
1.5.2	Distribution of pre-primary schools by region and facilities available - 1997	4
1.6.1	Enrolment in pre-primary schools by district, age and gender - 1997	5
1.6.2	Enrolment in pre-primary schools by region, age and gender - 1997	5
1.7.1	Enrolment in pre-primary schools run by PTA by district, age and gender – 1997	6
1.7.2	Enrolment in pre-primary schools run by PTA by region, age and gender – 1997	6
1.8.1	Employment in pre-primary schools by district and occupational status - 1997	7
1.8.2	Employment in pre-primary schools by region and occupational status - 1997	7
1.9	Teaching staff in pre-primary schools by type of administration and level of qualification - 1997	8
1.10	Teaching staff in pre-primary schools by highest educational level and age-group, 1997	9
1.11	Teaching staff in pre-primary schools by administration and length of teaching experience, 1997	9
2.	PRIMARY EDUCATION	
2.1.1	Distribution of primary schools by district and administration - 1997	10
2.1.2	Distribution of primary schools by region and administration - 1997	10
2.2.1	Distribution of primary schools by district and ownership of building, 1997	11
2.2.2	Distribution of primary schools by region and ownership of building, 1997	11
2.3	Distribution of rooms in primary schools by district, administration and use, 1997	12

2.4	Distribution of primary schools by district, administration and availability of facilities, 1997	13
2.5	Distribution of primary schools by district, administration and audio visual equipment available . 1997	13
2.6 1	Distribution of primary schools by district and enrolment range. 1997	14
2.6.2	Distribution of primary schools by region and enrolment range. 1997	14
2.7.1	Number of sections in primary schools by district and grade. 1997	15
2.7.2	Number of sections in primary schools by region and grade. 1997	15
2.8.1	Enrolment in primary schools by administration, gender, district and grade. 1997	16
2.8.2	Enrolment in primary schools by administration, gender, region and grade. 1997	19
2.9	Enrolment in primary schools by grade and gender (1995-1997)	22
2.10	Enrolment in primary schools by gender, age and grade. 1997 (Republic of Mauritius)	23
2.11	Enrolment in primary schools by gender, age and grade. 1997 (Island of Mauritius)	24
2.12	Enrolment in primary schools by gender, age and grade. 1997 (Island of Rodrigues)	25
2.13	Number and percentage of pupils studying Asian Language in primary schools by administration, language studied and grade. 1997	26
2.14	Primary enrolment and enrolment ratio by gender. 1988 - 1997 (Island of Mauritius)	27
2.15.1	Employment in primary schools by administration, gender, district and occupational status, 1997	28
2.15.2	Employment in primary schools by administration, gender, region and occupational status, 1997	31
2.16	Teaching staff in primary schools by administration, gender, district and age. 1997	34
2.17	General purpose teachers by administration, gender, district and highest educational level. 1997	37
2.18	Teaching staff in primary schools by length of teaching experience, administration and gender, 1997	40
2 19	Teaching staff in primary schools by gender, district of residence and district of school, 1997	41
2.20	Pupil/Teacher ratio in primary schools (General and Language group). 1988 - 1997	42
2.21	Number and percentage of passes at C.P.E. examination by district and gender - 1997	43
2.22	Number and percentage of passes at C.P.E. examination by subject and gender - 1997	44

2.23	Number and percentage of passes at C P E. examination by district. 1995 - 1997	44
------	--	----

3. SECONDARY EDUCATION

3.1 1	Distribution of secondary schools by district and administration - 1997	45
3.1 2	Distribution of secondary schools by region and administration - 1997	45
3.2	Distribution of rooms in secondary schools by administration, district and use, 1997	46
3.3	Recreational facilities by district and administration. 1997	47
3.4.1	Distribution of secondary schools by district and enrolment range. 1997	48
3.4.2	Distribution of secondary schools by region and enrolment range, 1997	48
3.5.1	Number of sections in secondary schools by district and grade, 1997	49
3.5.2	Number of sections in secondary schools by region and grade, 1997	49
3.6.1	Enrolment in secondary schools by administration, gender, district and grade, 1997	50
3.6.2	Enrolment in secondary schools by administration, gender, region and grade, 1997	53
3.7	Enrolment in secondary schools by grade and gender (1995 - 1997)	56
3.8	Enrolment in secondary schools by gender, age and grade. 1997 (Republic of Mauritius)	57
3.9	Enrolment in secondary schools by gender, age and grade. 1997 (Island of Mauritius)	58
3.10	Enrolment in secondary schools by gender, age and grade. 1997 (Island of Rodrigues)	59
3.11.1	Number of repeaters in secondary schools by administration, gender, district and grade. 1997	60
3.11.2	Number of repeaters in secondary schools by administration, gender, region and grade. 1997	63
3.12	Secondary enrolment and enrolment ratio by gender. 1988 - 1997 (Island of Mauritius)	66
3.13	Teaching staff in secondary schools by district, administration and gender, 1997	67
3.14	Teaching staff in secondary schools by age and gender, 1997	67
3.15.1	Teaching staff in secondary schools by gender, district and highest academic qualification. 1997	68
3.15.2	Teaching staff in secondary schools by gender, region and highest academic qualification, 1997	69
3.16	Teaching staff in secondary schools by length of teaching experience, administration and gender. 1997	70

3.17	Teaching staff in secondary schools by length of continued service in present school, administration and gender, 1997	71
3.18	Non-teaching staff in secondary schools by category, administration and gender, 1997	72
3.19	Pupil/Teacher Ratio in secondary schools by administration (1988 - 1997)	73
3.20	Cambridge School Certificate Examination results by administration and gender, 1995 – 1997	74
3.21	Cambridge Higher School Certificate Examination results by administration and gender, 1995 – 1997	75
3.22	Basic Secondary Schools, Polytechnics & Industrial and Vocational Training Board, 1997	76

4. TERTIARY EDUCATION

4.1	University of Mauritius - Enrolment by type of course, faculty and gender, including new admissions - 1997/1998	77
4.2	University of Mauritius - Enrolment (new admissions) by type of course, faculty and gender, 1997/98	78
4.3	University of Mauritius - Output by type of course and faculty, 1996/97	78
4.4	Mauritius Institute of Education - Enrolment by type of course and gender, 1997	79
4.5	Mahatma Gandhi Institute - Enrolment and Output by type of course and gender, 1996 – 1997	80

5. GRAPHS

Figure

1	Primary and secondary enrolment, 1988 – 97 (Island of Mauritius)	81
2	Primary and secondary enrolment, 1988 – 97 (Island of Rodrigues)	82
3	Enrolment Rate in primary and secondary schools, 1988 – 97 (Island of Mauritius)	83
4	Certificate of Primary Education, School Certificate and Higher School Certificate Examination results, 1988 – 97 (Island of Mauritius)	84
5	Certificate of Primary Education, School Certificate and Higher School Certificate Examination results, 1988 – 1997 (Island of Rodrigues)	85

ANNEX

Map showing the seven educational regions with the number of schools, 1997

EXPENDITURE

&

**PRE - PRIMARY
EDUCATION**

Table 1.1 - Recurrent Expenditure on Education, 1995/1996 - 1997/1998

	1995 - 1996	%	1996 - 1997	%	1997 - 1998	%
	Government Recurrent Expenditure (Rs. mn)	15,900	100.0	18,050	100.0	20,500
Recurrent Expenditure on Education(Rs. mn)	2,262	14.2	2,380	13.2	2,767	13.5

Table 1.2 - Recurrent Expenditure on Education by sector, 1995/1996 - 1997/1998

	Expenditure Rs (000)					
	1995 - 1996	%	1996 - 1997	%	1997- 1998	%
Preprimary	6,000	0.3	31,703	1.3	55,300	2.0
Primary	788,148	34.8	821,445	34.5	970,032	35.0
Secondary	971,766	43.0	958,540	40.3	1,091,735	39.5
Technical & Vocational	26,678	1.2	42,360	1.8	54,120	2.0
Post Secondary	237,508	10.5	303,765	12.8	330,630	11.9
Other	231,800	10.2	222,012	9.3	265,423	9.6
Total	2,261,900	100.0	2,379,825	100.0	2,767,240	100.0

Table 1.3.1 - Distribution of pre-primary schools by district and administration - 1997

District	Type of administration			
	PTA	Municipal/ V. Council	Private	Total
Port Louis	17	12	113	142
Pamplemousses	18	4	94	116
Riviere du Rempart	26	-	73	99
Flacq	29	1	94	124
Grand Port	23	15	80	118
Savanne	10	2	70	82
Plaines Wilhems	21	26	289	336
Moka	15	-	40	55
Black River	10	1	27	38
Island of Mauritius	169	61	880	1,110
Island of Rodrigues	3	-	32	35
Republic of Mauritius	172	61	912	1,145

Table 1.3.2 - Distribution of pre-primary schools by region and administration - 1997

Region	Administration			
	PTA	Municipal/ V Council	Private	Total
1 - Port Louis	24	15	160	199
2 - North	40	2	129	171
3 - East	42	1	135	178
4 - South	33	17	149	199
5 - Central	11	15	147	173
6 - West	19	11	160	190
7 - Rodrigues	3	-	32	35
All Regions	172	61	912	1,145

PTA - schools run by Parent Teachers Association

Table 1.4.1 - Distribution of pre-primary schools by district and school size - 1997

District	School size					Total
	< 30	30 < 50	50 < 70	70 < 100	100 & over	
Port Louis	58	43	22	9	10	142
Pamplemousses	53	37	16	6	4	116
Riviere du Rempart	42	37	15	2	3	99
Flacq	50	44	18	8	4	124
Grand Port	53	40	22	3	-	118
Savanne	40	28	11	3	-	82
Plaines Wilhems	155	113	35	16	17	336
Moka	29	12	9	2	3	55
Black River	15	15	6	2	-	38
Island of Mauritius	495	369	154	51	41	1,110
Island of Rodrigues	18	9	7	1	-	35
Republic of Mauritius	513	378	161	52	41	1,145

Table 1.4.2 - Distribution of pre-primary schools by region and school size - 1997

Region	School size					Total
	< 30	30 < 50	50 < 70	70 < 100	100 & over	
1 - Port Louis	85	63	26	14	11	199
2 - North	75	59	27	4	6	171
3 - East	78	56	27	10	7	178
4 - South	93	67	33	6	-	199
5 - Central	84	58	14	11	6	173
6 - West	80	66	27	6	11	190
7 - Rodrigues	18	9	7	1	-	35
All Regions	513	378	161	52	41	1,145

Table 1.5.1 - Distribution of pre-primary schools by district and facilities available - 1997

District	No. of Schools	Facilities available				
		Playground	Library	Radio/cassette	Tv set	Video cassette Player
Port Louis	142	121	14	126	51	45
Pamplemousses	116	108	27	93	42	35
Riviere du Rempart	99	92	10	85	26	23
Flacq	124	108	2	106	51	44
Grand Port	118	105	7	92	43	30
Savanne	82	71	15	66	25	20
Plaines Wilhems	336	311	37	298	148	134
Moka	55	53	10	44	18	11
Black River	38	33	2	27	9	7
Island of Mauritius	1,110	1,002	124	937	413	349
Island of Rodrigues	35	33	3	26	2	2
Republic of Mauritius	1,145	1,035	127	963	415	351

Table 1.5.2 - Distribution of pre-primary schools by region and facilities available - 1997

Region	No. of Schools	Facilities available				
		Playground	Library	Radio/cassette	Tv set	Video cassette Player
1 - Port Louis	199	175	28	171	74	64
2 - North	171	158	24	142	50	42
3 - East	178	160	12	149	69	55
4 - South	199	175	22	158	68	50
5 - Central	173	161	11	152	70	64
6 - West	190	173	27	165	82	74
7 - Rodrigues	35	33	3	26	2	2
All Regions	1,145	1,035	127	963	415	351

Table 1.6.1 - Enrolment in pre-primary schools by district, age and gender - 1997

District	Total (age in years)				Male (age in years)				Female (age in years)			
	3	4	5 & over	Total	3	4	5 & over	Total	3	4	5 & over	Total
Port Louis	1,202	2,578	2,339	6,119	576	1,290	1,197	3,063	626	1,288	1,142	3,056
Pamplemousses	1,019	1,897	1,558	4,474	514	1,040	809	2,363	505	857	749	2,111
Riviere du Rempart	1,065	1,649	926	3,640	512	817	477	1,806	553	832	449	1,834
Flacq	1,108	2,076	1,634	4,818	584	1,019	829	2,432	524	1,057	805	2,386
Grand Port	1,112	1,761	1,199	4,072	567	883	610	2,060	545	878	589	2,012
Savanne	738	1,063	781	2,582	358	539	403	1,300	380	524	378	1,282
Plaines Wilhems	3,386	5,136	4,089	12,611	1,701	2,591	2,007	6,299	1,685	2,545	2,082	6,312
Moka	570	852	711	2,133	297	422	365	1,084	273	430	346	1,049
Black River	286	617	414	1,317	157	325	217	699	129	292	197	618
Island of Mauritius	10,486	17,629	13,651	41,766	5,266	8,926	6,914	21,106	5,220	8,703	6,737	20,660
Island of Rodrigues	202	522	414	1,138	105	254	198	557	97	268	216	581
Republic of Mauritius	10,688	18,151	14,065	42,904	5,371	9,180	7,112	21,663	5,317	8,971	6,953	21,241

Table 1.6.2 - Enrolment in pre-primary schools by region, age and gender - 1997

Region	Total (age in years)				Male (age in years)				Female (age in years)			
	3	4	5 & over	Total	3	4	5 & over	Total	3	4	5 & over	Total
1 - Port Louis	1,585	3,376	3,144	8,105	773	1,679	1,611	4,063	812	1,697	1,533	4,042
2 - North	1,753	2,908	1,837	6,498	858	1,554	966	3,378	895	1,354	871	3,120
3 - East	1,683	2,915	2,340	6,938	885	1,432	1,190	3,507	798	1,483	1,150	3,431
4 - South	1,840	2,808	1,959	6,607	918	1,418	1,001	3,337	922	1,390	958	3,270
5 - Central	1,629	2,546	1,988	6,163	799	1,281	994	3,074	830	1,265	994	3,089
6 - West	1,996	3,076	2,383	7,455	1,033	1,562	1,152	3,747	963	1,514	1,231	3,708
7 - Rodrigues	202	522	414	1,138	105	254	198	557	97	268	216	581
All Regions	10,688	18,151	14,065	42,904	5,371	9,180	7,112	21,663	5,317	8,971	6,953	21,241

Table 1.7.1 - Enrolment in pre-primary schools run by PTA by district, age and gender - 1997

District	Total (age in years)				Male (age in years)				Female (age in years)			
	3	4	5 & over	Total	3	4	5 & over	Total	3	4	5 & over	Total
Port Louis	109	316	292	717	55	158	153	366	54	158	139	351
Pamplemousses	135	340	241	716	58	180	121	359	77	160	120	357
Riviere du Rempart	246	629	349	1,224	113	317	178	608	133	312	171	616
Flacq	209	691	508	1,408	112	359	279	750	97	332	229	658
Grand Port	190	460	303	953	89	232	144	465	101	228	159	488
Savanne	79	208	121	408	40	112	64	216	39	96	57	192
Plaines Wilhems	103	418	343	864	54	213	198	465	49	205	145	399
Moka	131	284	179	594	64	138	97	299	67	146	82	295
Black River	70	202	109	381	44	100	59	203	26	102	50	178
Island of Mauritius	1,272	3,548	2,445	7,265	629	1,809	1,293	3,731	643	1,739	1,152	3,534
Island of Rodrigues	18	61	46	125	6	27	23	56	12	34	23	69
Republic of Mauritius	1,290	3,609	2,491	7,390	635	1,836	1,316	3,787	655	1,773	1,175	3,603

Table 1.7.2 - Enrolment in pre-primary schools run by PTA by region, age and gender - 1997

Region	Total (age in years)				Male (age in years)				Female (age in years)			
	3	4	5 & over	Total	3	4	5 & over	Total	3	4	5 & over	Total
1 - Port Louis	139	425	375	939	72	207	200	479	67	218	175	460
2 - North	360	905	546	1,811	159	472	276	907	201	433	270	904
3 - East	335	946	661	1,942	173	484	360	1,017	162	462	301	925
4 - South	269	668	424	1,361	129	344	208	681	140	324	216	680
5 - Central	67	266	177	510	32	133	106	271	35	133	71	239
6 - West	102	338	262	702	64	169	143	376	38	169	119	326
7 - Rodrigues	18	61	46	125	6	27	23	56	12	34	23	69
All Regions	1,290	3,609	2,491	7,390	635	1,836	1,316	3,787	655	1,773	1,175	3,603

PTA : Parent Teachers Association

Table 1.8.1 - Employment in pre-primary schools by district and occupational status - 1997

District	Personnel				
	Total	Teaching	Non - teaching		
			Administrative	Other	Total
Port Louis	493	370	18	105	123
Pamplemousses	306	244	7	55	62
Riviere du Rempart	236	211	2	23	25
Flacq	336	269	11	56	67
Grand Port	291	229	8	54	62
Savanne	200	158	6	36	42
Plaines Wilhems	1.108	831	36	241	277
Moka	142	123	5	14	19
Black River	95	78	1	16	17
Island of Mauritius	3,207	2,513	94	600	694
Island of Rodrigues	86	75	2	9	11
Republic of Mauritius	3,293	2,588	96	609	705

Table 1.8.2 - Employment in pre-primary schools by region and occupational status - 1997

Region	Personnel				
	Total	Teaching	Non - teaching		
			Administrative	Other	Total
1 - Port Louis	643	489	19	135	154
2 - North	421	359	8	54	62
3 - East	476	391	16	69	85
4 - South	489	385	14	90	104
5 - Central	537	397	16	124	140
6 - West	641	492	21	128	149
7 - Rodrigues	86	75	2	9	11
All Regions	3,293	2,588	96	609	705

Table 1.9 - Teaching staff in pre primary schools by type of administration and level of qualification - 1997

Qualification	Type of administration			
	PTA	Municipal/ V. Council	Private	Total
Academic				
Below SC	138	60	1,009	1,207
Passed SC	268	47	919	1,234
Not Passed HSC	3	-	7	10
Passed HSC	13	11	43	67
Other & Not stated	2	1	67	70
Total	424	119	2,045	2,588
Professional				
None	6	3	226	235
Pre-primary Education in Service (PPU)	370	80	1,226	1,676
Certificate from : OMEP	17	23	287	327
Playground	-	3	24	27
Bethleem	5	3	60	68
Other & Not stated	26	7	222	255
Total	424	119	2,045	2,588

Table 1.10 - Teaching staff in preprimary schools by highest educational level and age-group, 1997

Highest Educational Level	Age - Group (years)						Total
	<30	30 < 40	40 < 50	50 < 60	60 & over	Not Stated	
Below SC	353	492	187	97	27	51	1,207
Passed SC	389	640	128	22	5	50	1,234
Not Passed HSC	4	6	-	-	-	-	10
Passed HSC	23	33	9	-	-	2	67
Other & N.S	7	14	15	3	4	27	70
Total	776	1,185	339	122	36	130	2,588

Table 1.11 - Teaching staff in preprimary schools by administration and length of teaching experience, 1997

Administration	Length of teaching experience (yrs)						Total
	< 5	5 < 10	10 < 15	15 < 20	20 & over	Not Stated	
PTA	91	150	108	36	28	11	424
Municipal/ District Council	17	22	22	26	20	12	119
Private	740	509	312	203	190	91	2,045
Total	848	681	442	265	238	114	2,588

**PRIMARY
EDUCATION**

Table 2.1.1 - Distribution of primary schools¹ by district and administration - 1997

District	Total	Administration					
		Government		Private			
				Aided		Non - Aided	
		No.	%	No.	%	No.	%
Port Louis	33	25	76	8	24	-	-
Pamplemousses	22	21	95	1	5	-	-
Riviere du Rempart	27	22	81	3	11	2	7
Flacq	35	27	77	8	23	-	-
Grand Port	31	26	84	5	16	-	-
Savanne	19	16	84	3	16	-	-
Plaines Wilhems	64	46	72	13	20	5	8
Moka	26	20	77	4	15	2	8
Black River	13	10	77	3	23	-	-
Island of Mauritius	270	213	79	48	18	9	3
Island of Rodrigues	13	8	62	5	38	-	-
Republic of Mauritius	283	221	78	53	19	9	3

Table 2.1.2 - Distribution of primary schools¹ by region and administration - 1997

Region	Total	Administration					
		Government		Private			
				Aided		Non - Aided	
		No.	%	No.	%	No.	%
1 - Port Louis	41	33	80	8	20	-	-
2 - North	43	38	88	3	7	2	5
3 - East	61	46	75	13	21	2	3
4 - South	49	41	84	8	16	-	-
5 - Central	34	22	65	8	24	4	12
6 - West	42	33	79	8	19	1	2
7 - Rodrigues	13	8	62	5	38	-	-
All Regions	283	221	78	53	19	9	3

¹ excluding schools not providing a complete stream e.g those which cater only for standard VI

Table 2.2.1 - Distribution of primary schools¹ by district and ownership of building, 1997

District	Ownership of building					
	Total	Government	Private	Religious organisation	Rented from an Individual	Other
Port Louis	33	26	-	7	-	-
Pamplemousses	22	21	-	1	-	-
Riviere du Rempart	27	22	2	3	-	-
Flacq	35	27	-	8	-	-
Grand Port	31	25	-	5	1	-
Savanne	19	15	-	3	-	1
Plaines Wilhems	64	46	2	15	-	1
Moka	26	19	1	4	1	1
Black River	13	10	-	3	-	-
Island of Mauritius	270	211	5	49	2	3
Island of Rodrigues	13	8	-	5	-	-
Republic of Mauritius	283	219	5	54	2	3

Table 2.2.2 - Distribution of primary schools¹ by region and ownership of building, 1997

Region	Ownership of building					
	Total	Government	Private	Religious organisation	Rented from an Individual	Other
1 - Port Louis	41	34	-	7	-	-
2 - North	43	38	2	3	-	-
3 - East	62	44	1	13	2	2
4 - South	49	40	-	8	-	1
5 - Central	34	22	2	10	-	-
6 - West	41	33	-	8	-	-
7 - Rodrigues	13	8	-	5	-	-
All Regions	283	219	5	54	2	3

¹ excluding schools not providing a complete stream e.g those which cater only for standard VI

Table 2.3 - Distribution of rooms in primary schools¹ by district, administration and use, 1997

District	All schools				Government schools				Private schools				
	Total no. of rooms	Use of rooms			Total no. of rooms	Use of rooms			Total no. of rooms	Use of rooms			
		Classroom	Office	Other purpose		Classroom	Office	Other purpose		Classroom	Office	Other purpose	None
Port Louis	761	608	36	111	6	435	26	89	6	173	10	22	-
Pamplemousses	447	348	24	72	3	438	23	72	3	8	1	-	-
Riviere du Rempart	603	439	37	125	2	509	26	109	2	67	11	16	-
Flacq	725	512	40	170	3	606	32	148	1	87	8	22	2
Grand Port	622	435	36	141	10	528	31	134	10	82	5	7	-
Savanne	371	309	25	35	2	323	22	31	2	41	3	4	-
Plaines Wilhems	1,568	1,219	74	217	58	1,093	50	192	22	390	24	25	36
Moka	449*	324	33	88	4	318	21	57	4	88	12	31	-
Black River	213	151	14	48	-	180	11	41	-	23	3	7	-
Island of Mauritius	5,310	4,345	319	1,007	88	4,551	242	873	50	959	77	134	38
Island of Rodrigues	257	180	16	57	4	138	9	31	3	85	7	26	1
Republic of Mauritius	5,567	4,525	335	1,064	92	4,689	251	904	53	1,044	84	160	39

¹ excluding schools not providing a complete stream e.g those which cater only for standard VI

* Revised

Table 2.4 - Distribution of primary schools¹ by district, administration and availability of facilities. 1997

District	All schools				Government schools				Private Schools			
	Total no. of schools	No. of schools having			Total no. of schools	No. of schools having			Total no. of schools	No. of schools having		
		Staff room	Library/ Reading room	Canteen		Staff room	Library/ Reading room	Canteen		Staff room	Library/ Reading room	Canteen
Port Louis	33	17	10	17	25	11	8	14	8	6	2	3
Pamplemousses	22	12	8	12	21	12	8	6	1	-	-	6
Riviere du Rempart	27	23	16	23	22	18	13	14	5	5	3	9
Flacq	35	20	24	20	27	16	20	19	8	4	4	1
Grand Port	31	15	8	15	26	13	7	14	5	2	1	1
Savanne	19	8	4	8	16	6	3	7	3	2	1	1
Plaines Wilhems	64	38	24	38	46	24	19	24	18	14	5	14
Moka	26	12	12	14	20	8	9	12	6	4	3	2
Black River	13	9	3	9	10	8	2	5	3	1	1	4
Island of Mauritius	270	154	109	156	213	116	89	115	57	38	20	41
Island of Rodrigues	13	7	10	11	8	4	6	6	5	3	4	5
Republic of Mauritius	283	161	119	167	221	120	95	121	62	41	24	46

Table 2.5 - Distribution of primary schools¹ by district, administration and audio visual equipment available, 1997

District	All schools			Government schools			Private Schools		
	Radio/cassette	Television set	Video cassette player	Radio/cassette	Television set	Video cassette player	Radio/cassette	Television set	Video cassette player
Port Louis	30	31	29	23	23	23	7	8	6
Pamplemousses	22	22	22	21	21	21	1	1	1
Riviere du Rempart	27	27	27	22	22	22	5	5	5
Flacq	33	35	35	25	27	27	8	8	8
Grand Port	28	31	31	24	26	26	4	5	5
Savanne	19	18	17	16	15	14	3	3	3
Plaines Wilhems	58	60	60	44	45	45	14	15	15
Moka	26	26	23	20	20	19	6	6	4
Black River	13	13	13	10	10	10	3	3	3
Island of Mauritius	256	263	257	205	209	207	51	54	50
Island of Rodrigues	11	11	11	6	7	6	5	4	5
Republic of Mauritius	267	274	268	211	216	213	56	58	55

¹ excluding schools not providing a complete stream e g those which cater only for standard VI

Table 2.6.1 - Distribution of primary schools¹ by district and enrolment range, 1997

District	Enrolment range							Total
	under 200	200 and under 400	400 and under 600	600 and under 800	800 and under 1000	1,000 and under 1200	1,200 and over	
Port Louis	2	5	8	10	3	2	3	33
Pamplemousses	5	5	5	4	2	1	-	22
Riviere du Rempart	7	6	9	1	2	1	1	27
Flacq	9	12	8	2	1	2	1	35
Grand Port	5	14	6	3	3	-	-	31
Savanne	4	8	4	2	1	-	-	19
Plaines Wilhems	6	14	15	12	7	5	5	64
Moka	12	8	3	3	-	-	-	26
Black River	5	4	3	-	1	-	-	13
Island of Mauritius	55	76	61	37	20	11	10	270
Island of Rodrigues	2	6	3	2	-	-	-	13
Republic of Mauritius	57	82	64	39	20	11	10	283

Table 2.6.2 - Distribution of primary schools¹ by region and enrolment range, 1997

Region	Enrolment range							Total
	under 200	200 and under 400	400 and under 600	600 and under 800	800 and under 1000	1,000 and under 1200	1,200 and over	
1 - Port Louis	2	8	11	10	4	3	3	41
2 - North	11	9	13	5	3	1	1	43
3 - East	22	19	11	5	1	2	1	61
4 - South	9	21	10	5	4	-	-	49
5 - Central	1	10	6	8	4	3	2	34
6 - West	10	9	10	4	4	2	3	42
7 - Rodrigues	2	6	3	2	-	-	-	13
All Regions	57	82	64	39	20	11	10	283

¹ excluding schools not providing a complete stream e.g those which cater only for standard VI

Table 2.7.1 - Number of sections in primary schools¹ by district and grade, 1997

District	No. of sections by grade							
	I	II	III	IV	V	VI	VI (repeaters only)	All Grades
Port Louis	87	85	87	90	85	79	27	540
Pamplemousses	47	48	51	49	42	42	14	293
Riviere du Rempart	58	56	54	53	49	48	17	335
Flacq	70	69	68	65	59	62	19	412
Grand Port	59	56	54	56	54	54	21	354
Savanne	38	39	36	35	36	35	8	227
Plaines Wilhems	168	171	170	206	160	153	44	1,072
Moka	40	42	40	38	40	33	12	245
Black River	20	20	21	21	20	18	10	130
Island of Mauritius	587	586	581	613	545	524	172	3,608
Island of Rodrigues	28	27	29	31	25	28	8	176
Republic of Mauritius	615	613	610	644	570	552	180	3,784

Table 2.7.2 - Number of sections in primary schools¹ by region and grade, 1997

Region	No. of sections by grade							
	I	II	III	IV	V	VI	VI (repeaters only)	All Grades
1 - Port Louis	106	104	108	111	103	97	34	663
2 - North	91	90	90	86	79	77	27	540
3 - East	109	110	107	102	98	94	30	650
4 - South	96	94	89	90	89	88	28	574
5 - Central	86	88	87	124	82	76	21	564
6 - West	99	100	100	100	94	92	32	617
7 - Rodrigues	28	27	29	31	25	28	8	176
All Regions	615	613	610	644	570	552	180	3,784

¹ excluding schools not providing a complete stream e.g those which cater only for standard VI

Table 2.8.1 - Enrolment in primary schools¹ by administration, gender, district and grade, 1997

All schools

District	Grade							All Grades
	I	II	III	IV	V	VI	VI (repeaters only)	
Total								
Port Louis	3,387	3,479	3,422	3,432	3,118	2,908	945	20,691
Pamplemousses	1,688	1,732	1,717	1,643	1,479	1,355	478	10,092
Riviere du Rempart	1,913	1,910	1,833	1,763	1,638	1,577	407	11,041
Flacq	2,294	2,244	2,136	2,038	1,881	1,905	537	13,035
Grand Port	2,052	1,914	1,917	1,724	1,627	1,596	452	11,282
Savanne	1,241	1,237	1,115	1,105	1,067	981	234	6,980
Plaines Wilhems	6,466	6,607	6,385	6,198	5,786	5,561	1,430	38,433
Moka	1,207	1,235	1,191	1,093	1,058	905	241	6,930
Black River	673	627	642	549	589	525	223	3,828
Island of Mauritius	20,921	20,985	20,358	19,545	18,243	17,313	4,947	122,312
Island of Rodrigues	751	746	816	830	688	752	214	4,797
Republic of Mauritius	21,672	21,731	21,174	20,375	18,931	18,065	5,161	127,109
Male								
Port Louis	1,735	1,817	1,773	1,750	1,570	1,423	469	10,537
Pamplemousses	876	870	885	823	759	718	256	5,187
Riviere du Rempart	977	976	918	855	822	808	209	5,565
Flacq	1,172	1,116	1,053	988	956	979	285	6,549
Grand Port	1,054	957	965	863	780	837	256	5,712
Savanne	631	634	580	547	530	483	129	3,534
Plaines Wilhems	3,287	3,292	3,253	3,194	2,842	2,831	750	19,449
Moka	608	629	590	544	519	461	132	3,483
Black River	350	322	307	286	277	264	131	1,937
Island of Mauritius	10,690	10,613	10,324	9,850	9,055	8,804	2,617	61,953
Island of Rodrigues	361	370	432	427	333	392	118	2,433
Republic of Mauritius	11,051	10,983	10,756	10,277	9,388	9,196	2,735	64,386
Female								
Port Louis	1,652	1,662	1,649	1,682	1,548	1,485	476	10,154
Pamplemousses	812	862	832	820	720	637	222	4,905
Riviere du Rempart	936	934	915	908	816	769	198	5,476
Flacq	1,122	1,128	1,083	1,050	925	926	252	6,486
Grand Port	998	957	952	861	847	759	196	5,570
Savanne	610	603	535	558	537	498	105	3,446
Plaines Wilhems	3,179	3,315	3,132	3,004	2,944	2,730	680	18,984
Moka	599	606	601	549	539	444	109	3,447
Black River	323	305	335	263	312	261	92	1,891
Island of Mauritius	10,231	10,372	10,034	9,695	9,188	8,509	2,330	60,359
Island of Rodrigues	390	376	384	403	355	360	96	2,364
Republic of Mauritius	10,621	10,748	10,418	10,098	9,543	8,869	2,426	62,723

¹ including enrolment in schools not providing a complete stream

Table 2.8.1 - Enrolment in primary schools¹ by administration, gender, district and grade, 1997 cont'd

Government schools

District	Grade							All Grades
	I	II	III	IV	V	VI	VI (repeaters only)	
Total								
Port Louis	2,398	2,478	2,423	2,373	2,206	1,984	711	14,573
Pamplemousses	1,664	1,705	1,692	1,615	1,446	1,332	473	9,927
Riviere du Rempart	1,656	1,670	1,583	1,536	1,408	1,365	351	9,569
Flacq	2,029	1,998	1,859	1,798	1,648	1,684	445	11,461
Grand Port	1,687	1,567	1,558	1,426	1,333	1,310	342	9,223
Savanne	1,090	1,096	990	974	932	881	215	6,178
Plaines Wilhems	4,300	4,393	4,219	4,012	3,755	3,469	998	25,146
Moka	864	905	869	777	763	721	191	5,090
Black River	582	538	570	482	521	461	198	3,352
Island of Mauritius	16,270	16,350	15,763	14,993	14,012	13,207	3,924	94,519
Island of Rodrigues	390	423	443	426	374	356	94	2,506
Republic of Mauritius	16,660	16,773	16,206	15,419	14,386	13,563	4,018	97,025
Male								
Port Louis	1,225	1,304	1,301	1,226	1,143	1,005	355	7,559
Pamplemousses	864	855	873	807	745	703	253	5,100
Riviere du Rempart	852	845	794	753	711	693	182	4,830
Flacq	1,038	995	910	879	854	872	225	5,773
Grand Port	872	781	788	705	640	692	190	4,668
Savanne	557	560	516	482	467	434	120	3,136
Plaines Wilhems	2,176	2,224	2,133	2,100	1,899	1,759	514	12,805
Moka	439	458	440	386	381	363	103	2,570
Black River	302	276	270	251	244	233	116	1,692
Island of Mauritius	8,325	8,298	8,025	7,589	7,084	6,754	2,058	48,133
Island of Rodrigues	186	217	240	210	185	201	48	1,287
Republic of Mauritius	8,511	8,515	8,265	7,799	7,269	6,955	2,106	49,420
Female								
Port Louis	1,173	1,174	1,122	1,147	1,063	979	356	7,014
Pamplemousses	800	850	819	808	701	629	220	4,827
Riviere du Rempart	804	825	789	783	697	672	169	4,739
Flacq	991	1,003	949	919	794	812	220	5,688
Grand Port	815	786	770	721	693	618	152	4,555
Savanne	533	536	474	492	465	447	95	3,042
Plaines Wilhems	2,124	2,169	2,086	1,912	1,856	1,710	484	12,341
Moka	425	447	429	391	382	358	88	2,520
Black River	280	262	300	231	277	228	82	1,660
Island of Mauritius	7,945	8,052	7,738	7,404	6,928	6,453	1,866	46,386
Island of Rodrigues	204	206	203	216	189	155	46	1,219
Republic of Mauritius	8,149	8,258	7,941	7,620	7,117	6,608	1,912	47,605

¹ including enrolment in schools not providing a complete stream

Table 2.8.1 - Enrolment in primary schools¹ by administration, gender, district and grade, 1997 cont'd

Private schools

District	Grade							All Grades
	I	II	III	IV	V	VI	VI (repeaters only)	
Total								
Port Louis	989	1,001	999	1,059	912	924	234	6,118
Pamplemousses	24	27	25	28	33	23	5	165
Riviere du Rempart	257	240	250	227	230	212	56	1,472
Flacq	265	246	277	240	233	221	92	1,574
Grand Port	365	347	359	298	294	286	110	2,059
Savanne	151	141	125	131	135	100	19	802
Plaines Wilhems	2,166	2,214	2,166	2,186	2,031	2,092	432	13,287
Moka	343	330	322	316	295	184	50	1,840
Black River	91	89	72	67	68	64	25	476
Island of Mauritius	4,651	4,635	4,595	4,552	4,231	4,106	1,023	27,793
Island of Rodrigues	361	323	373	404	314	396	120	2,291
Republic of Mauritius	5,012	4,958	4,968	4,956	4,545	4,502	1,143	30,084
Male								
Port Louis	510	513	472	524	427	418	114	2,978
Pamplemousses	12	15	12	16	14	15	3	87
Riviere du Rempart	125	131	124	102	111	115	27	735
Flacq	134	121	143	109	102	107	60	776
Grand Port	182	176	177	158	140	145	66	1,044
Savanne	74	74	64	65	63	49	9	398
Plaines Wilhems	1,111	1,068	1,120	1,094	943	1,072	236	6,644
Moka	169	171	150	158	138	98	29	913
Black River	48	46	37	35	33	31	15	245
Island of Mauritius	2,365	2,315	2,299	2,261	1,971	2,050	559	13,820
Island of Rodrigues	175	153	192	217	148	191	70	1,146
Republic of Mauritius	2,540	2,468	2,491	2,478	2,119	2,241	629	14,966
Female								
Port Louis	479	488	527	535	485	506	120	3,140
Pamplemousses	12	12	13	12	19	8	2	78
Riviere du Rempart	132	109	126	125	119	97	29	737
Flacq	131	125	134	131	131	114	32	798
Grand Port	183	171	182	140	154	141	44	1,015
Savanne	77	67	61	66	72	51	10	404
Plaines Wilhems	1,055	1,146	1,046	1,092	1,088	1,020	196	6,643
Moka	174	159	172	158	157	86	21	927
Black River	43	43	35	32	35	33	10	231
Island of Mauritius	2,286	2,320	2,296	2,291	2,260	2,056	464	13,973
Island of Rodrigues	186	170	181	187	166	205	50	1,145
Republic of Mauritius	2,472	2,490	2,477	2,478	2,426	2,261	514	15,118

¹ including enrolment in schools not providing a complete stream

Table 2.8.2 - Enrolment in primary schools¹ by administration, gender, region and grade, 1997

All schools

Region	Grade							All Grades
	I	II	III	IV	V	VI	VI (repeaters only)	
Total								
1 - Port Louis	4,117	4,204	4,152	4,142	3,758	3,488	1,203	25,064
2 - North	3,080	3,104	3,023	2,870	2,666	2,522	705	17,970
3 - East	3,475	3,432	3,296	3,101	2,909	2,787	754	19,754
4 - South	3,249	3,111	3,001	2,802	2,667	2,535	682	18,047
5 - Central	3,402	3,469	3,345	3,195	2,991	2,862	703	19,967
6 - West	3,598	3,665	3,541	3,435	3,252	3,119	900	21,510
7 - Rodrigues	751	746	816	830	688	752	214	4,797
All Regions	21,672	21,731	21,174	20,375	18,931	18,065	5,161	127,109
Male								
1 - Port Louis	2,116	2,209	2,152	2,116	1,886	1,723	612	12,814
2 - North	1,583	1,551	1,519	1,396	1,361	1,310	371	9,091
3 - East	1,766	1,725	1,629	1,514	1,450	1,438	405	9,927
4 - South	1,663	1,569	1,528	1,398	1,298	1,291	384	9,131
5 - Central	1,717	1,666	1,707	1,622	1,490	1,430	364	9,996
6 - West	1,845	1,893	1,789	1,804	1,570	1,612	481	10,994
7 - Rodrigues	361	370	432	427	333	392	118	2,433
All Regions	11,051	10,983	10,756	10,277	9,388	9,196	2,735	64,386
Female								
1 - Port Louis	2,001	1,995	2,000	2,026	1,872	1,765	591	12,250
2 - North	1,497	1,553	1,504	1,474	1,305	1,212	334	8,879
3 - East	1,709	1,707	1,667	1,587	1,459	1,349	349	9,827
4 - South	1,586	1,542	1,473	1,404	1,369	1,244	298	8,916
5 - Central	1,685	1,803	1,638	1,573	1,501	1,432	339	9,971
6 - West	1,753	1,772	1,752	1,631	1,682	1,507	419	10,516
7 - Rodrigues	390	376	384	403	355	360	96	2,364
All Regions	10,621	10,748	10,418	10,098	9,543	8,869	2,426	62,723

¹ including enrolment in schools not providing a complete stream

Table 2.8.2 - Enrolment in primary schools¹ by administration, gender, region and grade, 1997 cont'd

Government schools

Region	Grade							All Grades
	I	II	III	IV	V	VI	VI (repeaters only)	
Total								
1 - Port Louis	3,128	3,203	3,153	3,083	2,846	2,564	969	18,946
2 - North	2,823	2,864	2,773	2,643	2,436	2,310	649	16,498
3 - East	2,843	2,829	2,672	2,517	2,348	2,359	607	16,175
4 - South	2,733	2,623	2,517	2,373	2,238	2,149	553	15,186
5 - Central	2,088	2,101	2,014	1,877	1,756	1,593	432	11,861
6 - West	2,655	2,730	2,634	2,500	2,388	2,232	714	15,853
7 - Rodrigues	390	423	443	426	374	356	94	2,506
All Regions	16,660	16,773	16,206	15,419	14,386	13,563	4,018	97,025
Male								
1 - Port Louis	1,606	1,696	1,680	1,592	1,459	1,305	498	9,836
2 - North	1,458	1,420	1,395	1,294	1,250	1,195	344	8,356
3 - East	1,451	1,418	1,324	1,231	1,196	1,218	313	8,151
4 - South	1,407	1,319	1,287	1,175	1,095	1,097	309	7,689
5 - Central	1,065	1,028	1,033	994	918	809	225	6,072
6 - West	1,338	1,417	1,306	1,303	1,166	1,130	369	8,029
7 - Rodrigues	186	217	240	210	185	201	48	1,287
All Regions	8,511	8,515	8,265	7,799	7,269	6,955	2,106	49,420
Female								
1 - Port Louis	1,522	1,507	1,473	1,491	1,387	1,259	471	9,110
2 - North	1,365	1,444	1,378	1,349	1,186	1,115	305	8,142
3 - East	1,392	1,411	1,348	1,286	1,152	1,141	294	8,024
4 - South	1,326	1,304	1,230	1,198	1,143	1,052	244	7,497
5 - Central	1,023	1,073	981	883	838	784	207	5,789
6 - West	1,317	1,313	1,328	1,197	1,222	1,102	345	7,824
7 - Rodrigues	204	206	203	216	189	155	46	1,219
All Regions	8,149	8,258	7,941	7,620	7,117	6,608	1,912	47,605

¹ including enrolment in schools not providing a complete stream

Table 2.8.2 - Enrolment in primary schools¹ by administration, gender, region and grade, 1997 cont'd

Private schools

Region	Grade							All Grades
	I	II	III	IV	V	VI	VI (repeaters only)	
Total								
1 - Port Louis	989	1,001	999	1,059	912	924	234	6,118
2 - North	257	240	250	227	230	212	56	1,472
3 - East	632	603	624	584	561	428	147	3,579
4 - South	516	488	484	429	429	386	129	2,861
5 - Central	1,314	1,368	1,331	1,318	1,235	1,269	271	8,106
6 - West	943	935	907	935	864	887	186	5,657
7 - Rodrigues	361	323	373	404	314	396	120	2,291
All Regions	5,012	4,958	4,968	4,956	4,545	4,502	1,143	30,084
Male								
1 - Port Louis	510	513	472	524	427	418	114	2,978
2 - North	125	131	124	102	111	115	27	735
3 - East	315	307	305	283	254	220	92	1,776
4 - South	256	250	241	223	203	194	75	1,442
5 - Central	652	638	674	628	572	621	139	3,924
6 - West	507	476	483	501	404	482	112	2,965
7 - Rodrigues	175	153	192	217	148	191	70	1,146
All Regions	2,540	2,468	2,491	2,478	2,119	2,241	629	14,966
Female								
1 - Port Louis	479	488	527	535	485	506	120	3,140
2 - North	132	109	126	125	119	97	29	737
3 - East	317	296	319	301	307	208	55	1,803
4 - South	260	238	243	206	226	192	54	1,419
5 - Central	662	730	657	690	663	648	132	4,182
6 - West	436	459	424	434	460	405	74	2,692
7 - Rodrigues	186	170	181	187	166	205	50	1,145
All Regions	2,472	2,490	2,477	2,478	2,426	2,261	514	15,118

¹ including enrolment in schools not providing a complete stream

Table 2.9 - Enrolment in primary schools¹ by grade and gender (1995-1997)

Grade	1995			1996			1997		
	Total	Male	Female	Total	Male	Female	Total	Male	Female
Republic of Mauritius									
I	21,000	10,655	10,345	21,758	10,947	10,811	21,672	11,051	10,621
II	20,152	10,167	9,985	21,120	10,776	10,344	21,731	10,983	10,748
III	19,264	9,618	9,646	20,552	10,429	10,123	21,174	10,756	10,418
IV	18,232	9,305	8,927	19,024	9,429	9,595	20,375	10,277	10,098
V	18,329	9,215	9,114	18,246	9,338	8,908	18,931	9,388	9,543
VI	18,985	9,636	9,349	18,288	9,235	9,053	18,065	9,196	8,869
VI Repeaters	6,933	3,704	3,229	5,601	3,056	2,545	5,161	2,735	2,426
Total	122,895	62,300	60,595	124,589	63,210	61,379	127,109	64,386	62,723
Island of Mauritius									
I	20,220	10,247	9,973	20,995	10,569	10,426	20,921	10,690	10,231
II	19,344	9,751	9,593	20,334	10,367	9,967	20,985	10,613	10,372
III	18,487	9,240	9,247	19,686	9,979	9,707	20,358	10,324	10,034
IV	17,455	8,893	8,562	18,325	9,094	9,231	19,545	9,850	9,695
V	17,578	8,839	8,739	17,467	8,926	8,541	18,243	9,055	9,188
VI	18,129	9,206	8,923	17,561	8,874	8,687	17,313	8,804	8,509
VI Repeaters	6,582	3,534	3,048	5,287	2,884	2,403	4,947	2,617	2,330
Total	117,795	59,710	58,085	119,655	60,693	58,962	122,312	61,953	60,359
Island of Rodrigues									
I	780	408	372	763	378	385	751	361	390
II	808	416	392	786	409	377	746	370	376
III	777	378	399	866	450	416	816	432	384
IV	777	412	365	699	335	364	830	427	403
V	751	376	375	779	412	367	688	333	355
VI	856	430	426	727	361	366	752	392	360
VI Repeaters	351	170	181	314	172	142	214	118	96
Total	5,100	2,590	2,510	4,934	2,517	2,417	4,797	2,433	2,364

¹ including enrolment in schools not providing a complete stream

Table 2.10 - Enrolment in primary schools¹ by gender, age and grade, 1997

Republic of Mauritius

Age (in years)	Grade							Total
	I	II	III	IV	V	VI	VI (repeaters only)	
Total								
5	15,934	-	-	-	-	-	-	15,934
6	5,708	16,132	-	-	-	-	-	21,840
7	30	5,552	15,387	-	-	-	-	20,969
8	-	47	5,738	15,020	-	-	-	20,805
9	-	-	49	5,275	14,072	-	-	19,396
10	-	-	-	80	4,789	13,268	-	18,137
11	-	-	-	-	70	4,618	4,033	8,721
12	-	-	-	-	-	179	1,128	1,307
Total	21,672	21,731	21,174	20,375	18,931	18,065	5,161	127,109
Male								
5	8,101	-	-	-	-	-	-	8,101
6	2,933	8,177	-	-	-	-	-	11,110
7	17	2,777	7,765	-	-	-	-	10,559
8	-	29	2,955	7,589	-	-	-	10,573
9	-	-	36	2,642	6,989	-	-	9,667
10	-	-	-	46	2,355	6,757	-	9,158
11	-	-	-	-	44	2,344	2,109	4,497
12	-	-	-	-	-	95	626	721
Total	11,051	10,983	10,756	10,277	9,388	9,196	2,735	64,386
Female								
5	7,833	-	-	-	-	-	-	7,833
6	2,775	7,955	-	-	-	-	-	10,730
7	13	2,775	7,622	-	-	-	-	10,410
8	-	18	2,783	7,431	-	-	-	10,232
9	-	-	13	2,633	7,083	-	-	9,729
10	-	-	-	34	2,434	6,511	-	8,979
11	-	-	-	-	26	2,274	1,924	4,224
12	-	-	-	-	-	84	502	586
Total	10,621	10,748	10,418	10,098	9,543	8,869	2,426	62,723

¹ including enrolment in schools not providing a complete stream

Table 2.11 - Enrolment in primary schools¹ by gender, age and grade, 1997

Island of Mauritius

Age (in years)	Grade							Total
	I	II	III	IV	V	VI	VI (repeaters only)	
Total								
5	15,454	-	-	-	-	-	-	15,454
6	5,437	15,572	-	-	-	-	-	21,009
7	30	5,366	14,872	-	-	-	-	20,268
8	-	47	5,441	14,427	-	-	-	19,915
9	-	-	45	5,044	13,571	-	-	18,660
10	-	-	-	74	4,605	12,802	-	17,481
11	-	-	-	-	67	4,428	3,863	8,358
12	-	-	-	-	-	83	1,084	1,167
Total	20,921	20,985	20,358	19,545	18,243	17,313	4,947	122,312
Male								
5	7,880	-	-	-	-	-	-	7,880
6	2,793	7,903	-	-	-	-	-	10,696
7	17	2,681	7,493	-	-	-	-	10,191
8	-	29	2,798	7,283	-	-	-	10,110
9	-	-	33	2,524	6,755	-	-	9,312
10	-	-	-	43	2,257	6,504	-	8,804
11	-	-	-	-	43	2,247	2,016	4,306
12	-	-	-	-	-	53	601	654
Total	10,690	10,613	10,324	9,850	9,055	8,804	2,617	61,953
Female								
5	7,574	-	-	-	-	-	-	7,574
6	2,644	7,669	-	-	-	-	-	10,313
7	13	2,685	7,379	-	-	-	-	10,077
8	-	18	2,643	7,144	-	-	-	9,805
9	-	-	12	2,520	6,816	-	-	9,348
10	-	-	-	31	2,348	6,298	-	8,677
11	-	-	-	-	24	2,181	1,847	4,052
12	-	-	-	-	-	30	483	513
Total	10,231	10,372	10,034	9,695	9,188	8,509	2,330	60,359

¹ including enrolment in schools not providing a complete stream

Table 2.12 - Enrolment in primary schools by gender, age and grade, 1997

Island of Rodrigues

Age (in years)	Grade							Total
	I	II	III	IV	V	VI	VI (repeaters only)	
Total								
5	480	-	-	-	-	-	-	480
6	271	560	-	-	-	-	-	831
7	-	186	515	-	-	-	-	701
8	-	-	297	593	-	-	-	890
9	-	-	4	231	501	-	-	736
10	-	-	-	6	184	466	-	656
11	-	-	-	-	3	190	170	363
12	-	-	-	-	-	96	44	140
Total	751	746	816	830	688	752	214	4,797
Male								
5	221	-	-	-	-	-	-	221
6	140	274	-	-	-	-	-	414
7	-	96	272	-	-	-	-	368
8	-	-	157	306	-	-	-	463
9	-	-	3	118	234	-	-	355
10	-	-	-	3	98	253	-	354
11	-	-	-	-	1	97	93	191
12	-	-	-	-	-	42	25	67
Total	361	370	432	427	333	392	118	2,433
Female								
5	259	-	-	-	-	-	-	259
6	131	286	-	-	-	-	-	417
7	-	90	243	-	-	-	-	333
8	-	-	140	287	-	-	-	427
9	-	-	1	113	267	-	-	381
10	-	-	-	3	86	213	-	302
11	-	-	-	-	2	93	77	172
12	-	-	-	-	-	54	19	73
Total	390	376	384	403	355	360	96	2,364

Table 2.13 - Number and percentage of pupils studying Asian language in primary schools¹ by administration, language studied and grade, 1997

Island of Mauritius

Standard	I		II		III		IV		V		VI (including repeaters)		Total	
	Number	%	Number	%	Number	%	Number	%	Number	%	Number	%	Number	%
All schools														
Total number of pupils	20,921		20,985		20,358		19,545		18,243		22,260		122,312	
Asian language														
Hindi	8,181	39.1	8,142	38.8	8,056	39.6	7,667	39.2	7,200	39.5	8,363	37.6	47,609	38.9
Urdu	2,880	13.8	2,943	14.0	2,766	13.6	2,648	13.5	2,545	14.0	2,872	12.9	16,654	13.6
Tamil	1,302	6.2	1,315	6.3	1,270	6.2	1,295	6.6	1,053	5.8	1,257	5.6	7,492	6.1
Telugu	499	2.4	522	2.5	470	2.3	433	2.2	397	2.2	471	2.1	2,792	2.3
Marathi	348	1.7	335	1.6	326	1.6	317	1.6	297	1.6	342	1.5	1,965	1.6
Arabic	742	3.5	738	3.5	648	3.2	596	3.0	515	2.8	651	2.9	3,890	3.2
Modern Chinese	266	1.3	257	1.2	233	1.1	259	1.3	162	0.9	116	0.5	1,293	1.1
All Asian languages	14,218	68.0	14,252	67.9	13,769	67.6	13,215	67.6	12,169	66.7	14,072	63.2	81,695	66.8
Government														
Total number of pupils	16,270		16,350		15,763		14,993		14,012		17,131		94,519	
Asian language														
Hindi	7,323	45.0	7,362	45.0	7,174	45.5	6,923	46.2	6,403	45.7	7,466	43.6	42,651	45.1
Urdu	2,400	14.8	2,414	14.8	2,280	14.5	2,156	14.4	2,065	14.7	2,346	13.7	13,661	14.5
Tamil	1,112	6.8	1,110	6.8	1,071	6.8	1,080	7.2	879	6.3	1,046	6.1	6,298	6.7
Telugu	464	2.9	472	2.9	428	2.7	399	2.7	369	2.6	433	2.5	2,565	2.7
Marathi	291	1.8	282	1.7	289	1.8	270	1.8	242	1.7	296	1.7	1,670	1.8
Arabic	685	4.2	687	4.2	599	3.8	543	3.6	468	3.3	548	3.2	3,530	3.7
Modern Chinese	59	0.4	76	0.5	77	0.5	64	0.4	46	0.3	18	0.1	340	0.4
All Asian languages	12,334	75.8	12,403	75.9	11,918	75.6	11,435	76.3	10,472	74.7	12,153	70.9	70,715	74.8
Private														
Total number of pupils	4,651		4,635		4,595		4,552		4,231		5,129		27,793	
Asian language														
Hindi	858	18.4	780	16.8	882	19.2	744	16.3	797	18.8	897	17.5	4,958	17.8
Urdu	480	10.3	529	11.4	486	10.6	492	10.8	480	11.3	526	10.3	2,993	10.8
Tamil	190	4.1	205	4.4	199	4.3	215	4.7	174	4.1	211	4.1	1,194	4.3
Telugu	35	0.8	50	1.1	42	0.9	34	0.7	28	0.7	38	0.7	227	0.8
Marathi	57	1.2	53	1.1	37	0.8	47	1.0	55	1.3	46	0.9	295	1.1
Arabic	57	1.2	51	1.1	49	1.1	53	1.2	47	1.1	103	2.0	360	1.3
Modern Chinese	207	4.5	181	3.9	156	3.4	195	4.3	116	2.7	98	1.9	953	3.4
All Asian languages	1,884	40.5	1,849	39.9	1,851	40.3	1,780	39.1	1,697	40.1	1,919	37.4	10,980	39.5

¹ including enrolment in schools not providing a complete stream

Table 2.14 - Primary enrolment and enrolment ratio¹ by gender, 1988 - 1997 (Island of Mauritius)

Year	Male		Female		Both Sexes	
	Enrolment	Enrolment Ratio	Enrolment	Enrolment Ratio	Enrolment	Enrolment Ratio
1988	67.988	99	66.148	100	134,136	100
1989	66.698	98	64.928	101	131,626	99
1990	66.431	103	64.772	103	131,203	103
1991	65.468	106	63.686	106	129,154	106
1992	62.757	106	61.174	107	123,931	107
1993	60.758	107	59,244	108	120,002	108*
1994	59.769	107	58,150	108	117,919	108
1995	59.710	107	58,085	108	117,795	107
1996	60.693	107	58,962	108	119,655	107
1997	61.953	107	60,359	108	122,312	107

¹ Number of students enrolled per 100 population aged 6 to 11 years

* Revised

Table 2 15 1 - Employment in primary schools by administration, gender, district and occupational status, 1997

All schools

District	Head Teacher	Deputy Head Teacher	Teacher General	Teacher, Asian language							School clerk	Caretaker	Labourer	Other	TOTAL	
				Total	Hindi	Urdu	Tamil	Telegu	Marathi	Arabic						Modern Chinese
Total				199	68	75	26	4	1	19	6	28	77	118	5	1,103
Port Louis	31	170	475	183	120	38	15	9	-	1	-	16	50	92	1	708
Pamplemousses	22	64	280	183	114	29	21	18	1	-	-	20	69	103	7	803
Riv du Rempart	29	64	328	230	141	44	22	13	9	1	-	31	65	134	-	978
Flaq	35	82	401	145	63	30	21	16	12	3	-	25	58	97	1	789
Grand Port	30	83	350	89	26	20	16	14	6	7	-	14	38	51	-	485
Savanne	19	41	233	335	120	90	61	21	28	11	4	60	148	181	19	2,216
Plaines Wilhems	63	334	1,076	110	47	28	17	10	8	-	-	19	30	73	2	576
Moka	24	60	258	26	15	1	3	-	7	-	-	9	20	40	-	252
Black River	11	32	114	1,500	714	355	202	105	72	42	10	222	555	889	35	7,910
Island of Mauritius	264	930	3,515	-	-	-	-	-	-	-	-	13	30	76	6	350
Island of Rodrigues	10	30	185	1,500	714	355	202	105	72	42	10	235	585	965	41	8,260
Republic of Mauritius	274	960	3,700													
Male																
Port Louis	23	87	226	91	38	33	12	2	-	5	1	16	74	113	1	631
Pamplemousses	16	51	138	99	66	18	7	7	-	1	-	11	49	90	1	455
Riv du Rempart	22	47	190	102	70	15	9	8	-	-	-	11	68	98	2	540
Flaq	27	58	237	131	82	28	12	4	4	1	-	17	60	132	-	662
Grand Port	21	48	185	75	29	19	9	7	9	2	-	16	57	94	-	496
Savanne	14	24	137	61	16	18	12	10	2	3	-	8	38	49	-	331
Plaines Wilhems	41	163	388	119	34	42	22	8	6	7	-	25	136	170	1	1,043
Moka	10	38	113	56	24	16	6	4	6	1	-	7	30	64	1	319
Black River	3	18	44	9	6	1	1	-	1	-	-	6	19	39	-	138
Island of Mauritius	177	534	1,658	743	365	190	90	50	28	19	1	117	531	849	6	4,615
Island of Rodrigues	4	20	79	-	-	-	-	-	-	-	-	4	30	64	6	207
Republic of Mauritius	181	554	1,737	743	365	190	90	50	28	19	1	121	561	913	12	4,822
Female																
Port Louis	8	83	249	108	30	42	14	2	1	14	5	12	3	5	4	472
Pamplemousses	6	13	142	84	54	20	8	2	-	-	-	5	1	2	-	253
Riv du Rempart	7	17	138	81	44	14	12	10	1	5	-	9	1	5	5	263
Flaq	8	24	164	99	59	16	10	9	5	-	-	14	5	2	-	316
Grand Port	9	35	165	70	34	11	12	9	3	1	-	9	1	3	1	293
Savanne	5	17	96	28	10	2	4	4	4	4	-	6	-	2	-	154
Plaines Wilhems	22	171	688	216	86	48	39	13	22	4	4	35	12	11	18	1,173
Moka	14	22	145	54	23	12	11	6	2	-	-	12	-	9	1	257
Black River	8	14	70	17	9	-	2	-	6	-	-	3	1	1	-	114
Island of Mauritius	87	396	1,857	757	349	165	112	55	44	23	9	105	24	40	29	3,295
Island of Rodrigues	6	10	106	-	-	-	-	-	-	-	-	9	-	12	-	143
Republic of Mauritius	93	406	1,963	757	349	165	112	55	44	23	9	114	24	52	29	3,438

* including 59 physical education instructors

Table 2 15 1 - Employment in primary schools by administration, gender, district and occupational status, 1997 cont'd

District	Head Teacher	Deputy Head Teacher	Teacher General *	Teacher, Asian language							Total	Hindi	Urdu	Tamil	Telugu	Marathi	Arabic	Modern Chinese	School clerk	Caretaker	Labourer	Other	TOTAL
				Hindi	Urdu	Tamil	Telugu	Marathi	Arabic	Modern Chinese													
Both Sexes																							
Port Louis	23	124	330	55	54	19	4	1	17	2	21	61	88	3	802								
Pamplemousses	21	62	273	118	37	15	8	1	1	-	15	49	90	1	690								
Riv. du Rempart	24	55	268	109	27	19	18	1	-	-	16	64	92	-	693								
Flacq	27	67	333	122	41	17	12	8	1	-	23	56	112	-	819								
Grand Port	25	72	284	56	25	18	14	11	3	-	20	49	81	1	659								
Savanne	16	37	204	24	19	14	13	5	7	-	11	34	46	-	430								
Plaines Wilhems	46	246	695	96	69	46	16	23	8	-	41	112	130	-	1,528								
Moka	19	44	174	41	25	15	8	8	-	-	11	26	53	1	425								
Black River	8	27	95	14	1	3	-	5	-	-	7	17	32	-	209								
Island of Mauritius	209	734	2,656	635	298	166	93	62	37	2	165	468	724	6	6,255								
Island of Rodrigues	7	14	93	-	-	-	-	-	-	-	8	20	46	6	194								
Republic of Mauritius	216	748	2,749	635	298	166	93	62	37	2	173	488	770	12	6,449								
Male																							
Port Louis	18	74	178	35	28	10	2	-	5	1	13	59	88	1	512								
Pamplemousses	15	50	137	65	17	7	6	1	1	-	11	48	88	1	446								
Riv. du Rempart	20	42	171	67	13	7	8	-	-	-	11	63	88	-	490								
Flacq	21	53	207	71	26	8	4	3	1	-	16	51	112	-	573								
Grand Port	17	45	161	24	17	7	7	8	2	-	14	48	79	-	429								
Savanne	12	23	128	16	17	10	9	2	3	-	7	34	46	-	307								
Plaines Wilhems	32	139	305	30	31	20	7	5	6	-	19	106	130	-	830								
Moka	9	34	96	23	14	6	4	6	-	-	6	26	53	-	277								
Black River	3	17	36	6	1	1	-	1	-	-	5	16	31	-	117								
Island of Mauritius	147	477	1,419	337	164	76	47	25	18	1	102	451	715	2	3,981								
Island of Rodrigues	4	10	39	-	-	-	-	-	-	-	3	20	42	6	124								
Republic of Mauritius	151	487	1,458	337	164	76	47	25	18	1	105	471	757	8	4,105								
Female																							
Port Louis	5	50	152	20	26	9	2	1	12	1	8	2	-	2	290								
Pamplemousses	6	12	136	53	20	8	2	-	-	-	4	1	2	-	244								
Riv. du Rempart	4	13	97	42	14	12	10	1	-	-	5	1	4	-	203								
Flacq	6	14	126	51	15	9	8	5	-	-	7	5	-	-	246								
Grand Port	8	27	123	32	8	11	7	3	1	-	6	1	2	1	230								
Savanne	4	14	76	8	2	4	4	3	4	-	4	-	-	-	123								
Plaines Wilhems	14	107	390	66	38	26	9	18	2	-	22	6	-	-	698								
Moka	10	10	78	18	11	9	4	2	-	-	5	-	-	1	148								
Black River	5	10	59	8	-	2	-	4	-	-	2	1	1	-	92								
Island of Mauritius	62	257	1,237	298	134	90	46	37	19	1	63	17	9	4	2,274								
Island of Rodrigues	3	4	54	-	-	-	-	-	-	-	5	-	4	-	70								
Republic of Mauritius	65	261	1,291	298	134	90	46	37	19	1	68	17	13	4	2,344								

* including 44 physical education instructors

Table 2.15.1 - Employment in primary schools by administration, gender, district and occupational status, 1997 cont'd

Private schools

District	Head Teacher	Deputy Head Teacher	Teacher General *	Teacher - Asian language										School clerk	Caretaker	Labourer	Other	TOTAL
				Total	Hindi	Urdu	Tamil	Telegu	Marathi	Arabic	Modern Chinese							
Both Sexes																		
Port Louis	8	46	145	47	13	21	7	-	-	-	2	4	7	16	30	2	301	
Pamplemousses	1	2	7	4	2	1	-	1	-	-	-	-	1	1	2	-	18	
Riv. du Rempart	5	9	60	9	5	2	2	-	-	-	-	-	4	5	11	7	110	
Flacq	8	15	68	29	19	3	5	1	-	-	-	-	8	9	22	-	159	
Grand Port	5	11	66	18	7	5	3	1	-	-	-	-	5	9	16	-	130	
Savanne	3	4	29	7	2	1	2	1	-	-	-	-	3	4	5	-	55	
Plaines Wilhems	17	88	381	77	24	21	15	5	5	3	4	4	19	36	51	19	688	
Moka	5	16	84	13	6	3	2	2	-	-	-	-	8	4	20	1	151	
Black River	3	5	19	3	1	-	-	-	2	-	-	-	2	3	8	-	43	
Island of Mauritius	55	196	859	207	79	57	36	12	10	8	5	8	57	87	165	29	1,655	
Island of Rodrigues	3	16	92	-	-	-	-	-	-	-	-	-	5	10	30	-	156	
Republic of Mauritius	58	212	951	207	79	57	36	12	10	8	5	8	62	97	195	29	1,811	
Male																		
Port Louis	5	13	48	10	3	5	2	-	-	-	-	-	3	15	25	-	119	
Pamplemousses	1	1	1	3	1	1	-	1	-	-	-	-	-	1	2	-	9	
Riv. du Rempart	2	5	19	7	3	2	2	-	-	-	-	-	-	5	10	2	50	
Flacq	6	5	30	18	11	2	4	-	1	-	-	-	1	9	20	-	89	
Grand Port	4	3	24	10	5	2	2	-	1	-	-	-	2	9	15	-	67	
Savanne	2	1	9	4	-	1	2	1	-	-	-	-	1	4	3	-	24	
Plaines Wilhems	9	24	83	20	4	11	2	1	1	1	1	-	6	30	40	1	213	
Moka	1	4	17	3	1	2	-	-	-	-	-	-	1	4	11	1	42	
Black River	-	1	8	-	-	-	-	-	-	-	-	-	1	3	8	-	21	
Island of Mauritius	30	57	239	75	28	26	14	3	3	1	1	4	15	80	134	4	634	
Island of Rodrigues	-	10	40	-	-	-	-	-	-	-	-	-	1	10	22	-	83	
Republic of Mauritius	30	67	279	75	28	26	14	3	3	1	1	4	16	90	156	4	717	
Female																		
Port Louis	3	33	97	37	10	16	5	-	-	-	2	4	4	1	5	2	182	
Pamplemousses	-	1	6	1	1	-	-	-	-	-	-	-	1	-	-	-	9	
Riv. du Rempart	3	4	41	2	2	-	-	-	-	-	-	-	4	-	1	5	60	
Flacq	2	10	38	11	8	1	1	1	-	-	-	-	7	-	2	-	70	
Grand Port	1	8	42	8	2	3	1	2	-	-	-	-	3	-	1	-	63	
Savanne	1	3	20	3	2	-	-	-	1	-	-	-	2	-	2	-	31	
Plaines Wilhems	8	64	298	57	20	10	13	4	4	2	4	4	13	6	11	18	475	
Moka	4	12	67	10	5	1	2	2	-	-	-	-	7	-	9	0	109	
Black River	3	4	11	3	1	-	-	-	2	-	-	-	1	-	-	-	22	
Island of Mauritius	25	139	620	132	51	31	22	9	7	4	8	8	42	7	31	25	1,021	
Island of Rodrigues	3	6	52	-	-	-	-	-	-	-	-	-	4	-	8	-	73	
Republic of Mauritius	28	145	672	132	51	31	22	9	7	4	8	8	46	7	39	25	1,094	

* including 44 physical education instructors

Table 2 15.2 - Employment in primary schools by administration, gender, region and occupational status, 1997

Region	Head Teacher	Deputy Head Teacher	Teacher General	Teacher, Asian language								School clerk	Caretaker	Labourer	Other	TOTAL
				Total	Hindi	Urdu	Tamil	Telegu	Marathi	Arabic	Modern Chinese					
Total				247	98	85	33	5	1	19	6	35	94	149	4	1,359
1 - Port Louis	39	196	595	247	98	85	33	5	1	19	6	35	94	149	4	1,359
2 - North	45	110	516	325	208	59	31	25	1	1	-	31	108	168	8	1,311
3 - East	59	140	652	338	189	71	37	24	16	1	-	51	94	208	2	1,544
4 - South	48	123	578	231	87	49	37	30	18	10	-	38	95	148	1	1,262
5 - Central	34	163	597	182	65	49	28	12	17	10	1	33	75	94	16	1,194
6 - West	39	198	577	177	67	42	36	9	19	1	3	34	89	122	4	1,240
7 - Rodrigues	10	30	185	-	-	-	-	-	-	-	-	13	30	76	6	350
All Regions	274	960	3,700	1,500	714	355	202	105	72	42	10	235	585	965	41	8,260
Male																
1 - Port Louis	28	107	283	114	53	36	16	3	-	5	1	21	90	144	1	788
2 - North	33	84	284	181	123	31	13	13	-	1	-	20	108	162	3	875
3 - East	37	94	345	186	105	44	17	9	10	1	-	23	92	197	1	975
4 - South	34	71	320	134	44	36	21	17	11	5	-	24	94	143	-	820
5 - Central	24	86	215	73	23	25	11	3	5	6	-	14	67	90	-	569
6 - West	21	92	211	55	17	18	12	5	2	1	-	15	80	113	1	588
7 - Rodrigues	4	20	79	-	-	-	-	-	-	-	-	4	30	64	6	207
All Regions	181	554	1,737	743	365	190	90	50	28	19	1	121	561	913	12	4,822
Female																
1 - Port Louis	11	89	312	133	45	49	17	2	1	14	5	14	4	5	3	571
2 - North	12	26	232	144	85	28	18	12	1	-	-	11	-	6	5	436
3 - East	22	46	307	152	84	27	20	15	6	-	-	28	2	11	1	569
4 - South	14	52	258	97	43	13	16	13	7	5	-	14	1	5	1	442
5 - Central	10	77	382	109	42	24	17	9	12	4	1	19	8	4	16	625
6 - West	18	106	366	122	50	24	24	4	17	-	3	19	9	9	3	652
7 - Rodrigues	6	10	106	-	-	-	-	-	-	-	-	9	-	12	-	143
All Regions	93	406	1,963	757	349	165	112	55	44	23	9	114	24	52	29	3,438

* including 59 physical education instructors

Table 2 15 2 - Employment in primary schools by administration, gender, region and occupational status, 1997 cont'd

Government schools

Region	Head Teacher	Deputy Head Teacher	Teacher General	Teacher, Asian language										School clerk	Caretaker	Labourer	Other	TOTAL
				Total	Hindi	Urdu	Tamil	Telegu	Marathi	Arabic	Modern Chinese							
Total				200	85	64	26	5	1	17	2	28	77	118	3	1,057		
1 - Port Louis	31	150	450	316	203	57	29	25	1	1	-	27	104	159	1	1,204		
2 - North	40	101	456	292	162	64	30	20	15	1	-	34	80	164	1	1,216		
3 - East	45	107	493	206	78	43	32	27	16	10	-	30	83	126	1	1,077		
4 - South	40	108	483	134	48	39	19	8	13	7	-	20	52	64	-	756		
5 - Central	22	115	349	145	59	31	30	8	16	1	-	26	72	93	-	945		
6 - West	31	153	425	-	-	-	-	-	-	-	-	8	20	46	6	194		
7 - Rodrigues	7	14	93	-	-	-	-	-	-	-	-	8	20	46	6	194		
All Regions	216	748	2,749	1,293	635	298	166	93	62	37	2	173	488	770	12	6,449		
Male																		
1 - Port Louis	23	94	235	104	50	31	14	3	-	5	1	18	74	118	1	667		
2 - North	31	79	265	174	120	29	11	13	-	1	-	20	104	153	1	827		
3 - East	29	84	297	162	92	39	13	8	9	1	-	21	78	164	-	835		
4 - South	28	67	287	120	39	33	17	16	10	5	-	21	82	124	-	729		
5 - Central	17	69	168	58	20	18	9	2	4	5	-	9	47	64	-	432		
6 - West	19	84	167	50	16	14	12	5	2	1	-	13	66	92	-	491		
7 - Rodrigues	4	10	39	-	-	-	-	-	-	-	-	3	20	42	6	124		
All Regions	151	487	1,458	668	337	164	76	47	25	18	1	105	471	757	8	4,105		
Female																		
1 - Port Louis	8	56	215	96	35	33	12	2	1	12	1	10	3	-	2	390		
2 - North	9	22	191	142	83	28	18	12	1	-	-	7	-	6	-	377		
3 - East	16	23	196	130	70	25	17	12	6	-	-	13	2	-	1	381		
4 - South	12	41	196	86	39	10	15	11	6	5	-	9	1	2	1	348		
5 - Central	5	46	181	76	28	21	10	6	9	2	-	11	5	-	-	324		
6 - West	12	69	258	95	43	17	18	3	14	-	-	13	6	1	-	454		
7 - Rodrigues	3	4	54	-	-	-	-	-	-	-	-	5	-	4	-	70		
All Regions	65	261	1,291	625	298	134	90	46	37	19	1	68	17	13	4	2,344		

* including 44 physical education instructors

Table 2.15.2 - Employment in primary schools by administration, gender, region and occupational status, 1997 cont'd

Region	Head Teacher	Deputy Head Teacher	Teacher General	Teacher, Asian language										Total	Hindi	Urdu	Tamil	Telugu	Marathi	Arabic	Modern Chinese	School clerk	Caretaker	Labourer	Other	TOTAL
				Total	Hindi	Urdu	Tamil	Telugu	Marathi	Arabic	Modern Chinese															
Total				47	13	21	7	-	-	-	2	4	7	17	31	1	302									
1 - Port Louis	8	46	145	9	5	2	2	-	-	-	-	-	4	4	9	7	107									
2 - North	5	9	60	46	27	7	7	4	1	-	-	-	17	44	1	328										
3 - East	14	33	159	25	9	6	5	3	2	-	-	-	8	22	-	185										
4 - South	8	15	95	48	17	10	9	4	4	3	1	13	23	30	16	438										
5 - Central	12	48	248	32	8	11	6	1	3	-	-	5	17	29	4	295										
6 - West	8	45	152	-	-	-	-	-	-	-	-	-	10	30	-	156										
7 - Rodrigues	3	16	92	207	79	57	36	12	10	5	8	62	97	195	29	1,811										
All Regions	58	212	951	207	79	57	36	12	10	5	8	62	97	195	29	1,811										
Male																										
1 - Port Louis	5	13	48	10	3	5	2	-	-	-	-	3	16	26	-	121										
2 - North	2	5	19	7	3	2	2	-	-	-	-	-	4	9	2	48										
3 - East	8	10	48	24	13	5	4	1	1	-	-	2	14	33	1	140										
4 - South	6	4	33	14	5	3	4	1	1	-	-	3	12	19	-	91										
5 - Central	7	17	47	15	3	7	2	1	1	1	-	5	20	26	-	137										
6 - West	2	8	44	5	1	4	-	-	-	-	-	2	14	21	1	97										
7 - Rodrigues	-	10	40	-	-	-	-	-	-	-	-	1	10	22	-	83										
All Regions	30	67	279	75	28	26	14	3	3	1	-	16	90	156	4	717										
Female																										
1 - Port Louis	3	33	97	37	10	16	5	-	-	2	4	4	1	5	1	181										
2 - North	3	4	41	2	2	-	-	-	-	-	-	4	-	-	5	59										
3 - East	6	23	111	22	14	2	3	3	-	-	-	15	-	11	-	188										
4 - South	2	11	62	11	4	3	1	2	1	-	-	5	-	3	-	94										
5 - Central	5	31	201	33	14	3	7	3	3	2	1	8	3	4	16	301										
6 - West	6	37	108	27	7	7	6	1	3	-	3	6	3	8	3	198										
7 - Rodrigues	3	6	52	-	-	-	-	-	-	-	-	4	-	8	-	73										
All Regions	28	145	672	132	51	31	22	9	7	4	8	46	7	39	25	1,094										

* including 44 physical education instructors

Table 2.16 - Teaching staff in primary schools by administration, gender, district and age, 1997

All schools

District	Age									Total
	under 25	25 - 29	30 - 34	35 - 39	40 - 44	45 - 49	50 - 54	55 and over	Not stated	
Total										
Port Louis	35	68	64	69	166	178	71	21	2	674
Pamplemousses	20	39	45	43	122	123	65	6	-	463
Riviere du Rempart	29	57	49	53	136	122	53	9	3	511
Flacq	39	79	78	72	166	131	53	12	1	631
Grand Port	33	87	55	63	127	97	28	4	1	495
Savanne	23	45	47	40	86	56	21	3	1	322
Plaines Wilhems	36	89	85	146	380	429	187	59	-	1,411
Moka	26	39	45	46	80	80	44	7	1	368
Black River	12	43	22	14	23	16	4	6	-	140
Island of Mauritius	253	546	490	546	1,286	1,232	526	127	9	5,015
Island of Rodrigues	21	61	13	36	30	17	5	1	1	185
Republic of Mauritius	274	607	503	582	1,316	1,249	531	128	10	5,200
Male										
Port Louis	5	20	19	33	82	102	42	13	1	317
Pamplemousses	3	11	20	14	59	82	44	4	-	237
Riviere du Rempart	11	19	25	19	78	87	46	6	1	292
Flacq	10	38	45	37	97	86	42	12	1	368
Grand Port	8	34	27	30	74	62	21	3	1	260
Savanne	7	17	30	24	58	41	18	2	1	198
Plaines Wilhems	3	12	26	38	133	182	93	20	-	507
Moka	5	13	10	11	45	51	27	7	-	169
Black River	2	16	8	3	9	9	2	4	-	53
Island of Mauritius	54	180	210	209	635	702	335	71	5	2,401
Island of Rodrigues	10	26	5	14	16	6	1	-	1	79
Republic of Mauritius	64	206	215	223	651	708	336	71	6	2,480
Female										
Port Louis	30	48	45	36	84	76	29	8	1	357
Pamplemousses	17	28	25	29	63	41	21	2	-	226
Riviere du Rempart	18	38	24	34	58	35	7	3	2	219
Flacq	29	41	33	35	69	45	11	-	-	263
Grand Port	25	53	28	33	53	35	7	1	-	235
Savanne	16	28	17	16	28	15	3	1	-	124
Plaines Wilhems	33	77	59	108	247	247	94	39	-	904
Moka	21	26	35	35	35	29	17	-	1	199
Black River	10	27	14	11	14	7	2	2	-	87
Island of Mauritius	199	366	280	337	651	530	191	56	4	2,614
Island of Rodrigues	11	35	8	22	14	11	4	1	-	106
Republic of Mauritius	210	401	288	359	665	541	195	57	4	2,720

Table 2.16 - Teaching staff in primary schools by administration, gender, district and age, 1997 cont'd

Government schools

District	Age									Total
	under 25	25 - 29	30 - 34	35 - 39	40 - 44	45 - 49	50 - 54	55 and over	Not stated	
Total										
Port Louis	9	32	44	53	127	142	55	18	2	482
Pamplemousses	19	35	44	43	121	120	64	6	-	452
Riviere du Rempart	23	43	38	43	125	114	49	6	1	442
Flacq	25	54	64	58	152	121	47	12	1	534
Grand Port	28	56	44	56	110	86	27	3	1	411
Savanne	19	31	41	38	81	52	20	3	1	286
Plaines Wilhems	6	26	36	95	281	322	157	30	-	953
Moka	11	14	29	32	67	71	40	7	-	271
Black River	6	36	19	13	22	13	4	5	-	118
Island of Mauritius	146	327	359	431	1,086	1,041	463	90	6	3,949
Island of Rodrigues	10	33	9	25	10	3	2	1	-	93
Republic of Mauritius	156	360	368	456	1,096	1,044	465	91	6	4,042
Male										
Port Louis	1	11	14	27	68	88	37	12	1	259
Pamplemousses	3	10	20	14	58	81	43	4	-	233
Riviere du Rempart	11	15	19	18	74	81	43	4	1	266
Flacq	4	28	42	30	87	80	36	12	1	320
Grand Port	8	22	24	28	65	55	21	2	1	226
Savanne	7	14	27	23	55	38	18	2	1	185
Plaines Wilhems	-	7	14	30	102	154	84	13	-	404
Moka	3	8	8	8	42	47	26	7	-	149
Black River	1	13	7	3	9	7	2	3	-	45
Island of Mauritius	38	128	175	181	560	631	310	59	5	2,087
Island of Rodrigues	4	15	3	11	5	0	1	-	-	39
Republic of Mauritius	42	143	178	192	565	631	311	59	5	2,126
Female										
Port Louis	8	21	30	26	59	54	18	6	1	223
Pamplemousses	16	25	24	29	63	39	21	2	-	219
Riviere du Rempart	12	28	19	25	51	33	6	2	-	176
Flacq	21	26	22	28	65	41	11	-	-	214
Grand Port	20	34	20	28	45	31	6	1	-	185
Savanne	12	17	14	15	26	14	2	1	-	101
Plaines Wilhems	6	19	22	65	179	168	73	17	-	549
Moka	8	6	21	24	25	24	14	-	-	122
Black River	5	23	12	10	13	6	2	2	-	73
Island of Mauritius	108	199	184	250	526	410	153	31	1	1,862
Island of Rodrigues	6	18	6	14	5	3	1	1	-	54
Republic of Mauritius	114	217	190	264	531	413	154	32	1	1,916

Table 2.16 - Teaching staff in primary schools by administration, gender, district and age, 1997 cont'd

Private schools

District	Age									Total
	under 25	25 - 29	30 - 34	35 - 39	40 - 44	45 - 49	50 - 54	55 and over	Not stated	
Total										
Port Louis	26	36	20	16	39	36	16	3	-	192
Pamplemousses	1	4	1	-	1	3	1	-	-	11
Riviere du Rempart	6	14	11	10	11	8	4	3	2	69
Flacq	14	25	14	14	14	10	6	-	-	97
Grand Port	5	31	11	7	17	11	1	1	-	84
Savanne	4	14	6	2	5	4	1	-	-	36
Plaines Wilhems	30	63	49	51	99	107	30	29	-	458
Moka	15	25	16	14	13	9	4	-	1	97
Black River	6	7	3	1	1	3	-	1	-	22
Island of Mauritius	107	219	131	115	200	191	63	37	3	1,066
Island of Rodrigues	11	28	4	11	20	14	3	-	1	92
Republic of Mauritius	118	247	135	126	220	205	66	37	4	1,158
Male										
Port Louis	4	9	5	6	14	14	5	1	-	58
Pamplemousses	-	1	-	-	1	1	1	-	-	4
Riviere du Rempart	-	4	6	1	4	6	3	2	-	26
Flacq	6	10	3	7	10	6	6	-	-	48
Grand Port	-	12	3	2	9	7	-	1	-	34
Savanne	-	3	3	1	3	3	-	-	-	13
Plaines Wilhems	3	5	12	8	31	28	9	7	-	103
Moka	2	5	2	3	3	4	1	-	-	20
Black River	1	3	1	-	-	2	-	1	-	8
Island of Mauritius	16	52	35	28	75	71	25	12	-	314
Island of Rodrigues	6	11	2	3	11	6	-	-	1	40
Republic of Mauritius	22	63	37	31	86	77	25	12	1	354
Female										
Port Louis	22	27	15	10	25	22	11	2	-	134
Pamplemousses	1	3	1	-	-	2	-	-	-	7
Riviere du Rempart	6	10	5	9	7	2	1	1	2	43
Flacq	8	15	11	7	4	4	-	-	-	49
Grand Port	5	19	8	5	8	4	1	-	-	50
Savanne	4	11	3	1	2	1	1	-	-	23
Plaines Wilhems	27	58	37	43	68	79	21	22	-	355
Moka	13	20	14	11	10	5	3	-	1	77
Black River	5	4	2	1	1	1	-	-	-	14
Island of Mauritius	91	167	96	87	125	120	38	25	3	752
Island of Rodrigues	5	17	2	8	9	8	3	-	-	52
Republic of Mauritius	96	184	98	95	134	128	41	25	3	804

Table 2.17 - General purpose teachers* by administration, gender, district and highest educational level, 1997

All schools

District	Highest educational level						Total
	Lower Secondary	School Certificate or equivalent	Higher School Certificate or equivalent	Diploma	Degree	Other	
Total							
Port Louis	6	315	148	1	5	-	475
Pamplemousses	-	175	92	2	11	-	280
Riviere du Rempart	2	189	111	1	22	3	328
Flacq	4	213	174	-	9	1	401
Grand Port	1	199	143	-	6	1	350
Savanne	-	126	103	-	4	-	233
Plaines Wilhems	3	808	236	2	24	3	1,076
Moka	3	119	97	11	22	6	258
Black River	-	40	73	-	1	-	114
Island of Mauritius	19	2,184	1,177	17	104	14	3,515
Island of Rodrigues	15	158	4	1	1	6	185
Republic of Mauritius	34	2,342	1,181	18	105	20	3,700
Male							
Port Louis	1	168	52	1	4	-	226
Pamplemousses	-	98	29	2	9	-	138
Riviere du Rempart	2	130	49	-	8	1	190
Flacq	2	134	92	-	9	-	237
Grand Port	-	120	61	-	3	1	185
Savanne	-	80	54	-	3	-	137
Plaines Wilhems	-	312	62	1	13	-	388
Moka	1	63	38	2	8	1	113
Black River	-	18	25	-	1	-	44
Island of Mauritius	6	1,123	462	6	58	3	1,658
Island of Rodrigues	9	66	-	1	-	3	79
Republic of Mauritius	15	1,189	462	7	58	6	1,737
Female							
Port Louis	5	147	96	-	1	-	249
Pamplemousses	-	77	63	-	2	-	142
Riviere du Rempart	-	59	62	1	14	2	138
Flacq	2	79	82	-	-	1	164
Grand Port	1	79	82	-	3	-	165
Savanne	-	46	49	-	1	-	96
Plaines Wilhems	3	496	174	1	11	3	688
Moka	2	56	59	9	14	5	145
Black River	-	22	48	-	-	-	70
Island of Mauritius	13	1,061	715	11	46	11	1,857
Island of Rodrigues	6	92	4	-	1	3	106
Republic of Mauritius	19	1,153	719	11	47	14	1,963

* including 59 physical education instructors

Table 2 17 - General purpose teachers* by administration, gender, district and highest educational level, 1997 cont'd

Government schools

District	Highest Educational Level						Total
	Lower Secondary	School Certificate or equivalent	Higher School Certificate or equivalent	Diploma	Degree	Other	
Total							
Port Louis	4	235	85	1	5	-	330
Pamplemousses	-	174	86	2	11	-	273
Riviere du Rempart	2	168	92	-	6	-	268
Flacq	3	186	135	-	9	-	333
Grand Port	1	169	107	-	6	1	284
Savanne	-	112	88	-	4	-	204
Plaines Wilhems	-	584	98	1	10	2	695
Moka	-	97	70	-	7	-	174
Black River	-	34	60	-	1	-	95
Island of Mauritius	10	1,759	821	4	59	3	2,656
Island of Rodrigues	10	77	2	-	-	4	93
Republic of Mauritius	20	1,836	823	4	59	7	2,749
Male							
Port Louis	1	134	38	1	4	-	178
Pamplemousses	-	98	28	2	9	-	137
Riviere du Rempart	2	120	43	-	6	-	171
Flacq	1	120	77	-	9	-	207
Grand Port	-	106	51	-	3	1	161
Savanne	-	76	49	-	3	-	128
Plaines Wilhems	-	250	45	1	9	-	305
Moka	-	58	32	-	6	-	96
Black River	-	14	21	-	1	-	36
Island of Mauritius	4	976	384	4	50	1	1,419
Island of Rodrigues	6	31	-	-	-	2	39
Republic of Mauritius	10	1,007	384	4	50	3	1,458
Female							
Port Louis	3	101	47	-	1	-	152
Pamplemousses	-	76	58	-	2	-	136
Riviere du Rempart	-	48	49	-	-	-	97
Flacq	2	66	58	-	-	-	126
Grand Port	1	63	56	-	3	-	123
Savanne	-	36	39	-	1	-	76
Plaines Wilhems	-	334	53	-	1	2	390
Moka	-	39	38	-	1	-	78
Black River	-	20	39	-	-	-	59
Island of Mauritius	6	783	437	-	9	2	1,237
Island of Rodrigues	4	46	2	-	-	2	54
Republic of Mauritius	10	829	439	-	9	4	1,291

* including 44 physical education instructors

Table 2.17 - General purpose teachers* by administration, gender, district and highest educational level.
1997 cont'd

Private schools

District	Highest Educational Level						Total
	Lower Secondary	School Certificate or equivalent	Higher School Certificate or equivalent	Diploma	Degree	Other	
Total							
Port Louis	2	80	63	-	-	-	145
Pamplemousses	-	1	6	-	-	-	7
Riviere du Rempart	-	21	19	1	16	3	60
Flacq	1	27	39	-	-	1	68
Grand Port	-	30	36	-	-	-	66
Savanne	-	14	15	-	-	-	29
Plaines Wilhems	3	224	138	1	14	1	381
Moka	3	22	27	11	15	6	84
Black River	-	6	13	-	-	-	19
Island of Mauritius	9	425	356	13	45	11	859
Island of Rodrigues	5	81	2	1	1	2	92
Republic of Mauritius	14	506	358	14	46	13	951
Male							
Port Louis	-	34	14	-	-	-	48
Pamplemousses	-	-	1	-	-	-	1
Riviere du Rempart	-	10	6	-	2	1	19
Flacq	1	14	15	-	-	-	30
Grand Port	-	14	10	-	-	-	24
Savanne	-	4	5	-	-	-	9
Plaines Wilhems	-	62	17	-	4	-	83
Moka	1	5	6	2	2	1	17
Black River	-	4	4	-	-	-	8
Island of Mauritius	2	147	78	2	8	2	239
Island of Rodrigues	3	35	-	1	-	1	40
Republic of Mauritius	5	182	78	3	8	3	279
Female							
Port Louis	2	46	49	-	-	-	97
Pamplemousses	-	1	5	-	-	-	6
Riviere du Rempart	-	11	13	1	14	2	41
Flacq	-	13	24	-	-	1	38
Grand Port	-	16	26	-	-	-	42
Savanne	-	10	10	-	-	-	20
Plaines Wilhems	3	162	121	1	10	1	298
Moka	2	17	21	9	13	5	67
Black River	-	2	9	-	-	-	11
Island of Mauritius	7	278	278	11	37	9	620
Island of Rodrigues	2	46	2	-	1	1	52
Republic of Mauritius	9	324	280	11	38	10	672

* including 15 physical education instructors

Table 2.18 - Teaching staff in primary schools by length of teaching experience, administration and gender, 1997

Length of teaching experience	All Schools			Government Schools			Private Schools		
	Total	Male	Female	Total	Male	Female	Total	Male	Female
Republic of Mauritius									
under 3	572	181	391	338	127	211	234	54	180
3 and under 6	548	200	348	331	148	183	217	52	165
6 " " 9	406	169	237	317	144	173	89	25	64
9 " " 12	222	83	139	187	76	111	35	7	28
12 " " 15	60	26	34	40	22	18	20	4	16
15 " " 18	483	219	264	413	197	216	70	22	48
18 " " 21	1,072	566	506	912	507	405	160	59	101
21 " " 24	709	387	322	569	327	242	140	60	80
24 " " 27	596	347	249	486	303	183	110	44	66
27 " " 30	453	276	177	406	262	144	47	14	33
30 and over	79	26	53	43	13	30	36	13	23
Total	5,200	2,480	2,720	4,042	2,126	1,916	1,158	354	804
Island of Mauritius									
under 3	545	165	380	326	120	206	219	45	174
3 and under 6	513	188	325	305	139	166	208	49	159
6 " " 9	372	158	214	302	139	163	70	19	51
9 " " 12	205	76	129	174	71	103	31	5	26
12 " " 15	58	25	33	39	21	18	19	4	15
15 " " 18	462	211	251	401	192	209	61	19	42
18 " " 21	1,052	558	494	904	504	400	148	54	94
21 " " 24	686	375	311	563	323	240	123	52	71
24 " " 27	593	346	247	486	303	183	107	43	64
27 " " 30	450	273	177	406	262	144	44	11	33
30 and over	79	26	53	43	13	30	36	13	23
Total	5,015	2,401	2,614	3,949	2,087	1,862	1,066	314	752
Island of Rodrigues									
under 3	27	16	11	12	7	5	15	9	6
3 and under 6	35	12	23	26	9	17	9	3	6
6 " " 9	34	11	23	15	5	10	19	6	13
9 " " 12	17	7	10	13	5	8	4	2	2
12 " " 15	2	1	1	1	1	-	1	-	1
15 " " 18	21	8	13	12	5	7	9	3	6
18 " " 21	20	8	12	8	3	5	12	5	7
21 " " 24	23	12	11	6	4	2	17	8	9
24 " " 27	3	1	2	-	-	-	3	1	2
27 " " 30	3	3	-	-	-	-	3	3	-
30 and over	-	-	-	-	-	-	-	-	-
Total	185	79	106	93	39	54	92	40	52

Table 2.19 - Teaching staff in primary schools by gender, district of residence and district of school, 1997

Island of Mauritius

District of residence	District of school									Total
	Port Louis	Pamplemousses	Riviere du Rempart	Flacq	Grand Port	Savanne	Plaines Wilhems	Moka	Black River	
Total										
Port Louis	342	53	5	9	-	-	17	8	3	437
Pamplemousses	145	369	80	16	-	-	10	4	8	632
Riviere du Rempart	16	26	413	32	-	-	4	-	1	492
Flacq	5	9	3	468	4	-	2	17	-	508
Grand Port	-	-	-	2	377	19	7	5	-	410
Savanne	1	-	-	-	25	253	3	1	-	283
Plaines Wilhems	153	6	7	26	89	49	1,347	120	115	1,912
Moka	3	-	2	78	-	-	16	210	-	309
Black River	9	-	1	-	-	1	5	3	13	32
Island of Mauritius	674	463	511	631	495	322	1,411	368	140	5,015
Male										
Port Louis	155	20	3	4	-	-	4	2	1	185
Pamplemousses	81	194	44	8	-	-	2	2	4	335
Riviere du Rempart	6	16	243	25	-	-	1	-	-	291
Flacq	3	4	-	272	3	-	-	12	-	294
Grand Port	-	-	-	2	199	9	1	2	-	213
Savanne	1	-	-	-	16	168	2	-	-	187
Plaines Wilhems	64	3	1	16	42	21	482	40	44	713
Moka	3	-	-	41	-	-	10	110	-	164
Black River	4	-	1	-	-	-	5	1	4	15
Island of Mauritius	317	237	292	368	260	198	507	169	53	2,401
Female										
Port Louis	187	33	2	5	-	-	13	6	2	248
Pamplemousses	64	175	36	8	-	-	8	2	4	297
Riviere du Rempart	10	10	170	7	-	-	3	-	1	201
Flacq	2	5	3	196	1	-	2	5	-	214
Grand Port	-	-	-	-	178	10	6	3	-	197
Savanne	-	-	-	-	9	85	1	1	-	96
Plaines Wilhems	89	3	6	10	47	28	865	80	71	1,199
Moka	-	-	2	37	-	-	6	100	-	145
Black River	5	-	-	-	-	1	-	2	9	17
Island of Mauritius	357	226	219	263	235	124	904	199	87	2,614

Table 2.20 - Pupil / Teacher ratio in primary schools (General and Language group) . 1988 - 1997

Year	Republic of Mauritius	Island of Mauritius									Island of Rodrigues	
		General Purpose	All Asian languages	Hindi	Urdu	Tamil	Telugu	Marathi	Arabic	Modern Chinese		
1988	34	34	56	N.A	N.A	N.A	N.A	N.A	N.A	N.A	N.A	33
1989	34	34	55	67	46	41	24	28	117	104	104	34
1990	33	33	52	66	44	38	23	26	73	97	97	34
1991	33	33	52	65	44	38	23	26	83	78	78	32
1992	30	30	50	61	42	35	22	25	84	105	105	32
1993	29	30	49	61	41	35	22	25	92	116	116	29
1994	32	32	50	61	41	35	23	25	96	122	122	28
1995	34	34	52	64	44	38	23	26	112	172	172	28
1996	33	34	54	66	47	38	24	27	125	142	142	27
1997	34	35	54	67	47	37	27	27	93	129	129	27

N.A : Not available

Table 2.21 - Number and percentage of passes at C.P.E. examination by district and gender - 1997

District	Total			Male			Female		
	No Examined	No. of Passes	% of Passes	No. Examined	No. of Passes	% of Passes	No. Examined	No of Passes	% of Passes
School and private candidates									
Port Louis	4,047	2,545	62.9	2,011	1,190	59.2	2,036	1,355	66.6
Pamplemousses	2,375	1,333	56.1	1,289	665	51.6	1,086	668	61.5
Riviere du Rempart	2,279	1,389	60.9	1,192	671	56.3	1,087	718	66.1
Flacq	2,973	1,855	62.4	1,535	901	58.7	1,438	954	66.3
Grand Port	2,421	1,478	61.0	1,311	750	57.2	1,110	728	65.6
Savanne	1,355	879	64.9	687	427	62.2	668	452	67.7
Plaines Wilhems	7,975	5,626	70.5	4,095	2,743	67.0	3,880	2,883	74.3
Moka	1,403	891	63.5	729	448	61.5	674	443	65.7
Black River	943	431	45.7	489	208	42.5	454	223	49.1
Island of Mauritius	25,771	16,427	63.7	13,338	8,003	60.0	12,433	8,424	67.8
Island of Rodrigues	1,031	508	49.3	540	240	44.4	491	268	54.6
Republic of Mauritius	26,802	16,935	63.2	13,878	8,243	59.4	12,924	8,692	67.3
School candidates only									
Port Louis	3,882	2,479	63.9	1,913	1,149	60.1	1,969	1,330	67.5
Pamplemousses	2,137	1,268	59.3	1,140	633	55.5	997	635	63.7
Riviere du Rempart	2,115	1,333	63.0	1,079	638	59.1	1,036	695	67.1
Flacq	2,805	1,821	64.9	1,430	883	61.7	1,375	938	68.2
Grand Port	2,251	1,428	63.4	1,210	719	59.4	1,041	709	66.8
Savanne	1,338	873	65.2	676	422	62.4	662	451	68.1
Plaines Wilhems	7,530	5,481	72.8	3,834	2,666	69.5	3,696	2,815	76.2
Moka	1,307	860	65.8	679	437	64.4	628	423	67.4
Black River	889	413	46.5	462	202	43.7	427	211	49.4
Island of Mauritius	24,254	15,956	65.8	12,423	7,749	62.4	11,831	8,207	69.4
Island of Rodrigues	976	496	50.8	503	232	46.1	473	264	55.8
Republic of Mauritius	25,230	16,452	65.2	12,926	7,981	61.7	12,304	8,471	69.0
Private candidates only									
Port Louis	165	66	40.0	98	41	41.8	67	25	37.3
Pamplemousses	238	65	27.3	149	32	21.5	89	33	37.1
Riviere du Rempart	164	56	34.1	113	33	29.2	51	23	45.1
Flacq	168	34	20.2	105	18	17.1	63	16	25.4
Grand Port	170	50	29.4	101	31	30.7	69	19	27.5
Savanne	17	6	35.3	11	5	45.5	6	1	16.7
Plaines Wilhems	445	145	32.6	261	77	29.5	184	68	37.0
Moka	96	31	32.3	50	11	22.0	46	20	43.5
Black River	54	18	33.3	27	6	22.2	27	12	44.4
Island of Mauritius	1,517	471	31.0	915	254	27.8	602	217	36.0
Island of Rodrigues	55	12	21.8	37	8	21.6	18	4	22.2
Republic of Mauritius	1,572	483	30.7	952	262	37.2	620	221	42.6

Table 2.22 - Number and percentage of passes at C.P.E. examinations by subject and gender - 1997

School and private candidates

Subject	Total			Male			Female		
	No. Examined	No. of Passes	% of Passes	No. Examined	No of Passes	% of Passes	No. Examined	No. of Passes	% of Passes
Republic of Mauritius									
English	26,745	18,889	70.6	13,858	9,271	66.9	12,887	9,618	74.6
Mathematics	26,752	19,464	72.8	13,870	9,781	70.5	12,882	9,683	75.2
French	26,720	20,598	77.1	13,865	10,039	72.4	12,855	10,559	82.1
E. V. S.	26,748	18,895	70.6	13,866	9,539	68.8	12,882	9,356	72.6
Asian Languages	15,048	10,004	66.5	7,592	4,109	54.1	7,456	5,895	79.1
Island of Mauritius									
English	25,715	18,318	71.2	13,319	9,004	67.6	12,396	9,314	75.1
Mathematics	25,725	18,826	73.2	13,330	9,465	71.0	12,395	9,361	75.5
French	25,692	19,896	77.4	13,325	9,699	72.8	12,367	10,197	82.5
E. V. S.	25,720	18,290	71.1	13,326	9,246	69.4	12,394	9,044	73.0
Asian Languages	15,048	10,004	66.5	7,592	4,109	54.1	7,456	5,895	79.1
Hindi	9,184	5,912	64.4	4,645	2,422	52.1	4,539	3,490	76.9
Urdu	2,935	2,004	68.3	1,475	810	54.9	1,460	1,194	81.8
Tamil	1,323	938	70.9	652	383	58.7	671	555	82.7
Marathi	349	233	66.8	156	83	53.2	193	150	77.7
Telugu	465	328	70.5	233	140	60.1	232	188	81.0
Modern Chinese	96	71	74.0	33	17	51.5	63	54	85.7
Arabic	696	518	74.4	398	254	63.8	298	264	88.6
Island of Rodrigues									
English	1,030	571	55.4	539	267	49.5	491	304	61.9
Mathematics	1,027	638	62.1	540	316	58.5	487	322	66.1
French	1,028	702	68.3	540	340	63.0	488	362	74.2
E. V. S.	1,028	605	58.9	540	293	54.3	488	312	63.9

Table 2.23 - Number and percentage of passes at C.P.E. examination by district, 1995 - 1997

School candidates only

District	1995			1996			1997		
	No. Examined	No. of Passes	% of Passes	No. Examined	No. of Passes	% of Passes	No. Examined	No. of Passes	% of Passes
Port Louis	4,223	2,740	64.9	3,965	2,513	63.4	3,882	2,479	63.9
Pamplemousses	2,425	1,453	59.9	2,180	1,253	57.5	2,137	1,268	59.3
Riviere du Rempart	2,248	1,346	59.9	2,174	1,326	61.0	2,115	1,333	63.0
Flacq	3,056	1,994	65.2	2,890	1,832	63.4	2,805	1,821	64.9
Grand Port	2,558	1,622	63.4	2,297	1,551	67.5	2,251	1,428	63.4
Savanne	1,423	928	65.2	1,326	906	68.3	1,338	873	65.2
Plaines Wilhems	8,011	5,979	74.6	7,512	5,524	73.5	7,530	5,481	72.8
Moka	1,537	942	61.3	1,293	797	61.6	1,307	860	65.8
Black River	1,029	496	48.2	937	445	47.5	889	413	46.5
Island of Mauritius	26,510	17,500	66.0	24,574	16,147	65.7	24,254	15,956	65.8
Island of Rodrigues	1,223	621	50.8	1,055	590	55.9	976	496	50.8
Republic of Mauritius	27,733	18,121	65.3	25,629	16,737	65.3	25,230	16,452	65.2

**SECONDARY
EDUCATION**

Table 3.1.1 - Distribution of secondary schools by district and administration - 1997

District	Administration							
	All Schools	State ¹			Private			
		Total	Running up to Form VI	Other	Total	Running up to		Other
					Form V	Form VI		
Port Louis	18	3	3	-	15	8	5	2
Pamplemousses	11	3	3	-	8	7	1	-
Riviere du Rempart	9	3	2	1	6	3	3	-
Flacq	10	3	2	1	7	4	3	-
Grand Port	12	3	2	1	9	8	1	-
Savanne	10	2	1	1	8	8	-	-
Plaines Wilhems	48	9	7	2	39	16	23	-
Moka	8	2	2	-	6	5	1	-
Black River	1	1	1	-	-	-	-	-
Island of Mauritius	127	29	23	6	98	59	37	2
Island of Rodrigues	3	-	-	-	3	2	1	-
Republic of Mauritius	130	29	23	6	101	61	38	2

Table 3.1.2 - Distribution of secondary schools by region and administration - 1997

Region	Administration							
	All Schools	State ¹			Private			
		Total	Running up to Form VI	Other	Total	Running up to		Other
					Form V	Form VI		
1 - Port Louis	21	4	4	-	17	10	5	2
2 - North	17	5	4	1	12	8	4	-
3 - East	18	5	4	1	13	9	4	-
4 - South	22	5	3	2	17	16	1	-
5 - Central	25	4	3	1	21	8	13	-
6 - West	24	6	5	1	18	8	10	-
7 - Rodrigues	3	-	-	-	3	2	1	-
All Regions	130	29	23	6	101	61	38	2

¹ includes Mahatma Gandhi Institute

Table 3.2 - Distribution of rooms in secondary schools by administration, district and use. 1997

District	Use of rooms					
	Classroom	Office	Laboratory	Special room	Workshop	Multi-purpose room
All schools						
Port Louis	362	68	45	77	5	12
Pamplemousses	251	31	32	72	4	4
Riviere du Rempart	197	38	22	69	4	6
Flacq	264	48	23	68	5	7
Grand Port	185	36	27	50	8	5
Savanne	129	28	21	44	7	4
Plaines Wilhems	1.150	208	138	312	30	40
Moka	151	28	20	41	6	4
Black River	29	8	4	15	2	1
Island of Mauritius	2.718	493	332	748	71	83
Island of Rodrigues	92	13	7	18	-	2
Republic of Mauritius	2.810	506	339	766	71	85
State schools						
Port Louis	61	13	15	19	4	4
Pamplemousses	102	13	15	39	2	3
Riviere du Rempart	68	16	11	32	4	4
Flacq	61	12	10	21	2	4
Grand Port	48	13	13	25	4	4
Savanne	29	8	7	20	2	3
Plaines Wilhems	234	43	46	74	11	13
Moka	55	8	11	18	4	2
Black River	29	8	4	15	2	1
Island of Mauritius	687	134	132	263	35	38
Private schools						
Port Louis	301	55	30	58	1	8
Pamplemousses	149	18	17	33	2	1
Riviere du Rempart	129	22	11	37	-	2
Flacq	203	36	13	47	3	3
Grand Port	137	23	14	25	4	1
Savanne	100	20	14	24	5	1
Plaines Wilhems	916	165	92	238	19	27
Moka	96	20	9	23	2	2
Black River	-	-	-	-	-	-
Island of Mauritius	2.031	359	200	485	36	45
Island of Rodrigues	92	13	7	18	-	2
Republic of Mauritius	2.123	372	207	503	36	47

Table 3.3 - Recreational facilities by district and administration , 1997

District	Recreational facilities (number of)											
	All Schools				State Schools				Private Schools			
	Volleyball pitch	Basketball ground	Football ground		Volleyball pitch	Basketball ground	Football ground		Volleyball pitch	Basketball ground	Football ground	
Port Louis	32	5	1		3	1	1		29	4	-	
Pamplemousses	46	6	2		5	5	2		41	1	-	
Riviere du Rempart	24	5	3		3	2	2		21	3	1	
Flacq	22	5	3		2	2	2		20	3	1	
Grand Port	29	4	2		3	2	1		26	2	1	
Savanne	25	5	1		1	2	1		24	3	-	
Plaines Wilhems	175	40	29		12	4	4		163	36	25	
Moka	25	6	3		3	2	2		22	4	1	
Black River	2	2	1		2	2	1		-	-	-	
Island of Mauritius	380	78	45		34	22	16		346	56	29	
Island of Rodrigues	4	-	1		-	-	-		4	-	1	
Republic of Mauritius	384	78	46		34	22	16		350	56	30	

Table 3 4 1 - Distribution of secondary schools by district and enrolment range. 1997

District	Enrolment range					Total
	under 200	200 and under 500	500 and under 1,000	1,000 and under 1,500	1,500 and over	
Port Louis	1	5	10	2	-	18
Pamplemousses	-	3	8	-	-	11
Riviere du Rempart	-	4	2	3	-	9
Flacq	-	1	5	4	-	10
Grand Port	-	7	4	-	1	12
Savanne	3	4	3	-	-	10
Plaines Wilhems	1	9	24	13	1	48
Moka	1	3	4	-	-	8
Black River	-	-	-	1	-	1
Island of Mauritius	6	36	60	23	2	127
Island of Rodrigues	-	-	2	1	-	3
Republic of Mauritius	6	36	62	24	2	130

Table 3.4.2 - Distribution of secondary schools by region and enrolment range. 1997

Region	Enrolment range					Total
	under 200	200 and under 500	500 and under 1,000	1,000 and under 1,500	1,500 and over	
1 - Port Louis	1	6	12	2	-	21
2 - North	-	6	8	3	-	17
3 - East	1	4	9	4	-	18
4 - South	3	11	7	-	1	22
5 - Central	1	5	13	5	1	25
6 - West	-	4	11	9	-	24
7 - Rodrigues	-	-	2	1	-	3
All Regions	6	36	62	24	2	130

Table 3.5.1 - Number of sections in secondary schools by district and grade, 1997

District	No. of sections in grade							Total
	I	II	III	IV	V	Lower VI	Upper VI	
Port Louis	57	65	59	64	60	20	25	350
Pamplemousses	38	37	43	43	43	10	11	225
Riviere du Rempart	32	30	29	35	31	10	11	178
Flacq	43	39	39	57	51	14	17	260
Grand Port	32	32	30	38	37	8	10	187
Savanne	23	23	22	28	25	4	2	127
Plaines Wilhems	173	176	166	189	183	96	115	1,098
Moka	21	20	23	29	25	11	13	142
Black River	4	3	4	5	6	3	4	29
Island of Mauritius	423	425	415	488	461	176	208	2,596
Island of Rodrigues	18	17	17	18	14	3	2	89
Republic of Mauritius	441	442	432	506	475	179	210	2,685

Table 3.5.2 - Number of sections in secondary schools by region and grade, 1997

Region	No. of sections in grade							Total
	I	II	III	IV	V	Lower VI	Upper VI	
1 - Port Louis	68	74	70	75	75	23	27	412
2 - North	59	58	61	67	59	17	20	341
3 - East	64	59	62	86	76	25	30	402
4 - South	55	55	52	66	62	12	12	314
5 - Central	83	91	85	98	95	45	46	543
6 - West	94	88	85	96	94	54	73	584
7 - Rodrigues	18	17	17	18	14	3	2	89
All Regions	441	442	432	506	475	179	210	2,685

Table 3.6.1 - Enrolment in secondary schools by administration, gender, district and grade, 1997

All schools

District	Grade							All Grades
	I	II	III	IV	V	Lower VI	Upper VI	
Total	-	-	-	-	-	-	-	-
Port Louis	1,877	2,346	2,114	2,226	2,112	686	816	12,177
Pamplemousses	1,302	1,354	1,546	1,575	1,495	295	336	7,903
Riviere du Rempart	1,230	1,209	1,148	1,328	1,133	366	371	6,785
Flacq	1,542	1,475	1,405	1,961	1,660	518	488	9,049
Grand Port	1,094	1,054	1,036	1,170	1,275	226	287	6,142
Savanne	612	643	724	870	847	146	83	3,925
Plaines Wilhems	6,308	6,660	6,283	6,801	6,709	3,338	3,553	39,652
Moka	645	599	704	904	706	229	293	4,080
Black River	139	97	153	166	206	114	126	1,001
Island of Mauritius	14,749	15,437	15,113	17,001	16,143	5,918	6,353	90,714
Island of Rodrigues	635	621	632	601	481	80	75	3,125
Republic of Mauritius	15,384	16,058	15,745	17,602	16,624	5,998	6,428	93,839
Male								
Port Louis	914	1,083	979	958	1,063	346	447	5,790
Pamplemousses	554	548	677	699	678	99	83	3,338
Riviere du Rempart	648	647	537	660	591	124	135	3,342
Flacq	719	731	719	1,012	813	247	229	4,470
Grand Port	495	497	434	622	623	131	168	2,970
Savanne	298	316	333	405	429	79	46	1,906
Plaines Wilhems	3,227	3,506	3,171	3,287	3,427	1,584	1,782	19,984
Moka	310	284	338	418	339	145	158	1,992
Black River	-	-	77	100	110	64	55	406
Island of Mauritius	7,165	7,612	7,265	8,161	8,073	2,819	3,103	44,198
Island of Rodrigues	307	288	302	281	246	44	40	1,508
Republic of Mauritius	7,472	7,900	7,567	8,442	8,319	2,863	3,143	45,706
Female								
Port Louis	963	1,263	1,135	1,268	1,049	340	369	6,387
Pamplemousses	748	806	869	876	817	196	253	4,565
Riviere du Rempart	582	562	611	668	542	242	236	3,443
Flacq	823	744	686	949	847	271	259	4,579
Grand Port	599	557	602	548	652	95	119	3,172
Savanne	314	327	391	465	418	67	37	2,019
Plaines Wilhems	3,081	3,154	3,112	3,514	3,282	1,754	1,771	19,668
Moka	335	315	366	486	367	84	135	2,088
Black River	139	97	76	66	96	50	71	595
Island of Mauritius	7,584	7,825	7,848	8,840	8,070	3,099	3,250	46,516
Island of Rodrigues	328	333	330	320	235	36	35	1,617
Republic of Mauritius	7,912	8,158	8,178	9,160	8,305	3,135	3,285	48,133

Table 3.6.1 - Enrolment in secondary schools by administration, gender, district and grade, 1997 cont'd

State schools

District	Grade							All Grades
	I	II	III	IV	V	Lower VI	Upper VI	
Total								
Port Louis	288	274	246	270	339	264	338	2,019
Pamplemousses	412	445	509	414	403	229	282	2,694
Riviere du Rempart	368	382	242	294	256	244	266	2,052
Flacq	315	335	237	267	280	198	206	1,838
Grand Port	292	277	187	184	287	163	217	1,607
Savanne	140	125	154	172	204	86	83	964
Plaines Wilhems	1,120	1,110	838	810	867	836	1,124	6,705
Moka	253	190	218	214	225	181	245	1,526
Black River	139	97	153	166	206	114	126	1,001
Island of Mauritius	3,327	3,235	2,784	2,791	3,067	2,315	2,887	20,406
Male								
Port Louis	178	164	171	172	228	184	251	1,348
Pamplemousses	138	136	164	137	156	72	57	860
Riviere du Rempart	247	261	122	151	150	92	117	1,140
Flacq	125	154	158	175	170	92	90	964
Grand Port	180	172	157	166	219	131	168	1,193
Savanne	85	81	83	103	112	49	46	559
Plaines Wilhems	628	614	346	346	399	341	523	3,197
Moka	196	142	163	158	156	121	135	1,071
Black River	-	-	77	100	110	64	55	406
Island of Mauritius	1,777	1,724	1,441	1,508	1,700	1,146	1,442	10,738
Female								
Port Louis	110	110	75	98	111	80	87	671
Pamplemousses	274	309	345	277	247	157	225	1,834
Riviere du Rempart	121	121	120	143	106	152	149	912
Flacq	190	181	79	92	110	106	116	874
Grand Port	112	105	30	18	68	32	49	414
Savanne	55	44	71	69	92	37	37	405
Plaines Wilhems	492	496	492	464	468	495	601	3,508
Moka	57	48	55	56	69	60	110	455
Black River	139	97	76	66	96	50	71	595
Island of Mauritius	1,550	1,511	1,343	1,283	1,367	1,169	1,445	9,668

Table 3 6.1 - Enrolment in secondary schools by administration, gender, district and grade, 1997 cont'd

Private schools

District	Grade							All Grades
	I	II	III	IV	V	Lower VI	Upper VI	
Total								
Port Louis	1.589	2.072	1.868	1.956	1.773	422	478	10 158
Pamplemousses	890	909	1.037	1.161	1.092	66	54	5.209
Riviere du Rempart	862	827	906	1.034	877	122	105	4.733
Flacq	1.227	1.140	1.168	1.694	1.380	320	282	7.211
Grand Port	802	777	849	986	988	63	70	4.535
Savanne	472	518	570	698	643	60	-	2.961
Plaines Wilhems	5.188	5.550	5.445	5.991	5.842	2.502	2.429	32.947
Moka	392	409	486	690	481	48	48	2.554
Black River	-	-	-	-	-	-	-	-
Island of Mauritius	11.422	12.202	12.329	14.210	13.076	3.603	3.466	70.308
Island of Rodrigues	635	621	632	601	481	80	75	3.125
Republic of Mauritius	12.057	12.823	12.961	14.811	13.557	3.683	3.541	73 433
Male								
Port Louis	736	919	808	786	835	162	196	4 442
Pamplemousses	416	412	513	562	522	27	26	2.478
Riviere du Rempart	401	386	415	509	441	32	18	2.202
Flacq	594	577	561	837	643	155	139	3.506
Grand Port	315	325	277	456	404	-	-	1.777
Savanne	213	235	250	302	317	30	-	1.347
Plaines Wilhems	2.599	2.892	2.825	2.941	3.028	1.243	1.259	16.787
Moka	114	142	175	260	183	24	23	921
Black River	-	-	-	-	-	-	-	-
Island of Mauritius	5.388	5.888	5.824	6.653	6.373	1.673	1.661	33.460
Island of Rodrigues	307	288	302	281	246	44	40	1.508
Republic of Mauritius	5.695	6.176	6.126	6.934	6.619	1.717	1.701	34.968
Female								
Port Louis	853	1.153	1.060	1.170	938	260	282	5 716
Pamplemousses	474	497	524	599	570	39	28	2.731
Riviere du Rempart	461	441	491	525	436	90	87	2.531
Flacq	633	563	607	857	737	165	143	3.705
Grand Port	487	452	572	530	584	63	70	2.758
Savanne	259	283	320	396	326	30	-	1.614
Plaines Wilhems	2.589	2.658	2.620	3.050	2.814	1.259	1.170	16.160
Moka	278	267	311	430	298	24	25	1.633
Black River	-	-	-	-	-	-	-	-
Island of Mauritius	6.034	6.314	6.505	7.557	6.703	1.930	1.805	36.848
Island of Rodrigues	328	333	330	320	235	36	35	1.617
Republic of Mauritius	6.362	6.647	6.835	7.877	6.938	1.966	1.840	38.465

Table 3 6 2 - Enrolment in secondary schools by administration, gender, region and grade, 1997

All schools

Region	Grade							All Grades
	I	II	III	IV	V	Lower VI	Upper VI	
Total								
1 - Port Louis	2.256	2.674	2.516	2.600	2.518	758	873	14.195
2 - North	2.153	2.235	2.292	2.529	2.222	589	650	12.670
3 - East	2.187	2.074	2.109	2.865	2.366	747	781	13.129
4 - South	1.706	1.697	1.760	2.040	2.122	372	370	10.067
5 - Central	2.955	3.340	3.045	3.478	3.463	1.510	1.516	19.307
6 - West	3.492	3.417	3.391	3.489	3.452	1.942	2.163	21.346
7 - Rodrigues	635	621	632	601	481	80	75	3.125
All Regions	15.384	16.058	15.745	17.602	16.624	5.998	6.428	93.839
Male								
1 - Port Louis	1.157	1.319	1.260	1.205	1.344	418	504	7.207
2 - North	959	959	933	1.112	988	151	161	5.263
3 - East	1.029	1.015	1.057	1.430	1.152	392	387	6.462
4 - South	793	813	767	1.027	1.052	210	214	4.876
5 - Central	1.538	1.695	1.451	1.639	1.697	707	767	9.494
6 - West	1.689	1.811	1.797	1.748	1.840	941	1.070	10.896
7 - Rodrigues	307	288	302	281	246	44	40	1.508
All Regions	7.472	7.900	7.567	8.442	8.319	2.863	3.143	45.706
Female								
1 - Port Louis	1.099	1.355	1.256	1.395	1.174	340	369	6.988
2 - North	1.194	1.276	1.359	1.417	1.234	438	489	7.407
3 - East	1.158	1.059	1.052	1.435	1.214	355	394	6.667
4 - South	913	884	993	1.013	1.070	162	156	5.191
5 - Central	1.417	1.645	1.594	1.839	1.766	803	749	9.813
6 - West	1.803	1.606	1.594	1.741	1.612	1.001	1.093	10.450
7 - Rodrigues	328	333	330	320	235	36	35	1.617
All Regions	7.912	8.158	8.178	9.160	8.305	3.135	3.285	48.133

Table 3.6.2 - Enrolment in State secondary schools by administration, gender, region, district and grade.
1997 cont'd

State schools

Region	Grade							All Grades
	I	II	III	IV	V	Lower VI	Upper VI	
Total								
1 - Port Louis	426	410	410	407	495	336	395	2.879
2 - North	642	691	587	571	503	401	491	3.886
3 - East	568	525	455	481	505	379	451	3.364
4 - South	432	402	341	356	491	249	300	2.571
5 - Central	377	399	254	262	259	219	330	2.100
6 - West	882	808	737	714	814	731	920	5.606
7 - Rodrigues	-	-	-	-	-	-	-	-
All Regions	3.327	3.235	2.784	2.791	3.067	2.315	2.887	20.406
Male								
1 - Port Louis	316	300	335	309	384	256	308	2.208
2 - North	247	261	122	151	150	92	117	1.140
3 - East	321	296	321	333	326	213	225	2.035
4 - South	265	253	240	269	331	180	214	1.752
5 - Central	254	251	105	107	107	127	234	1.185
6 - West	374	363	318	339	402	278	344	2.418
7 - Rodrigues	-	-	-	-	-	-	-	-
All Regions	1.777	1.724	1.441	1.508	1.700	1.146	1.442	10.738
Female								
1 - Port Louis	110	110	75	98	111	80	87	671
2 - North	395	430	465	420	353	309	374	2.746
3 - East	247	229	134	148	179	166	226	1.329
4 - South	167	149	101	87	160	69	86	819
5 - Central	123	148	149	155	152	92	96	915
6 - West	508	445	419	375	412	453	576	3.188
7 - Rodrigues	-	-	-	-	-	-	-	-
All Regions	1.550	1.511	1.343	1.283	1.367	1.169	1.445	9.668

Table 3.6.2 - Enrolment in secondary schools by administration, gender, region, district and grade, 1997 cont'd

Private schools

Region	Grade							All Grades
	I	II	III	IV	V	Lower VI	Upper VI	
Total								
1 - Port Louis	1.830	2.264	2.106	2.193	2.023	422	478	11.316
2 - North	1.511	1.544	1.705	1.958	1.719	188	159	8.784
3 - East	1.619	1.549	1.654	2.384	1.861	368	330	9.765
4 - South	1.274	1.295	1.419	1.684	1.631	123	70	7.496
5 - Central	2.578	2.941	2.791	3.216	3.204	1.291	1.186	17.207
6 - West	2.610	2.609	2.654	2.775	2.638	1.211	1.243	15.740
7 - Rodrigues	635	621	632	601	481	80	75	3.125
All Regions	12.057	12.823	12.961	14.811	13.557	3.683	3.541	73.433
Male								
1 - Port Louis	841	1.019	925	896	960	162	196	4.999
2 - North	712	698	811	961	838	59	44	4.123
3 - East	708	719	736	1.097	826	179	162	4.427
4 - South	528	560	527	758	721	30	-	3.124
5 - Central	1.284	1.444	1.346	1.532	1.590	580	533	8.309
6 - West	1.315	1.448	1.479	1.409	1.438	663	726	8.478
7 - Rodrigues	307	288	302	281	246	44	40	1.508
All Regions	5.695	6.176	6.126	6.934	6.619	1.717	1.701	34.968
Female								
1 - Port Louis	989	1.245	1.181	1.297	1.063	260	282	6.317
2 - North	799	846	894	997	881	129	115	4.661
3 - East	911	830	918	1.287	1.035	189	168	5.338
4 - South	746	735	892	926	910	93	70	4.372
5 - Central	1.294	1.497	1.445	1.684	1.614	711	653	8.898
6 - West	1.295	1.161	1.175	1.366	1.200	548	517	7.262
7 - Rodrigues	328	333	330	320	235	36	35	1.617
All Regions	6.362	6.647	6.835	7.877	6.938	1.966	1.840	38.465

Table 3.7 - Enrolment in secondary schools by grade and gender (1995-1997)

Grade	1995			1996			1997		
	Total	Male	Female	Total	Male	Female	Total	Male	Female
Republic of Mauritius									
I	16,289	7,824	8,465	16,486	8,030	8,456	15,384	7,472	7,912
II	15,877	7,631	8,246	15,833	7,663	8,170	16,058	7,900	8,158
III	16,650	8,056	8,594	16,103	7,938	8,165	15,745	7,567	8,178
IV	16,661	8,254	8,407	17,567	8,617	8,950	17,602	8,442	9,160
V	14,817	7,163	7,654	15,761	7,728	8,033	16,624	8,319	8,305
Lower VI	4,935	2,456	2,479	5,361	2,640	2,721	5,998	2,863	3,135
Upper VI	5,875	2,886	2,989	5,926	2,950	2,976	6,428	3,143	3,285
Total	91,104	44,270	46,834	93,037	45,566	47,471	93,839	45,706	48,133
Island of Mauritius									
I	15,698	7,531	8,167	15,872	7,756	8,116	14,749	7,165	7,584
II	15,261	7,344	7,917	15,240	7,366	7,874	15,437	7,612	7,825
III	16,110	7,803	8,307	15,467	7,642	7,825	15,113	7,265	7,848
IV	16,225	8,056	8,169	17,043	8,368	8,675	17,001	8,161	8,840
V	14,439	6,990	7,449	15,328	7,534	7,794	16,143	8,073	8,070
Lower VI	4,887	2,432	2,455	5,284	2,600	2,684	5,918	2,819	3,099
Upper VI	5,835	2,867	2,968	5,886	2,932	2,954	6,353	3,103	3,250
Total	88,455	43,023	45,432	90,120	44,198	45,922	90,714	44,198	46,516
Island of Rodrigues									
I	591	293	298	614	274	340	635	307	328
II	616	287	329	593	297	296	621	288	333
III	540	253	287	636	296	340	632	302	330
IV	436	198	238	524	249	275	601	281	320
V	378	173	205	433	194	239	481	246	235
Lower VI	48	24	24	77	40	37	80	44	36
Upper VI	40	19	21	40	18	22	75	40	35
Total	2,649	1,247	1,402	2,917	1,368	1,549	3,125	1,508	1,617

Table 3.8 - Enrolment in secondary schools by gender, age and grade, 1997

Republic of Mauritius

Age (in years)	Grade							All Grades
	I	II	III	IV	V	Lower VI	Upper VI	
Total								
10	71	-	-	-	-	-	-	71
11	7,103	70	-	-	-	-	-	7,173
12	6,175	6,799	79	-	-	-	-	13,053
13	1,619	6,309	5,441	54	-	-	-	13,423
14	416	2,289	6,394	4,953	15	-	-	14,067
15	-	510	2,867	6,883	3,593	6	-	13,859
16	-	81	827	4,004	5,773	1,729	3	12,417
17	-	-	137	1,482	4,919	2,512	1,466	10,516
18	-	-	-	211	1,996	1,489	2,528	6,224
19	-	-	-	15	301	253	1,956	2,525
20	-	-	-	-	27	9	475	511
Total	15,384	16,058	15,745	17,602	16,624	5,998	6,428	93,839
Male								
10	21	-	-	-	-	-	-	21
11	3,325	38	-	-	-	-	-	3,363
12	3,159	3,188	34	-	-	-	-	6,381
13	751	3,277	2,525	27	-	-	-	6,580
14	216	1,091	3,173	2,292	3	-	-	6,775
15	-	271	1,368	3,355	1,692	3	-	6,689
16	-	35	392	1,936	2,779	726	2	5,870
17	-	-	75	718	2,613	1,223	594	5,223
18	-	-	-	104	1,054	767	1,215	3,140
19	-	-	-	10	165	137	1,082	1,394
20	-	-	-	-	13	7	250	270
Total	7,472	7,900	7,567	8,442	8,319	2,863	3,143	45,706
Female								
10	50	-	-	-	-	-	-	50
11	3,778	32	-	-	-	-	-	3,810
12	3,016	3,611	45	-	-	-	-	6,672
13	868	3,032	2,916	27	-	-	-	6,843
14	200	1,198	3,221	2,661	12	-	-	7,292
15	-	239	1,499	3,528	1,901	3	-	7,170
16	-	46	435	2,068	2,994	1,003	1	6,547
17	-	-	62	764	2,306	1,289	872	5,293
18	-	-	-	107	942	722	1,313	3,084
19	-	-	-	5	136	116	874	1,131
20	-	-	-	-	14	2	225	241
Total	7,912	8,158	8,178	9,160	8,305	3,135	3,285	48,133

Table 3.9 - Enrolment in secondary schools by gender, age and grade, 1997

Island of Mauritius

Age (in years)	Grade							All Grades
	I	II	III	IV	V	Lower VI	Upper VI	
Total								
10	71	-	-	-	-	-	-	71
11	6,811	69	-	-	-	-	-	6,880
12	5,920	6,542	79	-	-	-	-	12,541
13	1,539	6,053	5,241	54	-	-	-	12,887
14	408	2,204	6,165	4,800	14	-	-	13,591
15	-	491	2,729	6,676	3,501	6	-	13,403
16	-	78	771	3,855	5,635	1,705	3	12,047
17	-	-	128	1,403	4,788	2,490	1,445	10,254
18	-	-	-	199	1,909	1,460	2,503	6,071
19	-	-	-	14	276	249	1,929	2,468
20	-	-	-	-	20	8	473	501
Total	14,749	15,437	15,113	17,001	16,143	5,918	6,353	90,714
Male								
10	21	-	-	-	-	-	-	21
11	3,181	38	-	-	-	-	-	3,219
12	3,039	3,074	34	-	-	-	-	6,147
13	711	3,164	2,433	27	-	-	-	6,335
14	213	1,039	3,065	2,217	3	-	-	6,537
15	-	262	1,294	3,277	1,651	3	-	6,487
16	-	35	366	1,854	2,708	713	2	5,678
17	-	-	73	677	2,544	1,214	582	5,090
18	-	-	-	99	1,010	749	1,205	3,063
19	-	-	-	10	150	134	1,066	1,360
20	-	-	-	-	7	6	248	261
Total	7,165	7,612	7,265	8,161	8,073	2,819	3,103	44,198
Female								
10	50	-	-	-	-	-	-	50
11	3,630	31	-	-	-	-	-	3,661
12	2,881	3,468	45	-	-	-	-	6,394
13	828	2,889	2,808	27	-	-	-	6,552
14	195	1,165	3,100	2,583	11	-	-	7,054
15	-	229	1,435	3,399	1,850	3	-	6,916
16	-	43	405	2,001	2,927	992	1	6,369
17	-	-	55	726	2,244	1,276	863	5,164
18	-	-	-	100	899	711	1,298	3,008
19	-	-	-	4	126	115	863	1,108
20	-	-	-	-	13	2	225	240
Total	7,584	7,825	7,848	8,840	8,070	3,099	3,250	46,516

Table 3.10 - Enrolment in secondary schools by gender, age and grade. 1997

Island of Rodrigues

Age (in years)	Grade							All Grades
	I	II	III	IV	V	Lower VI	Upper VI	
Total								
11	292	1	-	-	-	-	-	293
12	255	257	-	-	-	-	-	512
13	80	256	200	-	-	-	-	536
14	8	85	229	153	1	-	-	476
15	-	19	138	207	92	-	-	456
16	-	3	56	149	138	24	-	370
17	-	-	9	79	131	22	21	262
18	-	-	-	12	87	29	25	153
19	-	-	-	1	25	4	27	57
20	-	-	-	-	7	1	2	10
Total	635	621	632	601	481	80	75	3,125
Male								
11	144	-	-	-	-	-	-	144
12	120	114	-	-	-	-	-	234
13	40	113	92	-	-	-	-	245
14	3	52	108	75	-	-	-	238
15	-	9	74	78	41	-	-	202
16	-	-	26	82	71	13	-	192
17	-	-	2	41	69	9	12	133
18	-	-	-	5	44	18	10	77
19	-	-	-	-	15	3	16	34
20	-	-	-	-	6	1	2	9
Total	307	288	302	281	246	44	40	1,508
Female								
11	148	1	-	-	-	-	-	149
12	135	143	-	-	-	-	-	278
13	40	143	108	-	-	-	-	291
14	5	33	121	78	1	-	-	238
15	-	10	64	129	51	-	-	254
16	-	3	30	67	67	11	-	178
17	-	-	7	38	62	13	9	129
18	-	-	-	7	43	11	15	76
19	-	-	-	1	10	1	11	23
20	-	-	-	-	1	-	-	1
Total	328	333	330	320	235	36	35	1,617

Table 3.11.1 - Number of repeaters in secondary schools by administration, gender, district and grade, 1997

All schools

District	Grade							All Grades
	I	II	III	IV	V	Lower VI	Upper VI	
Total								
Port Louis	119	224	284	403	696	39	205	1.970
Pamplemousses	39	26	121	373	517	23	128	1.227
Riviere du Rempart	83	76	101	320	333	2	119	1.034
Flacq	116	56	144	598	536	31	144	1.625
Grand Port	33	24	35	264	346	14	108	824
Savanne	10	13	22	222	284	35	25	611
Plaines Wilhems	351	582	645	1.368	1.790	267	760	5.763
Moka	9	24	46	222	154	19	47	521
Black River	1	-	11	17	-	2	-	31
Island of Mauritius	761	1.025	1.409	3.787	4.656	432	1.536	13.606
Island of Rodrigues	97	118	195	203	165	5	8	791
Republic of Mauritius	858	1.143	1.604	3.990	4.821	437	1.544	14.397
Male								
Port Louis	93	130	143	159	345	17	138	1.025
Pamplemousses	26	18	72	205	270	14	31	636
Riviere du Rempart	38	38	44	130	200	-	51	501
Flacq	56	37	64	308	284	17	71	837
Grand Port	17	16	18	150	173	9	65	448
Savanne	4	11	18	103	148	5	14	303
Plaines Wilhems	143	328	379	714	989	177	425	3.155
Moka	7	15	33	109	91	14	35	304
Black River	-	-	2	16	-	2	-	20
Island of Mauritius	384	593	773	1.894	2.500	255	830	7.229
Island of Rodrigues	46	64	85	95	66	1	3	360
Republic of Mauritius	430	657	858	1.989	2.566	256	833	7.589
Female								
Port Louis	26	94	141	244	351	22	67	945
Pamplemousses	13	8	49	168	247	9	97	591
Riviere du Rempart	45	38	57	190	133	2	68	533
Flacq	60	19	80	290	252	14	73	788
Grand Port	16	8	17	114	173	5	43	376
Savanne	6	2	4	119	136	30	11	308
Plaines Wilhems	208	254	266	654	801	90	335	2.608
Moka	2	9	13	113	63	5	12	217
Black River	1	-	9	1	-	-	-	11
Island of Mauritius	377	432	636	1.893	2.156	177	706	6.377
Island of Rodrigues	51	54	110	108	99	4	5	431
Republic of Mauritius	428	486	746	2.001	2.255	181	711	6.808

Table 3.11.1 - Number of repeaters in secondary schools by administration , gender, district and grade,1997,cont'd

State schools

District	Grade							All Grades
	I	II	III	IV	V	Lower VI	Upper VI	
Total								
Port Louis	-	2	4	5	57	17	98	183
Pamplemousses	-	3	16	24	111	14	114	282
Riviere du Rempart	1	5	3	45	46	2	94	196
Flacq	-	-	-	16	72	14	57	159
Grand Port	-	-	10	17	78	13	86	204
Savanne	-	-	1	26	67	5	25	124
Plaines Wilhems	-	3	9	15	94	28	235	384
Moka	4	3	16	13	38	17	47	138
Black River	1	-	11	17	-	2	-	31
Island of Mauritius	6	16	70	178	563	112	756	1,701
Male								
Port Louis	-	2	4	4	31	8	79	128
Pamplemousses	-	3	16	24	70	10	24	147
Riviere du Rempart	-	-	-	16	46	-	49	111
Flacq	-	-	-	16	48	8	29	101
Grand Port	-	-	10	16	60	9	65	160
Savanne	-	-	1	18	34	5	14	72
Plaines Wilhems	-	-	2	4	16	22	112	156
Moka	4	3	16	13	38	14	35	123
Black River	-	-	2	16	-	2	-	20
Island of Mauritius	4	8	51	127	343	78	407	1,018
Female								
Port Louis	-	-	-	1	26	9	19	55
Pamplemousses	-	-	-	-	41	4	90	135
Riviere du Rempart	1	5	3	29	-	2	45	85
Flacq	-	-	-	-	24	6	28	58
Grand Port	-	-	-	1	18	4	21	44
Savanne	-	-	-	8	33	-	11	52
Plaines Wilhems	-	3	7	11	78	6	123	228
Moka	-	-	-	-	-	3	12	15
Black River	1	-	9	1	-	-	-	11
Island of Mauritius	2	8	19	51	220	34	349	683

Table 3.11.1 - Number of repeaters in secondary schools by administration, gender, district and grade, 1997 cont'd

Private schools

District	Grade							All Grades
	I	II	III	IV	V	Lower VI	Upper VI	
Total								
Port Louis	119	222	280	398	639	22	107	1,787
Pamplemousses	39	23	105	349	406	9	14	945
Riviere du Rempart	82	71	98	275	287	-	25	838
Flacq	116	56	144	582	464	17	87	1,466
Grand Port	33	24	25	247	268	1	22	620
Savanne	10	13	21	196	217	30	-	487
Plaines Wilhems	351	579	636	1,353	1,696	239	525	5,379
Moka	5	21	30	209	116	2	-	383
Black River	-	-	-	-	-	-	-	-
Island of Mauritius	755	1,009	1,339	3,609	4,093	320	780	11,905
Island of Rodrigues	97	118	195	203	165	5	8	791
Republic of Mauritius	852	1,127	1,534	3,812	4,258	325	788	12,696
Male								
Port Louis	93	128	139	155	314	9	59	897
Pamplemousses	26	15	56	181	200	4	7	489
Riviere du Rempart	38	38	44	114	154	-	2	390
Flacq	56	37	64	292	236	9	42	736
Grand Port	17	16	8	134	113	-	-	288
Savanne	4	11	17	85	114	-	-	231
Plaines Wilhems	143	328	377	710	973	155	313	2,999
Moka	3	12	17	96	53	-	-	181
Black River	-	-	-	-	-	-	-	-
Island of Mauritius	380	585	722	1,767	2,157	177	423	6,211
Island of Rodrigues	46	64	85	95	66	1	3	360
Republic of Mauritius	426	649	807	1,862	2,223	178	426	6,571
Female								
Port Louis	26	94	141	243	325	13	48	890
Pamplemousses	13	8	49	168	206	5	7	456
Riviere du Rempart	44	33	54	161	133	-	23	448
Flacq	60	19	80	290	228	8	45	730
Grand Port	16	8	17	113	155	1	22	332
Savanne	6	2	4	111	103	30	-	256
Plaines Wilhems	208	251	259	643	723	84	212	2,380
Moka	2	9	13	113	63	2	-	202
Black River	-	-	-	-	-	-	-	-
Island of Mauritius	375	424	617	1,842	1,936	143	357	5,694
Island of Rodrigues	51	54	110	108	99	4	5	431
Republic of Mauritius	426	478	727	1,950	2,035	147	362	6,125

Table 3.11.2 - Number of repeaters in secondary schools by administration , gender, region and grade,1997

All schools

Region	Grade							All Grades
	I	II	III	IV	V	Lower VI	Upper VI	
Total								
1 - Port Louis	135	233	316	500	830	49	229	2,292
2 - North	106	93	190	596	716	15	223	1,939
3 - East	125	80	190	820	690	50	191	2,146
4 - South	43	37	57	486	630	49	133	1,435
5 - Central	132	284	344	784	1,050	129	424	3,147
6 - West	220	298	312	601	740	140	336	2,647
7 - Rodrigues	97	118	195	203	165	5	8	791
All Regions	858	1,143	1,604	3,990	4,821	437	1,544	14,397
Male								
1 - Port Louis	104	138	167	220	459	27	162	1,277
2 - North	53	48	92	274	356	4	58	885
3 - East	63	52	97	417	375	31	106	1,141
4 - South	21	27	36	253	321	14	79	751
5 - Central	62	149	184	408	544	68	206	1,621
6 - West	81	179	197	322	445	111	219	1,554
7 - Rodrigues	46	64	85	95	66	1	3	360
All Regions	430	657	858	1,989	2,566	256	833	7,589
Female								
1 - Port Louis	31	95	149	280	371	22	67	1,015
2 - North	53	45	98	322	360	11	165	1,054
3 - East	62	28	93	403	315	19	85	1,005
4 - South	22	10	21	233	309	35	54	684
5 - Central	70	135	160	376	506	61	218	1,526
6 - West	139	119	115	279	295	29	117	1,093
7 - Rodrigues	51	54	110	108	99	4	5	431
All Regions	428	486	746	2,001	2,255	181	711	6,808

Table 3.11.2 - Number of repeaters in State secondary schools by administration , gender, region and grade,1997 cont'd

State schools

Region	Grade							All Grades
	I	II	III	IV	V	Lower VI	Upper VI	
Total								
1 - Port Louis	-	5	20	29	127	27	122	330
2 - North	1	5	3	45	87	6	184	331
3 - East	4	3	16	29	110	31	104	297
4 - South	-	-	11	43	145	18	111	328
5 - Central	-	3	7	10	71	17	181	289
6 - West	1	-	13	22	23	13	54	126
7 - Rodrigues	-	-	-	-	-	-	-	-
All Regions	6	16	70	178	563	112	756	1,701
Male								
1 - Port Louis	-	5	20	28	101	18	103	275
2 - North	-	-	-	16	46	-	49	111
3 - East	4	3	16	29	86	22	64	224
4 - South	-	-	11	34	94	14	79	232
5 - Central	-	-	-	-	5	15	112	132
6 - West	-	-	4	20	11	9	-	44
7 - Rodrigues	-	-	-	-	-	-	-	-
All Regions	4	8	51	127	343	78	407	1,018
Female								
1 - Port Louis	-	-	-	1	26	9	19	55
2 - North	1	5	3	29	41	6	135	220
3 - East	-	-	-	-	24	9	40	73
4 - South	-	-	-	9	51	4	32	96
5 - Central	-	3	7	10	66	2	69	157
6 - West	1	-	9	2	12	4	54	82
7 - Rodrigues	-	-	-	-	-	-	-	-
All Regions	2	8	19	51	220	34	349	683

Table 3.11.2 - Number of repeaters in Private secondary schools by administration , gender, region and grade,1997 cont'd

Private schools

Region	Grade							All Grades
	I	II	III	IV	V	Lower VI	Upper VI	
Total								
1 - Port Louis	135	228	296	471	703	22	107	1,962
2 - North	105	88	187	551	629	9	39	1,608
3 - East	121	77	174	791	580	19	87	1,849
4 - South	43	37	46	443	485	31	22	1,107
5 - Central	132	281	337	774	979	112	243	2,858
6 - West	219	298	299	579	717	127	282	2,521
7 - Rodrigues	97	118	195	203	165	5	8	791
All Regions	852	1,127	1,534	3,812	4,258	325	788	12,696
Male								
1 - Port Louis	104	133	147	192	358	9	59	1,002
2 - North	53	48	92	258	310	4	9	774
3 - East	59	49	81	388	289	9	42	917
4 - South	21	27	25	219	227	-	-	519
5 - Central	62	149	184	408	539	53	94	1,489
6 - West	81	179	193	302	434	102	219	1,510
7 - Rodrigues	46	64	85	95	66	1	3	360
All Regions	426	649	807	1,862	2,223	178	426	6,571
Female								
1 - Port Louis	31	95	149	279	345	13	48	960
2 - North	52	40	95	293	319	5	30	834
3 - East	62	28	93	403	291	10	45	932
4 - South	22	10	21	224	258	31	22	588
5 - Central	70	132	153	366	440	59	149	1,369
6 - West	138	119	106	277	283	25	63	1,011
7 - Rodrigues	51	54	110	108	99	4	5	431
All Regions	426	478	727	1,950	2,035	147	362	6,125

Table 3.12 - Secondary enrolment and enrolment ratio¹ by gender, 1988 - 1997 (Island of Mauritius)

Year	Male		Female		Both Sexes	
	Enrolment	Enrolment Ratio	Enrolment	Enrolment Ratio	Enrolment	Enrolment Ratio
1988	36.673	47	35.716	48	72,389	47
1989	38.428	49	37,728	50	76,156	49
1990	38.242	49	38,198	50	76,440	49
1991	38.916	48	40,411	51	79,327	50
1992	40.352	48 *	41,354	51	81,706	50
1993	42.032	49	43,490	52	85,522	50
1994	42.636	49	44,541	53 *	87,177	51
1995	43.023	50	45,432	54	88,455	52
1996	44.198	52	45,922	56	90,120	54
1997	44,198	53	46,516	57	90,714	55

¹ No. of students enrolled per 100 population aged 12-19

* Revised

Table 3.13 - Teaching staff in secondary schools by district, administration and gender, 1997

District	All Schools			State Schools			Private Schools		
	Total	Male	Female	Total	Male	Female	Total	Male	Female
Port Louis	629	313	316	137	79	58	492	234	258
Pamplemousses	395	253	142	165	90	75	230	163	67
Riviere du Rempart	326	192	134	123	73	50	203	119	84
Flacq	434	284	150	105	68	37	329	216	113
Grand Port	315	166	149	96	62	34	219	104	115
Savanne	238	130	108	71	46	25	167	84	83
Plaines Wilhems	1,931	1,046	885	421	233	188	1,510	813	697
Moka	269	130	139	124	65	59	145	65	80
Black River	52	30	22	52	30	22	-	-	-
Island of Mauritius	4,589	2,544	2,045	1,294	746	548	3,295	1,798	1,497
Island of Rodrigues	121	70	51	-	-	-	121	70	51
Republic of Mauritius	4,710	2,614	2,096	1,294	746	548	3,416	1,868	1,548

Table 3.14 - Teaching staff in secondary schools by age and gender, 1997

Age (years)	Republic of Mauritius			Island of Mauritius			Island of Rodrigues		
	Total	Male	Female	Total	Male	Female	Total	Male	Female
Under 25	442	179	263	398	159	239	44	20	24
25 - 29	605	305	300	580	287	293	25	18	7
30 - 34	394	185	209	381	181	200	13	4	9
35 - 39	946	470	476	934	463	471	12	7	5
40 - 44	1,169	727	442	1,148	711	437	21	16	5
45 - 49	663	416	247	660	414	246	3	2	1
50 - 54	299	193	106	297	191	106	2	2	-
55 - 59	162	120	42	161	119	42	1	1	-
60 and over	14	9	5	14	9	5	-	-	-
Not Stated	16	10	6	16	10	6	-	-	-
Total	4,710	2,614	2,096	4,589	2,544	2,045	121	70	51

Table 3.15.1 - Teaching staff in secondary schools by gender, district and highest academic qualification, 1997

District	Highest academic qualification						Not Stated	Total
	Secondary		Tertiary					
	School Certificate or equivalent	Higher School Certificate or equivalent	Certificate or Diploma	First Degree	Post Graduate			
Total								
Port Louis	67	72	246	182	61	1	629	
Pamplemousses	45	74	83	144	49	-	395	
Riviere du Rempart	39	68	71	122	24	2	326	
Flacq	48	98	87	156	43	2	434	
Grand Port	32	84	69	96	32	2	315	
Savanne	37	70	39	62	30	-	238	
Plaines Wilhems	168	295	540	715	211	2	1,931	
Moka	15	33	68	109	44	-	269	
Black River	1	-	17	21	13	-	52	
Island of Mauritius	452	794	1,220	1,607	507	9	4,589	
Island of Rodrigues	7	54	14	39	7	-	121	
Republic of Mauritius	459	848	1,234	1,646	514	9	4,710	
Male								
Port Louis	30	12	126	110	34	1	313	
Pamplemousses	31	39	55	90	38	-	253	
Riviere du Rempart	24	38	49	64	16	1	192	
Flacq	28	59	63	101	31	2	284	
Grand Port	13	31	49	58	14	1	166	
Savanne	23	30	24	36	17	-	130	
Plaines Wilhems	100	151	273	397	123	2	1,046	
Moka	11	10	29	56	24	-	130	
Black River	1	-	7	14	8	-	30	
Island of Mauritius	261	370	675	926	305	7	2,544	
Island of Rodrigues	4	29	5	26	6	-	70	
Republic of Mauritius	265	399	680	952	311	7	2,614	
Female								
Port Louis	37	60	120	72	27	-	316	
Pamplemousses	14	35	28	54	11	-	142	
Riviere du Rempart	15	30	22	58	8	1	134	
Flacq	20	39	24	55	12	-	150	
Grand Port	19	53	20	38	18	1	149	
Savanne	14	40	15	26	13	-	108	
Plaines Wilhems	68	144	267	318	88	-	885	
Moka	4	23	39	53	20	-	139	
Black River	-	-	10	7	5	-	22	
Island of Mauritius	191	424	545	681	202	2	2,045	
Island of Rodrigues	3	25	9	13	1	-	51	
Republic of Mauritius	194	449	554	694	203	2	2,096	

Table 3.15.2 - Teaching staff in secondary schools by gender, region and highest academic qualification, 1997

Region	Highest academic qualification						
	Secondary		Tertiary			Not Stated	Total
	School Certificate or equivalent	Higher School Certificate or equivalent	Certificate or Diploma	First Degree	Post Graduate		
Total							
1 - Port Louis	75	94	269	220	70	1	729
2 - North	76	120	131	228	64	2	621
3 - East	63	131	155	265	87	2	703
4 - South	69	154	108	158	62	2	553
5 - Central	79	163	226	364	109	2	943
6 - West	90	132	331	372	115	-	1,040
7 - Rodrigues	7	54	14	39	7	-	121
All Regions	459	848	1,234	1,646	514	9	4,710
Male							
1 - Port Louis	38	26	144	135	41	1	385
2 - North	47	63	86	129	47	1	373
3 - East	39	69	92	157	55	2	414
4 - South	36	61	73	94	31	1	296
5 - Central	55	71	95	207	64	2	494
6 - West	46	80	185	204	67	-	582
7 - Rodrigues	4	29	5	26	6	-	70
All Regions	265	399	680	952	311	7	2,614
Female							
1 - Port Louis	37	68	125	85	29	-	344
2 - North	29	57	45	99	17	1	248
3 - East	24	62	63	108	32	-	289
4 - South	33	93	35	64	31	1	257
5 - Central	24	92	131	157	45	-	449
6 - West	44	52	146	168	48	-	458
7 - Rodrigues	3	25	9	13	1	-	51
All Regions	194	449	554	694	203	2	2,096

Table 3.16 - Teaching staff in secondary schools by length of teaching experience, administration and gender, 1997

Length of teaching experience (in years)	All Schools			State Schools			Private Schools			All Schools			State Schools			Private Schools			T	M	F
	T	M	F	T	M	F	T	M	F	T	M	F	T	M	F	T	M	F			
	Republic of Mauritius									Island of Mauritius											
under 3	775	359	416	199	81	118	576	278	298	717	331	386	199	81	118	518	250	268	58	28	30
3 and under 6	477	262	215	126	65	61	351	197	154	456	245	211	126	65	61	330	180	150	21	17	4
6 " 9	396	192	204	106	51	55	290	141	149	385	185	200	106	51	55	279	134	145	11	7	4
9 " 12	300	169	131	62	39	23	238	130	108	293	163	130	62	39	23	231	124	107	7	6	1
12 " 15	265	154	111	84	54	30	181	100	81	257	152	105	84	54	30	173	98	75	8	2	6
15 " 18	508	301	207	200	113	87	308	188	120	506	300	206	200	113	87	306	187	119	2	1	1
18 " 21	889	508	381	204	121	83	685	387	298	882	503	379	204	121	83	678	382	296	7	5	2
21 " 24	489	290	199	115	73	42	374	217	157	489	290	199	115	73	42	374	217	157	-	-	-
24 " 27	227	142	85	78	59	19	149	83	66	223	141	82	78	59	19	145	82	63	4	1	3
27 " 30	153	89	64	48	38	10	105	51	54	152	88	64	48	38	10	104	50	54	1	1	-
30 and over	231	148	83	72	52	20	159	96	63	229	146	83	72	52	20	157	94	63	2	2	-
Total	4,710	2,614	2,096	1,294	746	548	3,416	1,868	1,548	4,589	2,544	2,045	1,294	746	548	3,295	1,798	1,497	121	70	51

T: Total M: Male F: Female

Table 3.17 - Teaching staff in secondary schools by length of continued service in present school, administration and gender, 1997

Length of continued service (in years)	All Schools			State Schools			Private Schools			All Schools			State Schools			Private Schools			T	M	F			
	T	M	F	T	M	F	T	M	F	T	M	F	T	M	F	T	M	F						
	Island of Mauritius																					Island of Rodrigues		
	Republic of Mauritius																		Island of Mauritius			Island of Rodrigues		
under 2	978	542	436	475	278	197	503	264	239	413	475	278	197	455	239	216	48	25	23					
2 "	476	246	230	223	110	113	253	136	117	222	223	110	113	233	124	109	20	12	8					
3 "	249	144	105	106	68	38	143	76	67	100	106	68	38	130	68	62	13	8	5					
4 "	269	165	104	78	47	31	191	118	73	104	78	47	31	180	107	73	11	11	-					
5 "	268	150	118	113	62	51	155	88	67	117	113	62	51	149	83	66	6	5	1					
6 "	184	98	86	69	45	24	115	53	62	83	69	45	24	110	51	59	5	2	3					
7 "	179	97	82	50	31	19	129	66	63	80	50	31	19	127	66	61	2	-	2					
8 "	142	74	68	47	24	23	95	50	45	68	47	24	23	91	46	45	4	4	-					
9 "	73	45	28	19	13	6	54	32	22	28	19	13	6	52	30	22	2	2	-					
10 "	388	222	166	49	34	15	339	188	151	162	49	34	15	335	188	147	4	-	4					
15 and over	1,483	821	662	52	27	25	1,431	794	637	657	52	27	25	1,425	793	632	6	1	5					
Not Stated	21	10	11	13	7	6	8	3	5	11	13	7	6	8	3	5	-	-	-					
Total	4,710	2,614	2,096	1,294	746	548	3,416	1,868	1,548	2,045	1,294	746	548	3,295	1,798	1,497	121	70	51					

T Total M Male F: Female

Table 3.18 - Non-teaching staff in secondary schools by category, administration and gender, 1997

Category	All Schools			State Schools			Private Schools			All Schools			State Schools			Private Schools			T	M	F		
	T	M	F	T	M	F	T	M	F	T	M	F	T	M	F	T	M	F					
	Island of Mauritius																					Island of Mauritius	
Senior Management	205	136	69	45	32	13	160	104	56	200	132	68	45	32	13	155	100	55	5	4	1		
Other Administrative staff	703	233	470	206	73	133	497	160	337	690	230	460	206	73	133	484	157	327	13	3	10		
Caretaker	538	378	160	104	84	20	434	294	140	517	358	159	104	84	20	413	274	139	21	20	1		
Labourer	339	296	43	175	157	18	164	139	25	334	292	42	175	157	18	159	135	24	5	4	1		
Laboratory assistant	435	360	75	189	169	20	246	191	55	428	353	75	189	169	20	239	184	55	7	7	-		
Other	220	163	57	116	93	23	104	70	34	214	159	55	116	93	23	98	66	32	6	4	2		
Total	2,440	1,566	874	835	608	227	1,605	958	647	2,383	1,524	859	835	608	227	1,548	916	632	57	42	15		

T: Total M: Male F: Female

Table 3.19 - Pupil/Teacher Ratio in secondary schools by administration (1988-1997)

Year	All Schools			State Schools			Private Schools		
	No. of pupils	No. of teachers	Pupil / Teacher Ratio	No. of pupils	No. of teachers	Pupil / Teacher Ratio	No. of pupils	No. of teachers	Pupil / Teacher Ratio
Republic of Mauritius									
1988	73,765	3,700	20	16,180	1,036	16	57,585	2,664	22
1989	77,740	3,757	21	15,625	1,021	15	62,115	2,736	23
1990	78,110	3,728	21	15,227	986	15	62,883	2,742	23
1991	81,090	3,949	21	16,495	1,047	16	64,595	2,902	22
1992	83,591	4,050	21	17,014	1,089	16	66,577	2,961	22
1993	87,661	4,160	21	17,664	1,104	16	69,997	3,056	23
1994	89,581	4,234	21	17,664	1,104	16	71,917	3,130	23
1995	91,104	4,375	21	18,735	1,113	17	72,369	3,262	22
1996	93,037	4,564	20	19,479	1,205	16	73,558	3,359	22
1997	93,839	4,710	20	19,479	1,294	15	74,360	3,416	22
Island of Mauritius									
1988	72,389	3,643	20	15,322	1,010	15	57,067	2,633	22
1989	76,156	3,700	21	15,625	1,021	15	60,531	2,679	23
1990	76,440	3,668	21	15,227	986	15	61,213	2,682	23
1991	79,327	3,883	20	16,495	1,047	16	62,832	2,836	22
1992	81,706	3,981	21	17,014	1,089	16	64,692	2,892	22
1993	85,522	4,075	21	17,664	1,104	16	67,858	2,971	23
1994	87,177	4,141	21	18,189	1,077	17	68,988	3,064	23
1995	88,455	4,279	21	18,735	1,113	17	69,720	3,166	22
1996	90,120	4,445	20	19,479	1,205	16	70,641	3,240	22
1997	90,714	4,589	20	20,406	1,294	16	70,308	3,295	21
Island of Rodrigues									
1988	1,376	57	24	858	26	33	518	31	17
1989	1,584	57	28	-	-	-	1,584	57	28
1990	1,670	60	28	-	-	-	1,670	60	28
1991	1,763	66	27	-	-	-	1,763	66	27
1992	1,885	69	27	-	-	-	1,885	69	27
1993	2,139	85	25	-	-	-	2,139	85	25
1994	2,404	93	26	-	-	-	2,404	93	26
1995	2,649	96	28	-	-	-	2,649	93	28
1996	2,917	119	25	-	-	-	2,917	93	31
1997	3,125	121	26	-	-	-	3,125	121	26

Table 3.20 - Cambridge School Certificate Examination results by administration and gender, 1995-1997

Administration	1995			1996			1997			
	No. Examined	No. of Passes	% of Passes	No. Examined	No. of Passes	% of Passes	No. Examined	No. of Passes	% of Passes	
Republic of Mauritius	Total	12,089	8,494	70.3	12,846	9,626	74.9	13,661	10,316	75.5
	Male	5,683	3,919	69.0	6,126	4,448	72.6	6,665	4,914	73.7
	Female	6,406	4,575	71.4	6,720	5,178	77.1	6,996	5,402	77.2
Island of Mauritius	Total	11,716	8,285	70.7	12,470	9,392	75.3	13,238	10,067	76.0
	Male	5,512	3,816	64.1	5,947	4,331	64.1	6,463	4,794	74.2
	Female	6,204	4,469	72.0	6,523	5,061	77.6	6,775	5,273	77.8
State	Total	3,638	2,916	80.2	3,508	3,075	87.7	3,389	2,999	88.5
	Male	1,943	1,521	78.3	1,939	1,668	86.0	1,878	1,624	86.5
	Female	1,695	1,395	82.3	1,569	1,407	89.7	1,511	1,375	91.0
Private	Total	8,078	5,369	66.5	8,962	6,317	70.5	9,849	7,068	71.8
	Male	3,569	2,295	64.3	4,008	2,663	66.4	4,585	3,170	69.1
	Female	4,509	3,074	68.2	4,954	3,654	73.8	5,264	3,898	74.1
Island of Rodrigues	Total	373	209	56.0	376	234	62.2	423	249	58.9
	Male	171	103	60.2	179	117	65.4	202	120	59.4
	Female	202	106	52.5	197	117	59.4	221	129	58.4

Source: Mauritius Examination Syndicate

Table 3.21 - Cambridge Higher School Certificate Examination results by administration and gender, 1995 - 1997

Administration	1995			1996			1997			
	No. Examined	No. of Passes	% of Passes	No. Examined	No. of Passes	% of Passes	No. Examined	No. of Passes	% of Passes	
Republic of Mauritius	Total	5,319	3,528	66.3	5,257	3,619	68.8	5,793	4,232	73.1
	Male	2,554	1,655	64.8	2,515	1,729	68.7	2,711	1,942	71.6
	Female	2,765	1,873	67.7	2,742	1,890	68.9	3,082	2,290	74.3
Island of Mauritius	Total	5,279	3,503	66.4	5,218	3,592	68.8	5,722	4,196	73.3
	Male	2,535	1,645	64.1	2,497	1,718	64.1	2,674	1,920	71.8
	Female	2,744	1,858	67.7	2,721	1,874	68.9	3,048	2,276	74.7
State	Total	2,530	1,730	68.4	2,554	1,866	73.1	2,703	2,069	76.5
	Male	1,310	892	68.1	1,285	926	72.1	1,318	978	74.2
	Female	1,220	838	68.7	1,269	940	74.1	1,385	1,091	78.8
Private	Total	2,749	1,773	64.5	2,664	1,726	64.8	3,019	2,127	70.5
	Male	1,225	753	61.5	1,212	792	65.3	1,356	942	69.5
	Female	1,524	1,020	66.9	1,452	934	64.3	1,663	1,185	71.3
Island of Rodrigues	Total	40	25	62.5	39	27	69.2	71	36	50.7
	Male	19	10	52.6	18	11	61.1	37	22	59.5
	Female	21	15	71.4	21	16	76.2	34	14	41.2

Source: Mauritius Examination Syndicate

Table 3.22 - Basic Secondary Schools, Polytechnics & Industrial and Vocational Training Board - 1997

A. Basic Secondary Schools		Island of Mauritius	Island of Rodrigues	Republic of Mauritius
		Number of Schools	20	2
Aided (run by Management Trust Fund)		18	2	20
Non-Aided		2	-	2
Private (run by B.E. C.)		N. A	N. A	N. A
Number of pupils :	Total	1,068	123	1,191
	Male	777	96	873
	Female	291	27	318
Personnel :	Total	122	15	137
	Teaching	99	12	111
	Non- teaching	23	3	26
Pupil/Teacher ratio		11	10	11

B. Polytechnics		Droopnath Ramphul	Guy Forget	Total
		Number of Pupils :	Total	288
	Male	164	386	550
	Female	124	6	130
Personnel :	Total	36	107	143
	Teaching	19	63	82
	Non- teaching	17	44	61
Pupil/Teacher ratio		15	6	8

C. Industrial and Vocational Training Board		Enrolment		
		Full Time	Part Time	Total
1	Sir Kher Jagatsingh Training Centre	178	328	506
2	Prof. B.S. Uppadhyaya "	178	240	418
3	Print "	40	39	79
4	Mont Ida "	60	-	60
5	Bel Air "	34	-	34
6	Textile "	34	19	53
7	Jewellery "	47	-	47
8	Footwear and Leather "	27	-	27
9	Hotel School of Mauritius "	177	700	877
10	Electronics "	179	295	474
11	Design "	27	-	27
12	Precision Engineering "	61	9	70
13	Automotive "	98	181	279
14	Le Chou "	71	-	71
15	Hydraulics & Pneumatics "	-	187	187
16	Heavy Vehicle Driver "	-	196	196
17	Indusry Based Training Division(Head Office)	-	161	161
All Centres		1,211	2,355	3,566

Source : Industrial and Vocational Training Board

**TERTIARY
EDUCATION**

Table 4.1 - University of Mauritius - Enrolment by type of course, faculty and gender, including new admissions - 1997/1998

Level of course	Faculty of Agriculture			Faculty of Engineering			Faculty of Law and Management			Faculty of Science			Faculty of Social Studies and Humanities			All Faculties		
	M	F	T	M	F	T	M	F	T	M	F	T	M	F	T	M	F	T
Higher Degree	5	5	10	38	11	49	45	13	58	27	19	46	6	6	12	121	54	175
Degree	36	29	65	173	66	239	155	181	336	175	197	372	175	388	563	714	861	1,575
Diploma/Degree	56	70	126	407	122	529	54	65	119	-	-	-	25	59	84	542	316	858
Diploma	-	-	-	67	25	92	130	134	264	31	16	47	42	52	94	270	227	497
Certificate	30	-	30	-	-	-	-	-	-	-	-	-	-	-	-	30	-	30
Total	127	104	231	685	224	909	384	393	777	233	232	465	248	505	753	1,677	1,458	3,135

Full - Time	94	100	194	600	191	791	209	246	455	197	202	399	143	302	445	1,243	1,041	2,284
Part - Time	33	4	37	85	33	118	175	147	322	36	30	66	105	203	308	434	417	851
Total	127	104	231	685	224	909	384	393	777	233	232	465	248	505	753	1,677	1,458	3,135

Source: University of Mauritius T : Total M : Male F : Female

Table 4.2 - University of Mauritius - Enrolment (new admissions) by type of course, faculty and gender (1997/98)

Course	Faculty of Agriculture			Faculty of Engineering			Faculty of Law and Management			Faculty of Science			Faculty of Social Studies and Humanities			All Faculties		
	M	F	T	M	F	T	M	F	T	M	F	T	M	F	T	M	F	T
	Higher Degree	-	-	-	24	4	28	-	-	-	9	8	17	1	-	1	34	12
Degree	-	-	-	-	-	-	88	120	208	95	114	209	65	127	192	248	361	609
Diploma/Degree	31	55	86	291	68	359	-	-	-	-	-	-	7	28	329	151	480	
Diploma	30	-	30	42	14	56	92	77	169	-	-	-	26	37	190	128	318	
Certificate	-	-	-	-	-	-	-	-	-	-	-	-	-	-	-	-	-	-
External Award	-	-	-	-	-	-	-	-	-	-	-	-	-	-	-	-	-	-
Total	61	55	116	357	86	443	180	197	377	104	122	226	99	192	291	801	652	1,453

Table 4.3 - University of Mauritius - Output by type of course and faculty (1996/97)

Course	Faculty of Agriculture			Faculty of Engineering			Faculty of Law and Management			Faculty of Science			Faculty of Social Studies and Humanities			All Faculties		
	M	F	T	M	F	T	M	F	T	M	F	T	M	F	T	M	F	T
	Higher Degree	-	1	1	-	-	-	1	-	1	4	-	4	-	1	1	5	2
Degree	22	12	34	98	24	122	46	47	93	36	23	59	30	60	90	232	166	398
Diploma	24	15	39	32	28	60	82	62	144	16	-	16	24	61	85	178	166	344
Certificate	-	-	-	12	5	17	-	-	-	7	7	14	-	-	-	19	12	31
Total	46	28	74	142	57	199	129	109	238	63	30	93	54	122	176	434	346	780

Source: University of Mauritius

M : Male F : Female T : Total

Table 4.4 - Mauritius Institute of Education - Enrolment by type of course and gender, 1997

Course	Enrolment												
	Part-time						Full-time						
	First Year		Second Year		Third Year		First Year		Second Year		Total		
	M	F	M	F	M	F	M	F	M	F	M	F	T
Post Graduate Certificate in Education	-	-	65	36	-	-	-	-	-	-	65	36	101
Bachelor in Education (run jointly with the University of Mauritius)	-	-	55	64	71	54	-	-	-	-	126	118	244
Teacher's Diploma	-	-	61	52	30	43	-	-	-	-	91	95	186
Teacher's Certificate (Secondary)	3	8	-	-	-	-	-	-	-	-	3	8	11
Diploma in Educational Supervision and Inspection	22	6	-	-	-	-	-	-	-	-	22	6	28
Advanced Certificate in Educational Management for Headteachers	24	16	-	-	-	-	-	-	-	-	24	16	40
Teacher's Certificate (Primary), General Purpose	-	-	-	-	-	-	-	5	14	44	49	103	152
Advanced Certificate in Education for teachers :	195	198	-	-	-	-	-	-	-	-	195	198	393
Total	116	103	-	-	-	-	-	-	-	-	116	103	219
General Purpose	79	95	-	-	-	-	-	-	-	-	79	95	174
Asian Language	-	83	1	84	-	-	-	-	-	-	1	167	168
Teacher's Certificate Course (Pre-primary)	244	311	182	236	101	97	5	14	44	89	576	747	1,323
Total	244	311	182	236	101	97	5	14	44	89	576	747	1,323

Source: Mauritius Institute of Education M : Male F : Female T : Total

Table 4.5 - Mahatma Gandhi Institute - Enrolment and Output by type of course and gender, 1996 - 1997

Courses	Enrolment 1996/97			No. Examined	Output 1996/97		
	T	M	F		T	M	F
					No. passed		
Degree							
Fine Arts	44	18	26	-	-	-	-
Joint Hons. in Hindi ¹ (with university)	39	10	29	8	1	7	
Diploma							
Indian Music & Dance	20	16	4	2	1	1	
Fine Arts	18	14	4	3	1	2	
Hindi/Tamil/Telugu/Marathi/Urdu with Indian Philosophy/ French	58	16	42	88	23	65	
Hindi studies (Trainee Teacher Secondary)	-	-	-	6	2	4	
Marathi/Tamil Studies (Secondary teacher training)	4	1	3	-	-	-	
Indian Philosophy	-	-	-	22	11	11	
Advanced certificate							
Indian Music & Dance	40	15	25	11	6	2	
Certificate							
Indian Music & Dance	805	330	475	72	20	27	
Telugu	186	103	83	-	-	-	
Other	327	147	180	-	-	-	
Total	1,541	670	871	212	65	119	

M Male F Female T : Total

¹ Full time

GRAPHS

Fig. 1 - Primary and Secondary enrolment, 1988 - 1997
Island of Mauritius

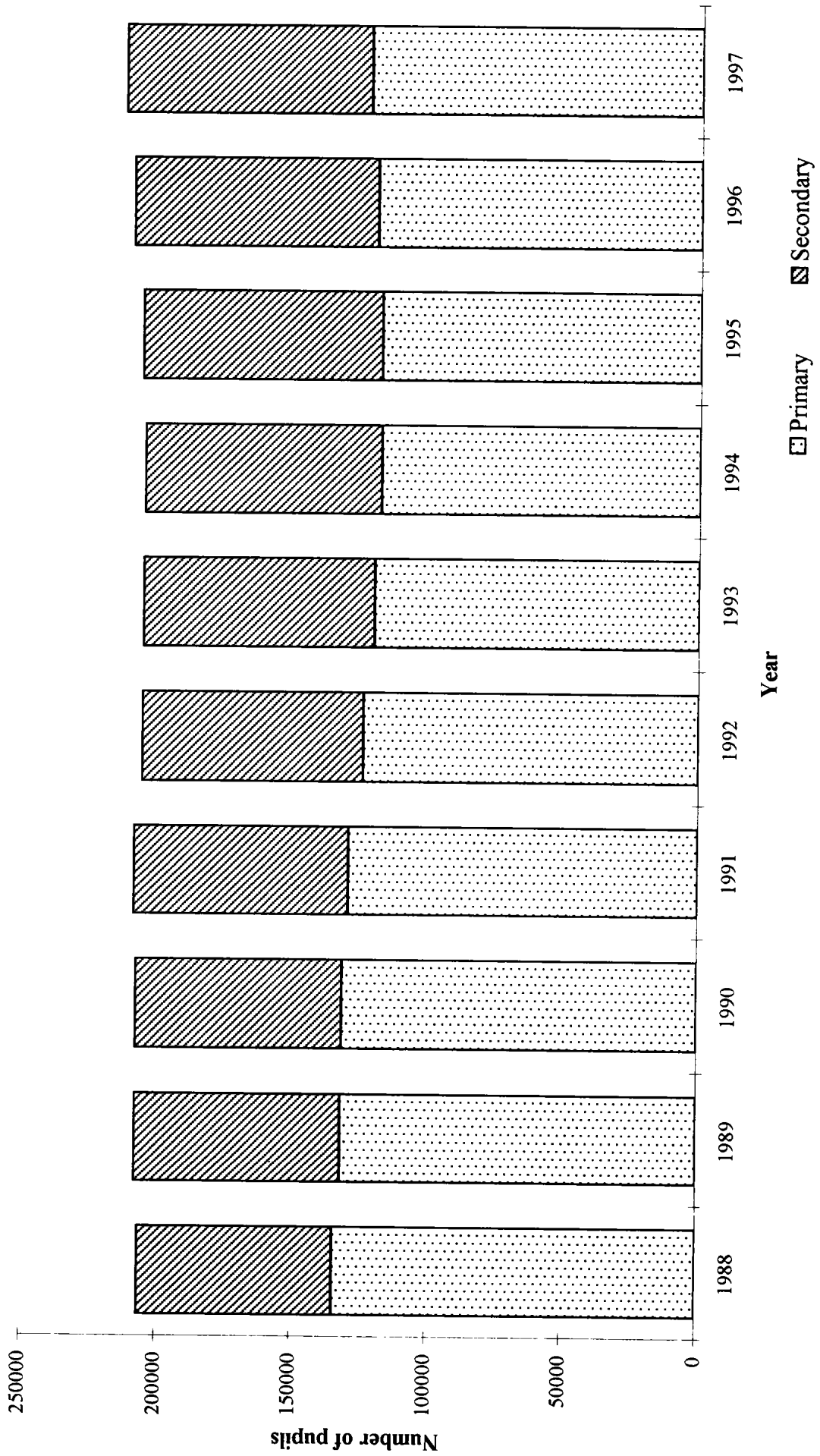


Fig. 2 - Primary and Secondary enrolment, 1988 - 1997
Island of Rodrigues



Fig. 3 - Enrolment Rate in Primary and Secondary Schools, 1988 - 1997
Island of Mauritius

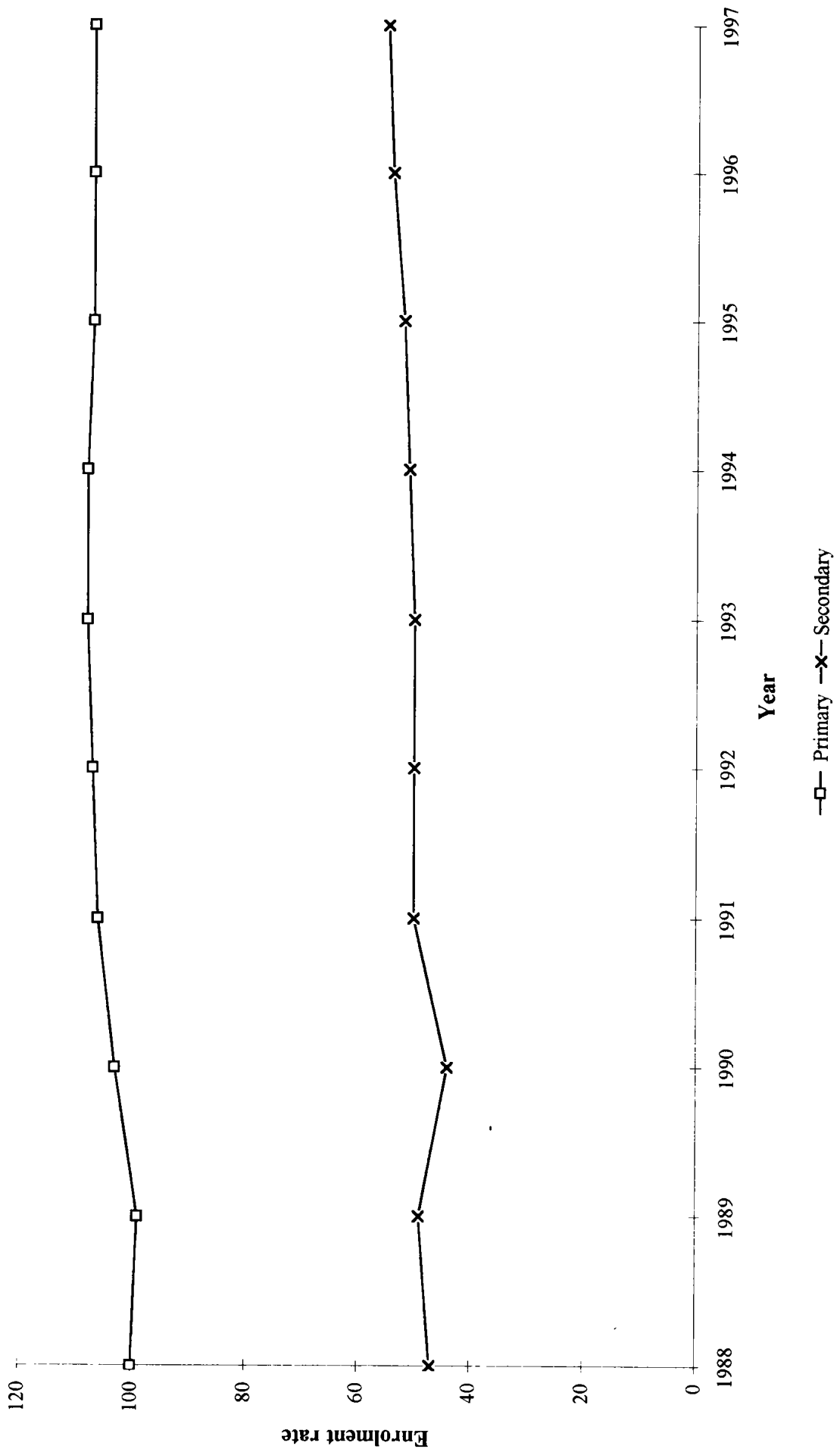
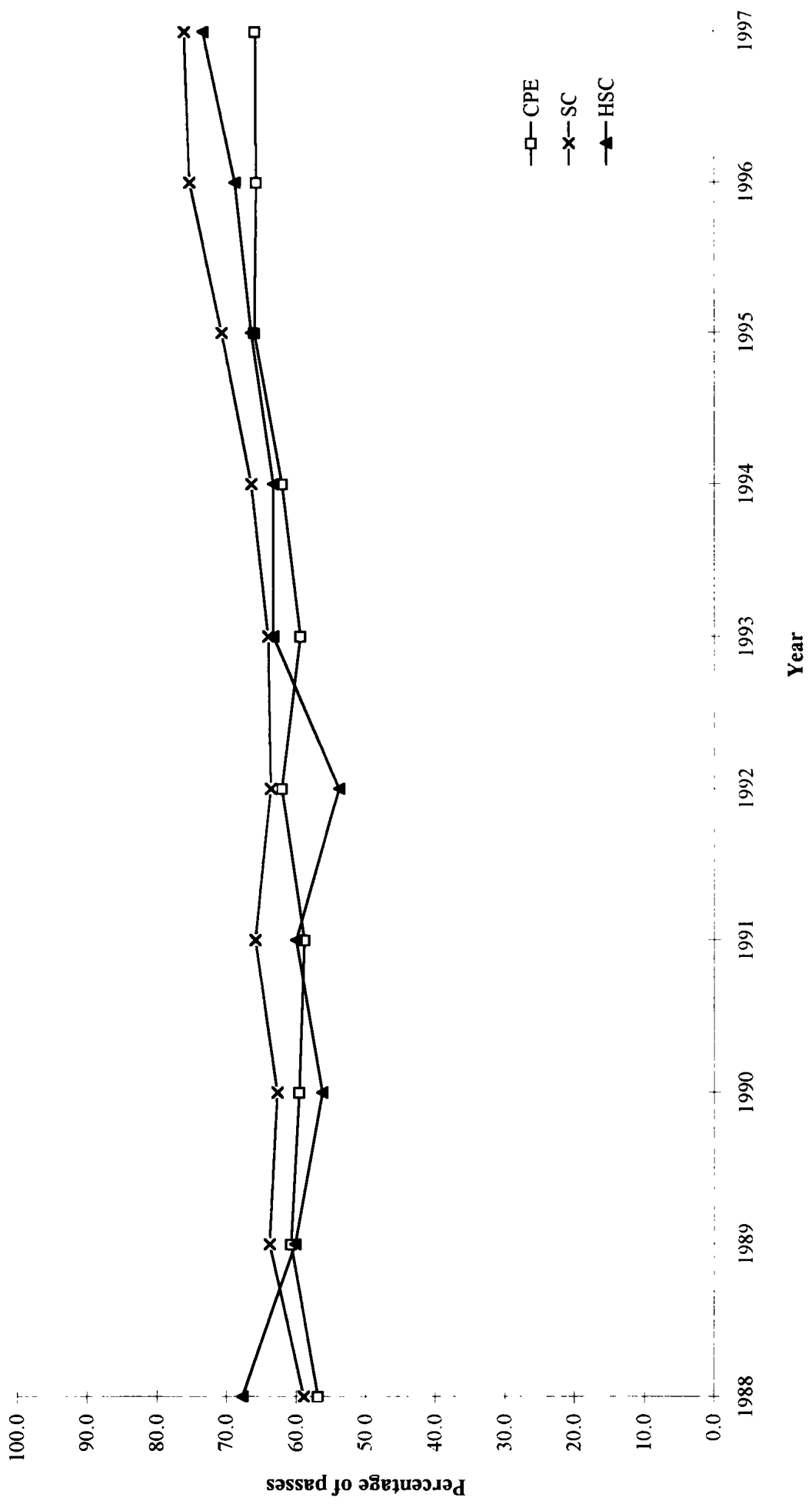
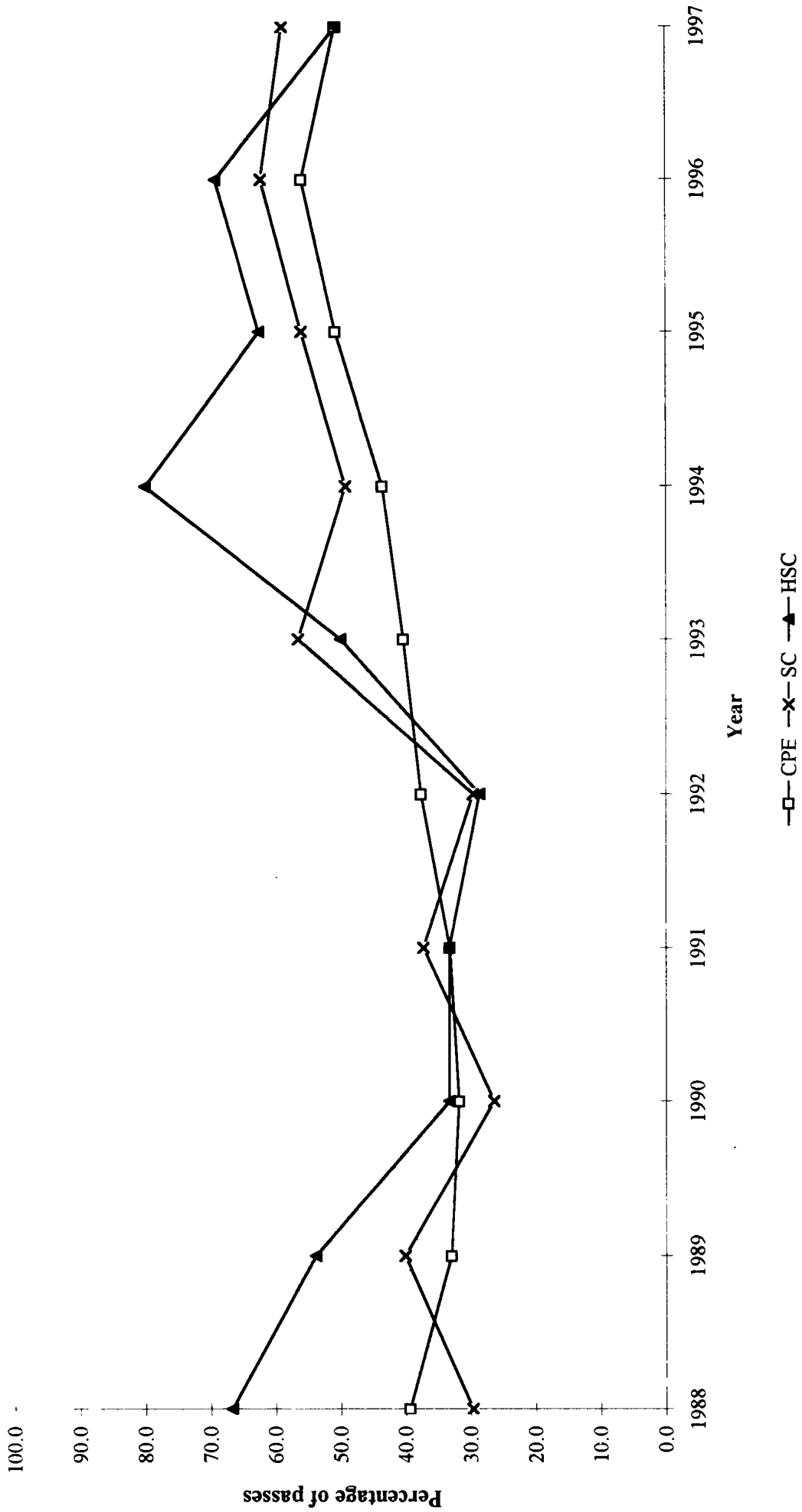


Fig. 4 - Certificate of Primary Education, School Certificate and Higher School Certificate Examination results, 1988 - 1997
Island of Mauritius



**Fig. 5 - Certificate of Primary Education, School Certificate and
Higher School Certificate Examination results, 1988 - 1997
Island of Rodrigues**



Annex

Map - The seven Educational Regions with their respective number of schools - 1997

