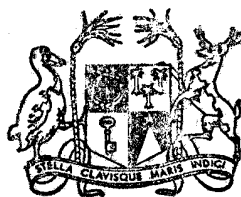


Vol. 15

No. 1



MAURITIUS

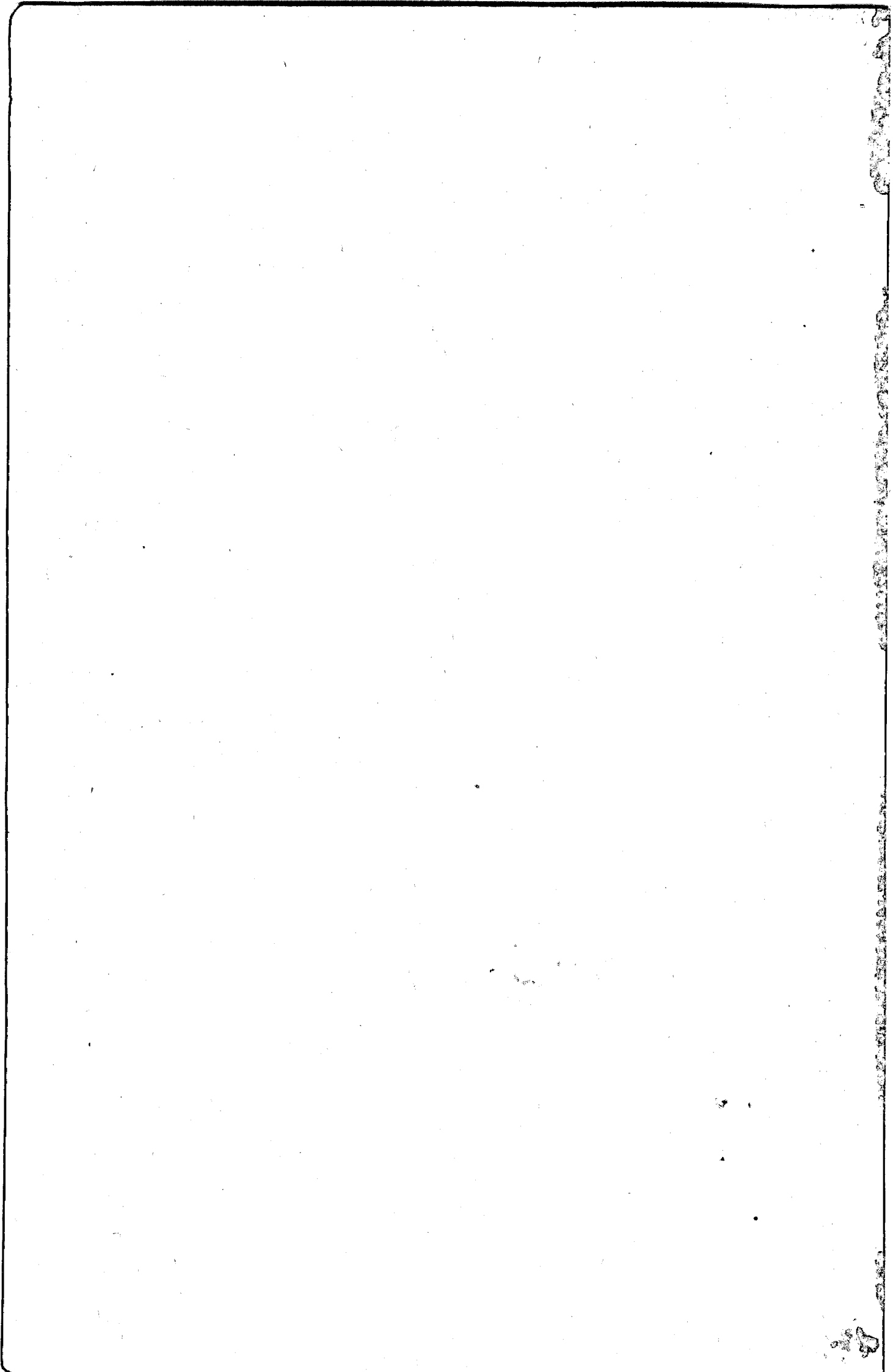
Ministry of Economic Planning and Development

CENTRAL STATISTICAL OFFICE

**BI-ANNUAL
DIGEST OF STATISTICS**

June 1980

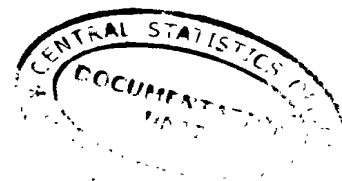
[Price : Rs 40.00]



BI-ANNUAL DIGEST OF STATISTICS

Vol. 15 No. 1

June 1980



The Bi-annual Digest of Statistics is a publication of the Central Statistical Office.

It is designed to present in a concise and readily accessible form the more important statistical series available on the demographic economic and social characteristics of Mauritius.

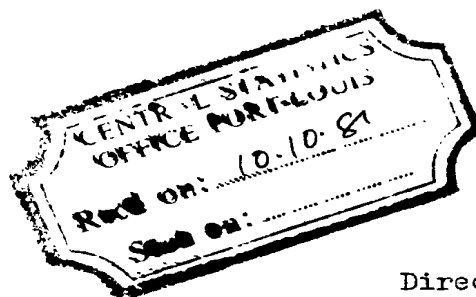
Some of the figures in this digest are provisional and liable to revision in later issues.

Where necessary, figures have been rounded off to the nearest final digit, and in some tables there may be discrepancies between the sum of the constituent items and the total as shown.

The following symbols are used throughout:

- Nil or negligible
- ... Not available

The assistance given by the Bank of Mauritius, all government departments and other bodies in providing data for publication in this issue is gratefully acknowledged.



J. AH KONG
Director of Statistics

Central Statistical Office
Rose Hill
Mauritius

March 1981

C O N T E N T S

	<u>Page</u>
<u>SECTION 1 - POPULATION AND VITAL STATISTICS</u>	
Table 1. 1 - Estimated population of Mauritius as at 30th June 1980 based on the final 1972 population census data	1
1. 2 - Evolution of the population of the islands of Mauritius and Rodrigues as from the 1972 census	1
1. 3 - Population increase in intercensal periods - Island of Mauritius, 1846 - 1972	2
1. 4(a) Population enumerated at each census by population group and sex - Island of Mauritius 1846 - 1952	3
1. 4(b) Population enumerated at each census by community and sex - Island of Mauritius 1962 - 1972	3
1. 5 - Estimated population of Mauritius by geographical district and sex, 1978-80 (mid-year estimates)	4
1. 6 - Intercensal population increase in urban and extra-urban areas according to present boundaries - Island of Mauritius, 1962 - 1972	5
1. 7 - Estimated population, urban and extra-urban - Island of Mauritius, 1977 - 1980 (mid-year estimates)	6
1. 8 - Age distribution of the population as enumerated at the censuses of 1962 and 1972, Island of Mauritius	7
1. 9 - Estimated age distribution of population - Island of Mauritius, 1979 - 1980	8
1.10 - Population growth and vital statistics - Island of Mauritius, 1963 - 1979	9
1.11 - Rate of increase of the population of Mauritius compared with other countries, 1963 - 1972	10
1.12 - Expectation of life in years at selected ages - Island of Mauritius	10
1.13 - Population and vital statistics - Island of Mauritius, 1921 - 1979	11
1.14 - Population and vital statistics rates - Island of Mauritius, 1921 - 1979	12
1.15 - Vital statistics by sex - Island of Mauritius, 1965 - June 1980	13
1.16 - Vital statistics by month of registration and sex - Island of Mauritius, 1979 - June 1980	14
1.17 - Infant deaths by age and sex - Island of Mauritius, 1978 - June 1980	15
1.18 - Deaths by age and sex - Island of Mauritius, 1978 - June 1980	16
1.19 - Deaths by cause - Island of Mauritius, 1979	17

CONTENTS (cont'd)

	<u>Page</u>
<u>SECTION 1 - POPULATION AND VITAL STATISTICS (cont'd)</u>	
Table 1.20 - Vital statistics by geographical district - Island of Mauritius, 1978 - 1979	18
1.21 - Fertility rates - Island of Mauritius, 1962, 1972-79	19
1.22 - Age-specific fertility rates by age of mother and live birth order - Island of Mauritius, 1962 and 1972 censuses	20
1.23 - Age-specific fertility rates by age of mother and live birth order - Island of Mauritius, 1978 - 79	21
1.24 - Population and vital statistics - Island of Rodrigues, 1963 - 1979	22
1.25 - Vital statistics by month of registration and sex - Island of Rodrigues, 1979 - June 1980	23
1.26 - Deaths by age and sex - Island of Rodrigues, 1978 - June 1980	24
1.27 - Deaths by cause - Island of Rodrigues, 1979	25

SECTION 2 - INTERNATIONAL TRAVEL AND TOURISM

Table 2.1 - Passenger traffic - Island of Mauritius, 1962 - 80	26
2.2 - Passenger traffic by country of original embarkation or final destination and by mode of transport, January - June 1980	27
2.3 - Tourist arrivals by mode of transport and total nights spent during period - Island of Mauritius, 1963 - June 1980	28
2.4 - Tourist arrivals and tourist nights by country of residence and mode of transport - Island of Mauritius, January - June 1980	29
2.5 - Official long-term emigrants by sex - Island of Mauritius, 1956 - June 1980	30

SECTION 3 - PUBLIC HEALTH

Table 3.1 - Health services (as at 31st December) Island of Mauritius, 1975 - 1979	31
3.2 - Statistics of government hospitals - Island of Mauritius, 1975 - 1980	32
3.3 - Notifiable, contagious or communicable diseases - Island of Mauritius, 1975 - 1980	33

SECTION 4 - PUBLIC FINANCE AND BANKING

Table 4.1 - Central government revenue and expenditure, 1977-81	34
4.2 - Functional classification of central government capital revenue, 1977 - 1981	34
4.3 - Functional classification of central government capital expenditure, 1977 - 1981	35
4.4 - Functional classification of central government recurrent revenue, 1977 - 1981	36
4.5 - Functional classification of central government recurrent expenditure, 1977 - 1981	37
4.6 - Public debt outstanding, 1976 - 1980	38
4.7 - Sinking funds held against the public debt, 1976 - 80	38
4.8 - Central government local loan repayments by year of maturity (end of June 1980)	39
4.9 - Outstanding loans and advances made from public funds (at end of June 1979 - 1980)	40

CONTENTS (Cont'd)
=====

<u>SECTION 4 - PUBLIC FINANCE AND BANKING (cont'd)</u>	<u>Page</u>
Table 4.10 - Income tax - individuals, year of assessment 1977 - 78	41
4.11 - Income tax - companies, year of assessment 1977 - 78	42
4.12 - Foreign exchange reserves, 1975 - 80	43
4.13 - Assets of the Bank of Mauritius, 1975 - 80	44
4.14 - Liabilities of the Bank of Mauritius, 1975 - 80	45
4.15 - Assets of commercial banks, 1975 - 80	46
4.16 - Liabilities of commercial banks, 1975 - 80	47
4.17 - Sectorwise Distribution of Commercial Banks' Credit, 1979-80	48
4.18 - Assets and liabilities of the Development Bank of Mauritius, 1975 - 79	49
4.19 - Assets and liabilities of the Mauritius Co-operative Central Bank Ltd, 1976 - 80	50
4.20 - Assets and Liabilities of the Mauritius Housing Corporation, 1975 - 79	50
4.21 - Assets and liabilities of the Sugar Insurance Fund Board, 1976 - 80	51
4.22 - Post Office Savings Bank, 1975 - 80	52
4.23 - Money supply, 1975 - 80	52
4.24 - Bank and interest rates, 1978 - 80	53
4.25 - Foreign exchange rates, 1978 - 80	54
 <u>SECTION 5 - NATIONAL ACCOUNTS</u>	
Table 5.1 - Gross national product by industrial origin (at current factor cost), 1976 - 79	55
5.2 - Distribution of the gross national product (at current prices) 1976 - 79	56
5.3 - Expenditure on gross national product (at current prices), 1976 - 79	57
5.4 - Gross domestic product (at constant 1976 prices, 1976 = 100), 1976 - 79	58
5.5 - Gross domestic fixed capital formation (at current prices), 1976 - 79	59
5.6 - Composition of gross domestic capital formation (at constant 1976 prices), 1976 - 79	60
5.7 - Balance of payments 1974 - 78	61
5.8 - Summary of Balance of payments 1975 - 79	64
 <u>SECTION 6 - CONSUMER PRICE INDICES</u>	
Table 6.1 - Consumer price indices (January - June 1962 = 100), 1963-76	65
6.2 - Consumer price indices (January - June 1976 = 100), 1976-80	66

CONTENTS (Cont'd)

SECTION 7 - EXTERNAL TRADE

	<u>Page</u>
Table 7.1 - Balance of visible trade, 1975 - 80	67
7.2 - Price indices of exports and imports and terms of trade, 1972 - 79	67
7.3 - Price indices of imports, by section, 1972 - 78	68
7.4 - Exports : quantities and values, 1975 - 79	69
7.5 - Total exports : main countries of destination - values, 1975 - 79	71
7.6 - Imports : values by S.I.T.C. sections, 1975 - 79	72
7.7 - Imports : selected commodities - values, 1975 - 79	73
7.8 - Imports : selected commodities - quantities, 1975 - 79	74
7.9 - Imports : main countries of origin - values, 1975 - 79	75
7.10 - Imports of fertilizers, 1977 - 79	76

SECTION 8 - EMPLOYMENT AND EARNINGS

Table 8.1 - Employment by major industrial group (March 71 - March 80)	80
8.2 - Employment by major industrial group (September 70 - September 79)	81
8.3 - Employment in specified sectors - sugar industry, 1979 - 80	82
8.4 - Employment in specified sectors - government services, 1979 - 80	82
8.5 - Employment in specified sectors - manufacturing industries, 1979 - 80	83
8.6 - Average monthly earnings by industrial group (March 1971 - March 1980)	84
8.7 - Average monthly earnings by industrial group (September 1970 - September 1979)	85
8.8 - Daily wage rates of manual workers, government services, 1978 - 79	86
8.9 - Statutory minimum wage-rates per day for typical occupations in principal industries 1976 - 79	87
8.10 - Employment and salaries of certain categories of non-agricultural employees on sugar millers' estates 1978-79	88
8.11 - Man-days actually worked and workers' earnings on sugar millers' estates 1978 - 80	90

SECTION 9 - SOCIAL SECURITY

Table 9.1 - Social benefits, 1976 - 80	91
9.2 - National Pension Scheme - contribution from employers/employees, 1976 - 80	92

SECTION 10 - EDUCATION

Table 10.1 - Primary education - number of schools, pupils and teachers, 1975 - 79	93
10.2 - Secondary education - number of schools, pupils and teachers, 1975 - 79	94

CONTENTS (Cont'd)

<u>SECTION 10 - EDUCATION (cont'd)</u>	<u>Page</u>
Table 10.3 - Enrolment by grade and sex in primary schools - Island of Mauritius, 1975 - 79	95
10.4 - Enrolment by grade and sex in primary schools - Island of Rodrigues, 1975 - 79	96
10.5 - Enrolment by grade and sex in secondary schools - Island of Mauritius, 1975 - 79	97
10.6 - Enrolment by grade and sex in secondary schools - Island of Rodrigues, 1975 - 79	98
10.7 - University of Mauritius - students enrolled, 1978 - 80	99
10.8 - University of Mauritius - output, 1977 - 79	100
 <u>SECTION 11 - TRANSPORT AND COMMUNICATION</u>	
Table 11.1 - Motor vehicles registered, 1975 - 80	101
11.2 - New registration of motor vehicles, 1978 - 80	102
11.3 - Bus operational statistics, 1975 - 79	103
11.4 - Road traffic accidents and casualties, 1975 - 79	103
11.5 - Sea-borne shipping, 1975 - 80	104
11.6 - Civil aviation, 1975 - 80	104
11.7 - Telephone service, 1976 - 80	105
11.8 - Broadcasting services, 1976 - 80	105
 <u>SECTION 12 - LAND UTILIZATION</u>	
Table 12.1 - Total area classified by utilization, 1972	106
12.2 - Effective area under cultivation, 1975 - 79	106
 <u>SECTION 13 - LOCAL PRODUCTION</u>	
Table 13.1 - Agriculture - production of main crops, 1976 - 80	107
13.2 - Livestock slaughtered, 1977 - 80	108
13.3 - Fisheries statistics, 1977 - 79	108
13.4 - Sugar Industry - cane cultivation, 1975 - 79	109
13.5 - Sugar manufacture, 1975 - 79	109
13.6 - Industry - production of selected commodities, 1976 - 80	110
13.7 - Industrial production:- number of establishments covered, 1974 - 79	111
13.8 - Industrial production:- value added, 1974 - 79	112
13.9 - Electricity - production, consumption, sales, etc., 1976 - 79	113
 <u>SECTION 14 - CONSTRUCTION STATISTICS</u>	
Table 14.1 - Number of permits issued for new buildings, 1977 - 80	114
14.2 - Number of permits issued for new buildings classified by urban/rural areas, 1977 - 80	115
 <u>SECTION 15 - CLIMATE</u>	
Table 15.1 - Monthly temperatures, 1979 - 80	116
15.2 - Monthly rainfall for the sugar cane districts, 1979 - 80	117

SECTION 1 - POPULATION AND VITAL STATISTICS

Table 1.1 - Estimated population of Mauritius as at 30th June 1980 based on the final 1972 population census data

Island	Area		Both sexes	Male	Female
	Sq. mile	Sq. km			
Island of Mauritius	720	1,865	926,578	455,031	471,547
Island of Rodrigues	40	104	30,275	14,612	15,663
Other islands	27	71	350	250	100
Mauritius	787	2,040	957,203	469,893	487,310

Table 1.2 - Evolution of the population of the islands of Mauritius and Rodrigues as from the 1972 census

	Island of Mauritius			Island of Rodrigues		
	Both sexes	Male	Female	Both sexes	Male	Female
Population (30.6.72) census)	826,199	413,580	412,619	24,769	12,270	12,499
Births Jul.72-June 80	+ 181,190	+ 92,211	+ 88,979	+ 8,744	+ 4,397	+ 4,347
Deaths " "	- 53,327	- 30,548	- 22,779	- 1,697	- 889	- 808
Arrivals " "	+ 1,083,618	+ 628,686	+ 454,932	+ 30,836	+ 19,876	+ 10,960
Departures " "	- 1,111,102	- 648,898	- 462,204	- 32,377	- 21,042	- 11,335
Estimated population 30.6.80	926,578	455,031	471,547	30,275	14,612	15,663

Table 1.3 - Population increase in intercensal periods - Island of Mauritius, 1846 - 1972

Census date	Population enumerated at census			Intercensal increase	Average annual rate of increase %
	Both sexes	Male	Female		
1st Aug. 1846	158,462	104,598	53,864		
20th Nov. 1851	180,823	119,341	61,482	22,361	2.55
8th Apr. 1861	310,050	202,961	107,089	129,227	5.87
11th Apr. 1871	316,042	193,575	122,467	5,992	0.19
4th Apr. 1881	359,874	208,655	151,219	43,832	1.31
6th Mar. 1891	370,588	206,038	164,550	10,714	0.29
1st Apr. 1901	371,023	199,552	171,471	435	0.01
31st Mar. 1911	368,791	194,095	174,696	- 2,232	- 0.06
21st May 1921	376,485	194,108	182,377	7,694	0.21
26th Apr. 1931	393,238	200,609	192,629	16,753	0.44
11th Jun. 1944	419,185	210,326	208,859	25,947	0.49
30th Jun. 1952	501,415	252,032	249,383	82,230	2.26
30th Jun. 1962 ^{1/}	681,619	342,306	339,313	180,204	3.12
30th Jun. 1972 ^{1/}	826,199	413,580	412,619	144,580	1.94

^{1/} de facto population - including the European members of the armed forces but excluding the passengers and crews of ships lying in the harbour.

Table 1.4 (a) - Population enumerated at each census by population group and sex - Island of Mauritius, 1846 - 1952

Year of census	General population			Indo-Mauritian population			Chinese population		
	Both sexes	Male	Female	Both sexes	Male	Female	Both sexes	Male	Female
1846	102,217	55,663	46,554	56,245	48,935	7,310	-	-	-
1851	102,827	55,059	47,768	77,996	64,282	13,714	-	-	-
1861	115,864	59,796	56,068	192,634	141,615	51,019	1,552	1,550	2
1871	97,497	49,487	48,010	216,258	141,804	74,454	2,287	2,284	3
1881	107,323	53,754	53,569	248,993	151,352	97,641	3,558	3,549	9
1891	111,517	55,397	56,120	255,920	147,499	108,421	3,151	3,142	9
1901	108,422	52,995	55,427	259,086	143,100	115,986	3,515	3,457	58
1911	107,432	51,808	55,624	257,697	138,974	118,723	3,662	3,313	349
1921	104,216	49,725	54,491	265,524	139,150	126,374	6,745	5,233	1,512
1931	115,666	54,733	60,933	268,649	139,533	129,116	8,923	6,343	2,580
1944	143,056	67,136	75,920	265,247	136,382	128,865	10,882	6,808	4,074
1952	148,238	70,370	77,868	335,327	171,241	164,086	17,850	10,421	7,429

At the 1962 census each

householder was asked, for the first time, to state the population group to which each member of his household claimed to belong.

Prior to 1962, it is probable that, from one census to another, different criteria have been used in classifying the population by population groups. Figures are therefore not strictly comparable from one census to another, before 1962.

Table 1.4 (b) - Population enumerated at each census by community and sex - Island of Mauritius, 1962 - 72

Year of census	Total population			Hindu			Muslim			Sino-Mauritian			General population		
	Both sexes	Male	Female	Both sexes	Male	Female	Both sexes	Male	Female	Both sexes	Male	Female	Both sexes	Male	Female
1962 ✓	681,619	342,306	339,313	344,587	174,698	169,889	110,322	55,971	54,351	23,058	12,654	10,404	203,652	98,983	104,669
1972 ✓	826,199	413,580	412,619	428,167	215,654	212,513	137,081	68,789	68,292	24,084	12,849	11,235	236,867	116,288	120,579

✓ de facto population - including the European members of the armed forces but excluding the passengers and crews of ships lying in the harbour

Table 1.5 - Estimated population^{1/} of Mauritius by geographical district and sex, 1978 - 80 (mid-year estimates)

Geographical district	30th June 1978			30th June 1979			30th June 1980		
	Both sexes	Male	Female	Both sexes	Male	Female	Both sexes	Male	Female
Port Louis	142,853	70,217	72,636	144,412	70,278	74,134	145,817	70,526	75,291
Pamplemousses	75,847	38,132	37,715	77,294	38,550	38,744	78,767	39,247	39,520
Rivière du Rempart	74,529	37,470	37,059	75,962	37,922	38,040	77,401	38,557	38,844
Flacq	99,658	49,825	49,833	101,752	50,569	51,183	103,781	51,496	52,285
Grand Port	87,957	43,948	44,009	89,504	44,413	45,091	90,918	44,971	45,947
Savanne	57,423	28,751	28,672	58,380	29,012	29,368	59,374	29,403	29,971
Plaines Wilhems	276,296	136,102	140,194	280,582	136,948	143,634	285,163	138,679	146,484
Moka	52,884	26,308	26,576	53,829	26,614	27,215	54,837	27,075	27,762
Black River	29,024	14,546	14,478	29,784	14,780	15,004	30,520	15,077	15,443
Island of Mauritius	896,471	445,299	451,172	911,499	449,086	462,413	926,578	455,031	471,547
Island of Rodrigues	27,842	13,536	14,306	29,203	14,277	14,926	30,275	14,612	15,663
Other islands	350	250	100	350	250	100	350	250	100
Mauritius	924,663	459,085	465,578	941,052	463,613	477,439	957,203	469,893	487,310

^{1/} based on the final 1972 population census data. No account has been taken of internal migration

Table 1.6 - Intercensal population increase in urban and extra-urban areas according to present boundaries - Island of Mauritius, 1962 - 72

Township ^{1/}	Population enumerated at 30.6.62			Population enumerated at 30.6.72 ^{2/}			Intercensal increase	
	Both sexes	Male	Female	Both sexes	Male	Female	Number	Annual average %
Port Louis	119,950	59,751	60,199	133,996	66,431	67,565	14,046	1.17
Beau Bassin - Rose Hill	62,296	30,580	31,716	80,318	39,701	40,617	18,022	2.89
Quatre Bornes	38,567	18,952	19,615	50,770	24,920	25,850	12,203	3.16
Vacoas-Phoenix	41,743	20,913	20,830	47,638	23,740	23,898	5,895	1.41
Curepipe	44,244	21,816	22,428	51,956	25,673	26,283	7,712	1.74
Urban population	306,800	152,012	154,788	364,678	180,465	184,213	57,878	1.89
Extra urban population	374,819	190,294	184,525	461,521	233,115	228,406	86,702	2.31
Total population	681,619	342,306	339,313	826,199	413,580	412,619	144,580	2.12

^{1/} according to proclaimed boundaries, altered in 1963 (Proclamation Nos. 12 and 13) and subsequently enlarged in 1965 - (Proclamation No. 23) and in 1967 (Proclamation No. 2). Urban population refers to the total population in townships.

^{2/} final population census data

Table 1.7 - Estimated^{1/} population, urban and extra-urban - Island of Mauritius, 1977 - 80

Township ^{2/}	30.6.77			30.6.78			30.6.79			30.6.80		
	Both sexes	Male	Female	Both sexes	Male	Female	Both sexes	Male	Female	Both sexes	Male	Female
Port Louis	141,022	69,413	71,609	142,853	70,217	72,636	144,412	70,278	74,134	145,817	70,526	75,291
Beau Bassin - Rose Hill	83,270	41,000	42,270	83,714	40,974	42,740	84,728	40,996	43,732	85,875	41,332	44,543
Quatre Bornes	53,465	26,208	27,257	53,835	26,265	27,570	54,509	26,307	28,202	55,278	26,601	28,677
Vacoas-Phoenix	50,987	25,280	25,707	51,793	25,532	26,261	52,793	25,814	26,979	53,966	26,330	27,636
Curepipe	54,156	26,664	27,492	54,356	26,615	27,741	55,175	26,751	28,424	56,024	27,056	28,968
Urban population	382,900	188,565	194,335	386,551	189,603	196,948	391,617	190,146	201,471	396,960	191,845	205,115
Extra-urban population	498,861	250,373	248,482	509,920	255,696	254,224	519,882	258,940	260,942	529,618	263,185	266,432
Total population	881,761	438,944	442,817	896,471	445,299	451,172	911,499	449,086	462,413	926,573	455,031	471,547
Percentage urban	43.4			43.1			43.0			42.8		

^{1/} based on the final 1972 population census data. No account has been taken of internal migration in computing the post-censal estimates

^{2/} according to proclaimed boundaries, altered in 1963 (Proclamation Nos. 12 and 13) and subsequently enlarged in 1965 (Proclamation No. 2) and in 1967 (Proclamation No. 23). Urban population refers to the total population in townships.

Table 1.8 - Age distribution of the population as enumerated at the censuses of 1962 and 1972, Island of Mauritius

Age group (years)	Population						% Distribution	
	1962			1972			1962	1972
	Both sexes	Male	Female	Both sexes	Male	Female		
Under 1	23,459	11,786	11,673	19,531	9,763	9,768	3.4	2.4
1 - 4	88,615	44,869	43,746	81,929	41,498	40,431	13.0	9.9
5 - 9	104,629	52,715	51,914	118,590	59,972	58,618	15.4	14.3
10 - 14	91,973	46,166	45,807	111,235	56,150	55,085	13.5	13.5
15 - 19	62,150	31,107	31,043	100,656	50,226	50,430	9.1	12.2
20 - 24	47,297	23,574	23,723	79,827	40,150	39,677	6.9	9.7
25 - 29	44,188	22,014	22,174	53,174	26,204	26,970	6.5	6.4
30 - 34	39,211	19,877	19,334	42,663	21,168	21,495	5.8	5.2
35 - 39	41,867	21,756	20,111	41,221	20,751	20,470	6.1	5.0
40 - 44	31,579	16,592	14,987	35,991	18,310	17,681	4.6	4.4
45 - 49	28,471	15,073	13,398	38,580	20,139	18,441	4.2	4.7
50 - 54	22,604	12,011	10,593	27,744	14,535	13,209	3.3	3.3
55 - 59	18,549	9,325	9,224	25,081	12,617	12,464	2.7	3.0
60 - 64	14,753	7,038	7,715	18,787	9,213	9,574	2.2	2.3
65 - 69	9,682	4,111	5,571	13,029	6,067	6,962	1.4	1.6
70 - 74	6,457	2,465	3,992	8,715	3,673	5,042	1.0	1.0
75 - 79	3,301	1,070	2,231	4,725	1,684	3,041	0.5	0.6
80 - 84	1,613	427	1,186	2,491	766	1,725	0.2	0.3
85 & over	906	183	723	1,379	285	1,094	0.1	0.1
Age unknown	315	147	168	851	409	442	0.1	0.1
All ages	681,619	342,306	339,313	826,199	413,580	412,619	100.0	100.0

Table 1.9 - Estimated age distribution of population - Island of Mauritius, 1979-80

Age group (years)	30th June 1979				30th June 1980			
	Male	Female	Both sexes		Male	Female	Both sexes	
			Number	%			Number	%
Under 1	12,000	11,863	23,863	2.6	12,550	12,102	24,652	2.7
1 - 4	42,799	41,930	84,729	9.3	44,406	42,979	87,385	9.4
5 - 9	48,015	47,616	95,631	10.5	48,008	47,622	95,630	10.3
10 - 14	55,108	54,973	110,081	12.1	53,026	53,285	106,311	11.5
15 - 19	57,021	56,392	113,413	12.4	57,659	57,382	115,041	12.4
20 - 24	47,481	48,899	96,380	10.6	48,790	50,471	99,261	10.7
25 - 29	41,641	43,543	85,184	9.3	41,808	44,224	86,032	9.3
30 - 34	28,289	30,790	59,079	6.5	30,658	32,667	63,325	6.8
35 - 39	19,846	22,083	41,929	4.6	21,125	23,202	44,327	4.8
40 - 44	20,845	20,919	41,764	4.6	20,196	21,125	41,321	4.4
45 - 49	16,879	17,578	34,457	3.8	16,643	18,167	34,810	3.8
50 - 54	18,613	18,291	36,904	4.0	18,107	18,251	36,358	3.9
55 - 59	14,698	13,650	28,348	3.1	16,223	14,998	31,221	3.4
60 - 64	10,645	11,174	21,819	2.4	10,263	11,168	21,431	2.3
65 - 69	7,528	9,617	17,145	1.9	7,893	10,280	18,173	2.0
70 - 74	4,226	6,181	10,407	1.1	4,030	6,216	10,246	1.1
75 - 79	2,360	3,828	6,188	0.7	2,536	4,112	6,648	0.7
80 - 84	944	2,369	3,313	0.4	925	2,444	3,369	0.4
85 & over	148	717	865	0.1	185	852	1,037	0.1
All ages	449,086	462,413	911,499	100.0	455,031	471,547	926,578	100.0
<u>Totals</u>								
Under 15	157,922	156,382	314,304	34.5	157,990	155,988	313,978	33.9
Under 18	193,593	191,728	385,321	42.3	193,190	191,132	384,322	41.5
Under 21	225,227	223,046	448,273	49.2	226,182	223,930	450,112	48.6
18 & over	255,493	270,685	526,178	57.7	261,841	280,415	542,256	58.5
21 & over	223,839	239,367	463,206	50.8	228,849	247,617	476,466	51.4
60 & over	25,911	33,886	59,797	6.6	25,832	35,072	60,904	6.6

Table 1.10 - Population ^{1/} growth and vital statistics - Island of Mauritius, 1963-79

Year	Population as at 31st December	Natural movement			External migration			Total increase	% increase during year			Mid-year population
		Live births	Deaths	Natural increase	Arrivals	Departures	(A - D) ^{2/}		Natural increase	due to (A - D) ^{2/}	Total	
1963	707,580	27,978	6,709	21,269	18,047	18,299	- 252	21,017	3.10	- 0.04	3.06	695,641
1964	727,814	27,528	6,184	21,344	21,221	22,331	- 1,110	20,234	3.02	- 0.16	2.86	716,298
1965	745,630	26,279	6,337	19,942	22,024	24,150	- 2,126	17,816	2.74	- 0.29	2.45	735,245
1966	762,901	26,817	6,701	20,116	26,456	29,301	- 2,845	17,271	2.70	- 0.38	2.32	753,276
1967	776,253	23,499	6,543	16,956	29,321	32,925	- 3,604	13,352	2.22	- 0.47	1.75	767,782
1968	788,955	24,413	7,126	17,287	31,403	35,988	- 4,585	12,702	2.23	- 0.59	1.64	781,615
1969	801,236	21,719	6,428	15,291	35,919	38,929	- 3,010	12,281	1.94	- 0.38	1.56	792,893
1970	813,400	21,623	6,309	15,314	48,819	51,969	- 3,150	12,164	1.91	- 0.39	1.52	805,489
1971	824,815	20,834	6,248	14,586	60,826	63,997	- 3,171	11,415	1.79	- 0.39	1.40	816,561
1972	834,486	20,496	6,506	13,990	77,174	81,493	- 4,319	9,671	1.70	- 0.52	1.18	826,199
1973	843,422	18,974	6,525	12,449	101,184	104,697	- 3,513	8,936	1.49	- 0.42	1.07	834,781
1974	855,821	22,938	6,221	16,717	109,044	113,362	- 4,318	12,399	1.98	- 0.51	1.47	845,755
1975	867,191	21,492	6,967	14,525	117,548	120,703	- 3,155	11,370	1.70	- 0.37	1.33	856,516
1976	880,781	22,250	6,815	15,435	139,303	141,148	- 1,845	13,590	1.78	- 0.21	1.57	867,885
1977	894,100	22,730	6,966	15,764	153,208	155,653	- 2,445	13,319	1.79	- 0.28	1.51	881,761
1978	909,905	24,250	6,400	17,850	161,688	163,733	- 2,045	15,805	2.00	- 0.23	1.77	896,471
1979	924,243	25,056	6,625	18,431	182,771	186,864	- 4,093	14,338	2.02	- 0.45	1.57	911,499

^{1/} revised in the light of the final 1972 population census data

^{2/} excess of arrivals over departures

Table 1.11 - Rate of increase of the population of Mauritius compared with other countries, (1963 - 72)

Continent & country	Average annual rate of increase 1963-72 (%)	Continent & country	Average annual rate of increase 1963-72 (%)
<u>AFRICA</u>		<u>ASIA</u>	
Mauritius	2.0	Ceylon	2.3
Island of Mauritius	1.9	China (Mainland)	1.8
Island of Rodrigues	3.3	India	2.2
<u>AMERICA</u>		Japan	1.1
Canada	1.6	Pakistan	2.4
Guyana	2.3	<u>EUROPE</u>	
Trinidad & Tobago	1.4	Albania	2.9
<u>OCEANIA</u>		France	0.9
Australia	1.9	United Kingdom	0.4
New Zealand	1.5		

Source : United Nations Demographic Yearbook 1972

Table 1.12 - Expectation of life in years at selected ages - Island of Mauritius

Exact age (years)	Males				Females			
	1942 _I / 1946 _I	1951 _I / 1953 _I	1961 _I / 1963 _I	1971-73	1942 _I / 1946 _I	1951 _I / 1953 _I	1961 _I / 1963 _I	1971-73
0	32.8	49.8	58.7	60.7	33.8	52.3	61.9	65.3
10	35.8	49.2	55.1	56.5	37.3	52.2	58.1	61.1
20	38.1	40.1	45.7	47.0	30.2	43.7	48.9	51.6
30	22.3	31.6	36.6	37.7	26.1	36.2	40.3	42.6
40	16.7	23.6	27.7	28.6	21.2	28.7	31.9	33.6
50	11.9	16.7	19.6	20.3	15.7	21.2	23.5	24.9
60	8.1	11.2	13.2	13.3	10.6	14.6	15.8	17.0
70	5.6	6.7	8.5	8.3	7.1	9.1	9.7	10.3
80	4.0	4.3	4.8	4.8	4.6	5.3	5.4	5.7

1/ excluding Sino-Mauritian community

Source : Mauritius Life Table

Table 1.13 - Population and vital statistics - Island of Mauritius, 1921-79

Period	Population ^{1/} at mid-period	Live births	Deaths	Natural increase	Infant deaths ^{2/}	Still births	Civil marriages
1921-25 Average	379,636	14,834	11,758	3,076	2,104	1,581	2,062
1926-30 "	403,248	14,208	11,614	2,594	2,002	1,256	1,455
1931-35 "	398,647	12,490	11,889	601	1,752	1,216	1,489
1936-40 "	412,003	13,621	11,157	2,464	2,119	1,240	2,093
1941-45 "	417,838	15,027	11,927	3,100	2,318	1,240	3,333
1946-50 "	438,797	19,595	9,113	10,482	2,343	1,348	3,503
1951-55 "	522,577	23,176	7,701	15,475	1,884	1,472	3,307
1956	574,938	24,910	6,739	18,171	1,644	1,789	3,080
1957	593,070	25,273	7,603	17,670	1,897	1,800	2,903
1958	609,518	24,600	7,112	17,488	1,659	1,703	3,169
1959	627,249	23,923	6,753	17,170	1,495	1,759	3,297
1960	644,743	25,307	7,248	18,059	1,760	1,783	3,113
1961	662,368	26,092	6,505	19,587	1,618	1,963	3,484
1962	681,619	26,267	6,325	19,942	1,579	1,841	3,893
1963	695,641	27,978	6,709	21,269	1,660	1,519	3,472
1964	716,298	27,528	6,184	21,344	1,561	1,611	3,965
1965	735,245	26,279	6,337	19,942	1,685	1,557	3,976
1966	753,276	26,817	6,701	20,116	1,721	1,384	4,157
1967	767,782	23,499	6,543	16,956	1,656	1,074	3,949
1968	781,615	24,413	7,126	17,287	1,688	1,110	3,974
1969	792,893	21,719	6,428	15,291	1,528	951	3,882
1970	805,489	21,623	6,309	15,314	1,232	857	4,499
1971	816,561	20,834	6,248	14,586	1,077	842	4,346
1972	826,199	20,496	6,506	13,990	1,308	718	5,082
1973	834,781	18,974	6,525	12,449	1,201	678	5,533
1974	845,755	22,938	6,221	16,717	1,045	854	6,771
1975	856,516	21,492	6,967	14,525	1,046	896	6,888
1976	867,885	22,250	6,815	15,435	900	784	8,262
1977	881,761	22,730	6,966	15,764	1,023	712	8,421
1978	896,471	24,250	6,400	17,850	823	653	10,532
1979	911,499	25,056	6,625	18,431	824	650	9,080

^{1/} figures for 1963-71 have been revised in the light of the final 1972 population census data.

^{2/} deaths of children under 1 year of age

Table 1.14 - Population and vital statistics rates^{1/} - Island of Mauritius, 1921-79

Period	Population at mid-period	Crude birth rate	Crude death rate	Rate of natural increase	Infantile mortality rate ^{2/}	Still birth rate ^{3/}	Marriage rate ^{4/}
1921-25 Average	379,636	39.1	31.0	8.1	141.8	96.3	10.9
1926-30 "	403,248	35.2	28.8	6.4	140.9	81.2	7.2
1931-35 "	398,647	31.3	29.8	1.5	140.3	88.7	7.5
1936-40 "	412,003	33.1	27.1	6.0	155.6	83.4	10.2
1941-45 "	417,838	36.0	28.5	7.5	154.3 ^{5/}	76.2	16.0
1946-50 "	438,797	44.7	20.8	23.9	119.6 ^{6/}	64.4	16.0
1951-55 "	522,277	44.3	14.7	29.6	81.3	59.7	12.7
1956	574,938	43.3	11.7	31.6	66.0	67.0	10.7
1957	593,070	42.6	12.8	29.8	75.1	66.5	9.8
1958	609,518	40.4	11.7	28.7	67.4	64.7	10.4
1959	627,249	38.1	10.8	27.3	62.5	68.5	10.5
1960	644,743	39.3	11.2	28.1	69.5	65.8	9.7
1961	662,368	39.4	9.8	29.6	62.0	70.0	10.5
1962	681,619	38.5	9.3	29.2	60.1	65.5	11.4
1963	695,641	40.2	9.6	30.6	59.3	51.5	10.0
1964	716,298	38.4	8.6	29.8	56.7	55.3	11.1
1965	735,245	35.7	8.6	27.1	64.1	55.9	10.8
1966	753,276	35.6	8.9	26.7	64.2	49.1	11.0
1967	767,782	30.6	8.5	22.1	70.5	43.7	10.3
1968	781,615	31.2	9.1	22.1	69.1	43.5	10.2
1969	792,893	27.4	8.1	19.3	70.4	41.9	9.8
1970	805,489	26.8	7.8	19.0	57.0	38.1	11.2
1971	816,561	25.5	7.7	17.8	51.7	38.8	10.6
1972	826,199	24.8	7.9	16.9	63.8	33.8	12.3
1973	834,781	22.7	7.8	14.9	63.3	34.5	13.3
1974	845,755	27.1	7.4	19.7	45.6	35.9	16.0
1975	856,516	25.1	8.1	17.0	48.7	40.0	16.1
1976	867,885	25.6	7.8	17.8	40.4	34.0	19.0
1977	881,761	25.8	7.9	17.9	45.0	30.4	19.1
1978	896,471	27.0	7.1	19.9	33.9	26.2	23.5
1979	911,499	27.5	7.3	20.2	32.9	25.3	19.9

^{1/} figures for 1963-71 have been revised in the light of the final 1972 population census data.

^{2/} deaths of children under 1 year of age per 1,000 live births

^{3/} still births per 1,000 total births (live births and still births)

^{4/} number of persons civilly married per 1,000 of mid-period population

^{5/} the rate reached 188.0 in 1945 when there were poliomyelitis and dysentery epidemics

^{6/} the rate reached 186.2 in 1948 when there was an epidemic of whooping cough.

Table 1.15 - Vital statistics by sex - Island of Mauritius, 1965 - June 1980

Year	Live births			Deaths			Infant deaths			Still births		
	Both sexes	Male	Female	Both sexes	Male	Female	Both sexes	Male	Female	Both sexes	Male	Female
1965	26,279	13,287	12,992	6,337	3,388	2,949	1,685	943	742	1,557	864	693
1966	26,817	13,554	13,263	6,701	3,550	3,151	1,721	943	778	1,383	716	667
1967	23,499	12,061	11,438	6,543	3,497	3,046	1,656	947	709	1,074	610	464
1968	24,413	12,394	12,019	7,126	3,744	3,382	1,688	935	753	1,110	598	512
1969	21,719	11,182	10,537	6,428	3,361	3,067	1,528	847	681	951	519	432
1970	21,622	11,090	10,532	6,309	3,444	2,865	1,232	706	526	857	450	407
1971	20,834	10,603	10,231	6,248	3,353	2,895	1,077	584	493	842	445	397
1972	20,496	10,458	10,038	6,506	3,447	3,059	1,308	716	592	718	360	358
1973	18,974	9,628	9,346	6,525	3,576	2,949	1,201	699	502	678	385	293
1974	22,938	11,684	11,254	6,221	3,409	2,812	1,045	579	466	854	461	393
1975	21,492	10,900	10,592	6,967	4,047	2,920	1,046	600	446	896	490	406
1976	22,250	11,256	10,994	6,815	3,975	2,840	900	510	390	784	394	390
1977	22,730	11,600	11,130	6,966	4,073	2,893	1,023	552	471	712	379	333
1978	24,250	12,328	11,922	6,400	3,722	2,678	823	476	347	653	350	303
1979	25,056	12,809	12,247	6,625	3,972	2,653	824	473	351	650	340	310
Jan.-June 1980	12,738	6,420	6,318	3,340	1,932	1,408	437	224	213	315	176	139

Table 1.16 - Vital statistics by month of registration and sex - Island of Mauritius, January 1979 - June 1980

Month of registration	Live births			Deaths			Infant deaths			Still births			Civil marriages
	Both sexes	Male	Female	Both sexes	Male	Female	Both sexes	Male	Female	Both sexes	Male	Female	
1979 : January	2,249	1,138	1,111	569	354	215	69	40	29	60	22	38	694
February	1,765	897	868	502	304	198	70	39	31	46	24	22	669
March	1,942	963	979	506	288	218	92	52	40	49	25	24	679
April	2,057	1,037	1,020	529	319	210	79	41	38	68	30	38	749
May	2,221	1,121	1,100	534	326	208	89	45	44	59	31	28	815
June	2,035	1,067	968	579	342	237	74	43	31	52	26	26	970
July	2,269	1,178	1,091	631	391	240	76	47	29	58	35	23	774
August	2,026	1,030	996	617	381	236	72	49	23	51	27	24	750
September	2,187	1,118	1,069	541	323	218	50	30	20	62	33	29	778
October	2,334	1,243	1,091	490	283	207	44	26	18	43	26	17	734
November	2,014	1,009	1,005	539	306	233	50	26	24	50	32	18	701
December	1,957	1,008	949	588	355	233	59	35	24	52	29	23	767
Whole year	25,056	12,809	12,247	6,625	3,972	2,653	824	473	351	650	340	310	9,080
1980 : January	2,254	1,160	1,094	580	332	248	69	33	36	52	29	23	566
February	2,177	1,071	1,106	538	302	236	81	42	39	51	30	21	559
March	2,029	1,009	1,020	581	329	252	88	38	50	53	20	33	560
April	2,070	1,072	998	505	303	202	63	37	26	49	27	22	777
May	2,218	1,114	1,104	554	318	236	74	35	39	54	32	22	691
June	1,990	994	996	582	348	234	62	39	23	56	38	18	881
January-June	12,738	6,420	6,318	3,340	1,932	1,408	437	224	213	315	176	139	4,034

Table 1.17 - Infant deaths (deaths under 1 year of age) by age and sex - Island of Mauritius, 1978 - June 1980

Age	1978			1979			January - June 1980		
	Both sexes	Male	Female	Both sexes	Male	Female	Both sexes	Male	Female
Under 1 day	166	98	68	160	91	69	69	31	38
1 - 6 days	229	132	97	272	160	112	116	65	51
7 - 27 days	78	48	30	80	51	29	51	26	25
28 days - under 2 months	53	33	20	46	23	23	18	6	12
2 - 3 months	88	46	42	74	39	35	44	19	25
4 - 5 months	78	47	31	71	38	33	38	20	18
6 - 7 months	64	35	29	43	23	20	51	31	20
8 - 9 months	38	24	14	45	31	14	37	18	19
10 - 11 months	29	13	16	33	17	16	13	8	5
Under 1 year	823	476	347	824	473	351	437	224	213

Table 1.18 - Deaths by age and sex - Island of Mauritius, 1978 - June 1980

Age group (years)	1978			1979			January - June 1980		
	Both sexes	Male	Female	Both sexes	Male	Female	Both sexes	Male	Female
Under 1	823	476	347	824	473	351	437	224	213
1 - 4	170	80	90	168	85	83	105	56	49
5 - 9	51	35	16	61	33	28	36	23	13
10 - 14	55	31	24	68	38	30	37	22	15
15 - 19	134	70	64	114	70	44	61	33	28
20 - 24	120	80	40	132	82	50	77	36	41
25 - 29	130	73	57	138	90	48	60	38	22
30 - 34	134	81	53	134	84	50	67	37	30
35 - 39	153	111	42	140	84	56	86	57	29
40 - 44	223	166	57	231	166	65	108	76	32
45 - 49	266	185	81	291	213	78	129	92	37
50 - 54	478	347	131	451	313	138	179	132	47
55 - 59	493	344	149	566	400	166	277	188	89
60 - 64	648	419	229	642	434	208	325	226	99
65 - 69	660	409	251	663	420	243	357	242	115
70 - 74	668	365	303	737	434	303	351	208	143
75 - 79	531	246	285	544	280	264	274	122	152
80 - 84	337	129	208	397	173	224	203	73	130
85 & over	326	75	251	324	100	224	171	47	124
Unknown	-	-	-	-	-	-	-	-	-
All ages	6,400	3,722	2,678	6,625	3,972	2,653	3,340	1,932	1,408

Table 1.19 - Deaths by cause - Island of Mauritius, 1979

Group	Cause of death	Deaths						Death rate per 100,000 of population	
		Under 1 year		1 to under 5 years		All ages			% of total deaths
		Both sexes	Both sexes	Both sexes	Male	Female			
I	Infective and parasitic diseases	205	59	416	233	183	45.6		
II	Neoplasms	1	4	427	233	194	46.9		
III	Endocrine, nutritional and metabolic diseases	6	2	338	170	168	37.1		
IV	Diseases of the blood and blood forming organs	5	4	77	33	44	8.4		
V	Mental disorders	-	-	25	25	-	2.7		
VI	Diseases of the nervous system and sense organs	10	6	128	76	52	14.0		
VII	Diseases of the circulatory system	10	6	2,279	1,426	853	250.0		
VIII	Diseases of the respiratory system	98	34	685	404	281	75.2		
IX	Diseases of the digestive system	19	5	306	222	84	33.6		
X	Diseases of the genito-urinary system	3	1	99	63	36	10.9		
XI	Complications of pregnancy, childbirth and the puerperium	-	-	25	-	25	2.7		
XII	Diseases of the skin and subcutaneous tissue	-	1	8	3	5	0.9		
XIII	Diseases of musculoskeletal system and connective tissue	-	-	9	2	7	1.0		
XIV	Congenital anomalies	45	-	50	27	23	5.5		
XV	Certain causes of perinatal morbidity and mortality	322	-	322	183	139	35.3		
XVI	Symptoms and ill-defined conditions	94	27	948	528	420	104.0		
XVII	Accidents, poisonings and violence	6	19	483	344	139	53.0		
	All causes	824	168	6,625	3,972	2,653	726.8		

Table 1.20 - Vital statistics by geographical district - Island of Mauritius, 1978 - 79

Geographical district	Estimated population as at 30.6.78	1978					Estimated population as at 30.6.79	1979				
		Live births	Deaths	Infant deaths/ /	Still births	Civil marriages		Live births	Deaths	Infant deaths/ /	Still births	Civil marriages
Port Louis	142,853	3,508	1,113	125	87	1,409	144,412	3,431	1,190	142	88	1,405
Pamplemousses	75,847	2,180	553	81	47	983	77,294	2,270	601	74	69	808
Rivière du Rempart	74,529	2,183	523	70	56	1,004	75,962	2,233	551	85	67	791
Flacq	99,658	3,049	722	137	101	999	101,752	3,169	742	107	87	876
Grand Port	87,957	2,442	644	95	96	1,151	89,504	2,446	668	87	71	791
Savanne	57,423	1,518	379	42	52	680	58,380	1,580	403	41	41	545
Plaines Wilhems	276,296	7,013	1,899	182	148	3,427	280,582	7,371	1,895	196	149	2,990
Moka	52,884	1,409	351	50	44	572	53,829	1,490	374	53	45	565
Black River	29,024	948	216	41	22	307	29,784	1,066	201	39	33	303
Whole island	896,471	24,250	6,400	823	653	10,532	911,499	25,056	6,625	824	650	9,080

/ deaths of children under 1 year of age

Table 1.21 - Fertility rates - Island of Mauritius, 1962, 1972 - 1979

	1962	1972	1973	1974	1975	1976	1977	1978	1979 ^{6/}
Crude birth rate ^{1/}	38.5	24.8	22.7	27.1	25.1	25.6	25.8	27.0	27.5
General fertility rate ^{2/}	181.4	104.5	95.6	108.9	101.9	103.3	101.5	105.0	104.7
Gross reproduction rate ^{3/}	2.90	1.67	1.50	1.71	1.57	1.54	1.49	1.52	1.50
Net reproduction rate ^{4/}	2.51	1.49	1.34	1.53	1.40	1.38	1.33	1.36	1.34
Female population aged 15 - 49 years (30th June)	144,770	195,373	201,003	206,051	210,987	215,771	223,556	230,799	240,204
<u>Age specific birth rates</u> ^{5/}									
Age of women (years)									
15 - 19	107.3	50.3	47.2	55.9	56.6	60.5	60.0	62.2	63.3
20 - 24	298.3	188.4	174.5	185.8	173.6	174.8	168.1	179.6	178.9
25 - 29	301.4	190.8	166.0	192.0	176.6	179.2	172.7	175.6	171.6
30 - 34	233.3	130.1	119.3	137.9	125.6	116.2	117.8	114.2	113.4
35 - 39	163.1	88.4	73.4	84.4	72.0	65.6	64.5	61.9	64.2
40 - 44	60.1	31.7	25.4	32.3	30.5	27.4	23.2	21.6	19.4
45 - 49	9.0	3.8	3.4	4.9	3.0	2.3	2.0	2.3	2.9

^{1/} registered live births per 1,000 of mid-year population

^{2/} live births occurred per 1,000 women aged 15 - 49 years

^{3/} the average number of daughters born to an average woman assuming that she survives to the end of her childbearing age and is subjected to a fixed schedule of age specific fertility rates.

^{4/} the extent of which the average woman will replace herself, assuming a fixed schedule of age-specific mortality and fertility rates to prevail through her reproductive span of life.

^{5/} live births occurred per 1,000 women in each age group

^{6/} revised, based on live births by occurrence

Table 1.22 - Age-specific fertility rates^{1/} by age of mother and live birth order - Island of Mauritius, 1962 & 1972 censuses

Year	Age of mother	Live birth order								Total
		First	Second	Third	Fourth	Fifth	Sixth & over			
1962	15 - 19	66.1	31.6	8.2	1.4	-	-	107.3		
	20 - 24	64.0	76.6	76.8	50.8	21.2	8.9	298.3		
	25 - 29	25.6	38.3	51.9	58.3	56.2	73.1	301.4		
	30 - 34	9.0	13.9	24.4	29.7	36.5	119.8	233.3		
	35 - 39	4.3	6.8	10.3	11.8	18.9	111.0	163.1		
	40 - 44	1.2	1.7	1.8	3.4	5.3	46.7	60.1		
	45 - 49	-	0.3	0.4	-	1.0	7.3	9.0		
G.F.R. ^{2/}	15 - 49	30.2	28.2	27.2	23.5	20.2	49.6	178.9		
1972	15 - 19	35.7	11.6	2.6	0.4	-	-	50.3		
	20 - 24	67.1	55.6	39.7	17.2	6.8	2.0	188.4		
	25 - 29	29.1	36.4	36.1	33.4	27.3	28.5	190.8		
	30 - 34	8.7	12.5	15.2	17.3	17.9	58.5	130.1		
	35 - 39	3.4	4.4	6.7	7.5	8.9	57.5	88.4		
	40 - 44	1.0	1.2	1.4	1.5	2.7	23.9	31.7		
	45 - 49	0.3	0.1	0.3	0.3	0.2	2.6	3.8		
G.F.R. ^{2/}	15 - 49	28.3	21.3	16.2	11.1	8.3	19.3	104.5		

^{1/} live births occurred per 1,000 females in each age-group

^{2/} General Fertility Rate - live births occurred per 1,000 women aged 15 - 49 years

Table 1.23 - Age-specific fertility rates ^{1/} by age of mother and live birth order - Island of Mauritius, 1978-79

Year	Age of mother	Live birth order							
		First	Second	Third	Fourth	Fifth	Sixth & over	Total	
1978	15 - 19	46.6	13.9	1.7	-	-	-	-	62.2
	20 - 24	79.0	60.8	29.4	8.4	1.6	0.4	0.4	179.6
	25 - 29	38.3	51.0	40.9	25.3	12.5	7.6	7.6	175.6
	30 - 34	12.9	18.1	20.9	19.0	17.1	26.2	26.2	114.2
	35 - 39	4.4	5.9	7.1	6.6	6.5	31.4	31.4	61.9
	40 - 44	1.1	1.0	1.7	1.4	2.1	14.3	14.3	21.6
	45 - 49	0.5	0.1	-	0.1	-	1.6	1.6	2.3
G.F.R. ^{2/}	15 - 49	36.4	27.8	17.1	9.3	5.5	8.9	8.9	105.0
1979 ^{3/}	15 - 19	47.2	14.1	1.9	0.1	-	-	-	63.3
	20 - 24	79.4	61.4	28.6	7.6	1.6	0.3	0.3	178.9
	25 - 29	39.8	49.0	39.6	25.8	11.4	6.0	6.0	171.6
	30 - 34	12.6	20.8	22.0	20.8	14.2	23.0	23.0	113.4
	35 - 39	4.2	6.1	8.1	8.6	7.9	29.3	29.3	64.2
	40 - 44	1.3	1.0	1.3	1.6	2.0	12.2	12.2	19.4
	45 - 49	0.3	0.4	-	0.3	0.2	1.7	1.7	2.9
G.F.R. ^{2/}	15 - 49	36.6	28.0	17.1	9.9	5.1	8.0	8.0	104.7

^{1/} live births occurred per 1,000 females in each age-group

^{2/} General Fertility Rate - live births occurred per 1000 women aged 15 - 49 years

^{3/} revised, based on live births by occurrence

Table 1.24 - Population^{1/} and vital statistics - Island of Rodrigues, 1963 - 1979

Year	Estimated mid-year population (30th June)	Live births	Deaths	Natural increase	Infant deaths	Still births	Civil marriages	Crude birth rate ^{2/}	Crude death rate ^{2/}	Rate of natural increase	Infantile mortality rate ^{3/}	Still birth rate ^{4/}	Civil marriage rate	Estimated population as at 31st December
1963	18,529	881	203	678	79	21	171	47.5	11.0	36.5	89.6	23.3	18.5	18,587
1964	18,974	1,082	237	845	86	32	161	57.0	12.5	44.5	79.5	28.7	17.0	19,282
1965	19,438	916	300	616	116	32	127	47.1	15.4	31.7	126.6	33.8	13.1	19,709
1966	20,084	1,014	243	771	89	26	132	50.5	12.1	38.4	87.8	25.0	13.1	20,388
1967	20,762	972	207	765	70	33	156	46.8	10.0	36.8	72.0	32.8	15.0	21,370
1968	21,832	996	256	740	102	30	145	45.6	11.7	33.9	102.4	29.2	13.3	22,166
1969	22,434	902	305	597	110	37	173	40.2	13.6	26.6	122.0	39.4	15.4	22,839
1970	23,433	1,143	211	932	80	35	152	48.8	9.0	39.8	70.0	29.7	13.0	23,749
1971	24,041	1,092	188	904	69	40	132	45.4	7.8	37.6	63.2	35.3	11.0	24,487
1972	24,769	999	247	752	91	31	132	40.3	10.0	30.3	91.1	30.1	10.7	25,096
1973	25,367	1,041	254	787	76	23	146	41.0	10.0	31.0	73.0	21.6	11.5	25,857
1974	25,709	1,064	203	861	68	25	134	41.4	7.9	33.5	63.9	23.0	10.4	26,123
1975	26,343	1,065	234	831	84	36	181	40.4	8.9	31.5	78.9	32.7	13.7	26,603
1976	26,539	1,024	153	871	36	24	189	38.6	5.8	32.8	35.2	22.9	14.2	27,049
1977	27,058	1,129	188	941	64	30	211	41.7	6.9	34.8	56.7	25.9	15.6	27,614
1978	27,842	1,028	196	832	53	27	209	36.9	7.0	29.9	51.6	25.6	15.0	28,375
1979	29,203	1,107	246	861	67	18	247	37.9	8.4	29.5	60.5	16.0	16.9	29,623

^{1/} revised in the light of the 1972 Population Census data

^{2/} per 1,000 of the mid-year population

^{3/} deaths of children under 1 year of age per 1,000 live births

^{4/} still births per 1,000 total births (live births and still births)

Table 1.25 - Vital statistics by month of registration and sex - Island of Rodrigues, January 1979 - June 1980

Month of registration	Live births			Deaths			Infant deaths			Still births			Civil marriages
	Both sexes	Male	Female	Both sexes	Male	Female	Both sexes	Male	Female	Both sexes	Male	Female	
1979 : January	93	49	44	14	6	8	2	1	1	2	1	1	13
February	68	36	32	15	8	7	3	1	2	1	-	1	8
March	89	48	41	15	11	4	2	2	-	3	2	1	14
April	104	47	57	28	14	14	6	2	4	-	-	-	24
May	95	48	47	34	17	17	10	6	4	3	-	3	17
June	102	51	51	21	9	12	10	5	5	1	-	1	14
July	109	60	49	20	13	7	10	7	3	3	3	-	20
August	80	42	38	28	13	15	1	-	1	-	-	-	25
September	75	40	35	24	18	6	6	5	1	-	-	-	20
October	122	57	65	21	15	6	7	6	1	2	1	1	32
November	90	48	42	11	5	6	5	4	1	1	-	1	33
December	80	48	32	15	11	4	5	4	1	2	2	-	27
Whole year	1,107	574	533	246	140	106	67	43	24	18	9	9	247
1980 : January	127	66	61	25	8	17	8	3	5	3	1	2	7
February	129	61	68	14	9	5	4	3	1	3	2	1	23
March	136	71	65	25	7	18	8	1	7	5	4	1	16
April	111	55	56	16	10	6	4	2	2	3	3	-	24
May	104	54	50	18	6	12	4	2	2	1	-	1	28
June	115	54	61	13	7	6	4	3	1	6	5	1	18
January - June	722	361	361	111	47	64	32	14	18	21	15	6	116

Table 1.26 - Deaths by age and sex - Island of Rodrigues, January 1978 - June 1980

Age group (years)	1978			1979			January - June 1980		
	Both sexes	Male	Female	Both sexes	Male	Female	Both sexes	Male	Female
Under 1	53	24	29	67	43	24	32	14	18
1 - 4	13	6	7	24	11	13	12	6	6
5 - 9	5	4	1	3	1	2	9	3	6
10 - 14	5	3	2	1	-	1	-	-	-
15 - 19	3	1	2	3	1	2	4	2	2
20 - 24	2	1	1	5	3	2	1	1	-
25 - 29	3	2	1	1	1	-	2	2	-
30 - 34	3	2	1	7	4	3	3	1	2
35 - 39	5	3	2	3	2	1	3	3	-
40 - 44	4	2	2	7	4	3	3	-	3
45 - 49	5	3	2	10	7	3	2	1	1
50 - 54	3	3	-	11	6	5	4	1	3
55 - 59	12	9	3	14	9	5	4	3	1
60 - 64	19	10	9	11	7	4	2	-	2
65 - 69	14	11	3	16	11	5	2	-	2
70 - 74	13	10	3	15	9	6	3	1	2
75 - 79	15	6	9	22	12	10	12	5	7
80 - 84	11	7	4	14	7	7	6	3	3
85 & over	8	3	5	12	2	10	7	1	6
Unknown	-	-	-	-	-	-	-	-	-
All ages	196	110	86	246	140	106	111	47	64

Table 1.27 - Deaths by cause - Island of Rodrigues, 1979

Group	Cause of death	Deaths						% of total deaths	Death rate per 100,000 of population
		Under 1 year		1 to under 5 years		All ages			
		Both sexes	Both sexes	Both sexes	Male	Female			
I	Infective and parasitic diseases	13	11	34	19	15	13.8	116.4	
II	Neoplasms	-	-	4	1	3	1.6	13.7	
III	Endocrine, nutritional and metabolic diseases	4	1	8	3	5	3.3	27.4	
IV	Diseases of the blood and blood forming organs	-	-	-	-	-	-	-	
V	Mental disorders	-	-	-	-	-	-	-	
VI	Diseases of the nervous system and sense organs	1	-	2	1	1	0.8	6.9	
VII	Diseases of the circulatory system	-	-	42	24	18	17.1	143.8	
VIII	Diseases of the respiratory system	12	3	20	14	6	18.1	68.5	
IX	Diseases of the digestive system	1	-	4	3	1	1.6	13.8	
X	Diseases of the genito-urinary system	-	-	1	1	-	0.4	3.4	
XI	Complications of pregnancy, childbirth and the puerperium	-	-	-	-	-	-	-	
XII	Diseases of the skin and subcutaneous tissue	-	-	-	-	-	-	-	
XIII	Diseases of musculoskeletal system and connective tissue	-	-	-	-	-	-	-	
XIV	Congenital anomalies	2	-	2	1	1	0.8	6.8	
XV	Certain causes of perinatal morbidity and mortality	21	-	21	13	8	8.6	71.9	
XVI	Symptoms and ill-defined conditions	13	8	104	56	48	42.3	356.1	
XVII	Accidents, poisonings and violence	-	1	4	4	-	1.6	13.7	
	All causes	67	24	246	140	106	100.0	842.4	

SECTION 2 - INTERNATIONAL TRAVEL AND TOURISM

Table 2.1 - Passenger traffic^{1/} - Island of Mauritius, 1962 - June 1980

Period	Arrivals			Departures			Net overseas migration
	Total	By sea	By air	Total	By sea	By air	
1962	15,189	4,258	10,931	16,075	4,374	11,701	- 886
1963	18,047	4,660	13,387	18,299	4,432	13,867	- 252
1964	21,221	5,187	16,034	22,331	5,478	16,853	- 1,110
1965	22,024	4,886	17,138	24,150	5,463	18,687	- 2,126
1966	26,456	5,544	20,912	29,301	6,330	22,971	- 2,845
1967	29,321	4,901	24,420	32,925	6,515	26,410	- 3,604
1968	31,403	4,264	27,139	35,988	5,967	30,021	- 4,585
1969	35,919	3,483	32,436	38,929	4,632	34,297	- 3,010
1970	48,819	3,984	44,835	51,969	4,376	47,593	- 3,150
1971	60,826	3,857	56,969	63,997	4,295	59,702	- 3,171
1972	77,174	3,741	73,433	81,493	4,072	77,421	- 4,319
1973	101,184	4,238	96,946	104,697	4,027	100,670	- 3,513
1974	109,044	3,848	105,196	113,362	3,772	109,590	- 4,318
1975	117,548	4,485	113,063	120,703	4,255	116,448	- 3,155
1976	139,303	4,367	134,936	141,148	4,441	136,707	- 1,845
1977	153,208	4,929	148,279	155,653	4,624	151,029	- 2,445
1978	161,688	4,411	157,277	163,733	4,698	159,035	- 2,045
1979	182,771	3,581	179,190	186,864	4,054	182,810	- 4,093
1980 : 1st Qr.	39,291	751	38,540	44,525	1,035	43,490	- 5,234
2nd Qr.	33,711	861	32,850	35,540	930	34,610	- 1,829

- ^{1/} includes : (a) the very small number of engaged or discharged seamen;
 (b) emigrants to and immigrants from the dependencies; and
 (c) movement of military personnel as from the 1962 Population Census

Table 2.2 - Passenger traffic by country of original embarkation or final destination, January - June 1980

Country of original embarkation or final destination	Total arrivals	Total departures
Australia	2,530	2,500
France	7,240	8,850
Germany, Fed. Rep.	3,430	3,640
Hong Kong	490	640
India	5,410	3,940
Italy	1,620	2,390
Kenya	1,330	1,410
Malagasy Republic	3,060	2,330
Malawi	100	160
Réunion	21,490	23,130
Rhodesia	140	260
Rodrigues	2,479	2,520
Seychelles	1,420	1,560
South Africa, Rep. of	12,110	12,900
Switzerland	500	680
Tanzania	490	490
United Kingdom	6,050	7,660
Zambia	1,090	1,570
Other countries	1,771	3,120
All countries	72,750	79,750

1/ excluding those transit passengers who did not leave the airport, 252 discharged seamen and 315 engaged seamen

Table 2.3 - Tourist^{1/} arrivals by mode of transport and total nights spent during period - Island of Mauritius, 1963 - June 1980

Period	Tourist arriving during period			Total nights spent during period
	Sea	Air	Total	
1963	1,008	6,719	7,727	99,400
1964	1,010	9,023	10,033	144,584
1965	746	9,312	10,058	144,875
1966	1,328	11,712	13,040	162,269
1967	937	13,877	14,814	171,967
1968	647	14,906	15,553	149,507
1969	455	20,132	20,587	220,572
1970	365	27,285	27,650	287,591
1971	168	36,230	36,398	399,739
1972	143	48,654	48,797	454,271
1973	1,293 ^{2/}	66,701	67,994	733,065
1974	472	72,443	72,915	772,183
1975	554	74,043	74,597	746,898
1976	778	91,783	92,561	892,222
1977	1,035	101,475	102,510	994,766
1978	696	107,626	108,322	1,051,610
1979	510	127,850	128,360	1,419,605
January-June 1980	150	52,230	52,380	584,120

^{1/} prior to 1964 a tourist has been defined as a non-resident staying in Mauritius for more than 24 hours but less than 6 months. As from 1964 a tourist is defined as a non-resident staying in the island for more than 24 hours but less than a year.

Figures for the two periods are nevertheless comparable because of the small number of visitors who stay longer than 6 months.

^{2/} includes about 700 persons who came for a religious conference

Table 2.4 - Tourist arrivals and tourist nights^{1/} by country of residence - Island of Mauritius, January-June 1980

Country of residence	Tourist arrivals	Tourist nights spent during period ^{1/}
Australia	1,530	14,880
France	8,160	96,020
Germany, Fed. Rep.	4,000	54,670
India	1,960	21,440
Italy	2,110	22,000
Kenya	440	4,370
Malagasy Republic	3,040	20,060
Reunion	11,540	108,840
Rhodesia	280	4,460
Seychelles	180	6,210
South Africa, Rep. of	9,860	96,030
Switzerland	740	12,750
Tanzania	320	2,280
United Kingdom	3,640	58,760
Zambia	670	8,110
Other countries	3,910	53,240
All countries	52,380	584,120

^{1/} include nights spent during January-June 1980 by tourists arriving prior to this period

Table 2.5 - Official long-term emigrants^{1/} by sex - Island of Mauritius, 1956 - June 1980

Year	Both sexes	Male	Female
1956	147	93	54
1957	109	68	41
1958	163	130	33
1959	170	128	42
1960	158	132	26
1961	837	629	208
1962	1,083	711	372
1963	594	326	268
1964	915	491	424
1965	1,408	659	749
1966	1,611	774	837
1967	2,225	1,038	1,187
1968	3,067	1,487	1,580
1969	2,379	1,119	1,260
1970	2,282	1,063	1,219
1971	2,351	1,078	1,273
1972	2,271	956	1,315
1973	2,037	844	1,193
1974	1,494	606	888
1975	874	328	546
1976	579	195	384
1977	290	120	170
1978	320	111	209
1979	191	43	148
Jan-June 1980	144	50	94

^{1/} persons who have obtained a permit to emigrate to another country

SECTION 3 - PUBLIC HEALTH

Table 3.1 - Health services (as at 31st December) - Island of Mauritius, 1975-79

	1975	1976	1977	1978	1979
<u>Hospitals</u>					
General hospitals	6	6	6	6	6
Special hospitals (psychiatric, leper, chest, eye and E.N.T.) ^{1/}	4	5	5	5	5
Prisons hospitals	2	2	2	2	1
Private hospitals on sugar estates	19	17	18	18	17
<u>Health Centre</u>	-	-	-	-	1
<u>Dispensaries</u>					
Public dispensaries	44	45	48	50	48
Prisons dispensaries	2	2	2	2	2
Private dispensaries on sugar estates	18	21	18	18	19
Mobile dispensaries	5	5	5	5	5
<u>Clinics</u>					
Dental	6	9	9	9	10
Social hygiene	1	1	1	1	1
Private	6	6	6	6	6
Public mobile ante-natal and family planning	1	1	1	1	1
Public mobile dental	1	1	2	2	2
<u>Maternal and child health and family planning clinics</u>	65	68	70	72	71
<u>Family planning (only)</u>					
Clinics	15	15	15	14	18
Supply centres	45	43	41	42	37
<u>Personnel (including Rodrigues)</u>					
<u>Doctors</u>					
Total government doctors ^{2/}	191	257	280	305	324
- of which specialists ^{3/}	76	100	102	102	104
Doctors in private practice	102	94	96	114	133
<u>Dentists</u>					
Government service ^{2/}	17	14	18	20	18
Private	25	23	27	26	35
<u>Pharmacists</u>					
Government service	4	6	8	7	7
Private	47	46	48	52	57
<u>Qualified nurses ^{4/} (excluding nurse-midwives)</u>					
Government service	1,033	1,081	1,130	1,269	1,309
<u>Qualified midwives/nurse-midwives ^{4/}</u>					
Government service	397	415	457	479	505

^{1/} the Leprosarium and the E.N.T. Centre are administratively attached to Sir Seewoosagur Rangoonlan National Hospital and Victoria Hospital respectively

^{2/} including temporary officers but excluding pre-registration ones

^{3/} excluding those performing administrative duties full-time

^{4/} revised

Table 3.2 - Statistics of government hospitals ✓ - Island of Mauritius, 1975-1980

Period	No. of beds (as at end of period)	Patients in hospitals on first day of period	Total admissions	Deaths	Discharges (excluding deaths)	Patients remaining on last day of period
1975	2,780	1,804	79,784	1,995	77,926	1,667
1976	2,802	1,667	76,521	1,790	74,738	1,660
1977	2,837	1,660	86,288	1,925	84,359	1,664
1978	2,836	1,664	90,443	1,819	88,592	1,696
1979	2,827	1,696	97,429	2,060	95,377	1,688
1979 : 1st Qr.	2,825	1,636	23,396	495	22,362	2,235
2nd Qr.	2,825	2,235	24,347	524	23,937	2,121
3rd Qr.	2,827	2,121	24,936	557	24,302	2,198
4th Qr.	2,827	2,198	24,750	484	24,776	1,688
1980 : 1st Qr.	2,778	1,688	24,994	561	23,788	2,333
2nd Qr.	2,778	2,333	25,454	513	24,869	2,405

✓ excluding prison hospitals

Table 3.3. - Notifiable, Contagious or Communicable Diseases - Island of Mauritius, 1975-80

Disease Period	Amoebiasis	Food Poisoning	Gonorrhoea	Infective Hepatitis	Leptospirosis	Leprosy	Malaria	Measles	Schistosomiasis	Syphilis	Tetanus	Tuberculosis	Typhoid Fever
1975	241	1	55	149	...	222	70
1976	250	1	50	145	...	198	23
1977	207	-	86	99	...	191	17
1978	206	-	77	32	...	195	17
1979	120	8	128	70	...	182	7
1979 : 1st Qr.	30	4	12	11	...	48	5
2nd Qr.	35	2	59	20	...	49	-
3rd Qr.	31	-	19	27	...	38	-
4th Qr.	24	2	38	12	...	47	2
1980 : 1st Qr.	3	7	40	143	1	-	221	-	1	4	3	44	111
2nd Qr.	-	14	66	52	-	-	162	6	29	1	1	23	4

SECTION 4 - PUBLIC FINANCE AND BANKING

Table 4.1 - Central government revenue and expenditure, 1977 - 78 to 1980 - 81

Financial year	Revenue			Expenditure			Surplus (+)
	Recurrent	Capital	Total	Recurrent	Capital	Total	Deficit (-)
1977-78	1,260.8	458.0	1,718.8	1,441.3	645.9	2,087.2	- 368.4
1978-79	1,486.4	718.9	2,205.3	1,770.0	669.3	2,439.3	- 234.0
1979-80	1,863.9	730.4	2,594.3	2,016.1	886.0	2,902.1	- 307.8
1980-81 ^{1/}	2,200.1	865.4	3,065.5	2,299.8	1,490.6	3,790.4	- 724.9

^{1/} revised estimates

Table 4.2 - Functional classification of central government capital revenue, 1977-78 to 1980-81

	(Rs million)			
	1977-78	1978-79	1979-80	1980-81 ^{1/}
Grants	1.6	1.0	1.8	1.4
Internal borrowing	-	299.3	387.0	160.0
External borrowing	427.5	378.9	283.0	651.1
Interest on investments	7.6	4.9	6.5	13.5
Transfer from recurrent revenue	-	-	-	-
Other capital revenue	21.3	34.8	52.1	39.4
Total	458.0	718.9	730.4	865.4

^{1/} estimates

Table 4.3 - Functional classification of central government capital expenditure,
1977-78 to 1980-81

(Rs million)

	1977-78	1978-79	1979-80	1980-81 ^{1/}
Agriculture and forests	53.6	51.0	60.6	79.5
Roads and bridges	2.9	14.9	25.0	46.1
Marine services and civil aviation	6.6	5.5	5.1	5.7
Health	12.4	12.7	13.5	17.8
Housing	27.9	32.8	39.4	76.4
Sewerage	4.8	4.4	15.0	24.0
Education	68.5	66.9	72.9	88.0
Telecommunications	19.8	42.0	15.4	24.2
Rural development	21.0	21.1	18.0	22.4
Development works	91.5	106.9	121.8	136.9
Rodrigues	26.3	27.5	38.6	35.3
Additional subscription to I.M.F. and I.B.R.D.	-	-	-	33.8
Contribution to share capital of Development Bank	3.9	-	-	-
Subscription to the African Development Bank	7.3	1.6	2.6	2.8
Contribution to share capital of Mauritius Sugar Terminal Corporation	-	-	140.0	33.5
I.M.F. Repurchase obligations	-	-	-	-
Loans : Development Bank of Mauritius	17.4	15.0	-	-
Central Electricity Board	12.8	35.7	24.5	220.0
Mauritius Housing Corporation	24.0	17.0	10.0	23.0
Central Housing Authority	17.3	39.8	52.2	75.0
Tea Development Authority	23.0	31.0	27.0	27.0
Central Water Authority	48.9	32.4	48.6	110.0
Agricultural Marketing Board	2.8	0.6	-	-
Sugar Planters' Mechanical Pool Corporation	-	-	-	-
Other loans	36.0	17.5	51.9	51.0
Reserve	-	-	-	40.0
Other capital expenditure	117.2	93.0	103.9	318.2
Total	645.9	669.3	886.0	1,490.6

^{1/} estimates

Table 4.4 - Functional classification of central government recurrent revenue, 1977-78 to 1980-81

(Rs million)

	1977-78	1978-79	1979-80	1980-81 ^{1/}
<u>Taxes on income and capital</u>	<u>298.9</u>	<u>328.9</u>	<u>296.2</u>	<u>334.5</u>
Income tax:				
Individuals	153.5	182.7	158.7	160.0
Companies	129.9	128.4	118.5	154.0
Contribution to Widows' Fund	9.0	10.2	11.7	12.5
Succession duties	6.5	7.6	7.3	8.0
<u>Taxes on financial transactions</u>	<u>51.1</u>	<u>62.2</u>	<u>70.9</u>	<u>79.5</u>
<u>Taxes on gambling</u>	<u>25.9</u>	<u>30.3</u>	<u>37.5</u>	<u>40.0</u>
<u>Taxes on consumption and production</u>	<u>744.8</u>	<u>855.7</u>	<u>1,214.2</u>	<u>1,425.5</u>
Import duties	412.7	465.0	640.3	802.0
Export duties	139.8	145.2	287.3	290.0
Excise duties	149.4	184.3	213.7	244.8
Business and professional licenses	11.2	16.3	19.8	23.8
Taxes on transportation	25.4	30.5	29.9	36.9
Taxes on tourism	6.3	9.5	16.2	20.0
Taxes on international travel	-	4.9	7.0	8.0
<u>Provision of goods and services</u>	<u>80.1</u>	<u>108.1</u>	<u>142.3</u>	<u>162.9</u>
Rental of government property	3.8	4.3	5.4	6.4
Telephone service	13.1	21.9	30.6	33.0
Marine services	-	-	-	-
Posts and telegraphs	18.9	20.9	26.1	30.6
Agriculture and forests	9.6	9.3	16.1	10.7
Other goods and services	34.7	51.7	64.1	82.2
<u>Interests, profits and dividends</u>	<u>47.5</u>	<u>69.9</u>	<u>76.9</u>	<u>88.5</u>
<u>Grants from British government</u>	<u>0.2</u>	<u>-</u>	<u>-</u>	<u>-</u>
<u>Other recurrent revenue</u>	<u>12.3</u>	<u>31.3</u>	<u>25.9</u>	<u>69.2</u>
Total	1,260.8	1,486.4	1,863.9	2,200.1

^{1/} estimates

Table 4.5 - Functional classification of central government recurrent expenditure, 1977-78 to 1980-81

(Rs million)

	1977-78	1978-79	1979-80	1980-81 ^{1/}
<u>General services</u>	<u>192.4</u>	<u>264.8</u>	<u>263.5</u>	<u>312.8</u>
General administration	19.9	19.4	19.8	35.2
Legislature	3.3	3.5	3.8	3.9
Maintenance of law and order:				
Justice and Attorney-General	9.2	11.1	11.3	12.0
Police and defence	71.7	124.2	117.1	130.6
Prisons	9.1	11.8	13.4	18.3
Revenue collection and financial control	41.2	46.5	46.9	50.9
Other general services	38.0	48.3	51.2	61.9
<u>Community services</u>	<u>100.3</u>	<u>116.3</u>	<u>69.4</u>	<u>79.1</u>
Maintenance of roads and public buildings	23.7	24.1	22.7	26.5
Water supplies	45.3	57.6	11.0	12.0
Sanitation and sewerage	15.3	17.3	17.9	19.2
Other community services	16.0	17.3	17.8	21.4
<u>Social services</u>	<u>613.4</u>	<u>756.0</u>	<u>817.5</u>	<u>903.8</u>
Education	252.8	301.4	330.8	360.8
Health (excluding sanitation)	136.5	153.1	157.9	166.1
Social Security:				
Family allowances	22.7	23.9	21.8	23.0
Outdoor relief	16.2	15.5	15.1	15.5
Old age pension	-	-	-	-
Contribution to National Pension Fund ^{2/}	100.2	112.9	118.3	120.0
Subsidy on essential foodstuffs	58.4	114.1	131.7	173.0
Housing	7.7	9.4	10.8	10.8
Other social services	18.9	25.7	31.1	34.6
<u>Economic services</u>	<u>129.2</u>	<u>119.2</u>	<u>126.2</u>	<u>153.8</u>
Agriculture and forests	46.2	50.1	51.4	60.1
Contribution to National Fertiliser Scheme	25.0	3.6	2.1	4.0
Civil aviation and marine services	10.4	11.8	13.8	19.6
Posts, telegraphs and telecommunications	29.8	32.9	34.9	41.4
Other economic services	17.8	20.8	24.0	28.7
<u>Unallocable expenditure</u>	<u>406.0</u>	<u>513.7</u>	<u>739.5</u>	<u>850.3</u>
Transfer to local authorities	61.8	84.4	94.4	101.7
Recurrent financial obligations:				
Public debt:				
Interest	121.2	185.3	328.8	360.6
Redemptions	12.7	20.4	63.2	111.1
Sinking fund	31.6	29.2	37.3	47.5
Public pensions and gratuities	75.3	85.7	96.6	99.4
Passages	2.3	3.1	2.8	2.4
Rodrigues	42.2	46.5	51.0	60.0
Development works	-	-	-	-
Other unallocable expenditure	58.9	59.1	65.4	67.6
<u>Transfer to capital budget</u>	<u>-</u>	<u>-</u>	<u>-</u>	<u>-</u>
Total	1,441.3	1,770.0	2,016.1	2,299.8

^{1/} revised estimates

^{2/} including old age pension

Table 4.6 - Public debt outstanding, 1976 - 1980

(Rs million)

End of period	Total public debt	Internal debt				External debt ^{1/}			
		Development loan stocks	Tap loan stocks	Other	Total internal debt	International development institutions	Foreign governments	Other	Total external debt
1976 June	1,226.6	835.0	105.6	23.1	963.7	107.4	155.5	-	262.9
December	1,208.0	820.0	102.4	23.1	945.5	108.0	154.5	-	262.5
1977 June	1,406.7	965.0	100.6	18.1	1,083.7	143.4	179.6	-	323.0
December	1,395.1	950.0	96.0	18.1	1,064.1	157.5	173.5	-	331.0
1978 June	1,731.0	940.5	28.3	18.1	986.9	185.1	211.7	347.3	744.1
December	1,957.3	1,113.0	23.5	18.1	1,154.6	202.5	223.7	376.5	802.7
1979 June	2,321.3	1,214.4	21.7	18.5	1,254.6	231.8	251.6	583.3	1,066.7
December	3,166.1	1,564.0	17.3	18.9	1,600.2	316.7	353.0	896.2	1,565.9
1980 June ^{2/}	3,227.4	1,554.0	16.7	21.1	1,591.8	374.8	398.2	862.6	1,635.6

^{1/} external debt is valued at rates of exchange ruling at end of each period^{2/} excluding external loans amounting to Rs mn 95.4 which have not yet been credited to the capital revenue of central government

Table 4.7 - Sinking funds held against the public debt

(Rs million)

	1976	1977	1978	1979	1980
Amount as at 30th June	150.1	156.4	97.5	93.0	84.2

Note: investments are valued at mean market prices

Table 4.8 - Central government local loan repayments by year of maturity
(end of June 1980)

Year of maturity	No. of loans to be repaid	Amount to be repaid (Rs million)
Development loan stocks 1980	2	30.0
" " " 1981	1	20.0
" " " 1982	2	55.0
" " " 1983	2	150.3
" " " 1984	4	85.0
" " " 1985	7	206.2
" " " 1986	1	15.0
" " " 1987	2	55.0
" " " 1988	2	30.0
" " " 1989	6	185.0
" " " 1990	2	45.0
" " " 1991	2	45.0
" " " 1992	3	55.0
" " " 1993	2	105.2
" " " 1994	2	170.0
" " " 1995	1	20.0
" " " 1996	2	60.0
" " " 1997	2	85.0
" " " 1998	-	-
" " " 1999	1	137.3
Tap loan stocks	-	16.7
Other loans	6	21.1
Total	52	1,591.8

Table 4.9 - Outstanding loans and advances made from public funds (at end of June) 1976 - 1980

(Rs million)

Debtor	1976	1977	1978	1979	1980
<u>Statutory bodies</u>	400.3	504.0	645.4	812.9	1,024.6
Agricultural Marketing Board	13.6	15.5	18.3	18.8	18.6
Central Electricity Board	101.9	117.4	125.0	153.0	175.7
Central Housing Authority	50.0	59.9	61.5	99.3	149.6
Central Water Authority	41.2	52.2	101.0	131.8	180.3
Development Bank of Mauritius	89.9	122.3	137.6	147.5	141.8
Mauritius Broadcasting Corporation	0.4	0.3	0.1	-	-
Mauritius Housing Corporation	34.9	45.0	68.0	88.7	97.0
Mauritius Sugar Industry Research Institute	0.9	0.8	0.6	0.5	0.3
Sugar Planters' Mechanical Pool Corporation	4.3	6.1	4.9	3.7	2.8
Tea Development Authority	62.6	82.9	105.9	135.0	162.0
Other statutory bodies	0.6	1.6	22.5	34.6	96.5
<u>Local authorities</u>	27.9	27.1	26.2	25.2	27.8
<u>Miscellaneous</u>	30.4	30.0	44.8	44.5	68.6
Sewerage scheme	19.5	20.2	20.5	20.9	20.3
Colonial Steamships Co. Ltd.	0.8	0.6	0.4	0.2	-
Tea estates	2.7	1.1	7.8	7.8	5.3
Mauritius Hotels Ltd.	0.9	0.9	0.8	0.7	0.6
Compagnie des Villages de Vacances de L'Ile de France Itée (COVIFRA)	4.1	4.1	3.9	3.7	3.2
Other	2.4	3.1	11.4	11.2	39.2
Total	458.6	561.1	716.4	882.6	1,121.0

Table 4.10 - Income tax^{1/} - Individuals

Range of gross income (Rupees)	Year of assessment 1977-78			
	Number of taxpayers ^{2/}	Gross income (Mn. Rs)	Chargeable income (Mn. Rs)	Tax charged (Mn. Rs)
10,000 or less	4,181	32.54	12.12	1.19
10,001 - 20,000	10,130	147.81	66.58	6.79
20,001 - 30,000	5,817	142.00	75.84	9.41
30,001 - 40,000	3,060	105.69	66.87	10.14
40,001 - 50,000	1,699	75.63	52.89	9.54
50,001 - 100,000	3,279	224.81	171.79	43.06
100,001 - 250,000	809	107.95	91.52	40.41
250,001 - 500,000	57	18.57	17.02	10.74
Over 500,000	13	8.64	7.82	5.31
Total	29,045	863.64	562.45	136.59

^{1/} the figures are provisional and relate to individuals who have voluntarily furnished complete returns. These are subject to amendment as the Income Tax Act 1974 empowers the Commissioner of Income Tax to revise cases under objection, to issue additional claims for the six years preceding the present year of assessment, and to claim back duty at any time in cases of false or incorrect returns of income for any previous year.

^{2/} married couples are counted as one.

Table 4.11 - Income tax^{1/} - Companies

Range of gross income (Rupees)	Year of assessment 1977-78			
	Number of companies	Gross income (Mn. Rs)	Chargeable income (Mn. Rs)	Tax charged (Mn. Rs)
25,000 or less	49	0.54	0.22	0.11
25,001 - 50,000	47	1.80	0.39	0.20
50,001 - 100,000	48	3.39	0.93	0.46
100,001 - 150,000	41	5.17	0.66	0.33
150,001 - 250,000	64	12.90	2.28	1.14
250,001 - 500,000	95	33.66	7.42	3.65
500,001 - 750,000	45	27.03	4.51	2.26
750,001 - 1,000,000	28	23.78	5.73	2.85
1,000,001 - 1,500,000	17	19.14	2.67	1.33
1,500,001 - 2,000,000	13	17.59	3.48	1.74
2,000,001 - 5,000,000	36	77.13	16.48	8.23
5,000,001 - 10,000,000	28	105.37	23.00	11.45
Over 10,000,000	57	1,381.82	179.66	89.46
Total	568	1,709.32	247.43	123.21

^{1/} the figures are provisional and relate to companies who have voluntarily furnished complete returns. These are subject to amendment as the Income Tax Act 1974 empowers the Commissioner of Income Tax to revise cases under objection, to issue additional claims for the six years preceding the present year of assessment, and to claim back duty at any time in cases of false or incorrect returns of income for any previous year.

Table 4.12 - Foreign exchange reserves, (Rs million), 1975 - 1980

End of period	I.M.F. ^{1/} position (net)	Bank of Mauritius	Government	Statutory bodies	Commercial banks (net)	Total
1975	42.4	1,045.6	18.7	- 5.9	42.5	1,143.3
1976	42.4	551.9	11.9	- 2.4	.25.8	629.6
1977	-	431.1	4.4	1.4	- 56.5	380.4
1978 ^{2/}	-	305.5	6.7	1.8	- 41.9	272.1
1979 ^{2/}	-	257.9	11.9	3.0	- 58.5	214.3
1979 ^{2/} : 1st Qr.	-	194.3	1.8	1.9	- 55.3	142.7
2nd Qr.	-	287.9	9.8	2.3	- 75.1	224.9
3rd Qr.	-	257.1	10.3	2.2	- 53.6	216.0
4th Qr.	-	257.9	11.9	3.0	- 58.5	214.3
1980 : 1st Qr.	-	340.7	10.5	2.8	- 81.6	272.4
2nd Qr.	-	312.0	11.2	3.6	- 83.1	243.7

^{1/} International Monetary Fund

^{2/} revised

Source : Bank of Mauritius

Table 4.13 - Assets of the Bank of Mauritius, (Rs million), 1975 - 1980

End of period	Grand Total	External					Local			
		Total	Balances with banks	Bills	Securities	IMF Special Drawing Rights	Total	Government Securities	Discounts and advances	Other assets
1975	1,063.8	1,045.6	327.6	470.5	233.2	14.3	18.2	0.7	5.0	12.5
1976	947.7	552.0	356.2	63.9	111.1	20.8	395.7	206.8	173.2	15.7
1977	1,183.7	431.1	156.9	150.3	106.0	17.9	752.6	344.8	384.4	23.4
1978	1,279.6	305.5	130.5	49.4	113.1	12.5	974.1	382.0	572.8	19.3
1979	1,562.9	257.9	105.4	121.1	25.5	5.9	1,305.0	624.5	644.0	36.5
1979 : 1st Qr..	1,243.6	194.3	97.8	25.7	57.1	13.7	1,049.3	396.8	597.3	55.2
2nd Qr.	1,322.3	287.9	231.5	21.1	25.8	9.6	1,034.4	422.2	574.8	37.3
3rd Qr.	1,345.6	257.1	178.3	50.8	20.1	7.9	1,088.5	462.5	603.3	22.7
4th Qr.	1,562.9	257.9	105.4	121.1	25.5	5.9	1,305.0	624.5	644.0	36.5
1980 : 1st Qr.	1,671.5	340.7	242.3	51.7	26.0	20.5	1,330.8	592.4	710.0	28.4
2nd Qr.	1,793.8	312.0	165.4	94.1	27.7	24.6	1,481.8	727.5	729.3	25.0

Source : Bank of Mauritius

Table 4.14 - Liabilities of the Bank of Mauritius (Rs Million), 1975-80

End of period	Grand Total	Capital and reserve	Notes in circulation	Coins in circulation	Deposits				Other liabilities	
					Total Deposits	Demand				Other deposits
						Government	Bankers	Other		
1975	1,663.8	28.0	479.9	15.8	344.7	118.6	124.4	51.1	60.6	197.4
1976	1,547.7	33.0	625.2	16.5	159.3	0.3	127.1	11.1	20.8	112.6
1977	1,185.7	33.0	779.4	21.7	190.0	0.5	105.5	10.7	73.5	159.6
1978	1,279.6	33.0	891.1	26.3	167.7	0.8	150.0	13.7	3.2	161.5
1979	1,562.9	33.0	803.5	28.3	385.1	2.5	187.4	175.2	20.0	313.0
1979 : 1st Qr.	1,243.6	33.0	773.6	25.9	201.3	0.7	173.8	25.3	1.5	209.8
2nd Qr.	1,322.3	33.0	758.8	26.0	240.2	27.5	193.8	17.4	1.5	264.3
3rd Qr.	1,345.6	33.0	713.5	27.2	344.0	2.5	190.5	16.4	134.8	227.9
4th Qr.	1,562.9	33.0	803.5	28.3	385.1	2.5	187.4	175.2	20.0	313.0
1980 : 1st Qr.	1,671.5	33.0	727.6	28.5	370.2	3.0	189.9	17.8	159.5	512.2
2nd Qr.	1,793.8	33.0	690.1	27.4	290.2	28.1	229.7	31.9	0.5	753.1

Source: Bank of Mauritius

Table 4.15 - Assets of Commercial Banks, 1975-1980

(Rs Million)

End of Period	Total Assets	Reserves		Foreign Assets		Claims on Government				Claims on Private Sector					
		Cash in Hand	Balances at Bank of Mauritius	Balances with Banks Abroad	Other ^{1/}	Treasury Bills	Government Securities	Advances ^{4/}	Local Bills Discounted	Bills Receivable	Bills Rediscounted	Loans & Advances to Public Bodies	Other ^{2/} Loans and Advances	Other ^{3/} Assets	
1975	1,631.6	55.6	134.5	41.9	12.4	126.2	392.5	1.5	66.0	58.4	3.0	10.4	607.0	122.2	
1976	1,766.2	54.9	127.1	13.8	21.1	-	247.0	1.4	52.1	86.8	15.4	25.7	975.6	145.5	
1977	2,167.1	107.5	105.5	19.1	24.8	79.0	179.1	80.5	44.6	81.0	26.0	26.8	1,173.8	219.4	
1978	2,515.5	93.3	149.9	23.7	25.7	100.4	330.2	72.1	65.3	62.7	3.7	22.8	1,353.6	212.1	
1979	2,977.3	107.0	187.4	36.8	26.8	136.0	397.3	103.7	53.0	79.6	54.0	48.8	1,486.2	260.7	
1979:															
1st Quarter	2,621.6	84.9	173.3	19.4	22.8	82.3	401.1	82.7	37.6	70.9	19.2	32.3	1,444.4	150.2	
2nd Quarter	2,769.3	85.2	193.7	25.2	31.3	144.0	401.0	109.1	63.3	63.5	9.5	25.1	1,431.8	186.6	
3rd Quarter	2,735.3	91.3	190.3	19.7	27.5	100.2	401.0	85.6	79.1	61.7	3.2	28.8	1,466.1	180.8	
4th Quarter	2,977.3	107.0	187.4	36.8	26.8	136.0	397.3	103.7	53.0	79.6	54.0	48.8	1,486.2	260.7	
1980:															
1st Quarter	3,040.6	108.8	189.9	36.9	28.7	84.1	422.5	137.4	58.3	82.8	22.7	59.3	1,574.8	234.4	
2nd Quarter	3,413.1	96.0	229.7	27.9	62.1	253.1	422.0	158.1	83.1	73.8	25.3	40.8	1,585.8	355.4	

^{1/} including foreign notes and coins, foreign bills discounted and foreign securities^{2/} including non-interbank investments^{3/} including interbank investments^{4/} including foreign currency loans to Government as from December, 1977

Source: Bank of Mauritius

Table 4.16 - Liabilities of commercial banks (Rs Million), 1975-80

End of Period	Total Liabilities	Capital and reserves	Private sector deposits				Government deposits	Credit from Bank of Mauritius	Balance due to		Bills	Other Liabilities ^{1/}
			Demand	Time	Savings	Total			Banks in Mauritius	Banks abroad		
1975	1,631.6	53.1	530.2	512.6	380.2	1,423.0	10.1	-	12.1	11.8	6.5	115.0
1976	1,766.2	71.4	506.5	450.9	513.6	1,471.0	4.5	10.2	45.8	9.1	10.0	144.2
1977	2,167.1	111.8	525.3	498.3	626.6	1,650.2	5.2	7.2	62.2	100.4	7.2	222.9
1978	2,515.5	154.7	615.5	650.1	759.9	2,025.5	4.5	31.7	1.7	91.3	9.6	196.5
1979	2,977.3	166.8	683.8	800.9	886.5	2,371.2	3.1	17.5	2.5	122.1	13.6	280.5
1979 : 1st Qr.	2,621.6	155.9	570.8	700.7	842.6	2,114.1	4.5	35.3	3.4	97.5	10.3	200.6
2nd Qr.	2,769.3	162.5	631.0	757.1	842.1	2,230.2	7.0	6.8	3.6	131.6	14.2	213.4
3rd Qr.	2,735.3	163.8	581.9	748.6	878.7	2,209.2	1.3	28.6	2.0	100.8	14.8	214.8
4th Qr.	2,977.3	166.8	683.8	800.9	886.5	2,371.2	3.1	17.5	2.5	122.1	13.6	280.5
1980 : 1st Qr.	3,040.6	165.4	615.0	834.2	947.7	2,396.9	8.3	63.1	1.0	147.2	10.7	248.0
2nd Qr.	3,413.1	195.2	719.8	1,030.0	965.7	2,715.5	19.4	8.0	1.0	173.1	14.7	286.2

^{1/} including interbank deposits and bills rediscounted with Bank of Mauritius

Source: Bank of Mauritius

Table 4.17 - Sector-wise Distribution of Commercial Banks' Credit to Private Sector (1979-80)

(Rs million)

	1979			1980		
	March	June	September	December	March	June
Sugar ^{1/}	385.2	310.9	354.4	328.3	417.7	332.0
Other Agricultural Interest	48.8	57.1	56.1	49.3	49.2	54.3
Export Processing Zone	318.7	348.9	329.3	344.6	333.2	369.8
Holders of Development Certificate	182.1	188.3	211.5	225.8	217.4	217.9
Other Industries and Manufacturers ^{2/}	236.6	231.4	218.2	252.8	241.1	281.4
Traders	219.7	223.2	216.4	228.9	219.9	221.0
Housing	52.3	58.4	62.6	64.9	66.7	72.2
Personal and Professional	84.5	101.3	105.9	119.7	128.0	145.7
Statutory and Para-Statel Bodies	32.3	25.1	29.3	49.2	59.7	41.0
Investments in Corporate Shares and Securities	11.5	11.5	11.7	11.7	11.7	11.7
Other Customers ^{3/}	32.7	37.1	43.5	46.4	53.3	61.8
Total	1,604.4	1,593.2	1,638.9	1,721.6	1,797.9	1,808.8

^{1/} including Mauritius Sugar Syndicate

^{2/} including Transport and Hotels

^{3/} including Stock Brokers and Financial Institutions

Table 4.18 - Assets and liabilities of the Development Bank of Mauritius
(at end of period), 1975 - 1979

(Rs million)

	1975	1976	1977	1978	1979
<u>Assets</u>					
Cash	0.1	0.2	0.1	0.1	0.9
Balances due by other banks in Mauritius	12.2	4.1	0.2	0.2	8.4
Loans and advances:					
Primary industries	11.1	12.5	12.8	16.9	16.5
Other industries	83.9	123.6	169.3	189.6	196.7
Other loans and advances	0.9	0.7	0.8	0.8	2.4
Investments					
Local (at cost)	61.7	76.3	106.8	99.9	99.4
Other assets	11.2	19.4	2.6	6.4	10.4
Total	181.1	236.8	292.6	313.9	334.7
<u>Liabilities</u>					
Deposits:					
Demand	1.9	2.7	6.7	5.1	3.2
Time	8.4	3.1	3.0	3.1	3.0
Savings	3.1	3.8	3.6	4.7	4.1
Share capital	23.5	27.5	31.4	31.4	41.9
Debentures	17.0	11.0	6.8	5.0	1.2
Government of Mauritius	83.6	107.0	140.6	145.9	144.5
Other liabilities	43.6	81.7	100.5	118.7	136.8
Total	181.1	236.8	292.6	313.9	334.7

Table 4.19 - Assets and liabilities of the Mauritius Co-operative Central Bank Ltd. (at end of February), 1976 - 1980

Rs million

	1976	1977	1978	1979	1980
Assets					
Cash at bank and in hand	7.8	24.8	17.3	8.1	10.8
Loans and advances:					
Primary industries	19.1	26.2	37.3	36.8	64.5
Housing	3.1	4.3	5.4	6.1	6.7
Other loans and advances	6.2	7.5	6.9	25.0	7.5
Investments:					
Local	31.2	9.3	16.1	12.2	12.2
Other assets	0.6	1.8	4.4	7.1	9.8
Total	68.0	73.9	87.4	95.3	111.5
Liabilities					
"Owned Funds"	8.5	9.9	11.1	12.2	13.0
Deposits:					
Demand	13.5	10.9	15.0	9.3	17.1
Time	30.3	36.9	33.9	39.7	48.9
Savings:	15.0	14.9	15.0	16.4	14.5
Balances due to other banks in Mauritius	-	-	11.3	16.2	15.9
Other liabilities	0.7	1.3	1.1	1.5	2.1
Total	68.0	73.9	87.4	95.3	111.5

Table 4.20 - Assets and Liabilities of the Mauritius Housing Corporation (at end of period, 1975 - 1979)

Rs million

	1975	1976	1977	1978	1979
Assets					
Cash in hand and on deposit	0.8	0.7	-	0.1	0.2
Housing loans	67.7	88.0	116.5	133.7	156.3
Investment (at cost)	0.7	0.8	1.1	1.1	1.3
Other assets	9.4	11.3	3.2	26.8	37.8
Total	78.6	100.8	120.8	161.7	195.6
Liabilities					
Loans: Local					
Government of Mauritius	30.4	37.5	54.5	82.2	98.2
Développement Bank of Mauritius	0.5	-	-	-	-
Other local loans	21.3	24.6	33.8	36.2	43.1
External					
British Government Commonwealth Development Corporation	12.0	11.7	11.3	10.8	15.4
Other liabilities	13.6	26.7	21.1	32.5	38.9
Total	78.6	100.8	120.8	161.7	195.6

Table 4.21 - Assets and liabilities of the Sugar Insurance Fund Board (at end of May), 1976 - 1980

(Rs million)

	1976	1977	1978	1979	1980
<u>Assets</u>					
Cash at bank	14.8	2.2	0.7	4.1	0.4
Loans and deposits	133.8	220.5	241.9	278.7	368.1
Special levy receivable	-	-	-	-	-
Compensation from reinsurers	30.7	2.0	0.8	0.8	0.8
Other assets	5.0	9.4	11.4	24.8	12.2
Total	184.3	234.1	254.8	308.4	381.5
<u>Liabilities</u>					
Sugar Insurance Fund	9.3	79.9	126.9	179.7	275.9
Reserve Fund	147.0	130.0	109.8	88.9	60.2
Estimated reinsurance premium	15.1	13.6	15.2	19.7	29.8
Compensation (current crop)	-	-	2.8	17.9	15.6
Other liabilities	12.9	10.6	0.1	2.2	-
Total	184.3	234.1	254.8	308.4	381.5

Table 4.22 - Post Office Savings Bank, 1975 - 1980

Period	Deposits during period (Rs million)	Withdrawal during period (Rs million)	Accumulated balance at end of period (Rs million)	Number of accounts at end of period
1975	33.4	21.6	62.1	116,368
1976	44.0	29.7	78.9	126,232
1977	51.8	40.1	93.6	138,901
1978	64.5	55.5	106.9	152,252
1979	45.3	54.1	104.7	164,505
1979 : 1st Qr.	14.8	12.9	108.8	155,752
2nd Qr.	10.0	14.5	110.9 ^{1/}	158,985
3rd Qr.	10.5	12.9	108.5	162,255
4th Qr.	10.0	13.8	104.7	164,505
1980 : 1st Qr.	10.5	11.3	107.8	166,528
2nd Qr.	8.8	14.0	107.0 ^{1/}	168,673

^{1/} includes interest capitalised to depositors' accounts

Table 4.23 - Money supply, 1975 - 1980

(Rs million)

End of period	Currency with the public ^{1/}	Demand deposits			Total money supply
		Bank of Mauritius ^{2/}	Commercial banks	Total	
1975	438.1	25.0	530.2	555.2	993.3
1976	587.9	4.3	506.5	510.8	1,098.7
1977	693.6	0.3	525.3	525.6	1,219.2
1978	824.1	9.6	615.5	625.1	1,449.2
1979	724.9	17.6	683.8	701.4	1,426.3
1979 : 1st Qr.	714.6	23.4	570.8	594.2	1,308.8
2nd Qr.	699.6	15.7	631.0	646.7	1,346.3
3rd Qr.	649.3	14.7	581.9	596.6	1,245.9
4th Qr.	724.9	17.6	683.8	701.4	1,426.3
1980 : 1st Qr.	647.3	16.1	615.0	631.1	1,278.4
2nd Qr.	621.5	30.3	719.8	750.1	1,371.6

^{1/} net of cash held by commercial banks

^{2/} miscellaneous private deposits

Source : Bank of Mauritius

Table 4.24 - Bank and interest rates, 1978-80

(per cent per annum)

	30.6.78	31.12.78	30.6.79	31.12.79	30.6.80
<u>Deposit Rates</u>					
Post Office Savings Bank	6½	6½	7½	7½	9
Commercial Banks:					
Savings accounts	6½	6½	7½	9 - 9½	9 - 9½
Fixed deposits:					
Up to 3 months	6¼	6¼	7¼	9¼	9¼
3 - 6 months	7	7	8	9½	9½
6 - 12 months	7½	7½	8½	10	10
12 - 18 months	8½	8½	9	10½	10½
18 - 24 months	9½	9½	9¾	11¼	11¼
24 - 36 months	10¼	10¼	10½	12	12
36 - 48 months	11	11	**	**	**
Over 48 months	**	**	**	**	**
<u>Lending Rates</u>					
Bank of Mauritius					
Bank Rate (advances)	9	9	9	10½	10½
Rediscount Rate	9½	9¾	9	10½	10½
Commercial Banks:					
Prime Rate	10	10	10	11¾	11¾
Export Finance Rate (Discount facilities)	10¼	10¼	10¼	11½	11¼
Fine Commercial Rate	10¼	10¼	10¼	12½	12½
Commercial Rate	13	13	16	17½	17½
Other Lending Rates (including rate on Co-operative credit)	7 - 12	7 - 12	8 - 16	9½ - 15½	9½ - 15½
<u>Public Notaries</u>					
Mortgage Loans	9 - 11	11 - 13	11 - 13	11 - 13	11 - 13
<u>Mauritius Housing Corporation:</u>					
Housing Loans	9 - 10	10½ - 12	10½ - 12	10½ - 12	10½ - 12

** no maximum rate fixed

Table 4.25 - Foreign Exchange Rates, 1979-80

Country	Currency	On 31.12.78		On 30.6.79		On 31.12.79		On 30.6.80	
		Bank sells	Bank buys	Bank sells	Bank buys	Bank sells	Bank buys	Bank sells	Bank buys
Australia	1 Dollar	6.92	6.67	6.78	6.55	8.53	8.20	8.91	8.52
Belgium	100 Francs	21.05	20.45	20.40	20.00	27.55	26.85	27.10	26.40
Canada	1 Dollar	5.09	4.97	5.18	5.07	6.56	6.42	6.67	6.53
France	1 Franc	1.44	1.39	1.42	1.37	1.91	1.84	1.87	1.80
Germany, Fed. Rep. of	1 Mark	3.31	3.23	3.28	3.20	4.46	4.33	4.35	4.20
Hong Kong	1 Dollar	1.26	1.22	1.20	1.17	1.59	1.54	1.57	1.52
India	100 Rupees	74.50	71.50	75.75	72.75	96.25	92.00	98.00	94.00
Italy	1000 Lires	7.25	7.00	7.25	7.00	9.55	9.25	9.12	8.82
Japan	100 Yen	3.13	3.04	2.80	2.73	3.21	3.14	3.52	3.43
Kenya	100 Shillings	81.50	78.50	81.50	78.50	105.00	100.75	106.00	101.75
Malagasy, Rep. of	100 Francs	2.97	2.79	2.92	2.74	3.91	3.69	3.83	3.67
New Zealand	1 Dollar	6.46	6.23	6.20	5.95	7.65	7.39	7.63	7.35
Pakistan	100 Rupees	61.50	58.50	61.75	58.75	78.50	74.50	78.25	74.25
Reunion	1 Franc	1.44	1.39	1.42	1.37	1.91	1.84	1.87	1.80
South Africa, Rep. of	1 Rand	6.98	6.73	7.16	6.91	9.55	9.02	9.93	9.62
Switzerland	1 Franc	3.71	3.62	3.65	3.56	4.85	4.73	4.71	4.59
United Kingdom	1 Pound Sterling	12.12	12.00	13.03	12.91	17.017	16.853	17.84	17.667
U.S.A.	1 Dollar	5.98	5.87	6.03	5.92	7.657	7.523	7.64	7.503

Source: Bank of Mauritius

SECTION 5 - NATIONAL ACCOUNTS

Table 5.1 - Gross national product by industrial origin (at current factor cost)
1976 - 1979 ^{1/}

	(Rs million)			
	1976	1977	1978	1979
1. Agriculture, forestry, hunting and fishing	1,066	1,100	1,142	1,473
2. Mining and quarrying	7	9	11	12
3. Manufacturing	668	728	803	1,010
4. Construction	318	390	436	500
5. Electricity, gas, water and sanitary services	79	120	140	185
6. Transportation, storage and communication	369	508	637	705
7. Wholesale and retail trade	337	427	430	480
8. Banking, insurance and real estate	109	158	199	220
9. Ownership of dwellings	107	131	162	180
10. Public administration and defence	204	231	291	310
11. Services	474	617	760	835
Gross domestic product at factor cost	3,738	4,419	5,011	5,910
Net factor income from the rest of the world	+ 47	- 2	- 30	- 81
Gross national product at factor cost	3,785	4,417	4,981	5,829
Per capita gross national product (at factor cost) (based on mid-year population)	(Rs) 4,361	(Rs) 5,009	(Rs) 5,556	(Rs) 6,395

^{1/} revised

Table 5.2 - Distribution of the gross national product (at current prices), 1976 - 1979^{1/}

	(Rs million)			
	1976	1977	1978	1979
1. Compensation of employees	2,179	2,713	3,064	3,587
2. Income from unincorporated enterprises	600	660	750	870
3. Income from property	300	325	340	375
4. Saving of corporations	355	385	445	450
5. Direct tax on corporations	294	277	295	425
6. General Government income from property and entrepreneurship	57	57	87	122
National income and depreciation =				
Gross national product at factor cost	3,785	4,417	4,981	5,829

^{1/} Revised

Table 5.3 - Expenditure on gross national product (at current prices), 1976 - 1979^{1/}

Rs million

	1976	1977	1978	1979
1. Private consumption expenditure on goods and services ^{2/}	2,178	3,204	3,378	4,379
2. General government consumption expenditure on goods and services	586	726	836	858
3. Gross domestic fixed capital formation of private enterprises	1,044	1,140	1,280	1,535
4. Gross domestic fixed capital formation of government and public enterprises	406	510	650	585
5. Increase in stocks ^{3/}	213	- 59	+ 203	+ 254
Consumption and gross capital formation	4,427	5,521	6,347	7,611
6. Net exports of goods and services	- 324	- 579	- 754	- 900
7. Net factor income from the rest of the world	+ 47	- 2	- 30	- 100
8. Less indirect taxes (net of subsidies)	- 365	- 523	- 582	- 782
Gross national product at factor cost	3,785	4,417	4,981	5,829

^{1/} Revised

^{2/} Includes increase in stocks of traders

^{3/} Increase in stocks of sugar, rice and flour (Government) and goods in bonded warehouses

Table 5.4 - Gross domestic product at constant 1976 prices (1976=100), 1976-79

	1976	1977	1978	1979 ^{1/}
1. Agriculture, forestry, hunting and fishing	100.0	100.0	100.6	106.1
2. Mining and quarrying	100.0	115.0	120.0	123.0
3. Manufacturing	100.0	107.6	107.8	112.4
4. Construction	100.0	114.5	120.2	122.6
5. Electricity, gas, water and sanitary services	100.0	116.0	127.6	139.8
6. Transportation, storage and communication	100.0	108.7	121.1	133.6
7. Wholesale and retail trade	100.0	118.7	111.3	105.3
8. Banking, insurance and real estate	100.0	120.0	144.0	165.6
9. Ownership of dwellings	100.0	105.0	110.5	116.0
10. Public administration and defence	100.0	103.0	108.0	110.2
11. Services	100.0	117.3	129.0	135.4
Overall index	100.0	108.6	112.6	117.9
Rate of growth (%)	-	8.6	3.7	4.7

^{1/} provisional

Table 5.5 - Composition of gross domestic fixed capital formation (at current prices) 1976 - 1979

(Rs million)

	1976	1977	1978	1979 ^{1/}
A. <u>By type of capital goods</u>				
(a) Land	15	20	22	25
(b) Dwellings	335	495	606	770
(c) Non-residential buildings	265	282	307	250
(d) Other construction and works	155	225	355	360
(e) Transport equipment				
(i) Passenger cars	73	73	31	25
(ii) Other equipment	81	67	107	100
(f) Machinery and other equipment	526	488	502	590
Gross domestic fixed capital formation	1,450	1,650	1,930	2,120
B. <u>By industrial use</u>				
(a) Agriculture, forestry & fishing	169	118	161	170
(b) Mining and quarrying	-	-	-	-
(c) Manufacturing	374	327	300	312
(d) Construction	48	44	57	47
(e) Electricity, gas, water and sanitary services	50	84	144	102
(f) Transportation, storage and communication	197	257	298	419
(g) Wholesale and retail trade	52	88	89	98
(h) Banking, insurance and real estate	6	8	19	18
(i) Ownership of dwellings	335	495	606	770
(j) Public administration	54	96	72	53
(k) Service industries	150	113	162	106
(l) Legal fees, stamp duties, etc.	15	20	22	25
Gross domestic fixed capital formation	1,450	1,650	1,930	2,120

^{1/} provisional

Table 5.6 - Composition of gross domestic fixed capital formation (at constant 1976 prices), 1976 - 1979

	1976	1977	1978	1979 ^{1/}
A. <u>By type of capital goods</u>				
(a) Land	15	16	18	20
(b) Dwellings	335	474	526	562
(c) Non-residential buildings	265	264	252	182
(d) Other construction and works	155	209	286	263
(e) Transport equipment				
(i) Passenger cars	73	65	26	12
(ii) Other equipment	81	58	84	75
(f) Machinery and other equipment	526	426	409	440
Gross domestic fixed capital formation	1,450	1,512	1,601	1,554
B. <u>By industrial use</u>				
(a) Agriculture, forestry & fishing	169	108	130	124
(b) Mining and quarrying	-	-	-	-
(c) Manufacturing	374	289	245	231
(d) Construction	48	39	46	35
(e) Electricity, gas, water and sanitary services	50	76	117	75
(f) Transportation, storage and communication	197	229	240	308
(g) Wholesale and retail trade	52	80	70	72
(h) Banking, insurance & real estate	6	7	16	13
(i) Ownership of dwellings	335	474	526	562
(j) Public administration	54	89	58	37
(k) Service industries	150	105	135	77
(l) Legal fees, stamp duties, etc	15	16	18	20
Gross domestic fixed capital formation	1,450	1,512	1,601	1,554

^{1/} provisional

Table 5.7 - Balance of payments 1974-78

Rs million

Item	1974		1975		1976		1977		1978	
	Credit	Debit	Credit	Debit	Credit	Debit	Credit	Debit	Credit	Debit
<u>A. Goods and services</u>	<u>2,150</u>	<u>1,922</u>	<u>2,329</u>	<u>2,272</u>	<u>2,486</u>	<u>2,771</u>	<u>2,690</u>	<u>3,286</u>	<u>2,740</u>	<u>3,560</u>
1. Merchandise	1,798	1,521	1,848	1,672	1,768	2,047	2,030	2,418	1,969	2,563
2. Non-monetary gold	-	5	-	7	-	8	-	12	-	17
3. Freight and insurance on merchandise	-	151	14	286	3	325	1	455	5	471
4. Other transportation	146	74	159	85	152	101	264	127	286	161
5. Travel	112	51	135	78	184	97	210	110	230	116
6. Investment income	26	20	60	45	98	59	34	51	35	83
on direct investment	(1)	(11)	(2)	(35)	(3)	(49)	(2)	(28)	(4)	(27)
other	(25)	(9)	(58)	(10)	(95)	(10)	(32)	(23)	(31)	(56)
7. Other government	28	13	36	25	26	32	31	12	55	19
8. Other private	40	47	77	74	255	102	120	101	160	130
<u>B. Unrequited transfers</u>	<u>103</u>	<u>20</u>	<u>93</u>	<u>23</u>	<u>67</u>	<u>25</u>	<u>108</u>	<u>24</u>	<u>115</u>	<u>30</u>
9. Private	41	11	49	13	46	20	52	23	60	27
10. Government	62	9	44	10	21	5	56	1	55	3
<u>Net total of goods, services and transfers</u>	<u>311</u>	<u>-</u>	<u>127</u>	<u>-</u>	<u>-</u>	<u>243</u>	<u>-</u>	<u>512</u>	<u>-</u>	<u>735</u>

Source: Bank of Mauritius

Table 5.7 - Balance of payments (cont'd), 1974-78

Rs million

Item	1974		1975		1976		1977		1978	
	Credit	Debit	Credit	Debit	Credit	Debit	Credit	Debit	Credit	Debit
<u>C. Capital (excluding reserves and related items)</u>	7	-	240	-	302	-	195	-	301	-
<u>Non-monetary sectors</u>	12	-	255	-	319	-	117	-	329	-
11,12. Direct investment and other private long-term	24	2	33	4	10	58	86	30	75	-
Direct investment liabilities	(24)	(-)	(33)	(-)	(-)	(24)	(20)	(-)	(28)	(-)
Other	(-)	(2)	(-)	(4)	(10)	(34)	(66)	(30)	(47)	(-)
13. Other private short-term	-	38	180	-	404	17	62	46	80	-
14. Local government	-	-	-	-	-	-	-	-	-	-
15. Central Government	40	12	71	25	11	31	69	24	189	15
Loans	(40)	(6)	(56)	(-)	(8)	(31)	(69)	(24)	(189)	(15)
Other liabilities	(-)	(1)	(-)	(25)	(-)	(-)	(-)	(-)	(-)	(-)
Assets	(-)	(5)	(15)	(-)	(3)	(-)	(-)	(-)	(-)	(-)
<u>Monetary sectors</u>	-	5	-	16	-	17	78	-	-	14
16. Private institutions	5	10	9	25	2	19	88	10	-	14
Liabilities	(5)	(-)	(9)	(-)	(2)	(-)	(88)	(-)	(-)	(9)
Assets	(-)	(10)	(-)	(25)	(-)	(19)	(-)	(10)	(-)	(5)
17. Central institutions	-	-	-	-	-	-	-	-	-	-
<u>D. 18. Allocation of Special Drawing Rights</u>	-	-	-	-	-	-	-	-	-	-

Source: Bank of Mauritius

Table 5.7 - Balance of payments (cont'd), 1974-78

Item	1974		1975		1976		1977		1978	
	Credit	Debit	Credit	Debit	Credit	Debit	Credit	Debit	Credit	Debit
<u>E. Reserves and related items</u>	-	<u>365</u>	-	<u>350</u>	<u>500</u>	-	<u>250</u>	-	<u>358</u>	-
19. Liabilities	36	-	-	-	-	-	84	-	236	-
Use of fund credit	(36)	-	-	-	-	-	(84)	-	-	-
Other	-	-	-	-	-	-	-	-	(236)	-
20. Assets	28	429	1	351	506	6	166	-	122	-
Monetary gold	-	-	-	-	-	-	-	-	-	-
Special Drawing Rights	(25)	-	(1)	-	-	(6)	(3)	-	(5)	-
Reserve position in the Fund	-	(21)	-	(42)	-	-	(42)	-	-	-
Foreign exchange	-	(408)	-	(308)	(506)	-	(121)	-	(118)	-
Other claims	(3)	-	-	(1)	-	-	-	-	-	(1)
<u>Net errors and omissions</u>	<u>47</u>	-	-	<u>16</u>	<u>45</u>	-	<u>67</u>	-	<u>62</u>	-

Source: Bank of Mauritius

Table 5.8 - Summary of Balance of Payments, 1975-79

Rs Million

Item	1975	1976 ^{1/}	1977	1978 ^{1/}	1979 ^{2/}
Merchandise account	+ 169	- 287	- 400	- 611	- 547
Net services account	- 112	+ 2	- 196	- 209	- 424
Net unrequired transfers	+ 70	+ 42	+ 84	+ 85	+ 100
Net capital movements	+ 240	- 316	+ 117	+ 329	+ 190
capital movements relating to sugar financing	(+ 180)	(- 371)	(- 44)	(+ 63)	(+ 108)
Other capital	(+ 60)	(+ 55)	(+ 161)	(+ 266)	(+ 82)
SDR allocation	-	-	-	-	+ 22
Errors and omissions	- 16	+ 45	+ 67	+ 62	+ 25
Overall balance of payments	+ 351	- 514	- 328	- 344	- 634
Monetary movements	- 351	+ 514	+ 328	+ 344	+ 634
Reserves movements ^{3/}	(- 51)	(+ 514)	(+ 243)	(+ 108)	(+ 58)
Exceptional financing	(-)	(-)	(+ 85)	(+ 236)	(+ 576)

^{1/} revised

^{2/} provisional

^{3/} a plus indicates a decrease and a minus an increase

Source: Bank of Mauritius

SECTION 6 - CONSUMER PRICE INDECES

Table 6.1 - Consumer price indices, 1963 - 1976

(Base : January - June 1962 = 100)

The table below gives three consumer price indices, viz:

- (a) an index for households in urban areas;
- (b) an index for households in rural areas;
- (c) a total index for the island of Mauritius as a whole

Period	Urban	Rural	Whole island
1963 (Average)	98.5	98.5	98.5
1964 "	100.5	100.2	100.3
1965 "	102.3	102.0	102.1
1966 "	105.0	104.5	104.7
1967 "	106.6	106.6	106.6
1968 "	113.0	114.9	114.1
1969 "	115.6	117.6	116.7
1970 "	117.6	119.2	118.5
1971 "	118.3	119.4	118.9
1972 "	125.8	124.9	125.3
1973 "	144.0	140.8	142.2
1974 "	185.8	181.9	183.6
1975 "	214.7	207.6	210.6
1976 (Average for Jan.-June)	241.6	231.9	236.1

Note : A new index with base period January to June 1976 has been introduced since July 1976. (See Table 6.2)

Table 6.2 - Consumer price indices, 1976 - 1980

(Base : January - June 1976 = 100)

The table below gives the new consumer price index which has been introduced since July 1976. The index is based on the consumption pattern of households earning incomes up to Rs 2,000 per month as revealed by the 1975 Household Budget Sample Survey.

Period	Index
1976 (Average)	101.2
1977 "	110.5
1978 "	119.9
1979 "	137.3
1979 January	125.9
February	127.0
March	127.9
April	127.8
May	128.9
June	131.7
July	134.4
August	137.7
September	137.9
October	138.6
November	159.4
December	170.2
1980 January	177.5
February	184.3
March	186.9
April	188.5
May	187.8
June	190.4

SECTION 7 - EXTERNAL TRADE

Table 7.1 - Balance of visible trade, 1975 - 80

Rs million

Period	Imports (c.i.f. value)	Exports (f.o.b. value)	Bunkers and ships' stores (f.o.b. value)	Balance of visible trade	
				Surplus	Deficit
1975	1,995.3	1,838.9	73.2	-	83.2
1976	2,408.5	1,769.8	64.9	-	573.8
1977	2,950.8	2,041.2	93.2	-	816.4
1978	3,076.4	1,987.1	85.9	-	1,003.4
1979 ^{1/}	3,634.4	2,432.7	140.7	-	1,061.0
1979 ^{1/} : 1st Qr.	724.2	426.2	29.1	-	268.9
2nd Qr.	885.2	541.4	29.9	-	313.9
3rd Qr.	902.1	634.6	36.5	-	231.0
4th Qr.	1,122.8	830.7	45.2	-	246.9
1980 ^{1/} : 1st Qr.	1,066.7	665.5	38.9	-	362.3
2nd Qr.	1,123.3	771.9	38.9	-	312.5

^{1/} provisional

Table 7.2 - Price (unit value) indices of exports and imports and terms of trade 1972 - 79

Period	Price indices		Terms of trade ^{1/}
	Export	Import	
1972 = 100			
1973	117	130	90
1974	291	212	137
1975	383	240	160
1975 = 100			
1976	82	112	73
1976 = 100			
1977	98	109	90
1977 = 100			
1978	98	106	92
1978 = 100			
1979	117	120	98

^{1/} ratio of export to import price index

Note : a rise in the index indicates that the terms of trade have moved in favour of Mauritius

Table 7.3 - Price (unit value) indices of imports, by section, 1972 - 79

Period	All sections	Food	Beverages and tobacco	Crude materials, inedible, except fuels	Mineral fuels, lubricants, etc.	Animal and vegetable oils and fats	Chemicals	Manufactured goods classified chiefly by material	Machinery and transport equipment	Miscellaneous manufactured articles
1972 = 100										
1973	130	148	114	134	121	117	120	124	123	138
1974	212	269	128	197	306	253	210	177	142	161
1975	240	254	166	236	367	261	283	223	178	184
1975 = 100										
1976	112	98	115	115	119	100	114	113	122	119
1976 = 100										
1977	109	106	106	115	107	113	99	110	113	107
1977 = 100										
1978	106	108	95	96	98	101	109	106	108	108
1978 = 100										
1979 ^{1/}	120	111	134	121	158	117	117	117	121	111

^{1/} Provisional

Table 7.4 - Exports - quantities and values, 1975 - 80

Quantity : Thousand metric tons
Value : Rs million (f.o.b.)

Period	Domestic exports										Re-exports value	Total value
	Total value	Sugar		Molasses		Tea		Fish and fish preparations				
		Quantity	Value	Quantity	Value	Quantity	Value	Quantity	Value			
1975	1,838.9	497.5	1,548.8	121.2	23.6	2.1	16.0	14.3				
1976	1,769.8	550.9	1,321.5	129.1	31.7	3.4	29.2	18.8				
1977	2,041.2	636.4	1,428.5	194.7	41.0	3.3	43.5	31.8				
1978	1,987.1	578.6	1,304.8	156.9	34.3	4.4	55.5 ²	32.1				
1979 ¹	2,432.7	612.1	1,590.0	171.6	69.2	3.9	39.3	31.2				
1979 ¹ : 1st Qr.	426.2	114.9	283.3	27.8	10.6	1.3	13.4	3.1				
2nd Qr.	541.4	135.9	331.7	22.5	8.0	1.4	13.1	8.5				
3rd Qr.	634.6	166.0	390.5	82.0	34.8	0.3	2.6	10.1				
4th Qr.	830.7	195.4	584.5	39.3	15.8	0.9	10.3	9.5				
1980 ¹ : 1st Qr.	666.5	131.0	443.4	53.1	31.1	0.9	11.0	0.6				
2nd Qr.	771.9	135.8	454.9	19.1	13.2	1.2	15.6	14.1				

¹ provisional

² revised

Table 7.4 - Exports - quantities and values, 1975 - 80 (cont'd)

Value : Rs million (f.o.b.)

Period	Domestic exports						Other domestic exports
	Textile yarn, fabrics and made-up articles	Processed diamonds and synthetic stones	Electronic components for machines	Clothing	Other manufactured goods	Value	
	Value	Value	Value	Value	Value	Value	
1975	1.7	9.3	62.1	118.2	13.2	10.8	
1976	17.2	8.5	61.7	204.8	19.7	22.9	
1977	55.9	21.2	59.1	273.2	28.4	26.7	
1978	38.7	49.1	54.3	312.7	36.9	35.2	
1979 ^{1/}	48.4	36.8	70.2	396.1	69.1	31.8	
1979 ^{1/} : 1st Qr.	8.7	8.3	13.5	61.9	10.5	5.5	
2nd Qr.	13.9	7.6	15.6	106.0	15.3	9.3	
3rd Qr.	15.8	0.7	18.9	114.9	17.2	8.9	
4th Qr.	10.0	20.2	22.2	113.2	26.1	8.2	
1980 ^{1/} : 1st Qr.	8.9	17.0	24.0	89.0	23.0	5.8	
2nd Qr.	16.7	11.0	25.6	163.6	23.7	16.6	

^{1/} provisional

Table 7.5 - Total exports : main countries of destination - values, 1976 - 80

Rs million (f.o.b.)

Country of destination	1976	1977	1978	1979 ^{1/}	Jan.-June 1980 ^{1/}
Total exports	1,769.8	2,041.2	1,987.1	2,432.7	1,438.4
<u>Preferential tariff countries</u>	<u>1,736.9</u>	<u>1,999.8</u>	<u>1,940.9</u>	<u>2,400.7</u>	<u>1,413.7</u>
<u>E.E.C. countries</u>	<u>1,497.7</u>	<u>1,739.8</u>	<u>1,655.8</u>	<u>2,023.5</u>	<u>1,340.2</u>
United Kingdom	1,226.7	1,363.6	1,289.0	1,545.9	988.6
France	162.6	159.2	145.8	267.6	191.6
Belgium	22.1	72.4	88.7	52.3	36.7
Denmark	2.8	1.9	4.4	5.6	2.0
Germany, Fed. Rep.	48.5	64.6	43.8	70.7	38.2
Netherlands	12.5	44.3	44.5	23.1	21.3
Réunion	21.6	20.7	21.0	33.1	26.2
Italy	0.6	12.1	12.5	16.1	33.6
Ireland	0.3	0.9	6.0	9.0	2.0
Luxembourg	0.1	0.1	0.1	-	-
<u>Other preferential tariff countries</u>	<u>239.2</u>	<u>260.0</u>	<u>285.1</u>	<u>377.2</u>	<u>73.5</u>
United States	103.5	121.9	174.9	316.2	47.6
Canada	67.0	58.6	44.5	20.7	0.2
South Africa, Rep. of	39.8	47.4	40.8	13.6	13.3
Hong Kong	10.6	13.3	7.8	5.5	1.2
Seychelles	5.0	6.5	4.6	3.2	2.7
Australia	5.6	6.2	3.7	5.0	2.7
Malaysia	3.3	0.4	1.7	1.5	1.3
Other	4.4	5.7	7.1	11.5	4.5
<u>General tariff countries</u>	<u>32.9</u>	<u>41.4</u>	<u>46.2</u>	<u>32.0</u>	<u>24.7</u>
Comoro Islands	3.5	11.6	13.6	11.0	5.9
Sweden	1.8	5.9	2.0	0.4	1.0
U.S.S.R.	2.4	3.7	-	-	3.0
Madagascar	6.1	3.4	3.1	2.4	1.1
Switzerland	1.7	3.1	6.9	6.7	11.8
Japan	0.6	3.5	4.0	0.5	0.5
Jordan	14.0	0.6	0.2	-	-
Iran	0.2	0.3	0.1	-	-
French Territory of Affars & Issas	-	5.1	12.8	6.4	-
Other	2.6	4.2	3.5	4.6	1.4

^{1/} provisional

Table 7.6 - Imports : values by S.I.T.C. 1/ (revised) sections, 1975 - 80

Rs million (c.i.f.)

Period	All sections	Food	Beverages & tobacco	Crude materials, inedible, except fuels	Mineral fuels, lubricants, etc.	Animal & vegetable oils and fats	Chemicals	Manufactured goods classified chiefly by material	Machinery and transport equipment	Miscellaneous manufactured articles	Miscellaneous transactions and commodities, n.e.s.
1975	1,995.3	459.8	16.5	48.6	194.6	51.8	180.3	468.1	441.4	126.7	7.6
1976	2,408.5	486.5	18.9	63.9	209.0	81.0	167.8	632.1	580.2	160.3	8.7
1977	2,950.8	582.0	32.0	95.8	275.3	79.1	212.3	790.3	679.1	191.9	13.1
1978	3,076.4	696.7	23.0	105.4	280.7	86.4	201.7	858.1	572.4	233.4	18.5
1979 ^{2/}	3,634.4	756.0	27.3	129.4	526.2	96.1	269.4	999.5	546.5	273.7	10.2
1979 ^{2/} : 1st Qr.	724.2	152.2	6.4	20.9	75.5	21.1	42.2	209.4	136.1	57.0	3.4
2nd Qr.	885.2	195.4	6.6	31.7	133.3	24.3	70.3	244.0	119.8	57.6	2.2
3rd Qr.	902.1	182.5	6.0	31.8	100.1	31.5	72.4	271.5	128.5	75.4	2.3
4th Qr.	1,122.8	225.9	8.3	45.0	217.4	19.2	84.5	274.6	162.0	83.7	2.3
1980 ^{2/} : 1st Qr.	1,066.7	257.8	8.1	34.8	152.3	41.9	64.0	255.5	182.7	69.1	0.5
2nd Qr.	1,123.3	253.7	5.8	59.8	165.5	13.7	87.4	310.5	163.6	62.3	0.9

1/ Standard International Trade Classification

2/ provisional

Table 7.7 - Imports : selected commodities - values, 1975 - 80

(Rs million c.i.f.)

Period	Rice	Wheat flour	Alcoholic beverages	Petroleum products refined	Vegetable edible oils	Fertilizers manufactured	Cotton fabrics	Other textile fabrics	Cement	Iron and steel	Manufactures of metals, n.e.s.	Machinery other than electric ^{2/}	Electric machinery apparatus and appliances ^{2/}	Road motor vehicles and parts
1975	133.0	98.9	9.2	192.7	35.2	63.6	31.7	79.7	56.2	72.1	52.1	213.1	138.6	82.0
1976	130.5	70.9	12.0	206.3	57.1	21.8	45.7	114.6	71.2	86.8	78.0	258.2	182.1	132.7
1977	106.1	79.8	14.6	270.4	49.0	30.0	44.7	108.0	84.6	122.4	99.5	254.0	256.7	161.8
1978	163.9	78.8	9.6	274.6	69.5	24.0	42.3	110.7	112.2	131.0	105.7	304.8	169.2	90.0
1979 ^{1/}	147.4	85.9	12.9	515.0	67.0	35.7	49.2	129.9	157.6	170.4	131.8	262.9	151.0	100.8
1979 ^{1/} : 1st Qr.	25.5	15.3	2.0	72.4	18.7	2.1	10.1	25.9	29.1	31.9	25.5	81.3	33.4	19.5
2nd Qr.	59.1	12.4	3.8	106.2	18.8	8.3	12.9	35.2	31.4	42.7	31.6	62.5	31.4	27.4
3rd Qr.	31.3	32.5	3.0	96.0	15.5	12.0	13.2	41.6	43.1	41.8	35.1	61.4	40.0	26.5
4th Qr.	31.5	25.7	4.0	216.5	14.1	13.3	13.0	27.2	33.8	53.9	39.7	57.7	46.2	27.4
1980 ^{1/} : 1st Qr.	55.5	29.0	3.6	150.1	29.4	6.3	9.0	30.5	34.6	38.3	32.3	87.8	54.0	38.0
2nd Qr.	31.6	34.7	4.1	156.7	5.8	5.5	11.6	25.0	47.1	50.8	32.0	77.7	52.9	31.3

^{1/} provisional

^{2/} As from 1979 the figures under these descriptions are not strictly comparable with those for previous years due to changes in classification.

Table 7.8 - Imports : selected commodities - quantities, 1975 - 80

Period	Rice (Thousand m/tons)	Wheat flour (Thousand m/tons)	Vegetable edible oils (Thousand m/tons)	Fertilizers manufactured (Thousand m/tons)	Cotton fabrics (Million sq. metres)	Cement (Thousand m/tons)	Iron and steel (Thousand m/tons)
1975	67.0	57.2	7.9	56.1	8.0	193.7	29.0
1976	79.2	40.1	11.7	36.5	10.2	220.9	39.8
1977	65.5	49.6	4.1	48.0	9.0	245.3	45.8
1978	78.5	49.5	17.1	36.7	9.8	294.6	56.5
1979 ^{1/}	72.3	46.5	14.2	47.8	8.6	294.5	57.9
1979 ^{1/} : 1st Qr.	13.6	9.1	4.4	4.3	1.9	69.1	11.1
2nd Qr.	30.6	7.3	4.2	15.4	2.4	77.6	16.2
3rd Qr.	19.2	19.3	3.4	11.9	2.7	87.0	14.8
4th Qr.	8.9	10.8	2.2	16.1	1.7	60.8	15.7
1980 ^{1/} : 1st Qr.	22.9	11.1	4.8	6.1	1.6	55.1	9.1
2nd Qr.	13.0	13.0	1.0	5.0	1.3	70.9	12.6

^{1/} provisional

Table 7.9 Imports - Main countries of origin - values, 1977 - 80

Country of origin	Rs million (c.i.f.)											
	1977	1978	1979 ^{1/}			1980 ^{1/}						
			1st Qr.	2nd Qr.	3rd Qr.	4th Qr.	1st Qr.	2nd Qr.	3rd Qr.	4th Qr.	1st Qr.	2nd Qr.
Total Imports	2,950.8	3,076.4	724.2	885.2	902.1	1,122.8	1,066.7	1,123.3				
<u>Preferential Tariff Countries</u>	<u>2,200.2</u>	<u>2,255.4</u>	<u>561.4</u>	<u>632.3</u>	<u>682.3</u>	<u>771.0</u>	<u>804.9</u>	<u>821.9</u>				
<u>E.E.C. Countries</u>	<u>1,444.4</u>	<u>1,414.0</u>	<u>277.3</u>	<u>286.7</u>	<u>285.7</u>	<u>319.9</u>	<u>369.6</u>	<u>346.5</u>				
United Kingdom	523.8	457.0	103.2	121.6	126.7	137.0	140.2	157.9				
France	319.1	338.2	85.0	69.8	99.2	82.0	95.5	93.2				
Germany Fed. Rep.	144.2	126.5	32.6	30.3	30.5	40.1	56.0	37.4				
Ireland	2.7	2.8	0.7	2.8	0.6	1.3	3.8	1.1				
Italy	52.9	74.8	20.1	29.0	13.1	29.6	38.7	38.2				
Netherlands	47.7	50.9	19.0	21.7	6.3	19.9	22.3	8.6				
Belgium	40.6	55.2	14.6	9.0	7.2	6.7	10.0	6.9				
Denmark	11.9	6.4	1.4	1.9	1.6	2.4	2.4	2.5				
Other E.E.C. countries	1.4	2.2	0.7	0.5	0.5	0.9	0.7	0.7				

^{1/} provisional

Table 7.9 - Imports - Main countries of origin - values, 1977 - 80 (cont'd)

Rs million (c.i.f.)

Country of origin	1977	1978	1979 ^{1/}	1979 ^{1/}				1980 ^{1/}	
				1st Qr.	2nd Qr.	3rd Qr.	4th Qr.	1st Qr.	2nd Qr.
<u>Other preferential tariff countries</u>	<u>1,055.8</u>	<u>1,141.4</u>	<u>1,477.3</u>	<u>284.1</u>	<u>345.6</u>	<u>396.6</u>	<u>451.1</u>	<u>435.3</u>	<u>475.4</u>
South Africa	312.3	358.9	496.9	85.1	129.1	114.4	168.3	145.6	198.5
Australia	156.8	168.3	181.4	45.2	36.1	43.5	56.6	57.1	65.6
India	94.9	126.3	169.5	46.1	49.8	40.2	33.4	87.7	40.8
Hong Kong	89.6	80.8	81.9	19.0	17.4	26.0	19.5	21.5	21.2
Kenya	86.7	80.3	136.8	29.1	24.3	46.1	37.3	34.1	41.6
U.S. America	75.9	97.2	152.0	20.6	25.3	41.6	64.5	30.3	31.2
Burma	60.4	28.5	5.2	0.6	0.4	0.9	3.3	0.9	0.4
New Zealand	46.8	62.2	58.2	7.9	11.9	28.4	10.0	16.6	34.7
Malaysia	46.3	49.4	57.4	8.8	18.8	16.9	12.9	19.1	15.8
Singapore	40.7	56.2	94.2	15.1	17.4	29.7	32.0	13.4	16.6
Pakistan	13.9	14.4	15.8	1.8	8.3	2.0	3.7	2.2	2.6
Canada	6.3	4.5	6.1	0.7	1.3	0.6	3.4	2.1	2.2
Other	25.2	14.4	21.9	4.0	5.5	6.3	6.2	4.7	4.2

^{1/} provisional

Table 7.9 - Imports : main countries of origin - values, 1977 - 80 (cont'd)

Rs million (c.i.f.)

Country of origin	1977	1978	1979 ^{1/}	1979 ^{1/}				1980 ^{1/}	
				1st Qr.	2nd Qr.	3rd Qr.	4th Qr.	1st Qr.	2nd Qr.
<u>General tariff countries</u>	<u>750.6</u>	<u>821.0</u>	<u>987.3</u>	<u>162.7</u>	<u>253.1</u>	<u>219.7</u>	<u>351.8</u>	<u>261.8</u>	<u>301.4</u>
Japan	222.5	181.5	176.7	29.1	35.2	48.2	64.2	48.2	60.9
Iran	130.3	84.3	54.6	43.0	10.9	0.7	-	-	-
Bahrain	118.4	155.6	309.2	22.7	73.3	57.3	155.9	108.2	106.0
China (Mainland)	77.0	142.9	61.6	12.7	12.1	17.5	19.3	24.0	19.4
China (Taiwan)	29.4	36.2	40.8	10.6	10.9	11.1	8.2	13.5	18.8
Switzerland	27.4	33.6	22.8	3.3	8.9	5.5	5.1	8.1	5.1
Thailand	26.4	9.0	44.8	2.0	22.9	19.2	0.6	1.6	1.9
Korea (Rep.)	19.1	24.8	27.6	7.1	7.9	6.0	6.6	6.2	7.1
Israel	16.4	13.1	18.4	3.4	5.6	3.4	6.0	6.7	6.5
Brazil	14.0	0.8	4.3	0.4	0.5	3.3	-	0.1	-
Sweden	8.9	8.4	14.9	4.7	2.5	2.2	5.5	3.9	3.8
Maldives	8.2	13.7	5.5	2.3	3.2	-	-	-	-
Austria	3.3	3.5	6.6	0.6	1.8	1.1	3.1	1.0	1.2
Madagascar	1.9	7.4	6.6	3.0	1.1	1.2	1.3	2.9	1.1
South Yemen	-	-	119.4	-	34.1	33.2	52.1	19.3	41.1
Nepal	-	-	21.2	8.1	13.0	-	0.1	0.3	0.3
Other	47.4	106.2	52.3	9.7	9.2	9.8	23.8	17.8	28.2 ^{2/}

^{2/} Qatar accounts for 13.0 mn and Peru 3.9 mn^{1/} provisional

Table 7.10 - Imports of fertilizers ^{1/}, 1978-80

Kind of fertilizers	1978		1979		Jan.-June 1980	
	Quantity (m/tons)	Value C.I.F. (Rs 000)	Quantity (m/tons)	Value C.I.F. (Rs 000)	Quantity (m/tons)	Value C.I.F. (Rs 000)
Total imports	42,847	27,160	53,079	39,095	12,544	12,615
<u>Nitrogenous fertilizers</u>	5,052	2,030	15,162	11,174	167	437
Sulphate of ammonia	5,000	3,029	15,162	11,165	-	-
Ammonia sulphate nitrate	2	5	-	1	-	-
Other nitrogenous fertilizers	51	48	1	8	167	437
<u>Potassic fertilizers</u>	20,587	2,516	24,838	14,450	10,256	10,737
Muriate of potash	20,105	2,014	24,038	13,490	10,051	10,291
Sulphate of potash	482	296	800	960	200	391
Other potassic fertilizers	-	-	-	-	5	5
<u>Phosphatic fertilizers</u>	17,173	14,607	13,064	13,348	2,122	1,341
Single superphosphate	752	557	-	-	-	-
Triple superphosphate	3,177	3,237	3,394	3,577	360	835
Phosphatic guano	6,122	3,135	5,312	3,420	1,271	484
Other	7,122	7,678	4,358	6,351	2	22
<u>Mixed and compound fertilizers</u>	32	164	14	122	9	100

^{1/} excluding imports from the islands of Agalega, St. Brandon and Rodrigues

^{2/} these two items have merged in 1979

Section 8 - EMPLOYMENT AND EARNINGS

1. The figures of employment and earnings in tables 8.1 - 8.6 apply to large establishments only. These being defined as :
 - (i) Sugar cane plantations where 25 arpents or more were harvested;
 - (ii) Tea plantations of 5 arpents or more;
 - (iii) All 'flue-cured' tobacco establishments, irrespective of acreage;
 - (iv) Non-agricultural establishments employing at least 10 persons at the time of the survey;
 - (v) All central and local government departments;
 - (vi) Establishments employing development workers.

2. a) Tables 8.5 and 8.6 show changes over time in the average monthly earnings as distinct from changes in statutory minimum wage rates which are shown in tables 8.7 and 8.8.

b) Apart from increase in salaries and wages, fluctuations in average monthly earnings may be due to:
 - (i). changes of different magnitude in the various categories of the labour force e.g. a large intake of employees at the lower end of the wage scale (as occurs when a new factory starts operation) has the effect of lowering the average earnings. On the other hand a large intake of professionals by, say, an architectural firm can cause a sudden jump in the average monthly earnings.

 - (ii) changes in overtime, regular bonuses and commissions

Table 8.1 - Employment ^{1/} 2/ by major industrial group (Bi-annual Survey of Employment and Earnings, March 1971 - March 1980)

Industrial group	1971	1972	1973	1974	1975	1976	1977	1978	1979	1980
<u>Agriculture and fishing</u>	55,375	58,165	58,919	56,847	58,157	59,459	61,384	58,410	55,612	53,993
<u>Sugar</u> ^{3/}	48,468	47,850	49,961	48,223	50,612	52,620	54,391	51,332	48,714	47,493
<u>Tea</u> ^{4/}	5,311	8,374	7,119	7,080	5,455	4,741	4,917	5,467	5,159	4,963
Tobacco	1,049	1,222	1,101	840	1,345	1,279	1,199	779	924	857
Other	547	719	738	704	745	819	877	832	815	680
<u>Mining and quarrying</u>	154	150	163	153	148	149	143	120	148	145
<u>Manufacturing</u>	8,740	10,306	13,489	18,480	21,126	26,416	30,941	31,954	35,141	36,431
<u>Electricity and water</u>	1,283	1,294	2,598	2,880	2,935	3,062	3,304	3,518	3,930	4,739
<u>Construction</u>	2,381	2,826	3,762	4,969	5,844	7,806	7,309	8,846	9,164	8,217
<u>Wholesale, retail trade, restaurants and hotels</u>	3,960	5,147	5,787	6,507	6,412	7,599	8,182	9,058	9,402	9,297
<u>Transport, storage and communication</u>	4,987	6,307	6,809	8,163	9,260	9,027	10,217	9,820	9,981	8,656
<u>Financing, insurance, real estate and business services</u>	1,635	1,822	2,155	2,412	2,671	2,962	3,531	4,059	4,316	4,284
<u>Community, social and personal services</u>	53,060	48,831	50,085	49,737	50,269	52,443	54,583	57,634	61,642	63,091
Government:										
(a) Central	45,454	40,777	41,445	40,727	41,370	42,552	42,841	44,528	47,820	49,123
(b) Local ^{5/}	3,139	3,121	3,278	3,163	3,360	3,617	4,557	4,988	5,251	5,389
Other	4,467	4,933	5,362	5,847	5,539	6,274	7,185	8,118	8,571	8,579
<u>Activities not elsewhere specified</u>	-	6,349	6,473	6,221	7,642	7,816	14,438	11,749	10,293	8,118
Grand total	131,575	141,197	150,240	156,369	164,464	176,739	194,032	195,168	199,629	196,971

^{1/} revised and classified according to the International Standard Industrial Classification, 1968 edition

^{2/} in large establishments - see introduction on page 79

^{3/} including factories

^{4/} including factories and Tea Development Authority

^{5/} Municipalities and district councils

Table 8.2 - Employment ^{1/} 2/ by major industrial group (Bi-annual Survey of Employment and Earnings, September 1970-September 1979)

Industrial group	1970	1971	1972	1973	1974	1975	1976	1977	1978	1979
<u>Agriculture & fishing</u>	60,561	59,842	61,924	62,063	63,049	64,469	64,182	65,297	60,767	59,347
Sugar ^{3/}	55,530	54,758	54,010	54,107	55,744	57,773	57,791	58,499	53,982	52,668
Tea ^{4/}	3,643	3,320	6,110	6,240	5,687	4,693	4,664	4,890	5,096	5,056
Tobacco	794	1,125	1,074	1,022	853	1,284	1,100	1,098	844	939
Other	594	639	730	694	765	719	627	810	845	684
<u>Mining and quarrying</u>	160	165	146	144	152	163	153	121	198	148
<u>Manufacturing</u>	7,821	9,775	11,576	15,722	20,813	22,517	29,348	33,241	33,077	35,566
<u>Electricity and water</u>	1,294	1,293	1,338	2,739	2,918	2,989	3,093	3,152	3,601	4,713
<u>Construction</u>	2,332	2,525	3,311	4,864	5,430	6,034	7,253	7,749	9,765	9,150
<u>Wholesale, retail trade, restaurants and hotels</u>	3,715	4,693	5,353	6,154	6,275	6,455	7,817	8,430	9,230	9,506
<u>Transport, storage and communication</u>	5,242	6,568	6,886	7,911	9,074	9,412	9,932	11,151	10,487	8,333
<u>Financing, insurance, real estate and business services</u>	1,479	1,755	1,955	2,295	2,582	2,812	3,220	3,747	4,368	4,357
<u>Community, social and personal services</u>	47,645	52,625	49,287	50,038	49,734	51,083	52,888	54,689	58,821	61,216
Government : (a) Central	40,248	44,583	40,917	41,051	40,389	40,893	42,759	42,415	45,404	47,321
(b) Local ^{5/}	3,187	3,243	3,371	3,410	3,404	3,579	3,659	4,723	5,137	5,366
Other	4,210	4,799	4,999	5,577	5,941	6,611	6,470	7,551	8,280	8,529
<u>Activities not elsewhere specified</u>	-	3,244	6,403	5,857	7,191	6,880	6,653	7,135	8,071	6,667
Grand Total	130,249	142,485	148,179	157,787	167,218	172,814	184,539	194,762	198,435	199,003

^{1/} revised and classified according to the International Standard Industrial Classification, 1968 edition

^{2/} in large establishments - see introduction on page 79

^{3/} including factories

^{4/} including factories and Tea Development Authority

^{5/} municipalities and district councils

Table 8.3 - Employment^{1/} in specified sectors - sugar industry, 1979 - 1980

Source of employment	Size class (arpents)	Total number of persons employed on		
		March 1979 ^{2/}	September 1979 ^{3/}	March 1980 ^{3/}
Sugar cane planters (including metayers)	25 -	892	1,102	788
	50 -	510	666	502
	75 -	226	331	219
	100 -	4,331	5,274	4,204
Total employed by: Planters		5,959	7,373	5,713
Millers' estates and annexes (including factories)		42,755	45,683	41,780
Total		48,714	53,056	47,493

1/ in large establishments - see introduction on page 79

2/ last Wednesday of the month

3/ last Thursday of the month

Note : Employment figures for millers' estates include workers in field, factory, garage and workshop

Table 8.4 - Employment^{1/} in specified sectors - government services, 1979 - 1980

Source of employment	Total number of persons employed on		
	March 1979 ^{2/}	September 1979 ^{3/}	March 1980 ^{3/}
Central government	47,820	47,321	49,123
Local government ^{4/}	5,251	5,366	5,389
Total	53,071	52,687	54,512

1/ in large establishments - see introduction on page 79

2/ last Wednesday of the month

3/ last Thursday of the month

4/ municipalities and district councils

Table 8.5 - Employment^{1/} in specified sectors - manufacturing industries, 1979 - 1980

Industrial group	Total number of persons employed		
	March 1979 <u>2/ 4/</u>	September 1979 <u>3/ 4/</u>	March 1980 <u>3/</u>
Food <u>5/</u>	2,427	2,460	2,497
Beverages and tobacco	2,674	2,535	2,564
Textiles	2,133	2,309	2,029
Wearing apparel	16,413	16,337	17,242
Wood and furniture	914	1,132	1,106
Paper products	340	302	321
Printing and publishing	1,225	1,147	1,084
Rubber and leather products	486	601	615
Miscellaneous chemical products	939	974	1,009
Plastic products	135	127	142
Non-metallic mineral products	1,501	1,533	1,474
Iron and steel basic industries	427	489	434
Metal products	646	651	711
Machinery:			
Electrical	1,862	2,097	2,275
Non-electrical	851	772	796
Transport equipment	729	715	773
Watches and clocks	186	213	278
Jewellery and related articles	579	530	458
Miscellaneous manufacturing industries	674	642	623
Total	35,141	35,566	36,431

^{1/} in large establishments - see introduction on page 79

^{2/} last Wednesday of the month

^{3/} last Thursday of the month

^{4/} revised

^{5/} excluding employees in sugar and tea factories, who have been included with plantation workers in agriculture

Table 8.6 - Average monthly earnings^{1/} by industrial group (Bi-annual Survey of Employment and Earnings - March 1971-March 1980)^{2/}

Industrial group	(Rupees)									
	1971	1972	1973	1974	1975	1976	1977	1978	1979	1980
Agriculture and fishing	160	188	219	289	333	448		647	687	781
Sugar ^{3/}	166	201	232	305	343	463		664	692	765
Tea ^{4/}	109	127	146	191	246	321		483	608	705
Other	159	146	168	227	315	378		659	785	1,477
Mining and quarrying	122	111	141	166	210	300		498	441	521
Manufacturing	203	221	216	255	305	367		550	610	745
Electricity and water	393	372	365	473	602	741		1,303	1,501	1,785
Construction	236	220	291	329	352	495		715	868	1,064
Wholesale, retail trade, restaurants and hotels	366	367	394	597	587	678		1,013	1,085	1,289
Transport, storage and communication	314	355	355	429	490	641		992	1,250	1,744
Financing, insurance, real estate & business services	628	703	720	892	1,001	1,306		1,700	1,783	2,143
Community, social and personal services	258	298	284	412	552	697		983	1,094	1,301
Government : (a) Central	250	289	305	403	550	684		977	1,080	1,281
(b) Local ^{5/}	225	263	273	391	470	668		819	951	1,161
Other	357	386	387	493	622	809		1,117	1,264	1,498
Activities not elsewhere specified	-	-	-	184	260	323		456	497	598
All sectors	223	253	276	355	429	546		790	885	1,067

^{1/} including daily rate workers; daily wages have been converted to a monthly basis assuming 26 working days in a month

^{2/} see notes on page 79

^{3/} including factories

^{4/} including factories and Tea Development Authority

^{5/} municipalities and district councils

Table 8.7 - Average monthly earnings^{1/} by industrial group (Bi-annual survey of Employment & Earnings - September 1970 - September 1979)^{2/} (Rupees)

Industrial group	1970	1971	1972	1973	1974	1975	1976	1977	1978	1979
Agriculture and fishing	197	195	262	250	343	381	554	660	779	811
Sugar ^{3/}	202	201	280	265	361	394	570	678	804	832
Tea ^{4/}	119	116	137	141	194	231	391	457	540	606
Other	170	162	174	169	240	337	438	610	682	750
Mining and quarrying	127	122	125	144	176	270	297	432	707	446
Manufacturing	211	215	227	226	271	323	414	521	606	631
Electricity and water	414	383	411	400	532	752	945	1,185	1,467	1,504
Construction	260	274	261	281	337	485	662	751	836	947
Wholesale, retail trade, restaurants and hotels	364	364	373	449	578	638	728	1,002	1,054	1,111
Transport, storage and communication	325	281	365	394	483	545	833	1,024	1,124	1,434
Financing, insurance, real estate & business services	646	675	749	770	980	1,130	1,400	1,607	1,673	1,879
Community, social and personal services	268	264	315	401	481	627	830	934	1,046	1,136
Government : (a) Central	262	256	309	408	478	621	819	920	1,031	1,111
(b) Local ^{5/}	218	237	271	317	441	576	852	797	885	1,081
Other	358	360	389	399	520	692	893	1,099	1,234	1,309
Activities not elsewhere specified	-	-	-	-	227	278	437	537	554	661
All sectors	241	240	295	324	400	483	654	775	887	962

^{1/} including daily rate workers, daily wages have been converted to a monthly basis assuming 26 working days in a month

^{2/} see notes on page 79

^{4/} including factories and Tea Development Authority

^{5/} municipalities and district councils

^{3/} including factories

Table 8.8 - Daily wage rates^{1/} of manual workers employed by the Central government as at 31st December, 1978 - 1979

Rupees

Occupation	Lowest		Highest	
	1978	1979	1978	1979
Pressman	31.11	35.54	53.00	59.85
Compositor	31.11	35.54	53.00	59.85
Fitter	31.11	35.54	53.00	59.85
Mechanic	31.11	35.54	53.00	59.85
Carpenter	31.11	35.54	53.00	59.85
Pattern Maker	31.11	35.54	53.00	59.85
Mason	31.11	35.54	53.00	59.85
Driver	27.50	31.54	43.53	49.54
Labourer (specialised)	21.26	24.73	27.50	31.54
Labourer (unskilled)	20.26	23.52	25.30	29.15

^{1/} daily wage rate has been converted from a monthly basis assuming 26 working days in a month. It includes extra remuneration and special increases.

Table 8.9 - Statutory minimum wage-rates^{1/} per day for typical occupation in principal industries, 1976 - 1979

Industry	Occupation	Year ^{2/}			
		1976	1977	1978	1979
1. Agriculture:	Field labourer : male	19.05	20.78	22.32	24.09
	Field labourer : female	11.50	12.77	13.77	14.88
	Field labourer : male	10.05	16.57	17.80	19.24
	Field labourer : female	5.96	10.69	11.54	12.46
Tobacco	Field labourer : male	17.00	18.58	19.96	21.57
	Field labourer : female	10.70	11.97	12.97	14.01
2. Manufacturing:	Brigadier	16.10	17.60	18.98	20.50
	Factory worker : male	13.50	14.92	16.07	17.36
	Factory worker : female	7.70	8.85	9.54	10.32
	Cabinet maker (grade I)	23.55	25.63	27.59	29.47
	Compositor (grade I)	20.77	22.62	24.27	26.08
	Stone breaker	19.30	21.15	22.69	24.46
	Blockmaker	16.00	17.50	18.88	20.45
	Pattern maker (grade I)	-	23.69	25.50	27.35
	Fitter (grade I)	-	23.69	25.50	27.35
	Carpenter (grade I)	22.35	24.31	26.12	27.97
Mason (grade I)	22.35	24.31	26.12	27.97	
3. Construction	Driver	23.40	25.53	27.50	37.05
	Conductor	20.19	22.04	23.69	32.14
4. Road transport:	Buses ^{3/}				

^{1/} rate per month converted to rate per day by dividing by 26

^{2/} as at 1st July of each year

^{3/} as from 1979, rate per day calculated by dividing rate per month by 22, due to the introduction of 40hr work per week in December 1978

Table 8.10- Employment and salaries ^{1/} of certain categories of non-agricultural employees on sugar millers' estates
(September inquiry)

Category	Grade	1978			1979		
		Number employed	Monthly salaries (Rs)		Number employed	Monthly salaries (Rs)	
			Lowest	Highest		Lowest	Highest
Motor mechanic (automobile)	Chief	11	1,539.50	1,539.50	13	1,614.50	1,658.14
"	Superior	81	1,185.00	1,481.22	73	1,243.00	1,551.22
"	I	99	1,056.75	1,056.90	85	1,112.75	1,141.00
"	II	78	835.50	983.84	70	886.50	1,003.50
Pan boiler	Chief	21	1,539.50	1,654.90	21	1,614.50	1,831.50
"	Superior	45	1,185.00	1,348.50	48	1,243.00	1,399.20
"	I	50	1,056.75	1,127.30	43	1,112.75	1,185.36
"	II	41	835.50	933.00	42	886.50	1,104.00
Fitter	Chief	32	1,254.50	1,539.50	34	1,316.50	1,700.00
"	Superior	97	1,185.00	1,240.72	86	1,243.00	1,302.72
"	I	93	1,056.75	1,121.00	85	1,112.75	1,189.78
"	II	104	835.50	962.00	100	886.50	1,054.00
Sheet metal worker and boiler maker	Chief	9	1,254.50	1,374.36	8	1,316.50	1,504.00
"	Superior	25	1,185.00	1,285.34	31	1,243.00	1,302.72
"	I	35	1,056.75	1,089.66	29	1,112.75	1,145.66
"	II	16	835.50	835.64	24	886.50	1,032.90

^{1/} including extra remuneration and special increases

Table 8.10 (cont'd) - Employment and salaries^{1/} of certain categories of non-agricultural employees on sugar millers' estates
(September inquiry)

Category	Grade	1978			1979		
		Number employed	Monthly salaries (Rs)		Number employed	Monthly salaries (Rs)	
			Lowest	Highest		Lowest	Highest
Turner	Chief	9	1,254.50	1,539.50	10	1,316.50	1,614.50
"	Superior	40	1,185.00	1,231.62	38	1,243.00	1,293.62
"	I	31	1,056.75	1,132.50	30	1,112.75	1,190.56
"	II	22	835.50	951.08	25	886.50	1,003.50
Welder	Chief	14	1,254.50	1,316.38	16	1,316.50	1,521.00
"	Superior	41	1,185.00	1,210.00	41	1,243.00	1,286.75
"	I	46	1,056.75	1,115.00	54	1,112.75	1,173.00
"	II	69	835.00	978.90	68	886.50	1,023.02
Carpenter	Chief	20	1,123.50	1,214.61	20	1,181.50	1,276.61
"	Superior	-	-	-	5	1,053.75	1,094.44
"	I	100	877.75	1,038.44	98	929.75	971.00
"	II	91	803.00	803.14	82	854.00	854.14
Driver (heavy mechanical unit, loading and harvesting machine operator)	Superior	53	998.00	1,170.00	65	1,052.00	1,228.52
"	I	50	840.00	965.00	69	891.00	1,009.50
"	II	38	762.25	819.00	34	812.25	863.00
Driver : lorries, vans, buses, cars, rollers, wheel tractors for haulage work and light loader	Superior	30	927.00	998.00	64	980.00	1,112.00
Factory operator	I	951	840.00	906.25	1,083	891.00	953.25
"	II	327	762.25	835.64	143	812.25	847.42
"	Superior	115	718.75	1,141.00	218	767.75	1,359.00
"	I	365	659.00	717.34	321	707.00	766.34
"	II	432	585.00	658.25	374	631.00	732.00

^{1/} including extra remuneration and special increases

Table 8.11 - Man-days actually worked and workers' earnings on sugar millers' estates, 1978 - 1980

Period	Workers on monthly rates of pay						Workers on daily rates of pay					
	Man-days actually worked (000)			Earnings (Rs million)			Man-days actually worked (000)			Earnings (Rs million)		
	1978	1979	1980 ^{2/}	1978	1979	1980 ^{2/}	1978	1979	1980 ^{2/}	1978	1979	1980 ^{2/}
January	506	527	630	33.2	27.1	31.0	93	58	65.5	4.0	2.0	2.3
February	731	761	719	22.8	25.1	30.7	120	68	87.0	3.8	1.8	3.1
March	916	1,128	748	25.3	28.6	30.2	125	75	66.7	2.9	2.0	2.2
April	718	715	776	23.3	25.1	29.8	102	57	63.4	2.5	1.9	2.2
May	798	762	856	23.9	26.5 ^{1/}	32.4	122	71	82.9	3.0	1.9	2.5
June	882	892	778	27.4	28.7	30.3	134	107	74.4	3.0	3.0	2.3
July	859	840		30.2	35.5		140	123		3.4	3.6	
August	937	732		35.8	28.2		166	117		4.6	3.4	
September	802	802		35.2	32.0		132	128		3.8	3.9	
October	845	799		32.8	32.3		141	123		3.8	3.9	
November	776	855		31.6	44.4		135	152		3.8	5.8	
December	838	815		92.1	108.2		130	138		7.5	7.4	
Total	9,608	9,627		413.6	441.7		1,540	1,217		46.1	40.6	

Note : (i) the table excludes the "Etat Major" staff

(ii) earnings and the number of "man-days actually worked" refer to 4 or 5 weekly periods ending on the pay-day of each month; the figures are therefore not strictly comparable from month to month

(iii) earnings also include cost of living allowance, extra remuneration, special increases, overtime, holiday and leave pay, housing allowance and end-of-year bonus

^{1/} revised

^{2/} provisional

Section 9 - Social Security

Table 9.1 - Social Benefits^{1/} - 1976-80

	1976-77	1977-78	1978-79	1979-80 ^{2/}
1. Outdoor Relief				
(i) No. of beneficiaries (regular)	20,290	15,221	14,746	14,354
(ii) Total amount paid (Rs mn)	20.6	16.2	15.6	14.9
2. Indoor Relief				
(i) No. of persons in infirmaries	608	576	576	595
(ii) No. of persons in orphanages	207	192	183	183
(iii) Total capitation grants paid (Rs mn)	1.56	1.87	2.03	2.3
3. Family Allowance				
(i) No. of beneficiaries	35,755	35,024	33,734	33,217
(ii) Total amount paid (Rs mn)	19.6	22.7	23.9	21.8
4. Retirement Allowance				
(i) No. of beneficiaries				
Basic Pension	58,348	60,012	61,631	63,000
Contributory Pension	-	-	443	1,141
(ii) Amount paid (Rs mn)				
Basic Pension	56.3	69.5	76.3	81.8
Contributory Pension	-	-	0.1	.38
5. Widow's Pension and Child's Allowance^{2/}				
(i) No. of beneficiaries				
Basic Pension	14,557	15,468	16,152	16,738
Contributory Pension	-	-	77	188
(ii) Amount paid (Rs mn)				
Basic Pension	11.2	22.3	25.4	26.3
Contributory Pension	-	-	0.04	.18
6. Orphans' Pension and Guardians Allowance^{3/}				
(i) No. of orphans	-	671	867	913
(ii) No. of guardians	-	438	564	603
(iii) Total amount paid (Rs mn)	-	0.4	0.6	0.7
7. Invalidity Pension and Child's Allowance^{4/}				
(i) No. of beneficiaries				
Basic Pension	-	5,724	5,644	6,037
Contribution Pension	-	-	6	85
(ii) Amount paid (Rs mn)				
Basic Pension	-	7.4	8.2	8.8
Contributory Pension	-	-	0.01	.03

Table 9.1 - Social benefits^{1/} - 1976 - 1980 (cont'd)

	1976-77	1977-78	1978-79	1979-80 ^{2/}
8. <u>Inmates Allowance</u> ^{5/}				
(i) No. of beneficiaries	-	535	508	499
(ii) Total amount paid (Rs mn)	-	0.06	0.09	0.1
9. <u>Industrial Injury Benefit</u> ^{6/}				
(i) Total paid (Rs mn)	-	-	-	0.5

^{1/} as at June. Payment of contributory benefits under the National Pension Scheme has been effective as from July 1978. Beneficiaries of basic and contributory pension are shown separately. But since beneficiaries of contributory pensions are also eligible for the corresponding basic pension the number of beneficiaries of the basic pension also includes those receiving contributory pension as well.

^{2/} effective as from December 1976; this also includes widows previously drawing outdoor relief.

^{3/} effective as from July 1977; this also includes orphans previously drawing outdoor relief.

^{4/} effective as from July 1977; this also includes invalids previously drawing outdoor relief.

^{5/} an allowance payable to a person who is other-wise qualified to receive a basic pension but is disqualified to receive that pension because he is an inmate of a charitable institution.

^{6/} effective as from August 1979

^{7/} provisional.

Table 9.2 - National Pensions Scheme - contribution from employers/employees

	1978-79	1979-80 ^{2/}
(i) No. of employers registered ^{1/}	1,300	10,700
(ii) Contribution from employers/employees (Rs mn)	63.2	85.5
(iii) Surcharge paid by employers (Rs mn)	0.08	0.2

^{1/} as at June

^{2/} provisional

SECTION 10 - EDUCATION

Table 10.1 - Primary education - number of schools, pupils and teachers, 1975 - 1979

A - Island of Mauritius

Period	Total number of schools ^{1/}	No. of pupils			Total	Number of teachers	Pupil/teacher ratio
		Government	Aided	Non-aided ^{2/}			
October 1975	234	106,949	33,202	5,324	145,475	5,677	26
" 1976	235	103,638	31,452	4,349	139,439	5,848	24
June 1977	236	100,612	30,688	4,719	136,019	6,250	22
" 1978	244	100,299	29,629	3,504	133,432	6,352	21
" 1979	254	93,940	27,779	3,446	125,165	6,373	20

B - Island of Rodrigues

October 1975	7	1,012	3,351	4,363	151	29
" 1976	7	968	3,595	4,563	160	29
June 1977	8	1,185	3,640	4,825	181	27
" 1978	8	1,211	3,709	4,920	185	27
" 1979	9	1,285	3,735	5,020	194	26

^{1/} this total includes only the number of government and aided primary schools. The number of pre-primary schools having primary sections are not included

^{2/} including pupils of the primary sections of pre-primary schools as well as aided and non-aided secondary schools

Table 10.2 - Secondary education - number of schools, pupils and teachers, 1975 - 1979

A - Island of Mauritius

Period	Total number of schools	No. of Pupils				Total	Number of teachers ^{3/}	Pupil/teacher ratio
		Government	Aided		Non-aided ^{2/}			
			Status A	Status B & non- ^{1/} recognised schools				
October 1975	125	3,296	10,240	45,511	4,095	63,142	2,065	31
" 1976	126	3,459	11,983	48,090	3,388	66,920	2,123	32
June 1977	130	3,809	18,755	51,866	3,608	78,038	2,439	32
" 1978	141	5,564	19,536	55,306	73	80,479	2,769	29
" 1979	148	7,673	18,938	55,266	69	81,946	3,042	27

B - Island of Rodrigues

October 1975	1	-	-	-	330	330	10	33
" 1976	1	-	-	344	-	344	12	29
June 1977	1	-	-	391	-	391	13	30
" 1978	1	-	-	460	-	460	18	26
" 1979	3	355	-	315	-	670	24	28

^{1/} including Private Junior Secondary Schools and Special Schools.

^{2/} as from April 1975, a number of non-aided schools have become aided schools following the implementation of the Ramphul's Report

^{3/} the number of teachers in the secondary schools is expressed in terms of full-time equivalent, taking 30 periods per week as full-time teaching

Table 10.3 - Enrolment by grade and sex in primary schools - Island of Mauritius, 1975 - 1979

Grade	1975			1976			1977			1978			1979		
	Both sexes	Male	Female	Both sexes	Male	Female	Both sexes	Male	Female	Both sexes	Male	Female	Both sexes	Male	Female
Std. I	20,744	10,619	10,125	19,901	10,110	9,791	18,995	9,677	9,318	19,027	9,662	9,365	18,457	9,254	9,203
Std. II	21,326	10,877	10,449	19,851	10,195	9,656	19,870	10,085	9,785	18,440	9,584	9,056	18,402	9,327	9,075
Std. III	20,813	10,567	10,246	21,239	10,818	10,421	19,790	10,139	9,651	19,853	10,072	9,781	18,303	9,320	8,983
Std. IV	22,834	11,549	11,285	20,591	10,477	10,114	21,144	10,797	10,347	19,624	10,085	9,539	19,604	9,980	9,624
Std. V	22,457	11,493	10,964	22,111	11,163	10,948	20,207	10,274	9,933	20,545	10,490	10,055	19,163	9,894	9,269
Std. VI	37,301	19,115	18,186	35,746	18,314	17,432	36,013	18,453	17,560	35,943	18,763	17,180	31,236	16,156	15,080
Total	145,475	74,220	71,255	139,439	71,077	68,362	136,019	69,425	66,594	133,432	68,456	64,976	125,165	63,931	61,234

Note: As from 1977, the enrolment figures refer to the month of June. For previous years, the reference period was October.

Table 10.4 - Enrolment by grade and sex in primary schools - Island of Rodrigues, 1975 - 1979

Grade	1975			1976			1977			1978			1979		
	Both sexes	Male	Female	Both sexes	Male	Female	Both sexes	Male	Female	Both sexes	Male	Female	Both sexes	Male	Female
Std. I	739	375	364	916	452	464	859	431	428	829	424	405	866	425	441
Std. II	758	389	369	742	371	371	933	456	477	865	434	431	840	424	416
Std. III	785	387	398	755	387	368	732	366	366	914	446	468	861	432	429
Std. IV	749	389	360	722	355	367	727	371	356	701	346	355	867	431	436
Std. V	567	260	307	667	334	333	683	341	342	653	326	327	650	323	327
Std. VI	765	403	362	761	373	388	891	435	456	958	488	470	936	487	449
Total	4,363	2,205	2,160	4,563	2,272	2,291	4,825	2,400	2,425	4,920	2,464	2,456	5,020	2,522	2,498

Note: as from 1977, the enrolment figures refer to the month of June. For previous years, the reference period was October.

Table 10.5 - Enrolment by grade and sex in secondary schools - Island of Mauritius, 1975 - 1979

Grade	1975			1976			1977			1978			1979		
	Both sexes	Male	Female	Both sexes	Male	Female	Both sexes	Male	Female	Both sexes	Male	Female	Both sexes	Male	Female
Form I	14,474	7,778	6,696	16,109	8,740	7,369	19,970	10,419	9,551	17,231	8,678	8,553	14,953	7,589	7,364
Form II	12,701	6,799	5,902	13,045	6,894	6,151	14,804	7,899	6,905	17,188	8,723	8,465	16,847	8,578	8,269
Form III	10,607	5,708	4,899	11,638	6,161	5,477	12,505	6,431	6,074	13,745	7,032	6,713	16,356	8,438	7,918
Form IV	11,194	6,186	5,008	11,216	6,140	5,076	12,628	6,633	5,995	13,631	7,121	6,510	14,760	7,744	7,016
Form V	11,303	6,706	4,597	11,966	6,790	5,176	14,315	8,007	6,308	14,533	8,135	6,398	14,358	7,989	6,369
Form VI	2,863	1,935	928	2,946	1,891	1,055	3,816	2,516	1,300	4,151	2,678	1,473	4,672	2,919	1,753
Total	63,142	35,112	28,030	66,920	36,616	30,304	78,038	41,905	36,133	80,479	42,367	38,112	81,946	43,257	38,689

Note : as from 1977, the enrolment figures refer to the month of June. For previous years, the reference period was October

Table 10.6 - Enrolment by grade and sex in secondary schools - Island of Rodrigues, 1975 - 1979

Grade	1975			1976			1977			1978			1979		
	Both sexes	Male	Female	Both sexes	Male	Female	Both sexes	Male	Female	Both sexes	Male	Female	Both sexes	Male	Female
Form I	70	42	28	105	63	42	109	60	49	258	130	128	438	206	232
Form II	105	63	42	69	31	38	100	58	42	68	37	31	109	54	55
Form III	60	31	29	85	45	40	121	54	67	93	49	44	63	35	28
Form IV	50	28	22	40	23	17	40	25	15	29	16	13	44	28	16
Form V	45	28	17	25	13	12	18	9	9	12	7	5	16	9	7
Form VI	-	-	-	20	13	7	3	3	-	-	-	-	-	-	-
Total	330	192	138	344	188	156	391	209	182	460	239	221	670	332	338

Note : As from 1977, the enrolment figures refer to the month of June. For previous years, the reference period was October.

Table 10.7 - University of Mauritius - Students enrolled, 1978 - 1980

	School of Administration		School of Agriculture		School of Industrial Technology		Total	
	1978-79	1979-80	1978-79	1979-80	1978-79	1979-80	1978-79	1979-80
Higher Degree courses	-	-	3	8	5	6	8	14
Degree courses	28	28	28	28	57	56	113	112
Diploma courses	223	175	80	60	142	89	445	324
Certificate courses	41	24	-	-	48	35	89	59
Professional courses	55	26	-	-	92	111	147	137
Non-award courses	-	-	-	-	-	-	-	-
Total	347	253	111	96	344	297	802	646

1/ revised

Table 10.8 - University of Mauritius - output, 1977 - 1979

	School of Administration		School of Agriculture		School of Industrial Technology		Total	
	1977-78	1978-79	1977-78	1978-79	1977-78	1978-79 ^{1/}	1977-78	1978-79 ^{1/}
Higher Degree courses	-	-	-	-	-	1	-	1
Degree courses	-	-	8	5	-	7	8	12
Diploma courses	40	90	17	20	63	56	120	166
Certificate courses	60	30	15	14	51	31	126	75
Total	100	120	40	39	114	95	254	254

Note : the output for professional courses is not available, the awards being from outside bodies

^{1/} Revised

SECTION 11 - TRANSPORT AND COMMUNICATION

Table 11.1 - Motor vehicles registered, 1975 - 1980

End of period	Grand total	Private vehicles				Commercial vehicles						Government owned vehicles
		Total	Cars	Motor cycles	Auto cycles	Total	Taxi-cars	Lorries	Vans	Buses	Other	
1975	43,017	29,083	16,198	5,512	7,373	12,020	1,635	3,201	4,113	1,149	1,922	1,914
1976	50,741	34,270	18,368	6,455	9,447	14,348	2,288	3,540	5,264	1,186	2,070	2,123
1977	59,670	39,893	20,630	7,884	11,379	17,645	3,700	3,942	6,529	1,261	2,213	2,132
1978	64,581	43,613	21,757	8,437	13,419	18,763	3,609	4,195	7,233	1,393	2,333	2,205
1979	68,990	47,430	22,400	8,550	16,480	19,344	3,479	4,250	7,747	1,468	2,400	2,216
1979 : 1st Qr.	65,881	44,733	21,938	8,472	14,323	18,937	3,581	4,227	7,364	1,424	2,341	2,211
2nd Qr.	67,213	45,839	22,144	8,508	15,187	19,147	3,521	4,262	7,560	1,440	2,364	2,227
3rd Qr.	67,834	46,411	22,210	8,519	15,682	19,229	3,527	4,224	7,639	1,452	2,387	2,194
4th Qr.	68,990	47,430	22,400	8,550	16,480	19,344	3,479	4,250	7,747	1,468	2,400	2,216
1980 : 1st Qr.	68,418	47,108	22,034	8,157	16,917	19,091	3,491	4,173	7,760	1,430	2,237	2,219
2nd Qr.	68,905	47,498	22,046	8,169	17,283	19,161	3,434	4,169	7,870	1,436	2,252	2,246

Table 11.2 - New registration of motor vehicles^{1/}, 1978 - 1980

Period	Grand Total	Cars	Lorries	Buses	Motor cycles and auto cycles	D.P.V. ^{2/} and vans	Other
1978 January	551	112	17	16	333	64	9
February	598	167	15	7	291	107	11
March	624	140	30	21	329	90	14
April	426	83	22	4	255	52	10
May	381	101	37	3	156	72	12
June	443	148	37	20	149	62	27
July	317	62	33	12	151	45	14
August	317	68	30	13	124	73	9
September	214	49	12	4	95	47	7
October	333	68	15	11	182	48	9
November	338	54	14	6	210	49	5
December	455	51	10	19	316	46	13
1979 January	552	65	12	-	422	48	5
February	415	48	8	21	286	47	5
March	351	47	15	12	233	41	3
April	518	52	7	6	369	77	7
May	401	44	7	11	254	73	12
June	459	70	25	7	283	62	12
July	386	78	11	7	235	44	11
August	300	82	12	10	156	31	9
September	283	53	11	10	146	36	27
October	477	95	21	13	280	63	5
November	541	71	18	11	393	39	9
December	230	39	9	10	155	15	2
1980 January	209	27	9	5	133	35	-
February	321	30	5	10	236	34	6
March	266	39	13	14	162	34	4
April	316	65	12	24	156	48	11
May	302	45	10	7	178	53	9
June	393	58	28	13	200	70	24

^{1/} including government vehicles

^{2/} dual purpose vehicles

Table 11.3 - Bus operational statistics, 1975 - 1979

	Unit	1975	1976	1977	1978	1979 ^{1/}
Total number of buses registered (at 30th June)	Number	1,103	1,155	1,220	1,328	1,440
Total vehicles - journeys	Thousand	3,640	4,049	3,804	3,731	3,003
Average vehicle - journeys per day	"	10	11	10	10	8
Total vehicle - miles	"	38,782	36,129	34,560	35,277	25,937
Average vehicle - miles per day	"	106	99	95	97	71
Total gross receipts	000 Rs	62,102	81,429	90,497	98,395	117,028
Average gross receipts per day	"	170	223	249	270	321

^{1/} Estimates

Table 11.4 - Road traffic accidents and casualties, 1975 - 1979

	1975	1976	1977	1978	1979
<u>Road traffic accidents</u>					
Number	<u>3,584</u>	<u>4,560</u>	<u>5,065</u>	<u>7,412</u>	<u>7,820</u>
Number per 100,000 of population	418	525	574	827	858
<u>Motor vehicle accidents</u>					
Number of motor vehicles involved	<u>3,133</u>	<u>4,678</u>	<u>5,526</u>	<u>6,754</u>	<u>8,017</u>
Number per 100,000 of population	366	539	627	753	880
Number per 1,000 registered motor vehicles	78	100	99	108	119
<u>Total casualties</u>	<u>2,767</u>	<u>2,333</u>	<u>3,195</u>	<u>4,040</u>	<u>4,266</u>
<u>Nature of casualty</u>					
Killed	161	141	135	132	137
Seriously injured	273	118	275	274	260
Slightly injured	2,333	2,074	2,785	3,634	3,869
<u>Casualties by class of road users</u>					
Pedestrians	1,157	973	1,207	1,548	1,602
Pedal cyclists	286	210	308	383	545
Passengers	811	630	838	946	1,021
Drivers or riders of motor vehicles	513	520	842	1,163	1,098

Table 11.5 - Sea-borne shipping^{1/}, 1975 - 1980

Period	Vessels entering		Vessels leaving		Goods	
	Number	Net registered tonnage (Thousand m/tons)	Number	Net registered tonnage (Thousand m/tons)	Unloaded (Thousand m/tons)	Loaded ^{2/} (Thousand m/tons)
1975	580	2,417	590	2,432	798	635
1976	482	2,025	477	2,048	812	682
1977	533	2,113	525	2,158	896	794
1978	521	2,109	495	1,986	1,063	760
1979	520	2,320	502	2,391	1,140	853
1979 : 1st Qr.	143	626	138	622	214	175
2nd Qr.	117	523	117	548	303	170
3rd Qr.	126	663	118	656	268	261
4th Qr.	134	508	129	565	355	247
1980 ^{3/} : 1st Qr.	163	464	163	586	239	169
2nd Qr.	151	583	160	604	317	173

^{1/} excluding fishing vessels berthed in Port Louis

^{2/} excluding bunkers

^{3/} provisional

Table 11.6 - Civil Aviation, 1975 - 1980

Period	Number of movements		Freight	
	Landings	Take offs	Unloaded (m/tons)	Loaded (m/tons)
1975	2,341	2,341	2,000.8	2,005.0
1976	2,371	2,371	1,542.3	3,633.4
1977	2,208	2,208	6,645.2	7,036.8
1978	2,308	2,308	3,375.7	4,371.3
1979	2,816	2,816	3,749.5	4,060.4
1979 : 1st Qr.	590	590	952.3	873.4
2nd Qr.	630	629	863.6	1,214.9
3rd Qr.	679	679	938.7	1,096.6
4th Qr.	917	917	994.8	875.4
1980 ^{4/} : 1st Qr.	848	848	800.0	759.1
2nd Qr.	826	826	748.9	1,321.8

Note: The following are relevant to this table:

- (1) only movements of commercial aircraft are accounted for
- (2) each touch down or each take off is counted as a separate movement
- (3) freight carried by planes other than commercial is included
- (4) provisional

SECTION 12 - LAND UTILIZATION

Table 12.1 - Total area^{1/} classified by utilization

	<u>Acres</u>
	1972
Agriculture	<u>262,500</u>
Sugar cane	242,100
Tea	15,400
Tobacco, vegetable, and other crops	5,000
Forests, scrub areas, grasslands and grazing lands	<u>159,300</u>
Forest plantation	16,740
Forest, natural	5,900
Savannahs, grasslands, meadows, etc.	18,400
Scrub and other forest lands	118,260
Reservoirs and ponds	<u>2,900</u>
Swamps and rocks	<u>3,500</u>
Roads (main thoroughfares)	<u>3,300</u>
Built-up areas	<u>29,300</u>
Total island	460,800

^{1/} based on the findings of the UNDP-FAO Land and Water Resources Survey team working on aerial photographs of the island taken at the end of 1965 and supplemented to some extent by land surveys.

Table 12.2 - Effective area under cultivation, 1975 - 1979

	<u>Acres</u>				
	1975	1976	1977	1978	1979
Sugar cane	213,500	215,400	215,500	214,300 ^{1/}	212,900
Tea	13,700	14,000	14,400	14,440	14,420
Tobacco	1,450	1,700	1,350	1,530	1,905

^{1/} revised

SECTION 13 - LOCAL PRODUCTION

Table 13.1 - Agriculture - production of main crops, 1976 - 1980

Commodity	Unit	1976	1977	1978	1979	Jan-June 1980
<u>Industrial crops</u>						
Sugar cane	Thousand m/tons	6,402	6,022	6,260	6,313	-
Tea (green leaf processed)	m/tons	21,678	23,607	25,733	25,718	12,900
Tobacco leaf <u>1/</u>	"	700	588	731	705	89
<u>Vegetables, pulses and fruits</u>						
Beans and peas	"	912	876 ^{4/}	911 ^{4/}	904	347
Creepers <u>2/</u>	"	5,671	5,745	6,368	5,483	2,979
Eddoes	"	187	209	214	121	79
Egg plants (bringelles)	"	729	785	878 ^{4/}	527	136
Ginger	"	826	515	608	387	194
Groundnuts	"	1,150	1,094	1,428	1,082	563
Maize	"	1,584	1,328	1,144	1,171	339
Manioc	"	260	226	246	182	30
Potatoes (Irish)	"	11,944	10,905	12,153	8,329	572
Rice	"	465	275	197	38	142
Sweet potatoes	"	123	131	164	105	15
Tomatoes	"	5,439	6,928	7,254	8,359	1,264
Mixed vegetables ^{3/}	"	7,286	6,682	6,987 ^{4/}	7,123	1,882
Bananas	"	7,540	7,586	7,154	6,663	796
Pineapples	"	687	607	542	452	147

1/ refers to crop year which normally extends from the beginning of April to the end of March

2/ include margoze, calabash, chouchou, cucumber, patolle, pipengaille, pumpkin, squash, voehm

3/ include beet, cabbage, carrot, cauliflower, chillies (long and small), garlic, leek, lettuce, onion, petsai, sweet pepper, ladies' finger (lalo)

4/ revised figures

Table 13.2 - Livestock slaughtered, 1977 - 80

Type of livestock	1977		1978		1979		Jan. - June 1980	
	No. of heads	Carcass weight (M/Tons)	No. of heads	Carcass weight (M/Tons)	No. of heads	Carcass weight (M/Tons)	No. of heads	Carcass weight (M/Tons)
Cattle	<u>10,230</u>	<u>1,257.2</u>	<u>7,709</u>	<u>1,156.8</u>	<u>8,893</u>	<u>1,633.0</u>	<u>5,440</u>	<u>1,029.8</u>
Local	<u>8,948</u>	<u>1,052.5</u>	<u>4,140</u>	<u>458.0</u>	<u>5,791</u>	<u>575.5</u>	<u>824</u>	<u>125.9</u>
Milchbreed								
Bulls & calves	4,078	444.2	2,581	265.9	1,735	215.2	302	36.8
Heifers	348	36.0	41	3.7	-	-	-	-
Cows	2,949	374.3	399	51.2	<u>440</u> ^{1/}	<u>66.8</u> ^{1/}	190	<u>25.4</u> ^{1/}
Other breed	1,573	198.0	1,119	137.2	1,616	293.6	332	63.7
Rodrigues	<u>413</u>	<u>54.7</u>	<u>47</u>	<u>5.5</u>	<u>56</u>	<u>7.7</u>	<u>9</u>	<u>1.1</u>
Imported	<u>869</u>	<u>150.0</u>	<u>3,522</u>	<u>693.3</u>	<u>5,046</u>	<u>1,049.8</u>	<u>4,607</u>	<u>902.7</u>
Goats	16,632	154.9	18,544	136.2	17,856	142.7	6,739	43.7
Sheep	2,775	43.0	2,838	37.4	3,236	40.6	2,381	31.7
Pigs	7,266	471.8	8,240	490.6	8,063	522.6	4,330	284.6

^{1/} including heifers

Table 13.3 - Fisheries statistics, 1977 - 1979

Source	1977	1978 ^{1/}	1979
Lagoons and off-lagoons	2,522	2,356	1,945
Banks	3,123	2,825	2,222
Barachois and ponds	12	16	26
Total	5,657	5,197	4,193

^{1/} revised

Table 13.4 - Sugar industry - cane cultivation, 1975 - 1979

Crop year	Area under cultivation (Thousand arpents)			Area harvested (Thousand arpents)			Canes harvested (Thousand m/tons)			Average yield (M/tons per arpent)		
	Millers	Planters	Total	Millers	Planters	Total	Millers	Planters	Total	Millers	Planters	Total
1975	116	88	205	104	85	190	2,783	1,553	4,316	26.7	18.0	22.8
1976	117	89	206	106	86	192	3,977	2,425	6,402	37.6	28.2	33.4
1977	117	89	206	105	86	191	3,747	2,275	6,022	35.7	26.5	31.5
1978	119	88	207	106	84	190	3,914	2,346	6,260	36.8	27.9	32.9
1979	117	86	203	107	82	189	3,977	2,336	6,315	37.3	28.4	33.4

Table 13.5 - Sugar manufacture, 1975 - 1979

Crop year	Number of factories operating	Commercial sugar recovered (% cane)	Products of manufacture (Thousand m/tons)			Residues of manufacture (Thousand m/tons)			Average sugar price ^{1/} ex-syndicate ^{2/} (Rs per m/ton)
			White sugar	Raw sugar	Total sugar	Molasses	Scums		
1975	21	10.99	25	443	468	129	153	2,677.03	
1976	21	10.91	53	637	690	199	208	1,617.00	
1977	21	11.08	48	618	666	195	205	1,678.36	
1978	21	10.63	42	623	665	202	210	1,742.01 ^{2/}	
1979	21	10.90	42	646	688	208	214	2,144.28	

^{1/} price of sugar is the average ex-syndicate price for raw sugar at 98.5° polarisation after deducting the sugar insurance premium and special levy and adding the planter's share of surplus.

^{2/} revised

Table 13.6 - Industry - production of selected commodities, 1976-80

	Unit	1976	1977	1978	1979	Jan. - June 1980 1/
Sugar	M/tons	689,932	665,435	665,219	688,383	3,702
Molasses	"	199,421	194,558	193,500	207,975	...
Tea manufactured	"	4,334	4,727	5,106	4,998	2,396
Aloe fibre	"	655	707	256	79	-
Alcohol @ 93.5 G.L.	H/litres	31,100	33,581	39,087	36,579	...
Local spirits (rum)	"	33,441	35,914	38,532	36,652	10,215
Denatured spirits :						
Power alcohol	"	1,450	1,790	1,714	2,352	999
Alcohol for heating and lighting	"	3,939	3,572	3,203	3,134	1,455
Perfumed spirits	"	903	1,032	1,190	853	603
Vinegar	"	885	508	846	847	338
Beer and stout	"	132,919	155,259	147,883	136,503	68,344
Country liquor	"	22,575	25,685	26,894	31,816	15,835
Soft aerated beverages	"	464,721	567,095	605,000	533,700	...
Cigarettes	M/tons	978	984	1,031	1,030	492
Matches	Gross boxes	168,918	188,222	153,550	161,200	90,125
Lime	M/tons	7,500	7,500	8,000	8,000	...
Sacks ^{2/}	Thousands	1,093	958	971	971	-
Salt	M/tons	6,000	6,000	6,000	6,000	...
Electricity generated	Mn Kwh	270	308	335	355	174

1/ provisional

2/ manufactured by the Mauritius Jute and Textiles Industries Ltd (ex Government Sack Factory)

Table 13.7 - Industrial production : number of establishments ^{1/} covered, 1974 - 1979

Industrial Activity	Number of establishments					
	1974	1975	1976	1977	1978	1979
Food manufacturing industries including sugar and tea manufacturing	137	141	147	148	146	138
Alcoholic beverages and tobacco manufactures	12	12	12	12	12	12
Manufacture of non-alcoholic beverages	7	5	4	5	5	5
Manufacture of textiles, made-up textiles and other wearing apparel	44	46	65	70	74	77
Manufacture of footwear, leather and leather products	14	15	13	14	17	17
Manufacture of wood, furniture and fixtures	23	22	21	22	22	22
Manufacture of paper products, printing, publishing and allied industries	32	34	34	36	40	41
Manufacture of chemicals and chemical products	33	34	34	36	35	35
Manufacture of metal products, transport equipment and machinery except electrical machinery	45	41	43	46	50	50
Manufacture of non-metallic mineral products	22	25	27	33	31	32
Manufacture of electrical machinery, apparatus and appliances	8	10	11	11	10	9
Other manufacturing industries	11	15	20	22	27	28
Total	388	400	431	455	469	466

^{1/} including those employing 10 or more persons except in the case of bread and pastry where all establishments are covered.

Table 13.8 - Industrial production : value added, 1974 - 1979

Industrial Activity	Value added (Rs Mn)					
	1974	1975	1976	1977	1978 ^{1/}	1979 ^{2/}
Food manufacturing industries including sugar and tea manufacturing	322	305	321	311	333	393
Alcoholic beverages and tobacco manufactures	19	29	42	48	50	54
Manufacture of non-alcoholic beverages	7	13	13	20	29	33
Manufacture of textiles, made-up textiles and other wearing apparel	33	58	91	110	137	171
Manufacture of footwear, leather and leather products	6	7	9	9	12	14
Manufacture of wood, furniture and fixtures	6	10	13	12	15	17
Manufacture of paper products, printing, publishing and allied industries	12	16	21	24	28	36
Manufacture of chemicals and chemical products	16	35	51	59	57	69
Manufacture of metal products, transport equipment and machinery except electrical machinery	31	32	38	50	63	70
Manufacture of non-metallic mineral products	12	17	20	30	35	39
Manufacture of electrical machinery, apparatus and appliances	15	20	21	21	16	22
Other manufacturing industries	3	7	10	14	24	26
Total	482	549	650	708	799	944

1/ revised

2/ provisional

Note: The data relate to the production of establishments employing 10 or more persons in industries that are classified under Major Division 3 of the International Standard Industrial Classification of all Economic Activities, except in the case of the manufacture of bread and pastry where all the establishments have been included.

Table 13.9 - Electricity^{1/}, production, consumption, sales, etc., 1976-1979

	Unit	1976	1977	1978	1979
Generating stations	Number	<u>9</u>	<u>9</u>	<u>9</u>	<u>8</u>
Hydro	"	7	7	7	6
Thermal	"	2	2	2	2
Plant - effective capacity	Kw	<u>87,140</u>	<u>92,800</u>	<u>111,840</u>	<u>133,240</u>
Hydro	"	25,440	24,940	22,940	22,940
Thermal	"	61,700	67,860	88,900	110,300
Energy generated	Million kwh	<u>244.9</u>	<u>283.8</u>	<u>310.2</u>	<u>329.9</u>
Hydro	"	54.8	56.2	54.0	59.7
Thermal	"	190.1	227.6	256.2	270.2
Energy purchased from sugar & other factories	"	25.3	24.4	25.0	25.2
Energy sold	"	225.4	257.7	280.4	290.1
Number of consumers on 31st December:	Number	<u>132,945</u>	<u>142,152</u>	<u>148,927</u>	<u>154,512</u>
Domestic	"	119,157	127,724	133,960	139,007
Commercial	"	11,114	11,553	11,956	12,385
Industrial	"	2,561	2,749	2,883	2,983
Special	"	113	126	128	137
Average selling price	Cents per Kwh	37.0	45.27	50.59	65.29
Total revenue	Rs mn	85.4	118.8	144.8	189.4
Total current expenditure	" "	85.3	115.0	143.1	160.1
Persons employed	Number	1,530	1,610	1,766	1,900

^{1/} statistical data relating to the Central Electricity Board

SECTION 14 - CONSTRUCTION STATISTICS

Table 14.1 - Number of permits issued for new buildings^{1/}, 1977 - 1980

Type of building	1977		1978		1979		Jan.-June 1980	
	No. of permits issued	Floor area (Thousand sq. ft)	No. of permits issued	Floor area (Thousand sq. ft)	No. of permits issued	Floor area (Thousand sq. ft)	No. of permits issued	Floor area (Thousand sq. ft)
<u>Residential</u>	<u>5,207</u>	<u>5,501</u>	<u>5,700</u>	<u>5,936</u>	<u>5,263</u>	<u>5,824</u>	<u>2,588</u>	<u>2,813</u>
<u>Non-residential</u>	<u>289</u>	<u>645</u>	<u>322</u>	<u>548</u>	<u>409</u>	<u>662</u>	<u>211</u>	<u>236</u>
Agriculture, forestry, hunting and fishing	9	14	3	4	12	19	2	1
Manufacturing	59	190	47	100	63	149	22	49
Construction	2	3	1	1	-	-	-	-
Electricity and water	2	16	2	2	8	38	2	3
Transportation, storage and communication	4	23	11	9	10	8	7	3
Wholesale and retail trade	180	293	197	317	256	330	145	121
Banking, insurance and real estate	1	5	6	46	3	5	5	19
Services	32	101	55	69	57	113	28	40
All buildings	5,496	6,146	6,022	6,484	5,672	6,486	2,799	3,049

^{1/} includes only new buildings for which permits have been issued by the Ministry of Works and Municipalities. Permits issued for extensions and alterations to existing buildings have not been included.

Table 14.2 - Number of permits issued for new buildings classified by urban/rural areas^{1/}, 1977 - 1980

Locality	1977		1978		1979		Jan.-June 1980	
	No. of permits issued	Floor area (Thousand sq. ft)	No. of permits issued	Floor area (Thousand sq. ft)	No. of permits issued	Floor area (Thousand sq. ft)	No. of permits issued	Floor area (Thousand sq. ft)
<u>Urban area</u>								
Port Louis	2,359	3,188	2,659	3,256	2,615	3,508	1,210	1,506
Beau Bassin - Rose Hill	613	982	764	942	690	990	310	371
Curepipe	486	737	497	696	431	638	223	335
Quatre Bornes	400	541	436	607	548	749	257	315
Vacoas-Phoenix	376	467	406	515	426	624	159	223
	484	461	556	496	520	507	261	262
<u>Rural areas</u>								
Pamplemousses	3,137	2,958	3,363	3,228	3,057	2,978	1,589	1,543
Rivière du Rempart	693	726	706	701	432	461	297	301
Flacq	540	490	460	429	236	232	185	168
Moka	236	185	530	468	787	627	329	280
Grand Port	253	217	154	156	243	272	113	122
Savanne	452	392	441	398	399	372	248	227
Plaines Wilhems - Black River	417	383	492	444	357	324	183	167
Whole island	5,496	6,146	6,022	6,484	5,672	6,486	2,799	3,049

^{1/} permits for urban areas are issued by Municipalities and those for rural areas by the Ministry of Works. Permits issued for extensions and alterations to existing buildings have not been included.

SECTION 15 - CLIMATE

Table 15.1 - Monthly temperatures, 1979 - 1980

Degrees Centigrade

Period	Vacoas Centre : 1,394 ft. A.M.S.L. ^{1/}				Plaisance Coastal region, South : 188 ft. A.M.S.L. ^{1/}			
	Maximum		Minimum		Maximum		Minimum	
	Mean	Departure from normal	Mean	Departure from normal	Mean	Departure from normal	Mean	Departure from normal
1979 July	21.9	+ 0.2	14.9	- 0.2	24.1	+ 0.2	18.3	+ 0.8
August	22.4	+ 1.3	15.2	+ 0.6	24.5	+ 1.1	18.2	+ 1.1
September	23.7	+ 1.4	15.8	+ 0.6	25.6	+ 1.3	19.0	+ 1.5
October	24.7	+ 1.2	16.5	+ 0.5	26.6	+ 1.1	18.9	+ 0.4
November	26.7	+ 1.2	18.3	+ 0.7	28.5	+ 1.2	20.9	+ 1.0
December	27.6	+ 0.9	20.3	+ 1.1	29.5	+ 0.9	22.7	+ 1.2
1980 January	27.0	- 0.1	21.0	+ 0.9	28.9	- 0.1	23.3	+ 0.8
February	26.7	- 1.1	20.1	- 0.6	28.7	- 0.8	22.5	- 0.2
March	27.3	0.0	21.5	+ 1.0	29.3	+ 0.3	23.3	+ 0.8
April	26.9	+ 0.6	20.0	+ 0.7	28.4	+ 0.4	22.0	+ 0.8
May	24.3	+ 0.2	17.7	+ 0.5	26.7	+ 0.6	20.5	+ 1.1
June	23.4	+ 0.7	16.9	+ 1.2	25.5	+ 0.6	19.3	+ 1.4

^{1/} above mean sea level

Source : Meteorological services

Table 15.2 - Monthly rainfall for the sugar cane districts, 1979 - 1980

Millimetres

Period	West		North		East		South		Centre		All districts	
	Amount	Difference from normal	Amount	Difference from normal	Amount	Difference from normal	Amount	Difference from normal	Amount	Difference from normal	Amount	Difference from normal
1979 July	5	- 23	28	- 43	85	- 85	97	- 49	76	- 59	70	- 56
August	43	+ 26	148	+ 87	126	- 2	188	+ 73	162	+ 52	156	+ 56
September	9	- 11	23	- 30	50	- 62	59	- 36	38	- 59	42	- 44
October	8	- 20	13	- 25	43	- 44	80	+ 4	42	- 30	46	- 20
November	3	- 59	42	- 33	94	- 27	62	- 57	58	- 50	60	- 44
December	492	+ 356	582	+ 461	748	+ 529	459	+ 262	651	+ 466	588	+ 410
1980 January	691	+ 502	862	+ 685	1,031	+ 719	1,022	+ 722	1,125	+ 792	996	+ 721
February	93	- 104	117	- 98	209	- 131	160	- 141	348	+ 8	198	- 94
March	226	- 39	495	+ 236	621	+ 191	451	+ 75	640	+ 274	529	+ 178
April	195	+ 79	308	+ 133	443	+ 131	290	- 9	353	+ 114	335	+ 83
May	54	- 10	139	+ 19	122	- 84	132	- 54	141	- 6	132	- 29
June	20	- 18	70	- 19	131	- 63	110	- 40	77	- 60	94	- 43

Source : Meteorological services

No.	Description	Date	Amount
1
2
3
4
5
6
7
8
9
10
11
12
13
14
15
16
17
18
19
20
21
22
23
24
25
26
27
28
29
30
31
32
33
34
35
36
37
38
39
40
41
42
43
44
45
46
47
48
49
50
51
52
53
54
55
56
57
58
59
60
61
62
63
64
65
66
67
68
69
70
71
72
73
74
75
76
77
78
79
80
81
82
83
84
85
86
87
88
89
90
91
92
93
94
95
96
97
98
99
100