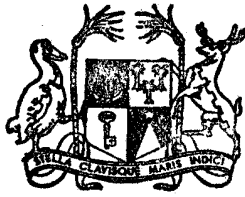


Mr. Coopman

Vol. 10

No. 1



MAURITIUS

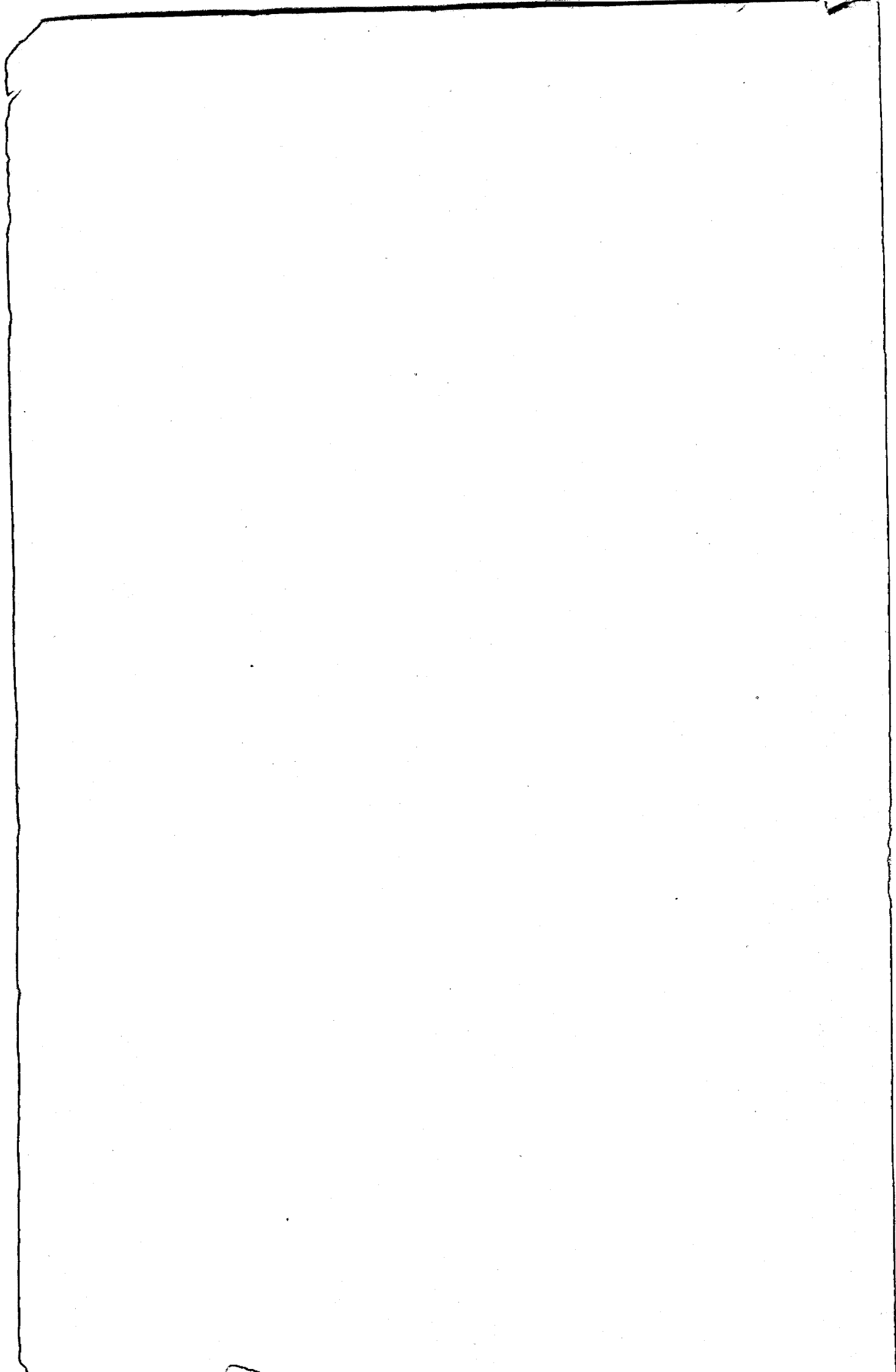
CENTRAL STATISTICAL OFFICE

Ministry of Economic Planning and Development

**BI-ANNUAL
DIGEST OF STATISTICS**

June 1975

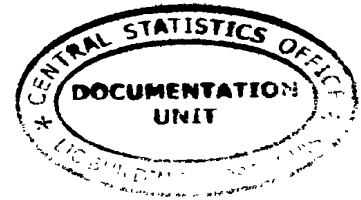
[Price : Rs 25.00]



BI-ANNUAL DIGEST OF STATISTICS

Vol. 10 No. I

June 1975



The Bi-annual Digest of Statistics is a publication of the Central Statistical Office.

It is designed to present in a concise and readily accessible form the more important statistical series available on the demographic, economic and social characteristics of Mauritius.

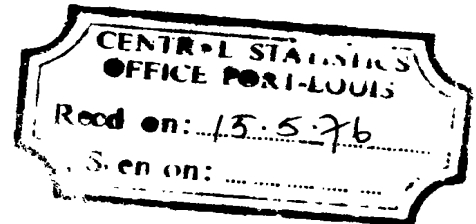
Some of the figures in this digest are provisional and liable to revision in later issues.

Where necessary, figures have been rounded off to the nearest final digit, and in some tables there may be discrepancies between the sum of the constituent items and the total as shown.

The following symbols are used throughout -

- Nil or negligible
- ... Not available

The assistance given by the Bank of Mauritius, all government departments and other bodies in providing data for publication in this issue is gratefully acknowledged.



J. AHKONG
Director of Statistics

Central Statistical Office
Rose Hill
Mauritius
February 1976

CONTENTS

	<u>Page</u>
<u>I - POPULATION AND VITAL STATISTICS</u>	
Table 1 - Estimated population of Mauritius as at 30th June 1975, based on the 1972 Population Census data	1
2 - Population increase in intercensal periods - Island of Mauritius, 1846-1972	1
3 - Population of Mauritius by geographical district and sex 1973-75 (mid-year estimates)	2
4 (a) - Population enumerated at each census by population group and sex - Island of Mauritius, 1846-1952	3
4 (b) - Population enumerated at each census by community and sex - Island of Mauritius, 1962-72	3
5 - Population growth and vital statistics - Island of Mauritius, 1963-74	4
6 - Rate of increase of the population of Mauritius compared with other countries	5
7 - Expectation of life in years at selected ages - Island of Mauritius	5
8 - Population and vital statistics - Island of Mauritius, 1921-74	6
9 - Population and vital statistics rates - Island of Mauritius, 1921-74	7
10 - Fertility rates - Island of Mauritius, 1962, 1972-74	8
11 - Age distribution of the population as enumerated at the censuses of 1962 and 1972, Island of Mauritius	9
12 - Estimated age distribution of population - Island of Mauritius, 1973-74	10
13 - Vital Statistics by month of registration - Island of Mauritius, January 1974 - June 1975	11
14 - Vital Statistics by geographical district - Island of Mauritius, 1973-74	12
15 - Still births and infant deaths by sex - Island of Mauritius, 1962-75	13
16 - Infant deaths (deaths under 1 year of age) by age and sex - Island of Mauritius	13
17 - Deaths by age and sex - Island of Mauritius, 1973-75	14
18 - Deaths by cause - Island of Mauritius, 1974	15
19 - Enumerated and estimated population, urban and extra-urban - Island of Mauritius, 1972-75	16
20 - Intercensal population increase in urban and extra-urban areas according to present boundaries - Island of Mauritius, 1962-72	17
21 - Population and vital statistics - Island of Rodrigues 1963-74	18
22 - Passenger traffic - Island of Mauritius, 1962-75	19
23 - Passenger traffic by country of original embarkation or final destination and by mode of transport, Jan - June 1975	20
24 - Tourist arrivals by mode of transport and total nights spent during period - Island of Mauritius, 1963 - June 1975	21

CONTENTS (Cont'd)

	<u>Page</u>
<u>I - POPULATION AND VITAL STATISTICS (Cont'd)</u>	
Table 25 - Tourist arrivals and tourist nights by country of residence and by mode of transport - Island of Mauritius, January - June 1975	22
26 - Official long-term emigrants by sex - Island of Mauritius, 1956-74	23
<u>II - PUBLIC HEALTH</u>	
Table 27 - Health services, Mauritius	24
28 - Statistics of hospitals, Mauritius	25
29 - Notifiable, contagious or communicable diseases, Mauritius	26
<u>III - PUBLIC FINANCE AND BANKING</u>	
Table 30 - Central government revenue and expenditure	27
31 - Functional classification of central government capital revenue	27
32 - Functional classification of central government capital expenditure	28
33 - Functional classification of central government recurrent revenue	29
34 - Functional classification of central government recurrent expenditure	30
35 - Central government indebtedness	31
36 - Sinking funds held against the public debt	31
37 - Central government local loan raisings	32
38 - Outstanding loans and advances made from public funds, as at 30th June	33
39 - Income tax - individuals	34
40 - Income tax - companies	35
41 - Sterling assets of central government, Bank of Mauritius and commercial banks	36
42 - Assets of the Bank of Mauritius	37
43 - Liabilities of the Bank of Mauritius	38
44 - Assets of commercial banks	39
45 - Liabilities of commercial banks	40
46 - Analysis of bills discounted, loans and advances made by commercial banks	41
47 - Assets and liabilities of the Development Bank of Mauritius	42
48 - Post Office Savings Bank	43
49 - Assets and liabilities of the Mauritius Co-operative Central Bank Ltd.	43
50 - Money supply	44
51 - Assets and liabilities of the Mauritius Housing Corporation	44
52 - Bank and interest rates	45
53 - Foreign exchange rates	46

CONTENTS (Cont'd)

	<u>Page</u>
IV - <u>NATIONAL ACCOUNTS</u>	
Table 54 - Gross national product, by industrial origin	47
54 - Gross national product, per capita	47
55 - Distribution of the gross national income	48
56 - Expenditure on gross national product	49
57 - Composition of gross domestic fixed capital formation	50
58 - Gross national product at constant prices	51
59 - Gross domestic fixed capital formation at constant prices	51
60 - Balance of payments	52-54
V - <u>CONSUMER PRICE INDICES</u>	
Table 61 - Consumer price indices	55
VI - <u>EXTERNAL TRADE</u>	
Table 62 - Balance of visible trade	56
63 - Price indices of exports and imports and the terms of trade	56
64 - Price indices of imports, by section	57
65 - Exports: quantities and values	58-59
66 - Total exports: main countries of destination - values	60
67 - Imports: values by S.I.T.C. sections	61
68 - Imports: selected commodities - values	62
69 - Imports: selected commodities - quantities	63
70 - Imports: main countries of origin - values	64-66
71 - Imports of fertilizers	67
VII - <u>EMPLOYMENT AND WAGES</u>	
Table 72 - Employment in large establishments by major industrial groups	68
73 - Employment by sex and age group	69
74 - Employment in specified sectors: sugar industry	70
75 - Employment in specified sectors: government services	70
76 - Employment in specified sectors: manufacturing industries	71
77 - Employment and salaries or wages by industries	72-75
78 - Job vacancies in large establishments	76-78
79 - Daily wage rates in certain industries (October inquiry)	79
80 - Daily wage rates of manual workers employed by the central government	80
81 - Employment and wages of certain categories of employees on sugar millers' estates (September inquiry)	81
82 - Employment and earnings on sugar millers' estates	82
VIII - <u>SOCIAL ASSISTANCE</u>	
Table 83 - Social benefits	83
IX - <u>EDUCATION</u>	
Table 84 - Primary education: number of schools, pupils and teachers	84
85 - Secondary education: number of schools, pupils and teachers	85
86 - Enrolment by grade and sex in primary schools: Mauritius	86

1.
20

... (y... ..)
... ..

VIII - SOCIETY

21

... ..

IX - EDUCATION

22

... ..

23

... ..

24

... ..

CONTENTS (Cont'd)

	<u>Page</u>
IX - <u>EDUCATION</u> (cont'd)	
Table 87 - Enrolment by grade and sex in primary schools: Rodrigues	87
88 - Enrolment by grade and sex in secondary schools: Mauritius	88
89 - Enrolment by grade and sex in secondary schools: Rodrigues	89
90 - University of Mauritius: students enrolled	90
91 - University of Mauritius: output	91
X - <u>TRANSPORT AND COMMUNICATION</u>	
Table 92 - Motor vehicles registered	92
93 - New registration of motor vehicles	93
94 - Bus operational statistics	94
95 - Road traffic accidents and casualties	94
96 - Sea-borne shipping	95
97 - Civil aviation	95
98 - Telephone service	96
99 - Broadcasting services	96
XI - <u>LAND UTILIZATION</u>	
Table 100 - Total area classified by utilization	97
101 - Effective area under cultivation	97
XII - <u>LOCAL PRODUCTION</u>	
Table 102 - Agriculture: production of main crops, fish and meat	98
103 - Industry: production of specific commodities	99
104 - Sugar industry: cane cultivation	100
105 - Sugar industry: sugar manufacture	100
106 - Construction statistics: issues of permits for new buildings	101
107 - Electricity: production, consumption sales, etc.	102
XIII - <u>CLIMATE</u>	
Table 108 - Monthly temperatures, 1974/75	103
109 - Monthly rainfall for the sugar cane districts, 1974/75	104

I - POPULATION AND VITAL STATISTICS

Table 1 - Estimated population of Mauritius as at 30th June 1975, based on the 1972 Population Census data

	Island of Mauritius			Island of Rodrigues		
	Male	Female	Both sexes	Male	Female	Both sexes
Population 30.6.72 (Census)	413,648	412,551	826,199	12,270	12,499	24,769
Births July 72-June 75	+32,465	+31,070	+63,535	+1,591	+1,582	+3,173
Deaths - do -	-10,807	-8,748	-19,555	- 339	- 339	- 678
Arrivals - do -	+177,667	+125,947	+303,614	+4,165	+2,648	+6,813
Departures- do -	-185,321	-131,956	-317,277	-4,657	-3,077	-7,734
Estimated population 30.6.75	427,652	428,864	856,516	13,030	13,313	26,343

Table 2 - Population increase in intercensal periods - Island of Mauritius, 1846-1972

Census date	Population enumerated at census			Intercensal increase	Average annual rate of increase %
	Both sexes	Male	Female		
1st Aug. 1846	158,462	104,598	53,864		
20th Nov. 1851	180,823	119,341	61,482	22,361	2.55
8th Apr. 1861	310,050	202,961	107,089	129,227	5.87
11th Apr. 1871	316,042	193,575	122,467	5,992	0.19
4th Apr. 1881	359,874	208,655	151,219	43,832	1.31
6th Mar. 1891	370,588	206,038	164,550	10,714	0.29
1st Apr. 1901	371,023	199,552	171,471	435	0.01
31st Mar. 1911	368,791	194,095	174,696	- 2,232	- 0.06
21st May 1921	376,485	194,108	182,377	7,694	0.21
26th Apr. 1931	393,238	200,609	192,629	16,753	0.44
11th Jun. 1944	419,185	210,326	208,859	25,947	0.49
29th Jun. 1952	501,415	252,032	249,383	82,230	2.26
30th Jun. 1962 ^{1/}	681,619	342,306	339,313	180,204	3.12
30th Jun. 1972 ^{1/}	826,199	413,648	412,551	144,580	1.94

^{1/} de facto population - including the European members of the Armed Forces but excluding the passengers and crews of ships lying in the harbour.

Table 3 - Population of Mauritius by geographical district and sex, 1973-75 (mid-year estimates)

Geographical district	Estimated population ^{1/} as at 30.6.73			Estimated population ^{1/} at at 30.6.74			Estimated population ^{1/} as at 30.6.75		
	Both sexes	Male	Female	Both sexes	Male	Female	Both sexes	Male	Female
Port Louis	135,296	67,619	68,277	136,802	67,662	69,140	138,161	68,249	69,912
Pamplemousses	69,807	35,369	34,438	71,011	35,960	35,051	72,065	36,450	35,615
Rivière du Rempart	67,946	34,458	33,488	69,299	35,105	34,194	70,544	35,658	34,886
Flacq	90,493	45,760	44,733	92,226	46,529	45,697	94,051	47,392	46,659
Grand Port	81,574	41,032	40,542	82,744	41,606	41,138	83,881	42,118	41,763
Savanne	53,445	26,948	26,497	54,170	27,259	26,911	54,812	27,562	27,250
Plaines Wilhems	260,662	129,049	131,613	262,320	130,141	132,679	265,192	131,175	134,017
Moka	49,081	24,651	24,430	49,865	25,021	24,844	50,496	25,278	25,218
Black River	26,477	13,353	13,124	26,818	13,535	13,283	27,314	13,770	13,544
Island of Mauritius	834,781	417,639	417,142	845,755	422,818	422,937	856,516	427,652	428,864
Island of Rodrigues	25,367	12,538	12,829	25,769	12,725	12,984	26,343	13,030	13,313
Other Islands	350	250	100	350	250	100	350	250	100
Mauritius	860,498	430,427	430,071	871,814	435,793	436,021	883,209	440,932	442,277

^{1/} Based on 1972 Population Census. No account has been taken of internal migration.

Table 4 (a) - Population enumerated at each census by population group and sex - Island of Mauritius, 1846-1952

Year of census	GENERAL POPULATION			INDO-MAURITIAN POPULATION			CHINESE POPULATION		
	Both sexes	Male	Female	Both sexes	Male	Female	Both sexes	Male	Female
1846	102,217	55,663	46,554	56,245	48,935	7,310	-	-	-
1851	102,827	55,059	47,768	77,996	64,282	13,714	-	-	-
1861	115,864	59,796	56,068	192,634	141,615	51,019	1,552	1,550	2
1871	97,497	49,487	48,010	216,258	141,804	74,454	2,287	2,284	3
1881	107,323	53,754	53,569	248,993	151,352	97,641	3,558	3,549	9
1891	111,517	55,397	56,120	255,920	147,499	108,421	3,151	3,142	9
1901	108,422	52,995	55,427	259,086	143,100	115,986	3,515	3,457	58
1911	107,432	51,808	55,624	257,697	138,974	118,723	3,662	3,313	349
1921	104,216	49,725	54,491	265,524	139,150	126,374	6,745	5,233	1,512
1931	115,666	54,733	60,933	268,649	139,533	129,116	8,923	6,343	2,580
1944	143,056	67,136	75,920	265,247	136,382	128,865	10,882	6,808	4,074
1952	148,238	70,370	77,868	335,327	171,241	164,086	17,850	10,421	7,429

At the 1962 census each household was asked, for the first time, to state the population group to which each member of his household claimed to belong.

Prior to 1962, it is probable that, from one census to another, different criteria have been used in classifying the population by population groups. Figures are therefore not strictly comparable from one census to another, before 1962.

Table 4(b) - Population enumerated at each census by community and sex - Island of Mauritius, 1962-72

Year of census	TOTAL POPULATION			HINDU			MUSLIM			SINO-MAURITIAN			GENERAL POPULATION		
	Both sexes	Male	Female	Both sexes	Male	Female	Both sexes	Male	Female	Both sexes	Male	Female	Both sexes	Male	Female
1962 ^{1/}	681,619	342,306	339,313	344,587	174,698	169,889	110,322	55,971	54,351	23,058	12,654	10,404	203,652	98,983	104,669
1972 ^{1/}	826,199	413,648	412,551	428,167	215,698	212,469	137,081	68,802	68,279	24,084	12,849	11,235	236,867	116,299	120,568

^{1/}de facto population - including the European members of the Armed Forces but excluding the passengers and crews of ships lying in the harbour.

Table 5 - Population^{1/} growth and vital statistics - Island of Mauritius, 1963-74

Year	Population as at 31st December	Natural movement			External migration			Total increase	% increase during year			Mid-year population
		Live Births	Deaths	Natural increase	Arrivals	Departures	(A - D) ^{2/}		Natural increase	due to	Total	
									(A - D) ^{2/}			
1963	707,580	27,978	6,709	21,269	18,047	18,299	- 252	21,017	- 0.04	3.06	695,641	
1964	727,814	27,528	6,784	21,344	21,221	22,331	- 1,110	20,234	- 0.16	2.86	710,230	
1965	745,630	26,279	6,337	19,942	22,024	24,150	- 2,126	17,816	- 0.29	2.45	735,245	
1966	762,901	26,817	6,701	20,116	26,456	29,301	- 2,845	17,271	- 0.38	2.32	753,276	
1967	776,253	23,499	6,543	16,956	29,321	32,925	- 3,604	13,352	- 0.47	1.75	767,782	
1968	788,955	24,413	7,126	17,287	31,403	35,988	- 4,585	12,702	- 0.59	1.64	781,615	
1969	801,236	21,719	6,428	15,291	35,919	38,929	- 3,010	12,281	- 0.38	1.56	792,893	
1970	813,400	21,623	6,309	15,314	48,819	51,969	- 3,150	12,164	- 0.39	1.52	805,489	
1971	824,815	20,834	6,248	14,586	60,826	63,997	- 3,171	11,415	- 0.39	1.40	816,561	
1972	834,486	20,496	6,506	13,990	77,174	81,493	- 4,319	9,671	- 0.53	1.17	826,199	
1973	843,422	18,974	6,525	12,449	101,184	104,697	- 3,513	8,936	- 0.42	1.07	834,781	
1974	855,821	22,938	6,221	16,717	109,044	113,362	- 4,318	12,399	- 0.51	1.47	845,755	

^{1/} Revised in the light of the 1972 Population Census data.

^{2/} Excess of arrivals over departures.

Table 6 - Rate of increase of the population of Mauritius compared with other countries

Continent & country	Average annual rate of increase 1963-72 (%)	Continent & country	Average annual rate of increase 1963-72 (%)
<u>AFRICA</u>		<u>ASIA</u>	
Mauritius	2.0	Ceylon	2.3
Island of Mauritius	1.9	China (Mainland)	1.8
Island of Rodrigues	3.3	India	2.2
<u>AMERICA</u>		Japan	1.1
Canada	1.6	Pakistan	2.4
Guyana	2.3	<u>EUROPE</u>	
Trinidad & Tobago	1.4	Albania	2.9
<u>OCEANIA</u>		France	0.9
Australia	1.9	United Kingdom	0.4
New Zealand	1.5		

Source : United Nations Demographic Yearbook 1972

Table 7 - Expectation of life in years at selected ages - Island of Mauritius

Exact age (years)	Males				Females			
	1942-46 ^{1/}	1951-53 ^{1/}	1961-63 ^{1/}	1971-73	1942-46 ^{1/}	1951-53 ^{1/}	1961-63 ^{1/}	1971-73
0	32.8	49.8	58.7	60.7	33.8	52.3	61.9	65.3
10	35.8	49.2	55.1	56.5	37.3	52.2	58.1	61.1
20	28.1	40.1	45.7	47.0	30.2	43.7	48.9	51.6
30	22.3	31.6	36.6	37.7	26.1	36.2	40.3	42.6
40	16.7	23.6	27.7	28.6	21.2	28.7	31.9	33.6
50	11.9	16.7	19.6	20.3	15.7	21.2	23.5	24.9
60	8.1	11.2	13.2	13.3	10.6	14.6	15.8	17.0
70	5.6	6.7	8.5	8.3	7.1	9.1	9.7	10.3
80	4.0	4.3	4.8	4.8	4.6	5.3	5.4	5.7

^{1/}Excluding Sino-Mauritian community

Source : Mauritius Life Table

Table 8 - Population and vital statistics - Island of Mauritius, 1921-74

Period	Population ^{1/} at mid-period	Live births	Deaths	Natural increase	Infant deaths ^{2/}	Still births	Civil marriages
1921-25 Average	379,636	14,834	11,758	3,076	2,104	1,581	2,062
1926-30 "	403,248	14,208	11,614	2,594	2,002	1,256	1,455
1931-35 "	398,647	12,490	11,889	601	1,752	1,216	1,489
1936-40 "	412,003	13,621	11,157	2,464	2,119	1,240	2,093
1941-45 "	417,838	15,027	11,927	3,100	2,318	1,240	3,333
1946-50 "	438,797	19,595	9,113	10,482	2,343	1,348	3,503
1951-55 "	522,577	23,176	7,701	15,475	1,884	1,472	3,307
1956	574,938	24,910	6,739	18,171	1,644	1,789	3,080
1957	593,070	25,273	7,603	17,670	1,897	1,800	2,903
1958	609,518	24,600	7,112	17,488	1,659	1,703	3,169
1959	627,249	23,923	6,753	17,170	1,495	1,759	3,297
1960	644,743	25,307	7,248	18,059	1,760	1,783	3,113
1961	662,368	26,092	6,505	19,587	1,618	1,963	3,484
1962	681,619	26,267	6,325	19,942	1,579	1,841	3,893
1963	695,641	27,978	6,709	21,269	1,660	1,519	3,472
1964	716,298	27,528	6,184	21,344	1,561	1,611	3,965
1965	735,245	26,279	6,337	19,942	1,685	1,557	3,976
1966	753,276	26,817	6,701	20,116	1,721	1,384	4,157
1967	767,782	23,499	6,543	16,956	1,656	1,074	3,949
1968	781,615	24,413	7,126	17,287	1,688	1,110	3,974
1969	792,893	21,719	6,428	15,291	1,528	951	3,882
1970	805,489	21,623	6,309	15,314	1,232	857	4,499
1971	816,561	20,834	6,248	14,586	1,077	842	4,346
1972	826,199	20,496	6,506	13,990	1,308	718	5,082
1973	834,781	18,974	6,525	12,449	1,201	678	5,533
1974	845,755	22,938	6,221	16,717	1,045	854	6,771

^{1/} Figures for 1963-71 have been revised in the light of the 1972 Population Census data.

^{2/} Deaths of children under 1 year of age.

Table 9 - Population and vital statistics rates^{1/} - Island of Mauritius, 1921-74

Period	Population at mid-period	Crude birth rate	Crude death rate	Rate of natural increase	Infantile mortality rate ^{2/}	Still birth rate ^{3/}	Marriage rate ^{4/}
1921-25 Average	379,636	39.1	31.0	8.1	141.8	96.3	10.9
1926-30 "	403,248	35.2	28.8	6.4	140.9	81.2	7.2
1931-35 "	398,647	31.3	29.8	1.5	140.3	88.7	7.5
1936-40 "	412,003	33.1	27.1	6.0	155.6	83.4	10.2
1941-45 "	417,838	36.0	28.5	7.5	154.3 ^{5/}	76.2	16.0
1946-50 "	438,797	44.7	20.8	23.9	119.6 ^{6/}	64.4	16.0
1951-55 "	522,577	44.3	14.7	29.6	81.3	59.7	12.7
1956	574,938	43.3	11.7	31.6	66.0	67.0	10.7
1957	593,070	42.6	12.8	29.8	75.1	66.5	9.8
1958	609,518	40.4	11.7	28.7	67.4	64.7	10.4
1959	627,249	38.1	10.8	27.3	62.5	68.5	10.5
1960	644,743	39.3	11.2	28.1	69.5	65.8	9.7
1961	662,368	39.4	9.8	29.6	62.0	70.0	10.5
1962	681,619	38.5	9.3	29.2	60.1	65.5	11.4
1963	695,641	40.2	9.6	30.6	59.3	51.5	10.0
1964	716,298	38.4	8.6	29.8	56.7	55.3	11.1
1965	735,245	35.7	8.6	27.1	64.1	55.9	10.8
1966	753,276	35.6	8.9	26.7	64.2	49.1	11.0
1967	767,782	30.6	8.5	22.1	70.5	43.7	10.3
1968	781,615	31.2	9.1	22.1	69.1	43.5	10.2
1969	792,893	27.4	8.1	19.3	70.4	41.9	9.8
1970	805,489	26.8	7.8	19.0	57.0	38.1	11.2
1971	816,561	25.5	7.7	17.8	51.7	38.8	10.6
1972	826,199	24.8	7.9	16.9	63.8	33.8	12.3
1973	834,781	22.7	7.8	14.9	63.3	34.5	13.3
1974	845,755	27.1	7.4	19.7	45.6	35.9	16.0

1/ Figures for 1963-71 have been revised in the light of the 1972 Population Census data.

2/ Deaths of children under 1 year of age per 1,000 live births.

3/ Still births per 1,000 total births (live births and still births).

4/ Number of persons civilly married per 1,000 of mid-period population.

5/ The rate reached 188.0 in 1945 when there were poliomyelitis and dysentery epidemics.

6/ The rate reached 186.2 in 1948 when there was an epidemic of whooping cough.

Table 10 - Fertility rates - Island of Mauritius, 1962, 1972-74

	1962	1972	1973	1974
Crude birth rate ^{1/}	58.5	24.8	22.7	27.1
General fertility rate ^{2/}	181.4	104.5	95.6	108.9
Gross reproduction rate ^{3/}	2.90	1.67	1.50	1.71
Net reproduction rate ^{4/}	2.51	1.49	1.34	1.53
<u>Age Specific birth rates^{5/}</u>				
Age of women (years)				
15 - 19	107.3	50.3	47.2	55.9
20 - 24	298.3	188.4	174.5	185.8
25 - 29	301.4	190.8	166.0	192.0
30 - 34	233.3	130.1	119.3	137.9
35 - 39	163.1	88.4	73.4	84.4
40 - 44	60.1	31.7	25.4	32.3
45 - 49	9.0	3.8	3.4	4.9

1/ Live births per 1,000 of mid-year population

2/ Live births per 1,000 women aged 15-49 years

3/ The average number of daughters born to an average woman assuming that she survives to the end of her childbearing age and is subjected to a fixed schedule of age-specific fertility rates.

4/ The extent to which the average woman will replace herself, assuming a fixed schedule of age-specific mortality and fertility rates to prevail through her reproductive span of life.

5/ Live births per 1,000 women in each age group

Table 11 - Age distribution of the population as enumerated at the censuses of 1962 and 1972, Island of Mauritius

Age group (years)	P O P U L A T I O N						% D I S T R I B U T I O N	
	1962			1972			1962	1972
	Male	Female	Both sexes	Male	Female	Both sexes		
Under 1	11,786	11,673	23,459	9,763	9,768	19,531	3.4	2.4
1 - 4	44,869	43,746	88,615	41,498	40,431	81,929	13.0	9.9
5 - 9	52,715	51,914	104,629	59,972	58,618	118,590	15.4	14.3
10 - 14	46,166	45,807	91,973	56,150	55,085	111,235	13.5	13.5
15 - 19	31,107	31,043	62,150	50,226	50,430	100,656	9.1	12.2
20 - 24	23,574	23,723	47,297	40,150	39,677	79,827	6.9	9.7
25 - 29	22,014	22,174	44,188	26,204	26,970	53,174	6.5	6.4
30 - 34	19,877	19,334	39,211	21,168	21,495	42,663	5.8	5.2
35 - 39	21,756	20,111	41,867	20,751	20,470	41,221	6.1	5.0
40 - 44	16,592	14,987	31,579	18,310	17,681	35,991	4.6	4.4
45 - 49	15,073	13,398	28,471	20,139	18,441	38,580	4.2	4.7
50 - 54	12,011	10,593	22,604	14,535	13,209	27,744	3.3	3.3
55 - 59	9,325	9,224	18,549	12,617	12,464	25,081	2.7	3.0
60 - 64	7,038	7,715	14,753	9,213	9,574	18,787	2.2	2.3
65 - 69	4,111	5,571	9,682	6,067	6,962	13,029	1.4	1.6
70 - 74	2,465	3,992	6,457	3,673	5,042	8,715	1.0	1.0
75 - 79	1,070	2,231	3,301	1,684	3,041	4,725	0.5	0.6
80 - 84	427	1,186	1,613	766	1,725	2,491	0.2	0.3
85 & over	183	723	906	285	1,094	1,379	0.1	0.1
Age unknown	147	168	315	409	442	851	0.1	0.1
All ages	342,306	339,313	681,619	413,580	412,619	826,199	100.0	100.0

Table 12 - Estimated age distribution of population - Island of Mauritius, 1973-74

Age group (years)	30th June 1973				30th June 1974			
	Male	Female	Both sexes		Male	Female	Both sexes	
			Number	%			Number	%
Under 10	108,249	105,701	213,950	25.6	105,654	103,305	208,959	24.7
10 - 14	57,355	55,931	113,286	13.6	58,597	57,243	115,840	13.7
15 - 19	50,474	50,669	101,143	12.1	51,724	51,597	103,321	12.2
20 - 24	42,461	42,040	84,501	10.1	44,263	44,140	88,403	10.5
25 - 29	28,696	29,570	58,266	7.0	29,810	30,527	60,337	7.1
30 - 34	20,565	21,143	41,708	5.0	21,527	22,187	43,714	5.2
35 - 39	21,391	21,168	42,559	5.1	21,038	21,076	42,164	5.0
40 - 44	17,757	17,418	35,175	4.2	17,901	17,605	35,506	4.2
45 - 49	20,499	18,995	39,494	4.8	20,068	18,919	38,987	4.6
50 - 54	14,972	13,659	28,631	3.4	16,055	14,691	30,746	3.6
55 - 59	12,872	12,548	25,420	3.0	12,673	12,070	24,743	2.9
60 - 64	9,318	9,698	19,016	2.3	10,101	10,696	20,797	2.5
65 - 69	6,334	7,249	13,583	1.6	6,419	7,410	13,829	1.6
70 - 74	3,931	5,470	9,401	1.1	4,020	5,405	9,425	1.1
75 - 79	1,849	3,482	5,331	0.7	1,979	3,604	5,583	0.7
80 - 84	712	1,815	2,527	0.3	706	1,911	2,617	0.3
85 & Over	204	586	790	0.1	233	551	784	0.1
All ages	417,639	417,142	834,781	100.0	422,818	422,937	845,755	100.0
<u>Totals</u>								
Under 15	165,604	161,632	327,236	39.2	164,251	160,548	324,799	38.4
Under 21	225,987	222,262	448,249	53.7	225,160	221,493	446,653	52.8
21 & over	191,652	194,880	386,532	46.3	197,658	201,444	399,102	47.2
60 & over	22,348	28,300	50,648	6.1	23,458	29,577	53,035	6.3

Table 13 - Vital statistics by month of registration and sex - Island of Mauritius, January 1974 - June 1975

Month of registration	Live births			Deaths			Infant deaths			Still births			Civil marriages
	Male	Female	Both sexes	Male	Female	Both sexes	Male	Female	Both sexes	Male	Female	Both sexes	
1974: January	1,085	1,036	2,121	280	208	488	52	45	97	29	27	56	512
February	865	845	1,710	219	162	381	46	26	72	28	32	60	437
March	946	900	1,846	297	236	533	36	31	67	46	43	89	431
April	1,003	966	1,969	312	306	618	57	45	102	32	24	56	582
May	934	955	1,889	273	231	504	45	39	84	20	44	64	527
June	1,054	979	2,033	277	246	523	56	50	106	33	37	70	550
July	970	964	1,934	306	275	581	55	54	109	45	25	70	678
August	970	917	1,887	321	247	568	57	47	104	56	33	89	658
September	894	910	1,804	303	247	550	57	32	89	40	35	75	586
October	1,120	1,106	2,226	270	243	513	41	27	68	49	27	76	589
November	943	859	1,802	262	206	468	43	27	70	45	34	79	523
December	900	817	1,717	289	205	494	51	26	77	38	32	70	698
Whole year	11,684	11,254	22,938	3,409	2,812	6,221	596	449	1,045	461	393	854	6,771
1975: January	919	926	1,845	336	218	554	58	40	98	43	34	77	577
February	758	744	1,502	293	208	501	38	31	69	46	34	80	414
March	869	799	1,668	323	215	538	59	36	95	37	29	66	504
April	1,087	1,000	2,087	319	250	569	57	61	118	35	32	67	622
May	1,016	956	1,972	344	224	568	48	37	85	41	43	84	560
June	918	869	1,787	365	246	611	61	33	94	42	39	81	622
Jan--June	5,567	5,294	10,861	1,980	1,361	3,341	321	238	559	244	211	455	3,299

Table 14 - Vital statistics by geographical district - Island of Mauritius, 1973-74

Geographical district	Estimated population as at 30.6.73	1973					Estimated population as at 30.6.74	1974				
		Live births	Deaths	Infant deaths/	Still births	Civil marriages		Live births	Deaths	Infant deaths/	Still births	Civil marriages
Port Louis	135,296	3,127	1,155	186	78	967	136,802	3,645	1,089	161	91	1,120
Paarlemousses	69,807	1,628	520	107	51	405	71,011	2,053	488	93	81	491
Rivière du Rempart	67,946	1,726	508	97	63	466	69,299	2,164	487	103	77	573
Flacq	90,493	2,464	731	174	110	576	92,226	3,072	710	128	152	674
Grand Port	81,574	1,904	746	148	73	406	82,744	2,354	664	136	111	577
Savanne	53,445	1,105	399	75	64	284	54,170	1,389	383	64	59	427
Plaines Wilhems	260,662	5,274	1,839	281	163	1,976	262,820	6,142	1,872	263	206	2,385
Moka	49,081	1,058	383	66	47	321	49,865	1,285	316	47	45	334
Black River	26,477	688	244	67	29	132	26,818	834	212	50	32	190
Whole island	834,781	18,974	6,525	1,201	678	5,533	845,755	22,938	6,221	1,045	854	6,771

1/ Deaths of children under 1 year of age

Table 15 - Still births and infant deaths by sex - Island of Mauritius, 1962-75

Period	Still births			Infant deaths		
	Both sexes	Male	Female	Both sexes	Male	Female
1962	1,841	1,001	840	1,579	896	683
1963	1,519 ^{1/}	827	691	1,660	929	731
1964	1,611 ^{2/}	896	714	1,561	900	661
1965	1,557	864	693	1,685	943	742
1966	1,384 ^{1/}	716	667	1,721	943	778
1967	1,074 ^{1/}	609	464	1,656	947	709
1968	1,110 ^{2/}	597	511	1,688	935	753
1969	951 ^{1/}	518	432	1,528	847	681
1970	857	450	407	1,232	706	526
1971	842	445	397	1,077	584	493
1972	718	360	358	1,308	716	592
1973	678	385	293	1,201	699	502
1974	854	461	393	1,045	579	466
1974: 1st Qr.	205	103	102	236	134	102
2nd Qr.	190	85	105	292	158	134
3rd Qr.	234	141	93	302	152	150
4th Qr.	225	132	93	215	135	80
1975 :1st Qr.	223	126	97	262	155	107
2nd Qr.	232	118	114	297	166	131

1/ Including one of unknown sex

2/ Including two of unknown sex

Table 16 - Infant deaths (deaths under 1 year of age) by age and sex - Island of Mauritius

Age	1973			1974			Jan-June 1975		
	Both sexes	Male	Female	B. t. sexes	Male	Female	Both sexes	Male	Female
Under 1 day	161	106	55	158	87	71	88	51	37
1 - 6 days	272	166	106	260	151	109	151	101	50
7 - 27 days	133	73	60	135	80	55	60	31	29
28 days - under 2 months	86	54	32	61	38	23	38	23	15
2 - 3 months	122	68	54	111	45	66	64	36	28
4 - 5 "	123	68	55	102	59	43	43	19	24
6 - 7 "	114	68	46	89	51	38	43	22	21
8 - 9 "	107	56	51	84	44	40	47	25	22
10 -11 "	83	40	43	45	24	21	25	13	12
Under 1 year	2,201	699	502	1,045	579	466	559	321	238

Table 17 - Deaths by age and sex - Island of Mauritius, 1973-75

Age group (years)	1973			1974			January-June 1975		
	Both sexes	Male	Female	Both sexes	Male	Female	Both sexes	Male	Female
0 - 4	1,790	978	812	1,435	782	651	739	427	312
5 - 9	117	58	59	96	49	47	46	22	24
10 - 14	84	52	32	65	29	34	41	19	22
15 - 19	125	69	56	112	59	53	51	31	20
20 - 24	152	54	78	137	62	75	62	39	23
25 - 29	91	37	54	102	47	55	64	38	26
30 - 34	104	50	54	90	39	51	68	35	33
35 - 39	131	71	60	126	65	61	76	41	55
40 - 44	175	110	65	188	106	82	93	59	34
45 - 49	271	180	91	274	180	94	177	139	38
50 - 54	335	226	109	353	253	100	206	142	64
55 - 59	420	285	135	393	258	135	252	179	73
60 - 64	527	346	181	570	365	205	304	223	81
65 - 69	539	343	196	587	373	214	299	196	103
70 - 74	587	317	270	600	315	285	323	188	135
75 - 79	471	231	240	477	231	246	212	96	116
80 - 84	345	114	231	325	127	198	184	62	122
85 and over	281	55	226	294	68	226	143	43	100
Unkn. wn	-	-	-	1	1	-	1	1	-
All ages	6,525	3,576	2,949	6,221	3,409	2,812	3,341	1,980	1,361

Table 18 - Deaths by cause - Island of Mauritius, 1974

Group ^{1/}	CAUSE OF DEATH	DEATHS						% of total deaths	Death rate per 100,000 of population
		Under 1 year		1 to under 5 years		All ages			
		Both sexes	Both sexes	Both sexes	Male	Female			
I	Infective and parasitic diseases	311	164	677	376	301	10.9	80.0	
II	Neoplasms	-	5	380	180	200	6.1	44.9	
III	Endocrine, nutritional and metabolic diseases	16	17	228	104	124	3.7	27.0	
IV	Diseases of the blood and blood forming organs	11	5	135	51	84	2.2	16.0	
V	Mental disorders	-	1	12	10	2	0.2	1.4	
VI	Diseases of the nervous system and sense organs	14	7	90	60	30	1.4	10.6	
VII	Diseases of the circulatory system	11	3	1,547	871	676	24.9	182.9	
VIII	Diseases of the respiratory system	159	84	911	507	404	14.6	107.7	
IX	Diseases of the digestive system	8	8	229	155	74	3.7	27.1	
X	Diseases of the genito-urinary system	4	3	63	38	25	1.0	7.4	
XI	Complications of pregnancy, childbirth and the puerperium	-	-	31	-	31	0.5	3.7	
XII	Diseases of the skin and subcutaneous tissue	-	-	4	3	1	0.1	0.5	
XIII	Diseases of musculoskeletal system and connective tissue	-	-	11	3	8	0.2	1.3	
XIV	Congenital anomalies	25	6	38	20	18	0.6	4.5	
XV	Certain causes of perinatal morbidity and mortality	314	-	314	177	137	5.0	37.1	
XVI	Symptoms and ill-defined conditions	161	60	1,149	566	583	18.4	135.9	
XVII	Accidents, poisonings and violence	11	25	402	288	114	6.5	47.5	
	All causes	1,045	388	6,221	3,409	2,812	100.0	735.5	

^{1/} International Classification, 1965

Table 19 - Enumerated and estimated population, urban and extra-urban - Island of Mauritius, 1972-75

Township	Enumerated population as at 30.6.72			Estimated population as at 30.6.75			Estimated population as at 30.6.74			Estimated population as at 30.6.75		
	Both sexes	Male	Female	Both sexes	Male	Female	Both sexes	Male	Female	Both sexes	Male	Female
Port Louis	133,996	66,445	67,551	135,296	67,019	68,277	136,802	67,662	69,140	138,161	68,249	69,912
Beau Bassin-Rose Hill	80,043	39,571	40,472	80,411	39,723	40,688	80,829	39,945	40,884	81,353	40,171	41,182
Quatre Bornes	50,825	24,946	25,879	51,219	25,152	26,067	51,638	25,359	26,279	52,134	25,568	26,566
Vacancas-Phoenix	47,834	23,842	24,042	48,377	24,062	24,315	48,809	24,279	24,530	49,354	24,528	24,826
Curepipe	52,154	25,812	26,342	52,480	25,971	26,509	52,709	26,092	26,617	53,068	26,238	26,830
Urban population	564,902	180,616	184,286	567,703	181,927	185,856	570,787	183,337	187,450	574,070	184,754	189,316
Extra-urban population	461,297	233,032	228,265	466,998	235,712	231,286	474,968	239,461	235,487	482,446	242,898	239,548
Total population	826,199	413,648	412,551	834,781	417,639	417,142	845,755	422,818	422,937	856,516	427,652	428,864
Percentage urban	44.2			44.0			43.8			43.7		

1/ Based on the 1972 Population Census. No account has been taken of internal migration in computing the post-censal estimates.

2/ According to proclaimed boundaries, altered in 1963 (Proclamations Nos. 12 and 13) and subsequently enlarged in 1965 (proclamation No.23) and in 1967 (proclamation No. 2). Urban population refers to the total population in townships.

Table 20 - Intercensal population increase in urban and extra-urban areas according to present boundaries -
Island of Mauritius - 1962-72

Township ^{1/}	Population enumerated at 30.6.62			Population enumerated at 30.6.72			Intercensal increase	
	Both sexes	Male	Female	Both sexes	Male	Female	Number	Annual % Average
	Port Louis	119,950	59,751	60,199	133,996	66,445	67,551	14,046
Beau Bassin - Rose Hill	62,296	30,580	31,716	30,743	30,571	40,472	17,747	2.85
Quatre Bornes	38,567	18,952	19,615	50,325	24,945	25,379	12,258	3.18
Vacoas - Phoenix	41,743	20,913	20,830	47,884	23,842	24,042	6,141	1.47
Curepipe	44,244	21,816	22,428	52,154	25,812	26,342	7,910	1.79
Urban population	306,800	152,012	154,788	364,902	180,616	184,286	58,102	1.89
Extra-urban population	374,819	190,294	184,525	461,297	233,032	228,265	36,478	2.31
Total population	681,619	342,306	339,313	826,199	413,648	412,551	144,580	2.12

^{1/}According to proclaimed boundaries, altered in 1963 (Proclamations Nos. 12 and 13) and subsequently enlarged in 1965 (Proclamation No. 23) and in 1967 (Proclamation No. 2). Urban population refers to the total population in townships.

Table 21 - Population^{1/} and vital statistics - Island of Rodrigues, 1963-74

Year	Estimated mid-year population (30th June)	Live births	Deaths	Natural increase	Infant deaths	Still births	Civil marriages	Crude birth rate ^{2/}	Crude death rate ^{2/}	Rate of natural increase	Infantile mortality rate ^{3/}	Still birth rate ^{4/}	Civil marriage rate	Estimated population as at 31st December
1963	18,529	881	203	678	79	21	171	47.5	11.0	36.5	89.6	23.3	18.5	18,587
1964	18,974	1,082	237	845	86	32	161	57.0	12.5	44.5	79.5	28.7	17.0	19,282
1965	19,438	916	300	616	116	32	127	47.1	15.4	31.7	126.6	33.8	13.1	19,709
1966	20,084	1,014	243	771	89	26	132	50.5	12.1	38.4	87.8	25.0	13.1	20,388
1967	20,762	972	207	765	70	33	156	46.8	10.0	36.8	72.0	32.8	15.0	21,370
1968	21,832	996	256	740	70	30	145	45.6	11.7	33.9	102.4	29.2	13.3	22,166
1969	22,434	902	305	597	110	37	173	40.2	13.6	26.6	122.0	39.4	15.4	22,839
1970	23,433	1,143	211	932	80	35	152	48.8	9.0	39.8	70.0	29.7	13.0	23,749
1971	24,041	1,092	188	904	69	40	132	45.4	7.8	37.6	63.2	35.3	11.0	24,487
1972	24,769	999	247	752	91	31	132	40.3	10.0	30.3	91.1	30.1	10.7	25,096
1973	25,367	1,041	254	787	76	23	146	41.0	10.0	31.0	73.0	21.6	11.5	25,857
1974	25,709	1,064	203	861	68	25	134	41.4	7.9	33.5	63.9	23.0	10.4	26,123

^{1/} Revised in the light of the 1972 Population Census data.

^{2/} Per 1,000 of the mid-year population.

^{3/} Deaths of children under 1 year of age per 1,000 live births.

^{4/} Still births per 1,000 total births (live births and still births).

Table 22 - Passenger traffic^{1/} - Island of Mauritius, 1962-75

Period	Arrivals			Departures			Net overseas migration
	Total	By sea	By air	Total	By sea	By air	
1962	15,189	4,258	10,931	16,075	4,374	11,701	- 886
1963	18,047	4,660	13,387	18,299	4,432	13,867	- 252
1964	21,221	5,187	16,034	22,331	5,478	16,853	- 1,110
1965	22,024	4,886	17,138	24,150	5,463	18,687	- 2,126
1966	26,456	5,544	20,912	29,301	6,330	22,971	- 2,845
1967	29,321	4,901	24,420	32,925	6,515	26,410	- 3,604
1968	31,403	4,264	27,139	35,988	5,967	30,021	- 4,585
1969	35,919	3,483	32,436	38,929	4,632	34,297	- 3,010
1970	48,819	3,984	44,835	51,969	4,376	47,593	- 3,150
1971	60,826	3,857	56,969	63,997	4,295	59,702	- 3,171
1972	77,174	3,741	73,433	81,493	4,072	77,421	- 4,319
1973	101,184	4,238	96,946	104,697	4,027	100,670	- 3,513
1974	109,044	3,848	105,196	113,362	3,772	109,590	- 4,318
1974 : 1st Qr.	27,278	728	26,550	32,033	698	31,335	- 4,755
2nd Qr.	22,649	1,060	21,589	24,082	888	23,194	- 1,433
3rd Qr.	30,328	961	29,367	31,959	943	31,016	- 1,631
4th Qr.	28,789	1,099	27,690	25,288	1,243	24,045	+ 3,501
1975 : 1st Qr.	25,256	1,011	24,245	30,264	879	29,385	- 5,008
2nd Qr.	22,260	903	21,357	24,077	788	23,289	- 1,817

^{1/} Includes : (a) the very small number of engaged or discharged seamen;
 (b) emigrants to and immigrants from the dependencies; and
 (c) movement of military personnel as from the 1962 population census.

Table 23 - Passenger traffic^{1/} by country of original embarkation or final destination and by mode of transport January-June 1975

Country of embarkation or disembarkation	Arrivals			Departures		
	Sea	Air	Total	Sea	Air	Total
Kenya	7	1,016	1,023	-	1,316	1,316
Malagasy Republic	19	343	362	9	753	762
Malawi	-	325	325	-	378	378
Reunion	88	17,835	17,923	75	13,885	18,960
Rhodesia	-	333	333	-	386	336
Seychelles	-	1,024	1,024	1	906	907
South Africa, Rep. of	23	6,755	6 773	39	8,203	8,242
Tanzania	-	173	173	-	303	303
Zambia	-	1,503	1,503	-	1,716	1,716
Rodrigues	955	314	1,269	774	320	1,094
Other Islands	231	-	231	145	-	145
Other African	-	390	390	-	460	460
U. S. S. R.	3	24	27	-	9	9
China (Taiwan)	26	11	37	-	69	69
Hong Kong	6	342	348	1	383	389
India	12	3,394	3,406	54	2,492	2,546
Japan	2	43	50	4	52	56
Saudi Arabia	-	232	232	-	7	7
Singapore	1	23	24	-	29	29
Other Asian	3	70	73	2	30	32
Australia	6	2,492	2,498	9	2,360	2,369
New Caledonia	-	53	53	-	21	21
New Zealand	-	164	164	-	64	64
Other Oceanian	-	14	14	-	4	4
Belgium	-	474	474	-	383	383
France	31	2,366	2,397	1	3,343	3,344
Germany, Fed. Rep. of	8	523	531	7	593	605
Italy	1	492	493	-	751	751
Switzerland	-	99	99	-	302	302
United Kingdom	10	3,394	3,904	6	6,599	6,605
Other European	33	170	203	24	243	267
Canada	-	63	63	1	159	160
U. S. A.	-	54	54	-	85	35
Other American	-	23	23	-	7	7
High Seas	-	-	-	-	-	-
Unknown	-	11	11	-	3	3
All countries	1,520	45,602	47,122	1,152	52,674	53,826

^{1/} Excluding those transit passengers who did not leave the airport, 394 discharged seamen and 515 engaged seamen.

Table 24 - Tourist^{1/} arrivals by mode of transport and total nights spent during period - Island of Mauritius, 1963 - June 1975

Period	Tourists arriving during period			Total nights spent during period
	Sea	Air	Total	
1963	1,003	6,719	7,727	99,400
1964	1,010	9,023	10,033	144,584
1965	746	9,312	10,058	144,875
1966	1,328	11,712	13,040	162,269
1967	937	13,377	14,314	171,967
1968	647	14,906	15,553	149,507
1969	455	20,132	20,587	220,572
1970	365	27,235	27,650	287,591
1971	163	36,230	36,393	399,739
1972	143	48,654	48,797	454,271
1973	1,293 ^{2/}	66,701	67,994	733,065
1974	472	72,443	72,915	772,183
Jan.-June 1975	223	30,030	30,253	317,663

^{1/} Prior to 1964 a tourist has been defined as a non-resident staying in Mauritius for more than 24 hours but less than 6 months. As from 1964 a tourist is defined as a non-resident staying in the island for more than 24 hours but less than a year.

Figures for the two periods are nevertheless comparable because of the small number of visitors who stay longer than 6 months.

^{2/} Includes about 700 persons who came for a religious conference.

Table 25 - Tourist arrivals by country of residence and by mode of transport -
Island of Mauritius, January-June 1975

Country of residence	Tourist arrivals			Tourist nights spent during Jan-June 1975 ^{1/}
	Sea	Air	Total	
Kenya	5	335	340	2,380
Malagasy Republic	3	649	652	6,010
Malawi	-	100	100	914
Réunion	40	10,462	10,502	103,052
Rhodesia	-	445	445	5,460
Seychelles	-	177	177	1,793
South Africa, Rep. of	20	5,969	5,939	57,621
Tanzania	-	56	56	512
Zambia	-	1,250	1,250	11,263
Other African	-	333	333	3,224
U. S. S. R.	3	52	55	330
China (Mainland)	-	8	8	93
China (Taiwan)	23	40	63	705
Hong Kong	-	92	92	1,217
India	9	1,052	1,061	8,747
Japan	3	105	103	402
Pakistan	-	36	36	470
Singapore	-	26	26	359
Other Asian	9	113	127	1,713
Australia	2	1,575	1,577	12,904
New Caledonia	-	30	30	160
New Zealand	-	253	253	1,276
Other Oceanian	-	30	30	163
Belgium	-	203	203	2,964
France	32	2,631	2,663	31,534
Germany, Fed. Rep. of	12	679	691	10,313
Italy	1	573	579	6,596
Switzerland	-	256	256	3,344
United Kingdom	8	1,451	1,459	24,635
Other European	38	390	423	5,099
Canada	-	132	132	1,679
U. S. A.	10	377	387	4,053
Other American	-	71	71	5,555
Unknown	-	4	4	58
All countries	223	30,030	30,253	317,663

^{1/} Include nights spent during Jan-June 1975 by tourists arriving before this period.

Table 26 - Official long-term emigrants^{1/} by sex -
Island of Mauritius, 1956-74

Year	Both sexes	Male	Female
1956	147	93	54
1957	109	68	41
1958	163	130	33
1959	170	128	42
1960	158	132	26
1961	837	629	208
1962	1,083	711	372
1963	594	326	268
1964	915	491	424
1965	1,408	659	749
1966	1,611	774	837
1967	2,225	1,038	1,187
1968	3,067	1,487	1,580
1969	2,379	1,119	1,260
1970	2,282	1,063	1,219
1971	2,351	1,078	1,273
1972	2,271	956	1,315
1973	2,037	844	1,193
1974	1,494	606	888

^{1/} Persons who have obtained a permit to emigrate to another country.

II - PUBLIC HEALTH

Table 27 - Health Services, Mauritius

	1970	1971	1972	1973	1974
<u>Hospitals</u>					
General hospitals	3	3	6	6	6
Special hospitals (mental diseases, leprosy and tuberculosis) 1/	3	3	4	4	3
Prisons hospitals	2	2	2	2	2
Private hospitals on sugar estates	22	23	23	21	20
<u>Dispensaries</u>					
Out-patients' departments of hospitals	11	11	10	10	10
Public dispensaries	43	43	45	44	44
Prisons dispensaries	2	2	2	2	2
Private dispensaries on sugar estates	21	23	23	21	18
Mobile dispensaries	5	5	5	5	5
<u>Clinics</u>					
Private	7	7	7	7	6
Public mobile ante-natal	1	1	1	1	1
Public mobile dental	2	2	2	1	1
<u>Maternal and Child Health Centres</u>					
	43	43	43	45	47
<u>Doctors</u>					
Government Service :					
Specialists 2/	41	42	46	55	59
Total government doctors 3/	140	144	140	173	226
Private Service :					
Registered medical practitioners	71	79	85	90	96
<u>Dentists</u>					
Government Service	6	6	6	9	12
Private	19	19	22	22	22
<u>Trained Nurses (government service) 4/</u>					
	320	877	1,013	1,072	1,137
<u>Midwives (government service) 4/</u>					
	149	154	176	174	171
<u>Pharmacists</u>					
Attached to hospitals	4	5	5	3	3
Private	45	43	49	43	43

1/ including one eye clinic as from 1972. The Leprosy hospital was merged with the Sir Seewoosagur National Hospital in 1974.

2/ included in figures for total government doctors

3/ including temporary Medical Officers

4/ revised

Table 26 - Statistics of hospitals - Mauritius

Period	No. of beds	Patients in hospitals on first day of period	Total admissions	Deaths	Discharges	Patients remaining on last day of period
1970	2,633	1,935	60,941	2,054	59,926	1,886
1971	2,712	1,886	62,736	2,148	60,721	1,753
1972	2,734	1,753	65,518	2,039	63,477	1,755
1973	2,751	1,755	60,379	2,075	58,412	1,647
1974	2,782	1,647	59,057	1,634	57,263	1,807
1974 : 1st Qr.	2,782	1,647	13,946 ^{1/}	371 ^{1/}	12,858 ^{1/}	2,364 ^{1/}
2nd Qr.	2,782	2,364 ^{1/}	14,993 ^{1/}	389 ^{1/}	14,567 ^{1/}	2,401 ^{1/}
3rd Qr.	2,782	2,401	14,851	496	14,411	2,343
4th Qr.	2,782	2,343	15,267	376	15,427	1,807
1975 ^{2/} 1st Qr.	2,737	1,804	15,759	405	14,730	2,348
2nd Qr.	2,737	2,343	15,674	476	15,139	2,407

^{1/} Revised

^{2/} Excluding prisons hospitals as from 1975.

Table 29 - Notifiable, contagious or communicable diseases - Mauritius

Disease Period	Enteric fever	Diphtheria	Acute polymyelitis	Puerperal fever	Erysipelas	Tuberculosis	Leprosy	Coroebro-spinal meningitis
1970	45	8	-	3	-	436	1	-
1971	25	17	-	-	-	307	-	-
1972	30	24	-	-	-	367	1	1
1973	21	2	-	-	-	285	2	-
1974	20	10	-	-	-	267	1	-
1974: 1st Qr.	4	4	-	-	-	72	1	-
2nd Qr.	5	4	-	-	-	78	-	-
3rd Qr.	5	-	-	-	-	57	-	-
4th Qr.	6	2	-	-	-	60	-	-
1975: 1st Qr.	34	-	-	-	-	50	1	-
2nd Qr.	22	1	-	-	-	60	-	-

III. PUBLIC FINANCE AND BANKING

Table 30- Central government revenue and expenditure

Rs million

Financial year	Revenue			Expenditure			Surplus (+) Deficit (-)
	Recurrent	Capital	Total	Recurrent	Capital	Total	
1972-73	376.7	156.4	533.1	326.4	127.4	453.8	+ 79.3
1973-74	515.4	130.1	645.5	534.8	244.9	779.7	- 134.2
1974-75	744.9	412.0	1156.9	734.3	259.0	993.3	+ 163.6
1975-76 ^{1/}	995.0	339.6	1334.6	976.8	385.3	1362.1	- 27.5

^{1/} estimates

Table 31 - Functional classification of central government capital revenue

Rs million

	1972-73	1973-74	1974-75	1975-76 ^{1/}
Grants:				
British government	8.7	0.2	0.1	-
Other foreign sources	5.0	2.6	6.6	23.8
Internal borrowing	108.9	83.7	306.4	100.0
External borrowing	17.8	38.5	53.2	140.3
Interest on investments	-	1.7	7.0	5.7
Transfer from recurrent revenue	15.0	-	-	60.0
Other capital revenue	1.0	3.4	38.7	9.8
Total	156.4	130.1	412.0	339.6

^{1/} estimates

Table 32 - Functional classification of central government capital expenditure

Rs million

	1972-73	1973-74	1974-75	1975-76 ²
Agriculture and forests	9.9	34.0	32.5	46.1
Irrigation ^{1/}	0.4	-	-	-
Roads and bridges	4.1	2.8	1.4	4.1
Marine services and civil aviation	7.0	25.2	15.5	40.8
Domestic water supplies ^{1/}	4.7	-	-	-
Health	1.7	3.2	4.0	4.5
Housing	0.3	0.3	5.7	8.1
Sewerage	8.7	7.5	7.1	9.6
Education	2.3	4.8	10.2	17.2
Telecommunications	4.6	5.9	6.8	10.0
Rural Development	0.2	1.8	10.8	13.0
Development Works	30.8	36.0	47.7	20.0
Rodrigues	5.0	5.3	12.2	14.6
Additional subscription to I.M.F. and I.B.R.D.	-	21.7	0.1	-
Contribution to share capital of Development Bank	-	4.8	4.2	4.5
Contribution to share capital of State Commercial Bank	4.5	-	-	-
Subscription to the African Development Bank	-	0.5	2.1	2.5
I.M.F. Repurchase obligations	-	-	-	40.0
Loans: Development Bank of Mauritius	0.7	10.7	19.8	29.0
Central Electricity Board	7.1	1.8	12.5	12.0
Mauritius Housing Corporation	2.0	1.1	5.7	10.6
Central Housing Authority	0.3	0.8	0.3	5.0
Municipalities	-	12.8	1.1	-
Tea Development Authority	8.2	11.6	18.4	14.0
Central Water Authority	1.9	9.2	8.7	12.5
Rose-Belle Sugar Estate Board	-	3.7	-	-
Sugar Planters' Mechanical Pool Corporation	-	0.3	3.5	1.0
Other loans	4.2	4.0	0.2	6.3
Redemption of loans	-	-	0.1	-
Other Capital Expenditure	18.8	35.1	28.4	59.9
Total	127.4	244.9	259.0	385.3

^{1/} projects now under the control of the Central Water Authority

^{2/} estimates

Table 33 - Functional classification of central government recurrent revenue

Rs million

	1972-73	1973-74	1974-75	1975-76 ^{1/}
<u>Taxes on Income and Capital</u>	<u>81.8</u>	<u>128.2</u>	<u>197.2</u>	<u>433.4</u>
Income Tax :				
Individuals	40.9	63.3	93.6	170.5
Companies	36.7	59.2	97.6	257.5
Contribution to Widows' Fund	2.0	2.7	3.0	2.9
Succession duties	2.2	3.0	3.0	2.5
<u>Taxes on Financial Transactions</u>	<u>16.8</u>	<u>25.1</u>	<u>28.6</u>	<u>29.2</u>
<u>Taxes on Gambling</u>	<u>4.7</u>	<u>6.5</u>	<u>8.9</u>	<u>7.1</u>
<u>Taxes on Consumption and Production</u>	<u>213.0</u>	<u>283.9</u>	<u>429.4</u>	<u>436.8</u>
Import duties	107.1	141.6	187.8	197.1
Export duties	29.9	48.1	129.8	129.0
Excise duties	59.5	74.9	89.0	88.2
Business and professional licenses	6.7	8.4	8.4	8.4
Taxes on transportation	9.8	10.9	12.3	11.6
Taxes on tourism	-	-	2.1	2.5
<u>Provision of Goods and Services</u>	<u>38.8</u>	<u>41.2</u>	<u>48.3</u>	<u>49.9</u>
Rental of government property	2.7	3.1	3.4	2.4
Telephone service	7.1	7.6	8.8	8.7
Marine services	7.5	8.4	10.4	10.2
Posts and telegraphs	5.6	6.3	7.6	7.9
Water and irrigation	1.6	-	-	-
Agriculture and forests	2.0	2.7	2.3	4.1
Other goods and services	12.3	13.1	15.8	16.6
<u>Interests, Profits and Dividends</u>	<u>16.8</u>	<u>20.0</u>	<u>22.6</u>	<u>28.1</u>
<u>Grants from British Government</u>	<u>0.2</u>	<u>1.3</u>	<u>0.8</u>	<u>0.2</u>
<u>Other Recurrent Revenue</u>	<u>4.6</u>	<u>9.2</u>	<u>9.1</u>	<u>10.3</u>
Total	376.7	515.4	744.9	995.0

^{1/} estimates

Table 34- Functional classification of central government recurrent expenditure

Rs million

	1972-73	1973-74	1974-75	1975-76
<u>General Services</u>	<u>53.5</u>	<u>70.3</u>	<u>91.8</u>	<u>112.3</u>
General administration	4.1	7.3	8.1	9.1
Legislature	0.9	1.6	2.5	2.7
Maintenance of law and order:				
Justice and Attorney General	2.6	3.9	4.9	6.3
Police and defence	19.5	26.8	35.0	48.2
Prisons	2.5	3.5	4.8	5.9
Revenue collection & financial control	8.2	11.5	16.7	18.9
Other general services	15.7	15.7	19.8	21.2
<u>Community Services</u>	<u>18.9</u>	<u>21.6</u>	<u>36.7</u>	<u>52.9</u>
Maintenance of roads & public buildings	7.7	8.0	12.6	18.4
Domestic water supplies	4.3	4.1	11.0	18.1
Sanitation and sewerage	4.0	5.4	7.1	8.7
Other community services	2.9	4.1	6.0	7.7
<u>Social Services</u>	<u>112.9</u>	<u>266.6</u>	<u>367.6</u>	<u>381.1</u>
Education	45.4	66.5	86.4	112.1
Health (excluding sanitation)	30.7	44.4	60.9	87.5
Social security:				
Family allowances	6.3	7.8	9.6	13.7
Outdoor relief	8.7	11.0	13.3	18.2
Old age pensions	14.4	19.6	25.4	31.9
Subsidy on rice and flour	-	107.0	157.2	100.0
Housing	2.5	3.2	5.3	6.5
Other social services	4.9	7.1	9.5	11.2
<u>Economic Services</u>	<u>26.1</u>	<u>36.0</u>	<u>51.1</u>	<u>114.8</u>
Agriculture and forests	8.7	12.8	20.0	25.4
Contribution to National Fertilizer Scheme	-	-	-	50.0
Civil aviation and marine services	4.4	6.3	8.5	10.8
Posts, telegraphs & telecommunications	7.3	10.2	13.1	17.0
Other economic services	5.7	6.7	9.5	11.6
<u>Unallocable Expenditure</u>	<u>100.0</u>	<u>140.3</u>	<u>187.1</u>	<u>255.7</u>
Transfer to local authorities	6.9	17.5	24.4	28.8
Recurrent financial obligations:				
Public debt:				
Interest	28.1	35.7	50.6	50.3
Redemptions	5.1	6.6	9.2	9.4
Sinking Fund	19.5	15.3	16.8	45.5
Public pensions & gratuities	19.5	25.0	36.6	37.7
Passages	1.5	1.7	1.9	2.4
Rodrigues	5.8	7.6	12.4	17.4
Relief works	2.7	3.1	4.6	28.5
Other unallocable expenditure	10.9	27.8	30.6	35.7
<u>Transfer to Capital Budget</u>	<u>15.0</u>	<u>-</u>	<u>-</u>	<u>60.0</u>
Total	282.4	554.8	734.3	976.0

Table 35 - Central Government indebtedness

Period	Rs million									
	Amount outstanding at beginning of period					Borrowing during period		Payment during period		Total
	Internal		External			Internal	External	Internal	External	
Tap loan	Other	U. K.	Other	Other	Internal	External	Internal	External		
1.7.71 - 30.6.72	125.8	90.7	134.2	30.6	30.6	9.3	18.1	6.2	381.3	
1.7.72 - 30.6.73	125.6	177.6	137.7	30.1	30.1	17.6	5.1	7.2	471.0	
1.7.73 - 30.6.74	120.6	287.5	143.9	34.3	34.3	34.7	10.0	9.7	586.3	
1.7.74 - 30.6.75	115.6	367.5	160.6	46.4	46.4	52.8	19.4	12.7	690.1	
1974: 1st Qr.	120.1	332.5	147.8	34.9	34.9	19.3 1/2	9.5	2.9	635.3	
2nd Qr.	115.6	327.5	159.5	39.6 1/2	39.6 1/2	11.0 1/2	-	3.1 1/2	642.2 1/2	
3rd Qr.	115.6	367.5	160.6	46.4	46.4	3.4	3.5	1.3	690.1	
4th Qr.	112.1	367.5	161.6	47.5	47.5	7.8	14.5	2.7	688.7	
1975: 1st Qr.	112.0	513.1	161.2	52.4	52.4	24.0	1.4	3.0	839.3	
2nd Qr.	110.6	513.1	174.0	60.6	60.6	17.6	-	5.7	858.9	

1/2 revised

Table 36 - Sinking funds held against the public debt

Amount as at 30th June	Rs million			
	1971	1972	1973	1974
	106.2	119.5	142.1	151.7
				1975
				153.4

Note: Investments have been valued at mean market prices

Table 37 - Central government local loan raisings

	Year of issue	Rate of interest % p.a.	Amount outstanding at 30.6.75 (Rs million)
Development welfare loan 1971-81	1950	3	3.1
Development (general purposes) Loan 1973-83	1962	5 $\frac{3}{4}$	15.0
Development (" ") Loan 1971-76	1966	6	5.0
Development Loan Stock 1985	1970	7 $\frac{1}{4}$	5.0
" " " 1975	1970	6 $\frac{1}{2}$	15.0
" " " 1977	1971	6 $\frac{1}{2}$	10.0
" " " 1991	1971	7 $\frac{1}{2}$	10.0
" " " 1976	1971	6 $\frac{1}{2}$	10.0
" " " 1979	1971	6 $\frac{3}{4}$	15.0
" " " 1986	1971	7 $\frac{1}{2}$	15.0
" " " 1978	1972	6 $\frac{1}{2}$	10.0
" " " 1984	1972	7	15.0
" " " 1979	1972	6 $\frac{1}{2}$	15.0
" " " 1988	1972	7 $\frac{1}{2}$	15.0
" " " 1977	1972	6 $\frac{1}{2}$	15.0
" " " 1980	1972	6 $\frac{3}{4}$	15.0
" " " 1990	1972	7 $\frac{1}{2}$	10.0
" " " 1978	1972	6 $\frac{1}{2}$	10.0
" " " 1982	1972	6 $\frac{3}{4}$	15.0
" " " 1992	1972	7 $\frac{1}{2}$	20.0
" " " 1980	1973	6 $\frac{1}{2}$	10.0
" " " 1989	1973	7 $\frac{1}{2}$	15.0
" " " 1980	1973	6 $\frac{1}{2}$	15.0
" " " 1985	1973	7	15.0
" " " 1989	1973	7 $\frac{1}{2}$	15.0
" " " 1992	1974	7 $\frac{1}{2}$	20.0
" " " 1985	1974	7	20.0
" " " 1981	1974	6 $\frac{1}{2}$	20.0
" " " 1987	1974	7	15.0
" " " 1993	1974	7 $\frac{1}{2}$	20.0
" " " 1979	1974	6 $\frac{1}{2}$	20.0
" " " 1984	1974	6 $\frac{3}{4}$	20.0
" " " 1989	1974	7 $\frac{1}{4}$	30.0
" " " 1994	1974	7 $\frac{1}{2}$	35.0
" " " 1982	1975	6 $\frac{1}{2}$	40.0
" " " 1987	1975	7	40.0
" " " 1991	1975	7 $\frac{1}{4}$	35.0
" " " 1994	1975	7 $\frac{1}{2}$	35.0
Tap Loan	1/	5	110.6

1/ Tap loans are issued every year since 1959. The date of redemption is at the option of the purchaser.

Table 38 - Outstanding loans and advances made from public funds as at 30th June

Debtor	Rs million				
	1971	1972	1973	1974	1975
Central Electricity Board	86.6	86.2	91.3	90.5	89.9
Central Housing Authority	33.7	33.9	33.6	48.9	47.1
Development Bank of Mauritius	16.2	23.3	26.9	33.3	57.9
Mauritius Housing Corporation	16.4	15.9	17.3	17.7	22.7
Mauritius Broadcasting Corporation	1.3	1.1	0.9	0.6	0.5
Municipalities	22.3	21.4	20.7	29.4	28.8
Sewerage scheme	12.3	14.1	15.4	16.7	18.2
Government Sack Factory	5.9	5.8	5.8	5.8	-
Colonial Steamships Co. Ltd.	1.6	1.5	1.3	1.1	1.0
Tea Estates	3.5	3.3	3.2	3.1	2.8
Mauritius Hotels Ltd	1.2	1.2	1.1	1.1	1.0
Agricultural Marketing Board	7.4	7.8	7.8	7.8	7.8
Sugar Planters' Mechanical Pool	-	-	-	0.3	3.8
Planters' Hurricane Loan	0.6	0.4	0.3	0.2	0.1
Tea Development Authority	-	4.8	12.6	24.6	42.7
Central Water Authority	-	-	1.9	14.7	34.7
Mauritius Sugar Industry Research Institute	-	1.0	1.4	1.2	1.1
Rose Belle S.E.	-	-	-	1.0	-
Compagnie des Villages de Vacances de l'Île de France Ltée (COVIFRA)	-	-	-	4.1	4.1
Other	3.3	3.1	2.9	2.5	2.0
TOTAL	212.8	224.8	244.4	309.6	366.2

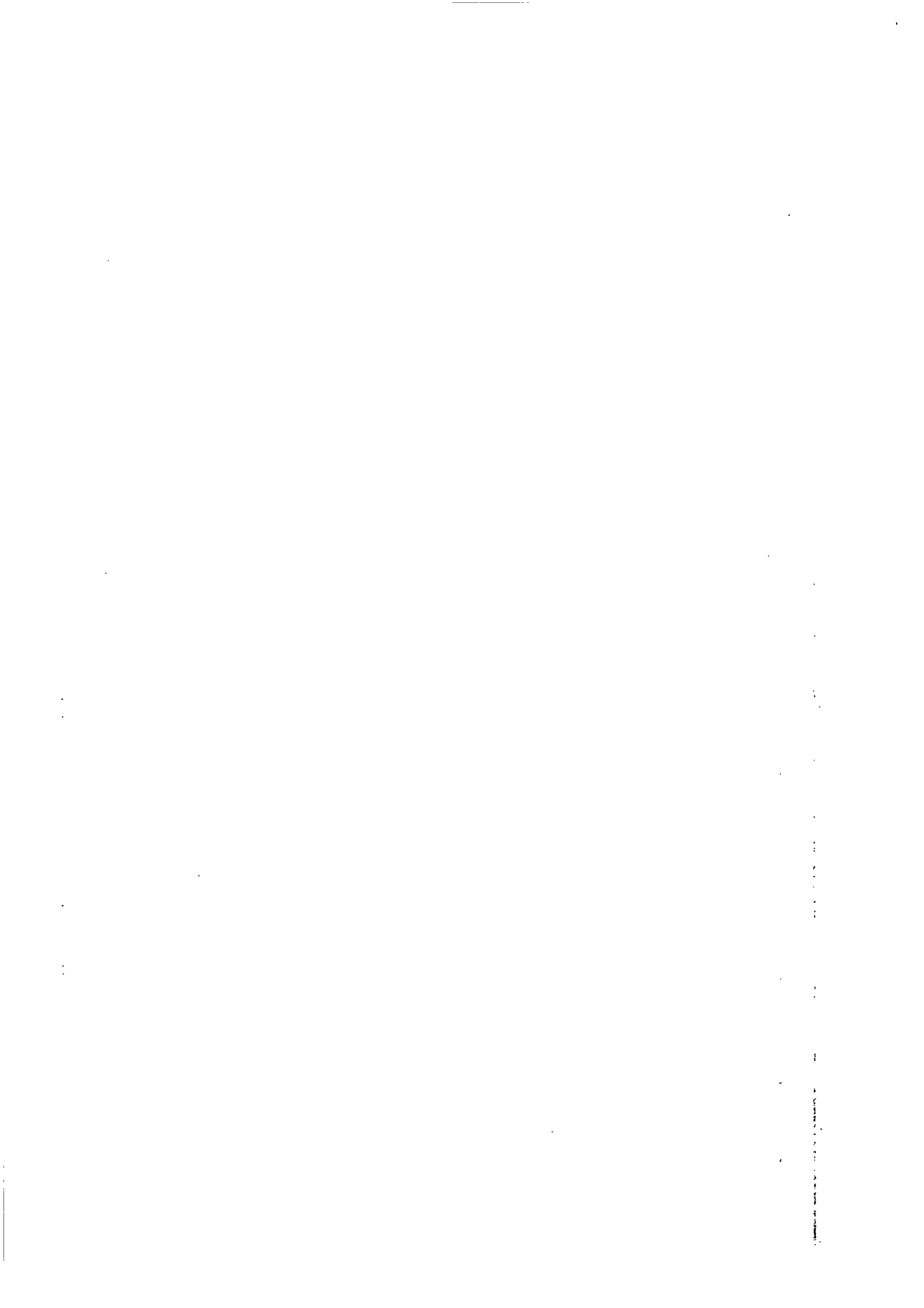


Table 39 - Income tax ^{1/} - Individuals

Range of gross income (Rupees)	Year of assessment 1971-72 ^{2/}				Year of assessment 1972-73 ^{2/}			
	Number of taxpayers	Gross income (Mn Rs)	Chargeable income (Mn Rs)	Tax assessed (Mn Rs)	Number of taxpayers	Gross income (Mn Rs)	Chargeable income (Mn Rs)	Tax assessed (Mn Rs)
5,000 or less	2,053	8.37	1.54	0.32	2,216	9.09	1.67	0.34
5,001 - 10,000	4,248	31.59	10.28	2.08	4,544	33.60	11.24	2.29
10,001 - 15,000	3,101	37.75	14.90	2.95	3,234	39.59	16.16	3.17
15,001 - 25,000	2,196	42.14	24.47	4.37	2,330	44.43	26.14	5.22
25,001 - 50,000	1,473	49.67	36.14	9.25	1,546	51.97	37.71	9.61
50,001 - 100,000	315	21.00	17.20	7.05	349	22.83	18.81	7.72
100,001 - 250,000	54	7.45	6.10	3.63	77	10.48	9.14	5.48
Over 250,000	13	3.99	3.73	2.63	11	3.90	3.13	2.25
TOTAL	13,453	201.96	114.36	32.38	14,307	215.89	124.00	36.08

Notes: ^{1/} The figures are provisional and subject to amendment, as the income tax ordinance empowers the Commissioner of Income Tax to revise cases under objection, to issue additional claims for the six years preceding the present year of assessment, and to claim back duty at any time in cases of false or incorred returns of income for any previous year.

^{2/} Revised.

Table 40 - Income tax ^{1/} - Companies

Range of gross income (Rupees)	Year of assessment 1971-72 ^{2/}				Year of assessment 1972-73 ^{2/}			
	Number of companies	Gross income (Mn Rs)	Chargeable income (Mn Rs)	Tax assessed (Mn Rs)	Number of companies	Gross income (Mn Rs)	Chargeable income (Mn Rs)	Tax assessed (Mn Rs)
5,000 or less	89	0.19	0.15	0.07	117	0.25	0.21	0.10
5,001 - 10,000	24	0.18	0.11	0.05	34	0.27	0.20	0.10
10,001 - 15,000	23	0.29	0.16	0.08	21	0.27	0.15	0.08
15,001 - 25,000	34	0.66	0.34	0.16	55	1.10	0.84	0.41
25,001 - 50,000	45	1.64	0.98	0.43	60	2.26	1.49	0.74
50,001 - 100,000	55	3.94	1.91	0.86	61	4.29	1.97	0.96
100,001 - 250,000	58	10.01	4.10	1.84	67	9.89	4.49	2.08
250,001 - 500,000	27	9.85	2.39	1.30	37	12.99	4.67	2.15
500,001 - 750,000	8	4.82	2.29	1.04	10	5.98	2.34	1.05
750,001 - 1,000,000	5	4.13	2.25	1.01	7	6.01	2.54	1.15
Over 1,000,000	26	72.81	36.03	16.15	37	124.66	65.12	32.14
TOTAL	394	108.52	51.21	22.99	506	167.97	84.02	40.96

Notes: ^{1/} The figures are provisional and subject to amendment, as the income tax ordinance empowers the Commissioner of Income Tax to revise cases under objection, to issue additional claims for the six years preceding the present year of assessment, and to claim back duty at any time in cases of false or incorrect returns of income for any previous year.

^{2/} Revised.

Table 41 - Sterling assets of central government, Bank of Mauritius and commercial banks
(at end of period)

Rs million

Period	INVESTMENTS (nominal value)				LIQUID ASSETS (cash, money at call and short-term deposits)				
	Central government	Semi-governmental institutions	Bank of Mauritius	Total	Central government ^{1/}	Semi-governmental institutions	Bank of Mauritius ^{2/}	Net balance of banks due from banks abroad	Total
1970	6.5	3.5	100.9	110.9	7.6	0.4	145.7	+ 20.7	174.4
1971	11.5	2.5	158.9	172.9	9.2	0.4	92.0	- 1.0	100.6
1972	17.1	0.9	212.7	230.7	4.0	1.9	165.5	+ 2.1	173.5
1973	17.3	0.2	152.0	169.5	7.8	1.6	204.3	+ 2.4	216.1
1974	16.9	0.2	170.0	187.1	10.1	1.6	569.8	+ 14.9	596.4
1974 : 1st Qr.	15.7	0.2	177.4	193.3	10.4	1.6	161.9	+ 8.0	181.9
2nd Qr.	16.5	0.2	123.6	140.3	7.1	1.5	26.1	+ 4.3	39.0
3rd Qr.	16.7	0.2	21.3	38.2	7.4	1.6	63.5	+ 1.6	74.1
4th Qr.	16.9	0.2	170.0	187.1	10.1	1.6	569.8	+ 14.9	596.4
1975 : 1st Qr.	16.8	0.2	296.4	313.4	14.1	1.7	351.7	+ 5.1	372.6
2nd Qr.	12.5	0.1	433.1	445.7	17.6	1.8	128.9	- 3.3	145.0

^{1/} Net of short-term borrowings.

^{2/} Includes IMF Special Drawing Rights.

Table 42 - Assets of the Bank of Mauritius
(at end of period)

Period	Grand Total	External						Local			
		Total	Balances with banks	Bills	Securities	IMF Special Drawing Rights	Total	Government securities	Discounts and advances	Other assets	
1970	253.4	246.5	131.0	16.1	84.8	14.6	6.9	0.5	2.6	3.8	
1971	308.1	250.9	64.3	76.9	82.0	27.7	57.2	16.9	32.9	7.4	
1972	468.1	378.2	124.9	106.6	106.1	40.6	89.8	48.8	32.8	8.2	
1973	454.1	356.4	163.8	52.3	99.7	40.6	97.7	20.8	67.6	9.3	
1974	769.5	739.8	554.3	152.4	17.6	15.5	29.7	7.5	12.2	10.0	
1974 : 1st Qr.	422.3	339.3	121.3	79.5	97.9	40.6	83.0	34.5	34.5	14.0	
2nd Qr.	414.4	149.7	13.2	35.3	88.4	12.8	264.7	92.4	159.3	13.0	
3rd Qr.	400.0	84.8	48.2	1.9	19.4	15.3	315.1	96.6	207.8	10.7	
4th Qr.	769.5	739.8	554.3	152.4	17.6	15.5	29.7	7.5	12.2	10.0	
1975 : 1st Qr.	723.6	648.1	336.2	65.2	231.2	15.5	75.5	1.7	63.4	10.4	
2nd Qr.	780.2	562.0	114.6	206.1	227.0	14.3	218.2	151.0	45.9	21.3	

Source: Bank of Mauritius

Table 43 - Liabilities of the Bank of Mauritius
(at end of period)

Period	Total	Capital and reserve	Notes in circulation	Coins in circulation	DEPOSITS					Other liabilities
					Total	Demand			Other	
						Government	Bankers			
							Other			
1970	253.4	9.5	103.1	6.6	121.2	3.3	6.1	3.0	103.8	3.0
1971	303.1	14.5	129.0	7.1	113.1	1.7	3.6	6.0	101.8	39.4
1972	463.1	16.6	160.7	8.4	235.3	130.8	30.1	33.0	41.9	46.6
1973	454.1	19.7	215.5	11.0	150.3	73.2	30.9	3.7	33.0	57.1
1974	769.5	24.2	344.4	12.6	253.4	36.3	112.8	7.8	51.5	129.5
1974 : 1st Qr.	422.3	19.7	204.1	10.5	122.3	34.5	33.6	7.9	41.3	65.7
2nd Qr.	414.4	24.7	207.8	10.8	33.7	1.9	32.4	7.1	42.3	87.4
3rd Qr.	400.0	24.7	225.1	11.4	33.9	0.3	34.5	7.1	42.0	55.0
4th Qr.	769.5	24.7	344.4	12.6	258.4	36.3	112.8	7.3	51.5	129.5
1975 : 1st Qr.	723.6	24.7	319.2	11.9	218.6	0.2	115.2	43.7	59.5	149.2
2nd Qr.	780.2	28.0	311.6	11.9	251.5	84.5	104.4	8.9	53.7	177.3

1/ Mainly due to semi-government bodies.

Source: Bank of Mauritius

Table 44 - Assets of commercial banks
(at end of period)

Period	Total	Balances due by			Loans and advances			Investments		Other assets		
		Cash	Other local banks		Banks abroad	Primary products	Other industries	Other advances	Local	Abroad	Bills discounted and bills receivable	Other
			Other local banks	Banks abroad								
1970	393.7	9.9	0.6	31.3	60.3	74.6	34.1	53.2	2.0	29.1	98.6	
1971	487.2	9.8	0.8	13.2	78.5	103.9	41.5	80.5	2.0	56.7	100.3	
1972	682.1	12.8	3.1	10.0	61.7	149.3	64.2	137.4	2.0	78.4	163.2	
1973	1,024.2	25.8	5.3	13.9	56.4	249.3	82.7	154.7	2.0	148.4	286.7	
1974	1,622.1	42.8	30.6	24.6	49.8	346.5	67.2	481.8	7.8	128.9	442.2	
1974: 1st Qr.	1,084.5	17.5	6.1	12.3	59.1	279.1	85.2	142.4	2.0	77.4	403.4	
2nd Qr.	1,063.2	17.8	4.2	10.8	68.8	145.1	206.9	113.6	-	84.0	412.0	
3rd Qr.	1,117.4	17.9	18.4	17.8	61.0	378.8	70.0	105.1	2.6	107.2	338.7	
4th Qr.	1,622.1	42.8	30.6	24.6	49.8	346.5	67.2	481.8	7.8	128.9	442.2	
1975: 1st Qr.	1,480.5	21.0	10.5	11.3	65.5	253.6	204.0	375.3	2.0	84.4	447.9	
2nd Qr.	1,441.9	20.0	19.8	10.8	126.0	265.3	220.5	222.9	2.0	98.5	456.1	

Rs million

Table 45 - Liabilities of commercial banks
(at end of period)

Period	Total	Notes in circulation	Deposits					Balances due to		Other liabilities
			Government	Non-government		Other local banks	Banks abroad	Other		
				Demand	Time				Savings	
1970	393.7	-	2.4	121.0	96.1	62.9	1.4	10.6	99.3	
1971	437.2	-	3.7	129.0	105.0	85.0	6.5	14.3	142.9	
1972	632.1	-	2.4	201.9	140.6	113.7	11.6	7.9	199.0	
1973	1,024.2	-	6.1	265.0	210.0	165.9	11.4	11.5	354.3	
1974	1,622.1	-	9.7	463.8	512.1	243.4	3.8	9.7	369.6	
1974 : 1st Qr.	1,084.5	-	7.5	263.5	137.1	134.2	11.2	4.3	421.7	
2nd Qr.	1,063.2	-	5.4	219.7	137.0	133.0	7.6	5.5	449.0	
3rd Qr.	1,117.4	-	6.1	247.9	202.2	197.6	19.0	16.2	428.5	
4th Qr.	1,622.1	-	9.7	463.8	512.1	243.4	8.8	9.7	369.6	
1975 : 1st Qr.	1,480.5	-	18.0	358.3	423.4	286.7	5.5	6.2	382.4	
2nd Qr.	1,441.9	-	9.6	330.6	297.3	294.2	3.4	14.1	437.7	

Rs million

Table 46 - Analysis of bills discounted, loans and advances made by commercial banks

	Rs million							
	1974				1975			
	March	June	September	December	March	June	September	December
Sugar industry	64.2	51.7	56.5	31.9	49.3	106.8		
Other agricultural interests	10.7	22.0	23.5	26.8	22.3	24.9		
Other industries and manufacturers	168.3	147.2	136.7	257.4	266.5	277.8		
Traders	120.0	137.3	141.9	133.1	137.9	149.3		
Personal and professional	56.5	56.9	51.3	46.3	47.2	57.1		
Stockbrokers	2.0	1.4	1.2	0.3	0.3	0.7		
Government	-	-	-	-	-	-		
Public bodies	19.1	5.3	6.3	7.8	8.3	6.5		
Financial institutions	2.3	2.0	2.8	3.0	4.3	3.3		
Other customers	11.4	12.3	13.3	14.6	15.2	14.8		
Foreign bills	7.6	9.1	6.1	6.2	5.0	7.0		
Total	462.1	445.2	489.6	527.4	556.8	648.2		

Source: Bank of Mauritius

Table 47 - Assets and liabilities of the Development Bank of Mauritius
(at end of period)

	<u>Rs million</u>				
	1970	1971	1972	1973	1974
<u>Assets</u>					
Cash	0.5	-	0.1	1.3	3.8
Balances due by other banks in Mauritius	1.4	0.9	0.4	3.4	18.4
Loans and advances:					
Primary industries	20.8	19.4	18.1	17.2	16.1
Other industries	17.1	17.9	22.9	25.6	38.6
Other loans and advances	0.4	0.4	0.4	-	1.5
Investments					
Local (at cost)	6.9	13.7	13.0	11.0	18.6
Overseas	2.1	-	-	-	-
Other assets	9.2	11.9	15.4	20.6	27.7
Total	58.4	64.2	70.3	79.1	124.7
<u>Liabilities</u>					
Notes in circulation	-	-	-	-	-
Deposits:					
Demand	2.0	1.1	1.3	3.8	5.9
Time	1.8	2.6	4.0	5.3	15.7
Savings	1.3	2.1	2.2	2.4	2.6
Share capital	-	10.0	10.0	10.0	17.8
Debentures	17.0	17.0	17.0	17.0	17.0
The Government of Mauritius	25.9	20.3	23.3	29.2	49.1
Bills	0.3	0.3	0.3	0.2	-
Other liabilities	9.6	10.8	12.2	11.2	16.6
Total	58.4	64.2	70.3	79.1	124.7

Table 48 - Post Office Savings Bank

Period	Deposits during period (Rs million)	Withdrawals during period (Rs million)	Accumulated balance at end of period (Rs million)	Number of accounts at 30th June
1970	11.4	11.5	27.7	92,200
1971	13.3	11.5	30.4	93,929
1972	17.1	13.4	35.3	97,944
1973	20.0	16.0	40.8	103,216
1974	25.0	18.6	48.6	109,077
1974 : 1st Qr.	5.9	4.4	42.3 _{1/}	...
2nd Qr.	4.4	4.5	43.6 _{1/}	109,077
3rd Qr.	5.3	5.5	43.5	...
4th Qr.	9.4	4.2	43.6	...
1975 : 1st Qr.	8.4	4.6	52.4 _{1/}	...
2nd Qr.	4.8	5.6	53.4	113,400

1/ Includes interest capitalised to Depositors Accounts

Table 49 - Assets and liabilities of the Mauritius Co-operative Central Bank Ltd.
(at end of February)

	Rs million				
	1970	1971	1972	1973	1974
Assets					
Cash at bank and in hand	0.2	2.1	1.6	1.9	2.3
Loans and advances:					
Primary industries	4.0	4.3	6.6	9.5	10.2
Housing	1.4	1.5	1.7	1.9	2.2
Other loans and advances	1.8	2.2	2.1	2.1	7.8
Investments:					
Local	5.6	7.4	7.4	12.1	9.8
Abroad	-	-	-	-	-
Other assets	0.2	0.7	0.8	0.8	2.7
Tot 1	13.2	13.2	20.2	23.3	35.0
Liabilities					
"Owned Funds"	3.7	4.1	4.5	5.2	5.3
Deposits:					
Demand	2.0	2.6	1.7	3.8	5.9
Time	5.0	8.5	10.5	15.1	17.3
Savings	2.2	2.6	2.8	3.6	4.6
Balances due to other banks in Mauritius	-	-	-	-	-
Other liabilities	0.3	0.4	0.7	0.6	1.4
Total	13.2	18.2	20.2	28.3	35.0

Table 50 - Money Supply
(at end of period)

Period	Currency with the public ^{1/}	Demand Deposits			Total money supply
		Bank of Mauritius ^{2/}	Commercial banks	Total	
1970	104.7	1.1	123.8	124.9	229.6
1971	126.3	0.9	134.4	135.3	261.6
1972	156.3	18.1	201.9	220.0	376.3
1973	200.6 ^{3/}	0.9	265.0	265.9	466.5 ^{3/}
1974	314.2 ^{3/}	0.7	468.8	469.5	783.7 ^{3/}
1974: 1st Qr.	197.1	0.2	263.5	268.7	465.8
2nd Qr.	200.8	0.1	219.7	219.8	420.6
3rd Qr.	218.5 ^{3/}	0.2	247.9	248.1	466.6 ^{3/}
4th Qr.	314.2 ^{3/}	0.7	468.8	469.5	783.7 ^{3/}
1975: 1st Qr.	310.1	36.6	358.3	394.9	705.0
2nd Qr.	303.4	1.7	380.6	382.3	685.7

^{1/} Net of cash held by commercial banks

^{2/} Miscellaneous private deposits

^{3/} Revised

Source: Bank of Mauritius

Table 51 - Assets and liabilities of the Mauritius Housing Corporation
(at end of period)

	Rs million				
	1970	1971	1972	1973	1974
Assets					
Cash in hand and on deposit	-	-	-	-	-
Housing loans	34.0	37.0	42.2	46.1	59.0
Investments (at cost)	0.5	0.4	0.5	0.5	0.7
Other assets	3.4	3.4	4.7	6.4	5.8
Total	37.9	40.8	47.4	53.0	65.5
Liabilities					
Loans: <u>Local</u>					
Government of Mauritius	14.1	13.9	14.7	15.5	19.7
Development Bank of Mauritius	0.4	0.4	0.4	0.5	0.5
Other local loans	8.6	11.6	13.8	17.4	19.8
<u>External</u>					
British Government	2.6	2.3	2.0	1.6	1.2
Commonwealth Development Corporation	6.2	6.1	7.3	9.8	12.3
Other liabilities	6.0	6.5	9.2	8.2	12.0
Total	37.9	40.8	47.4	53.0	65.5

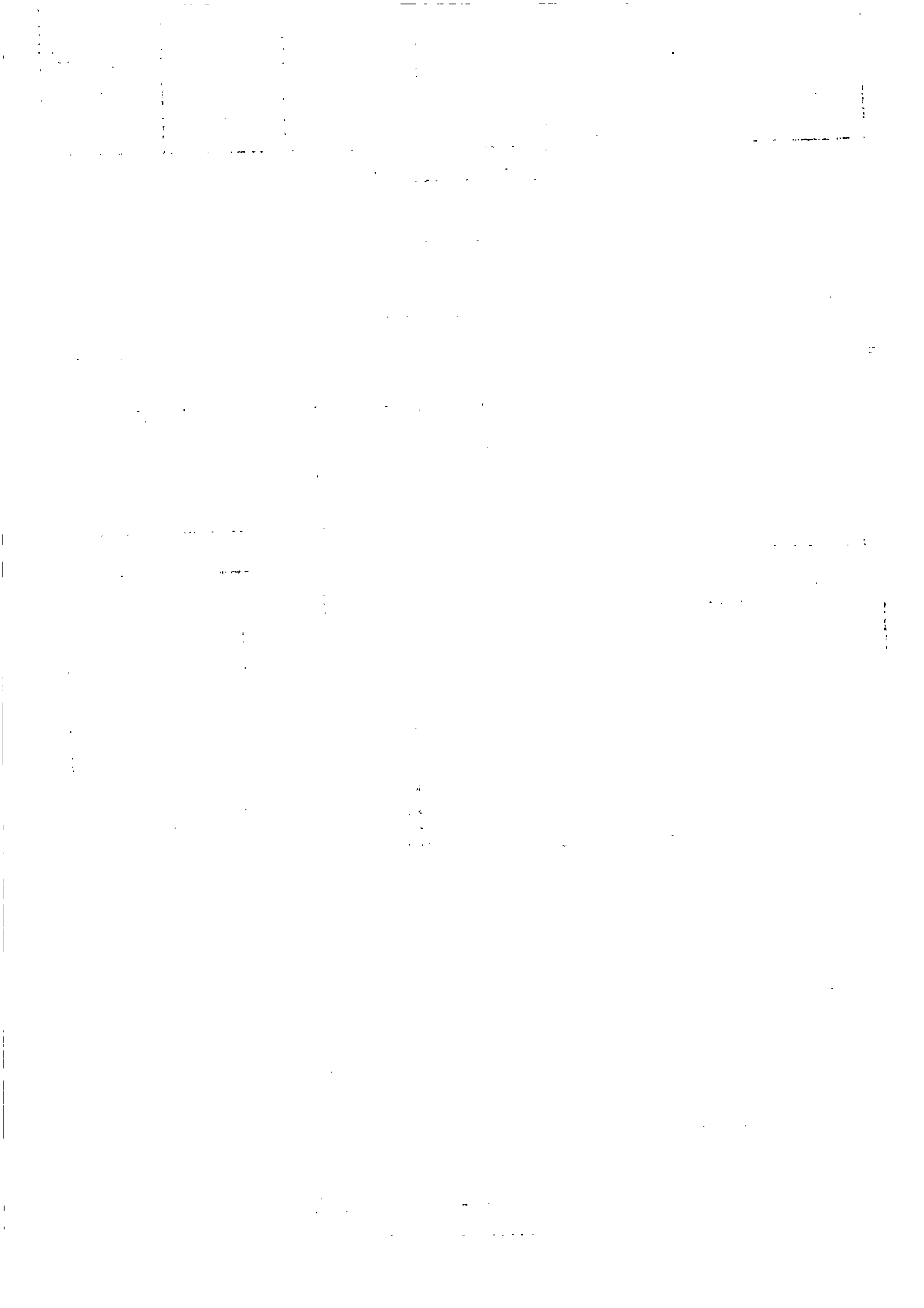


Table 52 - Bank end interest rates

	<u>Percent per annum</u>					
	31.12.72	30.6.73	31.12.73	30.6.74	31.12.74	30.6.75
<u>Deposit rates</u>						
Post Office Savings Bank	4	4	4	4	4	4
Trading banks: savings accounts	4	4	4	4	4	4
Fixed Deposits: 3 months	4½	4½	4½	4½	4½	4½
6 months	4¾	4¾	4¾	4¾	4¾	4¾
12 months	5½	5½	5½	5½	5½	5½
Over twelve months	6	6	6	6	6	6
18 months					6½	6½
24 months					7	7
36 months					7½	7½
Over 36 months					7¾	7¾
<u>Lending rates</u>						
Bank of Mauritius - discount rate	6	6	6	6	6	6
Trading banks - bills of exchange and advances	7 - 8½	7 - 8½	7 - 9½	7 - 8¾	7 - 9½	7 - 9
Public notaries - mortgage loans	9 - 11	9 - 11	9 - 11	9 - 11	9 - 11	9 - 11
Mauritius Housing Corporation - housing loans	8 - 8½	8 - 8½	8 - 8½	8 - 8½	8 - 8½	8 - 8½

1/ Between 12 and 17 months 2/ Between 18 and 24 months
 3/ Effective as from 20.8.74 4/ Effective as from 6.9.74

Note: Rates of interest on Treasury Loans are shown in table 37

Source: Bank of Mauritius

Table 53 - Foreign exchange rates

Country	Currency	on 31.12.73		on 30.6.74		on 31.12.74		on 30.6.75	
		Selling rate	Buying rate	Selling rate	Buying rate	Selling rate	Buying rate	Selling rate	Buying rate
United Kingdom	Pound sterling	13.40	13.25	13.40	13.25	13.40	13.25	13.40	13.25
Australia	Dollar	3.63	3.42	3.45	3.17	7.60	7.33	3.06	7.31
Belgium	Franc	0.142	0.133	0.146	0.140	0.153	0.154	0.173	0.167
Canada	Dollar	5.84	5.72	5.35	5.71	5.32	5.71	5.39	5.76
France	Franc	1.21	1.17	1.17	1.13	1.31	1.26	1.51	1.46
Germany, Fed. Rep. of	Mark	2.17	2.11	2.23	2.17	2.39	2.33	2.57	2.51
Hong Kong	Dollar	1.16	1.12	1.14	1.09	1.18	1.12	1.22	1.17
India	Rupee	0.73	0.70	0.73	0.70	0.73	0.70	0.73	0.70
Japan	Yen	0.0209	0.0203	0.0193	0.0200	0.0192	0.0187	0.0205	0.0191
Kenya	Shilling	0.345	0.320	0.799	0.774	0.303	0.784	0.349	0.326
Malagasy, Rep. of	Franc	0.025	0.0242	0.0234	0.0226	0.0262	0.0252	0.0301	0.0291
New Zealand	Dollar	3.34	3.12	3.25	3.03	7.53	7.33	7.90	7.64
Pakistan	Rupee	0.61	0.59	0.61	0.57	0.61	0.58	0.63 ^{1/2}	0.60 ^{1/2}
Reunion	Franc C.F.A.	0.0242	0.0234	0.0234	0.0226	0.0262	0.0252	1.51	1.46
South Africa, Rep. of	Rand	3.69	3.45	3.59	3.31	3.37	3.10	8.49	8.25
Switzerland	Franc	1.80	1.75	1.89	1.84	2.29	2.24	2.43	2.38
U.S.A.	Dollar	5.92	5.70	5.67	5.53	5.74	5.62	6.05	5.92

1/As from 3rd January 1975 exchange rates for Reunion were quoted in terms of the French Franc.

Source: Bank of Mauritius

IV. NATIONAL ACCOUNTS

Table 54 - Gross national product by industrial origin
(at current factor cost)

Rs million

	1970 ^{1/}	1971 ^{1/}	1972 ^{1/}	1973 ^{1/}	1974 ^{2/}
1. Agriculture, forestry, hunting and fishing	222	262	353	494	1,365
2. Mining and quarrying	1	1	2	2	2
3. Manufacturing	146	168	233	277	411
4. Construction	48	60	73	114	134
5. Electricity, gas, water and sanitary services	29	34	39	43	48
6. Transportation, storage and communication	108	114	129	161	191
7. Wholesale and retail trade	91	94	127	172	219
8. Banking, insurance and real estate	20	18	22	31	36
9. Ownership of dwellings	70	71	74	77	80
10. Public Administration and Defence	51	53	61	76	100
11. Services	126	141	166	203	244
GROSS DOMESTIC PRODUCT AT FACTOR COST	912	1,016	1,279	1,650	2,830
Net factor income from the rest of the world	+ 7	+ 7	+ 2	+ 16	+ 20
GROSS NATIONAL PRODUCT AT FACTOR COST	919	1,023	1,281	1,666	2,850
Per capita gross national product (at factor cost)	(Rs)	(Rs)	(Rs)	(Rs)	(Rs)
(Based on mid-year population)	1,140	1,253	1,550	1,996	3,370

^{1/} revised

^{2/} preliminary estimate

Table 55 - Distribution of the gross national income

	Rs million				
	1970 ^{1/}	1971 ^{1/}	1972 ^{1/}	1973 ^{1/}	1974 ^{2/}
1. Compensation of employees	516	555	656	833	1,105
2. Income from unincorporated enterprises	128	140	180	235	469
3. Income from property	128	137	161	223	330
4. Saving of corporations	99	135	134	244	550
5. Direct tax on corporations	39	47	91	126	400
6. General government income from property and entrepreneurship	33	34	37	37	40
7. <u>Less</u> interest on public debt	- 20	- 21	- 24	- 32	- 33
8. <u>Less</u> interest on consumers' debt	- 4	- 4	- 4	- 5	- 6
NATIONAL INCOME AND DEPRECIATION = Gross national product at factor cost	919	1,023	1,231	1,666	2,850

1/ revised

2/ preliminary

Table 56 - Expenditure on gross national product
(at current prices)

	Rs million				
	1970 ^{1/}	1971 ^{1/}	1972 ^{1/}	1973 ^{1/}	1974 ^{2/}
1. Private consumption expenditure on goods and services	734	733	929	1,122	1,745
2. General government consumption expenditure on goods and services	166	132	219	235	360
3. Gross domestic fixed capital formation of private enterprises	94	132	163	378	561
4. Gross domestic fixed capital formation of government and public enterprises	51	52	66	102	189
5. Increase in stocks
CONSUMPTION AND GROSS CAPITAL FORMATION	1,045	1,149	1,377	1,837	2,355
6. Net exports of goods and services	+ 3	+ 12	+ 55	+ 15	+ 250
7. Net factor income from the rest of the world	+ 7	+ 7	+ 2	+ 16	+ 20
3. <u>Less</u> indirect taxes (net of subsidies)	- 136	- 145	- 153	- 202	- 275
GROSS NATIONAL PRODUCT AT FACTOR COST	919	1,023	1,281	1,666	2,350

1/ Revised

2/ Preliminary

Table 57 - Composition of gross domestic fixed capital formation
(at current prices)

	Rs million				
	1970	1971	1972	1973	1974 ^{1/}
A. By type of capital goods					
a. Land ^{2/}	4	3	4	10	14
b. Dwellings	33	38	54	103	169
c. Non-residential buildings	23	30	34	76	156
d. Other construction and works	36	42	39	81	121
e. Transport equipment					
(i) Passenger cars	5	7	11	19	22
(ii) Other equipment	15	16	15	66	39
f. Machinery and other equipment	29	43	72	125	229
GROSS DOMESTIC FIXED CAPITAL FORMATION	145	184	229	430	750
B. By industrial use					
a. Agriculture, forestry and fishing	23	23	20	38	34
b. Mining and quarrying	-	-	-	-	-
c. Manufacturing	16	28	37	79	136
d. Construction	5	6	8	14	21
e. Electricity, gas, water and sanitary services	12	16	32	33	39
f. Transportation, storage and communication	32	35	42	126	134
g. Wholesale and retail trade	5	7	7	21	21
h. Banking, insurance and real estate	3	6	1	2	4
i. Ownership of dwellings	33	33	54	103	165
j. Public administration	-	1	1	3	14
k. Service industries	12	16	23	51	68
l. Legal fees, stamp duties, etc.	4	3	4	10	14
GROSS DOMESTIC FIXED CAPITAL FORMATION	145	184	229	430	750

^{1/} Preliminary

^{2/} Including legal fees, stamp duties, agents' commission, etc. connected with the transfer of ownership of land and buildings.

Table 58 - Gross national product at constant 1970 prices

Year	Gross national product at current prices (Rs million)	Index 1970 = 100	Percentage annual increase
1970	919	100.0	
1971	1,023	107.0	7.0
1972	1,281	117.6	9.9
1973	1,666	132.0	12.2
1974 ^{1/}	<u>2,850</u> 2850	146.8	<u>11.2</u>

1/ preliminary estimate

Table 59 - Gross domestic fixed capital formation at constant 1970 prices

Year	Gross domestic fixed capital formation at current prices (Rs million)	Index 1970 = 100	Percentage annual increase
1970	145	100.0	
1971	184	113.6	18.6
1972	229	133.3	12.8
1973	480	209.0	56.2
1974 ^{1/}	750	247.6	18.5

1/ preliminary estimate

Table 60 - Balance of Payments

Item	1970		1971		1972		1973		1974	
	Credit	Debit	Credit	Debit	Credit	Debit	Credit	Debit	Credit	Debit
A. GOODS AND SERVICES										
1. Merchandise	543	527	542	597	775	739	1,016	1,055	2,150	1,922
2. Non-monetary gold	338	360	362	410	577	524	755	778	1,798	1,521
3. Freight and insurance on merchandise	-	-	-	1	-	2	-	3	-	5
4. Other transportation	14	54	26	61	11	38	3	115	-	191
5. Travel	56	59	56	63	72	47	33	47	146	74
6. Investment income	27	20	39	23	52	29	33	34	112	51
On direct investment	17	12	19	14	16	17	27	12	26	20
Other	3	3	3	7	1	10	1	11	1	11
7. Other government	14	9	16	7	15	7	26	7	25	9
8. Other private	17	7	13	7	21	6	24	11	23	13
B. UNREQUIRED TRANSFERS										
9. Private	29	15	22	13	26	24	33	49	40	47
10. Government	31	10	36	11	62	15	52	13	103	20
NET TOTAL OF GOODS, SERVICES, AND TRANSFERS										
	42	-	-	30	33	-	2	-	311	-

Source: Bank of Mauritius

Table 60 - Balance of Payments (cont'd)

Item	1970		1971		1972		1973		1974	
	Credit	Debit	Credit	Debit	Credit	Debit	Credit	Debit	Credit	Debit
C. CAPITAL (EXCLUDING RESERVES AND RELATED ITEMS)										
NON-MONETARY SECTORS										
11,12. Direct investment and other private long-term	5	-	5	-	24	-	14	-	7	-
Direct investment liabilities	9	-	8	-	3	-	2	-	12	-
Other	-	4	-	3	21	-	12	-	24	2
13. Other private short-term	-	1	4	-	-	4	-	40	-	38
14. Local government	-	-	-	-	-	-	-	-	-	-
15. Central government	4	-	-	5	4	-	13	-	28	-
Loans received	11	11	12	24	12	5	19	3	40	6
Other liabilities	-	-	-	-	-	-	6	-	-	1
Assets	4	-	7	-	-	3	-	4	-	5
MONETARY SECTORS										
16 Private institutions	21	-	23	-	-	-	-	1	-	5
Liabilities	6	-	6	-	-	2	7	-	5	-
Assets	15	-	17	-	2	-	-	8	-	10
17. Central institutions	-	-	-	-	-	-	-	-	-	-
D. 13. ALLOCATION OF SPECIAL DRAWING RIGHTS	15	-	13	-	13	-	-	-	-	-

Source: Bank of Mauritius

Table 60 - Balance of Payments (cont'd)

Item	1970		1971		1972		1973		1974	
	Credit	Debit	Credit	Debit	Credit	Debit	Credit	Debit	Credit	Debit
<u>E. RESERVES AND RELATED ITEMS</u>										
19 Liabilities	-	94	-	9	-	124	21	-	-	365
Use of Fund credit	-	20	-	-	-	-	-	-	-	-
Other	-	-	-	-	-	-	-	-	-	-
20. Assets	-	74	-	9	-	124	21	-	-	365
Monetary gold	-	-	-	-	-	-	-	-	-	-
SDRs	-	15	-	13	-	13	-	-	25	-
Reserve Position in the Fund	-	10	-	4	-	-	-	-	15	-
Foreign Exchange	-	49	9	-	-	114	32	-	-	408
Other claims	-	-	-	1	3	-	-	1	3	-
<u>NET ERRORS AND OMISSIONS</u>	8	-	-	1	4	-	-	2	47	-

Source : Bank of Mauritius

V. CONSUMER PRICE INDICES

Table 61 - Consumer price indices

(Base: January-June 1962 = 100)

The table below gives three consumer price indices, viz:

- (a) an index for households in urban areas;
- (b) an index for households in rural areas;
- (c) a total index for Mauritius as a whole.

Period	Urban	Rural	Whole Island
1963 (Average)	98.5	98.5	98.5
1964 (")	100.5	100.2	100.3
1965 (")	102.3	102.0	102.1
1966 (")	105.0	104.5	104.7
1967 (")	106.6	106.6	106.6
1968 (")	113.0	114.9	114.1
1969 (")	115.6	117.6	116.7
1970 (")	117.6	119.2	118.5
1971 (")	118.3	119.4	118.9
1972 (")	125.8	124.9	125.3
1973 (")	144.0	140.8	142.2
1974 (")	185.8	181.9	183.6
1974 : January	169.3	164.7	166.7
February	172.3	166.8	169.2
March	175.7	169.5	172.1
April	184.3	179.3	181.6
May	186.9	183.7	185.1
June	190.1	187.4	188.6
July	191.1	188.4	189.5
August	190.6	187.7	188.9
September	190.0	186.6	188.0
October	190.5	187.3	188.7
November	192.9	189.7	191.1
December	195.9	191.8	193.6
1975 : January	198.1	192.9	195.1
February	210.7	205.5	207.7
March	212.1	206.3	208.8
April	206.1	200.8	203.1
May	208.4	202.6	205.1
June	212.0	205.5	208.2

VI. EXTERNAL TRADE

Table 62 - Balance of visible trade

Period	Imports (c.i.f. value)	Exports ^{1/} (f.o.b. value)	Bunkers and ships' stores (f.o.b. value)	Rs million	
				Balance of visible trade	
				Surplus	Deficit
1970	419.9	384.5	14.2	-	21.2
1971	461.6	361.7	17.3	-	82.6
1972	635.8	573.8	21.1	-	40.9
1973	915.8	748.3	28.5	-	139.0
1974	1,756.3	1,786.4	65.3	95.4	-
1974: 1st Qr.	344.3	245.3	8.1	-	90.9
2nd Qr.	483.7	101.7	14.2	-	367.8
3rd Qr.	488.3	489.0	19.9	20.6	-
4th Qr.	440.0	950.4	23.1	533.5	-
1975: 1st Qr.	475.0	148.3	21.4	-	305.3
2nd Qr.	463.8	446.4	19.3	1.9	-

^{1/}Including value of sugar quota certificates and the bonus received in lieu of the Commonwealth Preference on sugar exports (except for 1972), but excluding sales value of bunker fuel and ships' stores.

Table 63 - Price (unit value) indices of exports and imports and terms of trade

Period	Price indices		Terms of trade ^{1/}
	Export	Import	
1965 = 100			
1966	104	102	102
1967	108	104	104
1968	106	122	87
1969	108	118	92
1970	115	117	98
1971	125	129	97
1972	148	136	109
1972 = 100			
1973	117	130	90
1974	291	212	137

^{1/} Ratio of export to import price index.

A rise in the index indicates that the terms of trade have moved in favour of Mauritius.

Table 64 - Price (unit value) indices of imports, by section

Period	All sections	Food	Beverages and tobacco	Crude materials, inedible, except fuels	Mineral fuels, lubricants, etc.	Animal and vegetable oils and fats	Chemicals	Manufactured goods classified chiefly by material	Machinery and transport equipment	Miscellaneous manufactured articles
1965 = 100										
1966	102	104	101	90	103	95	99	99	106	100
1967	104	107	104	98	104	90	100	102	108	111
1968	122	130	118	114	122	84	106	116	136	128
1969	118	129	120	120	117	74	98	116	130	125
1970	117	117	125	121	123	89	99	119	129	129
1971	129	118	140	130	152	108	105	129	161	154
1972	136	125	152	136	152	101	119	132	164	170*
1972 = 100										
1973	130	148	114	134	121	117	120	124	123	138
1974	212	269	128	197	306	253	210	177	142	161

Table 65 - Exports : quantities and values

Quantity: thousand metric tons
Value : Rs million (f.o.b.)

Period	DOMESTIC EXPORTS											
	Total value	Re-exports value	Total value		Sugar		Molasses		Tea		Fish and fish preparations	Ginger
			Quantity	Value	Quantity	Value	Quantity	Value	Quantity	Value		
1970	584.6	8.2	376.3	575.0	341.2	100.4	10.6	2.6	14.1	0.7	0.4	
1971	561.7	6.0	355.7	489.3	313.4	133.4	9.2	3.1	17.0	0.5	0.7	
1972	573.8	7.7	566.1	670.0	507.6	142.4	14.2	3.9	20.8	0.9	0.6	
1973	748.5	11.6	736.8	699.2	608.1	185.2	40.3	3.7	18.9	8.0	0.9	
1974	1,786.4	15.4	1,771.0	668.4	1,537.8	169.1	45.0	3.1	19.7	14.6	1.7	
1974: 1st Qr.	245.3	2.7	242.6	154.7	200.8	20.3	5.2	1.2	7.0	3.8	0.4	
2nd Qr.	101.7	4.1	97.6	24.7	49.0	22.2	6.6	0.9	5.7	0.7	0.2	
3rd Qr.	489.0	5.0	484.0	227.3	419.0	50.7	12.3	0.4	2.6	3.2	0.7	
4th Qr.	950.4	3.6	946.8	261.7	869.0	75.9	20.9	0.6	4.4	6.9	0.4	
1975: 1st Qr.	148.3	5.7	144.6	49.2	92.2	9.9	2.9	0.9	6.8	5.2	0.3	
2nd Qr.	446.4	4.7	441.6	119.7	367.8	25.3	7.4	0.5	4.0	2.7	0.1	

✓ Including value of sugar quota certificates and the bonus received in lieu of the Commonwealth Preference on sugar exports but excluding sales value of bunker fuels and ships' stores.

Table 65 - Exports : quantities and values (cont'd)

Quantity: Thousand metric tons
Value : Us million (f.o.b.)

Period	DOMESTIC EXPORTS					
	Feeding stuff for animals	Processed diamonds and synthetic stones	Electronic components for machines	Clothing	Other manufactured goods	Other domestic exports
	Value	Value	Value	Value	Value	Value
1970	0.3	1.0	-	0.2	5.7	3.1
1971	0.2	2.3	-	1.7	7.1	3.6
1972	-	5.5	-	6.1	7.4	3.2
1973	0.9	19.7	5.3	20.6	7.4	6.7
1974	2.0	22.6	48.6	60.6	11.1	7.1
1974 : 1st Qr.	0.9	4.1	7.8	9.5	1.8	1.3
2nd Qr.	0.7	5.5	11.8	13.4	2.4	1.6
3rd Qr.	0.4	7.8	14.8	17.6	5.7	1.9
4th Qr.	-	5.2	14.2	20.3	5.2	2.3
1975 : 1st Qr.	0.1	1.5	15.3	16.4	2.2	1.5
2nd Qr.	0.3	5.8	17.7	30.0	3.4	2.4

1/ Including value of sugar quota certificates and the bonus received in lieu of the Commonwealth Preference on sugar exports but excluding sales value of bunker fuels and ships' stores.

Table 66 - Total exports^{1/}; main countries of destination - values

Country of destination	Rs Million (f.o.b.)				
	1971	1972	1973	1974	Jan-Jun 1975
<u>Total exports</u>	<u>361.7</u>	<u>573.8</u>	<u>748.3</u>	<u>1,786.4</u>	<u>594.6</u>
United Kingdom	198.8	339.5	338.6	630.6	334.3
Canada	101.1	107.7	185.9	640.2	70.1
United States	22.3	36.2	65.0	140.8	79.1
South Africa, Rep. of	15.8	18.9	17.4	24.2	13.9
Vietnam Republic	-	-	15.9	-	-
Iran	-	10.4	15.7	122.2	-
Iraq	-	-	15.7	34.6	-
Indonesia	-	-	15.5	7.0	-
Malaysia	-	8.1	15.1	1.2	3.3
France	1.3	3.5	14.8	43.7	44.1
U.S.S.R.	-	17.7	10.4	-	-
Reunion	5.1	7.7	9.2	12.5	6.5
South Yemen	-	-	5.8	-	-
Belgium	-	2.1	4.5	2.9	7.1
Germany, Fed. Rep. of	0.3	1.5	2.6	18.2	13.6
Netherlands	1.4	3.9	2.6	12.4	1.3
Hong Kong	0.4	0.7	2.4	12.5	5.2
Malagasy, Rep. of	2.5	2.2	1.9	1.8	1.4
United Republic of Tanzania	-	-	1.7	0.1	-
Japan	-	-	1.2	7.7	4.0
Switzerland	1.2	1.3	1.1	2.2	0.9
Other Countries	11.5	12.4	5.3	71.6 ^{2/}	9.8 ^{3/}

^{1/}Including the value of sugar quota certificates and the bonus received in lieu of the Commonwealth Preference on sugar exports.

^{2/}Including Somalia (Rs Mn 28.1), Sudan (Rs Mn 31.4), Australia (Rs Mn 2.2) and Seychelles (Rs Mn 2.6)

^{3/}Including Seychelles (Rs Mn 3.2)

Table 67 - Imports: values by S.I.T.C. (revised) sections

(Rs million (c.i.f.))

Period	All sections	Food	Beverages and tobacco	Crude materials, inedible, except fuels	Mineral fuels, lubricants, etc.	Animal and vegetable oils and fats	Chemicals	Manufactured goods classified chiefly by material	Machinery and transport equipment	Miscellaneous manufactured articles	Miscellaneous transactions and commodities, n.e.s.
1970	419.9	124.3	5.2	10.3	29.7	21.0	47.6	95.3	55.7	30.5	0.2
1971	461.6	121.6	6.1	11.3	29.7	23.9	49.7	104.4	77.5	32.1	0.3
1972	635.8	159.0	7.9	11.1	50.7	25.1	70.4	153.4	111.2	46.8	0.1
1973	915.8	217.8	9.3	14.2	65.6	23.1	81.4	222.4	225.1	58.5	0.4
1974	1,756.3	500.0	13.4	39.3	161.5	70.7	151.4	417.0	313.5	84.6	4.9
1974: 1st Qr.	344.5	86.7	2.9	8.9	31.2	12.5	22.6	89.3	72.4	16.6	0.8
2nd Qr.	483.7	152.5	3.3	8.3	54.0	28.9	25.3	105.3	85.4	19.6	1.1
3rd Qr.	488.3	139.0	3.5	14.2	23.2	11.2	58.7	125.0	89.3	24.8	1.5
4th Qr.	440.0	121.8	3.6	7.9	53.1	18.2	44.7	99.0	66.4	23.5	1.6
1975: 1st Qr.	475.0	127.9	3.0	12.9	55.1	18.6	47.5	97.9	87.8	22.9	1.4
2nd Qr.	463.8	106.1	4.0	12.9	23.5	12.9	55.1	117.3	99.6	30.2	2.0

Table 68 - Imports: selected commodities - values

Period	Rice	Wheat flour	Alcoholic beverages	Petroleum products	Vegetable edible oils	Fertilizers, manufactured	Cotton fabrics	Other textile fabrics	Cement	Iron and steel	Manufactures of metals, n.e.s.	Machinery other than electric	Electric machinery, apparatus and appliances	Road motor vehicles and parts
1970	38.2	22.8	3.8	29.3	15.3	18.2	9.5	14.3	7.1	21.3	11.2	22.6	15.9	15.0
1971	31.3	23.5	4.7	28.9	21.4	16.8	11.2	15.1	9.1	17.8	13.3	41.6	18.2	16.7
1972	42.6	29.0	6.0	49.9	16.7	28.5	12.2	29.1	10.1	22.7	17.6	44.9	41.4	23.6
1973	70.9	33.8	6.8	62.6	15.7	30.9	17.0	36.7	18.2	36.0	27.4	92.0	52.1	40.8
1974	227.0	85.7	9.4	159.5	52.8	55.8	22.4	64.9	28.7	95.3	44.8	128.8	111.9	55.4
1974 : 1st Qr.	37.5	13.9	2.2	30.8	9.9	6.3	4.0	14.2	6.8	12.5	11.8	27.4	19.5	13.0
2nd Qr.	68.2	31.9	2.6	53.7	20.8	4.4	4.8	16.3	5.7	26.1	12.9	37.6	31.4	15.6
3rd Qr.	60.2	20.5	2.5	22.6	8.0	28.0	7.6	17.7	8.6	33.7	10.4	36.7	33.2	16.3
4th Qr.	61.1	19.4	2.1	52.4	14.1	17.1	6.0	16.7	7.6	23.0	9.7	27.1	27.8	10.5
1975 : 1st Qr.	42.4	33.1	2.2	54.8	12.3	22.7	7.5	14.2	9.4	14.2	11.7	38.0	29.7	18.9
2nd Qr.	24.2	18.9	2.2	22.9	9.5	23.6	6.8	19.0	10.8	18.6	12.5	50.6	30.9	16.2

Rs million (c.i.f.)

Table 69 -- Imports: selected commodities - quantities

Period	Rice Thousand m/tons	Wheat flour Thousand m/tons	Vegetable edible oils Thousand m/tons	Fertilizers, manufactured Thousand m/tons	Cotton fabrics Million sq. metres	Other textile fabrics Million sq. metres	Cement Thousand m/tons	Iron and steel Thousand m/tons
1970	58.8	45.2	10.5	57.0	6.8	4.8	65.0	18.2
1971	54.1	43.4	12.0	52.0	7.5	4.7	82.2	16.3
1972	72.3	49.3	10.6	88.0	8.2	8.6	95.5	22.0
1973	58.1	44.0	8.6	72.1	7.5	9.5	151.4	27.5
1974	87.5	50.4	12.4	67.7	6.5	12.7	151.0	40.5
1974 : 1st Qr.	13.3	10.6	3.1	14.5	1.2	2.8	39.3	6.3
2nd Qr.	24.1	16.9	4.7	7.4	1.5	3.2	31.4	11.7
3rd Qr.	20.5	11.5	2.1	24.4	2.3	3.5	43.1	14.3
4th Qr.	24.6	11.4	2.5	21.4	1.5	3.4	37.2	8.2
1975 : 1st Qr.	22.1	16.8	2.2	20.3	2.1	3.0	42.8	5.6
2nd Qr.	12.6	10.9	2.3	21.2	2.1	4.0	38.4	7.3

Table 70 - Imports, main countries of origin - values

Period	Rs million (c.i.f.)									
	Total	United Kingdom	Republic of South-Africa	France	Japan	Iran	Pakistan	Australia	Germany Federal Republic	India
1970	419.9	88.0	37.8	29.4	21.3	14.9	3.7	30.6	20.5	12.8
1971	461.6	101.5	35.4	32.6	30.5	22.4	3.8	30.2	22.3	12.9
1972	635.8	151.0	50.4	43.3	49.3	42.1	5.4	44.9	36.6	16.8
1973	915.8	195.4	78.5	63.1	59.8	50.6	49.7	49.1	45.1	30.6
1974	1,756.3	253.4	161.1	133.4	100.2	148.8	6.3	83.1	110.6	35.3
1974: 1st Qr.	344.3	63.6	27.4	26.9	22.0	19.9	0.7	15.2	18.7	3.5
2nd Qr.	483.7	61.6	48.2	33.4	23.3	50.1	0.5	26.1	29.5	13.0
3rd Qr.	488.3	77.8	47.4	37.5	26.2	23.1	4.2	25.4	37.4	14.3
4th Qr.	440.0	50.4	38.1	35.6	26.7	55.7	0.9	16.4	25.0	4.5
1975: 1st Qr.	475.0	78.4	38.3	42.2	20.1	50.6	2.9	29.0	28.8	22.0
2nd Qr.	463.8	92.8	53.5	43.8	30.5	18.4	1.5	25.7	40.1	12.4

Table 70 - Imports: main countries of origin - values (cont'd)

Period	Rs million (c.i.f.)									
	China Mainland	United States	Hong Kong	Burma	Belgium	Kenya	Netherlands	Singapore	Austria	Italy
1970	8.4	23.9	10.2	23.1	5.3	14.6	5.4	6.3	2.0	4.4
1971	8.4	31.8	9.9	17.3	4.5	12.4	7.2	3.6	3.9	6.5
1972	14.0	21.6	17.6	34.4	6.9	12.6	14.8	12.4	6.9	8.6
1973	29.8	25.4	23.4	18.5	30.8	17.7	17.0	15.2	14.7	13.6
1974	149.4	87.2	49.6	40.4	39.8	20.0	28.0	31.7	18.8	20.5
1974 : 1st Qr.	28.9	9.3	17.4	16.5	9.6	5.7	4.1	5.6	4.7	3.6
2nd Qr.	42.3	26.5	10.3	0.6	9.8	3.3	8.9	9.2	10.8	4.5
3rd Qr.	8.4	21.8	11.2	23.2	11.8	6.4	9.6	9.6	1.4	5.9
4th Qr.	69.8	29.6	10.7	0.3	8.6	4.6	5.4	7.3	1.9	6.5
1975 : 1st Qr.	4.4	32.6	9.4	17.0	10.7	9.1	4.6	5.1	0.1	5.5
2nd Qr.	7.8	19.9	13.8	0.1	7.8	6.8	9.1	6.1	0.5	6.4

Table 70 - Imports: main countries of origin - values (cont'd)

Period	Rs million (c.i.f.)									
	China Taiwan	New Zealand	Malaysia	Switzerland	Denmark	Kuwait	Ethiopia	Madagascar	South Yemen	Other
1970	1.8	5.6	2.7	3.1	1.5	1.0	1.5	8.4	3.2	28.0
1971	2.4	5.9	4.2	3.8	1.4	0.7	1.6	3.0	-	31.9
1972	5.0	6.8	4.4	4.8	2.4	0.8	2.2	6.9	-	32.9
1973	9.7	9.1	6.3	5.9	6.9	5.4	5.0	4.3	1.4	34.8
1974	19.4	22.5	11.3	11.1	14.7	1.6	4.9	8.2	8.8	136.2
1974 : 1st Qr.	5.2	2.2	4.4	1.8	1.0	1.6	2.3	1.5	8.8	12.4
2nd Qr.	3.7	1.1	2.3	2.7	10.8	-	2.6	1.9	-	46.7 ^{1/}
3rd Qr.	4.9	13.7	2.3	2.4	1.0	-	-	3.8	-	57.6 ^{2/}
4th Qr.	5.6	5.5	2.3	4.2	1.9	-	-	1.0	-	19.5
1975 : 1st Qr.	3.6	8.4	2.6	2.8	0.1	-	2.1	2.1	-	42.5 ^{3/}
2nd Qr.	5.7	4.6	2.9	2.7	1.1	-	1.1	3.5	-	45.4 ^{4/}

^{1/} Including Thailand (Rs mn 35.3)

^{2/} Including Thailand (Rs mn 38.3)

^{3/} Including Thailand (Rs mn 23.9)

^{4/} Including Thailand (Rs mn 24.0)

Table 71 - Imports of fertilizers

Kind of fertilizers	1973		1974		January-June 1975	
	Quantity (m/tons)	Value C.I.F. (Rs 000)	Quantity (m/tons)	Value C.I.F. (Rs 000)	Quantity (m/tons)	Value C.I.F. (Rs 000)
TOTAL IMPORTS	81,175	32,213	75,214	57,708	45,221	48,209
NITROGENOUS FERTILIZERS	28,461	10,071	30,655	23,590	20,969	25,325
Sulphate of ammonia	27,676	9,785	28,095	20,898	19,769	23,115
Ammonia sulphate nitrate	775	277	1,550	1,730	600	991
Other nitrogenous fertilizers	10	11	1,010	962	600	1,219
POTASSIC FERTILIZERS	7,888	3,176	21,089	12,392	15,595	9,885
Muriate of potash	7,702	3,077	20,939	12,269	13,570	9,845
Sulphate of potash	180	94	150	125	25	38
Other	6	5	-	-	-	-
PHOSPHATIC FERTILIZERS	14,830	3,799	9,946	4,031	3,354	2,387
Single superphosphate	1,700	519	1,100	581	-	-
Triple superphosphate	4,025	1,968	1,300	1,640	1,200	1,531
Phosphatic guano	9,094	1,310	7,546	1,310	2,124	800
Other	11	2	-	-	30	56
MIXED AND COMPOUND FERTILIZERS	29,996	15,172	13,524	17,695	7,303	10,614

1/ excluding imports from dependencies

VII. EMPLOYMENT AND WAGES

The figures of employment in tables 72 - 78 apply to large establishments only - these being defined as :

- (i) Sugar cane plantations where 25 arpents or more were harvested;
- (ii) Tea plantations of 5 arpents or more;
- (iii) All 'flue-cured' tobacco establishments, irrespective of acreage;
- (iv) Non-agricultural establishments employing at least 10 persons on the day of the survey;
- (v) All central and local government departments.

Table 72 - Employment in large establishments by major industrial groups

Industrial group	Total number of persons employed on last Thursday of:		
	March 1974	Sept. 1974	March 1975
Agriculture, hunting, forestry and fishing	<u>56,847</u>	<u>63,049</u>	<u>58,157</u>
Sugar	48,223	55,744	50,612
Tea	4,483	3,293	3,076
Tea Development Authority	2,597	2,394	2,379
Other	1,544	1,618	2,090
Mining and quarrying	<u>153</u>	<u>152</u>	<u>148</u>
Manufacturing	<u>18,480</u>	<u>20,673</u>	<u>21,097</u>
Electricity, gas and water	<u>2,330</u>	<u>2,918</u>	<u>2,935</u>
Construction	<u>4,580</u>	<u>5,050</u>	<u>5,441</u>
Wholesale, retail trade, restaurants and hotels	<u>6,507</u>	<u>6,672</u>	<u>6,902</u>
Transport, storage and communication	<u>3,163</u>	<u>3,989</u>	<u>2,167</u>
Financing, insurance, real estate and business services	<u>2,412</u>	<u>2,530</u>	<u>2,630</u>
Community, social and personal services	<u>51,477</u>	<u>51,397</u>	<u>52,599</u>
Government (a) Central ^{1/}	42,467	42,062	43,711
(b) Local ^{2/}	3,163	3,404	3,360
Other	5,847	5,931	5,528
Activities not elsewhere specified	<u>6,221</u>	<u>7,191</u>	<u>7,642</u>
Development Works Corporation ^{1/}	6,221	7,191	7,642
Grand Total	157,720	168,621	166,718

^{1/} Including relief/development workers

^{2/} Municipalities and district councils.

Table 73 - Employment^{1/} by sex and age group: comparison with previous surveys

Age group	March 1974			September 1974			March 1975		
	Males	Females	Both sexes	Males	Females	Both sexes	Males	Females	Both sexes
13 years of age and over (i.e. adults)	120,371	31,544	152,415	127,497	35,522	163,019	126,900	34,666	161,654
Under 13 years of age (i.e. young persons)	3,545	1,760	5,305	3,968	1,634	5,602	3,813	1,251	5,064
TOTAL	124,416	33,304	157,720	131,465	37,156	168,621	130,801	35,917	166,718

^{1/} In large establishments - see introduction on page 66
Including relief/development workers

Table 74 - Employment^{1/} in specified sectors: sugar industry

Source of employment	Size class (arpents)	Total no. of persons employed on the last Thursday of :		
		March 1974	September 1974	March 1975
Sugar cane planters (including metayers)	25 -	1,496	1,668	1,565
	50 -	541	702	612
	75 -	427	493	438
	100 -	4,696	5,211	4,482
Total planters		7,160	8,074	7,097
Millers' estates and annexes (including factories)		41,063	47,670	43,515
Total		48,223	55,744	50,612

^{1/} in large establishments - see introduction on page 68

Note: Employment figures for millers' estates include workers in field, factory, garage and workshop.

Table 75 - Employment^{1/} in specified sectors: government services

Source of employment	Total no. of persons employed on the last Thursday of :		
	March 1974	September 1974	March 1975
Central government ^{2/}	42,467	42,062	43,711
Local government ^{3/}	3,163	3,404	3,360
Total	45,630	45,466	47,071

^{1/} in large establishments - see introduction on page 68

^{2/} including relief/development workers

^{3/} includes employees of district councils

Table 76 - Employment^{1/} in specified sectors: manufacturing industries

Industrial group	Total no. of persons employed on last Thursday of :		
	March 1974	September 1974	March 1975
Food ^{2/}	1,688	1,881	1,985
Beverages and tobacco	1,712	1,787	1,914
Textile (including aloe fibre)	614	778	829
Wearing apparel	5,907	7,079	7,418
Wood and furniture	812	913	922
Printing and publishing	1,011	1,064	995
Rubber and leather products	430	385	382
Chemical products	505	604	724
Non-metallic mineral products	866	910	965
Metal products	871	785	822
Repairs of machinery (except electrical)	453	600	537
Manufacture of electrical machinery (incl. repairs)	1,723	2,023	1,620
Transport equipment	984	964	994
Miscellaneous manufacturing industries	904	900	990
Total	18,480	20,673	21,097

^{1/} in large establishments - see introduction on page 68

^{2/} excluding employees in sugar and tea factories, who have been included with plantation workers in agriculture.

Date	Description	Debit	Credit
1900			
Jan 1	Balance		100.00
Jan 5	Dr. Cash	50.00	
Jan 10	Dr. Cash	25.00	
Jan 15	Dr. Cash	15.00	
Jan 20	Dr. Cash	10.00	
Jan 25	Dr. Cash	5.00	
Jan 30	Dr. Cash	5.00	
Feb 1	Dr. Cash	5.00	
Feb 5	Dr. Cash	5.00	
Feb 10	Dr. Cash	5.00	
Feb 15	Dr. Cash	5.00	
Feb 20	Dr. Cash	5.00	
Feb 25	Dr. Cash	5.00	
Feb 30	Dr. Cash	5.00	
Mar 1	Dr. Cash	5.00	
Mar 5	Dr. Cash	5.00	
Mar 10	Dr. Cash	5.00	
Mar 15	Dr. Cash	5.00	
Mar 20	Dr. Cash	5.00	
Mar 25	Dr. Cash	5.00	
Mar 30	Dr. Cash	5.00	
Apr 1	Dr. Cash	5.00	
Apr 5	Dr. Cash	5.00	
Apr 10	Dr. Cash	5.00	
Apr 15	Dr. Cash	5.00	
Apr 20	Dr. Cash	5.00	
Apr 25	Dr. Cash	5.00	
Apr 30	Dr. Cash	5.00	
May 1	Dr. Cash	5.00	
May 5	Dr. Cash	5.00	
May 10	Dr. Cash	5.00	
May 15	Dr. Cash	5.00	
May 20	Dr. Cash	5.00	
May 25	Dr. Cash	5.00	
May 30	Dr. Cash	5.00	
Jun 1	Dr. Cash	5.00	
Jun 5	Dr. Cash	5.00	
Jun 10	Dr. Cash	5.00	
Jun 15	Dr. Cash	5.00	
Jun 20	Dr. Cash	5.00	
Jun 25	Dr. Cash	5.00	
Jun 30	Dr. Cash	5.00	
Jul 1	Dr. Cash	5.00	
Jul 5	Dr. Cash	5.00	
Jul 10	Dr. Cash	5.00	
Jul 15	Dr. Cash	5.00	
Jul 20	Dr. Cash	5.00	
Jul 25	Dr. Cash	5.00	
Jul 30	Dr. Cash	5.00	
Aug 1	Dr. Cash	5.00	
Aug 5	Dr. Cash	5.00	
Aug 10	Dr. Cash	5.00	
Aug 15	Dr. Cash	5.00	
Aug 20	Dr. Cash	5.00	
Aug 25	Dr. Cash	5.00	
Aug 30	Dr. Cash	5.00	
Sep 1	Dr. Cash	5.00	
Sep 5	Dr. Cash	5.00	
Sep 10	Dr. Cash	5.00	
Sep 15	Dr. Cash	5.00	
Sep 20	Dr. Cash	5.00	
Sep 25	Dr. Cash	5.00	
Sep 30	Dr. Cash	5.00	
Oct 1	Dr. Cash	5.00	
Oct 5	Dr. Cash	5.00	
Oct 10	Dr. Cash	5.00	
Oct 15	Dr. Cash	5.00	
Oct 20	Dr. Cash	5.00	
Oct 25	Dr. Cash	5.00	
Oct 30	Dr. Cash	5.00	
Nov 1	Dr. Cash	5.00	
Nov 5	Dr. Cash	5.00	
Nov 10	Dr. Cash	5.00	
Nov 15	Dr. Cash	5.00	
Nov 20	Dr. Cash	5.00	
Nov 25	Dr. Cash	5.00	
Nov 30	Dr. Cash	5.00	
Dec 1	Dr. Cash	5.00	
Dec 5	Dr. Cash	5.00	
Dec 10	Dr. Cash	5.00	
Dec 15	Dr. Cash	5.00	
Dec 20	Dr. Cash	5.00	
Dec 25	Dr. Cash	5.00	
Dec 30	Dr. Cash	5.00	
Total		1000.00	1000.00

100

Table 77 - Employment^{1/} by method of payment and salaries or wages paid, March 1975

Industrial group	Number of employees on monthly rates of pay	Salaries for the month of March (Rs)	Number of employees on daily rates of pay	Wages for the last Thursday of March (Rs)
<u>Agriculture, hunting, forestry and fishing</u>				
Sugar ^{2/}	<u>32,765</u>	<u>12,435,387</u>	<u>25,392</u>	<u>266,866</u>
Tobacco	32,135	11,981,065	18,477	207,398
Tea ^{2/}	12	5,267	1,333	10,315
Tea Development Authority	125	93,891	2,951	19,756
Fishing	111	91,316	2,268	24,705
Other	156	111,371	171	2,712
Other	226	152,477	192	1,982
<u>Mining and quarrying</u>	<u>15</u>	<u>2,212</u>	<u>133</u>	<u>843</u>
Salt	15	9,212	133	343
<u>Manufacturing</u>	<u>5,254</u>	<u>3,007,771</u>	<u>15,843</u>	<u>154,572</u>
Food:				
Bread	60	16,077	391	5,297
Biscuits and confectionery	32	17,224	232	1,382
Other	683	345,263	587	3,628
Beverages and tobacco:				
Distilleries	79	45,047	65	674
Wine and beer	215	147,526	297	2,046
Soft drinks	422	163,997	263	1,882
Compounding of spirits and cigarette manufacture	169	230,214	399	4,053

^{1/} In large establishments - see introduction on page 68

^{2/} Including factories

Table 77 - Employment^{1/} by method of payment and salaries or wages paid, March 1975

Industrial group	Number of employees on monthly rates of pay	Salaries for the month of March (Rs)	Number of employees on daily rates of pay	Wages for the last Thursday of March (Rs)
<u>Manufacturing (cont'd)</u>				
Textiles	50	31,029	779	7,994
Wearing apparel:				
Footwear	96	59,531	363	2,922
Tailoring and shirtmaking	357	352,094	6,102	43,005
Wood and furniture	150	87,545	772	8,801
Printing and publishing	666	303,774	329	4,233
Rubber and leather products	113	43,350	269	1,726
Miscellaneous chemical products	399	261,223	325	2,595
Non-metallic mineral products:				
Stone and concrete	94	53,620	569	7,067
Other	64	41,243	233	2,860
Metal products	163	104,093	654	7,514
Repairs of machinery (except electrical)	102	94,464	435	6,650
Manufacture of electrical machinery (incl. repairs)	270	221,354	1,350	6,807

^{1/} In large establishments - see introduction on page 68

Table 77 - Employment^{1/} by method of payment and salaries or wages paid, March 1975 (cont'd)

Industrial group	Number of employees on monthly rates of pay	Salaries for the month of March (Rs)	Number of employees on daily rates of pay	Wages for the last Thursday of March (Rs)
<u>Manufacturing (cont'd)</u>				
Transport equipment:				
Building of transport equipment	194	144,610	800	29,117
Miscellaneous manufacturing industries	371	203,693	619	4,312
<u>Electricity, gas and water</u>	<u>1,758</u>	<u>1,405,504</u>	<u>1,177</u>	<u>13,950</u>
<u>Construction</u>	<u>292</u>	<u>338,853</u>	<u>5,142</u>	<u>60,643</u>
<u>Wholesale and retail trade and restaurants and hotels</u>	<u>5,829</u>	<u>3,780,761</u>	<u>1,073</u>	<u>10,480</u>
Wholesale and retail trade	3,801	3,091,925	663	6,183
Restaurants	446	134,161	167	1,536
Hotels	1,582	554,675	243	2,761

^{1/} In large establishments - see introduction on page 68

Table 77 - Employment^{1/} by method of payment and salaries or wages paid, March 1975 (Cont'd)

Industrial group	Number of employees on monthly rates of pay	Salaries for the month of March (Rs)	Number of employees on daily rates of pay	Wages for the last Thursday of March (Rs)
Transport, storage and communication	4,516	2,617,753	4,551	71,941
Road transport:				
Buses	2,992	1,401,834	1,755	16,213
Other	342	170,638	258	2,932
Docks and stevedoring	503	409,025	2,622	52,596
Other	679	636,156	16	200
Financing, insurance, real estate and business services	2,418	2,569,396	212	2,472
Banks and other financial institutions	1,392	1,537,249	13	126
Insurance	398	418,422	164	1,973
Business services	628	613,725	35	330
Community, social and personal services	36,534	23,847,020	16,065	533,098
Government services				
(a) Central ^{2/}	29,676	19,442,826	14,035	559,538
(b) Local	2,299	1,282,123	1,061	11,460
Private education services	3,093	2,057,274	102	959
Private health services	249	86,385	45	303
Repairs of motor vehicles	264	208,126	560	3,293
Other services	953	770,286	262	2,545
Activities not elsewhere specified	294	224,982	7,348	67,832
Development Works Corporation ^{2/}	294	224,982	7,348	67,382
GRAND TOTAL	89,632	50,236,639	77,036	1,232,756

^{1/} In large establishments - see introduction on page 68

^{2/} Including relief/development workers

Table 78 - Job vacancies^{1/} by industry in large establishments^{2/} as at 27th March, 1975

Industry	Job Title	Males	Females	Total
Sugar	Cutter	165	10	175
	Fitter	2	-	2
	Labourer	<u>56</u>	<u>61</u>	<u>117</u>
		<u>223</u>	<u>71</u>	<u>294</u>
Tobacco	Labourer	<u>27</u>	<u>43</u>	<u>70</u>
Tea	Leaf-plucker	<u>60</u>	<u>60</u>	<u>120</u>
Bakery and bakery products	Mixer	11	-	11
	Sweet folder	5	12	17
	Fitter	<u>1</u>	<u>-</u>	<u>1</u>
		<u>17</u>	<u>12</u>	<u>29</u>
Cigarette manufacture	Assistant foreman	1	-	1
	Mechanic	2	-	2
	Advertiser	<u>2</u>	<u>-</u>	<u>2</u>
		<u>5</u>	<u>-</u>	<u>5</u>
Wearing apparel: tailoring and shirtmaking	Knitting operator	5	159	164
	Machine operator	1	10	11
	Sewing machinist	-	10	10
	Packer	-	15	15
	Looping operator	-	20	20
	Press worker	-	5	5
	Mending operator	-	10	10
	Production supervisor	4	-	4
	Motor mechanic	5	-	5
	Account assistant	1	-	1
	Commercial assistant	2	-	2
	Steno-typist	-	1	1
	Skilled worker	1	-	1
	Electrician	1	-	1
Spinner	<u>-</u>	<u>50</u>	<u>50</u>	
	<u>20</u>	<u>230</u>	<u>300</u>	
Wood and furniture	Cabinet maker	5	-	5
	Welder	2	-	2
	Rattan worker	20	-	20
	Apprentice	<u>4</u>	<u>-</u>	<u>4</u>
		<u>31</u>	<u>-</u>	<u>31</u>

1/ Excluding central and local government

2/ See introduction on page 63

Table 78 - Job vacancies^{1/} by industry in large establishments^{2/} as at 27th March, 1975
(cont'd)

Industry	Job Title	Males	Females	Total
Chemical products	Box filler	<u>10</u>	<u>10</u>	<u>20</u>
	Tyre retreading	2	-	2
	Moulder	2	-	2
	Repairer	<u>2</u>	<u>-</u>	<u>2</u>
		<u>6</u>	<u>-</u>	<u>6</u>
Stone products	Mechanic	4	-	4
	Stone breaker	2	-	2
	Driver	20	-	20
	Labourer	<u>30</u>	<u>-</u>	<u>30</u>
		<u>56</u>	<u>-</u>	<u>56</u>
Metal products	Welder and bender	5	-	5
	Trainee	4	-	4
	Diesel mechanic	<u>1</u>	<u>-</u>	<u>1</u>
		<u>10</u>	<u>-</u>	<u>10</u>
Construction	Mason	52	-	52
	Carpenter	62	-	62
	Joiner	30	-	30
	Foreman	6	-	6
	Labourer	3	-	3
	Plasterer	5	-	5
	Painter	<u>5</u>	<u>-</u>	<u>5</u>
		<u>163</u>	<u>-</u>	<u>163</u>
Wholesale & Retail trade	Van-Driver	1	-	1
	Accounts Clerk	-	1	1
	Assistant Storekeeper	1	-	1
	Mechanic	1	-	1
	Messenger	2	-	2
	Technician	<u>2</u>	<u>-</u>	<u>2</u>
		<u>7</u>	<u>1</u>	<u>3</u>
Restaurant and Hotel	Waiter	4	-	4
	Cook	<u>2</u>	<u>-</u>	<u>2</u>
		<u>6</u>	<u>-</u>	<u>6</u>
Bus	Mechanic	6	-	6
	Electrician	2	-	2
	Driver	24	-	24
	Sheet metal worker	<u>2</u>	<u>-</u>	<u>2</u>
		<u>34</u>	<u>-</u>	<u>34</u>
Banking and legal services	Accountant	1	-	1
	Clerk	5	3	8
	Telephonist/Clerk	-	2	2
	Typist	<u>-</u>	<u>2</u>	<u>2</u>
		<u>6</u>	<u>5</u>	<u>11</u>

1/ Excluding central and local government

2/ See introduction on page 68

Table 78 - Job vacancies^{1/} by industry in large establishments as at 27th March 1975^{2/}
 (cont'd)

Industry	Job title	Males	Females	Total
Education	Manager	1	-	1
	Teacher	7	4	11
	Secretary	1	-	1
	Caretaker	1	-	1
	Carpenter	10	-	10
	Mason	13	-	13
	Shorthand typist	-	2	2
	Statistical assistant	1	-	1
	Labourer	2	-	2
		<u>36</u>	<u>6</u>	<u>42</u>
Private Health Service	Clerk/Typist	-	2	2
	Accounts assistant	1	-	1
	Clerical officer	1	-	1
	Inspector	2	-	2
		<u>4</u>	<u>2</u>	<u>6</u>
Motor vehicle repairs	Motor-mechanic	5	-	5
	Sheet metal worker	2	-	2
	Welder assistant	1	-	1
	Electrical welder	1	-	1
		<u>9</u>	<u>-</u>	<u>9</u>
TOTAL		730	490	1,220

^{1/} Excluding central and local government

^{2/} See introduction on page 68

Table 79 - Daily wage rates^{1/} in certain industries (October inquiry^{2/})

Rupees

Industry	Occupation	Lowest		Highest	
		1973	1974 ^{5/}	1973	1974 ^{5/}
1. Manufacture of bread ^{3/}	Brigadiers	7.56 ^{4/}	10.42 ^{4/}	7.56 ^{4/}	10.42 ^{4/}
2. Printing & publishing	Pressman	9.24	11.07	12.47	17.78
	Compositors (hand)	9.15 ^{4/}	11.09	12.33	20.62
3. Manufacture of machinery	Fitters	7.20	12.59	19.20	24.58
	Pattern makers	3.72	9.15	15.30	24.58
4. Repair of motor vehicles	Mechanics	6.00	7.05	14.40	19.62
5. Construction	Carpenters	9.25 ^{4/}	11.17 ^{4/}	10.71	13.67
	Masons	9.25 ^{4/}	11.17 ^{4/}	10.71	15.31
6. Electricity	Linesmen	15.54	16.38	26.32	27.08
	Labourers	9.54	10.00	13.23	13.60
7. Road passenger transport (buses)	Drivers	13.41	16.73 ^{4/}	13.41	17.98
	Conductors	11.52	14.81 ^{4/}	11.52	15.58
8. Municipal services	Labourers, unskilled	7.69	10.19	10.19	12.60

^{1/} Including C. O. L. A.

^{2/} Data are collected in October of each year from a sample of large establishments. The normal hours of work are 9 per day for (6) and 8 for all others.

The normal hours of work are 48 per week for (1) and 45 for all others.

^{3/} Non-mechanised bakeries.

^{4/} Statutory minimum.

^{5/} Provisional.

Table 80 - Daily wage rates^{1/} of manual workers employed by the central government as at 31st December

Rupees

Occupation	Lowest		Highest	
	1973	1974	1973	1974
Pressman	13.65	15.38	22.88	25.48
Compositor	13.65	15.33	22.88	25.48
Fitters (grade I)	13.65	15.38	22.88	25.48
Pattern Makers (grade I)	12.50	13.94	20.96	23.56
Mechanics (grade I)	13.65	15.38	22.88	25.48
Carpenters (grade I)	13.65	15.38	22.88	25.48
Masons (grade I)	11.73	13.17	18.85	21.15
Drivers (grade I)	11.73	13.17	19.23	21.54
Labourers (specialised)	8.46	9.62	11.15	12.60
Labourers (unskilled)	7.88	9.04	10.38	11.54

^{1/} (i) daily wage rate = monthly wage divided by 26.

(ii) including C. C. L. A.

Table 81 - Employment and wages^{1/} of certain categories of employees on sugar millers' estates (September inquiry)

Category	Grade	1973		1974 ^{2/}			
		Number employed	Monthly wages		Number employed	Monthly wages	
			Lowest	Highest		Lowest	Highest
Boiler makers & sheet metal workers	I	31	Rs 520.00	Rs 600.00	37	Rs 681.50	Rs 786.50
" " " "	II	30	450.00	466.70	39	581.00	613.00
Pan boilers	Chief	23	690.00	760.00	21	888.50	983.50
" "	"	58	520.00	594.00	53	681.50	797.50
" "	II	50	450.00	503.10	51	581.00	646.80
Boiler attendants	Chief	39	315.00	520.00	34	412.00	681.50
" "	Asst.	17	275.00	295.10	18	356.50	581.00
Fitters	I	109	520.00	650.25	119	681.50	861.88
" "	II	98	450.00	480.20	91	581.00	632.50
" "	III	83	360.00	400.00	83	472.50	512.50
Drivers of lorries, buses, vans, cars and wheel tractors used for haulage works only	I	638	355.00	432.00	640	467.50	556.00
" "	II	168	315.00	345.00	229	412.00	462.50
" "	III	23	285.00	310.20	12	367.00	367.00
All other drivers	I	32	340.00	340.10	76	439.00	515.50
" "	II	58	310.00	310.20	87	406.50	412.00
" "	III	19	275.00	275.10	1	367.00	367.00
Factory operators	I	143	305.00	360.00	160	401.50	512.50
" "	II	321	275.00	295.10	312	356.50	415.00
" "	III	352	245.00	270.10	463	325.50	351.62

^{1/} Including C.O.L.A.

^{2/} Provisional

Table 82 - Employment and earnings on sugar millers' estates

Period	WORKERS ON MONTHLY RATES OF PAY						WORKERS ON DAILY RATES OF PAY					
	Man-days actually worked (000)			Earnings (Rs mn)			Man-days actually worked (000)			Earnings (Rs mn)		
	1973	1974	1975 ^{1/}	1973	1974	1975 ^{1/}	1973	1974	1975 ^{1/}	1973	1974	1975 ^{1/}
January	132	365	592	1.8	6.7	9.9	594	258	170	4.8	3.3	2.6
February	149	559	738	1.8	7.5	10.1	700	247	219	5.1	2.5	3.0
March	140	565	796	1.8	7.8	10.4	653	214	220	5.0	2.3	2.8
April	139	626	904	1.8	8.1	11.1	651	232	250	5.3	2.4	3.1
May	179	722	874	1.9	9.9	9.6	886	278	246	6.6	3.2	2.8
June	160	624	911	1.9	8.3	9.6	307	270	268	5.7	2.8	2.9
July	176	796		2.2	11.2		967	425		8.2	4.9	
August	181	642		2.3	10.3		1,020	361		9.4	4.2	
September	153	649		2.2	10.9		778	375		7.2	4.5	
October	180	716		3.4	15.4		965	413		11.0	6.4	
November	153	608		4.2	11.3		789	358		9.9	4.6	
December	167	652		7.4	38.2		840	351		15.7	10.1	
Total	1,909	7,524		32.7	145.6		9,650	3,782		92.9	51.2	

Note: (i) The table excludes the "Etat Major" staff.

(ii) Earnings and the number of "man-days actually worked" refer to 4 or 5 weekly periods ending on the pay-day of each month; the figures are therefore not strictly comparable from month to month.

(iii) Earnings also include C.O.L.A. overtime, holiday and leave pay, housing allowance and end-of-year bonus.
1/ Provisional

VIII. SOCIAL ASSISTANCE

Table 83 - Social benefits

	1971-72	1972-73	1973-74	1974-75
<u>Outdoor relief</u>				
Total number of recipients as at 30th June	26,919	25,790	27,333	25,054
Total relief payments (Rs mn.)	8.4	8.0	10.8	13.6
<u>Indoor relief</u>				
Number of persons in infir- maries as at 30th June	741	698	669	651
Number of persons in orphanages as at 30th June	181	219	223	218
Total capitation grants paid (Rs mn.)	0.44	0.49	0.64	0.81
<u>Old age pension</u>				
Number of beneficiaries as at 30th June	46,747	48,279	51,366 ^{1/}	52,101
Total amount paid (Rs mn.)	13.5	14.4	19.4	25.4
<u>Family allowance</u>				
Number of beneficiaries as at 30th June	43,282	39,569	34,545	32,973
Total amount paid (Rs mn.)	6.2	6.3	7.8	9.6

^{1/} Revised

IX. EDUCATION

Table 84 - Primary education: number of schools, pupils and teachers

Mauritius

Period	Total number of schools ^{2/}	E N R O L L M E N T			Number of teachers	Pupil/teacher ratio
		Government	Aided	Non-aided ^{1/}		
October 1970	226	105,309	56,784	4,766	4,622	32
" 1971	228 ^{3/}	107,200	37,269	4,213	4,706	32
" 1972	229	109,481	57,198	4,935	4,923	31
" 1973	228	109,132	36,677	4,847	5,142	29
" 1974	233	108,880	34,528	4,734	5,421	27
<u>Rodrigues</u>						
October 1970	7	1,005	2,538	...	109	35
" 1971	7	1,069	2,580	...	107	34
" 1972	7	1,117	2,895	...	124	32
" 1973	7	1,084	3,090	...	128	33
" 1974	7	1,035	3,240	...	147	29

^{1/} including pupils of the primary sections of (1) preprimary schools; (2) aided and non-aided secondary schools.
^{2/} this total includes only the number of government and aided primary schools. The number of preprimary schools having primary sections are not included.

^{3/} Revised.

Table 85 - Secondary education: number of schools, pupils and teachers

Meuritiuis

Period	Total number of schools	S E C O N D A R Y				Total	Number of teachers	Pupil/teacher ratio
		Government	Aided	Non-aided	Total			
October 1970	137	2,679	6,979	34,049	43,707	1,756	25	
" 1971	137	2,839	7,213	35,845	46,897	1,763 ^{1/}	27	
" 1972	128	2,937	7,494	41,599	52,030	1,733	30	
" 1973	124	2,965	7,819	44,855	55,619	1,852 ^{2/}	30 ^{3/}	
" 1974	124	3,157	8,079	48,830	60,116	1,910	31	

Rodrigues

October 1970	2	-	-	262	262	11	24
" 1971	2	-	-	301	301	13	23
" 1972	2	-	-	300	300	13	23
" 1973 ^{2/}	2	-	-	274	274	11	25
" 1974 ^{3/}	1	-	-	325	325	11	25

1/ As from the year 1971 the number of teachers in the secondary schools has been expressed in terms of full time equivalent, taking 30 periods per week as full time teaching. For the years previous to 1971, the number of teachers stated is the exact number of persons doing teaching work.

2/ Provisional figures.

3/ Revised.

Table 86 - Enrolment by grade and sex in primary schools: Mauritius

GRADE	1970			1971			1972			1975			1974		
	Male	Female	Both sexes	Male	Female	Both sexes	Male	Female	Both sexes	Male	Female	Both sexes	Male	Female	Both sexes
Std. I	12,463	12,182	24,645	11,853	11,408	23,261	12,118	11,802	23,920	10,322	10,359	21,181	11,120	10,686	21,806
Std. II	12,650	12,309	24,959	12,408	12,176	24,584	11,842	11,471	23,313	11,751	11,460	25,191	10,640	10,307	20,947
Std. III	11,529	11,088	22,617	12,620	12,256	24,875	12,322	12,082	24,404	11,757	11,441	25,193	11,682	11,416	23,098
Std. IV	11,620	10,967	22,587	11,442	10,940	22,382	12,480	12,120	24,600	12,152	11,885	24,047	11,667	11,210	22,877
Std. V	10,156	9,373	19,529	11,433	10,734	22,167	11,159	10,682	21,841	12,235	11,792	24,027	11,953	11,642	23,595
Std. VI	17,173	15,349	32,522	16,478	14,934	31,412	17,480	16,056	33,536	18,105	16,907	35,012	18,484	17,335	35,819
Total	75,591	71,268	146,859	76,234	72,448	148,682	77,401	74,213	151,614	76,812	75,844	150,656	75,546	72,596	148,142

Table 87 - Enrolment by grade and sex in primary schools. Rodrigues

Grade	1970			1971			1972			1973			1974		
	Male	Female	Both sexes	Male	Female	Both sexes	Male	Female	Both sexes	Male	Female	Both sexes	Male	Female	Both sexes
Std. I	395	345	740	350	370	720	425	407	832	398	413	811	398	376	774
Std. II	513	322	640	406	347	753	548	364	712	431	411	842	396	403	799
Std. III	280	517	605	305	312	617	406	346	752	340	361	701	413	405	813
Std. IV	295	288	581	262	283	550	230	295	575	365	320	683	303	335	658
Std. V	198	205	403	250	251	501	257	270	507	242	271	515	309	279	588
Std. VI	277	297	574	246	262	508	315	317	632	307	317	624	311	347	658
TOTAL	1,769	1,774	3,543	1,819	1,830	3,649	2,011	1,999	4,010	2,081	2,093	4,174	2,130	2,145	4,275

Table 88 - Enrolment by grade and sex in secondary schools. Mauritius

GRADE	1970			1971			1972			1973			1974		
	Male	Female	Both sexes	Male	Female	Both sexes	Male	Female	Both sexes	Male	Female	Both sexes	Male	Female	Both sexes
Form I	5,407	4,102	9,509	6,445	5,219	11,664	6,912	5,531	12,443	7,053	5,374	12,927	7,712	6,450	14,162
Form II	5,042	3,536	8,578	4,897	3,817	8,714	6,037	4,585	10,622	5,209	4,991	11,200	6,362	5,426	11,788
Form III	4,159	3,032	7,191	4,608	3,342	7,950	4,721	3,488	8,209	5,511	4,210	9,821	5,719	4,727	10,446
Form IV	4,413	2,955	7,368	4,619	3,225	7,844	5,446	3,802	9,248	5,576	4,067	9,443	6,086	4,579	10,665
Form V	5,810	3,193	9,003	5,307	3,193	8,500	5,639	3,336	8,975	5,939	5,741	9,680	6,074	4,220	10,294
Form VI	1,455	605	2,058	1,579	646	2,225	1,796	737	2,533	1,741	807	2,548	1,862	899	2,761
TOTAL	26,284	17,423	43,707	27,455	19,442	46,897	30,551	21,479	52,030	31,929	23,690	55,619	33,815	26,301	60,116

Table 89 - Enrolment by grade and sex in secondary schools - Rodrigues

GRADE	1970			1971			1972			1973			1974		
	Male	Female	Both sexes	Male	Female	Both sexes	Male	Female	Both sexes	Male	Female	Both sexes	Male	Female	Both sexes
Form I	41	28	69	50	38	88	40	52	72	35	25	60	42	38	80
Form II	27	28	55	36	30	66	44	55	80	27	31	58	55	30	65
Form III	22	20	42	20	25	45	25	28	51	34	31	65	54	26	60
Form IV	39	30	69	30	31	61	29	23	52	23	23	45	28	27	55
Form V	14	15	27	23	18	41	22	25	45	26	19	45	33	32	65
Form VI	-	-	-	-	-	-	-	-	-	-	-	-	-	-	-
TOTAL	143	119	262	159	142	301	158	142	300	145	129	274	172	153	325

1/ Provisional

Table 90 - University of Mauritius: students enrolled

	School of Administration		School of Agriculture		School of Industrial Technology		Total	
	1972-73	1973-74	1972-73	1973-74	1972-73	1973-74	1972-73	1973-74
Degree courses	-	-	25	27	4	14	29	41
Diploma courses	149	185	62	69	118	145	329	399
Certificate courses	139	163	32	30	85	126	256	324
Professional courses	124	177	-	-	46	101	170	278
Non Award courses	493	278	-	-	-	-	493	278
TOTAL	905	808	119	126	253	386	1,277	1,320

Table 91 - University of Mauritius: output

	School of Administration		School of Agriculture		School of Industrial Technology		Total	
	1972-73	1973-74	1972-73	1973-74	1972-73	1973-74	1972-73	1973-74
Degree courses	-	-	9	9	3	-	12	9
Diploma courses	53	39	19	14	25	33	97	86
Certificate courses	50	91	22	36	41	63	113	190
TOTAL	103	130	50	59	69	96	222	285

Note: The output for professional courses are not available. Awards are from outside bodies

X - TRANSPORT AND COMMUNICATION

Table 92 - Motor vehicles registered

Period	Grand total	Private vehicles				Commercial vehicles						Government owned vehicles	
		Total	Cars	Motor cycles	Auto cycles	Total	Taxi-cars	Lorries	Vans	Buses	Other	Government owned vehicles	
1970	25,389	16,603	11,220	2,914	2,469	7,588	1,326	2,439	1,732	722	1,369	1,198	
1971	26,766	17,463	11,657	3,115	2,691	7,951	1,357	2,473	1,915	770	1,436	1,352	
1972	28,538	18,605	12,079	3,265	3,261	8,399	1,397	2,452	2,197	831	1,522	1,534	
1973	32,945	21,875	13,446	3,880	4,549	9,375	1,392	2,706	2,678	951	1,648	1,695	
1974	37,415	25,079	14,572	4,619	5,888	10,610	1,570	2,885	3,319	1,060	1,775	1,726	
1974: 1st Qr.	33,918	22,575	13,747	4,072	4,756	9,681	1,414	2,761	2,841	972	1,693	1,662	
2nd Qr.	35,134	23,478	14,097	4,216	5,165	9,978	1,451	2,795	3,033	995	1,704	1,678	
3rd Qr.	36,194	24,012	14,157	4,391	5,464	10,466	1,665	2,840	3,173	1,029	1,759	1,716	
4th Qr.	37,415	25,079	14,572	4,619	5,888	10,610	1,570	2,885	3,319	1,060	1,776	1,726	
1975: 1st Qr.	38,565	25,957	14,903	4,833	6,221	10,846	1,594	2,927	3,465	1,079	1,781	1,762	
2nd Qr.	39,958	26,959	15,275	5,056	6,628	11,199	1,608	3,039	3,644	1,103	1,805	1,800	

Note: The above table has been completely revised in the light of amendments to the Road Traffic Ordinance, 1962.

Figures in the new series are consequently not comparable with those published previously.

Table 93 - New Registration of Motor Vehicles^{1/}, 1974/75

Period	Grand total	Cars	Lorries	Buses	Motor cycles and auto cycles	D. P. V. ^{2/} and Vans	Other
1973 July	302	74	13	8	141	41	25
August	333	117	13	14	139	43	7
September	238	101	11	14	119	33	10
October	355	96	13	9	202	30	5
November	340	118	7	10	154	47	4
December	416	111	3	14	240	44	4
1974 January	326	87	5	3	179	49	3
February	246	100	4	8	100	25	9
March	327	123	11	11	113	63	6
April	355	119	3	3	166	63	1
May	439	140	3	9	203	71	8
June	382	111	18	12	170	67	4
July	421	125	11	9	194	60	22
August	309	77	13	14	154	35	16
September	325	93	16	12	132	56	16
October	341	93	8	8	181	38	13
November	300	56	16	14	182	29	3
December	507	142	5	12	286	60	2
1975 January	404	121	9	6	218	48	2
February	309	111	21	4	128	42	3
March	465	144	16	9	211	65	20
April	527	165	33	10	223	76	20
May	467	116	42	8	236	51	14
June	413	120	36	9	180	63	5

^{1/} Including Government Vehicles

^{2/} Dual Purposes Vehicles

Table 94 - Bus operational statistics

	Unit	1970	1971	1972	1973	1974
Total number of buses (at 30th June)	Number	679	770	796	834	995
Total vehicle - journeys	Thousand	2,559	2,513	2,900	3,290	3,663
Average vehicle - journeys per day	"	7	7	8	9	10
Total vehicle - miles	"	26,665	26,395	34,200	33,584	38,0355
Average vehicle - miles per day	"	73	72	93	92	104
Total number of passengers carried during year.	"	31,238	32,026	114,070	122,233	141,296
Average number of passengers carried per day	"	223	225	312	335	387
Total gross receipts	000 RS	21,542	22,454	26,540	36,613	43,023
Average gross receipts per day	"	59	62	72	100	132

Table 95 - Road traffic accidents and casualties

	1970	1971	1972	1973	1974
<u>Road traffic accidents</u>					
Number	2,142	2,075	2,547	2,366	3,017
Number per 100,000 of population	266 ^{1/}	254 ^{1/}	308 ^{1/}	343 ^{1/}	357
<u>Motor vehicle accidents</u>					
Number	2,009	1,960	2,457	2,639	2,842
Number per 100,000 of population	249 ^{1/}	240 ^{1/}	297 ^{1/}	322 ^{1/}	336
Number per 1,000 registered motor vehicles	80	75	90	88	81
<u>Total casualties</u>	2,174	2,100	2,259	2,327	2,660
<u>Nature of casualty</u>					
Killed	117	90	115	139	134
Seriously injured	254	243	218	256	264
Slightly injured	1,803	1,762	1,926	1,932	2,262
<u>Casualties by class of road users</u>					
Pedestrians	332	921	912	893	1,039
Pedal cyclists	374	290	316	315	290
Passengers	569	547	596	663	800
Drivers or riders of motor vehicles	349	342	435	451	531

^{1/} Revised

Table 96 - Sea-borne shipping

Period	Vessels entering		Vessels leaving		Goods	
	Number	Net registered tonnage Thousand m/tons	Number	Net registered tonnage Thousand m/tons	Unloaded Thousand m/tons	Loaded ^{1/} Thousand m/tons
1970	1,110	2,473	1,121	2,472	535	726
1971	981	2,165	948	2,183	670	636
1972	918	2,015	931	2,206	718	798
1973 ^{2/}	1,008	2,466	993	2,417	731	900
1974 ^{2/}	606	2,560	611	2,530	802	861
1974 ^{2/} : 1st Qr.	144	564	151	581	169	185
2nd Qr.	118	458	124	460	224	50
3rd Qr.	181	759	171	704	199	280
4th Qr.	163	779	165	785	210	346
1975 ^{2/} : 1st Qr.	168	748	168	729	220	79
2nd Qr.	159	630	164	669	165	151

1/ Excluding bunkers

2/ Excluding fishing vessels berthed in Port Louis

Table 97 - Civil Aviation

Period	Number of movements		Freight	
	Landings	Take offs	Unloaded (m/tons)	Loaded (m/tons)
1970	888	888	402.0	336.4
1971	1,167	1,167	511.2	670.9
1972	1,324	1,324	582.0	1,519.0
1973	1,592	1,592	952.3	1,298.4
1974	1,617	1,617	1,167.1	1,359.7
1974 : 1st Qr.	416	416	281.4	280.9
2nd Qr.	381	381	281.8	373.9
3rd Qr.	426	426	324.0	392.6
4th Qr.	394	394	279.9	312.3
1975 : 1st Qr.	452	452	343.7	205.9
2nd Qr.	665	665	443.6	388.0

Note: In this table (1) are included only movements of commercial aircraft;
 (2) each touch down or each take off is counted as a separate movement;
 (3) freight carried by planes other than commercial is included.

Table 98 - Telephone service

	Unit	End of period				
		1971	1972	1973	1974	Jan - June 1975
Main exchange (including rural automatic exchange)	Number	25	26	26	26	27
Capacity (in terms of line)	"	14,870	15,220	16,670	16,820	16,870
Exchange line connections	"	12,761	13,478	14,569	15,351	15,434
Individual installations	"	19,113	20,427	22,593	24,252	24,524
Call units registered (during period)	Thousand	21,673	24,636	26,520	29,221	11,824
Outstanding applications for telephone service	Number	898	1,799	2,736	5,806	6,410

Table 99 - Broadcasting services

	Unit	End of period				
		1971	1972	1973	1974	Jan-June 1975
RADIO						
Stations	Number	1	1	1	1	1
Transmitters	"	3	3	3	3	3
Aerial output: short wave	Kw.	10	10	10	10	10
medium wave	"	10	10	10	10	10
Weekly transmission time	Hour	116	116	116	116	116
New licenses issued ^{1/} (during period)	Number	2,009	1,903	2,078	1,893	683
Radio sets licensed ^{2/}	"	83,778	84,633	84,218	85,192	85,197
TELEVISION						
Stations	Number	1	1	1	1	1
Transmitters	"	5	5	5	5	5
Aerial output (ERP)	Kw.	15	15	15	15	15
Weekly transmission time	Hour	57 $\frac{3}{4}$	59 $\frac{1}{4}$	58 $\frac{1}{3}$	59 $\frac{2}{3}$	59 $\frac{2}{3}$
New licenses issued ^{1/} (during period)	Number	3,049	4,289	5,654	8,281	4,802
Television sets licensed	"	21,685	25,474	30,596	38,233	42,692
Omnibus licenses issued (during period)	"	179	133	186	181	87

^{1/} including omnibus licenses

^{2/} excluding scrapped sets

XI. LAND UTILIZATION

Table 100 - Total area^{1/} classified by utilization

	<u>Acres</u>
	1972
<u>Agriculture</u>	262,500
Sugar cane	242,100
Tea	15,400
Tobacco, vegetable, and other crops	5,000
<u>Forests, scrub areas, grasslands and grazing lands</u>	159,300
Forest plantations	16,740
Forest, natural	5,900
Savannah, grasslands, meadows, etc.	18,400
Scrub and other forest lands	118,260
<u>Reservoirs and ponds</u>	2,900
<u>Swamps and rocks</u>	3,500
<u>Roads (main thoroughfares)</u>	3,300
<u>Built-up areas</u>	29,300
Total island	460,800

^{1/} Based on the findings of the UNDP-FAO Land and Water Resources Survey team working on aerial photographs of the island taken at the end of 1965 and supplemented to some extent by land surveys.

Table 101 - Effective area under cultivation

	<u>Acres</u>				
	1970	1971	1972	1973	1974
Sugar cane	213,800	213,500	214,000	216,000	214,300 ^{1/}
Tea	9,400	10,000	12,000	12,600	13,500
Tobacco	600	1,000	1,100	1,100	1,300

^{1/} Revised

XII LOCAL PRODUCTION

Table 102 - Agriculture: production of main crops, fish and meat

Commodity	Unit	1972	1973	1974	Jan - June 1975
<u>INDUSTRIAL CROPS</u>					
Sugar cane	Thousand m/ton	6,315	6,243	5,964	-
Tea (green leaf processed)	m/ton	23,543	20,365	19,646	15,762
Tobacco leaf <u>1/</u>	"	614	677	771	343
<u>VEGETABLES, PULSES & FRUITS</u>					
Beans and peas	"	497	440	760	474
Creepers <u>2/</u>	"	7,390	6,862	4,513	2,730
Eddoes	"	472	530	354	70
Egg plants (bringelles)	"	1,490	1,012	947	269
Ginger	"	1,000	1,161	1,788	69
Groundnuts	"	1,471	1,984	1,545	1,169
Maize	"	470	442	1,684	674
Manioc	"	248	433	271	134
Potatoes (Irish)	"	7,516	10,069	9,254	1,065
Rice	"	1,149	883	668	345
Sweet potatoes	"	213	179	83	27
Tomatoes	"	5,440	4,778	6,715	2,350
Mixed vegetables <u>3/</u>	"	6,491	6,799	8,966	2,297
Bananas	"	9,990	10,214	8,727	1 654
Pineapples	"	415	673	1,056	213
<u>FISH, MEAT AND BY-PRODUCTS</u>					
Fish: Coastal fishing (controlled catch)	"	938	916	1,857	391
High seas	"	1,183	666	1,136	...
Meat <u>4/</u> : Beef	"	1,892	1,069	972	...
Goat	"	144	137	145	...
Mutton	"	65	35	43	...
Pork	"	760	762	579	...
Cattle hides and skins	Number	14,585	8,968	7,743	...

- 1/ Refers to crop year which normally extends from the beginning of April to the end of March.
- 2/ Include margoze, calabash, chouchou, cucumber, patolle, pipengaille, pumpkin, squash, voehm.
- 3/ Include beet, cabbage, carrot, cauliflower, chillies (long and small), garlic, leek, lettuce, onion, petsai, sweet pepper, ladies' finger (lalo).
- 4/ From local and imported livestock.

Table 103 - Industry : production of specific commodities

Commodity	Unit	1971	1972	1973	1974	Jan-June 1975
Sugar	M/Ton	621,037	686,366	713,464	696,786	2,071
Molasses	"	140,158	176,489	184,842	172,797	...
Tea (manufactured)	"	4,089	4,673	4,079	3,971	1,606
Aloe fibre	"	1,976	1,556	1,461	1,159	205
Alcohol @ 100 G. L.	H/Litres	13,478	16,920	17,833	23,464	...
Colonial spirits (rum)	"	14,916	17,996	19,024	24,962	6,943
Denatured spirits:						
Power alcohol	"	2,923	3,431	2,933	1,311	452
Alcohol for heat- ing and lighting	"	2,445	2,471	2,767	3,744	1,906
Perfumed spirits	"	503	604	329	633	392
Vinegar	"	450	883	491	629	236
Beer and stout	"	53,793	66,831	72,433	91,478	52,968
Country liquor	"	43,215	50,449	52,873	52,594	12,611
Soft aerated bevera- ges	"	110,900	137,300	214,000	239,000	...
Cigarettes	M/Ton	634	674	755	338	419
Matches	Gross boxes	109,466	117,505	155,140	143,109	75,650
Lime	M/Ton	6,000	6,000	7,000 ^{2/}	6,000	...
Sacks ^{1/}	Thou- sand	2,599	1,761	1,251	1,241	133
Salt	M/Ton	5,400
Electricity gene- rated	MH kWh	143	164	187	209	102

^{1/} Manufactured by the Mauritius Jute and Textiles Industries Ltd (ex Government Sack Factory)

^{2/} Revised

Table 104 - Sugar industry, cane cultivation

Crop year	AREA UNDER CULTIVATION (Thousand arpents)			AREA HARVESTED (Thousand arpents)			CANES HARVESTED (Thousand m/tons)			AVERAGE YIELD (m/tons per arpent)		
	Planters		Total	Planters		Total	Planters		Total	Planters		Total
	Millers	Planters		Millers	Planters		Millers	Planters		Millers	Planters	
1970	113	92	205	101	89	190	3,181	1,939	5,120	31.5	21.7	26.9
1971	114	91	205	102	87	189	3,433	1,822	5,255	33.7	20.8	27.8
1972	115	90	205	103	87	190	3,903	2,412	6,315	38.0	27.6	33.2
1973	116	91	207	104	88	192	3,854	2,589	6,243	37.2	27.0	32.5
1974	116	88	204	104	85	189	3,864	2,100	5,964	37.1	24.6	31.5

Table 105 - Sugar manufacture

Crop year	Number of factories operating	Commercial sugar recovered (% cane)	PRODUCTS OF MANUFACTURE (Thousand m/tons)			RESIDUES OF MANUFACTURE (Thousand m/tons)			Average sugar price ex-syndicate (Rs per m/ton)
			White sugar		Total sugar	Molasses		Jums	
			Raw sugar	White sugar		Molasses	Jums		
1970	21	11.26	554	22	576	142	166	471.69	
1971	21	11.82	587	34	621	140	169	522.64	
1972	21	10.89	651	55	686	176	196	641.43	
1973	21	11.48	662	56	718	185	200	833.59 ^{1/}	
1974	21	11.80	648	49	697	173	201	2038.00 ^{1/}	

^{1/} provisional

Table 106 - Construction Statistics: Issues of permits for new buildings^{1/}

Type of building	1971		1972		1973		1974	
	No. of permits issued	Floor area (Thousand sq. ft)	No. of permits issued	Floor area (Thousand sq. ft)	No. of permits issued	Floor area (Thousand sq. ft)	No. of permits issued	Floor area (Thousand sq. ft)
<u>Residential</u>	<u>1,685</u>	<u>1,710</u>	<u>2,006</u>	<u>2,201</u>	<u>2,623</u>	<u>2,673</u>	<u>2,918</u>	<u>3,021</u>
<u>Non-residential</u>	<u>183</u>	<u>580</u>	<u>197</u>	<u>519</u>	<u>332</u>	<u>905</u>	<u>288</u>	<u>2,187</u>
Agriculture, forestry, hunting & fishing	1	1	-	-	18	45	32	56
Manufacturing	36	259	29	225	64	391	48	1,228
Construction	-	-	1	3	3	22	-	-
Electricity, gas, water and sanitary services	2	16	1	1	6	6	4	17
Transportation, storage & communication	11	37	17	26	4	6	9	32
Wholesale and retail trade	79	100	56	113	147	204	145	648
Banking, insurance and real estate	1	2	3	5	3	15	1	1
Services	53	165	90	146	87	216	49	205
All buildings	1,868	2,290	2,203	2,720	2,955	3,578	3,206	5,208

^{1/} Include only buildings for which permits have been issued by the Ministry of Works & Municipalities

Table 107 - Electricity^{1/} : production, consumption, sales, etc.

	Unit	1971	1972	1973	1974
Generating stations	Number	2	2	2	2
Hydro	"	7	7	7	7
Thermal	"	2	2	2	2
Plant - effective capacity	Kw	<u>52,090</u>	<u>50,590</u>	<u>50,300</u>	<u>62,190</u>
Hydro	"	25,090	25,090	24,800	24,890
Thermal	"	27,000	25,500	31,500	37,300
Energy generated	Million kwh	<u>123.6</u>	<u>140.9</u>	<u>163.1</u>	<u>184.5</u>
Hydro	"	50.3	68.1	74.0	40.2
Thermal	"	73.3	72.8	89.1	144.3
Energy purchased from sugar & other factories	"	24.7	23.4	23.7	24.0
Energy sold	"	120.5	135.2	153.2	173.1
Number of consumers on 31st December:	Number	<u>97,385</u>	<u>103,021</u>	<u>109,962</u>	<u>116,748</u>
Domestic	"	85,948	91,092	97,497	103,905
Commercial	"	9,736	10,044	10,356	10,592
Industrial	"	1,516	1,688	1,899	2,074
Special	"	185	197	217	177
Average selling price	Cents per kwh	21.1	21.0	20.7	28.8
Total revenue	Rs mn	26.8	29.7	33.5	51.6
Total current expenditure	" "	25.0	26.9	33.8	52.0
Persons employed	Number	1,283	1,323	1,394	1,475

1/ Statistical data relating to the Central Electricity Board

XIII - CLIMATE

Table 108 - Monthly temperatures, 1974/75

Period	VACOAS Centre - 1,394 ft. A.M.S.L. <u>1/</u>				PLAISANCE Coastal Region, South - 188 ft. A.M.S.L. <u>1/</u>			
	Maximum		Minimum		Maximum		Minimum	
	Mean	Departure from normal	Mean	Departure from normal	Mean	Departure from normal	Mean	Departure from normal
1974: July	21.5	- 0.1	15.2	0.0	23.7	- 0.1	17.2	- 0.3
August	21.5	+ 0.4	15.2	+ 0.6	23.7	+ 0.3	17.3	+ 0.1
September	21.9	- 0.4	13.9	- 1.3	24.1	- 0.2	16.3	- 1.2
October	23.7	+ 0.1	15.5	- 0.5	26.1	+ 0.5	18.5	+ 0.1
November	25.7	+ 0.2	16.7	- 0.9	28.3	+ 1.0	19.3	- 0.6
December	27.0	+ 0.3	18.6	- 0.6	29.4	+ 0.8	20.9	- 0.6
1975: January	27.4	+ 0.3	19.8	- 0.3	29.8	+ 0.8	22.3	- 0.2
February	27.9	+ 0.1	20.5	- 0.2	29.8	+ 0.3	22.4	- 0.3
March	27.4	+ 0.1	19.6	- 0.9	28.8	- 0.2	21.9	- 0.6
April	26.7	+ 0.4	19.8	+ 0.5	28.4	+ 0.5	22.1	+ 1.0
May	25.5	+ 1.4	17.1	- 0.1	26.9	+ 0.8	19.1	- 0.3
June	22.1	- 0.6	15.5	- 0.2	24.5	- 0.4	18.5	+ 0.6

1/ above mean sea level

Degrees Centigrade

Table 109 - Monthly rainfall for the sugar cane districts, 1974/75

Period	WEST		NORTH		EAST		SOUTH		CENTRE		ALL DISTRICTS	
	Amount	Difference from normal	Amount	Difference from normal	Amount	Difference from normal	Amount	Difference from normal	Amount	Difference from normal	Amount	Difference from normal
1974: July	9	- 18	81	+ 10	122	- 48	138	- 8	135	0	116	- 10
August	44	+ 27	69	+ 9	158	+ 29	199	+ 84	198	+ 88	154	+ 54
September	31	+ 11	36	- 16	50	- 62	81	- 13	79	- 18	62	- 24
October	30	+ 2	10	- 29	19	- 68	24	- 52	36	- 36	23	- 44
November	6	- 55	35	- 40	53	- 68	44	- 75	24	- 84	38	- 66
December	182	+ 46	107	- 14	135	- 84	102	- 96	199	+ 14	133	- 44
1975: January	55	- 134	83	- 93	186	- 126	142	- 157	169	- 164	139	- 136
February	377	+ 181	283	+ 68	631	+ 291	418	+ 117	702	+ 362	486	+ 193
March	31	- 235	103	- 156	163	- 267	223	- 154	225	- 141	176	- 176
April	8	- 108	90	- 85	192	- 120	222	- 78	118	- 122	154	- 99
May	56	+ 1	172	+ 52	363	+ 157	411	+ 225	231	+ 84	292	+ 131
June	13	- 25	88	- 1	148	- 46	128	- 26	125	- 14	118	- 21

Millimetres