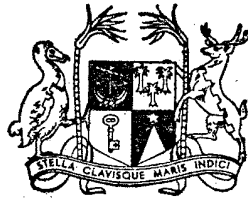


Library

Vol. 7

No. 1



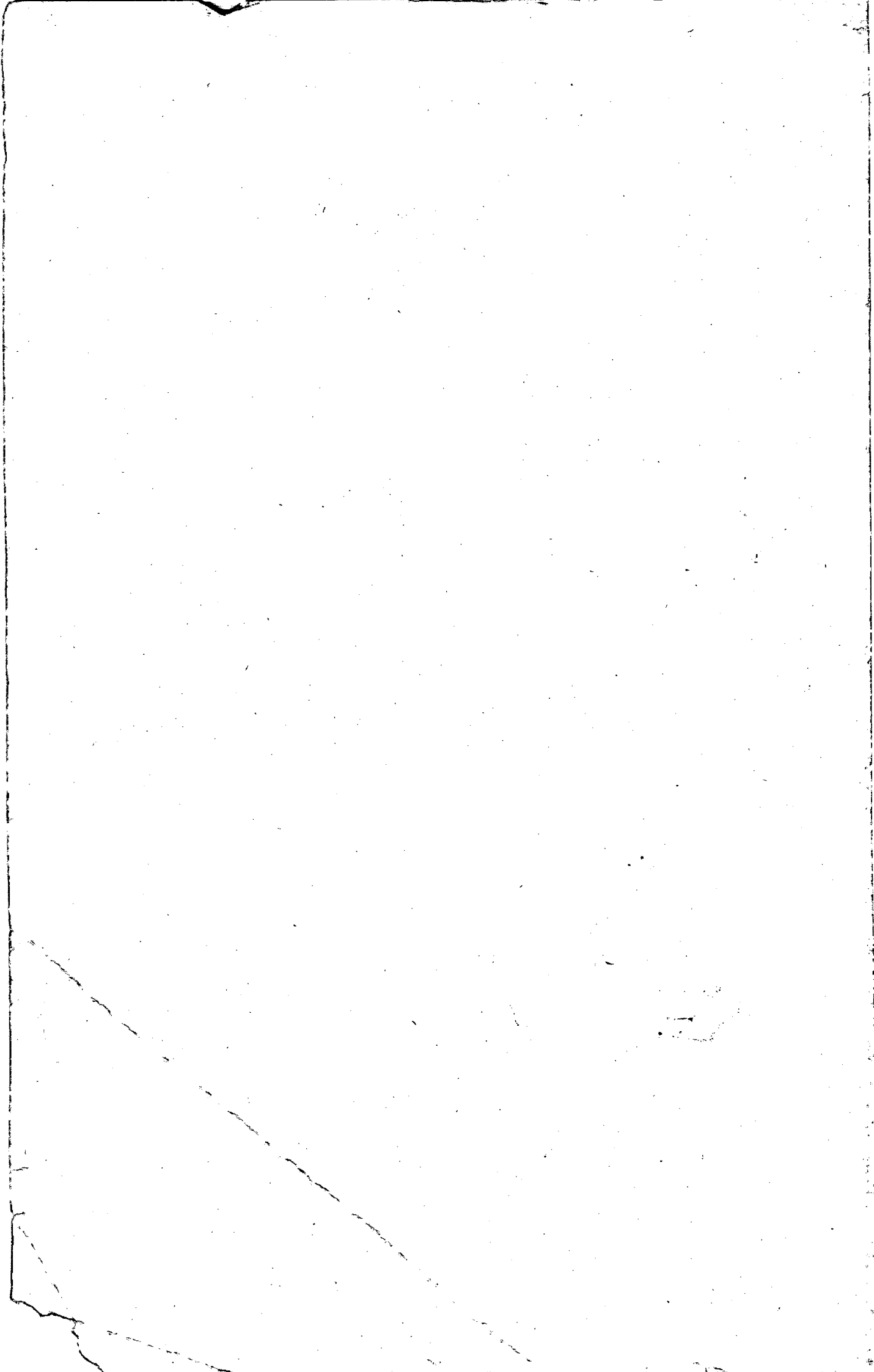
MAURITIUS

CENTRAL STATISTICAL OFFICE
Ministry of Economic Planning and Development

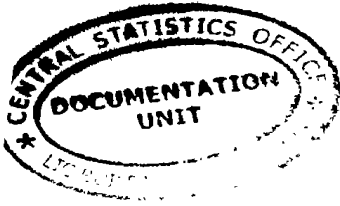
**BI-ANNUAL
DIGEST OF STATISTICS**

June 1972

[Price : Rs 5.00]



BI-ANNUAL DIGEST OF STATISTICS



Vol. 7 No. 1

June 1972

The Bi-annual Digest of Statistics is a publication of the Central Statistical Office.

It is designed to present in a concise and readily accessible form the more important statistical series available on the demographic, economic and social characteristics of Mauritius.

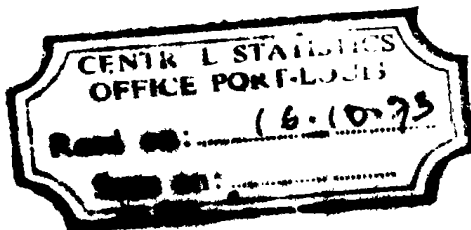
Some of the figures in this digest are provisional and liable to revision in later issues.

Where necessary, figures have been rounded off to the nearest final digit, and in some tables there may be discrepancies between the sum of the constituent items and the total as shown.

The following symbols are used throughout : -

- Nil or negligible
- ... Not available

The assistance given by the Bank of Mauritius, all government departments and other bodies in providing data for publication in this issue is gratefully acknowledged.



J.AHKONG
Asst. Director of Statistics

Central Statistical Office,
Rose Hill,
Mauritius,
January 1973.

CONTENTS

Page

I - POPULATION AND VITAL STATISTICS

Table 1 - Estimated population of Mauritius as at 31st December 1971, based initially on the census enumeration of June 1962	1
2 - Population of Mauritius as enumerated at each census (1846-1962)	1
3 - Post-censal population estimates, 1962-71	2
4 - Comparison with other countries	2
5 - Estimated population of Mauritius by population group, sex and geographical district as at 31st December, 1971	3
6 - Estimated age distribution of the population of Mauritius as at 30th June 1971	4
7 - Estimated population of towns as at 31st December 1971	5
8 - External migration	5
9 - Passenger traffic, by country of embarkation or disembarkation and by mode of transport, 1971.	6
10 - Tourist arrivals and tourist nights by country of residence and by mode of transport, Jan.-June 1972	7
11 - Population and vital statistics, Mauritius	8
12 - Live births and still births, Mauritius	9
13 - Infant deaths (deaths under 1 year of age) by age and sex, Mauritius	9
14 - Deaths by age and sex, Mauritius	10
15 - Population and vital statistics, Mauritius-quarterly	11
16 - Still births and infant deaths, Mauritius	12
17 - Expectation of life in years at selected ages	12
18 - Population and vital statistics - Rodrigues	13

II - PUBLIC HEALTH

Table 19 - Health services, Mauritius	14
20 - Statistics of hospitals, Mauritius	15
21 - Notifiable, contagious or communicable diseases, Mauritius	16
22 - Cause of death, 1971 - Mauritius	17

III - PUBLIC FINANCE AND BANKING

Table 23 - Central government revenue and expenditure	18
24 - Functional classification of central government recurrent revenue	18
25 - Functional classification of central government recurrent expenditure	19
26 - Functional classification of central government capital revenue	20
27 - Functional classification of central government capital expenditure	20
28 - Central government indebtedness	21
29 - Sinking funds held against the public debt	21
30 - Central government loanraisings	22
31 - Outstanding loans and advances made from public funds as at 30th June	22

CONTENTS (Cont'd)

Page

III - PUBLIC FINANCE AND BANKING (Cont'd)

Table 32 - Income tax - individuals	23
33 - " " - companies	24
34 - Sterling assets of Central Government, Bank of Mauritius and commercial banks	25
35 - Assets of the Bank of Mauritius	26
36 - Liabilities of the Bank of Mauritius	27
37 - Assets of commercial banks	28
38 - Liabilities of commercial banks	29
39 - Analysis of bills discounted, loans and advances made by commercial banks	30
40 - Assets and liabilities of the Development Bank of Mauritius	31
41 - Post Office Savings Bank	31
42 - Assets and liabilities of the Mauritius Co-operative Central Bank Ltd.	32
43 - Money supply	32
44 - Assets and liabilities of the Mauritius Housing Corporation	33
45 - Bank and interest rates	33
46 - Foreign exchange rates	34

IV - NATIONAL ACCOUNTS

Table 47 - Gross national product, by industrial origin	35
47 - " " " , per capita	35
48 - Distribution of the national income before providing for depreciation	36
49 - Expenditure on gross national product	37
50 - Composition of gross domestic fixed capital formation	38
51 - Balance of payments	39 & 40

V - CONSUMER PRICE INDICES

Table 52 - Consumer price indices	41
-----------------------------------	----

VI - EXTERNAL TRADE

Table 53 - Balance of visible trade	42
54 - Quantum and price indices of exports and imports and the terms of trade	42
55 - Quantum and price indices of imports, by section	43
56 - Exports : quantities and values	44
57 - Total exports : principal countries of destination - values	45
58 - Imports : values by S.I.T.C. sections	46
59 - " : selected commodities - values	47
60 - " : selected commodities - quantities	48
61 - " : main sources of supply - values	49
62 - Imports of fertilizers	50

CONTENTS (Cont'd)

Page

VII - EMPLOYMENT AND WAGES

Table 63 - Employment in large establishments by major industrial groups	51
64 - Employment by sex and age group	52
65 - Employment in specified sectors: sugar industry	53
66 - " " " " : government services	53
67 - " " " " : manufacturing industries	54
68 - Employment & salaries or wages by industries, March 1972	55 - 58
69 - Indicators of unemployment	59
70 - Daily wage rates in certain industries (October inquiry)	60
71 - Daily wage rates of manual workers employed by the central government	60
72 - Employment and wages of certain categories of employees on sugar millers' estates (September inquiry)	61
73 - Employment and earnings on sugar millers' estates	62

VIII - SOCIAL ASSISTANCE

Table 74 - Social benefits	63
----------------------------	----

IX - EDUCATION

Table 75 - Primary education: number of schools, pupils & teachers	64
76 - Secondary education: number of schools, pupils & teachers	65
77 - Enrolment by grade and sex in primary schools, Mauritius	66
78 - - do - , Rodrigues	67
79 - - do - secondary schools, Mauritius	68
80 - - do - primary schools, Rodrigues	69

X - TRANSPORT AND COMMUNICATION

Table 81 - Motor vehicles registered	70
82 - Bus operational statistics	71
83 - Road traffic accidents and casualties	71
84 - Sea borne shipping	72
85 - Civil aviation	72
86 - Telephone service	73
87 - Broadcasting services	73

XI - LAND UTILIZATION

Table 88 - Total area classified by utilization	74
89 - Effective area under cultivation	74

XII - LOCAL PRODUCTION

Table 90 - Agriculture: production of main crops, fish and meat	75
91 - Industry: production of specific commodities	76
92 - Sugar industry: cane cultivation	77
93 - " " sugar manufacture	77
94 - Electricity : production, consumption, sales, etc.	78

XIII - CLIMATE

Table 95 - Monthly temperatures, 1971/72	79
96 - Monthly rainfall for the sugar cane districts 1971/72	80

I. POPULATION AND VITAL STATISTICS

Table 1 - Estimated population of Mauritius as at 31st December 1971 based initially on the census enumeration of June 1962

Population	30th June 1962 (census)			31st December 1971		
	Both sexes	Male	Female	Both sexes	Male	Female
Total	681,619	342,306	339,313	830,606	416,875	413,731
General	203,652	98,983	104,669	230,487	113,888	116,599
Hindu	344,537	174,698	169,889	437,365	220,510	216,855
Muslim	110,322	55,971	54,351	137,758	69,113	68,645
Chinese	23,058	12,654	10,404	24,996	13,364	11,632

Table 2 - Population of Mauritius as enumerated at each census (1846-1962)

Census year	Population enumerated at census			Intercensal increase	Average annual rate of increase %
	Both sexes	Male	Female		
1846	158,462	104,598	53,864		
1851	180,823	119,341	61,482	22,361	2.55
1861	310,050	202,961	107,089	129,227	5.87
1871	316,042	193,575	122,467	5,992	0.19
1881	359,874	208,655	151,219	43,832	1.31
1891	370,588	206,038	164,550	10,714	0.29
1901	371,023	199,552	171,471	435	0.01
1911	368,791	194,095	174,696	- 2,232	- 0.06
1921	376,485	194,108	182,377	7,694	0.21
1931	393,238	200,609	192,629	16,753	0.44
1944	419,185	210,326	208,859	25,947	0.49
1952	501,415	252,032	249,383	82,230	2.26
1962 ⁺	681,619	342,306	339,313	180,204	3.12

⁺ de facto population - including the European members of the Armed Forces but excluding the passengers and crews of ships lying in the harbour.

Table 3 - Post censal population estimates, Mauritius 1962-71

Period	Total population (31st December)			Increase during period		Mid-year population (30th June)
	Both sexes	Male	Female	Numerical	Percent	
1962	692,354	347,743	344,611			631,619
1963	713,371	358,385	354,986	21,017	3.04	701,422
1964	733,605	368,534	365,071	20,234	2.84	722,089
1965	751,421	377,245	374,176	17,816	2.43	741,036
1966	768,692	385,677	383,015	17,271	2.30	759,067
1967	782,044	392,283	389,761	13,352	1.74	773,573
1968	794,746	398,572	396,174	12,702	1.62	787,406
1969	807,027	404,814	402,213	12,281	1.55	798,684
1970	819,191	411,019	408,172	12,164	1.51	811,280
1971	830,606	416,875	413,731	11,415	1.39	822,352

Table 4 - Comparison with other countries

Continent & country	Average annual rate of increase 1963-69 (%)	Continent & country	Average annual rate of increase 1963-69 (%)
<u>AFRICA:</u>		<u>ASIA:</u>	
Mauritius	2.2	Ceylon	2.4
<u>AMERICA:</u>		India	2.5
Canada	1.8	Japan	1.1
Guyana	3.1	Pakistan	2.1
Trinidad and Tobago	2.0	Taiwan	2.9
Chile	2.4	<u>EUROPE :</u>	
<u>OCEANIA:</u>		Albania	2.8
Australia	2.0	France	0.9
New Zealand	1.6	United Kingdom	0.6

Table 5 - Estimated population[†] of Mauritius by population group, sex and geographical district as at 31st December 1971

Geographical district	Total Population			General Population			Indo-Mauritian Population						Chinese Population		
	Both sexes	Male	Female	Both sexes	Male	Female	Hindu			Muslim			Both sexes	Male	Female
							Both sexes	Male	Female	Both sexes	Male	Female			
Port Louis	142,271	70,899	71,372	50,109	24,561	25,548	37,594	18,906	18,688	41,733	20,857	20,876	12,835	6,575	6,260
Pamplemousses	67,554	33,885	33,669	10,106	4,928	5,178	46,685	23,520	23,165	10,107	5,090	5,017	656	347	309
Riv. du Rempart	68,088	34,472	33,616	10,162	5,060	5,102	48,820	24,802	24,018	8,598	4,312	4,286	508	298	210
Flacq	93,102	47,097	46,005	15,958	8,136	7,822	63,706	32,072	31,634	12,509	6,347	6,162	929	542	387
Grand Port	85,527	43,275	42,252	19,857	10,030	9,827	52,528	26,587	25,941	11,830	5,913	5,917	1,312	745	567
Savanne	57,225	28,940	28,285	11,420	5,835	5,585	34,497	17,328	17,169	10,516	5,318	5,198	792	459	333
Plaines Wilhems	247,761	123,580	124,181	97,175	47,417	49,758	109,326	55,093	54,233	34,296	17,240	17,056	6,964	3,830	3,134
Moka	46,116	23,129	22,987	6,748	3,404	3,344	31,051	15,565	15,466	7,711	3,814	3,897	626	346	280
Black River	22,962	11,598	11,364	8,952	4,517	4,435	13,178	6,637	6,541	458	222	236	374	222	152
WHOLE ISLAND	830,606	416,875	413,731	1230,487	113,888	116,599	437,365	220,510	216,855	137,758	69,113	68,645	24,996	13,364	11,632
%	100.0			27.7			52.7			16.6			3.0		

[†]Based initially on the 1962 Population Census. No account has been taken of internal migration.

Table 6 - Estimated age distribution⁺ of the population of Mauritius as at 30th June 1971

Age group (years)	Male	Female	Both sexes	
			Number	% of total
0 - 4	53,000	51,400	104,400	12.7
5 - 9	60,850	59,800	120,650	14.7
10 - 14	54,250	53,000	107,250	13.0
15 - 19	49,000	48,300	97,300	11.8
20 - 24	41,800	41,150	82,950	10.1
25 - 29	26,650	26,500	53,150	6.5
30 - 34	21,700	21,950	43,650	5.3
35 - 39	19,300	19,250	38,550	4.7
40 - 44	19,350	18,650	38,000	4.6
45 - 49	19,350	18,050	37,400	4.5
50 - 54	14,400	13,350	27,750	3.4
55 - 59	12,400	11,400	23,800	2.9
60 - 64	8,400	8,500	16,900	2.0
65 - 69	6,050	6,950	13,000	1.6
70 - 74	3,750	5,300	9,050	1.1
75 - 79	1,800	3,650	5,450	0.7
80 - 84	700	1,700	2,400	0.3
85 and over	200	500	700	0.1
All ages	412,950	409,400	822,350	100.0
<u>Totals</u>				
Under 15	168,100	164,200	332,300	40.4
Under 21	227,575	222,610	449,985	54.7
21 and over	185,575	186,790	372,365	45.3
60 and over	20,900	26,600	47,500	5.8

⁺Based initially on the smoothed age distribution at the census of June 1962 corrected for under-enumeration of young children and pro-rated to official population estimates.

Table 7 - Estimated population[†] of towns as at 31st December 1971

Town	Population
Port Louis	142,270
Beau Bassin-Rose Hill	72,550
Quatre Bornes	46,405
Vacoas-Phoenix	50,025
Curepipe	52,915

[†]based initially on the 1962 Population Census. No account has been taken of internal migration.

Table 8 - External migration^{**}

Period	Arrivals			Departures			Net migration
	Total	By sea	By air	Total	By sea	By air	
1962	15,189	4,258	10,931	16,075	4,374	11,701	- 886
1963	18,047	4,660	13,387	18,299	4,432	13,867	- 252
1964	21,221	5,187	16,034	22,331	5,478	16,853	- 1,110
1965	22,024	4,886	17,138	24,150	5,463	18,687	- 2,126
1966	26,456	5,544	20,912	29,301	6,330	22,971	- 2,845
1967	29,321	4,901	24,420	32,925	6,515	26,410	- 3,604
1968	31,403	4,264	27,139	35,988	5,967	30,021	- 4,585
1969	35,919	3,483	32,436	38,929	4,632	34,297	- 3,010
1970	48,819	3,984	44,835	51,969	4,376	47,593	- 3,150
1971	60,826	3,857	56,969	63,997	4,295	59,702	- 3,171
1970 : 1st Qr	10,655	840	9,815	12,729	1,012	11,717	- 2,074
2nd Qr	9,584	620	8,964	11,041	1,010	10,031	- 1,457
3rd Qr	14,852	1,150	13,702	15,832	973	14,859	- 980
4th Qr	13,728	1,374	12,354	12,367	1,381	10,986	+ 1,361
1971: 1st Qr	13,287	966	12,321	15,941	1,177	14,764	- 2,654
2nd Qr	12,902	1,084	11,818	14,065	868	13,197	- 1,163
3rd Qr	18,064	671	17,393	19,403	975	18,428	- 1,339
4th Qr	16,573	1,136	15,437	14,588	1,275	13,313	+ 1,985

^{**}Includes (a) The very small number of engaged or discharged seamen; (b) Emigrants to and immigrants from the dependencies; and (c) Movement of military personnel as from the 1962 Population Census.

Table 9 - Passenger traffic⁺ by country of embarkation or disembarkation and by mode of transport, 1971

Country of embarkation or disembarkation	Arrivals			Departures		
	Sea	Air	Total	Sea	Air	Total
Kenya	4	1,550	1,554	5	2,150	2,155
Malagasy Republic	84	3,375	3,459	73	2,794	2,867
Malawi	-	379	379	-	471	471
Reunion	278	25,413	25,691	251	25,922	26,173
Rhodesia	-	197	197	-	214	214
Seychelles	107	19	126	138	27	165
South Africa, Rep. of	56	6,874	6,930	60	6,350	6,410
Tanzania	-	539	539	2	586	588
Zambia	-	1,519	1,519	-	1,640	1,640
Rodrigues	1,744	-	1,744	1,578	-	1,578
Other dependencies of Mauritius	473	-	473	429	-	429
Other countries in Africa	13	453	466	8	693	701
U.S.S.R.	99	128	227	92	145	237
Hong Kong	13	236	249	-	380	380
India	22	2,248	2,270	7	2,439	2,446
Japan	31	48	79	8	98	106
Singapore	15	45	60	1	46	47
Other countries in Asia	15	238	253	8	356	364
Australia	104	3,399	3,503	753	2,710	3,463
New Zealand	1	259	260	10	160	170
Other countries in Oceania	7	223	230	2	138	140
Belgium	-	563	563	-	616	616
France	17	1,563	1,580	10	2,718	2,728
Germany, Fed. Rep. of	8	669	677	10	754	764
Italy	4	284	288	3	221	224
Switzerland	-	118	118	-	129	129
United Kingdom	42	5,997	6,039	22	7,152	7,174
Other countries in Europe	51	307	358	20	394	414
Canada	1	80	81	2	114	116
U.S.A.	78	229	307	32	272	304
Other countries in America	1	17	18	1	13	14
Total	3,268	56,969	60,237	3,525	59,702	63,227

⁺excluding transit passengers, 589 discharged seamen and 770 engaged seamen.

Table 10 - Tourist arrivals and tourist nights by country of residence and by mode of transport, January-June 1972

Country of residence	Arrivals			Tourist nights
	Sea	Air	Total	
Kenya	-	263	263	1,886
Malagasy Republic	4	1,120	1,124	9,939
Malawi	-	37	37	317
Reunion	26	7,716	7,742	104,404
Rhodesia	-	191	191	2,330
Seychelles	1	66	67	690
South Africa	3	3,004	3,007	26,589
Tanzania	-	75	75	1,032
Zambia	-	863	863	8,804
Uganda	-	61	61	567
Other countries in Africa	-	213	213	1,818
U.S.S.R.	-	8	8	115
China	-	25	25	225
Hong-Kong	-	128	128	1,788
India	38	257	295	3,994
Japan	1	71	72	425
Singapore	1	11	12	94
Other countries in Asia	3	81	84	603
Australia	1	933	939	4,642
New Zealand	-	179	179	1,003
New Caledonia	-	66	66	415
Other countries in Oceania	-	31	31	229
France	4	1,318	1,322	14,070
Germany	-	627	627	6,697
Italy	-	157	157	1,914
Switzerland	-	131	131	1,167
United Kingdom	3	1,319	1,322	19,354
Other countries in Europe	2	249	251	2,938
Canada	-	81	81	476
U.S.A.	1	463	464	2,773
Other countries in America	-	20	20	111
All countries	88	19,769	19,857	221,409

Table 11 - Population and vital statistics - Mauritius.

Year	Estimated mid-year population (30th June)	Numbers				Rates per 1000 of the mid-year population				Rate of natural increase
		Marriages	Births	Deaths	Natural increase	Marriage ⁺ rate	Gross birth rate	Gross death rate	Rate of natural increase	
1944-48 Average	424,219	3,228	17,788	11,612	6,116	15.2	41.9	27.5	14.4	
1949-53 "	483,859	3,552	22,923	7,314	15,553	14.7	47.4	15.2	32.2	
1954-58 "	574,938	3,008	23,936	7,401	16,535	10.5	41.6	12.9	28.7	
1959-63 "	662,368	3,452	25,513	6,708	19,205	10.4	59.1	10.1	29.0	
1964-68 "	759,067	4,004	25,707	6,578	19,129	10.5	33.9	8.7	25.2	
1959	627,249	3,297	23,923	6,753	17,170	10.5	38.1	10.8	27.3	
1960	644,743	3,113	25,307	7,248	18,059	9.7	39.3	11.2	28.1	
1961	662,368	3,484	26,092	6,505	19,587	10.5	39.4	9.8	29.6	
1962	681,619	3,893	26,267	6,325	19,942	11.4	58.5	9.3	29.2	
1963	701,422	3,472	27,978	6,709	21,269	9.9	39.9	9.6	30.3	
1964	722,089	3,965	27,528	6,184	21,344	11.0	38.1	8.6	29.5	
1965	741,036	3,976	26,279	6,337	19,942	10.7	35.5	8.6	26.9	
1966	759,067	4,157	26,817	6,701	20,116	11.0	35.3	8.8	26.5	
1967	773,573	3,949	23,499	6,543	16,956	10.2	30.4	8.5	21.9	
1968	787,406	3,974	24,413	7,126	17,287	10.1	31.0	9.0	22.0	
1969	798,684	3,882	21,719	6,428	15,291	9.7	27.2	8.0	19.2	
1970	811,280	4,499	21,623	6,309	15,314	11.1	26.7	7.8	18.9	
1971	822,352	4,346	20,834	6,248	14,586	10.6	25.3	7.6	17.7	

+ Civil marriages only.

Note: Revision of population estimates from 1953 based on data obtained from the 1962 Population Census.

Table 12 - Live births and still births, Mauritius

Year	Numbers			Rates	
	Live births	Still births	Infant deaths	Still birth rate ⁺	Infantile mortality rate ⁺⁺
1944-48 Average	17,788	1,154	2,745	60.9	154.3
1949-53 "	22,913	1,464	1,945	60.1	84.9
1954-58 "	23,936	1,622	1,704	63.5	71.2
1959-63 "	25,913	1,773	1,622	64.0	62.6
1964-68 "	25,707	1,347	1,662	49.8	64.7
1959	23,923	1,759	1,495	68.5	62.5
1960	25,307	1,783	1,760	65.8	69.5
1961	26,092	1,963	1,618	70.0	62.0
1962	26,267	1,841	1,579	65.5	60.1
1963	27,978	1,519	1,660	51.5	59.3
1964	27,528	1,611	1,561	55.3	56.7
1965	26,279	1,557	1,685	55.9	64.1
1966	26,817	1,384	1,721	49.1	64.2
1967	23,499	1,074	1,656	43.7	70.5
1968	24,413	1,110	1,688	43.5	69.1
1969	21,719	951	1,528	41.9	70.4
1970	21,623	857	1,232	38.1	57.0
1971	20,834	842	1,077	38.8	51.7

⁺still births per 1000 total births (live births and still births)

⁺⁺deaths of children under 1 year of age per 1000 live births

Table 13 - Infant deaths (deaths under 1 year of age) by age and sex, Mauritius

Age	1969			1970			1971		
	Both sexes	Male	Female	Both sexes	Male	Female	Both sexes	Male	Female
Under 1 day	202	122	80	175	106	69	147	89	58
1 - 6 days	298	181	117	284	176	108	244	140	104
7 - 27 "	178	96	82	183	103	80	170	82	88
28 days-under 2 months	98	59	39	59	29	30	69	31	38
2 - 3 months	183	91	92	112	61	51	128	63	65
4 - 5 "	165	84	81	126	72	54	105	63	42
6 - 7 "	164	96	68	128	69	59	86	47	39
8 - 9 "	131	67	64	93	60	33	81	46	35
10 -11 "	109	51	58	72	30	42	47	23	24
Under 1 year	1,528	847	681	1,232	706	526	1,077	584	493

Table 14. - Deaths by age and sex, Mauritius

(Age group) in years	1969			1970			1971		
	Both sexes	Male	Female	Both sexes	Male	Female	Both sexes	Male	Female
0 - 4	2,262	1,212	1,050	1,734	946	788	1,461	764	697
5 - 9	160	79	81	113	57	56	106	52	54
10 - 14	88	38	50	77	41	36	89	47	42
15 - 19	106	56	50	80	46	34	105	56	49
20 - 24	119	49	70	110	57	53	103	40	63
25 - 29	98	41	57	95	39	56	106	56	50
30 - 34	117	54	63	108	43	65	105	43	62
35 - 39	133	70	63	131	60	71	126	72	54
40 - 44	177	99	78	208	121	87	170	100	70
45 - 49	232	134	98	271	169	102	268	174	94
50 - 54	288	175	113	289	185	104	338	228	110
55 - 59	371	226	145	414	280	134	465	313	152
60 - 64	441	268	173	500	321	179	577	389	188
65 - 69	477	281	196	571	341	230	560	323	237
70 - 74	489	263	226	604	344	260	628	322	306
75 - 79	378	167	211	446	213	233	493	215	278
80 - 84	267	91	176	326	125	201	299	96	203
85 and over	225	58	167	231	55	176	249	63	186
Unknown	-	-	-	1	1	-	-	-	-
All ages	6,428	3,361	3,067	6,309	3,444	2,865	6,248	3,353	2,895

Table 15 - Population and vital statistics, Mauritius - quarterly

Period	Marriages [#]	Live births			Deaths			Natural increase	Net overseas migration	Total increase	Estimated population at the end of the period	
		Both sexes		Female	Both sexes		Male					Female
		Male	Female	Male	Female	Male	Female					
1962	3,893	26,267	13,395	12,872	6,325	3,255	3,070	19,942	- 886	19,056	692,354	
1963	3,472	27,978	14,263	13,715	6,709	3,457	3,252	21,269	- 252	21,017	713,371	
1964	3,965	27,528	13,960	13,568	6,184	3,249	2,935	21,344	- 1,110	20,234	733,605	
1965	3,976	26,279	13,287	12,992	6,337	3,388	2,949	19,942	- 2,126	17,816	751,421	
1966	4,157	26,817	13,554	13,263	6,701	3,550	3,151	20,116	- 2,845	17,271	768,692	
1967	3,949	23,499	12,061	11,438	6,543	3,497	3,046	16,956	- 3,604	13,352	782,044	
1968	3,974	24,413	12,394	12,019	7,126	3,744	3,382	17,287	- 4,585	12,702	794,746	
1969	3,882	21,719	11,182	10,537	6,428	3,361	3,067	15,291	- 3,010	12,281	807,027	
1970	4,499	21,623	11,091	10,532	6,309	3,444	2,865	15,314	- 3,150	12,164	819,191	
1971	4,346	20,834	10,603	10,231	6,248	3,353	2,895	14,586	- 3,171	11,415	830,606	
1970 : 1st Qr.	1,280	5,806	2,972	2,834	1,804	990	814	4,002	- 2,074	1,928	808,955	
2nd Qr.	1,079	5,206	2,650	2,556	1,424	763	661	3,722	- 1,457	2,265	811,280	
3rd Qr.	1,079	5,533	2,866	2,667	1,610	882	728	3,923	- 980	2,943	814,223	
4th Qr.	1,061	5,078	2,603	2,475	1,471	809	662	3,607	+ 1,361	4,968	819,191	
1971 : 1st Qr.	902	4,920	2,505	2,415	1,405	743	662	3,515	- 2,654	861	820,052	
2nd Qr.	1,108	5,070	2,595	2,475	1,607	881	726	3,463	- 1,163	2,300	822,352	
3rd Qr.	1,053	5,423	2,715	2,708	1,742	923	819	3,681	- 1,339	2,342	824,694	
4th Qr.	1,283	5,421	2,788	2,633	1,494	806	688	3,927	+ 1,985	5,912	830,606	

[#] civil marriages only.

Table 16 - Still births and infant deaths, Mauritius

Period	Still births	Infant deaths		
		Both sexes	Male	Female
1962	1,841	1,579	896	683
1963	1,519	1,660	929	731
1964	1,611	1,561	900	661
1965	1,557	1,685	943	742
1966	1,384	1,721	943	778
1967	1,074	1,656	947	709
1968	1,110	1,688	935	753
1969	951	1,528	847	681
1970	857	1,232	706	526
1971	842	1,077	584	493
1970 : 1st Qr.	220	417	239	178
2nd Qr.	208	296	169	127
3rd Qr.	226	273	165	108
4th Qr.	203	246	133	113
1971 : 1st Qr	200	249	143	106
2nd Qr.	216	275	139	136
3rd Qr.	223	269	138	131
4th Qr.	203	284	164	120

Table 17 - Expectation of life in years at selected ages

Exact age (years)	Males			Females		
	1942-46 ⁺	1951-53 ⁺	1961-63	1942-46 ⁺	1951-53 ⁺	1961-63
0	32.8	49.8	58.7	33.8	52.3	61.9
10	35.8	49.2	55.1	37.3	52.2	58.1
20	28.1	40.1	45.7	30.2	43.7	48.9
30	22.3	31.6	36.6	26.1	36.2	40.3
40	16.7	23.6	27.7	21.2	28.7	31.9
50	11.9	16.7	19.6	15.7	21.2	23.5
60	8.1	11.2	13.2	10.6	14.6	15.8
70	5.6	6.7	8.5	7.1	9.1	9.7
80	4.0	4.3	4.8	4.6	5.3	5.4

⁺Excluding Chinese.

Source: Mauritius Life Tables.

Table 18 - Population and vital statistics - Rodrigues

Period	Estimated mid-year population (30th June)	Numbers				Rates				Estimated population as at 31st December
		Marriages	Births	Deaths	Natural increase	Marriage rate	Crude birth rate	Crude death rate	Rate of natural increase	
1962	18,335	145	895	160	735	15.8	48.8	8.7	40.1	18,674
1963	18,754	171	881	203	678	18.2	47.0	10.8	36.2	18,812
1964	19,199	161	1,082	237	845	16.8	56.4	12.4	44.0	19,507
1965	19,663	127	916	300	616	12.9	46.6	15.3	31.3	19,934
1966	20,309	132	1,014	243	771	13.0	49.9	12.0	37.9	20,613
1967	20,987	156	972	207	765	14.9	46.3	9.9	36.4	21,595
1968	22,057	145	996	256	740	15.1	45.2	11.6	33.6	22,391
1969	22,659	173	902	305	597	15.3	39.8	13.5	26.3	23,064
1970	23,658	152	1,143	211	932	12.8	48.3	8.9	39.4	23,974
1971	24,266	132	1,092	188	904	10.9	45.0	7.7	37.3	24,712

+ per 1000 of the mid-year population

II. PUBLIC HEALTH

Table 19 - Health Services, Mauritius

	1967	1968	1969	1970	1971
<u>Hospitals</u>					
General hospitals	8	8	8	8	8
Special hospitals (mental diseases, leprosy & tuberculosis)	3	3	3	3	3
Private hospitals on sugar estates	24	24	24	22	22
<u>Dispensaries</u>					
Public dispensaries & out-patients departments of hospitals	56	56	56	57	57
Private dispensaries on sugar estates	24	24	24	22	22
Mobile dispensaries	5	5	5	5	5
<u>Clinics</u>					
Private	5	5	5	7	7
Public mobile ante-natal	1	1	1	1	1
Public mobile dental	4	4	4	2	2
<u>Maternity & Child Health Centres</u>	39	39	41	43	43
<u>Doctors</u>					
Government Service:					
Specialists [✱]	34	34	36	41	42
Total government doctors	114	97	98	140 [@]	144 ⁺
Private Service:					
Registered medical practitioners	64	70	67	71	79
<u>Dentists</u>					
Government Service	9	8	7	6	6
Private	22	21	15	19	19
<u>Trained Nurses</u>	690	720	725	832	827
<u>Midwives</u>	141	160	157	150	148
<u>Pharmacists</u>					
Attached to hospitals	3	3	4	4	5
Private	48	48	46	45	48

✱ included in figures for total government doctors

@ including 25 temporary Medical Officers

+ including 23 temporary Medical Officers

Table 20 - Statistics of hospitals - Mauritius

Period	No. of beds	Patients in hospitals on first day of period	Total admissions	Deaths	Discharges	Patients remaining on last day of period
1967	2,578	1,723	54,982	2,255	52,734	1,716
1968	2,543	1,716	60,055	2,361	57,447	1,963
1969	2,561	1,963	59,421	1,997	57,452	1,935
1970	2,633	1,935	60,941	2,064	58,926	1,886
1971	2,712	1,886	62,736	2,148	60,721	1,753
1971 : 1st Qr.	2,712	1,886	15,120	474	14,165	2,367
2nd Qr.	2,712	2,367	16,199	566	15,745	2,255
3rd Qr.	2,712	2,255	15,551	597	14,830	2,379
4th Qr.	2,712	2,379	15,866	511	15,981	1,753
1972 : 1st Qr.	2,734	1,753	15,672	504	14,575	2,346
2nd Qr.	2,734	2,346	16,315	475	15,773	2,413

Table 21 - Notifiable, contagious or communicable diseases - Mauritius

Disease Period	Enteric fever	Diphtheria	Acute poliomyelitis	Puerperal fever	Erysipelas	Tuberculosis	Leprosy	Cerebro-spinal meningitis
1967	91	37	6	1	-	553	5	-
1968	32	44	-	2	2	499	1	-
1969	9	8	-	-	-	393	-	-
1970	45	8	-	3	-	436	1	-
1971	25	17	-	-	-	307	-	-
1971 : 1st Qr.	9	2	-	-	-	89	-	-
2nd Qr.	5	9	-	-	-	59	-	-
3rd Qr.	2	6	-	-	-	75	-	-
4th Qr.	9	-	-	-	-	84	-	-
1972 : 1st Qr.	8	3	-	-	-	93	-	-
2nd Qr.	7	1	-	-	-	98	1	1

Table 22 - Cause of death, 1971 - Icuritius

Section ⁺	CAUSE OF DEATH	D E A T H S						% of total deaths	Death rate per 100,000 of population
		Under 1 year		1 to under 5 years		All ages			
		Both sexes	Male	Female	Both sexes	Male	Female		
I	Infective and parasitic diseases	326		158	389	335	724	11,6	88,0
II	Neoplasms	1		1	161	128	289	4,6	35,1
III	Endocrine, nutritional and metabolic diseases	27		18	78	107	185	2,9	22,5
IV	Diseases of the blood and blood forming organs	4		11	48	99	147	2,3	17,9
V	Mental disorders	-		-	4	6	10	0,2	1,2
VI	Diseases of the nervous system and sense organs	12		6	48	51	99	1,6	12,0
VII	Diseases of the circulatory system	6		8	910	700	1,610	25,7	195,8
VIII	Diseases of the respiratory system	136		95	526	446	972	15,5	118,2
IX	Diseases of the digestive system	11		9	117	63	180	2,9	21,9
X	Diseases of the genito-urinary system	-		1	52	34	86	1,4	10,5
XI	Complications of pregnancy, childbirth, and the puerperium	-		-	-	24	24	0,4	2,9
XII	Diseases of the skin and subcutaneous tissue	-		-	3	1	4	0,1	0,5
XIII	Diseases of musculoskeletal system and connective tissue	-		-	6	12	18	0,3	2,2
XIV	Congenital anomalies	34		4	22	20	42	0,7	5,1
XV	Certain causes of perinatal morbidity and mortality	374		-	211	163	374	6,0	45,5
XVI	Symptoms and ill-defined conditions	143		52	567	607	1,174	18,8	142,8
XVII	Accidents, poisonings, and violence	3		21	211	99	310	5,0	37,7
	All causes	1,077		384	3,353	2,995	6,248	100,0	759,8

⁺International Classification, 1965

III. PUBLIC FINANCE AND BANKING

Table 23 - Central government revenue and expenditure

Financial year	Revenue [@]			Expenditure [@]			Rs million
	Recurrent	Capital	Total	Recurrent	Capital	Total	Surplus (+) Deficit (-)
1969-70	228,0	66,0	294,0	227,3	57,2	284,5	+ 9,5
1970-71	259,7	99,2	358,9	254,5	84,4	338,9	+ 20,0
1971-72	294,1	130,3	424,4	283,2	100,8	384,0	+ 40,4
1972-73 ⁺	310,7	158,4	469,1	310,6	199,7	510,3	- 41,2

[@] including tax reserve certificates

⁺ estimates

Table 24 - Functional classification of central government recurrent revenue

	Rs million			
	1969-70	1970-71	1971-72	1972-73 ⁺
<u>Taxes on Income and Capital</u>	<u>43.1</u>	<u>55.3</u>	<u>61.0</u>	<u>62.4</u>
Income Tax :				
Individuals	24,8	28,9	31,8	31,8
Companies	14,3	23,2	24,7	26,8
Development contribution	0,8	-	-	-
Contribution to Widows' Fund	1,6	1,8	1,9	1,3
Succession duties	1,6	1,4	2,6	2,0
<u>Taxes on Financial Transactions</u>	<u>8,7</u>	<u>8,1</u>	<u>13,2</u>	<u>10,5</u>
<u>Taxes on Gambling</u>	<u>3,3</u>	<u>3,3</u>	<u>3,6</u>	<u>3,7</u>
<u>Taxes on Consumption and Production</u>	<u>125,5</u>	<u>139,3</u>	<u>158,3</u>	<u>174,6</u>
Import duties	63,8	73,8	86,6	87,0
Export duties	16,8	18,7	19,6	25,0
Excise duties	30,8	32,6	37,0	48,1
Business and professional licences	6,4	6,3	6,7	6,4
Taxes on transportation	7,7	7,9	8,4	8,1
<u>Provision of Goods and Services</u>	<u>29,4</u>	<u>32,3</u>	<u>34,4</u>	<u>35,7</u>
Rental of government property	2,2	2,3	2,6	2,3
Telephone service	4,2	4,6	5,0	6,4
Marine services	6,9	6,4	7,0	6,8
Posts and telegraphs	4,6	4,6	5,0	5,2
Water and irrigation	2,8	3,0	3,0	3,0
Agriculture and forests	2,0	1,9	2,2	2,0
Other goods and services	6,7	9,5	9,6	10,0
<u>Interests, Profits and Dividends</u>	<u>12,3</u>	<u>16,0</u>	<u>17,1</u>	<u>18,2</u>
<u>Grants from British Government</u>	<u>0,6</u>	<u>0,7</u>	<u>1,6</u>	<u>0,6</u>
<u>Other Recurrent Revenue</u>	<u>5,1</u>	<u>4,7</u>	<u>4,9</u>	<u>5,0</u>
Total	228,0	259,7	294,1	310,7

⁺ estimates

Table 25 - Functional classification of central government recurrent expenditure

Rs million

	1969-70	1970-71	1971-72	1972-73
<u>General Services</u>	<u>30.5</u>	<u>36.0</u>	<u>41.5</u>	<u>48.6</u>
General administration	1.6	1.8	3.1	3.4
Legislature	0.8	0.8	0.8	0.8
Maintenance of law and order :				
Justice and Attorney General	1.9	2.0	2.4	2.7
Police and defence	13.5	14.9	17.2	20.4
Prisons	1.8	2.0	2.2	2.6
Revenue collection & financial control	5.2	5.9	6.5	9.1
Other general services	5.7	8.6	9.3	9.8
<u>Community Services</u>	<u>16.9</u>	<u>17.6</u>	<u>18.4</u>	<u>18.4</u>
Maintenance of roads & public buildings	7.8	8.0	7.6	6.9
Domestic water supplies	3.9	4.0	4.5	3.2
Sanitation and sewerage	3.1	3.3	3.7	4.6
Other community services	2.1	2.3	2.6	3.1
<u>Social Services</u>	<u>85.1</u>	<u>93.4</u>	<u>104.0</u>	<u>117.5</u>
Education	32.0	35.9	41.0	47.9
Health (excluding sanitation)	21.5	24.1	27.4	32.9
Social security :				
Family allowances	5.5	5.6	6.3	6.2
Outdoor relief	8.6	8.9	8.9	9.0
Old age pensions	11.6	12.0	13.6	14.0
Housing	1.5	2.4	2.1	2.4
Other social services	4.4	4.5	4.7	5.1
<u>Economic Services</u>	<u>19.9</u>	<u>21.8</u>	<u>25.1</u>	<u>27.5</u>
Agriculture and forests	7.0	7.9	8.6	9.5
Civil aviation and marine services	3.3	3.4	4.1	4.8
Posts, telegraphs & telecommunications	5.6	6.3	7.4	7.7
Other economic services	4.0	4.2	5.0	5.5
<u>Unallocable Expenditure</u>	<u>74.9</u>	<u>81.7</u>	<u>79.2</u>	<u>94.4</u>
Transfer to local authorities	6.2	6.9	7.0	7.2
Recurrent financial obligations:				
Public debt:				
Interest	16.9	17.4	20.8	23.4
Redemptions	6.2	7.4	4.7	5.9
Sinking Fund	6.6	10.3	10.0	13.6
Public pensions & gratuities	17.2	16.2	18.1	20.3
Passages	1.5	1.5	1.4	1.5
Rodrigues	4.1	4.6	5.1	6.2
Relief works	8.4	2.6	2.4	2.9
Other unallocable expenditure	7.8	14.8	9.7	13.4
Transfer to capital budget	-	4.0	15.0	4.0
Total	227.3	254.5	283.2	310.6

+ estimates



Table 26 - Functional classification of central government capital revenue
Rs million

	1969-70	1970-71	1971-72	1972-73 ⁺
Grants :				
British government	14.7	9.6	0.8	0.3
Other foreign sources	-	-	-	4.4
Internal borrowing	26.0	59.8	103.7	80.0
External borrowing	9.3	11.7	9.4	55.9
Interest on investments	0.1	0.4	0.2	0.2
Special Drawing Rights from I.M.F.	14.9	13.1	0.7	13.0
Transfer from recurrent revenue	-	4.0	15.0	4.0
Other capital revenue	1.0	0.6	0.5	0.6
Total	66.0	99.2	130.3	158.4

⁺ estimates

Table 27 - Functional classification of central government capital expenditure
Rs million

	1969-70	1970-71	1971-72	1972-73 ⁺
Agriculture and forests	12.5	13.6	10.1	14.0
Irrigation	0.9	0.4	2.1	0.8
Roads and bridges	1.4	2.5	4.0	4.4
Marine services and civil aviation	8.8	5.2	7.0	21.6
Domestic water supplies	2.6	2.9	6.1	10.2
Health	0.8	1.8	1.6	11.0
Housing	0.7	0.2	0.1	7.0
Sewerage	5.3	5.3	9.2	7.9
Education	2.2	3.1	1.5	8.6
Development works	-	8.4	20.4	26.6
Rodrigues	2.5	3.2	4.9	8.9
Additional subscription to I.M.F. and I.P.R.D.	-	11.1	-	-
Subscription to share capital of Development Bank	-	8.0	-	-
Loans :				
Development Bank of Mauritius	2.0	1.0	6.0	18.9
Central Electricity Board	-	1.6	1.6	2.0
Mauritius Housing Corporation	-	-	-	2.0
Central Housing Authority	1.0	0.2	-	7.0
Municipalities	0.8	0.6	-	-
Tea Development Authority	-	-	4.8	13.4
Sinking Fund Support Loan	-	8.8	-	-
Other loans	0.6	1.8	1.5	5.6
Redemption of loans	13.0	-	13.0	-
Other capital expenditure	2.1	4.7	6.9	29.8
Total	57.2	84.4	100.8	199.7

⁺ estimates

Table 28 - Central government indebtedness

Period	Rs million									
	Amount outstanding at beginning of period					Borrowing during period		Repayment during period		External
	Total	Internal		External		Internal	External	Internal	External	
		Tap loan	Other	U.K.	Other*					
1.7.68 - 30.6.69	341.1	92.3	53.1	160.2	35.5	5.3	16.3	4.0	38.2	
1.7.69 - 30.6.70	320.5	94.6	51.9	140.1	33.9	27.9	9.7	15.9	13.2	
1.7.70 - 30.6.71	327.8	106.6	50.9	138.0	32.3	61.4	11.5	2.4	17.1	
1.7.71 - 30.6.72	381.3	125.8	90.7	134.2	50.6	104.9	9.3	18.1	6.2	
1971 : 1st Qr.	359.3	118.3	70.8	138.7	31.5	20.0	4.4	0.6	1.4	
2nd Qr.	381.7	117.7	90.8	141.7	31.5	8.0	3.9	0.1	12.2	
3rd Qr.	381.3	125.8	90.7	134.2	30.6	7	2.3	2.9	0.3	
4th Qr.	380.4	122.9	90.7	136.2	30.6	40.0	2.0	7	1.4	
1972 : 1st Qr.	421.0	122.9	130.7	137.4	30.0	34.9	3.0	2.1	2.2	
2nd Qr.	454.4	125.6	160.7	138.1	30.0	30.0	2.0	13.1	2.3	

*International Bank for Reconstruction and Development, and International Development Association

Table 29 - Sinking funds held against the public debt

Amount as at 30th June	Rs million				
	1968	1969	1970	1971	1972
88.9	76.0	80.6	106.2	119.5	

Note : Investments have been valued at mean market prices

Table 30 - Central government loan raisings

	Year of issue	Rate of interest % p.a.	Amount outstanding @ 30.6.72 (Rs million)
<u>Local loans</u>			
Development Welfare Loan 1971-81	1950	3	3.1
Development (general purposes) Loan 1964-74	1953	4 $\frac{1}{4}$	14.4
Development (" ") Loan 1973-73	1962	5 $\frac{3}{4}$	15.0
Development (" ") Loan 1971-76	1966	6	5.0
Development Loan Stock 1985	1970	7 $\frac{1}{4}$	5.0
" " " 1975	1970	6 $\frac{1}{2}$	15.0
" " " 1977	1971	6 $\frac{1}{2}$	10.0
" " " 1991	1971	7 $\frac{1}{2}$	10.0
" " " 1976	1971	6 $\frac{1}{2}$	10.0
" " " 1979	1971	6 $\frac{3}{4}$	15.0
" " " 1986	1971	7 $\frac{1}{2}$	15.0
" " " 1974	1972	6	5.0
" " " 1978	1972	6 $\frac{1}{2}$	10.0
" " " 1984	1972	7	15.0
" " " 1979	1972	6 $\frac{1}{2}$	15.0
" " " 1983	1972	7 $\frac{1}{2}$	15.0
Tap loan	(a)	5	125.6
<u>U.K. Loans</u>			
Development (general purposes) Loan 1972-77	1955-56	4 $\frac{3}{4}$	25.0
" " " " " 1973-75	1964	6 $\frac{1}{2}$	19.9

(a) Tap loans are issued every year since 1959. The date of redemption is at the option of the purchaser.

Table 31 - Outstanding loans and advances made from public funds as at 30th June

Rs million

Debtor	1969	1970	1971	1972
Central Electricity Board	89.2	87.2	86.6	86.2
Central Housing Authority	33.5	35.4	33.7	33.9
Development Bank of Mauritius	21.5	23.9	16.2	23.3
Mauritius Housing Corporation	14.4	16.9	16.4	15.9
Mauritius Broadcasting Corporation	1.2	1.1	1.5	1.1
Municipalities	21.8	22.1	22.3	21.4
Sewerage schemes	9.4	11.1	12.8	14.1
Sack Factory	5.0	5.5	5.9	5.2
Tea estates	3.6	3.6	3.5	3.3
Mauritius Agricultural Marketing Board	3.5	5.7	7.4	7.7
Tea Development Authority	-	-	-	4.8
Other	7.9	7.4	6.7	7.3
Total	211.0	219.9	212.8	224.8

Table 32 - Income tax^(a) - individuals

Range of gross income (Rupees)	Year of assessment 1968-69						Year of assessment 1969-70					
	Taxpayers (No.)	Gross income (Mn Rs)	Chargeable income (Mn Rs)	Tax assessed (Mn Rs)	Taxpayers (No.)	Gross income (Mn Rs)	Chargeable income (Mn Rs)	Tax assessed (Mn Rs)	Taxpayers (No.)	Gross income (Mn Rs)	Chargeable income (Mn Rs)	Tax assessed (Mn Rs)
5,000 or less	3,683	13.03	2.38	0.39	2,765	10.81	1.97	0.30				
5,001 - 10,000	5,340	39.51	10.65	1.68	4,835	35.76	9.57	1.48				
10,001 - 15,000	2,790	33.77	13.19	2.17	2,559	31.01	11.86	1.90				
15,001 - 25,000	2,014	38.59	20.33	3.98	1,946	37.36	19.40	3.73				
25,001 - 50,000	1,270	42.26	26.68	7.92	1,207	40.17	25.13	7.23				
50,001 - 100,000	278	18.36	13.34	6.62	254	16.64	11.41	5.47				
100,001 - 250,000	49	6.60	4.94	3.13	38	5.12	3.95	2.57				
Over 250,000	6	2.23	1.93	1.47	5	1.63	1.35	1.00				
Total	15,430	194.37	93.44	27.36	13,607	178.50	84.64	23.68				

Note : (a) The figures are provisional and subject to amendment, as the income tax ordinance empowers the Commissioner of Income Tax to revise cases under objection, to issue additional claims for the six years preceding the present year of assessment, and to claim back duty at any time in cases of false or incorrect returns of income for any previous year.

(b) The income group refers to gross income now, whereas in previous issues of the digest it referred to chargeable income.

(a)
Table 33 - Income tax - companies

Range of gross income (Rupees)	Year of assessment 1968-69				Year of assessment 1969-70			
	Companies (No.)	Gross income (Mn Rs)	Chargeable income (Mn Rs)	Tax assessed (Mn Rs)	Companies (No.)	Gross income (Mn Rs)	Chargeable income (Mn Rs)	Tax assessed (Mn Rs)
5,000 or less	158	0.30	0.27	0.11	116	0.22	0.18	0.07
5,001 - 10,000	38	0.30	0.22	0.09	34	0.25	0.17	0.06
10,001 - 15,000	36	0.44	0.31	0.12	22	0.28	0.23	0.09
15,001 - 25,000	41	0.85	0.53	0.21	34	0.69	0.39	0.15
25,001 - 50,000	56	2.02	1.18	0.46	50	1.80	0.99	0.38
50,001 - 100,000	45	3.19	1.60	0.59	45	3.25	1.27	0.47
100,001 - 250,000	38	6.37	3.49	1.36	38	6.33	2.54	0.93
250,001 - 500,000	28	9.89	3.17	1.17	20	6.30	2.41	0.89
500,001 - 750,000	8	5.14	2.25	0.86	8	4.75	2.98	1.16
750,001 - 1,000,000	4	3.56	2.27	0.87	8	6.82	3.00	1.14
Over 1,000,000	24	61.29	30.80	11.40	17	44.82	21.31	8.00
TOTAL	476	93.35	46.09	17.24	392	75.51	35.47	13.34

Note : (a) The figures are provisional and subject to amendment, as the income tax ordinance empowers the Commissioner of Income Tax to revise cases under objection, to issue additional claims for the six years preceding the present year of assessment, and to claim back duty at any time in cases of false or incorrect returns of income for any previous years.

(b) The income group refers to gross income now, whereas in previous issues of the digest it referred to chargeable income.

Table 34 - Sterling assets of central government, Bank of Mauritius and commercial banks
(at end of period)

Rs million

Period	INVESTMENTS (nominal value)				LIQUID ASSETS (cash, money at call and short-term deposits)						Total
	Central government	Post Office Savings Bank	Semi-governmental institutions	Bank of Mauritius	Total	Central government (a)	Post Office Savings Bank	Semi-governmental institutions	Bank of Mauritius	Net balance of banks due from banks abroad	
1967	32.8	18.6	6.9	68.8	127.3	- 22.0	4.7	6.4	4.9	+ 36.0	30.0
1968	31.0	18.1	4.3	68.4	121.8	- 9.0	5.0	7.4	20.6	+ 19.5	42.6
1969	17.9	(b)	4.3	165.5	187.7	- 2.2	(b)	23.3	18.1	+ 39.3	78.5
1970	6.5	(b)	3.5	100.9	110.9	+ 7.6	(b)	0.4	145.7 ⁺	+ 20.7	174.4
1971	11.5	(b)	2.5	158.9	172.9	+ 9.2	(b)	0.4	92.0 ⁺	- 4.9	96.7
1971 : 1st Qr	6.5	(b)	3.5	84.9	94.9	+ 12.6	(b)	0.5	157.4 ⁺	+ 14.2	184.7
2nd Qr	7.4	(b)	3.5	67.4	78.3	+ 13.3	(b)	0.5	127.7 ⁺	- 3.3	138.2
3rd Qr	7.5	(b)	3.5	98.4	109.4	+ 11.1	(b)	0.4	111.5 ⁺	+ 2.5	125.5
4th Qr	11.5	(b)	2.5	158.9	172.9	+ 9.2	(b)	0.4	92.0 ⁺	- 1.0	100.6
1972 : 1st Qr	12.6	(b)	2.3	147.7	162.6	+ 6.9	(b)	0.6	137.6 ⁺	- 7.5	137.6
2nd Qr	13.9	(b)	2.3	134.9	151.1	+ 1.3	(b)	0.5	105.5 ⁺	- 4.0	103.3

(a) Net of short-term borrowings.

(b) During the third quarter of 1969, these assets were surrendered to the Bank of Mauritius in return for payments in Mauritian Rupees, and since then have been merged with those of the Bank of Mauritius.

+ Includes IMF Special Drawing Rights.

Table 35 - Assets of the bank of Mauritius
(at end of period)

Rs million

Period	Grand total	External				IMF Special Drawing Rights	Local		
		Total	Balances with banks	Bills	Securities		Government securities	Discounts & advances	Other assets
1967	116,7	75,8	4,9	25,8	43,1	-	34,0	6,9	2,0
1968	130,7	89,0	20,6	30,4	38,0	-	24,0	15,9	1,8
1969	219,0	180,0	18,1	44,3	117,6	-	14,9	19,7	4,4
1970	253,4	246,5	131,0	16,1	84,8	14,6	0,5	2,6	3,8
1971	308,1	250,9	64,3	76,9	82,0	27,7	16,9	32,9	7,4
1971: 1st Qr.	264,7	242,3	129,7	21,8	63,1	27,7	13,4	4,8	4,2
2nd Qr.	236,9	195,1	100,0	8,1	59,3	27,7	8,8	21,3	11,7
3rd Qr.	233,4	209,9	83,8	31,5	66,9	27,7	4,5	10,2	8,8
4th Qr.	308,1	250,9	64,3	76,9	82,0	27,7	16,9	32,9	7,4
1972 1st Qr.	319,2	305,4	117,1	66,2	81,5	40,6	-	6,1	7,6
2nd Qr.	294,1	240,4	64,9	11,6	123,3	40,6	12,9	30,0	10,7

Source : The Bank of Mauritius

Table 36 - Liabilities of the Bank of Mauritius
(at end of period)

Rs million

Period	Total	Capital & reserve	Notes in circulation	Coins in circulation	Total deposits	Demand deposits			Other* deposits	Other liabilities
						Government	Bankers	Other		
1967	116.7	5.0	94.1	6.2	0.5	-	0.5	-	10.9	
1968	130.7	6.0	91.1	6.0	24.2	1.5	1.6	0.1	3.4	
1969	219.0	7.2	100.5	6.2	76.6	3.0	3.5	3.1	28.5	
1970	253.4	9.5	108.1	6.6	121.2	3.3	6.1	3.0	8.0	
1971	308.1	14.5	129.0	7.1	118.1	1.7	8.6	6.0	39.4	
1971 1st Qr.	264.7	9.5	99.4	6.3	125.5	3.1	6.0	6.4	24.0	
2nd Qr.	236.9	14.5	98.6	6.3	92.1	3.0	8.0	3.3	25.4	
3rd Qr.	255.4	14.5	106.1	6.7	84.4	1.7	7.1	2.8	21.7	
4th Qr.	308.1	14.5	129.0	7.1	118.1	1.7	8.6	6.0	39.4	
1972 1st Qr.	319.2	14.5	131.2	7.3	111.4	46.0	16.9	3.5	54.7	
2nd Qr.	294.1	16.6	123.7	7.7	98.3	41.7	10.9	3.4	47.7	

*Mainly due to semi-government bodies

Source: The Bank of Mauritius

Table 37 - Assets of commercial banks
(at end of period)

Rs million

Period	Total	Cash	Balances due by		Loans and advances			Investments		Other assets	
			Other local banks	Banks abroad	Primary products	Other industries advances	Other	Local	Abroad	Bills discounted and bills receivable	Other
1967	315.3	7.0	2.2	52.3	73.9	75.4	21.9	6.7	2.0	15.2	58.7
1968	308.7	7.9	1.5	38.7	63.1	87.3	30.1	11.7	2.0	10.2	56.2
1969	344.6	9.5	0.5	45.2	78.1	78.4	29.2	24.2	2.0	11.6	65.9
1970	393.7	9.9	0.6	31.3	60.3	74.6	34.1	53.2	2.0	29.1	98.6
1971	487.2	9.8	0.8	13.2	78.5	103.9	41.5	80.5	2.0	56.7	100.3
1971 : 1st Qr.	390.9	9.0	0.4	24.8	47.3	81.8	32.1	56.1	2.0	34.8	102.4
2nd Qr.	411.7	7.2	0.6	15.6	69.1	91.8	36.4	51.0	2.0	43.1	94.9
3rd Qr.	412.6	8.7	2.9	14.9	58.9	92.0	40.0	61.6	2.0	35.8	95.8
4th Qr.	487.2	9.8	0.8	13.2	78.5	103.9	41.5	80.5	2.0	56.7	100.3
1972 : 1st Qr.	501.8	10.5	0.5	4.5	60.5	104.8	41.5	100.2	2.0	59.9	107.4
2nd Qr.	554.2	8.9	1.2	4.0	79.0	123.4	56.4	57.4	2.0	63.1	118.8

Table 38 - Liabilities of commercial banks

(at end of period)

Rs million

Period	Total	Notes in circulation	Deposits			Balance due to		Other liabilities
			Demand	Time	Savings	Other local banks	Banks abroad	
1967	313.3	-	139.7	30.5	41.6	5.4	16.3	79.8
1968	308.7	-	104.4	54.0	44.6	1.9	19.2	84.6

Period	Total	Notes in circulation	Deposits			Balance due to		Other liabilities	
			Government	Non-government	Savings	Local banks	Banks abroad		
				Demand	Time				
1969	344.6	-	3.8	116.7	70.2	49.1	-	6.0	98.8
1970	393.7	-	2.4	121.0	96.1	62.9	1.4	10.6	99.3
1971	487.2	-	3.7	129.8	105.0	35.0	6.5	14.3	142.9
1971: 1st Qr.	390.9	-	3.1	110.6	83.2	68.4	2.8	10.6	107.2
2nd Qr.	411.7	-	3.1	111.0	86.0	70.9	4.5	18.9	117.3
3rd Qr.	412.6	-	2.0	109.1	91.6	76.3	6.9	12.3	114.4
4th Qr.	487.2	-	3.7	129.8	105.0	35.0	6.5	14.3	142.9
1972: 1st Qr.	501.8	-	5.5	147.0	108.8	94.8	1.1	12.1	132.5
2nd Qr.	554.2	-	5.7	137.1	121.5	102.7	10.9	8.1	168.2

Note: No breakdown of deposits into government and non-government was available before March 1969.

Table 39 - Analysis of bills discounted, loans and advances made by commercial banks

	Rs million							
	1971				1972			
	March	June	September	December	March	June		
Sugar industry	65.3	94.3	76.5	116.4	104.1	112.2		
Other agricultural interests	3.3	4.0	5.3	7.2	11.0	7.4		
Other industries and manufactures	30.3	34.6	38.4	49.5	53.3	54.7		
Traders	55.7	61.5	56.5	56.7	54.9	72.9		
Personal and professional	19.4	21.0	25.0	23.2	22.6	25.6		
Stockbrokers	-	-	-	-	-	-		
Government	-	-	-	-	-	-		
Other public bodies	9.1	10.0	10.2	13.3	13.7	16.9		
Financial institutions	0.9	0.8	1.0	1.2	1.0	1.9		
Other customers	8.4	8.7	10.8	11.9	8.8	13.2		
Foreign bills	1.7	1.0	1.3	1.6	1.3	2.1		
Total	194.1	233.9	225.0	281.0	270.7	306.9		

Source : Bank of Mauritius

Table 40 - Assets and liabilities of the Development Bank of Mauritius
(at end of period)

Rs million

	1967	1968	1969	1970	1971
<u>Assets</u>					
Cash	-	0.1	-	0.5	-
Balances due by other banks in Mauritius	1.1	0.4	1.0	1.4	0.9
Loans and advances:					
Primary industries	23.7	22.7	21.6	20.8	19.4
Other industries	10.7	13.8	15.9	17.1	17.9
Other loans and advances	-	0.3	0.4	0.4	0.4
Investments:					
Local (at cost)	2.7	7.6	6.2	6.9	13.7
Overseas	1.6	2.4	2.0	2.1	-
Other assets	5.5	4.8	6.2	9.2	11.9
Total	43.3	52.1	53.3	58.4	64.2
<u>Liabilities</u>					
Notes in circulation	-	-	-	-	-
Deposits :					
Demand	1.0	0.8	1.4	2.0	1.1
Time	2.1	1.8	1.8	1.8	2.6
Savings	1.9	1.9	1.8	1.8	2.1
Share capital	-	-	-	-	10.0
Debentures	17.0	17.0	17.0	17.0	17.0
The Government of Mauritius	15.5	22.2	22.4	25.9	20.3
Bills	0.4	0.4	0.3	0.3	0.5
Other liabilities	7.4	8.0	8.6	9.6	10.8
Total	45.3	52.1	53.3	58.4	64.2

Table 41 - Post Office Savings Bank

Period	Deposits during period (Rs mn)	Withdrawals during period (Rs mn)	Accumulated balance at end of period (Rs mn)	Number of accounts at 30th June
1967	14.3	18.9	29.3	88,503
1968	11.2	13.5	27.0	89,653
1969	11.5	11.8	26.7	90,552
1970	11.4	11.5	27.7	92,200
1971	13.3	11.5	30.4	93,929
1971 : 1st Qr.	3.0	2.7	28.0	...
2nd Qr.	2.6	2.6	29.0	93,929
3rd Qr.	3.7	3.2	29.5	...
4th Qr.	4.0	3.0	30.4	...
1972 : 1st Qr.	4.5	2.9	32.0	...
2nd Qr.	3.4	3.1	33.5	97,944

Table 42 - Assets and liabilities of the Mauritius Co-operative Central Bank Ltd.
(at end of February)

Rs million

	1968	1969	1970	1971	1972
<u>Assets</u>					
Cash at bank and in hand	1.3	1.1	0.2	2.1	1.6
Loans and advances :					
Primary industries	4.0	4.1	4.0	4.3	6.6
Housing	1.2	1.2	1.4	1.5	1.7
Other loans and advances	1.2	0.9	1.8	2.2	2.1
Investments :					
Local	1.6	3.6	3.6	7.4	7.4
Abroad	7	7	7	7	7
Other assets	0.3	0.3	0.2	0.7	0.8
Total	9.6	11.2	13.2	18.2	20.2
<u>Liabilities</u>					
"Owned Funds"	3.1	3.4	3.7	4.1	4.5
Deposits :					
Demand	1.8	1.5	2.0	2.6	1.7
Time	1.7	4.0	5.0	8.5	10.5
Savings	2.6	2.0	2.2	2.6	2.8
Balances due to other banks in Mauritius	7	7	7	7	7
Other liabilities	0.4	0.3	0.3	0.4	0.7
Total	9.6	11.2	13.2	18.2	20.2

Table 43 - Money supply

Rs million

Period	Notes and coins in circulation <u>1/</u>	Demand deposits with commercial banks	Other deposits <u>2/</u>	Total money supply
1970: 1st Qr.	89.9	100.5	1.9	192.3
2nd Qr.	86.3	104.1	1.5	191.9
3rd Qr.	93.2	110.4	2.3	205.9
4th Qr.	104.7	123.8	2.9	231.4
1971: 1st Qr.	96.6	112.4	6.3	215.3
2nd Qr.	97.7	112.8	2.6	213.1
3rd Qr.	104.0	111.8	2.7	218.5
4th Qr.	126.3	134.4	3.5	264.2

1/ Net of cash held by the commercial banks.

2/ Miscellaneous current accounts with Bank of Mauritius.

Source : Bank of Mauritius.

Table 44 - Assets and liabilities of the Mauritius Housing Corporation
(at end of period)

Rs million

	1967	1968	1969	1970	1971
<u>Assets</u>					
Cash in hand and on deposit	0.2	-	-	-	-
Housing loans	28.3	30.7	32.1	34.0	37.0
Investments (at cost)	-	-	-	0.2	0.4
Other assets	0.4	1.7	3.1	3.4	3.4
Total	28.9	32.4	35.2	37.9	40.3
<u>Liabilities</u>					
Loans : Local					
Government of Mauritius	14.6	14.4	14.2	14.1	13.9
Development Bank of Mauritius	0.3	0.3	0.4	0.4	0.4
Other local loans	0.1	2.9	5.6	8.6	11.6
External					
British Government	3.5	3.3	3.0	2.6	2.3
Commonwealth Development Corporation	6.7	6.5	6.4	6.2	6.1
Other liabilities	3.7	5.0	5.6	6.0	6.5
Total	28.9	32.4	35.2	37.9	40.8

Table 45 - Bank and interest rates

	per cent per annum			
	31.12.70	30.6.71	31.12.71	30.6.72
<u>Deposit rates</u>				
Post Office Savings Bank	4	4	4	4
Trading banks:				
Savings accounts	4	4	4	4
Fixed deposits (3 months)	4 $\frac{1}{2}$	4 $\frac{1}{2}$	4 $\frac{1}{2}$	4 $\frac{1}{2}$
" " (6 months)	4 $\frac{3}{4}$	4 $\frac{3}{4}$	4 $\frac{3}{4}$	4 $\frac{3}{4}$
" " (12 months)	5 $\frac{1}{4}$	5 $\frac{1}{4}$	5 $\frac{1}{4}$	5 $\frac{1}{2}$
" " (over 12 months)	5 $\frac{1}{2}$ -6 $\frac{1}{2}$	5 $\frac{1}{2}$ -6 $\frac{1}{2}$	5 $\frac{1}{2}$ -6 $\frac{1}{2}$	6
<u>Lending rates</u>				
Bank of Mauritius - discount rate	6	6	6	6
Trading banks - bills of exchange and advances	7 $\frac{1}{2}$ -9	7 $\frac{1}{2}$ -9	7 $\frac{1}{2}$ -9	7-9
Public notaries - mortgage loans	9-11	9-11	9-11	9-11
Mauritius Housing Corporation - housing loans	8	8	8	8

Note : Rates of interest on Treasury loans are shown in table 30.

Source: Bank of Mauritius

Table 46 - Foreign exchange rates

Rupees

Country	Currency	on 30.6.71		on 31.12.71		on 30.6.72	
		Selling rate	Buying rate	Selling rate	Buying rate	Selling rate	Buying rate
United Kingdom	Pound sterling	13.40	13.25	13.40	13.25	13.40	13.25
Australia	Dollar	6.27	6.15	6.27	6.15	6.53	6.32
Belgium	Franc	0.115	0.11	0.116	0.113	0.125	0.122
Canada	Dollar	5.45	5.38	5.27	5.18	5.57	5.45
France	Franc	1.01	0.99	1.01	0.98	1.10	1.07
Germany, Fed. Rep. of	Mark	1.58	1.55	1.61	1.58	1.74	1.70
Hong Kong	Dollar	0.93	0.90	0.93	0.90	0.94	0.91
India	Rupee	0.7451	0.7324	0.72	0.70	0.72	0.69
Kenya	Shilling	0.783	0.76	0.75	0.725	0.72	0.695
Malajasy, Rep. of	Franc	0.0202	0.0198	0.0196	0.0190	0.022	0.0214
New Zealand	Dollar	6.27	6.15	6.27	6.15	6.53	6.37
Pakistan	Rupee	1.1742	1.1576	1.135	1.105	0.48	0.46
Reunion	Franc	0.0202	0.0198	0.0202	0.0196	0.022	0.0214
South Africa, Rep. of	Rand	7.84	7.70	6.90	6.75	6.90	6.75
Switzerland	Franc	1.36	1.33	1.36	1.33	1.44	1.43
U.S.A.	Dollar	5.55	5.47	5.26	5.17	5.48	5.36

Source: Bank of Mauritius

IV. NATIONAL ACCOUNTS

Table 47 - Gross national product by industrial origin
(at current factor cost)

	Rs million				
	1967	1968	1969	1970	1971 ^{**}
1. Agriculture, forestry, hunting and fishing	203	193	224	209	253
2. Mining and quarrying	1	1	1	1	1
3. Manufacturing	130	124	142	141	165
4. Construction	59	49	46	48	56
5. Electricity, gas, water and sanitary services	30	30	30	29	32
6. Transportation, storage and communication	100	102	105	108	113
7. Wholesale and retail trade	89	92	91	91	93
8. Banking, insurance and real estate	17	16	18	20	21
9. Ownership of dwellings	65	66	68	70	71
10. Public administration and defence	43	44	46	51	53
11. Services	104	110	116	126	135
GROSS DOMESTIC PRODUCT AT FACTOR COST	841	827	887	894	993
Net factor income from the rest of the world	- 5	- 3	+ 1	+ 7	+ 7
GROSS NATIONAL PRODUCT AT FACTOR COST	836	824	888	901	1,000
Per capita gross national product at factor cost (Based on mid-year population)	(Rs) 1,081	(Rs) 1,046	(Rs) 1,112	(Rs) 1,111	(Rs) 1,216

^{**}provisional

Table 48 - Distribution of the national income before providing for depreciation

	Rs million				
	1967	1968	1969	1970	1971 [#]
1. Compensation of employees	488	484	498	516	542
2. Income from unincorporated enterprises	111	119	128	128	142
3. Income from property	112	114	129	128	150
4. Saving of corporations	98	83	102	99	129
5. Direct tax on corporations	18	19	25	21	26
6. General government income from property and entrepreneurship	28	27	30	33	36
7. <u>Less</u> interest on public debt	- 15	- 18	- 18	- 20	- 21
8. <u>Less</u> interest on consumers' debt	- 4	- 4	- 4	- 4	- 4
<hr/>					
NATIONAL INCOME AND DEPRECIATION =					
Gross national product at factor cost	836	824	888	901	1,000

[#]provisional

Table 49 - Expenditure on gross national product
(at current prices)

	1967	1968	1969	1970	1971 [*]
1. Private consumption expenditure on goods and services	688	711	681	734	791
2. General government consumption expenditure on goods and services	163	154	156	166	178
3. Gross domestic fixed capital formation of private enterprises	87	94	100	94	105
4. Gross domestic fixed capital formation of government and public enterprises	58	47	44	51	75
5. Increase in stocks
CONSUMPTION AND GROSS CAPITAL FORMATION	996	1,006	981	1,045	1,149
6. Net exports of goods and services	- 27	- 40	+ 55	+ 3	+ 12
7. Net factor income from the rest of the world	- 5	- 3	+ 1	+ 7	+ 7
8. Less indirect taxes (net of subsidies)	- 128	- 139	- 149	- 154	- 168
GROSS NATIONAL PRODUCT AT FACTOR COST	836	824	888	901	1,000

*Provisional

Table 50 - Composition of gross domestic fixed capital formation
(at current prices)

Rs million

	1967	1968	1969	1970 ⁺	1971 ⁺
A. By type of capital goods					
a. Land ^x	2	4	3	4	3
b. Dwellings	37	32	35	33	38
c. Non-residential buildings	29	21	13	23	30
d. Other construction and works	27	24	34	36	42
e. Transport equipment					
(i) Passenger cars	4	5	4	5	7
(ii) Other equipment	11	15	22	15	16
f. Machinery and other equipment	35	40	33	29	48
GROSS DOMESTIC FIXED CAPITAL FORMATION	145	141	144	145	184
B. By industrial use					
a. Agriculture, forestry and fishing	19	17	19	23	28
b. Mining and quarrying	-	-	-	-	-
c. Manufacture	13	14	12	16	28
d. Construction	3	4	4	5	6
e. Electricity, gas and water and sanitary services	14	13	15	12	16
f. Transportation, storage and communications	21	30	37	32	35
g. Wholesale and retail trade	6	6	6	5	7
h. Banking, insurance and real estate	-	-	1	3	6
i. Ownership of dwellings	38	32	35	33	38
j. Public administration	1	-	1	-	1
k. Service industries	28	21	11	12	16
l. Legal fees, stamp duties, etc.	2	4	3	4	3
GROSS DOMESTIC FIXED CAPITAL FORMATION	145	141	144	145	184

⁺provisional

^x including legal fees, stamp duties, agents' commission, etc., connected with the transfer of ownership of land and buildings.

Table 51 - Balance of payments

Item	Rs million											
	1967		1968		1969		1970		1971		Debit	Credit
	Credit	Debit	Credit	Debit	Credit	Debit	Credit	Debit	Credit	Debit		
A. GOODS AND SERVICES												
1. Merchandise	306	332	359	359	367	328	388	360	362	410		
2. Non-monetary gold	-	1	1	1	-	1	-	-	-	1		
3. Freight and insurance on merchandise	1	49	51	8	5	46	14	54	26	61		
4. Other transportation	27	21	25	39	48	35	56	59	56	63		
5. Travel	14	23	21	13	18	18	27	20	39	23		
6. Investment income	10	16	15	12	14	14	17	12	19	14		
7. Government, not included elsewhere	15	6	5	14	14	5	17	7	18	7		
8. Other services	15	14	17	19	23	16	29	15	22	18		
9. Net goods and services	-	74	30	-	26	-	21	-	-	54		
B. TRANSFER PAYMENTS												
9. Private	5	12	11	6	8	6	13	6	15	6		
10. Central government	15	2	4	33	17	4	18	4	21	5		
Net transfer payments	6	-	-	24	15	-	21	-	25	-		

Table 51 - Balance of payments (cont'd)

Item	Rs million										
	1967		1968		1969		1970		1971		
	Credit	Debit	Credit	Debit	Credit	Debit	Credit	Debit	Credit	Debit	
<u>C. CAPITAL AND MONETARY GOLD</u>											
<u>Non-monetary sectors</u>											
11-14. Private	-	3	-	3	15	-	4	-	9	-	-
15. Central government	15	-	18	-	23	-	4	-	-	5	-
<u>ALLOCATION OF SDR*</u>	-	-	-	-	-	-	15	-	13	-	-
<u>Monetary sectors</u>											
16. Commercial banks: liabilities	13	-	3	-	-	11	6	-	6	-	-
17. Commercial banks: assets	4	-	11	-	-	7	14	-	17	-	-
18. Central institutions: liabilities	18	-	-	19	17	-	-	22	-	-	-
19. Central institutions: assets	31	-	-	16	-	82	-	71	-	-	9
OTHER CAPITAL, ERRORS AND OMISSIONS	-	10	12	-	4	-	8	-	-	-	1

*Special Drawing Rights

Source: Bank of Mauritius

V. CONSUMER PRICE INDICES

Table 52 - Consumer price indices

(Base: January-June 1962 = 100)

The table below gives three consumer price indices, viz :

- (a) an index for households in urban areas;
- (b) an index for households in rural areas;
- (c) a total index for Mauritius as a whole.

Period	Urban	Rural	Whole Island
1963 (Average)	98,5	98,5	98,5
1964 (")	100,5	100,2	100,3
1965 (")	102,3	102,0	102,1
1966 (")	105,0	104,5	104,7
1967 (")	106,6	106,6	106,6
1968 (")	113,0	114,9	114,1
1969 (")	115,6	117,6	116,7
1970 (")	117,6	119,2	118,5
1971 (")	118,3	119,4	118,9
1971 : January	116,8	117,8	117,4
February	118,9	120,6	119,9
March	118,5	120,0	119,3
April	117,3	118,8	118,1
May	117,3	118,7	118,1
June	117,6	119,0	118,4
July	118,3	119,2	118,8
August	118,5	119,6	119,1
September	118,7	119,6	119,2
October	118,5	118,9	118,8
November	119,0	119,6	119,3
December	120,6	120,6	120,6
1972 : January	122,8	122,7	122,8
February	124,3	123,9	124,1
March	124,4	124,1	124,2
April	125,2	124,8	125,0
May	124,4	124,0	124,2
June	124,6	124,0	124,3

VI. EXTERNAL TRADE

Table 53 - Balance of visible trade

Period	Imports (c.i.f.value)	Exports [≡] (f.o.b.value)	Bunkers and ships' stores (f.o.b. value)	Balance of visible trade	
				Surplus	Deficit
1967	371.1	306.8	9.4	-	54.9
1968	421.1	354.0	17.1	-	50.0
1969	376.0	365.2	17.9	7.1	-
1970	419.9	384.5	14.2	-	21.2
1971	461.6	360.8	17.3	-	83.5
1971 : 1st Qr.	103.8	61.1	3.1	-	39.6
2nd Qr.	119.4	28.5	4.3	-	86.6
3rd Qr.	133.0	116.1	4.5	-	112.4
4th Qr.	105.3	155.1	5.4	55.2	-
1972 : 1st Qr.	154.4	131.0	4.3	-	19.1
2nd Qr.	162.1	40.3	4.2	-	117.6

Rs million

[≡]Including value of sugar quota certificates and the bonus received in lieu of the Commonwealth Preference on sugar exports (except for 1971), but excluding sales value of bunker fuel and ships' stores.

Table 54 - Quantity and price indices of exports and imports and terms of trade

Period	Quantity indices		Price indices		Terms of trade ^x
	Export	Import	Export	Import	
1965 = 100					
1966	103	90	105	100	105
1967	91	99	108	102	106
1968	106	98	106	117	91

^xRatio of export to import price index.

A rise in the index indicates that the terms of trade has moved in favour of Mauritius.

Table 55- Quantum and price indices of imports, by section

Period	All sections	Food	Beverages and tobacco	Crude materials, inedible, except fuels	Mineral fuels, lubricants, etc.	Animal and vegetable oils and fats	Chemicals	Manufactured goods classified chiefly by material	Machinery and transport equipment	Miscellaneous manufactured articles
<u>Quantum indices</u>										
1965 = 100										
1966	90	97	72	89	85	126	98	93	65	90
1967	99	103	70	106	141	139	93	100	76	100
1968	98	96	73	106	172	154	99	90	82	89
<u>Price indices</u>										
1965 = 100										
1966	100	104	100	91	103	95	98	96	100	99
1967	102	107	102	99	102	88	97	99	102	104
1968	117	130	116	109	118	81	105	109	122	126

Table 56 - Exports : quantities and values

Period	Total value [*]	Re-exports value	DOMESTIC EXPORTS											
			Total		Sugar		Molasses		Tea		Other			
			Quantity	Value	Quantity	Value	Quantity	Value	Quantity	Value	Quantity	Value		
1967	306.8	6.1	...	300.7	515.8	281.3	96.9	8.5	1.6	8.4	...	2.4		
1968	354.0	7.7	...	346.3	596.0	320.7	169.2	11.9	1.7	9.6	...	4.0		
1969	365.2	7.0	...	353.2	596.1	326.0	125.3	10.1	2.7	14.6	...	7.6		
1970	384.5	8.2	...	376.3	575.0	341.2	100.4	10.6	2.6	14.1	...	10.4		
1971	360.8	6.0	...	354.8	489.3	313.4	133.4	8.3	3.1	17.0	...	16.0		
1971 : 1st Qr.	61.1	1.6	...	59.5	76.5	47.7	52.2	2.8	1.0	5.6	...	3.4		
2nd Qr.	28.5	1.7	...	26.8	23.1	14.8	24.1	2.2	1.0	5.2	...	4.6		
3rd Qr.	116.1	1.7	...	114.4	168.3	106.9	14.5	0.9	0.4	2.2	...	4.4		
4th Qr.	155.1	1.0	...	154.1	221.5	144.0	42.6	2.4	0.7	4.1	...	3.6		
1972 : 1st Qr.	131.0	1.5	...	129.5	170.0	106.9	16.8	1.1	1.2	6.7	...	4.8		
2nd Qr.	40.3	2.2	...	38.1	36.6	25.8	16.7	1.5	1.0	5.2	...	5.6		

* including value of sugar quota certificates and the bonus received in lieu of the Commonwealth Preference on sugar exports (except for 1971) but excluding sales value of bunker fuel and ships' stores.

Quantity: Thousand metric tons
Value : Rs million (f.o.b.)

Table 57 - Total exports* : principal countries of destination - values

Rs million (f.o.b.)

Period	United Kingdom	Canada	Republic of South Africa	New Zealand	Netherlands	Italy	Republic of Malagasy	Reunion	United States of America
1967	269,2	9,5	3,4	0,1	2,8	0,4	1,7	1,3	15,8
1968	272,2	44,1	6,9	0,3	0,3	0,9	1,9	2,5	21,6
1969	260,5	63,2	9,6	0,3	0,5	-	2,4	3,3	18,5
1970	260,4	77,6	12,1	0,3	-	0,2	2,6	3,9	21,1
1971	198,4	101,1	15,8	0,3	1,4	-	2,5	5,3	21,9
1971 : 1st Qr.	42,7	7,5	5,1	-	0,4	-	0,3	1,2	2,3
2nd Qr.	9,1	7,5	4,5	0,2	0,5	-	1,1	1,5	1,9
3rd Qr.	54,9	38,2	2,3	0,1	0,2	-	0,8	1,5	16,3
4th Qr.	91,7	47,9	3,9	-	0,3	-	0,3	1,0	1,4
1972 : 1st Qr.	87,2	7,0	6,8	-	0,7	0,1	0,3	1,5	15,9
2nd Qr.	21,0	-	4,2	0,4	0,5	-	0,8	2,2	0,4

*Including value of sugar quota certificates and the bonus received in lieu of the Commonwealth Preference on sugar exports

Table 58- Imports: values by S.I.T.C. sections

Rs million (c.i.f.)

Period	All Sections	Food	Beverages and tobacco	Crude materials inedible, except fuels	Mineral fuels, lubricants, etc.	Animal and vegetable oils and fats	Chemicals	Manufactured goods classified chiefly by material	Machinery and transport equipment	Miscellaneous manufactured articles	Miscellaneous transactions and commodities
1967	371.1	118.5	4.8	7.1	25.4	18.3	42.6	78.5	43.7	32.1	0.1
1968	421.1	135.5	5.7	7.8	35.9	18.5	49.0	77.6	56.5	34.6	0.1
1969	376.0	132.6	5.3	5.6	31.7	12.5	43.0	72.4	44.7	27.9	0.2
1970*	419.9	124.3	5.2	10.3	29.7	21.0	47.6	95.3	55.7	30.5	0.2
1971	461.6	121.6	6.1	11.7	29.7	28.9	49.7	104.0	77.5	32.1	0.3
1971 : 1st Qr.	103.8	29.9	1.0	2.7	9.3	5.4	10.4	22.2	15.6	7.0	0.2
2nd Qr.	119.4	28.7	1.7	3.1	6.7	10.0	12.2	25.3	24.2	7.6	-
3rd Qr.	133.0	36.8	1.7	3.6	9.1	5.2	16.1	29.3	22.6	8.7	-
4th Qr.	105.3	26.2	1.8	2.4	4.5	8.3	11.0	27.2	15.0	8.9	-
1972 : 1st Qr.	154.4	47.4	1.6	2.6	8.8	8.6	15.3	34.9	25.5	9.7	-
2nd Qr.	162.1	41.3	2.1	3.5	18.2	6.8	14.7	36.7	27.8	11.0	-

* As from 1970 S.I.T.C. (revised) used.

Table 59 - Imports : selected commodities - values

Period	Rs million (c.i.f.)													
	Rice	Wheat flour	Alcoholic beverages	Petroleum products	Vegetable edible oils	Fertilizers, manufactured	Cotton fabrics	Other textile fabrics	Cement	Iron and steel goods	Manufactures of metals, n.e.s.	Machinery other than electric	Electric machinery, apparatus and appliances	Road motor vehicles and parts
1967	44.2	15.3	4.0	25.0	16.2	19.0	11.4	8.4	8.1	12.7	10.8	16.6	16.3	9.9
1968	55.7	17.6	4.2	35.3	14.5	19.3	9.2	9.9	7.3	11.6	9.7	19.7	18.1	14.3
1969	54.9	23.0	4.0	31.1	9.7	17.1	8.4	10.7	8.4	9.3	8.2	18.6	15.0	10.4
1970	38.2	22.8	3.8	29.3	15.3	18.2	9.5	14.3	7.1	21.3	11.2	22.6	15.9	15.0
1971	31.3	23.5	4.7	28.9	21.4	16.8	11.2	15.1	9.1	17.8	13.3	41.6	18.2	16.7
1971 : 1st Qr.	9.7	5.5	0.7	9.1	3.4	3.3	2.8	3.1	1.8	3.5	2.6	8.2	4.2	2.9
2nd Qr.	5.7	6.3	1.2	6.6	7.6	2.9	2.3	3.8	1.7	4.7	3.4	13.3	4.9	5.8
3rd Qr.	11.5	7.9	1.4	8.9	3.2	6.0	2.9	3.9	3.2	5.5	3.9	12.3	5.3	4.6
4th Qr.	4.4	4.0	1.4	4.3	7.2	4.6	3.2	4.4	2.4	4.0	3.4	7.7	3.8	3.3
1972: 1st Qr.	14.3	9.4	1.1	8.7	6.8	4.9	2.8	6.1	2.0	5.4	4.6	12.0	8.2	4.9
2nd Qr.	12.5	7.8	1.6	17.9	3.2	2.4	3.2	6.7	2.9	6.0	3.8	11.8	9.8	5.9

Table 60 - Exports : selected commodities - quantities

Period	Rice Thousand m/tons	Wheat flour Thousand m/tons	Vegetable edible oils Thousand m/tons	Fertilizers manufactured Thousand m/tons	Cotton fabrics Million sq. metres	Other textile fabrics Million sq. metres	Cement Thousand m/tons	Iron and steel goods Thousand m/tons
1967	66,8	35,0	10,6	59,0	9,0	3,1	87,9	16,2
1968	61,5	36,2	10,2	57,3	6,5	3,6	67,1	14,2
1969	64,8	44,9	7,9	57,2	6,0	3,7	76,1	10,4
1970	58,6	45,2	10,5	57,0	6,8	4,8	65,0	18,2
1971	54,1	43,4	12,0	62,0	7,5	4,7	82,2	16,3
1971 : 1st Qr.	15,9	10,6	2,0	11,9	1,9	1,0	16,2	3,4
2nd Qr.	9,9	12,7	4,1	10,5	1,5	1,1	14,9	4,2
3rd Qr.	21,2	13,2	1,9	22,2	1,9	1,2	29,3	4,9
4th Qr.	7,1	6,9	4,0	17,4	2,2	1,3	21,7	3,8
1972 : 1st Qr.	26,7	15,6	4,3	19,4	1,8	1,8	17,8	5,2
2nd Qr.	20,7	13,1	2,1	7,9	2,2	2,0	27,6	5,8

Table 61 - Imports : main sources of supply - values

Rs million (c.i.f.)

Period	United Kingdom	Australia	Burma	Hong Kong	India	Republic of South Africa	Republic of Germany	Iran	Japan	Thailand	France	United States of America
1967	77.8	28.0	27.0	10.4	9.4	30.6	25.9	17.8	16.8	16.1	20.3	7.3
1968	99.6	25.7	42.3	8.7	11.5	31.4	27.9	12.6	14.3	10.7	23.8	8.8
1969	74.4	27.1	7.7	8.8	10.2	31.3	17.1	19.9	14.6	43.8	24.8	6.0
1970	88.0	30.4	23.1	10.2	12.8	37.8	20.5	14.9	21.8	12.8	29.5	23.9
1971	100.9	30.2	17.3	9.9	12.9	36.0	22.3	22.4	30.5	12.9	32.6	31.8
1971 : 1st Qr.	20.8	5.9	9.1	2.0	2.6	6.7	4.8	6.9	7.0	0.7	7.1	7.4
2nd Qr.	27.9	7.1	0.3	2.3	2.3	11.6	7.8	3.7	6.3	5.4	9.7	11.7
3rd Qr.	31.8	10.4	5.0	2.4	4.9	10.1	5.7	8.4	8.3	6.4	8.1	5.9
4th Qr.	20.4	6.8	2.9	3.2	3.1	7.6	4.0	3.4	8.9	0.4	7.7	6.8
1972 : 1st Qr.	32.9	12.0	12.9	2.7	4.5	14.5	10.9	7.2	10.0	0.4	13.3	4.1
2nd Qr.	33.3	10.8	10.4	3.6	3.2	12.9	7.3	15.7	10.7	0.2	12.2	6.1

Table 62 - Imports of fertilizers*

Kind of fertilizer	1970		1971		1st half-year 1972	
	Quantity (m/tons)	Value - c.i.f. (Rs 000)	Quantity (m/tons)	Value - c.i.f. (Rs 000)	Quantity (m/tons)	Value - c.i.f. (Rs 000)
TOTAL IMPORTS	65,756	19,157	68,087	17,504	31,440	7,766
<u>NITROGENOUS FERTILIZERS</u>	17,731	3,938	32,260	6,490	17,298	3,714
Sulphate of ammonia	16,500	3,592	31,636	6,306	16,815	3,563
Ammonia sulphate nitrate	1,195	330	620	181	440	139
Other nitrogenous fertilizers	36	16	4	3	43	12
<u>POTASSIC FERTILIZERS</u>	5,360	1,486	10,580	3,054	4,277	1,359
Muriate of potash	5,225	1,426	10,375	2,971	4,123	1,293
Sulphate of potash	135	60	205	83	155	66
<u>PHOSPHATIC FERTILIZERS</u>	12,294	2,212	10,728	2,443	6,762	1,407
Single superphosphate	1,435	320	1,540	351	1,075	260
Triple superphosphate	2,156	917	3,127	1,401	1,585	668
Phosphatic guano	8,703	975	6,061	691	4,102	479
MIXED AND CO-FOUND FERTILIZERS	30,371	11,521	14,519	5,517	3,103	1,287

*Excluding imports from dependencies.

VII - EMPLOYMENT AND WAGES

The figures of employment in tables 63 - 68 apply to large establishments only -- these being defined as :

- (i) Sugar cane plantations where 25 arpents or more were harvested;
- (ii) Tea plantations of 5 arpents or more;
- (iii) All 'flue cured' tobacco establishments, irrespective of acreage;
- (iv) Non-agricultural establishments employing at least 10 persons on the day of the survey;
- (v) All central and local government departments.

Table 63 - Employment in large establishments by major industrial groups

Industrial group	Total no. of persons employed on last Thursday of:		
	March 1971 ^{1/}	September 1971 ^{1/}	March 1972
Agriculture, hunting, forestry and fishing	55,375	59,740	58,040
Sugar	48,468	54,758	47,850
Tea	5,311	3,320	8,374 ⁺
Other	1,596	1,662	1,816
Mining and quarrying	154	165	150
Manufacturing	8,740	9,420	9,913
Electricity, gas and water	1,283	1,293	1,297
Construction	2,058	2,226	2,523
Wholesale and retail trade and restaurants and hotels	3,960	4,327	4,613
Transport, storage and communication	4,987	6,053	5,722
Financing, insurance, real estate & business services	1,635	1,734	1,710
Community, social and personal services :	35,163	35,382	35,903
Government :			
(a) Central	27,557	27,523	27,921
(b) Local ^{2/}	5,139	3,243	3,121
Other	4,467	4,616	4,921
Total (excluding relief/development workers)	113,355	120,340	120,081
Relief/development workers	17,552	19,897	18,657
(a) Government	17,552	16,691	12,504
(b) Development Works Corporation	-	3,206	6,153
GRAND TOTAL	130,907	140,237	138,738

^{1/} Figures for March 1971 and September, 1971 have been revised.

^{2/} Municipalities and district councils.

⁺ Including 1,839 persons who are being trained by the Tea Development Authority and who will eventually become the owners of small tea holdings.

Table 64 - Employment[®] by sex and age group

Age group	March 1971			September 1971			March 1972		
	Males	Females	Both sexes	Males	Females	Both sexes	Males	Females	Both sexes
	18 years of age and over (i.e. adults)	85,214	23,879	109,093	89,044	26,235	115,279	91,187	24,948
Under 18 years of age (i.e. young persons)	3,500	762	4,262	4,073	988	5,061	3,237	709	3,946
Total (excluding relief/ development workers)	88,714	24,641	113,355	93,117	27,223	120,340	94,424	25,657	120,081
Relief/development workers	17,071	481	17,552	19,508	389	19,897	18,243	414	18,657
GRAND TOTAL	105,785	25,122	130,907	112,625	27,612	140,237	112,667	26,071	138,738

[®] in large establishments - see introduction on page 51.

Table 65 - Employment[@] in specified sectors : sugar industry

Source of employment	Size class (arpents)	Total no. of persons employed on the last Thursday of :		
		March 1971	September 1971	March 1972
Sugar cane planters (including metayers)	25 -	1,818	2,088	1,835
	50 -	861	1,024	737
	75 -	620	598	453
	100 -	5,046	5,388	4,768
Total planters		8,345	9,098	7,793
Millers' estates and annexes (including factories)		40,123	45,660	40,057
Total		48,468	54,758	47,850

Note : Employment figures for millers' estates include workers in field, factory, garage and workshop.

[@] in large establishments - see introduction on page 51.

Table 66 - Employment[@] in specified sectors : government services

Source of employment	Total no. of persons employed on the last Thursday of :		
	March 1971	September 1971	March 1972
Central government	27,557	27,523	27,921
Local government ⁺	3,139	3,243	3,121
Relief/development works [≠]	17,552	16,691	12,504
Total	48,248	47,457	43,546

⁺includes employees of district councils.

[@]in large establishments - see introduction on page 51.

[≠]excludes relief/development workers employed by the Development Works Corporation.

Table 67 - Employment[@] in specified sectors : manufacturing industries

Industrial group	Total no. of persons employed on last Thursday of:		
	March 1971	September 1971	March 1972
Food ⁺	387	906	944
Beverages and tobacco	1,335	1,354	1,462
Textile (including aloe fibre)	699	860	719
Wearing apparel	1,055	1,413	1,651
Wood and furniture	335	389	492
Printing and publishing	785	784	811
Rubber and leather products	172	174	187
Chemical products	368	384	435
Non-metallic mineral products	600	588	542
Metal products	461	491	539
Repairs of machinery (except electrical)	554	552	578
Repairs of electrical machinery	153	151	155
Transport equipment [≠]	741	626	713
Miscellaneous manufacturing industries	595	748	690
Total	8,740	9,420	9,918

⁺ excluding employees in sugar and tea factories, who have been included with plantation workers in agriculture.

[@] in large establishments - see introduction on page 51.

[≠] excludes repairs of motor vehicles, which is now included in group "Community, social and personal services".

Table 63 - Employment[†] and salaries or wages by industries, Dec. 1972

(See introduction on page 51)

Industrial group	Number of employees on monthly rates of pay	Salaries for the month of March (Rs)	Number of employees on daily rates of pay	Wages for the last Thursday of March (Rs)
<u>Agriculture, hunting, forestry and fishing</u>	<u>8,612</u>	<u>3,260,813</u>	<u>49,428</u>	<u>294,941</u>
Sugar [‡]	8,132	3,067,067	39,718	251,372
Tobacco	14	3,593	1,208	4,630
Tea [‡]	209	108,860	8,165	36,605
Fishing	69	24,526	278	1,856
Other	188	56,767	59	478
<u>Mining and quarrying</u>	<u>9</u>	<u>2,250</u>	<u>141</u>	<u>555</u>
Salt	9	2,250	141	555
<u>Manufacturing</u>	<u>2,432</u>	<u>1,004,014</u>	<u>7,486</u>	<u>45,887</u>
Food :				
Bread	41	10,405	302	1,951
Biscuits and confectionery	25	7,377	167	572
Other	108	51,699	301	1,959
Beverages and tobacco :				
Distilleries	31	8,827	60	343
Wine and beer	170	70,834	316	1,511
Soft drinks	263	80,629	159	759
Compounding of spirits & cigarette manufacture	154	139,534	309	2,214

[†]including factories

[‡]excluding 10,657 relief/development workers

Table 68 - Employment* and salaries or wages by industries, March 1972 (cont'd)

Industrial group	Number of employees on monthly rates of pay	Salaries for the month of March (Rs)	Number of employees on daily rates of pay	Wages for the last Thursday of March (Rs)
<u>Manufacturing (cont'd)</u>				
Textiles :				
Alco fibre and sack factories	27	18,959	692	3,978
Wearing apparel :				
Footwear	107	38,897	235	1,639
Tailoring and shirtmaking	255	76,679	1,054	3,222
Wood and furniture	58	18,990	434	3,234
Printing and publishing	400	126,576	411	3,342
Rubber and leather products	36	21,788	101	534
Miscellaneous chemical products	165	79,072	270	1,265
Non-metallic mineral products :				
Stone and concrete	54	24,253	284	2,539
Other	30	13,886	174	886
Metal products	93	34,251	446	2,839
Repairs of machinery (except electrical)	90	55,830	488	4,249
Repairs of electrical machinery	46	23,975	109	725

*excluding 13,657 relief/development workers

Table 68 - Employment* and salaries or wages by industries, March 1972 (Cont'd)

Industrial group	Number of employees on monthly rates of pay	Salaries for the month of March (Rs)	Number of employees on daily rates of pay	Wages for the last Thursday of March (Rs)
<u>Manufacturing (cont'd)</u>				
Transport equipment :				
Building of transport equipment	137	65,655	576	5,924
Miscellaneous manufacturing industries	92	35,898	598	2,202
<u>Electricity, gas and water</u>	<u>1,195</u>	<u>463,064</u>	<u>99</u>	<u>712</u>
<u>Construction</u>	<u>174</u>	<u>108,113</u>	<u>2,349</u>	<u>17,149</u>
<u>Wholesale and retail trade and restaurants and hotels</u>	<u>3,618</u>	<u>1,554,061</u>	<u>1,023</u>	<u>5,737</u>
Wholesale and retail trade	2,781	1,363,976	503	3,012
Restaurants	159	30,943	86	428
Hotels	678	159,142	434	2,297

* excluding 18,657 relief/development workers.

Table 68 - Employment and salaries or wages by industries, March 1972 (Cont'd)

Industrial group	Number of employees on monthly rates of pay	Salaries for the month of March (Rs)	Number of employees on daily rates of pay	Wages for the last Thursday of March (Rs)
<u>Transport, storage and communication</u>	<u>3,038</u>	<u>1,232,595</u>	<u>2,754</u>	<u>31,611</u>
Road transport :				
Buses	1,637	598,538	996	7,835
Other	224	82,181	194	1,595
Docks and stevedoring	475	230,804	1,564	22,181
Other	502	321,072	-	-
<u>Financing, insurance, real estate and business services</u>	<u>1,742</u>	<u>1,234,032</u>	<u>18</u>	<u>152</u>
Banks and other financial institutions	989	744,706	8	50
Insurance	383	269,977	8	66
Business services	370	219,349	2	36
<u>Community, social and personal services</u>	<u>27,745</u>	<u>11,290,155</u>	<u>8,218</u>	<u>56,451</u>
Government services* : (a) Central	21,924	9,019,807	5,997	39,042
(b) Local	1,650	573,026	1,471	9,550
Private education services	2,322	859,635	122	952
Private health services	306	87,482	23	143
Repairs of motor vehicles	174	65,861	424	3,518
Other services	1,369	684,346	181	3,246
GRAND TOTAL	48,565	20,149,097	71,516	453,195

*excluding 18,657 relief/development workers

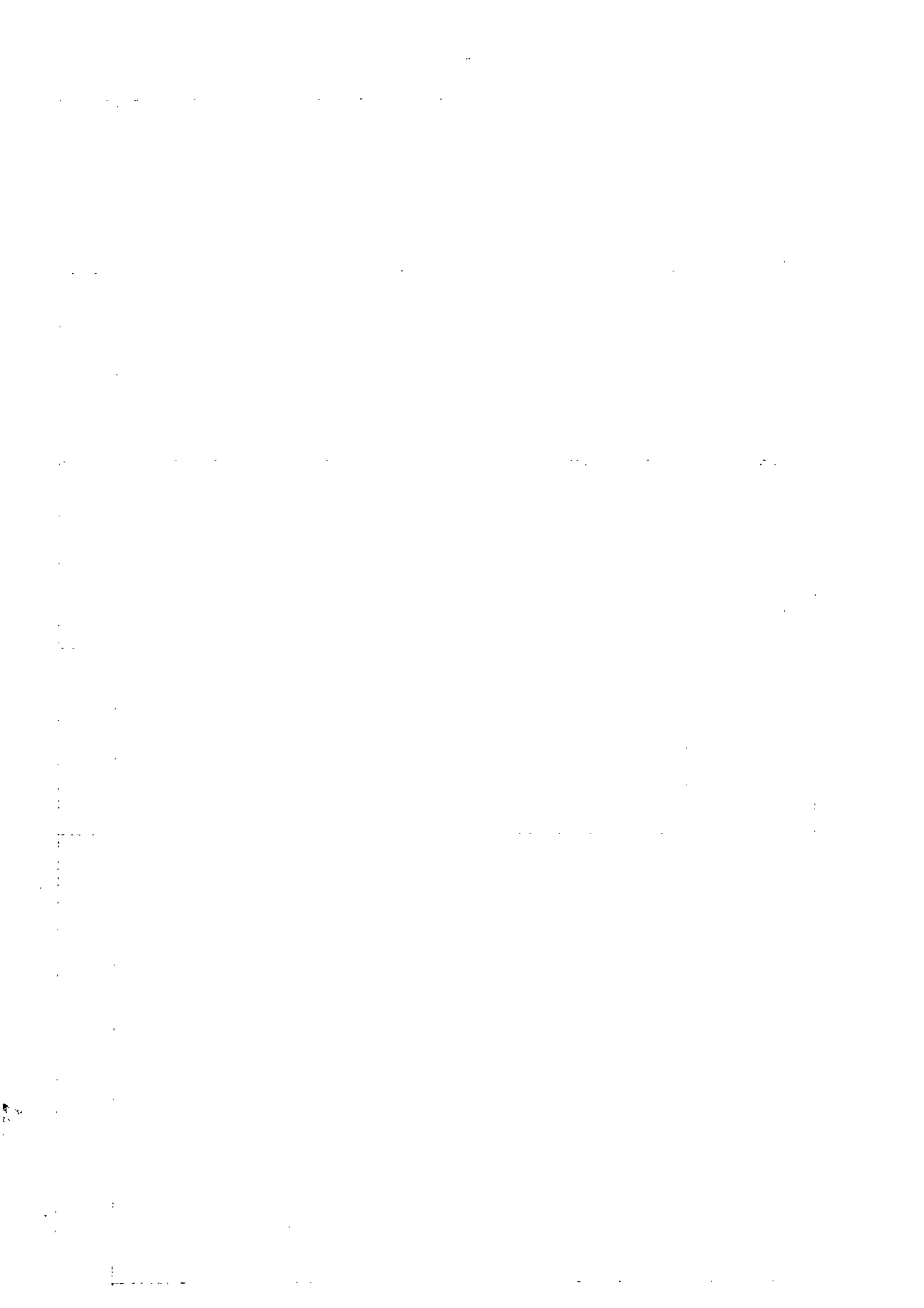


Table 69 - Indicators of unemployment

Month	Registered unemployed ⁺					Relief/development workers [#]				
	1968	1969	1970	1971	1972	1968	1969	1970	1971	1972
January	9,956	13,082	17,113	27,810	33,776	18,179	15,727	14,505	17,743	14,222
February	9,868	14,606	17,328	27,770	34,718	18,156	15,650	14,611	17,716	12,890
March	9,954	14,846	18,519	30,354	34,589	18,294	15,389	14,427	17,672	12,749
April	9,974	15,293	20,656	30,030	39,133	18,082	15,338	14,526	17,520	12,636
May	8,710	15,297	21,584	29,696	33,328	15,961	15,415	14,955	17,451	12,612
June	7,833	15,351	21,838	31,277	39,273	17,463	15,210	15,807	17,510	12,592
July	7,931	14,432	22,189	34,502		15,669	14,793	15,396	17,355	
August	7,472	13,041	19,986	32,034		14,818	13,847	16,118	16,998	
September	8,127	13,274	19,754	31,882		14,777	13,674	15,094	16,879	
October	8,447	13,154	22,418	31,083		14,212	13,534	17,296	16,747	
November	10,023	14,238	25,197	30,858		14,732	13,706	17,515	16,596	
December	10,698	14,794	25,328	30,632		15,658	14,450	17,768	14,207	

⁺These figures exclude persons already in employment but seeking a change in job.

[#]Including gangmen, supervisors, pay clerks, etc.

Table 70 - Daily wage rates in certain industries (October inquiry^{**})

Industry	Occupation	Rupees					
		Lowest			Highest		
		1969	1970	1971	1969	1970	1971
1. Manufacture of bread	Brigadiers	6.75	6.75	6.75	6.75	6.75	6.75
2. Manufacture of furniture	Cabinet makers	7.65	7.65	8.35	7.55	7.65	8.35
3. Publishing and printing	Pressmen	6.50	6.65	7.15	10.55	12.20	12.20
- do -	Compositors by hand	5.50	6.05	6.05	11.90	11.35	11.35
4. Manufacture of machinery	Fitters	5.85	5.85	6.40	11.20	12.00	12.00
- do -	Pattern makers	5.85	5.85	5.90	8.40	8.40	8.40
5. Repair of motor vehicles	Mechanics	5.00	5.00	5.00	11.15	12.00	12.00
6. Construction	Carpenters	6.60	6.60	6.50	10.00	10.00	10.00
- do -	Masons	5.50	6.60	7.00	10.00	12.00	12.00
7. Electricity	Linesmen	8.85	8.85	8.85	12.80	12.80	12.80
- do -	Labourers	6.85	6.50	6.50	7.20	7.20	7.20
8. Transport (bus companies) [†]	Drivers	9.60	(a)	(a)	9.60	(a)	(a)
- do -	Conductors	8.25	(b)	(b)	8.25	(b)	(b)
9. Municipal services	Labourers, unskilled	5.00	5.50	5.50	6.00	6.10	6.10

^{**}Data are collected in October of each year from a sample of large establishments.

The normal hours of work are 9 per day for (7) and 8 for all others

The normal hours of work are 48 per week for (1) and 45 for all others

[†]The basic rates of pay have been revised as follows :

For the first four hours on any normal working day (a) Drivers: Rs 5.50, (b) Conductors : Rs 4.75

For every subsequent hour not exceeding four (a) Drivers; Rs 1.20; (b) Conductors : Rs 1.03

A normal working week shall be of 45 hours and shall be completed in 6 days.

Table 71 - Daily wage rates of manual workers employed by the central government

	Minimum	Maximum
	Rs	Rs
Foremen	11.00	14.00
Artisans : Class II	9.90	10.70
" III	8.50	9.30
" IV	7.20	8.00
" V	6.60	7.00
" VI	6.00	6.40
" VII	5.60	6.00

Note : These rates exclude the 12% increase in wages which took effect as from 1st November 1971

Table 72 - Employment and wages of certain categories of employees on sugar millers' estates (September inquiry #)

Category	Grade	1970			1971		
		Number employed	Monthly wages		Number employed	Monthly wages	
			Lowest	Highest		Lowest	Highest
		Rs	Rs	Rs	Rs	Rs	
Boiler makers	I	29	280,00	320,00	24	280,00	320,00
"	II	27	225,00	250,00	29	225,00	250,10
Pan boilers	Chief	23	355,00	472,90	21	355,00	425,00
"	I	57	280,00	320,00	60	280,00	325,00
"	II	49	225,00	240,00	48	225,00	270,00
Boiler attendants	Chief	34	180,00	266,20	32	180,00	270,00
"	Asst.	26	160,00	180,00	31	160,00	180,00
Fitters	I	111	320,00	500,00	107	320,00	450,05
"	II	83	270,00	290,00	79	266,20	300,00
"	III	92	210,00	266,20	88	210,00	254,30
Drivers of lorries, buses, vans, cars and wheel tractors used for haulage works only	I	652	205,00	292,90	650	205,00	292,95
	II	101	180,00	197,90	100	180,00	195,00
	III	12	100,00	179,30	16	160,00	179,35
All other drivers	I	52	197,15	318,50	58	195,00	318,55
"	II	73	175,00	197,90	94	175,00	225,00
"	III	38	150,00	175,00	37	150,00	180,00
Factory operators	I	110	180,00	220,00	132	180,00	215,00
"	II	324	160,00	200,00	305	160,00	195,00
"	III	233	140,00	173,60	300	140,00	157,00

*Data are collected in the form of check list from all sugar millers.

Table 73 - Employment and earnings on sugar millers' estates

Month	WORKERS ON MONTHLY RATES OF PAY				WORKERS ON DAILY RATES OF PAY							
	Man-days actually worked (000)		Earnings (Rs mn)		Man-days actually worked (000)		Earnings (Rs mn)					
	1970	1971	1972	1971	1972	1970	1971	1972				
January	109	112	114	1.3	1.4	1.6	461	493	481	2.9	2.9	3.2
February	140	142	156	1.3	1.4	1.6	657	654	703	3.8	3.9	4.5
March	145	183	163	1.3	1.4	1.6	673	879	785	3.9	4.8	5.3
April	188	164	159	1.4	1.4	1.6	893	739	726	4.5	3.9	4.3
May	156	156	186	1.4	1.4	1.6	721	708	858	3.8	3.8	5.1
June	159	189	157	1.4	1.4	1.6	729	871	695	3.8	4.5	4.2
July	190	165		1.6	1.5		953	790		5.6	4.9	
August	168	169		1.8	1.7		892	875		6.1	6.3	
September	193	190		1.8	1.8		1,074	1,051		7.5	7.3	
October	165	163		1.7	1.7		917	850		5.9	5.6	
November	162	152		1.6	1.9		808	739		4.8	5.8	
December	178	180		4.7	5.1		900	976		6.1	10.0	
Total	1,953	1,965		21.3	22.1		9,678	9,625		58.7	63.7	

Note : (i) The table excludes the "Etat Major" staff.

(ii) Earnings and the number of "man-days actually worked" refer to 4 or 5 weekly periods ending on the pay-day of each month; the figures are therefore not strictly comparable from month to month.

(iii) Earnings also include overtime, holiday and leave pay, housing allowance and end-of-year bonus.

VIII. SOCIAL ASSISTANCE

Table 74 - Social benefits

	1967	1968	1969	1970	1971
<u>Outdoor relief</u>					
Total number of cases relieved	44,409	43,380	41,549	41,516	40,444
Total relief payments (Rs mn.)	9.7	8.8	7.8	8.4	8.1
<u>Indoor relief</u>					
Number of persons in infirmaries at end of year	726	719	756	749	728
Number of persons in orphanages at end of year	190	186	185	199	229
Total capitation grants paid (Rs mn.)	0.4	0.4	0.4	0.4	0.4
<u>Old age pension</u>					
Number of beneficiaries at end of year	40,393	41,760	42,670	43,761	46,625
Total amount paid (Rs mn.)	10.3	11.1	11.4	11.8	12.1
<u>Family allowance</u>					
Number of beneficiaries at end of year	52,930	40,564	42,116	43,755	43,083
Total amount paid (Rs mn.)	9.8	7.8	5.7	5.5	5.7
<u>Assistance to voluntary Organisations</u>					
Total cash grants paid (Rs mn.)	0.2	-	-	-	-

IX - EDUCATION

Table 75 - Primary education: number of schools, pupils and teachers

Mauritius

Period	Total number of schools	E N R O L M E N T			Total	Number of teachers	Pupil/teacher ratio
		Government	Aided	Non-aided [†]			
October 1967	293	97,468	35,317	4,175	136,960	4,110	33
" 1968	325	99,959	34,789	4,664	139,412	4,151	34
" 1969	330	101,944	35,499	5,637	143,080	4,300	33
" 1970	347	105,309	36,784	4,766	146,859	4,622	32
" 1971	347	107,200	37,269	4,213	148,682	4,708	32
<u>Rodrigues</u>							
October 1967	7	949	2,586	...	3,535	93	38
" 1968	7	995	2,552	...	3,547	102	35
" 1969	7	958	2,452	...	3,410	105	32
" 1970	7	1,005	2,538	...	3,543	109	53
" 1971	7	1,069	2,580	...	3,649	107	34

[†]including pupils of the primary sections of aided and non-aided secondary schools.

Table 76 - Secondary education : number of schools, pupils and teachers

Mauritius

Period	Total number of schools	E N R O L M E N T			Total	Number of teachers	Pupil/teacher ratio
		Government	Aided	Non-aided			
October 1967	141	2,505	6,218	29,560	38,283	1,637	23
" 1968	135	2,538	6,372	30,581	39,491	1,696	23
" 1969	139	2,616	7,003	32,605	42,224	1,715	25
" 1970	137	2,679	6,979	34,049	43,707	1,736	25
" 1971	137	2,839	7,213	36,845	46,897	1,763	27
<u>Rodrigues</u>							
October 1967	2	-	-	225	225	8	28
" 1968	2	-	-	212	212	10	21
" 1969	2	-	-	220	220	11	20
" 1970	2	-	-	262	262	11	24
" 1971	2	-	-	301	301	13	23

Table 77 - Enrolment by grade and sex in primary schools : Mauritius

GRADE	1967			1968			1969			1970			1971		
	Male	Female	Both sexes	Male	Female	Both sexes	Male	Female	Both sexes	Male	Female	Both sexes	Male	Female	Both sexes
Std. I	12,128	11,592	23,720	12,071	11,556	23,627	12,828	12,428	25,256	12,463	12,182	24,645	11,953	11,408	23,261
Std. II	10,877	10,158	21,035	12,110	11,497	23,607	11,809	11,404	23,213	12,650	12,309	24,959	12,408	12,176	24,584
Std. III	10,445	10,035	20,480	10,672	9,882	20,554	11,868	11,181	23,049	11,529	11,088	22,617	12,620	12,256	24,876
Std. IV	11,003	10,306	21,309	10,173	9,743	19,916	10,466	9,662	20,128	11,620	10,967	22,587	11,442	10,940	22,382
Std. V	10,453	9,390	19,843	10,632	9,839	20,471	9,360	9,370	19,230	10,156	9,373	19,529	11,433	10,734	22,167
Std. VI	16,476	14,097	30,573	16,744	14,493	31,237	17,195	15,009	32,204	17,173	15,349	32,522	16,478	14,934	31,412
TOTAL	71,362	65,576	136,938	72,402	67,010	139,412	74,026	69,054	143,080	75,591	71,268	146,859	76,234	72,448	148,682

Table 78 - Enrollment by grade and sex in primary schools : Rodrigues

GRADE	1967			1968			1969			1970			1971		
	Male	Female	Both sexes	Male	Female	Both sexes	Male	Female	Both sexes	Male	Female	Both sexes	Male	Female	Both sexes
Std. I	357	336	693	320	337	657	310	315	625	395	345	740	350	370	720
Std. II	290	276	566	348	331	679	305	334	639	318	322	640	406	347	753
Std. III	295	310	605	275	266	541	329	313	642	288	317	605	305	312	617
Std. IV	320	287	607	259	286	545	237	235	472	293	288	581	262	288	550
Std. V	251	248	499	267	250	517	206	223	429	198	205	403	250	251	501
Std. VI	287	278	565	319	289	608	315	288	603	277	297	574	246	262	508
TOTAL	1,800	1,735	3,535	1,788	1,759	3,547	1,702	1,708	3,410	1,769	1,774	3,543	1,819	1,830	3,649

Table 79 - Enrolment by grade and sex in secondary schools : Mauritius

GRADE	1967			1968			1969			1970			1971		
	Male	Female	Both sexes	Male	Female	Both sexes	Male	Female	Both sexes	Male	Female	Both sexes	Male	Female	Both sexes
Form I	5,684	3,760	9,444	5,522	4,104	9,626	5,407	4,102	9,509	6,455	5,219	11,664	6,455	5,219	11,664
Form II	4,425	2,882	7,307	4,622	3,289	7,911	5,042	3,536	8,578	4,897	3,817	8,714	4,897	3,817	8,714
Form III	4,002	2,564	6,566	4,180	2,827	7,007	4,159	3,032	7,191	4,608	3,342	7,950	4,608	3,342	7,950
Form IV	4,639	2,579	7,268	4,538	2,574	7,112	4,413	2,955	7,368	4,619	3,225	7,844	4,619	3,225	7,844
Form V	4,371	1,968	6,339	5,836	2,894	8,730	5,810	3,193	9,003	5,307	3,193	8,500	5,307	3,193	8,500
Form VI	920	449	1,369	1,313	570	1,883	1,453	605	2,058	1,579	646	2,225	1,579	646	2,225
TOTAL	24,091	14,202	38,293	25,730	16,494	42,224	26,284	17,423	43,707	27,455	19,442	46,897	27,455	19,442	46,897

Table 80 - Enrolment by grade and sex in secondary schools : Rodrigues

GRADE	1967			1968			1969			1970			1971		
	Male	Female	Both sexes	Male	Female	Both sexes	Male	Female	Both sexes	Male	Female	Both sexes	Male	Female	Both sexes
Form I	37	20	57	25	28	53	27	28	55	41	28	69	50	38	88
Form II	26	27	53	30	14	44	25	23	48	27	28	55	36	30	66
Form III	26	24	50	15	24	39	27	14	41	22	20	42	20	25	45
Form IV	21	19	40	28	27	55	19	31	50	39	30	69	30	31	61
Form V	5	10	15	8	13	21	13	13	26	14	13	27	23	18	41
Form VI	-	-	-	-	-	-	-	-	-	-	-	-	-	-	-
TOTAL	115	100	215	106	106	212	111	109	220	143	119	262	159	142	301

X. TRANSPORT AND COMMUNICATION

End of period

Table 81 - Motor vehicles registered

Period	Grand total	Private vehicles			Commercial vehicles					Government		
		Total	Cars	Motor cycles	Auto cycles	Total	Taxi-cars	Lorries	Vans	Buses	Other	Owned vehicles
1967	22,783	14,739	10,716	2,436	1,587	7,101	1,371	2,406	1,508	634	1,182	943
1968	23,811	15,375	10,876	2,600	1,899	7,371	1,405	2,423	1,536	657	1,300	1,065
1969	24,736	16,161	11,193	2,744	2,224	7,478	1,331	2,461	1,654	693	1,339	1,097
1970	25,389	16,603	11,220	2,914	2,469	7,588	1,326	2,439	1,732	722	1,369	1,198
1971	26,766	17,463	11,657	3,115	2,691	7,951	1,357	2,473	1,915	770	1,436	1,352
1971: 1st Qr.	25,567	16,710	11,236	2,951	2,523	7,623	1,521	2,435	1,762	729	1,376	1,234
2nd Qr.	25,976	16,939	11,361	3,010	2,568	7,755	1,345	2,457	1,820	743	1,390	1,282
3rd Qr.	26,419	17,204	11,505	3,068	2,631	7,878	1,359	2,469	1,875	753	1,422	1,337
4th Qr.	26,766	17,463	11,657	3,115	2,691	7,951	1,357	2,473	1,915	770	1,436	1,352
1972: 1st Qr.	27,215	18,856	12,884	3,184	2,788	6,995	1,369	2,471	909	783	1,463	1,364
2nd Qr.	27,206	17,737	11,673	3,107	2,957	8,020	1,561	2,385	2,011	799	1,464	1,449

Note: The above table has been completely revised in the light of amendments to the Road Traffic Ordinance, 1962.

Figures in the new series are consequently not comparable with those published previously.

Table 82 - Bus operational statistics

	Unit	1967	1968	1969	1970	1971
Total number of buses (at 30th June)	Number	621	622	651	679	770
Total vehicle-journeys	Thousand	2,160	2,243	2,340	2,559	2,513
Average vehicle-journeys per day	"	6	6	6	7	7
Total vehicle-miles	"	23,025	23,425	24,426	26,665	26,395
Average vehicle-miles per day	"	63	64	67	73	72
Total number of passengers carried during year)	"	68,607	71,661	74,475	81,238	82,026
Average number of passengers carried per day	"	188	196	204	223	225
Total gross receipts	000 Rs	18,856	18,851	19,820	21,542	22,454
Average gross receipts per day	"	52	52	54	59	62

Table 83 - Road traffic accidents and casualties

	1967	1968	1969	1970	1971
<u>Road traffic accidents</u>					
Number	<u>2,575</u>	<u>2,128</u>	<u>2,035</u>	<u>2,142</u>	<u>2,075</u>
Number per 100,000 of population	333	270	255	264	252
<u>Motor vehicle accidents</u>					
Number	<u>2,425</u>	<u>2,025</u>	<u>1,899</u>	<u>2,009</u>	<u>1,960</u>
Number per 100,000 of population	313	257	238	248	238
Number per 1,000 registered motor vehicles	110	87	78	80	75
<u>Total casualties</u>	<u>2,357</u>	<u>1,928</u>	<u>1,934</u>	<u>2,174</u>	<u>2,100</u>
<u>Nature of casualty</u>					
Killed	87	80	78	117	90
Seriously injured	222	218	176	254	248
Slightly injured	2,048	1,630	1,680	1,803	1,762
<u>Casualties by class of road users</u>					
Pedestrians	974	810	805	882	921
Pedal cyclists	396	310	280	374	290
Passengers	646	454	555	569	547
Drivers or riders of motor vehicles	341	354	294	349	342

Table 84 - Seaborne shipping

Period	Vessels entering		Vessels leaving		Goods	
	Number	Net registered tonnage	Number	Net registered tonnage	Unloaded	Loaded ⁺
		Thousand n/tons		Thousand n/tons	Thousand n/tons	Thousand n/tons
1967	1,026	2,499	1,023	2,460	594	627
1968	1,269	2,770	1,269	2,744	583	779
1969	1,315	2,487	1,311	2,436	615	750
1970	1,110	2,478	1,121	2,472	535	726
1971	985	2,165	948	2,188	670	636
1971 : 1st Qr.	214	496	221	509	151	134
2nd Qr.	203	542	198	504	175	35
3rd Qr.	301	626	267	590	154	215
4th Qr.	263	501	262	585	190	252
1972 : 1st Qr.	237	428	248	645	226	195
2nd Qr.	203	457	202	475	130	67

⁺ excluding bunkers

Table 85 - Civil aviation

Period	Number of movements		Freight	
	Landing	Take offs	Unloaded (n/tons)	Loaded (n/tons)
1967	601	604	229.7	118.5
1968	554	554	245.9	192.1
1969	598	598	277.8	235.8
1970	688	888	402.0	336.4
1971	1,167	1,167	511.2	670.9
1971 : 1st Qr.	260	260	84.6	138.0
2nd Qr.	297	297	124.3	134.9
3rd Qr.	330	330	113.6	200.6
4th Qr.	280	280	188.7	197.4
1972 : 1st Qr.	293	293	154.4	129.1
2nd Qr.	302	302	141.8	197.3

Note : In this table (1) are included only movements of commercial aircraft;
 (2) each touch down or each take off is counted as a separate movement;
 (3) freight carried by planes other than commercial is included.

XI. LAND UTILIZATION

Table 88 - Total area⁺ classified by utilization

	<u>Acres</u>
	1971
<u>Agriculture</u>	259,900
Sugar cane	242,100
Tea	12,800
Tobacco, vegetable and other crops	5,000
<u>Forests, scrub areas, grasslands and grazing lands</u>	161,900
Forest plantations	23,900
Forest, natural	5,900
Savannah, grasslands, meadows, etc.	18,400
Scrub and other forest lands	113,700
<u>Reservoirs and ponds</u>	2,900
<u>Swamps and rocks</u>	3,500
<u>Roads (main thoroughfares)</u>	3,300
<u>Built-up areas</u>	29,300
Total island	460,800

⁺Based on the findings of the UNDP-FAO Land and Water Resources Survey team working on aerial photographs of the island taken at the end of 1965 and supplemented to some extent by land surveys.

Table 89 - Effective area under cultivation

	<u>Acres</u>				
	1967	1968	1969	1970	1971
Sugar cane	214,000	211,700	213,400	213,800	213,500
Tea	7,900	8,400	8,800	9,400	10,000
Tobacco	800	1,000	600	600	1,000

XII. LOCAL PRODUCTION

Table 90 - Agriculture : production of main crops, fish and meat

Commodity	Unit	1968	1969	1970	1971	Jan.-June 1972
<u>INDUSTRIAL CROPS</u>						
Sugar cane	000 M/ton	5,152	5,824	5,120	5,256	-
Tea (green leaf processed)	M/ton	11,062	15,353	16,029	19,837	14,506
Tobacco leaf <u>a/</u>	"	742	442	526	562	304
<u>VEGETABLES, PULSES AND FRUITS</u>						
Beans and peas	"	652	613	455	513	171
Creepers <u>b/</u>	"	8,006	7,071	7,033	6,517	3,269
Eddoes	"	458	468	341	465	317
Egg plants (bringelles)	"	1,874	2,628	2,320	2,714	692
Ginger	"	882	1,152	760	984	545
Groundnuts	"	632	792	693	1,062	1,346
Maize	"	376	462	529	504	297
Manioc	"	241	239	249	252	110
Potatoes (Irish)	"	9,578	5,761	6,815	8,928	725
Rice	"	118	813	906	1,084	915
Sweet potatoes	"	268	219	211	254	114
Tomatoes	"	8,780	8,566	5,284	6,058	2,435
Mixed vegetables <u>c/</u>	"	7,227	7,715	6,804	7,845	2,339
Bananas	"	10,763	11,468	7,953	12,005	4,743
Pineapples	"	666	670	545	815	224
<u>FISH, MEAT & BY-PRODUCTS</u>						
Fish: Coastal fishing (controlled catch)	"	940	1,350	1,042	936	506
High seas	"	1,259	1,282	1,208	1,064	...
Meat <u>d/</u> : Beef	"	2,348	2,148	2,257	2,193	...
Goat	"	202	205	214	160	...
Mutton	"	40	44	92	56	...
Pork	"	536	543	561	629	...
Cattle hides and skins	Number	16,498	15,861	16,888	16,894	...

a/ Refers to crop year which normally extends from the beginning of April to the end of March

b/ Include margoze, calabash, chouchou, cucumber, patolle, pipengaille, pumpkin, squash, voehm.

c/ Include beet, cabbage, carrot, cauliflower, chillies (long and small), garlic, leek, lettuce, onion, petasai, sweet pepper, ladies' finger (lalo).

d/ From local and imported livestock.

Table 91 - Industry : production of specific commodities

Commodity	Unit	1968	1969	1970	1971	Jan.-June 1972 ⁺
Sugar	M/Tons	596,549	668,553	576,214	621,087	2,499
Molasses	"	132,707	166,332	142,427	140,158	...
Tea (manufactured)	"	2,288	3,197	3,258	4,089	2,859
Aloe fibre	"	1,319	1,294	1,534	1,976	699
Alcohol @ 100 G.L.	H/litre	12,863	12,420	12,006	13,478	...
Colonial spirits (rum)	"	14,047	13,361	12,923	14,916	2,819
Denatured spirits :						
Power alcohol	"	2,760	3,138	2,863	2,923	1,530
Alcohol for heating and lighting	"	2,769	1,934	2,329	2,445	1,234
Perfumed spirits	"	417	404	465	503	285
Vinegar	"	2,913	568	168	450	483
Beer and stout	"	39,259	36,799	44,036	53,793	31,316
Country liquor	"	32,949	33,362	33,963	43,215	23,756
Soft aerated beverages	"	82,800	92,000	98,800	110,900	...
Cigarettes	M/tons	562	586	590	634	333
Matches	Gross boxes	114,585	103,064	108,347	109,466	62,107
Lime	M/tons	6,000	6,000	6,000	6,000	...
Sacks ^{##}	Thousand	1,552	2,338	2,403	2,599	840
Salt	M/tons	4,200	4,200	4,500	5,400	...
Electricity generated	Mn kwh	126	130	136	148	80

⁺provisional

^{##}manufactured by the Government Sack Factory

Table 92 - Sugar industry: cane cultivation

Crop year	AREA UNDER CULTIVATION (Thousand arpentis)			AREA HARVESTED (Thousand arpentis)			CANES HARVESTED (Thousand m/tons)			AVERAGE YIELD (m/tons per arpent)		
	Millers	Planters	Total	Millers	Planters	Total	Millers	Planters	Total	Millers	Planters	Total
1967	111	94	205	101	91	192	3,569	2,215	5,814	35,3	24,7	30,3
1968	110	93	203	100	89	189	3,113	2,039	5,152	31,2	22,8	27,2
1969	110	95	205	99	89	188	3,564	2,260	5,824	36,1	25,2	30,9
1970	113	92	205	101	89	190	3,181	1,939	5,120	31,5	21,7	26,9
1971	114	91	205	102	87	189	3,433	1,822	5,255	33,7	20,8	27,8

Table 93 - Sugar manufacture

Crop year	Number of factories operating	Commercial sugar recovered (% cane)	PRODUCTS OF MANUFACTURE (Thousand m/tons)			RESIDUES OF MANUFACTURE (Thousand m/tons)			Average sugar price ex-syndicate (Rs per m/ton)
			White sugar	Raw sugar	Total sugar	Molasses	Scums		
1967	23	10,98	24	614	638	154	180	424,40	
1968	25	11,58	23	574	597	133	171	428,39	
1969	22	11,48	23	646	669	166	194	445,27	
1970	21	11,26	22	554	576	142	166	471,69	
1971	21	11,82	34	587	621	140	169	522,64	

Note: 1 arpent = 1.043 acres

Table 94 - Electricity^{**}: production, consumption, sales, etc.

	Unit	1968	1969	1970	1971
Generating stations	Number	<u>8</u>	<u>8</u>	<u>8</u>	<u>9</u>
Hydro	"	6	6	6	7
Thermal	"	2	2	2	2
Plant - effective capacity	Kw	<u>43,090</u>	<u>43,090</u>	<u>43,090</u>	<u>52,090</u>
Hydro	"	15,090	15,090	15,090	25,090
Thermal	"	28,000	28,000	28,000	27,000
Energy generated	Million Kwh	<u>107.8</u>	<u>104.4</u>	<u>113.7</u>	<u>123.6</u>
Hydro	"	46.5	26.5	50.9	50.3
Thermal	"	61.3	77.9	62.8	73.3
Energy purchased from sugar and other factories	"	18.6	24.9	22.3	24.7
Energy sold	"	98.3	102.5	109.1	120.5
Number of consumers on 31st December :	Number	<u>91,234</u>	<u>92,485</u>	<u>93,910</u>	<u>97,385</u>
Domestic	"	80,456	81,476	82,762	85,948
Commercial	"	9,212	9,423	9,520	9,736
Industrial	"	1,424	1,430	1,458	1,516
Special	"	142	156	170	195
Average selling price	Cents per Kwh	22.1	21.9	21.6	21.1
Total revenue	Rs mn	<u>23.0</u>	<u>23.7</u>	<u>24.8</u>	<u>26.8</u>
Total current expenditure	" "	21.6	23.4	22.7	25.2
Persons employed	Number	1,242	1,257	1,260	1,283

** Statistical data relating to the Central Electricity Board.

XIII. CLIMATE

Table 95 - Monthly temperatures, 1971/72

Period	VACOAS Centre - 1,394 ft. A.M.S.L. +				PLAISANCE Coastal Region, South - 188 ft. A.M.S.L. +			
	Maximum		Minimum		Maximum		Minimum	
	Mean	Departure from normal	Mean	Departure from normal	Mean	Departure from normal	Mean	Departure from normal
1971 : July	21,4	- 0,3	15,1	0,0	24,1	+ 0,2	18,3	+ 0,8
August	20,9	- 0,2	13,6	- 1,0	23,5	+ 0,1	16,9	- 0,2
September	21,5	- 0,5	14,3	- 0,9	24,5	+ 0,2	17,1	- 0,4
October	23,2	- 0,4	16,0	0,0	25,5	0,0	18,7	+ 0,2
November	26,0	+ 0,5	17,3	- 0,3	27,8	+ 0,5	18,7	- 1,2
December	27,7	+ 0,9	19,1	- 0,1	29,3	+ 0,7	20,8	- 0,7
1972 : January	27,7	+ 0,6	20,3	+ 0,2	29,9	+ 0,9	22,5	0,0
February	27,3	- 0,5	20,4	- 0,3	28,9	- 0,6	22,2	- 0,5
March	27,1	- 0,2	20,5	0,0	28,6	- 0,4	21,9	- 0,6
April	26,1	- 0,2	19,8	+ 0,5	28,1	+ 0,2	21,1	0,0
May	25,3	+ 1,2	17,9	+ 0,7	26,9	+ 0,8	19,9	+ 0,5
June	23,9	+ 1,2	16,4	+ 0,7	25,7	+ 0,8	17,9	0,0

+ above mean sea level

Table 96 - Monthly rainfall for the sugar cane districts, 1971/72

Millimetres

Period	WEST		NORTH		EAST		SOUTH		CENTRE		ALL DISTRICTS	
	Amount	Difference from normal	Amount	Difference from normal	Amount	Difference from normal	Amount	Difference from normal	Amount	Difference from normal	Amount	Difference from normal
1971 :												
July	19	- 8	70	- 1	122	- 48	115	- 31	156	+ 22	112	- 14
August	10	- 6	59	- 1	95	- 34	67	- 48	117	+ 6	80	- 20
September	2	- 18	9	- 43	20	- 92	23	- 71	27	- 70	19	- 67
October	17	- 11	16	- 22	55	- 32	57	- 18	42	- 30	42	- 24
November	147	+ 95	93	+ 18	154	+ 33	139	+ 19	145	+ 37	132	+ 28
December	76	- 60	31	- 90	55	- 164	103	- 94	98	- 88	74	- 104
1972 :												
January	98	- 91	225	+ 49	280	- 32	209	- 90	162	- 171	213	- 62
February	264	+ 68	366	+ 151	371	+ 31	264	- 37	550	+ 210	373	+ 80
March	57	- 209	192	- 67	170	- 260	229	- 148	181	- 185	193	- 159
April	140	+ 24	161	- 14	307	- 5	288	- 12	236	- 4	244	- 9
May	13	- 42	79	- 41	191	- 15	255	+ 69	121	- 26	162	+ 1
June	146	+ 103	280	+ 191	225	+ 31	216	+ 62	204	+ 65	229	+ 90

