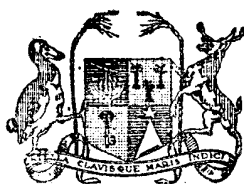


Vol. 4

No. 1



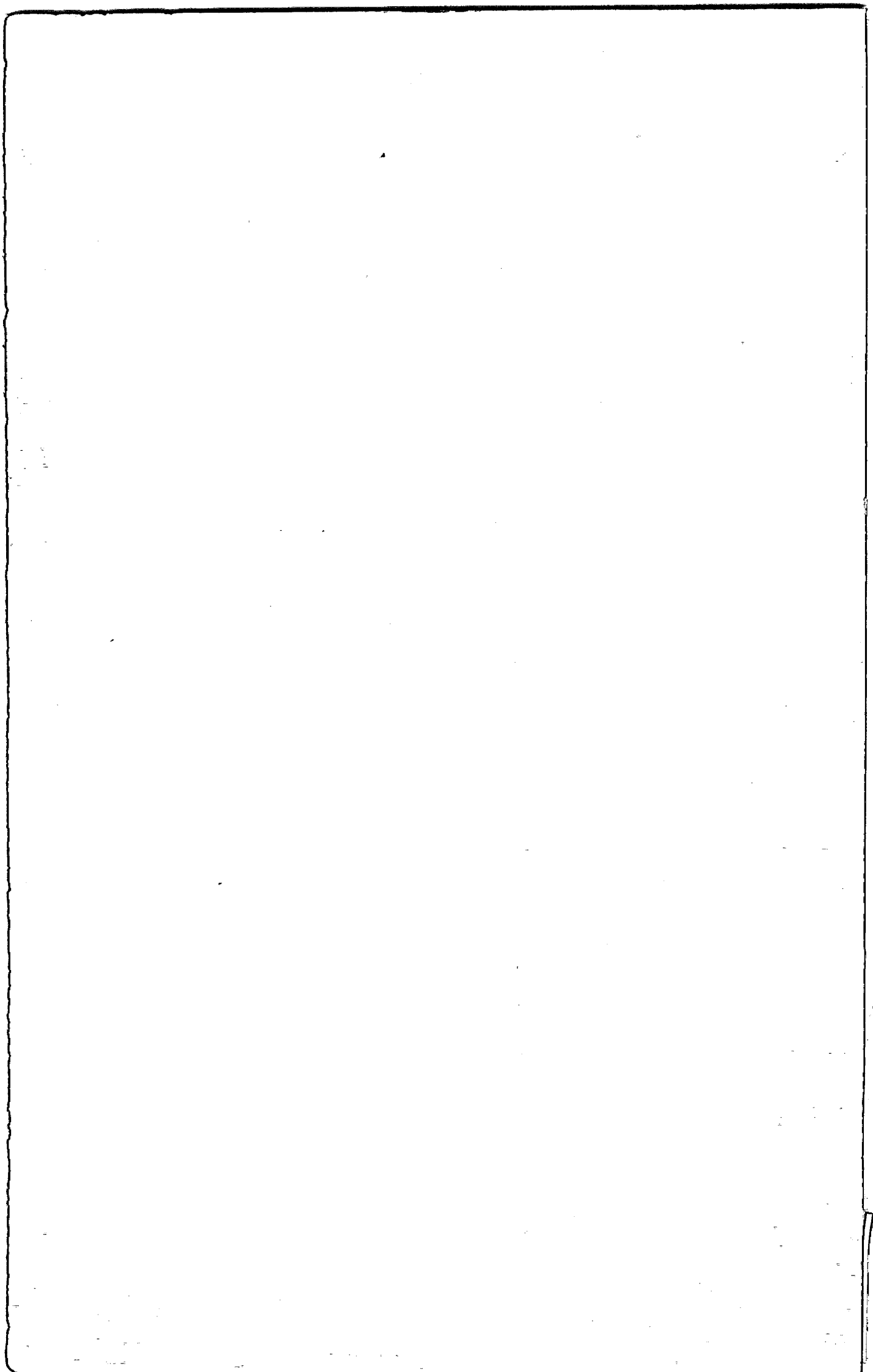
MAURITIUS

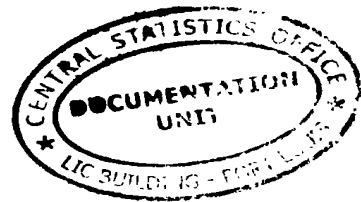
CENTRAL STATISTICAL OFFICE

**BI-ANNUAL
DIGEST OF STATISTICS**

June 1969

[Price : Rs 5.00]





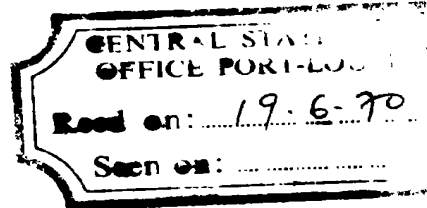
FOREWORD

This is the sixth issue of the Bi-annual Digest of Statistics. The digest has chiefly for purpose to present in a concise and readily accessible form the more important statistical series available on the demographic, economic and social characteristics of Mauritius.

The data contained in this publication have been up-dated to the end of June 1969, and the statistical tables are grouped under 13 sections as shown in the table of contents.

Owing to acute staffing difficulties and to considerable pressure of work in many other directions, it has unfortunately not been possible to publish this volume at an earlier date.

As is customary, the Central Statistical Office has much pleasure to record its appreciation of the assistance rendered by all contributors, official and private.



M. ETIENNE

Director of Statistics

February 1970.

BI-ANNUAL DIGEST OF STATISTICS

NOTES

The following symbols are used throughout : -

- Nil or negligible

... Not available

2. Some of the figures in this Digest are liable to revision in the later issues.

3. Where necessary, figures have been rounded off to the nearest final digit, and in some tables there may be discrepancies between the sum of the constituent items and the total as shown.

Central Statistical Office,
Mauritius.

CONTENTS

Page

I. POPULATION AND VITAL STATISTICS

Table 1 - Estimated population of Mauritius as at 30th June 1969, based initially on the census enumeration of June 1962	1
2 - Population of Mauritius as enumerated at each census (1846-1962)	1
3 - Post-censal population estimates, 1962-69	2
4 - Comparison with other countries	2
5 - Estimated population of Mauritius by population group, sex and geographical district as at 30.6.69	3
6 - Estimated age distribution of the population of Mauritius by sex as at 30th June, 1969	4
7 - Estimated population of towns as at 30th June, 1969	5
8 - External migration	5
9 - Passenger traffic, by country of origin or destination and by mode of transport, Jan.-June 1969	6
10 - Population and vital statistics	7
11 - Live births and still births	8
12 - Infant deaths (deaths under 1 year of age) by sex and age	8
13 - Deaths by age and sex	9
14 - Population and vital statistics - quarterly	10
15 - Still births and infant deaths	11
16 - Expectation of life in years at selected ages	11

II. PUBLIC HEALTH

Table 17 - Health services	12
18 - Statistics of hospitals	13
19 - Notifiable, contagious or communicable diseases	14
20 - Cause of death, 1968	15

III. PUBLIC FINANCE AND BANKING

Table 21 - Central government revenue and expenditure	16
22 - Functional classification of central government recurrent revenue	16
23 - Functional classification of central government recurrent expenditure	17
24 - Functional classification of central government capital revenue	18
25 - Functional classification of central government capital expenditure	18

CONTENTS (Cont'd)

	<u>Page</u>
<u>III. PUBLIC FINANCE AND BANKING</u> (Cont'd)	
Table 26 - Central government indebtedness	19
27 - Sinking funds held against the public debt	19
28 - Central government loan raisings	20
29 - Outstanding loans and advances made from public funds, balance at 30th June 1968 and 30th June 1969	20
30 - Sterling assets	21
31 - Assets and liabilities of the Bank of Mauritius	22
32 - Banking statistics - assets of commercial banks	23
33 - " " - liabilities of commercial banks	24
34 - " " - assets and liabilities of the Development Bank of Mauritius	25
35 - Banking statistics - Post Office Savings Bank	25
36 - " " - assets and liabilities of the Mauritius Co-operative Central Bank Ltd.	26
37 - Money supply	26
38 - Assets and liabilities of the Mauritius Housing Corporation	27
39 - Bank and interest rates	27
40 - Foreign exchange rates	28
<u>IV. NATIONAL ACCOUNTS</u>	
Table 41 - Gross National Product, by industrial origin	29
" " " - per capita	29
42 - Distribution of the National Income before providing for depreciation	30
43 - Expenditure on Gross National Product	31
44 - Composition of Gross Fixed Domestic Capital Formation	32
45 - Balance of Payments	33
<u>V. CONSUMER PRICE INDICES</u>	
Table 46 - Consumer price indices	34
<u>VI. EXTERNAL TRADE</u>	
Table 47 - Balance of visible trade	35
48 - Quantum and price indices of exports and imports and the terms of trade	35
49 - Quantum and price indices of imports, by section	36
50 - Exports : quantities and values	37

CONTENTS (Cont'd)

	<u>Page</u>
<u>VI. EXTERNAL TRADE</u> (Cont'd)	
Table 51 - Exports : principal countries of destination - values	38
52 - Imports : values by S.I.T.C. sections	39
53 - " : selected commodities - values	40
54 - " : selected commodities - quantities	41
55 - " : main sources of supply - values	42
56 - Imports of fertilizers	43
<u>VII. LABOUR AND WAGES</u>	
Table 57 - Employment by major industrial groups	44
58 - Employment by sex and age group	45
59 - Employment in specified sectors : Sugar Industry	46
60 - " " " " : Government Services	46
61 - " " " " : Manufacturing industries	47
62 - Indicators of unemployment	48
63 - Daily wage rates in certain industries	49
64 - Daily wage rates of manual workers employed by the central government	49
65 - Employment and wages of certain categories of employees on sugar millers' estates	50
66 - Employment and earnings on sugar millers' estates	51
<u>VIII. SOCIAL ASSISTANCE</u>	
Table 67 - Social benefits	52
<u>IX. EDUCATION</u>	
Table 68 - Education statistics	53
69 - Enrolment in primary and secondary schools, by type of institution	54
70 - Enrolment in primary schools, by grade and sex	55
71 - Enrolment in secondary schools by grade and sex	56
<u>X. TRANSPORT AND COMMUNICATION</u>	
72 - Motor vehicles registered	57
73 - Bus operational statistics	58
74 - Road traffic accidents and casualties	58
75 - Sea borne shipping	59
76 - Civil aviation	59
77 - Telephone service	60
78 - Broadcasting services	60

CONTENTS (Cont'd)

	<u>Page</u>
XI. <u>LAND UTILIZATION</u>	
Table 79 - Total area classified by utilization	61
79A- Effective area under cultivation	61
XII. <u>LOCAL PRODUCTION</u>	
Table 80 - Agriculture : production of main crops, fish and meat	62
81 - Industry : production of specific commodities	63
82 - Sugar Industry : cane cultivation	64
83 - " " : sugar manufacture	64
84 - Electricity : production, consumption, sales, etc.	65
XIII. <u>CLIMATE</u>	
Table 85 - Monthly temperatures, 1968-69	66
86 - Monthly rainfall for the sugar cane districts, 1968-69	67

I. POPULATION AND VITAL STATISTICS

Table 1 - Estimated population of Mauritius as at 30th June 1969 based initially on the census enumeration of June 1962

Population	30th June 1962 (Census)			30th June 1969		
	Both sexes	Male	Female	Both sexes	Male	Female
Total	681,619	342,306	339,313	798,684	400,496	398,188
General	203,652	98,983	104,669	224,596	109,860	114,736
Hindu	344,587	174,698	169,889	416,601	210,469	206,132
Muslim	110,322	55,971	54,351	132,381	66,679	65,702
Chinese	23,058	12,654	10,404	25,106	13,488	11,618

Table 2 - Population of Mauritius as enumerated at each census (1846-1962)

Census year	Population enumerated at census			Intercensal increase	Average annual rate of increase %
	Both sexes	Male	Female		
1846	158,462	104,598	53,864	-	-
1851	180,823	119,341	61,482	22,361	2.55
1861	310,050	202,961	107,089	129,227	5.87
1871	316,042	193,575	122,467	5,992	0.19
1881	359,874	208,655	151,219	43,832	1.31
1891	370,588	206,038	164,550	10,714	0.29
1901	371,023	199,552	171,471	435	0.01
1911	368,791	194,095	174,696	- 2,232	- 0.06
1921	376,485	194,108	182,377	7,694	0.21
1931	393,238	200,609	192,629	16,753	0.44
1944	419,185	210,326	208,859	25,947	0.49
1952	501,415	252,032	249,383	82,230	2.26
1962 ⁺	681,619	342,306	339,313	180,204	3.12

⁺ de facto population - including the European members of the Armed Forces but excluding the passengers and crews of ships lying in the harbour.

Table 3 - Post censal population estimates, 1962-69

Period	Total population (31st December)			Increase during period		Mid-year population (30th June)
	Both sexes	Male	Female	Numerical	Percent	
1962	692,354	347,743	344,611	-	-	681,619
1963	713,371	358,385	354,986	21,017	3.04	701,422
1964	733,605	368,534	365,071	20,234	2.84	722,089
1965	751,421	377,245	374,176	17,816	2.43	741,036
1966	768,692	385,677	383,015	17,271	2.30	759,067
1967	782,044	392,283	389,761	13,352	1.74	773,573
1968	794,746	398,572	396,174	12,702	1.62	787,406
1969	-	-	-	-	-	798,684

Table 4 - Comparison with other countries

Continent & Country	Average annual rate of increase 1958-66 (%)	Continent & Country	Average annual rate of increase 1958-66 (%)
AFRICA :		ASIA :	
Mauritius	2.8	Ceylon	2.6
AMERICA :		India	2.4
Canada	1.9	Japan	1.0
Guyana	2.8	Pakistan	2.1
Trinidad & Tobago	3.0	Taiwan	3.3
Chile	2.3	EUROPE :	
OCEANIA :		Albania	3.0
Australia	2.0	France	1.2
New Zealand	2.0	United Kingdom	0.7

Table 5 - Estimated population of Mauritius by population group, sex and geographical district as at 30.6.69

Geographical District	Total Population			General Population			Indo-Mauritian Population						Chinese Population		
	Both Sexes	Male	Female	Both Sexes	Male	Female	Hindu			Muslim			Both Sexes	Male	Female
							Both Sexes	Male	Female	Both Sexes	Male	Female			
Port Louis	138,137	68,741	69,396	48,917	23,725	25,192	36,134	18,192	17,942	40,149	20,159	19,990	12,937	6,665	6,272
Pamplemousses	64,815	32,612	32,203	9,849	4,812	5,037	44,488	22,491	21,997	9,808	4,948	4,860	670	361	309
R. du Rempart	64,596	32,735	31,861	9,778	4,809	4,969	46,068	23,478	22,590	8,231	4,144	4,087	519	304	215
Flacq	88,081	44,540	43,541	15,352	7,749	7,603	59,812	30,162	29,650	11,981	6,080	5,901	936	549	387
Grand Port	81,809	41,395	40,414	19,315	9,686	9,629	49,801	25,249	24,552	11,369	5,705	5,664	1,324	755	569
Savanne	55,109	27,946	27,163	11,088	5,650	5,438	33,156	16,711	16,445	10,057	5,114	4,943	808	471	337
Plaines Wilhems	240,205	119,416	120,789	95,241	45,896	49,345	105,063	53,043	52,020	32,974	16,652	16,322	6,927	3,825	3,102
Moka	44,003	22,064	21,939	6,477	3,235	3,242	29,548	14,833	14,715	7,364	3,658	3,706	614	338	276
Black River	21,929	11,047	10,882	8,579	4,298	4,281	12,531	6,310	6,221	448	219	229	371	220	151
WHOLE ISLAND	798,684	400,496	398,188	224,596	109,860	114,736	416,601	210,469	206,132	132,381	66,679	65,702	25,106	13,488	11,618
%	100.0			28.1			52.2			16.6			3.1		

* Based initially on the 1962 Population Census. No account has been taken of internal migration.

Table 6 - Estimated age distribution⁺ of the population of Mauritius as at 30th June 1969

Age Group (years)	Male	Female	Both Sexes	
			Number	% of total
0 - 4	57,350	56,250	113,600	14.2
5 - 9	59,200	57,900	117,100	14.7
10 - 14	52,350	51,450	103,800	13.0
15 - 19	48,900	48,600	97,500	12.2
20 - 24	35,150	35,050	70,200	8.8
25 - 29	23,700	23,600	47,300	5.9
30 - 34	21,700	22,100	43,800	5.5
35 - 39	18,750	18,350	37,100	4.7
40 - 44	20,700	19,900	40,600	5.1
45 - 49	17,200	15,800	33,000	4.1
50 - 54	13,900	12,700	26,600	3.3
55 - 59	11,800	10,900	22,700	2.8
60 - 64	8,100	8,400	16,500	2.1
65 - 69	5,900	6,800	12,700	1.6
70 - 74	3,400	5,100	8,500	1.0
75 - 79	1,550	3,200	4,750	0.6
80 - 84	700	1,650	2,350	0.3
85 & over	150	450	600	0.1
All Ages	400,500	398,200	798,700	100.0
<u>Totals</u>				
Under 15	168,900	165,600	334,500	41.9
Under 21	225,465	221,895	447,360	56.0
21 & over	175,035	176,305	351,340	44.0
60 & over	19,800	25,600	45,400	5.7

⁺Based initially on the smoothed age distribution at the census of June 1962 corrected for under-enumeration of young children and pro-rated to official population estimates.

Table 7 - Estimated population⁺ of towns as at 30th June 1969

Town	Population
Port Louis	138,140
Beau Bassin-Rose Hill	70,700
Quatre Bornes	45,000 ⁺⁺
Vacoas-Phoenix	48,480
Curepipe	51,460

⁺Based initially on 1962 Population Census. No account has been taken of internal migration.

⁺⁺including La Source locality as from March 1967.

Table 8 - External migration*

Period	Arrivals			Departures			Net migration
	Total	By sea	By air	Total	By sea	By air	
1962	15,189	4,258	10,931	16,075	4,374	11,701	- 886
1963	18,047	4,660	13,387	18,299	4,432	13,867	- 252
1964	21,221	5,187	16,034	22,331	5,478	16,853	- 1,110
1965	22,024	4,886	17,138	24,150	5,463	18,687	- 2,126
1966	26,456	5,544	20,912	29,301	6,330	22,971	- 2,845
1967	29,321	4,901	24,420	32,925	6,515	26,410	- 3,604
1968	31,403	4,264	27,139	35,988	5,967	30,021	- 4,585
1968 : 1st Qr.	7,640	1,154	6,486	9,779	1,793	7,986	- 2,139
2nd Qr.	6,278	804	5,474	7,517	1,562	5,955	- 1,239
3rd Qr.	8,874	954	7,920	9,946	1,138	8,808	- 1,072
4th Qr.	8,611	1,352	7,259	8,746	1,474	7,272	- 135
1969 : 1st Qr.	7,930	727	7,203	9,662	1,196	8,466	- 1,732
: 2nd Qr.	6,896	906	5,990	7,988	1,129	6,859	- 1,092

*Includes : (a) The very small figure of engaged or discharged seamen; (b) Emigrants to and immigrants from the dependencies; and (c) Movement of military personnel as from the 1962 Population Census.

Table 9 - Passenger traffic by country of origin or destination and by mode of transport, January-June, 1969

Country of origin or destination	Arrivals			Departures		
	Sea	Air	Total	Sea	Air	Total
Kenya	1	419	420	1	411	412
Malagasy Republic	149	1,076	1,225	167	1,068	1,235
Malawi	-	14	14	-	34	34
Reunion	123	5,765	5,888	177	6,123	6,300
Rhodesia	-	13	13	-	20	20
Seychelles	29	9	38	20	10	30
South Africa	152	1,526	1,678	116	1,794	1,910
Tanzania	2	193	195	-	188	188
Zambia	-	96	96	-	142	142
British Indian Ocean Territories	-	6	6	2	4	6
Rodrigues	709	-	709	716	-	716
Other Dependencies of Mauritius	96	-	96	101	-	101
Other Countries in Africa	7	113	120	2	198	200
China	1	-	1	-	-	-
Hong Kong	3	28	31	-	92	92
India	5	468	473	22	484	506
Japan	7	40	47	5	32	37
Singapore	-	18	18	-	24	24
Other Countries in Asia	22	152	174	3	155	158
Australia	11	779	790	605	1,053	1,658
New Zealand	-	96	96	3	143	146
Other Countries in Oceania	-	40	40	-	43	43
Belgium	-	3	3	-	18	18
France	37	435	472	28	558	586
Italy	-	74	74	-	104	104
Switzerland	-	31	31	-	36	36
United Kingdom	16	1,382	1,398	33	2,131	2,164
Other Countries in Europe	20	168	188	2	168	170
Canada	-	26	26	-	43	43
U.S.A.	2	207	209	-	228	228
Other Countries in America	1	16	17	-	21	21
Total	1,393	13,193	14,586	2,003	15,325	17,328

+ excluding transit passengers, 240 discharged seamen and 322 engaged seamen.

Table 10 - Population and vital statistics

Year	Estimated mid-year population (30th June)	Numbers				Rates per 1000 of the mid-year population			
		Marriages	Births	Deaths	Natural increase	Marriage rate	Crude birth rate	Crude death rate	Rate of natural increase
1944-48 Average	424,219	3,228	17,788	11,672	6,116	15.2	41.9	27.5	14.4
1949-53 "	483,859	3,552	22,913	7,358	15,555	14.7	47.4	15.2	32.2
1954-58 "	574,938	3,008	23,936	7,401	16,535	10.5	41.6	12.9	28.7
1959-63 "	662,368	3,452	25,913	6,708	19,205	10.4	39.1	10.1	29.0
1959	627,249	3,297	23,923	6,753	17,170	10.5	38.1	10.8	27.3
1960	644,743	3,113	25,307	7,248	18,059	9.7	39.3	11.2	28.1
1961	662,368	3,484	26,092	6,505	19,587	10.5	39.4	9.8	29.6
1962	681,619	3,893	26,267	6,325	19,942	11.4	38.5	9.3	29.2
1963	701,422	3,472	27,978	6,709	21,269	9.9	39.9	9.6	30.3
1964	722,089	3,965	27,528	6,184	21,344	11.0	38.1	8.6	29.5
1965	741,036	3,976	26,279	6,337	19,942	10.7	35.5	8.6	26.9
1966	759,067	4,157	26,817	6,701	20,116	11.0	35.3	8.8	26.5
1967	773,573	3,949	23,499	6,543	16,956	10.2	30.4	8.5	21.9
1968	787,406	3,974	24,413	7,126	17,287	10.1	31.0	9.0	22.0

Note : Revision of population estimates from 1953 based on data obtained from the 1962 Population Census.

Table 11 - Live births and still births

Year	Numbers			Rates	
	Live births	Still births	Infant deaths	Still birth rate ⁺	Infantile mortality rate ⁺⁺
1944-48 Average	17,788	1,154	2,745	60.9	154.3
1949-53 "	22,913	1,464	1,945	60.1	84.9
1954-58 "	23,936	1,622	1,704	63.5	71.2
1959-63 "	25,913	1,773	1,622	64.0	62.6
1959	23,923	1,759	1,495	68.5	62.5
1960	25,307	1,783	1,760	65.8	69.5
1961	26,092	1,963	1,618	70.0	62.0
1962	26,267	1,841	1,579	65.5	60.1
1963	27,978	1,519	1,660	51.5	59.3
1964	27,528	1,611	1,561	55.3	56.7
1965	26,279	1,557	1,685	55.9	64.1
1966	26,817	1,384	1,721	49.1	64.2
1967	23,499	1,074	1,656	43.7	70.5
1968	24,413	1,110	1,688	43.5	69.1

⁺Still births per 1000 total births (live births and still births)

⁺⁺Deaths of children under 1 year of age per 1000 live births

Table 12 - Infant deaths (deaths under 1 year of age) by age and sex

Age	1967			1968			Jan.-June 1969		
	Both Sexes	Male	Female	Both Sexes	Male	Female	Both Sexes	Male	Female
Total infant deaths	1,656	947	709	1,688	935	753	753	426	327
Under 1 day	173	98	75	120	72	48	83	51	32
1 - 6 days	405	253	152	421	254	167	149	94	55
7 - 27 days	216	116	100	276	145	131	90	47	43
28 days-under 2 months	108	58	50	167	92	75	53	30	23
2 - 3 months	198	109	89	196	107	89	89	47	42
4 - 5 months	169	95	74	153	82	71	79	42	37
6 - 7 months	163	92	71	139	72	67	91	52	39
8 - 9 months	130	75	55	123	55	68	74	43	31
10 - 11 months	94	51	43	93	56	37	45	20	25

Table 13 - Deaths by age and sex

Age Group	1967			1968			January-June 1969		
	Both sexes	Male	Female	Both sexes	Male	Female	Both sexes	Male	Female
	Total deaths	6,543	3,497	3,046	7,126	3,744	3,382	2,996	1,570
0 - 4	2,389	1,298	1,091	2,419	1,278	1,141	1,125	603	522
5 - 9	146	69	77	177	88	89	99	51	48
10 - 14	83	45	38	115	60	55	51	20	31
15 - 19	125	65	60	144	60	84	61	33	28
20 - 24	106	41	65	132	48	84	61	22	39
25 - 29	107	35	72	139	54	85	55	24	31
30 - 34	125	55	70	133	53	80	50	24	26
35 - 39	157	75	82	153	71	82	65	30	35
40 - 44	185	104	81	195	107	88	72	47	25
45 - 49	202	139	63	229	152	77	100	51	49
50 - 54	280	176	104	351	233	118	140	85	55
55 - 59	428	289	139	432	290	142	150	80	70
60 - 64	439	287	152	496	308	188	194	120	74
65 - 69	463	271	192	537	315	222	218	130	88
70 - 74	476	241	235	510	269	241	205	113	92
75 - 79	369	165	204	455	189	266	168	73	95
80 - 84	263	102	161	283	107	176	88	37	51
85 and over	200	40	160	226	62	164	94	27	67

Table 14 - Population and vital statistics - quarterly

Period	Marriages	Live Births			Deaths		Natural increase	Net overseas migration	Total increase	Estimated population at the end of the period	
		Both sexes	Male	Female	Both sexes	Male					Female
1965	3,976	26,279	13,287	12,992	6,337	3,388	2,949	19,942	- 2,126	17,816	751,421
1966	4,157	26,817	13,554	13,263	6,701	3,550	3,151	20,116	- 2,845	17,271	768,692
1967	3,949	23,499	12,061	11,438	6,543	3,497	3,046	16,956	- 3,604	13,352	782,044
1968	3,974	24,413	12,394	12,019	7,126	3,744	3,382	17,287	- 4,585	12,702	794,746
1968 : 1st Qr.	799	5,943	2,962	2,981	1,603	841	762	4,340	- 2,139	2,201	784,245
2nd Qr.	1,030	6,047	3,070	2,977	1,647	860	787	4,400	- 1,239	3,161	787,406
3rd Qr.	1,039	6,662	3,386	3,276	2,287	1,231	1,056	4,375	- 1,072	3,303	790,709
4th Qr.	1,106	5,761	2,976	2,785	1,589	812	777	4,172	- 135	4,037	794,746
1969 : 1st Qr.	847	4,992	2,571	2,421	1,540	786	754	3,452	- 1,732	1,720	796,466
2nd Qr.	984	4,766	2,400	2,366	1,456	784	672	3,310	- 1,092	2,218	798,684

Table 15 - Still births and infant deaths

Period	Still births	Infant deaths		
		Both sexes	Male	Female
1965	1,557	1,685	943	742
1966	1,384	1,721	943	778
1967	1,074	1,656	947	709
1968	1,110	1,688	935	753
1968 : 1st Qr.	245	384	215	169
2nd Qr.	323	404	223	181
3rd Qr.	293	526	289	237
4th Qr.	249	374	208	166
1969 : 1st Qr.	214	419	237	182
2nd Qr.	198	334	189	145

Table 16 - Expectation of life in years at selected ages

Exact Age (years)	Males			Females		
	1942-46 ⁺	1951-53 ⁺	1961-63	1942-46 ⁺	1951-53 ⁺	1961-63
0	32.8	49.8	58.7	33.8	52.3	61.9
10	35.8	49.2	55.1	37.3	52.2	58.1
20	28.1	40.1	45.7	30.2	43.7	48.9
30	22.3	31.6	36.6	26.1	36.2	40.3
40	16.7	23.6	27.7	21.2	28.7	31.9
50	11.9	16.7	19.6	15.7	21.2	23.5
60	8.1	11.2	13.2	10.6	14.6	15.8
70	5.6	6.7	8.5	7.1	9.1	9.7
80	4.0	4.3	4.8	4.6	5.3	5.4

⁺ excluding Chinese

Source : Mauritius Life Tables

II. PUBLIC HEALTH

Table 17 - Health Services

	1966	1967	1968
<u>Hospitals</u>			
General hospitals	8	8	8
Special hospitals (mental diseases, leprosy and tuberculosis)	3	3	3
Private hospitals on sugar estates	24	24	24
<u>Dispensaries</u>			
Public dispensaries and out-patients' departments of hospitals	56	56	56
Private dispensaries on sugar estates	24	24	24
Mobile dispensaries	5	5	5
<u>Clinics</u>			
Private	5	5	5
Public mobile ante-natal	1	1	1
Public mobile dental	4	4	4
<u>Maternity and Child Health Centres</u>	39	39	39
<u>Doctors</u>			
Government Service :			
Specialists	34	34	34
General practice	96	114	97
Private Service :			
Registered medical practitioners	84	64	70
<u>Dentists</u>			
Government Service	12	9	8
Private	20	22	21
<u>Trained Nurses</u>	678	690	720
<u>Midwives</u>	145	141	160
<u>Pharmacists</u>			
Attached to hospitals	4	3	3
Private	48	48	48

Table 18 - Statistics of hospitals

Period	No. of beds	Patients in hospitals on last day of period	Total admissions	Deaths	Discharges	Patients remaining on last day of period
1962	2,453	1,751	38,130	1,628	36,480	1,773
1963	2,453	1,773	45,717	1,959	43,686	1,845
1964	2,481	1,845	49,080	1,887	47,233	1,805
1965	2,514	1,805	51,445	1,955	49,356	1,939
1966	2,514	1,939	51,258	1,983	49,575	1,639
1967	2,578	1,723	54,982	2,255	52,734	1,716
1968	2,543	1,716	60,055	2,361	57,447	1,963
1968 : 1st Qr.	2,543	1,716	13,984	543	12,717	2,440
2nd Qr.	2,543	2,440	14,528	596	13,927	2,445
3rd Qr.	2,543	2,445	15,136	671	14,528	2,382
4th Qr.	2,543	2,382	16,407	551	16,275	1,963
1969 : 1st Qr.	2,561	1,963	14,228	546	13,272	2,373
2nd Qr.	2,561	2,373	14,927	483	14,501	2,316

Note : Pointe aux Canonniers Tuberculosis Hospital included as from 1967.

Table 19 - Notifiable, contagious or communicable diseases

Disease, Period	Enteric fever	Diphtheria	Acute poliomyelitis	Puerperal fever	Erysipelas	Cerebro- spinal meningitis	Tuberculosis	Leprosy	Murine typhus
1962	81	151	1	-	-	-	300	1	3
1963	89	145	3	2	2	-	429	4	3
1964	64	206	-	6	-	-	472	-	1
1965	77	78	-	-	-	-	366	-	-
1966	54	75	5	1	-	-	585	2	-
1967	91	37	6	1	-	-	553	5	-
1968	32	44	-	2	2	-	499	1	-
1968 : 1st Qr.	9	6	-	1	1	-	87	-	-
2nd Qr.	11	12	-	-	-	-	144	-	-
3rd Qr.	7	12	-	-	1	-	123	1	-
4th Qr.	5	14	-	1	-	-	145	-	-
1969 : 1st Qr.	2	3	-	-	-	-	116	-	-
2nd Qr.	4	2	-	-	-	-	91	-	-

Table 20 - Cause of death, 1968

Section ⁺	CAUSE OF DEATH	D E A T H S						Death rate per 100,000 of population		
		Under 1 year		1 to under 5 years		All Ages			% of total deaths	
		Both Sexes	Male	Female	Both Sexes	Male	Female			
I	Infective and parasitic diseases	25	138	91	229	38	138	229	3.2	29.1
II	Neoplasm	-	180	148	328	6	180	328	4.6	41.7
III	Allergis, endocrine system, metabolic and nutritional diseases	3	182	152	334	71	182	334	4.7	42.4
IV	Diseases of the blood and blood forming organs	10	90	204	294	25	90	294	4.1	37.3
V	Mental, psychoneurotic, and personality disorders	-	3	1	4	-	3	4	0.1	0.5
VI	Diseases of the nervous system and sense organs	7	273	226	499	12	273	499	7.0	63.4
VII	Diseases of the circulatory system	3	494	364	858	6	494	858	12.0	109.0
VIII	Diseases of the respiratory system	227	477	457	934	133	477	934	13.1	118.6
IX	Diseases of the digestive system	465	565	460	1,025	280	565	1,025	14.4	130.2
X	Diseases of the genito-urinary system	1	28	37	65	4	28	65	0.9	8.2
XI	Deliveries and complications of pregnancy, childbirth, and the puerperium	-	-	38	38	-	-	38	0.5	4.8
XII	Diseases of the skin and cellular system	2	4	3	7	-	4	7	0.1	0.9
XIII	Diseases of bones and organs of movement	-	7	6	13	1	7	13	0.2	1.7
XIV	Congenital malformations	22	13	13	26	4	13	26	0.4	3.3
XV	Certain diseases of early infancy	771	424	347	771	-	424	771	10.8	97.9
XVI	Symptoms, senility, and ill-defined conditions	146	648	741	1,389	131	648	1,389	19.5	176.4
XVII	Accidents, poisoning, and violence	6	218	94	312	20	218	312	4.4	39.6
	All causes	1,688	3,744	3,382	7,126	731	3,744	7,126	100.0	905.0

⁺ International Classification 1955

III. PUBLIC FINANCE AND BANKING

Table 21 - Central government revenue and expenditure

Financial Year	REVENUE ^②			EXPENDITURE ^②			Rs million	
	Recurrent	Capital	Total	Recurrent	Capital	Total	Surplus (+) Deficit (-)	
1965-66	182.2	74.6	256.8	201.9	53.7	255.6	+ 1.2	
1966-67	199.3	29.7	229.0	221.0	56.0	277.0	- 48.0	
1967-68	232.4	60.4	292.8	232.3	65.1	297.4	- 4.6	
1968-69	242.6	20.6	263.2	241.6	43.4	285.0	- 21.8	
1969-70*	242.0	90.2	332.2	241.7	79.9	321.6	+ 10.6	

Table 22 - Functional classification of central government recurrent revenue

	Rs million			
	1966-67	1967-68	1968-69	1969-70*
<u>Taxes on Income and Capital</u>	<u>45.7</u>	<u>49.0</u>	<u>49.4</u>	<u>54.2</u>
Income Tax :				
Individuals	27.5	26.6	26.7	30.1
Companies	13.8	18.0	17.6	20.0
Development contribution	-	0.8	1.0	0.5
Contribution to Widows' Fund	2.1	2.1	2.2	1.6
Succession duties	2.3	1.5	1.9	2.0
<u>Taxes on Financial Transactions</u>	<u>6.1</u>	<u>6.7</u>	<u>8.9</u>	<u>7.4</u>
<u>Taxes on Gambling</u>	<u>2.4</u>	<u>2.4</u>	<u>3.2</u>	<u>3.4</u>
<u>Taxes on Consumption and Production</u>	<u>109.4</u>	<u>118.8</u>	<u>123.3</u>	<u>128.4</u>
Import duties	56.6	62.2	64.1	66.8
Export duties	13.4	15.3	14.6	15.3
Excise duties	27.8	29.4	30.4	31.8
Business and professional licences	4.4	4.7	6.7	6.6
Taxes on transportation	7.2	7.2	7.5	7.9
<u>Provision of Goods and Services</u>	<u>18.5</u>	<u>24.8</u>	<u>28.0</u>	<u>31.9</u>
Rental of government property	2.0	1.8	2.1	2.4
Telephone service	3.3	3.6	4.0	4.0
Marine services	4.3	6.4	6.7	7.5
Posts and telegraphs	2.9	4.2	4.7	4.9
Water and irrigation	2.6	2.7	3.0	3.1
Agriculture and forests	1.5	1.7	2.0	2.0
Other goods and services	1.9	4.4	5.5	8.0
<u>Interests, Profits and Dividends</u>	<u>12.0</u>	<u>8.5</u>	<u>8.6</u>	<u>12.1</u>
<u>Grants from British Government</u>	<u>1.0</u>	<u>18.4</u>	<u>1.4</u>	<u>0.9</u>
<u>Other Recurrent Revenue</u>	<u>4.2</u>	<u>3.8</u>	<u>19.8</u>	<u>3.7</u>
Total	199.3	232.4	242.6	242.0

^②Including tax reserve certificates

* estimates

Table 23 - Functional classification of central government recurrent expenditure

	Rs million			
	1966-67	1967-68	1968-69	1969-70*
<u>General Services</u>	<u>27.0</u>	<u>27.3</u>	<u>29.2</u>	<u>30.9</u>
General administration	1.6	1.4	1.5	1.7
Legislature	0.6	0.7	0.8	0.8
Maintenance of Law and Order :				
Justice and Attorney General	1.8	1.8	1.8	1.9
Police and Defence	11.1	11.6	12.0	13.4
Prisons	1.7	1.8	1.8	2.0
Revenue collection and financial control	5.4	5.2	5.2	5.5
Other general services	4.8	4.8	6.1	5.6
<u>Community Services</u>	<u>17.3</u>	<u>17.1</u>	<u>16.7</u>	<u>17.9</u>
Maintenance of roads & public buildings	7.9	7.9	7.7	8.2
Domestic water supplies	3.9	3.9	3.9	4.0
Sanitation and sewerage	3.3	3.1	3.0	3.4
Other community services	2.2	2.2	2.1	2.3
<u>Social Services</u>	<u>84.0</u>	<u>90.4</u>	<u>91.2</u>	<u>89.7</u>
Education	27.4	29.4	29.8	31.5
Health (excluding sanitation)	18.3	18.8	18.8	22.6
Social Security :				
Family allowances	9.9	9.4	6.2	5.5
Outdoor relief	10.0	9.8	8.3	9.0
Old age pensions	10.6	11.0	11.3	11.4
Housing	1.6	1.6	1.5	1.7
Other social services	6.2	10.4	15.3	8.0
<u>Economic Services</u>	<u>17.9</u>	<u>20.7</u>	<u>18.9</u>	<u>20.6</u>
Agriculture and forests	7.3	8.2	6.5	8.1
Civil aviation and marine services	2.7	2.7	2.8	3.2
Posts, Telegraphs & Telecommunications	5.0	5.9	5.8	5.8
Other economic services	2.9	3.9	3.8	3.5
<u>Unallocable Expenditure</u>	<u>74.8</u>	<u>76.8</u>	<u>85.6</u>	<u>82.6</u>
Transfer to local authorities	6.8	6.9	5.8	6.5
Recurrent financial obligations :				
Public debt :				
Interest	12.0	15.2	17.7	18.4
Redemptions	1.7	2.1	18.3	6.2
Sinking Fund	4.6	4.9	6.6	10.5
Public pensions and gratuities	14.7	15.8	17.0	17.7
Passages	4.6	1.4	0.8	1.5
Rodrigues	3.7	3.8	4.0	4.2
Relief works	18.9	18.9	8.8	9.2
Other unallocable expenditure	7.8	7.8	6.6	8.4
Total	221.0	232.3	241.6	241.7

* estimates

Table 24 - Functional classification of central government capital revenue

	Rs million			
	1966-67	1967-68	1968-69	1969-70*
Grants :				
British government	4.1	15.7	10.7	11.5
Other foreign sources	-	-	1.6	0.1
Sale of property	0.2	-	-	-
Internal borrowing	11.4	20.2	3.4	38.0
External borrowing	8.7	19.6	2.4	38.5
Interest on investments	2.0	0.7	1.3	1.1
Tax reserve certificates	2.0	3.2	-	-
Other capital revenue	1.3	1.0	1.2	1.0
Total	29.7	60.4	20.6	90.2

Table 25 - Functional classification of central government capital expenditure

	Rs million			
	1966-67	1967-68	1968-69	1969-70*
Agriculture and forests	9.6	11.3	8.7	11.5
Irrigation	0.9	0.7	0.8	1.1
Roads and bridges	2.1	0.9	1.0	3.3
Marine services and civil aviation	2.6	1.2	4.7	12.4
Domestic water supplies	3.0	3.9	2.7	8.3
Health	9.6	13.8	4.5	1.0
Housing	2.7	0.6	1.8	1.2
Sewerage	2.7	3.3	5.9	6.3
Education	2.7	2.1	1.4	5.8
Rodrigues	2.6	4.2	3.9	3.3
Loans :				
Development Bank of Mauritius	7.1	7.7	-	4.0
Central Electricity Board	-	2.0	-	-
Mauritius Housing Corporation	1.3	1.7	-	-
Central Housing Authority	2.0	0.8	2.4	1.5
Municipalities	0.2	-	-	-
Other loans	0.5	0.1	3.7	0.6
Redemption of loans	-	-	-	13.0
Tax reserve certificates	1.6	2.7	-	-
Other capital expenditure	4.8	8.1	1.9	6.6
Total	56.0	65.1	43.4	79.9

* estimates

Table 26 - Central government indebtedness

Rs million

Period	Amount outstanding at beginning of period				Borrowing during period		Repayments during period	
	Total	Internal		External	Internal	External	Internal	External
		Tap loan	Other	U.K.				
1963-64	184.4	55.6	36.1	92.7	-	7.6	48.0	1.0
1964-65	239.0	63.2	36.1*	124.3	15.4	7.2	11.5	1.1
1965-66	256.4	70.2	36.1	123.8	26.3	12.9	20.3	1.5
1966-67	286.4	76.5	41.0	136.3	32.6	14.2	7.6	3.2
1967-68	301.2	88.2	39.7	141.8	31.5	22.1	26.0	3.6
1968-69	341.1	92.3	53.1	160.2	35.5	5.3	16.3	38.1
1968 : July-Sept.	341.1	92.3	53.1	160.2	35.5	3.9	13.9	34.9
Oct.-Dec.	323.4	95.5	53.1	139.2	35.5	-	-	0.8
1969 : Jan.-March	322.6	95.5	53.1	139.2	34.8	1.4	0.3	1.3
April-June	320.7	94.6	53.1	138.2	34.8	-	2.1	1.1

*International Bank for Reconstruction and Development

Table 27 - Sinking funds held against the public debt
(end of period)

Rs million

Period	1963-64	1964-65	1965-66	1966-67	1967-68	1968-69
Amount	54.2	62.6	73.7	81.0	88.9	76.0

Note : Investments have been valued at mean market prices

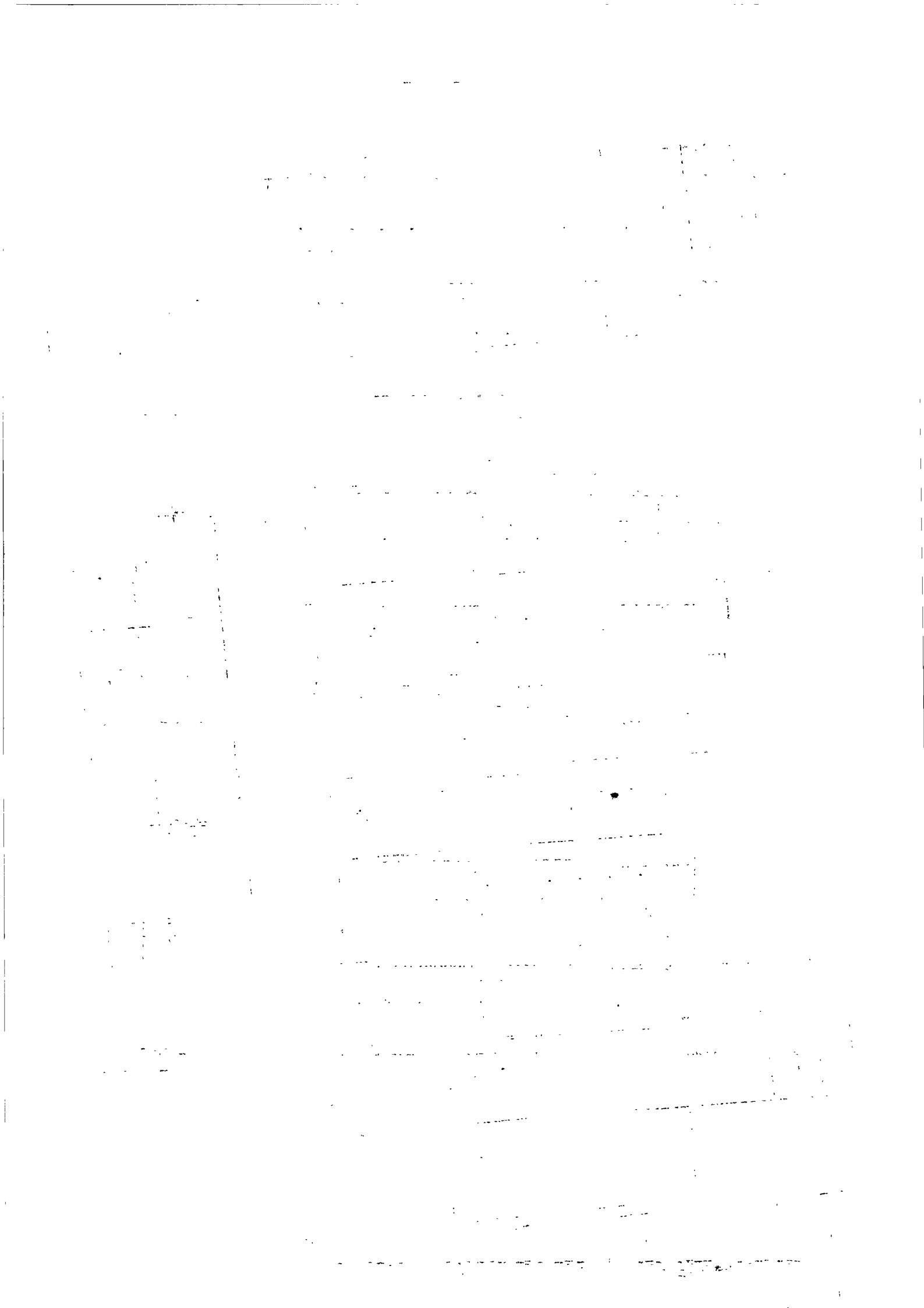


Table 28 - Central Government loan raisings

	Year of issue	Rate of interest (% p.a.)	Amount outstanding @ 30.6.69 (million rupees)
<u>Local Loans</u>			
Development Welfare Loan 1971-81	1950	3	3.1
Development (general purposes) Loan 1964-74	1953	4 $\frac{1}{4}$	14.5
Development (general purposes) Loan 1973-83	1962	5 $\frac{3}{4}$	15.0
Development (general purposes) Loan 1971-76	1966	6	5.0
Treasury debenture stock 1970	1968	6	14.0
Tap loan	(a)	5	94.6
<u>U.K. Loans</u>			
Development (general purposes) Loan 1972-77	1955-56	4 $\frac{3}{4}$	27.9
Development (general purposes) Loan 1973-75	1964	6 $\frac{1}{2}$	27.9

(a) Tap loans are issued every year since 1959. The date of redemption is at the option of the purchaser.

Table 29 - Outstanding loans and advances made from public funds

Debtor	Rs million	
	@ 30.6.68	@ 30.6.69
Central Electricity Board	91.9	89.2
Central Housing Authority	31.9	33.5
Development Bank of Mauritius	21.5	21.5
Mauritius Housing Corporation	14.6	14.4
Mauritius Broadcasting Corporation	-	1.2
Municipalities	22.3	21.8
General Manager of Railways	-	-
Sewerage Schemes	7.3	9.4
Sack Factory	5.0	5.0
Colonial Steamships	2.1	1.9
Tea Estates	3.7	3.6
Mauritius Hotels	1.4	1.3
Agricultural Marketing Board	1.0	3.5
Landlords of Private School Building	1.8	1.6
Planters' Hurricane Loan	0.9	0.8
Other	2.2	2.3
Total	207.6	211.0

Table 30 - Sterling assets
(end of period)

Rs million

Period	INVESTMENTS (Nominal value)				LIQUID ASSETS (Cash, money at call and short-term deposits)						
	Government	Currency backing	Semi-governmental institutions	Post Office Savings Bank	Total	Government	Currency backing	Semi-governmental institutions	Post Office Savings Bank	Total government and semi-governmental institutions	Net balances of banks due from banks abroad
1964	38.0	44.9	8.8	22.4	114.1	8.6	46.0	7.7	6.5	68.8	96.1
1965	40.8	57.7	6.9	20.3	125.7	0.8	37.3	7.0	8.9	54.0	44.0
1966	78.2	57.6	6.9	19.0	161.7	- 5.0	34.2	6.9	10.9	47.0	53.2
1967	57.8	(a)	6.9	18.8	83.5	-22.0	(a)	6.4	4.7	- 10.9	36.0
1968	44.1	(a)	4.3	18.1	66.5	- 9.9	(a)	7.4	5.0	2.5	19.5
1968 : 1st Qr.	60.4	(a)	6.9	18.8	86.1	-11.1	(a)	6.5	4.2	- 0.4	34.2
2nd Qr.	62.3	(a)	4.8	18.4	85.5	-23.0	(a)	12.8	5.6	- 4.6	- 15.9
3rd Qr.	43.0	(a)	4.5	18.1	65.6	- 5.7	(a)	7.1	6.0	7.4	- 16.6
4th Qr.	44.1	(a)	4.3	18.1	66.5	- 9.9	(a)	7.4	5.0	2.5	19.5
1969 : 1st Qr.	45.1	(a)	4.3	18.0	67.4	- 8.0	(a)	2.2	5.0	- 0.7	25.2
2nd Qr.	46.5	(a)	4.3	18.0	68.8	-11.5	(a)	2.4	5.0	- 4.1	- 37.3

*Net of short-term borrowings

(a) These assets have become the property of the Central Bank since August 1967 and are now shown in table 31. Hence 'Total Investments' and 'Total Liquid Assets of Government and Semi-government Institutions' before and after that date are not comparable.

Table 31 - Assets and liabilities of the Bank of Mauritius
(end of period)

Period	Rs million										
	Total	External					Local				Other assets
		Total	Balances with banks	Bills	Securities	Total	Government securities	Discounts & advances	Other assets		
1968 : March	108.8	60.3	6.7	14.7	38.9	48.5	32.8	13.6	2.1		
June	108.1	70.4	11.8	20.9	37.7	37.7	36.3	-	1.4		
Sept.	106.4	54.4	5.5	10.8	38.1	52.0	28.3	22.3	1.4		
Dec.	130.7	89.0	20.6	30.4	38.0	41.7	24.0	15.9	1.8		
1969 : March	139.4	85.9	6.8	15.2	63.9	53.5	28.8	22.9	1.8		
June	154.8	112.4	5.8	20.1	86.5	42.4	24.0	15.2	3.2		

Period	Rs million								
	Total	Paid up capital	Notes in circulation	Coins in circulation	Deposits		Other liabilities		
					Total	Public		Bankers'	Other
1968 : March	108.8	5.0	85.0	5.7	3.2	1.4	1.8	-	9.9
June	108.1	5.0	81.0	5.8	5.0	2.0	3.0	-	11.3
Sept.	106.4	5.0	85.3	5.8	6.4	0.6	5.7	0.1	3.9
Dec.	130.7	5.0	91.1	6.0	3.1	1.4	1.6	0.1	25.5
1969 : March	139.4	5.0	83.6	5.6	39.7	0.7	7.7	31.3	5.5
June	154.8	5.0	80.5	5.4	34.6	0.6	6.6	27.4	29.3

Note : The Central Bank commenced its activities in August 1967

Table 32 - Banking statistics - assets of commercial banks

Period	Total	Cash	Balances due by			Loans and advances				Investments		Other assets	
			Other local banks	Banks abroad	Primary products	Other industries	Other advances	Local	Abroad	Bills discounted and bills receivable	Other		
												Rs million	
1964 : 31st Dec.	311.1	7.3	2.0	97.4	44.9	51.6	32.4	10.6	2.4	15.3	47.2		
1965 : "	280.0	5.8	1.7	57.8	52.0	60.4	32.7	5.8	4.3	12.3	47.2		
1966 : "	284.3	5.3	4.6	56.7	50.8	59.3	36.4	6.9	2.0	14.1	48.2		
1967 : "	313.3	7.0	2.2	52.3	73.9	73.4	21.9	6.7	2.0	15.2	58.7		
1968 : "	308.7	7.9	1.5	38.7	63.1	87.3	30.1	11.7	2.0	10.2	56.2		
1968 : 31st March	302.6	8.0	5.9	49.0	59.2	79.3	23.7	6.7	2.0	15.3	53.5		
30th June	306.0	9.5	3.2	16.7	87.9	88.4	24.3	7.5	2.0	15.9	50.6		
30th Sept.	310.5	8.3	4.3	12.0	101.5	79.6	28.5	7.5	2.0	12.9	53.9		
31st Dec.	308.7	7.9	1.5	38.7	63.1	87.3	30.1	11.7	2.0	10.2	56.2		
1969 : 31st March	304.6	6.5	0.1	32.6	64.4	78.0	30.6	9.7	2.0	10.8	69.9		
30th June	317.7	6.8	0.5	8.5	87.2	86.2	31.9	20.1	2.0	13.5	61.0		

Table 33 - Banking statistics : liabilities of commercial banks

Period	Total	Notes in circulation	Deposits				Balances due to		Other liabilities
			Demand	Time	Savings	Other local banks	Banks abroad		
								Government	
Period	Total	Notes in circulation	Government	Demand	Time	Savings	Other local banks	Banks abroad	Other liabilities
1965 : 31st Dec.	280.0	-	128.4	38.2	28.1	1.8	13.9	69.6	
1966 : "	284.3	-	148.8	25.7	30.5	3.6	3.5	72.2	
1967 : "	313.3	-	139.7	30.5	41.6	5.4	16.3	79.8	
1968 : "	308.7	-	104.4	54.0	44.6	1.9	19.2	84.6	
1968 : 31st March	302.6	-	104.6	57.1	44.6	3.4	14.8	78.1	
30th June	306.0	-	99.3	49.8	44.4	2.7	32.7	77.1	
30th Sept.	310.5	-	104.1	49.1	45.1	1.6	28.6	82.0	
31st Dec.	308.7	-	104.4	54.0	44.6	1.9	19.2	84.6	

Period	Total	Notes in circulation	Deposits				Balances due to		Other liabilities
			Government	Non-Government		Other local banks	Banks abroad		
				Demand	Time			Savings	
Period	Total	Notes in circulation	Government	Demand	Time	Savings	Other local banks	Banks abroad	Other liabilities
1969 : 31st March	304.6	-	7.2	104.3	50.6	46.6	0.1	7.4	88.4
: 30th June	317.7	-	7.6	87.7	47.8	45.9	0.1	45.8	82.8

Note : No breakdown of deposits into Government and non-government was available before March 1969.

Table 34 - Assets and liabilities of the Development Bank of Mauritius

Rs million

	31.12.66	31.12.67	31.12.68	30.6.69
<u>Assets</u>				
Cash	0.1	-	0.1	-
Balances due by other banks in Mauritius	0.6	1.1	0.4	0.8
Loans and advances				
Primary industries	23.5	23.7	22.7	22.1
Other industries	9.1	10.7	13.8	15.3
Other loans and advances	-	-	0.3	0.4
Investments				
Local (at cost)	2.1	2.7	7.6	6.1
Overseas	1.3	1.6	2.4	2.0
Other assets	3.8	5.5	4.8	6.5
Total	40.7	45.3	52.1	53.2
<u>Liabilities</u>				
Notes in circulation	-	-	-	-
Deposits				
Demand	1.0	1.0	0.8	1.2
Time	2.5	2.1	1.8	1.8
Savings	2.0	1.9	1.9	1.8
Debentures	17.0	17.0	17.0	17.0
The Government of Mauritius	10.7	15.5	22.2	22.4
Bills	0.4	0.4	0.4	0.3
Other liabilities	7.1	7.4	8.0	8.7
Total	40.7	45.3	52.1	53.2

Table 35 - Post Office Savings Bank

Period	Deposits	Withdrawals	Accumulated	Number of
	during period	during period	balance at end of period	accounts at 30th June
	Rs Mn	Rs Mn	Rs Mn	
1964	16.9	15.6	34.8	84,642
1965	15.0	15.9	34.8	86,929
1966	14.3	16.2	33.9	88,171
1967	14.3	18.9	29.3	88,503
1968	11.2	13.5	27.0	89,653
1968 : 1st Qr.	2.9	2.9	29.3	...
2nd Qr.	3.0	3.3	29.0	89,653
3rd Qr.	2.5	4.0	27.5	...
4th Qr.	2.8	3.3	27.0	...
1969 : 1st Qr.	2.2	2.5	26.7	...
2nd Qr.	3.1	3.1	26.7	90,552

Table 36 - Assets and liabilities of the Mauritius Co-operative Central Bank Ltd.
Rs million

	28.2.67	28.2.68	28.2.69
<u>Assets</u>			
Cash at bank and in hand	0.2	1.3	1.1
Loans and advances:			
Primary industries	4.3	4.0	4.1
Housing	1.4	1.2	1.2
Other loans and advances	1.6	1.2	0.9
Investments :			
Local	0.6	1.6	3.6
Abroad	-	-	-
Other assets	0.3	0.3	0.3
Total	8.4	9.6	11.2
<u>Liabilities</u>			
"Owned Funds"	2.8	3.1	3.4
Deposits :			
Demand	2.1	1.8	1.5
Time	0.9	1.7	4.0
Savings	2.2	2.6	2.0
Balances due to other banks in Mauritius	-	-	-
Other liabilities	0.4	0.4	0.3
Total	8.4	9.6	11.2

Table 37 - Money supply
(end of period)

Period	Rs million			Total money supply
	Notes and coins 1/ in circulation	Demand deposits with Commercial banks 2/	Other deposits 3/	
1967 : 1st Qr.	85.2	97.3	2.1	184.6
2nd Qr.	83.2	81.5	1.4	166.1
3rd Qr.	80.9	88.6	2.8	172.3
4th Qr.	93.3	128.0	2.5	223.8
1968 : 1st Qr.	82.7	88.6	2.0	173.3
2nd Qr.	77.3	84.6	2.1	164.0
3rd Qr.	82.8	96.7	2.8	182.3
4th Qr.	89.2	100.7	1.7	191.6
1969 : 1st Qr.	82.8	104.3	2.3	189.4
2nd Qr.	79.1	87.7	3.5	170.3

1/ Net of cash held by banks

2/ Excludes government deposits

3/ Miscellaneous current accounts with Bank of Mauritius and Mauritius Co-operative Central Bank

Table 38 - Assets and Liabilities of the Mauritius Housing Corporation

	Rs million		
	31.12.66	31.12.67	31.12.68
<u>Assets</u>			
Cash in hand on deposit	-	0.2	-
Housing loans	22.9	28.3	30.7
Investments (at cost)	0.5	-	-
Other assets	0.2	0.4	1.7
Total	23.6	28.9	32.4
<u>Liabilities</u>			
Loans :			
Local			
Government of Mauritius	12.1	14.6	14.4
Development Bank of Mauritius	0.3	0.3	0.3
Other local loans	-	0.1	2.9
External			
British Government	3.8	3.5	3.3
Commonwealth Development Corporation	3.7	6.7	6.5
Other Liabilities	3.7	3.7	5.0
Total	23.6	28.9	32.4

Table 39 - Bank and Interest Rates

	per cent per annum		
	30.6.68	31.12.68	30.6.69
<u>Deposit rates</u>			
Post Office Savings Bank	3	3	4
Trading banks			
Savings accounts	3 $\frac{1}{2}$	4	4
Fixed deposits (3 months)	4 $\frac{1}{2}$	4 $\frac{1}{2}$ -4 $\frac{3}{4}$	5 $\frac{1}{2}$
" (6 months)	4 $\frac{3}{4}$	4 $\frac{3}{4}$ -5	5 $\frac{3}{4}$
" (12 months)	5	5 $\frac{1}{4}$ -5 $\frac{1}{2}$	6 $\frac{1}{4}$
" (over 12 months)	7-8	7-8	7-8
<u>Lending rates</u>			
Bank of Mauritius - discount rate	7 $\frac{1}{2}$	7 $\frac{1}{2}$	8
Trading banks - bills of exchange and advances	8 $\frac{1}{2}$ -9	8 $\frac{1}{2}$ -9	8 $\frac{1}{2}$ -9 $\frac{1}{2}$
Public notaries - mortgage loans	9-11	9-11	9-11
Mauritius Housing Corporation - housing loans	8	8	8

Note : Rates of interest on Treasury loans are shown in table 28.

Table 40 - Foreign exchange rates

Country	Currency	on 30.6.1968		on 31.12.1968		on 30.6.1969	
		Selling rate	Buying rate	Selling rate	Buying rate	Selling rate	Buying rate
United Kingdom	Pound sterling	13.40	13.20	13.40	13.20	13.40	13.25
Australia	Dollar	6.27-6.30	6.00-6.15	6.27-6.30	6.13	6.27	6.15
Belgium	Franc	0.113	0.108-0.11	0.1125	0.1116	0.113	0.110
Canada	Dollar	5.18-5.25	5.08-5.15	5.24	5.18	5.23	5.13
France	Franc	1.131-1.135	1.11-1.113	1.14	1.11	1.11	1.00
Germany Western	Mark	1.409-1.41	1.37-1.386	1.41	1.38	1.41	1.38
Hong Kong	Dollar	0.92	0.90	0.92	0.91	0.92	0.90
India	Rupee	0.7465	0.7315	0.7465	0.7315	0.7465	0.7315
Kenya	Shilling	0.78-0.783	0.76	0.783-0.7845	0.76	0.78	0.76
Madagascar	Franc	0.023	.0183-.022	0.023	0.022	0.0204	0.0176
New Zealand	Dollar	6.27-6.30	6.00-6.15	6.27-6.30	6.00-6.15	6.27	6.15
Pakistan	Rupee	1.175	1.155	1.175	1.155	1.175	1.155
Reunion	Franc	0.023	.0177-.022	0.023	0.022	0.0204	0.0176
South Africa	Rand	7.83-7.85	7.67-7.70	7.83-7.85	7.67-7.70	7.83	7.67
Switzerland	Franc	1.309-1.31	1.26-1.287	1.31	1.28	1.31	1.28
U.S.A.	Dollar	5.60-5.625	5.40-5.538	5.63	5.53	5.62	5.54

IV. NATIONAL ACCOUNTS

Table 41 - Industrial Origin of the Gross National Product
(at current factor cost)

	<u>Rs million</u>				
	1964	1965	1966	1967*	1968*
1. Agriculture, forestry, hunting and fishing	180	198	190	203	193
2. Mining and quarrying	1	1	1	1	1
3. Manufacturing	119	129	121	130	124
4. Construction	53	55	52	59	49
5. Electricity, gas, water and sanitary services	22	25	26	30	30
6. Transportation, storage and communication	95	102	99	100	102
7. Wholesale and retail trade	86	87	84	89	92
8. Banking, insurance and real estate	16	16	16	17	16
9. Ownership of dwellings	59	61	63	65	66
10. Public administration and defence	38	40	41	43	44
11. Services	91	94	99	104	110
GROSS DOMESTIC PRODUCT AT FACTOR COST	760	808	792	841	827
Net factor income from the rest of the world	- 2	- 6	- 1	- 5	- 3
GROSS NATIONAL PRODUCT AT FACTOR COST	758	802	791	836	824
Per Capita Gross National Product at factor cost (Based on mid-year population)	Rs 1,050	Rs 1,082	Rs 1,042	Rs 1,081	Rs 1,046

* provisional

Table 42 - Distribution of the national income before providing for depreciation

	Rs million				
	1963	1964	1965	1966	1967*
1. Compensation of employees	432	445	464	470	488
2. Income from unincorporated enterprises	130	102	106	110	111
3. Income from property	139	106	107	107	112
4. Saving of corporations	137	86	102	76	98
5. Direct tax on corporations	55	12	14	17	18
6. General government income from property and entrepreneurship	18	20	23	26	28
7. <u>Less</u> interest on public debt	- 7	- 9	- 10	- 11	- 15
8. <u>Less</u> interest on consumers' debt	- 4	- 4	- 4	- 4	- 4
NATIONAL INCOME AND DEPRECIATION =					
Gross National Product at factor cost	900	758	802	791	836

* provisional

Note : Figures for 1968 are not yet available

Table 43 - Expenditure on Gross National Product
(at current prices)

	1963	1964	1965	1966	1967*	1968*
1. Private consumption expenditure on goods and services	586	677	634	654	688	711
2. General government consumption expenditure on goods and services	115	126	138	152	163	154
3. Gross domestic fixed capital formation of private enterprises	87	126	107	86	87	94
4. Gross domestic fixed capital formation of government and public enterprises	73	51	48	47	58	47
5. Increase in stocks
CONSUMPTION AND GROSS CAPITAL FORMATION	861	980	927	939	996	1,006
6. Net exports of goods and services	+ 157	- 102	- 5	- 27	- 27	- 40
7. Net factor income from the rest of the world	- 6	- 2	- 6	- 1	- 5	- 3
8. Less indirect taxes (net of subsidies)	- 112	- 118	-114	- 120	-128	- 139
GROSS NATIONAL PRODUCT AT FACTOR COST	900	758	802	791	836	824

* provisional

Table 44 - Composition of Gross Fixed Domestic Capital Formation
(at current prices)

	Rs million				
	1964	1965	1966	1967	1968
A. By type of capital good					
a. Land ^x	3	2	2	2	4
b. Dwellings	44	37	29	37	32
c. Non-residential buildings	22	25	21	29	21
d. Other construction and work	32	31	28	27	24
e. Transport equipment					
(i) Passenger cars	8	6	4	4	5
(ii) Other equipment	16	12	22	11	15
f. Machinery & other equipment	52	42	27	35	40
GROSS FIXED DOMESTIC CAPITAL FORMATION	177	155	133	145	141
B. By industrial use [*]					
a. Agriculture, forestry and fishing	17	17	16	19	17
b. Mining and quarrying	-	-	-	-	-
c. Manufacture	33	17	11	13	14
d. Construction	3	4	3	3	4
e. Electricity, gas and water	16	15	12	14	13
f. Transportation, storage and communications	39	33	37	21	30
g. Wholesale and retail trade	6	9	4	6	6
h. Banking, insurance and real estate	2	1	2	-	-
i. Ownership of dwellings	45	38	29	38	32
j. Public Administration	1	3	4	1	-
k. Service industries	12	16	13	28	21
l. Legal fees, stamp duties, etc.	3	2	2	2	4
GROSS FIXED DOMESTIC CAPITAL FORMATION	177	155	133	145	141

^xIncluding legal fees, stamp duties, agents' commission, etc., connected with the transfer of ownership of land and buildings.

^{*}The figures for 1965 onwards are not strictly comparable with those of previous years as a better distribution of imports of machinery into user industries is now possible.

Table 45 - Balance of payments

ITEM	Rs million					
	1967		1968		1st half-year 1969	
	Credit	Debit	Credit	Debit	Credit	Debit
A. <u>GOODS AND SERVICES</u>						
1. Merchandise	306	332	359	359	79	157
2. Non-monetary gold	-	1	-	1	-	-
3. Freight and insurance on merchandise	1	49	8	51	4	21
4. Other transportation	27	21	39	25	22	16
5. Travel	14	23	14	21	7	9
6. Investment income	10	16	11	15	7	7
7. Government, not included elsewhere	15	6	14	5	8	3
8. Other services	15	14	19	17	10	8
Net goods and services	-	74	-	30	-	84
B. <u>TRANSFER PAYMENTS</u>						
9. Private	5	12	6	11	2	3
10. Central government	15	2	33	4	10	2
Net transfer payments	6	-	24	-	7	-
C. <u>CAPITAL & MONETARY GOLD</u>						
<u>Non-monetary sectors</u>						
11)						
12)						
13) Private	-	3	-	3	5	-
14)						
15. Central government	15	-	18	-	2	-
<u>Monetary sectors</u>						
16. Commercial banks : liabilities	13	-	3	-	27	-
17. Commercial banks : assets	4	-	14	-	30	-
18. Central institutions : liabilities	18	-	-	20	21	-
Central institutions : assets	31	-	-	16	-	23
OTHER CAPITAL, ERRORS AND OMISSIONS	-	10	10	-	15	-

V. CONSUMER PRICE INDICES

Table 46 - Consumer price indices
(Base : January-June 1962 = 100)

The table below gives three consumer price indices, viz :

- (a) an index for households in urban areas;
- (b) an index for households in rural areas;
- (c) a total index for Mauritius as a whole.

Period	Urban	Rural	Whole Island
1963 (Average)	98.5	98.5	98.5
1964 (")	100.5	100.2	100.3
1965 (")	102.3	102.0	102.1
1966 (")	105.0	104.5	104.7
1967 (")	106.6	106.6	106.6
1968 (")	113.0	114.9	114.1
1968 : January	110.6	112.0	111.4
February	112.5	113.6	113.2
March	114.2	115.6	115.0
April	113.4	115.3	114.5
May	111.8	113.6	112.8
June	112.6	114.7	113.8
July	114.5	116.8	115.8
August	113.7	115.9	115.0
September	113.4	115.5	114.6
October	113.2	115.3	114.4
November	113.3	115.4	114.5
December	113.0	115.2	114.2
1969 : January	114.3	116.4	115.5
February	115.7	117.7	116.8
March	116.2	118.1	117.3
April	115.2	117.4	116.5
May	115.9	118.2	117.2
June	114.8	116.8	115.9

VI. EXTERNAL TRADE

Table 47 - Balance of visible trade

Period	Imports (C.I.F.Value)	Exports [*] (F.O.B.Value)	Balance of visible trade	
			Surplus	Deficit
1964	388.9	366.9	-	22.0
1965	367.3	313.4	-	53.9
1966	333.2	337.6	4.4	-
1967	371.1	306.8	-	64.3
1968	421.1	354.0	-	67.1
1968 : 1st Qr.	105.4	69.4	-	36.0
2nd Qr.	99.9	19.3	-	80.6
3rd Qr.	104.9	99.2	-	5.7
4th Qr.	110.9	166.1	55.2	-
1969 : 1st Qr.	93.5	58.1	-	35.4
2nd Qr.	88.9	20.2	-	68.7

Rs millior.

^{*}Including value of sugar quota certificates and the bonus received in lieu of the Commonwealth Preference on sugar exports, but excluding sales value of bunker fuel and ships' stores.

Table 48 - Quantum and price indices of exports and imports and terms of trade

Period	Quantum indices		Price indices		Terms of trade ^x
	Export	Import	Export	Import	
1964 = 100 ^{xx}					
1964	100	100	100	100	100
1965	101	90	85	105	81
1966	104	81	89	106	84
1967	92	89	91	107	85
1965 = 100					
1965	100	100	100	100	100
1966	103	90	105	100	105
1967	91	99	108	102	106
1968	106	98	106	117	91

^xRatio of export price to import price index.
A rise in the index indicates that the terms of trade have moved in favour of Mauritius.

^{xx} Revised

Table 49 - Quantum and price indices of imports, by section

Period	All Sections	Food	Beverages and tobacco	Crude materials, inedible, except fuels	Mineral fuels, lubricants, etc.	Animal and vegetable oils and fats	Chemicals	Manufactured goods classified chiefly by material	Machinery and transport equipment	Miscellaneous manufactured articles	Quantum Indices						
											1964 = 100*	1965 = 100	1966	1967	1968	1969	
1965	90	99	91	103	105	116	91	85	76	82	105	116	91	85	76	82	
1966	81	95	64	88	89	147	90	80	49	72	89	147	90	80	49	72	
1967	89	102	63	111	147	159	85	86	60	79	147	159	85	86	60	79	
1966	90	97	72	89	85	126	98	93	65	90	85	126	98	93	65	90	
1967	99	103	70	106	141	139	93	100	76	100	141	139	93	100	76	100	
1968	98	96	73	106	172	154	99	90	82	89	172	154	99	90	82	89	
												Price Indices					
1964 = 100*	105	103	100	100	99	113	111	104	105	106	99	113	111	104	105	106	
1966	106	109	101	94	101	107	109	99	108	107	101	107	109	99	108	107	
1967	107	110	104	98	101	101	108	103	104	114	101	101	108	103	104	114	
1966 = 100	100	104	100	91	103	95	98	96	100	99	98	95	98	96	100	99	
1967	102	107	102	99	102	88	97	99	102	104	97	88	97	99	102	104	
1968	117	130	116	109	118	81	105	109	122	126	105	81	105	109	122	126	

* revised

1. The first part of the document discusses the importance of maintaining accurate records of all transactions and activities. It emphasizes that proper record-keeping is essential for transparency and accountability, particularly in financial matters. The text notes that without clear records, it becomes difficult to track expenses, revenues, and other critical data points.

2. The second section focuses on the role of technology in modern record-keeping. It highlights how digital tools and software solutions can significantly reduce the risk of human error and improve the efficiency of data management. The document suggests that organizations should invest in reliable technology to ensure their records are secure, accessible, and up-to-date.

3. The third part of the document addresses the legal and regulatory requirements surrounding record-keeping. It outlines the various laws and standards that govern how data should be stored, protected, and shared. The text stresses that compliance with these regulations is not only a legal obligation but also a key factor in building trust with stakeholders.

4. The fourth section discusses the importance of data security and privacy. It explains that as the volume of data grows, the risk of breaches and unauthorized access also increases. The document provides guidance on implementing robust security measures, such as encryption and access controls, to safeguard sensitive information.

5. The final part of the document concludes by summarizing the key takeaways and offering practical advice for organizations. It reiterates that consistent and accurate record-keeping is a cornerstone of effective business management and that adopting best practices can lead to improved performance and risk mitigation.

Table 50 - Exports* : quantities and values

Period	Total value*	Re-exports value	DOMESTIC EXPORTS											
			Total		Sugar		Mplasses		Tea		Other			
			Quantity	Value	Quantity	Value	Quantity	Value	Quantity	Value	Quantity	Value		
1963	427.8	6.8	...	420.9	574.3	400.2	109.8	13.5	1.0	5.5	1.8	
1964	366.9	7.0	...	359.9	575.7	344.2	99.1	8.8	0.8	4.4	2.5	
1965	313.4	9.9	...	303.5	569.4	290.3	92.1	5.0	1.1	5.9	2.2	
1966	337.6	9.0	...	328.6	579.9	306.4	127.5	11.5	1.3	6.5	4.1	
1967	306.8	6.1	...	300.7	515.8	281.3	96.9	8.5	1.6	8.4	2.4	
1968	354.0	7.7	...	346.3	596.0	320.7	169.2	11.9	1.7	9.6	4.0	
1968 :1st Qr	69.4	1.4	...	67.9	104.1	59.6	45.2	3.5	0.7	3.8	1.0	
2nd Qr	19.3	3.0	...	16.3	30.3	11.7	11.1	0.7	0.5	3.0	0.9	
3rd Qr	99.2	1.3	...	97.9	172.4	92.8	48.4	3.8	0.1	0.5	0.9	
4th Qr	166.1	2.0	...	164.2	289.3	156.7	64.5	3.9	0.4	2.4	1.2	
1969 :1st Qr	58.2	1.6	...	56.6	91.0	48.8	0.1	0.4	1.0	5.6	1.8	
2nd Qr	20.2	1.8	...	18.4	13.2	8.4	36.0	2.8	1.0	5.5	1.7	

*Including value of sugar quota certificates and the bonus received in lieu of the Commonwealth Preference on sugar exports but excluding sales value of bunker fuel and ships' stores.

Quantity : Thousand metric tons
Value : Million rupees F.O.B.

Table 51 - Total exports* : principal countries of destination - values

Period	Rs million F.O.B.									
	United Kingdom*	Canada	Republic of South Africa	New Zealand	Holland	Italy	Republic of Malagasy	Reunion	United States of America	
1963	296.9	66.7	1.2	0.4	0.1	8.4	1.5	1.8	47.8	
1964	279.5	57.1	2.3	0.3	1.6	11.8	0.9	1.0	5.4	
1965	245.5	28.0	11.8	0.5	0.6	0.3	0.9	1.6	14.1	
1966	275.7	30.9	1.3	0.2	0.3	-	1.1	2.9	16.4	
1967	269.2	9.5	3.4	0.1	2.8	0.4	1.7	1.3	15.8	
1968	272.2	44.1	6.9	0.3	0.3	0.9	1.9	2.5	21.6	
1968 : 1st Qr.	55.7	6.8	2.1	0.1	0.2	-	0.4	0.5	2.7	
2nd Qr.	5.9	7.6	2.1	0.1	0.1	0.8	0.7	0.7	-	
3rd Qr.	79.2	14.4	0.3	-	-	-	0.4	0.6	3.7	
4th Qr.	131.3	15.3	2.3	-	-	0.1	0.4	0.8	15.2	
1969 : 1st Qr.	44.6	4.1	4.2	-	-	-	0.5	0.6	0.4	
2nd Qr.	13.4	-	2.3	0.2	-	-	1.3	0.6	1.5	

*Including value of sugar quota certificates and the bonus received in lieu of the Commonwealth Preference on sugar exports.

Table 52 - Imports : values by S.I.T.C. sections

Period	Rs million C.I.F.										
	Total	Food	Beverages and tobacco	Crude materials, inedible, except fuels	Mineral fuels, lubricants, etc.	Animal and vegetable oils and fats	Chemicals	Manufactured goods classified chiefly by material	Machinery and transport equipment	Miscellaneous manufactured articles	Miscellaneous transactions and commodities n.e.s.
1963	333.1	94.7	7.9	5.6	14.2	12.1	39.7	70.8	55.7	31.7	0.8
1964	388.9	105.9	7.4	6.5	17.0	11.3	46.4	88.5	70.3	35.5	0.1
1965	367.3	108.0	6.8	6.7	17.7	14.9	47.1	78.6	56.3	31.0	0.3
1966	333.2	109.6	4.9	5.4	15.4	17.7	45.6	70.2	36.9	27.4	0.2
1967	371.1	118.5	4.8	7.1	25.4	18.3	42.6	78.5	43.7	32.1	0.1
1968	421.1	135.5	5.7	7.8	35.9	18.5	49.0	77.6	56.5	34.6	0.1
1968 : 1st Qr.	105.5	32.6	1.4	1.6	8.8	3.0	10.6	21.2	16.6	9.6	0.1
2nd Qr.	99.9	35.1	1.4	2.5	6.3	4.7	8.9	18.9	14.6	7.5	-
3rd Qr.	104.9	33.6	1.4	1.5	8.0	6.6	15.1	18.0	12.9	7.8	-
4th Qr.	110.9	34.2	1.5	2.2	12.8	4.1	14.4	19.5	12.4	9.8	-
1969 : 1st Qr.	93.4	34.6	1.1	1.1	9.6	3.1	8.5	16.8	12.1	6.3	0.2
2nd Qr.	89.0	30.9	1.2	1.3	4.5	4.3	9.0	19.0	11.3	7.5	-

[The page contains extremely faint and illegible text, likely bleed-through from the reverse side of the document. The text is arranged in approximately 15 horizontal lines across the page. No specific words or phrases can be discerned.]

Table 53 - Imports of merchandise : selected commodities - values

Period	Rice	Wheat flour	Alcoholic beverages	Petroleum products	Vegetable edible oils	Fertilizers manufactured	Cotton fabrics	Other textile fabrics	Cement	Iron and steel goods	Manufactures of metals n.e.s.	Machinery other than electric	Electric machinery apparatus and appliances	Road motor vehicles and parts
1963	38.3	12.1	5.9	13.8	11.5	16.4	12.1	6.5	7.4	9.0	12.0	17.8	22.0	13.8
1964	39.2	13.5	5.6	16.6	10.8	19.4	13.5	8.7	9.1	15.6	13.4	30.0	18.5	19.3
1965	39.3	14.4	5.1	17.4	14.4	18.4	10.8	7.3	8.9	11.6	11.3	23.2	17.2	14.7
1966	37.5	13.1	3.8	14.8	16.5	17.4	9.7	8.3	7.5	10.7	8.5	12.9	12.8	10.3
1967	44.2	15.3	4.0	25.0	16.2	19.0	11.4	8.4	8.1	12.7	10.8	16.6	16.3	9.9
1968	55.7	17.6	4.2	35.3	14.5	19.3	9.2	9.9	7.3	11.6	9.7	19.7	18.1	14.3
1968 : 1st Qr.	14.8	4.7	1.1	8.7	2.6	2.9	2.1	2.3	2.1	3.9	2.7	4.9	4.1	3.8
2nd Qr.	11.7	4.3	1.0	6.1	3.6	1.6	2.3	2.3	2.0	2.4	2.4	5.2	5.1	4.2
3rd Qr.	14.0	4.8	1.1	7.9	5.1	6.8	2.1	2.1	1.6	2.5	2.4	5.3	4.1	3.3
4th Qr.	15.1	3.8	1.0	12.6	3.2	8.0	2.7	3.1	1.5	2.9	2.2	4.3	4.7	3.0
1969 : 1st Qr.	17.6	4.3	0.8	9.4	2.7	2.2	1.9	2.3	1.6	2.5	2.0	4.8	3.7	3.0
2nd Qr.	9.4	6.4	1.0	4.4	3.2	2.1	2.4	2.4	2.2	2.7	2.1	4.3	4.2	2.7

Rs million C.I.F.

Table 54 - Imports of merchandise : selected commodities - quantities

Period	Rice	Wheat flour	Vegetable	Fertilizers	Cotton	Other textile	Cement	Iron and steel goods
	Thousand M/Tons	Thousand M/Tons	edible oils Thousand M/Tons	manufactured Thousand M/Tons	fabrics Million Sq. metres	fabrics Million Sq. metres	Thousand M/Tons	Thousand M/Tons
1963	69.7	28.2	8.2	66.7	9.6	2.0	80.4	12.9
1964	68.1	28.6	7.5	69.3	10.2	3.0	103.1	21.3
1965	67.2	35.5	8.6	58.1	8.5	2.6	95.4	15.8
1966	61.2	30.6	10.2	51.6	7.7	3.5	79.7	14.3
1967	66.8	35.0	10.6	59.0	9.0	3.1	87.9	16.2
1968	61.5	36.2	10.2	57.3	6.5	3.6	67.1	14.2
1968 : 1st Qr.	15.9	10.7	1.9	10.3	1.6	0.9	20.6	4.8
2nd Qr.	14.9	9.0	2.5	4.5	1.7	0.8	17.6	2.9
3rd Qr.	14.8	9.3	3.6	18.8	1.4	0.8	14.9	3.1
4th Qr.	16.0	7.2	2.2	23.6	1.8	1.1	14.0	3.4
1969 : 1st Qr.	19.6	8.3	2.1	7.6	1.4	0.7	14.8	2.9
2nd Qr.	10.5	12.4	2.9	7.0	1.7	0.8	20.1	2.9

Table 55 - Imports : main sources of supply - values

Period	Rs Million C.I.F.											
	United Kingdom	Australia	Burma	Hong-Kong	India	Republic of South Africa	Western Germany	Iran	Japan	Thailand	France	United States of America
1963	94.2	19.3	34.7	11.7	13.0	30.8	13.0	10.3	9.7	4.3	17.2	9.0
1964	115.2	30.6	26.5	12.3	16.3	32.3	13.7	11.3	15.6	13.9	17.2	11.4
1965	98.4	24.2	23.3	9.6	11.2	34.6	15.2	11.1	13.9	17.1	20.9	12.7
1966	79.1	23.9	23.1	8.8	9.9	27.3	19.7	11.4	14.2	14.3	20.2	7.5
1967	77.8	28.0	27.0	10.4	9.4	30.6	25.9	17.8	16.8	16.1	20.3	7.3
1968	99.6	25.7	42.3	8.7	11.5	31.4	27.9	12.6	14.3	10.7	23.8	8.8
1968 : 1st Qr.	31.2	5.2	3.2	1.9	2.7	6.6	5.1	3.3	3.3	10.1	7.1	2.0
2nd Qr.	25.0	7.1	11.0	2.2	3.9	8.4	6.0	2.6	2.6	0.1	5.4	1.6
3rd Qr.	23.3	6.2	14.0	2.1	2.3	8.6	9.8	2.2	3.5	0.1	5.4	3.1
4th Qr.	20.2	7.1	14.1	2.6	2.6	7.7	6.9	4.6	4.8	0.4	5.9	2.1
1969 : 1st Qr.	19.0	4.0	7.3	1.6	3.3	7.3	3.5	6.1	2.9	10.1	6.0	0.9
2nd Qr.	20.0	7.5	-	2.4	2.4	8.4	3.7	1.9	3.2	8.4	6.6	2.1

Table 56 - Imports of fertilizers *

Kind of Fertilizer	1967		1968		First half-year 1969	
	Quantity M/Tons	C.I.F. Value Rs 000	Quantity M/Tons	C.I.F. Value Rs 000	Quantity M/Tons	C.I.F. Value Rs 000
<u>TOTAL IMPORTS</u>	68,736	19,759	67,970	20,559	18,532	4,697
<u>NITROGENOUS FERTILIZERS</u>	19,018	4,529	15,939	3,786	7,395	1,751
Sulphate of ammonia	18,039	4,227	14,841	3,434	6,840	1,606
Ammonium sulphate nitrate	928	283	1,023	322	230	69
Sodium nitrate	50	18	75	30	325	76
Other nitrogenous fertilizers	1	1	-	-	-	-
<u>POTASSIC FERTILIZERS</u>	6,037	1,614	4,571	1,280	2,236	633
Muriate of potash	5,803	1,536	4,521	1,261	2,131	592
Sulphate of potash	234	78	50	19	105	41
<u>PHOSPHATIC FERTILIZERS</u>	12,686	1,655	14,583	2,385	5,129	932
Single superphosphate	1,638	387	2,233	521	101	23
Triple superphosphate	1,350	547	1,676	655	1,015	443
Phosphatic guano	9,698	721	10,669	1,205	3,963	444
Other phosphatic fertilizers	-	-	5	4	50	22
<u>MIXED AND COMPOUND FERTILIZERS</u>	30,995	11,961	32,877	13,108	3,772	1,381

* Excluding imports from dependencies.

VII. LABOUR AND WAGES

The figures of employment in tables 57-61 apply to large establishments only - these being defined as :

- (i) Sugar cane plantations known to harvest 25 arpents or more;
- (ii) Tea plantations of 5 arpents or more;
- (iii) All "flue cured" tobacco establishments, irrespective of acreage;
- (iv) Non-agricultural establishments employing at least 10 persons on the day of the survey;
- (v) All Central and Local Government departments.

Table 57 - Employment by major industrial groups

Industrial Group	Total no. of persons employed on last Thursday of		
	March 1968	September 1968	March 1969
Agriculture and fishing	56,431	61,605	53,636
Sugar	51,162	57,352	48,366
Tea	3,883	3,089	4,164
Other	1,386	1,164	1,106
Mining and quarrying	179	165	163
Manufacturing	7,675	7,660	7,748
Construction	2,327	1,420	1,616
Electricity	1,281	1,268	1,234
Commerce	3,240	3,245	3,222
Transport, storage and communication	4,421	5,142	4,410
Services :	31,344	31,209	31,973
Government	28,176	27,940	28,626
Other	3,168	3,269	3,347
Total (excluding relief workers)	106,898	111,714	104,002
Relief workers	17,768	13,428	13,459
GRAND TOTAL (including relief workers)	124,666	125,142	117,461

Table 58 - Employment by sex and age group

Age Group	March 1968		September 1968		March 1969				
	Males	Females	Total	Males	Females	Total	Males	Females	Total
18 years of age and over (i.e. adults)	78,200	22,807	101,007	81,537	24,215	105,752	77,219	22,041	99,260
Under 18 years of age (i.e. young persons)	4,922	969	5,891	4,862	1,100	5,962	4,182	560	4,742
Total (excluding relief workers)	83,122	23,776	106,898	86,399	25,315	111,714	81,401	22,601	104,002
Relief workers	17,657	111	17,768	13,376	52	13,428	13,395	64	13,459

Table 59 - Employment in specified sectors : Sugar Industry

Source of employment	Acreage group (arpents)	Total no. of persons employed on the last Thursday of :		
		March 1968	September 1968	March 1969
Sugar cane planters (including metayers)	25 -	2,943	2,456	1,806
	50 -	1,019	1,132	842
	75 -	425	470	468
	100 -	5,750	6,862	5,295
Total planters		10,137	10,920	8,411
Millers' estates & annexes (including factories)		41,025	46,432	39,955
Total		51,162	57,352	48,366

Note : Employment figures for Millers' Estates include workers in field, factory, garage and workshop.

Table 60 - Employment in specified sectors : Government Services

Source of employment	Total no. of persons employed on the last Thursday of :		
	March 1968	September 1968	March 1969
Central Government ⁺	25,588	25,114	25,780
Local Government	2,588	2,826	2,846
Relief works	17,768	13,428	13,459
Total	45,944	41,368	42,085

⁺includes employees of District Councils

Table 61 - Employment in specified sectors : Manufacturing Industries

Industrial Group	Total no. of persons employed on last Thursday of:		
	March 1968	September 1968	March 1969
Food ⁺	521	556	654
Beverages and tobacco	1,320	1,285	1,295
Textiles (including wool fibre)	1,055	957	922
Wearing apparel	398	389	416
Wood and furniture	240	230	233
Printing and publishing	683	658	694
Rubber and leather products	124	134	150
Chemical products	376	372	341
Non-metallic mineral products	597	553	603
Metal products	330	337	282
Repairs of machinery (except electrical)	608	605	591
Repairs of electrical machinery	157	168	170
Transport equipment	1,085	1,208	1,134
Miscellaneous manufac- turing industries	181	208	263
Total	7,675	7,660	7,748

⁺ excluding employees in sugar and tea factories, who have been included with plantation workers in Agriculture.

Table 62 - Indicators of unemployment

Month	Registered unemployed ⁺					Relief workers [*]				
	At end of period					At end of period				
	1965	1966	1967	1968	1969	1965	1966	1967	1968	1969
January	9,650	13,988	18,567	9,956	13,082	5,338	9,631	19,977	18,179	15,727
February	7,341	16,367	18,144	9,888	14,606	6,532	12,406	19,911	18,156	15,650
March	8,071	15,975	16,614	9,954	14,846	7,400	15,162	20,262	18,294	15,389
April	8,231	13,889	15,950	9,974	15,293	7,900	17,720	20,237	18,082	15,338
May	8,888	15,348	15,943	8,710	15,297	8,940	18,840	20,242	17,961	15,415
June	8,501	14,429	15,414	7,833	15,351	9,045	19,682	20,276	17,463	15,210
July	8,418	13,308	14,459	7,931		8,665	19,223	23,291	15,669	
August	7,480	11,625	11,609	7,472		8,185	18,817	31,696	14,818	
September	7,795	12,283	8,666	8,127		7,755	19,137	31,218	14,777	
October	7,325	13,101	14,601	8,447		7,390	19,124	19,050	14,212	
November	8,353	13,347	10,806	10,023		6,770	19,281	19,069	14,732	
December	9,942	15,885	9,366	10,698		6,964	19,773	18,469	15,658	

⁺These figures exclude persons already in employment but seeking a change in job.

^{*}Including gangmen, supervisors, pay clerks, etc.

Table 63 - Daily wage rates in certain industries (October Inquiry*)

Industry	Occupation	Rupees					
		Lowest			Highest		
		1966	1967	1968	1966	1967	1968
a. Manufacture of bread	Brigadiers	6.75	6.75	6.75	6.75	6.75	6.75
b. Manufacture of furniture	Cabinet makers	7.00	7.00	7.00	8.00	8.00	8.00
c. Publishing & printing	Pressmen	5.50	5.50	6.50	10.65	10.50	10.55
d. - do -	Compositors by hand	5.50	5.50	5.50	10.65	10.35	10.35
e. Manufacture of machinery	Fitters	4.95	5.10	5.45	10.95	10.95	10.95
f. - do -	Pattern makers	5.60	6.00	6.65	8.00	7.85	7.75
g. Repair of motor vehicles	Mechanics	4.00	5.50	4.00	9.50	10.50	11.50
h. Construction	Carpenters	6.25	6.25	6.50	8.00	8.50	10.00
i. - do -	Masons	6.25	7.25	7.00	9.00	8.50	8.00
j. Electricity	Linesmen	8.65	8.65	8.65	12.40	12.20	12.20
k. - do -	Labourers	6.50	6.50	6.70	6.70	6.70	7.20
l. Transport (bus companies)	Drivers	9.60	9.60	9.60	9.60	9.60	9.60
m. - do -	Conductors	8.25	8.25	8.25	8.25	8.25	8.25
n. Municipal services	Labourers, unskilled	5.00	5.00	5.00	5.40	5.40	6.00

The normal hours of work are 9 per day for (j) and (k) and 8 for all others
 The normal hours of work are 56 per week for (a), 48 for (l) and (m) and 45 for all others

*Data are collected in October of each year from a certain number of large establishments.

Table 64 - Daily wage rates of manual workers employed by the Central Government

	Minimum		Maximum	
	Rs		Rs	
Foremen	11.00		14.00	
Artisans :				
Class II	9.90		10.70	
III	8.50		9.30	
IV	7.20		8.00	
V	6.60		7.00	
VI	6.00		6.40	
VII	5.60		6.00	

Note : These rates are in force since July 1963.

Table 65 - Employment and wages of certain categories of employees on sugar millers' estates (September Inquiry*)

Category	Grade	1967			1968		
		Number employed	Monthly wages		Number employed	Monthly wages	
			Lowest	Highest		Lowest	Highest
			Rs	Rs		Rs	Rs
Boiler Makers	I	23	253.50	450.00	21	253.50	325.00
" "	II	16	188.50	220.00	17	188.50	234.00
Pan Boilers	Chief	26	338.00	800.00	23	338.00	460.00
" "	I	66	266.50	350.00	63	266.50	360.00
" "	II	60	195.00	253.50	63	195.00	253.50
Boiler Attendants	Chief	32	175.20	294.75	33	175.20	294.75
- do -	Asst.	33	149.50	195.00	35	149.50	195.00
Mill Drivers	I	370	149.50	294.75	368	149.50	294.75
- do -	II	218	130.00	145.00	210	130.00	145.34
Derrick Drivers	I	80	183.80	253.50	92	183.80	253.50
- do -	II	44	165.30	175.00	40	165.30	165.36
Fitters	I	114	294.75	427.63	110	294.75	500.00
- do -	II	76	253.50	260.00	77	253.50	275.60
- do -	III	78	195.00	240.24	89	195.00	240.24
Tractor Drivers	I	110	188.50	318.00	109	188.50	318.50
	II	44	169.00	188.50	39	169.00	188.50
	III	20	143.00	143.00	22	143.00	169.00
Loco Drivers		97	157.90	217.00	94	157.90	217.00
Car and Lorry Drivers	I	615	195.25	250.00	610	195.25	250.00
- do -	II	114	170.80	185.00	104	170.80	185.00

*Data are collected in September of each year from all sugar millers.

Table 66 - Employment and Earnings on Sugar Millers' Estates

Month	Workers on monthly rates of pay				Workers on daily rates of pay							
	Man-days actually worked (000)		Earnings (mm Rs)		Man-days actually worked (000)		Earnings (mm Rs)					
	1967	1968	1969	1967	1968	1969	1967	1968	1969			
January	107	143	137	1.3	1.3	1.4	515	736	612	3.0	4.0	3.4
February	156	151	148	1.3	1.4	1.6	753	719	677	3.6	3.5	3.8
March	164	139	155	1.3	1.5	1.4	778	666	690	4.1	3.7	3.9
April	137	147	186	1.3	1.3	1.4	651	742	882	3.5	4.1	4.4
May	179	172	157	1.3	1.3	1.3	859	872	710	4.4	4.5	3.7
June	147	147	160	1.3	1.3	1.3	694	721	717	3.6	3.8	3.7
July	164	197		1.5	1.7		842	1,102		4.8	6.5	
August	181	169		1.7	1.7		983	935		6.4	6.0	
September	154	172		1.6	1.7		792	929		5.4	5.9	
October	159	190		1.6	1.7		824	1,218		5.3	6.5	
November	174	163		1.6	1.5		910	823		5.7	4.6	
December	159	170		4.3	4.2		859	813		6.1	5.4	
Total	1,881	1,960		20.1	20.6		9,460	10,276		55.9	58.5	

Note : (i) The table excludes the "Etat Major" staff.

(ii) Earnings and the number of "man-days actually worked" refer to 4 or 5 weekly periods ending on the pay-day of each month, the figures are not strictly comparable from month to month.

(iii) Earnings also include overtime, holiday and leave pay, housing allowance and end-of-year bonus.

VIII, SOCIAL ASSISTANCE

Table 67 - Social benefits

	1964	1965	1966	1967	1968
<u>Outdoor relief</u>					
Total number of cases relieved	42,452	42,718	44,079	44,409	43,380
Total relief payments (Mn Rs)	8.4	9.0	9.3	9.7	8.8
<u>Indoor relief</u>					
Number of persons in infirmaries at end of year	703	706	714	726	719
Number of persons in orphanages at end of year	194	179	189	190	186
Total capitation grants paid (Mn Rs)	0.4	0.4	0.4	0.4	0.4
<u>Old age pension</u>					
Pensions in force at end of year	31,430	38,064*	39,198	40,393	41,760
Total pensions paid (Mn Rs)	8.3	9.9	10.4	10.8	11.1
<u>Family allowance</u>					
Number of beneficiaries at end of year	60,800	53,954	53,476	52,930	40,564
Total amount paid (Mn Rs)	9.6	9.3	9.9	9.8	7.8
<u>Assistance to voluntary organisations</u>					
Total cash grants paid (Mn Rs)	0.2	0.2	0.2	0.2	0.0

*The large increase in 1965 was due to the lowering of the qualifying age from 65 to 60 for men.

IX. EDUCATION

Table 68 - Education Statistics, Mauritius and Rodrigues

Period	PRIMARY				SECONDARY			
	Number of schools ⁺	Number of pupils	Number of teachers	Pupil/Teacher ratio	Number of schools ⁺	Number of pupils	Number of teachers	Pupil/Teacher ratio
October 1963	325	130,073	3,642	36	110	28,134	1,213	23
" 1964	297	132,074	3,750	35	119	31,797	1,348	24
" 1965	331	134,534	4,015	34	135	34,021	1,484	23
" 1966	340	136,944	4,129	33	144	35,127	1,542	23
" 1967	300	140,495	4,203	33	143	38,508	1,645	23
" 1968	332	142,959	4,253	34	137	39,703	1,706	23

⁺ Government, Aided and Non-Aided Schools

Table 69 - Enrolment in primary and secondary schools in Mauritius and Rodrigues by type of institution

Period	PRIMARY				SECONDARY			
	Total	Government	Aided	Non-Aided ⁺	Total	Government	Aided	Non-Aided
October 1963	130,073	75,672	48,377	6,024	28,134	1,945	4,900	21,289
" 1964	132,074	86,240	40,169	5,665	31,797	2,067	5,029	24,701
" 1965	134,534	89,374	39,117	6,043	34,021	2,367	5,568	26,086
" 1966	136,944	92,684	38,781	5,479	35,127	2,431	5,875	26,821
" 1967	140,495	98,417	37,903	4,175	38,508	2,505	6,218	29,785
" 1968	142,959	100,954	37,341	4,664	39,703	2,538	6,372	30,793

⁺Including pupils of the primary sections of Aided and Non-Aided Secondary Schools.

Table 70- Enrolment in Primary Schools (Mauritius and Rodrigues) by grade and sex

Grade	1964			1965			1966			1967			1968		
	Male	Female	Both Sexes	Male	Female	Both Sexes	Male	Female	Both Sexes	Male	Female	Both Sexes	Male	Female	Both Sexes
Std. I	12,091	11,534	23,625	11,487	11,044	22,531	11,771	11,049	22,820	12,485	11,928	24,413	12,391	11,893	24,284
Std. II	11,453	10,659	22,112	11,852	11,223	23,075	11,022	10,666	21,688	11,167	10,434	21,601	12,458	11,828	24,286
Std. III	11,526	10,464	21,990	11,288	10,339	21,627	11,575	10,891	22,466	10,740	10,345	21,085	10,947	10,148	21,095
Std. IV	10,177	9,108	19,285	11,327	10,187	21,514	11,012	9,991	21,003	11,323	10,593	21,916	10,432	10,029	20,461
Std. V	8,870	7,807	16,677	9,883	8,702	18,585	11,013	9,819	20,832	10,704	9,638	20,342	10,899	10,089	20,988
Std. VI	15,549	12,836	28,385	14,801	12,401	27,202	15,139	12,996	28,135	16,763	14,375	31,138	17,063	14,782	31,845
Total	69,666	62,408	132,074	70,638	63,896	134,534	71,532	65,412	136,944	73,182	67,313	140,495	74,190	68,769	142,959

Table 71 - Enrolment in secondary Schools (Mauritius and Rodrigues) by grade and sex

Grade	1964			1965			1966			1967			1968		
	Male	Female	Both Sexes	Male	Female	Both Sexes	Male	Female	Both Sexes	Male	Female	Both Sexes	Male	Female	Both Sexes
Form I	5,444	3,122	8,566	5,262	3,167	8,429	5,158	3,205	8,363	5,721	3,780	9,501	5,542	3,789	9,331
Form II	4,257	2,393	6,650	4,806	2,719	7,525	4,406	2,711	7,117	4,451	2,909	7,360	4,656	3,143	7,799
Form III	3,160	1,899	5,059	3,968	2,181	6,149	4,178	2,420	6,598	4,028	2,588	6,616	3,903	2,627	6,530
Form IV	3,204	1,807	5,011	3,184	1,759	4,943	3,749	2,063	5,812	4,710	2,598	7,308	4,566	2,601	7,167
Form V	4,028	1,600	5,628	4,236	1,684	5,920	4,064	1,939	6,003	4,376	1,978	6,354	4,881	2,334	7,215
Form VI	645	238	883	736	319	1,055	815	419	1,234	920	449	1,369	1,166	495	1,661
Total	20,738	11,059	31,797	22,192	11,829	34,021	22,370	12,757	35,127	24,206	14,302	38,508	24,714	14,989	39,703

X. TRANSPORT AND COMMUNICATION

Table 72 - Motor vehicles registered

Period	At end of period											
	Private vehicles					Commercial vehicles					Government owned vehicles	
	Grand Total	Total	Cars	Motor cycles	Auto cycles	Total	Taxi-cars	Lorries	Vans	Buses		Other
1967	22,783	14,739	10,716	2,436	1,587	7,101	1,371	2,406	1,508	634	1,182	943
1968	23,811	15,375	10,876	2,600	1,899	7,371	1,405	2,423	1,586	657	1,300	1,065
1968 : 1st Qr.	22,918	14,830	10,721	2,465	1,644	7,127	1,370	2,403	1,528	638	1,188	961
2nd Qr.	23,327	15,055	10,795	2,521	1,739	7,243	1,382	2,403	1,545	648	1,265	1,029
3rd Qr.	23,554	15,171	10,808	2,535	1,828	7,329	1,395	2,425	1,564	648	1,297	1,054
4th Qr.	23,811	15,375	10,876	2,600	1,899	7,371	1,405	2,423	1,586	657	1,300	1,065
1969 : 1st Qr.	24,040	15,585	10,969	2,642	1,974	7,382	1,385	2,429	1,598	669	1,301	1,073
2nd Qr.	24,266	15,808	11,082	2,672	2,054	7,387	1,326	2,443	1,621	681	1,316	1,071

Note : The above table has been completely revised in the light of amendments to the Road Traffic Ordinance 1962. Figures in the new series are consequently not comparable with those published previously.

Table 73 - Bus operational statistics

	Unit	1964	1965	1966	1967	1968
Total number of buses (at 30th June)	Number	564	604	591	621	622
Total vehicle journeys	Thousand	1,937	2,095	2,166	2,160	2,243
Average vehicle journeys per day	"	5	6	6	6	6
Total vehicle miles	"	20,907	22,112	22,614	23,025	23,425
Average vehicle miles per day	"	57	61	62	63	64
Total number of passengers carried during year	"	62,049	63,001	64,829	68,607	71,661
Average number of passengers carried per day	"	170	173	178	188	196
Total gross receipts	000 Rs	16,690	17,439	17,553	18,856	18,851
Average gross receipts per day	"	46	48	48	52	52

Table 74 - Road traffic accidents and casualties

	1964	1965	1966	1967	1968
<u>Road Traffic Accidents</u>					
Total number	<u>2,647</u>	<u>2,694</u>	<u>2,475</u>	<u>2,575</u>	<u>2,128</u>
Number per 100,000 persons	367	364	326	333	27
<u>Motor Vehicle Accidents</u>					
Number	<u>2,486</u>	<u>2,525</u>	<u>2,240</u>	<u>2,425</u>	<u>2,005</u>
Number per 100,000 persons	344	341	295	313	257
Number per 1,000 registered motor vehicles	130	119	109	110	97
<u>Total Casualties</u>	<u>2,001</u>	<u>2,159</u>	<u>2,125</u>	<u>2,357</u>	<u>1,928</u>
<u>Nature of Casualty</u>					
Killed	67	74	72	87	80
Seriously injured) 1,934) 2,085	217	222	218
Slightly injured			1,836	2,048	1,630
<u>Casualties by class of road users</u>					
Pedestrians	874	1,007	976	974	810
Pedal cyclists	377	447	345	396	310
Passengers	548	451	524	646	454
Drivers or riders of motor vehicles	202	254	280	341	354

Table 75 - Sea borne shipping

Period	Vessels entering		Vessels leaving		Goods	
	Number	Net registered tonnage	Number	Net registered tonnage	Unloaded	Loaded ⁺
		Thousand M/Tons		Thousand M/Tons	Thousand M/Tons	Thousand M/Tons
1963	493	1,651	486	1,598	466	694
1964	731	1,891	730	1,920	578	686
1965	710	1,728	714	1,734	550	619
1966	718	1,747	719	1,872	460	746
1967	1,026	2,499	1,023	2,460	594	627
1968	1,269	2,770	1,269	2,744	583	779
1968 : 1st Qr.	261	593	258	596	156	160
2nd Qr.	313	643	307	632	120	54
3rd Qr.	361	825	361	780	135	228
4th Qr.	334	709	343	736	172	337
1969 : 1st Qr.	267	566	271	559	146	134
2nd Qr.	334	560	320	558	129	22

⁺ excluding bunkers

Table 76 - Civil aviation

Period	Number of movements		Passengers		Freight	
	Landings	Take offs	Set down	Picked up	Unloaded	Loaded
					M/Tons	M/Tons
1963	390	390	12,912	13,405	120.4	51.5
1964	431	431	15,810	16,593	152.7	53.1
1965	511	510	16,967	18,541	153.1	70.2
1966	542	539	20,699	22,781	165.3	92.2
1967	601	604	24,084	26,037	229.7	118.5
1968	554	554	26,565	29,389	245.9	192.1
1968 : 1st Qr.	148	147	6,141	7,938	66.8	43.0
2nd Qr.	135	136	5,215	5,697	53.5	49.0
3rd Qr.	141	141	7,868	8,728	60.2	45.3
4th Qr.	130	130	7,341	7,026	65.4	54.8
1969 : 1st Qr.	131	131	7,367	8,593	48.8	33.5
2nd Qr.	142	142	6,057	6,922	54.0	50.1

Note : In this table : (1) are included only movements of commercial aircraft;
(2) each touch down and take off is counted as a separate movement;
(3) passengers in transit are excluded;
(4) freight carried by planes other than commercial are included.

Table 77 - Telephone service

	Unit	At end of period				
		1965	1966	1967	1968	Jan.- June 1969
Main exchanges (including rural automatic exchange)	Number	19	20	22	22	23
Capacity (in terms of lines)	"	10,720	11,820	11,970	11,957	13,097
No. of exchange line connections	"	9,179	9,620	10,178	10,417	10,595
Individual installations	"	13,634	14,399	15,328	15,996	16,301
Call units registered (during period)	Thousand	13,991	15,207	15,947	17,252	17,516
Outstanding applications for telephone service	Number	843	738	752	830	990

Table 78 - Broadcasting services

	Unit	At end of period				
		1965	1966	1967	1968	Jan.- June 1969
<u>SOUND</u>						
Stations	Number	1	1	1	1	1
Transmitters	"	3	3	3	3	3
Aerial output : short wave	Kw.	10	10	10	10	10
:medium wave	"	10	10	10	10	10
Weekly transmission time	hour	112	112	112	112	116
New licences issued (during period)	Number	4,996	3,741	4,243	8,939*	2,382+
Radio sets registered	"	62,581	65,662	69,905	76,829	78,823
<u>TELEVISION</u>						
Stations	"	1	1	1	1	1
Transmitters	"	5	5	5	5	5
Aerial output (ERP)	Kw.	15	15	15	15	15
Weekly transmission time	Hour	24	24	24	31 $\frac{1}{2}$	31 $\frac{1}{2}$
New licences issued (during period)	Number	3,534	2,579	3,430	4,409	2,339
Total viewers' licences	"	3,599	6,045	9,179	12,847	15,613

*including 714 omnibus licences

+including 800 omnibus licences

XI. LAND UTILIZATION

Table 79 - Total area⁺ classified by utilization

	<u>Acres</u>
	1968
<u>Agriculture</u>	257,900
Sugar cane	242,100
Tea	10,800
Tobacco, vegetables and other crops	5,000
<u>Forests, scrub areas, grass lands & grazing lands</u>	163,900
Forest plantations	23,900
Forest, natural	5,900
Savannah, grass lands, meadows, etc.	18,400
Scrub and other forest lands	115,700
<u>Reservoirs and ponds</u>	2,900
<u>Swamps and rocks</u>	3,500
<u>Roads (main thorough fares)</u>	3,300
<u>Built-up areas</u>	29,300
 Total Island Area	 460,800

⁺Based on the findings of the UNDP-FAO Land and Water Resources Survey team working on aerial photographs of the island taken at the end of 1965 and supplemented to some extent by land surveys.

Table 79 A - Effective area under cultivation

	<u>Acres</u>			
	1965	1966	1967	1968
Sugar cane	214,400	216,000	214,000	211,700
Tea	6,600	7,100	7,900	8,400
Tobacco	1,000	1,300	800	1,000

XII. LOCAL PRODUCTION

Table 80 - Agriculture : production of main crops, fish and meat

Commodity	Unit	1965	1966	1967	1968	Jan.- June 69
<u>INDUSTRIAL CROPS</u>						
Sugar cane	000 M/Tons	5,984	4,843	5,814	5,152	-
Tea (green leaf processed)	M/Ton	8,225	9,362	10,508	11,062	10,142
Tobacco leaf (a)	"	490	579	528	742	258
<u>VEGETABLES, PULSES AND FRUITS</u>						
Beans and peas	"	950	754	725	652	305
Creepers (b)	"	9,296	10,664	9,342	8,006	4,261
Eddoes	"	262	458	400	458	310
Egg plant (bringelles)	"	1,504	1,888	1,898	1,874	1,468
Ginger	"	403	762	970	882	345
Groundnuts	"	575	832	879	632	700
Maize	"	296	300	457	376	217
Manioc	"	269	348	454	241	137
Potatoes (Irish)	"	3,972	8,442	9,199	9,578	814
Sweet potatoes	"	478	349	233	268	110
Tomatoes	"	5,400	5,700	10,499 ^(c)	8,780	4,856
Mixed vegetables (d)	"	8,693	7,674	7,575	7,227	2,778
Bananas	"	10,318	9,023	9,865	10,763	5,760
<u>FISH, MEAT AND BY-PRODUCTS</u>						
Fish :						
Coastal fishing (controlled catch)	"	1,120	1,130	925 ^(e)	940	710
High seas	"	482	499	1,062	1,259	755
Meat ^(f) :						
Beef	"	1,939	2,100	2,498	2,348	...
Goat	"	170	162	226	202	...
Mutton	"	81	108	69	40	...
Pork	"	479	499	557	536	...
Cattle hides and skins	Number	14,719	14,803	16,593	16,498	...

(a) Refers to crop year which normally extends from the beginning of April to the end of March.

(b) Includes margoze, calabash, chouchou, cucumber, patolle, pipengaille, pumpkin, squash, voehm.

(c) About one eighth of this production was probably not harvested due to prices ruling in the market being too low.

(d) Includes beets, cabbage, carrot, cauliflower, chillies (long and small), garlic, leek, lettuce, onion, petsai, sweet pepper, ladies finger (lalo).

(e) Estimated

(f) From local and imported livestock.

Table 81 - Industry : production of specific commodities

Commodity	Unit	1965	1966	1967	1968	Jan.- June 1969
Sugar	M/Ton	664,403	561,762	638,322	596,549	-
Molasses	"	149,389	133,114	154,404	132,707	-
Tea (manufactured)	"	1,737	1,974	2,190	2,288	2,086
Aloe fibre	"	1,391	1,552	1,603	1,319	721
Alcohol @ 100 G.L.	Hectolitre	15,740	13,365	16,437	12,863	...
Colonial spirits (rum)	"	14,638	13,870	13,022	14,254	5,622
Denatured spirits :						
Power alcohol	"	3,214	3,422	3,081	2,680	1,410
Alcohol for heating and lighting	"	3,531	2,959	2,586	2,534	933
Perfumed spirits	"	318	344	768	355	149
Vinegar	"	2,080	5,320	10,404	2,913	523
Beer and stout	"	30,093	36,996	40,118	39,259	15,473
Country liquor	"	42,947	41,176	34,569	32,949	13,914
Soft aerated beverages	"	87,000	94,830	101,700	82,800	...
Cigarettes	M/Ton	589	580	583	562	284
Matches	Gross boxes	56,593	71,797	88,520	114,585	54,919
Lime	M/Ton	6,000	5,500	6,000	6,000	...
Sacks*	Thousand	1,600	1,652	1,335	1,552	1,371
Salt	M/Ton	4,200	4,200	4,200	4,200	...
Electricity generated	Mn kwh	103	112	121	126	65

* manufactured by the Government Sack Factory

Table 82 - Sugar Industry : cane cultivation

Crop year	AREA UNDER CULTIVATION (Thousand Arpents)			AREA HARVESTED (Thousand Arpents)			CANES HARVESTED (Thousand M/Tons)			AVERAGE YIELD (M/Tons per arpent)		
	Millers	Planters	Total	Millers	Planters	Total	Millers	Planters	Total	Millers	Planters	Total
1963	109	95	204	100	94	194	3,515	2,232	5,747	35.1	23.7	29.6
1964	110	97	207	100	95	195	2,615	1,765	4,380	26.2	18.5	22.4
1965	111	95	206	101	94	195	3,619	2,365	5,984	35.7	25.3	30.7
1966	111	97	208	102	94	196	3,004	1,839	4,843	29.5	19.5	24.7
1967	111	94	205	101	91	192	3,569	2,245	5,814	35.3	24.7	30.3
1968	110	93	203	100	89	189	3,113	2,039	5,152	31.2	22.8	27.2

Table 83 - Sugar Manufacture

Crop	Number of factories operating	Commercial sugar recovered % cane	PRODUCTS OF MANUFACTURE (Thousand M/Tons)			RESIDUES OF MANUFACTURE (Thousand M/Tons)			Average sugar price ex-syndicate (Rs per metric ton)
			White sugar	Raw sugar	Total sugar	Molasses	Scums		
1963	23	11.93	20	666	686	150	177	590.89	
1964	23	11.85	20	499	519	115	148	433.13	
1965	23	11.10	25	639	664	149	179	409.32	
1966	23	11.60	23	539	562	133	160	421.50	
1967	23	10.98	24	614	638	154	180	424.40	
1968	23	11.58	23	574	597	133	171	426.48	

Note : 1 arpent = 1.043 acres

Table 84 - Electricity*: production, consumption, sales, etc.

	Unit	1966	1967	1968
Generating stations	Number	<u>8</u>	<u>8</u>	<u>8</u>
Hydro	"	6	6	6
Thermal	"	2	2	2
Plant - effective capacity	Kw	<u>43,090</u>	<u>43,090</u>	<u>43,090</u>
Hydro	"	15,090	15,090	15,090
Thermal	"	28,000	28,000	28,000
Energy generated	Million Kwh	<u>94.3</u>	<u>103.6</u>	<u>107.8</u>
Hydro	" "	41.7	57.6	46.5
Thermal	" "	52.6	46.0	61.3
Energy purchased from sugar and other factories	" "	18.2	17.0	18.6
Energy sold	" "	88.5	94.3	98.3
Number of consumers on 31st December :	Number	<u>86,187</u>	<u>93,169</u>	<u>91,234</u>
Domestic	"	76,278	82,550	80,456
Commercial	"	8,503	9,113	9,212
Industrial	"	1,290	1,378	1,424
Special	"	116	128	142
Average selling price	Cents per kwh	19.2	19.3	22.1
Total revenue	Million Rs	18.5	19.4	23.0
Total current expenditure	" "	18.5	18.5	21.6
Persons employed	Number	1,301	1,285	1,242

*Statistical data relating to the Central Electricity Board.

XIII. CLIMATE

Table 85 - Monthly temperatures, 1968-69

Period	VACOAS Centre - 1,394 ft. A.M.S.L.				PLAISANCE Coastal Region, South - 188 ft. A.M.S.L.			
	Maximum		Minimum		Maximum		Minimum	
	Mean	Departure from normal	Mean	Departure from normal	Mean	Departure from normal	Mean	Departure from normal
1968 : July	21.1	- 0.2	14.7	- 0.5	23.9	0.0	17.9	+ 0.5
August	21.3	0.0	14.9	0.1	23.8	- 0.2	17.1	- 0.1
September	22.5	+ 0.4	14.9	- 0.5	24.5	- 0.2	17.2	- 0.3
October	23.5	0.0	16.1	+ 0.1	25.6	- 0.2	18.2	0.0
November	25.1	- 0.3	17.2	- 0.3	27.2	- 0.3	19.4	- 0.1
December	26.0	- 1.0	18.5	- 0.8	28.7	- 0.2	21.1	0.0
1969 : January	27.3	- 0.2	19.9	- 0.9	30.1	+ 0.5	22.5	+ 0.1
February	28.1	+ 1.0	20.3	- 0.4	29.8	+ 0.6	22.3	- 0.1
March	28.7	+ 1.8	20.9	+ 0.1	30.5	+ 1.6	22.9	+ 0.6
April	26.8	+ 0.8	20.7	+ 1.4	28.6	+ 0.8	22.3	+ 1.3
May	25.3	+ 1.3	18.9	+ 1.1	27.0	+ 0.7	20.9	+ 1.2
June	22.9	+ 1.0	16.0	0.0	25.2	+ 0.7	18.2	0.0

Table 86 - Monthly rainfall for the sugar cane districts, 1968-69

Period	WEST		NORTH		EAST		SOUTH		CENTRE		ALL DISTRICTS	
	Amount	Difference from normal	Amount	Difference from normal	Amount	Difference from normal	Amount	Difference from normal	Amount	Difference from normal	Amount	Difference from normal
1968 : July	21	- 6	99	+ 28	144	- 26	137	- 9	168	+ 34	132	+ 6
August	7	- 9	49	- 11	138	+ 9	96	- 19	79	- 32	86	- 14
September	21	+ 1	95	+ 43	141	+ 29	126	+ 32	92	- 5	110	+ 24
October	8	- 20	22	- 17	80	- 7	46	- 29	46	- 26	45	- 21
November	4	- 58	82	+ 7	142	+ 21	68	- 52	80	- 28	86	- 18
December	67	- 69	60	- 61	133	- 86	95	- 102	159	- 27	107	- 71
1969 : January	11	- 178	47	- 129	111	- 201	67	- 232	101	- 232	76	- 199
February	147	- 49	127	- 88	257	- 83	187	- 114	287	- 53	206	- 87
March	182	- 84	206	- 53	190	- 240	211	- 66	195	- 171	201	- 151
April	135	+ 19	208	+ 33	319	+ 7	309	+ 9	282	+ 42	275	+ 22
May	103	+ 48	129	+ 9	198	- 8	125	- 61	163	+ 16	148	- 13
June	30	- 8	48	- 41	78	- 116	94	- 60	85	- 54	76	- 63

In millimetres

