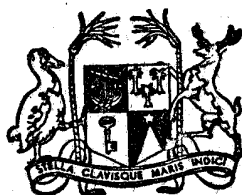


Vol. 15

No. 2



MAURITIUS

Ministry of Economic Planning and Development

CENTRAL STATISTICAL OFFICE

---

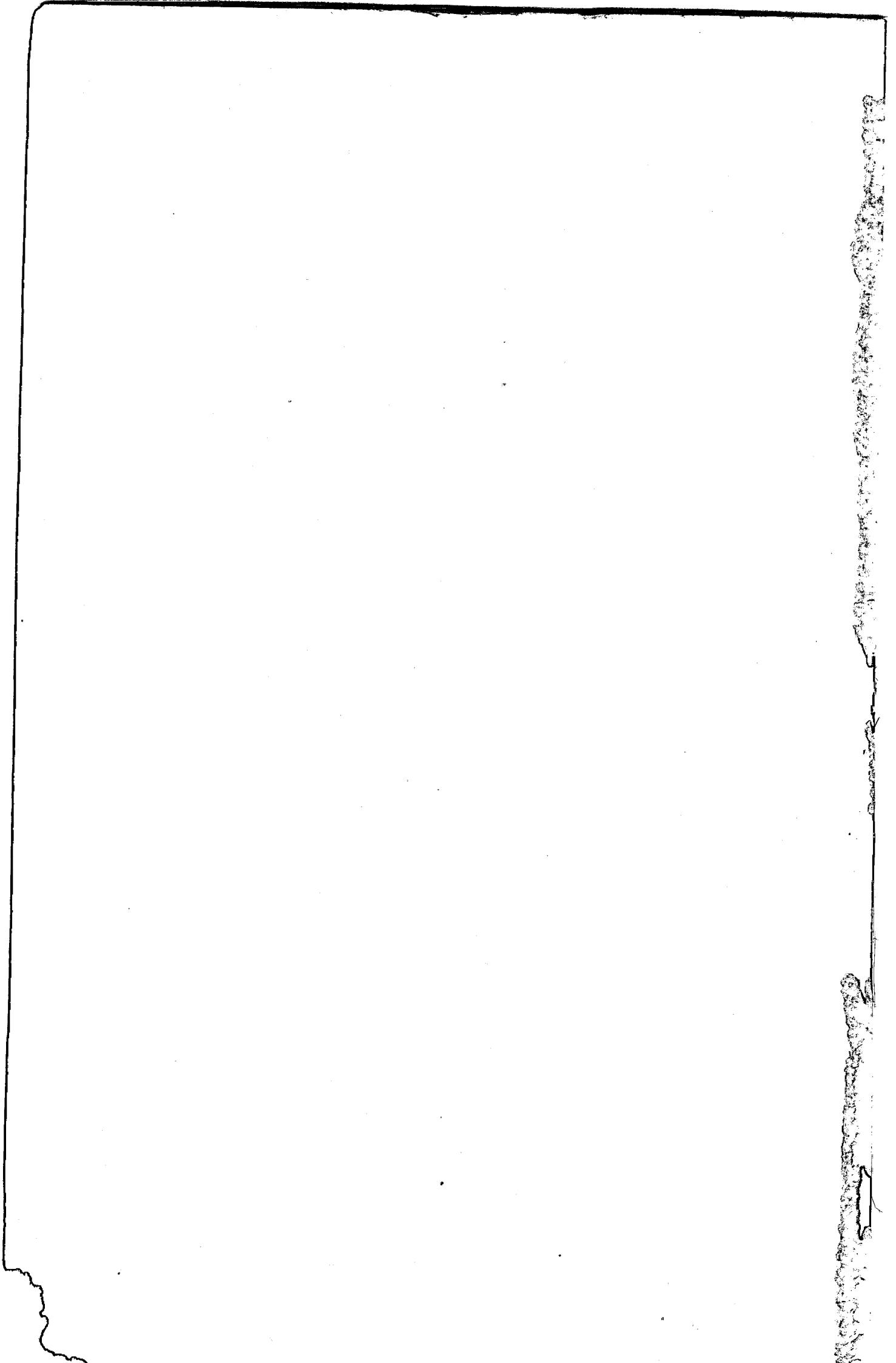
**BI-ANNUAL  
DIGEST OF STATISTICS**

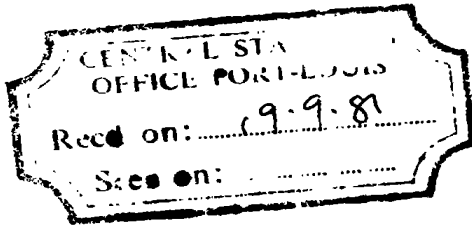
---

**December 1980**

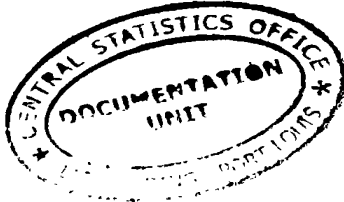
[ Price : Rs 40.00 ]

ES





BI-ANNUAL DIGEST OF STATISTICS



Vol. 15 No. 2

December 1980

The Bi-annual Digest of Statistics is a publication of the Central Statistical Office.

It is designed to present in a concise and readily accessible form the more important statistical series available on the demographic economic and social characteristics of Mauritius.

Some of the figures in this digest are provisional and liable to revision in later issues.

Where necessary, figures have been rounded off to the nearest final digit, and in some tables there may be discrepancies between the sum of the constituent items and the total as shown.

The assistance given by the Bank of Mauritius, all government departments and other bodies in providing data for publication in this issue is gratefully acknowledged.

J. AH KONG  
Director of Statistics

Central Statistical Office  
Rose Hill  
Mauritius

July 1981

N O T E S

SYMBOLS

The following symbols are used throughout :

- Nil or negligible
- ... Not available

ABBREVIATIONS

- Rs : Rupees
- 000 : Thousand
- Mn : Million
- M/ton : Metric ton : 1,000 kilos
- No. : Number
- n.e.s. : Not elsewhere specified

VALUES

All figures quoted are in Mauritian rupees.

EXCHANGE RATE

Conversion rate to Special Drawing Right (S.D.R.) :-

1 S.D.R. = 7.713759 Mauritian Rupees up to 23 October, 1979

1 S.D.R. = 10.00 Mauritian Rupees as from 24 October, 1979

C O N T E N T S

	<u>Page</u>
<u>SECTION 1 - POPULATION AND VITAL STATISTICS</u>	
Table 1. 1 - Estimated population of Mauritius as at 31st December 1980 based on the final 1972 population census data	1
1. 2 - Evolution of the population of the islands of Mauritius and Rodrigues as from the 1972 census	1
1. 3 - Population increase in intercensal periods - Island of Mauritius, 1846 - 1972	2
1. 4(a) Population enumerated at each census by population group and sex - Island of Mauritius 1846 - 1952	3
1. 4(b) Population enumerated at each census by community and sex - Island of Mauritius 1962 - 1972	3
1.5 - Estimated population of Mauritius by geographical district and sex, 1978 - 80 (end of year estimates)	4
1. 6 - Intercensal population increase in urban and extra-urban areas according to present boundaries - Island of Mauritius, 1962 - 1972	5
1. 7 - Estimated population, urban and extra-urban - Island of Mauritius, 1977 - 1980 (end of year estimates)	6
1. 8 - Age distribution of the population as enumerated at the censuses of 1962 and 1972, Island of Mauritius	7
1. 9 - Estimated age distribution of population - Island of Mauritius, 1979 - 1980	8
1.10 - Population growth and vital statistics - Island of Mauritius, 1963 - 1980	9
1.11 - Rate of increase of the population of Mauritius compared with other countries, 1963 - 1972	10
1.12 - Expectation of life in years at selected ages - Island of Mauritius	10
1.13 - Population and vital statistics - Island of Mauritius, 1921 - 1980	11
1.14 - Population and vital statistics rates - Island of Mauritius, 1921 - 1980	12
1.15 - Vital statistics by sex - Island of Mauritius, 1965 - 1980	13
1.16 - Vital statistics by month of registration and sex - Island of Mauritius, 1980	14
1.17 - Infant deaths by age and sex - Island of Mauritius, 1978 - 1980	15
1.18 - Deaths by age and sex - Island of Mauritius, 1978 - 1980	16
1.19 - Deaths by cause - Island of Mauritius, 1980	17

## CONTENTS (cont'd)

	<u>Page</u>
<u>SECTION I - POPULATION AND VITAL STATISTICS (cont'd)</u>	
Table 1.20 - Vital statistics by geographical district - Island of Mauritius, 1979 - 1980	18
1.21 - Fertility rates - Island of Mauritius, 1962, 1972-80	19
1.22 - Age-specific fertility rates by age of mother and live birth order - Island of Mauritius, 1962 and 1972 censuses	20
1.23 - Age-specific fertility rates by age of mother and live birth order - Island of Mauritius, 1979 - 80	21
1.24 - Population and vital statistics - Island of Rodrigues, 1963 - 1980	22
1.25 - Vital statistics by month of registration and sex - Island of Rodrigues, 1980	23
1.26 - Deaths by age and sex - Island of Rodrigues, 1978 - 1980	24
1.27 - Deaths by cause - Island of Rodrigues, 1980	25
<u>SECTION 2 - INTERNATIONAL TRAVEL AND TOURISM</u>	
Table 2.1 - Passenger traffic - Island of Mauritius, 1962 - 80	26
2.2 - Passenger traffic by country of original embarkation or final destination, 1980	27
2.3 - Tourist arrivals by mode of transport and tourist nights spent during period - Island of Mauritius, 1964 - 1980	28
2.4 - Tourist arrivals and tourist nights by country of residence - Island of Mauritius, 1980	29
2.5 - Official long-term emigrants by sex - Island of Mauritius, 1956 - 1980	30
<u>SECTION 3 - PUBLIC HEALTH</u>	
Table 3.1 - Health services (as at 31st December) - Island of Mauritius, 1976 - 1980	31
3.2 - Statistics of government hospitals - Island of Mauritius, 1976 - 1980	32
3.3 - Notifiable, contagious or communicable diseases - Island of Mauritius, 1976 - 1980	33
<u>SECTION 4 - PUBLIC FINANCE AND BANKING</u>	
Table 4.1 - Central government revenue and expenditure, 1977-81	34
4.2 - Functional classification of central government capital revenue, 1977 - 1981	34
4.3 - Functional classification of central government capital expenditure, 1977 - 1981	35
4.4 - Functional classification of central government recurrent revenue, 1977 - 1981	36
4.5 - Functional classification of central government recurrent expenditure, 1977 - 1981	37
4.6 - Public debt outstanding, 1976 - 1980	38
4.7 - Sinking funds held against the public debt, 1976 - 80	38

CONTENTS (cont'd)

	<u>Page</u>
<b><u>SECTION 4 - PUBLIC FINANCE AND BANKING (cont'd)</u></b>	
Table 4.8 - Central government local loan repayments by year of maturity (end of December 1980)	39
4.9 - Outstanding loans and advances made from public funds (at end of June), 1976 - 80	40
4.10 - Income tax - individuals, year of assessment 1977 - 79	41
4.11 - Income tax - companies, year of assessment 1977 - 79	42
4.12 - Foreign exchange reserves, 1976 - 80	43
4.13 - Assets of the Bank of Mauritius, 1976 - 80	44
4.14 - Liabilities of the Bank of Mauritius, 1976 - 80	45
4.15 - Assets of commercial banks, 1976 - 80	46
4.16 - Liabilities of commercial banks, 1976 - 80	47
4.17 - Sectorwise Distribution of Commercial Banks' Credit, 1979 - 80	48
4.18 - Assets and liabilities of the Development Bank of Mauritius, 1976 - 80	49
4.19 - Assets and liabilities of the Mauritius Co-operative Central Bank Ltd, 1976 - 80	50
4.20 - Assets and Liabilities of the Mauritius Housing Corporation, 1975 - 79	50
4.21 - Assets and liabilities of the Sugar Insurance Fund Board, 1976 - 80	51
4.22 - Post Office Savings Bank, 1976 - 80	52
4.23 - Money supply, 1976 - 80	52
4.24 - Bank and interest rates, 1978 - 80	53
4.25 - Foreign exchange rates, 1979 - 80	54
 <b><u>SECTION 5 - NATIONAL ACCOUNTS</u></b>	
Table 5.1 - National accounts - main aggregates, 1977 - 80	55
5.2 - Gross national product by industrial origin (at current factor cost), 1977 - 80	56
5.3 - Distribution of the gross national product (at current prices) 1977 - 80	57
5.4 - Expenditure on gross national product (at current prices), 1977 - 80	58
5.5 - Gross domestic product indices at constant 1976 prices by industrial origin, 1976 - 80	59
5.6 - Composition of gross domestic fixed capital formation (at current prices), 1977 - 80	60
5.7 - Composition of gross domestic fixed capital formation (at constant 1976 prices), 1977 - 1980	61
5.8 - Balance of payments, 1975 - 1979	62
5.9 - Summary of Balance of payments 1975 - 1979	65
 <b><u>SECTION 6 - CONSUMER PRICE INDICES</u></b>	
Table 6.1 - Consumer price indices (January - June 1962 = 100), 1963 - 76	66
6.2 - Consumer price indices (January - June 1976 = 100), 1976 - 80	67

## CONTENTS (cont'd)

	<u>Page</u>
<u>SECTION 7 - EXTERNAL TRADE</u>	
Table 7.1 - Balance of visible trade, 1976 - 80	68
7.2 - Price indices of exports and imports and terms of trade, 1976 - 80	68
7.3 - Price indices of imports, by section, 1976 - 80	69
7.4 - Exports : quantities and values, 1976 - 80	70
7.5 - Total exports : main countries of destination - values, 1976 - 80	72
7.6 - Imports : values by S.I.T.C. sections, 1976 - 80	73
7.7 - Imports : selected commodities - values, 1976 - 80	74
7.8 - Imports : selected commodities - quantities, 1976 - 80	75
7.9 - Imports : main countries of origin - values, 1978 - 80	76
7.10 - Imports of fertilizers, 1978 - 80	79
<u>SECTION 8 - EMPLOYMENT AND EARNINGS</u>	
Table 8.1 - Employment by major industrial group (March 71 - March 80)	81
8.2 - Employment by major industrial group (September 71 - September 80)	82
8.3 - Employment in specified sectors - (March 77 - March 80)	83
8.4 - Employment in specified sectors - (September 77 - September 80)	84
8.5 - Average monthly earnings by industrial group (March 71 - March 80)	85
8.6 - Average monthly earnings by industrial group (September 1971 - September 1980)	86
8.7 - Daily wage rates of manual workers by the central government, 1979 - 1980	87
8.8 - Statutory minimum wage-rates per day for typical occupation in principal industries, 1976 - 1980	88
8.9 - Daily wage rates (including extra remuneration & special increases) in certain industries, 1980	89
8.10 - Employment and salaries of certain categories of non-agricultural employees on sugar millers' estates, 1979-80	90
8.11 - Man-days actually worked and workers' earnings on sugar millers' estates 1978 - 80	92
<u>SECTION 9 - SOCIAL SECURITY</u>	
Table 9.1 - Social benefits, 1976 - 80	93
9.2 - National Pension Scheme - contribution from employers/employees, 1978 - 80	94
<u>SECTION 10 - EDUCATION</u>	
Table 10.1 - Primary education - number of schools, pupils and teachers, 1976 - 80	95
10.2 - Secondary education - number of schools, pupils and teachers, 1976 - 80	96



CONTENTS (Cont'd)

	<u>Page</u>
<u>SECTION 10 - EDUCATION (cont'd)</u>	
Table 10.3 - Enrolment by grade and sex in primary schools - Island of Mauritius, 1976 - 80	97
10.4 - Enrolment by grade and sex in primary schools - Island of Rodrigues, 1976 - 80	98
10.5 - Enrolment by grade and sex in secondary schools - Island of Mauritius, 1976 - 80	99
10.6 - Enrolment by grade and sex in secondary schools - Island of Rodrigues, 1976 - 80	100
10.7 - University of Mauritius - students enrolled, 1979 - 81	101
10.8 - University of Mauritius - output, 1978 - 80	102
<u>SECTION 11 - TRANSPORT AND COMMUNICATION</u>	
Table 11.1 - Motor vehicles registered, 1976 - 80	103
11.2 - New registration of motor vehicles, 1978 - 80	104
11.3 - Bus operational statistics, 1976 - 80	105
11.4 - Road traffic accidents and casualties, 1976 - 80	105
11.5 - Sea-borne shipping, 1976 - 80	106
11.6 - Civil aviation, 1976 - 80	106
11.7 - Telephone service, 1976 - 80	107
11.8 - Broadcasting services, 1976 - 80	107
<u>SECTION 12 - LAND UTILIZATION</u>	
Table 12.1 - Total area classified by utilization, 1972	108
12.2 - Effective area under cultivation, 1976 - 80	108
<u>SECTION 13 - LOCAL PRODUCTION</u>	
Table 13.1 - Agriculture - production of main crops, 1976 - 80	109
13.2 - Livestock slaughtered, 1977 - 80	110
13.3 - Fisheries statistics, 1977 - 80	110
13.4 - Sugar Industry - cane cultivation, 1976 - 80	111
13.5 - Sugar manufacture, 1976 - 80	111
13.6 - Industry - production of selected commodities, 1976 - 80	112
13.7 - Industrial production:- number of establishments covered, 1975-80	113
13.8 - Industrial production:- value added, 1975 - 80	114
13.9 - Electricity - production, consumption, sales etc., 1977 - 80	115
<u>SECTION 14 - CONSTRUCTION STATISTICS</u>	
Table 14.1 - Number of permits issued for new buildings, 1977 - 80	116
14.2 - Number of permits issued for new buildings classified by urban/rural areas, 1977 - 80	117
<u>SECTION 15 - CLIMATE</u>	
Table 15.1 - Monthly temperatures, 1979 - 80	118
15.2 - Monthly rainfall for the sugar cane districts, 1979 - 80	119

SECTION 1 - POPULATION AND VITAL STATISTICS

Table 1.1 - Estimated population of Mauritius as at 31st December 1980 based on the final 1972 population census data

Island	Area		Both sexes	Male	Female
	Sq. mile	Sq. Km			
Island of Mauritius	720	1,865	938,502	459,710	478,792
Island of Rodrigues	40	104	31,020	14,942	16,078
Other islands	27	71	350	250	100
<b>Mauritius</b>	<b>787</b>	<b>2,040</b>	<b>969,872</b>	<b>474,902</b>	<b>494,970</b>

Table 1.2 - Evolution of the population of the islands of Mauritius and Rodrigues as from the 1972 census

	Island of Mauritius			Island of Rodrigues		
	Both sexes	Male	Female	Both sexes	Male	Female
Population (30.6.72) census	826,199	413,580	412,619	24,769	12,270	12,499
Births Jul.72-Dec.80	+ 193,435	+ 98,482	+ 94,953	+ 9,333	+ 4,684	+ 4,649
Deaths " "	- 56,672	- 32,434	- 24,238	- 1,820	- 945	- 875
Arrivals " "	+1,173,846	+680,324	+493,522	+34,358	+22,147	+12,211
Departures " "	-1,198,306	-700,242	-498,064	-35,620	-23,214	-12,406
Estimated population 31.12.80	938,502	459,710	478,792	31,020	14,942	16,078

Table 1.3 - Population increase in intercensal periods - Island of Mauritius, 1846- 1972

Census date	Population enumerated at census			Intercensal increase	Average annual rate of increase %
	Both sexes	Male	Female		
1st Aug. 1846	158,462	104,598	53,864		
20th Nov. 1851	180,823	119,341	61,482	22,361	2.55
8th Apr. 1861	310,050	202,961	107,089	129,227	5.87
11th Apr. 1871	316,042	193,575	122,467	5,992	0.19
4th Apr. 1881	359,874	208,655	151,219	43,832	1.31
6th Mar. 1891	370,588	206,038	164,550	10,714	0.29
1st Apr. 1901	371,023	199,552	171,471	435	0.01
31st Mar. 1911	368,791	194,095	174,696	- 2,232	- 0.06
21st May 1921	376,485	194,108	182,377	7,694	0.21
26th Apr. 1931	393,238	200,609	192,629	16,753	0.44
11th Jun. 1944	419,185	210,326	208,859	25,947	0.49
30th Jun. 1952	501,415	252,032	249,383	82,230	2.26
30th Jun. 1962 <sup>1/</sup>	681,619	342,306	339,313	180,204	3.12
30th Jun. 1972 <sup>1/</sup>	826,199	413,580	412,619	144,580	1.94

<sup>1/</sup> de facto population - including the European members of the armed forces but excluding the passengers and crews of ships lying in the harbour.

Table 1.4(a) - Population enumerated at each census by population group and sex - Island of Mauritius, 1846 - 1952

Year of census	General population		Indo-Mauritian population		Chinese population		At the 1962 census each householder was asked, for the first time, to state the population group to which each member of his household claimed to belong.  Prior to 1962, it is probable that, from one census to another, different criteria have been used in classifying the population by population groups. Figures are therefore not strictly comparable from one census to another, before 1962.
	Both sexes	Male	Female	Both sexes	Male	Female	
1846	102,217	55,653	46,554	56,245	43,535	7,310	-
1851	102,827	55,055	47,768	77,996	64,202	15,714	-
1861	115,834	59,716	56,068	192,634	143,513	51,019	2
1871	97,497	49,487	48,010	216,258	141,304	74,454	3
1881	107,523	55,754	53,569	248,993	157,312	97,641	2
1891	111,517	55,307	56,120	255,920	147,411	108,421	2
1901	108,422	52,555	55,427	259,086	143,100	115,986	2
1911	107,432	51,808	55,624	257,697	138,574	115,725	58
1921	104,216	49,725	54,491	265,524	150,151	126,374	345
1931	115,566	54,733	60,933	268,649	150,522	121,116	1,512
1944	143,056	67,156	75,920	265,247	155,032	128,865	2,580
1952	148,238	70,370	77,868	335,327	171,211	164,086	4,074
							17,850
							10,421
							7,421

Table 1.4(b) - Population enumerated at each census by community and sex - Island of Mauritius, 1952 - 72

Year of census	Total population			Hindu			Muslim			Sino-Mauritian			General population		
	Both sexes	Male	Female	Both sexes	Male	Female	Both sexes	Male	Female	Both sexes	Male	Female	Both sexes	Male	Female
1962 $\checkmark$	681,619	342,506	339,313	344,587	174,698	169,889	110,322	55,971	54,351	23,058	12,654	10,404	203,652	98,983	104,669
1972 $\checkmark$	826,100	413,500	412,619	428,167	215,654	212,513	137,081	68,789	68,292	24,084	12,645	11,235	236,867	116,288	120,579

$\checkmark$  de facto population - including the European members of the armed forces but excluding the passengers and crews of ships lying in

Table 1.5 - Estimated population<sup>1/</sup> of Mauritius by geographical district and sex, 1978-80 (end of year estimates)

Geographical district	31st December 1978			31st December 1979			31st December 1980		
	Both sexes	Male	Female	Both sexes	Male	Female	Both sexes	Male	Female
Port Louis	144,815	71,099	73,716	146,101	70,939	75,162	147,586	71,117	76,269
Pamplemousses	76,879	38,567	38,312	78,232	39,008	39,224	79,824	39,674	40,150
Rivière du Rempart	75,572	37,941	37,631	76,944	38,380	38,564	78,436	39,010	39,420
Flacq	101,163	50,508	50,655	105,176	51,272	51,904	105,150	52,113	53,037
Grand Port	89,223	44,550	44,673	90,551	44,907	45,724	92,614	45,430	46,584
Savanne	58,216	29,097	29,119	59,145	29,367	29,778	60,048	29,680	30,368
Plaines Wilhems	290,804	138,139	142,665	285,135	139,076	146,059	289,098	140,071	149,027
Moka	55,558	26,603	26,955	54,444	26,927	27,517	55,471	27,350	28,121
Black River	25,675	14,848	14,827	26,435	15,080	15,355	27,001	15,265	15,816
Island of Mauritius	909,905	451,352	458,553	924,245	454,956	469,287	938,502	459,710	478,792
Island of Rodrigues	28,375	13,785	14,590	29,623	14,341	15,282	31,020	14,942	16,078
Other islands	350	250	100	350	250	100	350	250	100
Mauritius	938,630	465,387	473,243	954,216	469,547	484,669	969,872	474,902	494,970

<sup>1/</sup> based on the final 1972 population census data. No account has been taken of internal migration

Table 1.6 - Intercensal population increase in urban and extra-urban areas according to present boundaries - Island of Mauritius.  
1962 - 72

Township <sup>1/</sup>	Population enumerated at 30.6.62.			Population enumerated at 30.6.72 <sup>2/</sup>			Intercensal increase	
	Both sexes	Male	Female	Both sexes	Male	Female	Number	Annual average %
	Port Louis	119,950	59,751	60,199	133,996	66,431	67,565	14,046
Beau Bassin - Rose Hill	62,296	30,580	31,716	80,318	39,701	40,617	18,022	2.89
Quatre Bornes	33,567	18,952	19,615	50,770	24,920	25,850	12,200	3.16
Vacoas-Phoenix	41,743	20,913	20,830	47,638	25,740	23,898	5,895	1.41
Curepipe	44,244	21,816	22,428	51,556	25,673	26,283	7,712	1.74
Urban population	305,800	152,012	154,788	364,678	180,465	184,213	57,878	1.89
Extra urban population	374,819	190,294	184,525	461,521	233,115	228,406	86,702	2.31
Total population	681,619	342,306	339,313	826,199	413,580	412,619	144,580	2.12

<sup>1/</sup> according to proclaimed boundaries, altered in 1963 (Proclamation Nos. 12 and 13) and subsequently enlarged in 1965 - (Proclamation No. 23) and in 1967 (Proclamation No. 2). Urban population refers to the total population in townships.

<sup>2/</sup> final population census data

Table 1.7 - Estimated population, urban and extra-urban - Island of Mauritius, 1977 - 80

Township <sup>2/</sup>	31.12.77			31.12.78			31.12.79			31.12.80		
	Both sexes	Male	Female	Both sexes	Male	Female	Both sexes	Male	Female	Both sexes	Male	Female
Port Louis	142,901	70,257	72,644	144,815	71,099	73,716	146,101	70,939	75,162	147,386	71,117	76,269
Beau Bassin - Rose Hill	83,983	41,149	42,834	85,123	41,596	43,527	86,192	41,638	44,554	87,076	41,738	45,338
Quatre Bornes	53,891	26,310	27,581	54,661	26,616	28,045	55,366	26,711	28,655	55,976	26,850	29,126
Vacoas-Phoenix	51,595	25,445	26,150	52,672	25,930	26,742	53,687	26,279	27,408	54,746	26,624	28,122
Curepipe	54,549	26,730	27,819	55,358	27,083	28,275	56,205	27,222	28,983	56,895	27,341	29,554
Urban population	386,919	189,891	197,028	392,629	192,324	200,305	397,551	192,789	204,762	402,079	193,670	208,409
Extra-urban population	507,181	254,618	252,563	517,276	259,028	258,248	526,692	262,167	264,525	536,423	266,040	270,383
Total population	894,100	444,509	449,591	909,905	451,352	458,553	924,243	454,956	469,287	938,502	459,710	478,792
Percentage urban	43.3			43.2			43.0			42.8		

<sup>1/</sup> based on the final 1972 population census data. No account has been taken of internal migration in computing the post-censal estimates

<sup>2/</sup> according to proclaimed boundaries, altered in 1963 (Proclamation Nos. 12 and 13) and subsequently enlarged in 1965 (Proclamation No. 23) and in 1967 (Proclamation No. 2). Urban population refers to the total population in townships.

Table 1.8 - Age distribution of the population as enumerated at the censuses of 1962 and 1972, Island of Mauritius

Age group (years)	Population						% Distribution	
	1962			1972			1962	1972
	Both sexes	Male	Female	Both sexes	Male	Female		
Under 1	23,459	11,786	11,673	19,531	9,763	9,768	3.4	2.4
1 - 4	88,615	44,869	43,746	81,929	41,498	40,431	13.0	9.9
5 - 9	104,629	52,715	51,914	118,590	59,972	58,618	15.4	14.3
10 - 14	91,973	46,166	45,807	111,235	56,150	55,085	13.5	13.5
15 - 19	62,150	31,107	31,043	100,656	50,226	50,430	9.1	12.2
20 - 24	47,297	23,574	23,723	79,827	40,150	39,677	6.9	9.7
25 - 29	44,188	22,014	22,174	53,174	26,204	26,970	6.5	6.4
30 - 34	39,211	19,877	19,334	42,663	21,168	21,495	5.8	5.2
35 - 39	41,867	21,756	20,111	41,221	20,751	20,470	6.1	5.0
40 - 44	31,579	16,592	14,987	35,991	18,310	17,681	4.6	4.4
45 - 49	28,471	15,073	13,398	38,580	20,139	18,441	4.2	4.7
50 - 54	22,604	12,011	10,593	27,744	14,535	13,209	3.3	3.3
55 - 59	18,549	9,325	9,224	25,081	12,617	12,464	2.7	3.0
60 - 64	14,753	7,038	7,715	18,787	9,213	9,574	2.2	2.3
65 - 69	9,682	4,111	5,571	13,029	6,067	6,962	1.4	1.6
70 - 74	6,457	2,465	3,992	8,715	3,673	5,042	1.0	1.0
75 - 79	3,301	1,070	2,231	4,725	1,684	3,041	0.5	0.6
80 - 84	1,613	427	1,186	2,491	766	1,725	0.2	0.3
85 & over	906	183	723	1,379	285	1,094	0.1	0.1
Age unknown	315	147	168	851	409	442	0.1	0.1
All ages	681,619	342,306	339,313	826,199	413,580	412,619	100.0	100.0



Table 1.9 - Estimated age distribution of population - Island of Mauritius, 1979-80

Age group (years)	30th June 1979				30th June 1980			
	Male	Female	Both sexes		Male	Female	Both sexes	
			Number	%			Number	%
Under 1	12,000	11,863	23,863	2.6	12,550	12,102	24,652	2.7
1 - 4	42,799	41,930	84,729	9.3	44,406	42,979	87,385	9.4
5 - 9	48,015	47,616	95,631	10.5	48,008	47,622	95,630	10.3
10 - 14	55,108	54,973	110,081	12.1	53,026	53,285	106,311	11.5
15 - 19	57,021	56,392	113,413	12.4	57,659	57,382	115,041	12.4
20 - 24	47,481	48,899	96,380	10.6	48,790	50,471	99,261	10.7
25 - 29	41,641	43,543	85,184	9.3	41,808	44,224	86,032	9.3
30 - 34	28,289	30,790	59,079	6.5	30,658	32,667	63,325	6.8
35 - 39	19,846	22,083	41,929	4.6	21,125	23,202	44,327	4.8
40 - 44	20,845	20,919	41,764	4.6	20,196	21,125	41,321	4.4
45 - 49	16,879	17,578	34,457	3.8	16,643	18,167	34,810	3.8
50 - 54	18,613	18,291	36,904	4.0	18,107	18,251	36,358	3.9
55 - 59	14,698	13,650	28,348	3.1	16,223	14,998	31,221	3.4
60 - 64	10,645	11,174	21,819	2.4	10,263	11,168	21,431	2.3
65 - 69	7,528	9,617	17,145	1.9	7,893	10,280	18,173	2.0
70 - 74	4,226	6,181	10,407	1.1	4,030	6,216	10,246	1.1
75 - 79	2,360	3,828	6,188	0.7	2,536	4,112	6,648	0.7
80 - 84	944	2,369	3,313	0.4	925	2,444	3,369	0.4
85 & over	148	717	865	0.1	185	852	1,037	0.1
All ages	449,086	462,413	911,499	100.0	455,031	471,547	926,578	100.0
<u>Totals</u>								
Under 15	157,922	156,382	314,304	34.5	157,990	155,988	313,978	33.9
Under 18	193,593	191,728	385,321	42.3	193,190	191,132	384,322	41.5
Under 21	225,227	223,046	448,273	49.2	226,182	223,930	450,112	48.6
18 & over	255,493	270,685	526,178	57.7	261,841	280,415	542,256	58.5
21 & over	223,859	239,367	463,226	50.8	228,849	247,617	476,466	51.4
60 & over	25,911	33,886	59,797	6.6	25,832	35,072	60,904	6.6

Table 1.10 - Population<sup>1/</sup> growth and vital statistics - Island of Mauritius, 1963 - 80

Year	Population as at 31st December	Natural movement			External migration			Total increase	% increase during year			Mid-year population
		Live births	Deaths	Natural increase	Arrivals	Departures	(A - D) <sup>2/</sup>		Natural increase	due to	Total	
1963	707,580	27,978	6,709	21,269	18,047	18,299	- 252	5.10	- 0.04	3.06	695,641	
1964	727,814	27,528	6,184	21,344	21,201	22,331	- 1,110	3.02	- 0.16	2.86	716,293	
1965	745,630	26,279	6,337	19,942	22,024	24,150	- 2,126	2.74	- 0.22	2.45	735,245	
1966	762,901	26,817	6,701	20,116	26,456	29,301	- 2,845	2.70	- 0.38	2.32	753,275	
1967	776,253	23,499	6,543	16,956	29,321	32,925	- 3,604	2.22	- 0.47	1.75	767,782	
1968	788,955	24,413	7,126	17,287	31,403	35,988	- 4,585	2.23	- 0.52	1.64	791,615	
1969	801,236	21,719	6,428	15,291	35,919	38,929	- 3,010	1.94	- 0.38	1.56	792,893	
1970	813,400	21,623	6,309	15,314	48,819	51,969	- 3,150	1.91	- 0.39	1.52	805,489	
1971	824,815	20,834	6,248	14,586	60,826	63,997	- 3,171	1.79	- 0.39	1.40	816,561	
1972	834,486	20,496	6,506	13,990	77,174	81,493	- 4,319	1.70	- 0.52	1.18	825,199	
1973	843,422	18,974	6,525	12,449	101,101	104,000	- 3,515	1.49	- 0.42	1.07	834,731	
1974	855,821	22,938	6,221	16,717	109,044	113,362	- 4,318	1.93	- 0.51	1.47	845,755	
1975	867,191	21,492	6,967	14,525	117,548	120,703	- 3,155	1.70	- 0.37	1.33	855,516	
1976	880,781	22,250	6,815	15,435	139,303	141,143	- 1,845	1.78	- 0.21	1.57	867,885	
1977	894,100	22,730	6,966	15,764	153,208	155,653	- 2,445	1.79	- 0.28	1.51	881,761	
1978	909,905	24,250	6,400	17,850	161,688	163,733	- 2,045	2.00	- 0.23	1.77	896,471	
1979	924,243	25,056	6,625	18,431	182,771	186,864	- 4,093	2.02	- 0.45	1.57	911,499	
1980	938,502	24,983	6,685	18,298	163,230	167,269	- 4,039	1.98	- 0.44	1.54	926,578	

<sup>1/</sup> revised in the light of the final 1972 population census data

<sup>2/</sup> excess of arrivals over departures

Table 1.11 - Rate of increase of the population of Mauritius compared with other countries, (1963 - 72)

Continent & Country	Average annual rate of increase 1963-72 (%)	Continent & country	Average annual rate of increase 1963-72 (%)
<u>AFRICA</u>		<u>ASIA</u>	
Mauritius	2.0	Ceylon	2.3
Island of Mauritius	1.9	China (Mainland)	1.8
Island of Rodrigues	3.3	India	2.2
<u>AMERICA</u>		Japan	1.1
Canada	1.6	Pakistan	2.4
Guyana	2.3	<u>EUROPE</u>	
Trinidad & Tobago	1.4	Albania	2.9
<u>OCEANIA</u>		France	0.9
Australia	1.9	United Kingdom	0.4
New Zealand	1.5		

Source : United Nations Demographic Yearbook 1972

Table 1.12 - Expectation of life in years at selected ages - Island of Mauritius

Exact age (years)	Males				Females			
	1942 <sup>1/</sup> / 1946 <sup>1/</sup>	1951 <sup>1/</sup> / 1953 <sup>1/</sup>	1961 <sup>1/</sup> / 1963 <sup>1/</sup>	1971-73	1942 <sup>1/</sup> / 1946 <sup>1/</sup>	1951 <sup>1/</sup> / 1953 <sup>1/</sup>	1961 <sup>1/</sup> / 1963 <sup>1/</sup>	1971-73
0	32.8	49.8	58.7	60.7	33.8	52.3	61.9	65.3
10	35.8	49.2	55.1	56.5	37.3	52.2	58.1	61.1
20	38.1	40.1	45.7	47.0	30.2	43.7	48.9	51.6
30	22.3	31.6	36.6	37.7	26.1	36.2	40.3	42.6
40	16.7	23.6	27.7	28.6	21.2	28.7	31.9	33.6
50	11.9	16.7	19.6	20.3	15.7	21.2	23.5	24.9
60	8.1	11.2	13.2	13.3	10.6	14.6	15.8	17.0
70	5.6	6.7	8.6	8.3	7.1	9.1	9.7	10.3
80	4.0	4.3	4.8	4.8	4.6	5.3	5.4	5.7

<sup>1/</sup> excluding Sino-Mauritian Community

Source : Mauritius Life Table

Table 1.13 - Population and vital statistics - Island of Mauritius, 1921-80

Period	Population <sup>1/</sup> at mid-period	Live births	Deaths	Natural increase	Infant deaths <sup>2/</sup>	Still births	Civil marriage
1921-25 Average	379,636	14,834	11,758	3,076	2,104	1,581	2,062
1926-30 "	403,248	14,208	11,614	2,594	2,002	1,256	1,455
1931-35 "	398,647	12,490	11,889	601	1,752	1,216	1,439
1936-40 "	412,003	13,621	11,157	2,464	2,119	1,240	2,093
1941-45 "	417,838	15,027	11,927	3,100	2,318	1,240	3,333
1946-50 "	438,797	19,595	9,113	10,482	2,343	1,348	3,503
1951-55 "	522,577	23,176	7,701	15,475	1,884	1,472	3,307
1956	574,938	24,910	6,739	18,171	1,644	1,789	3,080
1957	593,070	25,273	7,603	17,670	1,897	1,800	2,903
1958	609,518	24,600	7,112	17,488	1,659	1,703	3,159
1959	627,249	23,923	6,753	17,170	1,495	1,759	3,297
1960	644,743	25,307	7,248	18,059	1,760	1,783	3,115
1961	662,368	26,092	6,505	19,587	1,618	1,963	3,434
1962	681,619	26,267	6,325	19,942	1,579	1,841	3,893
1963	695,641	27,978	6,709	21,269	1,660	1,519	3,472
1964	716,298	27,528	6,184	21,344	1,561	1,611	3,965
1965	735,245	26,279	6,337	19,942	1,685	1,557	3,976
1966	753,276	26,817	6,701	20,116	1,721	1,384	4,157
1967	767,782	23,499	6,543	16,956	1,656	1,074	3,949
1968	781,615	24,413	7,126	17,287	1,688	1,110	3,974
1969	792,893	21,719	6,428	15,291	1,528	951	3,832
1970	805,489	21,623	6,309	15,314	1,232	857	4,499
1971	816,561	20,834	6,248	14,586	1,077	842	4,346
1972	826,199	20,496	6,506	13,990	1,308	718	5,082
1973	834,781	18,974	6,525	12,449	1,201	678	5,533
1974	845,755	22,938	6,221	16,717	1,045	854	6,771
1975	856,516	21,492	6,967	14,525	1,046	896	6,838
1976	867,885	22,250	6,815	15,435	900	784	3,262
1977	881,761	22,730	6,966	15,764	1,023	712	8,421
1978	896,471	24,250	6,400	17,850	823	653	10,532
1979	911,499	25,056	6,625	18,431	824	650	9,080
1980	926,578	24,983	6,685	18,298	808	623	8,629

<sup>1/</sup> figures for 1963-71 have been revised in the light of the final 1972 population census data.

<sup>2/</sup> deaths of children under 1 year of age

Table 1.14 - Population and vital statistics rates<sup>1/</sup> - Island of Mauritius, 1921-80

Period	Population at mid-period	Crude birth rate	Crude death rate	Rate of natural increase	Infantile mortality rate <sup>2/</sup>	Still birth rate <sup>3/</sup>	Marriage rate <sup>4/</sup>
1921-25 Average	379,636	39.1	31.0	8.1	141.8	96.3	10.9
1926-30 "	403,248	35.2	28.8	6.4	140.9	81.2	7.2
1931-35 "	398,647	31.3	29.8	1.5	140.3	88.7	7.5
1936-40 "	412,003	33.1	27.1	6.0	155.6	83.4	10.2
1941-45 "	417,838	36.0	28.5	7.5	154.3 <sup>5/</sup>	76.2	16.0
1946-50 "	438,797	44.7	20.8	23.9	119.6 <sup>6/</sup>	64.4	16.0
1951-55 "	522,277	44.3	14.7	29.6	81.3	59.7	12.7
1956	574,938	43.3	11.7	31.6	66.0	67.0	10.7
1957	593,070	42.6	12.8	29.8	75.1	66.5	9.8
1958	609,518	40.4	11.7	28.7	67.4	64.7	10.4
1959	627,249	38.1	10.8	27.3	62.5	68.5	10.5
1960	644,743	39.3	11.2	28.1	69.5	65.8	9.7
1961	662,368	39.4	9.8	29.6	62.0	70.0	10.5
1962	681,619	38.5	9.3	29.2	60.1	65.5	11.4
1963	695,641	40.2	9.6	30.6	59.3	51.5	10.0
1964	716,298	38.4	8.6	29.8	56.7	55.3	11.1
1965	735,245	35.7	8.6	27.1	64.1	55.9	10.8
1966	753,276	35.6	8.9	26.7	64.2	49.1	11.0
1967	767,782	30.6	8.5	22.1	70.5	43.7	10.3
1968	781,615	31.2	9.1	22.1	69.1	43.5	10.2
1969	792,893	27.4	8.1	19.3	70.4	41.9	9.8
1970	805,489	26.8	7.8	19.0	57.0	38.1	11.2
1971	816,561	25.5	7.7	17.8	51.7	38.8	10.6
1972	826,199	24.8	7.9	16.9	63.8	33.8	12.3
1973	834,781	22.7	7.8	14.9	63.3	34.5	13.3
1974	845,755	27.1	7.4	19.7	45.6	35.9	16.0
1975	856,516	25.1	8.1	17.0	48.7	40.0	16.1
1976	867,885	25.6	7.8	17.8	40.4	34.0	19.0
1977	881,761	25.8	7.9	17.9	45.0	30.4	19.1
1978	896,471	27.0	7.1	19.9	33.9	26.2	23.5
1979	911,499	27.5	7.3	20.2	32.9	25.3	19.9
1980	926,578	27.0	7.2	19.8	32.3	24.3	18.6

<sup>1/</sup> figures for 1963-71 have been revised in the light of the final 1972 population census data.

<sup>2/</sup> deaths of children under 1 year of age per 1,000 live births

<sup>3/</sup> still births per 1,000 total births (live births and still births)

<sup>4/</sup> number of persons civilly married per 1,000 of mid-period population

<sup>5/</sup> the rate reached 188.0 in 1945 when there were poliomyelitis and dysentery epidemics

<sup>6/</sup> the rate reached 186.2 in 1948 when there was an epidemic of whooping cough.

Table 1.15 - Vital statistics by sex - Island of Mauritius, 1965 - 1980

Year	Live births			Deaths			Infant deaths			Still births		
	Both sexes	Male	Female	Both sexes	Male	Female	Both sexes	Male	Female	Both sexes	Male	Female
1965	26,279	13,287	12,992	6,337	3,388	2,949	1,685	943	742	1,557	864	693
1966	26,817	13,554	13,263	6,701	3,550	3,151	1,721	943	778	1,383	716	667
1967	23,499	12,061	11,438	6,543	3,497	3,046	1,656	947	709	1,074	510	464
1968	24,413	12,354	12,019	7,126	3,744	3,382	1,688	935	755	1,110	598	512
1969	21,719	11,182	10,537	6,428	3,361	3,067	1,528	847	681	951	519	432
1970	21,622	11,090	10,532	6,309	3,444	2,865	1,232	706	526	857	450	407
1971	20,834	10,600	10,231	6,248	3,353	2,895	1,077	584	493	842	443	597
1972	20,496	10,458	10,038	6,506	3,447	3,059	1,308	716	592	716	560	358
1973	18,974	9,628	9,346	6,525	3,576	2,949	1,201	699	502	678	385	293
1974	22,938	11,687	11,251	6,221	3,409	2,812	1,045	579	466	854	461	393
1975	21,492	10,500	10,992	6,967	4,047	2,920	1,046	600	446	896	430	406
1976	22,250	11,256	10,994	6,815	3,975	2,840	300	510	390	784	534	390
1977	22,730	11,600	11,130	6,966	4,073	2,893	1,023	552	471	712	513	333
1978	24,250	12,520	11,922	6,400	3,722	2,678	923	476	347	653	530	303
1979	25,056	12,809	12,247	6,625	3,972	2,653	824	473	351	650	540	310
1980	24,983	12,691	12,292	6,685	3,818	2,867	808	438	370	625	541	282

Table 1.16 - Vital statistics by month of registration and sex - Island of Mauritius, 1980

Month of registration	Live births			Deaths			Infant deaths			Still births			Civil marriages
	Both sexes	Male	Female	Both sexes	Male	Female	Both sexes	Male	Female	Both sexes	Male	Female	
1980: January	2,254	1,160	1,094	586	552	248	69	33	36	52	29	23	566
February	2,177	1,071	1,106	556	502	236	81	42	39	51	30	21	559
March	2,029	1,009	1,020	501	529	252	88	38	50	55	20	33	560
April	2,070	1,072	998	505	505	202	63	37	26	43	27	22	777
May	2,218	1,114	1,104	554	510	256	74	35	39	54	32	22	691
June	1,990	994	996	582	548	254	62	39	23	51	38	18	881
July	2,207	1,114	1,093	616	558	278	64	30	34	52	30	22	868
August	2,004	1,032	972	635	577	258	70	42	28	55	26	29	814
September	2,180	1,141	1,039	565	555	249	58	36	22	57	54	23	778
October	2,091	1,056	1,035	567	557	250	60	32	28	49	30	19	749
November	1,759	877	882	459	456	203	50	29	21	40	19	21	644
December	2,004	1,051	953	505	482	221	69	45	24	55	26	29	742
Whole Year	24,583	12,691	12,292	6,685	5,816	2,867	808	438	370	623	341	282	8,629

Table 1.17 - Infant deaths (deaths under 1 year of age) by age and sex - Island of Mauritius, 1978 - 80

Age	1978				1979				1980			
	Both sexes		Male	Female	Both sexes		Male	Female	Both sexes		Male	Female
	Under 1 day	166	98	68	160	91	69	130	63	67		
1 - 6 days	229	132	97	272	160	112	234	142	92			
7 - 27 days	78	48	30	80	51	29	96	51	45			
28 days - under 2 months	53	33	20	46	23	23	35	16	19			
2 - 3 months	88	46	42	74	39	35	79	39	40			
4 - 5 months	78	47	31	71	38	33	63	36	27			
6 - 7 months	64	35	29	45	23	20	75	43	32			
8 - 9 months	38	24	14	45	31	14	63	31	32			
10 - 11 months	29	13	16	33	17	16	33	17	16			
Under 1 year	823	476	347	824	473	351	808	438	370			



Table 1.18 - Deaths by age and sex - Island of Mauritius, 1970 - 80

Age group (years)	1978			1979			1980		
	Both sexes	Male	Female	Both sexes	Male	Female	Both sexes	Male	Female
Under 1	823	476	347	824	473	351	808	438	370
1 - 4	170	80	90	168	85	83	207	112	95
5 - 9	51	35	16	61	33	28	60	35	25
10 - 14	55	31	24	68	38	30	67	40	27
15 - 19	134	70	64	114	70	44	111	55	56
20 - 24	120	80	40	132	82	50	129	68	61
25 - 29	130	73	57	138	90	48	120	66	54
30 - 34	134	81	53	134	84	50	134	82	52
35 - 39	153	111	42	140	84	56	160	105	55
40 - 44	223	166	57	231	166	65	206	139	67
45 - 49	266	185	81	291	213	78	254	185	69
50 - 54	478	347	131	451	313	138	380	271	109
55 - 59	493	344	149	566	400	166	553	371	182
60 - 64	648	419	229	642	434	208	650	455	195
65 - 69	660	409	251	663	420	243	735	460	275
70 - 74	668	365	303	737	434	303	688	408	280
75 - 79	531	246	285	544	280	264	580	261	319
80 - 84	337	129	208	397	173	224	432	155	277
85 & over	326	75	251	318	96	222	406	108	298
Unknown	-	-	-	6	4	2	5	4	1
All ages	6,400	3,722	2,678	6,625	3,972	2,653	6,685	3,818	2,867

Table 1.19 - Deaths by cause - Island of Mauritius, 1980

Group	Cause of death	Deaths						Death rate per 100,000 of population
		Under 1 year	1 to under 5 years	All ages			% of total deaths	
		Both sexes	Both sexes	Both sexes	Male	Female		
I	Infective and parasitic diseases	239	80	471	256	215	7.0	50.8
II	Neoplasms	1	2	416	223	193	6.2	44.9
III	Endocrine, nutritional and metabolic diseases	7	5	209	98	111	3.1	22.6
IV	Diseases of the blood and blood forming organs	1	-	49	21	28	0.7	5.3
V	Mental disorders	-	-	19	16	3	0.3	2.1
VI	Diseases of the nervous system and sense organs	9	10	77	47	30	1.2	8.3
VII	Diseases of the circulatory system	13	2	2,544	1,482	1,062	38.1	274.6
VIII	Diseases of the respiratory system	107	47	643	363	280	9.6	69.4
IX	Diseases of the digestive system	8	2	255	202	53	3.8	27.5
X	Diseases of the genito-urinary system	2	-	102	63	39	1.5	11.0
XI	Complications of pregnancy, childbirth and the puerperium	-	-	27	-	27	0.4	2.9
XII	Diseases of the skin and subcutaneous tissue	-	-	4	1	3	0.1	0.4
XIII	Diseases of musculoskeletal system and connective tissue	-	-	7	3	4	0.1	0.8
XIV	Congenital anomalies	45	7	58	40	18	0.5	6.3
XV	Certain causes of perinatal morbidity and mortality	294	-	294	154	140	4.4	31.7
XVI	Symptoms and ill-defined conditions	79	27	1,037	515	522	15.5	111.9
XVII	Accidents, poisonings and violence	3	25	473	334	139	7.1	51.0
	All causes	808	207	6,635	3,818	2,867	100.0	721.5

1/ International classification, 1965

Table 1.20 - Vital statistics by geographical district - Island of Mauritius, 1979 - 80

Geographical district	Estimated population as at 30.6.79	1979				Estimated population as at 30.6.80	1980				
		Live births	Deaths	Infant deaths	Still births		Civil marriages	Live births	Deaths	Infant deaths	Still births
Port Louis	144,412	3,431	1,190	142	88	145,817	3,471	1,131	122	83	1,283
Pamplemousses	77,294	2,270	601	74	69	78,767	2,393	577	77	61	756
Rivière du Rempart	75,962	2,233	551	85	67	77,401	2,259	563	101	58	864
Flacq	101,752	3,169	742	107	87	103,781	3,037	762	134	93	962
Grand Port	89,504	2,446	660	87	71	90,918	2,344	653	79	70	808
Savanne	58,380	1,580	403	41	41	59,374	1,505	407	40	40	546
Plaines Wilhems	280,582	7,371	1,895	196	149	285,163	7,444	2,039	177	163	2,660
Moka	53,829	1,490	374	53	45	54,837	1,524	345	44	37	481
Black River	29,784	1,066	201	39	33	30,520	1,006	208	34	18	269
Whole island	911,499	25,056	6,625	824	650	926,578	24,983	6,685	808	623	8,629

1 deaths of children under 1 year of age

Table 1.21 - Fertility rates - Island of Mauritius, 1962-1972

	1962	1972	1973	1974	1975	1976	1977	1978	1979	1980 <sup>6/</sup>
Crude birth rate <sup>1/</sup>	38.5	24.8	22.7	27.1	25.1	25.6	25.8	27.0	27.5	27.0
General fertility rate <sup>2/</sup>	181.4	104.5	95.6	108.9	101.9	103.3	101.5	105.0	104.7	101.0
Gross reproduction rate <sup>3/</sup>	2.90	1.67	1.50	1.71	1.57	1.54	1.49	1.52	1.50	1.45
Net reproduction rate <sup>4/</sup>	2.51	1.49	1.54	1.53	1.40	1.38	1.35	1.36	1.34	1.30
Female population aged 15-49 years (50th June)	144,770	195,373	201,005	206,051	210,987	215,771	223,595	230,759	240,204	247,238
<u>Age-specific birth rates</u> <sup>5/</sup>										
Age of women (years)										
15 - 19	107.3	50.3	47.2	55.9	56.6	60.5	60.0	62.2	63.3	62.5
20 - 24	298.3	188.4	174.5	185.8	173.6	174.8	168.1	175.6	178.9	175.8
25 - 29	301.4	190.8	166.0	192.0	176.6	179.2	172.7	175.6	171.6	162.6
30 - 34	233.3	130.1	117.5	137.9	125.6	116.2	117.9	114.2	113.4	106.2
35 - 39	163.1	88.4	73.1	84.4	72.0	65.6	64.5	61.5	64.2	59.5
40 - 44	60.1	31.7	25.4	32.3	30.5	27.4	23.2	21.6	19.4	20.4
45 - 49	9.0	3.8	3.4	4.9	3.0	2.3	2.0	2.5	2.9	2.9

<sup>1/</sup> registered live births per 1,000 of mid-year population.

<sup>2/</sup> live births occurred per 1,000 women aged 15-49 years

<sup>3/</sup> the average number of daughters born to an average woman assuming that she survives to the end of her childbearing age and is subjected to a fixed schedule of age specific fertility rates.

<sup>4/</sup> the extent of which the average woman will replace herself, assuming a fixed schedule of age-specific mortality and fertility rates to prevail through her reproductive span of life.

<sup>5/</sup> live births occurred per 1,000 women in each age group

<sup>6/</sup> provisional.

Table 1.22 - Age-specific fertility rates<sup>1/</sup> by age of mother and live birth order - Island of Dominicus, 1962 & 1972 censuses

Year	Age of mother	Live birth order								Total
		First	Second	Third	Fourth	Fifth	Sixth or over			
1962	15 - 19	66.1	51.6	8.2	1.4	-	-	-	107.3	
	20 - 24	64.0	76.5	76.8	50.8	21.2	8.9	298.3		
	25 - 29	23.6	38.5	51.5	58.3	56.2	75.1	301.4		
	30 - 34	9.0	13.1	24.4	29.7	36.5	223.8	233.3		
	35 - 39	4.3	6.0	10.5	11.8	18.9	111.0	163.1		
	40 - 44	1.2	1.7	1.8	3.4	5.3	45.7	60.1		
	45 - 49	..	0.3	0.4	-	1.0	7.5	9.0		
G.F.R. <sup>2/</sup>		30.2	20.2	27.2	23.5	20.2	49.6	178.9		
1972	15 - 19	35.7	11.6	2.6	0.4	-	-	50.3		
	20 - 24	67.1	55.6	52.7	17.2	6.8	2.0	188.4		
	25 - 29	29.1	56.4	56.1	33.4	27.3	20.5	190.8		
	30 - 34	8.7	12.5	15.2	17.3	17.9	58.5	130.1		
	35 - 39	3.4	4.4	6.7	7.5	8.9	57.5	88.4		
	40 - 44	1.0	1.2	1.4	1.5	2.7	23.9	31.7		
	45 - 49	0.3	0.1	0.3	0.3	0.2	2.6	3.8		
G.F.R. <sup>2/</sup>		28.3	21.3	16.2	11.1	8.3	19.3	104.5		

<sup>1/</sup> live births occurred per 1,000 females in each age group

<sup>2/</sup> General Fertility Rate - live births occurred per 1,000 women aged 15 - 49 years

Table 1.25 - Age-specific fertility rates<sup>1/</sup> by age of mother and live birth order - Island of Mauritius, 1979 - 80

Year	Age of mother	Live birth order								Total
		First	Second	Third	Fourth	Fifth	Birth cover	Total		
1979	15 - 19	47.2	14.1	1.5	0.1	-	-	-	63.3	
	20 - 24	79.4	61.4	28.6	7.6	1.6	6.5	178.9		
	25 - 29	39.8	49.0	55.6	25.8	11.4	6.0	171.6		
	30 - 34	12.6	20.6	22.0	20.8	14.2	23.0	113.4		
	35 - 39	4.2	6.1	8.1	8.6	7.9	25.5	64.2		
	40 - 44	1.3	1.0	1.5	1.6	2.0	12.2	19.4		
	45 - 49	0.3	0.4	-	0.3	0.2	1.7	2.9		
G.F.R. <sup>2/</sup>		36.6	28.0	14.1	9.9	5.1	8.0	104.7		
1980 <sup>3/</sup>	15 - 19	46.9	13.5	2.0	0.1	-	-	62.5		
	20 - 24	79.4	60.1	26.0	7.4	1.7	0.3	175.8		
	25 - 29	39.4	48.6	58.2	22.5	8.9	5.0	162.6		
	30 - 34	13.6	20.7	21.4	19.6	13.3	17.6	106.2		
	35 - 39	4.2	6.7	7.3	8.3	9.4	23.0	59.5		
	40 - 44	1.9	1.1	2.2	2.0	2.0	11.2	20.4		
	45 - 49	0.5	0.3	0.2	0.3	0.2	1.4	2.9		
G.F.R. <sup>2/</sup>		36.6	27.5	16.5	9.1	4.8	5.5	101.0		

<sup>1/</sup> live birth occurred per 1,000 females in each age group

<sup>2/</sup> General Fertility Rate - live births occurred per 1000 women aged 15 - 49 years

<sup>3/</sup> provisional

Table 1.24 - Population and vital statistics - Island of Romania, 1963 - 80

Year	Estimated mid-year population (30th June)	Live Births	Deaths	Natural increase	Infant deaths	Still Births	Civil marriages	Crude birth rate <sup>2/</sup>	Crude death rate <sup>2/</sup>	Rate of natural increase	Infantile mortality rate <sup>3/</sup>	Still birth rate <sup>4/</sup>	Civil marriage rate	Estimated population as at 31st December
1963	18,529	881	203	678	79	22	171	47.5	11.0	36.5	82.6	23.3	18.5	18,587
1964	18,974	1,002	257	845	86	32	161	57.0	12.5	44.5	71.5	28.7	17.0	19,282
1965	19,433	1,116	300	616	116	32	127	47.1	15.4	31.7	126.6	33.8	13.1	19,709
1966	20,084	1,214	243	771	89	26	132	50.5	12.1	38.4	97.0	25.0	13.1	20,388
1967	20,762	1,272	207	765	70	25	150	46.8	10.0	36.8	72.0	32.8	15.0	21,370
1968	21,832	1,336	256	740	102	30	145	45.6	11.7	33.9	102.4	29.2	13.3	22,166
1969	22,434	1,402	305	597	110	37	173	40.2	13.6	26.6	122.0	39.4	15.4	22,839
1970	23,453	1,465	211	932	80	35	152	48.8	9.0	39.8	70.0	29.7	13.0	23,749
1971	24,041	1,692	180	904	69	40	132	45.4	7.8	37.6	65.2	35.3	11.0	24,487
1972	24,769	1,559	247	752	91	31	132	40.3	10.0	30.3	58.0	30.1	10.7	25,096
1973	25,367	1,641	254	787	76	23	145	41.0	10.0	31.0	53.0	21.6	11.5	25,857
1974	25,709	1,664	205	861	68	23	154	41.4	7.9	33.5	65.5	23.0	10.4	26,123
1975	26,345	1,665	234	831	84	36	181	40.4	8.9	31.5	70.0	32.7	13.7	26,605
1976	26,533	1,924	153	871	36	31	163	38.6	5.3	32.8	51.2	22.9	14.2	27,049
1977	27,058	1,927	183	941	64	30	211	41.7	6.9	34.8	56.7	25.9	15.6	27,614
1978	27,842	1,920	196	832	53	27	205	36.9	7.0	29.9	51.5	25.6	15.0	28,375
1979	29,205	1,907	246	861	67	18	217	37.9	8.4	29.5	50.5	16.0	16.9	29,623
1980	30,275	1,511	234	1,077	56	39	205	43.3	7.7	35.6	42.7	28.9	17.5	31,020

<sup>1/</sup> revised in the light of the 1972 Population Census data

<sup>2/</sup> per 1,000 of the mid-year population

<sup>3/</sup> deaths of children under 1 year of age per 1,000 live births

<sup>4/</sup> still births per 1,000 total births (live births and still births)

Table 1.25 - Vital statistics by month of registration and sex - Island of Rodrigues, 1980

Month of registration	Live births			Deaths			Infant deaths			Still births			Civil marriages
	Both sexes	Male	Female	Both sexes	Male	Female	Both sexes	Male	Female	Both sexes	Male	Female	
January	127	66	61	25	8	17	8	3	5	3	1	2	7
February	129	61	68	14	9	5	4	3	1	3	2	1	23
March	136	71	65	25	7	18	8	1	7	5	4	1	16
April	111	55	56	16	10	6	4	2	2	3	2	-	24
May	104	54	50	18	6	12	4	2	2	1	-	1	28
June	115	54	61	13	7	6	4	3	1	6	5	1	18
July	93	48	45	23	8	15	4	2	2	4	3	2	21
August	103	56	47	20	9	11	3	1	2	2	2	-	23
September	125	69	56	11	5	6	1	-	1	4	3	1	20
October	81	29	52	25	13	12	4	2	2	2	-	2	29
November	79	33	46	26	15	13	7	4	3	3	1	2	33
December	108	52	56	18	8	10	5	3	2	2	1	1	23
Whole year	1,311	648	663	234	103	131	56	26	30	39	25	14	265



Table 1.26 -- Deaths by age and sex -- Island of Rodrigues, 1978 -- 80

Age group (years)	1978			1979			1980		
	Both sexes	Male	Female	Both sexes	Male	Female	Both sexes	Male	Female
Under 1	53	24	29	67	43	24	56	26	30
1 - 4	13	6	7	24	11	13	43	20	23
5 - 9	5	4	1	3	1	2	12	4	8
10 - 14	5	3	2	1	-	1	-	-	-
15 - 19	3	1	2	3	1	2	4	2	2
20 - 24	2	1	1	5	3	2	3	1	2
25 - 29	3	2	1	1	1	-	2	2	-
30 - 34	3	2	1	7	4	3	6	3	3
35 - 39	5	3	2	3	2	1	5	4	1
40 - 44	4	2	2	7	4	3	7	2	5
45 - 49	5	3	2	10	7	3	4	2	2
50 - 54	3	3	-	11	6	5	7	2	5
55 - 59	12	9	3	14	9	5	6	4	2
60 - 64	19	10	9	11	7	4	7	3	4
65 - 69	14	11	3	16	11	5	10	3	7
70 - 74	13	10	3	15	9	6	15	7	8
75 - 79	15	6	9	22	12	10	22	10	12
80 - 84	11	7	4	14	7	7	12	6	6
85 & over	8	3	5	12	2	10	13	2	11
Unknown	-	-	-	-	-	-	-	-	-
All ages	196	110	86	246	140	106	234	103	131

Table 1.27 - Deaths by cause - Island of Rodrigues, 1980

Group	Cause of death	Deaths						% of total deaths	Death rate per 100,000 of population
		Under 1 year	1 to under 5 years	All ages					
		Both sexes	Both sexes	Both sexes	Male	Female			
I	Infective and parasitic diseases	10	16	32	14	18	13.7	105.7	
II	Neoplasms	-	-	1	-	1	0.4	3.3	
III	Endocrine, nutritional and metabolic diseases	2	-	6	1	5	2.6	19.8	
IV	Diseases of the blood and blood forming organs	-	-	-	-	-	-	-	
V	Mental disorders	-	-	-	-	-	-	-	
VI	Diseases of the nervous system and sense organs	2	1	3	3	-	1.3	9.9	
VII	Diseases of the circulatory system	-	-	36	11	25	15.4	118.9	
VIII	Diseases of the respiratory system	10	8	21	11	10	9.0	69.4	
IX	Diseases of the digestive system	1	-	3	3	-	1.3	9.9	
X	Diseases of the genito-urinary system	-	-	1	1	-	0.4	3.3	
XI	Complications of pregnancy, childbirth and the puerperium	-	-	1	-	1	0.4	3.3	
XII	Diseases of the skin and subcutaneous tissue	-	-	-	-	-	-	-	
XIII	Diseases of musculoskeletal system and connective tissue	-	-	-	-	-	-	-	
XIV	Congenital anomalies	-	-	1	-	1	0.4	3.3	
XV	Certain causes of perinatal morbidity and mortality	23	-	23	8	15	9.8	76.0	
XVI	Symptoms and ill-defined conditions	8	17	99	47	52	42.3	327.0	
XVII	Accidents, poisonings and violence	-	1	7	4	3	3.0	23.1	
	All causes	56	43	234	103	131	100.0	772.9	

1/ International classification, 1965

SECTION 2 -- INTERNATIONAL TRAVEL AND TOURISM

Table 2.1 - Passenger traffic<sup>1/</sup> - Island of Mauritius, 1962 - 1980

Period	Arrivals			Departures			Net overseas migration
	Total	By sea	By air	Total	By sea	By air	
1962	15,189	4,258	10,931	16,075	4,374	11,701	- 886
1963	18,047	4,660	13,387	18,299	4,432	13,867	- 252
1964	21,221	5,187	16,034	22,331	5,478	16,853	- 1,110
1965	22,024	4,886	17,138	24,150	5,463	18,687	- 2,126
1966	26,456	5,544	20,912	29,301	6,330	22,971	- 2,845
1967	29,321	4,901	24,420	32,925	6,515	26,410	- 3,604
1968	31,403	4,264	27,139	35,988	5,967	30,021	- 4,585
1969	35,919	3,483	32,436	38,929	4,632	34,297	- 3,010
1970	48,819	3,984	44,835	51,969	4,376	47,593	- 3,150
1971	60,826	3,857	56,969	63,997	4,295	59,702	- 3,171
1972	77,174	3,741	73,433	81,493	4,072	77,421	- 4,319
1973	101,184	4,238	96,946	104,697	4,027	100,670	- 3,513
1974	109,041	3,848	105,196	113,362	3,772	109,590	- 4,318
1975	117,548	4,465	113,063	120,703	4,255	116,448	- 3,155
1976	139,303	4,367	134,936	141,148	4,441	136,707	- 1,845
1977	153,208	4,929	148,279	155,653	4,624	151,029	- 2,445
1978	161,688	4,411	157,277	163,733	4,698	159,035	- 2,045
1979	182,771	3,581	179,190	186,864	4,054	182,810	- 4,093
1980	163,250	3,980	159,250	167,269	4,469	162,800	- 4,039
1980 : 1st Qr.	39,291	751	38,540	44,525	1,035	43,490	- 5,234
2nd Qr.	33,711	861	32,850	35,540	930	34,610	- 1,829
3rd Qr.	44,369	1,229	43,140	45,524	1,294	44,230	- 1,155
4th Qr.	45,859	1,139	44,720	41,680	1,210	40,470	+ 4,179

- <sup>1/</sup> includes : (a) the very small number of engaged or discharged seamen;  
 (b) emigrants to and immigrants from the dependencies; and  
 (c) movement of military personnel as from the 1962 Population Census

Table 2.2 - Passenger traffic by country of original embarkation or final destination, 1980

Country of original embarkation or final destination	Total arrivals	Total departures
Australia	5,220	5,180
France	16,870	17,670
Germany, Fed. Rep.	7,650	7,660
Hong Kong	1,020	1,230
India	8,550	8,090
Italy	3,260	4,190
Kenya	2,700	2,780
Malagasy Republic	5,880	4,980
Malawi	240	330
Reunion	51,710	52,400
Rhodesia	340	430
Rodrigues	5,722	6,042
Seychelles	2,810	3,420
South Africa, Rep. of	24,890	24,920
Switzerland	1,130	1,290
Tanzania	1,050	930
United Kingdom	15,850	16,300
Zambia	2,840	2,240
Other countries	4,878	6,458
All countries	162,610	166,540

1/ excluding those transit passengers who did not leave the airport, 620 discharged seamen and 729 engaged seamen

Table 2.3 - Tourist<sup>1/</sup> arrivals by mode of transport and tourist nights spent during period, 1964 - 1980

Period	Tourists arriving during period		Tourist nights spent during period <sup>2/</sup>	% change over previous year	
	Sea	Air		Tourist arrivals	Tourist nights
1964	1,010	9,023	144,600	+ 29.8	+ 45.5
1965	746	9,312	144,900	+ 0.2	+ 0.2
1966	1,328	11,712	162,300	+ 29.6	+ 12.0
1967	937	13,877	172,000	+ 13.6	+ 6.0
1968	647	14,906	149,500	+ 5.0	- 13.1
1969	455	20,132	220,600	+ 32.4	+ 47.6
1970	365	27,285	287,600	+ 34.3	+ 30.4
1971	168	36,230	399,700	+ 31.6	+ 39.0
1972	143	48,654	454,300	+ 34.1	+ 13.7
1973	1,293 <sup>3/</sup>	66,701	733,100	+ 39.3	+ 61.4
1974	472	72,443	772,200	+ 7.2	+ 5.3
1975	554	74,043	746,900	+ 2.3	- 3.3
1976	778	91,783	892,200	+ 24.1	+ 19.4
1977	1,035	101,475	994,800	+ 10.7	+ 11.5
1978	696	107,626	1,051,600	+ 5.7	+ 5.7
1979	510	127,850	1,419,600	+ 18.5	+ 35.0
1980	470	114,610	1,301,730	- 10.4	- 8.3

<sup>1/</sup> a tourist is defined as a non-resident staying in the island for more than 24 hours but less than a year

<sup>2/</sup> include nights spent during reference period by tourists arriving prior to the period

<sup>3/</sup> includes about 700 persons who came for a religious conference

Table 2.4 - Tourist arrivals and tourist nights<sup>1/</sup> by country of residence - Island of Mauritius, 1980

Country of residence	Tourist arrivals	Tourist nights spent during period <sup>1/</sup>
Australia	3,460	40,270
France	19,620	233,190
Germany, Fed. Rep.	9,050	125,710
India	2,950	47,960
Italy	4,300	40,880
Kenya	910	9,290
Malagasy Republic	6,480	43,030
Reunion	26,570	243,720
Rhodesia	630	9,450
Seychelles	450	8,710
South Africa, Rep. of	21,180	206,070
Switzerland	1,570	25,390
Tanzania	630	4,460
United Kingdom	7,690	142,070
Zambia	1,180	13,380
Other countries	8,410	108,150
All countries	115,080	1,301,730

<sup>1/</sup> include nights spent during 1980 by tourists arriving prior to this period

Table 2.5 - Official long-term emigrants<sup>1/</sup> by sex - Island of Mauritius, 1956 - 80

Year	Both sexes	Male	Female
1956	147	93	54
1957	109	68	41
1958	163	130	33
1959	170	128	42
1960	158	132	26
1961	837	629	208
1962	1,083	711	372
1963	594	326	268
1964	915	491	424
1965	1,408	659	749
1966	1,611	774	837
1967	2,225	1,038	1,187
1968	3,067	1,487	1,580
1969	2,379	1,119	1,260
1970	2,282	1,063	1,219
1971	2,351	1,078	1,273
1972	2,271	956	1,315
1973	2,037	844	1,193
1974	1,494	606	888
1975	874	328	546
1976	579	195	384
1977	290	120	170
1978	320	111	209
1979	191	43	148
1980	308	84	224

<sup>1/</sup> persons who have obtained a permit to emigrate to another country

SECTION 3 - PUBLIC HEALTH

Table 3.1 - Health services (as at 31st December) - Island of Mauritius, 1976-80

	1976	1977	1978	1979	1980
<u>Hospitals</u>					
General hospitals	6	6	6	7	7
Special hospitals (psychiatric, leper, chest, eye and E.N.T.) <u>1/</u>	5	5	5	5	5
Prisons hospitals	2	2	2	1	1
Private hospitals on sugar estates	17	18	18	17	11
<u>Health Centre</u>	-	-	-	1	1
<u>Dispensaries</u>					
Public dispensaries	45	48	50	48	51
Prisons dispensaries	2	2	2	2	2
Private dispensaries on sugar estates	21	18	18	19	24
Mobile dispensaries	5	5	5	5	5
<u>Clinics</u>					
Dental	9	9	9	10	10
Social hygiene	1	1	1	1	1
Private	6	6	6	6	7
Public mobile ante-natal and family planning	1	1	1	1	1
Public mobile dental	1	2	2	2	2
<u>Maternal and child health and family planning clinics</u>	68	70	72	71	71
<u>Family planning (only)</u>					
Clinics	15	15	14	18	15
Supply centres	43	41	42	37	29
<u>Personnel (including Rodrigues)</u>					
<u>Doctors</u>					
Total government doctors <u>2/</u>	257	280	305	324	338
- of which specialists <u>3/</u>	100	102	102	104	104
Doctors in private practice	94	96	114	133	165
<u>Dentists</u>					
Government service <u>2/</u>	14	18	20	18	22
Private	23	27	26	35	37
<u>Pharmacists</u>					
Government service	6	8	7	7	7
Private	46	48	52	57	62
<u>Qualified nurses (excluding nurse-midwives)</u>					
Government service	1,081	1,130	1,269	1,309	1,440
<u>Qualified midwives/nurse-midwives</u>					
Government service	415	457	479	505	550

1/ the Leprosarium and the E.N.T. Centre are administratively attached to Sir Seewoosagur Ramgoolam National Hospital and Victoria Hospital respectively

2/ including temporary officers but excluding pre-registration ones

3/ excluding those performing administrative duties full-time



Table 3.2 - Statistics of government hospitals<sup>1/</sup> - Island of Mauritius, 1976 - 1980

Period	No. of beds (as at end of period)	Patients in hospitals on first day of period	Total admissions	Deaths	Discharges (excluding deaths)	Patients remaining on last day of period
1976	2,802	1,667	76,521	1,790	74,738	1,660
1977	2,837	1,660	86,288	1,925	84,359	1,664
1978	2,836	1,664	90,443	1,819	88,592	1,696
1979	2,827	1,696	97,429	2,060	95,377	1,688
1980	2,707	1,688	104,791	2,128	102,612	1,739
1979 : 1st Qr.	2,825	1,636	23,396	495	22,362	2,235
2nd Qr.	2,825	2,235	24,347	524	23,937	2,121
3rd Qr.	2,827	2,121	24,936	557	24,302	2,198
4th Qr.	2,827	2,198	24,750	484	24,776	1,688
1980 : 1st Qr.	2,778	1,688	24,994	561	23,788	2,333
2nd Qr.	2,778	2,333	25,454	513	24,869	2,405
3rd Qr.	2,707	2,405	27,233	572	26,643	2,423
4th Qr.	2,707	2,423	27,110	482	27,312	1,739

<sup>1/</sup> excluding prison hospitals

Table 3.3 - Notifiable, contagious or communicable diseases - Island of Mauritius, 1976 - 1980

Disease Period	Amoebiasis	Food poisoning	Gonorrhoea	Infective Hepatitis	Lepto- spirosis	Leprosy	Malaria	Measles	Schisto- somi- asis	Syphilis	Tetanus	Tuber- culosis	Typhoid fever
1976	...	...	250	...	...	1	50	...	...	145	...	198	23
1977	...	...	207	...	...	-	86	...	...	99	...	191	17
1978	...	...	206	...	...	-	77	...	...	32	...	195	17
1979	...	...	120	...	...	8	128	...	...	70	...	182	7
1980	3	28	261	226	2	-	470	35	265	11	5	132	126
1979 : 1st Qr.	...	...	30	...	...	4	12	...	...	11	...	48	5
2nd Qr.	...	...	35	...	...	2	59	...	...	20	...	49	-
3rd Qr.	...	...	31	...	...	-	19	...	...	27	...	38	-
4th Qr.	...	...	24	...	...	2	38	...	...	12	...	47	2
1980 : 1st Qr.	3	7	40	143	1	-	221	-	1	4	3	44	111
2nd Qr.	-	14	66	52	-	-	162	6	29	1	1	23	4
3rd Qr.	-	5	83	12	-	-	27	24	171	2	1	32	-
4th Qr.	-	2	72	19	1	-	60	5	64	4	-	33	11

SECTION 4 - PUBLIC FINANCE AND BANKING

Table 4.1 - Central government revenue and expenditure, 1977-78 to 1980-81

Financial year	Revenue			Expenditure			Rs million
	Recurrent	Capital	Total	Recurrent	Capital	Total	Surplus (+) Deficit (-)
1977-78	1,260.8	458.0	1,718.8	1,441.3	645.9	2,087.2	- 368.4
1978-79	1,486.4	718.9	2,205.3	1,770.0	669.3	2,439.3	- 234.0
1979-80	1,863.9	730.4	2,594.3	2,016.1	886.0	2,902.1	- 307.8
1980-81 <sup>1/</sup>	2,200.1	865.4	3,065.5	2,299.8	1,490.6	3,790.4	- 724.9

<sup>1/</sup> revised estimates

Table 4.2 - Functional classification of central government capital revenue, 1977-78 to 1980-81

	Rs million			
	1977-78	1978-79	1979-80	1980-81 <sup>1/</sup>
Grants	1.6	1.0	1.8	1.4
Internal borrowing	-	299.3	387.0	160.0
External borrowing	427.5	378.9	283.0	651.1
Interest on investments	7.6	4.9	6.5	13.5
Transfer from recurrent revenue	-	-	-	-
Other capital revenue	21.3	34.8	52.1	39.4
Total	458.0	718.9	730.4	865.4

<sup>1/</sup> estimates

Table 4.3 - Functional classification of central government capital expenditure  
1977-78 to 1980-81

	Rs million			
	1977-78	1978-79	1979-80	1980-81 <sup>1/</sup>
Agriculture and forests	53.6	51.0	60.6	79.5
Roads and bridges	2.9	14.9	25.0	46.1
Marine services and civil aviation	6.6	5.5	5.1	5.7
Health	12.4	12.7	13.5	17.8
Housing	27.9	32.8	39.4	76.4
Sewerage	4.8	4.4	15.0	24.0
Education	68.5	66.9	72.9	80.0
Telecommunications	19.8	42.0	15.4	24.2
Rural development	21.0	21.1	18.0	22.4
Development works	91.5	106.9	121.8	155.1
Rodrigues	26.3	27.5	38.6	55.5
Additional subscription to I.M.F. and I.B.R.D.	-	-	-	35.8
Contribution to share capital of Development Bank	3.9	-	-	-
Subscription to the African Development Bank	7.3	1.6	2.6	2.8
Contribution to share capital of Mauritius Sugar Terminal Corporation	-	-	140.0	55.5
I.M.F. Repurchase obligations	-	-	-	-
Loans : Development Bank of Mauritius	17.4	15.0	-	-
Central Electricity Board	12.8	35.7	24.5	220.0
Mauritius Housing Corporation	24.0	17.0	10.0	23.0
Central Housing Authority	17.3	39.8	52.2	75.0
Tea Development Authority	23.0	31.0	27.0	27.0
Central Water Authority	48.9	32.4	48.6	110.0
Agricultural Marketing Board	2.8	0.6	-	-
Other loans	36.0	17.5	51.9	51.0
Reserve	-	-	-	40.0
Other capital expenditure	117.2	93.0	103.9	518.2
<b>Total</b>	<b>645.9</b>	<b>669.3</b>	<b>886.0</b>	<b>1,490.6</b>

<sup>1/</sup> estimates

Table 4.4 - Functional classification of central government recurrent revenue, 1977-78 to 1980-81

	Rs million			
	1977-78	1978-79	1979-80	1980-81 <sup>1/</sup>
<u>Taxes on income and capital</u>	<u>298.9</u>	<u>328.9</u>	<u>296.2</u>	<u>334.5</u>
Income tax:				
Individuals	153.5	182.7	158.7	160.0
Companies	129.9	128.4	118.5	154.0
Contribution to Widows' Fund	9.0	10.2	11.7	12.5
Succession duties	6.5	7.6	7.3	8.0
<u>Taxes on financial transactions</u>	<u>51.1</u>	<u>62.2</u>	<u>70.9</u>	<u>79.5</u>
<u>Taxes on gambling</u>	<u>25.9</u>	<u>30.3</u>	<u>37.5</u>	<u>40.0</u>
<u>Taxes on consumption and production</u>	<u>744.8</u>	<u>855.7</u>	<u>1,214.2</u>	<u>1,425.5</u>
Import duties	412.7	465.0	640.3	802.0
Export duties	139.8	145.2	287.3	290.0
Excise duties	149.4	184.3	213.7	244.8
Business and professional licenses	11.2	16.3	19.8	23.8
Taxes on transportation	25.4	30.5	29.9	36.9
Taxes on tourism	6.3	9.5	16.2	20.0
Taxes on international travel	-	4.9	7.0	8.0
<u>Provision of goods and services</u>	<u>80.1</u>	<u>108.1</u>	<u>142.3</u>	<u>162.9</u>
Rental of government property	3.8	4.3	5.4	6.4
Telephone service	13.1	21.9	30.6	33.0
Posts and telegraphs	18.9	20.9	26.1	30.6
Agriculture and forests	9.6	9.3	16.1	10.7
Other goods and services	34.7	51.7	64.1	82.2
<u>Interests, profits and dividends</u>	<u>47.5</u>	<u>69.9</u>	<u>76.9</u>	<u>88.5</u>
<u>Grants from British government</u>	<u>0.2</u>	<u>-</u>	<u>-</u>	<u>-</u>
<u>Other recurrent revenue</u>	<u>12.3</u>	<u>31.3</u>	<u>25.9</u>	<u>69.2</u>
Total	1,260.8	1,486.4	1,863.9	2,200.1

<sup>1/</sup> estimates

Table 4.5 - Functional classification of central government recurrent expenditure,  
1977-78 to 1980-81

Rs million

	1977-78	1978-79	1979-80	1980-81 <sup>1/</sup>
<u>General services</u>	<u>192.4</u>	<u>264.8</u>	<u>263.5</u>	<u>312.0</u>
General administration	19.9	19.4	19.8	35.2
Legislature	3.3	3.5	3.8	3.9
Maintenance of law and order:				
Justice and Attorney-General	9.2	11.1	11.3	12.0
Police and defence	71.7	124.2	117.1	130.6
Prisons	9.1	11.8	13.4	18.3
Revenue collection and financial control	41.2	46.5	46.9	50.9
Other general services	38.0	48.3	51.2	61.9
<u>Community services</u>	<u>100.3</u>	<u>116.3</u>	<u>69.4</u>	<u>79.1</u>
Maintenance of roads and public buildings	23.7	24.1	22.7	26.5
Water supplies	45.3	57.6	11.0	12.0
Sanitation and sewerage	15.3	17.3	17.9	19.2
Other community services	16.0	17.3	17.8	21.4
<u>Social services</u>	<u>613.4</u>	<u>756.0</u>	<u>817.5</u>	<u>903.8</u>
Education	252.8	301.4	330.8	360.8
Health (excluding sanitation)	136.5	153.1	157.9	166.1
Social Security:				
Family allowances	22.7	23.9	21.8	23.0
Outdoor relief	16.2	15.5	15.1	15.5
Contribution to National Pension Fund <sup>2/</sup>	100.2	112.9	118.3	120.0
Subsidy on essential foodstuffs	58.4	114.1	131.7	173.0
Housing	7.7	9.4	10.8	10.8
Other social services	18.9	25.7	31.1	34.6
<u>Economic services</u>	<u>129.2</u>	<u>119.2</u>	<u>126.2</u>	<u>153.0</u>
Agriculture and forests	46.2	50.1	51.4	60.1
Contribution to National Fertiliser Scheme	25.0	3.6	2.1	4.0
Civil aviation and marine services	10.4	11.8	13.8	19.6
Posts, telegraphs and telecommunications	29.8	32.9	34.9	41.4
Other economic services	17.8	20.8	24.0	28.7
<u>Unallocable expenditure</u>	<u>406.0</u>	<u>513.7</u>	<u>739.5</u>	<u>850.3</u>
Transfer to local authorities	61.8	84.4	94.4	101.7
Recurrent financial obligations:				
Public debt:				
Interest	121.2	185.3	328.8	360.6
Redemptions	12.7	20.4	63.2	111.1
Sinking fund	31.6	29.2	37.3	47.5
Public pensions and gratuities	75.3	85.7	96.6	99.4
Passages	2.3	3.1	2.8	2.4
Rodrigues	42.2	46.5	51.0	60.0
Other unallocable expenditure	58.9	59.1	65.4	67.6
<b>Total</b>	<b>1,441.3</b>	<b>1,770.0</b>	<b>2,016.1</b>	<b>2,299.0</b>

<sup>1/</sup> revised estimates

<sup>2/</sup> including old age pension

Table 4.6 - Public debt outstanding, 1976 - 1980

Rs million

End of period	Total public debt	Internal debt				External debt <sup>1/</sup>			
		Development loan stocks	Tap loan stocks	Other	Total internal debt	International development institutions	Foreign governments	Other	Total external debt
1976 June	1,226.6	835.0	105.6	23.1	963.7	107.4	155.5	-	262.9
December	1,208.0	820.0	102.4	23.1	945.5	108.0	154.5	-	262.5
1977 June	1,406.7	965.0	100.6	18.1	1,083.7	143.4	179.6	-	323.0
December	1,395.1	950.0	96.0	18.1	1,064.1	157.5	173.5	-	331.0
1978 June	1,731.0	940.5	28.3	18.1	986.9	185.1	211.7	347.3	744.1
December	1,957.3	1,113.0	23.5	18.1	1,154.6	202.5	223.7	376.5	802.7
1979 June <sup>2/</sup>	2,321.3	1,214.4	21.7	18.5	1,254.6	231.8	251.6	583.3	1,066.7
December	3,166.1	1,564.0	17.3	18.9	1,600.2	316.7	353.0	896.2	1,565.9
1980 June <sup>2/</sup>	3,227.4	1,554.0	16.7	21.1	1,591.8	374.8	398.2	862.6	1,635.6
December	3,625.6	1,524.0	14.8	22.0	1,560.8	412.1	449.6	1,203.1	2,064.8

<sup>1/</sup> external debt is valued at rates of exchange ruling at end of each period<sup>2/</sup> excluding external loans amounting to Rs mm 45.2 and 95.4 at end of June 1979 and 1980 respectively, which have not yet been credited to the capital revenue of central government

Table 4.7 - Sinking funds held against the public debt, 1976 - 1980

Rs million

Amount as at 30th June	1976	1977	1978	1979	1980
		150.1	156.4	97.5	93.0

Note: investments are valued at mean market prices

Table 4.8 - Central government local loan repayments by year of maturity  
(end of December 1980)

Year of maturity	No. of loans to be repaid	Amount to be repaid (Rs million)
Development loan stocks 1981	1	20.0
" " " 1982	2	55.0
" " " 1983	2	150.3
" " " 1984	4	85.0
" " " 1985	7	206.2
" " " 1986	1	15.0
" " " 1987	2	55.0
" " " 1988	2	30.0
" " " 1989	6	185.0
" " " 1990	2	45.0
" " " 1991	2	45.0
" " " 1992	3	55.0
" " " 1993	2	105.2
" " " 1994	3	170.0
" " " 1995	1	20.0
" " " 1996	2	60.0
" " " 1997	2	85.0
" " " 1998	-	-
" " " 1999	2	137.3
Tap loan stocks	-	14.8
Other loans	6	22.0
Total	52	1,560.8



Table 4.9 -- Outstanding loans and advances made from public funds (at end of June) 1976 - 1980

Rs million

Debtor	1976	1977	1978	1979	1980
<u>Statutory bodies</u>	<u>400.3</u>	<u>504.0</u>	<u>645.4</u>	<u>812.9</u>	<u>1,024.6</u>
Agricultural Marketing Board	17.6	15.5	18.3	18.8	18.6
Central Electricity Board	101.9	117.4	125.0	153.0	175.7
Central Housing Authority	50.0	59.9	61.5	99.3	149.6
Central Water Authority	41.2	52.2	101.0	131.8	180.3
Development Bank of Mauritius	89.9	122.3	137.6	147.5	141.8
Mauritius Broadcasting Corporation	0.4	0.3	0.1	-	-
Mauritius Housing Corporation	34.9	45.0	68.0	88.7	97.0
Mauritius Sugar Industry Research Institute	0.9	0.8	0.6	0.5	0.3
Sugar Planters' Mechanical Pool Corporation	4.3	6.1	4.9	3.7	2.8
Tea Development Authority	62.6	82.9	105.9	135.0	162.0
Other statutory bodies	0.6	1.6	22.5	34.6	96.5
<u>Local authorities</u>	<u>27.9</u>	<u>27.1</u>	<u>26.2</u>	<u>25.2</u>	<u>27.8</u>
<u>Miscellaneous</u>	<u>30.4</u>	<u>30.0</u>	<u>44.8</u>	<u>44.5</u>	<u>68.6</u>
Sewerage scheme	19.5	20.2	20.5	20.9	20.3
Colonial Steamships Co. Ltd.	0.8	0.6	0.4	0.2	-
Tea estates	2.7	1.1	7.8	7.8	5.3
Mauritius Hotels Ltd.	0.9	0.9	0.8	0.7	0.6
Compagnie des Villages de Vacances de Lille de France Ltee (COVIFRA)	4.1	4.1	3.9	3.7	3.2
Other	2.4	3.1	11.4	11.2	39.2
Total	458.6	561.1	716.4	882.6	1,121.0

Table 4.10 - Income tax<sup>1/</sup> - Individuals

Range of gross income (Rupees)	Year of assessment 1977-78 <sup>2/</sup>				Year of assessment 1978-79			
	Number of taxpayers <sup>3/</sup>	Gross income (Mn. Rs)	Chargeable income (Mn. Rs)	Tax charged (Mn. Rs)	Number of taxpayers <sup>3/</sup>	Gross income (Mn. Rs)	Chargeable income (Mn. Rs)	Tax charged (Mn. Rs)
10,000 or less	4,925	37.98	14.45	1.44	4,839	38.50	14.82	1.47
10,001 - 20,000	11,385	166.03	73.90	7.62	13,528	197.90	85.61	8.71
20,001 - 30,000	6,307	154.16	82.95	10.36	7,111	173.32	92.87	11.50
30,001 - 40,000	3,266	112.76	71.71	11.06	3,650	125.95	80.05	12.22
40,001 - 50,000	1,827	81.42	57.33	10.49	2,137	95.58	66.41	12.09
50,001 - 100,000	3,499	240.10	185.11	46.59	3,968	273.35	208.43	52.13
100,001 - 250,000	879	117.73	100.31	44.76	986	128.26	107.00	45.74
250,001 - 500,000	63	20.74	19.19	12.12	48	16.49	14.84	9.38
Over 500,000	20	13.73	12.64	9.21	2	1.08	0.98	0.66
Total	32,171	944.65	617.59	153.65	36,269	1,050.43	671.01	153.90

<sup>1/</sup> the figures are provisional and subject to amendment as the Income Tax Act 1974 empowers the Commissioner of Income Tax to revise cases under objection, to issue additional claims for the six years preceding the present year of assessment, and to claim back duty at any time in cases of false or incorrect returns of income for any previous year.

<sup>2/</sup> revised

<sup>3/</sup> married couples are counted as one

Table 4.11 - Income tax - Companies

Range of liable income (Rupees)	Year of assessment 1977-78 <sup>1/</sup>				Year of assessment 1978-79			
	Number of companies	Liable income (Mn. Rs)	Chargeable income (Mn. Rs)	Tax charged (Mn. Rs)	Number of companies	Liable income (Mn. Rs)	Chargeable income (Mn. Rs)	Tax charged (Mn. Rs)
25,000 or less	174	1.80	1.06	0.52	163	1.62	1.02	0.58
25,001 - 50,000	61	2.24	1.19	0.59	74	2.68	1.20	0.71
50,001 - 100,000	81	5.99	2.88	1.44	65	4.82	2.06	1.21
100,001 - 150,000	47	5.81	2.45	1.23	51	6.29	2.79	1.63
150,001 - 250,000	58	11.46	5.38	2.69	50	9.37	3.66	2.08
250,001 - 500,000	76	26.66	11.73	5.86	72	25.29	9.45	5.47
500,001 - 750,000	25	15.97	6.48	3.23	24	14.59	7.46	4.27
750,001 - 1,000,000	25	21.65	11.26	5.58	20	17.28	7.01	4.22
1,000,001 - 1,500,000	25	30.10	12.54	6.27	23	27.30	12.66	7.13
1,500,001 - 2,000,000	12	19.87	11.87	5.93	11	18.95	10.04	5.71
2,000,001 - 5,000,000	32	100.41	53.38	26.59	32	100.44	57.81	31.52
5,000,001 - 10,000,000	18	122.82	66.45	32.96	12	87.12	39.77	20.66
Over 10,000,000	8	136.77	71.69	35.84	6	104.69	75.86	37.93
Total	642	501.55	258.36	128.73	603	420.44	230.79	123.12

<sup>1/</sup> the figures are provisional and subject to amendment as the Income Tax Act 1974 empowers the Commissioner of Income Tax to revise cases under objection, to issue additional claims for the six years preceding the present year of assessment, and to claim back duty at any time in cases of false or incorrect returns of income for any previous year.

<sup>2/</sup> revised

Table 4.12 - Foreign exchange reserves, 1976 - 1980

Rs million

End of period	I.M.F. <sup>1/</sup> position (net)	Bank of Mauritius	Government	Statutory bodies	Commercial banks (net)	Total
1976	42.4	551.9	11.9	- 2.4	25.8	629.6
1977	-	431.1	4.4	1.4	- 56.5	380.4
1978	-	305.5	6.7	1.8	- 41.9	272.1
1979	-	257.9	11.9	3.0	- 58.5	214.3
1980	-	747.0	6.8	4.1	- 49.9	708.0
1979 : 1st Qr.	-	194.3	1.8	1.9	- 55.3	142.7
2nd Qr.	-	287.9	9.8	2.3	- 75.1	224.9
3rd Qr.	-	257.1	10.3	2.2	- 53.6	216.0
4th Qr.	-	257.9	11.9	3.0	- 58.5	214.3
1980 : 1st Qr.	-	340.7	10.5	2.8	- 81.6	272.4
2nd Qr.	-	312.0	11.2	3.6	- 83.1	243.7
3rd Qr.	-	356.6	7.2	3.9	- 63.6	304.1
4th Qr.	-	747.0	6.8	4.1	- 49.9	708.0

<sup>1/</sup> International Monetary Fund

Source : Bank of Mauritius

Table 4.13. Assets of the Bank of Mauritius, 1976 - 1980

Rs million.

End of period	Grand total	External						Local			
		Total	Balances with banks	Bills	Securities	S.D.R. <sup>1/</sup>	Notes and coins	Total	Government securities	Discounts and advances	Other assets
1976	947.7	552.0	356.2	63.9	111.1	20.8	-	395.7	206.8	173.2	15.7
1977	1,183.7	431.1	156.9	150.3	106.0	17.9	-	752.6	344.8	384.4	23.4
1978	1,279.6	305.5	130.5	49.4	113.1	12.5	-	974.1	382.0	572.8	19.3
1979	1,562.9	257.9	105.4	121.1	25.5	5.9	-	1,305.0	624.5	644.0	36.5
1980	2,118.6	747.0	714.7	2.3	29.6	-	0.4	1,371.6	533.9	805.5	32.2
1979 : 1st Qr.	1,243.6	194.3	97.8	25.7	57.1	13.7	-	1,049.3	396.8	597.3	55.2
2nd Qr.	1,322.3	287.9	231.5	21.1	25.8	9.6	-	1,034.4	422.2	574.8	37.3
3rd Qr.	1,345.6	257.1	178.3	50.8	20.1	7.9	-	1,088.5	462.5	603.3	22.7
4th Qr.	1,562.9	257.9	105.4	121.1	25.5	5.9	-	1,305.0	624.5	644.0	36.5
1980 : 1st Qr.	1,671.5	340.7	242.3	51.7	26.0	20.5	0.2	1,330.8	592.4	710.0	28.4
2nd Qr.	1,793.8	312.0	165.4	94.1	27.7	24.6	0.2	1,481.8	727.5	729.3	25.0
3rd Qr.	2,037.4	356.6	269.9	34.1	28.7	23.6	0.3	1,680.8	714.8	933.0	33.0
4th Qr.	2,118.6	747.0	714.7	2.3	29.6	-	0.4	1,371.6	533.9	805.5	32.2

<sup>1/</sup> Special Drawing Rights

Source : Bank of Mauritius

Table 4.14 - Liabilities of the Bank of Mauritius, 1976-80

Rs million

End of period	Grand Total	Capital and reserve	Notes in circulation	Coins in circulation	Deposits				Other liabilities	
					Total Deposits	Demand				Other deposits
						Government	Bankers	Other		
1976	947.7	33.0	626.2	16.5	159.3	0.3	127.1	11.1	20.8	112.6
1977	1,183.7	33.0	779.4	21.7	190.0	0.3	105.5	10.7	73.5	159.6
1978	1,279.6	33.0	891.1	26.3	167.7	0.8	150.0	13.7	3.2	161.5
1979	1,562.9	33.0	803.5	28.3	385.1	2.5	187.4	175.2	20.0	313.0
1980	2,118.6	33.0	868.4	29.0	262.8	3.1	224.3	34.1	1.3	925.5
1979 : 1st Qr.	1,243.6	33.0	773.6	25.9	201.3	0.7	173.8	25.3	1.5	209.8
2nd Qr.	1,322.3	33.0	758.8	26.0	240.2	27.5	193.8	17.4	1.5	264.3
3rd Qr.	1,345.6	33.0	713.5	27.2	344.0	2.5	190.3	16.4	134.8	227.9
4th Qr.	1,562.9	33.0	803.5	28.3	385.1	2.5	187.4	175.2	20.0	313.0
1980 : 1st Qr.	1,671.5	33.0	727.6	28.5	370.2	3.0	189.9	17.8	159.5	512.2
2nd Qr.	1,793.8	33.0	690.1	27.4	290.2	28.1	229.7	31.9	0.5	753.1
3rd Qr.	2,037.4	33.0	724.2	28.3	380.3	3.1	202.4	21.6	153.2	871.6
4th Qr.	2,118.6	33.0	868.4	29.0	262.8	3.1	224.3	34.1	1.3	925.5

Table 4.15 - Assets of Commercial Banks, 1976 - 1980

Rs million

End of Period	Total Assets	Reserves		Foreign Assets		Claims on Government				Claims on Private Sector					Other Assets
		Cash in hand	Balances at Bank of Mauritius	Balances with Banks Abroad	Other <sup>1/</sup>	Treasury Bills	Government Securities	Advances <sup>4/</sup>	Local Bills Dis-counted	Bills Receivable	Bills Redis-counted	Loans & advances to Public Bodies	Other <sup>2/</sup> Loans and Advances		
1976	1,766.2	54.9	127.1	13.8	21.1	-	247.0	1.4	52.1	86.8	15.4	25.7	975.6	145.3	
1977	2,167.1	107.5	105.5	19.1	24.8	79.0	179.1	80.5	44.6	81.0	26.0	26.8	1,173.8	219.4	
1978	2,515.5	95.3	149.9	23.7	25.7	100.4	330.2	72.1	65.3	62.7	3.7	22.8	1,353.6	212.1	
1979	2,977.3	107.0	187.4	36.8	26.8	136.0	397.3	105.7	53.0	79.6	54.0	48.8	1,486.2	260.7	
1980	3,751.9	162.4	224.3	34.2	70.2	434.5	419.8	135.6	87.7	78.2	24.4	52.3	1,638.5	389.8	
1979:1st Qr.	2,621.6	84.9	173.8	19.4	22.8	82.3	401.1	32.7	37.6	70.9	19.2	32.3	1,444.4	150.2	
2nd Qr.	2,769.3	85.2	193.7	25.2	31.3	144.0	401.0	109.1	63.3	63.5	9.5	25.1	1,431.8	186.6	
3rd Qr.	2,735.3	91.3	190.3	19.7	27.5	100.2	401.0	85.6	79.1	61.7	3.2	28.8	1,466.1	180.8	
4th Qr.	2,977.3	107.0	187.4	36.8	26.8	136.0	397.3	103.7	53.0	79.6	54.0	48.8	1,486.2	260.7	
1980:1st Qr.	3,040.6	108.8	189.9	36.9	28.7	84.1	422.5	137.4	58.3	82.8	22.7	59.3	1,574.8	234.4	
2nd Qr.	3,413.1	96.0	229.7	27.9	62.1	253.1	422.0	158.1	83.1	73.8	25.3	40.8	1,585.8	355.4	
3rd Qr.	3,400.4	119.6	202.4	41.2	57.7	228.3	422.3	147.7	86.7	73.8	25.1	40.2	1,588.5	366.9	
4th Qr.	3,751.9	162.4	224.3	34.2	70.2	434.5	419.8	135.6	87.7	78.2	24.4	52.3	1,638.5	389.8	

<sup>1/</sup> including foreign notes and coins, foreign bills discounted and foreign securities

<sup>2/</sup> including non-interbank investments

<sup>3/</sup> including interbank investments

<sup>4/</sup> including foreign currency loans to Government as from December, 1977

Source: Bank of Mauritius

Table 4.16 - Liabilities of commercial banks, 1976 - 1980

Rs million

End of Period	Total Liabilities	Capital and reserves	Private sector deposits			Government deposits	Credit from Bank of Mauritius	Balance due to		Bills	Other Liabilities <sup>1/</sup>
			Demand	Time	Savings			Bank of Mauritius	Banks abroad		
1976	1,766.2	71.4	506.5	450.9	513.6	1,471.0	4.5	45.8	9.1	10.0	144.2
1977	2,167.1	111.8	525.3	498.3	626.6	1,650.2	5.2	62.2	100.4	7.2	222.9
1978	2,515.5	154.7	615.5	650.1	759.9	2,025.5	4.5	1.7	91.3	9.6	196.5
1979	2,977.3	166.8	683.8	800.9	886.5	2,371.2	3.1	2.5	122.1	13.6	230.5
1980	3,751.9	198.4	953.3	1,051.5	1,065.4	3,070.2	9.6	0.9	154.3	12.3	230.5
1979 : 1st Qr.	2,621.6	155.9	570.8	700.7	842.6	2,114.1	4.5	3.4	97.5	10.3	200.6
2nd Qr.	2,769.3	162.5	631.0	757.1	842.1	2,230.2	7.0	3.6	131.6	14.2	213.4
3rd Qr.	2,735.3	163.8	581.9	748.6	878.7	2,209.2	1.3	2.0	100.8	14.8	214.8
4th Qr.	2,977.3	166.8	683.8	800.9	886.5	2,371.2	3.1	2.5	122.1	13.6	280.5
1980 : 1st Qr.	3,040.6	165.4	615.0	834.2	947.7	2,396.9	8.3	1.0	147.2	10.7	248.0
2nd Qr.	3,413.1	195.2	719.8	1,030.0	965.7	2,715.5	19.4	1.0	173.1	14.7	286.2
3rd Qr.	3,400.4	196.3	692.0	1,005.6	1,003.5	2,701.1	12.9	0.8	162.5	28.3	298.5
4th Qr.	3,751.9	198.4	953.3	1,051.5	1,065.4	3,070.2	9.6	0.9	154.3	12.3	285.3

<sup>1/</sup> including interbank deposits and bills rediscounted with Bank of Mauritius

Source: Bank of Mauritius



Table 4.17 - Sector-wise distribution of commercial banks' credit to private sector, 1979-80

Rs million

Sector	1979				1980			
	March	June	September	December	March	June	September	December
	Sugar <sup>1/</sup>	385.2	310.9	354.4	328.3	417.7	332.0	298.0
Other agricultural interests	48.8	57.1	56.1	49.3	49.2	54.3	53.9	65.3
Export Processing Zone	318.7	348.9	329.3	344.6	333.2	369.8	354.8	405.0
Holders of Development Certificate	182.1	188.3	211.5	225.8	217.4	217.9	213.8	215.4
Other industries and manufacturers <sup>2/</sup>	236.6	231.4	218.2	252.8	241.1	281.4	307.3	356.8
Traders	219.7	223.2	216.4	228.9	219.9	221.0	232.8	243.9
Housing	52.3	58.4	62.6	64.9	66.7	72.2	79.3	84.0
Personal and professional	84.5	101.3	105.9	119.7	128.0	145.7	155.8	177.9
Statutory and para-statal bodies	32.3	25.1	29.3	49.2	59.7	41.0	40.3	52.4
Investments in corporate shares and securities	11.5	11.5	11.7	11.7	11.7	11.7	11.7	11.8
Other customers <sup>3/</sup>	32.7	37.1	43.5	46.4	53.3	61.8	66.6	74.8
Total	1,604.4	1,593.2	1,638.9	1,721.6	1,797.9	1,808.8	1,814.3	1,881.1

<sup>1/</sup> including Mauritius Sugar Syndicate<sup>2/</sup> including transport and hotels<sup>3/</sup> including stock brokers and financial institutions

Source: Bank of Mauritius

Table 4.18 - Assets and liabilities of the Development Bank of Mauritius  
(at end of period), 1976 - 1980

Rs million

	1976	1977	1978	1979	1980
<u>Assets</u>					
Cash	0.2	0.1	0.1	0.9	0.2
Balances due by other banks in Mauritius	4.1	0.2	0.2	8.4	3.1
Loans and advances:					
Primary industries	12.5	12.8	16.9	16.5	20.5
Other industries	123.6	169.3	189.6	196.7	247.2
Other loans and advances	0.7	0.3	0.8	2.4	3.8
Investments					
Local (at cost)	76.3	106.8	99.9	99.4	103.6
Other assets	19.4	2.6	6.4	10.4	10.3
Total	236.8	292.6	313.9	334.7	388.7
<u>Liabilities</u>					
Deposits:					
Demand	2.7	6.7	5.1	3.2	6.1
Time	3.1	3.0	3.1	3.0	2.9
Savings	3.8	3.6	4.7	4.1	4.1
Share capital	27.5	31.4	31.4	41.9	46.9
Debentures	11.0	6.8	5.0	1.2	1.2
Government of Mauritius	107.0	140.6	145.9	144.5	137.8
Other liabilities	81.7	100.5	118.7	136.8	189.7
Total	236.8	292.6	313.9	334.7	388.7

Table 4.19 - Assets and liabilities of the Mauritius Co-operative Central Bank Ltd. (at end of February), 1976 - 1980

Rs million

	1976	1977	1978	1979	1980
<u>Assets</u>					
Cash at bank and in hand	7.8	24.8	17.3	8.1	10.8
Loans and advances:					
Primary industries	19.1	26.2	37.3	36.8	64.5
Housing	3.1	4.3	5.4	6.1	6.7
Other loans and advances	6.2	7.5	6.9	25.0	7.5
Investments:					
Local	31.2	9.3	16.1	12.2	12.2
Other assets	0.6	1.8	4.4	7.1	9.8
Total	68.0	73.9	87.4	95.3	111.5
<u>Liabilities</u>					
"Owned Funds"	8.5	9.9	11.1	12.2	13.0
Deposits:					
Demand	13.5	10.9	15.0	9.3	17.1
Time	30.3	36.9	33.9	39.7	48.9
Savings:	15.0	14.9	15.0	16.4	14.5
Balances due to other banks in Mauritius	-	-	11.3	16.2	15.9
Other liabilities	0.7	1.3	1.1	1.5	2.1
Total	68.0	73.9	87.4	95.3	111.5

Table 4.20 - Assets and liabilities of the Mauritius Housing Corporation (at end of period), 1976 - 1980

Rs million

	1976	1977	1978	1979	1980
<u>Assets</u>					
Cash in hand and on deposit	0.7	-	0.1	0.2	0.9
Housing loans	88.0	116.5	133.7	156.3	165.7
Investment (at cost)	0.8	1.1	1.1	1.3	1.4
Other assets	11.3	3.2	26.8	37.8	51.0
Total	100.8	120.8	161.7	195.6	219.0
<u>Liabilities</u>					
Loans: <u>Local</u>					
Government of Mauritius	37.5	54.5	82.2	98.2	101.6
Development Bank of Mauritius	-	-	-	-	-
Other local loans	24.6	33.8	36.2	43.1	53.6
<u>External</u>					
British Government	0.3	0.1	-	-	-
Commonwealth Development Corporation	11.7	11.3	10.8	15.4	19.1
Other liabilities	26.7	21.1	32.5	38.9	44.7
Total	100.8	120.8	161.7	195.6	219.0

Table 4.21 - Assets and liabilities of the Sugar Insurance Fund Board (at end of May), 1976 - 1980

Rs million

	1976	1977	1978	1979	1980
<u>Assets</u>					
Cash at bank	14.8	2.2	0.7	4.1	0.4
Loans and deposits	133.8	220.5	241.9	278.7	368.1
Compensation from reinsurers	30.7	2.0	0.8	0.8	0.8
Other assets	5.0	9.4	11.4	24.8	12.2
Total	184.3	234.1	254.8	308.4	381.5
<u>Liabilities</u>					
Sugar Insurance Fund	9.3	79.9	126.9	179.7	275.9
Reserve Fund	147.0	130.0	109.8	88.9	60.2
Estimated reinsurance premium	15.1	13.6	15.2	19.7	29.8
Compensation (current crop)	-	-	2.8	17.9	15.6
Other liabilities	12.9	10.6	0.1	2.2	-
Total	184.3	234.1	254.8	308.4	381.5

Table 4.22 - Post Office Savings Bank, 1976 - 1980

Period	Deposits during period (Rs million)	Withdrawal during period (Rs million)	Accumulated balance at end of period (Rs million)	Number of accounts at end of period
1976	44.0	29.7	78.9	126,232
1977	51.8	40.1	93.6	138,901
1978	64.5	55.5	106.9	152,252
1979	45.3	54.1	104.7	164,505
1980	39.1	50.9	105.9	171,645
1979 : 1st Qr.	14.8	12.9	108.8	155,752
2nd Qr.	10.0	14.5	110.9 <sup>1/</sup>	158,985
3rd Qr.	10.5	12.9	108.5	162,255
4th Qr.	10.0	13.8	104.7	164,505
1980 : 1st Qr.	10.5	11.3	107.8	166,528
2nd Qr.	8.8	14.0	107.0 <sup>1/</sup>	168,673
3rd Qr.	8.8	13.3	102.7	170,406
4th Qr.	11.0	12.3	105.9	171,645

<sup>1/</sup> includes interest capitalised to depositors' accounts

Table 4.23 - Money supply, 1976 - 1980

End of Period	Currency with the public <sup>1/</sup>	Demand deposits			Total money supply
		Bank of Mauritius <sup>2/</sup>	Commercial banks	Total	
1976	587.9	4.3	506.5	510.8	1,098.7
1977	693.6	0.3	525.3	525.6	1,219.2
1978	824.1	9.6	615.5	625.1	1,449.2
1979	724.9	17.6	683.8	701.4	1,426.3
1980	735.0	32.2	953.3	985.5	1,720.5
1979 : 1st Qr.	714.6	23.4	570.8	594.2	1,308.8
2nd Qr.	699.6	15.7	631.0	646.7	1,346.3
3rd Qr.	649.3	14.7	581.9	596.6	1,245.9
4th Qr.	724.9	17.6	683.8	701.4	1,426.3
1980 : 1st Qr.	647.3	16.1	615.0	631.1	1,278.4
2nd Qr.	621.5	30.3	719.8	750.1	1,371.6
3rd Qr.	632.9	20.0	692.0	712.0	1,344.9
4th Qr.	735.0	32.2	953.3	985.5	1,720.5

<sup>1/</sup> net of cash held by commercial banks

<sup>2/</sup> miscellaneous private deposits

Source : Bank of Mauritius

Table 4.24 - Bank and interest rates, 1978-80

per cent per annum

	31.12.78	30.6.79	31.12.79	30.6.80	31.12.80
<u>Deposit Rates</u>					
Post Office Savings Bank	6½	7½	7½	9	9
Commercial Banks:					
Savings accounts	6½	7½	9 - 9½	9 - 9½	9 - 9½
Fixed deposits:					
Up to 3 months	6¾	7¾	9¼	9¼	9¼
3 - 6 months	7	8	9½	9½	9½
6 - 12 months	7½	8½	10	10	10
12 - 18 months	8½	9	10½	10½	10½
18 - 24 months	9½	9¾	11¼	11¼	11¼
24 - 36 months	10¼	10½	12	12	12
36 - 48 months	11	++	++	++	++
<u>Lending Rates</u>					
Bank of Mauritius					
Bank Rate (advances)	9	9	10½	10½	10½
Rediscount Rate	9¾	9	10½	10½	10½
Commercial Banks:					
Prime Rate	10	10	11¾	11¾	11¾
Export Finance Rate (Discount facilities)	10¼	10¼	11¼	11¼	11¼
Prime Commercial Rate	10¼	10¼	12½	12½	12½
Commercial Rate	13	16	17½	17½	17½
Other Lending Rates (including rate on Co-operative credit)	7 - 12	8 - 16	9½ - 15½	9½ - 15½	9½ - 15½
<u>Public Notaries</u>					
Mortgage Loans	11 - 13	11 - 13	11 - 13	11 - 13	11 - 13
<u>Mauritius Housing Corporation:</u>					
Housing Loans	10½ - 12	10½ - 12	10½ - 12	12 - 14	12 - 14

++ no maximum rate fixed

Table 4.25 - Foreign Exchange Rates, 1979 - 80

Country	Currency	On 30.6.79		On 31.12.79		On 30.6.80		On 31.12.80	
		Bank sells	Bank buys	Bank sells	Bank buys	Bank sells	Bank buys	Bank sells	Bank buys
Australia	1 Dollar	6.78	6.55	8.53	8.20	8.91	8.52	9.39	8.99
Belgium	100 Francs	20.40	20.00	27.55	26.85	27.10	26.40	25.30	24.60
Canada	1 Dollar	5.18	5.07	6.56	6.42	6.67	6.53	6.71	6.54
France	1 Franc	1.42	1.37	1.91	1.84	1.87	1.80	1.76	1.69
Germany, Fed. Rep. of	1 Mark	3.28	3.20	4.46	4.33	4.35	4.20	4.06	3.92
Hong Kong	1 Dollar	1.20	1.17	1.59	1.54	1.57	1.52	1.56	1.51
India	100 Rupees	75.75	72.75	96.25	92.00	98.00	94.00	100.50	96.50
Italy	1000 Lires	7.25	7.00	9.55	9.25	9.12	8.82	8.65	8.35
Japan	100 Yen	2.80	2.73	3.21	3.14	3.52	3.43	3.90	3.80
Kenya	100 Shillings	81.50	78.50	105.00	100.75	106.00	101.75	105.50	101.00
Malagasy, Rep. of	100 Francs	2.92	2.74	3.91	3.69	3.83	3.67	3.60	3.45
New Zealand	1 Dollar	6.20	5.95	7.65	7.39	7.63	7.35	7.64	7.33
Pakistan	100 Rupees	61.75	58.75	78.50	74.50	78.25	74.25	82.00	77.75
Reunion	1 Franc	1.42	1.37	1.91	1.84	1.87	1.80	1.76	1.69
South Africa, Rep. of	1 Rand	7.16	6.91	9.35	9.02	9.93	9.62	10.57	10.26
Switzerland	1 Franc	3.65	3.56	4.85	4.73	4.71	4.59	4.53	4.42
United Kingdom	1 Pound Sterling	13.03	12.91	17.017	16.853	17.84	17.667	18.76	18.58
U.S.A.	1 Dollar	6.03	5.92	7.657	7.523	7.64	7.503	7.907	7.773

Source : Bank of Mauritius

SECTION 5 - NATIONAL ACCOUNTS

Table 5.1 - National Accounts - Main aggregates 1977 - 1980

Rs Million

	1977	1978	1979 <sup>1/</sup>	1980 <sup>2/</sup>
1. Gross domestic product at factor cost	4,419	5,011	6,040	6,600
2. Indirect taxes net of subsidies	523	582	782	1,000
3. Gross domestic product at market prices	4,942	5,593	6,822	7,600
4. Net factor income from rest of the world	- 2	- 30	- 81	- 150
5. Gross national product at factor cost	4,417	4,981	5,959	6,450
6. Gross national product at market prices	4,940	5,563	6,741	7,450
7. Final consumption expenditure :				
Total	3,786	4,242	4,994	6,348
Private	3,060	3,406	4,136	5,258
Government	726	836	858	1,090
8. Domestic savings	1,156	1,351	1,828	1,252
as % of gross domestic product at market prices	23	24	27	16
9. Gross domestic fixed capital formation : Total	1,650	1,930	2,120	2,350
Private	1,140	1,280	1,510	1,675
Public	510	650	610	675
Gross domestic fixed capital formation as % of gross domestic product at market prices	33	34	31	31
10. Gross domestic product at factor cost at constant 1976 prices	4,059	4,211	4,364	3,972
11. Imports of goods and non-factor services: Total	3,235	3,472	...	...
Goods	2,418	2,563	...	...
Services	817	909	...	...
12. Exports of goods and non-factor services: Total	2,641	2,682	...	...
Goods	2,030	1,969	...	...
Services	611	713	...	...
13. Net exports of goods and non-factor services	- 594	- 790	- 875	- 800
	(Rs)	(Rs)	(Rs)	(Rs)
14. Per capita gross national product at factor cost	5,009	5,556	6,538	6,961
15. Per capita gross national product at market prices	5,602	6,205	7,396	8,040

<sup>1/</sup> revised

<sup>2/</sup> preliminary estimate



Table 5.2 - Gross national product by industrial origin (at current factor cost)  
1977 - 1980

Rs million

	1977	1978	1979 <sup>1/</sup>	1980 <sup>2/</sup>
1. Agriculture, forestry, hunting and fishing	1,100	1,142	1,480	1,070
2. Mining and quarrying	9	11	12	15
3. Manufacturing	728	803	1,010	1,170
4. Construction	390	436	503	550
5. Electricity, gas, water and sanitary services	120	140	190	240
6. Transportation, storage and communication	508	637	745	920
7. Wholesale and retail trade	427	430	515	705
8. Banking, insurance and real estate	158	199	235	300
9. Ownership of dwellings	131	162	180	215
10. Public administration and defence	231	291	314	365
11. Services	617	760	856	1,050
Gross domestic product at factor cost	4,419	5,011	6,040	6,600
Net factor income from the rest of the world	- 2	- 30	- 81	- 150
Gross national product at factor cost	4,417	4,981	5,959	6,450
Per capita gross national product (at factor cost) (based on mid-year population)	(Rs) 5,009	(Rs) 5,556	(Rs) 6,538	(Rs) 6,961

<sup>1/</sup> revised

<sup>2/</sup> preliminary estimate

Table 5.3 - Distribution of the gross national product (at current prices), 1977 - 1980

Rs million

	1977	1978	1979 <sup>1/</sup>	1980 <sup>2/</sup>
1. Compensation of employees	2,713	3,064	3,607	4,325
2. Income from unincorporated enterprises	660	750	950	900
3. Income from property	325	340	385	350
4. Saving of corporations	385	445	485	375
5. Direct tax on corporations	277	295	410	375
6. General government income from property and entrepreneurship	57	87	122	125
National income and depreciation =				
Gross national product at factor cost	4,417	4,981	5,959	6,450

<sup>1/</sup> revised

<sup>2/</sup> preliminary estimate

Table 5.4 - Expenditure on gross national product (at current prices), 1977 - 1980

Rs million

	1977 <sup>1/</sup>	1978 <sup>1/</sup>	1979 <sup>1/</sup>	1980 <sup>2/</sup>
1. Private consumption expenditure on goods and services <sup>3/</sup>	3,075	3,442	4,136	5,258
2. General government consumption expenditure on goods and services	726	836	858	1,090
3. Gross domestic fixed capital formation of private enterprises	1,140	1,280	1,510	1,675
4. Gross domestic fixed capital formation of government and public enterprises	510	650	610	675
5. Increase in stocks <sup>4/</sup>	+ 85	+ 175	+ 583	- 298
Consumption and gross capital formation	5,536	6,383	7,697	8,400
6. Net exports of goods and non-factor services	- 594	- 790	- 875	- 800
7. Net factor income from the rest of the world	- 2	- 30	- 81	- 150
8. Less indirect taxes (net of subsidies)	- 523	- 582	- 782	- 1,000
Gross national product at factor cost	4,417	4,981	5,959	6,450

<sup>1/</sup> revised

<sup>2/</sup> preliminary estimate

<sup>3/</sup> excludes stock of traders

<sup>4/</sup> increase in stocks of sugar, rice and flour (government), goods in bonded warehouses and traders

Table 5.5 - Gross domestic product indices at constant 1976 prices by industrial origin, 1976 - 1980.

	1976	1977	1978 <sup>1/</sup>	1979 <sup>1/</sup>	1980 <sup>2/</sup>
1. Agriculture, forestry, hunting and fishing	100.0	100.0	100.6	100.6	67.3
2. Mining and quarrying	100.0	115.0	120.0	120.0	120.0
3. Manufacturing	100.0	107.6	107.6	111.8	105.7
4. Construction	100.0	114.5	120.1	122.6	111.3
5. Electricity, gas, water and sanitary services	100.0	116.0	127.8	139.2	148.1
6. Transportation, storage and communication	100.0	108.7	121.1	132.2	125.5
7. Wholesale and retail trade	100.0	118.7	111.3	115.7	112.5
8. Banking, insurance and real estate	100.0	120.0	144.0	154.1	162.4
9. Ownership of dwellings	100.0	105.0	110.3	115.9	121.5
10. Public administration and defence	100.0	103.0	107.8	110.3	112.7
11. Services	100.0	117.3	128.9	135.4	145.8
Overall index	100.0	108.6	112.6	116.7	106.3
Percentage annual growth rate of the gross domestic product at factor cost		+ 8.6	+ 3.7	+ 3.6	- 9.0

<sup>1/</sup> revised

<sup>2/</sup> preliminary estimate

Table 5.6 - Composition of gross domestic fixed capital formation (at current prices) 1977 - 1980

Rs million

	1977	1978	1979 <sup>1/</sup>	1980 <sup>2/</sup>
<b>A. <u>By type of capital goods</u></b>				
(a) Land	20	22	25	30
(b) Dwellings	495	606	767	800
(c) Non-residential buildings	282	307	282	270
(d) Other construction and works	225	355	312	330
(e) Transport equipment				
(i) Passenger cars	73	31	36	45
(ii) Other equipment	67	107	138	175
(f) Machinery and other equipment	488	502	560	700
<b>Gross domestic fixed capital formation</b>	<b>1,650</b>	<b>1,930</b>	<b>2,120</b>	<b>2,350</b>
<b>B. <u>By industrial use</u></b>				
(a) Agriculture, forestry & fishing	118	161	187	225
(b) Mining and quarrying	-	-	-	-
(c) Manufacturing	327	300	267	300
(d) Construction	44	57	32	25
(e) Electricity, gas, water and sanitary services	84	144	101	100
(f) Transportation, storage and communication	257	298	415	500
(g) Wholesale and retail trade	88	89	109	115
(h) Banking, insurance and real estate	8	19	19	40
(i) Ownership of dwellings	495	606	767	800
(j) Public administration	96	72	46	50
(k) Service industries	113	162	152	165
(l) Legal fees, stamp duties, etc.	20	22	25	30
<b>Gross domestic fixed capital formation</b>	<b>1,650</b>	<b>1,930</b>	<b>2,120</b>	<b>2,350</b>

<sup>1/</sup> revised

<sup>2/</sup> preliminary estimate

Table 5.7 - Composition of gross domestic fixed capital formation (at constant 1976 prices), 1977 - 1980

Rs million

	1977	1978	1979 <sup>1/</sup>	1980 <sup>2/</sup>
<b>A. By type of capital goods</b>				
(a) Land	16	18	20	20
(b) Dwellings	474	526	560	485
(c) Non-residential buildings	264	252	207	165
(d) Other construction and works	209	286	228	200
(e) Transport equipment				
(i) Passenger cars	65	26	17	12
(ii) Other equipment	58	84	104	83
(f) Machinery and other equipment	426	409	418	355
<b>Gross domestic fixed capital formation</b>	<b>1,512</b>	<b>1,601</b>	<b>1,554</b>	<b>1,320</b>
<b>B. By industrial use</b>				
(a) Agriculture, forestry & fishing	108	130	137	120
(b) Mining and quarrying	-	-	-	-
(c) Manufacturing	289	245	199	180
(d) Construction	39	46	24	15
(e) Electricity, gas, water and sanitary services	76	117	75	55
(f) Transportation, storage and communication	229	240	305	250
(g) Wholesale and retail trade	80	70	79	65
(h) Banking, insurance & real estate	7	16	14	20
(i) Ownership of dwellings	474	526	560	485
(j) Public administration	89	58	33	25
(k) Service industries	105	135	108	85
(l) Legal fees, stamp duties, etc.	16	18	20	20
<b>Gross domestic fixed capital formation</b>	<b>1,512</b>	<b>1,601</b>	<b>1,554</b>	<b>1,320</b>

<sup>1/</sup> revised

<sup>2/</sup> preliminary estimate

Table 5.8 - Balance of payments 1975-79

Rs million

Item	1975		1976		1977		1978		1979	
	Credit	Debit	Credit	Debit	Credit	Debit	Credit	Debit	Credit	Debit
A. Goods and services	2,329	2,272	2,486	2,771	2,690	3,286	2,740	3,560	5,284	4,288
1. Merchandise	1,848	1,672	1,768	2,047	2,030	2,418	1,969	2,563	2,427	3,046
2. Non-monetary gold	-	7	-	8	-	12	-	17	-	9
3. Freight and insurance on merchandise	14	286	3	325	1	455	5	471	1	547
4. Other transportation	159	85	152	101	264	127	286	161	333	216
5. Travel	135	78	184	97	210	110	230	116	260	152
6. Investment income	60	45	98	59	34	51	35	83	24	130
on direct investment	(2)	(35)	(3)	(49)	(2)	(28)	(4)	(27)	(3)	(12)
other	(58)	(10)	(95)	(10)	(32)	(23)	(31)	(56)	(21)	(118)
7. Other government	36	25	26	32	31	12	55	19	42	33
8. Other private	77	74	255	102	120	101	160	130	197	145
B. Unrequited transfers	93	23	67	25	108	24	115	30	125	47
9. Private	49	13	46	20	52	23	60	27	67	35
10. Government	44	10	21	5	56	1	55	3	58	12
Net total of goods, services and transfers	127	-	-	243	-	512	-	735	-	926

Source : Bank of Mauritius

Table 5.8 - Balance of payments (cont'd), 1975-79

Rs million

Item	1975		1976		1977		1978		1979	
	Credit	Debit	Credit	Debit	Credit	Debit	Credit	Debit	Credit	Debit
<u>C. Capital (excluding reserves and related items)</u>	240	-	-	302	195	-	501	-	292	-
<u>Non-monetary sectors</u>	255	-	-	319	117	-	329	-	275	-
11,12. Direct investment and other private long-term	33	4	58	10	86	30	75	-	112	42
Direct investment liabilities	(33)	(-)	(24)	(-)	(20)	(-)	(28)	(-)	(27)	(42)
Other	(-)	(4)	(34)	(10)	(66)	(30)	(47)	(-)	(85)	(-)
13. Other private short-term	180	-	17	404	62	46	80	-	107	-
14. Local government	-	-	-	-	-	-	-	-	-	-
15. Central Government	71	25	31	11	69	24	189	15	184	86
Loans	(56)	(-)	(31)	(8)	(69)	(24)	(189)	(15)	(184)	(26)
Other liabilities	(-)	(25)	(-)	(-)	(-)	(-)	(-)	(-)	(-)	(60)
Assets	(15)	(-)	(-)	(3)	(-)	(-)	(-)	(-)	(-)	(-)
<u>Monetary sectors</u>	-	16	17	-	78	-	-	28	17	-
16. Private institutions	9	25	19	2	88	10	-	28	31	14
Liabilities	(9)	(-)	(-)	(2)	(88)	(-)	(-)	(23)	(31)	(-)
Assets	(-)	(25)	(19)	(-)	(-)	(10)	(-)	(5)	(-)	(14)
17. Central institutions	-	-	-	-	-	-	-	-	-	-
<u>D. 18. Allocation of Special Drawing Rights</u>	-	-	-	-	-	-	-	-	22	-



Table 5.8 - Balance of payments (cont'd), 1975-79

Item	RS million									
	1975		1976		1977		1978		1979	
	Credit	Debit	Credit	Debit	Credit	Debit	Credit	Debit	Credit	Debit
<u>E. Reserves and related items</u>	-	<u>350</u>	<u>500</u>	-	<u>250</u>	-	<u>358</u>	<u>617</u>	-	-
19. Liabilities	-	-	-	-	84	-	236	576	-	-
Use of fund credit	-	-	-	-	(84)	-	-	(261)	-	-
Other	-	-	-	-	-	-	(236)	(315)	-	-
20. Assets	1	351	506	6	166	-	122	41	-	-
Monetary gold	-	-	-	-	-	-	-	-	-	-
Special Drawing Rights	(1)	-	-	(6)	(3)	-	(5)	(7)	-	-
Reserve position in the Fund	-	(42)	-	-	(42)	-	-	-	-	-
Foreign exchange	-	(308)	(506)	-	(121)	-	(118)	(40)	-	-
Other claims	-	(1)	-	-	-	-	-	(1)	(6)	-
<u>Net errors and omissions</u>	-	<u>16</u>	<u>45</u>	-	<u>67</u>	-	<u>76</u>	-	<u>6</u>	-

Source: Bank of Mauritius

Table 5.9 - Summary of Balance of Payments, 1975-79

Rs million

Item	1975	1976	1977	1978	1979 <sup>1/</sup>
Merchandise account	+ 169	- 287	- 400	- 611	- 628
Net services account	- 112	+ 2	- 196	- 209	- 376
Net unrequited transfers	+ 70	+ 42	+ 84	+ 85	+ 78
Net capital movements	+ 240	- 316	+ 117	+ 329	+ 275
Capital movements relating to sugar financing	(+ 180)	(- 371)	(- 44)	(+ 63)	(+ 29)
Other capital	(+ 60)	(+ 55)	(+ 161)	(+ 266)	(+ 246)
SDR allocation	-	-	-	-	+ 22
Errors and omissions	- 16	+ 45	+ 67	+ 62	- 5
Overall balance of payments	+ 351	- 514	- 328	- 344	- 634
Monetary movements	- 351	+ 514	+ 328	+ 344	+ 634
Reserves movements <sup>2/</sup>	(- 351)	(+ 514)	(+ 243)	(+ 108)	(+ 58)
Exceptional financing	(-)	(-)	(+ 85)	(+ 236)	(+ 576)

<sup>1/</sup> revised

<sup>2/</sup> a plus indicates a decrease and a minus an increase

Source : Bank of Mauritius

SECTION 6 - CONSUMER PRICE INDICES

Table 6.1 - Consumer price indices, 1963 - 1976

(Base : January - June 1962 = 100)

The table below gives three consumer price indices, viz:

- (a) an index for households in urban areas;
- (b) an index for households in rural areas;
- (c) a total index for the island of Mauritius as a whole

Period	Urban	Rural	- Whole island
1963 (Average)	98.5	98.5	98.5
1964 "	100.5	100.2	100.3
1965 "	102.3	102.0	102.1
1966 "	105.0	104.5	104.7
1967 "	106.6	106.6	106.6
1968 "	113.0	114.9	114.1
1969 "	115.6	117.6	116.7
1970 "	117.6	119.2	118.5
1971 "	118.3	119.4	118.9
1972 "	125.8	124.9	125.3
1973 "	144.0	140.8	142.2
1974 "	185.8	181.9	183.6
1975 "	214.7	207.6	210.6
1976 (Average for Jan.-June)	241.6	231.9	236.1

Note : A new index with base period January to June 1976 has been introduced since July 1976. (See Table 6.2)

Table 6.2 - Consumer price indices, 1976 - 1980

(Base : January - June 1976 = 100)

The table below gives the new consumer price index which has been introduced since July 1976. The index is based on the consumption pattern of households earning incomes up to Rs 2,000 per month as revealed by the 1975 Household Budget Sample Survey.

Period	Index
1976 (Average)	101.2
1977 "	110.5
1978 "	119.9
1979 "	137.3
1980 "	194.9
1979 January	125.9
February	127.0
March	127.9
April	127.8
May	128.9
June	131.7
July	134.4
August	137.7
September	137.9
October	138.6
November	159.4
December	170.2
1980 January	177.5
February	184.3
March	186.9
April	188.5
May	187.8
June	190.4
July	192.2
August	202.6
September	204.7
October	207.0
November	207.3
December	210.1

SECTION 7 - EXTERNAL TRADE

Table 7.1 - Balance of visible trade, 1976 - 1980

Rs million

Period	Imports (c.i.f. value)	Exports (f.o.b. value)	Bunkers and ships' stores (f.o.b. value)	Balance of visible trade	
				Surplus	Deficit
1976	2,408.5	1,769.8	64.9	-	573.8
1977	2,950.8	2,041.2	93.2	-	816.4
1978	3,076.4	1,987.1	85.9	-	1,003.4
1979	3,634.4	2,432.7	140.7	-	1,061.0
1980 <sup>1/</sup>	4,721.4	3,341.3	275.0	-	1,105.1
1979 : 1st Qr.	724.2	426.2	29.1	-	268.9
2nd Qr.	885.2	541.4	29.9	-	313.9
3rd Qr.	902.1	634.6	36.5	-	231.0
4th Qr.	1,122.8	830.7	45.2	-	246.9
1980 <sup>1/</sup> : 1st Qr.	1,066.5	666.5	74.0	-	326.0
2nd Qr.	1,123.2	771.9	74.0	-	277.3
3rd Qr.	1,249.8	1,149.5	61.2	-	39.1
4th Qr.	1,281.9	753.6	65.8	-	462.5

<sup>1/</sup> provisional

Table 7.2 - Price (unit value) indices of exports and imports and terms of trade 1976 - 1980

Period	Price indices		Terms of trade <sup>1/</sup>
	Export	Import	
1975 = 100			
1976 = 100	82	112	73
1977 = 100	98	109	90
1978 = 100	98	106	92
1979 = 100	117	120	98
1980 = 100	138	146	95

<sup>1/</sup> ratio of export to import price index

Note : a rise in the index indicates that the terms of trade have moved in favour of Mauritius



Table 7.4 - Exports - quantities and values, 1976 - 1980

Quantity : Thousand metric tons  
Value : Rs million (f.o.b.)

Period	Domestic exports										Re-exports value	Total value	
	Total value		Sugar		Molasses		Tea		Fish and fish preparations				
	Quantity	Value	Quantity	Value	Quantity	Value	Quantity	Value	Quantity	Value			
1976	550.9	1,321.5	129.1	31.7	3.4	29.2	18.8						
1977	636.4	1,428.5	194.7	41.0	3.3	43.5	31.8						
1978	578.6	1,304.8	156.9	34.3	4.4	55.5	32.1						
1979	612.1	1,590.0	171.6	69.2	3.9	39.3	31.2						
1980 <sup>1/</sup>	617.4	2,168.3	154.3	104.0	3.6	42.1	42.0						
1979 : 1st Qr.	114.9	283.3	27.8	10.6	1.3	13.4	3.1						
2nd Qr.	135.9	331.7	22.5	8.0	1.4	13.1	8.5						
3rd Qr.	166.0	390.5	82.0	34.8	0.3	2.6	10.1						
4th Qr.	195.4	584.5	39.3	15.8	0.9	10.3	9.5						
1980 <sup>1/</sup> : 1st Qr.	131.0	443.4	53.1	31.1	0.9	11.0	0.6						
2nd Qr.	135.8	454.9	19.1	13.2	1.2	15.6	14.1						
3rd Qr.	219.9	818.8	42.4	30.2	0.5	5.5	16.9						
4th Qr.	130.6	451.1	39.7	29.5	0.9	10.0	10.5						

<sup>1/</sup> provisional

Value : Rs million (f.o.b.)

Table 7.4 - Exports - quantities and values, 1976 - 1980 (cont'd)

Period	Domestic exports					
	Textile yarn, fabrics and made-up articles	Processed diamonds and synthetic stones	Electronic components for machines	Clothing	Other manufactured goods	Other domestic exports
	Value	Value	Value	Value	Value	Value
1976	17.2	8.5	61.7	204.8	19.7	22.9
1977	55.9	21.2	59.1	273.2	28.4	26.7
1978	38.7	49.1	54.3	312.7	36.9	35.2
1979	48.4	36.8	70.2	396.1	69.1	31.8
1980 <sup>1/</sup>	57.9	46.0	84.9	566.4	113.0 <sup>2/</sup>	36.6
1979 : 1st Qr.	8.7	8.3	13.5	61.9	10.5	5.5
2nd Qr.	13.9	7.6	15.6	106.0	15.3	9.3
3rd Qr.	15.8	0.7	18.9	114.9	17.2	8.9
4th Qr.	10.0	20.2	22.2	113.2	26.1	8.2
1980 <sup>1/</sup> : 1st Qr.	9.7	17.0	24.0	89.0	23.0	4.9
2nd Qr.	16.7	11.0	25.6	163.6	23.7	16.6
3rd Qr.	14.8	9.3	19.8	165.5	28.5	8.2
4th Qr.	16.8	8.7	15.6	148.5	37.7	7.0

<sup>1/</sup> provisional

<sup>2/</sup> including (a) Rs Mn 18.9 for spectacles and frames  
 (b) Rs Mn 17.8 for jewellery of gold, silver or platinum  
 (c) Rs Mn 17.4 for watches and clocks



Table 7.5 - Total exports : main countries of destination - values, 1976 - 80

Rs million (f.o.b.)

Country of destination	1976	1977	1978	1979	1980 <sup>1/</sup>
Total exports	1,769.8	2,041.2	1,987.1	2,432.7	3,341.3
<u>Preferential tariff countries</u>	<u>1,736.9</u>	<u>1,999.8</u>	<u>1,940.9</u>	<u>2,400.7</u>	<u>3,285.3</u>
<u>E.E.C. countries</u>	<u>1,497.7</u>	<u>1,739.8</u>	<u>1,655.8</u>	<u>2,023.5</u>	<u>3,050.4</u>
United Kingdom	1,226.7	1,363.6	1,289.0	1,545.9	2,263.1
France	162.6	159.2	145.8	267.6	427.5
Belgium	22.1	72.4	88.7	52.3	69.2
Denmark	2.8	1.9	4.4	5.6	9.0
Germany, Fed. Rep.	48.5	64.6	43.8	70.7	126.2
Netherlands	12.5	44.3	44.5	23.1	39.3
Reunion	21.6	20.7	21.0	33.1	45.9
Italy	0.6	12.1	12.5	16.1	66.6
Ireland	0.3	0.9	6.0	9.0	3.6
Luxembourg	0.1	0.1	0.1	-	-
<u>Other preferential tariff countries</u>	<u>239.2</u>	<u>260.0</u>	<u>285.1</u>	<u>377.2</u>	<u>234.9</u>
United States	103.5	121.9	174.9	316.2	165.2
Canada	67.0	58.6	44.5	20.7	0.3
South Africa, Rep. of	39.8	47.4	40.8	13.6	25.3
Hong Kong	10.6	13.3	7.8	5.5	2.4
Seychelles	5.0	6.5	4.6	3.2	20.9
Australia	5.6	6.2	3.7	5.0	4.3
Malaysia	3.3	0.4	1.7	1.5	4.6
Other	4.4	5.7	7.1	11.5	11.9
<u>General tariff countries</u>	<u>32.9</u>	<u>41.4</u>	<u>46.2</u>	<u>32.0</u>	<u>56.0</u>
Comoro Islands	3.5	11.6	13.6	11.0	13.9
Sweden	1.8	5.9	2.0	0.4	1.3
U.S.S.R.	2.4	3.7	-	-	4.1
Madagascar	6.1	3.4	3.1	2.4	4.8
Switzerland	1.7	3.1	6.9	6.7	26.9
Japan	0.6	3.5	4.0	0.5	0.5
Jordan	14.0	0.6	0.2	-	-
French Territory of Affairs & Issas	-	5.1	12.8	6.4	0.1
Other	2.8	4.5	3.6	4.6	4.4

1/ provisional

Table 7.6 - Imports : values by S.I.T.C. 1/ (revised) sections, 1976 - 80

Period	All sections	Rs million (c.i.f.)									
		Food	Beverages & tobacco	Crude materials, inedible, except fuels	Mineral fuels, lubricants, etc.	Animal & vegetable oils and fats	Chemicals	Manufactured goods classified chiefly by material	Machinery and transport equipment	Miscellaneous manufactured articles	Miscellaneous transactions and commodities, n.e.s.
1976	2,408.5	486.5	18.9	63.9	209.0	81.0	167.8	632.1	580.2	160.3	8.7
1977	2,950.8	582.0	32.0	95.8	275.3	79.1	212.3	790.3	679.1	191.9	13.1
1978	3,076.4	696.7	23.0	105.4	280.7	86.4	201.7	858.1	572.4	233.4	18.5
1979	3,634.4	756.0	27.3	129.4	526.2	96.1	269.4	999.5	546.5	273.7	10.2
1980 <sup>2/</sup>	4,721.4	1,084.4	25.8	211.2	667.3	129.6	317.0	1,227.8	738.7	295.9	23.7
1979 : 1st Qr.	724.2	152.2	6.4	20.9	75.5	21.1	42.2	209.4	136.1	57.0	3.4
2nd Qr.	885.2	195.4	6.6	31.7	133.3	24.3	70.3	244.0	119.8	57.6	2.2
3rd Qr.	902.1	182.5	6.0	31.8	100.1	31.5	72.4	271.5	128.5	75.4	2.3
4th Qr.	1,122.8	225.9	8.3	45.0	217.4	19.2	84.5	274.6	162.0	83.7	2.3
1980 <sup>2/</sup> : 1st Qr.	1,066.5	257.8	8.1	34.8	152.3	41.9	64.0	255.5	182.7	69.1	0.5
2nd Qr.	1,123.2	253.7	5.8	59.8	165.5	13.7	87.4	310.5	163.6	62.3	0.9
3rd Qr.	1,249.8	288.5	7.0	63.9	176.5	39.9	89.8	350.0	146.5	76.2	11.3
4th Qr.	1,281.9	284.4	4.9	52.7	173.0	34.2	75.8	311.8	245.7	88.3	11.1

1/ Standard International Trade Classification

2/ provisional

Table 7.7 - Imports : selected commodities - values, 1976 - 1980

(Rs million - c.i.f.)

Period	Rice	Wheat flour	Alcoholic beverages	Petroleum products refined	Vegetable edible oils	Fertilizers manufactured	Cotton fabrics	Other textile fabrics	Cement	Iron and steel	Manufactures of metals, n.e.s.	Machinery other than electric <sup>2/</sup>	Electric machinery apparatus and <sup>2/</sup>	Road vehicles and parts
1976	130.5	70.9	12.0	206.3	57.1	21.8	45.7	114.6	71.2	86.8	73.0	258.2	182.1	132.7
1977	106.1	79.8	14.6	270.4	49.0	30.0	44.7	103.0	84.6	122.4	99.3	254.0	256.7	161.8
1978	103.9	78.8	9.6	274.6	69.5	24.0	42.3	110.7	112.2	131.0	105.7	304.8	169.2	90.0
1979	147.4	85.9	12.9	515.0	67.0	35.7	49.2	129.9	137.6	170.4	151.8	262.9	151.0	100.8
1980 <sup>1/</sup>	237.3	168.8	13.5	645.5	91.9	41.2	43.5	124.9	194.1	200.6	136.6	238.5	210.0	138.4
1979 : 1st Qr.	25.5	15.3	2.0	72.4	18.7	2.1	10.1	25.9	29.1	31.9	25.5	81.3	33.4	19.5
2nd Qr.	53.1	12.4	3.8	130.0	18.8	8.5	12.9	35.2	51.4	42.7	31.6	62.5	31.4	27.4
3rd Qr.	51.3	32.5	3.0	96.0	15.5	12.0	13.2	41.6	43.1	41.8	55.1	61.4	40.0	26.5
4th Qr.	51.5	25.7	4.0	216.5	14.1	13.5	13.0	27.2	33.8	53.9	33.7	57.7	46.2	27.4
1980 <sup>1/</sup> : 1st Qr.	55.5	29.0	3.6	150.1	29.4	6.3	9.0	30.5	34.6	38.3	52.5	49.8	51.4	40.1
2nd Qr.	31.6	34.7	4.1	156.7	7.6	5.0	11.6	25.0	47.1	50.8	32.0	49.2	49.5	32.5
3rd Qr.	82.4	48.2	2.8	170.0	29.1	22.7	13.1	35.3	73.5	64.7	28.6	48.3	44.9	23.4
4th Qr.	67.8	56.8	3.0	168.8	25.7	6.4	9.8	33.9	38.9	46.9	45.8	91.0	64.2	42.3

<sup>1/</sup> provisional

<sup>2/</sup> as from 1979 the figures under these descriptions are not strictly comparable with those for previous years due to changes in classification.

Table 7.8 - Imports : selected commodities - quantities, 1976 - 80

Period	Rice (Thousand m/tons)	Wheat flour (Thousand m/tons)	Vegetable edible oils (Thousand m/tons)	Fertilizers manufactured (Thousand m/tons)	Cotton fabrics (Million sq. metres)	Cement (Thousand m/tons)	Iron and steel (Thousand m/tons)
1976	79.2	40.1	11.7	36.5	10.2	220.9	39.8
1977	65.5	49.6	4.1	48.0	9.0	245.5	45.8
1978	78.5	49.5	27.1	36.7	9.8	294.6	56.5
1979	72.3	46.5	14.2	47.8	8.6	294.5	57.9
1980 <sup>1/</sup>	88.0	57.5	29.5	33.2	5.3	222.3	48.5
1979 : 1st Qr.	13.6	9.1	4.4	4.3	1.9	59.1	11.1
2nd Qr.	30.6	7.3	4.2	15.4	2.4	77.6	16.2
3rd Qr.	19.2	19.3	5.4	11.9	2.7	67.0	14.8
4th Qr.	8.9	10.8	2.2	16.1	1.7	60.8	15.7
1980 <sup>1/</sup> : 1st Qr.	22.9	11.1	4.8	6.1	1.2	55.1	9.1
2nd Qr.	13.0	13.0	4.5	5.2	1.3	70.1	12.6
3rd Qr.	31.2	16.6	5.0	16.6	1.7	108.1	15.2
4th Qr.	20.9	16.8	6.4	5.3	1.2	56.2	11.6

<sup>1/</sup> provisional

Table 7.9 - Imports - main countries of origin - values, 1978 - 80

Rs million (c.i.f.)

Country of origin	1978	1979	1980 <sup>1/</sup>	1980 <sup>1/</sup>			
				1st Qr.	2nd Qr.	3rd Qr.	4th Qr.
Total imports	3,076.4	3,634.4	4,721.4	1,066.5	1,123.2	1,249.8	1,281.9
<u>Preferential Tariff Countries</u>	<u>2,255.4</u>	<u>2,647.0</u>	<u>3,385.6</u>	<u>804.7</u>	<u>821.8</u>	<u>865.9</u>	<u>893.3</u>
<u>E.E.C. Countries</u>	<u>1,114.0</u>	<u>1,169.7</u>	<u>1,466.6</u>	<u>369.4</u>	<u>346.4</u>	<u>338.9</u>	<u>412.1</u>
United Kingdom	457.0	488.6	544.5	140.0	157.8	123.1	123.8
France	338.2	335.9	505.3	95.5	93.2	120.5	196.1
Germany, Fed. Rep.	126.5	133.5	174.5	56.0	37.4	44.0	37.2
Ireland	2.8	5.4	6.4	3.8	1.1	0.8	0.7
Italy	74.8	91.9	134.3	38.7	38.2	24.7	32.7
Netherlands	50.9	66.9	46.4	22.3	8.6	8.8	6.7
Belgium	55.2	37.5	29.3	10.0	6.9	6.2	6.2
Denmark	6.4	7.3	22.1	2.4	2.5	9.9	7.3
Other E.E.C. countries	2.2	2.6	3.8	0.7	0.7	0.9	1.4

<sup>1/</sup> provisional

Table 7.9 Imports - main countries of origin - values, 1978 - 80 (cont'd)

Rs million - (c.i.f.)

Country of origin	1978	1979	1980 <sup>1/</sup>			
			1st Qr.	2nd Qr.	3rd Qr.	4th Qr.
Other preferential tariff countries	1,141.4	1,477.3	1,915.0	475.4	527.0	481.2
South Africa	558.3	455.9	634.3	138.5	165.3	124.9
Australia	168.3	181.4	272.9	65.6	56.8	93.4
India	126.3	169.5	232.9	40.8	57.9	46.5
Hong Kong	80.0	81.9	81.7	21.2	16.2	22.8
Kenya	80.5	136.8	158.1	41.0	46.2	36.2
U.S. America	97.2	152.0	214.1	51.2	70.9	81.7
Burma	20.5	5.2	2.8	0.4	1.2	0.3
New Zealand	62.2	58.2	98.9	34.7	25.5	22.1
Malaysia	49.4	57.4	73.5	15.8	20.7	17.9
Singapore	56.2	94.2	73.8	16.6	21.4	22.4
Pakistan	14.4	15.8	45.4	2.6	39.3	1.3
Canada	4.5	6.1	8.8	2.2	1.1	3.4
Other	14.4	21.9	21.8	4.2	4.5	8.4

<sup>1/</sup> provisional

Table 7.3 - I. of 50 main countries of origin - values in Rs million - 1978-80 (cont'd)

(Rs million - c.i.f.)

Country of origin	1978	1979	1980	1980			
				1st Qr.	2nd Qr.	3rd Qr.	4th Qr.
<u>General tariff countries</u>	<u>821.0</u>	<u>987.3</u>	<u>1,375.8</u>	<u>261.8</u>	<u>301.4</u>	<u>384.0</u>	<u>388.6</u>
Japan	181.5	176.7	245.7	48.2	60.9	61.4	75.2
Iran	84.3	54.6	0.1	-	-	-	-
Bahrain	155.6	309.2	525.0	108.2	106.0	146.7	152.1
China (Mainland)	142.9	61.6	351.6	24.0	19.4	27.1	61.3
China (Taiwan)	36.2	40.8	62.5	13.5	18.8	10.6	13.6
Switzerland	33.6	22.8	71.4	8.1	5.1	16.2	8.0
Thailand	9.0	44.8	4.5	1.6	1.9	0.5	1.1
Korea (Rep.)	24.8	27.6	54.0	6.2	7.1	7.3	13.4
Israel	13.1	18.4	31.6	6.7	6.5	9.6	8.0
Brazil	0.8	4.3	15.5	0.1	-	7.7	5.9
Sweden	8.4	14.9	44.2	3.9	3.8	1.8	4.7
Maldives	13.7	5.5	-	-	-	-	-
Spain	30.7	4.6	40.5	0.8	1.0	31.8	7.0
Madagascar	7.4	6.6	7.1	2.9	1.1	0.8	3.2
South Yemen	-	119.4	82.7	15.3	41.1	14.5	6.4
Nepal	-	21.2	16.4	0.3	0.3	15.5	0.3
Other	79.0	54.3	100.4	18.0	28.4	31.9	22.1

Table 7.10 - Imports of fertilizers<sup>1/</sup>, 1978 - 1980

Kind of fertilizers	1978		1979		1980	
	Quantity (m/tons)	Value C.I.F. (Rs 000)	Quantity (m/tons)	Value C.I.F. (Rs 000)	Quantity (m/tons)	Value C.I.F. (Rs 000)
Total imports	42,847	27,160	53,079	39,095	37,811	44,954
<u>Nitrogenous fertilizers</u>	<u>5,052</u>	<u>3,080</u>	<u>15,162</u>	<u>11,174</u>	<u>5,419</u>	<u>6,612</u>
Sulphate of ammonia	5,000	3,029	15,162	11,165	5,066	5,702
Ammonium sulphate nitrate	2	3	-	1	-	-
Other nitrogenous fertilizers	51	48	1	8	353	910
<u>Potassic fertilizers</u>	<u>20,587</u>	<u>9,310</u>	<u>24,838</u>	<u>14,450</u>	<u>22,702</u>	<u>24,971</u>
Muriate of potash	20,105	9,014	24,038	13,490	22,094	23,587
Sulphate of potash	482	296	800	960	600	1,287
Other phosphatic fertilizers	-	-	-	-	8	97
<u>Phosphatic fertilizers</u>	<u>17,173</u>	<u>14,607</u>	<u>13,064</u>	<u>13,348</u>	<u>9,668</u>	<u>13,062</u>
Single superphosphate)	752	557	} 3,394	} 3,577	} 1,897	} 2,753
Triple superphosphate) <sup>2/</sup>	3,177	3,237				
Phosphatic guano	6,122	3,135	5,312	3,420	4,619	3,746
Other	7,122	7,678	4,358	6,351	3,152	6,563
<u>Mixed and compound fertilizers</u>	<u>32</u>	<u>164</u>	<u>14</u>	<u>123</u>	<u>22</u>	<u>309</u>

<sup>1/</sup> excluding imports from the islands of Agalega, St. Brandon and Rodrigues

<sup>2/</sup> these two items have merged in 1979



Section 8 - EMPLOYMENT AND EARNINGS

1. The figures of employment and earnings in tables 8.1 - 8.6 apply to large establishments only. These being defined as:
  - (i) Sugar cane plantations where 25 arpents or more were harvested;
  - (ii) Tea plantations of 5 arpents or more;
  - (iii) All 'flue-cured' tobacco establishments, irrespective of acreage;
  - (iv) Non-agricultural establishments employing at least 10 persons at the time of the survey;
  - (v) All central and local government departments;
  - (vi) Establishments employing development workers.
  
2. a) Tables 8.5 and 8.6 show changes over time in the average monthly earnings as distinct from changes in statutory minimum wage rates which are shown in tables 8.7 and 8.8.
- b) Apart from increase in salaries and wages, fluctuations in average monthly earnings may be due to:
  - (i) changes of different magnitude in the various categories of the labour force e.g. a large intake of employees at the lower end of the wage scale (as occurs when a new factory starts operation) has the effect of lowering the average earnings. On the other hand a large intake of professionals by, say, an architectural firm can cause a sudden jump in the average monthly earnings.
  - (ii) changes in overtime, regular bonuses and commissions

Table 8.1 - Employment <sup>1/2/</sup> by major industrial group (Bi-annual Survey of Employment and Earnings, March 1971 - March 1980)

Industrial group	1971	1972	1973	1974	1975	1976	1977	1978	1979	1980
<u>Agriculture and fishing</u>	<u>55,375</u>	<u>58,165</u>	<u>58,919</u>	<u>56,847</u>	<u>58,157</u>	<u>59,459</u>	<u>61,384</u>	<u>58,410</u>	<u>55,612</u>	<u>54,014</u>
<u>Sugar</u> <sup>3/</sup>	48,468	47,850	49,961	48,223	50,612	52,620	54,391	51,332	48,714	47,493
<u>Tea</u> <sup>4/</sup>	5,311	8,374	7,119	7,080	5,455	4,741	4,917	5,467	5,159	4,963
Tobacco	1,049	1,222	1,101	840	1,345	1,279	1,199	779	924	857
Other	547	719	738	704	745	819	877	832	815	701
<u>Mining and quarrying</u>	<u>154</u>	<u>150</u>	<u>163</u>	<u>153</u>	<u>148</u>	<u>149</u>	<u>143</u>	<u>120</u>	<u>148</u>	<u>145</u>
<u>Manufacturing</u>	<u>8,740</u>	<u>10,306</u>	<u>13,489</u>	<u>18,480</u>	<u>21,126</u>	<u>26,416</u>	<u>30,941</u>	<u>31,954</u>	<u>35,141</u>	<u>36,151</u>
<u>Electricity and water</u>	<u>1,283</u>	<u>1,294</u>	<u>2,598</u>	<u>2,880</u>	<u>2,935</u>	<u>3,062</u>	<u>3,304</u>	<u>3,518</u>	<u>3,930</u>	<u>4,639</u>
<u>Construction</u>	<u>2,381</u>	<u>2,826</u>	<u>3,762</u>	<u>4,969</u>	<u>5,844</u>	<u>7,806</u>	<u>7,309</u>	<u>8,846</u>	<u>9,164</u>	<u>8,242</u>
<u>Wholesale, retail trade, restaurants and hotels</u>	<u>3,960</u>	<u>5,147</u>	<u>5,787</u>	<u>6,507</u>	<u>6,412</u>	<u>7,599</u>	<u>8,182</u>	<u>9,058</u>	<u>9,402</u>	<u>9,297</u>
<u>Transport, storage and communication</u>	<u>4,987</u>	<u>6,307</u>	<u>6,809</u>	<u>8,163</u>	<u>9,260</u>	<u>9,027</u>	<u>10,217</u>	<u>9,820</u>	<u>9,981</u>	<u>8,656</u>
<u>Financing, insurance, real estate and business services</u>	<u>1,635</u>	<u>1,822</u>	<u>2,155</u>	<u>2,412</u>	<u>2,671</u>	<u>2,962</u>	<u>3,521</u>	<u>4,059</u>	<u>4,316</u>	<u>4,352</u>
<u>Community, social and personal services</u>	<u>53,060</u>	<u>48,831</u>	<u>50,085</u>	<u>49,737</u>	<u>50,269</u>	<u>52,443</u>	<u>54,583</u>	<u>57,634</u>	<u>61,642</u>	<u>62,696</u>
Government:										
(a) Central	45,454	40,777	41,445	40,727	41,370	42,552	42,841	44,528	47,820	48,728
(b) Local <sup>5/</sup>	3,139	3,121	3,278	3,163	3,360	3,617	4,557	4,988	5,251	5,389
Other	4,467	4,933	5,362	5,847	5,539	6,274	7,185	8,118	8,571	8,579
<u>Activities not elsewhere specified</u>	<u>-</u>	<u>6,349</u>	<u>6,473</u>	<u>6,221</u>	<u>7,642</u>	<u>7,816</u>	<u>14,438</u>	<u>11,749</u>	<u>10,293</u>	<u>8,118</u>
Grand total	131,575	141,197	150,240	156,369	164,464	176,739	194,032	195,168	199,629	196,317

<sup>1/</sup> revised and classified according to the International Standard Industrial Classification, 1968 edition

<sup>2/</sup> in large establishments - see introduction on page 80

<sup>4/</sup> including factories and Tea Development Authority

<sup>5/</sup> municipalities and district councils

<sup>3/</sup> including factories

Table 8.2 - Employment <sup>2/</sup> by major industrial group (Bi-annual Survey of Employment and Earnings, September 1971 - September 1980)

Industrial group	1971	1972	1973	1974	1975	1976	1977	1978	1979	1980
<u>Agriculture &amp; fishing</u>	<u>59,842</u>	<u>61,924</u>	<u>62,063</u>	<u>63,049</u>	<u>64,469</u>	<u>64,182</u>	<u>65,297</u>	<u>60,767</u>	<u>59,368</u>	<u>58,022</u>
<u>Sugar</u> <sup>3/</sup>	<u>54,758</u>	<u>54,010</u>	<u>54,107</u>	<u>55,744</u>	<u>57,773</u>	<u>57,791</u>	<u>58,499</u>	<u>53,982</u>	<u>52,668</u>	<u>51,146</u>
<u>Tea</u> <sup>4/</sup>	<u>3,320</u>	<u>6,110</u>	<u>6,240</u>	<u>5,687</u>	<u>4,693</u>	<u>4,664</u>	<u>4,890</u>	<u>5,096</u>	<u>5,056</u>	<u>4,743</u>
Tobacco	<u>1,125</u>	<u>1,074</u>	<u>1,022</u>	<u>853</u>	<u>1,284</u>	<u>1,100</u>	<u>1,098</u>	<u>844</u>	<u>939</u>	<u>1,202</u>
Other	<u>639</u>	<u>730</u>	<u>694</u>	<u>765</u>	<u>719</u>	<u>627</u>	<u>810</u>	<u>845</u>	<u>705</u>	<u>931</u>
<u>Mining and quarrying</u>	<u>165</u>	<u>146</u>	<u>144</u>	<u>152</u>	<u>163</u>	<u>153</u>	<u>121</u>	<u>198</u>	<u>148</u>	<u>145</u>
<u>Manufacturing</u>	<u>2,775</u>	<u>11,576</u>	<u>15,722</u>	<u>20,813</u>	<u>22,517</u>	<u>29,348</u>	<u>33,241</u>	<u>33,077</u>	<u>35,589</u>	<u>35,817</u>
<u>Electricity and water</u>	<u>1,293</u>	<u>1,338</u>	<u>2,732</u>	<u>2,918</u>	<u>2,982</u>	<u>3,093</u>	<u>3,152</u>	<u>3,601</u>	<u>4,713</u>	<u>4,487</u>
<u>Construction</u>	<u>2,525</u>	<u>3,311</u>	<u>4,864</u>	<u>5,430</u>	<u>6,034</u>	<u>7,252</u>	<u>7,742</u>	<u>9,765</u>	<u>9,202</u>	<u>7,642</u>
<u>Wholesale, retail trade, restaurants and hotels</u>	<u>4,693</u>	<u>5,353</u>	<u>6,154</u>	<u>6,275</u>	<u>6,455</u>	<u>7,817</u>	<u>8,480</u>	<u>9,280</u>	<u>9,506</u>	<u>9,097</u>
<u>Transport, storage and communication</u>	<u>6,568</u>	<u>6,886</u>	<u>7,911</u>	<u>9,074</u>	<u>9,412</u>	<u>9,932</u>	<u>11,151</u>	<u>10,487</u>	<u>8,333</u>	<u>7,762</u>
<u>Financing, insurance, real estate and business services</u>	<u>1,755</u>	<u>1,955</u>	<u>2,295</u>	<u>2,582</u>	<u>2,812</u>	<u>3,220</u>	<u>3,747</u>	<u>4,368</u>	<u>4,372</u>	<u>4,344</u>
<u>Community, social and personal services</u>	<u>52,625</u>	<u>49,287</u>	<u>50,038</u>	<u>49,734</u>	<u>51,083</u>	<u>52,888</u>	<u>54,689</u>	<u>58,821</u>	<u>61,216</u>	<u>62,848</u>
Government :										
(a) Central	<u>44,583</u>	<u>40,317</u>	<u>41,051</u>	<u>40,387</u>	<u>40,873</u>	<u>42,757</u>	<u>42,415</u>	<u>45,404</u>	<u>47,321</u>	<u>49,129</u>
(b) Local <sup>5/</sup>	<u>3,243</u>	<u>3,371</u>	<u>3,410</u>	<u>3,404</u>	<u>3,577</u>	<u>3,657</u>	<u>4,723</u>	<u>5,137</u>	<u>5,366</u>	<u>5,500</u>
Other	<u>4,799</u>	<u>4,600</u>	<u>5,577</u>	<u>5,941</u>	<u>6,611</u>	<u>6,470</u>	<u>7,551</u>	<u>8,280</u>	<u>8,527</u>	<u>8,219</u>
<u>Activities not elsewhere specified</u>	<u>3,244</u>	<u>6,403</u>	<u>5,857</u>	<u>7,191</u>	<u>6,880</u>	<u>6,653</u>	<u>7,135</u>	<u>8,071</u>	<u>6,667</u>	<u>6,477</u>
Grand total	<u>142,485</u>	<u>148,179</u>	<u>157,787</u>	<u>167,218</u>	<u>172,814</u>	<u>184,539</u>	<u>194,762</u>	<u>198,435</u>	<u>199,114</u>	<u>196,641</u>

1/ revised and classified according to the International Standard Industrial Classification, 1968 edition

2/ in large establishments - see introduction on page 80

3/ including factories

4/ including factories and Tea Development Authority

5/ municipalities and district councils

Table 8.3 - Employment<sup>1/</sup> in specified sectors (March 1977 - March 1980)

	1977	1978	1979	1980
<b>(a) Sugar Industry</b>				
Total employed by :				
Planters (including metayers)	7,922	6,542	5,959	5,713
Millers' estates and annexes <sup>2/</sup> (including factories)	46,469	44,790	42,755	41,780
<b>Total</b>	<b>54,391</b>	<b>51,332</b>	<b>48,714</b>	<b>47,493</b>
<b>(b) Manufacturing industries</b>				
<b>Industrial group</b>				
Food <sup>3/</sup>	2,157	2,342	2,427	2,497
Beverages and tobacco	2,181	2,691	2,674	2,479
Textiles	2,591	2,216	2,133	2,029
Wearing apparel	13,032	13,999	16,413	17,021
Wood and furniture	932	980	914	1,119
Paper products	345	382	340	321
Printing and publishing	903	1,120	1,225	1,097
Rubber and leather products	633	498	486	615
Miscellaneous chemical products	973	907	939	1,009
Plastic products	126	134	135	142
Non-metallic mineral products	1,302	1,421	1,501	1,474
Iron and steel basic industries	...	...	427	434
Metal products	758	756	646	711
<b>Machinery :</b>				
Electrical	2,293	1,627	1,862	2,275
Non-electrical	825	674	851	796
Transport equipment	663	812	729	773
Watches and clocks	...	...	186	278
Jewellery and related articles	425	464	579	458
Miscellaneous manufacturing industries	802	931	674	623
<b>Total</b>	<b>30,941</b>	<b>31,954</b>	<b>35,141</b>	<b>36,151</b>

<sup>1/</sup> in large establishments - see introduction on page 80

<sup>2/</sup> including workers in field, factory, garage and workshop

<sup>3/</sup> excluding employees in sugar and tea factories, who have been included with plantation workers in agriculture

Table 8.4 - Employment<sup>1/</sup> in specified sectors (September 1977 - September 1980)

	1977	1978	1979	1980
<u>(a) Sugar industry</u>				
Total employed by :				
Planters (including metayers)	9,106	7,652	7,373	6,793
Millers' estates and annexes (including factories)	49,393	46,330	45,683	44,353
Total	58,499	53,982	53,056	51,146
<u>(b) Manufacturing industries</u>				
Industrial group				
Food <sup>3/</sup>	2,438	2,417	2,460	2,617
Beverages and tobacco	2,432	2,639	2,535	2,522
Textiles	2,868	1,994	2,309	2,169
Wearing apparel	14,166	14,759	16,337	16,927
Wood and furniture	1,000	969	1,132	1,096
Paper products	385	364	302	335
Printing and publishing	1,077	1,266	1,147	1,071
Rubber and leather products	556	681	601	563
Miscellaneous chemical products	963	963	974	1,050
Plastic products	143	123	127	128
Non-metallic mineral products	1,355	1,474	1,533	1,696
Iron and steel basic industries	...	365	489	427
Metal products	734	576	651	731
Machinery :				
Electrical	2,175	1,726	2,097	1,567
Non-electrical	849	768	772	758
Transport equipment	745	749	715	770
Watches and clocks	...	153	213	280
Jewellery and related articles	451	463	530	438
Miscellaneous manufacturing industries	904	628	642	672
Total	33,241	33,077	35,566	35,817

<sup>1/</sup> in large establishments - see introduction on page 80

<sup>2/</sup> including workers in field, factory, garage and workshop

<sup>3/</sup> excluding employees in sugar and tea factories, who have been included with plantation workers in agriculture

Table 0.5: 1/ Monthly earnings by industrial group (Bi-annual survey of employees and earnings - March 1971-March 1980) 2/  
(Rupees)

Industrial group	1971	1972	1973	1974	1975	1976	1977	1978	1979	1980
Agriculture and fishing	160	188	219	289	333	448		647	687	781
<u>3/</u> Sugar	166	201	232	305	343	463		664	692	765
<u>4/</u> Tea	109	127	146	191	246	321		483	608	705
Other	159	146	168	227	315	378		659	785	1,477
Mining and quarrying	122	111	141	166	210	300		498	441	521
Manufacturing	203	221	216	255	305	367		550	610	745
Electricity and water	393	372	365	473	602	741		1,303	1,501	1,785
Construction	236	220	291	329	352	495		715	868	1,064
Wholesale, retail trade, restaurants and hotels	366	367	394	597	587	678		1,013	1,085	1,289
Transport, storage and communication	314	355	335	429	490	641		992	1,250	1,744
Financing, insurance, real estate & business services	628	703	720	892	1,001	1,306		1,700	1,783	2,143
Community, social and personal services	258	298	284	412	552	697		983	1,094	1,301
Government : (a) Central	250	289	305	403	550	684		977	1,080	1,281
(b) Local <u>5/</u>	225	263	273	391	470	668		819	951	1,161
Other	357	386	387	493	622	809		1,117	1,264	1,498
Activities not elsewhere specified	-	-	-	184	260	323		456	497	598
All sectors	223	253	276	355	429	546		790	885	1,067

1/ including daily rate workers; daily wages have been converted to a monthly basis assuming 26 working days in a month

2/ see notes on page 80

3/ including factories

4/ municipalities and Tea Development Authority

5/ municipalities and district councils

Table B.6 - Average monthly earnings<sup>1/</sup> by industrial group (Bi-annual Survey of Employment & Earnings - September 1971 - September 1980)<sup>2/</sup>  
(Rupees)

Industrial group	1971	1972	1973	1974	1975	1976	1977	1978	1979	1980
Agriculture and fishing	195	262	250	343	381	554	660	779	817	1,028
Sugar <sup>3/</sup>	201	280	265	361	394	570	678	804	839	1,059
Tea <sup>4/</sup>	116	137	141	194	231	391	457	540	606	783
Other	162	174	169	240	337	438	610	682	750	834
Mining and quarrying	122	125	144	176	270	297	432	707	446	583
Manufacturing	215	227	226	271	323	414	521	606	631	814
Electricity and water	383	411	400	532	752	945	1,185	1,467	1,504	1,820
Construction	274	261	281	337	485	662	751	836	947	1,193
Wholesale, retail trade, restaurants and hotels	364	373	449	578	638	728	1,002	1,054	1,111	1,430
Transport, storage and communication	281	365	394	483	545	833	1,024	1,124	1,434	1,875
Financing, insurance, real estate & business services	675	749	770	980	1,130	1,400	1,607	1,673	1,879	2,419
Community, social and personal services	264	315	401	481	627	830	934	1,046	1,136	1,479
Government : (a) Central	256	309	408	478	621	819	920	1,031	1,111	1,478
(b) Local <sup>5/</sup>	237	271	317	441	576	852	797	885	1,081	1,206
Other	360	389	399	520	692	893	1,099	1,234	1,309	1,667
Activities not elsewhere specified	-	-	-	227	278	437	537	554	661	742
All sectors	240	295	324	400	483	654	775	887	963	1,229

<sup>1/</sup> including daily rate workers, daily wages have been converted to a monthly basis assuming 26 working days in a month

<sup>2/</sup> see notes on page 80

<sup>3/</sup> including factories

<sup>4/</sup> including factories and Tea Development Authority

<sup>5/</sup> municipalities and district councils

Table 8.7 - Daily wage rates<sup>1/</sup> of manual workers employed by the Central government as at 31st December, 1979 - 1980

(Rupees)

Occupation	Lowest		Highest	
	1979	1980	1979	1980
Pressman	35.54	39.46	59.85	66.39
Compositor	35.54	39.46	59.85	66.39
Fitter	35.54	39.46	59.85	66.39
Mechanic	35.54	39.46	59.85	66.39
Carpenter	35.54	39.46	59.85	66.39
Pattern Maker	35.54	39.46	59.85	66.39
Mason	35.54	39.46	59.85	66.39
Driver	31.54	35.04	49.54	54.81
Labourer (specialised)	24.73	27.38	31.54	35.04
Labourer (unskilled)	23.52	26.17	29.15	32.42

<sup>1/</sup> daily wage rate has been converted from a monthly basis assuming 26 working days in a month. It includes extra remuneration and special increases.



Table C.3 - Statutory minimum wage-rates<sup>1/</sup> per day for typical occupations in principal industries, 1976 - 1980

(rupees)

Industry	Occupation	Year <sup>2/</sup>					
		1976	1977	1978	1979	1980	
1. Agriculture: Sugar	Field labourer : male	19.05	20.78	22.32	24.09	28.63	
	female	11.50	12.77	13.77	14.88	17.74	
	Tea	10.05	16.57	17.80	19.24	22.93	
Tobacco	Field labourer : male	5.96	10.69	11.54	12.46	14.86	
	female	17.00	18.58	19.96	21.57	25.82	
	Field labourer : male	10.70	11.97	12.97	14.01	16.70	
2. Manufacturing: Bread manufacture (mechanised), Export enterprise	Brigadier	16.10	17.60	18.98	20.50	24.47	
	Factory worker : male	13.50	14.92	16.07	17.36	20.70	
	female	7.70	8.85	9.54	10.32	12.29	
	Cabinet maker (grade I)	23.55	25.63	27.59	29.47	35.13	
	Compositor (grade I)	20.77	22.62	24.27	26.08	31.00	
	Stone breaker	19.30	21.15	22.69	24.46	29.00	
	Blockmaker	16.00	17.50	18.88	20.45	24.33	
	Pattern maker (grade I)	-	23.69	25.50	27.35	32.62	
	Fitter (grade I)	-	23.69	25.50	27.35	32.62	
	Carpenter (grade I)	22.35	24.31	26.12	27.97	33.24	
3. Construction	Mason (grade I)	22.35	24.31	26.12	27.97	33.24	
	Driver	23.40	25.53	27.50	37.05	44.14	
4. Road transport: Buses <sup>3/</sup>	Conductor	20.19	22.04	23.69	32.14	38.36	

<sup>1/</sup> rate per month converted to rate per day by dividing by 26

<sup>2/</sup> as at 1st July of each year

<sup>3/</sup> as from 1979, rate per day calculated by dividing rate per month by 22, due to the introduction of 40hr work per week in December 1978

Table 8.9 - Daily wage rates<sup>1/</sup> (including extra remuneration and special increases) in certain industries - October inquiry<sup>2/</sup>, 1980

Industry	Occupation	(Rupees)	
		Lowest 1980	Highest 1980
1. Manufacture of bread <sup>3/</sup>	Brigadier	24.47 <sup>4/</sup>	...
2. Printing and publising	Pressman	31.00 <sup>4/</sup>	...
	Compositor (hand)	31.00 <sup>4/</sup>	...
3. Manufacture of machinery	Fitter (grade I)	32.62	38.73
	Pattern maker(grade I)	32.62	38.73
4. Repair of motor vehicles	Mechanic (grade I)	32.62	53.50
5. Construction	Carpenter (grade I)	33.24	39.88
	Mason (grade I)	33.24	39.88
6. Electricity	Linenman	56.36	84.77
	Labourer	33.86	41.86
7. Road passenger transport (buses)	Driver	44.14	47.45
	Conductor	38.36	41.25
8. Municipal services	Gardener (Male)	26.88	39.92

<sup>1/</sup> information on daily wages was not published in the December 1979 & June 1980 issues of the Digest because of low response and unreliability of data collected at the October 1979 enquiry.

<sup>2/</sup> data are collected in October of each year from a sample of large establishments. The normal hours of work are 48 hours per week for the manufacture of bread and (40 - 45) hours for the others.

<sup>3/</sup> mechanised bakeries - day shift.

<sup>4/</sup> statutory minimum wages are given because it has not been possible to compute lowest and highest wages as a result of poor response and unreliability of information obtained.

Table 8.10 - Employment and salaries <sup>1/</sup> of certain categories of non-agricultural employees on sugar millers' estates  
(September inquiry)

Category	Grade	1979			1980		
		Number employed	Monthly salaries (Rs)		Number employed	Monthly salaries (Rs)	
			Lowest	Highest		Lowest	Highest
Motor mechanic (automobile)	Chief	13	1,614.50	1,658.14	14	1,926.50	2,446.00
" "	Superior	73	1,243.00	1,551.22	66	1,489.00	1,842.36
" "	I	85	1,112.75	1,141.00	101	1,338.75	1,488.76
" "	II	70	886.50	1,003.50	77	1,057.50	1,197.68
Pan boiler	Chief	21	1,614.50	1,831.50	20	1,926.50	2,061.00
" "	Superior	48	1,243.00	1,399.20	45	1,489.00	1,735.00
" "	I	43	1,112.75	1,185.36	50	1,338.75	1,409.20
" "	II	42	886.50	1,104.00	41	1,057.50	1,151.28
Fitter	Chief	34	1,316.50	1,700.00	29	1,580.50	2,679.82
" "	Superior	86	1,243.00	1,302.72	98	1,489.00	1,566.76
" "	I	85	1,112.75	1,189.78	95	1,338.75	1,424.80
" "	II	100	886.50	1,054.00	92	1,057.50	1,193.92
Sheet metal worker and boiler maker	Chief	8	1,316.50	1,504.00	9	1,580.50	1,772.50
" "	Superior	31	1,243.00	1,302.72	32	1,489.00	1,566.76
" "	I	29	1,112.75	1,145.66	35	1,338.75	1,416.48
" "	II	24	886.50	1,032.90	23	1,057.50	1,200.68

<sup>1/</sup> including extra remuneration and special increases

Table B.10 (cont'd) - Employment and salaries<sup>1/</sup> of certain categories of non-agricultural employees on sugar millers' estates  
(September inquiry)

Category	Grade	1979			1980		
		Number employed	Monthly salaries (Rs)		Number employed	Monthly salaries (Rs)	
			Lowest	Highest		Lowest	Highest
Turner	Chief	10	1,316.50	1,614.50	9	1,580.50	1,926.50
"	Superior	38	1,243.00	1,293.62	36	1,489.00	1,535.04
"	I	30	1,112.75	1,190.56	31	1,338.75	1,414.40
"	II	25	886.50	1,003.50	26	1,057.50	1,172.60
Welder	Chief	16	1,316.50	1,521.00	15	1,580.50	1,617.20
"	Superior	41	1,243.00	1,286.75	38	1,489.00	1,514.00
"	I	54	1,112.75	1,173.00	60	1,338.75	1,408.00
"	II	68	886.50	1,023.02	60	1,057.50	1,191.06
Carpenter	Chief	20	1,181.50	1,276.61	3	1,526.20	1,926.86
"	Superior	5	1,053.75	1,094.44	19	1,416.00	1,489.00
"	I	98	929.75	971.00	104	1,106.75	1,259.00
"	II	82	854.00	854.14	77	1,020.00	1,062.36
Driver (heavy mechanical unit, loading and harvesting machine operator)	Superior	65	1,052.00	1,228.52	63	1,259.00	1,474.46
"	I	69	891.00	1,009.50	189	1,062.00	1,171.04
"	II	34	812.25	863.00	39	968.25	1,116.96
Driver : lorries, vans, buses, cars, rollers, wheel tractors for haulage work and light loader	Superior	64	980.00	1,112.00	45	1,171.00	1,258.92
Factory operator	I	1,083	891.00	953.25	1,101	1,062.00	1,122.00
"	II	143	812.25	847.42	154	968.25	1,036.50
"	Superior	218	767.75	1,359.00	130	914.75	1,316.00
"	I	321	707.00	766.34	357	844.00	913.38
"	II	374	631.00	732.00	397	749.00	842.14

<sup>1/</sup> including extra remuneration and special increases

Table 3.11 - Man-days actually worked and workers' earnings on sugar millers' estates, 1973 - 1980

Period	Workers on monthly rates of pay						Workers on daily rates of pay					
	Man-days actually worked (000)			Earnings (Rs million)			Man-days actually worked (000)			Earnings (Rs million)		
	1978	1979	1980	1978	1979	1980	1978	1979	1980	1978	1979	1980
January	506	526	635 <sup>1/2</sup>	33.2	27.1	31.0	93	58	65.6 <sup>1/2</sup>	4.0	2.0	2.2 <sup>1/2</sup>
February	731	761	710 <sup>1/2</sup>	22.8	25.1	30.7	120	68	86.2 <sup>1/2</sup>	3.8	1.8	3.1
March	916	1,128	772 <sup>1/2</sup>	25.3	28.6	30.4 <sup>1/2</sup>	125	75	66.9 <sup>1/2</sup>	2.9	2.0	2.2
April	718	715	781 <sup>1/2</sup>	23.3	25.1	30.4 <sup>1/2</sup>	102	57	64.9 <sup>1/2</sup>	2.5	1.9	2.2
May	798	762	870 <sup>1/2</sup>	23.9	26.5	32.5 <sup>1/2</sup>	122	71	85.3 <sup>1/2</sup>	3.0	1.9	2.5
June	882	892	777 <sup>1/2</sup>	27.4	28.7	30.5 <sup>1/2</sup>	134	107	73.8 <sup>1/2</sup>	3.0	3.0	2.3
July	859	840	837	30.2	35.5	36.0	140	123	100.8	3.4	3.6	3.4
August	937	732	888	35.8	28.2	43.6	166	117	151.4	4.6	3.4	5.3
September	802	802	830	35.2	32.0	40.4	132	128	134.8	3.8	3.9	4.8
October	845	799	887	32.8	32.3	43.8	141	123	123.4	3.8	3.9	4.6
November	776	855	742	31.6	44.4	36.1	135	152	110.4	3.8	5.8	3.8
December	838	815	823	92.1	108.2	117.6	130	138	98.3	7.5	7.4	7.5
Total	9,608	9,627	9,552	413.6	441.7	503.0	1,540	1,217	1,161.8	46.1	40.6	43.9

Note : (i) the table excludes the "Etat Major" staff

(ii) earnings and the number of "man-days actually worked" refer to 4 or 5 weekly periods ending on the pay-day of each month; the figures are therefore not strictly comparable from month to month

(iii) earnings also include cost of living allowance, extra remuneration, special increases, overtime, holiday and leave pay, housing allowance and end-of-year bonus

<sup>1/2</sup> revised

Section 9 - Social Security

Table 9.1 - Social Benefits<sup>1/</sup> - 1976-80

	1976-77	1977-78	1978-79	1979-80
1. <u>Outdoor Relief</u>				
(i) No. of beneficiaries (regular)	20,290	15,221	14,746	14,354
(ii) Total amount paid (Rs mn)	20.6	16.2	15.6	15.1
2. <u>Indoor Relief</u>				
(i) No. of persons in infirmaries	608	576	576	595
(ii) No. of persons in orphanages	207	182	183	183
(iii) Total capitation grants paid (Rs mn)	1.56	1.87	2.03	2.00
3. <u>Family Allowance</u>				
(i) No. of beneficiaries	35,755	35,024	33,734	33,217
(ii) Total amount paid (Rs mn)	19.6	22.7	23.9	21.8
4. <u>Retirement Pension</u>				
(i) No. of beneficiaries				
Basic Pension	58,348	60,012	61,631	63,000
Contributory Pension	-	-	443	1,141
(ii) Amount paid (Rs mn)				
Basic Pension	56.3	69.5	78.0 <sup>7/</sup>	81.8
Contributory Pension	-	-	0.11	0.38
5. <u>Widow's Pension and Child's Allowance</u> <sup>2/</sup>				
(i) No. of beneficiaries				
Basic Pension	14,557	15,468	16,152	16,738
Contributory Pension	-	-	77	188
(ii) Amount paid (Rs mn)				
Basic Pension	11.2	22.3	25.4	26.3
Contributory Pension	-	-	0.04	0.18
6. <u>Orphans' Pension and Guardians Allowance</u> <sup>3/</sup>				
(i) No. of orphans	-	671	867	913
(ii) No. of guardians	-	438	564	603
(iii) Total amount paid (Rs mn)	-	0.39	0.64	0.71
7. <u>Invalidity Pension and Child's Allowance</u> <sup>4/</sup>				
(i) No. of beneficiaries				
Basic Pension	-	5,724	5,644	6,037
Contributory Pension	-	-	6	35
(ii) Amount paid (Rs mn)				
Basic Pension	-	7.4	8.2	8.8
Contributory Pension	-	-	-	0.03

Table 9.1 - Social Benefits<sup>1/</sup> - 1976 - 1980 (cont'd)

	1976-77	1977-78	1978-79	1979-80
<u>C. Inmates Allowance</u> <sup>5/</sup>				
(i) No. of beneficiaries	-	535	508	489
(ii) Total amount paid (Rs mn)	-	0.06	0.09	0.11
<u>D. Industrial Injury Benefit</u> <sup>6/</sup>				
Total amount paid (Rs mn)	-	-	-	0.51
<u>E. Lumpsum payment to ex SIPP Members</u>				
Total amount paid (Rs mn)	-	-	0.22	1.22

<sup>1/</sup> as at June. Payment of contributory benefits under the National Pension Scheme has been effective as from July 1976. Beneficiaries of basic and contributory pension are shown separately. But since beneficiaries of contributory pension are also eligible for the corresponding basic pension the number of beneficiaries of the basic pension also includes those receiving contributory pension as well.

<sup>2/</sup> effective as from December 1976, this also includes widows previously drawing outdoor relief.

<sup>3/</sup> effective as from July 1977; this also includes orphans previously drawing outdoor relief.

<sup>4/</sup> effective as from July 1977; this also includes invalids previously drawing outdoor relief.

<sup>5/</sup> an allowance payable to a person who is other-wise qualified to receive a basic pension but is disqualified to receive that pension because he is an inmate of a charitable institution.

<sup>6/</sup> effective as from August 1979

<sup>7/</sup> revised.

Table 9.2 - National Pensions Scheme - contribution from employers/employees

	1978-79	1979-80
(i) No. of employers registered <sup>1/</sup>	1,300	10,700
(ii) Contribution from employers/employees (Rs mn)	63.2	35.5
(iii) Surcharge paid by employers (Rs mn)	0.08	0.20

<sup>1/</sup> as at June

SECTION 10 - EDUCATION

Table 10.1 - Primary education - number of schools, pupils and teachers, 1976 - 1980

A - Island of Mauritius

Period	Total number of schools <u>1/</u>	No. of pupils			Number of teachers	Pupil/teacher ratio
		Government	Aided	Non-aided <u>2/</u>		
October 1976	235	103,638	31,452	4,349	5,848	24
June 1977	236	100,612	30,688	4,719	6,250	22
" 1978	244	100,299	29,629	3,504	6,352	21
" 1979	254	93,940	27,779	3,446	6,373	20
" 1980 <u>3/</u>	257	93,345	26,903	3,418	6,177	20

B - Island of Rodrigues

October 1976	7	968	3,595	...	4,563	160	29
June 1977	8	1,185	3,640	...	4,825	181	27
" 1978	8	1,211	3,709	...	4,920	185	27
" 1979	9	1,285	3,735	...	5,020	194	26
" 1980 <u>3/</u>	10	1,957	3,091	...	5,048	197	26

1/ this total includes only the number of government and aided primary schools. The number of pre-primary schools having primary sections are not included

2/ including pupils of the primary sections of pre-primary schools as well as aided and non-aided secondary schools

3/ provisional



Table 10.2 - Secondary education - number of schools, pupils and teachers, 1976 - 1980

A - Island of Mauritius

Period	Total number of schools	No. of Pupils				Non-aided <sup>2/</sup>	Total	Number of teachers <sup>3/</sup>	Pupil/teacher ratio
		Government	Aided						
			Status A	Status B & non- <sup>1/</sup> recognised schools					
October 1976	126	3,459	11,983	48,090	3,388	66,920	2,123	32	
June 1977	130	3,809	18,755	51,866	3,608	78,038	2,439	32	
" 1978	141	5,564	19,536	55,306	73	80,479	2,769	29	
" 1979	148	7,673	18,938	55,266	69	81,946	3,042	27	
" 1980 <sup>4/</sup>	148	9,692	19,663	51,465	61	80,881	3,075	26	

B - Island of Rodrigues

October 1976	1	-	-	344	-	344	12	29
June 1977	1	-	-	391	-	391	13	30
" 1978	1	-	-	460	-	460	18	26
" 1979	3	355	-	315	-	670	24	28
" 1980 <sup>4/</sup>	3	461	-	314	-	775	26	30

<sup>1/</sup> including Private Junior Secondary Schools and Special Schools

<sup>2/</sup> as from April 1975, a number of non-aided schools have become aided schools following the implementation of the Ramphul's Report

<sup>3/</sup> the number of teachers in the secondary schools is expressed in terms of full-time equivalent, taking 30 periods per week as full-time teaching

<sup>4/</sup> provisional

Table 10.3 - Enrolment by grade and sex in primary schools - Island of Mauritius, 1976 - 1980

Grade	1976			1977			1978			1979			1980 <sup>1/</sup>		
	Both sexes	Male	Female	Both sexes	Male	Female	Both sexes	Male	Female	Both sexes	Male	Female	Both sexes	Male	Female
	Std. I	19,501	10,110	9,391	18,995	9,677	9,318	18,627	9,662	9,365	18,457	9,254	9,203	21,167	10,773
Std. II	19,851	10,195	9,656	19,870	10,085	9,785	18,440	9,384	9,056	18,402	9,591	9,075	18,243	9,089	9,154
Std. III	21,254	10,318	10,421	19,790	10,159	9,631	19,853	10,072	9,781	18,305	9,520	8,983	18,320	9,312	9,008
Std. IV	20,991	10,477	10,114	21,144	10,797	10,347	19,624	10,085	9,539	19,604	9,980	9,624	18,168	9,273	8,895
Std. V	22,111	11,163	10,948	20,207	10,274	9,933	20,545	10,490	10,055	19,163	9,894	9,269	19,455	9,876	9,579
Std. VI	35,746	18,514	17,432	36,013	18,453	17,560	35,943	18,763	17,180	31,236	16,156	15,080	28,313	14,863	13,450
Total	139,439	71,077	68,362	136,019	69,425	66,594	133,452	68,456	64,976	125,165	63,931	61,234	123,666	63,186	60,480

Note: as from 1977, the enrolment figures refer to the month of June. For previous years, the reference period was October.

<sup>1/</sup> provisional.

Table 10.4 - Enrolment by grade and sex in primary schools - Island of Rodrigues, 1976 - 1980

Grade	1976			1977			1978			1979			1980 <sup>1/</sup>		
	Both sexes	Male	Female	Both sexes	Male	Female	Both sexes	Male	Female	Both sexes	Male	Female	Both sexes	Male	Female
Std. I	316	452	464	859	431	428	828	424	405	866	425	441	897	441	456
Std. II	742	371	371	933	456	477	865	434	431	840	424	426	850	417	453
Std. III	739	387	368	732	366	366	814	446	468	861	432	451	858	422	416
Std. IV	722	355	367	727	371	356	701	346	355	867	431	436	817	412	405
Std. V	667	334	333	683	341	342	653	326	327	650	323	327	788	388	400
Std. VI	751	373	388	891	435	455	858	488	470	936	487	475	858	442	416
Total	4,565	2,272	2,291	4,825	2,400	2,425	4,520	2,464	2,456	5,020	2,522	2,490	5,048	2,522	2,526

Note: as from 1977, the enrolment figures refer to the month of June. For previous years, the reference period was October

<sup>1/</sup> provisional

Table 10.5 - Enrolment by grade and sex in secondary schools - Island of Mauritius, 1976 - 1980

Grade	1976			1977			1978			1979			1980 <sup>1/</sup>		
	Both sexes	Male	Female	Both sexes	Male	Female	Both sexes	Male	Female	Both sexes	Male	Female	Both sexes	Male	Female
Form I	16,109	8,740	7,369	19,970	10,419	9,551	17,251	8,678	8,553	14,953	7,589	7,364	13,970	6,969	7,001
Form II	13,045	6,894	6,151	14,804	7,899	6,905	17,180	8,723	8,465	16,847	8,578	8,269	14,424	7,242	7,182
Form III	11,639	6,161	5,477	12,505	6,431	6,074	15,745	7,032	6,713	16,356	8,438	7,918	16,087	8,120	7,967
Form IV	11,216	6,140	5,076	12,628	6,633	5,995	15,651	7,121	6,510	14,760	7,744	7,015	16,272	8,246	8,026
Form V	11,365	6,750	5,176	14,315	8,007	6,308	14,535	8,135	6,398	14,358	7,989	6,569	15,129	8,160	6,969
Form VI	2,945	1,691	1,055	3,816	2,516	1,300	4,151	2,678	1,473	4,672	2,519	1,753	4,999	2,980	2,019
Total	66,920	36,616	30,304	78,038	41,905	36,133	80,471	42,367	38,112	81,946	43,257	38,689	80,881	41,717	39,164

Note: as from 1977, the enrolment figures refer to the month of June. For previous years, the reference period was October

<sup>1/</sup> provisional

Table 10.6 - Enrolment by grade and sex in secondary schools - Island of Rodrigues, 1976 - 1980

Grade	1976			1977			1978			1979			1980 <sup>1/</sup>		
	Both sexes	Male	Female	Both sexes	Male	Female	Both sexes	Male	Female	Both sexes	Male	Female	Both sexes	Male	Female
Form I	105	63	42	109	60	49	258	150	128	438	206	232	284	147	137
Form II	69	51	38	100	58	42	66	37	31	109	54	55	358	176	182
Form III	85	45	40	121	54	67	55	49	44	63	35	23	59	31	28
Form IV	40	25	17	40	25	15	20	16	13	44	28	16	41	21	20
Form V	25	15	12	18	9	9	12	7	5	16	9	7	27	18	9
Form VI	20	15	7	3	3	-	-	-	-	-	-	-	6	4	2
Total	344	180	156	391	209	182	450	239	221	670	332	356	775	397	378

Note: as from 1977, the enrolment figures refer to the month of June. For previous years, the reference period was October.

<sup>1/</sup> provisional

Table 10.7 - University of Mauritius - Students enrolled, 1979 - 1981

	School of Administration		School of Agriculture		School of Industrial Technology		Total	
	1979-80	1980-81	1979-80	1980-81	1979-80	1980-81	1979-80	1980-81
	Higher Degree courses	-	-	8	9	6	6	14
Degree courses	28	-	28	17	56	37	112	54
Diploma courses	175	96	50	37	89	37	324	170
Certificate courses	24	8	-	-	35	23	59	31
Professional courses	26	9	-	-	111	95	137	104
Non-award courses <sup>1/</sup>	66	96	-	-	18	-	84	96
Total	319	209	96	63	315	198	730	470

<sup>1/</sup> revised

Table 10.8 - University of Mauritius - output, 1978-1980

	School of Administration		School of Agriculture		School of Industrial Technology		Total	
	1978-79	1979-80	1978-79	1979-80	1978-79	1979-80	1978-79	1979-80
Higher Degree courses	-	-	-	-	1	-	1	-
Degree courses	-	28	5	5	7	12	12	45
Diploma courses	90	83	20	17	56	10	166	110
Certificate courses	30	22	14	15	31	52	75	69
Total	120	133	39	37	95	54	254	224

Note : the output for professional courses is not available, the awards being from outside bodies

SECTION 11 - TRANSPORT AND COMMUNICATION

Table 11.1 - Motor vehicles registered, 1976 - 1980

End of period	Grand total	Private vehicles				Commercial vehicles							Government owned vehicles
		Total	Cars	Motor cycles	Auto cycles	Total	Taxi cars	Lorries	Vans	Buses	Other		
1976	50,741	34,270	18,368	6,455	9,447	14,348	2,288	3,540	5,264	1,186	2,070	2,123	
1977	59,670	39,893	20,630	7,884	11,379	17,645	3,700	3,942	6,529	1,261	2,213	2,132	
1978	64,581	43,613	21,757	8,437	13,419	18,763	3,609	4,195	7,233	1,393	2,333	2,205	
1979	68,990	47,430	22,400	8,550	16,480	19,344	3,479	4,250	7,747	1,468	2,400	2,216	
1980	69,829	48,256	22,280	8,304	17,672	19,427	3,305	4,200	8,153	1,490	2,279	2,146	
1979 : 1st Qr.	65,881	44,733	21,938	8,472	14,323	18,937	3,581	4,227	7,364	1,424	2,341	2,211	
2nd Qr.	67,213	45,839	22,144	8,508	15,187	19,147	3,521	4,262	7,560	1,440	2,364	2,227	
3rd Qr.	67,834	46,411	22,210	8,519	15,682	19,229	3,527	4,224	7,639	1,452	2,387	2,194	
4th Qr.	68,990	47,430	22,400	8,550	16,480	19,344	3,479	4,250	7,747	1,468	2,400	2,216	
1980 : 1st Qr.	68,418	47,108	22,034	8,157	16,917	19,091	3,491	4,173	7,760	1,430	2,237	2,219	
2nd Qr.	68,905	47,498	22,046	8,169	17,283	19,161	3,434	4,169	7,870	1,436	2,252	2,246	
3rd Qr.	69,175	47,896	22,285	8,220	17,391	19,164	3,245	4,187	8,000	1,446	2,286	2,115	
4th Qr.	69,829	48,256	22,280	8,304	17,672	19,427	3,305	4,200	8,153	1,490	2,279	2,146	



Table 11.2 - New registration of motor vehicles<sup>1/</sup>, 1978-1980

Period	Grand Total	Cars	Lorries	Buses	Motor cycles and auto cycles	D.P.V. <sup>2/</sup> and vans	Other
1978 January	551	112	17	16	333	64	9
February	598	167	15	7	291	107	11
March	624	140	30	21	329	90	14
April	426	83	22	4	255	52	10
May	381	101	37	3	156	72	12
June	443	148	37	20	149	62	27
July	317	62	53	12	151	45	14
August	317	68	30	13	124	73	9
September	214	49	12	4	95	47	7
October	333	68	15	11	182	48	9
November	338	54	14	6	210	49	5
December	455	51	10	19	316	46	13
1979 January	552	65	12	-	422	48	5
February	415	48	8	21	286	47	5
March	351	47	15	12	233	41	3
April	518	52	7	6	369	77	7
May	401	44	7	11	254	73	12
June	459	70	25	7	283	62	12
July	386	78	11	7	235	44	11
August	300	82	12	10	156	31	9
September	283	53	11	10	146	36	27
October	477	95	21	13	280	63	5
November	541	71	18	11	393	39	9
December	230	39	9	10	155	15	2
1980 January	209	27	9	5	133	35	-
February	321	30	5	10	236	34	6
March	266	39	13	14	162	34	4
April	316	65	12	24	156	48	11
May	302	45	10	7	178	53	9
June	393	58	28	13	200	70	24
July	327	82	14	13	144	53	21
August	230	51	4	11	111	42	11
September	257	62	10	11	99	67	8
October	312	55	9	17	184	41	6
November	377	67	7	23	196	60	24
December	489	71	3	20	302	88	5

<sup>1/</sup> including government vehicles

<sup>2/</sup> dual purpose vehicles

Table 11.3 - Bus operational statistics, 1976 - 1980

	Unit	1976	1977	1978	1979	1980 <sup>2/</sup>
Total number of buses registered (at 30th June)	Number	1,155	1,220	1,328	1,440	1,436
Total vehicle - journeys	Thousand	4,049	3,804	3,731	3,003	4,070
Average vehicle - journeys per day	"	11	10	10	8	11
Total vehicle - miles	"	36,129	34,560	35,277	28,595 <sup>1/</sup>	35,345
Average vehicle - miles per day	"	99	95	97	78 <sup>1/</sup>	97
Total gross receipts	000 Rs	81,429	90,497	98,395	117,028	162,173
Average gross receipts per day	"	223	249	270	321	444

1/ revised

2/ estimates

Table 11.4 - Road traffic accidents and casualties, 1976 - 1980

	1976	1977	1978	1979	1980
<u>Road traffic accidents</u>					
Number	<u>4,560</u>	<u>5,065</u>	<u>7,412</u>	<u>7,820</u>	<u>5,457</u>
Number per 100,000 of population	525	574	827	858	589
<u>Motor vehicle accidents</u>					
Number of motor vehicles involved	<u>4,678</u>	<u>5,526</u>	<u>6,754</u>	<u>8,017</u>	<u>8,725</u>
Number per 100,000 of population	539	627	753	880	942
Number per 1,000 registered motor vehicles	100	99	108	119	127
<u>Total casualties</u>	<u>2,333</u>	<u>3,195</u>	<u>4,040</u>	<u>4,266</u>	<u>2,068</u>
<u>Nature of casualty</u>					
Killed	141	135	132	137	124
Seriously injured	118	275	274	260	127
Slightly injured	2,074	2,785	3,634	3,869	1,817
<u>Casualties by class of road users</u>					
Pedestrians	973	1,207	1,548	1,602	592
Pedal cyclists	210	308	383	545	340
Passengers	630	838	946	1,021	586
Drivers or riders of motor vehicles	520	842	1,163	1,098	550

Table 11.5 - Sea-borne shipping<sup>1/</sup>, 1976 - 1980

Period	Vessels entering		Vessels leaving		Goods	
	Number	Net registered tonnage (Thousand m/tons)	Number	Net registered tonnage (Thousand m/tons)	Unloaded (Thousand m/tons)	Loaded <sup>2/</sup> (Thousand m/tons)
1976	482	2,025	477	2,048	812	682
1977	533	2,113	525	2,158	896	794
1978	521	2,109	495	1,986	1,063	760
1979	520	2,320	502	2,391	1,140	853
1980 <sup>3/</sup>	556	2,305	574	2,431	1,189	836
1979 : 1st Qr.	143	626	138	622	214	175
2nd Qr.	117	523	117	548	303	170
3rd Qr.	126	663	118	656	268	261
4th Qr.	134	508	129	565	355	247
1980 <sup>3/</sup> : 1st Qr.	131	458	136	572	237	209
2nd Qr.	136	581	144	601	316	173
3rd Qr.	152	596	150	580	286	273
4th Qr.	137	670	144	678	350	181

1/ excluding fishing vessels berthed in Port Louis

2/ excluding bunkers

3/ provisional

Table 11.6 - Civil Aviation, 1976 - 1980

Period	Number of movements		Freight	
	Landings	Take offs	Unloaded (m/tons)	Loaded (M/tons)
1976	2,371	2,371	1,542.3	3,633.4
1977	2,208	2,208	6,645.2	7,036.8
1978	2,308	2,308	2,375.7	4,371.3
1979	2,816	2,816	3,749.5	4,060.4
1980	3,412	3,412	2,977.8	4,396.8
1979 : 1st Qr.	590	590	952.3	873.4
2nd Qr.	630	630	863.6	1,214.9
3rd Qr.	679	679	938.7	1,096.6
4th Qr.	917	917	994.8	875.4
1980 : 1st Qr.	848	848	800.0	759.1
2nd Qr.	826	826	748.9	1,321.8
3rd Qr.	885	885	664.4	1,108.4
4th Qr.	853	853	764.5	1,207.5

Note : The following are relevant to this table:

- (1) only movements of commercial aircraft are accounted for
- (2) each touch down or each take off is counted as a separate movement
- (3) freight carried by planes other than commercial is included

Table 11.7 - Telephone service (end of period), 1976 - 1980

	Unit	1976	1977	1978	1979	1980
Main exchange (including rural automatic exchange)	Number	26	26	30	30	32
Capacity (in terms of line)	"	20,550	22,950	37,750	37,750	37,750
Exchange line connection	"	16,324	17,712	19,943	22,456	23,627
Individual installations	"	26,505	29,145	32,121	35,950	36,960
Call units registered (during period)	Thousand	30,913	32,876	33,109	37,585	34,218

Table 11.8 - Broadcasting services (end of period), 1976 - 1980

	Unit	1976	1977	1978	1979	1980
<u>Sound</u>						
Stations	Number	1	1	1	1	1
Transmitters	"	3	4	4	4	4
Aerial output: short wave	Kw.	10	10	10	10	10
medium wave	"	10	10	10	10	10
Weekly transmission time	Hour	116	116	116	115	116
Radio sets newly licensed <sup>1/</sup> (during period)	Number	2,873	6,467	7,300 <sup>3/</sup>	7,400	6,395
Radio sets licensed <sup>2/</sup>	"	87,380	93,454	99,750	105,783	110,832
<u>Television</u>						
Stations	Number	1	1	1	1	1
Transmitters	"	5	5	5	5	5
Aerial output (ERP)	Kw.	15	15	15	15	15
Weekly transmission time	Hour	63	63	63	63	63
New licences issued <sup>1/</sup> (during period)	Number	8,943	10,190	8,060	5,505 <sup>3/</sup>	3,840
Television sets licensed	"	54,341	64,062	71,611	76,479	79,442
New omnibus licences issued (during period)	"	127	81	102	109	126

1/ including omnibus licences

2/ excluding scrapped sets

3/ revised

SECTION 12 - LAND UTILIZATION

Table 12.1 - Total area<sup>1/</sup> classified by utilization

	<u>Acres</u>
	1972
Agriculture	<u>262,500</u>
Sugar cane	242,100
Tea	15,400
Tobacco, vegetable, and other crops	5,000
Forests, scrub areas, grasslands and grazing lands	<u>159,300</u>
Forest plantation	16,740
Forest, natural	5,900
Savannahs, grasslands, meadows, etc.	18,400
Scrub and other forest lands	118,260
Reservoirs and ponds	<u>2,900</u>
Swamps and rocks	<u>3,500</u>
Roads (main thoroughfares)	<u>3,300</u>
Built-up areas	<u>29,300</u>
Total island	460,800

<sup>1/</sup> based on the findings of the UNDP-FAO Land and Water Resources Survey team working on aerial photographs of the island taken at the end of 1965 and supplemented to some extent by land surveys.

Table 12.2 - Effective area under cultivation, 1976 - 1980

	<u>Acres</u>				
	1976	1977	1978	1979	1980
Sugar cane	215,400	215,500	214,300	211,800 <sup>1/</sup>	211,400
Tea	14,000	14,400	14,440	10,220 <sup>2/</sup>	9,675 <sup>2/</sup>
Tobacco	1,700	1,350	1,530	1,905	2,160

<sup>1/</sup> revised

<sup>2/</sup> excluding roads, rivers and waste land as from 1979

SECTION 13 - LOCAL PRODUCTION

Table 13.1 - Agriculture - production of main crops, 1976 - 1980

Commodity	Unit	1976	1977	1978	1979	1980
<u>Industrial crops</u>						
Sugar cane	Thousand m/tons	6,402	6,022	6,260	6,313	4,564
Tea (green leaf processed)	m/tons	21,678	23,607	25,733	25,718	22,438
Tobacco leaf <u>1/</u>	"	700	588	731	705	1,153
<u>Vegetables, pulses and fruits</u>						
Beans and peas	"	912	876	911	904	1,162
Creepers <u>2/</u>	"	5,671	5,745	6,368	5,483	6,110
Eddoes	"	187	209	214	121	172
Eggs plants (bringelles)	"	729	785	878	527	573
Ginger	"	826	515	608	387	348
Groundnuts	"	1,150	1,094	1,428	1,082	1,071
Maize	"	1,584	1,328	1,144	1,171	732
Manioc	"	260	226	246	182	86
Potatoes (Irish)	"	11,944	10,905	12,153	8,329	11,694
Rice	"	465	275	197	38	159
Sweet potatoes	"	123	131	164	105	85
Tomatoes	"	5,439	6,928	7,254	8,359	6,121
Mixed vegetables <u>3/</u>	"	7,286	6,682	6,987	7,123	8,454
Bananas	"	7,540	7,586	7,154	6,663	2,625
Pineapples	"	687	607	542	452	258

1/ refers to crop year which normally extends from the beginning of April to the end of March

2/ include margoze, calabash, chouchou, cucumber, patolle, pipengaille, pumpkin, squash, voehm

3/ include beet, cabbage, carrot, cauliflower, chillies (long and small), garlic, leek, lettuce, onion, petsai, sweet pepper, ladies'finger (lalo)

Table 13.2 - Livestock slaughtered, 1977 - 1980

Type of livestock	1977		1978		1979		1980	
	No. of heads	Carcass weight (M/Tons)	No. of heads	Carcass weight (M/Tons)	No. of heads	Carcass weight (M/Tons)	No. of heads	Carcass weight (M/Tons)
<u>Cattle</u>	<u>10,230</u>	<u>1,257.2</u>	<u>7,709</u>	<u>1,156.8</u>	<u>8,893</u>	<u>1,633.0</u>	<u>10,217</u>	<u>1,848.9</u>
Local	<u>8,948</u>	<u>1,052.5</u>	<u>4,140</u>	<u>458.0</u>	<u>3,791</u>	<u>575.5</u>	<u>2,896</u>	<u>454.7</u>
Milchbreed								
Bulls & calves	4,078	444.2	2,581	265.9	1,735	215.2	873	104.5
Heifers	348	36.0	41	3.7	-	-	-	-
Cows	2,949	374.3	399	51.2	<u>440</u>	<u>66.8</u>	<u>463</u>	<u>63.7</u>
Other breed	1,573	198.0	1,119	137.2	1,616	293.6	1,560	286.5
Rodrigues	<u>413</u>	<u>54.7</u>	<u>47</u>	<u>5.5</u>	<u>56</u>	<u>7.7</u>	<u>446</u>	<u>59.6</u>
Imported	<u>869</u>	<u>150.0</u>	<u>3,522</u>	<u>693.3</u>	<u>5,046</u>	<u>1,049.8</u>	<u>6,875</u>	<u>1,334.6</u>
Goats	16,632	154.9	18,544	136.2	17,856	142.7	14,185	90.0
Sheep	2,775	43.0	2,838	37.4	3,236	40.6	4,189	50.8
Pigs	7,266	471.8	8,240	490.6	8,063	522.6	9,154	607.4

1/ including heifers

Table 13.3 - Fisheries statistics, 1977 - 1980

Source	(M/Tons)			
	1977	1978	1979	1980
Lagoons and off-lagoons	2,522	2,356	2,345	1,635
Banks	3,123	2,825	1,857	1,405
Barachois and ponds	12	16	26	27
Total	5,657	5,197	4,228	3,067

1/ revised

Table 13.4 - Sugar industry - cane cultivation, 1976 - 1980

Crop year	Area under cultivation (Thousand arpents)		Area harvested (Thousand arpents)		Cane harvested (Thousand m/tons)		Average yield (m/tons per arpent)	
	Millers	Planters	Millers	Planters	Millers	Planters	Millers	Planters
1976	117	89	106	192	3,977	2,425	37.6	28.2
1977	117	89	105	191	3,747	2,275	35.7	26.5
1978	119	88	106	190	3,914	2,346	36.8	27.9
1979	117	86	107	189	3,977	2,336	37.3	28.4
1980	117	85	106	187	2,874	1,690	27.0	20.8
							57.6	28.2
							35.7	26.5
							36.8	27.9
							37.3	28.4
							27.0	20.8

Table 13.5 - Sugar manufacture, 1976 - 1980

Crop year	Number of factories operating	Commercial sugar recovered (% cane)	Products of manufacture (Thousand m/tons)			Residues of manufacture (Thousand m/tons)		Average sugar price <sup>1/</sup> ex-syndicate <sup>2/</sup> (Rs per m/ton)
			White sugar	Raw sugar	Total sugar	Molasses	Scums	
1976	21	10.91	55	637	690	199	208	1,617.03 <sup>2/</sup>
1977	21	11.08	48	618	666	195	205	1,678.36
1978	21	10.63	42	623	665	202	210	1,742.01
1979	21	10.90	42	646	688	200	214	2,144.28
1980	21	10.42	51	444	475	156	177	2,293.00 <sup>3/</sup>

<sup>1/</sup> price of sugar is the average ex-syndicate price for raw sugar at 98.5° polarisation after deducting the sugar insurance premium and special levy and adding the planter's share of surplus.

<sup>2/</sup> revised

<sup>3/</sup> provisional



Table 13.6 - Industry - production of selected commodities, 1976 - 1980

	Unit	1976	1977	1978	1979 <sup>1/</sup>	1980 <sup>2/</sup>
Sugar	M/tons	689,932	665,435	665,219	688,383	475,494
Molasses	"	199,421	194,558	193,500	207,500	137,100
Tea manufactured	"	4,334	4,727	5,106	5,072	4,347
Alcohol @ 93.5 G.L	H/litres	31,100	33,581	39,087	36,579	23,095
Denatured spirits:						
Power alcohol	"	1,450	1,790	1,714	2,352	1,778
Alcohol for heating and lighting	"	3,939	3,572	3,203	3,134	3,294
Perfumed spirits	"	903	1,032	1,190	853	1,102
Vinegar	"	885	508	846	847	733
Beer and stout	"	132,919	155,259	147,883	136,503	136,770
Country liquor	"	22,575	25,685	26,894	31,816	33,030
Soft aerated beverages	"	464,721	567,095	605,000	533,700	473,500
Cigarettes	M/tons	878	984	1,031	1,030	959
Matches	Gross boxes	168,918	188,222	153,550	161,200	171,525
Lime	M/tons	7,500	7,500	8,000	8,000	7,500
Salt	"	6,000	6,000	6,000	6,000	6,000
Electricity generated	Mn Kwh	270	308	335	355	355

<sup>1/</sup> revised

<sup>2/</sup> provisional

Table 13.7 - Industrial production : number of establishments <sup>1/</sup> covered, 1975 - 1980

Industrial Activity	Number of establishments					
	1975	1976	1977	1978	1979	1980
Food manufacturing industries including sugar and tea manufacturing	141	147	148	146	158	164
Alcoholic beverages and tobacco manufactures	12	12	12	12	11	11
Manufacture of non-alcoholic beverages	5	4	5	5	5	5
Manufacture of textiles, made-up textiles and other wearing apparel	46	65	71	79	97	103
Manufacture of footwear, leather and leather products	15	13	14	17	17	18
Manufacture of wood, furniture and fixtures	22	21	22	22	23	22
Manufacture of paper products, printing, publishing and allied industries	34	34	36	40	43	43
Manufacture of chemicals and chemical products	34	34	36	35	37	36
Manufacture of metal products, transport equipment and machinery except electrical machinery	41	43	46	50	51	54
Manufacture of non-metallic mineral products	25	27	33	31	31	32
Manufacture of electrical machinery, apparatus and appliances	10	11	11	10	9	9
Other manufacturing industries	15	20	22	27	27	31
Total	400	431	456	474	509	529

<sup>1/</sup> including those employing 10 or more persons except in the case of bread and pastry where all establishments are covered. Establishments employing less than 10 persons but whose production is greater than one million rupees, have also been included.

Table 1.8 - Industrial production : value added, 1975 - 1980

(Rs Million)

Industrial Activity	Value added					
	1975	1976	1977	1978	1979 <sup>1/</sup>	1980 <sup>2/</sup>
Food manufacturing industries including sugar and tea manufacturing	305	321	311	333	432	406
Alcoholic beverages and tobacco manufactures	29	42	48	50	48	68
Manufacture of non-alcoholic beverages	13	13	20	29	32	39
Manufacture of textiles, made-up textiles and other wearing apparel	58	91	110	137	197	272
Manufacture of footwear, leather and leather products	7	9	9	12	16	23
Manufacture of wood, furniture and fixtures	10	13	12	15	18	21
Manufacture of paper products, printing, publishing and allied industries	16	21	24	28	36	44
Manufacture of chemicals and chemical products	35	51	59	57	67	76
Manufacture of metal products, transport equipment and machinery except electrical machinery	32	38	50	63	72	85
Manufacture of non-metallic mineral products	17	20	30	35	39	51
Manufacture of electrical machinery, apparatus and appliances	20	21	21	16	18	16
Other manufacturing industries	7	10	14	24	21	32
Total	549	650	708	799	996	1,133

<sup>1/</sup>revised<sup>2/</sup>provisional

Note : The data relate to the production of establishments employing 10 or more persons in industries that are classified under Major Division 3 of the International Standard Industrial Classification of all Economic Activities, except in the case of the manufacture of bread and pastry where all the establishments have been included. Establishments employing less than 10 persons but whose production is greater than one million rupees, have also been included.

Table 13.9 - Electricity<sup>1/</sup>, production, consumption, sales, etc., 1977-1980

	Unit	1977	1978	1979 <sup>2/</sup>	1980
Generating stations	Number	2	2	1	1
Hydro	"	7	7	5	5
Thermal	"	2	2	2	2
Plant - effective capacity	Kw	<u>92,800</u>	<u>111,840</u>	<u>131,640</u>	<u>131,640</u>
Hydro	"	24,940	22,940	22,440	22,440
Thermal	"	67,860	88,900	109,200	109,200
Energy generated	Million kwh	<u>283.8</u>	<u>310.2</u>	<u>329.4</u>	<u>328.2</u>
Hydro	"	56.2	54.0	59.2	82.8
Thermal	"	227.6	256.2	270.2	245.4
Energy purchased from sugar and other factories	"	24.4	25.0	25.7	26.8
Energy sold	"	257.7	280.4	290.1	289.5
Number of consumers on 31st December:	Number	142,152	148,927	154,512	155,957
Domestic	"	127,724	133,960	139,007	140,302
Commercial	"	11,553	11,956	12,385	12,556
Industrial	"	2,749	2,883	2,983	2,960
Special	"	126	128	137	139
Average selling price	Cents per Kwh	45.27	50.59	65.29	102.00
Total revenue	Rs mn	118.8	144.8	189.4	302.1
Total current expenditure <sup>2/</sup>	"	115.7	143.1	197.5	273.8
Persons employed	Number	1,610	1,766	1,900	1,895

<sup>1/</sup> statistical data relating to the Central Electricity Board

<sup>2/</sup> revised

## SECTION 14 - CONSTRUCTION

Table 14.1 - Number of permits issued for new buildings<sup>1/</sup>, 1977 - 1980

Type of building	1977		1978		1979		1980	
	No. of permits issued	Floor area (Thousand sq. ft)	No. of permits issued	Floor area (Thousand sq. ft)	No. of permits issued	Floor area (Thousand sq. ft)	No. of permits issued	Floor area (Thousand sq. ft)
<u>Residential</u>	5,207	5,501	5,700	5,936	5,263	5,824	4,442	4,929
<u>Non-residential</u>	289	645	322	548	409	662	461	595
Agriculture, forestry, hunting and fishing	9	14	3	4	12	19	4	2
Manufacturing	59	190	47	100	63	149	43	89
Construction	2	3	1	1	-	-	-	-
Electricity and water	2	16	2	2	8	38	2	3
Transportation, storage and communication	4	23	11	9	10	8	16	11
Wholesale and retail trade	180	293	197	317	256	330	319	335
Banking, insurance and real estate	1	5	6	46	3	5	18	59
Services	32	101	55	69	57	113	59	9.6
All buildings	5,496	6,146	6,022	6,484	5,672	6,486	4,903	5,524

<sup>1/</sup> includes only new buildings for which permits have been issued by the Ministry of Works and Municipalities. Permits issued for extensions and alterations to existing buildings have not been included.

Table 14.2 - Number of permits issued for new buildings classified by urban/rural areas<sup>1/</sup>, 1977 - 1980

Locality	1977		1978		1979		1980	
	No. of permits issued	Floor area (Thousand sq. ft)	No. of permits issued	Floor area (Thousand sq. ft)	No. of permits issued	Floor area (Thousand sq. ft)	No. of permits issued	Floor area (Thousand sq. ft)
<u>Urban areas</u>								
Port Louis	2,359	3,188	2,659	3,256	2,615	3,508	2,201	2,863
Beau Bassin - Rose Hill	613	982	764	942	690	990	572	620
Curepipe	486	737	497	696	431	638	399	766
Quatre Bornes	400	541	436	607	548	749	435	580
Vacoas-Phoenix	376	467	406	515	426	624	344	454
	484	461	556	496	520	507	451	443
<u>Rural areas</u>								
Pamplemousses	3,137	2,958	3,363	3,228	3,057	2,978	2,702	2,661
Rivière du Rempart	693	726	706	701	432	461	486	475
Flacq	540	490	460	429	236	232	243	224
Moka	236	185	530	468	787	627	571	483
Grand Port	253	217	154	156	243	272	229	251
Savanne	452	392	441	398	399	372	416	386
Plaines Wilhems - Black River	417	383	492	444	357	324	316	281
	546	565	580	632	603	689	441	561
Whole island	5,496	6,146	6,022	6,484	5,672	6,486	4,903	5,524

<sup>1/</sup> permits for urban areas are issued by Municipalities and those for rural areas by the Ministry of Works. Permits issued for extensions and alterations to existing buildings have not been included.

Table 15.1 - Monthly temperatures, 1980

Degrees Centigrade

Period	Vacoas Centre : 1,394 ft. A.M.S.L. <sup>1/</sup>				Plaisance Coastal region, South : 188 ft. A.M.S.L. <sup>1/</sup>			
	Maximum		Minimum		Maximum		Minimum	
	Mean	Departure from normal	Mean	Departure from normal	Mean	Departure from normal	Mean	Departure from normal
1980 January	27.0	- 0.1	21.0	+ 0.9	28.9	- 0.1	23.3	+ 0.8
February	26.7	- 1.1	20.1	- 0.6	28.7	- 0.8	22.5	- 0.2
March	27.3	0.0	21.5	+ 1.0	29.3	+ 0.3	23.3	+ 0.8
April	26.9	+ 0.6	20.0	+ 0.7	28.4	+ 0.4	22.0	+ 0.8
May	24.3	+ 0.2	17.7	+ 0.5	26.7	+ 0.6	20.5	+ 1.1
June	23.4	+ 0.7	16.9	+ 1.2	25.5	+ 0.6	19.3	+ 1.4
July	22.2	+ 0.5	15.6	+ 0.5	24.3	+ 0.4	18.5	+ 1.0
August	21.5	+ 0.4	14.5	- 0.1	23.8	+ 0.4	17.7	+ 0.6
September	22.7	+ 0.3	15.5	+ 0.3	24.8	+ 0.5	18.5	+ 0.9
October	24.7	+ 1.2	16.8	+ 0.8	26.3	+ 0.7	19.1	+ 0.7
November	25.5	0.0	17.6	0.0	27.6	+ 0.3	20.9	+ 1.0
December	27.3	+ 0.5	19.3	+ 0.1	29.3	+ 0.7	22.2	+ 0.7

<sup>1/</sup> above mean sea level

Source : Meteorological services

Table 15.2 - Monthly rainfall for the sugar cane districts, 1980

Millimetres

Period	West		North		East		South		Centre		All districts	
	Amount	Difference from normal	Amount	Difference from normal	Amount	Difference from normal	Amount	Difference from normal	Amount	Difference from normal	Amount	Difference from normal
1980 January	691	+ 502	862	+ 685	1,031	+ 719	1,022	+ 722	1,125	+ 792	996	+ 721
February	93	- 104	117	- 98	209	- 131	160	- 141	348	+ 8	198	- 94
March	226	- 39	495	+ 236	621	+ 191	451	+ 75	640	+ 274	529	+ 178
April	195	+ 79	308	+ 133	443	+ 131	290	- 9	353	+ 114	335	+ 33
May	54	- 10	139	+ 19	122	- 84	132	- 54	141	- 6	132	- 29
June	20	- 18	70	- 19	131	- 63	110	- 40	77	- 60	94	- 43
July	11	- 17	65	- 7	150	- 21	173	+ 27	103	- 32	121	- 5
August	2	- 15	36	- 24	71	- 57	91	- 24	55	- 55	63	- 37
September	12	- 8	35	- 17	105	+ 7	135	+ 36	78	+ 19	90	+ 1
October	27	+ 6	68	+ 29	127	+ 40	76	+ 5	94	+ 21	87	+ 14
November	3	- 58	20	- 55	70	- 51	77	- 26	72	- 36	58	- 41
December	35	- 102	64	- 57	65	- 153	122	- 75	78	- 107	85	- 93

Source : Meteorological services