

MAURITIUS

Ministry of Economic Planning and Development

CENTRAL STATISTICAL OFFICE

**DIGEST
OF
AGRICULTURAL STATISTICS**

1991

July 1992

(Price Rs. 75.00)

DIGEST OF AGRICULTURAL STATISTICS - 1991

F O R E W O R D

This is the eighth issue of a regular publication of the Central Statistical Office on Agricultural Statistics for the Island of Mauritius.

The digest is designed to bring together in a single report as many statistical series as possible on agricultural statistics. It thus contains information on the sugar, tea, tobacco, foodcrops, livestock and fisheries sectors. It also includes a series of yearly "Food Balance Sheets" showing the pattern of food consumption of the population.

The data published normally cover the last five years (1987-1991), and are the latest available as at end of April 1992. Some of the figures are therefore provisional and subject to revision in later issues. Figures in successive issues of the digest supersede those appearing in previous ones.

It is hoped that the statistics which have been assembled in this digest will be useful to the public in general and to agricultural policy makers, planners and scientists in particular.

The preparation of this digest has required the co-operation of numerous organisations, both public and private. This co-operation is gratefully acknowledged here.

D. Zmanay
Director of Statistics

Central Statistical Office,
Ministry of Economic Planning
and Development,
PORT LOUIS.

July 1992

CONTENTS

SECTION 1 - SUMMARY TABLES - AGRICULTURAL SECTOR

	<u>PAGE</u>
Table 1.1 - Share of agriculture in the economy, 1987 - 1991	2
1.2 - Production account of agriculture, 1987 - 1991	3
1.3 - Value added at factor cost of agriculture (at current prices), by main products groups, 1987 - 1991	3
1.4 - Index of agricultural production, 1990 - 1991	4
1.5 - Agricultural crops: area harvested and production, 1990 - 1991	5
1.6 - Production of agro-industrial products, 1990 - 1991	5
1.7 - Exports of agricultural and food products, 1987 - 1991	7
1.8 - Employment in agricultural, industrial and services sector, 1982 - 1991	8
1.9 - Employment in the agriculture sector (large establishment), 1987 - 1991	9
1.10 - Employment in the agriculture sector (large and small establishments), June 1991	10

SECTION 2 - SUGAR INDUSTRY

Table 2.1 - Production account of the sugar industry, 1990	11
2.2 - Area under sugar cane cultivation as at 30th June, 1990 - 1991	12
2.3 - Area harvested, cane production, cane yield for estates, metayers and owner-planters, 1982 - 1991	14
2.4 - Area harvested, cane production, cane yield of estates, metayers and owner-planters by region, 1990 - 1991	15
2.5 - Sugar crop 1990 (area harvested, canes produced, yield and sugar production by factory area)	16
2.6 - Sugar crop 1991 (area harvested, cane produced, yield and sugar production by factory area)	17
2.7 - Frequency distribution of owner and tenant planters, 1990 - 1991	18
2.8 - Mechanical loading and harvesting of canes, 1982 - 1991	19

CONTENTS (Cont'd)

SECTION 2 - SUGAR INDUSTRY (cont'd)

PAGE

Table 2.9 - Production of sugar, molasses and scum, 1982 - 1991	21
2.10 - Supply and disposal of sugar, 1982 - 1991	22
2.11 - Monthly supply and disposal of sugar, 1991	23
2.12 - Sugar sales and revenue, crop year 1982/83 - 1991/92	25
2.13 - Sugar exports by main markets, crop year, 1987/88 - 1990/91	27
2.14 - Earnings of sugar producers-ex-syndicate, before charging sugar insurance premium, 1987 - 1991	28
2.15 - Monthly average price of sugar (London daily price), 1982 - 1991	30
2.16 - Employment by sugar estates with factories and large sugar cane planters, 1988 - 1991	31

SECTION 3 - TEA AND TOBACCO

Table 3.1 - Area under tea, 1987 - 1991	32
3.2 - Frequency distribution of individual plantations by size (hectares), 1991	32
3.3 - Production of green leaf by type of producer, 1987 - 1991	33
3.4 - Production of black tea by factories, 1987 - 1991	34
3.5 - Exports of black tea at current and constant 1976 prices, 1986 - 1990	35
3.6 - Exports of tea by country of destination, 1987 - 1991	36
3.7 - Tobacco: Area harvested, yield and production of leaf, 1987 - 1991	37
3.8 - Tobacco: Price paid to planters and value of production, 1987 - 1991	38

CONTENTS (Cont'd)

<u>SECTION 4 - FOODCROPS</u>	<u>PAGE</u>
Table 4.1 - Area harvested and production of foodcrops 1987 - 1991	40
4.2 - Average yield of selected foodcrops, 1982 - 1991	42
4.3 - Area harvested and production of foodcrops grown in interline plantations, 1989 - 1991	43
4.4 - Foodcrops: monthly area harvested, 1990	44
4.5 - Foodcrops: monthly area harvested, 1991	45
4.6 - Monthly production of foodcrops, 1990	46
4.7 - Monthly production of foodcrops, 1991	47
4.8 - Area harvested and production of foodcrops by district, 1987 - 1991	48
4.9 - Area harvested and production of beans and peas by district, 1987 - 1991	49
4.10 - Area harvested and production of potato by district, 1987 - 1991	50
4.11 - Area harvested and production of maize by district, 1987 - 1991	51
4.12 - Area harvested and production of groundnut by district, 1987 - 1991	52
4.13 - Area harvested and production of onion by district, 1987 - 1991	53
4.14 - Area harvested and production of tomato by district, 1987 - 1991	54
4.15 - Area harvested and production of cabbage and cauliflower by district, 1987 - 1991	55
4.16 - Area harvested and production of creepers by district, 1987 - 1991	56
4.17 - Area harvested and production of other vegetables by district, 1987 - 1991	57
4.18 - Area harvested and production of banana by district, 1987 - 1991	58
4.19 - Area harvested and production of pineapple by district, 1987 - 1991	59

CONTENTS (Cont'd)

<u>SECTION 4 - FOODCROPS (cont'd)</u>	<u>PAGE</u>
Table 4.20 - Retail prices of foodcrops, 1990	60
4.21 - Retail prices of foodcrops, 1991	62
4.22 - Number of fruit trees (bearing/non bearing) grown in backward by species, 1985	64
 <u>SECTION 5 - LIVESTOCK AND FISHERIES</u>	
Table 5.1 - Cattle population for past Livestock Censuses, 1921 - 1983	65
5.2 - Number of cattle, goats, sheep and pigs by sex and type of breeder, 1983 Livestock Census	65
5.3 - Regional distribution of small cattle breeders by herdsize and number of cattle owned, 1983 Livestock Census	66
5.4 - Livestock slaughtered, 1987 - 1991	67
5.5 - Production of fish (in wet weight equivalent) 1982 - 1991	68
5.6 - Exports and imports of fish and fish preparations 1986 - 1991	69
5.7 - Catch from artisanal fishing by type, 1987 - 1991	70
5.8 - Number of professional and active fishermen by region and type, 1991	70
 <u>SECTION 6 - FOOD BALANCE SHEET</u>	
Table 6.1 - Per capita consumption of selected commodities, 1984 - 1991	72
6.2 - Per capita consumption of food commodities, 1988 - 1991	73
6.3 - Food balance sheet, 1990	78
6.4 - Food balance sheet, 1991	83
 <u>SECTION 7 - MISCELLANEOUS</u>	
Table 7.1 - Total land classified by utilization	88
7.2 - Effective area under cultivation, 1987 - 1991	89

CONTENTS (Cont'd)

<u>SECTION 7 - MISCELLANEOUS (cont'd)</u>	<u>PAGE</u>
Table 7.3 - Land under irrigation, December 1984	89
7.4 - Imports of agricultural and food products, 1987 - 1991	90
7.5 - Imports of selected items (Quantity), 1987 - 1991	93
7.6 - Imports of major agricultural inputs and machinery, 1987 - 1991	94
7.7 - Consumption of fertilizers, 1985 - 1991	95
7.8 - Average price of fertilizers, 1987 - 1991	96
7.9 - Monthly rainfall for the sugar cane districts, 1991	98
7.10 - Monthly temperatures, 1991	99

I L L U S T R A T I O N S

	<u>PAGE</u>
Fig. 1 - Distribution of gross domestic product by sector 1982 - 1991 (at factor cost and at current prices)	1
2 - Share of agriculture in the economy, 1991	1
3 - Index of agricultural production, 1989 - 1991	4
4 - Total domestic exports, 1982 - 1991 (F.O.B. Value)	6
5 - Employment in agriculture, industrial and services sector, 1982 - 1991	8
6 - Area under sugar cane cultivation as at 30 June 1991	12
7 - Sugar cane area harvested and production, 1972 - 1991	13
8 - Average yield of sugar cane, 1987 - 1991	13
9 - Evolution of extraction rate, 1982 - 1991	20
10 - Value of sugar production at current and constant prices, 1982/83 - 1991/92	24
11 - Average export price of sugar, 1984 - 1991	26
12 - Average ex-Syndicate price of sugar, 1982 - 1991	28
13 - Monthly average price of sugar, July 1989 - December 1991 (London daily price, F.O.B. Value)	29
14 - Exports of black tea (at current and constant 1982 prices), 1982 - 1991	35
15 - Foodcrops production, 1982 - 1991	39
16 - Exports and imports of fish, 1982 - 1991	69
17 - Per capita consumption of selected commodities, 1984 - 1991	71
18 - Total land area classified by utilization - 1986	88
19 - Consumption of fertilisers (Nutrients content N, P ₂ O ₅ , K ₂ O), 1977 - 1991	95
20 - Price index of fertilisers, 1982 - 1991	96
21 - Monthly rainfall, 1990 - 1991	97
22 - Monthly temperatures, 1990 - 1991	97

NOTES

Symbols

The following symbols are used throughout:

... Negligible

— Nil

Abbreviations

Rs : Rupees (Mauritian)

'000 : Thousand

Mn : Million

No. : Number

N.A. : Not available

n.e.s.: Not elsewhere specified

Conversion factors

1 hectare = 2.36922 arpents

1 inch = 25.4 millimetres

Degrees Celcius (Centigrade) to ~~convert into~~degrees
Fahrenheit multiply by 9 and add 32°

$\frac{5}{9}$

1 metric ton = 1,000 kilos = 0.9842 long ton

Regions

Corresponding District

North	Port Louis, Pamplemousses and Rivière du Rempart
South	Grand Port and Savanne
East	Flacq
West	Black River
Centre	Plaines Wilhems and Moka

Note : Figures for 1991 are provisional

SUMMARY TABLES

AGRICULTURAL SECTOR

Agricultural Production -- Year 1991

1. Sugar

Sugar production in 1991 amounted to 611,340 tonnes as compared to 624,302 tonnes the previous year. The 1991 crop, for the second consecutive year, suffered from the effects of drought conditions that prevailed at the vegetative stage, mostly in the northern regions. In addition, a further reduction of 300 hectares was reported in total cane area harvested which brought the total area to about 76,000 hectares. It should be noted that total area under cane has been reduced by some 900 hectares over the last three years.

Yield of sugar cane per hectare, however, improved slightly to 74.0 tonnes from 72.7 tonnes in 1990 bringing the total cane harvested to 5,621.110 tonnes i.e. 1% higher than in 1990. On the other hand, the extraction rate was lower than the previous year and stood at 10.88% compared to 11.25% in 1990.

2. Tea

Area cultivated under tea decreased slightly by some 35 hectares to 2,870 hectares in 1991 yielding 30,535 tonnes of green leaves, a slightly higher crop than the previous year when it amounted to 29,863 tonnes. The black tea produced therefrom went up by 3% to reach 5,930 tonnes.

The average export price of black tea in 1991 dropped by about 6% selling at Rs 18.32 per Kg against Rs 19.40 per Kg in 1990.

3. Tobacco

Area under tobacco remained at around 620 hectares, but due to favourable climatic conditions that prevailed in the southern regions, the yield per hectare improved by about 10%. Consequently, a higher crop was harvested in 1991, amounting to 875 tonnes as compared to 800 tonnes the preceding year.

4. Foodcrops

Foodcrop production in 1991 dropped by about 1,750 tonnes or 3% to 64,090 tonnes from 65,840 tonnes in 1990. Total area harvested was also reduced by some 200 hectares.

Significant decrease were reported in the production of the following foodcrops as a result of the drought conditions that prevailed or by diseases or by both:-

<u>Foodcrop</u>	<u>1990</u> (tonnes)	<u>1991</u>	<u>Decrease</u> (%)
Cauliflower	1,280	780	- 39%
Ginger	625	460	- 26%
Beans and peas	1,280	975	- 24%
Groundnut	1,755	1,380	- 21%
Tomato	11,570	9,385	- 19%
Potato	17,020	16,445	- 8%

Unavailability of bean and groundnut seeds led to a reduction in the area under these crops. Instead, more creepers were grown thereby pushing the production of these commodities by 32% to reach 12,345 tonnes against 9,330 tonnes in 1990.

Production of ginger came back to its normal level of about 460 tonnes after over production in 1990.

The adoption of high yielding varieties by traditional onion growers resulted in a crop which was 8% higher.

5. Livestock and Poultry

Total beef production increased by 5% to around 2,160 tonnes. Production from local sources, exclusive of Rodrigues went up by 18%, whilst that from imported cattle remained at around 1,610 tonnes.

The share of local sources in total beef production is only 25%.

Production of goat meat and mutton in 1991 increased by 13% to reach 175 tonnes, whilst that of pork went up by 9% to attain 905 tonnes. Poultry production rose by 6% in 1991 and stood at 13,250 tonnes.

6. Fisheries

Total fish production in 1991, recorded a significant growth of 34% increasing by nearly 5,000 tonnes to attain 17,700 tonnes. The overall growth resulted mainly from a 70% increase reported in tuna fishing with the coming into operation of an additional vessel.

Production of fresh fish (coastal) decreased by 3% and frozen fish, other than tuna, by 2%.

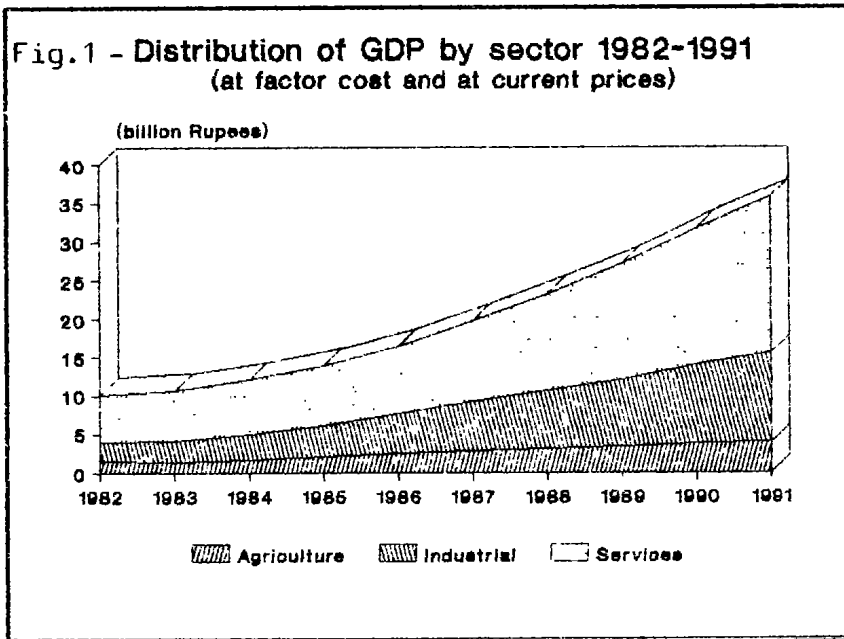


Fig. 2 - Share of agriculture in the economy 1991

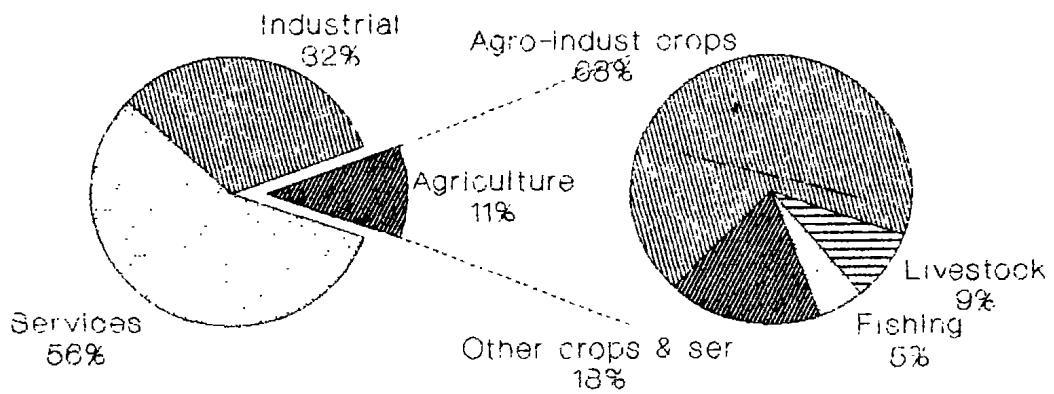


Table 1.1 - Share of agriculture in the economy, 1987 - 1991

	Unit	1987	1988	1989	1990 ^{1/}	1991 ^{2/}
Gross domestic product (G.D.P.), at market prices	Rs Mn	23,575	27,803	32,265	37,925	42,725
Gross domestic product (G.D.P.), at current factor cost	Rs Mn	19,695	23,181	27,074	31,739	35,755
Value added - agriculture, at current factor cost	Rs Mn	2,884	3,067	3,370	3,881	5,983
of which sugar	Rs Mn	(2,124)	(2,177)	(2,355)	(2,675)	(2,608)
Share of agriculture in G.D.P. at factor cost	%	15	13	12	12	11
Share of sugar in agriculture	%	74	71	70	69	65
Gross domestic fixed capital formation (GDFCF)	Rs Mn	5,090	7,990	8,565	11,865 ^{3/}	12,120
G.D.F.C.F. in agriculture	Rs Mn	290	230	200	270	300
Share of investment in agriculture in total G.D.F.C.F.	%	5.7	2.9	2.3	2.0	3.0
Annual growth rate of G.D.P. at factor cost	%	+8.4	+6.1	+4.7	+7.1	+4.6
Annual growth rate of agriculture	%	-3.0	-5.3	-7.8	+9.8	-1.4
Annual growth rate of sugar	%	-4.4	-9.4	-12.5	+11.9	-3.5

^{1/} revised estimates

^{2/} preliminary estimates

^{3/} includes purchase of aircraft and marine vessel

Table 1.2 - Production account of agriculture, 1987 - 1991

	<u>Rs Million</u>				
	1987	1988	1989	1990	1991
Gross Output	3,076.9	4,200.6	4,641.9	5,300.7	5,549.0
Intermediate Consumption	1,104.5	1,240.4	1,342.4	1,505.1	1,667.0
Value added (market prices)	2,772.4	2,960.2	3,299.5	3,803.6	3,882.0
Indirect taxes net of subsidies	-112.3	-106.5	-71.0	-76.2	-101.0
Value added (factor cost)	2,884.7	3,066.7	3,370.5	3,879.8	3,983.0
Wages and salaries	1,188.2	1,394.0	1,510.7	1,755.4	1,990.0
Gross operating surplus	1,696.5	1,672.7	1,859.8	2,124.4	1,993.0

Table 1.3 - Value added at factor cost of agriculture (at current prices) by main product groups, 1987 - 1991

	<u>Rs Million</u>				
Product groups	1987	1988	1989	1990	1991
Industrial crops	2,235.7	2,297.1	2,462.4	2,781.6	2,721.4
Sugar cane	(2,124.4)	(2,176.7)	(2,355.9)	(2,674.0)	(2,608.0)
Tea (green leaf)	(85.2)	(93.6)	(71.3)	(81.3)	(79.4)
Tobacco leaf	(26.1)	(26.8)	(35.2)	(26.3)	(34.0)
Foodcrops	186.7	239.7	312.9	413.2	464.7
Fruits, flowers & forestry	62.5	78.4	109.9	135.4	149.1
Livestock and poultry products	217.2	229.6	259.1	305.5	344.1
Fishing	107.8	144.6	141.3	157.1	212.4
Agriculture services and other agricultural activities n.e.s.	74.8	77.5	84.9	86.9	91.3
Total Agriculture	2,884.7	3,066.7	3,370.0	3,879.8	3,983.0

Table 1.4 - Index of Agricultural production, 1990 - 1991

(Base year 1987 = 100)

	1990	1991
Sugar cane	<u>88.7</u>	<u>85.6</u>
Other Agriculture, Forestry and Fishing of which:	<u>116.0</u>	<u>116.8</u>
Tea and Tobacco	79.4	83.3
Foodcrops, fruits and flowers	143.4	136.8
Livestock, poultry and derived products	122.9	127.8
Fishing	92.9	97.5
Total Agriculture	95.9	93.8
Annual growth rate of Agriculture (%)	+9.6	-2.2

Fig. 3 - Index of agricultural production 89-91
(base year 1987=100)

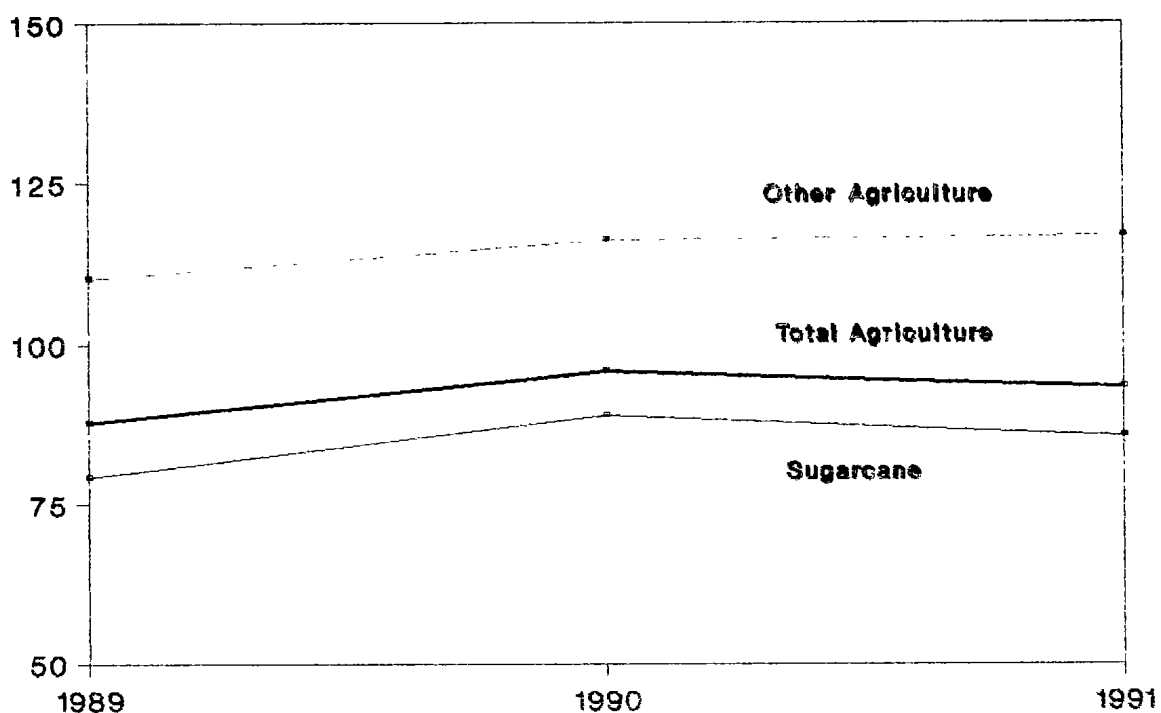


Table 1.5 - Agricultural Crops: Area Harvested and Production, 1990 - 1991

CROPS	1990 ^{1/}		1991 ^{3/}	
	Area Harvested (Hectares)	Production (Metric Tons)	Area Harvested (Hectares)	Production (Metric Tons)
1. Sugar cane	76,303	5,548,291	75,966	5,621,103
2. Tea (Green Leaves)	2,905 ^{2/}	29,868	2,870 ^{2/}	30,635
3. Tobacco	632	799	623	876
4. Foodcrops	5,699	65,840	5,493	64,090

^{1/} Revised

^{2/} Area under cultivation

^{3/} Provisional

Table 1.6 - Production of Agro-Industrial Products, 1990 - 1991

Agro-industrial Products	Unit	1990	1991 ^{3/}
1. Sugar	M/Tons	624,302	611,340
2. Tea (manufactured)	"	5,751	5,934
3. Beef ^{1/}	"	2,049	2,157
Local including Rodrigues	"	(450)	(544)
Imported	"	(1,599)	(1,613)
4. Goat meat and mutton ^{1/}	"	155*	178
5. Pork ^{1/}	"	830	906
6. Poultry	"	12,500	13,250
7. Milk	000 Litres	11,000	10,800
8. Fish ^{2/}	M/Tons	13,222	17,700
Coastal	"	(2,587)*	(2,518)
Other	"	(10,635)*	(15,182)

^{1/} Comprises abattoir slaughters only

^{2/} Fresh weight equivalent

^{3/} Provisional

* Revised

Fig. 4 - Total domestic exports (1982-1991)
(fob value)

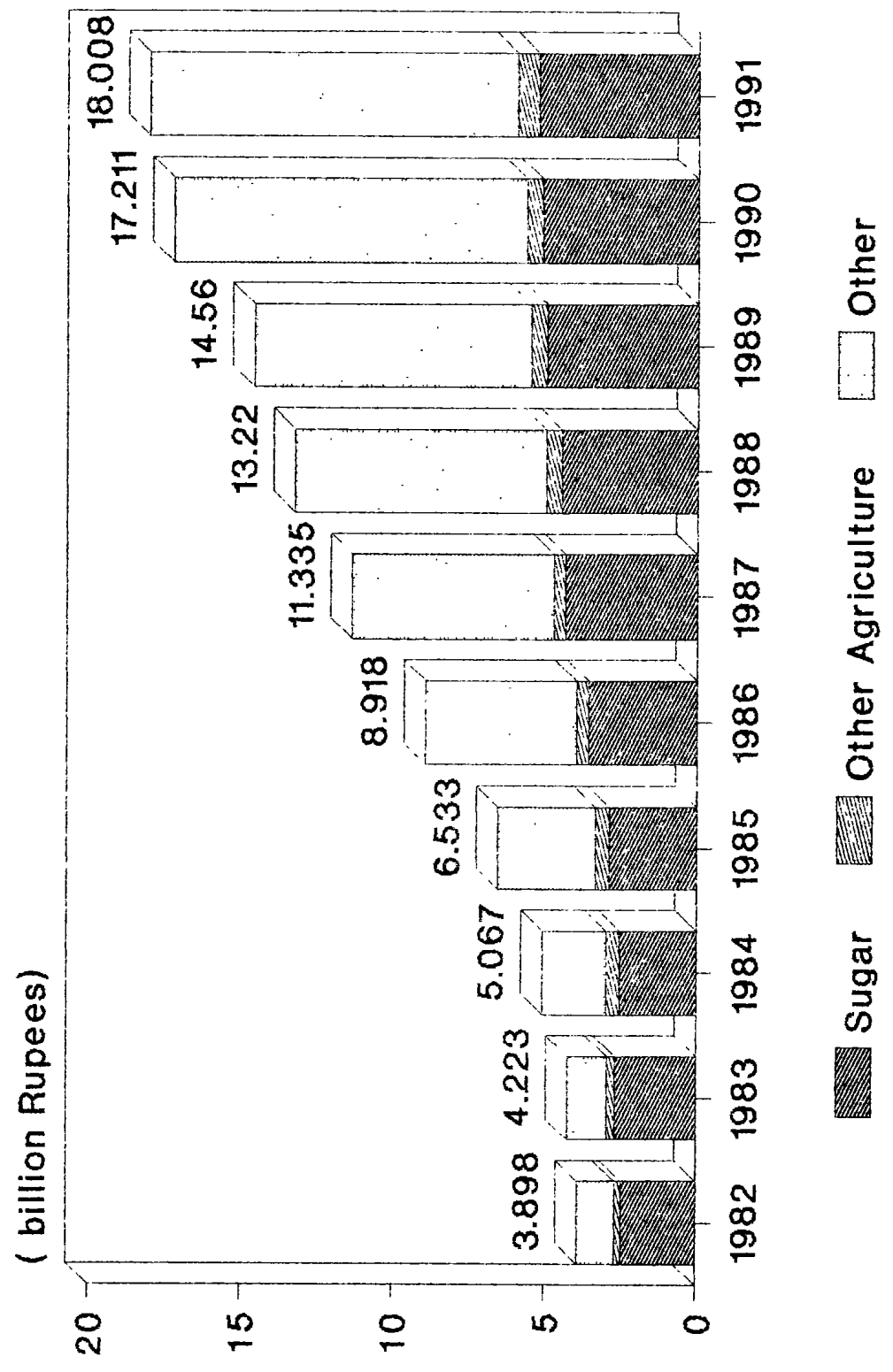


Table 1.7 - Exports of agricultural and food products, 1987 - 1991

(F.O.B. value in Rs million)

Item	1987	1988	1989	1990	1991
Sugar	4,328.0	4,466.7	4,946.1	5,104.5	5,221.1
Molasses	81.0	91.8	66.1	102.1	95.9
Tea	89.8	87.8	88.5	83.6	82.5
Fish and fish preparations	132.0	202.1	208.0	159.6	315.5
Vegetables and fruits	17.3	43.2	34.3	36.6	38.0
Cut flowers and foliage	24.6	35.1	51.5	70.4	86.6
Other agricultural and food products	31.9	39.4	54.0	70.1	88.0
Total agricultural and food products	4,704.6	4,966.1	5,448.5	5,626.9	5,927.6
Total domestic exports	11,335.0	13,220.0	14,542.0	17,210.9	18,007.7
<u>% Exports agricultural & food products</u>					
Total domestic exports	41.5	37.6	37.5	32.7	32.9

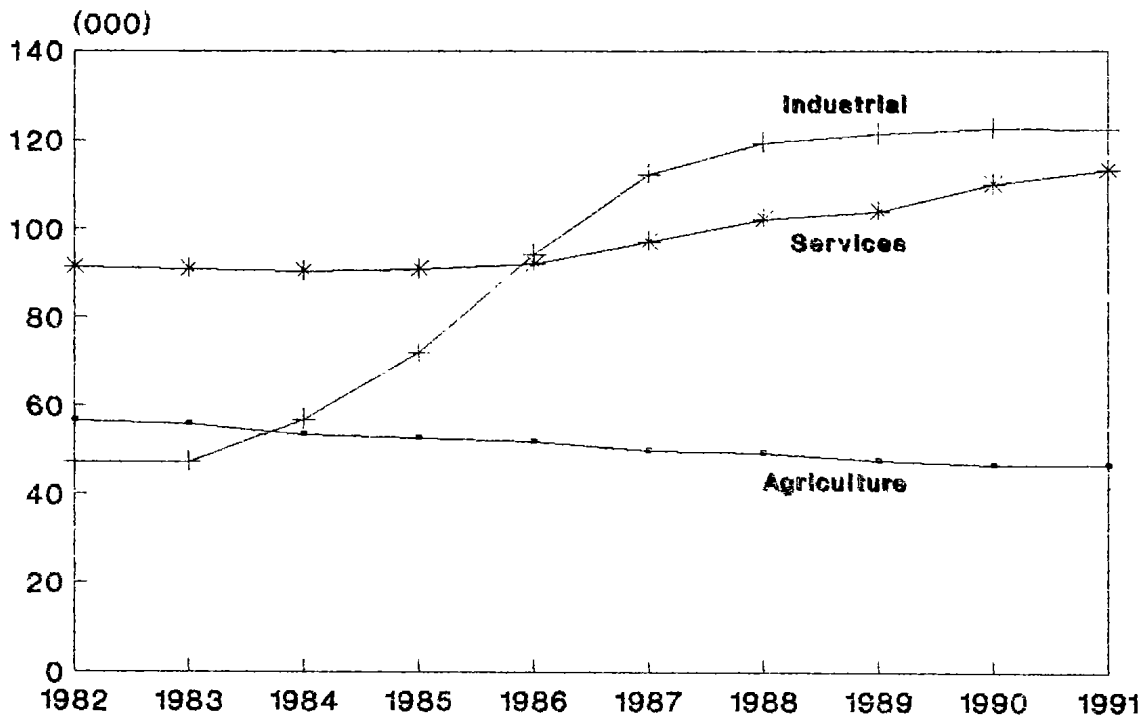
Table 1.8 - Employment in agriculture, industrial and services sector (large establishments ^{1/}), September 1982 - September 1991

	Agriculture	Industrial	Services
1982	56,711	47,058	91,309
1983	55,826	47,056	90,945
1984	53,453	56,819	90,355
1985	52,651	71,898	90,839
1986	52,032	94,241	92,012
1987	50,012	112,384	97,260
1988	49,599	119,421	102,217
1989	47,832	121,388	103,932
1990	46,845	122,505	110,840
1991	46,885	122,354	113,261

^{1/} establishments with 10 employees or more

See also footnotes page 9

Fig. 5 - Employment by sector, sept.82-sept.91
(large establishments)



Establishments with 10 or more employees

Table 1.9 - Employment in the agricultural sector (Large establishments) 1987 - 1991

	M a r c h					S e p t e m b e r				
	1987	1988	1989	1990	1991	1987	1988	1989	1990	1991
Sugar	40,974	39,698	39,579	39,945	40,138	44,317	43,722	42,099	41,095	41,377
- Estates with factories 2/	(36,251)	(35,413)	(35,356)	(35,552)	(35,287)	(39,219)	(38,883)	(37,584)	(36,810)	(37,314)
- Planters 3/	(4,723)	(4,285)	(4,223)	(4,393)	(4,851)	(5,098)	(4,839)	(4,515)	(4,285)	(4,063)
Tea 4/	3,133	3,013	2,840	2,758	2,623	2,747	2,887	2,812	2,785	2,420
Tobacco 5/	455	421	432	437	433	1,104	930	924	920	920
Fishing	397	478	492	355	366	382	504	441	435	391
Other agricultural activities	1,422	1,383	1,590	1,566	1,777	1,462	1,556	1,556	1,610	1,777
Total agriculture	46,381	44,993	44,933	45,061	45,337	50,012	49,599	47,832	46,845	46,885

1/ establishment with 10 employees or more

2/ including sugar milling

3/ planters cultivating more than 10.6 hectares

4/ including tea manufacturing, TDA and planters cultivating more than 2.1 hectares

5/ planters cultivating flue-cured tobacco only

Table 1.10 - Employment in the agricultural sector (large and small establishments) - June 1991

Sector	Large establishments			Small establishments 1/			Total employment		
	Male	Female	Total	Male	Female	Total	Male	Female	Total
Sugar ^{2/}	30,215	10,545	40,760	5,000	2,000	7,000	35,215	12,545	47,760
Tea ^{3/}	1,850	675	2,525	3,000	2,500	5,500	4,850	3,175	8,025
Fishing	350	30	380	3,650	-	3,650	4,000	30	4,030
Other	1,500	960	2,460	6,500	6,700	13,200	8,000	7,660	15,660
TOTAL	33,915	12,210	46,125	18,150	11,200	29,350	52,065	23,410	75,475

1/ Estimates

2/ Including Sugar Milling

3/ Including Tea Manufacturing and Tea Development Authority

SUGAR INDUSTRY

Table 2.1- Production account of the sugar industry, 1990

Rs Mn

Industrial activity	Gross output at producer's value	Intermediate consumption	Value added at market prices	Indirect taxes	Value added at factor cost	Compensation of employees	Gross operating surplus
Agriculture	3,659.5	985.5	2,674	-	2,674	1,485.4	1,188.6
Manufacturing ^{1/}	5,643.4	4,493.6	1,149.8	430	719.8	327.4	392.4
Transport ^{2/}	436.8	206.7	230.1	3.5	226.6	106.6	120
Distribution	21.0	4.0	17	-	17	9	8
T O T A L	9,760.7	5,689.8	4,070.9	433.5	3,637.4	1,928.4	1,709

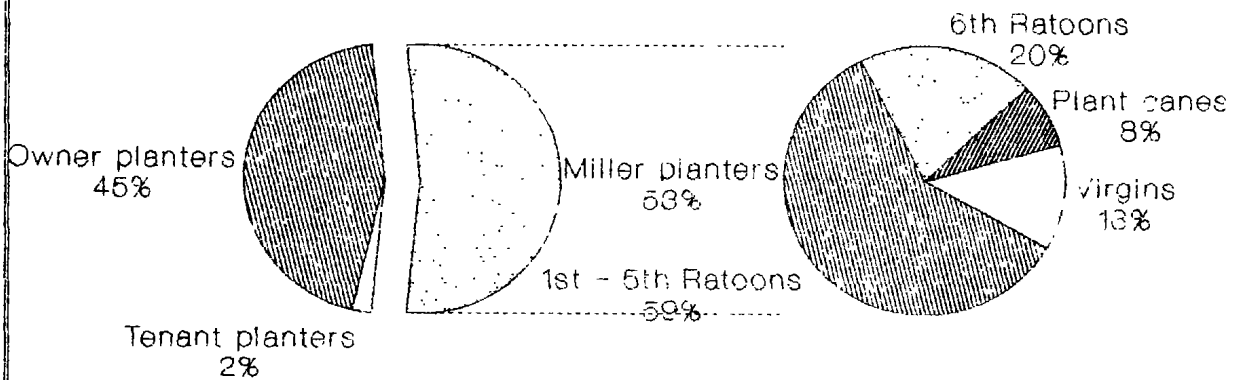
^{1/} Intermediate consumption of manufacturing includes gross output of sugar cane cultivation

^{2/} Transport costs of sugar estates with factories only

Table 2.2 - Area under sugarcane cultivation as at 30th June 1990 - 1991
(Hectares)

	at 30th June 1990	at 30th June 1991
(i) Miller - Planters	<u>43,282</u>	<u>43,428</u>
- Plant canes	3,327	3,363
- Virgins	5,456	5,490
- Ratoons		
1st to 5th ratoon	25,944	25,711
6th and other ratoons	9,142	8,864
(ii) Owner - Planters	<u>37,185</u>	<u>36,833</u>
(iii) Tenant - Planters	<u>1,885</u>	<u>1,855</u>
T o t a l	82,352	82,116

Fig. 6 - Area under sugarcane cultivation
(30 June 1991)



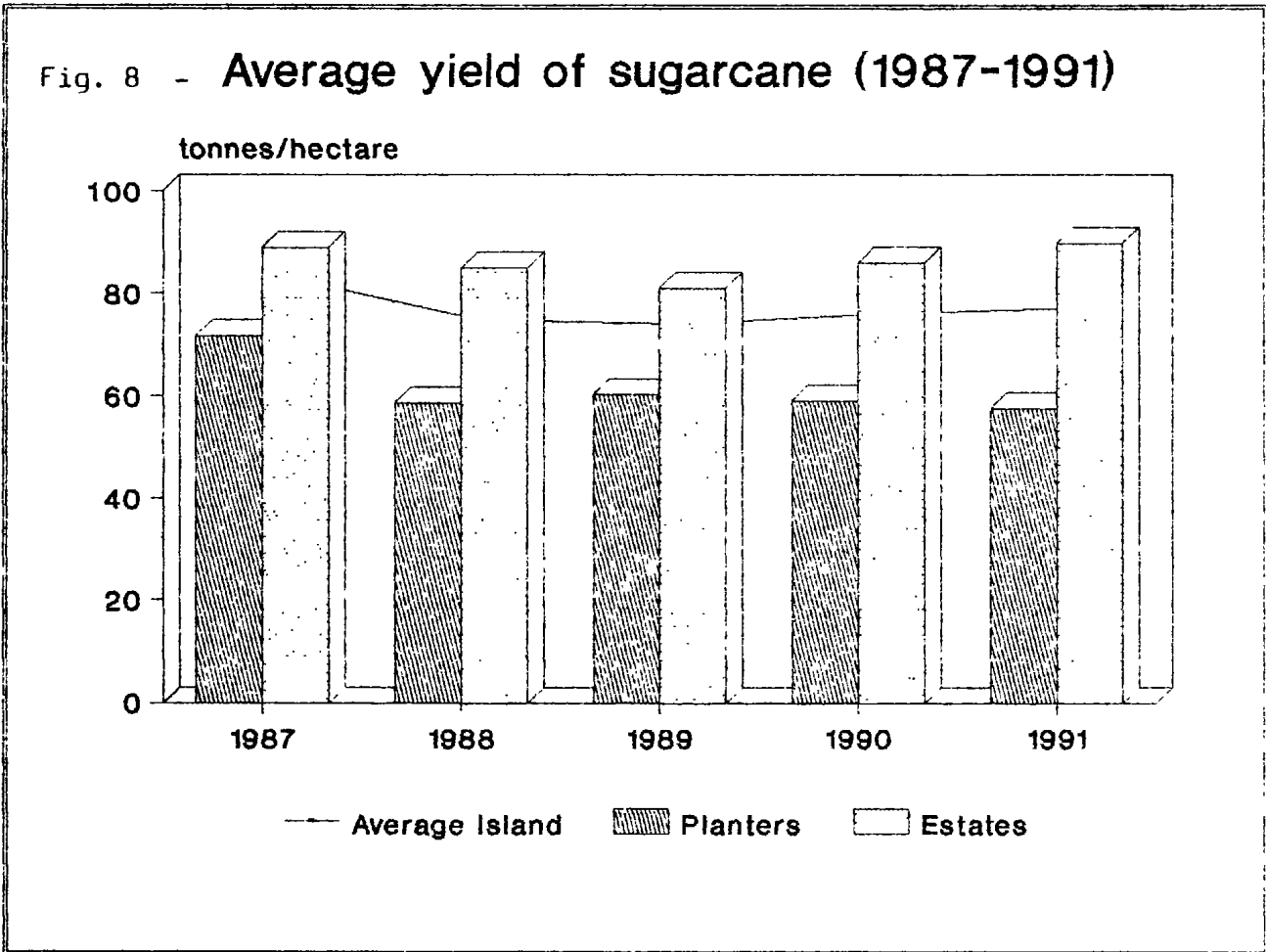
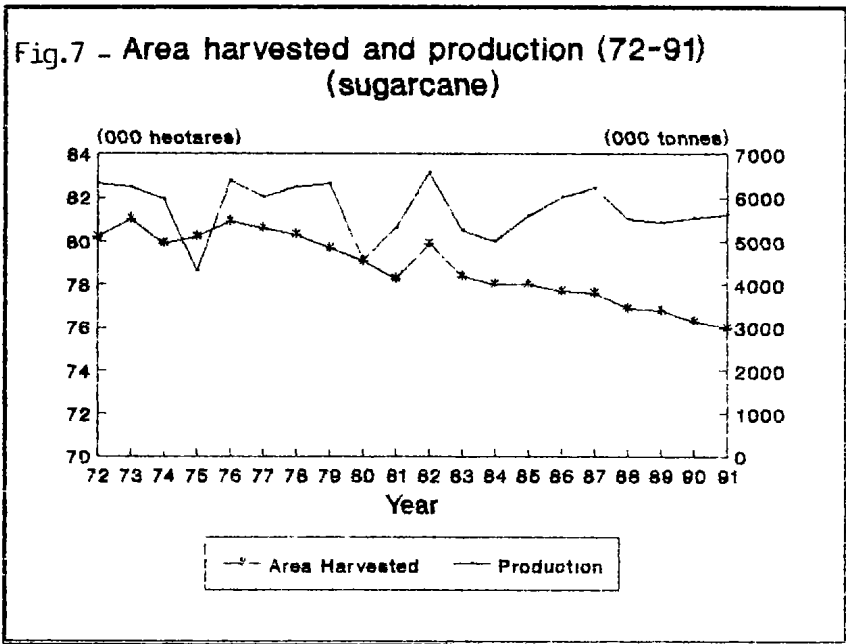


Table 2.3 - Area harvested, cane production, cane yield for estates, metayers and owner planters, 1982 - 1991

Year	Area harvested (hectares)				Cane production (1,000) tonnes				Cane yield (tonnes/hectare)			
	Estates	Metayer	Owner planters	Total	Estates	Metayer	Owner planters	Total	Estates	Metayer	Owner planters	Total
1982	43,305	1,746	34,857	79,908	3,942	100	2,540	6,582	91.0	57.3	72.9	62.4
1983	41,981	1,812	34,642	78,435	3,203	87	1,965	5,255	76.3	48.0	56.7	67.0
1984	41,569	1,936	34,450	78,003	3,117	85	1,807	5,009	75.0	43.9	52.4	64.2
1985	41,023	1,973	35,032	78,028	3,281	100	2,202	5,583	80.0	50.7	62.9	71.5
1986	39,282	2,020	36,407	77,709	3,381	108	2,536	6,025	86.1	53.4	69.7	77.5
1987	39,191	1,936	36,425	77,552	3,479	108	2,644	6,231	88.8	55.9	72.6	80.3
1988	38,855	1,956	36,100	76,919	3,291	94	2,132	5,517	84.7	48.3	59.0	71.7
1989	39,374	1,842	35,569	76,785	3,180	80	2,176	5,436	80.8	43.5	61.2	70.8
1990	39,057	1,730	35,515	76,302	3,856	74	2,118	5,548	85.9	42.9	59.6	72.7
1991	39,235	1,713	35,019	75,969	3,511	87	2,023	5,621	89.5	50.9	57.7	74.0

Table 2.4 - Area harvested, cane production, cane yield of estates, metayer and owner-planters by region, 1990 - 1991

	Area harvested (hectares)					Cane production (000 tonnes)					Cane yield (tonnes/hectares)					
	Estates	Metayer	Owner planters	Total	Estates	Metayer	Owner planters	Total	Estates	Metayer	Owner planters	Total	Estates	Metayer	Owner planters	Total
<u>1990</u>																
North	4,268	-	14,485	18,753	358	-	874	1,232	33.8	-	60.3	65.7				
South	16,173	795	7,179	24,147	1,437	39	456	1,932	88.9	49.0	63.5	80.0				
East	10,290	934	7,707	18,931	855	35	421	1,311	83.1	37.5	54.7	69.2				
West	4,156	-	1,916	6,072	338	-	130	468	81.3	-	67.8	77.1				
Centre	4,170	1	4,228	8,399	368	-	237	605	88.2	-	56.1	72.0				
Total	39,057	1,730	35,515	76,302	3,356	74	2,118	5,548	86.7	42.8	59.6	72.7				
<u>1991</u>																
North	4,300	-	14,062	18,364	304	-	647	951	70.7	-	46.0	51.7				
South	16,133	814	7,151	24,098	1,553	50	518	2,121	96.3	61.4	72.4	88.0				
East	10,260	898	7,768	18,926	936	37	495	1,468	91.2	41.2	63.7	77.6				
West	4,196	-	1,918	6,114	306	-	88	394	72.9	-	45.9	64.4				
Centre	4,346	1	4,120	8,467	412	-	275	687	94.8	-	66.7	81.1				
Total	39,235	1,713	35,019	75,989	3,511	87	2,023	5,621	89.5	50.8	57.8	74.0				

Table 2.5 - Sugar crop 1990 (area harvested, canes produced, yield and sugar production by factory area)

Factory area	Area harvested (hectares)	Sugar cane production (tonnes)	Yield (tonnes/hectare)	Sugar production (tonnes)
<u>North</u>	<u>10,753</u>	<u>1,231,808</u>	<u>65.7</u>	<u>133,950</u>
Beau Plan	3,733	245,134	65.7	27,043
Belle Vue	5,535	358,652	64.8	30,017
Mon Loisir	3,642	247,012	67.8	27,850
Mount	2,349	204,684	87.1	22,061
St Antoine	3,494	176,326	50.5	18,948
<u>South</u>	<u>24,147</u>	<u>1,932,532</u>	<u>80.0</u>	<u>214,511</u>
Bel Ombre	2,694	143,765	55.2	16,224
Britannia	2,729	217,229	79.6	25,717
Mon Trésor/Mon Désert	3,134	273,861	87.4	31,270
Riche en Eau	3,559	309,661	87.0	34,409
Rose Belle	3,031	196,417	64.8	21,071
St Felix	2,467	153,236	62.1	16,395
Savannah	3,361	302,842	90.1	35,255
Union St. Aubin	3,172	330,521	104.2	33,763
<u>East</u>	<u>18,931</u>	<u>1,311,148</u>	<u>69.3</u>	<u>151,432</u>
Beau Champ	5,783	452,173	78.2	52,100
Constance	4,100	232,588	56.6	27,217
Fuel	9,048	626,387	69.3	71,515
<u>West</u>	<u>6,072</u>	<u>467,916</u>	<u>77.1</u>	<u>55,091</u>
Medine	6,072	467,916	77.1	55,091
<u>Centre</u>	<u>8,399</u>	<u>604,887</u>	<u>72.0</u>	<u>61,431</u>
Highlands	3,599	235,352	65.4	26,341
Mon Désert Alma	4,800	369,535	77.0	42,442
Total Island	76,302	5,548,291	72.7	624,512

Table 2.6 - Sugar Crop 1991 (area harvested, canes produced, yield and sugar production by factory area)

Factory area	Area harvested (hectares)	Sugarcane production (m.tons)	Yield (m.tons/hectares)	Sugar production (m.tons)
<u>North</u>	<u>18,394</u>	<u>950,545</u>	<u>51.7</u>	<u>24,117</u>
Beau Plan	3,714	202,338	54.5	28,701
Belle Vue	5,343	232,118	43.4	23,500
Mon Loisir	3,593	209,737	58.4	24,777
Mount	2,309	199,487	86.4	20,728
St Antoine	3,403	106,865	31.4	11,100
<u>South</u>	<u>24,093</u>	<u>2,120,715</u>	<u>88.0</u>	<u>228,724</u>
Bel Ombre	2,749	170,022	61.8	17,110
Britannia	2,713	251,671	92.8	28,710
Mon Trésor/Mon Désert	3,031	260,042	85.8	29,002
Riche en Eau	3,491	323,540	92.7	34,210
Rose Belle	3,137	279,914	89.2	29,200
St. Felix	2,470	173,549	70.3	18,570
Savannah	3,362	327,585	97.4	30,900
Union St. Aubin	3,145	334,392	106.3	33,500
<u>East</u>	<u>18,926</u>	<u>1,468,412</u>	<u>77.6</u>	<u>165,300</u>
Beauchamp	5,731	482,408	84.2	52,700
Constance	3,954	200,396	50.7	26,200
Fuel	9,241	785,608	85.0	86,400
<u>West</u>	<u>6,114</u>	<u>394,122</u>	<u>64.5</u>	<u>44,200</u>
Medine	6,114	394,122	64.5	44,200
<u>Centre</u>	<u>8,467</u>	<u>687,309</u>	<u>81.2</u>	<u>74,200</u>
Highlands	3,542	270,837	76.5	30,000
Mon Desert Alma	4,925	416,472	84.6	44,200
Total Island	75,989	5,621,103	74.0	611,300

Table 2.7 - Frequency distribution of owner and tenant planters, 1990 - 1991

Range (hectares)	1990						1991					
	Owner planters		Tenant planters		Total		Owner planters		Tenant planters		Total	
	Number	Hectares harvested	Number	Hectares harvested	Number	Hectares harvested	Number	Hectares harvested	Number	Hectares harvested	Number	Hectares harvested
Up to 0.250	11,658	1,698	130	20	11,788	1,718	11,234	1,625	119	19	11,353	1,644
0.251 - 0.500	8,287	3,113	210	80	8,497	3,193	8,237	3,070	190	72	8,427	3,142
0.501 - 1,000	7,006	5,029	349	255	7,355	5,284	6,731	4,825	349	253	7,080	5,078
1.001 - 2,000	4,123	5,719	346	494	4,469	6,213	3,963	5,507	333	475	4,296	5,982
2.001 - 5,000	2,011	5,829	194	561	2,205	6,390	1,946	5,654	190	567	2,136	6,221
5.001 - 10,000	416	2,859	31	205	447	3,064	412	2,839	39	257	451	3,096
10.001 - 25,000	136	1,988	9	116	145	2,104	132	1,981	5	70	137	2,051
25.001 - 50,000	46	1,618	-	-	46	1,618	48	1,752	-	-	48	1,752
50.001 - 100,000	37	2,434	-	-	37	2,434	36	2,574	-	-	36	2,574
100.001 - 200,000	9	1,258	-	-	9	1,258	9	1,304	-	-	9	1,304
200.001 and over	12	3,970	-	-	12	3,970	12	3,888	-	-	12	3,888
Total	33,741	35,515	1,269	1,731	35,010	37,246	32,760	35,019	1,225	1,713	33,985	36,732

Table 2.8 - Mechanical loading and harvesting of canes, 1982 - 1991

Year	Mechanical loading				Area Utilized (hectares)	Mechanical harvesting			
	Quantity of canes mechanically loaded					Quantity of canes mechanically harvested			
	Estates (tonnes)	Planters (tonnes)	(tonnes)	% of total Production		Estates (tonnes)	Planters (tonnes)	(tonnes)	% of total Production
1982	1,960,671	321,320	2,281,991	34.5	266	23,665	108	23,773	0.4
1983	1,739,768	187,354	1,927,122	36.7	-	-	-	-	-
1984	1,620,328	199,735	1,820,063	36.3	-	-	-	-	-
1985	1,710,185	304,044	2,014,229	36.1	-	-	-	-	-
1986	1,901,209	542,593	2,443,802	40.6	-	-	-	-	-
1987	2,059,414	482,301	2,541,715	40.8	-	-	-	-	-
1988	1,906,446	342,538	2,248,984	40.5	88	6,816	-	6,816	-
1989	2,194,531	284,665	2,479,196	45.6	245	6,009	12,075	18,084	0.3
1990	2,418,304	467,095	2,885,399	52.0	1,032	66,594	41,248	107,842	1.9
1991	2,508,564	330,957	2,839,521	50.5	1,634	107,164	41,522	148,686	2.6

Fig. 9 - Evolution of Extraction Rate
(Sugar recovered % cane, 1982-1991)

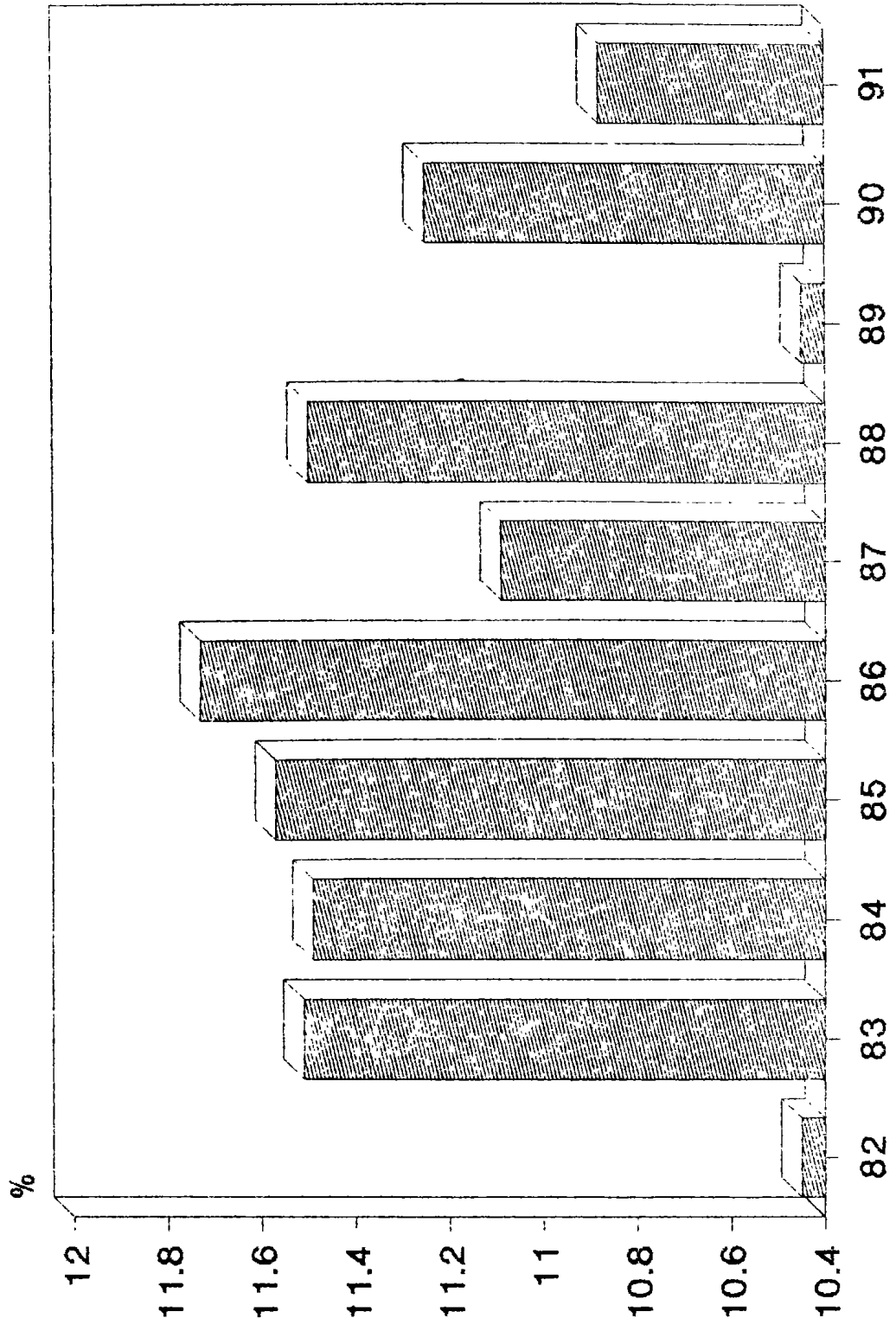


Table 2.9 - Production of sugar, molasses and scums, 1982 - 1991

Year	SUGAR									
	Production (tonnes)			Commercial sugar recovered % cane	Average tonnes of cane (per tonne sugar)	Average yield of sugar (tonnes per hectare)	Average polarisation (degrees)	Molasses (tonnes)	Scums (tonnes)	
	White	Raw	Total							
1982	40,902	647,033	687,940	10.45	9.57	8.10	98.7	190,103	245,416	
1983	37,738	566,992	604,730	11.51	8.69	7.23	98.7	162,143	204,311	
1984	39,842	535,775	575,617	11.49	8.70	7.37	98.7	141,652	202,999	
1985	42,698	597,099	645,797	11.57	8.65	8.24	98.7	154,149	216,417	
1986	38,130	668,709	706,839	11.73	8.52	9.10	98.7	173,398	235,130	
1987	43,262	647,972	691,134	11.09	9.02	8.91	98.7	191,946	245,520	
1988	36,972	597,252	634,224	11.50	8.70	8.25	98.7	179,622	238,457	
1989	43,508	524,793	568,301	10.45	9.57	7.36	98.7	164,718	239,159	
1990	44,325	579,977	624,302	11.25	8.89	8.18	98.7	168,023	245,060	
1991	55,227	556,113	611,340	10.86	9.19	8.05	98.7	174,933	295,095	

Table 2.10- Supply and disposal of sugar, 1982-1991

('000 tonnes tel quel)

Calendar year	Opening stock	Production	Available supplies	Exports	Domestic consumption	Loss or surplus in storage	Closing stock
1982	244.8	607.9	932.7	596.0	35.4	-	300.5
1983	300.5	604.7	905.2	608.0	36.5	-0.6	260.1
1984	260.1	575.6	835.7	530.7	30.0	+0.3	267.3
1985	267.3	645.0	913.1	539.5	36.0	+0.1	336.9
1986	336.9	705.0	1,043.7	624.9	37.7	-0.5	300.6
1987	300.6	691.1	1,071.7	656.3	30.6	+0.7	377.5
1988	377.5	634.2	1,011.7	652.5	30.1	-0.2	320.9
1989	320.9	560.3	889.2	636.2	37.4	-0.3	215.3
1990	215.3	624.3	839.6	570.0	30.7	+0.1	223.0
1991	223.0	611.5	834.4	551.4	40.1	-0.5	242.5

Table 2.11 - Monthly supply and disposal of sugar, 1991

(Tonnes total)

Month	Opening stock	Production	Available supplies	Exports	Domestic consumption	Loss or surplus in storage	Closing stock
January	223,066	-	223,066	67,324	3,369	-	152,374
February	152,374	-	152,374	30,035	3,005	-	110,453
March	110,453	-	110,453	30,272	3,424	-	60,756
April	60,756	-	60,756	7,103	3,232	-	50,422
May	50,422	-	50,422	22,640	3,191	-	32,591
June	32,591	9,010	42,409	17,063	2,800	-541	21,924
July	21,924	94,005	116,009	03,690	3,191	-	29,927
August	29,927	130,536	160,463	76,996	3,227	-	00,241
September	00,241	125,233	205,474	36,003	3,005	-	166,306
October	166,306	142,000	309,106	52,321	3,607	-	253,090
November	253,090	00,113	341,211	63,414	3,410	-	274,307
December	274,307	19,955	294,342	47,700	4,294	-	242,340
Total year	223,066	611,340	034,406	551,442	40,075	-541	242,340

Fig. 10 - Value of Sugar Production (1982-1991)
(at current & constant prices)

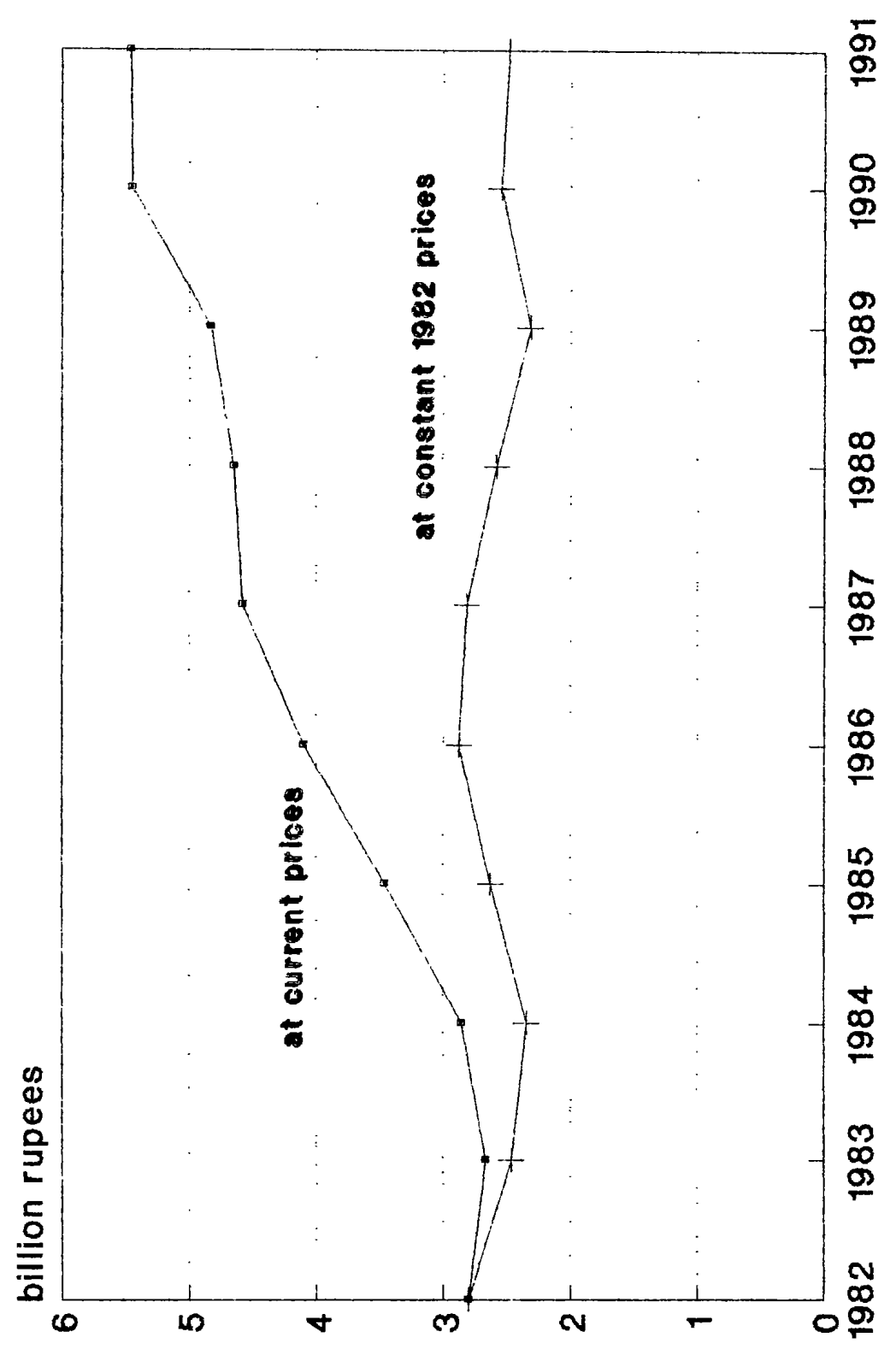


Table 1 - Sugar sales and revenue, crop year 1982/83 - 1991/92

Crop year	Production		Exports		Local sales	
	Quantity 000 (tonnes)	Value (Rs Million)	Quantity 000 (tonnes)	Value (Rs Million)	Quantity 000 (tonnes)	Value (Rs Million)
1982/83	687.9	2,801.1	647.7	2,713.5	35.4	87.6
1983/84	604.7	2,665.5	569.5	2,579.8	36.5	85.7
1984/85	575.6	2,858.4	537.1	2,755.7	38.4	102.7
1985/86	645.8	3,458.9	608.5	3,361.2	36.8	97.7
1986/87	706.8	4,098.6	662.8	3,982.7	44.8	115.9
1987/88	691.1	4,578.9	658.5	4,489.7	32.4	89.2
1988/89	634.2	4,646.0	599.2	4,550.3	34.7	94.3
1989/90	568.3	4,826.8	532.4	4,727.7	36.0	99.1
1990/91	624.3	5,445.0	594.5	5,339.4	38.4	105.5
1991/92	611.3	5,460.0	567.0	5,340.0	44.0	120.0

Note : (1) Harvesting generally extends from June to December, while export and local sales are spread over the period 1st July to 30th June the following year.

(2) Production may not tally with exports and local sales due to loss or surplus in storage.

(3) For crop year 1991/92, estimated figures are given.

Source : Mauritius Sugar Syndicate

Fig. 11- Average export price of sugar (84-91)
(by main markets)

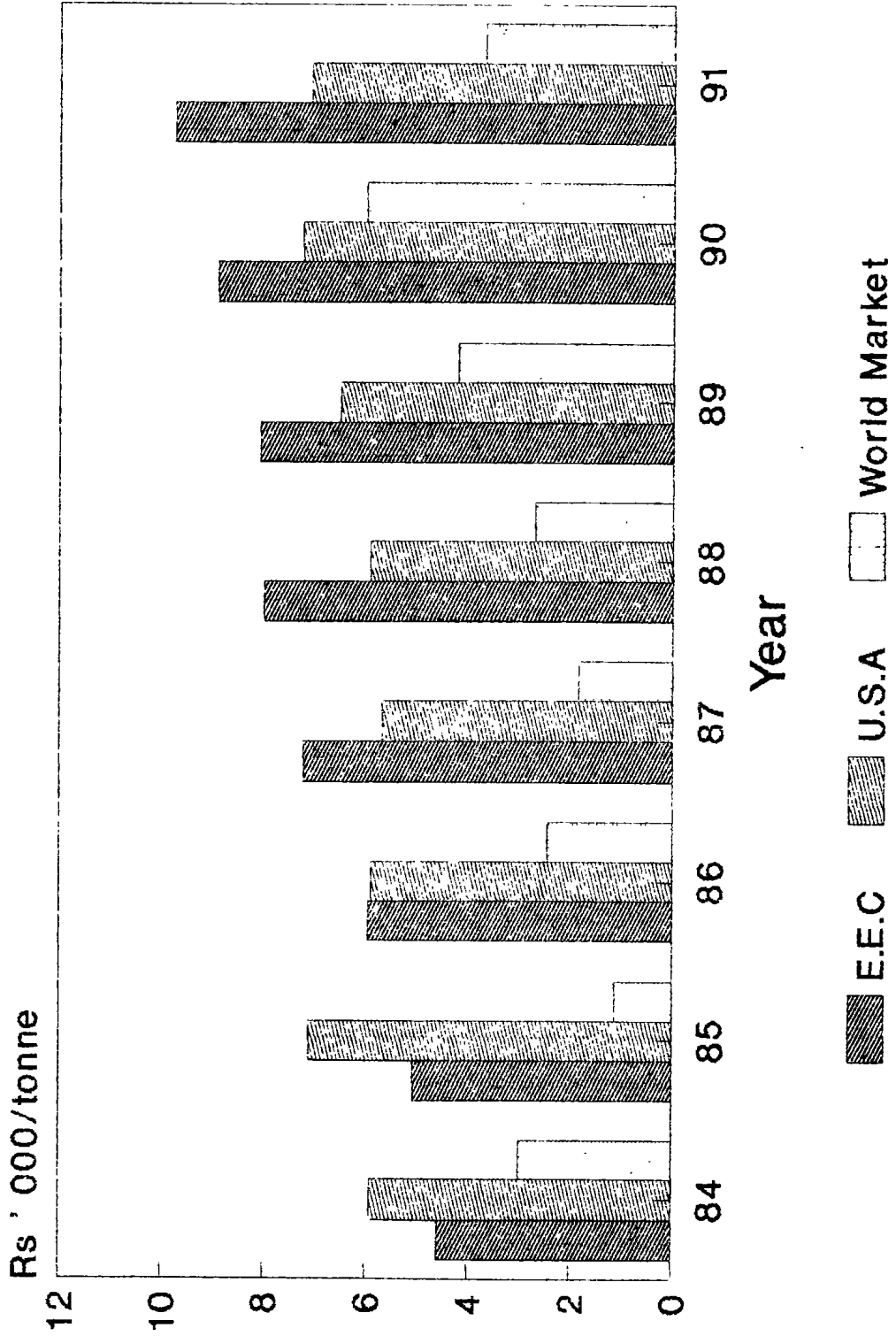


Table 2.1) - Sugar exports by main markets, crop year 1988/89 - 1990/91

(Quantity in '000 tonnes tel quel, Average price in Rs/tonne of sugar at 98.5° Pol)

	1987/88			1988/89			1989/90			1990/91		
	Quantity ('000 tonnes)	Value (Rs Mn)	Average price (Rs/tonne)	Quantity ('000 tonnes)	Value (Rs Mn)	Average price (Rs/tonne)	Quantity ('000 tonnes)	Value (Rs Mn)	Average price (Rs/tonne)	Quantity ('000 tonnes)	Value (Rs Mn)	Average price (Rs/tonne)
E.E.C	507.2	4,055.8	7,988	514.7	4,159.0	8,064	506.3	4,515.2	8,900	517.9	4,966.9	9,746
U.S.A	7.3	41.8	5,913	15.3	99.7	6,500	15.9	115.0	7,243	25.6	183.2	7,079
World market	144.0	392.0	2,696	69.5	293.0	4,204	10.2	97.5	6,002	51.0	189.3	3,679
Total	658.5	4,489.6	6,800	599.5	4,551.7	7,576	532.4	4,727.7	8,862	594.5	5,339.4	9,096

✓ Inclusive of a stock of 31,388 tonnes of uncommitted sugar valued at prevailing world price (June 1988)

Table 2.14 - Earnings of sugar producers - Ex-syndicate, before charging sugar insurance premium, 1987 - 1991

Rupees/tonne of sugar basis
98.5° Pol.

	1987	1988	1989	1990	1991
On the first 1,000 tonnes exported	6,102	6,855	7,846	8,030	8,167
On the next 2,000 tonnes exported	5,178	5,848	7,846	8,030	8,167
On the remainder	4,717	5,344	6,482	6,633	6,756
Average for all producers	5,228	5,902	7,182	7,337	7,422
Index (Base 1982 = 100)	119.0	190.8	232.1	237.1	239.8
Annual growth rate of earnings of sugar production (%)	+14.1	+12.9	+21.6	+ 2.2	+ 1.1

Source: Mauritius Syndicate

Fig. 12-Average ex-synd. price of sugar 82-91
before charging sugar insurance premium

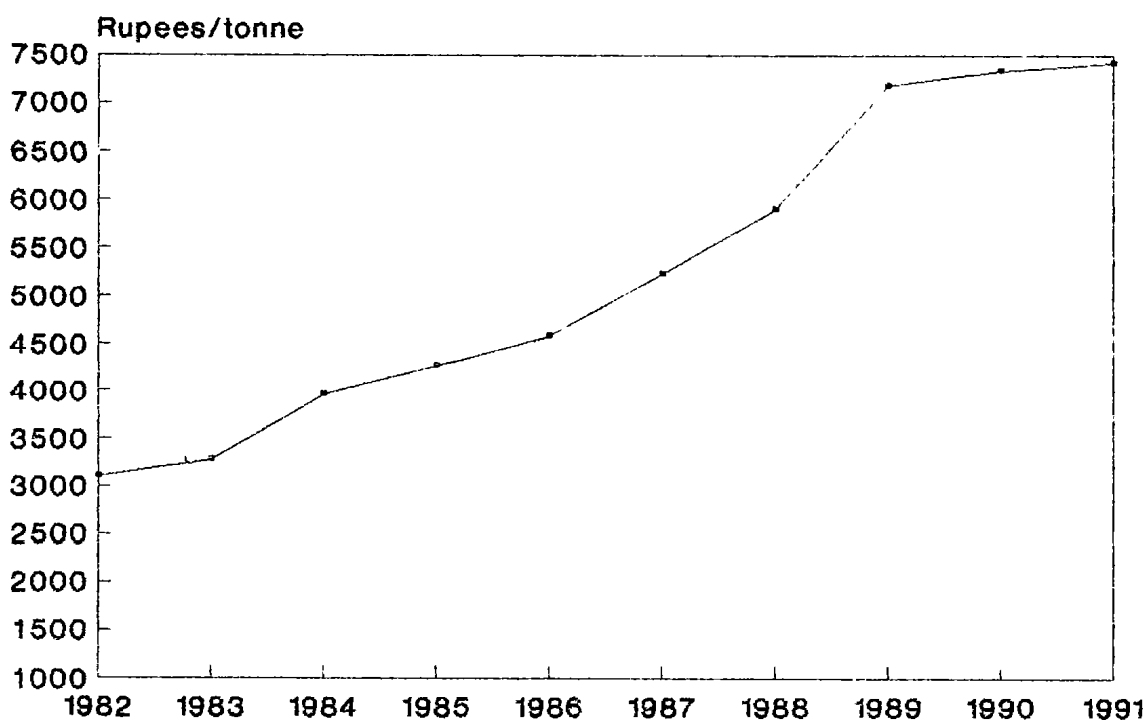


Fig. 13 - Monthly average price of sugar
(London daily price, fob value)

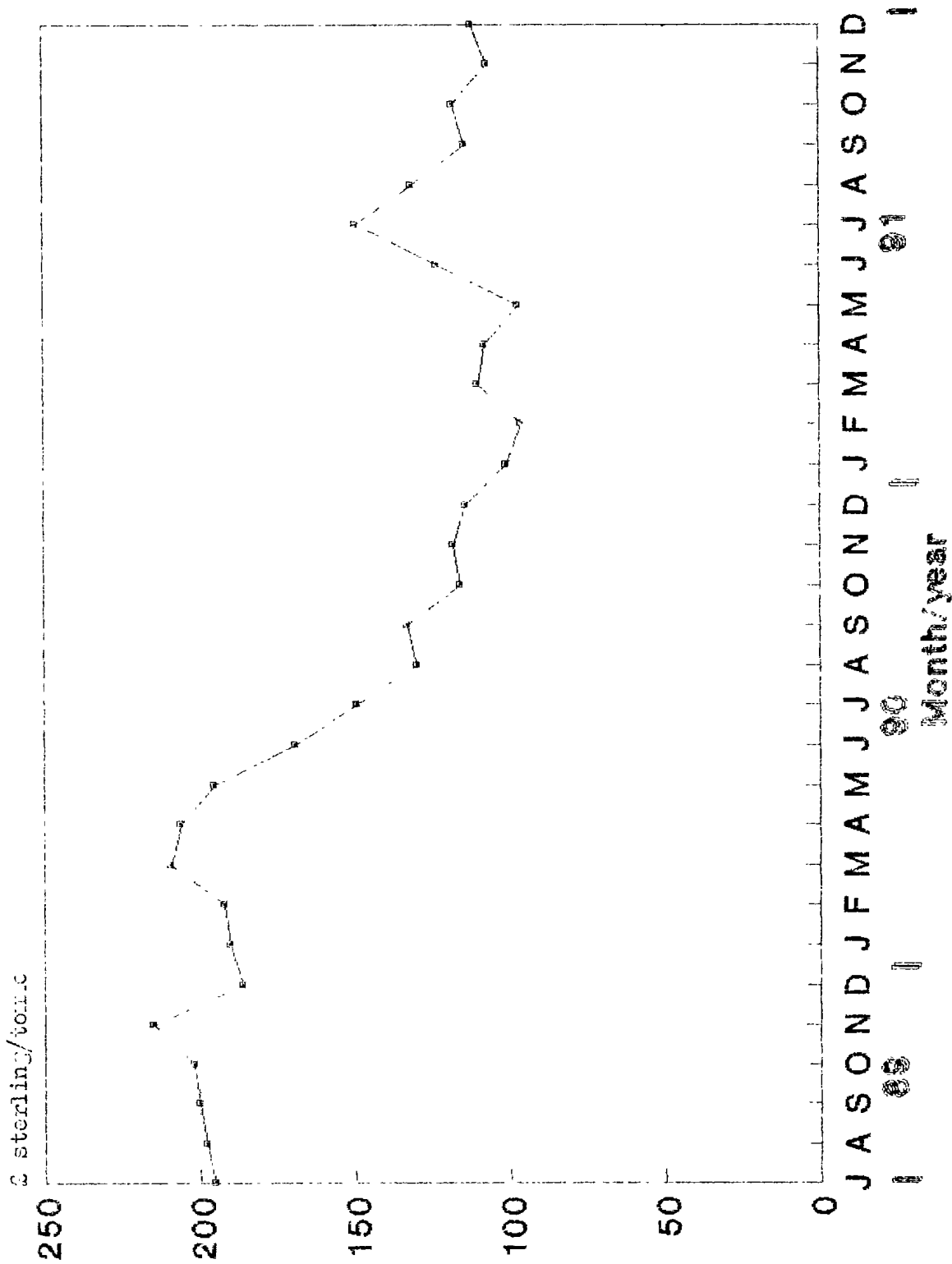


Table 2.15 - Monthly average price of sugar at CIF Value (London daily Price), (1982-- 1991)

(£ Sterling/tonne)

Year	January	February	March	April	May	June	July	August	September	October	November	December	Average price	Index 1976 = 100
1981	276	257	240	202	180	207	218	205	163	160	155	167	203	130
1982	166	170	152	136	113	100	113	100	86	91	102	103	122	78
1983	100	108	108	112	148	172	168	175	154	159	139	133	140	90
1984	126	119	114	112	109	107	93	86	91	102	95	88	104	67
1985	95	102	100	83	71	69	67	88	98	92	97	96	88	56
1986	90	102	119	4	-	-	-	-	-	-	-	-	N.A.	N.A.
1986	-	-	-	137	114	93	83	86	72	83	94	93	N.A.	N.A.
1987	98	110	108	92	91	80	86	81	81	92	93	101	93	60
1988	121	109	105	103	109	135	191	154	135	132	133	136	130	83
1989	121	135	153	160	165	181	195	198	200	202	215	186	176	112
1990	190	192	209	206	195	169	149	130	133	116	118	114	160	102
1991	101	96	110	108	97	123	149	131	114	118	108	112	110	72

As from April 1986, London daily price of sugar is available at F.O.B. Value

Source : Mauritius Sugar Syndicate

Table 2.16 - Employment by sugar estates with factories and large sugar cane planters ^{1/} 1988 - 1991

	1988												1989											
	March ^{2/}				September ^{2/}				March ^{2/}				September ^{2/}											
	Estates	Planters	Total	Estates	Planters	Total	Estates	Planters	Total	Estates	Planters	Total	Estates	Planters	Total									
Males	26,948	2,719	29,667	29,485	3,144	32,629	27,038	2,646	29,684	28,354	2,868	31,222												
Females	8,465	1,566	10,031	9,398	1,695	11,093	8,318	1,577	9,895	9,230	1,647	10,877												
Total	35,413	4,285	39,698	38,883	4,839	43,722	35,356	4,223	39,579	37,584	4,515	42,099												
	1990												1991											
	March ^{2/}				September ^{2/}				March ^{2/}				September ^{2/}											
	Estates	Planters	Total	Estates	Planters	Total	Estates	Planters	Total	Estates	Planters	Total	Estates	Planters	Total									
Males	27,144	22,729	29,873	28,082	2,678	30,750	26,757	3,043	29,800	28,024	2,604	30,628												
Females	8,408	1,664	10,072	8,738	1,607	10,345	8,530	1,808	10,338	9,290	1,459	10,749												
Total	35,552	4,393	39,945	36,810	4,285	41,095	35,287	4,851	40,138	37,314	4,063	41,377												

^{1/} cultivating more than 10.6 hectares each

^{2/} last Thursday of the month

TEA

&

TOBACCO

Table 3.1 - Area under tea, 1987 - 1991

(Hectares)

	1987	1988	1989	1990	1991
Plantation cultivated by factories	139	141	48	68	50
Plantation cultivated by private planters	828	825	873	775	715
Plantation cultivated by the T.D.A	2,664	2,394	2,125	2,037	2,079
Plantation cultivated for experimental purposes	30	25	25	25	25
Total area cultivated	3,661	3,385	3,071	2,905	2,869

Table 3.2- Frequency distribution of individual plantations by size (hectares), 1991

	No. of individual plantations	Aggregate area cultivated (hectares)
Less than 0.42	1,204	277
0.42 but less than 0.84	1,663	1,069
0.84 but less than 1.27	1,204	1,087
1.27 but less than 1.69	64	92
1.69 but less than 2.11	28	51
2.11 but less than 4.22	8	20
4.22 but less than 10.55	4	23
10.55 but less than 42.20	3	75
42.20 and above	1	175
Total	4,179	2,369

Table 3.3 - Production of green leaf of tea by type of producer, 1987 - 1991

Year	Metric tons					Total
	Factory estates	Metayers	Free planters	Planters in Co-operative Societies	Other <input checked="" type="checkbox"/>	
1987	3,024	3,211	2,244	31,117	321	39,917
1988	2,918	3,553	2,582	26,798	312	36,163
1989	2,155	2,803	2,403	21,637	241	29,239
1990	1,851	2,338	2,460	22,932	287	29,868
1991	1,740	2,156	2,189	24,555	223	30,863

including Tea Development Authority

Source : Tea Board

Table 3.4 - Production of black tea by factories, 1987 - 1991

(Metric Tons)

F a c t o r y	1987	1988	1989	1990	1991
Belle Rive	988.4	1,096.0	829.3	998	1,102
Dubreuil	2,027.3	1,911.6	1,332.4	1,503	1,534
Bois Chéri	1,072.1	1,025.1	757.9	648	600
Nouvelle France	611.7	419.1	280.1	339	234
La Chartreuse	1,668.6	1,173.6	370.0	-	-
La Flora	277.6	332.5	205.9	173	155
Corson	373.9	423.5	390.7	428	355
Pont Colville	128.5	30.9	33.0	8	-
La Pipe	-	441.5	1,300.6	1,654	1,930
T o t a l	7,148.1	6,854.0	5,499.9	5,751	5,918

Source : Tea Board

Table 3.5 - Exports of black tea (at current and constant 1976 and 1982 prices)

(1987 - 1991

	1987	1988	1989	1990	1991
Quantity (tonnes)	6,588	5,435	4,749	4,414	4,494
<u>Exports (FOB value in Rs Mn)</u>					
At current prices	89.8	87.8	88.5	85.6	82.5
At constant 1976 prices	56.8	46.2	40.4	37.6	38.3
At constant 1982 Prices	99.3	81.9	71.6	66.5	67.7

Fig. 14 - Exports of black tea 82-91
(at current & constant prices)

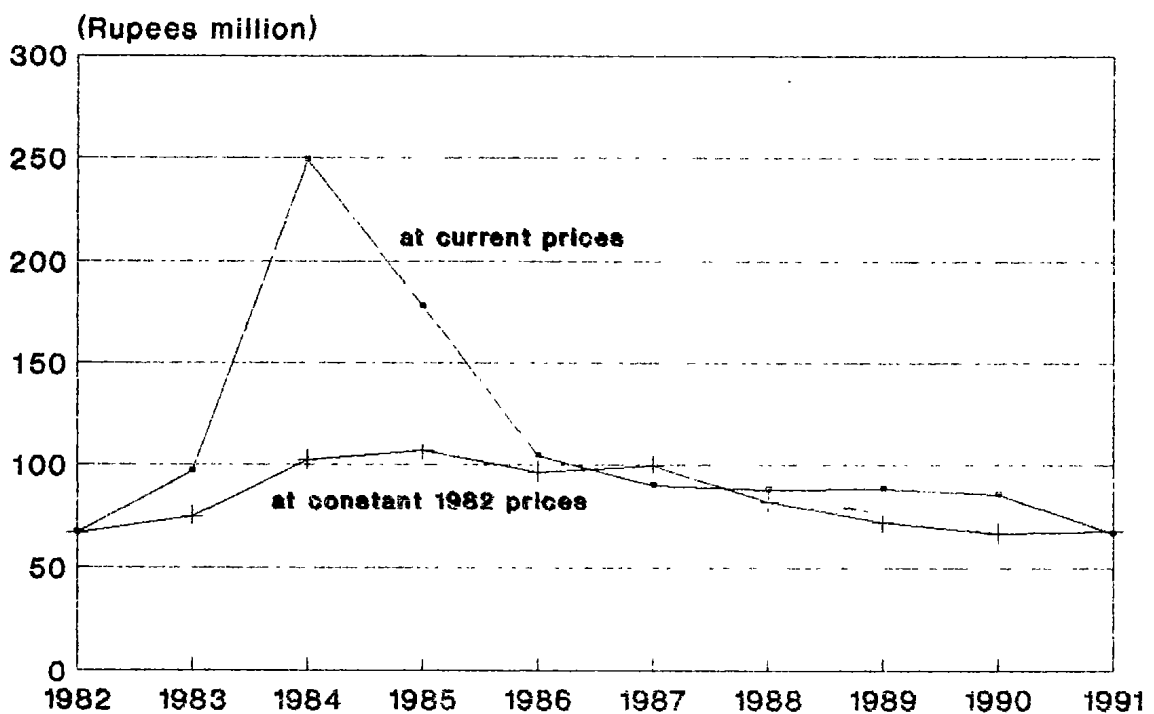


Table 3.6 - Exports of tea by country of destination, 1987 - 1991

(Quantity in tonnes; F.O.B. value in Rs Mn)

Country of destination	1987		1988		1989		1990		1991	
	Quantity	Value	Quantity	Value	Quantity	Value	Quantity	Value	Quantity	Value
United Kingdom	3,758.2	49.0	3,731.2	58.1	3,786.1	68.9	2,709.0	54.6	2,904.0	53.2
South Africa	454.5	4.9	67.6	0.6	89.2	0.9	73.1	0.7	70.1	0.7
U.S.S.R	338.1	6.7	253.7	5.1	274.1	6.4	551.0	14.5	-	-
Netherlands	562.3	7.9	46.3	0.7	84.6	1.8	180.0	2.6	60.4	1.1
Pakistan	1,000.0	12.3	1,003.0	18.2	280.0	5.3	582.0	7.1	871.6	15.5
United States	29.6	0.5	28.1	0.5	-	-	-	-	118.6	2.0
Kenya	17.9	0.2	4.1	0.1	-	-	-	-	74.5	0.4
Reunion	44.4	2.2	16.3	0.6	22.5	1.1	15.5	0.9	19.8	1.3
Canada	9.0	0.1	17.9	0.2	-	-	-	-	33.6	0.7
Other countries	374.1	6.0	187.0	3.7	212.5	4.1	303.4	5.2	341.3	7.6
Total Exports	6,588.1	89.8	5,435.2	87.8	4,749.0	88.5	4,414.0	85.6	4,493.9	82.5

Table 3.7 - Tobacco: Area harvested, Yield and Production of leaf, 1987 - 1991^{1/}

	1987	1988	1989	1990	1991
<u>Number of growers</u>	<u>534</u>	<u>535</u>	<u>536</u>	<u>532</u>	<u>529</u>
- Virginia Flue-cured	(213)	(215)	216	216	215
- Amarello Air-cured	(321)	(320)	320	316	314
<u>Area harvested (hectares)</u>	<u>633</u>	<u>754</u>	<u>775</u>	<u>632</u>	<u>623</u>
- Virginia Flue-cured	556	665	662	552	559
- Amarello Air-cured	77	89	113	80	64
<u>Average Yield (tonnes/hectare)</u>	<u>1.42</u>	<u>1.29</u>	<u>1.33</u>	<u>1.26</u>	<u>1.41</u>
- Virginia Flue-cured	1.40	1.27	1.29	1.26	1.40
- Amarello Air-cured	1.60	1.39	1.60	1.30	1.50
<u>Leaf production (tonnes)</u>	<u>908</u>	<u>967</u>	<u>1,036</u>	<u>799</u>	<u>876</u>
- Virginia Flue-cured	784	845	855	695	780
- Amarello Air-cured	124	122	181	104	96

^{1/} Crop year usually extends from May to April the following year.

Table 3.0 - Tobacco: Price paid to planters and value of production, 1987 - 1991

	1987	1988	1989	1990	1991
<u>Average Price to planters (Rs/Kg)</u>					
- Virginia Flue-cured	42.37	43.47	49.59	58.13	58.00
- Amarello Air-cured	27.06	23.70	25.98	32.84	32.89
<u>Value of Production (Rs mn)</u>	<u>36.0</u>	<u>39.7</u>	<u>47.9</u>	<u>43.8</u>	<u>48.4</u>
<u>Tobacco used in Cigarette Manufacture (tonnes)</u>	<u>1,049.7</u>	<u>926.8</u>	<u>951.0</u>	<u>900.0</u>	<u>1,065.0</u>
- Domestic leaf	1,004.3	932.5	869.0	839.0	1,010.0
- Imported leaf	45.4	64.3	82.0	61.0	55.0

FOODCROPS

Fig. 15 - Foodcrops Production 1982-1991

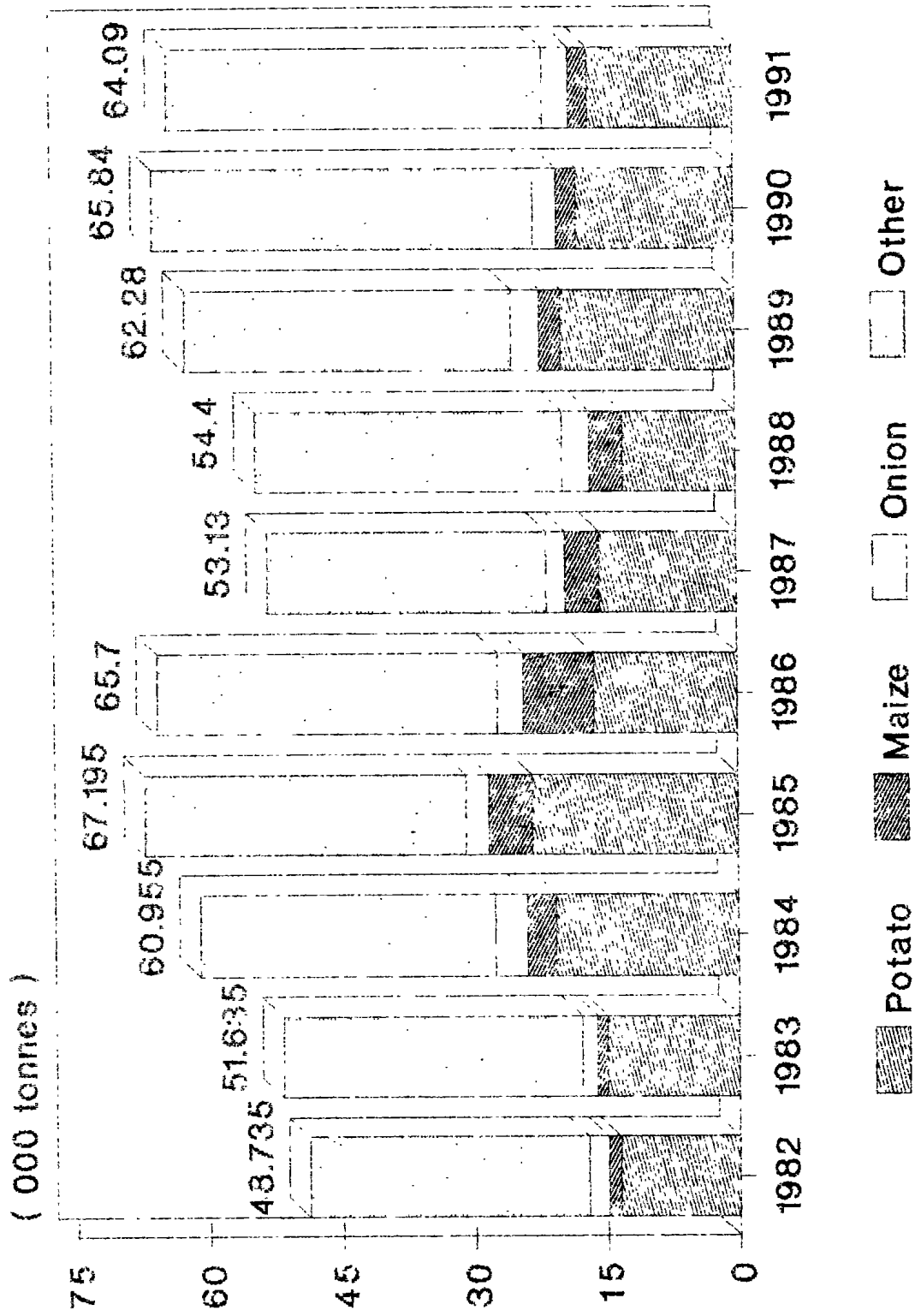


Table 4.1 - Area harvested and production of foddercrops, 1987 - 1991

(Area in hectares Production in Metric tons)

Foddercrops	1987		1988		1989		1990		1991	
	Area	Production	Area	Production	Area	Production	Area	Production	Area	Production
Beans	231	750	330	1,120	309	1,105	319	1,235	255	915
Beet	10	165	10	175	13	210	13	165	12	150
Bittergourd	44	145	43	155	52	230	67	240	70	230
Brinjal	66	530	76	735	79	835	92	1,230	98	1,270
Cabbage	116	2,675	121	2,915	132	2,945	167	3,680	172	3,490
Calabash	52	670	76	910	95	1,210	111	1,315	194	2,540
Carrot	49	815	48	740	62	1,025	61	1,100	53	915
Cauliflower	21	340	55	955	52	920	69	1,280	52	780
Chillies (long)	77	235	94	340	68	275	84	410	97	450
Chillies (small)	39	130	50	175	43	200	33	185	29	145
Chouchou	97	1,955	83	1,875	112	2,575	91	2,145	74	1,645
Cucumber	116	1,280	107	1,285	194	2,450	226	2,720	256	3,120
Eddoes (violet)	13	170	15	185	14	180	17	195	16	190
Eddoes (curry)	29	260	35	295	28	245	35	295	29	220
Garlic	38	245	26	165	21	160	21	170	17	140
Ginger	15	240	15	220	23	300	36	625	24	460
Green peas	13	30	18	35	18	35	13	45	10	30
Groundnut	514	1,645	568	1,685	458	1,505	592	1,755	480	1,380
Leek	3	25	3	25	3	35	4	30	3	25
Lettuce	14	175	33	425	41	545	47	610	41	560

Table 4.1 Area harvested and production of foodcrops, 1967 - 1971 (cont'd)

(Area : hectares Production : Metric tons)

Foodcrops	1967		1968		1969		1990		1991	
	Area	Production	Area	Production	Area	Production	Area	Production	Area	Production
Ladies finger	29	195	37	230	56	360	60	370	44	255
Maize	1,086	3,865	985	3,790	641	2,395	542	2,265	570	2,120
Manioc	16	295	21	315	14	210	14	190	14	190
(non)	202	2,145	245	3,090	245	3,225	216	2,635	215	2,960
Patole	20	145	22	160	23	175	29	205	48	415
Pe-tsai	29	490	34	560	40	670	57	615	56	910
Pipengaille	27	295	29	275	33	360	45	470	44	510
Potato	786	15,535	673	12,770	925	19,690	934	17,820	833	16,445
Pumpkin	77	1,275	68	1,210	100	1,660	98	1,670	176	3,055
Rice	14	40	5	20	3	20	-	-	2	10
Squash	22	175	36	305	42	395	36	290	51	435
Sweet pepper	2	5	3	10	2	15	3	20	3	10
Sweet potato	34	290	45	390	44	380	43	325	45	340
Tomato	647	6,825	698	7,315	813	9,195	975	11,570	887	9,385
Voehn	29	100	41	160	49	195	60	275	66	345
Banana	371	7,920	369	7,920	348	4,640	350	6,135	359	6,490
Pineapple	63	1,015	65	1,465	100	1,540	87	1,355	93	1,480
Total foodcrops	5,017	53,130	5,200	54,400	5,303	62,200	5,699	65,840	5,493	64,090

Table 4.2 - Average yield (kg/ha) of selected vegetables in the period 1982-1991

(60 times/ha crop)

	1982	1983	1984	1985	1986	1987	1988	1989	1990	1991
Potato	21.3	20.2	25.2	27.0	25.3	19.7	19.0	21.3	18.1	19.7
Tomato	11.7	13.0	11.6	12.9	12.5	10.5	10.6	11.3	11.9	10.6
Onion	10.3	14.2	12.9	12.3	11.7	10.6	12.6	13.2	12.2	13.8
Cabbage	27.5	25.2	26.2	26.4	26.6	23.1	24.1	22.3	22	20.3
Calliflower	17.0	16.0	17.3	16.6	17.9	16.2	17.4	17.7	18.5	15.1
Beans	3.7	3.4	4.0	3.7	3.1	3.2	3.3	3.6	3.9	3.7
Groundnuts	3.5	3.0	2.9	3.1	3.1	3.2	3.0	3.3	3.5	2.9
Maize	2.5	2.9	4.4	4.7	4.4	3.5	3.8	3.7	4.2	3.7

Table 4.3 - Area planted and production of foodcrops grown in interline plantations, 1989 - 1991

Foodcrops	1989			1990			1991		
	Area (hectares)		Production (tonnes)	Area (hectares)		Production (tonnes)	Area (hectares)		Production (tonnes)
	Interline	Pure stand equivalent		Interline	Pure stand equivalent		Interline	Pure stand equivalent	
Beans	298.7	121.2	295	333.8	112.7	371	152.4	58.7	238
Peas	22.8	9.2	23	17.0	7.6	28	22.8	8.4	29
Groundnut	849.6	294.1	1,035	1,051.5	401.8	1,109	932.9	330.1	1,031
Maize	944.2	255.3	911	713.4	252.4	841	892.1	240.1	919
Potato	1,352.0	663.9	14,591	1,394.9	657.7	12,194	1,238.3	516.6	12,240
Tomato	200.3	125.6	1,451	191.7	105.3	1,235	160.8	88.3	900
Other	67.0	35.7	412	77.5	43.3	451	118.3	60.1	615
Total	3,734.6	1,505.0	18,718	3,779.8	1,541.3	16,229	3,417.6	1,412.3	15,972

Table 4.4 - Monthly area harvested, 1990

(Hectares)

Foodcrops	January	February	March	April	May	June	July	August	September	October	November	December	Total
Beans & peas	33.1	13.5	16.0	17.0	21.2	26.3	39.9	31.9	39.1	50.9	25.8	18.2	332.9
Potato	198.8	2.7	-	-	-	6.1	77.9	142.2	50.2	132.1	173.5	200.2	983.7
Rice	-	-	-	-	-	-	-	-	-	-	-	-	-
Maize	135.6	104.2	31.0	-	0.5	41.0	62.9	7.7	49.6	53.3	20.3	35.6	541.7
Groundnut	97.5	61.8	24.2	39.3	13.6	40.6	75.8	47.2	46.9	52.3	21.9	71.1	592.2
Onion	0.1	0.1	-	0.7	7.0	16.3	23.3	34.2	28.1	41.2	50.1	14.5	215.6
Finger	-	-	-	-	1.3	3.1	9.3	13.6	4.1	1.0	2.8	0.5	35.7
Garlic	-	-	-	-	-	-	-	-	9.3	7.3	4.2	0.1	20.9
Chillies	7.9	7.3	5.9	5.9	7.3	7.8	10.5	12.5	14.6	13.0	13.3	11.4	117.4
Tomato	56.4	99.6	114.4	83.7	57.8	57.7	61.7	65.1	70.3	69.0	109.2	129.9	974.8
Cabbage	7.0	7.9	10.3	9.6	13.4	14.7	15.8	24.4	18.6	14.9	17.8	11.9	167.3
Cauliflower	-	-	0.2	0.2	3.4	8.0	18.6	9.4	15.6	13.0	0.4	0.1	68.9
Brinjal	6.5	5.9	4.8	5.1	5.8	5.6	7.1	8.6	9.9	11.4	10.7	11.1	92.5
Creepers	109.7	85.6	65.3	49.5	48.7	47.4	47.3	41.6	44.2	56.2	71.1	97.1	763.7
Mixed vegetables	22.5	22.0	24.9	26.4	32.3	30.3	33.2	37.1	36.6	40.7	24.2	24.6	354.8
Banana	28.3	28.3	28.4	29.7	29.9	30.0	29.9	29.2	29.2	29.1	29.1	29.2	350.3
Pineapple	10.6	10.8	8.8	7.4	6.6	5.4	3.7	3.6	7.1	7.6	7.3	8.0	86.9
Total foodcrops	714.0	449.7	334.2	274.5	248.8	340.3	516.9	508.3	473.4	593.0	581.7	664.5	5,699.3

Table 4.5 - Monthly area harvested, 1991

(Hectares)

Foodcrops	January	February	March	April	May	June	July	August	September	October	November	December	Total
Beans & peas	19.7	11.1	14.9	17.6	28.3	20.6	16.9	17.8	39.2	26.5	25.7	31.7	265.0
Potato	102.8	-	-	-	-	7.6	38.9	126.9	42.0	130.0	171.8	206.9	832.9
Rice	0.5	-	-	-	-	-	-	-	-	-	1.0	-	1.5
Maize	69.8	38.6	131.6	-	19.4	3.4	30.4	26.5	19.8	24.2	35.6	120.7	570.2
Groundnut	84.6	25.5	26.9	31.7	26.1	30.2	65.1	45.1	42.6	22.3	44.6	35.4	480.1
Onion	-	-	1.4	0.5	4.0	8.2	25.2	48.7	35.4	19.8	35.9	35.9	215
Ginger	-	-	0.1	-	0.4	1.7	3.4	2.5	8.6	6.4	0.8	0.5	24.2
Garlic	-	-	-	-	-	-	0.4	-	4.6	9.5	2.5	0.1	17
Chillies	10.7	8.9	8.6	8.1	8.1	10.0	12.8	11.9	12.3	14.5	12.7	12.7	126.6
Tomato	126.0	93.5	83.7	65.9	53.4	63.5	59.8	49.7	52.2	62.0	61.7	95.7	887.1
Cabbage	9.3	9.7	7.8	13.1	10.6	16.9	20.5	21.9	17.8	17.0	17.1	10.0	171.7
Cauliflower	-	-	-	0.4	4.6	7.2	15.4	13.4	6.8	2.5	1.3	-	51.6
Brinjal	10.3	9.7	8.2	6.1	6.6	6.5	7.5	8.3	9.1	9.1	8.7	8.7	98.1
Creepers	101.1	87.9	82.1	72.0	66.3	56.5	55.6	54.0	57.6	79.1	122.8	146.9	979.4
Mixed vegetables	21.7	20.7	19.6	21.0	28.0	32.6	27.1	30.0	28.4	35.7	29.2	27.4	321.4
Banana	28.4	28.3	28.1	28.1	27.7	28.0	27.9	28.0	32.9	33.8	33.3	34.6	359.1
Pineapple	7.5	7.6	7.2	6.3	7.3	8.4	8.9	8.0	8.6	7.7	8.0	7.1	92.6
Total foodcrops	598.4	390.8	420.2	270.8	290.8	300.8	411.5	492.7	417.9	497.7	627.7	774.1	5,493.5

(Tonnes)

Foodcrops	January	February	March	April	May	June	July	August	September	October	November	December	Total
Beans & peas	122	56	53	66	92	125	177	17	126	161	94	71	1,280
Potato	3,887	45	-	-	-	100	1,369	2,775	919	2,573	3,342	2,810	17,820
Onion	-	-	-	-	-	-	-	-	-	-	-	-	-
Maize	696	372	54	-	1	262	239	32	117	275	75	142	2,265
Groundnut	346	241	85	134	39	104	139	123	137	134	57	216	1,755
Garlic	1	1	-	1	20	56	152	224	72	632	611	171	2,635
Ginger	-	-	-	-	-	56	152	224	72	21	70	9	625
Chillies	44	44	30	37	42	45	55	63	74	57	37	1	170
Tomato	686	1,140	1,262	995	670	758	765	821	999	782	1,230	1,462	11,570
Cabbage	135	154	132	147	253	340	397	675	484	333	391	239	5,680
Cauliflower	-	-	4	3	56	161	379	155	283	194	6	1	1,200
Brinjal	80	68	55	59	71	72	93	112	173	159	145	143	1,230
Creepers	1,311	913	610	555	669	572	744	726	714	669	742	997	9,330
Mixed vegetables	268	237	215	267	378	372	403	522	485	425	262	281	4,115
Banana	457	454	470	521	524	525	524	509	532	534	543	542	6,155
Pineapple	157	153	137	117	106	84	61	62	115	121	113	129	1,355
Total foodcrops	9,190	3,878	3,123	2,910	2,974	3,810	5,706	7,276	5,913	7,127	7,776	7,263	65,840

(Tonnes)

Foodcrops	January	February	March	April	May	June	July	August	September	October	November	December	Total
Beans & peas	62	37	54	78	116	89	76	71	110	82	93	107	975
Potato	1,570	-	-	-	-	130	735	2,290	875	3,025	3,560	4,260	16,445
Rice	3	-	-	-	-	-	-	-	-	-	7	-	10
Maize	361	229	477	-	120	13	122	120	55	76	110	437	2,120
Groundnut	180	37	85	77	112	115	160	165	132	62	145	109	1,380
Onion	-	-	2	1	16	79	239	540	575	447	449	612	2,960
Ginger	-	-	1	-	6	30	50	40	194	116	13	10	460
Garlic	-	-	-	-	-	-	4	-	35	78	22	-	140
Chillies	50	45	46	46	45	42	45	53	48	54	61	59	595
Tomato	1,009	700	630	648	621	833	762	619	681	769	973	1,140	9,385
Cabbage	158	167	135	244	197	355	371	482	396	357	331	190	3,490
Cauliflower	-	-	-	8	60	118	252	216	96	25	5	-	780
Brinjal	122	119	104	80	87	60	100	110	112	115	113	119	1,270
Creepers	1,070	919	876	651	673	719	714	530	612	1,006	1,700	2,001	12,345
Mixed vegetables	195	186	230	241	318	367	341	390	373	423	365	336	3,765
Banana	539	536	533	533	526	531	530	533	548	560	550	572	6,490
Pineapple	106	106	100	102	116	175	142	128	125	112	112	156	1,480
Total foodcrops	5,424	3,681	3,273	2,909	3,213	3,678	4,744	6,493	5,174	7,307	8,623	10,171	64,090

Table 4.8 - Area harvested and production of foodcrops by district, 1987 - 1991

(Area in Hectares; Production in tons)

District	1987		1988		1989		1990		1991	
	Area	Production	Area	Production	Area	Production	Area	Production	Area	Production
Rivière du Rempart	761.4	4,722	746.4	4,439	784.0	6,413	730.4	6,435	756.3	6,616
Pamplemousses	538.1	4,645	514.3	5,000	584.6	6,465	725.3	3,320	473.7	4,551
Moka	699.4	11,090	729.4	10,351	780.4	12,147	780.0	12,517	768.5	12,261
Flacq	986.0	6,393	799.2	5,092	707.7	4,325	704.0	4,680	960.5	7,640
Black River	122.8	1,435	299.7	2,621	275.3	3,115	283.2	2,997	135.4	1,735
Plaines Wilhems	406.0	6,730	624.0	9,342	756.0	11,972	910.0	13,129	759.0	11,291
Grand Port	829.8	6,203	609.3	5,371	578.2	4,880	596.0	5,360	781.9	7,106
Savanne	673.6	11,324	797.7	11,684	837.0	12,958	970.4	12,394	858.2	12,829
Whole Island	5,017.3	53,130	5,200.5	54,400	5,303.2	62,280	5,699.3	65,840	5,493.5	64,090

Table 4.9 - Area harvested and production of beans and peas by district, 1987 - 1991

(Area in hectares; Production in tonnes)

District	1987		1988		1989		1990		1991	
	Area	Production	Area	Production	Area	Production	Area	Production	Area	Production
R v ere du Rempart	50.6	152	50.3	176	64.3	241	66.0	300	55.7	211
Pamplemousses	24.5	79	24.1	92	13.3	84	26.2	114	14.1	53
Moka	51.1	198	45.6	172	36.1	147	33.8	165	36.8	154
Flacq	33.8	133	71.5	249	32.8	115	39.0	134	32.3	101
Black River	16.5	36	84.5	128	75.0	109	42.9	74	22.0	45
Plaines Wilhems	14.3	51	39.6	181	56.8	316	60.7	321	42.5	211
Grand Port	29.5	88	27.9	96	26.6	85	34.8	110	44.9	158
Savanne	23.2	43	12.6	41	15.5	43	23.5	62	16.7	42
Whole Island	243.5	780	356.1	1,155	327.0	1,140	332.9	1,280	265.0	975

Table 4.10- Area harvested and production of potato by district, 1987 - 1991

(Area in hectares; Production in tonnes)

District	1987		1988		1989		1990		1991	
	Area	Production	Area	Production	Area	Production	Area	Production	Area	Production
Riviere du Rempart	20.2	355	15.2	132	42.3	1,025	42.3	844	40.2	707
Pamplemousses	62.5	976	52.8	908	64.0	1,181	76.3	1,278	10.5	179
Moka	192.5	3,748	133.0	2,348	247.9	4,829	245.6	4,563	265.9	4,749
Flacq	11.0	177	24.9	172	22.8	259	24.4	450	49.7	905
Black River	5.9	65	22.8	462	32.3	619	70.5	905	16.6	369
Plaines Wilhems	135.9	2,998	135.1	2,176	148.0	2,935	212.0	3,557	126.7	2,574
Grand Port	58.2	1,264	46.0	896	76.7	1,346	48.4	715	33.2	725
Savanne	301.4	5,952	243.5	5,374	290.8	7,496	264.2	5,508	290.1	6,237
Whole Island	787.6	15,535	673.3	12,770	924.8	19,690	983.7	17,820	832.9	16,445

Table 1.1 - Area harvested and production of maize by district, 1967-1991

(Area in hectares, Production in tonnes)

District	1967		1968		1969		1990		1991	
	Area	Production	Area	Production	Area	Production	Area	Production	Area	Production
Rivière du Rempart	89.5	354	59.5	224	31.4	132	44.7	161	32.3	153
Pamplemousses	21.1	70	6.8	22	6.1	17	5.6	10	0.3	1
Moka	62.3	225	124.9	300	73.0	214	81.8	282	49.4	103
Flacq	457.2	1,767	300.5	1,286	236.8	826	205.9	763	292.1	1,019
Black River	4.2	13	61.6	252	7.8	38	14.8	53	-	-
Plaines Wilhems	15.2	97	-	-	9.1	-	0.2	1	2.2	5
Grand Port	354.2	1,294	246.5	653	157.9	570	61.8	394	150.5	697
Savanne	14.3	45	184.9	973	120.1	598	126.8	601	35.4	142
Whole Island	1,900.1	3,865	984.7	3,790	641.2	2,395	541.7	2,265	573.2	2,120

Table 1.12 - Area harvested and production of groundnut by district, 1987 - 1991

(Area in hectares; Production in tonnes)

District	1987		1988		1989		1990		1991	
	Area	Production	Area	Production	Area	Production	Area	Production	Area	Production
Rivière du Rempart	203.4	731	205.1	635	171.9	704	122.6	432	127.7	469
Pamplemousses	117.0	298	76.8	206	69.9	177	84.3	245	55.6	215
Moka	0.4	30	4.2	13	4.2	16	1.1	6	1.9	7
Flacq	93.3	289	103.0	304	112.2	327	110.6	404	113.6	320
Black River	31.6	110	36.7	122	33.4	72	60.0	171	26.6	58
Plaines Wilhems	1.3	5	5.5	20	4.9	20	0.0	5	1.3	3
Grand Port	35.9	96	47.7	123	19.6	65	50.8	168	30.9	120
Savanne	22.0	86	89.1	262	41.4	124	153.2	304	54.5	180
Whole Island	514.5	1,645	560.1	1,605	457.5	1,505	592.2	1,755	400.1	1,380

Table 4.1j - Area harvested and production of onion by district, 1967 - 1991

(Area in hectares; Production in tonnes)

District	1967		1988		1989		1990		1991	
	Area	Production	Area	Production	Area	Production	Area	Production	Area	Production
Rivière du Rempart	15.2	86	15.6	115	18.7	128	11.2	87	5.5	64
Pamplemousses	1.7	23	1.7	15	2.4	23	1.7	18	3.5	7
Moka	-	-	0.8	9	0.5	7	0.1	1	4.7	67
Flacq	118.2	840	104.7	844	102.6	973	84.4	730	84.5	921
Black River	23.2	611	28.3	710	28.0	700	30.4	768	23.1	628
Plaines Wilhems	20.3	381	57.4	1,047	87.2	1,241	65.3	767	73.7	1,048
Grand Port	29.1	177	31.2	292	22.2	126	19.4	195	18.3	165
Savanne	2.5	27	5.5	58	2.8	27	3.1	29	5.1	60
Whole Island	202.2	2,145	245.2	3,090	245.2	3,225	215.6	2,635	215.0	2,960

Table 4.14 - Area harvested and production of tomato by district, 1967 - 1991

(Area in hectares, Production in tonnes)

District	1987		1988		1989		1990		1991	
	Area	Production	Area	Production	Area	Production	Area	Production	Area	Production
Rivière du Rempart	251.5	2,072	271.8	2,212	255.0	2,882	255.0	2,997	291.9	2,874
Pamplemousses	112.7	1,279	120.3	1,622	154.4	2,023	236.3	3,102	134.0	1,665
Moka	36.7	698	40.5	740	50.0	552	41.7	777	39.0	689
Flacq	34.2	320	33.8	286	50.4	404	56.3	510	64.7	736
Black River	18.6	358	32.5	580	44.4	868	30.2	606	15.5	307
Plaines Wilhems	9.7	141	21.1	319	17.8	247	24.2	299	12.6	147
Grand Port	101.3	227	102.6	786	105.1	979	206.9	1,855	251.3	1,745
Savanne	62.3	1,020	65.8	766	114.8	1,240	124.2	1,384	100.1	1,222
Whole Island	647.0	6,825	688.4	7,315	815.5	9,195	974.8	11,570	667.1	9,385

Table 4.15 - Area harvested and production of cabbage and cauliflower by district, 1987 - 1991

(Area in hectares; Production in tonnes)

District	1987		1988		1989		1990		1991	
	Area	Production	Area	Production	Area	Production	Area	Production	Area	Production
Rivière du Rempart	1.3	16	0.4	8	0.3	4	0.3	8	0.3	3
Pamplemousses	0.4	12	1.2	19	2.9	70	2.0	41	1.2	25
Moka	46.8	1,184	33.8	951	36.1	700	37.5	866	48.7	1,052
Flacq	18.1	447	7.2	140	6.3	134	11.2	275	13.4	305
Black River	1.3	23	1.7	33	1.4	37	3.5	80	1.7	36
Plaines Wilhems	62.5	1,219	127.6	2,656	132.0	2,834	172.5	3,489	145.7	2,617
Grand Port	2.5	34	0.8	15	1.4	26	1.2	22	5.8	109
Savanne	3.8	80	2.9	48	3.6	60	8	179	6.6	123
Whole Island	136.7	3,015	175.6	3,870	184.0	3,865	236.2	4,960	223.3	4,270

Table 4.1 - Area involved in production of crops in the districts (1987-1991)

District	1987		1988		1989		1990		1991	
	Area	Production	Area	Production	Area	Production	Area	Production	Area	Production
Rivière du Rempart	63.1	716	92.3	701	111.6	945	148.4	1,318	156.9	1,668
Pamplemousses	57.8	591	64.8	645	90.5	1,116	89.4	1,138	62.1	862
Moka	151.9	2,834	125.0	2,640	129.7	2,668	120.1	2,571	112.9	1,988
Flacq	28.7	247	32.1	261	36.3	330	50.0	440	144.2	1,975
Black River	3.6	51	9.6	91	28.7	420	10.7	114	7.2	69
Plaines Wilhems	56.5	572	106.4	1,193	169.3	2,314	184.4	2,142	194.7	2,453
Grand Port	65.6	619	58.4	600	66.6	685	107.1	1,037	205.0	2,299
Savanne	36.3	410	17.6	204	67.4	860	53.6	570	76.5	1,031
Whole Island	484.1	6,040	506.2	6,335	706.3	9,340	763.7	9,330	979.5	12,345

Table 1.17 - Area harvested and production of main vegetables in Guyana, 1987 - 1991

(Area in hectares, Production in tonnes)

District	1987		1988		1989		1990		1991	
	Area	Production	Area	Production	Area	Production	Area	Production	Area	Production
Rivière du Rempart	44.7	213	35.8	200	44.5	286	38.8	271	43.2	355
Pamplemousses	122.0	912	127.8	996	158.7	1,461	183.5	1,953	129.5	1,156
Moka	67.5	717	99.2	948	63.3	1,038	88.0	983	79.6	822
Flacq	63.2	621	64.1	421	54.0	343	66.0	528	105.0	869
Black River	17.3	164	21.6	237	21.5	227	17.4	181	17.5	169
Plaines Wilhems	62.3	1,127	120.3	1,542	149.9	1,965	179.2	2,353	123.6	2,119
Grand Port	40.0	395	50.6	468	34.4	305	33.0	296	41.6	449
Savanne	17.3	196	10.4	123	18.0	120	15.4	170	21.5	301
Whole Island	479.5	4,345	529.8	4,935	561.3	5,745	621.3	6,735	286.7	6,240

Table 4.13 - Area harvested and production of banana by district, 1937 - 1991

(Area in hectares; Production in tonnes)

District	1987		1988		1989		1990		1991	
	Area	Production	Area	Production	Area	Production	Area	Production	Area	Production
Rivière du Rempart	1.7	27	0.4	14	1.0	15	1.0	16	5.6	112
Pamplemousses	1.7	36	1.7	35	2.0	25	1.8	30	6.0	118
Matika	46.4	1,158	70.5	1,822	65.0	1,010	67.5	1,465	67.1	1,618
Flacq	71.7	1,230	49.4	659	45.0	450	44.3	405	40.1	480
Black River	0.4	4	0.4	6	2.0	25	2.0	25	5.1	105
Plaines Wilhems	8.0	147	11.0	208	10.0	100	10.6	175	6.1	114
Grand Port	73.0	1,379	71.3	1,351	65.0	665	31.6	500	38.0	595
Savanne	167.6	3,939	164.6	3,825	158.2	2,350	191.5	3,519	191.1	3,348
Whole Island	370.6	7,920	369.3	7,920	348.2	4,640	350.3	6,135	359.1	6,490

Table 4.19 - Area harvested and production of pineapple by districts, 1967 - 1991

(Area in hectares; Production in tonnes)

District	1967		1988		1989		1990		1991	
	Area	Production	Area	Production	Area	Production	Area	Production	Area	Production
Rivière du Rempart	-	-	-	-	2.0	56	0.1	1	-	-
Pamplemousses	16.0	369	17.3	370	13.8	286	18.2	391	11.6	270
Moka	15.6	298	51.9	828	68.8	966	56.8	838	62.7	1,012
Flacq	29.5	322	8.0	170	8.5	164	3.9	41	1.4	17
Black River	-	-	-	-	-	-	-	-	-	-
Plaines Wilhems	-	-	-	-	-	-	-	-	-	-
Grand Port	-	-	6.8	89	2.7	28	1.0	16	4.3	46
Savanne	2.1	26	0.8	8	4.4	40	6.9	68	12.6	135
Whole Island	63.3	1,015	84.8	1,465	100.2	1,540	86.9	1,355	92.6	1,460

Table 4.20 - Retail prices of foodgrains, 1972

(Rupees)

Foodcrops	Unit	January	February	March	April	May	June	July	August	September	October	November	December
Beans	Kg	9.95	17.00	21.50	14.40	13.45	10.25	9.00	11.90	13.90	11.05	14.80	16.00
Beet	Unit	2.50	3.30	3.95	3.70	4.00	4.85	4.30	3.60	3.20	3.15	3.35	3.90
Bittergourd	Kg	11.45	20.50	22.00	17.45	20.55	20.95	22.30	24.75	27.40	24.45	25.00	22.75
Prinjal	Kg	5.75	11.10	15.15	12.20	15.00	10.55	11.55	12.25	12.35	11.95	12.90	9.50
Cabbage	Unit	6.70	6.55	9.45	9.60	9.10	6.60	5.35	6.10	5.60	5.25	7.20	7.45
Calabash	Kg	5.10	7.65	13.20	8.45	8.90	10.45	9.75	7.70	6.70	7.90	8.00	7.95
Carrot	Kg	8.75	12.70	19.25	24.95	11.45	13.50	10.35	9.60	9.00	7.95	11.70	13.40
Cauliflower	Unit	-	-	-	25.00	24.25	15.60	11.80	11.25	10.90	12.55	15.00	-
Chillies (long)	Kg	30.65	26.75	44.25	27.90	26.50	27.50	19.50	23.50	26.00	23.15	25.40	35.25
Chillies (small)	Kg	51.80	34.15	48.90	36.00	37.25	56.35	61.15	104.40	184.15	99.85	90.50	73.50
Choukrou	Kg	9.60	14.00	13.50	7.10	4.60	3.35	3.45	3.20	4.70	6.20	7.65	12.70
Cucumber	Unit	2.40	4.65	7.75	4.90	5.45	6.20	6.25	6.50	5.70	5.40	6.60	7.85
Eddoes(violet)	Kg	11.95	11.35	12.05	11.30	10.45	10.15	11.15	9.80	10.70	12.10	10.95	10.65
Eddoes (curry)	Kg	12.00	9.75	10.35	7.75	7.75	8.60	8.80	8.50	9.05	9.00	9.25	11.50
Garlic	Kg	40.75	40.00	42.00	-	-	-	40.00	-	32.00	52.35	56.00	63.50
Garger	Kg	34.90	34.75	37.90	41.50	47.00	36.50	27.50	31.10	29.75	27.75	32.00	29.15
Green peas	Kg	31.00	30.00	-	-	-	32.15	21.50	19.10	18.00	21.90	26.45	26.80

Table 4.2c - Retail prices of foodcrops, 1990 (cont'd)

(Rupees)

Foodcrops	Unit	January	February	March	April	May	June	July	August	September	October	November	December
Groundnut (fresh)	kg	12.25	13.30	13.65	14.75	16.30	15.00	14.40	13.65	14.80	14.80	16.10	14.75
Groundnut (dry)	kg	23.25	22.80	23.05	23.05	24.50	25.50	24.75	24.80	25.50	25.75	25.75	25.70
Leek	unit	2.00	4.05	5.60	4.60	5.10	1.85	2.15	2.35	2.25	2.20	2.30	2.35
Lettuce	unit	2.80	4.10	4.70	4.00	3.65	3.65	3.10	2.90	3.00	2.95	3.60	4.55
Ladies Finger	kg	19.65	20.70	23.90	17.95	20.25	18.00	23.45	25.50	27.75	27.55	27.75	27.90
Maize (Grain)	kg	5.60	6.00	6.50	6.30	6.30	6.90	5.50	6.10	5.40	6.50	6.00	5.50
Manioc	kg	10.00	8.55	9.00	10.00	10.85	9.15	9.50	9.05	9.50	10.40	9.80	10.40
Onion (local)	kg	8.00	8.00	8.00	-	12.00	8.00	8.00	8.00	8.00	8.00	8.00	8.00
Patole	kg	6.50	9.90	13.55	9.30	11.50	11.00	10.35	10.75	12.40	11.25	11.70	10.45
Petsai	unit	4.60	4.45	5.65	6.00	5.95	5.25	5.65	5.20	4.00	4.35	5.95	5.90
Pipengaille	kg	11.25	12.00	15.05	9.80	12.15	11.35	13.35	13.75	15.70	14.15	14.90	16.15
Potato	kg	3.50	3.50	3.50	3.50	3.50	3.50	3.50	3.50	3.50	3.50	3.50	4.60
Pumpkin	kg	4.30	4.60	5.70	6.50	8.20	8.75	6.90	6.00	5.65	5.40	5.70	6.25
Squash	unit	2.70	3.85	4.40	3.25	2.90	4.30	3.85	4.45	3.75	3.35	3.75	4.70
Sweet pepper	unit	2.50	6.75	6.75	4.75	6.70	4.60	3.50	3.05	2.90	2.55	2.55	2.00
Sweet potato	kg	7.15	7.50	7.55	8.15	8.35	7.90	9.00	8.25	8.70	10.10	9.70	10.00
Tomato	kg	16.35	16.70	22.45	20.05	22.50	18.75	15.95	17.65	15.70	16.10	15.85	12.40
Voehm	kg	7.95	11.45	17.20	11.90	13.25	11.45	12.20	12.90	13.50	12.45	13.95	13.95

Table 4.21 - Retail prices of foodcrops, 1991

(Rupees)

Foodcrops	Unit	January	February	March	April	May	June	July	August	September	October	November	December
Beans	kg	20.65	24.30	22.45	14.05	14.90	10.15	21.40	21.70	22.40	21.05	15.25	13.20
Beet	unit	4.75	5.00	4.35	5.30	5.50	4.80	4.80	4.55	3.80	3.60	3.45	3.35
Bittergourd	kg	23.40	25.70	19.65	18.45	17.05	20.90	29.35	29.40	32.40	29.95	22.30	16.55
Brinjal	kg	12.65	12.00	6.15	9.40	8.20	10.50	15.70	13.90	15.10	14.55	11.70	9.50
Cabbage	unit	10.60	10.35	12.40	13.00	11.45	6.55	8.80	6.50	5.00	5.05	5.20	7.50
Calabash	kg	8.75	10.30	8.55	8.25	7.90	10.40	10.35	12.30	10.60	9.05	6.30	5.00
Carrot	kg	26.20	23.00	17.95	17.50	18.75	13.50	17.90	13.40	10.00	8.90	10.05	10.31
Cauliflower	unit	-	-	-	-	25.30	15.60	20.90	15.30	14.20	16.45	22.50	23.75
Chillies (long)	kg	52.40	30.75	28.75	20.00	18.35	27.50	55.60	55.00	37.50	27.10	20.25	15.25
Chillies (small)	kg	76.75	86.25	56.50	26.75	30.35	56.30	81.75	93.15	95.00	60.25	50.75	47.10
Chouchou	kg	16.55	19.80	13.40	7.75	6.25	3.30	4.10	4.50	6.40	7.05	6.35	7.50
Cucumber	unit	10.15	10.90	10.15	6.95	7.10	6.20	11.50	8.75	8.40	7.60	5.10	3.60
Eddoes (violet)	kg	15.70	14.30	16.80	16.45	19.30	10.15	20.40	19.55	17.00	17.45	18.10	18.25
Eddoes (curry)	kg	11.30	14.00	15.80	13.70	14.40	18.55	14.45	15.25	13.65	13.00	13.00	12.00
Garlic (local)	kg	-	-	-	40.80	39.50	-	80.20	48.00	55.65	57.50	57.85	60.00
Ginger	kg	31.00	33.25	33.15	36.75	40.25	36.50	38.25	33.10	34.50	28.40	27.50	30.90
Green peas	kg	32.00	40.00	40.00	-	-	32.10	28.10	22.10	24.90	29.15	29.40	35.25

Table 4.21 - Retail prices of foodcrops, 1991 (cont'd)

(Rupees)

Foodcrops	Unit	January	February	March	April	May	June	July	August	September	October	November	December
Groundnut (fresh)	Kg	14.50	15.20	15.70	15.60	16.00	15.80	15.80	16.20	15.60	17.50	18.30	20.00
Groundnut (dry)	Kg	26.50	26.70	28.80	29.50	30.25	28.80	29.00	29.80	30.00	31.50	31.00	17.40
Leek	Unit	2.90	2.80	2.65	2.75	2.35	2.40	3.50	2.75	2.65	3.00	2.50	2.25
Lettuce	Unit	5.45	5.35	5.15	5.85	5.15	3.60	4.00	4.10	3.50	3.35	3.60	3.90
Ladies finger	Kg	27.55	28.95	27.20	19.05	14.65	18.00	27.85	29.75	33.00	34.30	31.60	26.95
Maize (grain)	Kg	17.30	15.50	6.00	6.00	6.00	5.50	5.50	5.50	5.50	5.20	-	-
Manioc	Kg	11.25	13.95	13.20	12.70	13.05	9.10	11.70	11.90	10.90	11.95	11.15	10.95
Onion (local)	Kg	8.00	6.00	-	8.00	8.00	8.00	8.00	8.00	8.00	8.00	8.00	8.00
Patole	Kg	11.80	13.15	11.00	10.30	8.15	11.00	14.90	15.05	13.40	13.90	11.00	9.05
Petsai	Unit	6.00	6.60	6.50	6.90	7.05	5.20	6.10	5.65	5.40	5.35	4.80	5.30
Pipengaille	Kg	16.00	15.90	12.65	8.20	7.00	11.30	16.30	16.30	17.20	19.00	14.50	13.55
Potato	Kg	5.00	5.00	5.00	5.00	5.00	3.50	5.00	5.00	5.00	5.00	5.00	5.00
Purpkin	Kg	7.30	9.55	10.95	10.95	9.65	6.75	9.60	10.50	10.55	9.75	8.30	6.85
Squash	Unit	4.55	6.10	6.50	6.00	5.30	4.30	5.45	4.65	5.00	4.00	3.00	3.10
Sweet pepper	Unit	2.35	2.85	3.40	2.35	2.40	2.20	2.85	2.70	2.70	2.30	2.35	1.90
Sweet potato	Kg	11.40	12.00	13.95	15.15	13.90	7.90	12.15	11.90	11.40	-	11.10	10.90
Tomato	Kg	23.70	39.05	42.40	40.70	27.17	18.70	10.80	14.40	17.80	15.50	17.95	15.25
Voehm	Kg	14.25	14.80	12.00	9.80	12.25	11.40	17.15	18.25	20.600	18.25	12.30	9.70

Table 4.22- Number of fruit trees^{1/} (bearing/non-bearing) grown in backyard
by species, 1985

	Number of fruit trees		
	Bearing	Non-bearing	Total
Banana	150,227	399,396	549,624
Mango	142,940	94,831	237,771
Pawpaw	130,609	78,802	217,491
Citrus	64,640	135,099	199,937
Lime	(14,623)	(35,302)	(49,925)
Lemon	(12,023)	(19,552)	(31,575)
Mandarine	(4,218)	(9,293)	(13,511)
Orange	(1,311)	(4,422)	(6,233)
Other Citrus	(32,165)	(66,528)	(98,693)
Guava	104,062	88,629	192,691
Coconut	42,175	84,337	126,512
Longane	53,250	50,272	103,522
Avocado	41,139	36,996	78,135
Pine apple	21,702	51,651	73,353
Jackfruit	30,076	14,565	45,441
Letchi	22,243	16,700	38,943
Fruit de Cithere	16,497	11,822	28,319
Atte	16,980	8,335	25,315
Coeur de boeuf	8,130	8,334	16,464
Corrosol	7,817	6,451	14,268
Grenadille	7,407	6,034	13,441
Breadfruit	9,586	2,491	12,077
Olive	5,667	5,284	10,951
Grapes	3,747	4,493	8,245
Tamarin	3,911	2,516	6,427
Other	110,004	87,715	197,799
T o t a l	1,002,020	1,194,756	2,196,776

1/ based on fruit trees survey March-April

[The page contains extremely faint and illegible text, likely bleed-through from the reverse side of the document. The text is arranged in several horizontal lines across the page, but the characters are too light to be transcribed accurately.]

LIVESTOCK

&

FISHERIES

Table 2.1 - Cattle population in the 11 districts, 1921 - 1973

Census Year	1921	1930	1940	1943	1950	1955	1964	1973	1979	1983
Number of cattle	44,339	25,925	24,269	34,443	37,213	40,074	45,683	41,094	21,090	25,405

Table 5.2 - Number of cattle, goats, sheep and pigs by sex and type of breeder (1983 Livestock Census)

Type of breeder	CATTLE		GOATS			SHEEP			PIGS		
	Male	Female	TOTAL	Male	Female	TOTAL	Male	Female	Male	Female	TOTAL
Small breeders	4,179	11,741	15,920	25,399	46,879	72,278	211	378	3,153	3,901	7,054
Large breeders	2,150	6,105	8,255	25	51	76	265	1,094	472	559	1,031
Livestock Breeding Station and Prison farm	266	1,044	1,310	113	229	342	27	62	257	256	513
T O T A L	5,595	18,890	25,485	25,537	47,159	72,696	503	1,534	3,882	4,716	8,598

Source: Veterinary Services, Ministry of Agriculture, Fisheries and Natural Resources

Table 5.3 - Regional distribution of small cattle breeders by herd size and number of cattle owned (1983 Livestock Census)

	No. of small breeder keeping			Total no. of small breeders	No. of cattle owned
	1 cattle	2 cattle	2 cattle		
1. Port Louis	466	323	143	932	1,683
2. Triolet	62	24	8	94	141
3. Pamplemousses	543	260	83	886	1,530
4. Goodlands	384	167	38	589	471
5. Rivière du Rempart	268	183	49	500	790
6. Mapou	132	102	21	255	401
7. Flacq	338	283	76	697	1,102
8. Brisée Verdière	363	253	78	694	1,134
9. Bel Air	273	237	68	578	960
10. Quartier Militaire	349	330	133	812	1,435
11. Moka	209	194	96	499	922
12. Black River	136	127	128	391	914
13. Black River (Albion)	83	92	53	228	462
14. Plaines Wilhems (lower)	192	167	48	407	693
15. Plaines Wilhems (upper)	321	290	114	725	1,276
16. Union Park	71	62	18	151	252
17. Rivière des Anguilles	82	68	28	178	325
18. New Grove	194	203	83	480	670
19. Plaisance	64	83	32	179	331
T O T A L	4,530	3,448	1,297	9,275	15,920

Source: Veterinary Services, Ministry of Agriculture, Fisheries and Natural Resources

Table 5.4 - Livestock slaughtered, 1987 - 1991

Type of livestock	1987		1988		1989		1990		1991	
	No. of heads	Carcass weight (M/tons)	No. of heads	Carcass weight (M/tons)	No. of heads	Carcass weight (M/tons)	No. of heads	Carcass weight (M/tons)	No. of heads	Carcass weight (M/tons)
<u>Cattle</u>	2,247	1,117.0	10,346	1,560.8	10,836	1,641.5	12,913	2,048.6	14,254	2,156.6
<u>Local</u>	6,467	994.2	5,183	779.9	3,603	531.2	2,591	399.0	2,744	457.6
<u>Milchbred</u>										
Bulls & Calves	1,963	241.8	2,080	231.3	1,541	174.8	1,149	132.7	962	115.2
Cows 2/	567	77.3	633	35.7	357	49.6	130	18.1	254	36.6
Other breeds	3,937	674.6	2,476	459.9	1,705	306.8	1,312	233.2	1,528	305.8
<u>Rodrigues</u>	1,422	193.4	1,401	178.7	446	57.7	451	60.9	683	86.3
<u>Imported</u>	1,358	229.4	2,162	602.9	6,787	1,052.6	9,871	1,593.7	10,927	1,612.7
<u>Goats</u>	23,428	136.2	22,765	137.9	15,892	101.1	14,752	133.0	16,942	164.3
Local and Rodrigues	23,428	136.2	22,766	137.9	15,478	95.2	9,566	61.8	10,336	63.2
Imported	-	-	-	-	414	5.9	5,186	72.0	6,606	50.1
<u>Sheep</u>	3,883	36.2	4,800	42.1	3,850	31.4	2,642	21.1	1,566	12.0
<u>Pigs</u>	13,460	732.3	13,138	659.9	12,697	659.0	11,949	829.5	13,017	905.6

1/ Abattoir slaughterers only

2/ Including Heifers

Source: Mauritius Meat Authority

Table 5.5 - Production ^{1/} of fish (in wet weight equivalent), 1982 - 1991

(tonnes)

	1982	1983	1984	1985	1986	1987	1988	1989	1990	1991
<u>High seas</u> ^{2/}	7,880	7,487	8,469	11,629	11,907	13,790	12,966	12,785	10,568	15,116
Local vessels	4,467	4,777	6,741	8,971	8,814	13,790	12,966	12,785	10,568	15,116
Foreign vessels	3,413	2,710	1,728	2,658	3,093	-	-	-	-	-
<u>Coastal Fishing</u>	1,754	2,070	2,075	2,034	2,062	2,297	2,469	2,494	2,587	2,518
Lagoon and off lagoon	1,054	1,370	1,375	1,334	1,362	1,597	1,519	1,544	1,637	1,568
Sport fishing	400	400	400	400	400	400	650	650	650	650
Amateur fishing	300	300	300	300	300	300	300	300	300	300
<u>Ponds and Barachois</u>	37	35	36	35	46	62	71	70	67	66
Total Production	9,671	9,592	10,580	13,698	14,015	16,149	15,506	15,349	13,222	17,700

^{1/} including fish caught by foreign vessels

^{2/} includes fish caught for the canning industry

Source : Ministry of Agriculture, Fisheries and Natural Resources

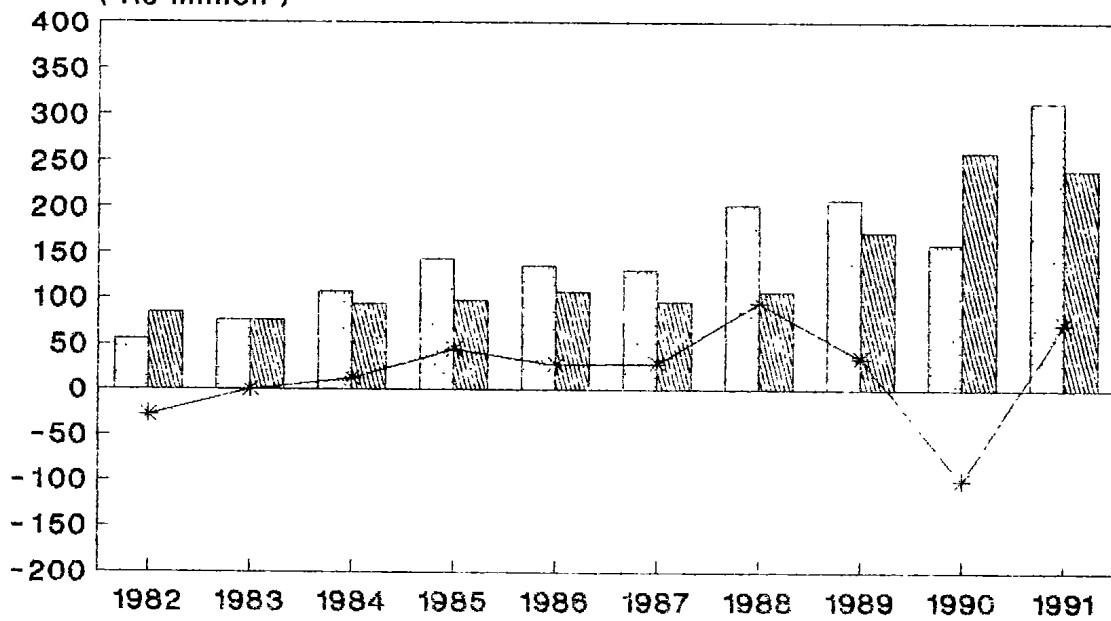
Table 5.6 - Exports and imports of fish and fish preparations, 1986 - 1991

(Rs Mn)

	1986	1987	1988	1989	1990	1991
Exports (F.O.B. Value)	135.2	130.3	202.1	208.0	159.6	312.9
Imports (C.I.F. Value)	107.4	95.7	107.0	172.2	259.7	240.7
Net exports	+27.8	+30.1	+95.1	+35.8	-100.1	+72.2

Fig. 16 - Exports & Imports of Fish 1982-1991

(Rs million)



□ Exports ▨ Imports * Net Exports

Table 5.7 - Catch from artisanal fishing by type, 1987 - 1991

	Tonnes				
	1987	1988	1989	1990	1991
Fin fish	1,328	1,293	1,374	1,435	1,384
Bony	(1,312)	(1,284)	(1,364)	(1,424)	(1,382)
Cartilaginous	(16)	(9)	(10)	(11)	(2)
Shell fish	32	13	15	19	10
Molluscs	237	173	155	183	174
Total	1,597	1,519	1,544	1,637	1,568

Table 5.8 - Number of professional and active fishermen by region and type, 1991

Region	Type	Basket trap	Line	Basket trap & line	Large net	Gill net	Other	Total
North and north west		286	210	109	170	21	6	802
West		105	200	28	109	28	10	480
South and South west		240	-	113	72	3	8	436
South east		23	74	305	119	38	4	563
East and north east		89	114	109	62	12	-	386
Total		743	598	664	532	102	28	2,667

Source : Ministry of Agriculture, Fisheries and Natural Resources

FOOD

BALANCE SHEET

Food Balance Sheet

General Notes

1. All data relate to the Island of Mauritius only (not its dependencies).
2. Quantity is in tonnes unless otherwise specified.
3. (a) Gross imports include imports from dependencies
(b) Gross exports include exports to dependencies
4. Estimated changes in stock:

A plus sign indicates that there has been a decrease in stock, that is an increase in supply. A negative sign would mean the converse.
5. Data on production of foodcrops may not tally with production data published in other sections since allowance has been made here for backyard production.
6. Local production of meat includes imported live animals slaughtered in Mauritius. Estimates for off-abattoir slaughters have been included.
7. Data on fish and crustaceans are given in terms of wet-weight equivalent.
8. As from 1989 onwards, population includes Mauritian residents and Mauritians residing abroad.

--*-*-*

Fig. 14 - Per capita consumption of selected commodities 1984 - 1991

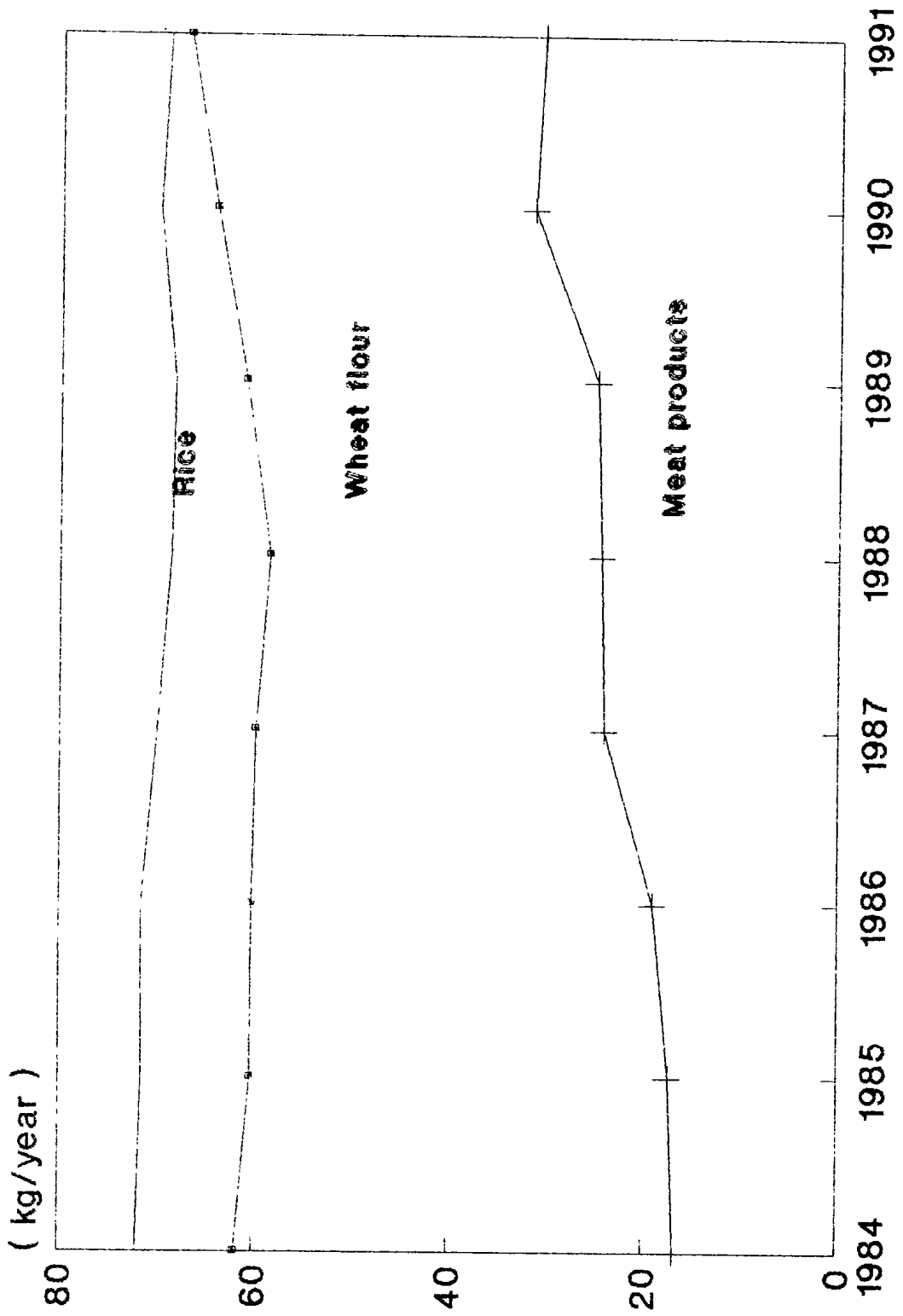


Table 6.1 - Per capita consumption of selected commodities, 1984 - 1991

Selected commodities	(Kgms/year)									
	1984	1985	1986	1987	1988	1989	1990	1991		
Wheat flour	61.04	60.31	60.19	59.78	58.38	60.94	64.05	66.85		
Milled rice	71.92	71.45	71.51	69.92	68.53	68.22	69.06	68.86		
Potatoes	10.93	21.93	18.23	20.51	17.50	20.46	19.74	21.70		
Sugar	36.27	35.38	35.91	36.48	35.92	34.92	35.91	36.87		
Fresh vegetable <u>1/</u>	27.60	28.01	29.59	21.61	26.52	32.82	30.03	36.06		
Oil and fats	19.67	19.07	20.53	21.35	23.13	12.07	22.99	24.61		
Milk fresh (litres)	9.22	10.59	10.90	11.31	12.52	13.39	10.85	10.90		
Milk (powdered) <u>2/</u>	9.62	8.95	8.55	9.25	11.05	11.02	10.30	9.47		
Pulses <u>2/</u>	7.13	9.01	8.23	11.36	10.61	7.93	13.73	9.42		
Eggs	3.68	3.01	2.55	3.74	4.29	4.75	4.88	4.97		
Meat and meat preparations <u>2/</u>	16.73	17.32	18.98	24.00	24.30	24.35	31.45	30.49		
Banana	4.62	6.89	7.49	7.52	7.45	4.34	5.70	5.94		
Other fresh fruits	2.95	2.65	3.20	4.21	5.22	6.57	6.21	7.53		
Fish and fish preparations <u>3/</u>	14.00	12.32	14.62	15.30	16.61	17.54	17.82	18.57		

1/ includes: beans, beet, brinjal, cabbage, carrot, cauliflower, green peas, leek, lettuce, ladies finger, patsai, tomato, and creepers

2/ no adjustment has been made for changes in stock

3/ wet weight equivalent

Table 6.2 - Per capita consumption of food commodities, 1988 - 1991

Commodity	1988		1989		1990		1991	
	Kgms P/year	Grams P/day	Kgms P/year	Grams P/day	Kgms P/year	Grams P/day	Kgms P/year	Grams P/day
<u>CEREALS</u>								
Wheat	-	-	-	-	-	-	-	-
Wheat/flour	58.30	159.51	60.94	166.96	64.05	174.40	66.85	185.15
Paddy/milled rice	60.53	167.24	68.22	186.90	69.86	189.53	68.86	188.66
Maize	0.99	2.70	1.08	2.96	1.09	2.96	1.16	3.18
Oats	0.04	0.11	0.03	0.08	0.02	0.05	0.05	0.14
Barley	-	-	-	-	-	-	-	-
Malt	0.10	0.27	-	-	-	-	-	-
Other cereals (Unmilled) <u>1/</u>	0.05	0.07	0.02	0.06	0.06	0.17	0.07	0.19
Other cereals (Flour)	0.51	0.84	0.34	0.93	0.65	1.77	0.14	0.38
Cereals preparations <u>2/</u>	2.95	8.01	4.06	11.16	4.03	10.91	2.00	5.48
<u>STARCHY-FOODS</u>								
Potatoes	17.50	47.81	20.46	56.05	19.74	53.57	21.70	59.45
Sweet potatoes	0.35	0.94	0.33	0.91	0.29	0.79	0.29	0.79
Cassava (Manioc)	0.30	0.81	0.20	0.56	0.19	0.50	0.18	0.49
Tapioca & Sago	0.31	0.86	0.14	0.39	0.16	0.43	0.34	0.93
Taro (Eddoes)	0.44	1.21	0.39	1.07	0.47	1.27	0.40	1.10

1/ includes wheat unmilled

2/ refers to prepared breakfast foods, macaroni and spaghetti, bakery products and other

Table 6.2 - Per capita consumption of food commodities in 1988-1991 (cont'd)

Commodity	1988		1989		1990		1991	
	Kgms P/year	Grams P/day	Kgms P/year	Grams P/day	Kgms P/year	Grams P/day	Kgms P/year	Grams P/day
<u>SUGARS</u>								
Cane sugar 1/	35.92	98.14	34.92	95.67	35.91	98.38	36.87	101.01
Other sugars	0.60	1.63	0.49	1.36	0.56	1.53	0.56	1.53
Sugar preparations	0.22	0.59	0.38	1.05	0.47	1.28	0.52	1.42
Honey	0.07	0.20	0.08	0.21	0.09	0.25	0.10	0.27
<u>PULSES, NUTS & SEEDS</u>								
Pulses 2/	10.61	28.99	7.93	21.73	13.73	37.62	9.42	25.81
Groundnuts (in shells or not)	1.58	4.32	1.78	4.88	2.08	5.70	1.90	5.21
Coconuts 3/	3.39	9.26	3.36	9.21	3.53	9.12	3.81	10.44
Other edible nuts	0.03	0.09	0.04	0.11	0.06	0.16	0.04	0.11
<u>VEGETABLES</u>								
Tomatoes	6.95	18.99	8.55	23.42	10.86	29.75	8.71	23.66
Other (fresh) 4/	19.57	53.47	24.27	66.49	27.17	74.44	27.35	74.93
Onion	6.14	16.78	6.11	16.74	5.88	16.11	7.99	21.89
Vegetable prepared or preserved	1.03	2.81	1.15	3.15	1.26	3.45	1.55	4.25

1/ includes raw and white sugar

2/ green peas and beans are accounted for as vegetables

3/ includes green and dried coconuts and copra for manufacturing

4/ excludes potatoes, tomatoes, onion, ginger, groundnuts, bananas, pineapples, garlic, manioc, sweet pepper, chillies, sweet potatoes, eddoes, rice and maize which are given separately

Table 6 - Per Capita Availability of Selected Commodities in L.S. - 1991 (cont'd.)

Commodity	1988		1989		1990		1991	
	Kgms P/year	Grams P/day	Kgms P/year	Grams P/day	Kgms P/year	Grams P/day	Kgms P/year	Grams P/day
<u>FRUITS</u>								
Fresh bananas	7.45	20.36	4.34	11.89	5.70	15.62	5.94	16.27
Fresh citrus	1.61	4.39	2.25	6.16	2.10	5.75	2.48	6.79
Fresh apples	1.43	3.90	1.98	5.42	2.29	6.27	2.88	7.89
Fresh pineapples	1.40	3.82	1.38	3.78	1.16	3.22	1.31	3.59
Fresh other ^{1/}	0.21	0.56	0.27	0.71	0.12	0.33	0.24	0.66
Fresh grapes	0.57	1.57	0.69	1.89	0.52	1.42	0.67	1.84
Dried grapes	0.12	0.32	0.11	0.31	0.18	0.49	0.09	0.25
Dried other	0.11	0.31	0.25	0.70	0.40	1.10	0.25	0.68
Preserved fruits	0.75	2.04	0.76	2.08	0.55	2.59	0.78	2.14
Fruit & vegetable juices	1.34	3.66	2.10	5.75	2.70	7.40	4.16	11.40
<u>MISCELLANEOUS</u>								
Ginger	0.19	0.52	0.34	0.95	0.57	1.56	0.41	1.12
Pepper, chillies, etc.	0.43	1.16	0.49	1.53	0.51	1.40	0.56	1.53
Garlic	0.56	1.52	1.00	2.74	0.60	1.64	0.70	1.92
Other spices	1.11	3.04	1.66	4.55	1.30	3.56	0.99	2.71
Cocoa/chocolate ^{2/}	0.40	1.10	0.53	1.42	0.60	1.64	0.55	1.50

^{1/} no estimate of local fruit production and consumption is available

^{2/} including food preparations containing cocoa

Table 5.2 - Per capita consumption of food commodities, 1968 - 1991 (cont'd)

Commodity	1988		1989		1990		1991	
	Kgms P/year	Grams P/day	Kgms P/year	Grams P/day	Kgms P/year	Grams P/day	Kgms P/year	Grams P/day
<u>MEAT</u>								
Cattle/meat	5.77	15.77	5.59	15.32	8.48	23.25	6.72	18.41
Goat & sheep/meat	2.09	9.26	2.85	7.75	2.73	10.22	5.13	14.05
Pigs/meat	0.76	2.08	0.68	1.86	0.80	2.19	0.78	2.14
Edible offals for the 4 above items	2.73	7.46	2.55	6.98	2.42	6.65	2.53	6.95
Poultry/meat	10.27	28.06	11.81	32.36	14.32	39.22	13.91	38.11
Rabbit	0.02	0.07	0.02	0.07	0.02	0.07	0.02	0.05
Game/meat	0.40	1.03	0.41	1.13	0.41	1.11	0.45	1.23
Bacon, ham and sausages	0.26	0.70	0.51	0.85	0.50	0.81	0.33	0.90
Meat preparations	0.67	1.83	0.77	2.11	0.85	2.33	0.48	1.32
Other/offals	0.11	0.29	0.10	0.27	0.12	0.35	0.14	0.38
<u>EGGS</u>								
Hen/eggs	4.29	11.72	4.75	13.01	4.88	13.37	4.97	15.62
<u>MILK</u>								
Fresh milk & cream	14.52	34.21	15.39	36.68	10.85	29.75	10.90	29.86
Fried milk exceeding 1.5% by wt. of fat	8.03	21.94	7.60	20.82	5.53	14.60	4.69	12.85
Dried milk not exceeding 1.5% by wt. of fat	3.02	8.25	3.42	9.37	4.97	13.61	4.78	13.10
Condensed milk	0.45	1.23	0.50	0.81	0.41	1.12	1.00	2.74
Milk/cheese	1.02	2.79	1.00	2.74	1.00	2.74	1.46	4.00

Table 6.2 - Per capita consumption of food commodities, 1989 - 1991 (continued)

Commodity	1988		1989		1990		1991	
	Kgms P/year	Grams P/day	Kgms P/year	Grams P/day	Kgms P/year	Grams P/day	Kgms P/year	Grams P/day
<u>FISH</u>								
Fresh or frozen	9.90	27.05	9.72	26.63	7.63	20.90	7.76	21.26
Other	4.95	13.52	5.81	15.92	7.66	20.99	8.65	23.70
<u>CNIDACEANS & MOLLUSCS</u>								
Fresh or frozen	0.45	1.23	0.67	1.84	0.79	2.16	0.87	2.38
Other	0.71	1.94	1.34	3.67	1.74	4.76	1.29	3.53
<u>OILS AND FATS</u>	23.13	60.20	22.07	60.47	22.99	62.99	24.61	67.42
<u>BEVERAGE CROPS</u>								
Tea	1.10	3.01	0.96	2.65	0.97	2.66	0.96	2.63
Coffee	0.11	0.29	0.21	0.58	0.17	0.45	0.19	0.52
<u>ALCOHOLIC BEVERAGES</u>								
(Hectolitres)	2.25	6.14	2.26	6.19	N.A	N.A	N.A	N.A
Spirits (100° GL)	(litres)	(c.c)	(litres)	(c.c)	(litres)	(c.c)	(litres)	(c.c)
Beer, cider and wine	31.52	86.15	31.68	86.79	32.67	89.51	33.69	92.30
	(litres)	(c.c)	(litres)	(c.c)	(litres)	(c.c)	(litres)	(c.c)

Table 6.3 - Food Balance Sheet, 1990
 Population at 30.6.90 = 1,024,571

(Figures in tonnes unless otherwise specified)

Commodity	Production		Estimated changes in stock	Gross Imports	Supply	Gross Exports	Total	Domestic Utilization						
	Input	Output						Feed	Seed	Manu- facture	Waste	Food		
<u>CEREALS</u>														
Wheat	-	-	- 5,123	94,595	89,467	-	89,467	-	-	-	-	-	-	-
Wheaten flour	89,467	69,847	- 3,000	6,053	67,900	1,600	66,300	-	-	-	675	-	65,625	-
Paddy/milled rice	-	-	- 3,725	80,525	76,800	4,500	72,300	-	-	-	725	-	71,575	-
Maize	-	2,265	+ 6,573	22,694	31,532	22	31,510	30,200	15	-	175	-	1,120	-
Oats	-	-	-	127	127	-	127	107	-	-	-	-	20	-
Barley	-	-	-	21	21	-	21	-	-	21	-	-	-	-
Malt	-	-	+ 169	3,886	4,055	-	4,055	-	-	4,055	-	-	-	-
Other Cereals (Unmilled)	-	-	-	134	134	-	134	70	-	-	-	-	64	-
Other Cereals	-	-	-	677	-	7	578	-	-	-	-	-	670	-
Cereals Preparations 1/	-	-	-	4,205	-	75	4,130	-	-	-	-	-	4,130	-
<u>STARCHY FOODS</u>														
Potatoes	-	19,070	+ 1,008	3,497	23,575	350	23,225	-	2,200	-	800	-	20,225	-
Sweet potatoes	-	325	-	-	325	-	325	25	-	-	-	-	300	-
Cassava (Manioc)	-	190	-	-	190	-	190	-	-	-	-	-	190	-
Tapioca & Sago 2/	-	-	-	162	162	-	162	-	-	-	-	-	162	-
Taro (Eddoes)	-	480	-	-	480	-	480	-	-	-	-	-	480	-

1/ refers to prepared breakfast foods, macaroni and spaghetti, bakery products and other

2/ new item, formerly included in preserved and prepared vegetables

Table 6.3 - Food Balance Sheet, 1990 (cont'd)

Commodity	Production		Estimated changes in stock	Gross Imports	Supply	Gross Exports	Domestic Utilisation										
	Input	Output					Total	Feed	Seed	Manu- facture	Waste	Food					
<u>SUGARS</u>																	
Cane/Sugar 1/	5,548,291	624,302	-7,507	7	616,702	579,537	-	37,165	-	-	-	370	36,795				
Other sugars	-	-	-	572	572	-	-	572	-	-	-	-	572				
Sugar preparations	-	-	-	505	505	20	-	485	-	-	-	-	485				
Honey	-	35	-	58	93	-	-	93	-	-	-	-	93				
<u>PULSES NUTS & SEEDS</u>																	
Pulses 2/	-	175	-	14,189	14,364	150	-	14,214	-	-	-	144	14,070				
Groundnuts (in shells or not)	-	1,755	-	478	2,233	-	-	2,233	-	100	-	-	2,133				
Coconuts 3/	-	2,300	-	1,200	3,500	10	-	3,490	-	-	-	80	3,410				
Other edible nuts	-	-	-	60	60	-	-	60	-	-	-	-	60				
<u>VEGETABLES</u>																	
Tomatoes	-	11,570	-	-	11,570	20	-	11,550	-	-	150	270	11,130				
Other (fresh) 4/	-	29,375	-	312	29,687	500	-	29,187	-	-	600	750	27,837				
Onions	-	2,635	-	3,542	6,177	5	-	6,172	-	-	-	150	6,022				
Vegetables prepared or preserved	-	600	-	737	1,337	47	-	1,290	-	-	-	-	1,290				

1/ Brown sugar and white sugar combined

2/ Green peas and beans are accounted for as vegetables

3/ Includes green and fried coconuts and copra for manufacturing

4/ Excludes potatoes, tomatoes, onion, ginger, groundnuts, bananas, pineapples, garlic, manioc, sweet pepper, chillies, sweet potatoes, edibles, rice, maize which are given separately

Table C.3... Food Balance Sheet, 1990 (cont'd)

Commodity	Production		Estimated changes in stock	Gross Imports	Supply	Gross Exports	Total	Domestic Utilization						
	Input	Output						Feed	Seed	Manu- facture	Waste	Food		
<u>FRUITS</u>														
Fresh bananas	-	6,135	-	-	6,135	-	6,135	-	-	-	300	5,835		
Fresh citrus	-	-	-	2,239	2,239	70	2,169	-	-	-	22	2,147		
Fresh apples	-	-	-	2,384	2,384	10	2,374	-	-	-	24	2,350		
Fresh pineapples	-	1,355	-	-	1,355	125	1,230	-	-	-	25	1,205		
Fresh other ^{1/}	-	-	-	473	473	350	123	-	-	-	-	123		
Fresh grapes	-	-	-	539	539	-	539	-	-	-	9	530		
Dried grapes	-	-	-	181	181	-	181	-	-	-	-	181		
Dried other	-	-	-	409	409	-	409	-	-	-	-	409		
Preserved fruits	-	154	-	856	1,010	40	970	-	-	-	-	970		
Fruit & vegetable juices	-	375	-	2,464	2,839	50	2,789	-	-	-	20	2,769		
<u>MISCELLANEOUS</u>														
Ginger	-	625	-	2	627	-	627	-	-	-	57	585		
Pepper, chillies, etc.	-	595	-	135	730	207	523	-	-	-	3	520		
Garlic	-	170	-	447	617	3	614	-	-	-	-	611		
Other spices	-	158	-	1,212	1,370	30	1,340	-	-	-	13	1,327		
Cocoa/chocolate ^{3/}	-	-	-	614	614	-	614	-	-	-	-	614		

^{1/} No estimate of local fruit production and consumption is available

^{2/} includes green chillies and sweet pepper

^{3/} including food preparations containing cocoa

Table 6.3 - Food Balance Sheet, 1990 (cont'd)

Commodity	Production		Estimated changes in stock	Gross Imports	Supply	Gross Exports	Domestic Utilization								
	Input	Output					Total	Feed	Seed	Manu- facture	Waste	Food			
<u>EAT</u>															
Cattle/meat	(H) 13,400*	2,125	-	7,150	9,275	325	8,950	-	-	175	90	8,685			
Goat & sheep/meat	(H) 25,400*	210	-	3,675	3,885	25	3,860	-	-	-	40	3,820			
Pigs/meat	(H) 12,600*	875	-	98	973	-	973	-	-	150	8	815			
Edible offals for the above 4 items	-	620	-	1,900	2,520	20	2,500	-	-	-	15	2,485			
Poultry/meat	-	12,500	-	2,279	14,779	100	14,679	-	-	-	10	14,669			
Rabbit	-	25	-	-	25	-	25	-	-	-	-	25			
Game/meat	-	450	-	-	450	30	420	-	-	-	-	420			
Bacon, ham and sausages	150	150	-	157	307	-	307	-	-	-	-	307			
Meat preparations	175	150	-	970	1,120	250	870	-	-	-	-	870			
Other/offals	-	125	-	-	125	-	125	-	-	-	-	125			
<u>EGGS</u>															
Hen/eggs	-	5,675	-	17	5,692	50	5,642	-	575	-	67	5,000			
<u>MILK</u>															
Fresh milk & cream	-	11,000	-	200	11,200	30	11,170	-	-	-	50	11,120			
Dried milk exceeding 1.5% by wt. of fat	-	-	-	5,741	5,741	250	5,491	-	-	-	25	5,466			
Dried milk not exceeding 1.5% by wt. of fat	-	-	-	5,217	5,217	100	5,117	-	-	-	25	5,092			
Condensed milk	-	-	-	438	438	15	423	-	-	-	-	423			
Milk/cheese	-	-	-	1,068	1,068	30	1,038	-	-	-	10	1,028			

) No. of heads

includes live animals slaughtered in Mauritius

/ for hatching purposes

6.3 - Food Balance Sheet, 1991 (cont'd)

Commodity	Production		Estimated changes in stock	Gross Imports	Supply	Gross Exports	Domestic Utilization										
	Input	Output					Total	Feed	Seed	Manufacture	Other	Food					
<u>FISH</u>																	
Fresh or frozen	-	12,935	-109	7,668	20,494	42	20,452	-	-	12,632	-	-	-	7,820			
Other	12,632	11,560	-1,797	4,499	14,352	6,500	7,852	-	-	-	-	-	-	7,852			
<u>CRUSTACEANS & MOLLUSCS</u>																	
Fresh or frozen	-	47	-	768	815	7	808	-	-	-	-	-	-	808			
Other	-	-	-	1,787	1,787	-	1,787	-	-	-	-	-	-	1,787			
<u>OILS AND FATS</u>																	
TEA	18,400	21,161	504	21,236	42,901	700	42,201	-	-	18,400	-	246	-	23,555			
COFFEE	29,611	5,751	-281	7	5,477	4,470	1,007	-	-	-	-	10	-	997			
<u>ALCOHOLIC BEVERAGES</u>																	
(Hectolitres)	N.A.	N.A.	-	3,291	N.A.	1,700	N.A.	-	-	-	-	-	-	N.A.			
Molasses/spirits	-	341,600	-250	9,882	351,232	16,500	334,732	-	-	-	-	-	-	334,732			

Population at 30.6.91 = 1,635,507

(Figures in tonnes unless otherwise specified)

Commodity	Production		Estimated changes in stock	Gross Imports	Supply	Gross Exports	Domestic Utilization								
	Input	Output					Total	Feed	Seed	Manu- facture	Was.c	Food			
CEREALS															
Wheat	-	-	+5,828	63,354	61,182	-	69,182	-	-	-	69,182	-	-	-	-
Wheaten flour	69,182	53,983	-855	18,417	71,545	1,600	69,945	-	-	-	-	700	-	69,245	-
Paddy/milled rice	-	7	-	76,285	76,292	4,250	72,042	-	-	-	-	720	-	71,322	-
Maize	-	2,120	-1,206	35,787	36,701	36	36,665	35,250	15	-	-	200	-	1,200	-
Oats	-	-	-	315	315	-	315	265	-	-	-	-	-	50	-
Barley	-	-	-	11	11	-	11	-	-	-	11	-	-	-	-
Malt	-	-	-187	4,531	4,344	-	4,344	-	-	-	4,344	-	-	-	-
Other Cereals (Unmilled)	-	-	-	148	148	2	146	76	-	-	-	-	-	70	-
Other Cereals	-	-	-	840	840	95	745	585	-	-	-	10	-	150	-
Cereals Preparations ^{1/}	-	-	-	2,156	2,156	85	2,071	-	-	-	-	-	-	2,071	-
STARCHY FOODS															
Potatoes	-	17,095	+600	8,157	25,852	450	25,402	-	2,130	-	-	800	-	22,472	-
Sweet potatoes	-	340	-	-	340	-	340	35	-	-	-	-	-	305	-
Cassava (Manioc)	-	190	-	-	190	-	190	-	-	-	-	-	-	190	-
Tapioca & Sago ^{2/}	-	-	-	354	354	-	354	-	-	-	-	-	-	354	-
Taro (Eddoes)	-	410	-	-	410	-	410	-	-	-	-	-	-	410	-

1/ refers to prepared breakfast foods, macaroni and spaghetti, bakery products and other

2/ new item, formerly included in preserved and prepared vegetables

Table 6.4 - Food Balance Sheet, 1991 (cont'd)

Commodity	Production		Estimated changes in stock	Gross Imports	Supply	Gross Exports	Domestic Utilization								
	Input	Output					Total	Feed	Seed	Manu- facture	Waste	Food			
<u>SUGARS</u>															
Cane/sugar ^{1/}	5,621,103	611,340	-19,823	2	591,519	552,942	38,577	-	-	-	-	385	38,192		
Other sugars	-	-	-	580	580	-	580	-	-	-	-	-	580		
Sugar preparations	-	-	-	571	571	27	544	-	-	-	-	-	544		
Honey	-	40	-	66	106	-	106	-	-	-	-	-	106		
<u>PULSES NUTS & SEEDS</u>															
Pulses ^{2/}	-	125	-	9,930	10,055	200	9,855	-	-	-	-	100	9,755		
Groundnuts (in shells or not)	-	1,380	-	686	2,066	1	2,065	-	-	100	-	-	1,965		
Coconuts ^{3/}	-	2,200	-	1,828	4,028	-	4,028	-	-	-	-	78	3,950		
Other edible nuts	-	-	-	54	54	16	38	-	-	-	-	-	38		
<u>VEGETABLES</u>															
Tomatoes	-	9,385	-	-	9,385	25	9,385	-	-	-	125	235	9,025		
Other (fresh) ^{4/}	-	30,100	-	80	30,180	500	29,680	-	-	-	600	750	28,330		
Onions	-	2,960	+360	5,157	8,477	5	8,477	-	-	-	-	200	8,277		
Vegetables prepared or preserved	-	625	-	982	1,607	30	1,604	-	-	-	-	-	1,604		

1/ brown sugar and white sugar combined

2/ green peas and beans are accounted for as vegetables

3/ includes green and dried coconuts and copra for manufacturing

4/ excludes potatoes, tomatoes, onion, ginger, groundnuts, bananas, pineapples, garlic, manioc, sweet pepper, chillies, sweet potatoes, eddoes, rice, maize which are given separately

Table 6.4 - Food Balance Sheet, 1991 (cont'd)

Commodity	Production		Estimated changes in stock	Gross Imports	Supply	Gross Exports	Domestic Utilization								
	Input	Output					Total	Feed	Seed	Manu- facture	Waste	Food			
FRUITS															
Fresh bananas	-	6,490	-	-	6,490	15	6,475	-	-	-	-	325	6,150		
Fresh citrus	-	-	-	2,723	2,723	125	2,598	-	-	-	-	30	2,568		
Fresh apples	-	-	-	3,030	3,030	15	3,015	-	-	-	-	30	2,985		
Fresh pineapples	-	1,400	-	-	1,400	100	1,300	-	-	-	-	27	1,353		
Fresh other ^{1/}	-	N.A.	-	649	649	400	249	-	-	-	-	-	249		
Fresh grapes	-	-	-	706	706	1	705	-	-	-	-	10	695		
Dried grapes	-	-	-	94	94	-	94	-	-	-	-	-	94		
Dried other	-	-	-	259	259	-	259	-	-	-	-	-	259		
Preserved fruits	-	175	-	807	982	175	807	-	-	-	-	-	807		
Fruit & vegetables juices	-	400	-	3,994	4,394	50	4,344	-	-	-	-	30	4,314		
MISCELLANEOUS															
Ginger	-	460	-	1	461	-	461	-	-	31	-	5	425		
Pepper, chillies, etc.	-	605	-	103	788	200	588	-	-	-	-	3	585		
Garlic	-	140	-	583	723	-	723	-	-	3	-	-	720		
Other spices	-	175	-	920	1,095	60	1,035	-	-	-	-	10	1,025		
Cocoa/chocolate ^{3/}	-	-	-	568	568	-	568	-	-	-	-	-	568		

^{1/} No estimate of local fruits production and consumption is available

^{2/} includes green chillies and sweet pepper

^{3/} including food preparations containing cocoa

Commodity	Production		Estimated changes in stock	Gross Imports	Supply	Gross Exports	Domestic Utilization								
	Input	Output					Total	Feed	Seed	Manu- facture	Waste	Food			
<u>MEAT</u>															
Cattle/Meat	(H) 14,810*	2,250	-	5,125	7,375	100	7,275	-	-	240	75	6,960			
Goat & Sheep/Meat	(H) 28,500*	238	-	5,151	5,389	25	5,364	-	-	-	54	5,310			
Pigs/meat	(H) 13,600*	945	-	58	1,003	15	988	-	-	175	6	807			
Edible offals for the above 4 items	-	550	-	2,009	2,659	20	2,639	-	-	-	17	2,622			
Poultry meat	-	13,250	-	1,271	14,521	100	14,421	-	-	-	15	14,406			
Rabbit	-	25	-	-	25	-	25	-	-	-	-	25			
Game meat	-	475	-	-	475	5	470	-	-	-	-	470			
Bacon, ham and sausages	175	175	-	183	358	10	348	-	-	-	-	348			
Meat preparations	240	200	-	601	601	300	501	-	-	-	-	501			
Other offals	-	150	-	-	150	-	150	-	-	-	-	150			
<u>EGGS</u>															
Hen/eggs	-	5,350	-	19	5,369	50	5,819	-	600	-	69	5,150			
<u>MILK</u>															
Fresh milk & cream	-	10,300	-	1,072	11,372	30	11,342	-	-	-	50	11,292			
Dried milk exceeding 1.5% by wt. of fat	-	-	-	5,134	5,134	250	4,884	-	-	-	24	4,860			
Dried milk not exceeding 1.5% by wt. of fat	-	-	-	5,053	5,053	75	4,978	-	-	-	24	4,954			
Condensed milk	-	-	-	1,046	1,046	15	1,031	-	-	-	-	1,031			
Milk/cheese	-	-	-	1,560	1,560	35	1,525	-	-	-	15	1,510			

(H) No. of heads * for hatching purposes † includes imported live animals slaughtered in Mauritius

Table 6. Exports and Imports (cont'd)

Commodity	Production		Estimated changes in stock	Gross Exports	Supply	Gross Exports	Total	Domestic Utilization						
	Input	Output						Feed	Seed	Manu- facture	Waste	Food		
<u>FISH</u>														
Fresh or frozen	-	-16,904	-1,592	9,485	24,795	56	24,739	-	-	16,702	-	8,037		
Other	16,702	15,115	+139	5,020	20,274	11,311	8,965	-	-	-	-	8,965		
<u>FRUIT, VEGETABLES & MOLLUSCS</u>														
Fresh or frozen	-	64	-	840	904	4	900	-	-	-	-	900		
Other	-	-	-	1,555	1,355	-	1,355	-	-	-	-	1,355		
OLL. AND FATS	22,317	24,255	-1,217	16,695	49,715	750	48,965	-	-	22,317	1,160	25,488		
N.A.	50,502	5,918	-242	10	5,686	4,555	1,151	-	-	-	155	996		
COFFEES	-	-	-	193	193	1..	192	-	-	-	-	192		
<u>ALCOHOLIC BEVERAGES</u> (Hectolitres)														
Molasses, spirits, LCC GL	N.A.	N.A.	-	2,452	N.A.	1,725	N.A.	-	-	-	-	N.A.		
Beer, Cider & Wine	-	555,500	-1,250	11,866	566,116	17,100	549,016	-	-	-	-	349,016		

MISCELLANEOUS

Table 7.1 - Total area 1/ classified by utilization

	1986	
	Hectares	%
Agriculture	<u>90,000</u>	<u>48</u>
Sugar cane	83,625	45
Tea	3,775	2
Tobacco, vegetable and other crops	2,600	1
Forests, scrub area, grasslands and grazing lands	<u>65,400</u>	<u>35</u>
Forests plantation	6,775	4
Forest, natural	2,387	1
Savannahs, grasslands, meadows, etc.	7,438	4
Scrub and other forest lands	48,800	26
Reservoirs and ponds	<u>1,180</u>	<u>1</u>
Swamps and rocks	<u>1,430</u>	<u>1</u>
Roads (including roads and footpaths in sugarcane and tea plantations)	<u>3,465</u>	<u>2</u>
Built-up areas	<u>25,000</u>	<u>13</u>
Total island	186,475	100

1/ based on the findings of the UNDP -- FAO Land and Water Resources Survey team working on aerial photographs of the island taken at the end of 1965 and supplemented to some extent with data from administrative sources for the year 1986

Fig. 18 - Land utilization - 1986

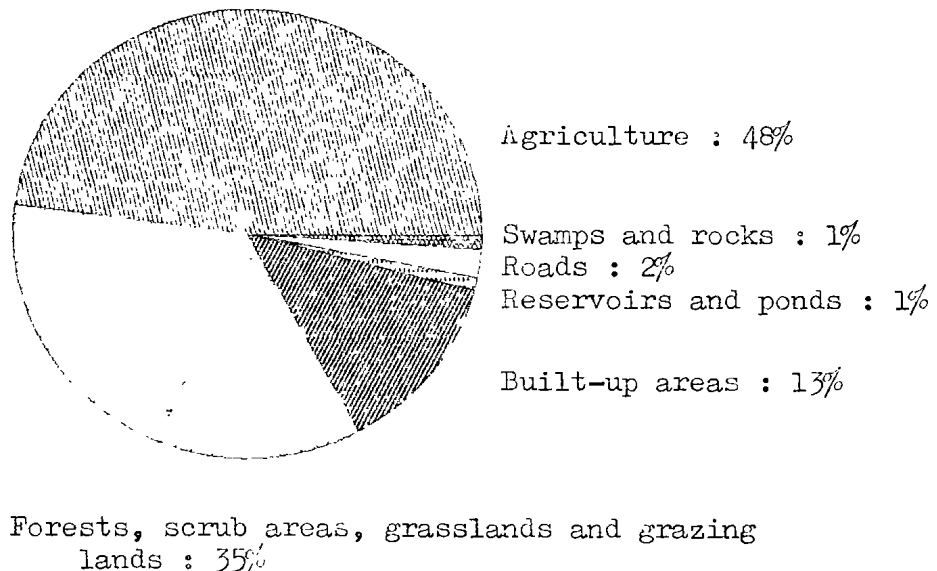


Table 7.2 - Effective area under cultivation, 1987 - 1991

	<u>Hectares</u>				
	1987	1988	1989	1990	1991
Sugar cane	83,353	83,102	82,418	82,352	82,015
Tea	3,661	3,385	3,070	2,905	2,870
Tobacco	634	755	795	632	653

Table 7.3 - Land under irrigation - December, 1984

Region	<u>Hectares</u>			
	Overhead	Surface	Drip	Total
North	3,844	836	63	4,743
East	935	591	-	1,526
Centre	633	532	-	1,165
West	1,245	3,758	170	5,173
South	2,826	490	75	3,391
Total 1984	9,483	6,207	308	15,998
Total 1983	8,425	5,434	313	14,172

Source : Irrigation Authority

Table 7.4 - Imports of agricultural and food products, 1967 - 1991

(C.I.F. Value in Rs Million)

Description of product	1987	1988	1989	1990	1991
1. Live animals (cattle)	14.7 (8.0)	13.6 (9.2)	36.0 (30.0)	57.4 (42.9)	64.3 (51.8)
2. Meat and meat preparations (Meat and edible meat offals, fresh, chilled or frozen)	204.6 (103.9)	211.5 (104.6)	240.2 (207.4)	329.4 (203.2)	362.6 (206.1)
(Meat and edible meat offals prepared or preserved)	(20.7)	(26.9)	(32.8)	(46.2)	(76.5)
3. Dairy products and eggs (Milk and cream)	254.0 (195.5)	332.6 (254.9)	472.8 (306.3)	512.5 (415.1)	545.0 (419.1)
(Butter, ghee, cheese & curd)	(59.2)	(77.4)	(86.2)	(97.1)	(126.4)
4. Fish, crustaceans, molluscs and preparation thereof	95.7 (42.2)	107.0 (34.2)	172.2 (55.1)	259.7 (142.3)	240.9 (109.2)
(Fish - fresh, chilled and frozen)	(12.5)	(5.3)	(3.0)	(2.9)	(4.6)
(Fish - dried, salted, smoked)	(25.2)	(41.5)	(50.4)	(68.9)	(62.9)
(Fish, crustaceans and molluscs - prepared and otherwise preserved)					

Table 7.4 - Imports of agricultural and allied products, 1987 - 1991 (cont'd)

Description of product	(C.I.F. Value in Rs Million)					
	1986	1987	1988	1989	1990	1991
5. Cereals and cereal preparations	445.6	506.9	621.0	851.7	736.8	703.5
(Rice)	(162.8)	(209.2)	(299.5)	(412.0)	(401.2)	(315.7)
(Maize)	(32.8)	(42.6)	(38.1)	(73.8)	(54.6)	(84.2)
(Wheat flour)	(198.7)	(189.3)	(218.1)	(161.9)	(41.9)	(75.8)
(Cereal preparations)	(46.5)	(61.8)	(58.6)	(83.4)	(95.4)	(104.9)
6. Vegetables and fruits	113.1	178.2	200.4	256.3	288.8	371.1
(Potatoes)	(6.7)	(22.0)	(20.0)	(25.3)	(20.6)	(41.4)
(Pulses)	(53.9)	(76.3)	(58.7)	(73.4)	(95.6)	(90.7)
(Fruits and nuts, fresh or dried)	(28.5)	(37.3)	(49.0)	(20.3)	(87.8)	(115.2)
(Fruit preserved and fruit preparations)	(6.7)	(10.9)	(12.0)	(14.3)	(18.1)	(18.3)
7. Sugar (sugar preparations and honey)	13.6	16.6	26.5	28.7	32.7	44.9

Table 7.4 - Imports of agricultural and food products, 1987 - 1991 (continued)

(C.I.F. Value in Rs Million)

	1987	1988	1989	1990	1991
8. Coffee, tea, cocoa, spices and manufactured thereof (Chocolate and food preparations containing cocoa) (Spices)	53.0 (15.6) (36.4)	55.6 (16.9) (24.7)	65.6 (28.6) (25.2)	70.6 (31.6) (22.0)	74.8 (34.8) (24.1)
9. Feeding stuff for animals	54.5	71.5	90.0	88.7	91.5
10. Miscellaneous food preparations	59.0	80.5	108.8	149.9	164.7
11. Beverages and tobacco (Non-alcoholic beverages n.e.s.) (Alcoholic beverages) (Tobacco, manufactured) (Tobacco unmanufactured)	57.4 (6.9) (42.7) (3.4) (5.7)	66.1 (7.0) (47.7) (4.6) (6.8)	74.8 (5.7) (54.8) (5.7) (8.1)	89.5 (7.6) (74.4) (5.0) (2.4)	112.7 (18.6) (80.1) (9.4) (4.7)
12. Vegetable oils and fats	100.2	120.6	181.6	214.6	251.3
Total agricultural and food products	1,613.6	1,922.9	2,578.7	2,880.6	3,020.2
Total imports	13,042.5	17,247.0	20,217.1	24,018.7	24,650.0
Total imports of agriculture and food products %	12.4	11.1	12.8	12.0	12.3
Total imports					

Table 7.5 - Imports of selected items (Quantity), 1987 - 1991

I t e m s	Tonnes				
	1987	1988	1989	1990	1991
1. Rice	84,138	72,323	90,774	80,525	76,205
2. Maize	25,667	21,180	32,580	22,694	35,707
3. Wheat flour	58,195	58,993	33,563	6,053	18,417
4. Pulses	11,589	8,710	8,014	14,189	9,930
5. Fruits (fresh & dried)	3,769	5,713	8,373	8,112	9,345
6. Coffee	151	262	220	234	193
7. Cocoa/chocolate	299	409	496	614	500
8. Vegetable oils & fats	18,670	21,657	22,332	21,625	27,306
9. Cattle* (live)	1,694	2,500	6,882	9,953	12,690
10. Meat & edible meat offals (fresh, chilled or frozen)	12,561	11,511	10,761	15,110	13,620
11. Meat & edible meat offals (prepared or preserved)	660	777	881	1,140	1,843
12. Milk and cream	10,519	12,072	11,999	11,621	12,355
13. Butter, ghee, cheese & curd	2,121	2,398	2,316	2,102	2,534
14. Fish, crustaceans & molluscs (fresh, chilled and frozen)	3,475	2,911	3,879	8,403	6,441
15. Fish, crustaceans & molluscs (dried, salted and smoked)	752	636	461	212	113
16. Fish, crustaceans & molluscs (prepared or otherwise preserved)	1,245	2,480	2,250	2,489	3,027

* Number of heads

Table 7.6 - Imports of major agricultural inputs and machinery, 1987 - 1991

Commodities	(Quantity in metric tons, C.I.F. Value in Rs 000)									
	1987		1988		1989		1990		1991	
	Quantity	Value	Quantity	Value	Quantity	Value	Quantity	Value	Quantity	Value
Fertilizers	53,632	77,794	40,467	24,209	60,794	127,029	61,473	129,189	47,414	119,009
Insecticides	434	24,413	349	20,925	297	23,059	354	27,049	275	26,417
Fungicides	153	7,095	155	8,463	112	7,304	167	13,446	116	9,150
Weedkillers	780	43,155	694	41,762	735	53,060	991	79,504	702	60,920
Agricultural machinery	N.A.	65,706	N.A.	109,749	N.A.	135,000	N.A.	N.A.	N.A.	N.A.

Table 7.7 - Consumption fertilizers, 1985 - 1991

(tonnes)

Year	Product weight	Nutrients contents		
		N	P ₂ O ₅	K ₂ O
1985	72,949	10,464	4,430	13,824
1986	68,228	11,075	3,696	13,737
1987	69,772	11,307	4,192	13,942
1988	66,554	10,983	4,072	12,803
1989	71,533	10,345	4,224	14,350
1990	68,547	11,426	5,609	11,972
1991	67,418	11,602	3,832	12,520

Fig. 19 - Consumption of fertilisers 1977-1991
(nutrients content N, P₂O₅, K₂O)

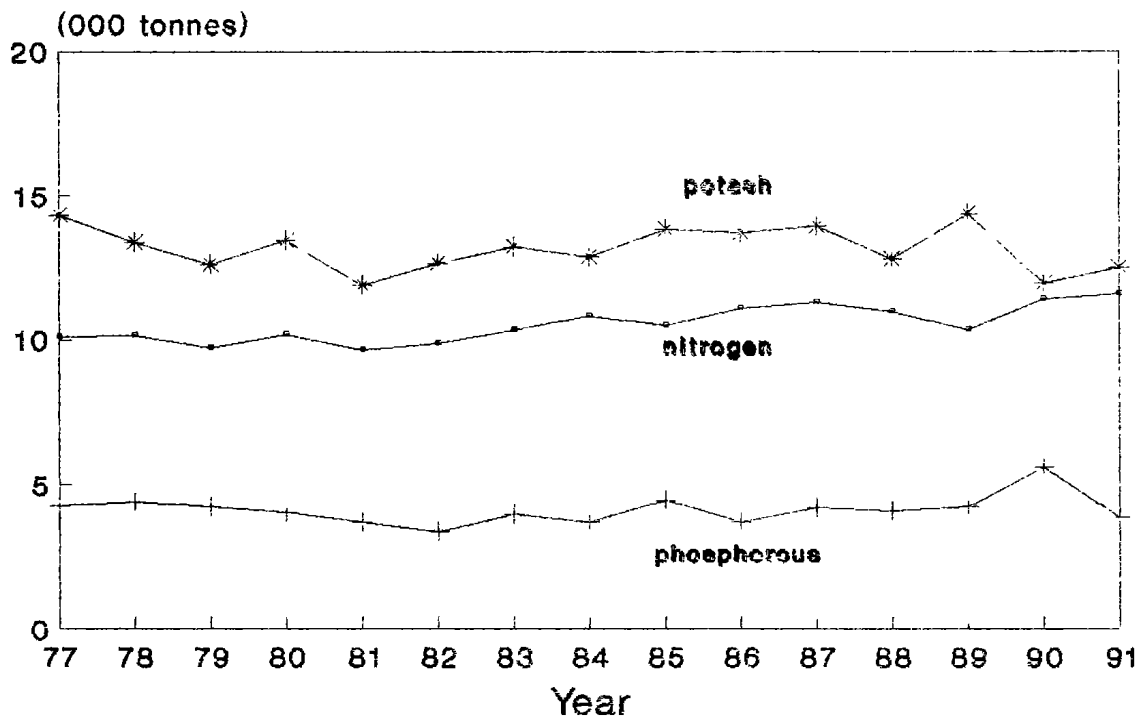


Fig. 20 - Price Index of Fertilizers 1982-1991
(base year 1981=100)

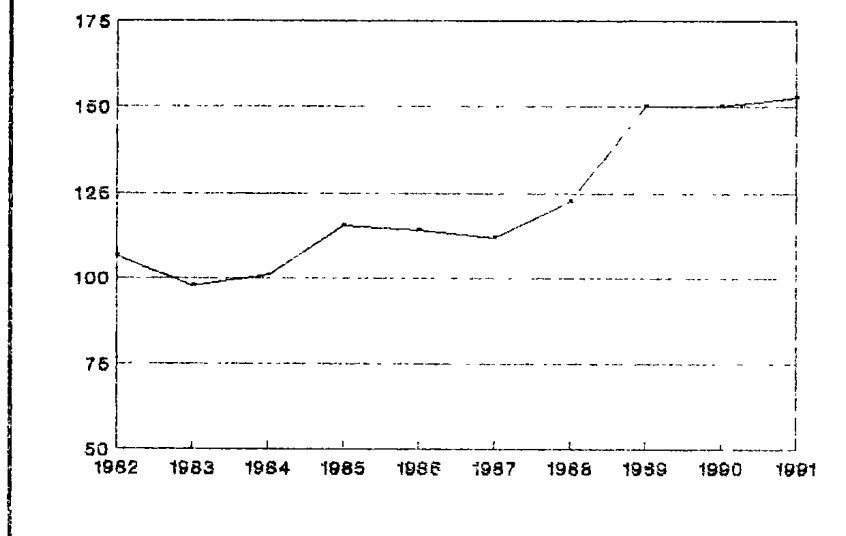


Table 7.8 - Average price^{1/} of fertilisers, 1987 - 1991

Fertilizers	(Rupees/tonne)				
	1987	1988	1989	1990	1991
<u>Straight fertilizers</u>					
Ammonium Nitrate Solution	-	-	-	-	-
Di-Ammonium Phosphate	5,275	5,660	6,895	6,895	7,010
Triple Superphosphate	3,562	3,900	4,720	4,720	4,795
Muriate of Potash	2,340	2,620	3,230	3,230	3,265
Ammonium Sulphate	1,790	1,955	2,400	2,400	2,445
Single Superphosphate	2,431	2,675	3,275	3,275	3,330
Sulphate of Potash	3,815	4,350	5,500	5,500	5,592
Potassium Nitrate	6,000	7,000	8,600	8,620	8,755
Urea	3,315	-	-	-	-
Calcium Ammonium Nitrate	2,250	2,600	3,100	3,110	3,182
<u>Complex Fertilizers</u>					
17-8-25	3,075	3,325	4,070	4,070	4,138
17-2-27	2,800	3,030	3,730	3,730	3,772
13-13-20 + 2Mg O	3,025	3,275	4,010	4,010	4,071
22.5-7.5-7.5	2,925	3,175	3,900	3,900	3,965
Price Index (1981 = 100)	112.0	122.6	150.1	150.2	152.7

^{1/} actual price paid by farmers

Fig. 21 - Monthly rainfall 1990-1991
(difference from normal, all districts)

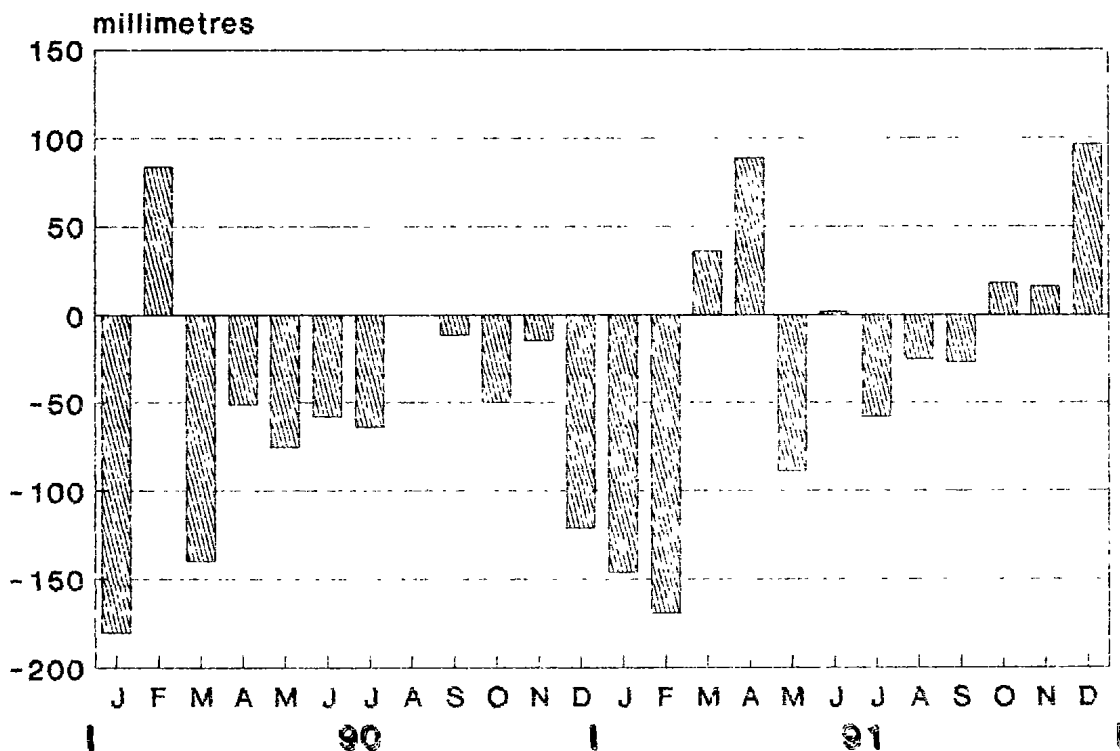


Fig. 22 - Monthly temperatures 1990-1991
(departure from normal, Plaisance)

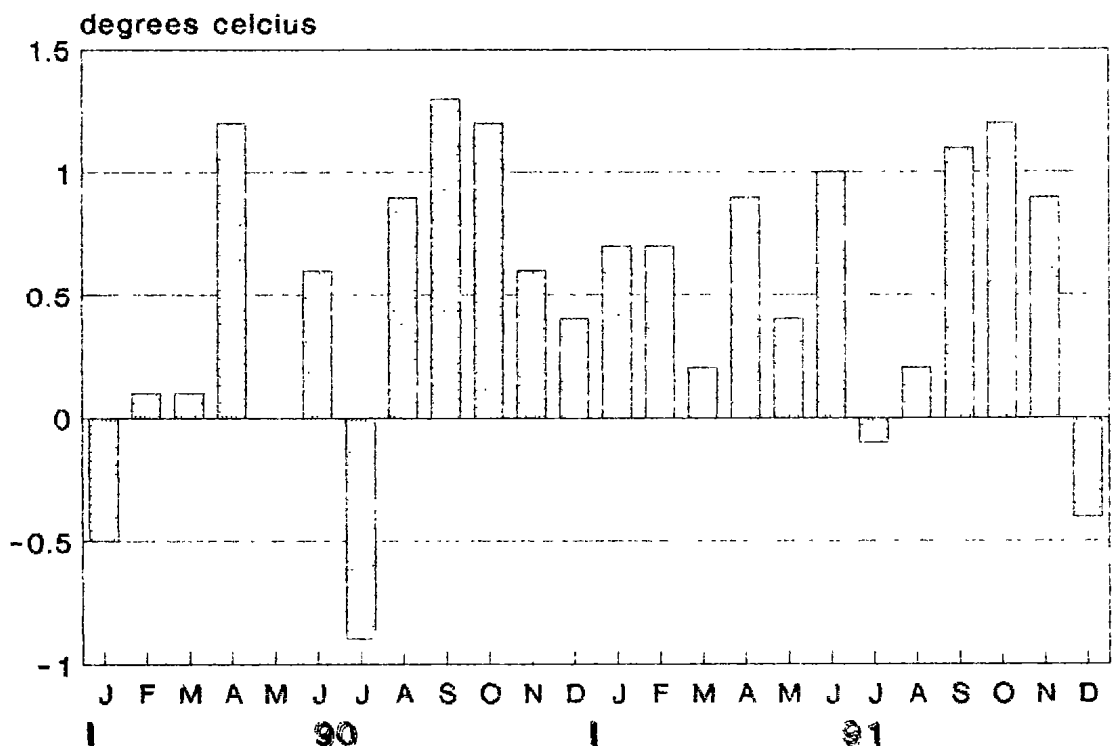


Table 7.9 - Monthly rainfall for the four major districts, 1971

(Millimetres)

Period	West		North		East		South		Centre		All Districts	
	Amount	Difference From Normal	Amount	Difference From Normal	Amount	Difference From Normal	Amount	Difference From Normal	Amount	Difference From Normal	Amount	Difference From Normal
January	99	+ 75	81	-137	150	-164	161	-141	145	-189	132	-146
February	59	-127	81	-143	144	-200	143	-169	196	-170	128	-169
March	154	+ 35	116	- 63	356	+ 65	401	+123	213	- 47	279	+ 36
April	109	+ 14	240	+ 74	371	+100	406	+127	258	+ 46	316	+ 89
May	3	- 33	31	- 64	87	-109	85	-113	50	- 68	61	- 89
June	17	- 15	77	- 5	140	- 9	155	+ 11	135	+ 26	119	+ 2
July	8	- 13	31	- 44	61	- 85	94	-166	74	- 42	51	- 58
August	7	- 13	44	- 24	108	- 23	116	- 26	74	- 44	83	- 25
September	6	- 11	23	- 23	52	- 42	75	- 21	44	- 32	47	- 27
October	28	+ 8	33	- 9	110	+ 15	143	+ 50	75	+ 5	91	+ 18
November	27	- 12	83	+ 25	144	+28	141	+ 22	66	- 25	110	+ 16
December	86	- 44	39	-110	114	-146	203	- 42	99	-139	119	- 96
Total year	603	-286	879	-529	1837	-570	2,128	-245	1,434	-679	1,546	-449

Source : Meteorological Services

Table 7.11 - Monthly temperatures, 1991

(Degrees Celsius)

Period	VACCAS (CENTRE) * 424 metres A.M.S.L.				PLAISANCE (COASTAL REGION SOUTH) 58 metres A.M.S.L.*			
	M A X I M U M		M I N I M U M		M A X I M U M		M I N I M U M	
	Mean	Departure from Normal	Mean	Departure from Normal	Mean	Departure from Normal	Mean	Departure from Normal
January	28.5	+1.2	21.0	+0.7	31.5	+2.1	23.3	+0.7
February	28.5	+1.0	20.9	+0.3	30.2	+0.8	23.5	+0.7
March	27.9	+0.6	20.7	+0.3	29.7	+0.6	22.8	+0.2
April	25.9	-0.4	19.9	+0.4	28.0	-0.1	22.5	+0.9
May	25.0	+0.4	17.1	-0.4	26.5	0.0	20.2	+0.4
June	22.7	-0.2	16.1	+0.2	24.7	-0.4	19.3	+1.0
July	21.4	-0.5	14.5	-0.7	23.7	-0.5	17.7	-0.1
August	21.9	+0.3	15.1	+0.2	24.1	+0.2	17.7	+0.2
September	23.5	+0.9	16.1	+0.8	25.7	+0.9	18.9	+1.1
October	24.3	+0.4	17.7	+1.2	26.5	+0.4	20.1	+1.2
November	25.9	+0.2	18.7	+0.9	28.1	+0.3	21.1	+0.9
December	26.8	-0.2	19.0	-0.4	28.8	+0.2	21.3	+0.4

* Above mean sea level

Source : Meteorological services